

Introduction

Overview

The Parts List section provides exploded view illustrations of all spared subsystem components and a listing of the corresponding part numbers. The illustrations show the relationships between parts.

Organization of this Section

The following elements make up the Parts List section:

Parts Lists (PL)

Each item number in the part numbers listing corresponds to an item number in the illustration. All the parts in a given subsystem of the machine will be located in the same illustration or in a series of associated illustrations. The parts which are not spared are indicated by “- -” in the Part column.

Exploded View Illustrations

An item that is called out on an illustration has a corresponding listing within this section.

Components are given item numbers that correspond to the part number listings.

Hardware items are lettered. All hardware dimensions are in millimeters unless otherwise noted.

Assemblies and kits are a combination of several separate components. A bracket is used on the illustration when an assembly or kit is spared but is not shown. The item number of the assembly or kit precedes the bracket; the item numbers of the piece parts follow it.

Part Number Index

This index lists all the spared parts in the system in numerical order. Each number is followed by a reference to the parts list on which the part may be found.

Other Information

Abbreviations

Abbreviations which may be used in the parts lists text or illustrations are as follows:

US ----- United States Parts Distribution System

XE ----- European Parts Distribution System

AO ----- South America Parts Distribution System

XCL ----- Canada Parts Distribution System

P/J ----- Plug/Jack

P/O ----- Part of

W/ ----- With

W/O ----- Without

Tag

A Tag is used when a part or area of the system has been modified. The Change Tag Index, which is found in the General Procedures/Information Section, lists the name and purpose of the Tag. In some cases, you will go to the parts lists and find a part number listed as “with Tag.” Go to the Change Tag Index for a description of what the Tag is and what you need to install the Tag. The Change Tag Index will either list a kit number or indicate “piece part.” If “piece part” is indicated, the parts lists reference(s) will be given and all parts associated with the Tag will have to be individually located, ordered, and installed.

The notation “P/O Tag” after a part number indicates that the item is part of a Tag. The notation “Tag” after a part number will be used only to indicate the entire Tag, whether that is a kit number or an individual part.

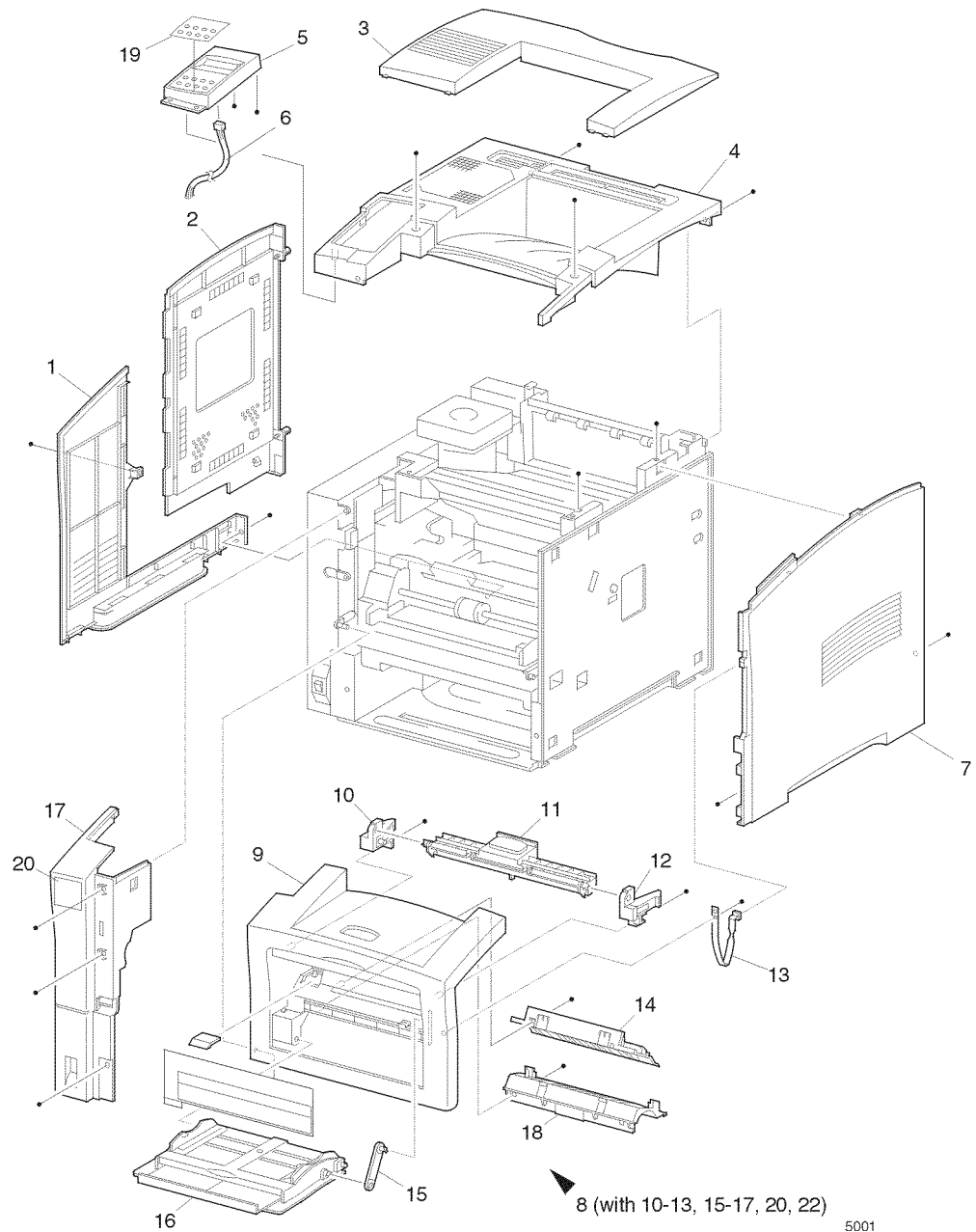
Whenever you install a Tag kit or all the piece parts that make up a Tag, mark the appropriate number on the Tag matrix.

Using the Parts List

1. The numbers shown in each illustration correspond to the parts list number for that illustration.
2. Throughout this manual, parts are identified by the prefix “PL”, followed by a number, a decimal point, and another number. For example, PL3.1.12 means the part is item 12 of parts list 3.1.
3. The capital letters “C”, “E”, and “S” shown in an illustration stand for C-ring, E-ring, and Screw, respectively.
4. A shaded triangle t in an illustration indicates the item is part of an assembly.
5. The notation “with X~Y” following an part name indicates an assembly that is made up of components X through Y. For example, “1 (with 2~4)” means part 1 consists of part 2, part 3, and part 4.
6. The notation “RS” means that the part is a requested spare. Part numbers for these parts will be provided as soon as they are available.
7. An asterisk * following a part name indicates the page contains a note about this part.
8. The notation “J1<->J2 and P2” is attached to a wire harness. It indicates that connector jack 1 is attached to one end of the wire harness and connector jack 2 is attached to the other end that is plugged into plug 2.
9. A notation “(part of item 1.1)” indicates that the part is included with item 1.2.1 (PL1.2, line item 1).

PL 1.1 Covers (1 of 3)

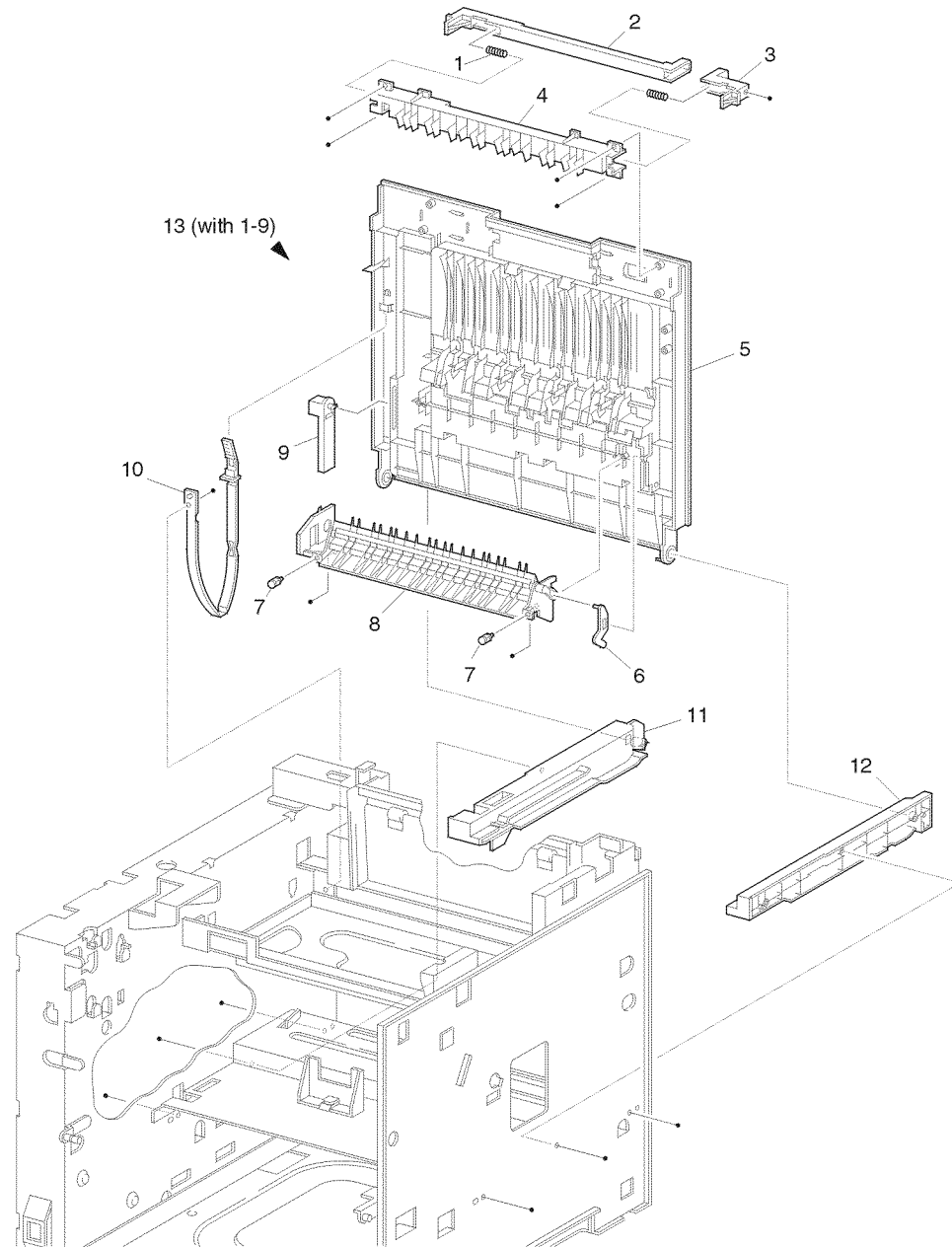
Item	Part	Description
1	48E64591	Left Cover
2	802K11330	Left Interface Cover
3	48E64642	Option Cover
4	48K76454	Top Cover Assembly
5	802K09700	Control Panel Assembly (with 6)
6	162K55281	Control Panel Harness Assembly
7	48E64612	Right Cover
8	802K10800	Front Cover Assembly (with 10-13, 15-17, 20, 22)
9		Front Cover
10	-----	Left Latch Assembly
11	-----	Lever
12	-----	Right Latch Assembly
13	3E48991	Stopper Cover
14	-----	Envelope Chute
15	3E43880	Tray Stopper
16	50K39130	MBF Tray Assembly
17	48E64624	Left Front Cover
18	-----	MBF Chute
19	891E95830	Control Panel Overlay (English 110V)
	892E03010	Control Panel Overlay (Symbols 220V)
	892E15040	Control Panel Overlay (Spanish)
	892E15050	Control Panel Overlay (Portuguese)
	892E15020	Control Panel Overlay (French Canadian)
20	892E08500	Xerox Logo Badge
S	600K79660	Hardware Kit (Includes Screw)



5001

PL 1.2 Covers (2 of 3)

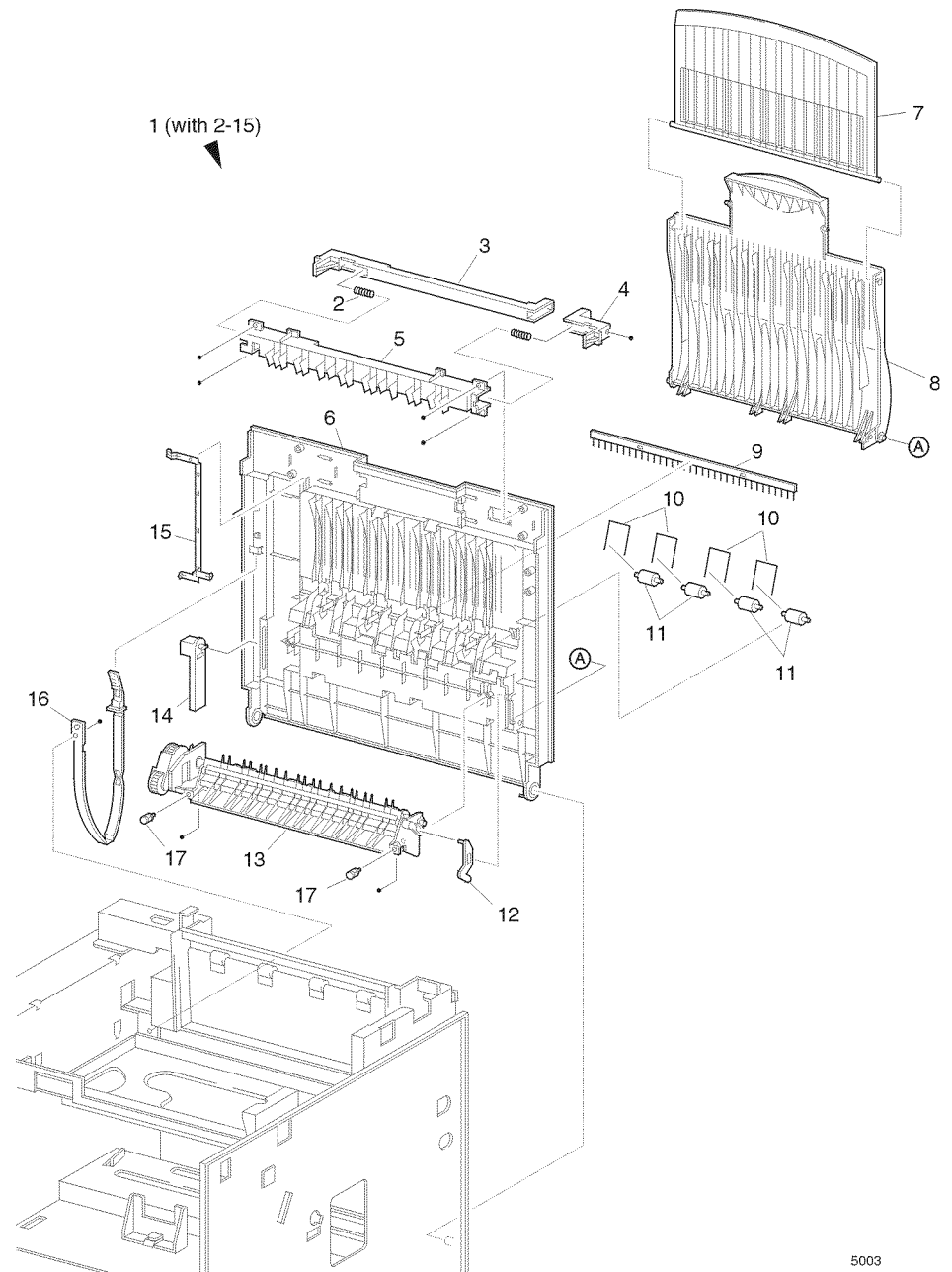
Item	Part	Description
1	-----	Latch Spring
2	-----	Left Latch
3	-----	Right Latch
4	-----	Latch Cover
5	-----	Rear Cover
6	-----	Direction Arm
7	600K79530	Cap Kit (quantity 2)
8	54K14991	Face Up Chute Assembly
9	-----	Right Pivot Stopper
10	3E46120	Stopper
11	-----	Duplex Guide Rail-Left
12	-----	Duplex Guide Rail-Right
13	802K10010	Rear Cover Assembly (with 1-9)
S	600K79660	Hardware Kit (Includes Screw)



5002

PL 1.3 Covers (3 of 3) Options

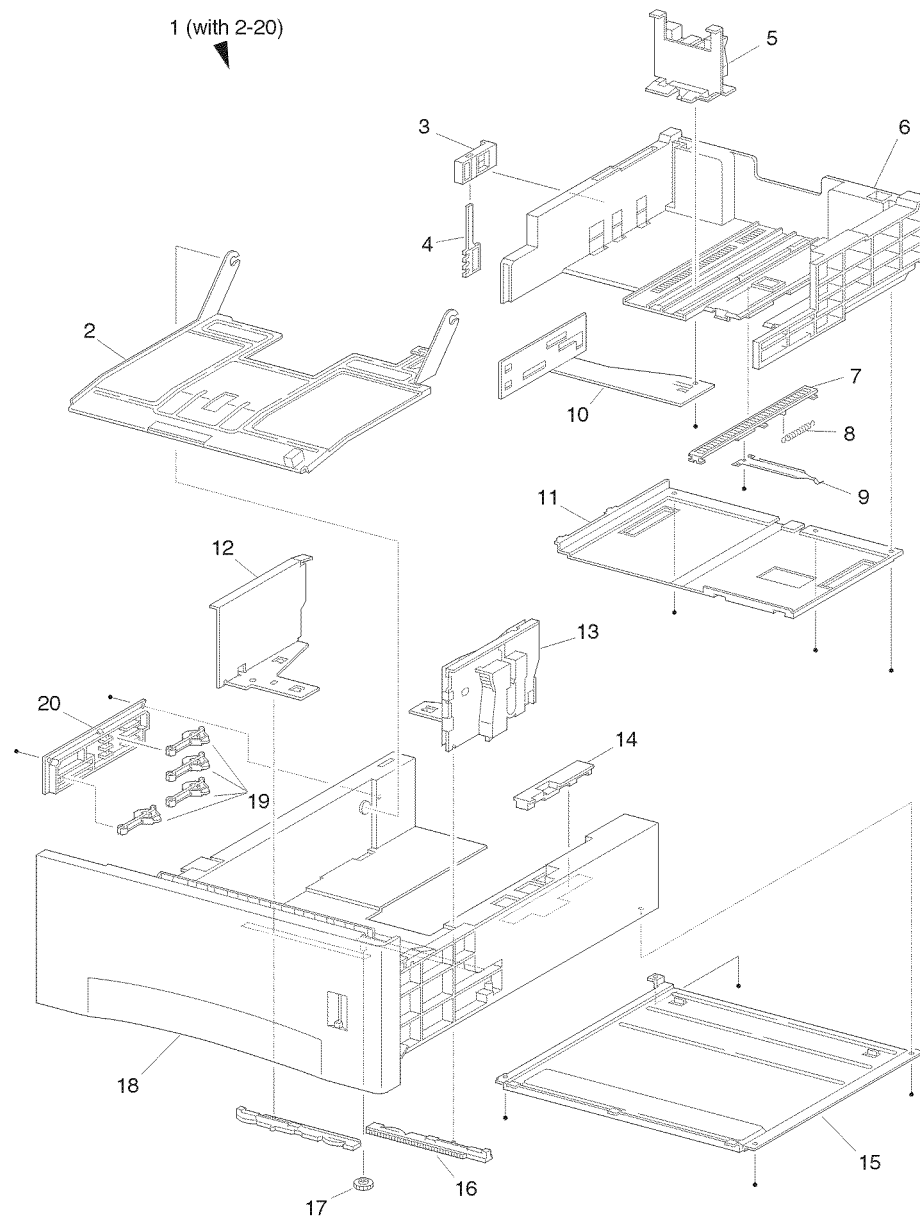
Item	Part	Description
1	-----	Rear Face-up Cover Assembly (with 2-15)
2	-----	Latch Spring
3	-----	Left Latch
4	-----	Right Latch
5	-----	Latch Cover
6	-----	Rear Cover
7	-----	Face-up Sub Tray
8	-----	Face-up Main Tray
9	-----	Eliminator
10	-----	Pinch Spring
11	-----	Pinch Roll
12	-----	Direction Arm
13	54K14991	Face-up Chute Assembly
14	-----	Right Stopper Pivot
15	-----	Face-up Ground Spring
16	3E46120	Right Stopper
17	600K79530	Cap Kit (quantity 2)
S	600K79660	Hardware Kit (Includes Screw)



5003

PL 2.1 Tray 1 (1 of 2)

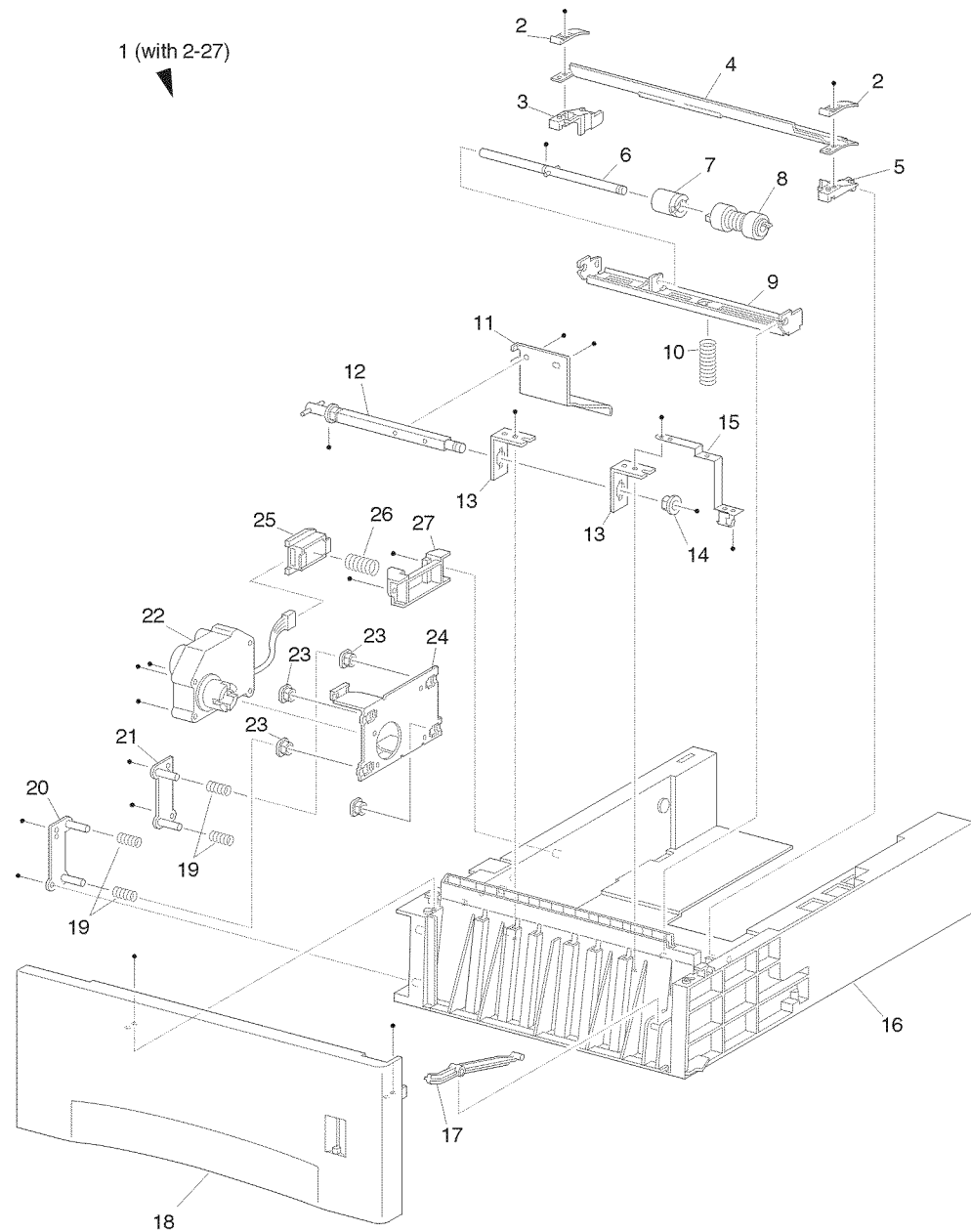
Item	Part	Description
1	109R00448	Cassette Assembly (with 2-20 and PL 2.2)
2	-----	Bottom Plate Assembly
3	-----	Customer Size Knob
4	-----	Custom Size Plate
5	-----	End Guide Assembly
6	-----	Extension Housing
7	-----	Rack Slide
8	-----	Extension Spring
9	-----	Latch Spring
10	-----	Size Plate
11	-----	Base Extension
12	-----	Left Side Guide Assembly
13	-----	Right Side Guide Assembly
14	-----	Link
15	-----	Tray 1 Base
16	-----	Rack
17	-----	Pinion
18	-----	Sub Cassette Assembly
19	-----	Tray 1 Actuator
20	-----	Actuator Cover
S	600K79660	Hardware Kit (Includes Screw)



5004

PL 2.2 Tray 1 (2 of 2)

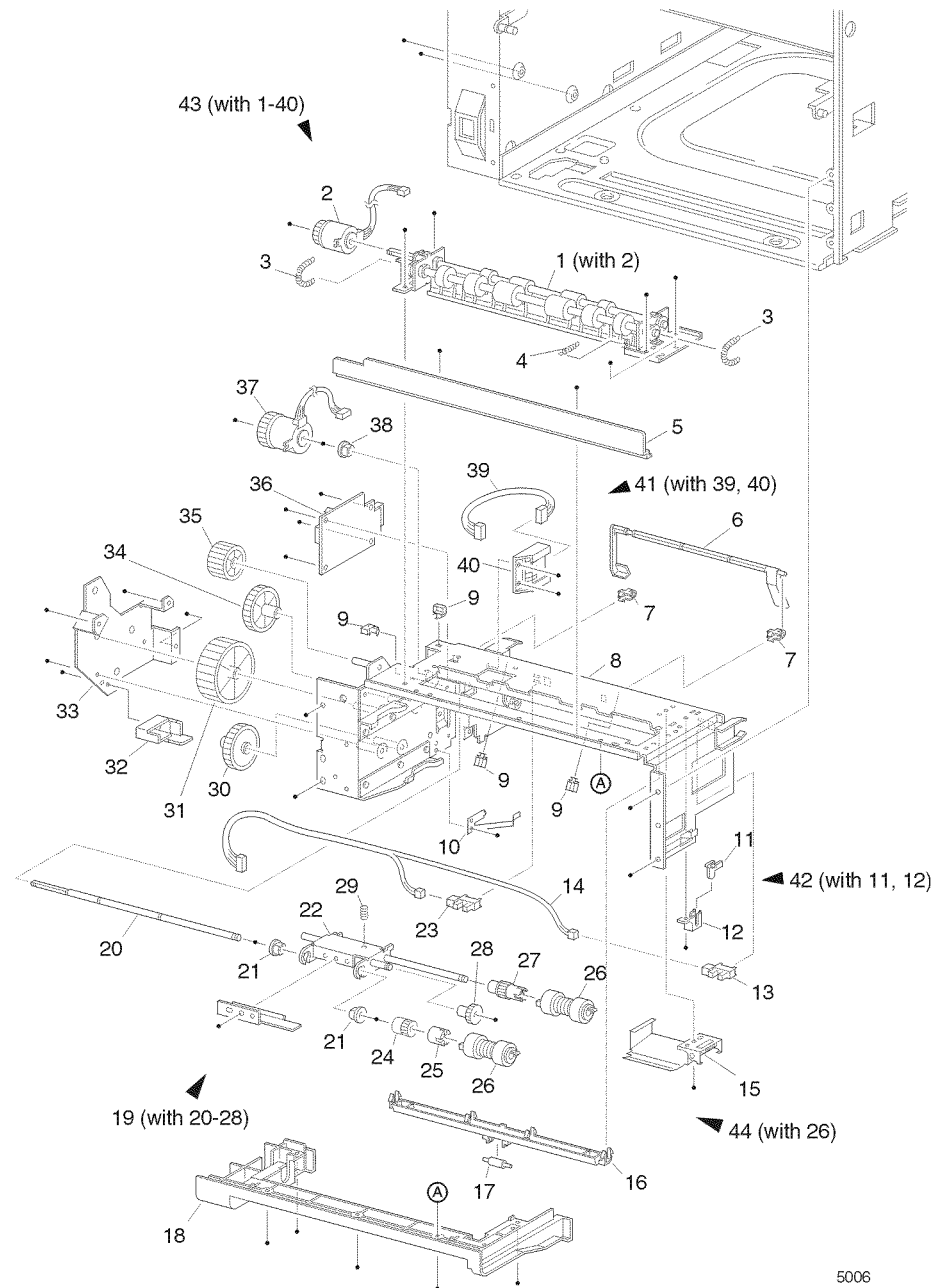
Item	Part	Description
1	-----	Cassette Assembly (with 2-27) (P/ O PL 2.1 Item 1)
2	-----	Retard Cap
3	-----	Retard Chute Base - Left
4	-----	Retard Chute
5	-----	Retard Chute Base - Right
6	-----	Retard Shaft Assembly
7	5K82890	Friction Clutch Assembly
8	600K79550	Roll Assembly Kit
9	-----	Retard Bracket
10	809E11830	Retard Spring
11	-----	Tongue Plate
12	-----	Tongue Shaft Assembly
13	-----	Lift Up Shaft Holder
14	-----	Bearing
15	-----	Lift Up Ground Spring
16	-----	Cassette Housing
17	-----	Lever
18	-----	Cassette Handle Assembly
19	-----	Motor Spring
20	-----	Right Holder
21	-----	Left Holder
22	127K24682	Motor Assembly
23	-----	Bearing
24	-----	Motor Holder Assembly
25	114E11680	Connector
26	-----	Spring
27	-----	Socket Guide
S	600K79660	Hardware Kit (Includes Screw)



5005

PL 3.1 Paper Feeder

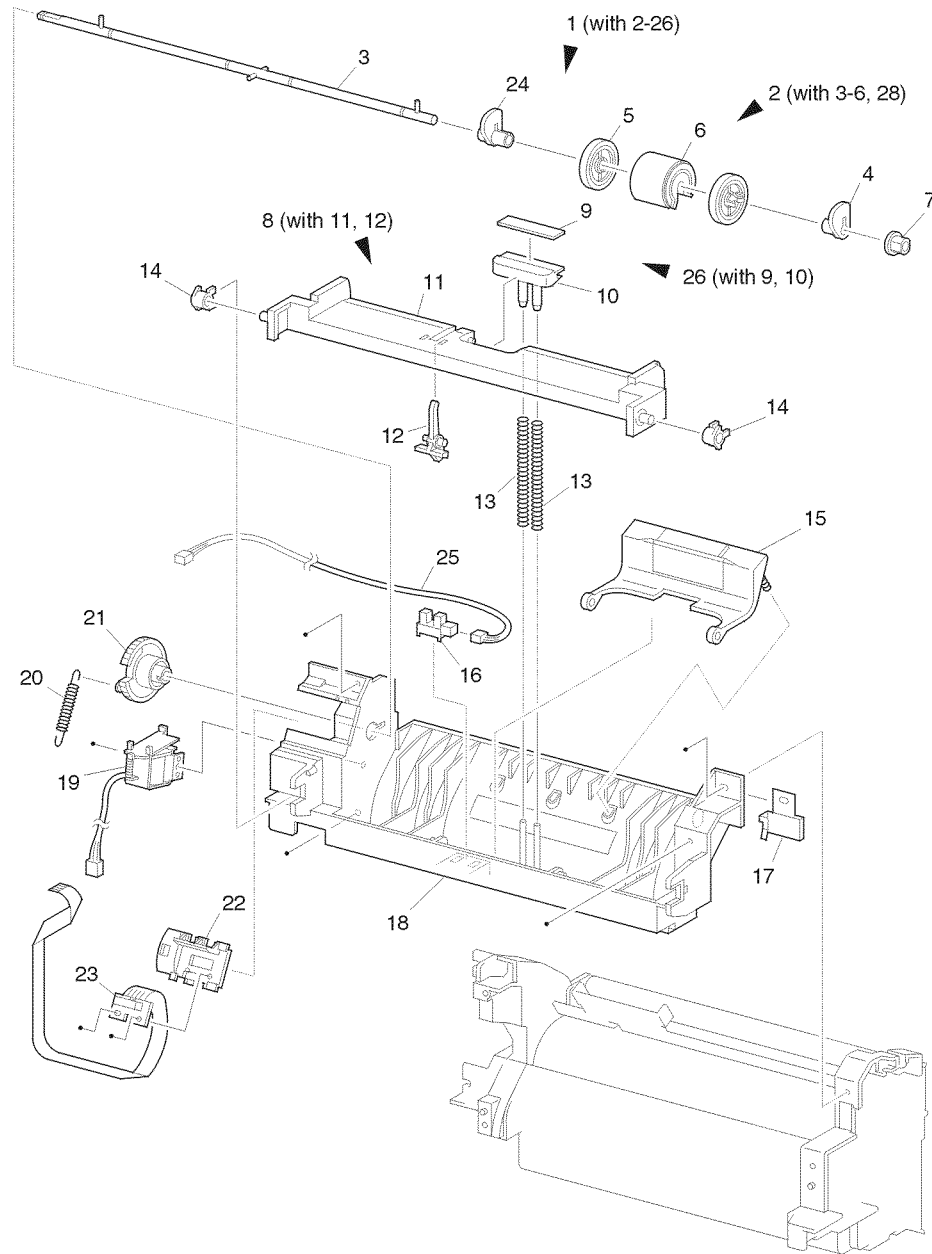
Item	Part	Description
1	22K51531	Turn Roll Assembly (with 2)
2	121K20151	Turn Clutch Assembly
3	-----	Extension Spring
4	809E11630	Chute Spring
5	-----	Feed CST Cover
6	120E16960	No Paper Actuator
7	830E18131	Support Actuator
8	-----	Feeder Frame Assembly
9	-----	Clamp
10	-----	Left Latch Spring
11	-----	Low Paper Actuator (P/O item 42)
12	-----	Low Paper Actuator Support (P/O item 42)
13	130E81970	Low Paper Sensor
14	162K47211	No Paper Sensor Harness Assy.
15	-----	Front Chute Assembly
16	-----	Turn Chute
17	-----	Roll 7
18	-----	Feeder Cover
19	600K79320	Feed Head Assembly (with 20-28)
20	-----	Feed Shaft (P/O item 19)
21	-----	Bearing (P/O item 19)
22	-----	Nudger Support Assembly (P/O item 19)
23	130E81970	Stack Height Sensor (P/O item 19)
24	-----	Gear Clutch (P/O item 19)
25	-----	O/W Clutch Assembly(P/O item 19)
26	-----	Roll Assembly (P/O item 44)
27	-----	Gear 25T (P/O item 19)
28	-----	Gear 31T (P/O item 19)
29	809E11610	Nudger Spring
30	-----	Gear 4
31	-----	Gear 2
32	-----	Gear Cover
33	-----	Bracket
34	-----	Gear 3
35	-----	Gear 1
36	160K52781	Feeder PWB
37	121K19010	Feed Clutch Assembly
38	-----	Bearing
39	-----	N/MOT Harness Assembly
40	-----	Socket
41	600K79640	Socket & Harness Kit (with 39, 40)
42	600K79650	Actuator & Support Kit (with 11, 12)
43	22K56900	Feeder Assembly 1 Kit (with 1-40)
44	600K79550	Feed Roll Kit (item 26- quantity 3)
45	108R00330	Feed Roll Usage Kit (item 44- quantity 2)
46	600K79660	Hardware Kit (includes screw)



5006

PL 4.1 MBF Chute

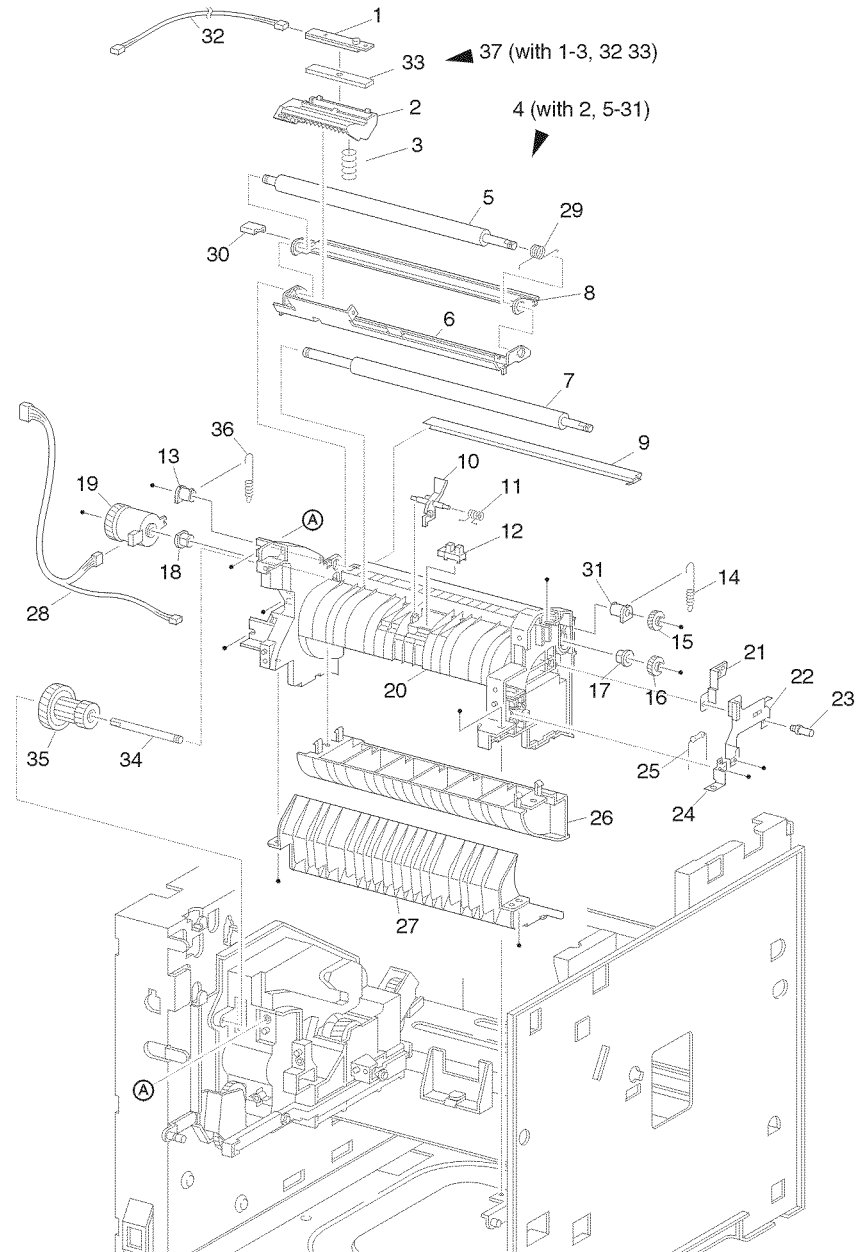
Item	Part	Description
1	54K13630	MBF Chute Assembly (with 2-30)
2	-----	MBF Roll Assembly (with 3-6, 28)
3	-----	MBF Shaft Assembly
4	-----	MBF Pick-up CAM
5	-----	Core
6	22K50812	MBF Roll Assembly
7	-----	Bearing
8	-----	Tray Bottom Assembly (with 11, 12)
9	-----	MBF Bottom Pad
10	-----	Tray Pick-up
11	-----	Tray Bottom (P/O item 8)
12	120E17120	MBF No Paper Actuator (P/O item 8)
13	-----	MBF Bottom Spring Tray
14	-----	Exit Bearing
15	19K94570	Retard Pad Assembly
16	130E81970	Paper Set Sensor
17	-----	MBF Ground Plate
18	-----	MBF Chute Assembly
19	121E85920	Pick Up Solenoid
20	809E20170	MBF Spring
21	7E54660	Gear Pick Up
22	-----	Envelope Connector Plate
23	113K82141	Envelope Connector Assembly
24	-----	MBF (Left) Cam Pick-up
25	162K47021	MBF No Paper Harness Assembly (J45-J451)
26	19K96830	Pick Up Pad Assembly (with 9, 10)
S	600K79660	Hardware Kit (Includes Screw)



5007

PL 5.1 Paper Handler Assembly

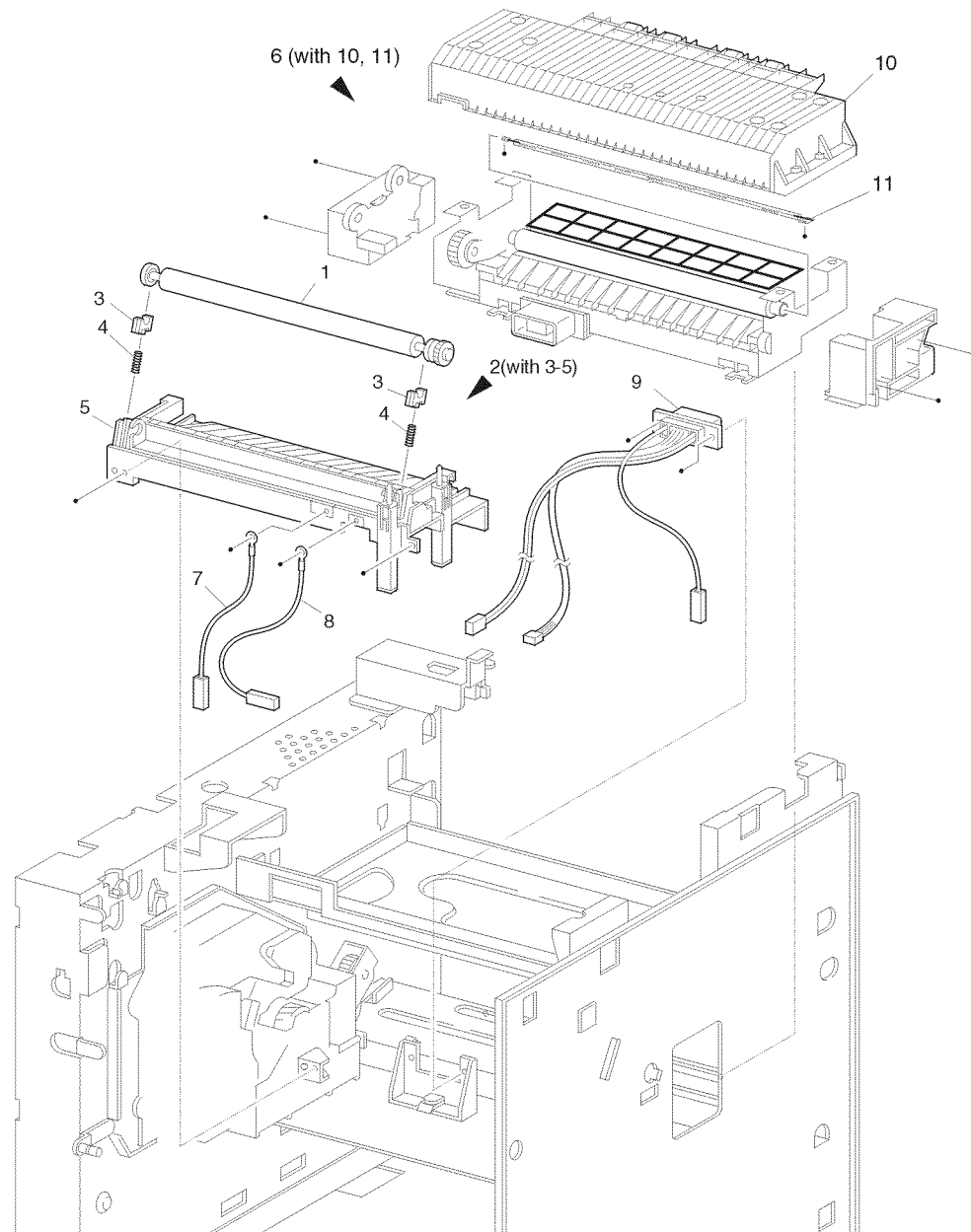
Item	Part	Description
1	-----	Toner Sensor
2	-----	Toner Holder Sensor
3	-----	Toner Spring Sensor
4	54K14980	Paper Handler Assembly (with 2, 5-31)
5	-----	Registration Roll - Metal
6	-----	Upper Chute Assembly
7	59K11910	Registration Roll - Rubber
8	-----	Chute Inlet
9	-----	Ground Spring - Bottom
10	120E13331	Registration Actuator
11	809E19721	Registration Sensor Spring
12	130E81970	Registration Sensor
13	-----	Metal Bearing
14	9E79120	Registration Spring - Right
15	7E54671	Registration Gear - Metal
16	7E54681	Registration Gear - Rubber
17	-----	Right Bearing - Rubber
18	-----	Left Bearing - Rubber
19	121E85820	Registration Clutch
20	-----	Upper Chute Bottom
21	-----	Ground Spring - Right
22	-----	Ground Spring - Center
23	-----	Ground Screw
24	-----	Left Spring
25	-----	Resist Baffle
26	-----	Lower Chute Bottom
27	-----	CST Chute
28	162K47011	Registration Harness Assembly (J43-J431, J432)
29	-----	Torsion Spring
30	-----	Lever Handle
31	-----	Right Metal Bearing
32	-----	Toner Sensor Harness Assembly (J42-J421)
33	-----	TNS Cushion
34	6E60980	Shaft 14
35	7E54650	Gear 14
36	809E19030	Registration Spring Left
37	600K79380	Toner Sensor Kit (with 1-3, 32 & 33)
S	600K79660	Hardware Kit (Includes Screw)



5008

PL 6.1 Chute Transport & Fuser

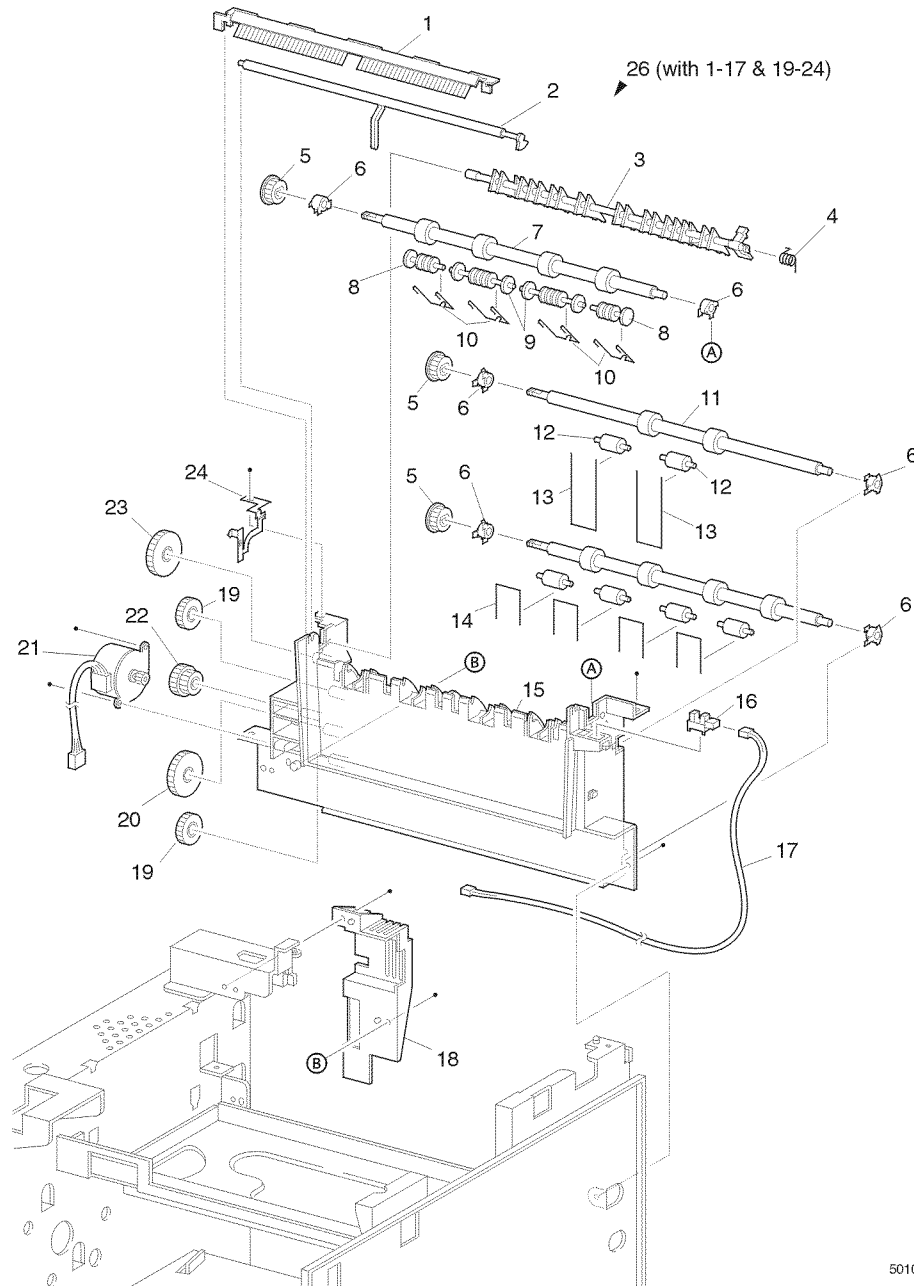
Item	Part	Description
1	22K55010	BTR Assembly
2	54K15000	Transfer Chute Assembly (with 3-5)
3	-----	Bearing BTR SUP
4	-----	Spring BTR
5	-----	Transport Chute (reference only)
6	126K10132	Fuser Assembly (120V) (with 10, 11)
	126K10141	Fuser Assembly (230V)
7	-----	DTS Wire Assembly
8	-----	TR Wire Assembly
9	162K47191	Fuser Harness Assembly (120V) (J271, J11, J27, J262)
	162K51861	Fuser Harness Assembly (230) (J271, J11, J27, J262)
10	802K10000	Fuser Upper Cover Assembly
11	126K08410	Heat Rod (120V)
	126K09710	Heat Rod (230V)
12	108R00328	Usage Kit (120V) (with Fuser, BTR, 3 Feed Rolls)
13	108R00329	Usage Kit (230V) (with Fuser, BTR, 3 Feed Rolls)
S	600K79660	Hardware Kit (Includes Screw)



5009

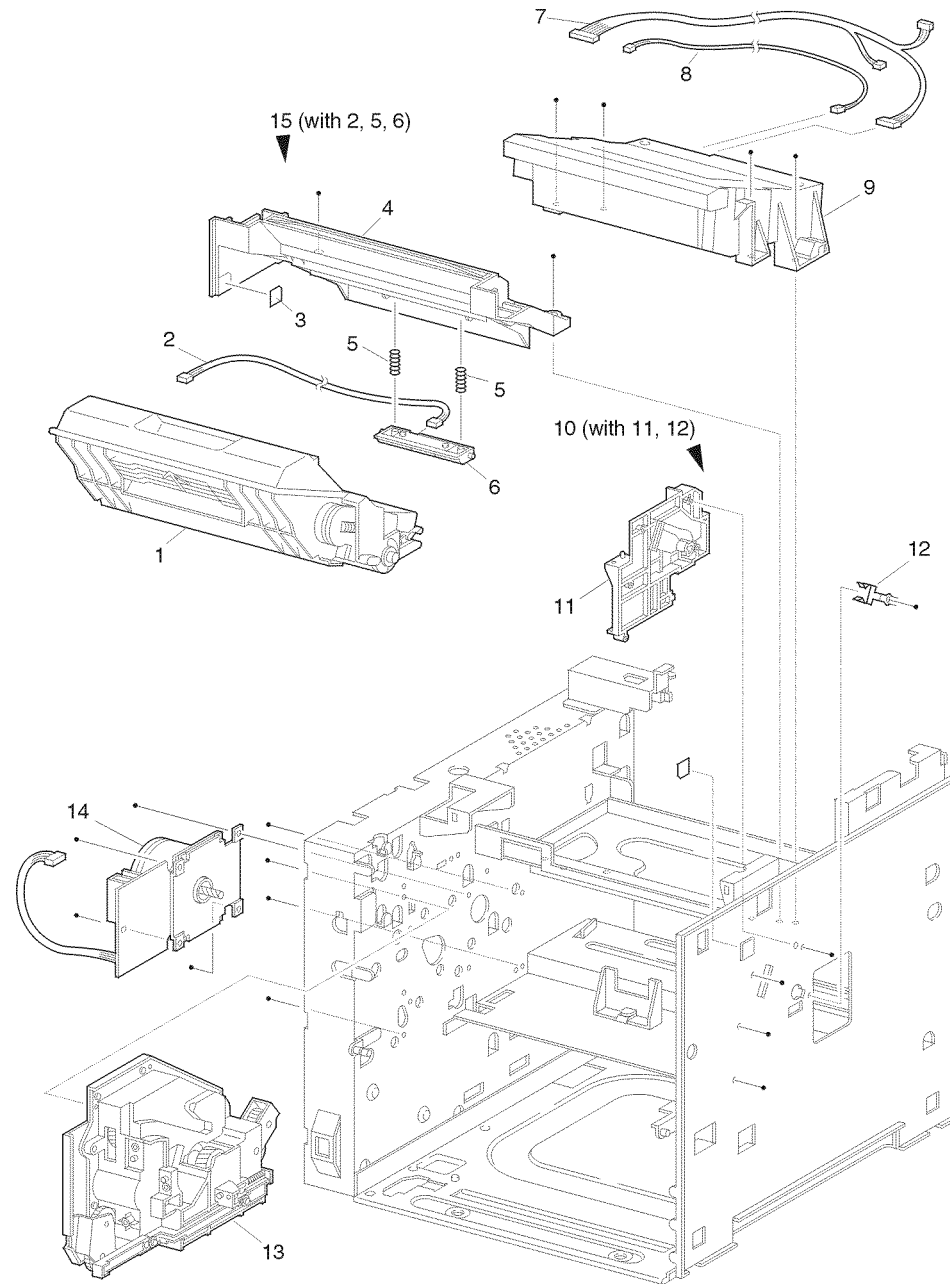
PL 7.1 Exit

Item	Part	Description
1	105K14903	Static Eliminator Assembly
2	120E13350	Stack Full Actuator
3	-----	Exit Gate
4	-----	Exit Spring
5	-----	Exit-17 Gear
6	-----	Exit Bearing
7	59K11950	MID-1-3 Roll Assembly
8	-----	Out Exit Roll Pinch
9	-----	Exit Roll Pinch
10	-----	Exit Spring Pinch
11	59K11960	MID-2 Roll Assembly
12	-----	Roll Pinch
13	-----	MID Spring Pinch
14	-----	Spring Pinch
15	-----	Exit Chute
16	130E81970	Exit Photo Sensor
17	162K46981	Stack Full Sensor Harness Assembly (J30-J301)
18	-----	Interlock Cover
19	-----	Exit-23 Gear
20	-----	Exit-33 Gear
21	127K24111	Exit Motor Assembly
22	-----	Exit Gear 17/47
23	-----	Exit Gear -32
24	-----	Exit Ground Spring
25	600K79540	Bearing Kit (quantity 6 of item 6)
26	54K15890	Exit Chute Assembly (with 1-16, 17, 19-24)
S	600K79660	Hardware Kit (Includes Screw)



PL 8.1 Drive & Xerographics

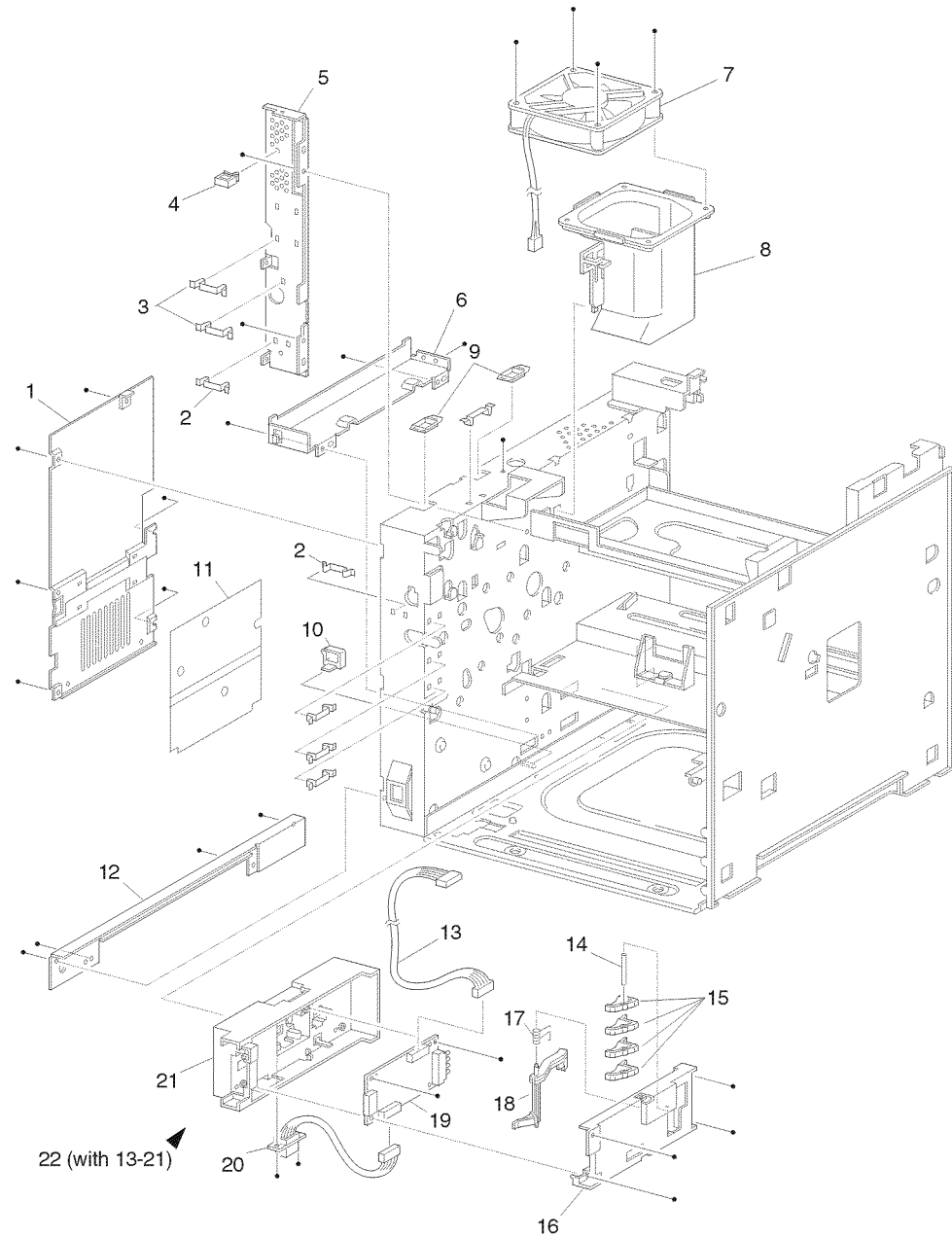
Item	Part	Description
1	113R00445	Print Cartridge (XC 10K)
	113R00446	Print Cartridge (XC 15K)
2	-----	Print Cartridge Sensor Harness
3	-----	Arrow Label
4	32K94111	Print Cartridge Top Guide Assembly
5	-----	Spring (P/O item 15)
6	-----	Print Cartridge Sensor Assembly (P/O item 15)
7	162K46922	Laser Harness Assembly (J21-J211, J212, J213)
8	-----	VDO Harness Assembly (J22-J223) (P/O item 7)
9	62K09600	Laser Assembly
10	-----	Print Cartridge Side Guide Assembly-R (with 11, 12)
11	-----	Print Cartridge Side Guide
12	-----	Spring Clip
13	7K85220	Drive Gear Assembly
14	127K27791	Main Motor Assembly
15	32K94130	Print Cartridge Sensor Kit (with 2, 5, 6)
S	600K79660	Hardware Kit (Includes Screw)



5011

PL 9.1 Frame & Size Sensor

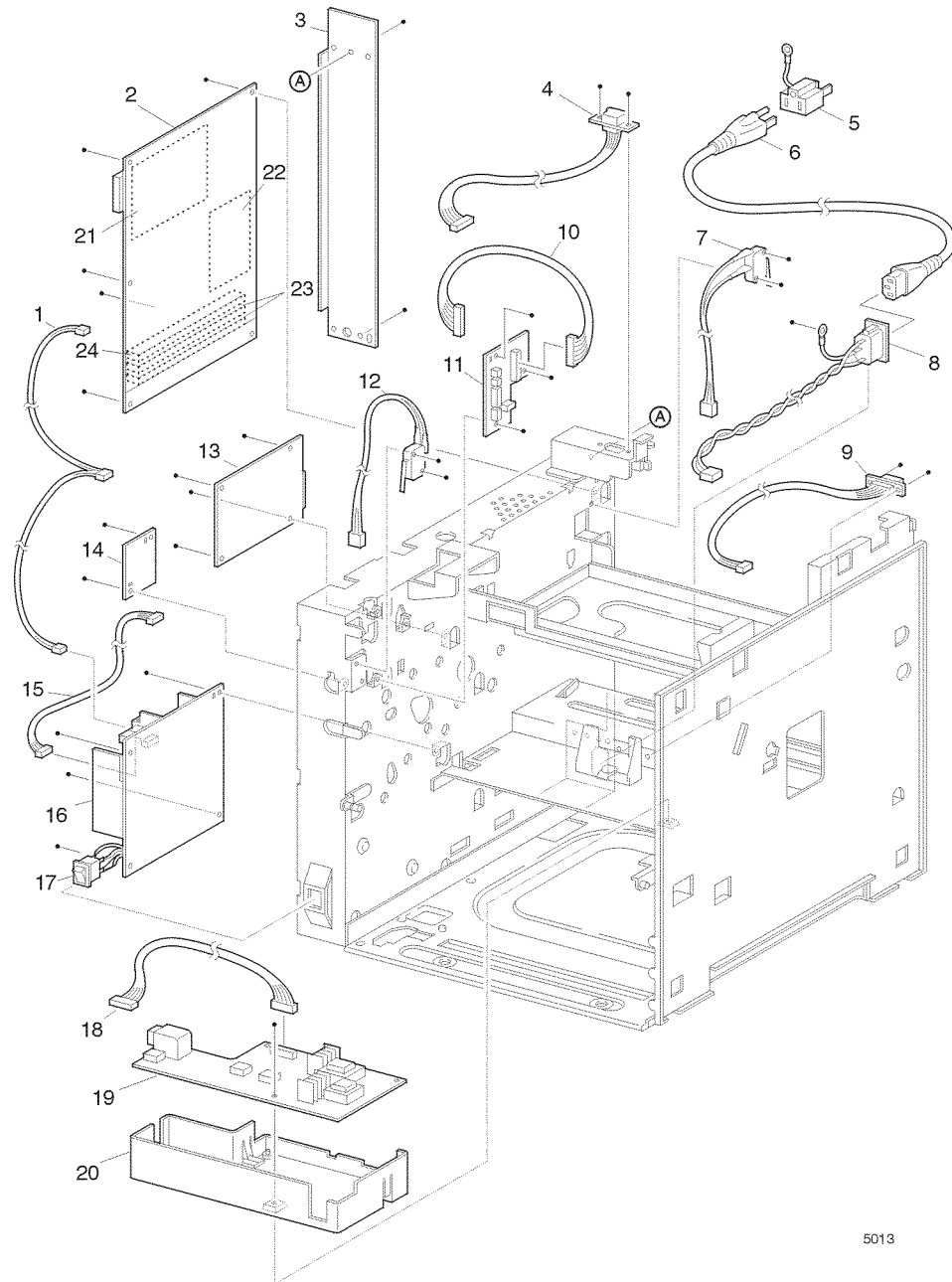
Item	Part	Description
1	-----	Left Plate Assembly
2	-----	Clamp Press
3	-----	Left Clamp Press
4	-----	Interface Clamp
5	-----	Lower B Elec Box
6	-----	Lower A Elec Box
7	127K24771	Fan Assembly
8	-----	Duct
9	-----	Edge Saddle H
10	-----	AC Clamp
11	-----	Insulator Plate
12	-----	Plate Handle
13	162K47001	Feeder Harness Assembly (J33-J331)
14	-----	CAM Shaft
15	-----	Size Sensor Actuators
16	-----	Cover Size Sensor
17	-----	Spring CAM
18	-----	Lever CAM
19	160K52771	Tray 1 Size PWB
20	162K48420	Size Harness Assembly (J51-J52)
21	-----	Size Sensor Housing
22	802K09970	Size Sensor 1 Kit (with 13-21)
S	600K79660	Hardware Kit (Includes Screw)



5012

PL 10.1 Electrical

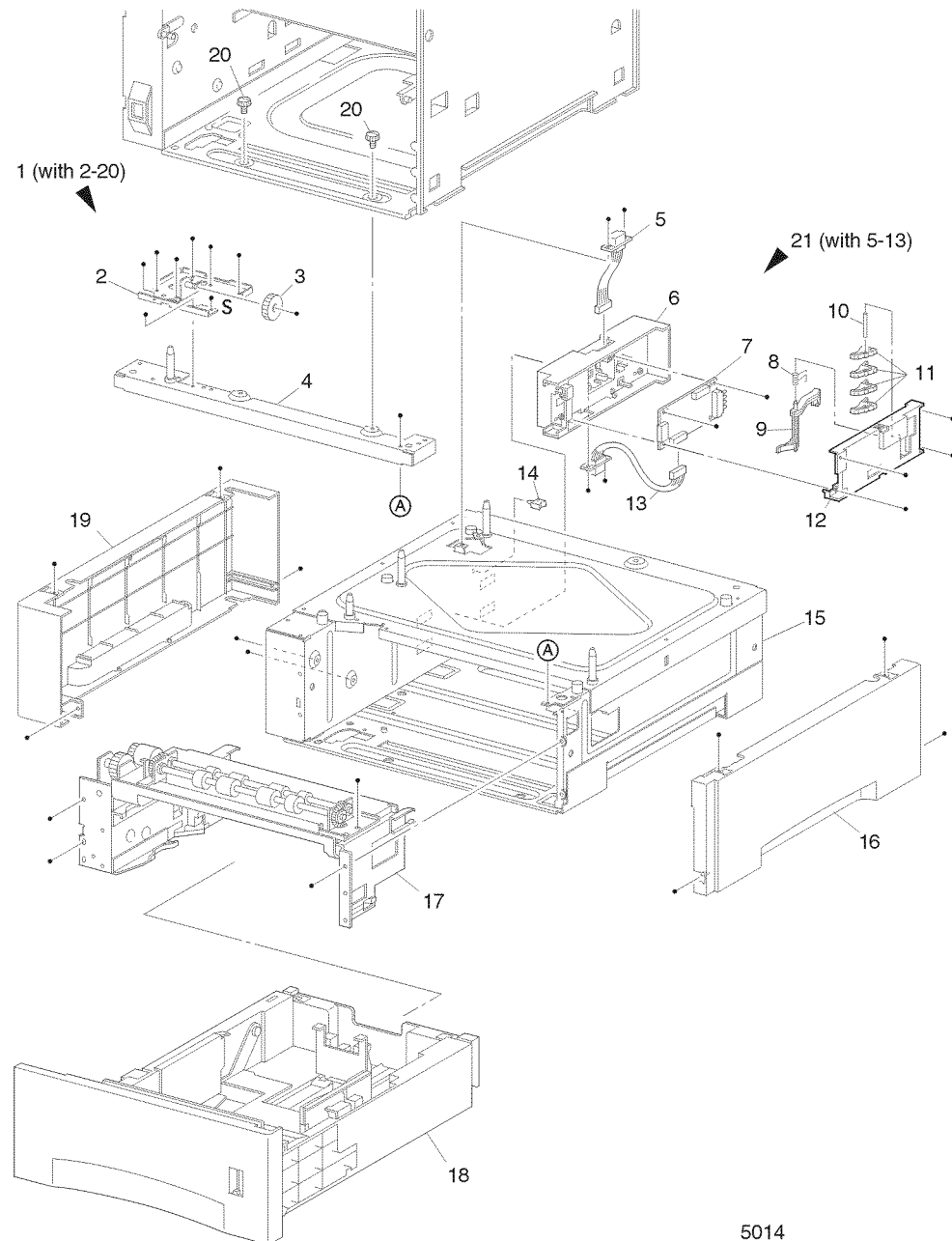
Item	Part	Description
1	162K47201	System Controller Harness Assembly (J287-J282, J288)
2	160K65650	System Controller PWB (Network)
	160K65940	System Controller PWB (Non-network)
3	-----	Back Panel
4	162K49271	OCT Harness Assembly (J35-P351)
5	-----	Adapter
6	-----	Power Cord
7	110K08571	Rear Interlock Switch Assembly
8	-----	AC Wire Assembly (J285)
9	162K46991	Duplex Harness Assembly (J34-P341)
10	162K46941	Connector Harness Assembly (J23-J231)
11	160K52761	Connector PWB
12	110K08561	Front Interlock Switch Assembly
13	160K52414	Print Engine Controller PWB
14	105K15401	5VDC PWB
15	162K46972	LVPS Harness Assembly (J28-J218)
16	105K14931	LVPS PWB (120V)
	105K15411	LVPS PWB (230V)
17	110E93711	Main Switch
18	162K46962	HVPS Harness Assembly
19	105K14954	HVPS PWB
20	-----	HVPS Housing
21	160K71520	Serial Card
	160K71530	10 Base 2 Network Card
	160K71540	Token Ring Card
22		Hard Disk Drive
23	733W14695	16 mb Dimm
	733W14696	32 mb Dimm
	733W14697	64 mb Dimm
24	160K71940	8 mb Flash Dimm
S	600K79660	Hardware Kit (Includes Screw)



5013

PL 11.1 500 Sheet Feeder (1 of 2)

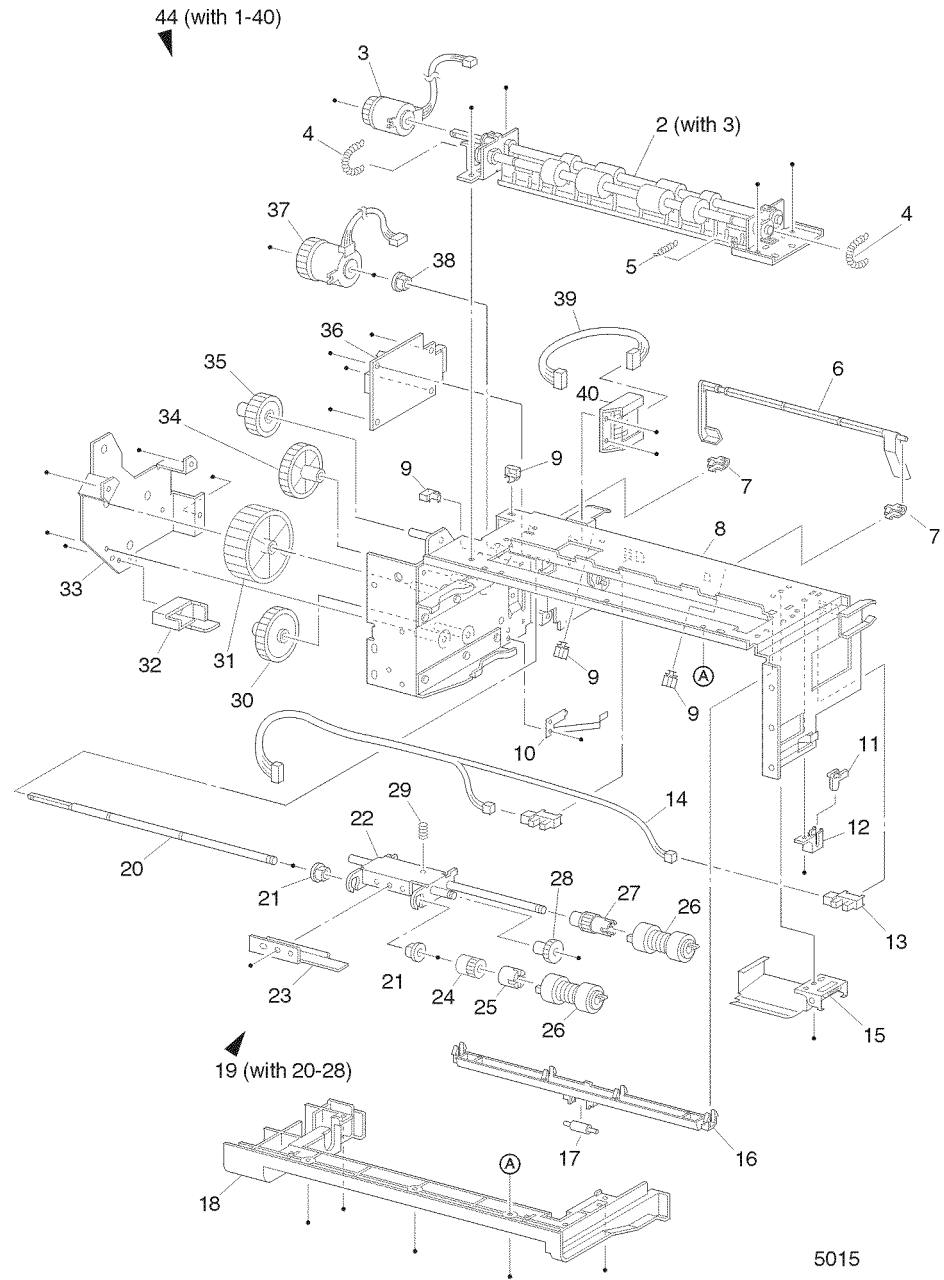
Item	Part	Description
1	-----	Option Feeder Assembly (with 2-20)
2	-----	Gear OPT Bracket Assembly
3	7E54920	Gear OPT I
4	-----	Top Plate
5	162K48431	Option Size Harness Assembly
6	-----	Size Sensor Housing
7	160K53061	Size Option PWB
8	-----	CAM Spring
9	-----	CAM Lever
10	-----	CAM Shaft
11	-----	CAM SW
12	-----	Cover Size Sensor
13	162K48420	Size Harness Assembly
14	-----	Clamp
15	-----	Main Frame Assembly
16	802E04930	Right Side Cover
17	22K56910	Feeder Assembly
18	109R00448	Cassette Assembly
19	802E04920	Left Side Cover
20	600K79670	Screw (quantity 3)
21	802K09980	Size Sensor Housing Assembly (with 5-13)
S	600K79660	Hardware Kit (Includes Screws)



5014

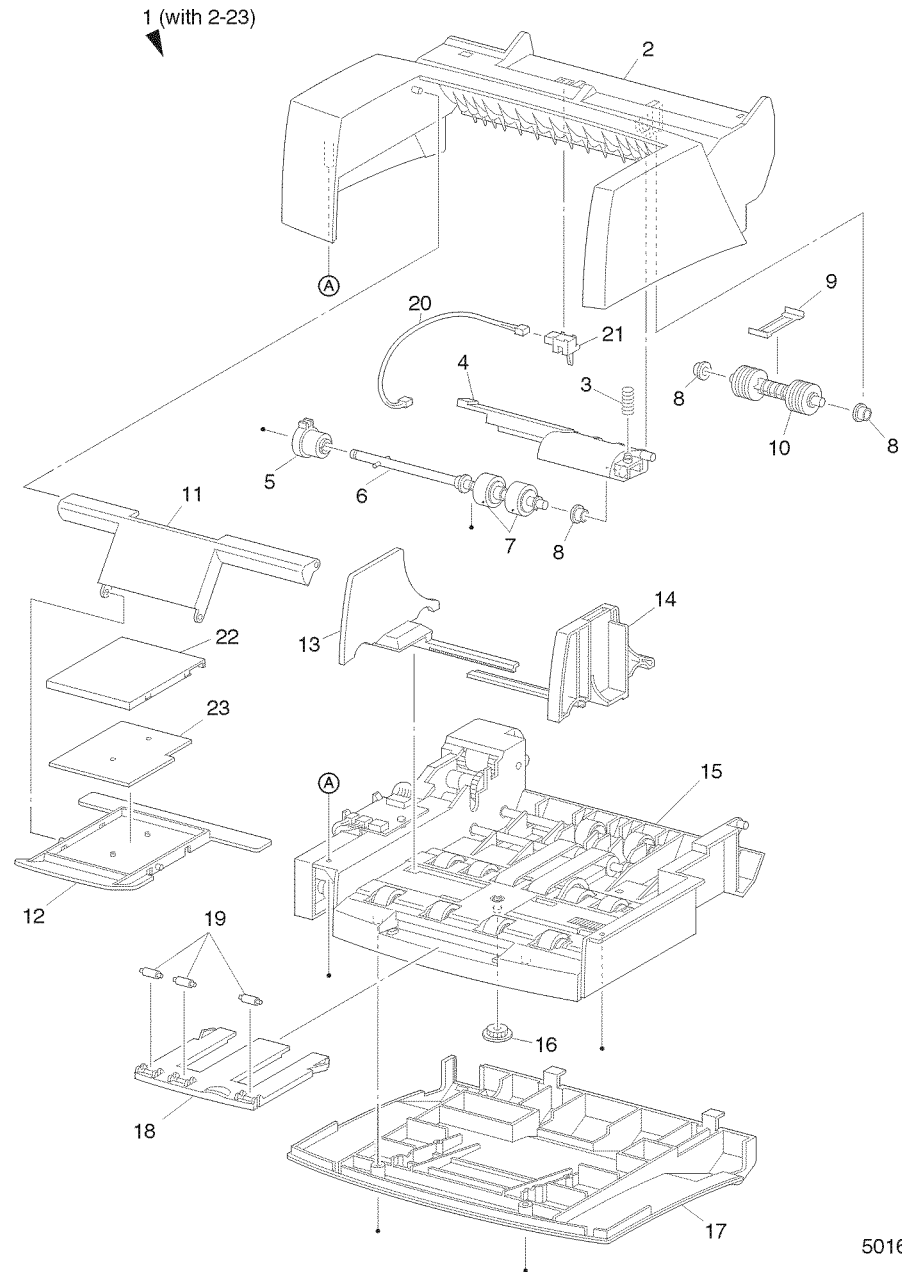
PL 11.2 500 Sheet Feeder (2 of 2)

Item	Part	Description
1	-----	Feeder Assembly (with 2-40)
2	22K55001	Turn Roll Assembly (with 3)
3	121K20151	Turn Clutch Assembly
4	-----	Spring Extension
5	809E11630	Spring Chute
6	120E16960	No Paper Actuator
7	-----	Actuator Support
8	-----	Feeder Frame Assembly
9	-----	Clamp
10	-----	Left Latch Spring
11	-----	Low Paper Actuator (P/O item 43)
12	-----	Low Paper Support Actuator (P/O item 43)
13	130E81970	Low Paper Sensor
14	162K47211	N/Sensor Harness Assembly
15	-----	Front Chute Assembly
16	-----	Turn Chute
17	-----	Roll 7
18	-----	Feeder Cover
19	600K79320	Feeder Assembly (with 20-28)
20	-----	Feed Shaft
21	-----	Bearing
22	-----	Nudger Support Assembly
23	-----	Nudger Chute
24	-----	Gear Clutch
25	-----	O/W Clutch Assembly
26	-----	Roll Assembly
27	-----	Gear 25T
28	-----	Gear 31T
29	-----	Nudger Spring
30	-----	Gear 4
31	-----	Gear 2
32	-----	Gear Cover
33	-----	Bracket
34	-----	Gear 3
35	-----	OPT Gear
36	160K52781	Feeder PWB
37	121K19010	Feed Clutch Assembly
38	-----	Bearing
39	-----	N/Motor Harness Assembly
40	-----	Socket
41	600K79550	Feed Roll Kit (item 26- quantity 3)
42	600K79640	Socket & Harness Kit (with 39, 40)
43	600K79650	Actuator & Support Kit (with 11, 12)
44	22K56900	Feeder Assembly 1 Kit (with 1-40)
45	108R00330	Feed Roll Usage Kit (item 41- quantity 2)
S	600K79660	Hardware Kit (Includes Screw)



PL 12.1 Envelope Feeder (1 of 2)

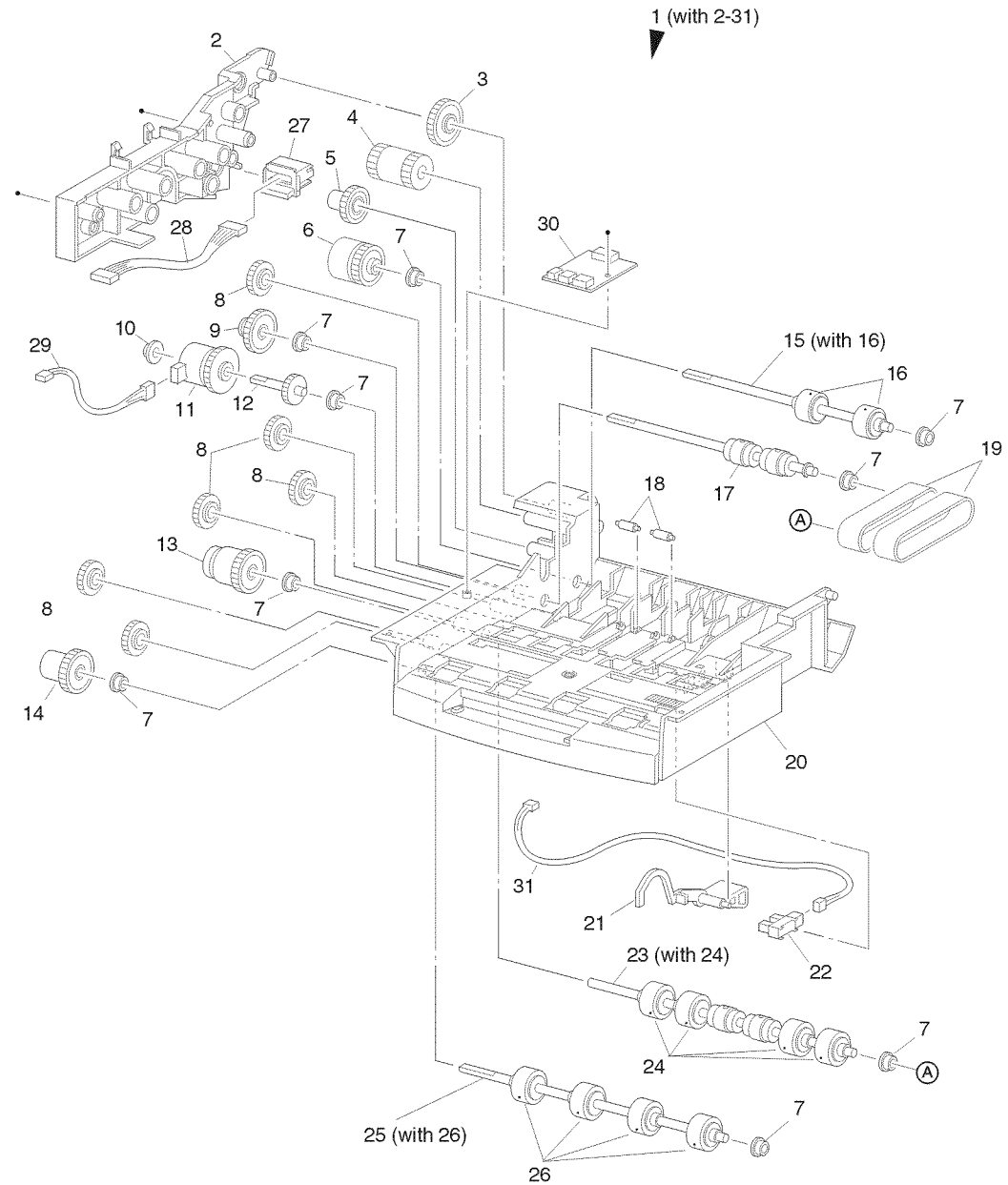
Item	Part	Description
1	-----	Envelope Feeder Assembly (with 2-23)
2	54E14452	Top Chute
3	-----	Retard Spring
4	-----	Retard Holder
5	-----	Torque 29 Clutch Assembly
6	-----	Retard Roll Assembly (with 7)
7	-----	Retard Roll
8	-----	Feeder Bearing
9	-----	Pinch Spring
10	59E93940	Exit Pinch Roll
11	31E93291	Weight Arm
12	-----	Weight Holder
13	-----	Envelope Left Side Guide
14	-----	Envelope Right Side Guide
15	-----	Envelope Feeder Sub Assembly
16	-----	Pinion Gear
17	-----	Bottom Cover
18	-----	Tray Extension
19	-----	Envelope Pinch Roll
20	-----	Sensor Harness Assembly
21	130K60390	Exit Sensor Assembly
22	-----	Weight Cover
23	-----	Weight Plate
24	600K79310	Retard Roll Kit Assembly
S	600K79660	Hardware Kit (Includes Screw)



5016

PL 12.2 Envelope Feeder (2 of 2)

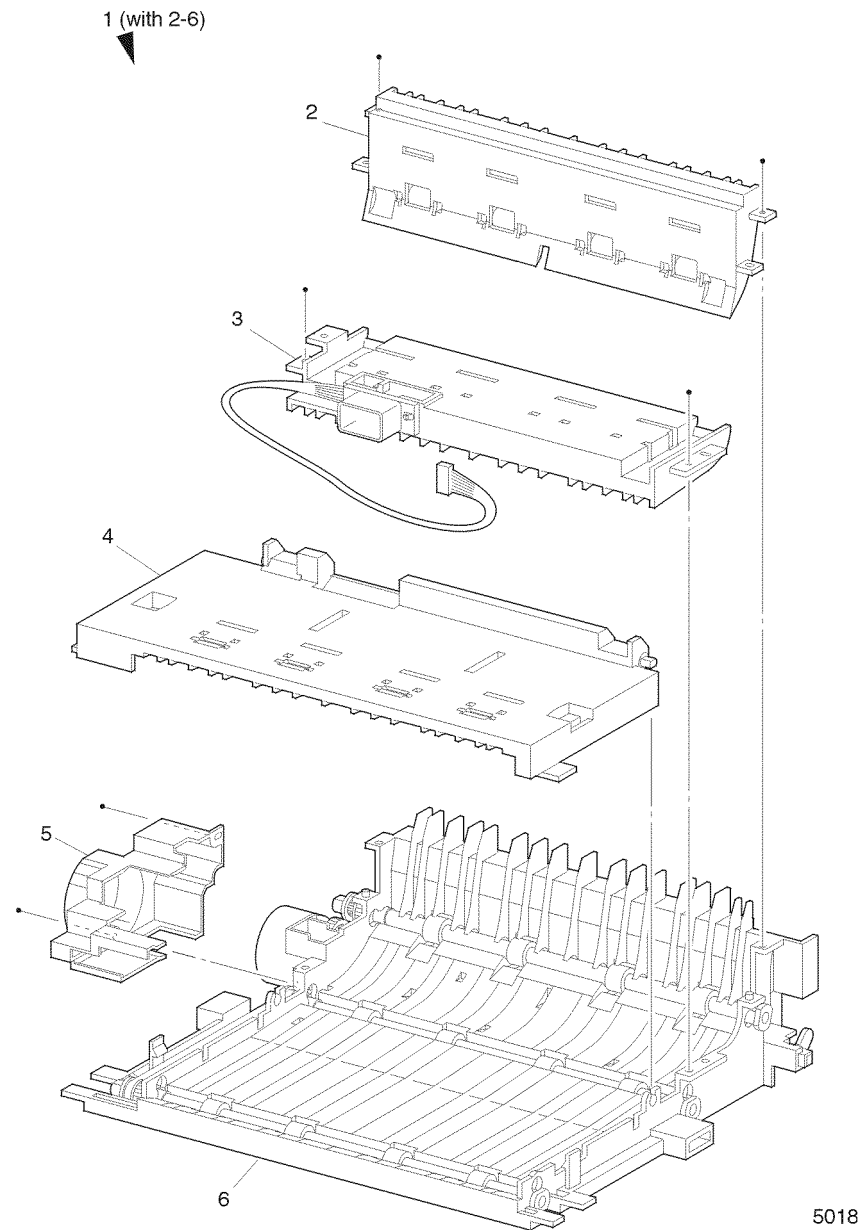
Item	Part	Description
1	-----	Envelope Feeder Sub Assembly (with 2-31)
2	-----	Gear Cover
3	7E27420	Gear 29
4	-----	Gear Drive 21
5	7E36080	Gear 23
6	121K87180	Torque 25 Clutch Assembly
7	-----	Feeder Bearing
8	7E28780	Idler 21 Gear
9	121K87201	One Way 26 Clutch Assembly
10	-----	Bearing Clutch Elec
11	121K87190	Feed Clutch
12	6E47120	Clutch Shaft 17
13	121K87210	One Way Clutch Assembly
14	121K87220	One Way Clutch Assembly
15	-----	Transport Roll Assembly (with 16)
16	-----	Transport Roll
17	-----	Bottom Roll Assembly
18	-----	Envelope Pinch Roll
19	-----	Feed Belt
20	-----	Main Chassis
21	-----	No Paper Actuator
22	130E81970	No Paper Sensor
23	-----	Feed Roll Assembly 1 (with 24)
24	-----	Feeder Roll
25	-----	Feed Roll Assembly 2 (with 26)
26	-----	Feeder Roll
27	-----	Envelope Connector
28	-----	Main Harness Assembly
29	-----	Clutch Harness Assembly
30	-----	Envelope PWB
31	-----	No Paper Harness Assembly
S	600K79660	Hardware Kit (Includes Screw)



5017

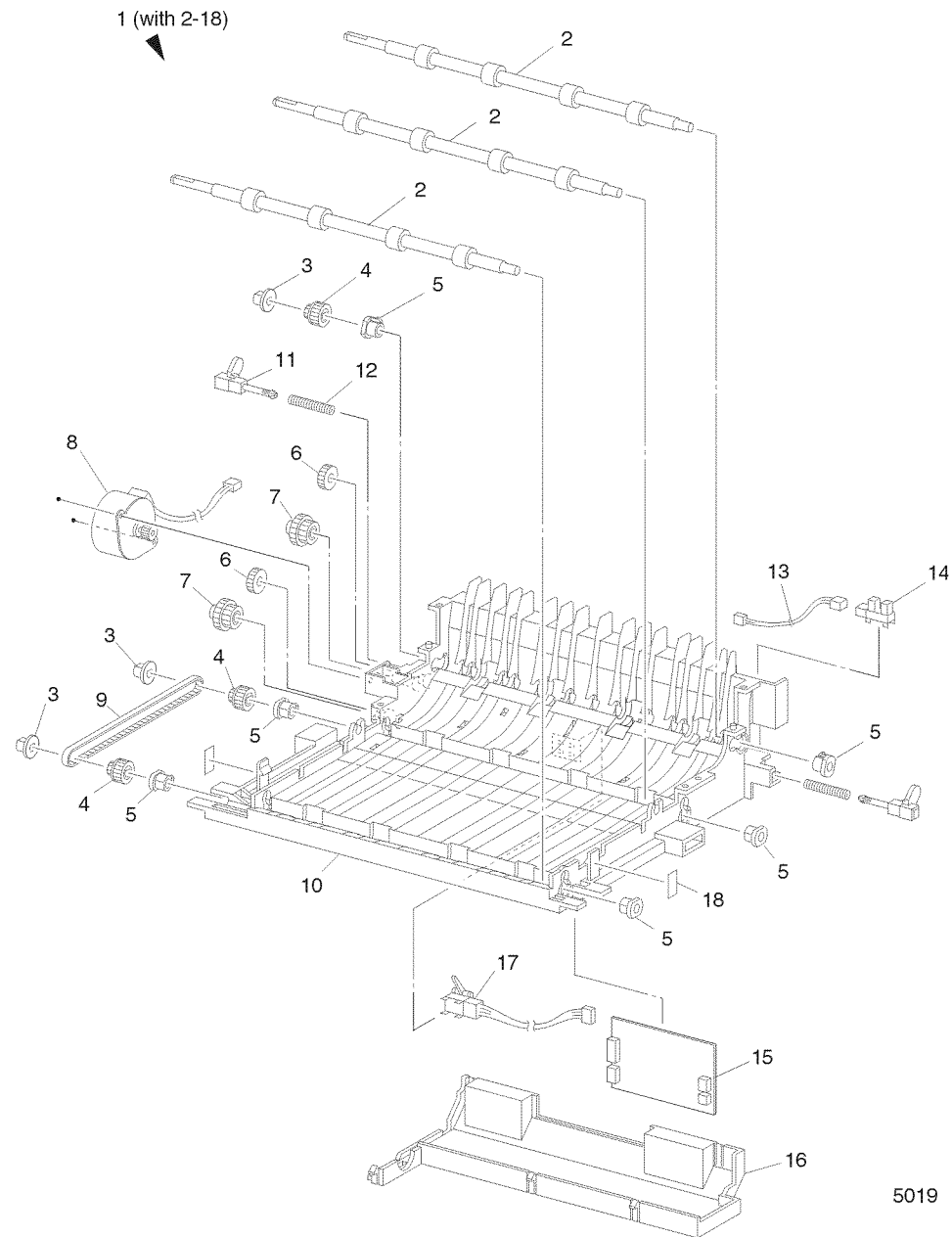
PL 13.1 Duplex (1 of 2)

Item	Part	Description
1	-----	Duplex Assembly (with 2-6)
2	-----	Turn Chute Assembly
3	-----	Connector Chute Assembly Connector
4	54K15061	Upper Chute Assembly
5	-----	Duplex Drive Cover
6	-----	Lower Duplex Chute Assembly
S	600K79660	Hardware Kit (Includes Screw)



PL 13.2 Duplex (2 of 2)

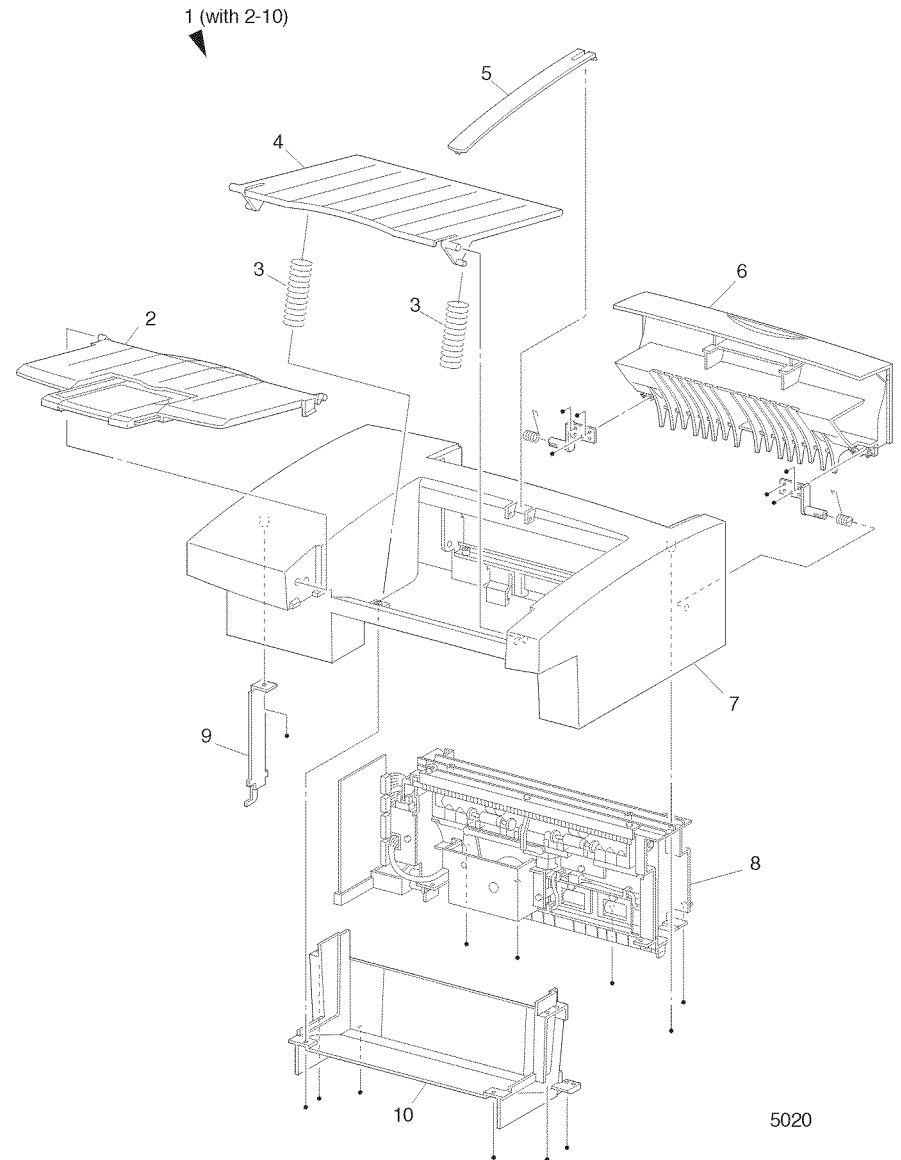
Item	Part	Description
1	-----	Lower Duplex Chute Assembly (with 2-18)
2	59K12151	Duplex Roll Assembly
3	3E47580	Duplex Stopper Belt
4	-----	Duplex Gear 17/Pulley
5	-----	Duplex Bearing
6	-----	Duplex Gear 18
7	-----	Duplex Gear 17/39
8	127K24800	Motor Assembly
9	423W15455	Synchronous Belt
10	-----	Lower Duplex Chute
11	-----	Duplex Latch
12	-----	Duplex Latch Spring
13	-----	Duplex Sensor Harness
14	130E81970	Face Up Tray Sensor
15	160K53051	Duplex PWB
16	-----	Duplex Cover
17	130K83310	Duplex Transport Sensor
18	-----	Duplex Handle Label
S	600K79660	Hardware Kit (Includes Screw)



5019

PL 14.1 Offset Catch Tray (1 of 2)

Item	Part	Description
1	-----	Offset Catch Tray Assembly (with 2-10)
2	50K38631	Exit Tray Assembly
3	-----	Tray Spring
4	50E89160	Exit Tray
5	12E09550	Weight Link
6	802E02773	Rear Cover
7	802E02755	OCT Cover
8	54K14842	Inner Exit Chute Assembly
9	-----	Hook Cover
10	-----	Lower Cover
S	600K79660	Hardware Kit (Includes Screw)



PL 14.2 Offset Catch Tray (2 of 2)

Item	Part	Description
1	54K14842	Inner Exit Chute Assembly (with 2-43)
2	-----	OCT Harness Assembly (J21-P202)
3	-----	PWB Holder
4	160K47332	OCT PWB
5	-----	Ground Plate
6	127K28640	Drive Motor Assembly
7	-----	Gear Exit 20
8	-----	Bearing Exit
9	-----	Gear 27
10	-----	Gear 26
11	-----	Gear 47W
12	-----	Gear Exit
13	-----	Static Eliminator
14	-----	HSG Gear
15	121K20551	Direction Solenoid
16	11E09450	Solenoid Lever
17	-----	Solenoid Pin
18	130K84220	Exit Sensor Assembly
19	120E17191	Stack Full Actuator
20	130E81970	Stack Full Sensor
21	-----	OCT Sensor Harness Assembly (J224-225, J226, J227, J228)
22	-----	Offset Roll Assembly (with 23-26, 43)
23	-----	Exit Roll Assembly
24	-----	Exit Roll Pinch
25	-----	Offset Bearing
26	-----	OCT Guide
27	-----	OCT Holder
28	-----	Exit Shaft
29	-----	Mid Roll Assembly
30	-----	OCT Pinch Roll
31	-----	Mid Pinch Spring
32	54E14431	Inner Exit Chute
33	802K05770	Offset Assembly (with 35-39)
34	-----	Offset Motor Assembly
35	-----	Offset Housing
36	130E81970	OCT Home Sensor
37	-----	Offset Lever
38	-----	Core Gear
39	-----	Ferrite Core
40	-----	OCT Wire Assembly
41	-----	Sensor Bracket
42	-----	Saddle Edge
43	-----	Exit Pinch Spring
S	600K79660	Hardware Kit (Includes Screw)

