

Parts List

5

In this chapter...

- [Serial Number Format](#)
- [Using the Parts List](#)
- [Parts Lists](#)
 - [PL 1.1 Covers \(3610\)](#)
 - [REP 5.6 MCU PWB](#)
 - [PL 1.3 Rear Cover Assembly](#)
 - [PL 1.4 Control Panel \(3610\)](#)
 - [PL 1.5 Control Panel \(3615\)](#)
 - [PL 2.4 Duplex Chute](#)
 - [PL 2.1 Registration](#)
 - [PL 2.3 Feed Assembly](#)
 - [PL 2.1 Registration](#)
 - [PL 2.4 Duplex Chute](#)
 - [PL 2.6 MSI](#)
 - [PL 2.7 Bypass Tray](#)
 - [PL 3.1 Xerographics](#)
 - [PL 3.2 ROS Assembly](#)
 - [PL 3.3 Toner Dispense](#)
 - [PL 3.4 Transfer Roller](#)
 - [PL 3.5 Fusing Assembly](#)
 - [PL 4.1 Drive](#)
 - [PL 4.2 NOHAD](#)
 - [PL 5.1 Electrical \(ESS PWB / LVPS\) \(3610\)](#)
 - [PL 5.2 Electrical \(ESS PWB / LVPS\) \(3615\)](#)
 - [PL 5.3 Electrical \(MCU PWB / HVPS\)](#)
 - [PL 5.4 Electrical Connections](#)
 - [PL 6.1 IIT Scanner / DADF](#)
 - [PL 7.1 Tray 1/Optional Tray 550-Sheet Feeder \(1/4\)](#)
 - [PL 7.2 Tray 1/Optional Tray 550-Sheet Feeder \(2/4\)](#)
 - [PL 7.3 Tray 1/Optional Tray 550-Sheet Feeder \(3/4\)](#)
 - [PL 7.4 Tray 1/Optional Tray 550-Sheet Feeder \(4/4\)](#)
- [Quick Reference Spares List for the 3610 and 3615](#)
- [Xerox Supplies](#)

Serial Number Format

Changes to Xerox products are made to accommodate improved components as they become available. It is important when ordering parts to include the following information:

- Component's part number
- Product type or model number
- Serial Number of the printer

The serial numbers are only reset to the starting serial number when the ending serial number is reached. At that time the revision digit will be rolled. Serial numbers below 10001 are reserved for XOG Final Integration Center (FIC) sites if re-serialization is needed.

Note: Not all of the serial number will be used. This is a buffer in case additional units are built by Fuji Xerox for each model of printer during pre-production.

110V Engine Format

The nine-digit serial number has the following format:

- **PPSSSSSS**
- **PPP** = Three digit alphanumeric product code
- **SSSSSS** = Six digit numeric serial number

Table 1: 110V Engine Format

Product	Product Code	Starting Serial Number	Ending Serial Number
Pre-Production (PP)			
xxxx_xx, 110V Engine	xxx	xxxxxx	xxxxxx
Mass Production (MP)			
xxxx_xx, 110V Engine	xxx	xxxxxx	xxxxxx
* Not all of the serial numbers will be used. This is a buffer in case additional units are built by FX during pre-production * Serial numbers between xxxxxx - xxxxxx are reserved for XOG FIC sites if re-serialization is needed. A serial number break or a new serial number range will be provided when a major product change occurs.			

220V Engine Format

- MMMSSSSSc
- **MMM** = Manufacturing Location Code, 3 digit numeric code
- **SSSSSS** = Six digit numeric serial number
- **c** = check digit

Table 2: 220V Engine Format

Product	Product Code	Manufacturing Location Code	Starting Serial Number	Ending Serial Number
Pre-Production (PP)				
xxxxx_x, 220V Engine	xxx	xxx	xxxxxx	xxxxxx
xxxxx_xx, 220V Engine	xxx	xxx	xxxxxx	xxxxxx
Mass Production (MP)				
xxxxx_x, 220V Engine	xxx	xxx	xxxxxx	xxxxxx
xxxxx_xx, 220V Engine	xxx	xxx	xxxxxx	xxxxxx
* Not all of the serial numbers will be used. This is a buffer in case additional units are built by FX during pre-production.				

Examples

110V Printer

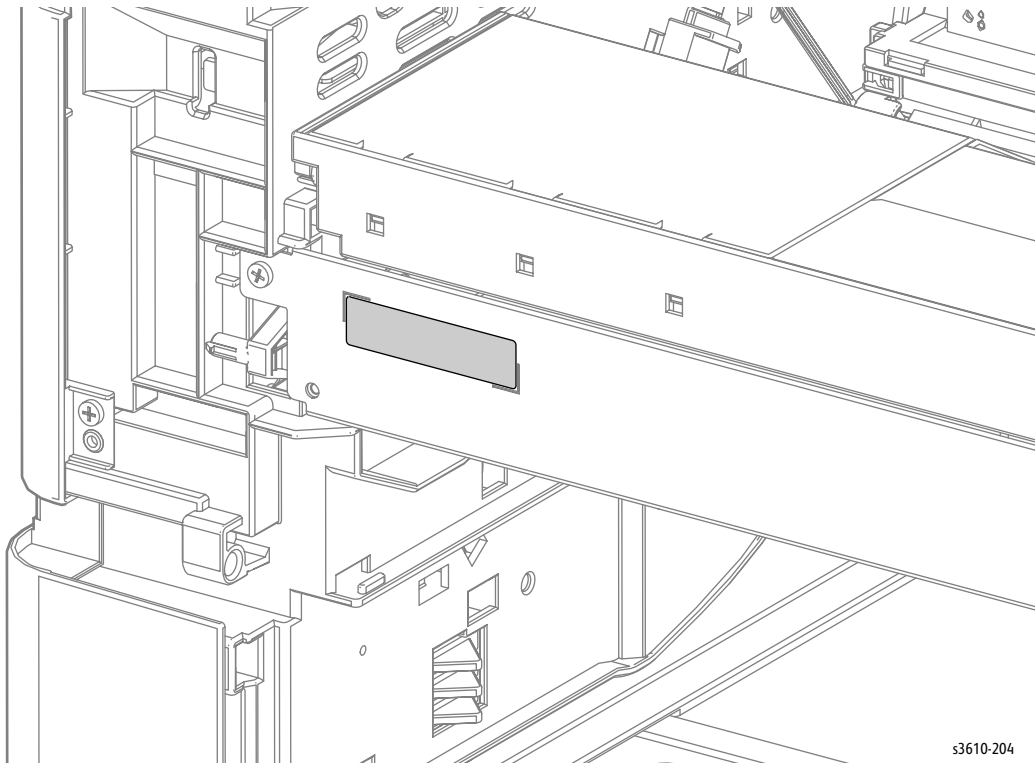
- xxxxxxxxx: Xerox Serial Number
- Product code for 110V printer = xxx
- Serial number for xxxx_xx = xxxxxx

220V Printer

- xxxxxxxxx
- Manufacturing location code for 220V printer = xxx
- Serial number for xxxxx_x = xxxxxx
- Check digit = x

Serial Number Location and Layout

The serial number label is located on the frame behind the Front Cover.



s3610-204

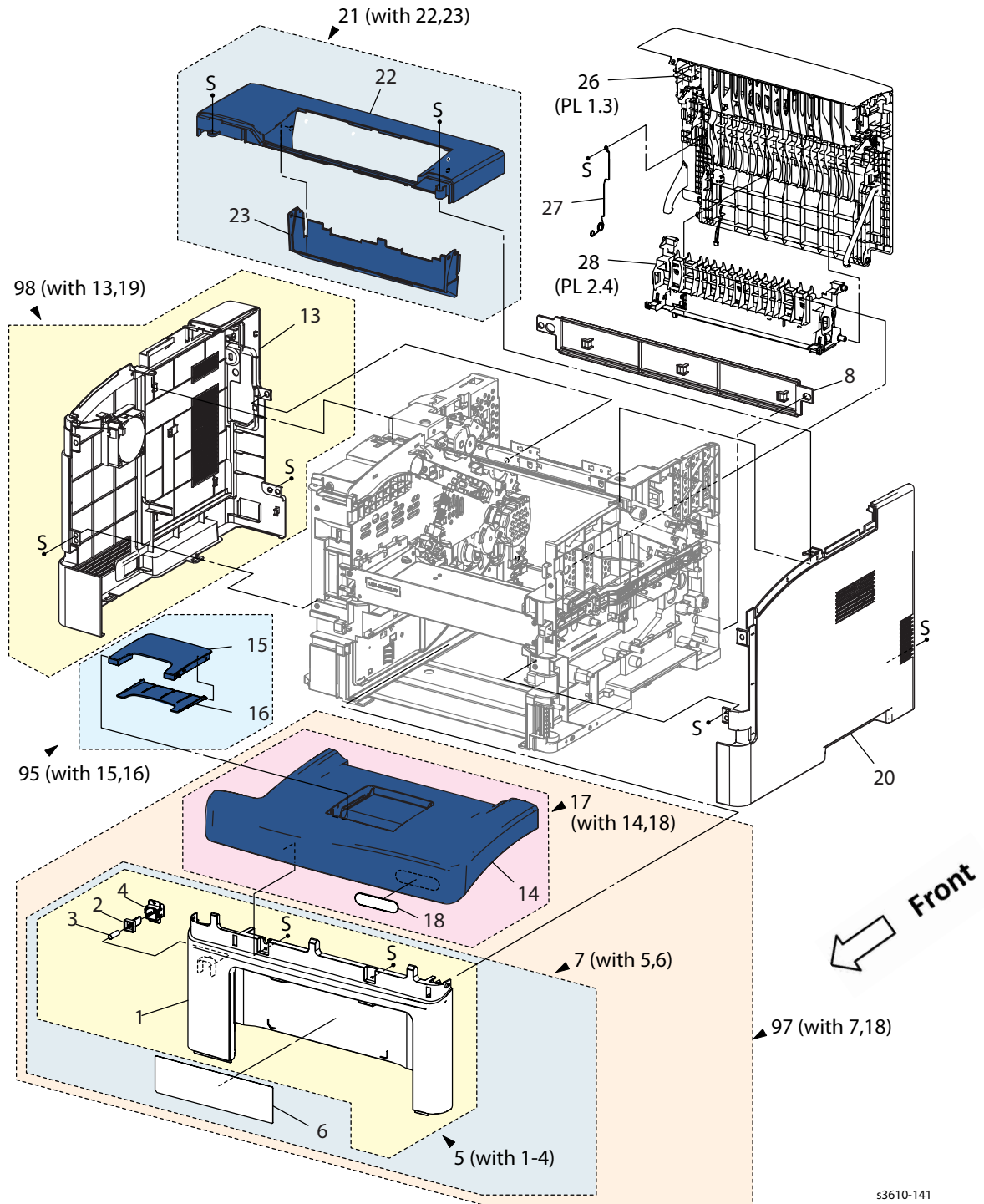
Using the Parts List

- ID No.: The callout number from the exploded part diagram.
- Name/ Description: The name of the part to be ordered and the number of parts supplied per order.
- Part Number: The material part number used to order that specific part.
- A black triangle preceding a number followed by a parenthetical statement in an illustrated parts list means the item is a parent assembly, made up of the individual parts called out in parentheses.
- The notation “with X~Y” following a part name indicates an assembly that is made up of components X through Y. For example, “1 (with 2~4)” means part 1 consists of part 2, part 3, and part 4.
- The notation “J1<>J2 and P2” is attached to a wire harness. It indicates that connector Jack 1 is attached to one end of the wire harness and connector J2 is attached to the other end that is plugged into P2.

Note: Only parts showing part numbers are available for ordering by support. Parts not showing part numbers are available on the parent assembly.

Parts Lists

PL 1.1 Covers (3610)

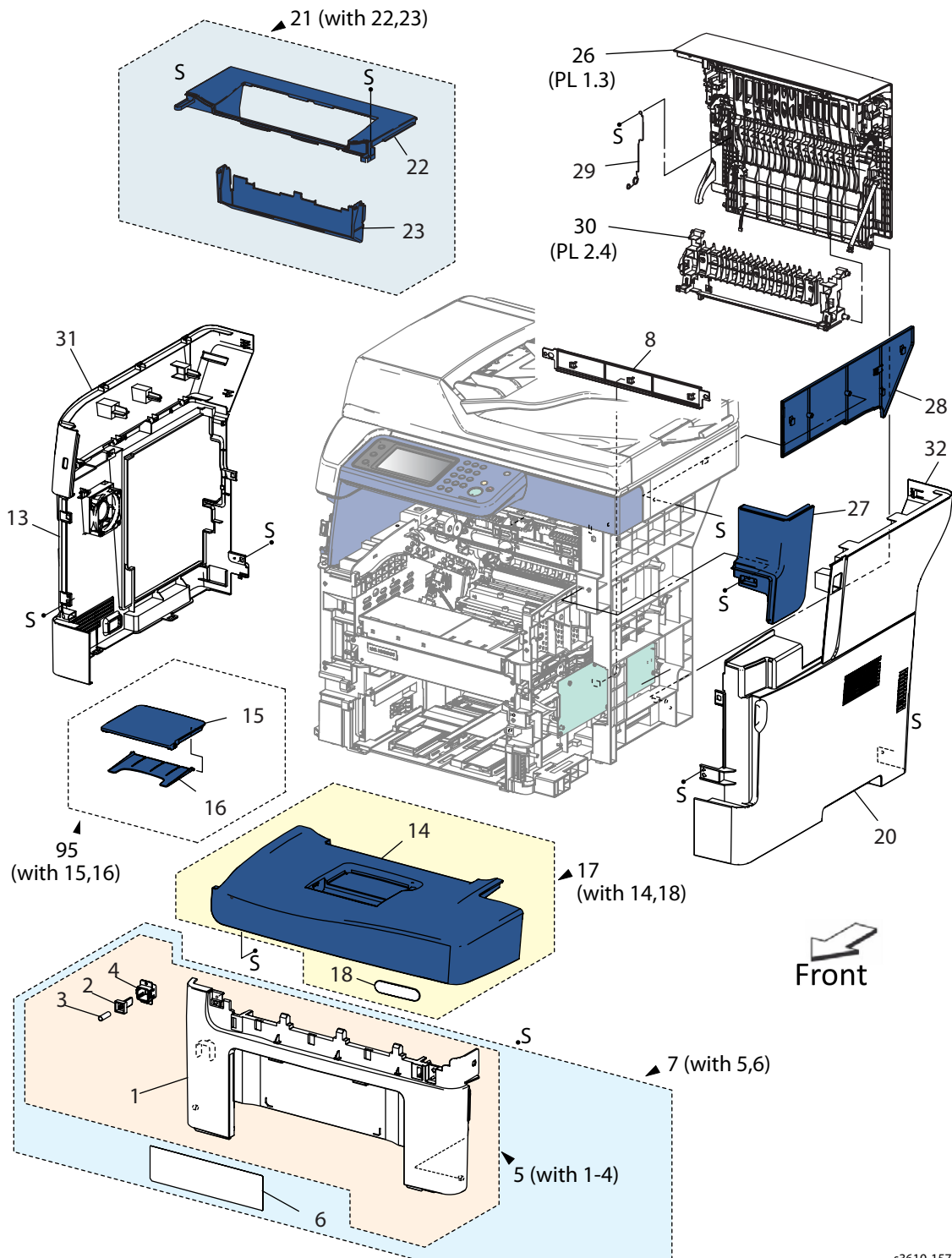


s3610-141

Parts List 1.1 Covers (3610)

Item	Description	Part Number
1.	Front Cover	
2.	Interlock Actuator	
3.	Interlock Spring	
4.	Interlock Holder	
5.	Front Cover Assembly (with 1-4)	
6.	Label MSI Instruction	
7.	Front Cover Assembly (with 5, 6) (REP 1.2)	604K85880
8.	Lower Rear Cover (REP 1.8)	848E82672
9.		
13.	Left Side Cover (REP 1.7)	848E82792
14.	Top Front Cover	
15.	Cover Extension	
16.	Cover Extension 2nd	
17.	Top Front Cover Assembly (with 14, 18) (REP 1.4)	604K84920
18.	Logo Plate Assembly	
19.		
20.	Right Side Cover (REP 1.6)	604K84941
21.	Top Cover Assembly (with 22, 23) (REP 1.4)	848K62885
22.	Top Cover (Mid)	
23.	Exit Cover (Mid)	
24.		
25.		
26.	Rear Cover Assembly (REP 1.5)	848K70060
27.	Spring-earth DTS Out	
28.	Duplex Chute Assembly (PL 2.4) (REP 2.1)	054K48100
95.	Top Front Cover Extension Assembly (with 15, 16) (REP 1.3)	604K77391
97.	Cover Assembly Front (with 7,18)	
98.	Left Side Cover Assembly (with 13, 19)	

PL 1.2 Covers (3615)

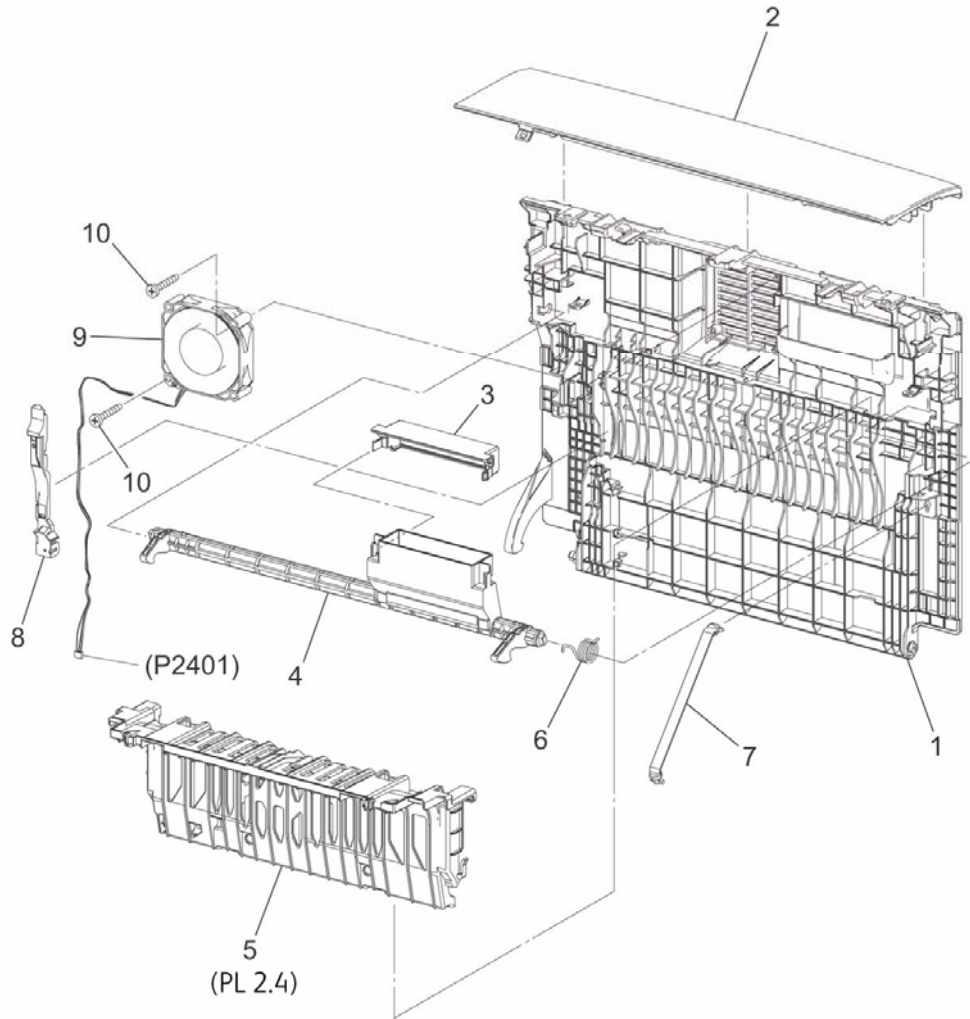


s3610-157

Parts List 1.2 Covers (3615)

Item	Description	Part Number
1.	Front Cover	
2.	Actuator Interlock	
3.	Spring Interlock	
4.	Holder Interlock	
5.	Front Cover Assembly (with 1-4)	
6.	Label MSI Instruction	
7.	Front Cover Assembly (with 5, 6) (REP 1.2)	604K85890
8.	Lower Rear Cover (REP 1.18)	848E82672
9.		
10.		
11.		
12.		
13.	Left Side Cover (REP 1.11)	848E82815
14.	Top Front Cover	
15.	Cover Extension	
16.	Cover Extension 2nd	
17.	Top Front Cover Assembly (with 14, 18) (REP 1.3)	604K84931
18.	Logo Plate	
19.		
20.	Right Side Cover (REP 1.13)	848K68342
21.	Top Cover Assembly (with 22, 23) (REP 1.15)	848K62912
22.	Top Cover	
23.	Exit Cover	
24.		
25.		
26.	Rear Cover Assembly (PL 1.3) (REP 1.8)	604K85650
27.	IIT Lower Right Cover (REP 1.13)	848E82901
28.	IIT Right Inner Cover (REP 1.14)	848E89270
29.	Earth Spring	
30.	Duplex Chute Assembly (PL 2.4) (REP 2.1)	054K48100
31.	Upper Left Side Cover (REP 1.11)	848E89213
32.	Upper Right Side Cover (REP 1.13)	848E89231
95.	Kit Cover Assembly Extension (with 15, 16) (REP 1.3)	604K85900

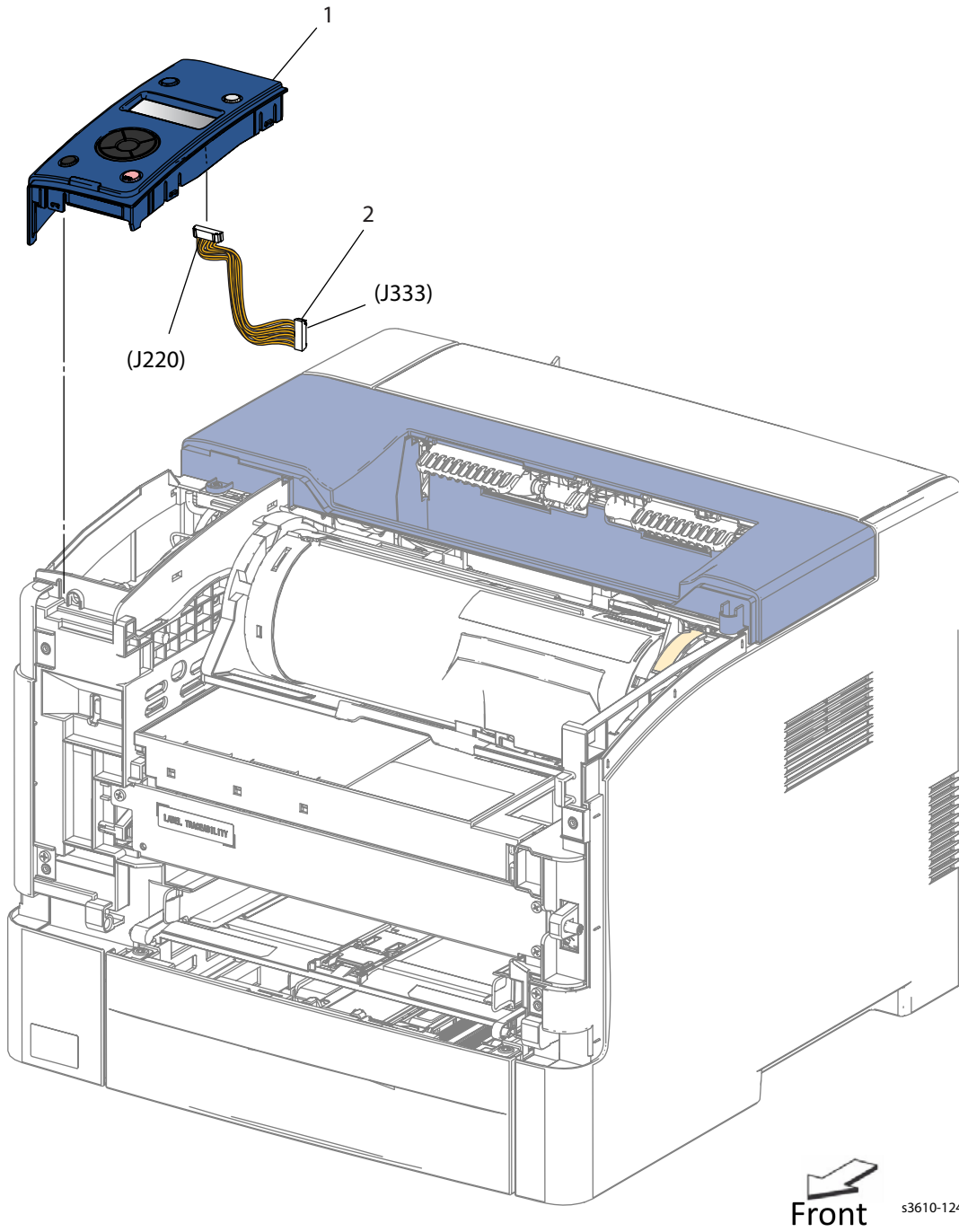
PL 1.3 Rear Cover Assembly



Parts List 1.3 Rear Cover Assembly

Item	Description	Part Number
1.	Rear Cover Assembly (REP 1.5) (REP 1.18)	604K85650
2.	Top Rear Cover	
3.	Rear Cover Latch	
4.	Rear Latch	
5.	Duplex Chute (PL 2.4) (REP 2.1)	054K48100
6.	Rear Latch Spring	
7.	Rear Strap	868E76893
8.	Rear Guide Harness	
9.	Rear Fan	
10.	Rear Fan Screw	

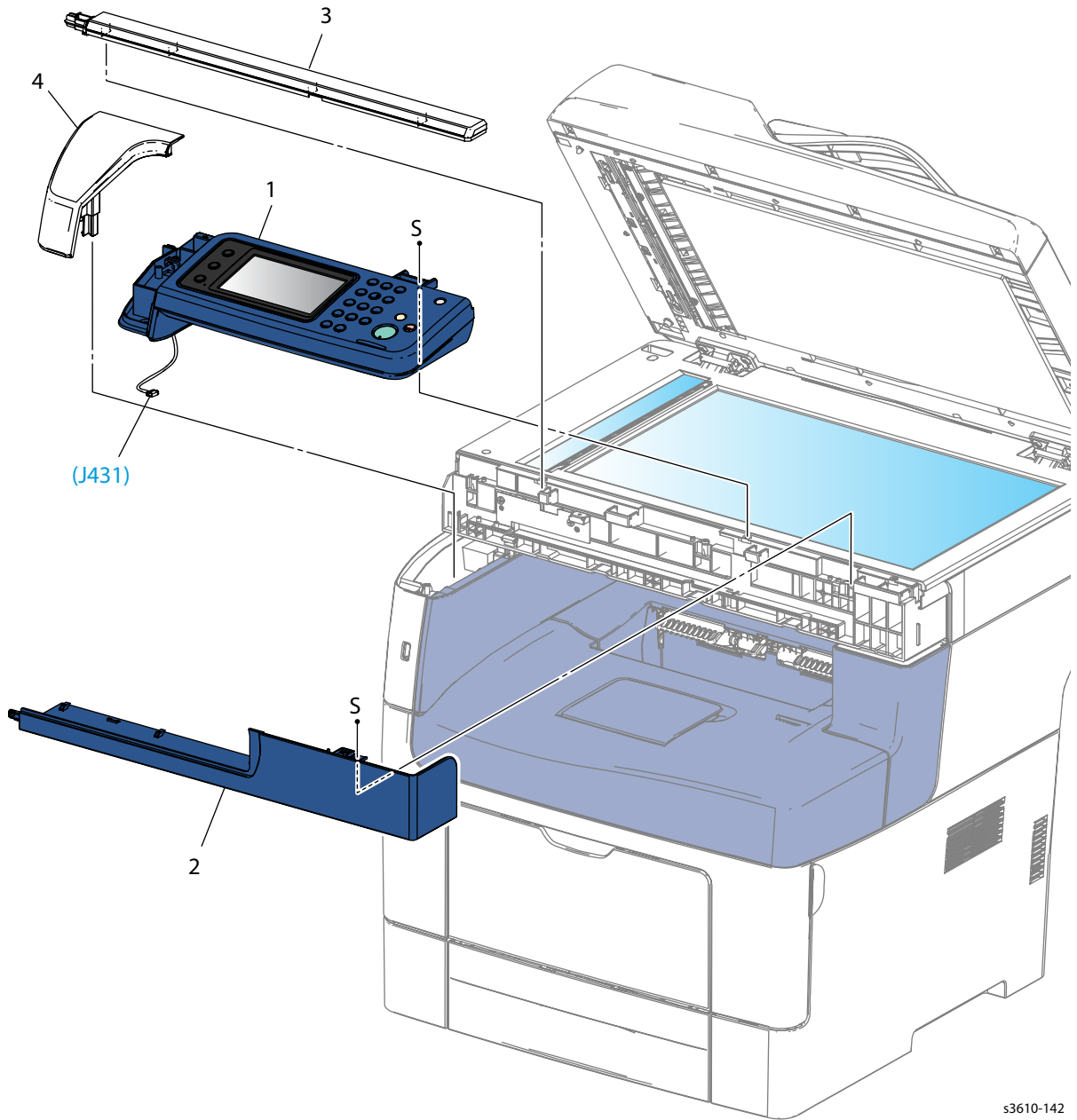
PL 1.4 Control Panel (3610)



Parts List 1.4 Control Panel

Item	Description	Part Number
1.	Control Panel (REP 1.1)	848K79123
2.	UI Harness Assembly	

PL 1.5 Control Panel (3615)



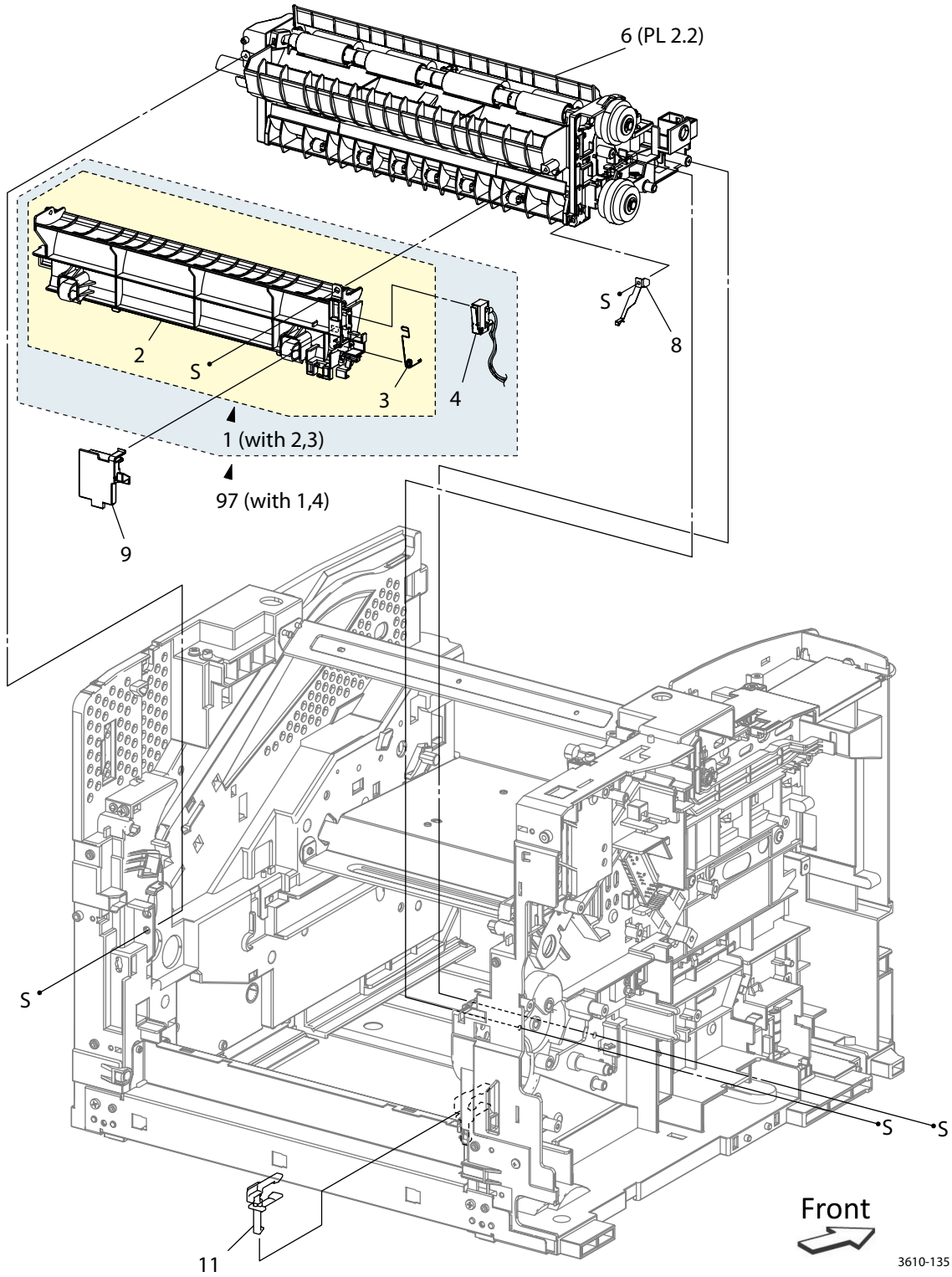
s3610-142

Parts List 1.5 IIT Control Panel

1.	Control Panel AIO 110V Control Panel AIO 220V (REP 1.12)	See attached bulletin
2.	IIT Front Bottom Cover (REP 1.10)	848E93191
3.	IIT Front Top Cover (REP 1.9)	848E93181
4.	Left Side Cover (REP 1.17)	848E93171



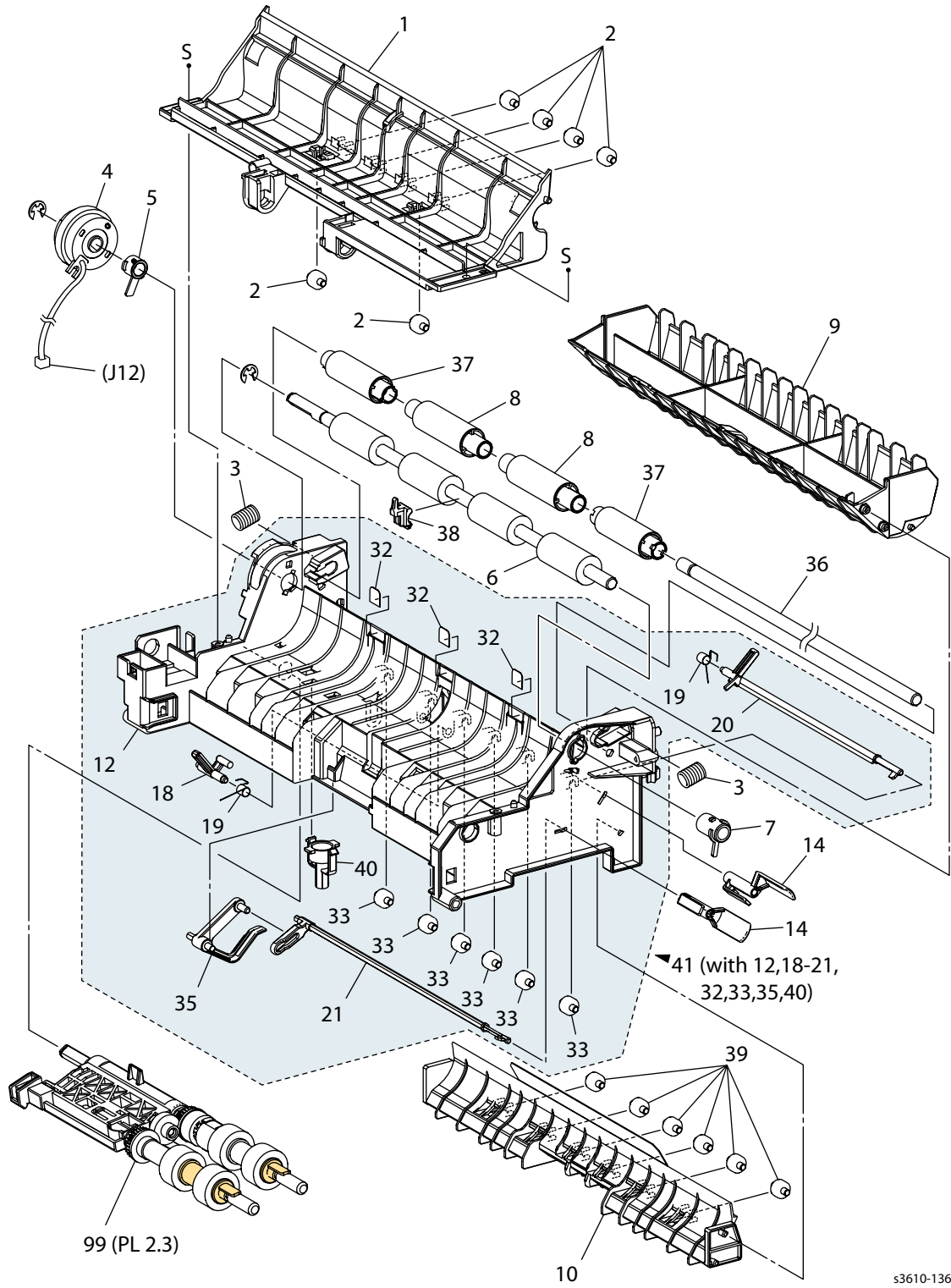
PL 2.1 Registration



Parts List 2.1 Registration

Item	Description	Part Number
1.	Duplex Lower Chute Assembly (with 2, 3)	
2.	Duplex Lower Chute	
3.	Spring Wc Il	
4.	Interlock Harness Assembly	
5.		
6.	Transport Assembly (REP 2.2)	059K79334
7.		
8.	Registration Out Earth Plate	
9.	Rear Fan Connector Holder	
10.		
11.	CST Stopper (REP 2.9)	803E13351
97.	(3610) Rear Interlock Assembly (with1, 4)	604K85740
	(3615) Rear Interlock Assembly (with1, 4) (REP 2.10)	604K85750

PL 2.2 Transport Assembly

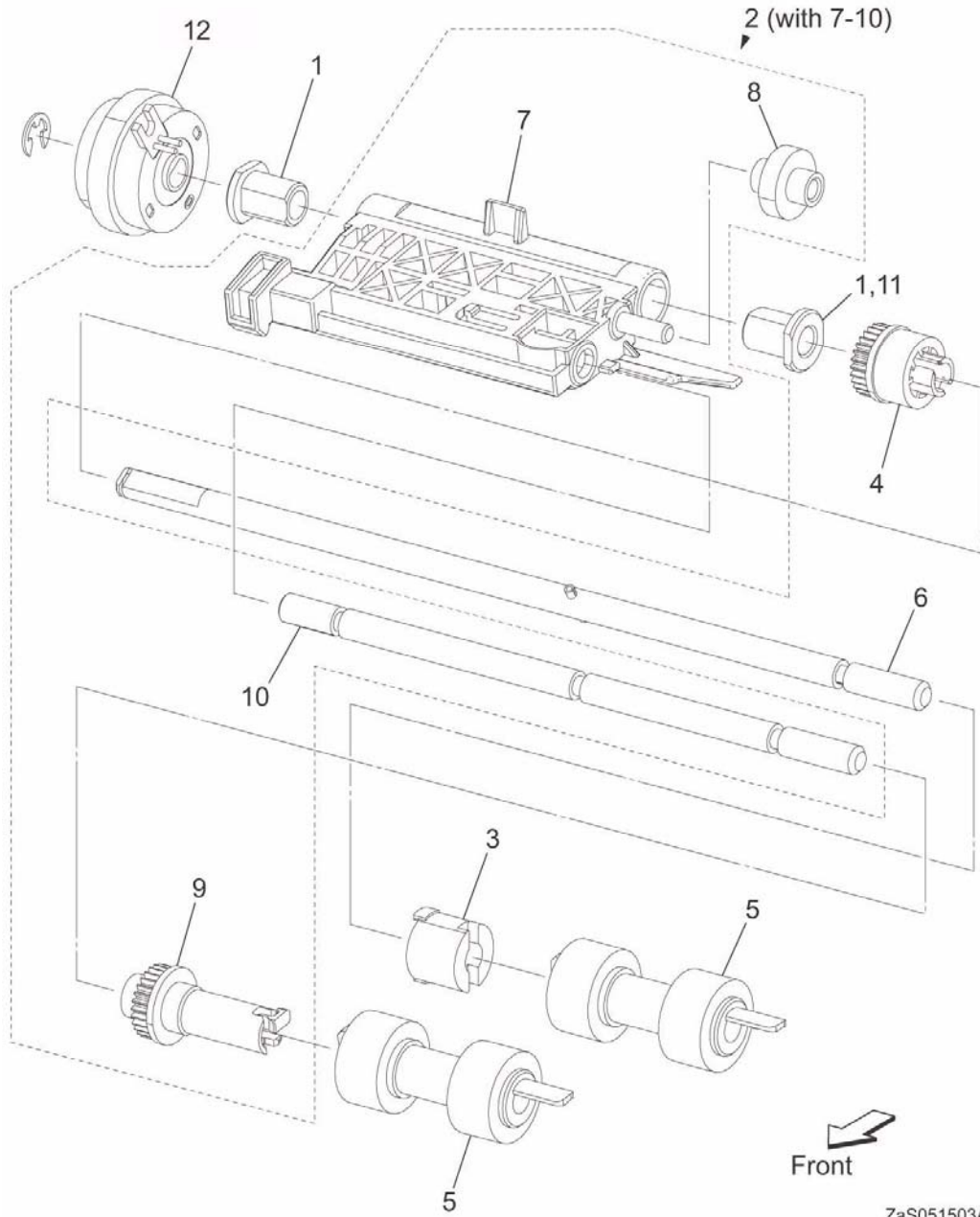


s3610-136

Parts List 2.2 Transport Assembly

Item	Description	Part Number
1.	Registration In Chute	
2.	Support Roll 2	
3.	Registration Spring	
4.	Registration Clutch (REP 2.6)	121K51870
5.	Registration Earth Bearing ZA	
6.	Rubber Roll Assembly ZA (REP 2.7)	059K74580
7.	Right Registration Bearing	
8.	Registration Pinch Roll Assembly	
9.	Registration Out Chute	
10.	Lower Feed Chute	
11.		
12.	Registration Chute	
13.		
14.	Registration Shutter Sensor (REP 2.8)	055E60433
15.		
16.		
17.		
18.	Registration Actuator MSI	
19.	Actuator Spring ZA	
20.	Actuator	
21.	No Paper Tray Actuator	
32.	Chute Guide	
33.	Support Roll 2	
34.		
35.	No Paper Tray Actuator	
36.	Registration Pinch Roll Shaft	
37.	Registration Pinch Roll	
38.	Center Bearing	
39.	Support Roll 2	
40.		
41.	Registration Chute Assembly (with 12, 18-21, 32-35)	
99.	Feeder Assembly Kit (REP 2.3)	

PL 2.3 Feed Assembly

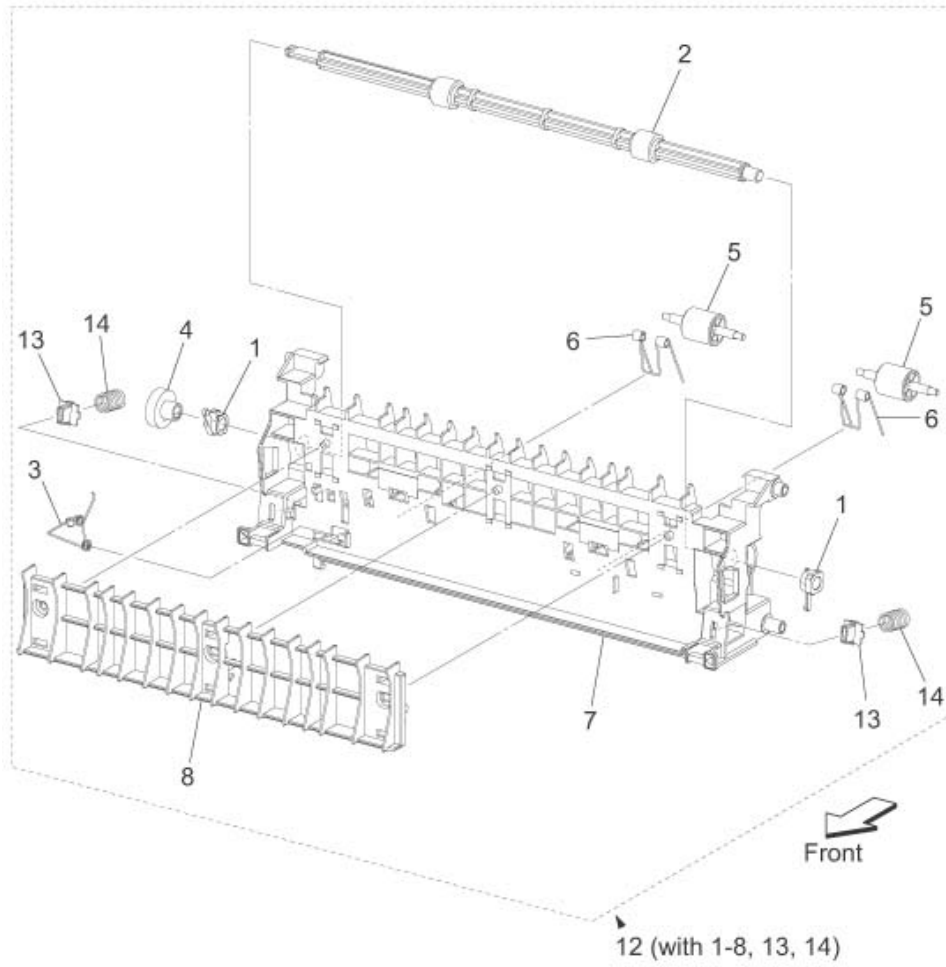


ZaS051503AB

Parts List 2.3 Feed Assembly

Item	Description	Part Number
1.	Nudger Bearing	
2.	Feeder Assembly (with 7-10)	
3.	Feed Gear	
4.	One-way Feed Clutch	
5.	Feed Roll Assembly (3 pack) (REP 2.3)	604K11192
6.	Feed Shaft Assembly	
7.	Nudger Plate	
8.	Nudger Idler Gear	
9.	Nudger Gear	
10.	Nudger Shaft	
11.	Nudger Bearing	
12.	CST Feed Clutch (REP 2.5)	121K51880

PL 2.4 Duplex Chute

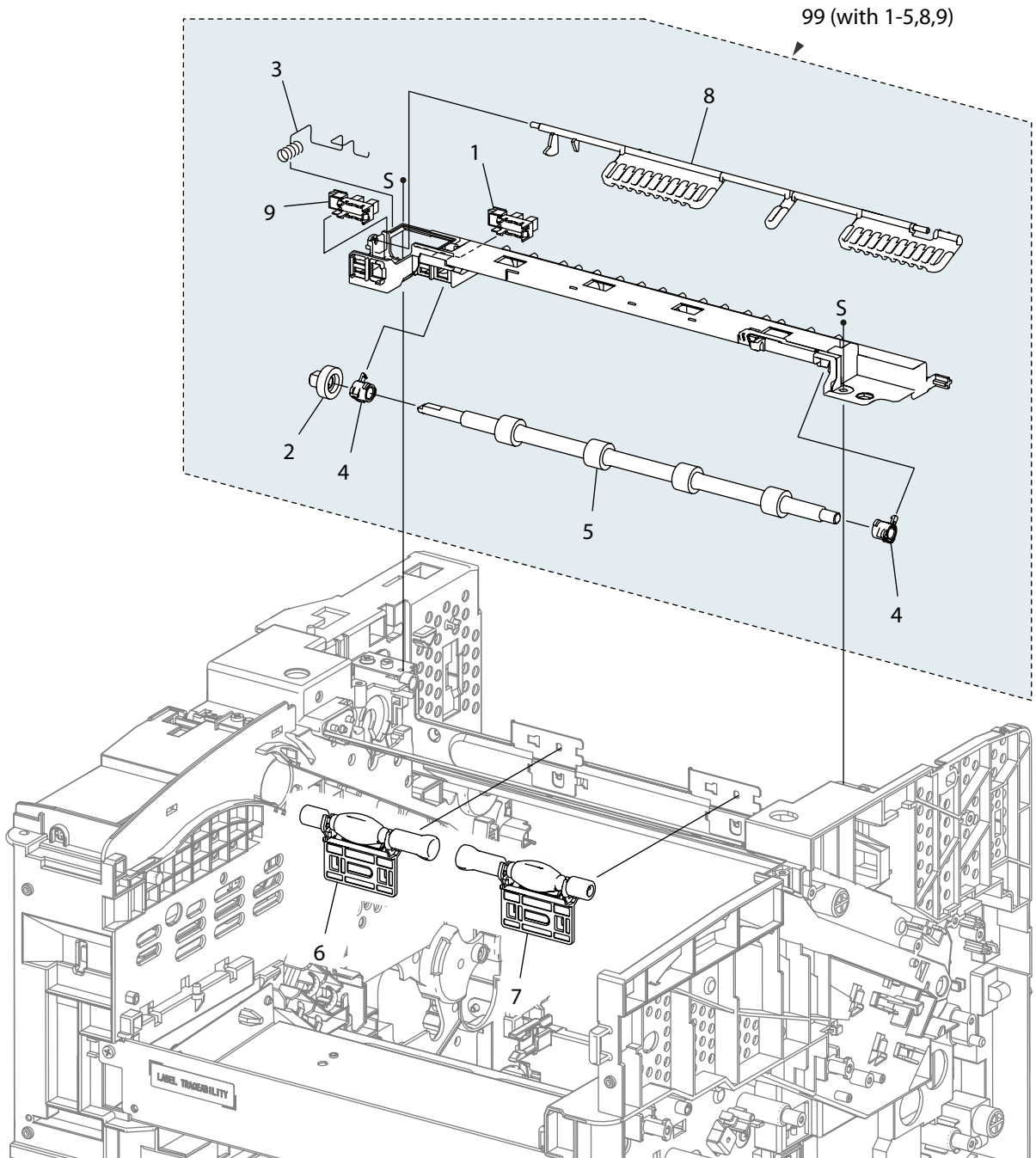


ZaS051401AA

Parts List 2.4 Duplex Chute

Item	Description	Part Number
1.	Duplex Bearing	
2.	Duplex Roll Assembly	
3.	Earth Spring	
4.	Duplex Gear	
5.	Duplex Pinch Roll	
6.	Duplex Pinch Roll Spring	
7.	Duplex In Chute	
8.	Transport Chute	
9.		
10.		
11.		
12.	Duplex Chute Assembly (with 1-8,13,14) (REP 2.1)	054K48100
13.	BTR Spring Cap	
14.	BTR Spring	

PL 2.5 Exit Chute

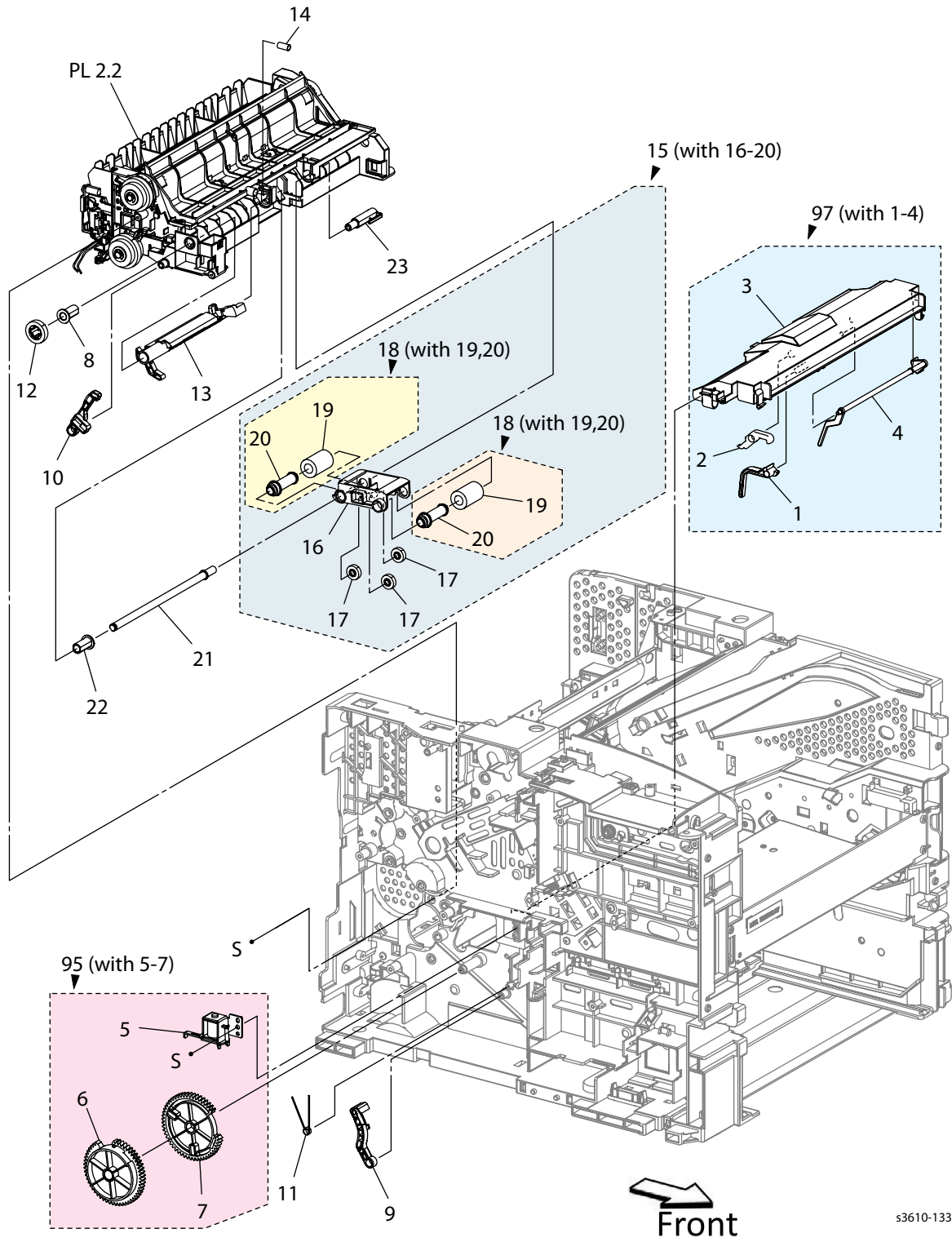


s3610-137

Parts List 2.5 Exit Chute

Item	Description	Part Number
1.	Exit Sensor	
2.	Exit Gear	
3.	Earth Sensor Spring	
4.	Exit Bearing	
5.	Exit Roll Assembly	
6.	Left Pinch Roll Assembly (REP 2.15)	604K77510
7.	Right Pinch Roll Assembly (REP 2.15)	604K77520
8.	Full Stack Actuator	
9.	Full Stack Sensor (REP 2.13)	930W00123
99.	Exit Chute Assembly (with 1-5, 8, 9) (REP 2.11)	054K48380

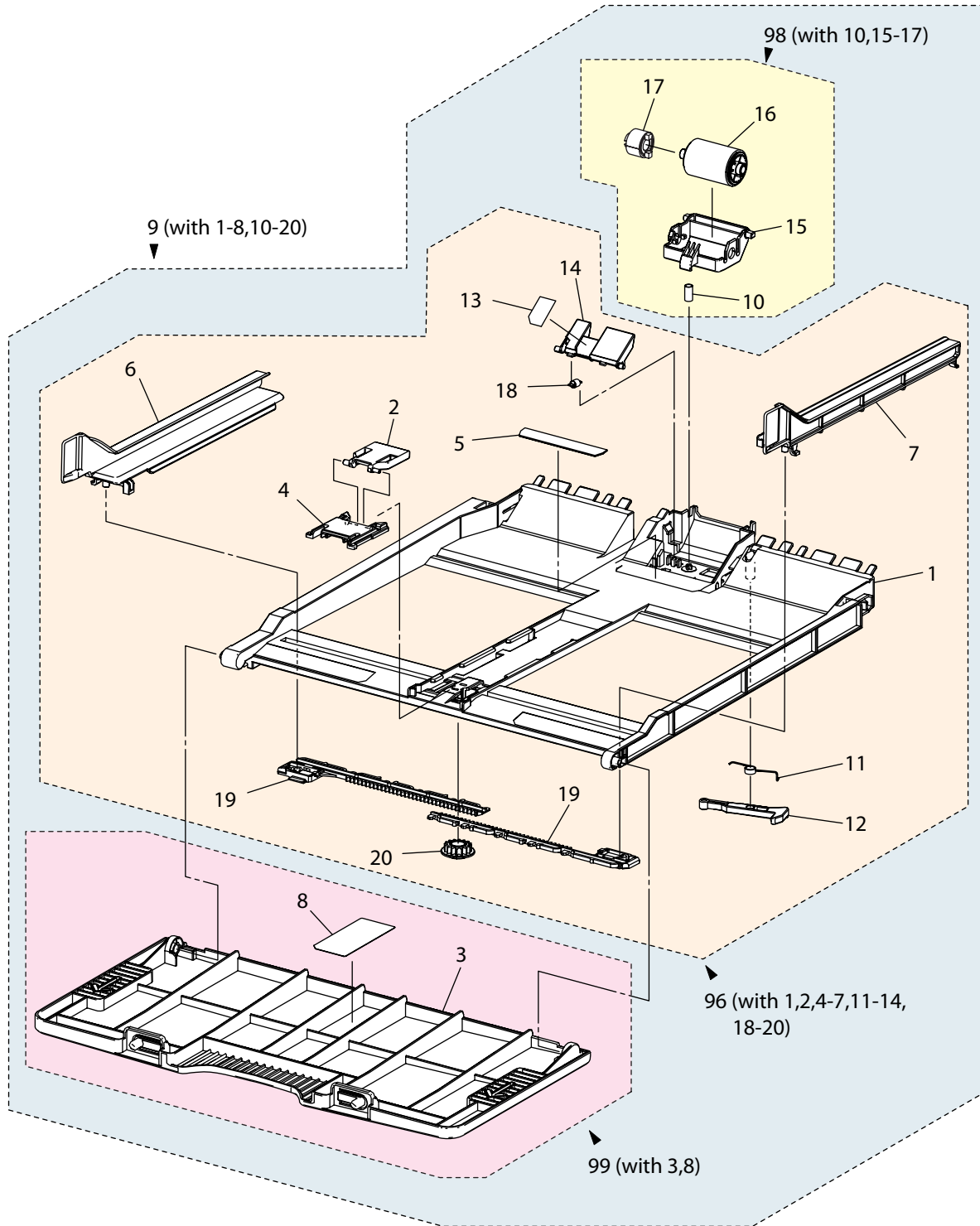
PL 2.6 MSI



Parts List 2.6 MSI

Item	Description	Part Number
1.	MSI In Stopper	
2.	MSI In Lock	
3.	Top Frame	
4.	No Paper Actuator	
5.	Feed Solenoid (REP 2.14)	121E23570
6.	MSI 1 Segment Gear	
7.	MSI 2 Segment Gear	
8.	Feed Bearing	
9.	Arm Lifter	
10.	Stopper Lifter	
11.	Feed Spring	
12.	Feed Gear	
13.	Lifter Lever	
14.	Spring	
15.	Pick Up Holder Assembly (with 16-20) (REP 2.15)	059K78790
16.	Pick UpHolder	
17.	Idler Feeder Gear	
18.	Feed Roll Assembly (with 19, 20)	
19.	Rubber Roll	
20.	Roll Core	
21.	Feed Shaft	
22.	Feed Bearing	
23.	Pick Up Flange	
95.	MSI Solenoid Assembly (with 5-7)	121E23570
97.	Top Frame Assembly (with 1-4) (REP 2.16)	801K57914

PL 2.7 Bypass Tray

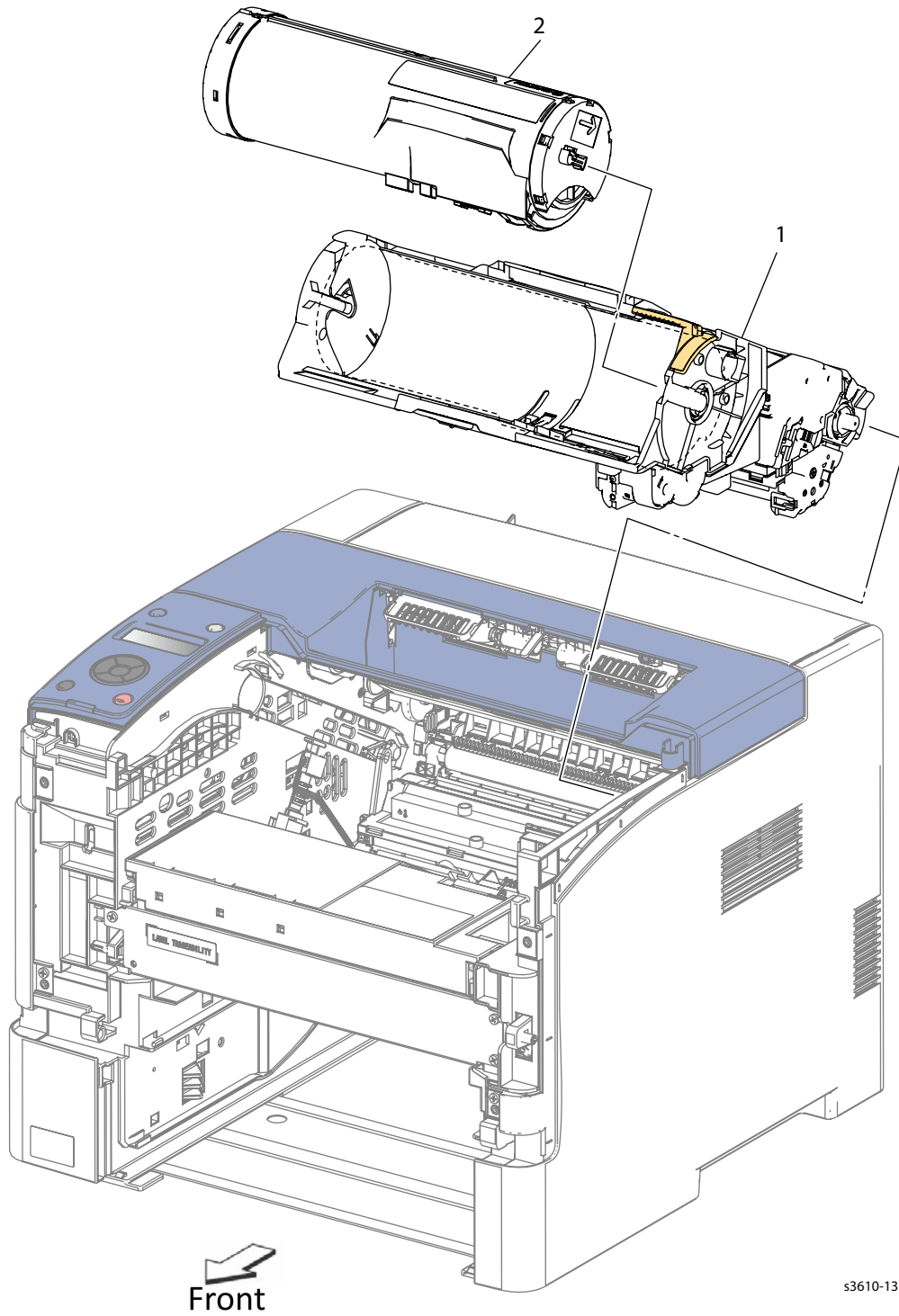


s3610-134

Parts List 2.7 Bypass Tray

Item	Description	Part Number
1.	Base Tray	
2.	End Guide	
3.	MSI Cover	
4.	Holder	
5.	MSI Pad	
6.	Left Side Guide	
7.	Right Side Guide	
8.	Label	
9.	MSI Tray Assembly (with 1-8, 10-20) (Bypass Tray)	050K71290
10.	Retard Roll Spring	
11.	Stopper Spring	
12.	Lock	
13.	MSI Mylar Guide	
14.	Stopper	
15.	Retard Roll Holder	
16.	Retard Roll Assembly	
17.	Friction Clutch Assembly	
18.	MSI Paper Stopper Spring	
19.	Side Guide Rack	
20.	Pinion Gear	
96.	MSI Frame Assembly (with 1, 2, 4-7, 11-14, 18-20)	
98.	MSI Retard Roll Assembly (with 10, 15-17) (REP 2.17)	604K78370
99.	MSI Cover Kit (with 3, 8)	

PL 3.1 Xerographics

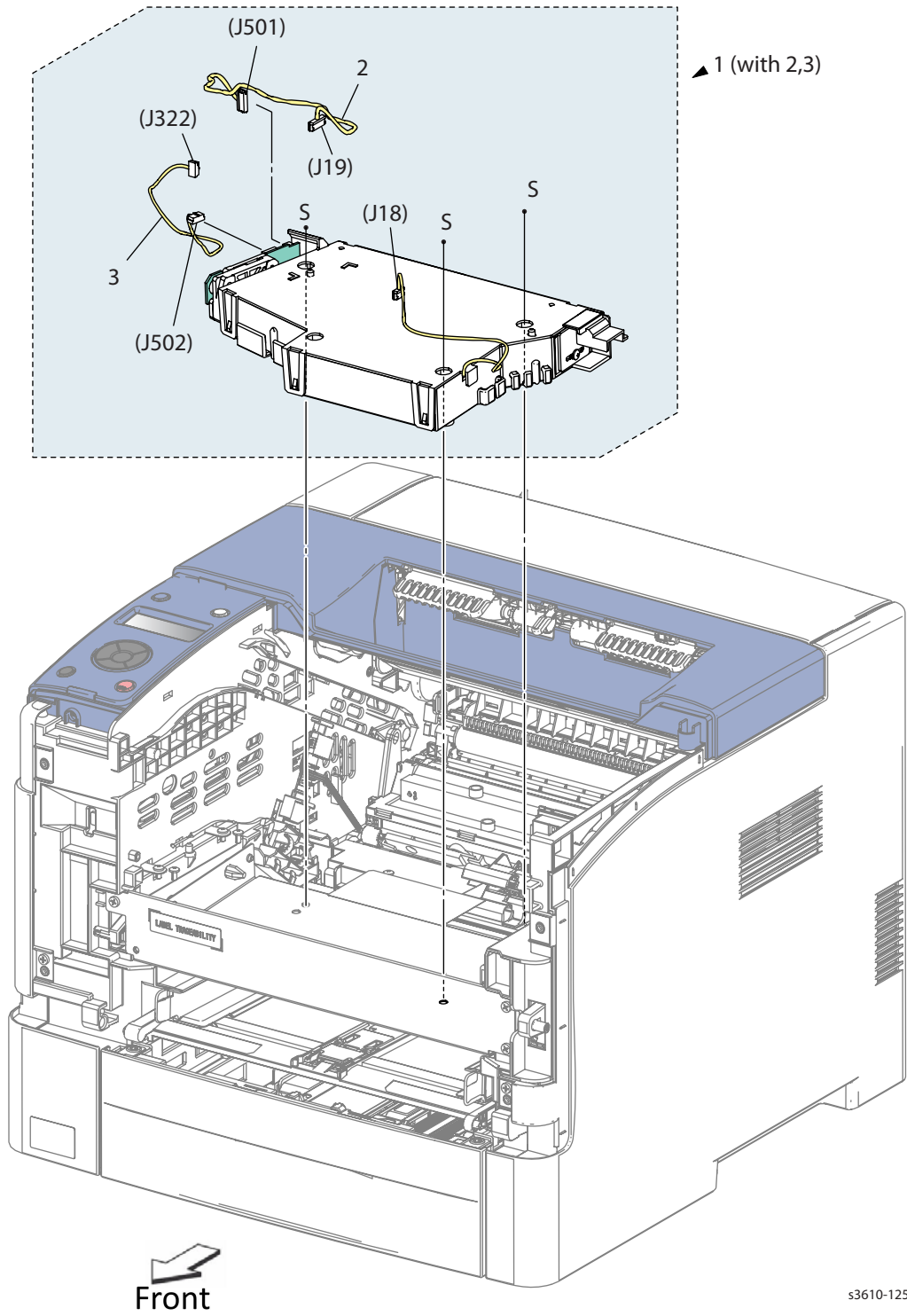


s3610-131

Parts List 3.1 Xerographics

Item	Description	Part Number
1.	Xerographic Assembly (Drum Cartridge)	See Consumables in Section 8
2.	Toner Cartridge Toner Cartridge (Hi capacity)	See Consumables in Section 8

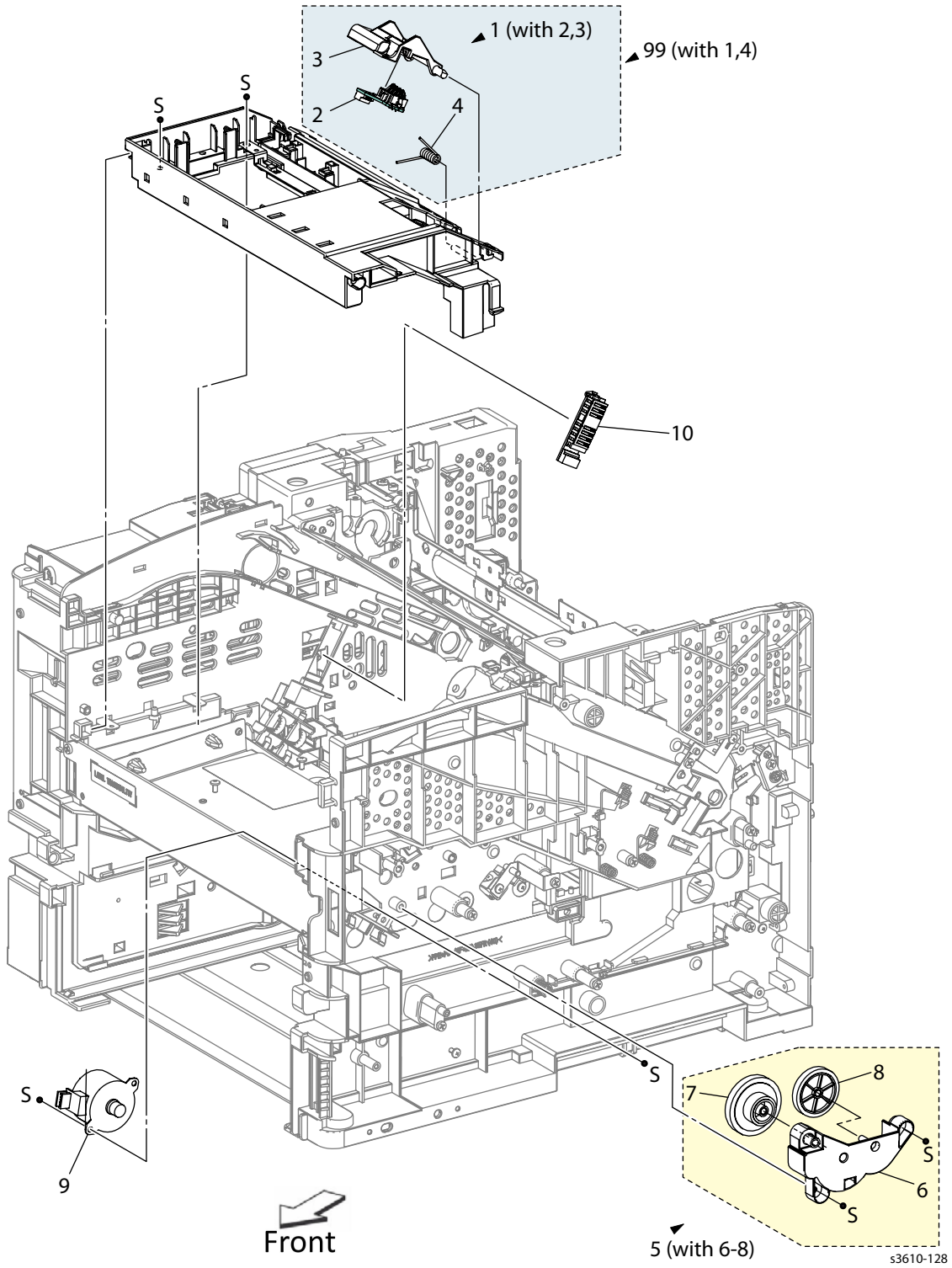
PL 3.2 ROS Assembly



Parts List 3.2 ROS Assembly

Item	Description	Part Number
1.	ROS Assembly (with 2, 3) (REP 3.1)	062K24263
2.	ROS-MCU Harness	
3.	Video Harness	

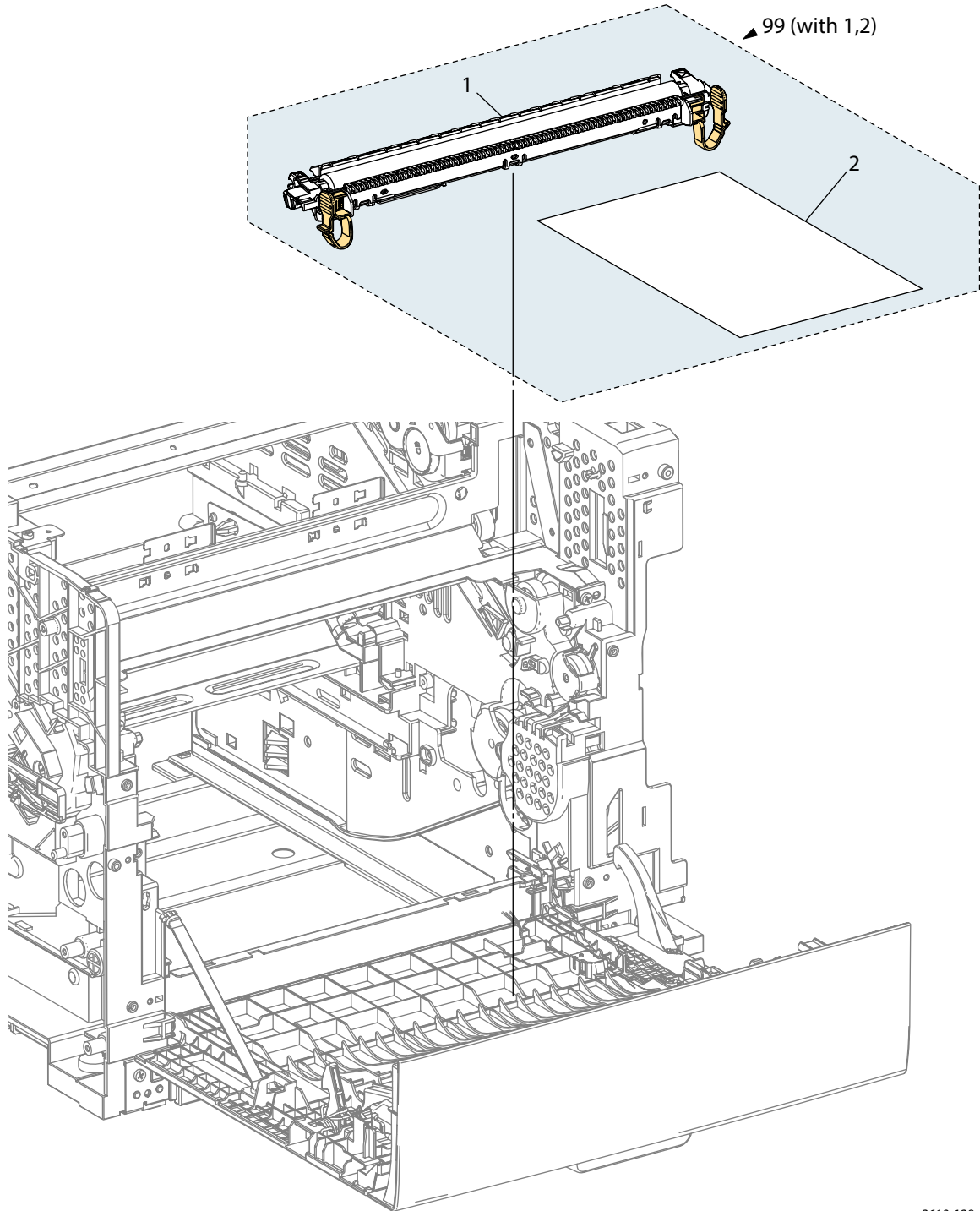
PL 3.3 Toner Dispense



Parts List 3.3 Toner Dispense

Item	Description	Part Number
1.	CRUM Housing Assembly (with 2, 3)	
2.	CRUM Connector Assembly	
3.	CRUM Housing	
4.	CRUM Spring	
5.	Dispense Drive Assembly (with 6-8) (REP 4.6)	007K18413
6.	Dispense Housing Drive	
7.	Gear Idler Motor	
8.	Output Gear	
9.	Dispense Motor (REP 4.7)	127K52160
10.	Xerographic Connector Assembly (REP 3.3)	116K91040
99.	CRUM Assembly Kit (with 1, 4) (REP 3.2)	604K77290

PL 3.4 Transfer Roller

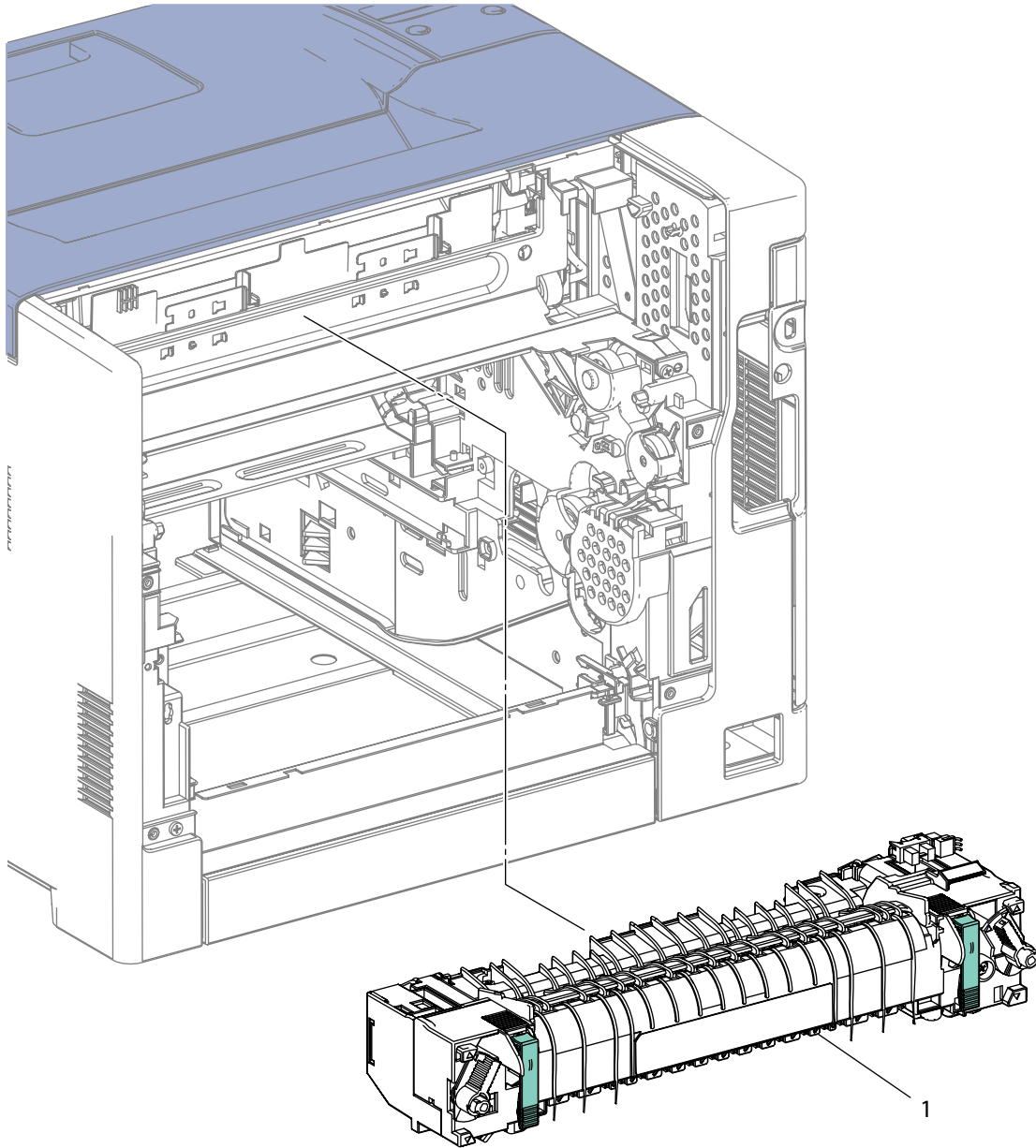


s3610-129

Parts List 3.4 Transfer Roller

Item	Description	Part Number
1.	Transfer Roll Assembly CRU (REP 3.4)	059K75560

PL 3.5 Fusing Assembly

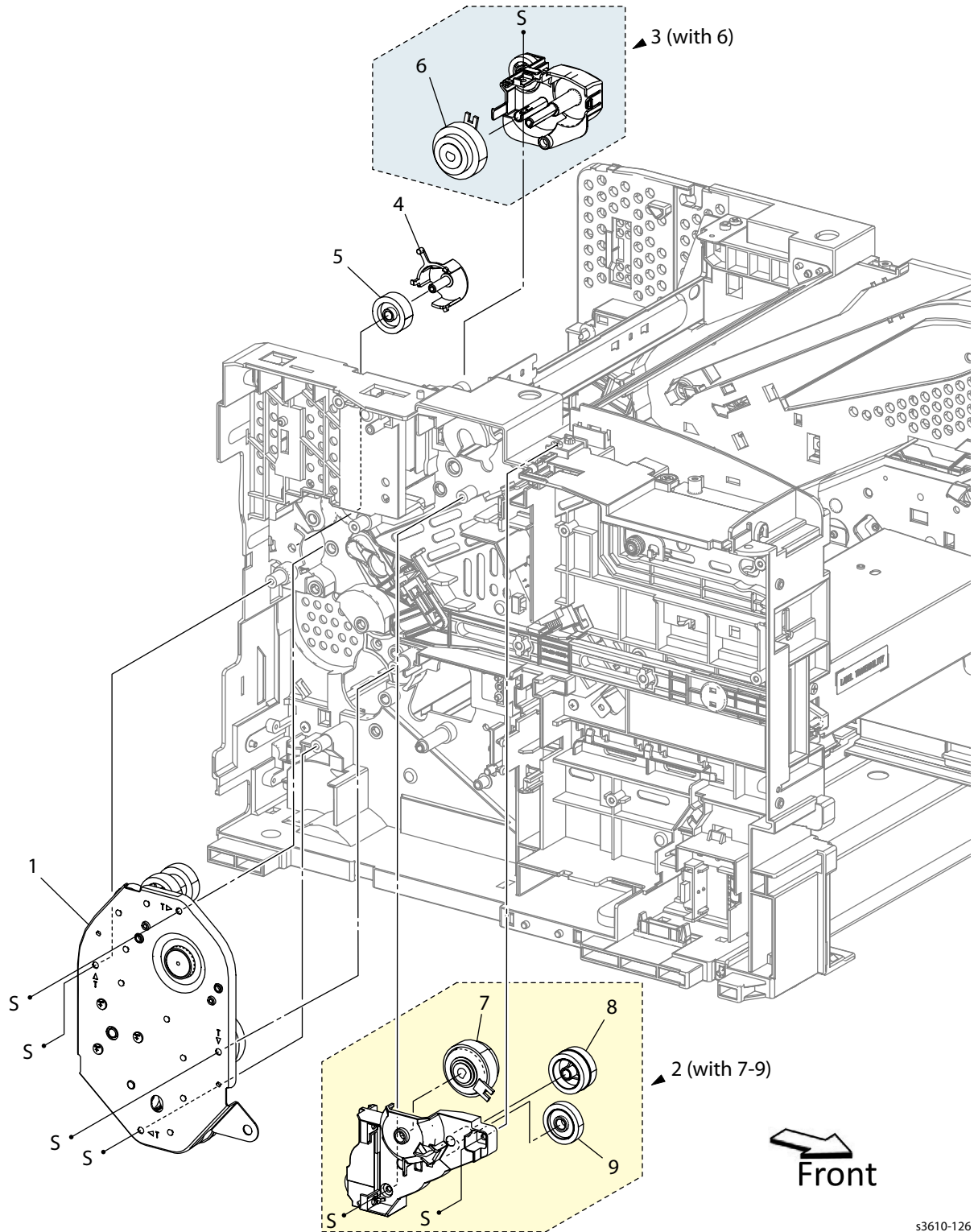


s3610-130

Parts List 3.5 Fuser

Item	Description	Part Number
1.	Fusing Assembly 110v (REP 3.5) Fusing Assembly 110v for envelopes Fusing Assembly 220v	126K30919 604K98010 126K30929

PL 4.1 Drive

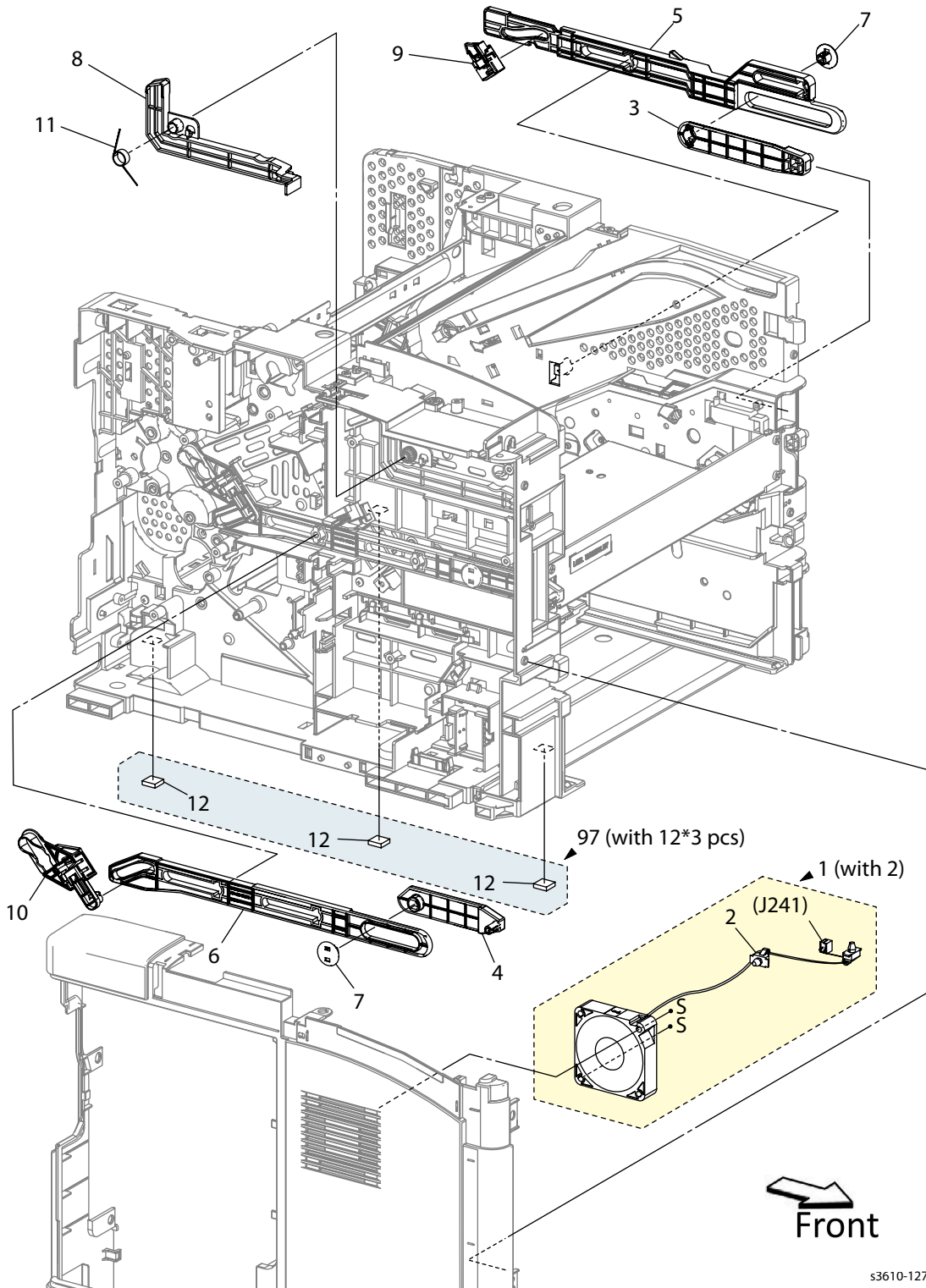


s3610-126

Parts List 4.1 Drive

Item	Description	Part Number
1.	Main Drive Assembly (REP 4.1)	007K18903
2.	Drive Exit Out Holder Assembly (with 7-9) (REP 4.2)	007K18912
3.	Drive Exit In Holder Assembly S3 (with 6) (REP 4.3)	007K18931
4.	Duplex Gear Holder (REP 4.4)	019E83450
5.	Duplex In Gear (REP 4.4)	807E38660
6.	Exit Assembly Clutch T21	
7.	Assembly Invert Clutch T24	
8.	Gear	
9.	Gear	

PL 4.2 NOHAD

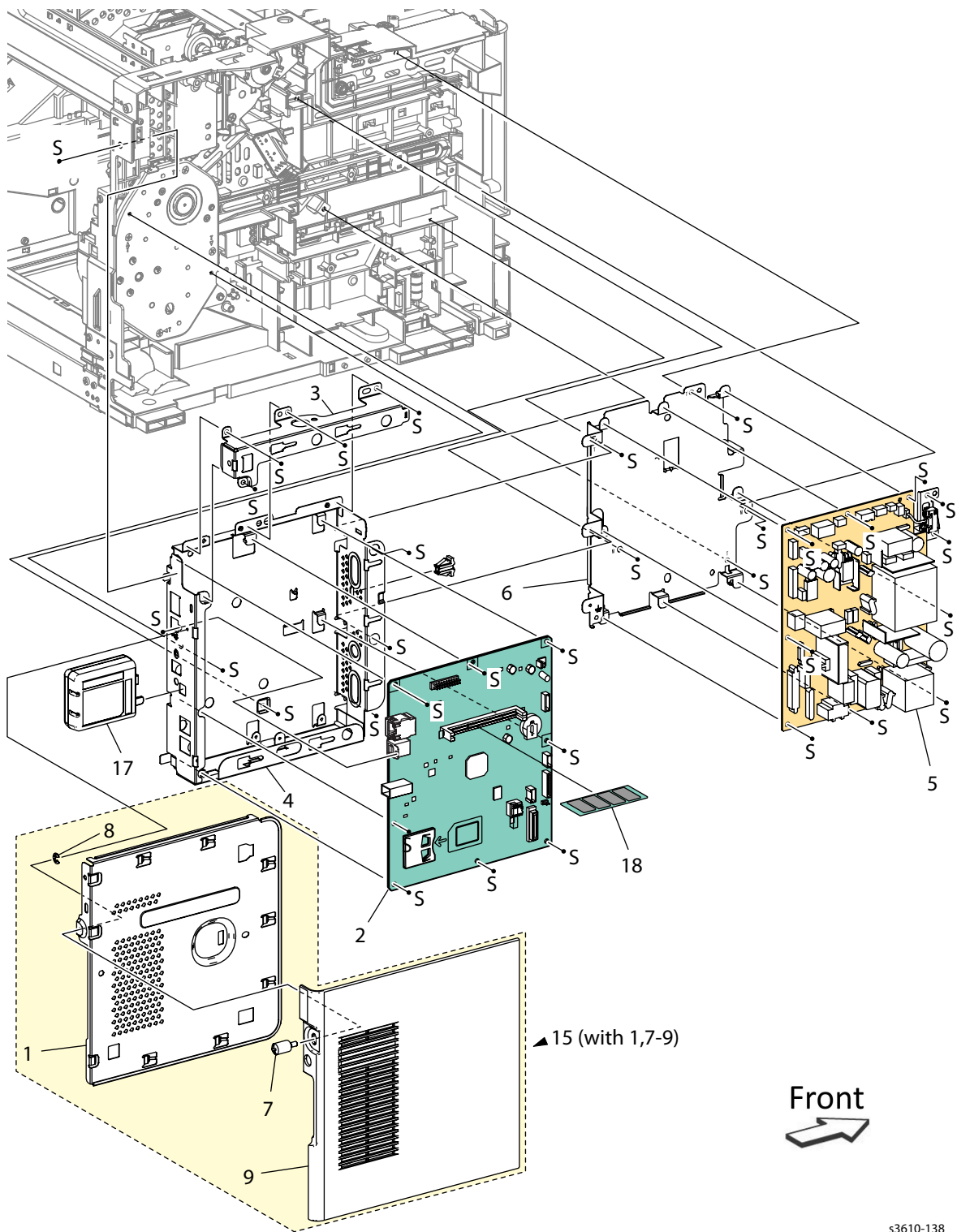


s3610-127

Parts List 4.2 NOHAD

Item	Description	Part Number
1.	LVPS Fan Assembly	127K66001
2.	Band Cable	
3.	Right Front Link (REP 4.5)	012E18133
4.	Left Front Link (REP 4.5)	012E18143
5.	Right Shaft Link	
6.	Left Shaft Link	
7.	Link Connector	012E18172
8.	Link Interlock	
9.	Right Xerographic Stopper Assembly	
10.	Left Xerographic Stopper Assembly	
11.	Interlock Spring	
12.	Foot	
97.	Foot Assembly	604K77650

PL 5.1 Electrical (ESS PWB / LVPS) (3610)

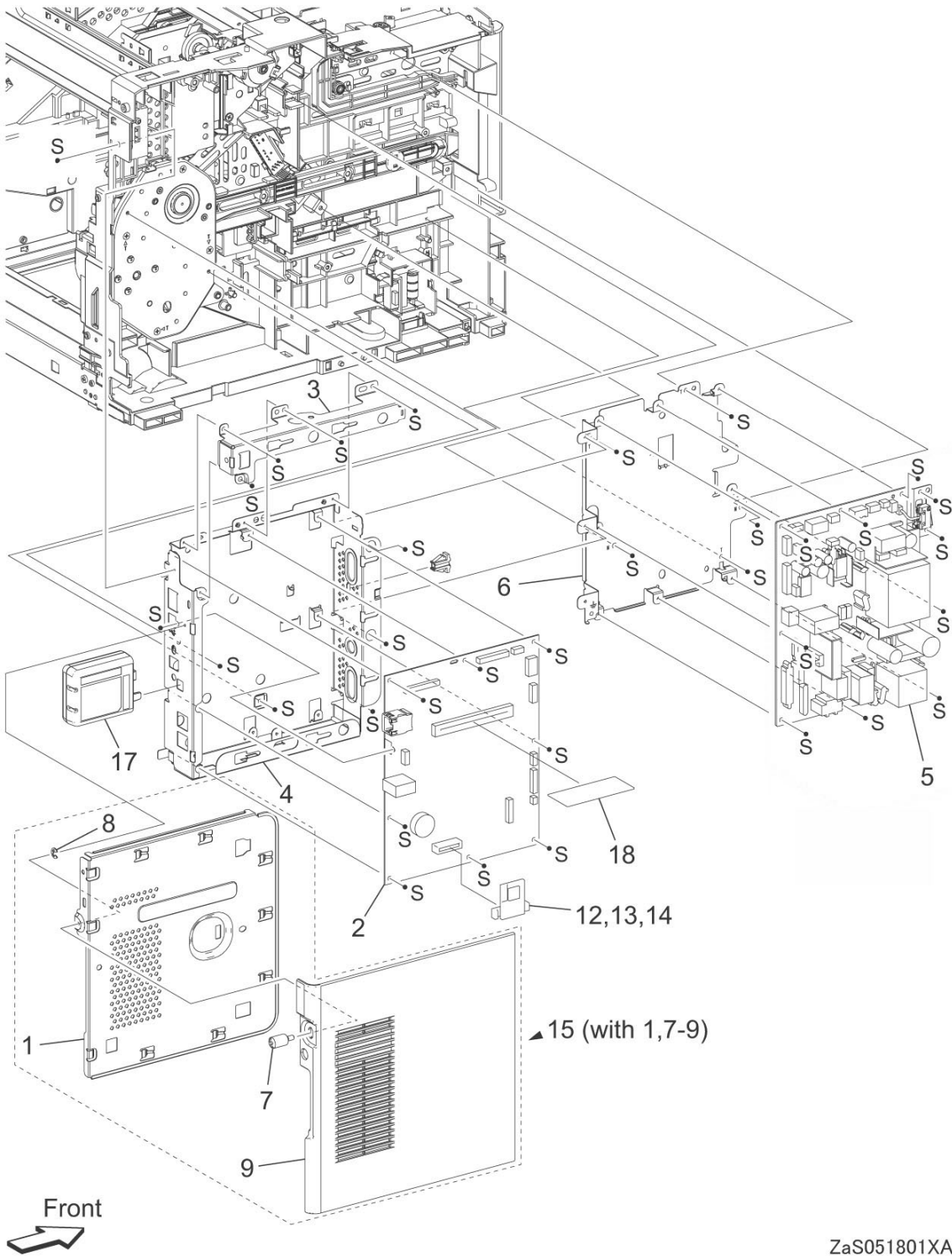


s3610-138

Parts List 5.1 Electrical (3610)

Item	Description	Part Number
1.	ESS Plate Window	
2.	ESS PWB (REP 5.1)	960K68395
3.	ESS Top Plate	
4.	ESS Housing	
5.	LVPS PWB 110 LVPS PWB 220 (REP 5.3)	604K78920 604K78930
6.	LVPS Plate	
7.	Screw	
8.	E-Ring	
9.	Cover ESS Low	
10.		
11.		
12.	ROM Font Kit	
13.		
14.		
15.	ESS Cover Assembly (REP 5.2)	848K63101
16.		
17.	Wireless Adaptor	
18.	Memory Kit (512 Mb)	

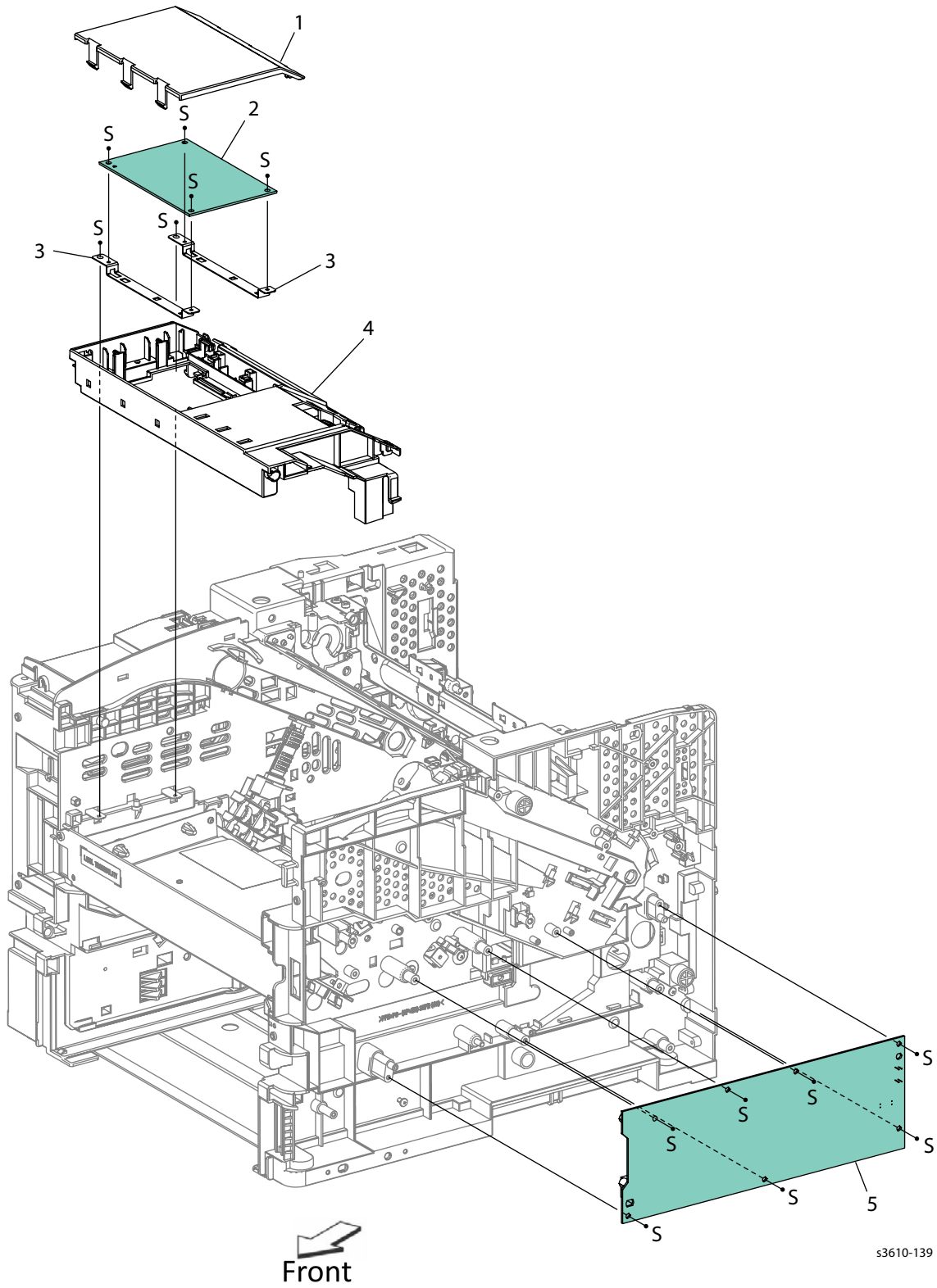
PL 5.2 Electrical (ESS PWB / LVPS) (3615)



Parts List 5.2 Electrical (3615)

Item	Description	Part Number
1.	ESS Plate Window	
2.	ESS PWB (REP 5.1)	960K69985
3.	ESS Top Plate	
4.	ESS Housing	
5.	LVPS PWB 110 LVPS PWB 220 (REP 5.3)	604K85611 604K85621
6.	LVPS Plate	
7.		
8.	Front USB Harness Assembly	
9.	FAX Guard	
10.	FAX PWB Assembly (REP 5.4)	960K67970
11.	Front USB Assembly (REP 5.5)	952K08202
12.	ESS Cover Assembly (with 1, 13-15) (REP 5.2)	848K82861
13.	Screw	
14.	E-Ring	
15.	ESS Cover	
16.	Cable Clamp	
17.	Wireless Adaptor	676K21281
18.		
19.	SD Card	497K13650
20.	Speaker Cover	
21.	Speaker Assembly	

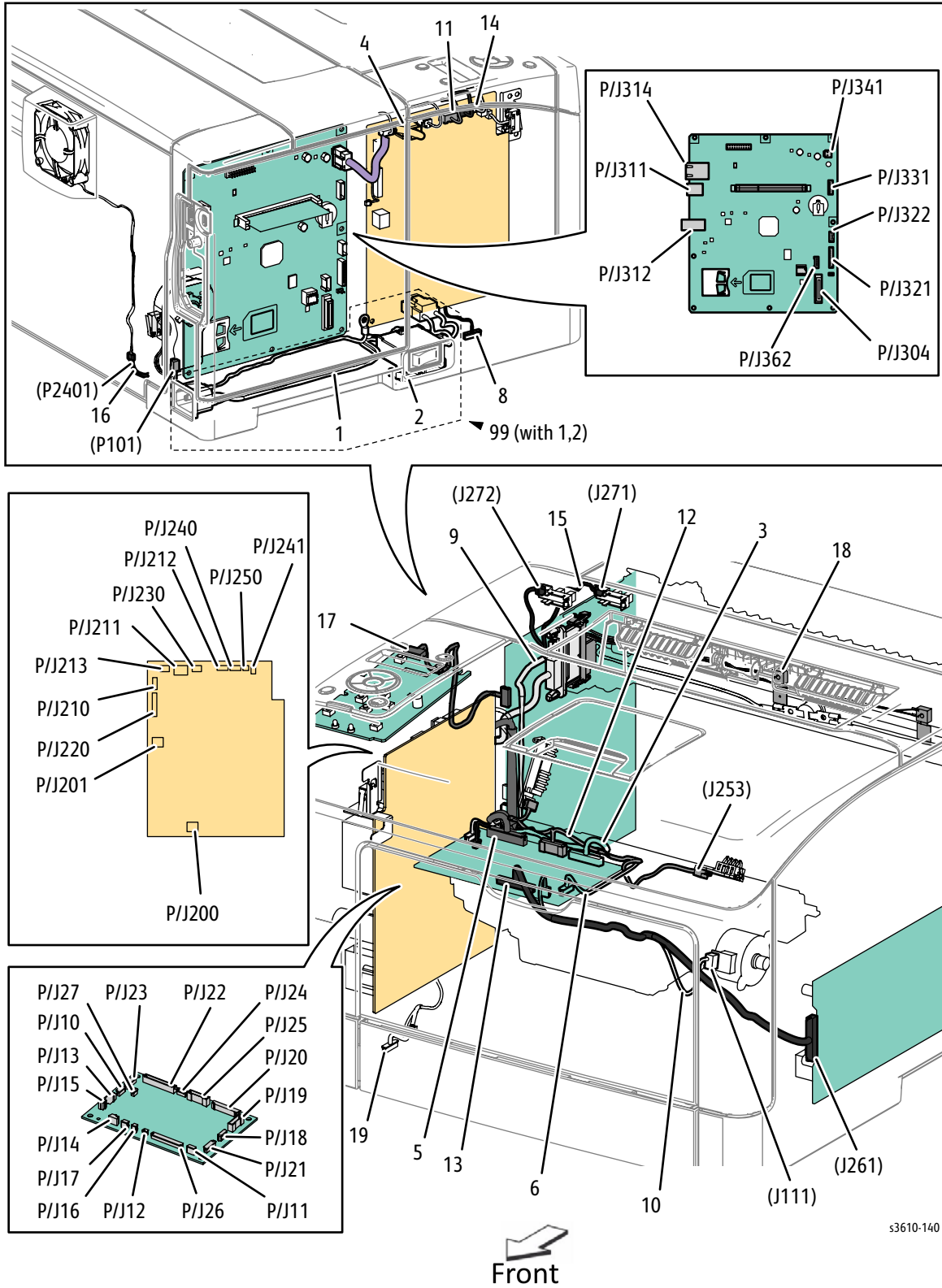
PL 5.3 Electrical (MCU PWB / HVPS)



Parts List 5.3 Electrical

Item	Description	Part Number
1.	MCU Cover	
2.	MCU PWB (REP 5.6)	960K71042
3.	MCU Bracket	
4.	MCU Housing	
5.	HVPS (REP 5.7) (REP 5.8)	105K30954

PL 5.4 Electrical Connections

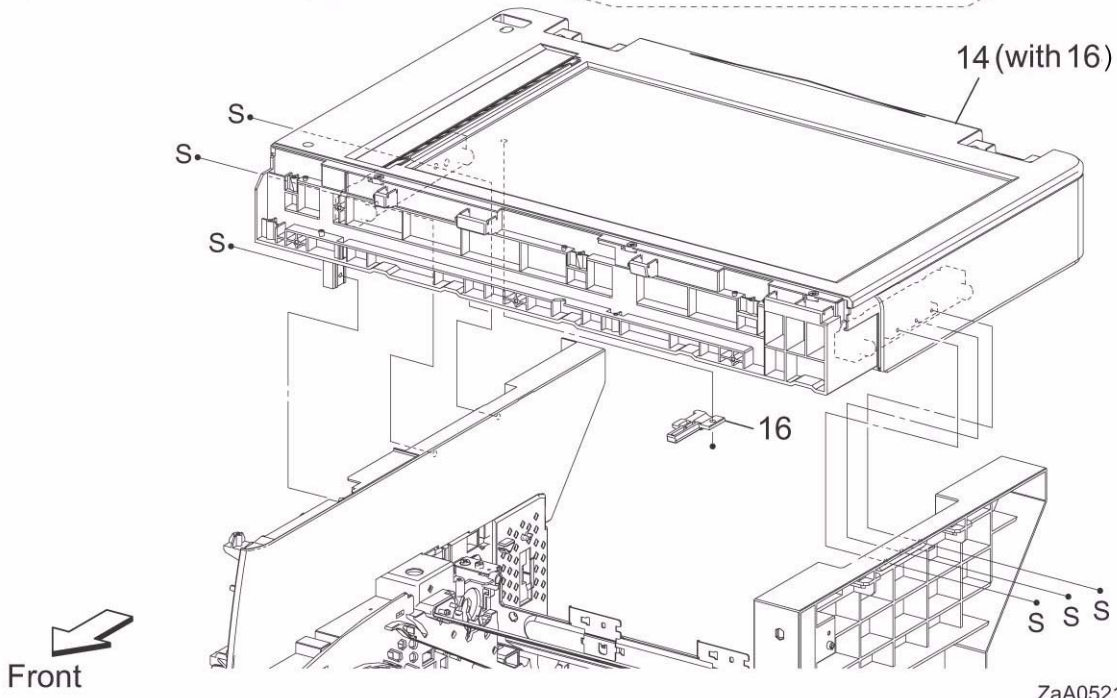
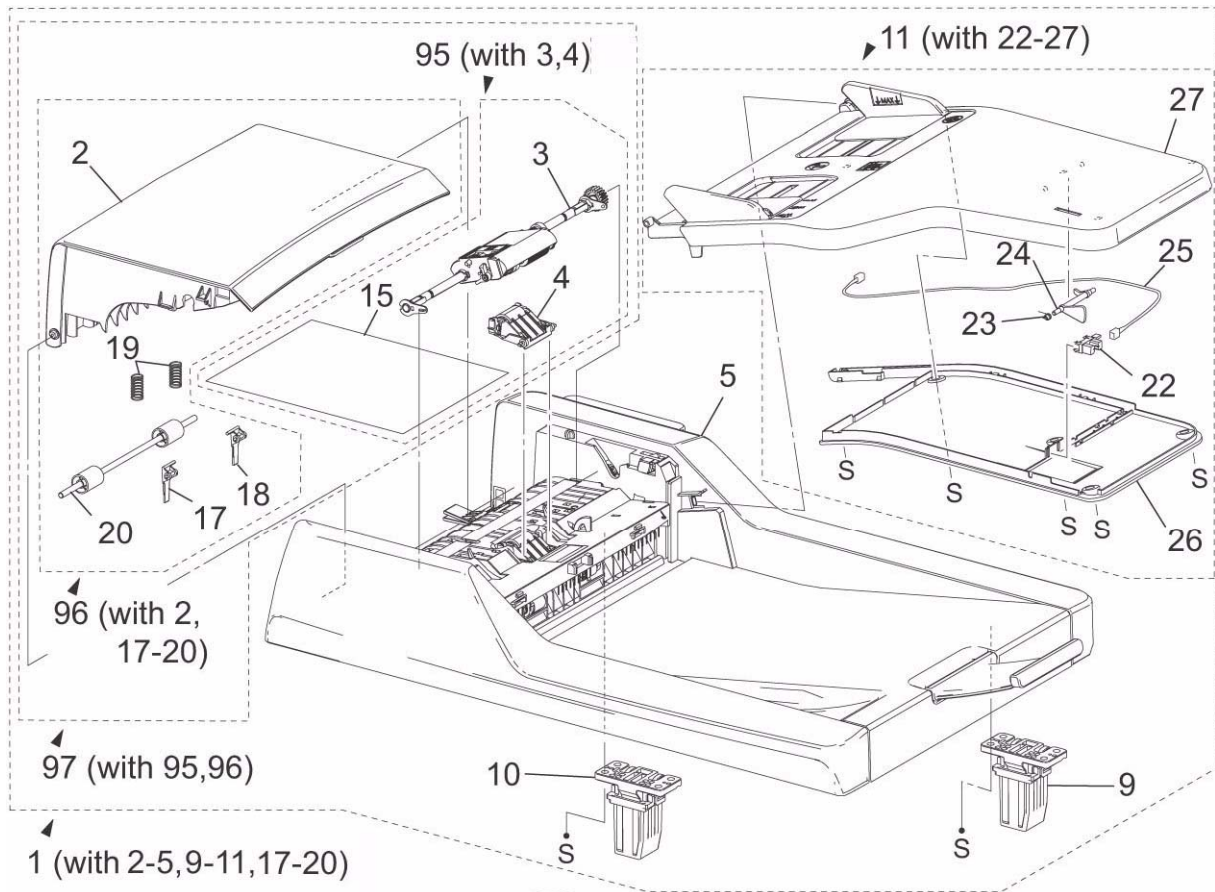


s3610-140

Parts List 5.4 Electrical

Item	Description	Part Number
1.	Inlet Harness Assembly 100 Inlet Harness Assembly 200	
2.	Bracket Switch	
3.	ESS Harness Assembly	
4.	ESS Power Harness Assembly SFP	
5.	Harness Assembly LV	
6.	MCU Harness Assembly 24v	
7.		
8.	OP FDR Harness Assembly	
9.	FSR Harness Assembly 100 FSR Harness Assembly 200	
10.	Dispense Motor Harness Assembly	
11.	Main Motor Harness Assembly	
12.	Xerographic Harness Assembly CRUM	
13.	Harness Assembly HV	
14.	Test Relay Harness Assembly	
15.	Exit Sensor Harness Assembly	
16.	Rear Fan Harness Assembly	
17.	Harness Assembly	
18.	Drawer Harness Assembly	
99.	(3610) AC Inlet Kit 100v (With 1, 2) (3610) AC Inlet Kit 200v (With 1, 2) (REP 5.9)	604K78900 604K78910
99.	(3615) AC Inlet Kit 100v (With 1, 2) (3615) AC Inlet Kit 200v (With 1, 2) (REP 5.9)	604K85630 604K85640

PL 6.1 IIT Scanner / DADF

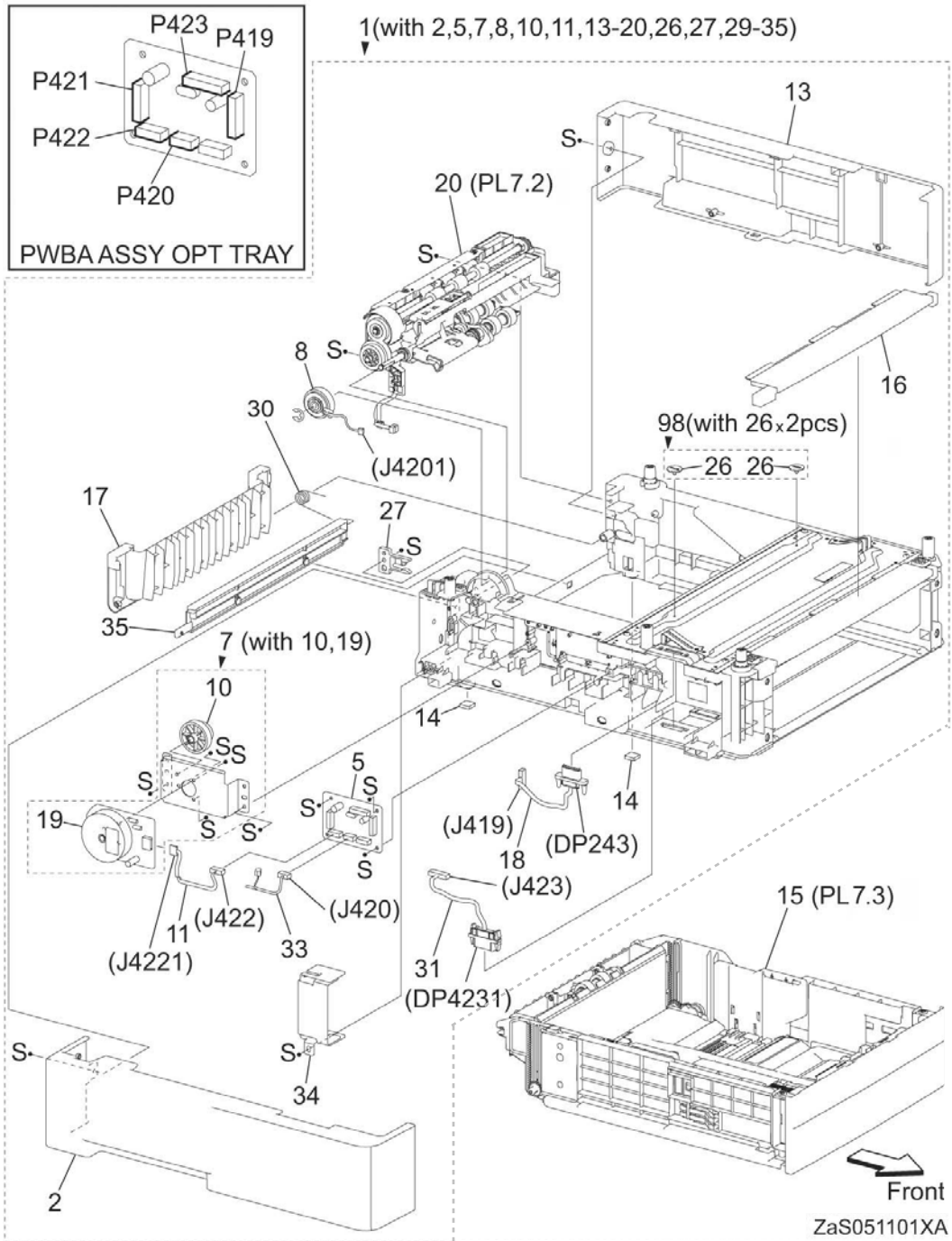


ZaA052101XB

Parts List 6.1 IIT Scanner / DADF

Item	Description	Part Number
1.	DADF Assembly (With 2-5, 9-11,17-20) (REP 6.2)	604K86162
2.	Top Cover	
3.	Roller Assembly	
4.	Separation Pad	
5.	Rear Cover	
6.		
7.		
8.		
9.	Right Hinge Assembly (REP 6.3)	003K89860
10.	Left Hinge Assembly (REP 6.3)	003K89140
11.	Tray Assembly (with 22-27) (REP 6.5)	050K71060
12.		
13.		
14.	IIT Assembly (with 16) (REP 6.1)	604K86152
15.		
16.	Harness Cover	
17.	Left Stopper Plate	
18.	Right Stopper Plate	
19.	Idle Spring	
20.	Idler Roll Assembly	
22.	Sensor	
23.	Bearing	
24.	Actuator	
25.	Harness	
26.	Bottom Plate	
27.	Top Plate	
95.	DADF Pick Up Module Kit (with 3, 4) (REP 6.4)	604K85850
96.	Top Cover Assembly (with 2, 17-20)	604K85860
97.	DADF Top Cover Kit (with 95, 96)	
98.		

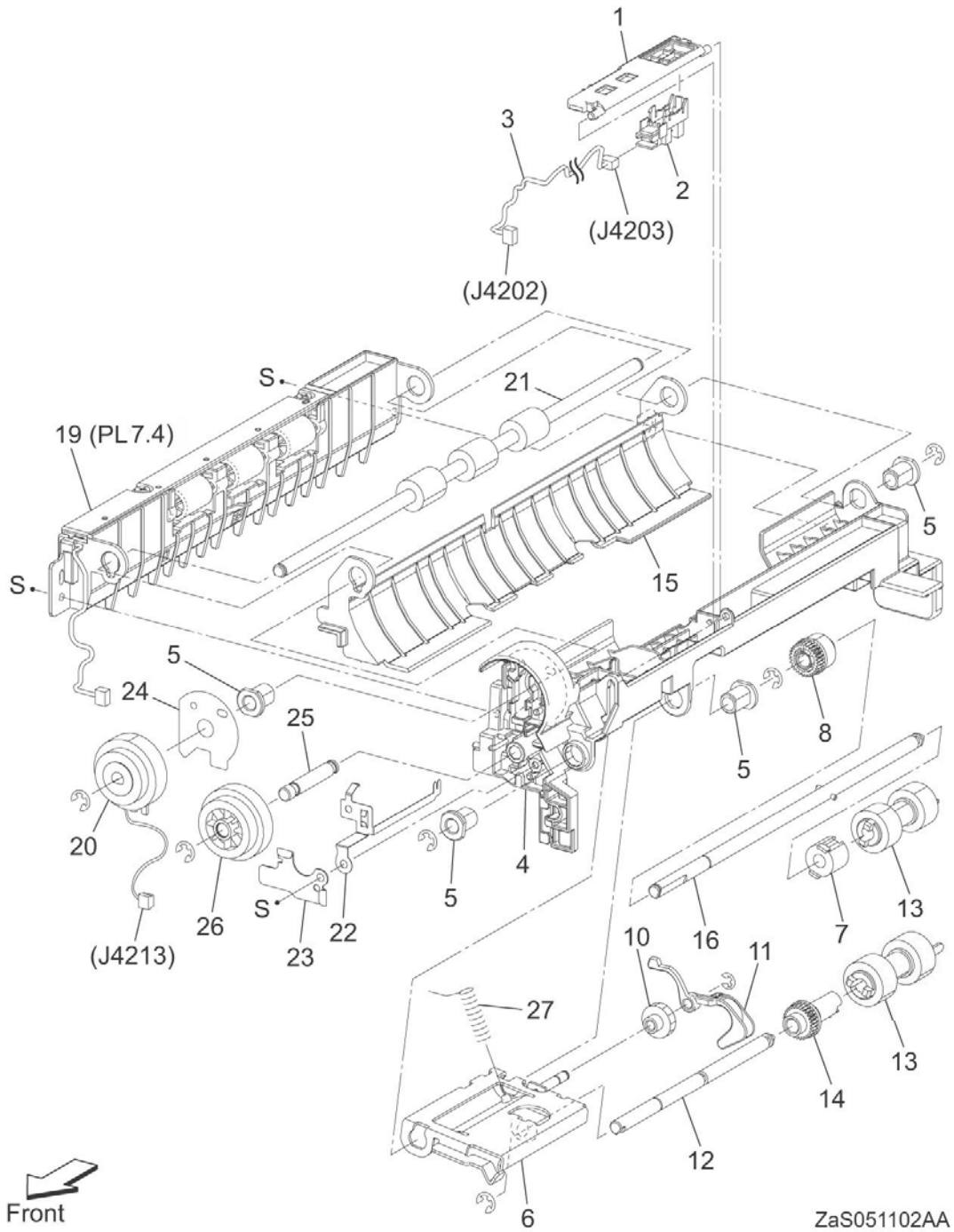
PL 7.1 Tray 1/Optional Tray 550-Sheet Feeder (1/4)



Parts List 7.1 Tray 1/Optional Tray 550-Sheet Feeder (1/4)

Item	Description	Part Number
1.	Feeder Assembly (with 2,5,7,8,10,11,13,14,16-20,26,27,29-35) (REP 7.11)	(3610) 059K82011 (3615) 059K82021
2.	Left Side Cover	
3.		
4.		
5.	Optional Tray PWB Assembly (REP 7.5)	960K67512
6.		
7.	Drive Assembly (REP 7.6)	007K18020
8.	Feed Clutch Assembly (REP 7.7)	005K83210
9.		
10.	Gear	
11.	Tray Motor Harness Assembly	
12.		
13.	Right Side Cover	
14.	Foot	
15.	Tray Assembly	050K71211
16.	Top Cover	
17.	Rear Cover	
18.	Drawer 1 Harness Assembly	
19.	Motor Assembly	
20.	Feeder Assembly 550 (REP 7.11)	059K86170
21.		
22.		
23.		
24.		
25.		
26.	Screw Locks	
27.	Stopper CST	803E10840
28.		
29.	Size Switch Assembly	
30.	Rear Spring Cover	
31.	Drawer 2 Harness Assembly	
32.		
33.	C2 Turn Harness Assembly	
34.	Locator Pin Bracket 55	
35.	Rear Under Cover	
98.	Feeder Assembly (with 26)	

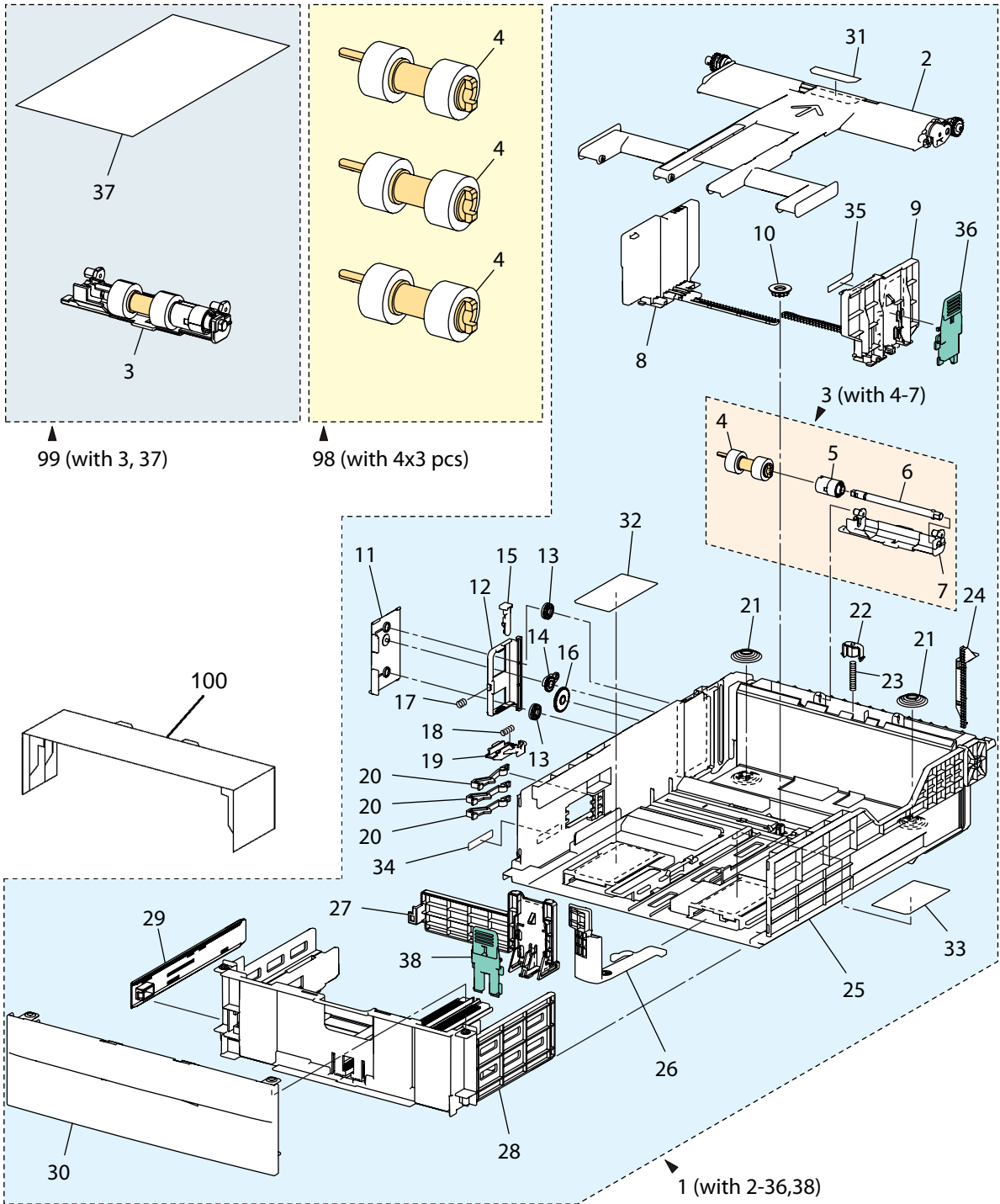
PL 7.2 Tray 1/Optional Tray 550-Sheet Feeder (2/4)



Parts List 7.2 Tray 1/Optional Tray 550-Sheet Feeder (2/4)

Item	Description	Part Number
1.	No Paper Sensor Cover	
2.	No Paper Sensor (REP 7.9)	930W00123
3.	Optional No Paper Harness Assembly	
4.	Upper Chute- Optional 550	
5.	Nudger Bearing	
6.	Nudger Assembly Support	
7.	One-way Feed Clutch	
8.	Feed Gear	
9.		
10.	Nudger Idler Gear	
11.	No Paper Actuator	
12.	Nudger Shaft	
13.	Feed Roll Assembly (3 pack) (REP 7.11)	604K11192
14.	Nudger Gear	
15.	Lower Chute Optional 550	
16.	Feed Shaft Assembly 550	
17.		
18.		
19.	Pinch Chute Assembly 550	
20.	Registration Clutch Assembly (REP 7.10)	121K48670
21.	Take Away Roll Assembly (REP 7.14)	059K71770
22.	Earth Plate	
23.	Nudger Spring Bracket	
24.	Sensor Cover Harness	
25.	Gear Shaft	
26.	Optional Feeder Gear 550	
27.	Optional Nudger Spring	

PL 7.3 Tray 1/Optional Tray 550-Sheet Feeder (3/4)

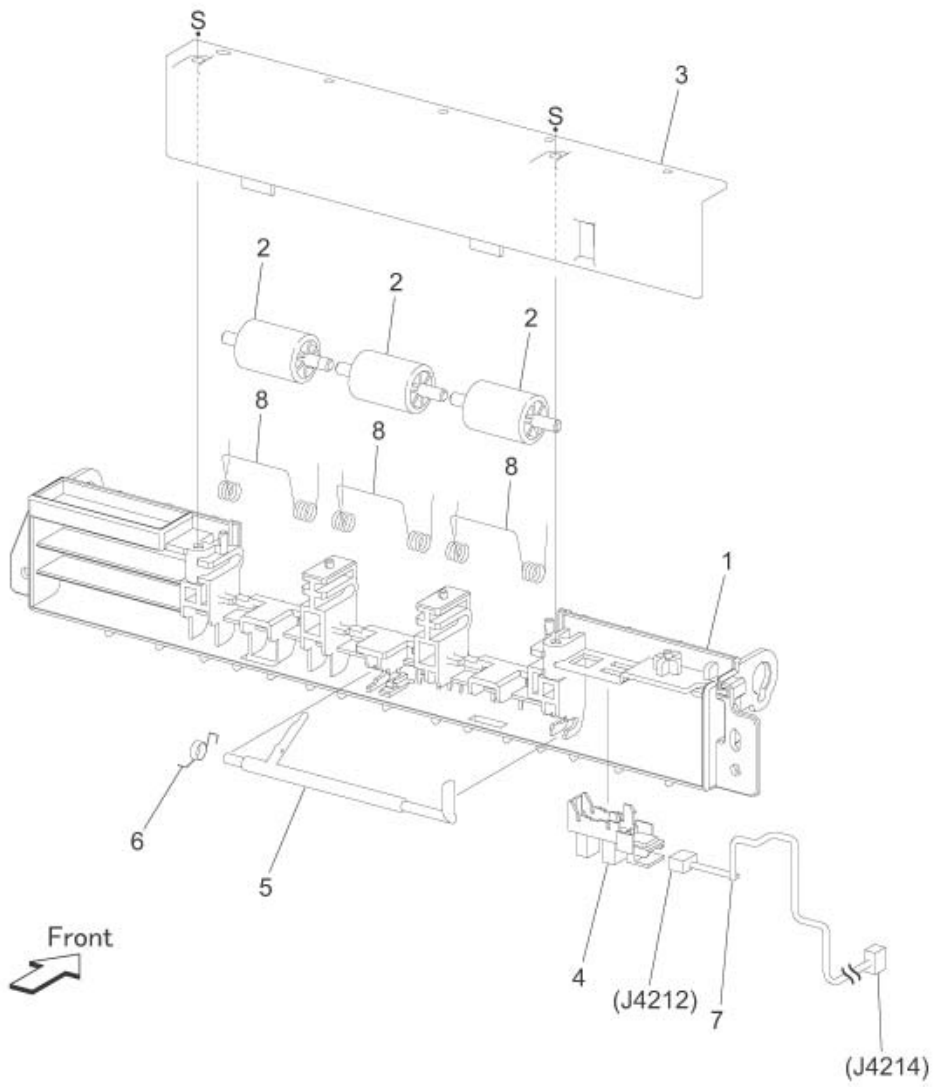


s3610-132

Parts List 7.3 Tray 1/Optional Tray 550-Sheet Feeder (3/4)

Item	Description	Part Number
1.	IOT Cassette Assembly (With 2-36,38)	050K71211
2.	Plate Bottom CST Mat X	
3.	Retard Holder Assembly CST (With 4-7)	
4.	Feed Roll Assembly	
5.	Friction Clutch	
6.	Retard Shaft CST	
7.	Retard Holder CST	
8.	Right Side Guide Assembly	
9.	Left Side Guide Assembly	
10.	Pinion Gear	
11.	Cover BTM Lock 550	
12.	Back BTM Lock 550	
13.	Pinion Gear BTM Lock	
14.	Gear Lever BTM Lock	
15.	Lever BTM Lock	
16.	Gear 40 BTM Lock	
17.	Spring BTM Lock	
18.	Spring Lock Pb	
19.	Actuator Lock Pb L	
20.		
21.	Spring BTM Up 550 A4	
22.	Retard Spring Holder	
23.	Retard Spring Cst	
24.	Rack Left Up Pb 550	
25.	Housing Base 550	
26.	Lever Ext End 550	
27.	End Guide 550	
28.	Housing End 550	
29.		
30.	Tray Handle 550	
31.	Pad Pb	
32.	Instruction Label- D	
33.	Instruction Label Ad	
34.	Tray Label	
35.	Label	
36.	Handle Gd Sd	
37.	Retard Assembly Roll Instruction	
38.	End Guide Handle	
98.	Feed Rolls (With 4*3 Pcs) (REP 7.11)	604K11192
99.	Retard Roll Assembly Kit (With 3,37) (REP 7.13)	604K78360
100.	Dust Cover	848E93660

PL 7.4 Tray 1/Optional Tray 550-Sheet Feeder (4/4)



ZaS051104AA

Parts List 7.4 Tray 1/Optional Tray 550-Sheet Feeder (4/4)

Item	Description	Part Number
1.	Pinch Roll Chute	
2.	Pinch Roll	
3.	Chute Cover	
4.	Pre-Registration Sensor (REP 7.13)	930W00123
5.	Pre-Registration Actuator	
6.	Pre-Registration Sensor Spring	
7.	Harness Assembly	
8.	Pinch Roll Spring	

Quick Reference Spares List for the 3610 and 3615

SFP/MFP	Part Number	Part Description	PL Number	REP Number
SFP MFP	604K85880 604K85890	Front Cover Assembly Front Cover Assembly	PL 1.1 PL 1.2	REP 1.2
SFP MFP	848E82792 848E82815	Left Side Cover Left Side Cover	PL 1.1 PL 1.2	REP 1.7 REP 1.11
SFP MFP	604K84920 604K84931	Top Front Cover Assembly Top Front Cover Assembly	PL 1.1 PL 1.2	REP 1.3
SFP MFP	604K84941 848K68342	Right Side Cover Right Side Cover	PL 1.1 PL 1.2	REP 1.6 REP 1.13
SFP MFP	848K62885 848K62912	Top Cover Assembly Top Cover Assembly	PL 1.1 PL 1.2	REP 1.4 REP 1.15
SFP MFP	848K70060 604K85650	Rear Cover Assembly Rear Cover Assembly	PL 1.1 PL 1.2	REP 1.5 REP 1.18
SFP MFP	848E82672	Lower Rear Cover	PL 1.1 PL 1.2	REP 1.8 REP 1.18
MFP	848E82901	IIT Lower Right Cover	PL1.2	REP 1.13
MFP	848E89270	IIT Right Inner Cover	PL 1.2	REP 1.14
MFP	848E89213	Upper Left Side Cover	PL 1.2	REP 1.16
MFP	848E89231	Upper Right Side Cover	PL 1.2	REP 1.13
SFP MFP	604K77391 604K85900	Cover Extension Assembly Cover Extension Assembly	PL 1.1 PL 1.2	REP 1.3
	868E76893	Rear Strap	PL 1.3	NA
SFP	848K79123	Control Panel	PL 1.4	REP 1.1
MFP	848K75635 848K82824	Control Panel 110V Control Panel 220V	PL 1.5	REP 1.12
MFP	848E93191	IIT Front Bottom Cover	PL 1.5	REP 1.10
MFP	848E93181	IIT Front Top Cover	PL 1.5	REP 1.9
MFP	848E93171	Lower Left Side Cover	PL 1.5	REP 1.17
	059K79334	Registration Transport Assembly	PL 2.1	REP 2.2
	803E13351	Tray 1 Stopper	PL 2.1	REP 2.8

SFP/MFP	Part Number	Part Description	PL Number	REP Number
SFP MFP	604K85740 604K85750	Rear Interlock Assembly Rear Interlock Assembly	PL 2.1	REP 2.10
	121K51870	Registration Clutch	PL 2.2	REP 2.6
	059K74580	Rubber Roll Assembly	PL 2.2	REP 2.7
	055E60433	Registration Shutter Sensor	PL 2.2	REP 2.8
	604K11192	Feed Rolls (3 pack)	PL 2.3	REP 2.4
	121K51880	Feed Clutch	PL 2.3	REP 2.5
	054K48100	Duplex Chute Assembly	PL 2.4	REP 2.1
	604K77510	Exit Chute Left Pinch Roll Assembly	PL 2.5	REP 2.12
	604K77520	Exit Chute Right Pinch Roll Assembly	PL 2.5	REP 2.12
	930W00123	Exit Chute Full Stack Sensor	PL 2.5	REP 2.13
	054K48380	Exit Chute Assembly	PL 2.5	REP 2.11
	121E23570	MSI Feed Solenoid	PL 2.6	REP 2.14
	059K78790	MSI Pick Up Holder Assembly	PL 2.6	REP 2.15
	801K57914	MSI Top Frame Assembly	PL 2.6	REP 2.16
	050K71290	MSI Tray Assembly	PL 2.7	NA
	604K78370	MSI Retard Roll Assembly	PL 2.7	REP 2.17
	062K24263	ROS Assembly	PL 3.2	REP 3.1
	007K18413	Toner Dispense Drive Assembly	PL 3.3	REP 4.6
	127K52160	Toner Dispense Motor	PL 3.3	REP 4.7
	604K77290	CRUM Assembly	PL 3.3	REP 3.2
	116K91040	Xerographic Connector Assembly	PL 3.3	REP 3.3
	059K75560	Transfer Roll Assembly CRU	PL 3.4	REP 3.4
	126K30919 126K30929	Fusing Assembly 110v Fusing Assembly 220v	PL 3.5	REP 3.5
	007K18903	Main Drive Assembly	PL 4.1	REP 4.1
	007K18912	Drive Exit Out Holder Assembly	PL 4.1	REP 4.2
	007K18931	Drive Exit In Holder Assembly	PL 4.1	REP 4.3

Parts List

SFP/MFP	Part Number	Part Description	PL Number	REP Number
	019E83450	Duplex Gear Holder	PL 4.1	REP 4.4
	807E38660	Duplex In Gear	PL 4.1	REP 4.4
	127K66001	LVPS Fan Assembly	PL 4.2	NA
	012E18133	Right Front Link	PL 4.2	REP 4.5
	012E18143	Left Front Link	PL 4.2	REP 4.5
	012E18172	Link Connector	PL 4.2	NA
	604K77650	Foot Assembly	PL 4.2	NA
SFP MFP	960K68394 960K69984	ESS PWB	PL 5.1 PL5.2	REP 5.1
	848K631	ESS Cover Assembly	PL 5.1 PL 5.2	REP 5.2
SFP	604K78920 604K78930	LVPS Kit 110v LVPS Kit 220v	PL 5.1	REP 5.3
MPF	960K67970	FAX PWB Assembly	PL 5.2	REP 5.4
MPF	952K08202	Front USB Assembly	PL 5.2	REP 5.5
MPF	604K85611 604K85621	LVPS Kit 110v LVPS Kit 220v	PL 5.2	REP 5.3
	960K71042	MCU PWB	PL 5.3	REP 5.6
SFP MFP	105K30954	HVPS	PL 5.3	REP 5.7 REP 5.8
SPF	604K78900 604K78910	AC Inlet Kit (100v) AC Inlet Kit (200v)	PL 5.4	REP 5.9
MPF	604K85630 604K85640	AC Inlet Kit (100v) AC Inlet Kit (200v)	PL 5.4	REP 5.9
MFP	604K86152	IIT Assembly	PL 6.1	REP 6.1
MFP	059K86162	DADF Assembly	PL 6.1	REP 6.2
MFP	003K89860 003K89140	DADF Right Hinge Assembly DADF Left Hinge Assembly	PL 6.1	REP 6.3
MFP	050K71060	DADF Tray Assembly	PL 6.1	NA
MFP	604K85850	DADF Pick Up Module Kit	PL 6.1	REP 6.4

SFP/MFP	Part Number	Part Description	PL Number	REP Number
MFP	604K85860	DADF Top Cover Assembly	PL 6.1	NA
	960K67512	Optional Tray PWB Assembly (550)	PL 7.1	REP 7.1
	007K18020	Drive Assembly (550)	PL 7.1	REP 7.6
	005K83210	Feed Clutch Assembly (550)	PL 7.1	REP 7.7
	050K71211	Tray Assembly (550)	PL 7.1	
	059K86170	Feeder Assembly (550)	PL 7.1	REP 7.8
	803E10840	Stopper CST (550)	PL 7.1	NA
SFP MFP	059K82011 059K82021	Feeder Assembly (w/o tray)	PL 7.1	REP 7.11
	930W00123	No Paper Sensor (550)	PL 7.2	REP 7.9
	121K48670	Registration Clutch Assembly (550)	PL 7.2	REP 7.10
	059K71770	Take Away Roll Assembly (550)	PL 7.2	REP 7.14
	050K71210	IOT Cassette Assembly (550)	PL 7.3	NA
	604K11192	Feed Rolls (550)	PL 7.2	REP 7.11
	604K78360	Retard Roll Assembly Kit (550)	PL 7.3	REP 7.12
	930W00123	Pre-Registration Sensor (550)	PL 7.4	REP 7.13

Xerox Supplies

Part	Description	Capacity	Part Number
Toner Cartridge	NA / XE Sold	Standard Capacity (5.9K)	106R02720
	DMO Sold	Standard Capacity (5.9K)	106R02721
	NA / XE Sold	High Capacity (14.1K)	106R02722
	DMO Sold	High Capacity (14.1K)	106R02723
	NA / XE Sold	Extra High Capacity (25.3K)	106R02731
	DMO Sold	Extra High Capacity (25.3K)	106R02732
	Worldwide Metered / Page Pack	Extra High Capacity (25.3K)	106R02724

Yield is based on ISO / IEC 19752 Test Standard. Toner consumption will vary depending on image, area coverage and the media that is used.