

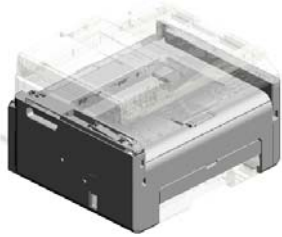
Model Op-MF2

(M217/M218/M229/M230/M235/M237/M240/M247/M250)

Parts Catalog

Model	Product Code	PC Style
Digital B&W Copiers	M217/M218/M229/M230/M235/M237/M240/M247/M250	3D

Unit All



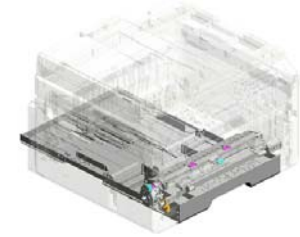
U001
EXTERIOR



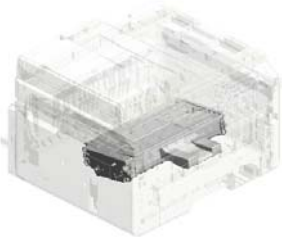
U002
OPERATION/ADF/SCANNER



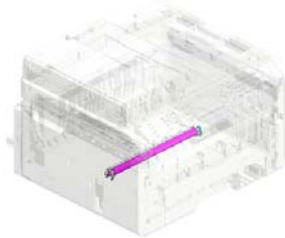
U003
LASER UNIT



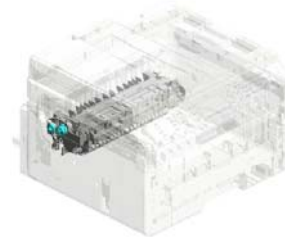
U004
PAPER FEED



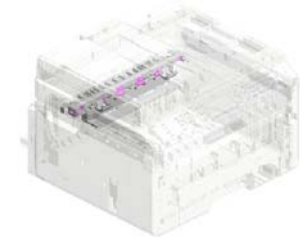
U005
PCU



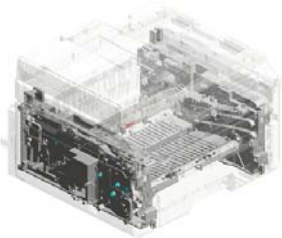
U006
TRANSFER/SEPARATION



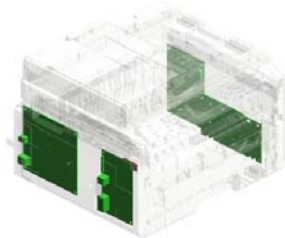
U007
FUSING SECTION



U008
PAPER EXIT



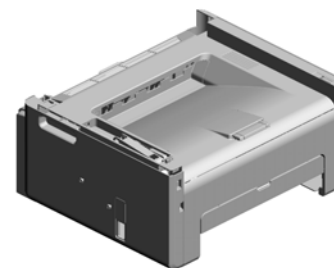
U009
MAIN DRIVE/MAIN FRAME



U010
ELECTRICAL

U001 EXTERIOR

11.M1341261 COVER:SIDE PLATE:RIGHT:MF
 2.AG070514 MAGNET CATCH
 12.M1341314 COVER:UPPER:MF
 8.M1334486 TRAY:EXIT:P
 7.M1334485 EXTENSION TRAY:EXIT:P



4.M1331311 COVER:EXIT:FRAM E

20.M2131332 COVER:REAR

1.04583010N (x10) HEXAGON HEAD T APPING SCREW:3 X10

13.M1341342 (M217/M218/M237): COVER:REAR LOWER:NET

14.M1341344 (x3) (M229/230/235/240/247/250):(CHN):(EU/AA):(IND):COVER:REAR LOWER

3.G5123029 RUBBER FOOT

6.M1331327 MANUAL FEED TABLE:ENTRANCE

9.M1341255 (x4) (NA):(EU/AA):(IND):(TWN):COVER:LEFT:MF:USB:WW

19.M1341500 (x2) SCREW:M3X10:JOINT

10.M1341258 (x4) (NA):(EU/AA):(IND):(TWN):COVER:FAX:4IN1:WW

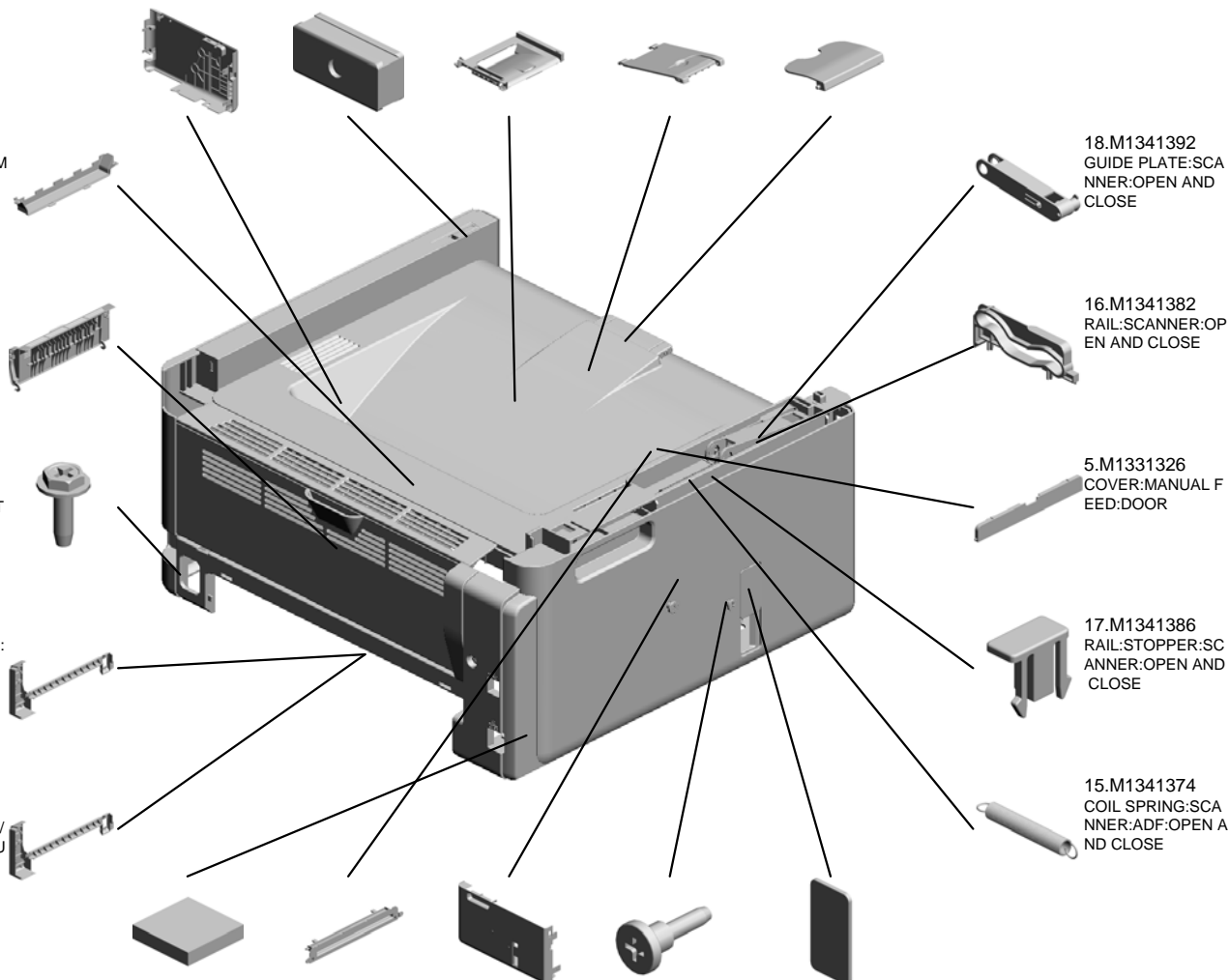
18.M1341392 GUIDE PLATE:SCANNER:OPEN AND CLOSE

16.M1341382 RAIL:SCANNER:OPEN AND CLOSE

5.M1331326 COVER:MANUAL FEED:DOOR

17.M1341386 RAIL:STOPPER:SCANNER:OPEN AND CLOSE

15.M1341374 COIL SPRING:SCANNER:ADF:OPEN AND CLOSE

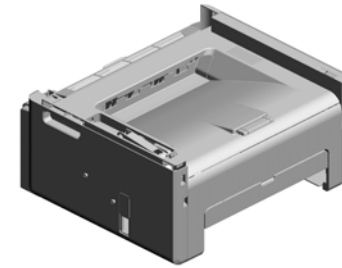


U001 EXTERIOR

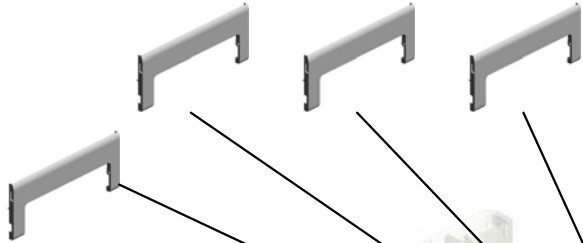
21.M2171321 (x3)
(M217):(NA):(EU/AA)
):(TWN):COVER:FR
ONT

23.M2181321 (x4)
(M218/M237):(CHN)
:(NA):(EU/AA):(IND)
:COVER:FRONT

24.M2291321 (x3)
(M229/M235):(CHN)
:(EU/AA):(IND):COV
ER:FRONT



25.M2301321 (M230):(EU/AA):CO
VER:FRONT



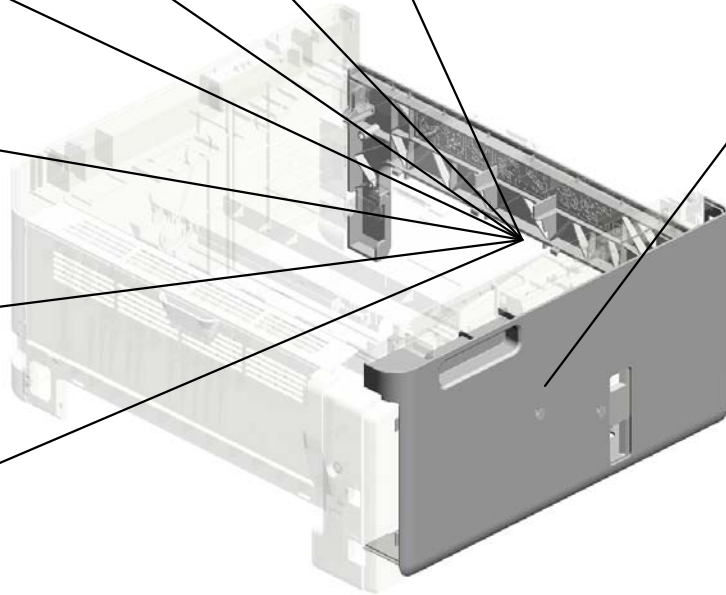
26.M2401321 (M240):(CHN):COV
ER:FRONT



27.M2471321 (M247):(EU/AA):CO
VER:FRONT



28.M2501321 (M250):(EU/AA):CO
VER:FRONT

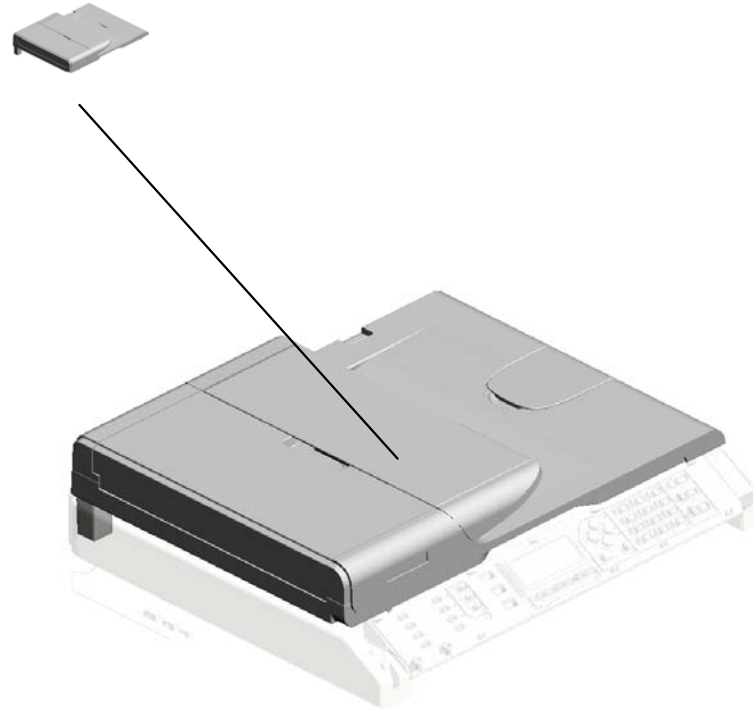


22.M2181254 (CHN):COVER:LEF
T:USB:HAND SET



U002.OPERATION/ADF/SCANNER

U002_S001
M2291630
ADF:ASS'Y



U001	U002	U003	U004	U005	U006	U007	U008	U009	U010
------	-------------	------	------	------	------	------	------	------	------

U002 OPERATION/ADF/SCANNER

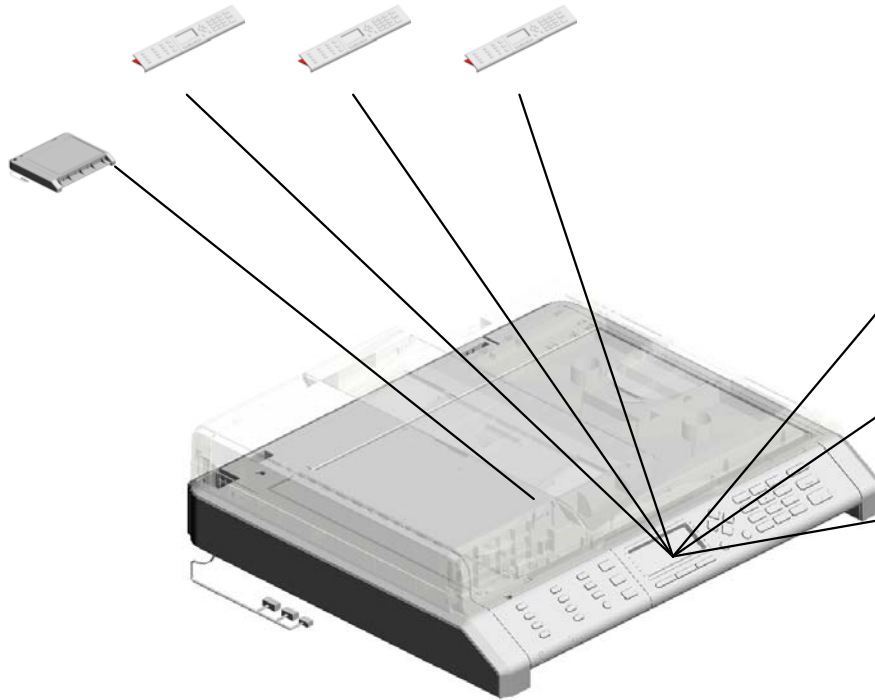
2.M2171517 (NA):OPERATION P
ANEL:ASS'Y

3.M2171519 (TWN):OPERATION
PANEL:ASS'Y

4.M2171527 (x2)
(M217/M237/M247/
M250):(EU/AA):(IND
):OPERATION PAN
EL:ASS'Y



7.M2291600
SCANNER:ASS'Y



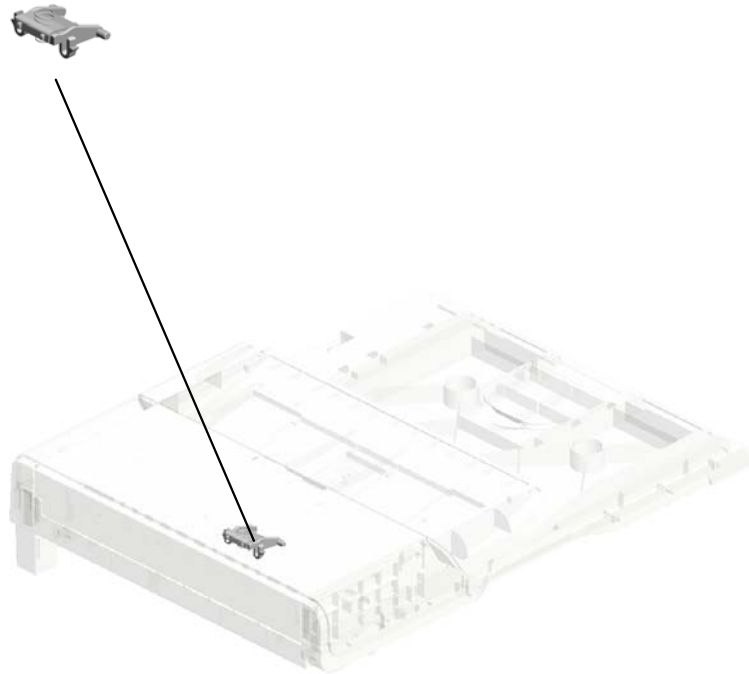
5.M2181521 (M218):(CHN):OPE
RATION PANEL:AS
S'Y

6.M2281521 (M229/M240):(CHN)
:OPERATION PANE
L:ASS'Y

9.M2301527 (M230/M235):(EU/A
A):(IND):OPERATIO
N PANEL:ASS'Y

U002_S001
ADF:ASS'Y

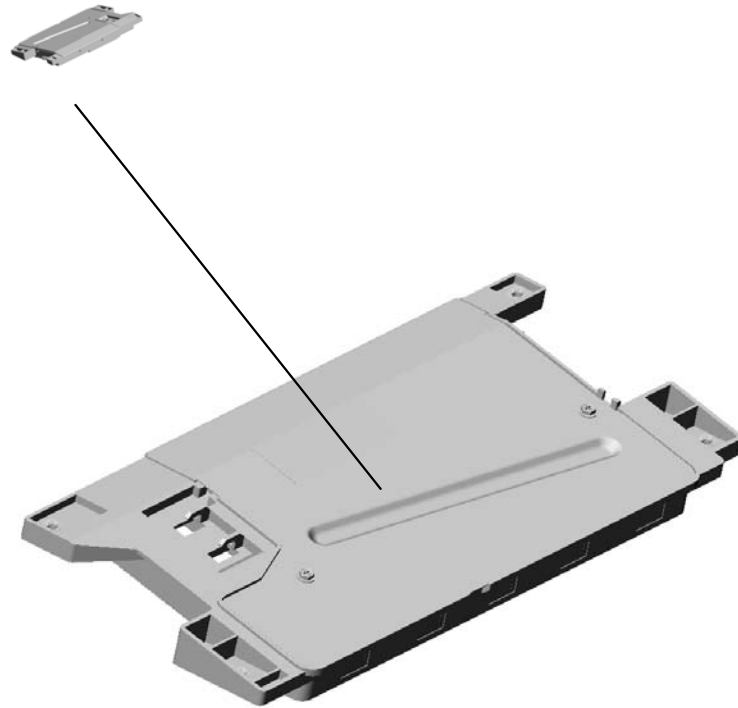
1.M1562842
SEPARATION PAD:
ASS'Y



8.M2291630
ADF:ASS'Y

U003.LASER UNIT

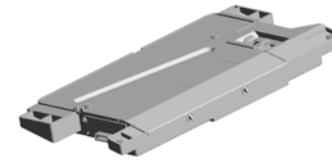
U003_S001
M1331850
OPTICAL WRITING UNIT



U001	U002	U003	U004	U005	U006	U007	U008	U009	U010
------	------	------	------	------	------	------	------	------	------

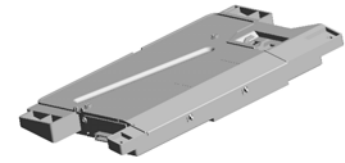
U003
LASER UNIT

1.04583010N
(x4)
HEXAGON HEAD TAPPING SCREW:3
X10



U003_S001
OPTICAL WRITING UNIT

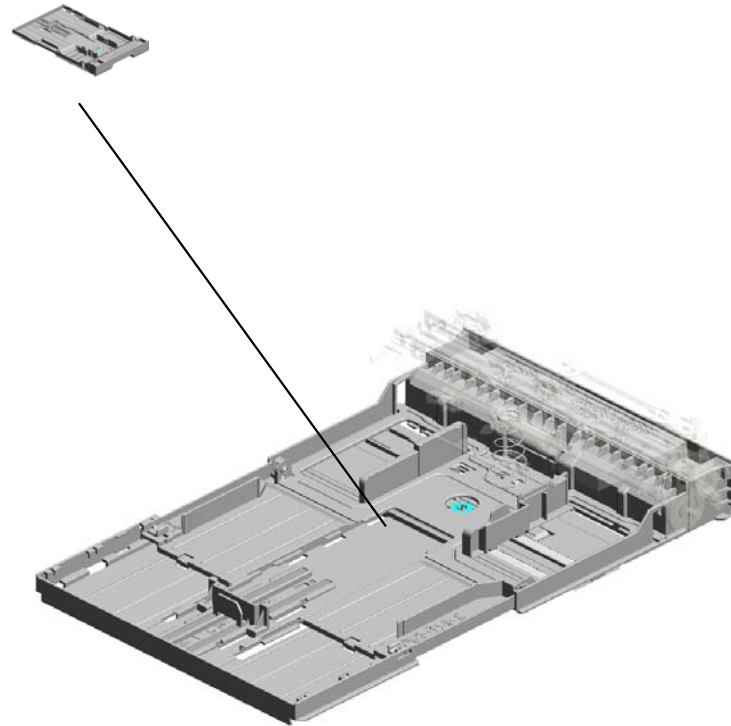
1.04583010N
(x2)
HEXAGON HEAD TAPPING SCREW:3
X10



2.M1331850
OPTICAL WRITING
UNIT

U004.PAPER FEED

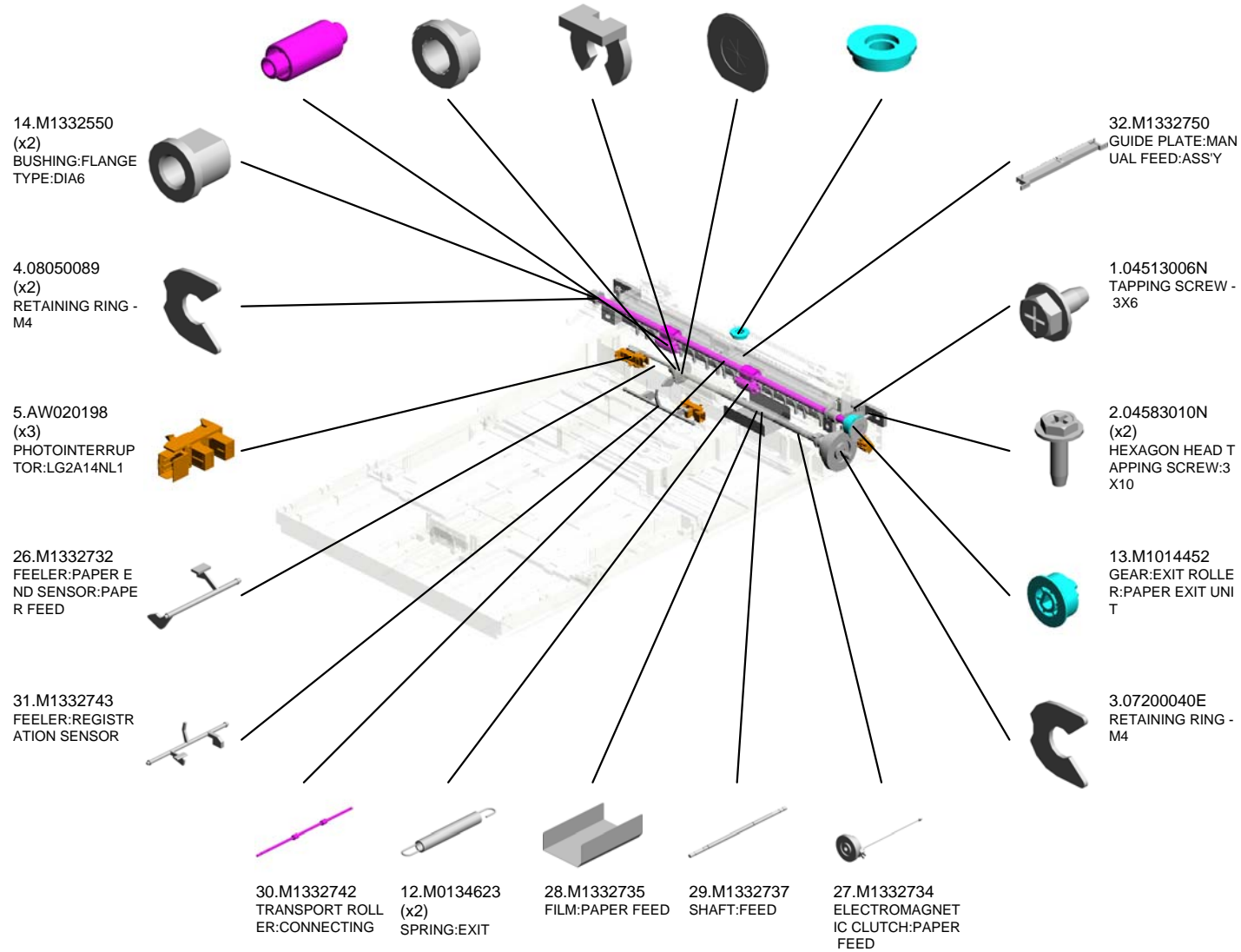
U004_S001
M2132501
PAPER TRAY:ASSY



U001	U002	U003	U004	U005	U006	U007	U008	U009	U010
------	------	------	------	------	------	------	------	------	------

U004 PAPER FEED

- 11.M0134622 (x2) EXIT ROLLER:DUPLEX
- 10.M0124488 (x2) BUSHING:DIA6XDI A10X6
- 6.G0201160 (x2) SNAP RING
- 9.M0122631 (x2) CLOTH:EARTH:PA PER FEED
- 7.G8003133 SIDE FENCE GEAR



U004 PAPER FEED

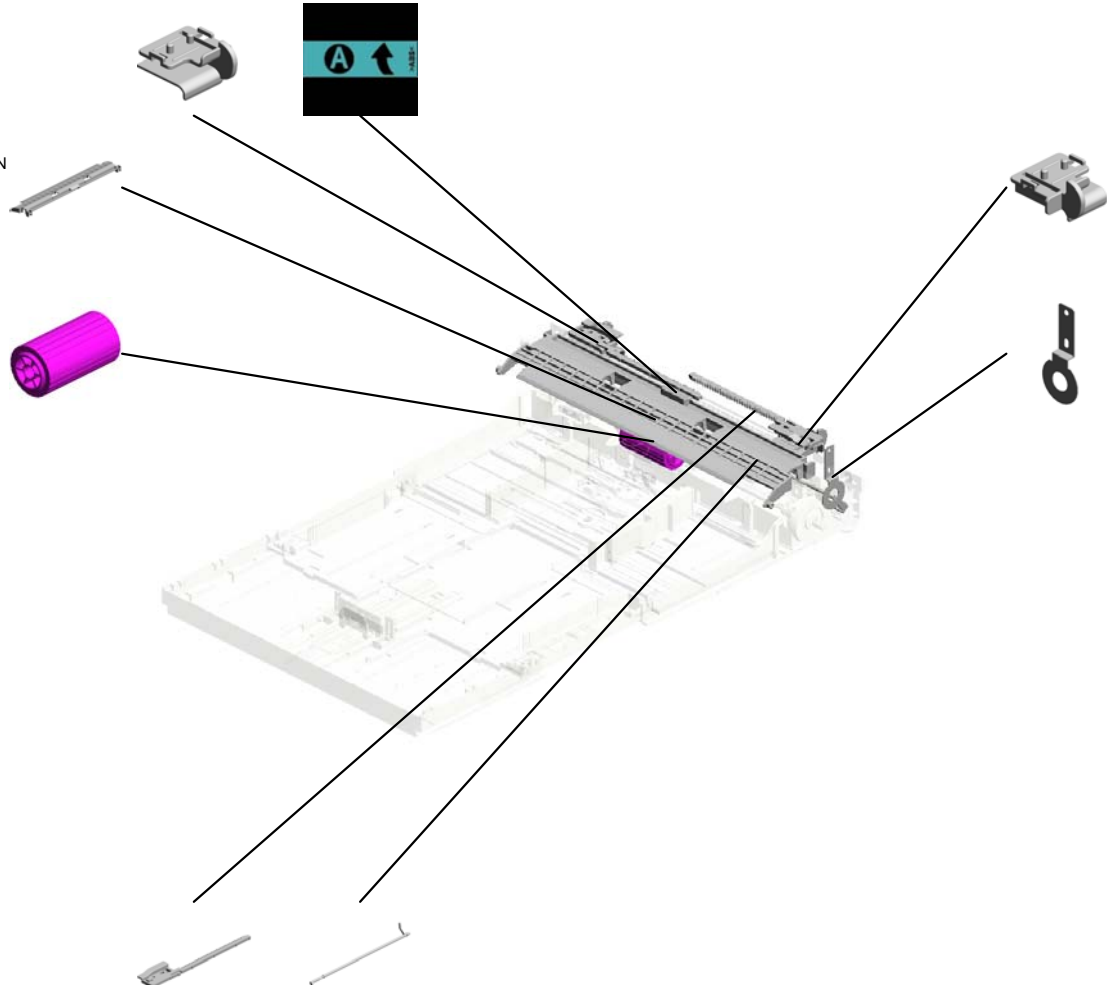
34.M1332753
SIDE FENCE:MAN
UAL FEED:RIGHT

41.M2132742
DECAL:GUIDE:JOI
NT UNIT



40.M2132741
GUIDE PLATE:CON
NECTING

37.M1332759
PAPER FEED ROL
LER



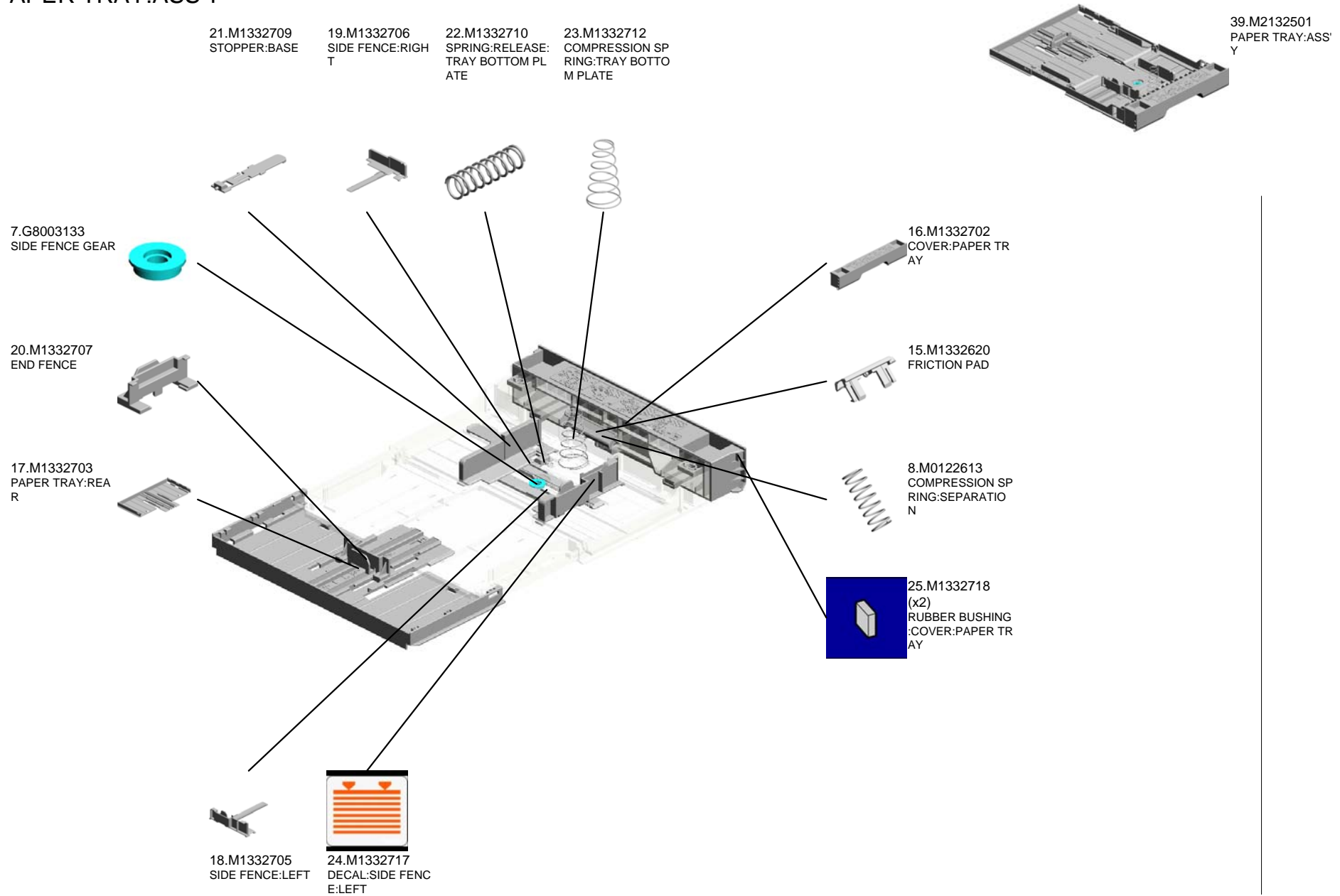
33.M1332752
SIDE FENCE:MAN
UAL FEED:LEFT

38.M1332762
GROUND PLATE:R
OLLER:CONNECTI
NG

35.M1332754
(x2)
RACK:SIDE FENCE

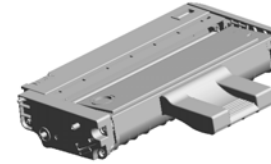
36.M1332755
FEELER:MANUAL
FEED SENSOR

U004_S001
PAPER TRAY:ASS'Y



U005
PCU

2.08050089
RETAINING RING -
M4



1.04583010N
(x6)
HEXAGON HEAD T
APPING SCREW:3
X10

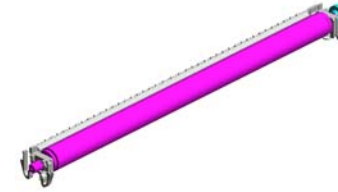


U006 TRANSFER/SEPARATION

4.M1336259
(x2)
ROLLER:POSITION
ING:TRANSFER R
OLLER

1.M1336201
SEPARATION UNIT
:ASS'Y

2.M1336250
TRANSFER ROLLE
R



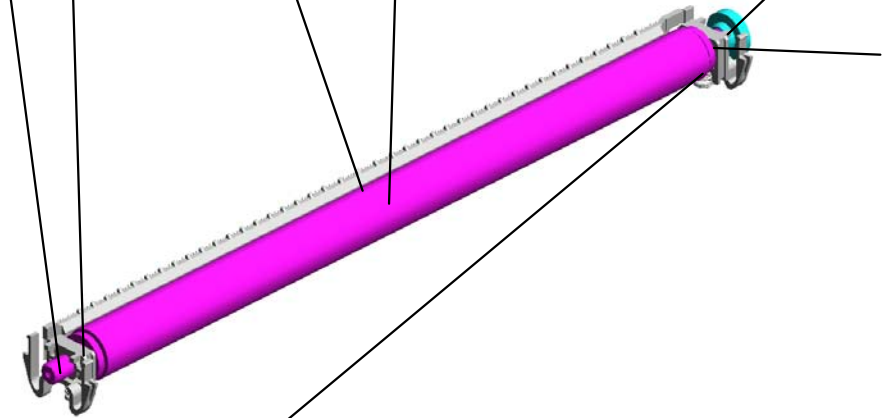
5.M1336262
BUSHING:TRANSF
ER ROLLER:RIGHT



3.M1336254
GEAR:TRANSFER
ROLLER



6.M1336263
BUSHING:TRANSF
ER ROLLER:LEFT



7.M1336264
(x2)
SPRING:TRANSFE
R ROLLER



U001	U002	U003	U004	U005	U006	U007	U008	U009	U010
------	------	------	------	------	------	------	------	------	------

U007.FUSING SECTION

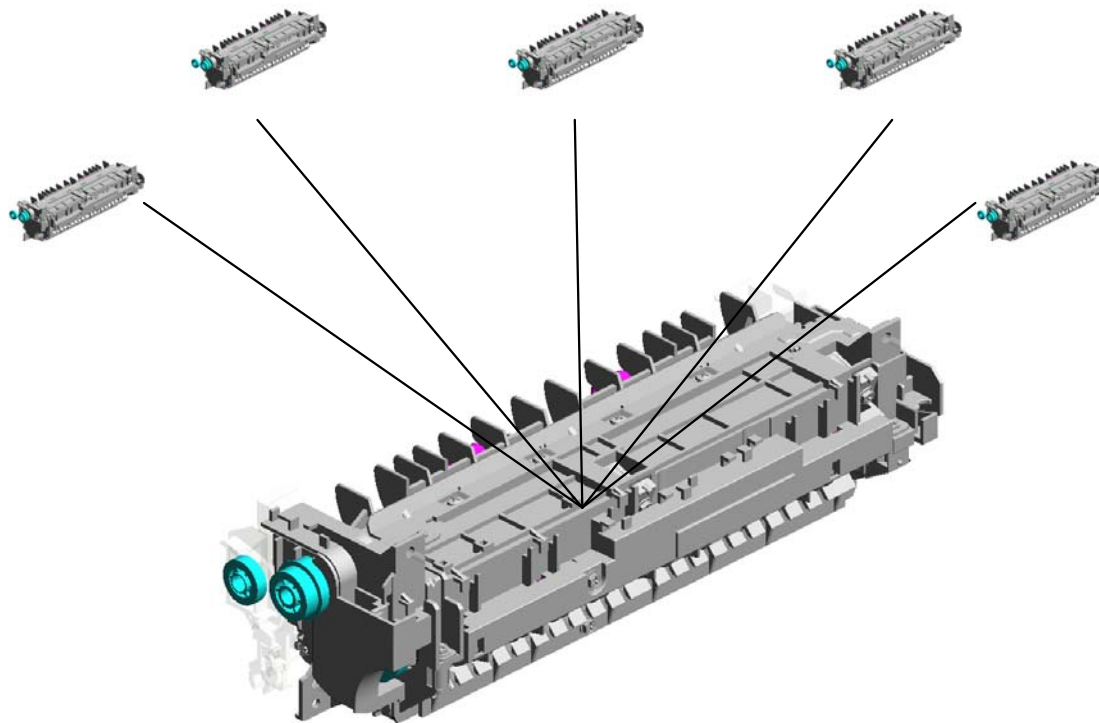
U007_S001
M2134001
(CHN):FUSING UNIT:ASS'Y

U007_S002
M2134002
(EU/AA):(IND):FUSING UNIT:
ASS'Y

U007_S003
M2134002
(EU/AA):(IND):FUSING UNIT:
ASS'Y

U007_S005
M2154003
(TWN):FUSING UNIT:ASS'Y

U007_S004
M2134003
(NA):FUSING UNIT:ASS'Y



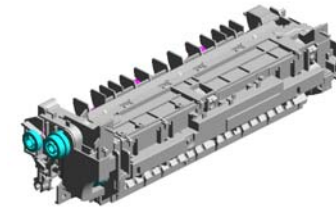
U001	U002	U003	U004	U005	U006	U007	U008	U009	U010
------	------	------	------	------	------	------	------	------	------

U007 FUSING SECTION

50.M2134240 EXIT ROLLER:STR
AIGHT:ASS'Y

21.M1334220 COIL SPRING:FEE
LER:EXIT

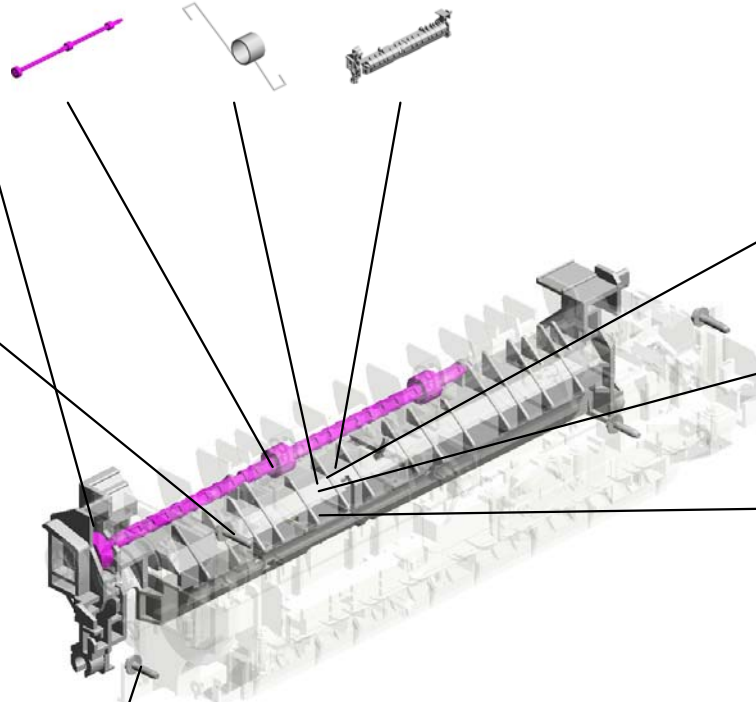
17.M1334216 GUIDE PLATE:STR
AIGHT



36.M1334254
DECAL:WARNING (HIGH TEMPERATU
RE):REAR RART



2.04503014N
(x2)
TAPPING SCREW:
M3X14



20.M1334219
FEELER:EXIT:SEN
SOR



27.M1334228
COVER:FEELER



7.AW020198
PHOTOINTERRUP
TOR:LG2A14NL1



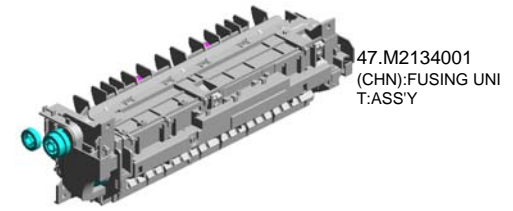
5.04583012N
(x2)
HEXAGON HEAD T
APPING SCREW:3
X12



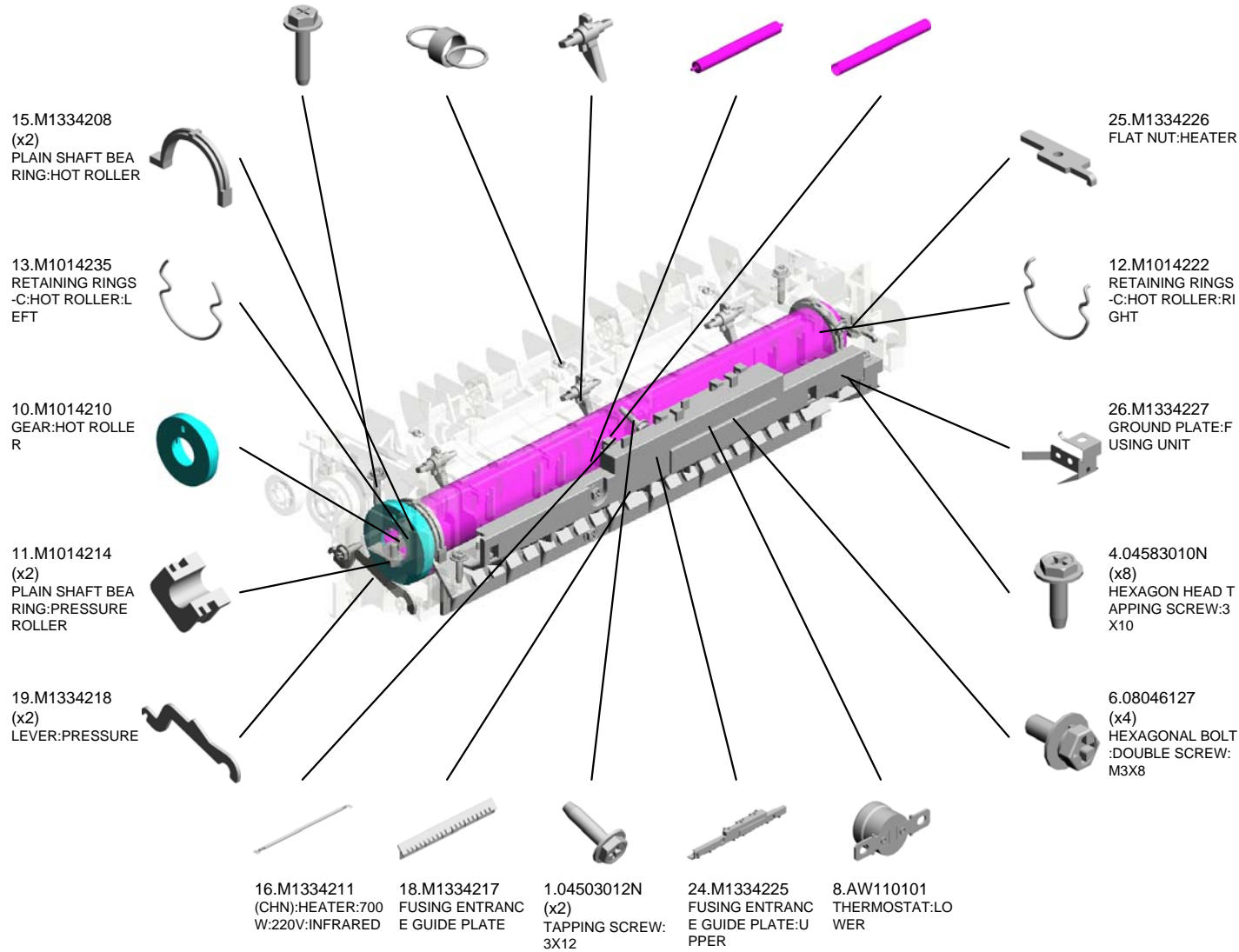
U001	U002	U003	U004	U005	U006	U007	U008	U009	U010
------	------	------	------	------	------	------	------	------	------

U007_S001
(CHN):FUSING UNIT:ASS'Y

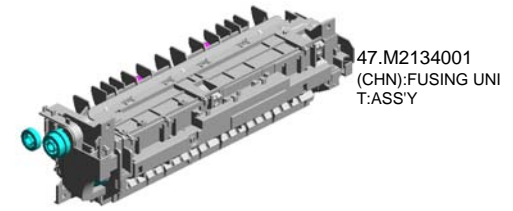
- 3.04523014N (x4) BINDING SELF-TAPPING SCREW:M3 X14
- 23.M1334223 (x3) TENSION SPRING: PICKOFF PAWL
- 22.M1334221 (x3) STRIPPER PAWLS
- 14.M1334204 PRESSURE ROLLER: DIA25
- 9.M1014203 HOT ROLLER



47.M2134001
(CHN):FUSING UNIT:ASS'Y

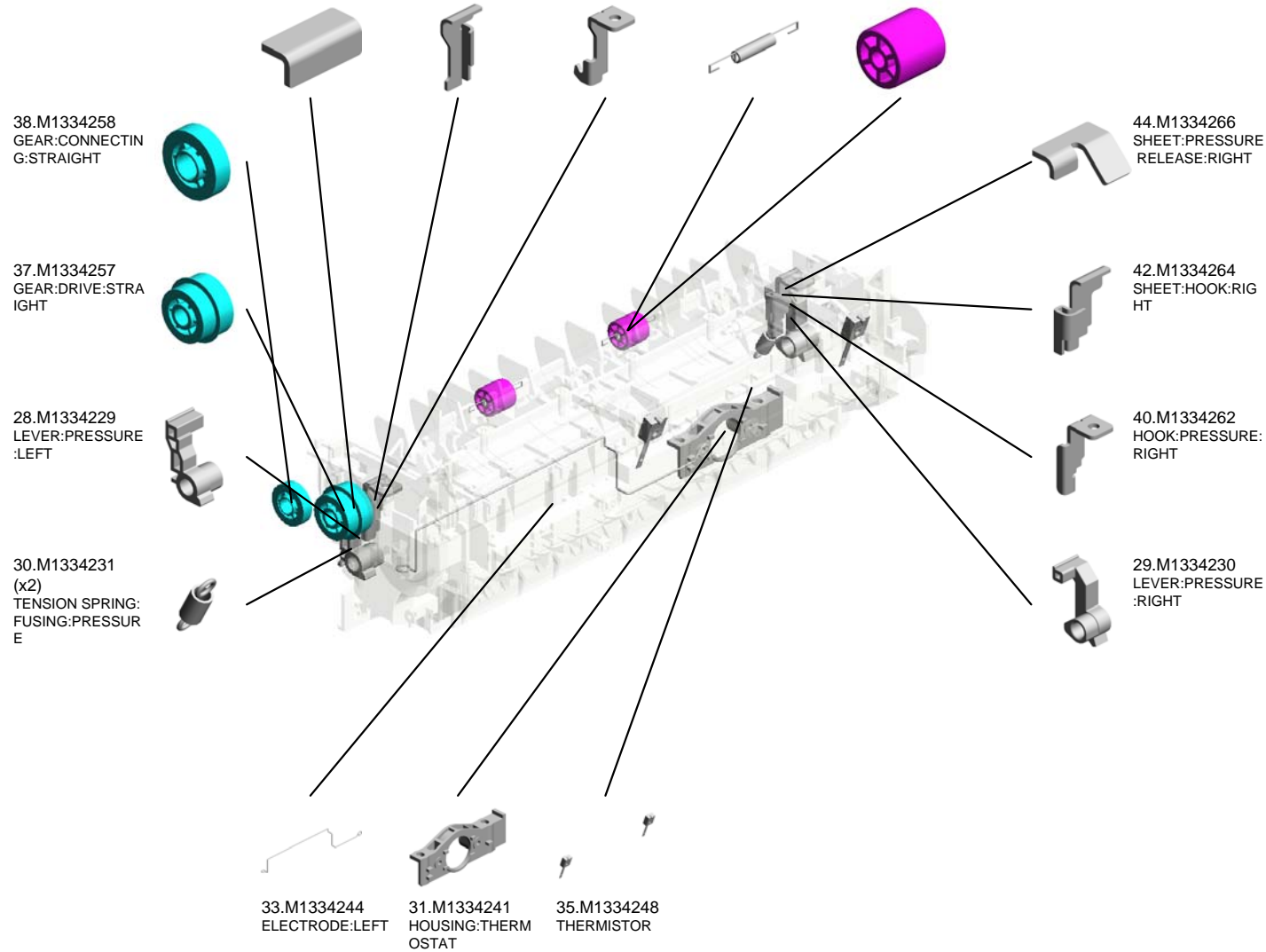


U007_S001
(CHN):FUSING UNIT:ASS'Y



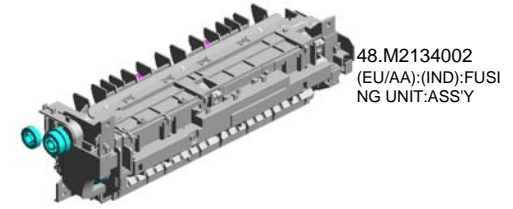
- 43.M1334265 SHEET:PRESSURE RELEASE:LEFT
- 41.M1334263 SHEET:HOOK:LEFT
- 39.M1334261 HOOK:PRESSURE:LEFT
- 34.M1334245 (x2) SPRING:EXIT ROLLER:FUSING
- 32.M1334243 (x2) EXIT ROLLER:FUSING

47.M2134001
(CHN):FUSING UNIT:ASS'Y

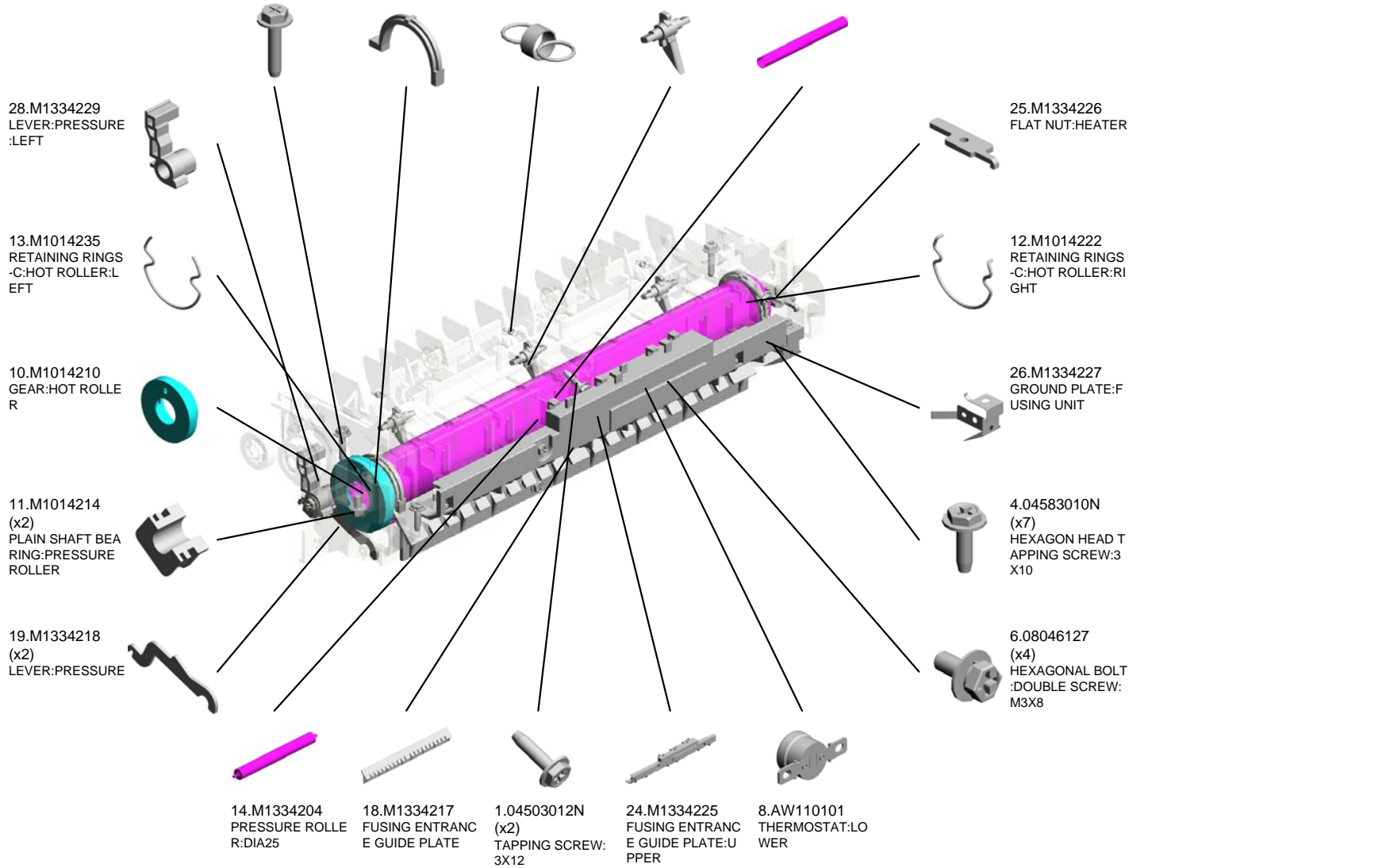


U007_S002
(EU/AA):(IND):FUSING UNIT:ASS'Y

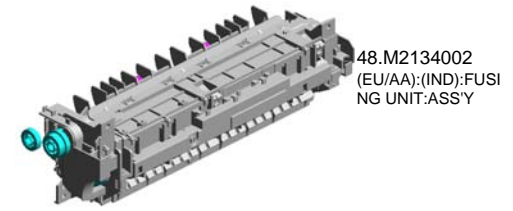
- 3.04523014N (x4) BINDING SELF-TAPPING SCREW:M3 X14
- 15.M1334208 (x2) PLAIN SHAFT BEARING:RING:HOT ROLLER
- 23.M1334223 (x3) TENSION SPRING: PICKOFF PAWL
- 22.M1334221 (x3) STRIPPER PAWLS
- 9.M1014203 HOT ROLLER



48.M2134002
(EU/AA):(IND):FUSING UNIT:ASS'Y



U007_S002
 (EU/AA):(IND):FUSING UNIT:ASS'Y



48.M2134002
 (EU/AA):(IND):FUSING UNIT:ASS'Y

41.M1334263 SHEET:HOOK:LEFT
 39.M1334261 HOOK:PRESSURE:LEFT
 32.M1334243 (x2) EXIT ROLLER:FUSING
 34.M1334245 (x2) SPRING:EXIT ROLLER:FUSING

38.M1334258 GEAR:CONNECTING:STRAIGHT

43.M1334265 SHEET:PRESSURE RELEASE:LEFT

37.M1334257 GEAR:DRIVE:STRAIGHT

30.M1334231 (x2) TENSION SPRING:FUSING:PRESSURE

33.M1334244 ELECTRODE:LEFT

45.M1454212 (EU/AA):(IND):HEATER:700W:230V

31.M1334241 HOUSING:THERMOSTAT

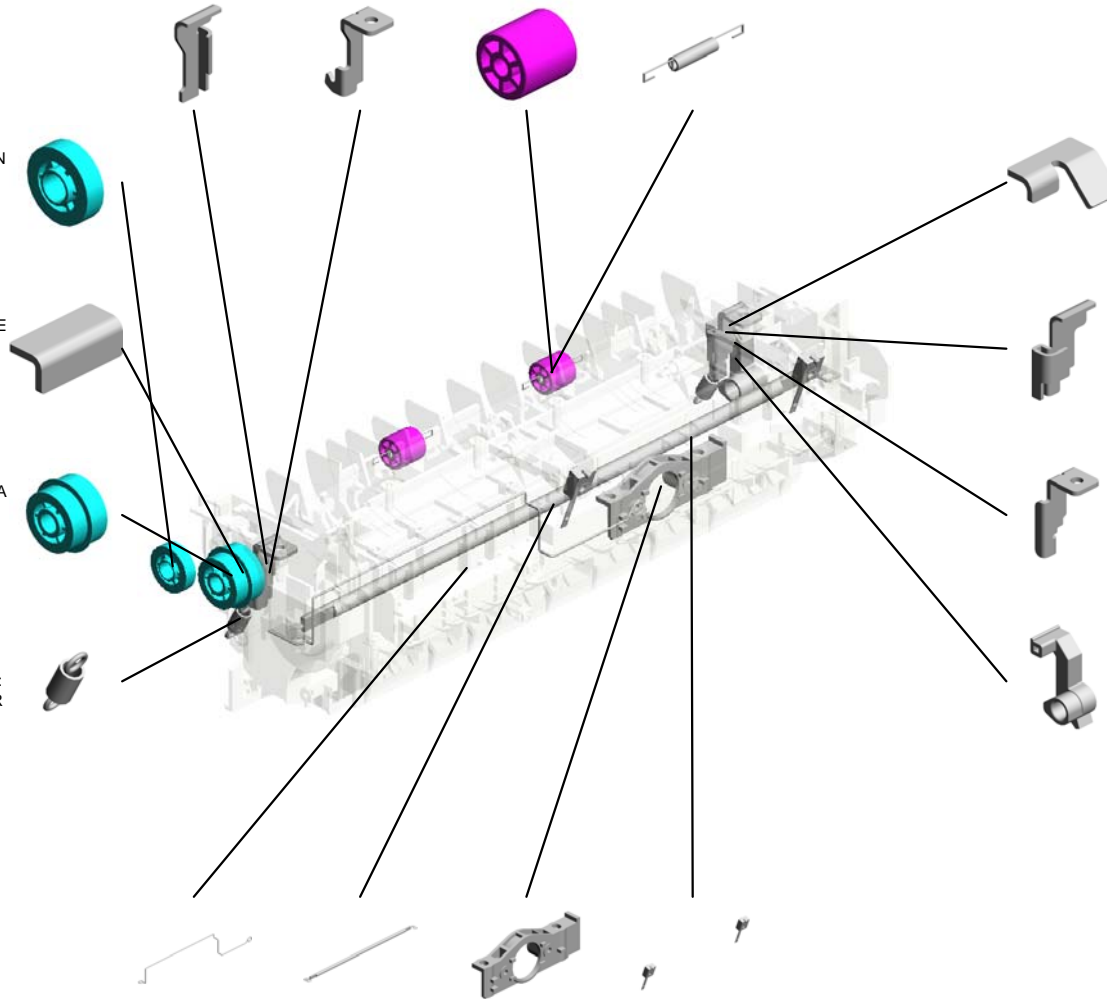
35.M1334248 THERMISTOR

44.M1334266 SHEET:PRESSURE RELEASE:RIGHT

42.M1334264 SHEET:HOOK:RIGHT

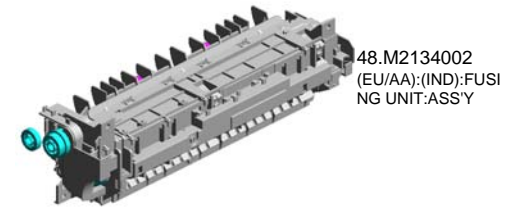
40.M1334262 HOOK:PRESSURE:RIGHT

29.M1334230 LEVER:PRESSURE:RIGHT

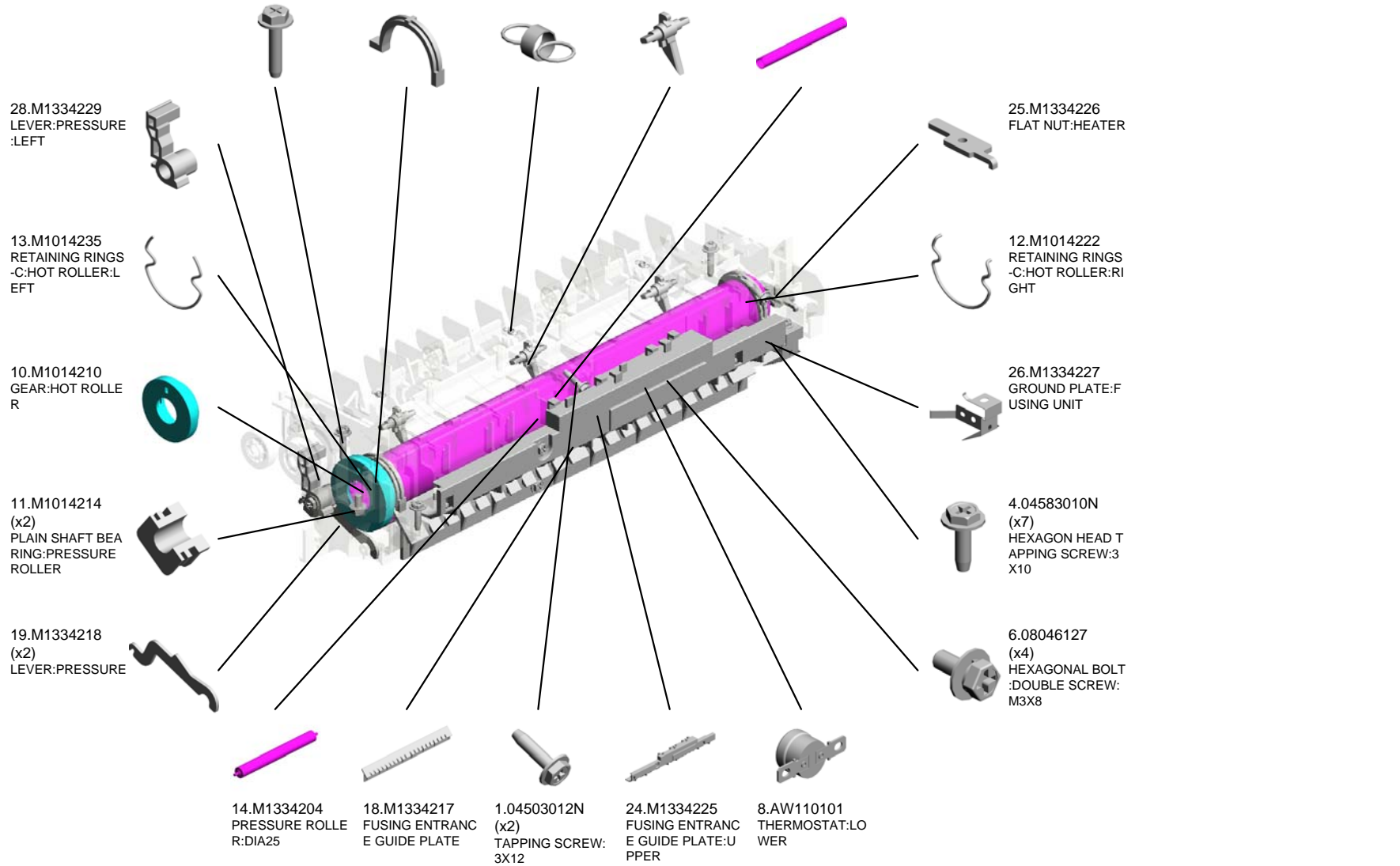


U007_S003
(EU/AA):(IND):FUSING UNIT:ASS'Y

- | | | | | |
|--|--|---|---------------------------------------|--------------------------|
| 3.04523014N
(x4)
BINDING SELF-TAPPING SCREW:M3 X14 | 15.M1334208
(x2)
PLAIN SHAFT BEARING RING:HOT ROLLER | 23.M1334223
(x3)
TENSION SPRING: PICKOFF PAWL | 22.M1334221
(x3)
STRIPPER PAWLS | 9.M1014203
HOT ROLLER |
|--|--|---|---------------------------------------|--------------------------|



48.M2134002
(EU/AA):(IND):FUSING UNIT:ASS'Y



28.M1334229
LEVER:PRESSURE :LEFT

13.M1014235
RETAINING RINGS -C:HOT ROLLER:LEFT

10.M1014210
GEAR:HOT ROLLER

11.M1014214
(x2)
PLAIN SHAFT BEARING RING:PRESSURE ROLLER

19.M1334218
(x2)
LEVER:PRESSURE

14.M1334204
PRESSURE ROLLER:DIA25

18.M1334217
FUSING ENTRANCE GUIDE PLATE

1.04503012N
(x2)
TAPPING SCREW: 3X12

24.M1334225
FUSING ENTRANCE GUIDE PLATE:UPPER

8.AW110101
THERMOSTAT:LOWER

25.M1334226
FLAT NUT:HEATER

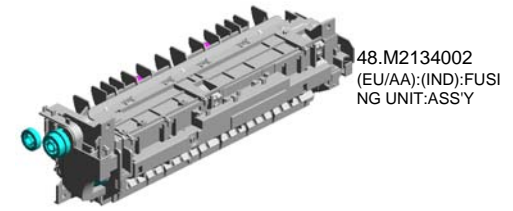
12.M1014222
RETAINING RINGS -C:HOT ROLLER:RIGHT

26.M1334227
GROUND PLATE:FUSING UNIT

4.04583010N
(x7)
HEXAGON HEAD TAPPING SCREW:3 X10

6.08046127
(x4)
HEXAGONAL BOLT :DOUBLE SCREW: M3X8

U007_S003
 (EU/AA):(IND):FUSING UNIT:ASS'Y



48.M2134002
 (EU/AA):(IND):FUSING UNIT:ASS'Y

41.M1334263 SHEET:HOOK:LEFT
 39.M1334261 HOOK:PRESSURE:LEFT
 32.M1334243 (x2) EXIT ROLLER:FUSING
 34.M1334245 (x2) SPRING:EXIT ROLLER:FUSING

38.M1334258 GEAR:CONNECTING:STRAIGHT

43.M1334265 SHEET:PRESSURE RELEASE:LEFT

37.M1334257 GEAR:DRIVE:STRAIGHT

30.M1334231 (x2) TENSION SPRING:FUSING:PRESSURE

33.M1334244 ELECTRODE:LEFT

45.M1454212 (EU/AA):(IND):HEATER:700W:230V

31.M1334241 HOUSING:THERMOSTAT

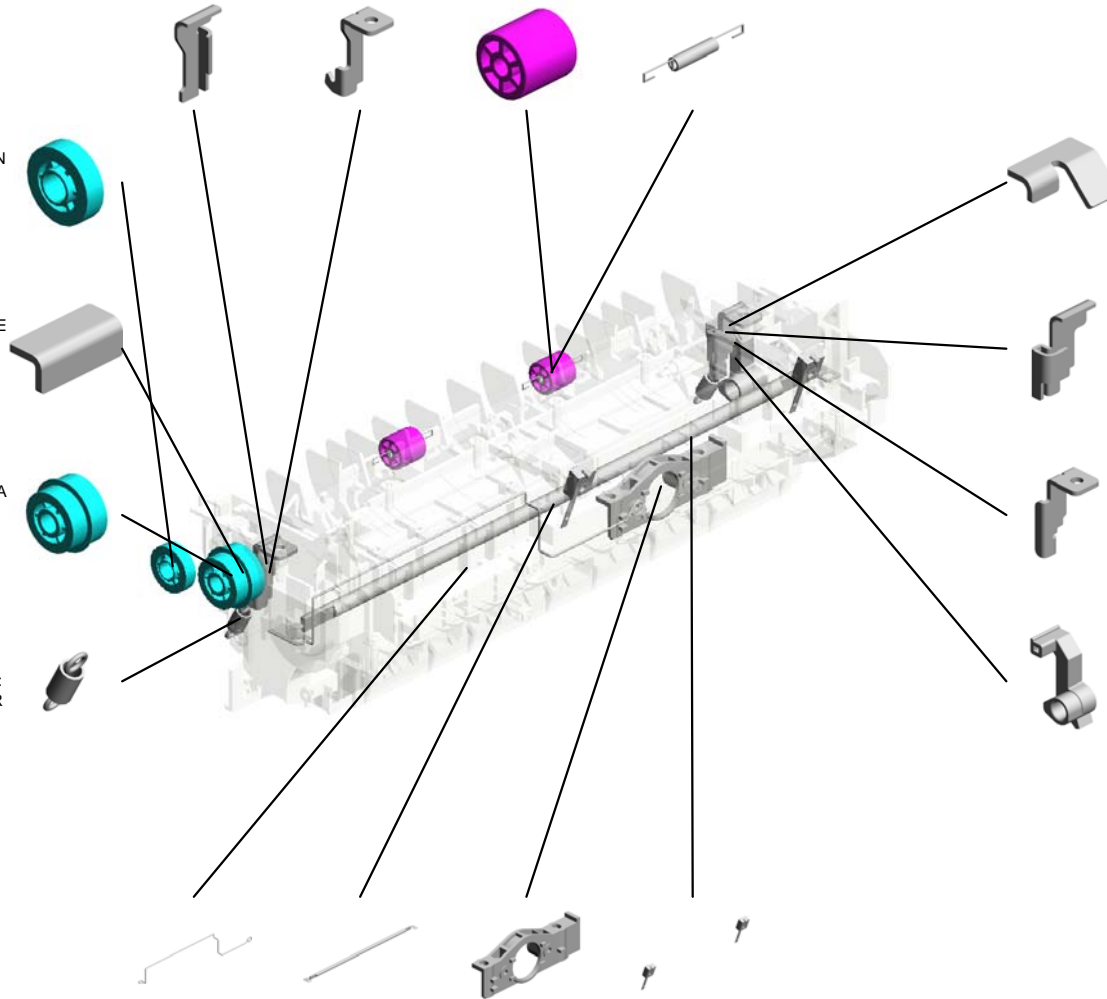
35.M1334248 THERMISTOR

44.M1334266 SHEET:PRESSURE RELEASE:RIGHT

42.M1334264 SHEET:HOOK:RIGHT

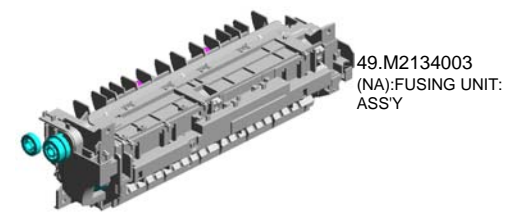
40.M1334262 HOOK:PRESSURE:RIGHT

29.M1334230 LEVER:PRESSURE:RIGHT

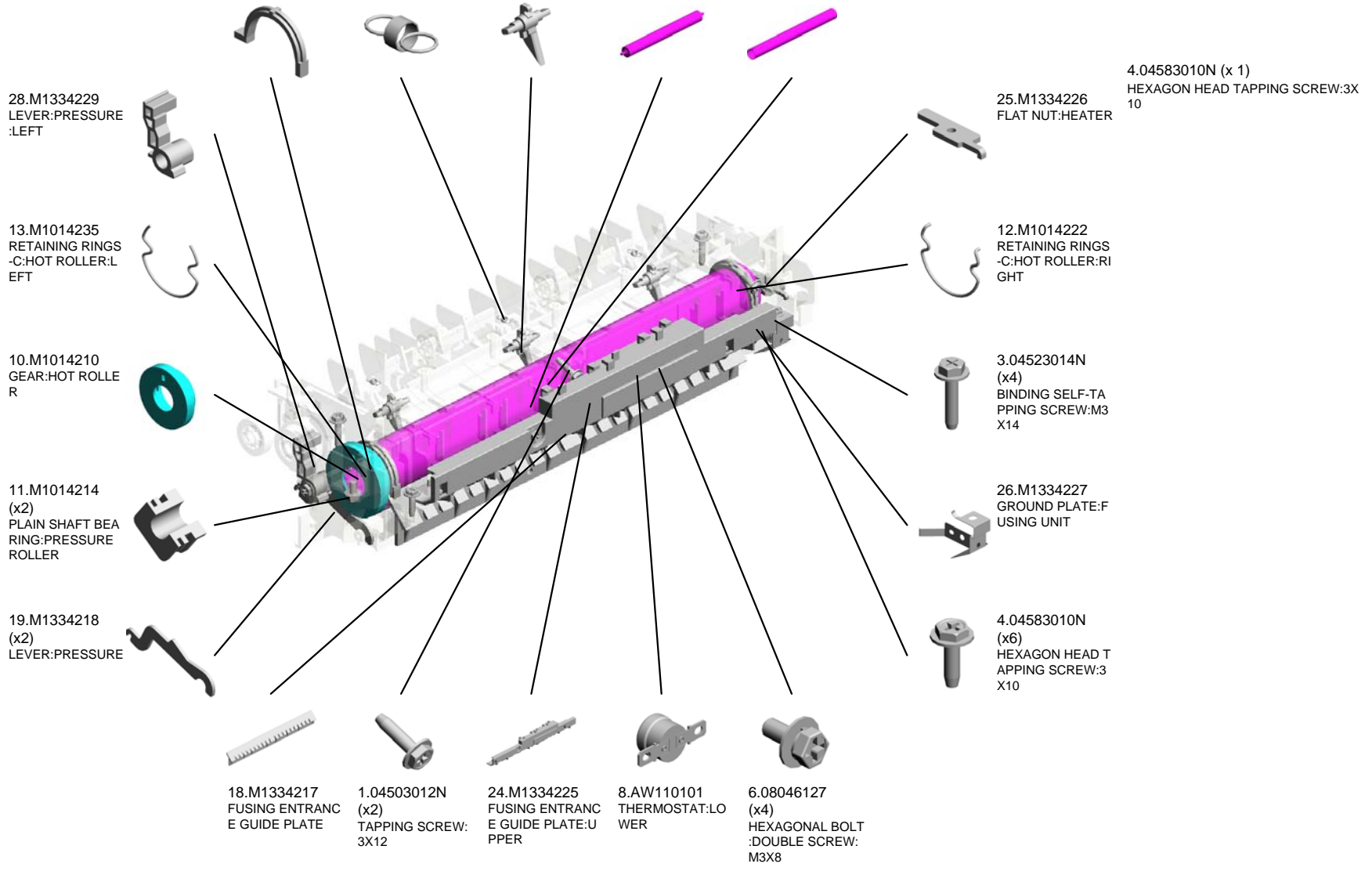


U007_S004
(NA):FUSING UNIT:ASS'Y

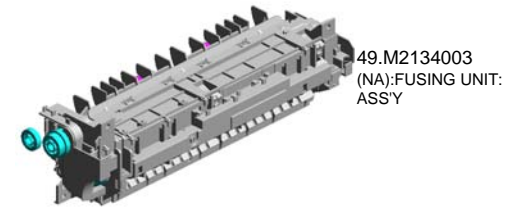
- 15.M1334208 (x2) PLAIN SHAFT BEARING RING:HOT ROLLER
- 23.M1334223 (x3) TENSION SPRING: PICKOFF PAWL
- 22.M1334221 (x3) STRIPPER PAWLS
- 14.M1334204 PRESSURE ROLLER: DIA25
- 9.M1014203 HOT ROLLER



49.M2134003
(NA):FUSING UNIT: ASS'Y



U007_S004
(NA):FUSING UNIT:ASS'Y



- 41.M1334263 SHEET:HOOK:LEFT
- 39.M1334261 HOOK:PRESSURE:LEFT
- 32.M1334243 (x2) EXIT ROLLER:FUSING
- 34.M1334245 (x2) SPRING:EXIT ROLLER:FUSING

38.M1334258 GEAR:CONNECTING:STRAIGHT

43.M1334265 SHEET:PRESSURE RELEASE:LEFT

37.M1334257 GEAR:DRIVE:STRAIGHT

30.M1334231 (x2) TENSION SPRING:FUSING:PRESSURE

33.M1334244 ELECTRODE:LEFT

46.M1454213 (NA):HEATER:700W:120V

31.M1334241 HOUSING:THERMOSTAT

35.M1334248 THERMISTOR

44.M1334266 SHEET:PRESSURE RELEASE:RIGHT

42.M1334264 SHEET:HOOK:RIGHT

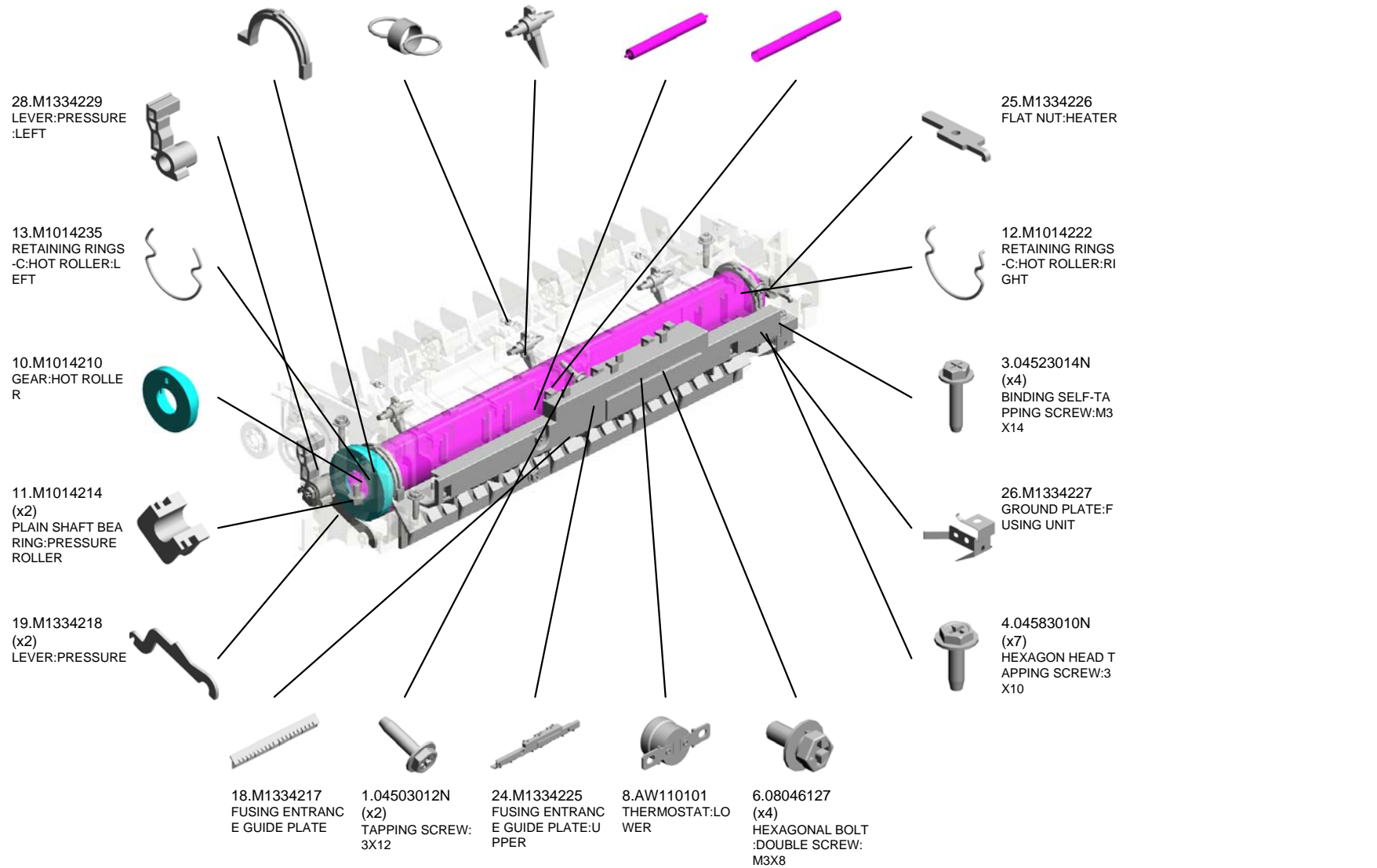
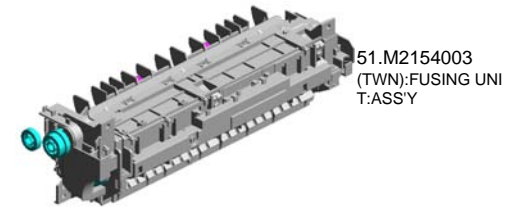
40.M1334262 HOOK:PRESSURE:RIGHT

29.M1334230 LEVER:PRESSURE:RIGHT

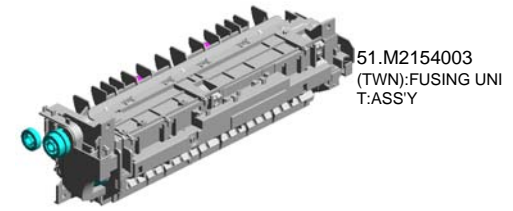
49.M2134003 (NA):FUSING UNIT:ASS'Y

U007_S005
(TWN):FUSING UNIT:ASS'Y

- 15.M1334208 (x2) PLAIN SHAFT BEARING: HOT ROLLER
- 23.M1334223 (x3) TENSION SPRING: PICKOFF PAWL
- 22.M1334221 (x3) STRIPPER PAWLS
- 14.M1334204 PRESSURE ROLLER: DIA25
- 9.M1014203 HOT ROLLER



U007_S005
(TWN):FUSING UNIT:ASS'Y



51.M2154003
(TWN):FUSING UNIT:ASS'Y

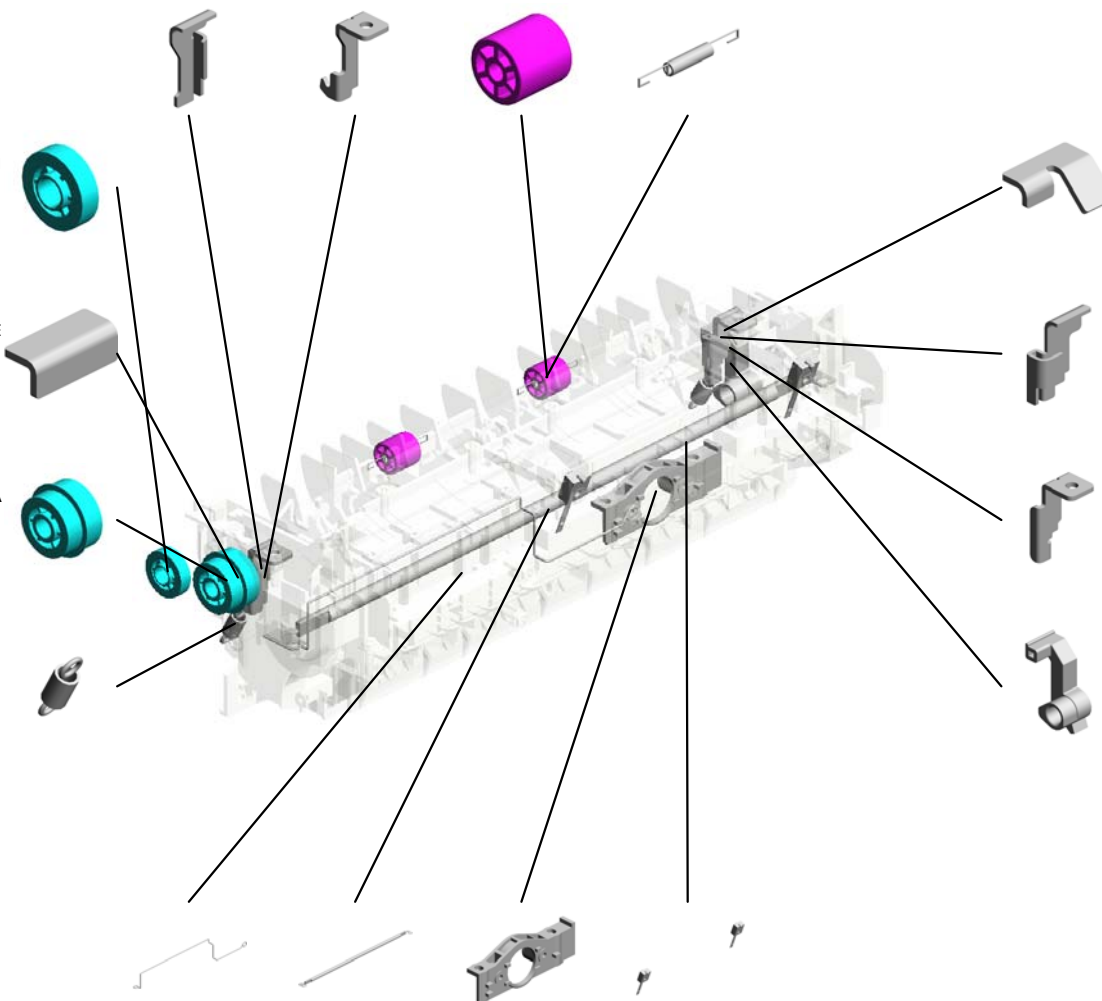
41.M1334263 SHEET:HOOK:LEFT
39.M1334261 HOOK:PRESSURE:LEFT
32.M1334243 (x2) EXIT ROLLER:FUSING
34.M1334245 (x2) SPRING:EXIT ROLLER:FUSING

38.M1334258 GEAR:CONNECTING:STRAIGHT

43.M1334265 SHEET:PRESSURE RELEASE:LEFT

37.M1334257 GEAR:DRIVE:STRAIGHT

30.M1334231 (x2) TENSION SPRING:FUSING:PRESSURE



44.M1334266 SHEET:PRESSURE RELEASE:RIGHT

42.M1334264 SHEET:HOOK:RIGHT

40.M1334262 HOOK:PRESSURE:RIGHT

29.M1334230 LEVER:PRESSURE:RIGHT

33.M1334244 ELECTRODE:LEFT
52.M2154213 (TWN):HEATER:700W:110V
31.M1334241 HOUSING:THERMOSTAT
35.M1334248 THERMISTOR

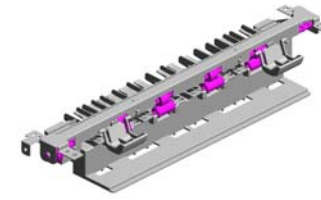
U001	U002	U003	U004	U005	U006	U007	U008	U009	U010
------	------	------	------	------	------	------	------	------	------

U008 PAPER EXIT

7.M1334465 (x2)
PLATE:EXIT

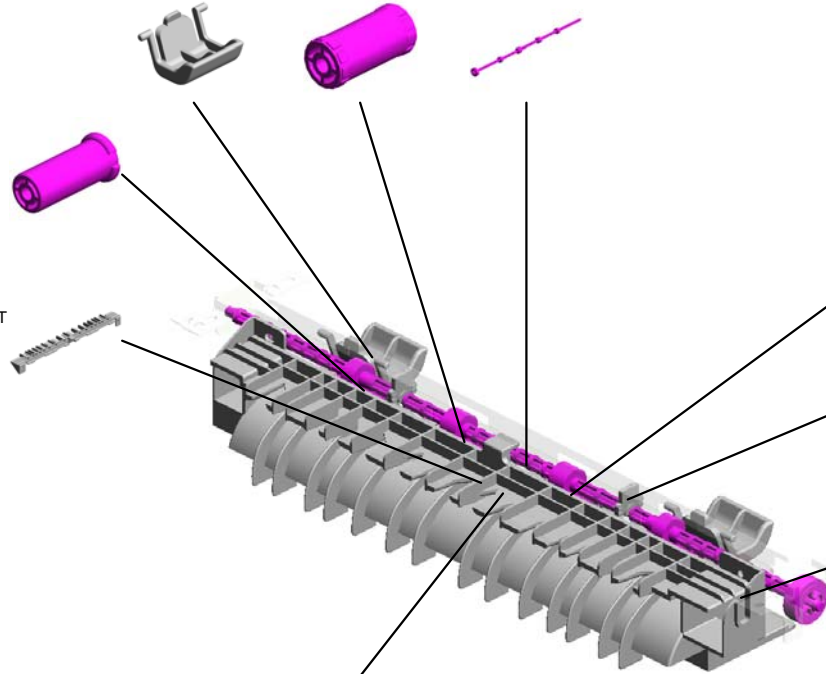
5.M1334457 (x2)
EXIT ROLLER

10.M2134451
EXIT ROLLER:PAPER EXIT UNIT



6.M1334459 (x2)
EXIT ROLLER

8.M1334466
GUIDE PLATE:EXIT :UPPER



9.M1334467
GUIDE PLATE:EXIT :LOWER

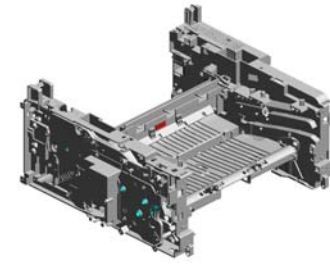
3.M0124454 (x4)
SPRING:EXIT ROLLER:EXIT

4.M1334453 (x2)
PLAIN SHAFT BEARING:EXIT

1.04513008N (x2)
TAPPING SCREW - M3X8

2.04583010N (x 4)
HEXAGON HEAD TAPPING SCREW:3X10

U009 MAIN DRIVE/MAIN FRAME



- 4.04583010N (x23) HEXAGON HEAD TAPPING SCREW:3 X10
- 6.07200060E RETAINING RING - M6
- 3.04513006N (x4) TAPPING SCREW - 3X6
- 19.M1331090 SAFETY SWITCH:ARM
- 20.M1331093 COIL SPRING:LEFT :EXIT

1.03530040N (x3) SCREW - M3X4

14.M1331063 COIL SPRING:DISC HARGE:AIO

7.12042612 (x2) MICRO SWITCH:D3 V-16506-3C25

2.04503020N (x2) TAPPING SCREW: M3X20

8.G5123029 (x3) RUBBER FOOT

12.M1331061 COIL SPRING:DISC HARGE:ELECTRODE PLATE

11.M1180501 SPEAKER:M118

5.04593008N (x2) BINDING HEAD TAPPING SCREW:3X8

13.M1331062 ELECTRODE PLATE:TRANSFER

17.M1331067 COIL SPRING:TRANSFER:CHARGE

10.M0124699 DECAL:WARNING (HIGH TEMPERATURE):FRONT

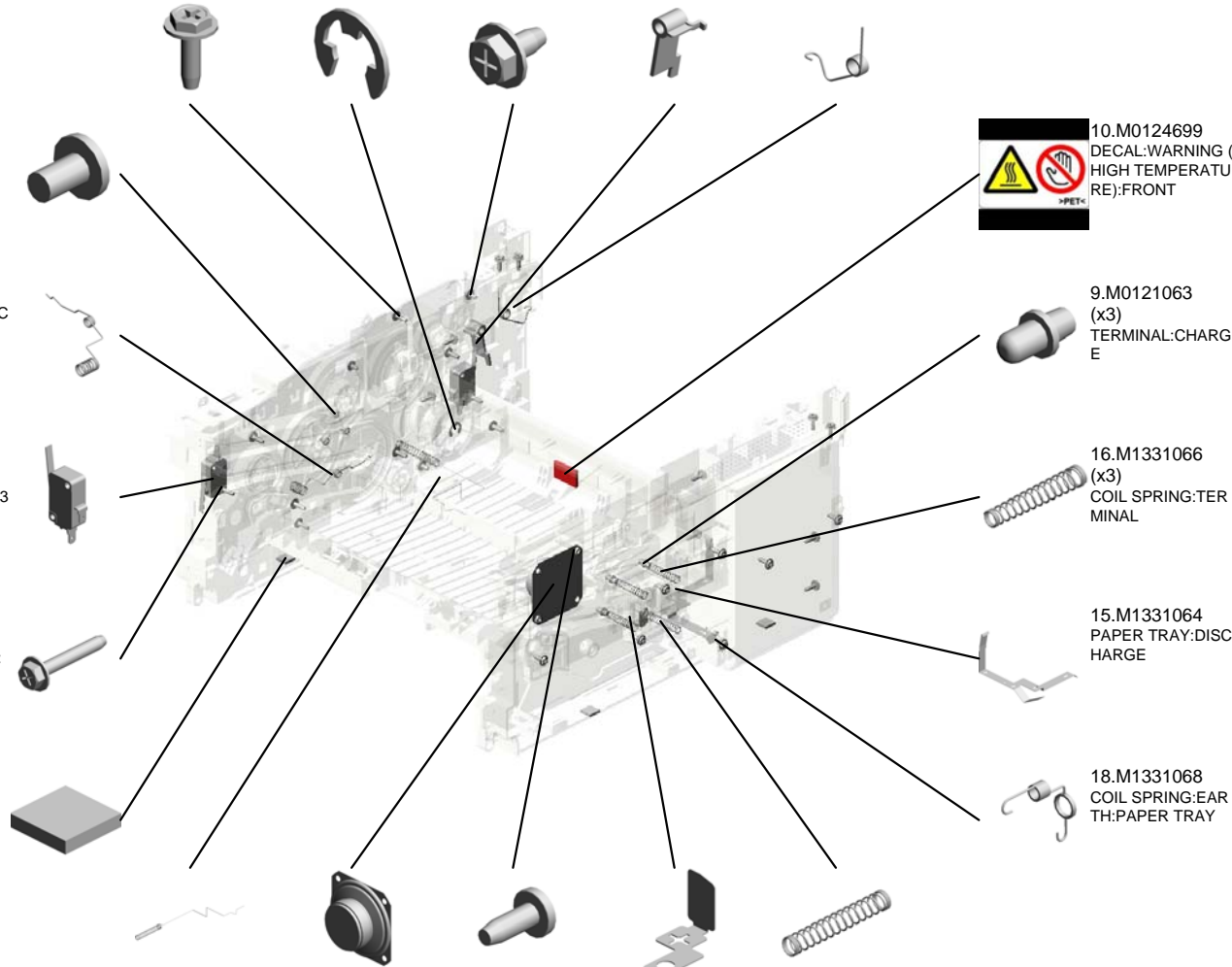
3.04513006N (x 5) TAPPING SCREW - 3X6

9.M0121063 (x3) TERMINAL:CHARGE

16.M1331066 (x3) COIL SPRING:TERMINAL

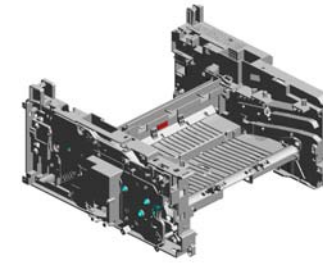
15.M1331064 PAPER TRAY:DISC HARGE

18.M1331068 COIL SPRING:EAR TH:PAPER TRAY



U009 MAIN DRIVE/MAIN FRAME

39.M2131150 DC BRUSHLESS MOTOR:17.15W
 24.M1331118 GEAR:DRIVE:FUSIONG:NO.1
 25.M1331119 GEAR:DRIVE:FUSIONG:NO.2
 29.M1331127 GEAR:DRIVE:EXIT:NO.2
 34.M1341097 SHAFT:TURN:SCANNER:LEFT



38.M2131041 (M217/M218/M237/M247/M250):CASE:WIFI

30.M1331131 GEAR:DRIVE:PAPER FEED:NO.1

31.M1331132 GEAR:DRIVE:PAPER FEED:NO.2

32.M1331133 GEAR:DRIVE:PAPER FEED:NO.3

36.M1351372 (x4) GROUND PLATE:FIX:NO.1

23.M1331117 GEAR:DRIVE:DRUM

33.M1331146 SPRING:DRIVE SUB-UNIT:RELEASE

26.M1331120 GEAR:DRIVE:FUSIONG:NO.3

27.M1331121 GEAR:DRIVE:FUSIONG:NO.4

28.M1331126 GEAR:DRIVE:EXIT:NO.1

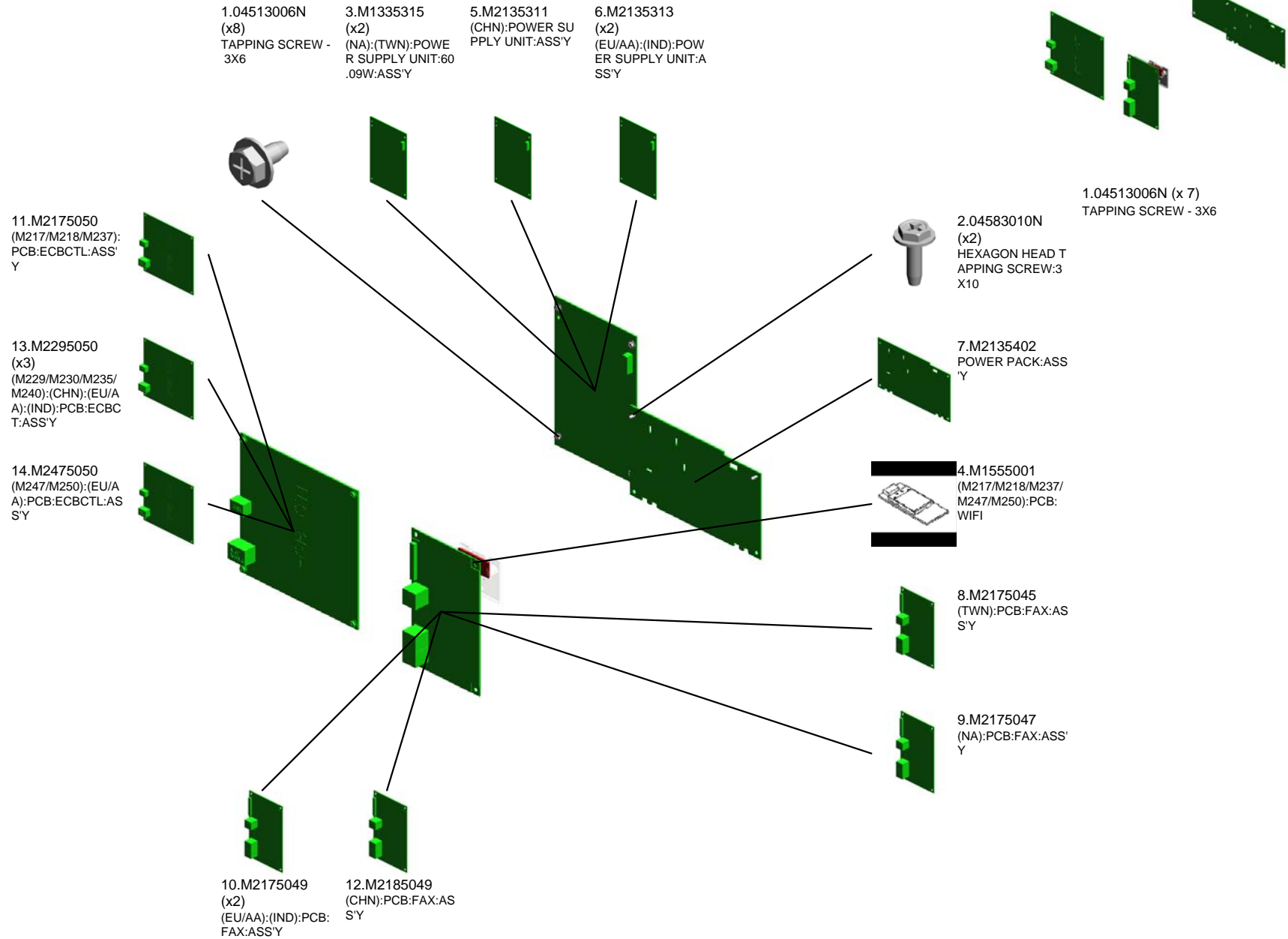
35.M1341098 SHAFT:TURN:SCANNER:RIGHT

22.M1331099 (x4) (M218/229/235/237/250):(CHN/NA/EU/AA/IND):HEAT INSULATING PLATE

37.M1451099 (x4) (M217/M230/M240/M247):(CHN/NA/EU/AA/TWN):HEAT INSULATING PLATE

21.M1331094 COIL SPRING:RIGID:EXIT

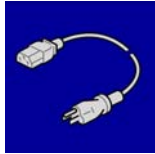
U010 ELECTRICAL



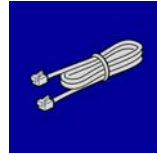
ACCESSORIES



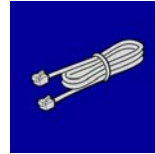
1.11050780
CLAMP:LWST-1012



2.11500409
(TWN):POWER SUPPLY CODE:125V:
15A



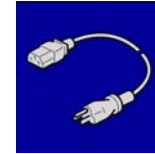
3.H4524105
(x3)
(CHN):(EU/AA):(IND):MODULER COR
D:6PIN-6PIN



4.H5235350
(x2)
(NA):(TWN):TELEPHONE CABLE



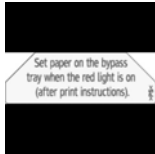
5.M1011301
PLATE:LOGO:RIC



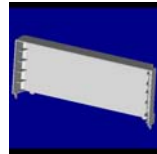
6.M1015799
(CHN):POWER SUPPLY CORD



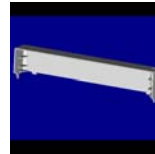
7.M1331328
(CHN):DECAL:MANUAL FEED:CAUTI
ON



8.M1331329
(x3)
(NA):(EU/AA):(IND):DECAL:MANUAL F
R TRAY:LG
EED:CAUTION:WW



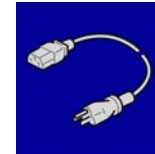
9.M1332711
(NA):COVER:PREVENTFENCE:PAPE
R TRAY:LG



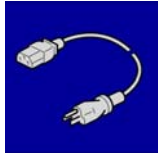
10.M1332715
COVER:PREVENTFENCE:PAPER TR
AY:A4



11.M1351356
(CHN):DECAL:HOLDER:CAUTION



12.M1545697
(NA):POWER SUPPLY CORD:125V:10
A



13.M1545699
(x2)
(EU/AA):(IND):POWER SUPPLY COR
D:250V:10A



14.M1560462
(CHN):HAND SET:SUB-ASS'Y



15.M1785452
(x3)
(CHN):(NA):(IND):CABLE:USB



16.M2150405
(x3)
(M217/M237/M247/M250):(NA):(EU/AA
):(IND):DECAL:CAUTION:SCNTOUSB



17.M2160405
(M216):(CHN):DECAL:CAUTION:SCN
TOUSB



18.M2171358
(CHN):HAND SET:HOLDER

Exclusive Parts

Number	Part Name	Group	ID
AG070514	MAGNET CATCH	U001	2
AW020198	PHOTOINTERRUPTOR:LG2A14NL 1	U004	5
		U007	7
AW110101	THERMOSTAT:LOWER	U007_S001	8
		U007_S002	8
		U007_S003	8
		U007_S004	8
		U007_S005	8
G0201160	SNAP RING	U004	6
G5123029	RUBBER FOOT	U001	3
		U009	8
G8003133	SIDE FENCE GEAR	U004	7
		U004_S001	7
H4524105	(CHN):(EU/AA):(IND):MODULER CO RD:6PIN-6PIN	ACCESSORIES	3
H5235350	(NA):(TWN):TELEPHONE CABLE	ACCESSORIES	4
M0121063	TERMINAL:CHARGE	U009	9
M0122613	COMPRESSION SPRING:SEPARAT ION	U004_S001	8
M0122631	CLOTH:EARTH:PAPER FEED	U004	9
M0124454	SPRING:EXIT ROLLER:EXIT	U008	3
M0124488	BUSHING:DIA6XDIA10X6	U004	10
M0124699	DECAL:WARNING (HIGH TEMPER ATURE):FRONT	U009	10
M0134622	EXIT ROLLER:DUPLEX	U004	11
M0134623	SPRING:EXIT	U004	12
M1011301	PLATE:LOGO:RIC	ACCESSORIES	5
M1014203	HOT ROLLER	U007_S001	9
		U007_S002	9
		U007_S003	9
		U007_S004	9
		U007_S005	9
M1014210	GEAR:HOT ROLLER	U007_S001	10
		U007_S002	10
		U007_S003	10
		U007_S004	10
		U007_S005	10
M1014214	PLAIN SHAFT BEARING:PRESSUR	U007_S001	11

Number	Part Name	Group	ID
	E ROLLER	U007_S002	11
		U007_S003	11
		U007_S004	11
		U007_S005	11
M1014222	RETAINING RINGS-C:HOT ROLLE R:RIGHT	U007_S001	12
		U007_S002	12
		U007_S003	12
		U007_S004	12
		U007_S005	12
M1014235	RETAINING RINGS-C:HOT ROLLE R:LEFT	U007_S001	13
		U007_S002	13
		U007_S003	13
		U007_S004	13
		U007_S005	13
M1014452	GEAR:EXIT ROLLER:PAPER EXIT UNIT	U004	13
M1015799	(CHN):POWER SUPPLY CORD	ACCESSORIES	6
M1180501	SPEAKER:M118	U009	11
M1331061	COIL SPRING:DISCHARGE:ELECT RODE PLATE	U009	12
M1331062	ELECTRODE PLATE:TRANSFER	U009	13
M1331063	COIL SPRING:DISCHARGE:AIO	U009	14
M1331064	PAPER TRAY:DISCHARGE	U009	15
M1331066	COIL SPRING:TERMINAL	U009	16
M1331067	COIL SPRING:TRANSFER:CHARG E	U009	17
M1331068	COIL SPRING:EARTH:PAPER TRA Y	U009	18
M1331090	SAFETY SWITCH:ARM	U009	19
M1331093	COIL SPRING:LEFT:EXIT	U009	20
M1331094	COIL SPRING:RIGHT:EXIT	U009	21
M1331099	(M218/229/235/237/250):(CHN/NA/E U/AA/IND):HEAT INSULATING PLA TE	U009	22
M1331117	GEAR:DRIVE:DRUM	U009	23
M1331118	GEAR:DRIVE:FUSING:NO.1	U009	24
M1331119	GEAR:DRIVE:FUSING:NO.2	U009	25
M1331120	GEAR:DRIVE:FUSING:NO.3	U009	26

Exclusive Parts

Number	Part Name	Group	ID
M1331121	GEAR:DRIVE:FUSING:NO.4	U009	27
M1331126	GEAR:DRIVE:EXIT:NO.1	U009	28
M1331127	GEAR:DRIVE:EXIT:NO.2	U009	29
M1331131	GEAR:DRIVE:PAPER FEED:NO.1	U009	30
M1331132	GEAR:DRIVE:PAPER FEED:NO.2	U009	31
M1331133	GEAR:DRIVE:PAPER FEED:NO.3	U009	32
M1331146	SPRING:DRIVE SUB-UNIT:RELEASE	U009	33
M1331311	COVER:EXIT:FRAME	U001	4
M1331326	COVER:MANUAL FEED:DOOR	U001	5
M1331327	MANUAL FEED TABLE:ENTRANCE	U001	6
M1331328	(CHN):DECAL:MANUAL FEED:CAUTION	ACCESSORIES	7
M1331329	(NA):(EU/AA):(IND):DECAL:MANUAL FEED:CAUTION:WW	ACCESSORIES	8
M1331850	OPTICAL WRITING UNIT	U003_S001	2
M1332550	BUSHING:FLANGE TYPE:DIA6	U004	14
M1332620	FRICTION PAD	U004_S001	15
M1332702	COVER:PAPER TRAY	U004_S001	16
M1332703	PAPER TRAY:REAR	U004_S001	17
M1332705	SIDE FENCE:LEFT	U004_S001	18
M1332706	SIDE FENCE:RIGHT	U004_S001	19
M1332707	END FENCE	U004_S001	20
M1332709	STOPPER:BASE	U004_S001	21
M1332710	SPRING:RELEASE:TRAY BOTTOM PLATE	U004_S001	22
M1332711	(NA):COVER:PREVENTFENCE:PAPER TRAY:LG	ACCESSORIES	9
M1332712	COMPRESSION SPRING:TRAY BOTTOM PLATE	U004_S001	23
M1332715	COVER:PREVENTFENCE:PAPER TRAY:A4	ACCESSORIES	10
M1332717	DECAL:SIDE FENCE:LEFT	U004_S001	24
M1332718	RUBBER BUSHING:COVER:PAPER TRAY	U004_S001	25
M1332732	FEELER:PAPER END SENSOR:PAPER FEED	U004	26
M1332734	ELECTROMAGNETIC CLUTCH:PAPER FEED	U004	27

Number	Part Name	Group	ID
	PER FEED		
M1332735	FILM:PAPER FEED	U004	28
M1332737	SHAFT:FEED	U004	29
M1332742	TRANSPORT ROLLER:CONNECTING	U004	30
M1332743	FEELER:REGISTRATION SENSOR	U004	31
M1332750	GUIDE PLATE:MANUAL FEED:ASSY	U004	32
M1332752	SIDE FENCE:MANUAL FEED:LEFT	U004	33
M1332753	SIDE FENCE:MANUAL FEED:RIGHT	U004	34
M1332754	RACK:SIDE FENCE	U004	35
M1332755	FEELER:MANUAL FEED SENSOR	U004	36
M1332759	PAPER FEED ROLLER	U004	37
M1332762	GROUND PLATE:ROLLER:CONNECTING	U004	38
M1334204	PRESSURE ROLLER:DIA25	U007_S001	14
		U007_S002	14
		U007_S003	14
		U007_S004	14
		U007_S005	14
M1334208	PLAIN SHAFT BEARING:HOT ROLLER	U007_S001	15
		U007_S002	15
		U007_S003	15
		U007_S004	15
		U007_S005	15
M1334211	(CHN):HEATER:700W:220V:INFRA RED	U007_S001	16
M1334216	GUIDE PLATE:STRAIGHT	U007	17
M1334217	FUSING ENTRANCE GUIDE PLATE	U007_S001	18
		U007_S002	18
		U007_S003	18
		U007_S004	18
		U007_S005	18
M1334218	LEVER:PRESSURE	U007_S001	19
		U007_S002	19
		U007_S003	19
		U007_S004	19

Exclusive Parts

Number	Part Name	Group	ID
		U007_S005	19
M1334219	FEELER:EXIT:SENSOR	U007	20
M1334220	COIL SPRING:FEELER:EXIT	U007	21
M1334221	STRIPPER PAWLS	U007_S001	22
		U007_S002	22
		U007_S003	22
		U007_S004	22
		U007_S005	22
M1334223	TENSION SPRING:PICKOFF PAWL	U007_S001	23
		U007_S002	23
		U007_S003	23
		U007_S004	23
		U007_S005	23
M1334225	FUSING ENTRANCE GUIDE PLATE :UPPER	U007_S001	24
		U007_S002	24
		U007_S003	24
		U007_S004	24
		U007_S005	24
M1334226	FLAT NUT:HEATER	U007_S001	25
		U007_S002	25
		U007_S003	25
		U007_S004	25
		U007_S005	25
M1334227	GROUND PLATE:FUSING UNIT	U007_S001	26
		U007_S002	26
		U007_S003	26
		U007_S004	26
		U007_S005	26
M1334228	COVER:FEELER	U007	27
M1334229	LEVER:PRESSURE:LEFT	U007_S001	28
		U007_S002	28
		U007_S003	28
		U007_S004	28
		U007_S005	28
M1334230	LEVER:PRESSURE:RIGHT	U007_S001	29
		U007_S002	29
		U007_S003	29
		U007_S004	29

Number	Part Name	Group	ID
		U007_S005	29
M1334231	TENSION SPRING:FUSING:PRESS URE	U007_S001	30
		U007_S002	30
		U007_S003	30
		U007_S004	30
		U007_S005	30
M1334241	HOUSING:THERMOSTAT	U007_S001	31
		U007_S002	31
		U007_S003	31
		U007_S004	31
M1334243	EXIT ROLLER:FUSING	U007_S001	32
		U007_S002	32
		U007_S003	32
		U007_S004	32
		U007_S005	32
M1334244	ELECTRODE:LEFT	U007_S001	33
		U007_S002	33
		U007_S003	33
		U007_S004	33
		U007_S005	33
M1334245	SPRING:EXIT ROLLER:FUSING	U007_S001	34
		U007_S002	34
		U007_S003	34
		U007_S004	34
		U007_S005	34
M1334248	THERMISTOR	U007_S001	35
		U007_S002	35
		U007_S003	35
		U007_S004	35
		U007_S005	35
M1334254	DECAL:WARNING (HIGH TEMPER ATURE):REAR PART	U007	36
M1334257	GEAR:DRIVE:STRAIGHT	U007_S001	37
		U007_S002	37
		U007_S003	37
		U007_S004	37
		U007_S005	37

Exclusive Parts

Number	Part Name	Group	ID
M1334258	GEAR:CONNECTING:STRAIGHT	U007_S001	38
		U007_S002	38
		U007_S003	38
		U007_S004	38
		U007_S005	38
M1334261	HOOK:PRESSURE:LEFT	U007_S001	39
		U007_S002	39
		U007_S003	39
		U007_S004	39
		U007_S005	39
M1334262	HOOK:PRESSURE:RIGHT	U007_S001	40
		U007_S002	40
		U007_S003	40
		U007_S004	40
		U007_S005	40
M1334263	SHEET:HOOK:LEFT	U007_S001	41
		U007_S002	41
		U007_S003	41
		U007_S004	41
		U007_S005	41
M1334264	SHEET:HOOK:RIGHT	U007_S001	42
		U007_S002	42
		U007_S003	42
		U007_S004	42
		U007_S005	42
M1334265	SHEET:PRESSURE RELEASE:LEFT	U007_S001	43
		U007_S002	43
		U007_S003	43
		U007_S004	43
		U007_S005	43
M1334266	SHEET:PRESSURE RELEASE:RIGHT	U007_S001	44
		U007_S002	44
		U007_S003	44
		U007_S004	44
		U007_S005	44
M1334453	PLAIN SHAFT BEARING:EXIT	U008	4
M1334457	EXIT ROLLER	U008	5
M1334459	EXIT ROLLER	U008	6

Number	Part Name	Group	ID
M1334465	PLATE:EXIT	U008	7
M1334466	GUIDE PLATE:EXIT:UPPER	U008	8
M1334467	GUIDE PLATE:EXIT:LOWER	U008	9
M1334485	EXTENSION TRAY:EXIT:P	U001	7
M1334486	TRAY:EXIT:P	U001	8
M1335315	(NA):(TWN):POWER SUPPLY UNIT:60.09W:ASS'Y	U010	3
M1336201	SEPARATION UNIT:ASS'Y	U006	1
M1336250	TRANSFER ROLLER	U006	2
M1336254	GEAR:TRANSFER ROLLER	U006	3
M1336259	ROLLER:POSITIONING:TRANSFER ROLLER	U006	4
M1336262	BUSHING:TRANSFER ROLLER:RIGHT	U006	5
M1336263	BUSHING:TRANSFER ROLLER:LEFT	U006	6
M1336264	SPRING:TRANSFER ROLLER	U006	7
M1341097	SHAFT:TURN:SCANNER:LEFT	U009	34
M1341098	SHAFT:TURN:SCANNER:RIGHT	U009	35
M1341255	(NA):(EU/AA):(IND):(TWN):COVER:LEFT:MF:USB:WW	U001	9
M1341258	(NA):(EU/AA):(IND):(TWN):COVER:FAX:4IN1:WW	U001	10
M1341261	COVER:SIDE PLATE:RIGHT:MF	U001	11
M1341314	COVER:UPPER:MF	U001	12
M1341342	(M217/M218/M237):COVER:REAR LOWER:NET	U001	13
M1341344	(M229/230/235/240/247/250):(CHN):(EU/AA):(IND):COVER:REAR LOWER	U001	14
M1341374	COIL SPRING:SCANNER:ADF:OPEN AND CLOSE	U001	15
M1341382	RAIL:SCANNER:OPEN AND CLOSE	U001	16
M1341386	RAIL:STOPPER:SCANNER:OPEN AND CLOSE	U001	17
M1341392	GUIDE PLATE:SCANNER:OPEN AND CLOSE	U001	18
M1341500	SCREW:M3X10:JOINT	U001	19

Exclusive Parts

Number	Part Name	Group	ID
M1351356	(CHN):DECAL:HOLDER:CAUTION	ACCESSORIES	11
M1351372	GROUND PLATE:FAX:NO.1	U009	36
M1451099	(M217/M230/M240/M247):(CHN/NA/EU/AA/TWN):HEAT INSULATING PLATE	U009	37
M1454212	(EU/AA):(IND):HEATER:700W:230V	U007_S002	45
		U007_S003	45
M1454213	(NA):HEATER:700W:120V	U007_S004	46
M1545697	(NA):POWER SUPPLY CORD:125V:10A	ACCESSORIES	12
M1545699	(EU/AA):(IND):POWER SUPPLY CORD:250V:10A	ACCESSORIES	13
M1555001	(M217/M218/M237/M247/M250):PCB:WIFI	U010	4
M1560462	(CHN):HAND SET:SUB-ASS'Y	ACCESSORIES	14
M1562842	SEPARATION PAD:ASS'Y	U002_S001	1
M1785452	(CHN):(NA):(IND):CABLE:USB	ACCESSORIES	15
M2131041	(M217/M218/M237/M247/M250):CASE:WIFI	U009	38
M2131150	DC BRUSHLESS MOTOR:17.15W	U009	39
M2131332	COVER:REAR	U001	20
M2132501	PAPER TRAY:ASS'Y	U004_S001	39
M2132741	GUIDE PLATE:CONNECTING	U004	40
M2132742	DECAL:GUIDE:JOINT UNIT	U004	41
M2134001	(CHN):FUSING UNIT:ASS'Y	U007_S001	47
M2134002	(EU/AA):(IND):FUSING UNIT:ASS'Y	U007_S002	48
		U007_S003	48
M2134003	(NA):FUSING UNIT:ASS'Y	U007_S004	49
M2134240	EXIT ROLLER:STRAIGHT:ASS'Y	U007	50
M2134451	EXIT ROLLER:PAPER EXIT UNIT	U008	10
M2135311	(CHN):POWER SUPPLY UNIT:ASS'Y	U010	5
M2135313	(EU/AA):(IND):POWER SUPPLY UNIT:ASS'Y	U010	6
M2135402	POWER PACK:ASS'Y	U010	7
M2150405	(M217/M237/M247/M250):(NA):(EU/AA):(IND):DECAL:CAUTION:SCNTO USB	ACCESSORIES	16

Number	Part Name	Group	ID
M2154003	(TWN):FUSING UNIT:ASS'Y	U007_S005	51
M2154213	(TWN):HEATER:700W:110V	U007_S005	52
M2160405	(M216):(CHN):DECAL:CAUTION:SCNTOUSB	ACCESSORIES	17
M2171321	(M217):(NA):(EU/AA):(TWN):COVER:FRONT	U001	21
M2171358	(CHN):HAND SET:HOLDER	ACCESSORIES	18
M2171517	(NA):OPERATION PANEL:ASS'Y	U002	2
M2171519	(TWN):OPERATION PANEL:ASS'Y	U002	3
M2171527	(M217/M237/M247/M250):(EU/AA):(IND):OPERATION PANEL:ASS'Y	U002	4
M2175045	(TWN):PCB:FAX:ASS'Y	U010	8
M2175047	(NA):PCB:FAX:ASS'Y	U010	9
M2175049	(EU/AA):(IND):PCB:FAX:ASS'Y	U010	10
M2175050	(M217/M218/M237):PCB:ECBCTL:ASS'Y	U010	11
M2181254	(CHN):COVER:LEFT:USB:HAND SET	U001	22
M2181321	(M218/M237):(CHN):(NA):(EU/AA):(IND):COVER:FRONT	U001	23
M2181521	(M218):(CHN):OPERATION PANEL:ASS'Y	U002	5
M2185049	(CHN):PCB:FAX:ASS'Y	U010	12
M2281521	(M229/M240):(CHN):OPERATION PANEL:ASS'Y	U002	6
M2291321	(M229/M235):(CHN):(EU/AA):(IND):COVER:FRONT	U001	24
M2291600	SCANNER:ASS'Y	U002	7
M2291630	ADF:ASS'Y	U002_S001	8
M2295050	(M229/M230/M235/M240):(CHN):(EU/AA):(IND):PCB:ECBCTL:ASS'Y	U010	13
M2301321	(M230):(EU/AA):COVER:FRONT	U001	25
M2301527	(M230/M235):(EU/AA):(IND):OPERATION PANEL:ASS'Y	U002	9
M2401321	(M240):(CHN):COVER:FRONT	U001	26
M2471321	(M247):(EU/AA):COVER:FRONT	U001	27
M2475050	(M247/M250):(EU/AA):PCB:ECBCTL:ASS'Y	U010	14

Exclusive Parts

Number	Part Name	Group	ID
M2501321	(M250):(EU/AA):COVER:FRONT	U001	28

Standard Parts



03530040N
SCREW - M3X4



04503012N
TAPPING SCREW:3X12



04503014N
TAPPING SCREW:M3X14



04503020N
TAPPING SCREW:M3X20



04513006N
TAPPING SCREW - 3X6



04513008N
TAPPING SCREW - M3X8



04523014N
BINDING SELF-TAPPING SCREW:M3X14



04583010N
HEXAGON HEAD TAPPING SCREW:3X10



04583012N
HEXAGON HEAD TAPPING SCREW:3X12



04593008N
BINDING HEAD TAPPING SCREW:3X8



07200040E
RETAINING RING - M4



07200060E
RETAINING RING - M6



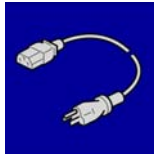
08046127
HEXAGONAL BOLT:DOUBLE SCREW:M3X8



08050089
RETAINING RING - M4



11050780
CLAMP:LWST-1012



11500409
(TWN):POWER SUPPLY CODE:125V:15A



12042612
MICRO SWITCH:D3V-16506-3 C25

