

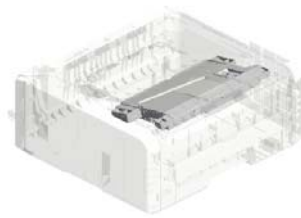
Model Op-P2
(M213/M214/M222/M223/M245/M248)
Parts Catalog

Model	Product Code	PC Style
B&W Printers	M213/M214/M222/M223/M245/M248	3D

Unit All



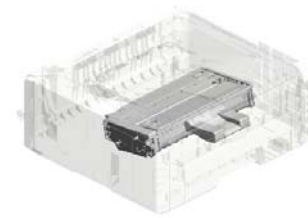
U001
EXTERIOR



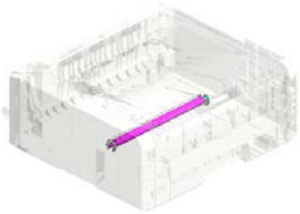
U002
LASER UNIT



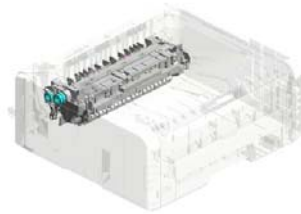
U003
PAPER FEED



U004
PCU



U005
TRANSFER/SEPARATION



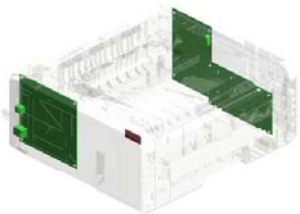
U006
FUSING



U007
PAPER EXIT

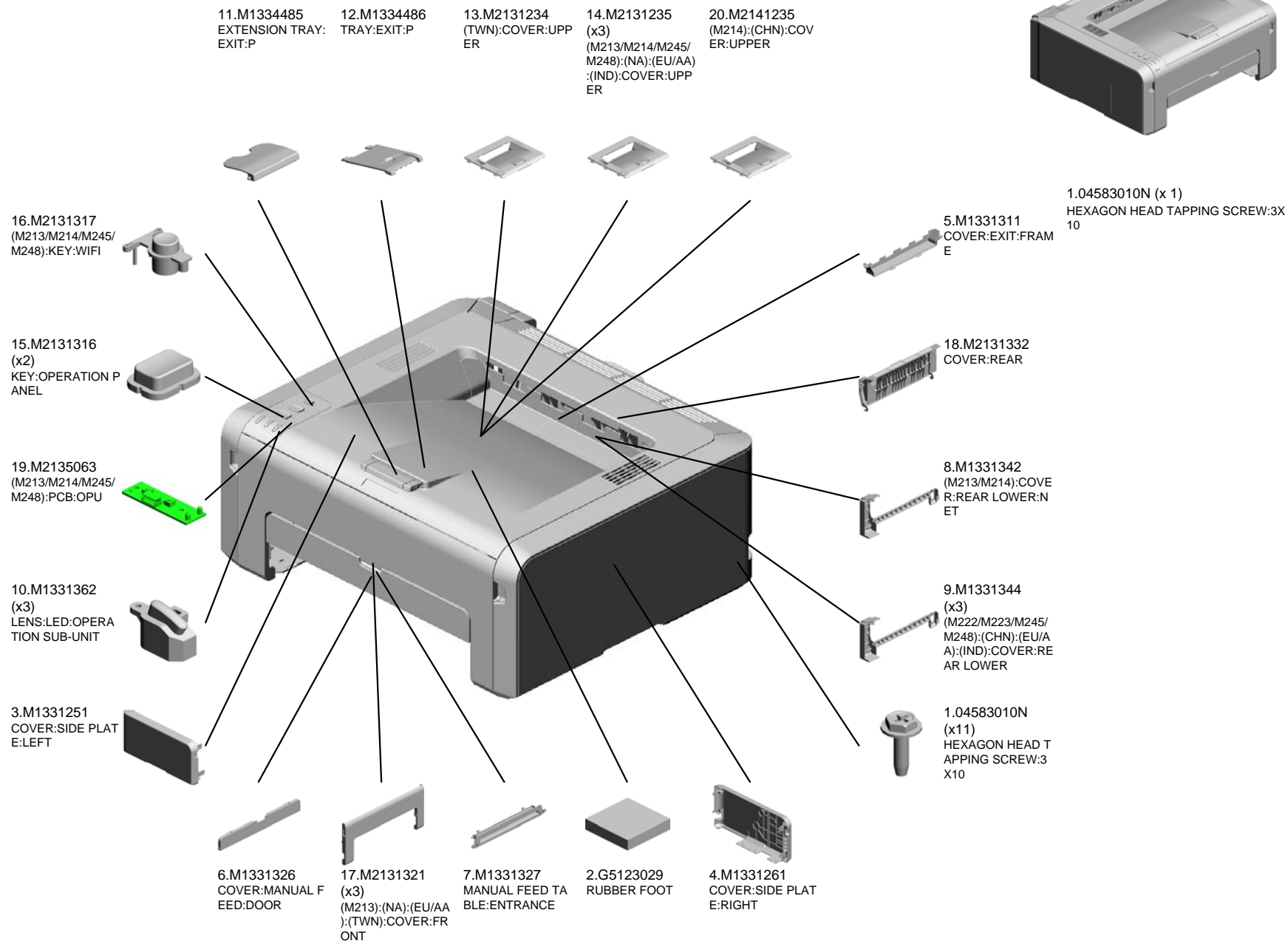


U008
MAIN DRIVE/MAIN FRAME



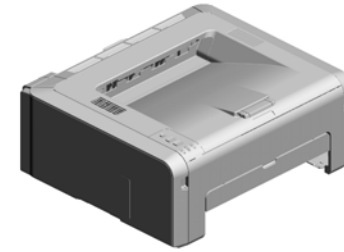
U009
ELECTRICAL

U001 EXTERIOR



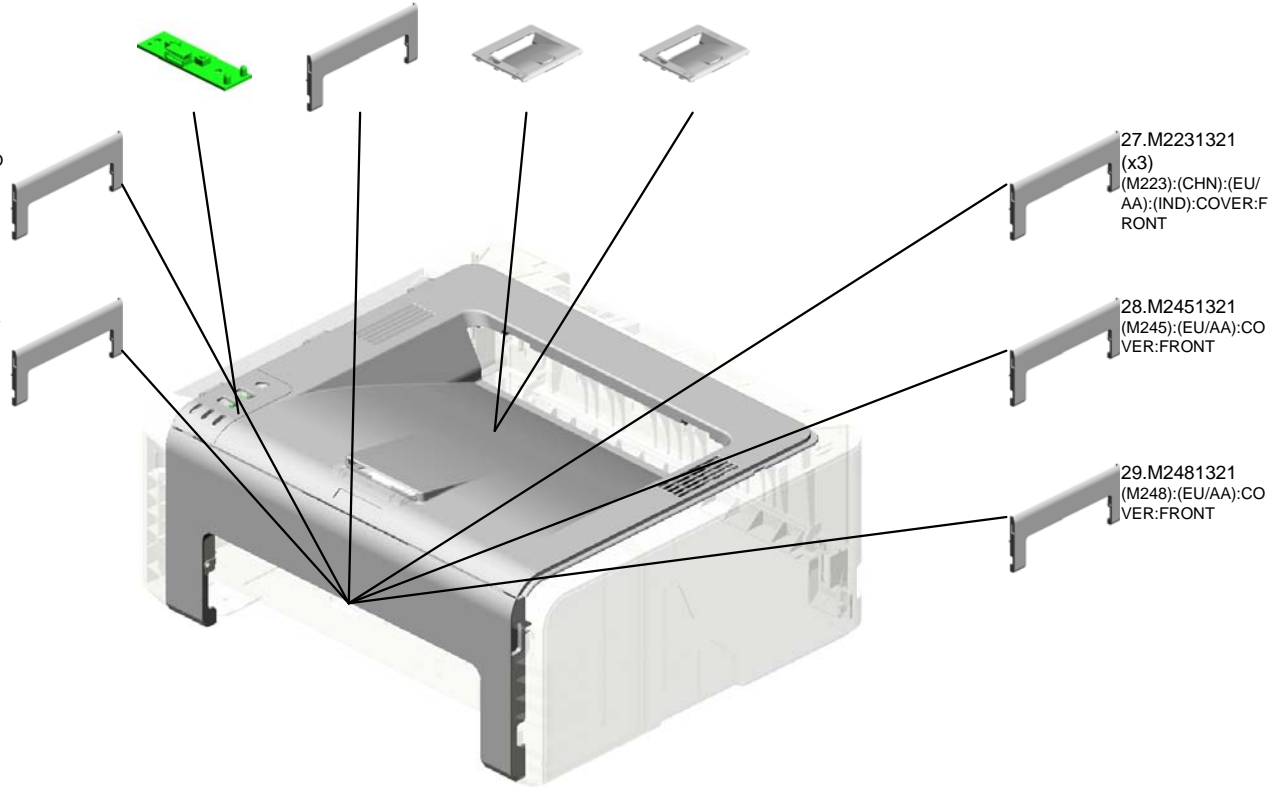
U001 EXTERIOR

25.M2225060 (x3) (M222/M223):(CHN) :(EU/AA):(IND):PCB :OPU	21.M2141321 (x4) (M214):(CHN):(NA): (EU/AA):(IND):COV ER:FRONT	22.M2221320 (x2) (M222/M223):(EU/A A):(IND):COVER:UP PER	26.M2231320 (M222/M223):(CHN) :COVER:UPPER
--	--	--	--



23.M2221321
(M222):(EU/AA):CO
VER:FRONT

24.M2221322
(M222):(CHN):COV
ER:FRONT



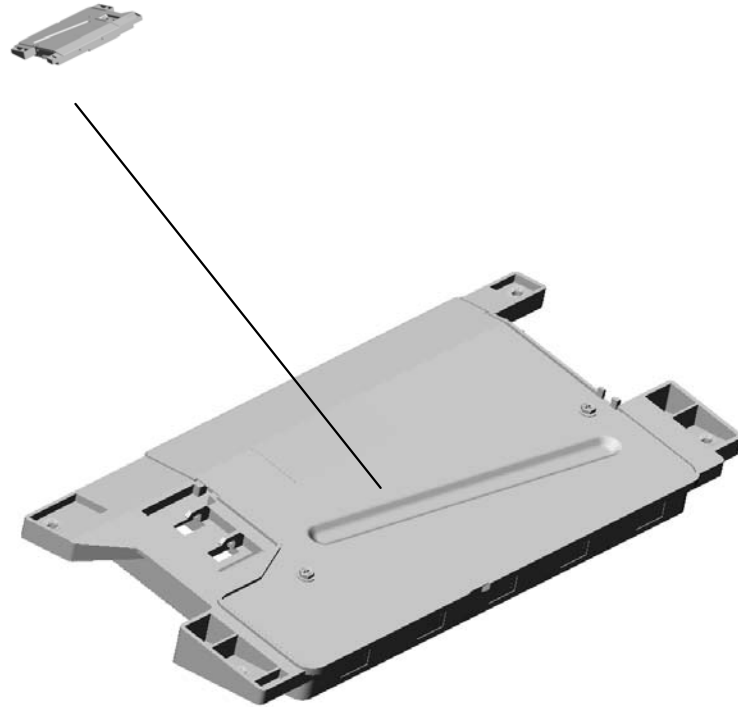
27.M2231321
(x3)
(M223):(CHN):(EU/
AA):(IND):COVER:F
RONT

28.M2451321
(M245):(EU/AA):CO
VER:FRONT

29.M2481321
(M248):(EU/AA):CO
VER:FRONT

U002.LASER UNIT

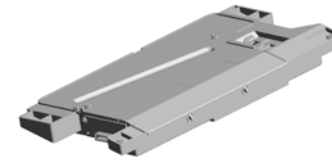
U002_S001
M1331850
OPTICAL WRITING UNIT



U001	U002	U003	U004	U005	U006	U007	U008	U009
------	------	------	------	------	------	------	------	------

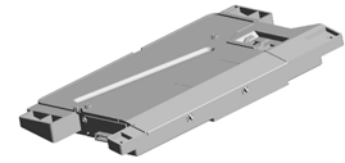
U002
LASER UNIT

1.04583010N
(x4)
HEXAGON HEAD TAPPING SCREW:3
X10

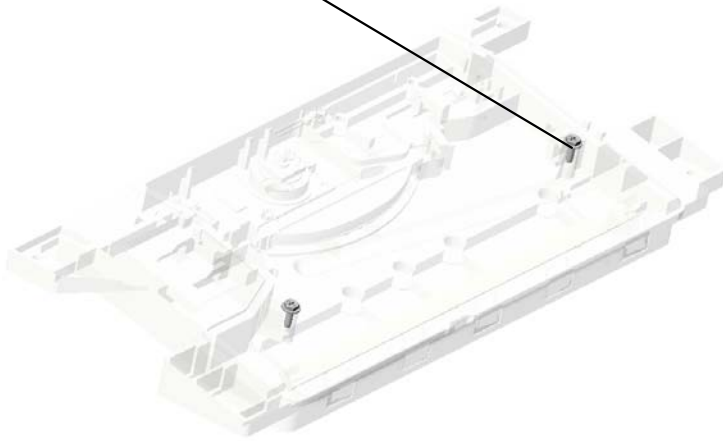


U002_S001
OPTICAL WRITING UNIT

1.04583010N
(x2)
HEXAGON HEAD TAPPING SCREW:3
X10

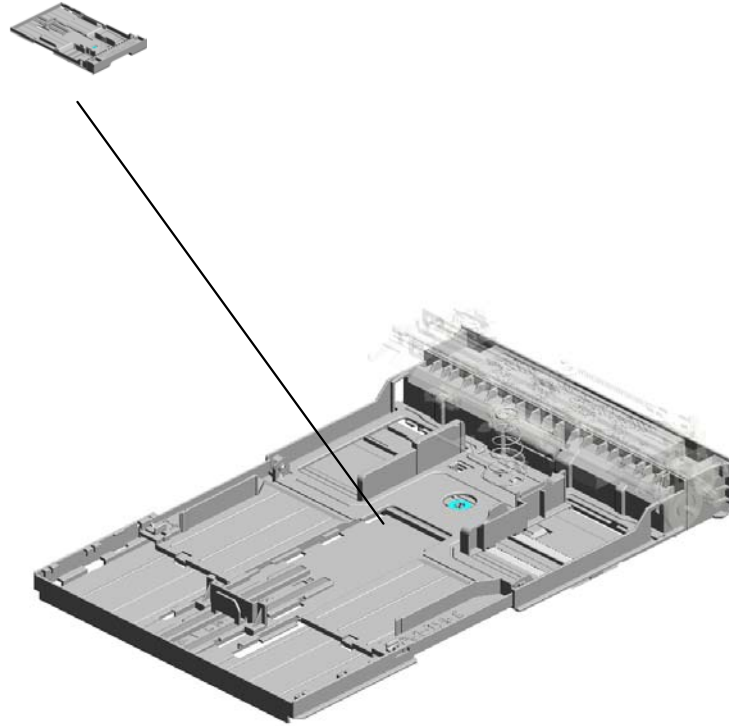


2.M1331850
OPTICAL WRITING
UNIT



U003.PAPER FEED

U003_S001
M2132501
PAPER TRAY:ASSY



U001	U002	U003	U004	U005	U006	U007	U008	U009
------	------	------	------	------	------	------	------	------

U003 PAPER FEED

- 11.M0134622 (x2) EXIT ROLLER:DUPLEX
- 10.M0124488 (x2) BUSHING:DIA6XDI A10X6
- 6.G0201160 (x2) SNAP RING
- 9.M0122631 (x2) CLOTH:EARTH:PA PER FEED
- 7.G8003133 SIDE FENCE GEAR



14.M1332550 (x2) BUSHING:FLANGE TYPE:DIA6



4.08050089 (x2) RETAINING RING - M4



5.AW020198 (x3) PHOTOINTERRUPTOR:LG2A14NL1



26.M1332732 FEELER:PAPER END SENSOR:PAPER FEED



31.M1332743 FEELER:REGISTRATION SENSOR



30.M1332742 TRANSPORT ROLLER:CONNECTING



12.M0134623 (x2) SPRING:EXIT



28.M1332735 FILM:PAPER FEED



29.M1332737 SHAFT:FEED



27.M1332734 ELECTROMAGNETIC CLUTCH:PAPER FEED



32.M1332750 GUIDE PLATE:MANUAL FEED:ASSY



1.04513006N TAPPING SCREW - 3X6



2.04583010N (x2) HEXAGON HEAD TAPPING SCREW:3 X10



13.M1014452 GEAR:EXIT ROLLER:PAPER EXIT UNIT



3.07200040E RETAINING RING - M4



U003 PAPER FEED

34.M1332753
SIDE FENCE:MAN
UAL FEED:RIGHT

41.M2132742
DECAL:GUIDE:JOI
NT UNIT



40.M2132741
GUIDE PLATE:CON
NECTING



37.M1332759
PAPER FEED ROL
LER



33.M1332752
SIDE FENCE:MAN
UAL FEED:LEFT



38.M1332762
GROUND PLATE:R
OLLER:CONNECTI
NG



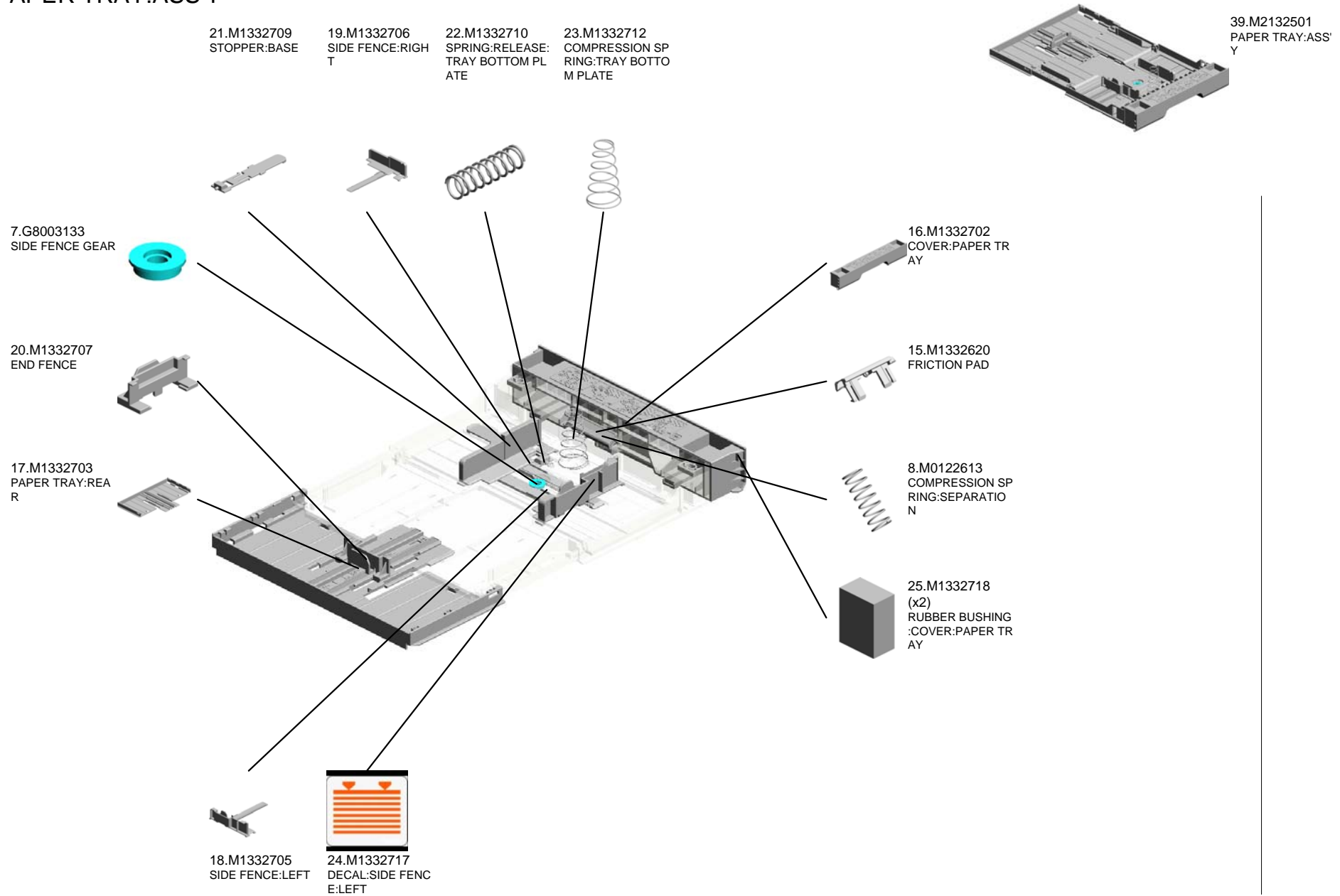
35.M1332754
(x2)
RACK:SIDE FENCE



36.M1332755
FEELER:MANUAL
FEED SENSOR

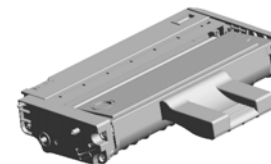


U003_S001
PAPER TRAY:ASS'Y



U004
PCU

2.08050089
RETAINING RING -
M4

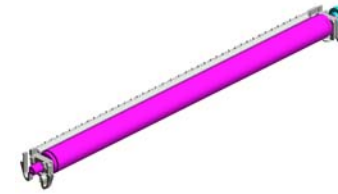


1.04583010N
(x6)
HEXAGON HEAD T
APPING SCREW:3
X10



U005 TRANSFER/SEPARATION

4.M1336259 (x2)
ROLLER:POSITIONING:TRANSFER ROLLER
1.M1336201
SEPARATION UNIT ASS'Y
2.M1336250
TRANSFER ROLLER



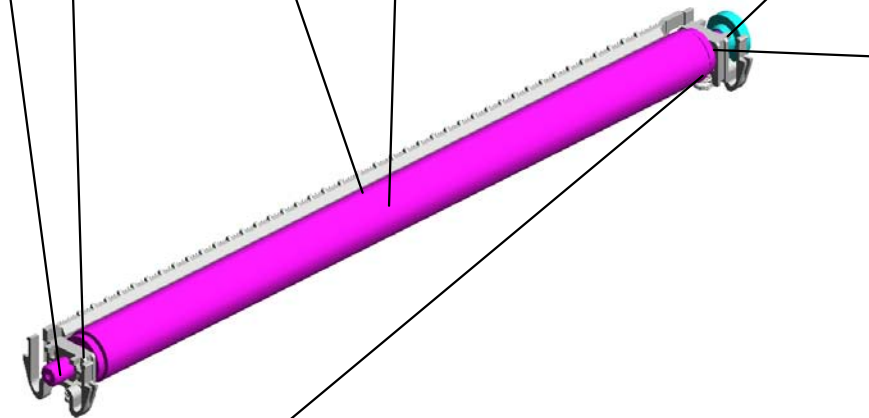
5.M1336262
BUSHING:TRANSFER ROLLER:RIGHT



3.M1336254
GEAR:TRANSFER ROLLER



6.M1336263
BUSHING:TRANSFER ROLLER:LEFT



7.M1336264 (x2)
SPRING:TRANSFER ROLLER



U006.FUSING

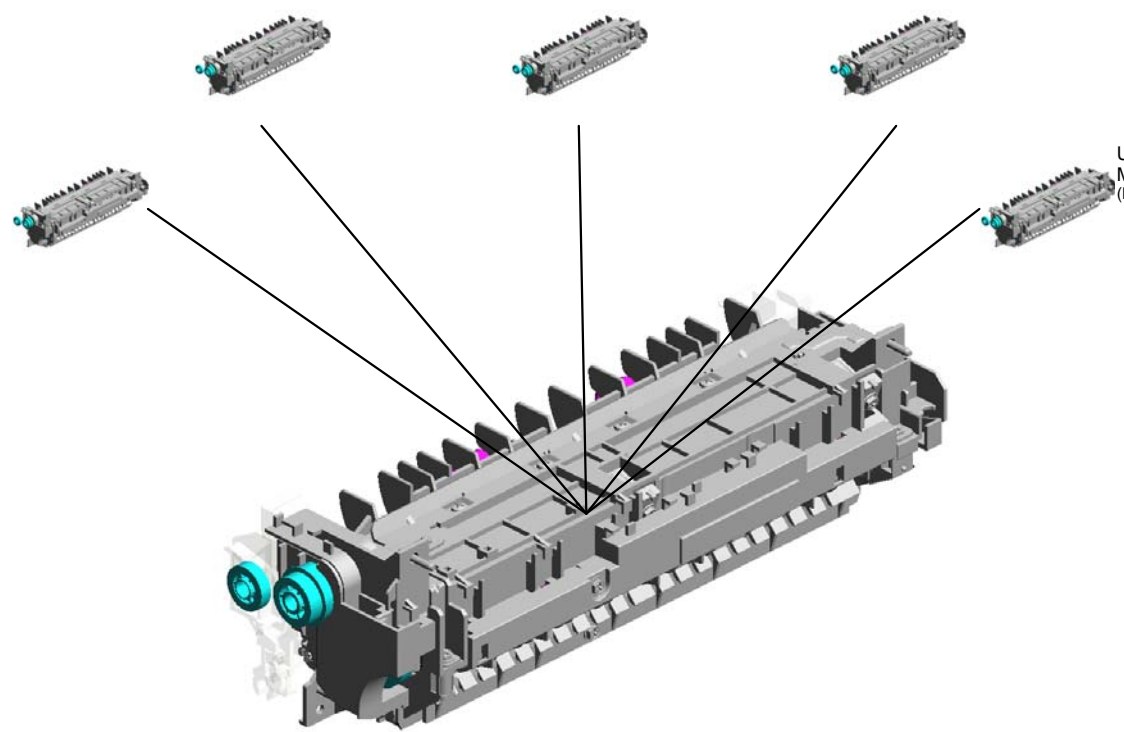
U006_S001
M2134001
(CHN):FUSING UNIT:ASS'Y

U006_S002
M2134002
(EU/AA):(IND):FUSING UNIT:
ASS'Y

U006_S003
M2134002
(EU/AA):(IND):FUSING UNIT:
ASS'Y

U006_S005
M2154003
(TWN):FUSING UNIT:ASS'Y

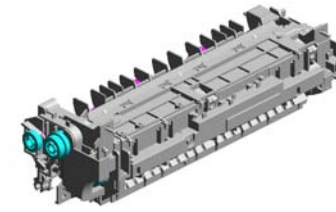
U006_S004
M2134003
(NA):FUSING UNIT:ASS'Y



U001	U002	U003	U004	U005	U006	U007	U008	U009
------	------	------	------	------	-------------	------	------	------

U006 FUSING

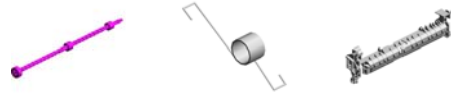
50.M2134240 EXIT ROLLER:STR
AIGHT:ASS'Y
21.M1334220 COIL SPRING:FEE
LER:EXIT
17.M1334216 GUIDE PLATE:STR
AIGHT



36.M1334254
DECAL:WARNING (←
HIGH TEMPERATU
RE):REAR RART



2.04503014N
(x2)
TAPPING SCREW:
M3X14



20.M1334219
FEELER:EXIT:SEN
SOR



27.M1334228
COVER:FEELER



7.AW020198
PHOTOINTERRUP
TOR:LG2A14NL1



5.04583012N
(x2)
HEXAGON HEAD T
APPING SCREW:3
X12



U001	U002	U003	U004	U005	U006	U007	U008	U009
------	------	------	------	------	-------------	------	------	------

U006_S001
(CHN):FUSING UNIT:ASS'Y

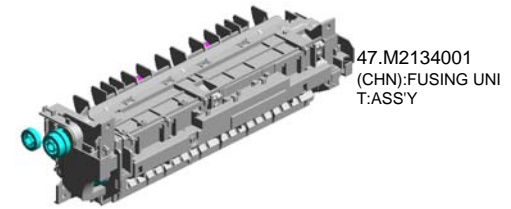
23.M1334223
(x3)
TENSION SPRING:
PICKOFF PAWL

22.M1334221
(x3)
STRIPPER PAWLS

9.M1014203
HOT ROLLER

16.M1334211
(CHN):HEATER:700
W:220V:INFRARED

1.04503012N
(x2)
TAPPING SCREW:
3X12



47.M2134001
(CHN):FUSING UNI
T:ASS'Y

15.M1334208
(x2)
PLAIN SHAFT BEA
RING:HOT ROLLER

13.M1014235
RETAINING RINGS
-C:HOT ROLLER:L
EFT

10.M1014210
GEAR:HOT ROLLE
R

11.M1014214
(x2)
PLAIN SHAFT BEA
RING:PRESSURE
ROLLER

19.M1334218
(x2)
LEVER:PRESSURE

4.04583010N
(x8)
HEXAGON HEAD T
APPING SCREW:3
X10

14.M1334204
PRESSURE ROLLE
R:DIA25

18.M1334217
FUSING ENTRANC
E GUIDE PLATE

24.M1334225
FUSING ENTRANC
E GUIDE PLATE:U
PPER

8.AW110101
THERMOSTAT:LO
WER

25.M1334226
FLAT NUT:HEATER

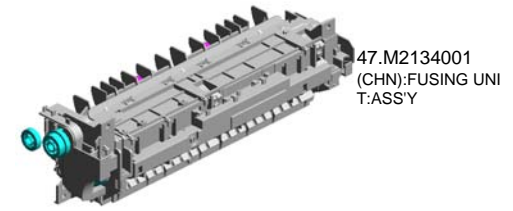
12.M1014222
RETAINING RINGS
-C:HOT ROLLER:RI
GHT

3.04523014N
(x4)
BINDING SELF-TA
PPING SCREW:M3
X14

26.M1334227
GROUND PLATE:F
USING UNIT

6.08046127
(x4)
HEXAGONAL BOLT
-DOUBLE SCREW:
M3X8

U006_S001
(CHN):FUSING UNIT:ASS'Y



47.M2134001
(CHN):FUSING UNIT:ASS'Y

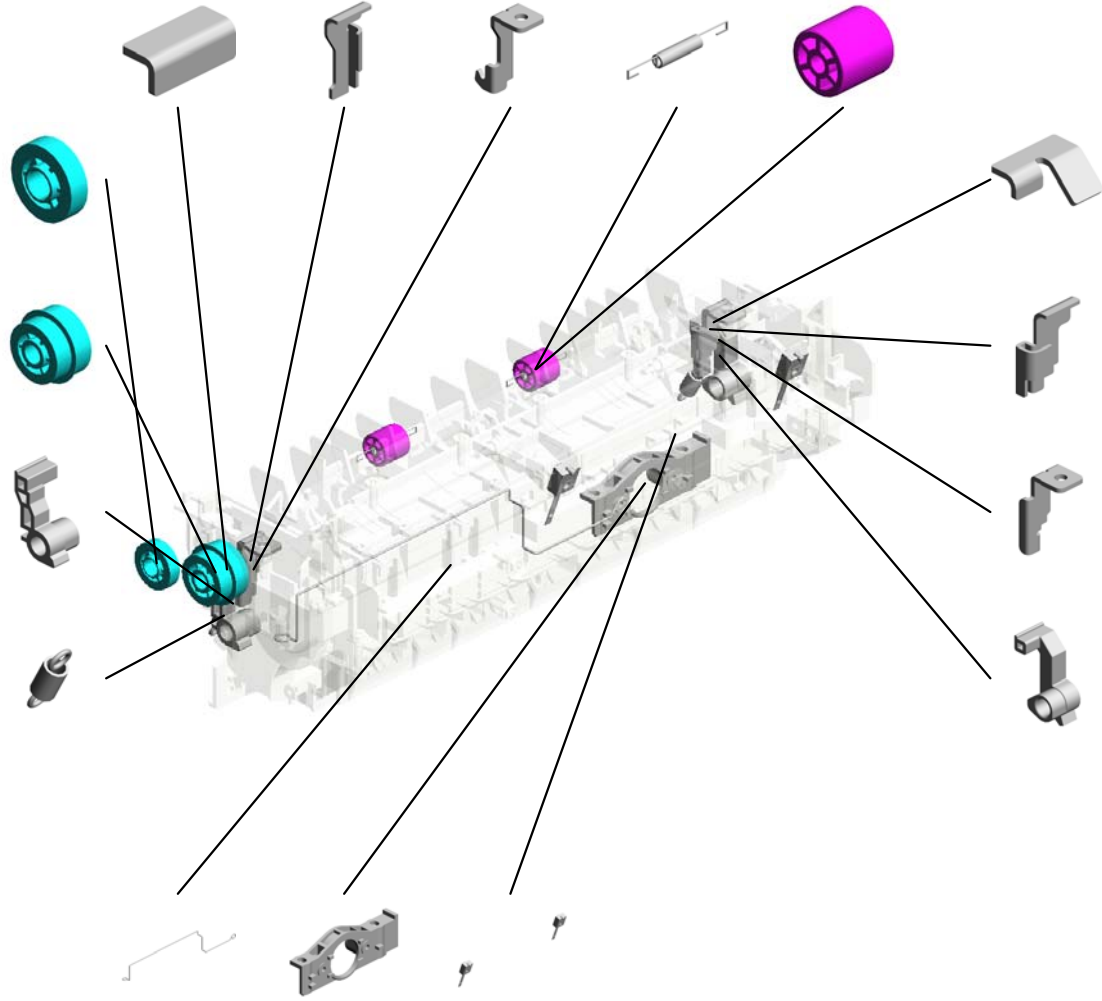
- 43.M1334265 SHEET:PRESSURE RELEASE:LEFT
- 41.M1334263 SHEET:HOOK:LEFT
- 39.M1334261 HOOK:PRESSURE:LEFT
- 34.M1334245 (x2) SPRING:EXIT ROLLER:FUSING
- 32.M1334243 (x2) EXIT ROLLER:FUSING

38.M1334258 GEAR:CONNECTING:STRAIGHT

37.M1334257 GEAR:DRIVE:STRAIGHT

28.M1334229 LEVER:PRESSURE:LEFT

30.M1334231 (x2) TENSION SPRING:FUSING:PRESSURE



44.M1334266 SHEET:PRESSURE RELEASE:RIGHT

42.M1334264 SHEET:HOOK:RIGHT

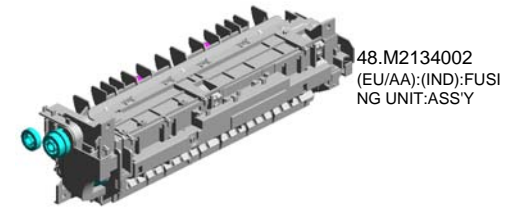
40.M1334262 HOOK:PRESSURE:RIGHT

29.M1334230 LEVER:PRESSURE:RIGHT

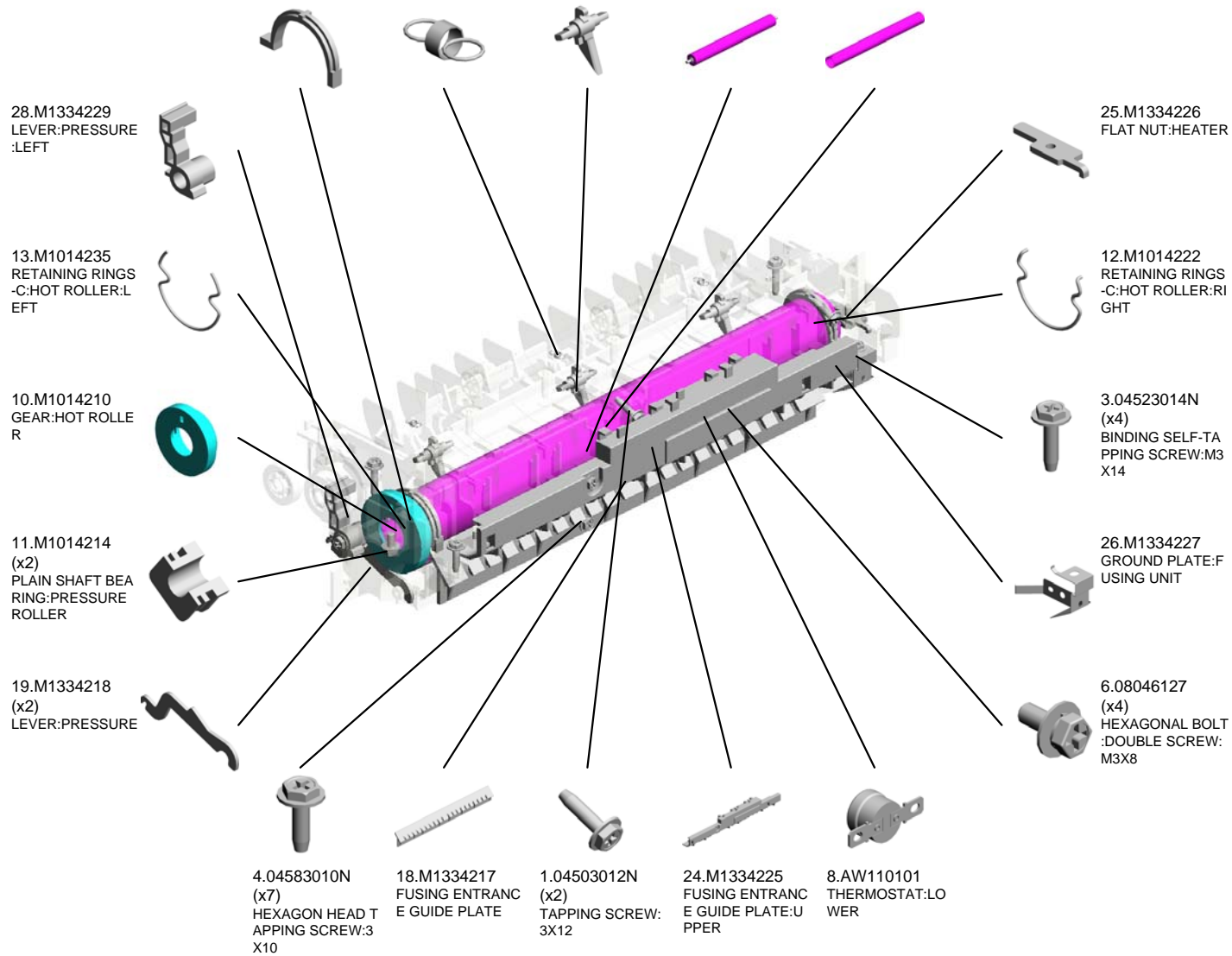
- 33.M1334244 ELECTRODE:LEFT
- 31.M1334241 HOUSING:THERMOSTAT
- 35.M1334248 THERMISTOR

U006_S002
(EU/AA):(IND):FUSING UNIT:ASS'Y

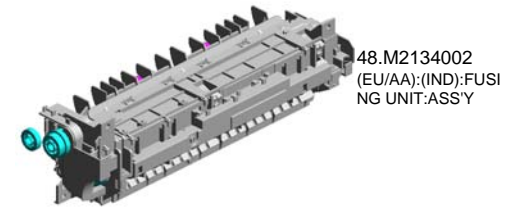
- | | | | | |
|---|---|---------------------------------------|---------------------------------------|--------------------------|
| 15.M1334208
(x2)
PLAIN SHAFT BEARING RING: HOT ROLLER | 23.M1334223
(x3)
TENSION SPRING: PICKOFF PAWL | 22.M1334221
(x3)
STRIPPER PAWLS | 14.M1334204
PRESSURE ROLLER: DIA25 | 9.M1014203
HOT ROLLER |
|---|---|---------------------------------------|---------------------------------------|--------------------------|



48.M2134002
(EU/AA):(IND):FUSING UNIT:ASS'Y



U006_S002
 (EU/AA):(IND):FUSING UNIT:ASS'Y



48.M2134002
 (EU/AA):(IND):FUSING UNIT:ASS'Y

41.M1334263 SHEET:HOOK:LEFT
 39.M1334261 HOOK:PRESSURE:LEFT
 32.M1334243 (x2) EXIT ROLLER:FUSING
 34.M1334245 (x2) SPRING:EXIT ROLLER:FUSING

38.M1334258 GEAR:CONNECTING:STRAIGHT

43.M1334265 SHEET:PRESSURE RELEASE:LEFT

37.M1334257 GEAR:DRIVE:STRAIGHT

30.M1334231 (x2) TENSION SPRING:FUSING:PRESSURE

33.M1334244 ELECTRODE:LEFT

45.M1454212 (EU/AA):(IND):HEATER:700W:230V

31.M1334241 HOUSING:THERMOSTAT

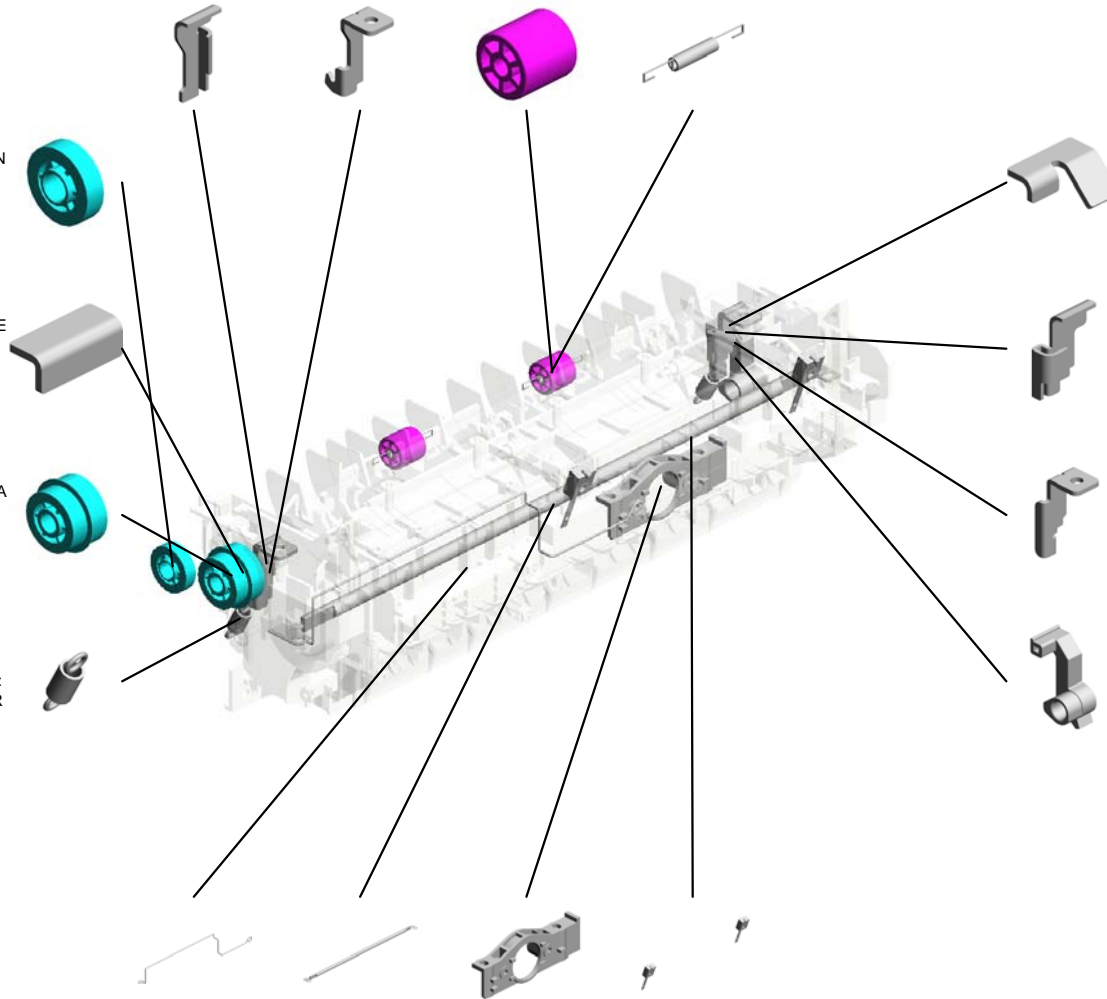
35.M1334248 THERMISTOR

44.M1334266 SHEET:PRESSURE RELEASE:RIGHT

42.M1334264 SHEET:HOOK:RIGHT

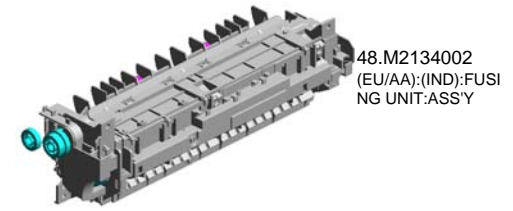
40.M1334262 HOOK:PRESSURE:RIGHT

29.M1334230 LEVER:PRESSURE:RIGHT

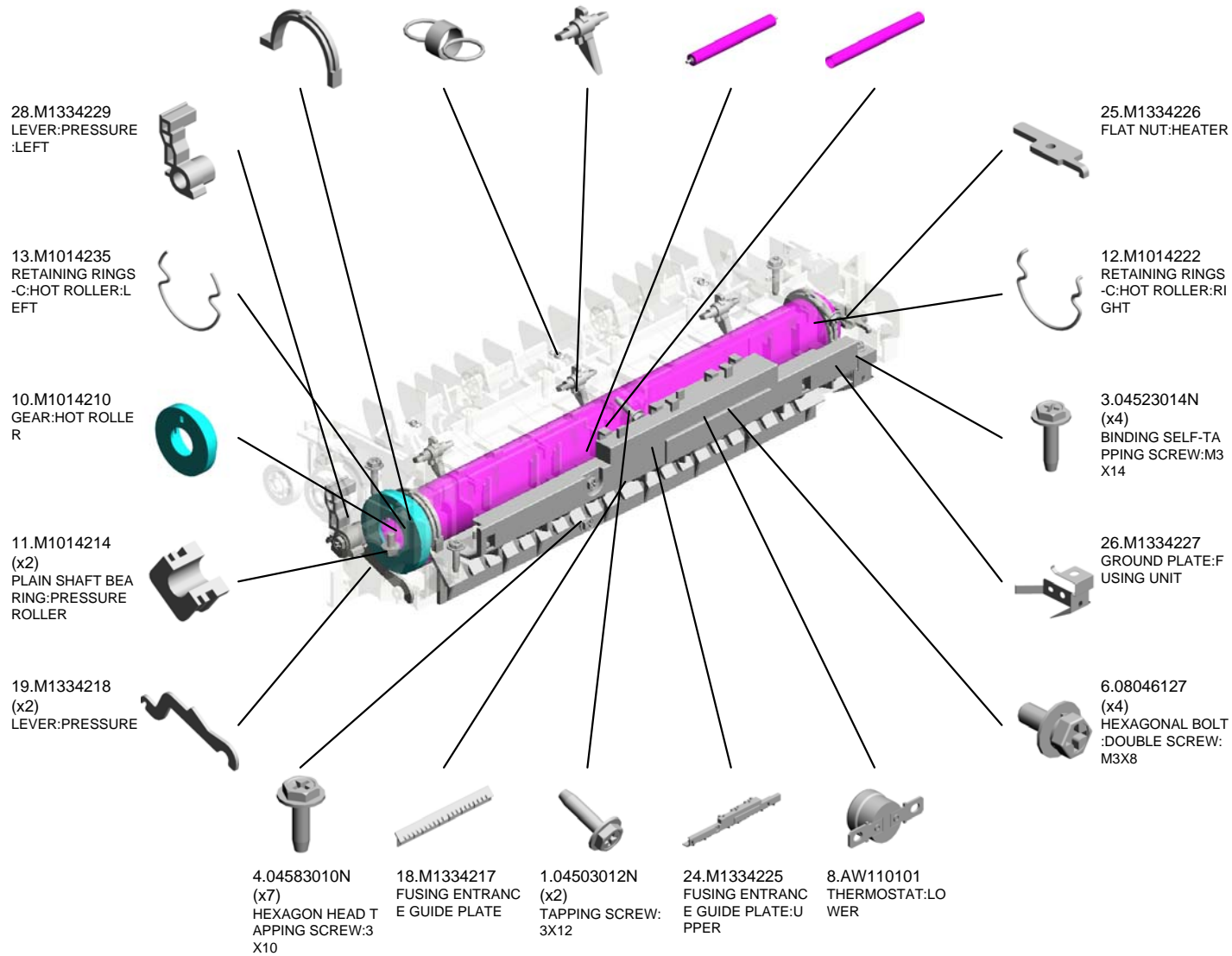


U006_S003
(EU/AA):(IND):FUSING UNIT:ASS'Y

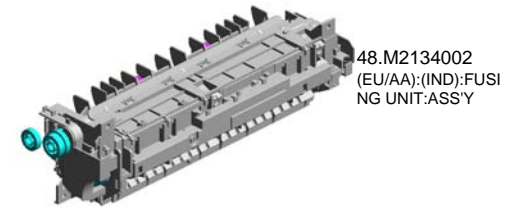
- | | | | | |
|---|--|---------------------------------------|--|--------------------------|
| 15.M1334208
(x2)
PLAIN SHAFT BEA
RING:HOT ROLLER | 23.M1334223
(x3)
TENSION SPRING:
PICKOFF PAWL | 22.M1334221
(x3)
STRIPPER PAWLS | 14.M1334204
PRESSURE ROLLE
R:DIA25 | 9.M1014203
HOT ROLLER |
|---|--|---------------------------------------|--|--------------------------|



48.M2134002
(EU/AA):(IND):FUSI
NG UNIT:ASS'Y



U006_S003
 (EU/AA):(IND):FUSING UNIT:ASS'Y



48.M2134002
 (EU/AA):(IND):FUSI
 NG UNIT:ASS'Y

41.M1334263 SHEET:HOOK:LEFT
 39.M1334261 HOOK:PRESSURE:LEFT
 32.M1334243 (x2) EXIT ROLLER:FUSING
 34.M1334245 (x2) SPRING:EXIT ROLLER:FUSING

38.M1334258 GEAR:CONNECTING:STRAIGHT

43.M1334265 SHEET:PRESSURE RELEASE:LEFT

37.M1334257 GEAR:DRIVE:STRAIGHT

30.M1334231 (x2) TENSION SPRING:FUSING:PRESSURE

44.M1334266 SHEET:PRESSURE RELEASE:RIGHT

42.M1334264 SHEET:HOOK:RIGHT

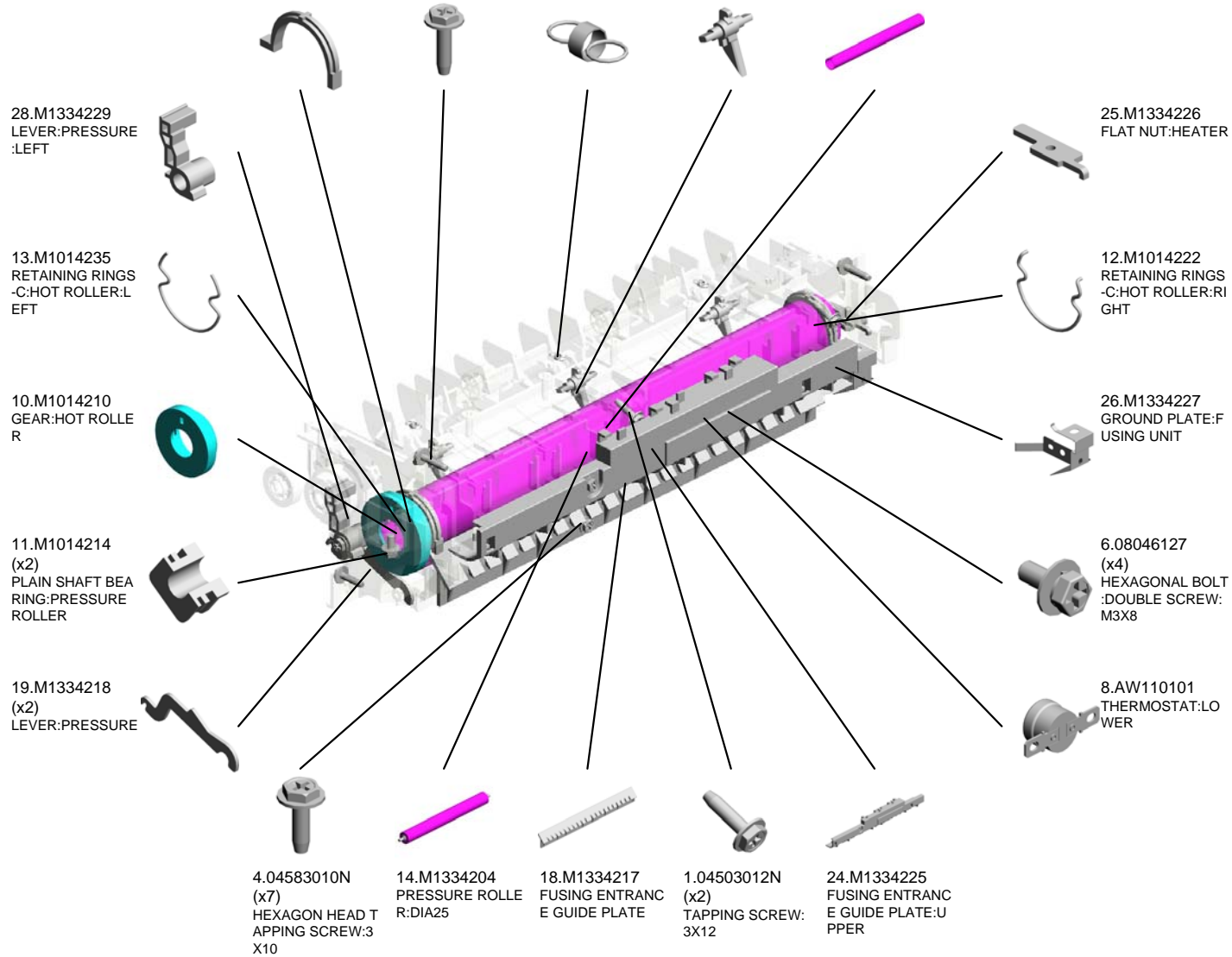
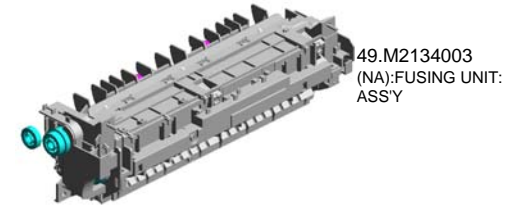
40.M1334262 HOOK:PRESSURE:RIGHT

29.M1334230 LEVER:PRESSURE:RIGHT

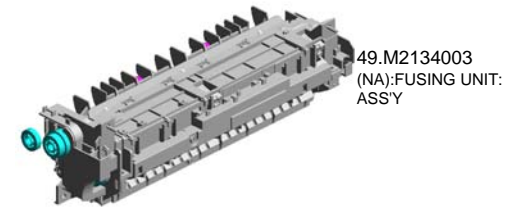
33.M1334244 ELECTRODE:LEFT
 45.M1454212 (EU/AA):(IND):HEATER:700W:230V
 31.M1334241 HOUSING:THERMOSTAT
 35.M1334248 THERMISTOR

U006_S004
(NA):FUSING UNIT:ASS'Y

- 15.M1334208 (x2) PLAIN SHAFT BEARING RING:HOT ROLLER
- 3.04523014N (x4) BINDING SELF-TAPPING SCREW:M3 X14
- 23.M1334223 (x3) TENSION SPRING: PICKOFF PAWL
- 22.M1334221 (x3) STRIPPER PAWLS
- 9.M1014203 HOT ROLLER



U006_S004
(NA):FUSING UNIT:ASS'Y



49.M2134003
(NA):FUSING UNIT:
ASS'Y

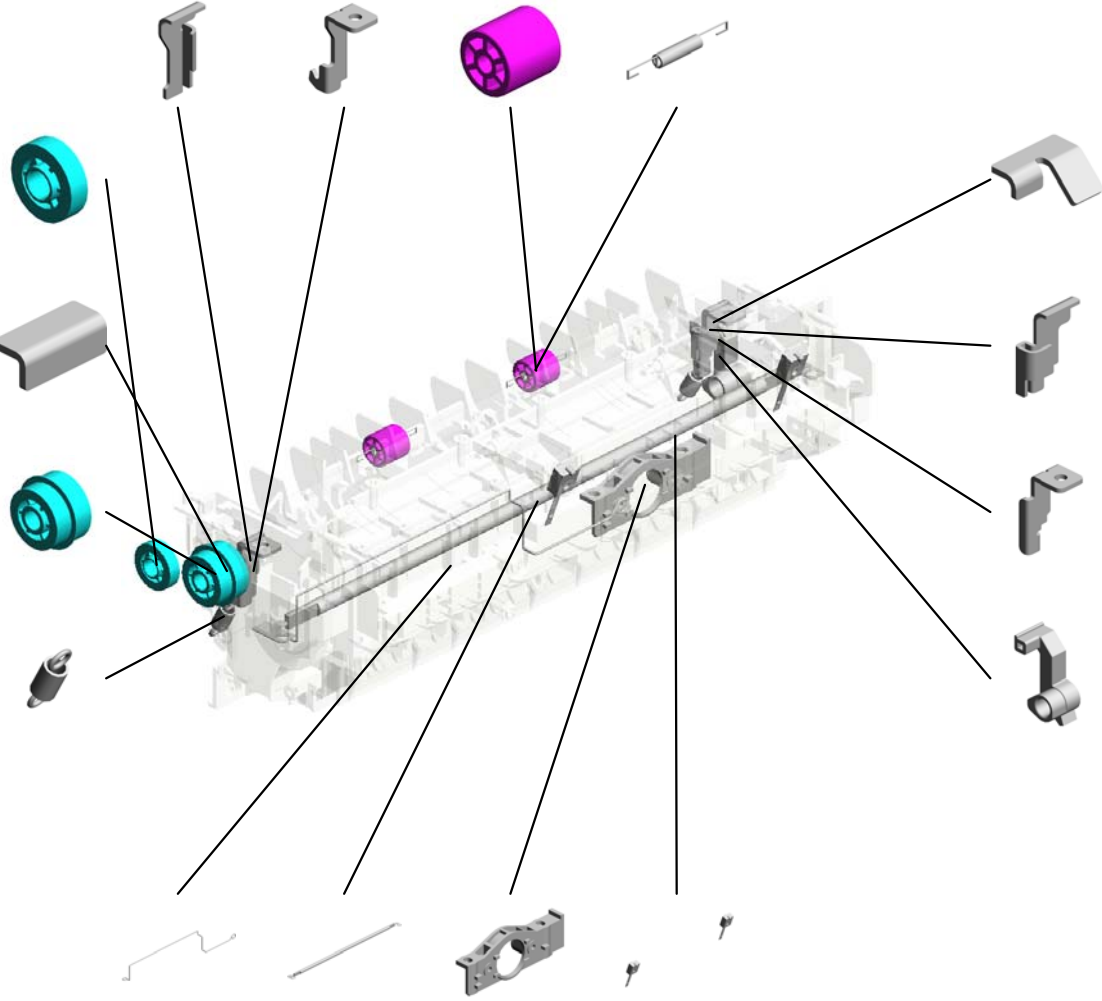
- 41.M1334263 SHEET:HOOK:LEFT
- 39.M1334261 HOOK:PRESSURE:LEFT
- 32.M1334243 (x2) EXIT ROLLER:FUSING
- 34.M1334245 (x2) SPRING:EXIT ROLLER:FUSING

38.M1334258 GEAR:CONNECTING:STRAIGHT

43.M1334265 SHEET:PRESSURE RELEASE:LEFT

37.M1334257 GEAR:DRIVE:STRAIGHT

30.M1334231 (x2) TENSION SPRING:FUSING:PRESSURE



44.M1334266 SHEET:PRESSURE RELEASE:RIGHT

42.M1334264 SHEET:HOOK:RIGHT

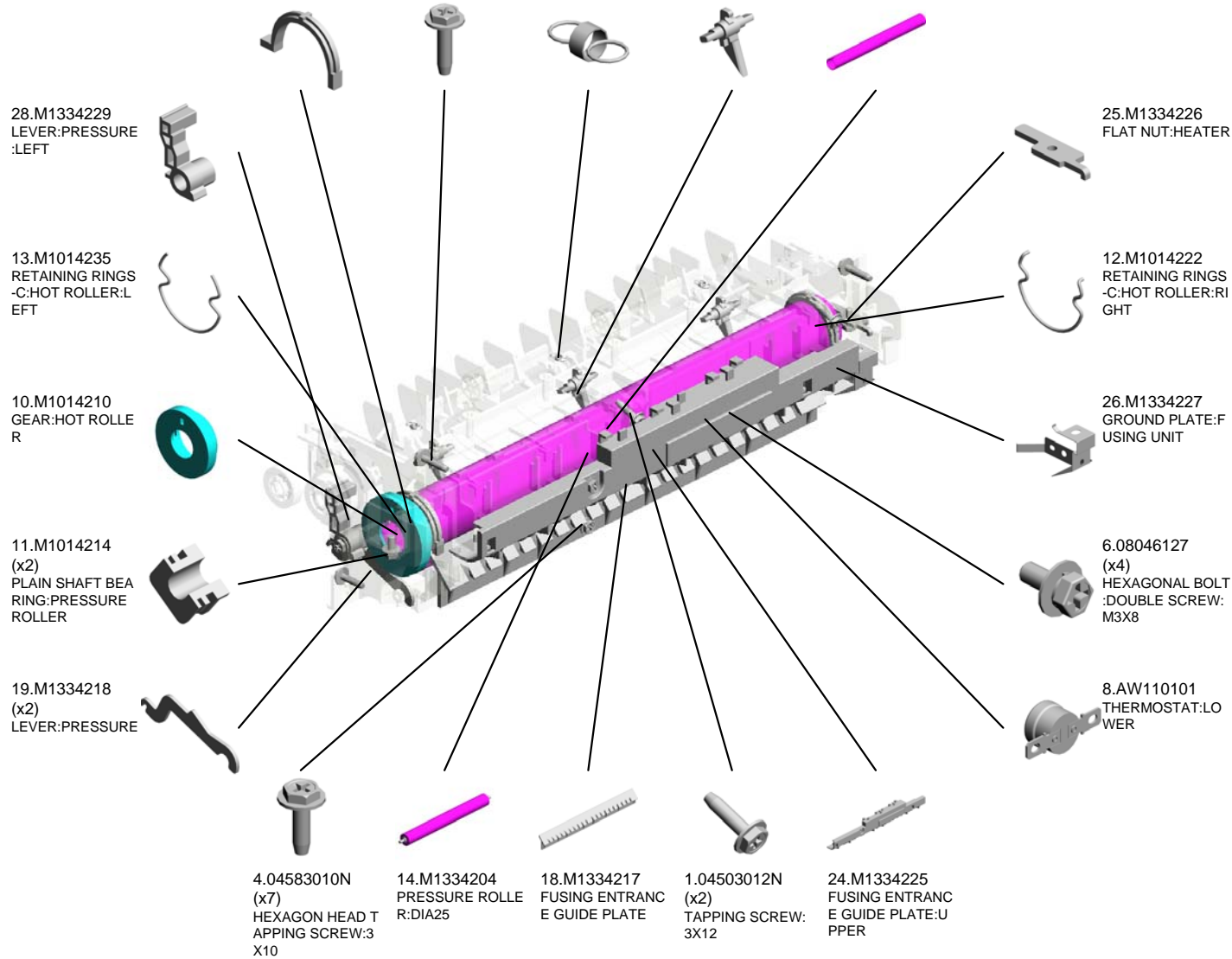
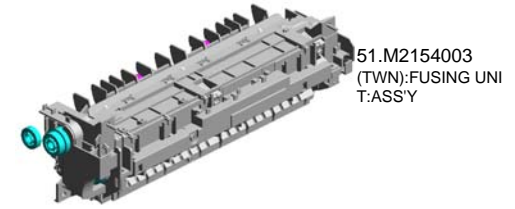
40.M1334262 HOOK:PRESSURE:RIGHT

29.M1334230 LEVER:PRESSURE:RIGHT

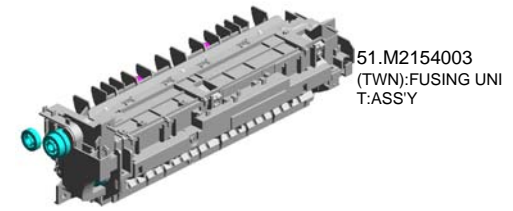
- 33.M1334244 ELECTRODE:LEFT
- 46.M1454213 (NA):HEATER:700W:120V
- 31.M1334241 HOUSING:THERMOSTAT
- 35.M1334248 THERMISTOR

U006_S005
(TWN):FUSING UNIT:ASS'Y

- 15.M1334208 (x2) PLAIN SHAFT BEARING RING:HOT ROLLER
- 3.04523014N (x4) BINDING SELF-TAPPING SCREW:M3 X14
- 23.M1334223 (x3) TENSION SPRING: PICKOFF PAWL
- 22.M1334221 (x3) STRIPPER PAWLS
- 9.M1014203 HOT ROLLER



U006_S005
(TWN):FUSING UNIT:ASS'Y



51.M2154003
(TWN):FUSING UNIT:ASS'Y

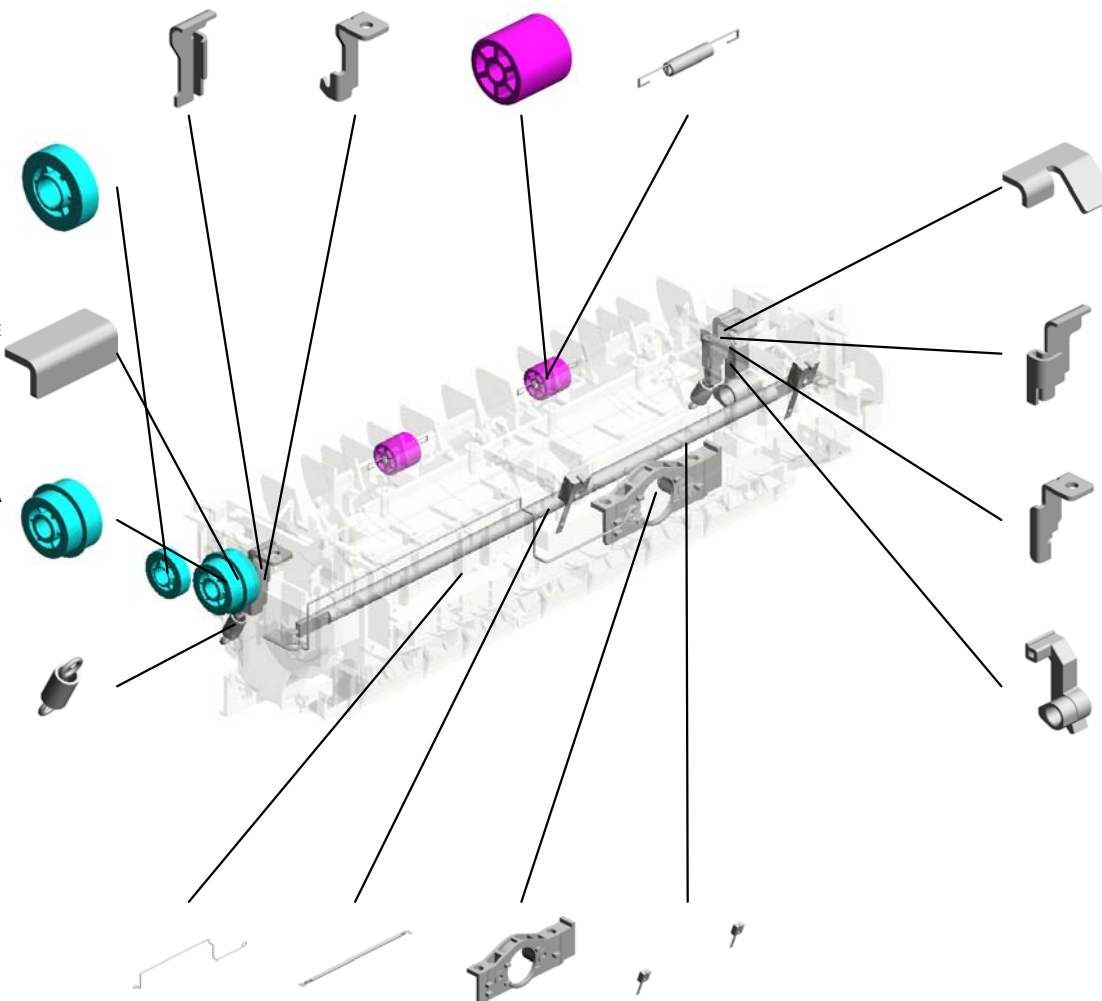
- 41.M1334263 SHEET:HOOK:LEFT
- 39.M1334261 HOOK:PRESSURE:LEFT
- 32.M1334243 (x2) EXIT ROLLER:FUSING
- 34.M1334245 (x2) SPRING:EXIT ROLLER:FUSING

38.M1334258 GEAR:CONNECTING:STRAIGHT

43.M1334265 SHEET:PRESSURE RELEASE:LEFT

37.M1334257 GEAR:DRIVE:STRAIGHT

30.M1334231 (x2) TENSION SPRING:FUSING:PRESSURE



44.M1334266 SHEET:PRESSURE RELEASE:RIGHT

42.M1334264 SHEET:HOOK:RIGHT

40.M1334262 HOOK:PRESSURE:RIGHT

29.M1334230 LEVER:PRESSURE:RIGHT

33.M1334244 ELECTRODE:LEFT

52.M2154213 (TWN):HEATER:700W:110V

31.M1334241 HOUSING:THERMOSTAT

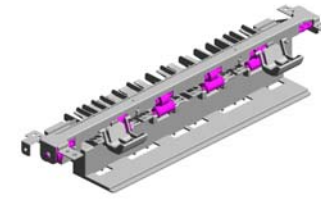
35.M1334248 THERMISTOR

U007 PAPER EXIT

7.M1334465 (x2)
PLATE:EXIT

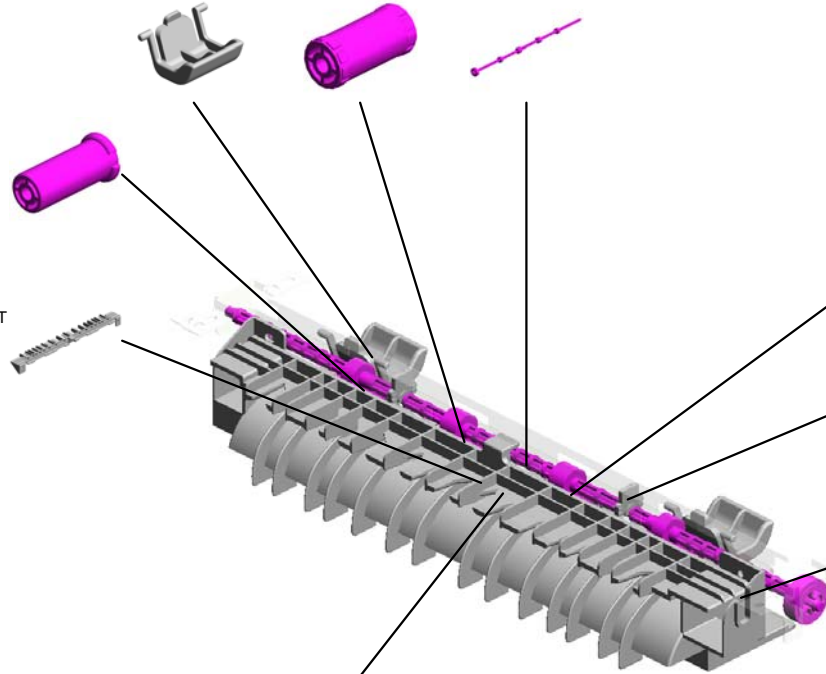
5.M1334457 (x2)
EXIT ROLLER

10.M2134451
EXIT ROLLER:PAPER EXIT UNIT



6.M1334459 (x2)
EXIT ROLLER

8.M1334466
GUIDE PLATE:EXIT :UPPER



3.M0124454 (x4)
SPRING:EXIT ROLLER:EXIT

4.M1334453 (x2)
PLAIN SHAFT BEARING:EXIT

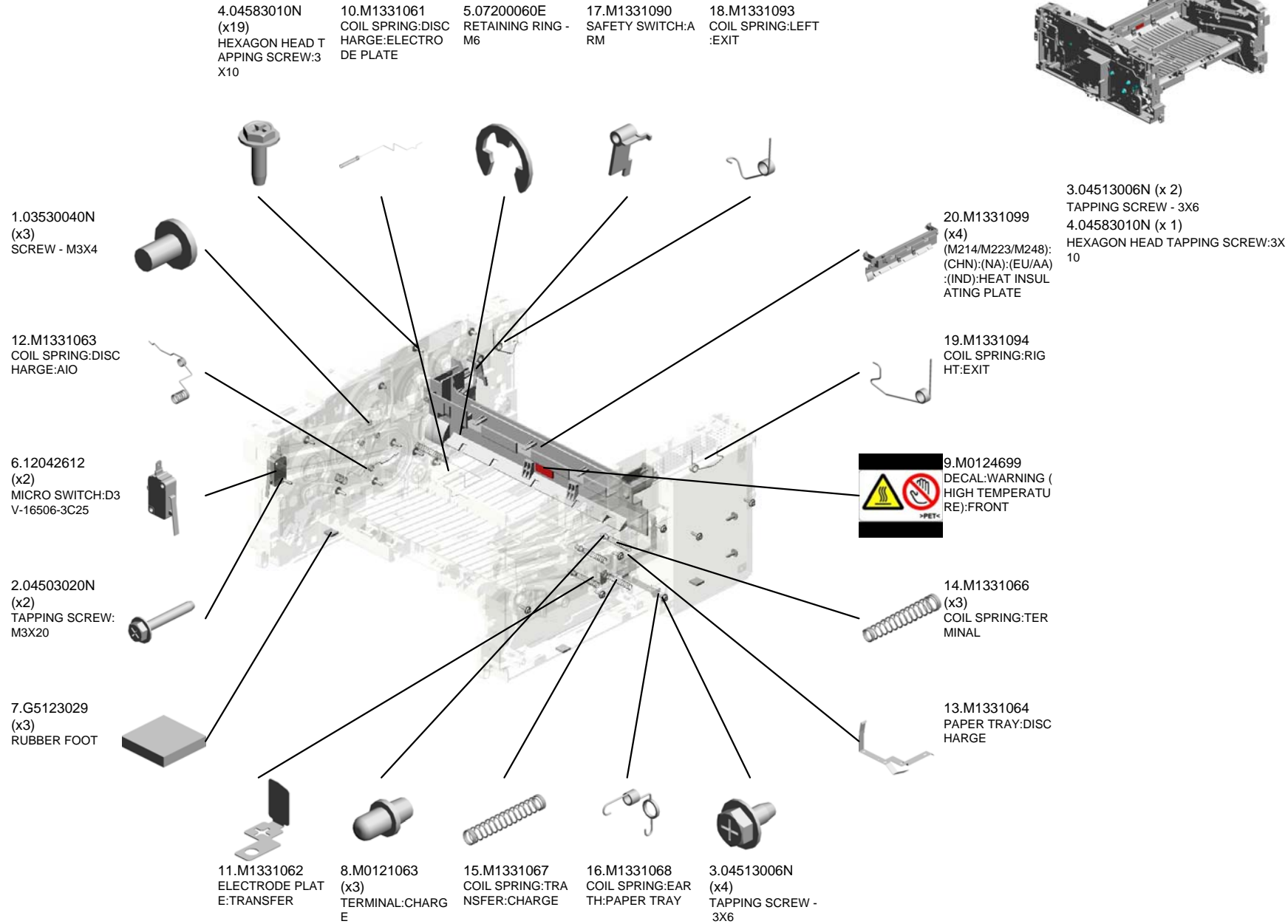
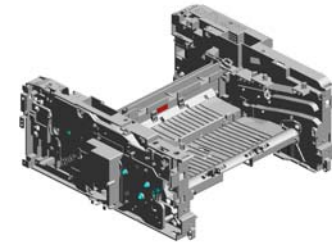
1.04513008N (x2)
TAPPING SCREW - M3X8

2.04583010N (x 4)
HEXAGON HEAD TAPPING SCREW:3X10

9.M1334467
GUIDE PLATE:EXIT :LOWER

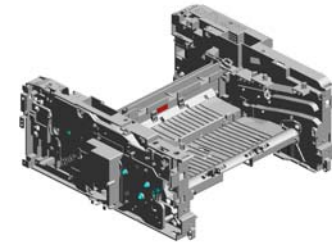
U001	U002	U003	U004	U005	U006	U007	U008	U009
------	------	------	------	------	------	------	------	------

U008 MAIN DRIVE/MAIN FRAME



U008 MAIN DRIVE/MAIN FRAME

34.M2131150 DC BRUSHLESS MOTOR:17.15W
 22.M1331118 GEAR:DRIVE:FUSIONG:NO.1
 23.M1331119 GEAR:DRIVE:FUSIONG:NO.2
 27.M1331127 GEAR:DRIVE:EXIT:NG:NO.2

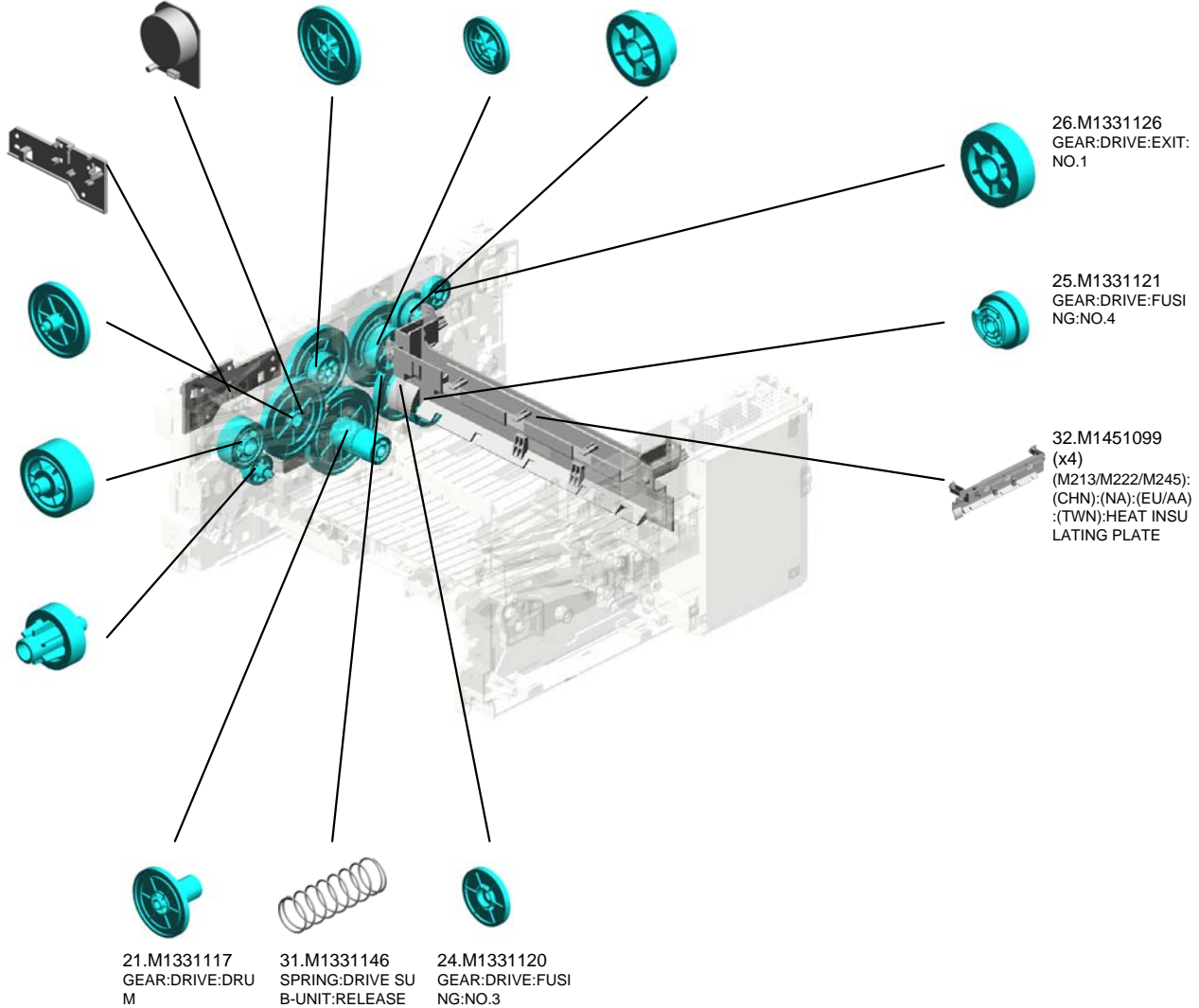


33.M2131041 (M213/M214/M245/M248):CASE:WIFI

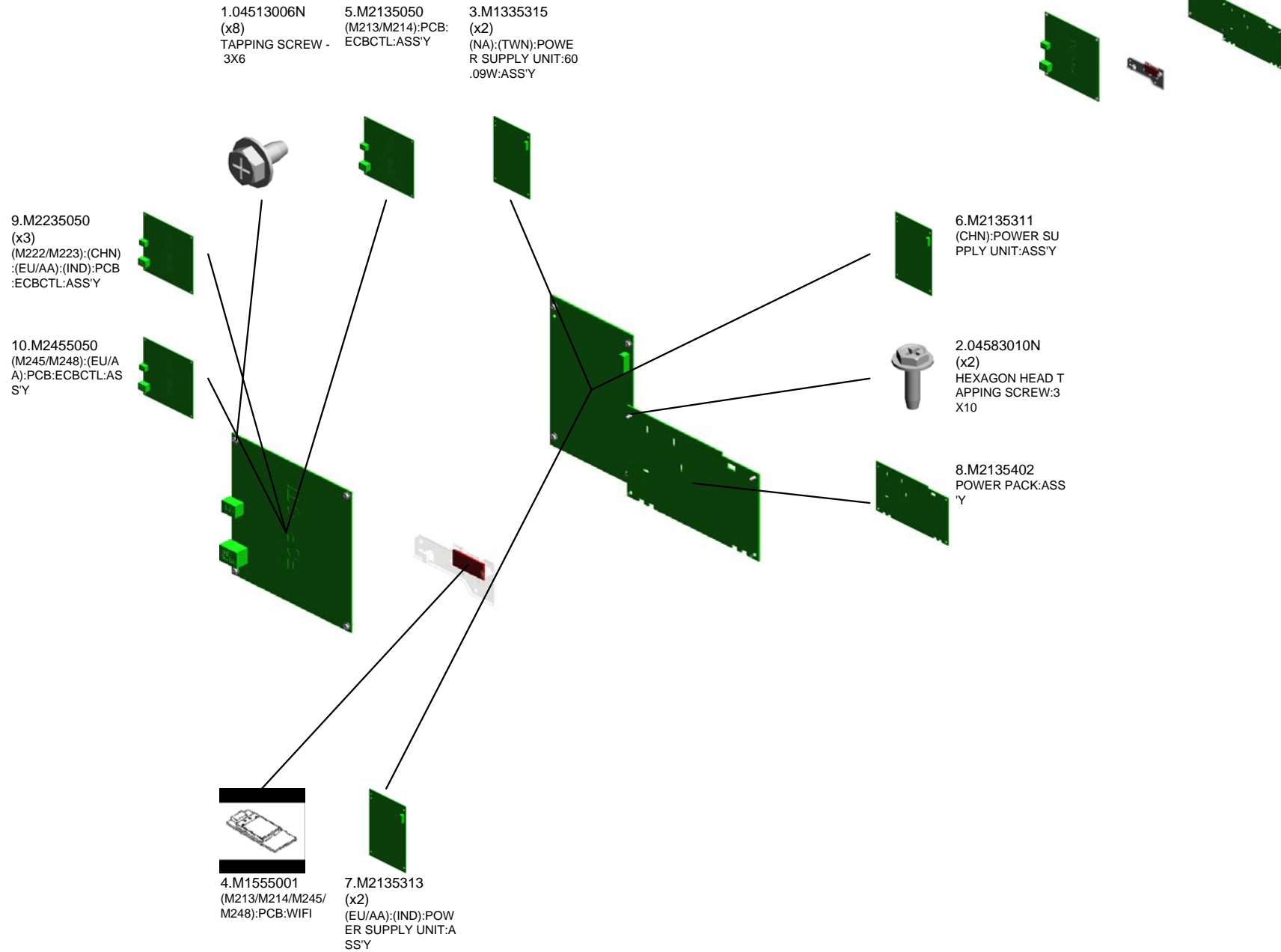
28.M1331131 GEAR:DRIVE:PAPER FEED:NO.1

29.M1331132 GEAR:DRIVE:PAPER FEED:NO.2

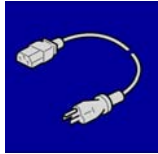
30.M1331133 GEAR:DRIVE:PAPER FEED:NO.3



U009 ELECTRICAL



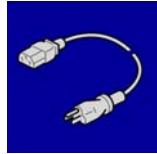
ACCESSORIES



1.11500409
(TWN):POWER SUPPLY CODE:125V:
15A



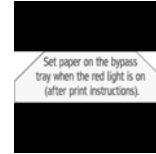
2.M1011301
PLATE:LOGO:RIC



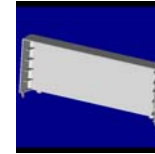
3.M1015799
(CHN):POWER SUPPLY CORD



4.M1331328
(CHN):DECAL:MANUAL FEED:CAUTI
ON



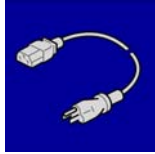
5.M1331329
(x3)
(NA):(EU/AA):(IND):DECAL:MANUAL F
R TRAY:LG
EED:CAUTION:WW



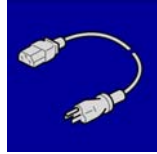
6.M1332711
(NA):COVER:PREVENTFENCE:PAPE



7.M1332715
COVER:PREVENTFENCE:PAPER TR
AY:A4



8.M1545697
(NA):POWER SUPPLY CORD:125V:10
A



9.M1545699
(x2)
(EU/AA):(IND):POWER SUPPLY COR
D:250V:10A



10.M1785452
(x3)
(M214/M222/M223):(CHN):(NA):(IND):
CABLE:USB

Exclusive Parts

Number	Part Name	Group	ID
AW020198	PHOTOINTERRUPTOR:LG2A14NL 1	U003	5
		U006	7
AW110101	THERMOSTAT:LOWER	U006_S001	8
		U006_S002	8
		U006_S003	8
		U006_S004	8
		U006_S005	8
G0201160	SNAP RING	U003	6
G5123029	RUBBER FOOT	U001	2
		U008	7
G8003133	SIDE FENCE GEAR	U003	7
		U003_S001	7
M0121063	TERMINAL:CHARGE	U008	8
M0122613	COMPRESSION SPRING:SEPARATION	U003_S001	8
M0122631	CLOTH:EARTH:PAPER FEED	U003	9
M0124454	SPRING:EXIT ROLLER:EXIT	U007	3
M0124488	BUSHING:DIA6XDIA10X6	U003	10
M0124699	DECAL:WARNING (HIGH TEMPERATURE):FRONT	U008	9
M0134622	EXIT ROLLER:DUPLEX	U003	11
M0134623	SPRING:EXIT	U003	12
M1011301	PLATE:LOGO:RIC	ACCESSORIES	2
M1014203	HOT ROLLER	U006_S001	9
		U006_S002	9
		U006_S003	9
		U006_S004	9
		U006_S005	9
M1014210	GEAR:HOT ROLLER	U006_S001	10
		U006_S002	10
		U006_S003	10
		U006_S004	10
		U006_S005	10
M1014214	PLAIN SHAFT BEARING:PRESSURE ROLLER	U006_S001	11
		U006_S002	11
		U006_S003	11
		U006_S004	11
		U006_S005	11

Number	Part Name	Group	ID
M1014222	RETAINING RINGS-C:HOT ROLLER:RIGHT	U006_S001	12
		U006_S002	12
		U006_S003	12
		U006_S004	12
		U006_S005	12
M1014235	RETAINING RINGS-C:HOT ROLLER:LEFT	U006_S001	13
		U006_S002	13
		U006_S003	13
		U006_S004	13
		U006_S005	13
M1014452	GEAR:EXIT ROLLER:PAPER EXIT UNIT	U003	13
M1015799	(CHN):POWER SUPPLY CORD	ACCESSORIES	3
M1331061	COIL SPRING:DISCHARGE:ELECTRODE PLATE	U008	10
M1331062	ELECTRODE PLATE:TRANSFER	U008	11
M1331063	COIL SPRING:DISCHARGE:AIO	U008	12
M1331064	PAPER TRAY:DISCHARGE	U008	13
M1331066	COIL SPRING:TERMINAL	U008	14
M1331067	COIL SPRING:TRANSFER:CHARGE	U008	15
M1331068	COIL SPRING:EARTH:PAPER TRAY	U008	16
M1331090	SAFETY SWITCH:ARM	U008	17
M1331093	COIL SPRING:LEFT:EXIT	U008	18
M1331094	COIL SPRING:RIGHT:EXIT	U008	19
M1331099	(M214/M223/M248):(CHN):(NA):(EU/AA):(IND):HEAT INSULATING PLATE	U008	20
M1331117	GEAR:DRIVE:DRUM	U008	21
M1331118	GEAR:DRIVE:FUSING:NO.1	U008	22
M1331119	GEAR:DRIVE:FUSING:NO.2	U008	23
M1331120	GEAR:DRIVE:FUSING:NO.3	U008	24
M1331121	GEAR:DRIVE:FUSING:NO.4	U008	25
M1331126	GEAR:DRIVE:EXIT:NO.1	U008	26
M1331127	GEAR:DRIVE:EXIT:NO.2	U008	27
M1331131	GEAR:DRIVE:PAPER FEED:NO.1	U008	28
M1331132	GEAR:DRIVE:PAPER FEED:NO.2	U008	29

Exclusive Parts

Number	Part Name	Group	ID
M1331133	GEAR:DRIVE:PAPER FEED:NO.3	U008	30
M1331146	SPRING:DRIVE SUB-UNIT:RELEASE	U008	31
M1331251	COVER:SIDE PLATE:LEFT	U001	3
M1331261	COVER:SIDE PLATE:RIGHT	U001	4
M1331311	COVER:EXIT:FRAME	U001	5
M1331326	COVER:MANUAL FEED:DOOR	U001	6
M1331327	MANUAL FEED TABLE:ENTRANCE	U001	7
M1331328	(CHN):DECAL:MANUAL FEED:CAUTION	ACCESSORIES	4
M1331329	(NA):(EU/AA):(IND):DECAL:MANUAL FEED:CAUTION:WW	ACCESSORIES	5
M1331342	(M213/M214):COVER:REAR LOWER:NET	U001	8
M1331344	(M222/M223/M245/M248):(CHN):(EU/AA):(IND):COVER:REAR LOWER	U001	9
M1331362	LENS:LED:OPERATION SUB-UNIT	U001	10
M1331850	OPTICAL WRITING UNIT	U002_S001	2
M1332550	BUSHING:FLANGE TYPE:DIA6	U003	14
M1332620	FRICTION PAD	U003_S001	15
M1332702	COVER:PAPER TRAY	U003_S001	16
M1332703	PAPER TRAY:REAR	U003_S001	17
M1332705	SIDE FENCE:LEFT	U003_S001	18
M1332706	SIDE FENCE:RIGHT	U003_S001	19
M1332707	END FENCE	U003_S001	20
M1332709	STOPPER:BASE	U003_S001	21
M1332710	SPRING:RELEASE:TRAY BOTTOM PLATE	U003_S001	22
M1332711	(NA):COVER:PREVENTFENCE:PAPER TRAY:LG	ACCESSORIES	6
M1332712	COMPRESSION SPRING:TRAY BOTTOM PLATE	U003_S001	23
M1332715	COVER:PREVENTFENCE:PAPER TRAY:A4	ACCESSORIES	7
M1332717	DECAL:SIDE FENCE:LEFT	U003_S001	24
M1332718	RUBBER BUSHING:COVER:PAPER TRAY	U003_S001	25
M1332732	FEELER:PAPER END SENSOR:PA	U003	26

Number	Part Name	Group	ID
	PER FEED		
M1332734	ELECTROMAGNETIC CLUTCH:PAPER FEED	U003	27
M1332735	FILM:PAPER FEED	U003	28
M1332737	SHAFT:FEED	U003	29
M1332742	TRANSPORT ROLLER:CONNECTING	U003	30
M1332743	FEELER:REGISTRATION SENSOR	U003	31
M1332750	GUIDE PLATE:MANUAL FEED:ASSY	U003	32
M1332752	SIDE FENCE:MANUAL FEED:LEFT	U003	33
M1332753	SIDE FENCE:MANUAL FEED:RIGHT	U003	34
M1332754	RACK:SIDE FENCE	U003	35
M1332755	FEELER:MANUAL FEED SENSOR	U003	36
M1332759	PAPER FEED ROLLER	U003	37
M1332762	GROUND PLATE:ROLLER:CONNECTING	U003	38
M1334204	PRESSURE ROLLER:DIA25	U006_S001	14
		U006_S002	14
		U006_S003	14
		U006_S004	14
		U006_S005	14
M1334208	PLAIN SHAFT BEARING:HOT ROLLER	U006_S001	15
		U006_S002	15
		U006_S003	15
		U006_S004	15
		U006_S005	15
M1334211	(CHN):HEATER:700W:220V:INFRA RED	U006_S001	16
M1334216	GUIDE PLATE:STRAIGHT	U006	17
M1334217	FUSING ENTRANCE GUIDE PLATE	U006_S001	18
		U006_S002	18
		U006_S003	18
		U006_S004	18
		U006_S005	18
M1334218	LEVER:PRESSURE	U006_S001	19
		U006_S002	19

Exclusive Parts

Number	Part Name	Group	ID
		U006_S003	19
		U006_S004	19
		U006_S005	19
M1334219	FEELER:EXIT:SENSOR	U006	20
M1334220	COIL SPRING:FEELER:EXIT	U006	21
M1334221	STRIPPER PAWLS	U006_S001	22
		U006_S002	22
		U006_S003	22
		U006_S004	22
		U006_S005	22
M1334223	TENSION SPRING:PICKOFF PAWL	U006_S001	23
		U006_S002	23
		U006_S003	23
		U006_S004	23
		U006_S005	23
M1334225	FUSING ENTRANCE GUIDE PLATE :UPPER	U006_S001	24
		U006_S002	24
		U006_S003	24
		U006_S004	24
		U006_S005	24
M1334226	FLAT NUT:HEATER	U006_S001	25
		U006_S002	25
		U006_S003	25
		U006_S004	25
		U006_S005	25
M1334227	GROUND PLATE:FUSING UNIT	U006_S001	26
		U006_S002	26
		U006_S003	26
		U006_S004	26
		U006_S005	26
M1334228	COVER:FEELER	U006	27
M1334229	LEVER:PRESSURE:LEFT	U006_S001	28
		U006_S002	28
		U006_S003	28
		U006_S004	28
		U006_S005	28
M1334230	LEVER:PRESSURE:RIGHT	U006_S001	29
		U006_S002	29

Number	Part Name	Group	ID
		U006_S003	29
		U006_S004	29
		U006_S005	29
M1334231	TENSION SPRING:FUSING:PRESS URE	U006_S001	30
		U006_S002	30
		U006_S003	30
		U006_S004	30
		U006_S005	30
M1334241	HOUSING:THERMOSTAT	U006_S001	31
		U006_S002	31
		U006_S003	31
		U006_S004	31
		U006_S005	31
M1334243	EXIT ROLLER:FUSING	U006_S001	32
		U006_S002	32
		U006_S003	32
		U006_S004	32
		U006_S005	32
M1334244	ELECTRODE:LEFT	U006_S001	33
		U006_S002	33
		U006_S003	33
		U006_S004	33
		U006_S005	33
M1334245	SPRING:EXIT ROLLER:FUSING	U006_S001	34
		U006_S002	34
		U006_S003	34
		U006_S004	34
		U006_S005	34
M1334248	THERMISTOR	U006_S001	35
		U006_S002	35
		U006_S003	35
		U006_S004	35
		U006_S005	35
M1334254	DECAL:WARNING (HIGH TEMPER ATURE):REAR PART	U006	36
M1334257	GEAR:DRIVE:STRAIGHT	U006_S001	37
		U006_S002	37
		U006_S003	37

Exclusive Parts

Number	Part Name	Group	ID
		U006_S004	37
		U006_S005	37
M1334258	GEAR:CONNECTING:STRAIGHT	U006_S001	38
		U006_S002	38
		U006_S003	38
		U006_S004	38
		U006_S005	38
M1334261	HOOK:PRESSURE:LEFT	U006_S001	39
		U006_S002	39
		U006_S003	39
		U006_S004	39
		U006_S005	39
M1334262	HOOK:PRESSURE:RIGHT	U006_S001	40
		U006_S002	40
		U006_S003	40
		U006_S004	40
		U006_S005	40
M1334263	SHEET:HOOK:LEFT	U006_S001	41
		U006_S002	41
		U006_S003	41
		U006_S004	41
		U006_S005	41
M1334264	SHEET:HOOK:RIGHT	U006_S001	42
		U006_S002	42
		U006_S003	42
		U006_S004	42
		U006_S005	42
M1334265	SHEET:PRESSURE RELEASE:LEFT	U006_S001	43
		U006_S002	43
		U006_S003	43
		U006_S004	43
		U006_S005	43
M1334266	SHEET:PRESSURE RELEASE:RIGHT	U006_S001	44
		U006_S002	44
		U006_S003	44
		U006_S004	44
		U006_S005	44
M1334453	PLAIN SHAFT BEARING:EXIT	U007	4

Number	Part Name	Group	ID
M1334457	EXIT ROLLER	U007	5
M1334459	EXIT ROLLER	U007	6
M1334465	PLATE:EXIT	U007	7
M1334466	GUIDE PLATE:EXIT:UPPER	U007	8
M1334467	GUIDE PLATE:EXIT:LOWER	U007	9
M1334485	EXTENSION TRAY:EXIT:P	U001	11
M1334486	TRAY:EXIT:P	U001	12
M1335315	(NA):(TWN):POWER SUPPLY UNIT:60.09W:ASS'Y	U009	3
M1336201	SEPARATION UNIT:ASS'Y	U005	1
M1336250	TRANSFER ROLLER	U005	2
M1336254	GEAR:TRANSFER ROLLER	U005	3
M1336259	ROLLER:POSITIONING:TRANSFER ROLLER	U005	4
M1336262	BUSHING:TRANSFER ROLLER:RIGHT	U005	5
M1336263	BUSHING:TRANSFER ROLLER:LEFT	U005	6
M1336264	SPRING:TRANSFER ROLLER	U005	7
M1451099	(M213/M222/M245):(CHN):(NA):(EU/AA):(TWN):HEAT INSULATING PLATE	U008	32
M1454212	(EU/AA):(IND):HEATER:700W:230V	U006_S002	45
		U006_S003	45
M1454213	(NA):HEATER:700W:120V	U006_S004	46
M1545697	(NA):POWER SUPPLY CORD:125V:10A	ACCESSORIES	8
M1545699	(EU/AA):(IND):POWER SUPPLY CORD:250V:10A	ACCESSORIES	9
M1555001	(M213/M214/M245/M248):PCB:WIFI	U009	4
M1785452	(M214/M222/M223):(CHN):(NA):(IND):CABLE:USB	ACCESSORIES	10
M2131041	(M213/M214/M245/M248):CASE:WIFI	U008	33
M2131150	DC BRUSHLESS MOTOR:17.15W	U008	34
M2131234	(TWN):COVER:UPPER	U001	13
M2131235	(M213/M214/M245/M248):(NA):(EU/AA):(IND):COVER:UPPER	U001	14

Exclusive Parts

Number	Part Name	Group	ID
M2131316	KEY:OPERATION PANEL	U001	15
M2131317	(M213/M214/M245/M248):KEY:WIFI	U001	16
M2131321	(M213):(NA):(EU/AA):(TWN):COVER:FRONT	U001	17
M2131332	COVER:REAR	U001	18
M2132501	PAPER TRAY:ASS'Y	U003_S001	39
M2132741	GUIDE PLATE:CONNECTING	U003	40
M2132742	DECAL:GUIDE:JOINT UNIT	U003	41
M2134001	(CHN):FUSING UNIT:ASS'Y	U006_S001	47
M2134002	(EU/AA):(IND):FUSING UNIT:ASS'Y	U006_S002	48
		U006_S003	48
M2134003	(NA):FUSING UNIT:ASS'Y	U006_S004	49
M2134240	EXIT ROLLER:STRAIGHT:ASS'Y	U006	50
M2134451	EXIT ROLLER:PAPER EXIT UNIT	U007	10
M2135050	(M213/M214):PCB:ECBCTL:ASS'Y	U009	5
M2135063	(M213/M214/M245/M248):PCB:OPU	U001	19
M2135311	(CHN):POWER SUPPLY UNIT:ASS'Y	U009	6
M2135313	(EU/AA):(IND):POWER SUPPLY UNIT:ASS'Y	U009	7
M2135402	POWER PACK:ASS'Y	U009	8
M2141235	(M214):(CHN):COVER:UPPER	U001	20
M2141321	(M214):(CHN):(NA):(EU/AA):(IND):COVER:FRONT	U001	21
M2154003	(TWN):FUSING UNIT:ASS'Y	U006_S005	51
M2154213	(TWN):HEATER:700W:110V	U006_S005	52
M2221320	(M222/M223):(EU/AA):(IND):COVER:UPPER	U001	22
M2221321	(M222):(EU/AA):COVER:FRONT	U001	23
M2221322	(M222):(CHN):COVER:FRONT	U001	24
M2225060	(M222/M223):(CHN):(EU/AA):(IND):PCB:OPU	U001	25
M2231320	(M222/M223):(CHN):COVER:UPPER	U001	26
M2231321	(M223):(CHN):(EU/AA):(IND):COVER:FRONT	U001	27
M2235050	(M222/M223):(CHN):(EU/AA):(IND):PCB:ECBCTL:ASS'Y	U009	9

Number	Part Name	Group	ID
M2451321	(M245):(EU/AA):COVER:FRONT	U001	28
M2455050	(M245/M248):(EU/AA):PCB:ECBCTL:ASS'Y	U009	10
M2481321	(M248):(EU/AA):COVER:FRONT	U001	29

Standard Parts



03530040N
SCREW - M3X4



04503012N
TAPPING SCREW:3X12



04503014N
TAPPING SCREW:M3X14



04503020N
TAPPING SCREW:M3X20



04513006N
TAPPING SCREW - 3X6



04513008N
TAPPING SCREW - M3X8



04523014N
BINDING SELF-TAPPING SCREW:M3X14



04583010N
HEXAGON HEAD TAPPING SCREW:3X10



04583012N
HEXAGON HEAD TAPPING SCREW:3X12



07200040E
RETAINING RING - M4



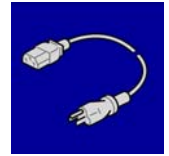
07200060E
RETAINING RING - M6



08046127
HEXAGONAL BOLT:DOUBLE SCREW:M3X8



08050089
RETAINING RING - M4



11500409
(TWN):POWER SUPPLY CODE:125V:15A



12042612
MICRO SWITCH:D3V-16506-3 C25

