



---

# FS-720/820/920

## PARTS LIST

Published in October 2004  
2GLPL070  
842GL120

## NOTE

1.Indicate parts number and machine model when placing an order.

eg.	Parts Number	Parts Name	Machine Model	Cycle	Quantity
	302GL04010	COVER LID TOP	FS-720	50Hz/60Hz	1
	5MVB872SH033	COVER LID TOP	FS-820	50Hz/60Hz	1
	5MVB872SH034	COVER LID TOP	FS-920	50Hz/60Hz	1

2.Service calls and freight will be charged separately.

3.Symbols in the "Parts Number" column.

- Parts with "•" are component parts or sub-assemblies of the assembly appearing immediately above them.

eg.	Parts Number	Parts Name	Parts Number	Parts Name
	302FV93080	CT-110	•2DC07010	STOPPER PAPER
			•5MVX541DG003	LEVER SIDE

- Parts with "⊙" indicates the spare parts and the parts without "⊙" can not be supplied.

— CONTENTS —

FIG. 1	EXTERIOR COVERS.....	2
FIG. 2	FRAMES I.....	4
FIG. 3	FRAMES II.....	6
FIG. 4	CASSETTE SECTION.....	8
FIG. 5	DRIVING, COOLING SECTION.....	10
FIG. 6	IMAGE FORMATION SECTION.....	12
FIG. 7	DEVELOPING UNIT.....	14
FIG. 8	FIXING SECTION.....	16
FIG. 9	PARTS PACKAGES.....	18

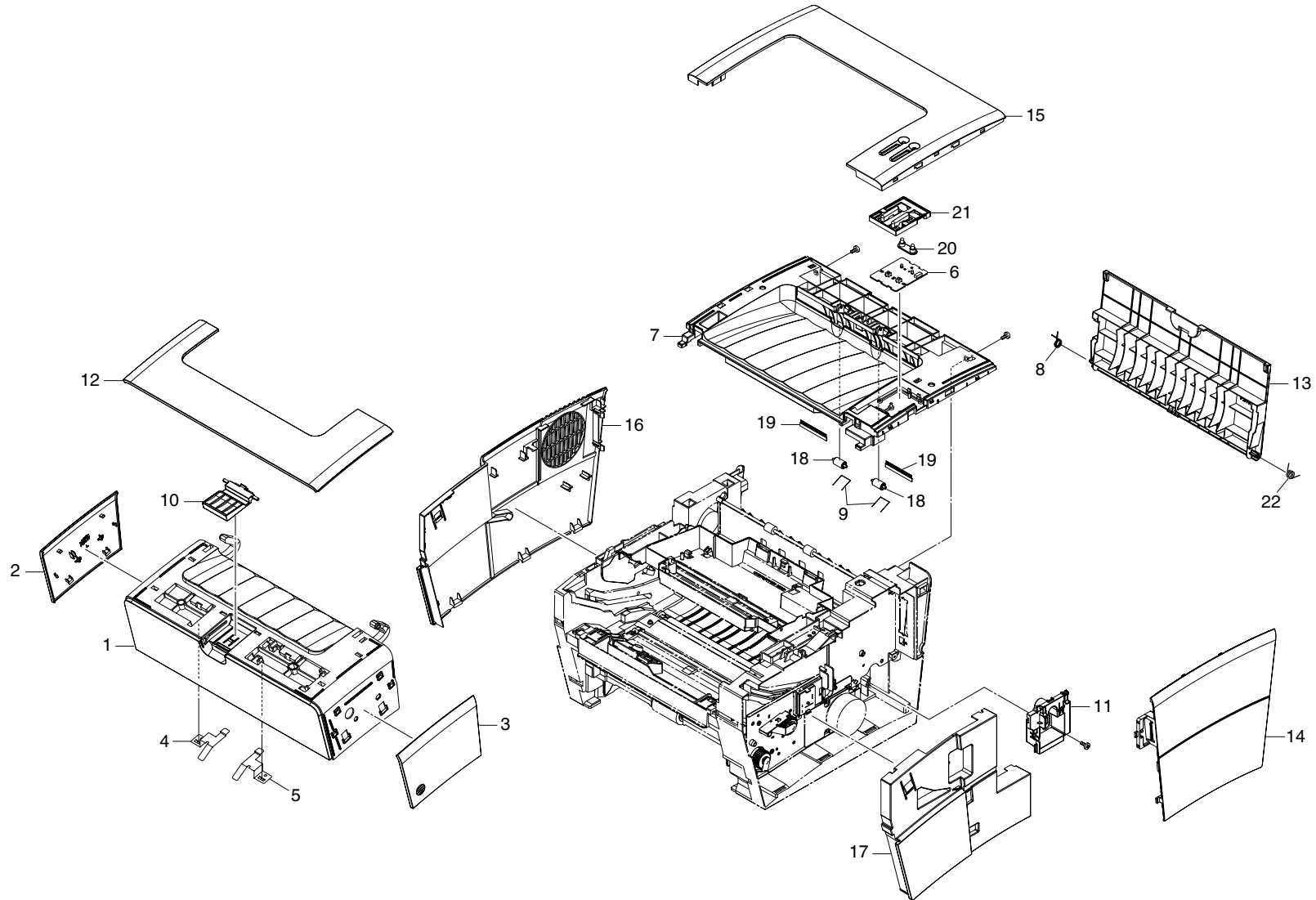


FIG. 1 EXTERIOR COVERS

2GL/2FV/2FW

SP	Ref.No.	Part.No.	Alternative.	Description	Quantity	
					120	230
⊙	1	5MVB877SB011	2FV04100	BASE LID	1	1
⊙	2	5MVB771SH002	2FV04090	COVER LID L	1	1
⊙	3	5MVB771SH003	2FV04080	COVER LID R	1	1
	4	302FV04180	2FV04180	PLATE TRAY L	1	1
	5	302FV04190	2FV04190	PLATE TRAY R	1	1
⊙	6	5AAPRCZC1015AHR	2FV01050	P.W.BOARD ASSY KP-1111	1	1
⊙	7	5MVB886SB013	2FV04010	BASE TOP	1	1
	8	5MMW126SD001	2FV04130	SPRING COVER REAR	1	1
⊙	9	5MMW603LD002	2FV04120	SPRING PULLEY FD	2	2
⊙	10	5MVB652SB015	2FV04110	TRAY FD	1	1
	11	5MVX664SB003	2FV02140	GUIDE CF	1	1
⊙	12	302GL04010	2GL04010	COVER LID TOP (FS-720)	1	1
⊙	12	5MVB872SH033	2FV04070	COVER LID TOP (FS-820)	1	1
⊙	12	5MVB872SH034	2FV04010	COVER LID TOP (FS-920)	1	1
⊙	13	5MVB874SB011	2FV04060	COVER REAR	1	1
⊙	14	5MVB882SH007	2FV04050	COVER RIGHT SUB	1	1
⊙	15	5MVB882SH008	2FV04040	COVER TOP	1	1
⊙	16	5MVB883SH033	2FV04030	COVER LEFT	1	1
⊙	17	5MVB885SH029	2FV04020	COVER RIGHT	1	1
⊙	18	5MVM363DB001	2FV04150	PULLEY FD	2	2
⊙	19	5MVS625XF001	2FV04140	DISCHARGER FD	2	2
⊙	20	5MVX321AC002	2FV04170	LENS LED	1	1
⊙	21	5MVX662SH006	2FV04160	BUTTON	1	1
	22	302FV04200	2FV04200	SPRING COVER REAR R	1	1

- Parts with "\*" are component parts or sub-assemblies of the assembly appearing immediately above them.
- Parts with "⊙" indicates the spare parts.

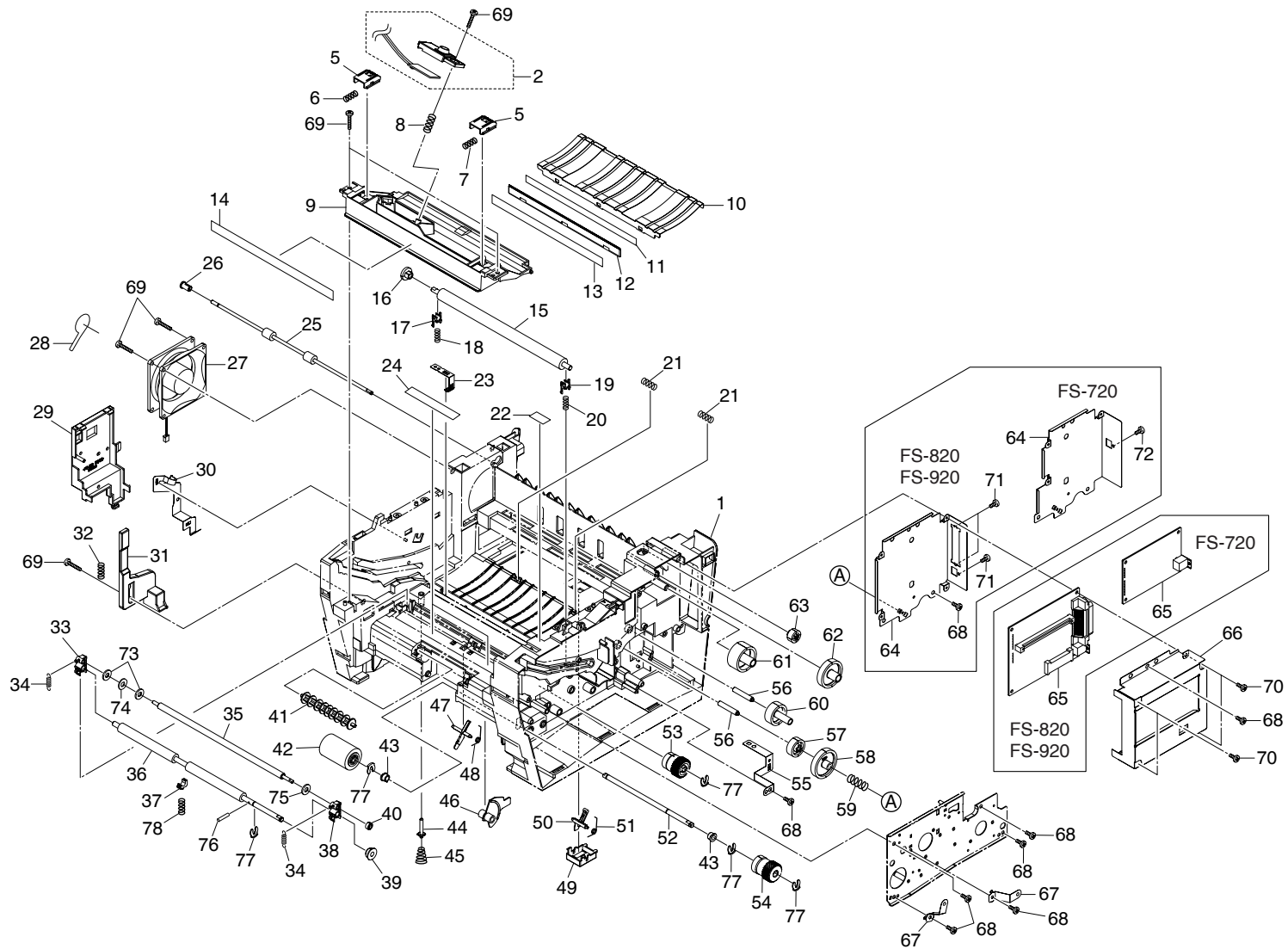


FIG. 2 FRAMES I

2GL/2FV/2FW

SP	Ref.No.	Part.No.	Alternative.	Description	Quantity	
					120	230
	1	5MVX888CB001	2FV02170	FRAME BASE	1	1
⊙	2	302FV0030	2FV00030	TE SENSOR ASY	1	1
	5	5MVX431DN005	2FV02100	LEVER LOCK DLP	2	2
	6	5MMW261LD067	2FV02270	SPRING LEVER LOCK L	1	1
	7	5MMW261LD068	2FV02280	SPRING LEVER LOCK R	1	1
	8	5MMW261LD036	2A814570	SPRING TE SENSOR	1	1
	9	5MVX865SB008	2FV02160	GUIDE FEED	1	1
	10	5MMU862SL001	2FV02250	PLATE EARTH GUIDE	1	1
	11	5MVS812XF003	2A816120	TAPE BRUSH	1	1
	12	5MMS821LD014	2A816080	BRUSH DISCHARGER	1	1
	13	5MVS812KF006	2A816090	SHEET DISCHARGER	1	1
	14	302FV02510	2FV02510	LABEL JAM OPERATION	1	1
⊙	15	5MMT876SN104	2FV02230	ROLLER TRANSFER	1	1
⊙	16	5MVG127DN131	2FV02030	GEAR TC Z17	1	1
⊙	17	5MVX221DB023	2A816020	BUSH TC L	1	1
⊙	18	5MMW251LD043	2A816040	SPRING TC L	1	1
⊙	19	5MVX221DW008	2A816030	BUSH TC R	1	1
⊙	20	302FV02490	2FV02490	SPRING TC R	1	1
	21	302FV02480	2FV02480	SPRING ROLL	2	2
	22	302FV14500	2FV14500	LABEL GUIDE DLP	1	1
	23	5MMX331LD005	2FV02330	PLATE CONTACT TC	1	1
⊙	24	5MVS721KF007	2FV02390	SHEET REGIST	2	2
	25	5MMT875SN016	2FV02220	ROLLER FD	1	1
	26	302FV02470	2FV02470	BUSH FD	1	1
⊙	27	302FV45010	2FV45010	FAN MOTOR	1	1
	28	302FV02500	2FV02500	SHEET FAN	1	1
	29	5MVB763CB001	2FV02010	COVER MC	1	1
	30	5MMX763LD007	2FV02370	PLATE CONTACT MC	1	1
	31	5MVX763SB011	2FV02150	ROD INTERLOCK	1	1
	32	5MMW451LD001	2B700570	SPRING INTERLOCK	1	1
⊙	33	5MVX221DB019	2A806420	BUSH REGIST LEFT	1	1
⊙	34	5MMW261LD023	2A806410	SPRING REGIST R	2	2
⊙	35	5MMT865SN010	2A806050	ROLLER REGIST UP	1	1
⊙	36	5MMT876SN105	2FV02240	ROLLER REGIST LOW	1	1
⊙	37	2FM02180		BUSH REGIST C	1	1
⊙	38	5MVX221DW006	2A806430	BUSH REGIST RIGHT	1	1
⊙	39	5MVG127DB047	2A806230	GEAR REGIST Z20	1	1
⊙	40	5MVG126DB025	2A806240	GEAR REGIDT Z13	1	1
⊙	41	5MVM776DB001	2FV02090	PULLEY FEED	1	1
⊙	42	5AAR0LL+044	2A806010	ROLLER FEED ASSY	1	1
	43	5MVM176DN016	2BR20170	BUSH A	2	2
	44	5MMT365SN003	2A815020	PIN CONTACT BIAS	1	1
	45	5MMW361LD028	2FV02310	SPRING PIN BIAS	1	1
	46	5MVX552DB001	2FV02130	ACTUATOR EMPTY	1	1
⊙	47	5MVX441SB006	2FV02110	ACTUATOR REGIST	1	1
	48	5MMW261LD066	2FV02260	SPRING ACTUATOR	1	1
	49	5MVX432SB014	2FV02460	BKT ACTUATOR EXIT	1	1
⊙	50	5MVX442SB011	2FV02120	ACTUATOR EXIT	1	1
	51	5MMW261LD069	2FV02290	SPRING EXIT	1	1
	52	5MMT766SN011	2FV02210	SHAFT FEED	1	1

SP	Ref.No.	Part.No.	Alternative.	Description	Quantity	
					120	230
⊙	53	5AAVCLTCH032	2FV02180	CLUTCH REGIST	1	1
⊙	54	5AAVCLTCH028	2BY02020	CLUTCH FEED	1	1
	55	5MMX643LD006	2FV02360	PLATE EARTH B	1	1
⊙	56	5MMT463SN002	2FV02200	PIN DRIVE	2	2
⊙	57	5MVG138DN088	2FV02040	GEAR FREE Z28S	1	1
⊙	58	5MVG158DN059	2FV02060	GEAR FREE Z46H	1	1
	59	5MMW371LD006	2FV02320	SPRING FREE	1	1
⊙	60	5MVG148DN107	2FV02050	GEAR Z34S	1	1
⊙	61	5MVG158DN060	2FV02070	GEAR FD Z42S	1	1
⊙	62	5MVG158DN061	2FV02080	GEAR FD Z45S	1	1
⊙	63	5MVG127DN130	2FV02020	GEAR FD Z19S	1	1
	64	302GL03010	2GL03010	LID CONTROLLER (FS-720)	1	1
	64	5MMX774SL002	2FV03010	LID CONTROLLER (FS-820/920)	1	1
⊙	65	5AAPRLGC2029AHR	2FV01180	P.W.BOARD ASSY (FS-720)	1	1
⊙	65	5AAPRLGR2010AHR	2FV01180	P.W.BOARD ASSY (FS-820)	1	1
⊙	65	5AAPRLGR2010BHR	2FV01000	P.W.BOARD ASSY (FS-920)	1	1
	66	302FV03020	2FV03020	BOX COCONTROLLER	1	1
	67	5MMX522LD013	2FV02340	PLATE EARTH FEED	2	2
	68	5MBTPB4010WW++R	B8204100	BIND T.T. SCREW(+)	9	9
	69	5MBTP44010WW++R		TP T.T. SCREW(+)	6	6
	70	5MBTPB3006TW++R	B1A53060	BIND T.T. SCREW(+)	4	4
	71	5MBSPP3010NN	2DW03010	PAN HEAD SCREW(+)(FS-820/920)	3	3
	72	5MBSPP3010NN	2DW03010	PAN HEAD SCREW(+)(FS-720)	1	1
⊙	73	5MBWK41A03NN	C2891100	POLY-SLIDER WASHER 4.1X10X0.3t	2	2
⊙	74	5MBWW43802SP	C3790080	WAVE WASHER M4.3X8.0X0.2T S-BLK	1	1
⊙	75	5MBWK4165+NN	C2894650	POLY SLIDER	1	1
⊙	76	5MBP2008WWLD	E1120080	SPRING PIN	1	1
	77	5MVX111DN003	2A806250	RING STOPPER	5	5
	78	2FM02580		SPRING REGIST C	1	1

- Parts with "\*" are component parts or sub-assemblies of the assembly appearing immediately above them.
- Parts with "⊙" indicates the spare parts.

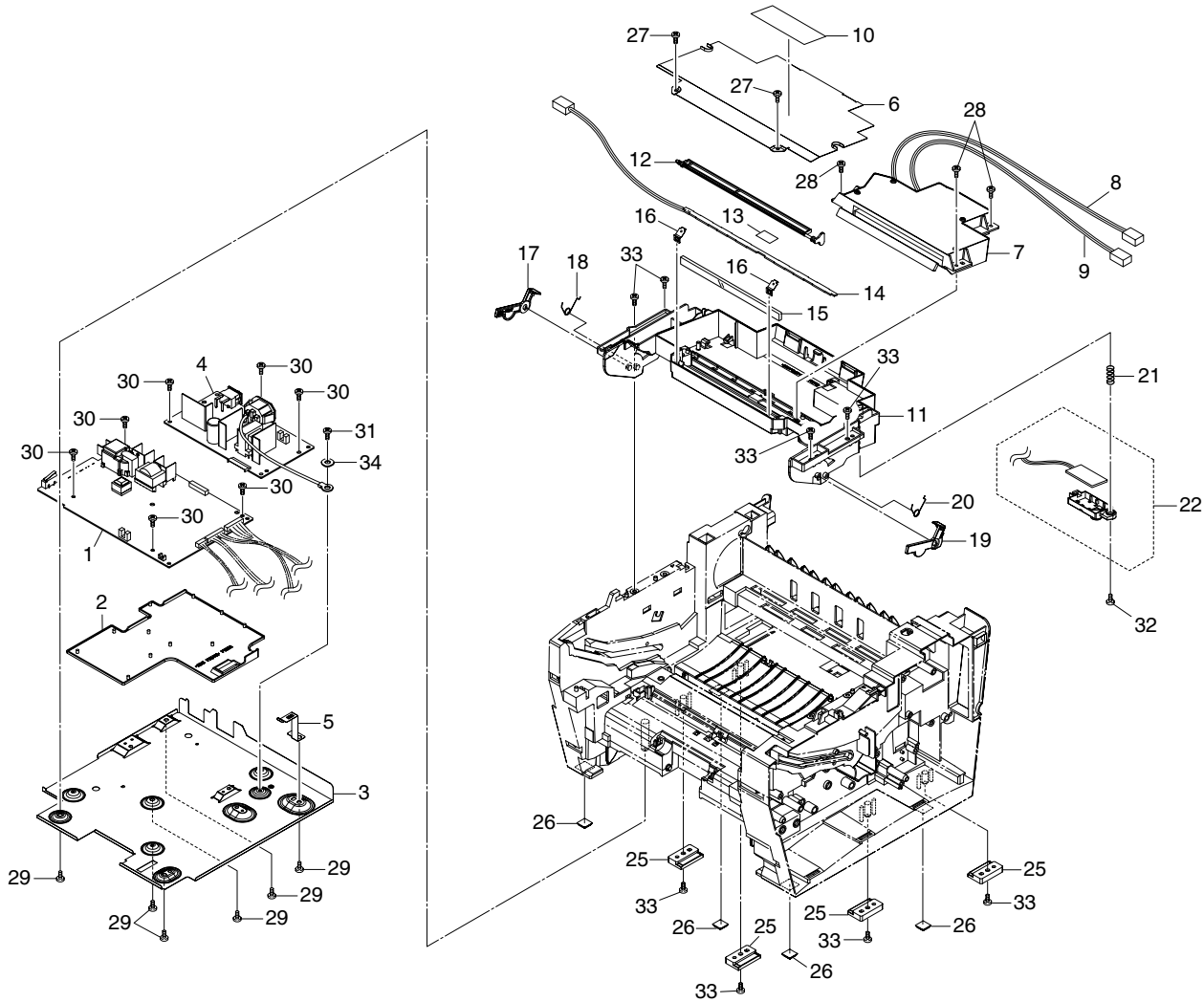




FIG. 3 FRAMES II

2GL/2FV/2FW

SP	Ref.No.	Part.No.	Alternative.	Description	Quantity	
					120	230
⊙	1	2FV01240	5AAPRCZC1014CHR	P.W.B.ASSY KP-1085 E SERVICE	1	1
	2	5MVS777CB001	2FV02000	COVER PWB	1	1
	3	5MMX884SL002	2FV02380	PLATE BOTTOM FRAME	1	1
⊙	4	5AAEZB12E++1++P	2FV28010	SWITCHING REGULATOR		1
⊙	4	5AAEZB12U++1++P	2FV28020	SWITCHING REGULATOR	1	
	5	5MMX541LD002	2FV02350	PLATE EARTH A	1	1
	6	5MMS875SL007	2FV12020	COVER SCANNER	1	1
	7	302FV93090	2FV93090	LK-110	1	1
	8	5AACCNSW2GEA++R	2FV26020	CONN CORD ASSY	1	1
	9	5AACCNSX2GEA++R	2FV26050	CONN CORD ASSY	1	1
	10	302FV12080	2FV12080	LABEL LASER CAUTION	1	1
	11	5MVX876XB002	2FV12060	FRAME MID	1	1
	12	5MVX821SB014	2FV12050	SHUTTER LSU	1	1
	13	302FV12070	2FV12070	SHEET ERASER	1	1
⊙	14	5AAPRELC1008AHR	2FV01100	P.W.B ASSY KP-5157	1	1
	15	2DC13030		MIRROR LSU	1	1
	16	5MMX221LD034	2FV12030	SPRING MIRROR	2	2
	17	5MVX631SB006	2FV02420	LEVER STOPPER L	1	1
	18	5MMW165SD001	2FV02400	SPRING STOPPER L	1	1
	19	5MVX631SB007	2FV02430	LEVER STOPPER R	1	1
	20	5MMW165SD002	2FV02410	SPRING STOPPER R	1	1
	21	5MMW261LD070	2FV12010	SPRING FULL SENSOR	1	1
⊙	22	302FV00040	2FV00040	FULL SENSOR ASSY	1	1
	25	5MVX431SB012	2FV02450	RAIL FRAME	4	4
	26	5MVX221RB014	2BS03110	FOOT	4	4
	27	5MBTPB3008PW++R	B1A63080	BIND T.T SCREW(+)	2	2
	28	5MBTPB3012PW++R	B1A63120	BIND T.T SCREW(+)	3	3
	29	5MBTPB4010WW++R	B8204100	BIND T.T SCREW(+)	6	6
	30	5MBTPB3006TW++R	B1A53060	BIND T.T SCREW(+)	7	7
	31	5MBTPB4006TW++R	B1A54060	BIND T.T SCREW(+)	1	1
	32	BAA63080		TP T.T SCREW	1	1
	33	5MBTP44010WW++R		TP T.T SCREW(+)	8	8
	34	5MBWG40853SW++R		OT LOCK WASHER	1	1

- Parts with "\*" are component parts or sub-assemblies of the assembly appearing immediately above them.
- Parts with "⊙" indicates the spare parts.

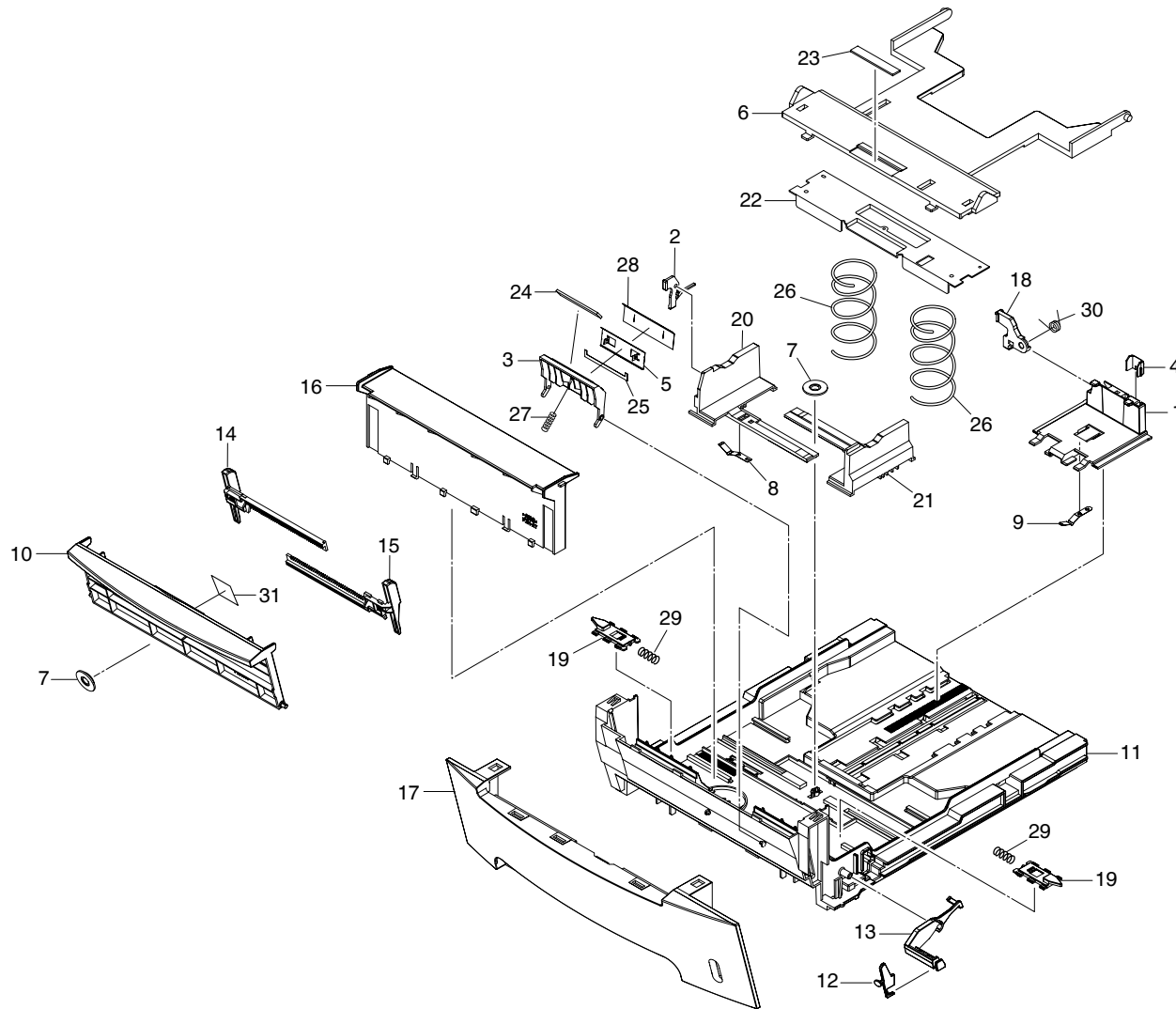


FIG. 4 CASSETTE SECTION

SP	Ref.No.	Part.No.	Alternative.	Description	Quantity	
					120	230
⊙		302FV93080	2FV93080	CT-110	1	1
	1	*2DC07010		STOPPER PAPER	1	1
	2	*5MVX541DG003	2A807161	LEVER SIDE	1	1
	3	*5MVX642SH010	2A807100	SEPARATOR PAPER	1	1
	4	*2DC07020		POSITIONING FOLIO PAPER	1	1
	5	*5MMX631LD003	2A807180	GUIDE SEPARATOR	1	1
	6	*2FV06180		BOTTOM CASSETTE	1	1
	7	*5MVG127DN071	2A807050	GEAR CASSETTE	2	2
	8	*5MMP141LD002	2A807510	PLATE SIDE GUIDE	1	1
	9	*5MMP141LD003	2A807520	PLATE STOPPER	1	1
	10	*5MVB864SB024	2FV06100	TRAY MULTI	1	1
	11	*5MVB887SB002	2FV06010	BASE CASSETTE	1	1
	12	*5MVX321SG002	2FV06090	MARKER INDICATOR	1	1
	13	*5MVX664SH005	2FV06070	LEVER PAPER INDICATOR	1	1
	14	*5MVX762SB019	2FV06040	GUIDE MULTI L	1	1
	15	*5MVX762SB020	2FV06050	GUIDE MULTI R	1	1
	16	*5MVX864SB013	2FV06060	GUIDE TURN	1	1
	17	*5MVX876SB010	2FV06020	COVER CASSETTE	1	1
	18	*5MVX541DG002	2A807191	LEVER REAR	1	1
	19	*5MVX631DN001	2FV06030	LOCK CASSETTE	2	2
	20	*302A807031	2A807031	GUIDE SIDE L	1	1
	21	*302A807021	2A807021	GUIDE SIDE R	1	1
	22	*5MMS856SL001	2A807170	PLATE BOTTOM	1	1
	23	*5MVS616XN001	2A807080	PAD BOTTOM	1	1
	24	*302FV06190	2FV06190	PAD SEPARATOR	1	1
25	*2DC0704	2DC07040	FILM SEPARATOR	1	1	
⊙	26	*5MMW552LD004	2FV06120	SPRING CASSETTE	2	2
	27	*5MMW251LD047	2A807110	SPRING SEPARATOR C	1	1
	28	*5MVS631TX001	3BW07040	TAPE SEPARATOR OP	1	1
	29	*5MMW251LD045	2A807140	SPRING LOCK	2	2
	30	*5MMW171LD006	2A807530	SPRING STOPPER	1	1
	31	*302FV06210	2FV06210	LABEL MANUAL FEED	1	1

- Parts with "\*" are component parts or sub-assemblies of the assembly appearing immediately above them.
- Parts with "⊙" indicates the spare parts.

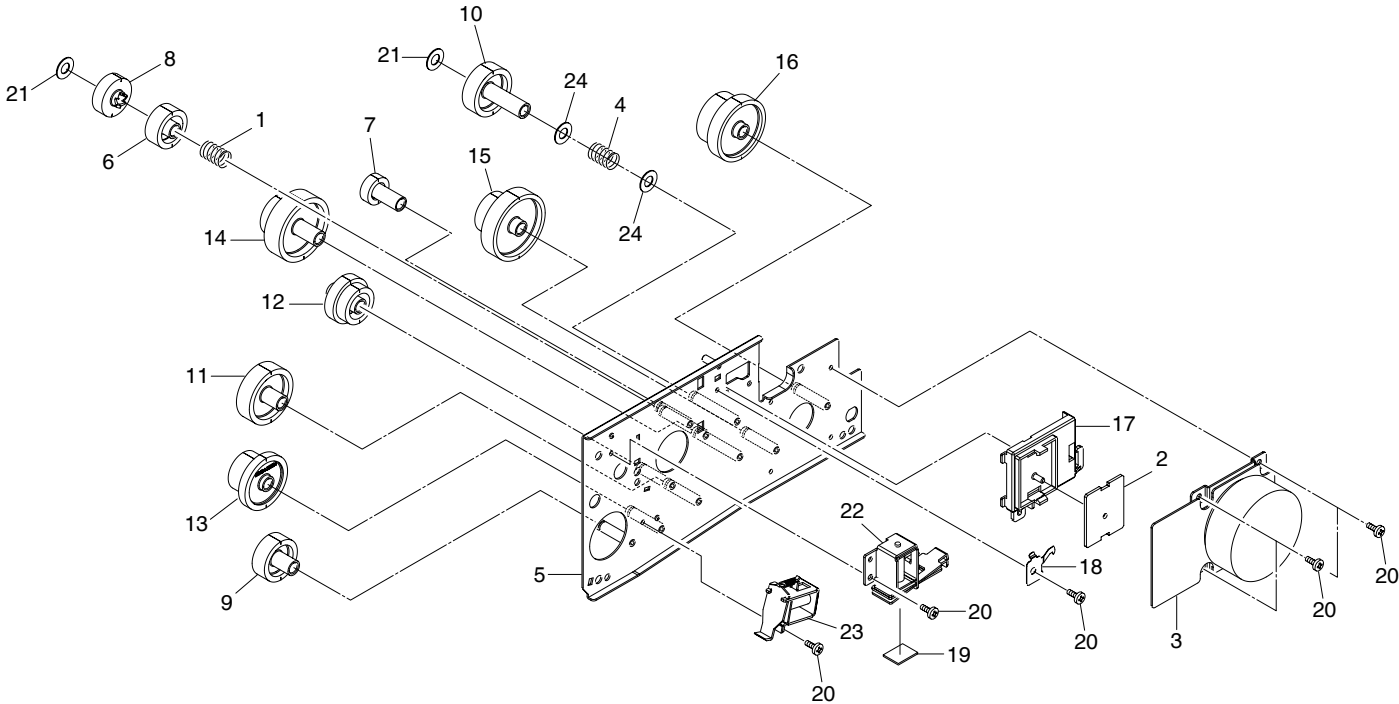


FIG. 5 DRIVING, COOLING SECTION

2GL/2FV/2FW

SP	Ref.No.	Part.No.	Alternative.	Description	Quantity	
					120	230
⊙		302FV93060	2FV93060	DR-110	1	1
	1	•5MMW261LD071	2FV22010	SPRING REVERSE	1	1
⊙	2	•5AAPRIFC1037AHR	2FV01080	P.W.B ASSY KP-1113	1	1
⊙	3	•5AAXMT074GEA	2FV27000	MOTOR MAIN	1	1
	4	•302FV22160	2FV22160	SPRING GEAR	1	1
	5	•5MMX874SL005	2FV22030	PLATE DRIVE	1	1
	6	•5MVG127DN132	2FV22040	GEAR FREE Z26H A	1	1
	7	•5MVG127DN133	2FV22050	GEAR Z18H	1	1
	8	•5MVG138DN089	2FV22060	GEAR FREE Z26H B	1	1
	9	•5MVG138DN090	2FV22070	GEAR Z29H	1	1
	10	•5MVG148DN108	2FV22080	GEAR Z33H	1	1
	11	•5MVG148DN109	2FV22090	GEAR Z39H	1	1
	12	•5MVG148DN110	2FV22100	GEAR Z31H-Z25H	1	1
	13	•5MVG148DN111	2FV22110	GEAR Z38H-Z26H	1	1
	14	•5MVG158DN062	2FV22120	GEAR Z45H-Z27H	1	1
	15	•5MVG168DN022	2FV22130	GEAR Z76H-Z27H	1	1
	16	•5MVG168DN023	2FV22140	GEAR Z70H-Z34H	1	1
	17	•5MVX652SB015	2FV22150	BRACKET DRIVE	1	1
	18	•5MMX321LD040	2FV22020	PLATE EARTH DRUM	1	1
	19	•7MVS217SN002	2A806280	PAD SOLENOID	1	1
	20	•5MBTPB3006TW++R	B1A53060	BIND T.T SCREW(+)	7	7
	21	•5MBWL5280+NN	C2891080	POLY CUT WASHER	2	2
⊙	22	•2A806142		SOLENOIDE REGIST	1	1
⊙	23	•2A806131		SOLENOID FEED	1	1
	24	•5MBWK62955NN	C2892950	POLY WASHER	2	2

- Parts with "\*" are component parts or sub-assemblies of the assembly appearing immediately above them.
- Parts with "⊙" indicates the spare parts.

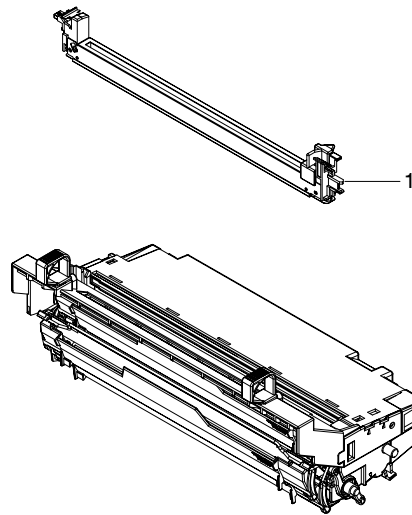


FIG. 6 IMAGE FORMATION SECTION

2GL/2FV/2FW

SP	Ref.No.	Part.No.	Alternative.	Description	Quantity	
					120	230
⊙	1	302FV93010	2FV93010	DK-110	1	1
⊙		•302FV93070	2FV93070	MC-110	1	1

- Parts with "•" are component parts or sub-assemblies of the assembly appearing immediately above them.
- Parts with "⊙" indicates the spare parts.

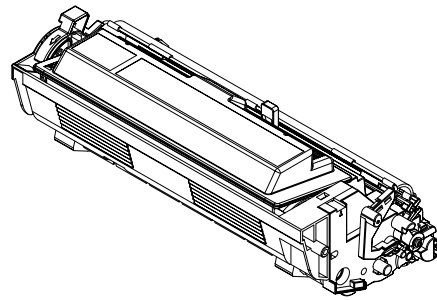




FIG. 7 DEVELOPING UNIT

2GL/2FV/2FW

SP	Ref.No.	Part.No.	Alternative.	Description	Quantity	
					120	230
⊙		302FV93020	2FV93020	DV-110		1
⊙		302FV93030	2FV93030	DV-112	1	

- Parts with "\*" are component parts or sub-assemblies of the assembly appearing immediately above them.
- Parts with "⊙" indicates the spare parts.

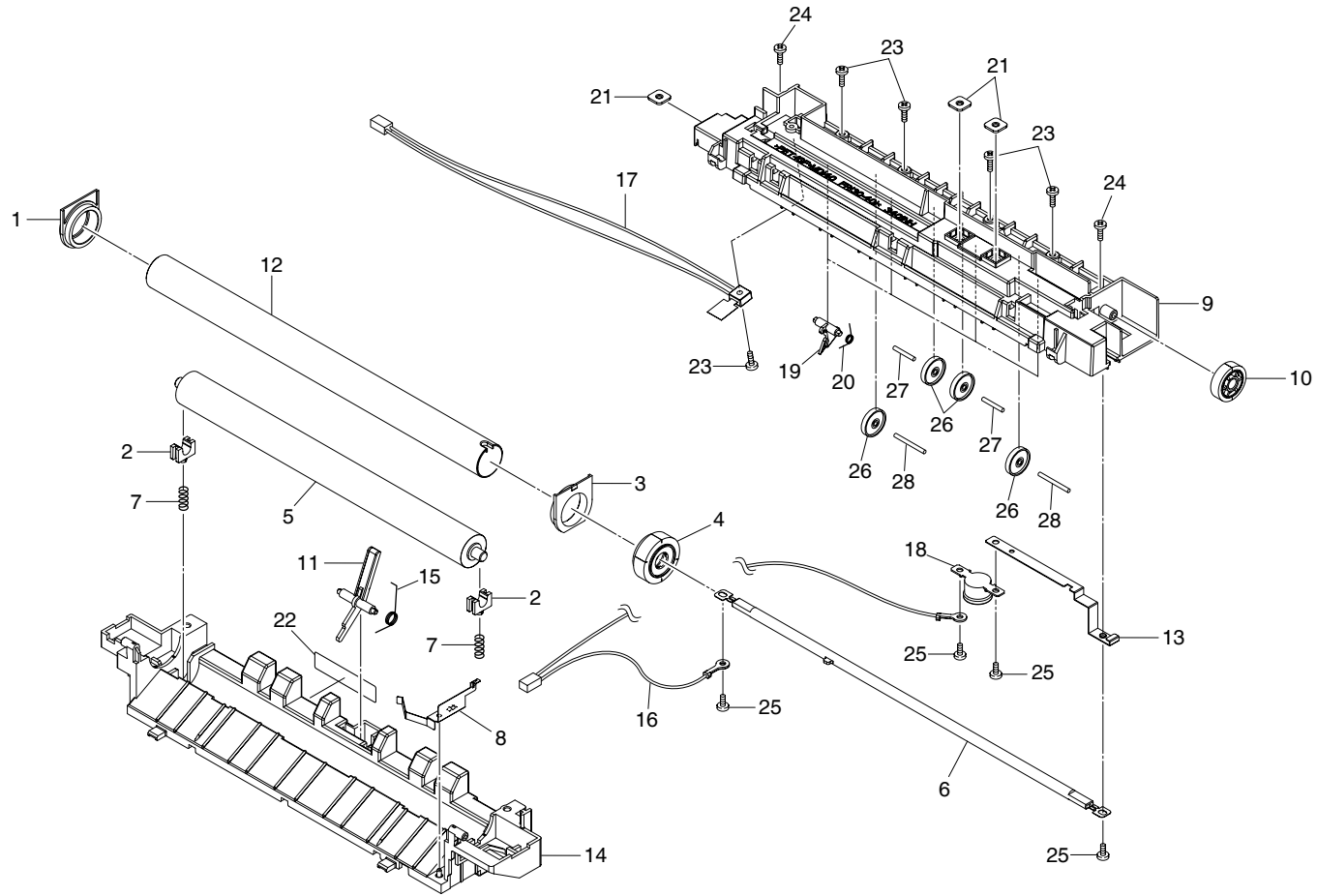


FIG. 8 FIXING SECTION

2GL/2FV/2FW

SP	Ref.No.	Part.No.	Alternative.	Description	Quantity	
					120	230
⊙		302FV93040	2FV93040	FK-110(E)		1
⊙		302FV93050	2FV93050	FK-110(U)	1	
⊙	1	•5MVM188XN016	2A820131	BUSH HEAT L	1	1
⊙	2	•2BY20070		BUSH PRESS	2	2
⊙	3	•5MVM188XN015	2A820120	BUSH HEAT R	1	1
⊙	4	•5MVG148XN008	2A820160	GEAR HEAT Z33	1	1
⊙	5	•2DC20060		ROLLER PRESS	1	1
⊙	6	•5HZPB2413120103	2FV27020	HEATER LAMP E		1
⊙	6	•5HZPB1216320103	2FV27010	HEATER LAMP U	1	
⊙	7	•5MMW261SD016	2FV20070	SPRING PRESS	2	2
	8	•5MMX533LD003	2FV20040	PLATE EARTH FUSER	1	1
	9	•5MVB864KB009	2FV20020	FRAME FUSER UP	1	1
	10	•5MVG138XN010	2FV20090	GEAR IDLE Z25	1	1
⊙	11	•5MVX531CB002	2FV20030	ACTUATOR FUSER	1	1
⊙	12	•5MMT876AX002	2BY20010	ROLLER HEAT	1	1
	13	•5MMX611RD001	2FV20080	PLATE CORD	1	1
	14	•5MVB866KB003	2FV20010	FRAME FUSER LOW	1	1
	15	•5MMW261LD073	2FV20060	SPRING ACTUATOR	1	1
	16	•5AACCNSX3GEA++R	2FV26060	CONN CORD ASSY		1
	16	•5AACCNSX4GEA++R	2FV26070	CONN CORD ASSY	1	
⊙	17	•5AAXTM017GEA++R	2FV27040	THERMISTOR ASSY	1	1
⊙	18	•302FV27060	2FV27060	THERMOSTAT 250V170C	1	1
	19	•5AAVSEPR015	2A820360	SEPARATOR ASSY	4	4
	20	•5MMW261LD072	2FV20050	SPRING SEPARATOR	4	4
	21	•5MMS111SL002	2BY20050	NUT FUSER A	3	3
	22	•5MVVL611WN06	2FV20100	LABEL FUSER CAUTION	1	1
	23	•5MBTPB3012PW++R	B1A63120	BIND T.T SCREW(+)	5	5
	24	•5MBTPB4010PW++R	B1A64100	BIND T.T SCREW(+)	2	2
	25	•5MBSP43006NW++R	B4A03060	TP HEAD SCREW(+)	4	4
	26	•302FV20130	2FV20130	PULLEY EXIT	4	4
	27	•5MBP2012WPLD	E5120120	PARALLEL PIN	2	2
	28	•7BP512016+++H01	BP010450	PARALLEL PIN	2	2

- Parts with "•" are component parts or sub-assemblies of the assembly appearing immediately above them.
- Parts with "⊙" indicates the spare parts.

FIG. 9 PARTS PACKAGES

2GL/2FV/2FW

SP	Ref.No.	Part.No.	Alternative.	Description	Quantity	
					120	230
⊙		302GLP1010	2GLP1010	PACKING MATTERS 2GL(E) (FS-720)		1
⊙		302GLP1020	2GLP1020	PACKING MATTERS 2GL(U) (FS-720)	1	
⊙		302FVP1010	2FVP1010	PACKING MATTERS 2FV(E) (FS-820)		1
⊙		302FVP1020	2FVP1020	PACKING MATTERS 2FV(U) (FS-820)	1	
⊙		302FWP1010	2FWP1010	PACKING MATTERS 2FW(E) (FS-920)		1
⊙		302FWP1020	2FWP1020	PACKING MATTERS 2FW(U) (FS-920)	1	
⊙		302FP50330	2FP50330	POLY BAG	1	1
⊙		302FV50010	2FV50010	POLY BAG	1	1
⊙		302FV50020	2FV50020	POLY BAG	1	1

• Parts with "\*" are component parts or sub-assemblies of the assembly appearing immediately above them.

• Parts with "⊙" indicates the spare parts.

• Parts with "••" are component parts or sub-assembly with "•" appearing immediately above them.