

**brother**®

**P-touch**

**PARTS REFERENCE LIST**

**MODEL: QL-570/570VM**

MECHANISMS & ELECTRONICS

## NOTES FOR USING THIS PARTS REFERENCE LIST

1. When ordering parts, inform us of the following items:

- (1) Code
- (2) Q'ty
- (3) Description
- (4) Symbol (PCB No., Revision, and Parts location mounted on the PCB.)

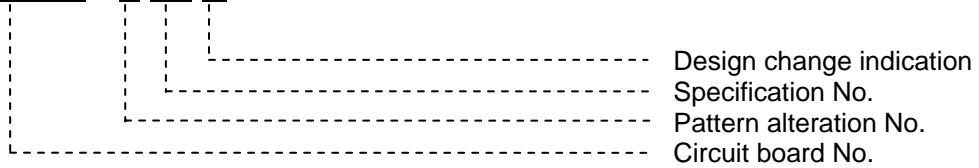
Note : Orders without Parts Code or Tool No. cannot be accepted.

[ Example ]

REF. NO.	CODE	Q'TY	DESCRIPTION	SYMBOL	REMARKS
					R

Revision No. : marked on the printed circuit board.

**B55L182 - 1 01 A**



2. Design-changed parts:

When the parts are design-changed, any one of the following symbols is indicated in the REMARKS column.

- CHNG#A: compatible between old and new
- CHNG#B: replaceable from old to new
- CHNG#D: incompatible
- ADD : newly added

3. Parts marked with an "R" in the REMARKS column are recommended spare parts.

4. The original of this list was made based on the information as of Oct, 2007.

5. Parts are subject to change in design without prior notice.

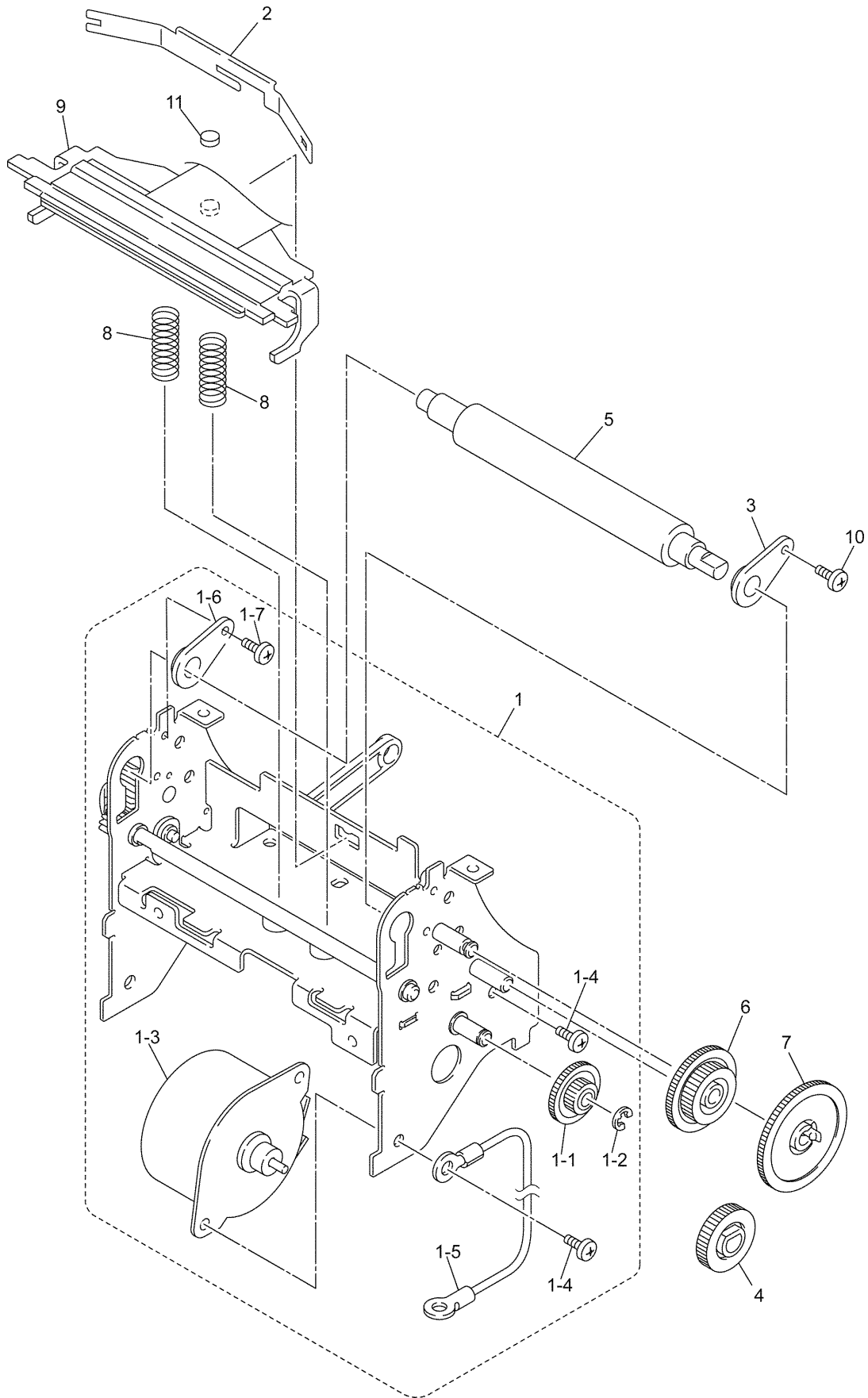
### COUNTRIES

- |                          |                     |                    |
|--------------------------|---------------------|--------------------|
| U.S.A. ----- USA         | India ----- IND     | Argentina ---- ARG |
| Germany ----- DEU        | Denmark ----- DNK   | Spain ---- ESP     |
| Canada ----- CAN         | Austria ----- AUT   | China ----- CHN    |
| United Kingdom ----- GBR | Hong Kong ----- HKG |                    |
| France ----- FRA         | Australia ----- AUS |                    |
| Brazil ---- BRA          | Singapore ----- SGP |                    |

# CONTENTS

1 . PRINT MECHANISM .....	1
2 . COVERS .....	3
3 . CUTTER .....	5
4 . MAIN PCB .....	7
5 . SENSORS .....	9
6 . POWER SUPPLY PCB .....	11
7 . ATTACHMENTS .....	13
8 . PRINTED MATTER .....	15
9 . PACKING MATERIALS .....	17

1 . PRINT MECHANISM

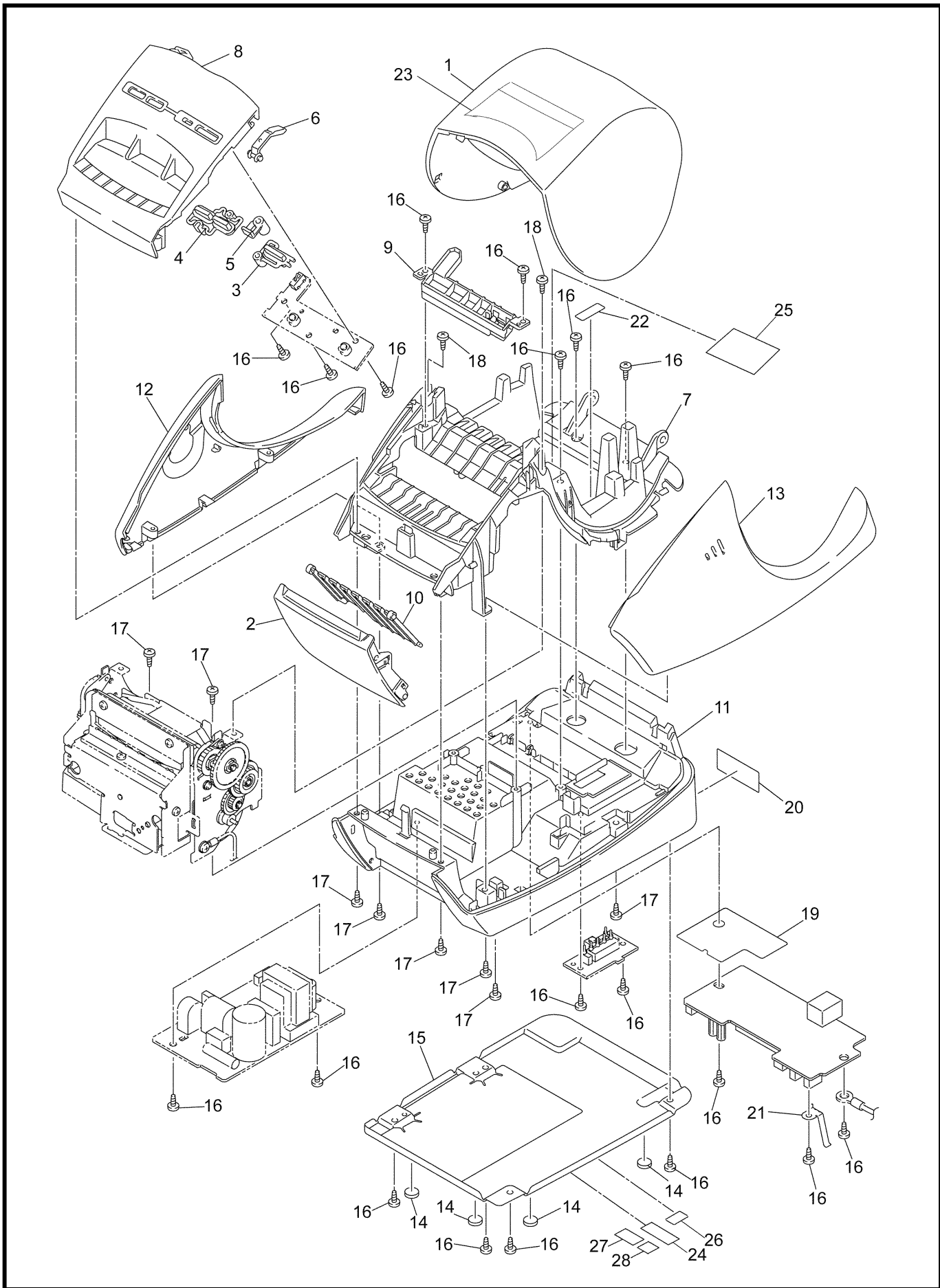


MODEL QL-570 8V7-106-045

1 . PRINT MECHANISM

REF.NO.	CODE	Q'TY	DESCRIPTION	REMARKS
1	LB7295001	1	MECHA ASSY QL570	
1-1	LB5019001	1	DOUBLE GEAR A	
1-2	048025346	2	RETAINING RING E2.5	
1-3	LB5032001	1	TAPE FEED MOTOR ASSY QL	
1-4	060300416	2	SCREW BIND M3X4	
1-5	LB7302001	1	FG HARNESS ASSY QL570	
1-6	LB5017001	1	PLATEN SHAFT BUSHING	add
1-7	000020416	1	SCREW BIND M2X4	add
2	LB7303001	1	HEAD HOLD SPRING QL570	
3	LB5017001	1	PLATEN SHAFT BUSHING	
4	LB5018001	1	PLATEN GEAR	
5	LB7552001	1	PLATEN ASSY QL570	chng#B
6	LB5020001	1	DOUBLE GEAR B	
7	LB5021001	1	DOUBLE GEAR C	
8	LB7306001	2	HEAD SPRING L QL570	
9	LB7478001	1	HEAD ASSY KD3002-11	
10	060020416	1	SCREW BIND M2X4	CHNG#A
11	LA5753001	1	LOWER FOOT 2300	

2 . COVERS

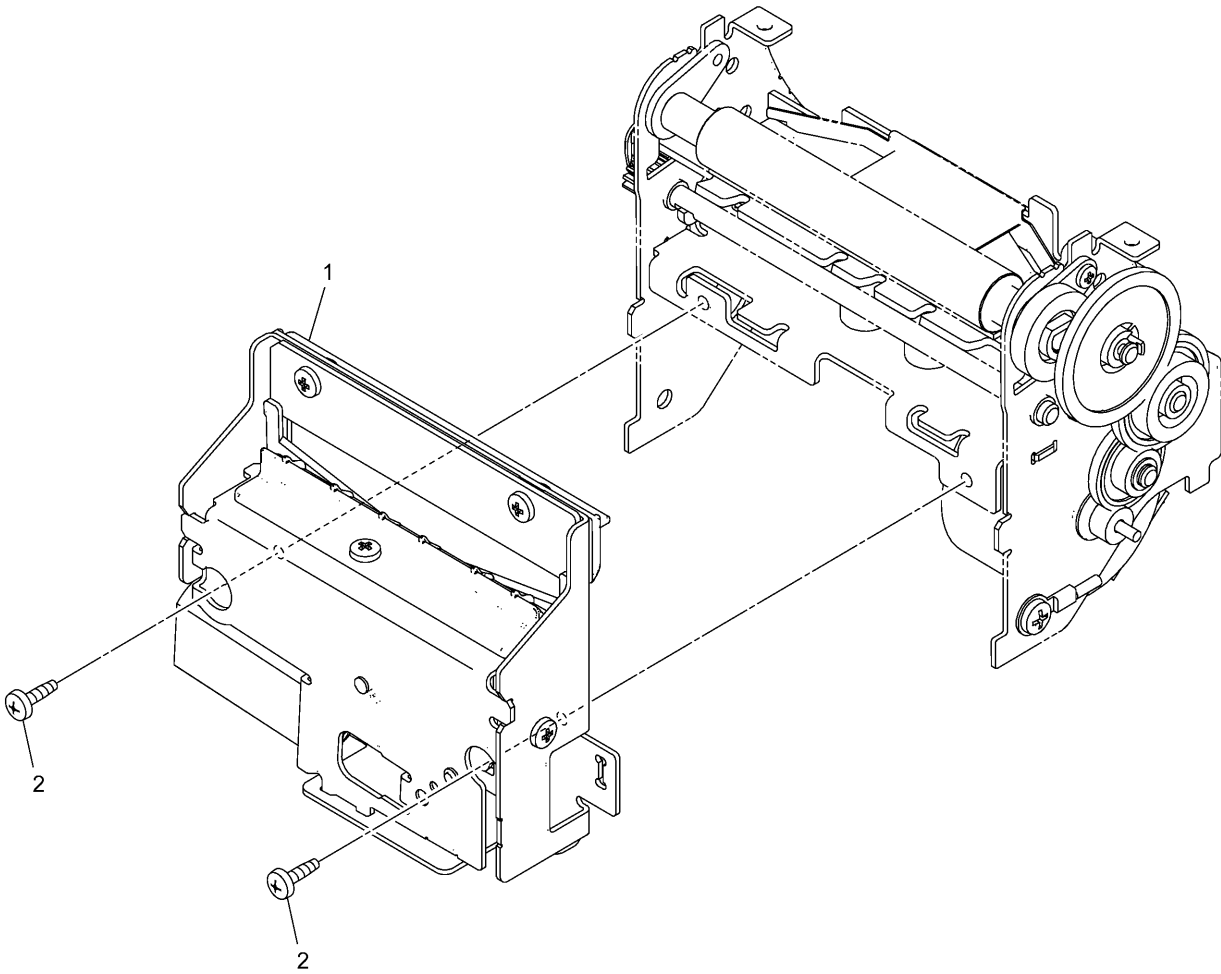


MODEL QL-570 8V7-106-061

## 2 . COVERS

REF.NO.	CODE	QTY	DESCRIPTION	REMARKS
1	LB7330001	1	TOP COVER QL570	
2	LB7331001	1	FRONT COVER QL570	
3	LB7332001	1	POWER BUTTON QL570	
4	LB7333001	1	FEED BUTTON QL570	
5	LB7334001	1	LED GUIDE QL570	
6	LB7338001	1	COVER SENSOR ARM QL570	
7	LB7335001	1	UPPER COVER QL570	
8	LB7337001	1	PANEL COVER QL570 US FOR USA/BRA	
8	LB7312001	1	PANEL COVER QL570 EU FOR DEU/CAN/GBR/FRA/IND/DNK/AUT/HKG/AUS/SGP/ARG/ESP/CHN	
9	LB7336001	1	INSERT GUIDE QL570	
10	LB7339001	1	TRAY S QL570	
11	LB7340001	1	UNDER COVER QL570 FOR USA/CAN/BRA/IND/HKG/AUS/SGP/ARG/CHN	
11	LB8476001	1	UNDER COVER QL570 EU FOR DEU/GBR/FRA/DNK/AUT/ESP	ADD
12	LB7341001	1	SIDE COVER L QL570	
13	LB7342001	1	SIDE COVER R QL570	
14	LA5753001	4	LOWER FOOT 2300	
15	LB7350001	1	LOWER PLATE ASSY QL570	
16	085270617	19	TAPTITE BIND B M2.6X6	
17	085270817	8	TAPTITE BIND B M2.6X8	
18	LB6834001	2	SCREW BIND M2.6X4	
19	LB7418001	1	INSULATING SHEET S QL570	
20	LN3730001	1	USB STICKER US FOR USA/IND/HKG/AUS/SGP	
20	LN7111001	1	USB STICKER EU FOR DEU/CAN/GBR/FRA/BRA/DNK/AUT/ARG/ESP	
20	LN6660001	1	USB STICKER CHN FOR CHN	
21	LB7344001	1	GROUND SPRING PLATE QL570	
22	LB6321001	1	VOLUME COVER LABEL	
23	LB6979001	1	MYLAR LABEL QL-570 AUS FOR AUS	
24	LA4998001	1	C-TICK MARK FOR AUS	
25	LB7619001	1	ROLL SET GUIDE LABEL QL-570	add
26	LN7113001	1	EEE LABEL COVER CHN FOR DEU/GBR/FRA/DNK/AUT/ESP	
27	LW0985001	1	CHINA ROHS STICKER 10 FOR CHN	
28	LW1476001	1	CHINA PRODUCTION DATE LABEL FOR CHN	
	LB8242001	1	IRAM LABEL ARG COVER FOR ARG	

### 3 . CUTTER



MODEL QL-570 8V7-106-050

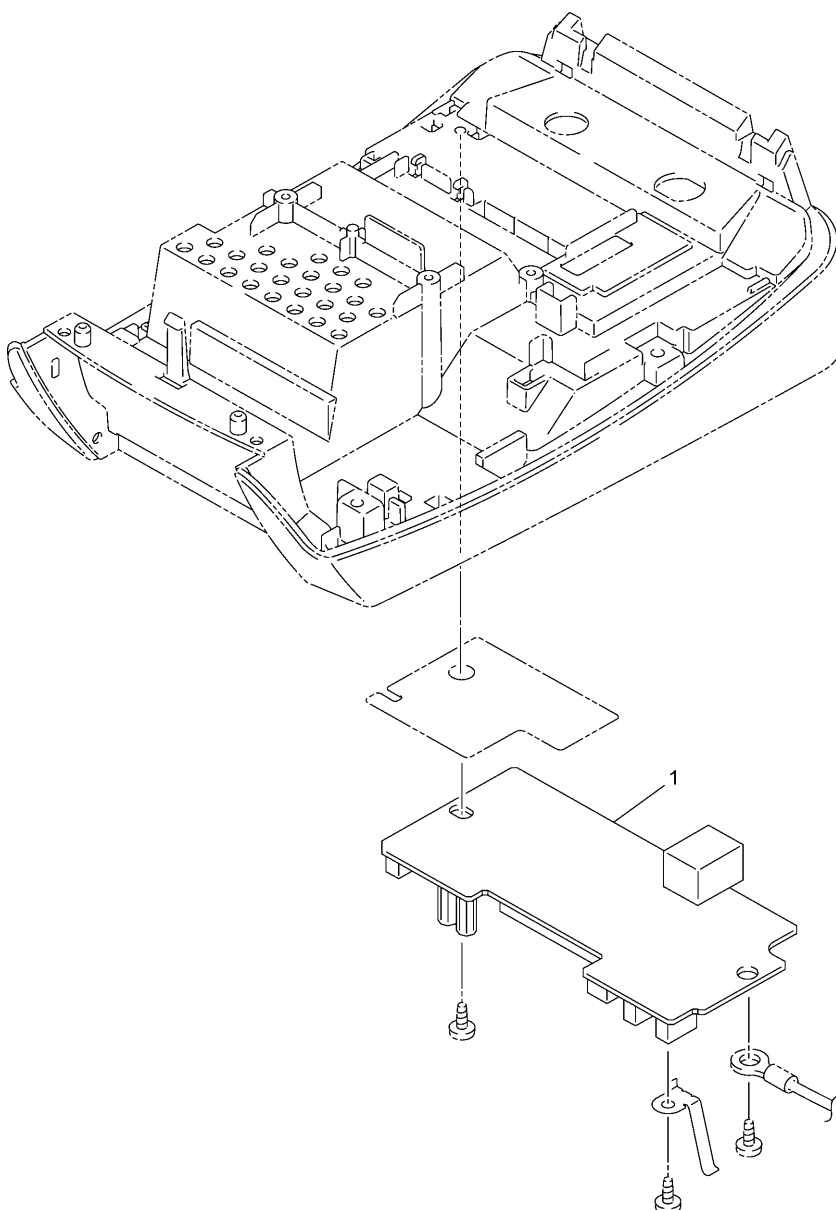
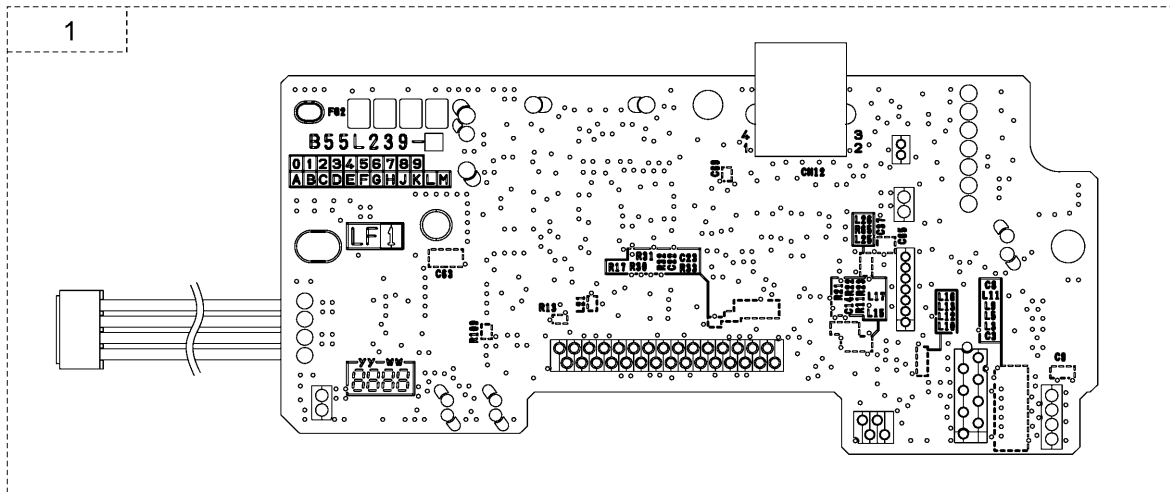


3 . CUTTER

REF.NO.	CODE	Q'TY	DESCRIPTION	SYMBOL	REMARKS
1	LB7314001	1	CUTTER UNIT ASSY QL570, QL-570 FOR USA/DEU/CAN/GBR/FRA/BRA/IND/DNK/AUT/ HKG/AUS/SGP/ARG/ESP, QL-570VM		
1	LB7734001	1	CUTTER UNIT ASSY QL570CHN FOR CHN		
2	LB7402001	2	SCREW BIND M2.6X5		

MODEL QL-570 8V7-106-050

4 . MAIN PCB

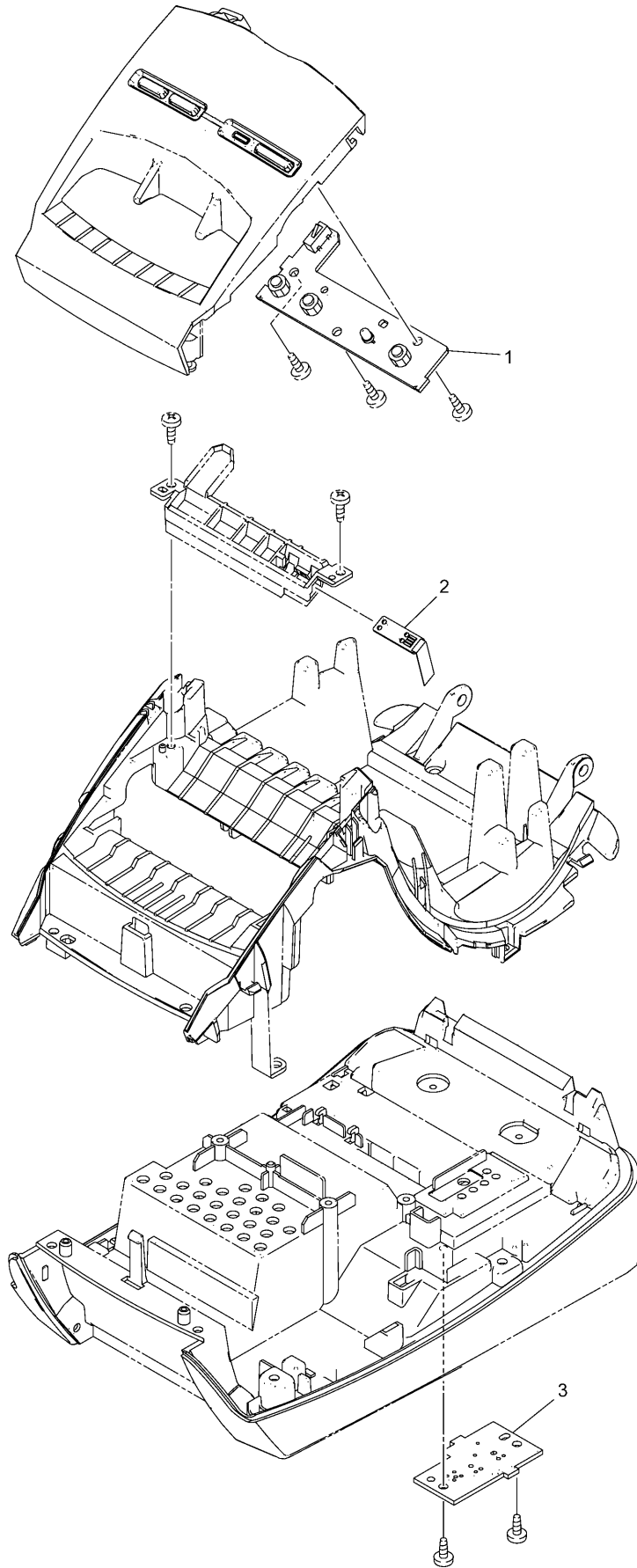


4 . MAIN PCB

REF.NO.	CODE	Q'TY	DESCRIPTION	SYMBOL	REMARKS
1	LB7368001	1	MAIN PCB ASSY QL570	B55L239-301D	R

MODEL QL-570 8V7-106-101

5. SENSORS

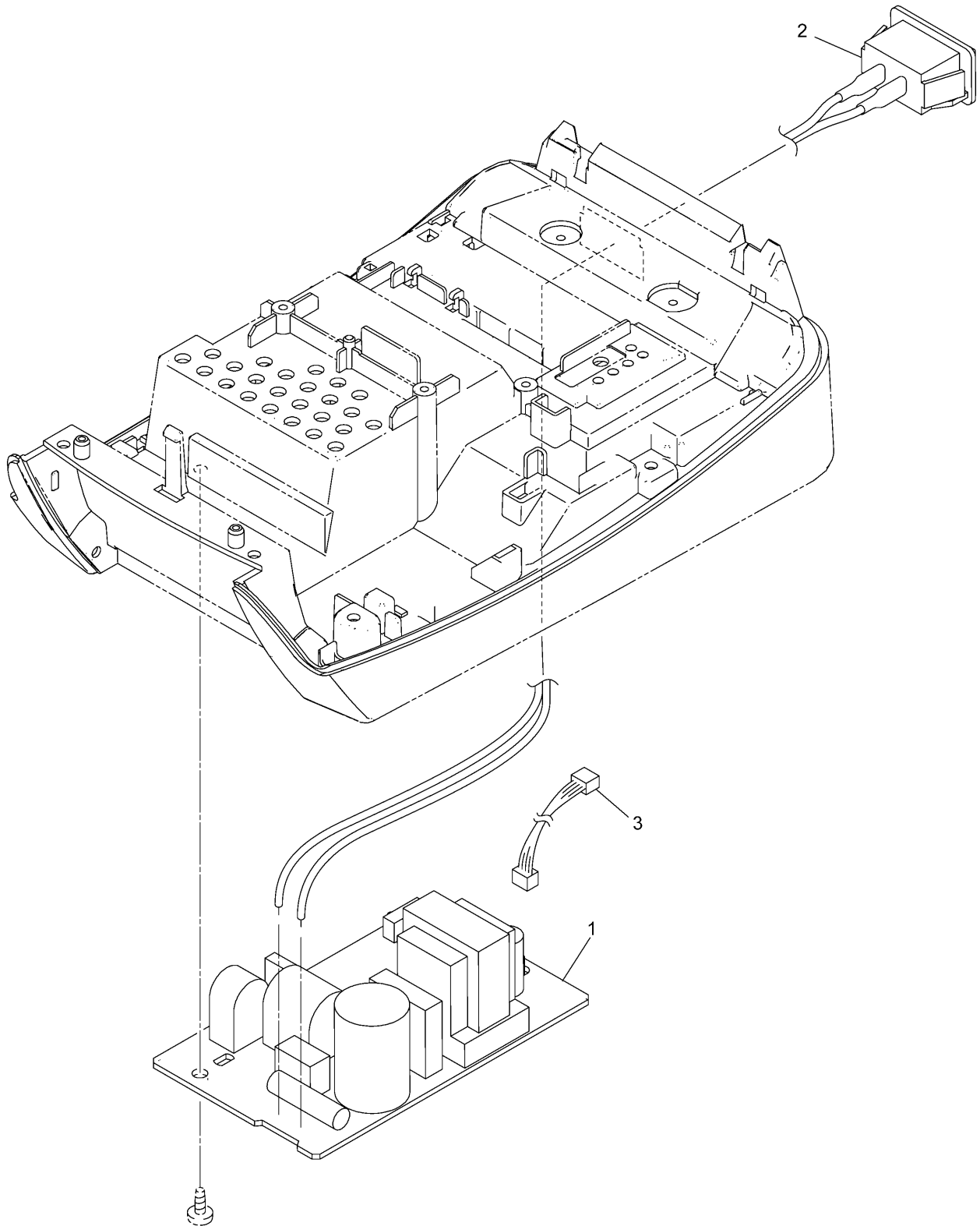


5. SENSORS

REF.NO.	CODE	Q'TY	DESCRIPTION	SYMBOL	REMARKS
1	LB7356001	1	SB PCB ASSY QL-570	B55L243-301A	R
2	LB6156001	1	TAPE SENSOR PCB ASSY QL650TD	B55L200	R
3	LB7360001	1	MEDIA PCB ASSY QL570	B55L244-201	R

MODEL QL-570 8V7-106-100

## 6 . POWER SUPPLY PCB



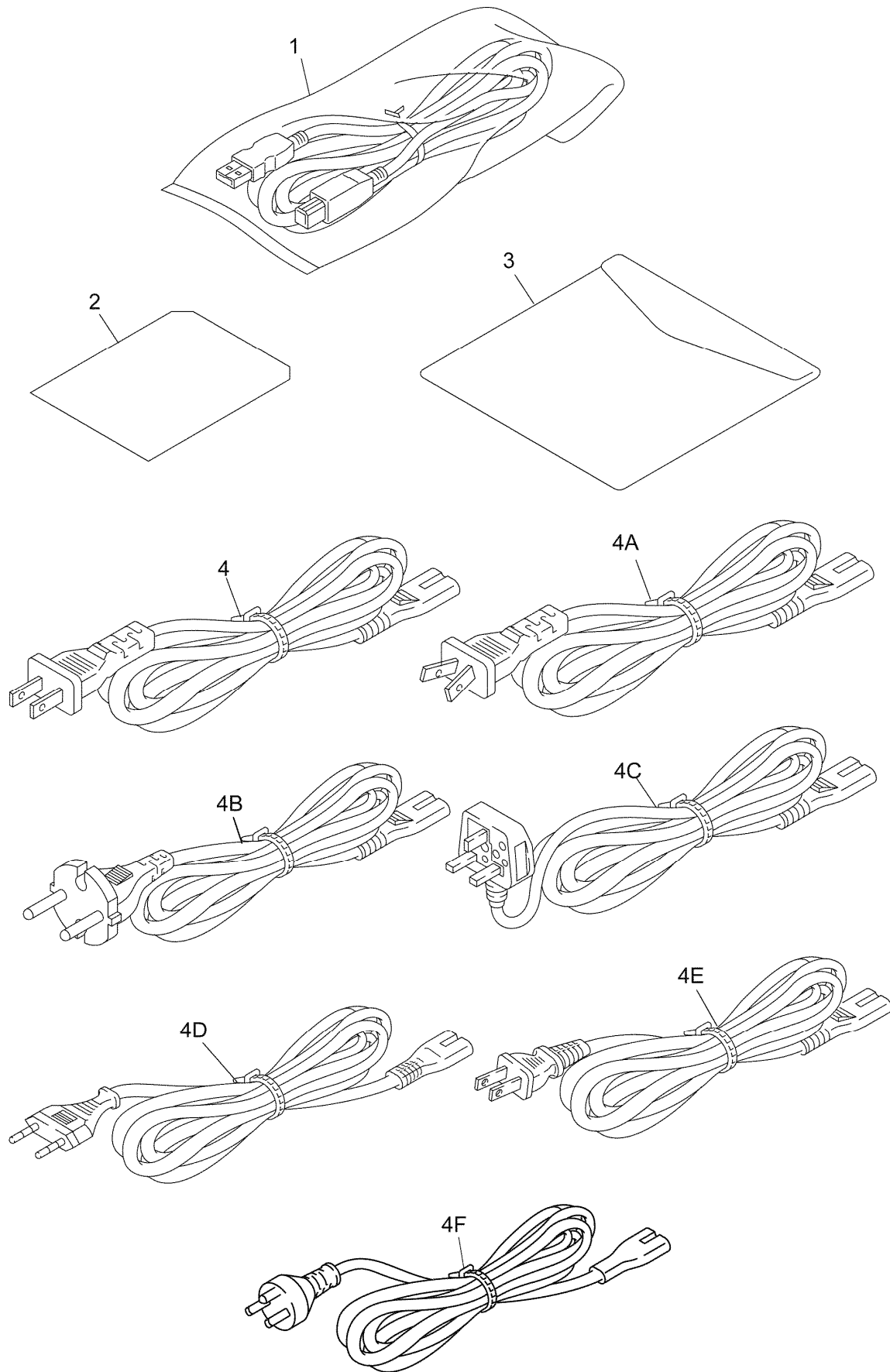
MODEL QL-570 8V7-106-102

6 . POWER SUPPLY PCB

REF.NO.	CODE	Q'TY	DESCRIPTION	SYMBOL	REMARKS
1	LB7364001	1	POWER SUPPLY ASSY MPW6433 FOR USA/CAN/BRA		R
1	LB7365001	1	POWER SUPPLY ASSY MPW6333 FOR IND/HKG/AUS/SGP/ARG		R
1	LB8488001	1	POWER SUPPLY ASSY MPW1926 FOR DEU/GBR/FRA/DNK/AUT/ESP		ADD/R
1	LB7730001	1	POWER SUPPLY ASSY MPW6333CL FOR CHN		add/R
2	LB7366001	1	SUB ASSY INLET QL570		
3	LB7382001	1	POWER8 HARNESS ASSY QL570		

MODEL QL-570 8V7-106-102

## 7. ATTACHMENTS



MODEL QL-570 8V7-106-910

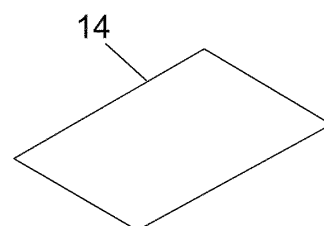
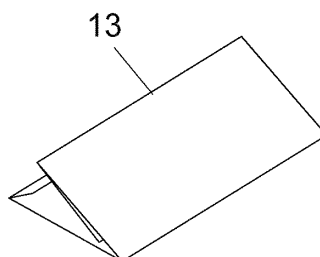
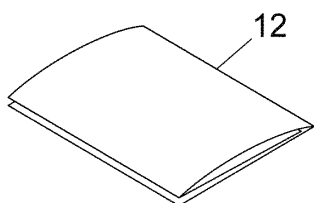
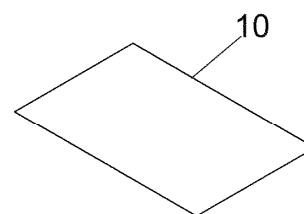
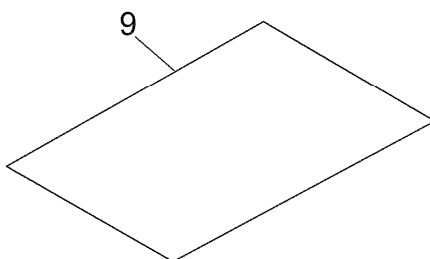
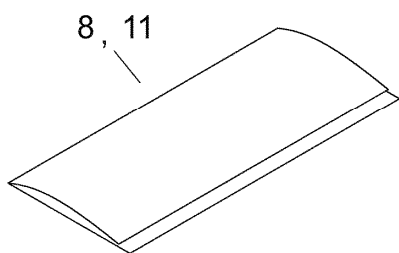
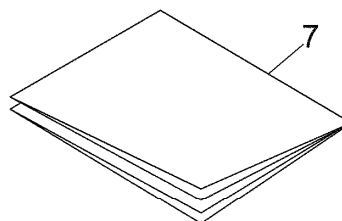
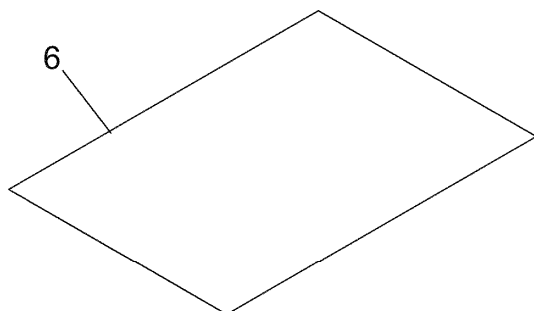
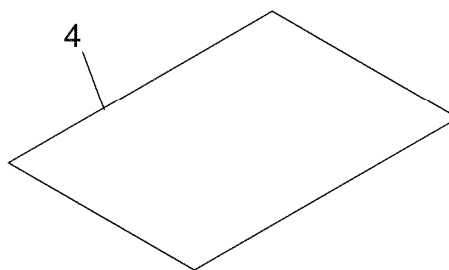
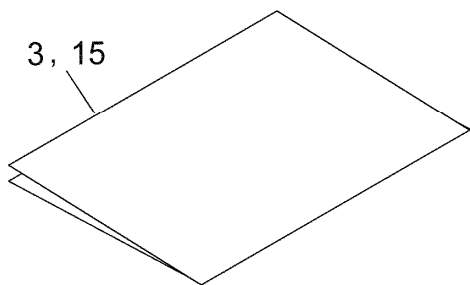
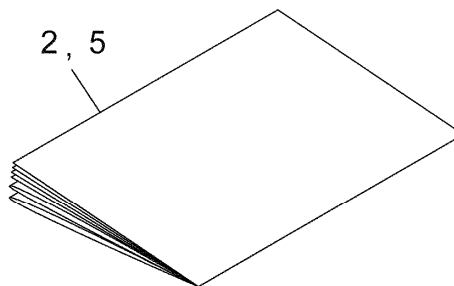
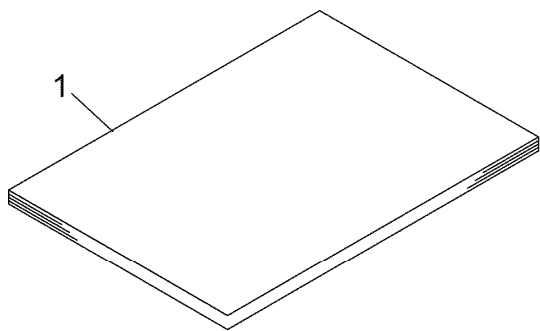


## 7 . ATTACHMENTS

REF.NO.	CODE	Q'TY	DESCRIPTION	SYMBOL	REMARKS
1	LJ9803001	1	USB2.0 CABLE 2.0		CHNG#A
2	LB5690001	1	CLEANING SHEET WORLD		
<del>3</del>	<del>LB7410004</del>	<del>4</del>	<del>CD-ROM QL-570 US FOR USA</del>		del
3	LB8998001	1	CD-ROM QL SERIES US2, QL-570 FOR USA/CAN/BRA		CHNG#B
3	LB8999001	1	CD-ROM QL SERIES EU1/AP FOR DEU/GBR/FRA/IND/DNK/HKG/AUS/SGP/ESP		CHNG#B
3	LB9001001	1	CD-ROM QL SERIES EU2 FOR FRA/ARG/ESP		CHNG#B
3	LB9002001	1	CD-ROM QL SERIES NORDIC FOR DNK		CHNG#B
3	LB9003001	1	CD-ROM QL SERIES CEE FOR AUT		CHNG#B
3	LB9013001	1	MANUAL CD QL CEE FOR AUT		CHNG#B
3	LB9005001	1	CD-ROM QL-570 CHN FOR CHN		CHNG#B
3	LB8993001	1	CD-ROM QL-570VM US FOR QL-570VM		CHNG#B
4	LW2359001	1	POWER SUPPLY CORD CSA LF FOR USA/CAN		
4A	LN8127001	1	POWER SUPPLY CORD AUS FOR AUS		
4B	LB8009001	1	AC CORD ASSY EU FOR DEU/FRA/DNK/AUT/ESP		chn#B
4C	LN8125001	1	POWER SUPPLY CORD BS FOR HKG/SGP		
4C	LB8010001	1	AC CORD ASSY BS FOR GBR		add
4D	LW2641001	1	POWER SUPPLY CORD INDIA FOR IND		
4D	XE3210001	1	POWER SUPPLY CORD:BRZ FOR BRA		
4E	LW5704001	1	POWER SUPPLY CORD CHN FOR CHN		CHNG#B
4F	XD0111151	1	POWER SUPPLY CORD:IRAM FOR ARG		
	LB8150001	1	BADGE HOLDER ASSY QL-570VM US FOR QL-570VM		
	LB8152001	1	STRAP ASSY QL-570VM US FOR QL-570VM		

MODEL QL-570 8V7-106-910

8 . PRINTED MATTER



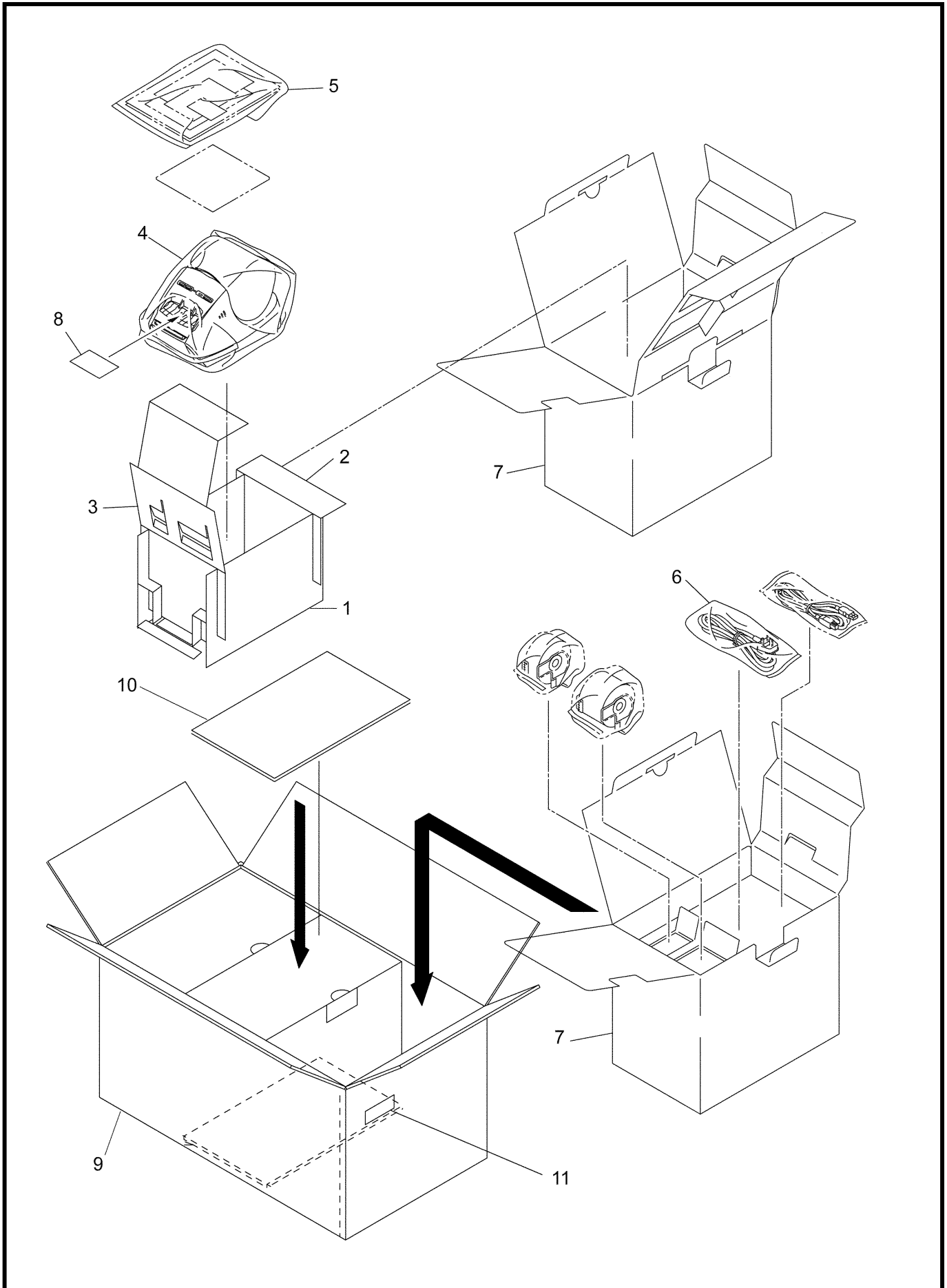
MODEL QL-570 8V7-106-920

## 8 . PRINTED MATTER

REF.NO.	CODE	Q'TY	DESCRIPTION	SYMBOL	REMARKS
1	LB8714001	1	USER'S MANUAL 570/580N US, QL-570 FOR USA/BRA		CHNG#B
1	LB8715001	1	USER'S MANUAL 570 CAN FOR CAN		CHNG#B
1	LB8724001	1	USER'S MANUAL 570/580N EU1 FOR DEU/GBR/FRA		CHNG#B
1	LB8726001	1	USER'S MANUAL 570/580N EU3 FOR FRA/ARG/ESP		CHNG#B
4	<del>LB8504004</del>	4	<del>QL SETUP GUIDE 570/580N EU1 FOR AUT</del>		DEL
1	LB8725001	1	USER'S MANUAL 570/580N EU2 FOR DNK		CHNG#B
1	LB8727001	1	USER'S MANUAL 570/580N ASIA FOR IND/HKG/AUS/SGP		CHNG#B
1	LB8740001	1	QL SETUP GUIDE 570/580N CHN FOR CHN		CHNG#B
2	LB7717001	1	DK ROLL/TAPE CATALOG US570/580 FOR USA/BRA		chng#B
2	LB7284001	1	DK ROLL/TAPE CATALOG AUS FOR AUS		
2	LB7697001	1	DK ROLL/TAPE CATALOG EU570/580 FOR DEU/GBR/FRA/DNK/AUT/ARG/ESP		
3	LB7518001	1	REGISTRATION CARD QL US FOR USA		chng#B
4	LN6297001	1	REGISTER INSERTION US CH FOR USA		
5	LB8142001	1	2YEARS WARRANTY CARD FOR CAN		chng#B
6	LW7034001	1	WEEE & BATTERY INSERTION EU FOR DEU/GBR/FRA/DNK/AUT/ESP		CHNG#B
7	LA1661001	1	WARRANTY CARD EURO CH FOR DEU/GBR/FRA/DNK/AUT/ESP		chng#B
8	LM4756001	1	WARRANTY CARD IRE FOR GBR		
9	LW2661001	1	WARRANTY CARD FRA FOR FRA		
9	LS1027001	1	WARRANTY CARD BRZ FOR BRA		
10	LM2019001	1	WARRANTY CARD SWE/NOR FOR DNK		
11	LA4592001	1	WARRANTY CARD HONG KONG FOR HKG		
12	LJ5400001	1	WARRANTY CARD SPA FOR ESP		
12	LM2652001	1	WARRANTY CARD POR FOR ESP		
	LX0474001	1	WARRANTY CARD BH9 ARG FOR ARG		
13	LW3773001	1	WARRANTY CARD CHINA FOR CHN		CHNG#B
14	LW3135001	1	CEE WARRANTY CARD FOR AUT		CHNG#B
15	LB9153001	1	INSTALL GUIDE QL EN/DE/FR/NL FOR DEU/GBR/FRA		ADD
15	LB9155001	1	INSTALL GUIDE QL ES/PT/IT FOR FRA/ESP		ADD
15	LB9154001	1	INSTALL GUIDE QL DA/NO/SV/FI FOR DNK		ADD
15	LB9160001	1	INSTALL G QL AUS FOR IND/HKG/AUS/SGP		ADD
	LB8702001	1	USER'S MANUAL QL570VM US FOR QL-570VM		CHNG#B
	LB8155001	1	QUICK REFERENCE QL570VM US FOR QL-570VM		
	LB8238001	1	UNPACKING INSTRUCTION QL570 FOR QL570		ADD
	LW3688001	1	INSERTION ARGENTINA FOR ARG		

MODEL QL-570 8V7-106-920

9 . PACKING MATERIALS



MODEL QL-570 8V7-106-930

9 . PACKING MATERIALS

REF.NO.	CODE	Q'TY	DESCRIPTION	SYMBOL	REMARKS
1	LB7352001	1	PAD LOWER QL570		
2	LB7401001	1	PAD UPPER QL570		
3	LB7353001	1	PARTITION PAD QL570		
4	LB7578001	1	BAG 300X400H		chn#A
5	LA6867001	1	BAG 215X360H		
6	LA7882001	1	BAG 130X350 EXCEPT FOR BRA/ARG		
7	LB9208001	1	CARTON QL-570 US, QL-570 FOR USA/BRA		CHNG#B
7	LB9079001	1	CARTON QL-570 CAN FOR CAN		CHNG#B
7	LB9131001	1	CARTON QL-570 EU FOR DEU/GBR/FRA/ESP/DNK/AUT/ARG		CHNG#B
7	LB8883001	1	CARTON QL-570 CHN FOR CHN		CHNG#B
7	LB9134001	1	CARTON QL-570 ASIA FOR IND/HKG/AUS/SGP		CHNG#B
7	LB9017001	1	CARTON QL-570VM US FOR QL-570VM		CHNG#B
8	LB5431000	1	PLATEN PROTECT PAD		
9	LB7354001	1	CARTON (X3) QL570 US, QL-570 FOR USA/CAN/BRA/IND/HKG/AUS/SGP/ARG		
9	LB7373001	1	CARTON (X3) QL570 EU FOR DEU/GBR/FRA/DNK/AUT/ESP		
9	LB8080001	1	CARTON (X3) QL-570 CHN FOR CHN		add
9	LB8158001	1	CARTON (X3) QL570VM FOR QL-570VM		
10	LB7355001	1	PAD QL570		
11	UN8891001	1	C-TICK MARK FOR AUS		
	LN6938001	1	AUSTRIA LABEL LARGE FOR AUT		
	LB8157001	1	ROLL PAD QL570VM FOR QL-570VM		
	LB7739001	1	3YEAR WARRANTY STICKER AUS FOR AUS		add
	LW3751001	1	3YR GUARANTEE MYLAR LABEL GER FOR DEU		ADD
	LB8275001	1	IRAM LABEL QL-570 ARG FOR ARG		

MODEL QL-570 8V7-106-930

**brother**®

Oct, 2007  
PL-PT004

Revised  
Ver. D-1