



P-touch

PARTS REFERENCE LIST

MODEL: QL-550

MECHANISMS & ELECTRONICS

NOTES FOR USING THIS PARTS REFERENCE LIST

1. When ordering parts, inform us of the following items:

- (1) Code
- (2) Q'ty
- (3) Description
- (4) Symbol (PCB No., Revision, and Parts location mounted on the PCB.)

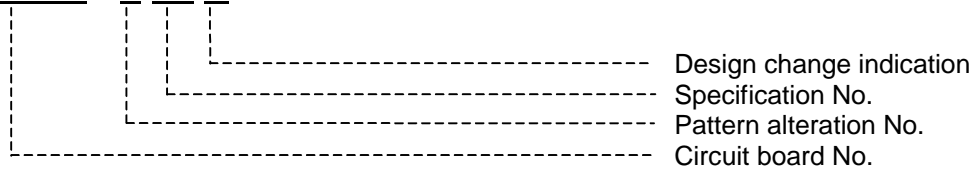
Note : Orders without Parts Code or Tool No. cannot be accepted.

[Example]

REF. NO.	SYMBOL	CODE	Q'TY	DESCRIPTION	REMARKS
					R

Revision No. : marked on the printed circuit board.

B55L182 - 1 01 A



2. Design-changed parts:

When the parts are design-changed, any one of the following symbols is indicated in the REMARKS column.

- CHNG#A: compatible between old and new
- CHNG#B: replaceable from old to new
- CHNG#D: incompatible
- ADD : newly added

3. Parts marked with an "R" in the REMARKS column are recommended spare parts.

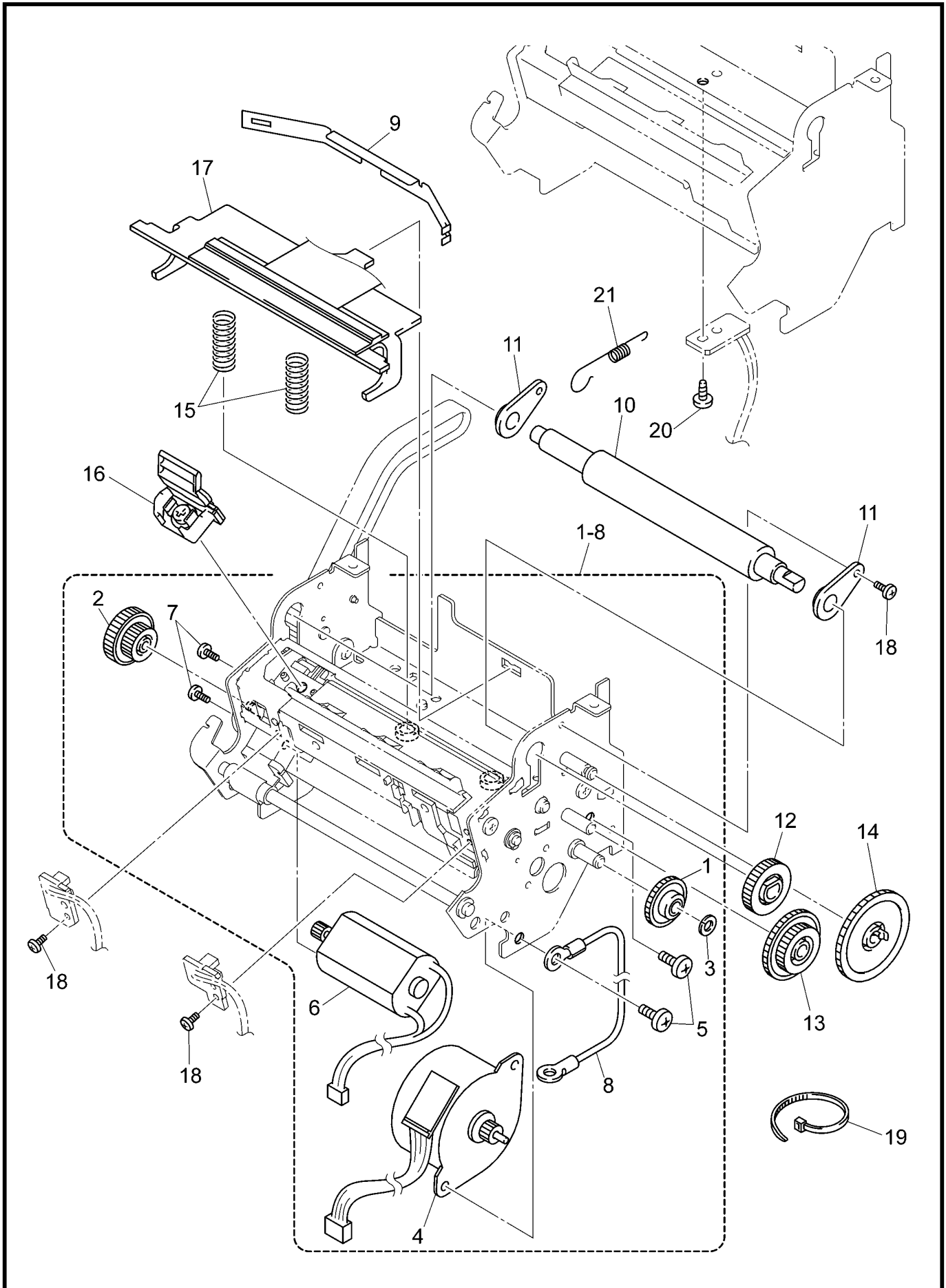
4. The original of this list was made based on the information as of May, 2004.

5. Parts are subject to change in design without prior notice.

CONTENTS

1 . PRINT MECHANISM	1
2 . COVERS	3
3 . MAIN PCB	5
4 . SENSORS	7
5 . POWER SUPPLY PCB	7
6 . ATTACHMENTS	9
7 . PRINTED MATTER	9
8 . PACKING MATERIALS	11

1 . PRINT MECHANISM



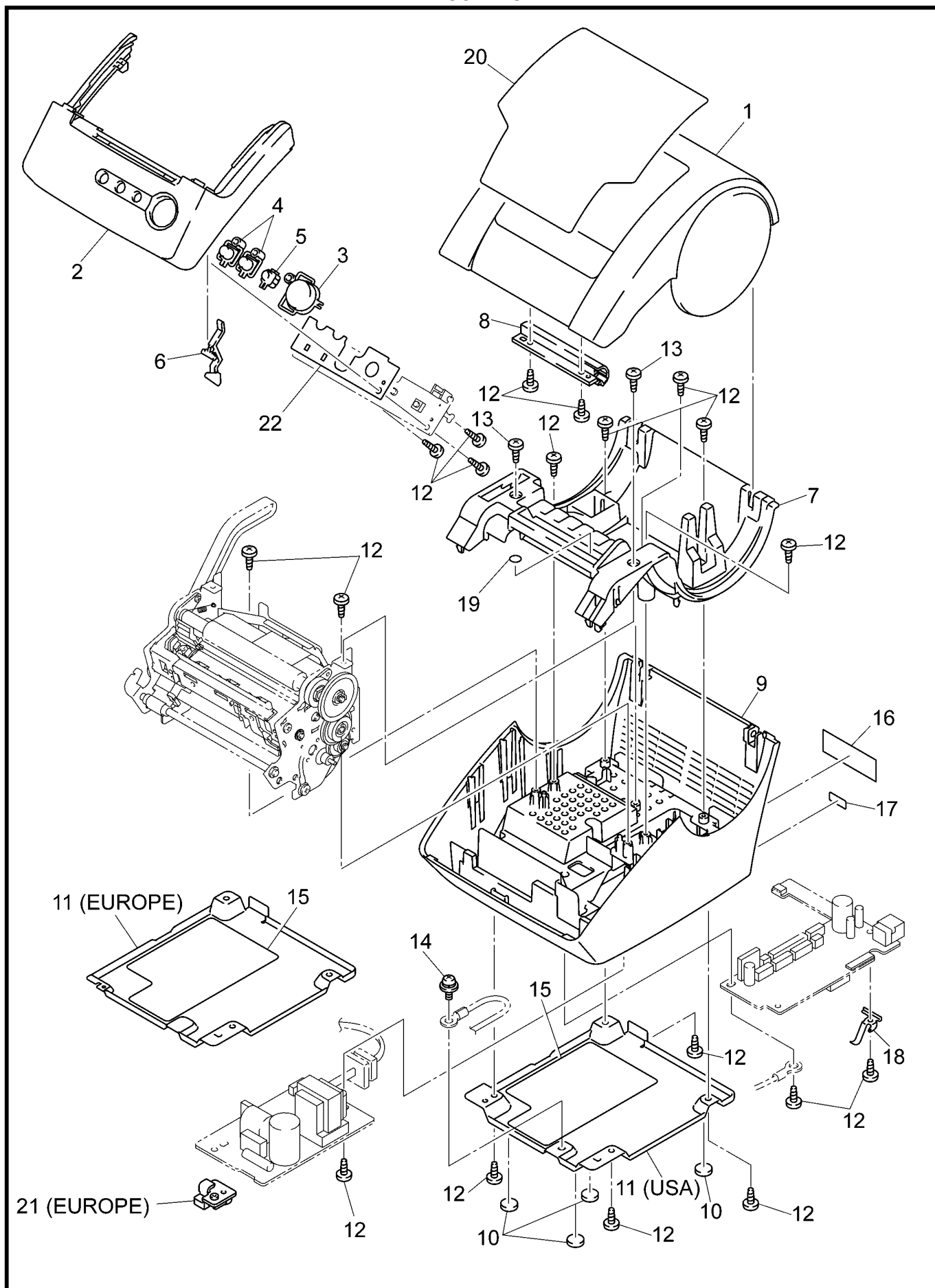
MODEL QL-550 8V7-102-045

1 . PRINT MECHANISM

REF.NO.	CODE	Q'TY	DESCRIPTION	REMARKS
1-8	LB5001001	1	MECHA QL550 ASSY	
1	LB5019001	1	DOUBLE GEAR A	
2	LB5023001	1	CUTTER DOUBLE GEAR	
3	048025346	1	RETAINING RING, E2.5	
4	LB5032001	1	TAPE FEED MOTOR ASSY QL	
5	060300415	2	SCREW, BIND M3X4	
6	LB5034001	1	FULL CUTTER MOTOR ASSY	
7	000020415	2	SCREW, BIND M2X4	
8	LB5062001	1	FG HARNESS ASSY	
9	LB5014001	1	HEAD HOLD SPRING	
10	LB5015001	1	PLATEN ASSY	
11	LB5017001	2	PLATEN SHAFT BEARING	
12	LB5018001	1	PLATEN GEAR	
13	LB5020001	1	DOUBLE GEAR B	
14	LB5021001	1	DOUBLE GEAR C	
15	LB5013001	2	HEAD SPRING	
16	LB5436001	1	CUTTER BLADE SCREW ASSY NR	R
17	LB5044001	1	HEAD ASSY KF3002-11	R
18	000020415	3	SCREW, BIND M2X4	
19	UN7903000	1	FASTENING BAND L100	
20	060260415	1	SCREW, BIND M2.6X4	
21	LB5426001	1	SPRING	

MODEL QL-550 8V7-102-045

2. COVERS



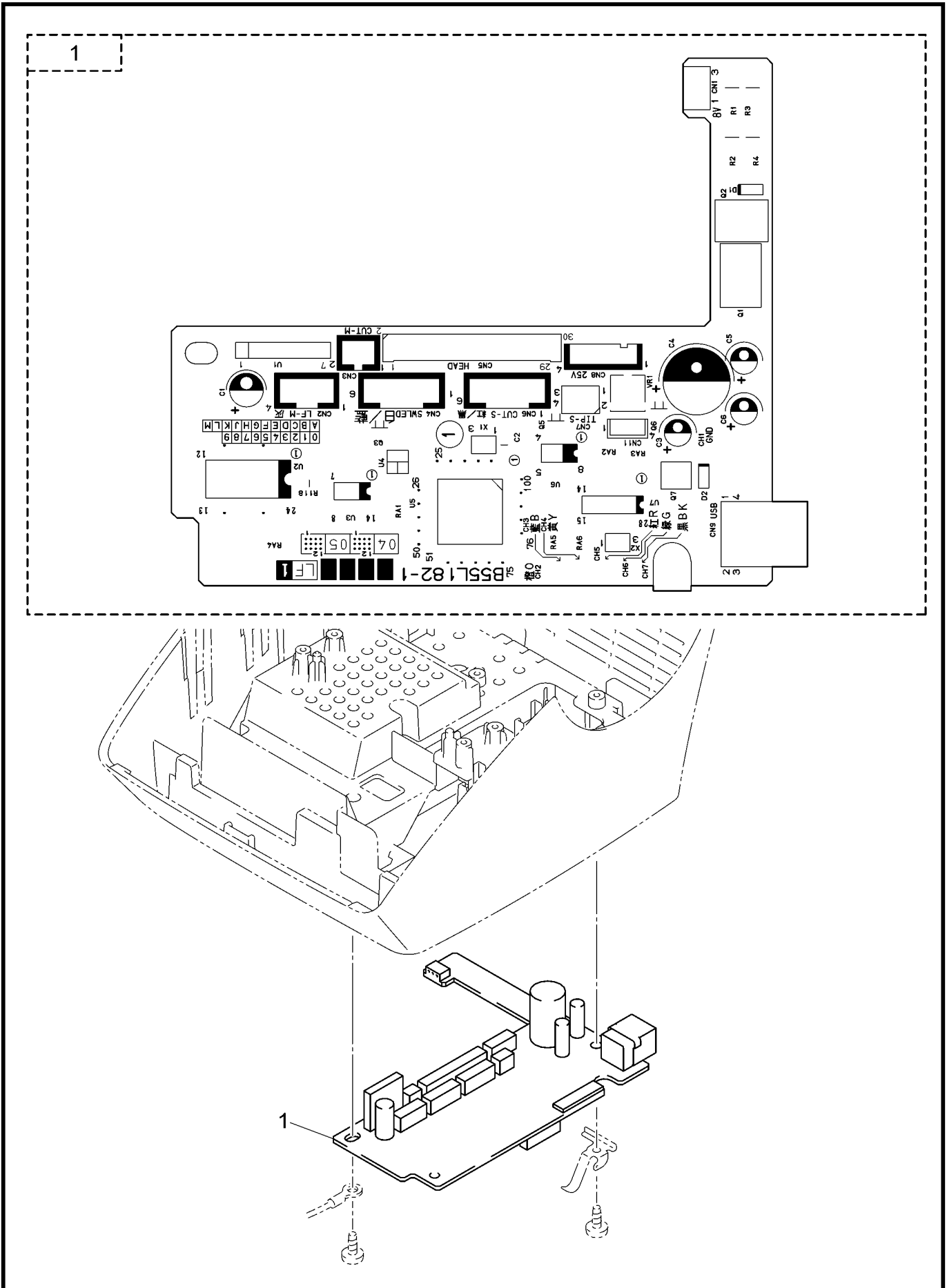
MODEL QL-550 8V7-102-061

2 . COVERS

REF.NO.	CODE	Q'TY	DESCRIPTION	REMARKS
1	LB5354001	1	TOP COVER ASSY QL550 (USA)	
1	LB5354002	1	TOP COVER ASSY QL550 (EUROPE)	
2	LB5052001	1	FRONT COVER QL550 (USA)	
2	LB5358001	1	FRONT COVER QL550EU (EUROPE)	
3	LB5053001	1	POWER BUTTON	
4	LB5054001	2	CUT FEED BUTTON	
5	LB5055001	1	LED GUIDE	
6	LB5056001	1	COVER SENSOR ARM	
7	LB5057001	1	UPPER COVER	
8	LB5058001	1	INSERT GUIDE	
9	LB5059001	1	UNDER COVER QL550 (USA)	
9	LB5289001	1	UNDER COVER QL550EU (EUROPE)	
10	LA5753001	4	LOWER FOOT 2300	
11	LB5061001	1	LOWER PLATE (USA)	
11	LB5349001	1	LOWER PLATE EU (EUR)	
12	085270617	19	TAPTITE, BIND B M2.6X6	
13	060260417	2	SCREW, BIND M2.6X4	
14	UF4444001	1	SCREW, PAN(P WASHER) M4X6 (USA)	
15	LB5064001	1	INSULATING SHEET	
16	LN3730001	1	USB STICKER US	
17	LB5101001	1	MODEL NAME LABEL QL	
18	LB5302001	1	GROUND SPRING PLATE	
19	LB5361001	1	REFLECT SHEET	
20	LB5369001	1	MYLAR LABEL QL550 (USA)	
21	LB5350001	1	LOWER PLATE SPACER (EUROPE)	
22	LB5427001	1	SB PCB PROTECT SHEET	

MODEL QL-550 8V7-102-061

3. MAIN PCB



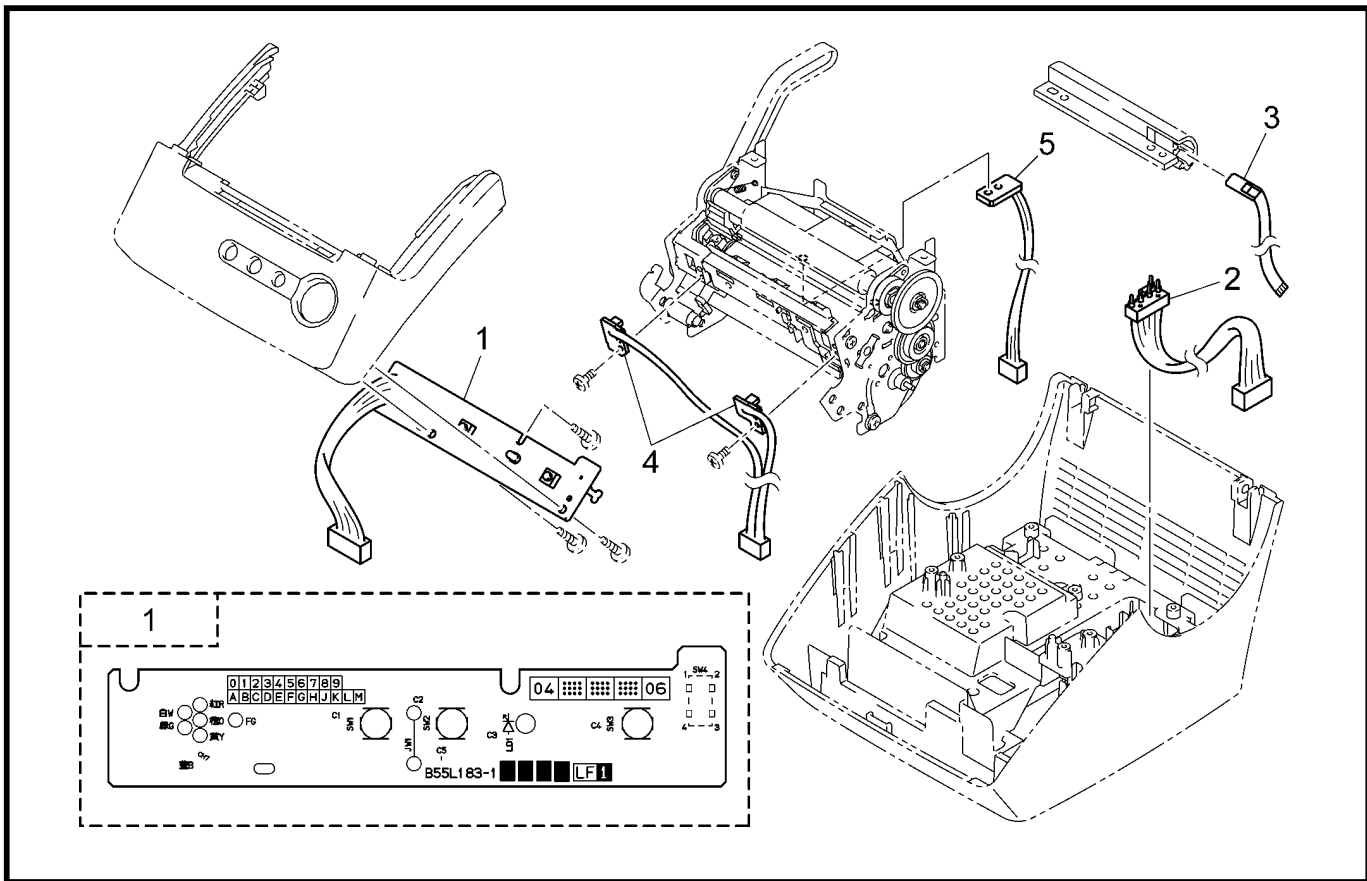
MODEL QL-550 8V7-102-101

3 . MAIN PCB

REF.NO.	SYMBOL	CODE	Q'TY	DESCRIPTION	REMARKS
1	B55L182-102B	LB5077001	1	MAIN PCB ASSY QL550	R

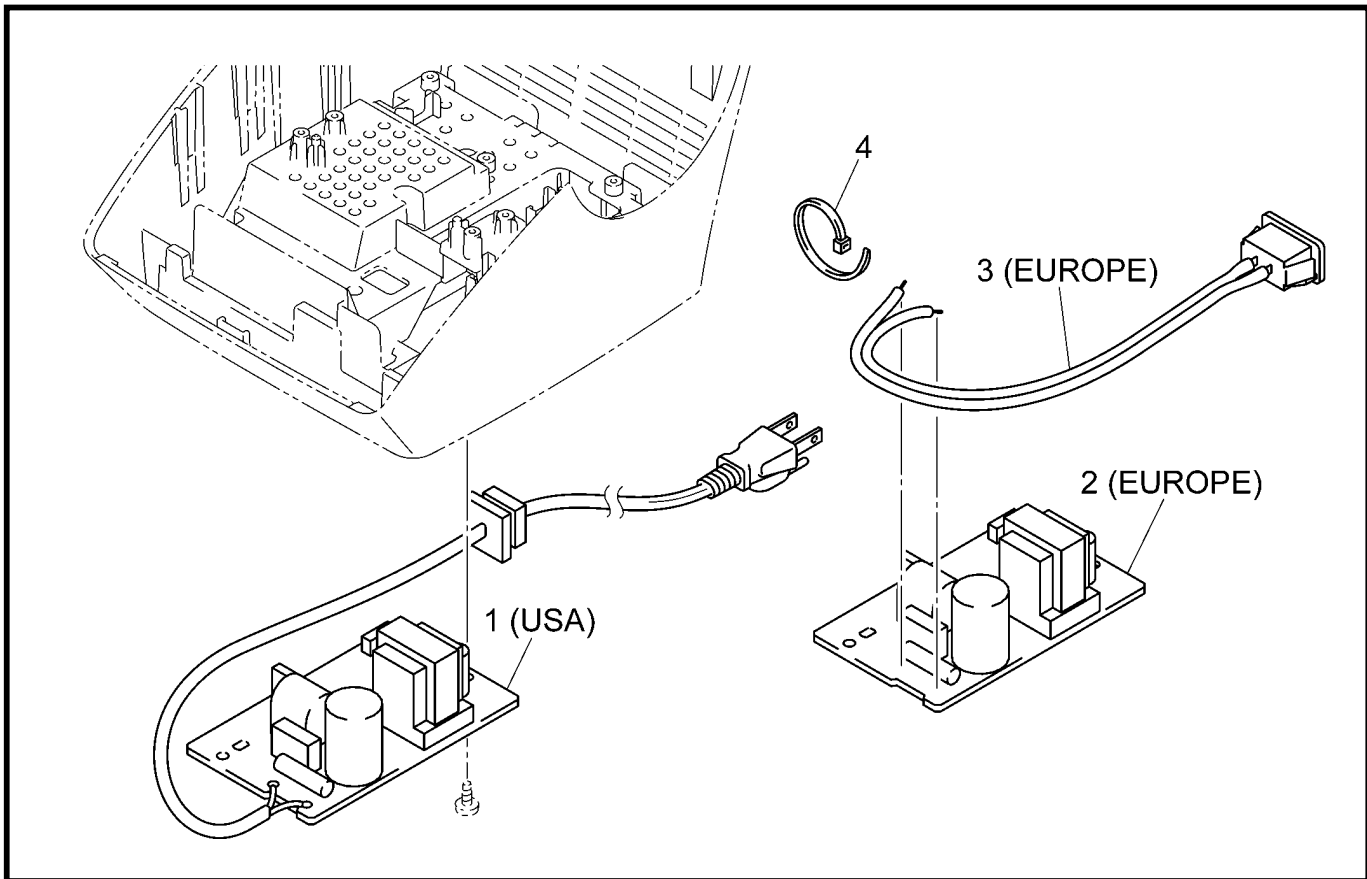
MODEL QL-550 8V7-102-101

4. SENSORS



MODEL QL-550 8V7-102-100

5. POWER SUPPLY PCB



MODEL QL-550 8V7-102-102

4 . SENSORS

REF.NO.	SYMBOL	CODE	Q'TY	DESCRIPTION	REMARKS
1	B55L183-102A	LB5067001	1	SB PCB ASSY QL550	R
2		LB5070001	1	MEDIA SENSER ASSY QL	R
3	B55L184-1	LB5072001	1	TAPE SENSER ASSY QL	R
4	B55L144/145-1C	LB5075001	1	CUTTER SENSOR PCB ASSY QL550	R
5	B55L177-1B	LB5298001	1	THERMISTOR PCB ASSY QL	R

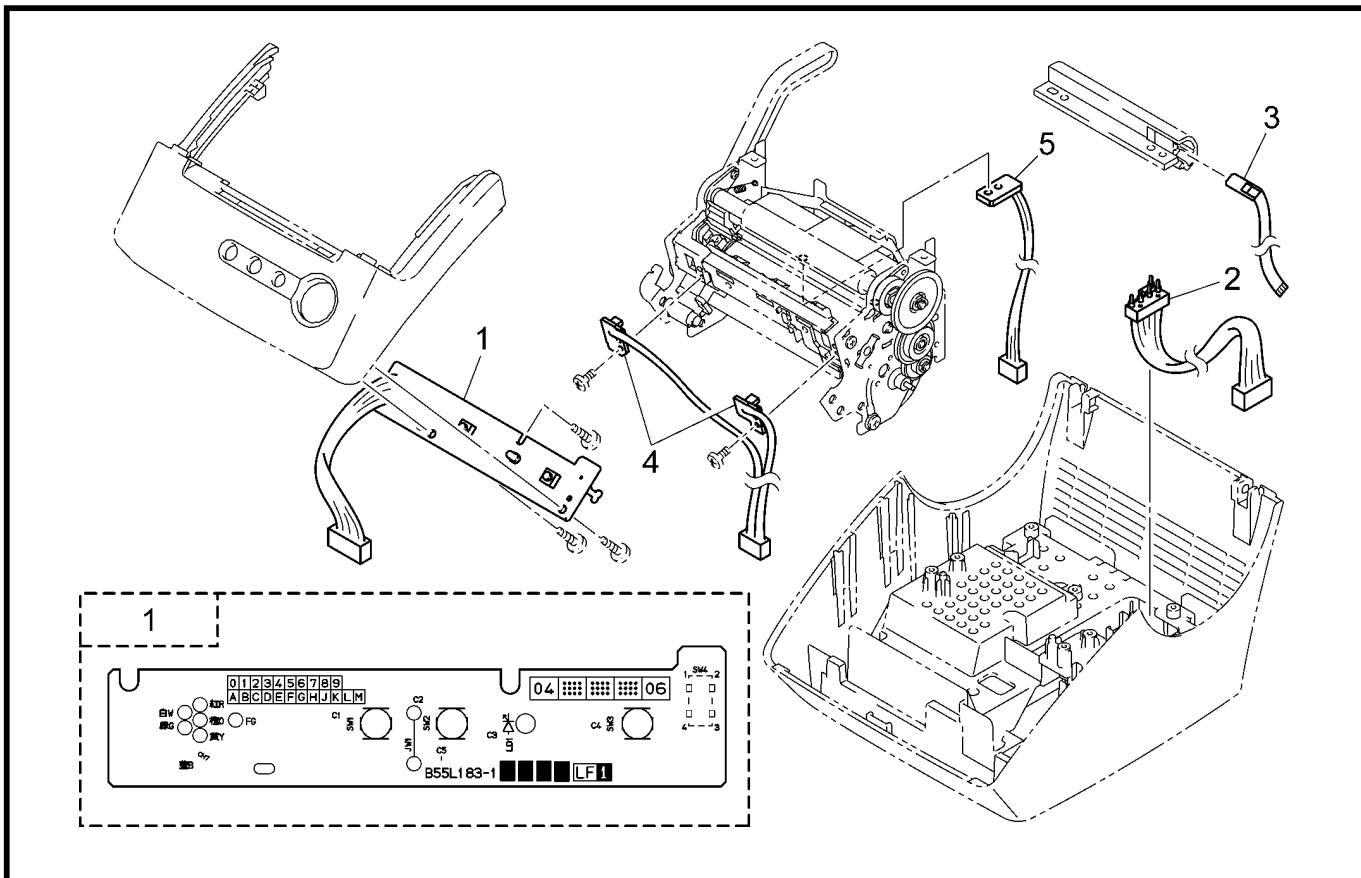
MODEL QL-550 8V7-102-100

5 . POWER SUPPLY PCB

REF.NO.	SYMBOL	CODE	Q'TY	DESCRIPTION	REMARKS
1	T7NAVI/US-1	LB5087001	1	POWER SUPPLY ASSY QL US (USA)	R
2	T7NAVI/EUR-1A	LG4605001	1	POWER SUPPLY ASSY T7NAVI/ EUR (EUROPE)	R
3		LB5291001	1	SUB ASSY INLET QL (EUROPE)	
4		UN7903000	1	FASTENING BAND L100 (EUROPE)	

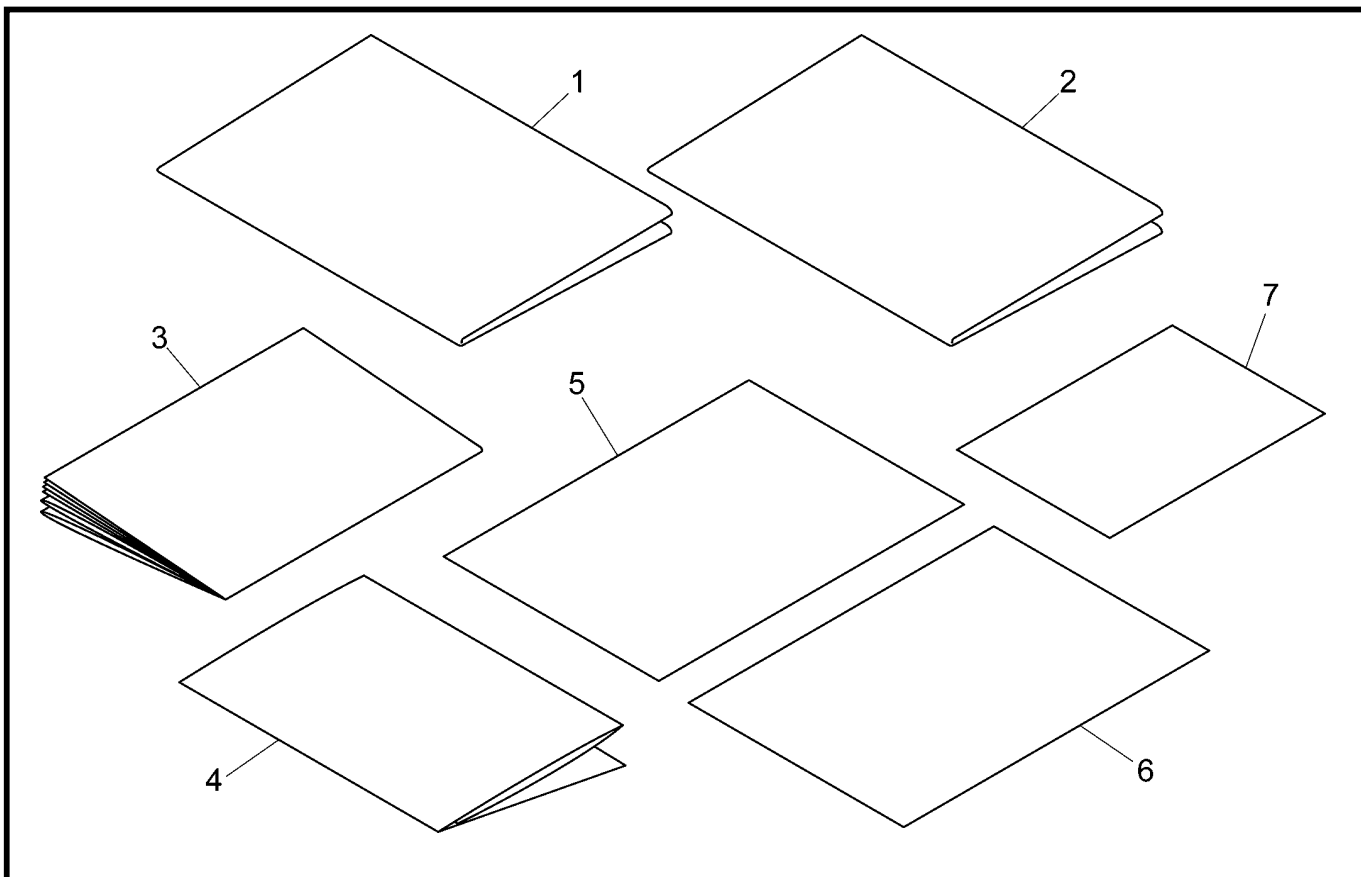
MODEL QL-550 8V7-102-102

4. SENSORS



MODEL QL-550 8V7-102-100

5. POWER SUPPLY PCB



MODEL QL-550 8V7-102-102

6 . ATTACHMENTS

REF.NO.	SYMBOL	CODE	Q'TY	DESCRIPTION	REMARKS
1A		LN6270001	1	USB2.0 I/F CABLE WY (USA)	
1B		LA9205001	1	USB I/F CORE CABLE (EUROPE)	
2		LB5090001	1	PAPER GUIDE	
3		X59354121	1	POWER SUPPLY CORD -BS (GBR)	
4		LB5366001	1	CLEANING SHEET	
5		LB5382001	1	CD-ROM ASSY QL-550	

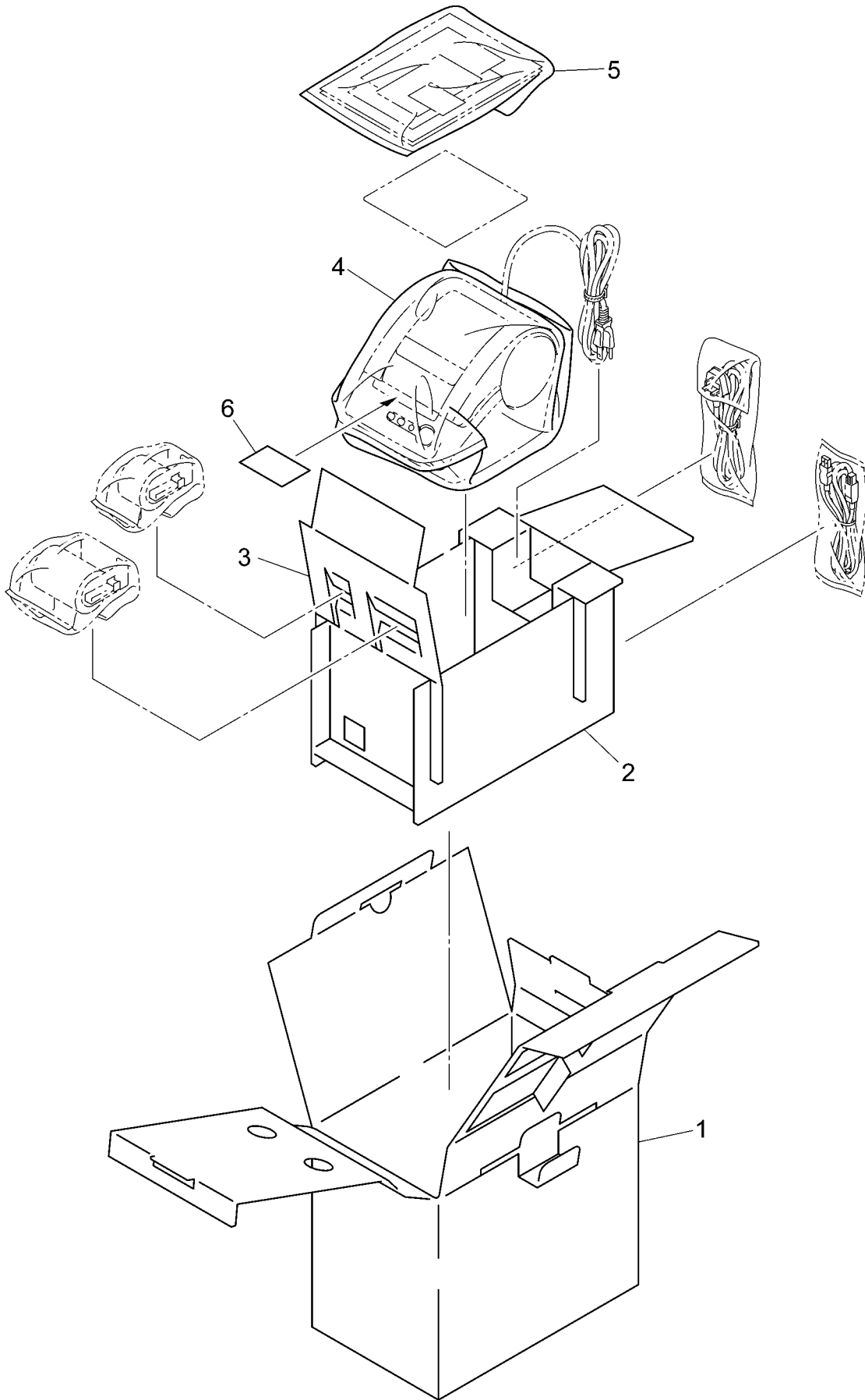
MODEL QL-550 8V7-102-910

7 . PRINTED MATTER

REF.NO.	SYMBOL	CODE	Q'TY	DESCRIPTION	REMARKS
1		LB5092001	1	QUICK START GUIDE QL-US	
2		LB5424001	1	QUICK START GUIDE QL-ES	
3		LB5093001	1	DK LABEL/TAPE GUIDE	
4	B	LA4059001	1	WARRANTY CARD US CH (USA)	
5		LB5428001	1	INSERTION SHEET QL	
6		LB5429001	1	INSERTION SHEET AP	
7		LB5430001	1	UNPACKING INSTRUCTION QL	

MODEL QL-550 8V7-102-920

8 . PACKING MATERIALS



MODEL QL-550 8V7-102-930

7 . PACKING MATERIALS

REF.NO.	SYMBOL	CODE	Q'TY	DESCRIPTION	REMARKS
1		LB5096001	1	CARTON QL550 US (USA)	R
1		LB5260001	1	CARTON QL550 EU (EUROPE)	R
2		LB5098000	1	PAD LOWER	
3		LB5099000	1	PARTITION PAD	
4		LB5100001	1	BAG, 300X400H (BODY)	
5		LA6867001	1	BAG, 215X360H (USER'S MANUAL)	
6		LB5431000	1	PLATEN PROTECT PAD	

MODEL QL-550 8V7-102-930

brother®

May, 2004
8V7002BE0
Printed in Japan