



For the Latest Chip Information

Please visit Static Control's Chip Center for a listing of all the cartridges for which these chips are qualified. The chip center is located online at www.scc-inc.com/chipcenter. Contact your Static Control Support Team for product information, ordering and technical support services. For the latest cartridge information and other SSS™ documents, please visit www.scc-inc.com.

Chip markings may vary depending on region and color. Chip appearance subject to change. Pictures and images may not be reflective of current offering.



Warning: To prevent damage, personal grounding devices such as Static Control's Field Service Kit (FSKL3RD), should always be used when working with static sensitive components.

TOOLS & SUPPLIES

- Angle Blade Knife (**ABKTOOL**)
- Mini Glue Gun (**GLUEGUN**)
- Glue Sticks (**GLUESTICK**)
- Rubber Gloves
- Field Service Kit (**FSKL3RD**)

STEP 1.1 (REMOVAL)

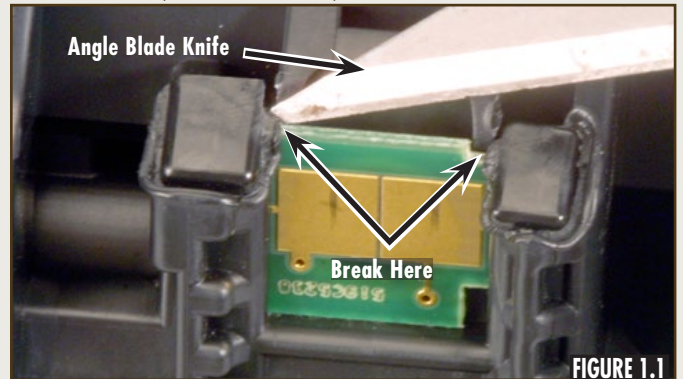


FIGURE 1.1

Use an angle blade knife tool and carefully break away the molding covering the top two corners of the used chip (Figure 1.1).

STEP 1.2

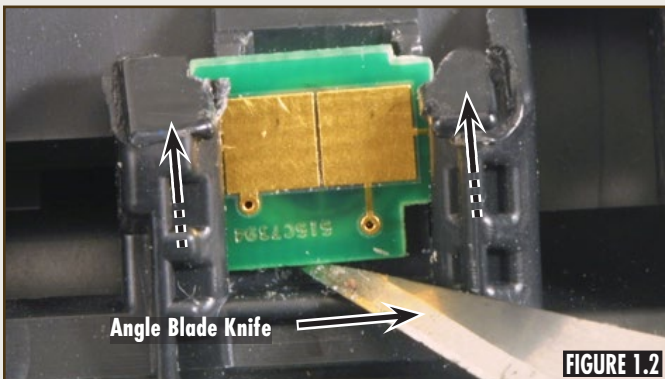


FIGURE 1.2

Use the angle blade knife tool to lift the used chip out of the cartridge (Figure 1.2).

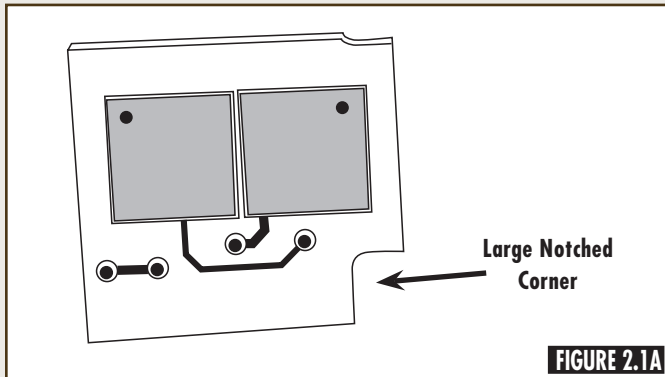
Orientation 1	Orientation 2
HP® 2600/2605/1600/CM1015/1017	HP® 3000/2700
HP® 5200	HP® 3600/3800
HP® 700 M712/M725	HP® 4700/4730
Canon® LBP-3500/3900/3950	HP® CP4005
Canon® LBP-3920/3970	HP® CP6015/CM6040/CM6030
Canon® LBP-3980	Canon® LBP-5300/5400
Canon® LBP-5000	Canon® LBP-MF9170, MF9150, MF9130
Canon® M5025/5035	Canon® LBP-8450
Canon® Satera LBP-8610/8620/8630	Canon® C1022
Canon® Satera LBP-8710/8720/8730	Canon® MF9220/9280 MFP



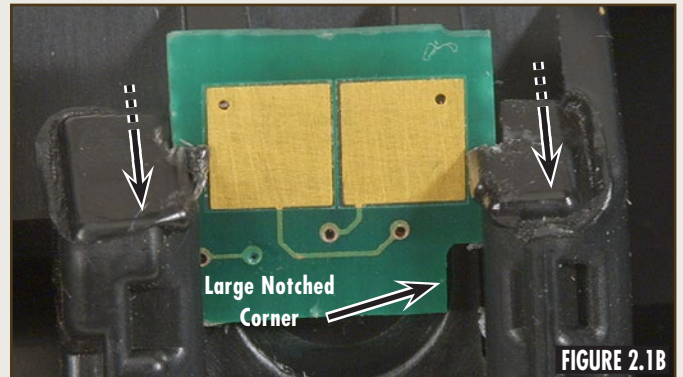
Note: Installation of the Static Control chip requires a specific orientation based on the printer model. Find your printer model in the chart above and note the required orientation.



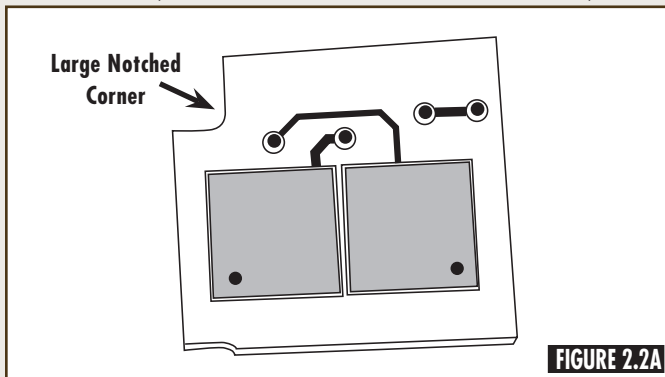
STEP 2.1 (ORIENTATION 1 - INSTALL)



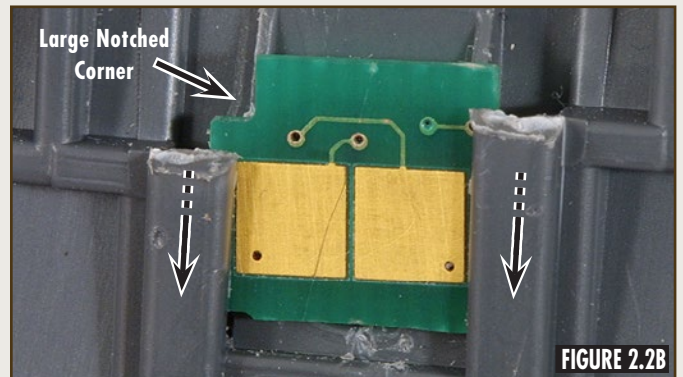
Orient the replacement chip with the large notched corner as shown in Figure 2.1A and slide into the cartridge (Figure 2.1B).



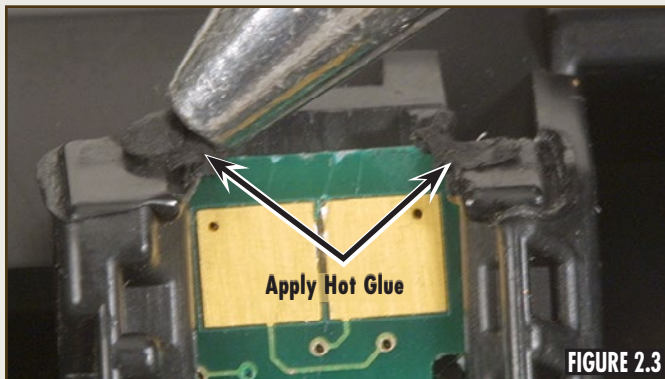
STEP 2.2 (ORIENTATION 2 - INSTALL)



Orient the replacement chip with the large notched corner as shown in Figure 2.2A and slide into the cartridge (Figure 2.2B).



STEP 2.3



Apply a very small amount of hot glue to the top two corners of the chip (Figure 2.3).



Warning: Excessive amounts of the hot glue material will cause unnecessary damage during the next chip removal/installation process.

DEDICATION TO TRAINING

In order to produce consistent high quality prints that are virtually indistinguishable from the OEM, it is essential to follow Static Control's remanufacturing instructions exactly as directed. Static Control is dedicated to informing customers of the latest innovations in training and knowledge. Access to these instructions, our technical support staff and View on Demand Webinars is available to all customers in good standing.

ELECTROPHOTOGRAPHICALLY MATCHED COMPONENTS

We provide these critical components that have been electrophotographically matched for use in remanufactured toner cartridges. It is vital that the critical components be replaced as a system to ensure consistent high quality performance. We provide additional components such as felts, foams and recovery blades, should you decide they are necessary. Using Static Control's system of components allows you to use less expensive non-virgin cartridges and create remanufactured cartridges that provide high quality prints virtually indistinguishable from the OEM.

INDUSTRY LEADER

Static Control is the global leader in aftermarket imaging and remanufacturing technology. Offices are located worldwide and all research, development, manufacturing and engineering takes place at their Sanford, North Carolina, USA world headquarters. Currently, Static Control manufactures in-house over 8,000 imaging products and supplies over 15,000 imaging products to the aftermarket industry.



Static Control Components (USA - World Headquarters)
3010 Lee Avenue PO Box 152 Sanford, NC 27331
US/Canada Tel: +1 800-488-2426 • Fax: +1 800-488-2452
Int'l Tel: +1 919-774-3808 • Fax: +1 919-774-1287
Email: info@scc-inc.com

Static Control (Hong Kong) Limited
Unit 2201 22/F Tower II, Metroplaza
223 Hing Fong Road, Kwai Fong, Hong Kong
Tel: +852-2427-6011 Fax: +852-2427-6677
Email: info@scchongkong.hk

Static Control Components (Europe) Limited
Unit 30, Worton Grange
Reading, Berkshire RG2 0TG, United Kingdom
Tel: +44 (0) 118-923-8800 Fax: +44 (0) 118-923-8811
Email: info@scceurope.co.uk

Static Control (Johannesburg) Limited
The Warehouse, Unit 1&2 - Corner of Deodar Road &
Constantia Avenue, Pomona 1619 PO Box 7288
Bonera Park 1622, South Africa
Tel: +27-11-570-2300 Fax: +27-11-973-2130
Email: info@sccafrica.co.za