

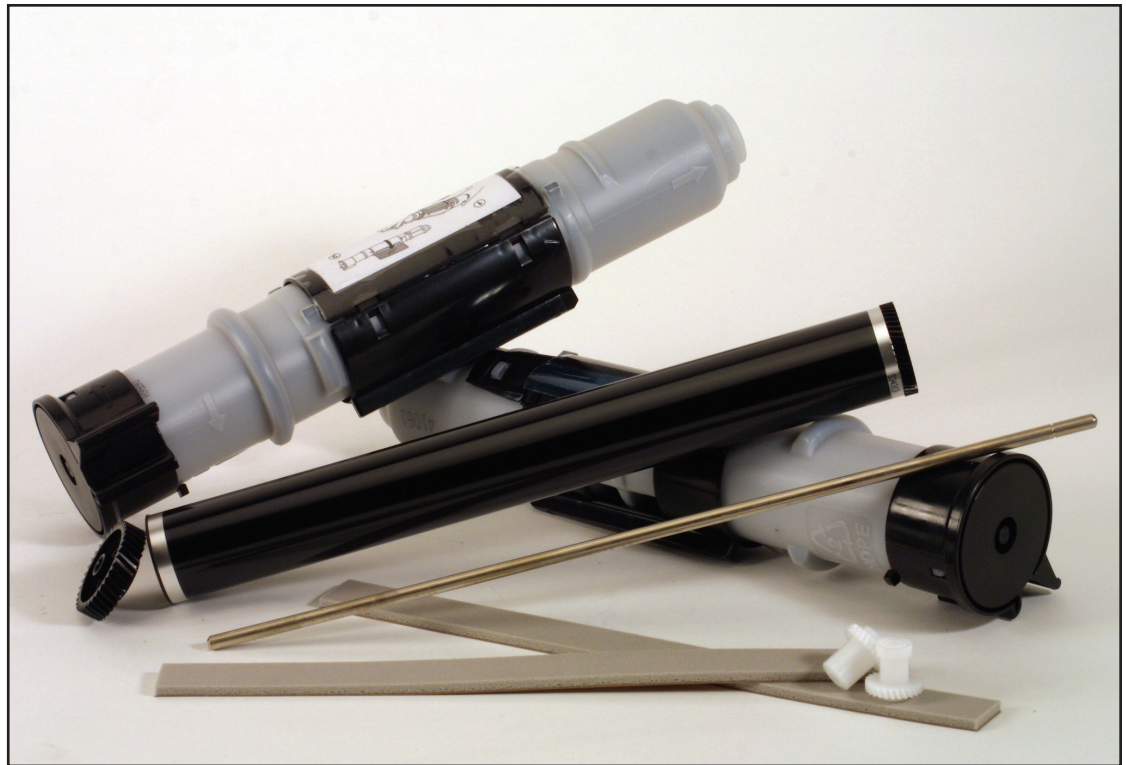
Brother® HL-720/ MFC-4800/HL-1040

imaging system



Brother® HL-720 Compatibility

Brother® HL-700/720/730/760
 Brother® MFC-4300/4350/4450/
 4550/4600/4650/6550/6650/
 7550/7650/7750/9050/9060/
 9500/9550
 Brother® IntelliFax 2550/2600/
 2750/3550/3650/3750
 Fax 8000/8200/8050/8060/
 8250/8650
 Xerox® Omnifax L620/621
 Brother® MFC-4800/6800
 Brother® IntelliFax 2800/2900/3800
 Fax 2800/2900/3800, DCP-1000
 Brother® HL-820/1040/1050/1060/
 1070/P2000
 Brother® MFC-P2000



Engine Overview

In 1996 Brother® released HL-720 series printers. Targeted at small and home business, the duty cycle is rated at 3k pages and print speed is six pages per minute. The HL-720 uses a toner tube rather than a traditional toner cartridge and is rated at 2.2k. The toner tube fits into the drum unit which is rated at 20k pages.

In 1998 Brother® released HL-1040 series printers to replace the HL-720. With an increased print speed of 10 pages per minute and the same duty cycle of 3k pages.

In 2001 Brother® released the replacement series for the HL-1040 with the MFC-4800. Also targeted at small and home business, these machines offered the same duty cycle as the HL-720 series and the same print speed of 10 pages per minute. Like its predecessor, the MFC-4800 uses toner tube technology and is rated at 2.2k pages. The toner tube also fits into a drum unit which is rated at 12k pages.

Engine Information

Engine Manufacturer	Brother®		
Printer Name	HL-720	MFC-4800	HL-1060
Date of Printer Intro	1996	2001	1996
Print Speed (pages per minute)	6 ppm	10ppm	10ppm
Resolution (dots per inch)	600x600 dpi	600/600 dpi	600x600dp

Supplies Information

Cartridge:	Brother®	Brother®	Brother®
OEM Part Number	TN200	TN250	TN300
OEM Rated Page Yield	2,200	2,200	2,200
OEM Web MSRP*	\$35.99	\$35.99	\$35.99
Wholesale Price*	\$22.51	\$22.66	23.04
Drum Unit:	Brother®	Brother®	Brother®
OEM Part Number (N & S America)	DR200	DR250	DR300
OEM Rated Page Yield	20,000	12,000	12,000
OEM Web MSRP*	186.99	\$185.99	\$182.99
Wholesale Price*	\$125.40	\$133.00	\$133.33

*Prices as of 7/28/06



Toner tube

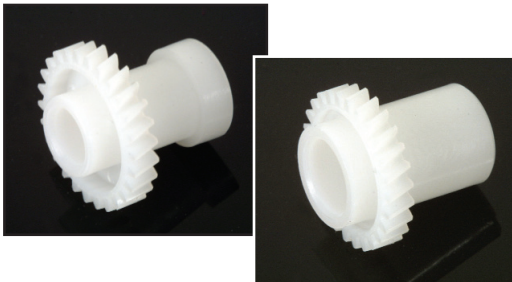
SCC offers a filled universal toner tube that performs properly in Brother models that utilize the TN-200, TN-250 and TN-300. Remanufacturers can stock fewer SKUs, reduce labor and testing and broaden their product portfolio. This toner tube will work in over 50 different Brother models and across three engine families, so you can now stock one SKU instead of three. Our toner tube is also IP safe, so you can have peace of mind.

B4800-115 115g Filled Toner Tube for Use in Various Brother® Cartridges

Drum

Did you know that there are 12 different core types out there for the DR-200, DR-250 and DR-300? SCC has developed a universal drum solution that will work with all core types. Our Odyssey drum performs with similar performance to the OEM and includes a drum gear and matching drive train gear. With this universal offering, you can stock fewer core types and still achieve high performance. Our solution also helps to eliminate audible clicking and gear chatter caused by gears not meshing properly.

DRB4800 Odyssey® Drum with Gears and Drum Drive Gear for Use in Brother® MFC-4800 (DR-200/250/300)

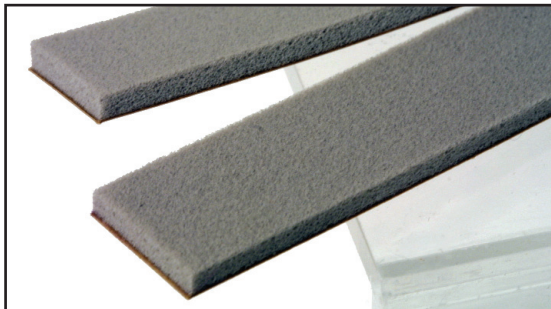


Transfer roller gears

SCC offers transfer roller gears for Brother DR-200, DR-250 and DR-300 drum units that mesh properly with our drum and drive train gear. These gears eliminate audible clicking and gear chatter that can result from gear teeth not meshing properly. With 12 different core variations out there for these drum units, remanufacturers need replacement transfer roller gears in two varieties, and now we have them.

B4800TRGR-N Narrow Transfer Roller Gear for Use in the Brother® MFC-4800 (DR-200/250/300)

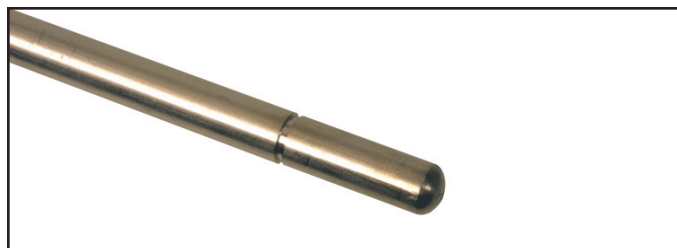
B4800TRGR-W Wide Transfer Roller Gear for Use in the Brother® MFC-4800 (DR-200/250/300)



Doctor blade sealing foam

Doctor blade sealing foams in Brother DR-250 and DR-300 drum units become compacted with toner and cause leakage. SCC offers a replacement doctor blade sealing foam to prevent leakage. This doctor blade sealing foam can save remanufacturers the time and labor it takes to clean and repair the OEM foam.

B4800DBSFM Doctor Blade Sealing Foams



Drum axle

OEM Brother DR-200 drum axles are longer than the axles in DR-250 and DR-300 drum units. Therefore, if a DR-200 core is used to make a universal cartridge, the OEM shaft will prevent the cartridge from fitting in machines that utilize the DR-250 or DR-300. Remanufacturers starting with a DR-200 core, need a drum axle that will work in all models supported by DR-200, DR-250 and DR-300. SCC's universal drum axle will work in all 50 models.

B4800DAXLE Drum Axle

Brother® HL-720/ MFC-4800/HL-1040

product listings

Brother HL-720/MFC-4800/HL-1040

Call for Competitive Market Quotation

SCC Code	Qty.	Description
Toner		
B4800-115	1	115g filled toner tube for use in various Brother® cartridges
Drums		
DRB4800	1	Odyssey® drum with gears and drum drive gear for use in Brother® MFC-4800 (DR-200/250/300)
Doctor Blade		
B4800DBLADE	1	Doctor blade for Brother® MFC-4800
Cartridge Parts & Supplies		
B4800DBSFM	50	Doctor blade sealing foam for use in Brother® MFC-4800
B4800TRGR-N	5	narrow transfer roller gear for use in the Brother® MFC-4800 (DR-200/250/300)
B4800DRAXLE	5	Drum axle for use in Brother® MFC-4800
B4800TRGR-W	5	wide transfer roller gear for use in the Brother® MFC-4800 (DR-200/250/300)
Products Under Development - call for availability		
Developer Roller		
Drum Reset Sheet		