

The easy to use,  
stylish and compact,  
laser fax machine

**i-SENSYS**  
FAX-L150

**i-SENSYS**  
FAX-L170

you can

FAX-L170



## Super G3 laser fax machine, with handset\*

This compact Super G3 fax is effortless to use and maintain. Offering superb energy efficiency with a range of professional fax features it's the ideal solution for small and medium-sized businesses.

### Key features

- Super G3 fax modem (33.6kbps) - 3 seconds per page\*\* transmission
- Stylish, minimal, space-saving design
- Ultra High Quality 256 greyscale imaging for faxing fine details
- 512-page\*\* transmit and receive fax memory
- 30 one-touch\*\*\* and 100 coded speed dials
- Convenient, easy to use All-in-One cartridge
- 150-sheet paper capacity
- 30-page Automatic Document Feeder
- Intuitive LCD display for a better user experience
- Copying: 12 copies per minute - fast warm up time from sleep mode
- Class leading energy efficiency
- Handset as standard\*

### What's in the Box

Main unit (with Handset\*), Cartridge 728 starter, power cord, telephone line cable, document tray, destination labels, starter guide and warranty card - with user software and manual CDs.

### Dimensions (WxDxH)

372 mm x 303 mm x 303 mm

### Supported OS

**Windows** 2000/ XP/ VISTA/ 7

**Mac OS X** 10.4.9 - 10.7

(Web distribution only)

**Linux** (Web distribution only)



PRINT



COPY



FAX

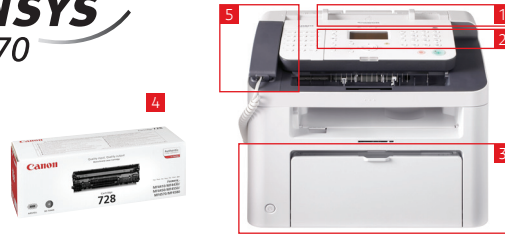


SCAN

\*Fax-L170 only, Fax-L150 optional. \*\*Based on ITU-T Standard Chart No. 1. \*\*\*FAX-L170 only. FAX-L150 has 15 one-touch dials.

**Canon**

Specifications



- 1 ADF
- 2 5-line LCD
- 3 150-sheet paper cassette
- 4 Cartridge 728
- 5 Handset (standard on FAX-L170 only)

<b>FAX UNIT TYPE</b> Type Compatibility Applicable line Modem speed Print technology Scanner type	Standalone facsimile & Laser printer Group 3 PSTN 33.6K bps (Super G3) Laser beam printing Sheet fed
<b>FAX SCANNING FEATURES</b> Automatic document feeder Document size Effective scanning width Scanning speed Fax resolution Image processing system Half-tone	30 sheets Width - 216mm(Max), 139.7mm(Min) Length - 356mm(Max), 127mm(Min) 214mm Approx. 3.4 sec/page Approx. 15.8 pages/minute Up to 200 x 400 dpi UHQ (Ultra High Quality) 256 shades of grey scale
<b>FAX PRINTING FEATURES</b> Printing method Print speed First Print Out Time Print resolution Print Quality Paper capacity Print cartridge Cartridge Yield Page collated print Paper output tray capacity Media Types Media Sizes:  Printing width Toner save mode Auto image reduction on reception	Laser Beam Printing 18 pages per minutes 7.8 secs 600 x 400 dpi Up to 1200 x 600 dpi 150 sheet CRG728 All in One cartridge approx. 2100 pages <sup>1,2</sup> Yes ( Face down print ) 100 sheets Plain, heavy, Recycled, Transparecy, Label, Envelope Cassette: A4, B5, A5, LGL, LTR, STMT, EXE, OFFICIO, B-OFFICIO, M-OFFICIO, GLTR, GLGL, FLS, 16K, Postcard, Envelope: COM10, Monarch, C5, DL, Custom (Min. 76.2 x 127mm to Max. 216 x 356mm)  ADF: A4, B5, A5, B6, Letter, Legal, Statement, Min. 127 x 139.7mm to Max. 216 x 356mm 206mm Yes Yes (100 to 75% 1% increments)
<b>TRANSMISSION AND RECEPTION FEATURES</b> Transmission speed Compression method Memory transmission FAX memory Memory backup Memory reception Dual access Error correction mode(ECM) Delayed transmission Sequential broadcast Reception Sub-address transmission Error re-transmission Fax transfer	3 seconds per page with 33.6K bps modem <sup>3</sup> MH, MR, MMR Yes 512 pages <sup>3</sup> 5 mins Yes Yes Yes Yes Yes (FAX-L170 140 locations )/ (FAX-L150 125 locations) Max. 140 destinations (FAX-L170) / Max. 125 destinations (FAX-L150) Yes Yes Yes Yes Yes
<b>SECURITY AND MANAGEMENT FEATURES</b> Forced memory reception Reports  Transmission header Reception footer	Yes Activity Management Report (TX/RX), Activity Result Report Yes Yes
<b>TELEPHONY FEATURES</b> One-touch dials Coded dials Group dials  Program dial Redial Dial search FAX/TEL auto switch Answering machine Hook-up Remote reception On Hook key Telephone handset Type	30 (FAX-L170)/ 15 (FAX-L150) 100 Max. 129 dials / Max. 129 destinations (FAX-L170) / Max. 114 dials / Max. 114 destinations (FAX-L150) Yes Yes ( automatic and manual ) Yes Yes Yes Yes Yes Yes (FAX-L170 only) Standard (FAX-L170) / Optional Telephone kit 6 (FAX-L150)

<b>COPIER FEATURES</b> Copy resolution  Copy speed ( Mono ) Multiple copy Zoom First copy output time (FCOT)	TEXT/PHOTO mode, TEXT mode, PHOTO mode: 600 dpi x 600 dpi 11.8 pages per minutes Up to 99 copies 50% - 200% in 1% increments Less than 22.3 secs
<b>OTHER FEATURES</b> Type LCD Display Languages  Energy saver key	5 lines 23 languages: (English/ Spanish/ French/ Italian/ Hungarian/ Dutch/ Norwegian/ Polish/ Greek/ Estonian/ Croatian/ Bulgarian/ Portuguese/ Slovene/ Slovak/ Finnish/ Swedish/ Turkish/ Russian/ Czech/ Danish/ German/ Romanian) Yes
<b>PRINTER FEATURES</b> Interface Printer Language Memory Printer  Supplied Drivers	USB 2.0 Hi-Speed UFRII-LT 64MB Windows 2000/ XP/ VISTA/ 7 MAC OS X 10.4.9 - 10.7 <sup>4</sup> Linux <sup>4,5</sup> Printer Driver, FAX Driver
<b>GENERAL FEATURES</b> Duty Cycle Warm-Up time Recovery time Dimensions (cassette closed) W x H x D Installation space (including trays) Weight Power consumption  Noise Levels  Operating Environment Power Source	Max 8,000 pages per month (TBD) Approx. 14 seconds or less from power on Approx. 3.5 seconds (TBD) 372 x 303 x 303 mm 572 x 724 x 520 mm (FAX-L170) / 656 x 724 x 520 mm (FAX-L150) Approx. 8.8kg (FAX-L170) / 8.6kg (FAX-L150) Maximum: 1020W Active: 400W Standby: 10W Sleep: 1.5W Typical Electricity Consumption (TEC): 0.6 kWh/w Sound Power: Active: 6.5 B Standby: 4.3 B or less  Sound Pressure: Active: 53 dB Standby: Inaudible Temperature: 50 to 86°F (10 to 30°C) Humidity: 20% to 80% RH (no condensation) 220-240 V (±10%), 50/60 Hz (±2 Hz)
<b>OPTIONS</b> Items	Tel-6 Telephone handset with cradle (FAX-L150 only)
Standard disclaimers. All specifications subject to change without notice [1] Based on ISO/IEC 19752 [2] Ships with 1,000 pages starter cartridge [3] Based on ITU-T Standard Chart No. 1 [4] Web distribution only [5] Linux support printing only.	

