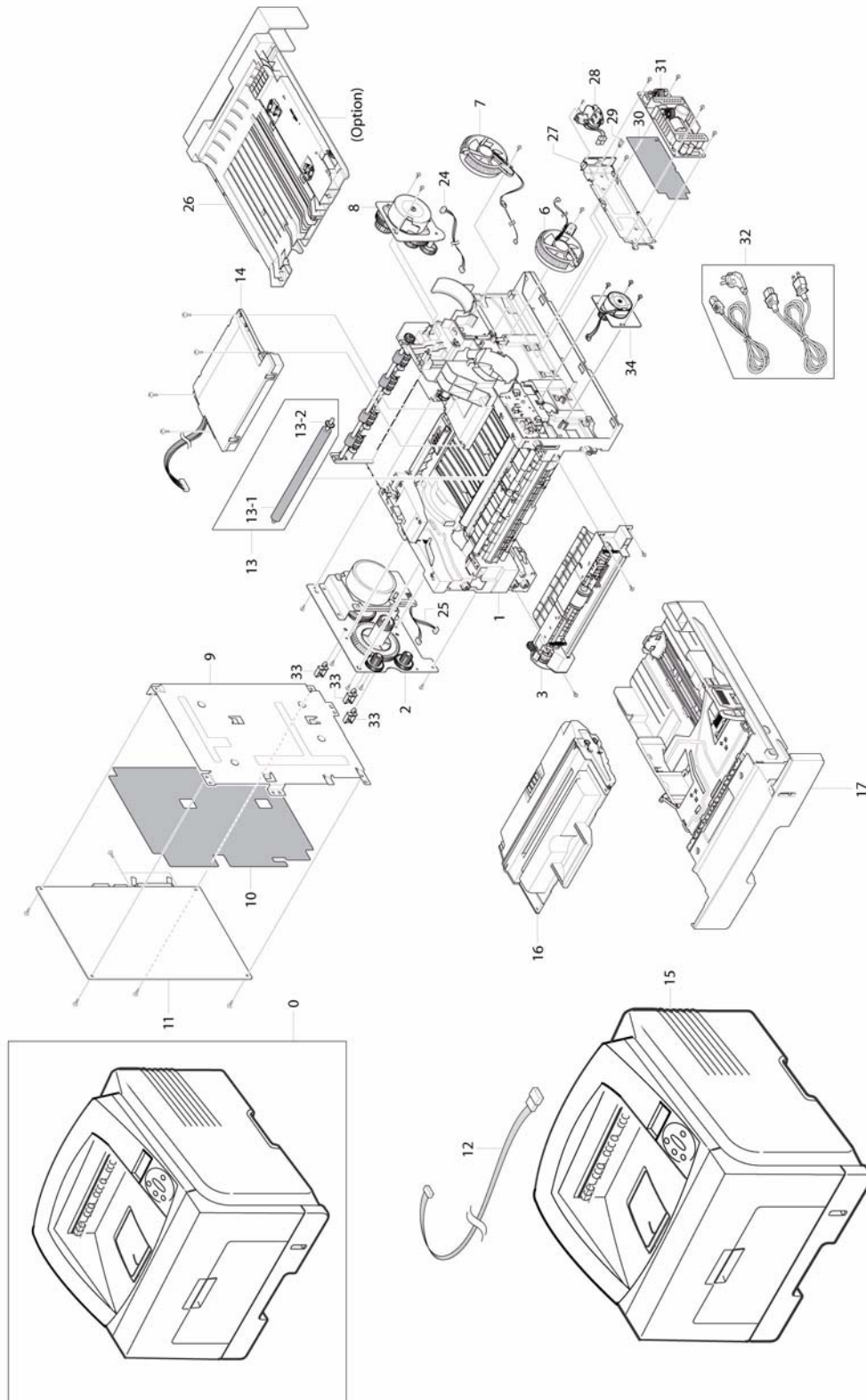


5 Parts List

PL 1 Main Parts List	5-2
PL 2 Cover Assembly	5-4
PL 3 Front Cover Assembly	5-6
PL 4 Rear Cover Assembly	5-8
PL 5 OPE Cover Assembly	5-10
PL 6 Frame (1 of 3)	5-12
PL 7 Frame (2 of 3)	5-14
PL 8 Frame (3 of 3)	5-16
PL 9 MP Assembly	5-18
PL 10 Main Drive Assembly	5-20
PL 11 Fuser Drive Assembly	5-22
PL 12 Duplex Unit (Optional)	5-24
PL 13 Fuser Unit (1 of 2)	5-26
PL 14 Fuser Unit (2 of 2)	5-28
PL 15 Cassette Unit	5-30

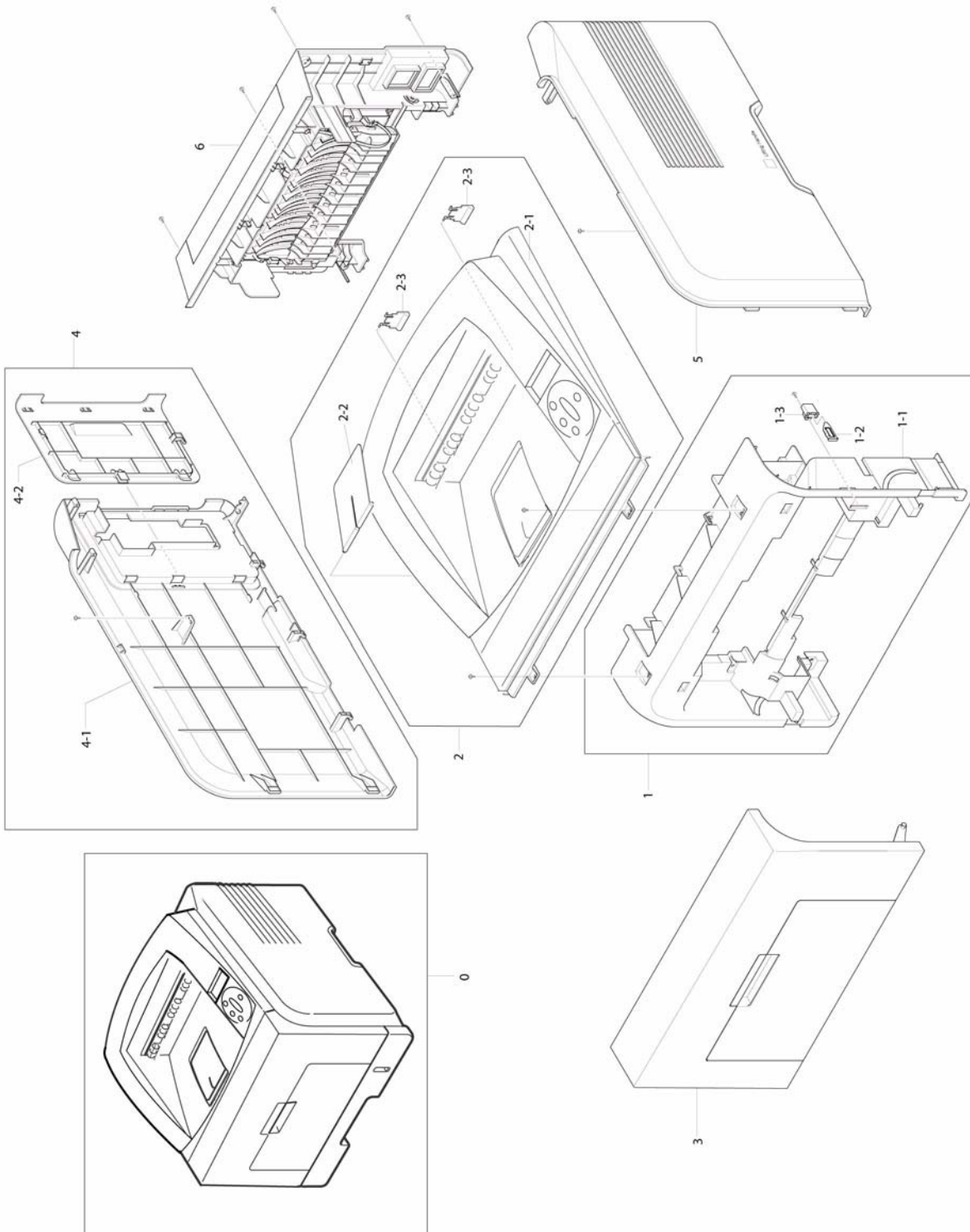
PL 1 Main Parts List



PL 1 Main Parts List

No.	Part No.	Description	QT'y	Remark
5.1-0	-	MACHINE		
5.1-1	-	ELA HOU-FRAME 220V	1	
5.1-1	-	ELA HOU-FRAME 110V	1	
5.1-2	007N01561	ELA UNIT-MAIN DRIVE	1	
5.1-3	002N02783	ELA HOU-MPF	1	
5.1-6	127N07328	FAN-DC	1	REP 14
5.1-7	127N07485	FAN-DC	1	REP 14
5.1-8	-	ELA UNIT-FUSER DRIVE	1	
5.1-9	-	MEA-SHIELD CONTROLLER	1	REP 8
5.1-10	-	SHEET-INSULATOR_PBA	1	REP 8
5.1-11	140N63345	PBA MAIN-CONTROLLER	1	REP 8
5.1-12	-	CBF HARNESS-LCD_OPE	1	
5.1-13	002N02628	MEA-TRANSFER ROLLER	1	
5.1-13-1	-	ROLLER-TRANSFER	1	
5.1-13-2	-	GEAR-TRANSFER	1	
5.1-14	122N00259	UNIT-LSU	1	REP 23
5.1-15	-	MEA-COVER	1	
5.1-16	-	ELA UNIT-INITIAL DEVE (CARTRIDGE-PRINT)	1	
5.1-17	050N00535	MEA UNIT-CASSETTE	1	
5.1-24	-	CBF HARNESS-EXIT MTR	1	
5.1-25	-	CBF HARNESS-MAIN MTR	1	
5.1-26	101N01422	MEA UNIT-DUPLEX	1	
5.1-27	-	SHIELD-P-SMPS	1	REP 11
5.1-28	-	CBF HARNESS-AC INLET	1	
5.1-29	-	CABLE CLAMP	3	
5.1-30	-	SHEET-INSULATOR_SMPS	1	REP 11
5.1-31	112N00229	SMPS (220V)	1	REP 11
5.1-31	112N00228	SMPS (110V)	1	REP 11
5.1-32	117N01769	CBF-POWER CORD(220V)	1	
5.1-32	105N02072	CBF-POWER CORD(110V)	1	
5.1-33	-	CABLE CLAMP	3	
5.1-34	-	ELA UNIT-DUPLEX DRIVE	1	REP 10
	097N01539	OPTIONAL TRAY (NOT SHOWN)	1	
	144N00159	OPTIONAL MEMORY (128Mb) (NOT SHOWN)	1	
	144N00139	OPTIONAL MEMORY (256Mb) (NOT SHOWN)	1	

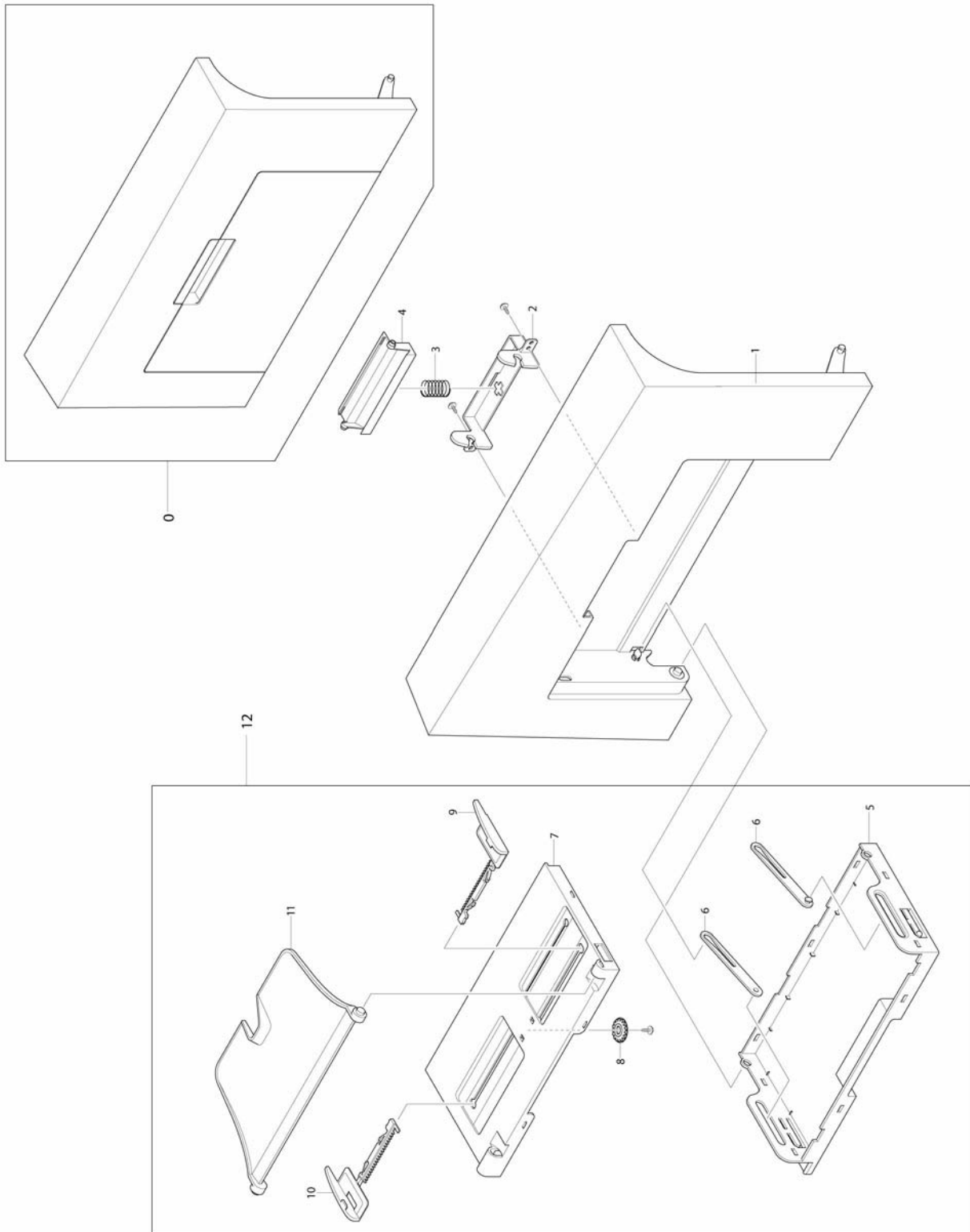
PL 2 Cover Assembly



PL 2 Cover Assembly

No.	Part No.	Description	QT'y	Remark
5.2-0	-	MEA-COVER	1	
5.2-0	-	MEA-COVER	1	
5.2-1	-	MEA-COVER MIDDLE	1	REP 18
5.2-1-1	-	COVER-M_MIDDLE	1	
5.2-1-2	-	PMO-M-SUB ACTUATOR	1	
5.2-1-3	-	CAP-M_SUB ACTUATOR	1	
5.2-2	-	MEA-COVER TOP	1	REP 5
5.2-2-1	-	COVER-M_TOP	1	
5.2-2-2	-	PMO-STACKER RX	1	
5.2-2-3	-	PMO-SUB STACKER	2	
5.2-3	-	MEA-COVER FRONT	1	
5.2-4	-	MEA-COVER SIDE L	1	REP 7
5.2-4-1	-	COVER-M_SIDE L	1	
5.2-4-2	-	COVER-M_DIMM	1	
5.2-5	-	MEA-COVER SIDE R	1	REP 7
5.2-6	-	MEA-COVER REAR	1	REP 3

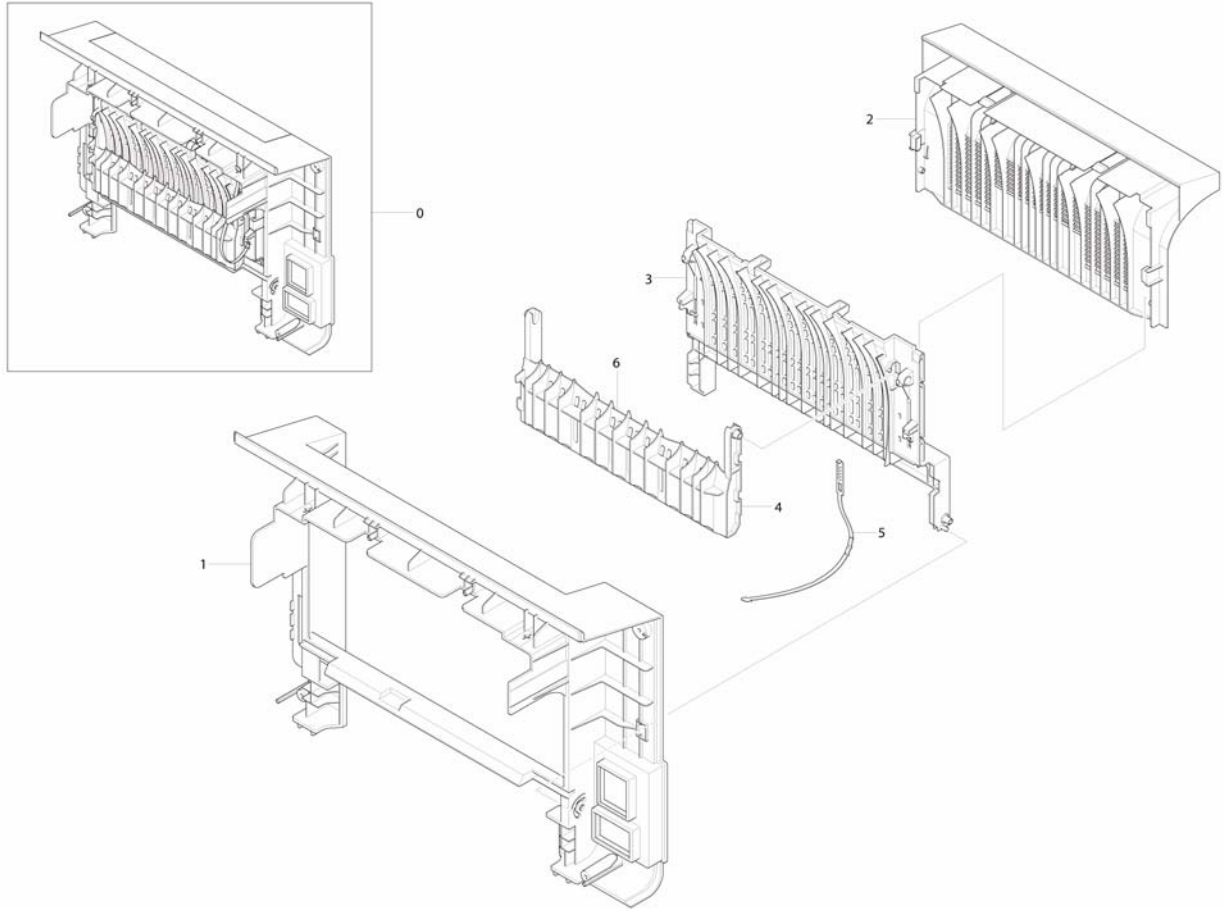
PL 3 Front Cover Assembly



PL 3 Front Cover Assembly

No.	Part No.	Description	QT'y	Remark
5.3-0	-	MEA-COVER FRONT	1	REP 1
5.3-1	-	COVER-M_FRONT	1	
5.3-2	-	HOLDER-M_LOCKER	1	
5.3-3	-	SPRING ETC-CIS(C2)	1	
5.3-4	-	KNOB-M_LOCKER	1	
5.3-5	-	TRAY-M-ASF_INPUT	1	
5.3-6	-	TRAY-M-LINK_MP	2	
5.3-7	-	TRAY-M-ASF_INPUT UPPER	1	
5.3-8	-	GEAR-PINION	1	
5.3-9	-	ADJUST-M_MP R	1	
5.3-10	-	ADJUST-M_MP L	1	
5.3-11	-	TRAY-M-ASF_FOLDER	1	
5.3-12	-	MP TRAY ASSEMBLY	1	REP 2

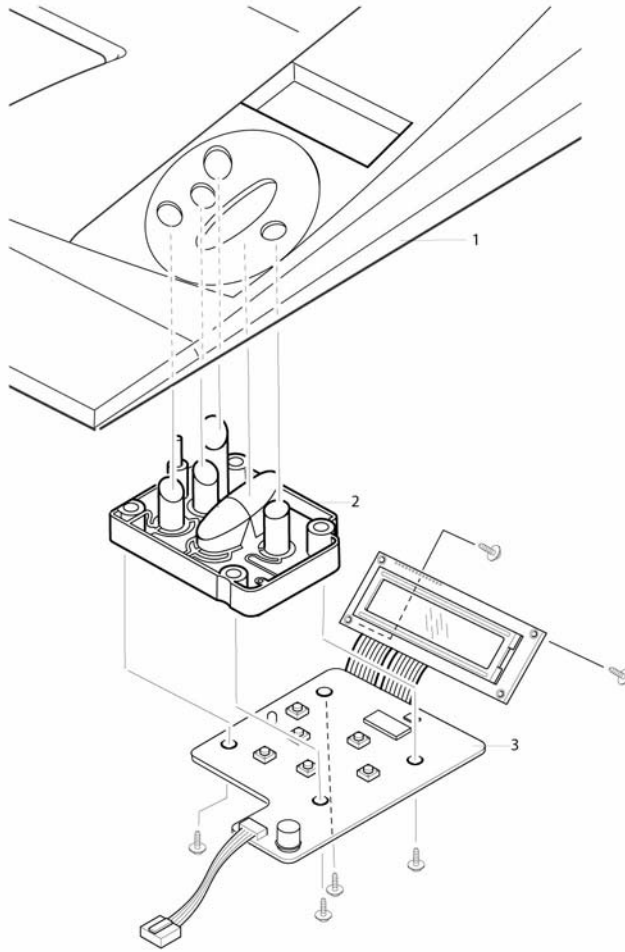
PL 4 Rear Cover Assembly



PL 4 Rear Cover Assembly

No.	Part No.	Description	QT'y	Remark
5.4-0	-	MEA-COVER REAR	1	
5.4-1	-	COVER-REAR	1	
5.4-2	-	COVER-M_FACE UP	1	
5.4-3	-	COVER-M STACKER REAR	1	
5.4-4	-	GUIDE-OUTPUT FUSER	1	
5.4-5	-	STOPPER-M-STRAP	1	
5.4-6	-	GUIDE-OUTPUT F UPPER	1	

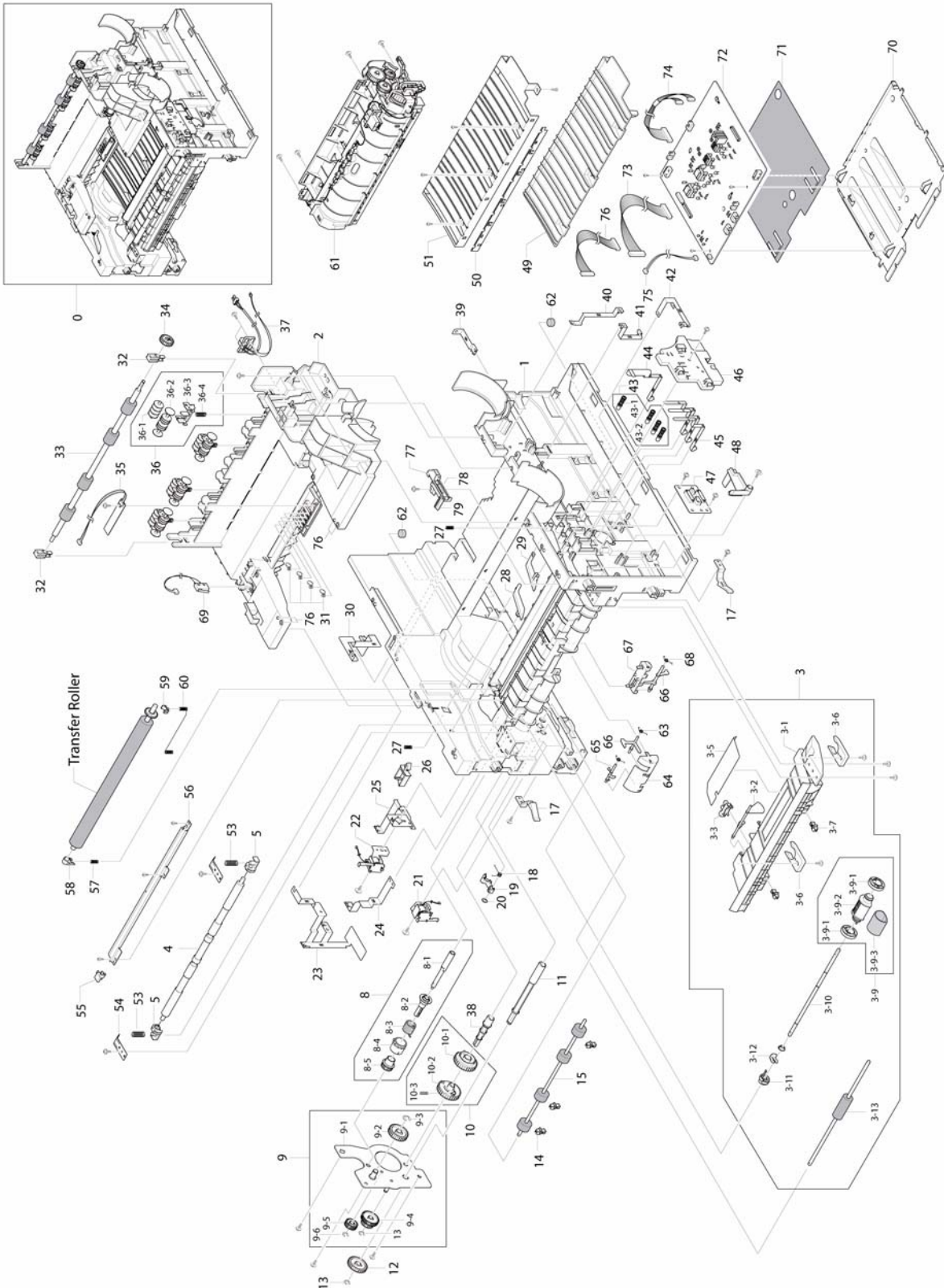
PL 5 OPE Cover Assembly



PL 5 OPE Cover Assembly

No.	Part No.	Description	QT'y	Remark
5.5-1	-	MEA-COVER TOP	1	REP 5
5.5-2	-	KEYS ASSEMBLY	1	REP 6
5.5-3	-	PBA SUB-OPE	1	REP 6

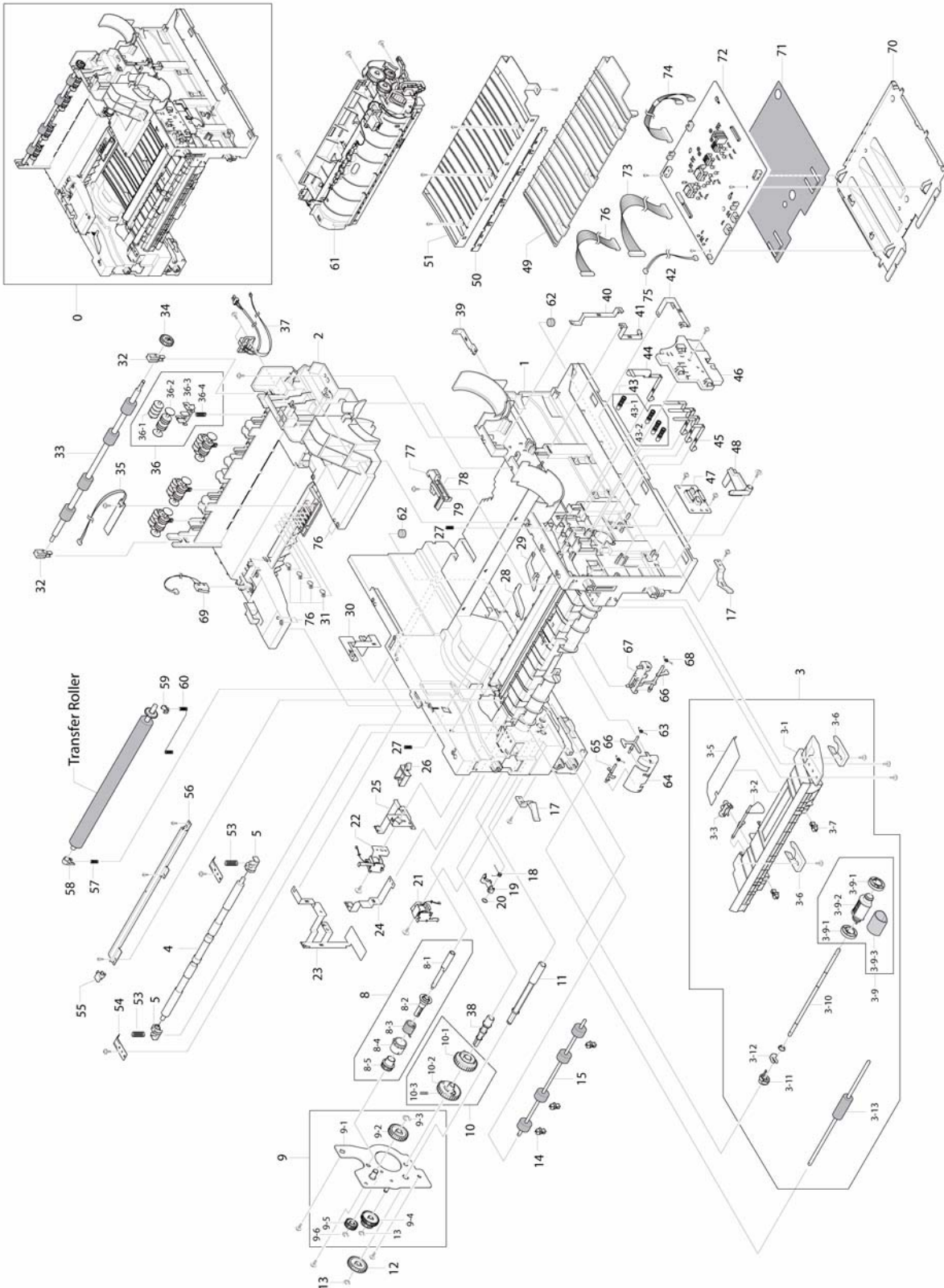
PL 6 Frame (1 of 3)



PL 6 Frame (1 of 3)

No.	Part No.	Description	QT'y	Remark
5.6-0	-	ELA HOU-FRAME 220V	1	
5.6-0	-	ELA HOU-FRAME 110V	1	
5.6-1	-	FRAME-M_BASE	1	
5.6-2	-	FRAME-M_EXIT	1	
5.6-3	-	ELA HOU-GUIDE DUP F	1	REP 16
5.6-3-1	-	GUIDE-M_FRONT DUPLEX	1	
5.6-3-2	-	LEVER-ACTUATOR EMPTY	1	
5.6-3-3	-	PHOTO-INTERRUPTER	1	
5.6-3-5	-	SHEET-GUIDE FRONT DU	1	
5.6-3-6	-	CAM-CATCH	2	
5.6-3-7	-	PMO-BUSHING FEED	2	
5.6-3-9	022N02292	MEA-ROLLER PICK UP	1	REP 15
5.6-3-9-1	-	ROLLER-IDLE PICK UP	2	
5.6-3-9-2	-	HOUSING-M_PICK UP	1	
5.6-3-9-3	-	ROLLER-PICK UP	1	
5.6-3-10	-	SHAFT-PICK UP	1	
5.6-3-11	-	CAM-SHAFT PICK UP	1	
5.6-3-12	-	PMO-BUSHING_P/U,MP	1	
5.6-3-13	022N02293	ROLLER-FEED	1	
5.6-4	-	SHAFT-FEED IDLE	1	REP 20
5.6-5	-	BUSH-M-FEED IDLE	2	
5.6-8	005N01031	MEA UNIT-CLUTCH	1	REP 20
5.6-8-1	-	SHAFT-FEED	1	
5.6-8-2	-	PMO-HUB CLUTCH	1	
5.6-8-3	-	SPRING-TS	1	
5.6-8-4	-	PMO-COLLAR_SPRING	1	
5.6-8-5	-	GEAR-FEED 1	1	
5.6-9	-	MEA UNIT-BRACKET FEED	1	REP 20
5.6-9-1	-	BRACKET-P-FEED	1	
5.6-9-2	-	GEAR-IDLE Z29 HELICAL	1	
5.6-9-3	-	RING-E	1	
5.6-9-4	-	GEAR-RETARD 39/19	1	
5.6-9-5	-	GEAR-T2 IDEL_Z27	1	
5.6-9-6	-	RING-E	2	
5.6-10	-	MEA UNIT-GEAR PICK UP	1	
5.6-10-1	-	GEAR-PICK UP_INNER	1	
5.6-10-2	-	GEAR-PICK UP_OUTER	1	
5.6-10-3	-	SPRING-CS	1	

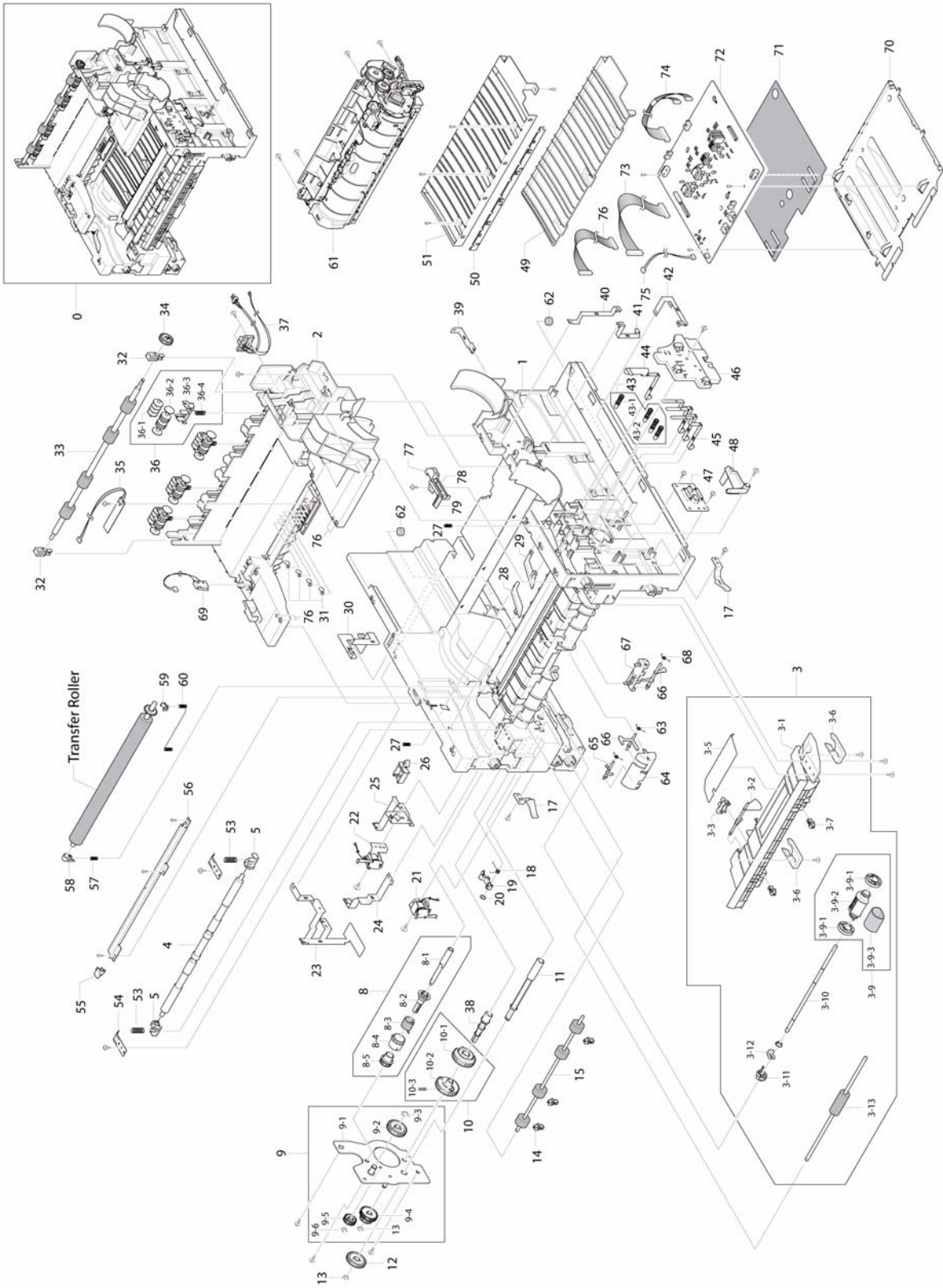
PL 7 Frame (2 of 3)



PL 7 Frame (2 of 3)

No.	Part No.	Description	QT'y	Remark
5.6-11	-	SHAFT-M_FEED2	1	
5.6-12	-	GEAR-FEED2 Z27	1	
5.6-13	-	RING-E	1	
5.6-14	-	PMO-BUSHING FEED	3	
5.6-15	022N02080	ROLLER-FEED ROLLER 1	1	REP 20
5.6-17	-	PMO-LOCKER CST	2	
5.6-18	-	SPRING-TS	1	
5.6-19	-	CAM-M-PICK_UP	1	
5.6-20	-	RING-CS	1	
5.6-21	-	SOLENOID-MANUAL	1	REP 21
5.6-22	-	SOLENOID-FEED	1	REP 21
5.6-23	-	GROUND-P-DRIVE	1	
5.6-24	-	GROUND-P-PUSH BUSHING	1	
5.6-25	-	GROUND-P-DRIVE2	1	
5.6-26	-	CABLE CLAMP	1	
5.6-27	-	SPRING ETC-GUIDE DEVE	2	
5.6-28	-	PMO-PLATE GUIDE DEVE_L	1	
5.6-29	-	PMO-PLATE GUIDE DEVE_R	1	
5.6-30	-	GROUND-P-SHIELD	1	
5.6-31	-	TERMINAL-P_CRUM	4	
5.6-32	-	HOLDER-BEARING EXIT F/DOWN	2	
5.6-33	022N02081	MEA RACK-EXIT ROLLER	1	REP 22
5.6-34	-	ROLLER-EXIT F/DOWN	1	
5.6-35	-	PBA SUB-TERMINAL	1	REP 24
5.6-36	022N02081	MEA RACK-EXIT ROLLER	4	
5.6-36-1	-	PMO-ROLLER FD R	1	
5.6-36-2	-	PMO-ROLLER FD F	1	
5.6-36-3	-	PMO-HOLDER EXIT ROLL	1	
5.6-36-4	-	SPRING ETC-EXIT ROLL FD	1	

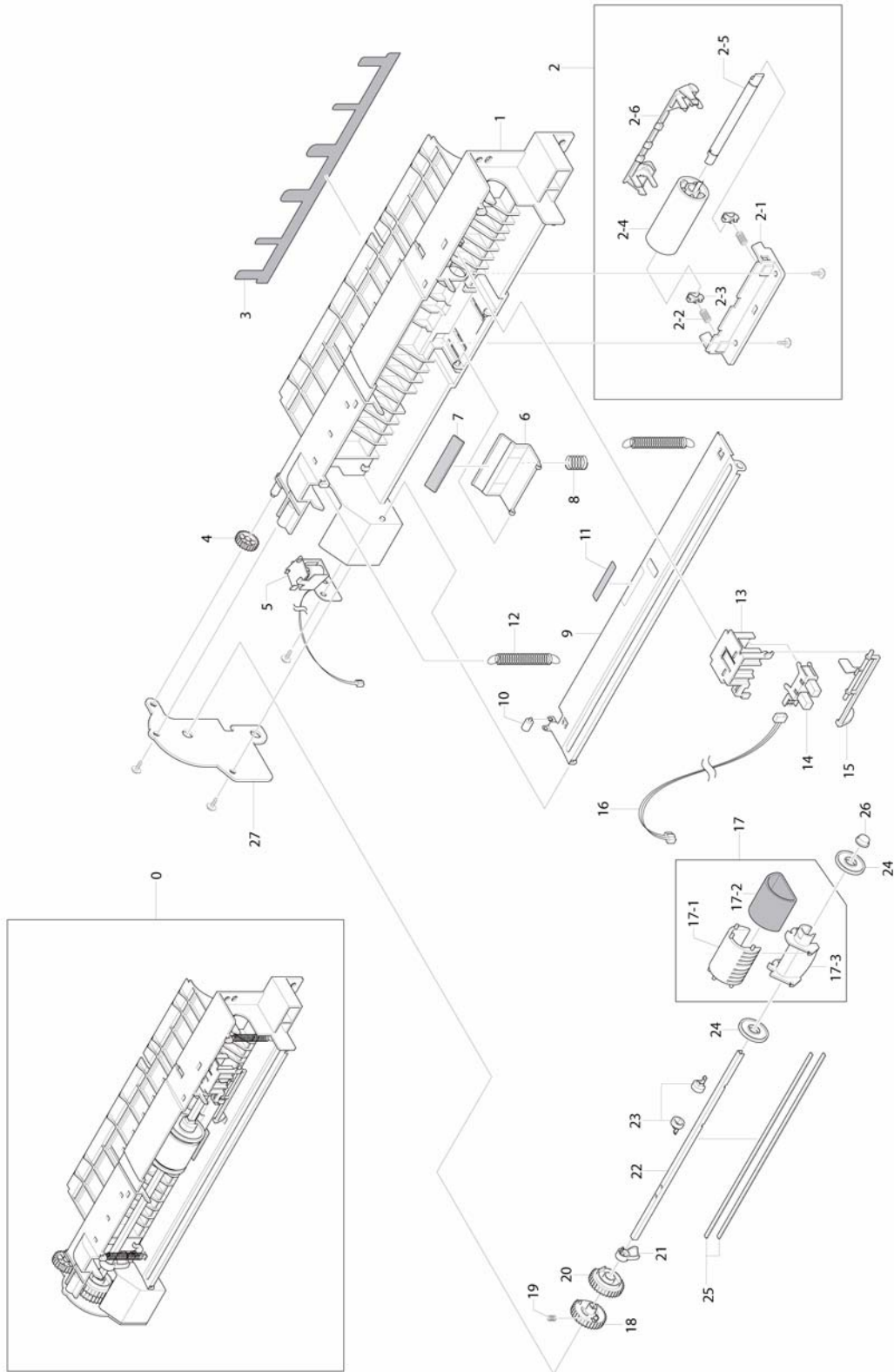
PL 8 Frame (3 of 3)



PL 8 Frame (3 of 3)

No.	Part No.	Description	QT'y	Remark
5.6-39	-	GROUND-P-FUSER	1	
5.6-40	-	GROUND-P-MOTOR FUSER	1	
5.6-41	-	GROUND-P-SHIELD SMPS	1	
5.6-42	-	GROUND-P-GUIDE TR	1	
5.6-43	-	MEC-TERMINAL	4	
5.6-43-1	-	SPRING ETC-HV APOLLO	1	
5.6-43-2	-	IPR-TERMINAL	1	
5.6-44	-	TERMINAL-P-HV CR		
5.6-45	-	IPR-P-TERMINAL CON	1	
5.6-46	-	HOUSING-M_TERMINAL	3	
5.6-47	-	PBA-CONNECTION	1	REP 12
5.6-48	-	PMO-ACTUATOR CVR OPEN	1	
5.6-49	-	GUIDE-TR RIB	1	
5.6-50	-	PLATE-E_SAW	1	
5.6-51	-	GUIDE-P-TR	1	
5.6-53	-	SPRING ETC-TR	2	
5.6-54	-	PLATE-P-PUSH BUSHING	2	
5.6-55	-	HOLDER-M-PTL R2	1	
5.6-56	-	IPR-P-EARTH TRANSFER	1	REP 25
5.6-57	-	SPRING ETC-TR L HAWK	1	
5.6-58	-	BUSH-M-TR L	1	
5.6-59	-	PMO-BUSHING_TR(L)	1	
5.6-60	-	GROUND-P-EARTH TR	1	
5.6-61	-	ELA UNIT-FUSER(220V)	1	
5.6-61	-	ELA UNIT-FUSER(110V)	1	
5.6-62	-	FOOT-BACK	2	
5.6-63	-	SPRING-TS	3	
5.6-64	-	HOLDER-M_ACT REGI	1	
5.6-65	-	LEVER-M_ACTUATOR REGI	1	
5.6-66	-	LEVER-M_ACT DUP OUT	1	
5.6-67	-	HOLDER-M_ACT FEED	1	
5.6-68	-	SPRING-TS	3	
5.6-69	-	CBF HARNESS-LSU S/W	1	
5.6-70	-	SHIELD-P-HVPS	1	REP 17
5.6-71	-	SHEET-INSULATOR_HVPS	1	REP 17
5.6-72	112N00230	HVPS	1	REP 17
5.6-73	-	CBF HARNESS-SMPS	1	
5.6-74	-	CBF HARNESS-ENGINE	1	
5.6-75	-	CBF HARNESS-PAPER EMP	1	
5.6-76	-	PLATE-LSU SUPPORT	1	

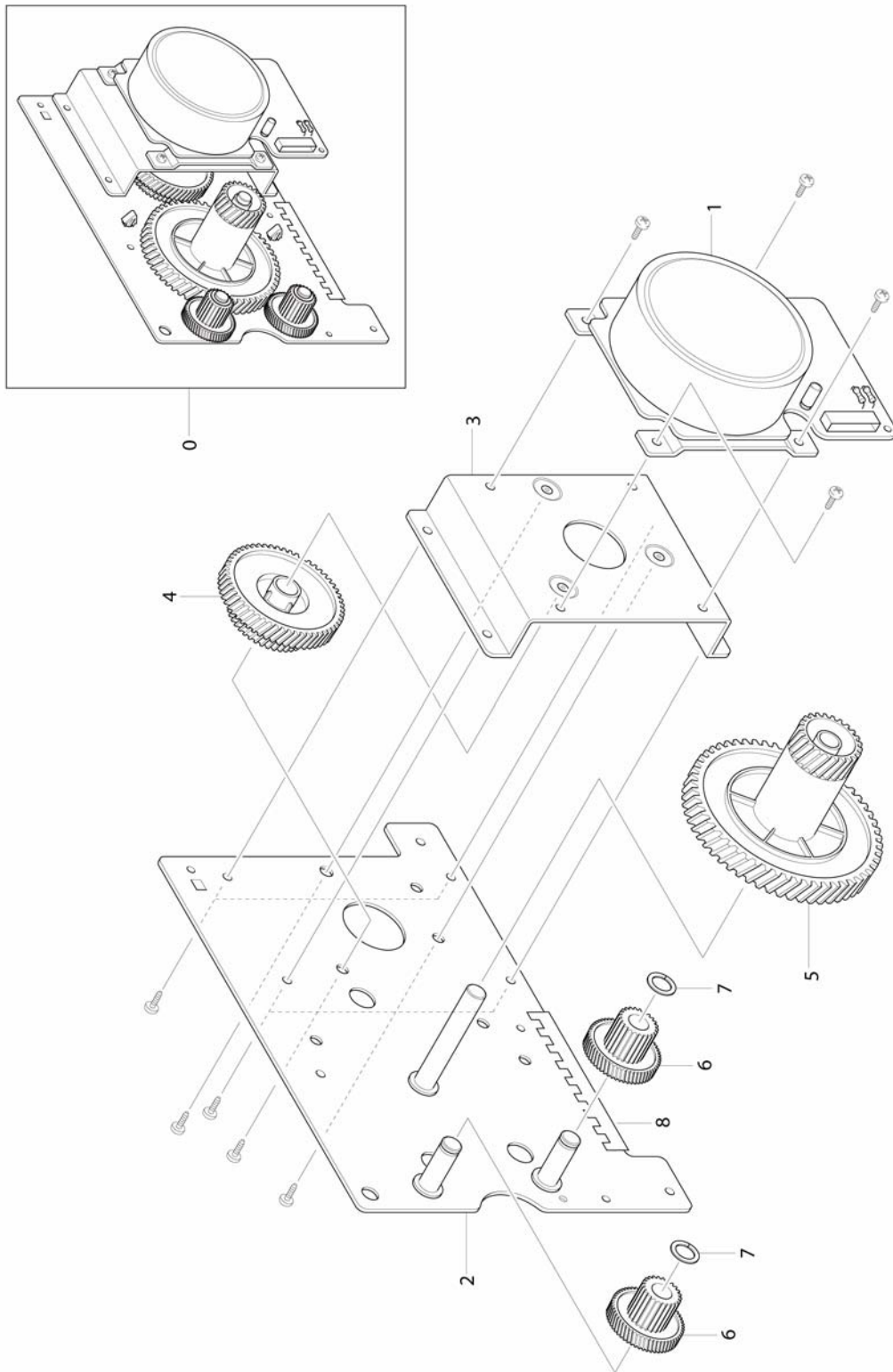
PL 9 MP Assembly



PL 9 MP Assembly

No.	Part No.	Description	QT'y	Remark
5.9-0	-	ELA HOU-MPF	1	REP 19
5.9-1	-	FRAME-M_MP	1	
5.9-2	-	MEA-IDLE FEED	1	
5.9-2-1	-	HOLDER-M_IDLE FEED	1	
5.9-2-2	-	SPRING ETC-EXIT LOWER IDLE	2	
5.9-2-3	-	HOLDER-M_SHAFT IDLE	2	
5.9-2-4	-	ROLLER-IDLE FEED	1	
5.9-2-5	-	SHAFT-IDLE FEED	1	
5.9-2-6	-	COVER-M_IDLE FEED	1	
5.9-3	-	SHEET-GUIDE MP	1	
5.9-4	-	GEAR-IDLE 23	1	
5.9-5	121N01173	SOLENOID-MP	1	
5.9-6	-	HOLDER-M-PAD_MP	1	
5.9-7	019N00742	RPR-FRICTION PAD	1	
5.9-8	-	SPRING ETC-EXIT ROLL FD	1	
5.9-9	-	PLATE-P-KNOCK UP_MP	1	
5.9-10	-	PMO-ROLLER CAM.MP	1	
5.9-11	-	RPR-PAD CASSETTE	1	
5.9-12	-	SPRING-ES	2	
5.9-13	-	HOLDER-M-SENSOR_MP	1	
5.9-14	-	PHOTO-INTERRUPTER	1	
5.9-15	-	PMO-M-ACT EMPTY MP	1	
5.9-16	-	CBF HARNESS-MPF SEN	1	
5.9-17	130N01366	MEA-PICK UP_MP	1	REP 19
5.9-17-1	130N01534	RUBBER-PICK UP MP	1	
5.9-17-2	-	HOUSING-M_PICK UP_MP	1	
5.9-17-3	-	HOUSING-M-PICK UP2_R2	1	
5.9-18	-	GEAR-M-PICK UP_MP	1	
5.9-19	-	SPRING-CS	1	
5.9-20	-	GEAR-M-HOLDER_MP	1	
5.9-21	-	CAM-M_PICK UP MP	1	
5.9-22	-	SHAFT-P-PICK_UP	1	
5.9-23	-	STOPPER-M-PICK UP_R2	2	
5.9-24	-	PMO-IDLE PICK_UP	2	
5.9-25	-	SHAFT-P-CORE	2	
5.9-26	-	BUSH-M-PICK_UP R	1	
5.9-27	-	BRACKET-P-PICKUP_MP	1	

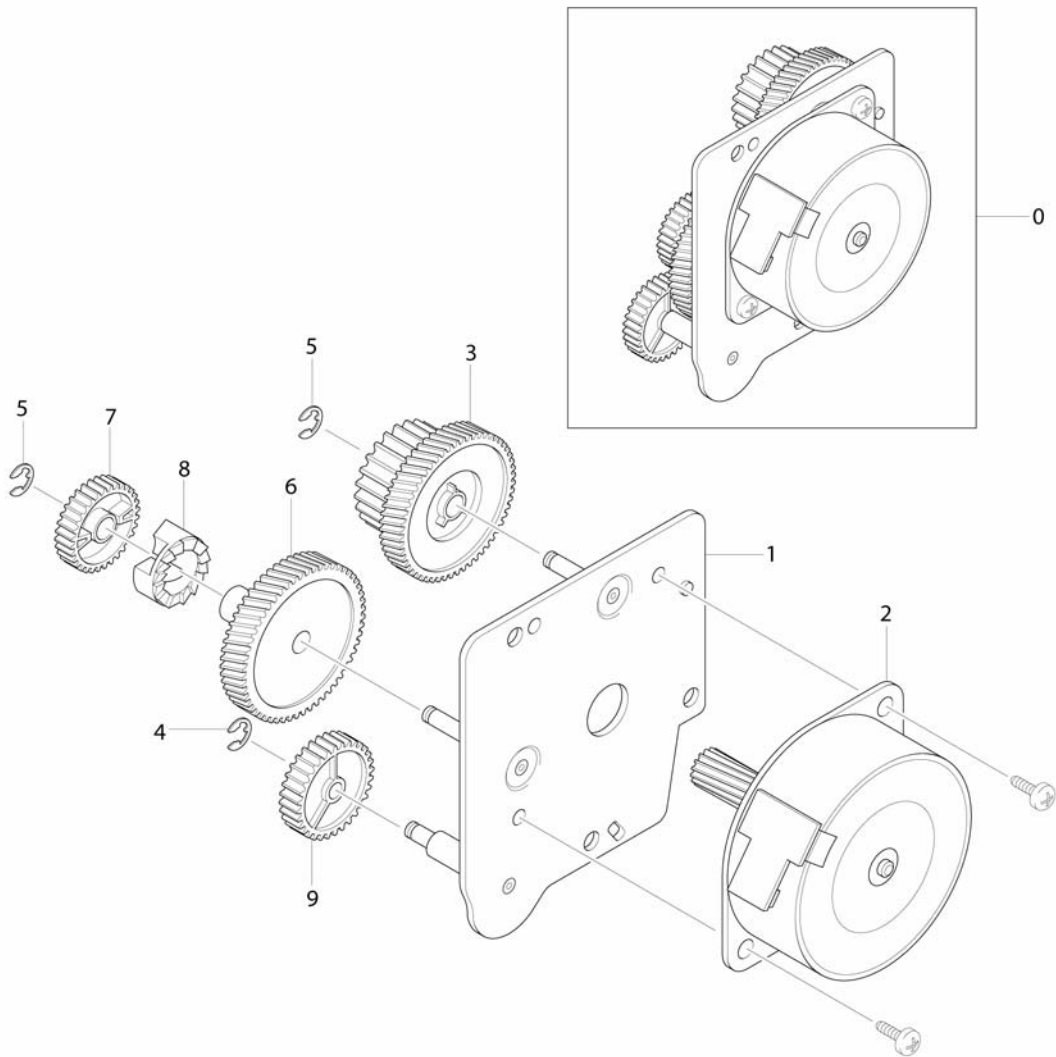
PL 10 Main Drive Assembly



PL 10 Main Drive Assembly

No.	Part No.	Description	QT'y	Remark
5.10-0	007N01561	ELA UNIT-MAIN DRIVE	1	REP 9
5.10-1	-	MOTOR DC-BLDC MAIN	1	REP 9
5.10-2	-	BRACKET-P-GEAR MAIN	1	
5.10-3	-	BRACKET-P-MOTOR MAIN	1	
5.10-4	-	GEAR-OPC RDCN 93/61	1	
5.10-5	-	GEAR-OPC DRV 113/33	1	
5.10-6	-	GEAR-FEED RDCN 55/18	2	
5.10-7	-	WASHER-PLAIN	2	
5.10-8	-	GASKET	2	

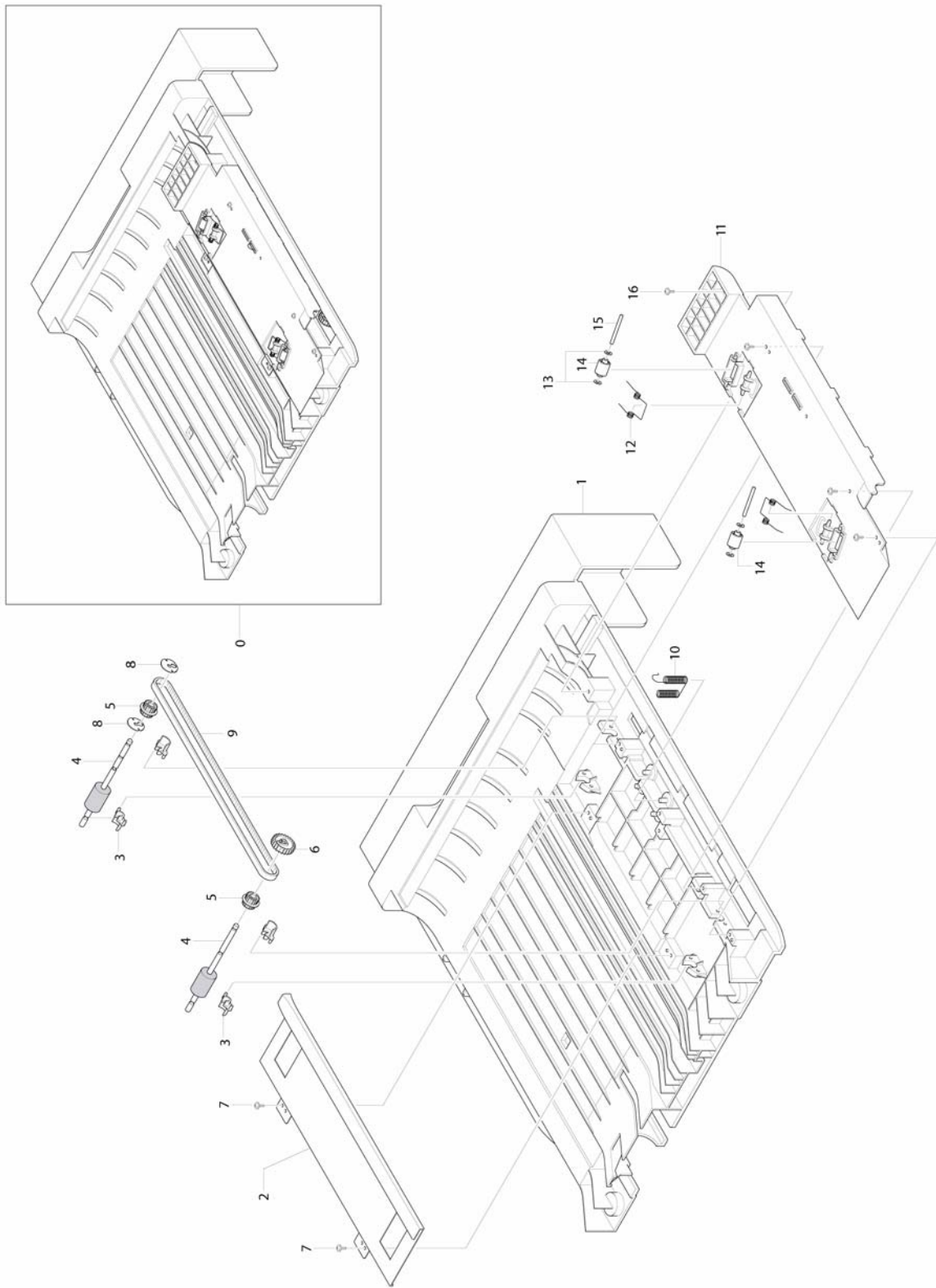
PL 11 Fuser Drive Assembly



PL 11 Fuser Drive Assembly

No.	Part No.	Description	QT'y	Remark
5.11-0	-	ELA HOU-FUSER DRIVE	1	REP 13
5.11-1	-	BRACKET-P-FUSER EXIT	1	
5.11-2	127N07560	MOTOR STEP-MAIN	1	REP 13
5.11-3	-	GEAR-EXIT RDCN 87/24	1	
5.11-4	-	RING-E	1	
5.11-5	-	RING-E	2	
5.11-6	-	GEAR-FUSER RDCN IN 95	1	
5.11-7	-	GEAR-RDCN FUSER OUT	1	
5.11-8	-	GEAR-HUB CLUTCH	1	
5.11-9	-	GEAR-FUSER IDLE FR	1	

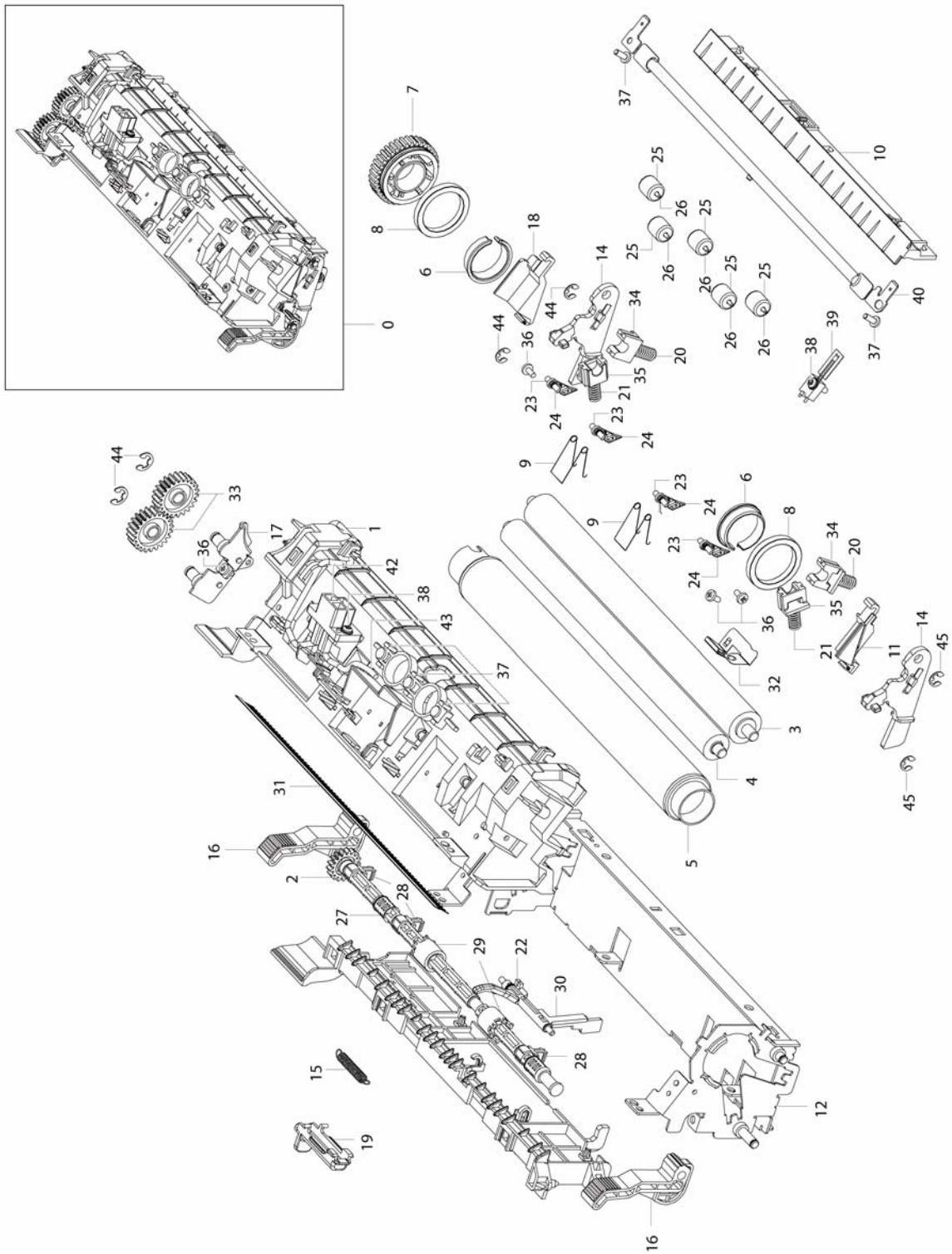
PL 12 Duplex Unit



PL 12 Duplex Unit

No.	Part No.	Description	QT'y	Remark
5.12-0	-	MEA UNIT-DUPLEX	1	
5.12-1	-	FRAME-M_DUP	1	
5.12-2	-	BRACKET-P-ALIGN DUP	1	
5.12-3	-	BUSH-M-FEED, DUP	4	
5.12-4	-	ROLLER-FEED_DUP2	1	
5.12-4	-	ROLLER-FEED_DUP	1	
5.12-5	-	PULLEY-18_DUP	2	
5.12-6	-	GEAR-EXIT F/DOWN	1	
5.12-7	-	SCREW-TAPTITE	2	
5.12-8	-	RING-C	1	
5.12-9	-	BELT-TIMMING	1	
5.12-10	-	TERMINAL-P-GND DUP	2	
5.12-11	-	GUIDE-M_UPPER DUP	1	
5.12-12	-	SPRING-TS	2	
5.12-13	-	PCT-SILP WASHER	4	
5.12-14	-	ROLLER-M-IDLE_DUP	2	
5.12-15	-	SHAFT-IDLE ROLL, DUP	2	
5.12-16	-	SCREW-TAPTITE	4	
-	-	ELA UNIT-ROLLER_DUP2	1	
-	-	ELA UNIT-ROLLER_DUP	1	

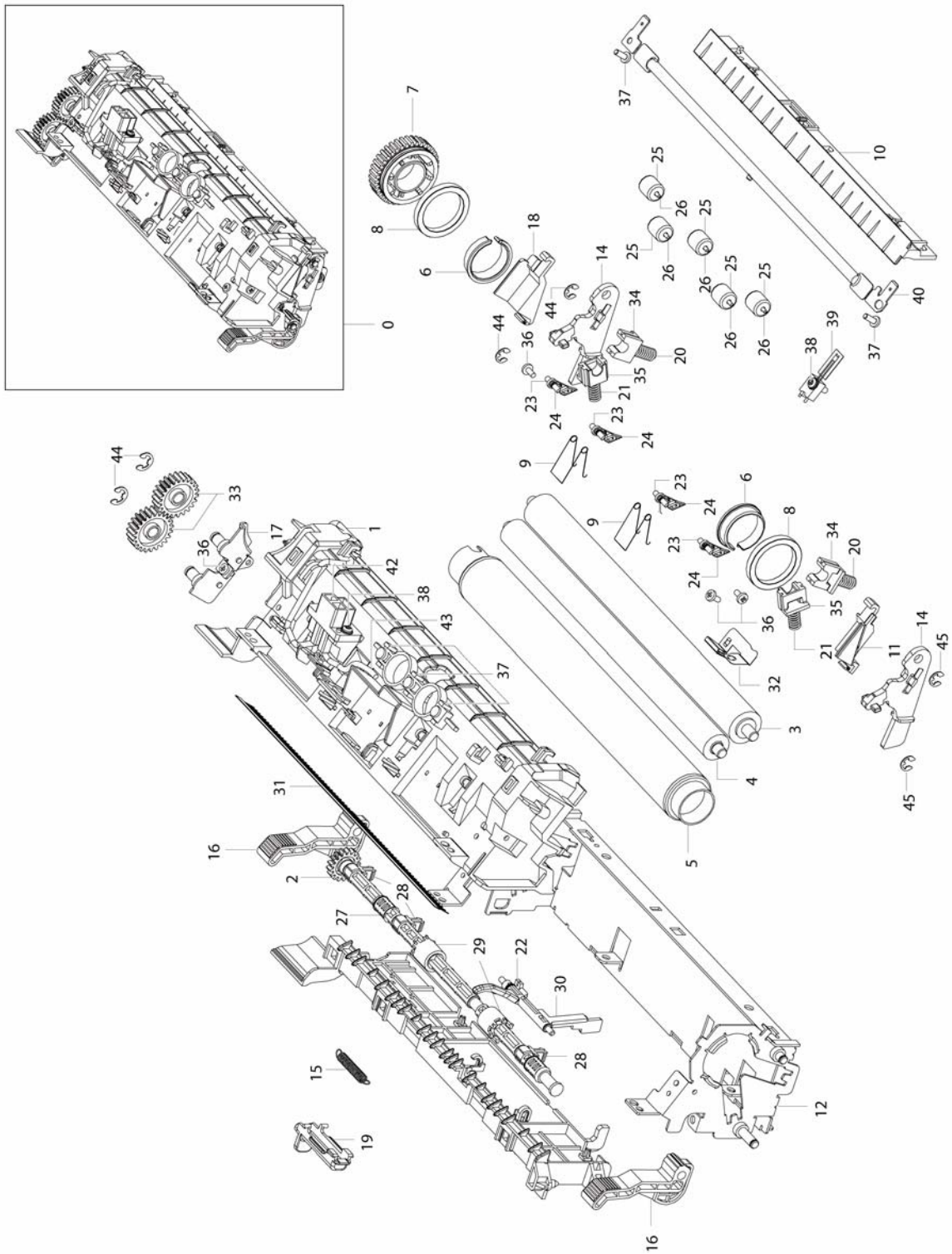
PL 13 Fuser Unit (1 of 2)



PL 13 Fuser Unit (1 of 2)

No.	Part No.	Description	QT'y	Remark
5.13-0	126N00291	ELA UNIT-FUSER (110V)	1	REP 4
5.13-0	126N00290	ELA UNIT-FUSER (220V)	1	REP 4
5.13-1	-	COVER-FUSER_UPPER	1	
5.13-2	-	GEAR-EXIT	1	
5.13-3	022N02365	ROLLER-PRESSURE	1	
5.13-4	022N02301	ROLLER-PRESSURE	1	
5.13-5	022N02366	ROLLER-HEAT	1	
5.13-6	-	BUSH-HR_R	2	
5.13-7	-	GEAR-FUSER	1	
5.13-8	-	BEARING-BALL	2	
5.13-9	-	SPRING-TS	2	
5.13-10	-	GUIDE-INPUT	1	
5.13-11	-	CAP-LAMP_L	1	
5.13-12	-	FRAME-FUSER	1	
5.13-13	-	GUIDE-REAR	1	
5.13-14	-	LEVER-LINK JAM	2	
5.13-15	-	SPRING-ES	1	
5.13-16	-	HOLDER-JAM	2	
5.13-17	-	BRACKET-FUSER	1	
5.13-18	-	CAP-LAMP_R	1	
5.13-19	-	HOLDER-M_REAR_LEVER	1	
5.13-20	-	SPRING-CS	2	
5.13-21	-	SPRING-CS	2	
5.13-22	-	SPRING ETC-ACTUATOR	1	

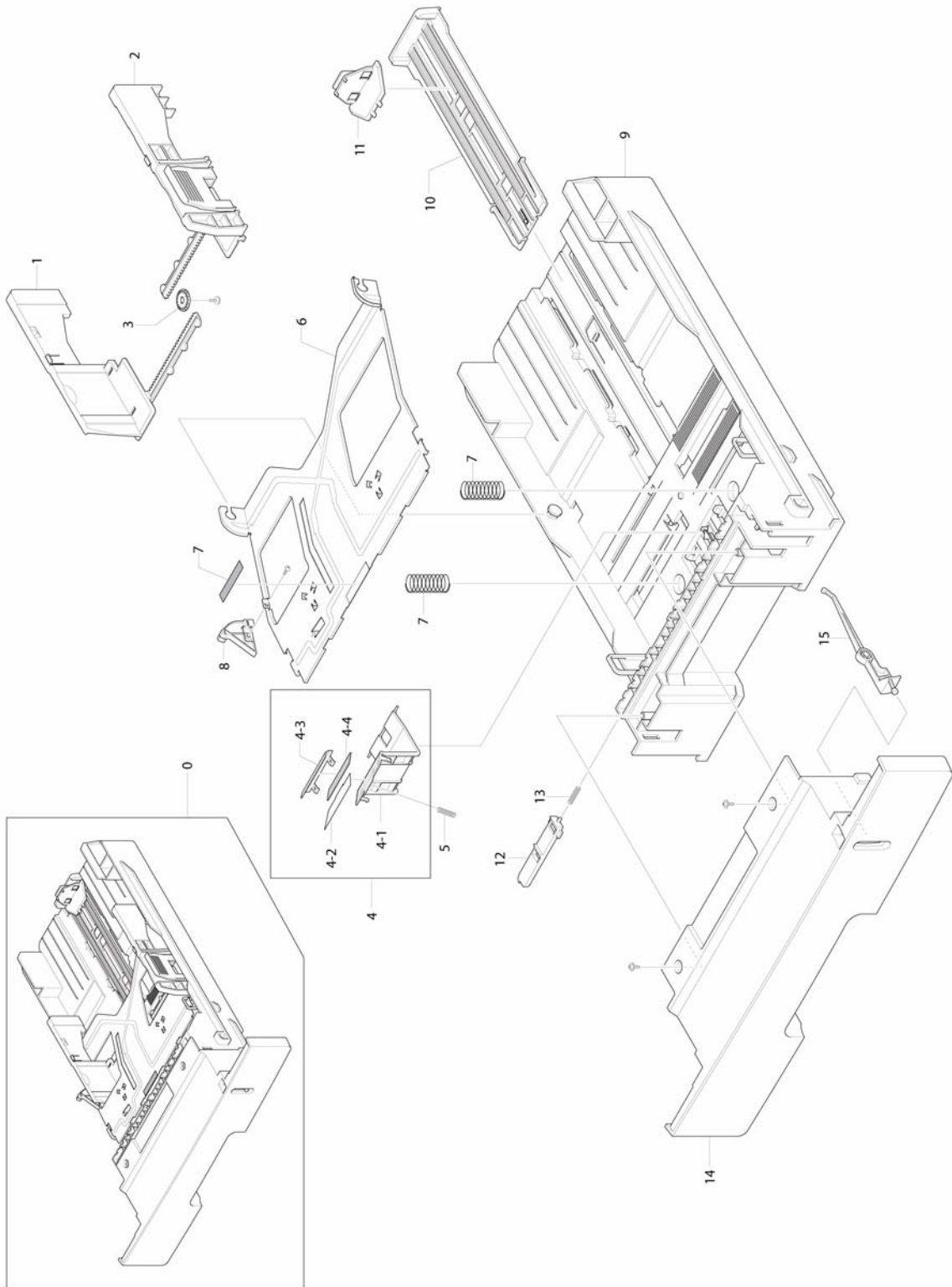
PL 14 Fuser Unit (2 of 2)



PL 14 Fuser Unit (2 of 2)

No.	Part No.	Description	QT'y	Remark
5.14-23	-	GUIDE-CLAW	4	
5.14-24	-	SPRING ETC-CLAW	4	
5.14-25	-	PEX-ROLLER F/UP(2)	5	
5.14-26	-	IEX-SHAFT IDLE,F/UP	5	
5.14-27	-	SHAFT-EXIT_F/UP	1	
5.14-28	-	BUSH-TX	3	
5.14-29	-	RUBBER-EXIT_F/UP	2	
5.14-30	-	ACTUATOR-EXIT	1	
5.14-31	-	MEC-BRUSH ANTISTATIC	1	
5.14-32	-	ELECTRODE-EARTH	1	
5.14-33	-	GEAR-IDLE 23 FUSER	2	
5.14-34	-	BUSH-PR_1ST	2	
5.14-35	-	BUSH-PR_2ND	2	
5.14-36	-	SCREW-TAPTITE	4	
5.14-37	-	SCREW-TAPTITE	5	
5.14-38	-	SCREW-TAPTITE	3	
5.14-39	130N01489	THERMISTOR-NTC ASSY	1	
5.14-40	130N01490	THERMOSTAT	1	
5.14-41	122N00260	LAMP-HALOGEN (110V)	1	
5.14-41	122N00261	LAMP-HALOGEN (220V)	1	
5.14-42	-	CBF HARNESS-FUSER CON	1	
5.14-43	-	CBF HARNESS-FUSER (220V)	1	
5.14-43	-	CBF HARNESS-FUSER (110V)	1	
5.14-44	-	RING-E	2	
5.14-45	-	RING-E	4	

PL 15 Cassette Unit



PL 15 Cassette Unit

No.	Part No.	Description	QT'y	Remark
5.15-0	-	MEA UNIT-CASSETTE	1	
5.15-1	-	ADJUST-M-CASSETTE_L	1	
5.15-2	-	ADJUST-M-CASSETTE_R	1	
5.15-3	-	GEAR-PINION	1	
5.15-4	-	MEA UNIT-HOLDER PAD	1	
5.15-4-1	-	HOLDER-M-PAD	1	
5.15-4-2	-	SHEET-HOLDER PAD R2	1	
5.15-4-3	-	IPR-PLATE PAD	1	
5.15-4-4	-	RPR-FRICTION PAD	1	
5.15-5	-	SPRING ETC-EXIT ROLL FD	1	
5.15-6	-	PLATE-P-KNOCK_UP	1	
5.15-7	-	SPRING-CS	2	
5.15-7	-	RPR-PAD CASSETTE	1	
5.15-8	-	CAM-M-KNOCK UP	1	
5.15-9	-	FRAME-M_CASSETTE	1	
5.15-10	-	GUIDE-M-EXTENSION L2	1	
5.15-11	-	PMO-EXTENSION SMALL	1	
5.15-12	-	PMO-PLATE_LOCKER	1	
5.15-13	-	SPRING ETC-LOCKER,PLATE	1	
5.15-14	-	COVER-M_SUB CST	1	
5.15-15	-	INDICATOR-M_CASSETTE	1	