

Parts List

In this chapter...

- Serial Number Format
- Using the Parts List
- Parts Lists
- Xerox Supplies and Accessories

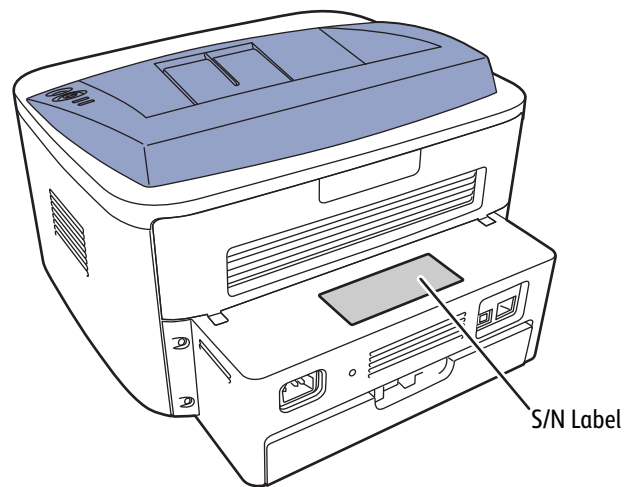
Chapter 9

Serial Number Format

Changes to Xerox products are made to accommodate improved components as they become available. It is important when ordering parts to include the following information:

- Component's part number
- Product type or model number
- Serial Number of the printer

The serial number is found on a label located on the back of the printer.



s3160-123

The nine-digit serial number has the following format:

PPSSSSSS

PPP = Three digit alphanumeric product code

Product Code	Product
TVB	3140, 110 V Engine
TVX	3140, 220 V Engine
UWX	3155, 220 V Engine
UWB	3160B, 220 V Engine
UXA	3160N, 110 V Engine
UXB	3160N, 220 V Engine

SSSSSS = Six digit numeric serial number based on the following table:

Product	Starting Serial Number	Ending Serial Number
3140, 110 V Engine	041501	071500
3140, 220 V Engine	071501	271500
3155, 220 V Engine	301501	401500
3160B, 220 V Engine	401501	431500
3160N, 110 V Engine	431501	461500
3160N, 220 V Engine	461501	511500

Example

UXB461515: Xerox Serial Number

UXB: Product Code for the Phaser 3160N, 220V printer

461515 = Serial Number for 3160N

Using the Parts List

- **ID No.:** The callout number from the exploded part diagram.
- **Name/Description:** The name of the part to be ordered and the number of parts supplied per order.
- **Part Number:** The material part number used to order that specific part.
- Parts identified throughout this manual are referenced **PL#.#.#**; For example, PL3.1.10 means the part is item 10 of Parts List 3.1.
- A black triangle preceding a number followed by a parenthetical statement in an illustrated parts list means the item is a parent assembly, made up of the individual parts called out in parentheses.
- The notation “**with X~Y**” following a part name indicates an assembly that is made up of components X through Y. For example, “1 (with 2~4)” means part 1 consists of part 2, part 3, and part 4.
- An asterisk (*) following a part name indicates the page contains a note about this part.
- The notation (NS) next to a part indicates that particular part is not spared, but contained in a kit or major assembly.
- The notation “**J1<>J2 and P2**” is attached to a wire harness. It indicates that connector Jack 1 is attached to one end of the wire harness and connector J2 is attached to the other end that is plugged into P2.

Note

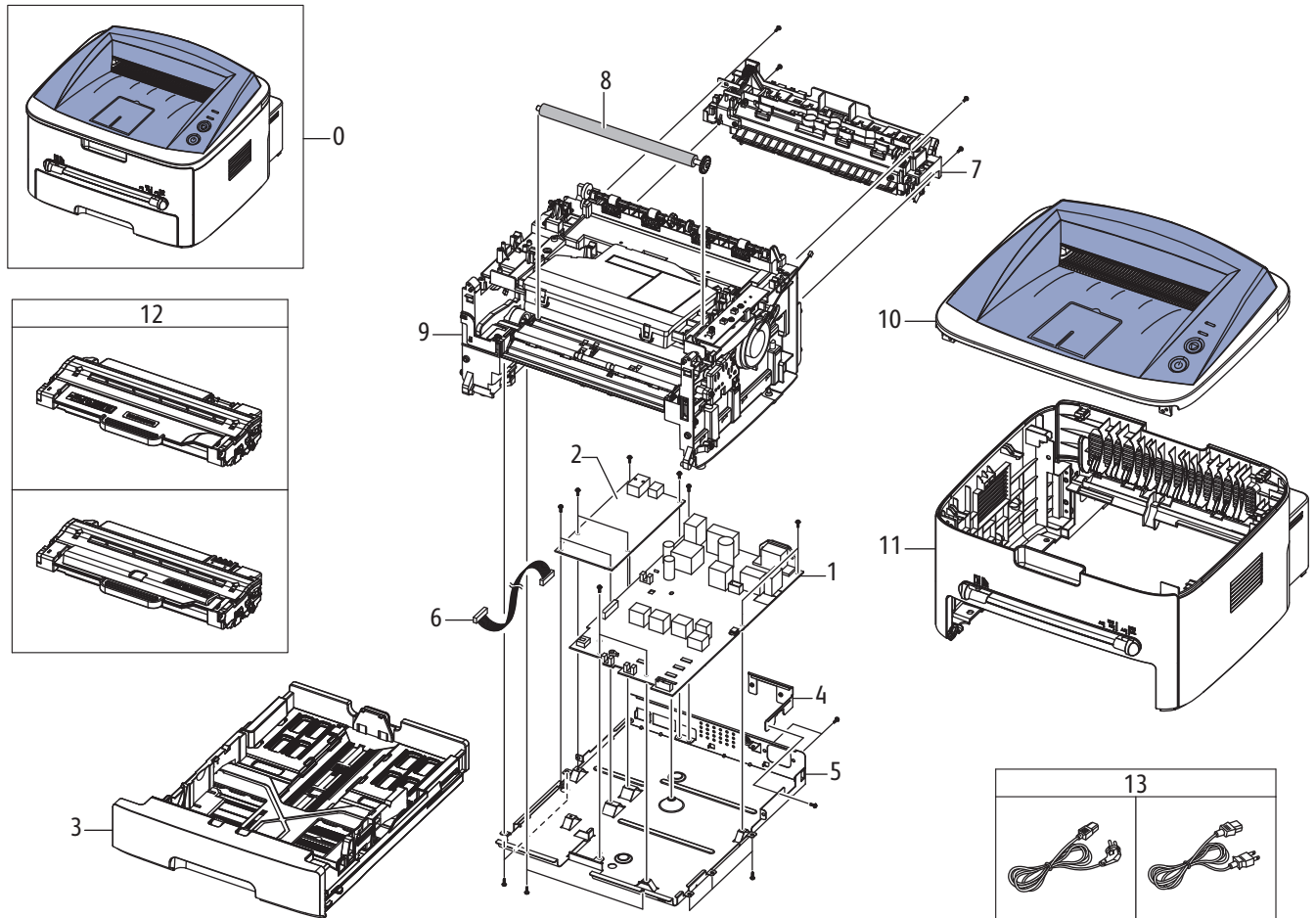
Only parts showing part numbers are available for ordering by support. Parts not showing part numbers are available on the parent assembly.

Abbreviations

Abbreviation	Meaning
C	C-ring
E	E-ring
KL	K-clip
S	Screw

Parts Lists

Parts List 1.0 Main

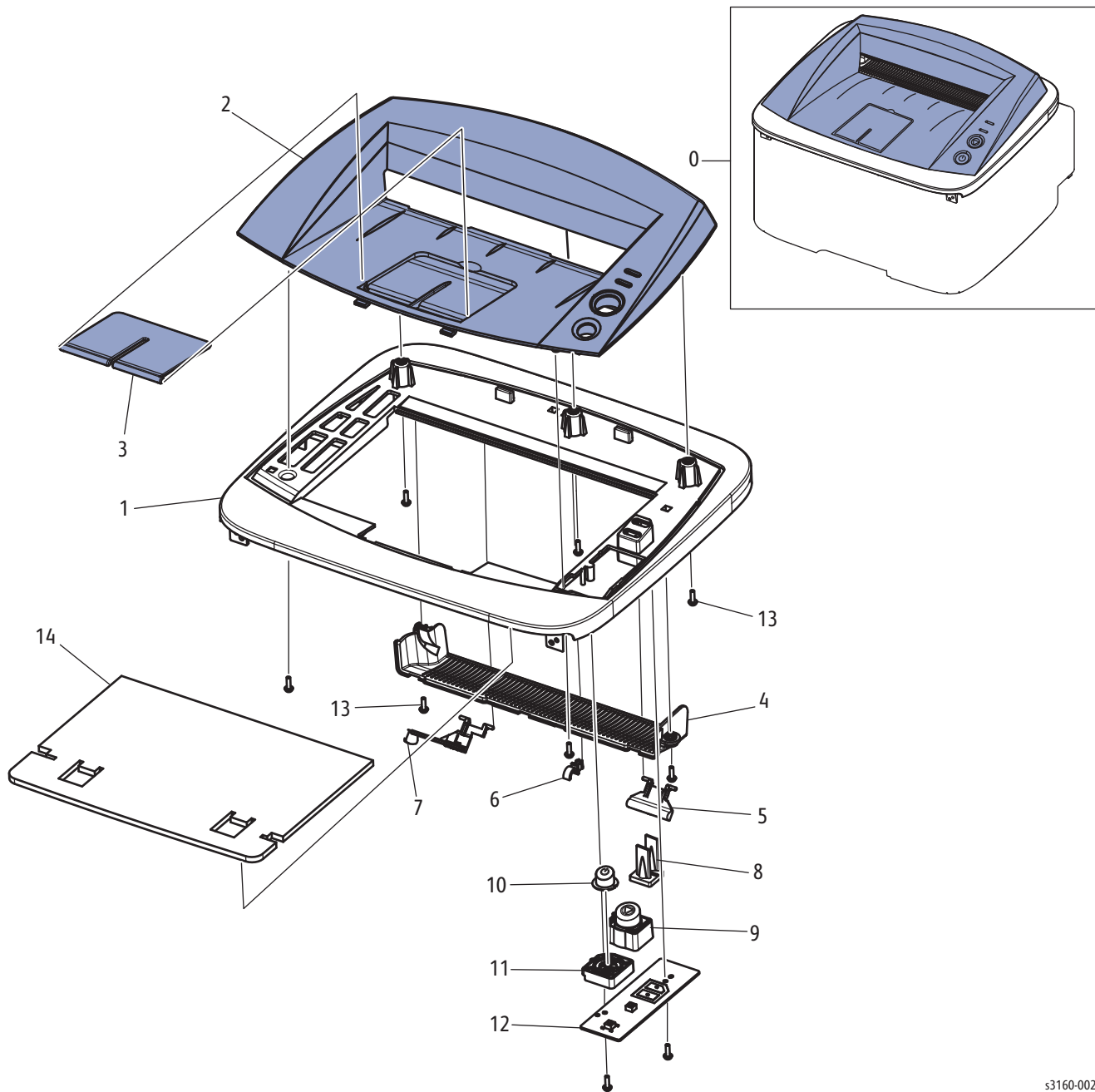


s3160-001

Parts List 1.0 Main

ID No.	Name/Description	Part Number
1.	Power Supply Board, 110V Power Supply Board, 220V	105N02172 105N02173
2.	Controller Board 3140 3155 3160B 3160N	140N63413 140N63414 140N63415 140N63411
3.	Paper Tray	050N00547
4.	Power Inlet Bracket	—
5.	Engine Shield	—
6.	Engine Harness	—
7.	Fuser - 110V Fuser - 220V	126N00332 126N00333
8.	Transfer Roller	022N02354
9.	Main Frame	—
10.	Top Cover	002N02909
11.	Front Cover 3140 3155 3160B 3160N	002N02910 002N02911 002N02912 002N02906
12.	Print Cartridge - 1.5K Print Cartridge - 2.5K	108R00908 108R00909
13.	Power Cord, 110V Power Cord, 220V	105N02072 117N01769

Parts List 2.0 Top Cover

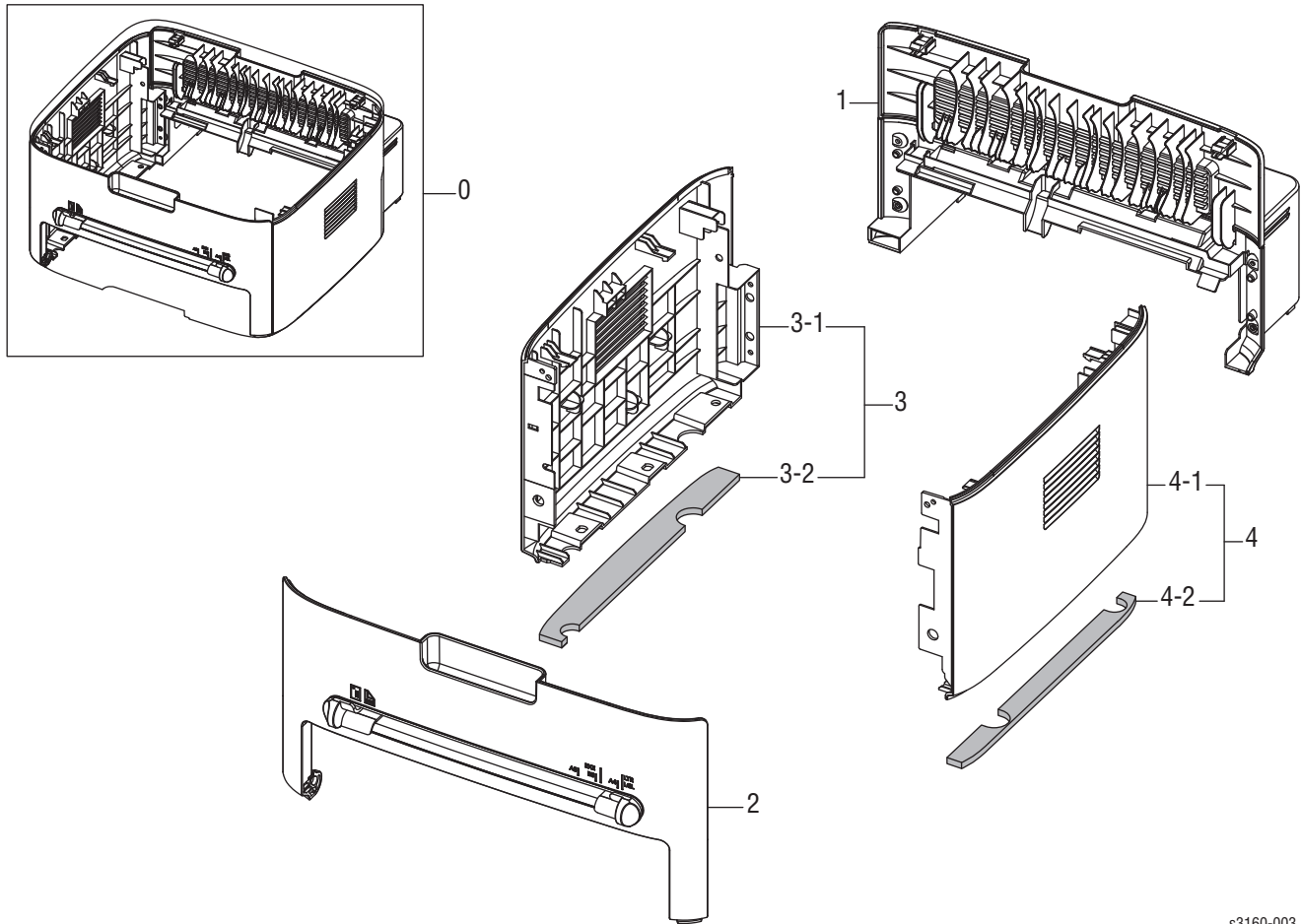


s3160-002

Parts List 2.0 Top Cover

ID No.	Name/Description	Part Number
0.	Top Cover Assembly	002N02909
1.	Top Cover	—
2.	Cover-Top Upper	—
3.	Stacker	—
4.	Exit Cover	—
5.	PMO-Sub_M_Stacker	—
6.	PMO-Bushing_F/Down	—
7.	Out Bin Full Actuator	—
8.	LED Lens	—
9.	Key-Start	—
10.	Key-Power	—
11.	Key-Power Holder	—
12.	Control Panel	140N63412
13.	Screw-Taptype	—
14.	Sponge-Cover_Top (3155 and 3160 models only)	—

Parts List 3.0 Covers

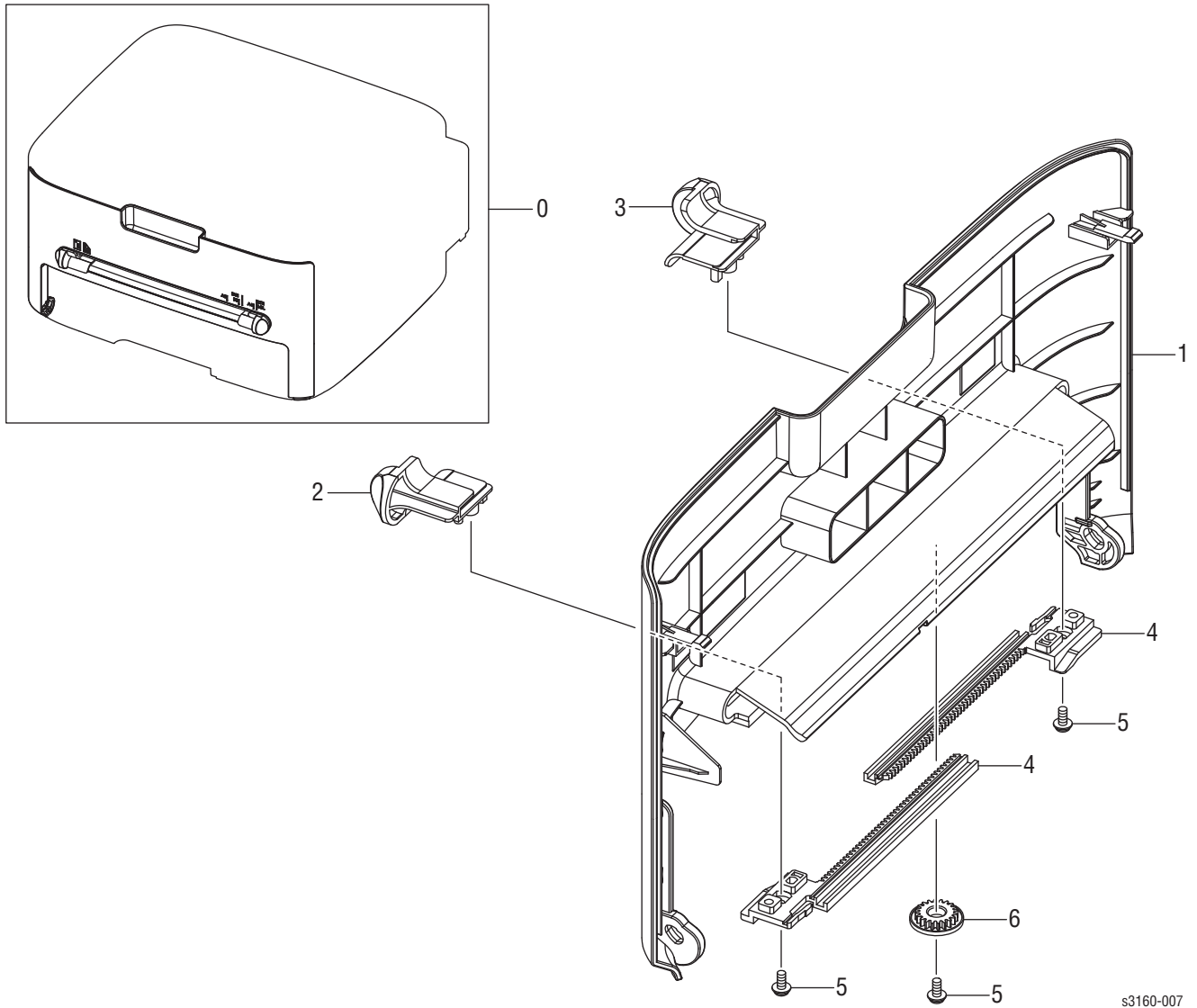


s3160-003

Parts List 3.0 Cover Assemblies

ID No.	Name/Description	Part Number
1.	Rear Cover Assembly 3140/3155/3160B 3160N	002N02913 002N02905
2.	Front Cover Assembly 3140 3155 3160B 3160N	002N02910 002N02911 002N02912 002N02906
3.	Left Cover Assembly	002N02907
4.-	Right Cover Assembly	002N02908

Parts List 4.0 Front Cover

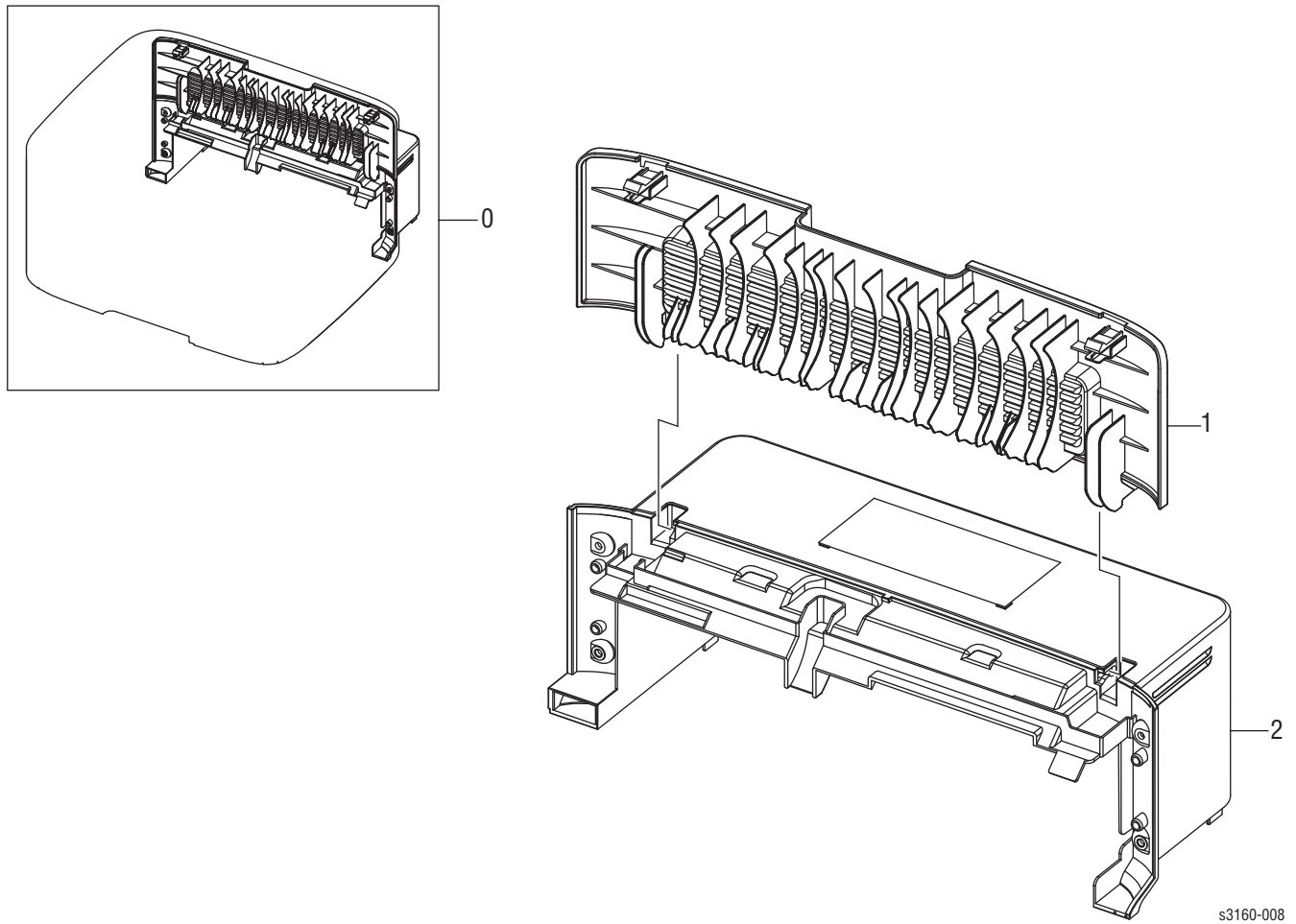


s3160-007

Parts List 4.0 Cover Assemblies

ID No.	Name/Description	Part Number
1.	Front Cover Assembly	
	3140	002N02910
	3155	002N02911
	3160B	002N02912
	3160N	002N02906
2.	Adjust-Manual_Right	—
3.-	Adjust-Manual_Left	—
4.	Adjust Rack-M-Manual	—
5.	Screw-Taptype	—
6.	Gear-Rack_Pinion	—

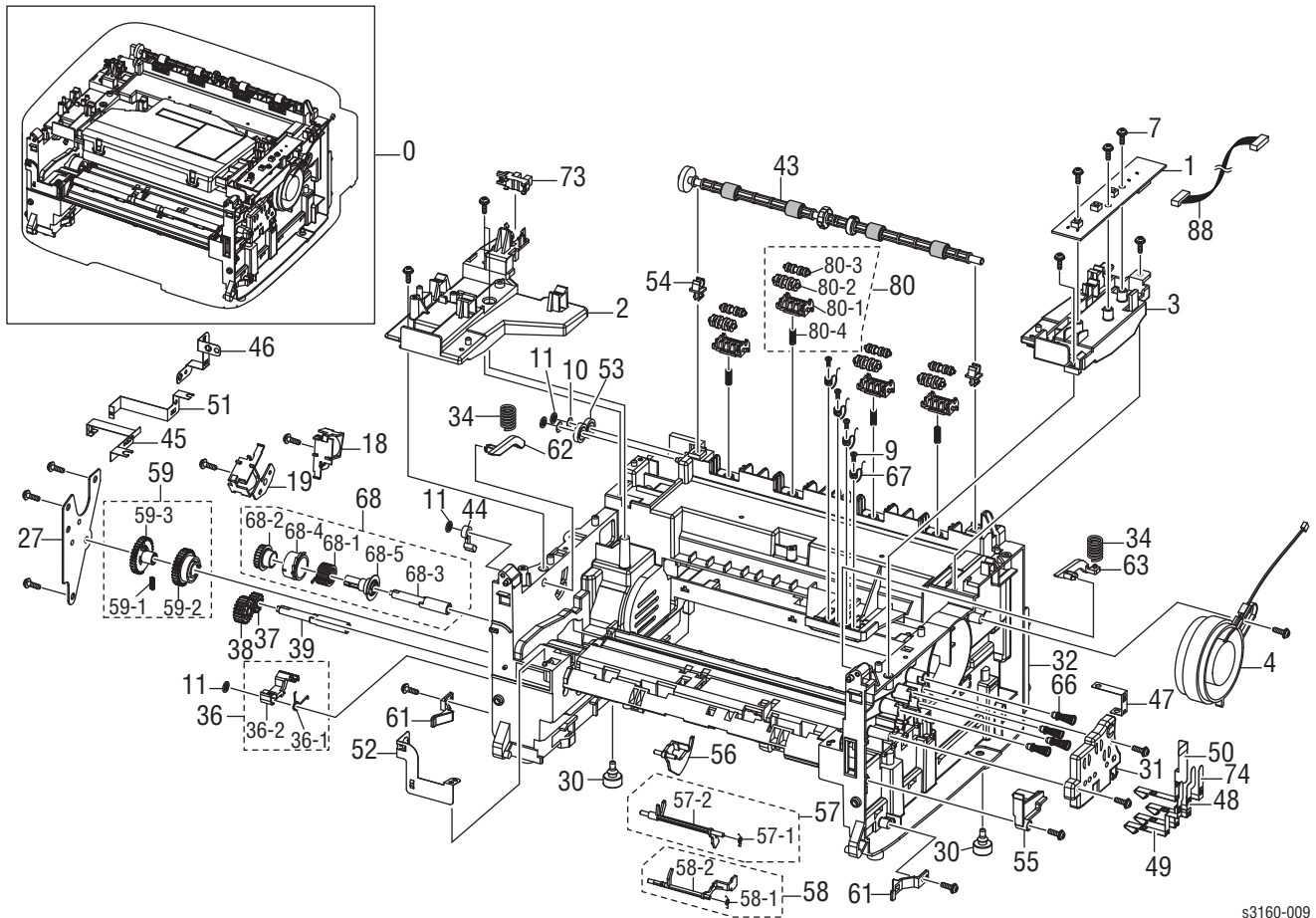
Parts List 5.0 Rear Cover



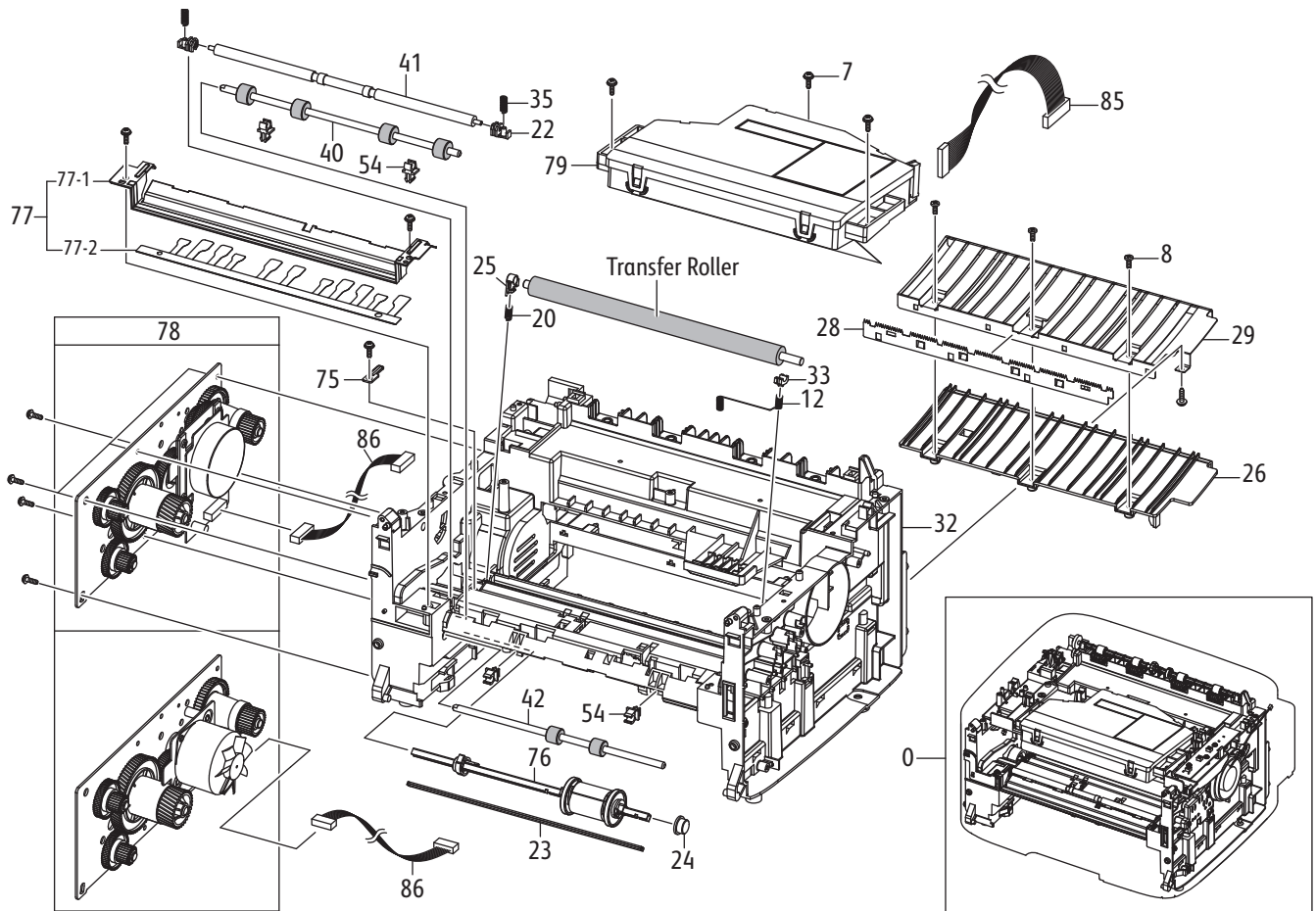
Parts List 5.0 Cover Assemblies

ID No.	Name/Description	Part Number
0.	Rear Cover Assembly 3140/3155/3160B 3160N	002N02913 002N02905
1.	Upper Rear Cover	—
2.	Lower Rear Cover	—

Parts List 6.0 Main Frame



s3160-009



s3160-010

Parts List 6.0 Frame

ID No.	Name/Description	Part Number
1.	Control Panel	140N63412
2.	Frame-Holder_LSU_L	—
3.	Frame-Holder_LSU_R	—
4.	Fan	127N07583
7.	Screw-Taptype	—
8.	Screw-Taptype	—
9.	Screw-Taptype	—
10.	Washer-Plain	—
11.	Ring-CS	—
12.	Spring-Etc	—
18.	Pick Up Solenoid	121N01168
19.	Manual Solenoid	121N01162
20.	Spring-CS	—
22.	Bush-M-Feed Idle	—
23.	Shaft-P-Core	—
24.	Bush-M-Pick Up R	—
25.	Bush-M-TR L	—
26.	Guide-M-TR Rib	—
27.	Feed Bracket	—
28.	Plate-P-Saw	—
29.	Guide-P-TR	—
30.	Foot-ML80	—
31.	Housing-Terminal	—
32.	Frame-Base	—
33.	Bush-TR_L	—
34.	Spring ETC-Guide Deve	—
35.	Spring ETC-TR	—
36.	Frame-Left Stopper Pick Up	—
36-1.	Spring-TS	—
36.2.	Cam-M-Pick Up	—
37.	Gear-Feed 2	—
38.	Gear-Idle 23	—
39.	Shaft-Feed	—
40.	Roller-Registration	—
41.	Shaft-Idle Feed	—

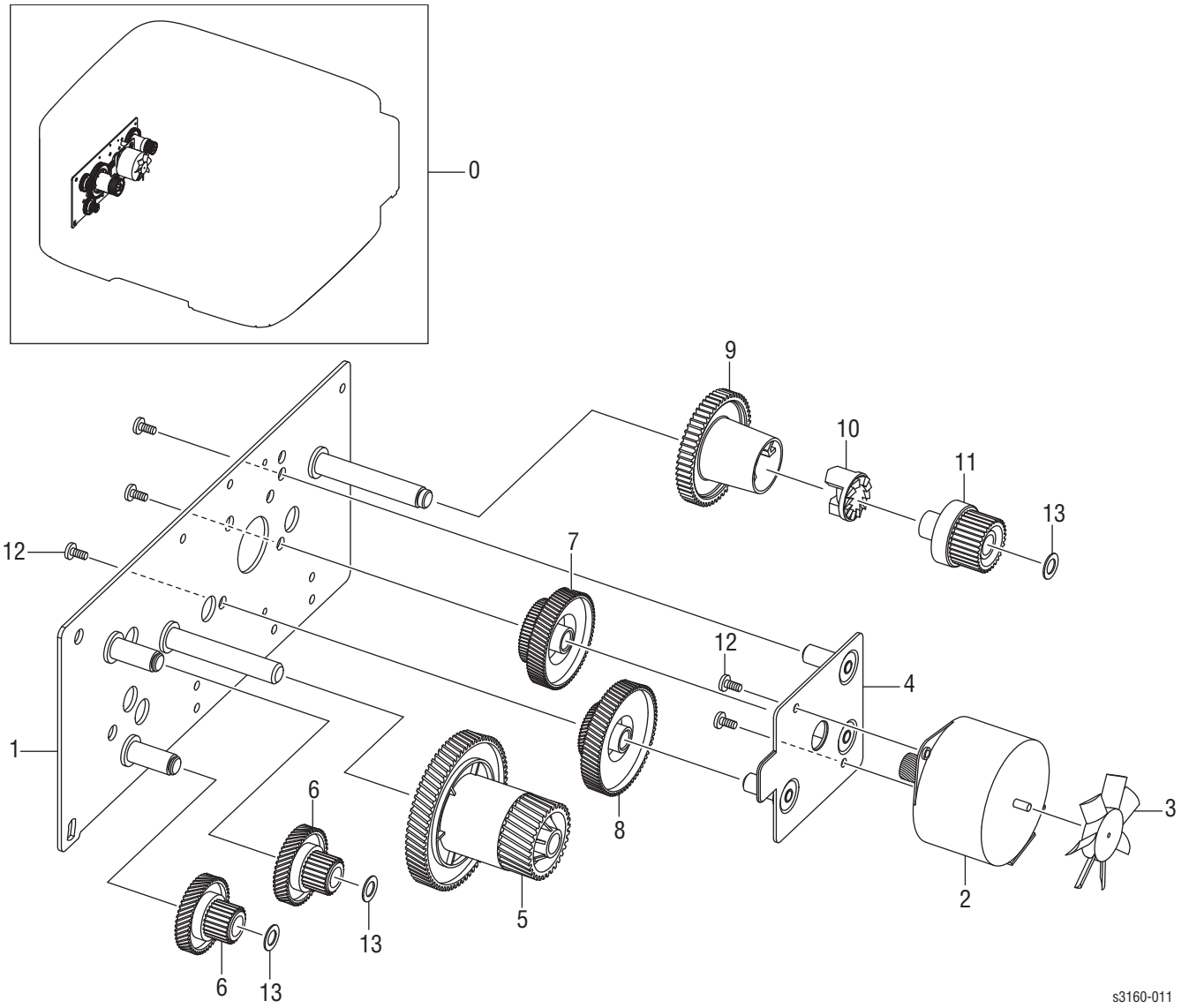
Parts List 6.0 Frame (Continued)

ID No.	Name/Description	Part Number
42.	Roller-Feed	022N02421
43.	Frame-Roller Exit Face Down	—
44.	Stopper-Lever_DR	—
45.	IPR-P-Ground_Drive	—
46.	Ground-Fuser	—
47.	IPR-P-Ground_TR	—
48.	Terminal-Con	—
49.	Terminal-Supply	—
50.	Terminal-CR	—
51.	IPR-P_Ground_Drive2	—
52.	IPR-P-Ground_Guide Paper	—
53.	PMO-Gear_Exit_DRV16	—
54.	PMO-Bushing Feed	—
55.	Cover Open Actuator	—
56.	Paper Tray Empty Actuator	120N00425
57.	Feed Actuator	
57-1.	Spring-TS	009N01653
57-2.	PMO-Feed Actuator	022N02127
58.	Manual Feed Actuator	120N00532
58-1.	Spring-TS	009N01657
58-2.	PMO-Actuator Manual	709N00007
59.	Pick Up Gear Unit	—
59-1.	Spring-CS	—
59-2.	PMO-Gear Pick Up A	—
59-3.	PMO-Gear Pick Up B	—
60.	PMO-Locker CST	—
61.	PMO-Plate Guide Deve_L	—
62.	PMO-Plate Guide Deve_R	—
66.	MEC-Terminal	—
67.	Terminal-CRUM	—
68.	Clutch Assembly	005N01031
68-1.	Spring-TS	—
68-2.	Gear-Feed 1	—
68-3.	Shaft-Feed	—
68-4.	PMO-Collar Spring	—
68-5.	PMO-Hub Clutch	—
73.	Photo-Interrupter	130N01574
74.	IPR-P-Terminal CON	—
75.	Bracket-Bush_TR L	—

Parts List 6.0 Frame (Continued)

ID No.	Name/Description	Part Number
76.	Pick Up Roller Assembly	001N00518
77.	Frame-Front Guide Paper	—
77-1.	Guide-P-Paper	—
77-2.	Sheet-Guide_Paper	—
78.	Drive Bracket 3140 3155/3160	030N00771 030N00770
79.	Laser Unit	130N01579
80.	Frame-Roller Decurl	—
80-1.	Holder-M-Exit F/Down	—
80-2.	Roller-M-Exit FR	—
80-3.	Roller-M-Exit Main	—
80-4.	Spring-CS	—
84.	Harness-Bin full	—
85.	Harness-Laser	—
86.	Harness-Step Motor Clutch	—
87.	Harness-CRUM	—
88.	Harness-OPE	—

Parts List 7.0 Drive Assembly (Model 3140)

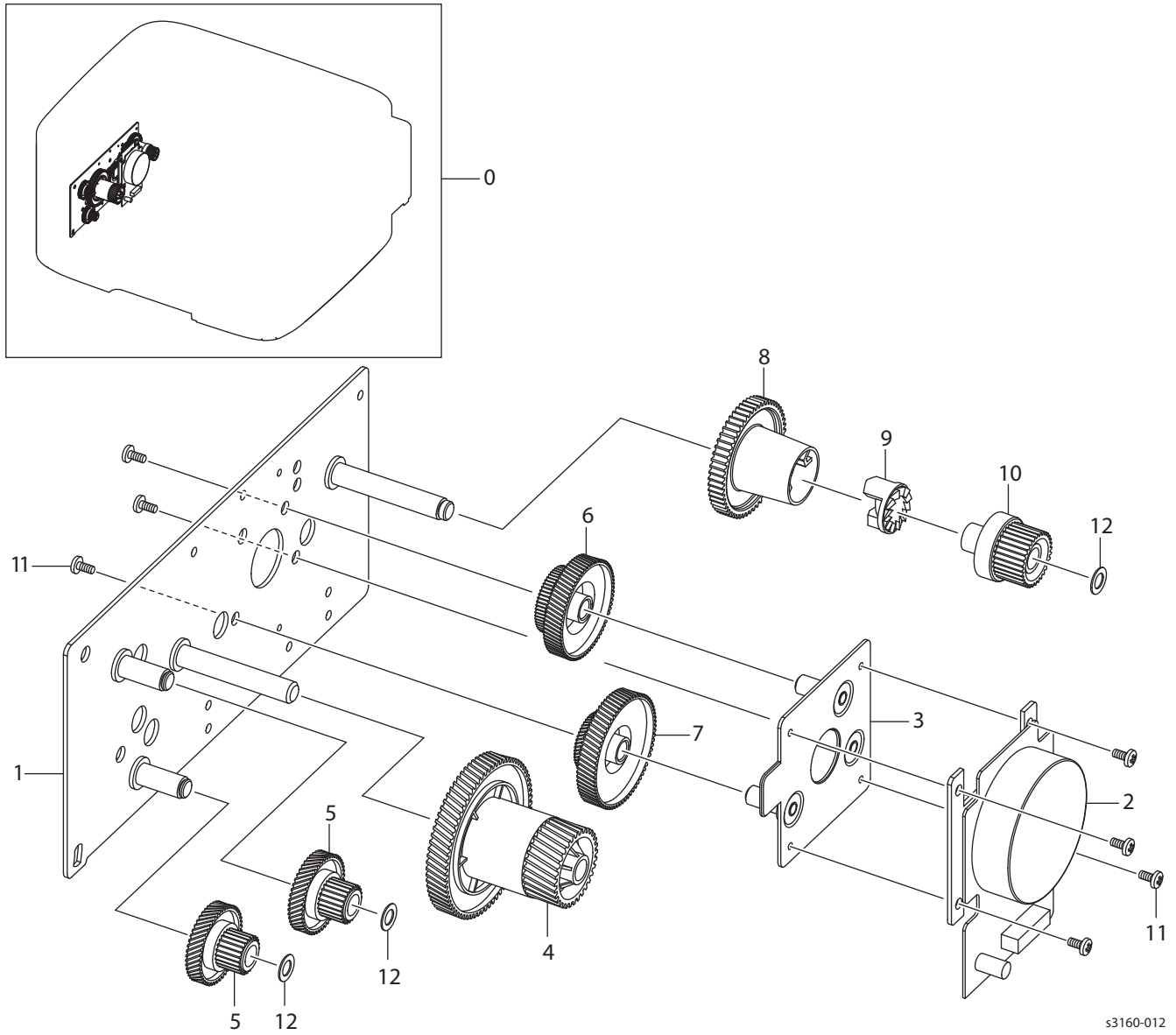


s3160-011

Parts List 7.0 Drive Assembly (Model 3140)

ID No.	Name/Description	Part Number
0.	Drive Assembly	030N00771
1.	Bracket Gear	—
2.	Step Motor	—
3.	Impeller	—
4.	Step Motor Bracket	—
5.	Gear RDCN OPC	—
6.	Gear RDCN 57/18	—
7.	Gear RDCN 90/31	—
8.	Gear RDCN 103/41	—
9.	Gear DRV Fuser Out	—
10.	Gear Hub Clutch	—
11.	Gear DRV Fuser In	—
12.	Screw-Taptype	—
13.	Plain Washer	—
14.	Motor BLDC	—

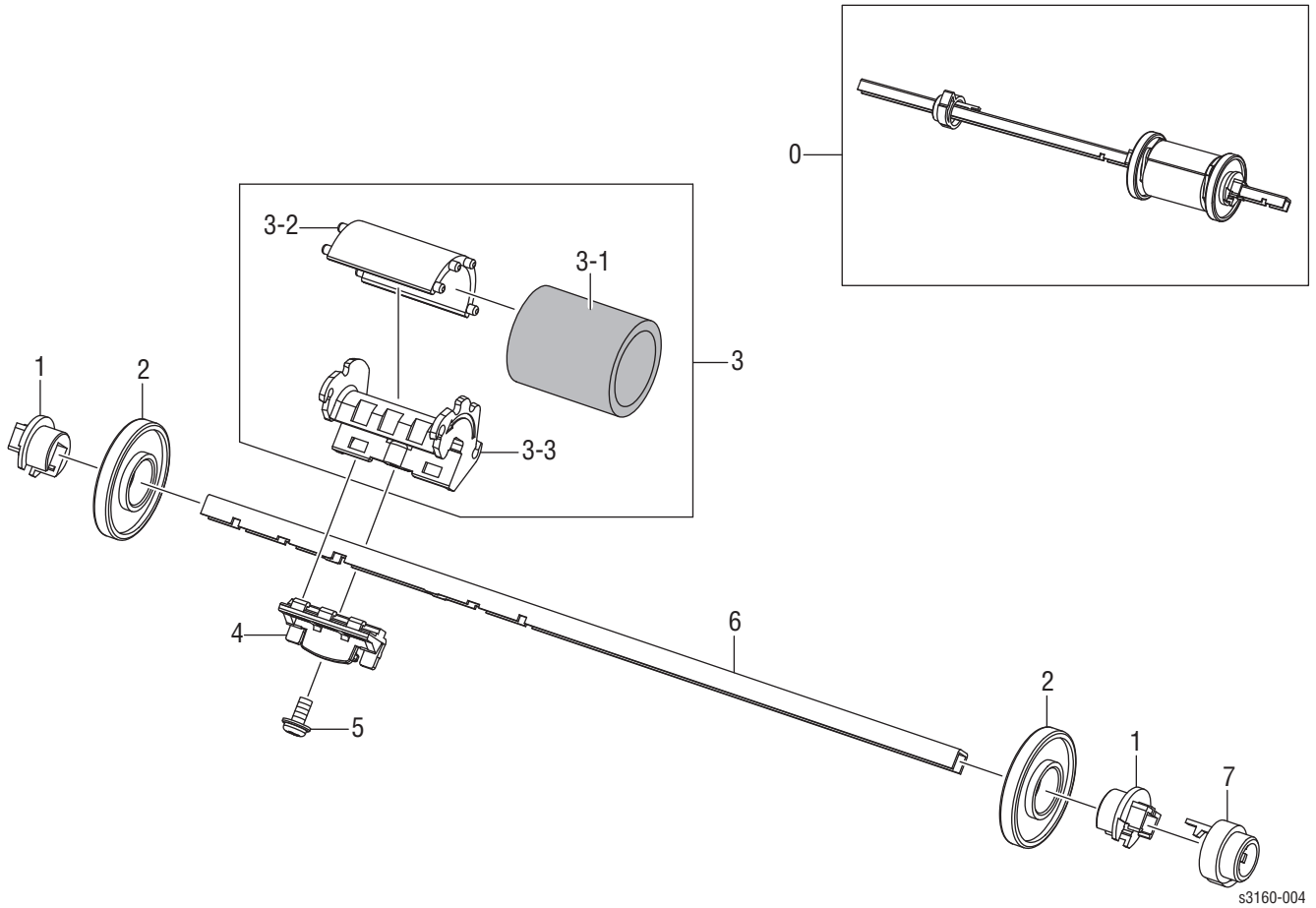
Parts List 7.1 Drive Assembly (Models 3155/3160)



Parts List 7.1 Drive Assembly (Models 3155/3160)

ID No.	Name/Description	Part Number
0.	Drive Assembly	030N00770
1.	Bracket P Gear 1400	—
2.	Motor BLDC	—
3.	Bracket Motor Step	—
4.	Gear RDCN OPC	—
5.	Gear RDCN 57/18	—
6.	Gear RDCN 90/31	—
7.	Gear RDCN 103/41	—
8.	Gear DRV Fuser Out	—
9.	Gear Hub Clutch	—
10.	Gear DRV Fuser In	—
11.	Gear Fuser DR OUT 37	—
12.	Gear Hub Clutch	—
13.	Gear DRV Fuser In	—
14.	Screw-Taptype	—
15.	Plain Washer	—

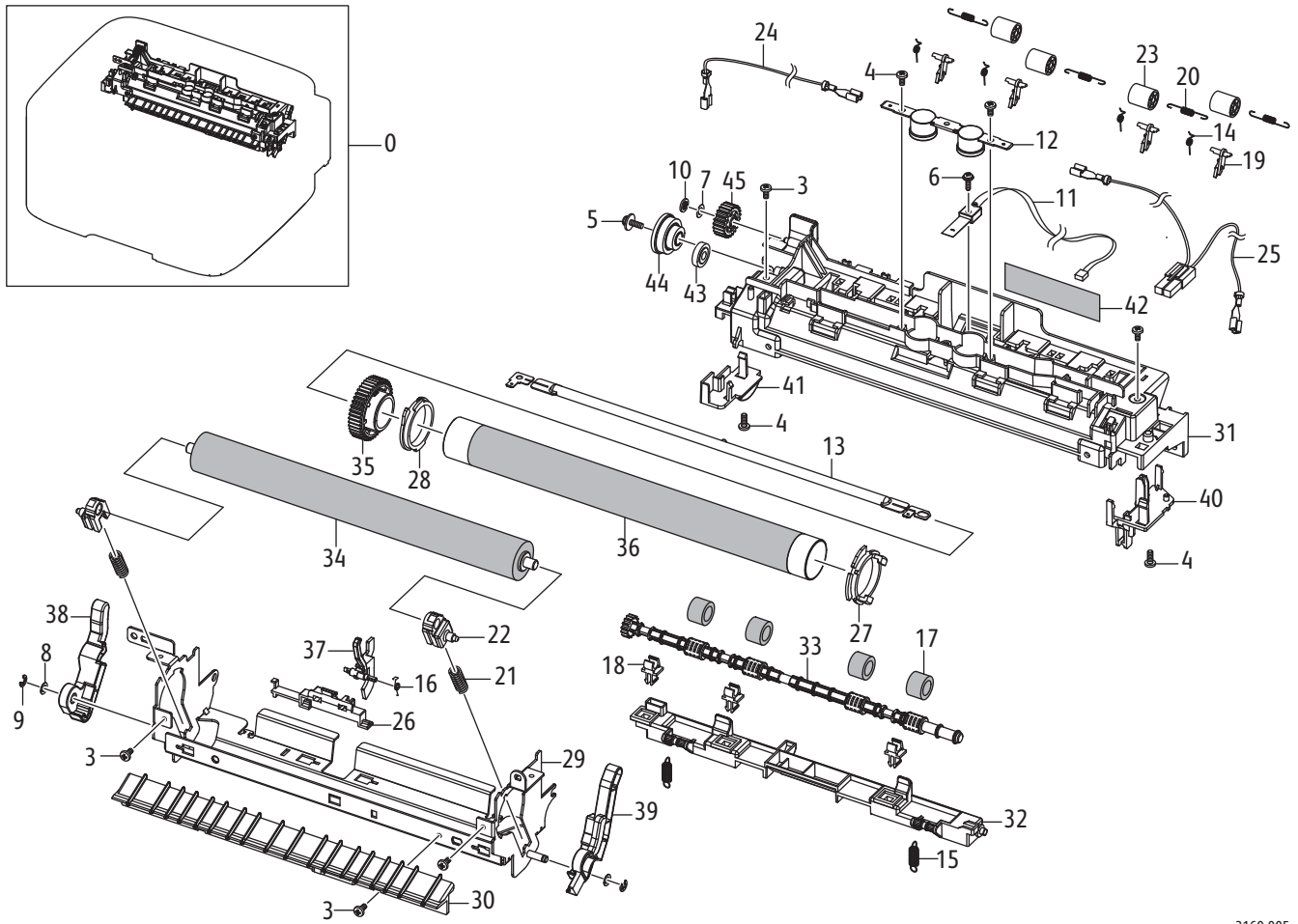
Parts List 8.0 Pick Up Roller Assembly



Parts List 8.0 Pick Up Roller Assembly

ID No.	Description	Part Number
0.	Pick Up Roller Assembly	001N00518
1.	Pick Up Stopper	—
2.	PMO-Idle Pick Up	—
3.	Frame Base- Pick Up Rubber	—
3-1.	Pick Up Rubber	—
3-2.	Pick Up Rubber Housing	—
3-3.	Pick Up Housing	—
4.	Pick up Holder	—
5.	Screw-Taptype	—
6.	Shaft-P-Pick Up	—
7.	Bush-M-Pick Up L	—

Parts List 9.0 Fuser



s3160-005

Parts List 9.0 Fuser

ID No.	Name/Description	Part Number
0.	Fuser (110V) Fuser (220V)	126N00332 126N00333
3.	Screw-Taptype	—
4.	Screw-Taptype	—
5.	Screw-Taptype	—
6.	Screw-Taptype	—
7.	Washer Plain	—
8.	Washer Plain	—
9.	E-Ring	—
10.	Ring-CS	—
11.	Thermistor	130N01578
12.	Thermostat	130N01490
13.	Halogen Lamp 110V 220V	122N00269 122N00270
14.	Spring TS	—
15.	Spring ES	—
16.	Spring TS	009N01657
17.	RMO Rubber Exit	—
18.	PMO Bushing TX	—
19.	Guide Claw	—
20.	Spring ETC-Fuser Exit	—
21.	Spring ETC-PR(7300)	—
22.	Bush-PR High	—
23.	PMO-Exit Roller	—
24.	Harness-Fuser Joint	—
25.	Harness-Fuser AC	—
26.	Holder-Actuator	—
27.	Bush-M-HR R R2	—
28.	Bush-M-HR L R2	—
29.	Fuser Frame	—
30.	Input Guide	—
31.	Fuser Cover	—
32.	Fuser Dummy Cover	—
33.	Roller-M-Exit F/Up	—
34.	Pressure Roller	022N01611
35.	Gear Fuser	—
36.	Heat Roller	022N02310

Parts List 9.0 Fuser

ID No.	Name/Description	Part Number
37.	Exit Actuator	—
38.	Lever Link Jam-L	—
39.	Lever Link Jam-R	—
40.	CAP Lamp-L	—
41.	CAP Lamp-R	—
42.	Caution Label	—
43.	PMO-Gear Exit Drv16	—
44.	Gear-RDCN Exit	—
45.	Gear-Idle 23	—

Parts List 10.0 Paper Tray Assembly

ID No.	Description	Part Number
0.	Paper Tray	050N00547
1.	Tray Frame	—
2.	Guide-Extension CST	—
3.	PMO Extension Small	—
4.	Adjust-M Cassette-R	—
5.	Adjust-M Cassette-L	—
6.	RPR-Pad Tray	—
7.	Plate-P-Knock Up	—
8.	Cam-M-Knock Up	—
9.	Screw-Taptype	—
10.	Spring-CS	—
11.	Tray Holder Pad Assembly	019N00998
11-1.	Sheet-Holder Pad	—
11-2.	Friction Pad	—
11-3.	Holder Pad	—
12.	Holder Pad Housing	—
13.	Spring ETC-Exit Roll FD	—
14.	Roller-M-Idle Feed	—
15.	Spring-ES	—
16.	Tray Cover	—
17.	Screw-Taptype	—
18.	Gear-Pinion	—
19.	Screw-Taptype	—
20.	PMO-Plate Locker	—
21.	Spring ETC-Locker, Plate	—
22.	PMO-Roller Upper DP	—

Xerox Supplies and Accessories

Consumables and Maintenance Items

Parts List Reference	Description	Part Number
PL1.0.11	Transfer Roller (50K)	022N02354
PL8.0.0	Fuser - 110V (50K)	126N00332
	Fuser - 220V (50K)	126N00333
PL1.0.12	Print Cartridge - 2.5K	108R00909
	Print Cartridge - 1.5K	108R00908

Power Cords

Description	Part Number
Power Cord, 110V	105N02072
Power Cord, 220V	117N01769