

OL600ex/610ex

8. PARTS LIST

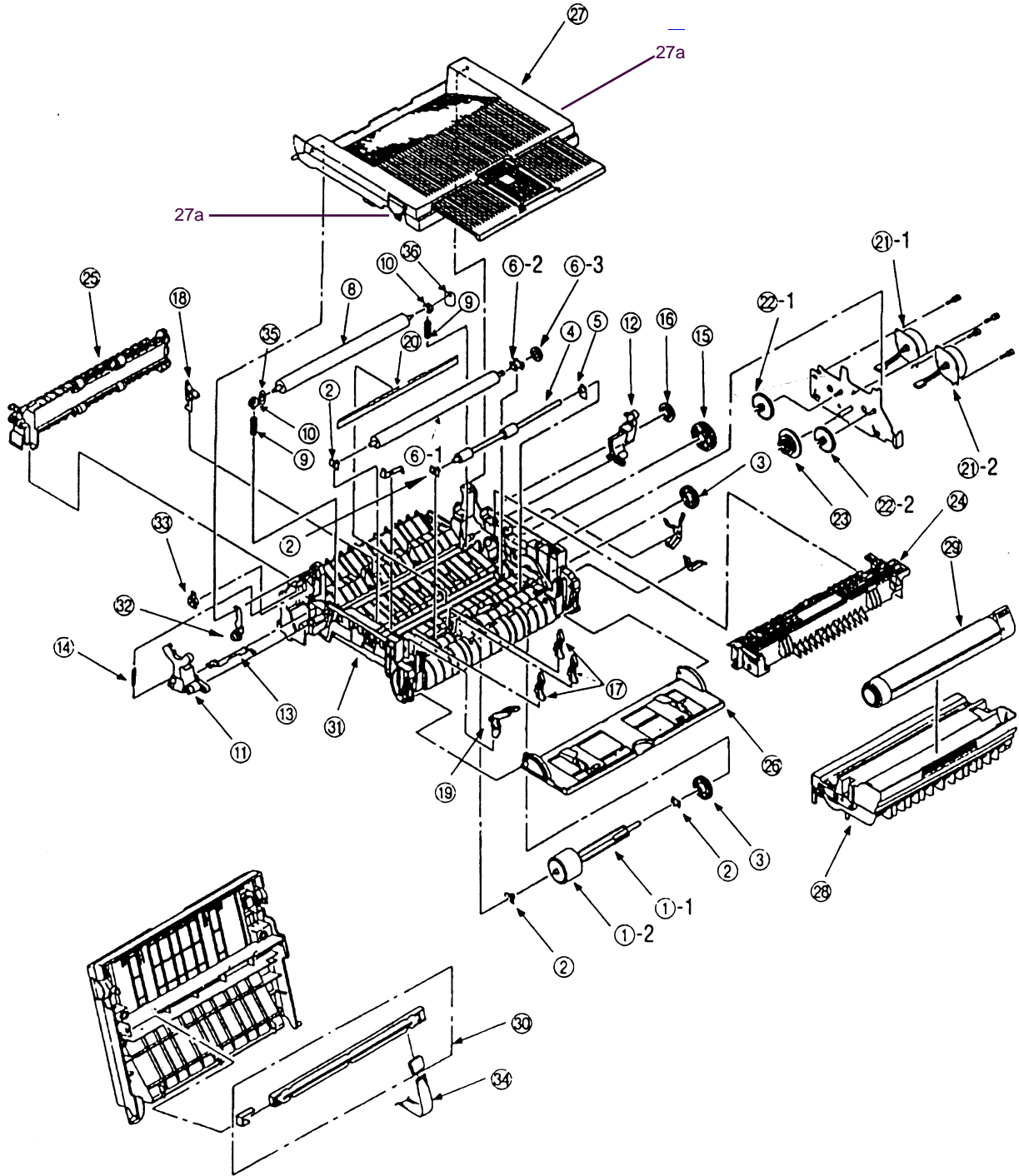


Figure 8-1 Lower Base Unit

OL600ex/610ex

Table 8-1 Lower Base Unit

No.	Name/Rating	Part No.	USE		Remarks
			OL600ex	OL610ex	
1-1	Hopping roller shaft	3PP4083-6020P1	1	1) Use
1-2	Hopping roller rubber F	4PB4122-1280P1	1	1) 3PA4083-6019G1
2	Bearing	4PP4083-6022P2	4	4	
3	Hopping roller clutch gear	4PB4083-6024P1	2	2	
4	Registration roller	3PB4083-6030P1	1	1	
5	Bearing (Registration)	4PP4083-6031P1	1	1	
6-1	Transfer roller A	3YB4083-7640P3	1	1	
6-2	Bearing C	3PP4083-6289P1	1	1	
6-3	TR Gear A	3PP4083-6290P1	1	1	
8	Back-up roller	3P84083-6064P2	1	1	
9	Bias spring B	4PP4083-7620P1	2	2	
10	Back-up roller bushing	4PP4083-6052P1	2	2	
11	Reset lever L	3PP4083-6053P1	1	1	
12	Reset lever R	3PP4083-6054P1	1	1	
13	Cover open arm	3PP4083-6058P1	1	1	
14	Stacker cover reset spring	4PP4083-6057P1	1	1	
15	Fuser roller idle gear	4PP4083-6080P1	1	1	
16	Eject roller idle gear	4PP4083-M1PI	1	1	
17	Sensor plate (Inlet, paper)	4PP4083-6083P1	3	3	
18	Sensor plate (Outlet)	4PA4083-6025G1	1	1	
19	Toner sensor (Adhesion)	4PP4083-6086G1	1	1	
20	Diselectrification bar	4PB4083-3182P3	1	1	
21.1	Pulse motor A	4PB4076-6150P1	1	1	Exit
21-2	Pulse motor B	4P84076-6151 PI	1	1	Pickup
22-1	Idle gear D	3PP4076-6145P1	1	1	
22-2	Idle gear E	3PP4076-6146P1	1	1	
23	Reduction gear C	3PP4076-6147P1	1	1	
24	Fusing unit	2YX4083-6100G5	1	1	120V
	Fusing unit	2YX4083-6100G6	1	1	230V
25	Eject roller assy	2PA4083-6120G2	1	1	
26	Manual feed guide assy	2PA4083-6130G1	1	1	
27	Face down stacker cover assy	2PA4083-6160G4	1	1	
27A	Release Lever	3PP4083-6163P1	1	1	
28	Image drum kit	4YA4083-7300G2	1	1	ODA (Consumable)
	Image drum kit	4YA4083-7i00G3	1	1	OEUINT (Consum.)
29	Toner cartridge kit	4YA4083-6400G2	1	1	ODA (Consumable)
	Toner cartridge kit	4YA4083-6400G3	1	1	OEUINT (Consum.)
30	LED head assy	3YX4083-6245G3	1	1	
31	lower base	2PP4083-6801 G2	1	1	
32	Stacker cover damper arm	4PP4083-6191G1	1	1	
33	Stacker cover damper gear	4PB4083-6197P1	1	1	
34	Flexible cable (LED head)	4YX4121-1025G2	1	1	
35	Washer 8	4PP4120-1209P1	1	1	
36	Washer C	4PP4120-1210P1	1	1	

OL600ex/610ex

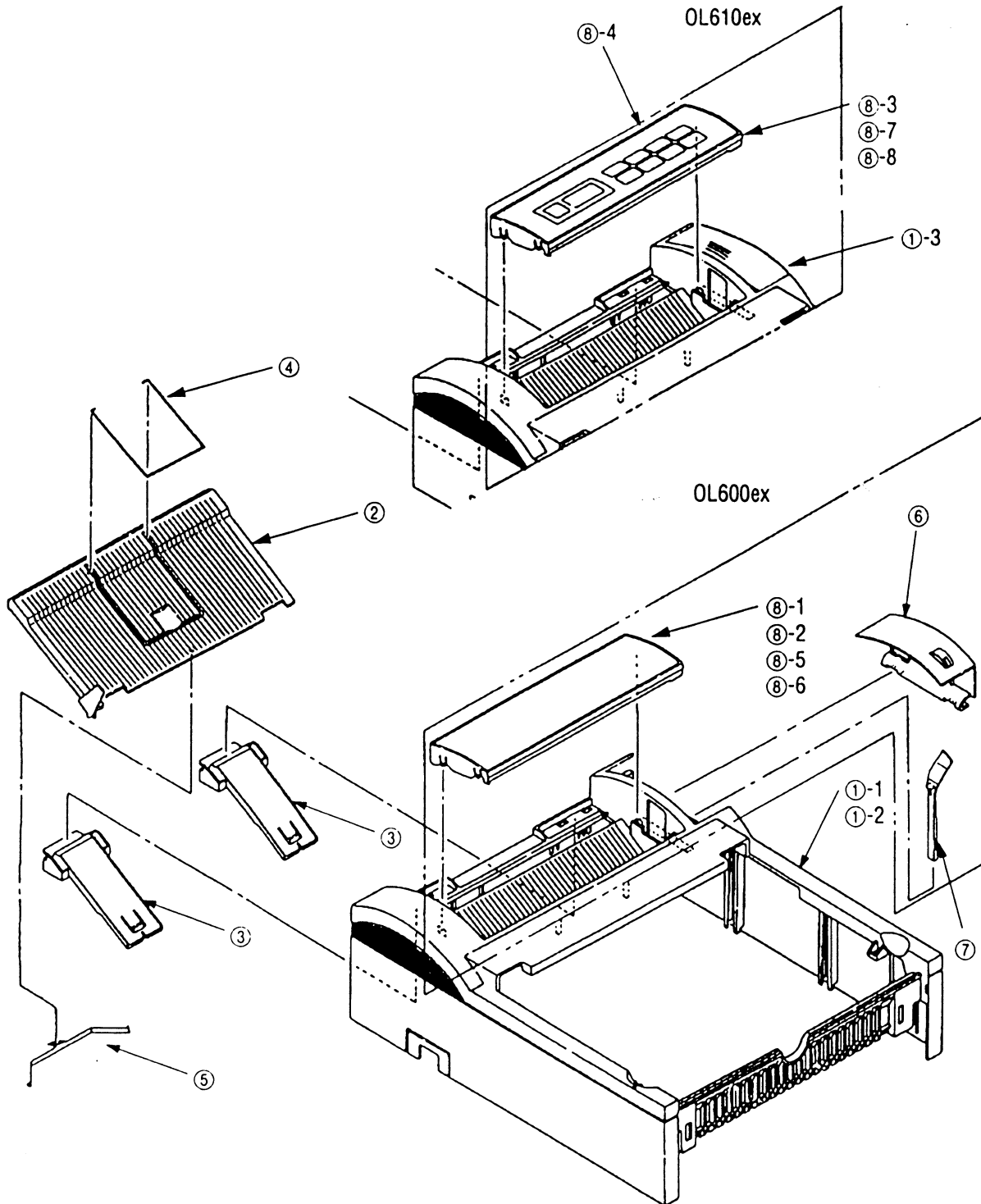


Figure 8-2 Upper Cover Unit

OL600ex/610ex

Table 8-2 Upper Cover Unit

No.	Name/Rating	Part No.	USE		Remarks
			OL600ex	OL610ex	
1-1	Upper cover	2PP4083-6808G1	1	1	ODA
	Upper cover	2PP4083-6808G1	1	-	OEUINT
1.2	Uppercover	2PP4083-6808G2	-	1	OEUINT
1.3	Upper cover assy	2PA4094-781?GS	-	-	ODA
2	Stacker	1PP4094-7814P1	1	1	
3	Stacker clamp	3PP4094-78i6P1	2	2	
4	Guide wire	4P83517-1567P1	1	1	
5	Leaf spring	3PP3517-1601f 1	1	1	
6	Lens cover	2PP4128-1171 PI	1	-	
7	Lens frame	3PP4128-1172P1	1	-	
8-1	Logo frame	1PP4128-1246P1	1	-	ODA
8-2	Logo frame	1 PP4128-1246P2	-	1	ODA
8.3	Operator panel assy	2YX4083-6170G31	-	-	ODA
8-4	Operator panel sheet	3PB4128-1273P1	-	-	ODA
8-5	Logo frame	1 PP4128-1246P3	1	-	OEC
8-6	Logo frame	1 PP4128-1246P6	1	-	OKI-INT
8-7	Operator panel assy	2YX4083-6170G32	-	1	OEL
8-8	Operator panel assy	2YX4083-6170G33	-	1	OKJ-INT

OL600ex/610ex

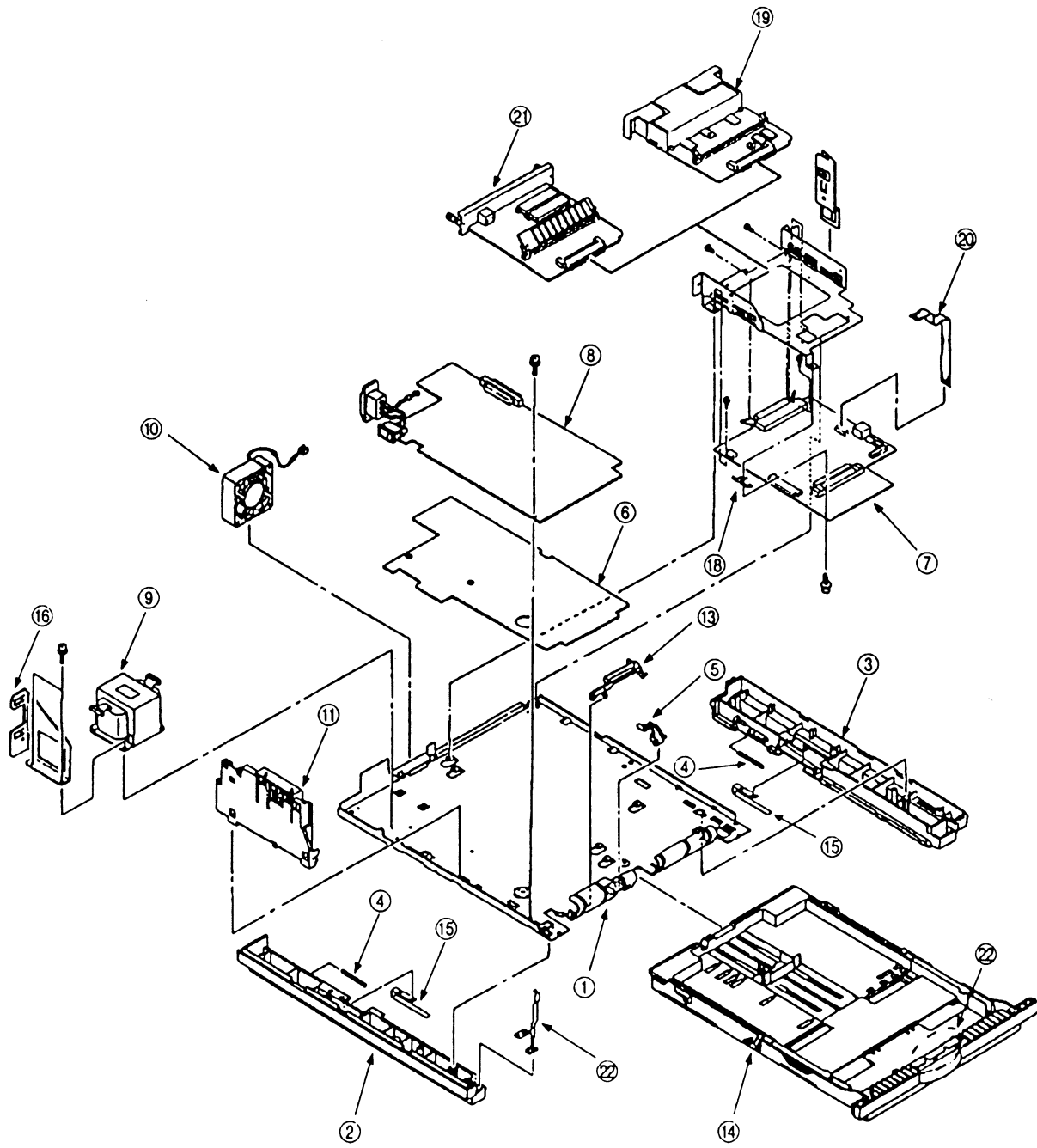


Figure 8-3 Base Unit

OL600ex/610ex

Table 8-3 Base Unit

No.	Name/Rating	Part No.	USE		Remarks
			OL600ex	OL610ex	
1	Base plate	2PP4083-6809G1	1	1	
2	Cassette guide L	3PP4083-6802G1	1	1	
3	Cassette guide R	3PP4083-6803G1	1	1	
4	Cassette eject spring	4PP4083-6152P1	2	2	
4	Sensor plate (paper end)	4PP4083-6082P1	1	1	
6	Insulator	3PB4083-6144P1	1	1	
7	Control board (LO5C)	4YA4.046-1670G1 1	1	-	ODA
		4YA4046-1670G12	1	-	OKI-INT
		4YA4046-1670G9	1	-	OEL only
	Control board (LO6C)	4YA4046-1671 G 1 1	-	1	ODA
		4YA4046-1671G12	-	1	OEUOKI-INT
8	Power supply board	4YA4049-7101G01	1	1	120V
	Power supply board	4YA4049-7101GO2	1	1	230V
9	Transformer	4YB4049-7032P3	1	1	120V
	Transformer	4Y84049-7033P3	1	1	230V
10	Fan motor	4PB4076-6152P1	1	1	
11	Contact assy	3PA4083-6090G1	1	1	
13	Cassette sensor plate	3PP4083-6154P1	1	1	
14	Paper cassette	4YA4083-6260G2	1	1	ODA (Option)
	Paper cassette	4YA4083-6260G3	1	1	OEUINT (Option)
15	Support spring	4PP4083-6153P1	2	2	
16	Inlet holder	4PP4083-6145P1	1	1	
18	Ground plate	4PP4083-6137P1	1	1	
19	LQME-PCB (RAM board)	4YA4121-1058G 1 1	1	1	Option
20	Sumi card assy (Ope. panel)	4YX4121-1035G2	-	-	ODA
	Sumi card assy (Ope. panel)	4YX4121-1035G2	-	1	OEUINT
21	LQ8A PCB (PS control)	4YA4046-1672G1 1	-	1	OEUINT (Option)
22	Separator assy (paper cassette)	3PP4083-5663G1	1	1	