

Printer General Assy

Rev.	No.	Part No.	Description	Q'ty/ Unit	RSPL	Recommended Q'ty/Year			Remarks	RoHS -since FCS G on the way
						per 500	per 1000	per 2000		
	1	43481201	Lower_Cover Assy	1	-	-	-	-	OEL_230V CENTRO+RS+USB	-
		43481203	Lower_Cover Assy	1	-	-	-	-	OEL_230V CENTRO+RS	-
	2	43483501	Cover Upper Assy	1	-	-	-	-		-
	3	43560101	Cover access Assy	1	0	1	2	4		-
	4	43484801	Cover Rear	1	0	1	2	4		-
	5	43514501	Ribbon Protector Assy	1	0	5	10	20		-
	6	43478701	Tractor Assy	1	0	2	4	8		-
	7	43482501	Pull Up Roller Unit	1	0	2	4	8		-
	8	43471901	Printer Unit	1	-	-	-	-		-
	12	43485901	Platen knob	1	-	-	-	-		-
	13	43514801	Carriage-Stopper	1	-	-	-	-		-
	15	43560201	Sheet Guide Assy	1	0	1	2	4		-
	16	43514901	Wire guide rear	2	-	-	-	-		-
3	17	43655701	Pull up guide	1	-	-	-	-		-
2	23	43514201	Lock piece	1	-	-	-	-		-

This table lists the components and maintenance parts that are required for operating 500,1000,2000 units of this printer per year under the following conditions.

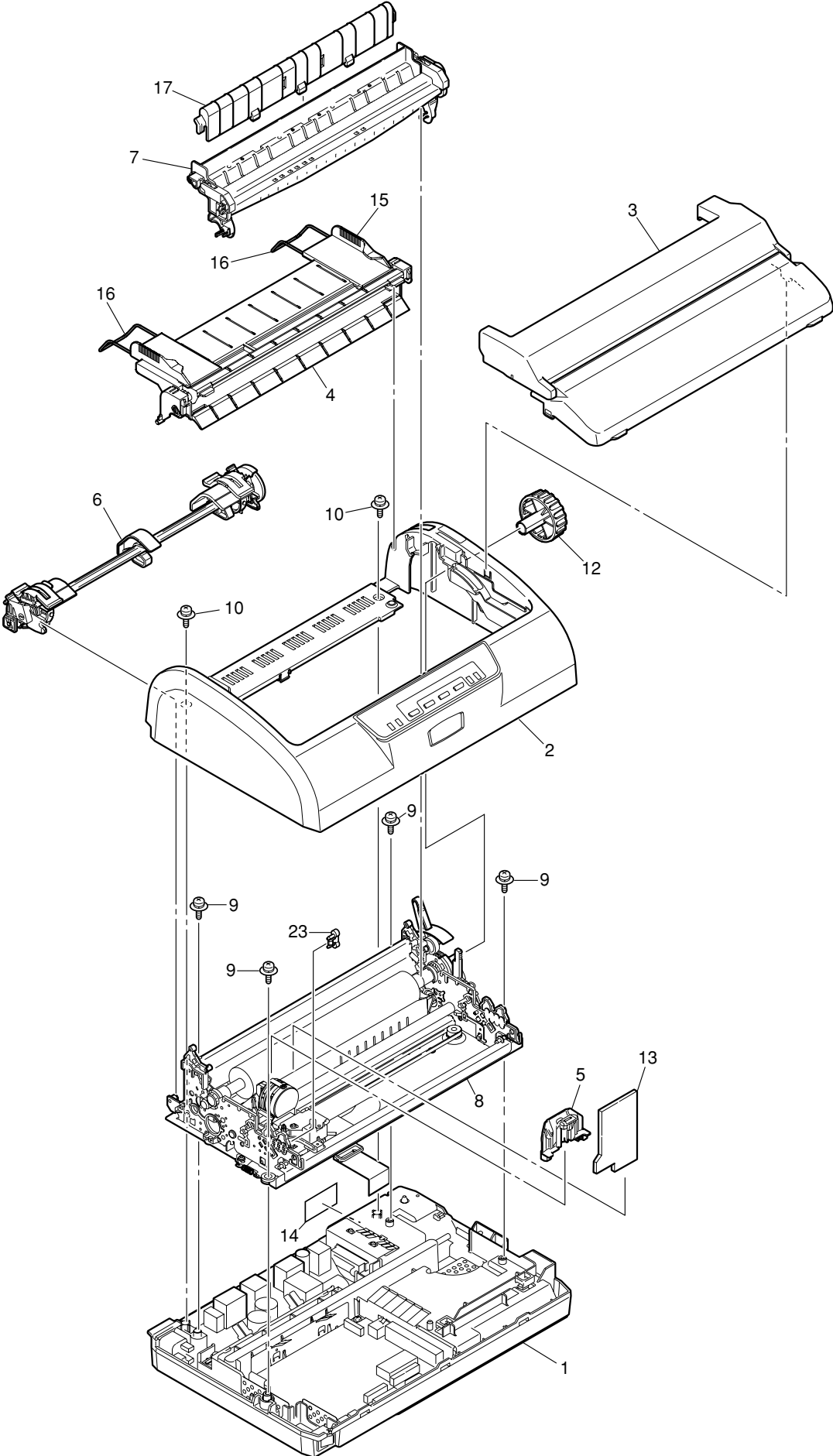
Operating condition

Mechanism unit: The estimated operation time is 2hr./day and 50hr./month.

Control unit : The estimated power ON time is 8hr./day and 200hr./month.

*Parts that will affect the quantity due to maintenance conditions are not considered.

Printer General Assy

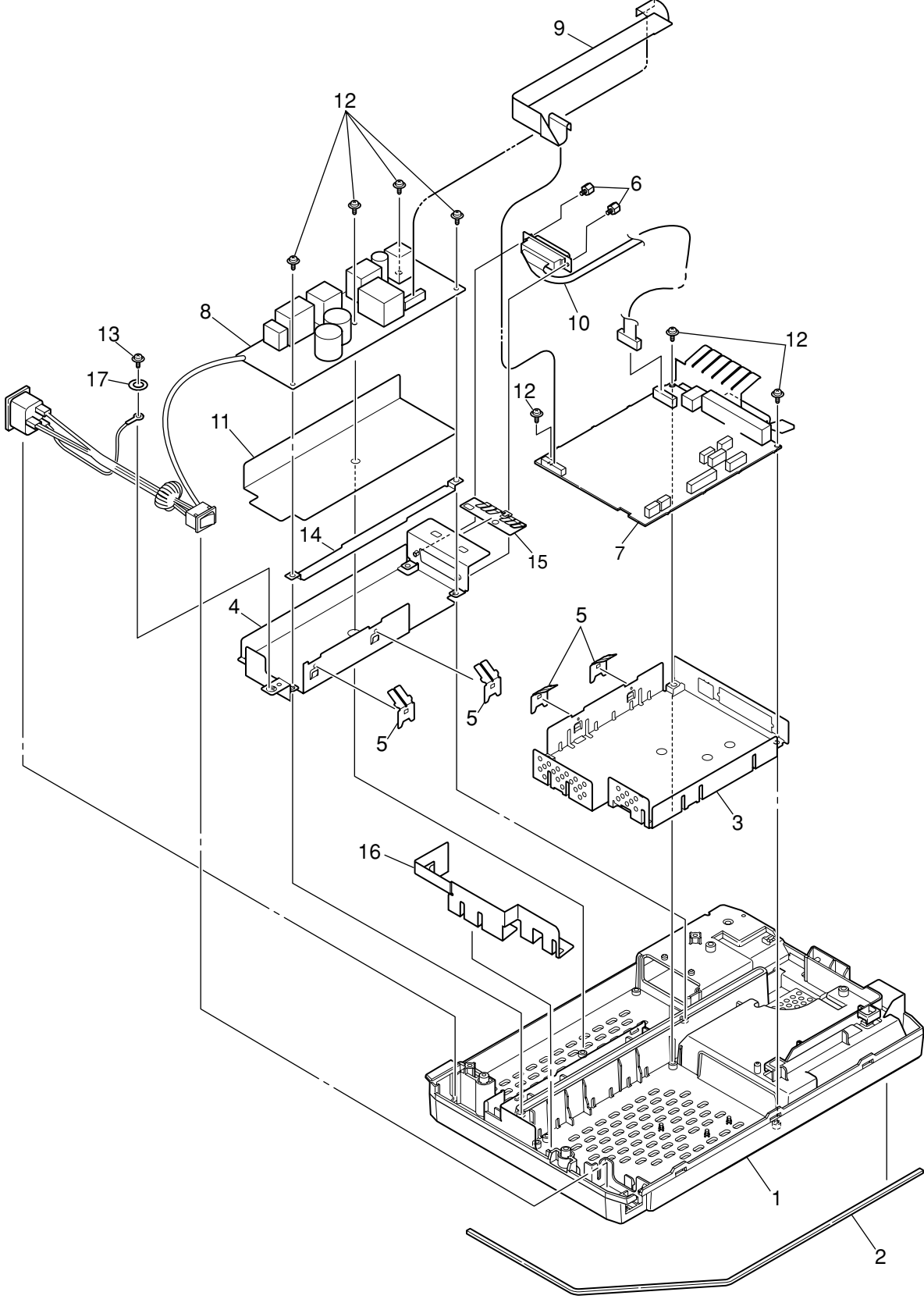


Lower Cover Assy

Rev.	No.	Part No.	Description	Q'ty/ Unit	RSPL	Recommended Q'ty/Year			Remarks	RoHS -since FCS G on the way
						per 500	per 1000	per 2000		
	1	43481301	Lower Cover	1	-	-	-	-		-
	2	43481601	Foam Sound Proof A	1	-	-	-	-		-
	3	43481901	Shield Plate F	1	-	-	-	-	CENTRO+RS+USB	-
		43481902	Shield Plate F	1	-	-	-	-	CENTRO+RS	-
	4	43482001	Plate shield Rear Lower	1	-	-	-	-		-
	5	43482101	Plate FG	4	-	-	-	-		-
3	7	43440802	Board-L09	1	0	3	6	12	OEL CENTRO+RS+USB	-
		43440804	Board-L09	1	0	3	6	12	OEL CENTRO+RS	-
		43440810	Board-L09	1	0	3	6	12	AOS CENTRO+RS+USB	-
3	8	43703801	PWR unit-ACDC Switch	1	0	3	6	12	100VAC127VAC	-
		43703802	PWR unit-ACDC Switch	1	0	3	6	12	220VAC240VAC	-
	9	43560001	POW Cord Bending Figure	1	0	3	6	12		-
	10	43390801	Conn-Cord-RS232C	1	0	3	6	12	Only RS	-

Note) For assemblies with "0" not marked in the RSPL column, the maintenance parts are not available.

Lower Cover Assy



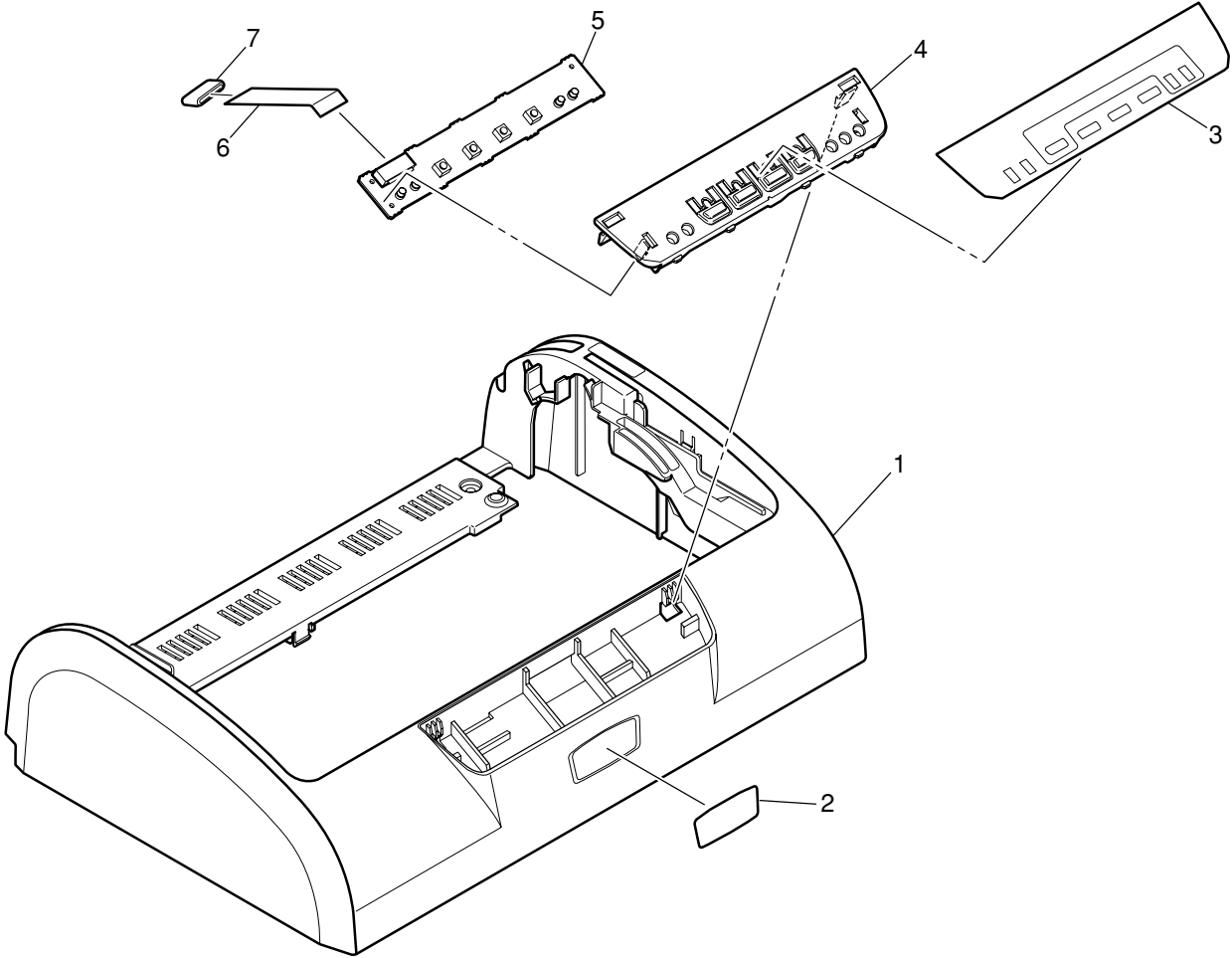
Cover Upper Assy

Rev.	No.	Part No.	Description	Q'ty/ Unit	RSPL	Recommended Q'ty/Year			Remarks	RoHS -since FCS G on the way
						per 500	per 1000	per 2000		
	1	43483701	Cover Upper	1	0	1	2	4		-
	3	43483801	Sheet Operation Panel	1	0	1	2	4		-
	4	43483901	OP panel frame	1	-	-	-	-		-
	5	43516302	Board-LSO	1	0	3	6	12		-
	6	43559701	OP Cord Bending Figure	1	0	3	6	12		-
3	7	1051011C0001	Core	1	-	-	-	-		-

Note) For assemblies with "0" not marked in the RSPL column, the maintenance parts are not available.



Cover Upper Assy

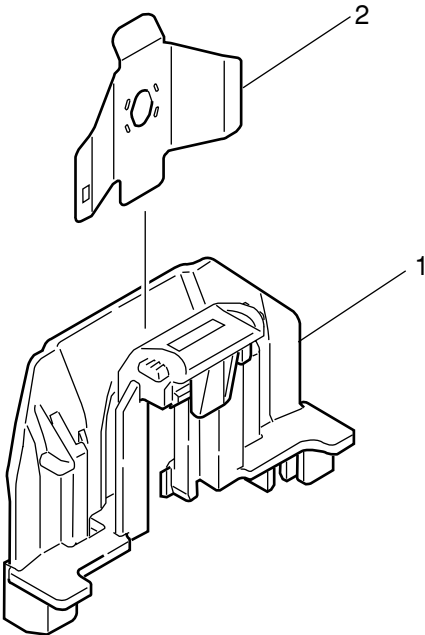


Ribbon Protecto Assy

Rev.	No.	Part No.	Description	Q'ty/ Unit	RSPL	Recommended Q'ty/Year			Remarks	RoHS -since FCS G on the way
						per 500	per 1000	per 2000		
	1	43476201	Ribbon Protector Bracket	1	0	5	10	20		-
	2	43498001	Ribbon Protector	1	0	5	10	20		-

Note) For assemblies with "0" not marked in the RSPL column, the maintenance parts are not available.

Ribbon Protecto Assy

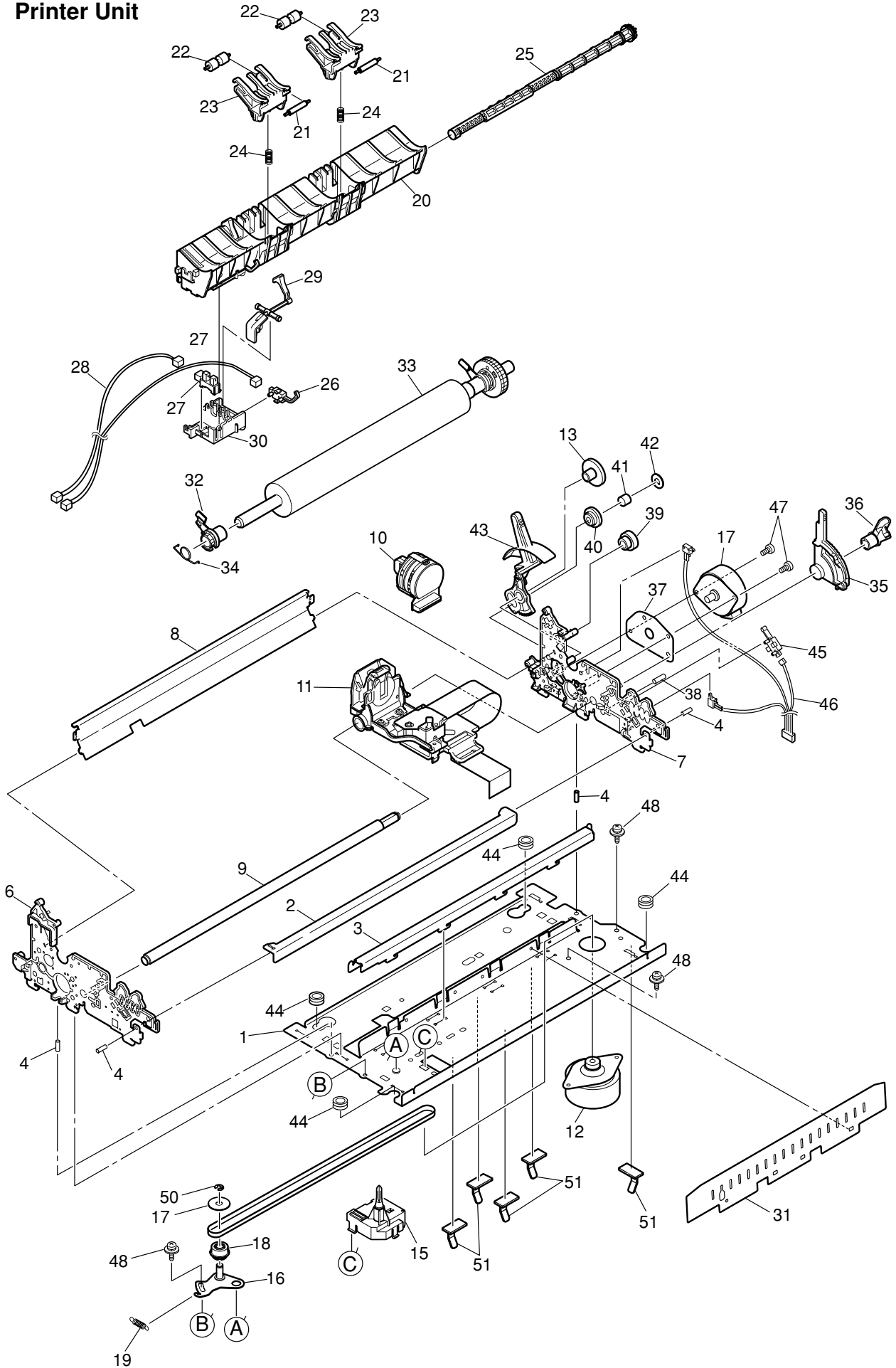


Printer Unit

Rev.	No.	Part No.	Description	Q'ty/ Unit	RSPL	Recommended Q'ty/Year			Remarks	RoHS -since FCS G on the way
						per 500	per 1000	per 2000		
	1	43472101	Lower-Base	1	-	-	-	-		-
	2	43473301	Guide-Beam	1	-	-	-	-		-
	3	43473401	Front-Beam	1	-	-	-	-		-
	4	SPP3-10SUS	PIN(φ3-10)	4	-	-	-	-		-
	6	43534801	Side Frame L Outsert	1	-	-	-	-		-
	7	43534901	Side Frame R Outsert	1	-	-	-	-		-
	8	43473501	Rear beam	1	-	-	-	-		-
	9	43475301	Carriage Shaft	1	-	-	-	-		-
	10	43502802	head9Pin)	1	0	20	40	80		-
	11	43517601	Carriage Assy	1	-	-	-	-		-
	12	43473701	Stepping Motor	1	0	5	10	20		-
	14	43509701	Stepping Motor	1	0	5	10	20		-
	15	43473901	Ribbon Feed Assy	1	0	2	4	8		-
3	16	43640701	Idle pulley bracket	1	0	2	4	8		-
3	17	43640801	Washer Idle Pulley	1	0	2	4	8		-
	18	43473801	Idle pulley	1	0	2	4	8		-
	20	43473201	Paper pan	1	-	-	-	-		-
	21	43478201	Roller F(Rubber)	2	-	-	-	-		-
	22	43478301	Roller R(Rubber)	2	-	-	-	-		-
	23	43478401	Roller Frame	2	-	-	-	-		-
	25	43478601	Shaft Release	1	-	-	-	-		-
	26	43532901	Bottom-Paper End	1	0	3	6	12		-
	27	40135301	Photo-Interrupter	1	0	3	6	12		-
	28	43519401	Conn Cord Sensor(6P)	1	0	5	10	20		-
	29	43536701	Sensor arm	1	-	-	-	-		-
	30	43536801	Sensor arm Holder	1	-	-	-	-		-
	32	43480401	Platen Coller L	1	-	-	-	-		-
	33	43480201	Platen Assy	1	0	10	20	40		-
	35	43476801	Adjust lever(HG)	1	-	-	-	-		-
	36	43476901	Adjust Knob	1	-	-	-	-		-
	37	43477101	LF motor plate	1	-	-	-	-		-
	43	43477701	Release lever	1	-	-	-	-		-
	44	43475401	Rubber foot	4	-	-	-	-		-
	45	43532801	Gap SW	1	0	3	6	12		-
	46	43519501	Conn Cord Sensor(7P)	1	0	5	10	20		-

Note) For assemblies with "0" not marked in the RSPL column, the maintenance parts are not available.

Printer Unit



Carriage Assy

Rev.	No.	Part No.	Description	Q'ty/ Unit	RSPL	Recommended Q'ty/Year			Remarks	RoHS -since FCS G on the way
						per 500	per 1000	per 2000		
	1	43475701	Carriage Frame	1	-	-	-	-		-
	2	43476001	Carriage Plate	1	-	-	-	-		-
	3	43476301	SP Belt	1	0	3	6	12		-
	4	43476401	Guide Cable	1	-	-	-	-		-
	5	43476501	Slider	1	-	-	-	-		-
	6	43476601	Clamp Head	1	-	-	-	-		-
	7	43510201	Piece Slider	1	-	-	-	-		-
	8	43510101	Film Guide	1	-	-	-	-		-
	9	43559801	Head Cord(16) Bending Figure	1	0	3	6	12		-
	11	43514301	Clamp Head Cable	1	-	-	-	-		-
	12	40135301	Photo-Interrupter	1	0	3	6	12		-
	13	43519301	Conn Cord Sensor(3P)	1	0	5	10	20		-

Note) For assemblies with "0" not marked in the RSPL column, the maintenance parts are not available.

Carriage Assy

