

PARTS CATALOG

**imageCLASS D1180/1170/
1150/1120/i-SENSYS
MF6680dn**

Canon

Mar 19 2010

PREFACE

This Parts Catalog contains listings of parts used

Diagrams are provided with the listings to aid the service technician in identifying clearly, the item to be ordered.

Whenever ordering parts, consult this Parts Catalog for all of the information pertaining to each item. Be sure to include, in the Parts Request, the full item description, the item part number, and the quantity.

COPYRIGHT (C) 1999 CANON INC.

Use of this manual should be strictly supervised to avoid disclosure of confidential information.

Contents

NUMERICAL INDEX

imageCLASS D1180/1170/1150/1120/i-SENSYS MF6680dn(Numerical Index).....	1-1
---	-----

imageCLASS D1180/1170/1150/1120/i-SENSYS MF6680dn(Parts Catalog)

A1	ASSEMBLY LOCATION DIAGRAM	2-1
A2	OPTION PARTS CATALOG LIST	2-2
001	ACCESSORIES	2-3
100	EXTERNAL COVERS, PANELS, ETC.	2-5
101	INTERNAL COMPONENTS 1	2-9
102	INTERNAL COMPONENTS 2 (TYPE I)	2-11
102A	INTERNAL COMPONENTS 2 (TYPE II)	2-13
103	INTERNAL COMPONENTS 3	2-15
104	INTERNAL COMPONENTS 4 (TYPE I)	2-17
104A	INTERNAL COMPONENTS 4 (TYPE II)	2-19
105	INTERNAL COMPONENTS 5 (TYPE I)	2-21
105A	INTERNAL COMPONENTS 5 (TYPE II)	2-23
106	INTERNAL COMPONENTS 6	2-25
160	READER/ADF ASSEMBLY	2-27
162	PAPER FEEDER ASSEMBLY	2-30
300	CASSETTE ASSEMBLY	2-33
400	READER ASSEMBLY	2-35
ZZA	MECHANICAL STANDARD PARTS (HOW TO USE)	2-37
ZZB	MECHANICAL STANDARD PARTS (SCREWS)	2-38
ZZC	MECHANICAL STANDARD PARTS (BOLTS)	2-45
ZZD	MECHANICAL STANDARD PARTS (NUTS)	2-46
ZZE	MECHANICAL STANDARD PARTS (RETAINING RINGS)	2-47

NUMERICAL INDEX

imageCLASS D1180/1170/1150/1120/i-SENSYS MF6680dn(Numerical Index)

PARTS NUMBER	FIGURE & KEY NO.	PARTS NUMBER	FIGURE & KEY NO.	PARTS NUMBER	FIGURE & KEY NO.
FC7-0496-000	100 - 1	FC9-2168-000	102 - 2	FK2-8634-000	400 - 5
FC7-6052-010	162 - 1	FC9-2190-000	001 - 2	FK2-8635-000	400 - 6
FC7-6182-000	162 - 2	FC9-4891-000	106 - 4	FK2-9074-000	001 - 1
FC7-6189-000	160 - 1	FC9-4892-000	100 - 13	FK3-0732-000	105 - 1
FC7-6278-000	162 - 3	FC9-4893-000	100 - 14	FK3-0732-000	105A - 1
FC7-6281-000	162 - 4	FC9-4894-000	100 - 15	FK3-0909-000	001 - 1
FC7-6297-000	162 - 5	FC9-4895-000	100 - 16	FK3-0912-000	001 - 1
FC7-6299-000	162 - 7	FC9-4896-000	100 - 17	FK3-0913-000	001 - 1
FC7-6300-000	162 - 8	FC9-4897-000	100 - 18	FK3-0914-000	001 - 1
FC7-6320-000	160 - 2	FC9-4909-000	100 - 27	FK3-0915-000	001 - 1
FC7-6321-000	160 - 3	FC9-4910-000	100 - 27	FK3-0916-000	001 - 1
FC7-6322-000	160 - 4	FC9-4912-000	100 - 27	FK3-0917-000	001 - 1
FC9-1486-000	160 - 7	FC9-4913-000	100 - 27	FL2-6637-000	160 - 17
FC9-1493-000	400 - 2	FC9-4914-000	100 - 27	FL3-1421-000	160 - 18
FC9-1494-000	160 - 8	FC9-4916-000	100 - 7	FL3-1430-000	160 - 19
FC9-1496-000	160 - 5	FC9-4917-000	001 - 17	FL3-1431-000	162 - 10
FC9-1497-000	160 - 6	FC9-4919-000	100 - 4	FL3-1437-000	162 - 11
FC9-1499-000	160 - 9	FC9-4990-000	160 - 14	FL3-1439-000	160 - 20
FC9-1500-000	160 - 10	FC9-4991-000	160 - 14	FL3-1504-000	300 - 13
FC9-1501-000	160 - 11	FC9-4992-000	160 - 14	FM3-9525-000	400 -
FC9-1502-000	160 - 12	FC9-5109-000	160 - 7	FM3-9527-000	400 - 8
FC9-1504-000	160 - 13	FC9-5110-000	160 - 7	FM3-9534-000	160 - 21
FC9-1512-000	162 - 9	FC9-5111-000	160 - 8	FM3-9538-000	160 - 23
FC9-1999-000	100 - 2	FC9-5654-000	162 - 6	FM3-9541-000	162 - 13
FC9-2007-000	100 - 3	FC9-5660-000	160 - 15	FM3-9542-000	162 - 14
FC9-2008-000	100 - 4	FC9-5661-000	160 - 16	FM3-9543-000	162 - 15
FC9-2016-000	100 - 24	FC9-6977-000	100 - 10	FM3-9791-000	100 - 21
FC9-2017-000	100 - 5	FC9-7005-000	100 - 20	FM3-9793-000	100 - 22
FC9-2018-000	100 - 6	FC9-7574-000	400 - 1	FM3-9794-000	100 - 23
FC9-2020-000	100 - 7	FC9-8934-000	100 - 33	FM3-9797-000	101 - 1
FC9-2032-000	300 - 1	FC9-8942-000	103 - 8	FM3-9798-000	300 -
FC9-2034-000	300 - 2	FC9-8943-000	100 - 34	FM3-9800-000	300 - 14
FC9-2035-000	300 - 3	FC9-8944-000	100 - 11	FM3-9801-000	300 - 15
FC9-2038-000	100 - 27	FH2-7080-000	001 - 7	FM3-9802-000	300 - 16
FC9-2055-000	100 - 8	FH2-7082-000	001 - 5	FM3-9803-000	100 - 25
FC9-2056-000	100 - 9	FH2-7170-000	001 - 6	FM3-9816-000	100 - 26
FC9-2057-000	100 - 10	FH2-7192-000	001 - 3	FM3-9817-000	100 - 25
FC9-2068-000	106 - 1	FK2-0472-010	105 - 13	FM3-9818-000	100 - 25
FC9-2069-000	106 - 2	FK2-2064-000	104 - 1	FM3-9819-000	100 - 25
FC9-2071-000	106 - 3	FK2-2064-000	104A - 1	FM4-1487-000	104 - 8
FC9-2072-000	300 - 4	FK2-5274-000	001 - 3	FM4-1488-000	104 - 8
FC9-2074-000	300 - 5	FK2-6324-000	105 - 2	FM4-1605-000	104 - 9
FC9-2075-000	300 - 6	FK2-6325-000	105 - 2	FM4-1605-000	104A - 9
FC9-2076-000	300 - 7	FK2-6604-000	001 - 4	FM4-1607-000	102 - 11
FC9-2077-000	300 - 8	FK2-8524-000	103 - 1	FM4-1613-010	105 - 7
FC9-2078-000	300 - 9	FK2-8572-000	105 - 3	FM4-1614-010	105 - 7
FC9-2089-000	300 - 10	FK2-8572-000	105A - 3	FM4-1615-010	105 - 7
FC9-2090-000	300 - 11	FK2-8573-000	400 - 4	FM4-1620-000	105 - 8
FC9-2091-000	300 - 12	FK2-8574-000	105 - 4	FM4-1620-000	105A - 8
FC9-2101-000	400 - 3	FK2-8574-000	105A - 4	FM4-1621-000	105 - 8
FC9-2166-000	100 - 12	FK2-8629-000	105 - 5	FM4-1621-000	105A - 8
FC9-2167-000	102 - 1	FK2-8630-000	105 - 5	FM4-1622-000	105 - 8

NUMERICAL INDEX

imageCLASS D1180/1170/1150/1120/i-SENSYS MF6680dn(Numerical Index)

PARTS NUMBER	FIGURE & KEY NO.	PARTS NUMBER	FIGURE & KEY NO.	PARTS NUMBER	FIGURE & KEY NO
FM4-1622-000	105A - 8	HC1-0586-000	162 - 31	RM1-6414-000	102A - 8
FM4-1624-000	105 - 9	HC1-2034-000	001 - 10	RM1-6419-000	103 - 3
FM4-1624-000	105A - 9	HH2-2824-000	001 - 11	RM1-6423-000	104 - 7
FM4-1647-000	100 - 25	HK1-0516-010	001 - 8	RM1-6423-000	104A - 7
FM4-1649-000	100 - 25	HU1-1022-000	160 - 29	RM1-6424-000	103 - 4
FM4-1651-000	100 - 25	HU1-1022-000	162 - 32	RM1-6427-000	100 - 30
FM4-1656-000	102 - 3	NPN	001 -	RM1-6441-000	100 - 32
FM4-1872-000	162 - 16	NPN	100 -	RM1-6445-000	101 - 4
FM4-1873-000	162 - 17	NPN	101 -	RM1-6450-000	103 - 7
FM4-1875-000	162 - 18	NPN	102 -	RM1-6454-000	300 - 20
FM4-1883-000	160 - 22	NPN	102A -	RU5-2327-000	300 - 21
FM4-1884-000	162 -	NPN	103 -	RU5-2895-000	100 - 31
FM4-1885-000	162 - 12	NPN	104 -	VS1-7177-002	162 - 33
FM4-2669-010	105 - 7	NPN	104A -	VS1-7177-003	104 - 14
FM4-2678-000	105A - 7	NPN	105 -	VS1-7177-003	104A - 12
FM4-3215-000	105A - 7	NPN	105A -	VS1-7177-003	105 - 11
FM4-3216-000	105A - 7	NPN	106 -	VS1-7177-003	105A - 2
FM4-3217-000	105A - 7	NPN	160 -	VS1-7207-004	162 - 34
FM4-5367-000	102A - 3	QK1-6441-000	001 - 13	WC4-5171-000	104 - 10
FM4-5386-000	102A - 2	QK1-6443-000	001 - 16	WC4-5171-000	104A - 10
FM4-5724-000	104A - 8	QK1-6446-000	001 - 15	WG8-5696-000	162 - 35
FM4-5725-000	104A - 8	QK1-6449-000	001 - 14	WG8-5696-000	400 - 9
FM4-6078-000	105 - 10	QK1-6455-000	001 - 12	XA9-0476-000	160 - 30
FM4-6078-000	105A - 5	RC1-3507-000	300 - 18	XA9-0476-000	400 - 10
FM4-6439-000	100 - 25	RC1-3508-000	300 - 19	XA9-0831-000	160 - 31
FM4-6440-000	100 - 25	RC2-6130-000	102 - 12	XA9-0994-000	102 - 10
FM4-6441-000	100 - 25	RC2-6130-000	102A - 10	XA9-0994-000	102A - 1
FM4-6442-000	100 - 25	RC2-6273-000	100 - 28	XA9-1420-000	103 - 5
FM4-6443-000	100 - 25	RC2-8291-000	100 - 29	XA9-1420-000	104 - 11
FM4-6444-000	100 - 25	RK2-2729-000	104 - 2	XA9-1420-000	105 - 12
FM4-6445-000	100 - 25	RK2-2729-000	104A - 2	XA9-1503-000	101 - 5
FM4-6446-000	100 - 25	RK2-2731-000	104 - 3	XA9-1503-000	104 - 12
FM4-6597-000	400 - 7	RK2-2731-000	104A - 3	XA9-1503-000	106 - 6
FS7-0980-000	300 - 17	RK2-2733-000	104 - 4	XA9-1671-000	100 - 19
FU5-6992-000	162 - 19	RK2-2733-000	104A - 4	XA9-1671-000	101 - 6
FU6-2998-000	162 - 20	RL1-2115-000	102 - 4	XA9-1671-000	102 - 9
FU6-2999-000	162 - 21	RL1-2115-000	102A - 4	XA9-1671-000	102A - 9
FU7-0667-000	162 - 22	RL1-2120-000	104 - 5	XA9-1671-000	103 - 6
FU7-0668-000	162 - 23	RL1-2120-000	104A - 5	XA9-1671-000	104 - 13
FU7-0669-000	162 - 24	RM1-1301-000	102 - 5	XA9-1671-000	104A - 11
FU7-0671-000	162 - 25	RM1-1301-000	102A - 5	XA9-1671-000	105 - 6
FU7-0672-000	160 - 24	RM1-4275-000	104 - 6	XA9-1671-000	105A - 6
FU7-0676-000	162 - 26	RM1-4275-000	104A - 6	XA9-1671-000	106 - 5
FU7-0678-000	162 - 27	RM1-6350-000	102 - 6	XD1-3100-407	102 - 501
FU7-2016-000	162 - 28	RM1-6350-000	102A - 6	XD1-3100-407	102A - 501
FU7-2018-000	160 - 25	RM1-6378-000	102 - 7	XD3-2300-322	101 - 501
FU7-2021-000	162 - 29	RM1-6378-000	102A - 7		
FU8-0895-000	160 - 26	RM1-6401-000	101 - 3		
FU8-2007-000	160 - 27	RM1-6402-000	103 - 2		
FU8-2008-000	162 - 30	RM1-6405-000	101 - 2		
HB1-4978-000	001 - 9	RM1-6406-000	101 - 2		
HC1-0586-000	160 - 28	RM1-6414-000	102 - 8		

imageCLASS D1180/1170/1150/1120/i-SENSYS MF6680dn(Parts Catalog)

imageCLASS D1180

120V US	F15-7031-000	ETZ02001-	TYPE I FAX model
120V US	F15-7036-000	GTP02001-	TYPE II FAX model

imageCLASS D1170

120V US	F15-7032-000	ETY02001-	TYPE I FAX model
120V US	F15-7037-000	GTK02001-	TYPE II FAX model

imageCLASS D1150

120V US	F15-7033-000	ETQ02001-	TYPE I FAX model
120V CA,LTN	F15-7033-000	ETR02001-	TYPE I FAX model
120V US	F15-7038-000	GSU02001-	TYPE II FAX model
120V CA,LTN	F15-7038-000	GSZ02001-	TYPE II FAX model
230V LTN,SG	F15-7043-000	ETS02001-	TYPE I FAX model
230V LTN,SG	F15-7048-000	GTA02001-	TYPE II FAX model
230V CN	F15-7058-000	ETU02001-	TYPE I FAX model
230V KR	F15-7063-000	ETV02001-	TYPE I FAX model
230V KR	F15-7068-000	GTE02001-	TYPE II FAX model
230V AU	F15-7083-000	ETT02001-	TYPE I FAX model
230V AU	F15-7088-000	GTC02001-	TYPE II FAX model

imageCLASS D1120

120V US	F15-7035-000	ETN02001-	TYPE I
120V CA,LTN	F15-7035-000	ETP02001-	TYPE I

120V US	F15-7039-000	GSS02001-	TYPE II
120V CA,LTN	F15-7039-000	GST02001-	TYPE II

i-SENSYS MF6680dn

230V EUR1	F15-7091-000	EUA02001-	TYPE I FAX model
230V EUR2	F15-7091-000	EUD02001-	TYPE I FAX model
230V EUR3	F15-7091-000	EUE02001-	TYPE I FAX model
230V EUR1	F15-7096-000	GTQ02001-	TYPE II FAX model
230V EUR2	F15-7096-000	GTU02001-	TYPE II FAX model
230V EUR3	F15-7096-000	GTV02001-	TYPE II FAX model

Contents

A1	ASSEMBLY LOCATION DIAGRAM	2-1
A2	OPTION PARTS CATALOG LIST	2-2
001	ACCESSORIES	2-3
100	EXTERNAL COVERS, PANELS, ETC.	2-5
101	INTERNAL COMPONENTS 1	2-9
102	INTERNAL COMPONENTS 2 (TYPE I).....	2-11
102A	INTERNAL COMPONENTS 2 (TYPE II).....	2-13
103	INTERNAL COMPONENTS 3	2-15
104	INTERNAL COMPONENTS 4 (TYPE I).....	2-17
104A	INTERNAL COMPONENTS 4 (TYPE II).....	2-19
105	INTERNAL COMPONENTS 5 (TYPE I).....	2-21
105A	INTERNAL COMPONENTS 5 (TYPE II).....	2-23
106	INTERNAL COMPONENTS 6	2-25
160	READER/ADF ASSEMBLY	2-27
162	PAPER FEEDER ASSEMBLY	2-30
300	CASSETTE ASSEMBLY	2-33
400	READER ASSEMBLY	2-35
ZZA	MECHANICAL STANDARD PARTS (HOW TO USE)	2-37
ZZB	MECHANICAL STANDARD PARTS (SCREWS).....	2-38
ZZC	MECHANICAL STANDARD PARTS (BOLTS).....	2-45
ZZD	MECHANICAL STANDARD PARTS (NUTS).....	2-46
ZZE	MECHANICAL STANDARD PARTS (RETAINING RINGS)	2-47

FIGURE A1 ASSEMBLY LOCATION DIAGRAM

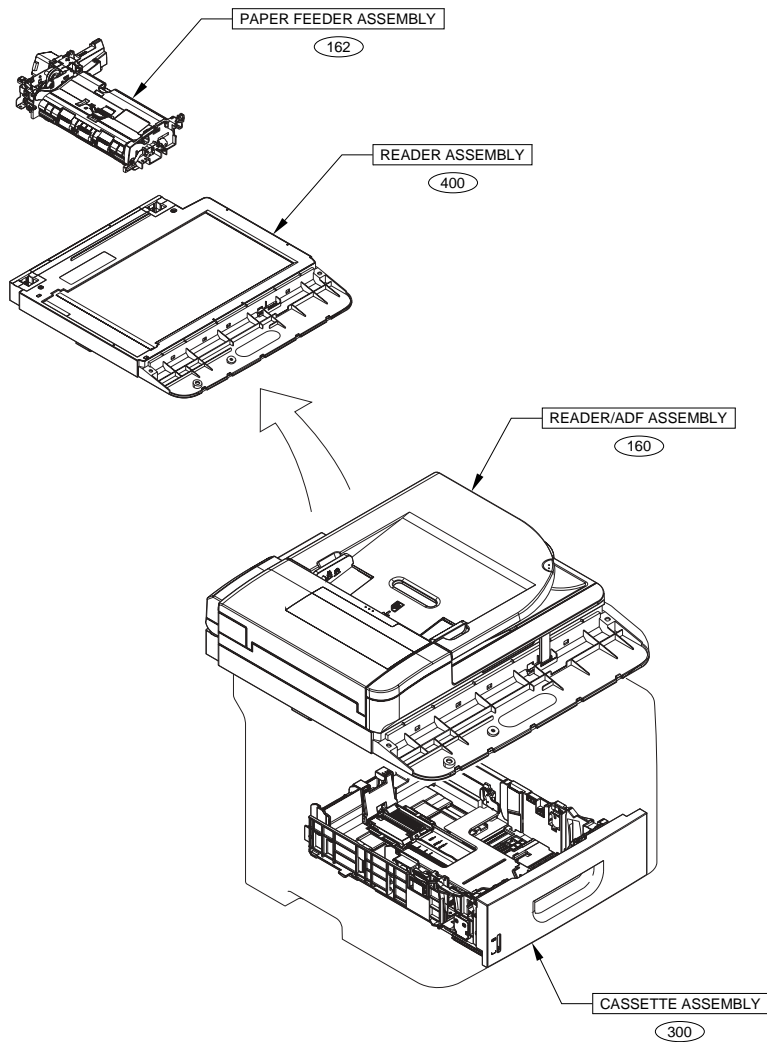
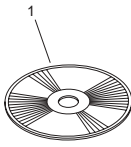


FIGURE A2 OPTION PARTS CATALOG LIST

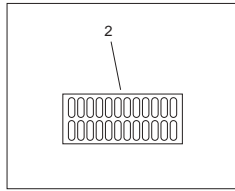
This is the table of the machine's options whose parts catalog is issued.

No.	Model Name(English)	Model Name(Japanese)
1	Cassette Feeding Module-U1	1段カセットユニット・U1

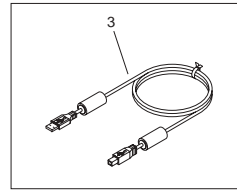
FIGURE 001 ACCESSORIES



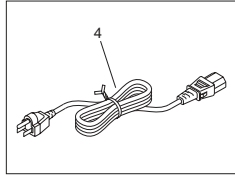
FAX model



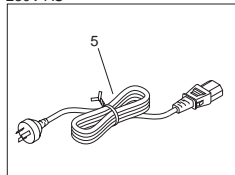
230V



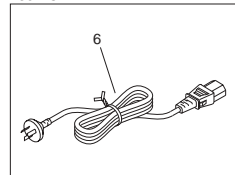
120V



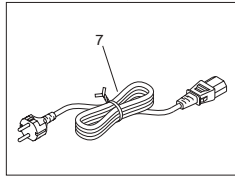
230V AU



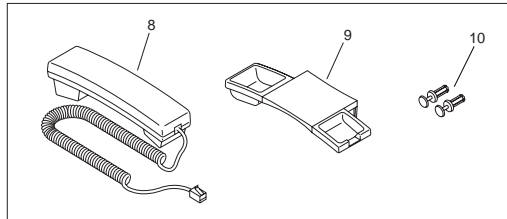
230V CN



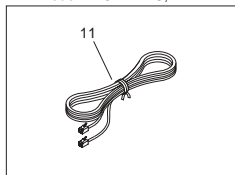
230V EXCEPT AU,CN



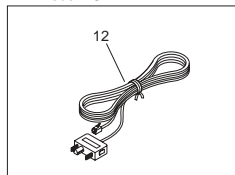
CN



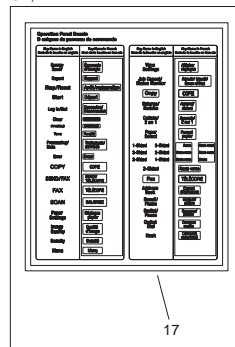
FAX model EXCEPT AU, KR



FAX model AU



CA, LTN



FAX model EUR

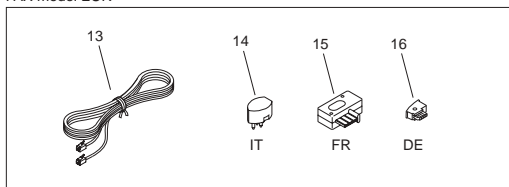
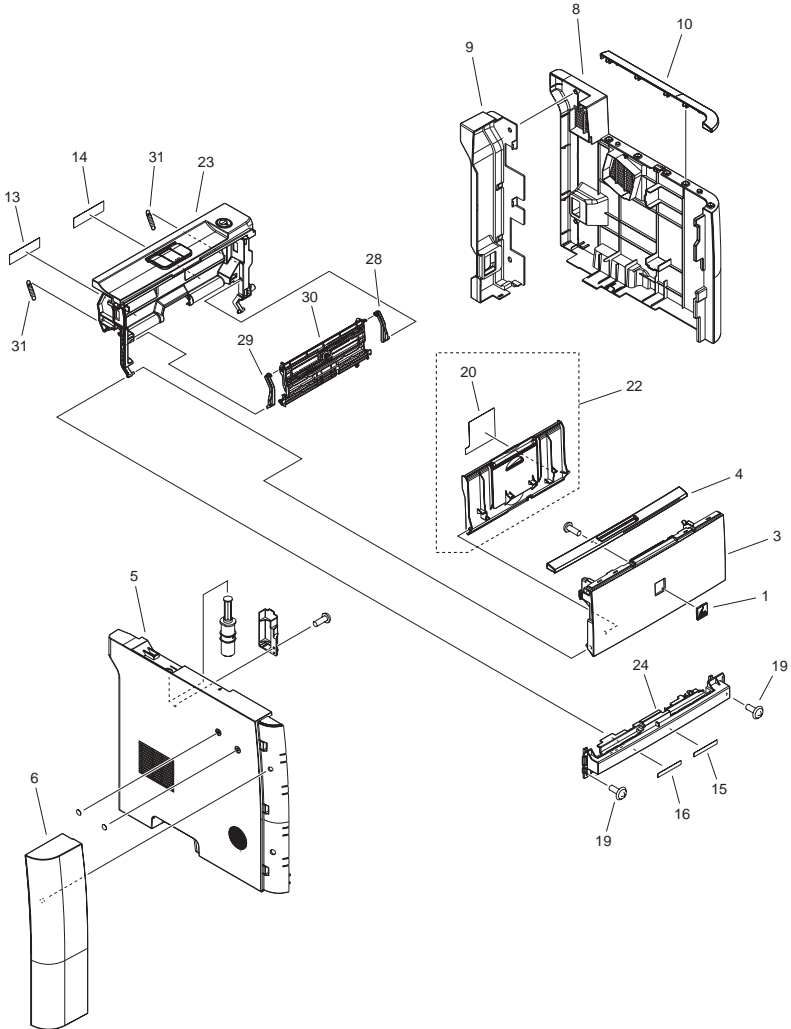


FIGURE & KEY NO.	PARTS NUMBER	RANK	Q'TY	DESCRIPTION	SERIAL NUMBER/REMARKS	SVC
Fig.001	NPN		RF	ACCESSORIES		
1	FK3-0914-000		1	CD-ROM, USER SOFTWARE	D1180	
1	FK3-0909-000		1	CD-ROM, USER SOFTWARE	D1170,D1150 US,CA,LTN,D1120	
1	FK3-0912-000		1	CD-ROM, USER SOFTWARE	D1150 LTN,SG,AU	
1	FK3-0913-000		1	CD-ROM, USER SOFTWARE	D1150 KR	
1	FK2-9074-000		1	CD-ROM, USER SOFTWARE	D1150 CN	
1	FK3-0915-000		1	CD-ROM, USER SOFTWARE	MF6680dn English,French,Italian,German,Spanish	
1	FK3-0916-000		1	CD-ROM, USER SOFTWARE	MF6680dn English,Russian,Dutch,Polish	
1	FK3-0917-000		1	CD-ROM, USER SOFTWARE	MF6680dn English,Russian,Dutch,Polish	
2	FC9-2190-000		1	LABEL, DESTINATION	FAX model	
3	FH2-7192-000		1	CABLE,USB	230V TYPE I	
3	FK2-5274-000		1	CABLE, USB	230V TYPE II	
4	FK2-6604-000		1	CORD, POWER SUPPLY	120V	
5	FH2-7082-000		1	CORD, POWER	230V AU	
6	FH2-7170-000		1	CORD, POWER, 220V	230V CN	
7	FH2-7080-000		1	CORD, POWER, 230V	230V EXCEPT AU,CN	
8	HK1-0516-010		1	HANDSET UNIT	CN	
9	HB1-4978-000		1	HOLDER, HANDSET CRADLE	CN	
10	HC1-2034-000		2	RIVET	CN	
11	HH2-2824-000		1	MODULAR CORD, 2P	FAX model EXCEPT AU,KR	
12	QK1-6455-000		1	CORD, MODULAR	FAX model AU	
13	QK1-6441-000		1	CORD, MODULAR	FAX model EUR	
14	QK1-6449-000		1	PLUG	FAX model IT	
15	QK1-6446-000		1	PLUG	FAX model FR	
16	QK1-6443-000		1	PLUG	FAX model DE	
17	FC9-4917-000		1	LABEL, CONTROL PANEL	CA,LTN	

FIGURE 100
EXTERNAL COVERS, PANELS, ETC.



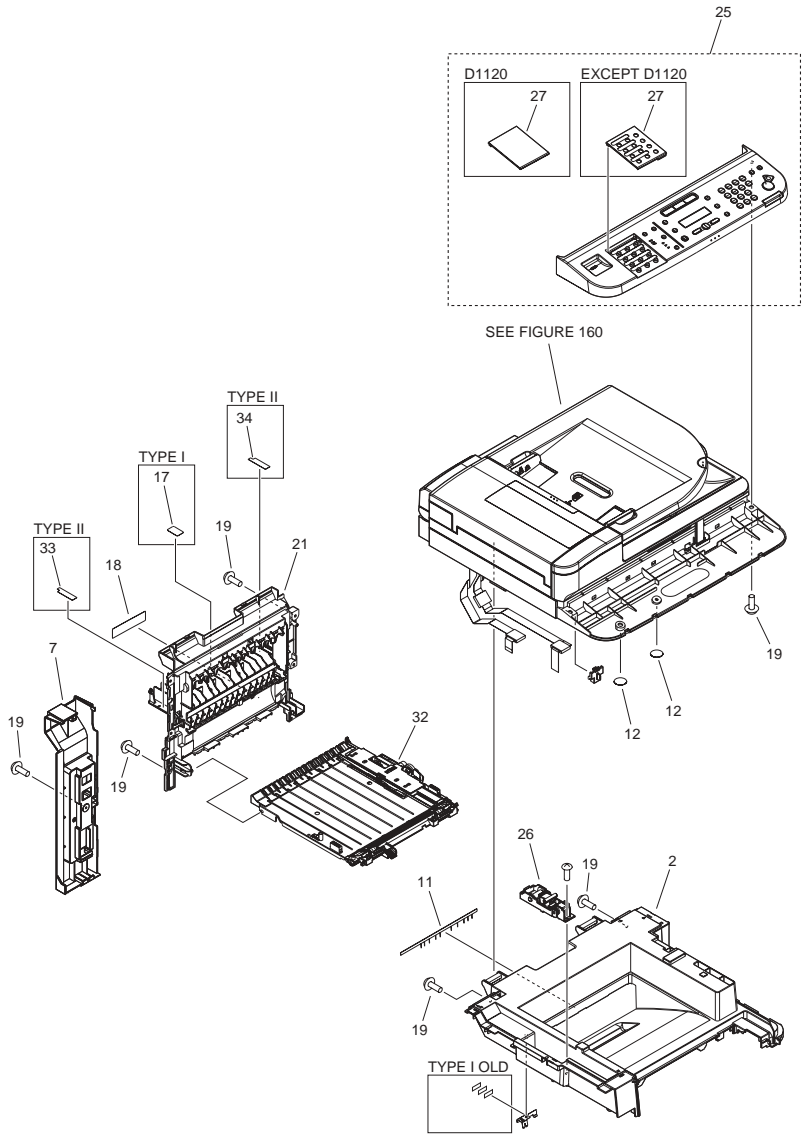


FIGURE & KEY NO.	PARTS NUMBER	R A N K	Q'TY	DESCRIPTION	SERIAL NUMBER/ REMARKS	S V C
Fig.100	NPN		RF	EXTERNAL COVERS, PANELS, ETC.		
1	FC7-0496-000		1	EMBLEM		
2	FC9-1999-000		1	COVER, UPPER		
3	FC9-2007-000		1	COVER, MULTI FEED		
4	FC9-2008-000		1	COVER, FRONT UPPER	EXCEPT D1120 TYPE I	
4	FC9-4919-000		1	COVER, FRONT UPPER	D1120 TYPE I	
5	FC9-2017-000		1	COVER, LEFT		
6	FC9-2018-000		1	COVER, FRONT, LEFT		
7	FC9-2020-000		1	COVER, REAR LEFT	EXCEPT D1120	
7	FC9-4916-000		1	COVER, REAR LEFT	D1120	
8	FC9-2055-000		1	COVER, RIGHT		
9	FC9-2056-000		1	COVER, REAR RIGHT		
10	FC9-2057-000		1	COVER, RIGHT UPPER	EXCEPT D1120 TYPE I	
10	FC9-6977-000		1	COVER, RIGHT UPPER	D1120 TYPE I	
11	FC9-8944-000		1	ELIMINATOR, STATIC CHARGE		
12	FC9-2166-000		2	SHEET, ELES. PREVENTION		
13	FC9-4892-000		1	LABEL, PRESSURE RELEASE		
14	FC9-4893-000		1	LABEL, JAM CLEARING		
15	FC9-4894-000		1	LABEL, PREVENTION		
16	FC9-4895-000		1	LABEL, RELEASE LEVER		
17	FC9-4896-000		1	LABEL, HIGH TMP. CAUTION	TYPE I	
18	FC9-4897-000		1	LABEL, PAPER SIZE SETTING		
19	XA9-1671-000		AR	SCREW, D, M3X8		
20	FC9-7005-000		1	LABEL, PAPER SIZE		
21	FM3-9791-000		1	REAR COVER ASSEMBLY		
22	FM3-9793-000		1	EXPANSION TRAY ASSEMBLY		
23	FM3-9794-000		1	INNER COVER ASSEMBLY		
24	FC9-2016-000		1	COVER, FRONT, LOWER		
25	FM3-9803-000		1	CONTROL PANEL ASSEMBLY	D1180 TYPE I	
25	FM4-6439-000		1	CONTROL PANEL ASSEMBLY	D1180 TYPE II	
25	FM3-9817-000		1	CONTROL PANEL ASSEMBLY	D1170 TYPE I	
25	FM4-6440-000		1	CONTROL PANEL ASSEMBLY	D1170 TYPE II	

FIGURE & KEY NO.	PARTS NUMBER	R A N K	Q'TY	DESCRIPTION	SERIAL NUMBER/ REMARKS	S V C
25	FM3-9818-000		1	CONTROL PANEL ASSEMBLY	D1150 US,CA,LTN TYPE I	
25	FM4-6441-000		1	CONTROL PANEL ASSEMBLY	D1150 US,CA,LTN TYPE II	
25	FM4-1649-000		1	CONTROL PANEL ASSEMBLY	D1150 LTN,SG,AU TYPE I	
25	FM4-6443-000		1	CONTROL PANEL ASSEMBLY	D1150 LTN,SG,AU TYPE II	
25	FM4-1651-000		1	CONTROL PANEL ASSEMBLY	D1150 KR TYPE I	
25	FM4-6445-000		1	CONTROL PANEL ASSEMBLY	D1150 KR TYPE II	
25	FM4-6444-000		1	CONTROL PANEL ASSEMBLY	D1150 CN TYPE II	
25	FM3-9819-000		1	CONTROL PANEL ASSEMBLY	D1120 TYPE I	
25	FM4-6442-000		1	CONTROL PANEL ASSEMBLY	D1120 TYPE II	
25	FM4-1647-000		1	CONTROL PANEL ASSEMBLY	MF6680dn TYPE I	
25	FM4-6446-000		1	CONTROL PANEL ASSEMBLY	MF6680dn TYPE II	
26	FM3-9816-000		1	HINGE, ASSMBLY		
27	FC9-2038-000		1	COVER, ONE-TOUCH	D1180,D1170	
27	FC9-4909-000		1	COVER, ONE-TOUCH	D1150 US,CA,LTN,SG,AU	
27	FC9-4913-000		1	COVER, ONE-TOUCH	D1150 KR	
27	FC9-4912-000		1	COVER, ONE-TOUCH	D1150 CN	
27	FC9-4914-000		1	COVER, ONE-TOUCH	D1120	
27	FC9-4910-000		1	COVER, ONE-TOUCH	MF6680dn	
28	RC2-6273-000		1	HINGE, MULTI-PURPOSE, RIGHT		
29	RC2-8291-000		1	HINGE, MULTI-PURPOSE, LEFT		
30	RM1-6427-000		1	MP LIFTING PLATE ASSMBLY		
31	RU5-2895-000		2	SPRING, TENSION		
32	RM1-6441-000		1	DUPLEXING PAPER FEED ASS'Y		
33	FC9-8934-000		1	LABEL, HIGH TMP. CAUTION	TYPE II	
34	FC9-8943-000		1	LABEL, HIGH TMP. CAUTION	TYPE II	

FIGURE 101 INTERNAL COMPONENTS 1

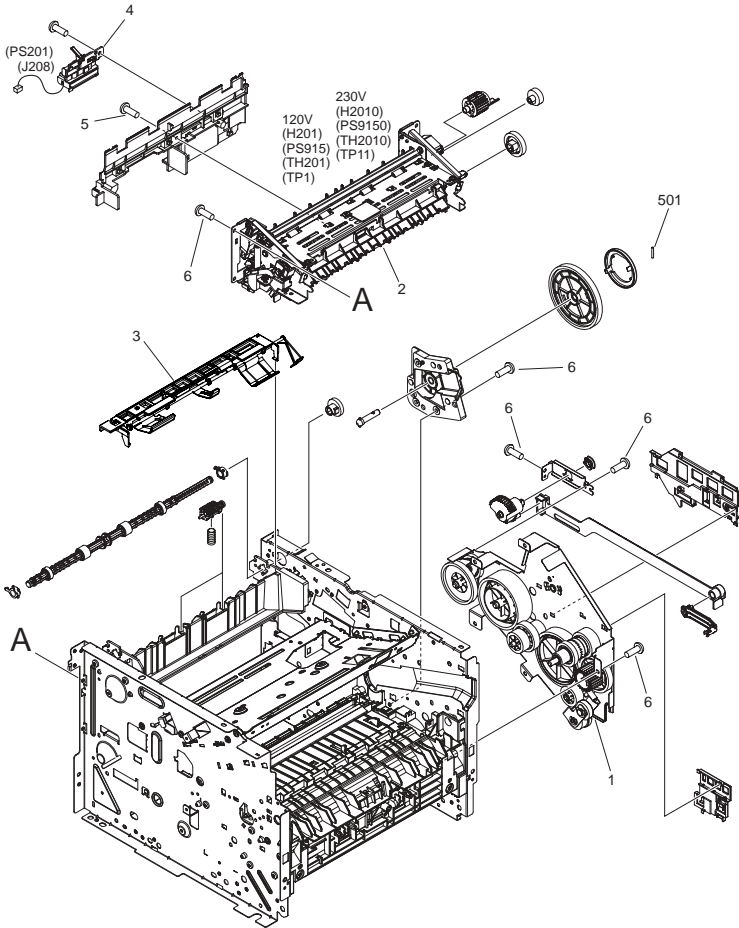


FIGURE & KEY NO.	PARTS NUMBER	RANK	Q'TY	DESCRIPTION	SERIAL NUMBER/REMARKS	SVC
Fig.101	NPN		RF	INTERNAL COMPONENTS 1		
1	FM3-9797-000		1	MAIN DRIVE ASSEMBLY		
2	RM1-6405-000		1	FIXING ASS'Y	120V H201,PS915,TH201,TP1	
2	RM1-6406-000		1	FIXING ASS'Y	230V H2010,PS9150,TH2010,T P11	
3	RM1-6401-000		1	PAPER RETAINING DELIVERY ASS'Y		
4	RM1-6445-000		1	REVERSE SENSOR ASS'Y	PS201	
5	XA9-1503-000		3	SCREW, TAP, M3X6		
6	XA9-1671-000		AR	SCREW, D, M3X8		
501	XD3-2300-322		1	PIN		

FIGURE 102 INTERNAL COMPONENTS 2 (TYPE I)

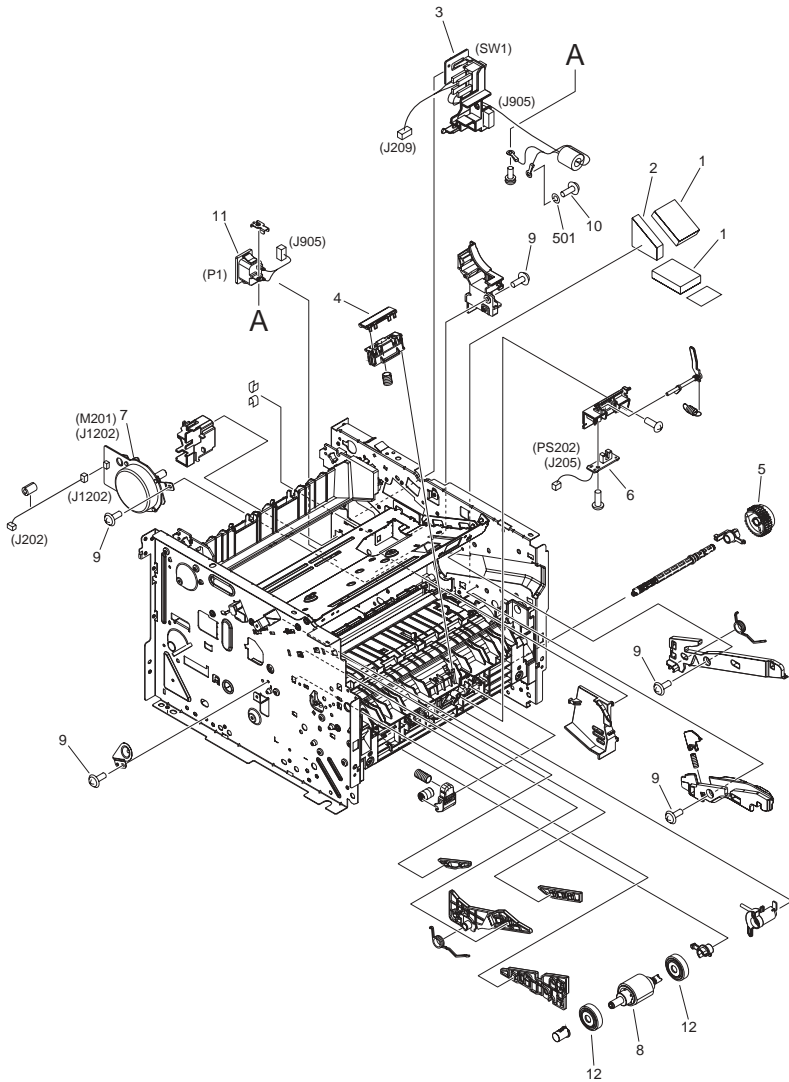


FIGURE & KEY NO.	PARTS NUMBER	R A N K	Q'TY	DESCRIPTION	SERIAL NUMBER/ REMARKS	S V C
Fig.102	NPN		RF	INTERNAL COMPONENTS 2	TYPE I	
1	FC9-2167-000		2	CUSHION, 1		
2	FC9-2168-000		1	CUSHION, 2		
3	FM4-1656-000		1	MAIN SWITCH UNIT	SW1	
4	RL1-2115-000		1	PAD, MULTI-PURPOSE SEPARATION		
5	RM1-1301-000		1	PAPER PICK-UP GEAR ASSEMBLY		
6	RM1-6350-000		1	MULTI-PURPOSE SENSOR PCB ASS'Y	PS202	
7	RM1-6378-000		1	MAIN MOTOR ASSEMBLY	M201	
8	RM1-6414-000		1	PAPER PICK-UP ROLLER ASS'Y		
9	XA9-1671-000		AR	SCREW, D, M3X8		
10	XA9-0994-000		1	SCREW, TP, M4X6		
11	FM4-1607-000		1	INLET CABLE ASSEMBLY	P1	
12	RC2-6130-000		2	ROLLER, CASSETTE PAPER PICK-UP		
501	XD1-3100-407		1	LOCK-WASHER, SPRING		

FIGURE 102A INTERNAL COMPONENTS 2 (TYPE II)

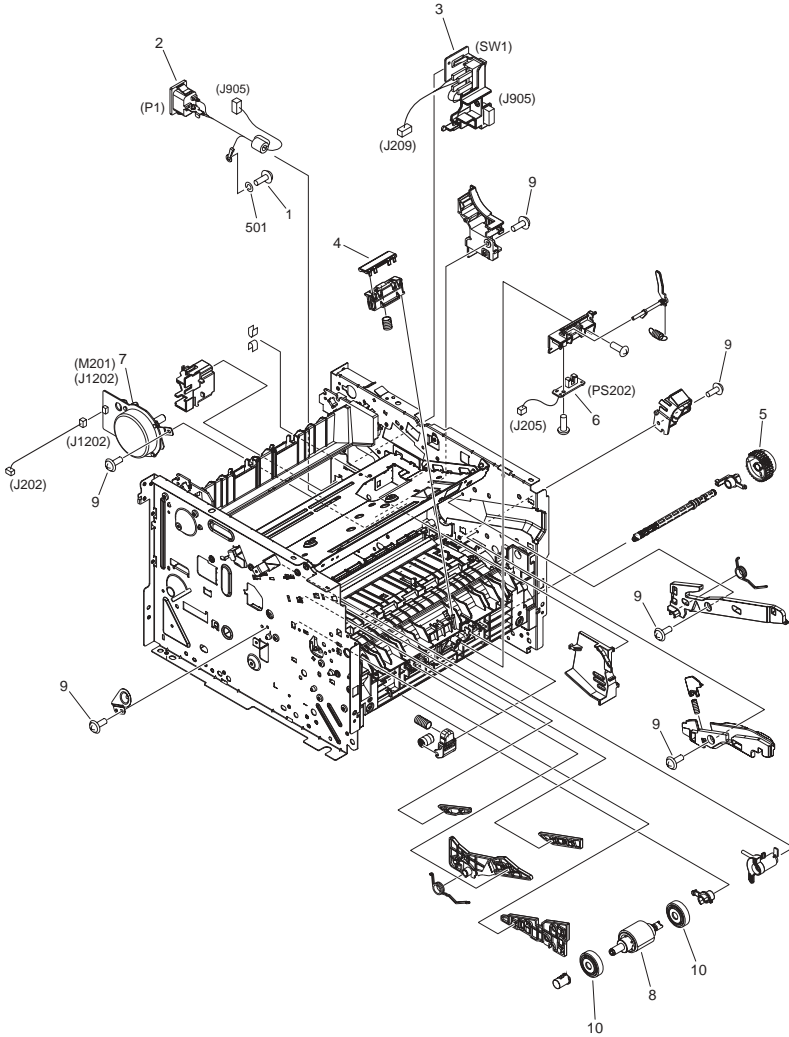


FIGURE & KEY NO.	PARTS NUMBER	R A N K	Q'TY	DESCRIPTION	SERIAL NUMBER/ REMARKS	S V C
Fig.102A	NPN		RF	INTERNAL COMPONENTS 2	TYPE II	
1	XA9-0994-000		1	SCREW, TP, M4X6		
2	FM4-5386-000		1	INLET CABLE ASSEMBLY	P1	
3	FM4-5367-000		1	MAIN SWITCH UNIT	SW1	
4	RL1-2115-000		1	PAD, MULTI-PURPOSE SEPARATION		
5	RM1-1301-000		1	PAPER PICK-UP GEAR ASSEMBLY		
6	RM1-6350-000		1	MULTI-PURPOSE SENSOR PCB ASS'Y	PS202	
7	RM1-6378-000		1	MAIN MOTOR ASSEMBLY	M201	
8	RM1-6414-000		1	PAPER PICK-UP ROLLER ASS'Y		
9	XA9-1671-000		AR	SCREW, D, M3X8		
10	RC2-6130-000		2	ROLLER, CASSETTE PAPER PICK-UP		
501	XD1-3100-407		1	LOCK-WASHER, SPRING		

FIGURE 103 INTERNAL COMPONENTS 3

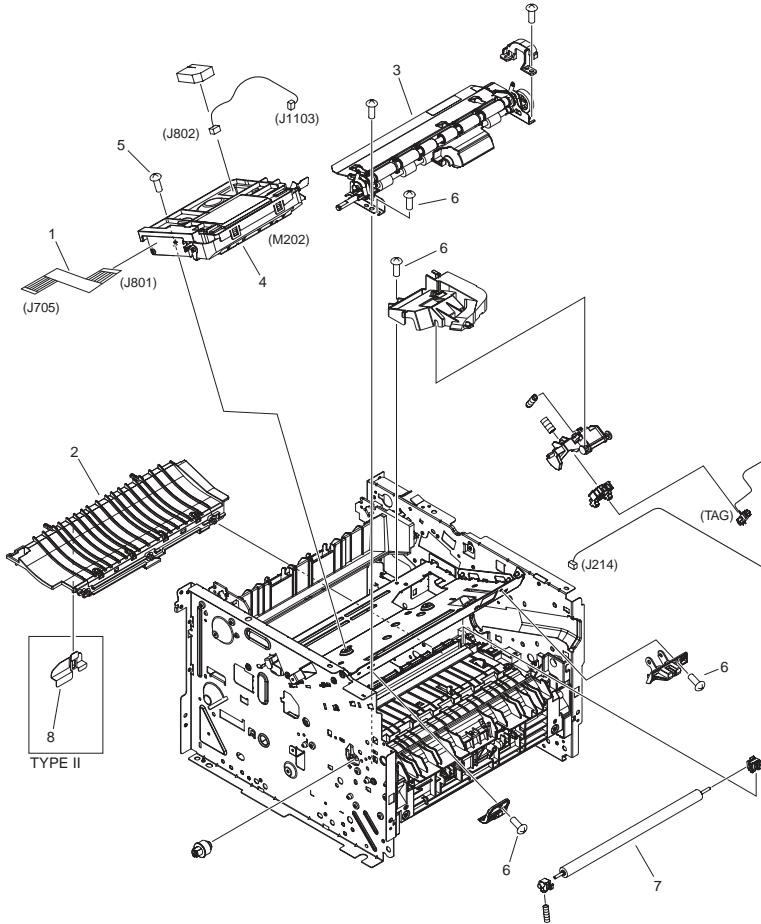


FIGURE & KEY NO.	PARTS NUMBER	RANK	Q'TY	DESCRIPTION	SERIAL NUMBER/REMARKS	SVC
Fig.103	NPN		RF	INTERNAL COMPONENTS 3		
1	FK2-8524-000		1	CABLE, FLAT		
2	RM1-6402-000		1	PAPER FEED GUIDE ASS'Y		
3	RM1-6419-000		1	REGISTRATION ASS'Y		
4	RM1-6424-000		1	SCANNER ASS'Y	M202	
5	XA9-1420-000		4	SCREW, W/WASHER, M3X8		
6	XA9-1671-000		4	SCREW, D, M3X8		
7	RM1-6450-000		1	TRANSFER ROLLER ASS'Y		
8	FC9-8942-000		1	SHEET, PROTECTIVE	TYPE II	

FIGURE & KEY NO.	PARTS NUMBER	R A N K	Q'TY	DESCRIPTION	SERIAL NUMBER/ REMARKS	S V C
Fig.104	NPN		RF	INTERNAL COMPONENTS 4	TYPE I	
1	FK2-2064-000		1	FAN	FM201	
2	RK2-2729-000		1	SOLENOID	SL201	
3	RK2-2731-000		1	SOLENOID	SL203	
4	RK2-2733-000		1	SOLENOID	SL202	
5	RL1-2120-000		1	ROLLER,MULTI-PURPOSE PICK-UP		
6	RM1-4275-000		1	PAPER PICK-UP GEAR ASS'Y		
7	RM1-6423-000		1	REVERSE DRIVE ASS'Y		
8	FM4-1487-000		1	ENGINE CONTROLLER PCB ASS'Y	120V	
8	FM4-1488-000		1	ENGINE CONTROLLER PCB ASS'Y	230V	
9	FM4-1605-000		1	CONNECTING PCB ASS'Y		
10	WC4-5171-000		1	MICROSWITCH	SW2	
11	XA9-1420-000		4	SCREW, W/WASHER, M3X8		
12	XA9-1503-000		3	SCREW, TAP, M3X6		
13	XA9-1671-000		AR	SCREW, D, M3X8		
14	VS1-7177-003		1	CONNECTOR, SNAP TIGHT, BK		

FIGURE 104A
INTERNAL COMPONENTS 4 (TYPE II)

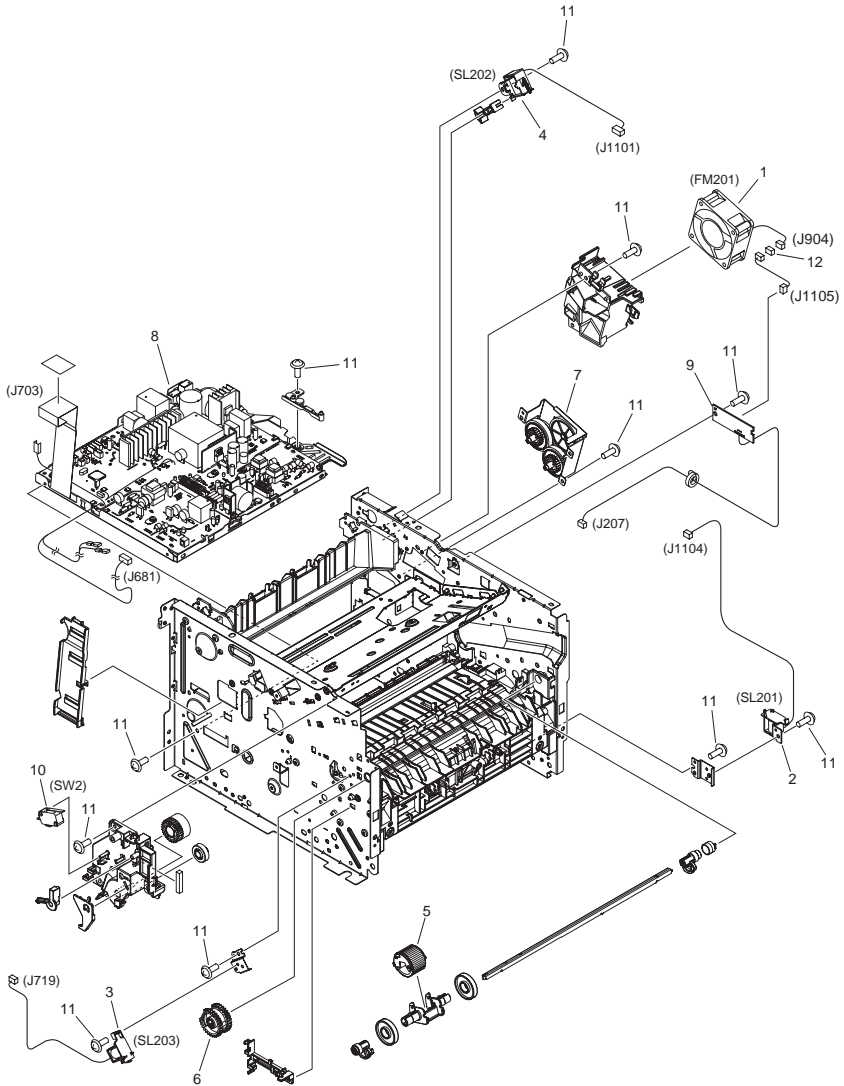


FIGURE & KEY NO.	PARTS NUMBER	R A N K	Q'TY	DESCRIPTION	SERIAL NUMBER/ REMARKS	S V C
Fig.104A	NPN		RF	INTERNAL COMPONENTS 4	TYPE II	
1	FK2-2064-000		1	FAN	FM201	
2	RK2-2729-000		1	SOLENOID	SL201	
3	RK2-2731-000		1	SOLENOID	SL203	
4	RK2-2733-000		1	SOLENOID	SL202	
5	RL1-2120-000		1	ROLLER,MULTI-PURPOSE PICK-UP		
6	RM1-4275-000		1	PAPER PICK-UP GEAR ASS'Y		
7	RM1-6423-000		1	REVERSE DRIVE ASS'Y		
8	FM4-5724-000		1	ENGINE CONTROLLER PCB ASS'Y	120V	
8	FM4-5725-000		1	ENGINE CONTROLLER PCB ASS'Y	230V	
9	FM4-1605-000		1	CONNECTING PCB ASS'Y		
10	WC4-5171-000		1	MICROSWITCH	SW2	
11	XA9-1671-000		AR	SCREW, D, M3X8		
12	VS1-7177-003		1	CONNECTOR, SNAP TIGHT, BK		

FIGURE 105 INTERNAL COMPONENTS 5 (TYPE I)

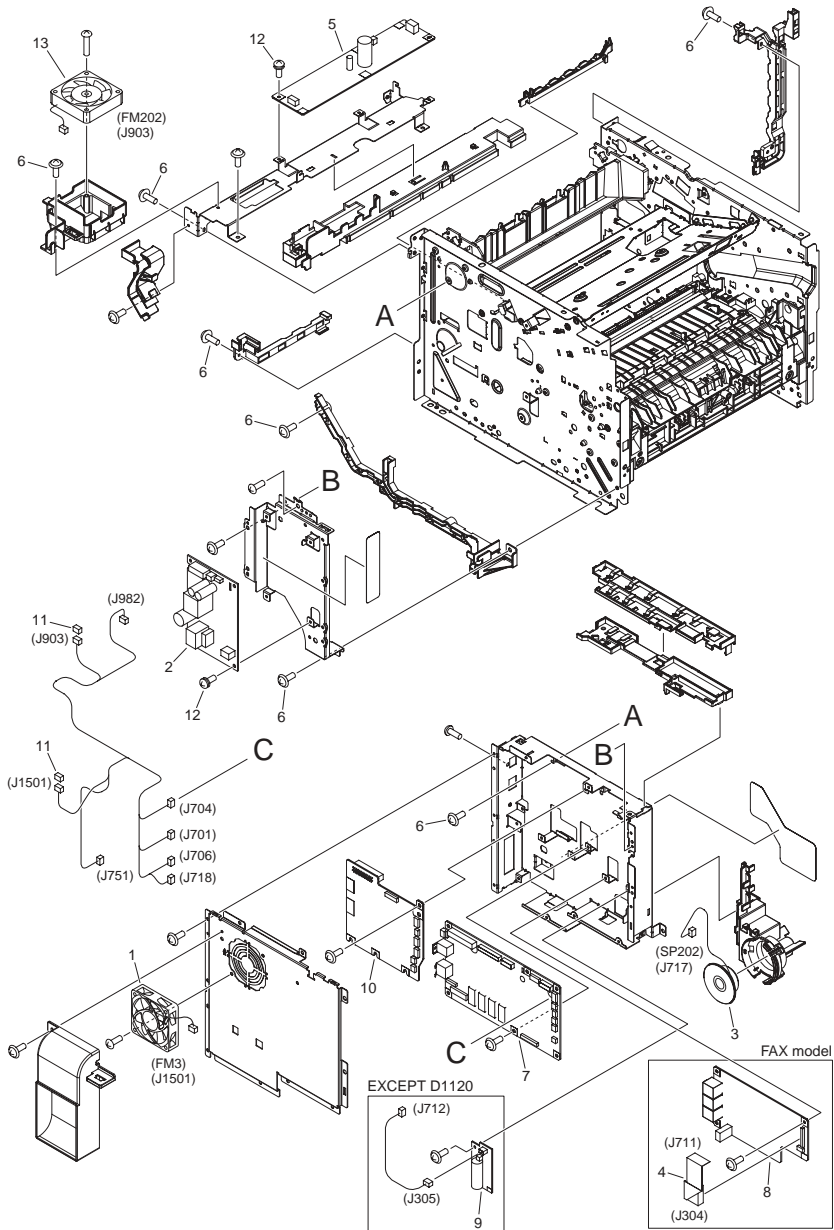


FIGURE & KEY NO.	PARTS NUMBER	RANK	Q'TY	DESCRIPTION	SERIAL NUMBER/REMARKS	SVC
Fig.105	NPN		RF	INTERNAL COMPONENTS 5	TYPE I	
1	FK3-0732-000		1	FAN	FM3	
2	FK2-6324-000		1	ALL DAY POWER PCB ASSEMBLY	120V	
2	FK2-6325-000		1	ALL DAY POWER PCB ASSEMBLY	230V	
3	FK2-8572-000		1	SPEAKER	SP202	
4	FK2-8574-000		1	CABLE, FLAT	FAX model	
5	FK2-8629-000		1	POWER SUPPLY PCB ASSEMBLY	120V	
5	FK2-8630-000		1	POWER SUPPLY PCB ASSEMBLY	230V	
6	XA9-1671-000		7	SCREW, D, M3X8		
7	FM4-1613-010		1	SCNT PCB ASSEMBLY	D1180,MF6680dn	
7	FM4-1614-010		1	SCNT PCB ASSEMBLY	D1170	
7	FM4-1615-010		1	SCNT PCB ASSEMBLY	D1150	
7	FM4-2669-010		1	SCNT PCB ASSEMBLY	D1120	
8	FM4-1620-000		1	NCU BOARD PCB ASS'Y	FAX model US	
8	FM4-1621-000		1	NCU BOARD PCB ASS'Y	FAX model AU	
8	FM4-1622-000		1	NCU BOARD PCB ASS'Y	FAX model LTN,SG,CN,KR,EUR	
9	FM4-1624-000		1	CAPASITOR PCB ASS'Y	EXCEPT D1120	
10	FM4-6078-000		1	ADF/READER DRIVER PCB ASS'Y		
11	VS1-7177-003		2	CONNECTOR, SNAP TIGHT, BK		
12	XA9-1420-000		8	SCREW, W/WASHER, M3X8		
13	FK2-0472-010		1	FAN	FM202	

FIGURE 105A
INTERNAL COMPONENTS 5 (TYPE II)

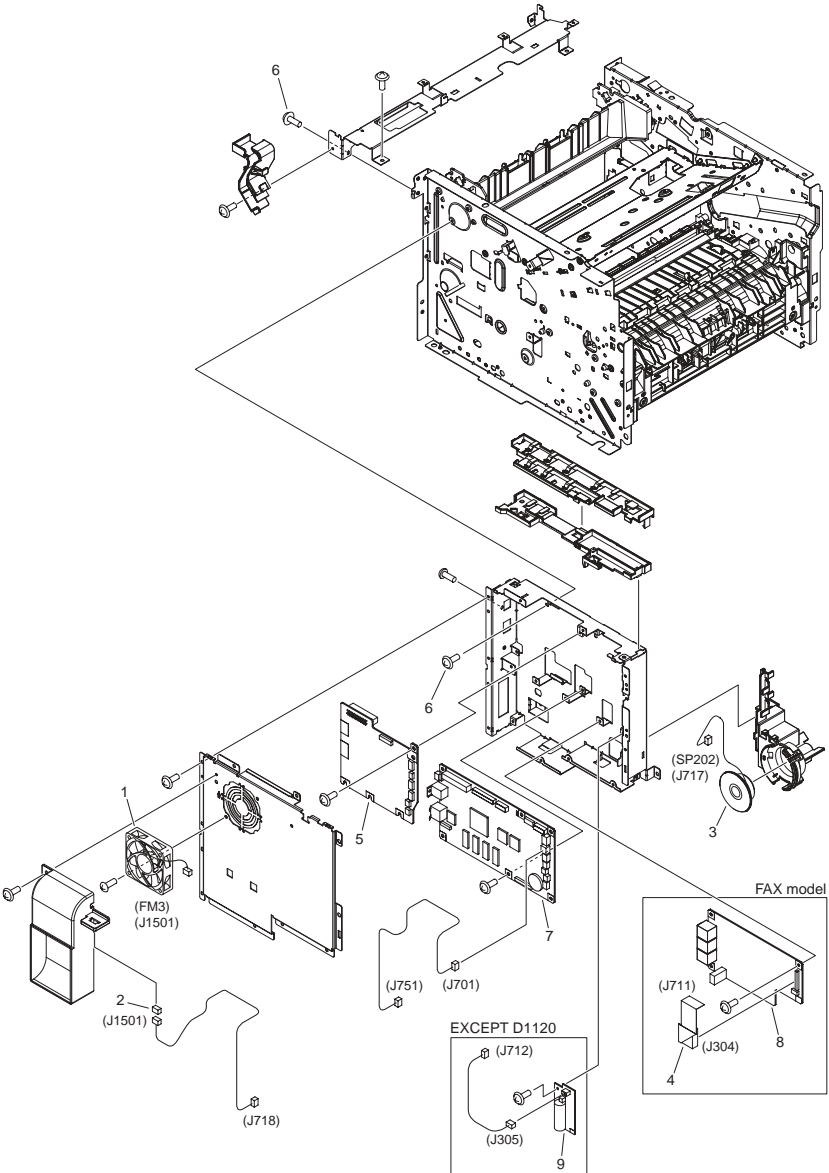


FIGURE & KEY NO.	PARTS NUMBER	R A N K	Q'TY	DESCRIPTION	SERIAL NUMBER/ REMARKS	S V C
Fig.105A	NPN		RF	INTERNAL COMPONENTS 5	TYPE II	
1	FK3-0732-000		1	FAN	FM3	
2	VS1-7177-003		1	CONNECTOR, SNAP TIGHT, BK		
3	FK2-8572-000		1	SPEAKER	SP202	
4	FK2-8574-000		1	CABLE, FLAT	FAX model	
5	FM4-6078-000		1	ADF/READER DRIVER PCB ASSY		
6	XA9-1671-000		7	SCREW, D, M3X8		
7	FM4-3215-000		1	SCNT PCB ASSEMBLY	D1180,MF6680dn	
7	FM4-3216-000		1	SCNT PCB ASSEMBLY	D1170	
7	FM4-3217-000		1	SCNT PCB ASSEMBLY	D1150	
7	FM4-2678-000		1	SCNT PCB ASSEMBLY	D1120	
8	FM4-1620-000		1	NCU BOARD PCB ASS'Y	FAX model US	
8	FM4-1621-000		1	NCU BOARD PCB ASS'Y	FAX model AU	
8	FM4-1622-000		1	NCU BOARD PCB ASS'Y	FAX model LTN,SG,CN,KR,EUR	
9	FM4-1624-000		1	CAPASITOR PCB ASS'Y	EXCEPT D1120	

FIGURE 106 INTERNAL COMPONENTS 6

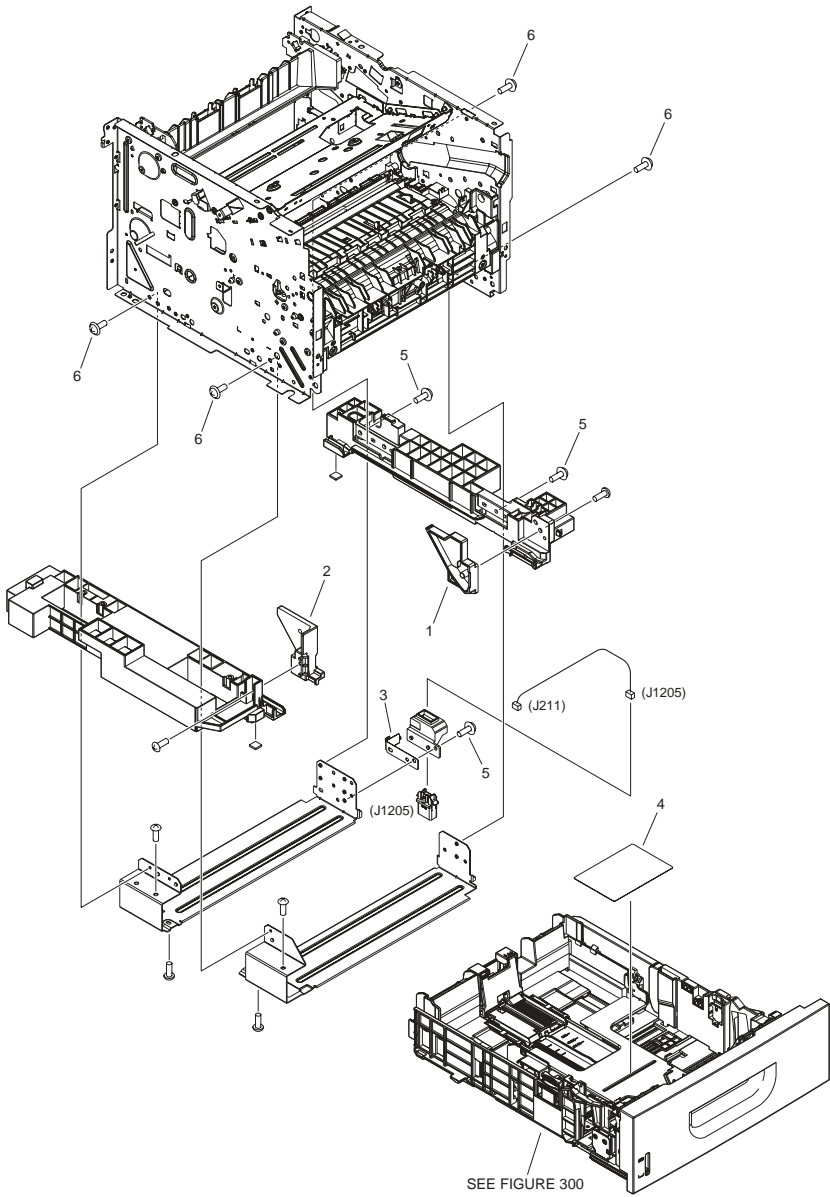


FIGURE & KEY NO.	PARTS NUMBER	RANK	Q'TY	DESCRIPTION	SERIAL NUMBER/REMARKS	SVC
Fig.106	NPN		RF	INTERNAL COMPONENTS 6		
1	FC9-2068-000		1	GUIDE, CASSETTE, RIGHT		
2	FC9-2069-000		1	GUIDE, CASSETTE, LEFT		
3	FC9-2071-000		1	SPRING, LEAF		
4	FC9-4891-000		1	LABEL, PAPER EXCHANGE		
5	XA9-1671-000		4	SCREW, D, M3X8		
6	XA9-1503-000		6	SCREW, TAP, M3X6		

FIGURE 160 READER/ADF ASSEMBLY

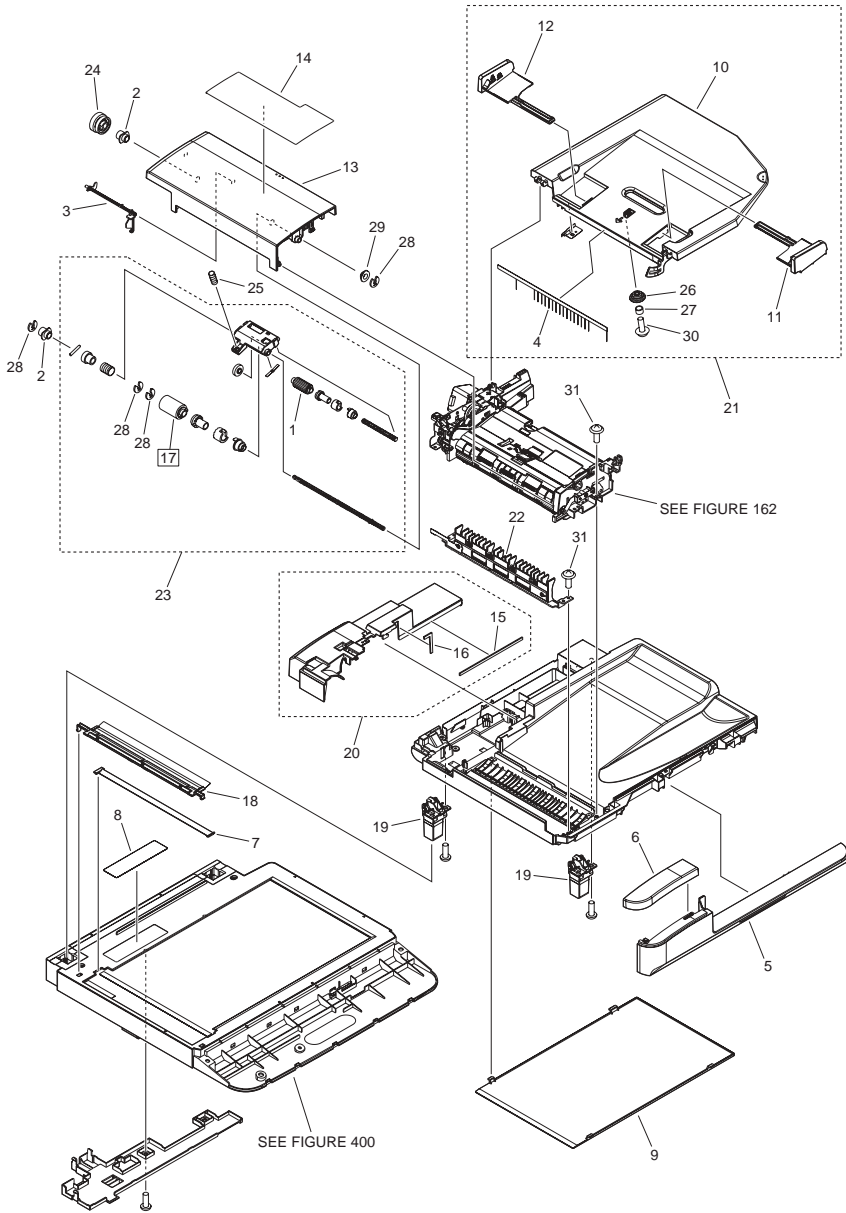


FIGURE & KEY NO.	PARTS NUMBER	R A N K	Q'TY	DESCRIPTION	SERIAL NUMBER/ REMARKS	S V C
Fig.160	NPN		RF	READER/ADF ASSEMBLY		
1	FC7-6189-000		1	ROLLER, PICK-UP		
2	FC7-6320-000		2	BUSHING		
3	FC7-6321-000		1	FLAG, DOCUMENT SCANNER		
4	FC7-6322-000		1	ELIMINATOR, STATIC CHARGE		
5	FC9-1496-000		1	COVER, ADF, FRONT LOWER		
6	FC9-1497-000		1	COVER, ADF, FRONT UPPER		
7	FC9-1486-000		1	PLATE, PAPER SIZE	A/INCH SIZE	
7	FC9-5109-000		1	PLATE, PAPER SIZE	A SIZE	
7	FC9-5110-000		1	PLATE, PAPER SIZE	A/B/K/INCH SIZE	
8	FC9-1494-000		1	LABEL, COPY PROHIBITION	US,CA,LTN,EUR	
8	FC9-5111-000		1	LABEL, COPY PROHIBITION	LTN,SG,AU	
9	FC9-1499-000		1	SHEET, WHITE		
10	FC9-1500-000		1	TRAY, DOCUMENT		
11	FC9-1501-000		1	GUIDE, DOCUMENT, FRONT		
12	FC9-1502-000		1	GUIDE, DOCUMENT, REAR		
13	FC9-1504-000		1	PANEL, OPEN/CLOSE		
14	FC9-4990-000		1	LABEL, GLASS CLEANING	A/INCH SIZE	
14	FC9-4991-000		1	LABEL, GLASS CLEANING	A SIZE	
14	FC9-4992-000		1	LABEL, GLASS CLEANING	A/B/K/INCH SIZE	
15	FC9-5660-000		1	CUSHION		
16	FC9-5661-000		1	CUSHION		
17	FL2-6637-000		1	ROLLER, SEPARATION	[DP]	
18	FL3-1421-000		1	HOLDER, DOCUMENT,RELEASE SHEET		
19	FL3-1430-000		2	HINGE, ADF		
20	FL3-1439-000		1	ADF REAR COVER ASSY		
21	FM3-9534-000		1	DOCUMENT TRAY ASSEMBLY		
22	FM4-1883-000		1	PAPER FEED GUIDE ASSEMBLY		
23	FM3-9538-000		1	SEPARATION ROLLER ASSEMBLY		
24	FU7-0672-000		1	GEAR, 24T		
25	FU7-2018-000		1	SPRING, COMPRESSION		
26	FU8-0895-000		1	GEAR, 18T		

FIGURE & KEY NO.	PARTS NUMBER	R A N K	Q'TY	DESCRIPTION	SERIAL NUMBER/ REMARKS	S V C
27	FU8-2007-000		1	SPRING, COMPRESSION		
28	HC1-0586-000		4	RETAINING RING		
29	HU1-1022-000		1	BUSHING		
30	XA9-0476-000		1	SCREW,TP M3X8		
31	XA9-0831-000		7	SCREW, P, M3X10		

FIGURE 162 PAPER FEEDER ASSEMBLY

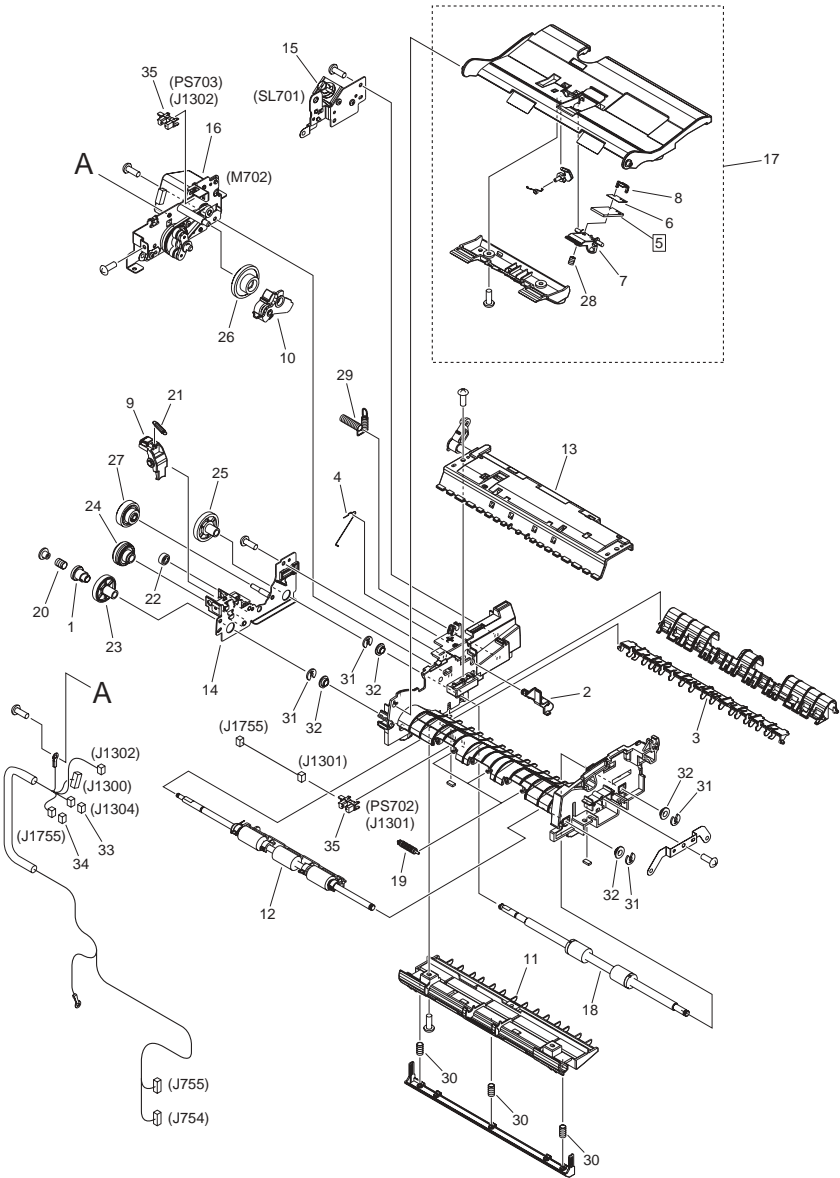


FIGURE & KEY NO.	PARTS NUMBER	R A N K	Q'TY	DESCRIPTION	SERIAL NUMBER/ REMARKS	S V C
Fig.162	FM4-1884-000		1	PAPER FEEDER ASSEMBLY		
1	FC7-6052-010		1	RATCHET, PAPER FEED ROLLER		
2	FC7-6182-000		1	LEVER, ROLLER RELEASE		
3	FC7-6278-000		1	FLAPPER, PAPER DELIVERY		
4	FC7-6281-000		1	SPRING, ARM		
5	FC7-6297-000		1	PAD, SEPARATION	[DP]	
6	FC9-5654-000		1	SHEET, SEPARATION PAD		
7	FC7-6299-000		1	HOLDER, SEPARATION PAD		
8	FC7-6300-000		1	CLAMP, SEPARATION PAD		
9	FC9-1512-000		1	LEVER, RELEASE		
10	FL3-1431-000		1	ARM, SEPARATION SWING		
11	FL3-1437-000		1	GUIDE, LOWER ASSEMBLY		
12	FM4-1885-000		1	PAPER FEED ROLLER ASSEMBLY		
13	FM3-9541-000		1	PAPER DELIVERY ASSEMBLY		
14	FM3-9542-000		1	DRIVE PLATE ASSEMBLY		
15	FM3-9543-000		1	SOLENOID ASSEMBLY	SL701	
16	FM4-1872-000		1	MOTOR DRIVE ASSEMBLY	M702	
17	FM4-1873-000		1	GUIDE ASSEMBLY, UPPER		
18	FM4-1875-000		1	PAPER DELIVERY ROLLER ASSY		
19	FU5-6992-000		3	ROLLER, AUXILIARY		
20	FU6-2998-000		1	SPRING, COMPRESSION		
21	FU6-2999-000		1	SPRING, TENSION		
22	FU7-0667-000		1	GEAR, 20T		
23	FU7-0668-000		1	GEAR, 54T		
24	FU7-0669-000		1	GEAR, 46T/23T		
25	FU7-0671-000		1	GEAR, 36T		
26	FU7-0676-000		1	GEAR, 21T/42T		
27	FU7-0678-000		1	GEAR, 51T/17T		
28	FU7-2016-000		1	SPRING, COMPRESSION		
29	FU7-2021-000		1	SPRING, COMPRESSION		
30	FU8-2008-000		3	SPRING, COMPRESSION		
31	HC1-0586-000		5	RETAINING RING		

FIGURE & KEY NO.	PARTS NUMBER	RANK	Q'TY	DESCRIPTION	SERIAL NUMBER/REMARKS	SVC
32	HU1-1022-000		4	BUSHING		
33	VS1-7177-002		1	CONNECTOR, SNAP TIGHT, BK		
34	VS1-7207-004		1	CONNECTOR, SNAP TIGHT, BK		
35	WG8-5696-000		2	PHOTO INTERRUPTER, TLP1243	PS702,PS703	

FIGURE 300 CASSETTE ASSEMBLY

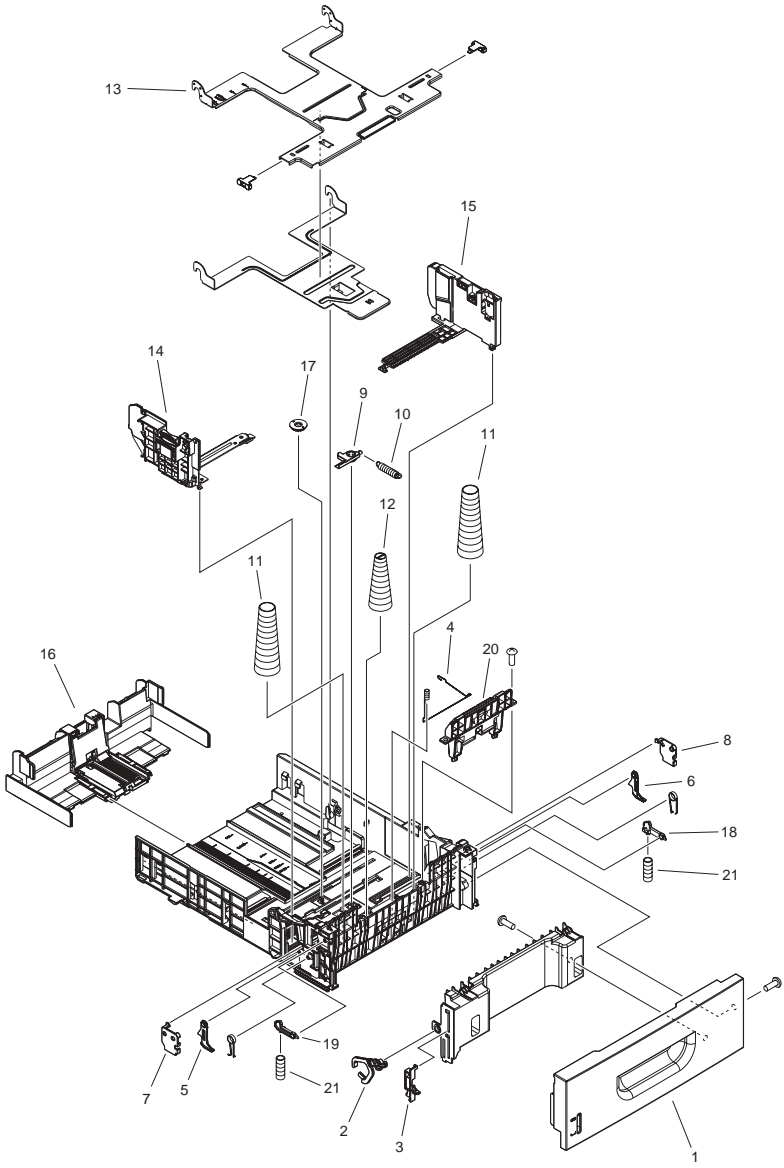


FIGURE & KEY NO.	PARTS NUMBER	R A N K	Q'TY	DESCRIPTION	SERIAL NUMBER/ REMARKS	S V C
Fig.300	FM3-9798-000		1	CASSETTE ASSEMBLY		
1	FC9-2032-000		1	COVER, FRONT		
2	FC9-2034-000		1	ARM, REMNANT INDICATION		
3	FC9-2035-000		1	LEVER, REMNANT INDICATION		
4	FC9-2072-000		1	SPRING, GROUNDING		
5	FC9-2074-000		1	STOPPER, LEFT		
6	FC9-2075-000		1	STOPPER, RIGHT		
7	FC9-2076-000		1	COVER, STOPPER, LEFT		
8	FC9-2077-000		1	COVER, STOPPER, RIGHT		
9	FC9-2078-000		1	LEVER, LOCK		
10	FC9-2089-000		1	SPRING, TENSION		
11	FC9-2090-000		2	SPRING, COMPRESSION		
12	FC9-2091-000		1	SPRING, COMPRESSION		
13	FL3-1504-000		1	PLATE, PAPER LIFTING		
14	FM3-9800-000		1	PAPER SIDE END LEFT ASSEMBLY		
15	FM3-9801-000		1	PAPER SIDE END RIGHT ASSEMBLY		
16	FM3-9802-000		1	BACK END LIMIT ASSEMBLY		
17	FS7-0980-000		1	GEAR,16T		
18	RC1-3507-000		1	STOPPER, CASSETTE, RIGHT		
19	RC1-3508-000		1	STOPPER, CASSETTE, LEFT		
20	RM1-6454-000		1	SEPARATION PAD ASSEMBLY		
21	RU5-2327-000		2	SPRING, COMPRESSION		

FIGURE 400 READER ASSEMBLY

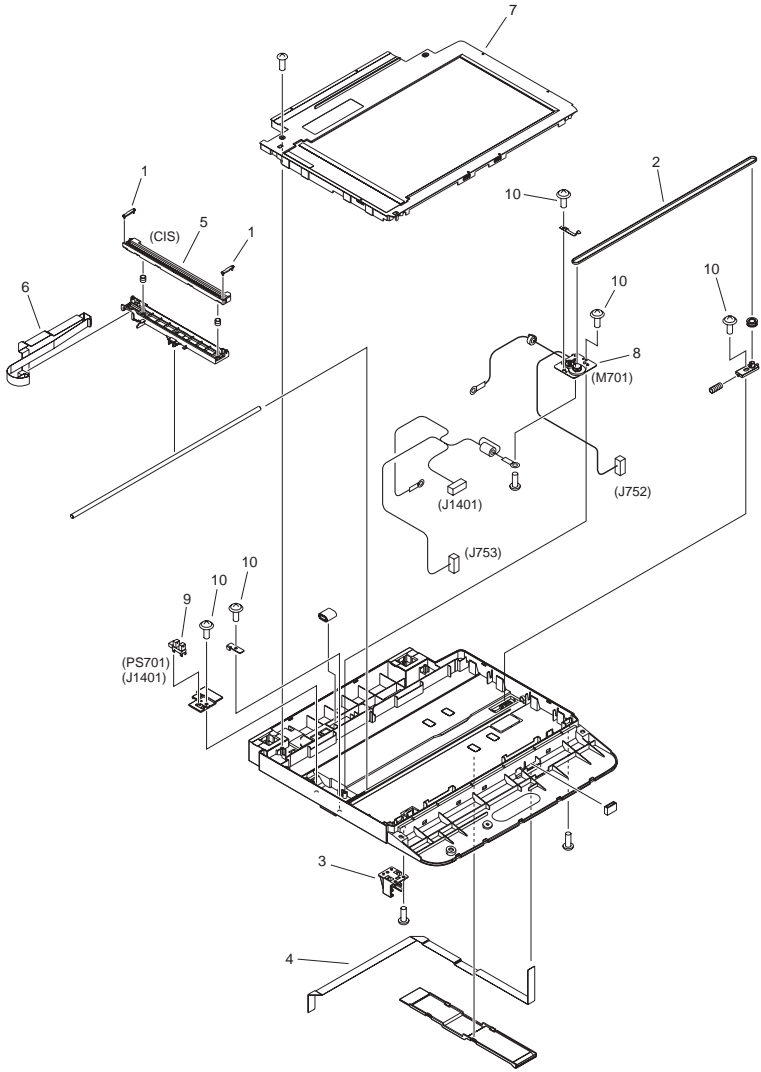


FIGURE & KEY NO.	PARTS NUMBER	RANK	Q'TY	DESCRIPTION	SERIAL NUMBER/REMARKS	SVC
Fig.400	FM3-9525-000		1	READER ASSEMBLY		
1	FC9-7574-000		2	SPACER, CIS		
2	FC9-1493-000		1	BELT, TIMING		
3	FC9-2101-000		1	MOUNT, SUPPORTER		
4	FK2-8573-000		1	CABLE, FLAT		
5	FK2-8634-000		1	CONTACT IMAGE SENSOR	CIS	
6	FK2-8635-000		1	CABLE, FLAT		
7	FM4-6597-000		1	READER COVER UNIT		
8	FM3-9527-000		1	DC MOTOR ASSEMBLY	M701	
9	WG8-5696-000		1	PHOTO INTERRUPTER, TLP1243	PS701	
10	XA9-0476-000		5	SCREW,TP M3X8		

FIGURE ZZA

MECHANICAL STANDARD PARTS (HOW TO USE)

Mechanical standard parts

機械標準部品

About a mechanical standard parts

A Mechanical standard parts is a mechanical part which not parts peculiar to a product. They are parts which are common to a Canon product and are used, such as a screw and a washer. The Fig No. and parts number of the mechanical standard parts are not listed in the product parts catalog. Refer to the parts catalog of mechanical standard parts when checking the parts number for screw or washer etc. and identify them by part shape or size.

機械標準部品とは

機械標準部品とは、製品特有の部品ではなく、ねじやワッシャなどキヤノン製品共通で使用されている機械部品（メカ部品）のことです。
製品のパーツカタログには、機械標準部品のFig No.や部品番号は記載していません。
ねじや、ワッシャ等の部品番号を調べるときは、機械標準部品のパーツカタログを参照し、部品の形状や大きさから判断し、使用している部品を調べてください。

Material and surface treatment of a mechanical standard parts

Material and surface treatment of mechanical standard parts are assigned commonly for each part. Refer to the Table 1 for the parts which material and surface treatment are assigned as numbers.

機械標準部品の材料および表面処理

機械標準部品の材料および表面処理については、各種部品共通で決められています。
材料および表面処理が番号で決められている部品については、表1を参照してください。

Table 1 Material and Surface treatment
表1 材料および表面処理

No. 番号	Material 材料	Surface treatment 表面処理	Color 色
1	Stainless steel ステンレス	Stainless steel black coloring (BC4) ステンレス黒着色(BC4)	Black 黒
2		not to be given なし	White 白
3	Brass 黄銅	Regular nickel plating (NL) 普通ニッケルメッキ(NL)	White 白
4		Black nickel plating (BN) 黒色ニッケルメッキ(BN)	Black 黒
5	Steel 鋼	White zinc trivalent chromate treating (ZC3) 白色亜鉛3価クロメート(ZC3)	White 白
6		Regular nickel chromium plating (NC) 普通ニッケルクロムメッキ(NC)	White 白
7		Regular nickel plating (NL) 普通ニッケルメッキ(NL)	White 白
8		Iron and steel phosphating (P1) 鉄鋼磷酸塩処理(P1)	Black 黒
9		Black zinc trivalent chromate treating (BZ3) 黒色亜鉛3価クロメート(BZ3)	Black 黒

FIGURE ZZB MECHANICAL STANDARD PARTS (SCREWS)

1. Screws ねじ

How to read Parts Numbers
部品番号の見方

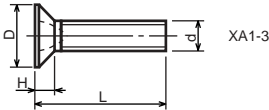
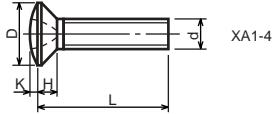
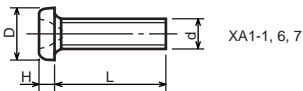
Screws
ねじ

XB1-2400-609

Type No.
類別番号
Normal designation (d)
ねじの呼び(d)
Length (L)
ねじの長さ(L)
Material and Surface treatment
材料および表面処理

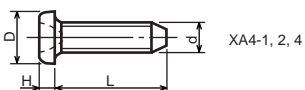
XB1-2 expresses Binding head machine screw.
XB1-2は、バインドねじを表す
40 expresses M4.0.
40は、M4.0を表す
0-60 expresses a length of 6.0mm.
0-60は、6.0mmの長さを表す
9 expresses Steel (Black zinc trivalent chromate
treating) from Table 1.
9は、表1より鋼(黒色亜鉛3価クロメート)を表す

1-1. Cross Recessed Head Screws for Precision Equipments 精密機器用十字穴付き小ねじ



Type No. 類別番号	Type 類別	Head size (mm) 頭部寸法 (mm)							
		M1.4	M1.6	M1.7	M2	M2.5	M2.6		
XA1-1	Pan head Class 1 なべ1種	D	XA1-1	2	2.4	2.5	3	3.8	4
		H	XA1-1	0.5	0.55	0.5	0.6	0.9	0.8
XA1-3	Countersunk head Class 1 さら1種	D	XA1-3	2	2.4	2.5	3	3.8	4
		H	XA1-3	0.48	0.55	0.58	0.73	0.85	0.93
XA1-4	Oval countersunk head Class 1 丸さら1種	D	XA1-4	2	2.4	2.5	3	3.8	4
		H + K	XA1-4	0.68	0.8	0.88	1	1.25	1.3
XA1-6	Pan head Class 3 なべ3種	D	XA1-6	2.5	2.8	3	3.5	4.3	4.5
		H	XA1-6	0.8	0.85	0.9	1	1.3	1.2
XA1-7	Pan head Class 2 なべ2種	D	XA1-7	2.5	2.8	3	3.5	4.3	4.5
		H	XA1-7	0.5	0.55	0.5	0.6	0.9	0.8

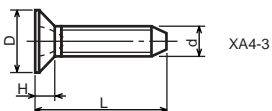
1-2. Precision Tapping Screws
精密用タッピンねじ



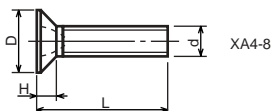
XA4-1, 2, 4



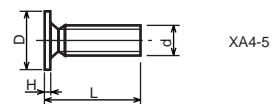
XA4-6, 7, 9



XA4-3



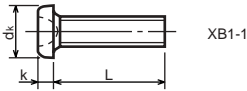
XA4-8



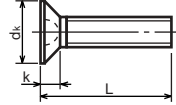
XA4-5

Type No. 類別番号	Type 類別	Head size (mm) 頭部寸法 (mm)						
		M1.4	M1.6	M1.7	M2	M2.5	M2.6	
XA4-1	With tapered end pan head Class 1 絞りなべ1種	D XA4-1	2	2.4	2.5	3	3.8	4
		H XA4-1	0.5	0.55	0.5	0.6	0.9	0.8
XA4-2	With tapered end pan head Class 3 絞りなべ3種	D XA4-2	2.5	2.8	3	3.5	4.3	4.5
		H XA4-2	0.8	0.85	0.9	1	1.3	1.2
XA4-3	With tapered end countersunk head 絞り-さら	D XA4-3	2	2.4	2.5	3	3.8	4
		H XA4-3	0.48	0.55	0.58	0.73	0.85	0.93
XA4-4	With tapered end pan head Class 2 絞りなべ2種	D XA4-4	2.5	2.8	3	3.5	4.3	4.5
		H XA4-4	0.5	0.55	0.5	0.6	0.9	0.8
XA4-5	With parallel end ultra thin head ストレート-超薄頭	D XA4-5	2.5	2.8	3	-	-	-
		H XA4-5	0.2	0.2	0.2	-	-	-
XA4-6	With parallel end pan head Class 1 ストレートなべ1種	D XA4-6	2	2.4	2.5	3	3.8	4
		H XA4-6	0.5	0.55	0.5	0.6	0.9	0.8
XA4-7	With parallel end pan head Class 3 ストレートなべ3種	D XA4-7	2.5	2.8	3	3.5	4.3	4.5
		H XA4-7	0.8	0.85	0.9	1	1.3	1.2
XA4-8	With parallel end countersunk head ストレート-さら	D XA4-8	2	2.4	2.5	3	3.8	4
		H XA4-8	0.48	0.55	0.58	0.73	0.85	0.93
XA4-9	With parallel end pan head Class 2 ストレートなべ2種	D XA4-9	2.5	2.8	3	3.5	4.3	4.5
		H XA4-9	0.5	0.55	0.5	0.6	0.9	0.8

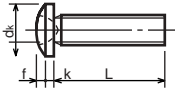
1-3. Cross Recessed Head Screws
 一般用十字穴付き小ねじ



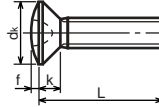
XB1-1



XB1-3



XB1-2

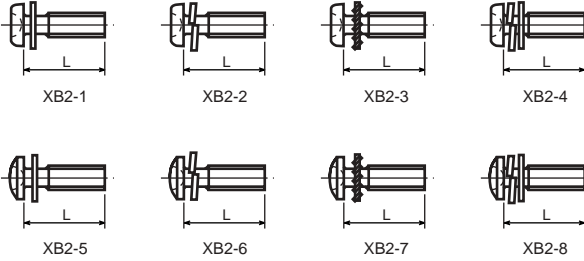


XB1-4

Type No. 類別番号	Type 類別
XB1-1	Pan head なべ
XB1-2	Binding head バインド
XB1-3	Countersunk head さら
XB1-4	Oval countersunk head 丸さら

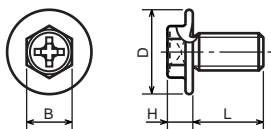
		Head size (mm) 頭部寸法 (mm)					
		M2	M2.5	M2.6	M3	M4	M5
dk	XB1-1	3.5	4.5	4.5	5.5	7	9
k	XB1-1	1.3	1.7	1.7	2	2.6	3.3
dk	XB1-2	4.3	5.3	5.5	6.3	8.3	10.3
k+f	XB1-2	1.2	1.5	1.6	1.9	2.5	3.1
dk	XB1-3	4	5	-	6	8	10
k	XB1-3	1.2	1.45	-	1.75	2.3	2.8
dk	XB1-4	4	5	-	6	8	10
k+f	XB1-4	1.6	2	-	2.45	3.2	4
Screw part length ねじ部長さ b		8	12	12	12	16	20

1-4. Cross Recessed Head Screws with Captive Washer
座金組み十字穴付き小ねじ



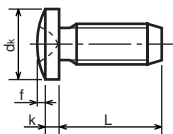
Type No. 類別番号	Type 類別
XB2-1	Pan head + Plain washer (circular bright) なべねじ+平座金
XB2-2	Pan head + Spring washer なべねじ+ばね座金
XB2-3	Pan head + Toothed lock washer なべねじ+歯付座金
XB2-4	Pan head + Spring washer and plain washer (circular bright) なべねじ+(ばね+平)座金
XB2-5	Binding head + Plain washer (circular bright) バインドねじ+平座金
XB2-6	Binding head + Spring washer バインドねじ+ばね座金
XB2-7	Binding head + Toothed lock washer バインドねじ+歯付座金
XB2-8	Binding head + Spring washer and plain washer (circular bright) バインドねじ+(ばね+平)座金

1-5. Hexagon Head Tapping Screws for Metallic Materials
 金属用六角タッピンねじ



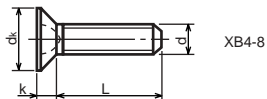
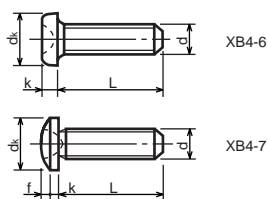
Type No. 類別番号	Type 類別	Head size (mm) 頭部寸法 (mm)	
		M3	M4
XB3-6	For metallic materials 金属用タッピン	D	8 10
		B	5.5 5.5
XB3-7	For metallic materials with clawed 金属用タッピン-つめ付き	H XB3-6	3.1 3.1
		H XB3-7	3.2 3.2

1-6. Special Tapping Screws
 特殊タッピンねじ



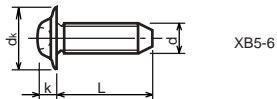
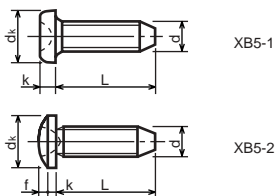
Type No. 類別番号	Type 類別	Head size (mm) 頭部寸法 (mm)	
		M3	M4
XB4-5	Binding head バインド	d _k	6.3 8.3
		k	1.3 1.7
		k+f	1.9 2.5

1-7. General Head Tapping Screws
一般用タッピンねじ



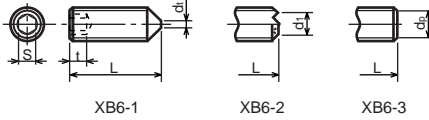
Type No. 類別番号	Type 類別	Head size (mm) 頭部寸法 (mm)						
		M2	M2.5	M2.6	M3	M4	M5	
XB4-6	Pan head なべ	d_k XB4-6	3.5	4.5	4.5	5.5	7	9
		k XB4-6	1.3	1.7	1.7	2	2.6	3.3
XB4-7	Binding head バインド	d_k XB4-7	4.3	5.3	5.5	6.3	8.3	10.3
		$k+f$ XB4-7	1.2	1.5	1.6	1.9	2.5	3.1
XB4-8	Countersunk head さら	d_k XB4-8	4	5	5.2	6	8	10
		k XB4-8	1.2	1.45	1.5	1.75	2.3	2.8

1-8. Tapping Screws for Metallic Materials
金属用タッピンねじ



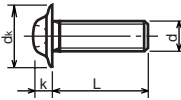
Type No. 類別番号	Type 類別	Head size (mm) 頭部寸法 (mm)					
		M2.5	M2.6	M3	M4	M5	
XB5-1	Pan head なべ	d_k XB5-1	4.5	4.5	5.5	7	9
		k XB5-1	1.7	1.7	2	2.6	3.3
XB5-2	Binding head バインド	d_k XB5-2	5.5	5.5	6.3	8.3	10.3
		$k+f$ XB5-2	1.6	1.6	1.9	2.5	3.1
XB5-6	Flanged pan head つば付きなべ	d_k XB5-6	6.5	6.5	8	10	12
		k XB5-6	2.1	2.1	1.75	3.2	4

1-9. Hexagon Socket Set Screws
六角穴付止めねじ



Type No. 類別番号	Type 類別	Head size (mm) 頭部寸法 (mm)							
		M1.6 M1.7	M2	M2.5 M2.6	M3	M5	M5	M6	
XB6-1	Cone point とがり先	S	0.7	0.9	1.3	1.5	2	2.5	3
		t	1.5	1.7	2	2	2.5	3	3.5
		$d_{t \max}$ XB6-1	0.4	0.5	0.65	0.75	1	1.25	1.5
		$d_{l \max}$ XB6-2	-	1.2	1.5	1.7	2.2	2.8	3.3
		$d_{l \min}$ XB6-2	-	1	1.2	1.4	1.9	2.4	2.9
XB6-3	Flat point 平先	$d_{p \max}$ XB6-3	0.8	1	1.5	2	2.5	3.5	4
		$d_{p \min}$ XB6-3	0.55	0.75	1.25	1.75	2.25	3.2	3.7

1-10. Flanged Pan Head Machine Screws
つば付きなべ小ねじ



Type No. 類別番号	Type 類別	Head size (mm) 頭部寸法 (mm)					
		M2	M2.5 M2.6	M3	M5	M5	
XB6-7	Flanged pan head つば付きなべ	d_k	5	6.5	8	10	12
		k	1.7	2.1	2.5	3.2	4

FIGURE ZZC MECHANICAL STANDARD PARTS (BOLTS)

2. Bolts (Socket head cap screw)

ボルト

How to read Parts Numbers
部品番号の見方

Bolt (Socket head cap screw)
ボルト

XB7-1080-409

Type No.
類別番号

Normal designation (d)
ねじの呼び (d)

Length (L)
ねじの長さ (L)

Material and Surface treatment
材料および表面処理

XB7-1 expresses Hexagon socket head cap screws.
XB7-1は、六角穴付きボルトを表す

080 expresses M8.0.
080は、M8.0を表す

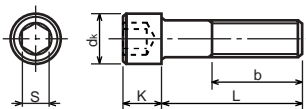
40 expresses a length of 40mm.
40は、40mmの長さを表す

9 expresses Steel (Black zinc trivalent chromate
treating) from Table 1.

9は、表1より鋼(黒色亜鉛3価クロメート)を表す

2-1. Hexagon socket head cap screws

六角穴付きボルト



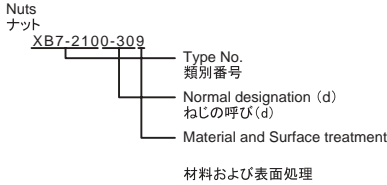
Type No. 類別番号	Type 類別
XB7-1	Hexagon socket head cap screws 六角穴付きボルト

	Head size (mm) 頭部寸法 (mm)						
	M3	M4	M5	M6	M8	M10	M12
S	2.5	3	4	5	6	8	10
d_k	5.5	7	8.5	10	13	16	18
K	3	4	5	6	8	10	12
Screw part length b_{max} ねじ部長さ b_{max}	18	20	22	24	28	32	36

FIGURE ZZD MECHANICAL STANDARD PARTS (NUTS)

3. Nuts ナット

How to read Parts Numbers
部品番号の見方



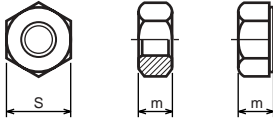
XB7-210 expresses Hexagon nut class 1.
XB7-210は、六角ナット1種を表す

0-30 expresses M3.0.
0-30は、M3.0を表す

9 expresses Steel (Black zinc trivalent chromate
treating) from Table 1.

9は、表1より鋼(黒色亜鉛3価クロメート)を表す

3-1. Hexagon Nuts and Hexagon Thin Nuts 六角ナット



Type No. 類別番号	Type 類別
XB7-210	Hexagon nut Class 1 六角ナット-1種
XB7-220	Hexagon nut Class 3 六角ナット-3種
XB7-230	Hexagon nut Style 1 double chamfered 六角ナット-スタイル1-両面とり
XB7-231	Hexagon nut Style 1 washer faced 六角ナット-スタイル1-座付き
XB7-240	Hexagon nut Style 2 double chamfered 六角ナット-スタイル2-両面とり
XB7-241	Hexagon nut Style 2 washer faced 六角ナット-スタイル2-座付き
XB7-250	Hexagon nut 六角ナット
XB7-260	Hexagon thin nut double chamfered 六角低ナット-両面とり
XB7-270	Hexagon thin nut not chamfered 六角低ナット-面とり無し

	Head size (mm) 頭部寸法 (mm)						
	M2	M2.5	M3	M4	M5	M6	M8
S	4	5	5.5	7	8	10	13
m XB7-210	1.6	2	2.4	3.2	4	5	6.5
m XB7-220	1.2	1.6	1.8	2.4	3.2	3.6	5
m XB7-230, 231	1.6	2	2.4	3.2	4.7	5.2	6.8
m XB7-240, 241	-	-	-	-	5.1	5.7	7.5
m XB7-250	-	-	-	-	5.6	6.1	7.9
m XB7-260	1.2	1.6	1.8	2.2	2.7	3.2	4
m XB7-270	1.2	1.6	1.8	2.2	2.7	3.2	4

FIGURE ZZE MECHANICAL STANDARD PARTS (RETAINING RINGS)

5. Retaining Rings

止め輪

How to read Parts Numbers

部品番号の見方

Retaining Rings

止め輪

XD2-1100-202

Type No.
類別番号

Nominal designation

呼び

Material and Surface treatment

材料および表面処理

XD2-110 expresses retaining ring-E type (Type1).
XD2-110は、E形止め輪(1種)を表す

0-20 expresses a 020 of nominal designation.
(See Table 5)

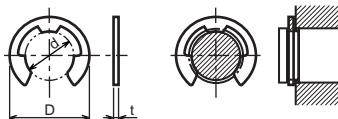
0-20は、呼び020を表す(表5参照)

2 expresses Stainless steel (Surface treatment is not to be given) from Table 1.

2は、表1よりステンレス(表面処理なし)を表す

5-1. Retaining Rings - E type

E形止め輪

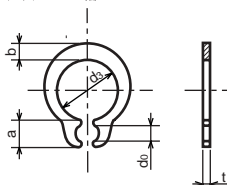


Type No. 類別番号	Type 類別
XD2-110	Retaining ring - E type (Type 1) E形止め輪(1種)
XD2-120	Retaining ring - E type (Type 2) E形止め輪(2種)

Table 5 表5

Type 種類	Nominal designation 呼び	d (mm)	D (mm)	t (mm)
Type 1 1種	007	0.65	2	0.2
	010	0.95	2.8	0.2
	013	1.25	3.3	0.3
	017	1.65	4.2	0.4
	020	1.95	4.6	0.5
	024	2.35	6	0.6
	028	2.74	6.5	0.6
	032	3.14	7.2	0.6
	037	3.64	8	0.7
	040	3.93	10	0.7
	042	4.13	10	0.7
	050	4.93	11	0.7
	058	5.73	12	0.7
	060	5.93	12.7	0.9
	064	6.32	13.5	0.9
	074	7.31	15	0.9
080	7.91	16.5	1	
Type 2 2種	008	0.8	2	0.2
	012	1.2	3	0.3
	015	1.5	4	0.4
	020	2	5	0.4
	025	2.5	6	0.4
	030	3	7	0.6
	040	4	9	0.6
	050	5	11	0.6
	060	6	12	0.8
	070	7	14	0.8
	080	8	16	0.8
	090	9	18	0.8
	100	10	20	1

5-2. Grip Rings
グリップ止め輪

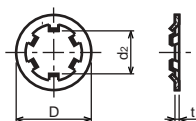


Type No. 類別番号	Type 類別
XD2-210	Grip ring グリップ止め輪

Table 5 表5

Nominal designation 呼び	d ₃ (mm)	t (mm)	b (mm)	a (mm)	d ₀ (mm)
020	1.9	0.5	1	1.8	0.8
025	2.35	0.5	1.2	1.9	0.9
030	2.85	0.6	1.4	1.9	0.9
035	3.3	0.6	1.6	2	0.9
040	3.8	0.8	1.8	2.8	1.2
045	4.25	0.8	2	2.9	1.3
050	4.75	0.8	2.2	2.9	1.3
060	5.7	1	2.4	3.1	1.4
070	6.7	1	2.7	3.3	1.4
080	7.7	1	3	3.5	1.4
090	8.65	1.2	3.3	4.7	1.5
100	9.65	1.2	3.5	4.7	2

5-3. Toothed Retaining Rings
歯付き形止め輪



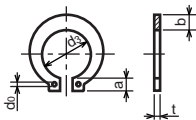
Type No. 類別番号	Type 類別
XD2-230	Toothed retaining ring 歯付き形止め輪

Table 5 表5

Nominal designation 呼び	d _z (mm)	D (mm)	t (mm)	No of teeth 歯数
015	1.4	5.2	0.25	3
020	1.9	6	0.25	3
024	2.3	6.4	0.25	3
030	2.8	8	0.25	4
040	3.8	9	0.25	4
050	4.8	10	0.25	5
060	5.8	11	0.25	5
080	7.8	13	0.25	5
100	9.8	15.4	0.25	6

5-4. Retaining Rings - C Type

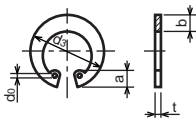
C形止め輪



Type No. 類別番号	Type 類別
XD2-310	Retaining ring - C type for shaft C形止め輪 軸用

Table 5 表5

Nominal designation 呼び	d ₃ (mm)	t (mm)	b (mm)	a (mm)	d ₀ (mm)
010	9.3	1	1.6	3	1.2
012	11.1	1	1.8	3.2	1.5
014	12.9	1	2	3.4	1.7
015	13.8	1	2.1	3.5	1.7
016	14.7	1	2.2	3.6	1.7
017	15.7	1	2.2	3.7	1.7
018	16.5	1.2	2.6	3.8	1.7
020	18.5	1.2	2.7	3.9	2
022	20.5	1.2	2.7	4.1	2
025	23.2	1.2	3.1	4.3	2
028	25.9	1.5	3.1	4.6	2
030	27.9	1.5	3.5	4.8	2
032	29.6	1.5	3.5	5	2.5
035	32.2	1.5	4	5.4	2.5



Type No. 類別番号	Type 類別
XD2-320	Retaining ring - C type for hole C形止め輪 穴用

Table 5 表5

Nominal designation 呼び	d ₃ (mm)	t (mm)	b (mm)	a (mm)	d ₀ (mm)
010	10.7	1	1.8	3.1	1.2
011	11.8	1	1.8	3.2	1.2
012	13	1	1.8	3.3	1.5
014	15.1	1	2	3.6	1.7
016	17.3	1	2	3.7	1.7
018	19.5	1	2.5	4	1.7
019	20.5	1	2.5	4	2
020	21.5	1	2.5	4	2
022	23.5	1	2.5	4.1	2
025	26.9	1.2	3	4.4	2
028	30.1	1.2	3	4.6	2
030	32.1	1.2	3	4.7	2
032	34.4	1.2	3.5	5.2	2.5
035	37.8	1.5	3.5	5.2	2.5
037	39.8	1.5	3.5	5.2	2.5
040	43.5	1.8	4	5.7	2.5
042	45.5	1.8	4	5.8	2.5
045	48.5	1.8	4.5	5.9	2.5
047	50.5	1.8	4.5	6.1	2.5
050	54.2	2	4.5	6.5	2.5
052	56.2	2	5.1	6.5	2.5
055	59.2	2	5.1	6.5	2.5
060	64.2	2	5.1	6.8	2.5
062	66.2	2	5.5	6.9	2.5
068	72.5	2.5	6	7.4	2.5
072	76.5	2.5	6.6	7.4	2.5
075	79.5	2.5	6.6	7.8	2.5
080	85.5	2.5	7	8	2.5
085	90.5	3	7	8	3
090	95.5	3	7.6	8.3	3
095	100.5	3	8	8.5	3

Prepared by
OIP Service Management Center
CANON INC.

Canon