

7. Parts catalog

How to use this parts catalog

The following legend is used in the parts catalog:

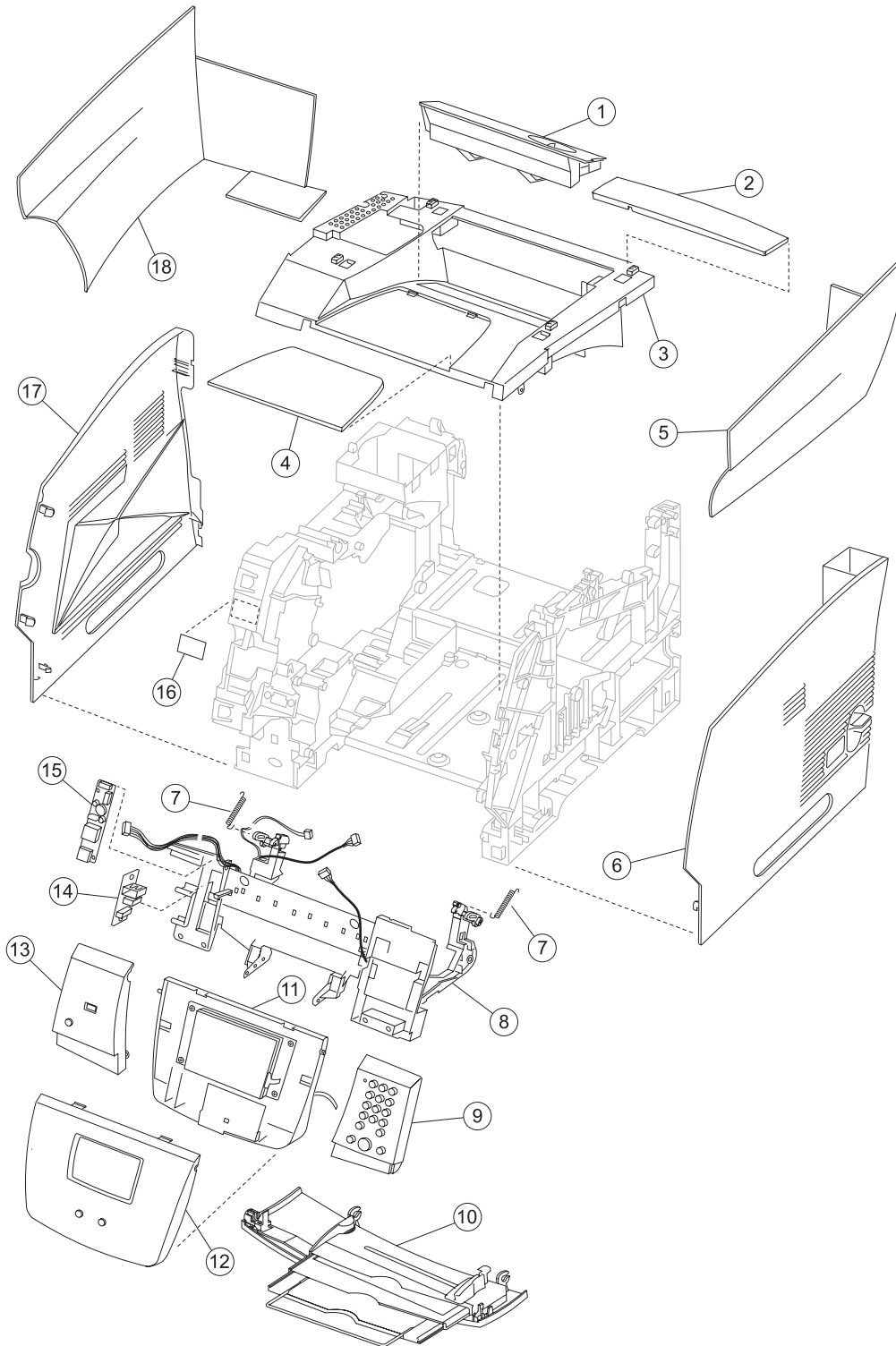
Asm-Index	Part number	Units/mach - OR - Units/option	Units/ kit or pkg	Description
-----------	-------------	--------------------------------------	-------------------------	-------------

- **Asm-index:** identifies the assembly and the item in the diagram. For example, 3-1 indicates Assembly 3 and the item number 1.
- **Part number:** identifies the unique number that identifies this FRU.
- **Units/mach:** refers to the number of units actually used in the base machine or product.
- **Units/option:** refers to the number of units used in the option and does not include the base machine.
- **Units/kit or pkg:** refers to the number of units packaged together and identified by the part number.
- **PP:** (Parts Packet) in the parts description column indicates the part is contained in a parts packet.
- **NS:** (Not shown) in the Asm-Index column indicates that the part is procurable but is not pictured in the illustration.
- **NA:** (Not available) in the parts description column indicates the part is shown for identification purposes only and is not available as a FRU.

Model information used in the parts catalog.

Model name	Configuration	Machine type	Parts catalog
Lexmark X644e	Network	7002-001	001
Lexmark X642e	Network	7002-003	003
Lexmark X642e	Network, modem	7002-005	005
Lexmark X644e	Network, modem	7002-011	011
Lexmark X646e	Network, hard disk	7002-101	101
Lexmark X646e	Network, modem, hard disk	7002-111	111
Lexmark X644e	HV, network	7002-002	002
Lexmark X642e	HV, network	7002-004	004
Lexmark X642e	HV, network, modem	7002-006	006
Lexmark X644e	HV, network, modem	7002-012	012
Lexmark X646e	HV, network, hard disk	7002-102	102
Lexmark X646e	HV, network with hard disk	7002-112	112

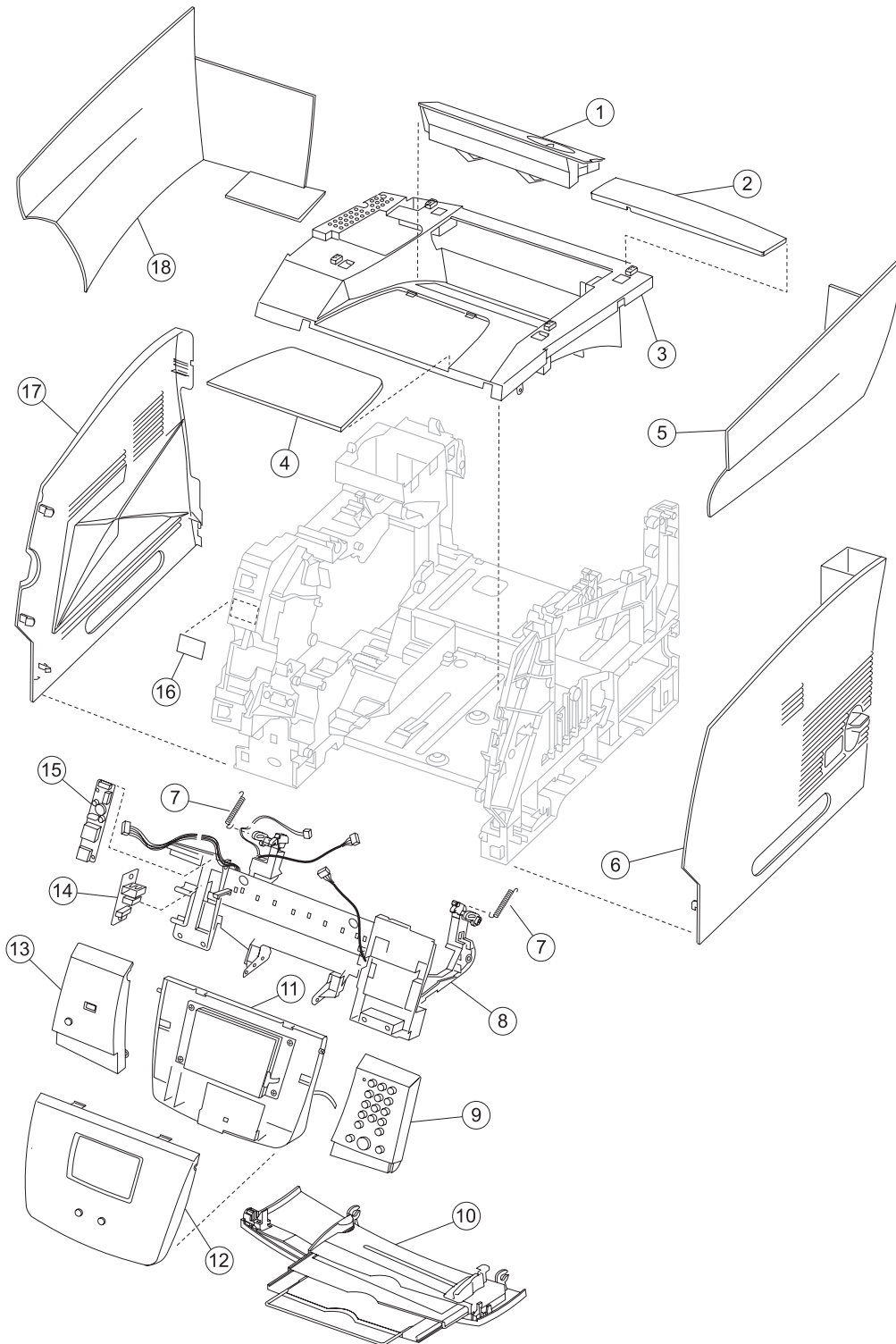
Assembly 1: Covers—printer (model X642e)



Assembly 1: Covers—printer (model X642e)

Asm-Index	Part number	Units/mach	Units/kit or pkg	Description
1—1	40X0001	1	1	Fuser wiper cover assembly
2	40X0469	1	1	Upper sub cover assembly
3	40X0467	1	1	Upper cover assembly
4	40X0468	1	1	Upper tray cover (paper support)
5	40X0473	1	1	Right side cover
6	40X0471	1	1	Right cover assembly
7	40X0516	2	1	Counterbalance spring
8	40X3309	1	1	Upper front cover hinge assembly—X642e, includes: <ul style="list-style-type: none"> • Operator panel frame (hinge) • UICC 18-pin cable • USB cable • Cover open sensor • Left hinge cable retainer • Right hinge cable retainer • Left hinge spring • Right hinge spring • Ground cable • Screw, M3x10 (3) • Screw, Sunk head (1)
9	40X3303	1	1	Operator panel right cover assembly—X642e, includes: <ul style="list-style-type: none"> • Operator panel right cover • Dial numeric pad key • Control 1—Stop key • Control 2—Go key • Control 3—Clear key • Hook, operator panel right assembly • Compression spring • LCD operator panel cap • UICC #1 card assembly • Screw, M3x8 (2) • Screw, M3x8 (2)
10	40X0493	1	1	Multipurpose tray assembly
11	40X3301	1	1	LCD mono touchscreen display assembly—X642e, includes: <ul style="list-style-type: none"> • LCD lower cover • Mono LCD assembly • LCD frame lever • LCD lever spring • Core • Screw, M3x8 (4)
12	40X3299	1	1	Cover bezel with Lexmark logo—X642e, includes <ul style="list-style-type: none"> • Bezel • UICC #3 • Home key • M3x8 screws (2)
13	40X3302	1	1	Operator panel left cover assembly—X642e, includes <ul style="list-style-type: none"> • Operator left cover • Operator panel left hook • Admin key • UICC #2 card assembly • Compression spring • M3x18 screws (2) • M3x18 screws (2)
14	40X0151	1	1	USB board assembly

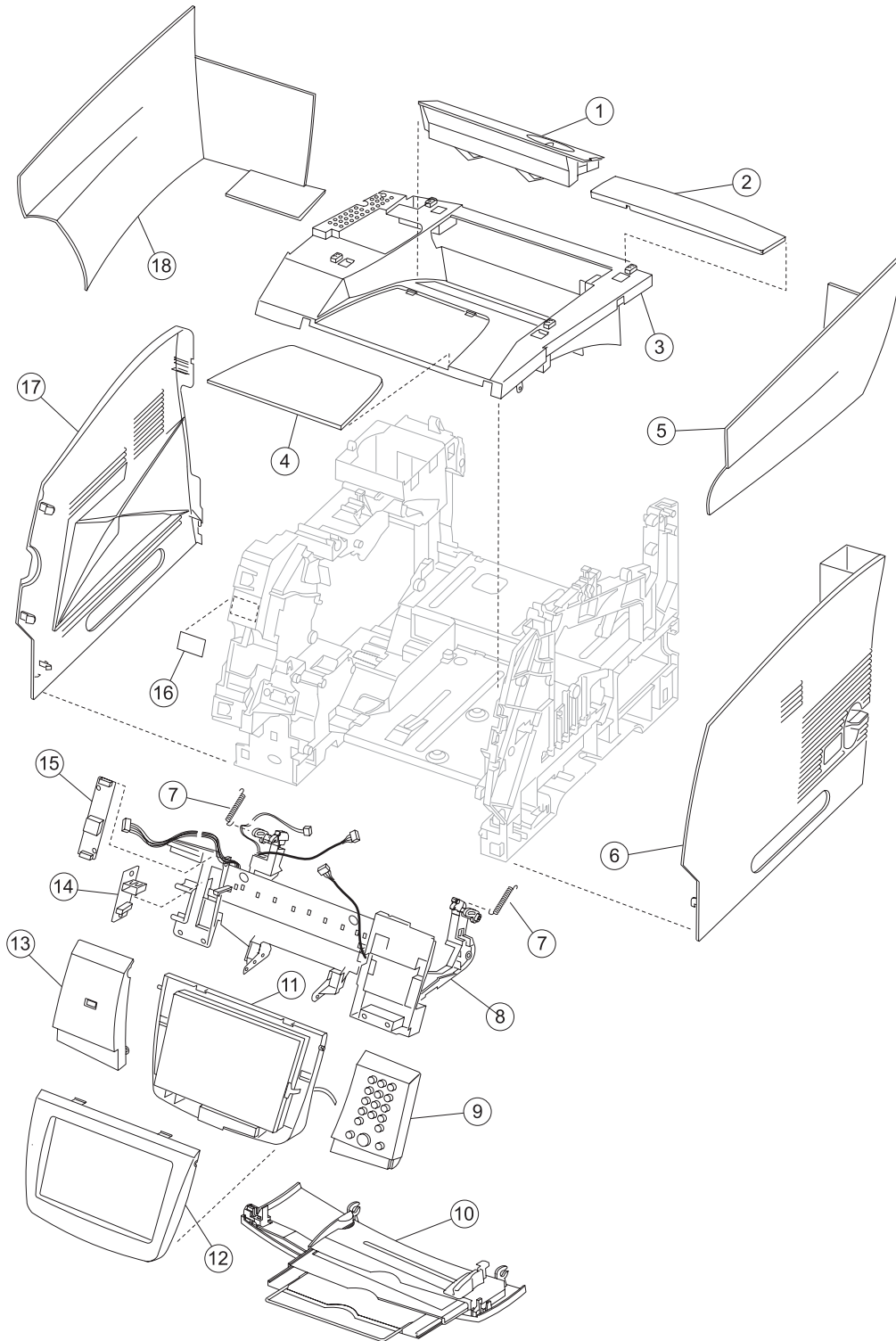
Assembly 1 (continued): Covers—printer (model X642e)



Assembly 1: Covers—printer (model X642e)

Asm-Index	Part number	Units/mach	Units/kit or pkg	Description
1—15	40X3304	1	1	LCD (mono) touchscreen inverter card—X642e
16	40X0009	1	1	TLI/ID/serial number label—blank
17	40X0470	1	1	Left cover assembly
18	40X0472	1	1	Left side cover
NS		5	10	Parts packet (cable ties) (PP 40X0174)
NS	40X0050	2	1	Counterbalance spring

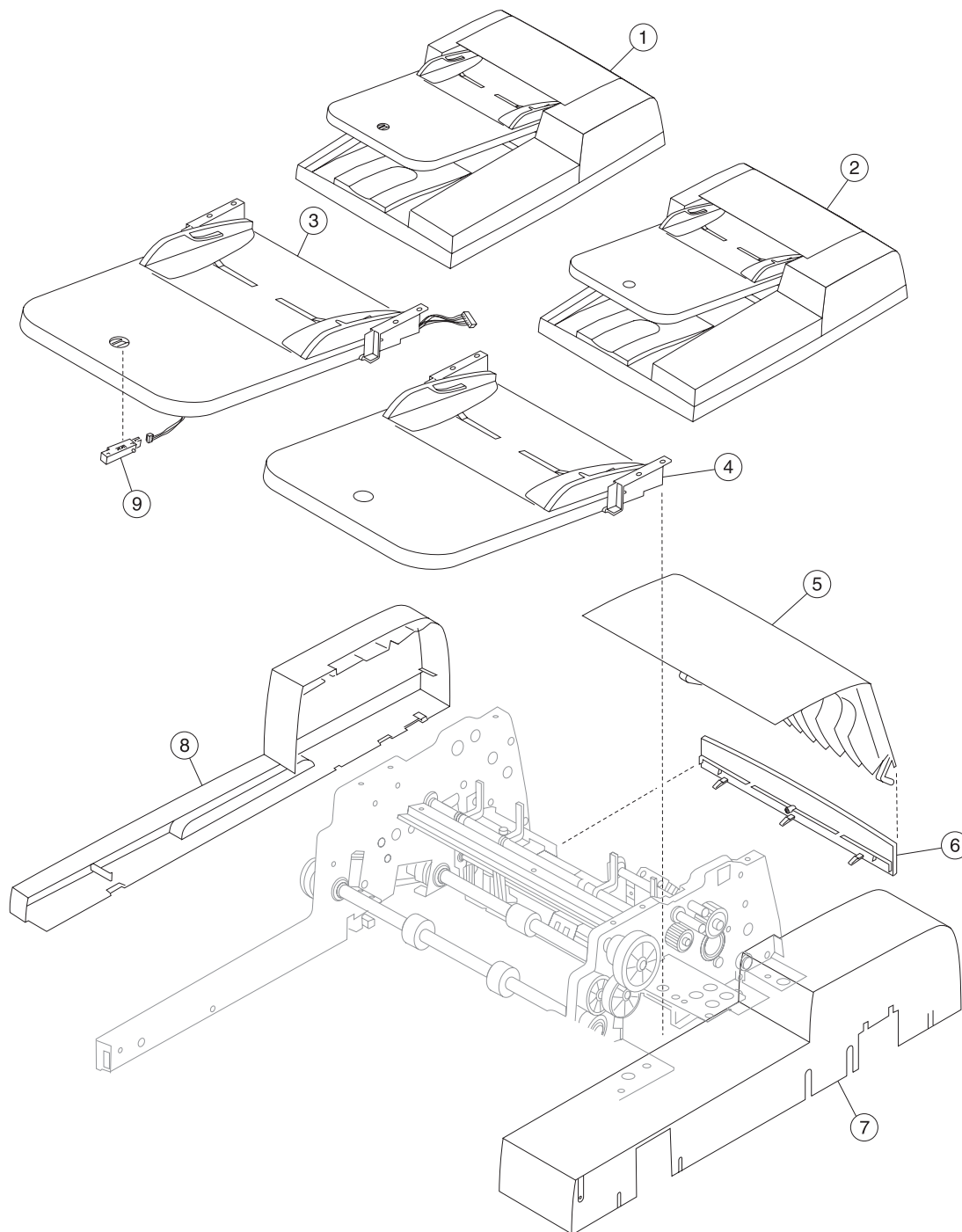
Assembly 2: Cover—printer (models X644e and X646e)



Assembly 2: Covers—printer (models X644e and X646e)

Asm-Index	Part number	Units/mach	Units/kit or pkg	Description
2—1	40X0001	1	1	Fuser wiper cover assembly
2	40X0469	1	1	Upper sub cover assembly
3	40X0467	1	1	Upper cover assembly
4	40X0468	1	1	Upper tray cover (paper support)
5	40X0473	1	1	Right side cover
6	40X0471	1	1	Right cover assembly
7	40X0516	2	1	Counterbalance spring
8	40X0515	1	1	Upper front cover hinge assembly—X644e/X646e, includes: <ul style="list-style-type: none"> • Cable, VICC 18-pin • Hinge, operator panel • USB cable (1) • Cover open switch and cable (1) • Left cable retainer (1) • Right cable retainer (1) • Left hinge spring (1) • Right hinge spring (1)
9	40X0496	1	1	Operator panel right cover assembly—X644e/X646e, includes: <ul style="list-style-type: none"> • Stop button (1) • Go button (1) • Clear button (1) • LED cap (1) • Dial number pad • User interface control card assembly • Compression spring • Operator panel right cover • Operator panel right side hook
10	40X0493	1	1	Multipurpose tray assembly
11	40X0494	1	1	LCD touchscreen display assembly—X644e/X646e
12	40X3313	1	1	Cover bezel with Lexmark logo—X644e
12	40X0476	1	1	Cover bezel with Lexmark logo—X646e
13	40X0495	1	1	Operator panel left cover assembly—X644e/X646e
14	40X0151	1	1	USB board assembly
15	40X0497	1	1	LCD touchscreen inverter card
16	40X0009	1	1	TLI/ID/serial number label—blank
17	40X0470	1	1	Left cover assembly
18	40X0472	1	1	Left side cover
NS		5	10	Parts packet (cable ties) (PP 40X0174)
NS	40X0050	2	1	Counterbalance spring

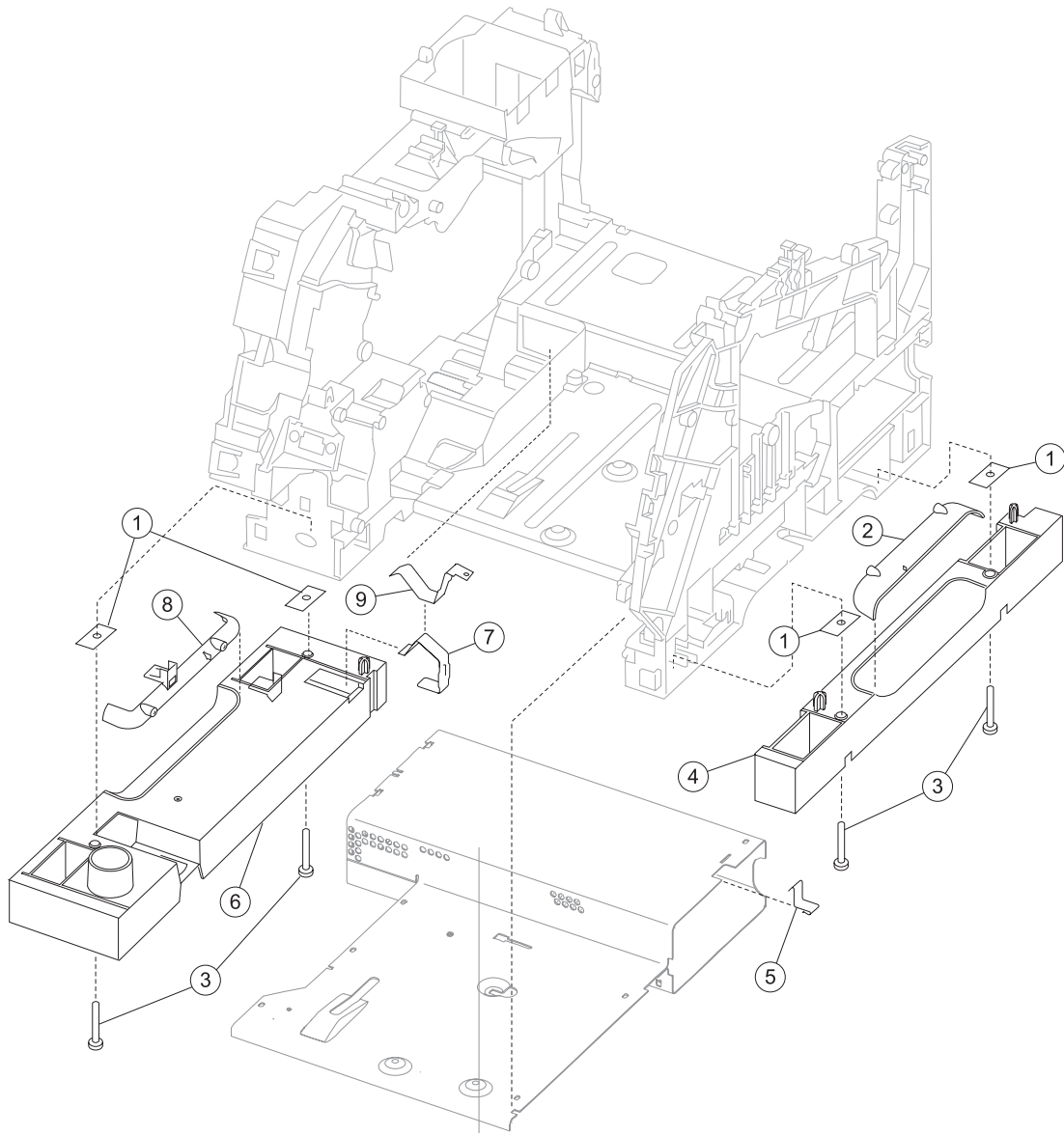
Assembly 3: Covers—ADF scanner



Assembly 3: Covers—ADF scanner

Asm-Index	Part number	Units/mach	Units/kit or pkg	Description
3—1	40X0450	1	1	Complete ADF assembly—X644e/X646e
2	40X3296	1	1	Complete ADF assembly—X642e
3	40X0451	1	1	Document tray assembly—X644e/X646e
4	40X3297	1	1	Document tray assembly—X642e
5	40X0452	1	1	ADF top cover assembly
6	40X0463	1	1	ADF scan cover
7	40X0465	1	1	ADF rear cover
8	40X0464	1	1	ADF front cover
9		1	1	Parts packet, sensors (PP 40X0481)

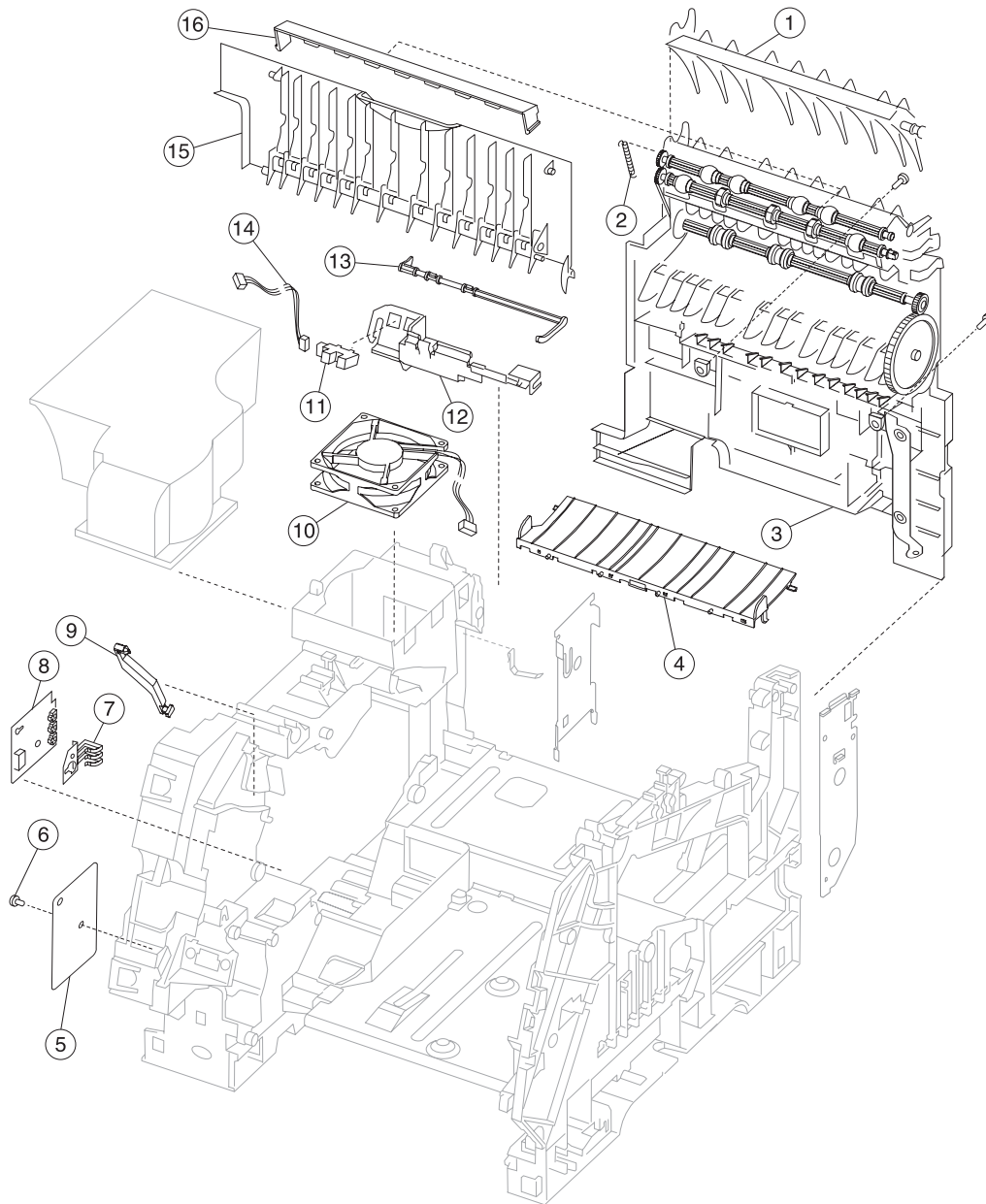
Assembly 4: Frame 1



Assembly 4: Frame 1

Asm-Index	Part number	Units/mach	Units/kit or pkg	Description
4—1	40X0065	4	1	Frame extension, nut plate
2	40X0225	1	1	Right side hand holder
3		4	4	Parts packet (PP 40X0165)
4	40X0024	1	1	Right frame extension
5	40X0026	1	1	Right side frame ground contact
6	40X0025	1	1	Left frame extension
7	40X0060	1	1	External ground clip
8	40X0231	1	1	Left side hand holder
9	40X0285	1	1	Frame clip

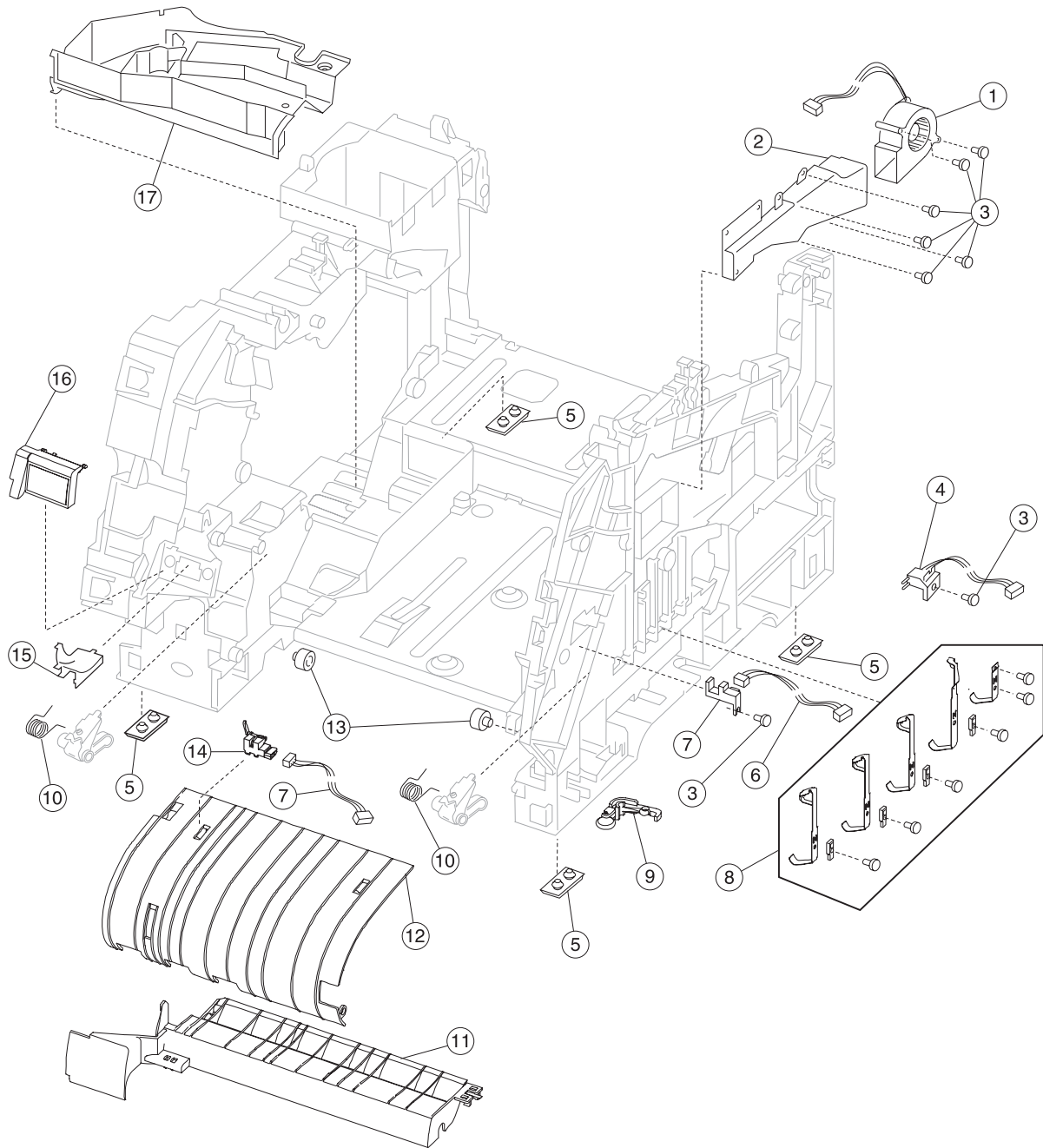
Assembly 5: Frame 2



Assembly 5: Frame 2

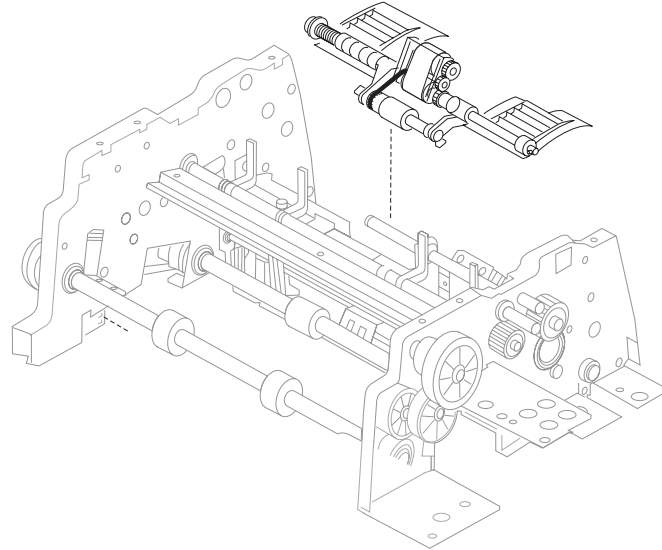
Asm-Index	Part number	Units/mach	Units/kit or pkg	Description
5—1	40X0027	1	1	Upper redrive deflector
2	40X0028	1	1	Upper diverter spring
3	40X0030	1	1	Redrive assembly—500-sheet in/500 out
4	40X0032	1	1	Transfer deflector with brush
5	40X0044	1	1	Gear guard
6			1	Parts packet (PP 40X0165)
7	40X0048	1	1	Paper switch activate spring
8	40X0046	1	1	Paper size sensing board assembly
9	40X0049	1	1	Gear release link
10	40X0054	1	1	Main fan with cable—500-sheet output
11	40X0051	1	1	Standard bin level sensor
12	40X0052	1	1	Standard bin level sensor bracket
13	40X0058	1	1	Output paper level flag
14	40X0264	1	1	Standard bin level sensor cable
15	40X0232	1	1	Redrive door assembly 500 sheet
16	40X0059	1	1	Extension guide
NS		2	2	Parts packet, redrive mounting screws (P/N 40X0254)

Assembly 6: Frame 3



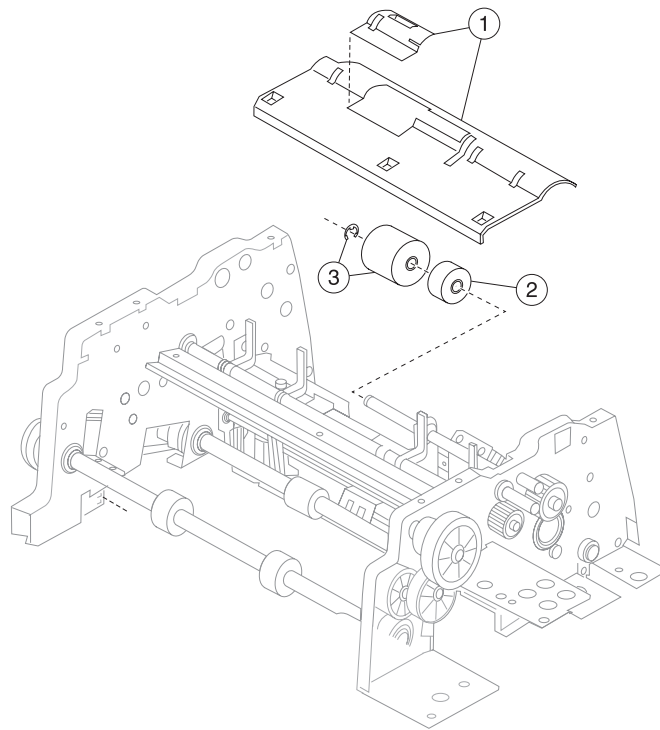
Assembly 6: Frame 3

Asm-Index	Part number	Units/mach	Units/kit or pkg	Description
6—1	40X0249	1	1	EP DC fan assembly
2	40X0208	1	1	Blower duct
3		1	1	Parts packet (PP 40X0165)
3		1	1	Parts packet (PP 40X0165)
4	40X0034	1	1	Signature button contact assembly with cable
5	40X0033	4	1	Machine mounting pad
6	40X0223	1	1	HVPS/input sensor/toner sensor cable assembly
7	40X0036	1	1	Toner sensor assembly
8	40X0306	1	1	High voltage contact kit, including: <ul style="list-style-type: none"> • Charge roll contact (1) • Doc/TAR/Dev contact (3) • PC drum contact (1) • Screw (5) • Screw block (4)
9	40X0213	1	1	Tray bias assembly
10	40X0021	2	1	Cartridge holddown assembly
11	40X0040	1	1	Upper paper feed deflector
12	40X0042	1	1	Inner paper feed deflector
13	40X0039	2	1	Developer support roller
14	40X0043	1	1	Input sensor
15	40X0209	1	1	Gear #60 MPF shield
16	40X0045	1	1	ESD shield with label
17	40X0207	1	1	EP duct

Assembly 7: Scanner automatic document feeder (ADF)—pickup

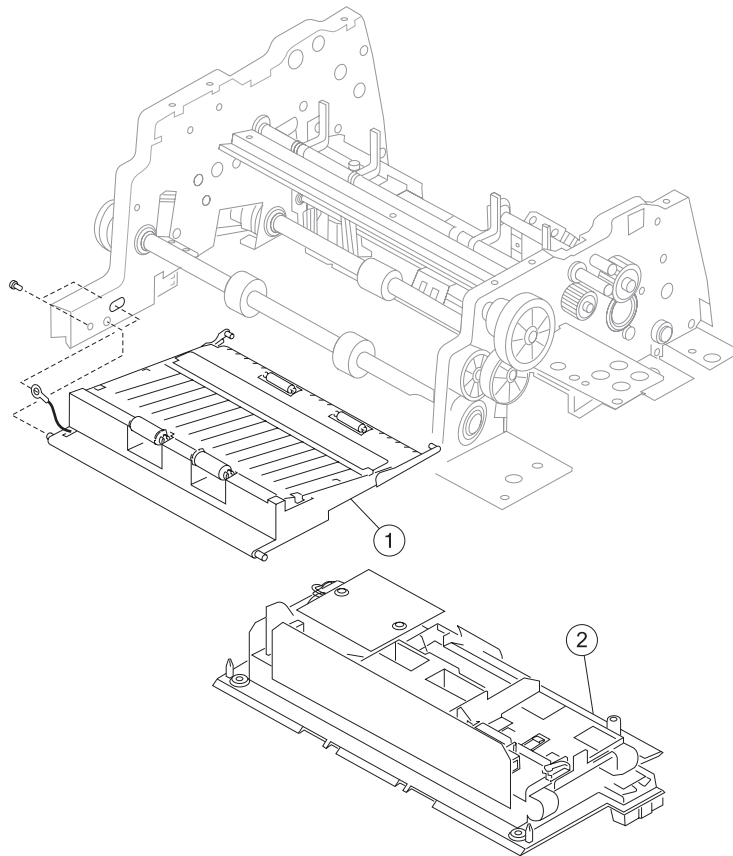
Asm-Index	Part number	Units/mach	Units/kit or pkg	Description
7—1	40X0453	1		Pickup assembly

Assembly 8: Scanner ADF—paper feed



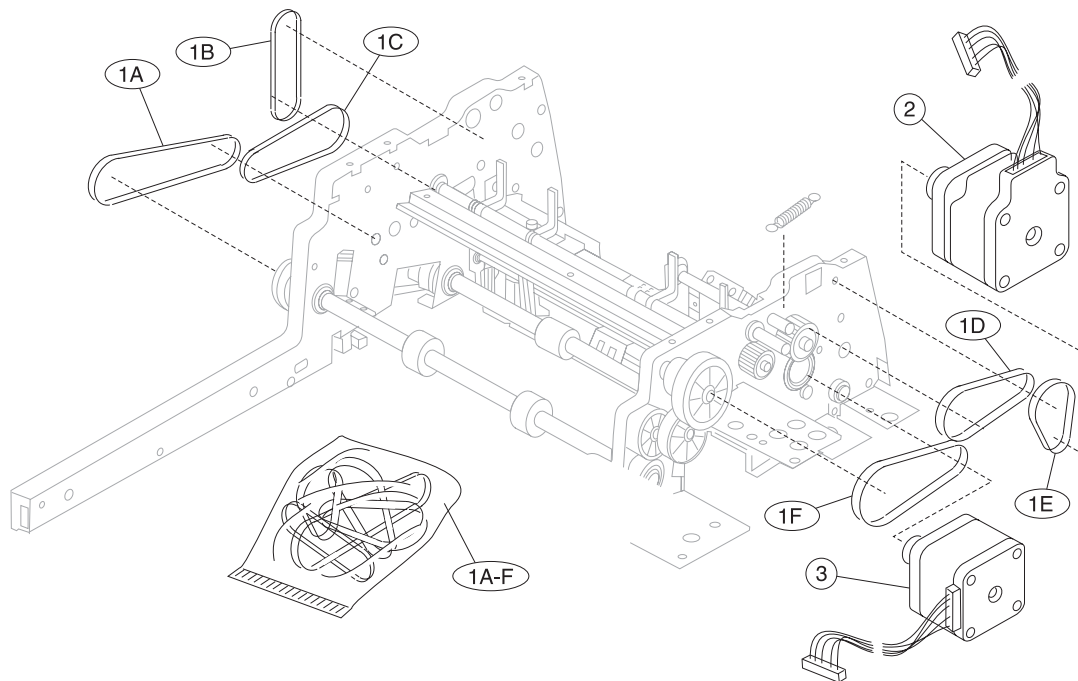
Asm-Index	Part number	Units/mach	Units/kit or pkg	Description
8—1	40X0459	1	1	Upper entrance guide assembly
2	40X2799	1	1	Torque limiter
3	40X0454	1	1	Reverse roller with clip

Assembly 9: Scanner ADF—lower exit guide assembly



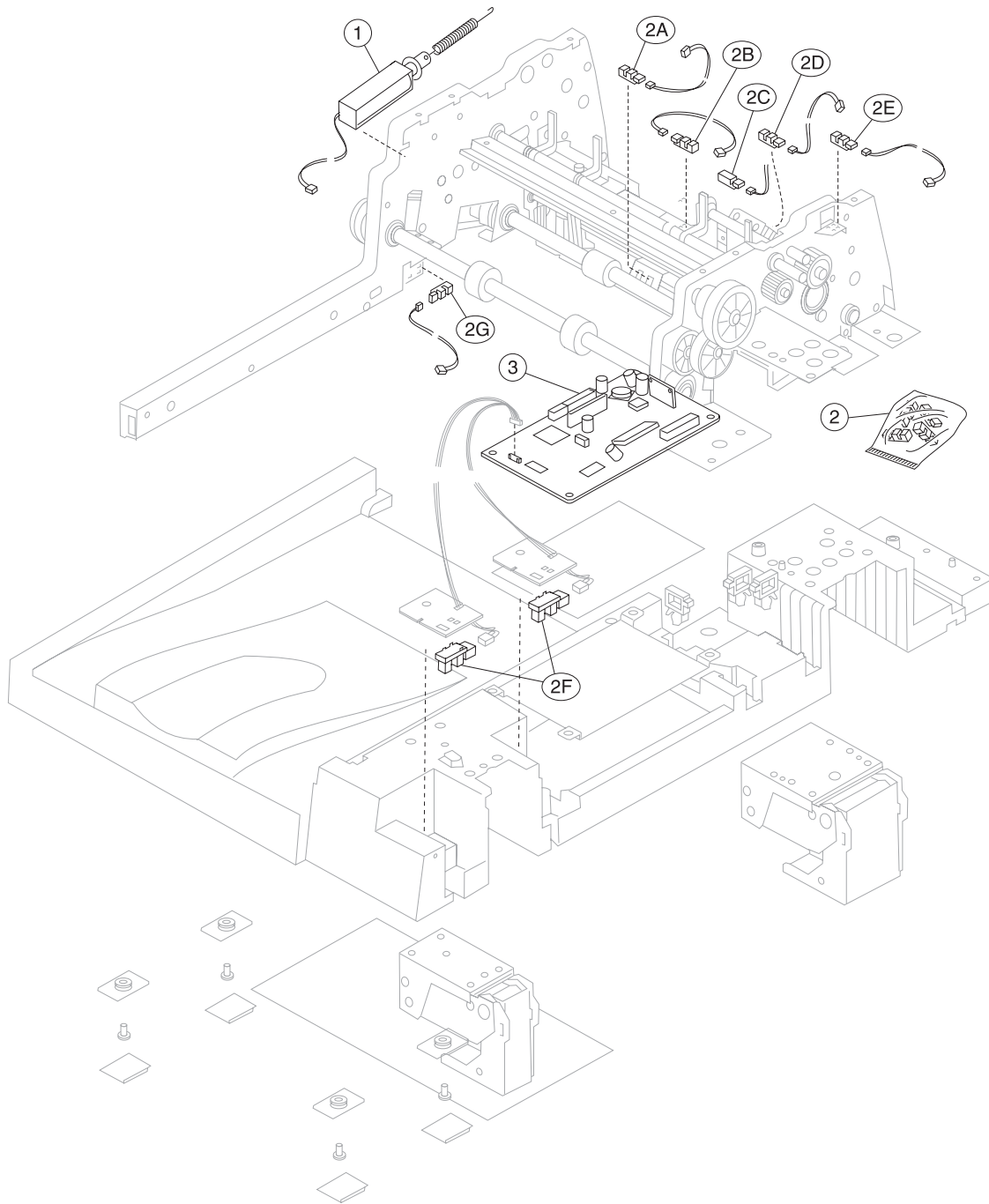
Asm-Index	Part number	Units/mach	Units/kit or pkg	Description
9—1	40X0460	1	1	Lower exit guide assembly—X644e/X646e
1	40X3311	1	1	Lower exit guide assembly—X642e
2	40X0458	1	1	ADF CCD module assembly—X644e/X646e only

Assembly 10: Scanner ADF—motors and belts



Asm-Index	Part number	Units/mach	Units/kit or pkg	Description
10—1	40X0482	1	1	Belts, including: <ul style="list-style-type: none"> • A—Timing belt 52M194 • B—Timing belt 52M172 • C—Timing belt motor 52M292 • D—Timing belt second transport 52M152 • E—Timing belt first transport 52M132 <p>Note: Belt P/N stamped on belt.</p> <ul style="list-style-type: none"> • F—Timing belt knob 52M172
2	40X0461	1	1	Feed motor (ADF feed)
3	40X0462	1	1	ADF scan motor assembly

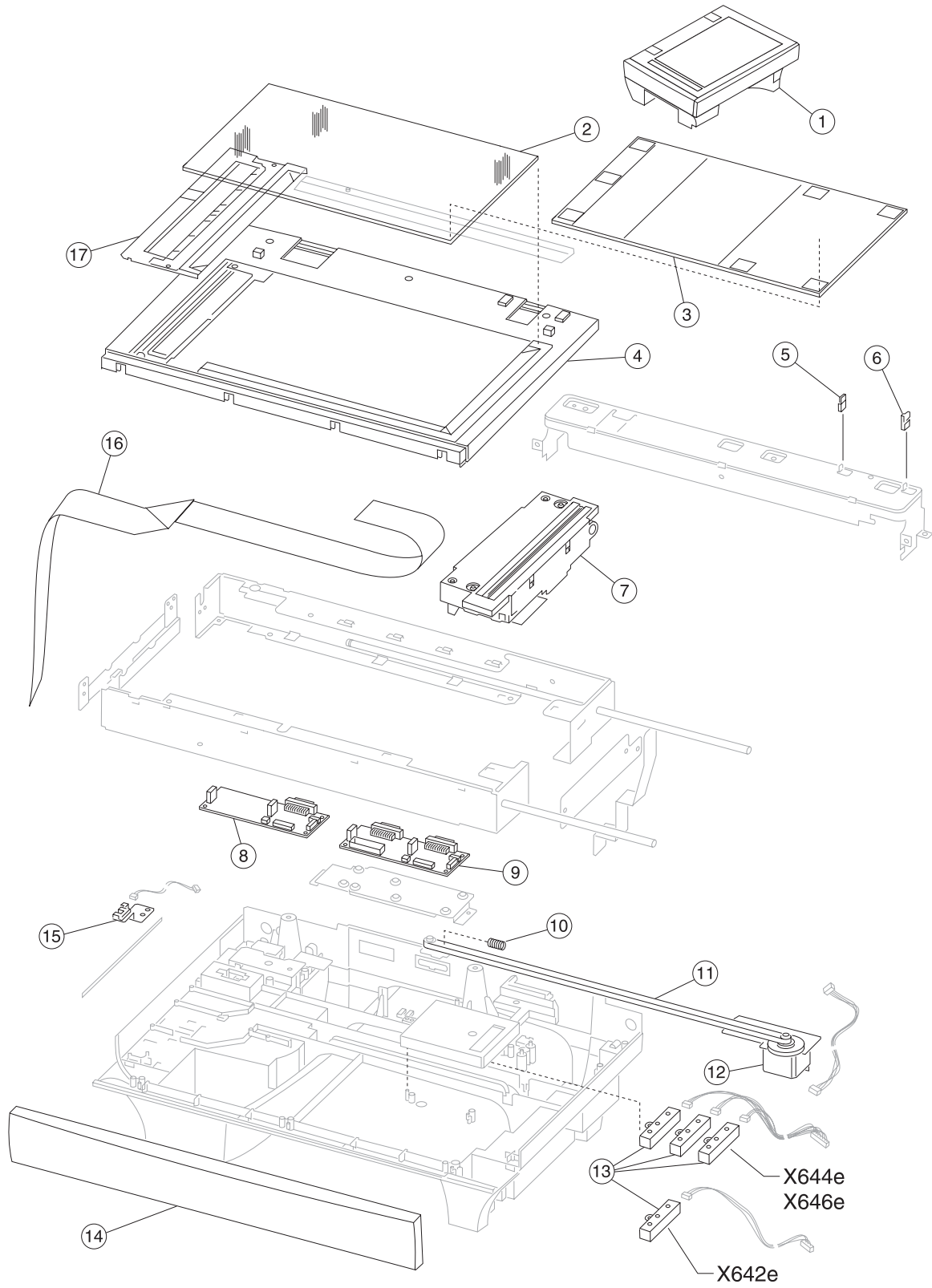
Assembly 11: Scanner ADF—sensors



Assembly 11: ADF—sensors

Asm-Index	Part number	Units/mach	Units/kit or pkg	Description
11—1	40X0456	1	1	Pickup arm assembly solenoid
2	40X0481	1	4	Parts packet, sensors <ul style="list-style-type: none"> • A—Second scan sensor • B—Paper present • C—Interval sensor • D—First scan sensor • E—ADF top cover open • F—Flatbed cover open • G—Jam access door <p>Note: There are four different sensors in the parts packet, some of the same sensors are used in different locations.</p>
3	40X0486	1	1	Motor driver card

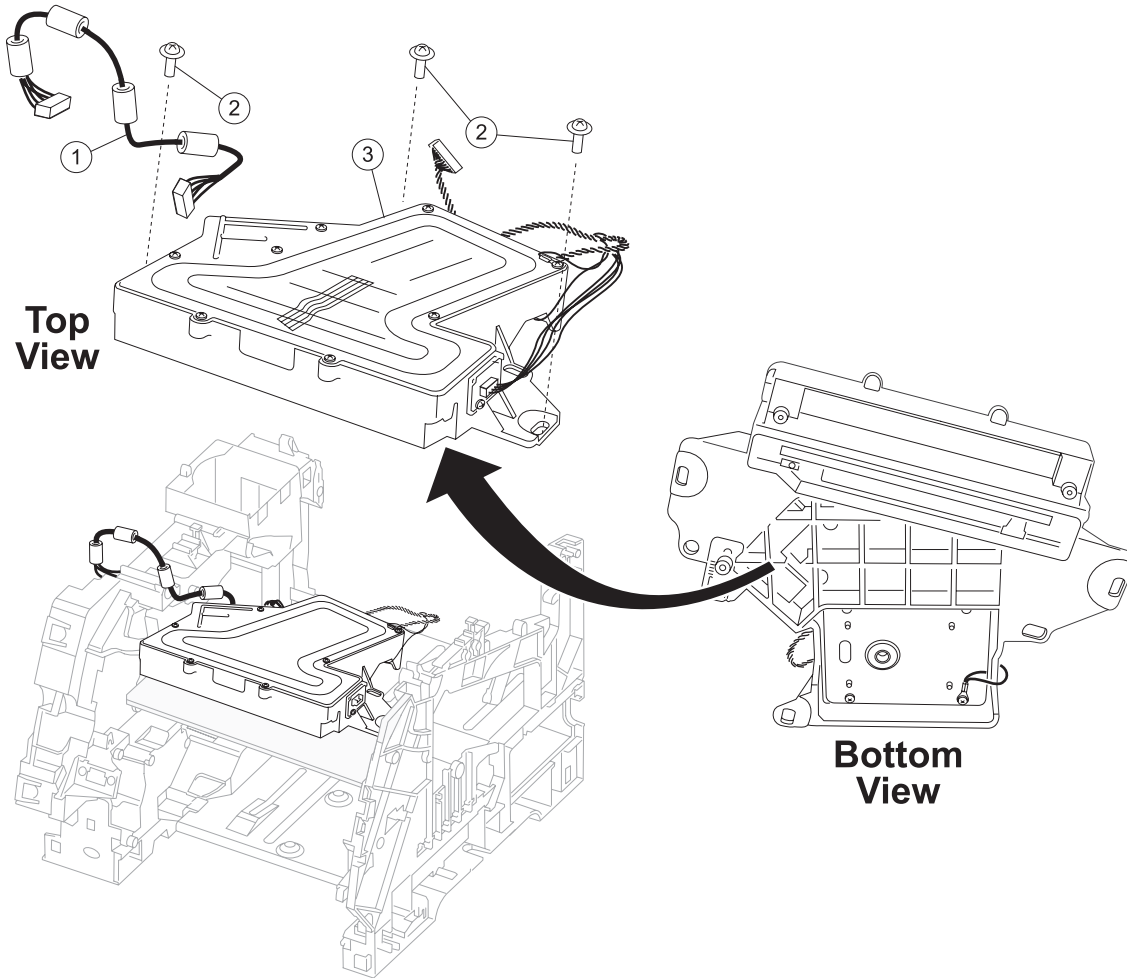
Assembly 12: Scanner—flatbed




Assembly 12: Scanner—flatbed

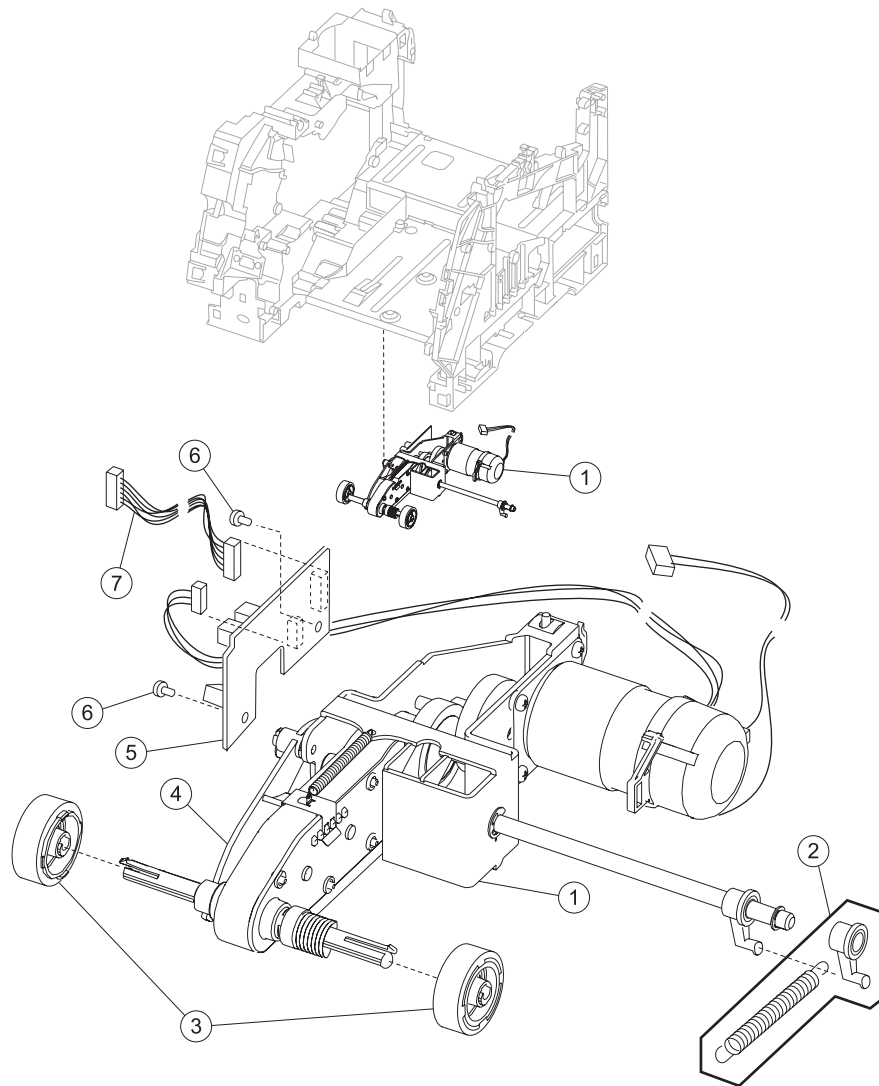
Asm-Index	Part number	Units/mach	Units/kit or pkg	Description
12—1	40X3298	1	1	Complete flatbed scanner assembly—X642e
1	40X0457	1	1	Complete flatbed scanner assembly—X644e/X644e
2	40X0483	1	1	Flatbed contact glass
3	40X0466	1	1	Flatbed white cushion
4	40X0475	1	1	Scan cover
5	40X0513	1	1	Flatbed cover closed actuator
6	40X0514	1	1	Flatbed cover closing actuator
7	40X0478	1	1	Flatbed CCD module assembly
8	40X3312	1	1	Flatbed interconnect card assembly—X642e
9	40X0485	1	1	Flatbed interconnect card assembly—X644e/X646e
10	40X0490	1	1	Belt tension spring
11	40X0479	1	1	Flatbed CCD drive belt
12	40X0480	1	1	Flatbed scan motor, including flatbed scan motor to flatbed interconnect card cable
13	40X0491	1	1	Flatbed paper size sensor assembly (assembly includes 3 sensors)—X644e/X646e
13	40X0491	1	1	Flatbed paper size sensor assembly (assembly includes 3 sensors but only one sensor is required)—X642e
14	40X0474	1	1	Front cover
15	40X0481	1	1	Parts packet, sensors (home sensor)
16	40X0487	1	1	Flatbed CCD ribbon cable
17	40X0484	1	1	Glass holder assembly

Assembly 13: Printhead



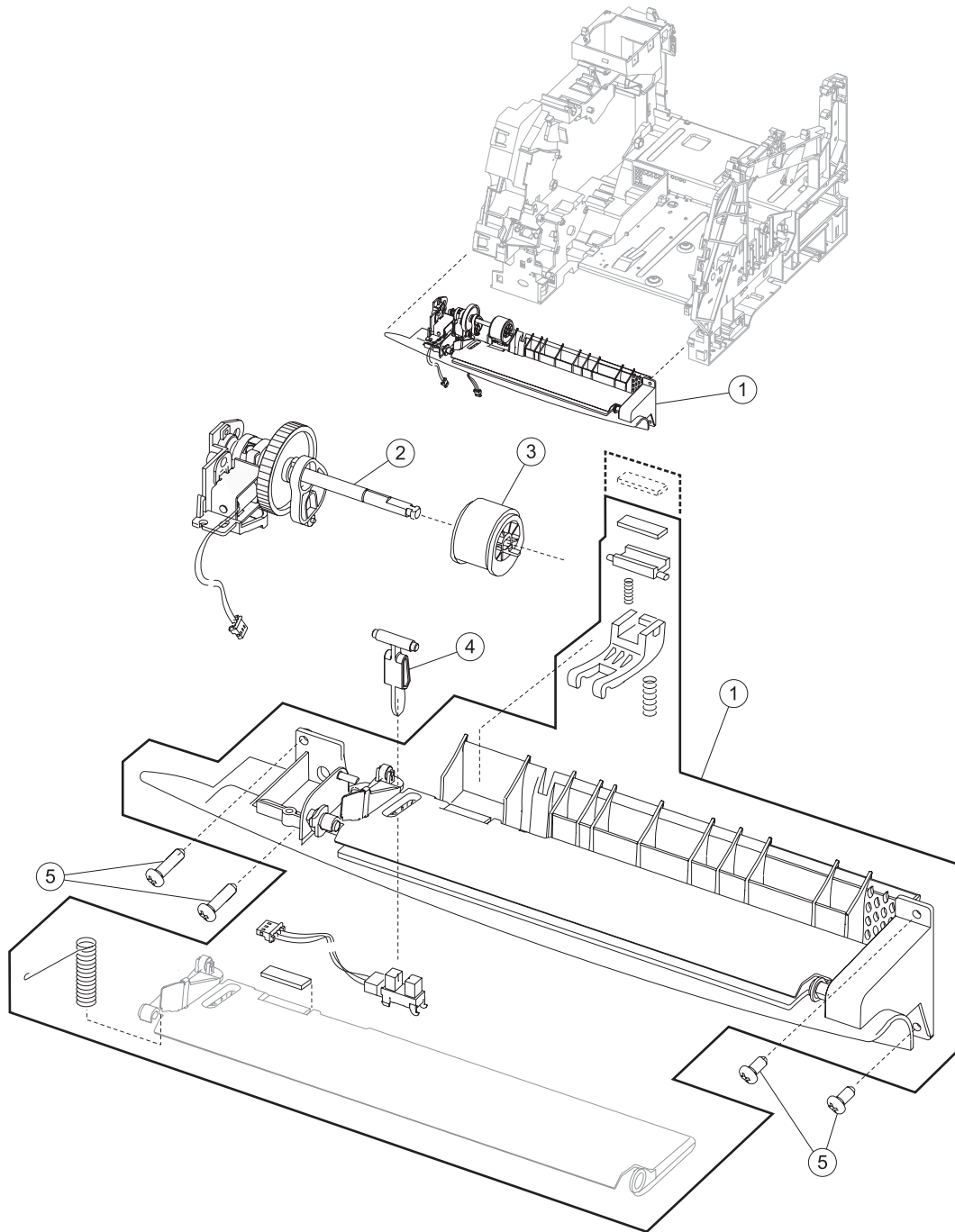
Asm-Index	Part number	Units/mach	Units/kit or pkg	Description
13—1	40X0061	1	1	Laser printhead cable assembly
2				Parts packet (PP 40X0165) (printhead mounting screw)
3	40X0062	1	1	Printhead assembly (includes all cables)
<div style="display: flex; align-items: center; justify-content: center;">  <div> <p>CAUTION</p> <p>The printhead is not a serviceable FRU. Do not disassemble the printhead.</p> </div> </div>				

Assembly 14: Paper feed—autocompensator



Asm-Index	Part number	Units/mach	Units/kit or pkg	Description
14—1	40X0066	1	1	Pick arm assembly—500-sheet
2	40X0069	1	1	Parts packet, bellcrank assembly for—500-sheet tray <ul style="list-style-type: none"> • Bellcrank (1) • Spring (1)
3	40X0070	2	2	Pick tires, pick roll assembly
4	40X0072	1	1	Paper out flag—500-sheet tray
5	40X0215	1	1	Paper low/out sensor card assembly, 500-sheet
6				Parts packet (PP 40X0165) (hanger)
7	40X0074	1	1	Paper size/autocompensator cable

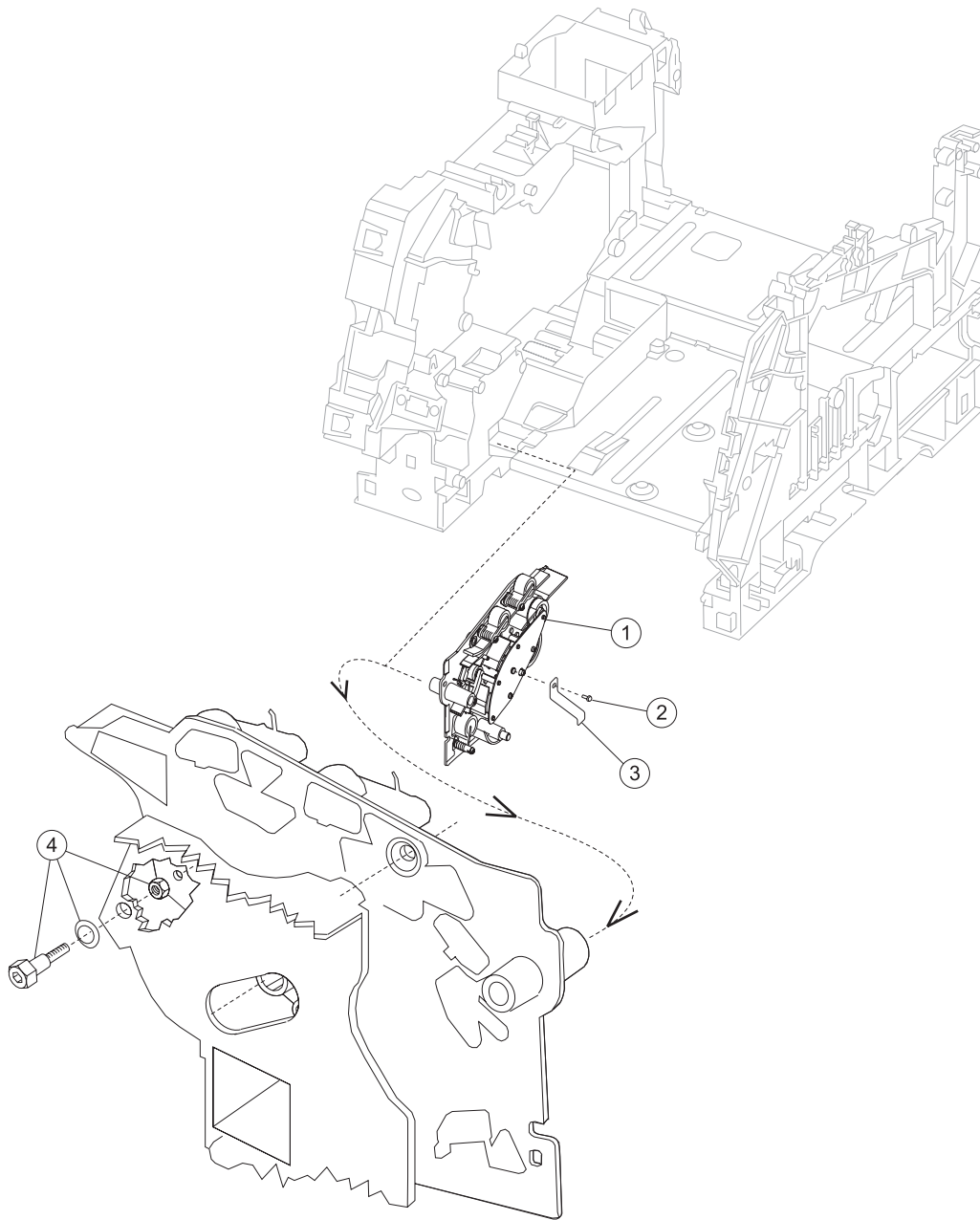
Assembly 15: Paper feed—multipurpose feeder



Assembly 15: Paper feed—multipurpose feeder

Asm-Index	Part number	Units/mach	Units/kit or pkg	Description
15—1	40X0079	1	1	Multipurpose feeder lower deflector assembly
2	40X0310	1	1	Multipurpose feeder pick arm assembly with solenoid
3	40X0076	1	1	Pick roll assembly
4	40X0077	1	1	Multipurpose feeder paper out flag
5			1	Parts packet (PP 40X0165) (lower deflector mounting screw, 8 mm)
5			1	Parts packet (PP 40X0165) (lower deflector mounting screw, 12 mm)
5			1	Parts packet (PP 40X0165) (frame mounting screw)
NS			1	Parts packet (PP 40X0165) (pick roll shaft clip)

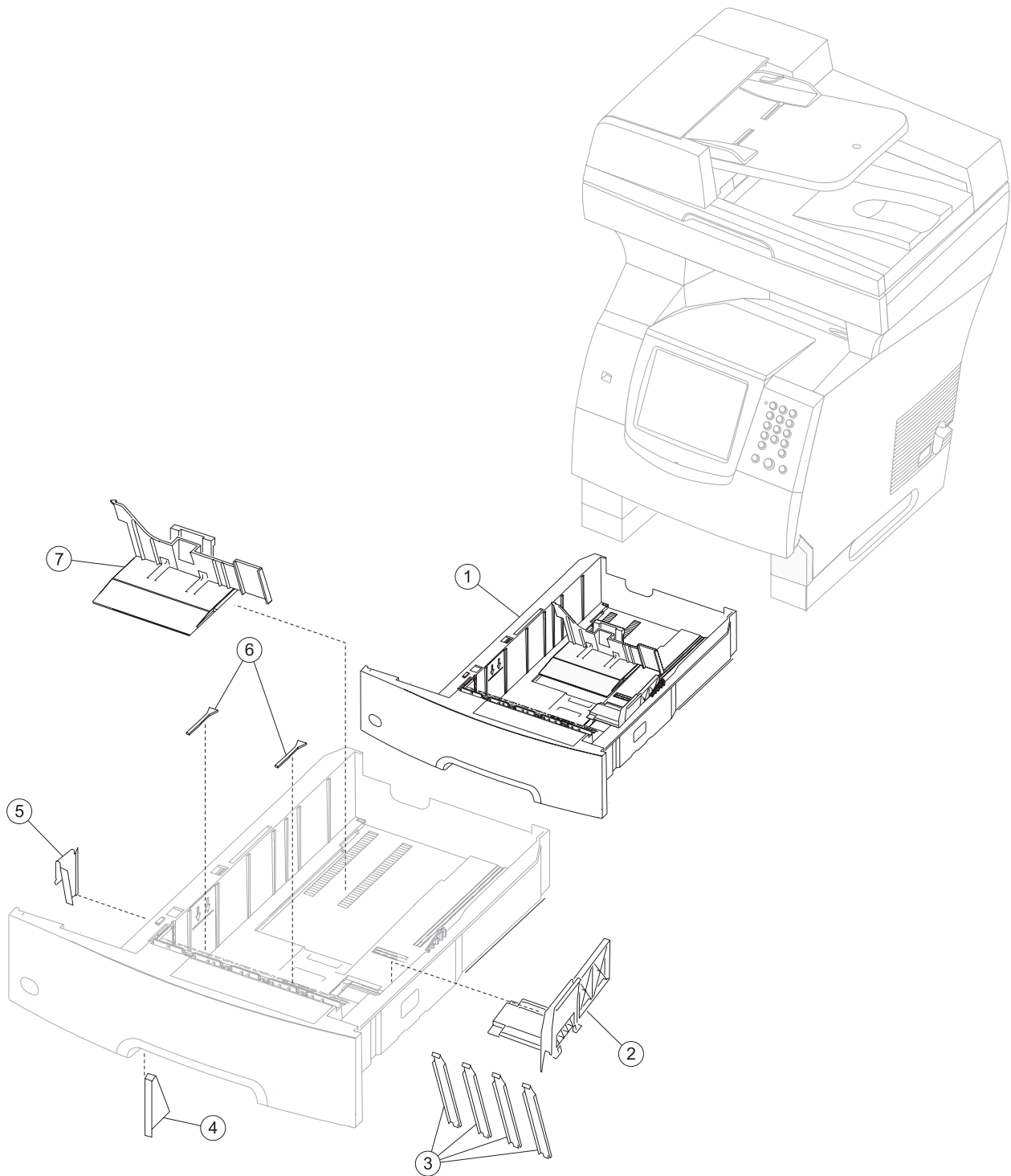
Assembly 16: Paper feed—alignment



Assembly 16: Paper feed—alignment

Asm-Index	Part number	Units/mach	Units/kit or pkg	Description
16—1	40X0084	1	1	Paper feed alignment assembly paper feed
2			1	Parts packet (PP 40X0165) (clip ref ground mounting screw)
3	40X0085	1	1	Reference ground clip
4	40X0086	1	1	Parts packet (reference adjust) <ul style="list-style-type: none"> • Screw, paper reference adjust (1) • Washer, paper reference adjust (1) • Nut, paper reference adjust (1)
NS		1	1	Parts packet (PP 40X0165) (alignment asm mounting screw)

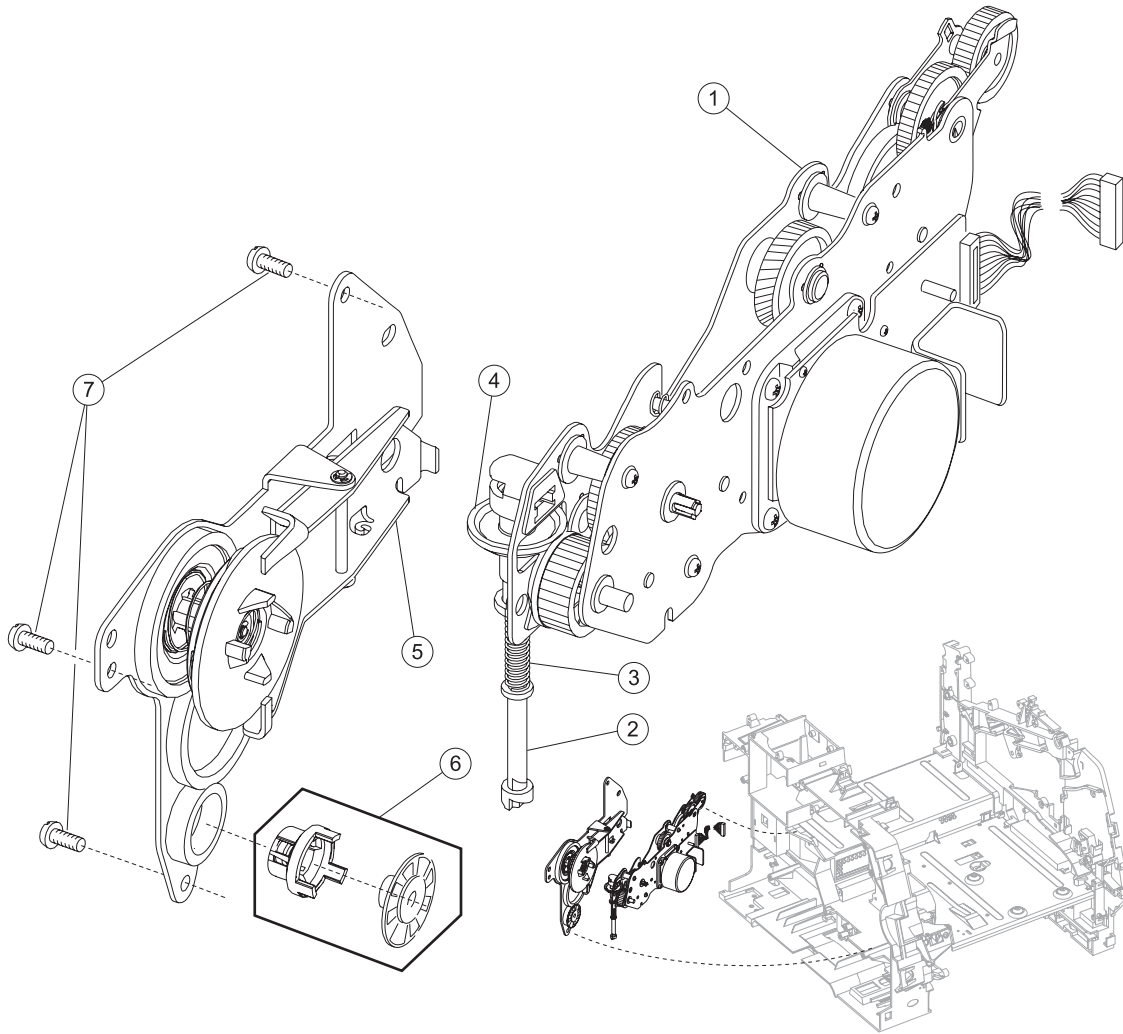
Assembly 17: Integrated 500-sheet paper tray



Assembly 17: Integrated 500-sheet paper tray

Asm-Index	Part number	Units/mach	Units/kit or pkg	Description
17—1	40X0098	1	1	Tray assembly—500-sheet tray
2	40X0099	1	1	Side restraint
3	40X0182	4	1	Wear strip
4	40X0103	1	1	Pass thru plate—500-sheet tray
5	40X0183	1	1	Wear plate—500-sheet tray
6	40X0105	2	1	Restraint pad
7	40X0106	1	1	Back restraint

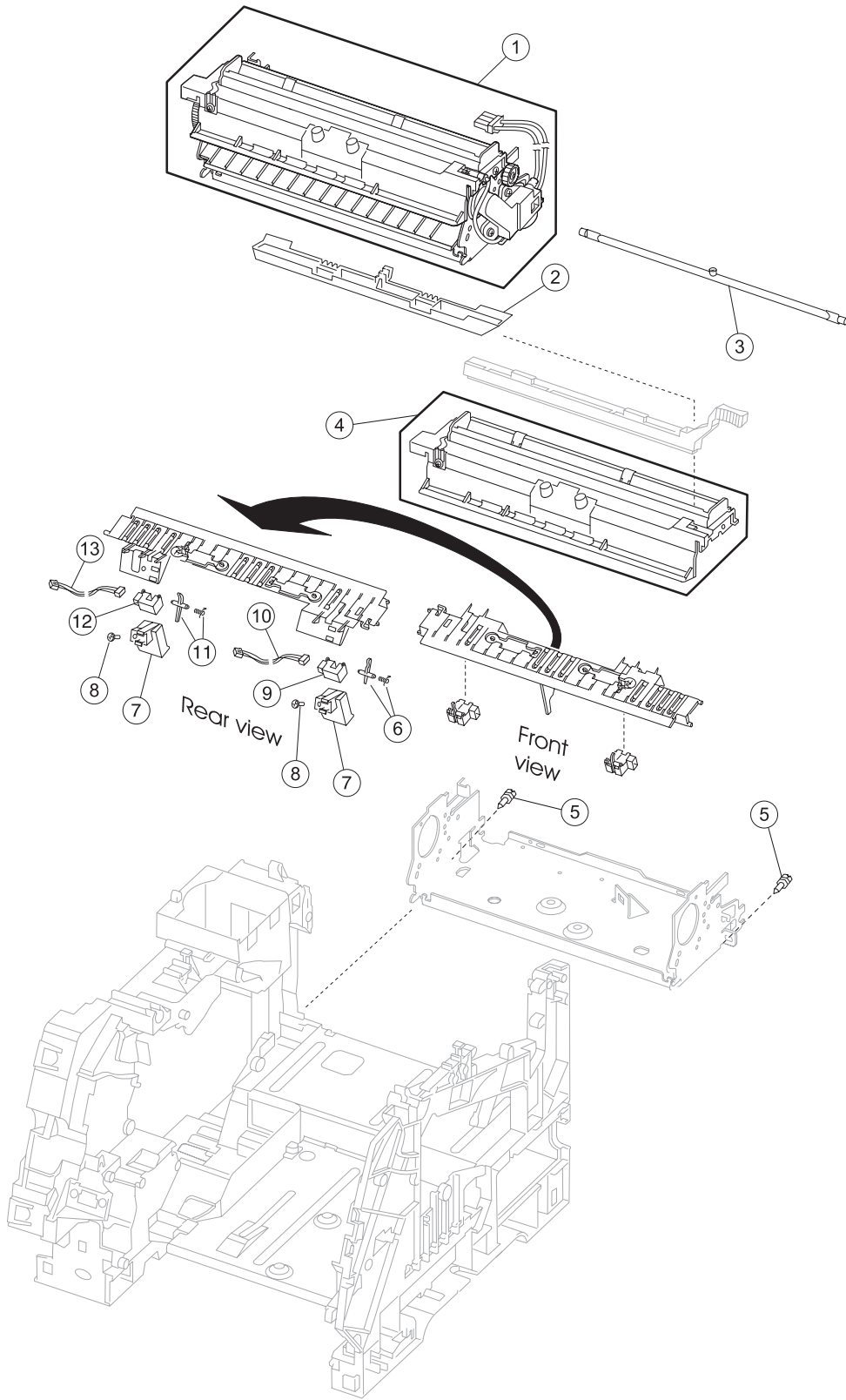
Assembly 18: Drives—Main drive and developer drive



Assembly 18: Drives—Main drive and developer drive

Asm-Index	Part number	Units/mach	Units/kit or pkg	Description
18—1	40X0107	1	1	Gearbox with motor
2	40X0111	1	1	Power takeoff shaft—500-sheet
3	40X0112	1	1	Power takeoff shaft spring
4	40X0113	1	1	Bevel gear with grease packet and washer <ul style="list-style-type: none"> • Bevel gear (1) • Instruction sheet (1) • Grease packet (1) • washer (1)
5	40X0114	1	1	Developer drive assembly
6	40X0115			Parts packet, developer drive <ul style="list-style-type: none"> • Developer drive shaft (1) • shaft, coupler gear #55 (1)
7			3	Parts packet (PP 40X0165) (developer drive ground screw)
NS			4	Parts packet (PP 40X0165) (gearbox mounting screw)

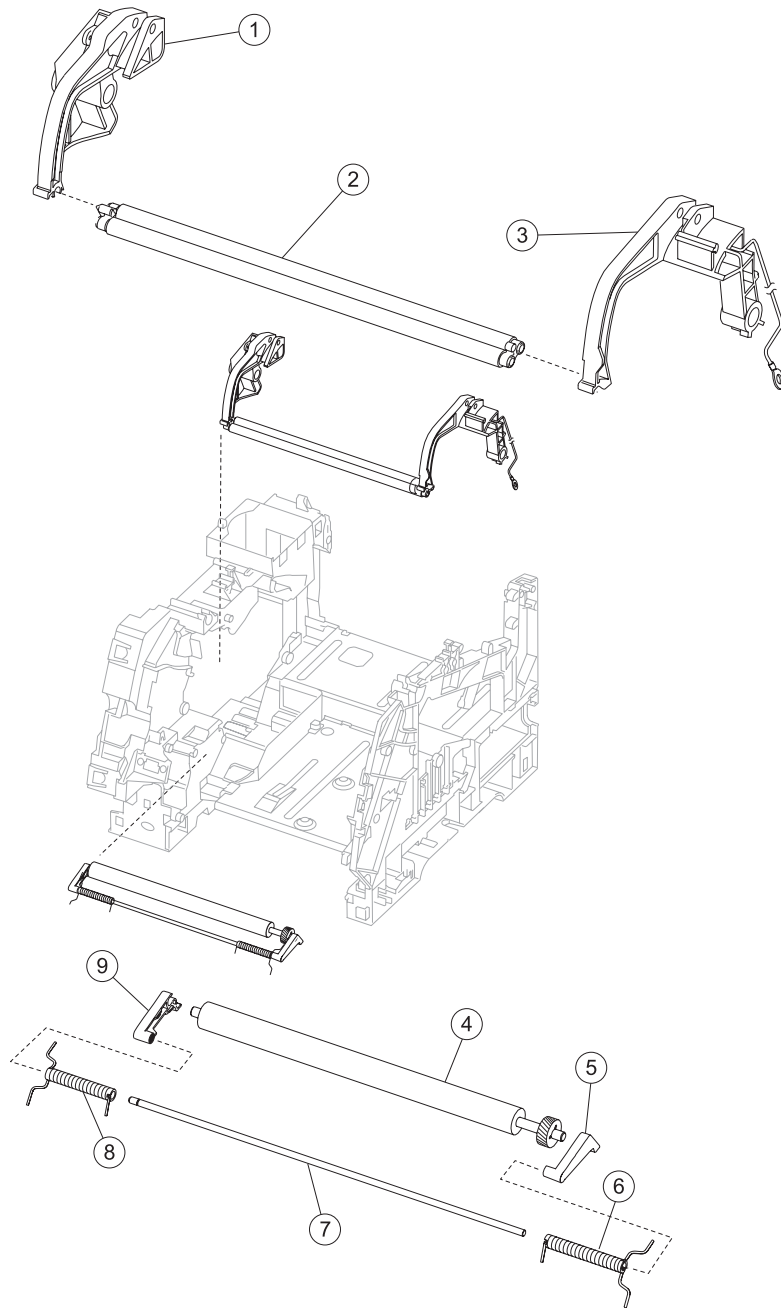
Assembly 19: Hot roll fuser



Assembly 19: Hot roll fuser

Asm-Index	Part number	Units/mach	Units/kit or pkg	Description
19—1	40X2592	1	1	Fuser assembly w/115 V lamp
1	40X2591	1	1	Fuser assembly w/100 V lamp
1	40X2590	1	1	Fuser assembly w/220 V lamp
2	40X0120	1	1	Fuser wiper cavity cover
3	40X0122	1	1	Fuser lamp, 115V
3	40X0123	1	1	Fuser lamp, 220V
4	40X0121	1		Fuser cover assembly kit, including: <ul style="list-style-type: none"> • Thermistor (1) • Thermostat (1) • Left and right fuser lamp contact assemblies (1)
5				Parts packet (fuser mounting screw) (PP 40X0254)
6	40X0239	1		Exit sensor flag/spring kit, including: <ul style="list-style-type: none"> • Spring (1) • Flag (1)
7	40X0236	1	1	Exit/narrow media sensor cover
8				Parts packet (PP 40X0165)
9	40X0125	1	1	Exit sensor
10	40X0230	1	1	Exit sensor cable
11	40X0238	1		Narrow media flag/spring kit, including: <ul style="list-style-type: none"> • Spring • Flag
12	40X0124	1	1	Narrow media sensor
13	40X0229	1	1	Narrow media sensor cable
NS	40X0226	1	1	Fuser AC to fuser lamp cable

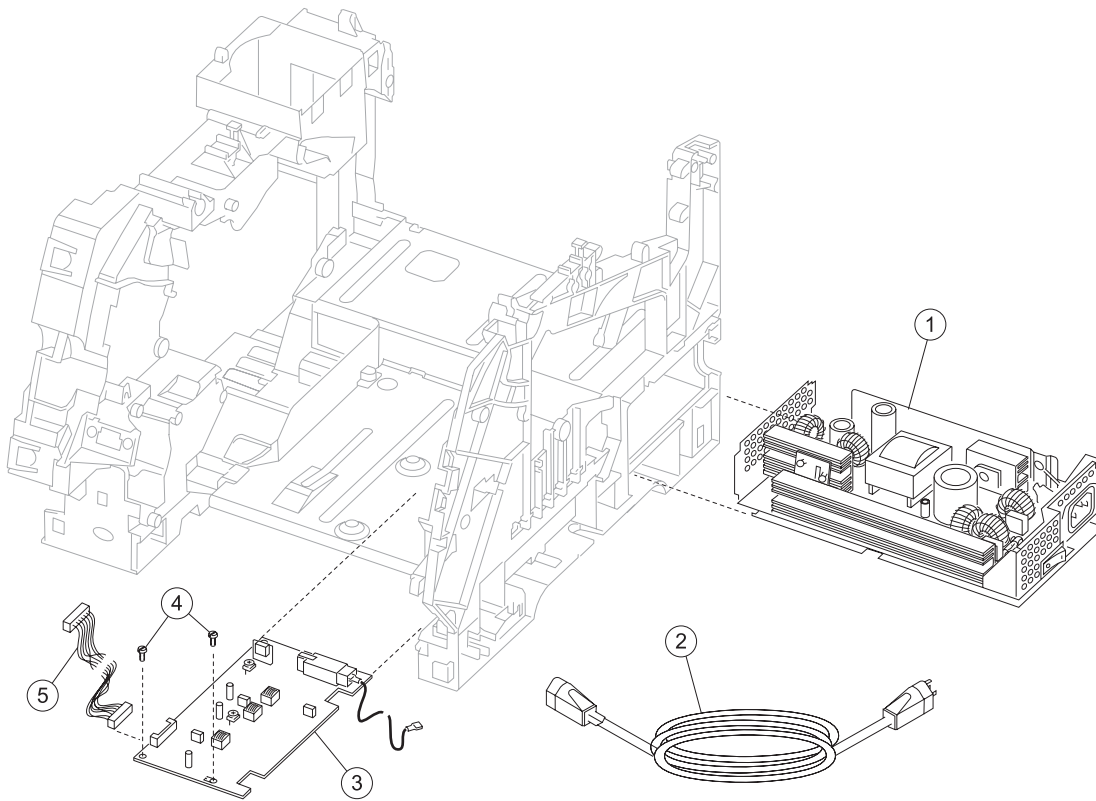
Assembly 20: Transfer/charging



Assembly 20: Transfer/charging

Asm-Index	Part number	Units/mach	Units/kit or pkg	Description
20—1	40X0126		1	Parts kit, charge roll link asm, left side
2	40X0127	1	2	Charge roll assembly, dual
3	40X0129		1	Parts kit, right side charge roll link assembly
4	40X0130	1	1	Transfer roll assembly
5	40X0131	1	1	Transfer roll assembly right arm
6	40X0132	1	1	Transfer roll right spring
7	40X0133	1	1	Transfer pivot shaft
8	40X0134	1	1	Transfer roll left spring
9	40X0135	1	1	Transfer roll left arm
NS			1	Parts packet (PP 40X0165) (charge roll screw)
NS			1	Parts packet (PP 40X0165) (C-clip, pivot shaft)

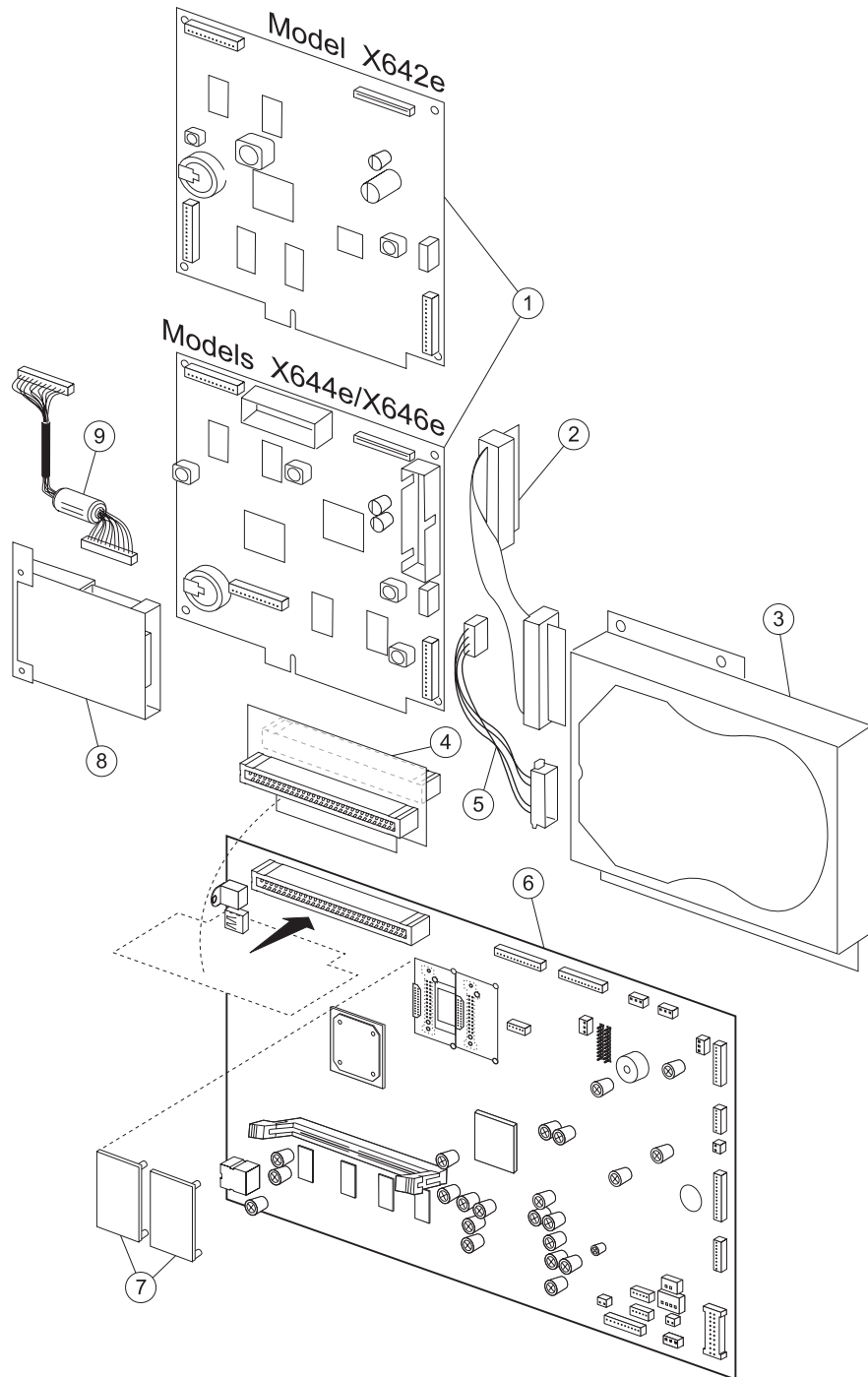
Assembly 21: Electronics—power supplies



Assembly 21: Electronics—power supplies

Asm-Index	Part number	Units/mach	Units/kit or pkg	Description
21—1	40X0517	1	1	LVPS/AIO—115 V ac
1	40X0518	1	1	LVPS/AIO—220 V ac
2	40X0260	1	1	Power cord set (8 ft right angle, 13 amp)—United States, Canada, Caribbean countries, Colombia, Costa Rica, Dominican Republic, El Salvador, Equator, Guatemala, Honduras, Mexico, Nicaragua, Panama, Puerto Rico, Saudi Arabia, Venezuela, and Virgin Islands
2	40X0256	1	1	Power cord set (8 ft right angle)—Bolivia and Peru
2	40X0255	1	1	Power cord set (8 ft right angle)—Argentina
2	40X0257	1	1	Power cord set (8 ft right angle)—Chile, Uruguay
2	40X0258	1	1	Power cord set (8 ft right angle)—Arabic, Austria, Belgium, Bluemark, CIS, Czechoslovakia, Denmark, Finland, France, Germany, Greece, Hungary, Ireland, Italy, Medmark, (1 and 2), Netherlands, Norway, Paraguay, Poland, Portugal, Russia, Slavic countries, Spain, Sweden, Turkey, and UK.
2	40X0293	1	1	Power cord set (8 ft right angle)—Anguilla (UK), Antigua and Barbuda, Bahrain, Botswana, Burma (Myanmar), Channel Islands, Cyprus, Dominica, Falkland Islands, Gambia, Ghana, Gibraltar, Grenada, Guyana, Hong Kong, Iraq, Ireland, Isle of Man, Jordan, Kenya, Kuwait, Lebanon, Liberia, Malawi, Malaysia, Malta, Mauritius, Montserrat, Nigeria, Oman, Pakistan, Pitcairn Island (UK), Qatar, Scotland, Seychelles, Sierra Leone, Singapore, St. Kitts and Nevis, St. Lucia, St. Vincent and Grenadines, Sudan, Tanzania, Trinidad and Tobago, Uganda, United Arab Emirates, United Kingdom, Vanuatu, Wales, Yemen, Zambia, Zimbabwe.
2	40X0259	1	1	Power cord set (6 ft right angle)—Brazil
2	40X0301	1	1	Power cord set (8 ft straight)—AS/NZS
2	40X0271	1	1	Power cord set (8 ft straight)—Hong Kong
2	40X0302	1	1	Power cord set (8 ft right angle)—Japan
2	40X0280	1	1	Power cord set (6 ft straight)—Korea
2	40X0303	1	1	Power cord set (8 ft straight)—PRC
2	40X0281	1	1	Power cord set (6 ft right angle)—Taiwan
2	40X0294	1	1	Power cord set (8 ft right angle)—Denmark, Norway, and Sweden
2	40X0295	1	1	Power cord set (8 ft right angle)—Israel
2	40X0304	1	1	Power cord set (8 ft right angle)—Botswana, Lesotho, Namibia, Pakistan, and South Africa
2	40X0305	1	1	Power cord set (8 ft right angle)—Switzerland
3	56P4244	1	1	High voltage power supply
4		1		Parts packet (PP 40X0165)
5	40X0223	1	1	Front cable harness (HVPS/input sensor/toner sensor)

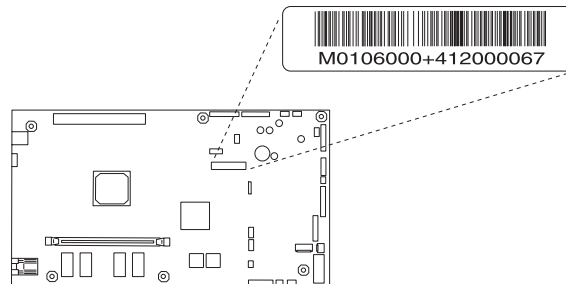
Assembly 22: Electronics—card assemblies



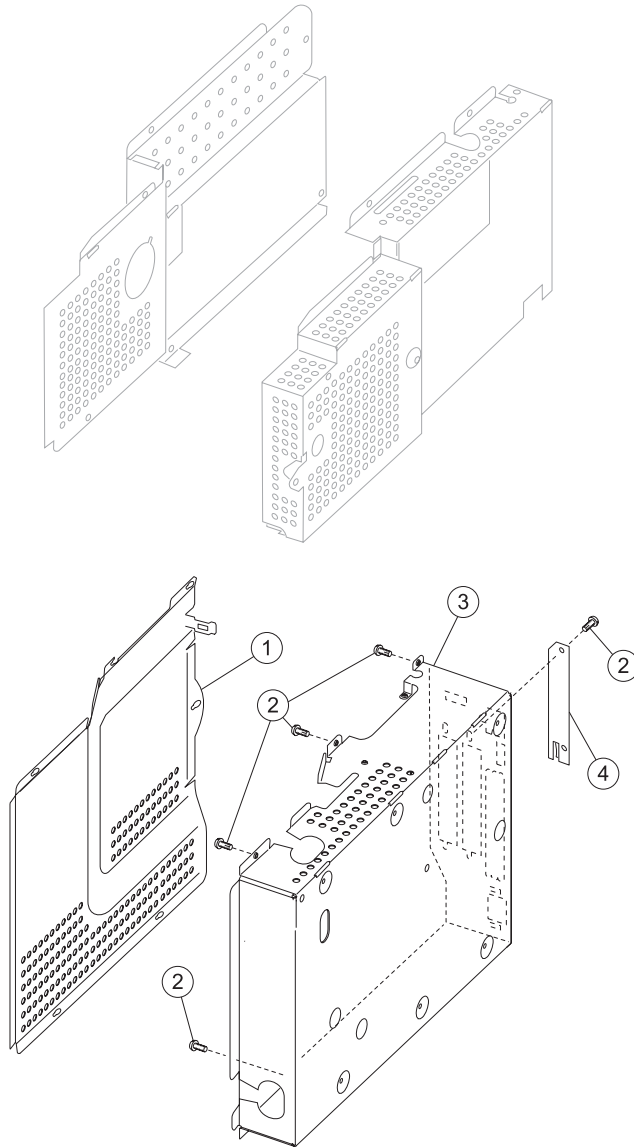
Assembly 22: Electronics—card assemblies

Asm-Index	Part number	Units/mach	Units/kit or pkg	Description
22—1	40X3305	1	1	Scanner control card—X642e
1	40X0498	1	1	Scanner control card—X644e/X646e
2	40X0509	1	1	Hard disk IDE 50-pin cable—X646e
3	40X0489	1	1	Hard disk assembly—X646e
4	40X0520	1	1	Interface card assembly
5	40X0510	1	1	Hard disk 4-pin power cable—X646e
6	40X3310	1	1	System board assembly—X642e (Board ID M010 6030)
6	40X2722	1	1	System board assembly (network)—X644e/X646e (Board ID M010 6000)
7	40X3477	1	1	Bar code card assembly—X642e
7	40X2792	1	1	Bar code card assembly—X644e/X646e
7	40X2529	1	1	IPDS SCS/TNe card assembly—X644e/X646e
7	40X2793	1	1	PRESCRIBE card assembly—X644e/X646e
7	40X3479	1	1	PrintCryption card assembly—X642e
7	40X4178	1	1	PrintCryption card assembly—X644e/X646e
8	40X0519	1	1	Modem card assembly
9	40X0507	1	1	Modem 30-pin cable
NS	40X3478	1	1	Forms card assembly—X642e
NS	40X4179	1	1	Forms card assembly—X644e/X646e

Note: The system board has a label with a board ID and barcode. Use the first eight numbers to identify the board with the part number in the table above:

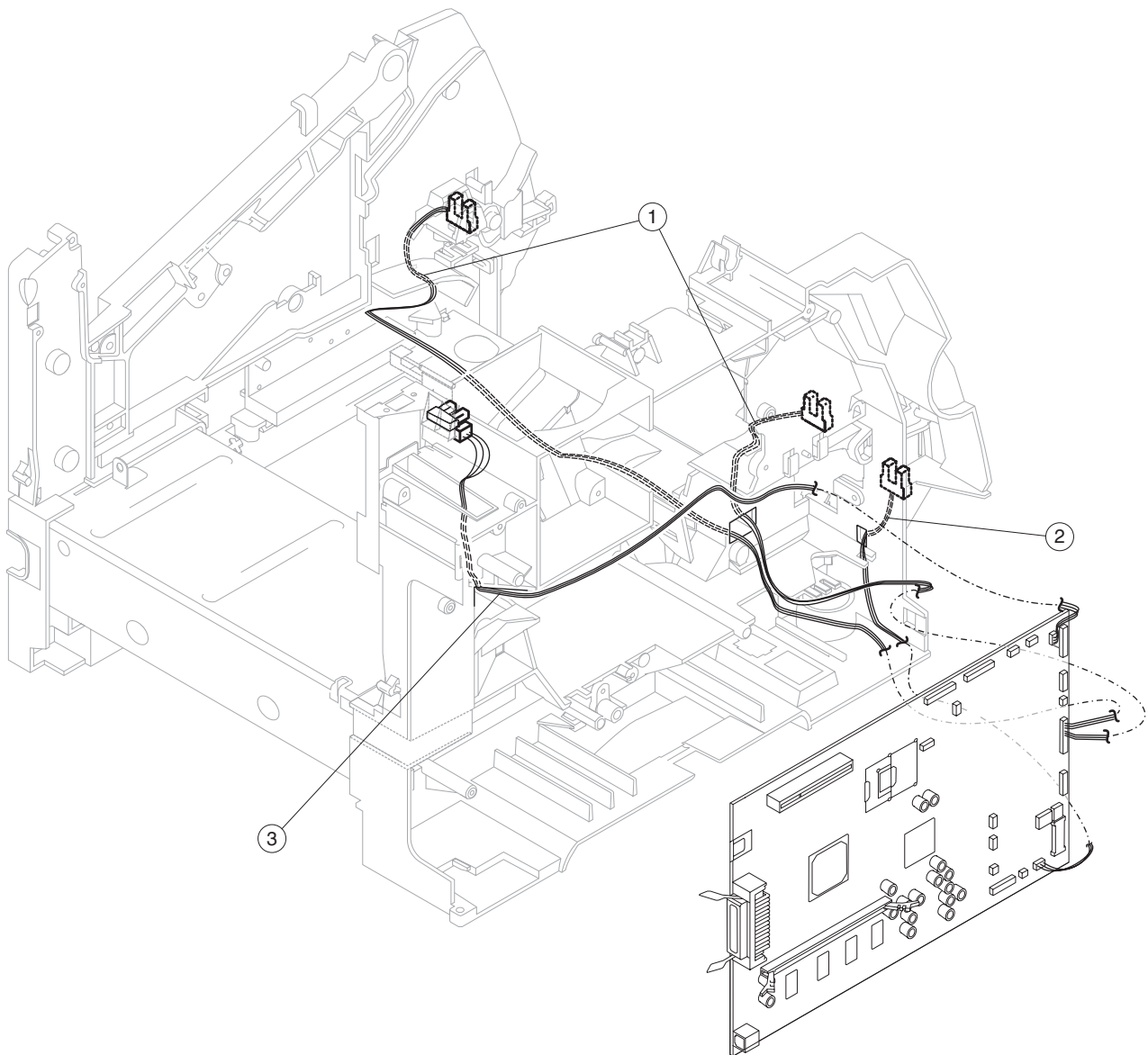


Assembly 23: Electronics—shields



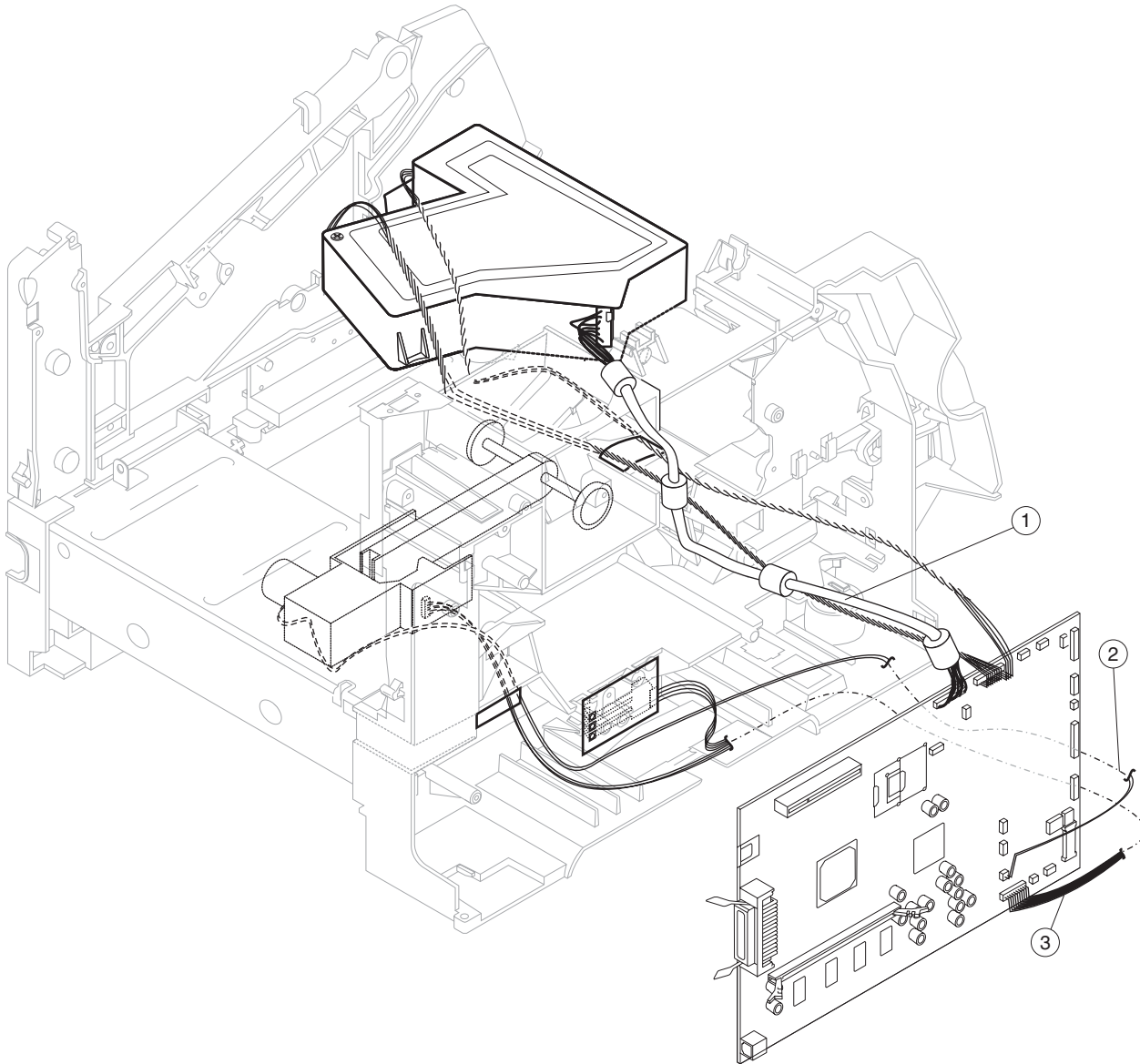
Asm-Index	Part number	Units/mach	Units/kit or pkg	Description
23—1	40X0150	1	1	Outer shield
2				Parts packet (PP 40X0165) (INA cover mounting screw)
2				Parts packet (PP 40X0165) (outer shield mounting screw)
2				Parts packet (PP 40X0165) (inner shield mounting screw)
3	40X0149	1	1	Inner shield assembly
4	40X0153	1	1	INA flat cover (blank)
NS	40X0152	1	1	Ethernet shield (blank)

Assembly 24: Cabling diagram 1



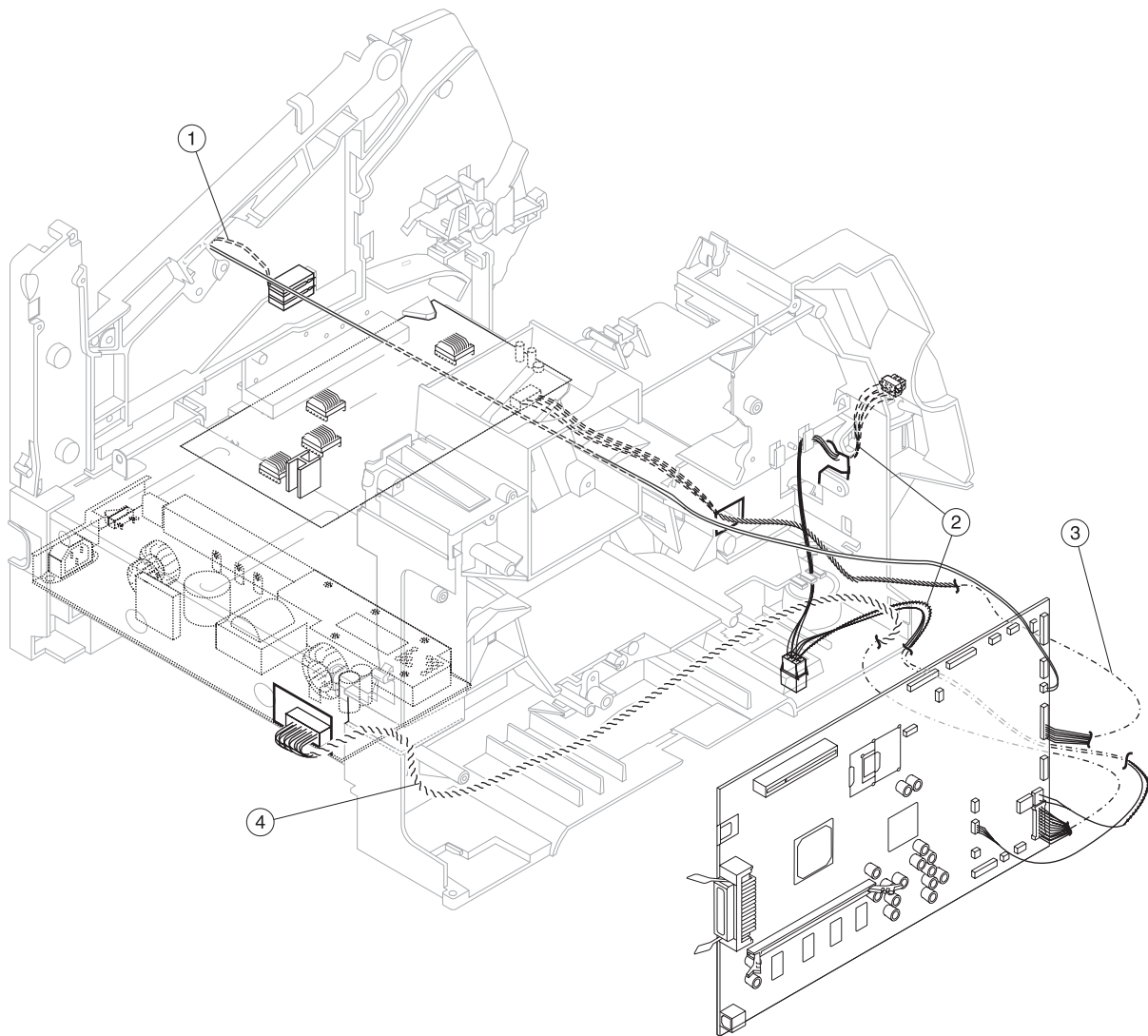
Asm-Index	Part number	Units/mach	Units/kit or pkg	Description
24—1	40X0223	1	1	HVPS/input sensor/toner sensor cable assembly
2	40X0160	1	1	MPF sensor cable
3	40X0264	1	1	Standard bin level sensor cable

Assembly 25: Cabling diagram 2



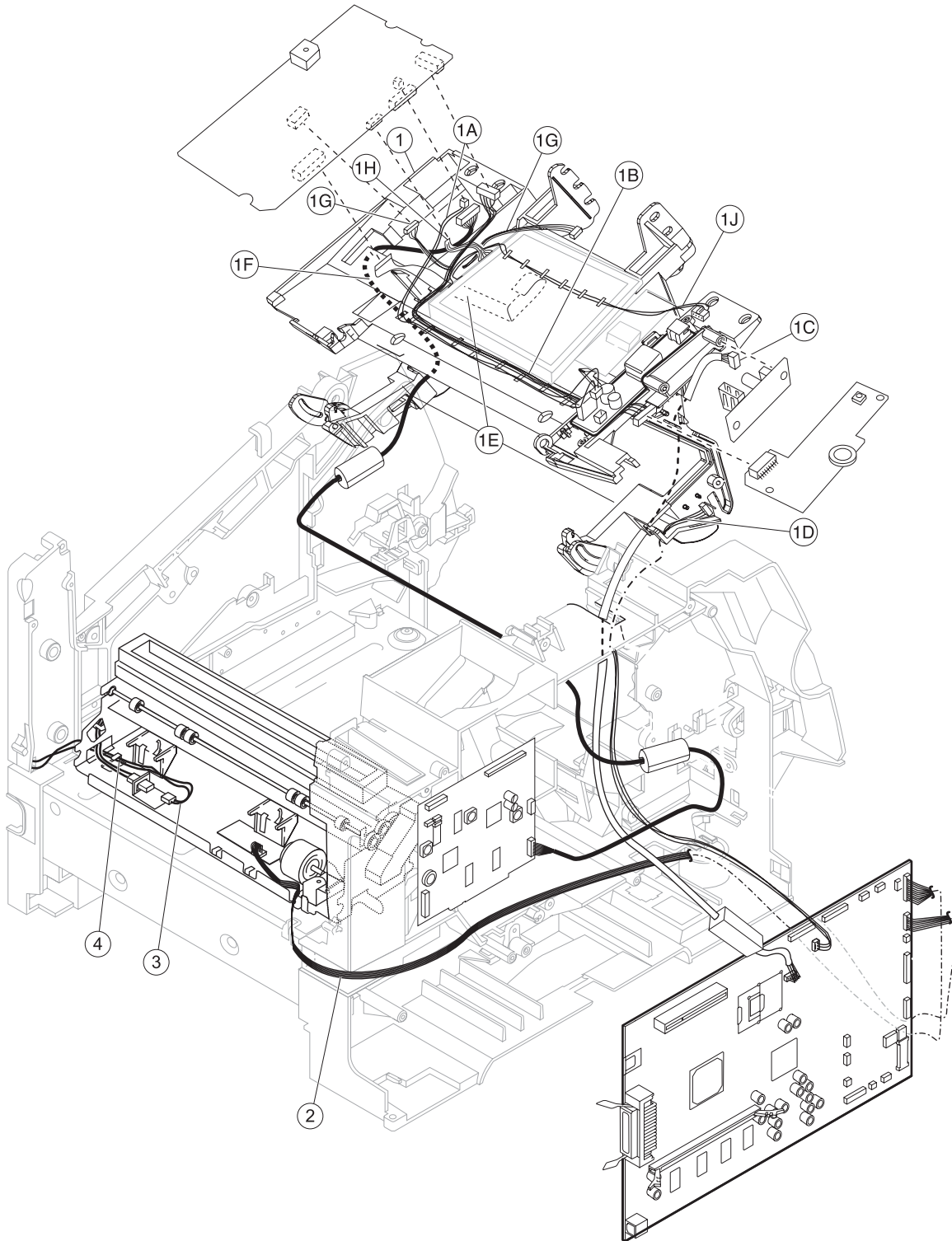
Asm-Index	Part number	Units/mach	Units/kit or pkg	Description
25—1	40X0061	1	1	Laser printhead cable assembly
2	40X0074	1	1	Paper size/autocompensator cable
3	40X0046	1	1	Paper size sensing board assembly

Assembly 26: Cabling diagram 3



Asm-Index	Part number	Units/mach	Units/kit or pkg	Description
26—1	40X0034	1	1	Signature button contact assembly with cable
2	40X0156	1	1	Bottom/front autoconnect cable assembly
3	40X0223	1	1	HVPS/input sensor/toner sensor cable assembly
4	40X0224	1	1	LVPS to system board cable assembly

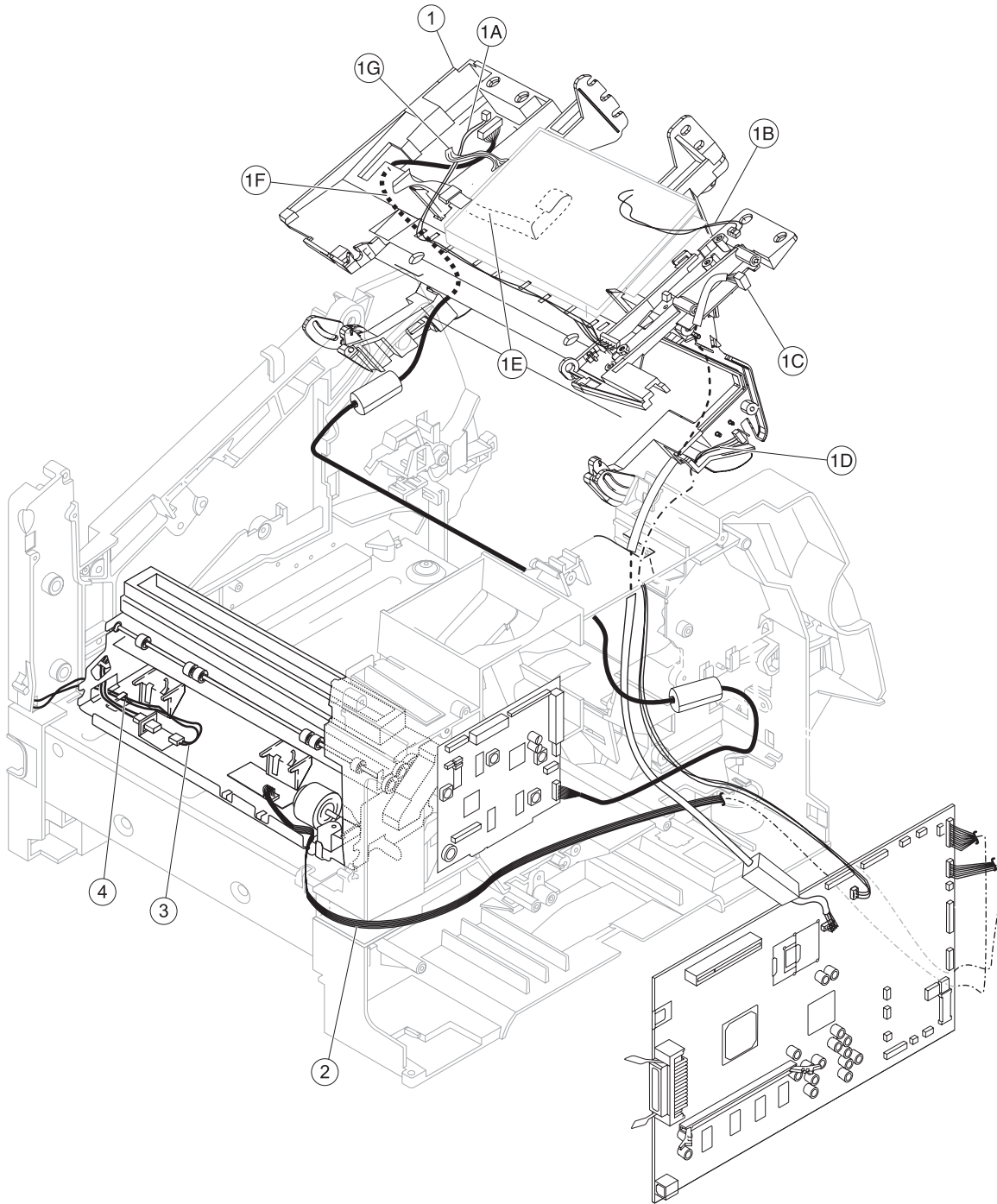
Assembly 27: Cabling diagram 4—model X642e



Assembly 27: Cabling diagram 4—model X642e

Asm-Index	Part number	Units/mach	Units/kit or pkg	Description
27—1	40X3309	1	1	Upper front cover hinge assembly—X642e, includes <ul style="list-style-type: none"> • 1A—Operator panel to LCD Inverter card cable (2-pin) • 1B—Operator panel card to UICC #2 card cable (8-pin) • 1C—USB cable (1) • 1D—Cover open switch/cable from system board • 1E—LCD display to operator panel card cable (14-pin ribbon) • 1F—Operator panel cable from SCC • 1G—Operator panel card to bezel card cable (4-pin) • 1H—LCD display to operator panel card cable (4-pin) • 1J—Operator panel to LCD inverter card cable (2-pin)
2	40X0162	1	1	System board to fuser board cable assembly
3	40X0163	1	1	Fuser AC lamp to LVPS cable assembly
4	40X0226	1	1	Fuser connector (fuser AC to fuser lamp)

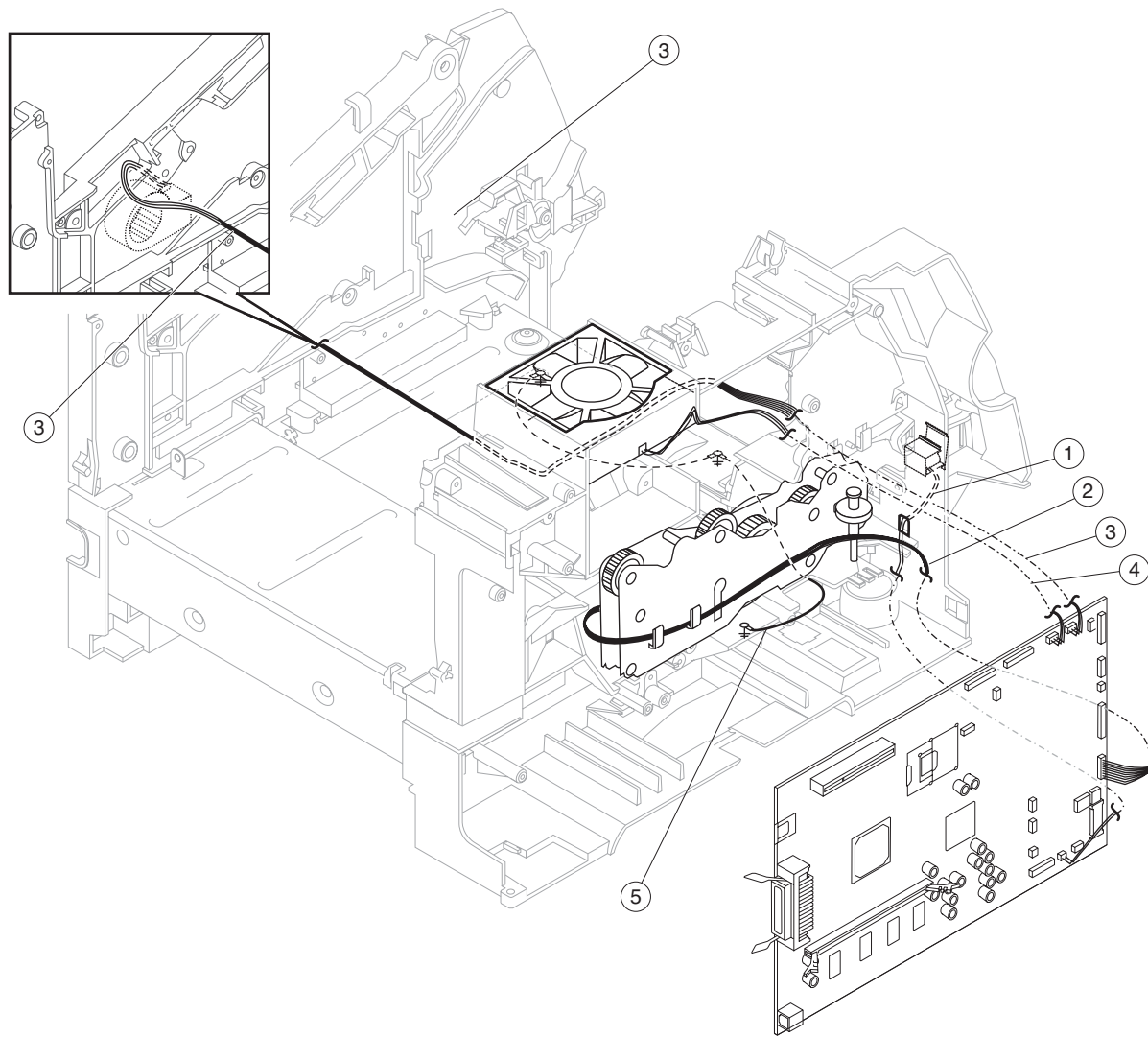
Assembly 28: Cabling diagram 4—models X644e/X646e



Assembly 28: Cabling diagram 4—models X644e/X646e

Asm-Index	Part number	Units/mach	Units/kit or pkg	Description
28—1	40X0515	1	1	Upper front cover hinge assembly—X644e/X646e, includes: <ul style="list-style-type: none"> • 1A—LCD display to LCD inverter card cable (2-pin) • 1B—Operator panel card to LCD inverter card cable (8-pin) • 1C—USB cable (1) • 1D—Cover open switch/cable (1) • 1E—LCD display to operator panel cable (14-pin) • 1F—Operator panel cable to SCC card (1) • 1G—LCD display to operator panel cable (4-pin)
2	40X0162	1	1	System board to fuser board cable assembly
3	40X0163	1	1	Fuser AC lamp to LVPS cable assembly
4	40X0226	1	1	Fuser connector (fuser AC to fuser lamp)

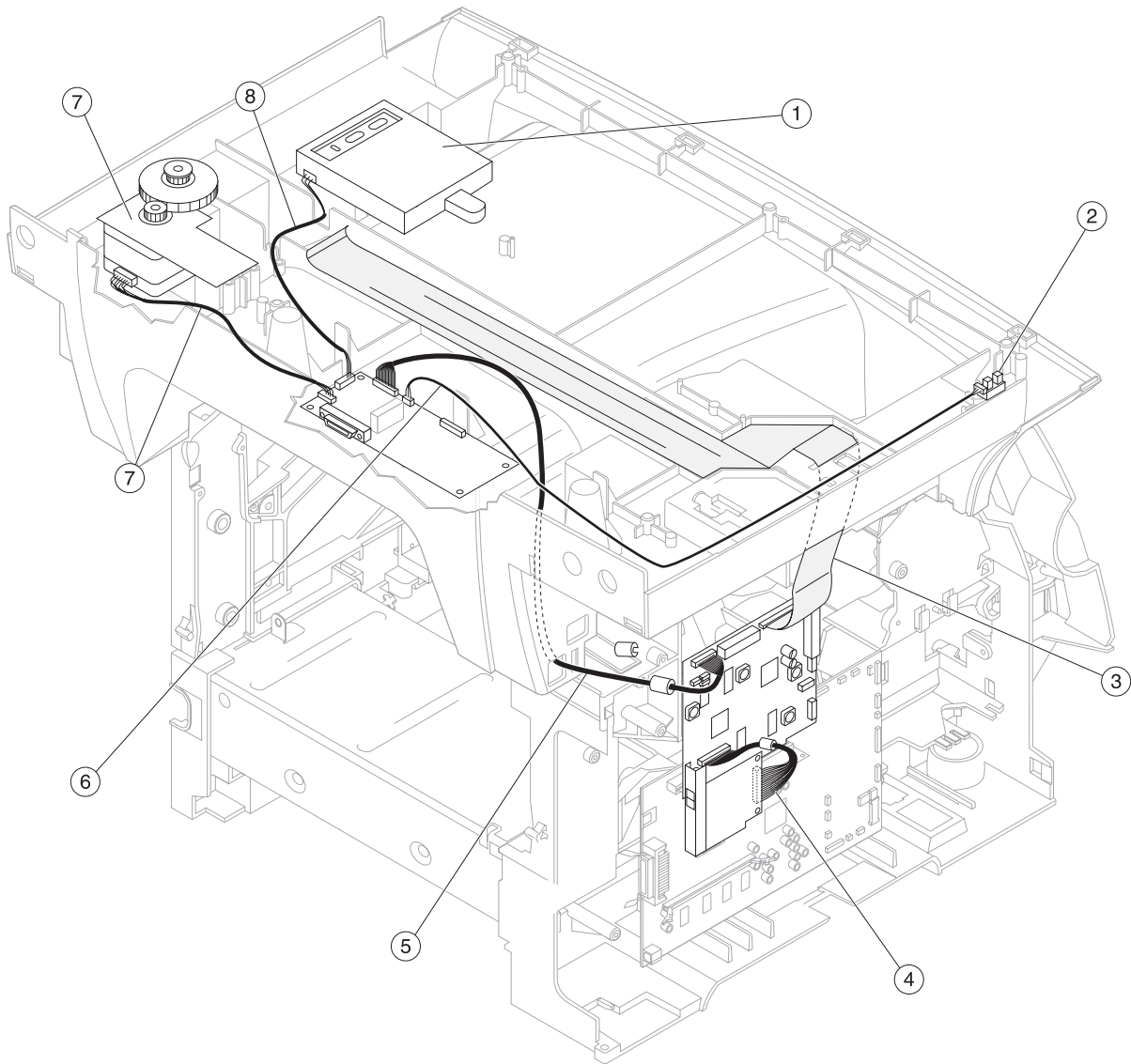
Assembly 29: Cabling diagram 5



Assembly 29: Cabling diagram 5

Asm-Index	Part number	Units/mach	Units/kit or pkg	Description
29—1	40X0310	1	1	Multipurpose feeder pick arm assembly with solenoid
2	40X0159	1	1	Main drive motor cable assembly
3	40X0249	1	1	EP DC fan assembly
4	40X0054	1	1	Main fan with cable, 500-sheet output
5	40X0161	1	1	Ground cable

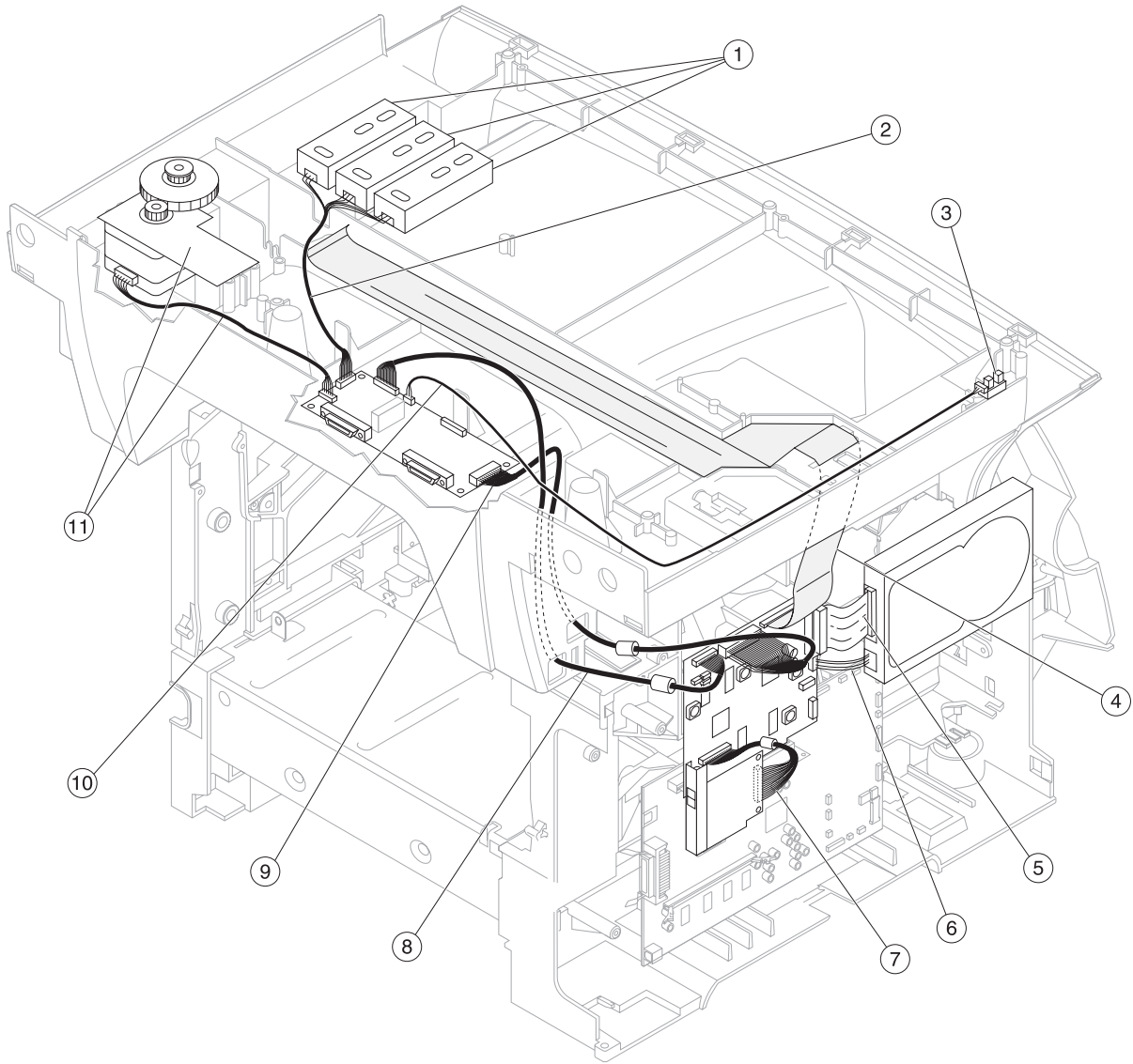
Assembly 30: Cabling diagram 6—model X642e



Assembly 30: Cabling diagram 6—model X642e

Asm-Index	Part number	Units/mach	Units/kit or pkg	Description
30—1	40X0491	1	1	Flatbed paper size sensor assembly (3 sensors are included in the assembly, model X642e uses only one)
2	40X0481	1	1	Parts packet, sensors (home sensor)
3	40X0487	1	1	Flatbed CCD ribbon cable
4	40X0507	1	1	Modem 30-pin cable
5	NA	1	1	Flatbed interconnect card (CN1) to SCC card cable (J15) (NOT AVAILABLE AS A FRU)
6	NA	1	1	Flatbed interconnect card (CN4) to home sensor cable (NOT AVAILABLE AS A FRU)
7	40X0480	1	1	Flatbed scan motor, including flatbed scan motor to flatbed interconnect card cable
8	NA	1	1	Flatbed paper size sensor to interconnect card cable (CN3) (NOT AVAILABLE AS A FRU)

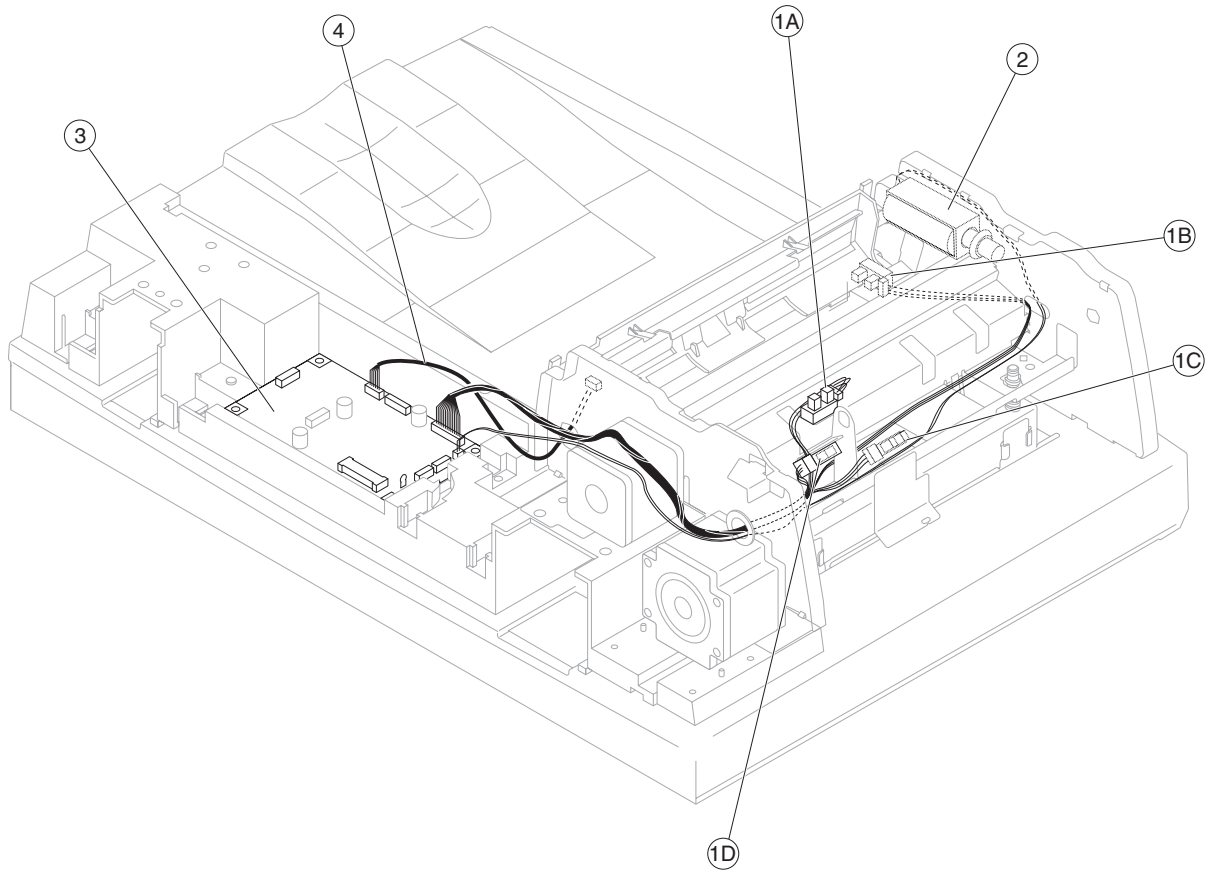
Assembly 31: Cabling diagram 6—models X644e/X646e



Assembly 31: Cabling diagram 6—models X644e/X646e

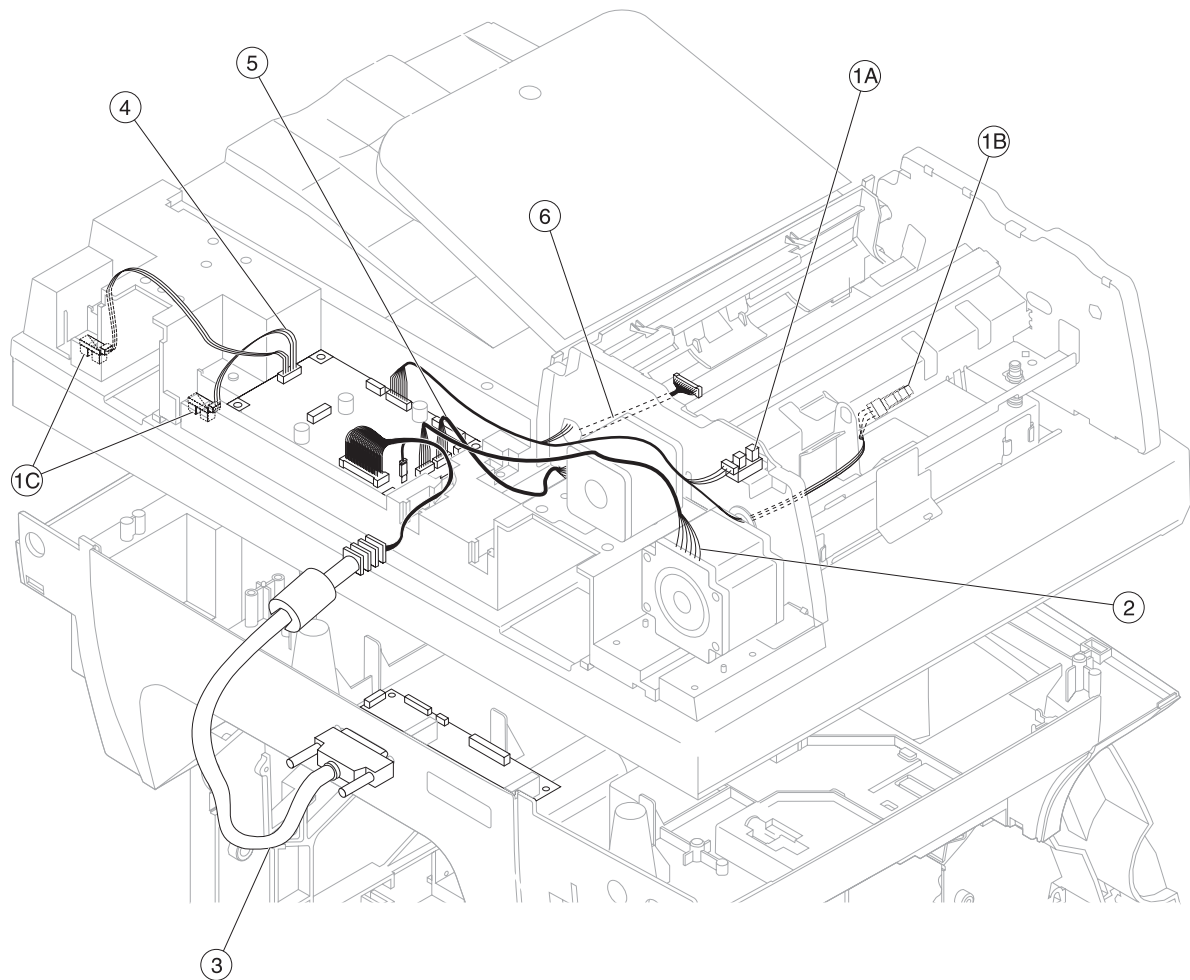
Asm-Index	Part number	Units/mach	Units/kit or pkg	Description
31—1	40X0491	1	1	Flatbed paper size sensor assembly (3 sensors are included in the assembly, model X642e uses only one)
2	NA	1	1	Flatbed paper size sensor cable to flatbed interconnect card (CN3) (NOT AVAILABLE AS A FRU)
3	40X0481	1	1	Parts packet, sensors (home sensor)
4	40X0487	1	1	Flatbed CCD ribbon cable
5	40X0509	1	1	Hard disk IDE 50-pin cable—X646e
6	40X0510	1	1	Hard disk 4-pin power cable—X646e
7	40X0507	1	1	Modem 30-pin cable
8	NA	1	1	Scanner control card (J1) to flatbed interconnect card (CN1) cable (NOT AVAILABLE AS A FRU)
9	NA	1	1	Scanner control card (J28) to flatbed interconnect card (CN5) (NOT AVAILABLE AS A FRU)
10	NA	1	1	Home sensor to flatbed interconnect card (Cn4) (NOT AVAILABLE AS A FRU)
11	40X0480	1	1	Flatbed scan motor, including scan motor

Assembly 32: Cabling diagram 7



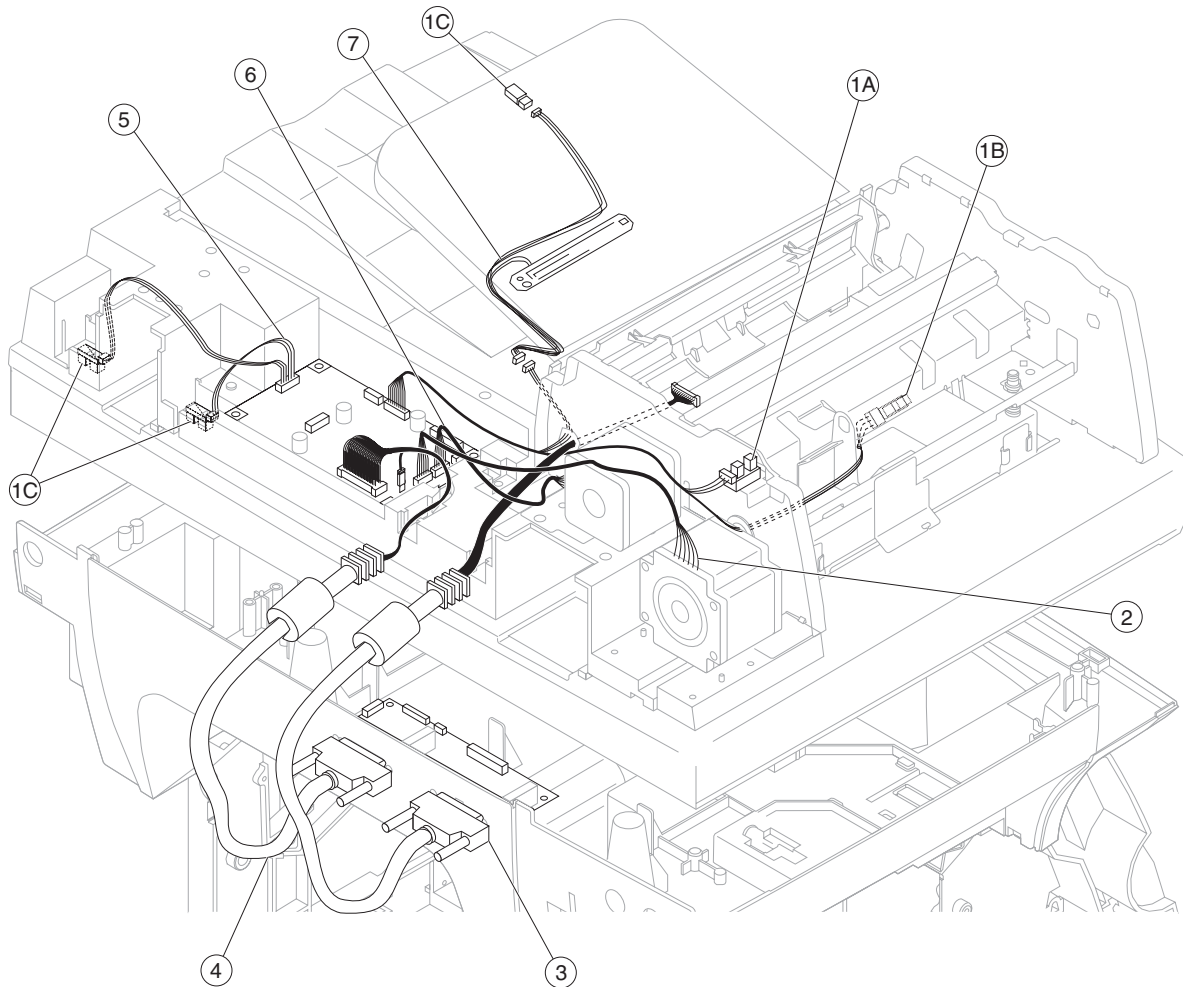
Asm-Index	Part number	Units/mach	Units/kit or pkg	Description
32—1	40X0481	1	1	Parts packet, sensors <ul style="list-style-type: none"> • A—Second scan sensor • B—Jam access door sensor • C—First scan sensor • D—Interval sensor
2	40X0456	1	1	Pickup arm assembly solenoid
3	40X0486	1	1	Motor driver card
4	NA	1	1	Paper present sensor cable (NOT AVAILABLE AS A FRU)

Assembly 33: Cabling diagram 8—model X642e



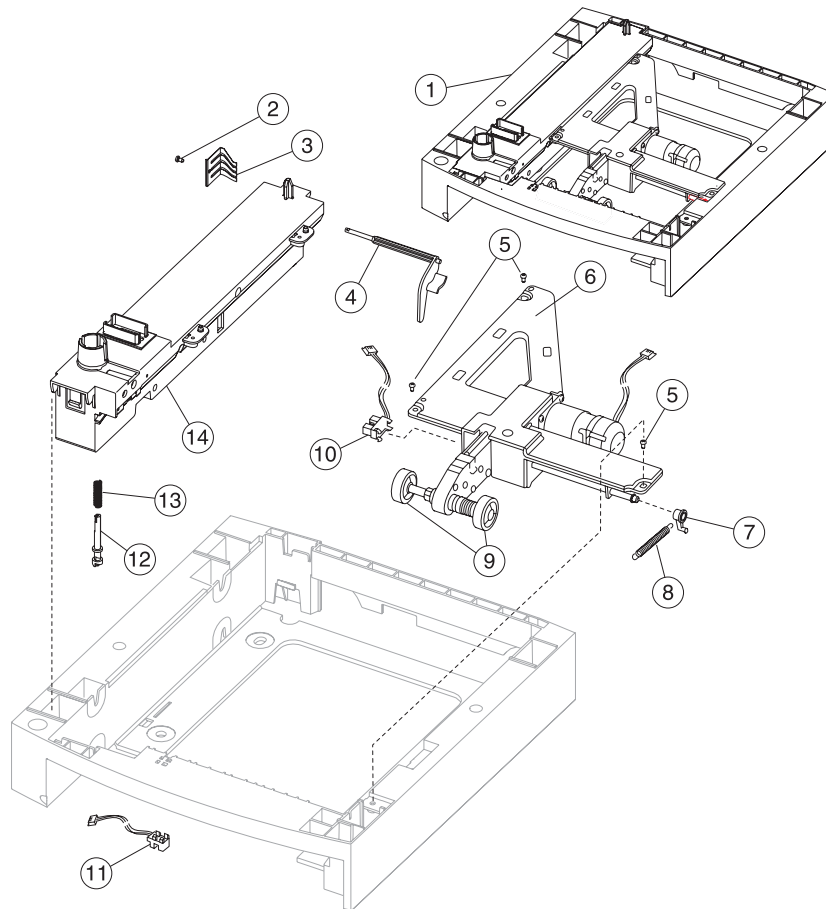
Asm-Index	Part number	Units/mach	Units/kit or pkg	Description
33—1	40X0481	1	1	Parts packet, sensors <ul style="list-style-type: none"> • A—ADF top cover open sensor • B—First scan sensor • C—Flatbed cover closed sensors (cover closing, cover closed) • D—ADF paper length sensor
2	NA	1	1	Feed motor cable (NOT AVAILABLE AS A FRU)
3	40X0506	1	1	MDC to flatbed interconnect card 36-pin cable
4	NA	1	1	Flatbed cover open sensor cable (NOT AVAILABLE AS A FRU)
5	N/A	1	1	Transport motor cable (NOT AVAILABLE AS A FRU)
6	N/A	1	1	Paper length sensor cable, includes paper width sensor assembly—X644e/X646e

Assembly 34: Cabling diagram 8—models X644e/X646e



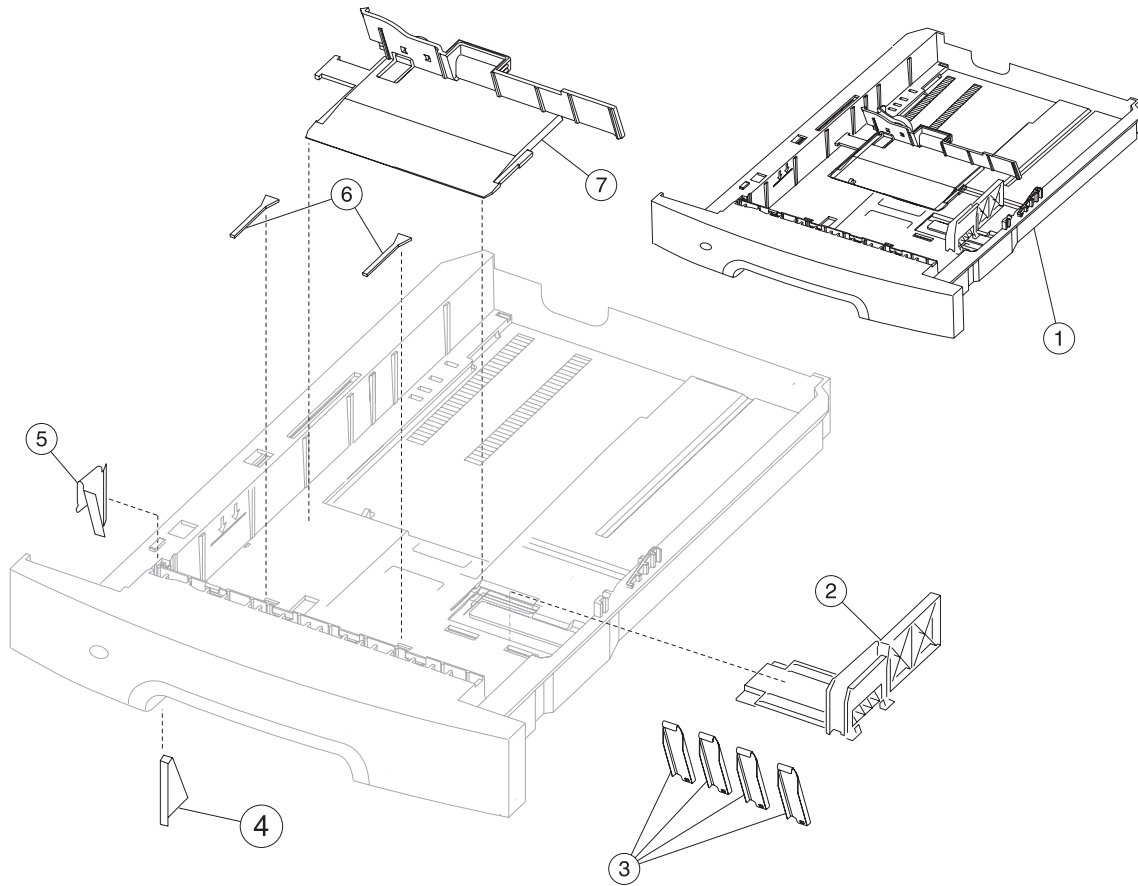
Asm-Index	Part number	Units/mach	Units/kit or pkg	Description
34—1	40X0481	1	1	Parts packet, sensors <ul style="list-style-type: none"> • A—ADF top cover open sensor • B—First scan sensor • C—Flatbed cover closed sensors (cover closing, cover closed) • D—ADF paper length sensor
2	NA	1	1	Feed motor cable (NOT AVAILABLE AS A FRU)
3	40X0502	1	1	ADF CCD to flatbed interconnect card 36-pin cable—X644e/X646e
4	40X0506	1	1	MDC to flatbed interconnect card 36-pin cable
5	NA	1	1	Flatbed cover open sensor cable (NOT AVAILABLE AS A FRU)
6	N/A	1	1	Transport motor cable (NOT AVAILABLE AS A FRU)
7	N/A	1	1	Paper length sensor cable, includes paper width sensor assembly—X644e/X646e

Assembly 35: Optional 250-sheet paper drawer



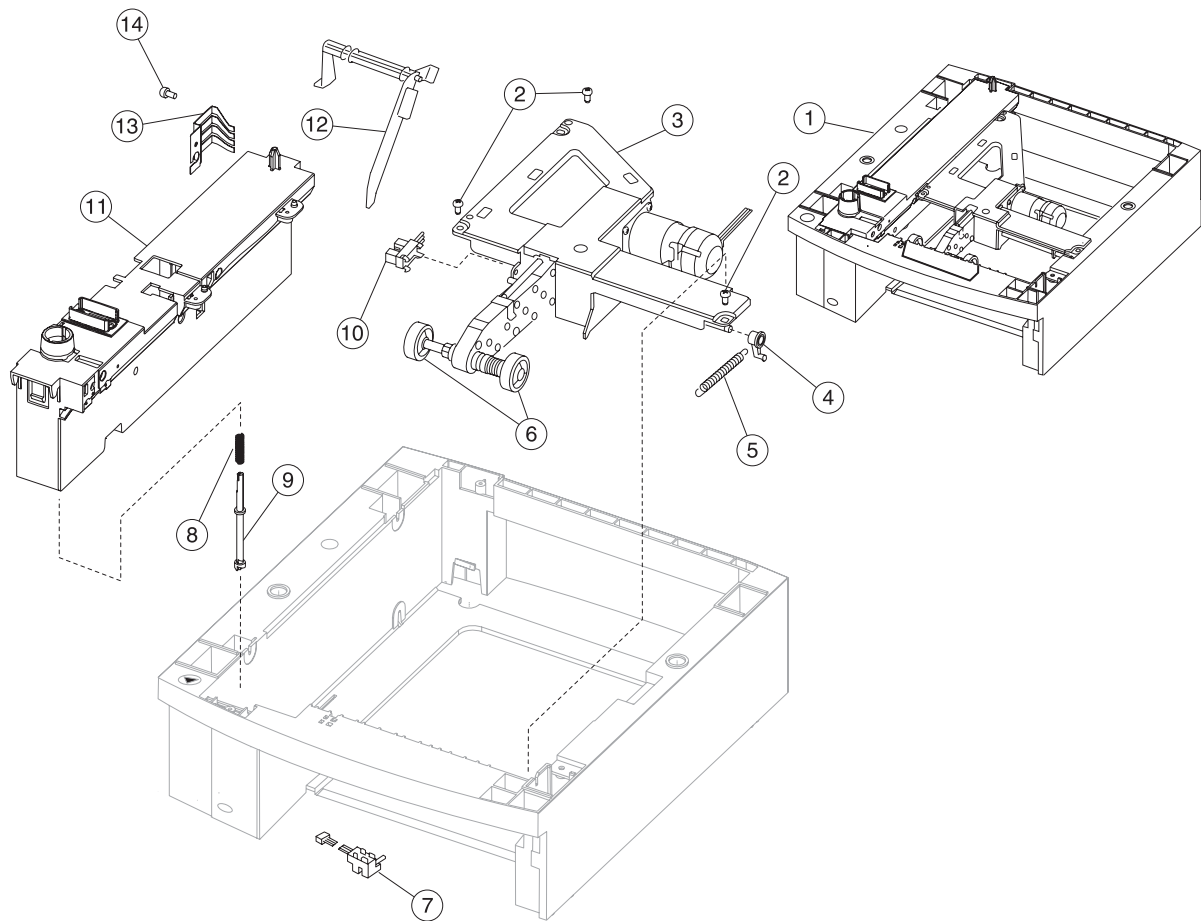
Asm-Index	Part number	Units/option	Units/kit or pkg	Description
35—1	40X3230	1	1	250-sheet paper drawer, complete assembly
2		1	1	Parts packet, screws (PP 99A0263) (switch spring)
3	99A0063	1	1	Switch activate spring
4	56P4129	1	1	Paper out arm—250-sheet
5		3	3	Parts packet, screws (PP 99A0263) (auto comp mounting)
5		4	4	Parts packet, screws (PP 99A0263)
6	40X3232	1	1	Pick arm assembly
7	56P1228	1	1	Bellcrank—250-sheet paper tray
8	99A1929	2	1	Bellcrank spring—250-sheet paper tray
9	40X0070	2	2	Pick roll assembly
10	40X3234	1	1	Bin low sensor with cable
11	40X3233	1	1	Option pass thru sensor
12	99A0272	1	1	Drive shaft—250-sheet
13	99A0275	1	1	Power takeoff spring
14	40X3237	1	1	Base assembly

Assembly 36: Optional 250-sheet paper tray



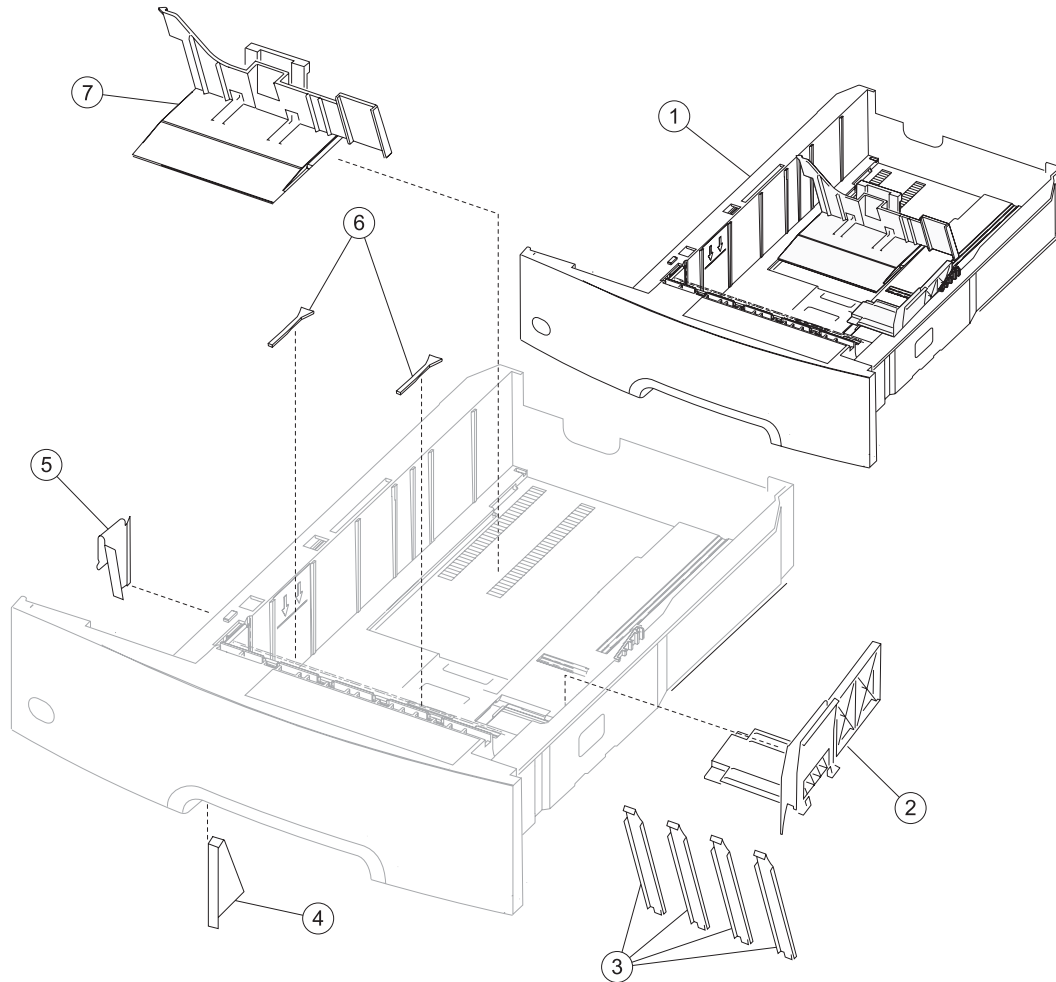
Asm-Index	Part number	Units/option	Units/kit or pkg	Description
36—1	40X3231	1	1	Tray assembly, option—250-sheet
2	40X3235	1	1	Side restraint—250-sheet tray
3	56P1279	1	4	Wear strips
4	56P4230	1	1	Plate—250 sheet pass thru
5	99A0121	1	1	Plate—250-sheet tray wear
6	99A0120	1	2	Restraint pad
7	40X3236	1	1	Back restraint—250-sheet tray

Assembly 37: Optional 500-sheet paper drawer



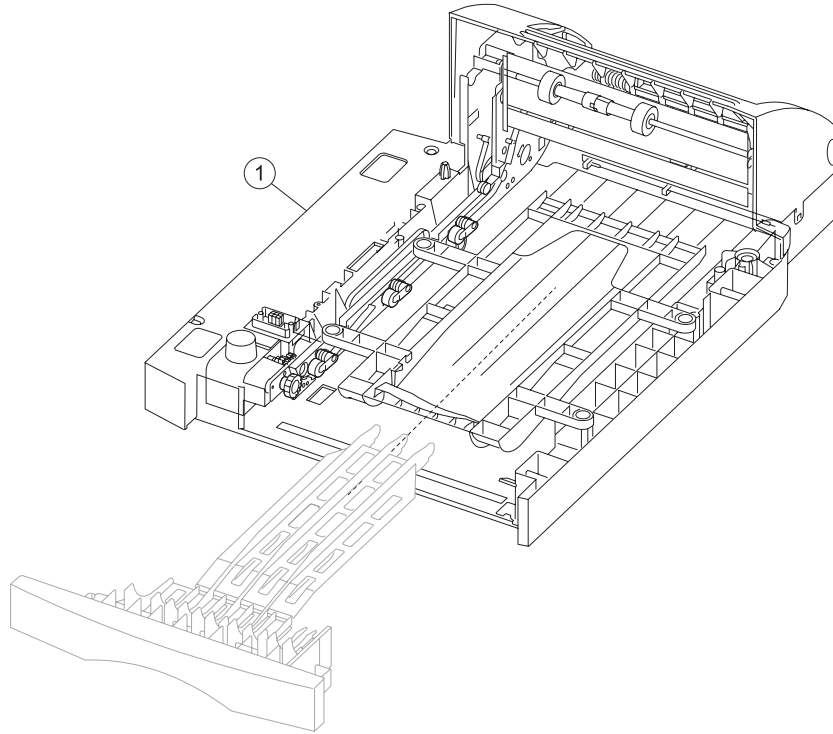
Asm-Index	Part number	Units/option	Units/kit or pkg	Description
37—1	40X3243	1	1	Drawer assembly, complete—500-sheet
2		3	3	Parts packet, screws (PP 99A0263) (auto comp mounting screw)
3	40X3246	1	1	Pick arm assembly—500 sheet
4	56P1228	1	1	Bellcrank spring arm
5	56P2540	1	1	Bellcrank spring—500-sheet option tray
6	40X0070	1	2	Pick roll assembly
7	40X3244	1	1	Option pass thru sensor
8	99A0275	1	1	Power takeoff spring
9	99A0447	1	1	Drive shaft—500-sheet
10	40X3245	1	1	Bin low sensor with cable
11	40X3247	1	1	Base assembly, 500-sheet
12	56P4145	1	1	Paper out arm—500-sheet drawer
13	99A0063	1	1	Switch activate spring
14		1	1	Parts packet, screws (PP 99A0263)

Assembly 38: Optional 500-sheet paper tray



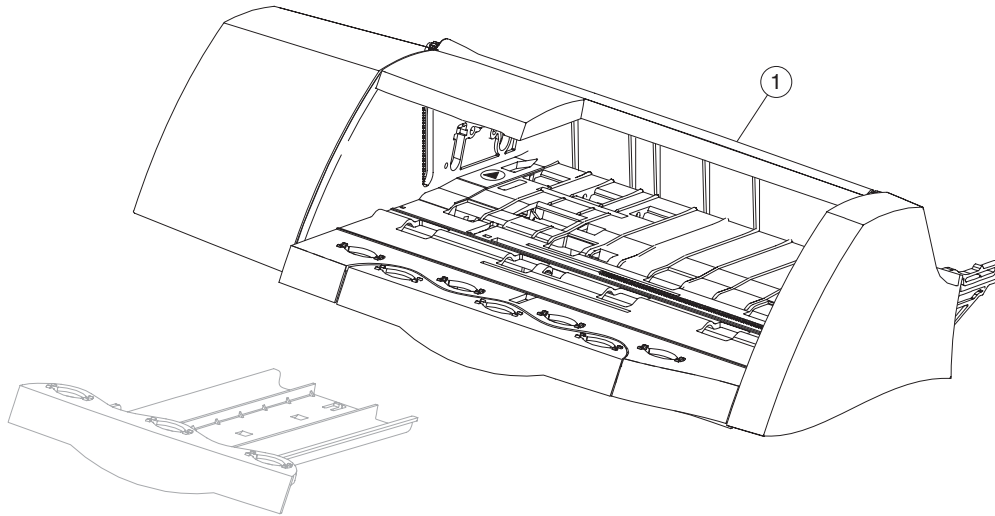
Asm-Index	Part number	Units/option	Units/kit or pkg	Description
38—1	56P4150	1	1	Complete tray assembly—500-sheet
2	56P4137	1	1	Side restraint—500-sheet tray
3	99A0292	1	4	Wear strips
4	56P4196	1	1	Pass thru plate
5	99A0120	1	2	Restraint pad
6	56P4195	1	1	Wear plate—500 sheet
7	56P4147	1	1	Back restraint—500-sheet tray

Assembly 39: Duplex option



Asm-Index	Part number	Units/option	Units/kit or pkg	Description
39—1	56P4102	1	1	Duplex assembly—500-sheet

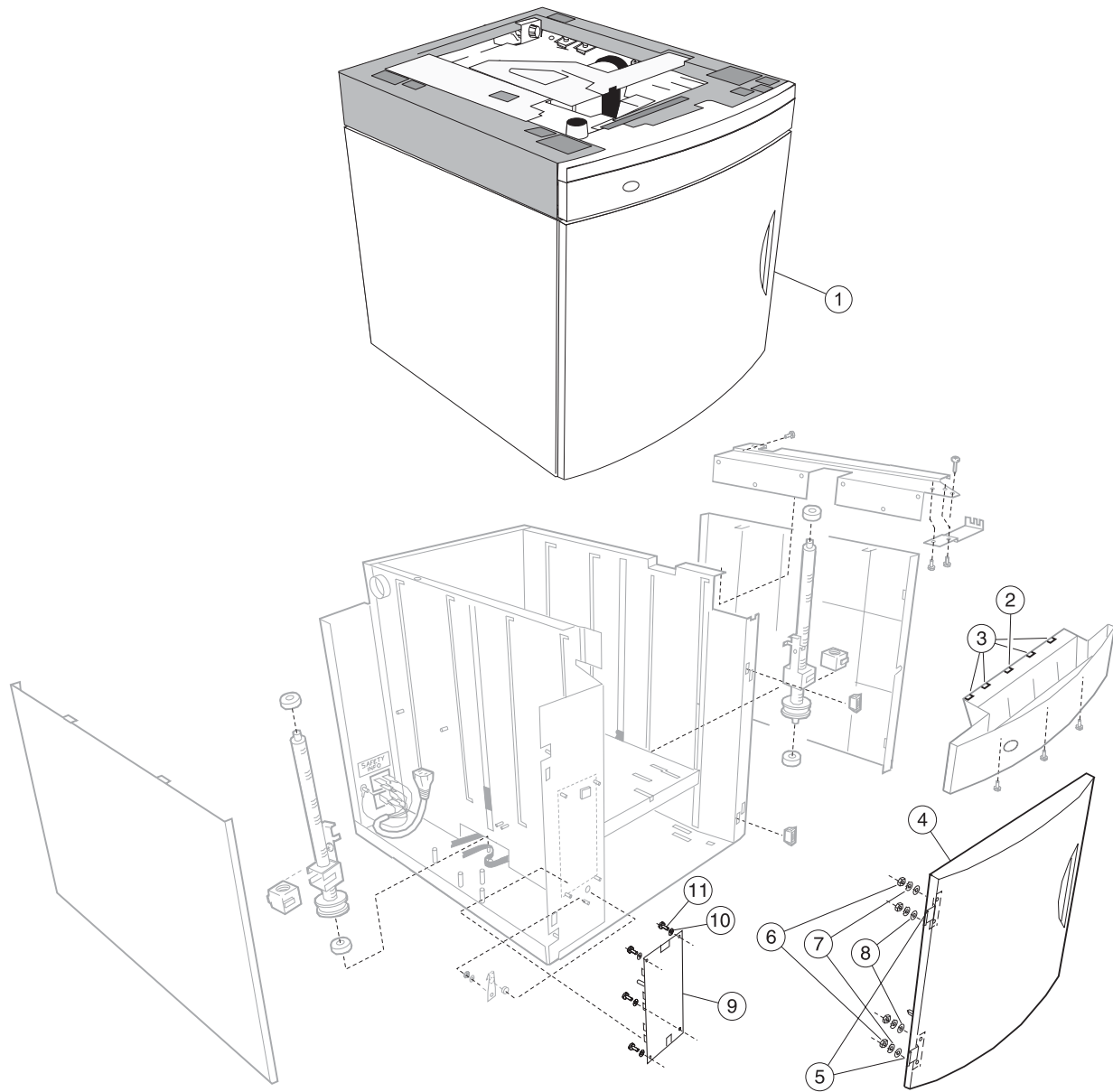
Assembly 40: Envelope feeder



Assembly 40: Envelope feeder

Asm-Index	Part number	Units/option	Units/kit or pkg	Description
40—1	40X3248	1	1	Complete envelope option

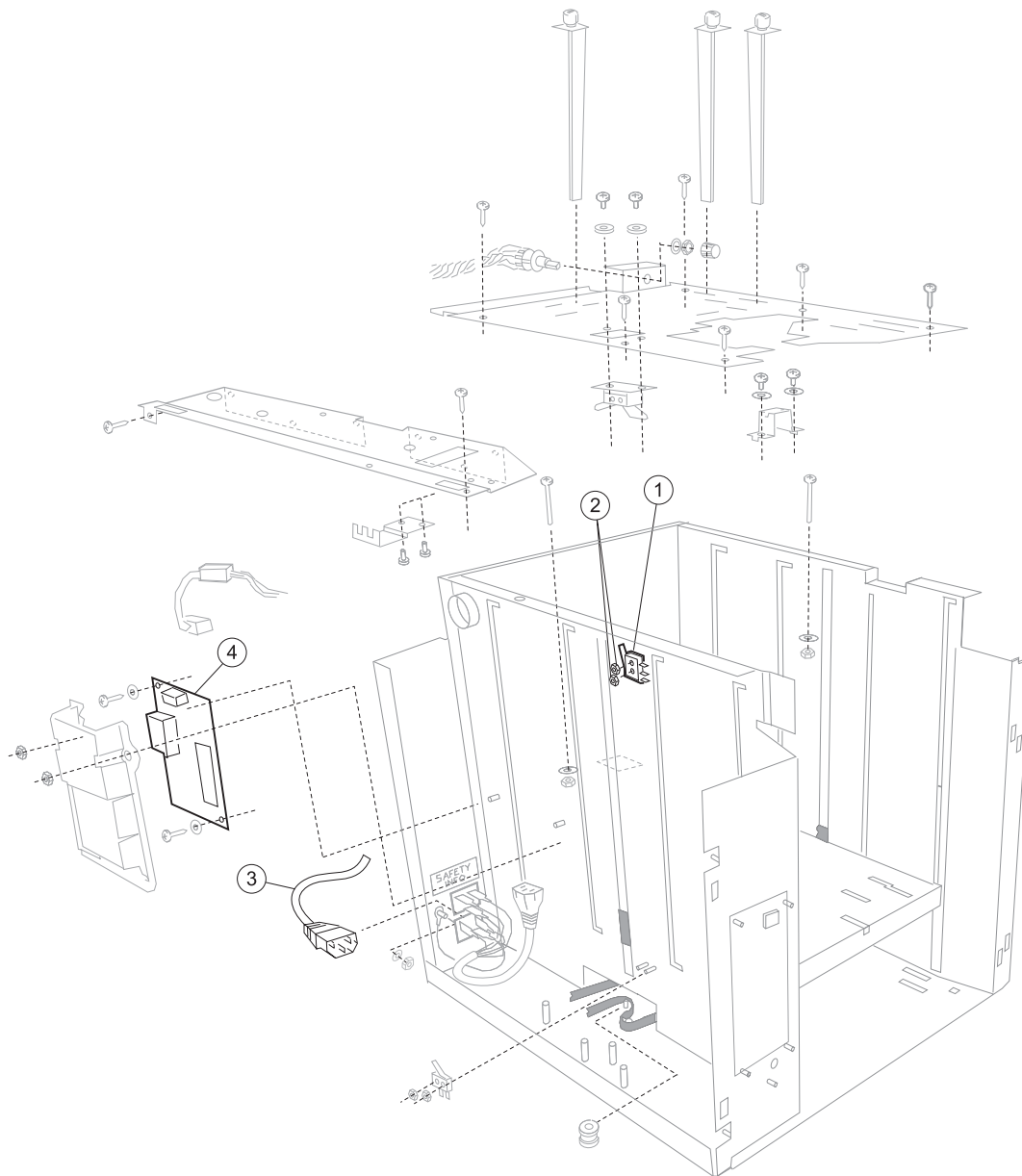
Assembly 41: High-capacity feeder 1



Assembly 41: High capacity feeder 1

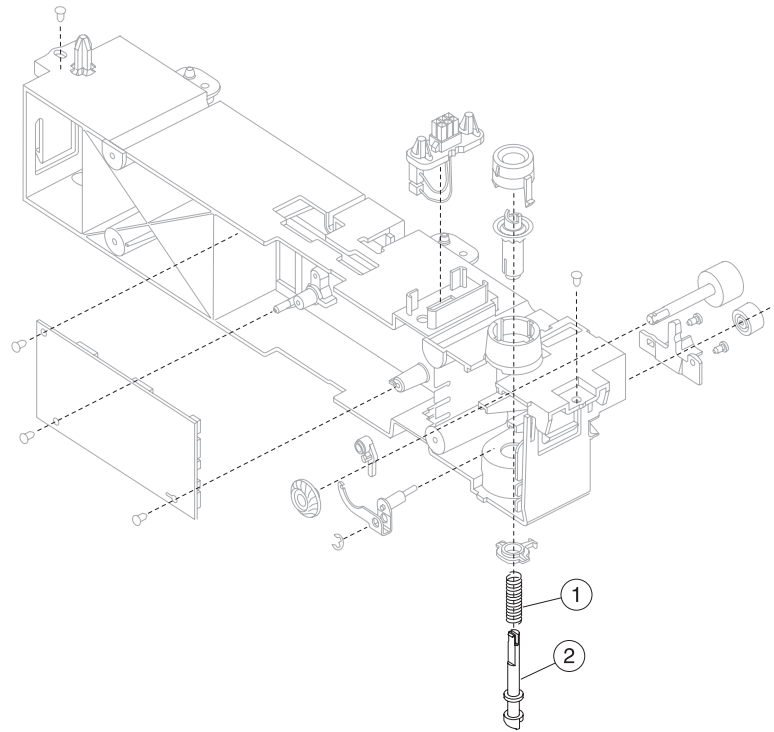
Asm-Index	Part number	Units/option	Units/kit or pkg	Description
41—1	40X3250	1	1	Complete option assembly (letter)
1	40X3249	1	1	Complete option assembly (A4)
2	99A1818	1	1	Wear dimple strip
3	99A0681	4	1	Wear strip
4	40X3254	1	1	Front door assembly
5	56P4157	1	2	Door hinge
6		4	1	Parts packet, nuts (PP 99A0676) (6-32 hinge mounting nut)
7		4	1	Parts packet, washers (PP 99A0677) (hinge mounting flat washer)
8		4	1	Parts packet, washers (PP 99A0677) (hinge mounting star washer)
9	40X3252	1	1	2000-sheet option control card assembly
10		4	4	Parts packet, screws (PP 99A0675) (card asm. mounting)
11		4	4	Parts packet, screws (PP 99A0675) (card assembly mounting screw)
11	99A0658	2	2	Door magnet

Assembly 42: High-capacity feeder 2



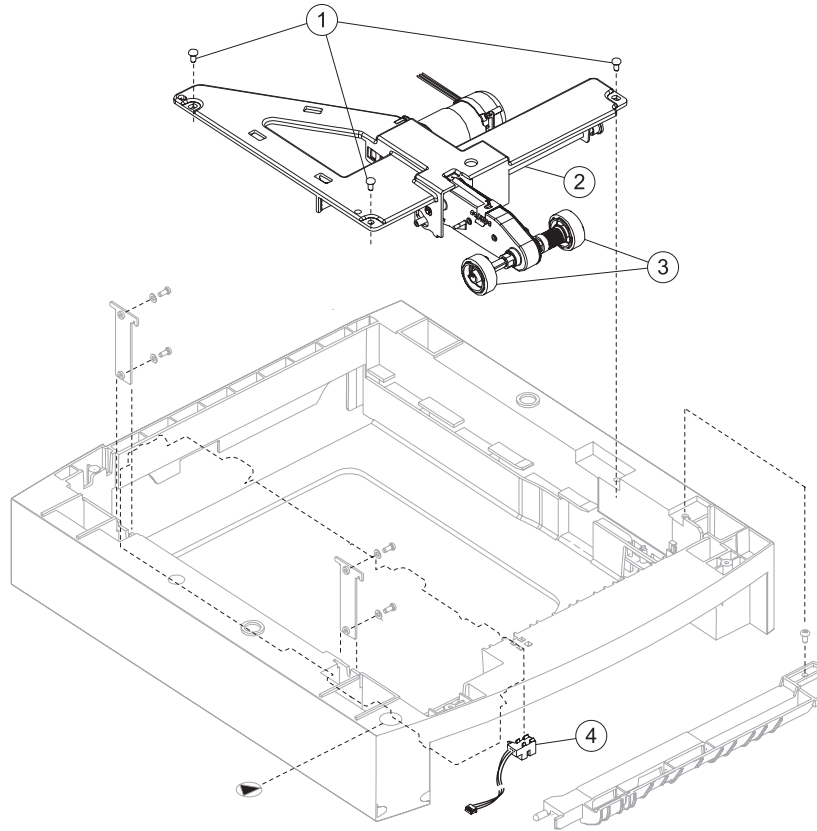
Asm-Index	Part number	Units/option	Units/kit or pkg	Description
42—1	99A0654	1	1	Paper low switch
2				Parts packet, nuts (PP 99A0676)
3	40X3262	1	1	AC external jumper cord
4	40X3260	1	1	Power supply board

Assembly 43: High-capacity feeder 3



Asm-Index	Part number	Units/option	Units/kit or pkg	Description
43—1	99A0275	1	1	Power takeoff spring
2	99A0272	1	1	Drive shaft—250-sheet

Assembly 44: High-capacity feeder 4



Asm-Index	Part number	Units/option	Units/kit or pkg	Description
44—1		3		Parts packet, screws (PP 99A0263) (auto comp assembly mounting screw)
2	40X3255	1	1	Pick arm assembly—2000-sheet
3	40X0070	2	2	Pick roll assembly
4	40X3233	1	1	Option pass thru sensor

Assembly 45: Options

Asm-Index	Part number	Units/option	Units/kit or pkg	Description
NS	40X1508	1	1	128MB memory option
NS	40X1509	1	1	256MB memory option
NS	40X1510	1	1	512MB memory option
NS	40X1564	1	1	32MB Flash card
NS	40X1455	1	1	64MB Flash card
NS	40X3477	1	1	Bar code card assembly—X642e
NS	40X2792	1	1	Bar code card assembly—X644e/X646e
NS	40X3479	1	1	PrintCryption card assembly—X642e
NS	40X4178	1	1	PrintCryption card assembly—X644e/X646e
NS	40X2793	1	1	PRESCRIBE card assembly—X644e/X646e
NS	40X1376	1	1	MarkNet 8020 Gigabit Ethernet
NS	40X1377	1	1	MarkNet 8030 Fiber Ethernet
NS	40X1378	1	1	MarkNet 8050 wireless print server, 802.11g, US
NS	40X1562	1	1	MarkNet 8050 wireless print server, 802.11g, non-US
NS	40X0291	1	1	Parallel 1284-B interface card
NS	40X0290	1	1	RS232C serial interface card
NS	40X2529	1	1	IPDS SCS/TNe card assembly—X644e/X646e
NS	56P4116	1	1	Universal adjustable tray assembly—400-sheet
NS	40X3478	1	1	Forms card assembly—X642e
NS	40X4179	1	1	Forms card assembly—X644e/X646e
NS	40X1513	1	1	Simplified Chinese font card
NS	40X1514	1	1	Traditional Chinese font card
NS	40X1515	1	1	Korean font card
NS	40X1512	1	1	Japanese font card
NS	40X0179	1	1	Nyogel 744 grease packet
NS	40X0171	1	1	Cartridge shipping package, empty
NS	7375947	1	1	Relocation kit
NS	40X0499	1	1	Screws, parts packet