

7. Parts catalog

How to use this parts catalog

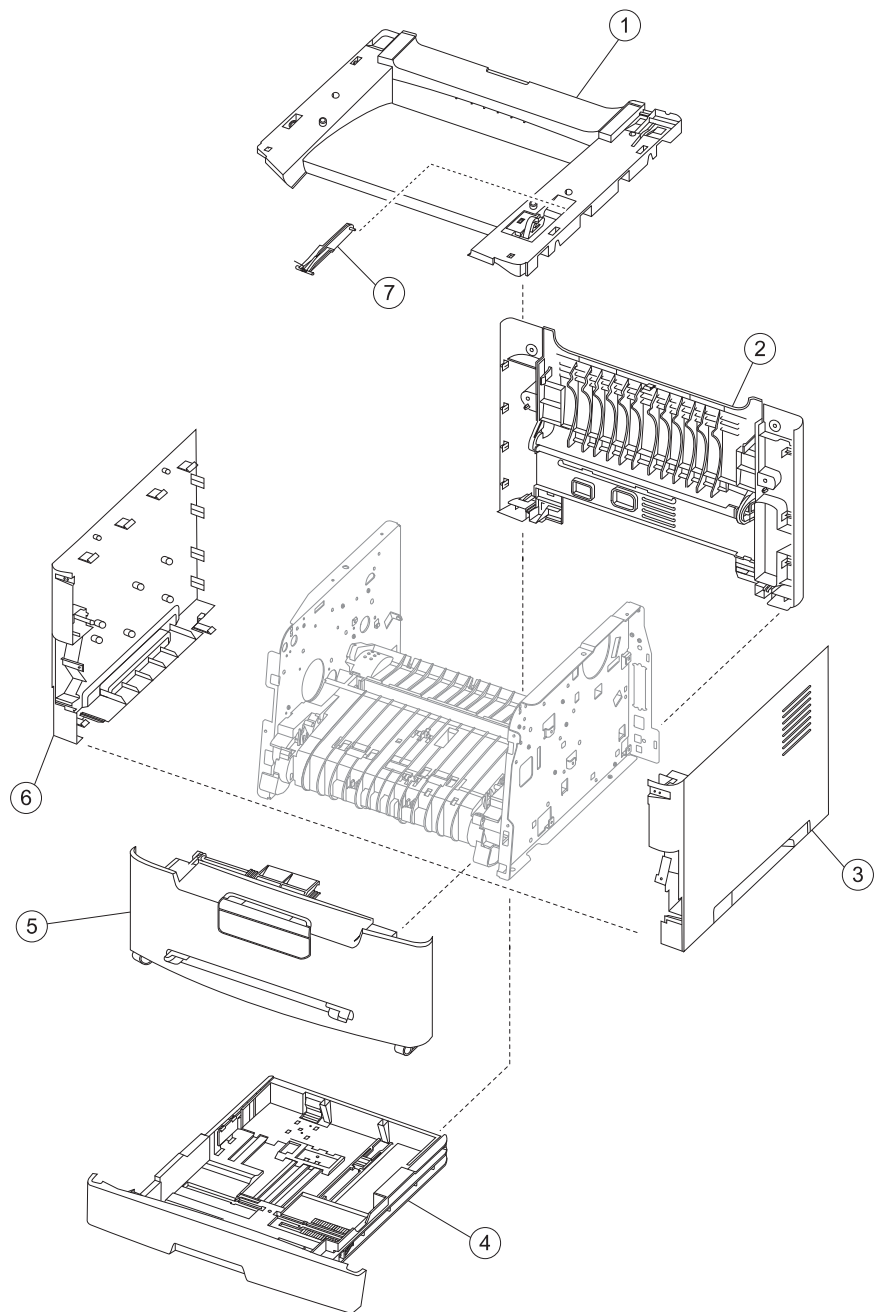
The following legend is used in the parts catalog:

Asm-Index	Part number	Units/mach	Units/FRU	Description
-----------	-------------	------------	-----------	-------------

- **Asm-index:** identifies the assembly and the item in the diagram. For example, 3-1 indicates assembly 3 and the item number 1.
- **Part number:** identifies the unique number that identifies this FRU.
- **Units/mach:** refers to the number of units actually used in the machine or product.
- **Units/FRU:** refers to the number of units packaged together and identified by the part number.
- **NS:** (Not shown) in the Asm-Index column indicates that the part is procurable but is not pictured in the illustration.
- **PP:** (Parts Packet) in the parts description column indicates the part is contained in a parts packet.
- Model information used in the parts catalog.

Machine type and model	Description
7011-200	Lexmark X203n
7011-215	Lexmark X204n

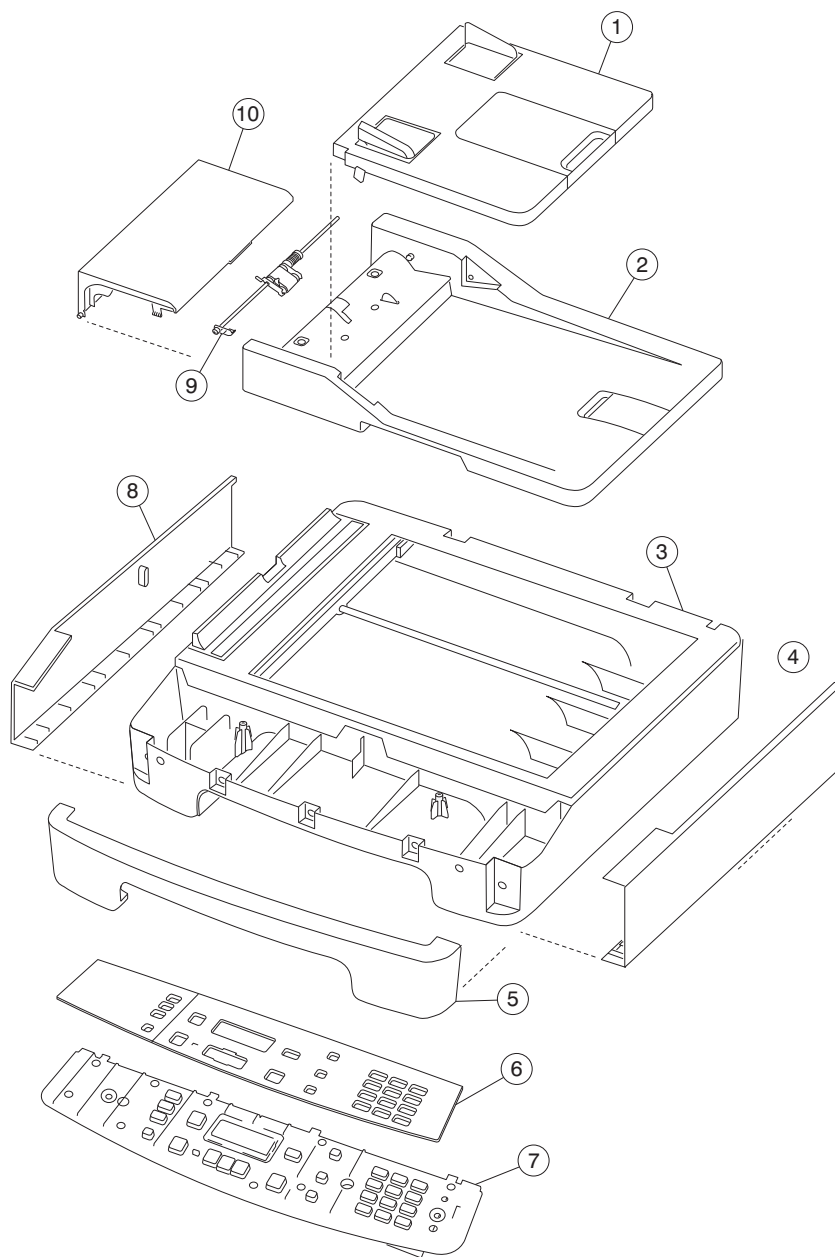
Assembly 1: Covers



Assembly 1: Covers

Asm-Index	Part number	Units/mach	Units/FRU	Description
1	40X5635	1	1	Top cover
2	40X5638	1	1	Rear cover assembly
3	40X5637	1	1	Right cover
4	40X5774	1	1	Main tray
5	40X5640	1	1	Front cover assembly
6	40X5636	1	1	Left cover
7	40X5764	1	1	Cam follower w/spring
NS	40X5775	1	1	Front access door strap

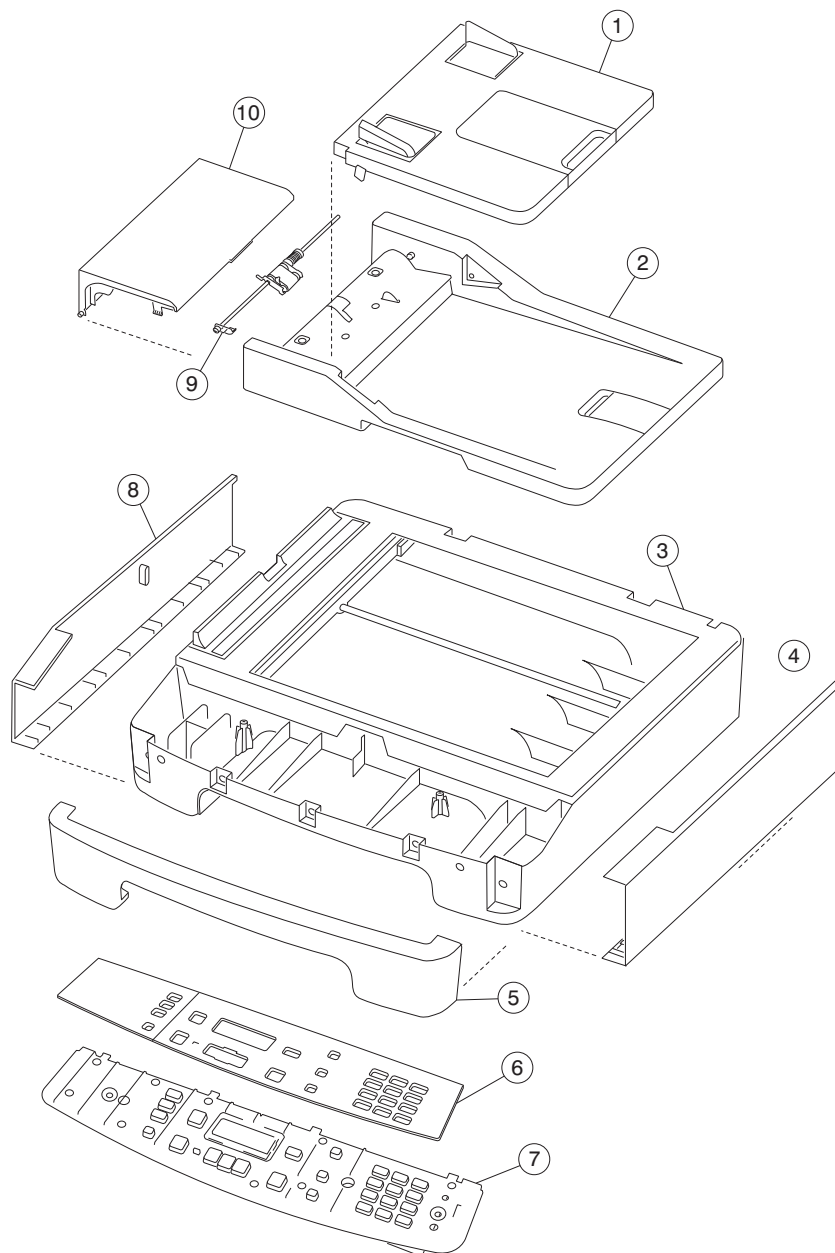
Assembly 2: Scanner



Assembly 2: Scanner

Asm-Index	Part number	Units/mach	Units/FRU	Description
1	40X5632	1	1	ADF input tray assembly
2	40X5761	1	1	ADF assembly (X204 Only)
3	40X5767	1	1	Flatbed assembly
4	40X5759	1	1	Right flatbed cover
5	40X5641	1	1	Scanner front cover
6	40X0384	1	1	X 203 Operator panel overlay (English)
6	40X0385	1	1	X 204 Operator panel overlay (English)
6	40X0354	1	1	X 203 Operator panel overlay (Spanish)
6	40X0355	1	1	X 204 Operator panel overlay (Spanish)
6	40X0348	1	1	X 203 Operator panel overlay (French)
6	40X0349	1	1	X 204 Operator panel overlay (French)
6	40X0356	1	1	X 203 Operator panel overlay (Brazilian Portuguese)
6	40X0357	1	1	X 204 Operator panel overlay (Brazilian Portuguese)
6	40X0352	1	1	X 203 Operator panel overlay (German)
6	40X0353	1	1	X 204 Operator panel overlay (German)
6	40X0350	1	1	X 203 Operator panel overlay (Italian)
6	40X0351	1	1	X 204 Operator panel overlay (Italian)
6	40X0358	1	1	X 203 Operator panel overlay (Dutch)
6	40X0359	1	1	X 204 Operator panel overlay (Dutch)
6	40X0360	1	1	X 203 Operator panel overlay (Danish)
6	40X0361	1	1	X 204 Operator panel overlay (Danish)
6	40X0362	1	1	X 203 Operator panel overlay (Norwegian)
6	40X0363	1	1	X 204 Operator panel overlay (Norwegian)
6	40X0364	1	1	X 203 Operator panel overlay (Swedish)
6	40X0365	1	1	X 204 Operator panel overlay (Swedish)
6	40X0366	1	1	X 203 Operator panel overlay (Finnish)
6	40X0367	1	1	X 204 Operator panel overlay (Finnish)
6	40X0370	1	1	X 203 Operator panel overlay (Russian)
6	40X0371	1	1	X 204 Operator panel overlay (Russian)
6	40X0368	1	1	X 203 Operator panel overlay (Polish)
6	40X0369	1	1	X 204 Operator panel overlay (Polish)
6	40X0372	1	1	X 203 Operator panel overlay (Turkish)
6	40X0373	1	1	X 204 Operator panel overlay (Turkish)
6	40X0374	1	1	X 203 Operator panel overlay (Hungarian)
6	40X0375	1	1	X 204 Operator panel overlay (Hungarian)
6	40X0376	1	1	X 203 Operator panel overlay (Czech)
6	40X0377	1	1	X 204 Operator panel overlay (Czech)
6	40X0378	1	1	X 203 Operator panel overlay (Simplified Chinese)
6	40X0379	1	1	X 204 Operator panel overlay (Simplified Chinese)

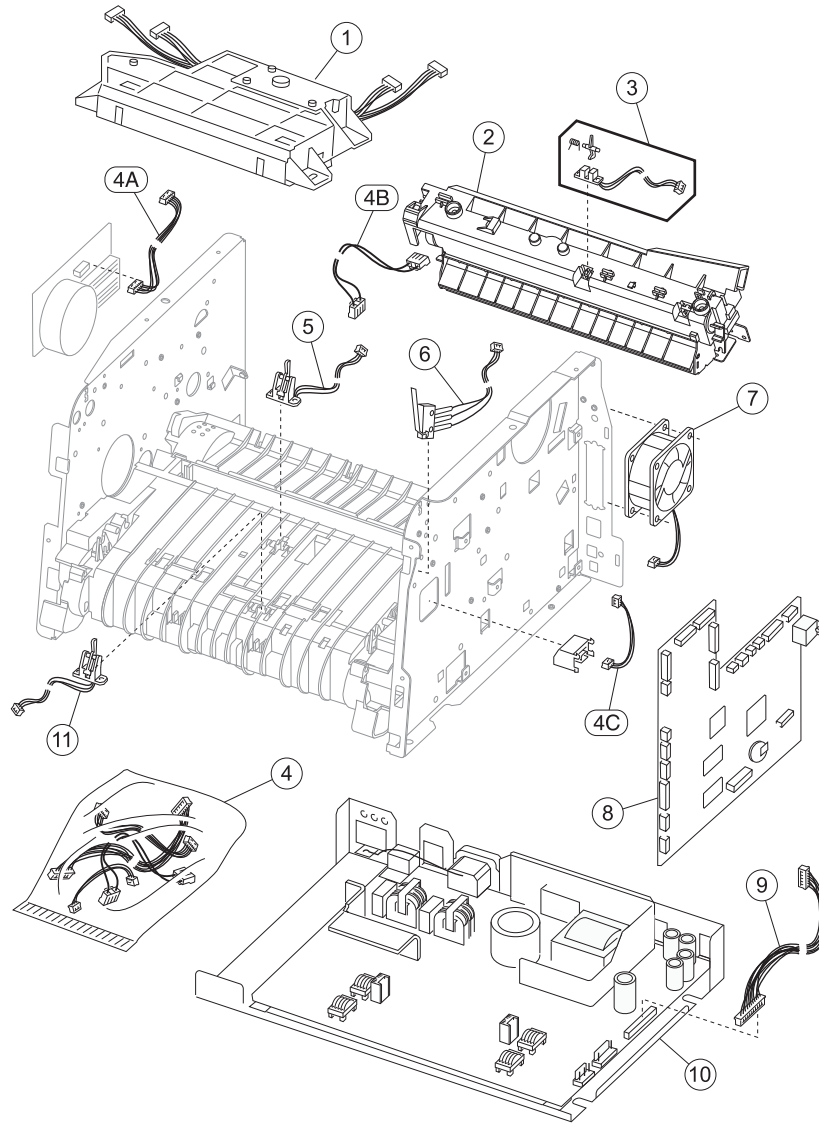
Assembly 2 (continued): Scanner



Assembly 2 (continued): Scanner

Asm-Index	Part number	Units/mach	Units/FRU	Description
6	40X0380	1	1	X 203 Operator panel overlay (Traditional Chinese)
6	40X0381	1	1	X 204 Operator panel overlay (Traditional Chinese)
6	40X0382	1	1	X 203 Operator panel overlay (Korean)
6	40X0383	1	1	X 204 Operator panel overlay (Korean)
7	40X5627	1	1	Operator panel assembly X203
7	40X5628	1	1	Operator panel assembly X204
8	40X5758	1	1	Left flatbed cover
9	40X5768	1	1	ADF separator roll assembly
10	40X5631	1	1	ADF top cover
NS	40X5770	1	1	ADF separator pad w / mylar sheet
NS	40X5762	1	1	ADF cable
NS	40X5963	1	1	Flatbed cover w/o ADF (X203 only)
NS	40X5763	1	1	Operator panel cable

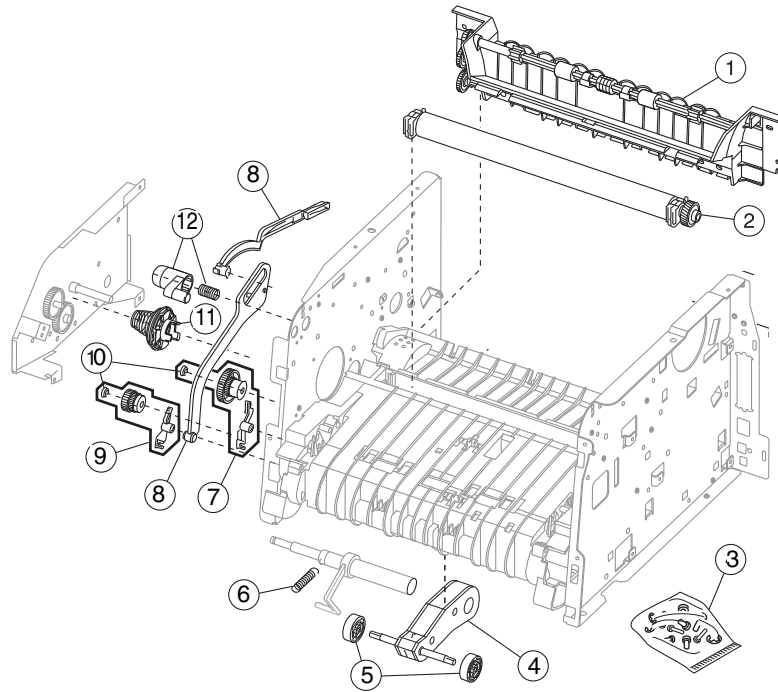
Assembly 3: Electronics




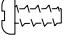

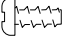
Assembly 3: Electronics

Asm-Index	Part number	Units/mach	Units/FRU	Description
1	40X1303	1	1	Laser/mirror print assembly, X203, X204
2	40X4194	1	1	Fuser assembly, 110 V
2	40X4195	1	1	Fuser assembly, 220 V
3	40X1325	1	1	Exit sensor assembly
4	40X1333	1	1	Miscellaneous cable assemblies. <p style="text-align: center;">Note: Use the LVPS cable in part 40X5780.</p> <ul style="list-style-type: none"> • a - Main drive motor • b - Fuser power • c - Toner sensor (not used on the X203, and X204)
5	40X1323	1	1	Input #1 sensor assembly
6	40X1326	1	1	Cover open sensor assembly
7	40X1328	1	1	Cooling fan
8	40X5765	1	1	Controller card (X203)
8	40X5766	1	1	Controller card (X204)
9	40X5780	1	2	Cable kit (LVPS cable)
10	40X5630	1	1	LVPS/HVPS 110V card
10	40X5629	1	1	LVPS/HVPS 220V card
11	40X1324	1	1	Input #2 sensor assembly (manual feeder)
NS	40X5625	1		Print engine cable kit (Laser diode cable, Mirror motor cable, motor cable)
NS	40X0386	1	1	Fax card

Assembly 4: Frame



Assembly 4: Frame

Asm-Index	Part number	Units/mach	Units/FRU	Description
1	40X1334	1	1	Paper exit guide assembly
2	40X2822	1	1	Transfer, roll, bearings, gear, spring
3	40X1353	N/A	N/A	Screws, miscellaneous (actual size) TP2NC-3.0+6P-Ni (2)   M3.0*0.5+6P-Ni Washer (2) MT3.0*0.5+6PF-Ni (5) TP2NC-3.0+6PF-Ni (4)  
4	40X4731	1	1	ASM, Pick arm
5	56P1820	2	2	Paper feed, rubber tires
6	40X1354	1	1	Front door & ACM spring
7	40X1331	1	1	Autocompensator clutch CBM
8	56P2083	1	1	Door-fuser idle gear link CBM
9	40X1330	1	1	Manual feed clutch CBM
10	56P2648	2	2	Plastic snap rings
11	40X1329	1	1	Developer drive coupling assembly
12	40X5760	1	1	Front access cover latch CBM

Assembly 5: Miscellaneous

Asm-Index	Part number	Units/mach	Units/FRU	Description
NS	12A2405	1	1	USB cable, packaged
NS	40X0289	1	1	Power cord, 1.8M (straight)—USA, Canada
NS	40X0278	1	1	Power cord, 6 foot (straight)—Europe and others
NS	40X0288	1	1	Power cord, 6 foot—Argentina
NS	40X0271	1	1	Power cord, 6 foot—United Kingdom
NS	40X0275	1	1	Power cord, 6 foot (straight)—Israel
NS	40X0274	1	1	Power cord, 6 foot—Switzerland
NS	40X0276	1	1	Power cord, 6 foot—South Africa
NS	40X0287	1	1	Power cord, 6 foot (straight)—Traditional Italy
NS	40X0279	1	1	Power cord, 6 foot (straight)—Danish
NS	40X4596	1	1	Power cord, 8 foot (straight)—Brazil
NS	40X0282	1	1	Power cord, 1.8M (straight)—PRC
NS	40X0270	1	1	Power cord, 1.8M (straight)—Japan
NS	40X0280	1	1	Power cord, 1.8M (straight)—Korea
NS	40X0281	1	1	Power cord, 1.8M (straight)—Taiwan
NS	40X0296	1	1	Power cord, 1.8M (straight)—Australia