

# CHAPTER 7 PARTS LIST

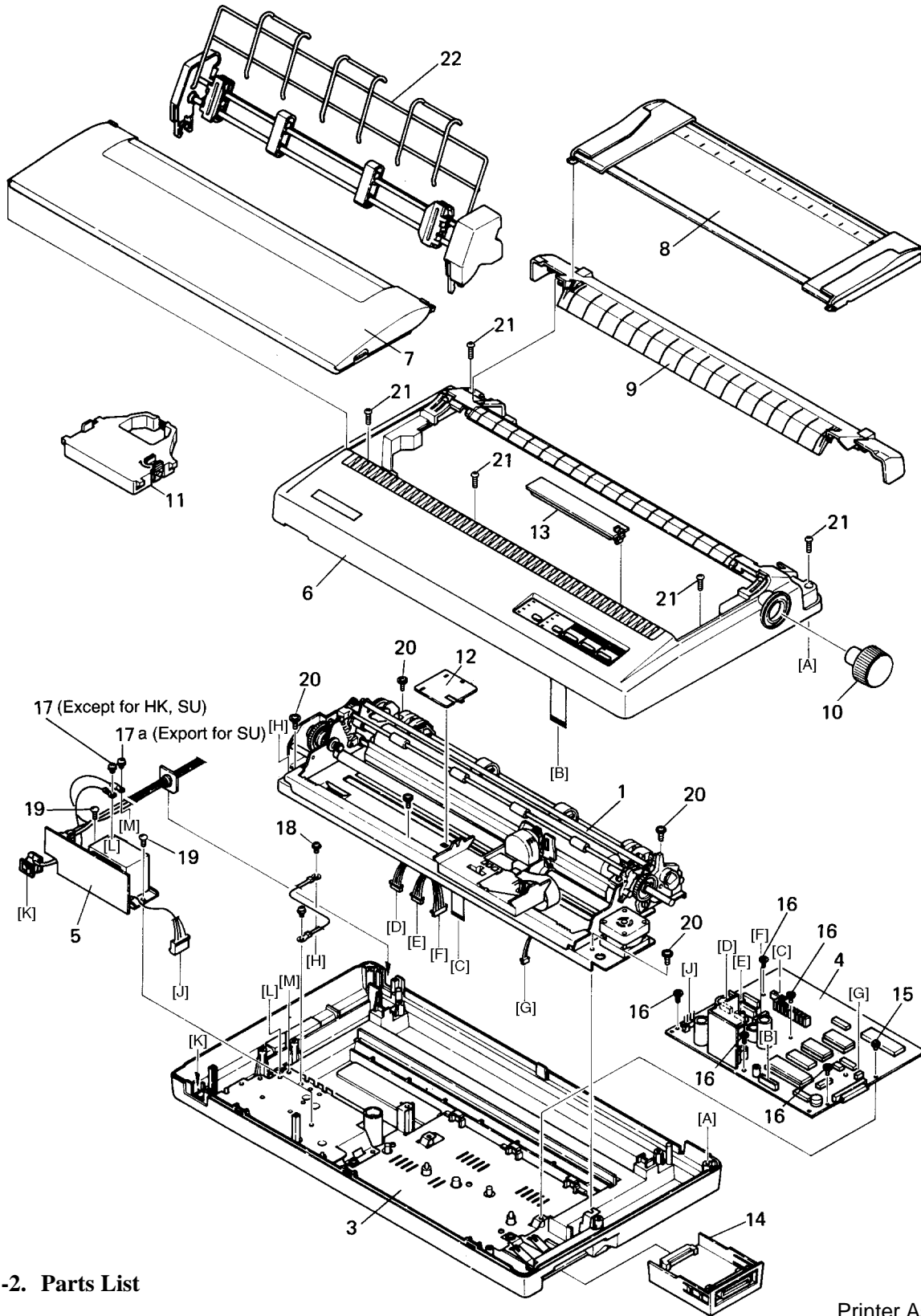
## HOW TO USE PARTS LIST

- (1) DRWG. NO.  
This column shows the drawing number of the illustration.
- (2) REVISED EDITION MARK  
This column shows a revision number.  
Parts that have been added in the revised edition are indicated with “#”.  
Parts that have been abolished in the revised edition are indicated with “\*”. For examplr,  
#1: First edition → Second edition      #2: Second edition → Third edition  
\*1: First edition → Second edition      \*2: Second edition → Third edition
- (3) PARTS NO.  
Parts numbers must be notified when ordering replacement parts.
- (4) PARTS NAME  
Parts names must be notified when ordering replacement parts.
- (5) Q`TY  
This column shows the number of the part used as indicated in the figure.
- (6) REMARKS  
When there are differences in the specifications of the fuse, destinations, etc., the differences are described in words or indicated by two letters.  
US ... U.S.A.      EC ... EC(with Germany)      UK ... United Kingdom      SC ... Scandinavia  
AS ... Australia      HK ... Hong Kong      TW ... Taiwan      SU ... Russia  
LA ... Lation America      PL ... Poland  
The seal number of ROM is described in this column. The “\*\*\*” mark of seal number is a variable representing on the software version.
- (7) RANK  
Parts marked “S” are service parts. Service parts are recommended to be in stock for maintenance.

<p><b>1. Printer Assembly ..... 66</b></p> <p>1-1. Disassembly Drawing ..... 66</p> <p>1-2. Parts List ..... 66</p> <p><b>2. Printer Mechanism ..... 69</b></p> <p>2-1. Disassembly Drawing ..... 69</p> <p>2-2. Parts List ..... 70</p> <p><b>3. Sub-assembly ..... 71</b></p> <p>3-1. Upper Case Unit ..... 71</p> <p>3-2. Lower Case Unit ..... 72</p> <p>3-3. Interface Cartridge Unit ..... 73</p> <p>3-4. Pull Tractor Unit (option) ..... 74</p> <p>3-5. Frame Unit ..... 75</p> <p>3-6. Tractor Unit ..... 77</p> <p>3-7. Platen Unit ..... 78</p> <p><b>4. Wiring Scheme of Printer ..... 79</b></p> <p><b>5. Main Logic Board ..... 80</b></p> <p>5-1. Circuit Diagram ..... 80</p> <p>5-2. Component Layout ..... 84</p> <p>5-3. Parts List ..... 85</p> <p><b>6. Control Panel Board ..... 88</b></p>	<p><b>6-1. Circuit Diagram ..... 88</b></p> <p><b>6-2. Component Layout ..... 89</b></p> <p><b>6-3. Parts List ..... 89</b></p> <p><b>7. Fuse Board ..... 90</b></p> <p>7-1. Circuit Diagram ..... 90</p> <p>7-2. Component Layout ..... 90</p> <p>7-3. Parts List ..... 90</p> <p><b>8. Parrallel Straight Board ..... 91</b></p> <p>8-1. Circuit Diagram ..... 91</p> <p>8-2. Component Layout ..... 92</p> <p>8-3. Parts List ..... 92</p> <p><b>9. Serial Buffer Board (option) ..... 93</b></p> <p>9-1. Circuit Diagram ..... 93</p> <p>9-2. Component Layout ..... 94</p> <p>9-3. Parts List ..... 95</p> <p><b>10. Parallel Buffer Board (option) ..... 96</b></p> <p>10-1. Circuit Diagram ..... 96</p> <p>10-2. Component Layout ..... 97</p> <p>10-3. Parts List ..... 98</p> <p><b>11. Waveform with Oscilloscope ..... 99</b></p>
---	---

# 1. Printer Assembly

## 1-1. Disassembly Drawing



## 1-2. Parts List

Printer Assembly

DRWG.NO.	REV.	PARTS NO.	PARTS NAME	Q'TY	REMARKS	RANK
1		89064810	MECHANISM WITH HEAD DP935	1		S
2	*1	82900772	RIBBON HOLDER	1	891 TO SECTION 2-2	S
3		87291130	LOWER CASE UNIT	1	NX-1500 EXCEPT FOR SC	S
		87291150	LOWER CASE UNIT	1	LC-15 SC FOR SC	S

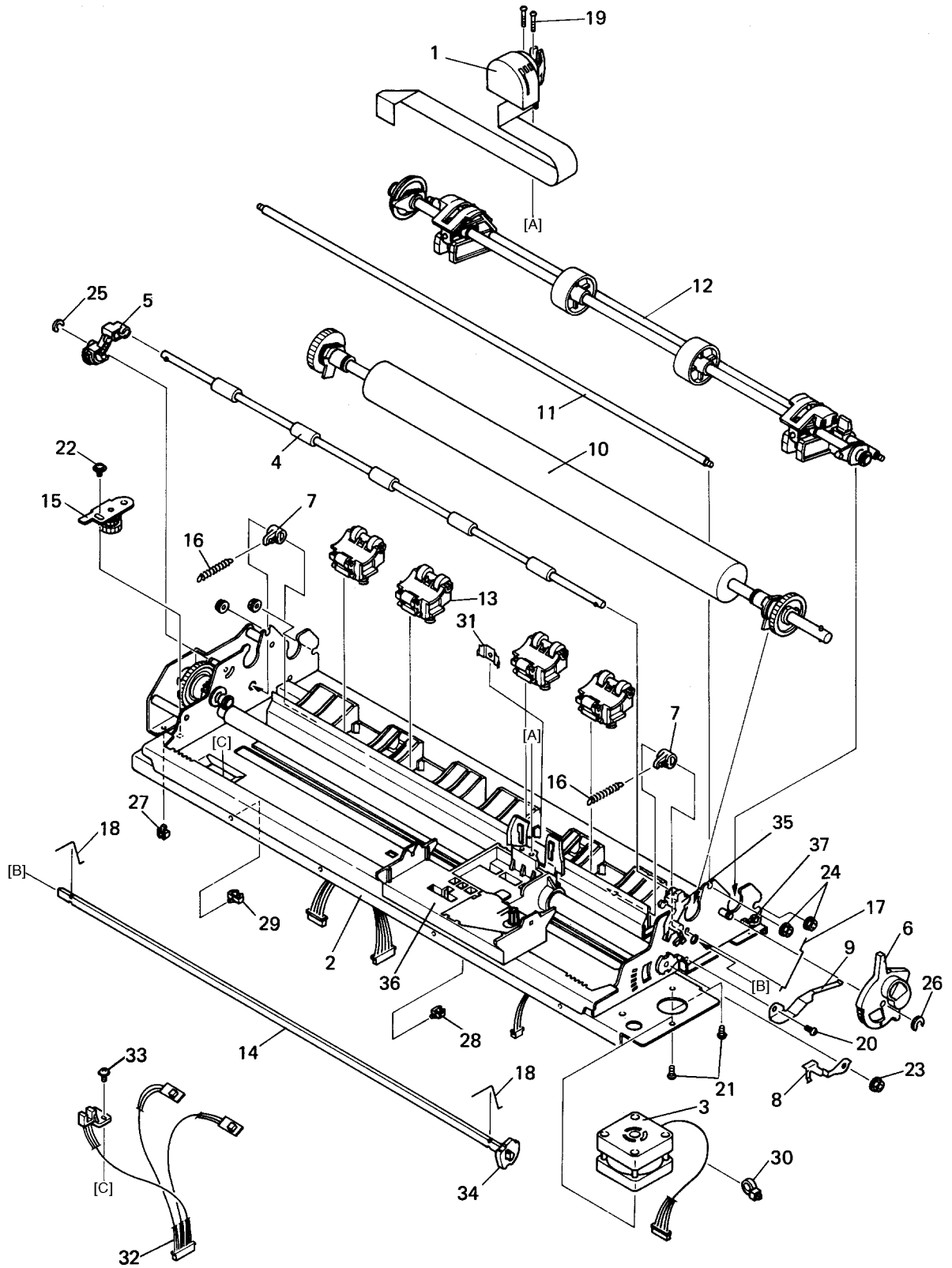
Printer Assembly

DRWG.NO.	REV.	PARTS NO.	PARTS NAME	Q'TY	REMARKS	RANK
4		87292150	MAIN LOGIC BOARD UNIT NX-1500	1	US,UK,AS,TW,LA	S
		87292160	MAIN LOGIC BD UNIT NX-1500 HK	1	FOR HK	S
		87292170	MAIN LOGIC BD UNIT LC-15 EC	1	FOR EC,SC	S
	*	2 87292170	MAIN LOGIC BD UNIT LC-15 EC	1	FOR SU	S
	#	2 87295900	MAIN LOGIC BD UNIT NX-1500 SU	1	FOR SU	S
	#	2 87295880	MAIN LOGIC BD UNIT LC-15 PL	1	FOR PL	S
5		87294110	FUSE BOARD UNIT NX-1500 US	1	FOR US,TW	S
		87294120	FUSE BOARD UNIT LC-15 EC	1	FOR EC,SC,LA,PL	S
	*	2 87294120	FUSE BOARD UNIT LC-15 EC	1	FOR SU	S
	*	3 87294300	FUSE BOARD UNIT NX-1500 SU	1	FOR SU	S
	#	3 87294120	FUSE BOARD UNIT LC-15 EC	1	FOR SU	S
		87294130	FUSE BOARD UNIT LC-15 UK	1	FOR UK	S
		87294140	FUSE BOARD UNIT LC-15 AS	1	FOR AS	S
		87294150	FUSE BOARD UNIT NX-1500 HK	1	FOR HK	S
6		87290190	UPPER CASE UNIT NX-1500	1	FOR US,HK,TW,LA	S
		87290200	UPPER CASE UNIT LC-15	1	FOR EC,UK,AS,SC	S
	#	1 87290370	UPPER CASE UNIT NX-1500 SU	1	FOR SU(NX)	
	#	1 87295140	UPPER CASE UNIT LC-15 SU	1	FOR SU(LC)	
	#	2 87295150	UPPER CASE UNIT LC-15 PL(P)	1	FOR PL	
7	*	3 83023420	PRINTER COVER NX-1500	1		S
	#	3 83023421	PRINTER COVER NX-1500	1		S
8	*	3 87296050	PAPER GUIDE UNIT NX-1500	1		S
	#	3 87816240	PAPER GUIDE UNIT XBL-15II	1		S
9	*	1 83023430	REAR COVER NX-1500	1		S
	*	3 83023431	REAR COVER NX-1500	1		S
	#	3 83025801	REAR COVER XBL-15II	1		S
10	*	3 87296030	PLATEN KNOB UNIT NX-2400	1		S
	#	3 87816230	PLATEN KNOB UNIT XBL-15II	1		S
11		80981220	INK RIBBON CARTRIDGE JAN X9	1	EC,UK,AS,SC,SU,LA	S
	*	2 80981220	INK RIBBON CARTRIDGE JAN X9	1	FOR TW,HK	S
	#	2 80982200	INK RIBBON CARTRIDGE JAN Z9HD	1	FOR TW,HK	S
	*	2 80981210	INK RIBBON CARTRIDGE UPC X9	1	FOR US,LA	S
	#	2 80982210	INK RIBBON CARTRIDGE UPC Z9HD	1	FOR US,LA	S
	*	4 80981880	INK RIBBON CARTRIDGE UPC LZ9	1	FOR US,LA :OPTION	
	#	4 80981900	INK RIBBON CARTRIDGE UPC LZ9	1	FOR US,LA :OPTION	
	#	1 80981890	INK RIBBON CARTRIDGE JAN LZ9	1	EXC.FOR US,LA:OPTION	
12	*	2 83910911	CABLE HOLDER 921	1		S
	#	2 83910912	CABLE HOLDER 921	1		S
13	*	3 83911440	ROM COVER NX-1500	1		S
	#	3 83025810	ROM COVER XBL-15II	1		S
14	*	2 87299210	IF CARTRIDGE UNIT X15	1	PARALLEL I/F	S
	#	2 87808010	CARTRIDGE PAR UNIT Z15	1	PARALLEL I/F	S
		89597010	BUFFER CARTRIDGE IP-128XL UPC	1	FOR US,LA :OPTION	
		89597030	BUFFER CARTRIDGE IP-128XLHKJAN	1	FOR HK :OPTION	
		89597020	BUFFER CARTRIDGE IP-128XL JAN	1	EXC.FOR US,LA,HK:OP.	
		87299220	SERIAL CARTRIDGE IS-8XL UPC	1	FOR US,LA :OPTION	
		87299230	SERIAL CARTRIDGE IS-8XL JAN	1	EXC.FOR US,LA,HK:OP.	
		87299240	SERIAL CARTRIDGE IS-8XL JAN HK	1	FOR HK :OPTION	
15		01903055	SCREW TR 3-8 WS/WF	1		S
16		01903038	SCREW TAT 3-10 PT-FL	5		S
17		01914036	SCREW TR 4-5 WS	1	EXCEPT FOR HK,SU	S
17a		01914036	SCREW TR 4-5 WS	1	EXCEPT FOR SU	S
18	*	2 01914039	SCREW TAT 4-8 WS	1		S
	#	2 01914034	SCREW TAT 4-8 CT-WF	1		S
19	*	3 01704103	SCREW TRS 4-10-C	2	FOR US	S
	*	3 01901425	SCREW TR 4-10 FL	2	EXCEPT FOR US	S
	#	3 01901425	SCREW TR 4-10 FL	2		S

DRWG.NO.	REV.	PARTS NO.	PARTS NAME	Q'TY	REMARKS	RANK
20		01914031	SCREW TAT 4-12 PT-FL	5		S
21		01914030	SCREW TAT 4-15 PT	5		S
22		87299160	PULL TRACTOR UNIT PT-15XJ UPC	1	FOR US,LA :OPTION	
		87299190	PULL TRACTOR UNIT PT-15XJ JAN	1	EXC.FOR US,LA:OPTION	
-		89590183	ASF SF-15DJ US	1	FOR US,LA :OPTION	
		89590181	ASF SF-15DJ WG	1	FOR EC :OPTION	
		89590180	ASF SF-15DJ UK	1	FOR UK,SC,TW :OPTION	
	#1	89590186	ASF SF-15DJ HK	1	FOR HK,SU :OPTION	
	#2	89590185	ASF SF-15DJ AS	1	FOR AS :OPTION	

## 2. Printer Mechanism

### 2-1. Disassembly Drawing



## 2-2. Parts List

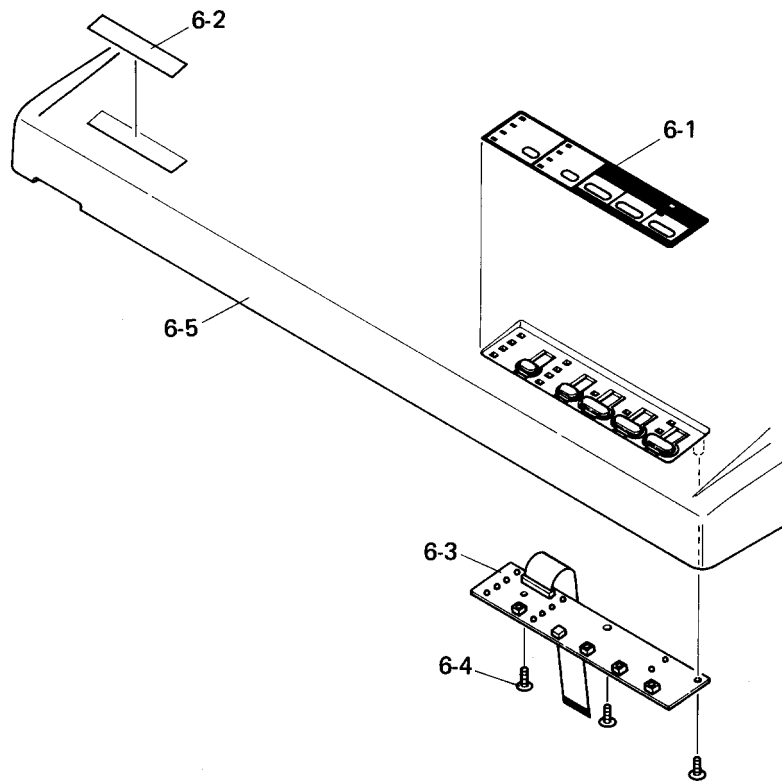
### Printer Mechanism

DRWG.NO.	REV.	PARTS NO.	PARTS NAME	Q'TY	REMARKS	RANK
1		89131010	PRINT HEAD DP9305	1		S
2	*1	87060130	FRAME UNIT 935	1		
	#1	87060131	FRAME UNIT 935	1	NOTE1	
3		87061110	CARRIAGE MOTOR UNIT 935	1		S
4		87067170	BAIL ROLLER SHAFT UNIT 935	1		S
5		83400650	BAIL LEVER L 935	1		S
6	*2	83400470	RELEASE LEVER 921	1		S
	#2	83400471	RELEASE LEVER 921	1		S
7		83400670	SPRING HOLDER LEVER 935	2		
8	*1	82401140	ADJUSTING LEVER 935	1		
	#1	82401141	ADJUSTING LEVER 935	1		
9		82501100	HOLDER SPRING B 935	1		
10		87063080	PLATEN UNIT B 935	1		S
11		81370660	TRACTOR STAY 935	1		
12		87066050	TRACTOR UNIT 935	1		S
13		87067180	ROLLER HOLDER UNIT 935	4		S
14	*1	87067190	RELEASE SHAFT UNIT 935	1	INCLUDES NO.34	
	#1	81380520	RELEASE SHAFT 935	1	NOT INCLUDE NO.34	
15	*3	87067030	TENSION LEVER UNIT 921	1		
	#3	87427020	TENSION LEVER UNIT 741	1		
16	*1	80510860	SPRING E050-055-0358	2		S
	*3	80510930	SPRING E056-060-0397	2		S
	#3	80510931	SPRING E056-060-0397	2		S
17	*1	80530570	GROUND CONTACT SPRING 921	1		S
	#1	80530571	GROUND CONTACT SPRING 921	1		S
18	*1	80530660	HOLDER SPRING 935	2		S
	#1	80530661	HOLDER SPRING 935	2		S
19		01902612	SCREW TAT 2.6-16 PT	2		S
20		01903064	SCREW TAT 3-5 CT	1		S
21		00830604	SCREW TR 3-6	2		S
22		01903018	SCREW TR 3-6 WS/WF	1		S
23		02040404	FLANGED NUT NHW4.0-S	1		S
24	*2	02040403	TOOTHED NUT NHK4	4		S
	#2	02020401	HEXAGON NUT NH4-2	4		S
25		04020015	STOP RING SE3.0	1		S
26		04020016	STOP RING SE4.0	1		S
27		04991214	MINI CORD CLAMP UAMS-05-0	1		S
28		04991230	MINI CORD CLAMP UAMS-05-SN	1		S
29		04991232	MINI CORD CLAMP UAMS-05SN-W	2		S
30		04991204	FASTENER T18S	3		S
31	*1	82900772	RIBBON HOLDER 891	1		S
	*2	82900773	RIBBON HOLDER 891	1		S
	#2	82902200	RIBBON HOLDER 935	1		S
32	#1	87060720	DETECTOR UNIT A ASSY 935	1		
33	#1	01903073	SCREW TR 3-6 FL SPECIAL	1		
34	*2	83100611	RELEASE GEAR 921	1		
	#2	83100612	RELEASE GEAR 921	1		
35	#2	83400660	BAIL LEVER R 935	1		
36	#2	87060270	CARRIAGE UNIT 935	1		
37	#2	87060700	DETECTOR UNIT B ASSY 935	1		

Note 1: Frame unit includes drawing no. 9, 13, 14, 20, 27, 32, 33, 34, 35, 36 and 37.

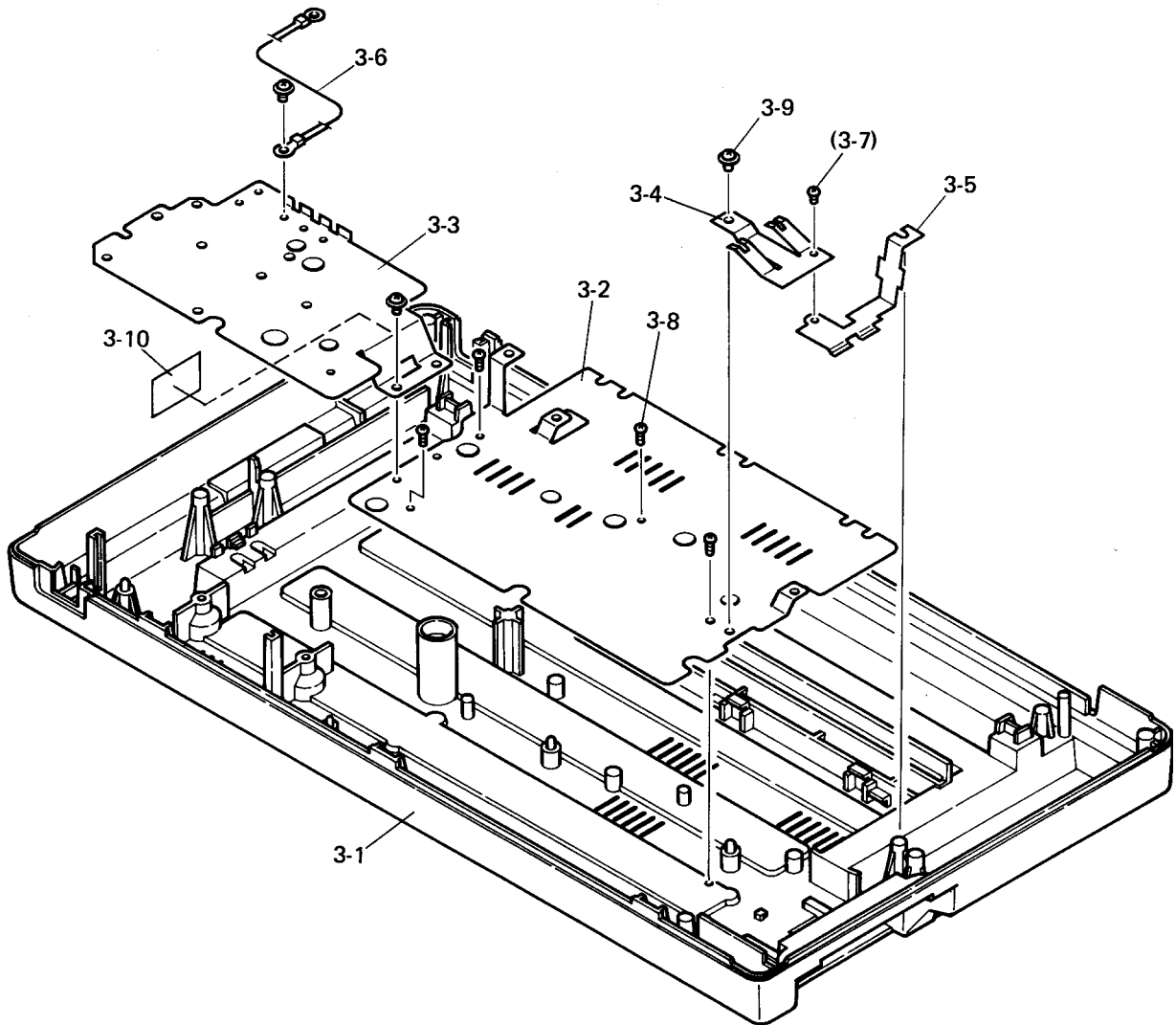
### 3. Sub-assembly

#### 3-1. Upper Case Unit



DRWG.NO.	REV.	PARTS NO.	PARTS NAME	Q'TY	REMARKS	RANK
6-1	*2	80086550	OPERATION SHEET SPECIAL LC-15	1	FOR SU	
	#2	80087200	OPERATION SHEET NX-1500 SU	1	FOR SU	
		80086220	OPERATION SHEET NX-1500	1	EXCEPT FOR SU	S
6-2	*3	80081910	BRAND SEAL NX-1500	1	FOR NX-1500	S
	#3	80081911	BRAND SEAL NX-1500	1	FOR NX-1500	S
	*3	80082500	BRAND SEAL LC-15	1	FOR LC-15	S
	#3	80082501	BRAND SEAL LC-15	1	FOR LC-15	S
	*3	80083640	BRAND SEAL LC-15 SU	1	FOR LC-15 SU	
	#3	80083641	BRAND SEAL LC-15 SU	1	FOR LC-15 SU	
	*3	80083650	BRAND SEAL LC-15 PL	1	FOR LC-15 PL	
	#3	80083651	BRAND SEAL LC-15 PL	1	FOR LC-15 PL	
6-3		87290810	CONTROL PANEL BD UNIT NX-1500	1		S
6-4		01903038	SCREW TAT 3-10 PT-FL	3		S
6-5	*2	83023400	UPPER CASE NX-1500	1		
	*3	83023401	UPPER CASE NX-1500	1		
	#3	83025781	UPPER CASE XBL-15II	1		
-	*3	80992560	SHEET U1 NX-2415	1		
	*3	80992570	SHEET U2 NX-2415	1		
	*3	80992740	SHEET U3 NX-2415	1		
	*3	80992800	SHEET U1 NX-1500	1		

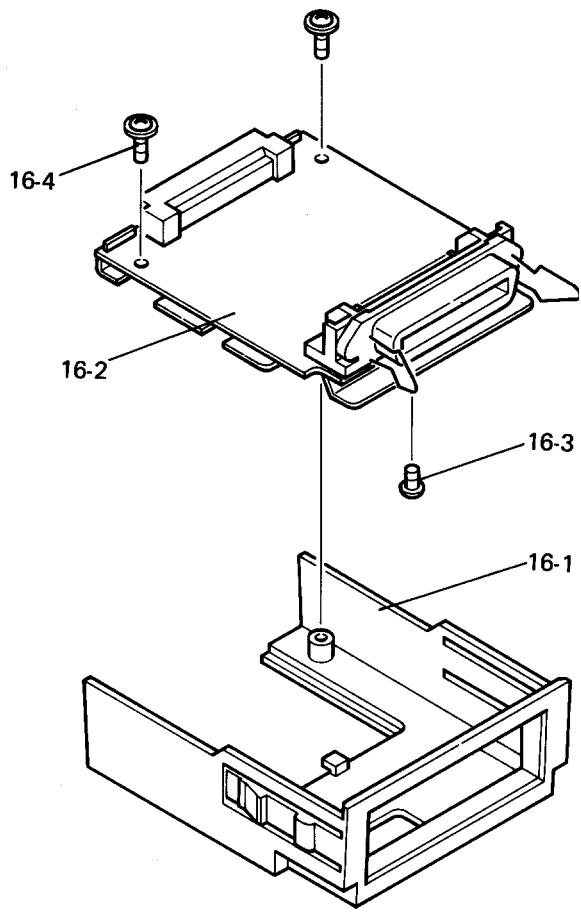
### 3-2. Lower Case Unit



DRWG. NO.	REV.	PARTS NO.	PARTS NAME	Q' TY	REMARKS	RANK
3-1	*2	83023410	LOWER CASE NX-1500	1		
	*3	83023411	LOWER CASE NX-1500	1		
	#3	83023413	LOWER CASE NX-1500	1		
3-2		82010900	BOARD CHASSIS NX-1500	1		
3-3		82010910	POWER CHASSIS NX-1500	1		
3-4		82501050	GROUND SPRING NX-1500	1		
3-5		82901390	GROUND BRACKET NX-1500	1		
3-6		80925381	MESHED GROUND WIRE 80-A	1		S
3-7	*2	01903064	SCREW TAT 3-5 CT	1		S
	*3	01903094	SCREW TAT 3-5 DT	1		S
3-8	*3	00930803	SCREW TAT 3-8 PT	4		S
	#3	00930803	SCREW TAT 3-8 PT	2		S
3-9	*1	01914032	SCREW TAT 4-7 CT	3		S
	*2	01914039	SCREW TAT 4-8 WS	3		S
	#2	01914034	SCREW TAT 4-8 CT-WF	3		S
3-10		80086480	CAUTION SEAL LC-10II SC	1	FOR SC ONLY	
-	*3	80992810	SHEET L1 NX-1500	1		
	*3	80992820	SHEET L2 NX-1500	1		
	*3	80992830	SHEET L3 NX-1500	1		
	*3	80992840	SHEET L4 NX-1500	1		
	*4	80992850	SHEET L5 NX-1500	1		
	#4	80992851	SHEET L5 NX-1500	1		
	*4	80992860	SHEET L6 NX-1500	1		
	#4	80992861	SHEET L6 NX-1500	1		

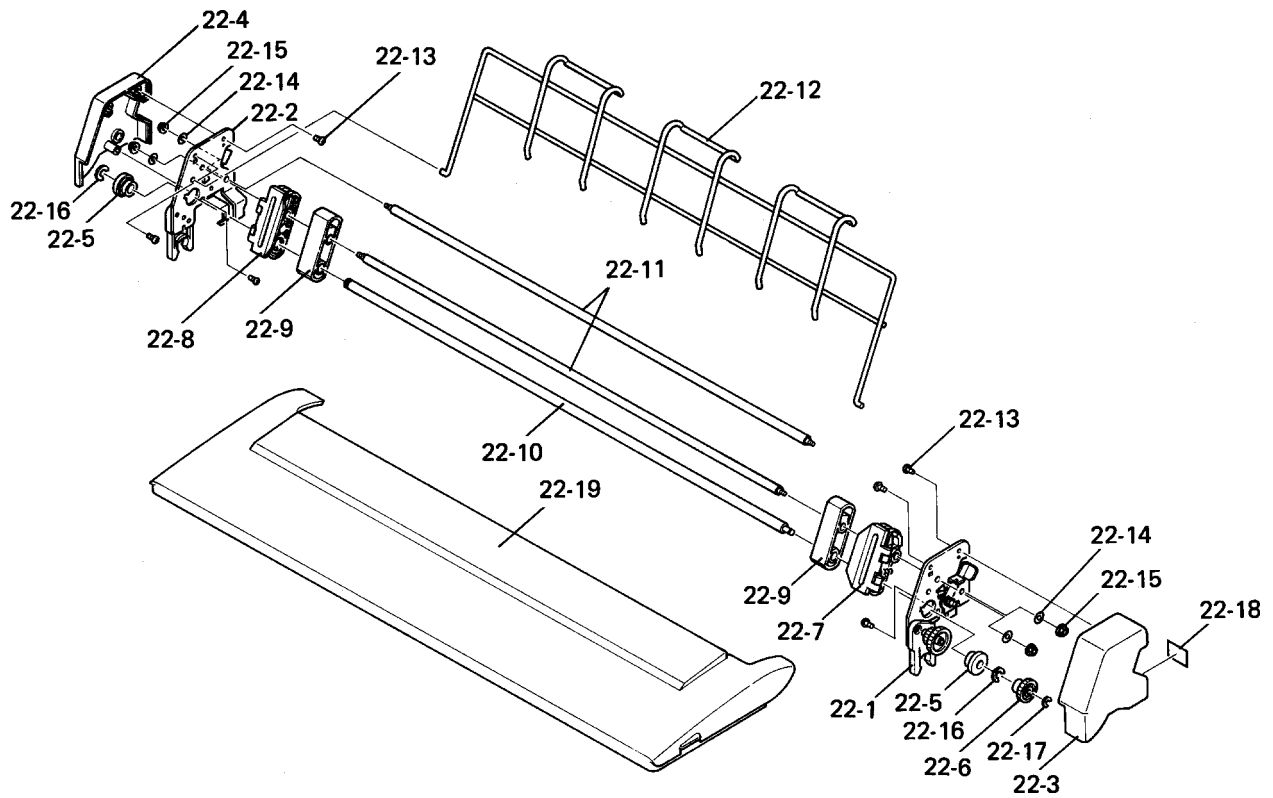


### 3-3. Interface Cartridge Unit



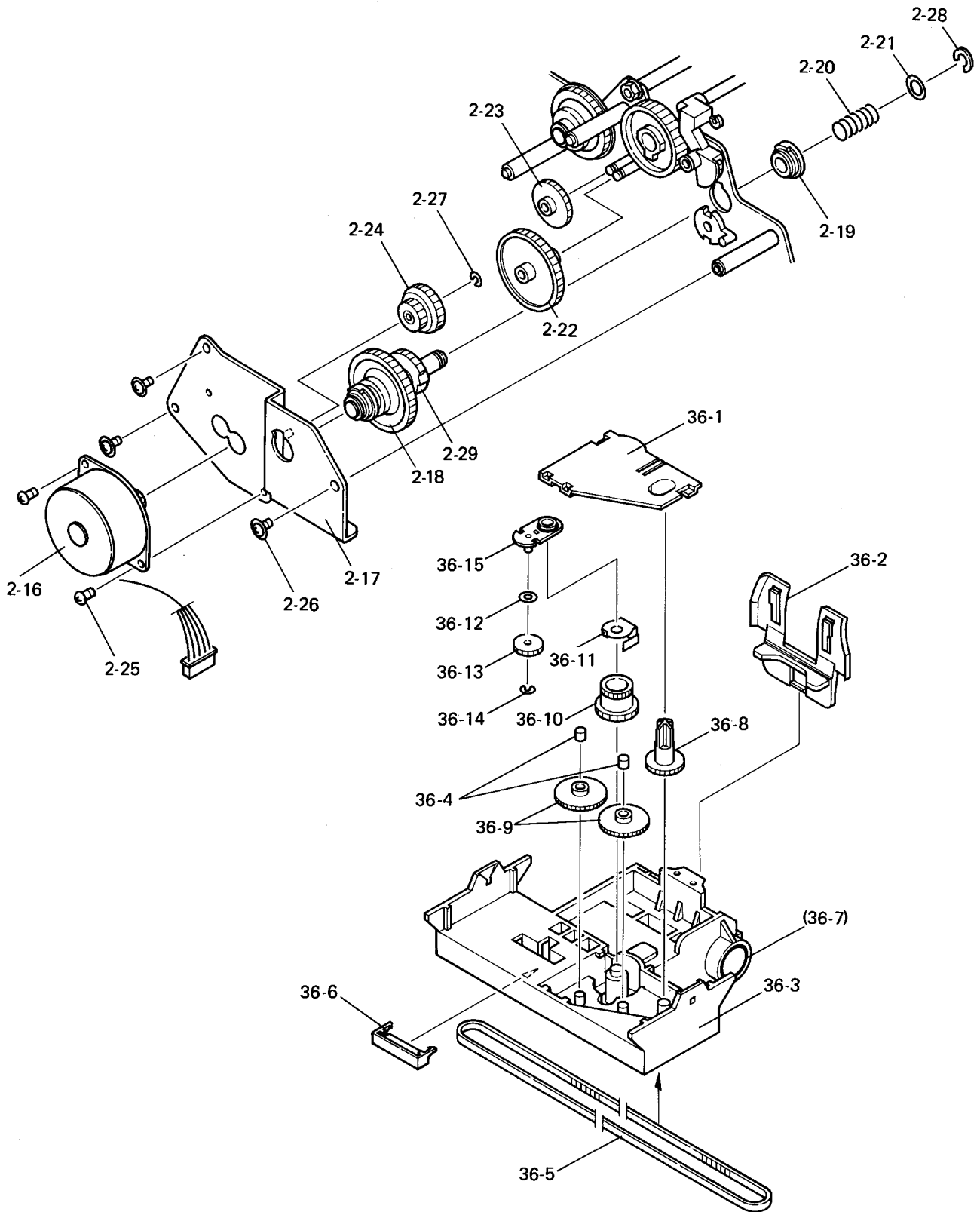
DRWG. NO.	REV.	PARTS NO.	PARTS NAME	Q'TY	REMARKS	RANK
16-1	*2	83023450	INTERFACE COVER NX-1500	1		
	*3	83024920	INTERFACE COVER ZB-15	1		
	#3	83024921	INTERFACE COVER ZB-15	1		
16-2		87297030	PARALLEL I/F BOARD UNIT NX-1500	1		S
		87299260	SERIAL I/F BOARD UNIT X15	1	EXCEPT FOR HK:OPTION	
		87299270	SERIAL I/F BOARD UNIT X15 HK	1	FOR HK :OPTION	
16-3		01903064	SCREW TAT 3-5 CT	1		S
16-4		01903038	SCREW TAT 3-10 PT-FL	2		S

### 3-4. Pull Tractor Unit (option)



DRWG. NO.	REV.	PARTS NO.	PARTS NAME	Q'TY	REMARKS	RANK
22- 1		87299340	FRAME R UNIT PT-15X	1		
22- 2		87299350	FRAME L UNIT PT-15X	1		
22- 3		83023560	TRACTOR COVER R PT-15X	1		
22- 4		83023570	TRACTOR COVER L PT-15X	1		
22- 5		83200090	BUSHING 848	2		
22- 6		83101140	GEAR 32X0.5 PT-15X	1		
22- 7		80906030	TRACTOR UNIT R 905	1		
22- 8		80906040	TRACTOR UNIT L 905	1		
22- 9	*3	83911060	SHEET GUIDE 905	2		
	#3	83911061	SHEET GUIDE 905	2		
22-10	*3	81360640	TRACTOR SHAFT PT-15X	1		
	#3	81360641	TRACTOR SHAFT PT-15X	1		
22-11		81370670	TRACTOR STAY PT-15X	2		
22-12		80530750	PAPER GUIDE PT-15X	1		
22-13		01902609	SCREW TAT 2.6-5 PT	6		
22-14		02440401	WAVE WASHER WW4X8X0.2X1.5H	4		
22-15		02040301	FLANGED NUT NHW3	4		
22-16		04020017	STOP RING SE5.0	2		
22-17		04020015	STOP RING SE3.0	1		
22-18		80082570	BRAND SEAL PT-15XJ	1		
22-19		83023620	PRINTER COVER PT-15X	1		

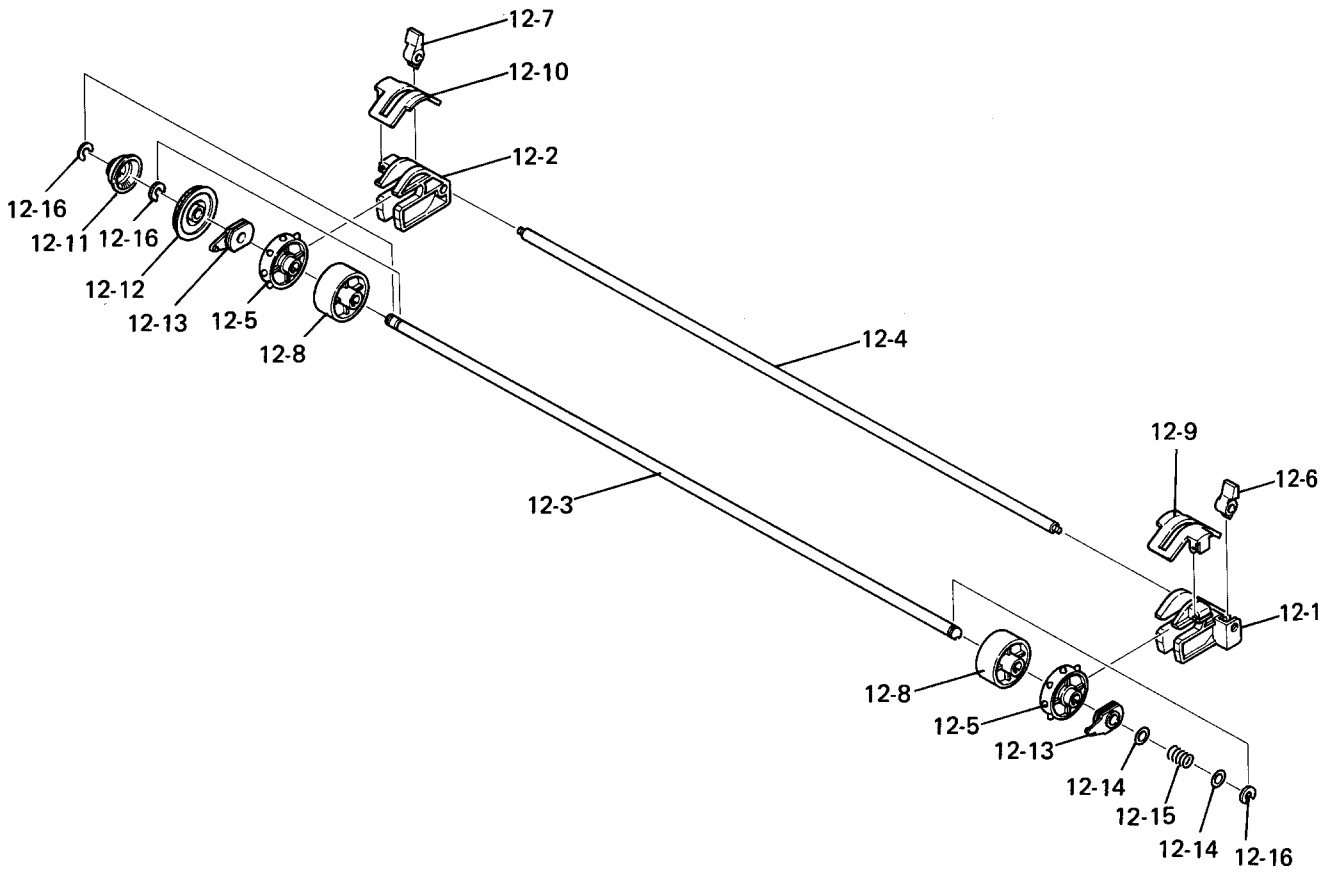
### 3-5. Frame Unit



Frame Unit

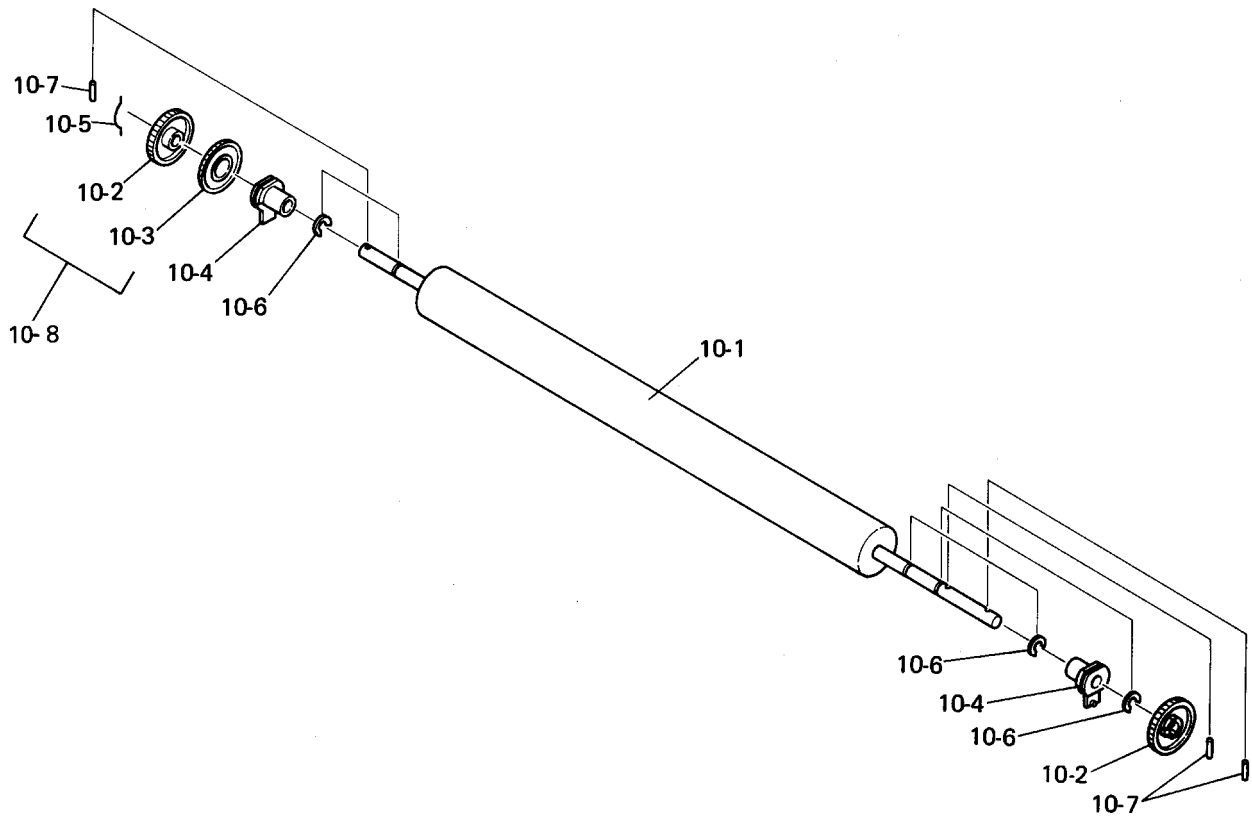
DRWG.NO.	REV.	PARTS NO.	PARTS NAME	Q'TY	REMARKS	RANK
36-1		83910901	GEAR COVER 921	1		S
36-2		83902300	CARD HOLDER 935	1		S
36-3	*2	83902320	CARRIAGE 935	1		
	*2	83902321	CARRIAGE 935	1		
	#2	87060471	CARRIAGE ASSY 935	1	INCLUDES NO.36-7	
36-4		81210310	BUSHING 4X5X4.5 921	2		
36-5		80902140	TIMING BELT HTD102 524X4.8	1		
36-6	*3	80203010	REAR SLIDER 921	1		S
	#3	80203011	REAR SLIDER 921	1		S
36-7	*2	80210470	BUSHING 14X16X10	2		S
36-8		83120470	RIBBON CASSETTE GEAR 921	1		S
36-9		83100592	IDLER GEAR 70X0.3	2		S
36-10		83100600	IDLER GEAR 16X1-40	1		S
36-11		82501020	CLUTCH LEVER SPRING 921	1		S
36-12		02303025	POLY-SLIDER WP3X0.25	1		S
36-13		83100541	IDLER GEAR 17X41X0.3	1		S
36-14		04020002	STOP RING SE1.5	1		S
36-15		87412910	CLUTCH PLATE ASSY 102	1		S
2-16		87060730	PAPER FEED MOTOR ASSY 935	1		S
2-17		87060740	PF MOTOR PLATE ASSY 935	1		S
2-18	*1	87060750	CLUTCH SHAFT ASSY 935	1		S
	#1	87060751	CLUTCH SHAFT ASSY 935	1	NOT INCLUDE NO.2-29	S
2-19		83200490	BUSHING F7X16X6.5	1		
2-20		80520640	SPRING C080-035-0216	1		
2-21		02307050	POLY-SLIDER WP7X0.5	1		
2-22		83100520	IDLER GEAR 16X72X0.5	1		
2-23		83100510	GEAR 40X0.5	1		
2-24		83101100	IDLER GEAR 24X40X0.5 935	1		S
2-25		01903064	SCREW TAT 3-5 CT	2		S
2-26		01903031	SCREW TR 3-6 FL	3		
2-27		04020010	STOP RING SE2.0	1		S
2-28		04020017	STOP RING SE5.0	1		
2-29	#1	83101090	GEAR 22X1.0 935	1		

### 3-6. Tractor Unit



DRWG. NO.	REV.	PARTS NO.	PARTS NAME	Q'TY	REMARKS	RAN
12-1		83901620	TRACTOR HOLDER R	891	1	S
12-2		83901631	TRACTOR HOLDER L	891	1	S
12-3	*3	81360620	TRACTOR SHAFT	935	1	
	#3	81360622	TRACTOR SHAFT	935	1	
12-4		81370660	TRACTOR STAY	935	1	
12-5		83110110	SPROCKET WHEEL	891	2	S
12-6		83400311	CLAMP LEVER R	831	1	S
12-7		83400321	CLAMP LEVER L	831	1	S
12-8	*3	83901600	SHEET GUIDE	891	2	
	#3	83901601	SHEET GUIDE	891	2	
12-9		83910861	TRACTOR COVER R	891	1	S
12-10		83910871	TRACTOR COVER L	891	1	S
12-11		83110100	TRACTOR CLUTCH	891	1	S
12-12		83100530	TRACTOR GEAR 64X0.5		1	S
12-13		83200700	TRACTOR BUSHING	905	2	
12-14		02307050	POLY-SLIDER WP7X0.5		2	S
12-15	*3	80520350	SPRING C090-070-0130		1	S
	#3	80520351	SPRING C090-070-0130		1	S
12-16		04020017	STOP RING SE5.0		3	S

### 3-7. Platen Unit



DRWG. NO.	REV.	PARTS NO.	PARTS NAME	Q'TY	REMARKS	RANK	
10-1	*3	80202140	PLATEN B	935	1		
10-1	#3	80202141	PLATEN B	935	1		
10-2		83100550	PLATEN GEAR A	891	2	S	
10-3		83100560	PLATEN GEAR B	891	1	S	
10-4		83902310	PLATEN HOLDER	935	2		
10-5		80530520	PLATEN GEAR SPRING	891	1	S	
10-6	*1	04020014	STOP RING SE6.0		3	S	
	#1	04020022	STOP RING SE6.0-SUS		3	S	
10-7		04012502	ROLL PIN SP2.5X12		3		
10-8	#2	87063340	PLATEN GEAR ASSY	891B	1	WITH 10-2,3,5	S