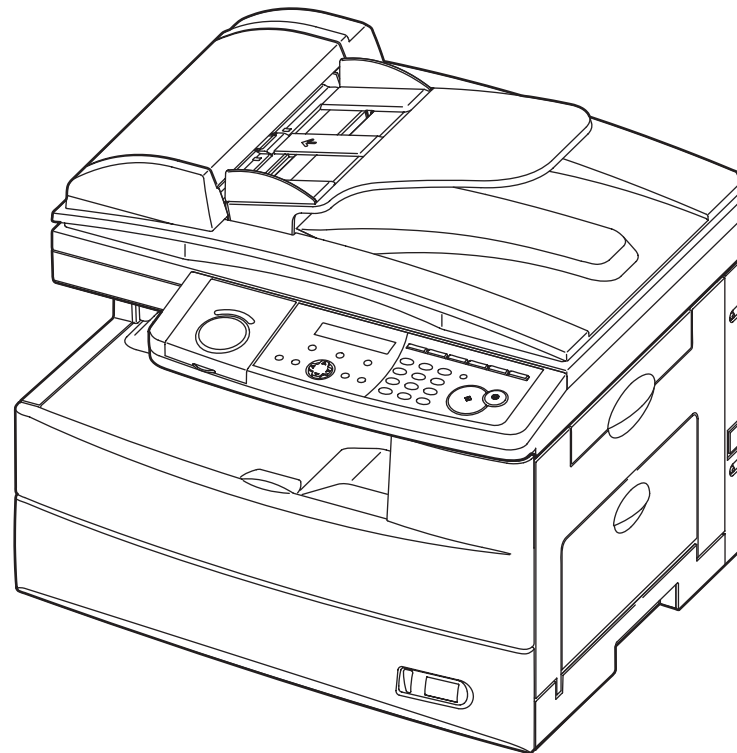


PARTS CATALOGUE

product code

DA7481



Konica Minolta

190f

EUR

PRICE

EURO

2007/07/23

date

~~2007/05/11~~

AA

<HOW TO USE THIS CATALOGUE>

1. INTRODUCTION

Before placing a purchase order for spare parts, please read following instructions to avoid any misunderstandings.

2. DEFINITION

In this catalogue, a "part" means each component of a fax machine. Every part has its own name and own number in order to distinguish each other.

3. HOW TO SEE THIS CATALOGUE

Example: D61182 ← <1> PARTS LIST

D61-001 ← <2> COVER ← <3>

NO ← <4> PART NO ← <5> PART NAME ← <6> QTY ← <7> UNIT PRICE ← <8>

<9> →	*	Index No	PART NO	PART NAME	QTY	UNIT PRICE
	*	001-001	D61-0323A-5X	TOP COVER	1	
	*	002	D61-03040-5XJ	LCD WINDOW	1	
		003	D61-03050-5XA	TEN KEY	1	2,310
		101	D61-0323A-4X	TOP COVER ASSY	1	1,200

(1) Explanation :

- <1> Product Code : Code number of the machine you use. Every model has its unique code number resenting the country and its specification.
- <2> Page Index : Used to refer the page number of illustration.
- <3> Cover : The word that indicates the section of the facsimile the whole illustration on the left page shows.
- <4> Index No : Represents reference number of each part in the illustration.
- <5> Part No : Part number.
- <6> Part Name : Name of the part.
- <7> Q'ty : The quantity of the part which this "Index No" indicates.
- <8> Unit Price : Price of the part.
The price shown on this catalogue is the "List Price".
When calculating the distributor's price, please truncate the calculated price to 2 decimal places
- <9> Asterisk (*) : Parts marked with an asterisk are not available disapproved for sale. So, prices for those parts are not shown .

(2) HOW TO USE THIS CATALOGUE

The catalogue consists of an illustration and Parts List. Please identify your requested part in the illustration on the left page, find the index number and look through the right page to find the part number of the required component.

4. PART NUMBER

The most important information is the part number.

(3 digits) + (5 digits) + (2 or 3 digits) = 10 or 11 digits

D61 - 08120 - 5 XX
↑ ↑ ↑ ↑
<1> <2> <3> <4>

- <1> Model code : Specifies the model. Since some parts are common to several models, there are some parts whose "Model Code" differs from the other parts, though they are all a part of a machine of one product code.
- <2> Part code : Identifies the part in a model.
- <3> Level code : Represents the level of parts assembly
- 6 : Not an assembled part
 - 5 : Several parts are assembled.
 - 4 : Several "level 6" and/or "level 5" parts are assembled
 - 3 : "Level 6", "level 5", and/or "level 4" parts are assembled.
- <4> Sub Number : Represents the specification and revision of parts. The letter "X" is where the revision of parts is shown. When you order a part, please write the exact part number shown on your catalogue. We will supply the part with the latest version.

5. ILLUSTRATION

The shape or quantity of parts may differ from this illustration depending on country.

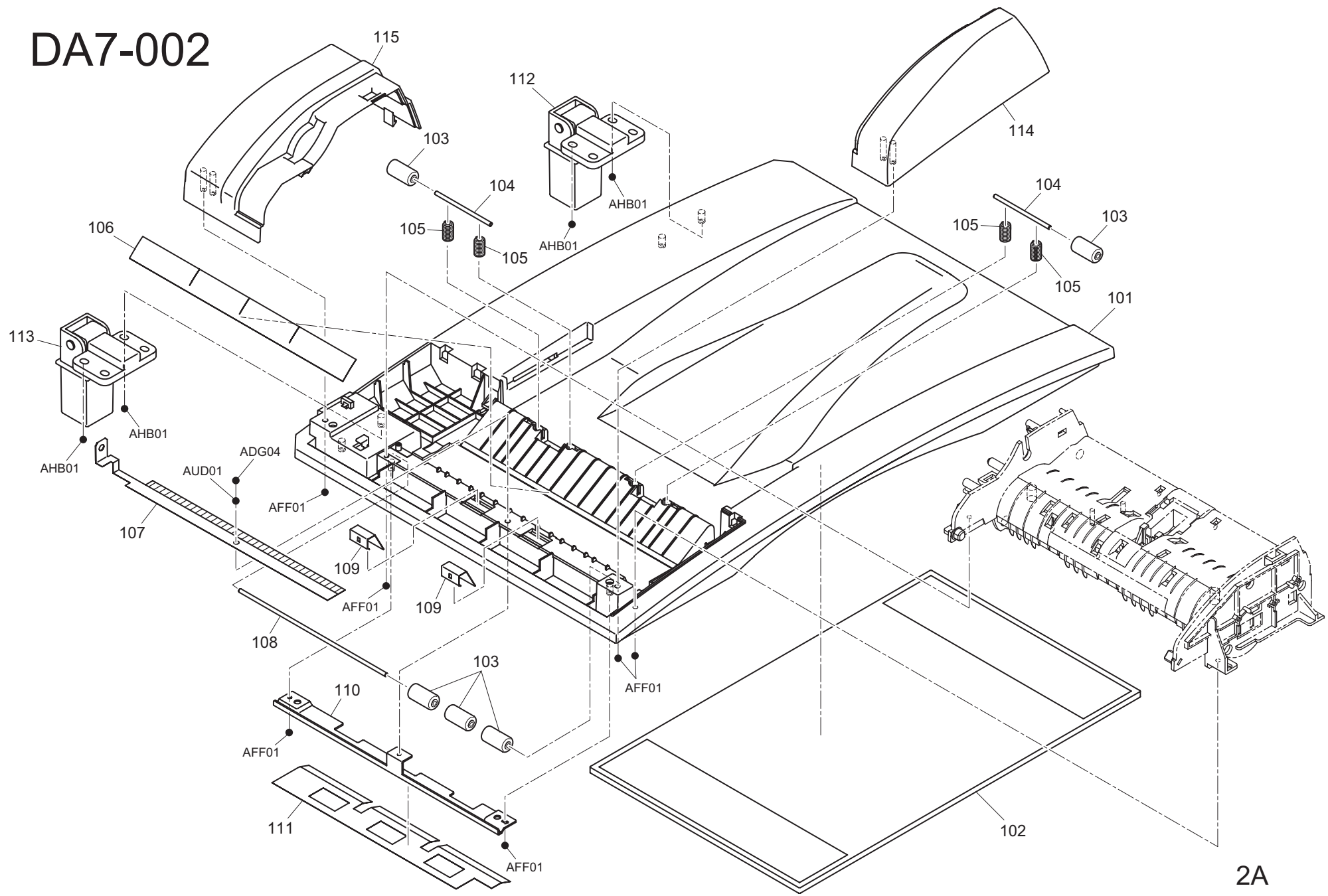
EXCEPTION ; the above rule is not applied to the parts with numbers which start with "ZA1" (Ex,;ZA1-00432-70), since they are purchased from other vendors. So please write the number exactly the same as shown on the list. Please do NOT write "X" unless the part number actually ends with "X".

- * As for the parts to maintain the basic functions of the machine, we will generally supply them for five years after the machine production is discontinued.
- * The parts price on this catalogue are subject to change without notice. If the price of a part has been changed, the new price will be informed when we answer shipping dates for purchase orders.
- * Please let us know the "Product Code" every time you place an order for a **Main Control PCB**.
The ROM for each Main Control PCB differs by product code even if they have the same Part Number.

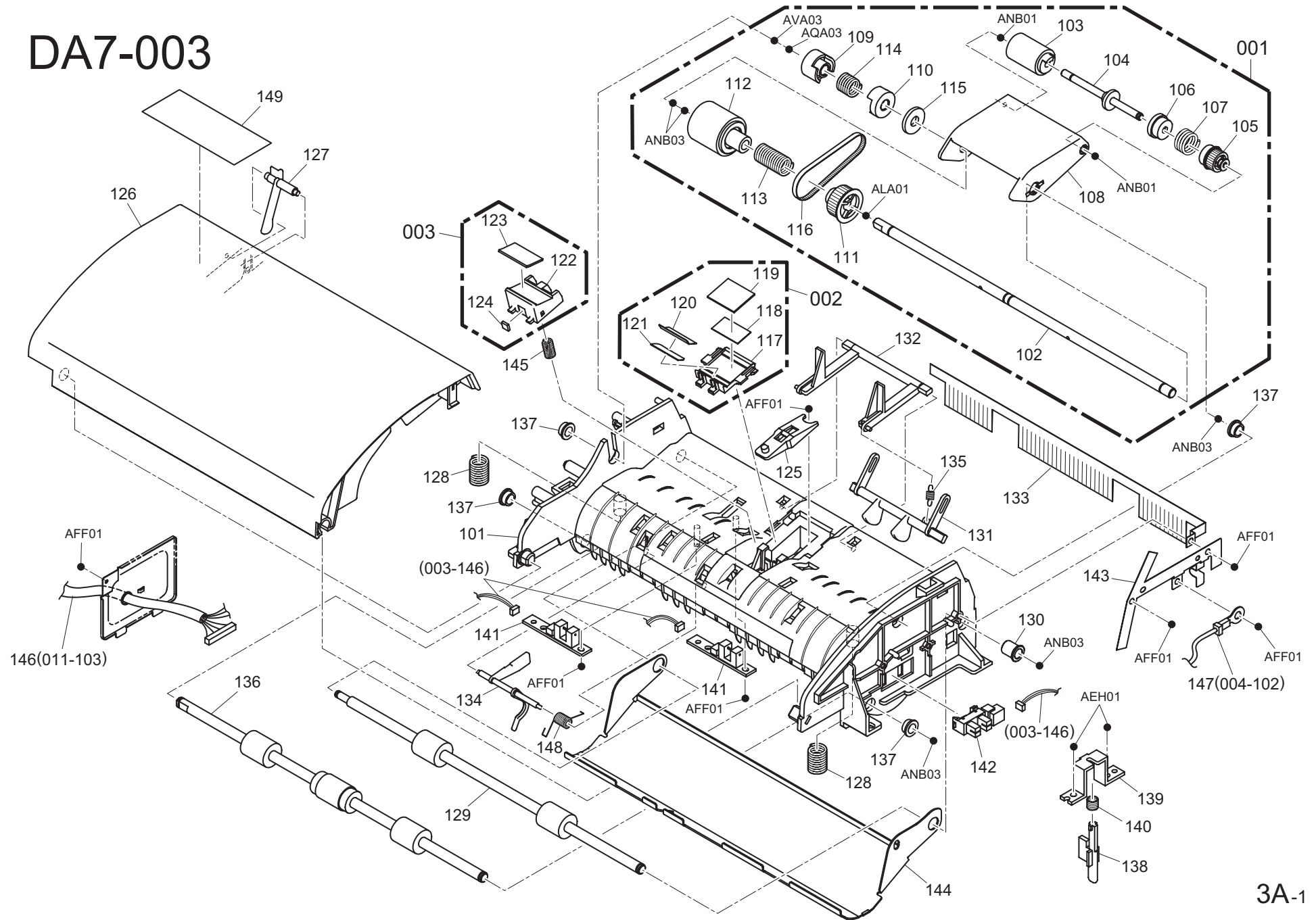
DA7 CONTENTS

DA7-002	COVER PLATEN	DA7-020	PRINTER TRANSFER
DA7-003	ADF GUIDE	DA7-021	PRINTER MALTI PURPOSE
DA7-004	ADF MOTOR	DA7-022	PRINTER CASSETTE (1st)
DA7-005	PANEL	DA7-023	PRINTER CASSETTE (2nd) 1
DA7-006	TOP COVER	DA7-024	PRINTER CASSETTE (2nd) 2
DA7-007	CHASSIS SCANNER	DA7-081	ACCESSORY1
DA7-008	SCANNER	DA7-082	ACCESSORY2
DA7-009	PRINTER COVER	DA7-083	ENCLOSURE
DA7-010	PRINTER POWER SUPPLY/NCU	DA7-091	COMSUMABLE
DA7-011	PRINTER PCB MAIN	DA7-093	SERVICE PARTS
DA7-012	PRINTER CHASSIS1		
DA7-013	PRINTER CHASSIS2		
DA7-014	PRINTER CHASSIS3		
DA7-015	PRINTER DRIVE1		
DA7-016	PRINTER DRIVE2		
DA7-017	PRINTER EXIT		
DA7-018	PRINTER FUSER		
DA7-019	PRINTER JAM ACCESS COVER		

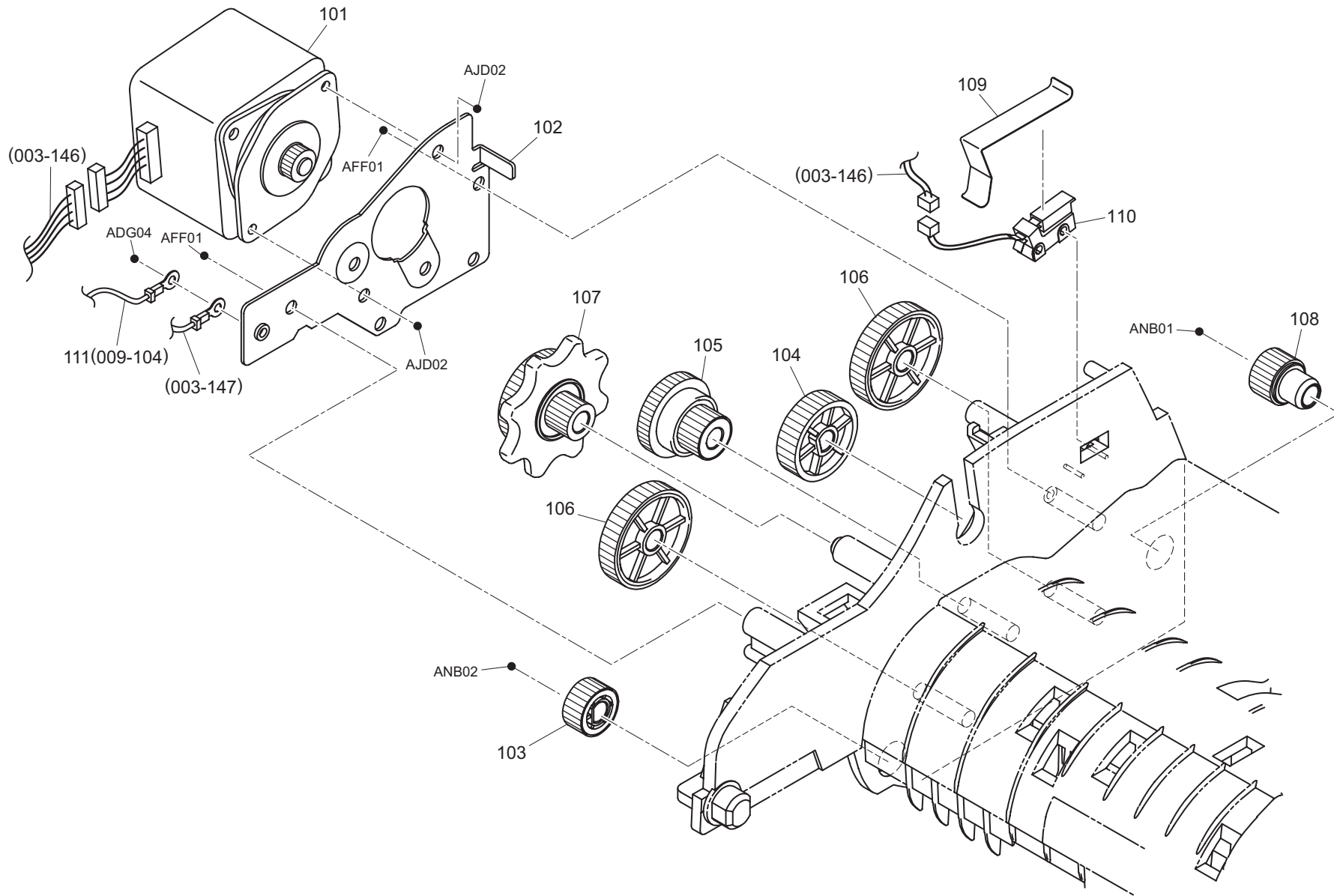
DA7-002



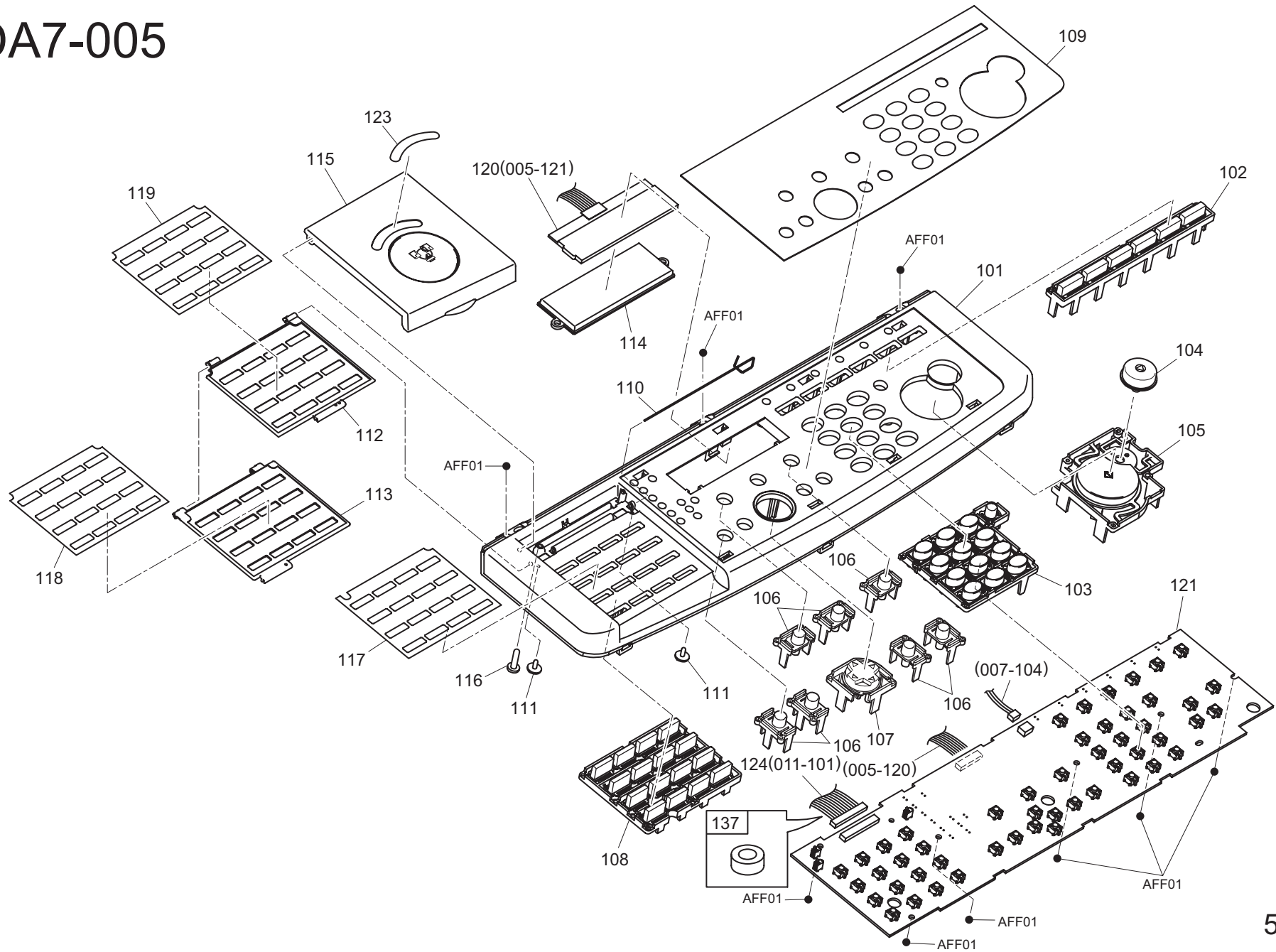
DA7-003



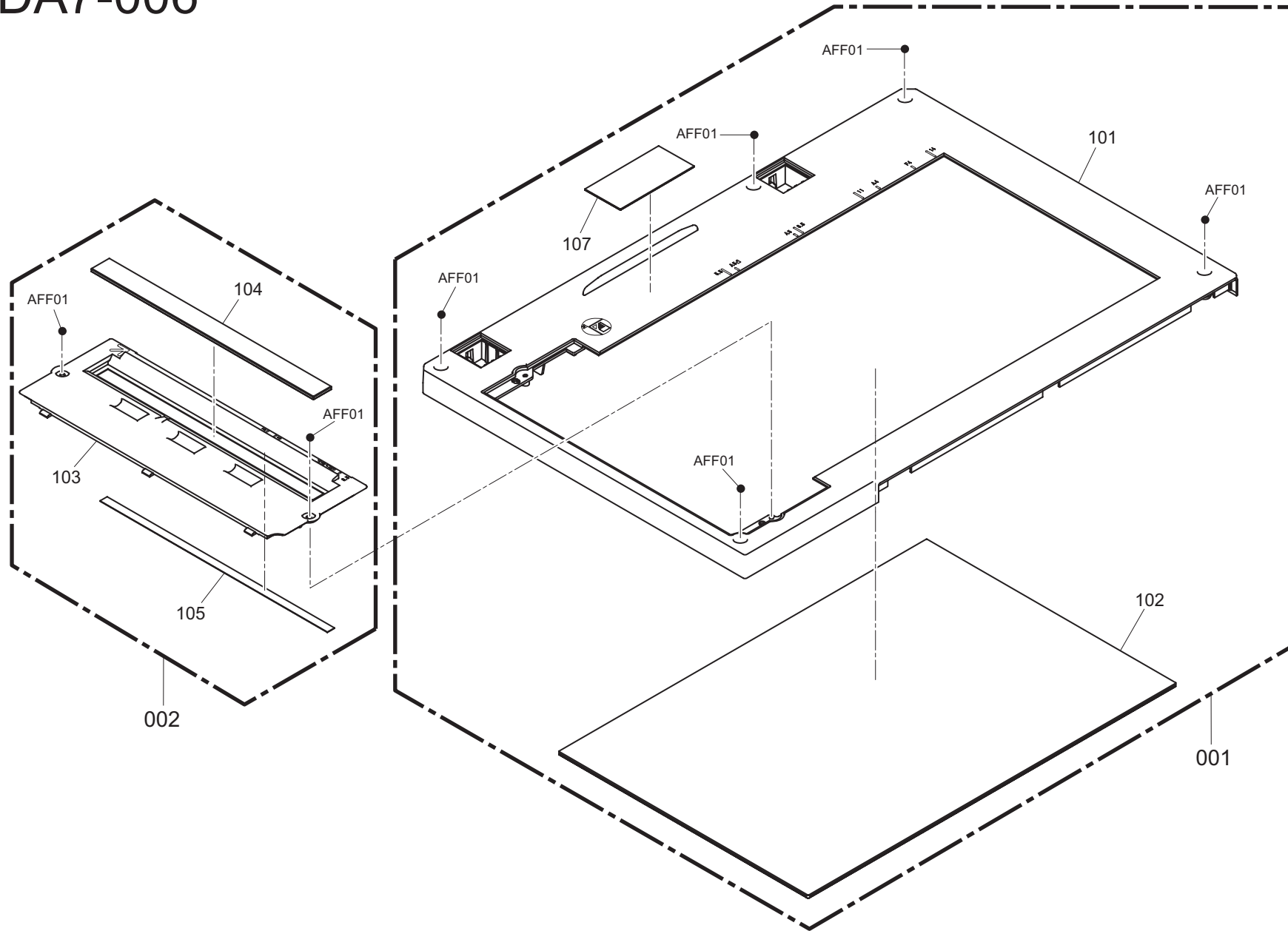
DA7-004



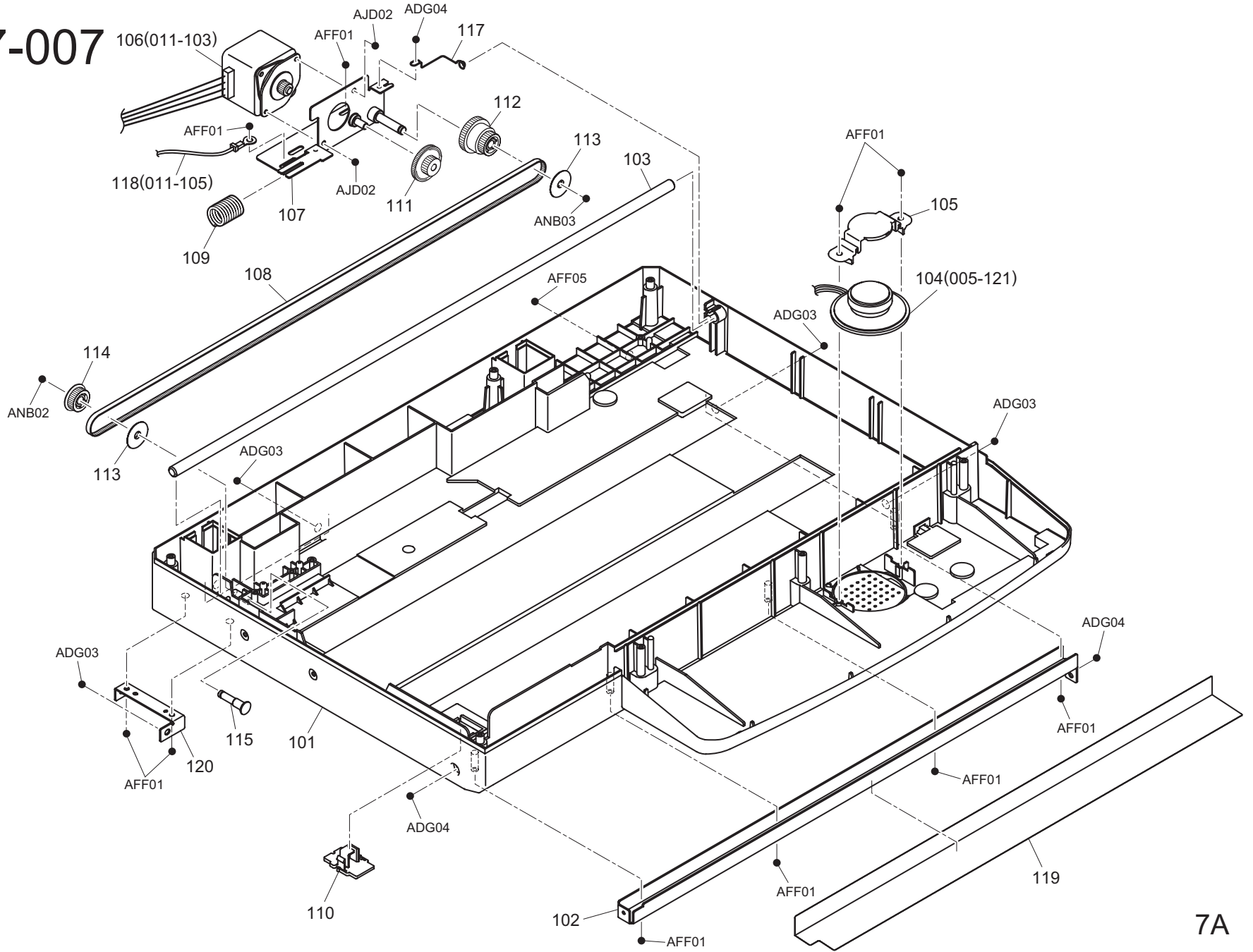
DA7-005



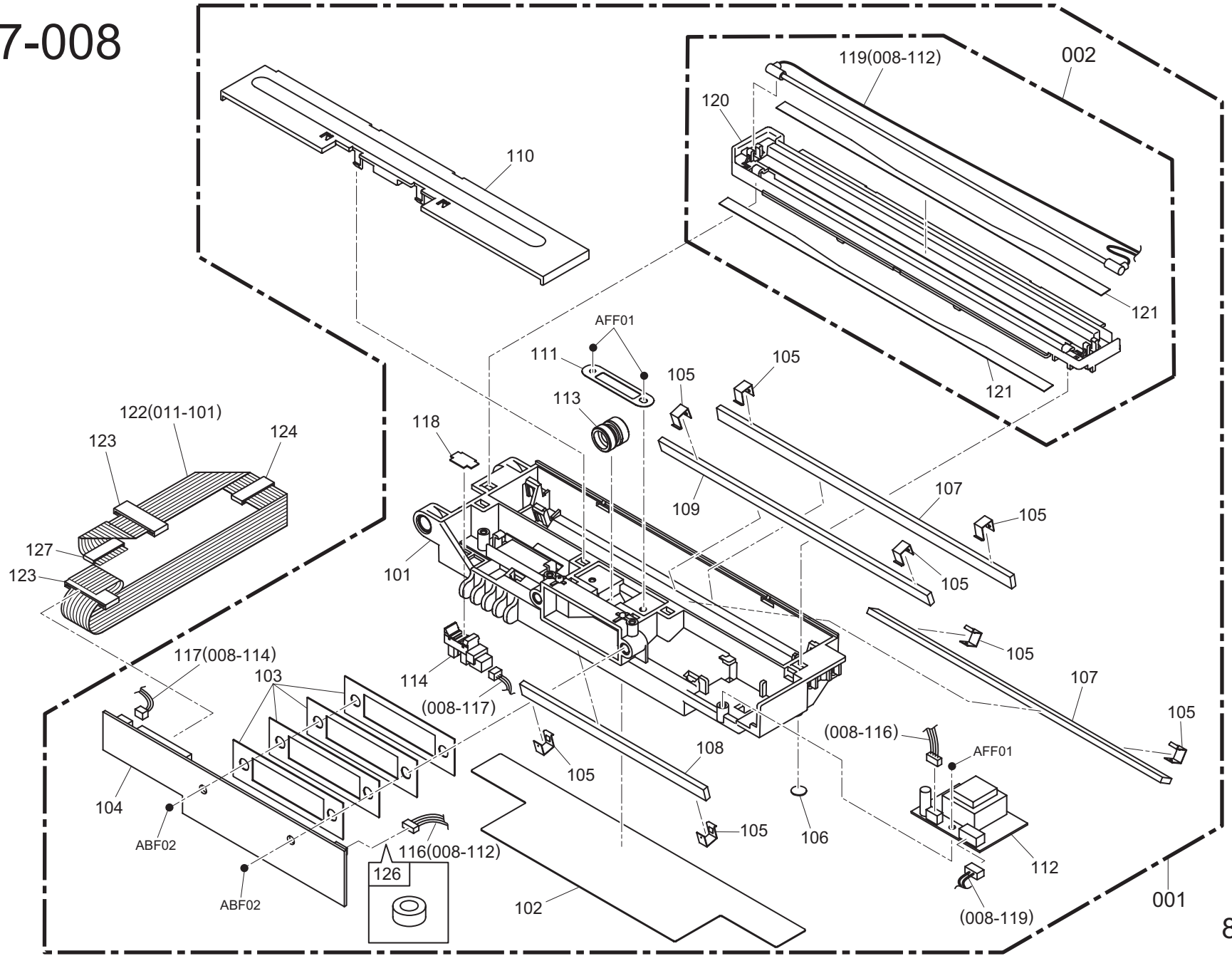
DA7-006



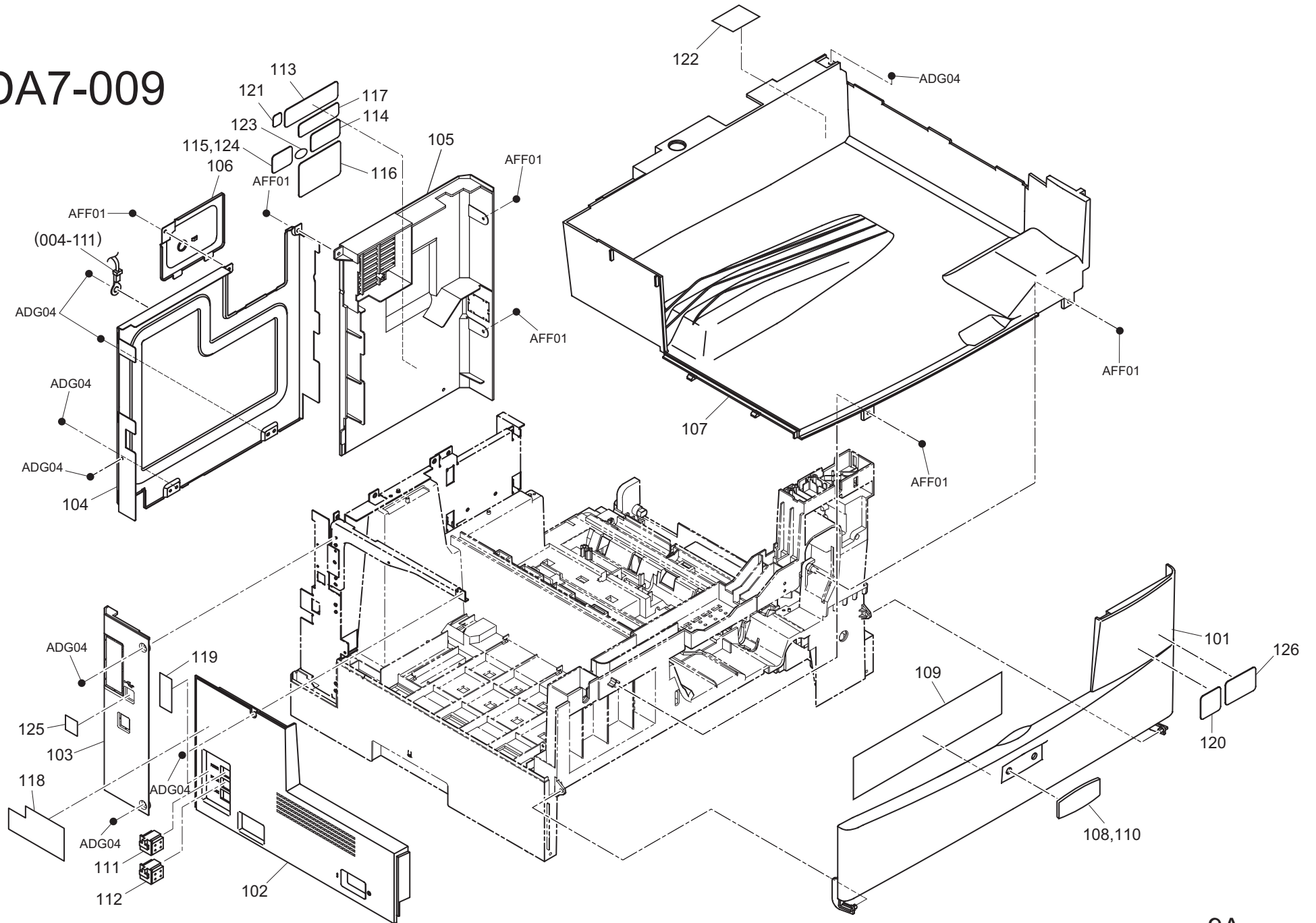
DA7-007



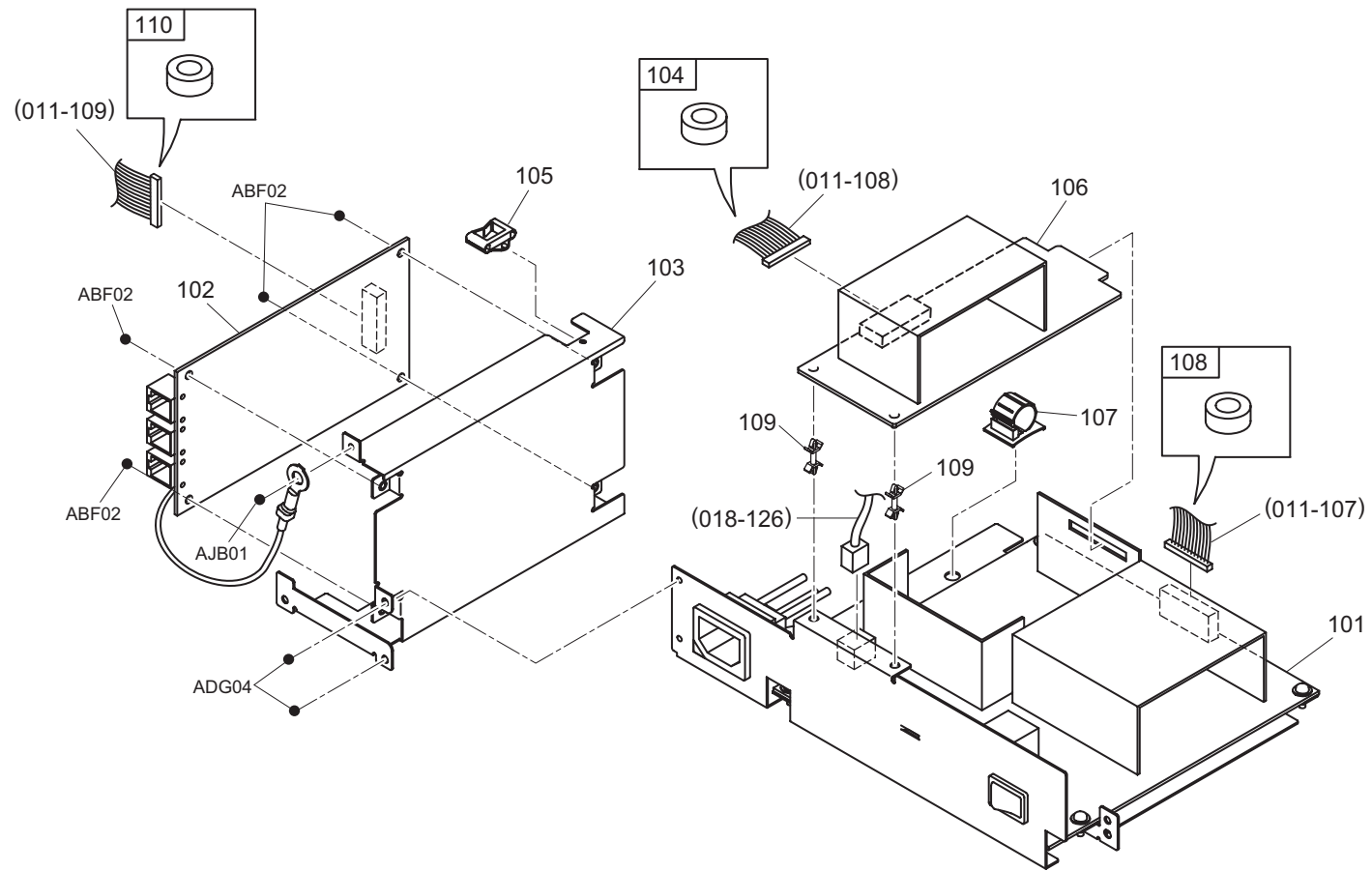
DA7-008



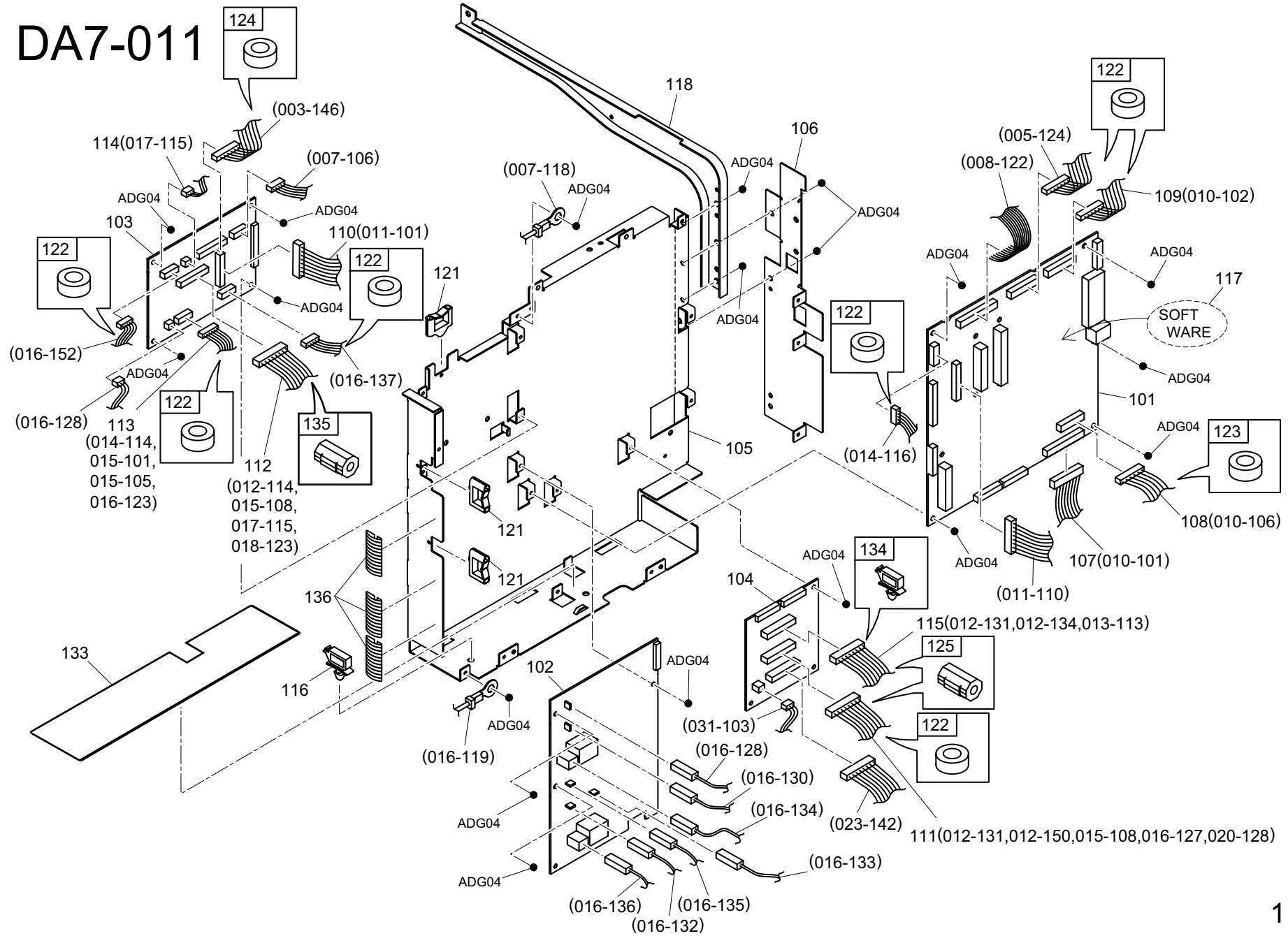
DA7-009



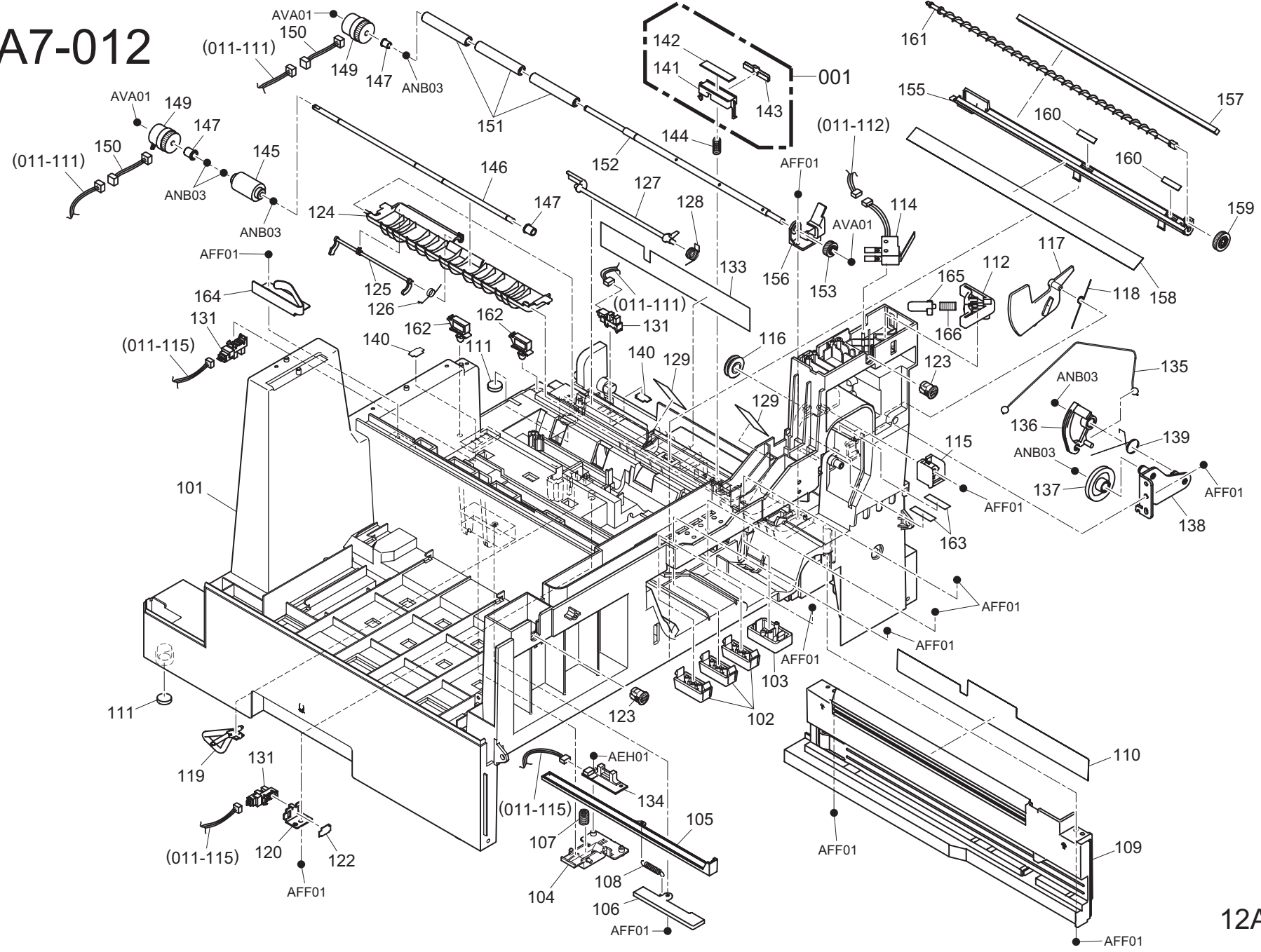
DA7-010



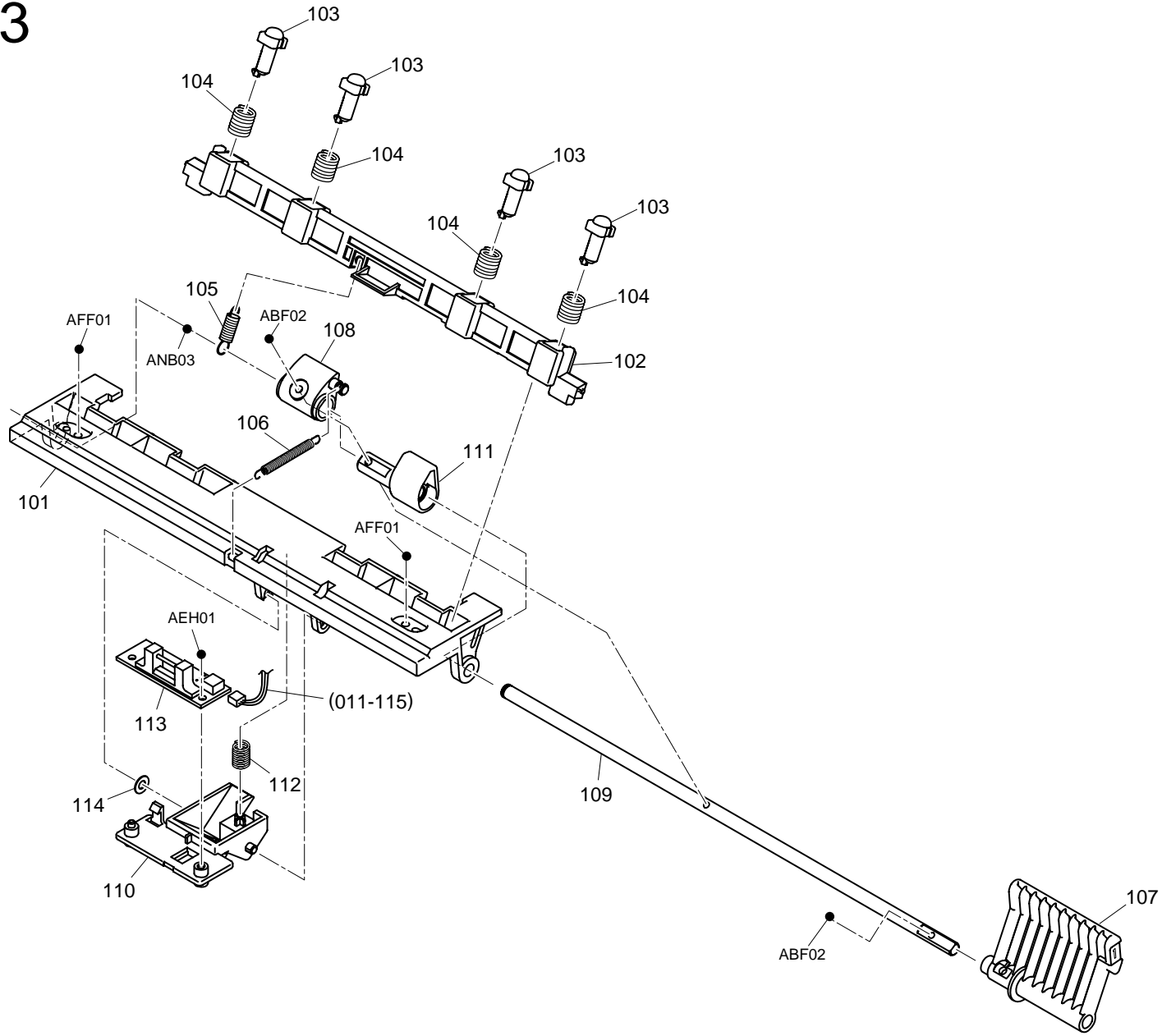
DA7-011



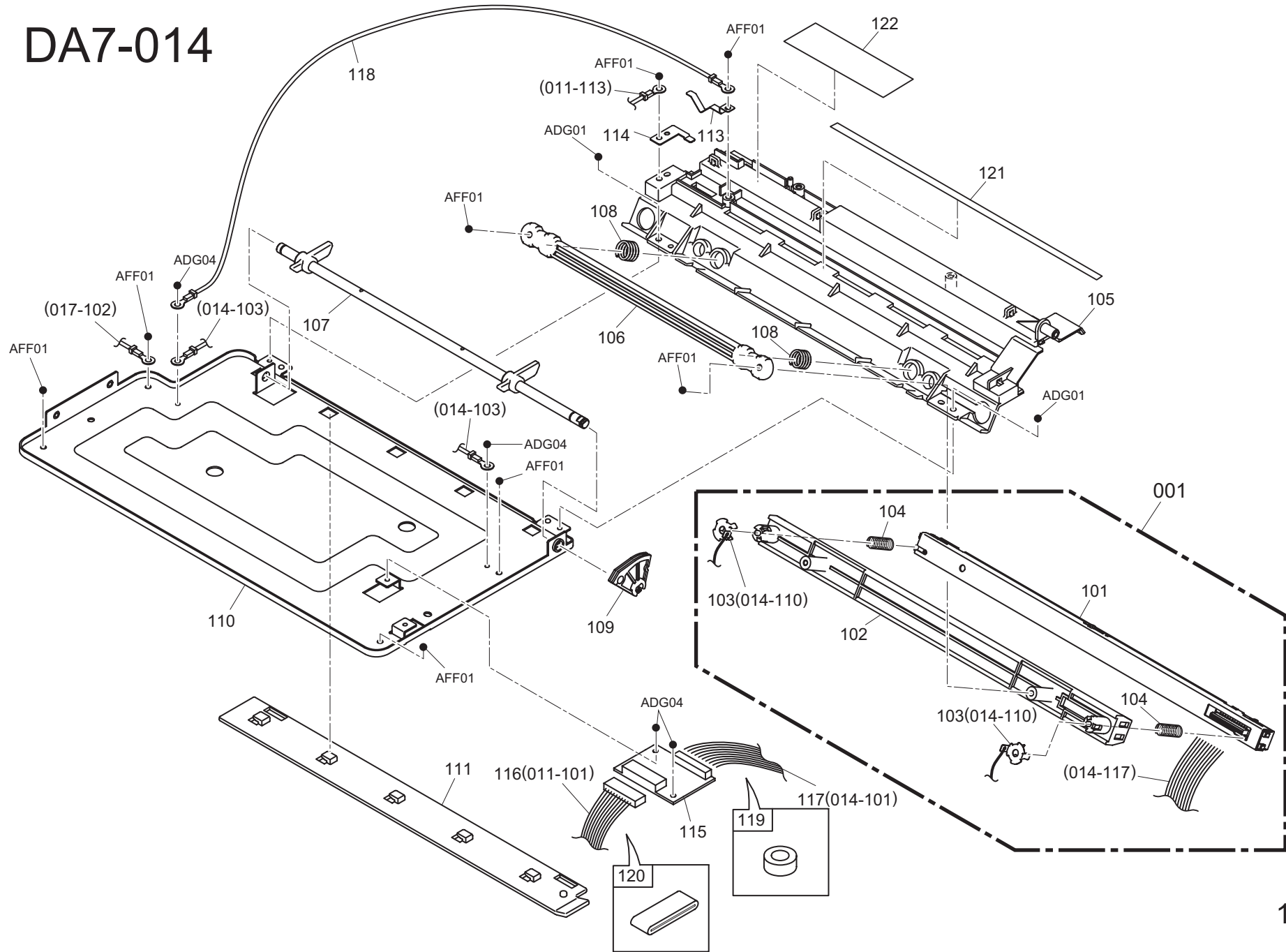
DA7-012



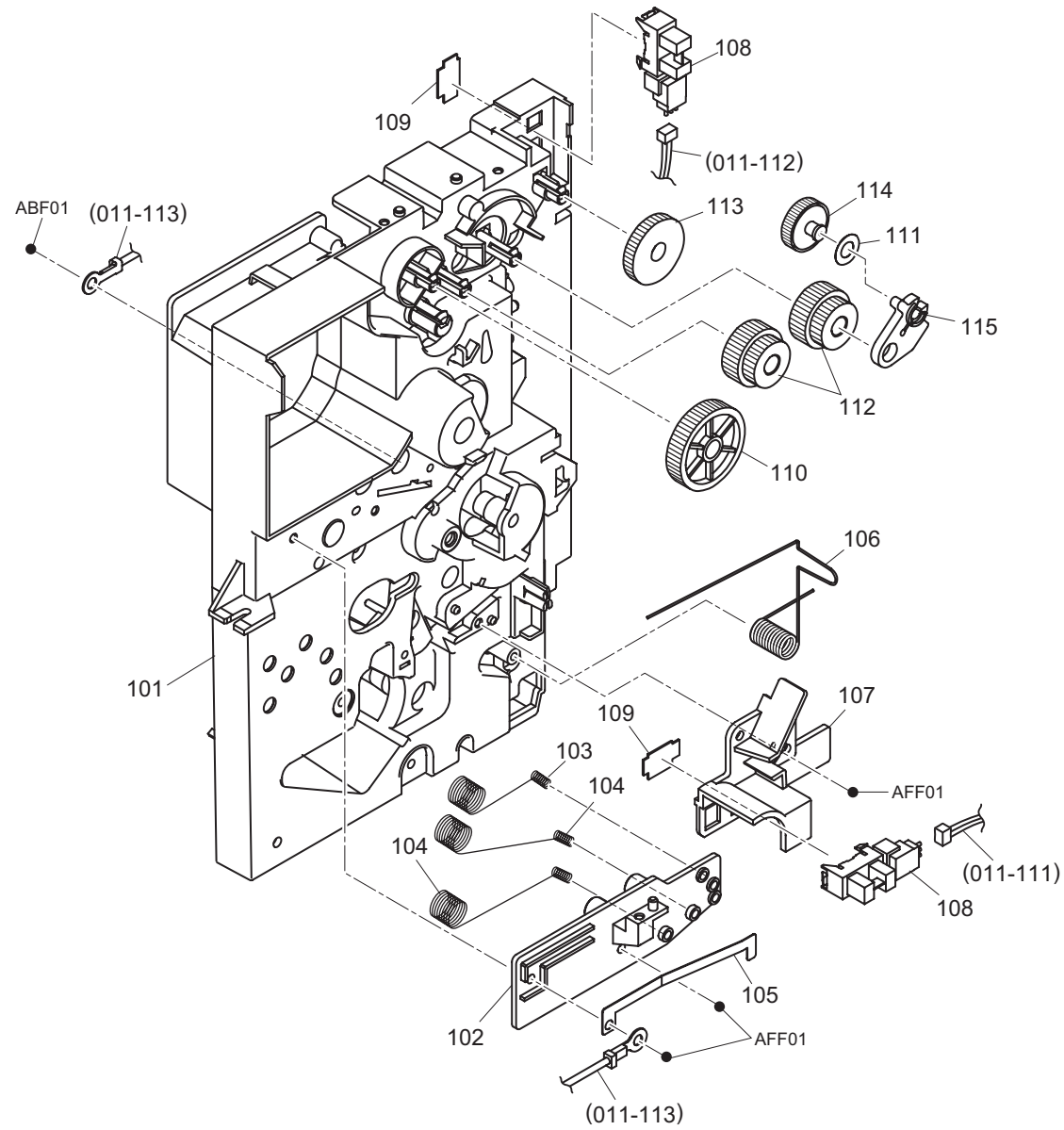
DA7-013



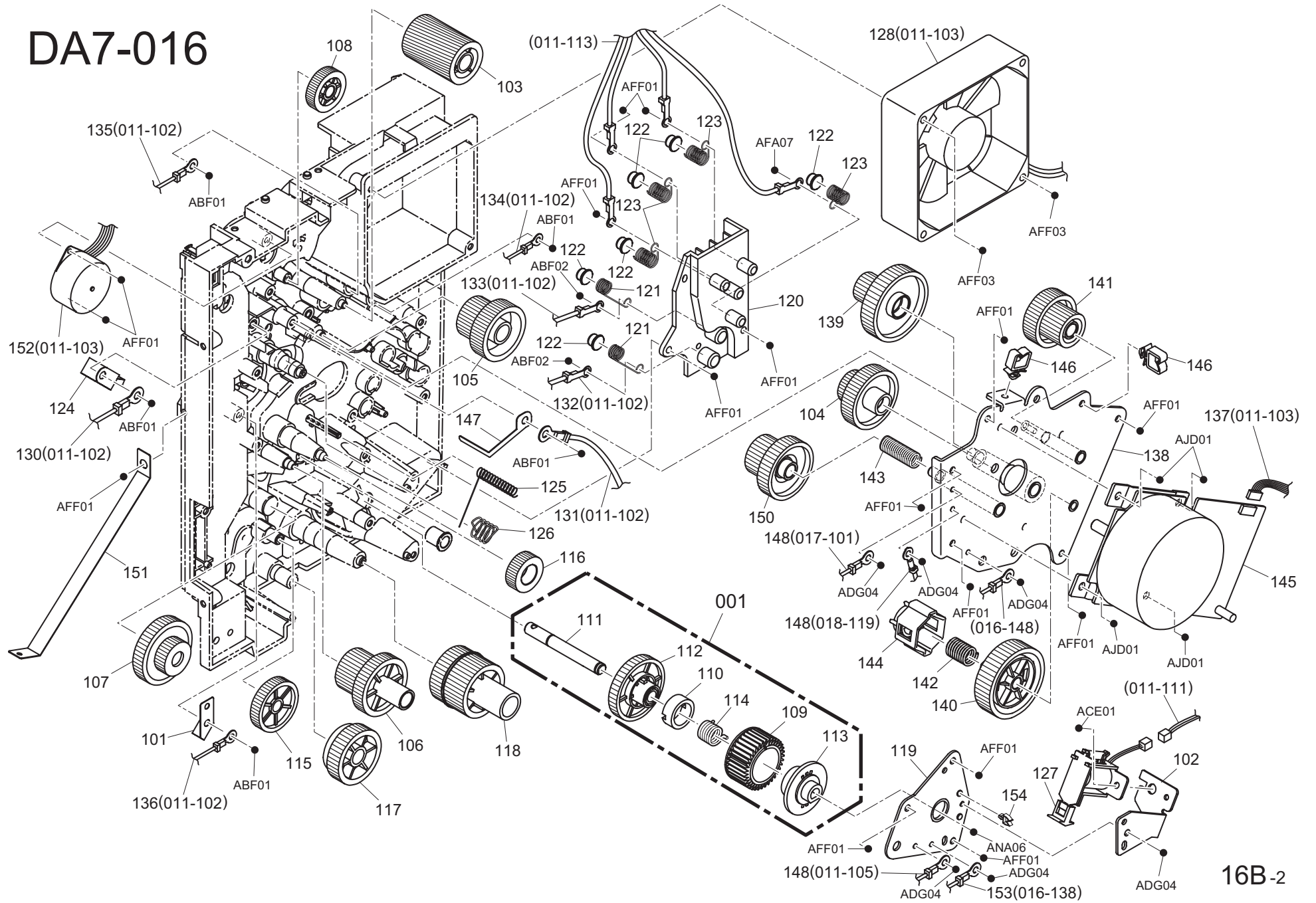
DA7-014



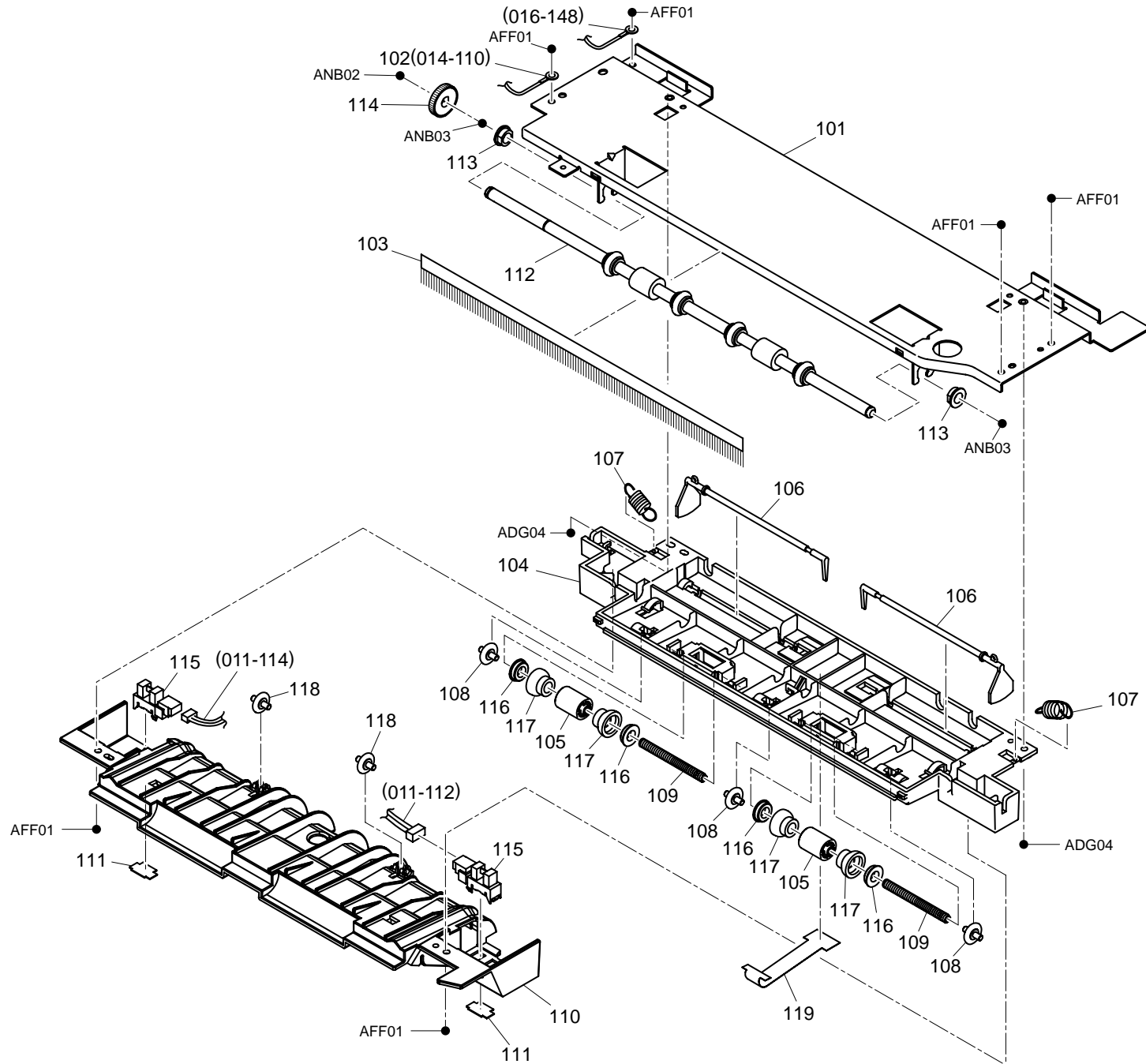
DA7-015



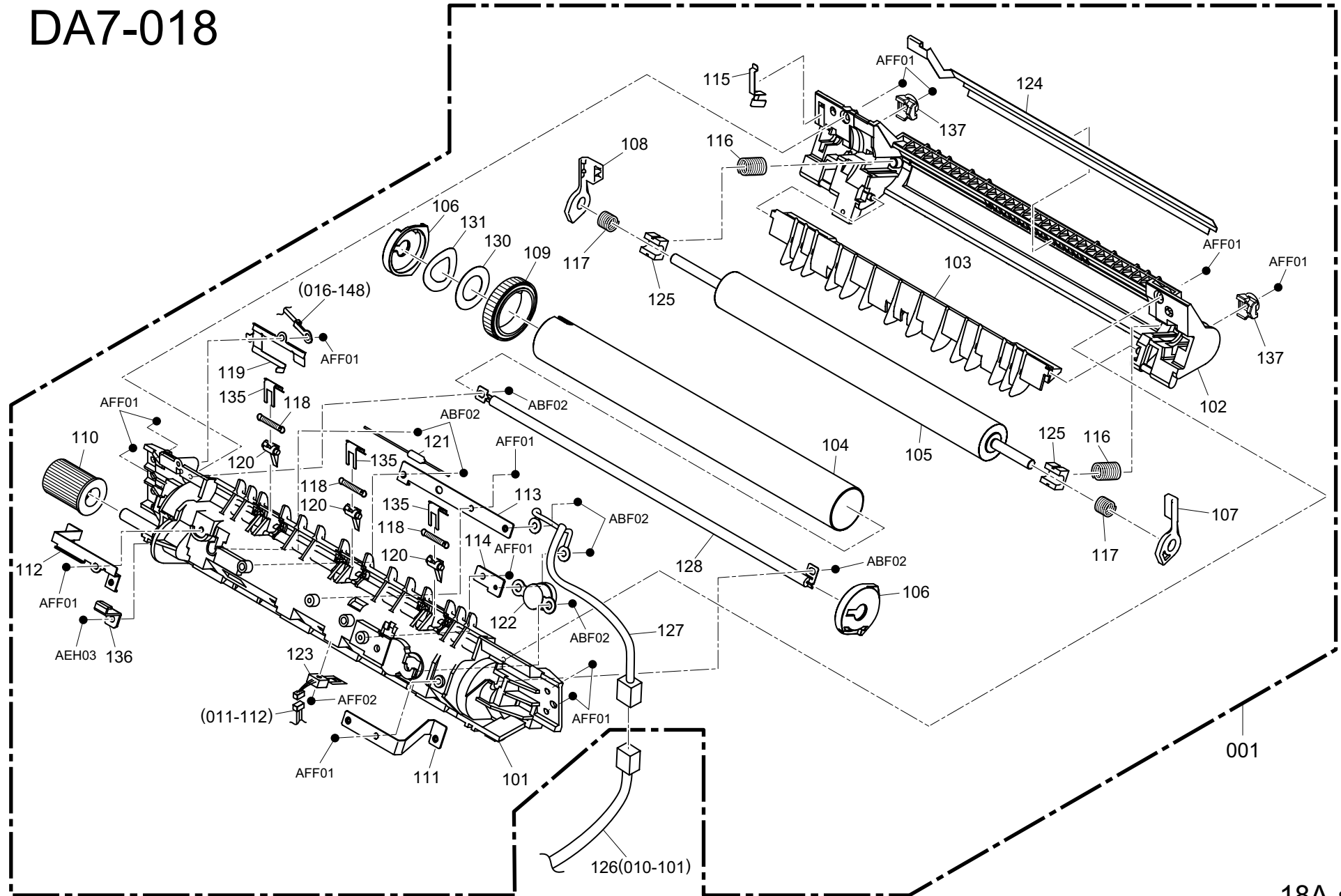
DA7-016



DA7-017

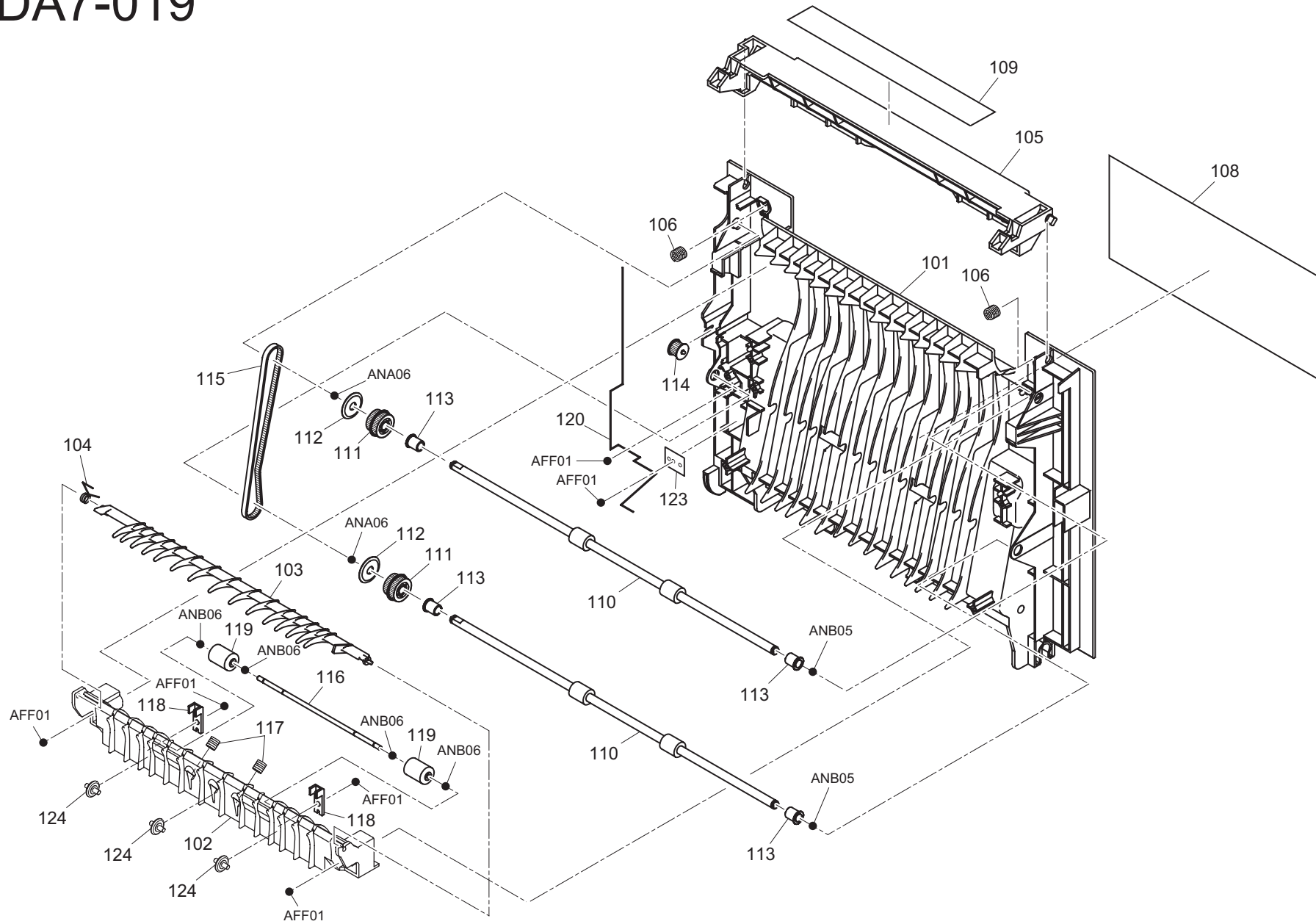


DA7-018

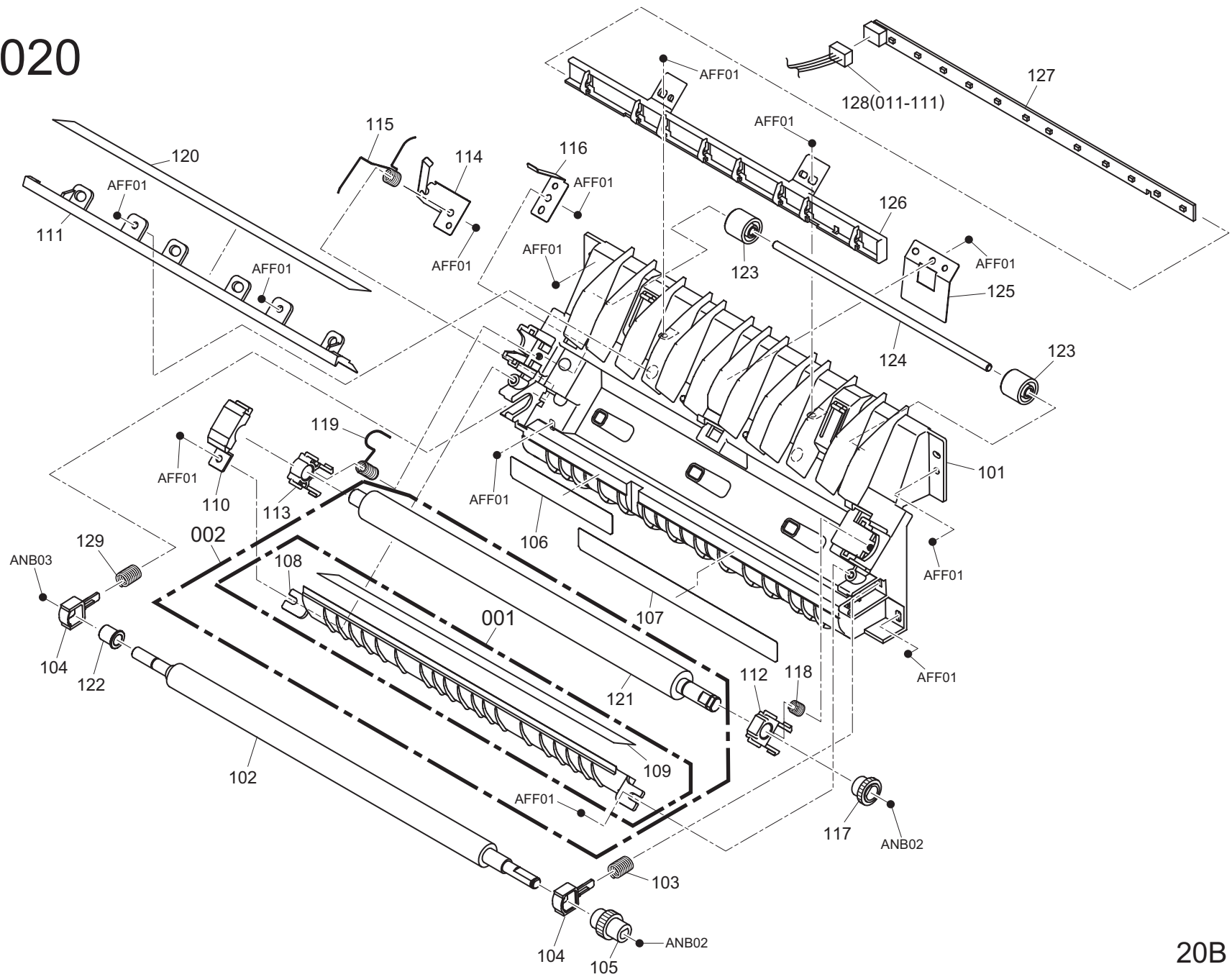


001

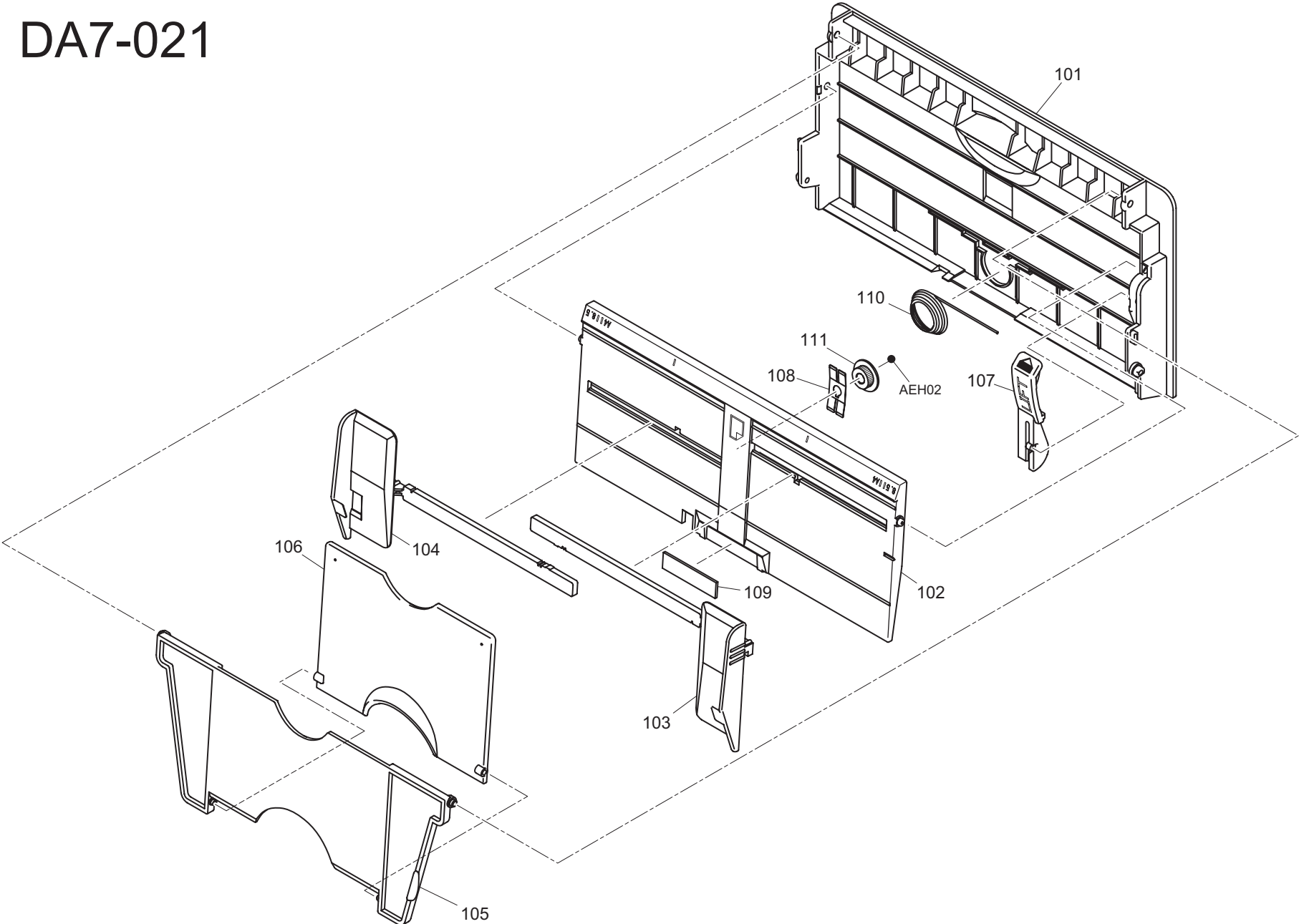
DA7-019



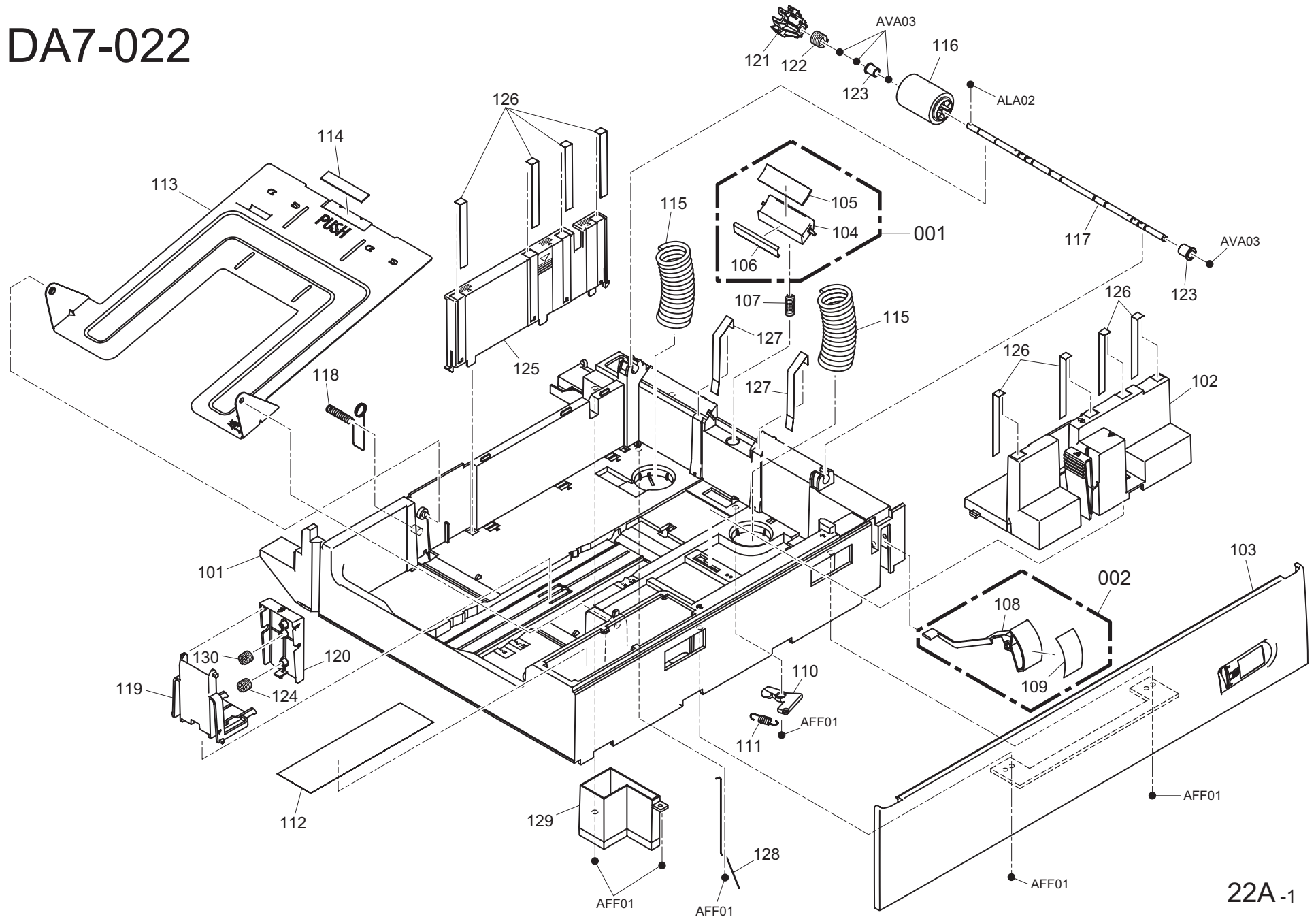
DA7-020



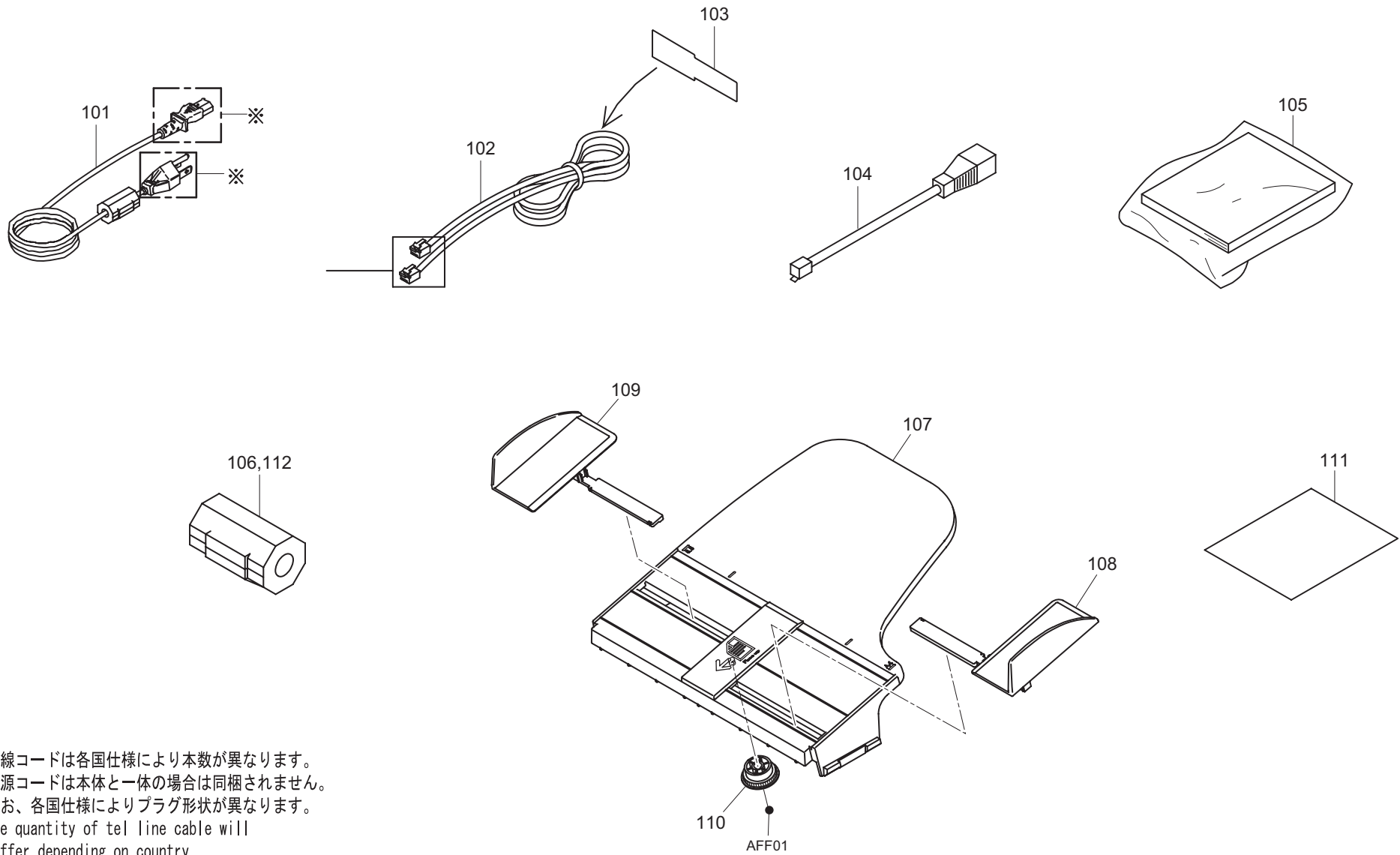
DA7-021



DA7-022

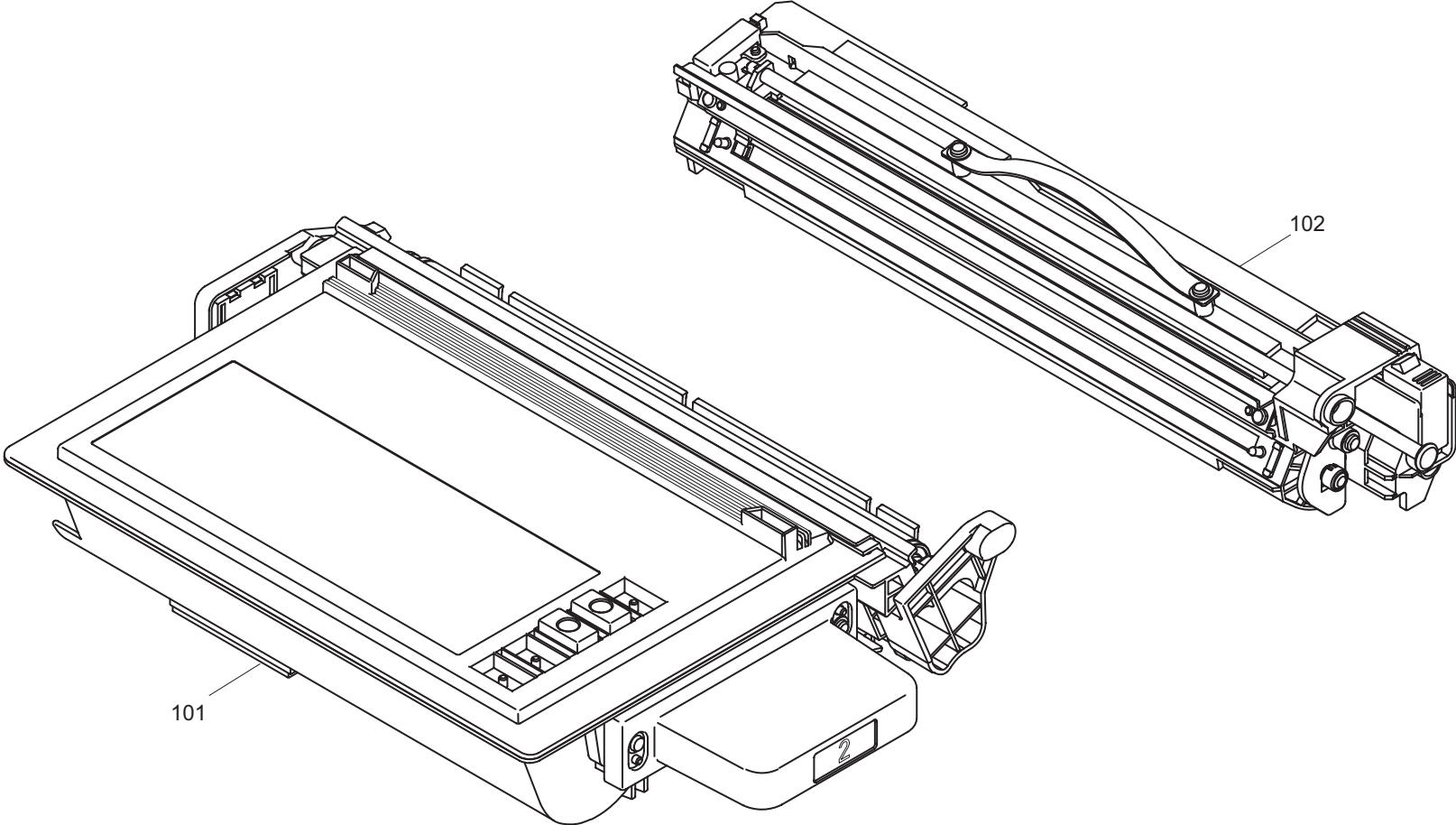


DA7-081

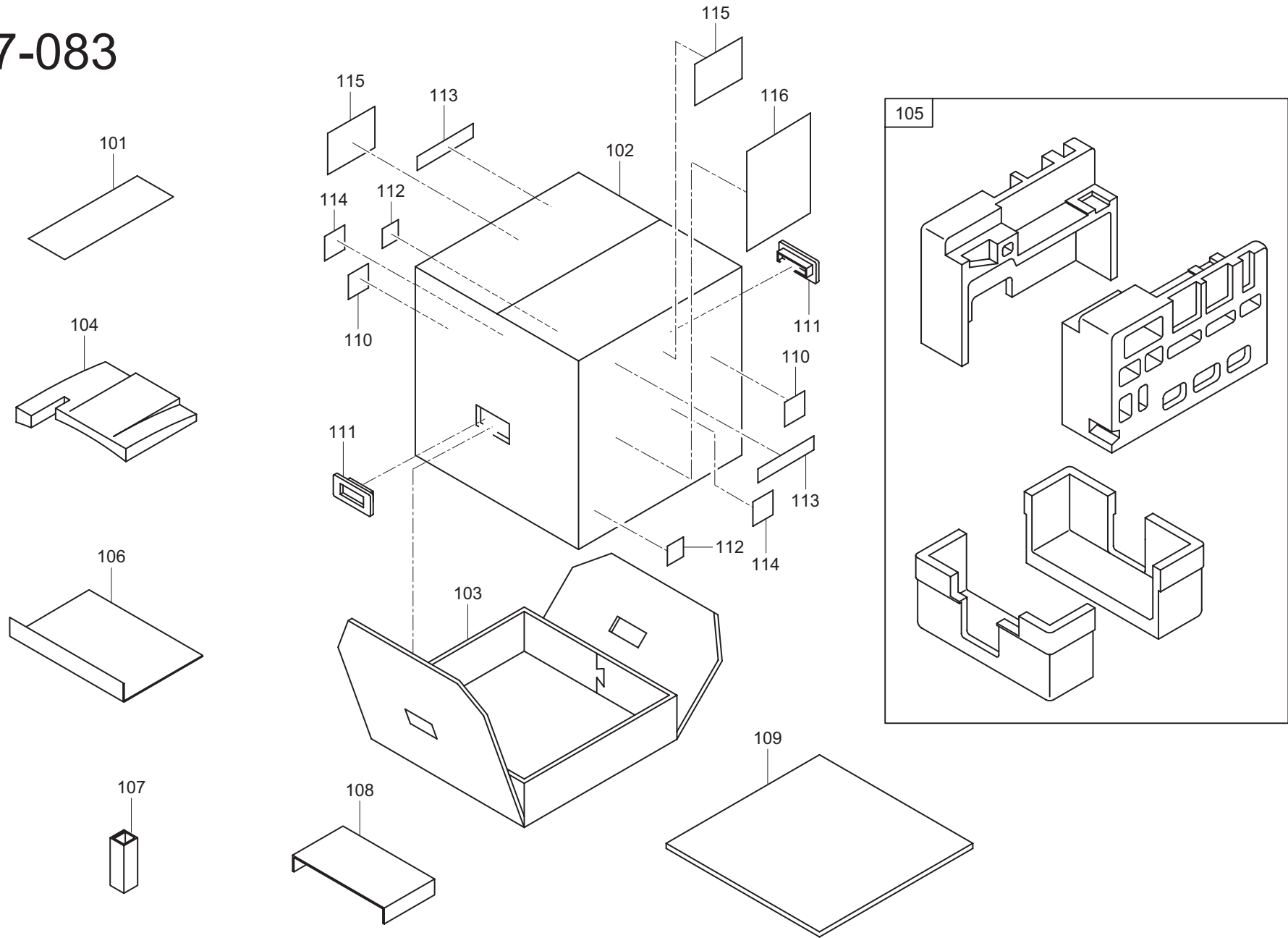


※ 回線コードは各国仕様により本数が異なります。
電源コードは本体と一体の場合は同梱されません。
なお、各国仕様によりプラグ形状が異なります。
The quantity of tel line cable will
differ depending on country.
Power cord will not be enclosed
when installed in the product.
Plug/connector shape will also
differ depending on country.

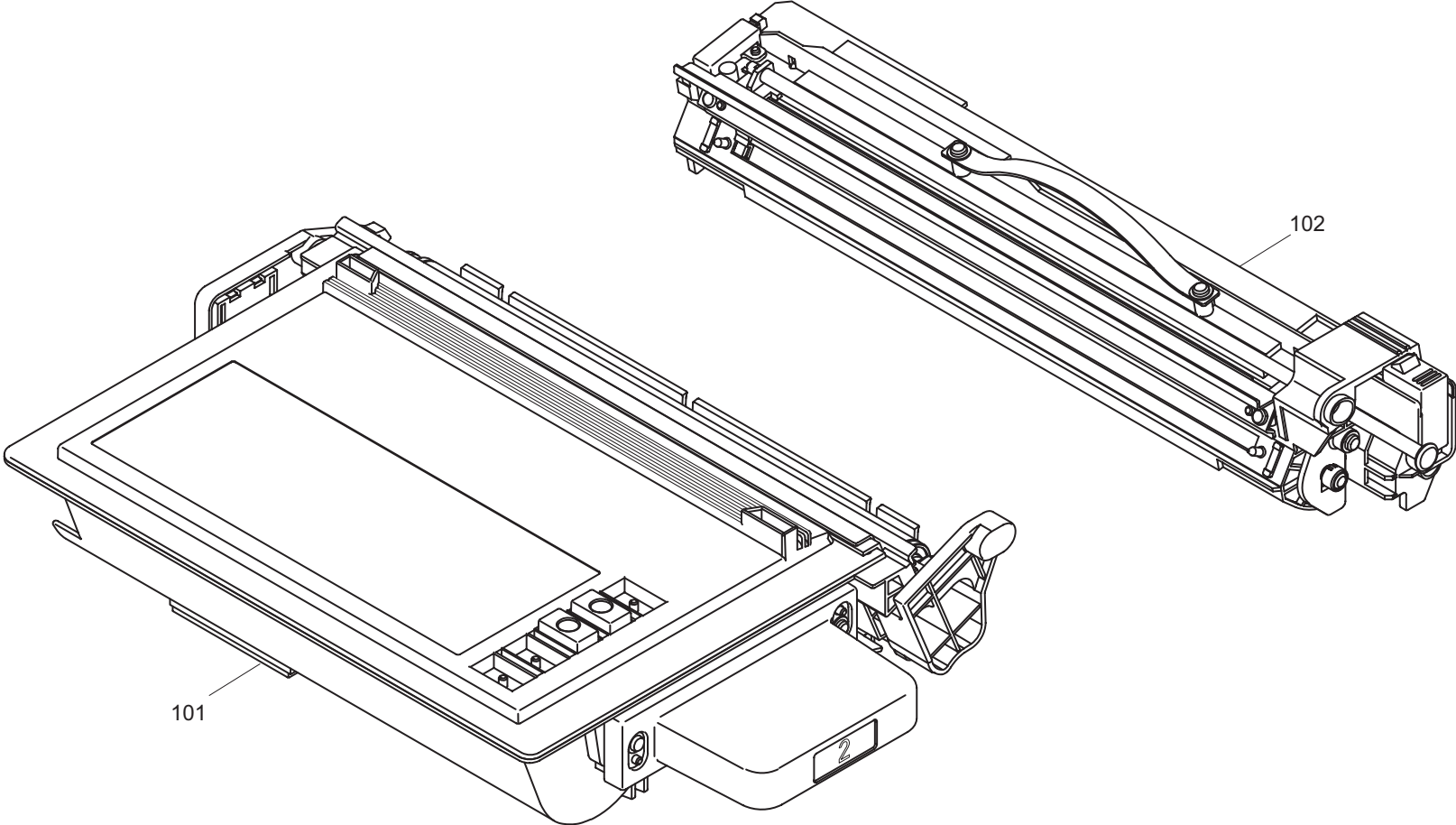
DA7-082









DA7-083



DA7-091



DA7 FASTENERS

	PARTS NAME	SIZE	PRICE (EURO)		
ABF01	PHR(3c)	M3X6	9.6 / 500pcs		
ABF02	PHR(3c)	M3X8	14.4 / 500pcs		
ACE01	S TITE(3c)	3x6	4.8 / 500pcs		
ACE02	S TITE(3c)	3x8	3.8 / 500pcs		
ACE04	S TITE(3c)	4x8	14.4 / 500pcs		
ADC02	S TITE CUP(Uc)	3X8	4.8 / 500pcs		
ADF01	S TITE CUP(WITH SPRING WASHER)	3X8	14.4 / 500pcs		
ADG01	S TITE CUP(3c)	3X6	4.8 / 500pcs		
ADG03	S TITE CUP(3c)	4X8	14.4 / 500pcs		
ADG04	S TITE CUP(3c)	3X8	4.8 / 500pcs		
AEA03	P TITE	3X6	9.6 / 500pcs		
AEH01	P TITE(3c)	3X8	4.8 / 500pcs		
AEH02	P TITE(3c)	3X6	9.6 / 500pcs		
AFA07	P TITE CUP	3X8	9.6 / 500pcs		
AFF01	P TITE CUP(3c)	3X8	4.8 / 500pcs		
AFF02	P TITE CUP(3c)	3X10	9.6 / 500pcs		
AFF03	P TITE CUP(3c)	3X30	19.2 / 500pcs		
AFF04	P TITE CUP(3c)	3X5	14.4 / 500pcs		
AFF05	P TITE CUP(3c)	4X10	14.4 / 500pcs		
AFF06	P TITE CUP(3c)	3X6	9.6 / 500pcs		
AHB01	B TITE CUP(3c)	4X12	14.4 / 500pcs		
AJB01	PHS(Ni)	M4X6	7.4 / 500pcs		
AJD01	PHS(3c)	M4X6	9.6 / 500pcs		
AJD02	PHS(3c)	M3X6	9.6 / 500pcs		
AJD03	PHS(3c)	M3X8	9.6 / 500pcs		
ALA01	PK	2X10	9.6 / 500pcs		
ALA02	PK	2X12	9.6 / 500pcs		
ALA04	PK	2.5X24	19.2 / 500pcs		
ANA06	DR	6	4.8 / 500pcs		
ANB01	DR(BK)	3	4.8 / 500pcs		
ANB02	DR(BK)	4	4.8 / 500pcs		
ANB03	DR(BK)	5	4.8 / 500pcs		
ANB05	DR(BK)	7	14.4 / 500pcs		
ANB06	DR(BK)	2	4.8 / 500pcs		
AQA03	PARALLEL PIN	2X10	9.6 / 500pcs		
AUD01	ZR(3c)	4	4.8 / 500pcs		
AVA01	JR	4	9.6 / 500pcs		
AVA03	JR	5	19.2 / 500pcs		