

PARTS CATALOG

iR2202/2002 Series

Canon

Jan 16 2014

PREFACE

This Parts Catalog contains listings of parts used

Diagrams are provided with the listings to aid the service technician in identifying clearly, the item to be ordered.

Whenever ordering parts, consult this Parts Catalog for all of the information pertaining to each item. Be sure to include, in the Parts Request, the full item description, the item part number, and the quantity.

COPYRIGHT (C) 1999 CANON INC.

Use of this manual should be strictly supervised to avoid disclosure of confidential information.

Contents

NUMERICAL INDEX

iR2202/2002 Series(Numerical Index)..... 1-1

iR2202/2002 Series(Parts Catalog)

A1	ASSEMBLY LOCATION DIAGRAM	2-1
A2	OPTION PARTS CATALOG LIST	2-4
001	ACCESSORIES	2-5
100	EXTERNAL COVERS, PANELS, ETC.	2-6
101	INTERNAL COMPONENTS 1	2-9
102	INTERNAL COMPONENTS 2	2-12
103	MACHINE REAR PLATE 1	2-14
104	MACHINE REAR PLATE 2	2-16
110	LEFT DOOR ASSEMBLY	2-18
130	CONTROL PANEL ASSEMBLY (NETWORK MODEL)	2-20
130A	CONTROL PANEL ASSEMBLY (LOCAL PRINT MODEL) ..	2-22
250	MAIN DRIVE ASSEMBLY	2-24
300	CASSETTE ASSEMBLY	2-27
310	CASSETTE FEEDER ASSEMBLY	2-29
311	PAPER PICK-UP ASSEMBLY	2-31
312	MULTI FEED ASSEMBLY	2-33
315	MULTI FEED TRAY ASS'Y	2-36
330	TRANSFER MOUNT ASSEMBLY	2-37
350	PAPER DELIVERY ASSEMBLY	2-39
400	READER ASSEMBLY	2-41
460	LASER SCANNER ASSEMBLY	2-43
640	DEVELOPING ASSEMBLY	2-44
810	FIXING ASSEMBLY	2-46
900	CONTROLLER PCB ASSEMBLY	2-49
930	H.V.T PCB ASSEMBLY	2-50
D10	COPYBOARD COVER ASSEMBLY (COPYBOARD MODEL)	2-51
H30	CASSETTE ASSEMBLY (2 CASSETTE UNIT MODEL)	2-53
H40	CASSETTE FEEDER ASSEMBLY (2 CASSETTE UNIT MODEL)	2-55
H42	PAPER PICK-UP ASSEMBLY (2 CASSETTE UNIT MODEL)	2-58
S20	DUPLEX FEEDER ASSEMBLY (DUPLEX MODEL)	2-61
ZZA	MECHANICAL STANDARD PARTS (HOW TO USE)	2-64
ZZB	MECHANICAL STANDARD PARTS (SCREWS)	2-65
ZZC	MECHANICAL STANDARD PARTS (BOLTS)	2-72
ZZD	MECHANICAL STANDARD PARTS (NUTS)	2-73

Contents

ZZE MECHANICAL STANDARD PARTS (RETAINING RINGS) 2-74

NUMERICAL INDEX

IR2202/2002 Series(Numerical Index)

PARTS NUMBER	FIGURE & KEY NO.	PARTS NUMBER	FIGURE & KEY NO.	PARTS NUMBER	FIGURE & KEY NO
4A3-6738-000	H42 - 25	FC6-4170-000	640 - 7	FC8-0168-000	312 - 12
4Y8-3040-000	400 - 19	FC6-4173-000	640 - 8	FC8-0170-000	H42 - 35
FA8-2447-000	H40 - 12	FC6-4176-000	640 - 19	FC8-0172-000	H42 - 8
FA8-2448-000	H42 - 1	FC6-4177-000	640 - 20	FC8-0352-000	300 - 1
FA8-2449-000	H42 - 2	FC6-4202-000	640 - 15	FC8-4965-000	300 - 11
FB4-5532-000	H40 - 2	FC6-4209-020	312 - 1	FC9-0772-000	810 - 32
FB4-5808-020	H30 - 12	FC6-4210-000	312 - 2	FC9-0923-000	311 - 2
FB4-5809-020	H30 - 6	FC6-4211-010	312 - 3	FC9-1022-010	311 - 3
FB4-5810-000	H30 - 8	FC6-4215-000	315 - 1	FC9-1024-000	311 - 4
FB4-5813-020	H30 - 7	FC6-4218-000	315 - 2	FC9-1025-000	311 - 5
FB4-5814-000	H30 - 1	FC6-4219-000	315 - 3	FC9-1026-000	311 - 6
FB4-9817-030	H42 - 37	FC6-4220-000	315 - 4	FC9-1032-000	311 - 7
FB6-1536-000	H40 - 13	FC6-4221-000	315 - 5	FC9-1037-000	300 - 2
FB6-1541-000	H42 - 33	FC6-4222-000	315 - 6	FC9-1043-000	300 - 20
FB6-1550-000	H42 - 6	FC6-4223-000	315 - 7	FC9-1044-000	300 - 9
FB6-1551-000	H42 - 7	FC6-4224-000	312 - 4	FC9-1046-000	300 - 14
FB6-1608-000	H40 - 3	FC6-4227-020	312 - 5	FC9-1051-000	311 - 8
FB6-1614-000	H42 - 9	FC6-4231-000	312 - 6	FC9-1624-000	311 - 9
FB6-1615-000	H42 - 10	FC6-4232-000	110 - 1	FC9-1625-000	311 - 10
FB6-1616-000	H42 - 11	FC6-4234-000	312 - 7	FC9-1632-000	311 - 11
FB6-1624-000	H42 - 13	FC6-4238-000	110 - 2	FC9-1683-000	300 - 3
FB6-1626-000	H42 - 14	FC6-4239-000	312 - 8	FC9-4288-000	H42 - 36
FB6-1628-000	H42 - 15	FC6-4288-020	H42 - 49	FC9-7720-000	110 - 5
FB6-1631-030	H42 - 38	FC6-4290-000	H42 - 32	FC9-7720-000	810 - 22
FB6-1634-000	H42 - 18	FC6-4304-000	H42 - 24	FE3-2751-000	350 - 1
FB6-1636-000	H42 - 20	FC6-4308-000	102 - 8	FE3-2752-000	350 - 4
FB6-1644-000	H30 - 2	FC6-4326-000	310 - 1	FE3-2753-000	101 - 23
FB6-1646-000	H30 - 9	FC6-4351-000	H42 - 55	FE3-2754-000	101 - 24
FB6-1649-000	H30 - 10	FC6-4355-000	H42 - 26	FE3-2755-000	101 - 25
FB6-1650-000	H30 - 16	FC6-4356-000	H42 - 39	FE3-2756-000	101 - 26
FB6-1660-000	H42 - 21	FC6-4357-000	H40 - 4	FE3-2756-000	350 - 18
FB6-1905-000	H42 - 22	FC6-4358-000	H42 - 27	FE3-2757-000	101 - 27
FB6-1908-000	H42 - 31	FC6-4375-000	810 - 18	FE3-2758-000	101 - 30
FB6-1909-000	H42 - 23	FC6-4377-000	110 - 3	FE3-2759-000	350 - 14
FB6-1910-000	H40 - 7	FC6-4390-000	H42 - 17	FE3-2760-000	350 - 15
FB6-1920-000	H40 - 14	FC6-4413-000	S20 - 1	FE3-2762-000	350 - 3
FB6-1996-000	H40 - 15	FC6-4508-000	D10 - 1	FE3-2763-000	350 - 4
FB6-1997-000	H40 - 16	FC6-4509-000	D10 - 2	FE3-2764-000	101 - 28
FB6-2000-000	H30 - 3	FC6-4513-000	100 - 19	FE3-2765-000	101 - 22
FB6-6896-000	640 - 1	FC6-6706-000	H40 - 5	FE3-2766-000	350 - 16
FC5-0543-000	312 - 16	FC6-6710-000	H40 - 30	FE3-2769-000	101 - 29
FC5-4265-000	D10 - 6	FC6-6714-000	H40 - 17	FE3-2787-000	350 - 5
FC5-4425-000	311 - 1	FC6-6718-000	H40 - 21	FE3-2788-000	350 - 6
FC5-4860-000	810 - 1	FC6-6720-000	H40 - 1	FE3-2792-000	S20 - 3
FC6-4135-000	102 - 9	FC6-6758-000	110 - 4	FE3-2811-000	110 - 6
FC6-4143-020	101 - 2	FC6-6758-000	S20 - 2	FE3-2812-000	110 - 25
FC6-4163-000	640 - 14	FC7-1757-020	101 - 2	FE3-2813-000	330 - 1
FC6-4164-000	640 - 2	FC7-2409-000	104 - 1	FE3-2814-000	330 - 2
FC6-4165-000	640 - 3	FC7-2944-000	100 - 1	FE3-2815-000	330 - 3
FC6-4166-000	640 - 4	FC8-0165-000	312 - 9	FE3-2816-000	330 - 4
FC6-4168-000	640 - 5	FC8-0166-000	312 - 10	FE3-2817-000	330 - 5
FC6-4169-000	640 - 6	FC8-0167-010	312 - 11	FE3-2818-000	330 - 6

NUMERICAL INDEX

iR2202/2002 Series(Numerical Index)

PARTS NUMBER	FIGURE & KEY NO.	PARTS NUMBER	FIGURE & KEY NO.	PARTS NUMBER	FIGURE & KEY NO.
FE3-2823-000	S20 - 4	FE3-2906-000	H42 - 4	FE3-3017-000	250 - 11
FE3-2826-000	S20 - 5	FE3-2907-000	H42 - 3	FE3-3018-000	250 - 12
FE3-2827-000	S20 - 6	FE3-2917-000	310 - 2	FE3-3019-000	250 - 13
FE3-2828-000	110 - 7	FE3-2919-000	310 - 3	FE3-3020-000	250 - 14
FE3-2829-000	110 - 8	FE3-2923-000	311 - 12	FE3-3021-000	250 - 15
FE3-2830-000	110 - 9	FE3-2924-000	311 - 13	FE3-3023-000	250 - 16
FE3-2831-000	110 - 10	FE3-2925-000	311 - 14	FE3-3024-000	311 - 19
FE3-2832-000	S20 - 7	FE3-2926-000	311 - 15	FE3-3025-000	311 - 20
FE3-2833-000	S20 - 8	FE3-2928-000	310 - 4	FE3-3027-000	250 - 17
FE3-2834-000	S20 - 9	FE3-2930-000	310 - 12	FE3-3031-000	250 - 18
FE3-2836-000	110 - 11	FE3-2931-000	310 - 13	FE3-3032-000	250 - 19
FE3-2837-000	110 - 12	FE3-2932-000	310 - 5	FE3-3039-000	103 - 21
FE3-2838-000	S20 - 10	FE3-2935-000	300 - 4	FE3-3040-000	103 - 22
FE3-2839-000	S20 - 11	FE3-2935-000	H30 - 4	FE3-3041-000	102 - 23
FE3-2840-000	S20 - 12	FE3-2937-000	300 - 5	FE3-3042-000	311 - 21
FE3-2841-000	S20 - 13	FE3-2939-000	300 - 6	FE3-3045-000	250 - 20
FE3-2843-000	330 - 7	FE3-2940-000	300 - 7	FE3-3047-000	103 - 6
FE3-2844-000	330 - 8	FE3-2941-000	102 - 1	FE3-3048-000	250 - 21
FE3-2845-000	330 - 9	FE3-2942-000	102 - 2	FE3-3053-000	250 - 22
FE3-2846-000	330 - 10	FE3-2943-000	102 - 3	FE3-3059-000	250 - 23
FE3-2847-000	S20 - 14	FE3-2945-000	H40 - 25	FE3-3060-000	103 - 20
FE3-2848-000	S20 - 15	FE3-2946-000	H40 - 26	FE3-3061-000	250 - 24
FE3-2849-000	S20 - 16	FE3-2950-000	310 - 14	FE3-3062-000	250 - 25
FE3-2850-000	S20 - 17	FE3-2951-000	102 - 4	FE3-3070-000	H42 - 16
FE3-2853-000	S20 - 18	FE3-2952-000	102 - 5	FE3-3071-000	H42 - 52
FE3-2854-000	S20 - 19	FE3-2953-000	300 - 15	FE3-3074-000	250 - 26
FE3-2855-000	S20 - 20	FE3-2954-000	300 - 16	FE3-3075-000	H42 - 53
FE3-2858-000	S20 - 21	FE3-2959-000	310 - 6	FE3-3076-000	300 - 25
FE3-2859-000	S20 - 22	FE3-2960-000	310 - 7	FE3-3077-000	300 - 25
FE3-2863-000	S20 - 23	FE3-2964-000	311 - 16	FE3-3089-000	101 - 3
FE3-2866-000	330 - 11	FE3-2965-000	102 - 6	FE3-3092-000	102 - 15
FE3-2868-000	103 - 19	FE3-2966-000	102 - 7	FE3-3093-000	102 - 16
FE3-2869-000	350 - 7	FE3-2967-000	311 - 17	FE3-3095-000	102 - 22
FE3-2870-000	350 - 8	FE3-2968-000	H30 - 20	FE3-3096-000	102 - 10
FE3-2871-000	350 - 9	FE3-2980-000	311 - 18	FE3-3098-000	102 - 17
FE3-2872-000	350 - 10	FE3-2982-000	103 - 1	FE3-3100-000	101 - 4
FE3-2873-000	350 - 11	FE3-2983-000	300 - 25	FE3-3102-000	101 - 6
FE3-2874-000	350 - 12	FE3-2986-000	310 - 8	FE3-3105-000	101 - 7
FE3-2875-000	101 - 17	FE3-2987-000	300 - 17	FE3-3107-000	102 - 18
FE3-2878-000	350 - 13	FE3-2988-000	H40 - 20	FE3-3141-000	100 - 3
FE3-2879-000	330 - 12	FE3-2989-000	300 - 4	FE3-3142-000	101 - 1
FE3-2880-000	330 - 13	FE3-3002-000	250 - 1	FE3-3143-000	310 - 9
FE3-2881-000	110 - 13	FE3-3003-000	250 - 2	FE3-3144-000	100 - 4
FE3-2881-000	S20 - 24	FE3-3008-000	103 - 2	FE3-3145-000	100 - 5
FE3-2882-000	330 - 19	FE3-3009-000	250 - 3	FE3-3147-000	100 - 7
FE3-2885-000	315 - 8	FE3-3010-000	250 - 4	FE3-3148-000	100 - 9
FE3-2886-000	315 - 9	FE3-3011-000	250 - 5	FE3-3149-000	100 - 10
FE3-2887-000	315 - 9	FE3-3012-000	250 - 6	FE3-3150-000	100 - 11
FE3-2888-000	315 - 9	FE3-3013-000	250 - 7	FE3-3157-000	102 - 19
FE3-2899-000	H30 - 13	FE3-3014-000	250 - 8	FE3-3159-000	102 - 20
FE3-2903-000	H42 - 19	FE3-3015-000	250 - 9	FE3-3160-000	101 - 8
FE3-2905-000	H42 - 5	FE3-3016-000	250 - 10	FE3-3161-000	101 - 9

NUMERICAL INDEX

iR2202/2002 Series(Numerical Index)

PARTS NUMBER	FIGURE & KEY NO.	PARTS NUMBER	FIGURE & KEY NO.	PARTS NUMBER	FIGURE & KEY NO
FE3-3162-000	101 - 10	FE3-3312-000	640 - 10	FK2-9196-000	311 - 22
FE3-3163-000	101 - 11	FE3-3329-000	101 - 5	FK4-0151-000	900 - IC
FE3-3164-000	102 - 24	FE3-3341-000	101 - 5	FK4-0512-000	103 - 5
FE3-3165-000	110 - 15	FE3-3342-000	101 - 5	FK4-0513-000	S20 - 25
FE3-3166-000	110 - 16	FE3-3373-000	310 - 10	FK4-0515-000	H42 - 54
FE3-3167-000	110 - 17	FE3-3374-000	103 - 3	FK4-0517-000	104 - 3
FE3-3168-000	110 - 18	FE3-3375-000	103 - 7	FK4-0518-000	102 - 25
FE3-3171-000	110 - 19	FE3-3379-000	104 - 2	FK4-0519-000	104 - 4
FE3-3175-000	100 - 8	FE3-3397-000	310 - 15	FK4-0523-000	104 - 7
FE3-3180-000	100 - 2	FE3-3429-000	H30 - 18	FK4-0524-000	104 - 7
FE3-3182-000	100 - 2	FE3-3560-000	400 - 2	FK4-0525-000	104 - 7
FE3-3183-000	810 - 30	FE3-3561-000	400 - 9	FK4-0526-000	104 - 7
FE3-3184-000	810 - 30	FE3-3562-000	400 - 10	FK4-0527-000	104 - 7
FE3-3185-000	810 - 30	FE3-3567-000	400 - 11	FK4-0529-000	250 - 27
FE3-3189-000	100 - 17	FE3-3570-000	400 - 13	FK4-0830-000	400 - 12
FE3-3190-000	100 - 17	FE3-3596-000	400 - 14	FK4-1650-000	001 - 3
FE3-3191-000	100 - 17	FE3-3658-000	130 - 1	FK4-1651-000	001 - 3
FE3-3192-000	100 - 16	FE3-3662-000	130 - 2	FK4-1652-000	001 - 3
FE3-3193-000	100 - 16	FE3-3663-000	130 - 3	FK4-1653-000	001 - 3
FE3-3194-000	100 - 16	FE3-3665-000	130A - 1	FK4-1654-000	001 - 3
FE3-3195-000	100 - 16	FE3-3666-000	130A - 3	FK4-1655-000	001 - 3
FE3-3210-000	810 - 2	FE3-3668-000	130A - 2	FK4-1821-000	001 - 1
FE3-3212-000	810 - 3	FE3-3669-000	130 - 4	FK4-1822-000	001 - 2
FE3-3213-000	810 - 4	FE3-3669-000	130A - 4	FL0-0672-000	130 - 6
FE3-3214-000	810 - 5	FE3-3673-000	130 - 5	FL0-0672-000	130A - 6
FE3-3215-000	810 - 6	FE3-3673-000	130A - 5	FL0-0673-000	130 - 7
FE3-3222-000	810 - 7	FE3-3696-000	400 - 6	FL0-0673-000	130A - 7
FE3-3227-000	810 - 20	FE3-3719-000	103 - 8	FL0-0674-000	130A - 11
FE3-3228-000	810 - 8	FE3-3722-000	103 - 9	FL0-0675-000	130 - 8
FE3-3229-000	810 - 23	FE3-3723-000	100 - 20	FL0-0676-000	130 - 9
FE3-3231-000	810 - 27	FE3-3754-000	400 - 3	FL0-0677-000	130 - 10
FE3-3232-000	810 - 28	FE3-3773-000	103 - 4	FL0-0677-000	130A - 8
FE3-3235-000	810 - 33	FE3-3774-000	100 - 21	FL0-0678-000	130 - 11
FE3-3236-000	810 - 9	FE3-3775-000	100 - 12	FL0-0678-000	130A - 9
FE3-3237-000	810 - 10	FE3-3776-000	100 - 13	FL0-0679-000	130 - 12
FE3-3241-000	103 - 16	FE3-3778-000	D10 - 3	FL0-0679-000	130A - 10
FE3-3242-000	103 - 17	FE3-3779-000	D10 - 4	FL0-0680-000	130 - 13
FE3-3244-000	101 - 13	FE3-5642-000	400 - 4	FL0-0688-000	100 - 18
FE3-3245-000	101 - 14	FE3-6104-000	400 - 5	FL0-0695-000	311 - 23
FE3-3246-000	101 - 15	FE3-6131-000	D10 - 5	FL0-0696-000	300 - 8
FE3-3247-000	810 - 11	FE3-6408-000	100 - 14	FL0-0701-000	110 - 20
FE3-3248-000	103 - 18	FE3-6450-000	100 - 14	FL0-0702-000	S20 - 26
FE3-3249-000	810 - 12	FE3-6485-000	100 - 14	FL0-0705-000	330 - 14
FE3-3253-000	810 - 24	FE5-4048-000	H42 - 40	FL0-0708-000	310 - 11
FE3-3254-000	810 - 25	FF6-1610-000	H42 - 34	FL0-0714-000	H40 - 31
FE3-3258-000	810 - 13	FF6-1621-000	H42 - 28	FL0-0734-000	330 - 17
FE3-3263-000	102 - 28	FG6-8440-000	H40 - 6	FL0-0735-000	300 - 10
FE3-3267-000	810 - 29	FH4-6294-000	900 - IC	FL0-0736-000	300 - 12
FE3-3279-000	810 - 14	FK2-0360-000	110 - 21	FL0-0835-000	130 - 14
FE3-3284-000	810 - 15	FK2-1070-000	312 - 13	FL0-0835-000	130A - 12
FE3-3285-000	810 - 34	FK2-1072-000	312 - 14	FL0-1100-000	100 - 15
FE3-3311-000	640 - 9	FK2-1104-000	H42 - 29	FL0-1766-000	130A - 13

NUMERICAL INDEX

iR2202/2002 Series(Numerical Index)

PARTS NUMBER	FIGURE & KEY NO.	PARTS NUMBER	FIGURE & KEY NO.	PARTS NUMBER	FIGURE & KEY NO
FL0-1767-000	130A - 13	FM1-B366-000	300 -	FM1-F150-000	300 -
FL0-1768-000	130A - 13	FM1-B382-000	130A -	FM1-F160-000	810 -
FL0-1769-000	130 - 15	FM1-B383-000	130A -	FM1-F161-000	810 -
FL0-1770-000	130 - 15	FM1-B384-000	130 -	FM1-F162-000	810 -
FL0-1771-000	130 - 15	FM1-B385-000	130 -	FM1-F163-000	810 -
FL0-1772-000	130 - 15	FM1-B386-000	130 -	FM1-F164-000	810 -
FL0-1775-000	100 - 6	FM1-B394-000	H42 -	FM1-F171-000	460 -
FL0-1776-000	100 - 6	FM1-B397-000	H40 - 11	FM1-F172-000	460 -
FL0-1777-000	100 - 6	FM1-B398-000	H40 - 19	FM1-F182-000	315 -
FL0-1778-000	100 - 6	FM1-B468-000	400 - 1	FM1-F917-000	104 - 18
FL0-1779-000	100 - 6	FM1-B469-000	400 - 1	FM2-3287-000	640 - 21
FL0-1780-000	100 - 6	FM1-B473-000	400 - 7	FM2-3325-000	H30 - 5
FL0-1781-000	100 - 6	FM1-B474-000	400 - 8	FM2-3326-010	H30 - 11
FL0-1782-000	100 - 6	FM1-B886-000	S20 - 27	FM2-4020-000	101 - 12
FL0-1783-000	100 - 6	FM1-B998-000	130A - 15	FM2-4421-000	312 - 19
FL0-1784-000	100 - 6	FM1-B999-000	130 - 17	FM2-4496-000	H40 - 22
FL0-2039-000	330 - 18	FM1-C913-000	104 - 8	FM2-4499-000	H40 - 10
FL0-2043-000	315 - 10	FM1-C914-000	104 - 9	FM2-4786-000	104 - 14
FL0-2051-000	310 - 21	FM1-C915-000	104 - 10	FM3-3672-010	640 - 18
FL0-3345-000	310 - 22	FM1-C916-000	104 - 5	FM3-9348-000	300 - 19
FL0-3928-000	100 - 3	FM1-C917-000	104 - 6	FM4-0040-000	104 - 15
FL2-3193-000	640 - 11	FM1-C921-000	101 - 19	FS1-1205-000	102 - 13
FL2-3197-000	640 - 12	FM1-C922-000	103 - 10	FS1-1205-000	250 - 29
FL2-3199-000	640 - 13	FM1-C923-000	102 - 26	FS1-1205-000	311 - 27
FL2-3200-000	312 - 15	FM1-C924-000	103 - 11	FS1-1205-000	H42 - 41
FL2-3201-010	312 - 17	FM1-C926-000	101 - 21	FS5-1805-000	350 - 2
FL2-3202-000	312 - 18	FM1-C928-000	104 - 11	FS5-9714-000	H42 - 50
FL2-3304-000	640 - 16	FM1-C929-000	310 - 17	FS6-2917-000	H30 - 14
FL2-3305-000	H30 - 19	FM1-C933-000	103 - 14	FS7-0207-000	H30 - 15
FL2-9922-000	H42 - 12	FM1-C934-000	110 - 22	FS7-0225-000	H42 - 42
FL3-1352-000	311 - 24	FM1-C936-000	104 - 12	FS7-0226-000	H42 - 43
FL3-1447-000	300 - 21	FM1-C937-000	104 - 13	FS7-0227-000	H42 - 44
FM1-B028-000	640 - 17	FM1-C939-000	101 - 20	FS7-0228-000	H42 - 45
FM1-B029-000	640 -	FM1-C940-000	110 - 26	FS7-0229-000	H42 - 46
FM1-B037-000	102 - 12	FM1-C941-000	S20 - 29	FS7-0230-000	H42 - 47
FM1-B316-000	350 -	FM1-C942-000	S20 - 30	FU5-1519-000	810 - 35
FM1-B317-000	350 -	FM1-C943-000	S20 - 31	FU5-1520-000	810 - 36
FM1-B325-000	H30 -	FM1-C944-000	S20 - 32	FU5-1527-000	312 - 20
FM1-B328-000	250 - 28	FM1-C945-000	H40 - 24	FU5-1528-000	312 - 21
FM1-B334-000	810 - 16	FM1-C946-000	H40 - 27	FU5-1529-000	312 - 22
FM1-B335-000	810 - 16	FM1-C947-000	H40 - 28	FU5-1530-000	312 - 23
FM1-B336-000	130A -	FM1-C951-000	930 -	FU5-8586-000	310 - 16
FM1-B337-000	130 -	FM1-C952-000	H40 - 18	FU5-8588-000	H30 - 17
FM1-B340-000	810 - 17	FM1-C958-000	400 - 15	FU6-0761-000	640 - 22
FM1-B342-000	810 - 19	FM1-D020-000	400 - 16	FU6-0762-000	640 - 23
FM1-B345-000	810 - 26	FM1-D996-000	900 -	FU6-0763-000	640 - 24
FM1-B347-000	810 - 31	FM1-D997-000	900 -	FU6-0764-000	640 - 25
FM1-B350-000	311 -	FM1-D998-000	900 -	FU6-0765-000	640 - 26
FM1-B353-000	300 - 13	FM1-E878-000	900 -	FU6-0773-000	330 - 15
FM1-B359-000	330 -	FM1-E879-000	900 -	FU6-0788-000	250 - 30
FM1-B364-000	130 - 16	FM1-F146-000	640 -	FU6-0814-000	312 - 24
FM1-B365-000	130A - 14	FM1-F147-000	640 -	FU6-2146-000	102 - 11

NUMERICAL INDEX

iR2202/2002 Series(Numerical Index)

PARTS NUMBER	FIGURE & KEY NO.	PARTS NUMBER	FIGURE & KEY NO.	PARTS NUMBER	FIGURE & KEY NO
FU6-2160-000	110 - 24	WG8-5935-000	310 - 19		
FU6-2174-000	310 - 18	WG8-5935-000	311 - 25		
FU6-2175-000	H42 - 51	WG8-5935-000	330 - 16		
FU6-2180-000	312 - 25	WG8-5935-000	350 - 17		
FU6-2182-000	312 - 26	WG8-5935-000	400 - 17		
FU6-2194-000	101 - 18	WG8-5935-000	810 - 21		
FU6-2406-000	311 - 28	WG8-5935-000	S20 - 35		
FU7-2221-000	312 - 27	WP2-5316-000	104 - 16		
FU7-2222-000	312 - 28	XA9-1386-000	100 - 22		
FU7-2234-000	H42 - 30	XA9-1386-000	101 - 31		
FU7-2923-000	311 - 29	XA9-1386-000	102 - 27		
FU7-2982-000	311 - 30	XA9-1386-000	103 - 23		
FU7-2987-000	300 - 23	XA9-1386-000	104 - 17		
FU7-2988-000	300 - 24	XA9-1386-000	250 - 32		
FU7-2989-000	300 - 22	XA9-1386-000	S20 - 36		
FU7-2990-000	300 - 18	XA9-2006-000	810 - 37		
FU8-0573-000	311 - 31	XD1-1106-235	H40 - 501		
NPN	001 -	XD3-1200-122	H42 - 501		
NPN	100 -	XD3-2200-102	810 - 501		
NPN	101 -	XF2-3611-640	S20 - 28		
NPN	102 -	XG9-0737-000	102 - 14		
NPN	103 -	XH9-0135-000	H40 - 29		
NPN	104 -				
NPN	110 -				
NPN	250 -				
NPN	310 -				
NPN	312 -				
NPN	400 -				
NPN	D10 -				
NPN	H40 -				
NPN	S20 -				
RB2-1850-000	250 - 31				
VS1-7177-002	103 - 12				
VS1-7177-002	312 - 29				
VS1-7177-002	H40 - 23				
VS1-7177-003	110 - 23				
VS1-7177-003	311 - 26				
VS1-7177-003	312 - 30				
VS1-7177-004	312 - 31				
VS1-7177-011	S20 - 33				
VS1-7177-013	103 - 15				
VS1-7177-013	H40 - 9				
VS1-7207-003	310 - 20				
VS1-7454-002	103 - 13				
VS1-8412-011	110 - 27				
WC2-5680-000	H40 - 8				
WE8-6816-000	400 - 18				
WE8-6817-000	S20 - 34				
WG8-5696-000	312 - 32				
WG8-5836-000	H42 - 48				
WG8-5935-000	101 - 16				
WG8-5935-000	102 - 21				

iR2202/2002 Series(Parts Catalog)

imageRUNNER 2202DN COPYBOARD/DUPLEX/2 CASSETTE
UNIT/NETWORK MODEL

220V CN F19-1761-000 QMX

imageRUNNER 2202N COPYBOARD/NETWORK MODEL

220V CN F19-1762-000 QMY

230V EUR F19-1792-000 QMV

imageRUNNER 2202N NETWORK MODEL

120V LTN F19-1731-000 QMU

230V SG,HK F19-1741-000 QMW

230V LTN F19-1743-000 QXT

imageRUNNER 2202L COPYBOARD/LOCAL PRINT MODEL

220V CN F19-1661-000 QNJ

imageRUNNER 2202 COPYBOARD/LOCAL PRINT MODEL

230V EUR F19-1691-000 QNH

imageRUNNER 2002G COPYBOARD/NETWORK MODEL

220V CN F19-1763-000 QMR

imageRUNNER 2002N NETWORK MODEL

230V SG,HK F19-1742-000 QMQ

imageRUNNER 2002L COPYBOARD/LOCAL PRINT MODEL

220V CN F19-1662-000 QNE

220V CN F19-1663-000 QRS

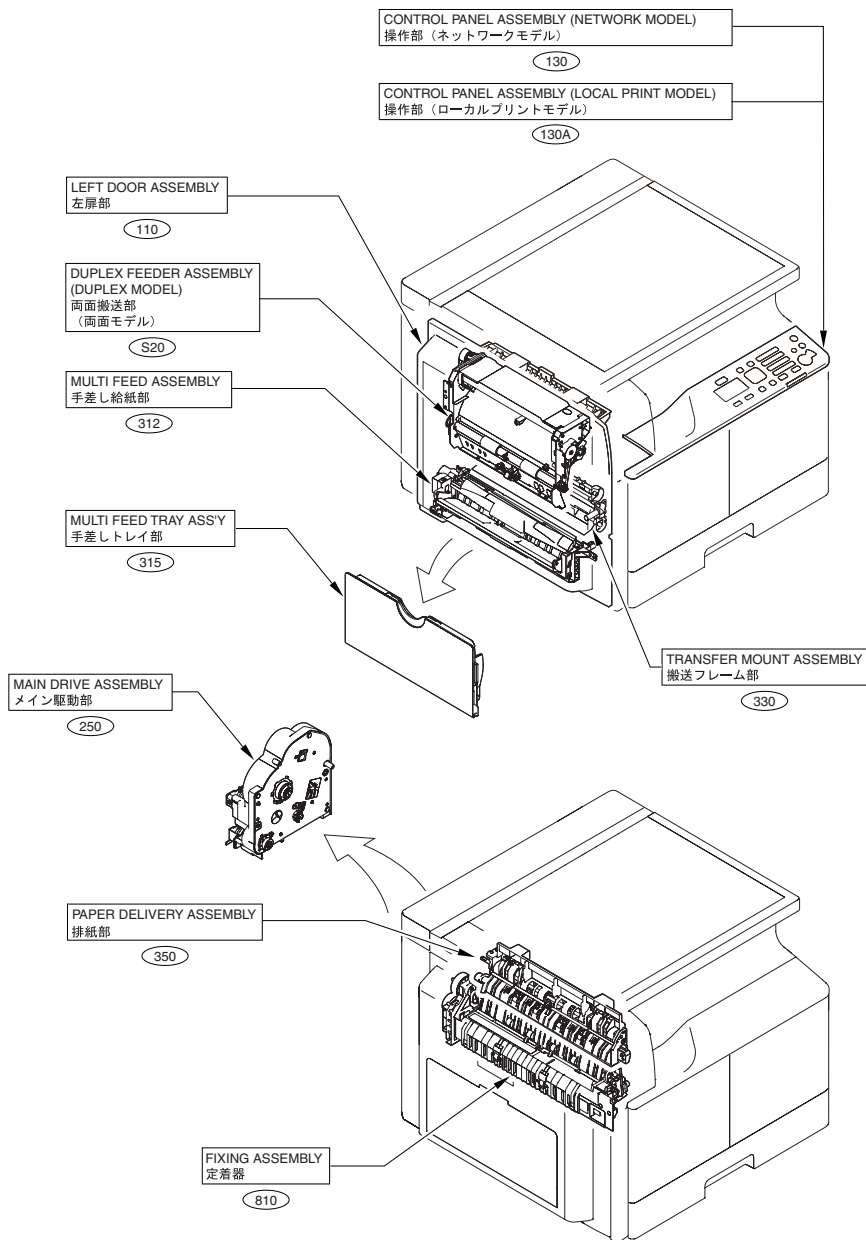
imageRUNNER 2002 COPYBOARD/LOCAL PRINT MODEL

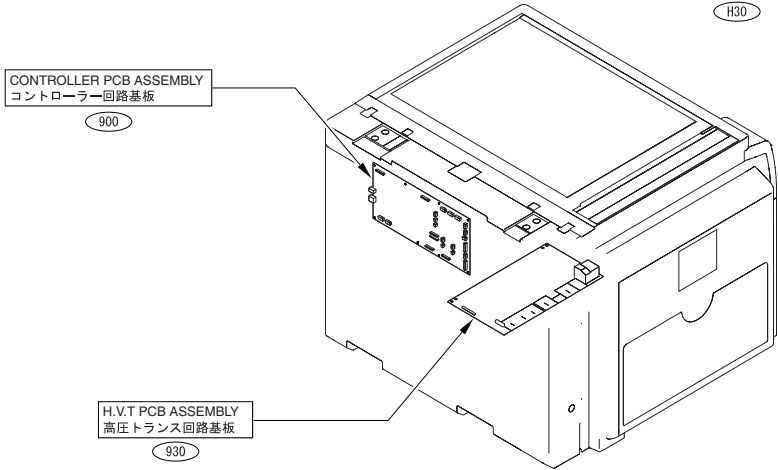
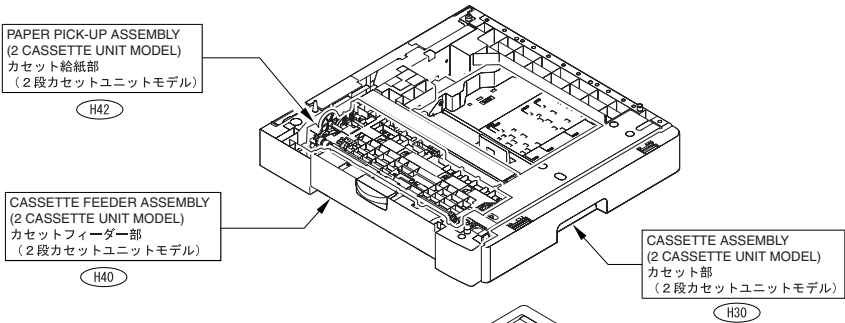
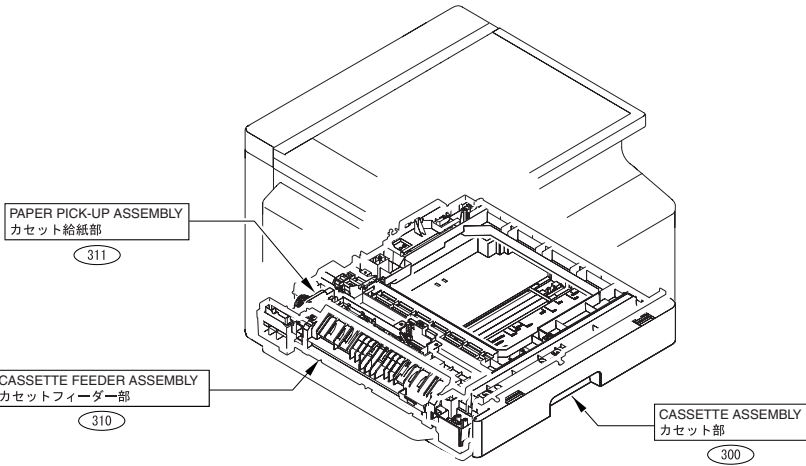
230V SG,HK F19-1641-000 QNA

Contents

A1	ASSEMBLY LOCATION DIAGRAM	2-1
A2	OPTION PARTS CATALOG LIST	2-4
001	ACCESSORIES	2-5
100	EXTERNAL COVERS, PANELS, ETC.	2-6
101	INTERNAL COMPONENTS 1	2-9
102	INTERNAL COMPONENTS 2	2-12
103	MACHINE REAR PLATE 1	2-14
104	MACHINE REAR PLATE 2	2-16
110	LEFT DOOR ASSEMBLY	2-18
130	CONTROL PANEL ASSEMBLY (NETWORK MODEL).....	2-20
130A	CONTROL PANEL ASSEMBLY (LOCAL PRINT MODEL).....	2-22
250	MAIN DRIVE ASSEMBLY	2-24
300	CASSETTE ASSEMBLY	2-27
310	CASSETTE FEEDER ASSEMBLY	2-29
311	PAPER PICK-UP ASSEMBLY	2-31
312	MULTI FEED ASSEMBLY	2-33
315	MULTI FEED TRAY ASS'Y	2-36
330	TRANSFER MOUNT ASSEMBLY	2-37
350	PAPER DELIVERY ASSEMBLY	2-39
400	READER ASSEMBLY	2-41
460	LASER SCANNER ASSEMBLY	2-43
640	DEVELOPING ASSEMBLY	2-44
810	FIXING ASSEMBLY	2-46
900	CONTROLLER PCB ASSEMBLY	2-49
930	H.V.T PCB ASSEMBLY	2-50
D10	COPYBOARD COVER ASSEMBLY (COPYBOARD MODEL).....	2-51
H30	CASSETTE ASSEMBLY (2 CASSETTE UNIT MODEL)	2-53
H40	CASSETTE FEEDER ASSEMBLY (2 CASSETTE UNIT MODEL).....	2-55
H42	PAPER PICK-UP ASSEMBLY (2 CASSETTE UNIT MODEL)	2-58
S20	DUPLEX FEEDER ASSEMBLY (DUPLEX MODEL)	2-61
ZZA	MECHANICAL STANDARD PARTS (HOW TO USE)	2-64
ZZB	MECHANICAL STANDARD PARTS (SCREWS).....	2-65
ZZC	MECHANICAL STANDARD PARTS (BOLTS).....	2-72
ZZD	MECHANICAL STANDARD PARTS (NUTS).....	2-73
ZZE	MECHANICAL STANDARD PARTS (RETAINING RINGS)	2-74

FIGURE A1 ASSEMBLY LOCATION DIAGRAM





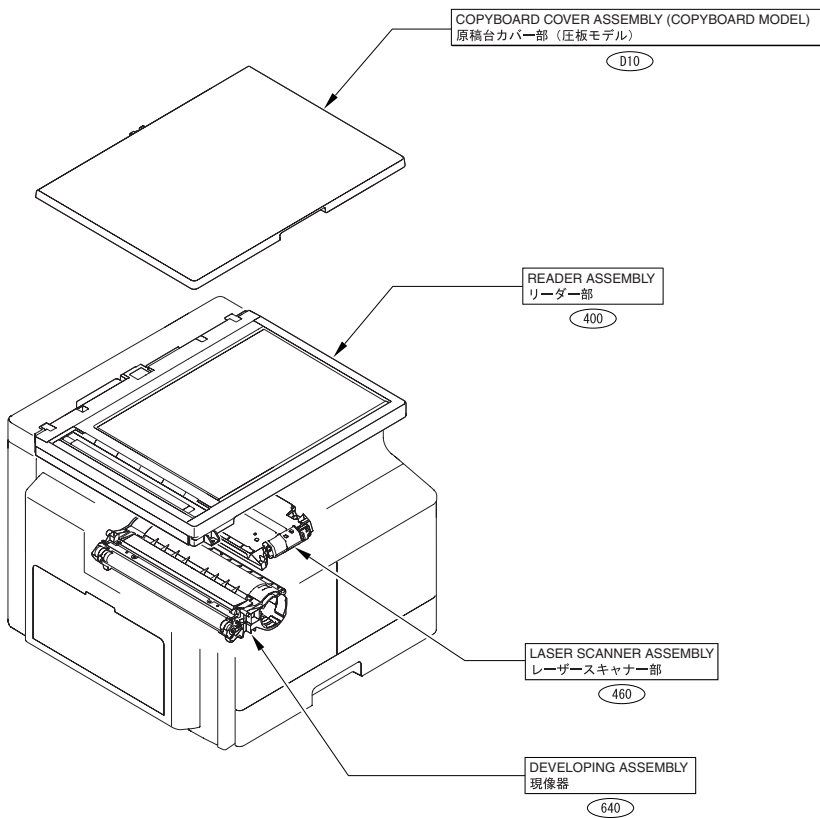


FIGURE A2 OPTION PARTS CATALOG LIST

This is the table of the machine's options whose parts catalog is issued.
本機オプションで、パーツカタログが発行されている機種の一覧である。

No.	Model Name(English)	Model Name(Japanese)
1	DADF-AM1	(日本仕向けなし)
2	Platen Cover Type T	(日本仕向けなし)
3	Cassette Feeding Module-AB1	(日本仕向けなし)
4	FL Cassette-AU1	(日本仕向けなし)
5	Duplex Unit-C1	(日本仕向けなし)
6	Heater Kit-M1	(日本仕向けなし)
7	Cassette Heater Unit-40	(日本仕向けなし)

FIGURE 001 ACCESSORIES

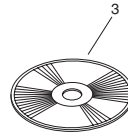
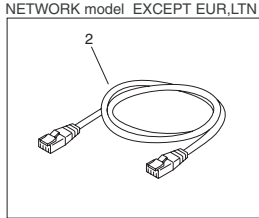
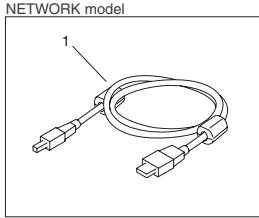


FIGURE & KEY NO.	PARTS NUMBER	RANK	Q'TY	DESCRIPTION	SERIAL NUMBER/REMARKS	SVC
Fig.001	NPN		RF	ACCESSORIES		
1	FK4-1821-000		1	CABLE, USB	NETWORK model	
2	FK4-1822-000		1	CABLE, LAN	NETWORK model EXCEPT EUR,LTN	
3	FK4-1650-000		1	CD-ROM, SOFTWARE FOR UFR II LT	SG,HK	
3	FK4-1651-000		1	CD-ROM, SOFTWARE FOR UFR II LT	LTN(230V)	
3	FK4-1652-000		1	CD-ROM, SOFTWARE FOR UFR II LT	LTN(120V)	
3	FK4-1653-000		1	CD-ROM, SOFTWARE FOR UFR II LT	EUR, NETWORK model	
3	FK4-1654-000		1	CD-ROM, SOFTWARE FOR UFR II LT	EUR, LOCAL PRINT model	
3	FK4-1655-000		1	CD-ROM, SOFTWARE FOR UFR II LT	CN	

FIGURE 100 EXTERNAL COVERS, PANELS, ETC.

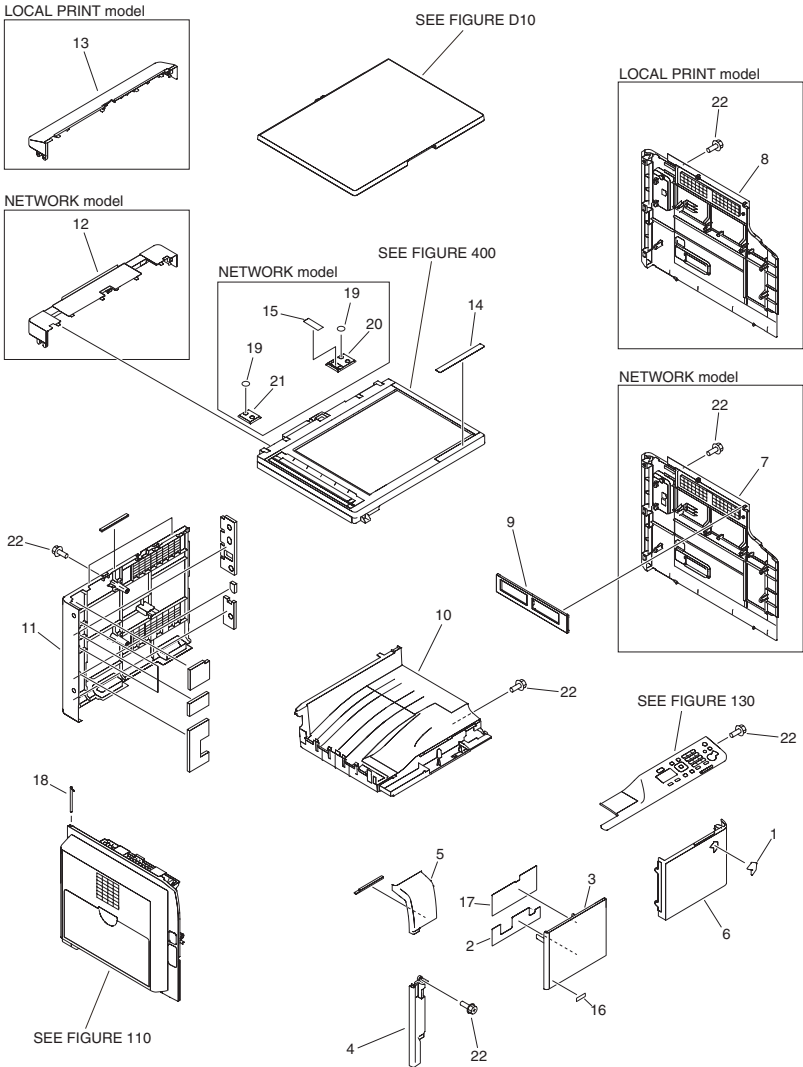


FIGURE & KEY NO.	PARTS NUMBER	RANK	Q'TY	DESCRIPTION	SERIAL NUMBER/REMARKS	SVC
Fig.100	NPN		RF	EXTERNAL COVERS, PANELS, ETC.		
1	FC7-2944-000		1	EMBLEM		
2	FE3-3182-000		1	LABEL, LASER CAUTION	SG,HK,CN	
2	FE3-3180-000		1	LABEL, LASER CAUTION	EUR,LTN	
3	FE3-3141-000		1	COVER, FRONT, LEFT	EXCEPT iR2002L (QRS)	
3	FL0-3928-000		1	COVER, FRONT, LEFT	iR2002L (QRS)	
4	FE3-3144-000		1	COVER, LEFT FRONT		
5	FE3-3145-000		1	COVER, FRONT, LEFT UPPER		
6	FL0-1775-000		1	COVER, FRONT, RIGHT	iR2202L	
6	FL0-1776-000		1	COVER, FRONT, RIGHT	iR2202, EUR	
6	FL0-1777-000		1	COVER, FRONT, RIGHT	iR2002L (QNE)	
6	FL0-1778-000		1	COVER, FRONT, RIGHT	iR2002, SG,HK	
6	FL0-1779-000		1	COVER, FRONT, RIGHT	iR2202N, EUR,SG,HK,LTN(230V),C N	
6	FL0-1780-000		1	COVER, FRONT, RIGHT	iR2202N, LTN(120V)	
6	FL0-1781-000		1	COVER, FRONT, RIGHT	iR2002G	
6	FL0-1782-000		1	COVER, FRONT, RIGHT	iR2002N, SG,HK	
6	FL0-1783-000		1	COVER, FRONT, RIGHT	iR2002L (QRS)	
6	FL0-1784-000		1	COVER, FRONT, RIGHT	iR2202DN	
7	FE3-3147-000		1	COVER, RIGHT	NETWORK model	
8	FE3-3175-000		1	COVER, RIGHT	LOCAL PRINT model	
9	FE3-3148-000		1	COVER, RIGHT, INNER		
10	FE3-3149-000		1	TRAY, DELIVERY		
11	FE3-3150-000		1	COVER, REAR		
12	FE3-3775-000		1	COVER, READER, REAR	NETWORK model	
13	FE3-3776-000		1	COVER, READER, REAR	LOCAL PRINT model	
14	FE3-6408-000		1	LABEL, COPY INHIBITED	EUR	
14	FE3-6450-000		1	LABEL, COPY INHIBITED	SG,HK,LTN	
14	FE3-6485-000		1	LABEL, COPY INHIBITED	CN	
15	FL0-1100-000		1	SHEET, OPEN/CLOSE SENSOR LEVER	NETWORK model	
16	FE3-3192-000		1	LABEL, TONER	SG,HK,CN (EXCEPT QRS)	

FIGURE & KEY NO.	PARTS NUMBER	RANK	Q'TY	DESCRIPTION	SERIAL NUMBER/REMARKS	SVC
16	FE3-3193-000		1	LABEL, TONER	EUR	
16	FE3-3194-000		1	LABEL, TONER	LTN	
16	FE3-3195-000		1	LABEL, TONER	CN (QRS)	
17	FE3-3191-000		1	LABEL, TONER EXCHANGE	SG,HK,CN	
17	FE3-3189-000		1	LABEL, TONER EXCHANGE	EUR	
17	FE3-3190-000		1	LABEL, TONER EXCHANGE	LTN	
18	FL0-0688-000		1	PIN, HINGE		
19	FC6-4513-000		2	SEAL	NETWORK model	
20	FE3-3723-000		1	COVER, HINGE, RIGHT	NETWORK model	
21	FE3-3774-000		1	COVER, HINGE, LEFT	NETWORK model	
22	XA9-1386-000		AR	SCREW,RS,M3X8		

FIGURE 101 INTERNAL COMPONENTS 1

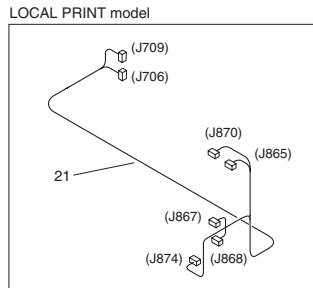
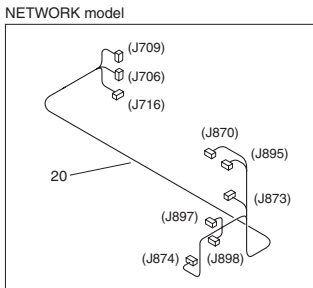
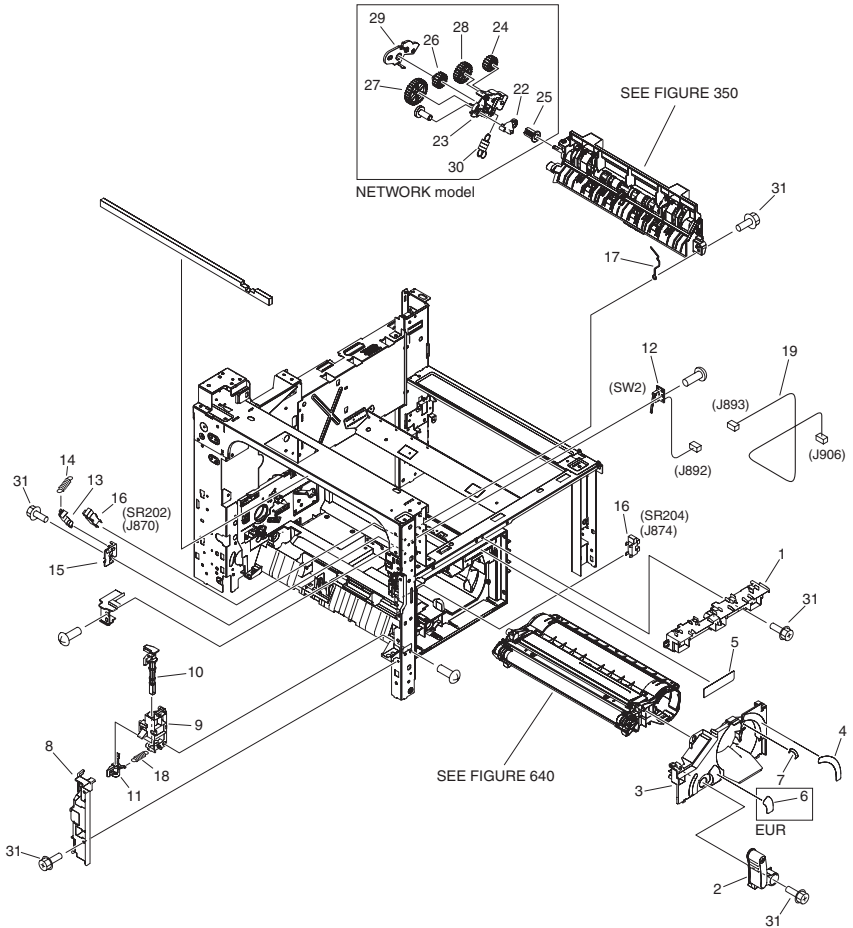


FIGURE & KEY NO.	PARTS NUMBER	RANK	Q'TY	DESCRIPTION	SERIAL NUMBER/REMARKS	SVC
Fig.101	NPN		RF	MACHINE FRONT PLATE		
1	FE3-3142-000		1	COVER, FRONT, INNER		
2	FC7-1757-020		1	LEVER, DEV, PRESSURE	EUR	
2	FC6-4143-020		1	LEVER, DEV, PRESSURE	EXCEPT EUR	
3	FE3-3089-000		1	GUIDE, TONER BOTTLE		
4	FE3-3100-000		1	LABEL, TONER BOTTLE		
5	FE3-3329-000		1	LABEL, TONER MODEL	SG,HK,CN	
5	FE3-3341-000		1	LABEL, TONER MODEL	EUR	
5	FE3-3342-000		1	LABEL, TONER MODEL	LTN	
6	FE3-3102-000		1	LABEL, DEV. PRESSURE LOCK	EUR	
7	FE3-3105-000		1	LABEL, TONER SET INSTRUCTION		
8	FE3-3160-000		1	COVER, HOOK		
9	FE3-3161-000		1	HOLDER, HOOK		
10	FE3-3162-000		1	HOOK, DOOR, UPPER		
11	FE3-3163-000		1	HOOK, DOOR, LOWER		
12	FM2-4020-000		1	DOOR SWITCH PCB ASS'Y	SW2	
13	FE3-3244-000		1	FLAG, SENSOR		
14	FE3-3245-000		1	SPRING, TENSION		
15	FE3-3246-000		1	GUIDE, FIXING POSITION, RIGHT		
16	WG8-5935-000		2	IC, PHOTO INTERRUPTER	SR202,SR204	
17	FE3-2875-000		1	SPRING, GROUNDING		
18	FU6-2194-000		1	SPRING, TENSION		
19	FM1-C921-000		1	CABLE, DOOR SWITCH		
20	FM1-C939-000		1	CABLE, PAPER EJECT SENSOR	NETWORK model	
21	FM1-C926-000		1	CABLE, PAPER EJECT SENSOR	LOCAL PRINT model	
22	FE3-2765-000		1	HOLDER, PAPER DELIVERY	NETWORK model	
23	FE3-2753-000		1	HOLDER, GEAR	NETWORK model	
24	FE3-2754-000		1	GEAR, 17T	NETWORK model	
25	FE3-2755-000		1	BUSHING	NETWORK model	
26	FE3-2756-000		1	GEAR, 17T	NETWORK model	
27	FE3-2757-000		1	GEAR, 31T	NETWORK model	
28	FE3-2764-000		1	GEAR, 24T	NETWORK model	

FIGURE & KEY NO.	PARTS NUMBER	R A N K	Q'TY	DESCRIPTION	SERIAL NUMBER/ REMARKS	S V C
29	FE3-2769-000		1	COVER, HOLDER	NETWORK model	
30	FE3-2758-000		1	SPRING, TENSION	NETWORK model	
31	XA9-1386-000		AR	SCREW,RS,M3X8		

FIGURE 102 INTERNAL COMPONENTS 2

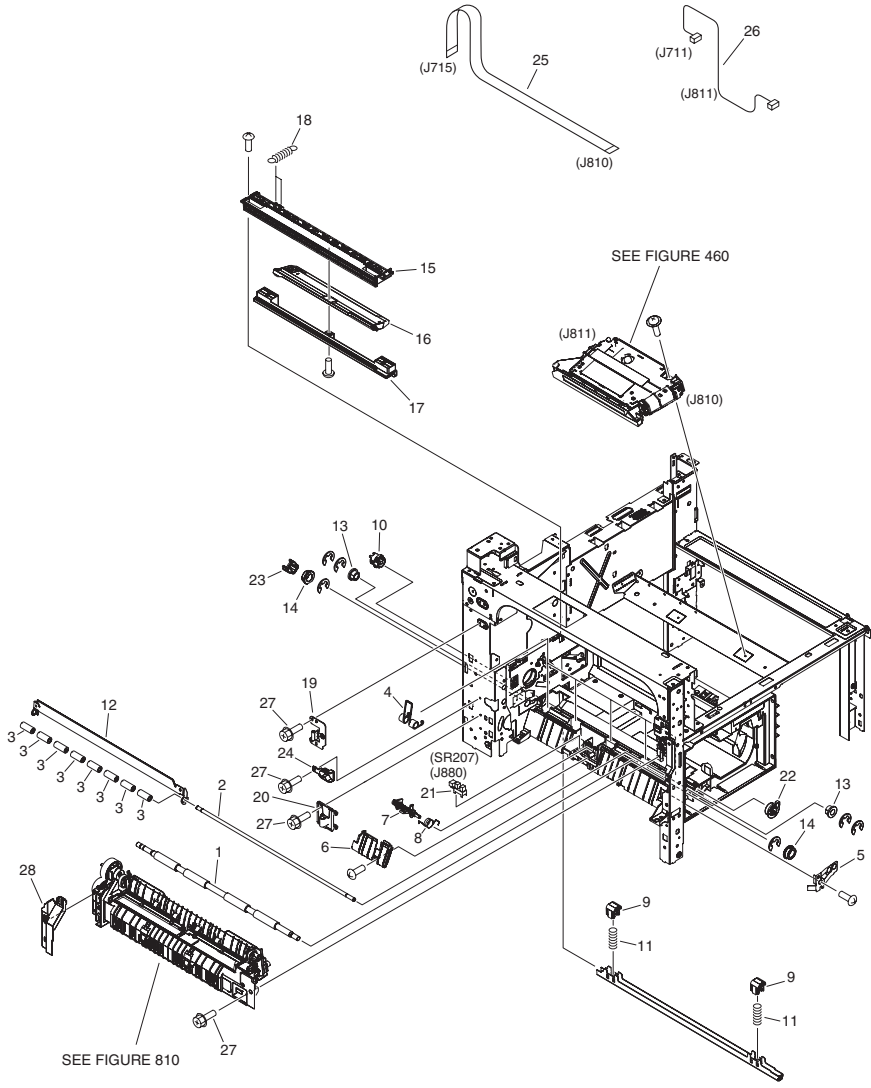


FIGURE & KEY NO.	PARTS NUMBER	RANK	Q'TY	DESCRIPTION	SERIAL NUMBER/REMARKS	SVC
Fig.102	NPN		RF	INTERNAL COMPONENTS 2		
1	FE3-2941-000		1	ROLLER, REGISTRATION		
2	FE3-2942-000		1	SHAFT, TRANSMISSION		
3	FE3-2943-000		8	ROLLER, REGIST PRESSURE		
4	FE3-2951-000		5	SPRING, TORSION		
5	FE3-2952-000		1	SPRING, LEAF		
6	FE3-2965-000		1	COVER, SENSOR		
7	FE3-2966-000		1	FLAG, SENSOR		
8	FC6-4308-000		1	SPRING, TORSION		
9	FC6-4135-000		2	CAM, PRESSURE, DEV.		
10	FE3-3096-000		1	BUSHING		
11	FU6-2146-000		2	SPRING, COMPRESSION		
12	FM1-B037-000		1	GUIDE UNIT, PRE-TRANS., UPPER		
13	FS1-1205-000		2	BUSHING		
14	XG9-0737-000		2	BUSHING		
15	FE3-3092-000		1	HOLDER, LASER SHUTTER, 1		
16	FE3-3093-000		1	SHUTTER, LASER		
17	FE3-3098-000		1	HOLDER, LASER SHUTTER, 2		
18	FE3-3107-000		2	SPRING, TENSION		
19	FE3-3157-000		1	PLATE, HINGE		
20	FE3-3159-000		1	HOLDER, HINGE		
21	WG8-5935-000		1	IC, PHOTO INTERRUPTER	SR207	
22	FE3-3095-000		1	BUSHING		
23	FE3-3041-000		1	COUPLING		
24	FE3-3164-000		1	BLOCK, POSITIONING, DOOR		
25	FK4-0518-000		1	CABLE, FLEXIBLE FLAT		
26	FM1-C923-000		1	CABLE, POLYGON MOTOR		
27	XA9-1386-000		2	SCREW,RS,M3X8		
28	FE3-3263-000		1	COVER, AC CABLE		

FIGURE 103 MACHINE REAR PLATE 1

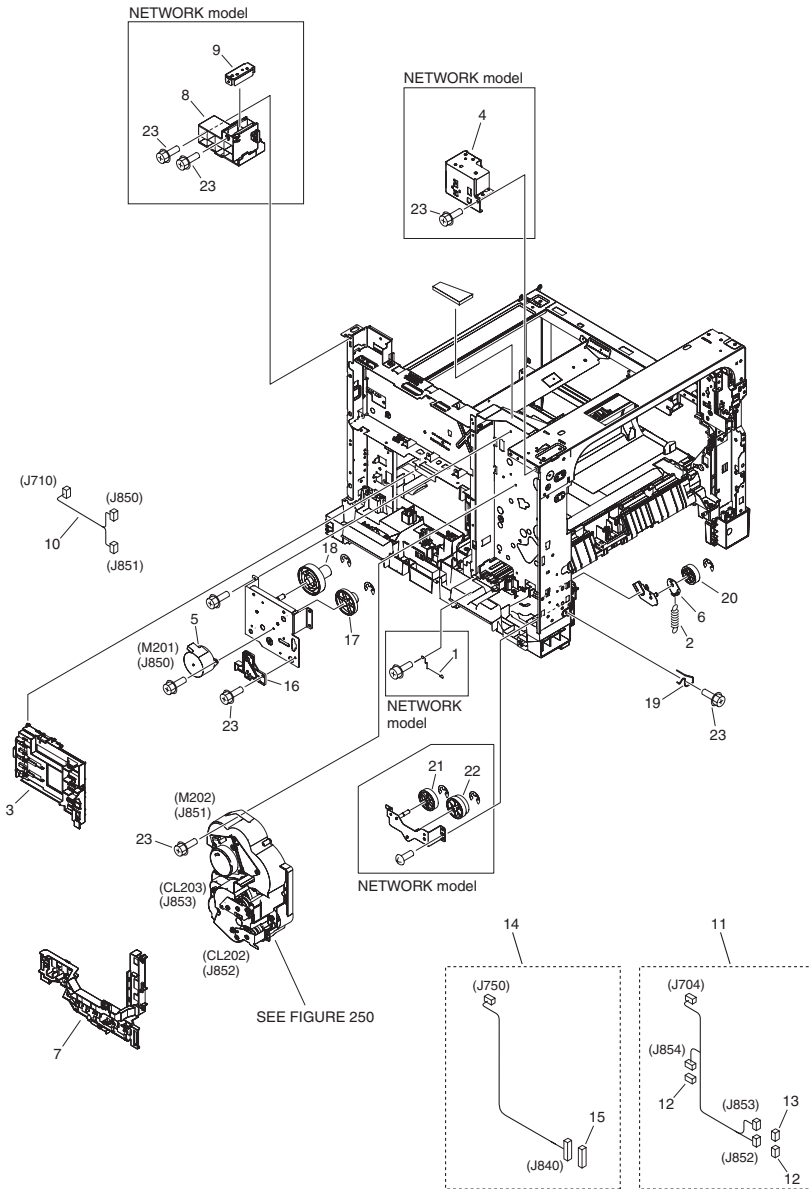


FIGURE & KEY NO.	PARTS NUMBER	R A N K	Q'TY	DESCRIPTION	SERIAL NUMBER/ REMARKS	S V C
Fig.103	NPN		RF	MACHINE REAR PLATE 1		
1	FE3-2982-000		1	SPRING, GROUNDING	NETWORK model	
2	FE3-3008-000		1	SPRING, TENSION		
3	FE3-3374-000		1	GUIDE, CABLE		
4	FE3-3773-000		1	MOUNT, HINGE, LEFT	NETWORK model	
5	FK4-0512-000		1	MOTOR, STEPPING	M201	
6	FE3-3047-000		1	STOPPER		
7	FE3-3375-000		1	GUIDE, CABLE		
8	FE3-3719-000		1	MOUNT, HINGE, RIGHT	NETWORK model	
9	FE3-3722-000		1	PLATE, HINGE, RIGHT	NETWORK model	
10	FM1-C922-000		1	CABLE, MAIN/FIXING MOTOR		
11	FM1-C924-000		1	CABLE, CLUTCH/SOLENOID		
12	VS1-7177-002		2	CONNECTOR, SNAP TIGHT, BK		
13	VS1-7454-002		1	CONNECTOR, SNAP TIGHT		
14	FM1-C933-000		1	CABLE, LEFT DOOR		
15	VS1-7177-013		1	CONNECTOR, SNAP TIGHT		
16	FE3-3241-000		1	GUIDE, FIXING POSITION, LEFT		
17	FE3-3242-000		1	GEAR, 22T/80T		
18	FE3-3248-000		1	GEAR, 19T/91T		
19	FE3-2868-000		1	SPRING, GROUNDING		
20	FE3-3060-000		1	GEAR, 33T		
21	FE3-3039-000		1	GEAR, 45T	NETWORK model	
22	FE3-3040-000		1	GEAR, 28T/46T	NETWORK model	
23	XA9-1386-000		AR	SCREW,RS,M3X8		

FIGURE 104 MACHINE REAR PLATE 2

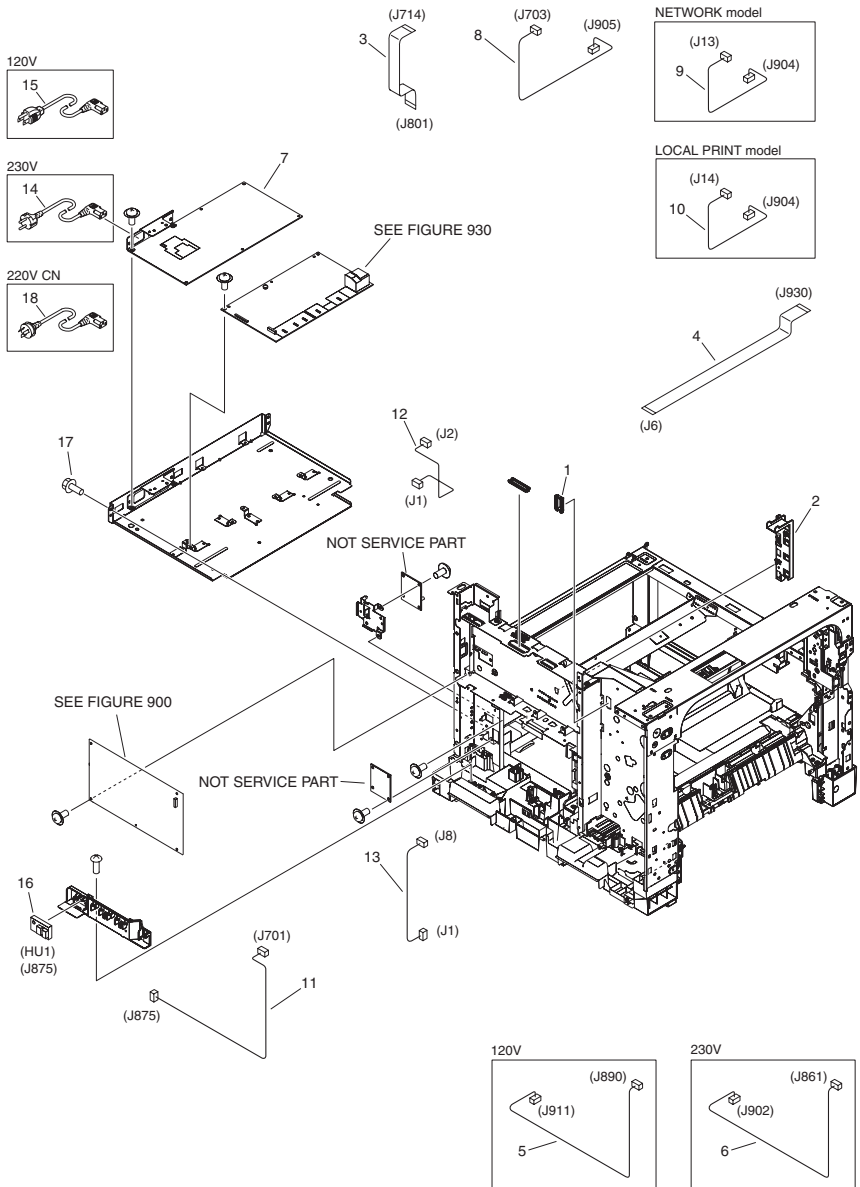


FIGURE & KEY NO.	PARTS NUMBER	RANK	Q'TY	DESCRIPTION	SERIAL NUMBER/REMARKS	SVC
Fig.104	NPN		RF	MACHINE REAR PLATE 2		
1	FC7-2409-000		1	BUSHING		
2	FE3-3379-000		1	GUIDE, CABLE		
3	FK4-0517-000		1	CABLE, FLEXIBLE FLAT		
4	FK4-0519-000		1	CABLE, FLEXIBLE FLAT		
5	FM1-C916-000		1	CABLE, FIXING, AC	120V	
6	FM1-C917-000		1	CABLE, FIXING, AC	230V	
7	FK4-0523-000		1	POWER SUPPLY UNIT	LOCAL PRINT model, 230V, EXCEPT EUR	
7	FK4-0524-000		1	POWER SUPPLY UNIT	LOCAL PRINT model, 230V, EUR	
7	FK4-0525-000		1	POWER SUPPLY UNIT	NETWORK model, 230V, EXCEPT EUR	
7	FK4-0526-000		1	POWER SUPPLY UNIT	NETWORK model, 230V, EUR	
7	FK4-0527-000		1	POWER SUPPLY UNIT	NETWORK model, 120V	
8	FM1-C913-000		1	CABLE, CONTROLLER, SIGNAL		
9	FM1-C914-000		1	CABLE, CONTROLLER, POWER	NETWORK model	
10	FM1-C915-000		1	CABLE, CONTROLLER, POWER	LOCAL PRINT model	
11	FM1-C928-000		1	CABLE, ENVIRONMENT SENSOR		
12	FM1-C936-000		1	CABLE, SOFT-ID PCB		
13	FM1-C937-000		1	CABLE, COUNTER PCB		
14	FM2-4786-000		1	POWER CORD	230V	
15	FM4-0040-000		1	CORD, POWER	120V	
16	WP2-5316-000		1	SENSOR UNIT, HUMIDITY	HU1	
17	XA9-1386-000		AR	SCREW,RS,M3X8		
18	FM1-F917-000		1	POWER CORD	220V CN	

FIGURE 110 LEFT DOOR ASSEMBLY

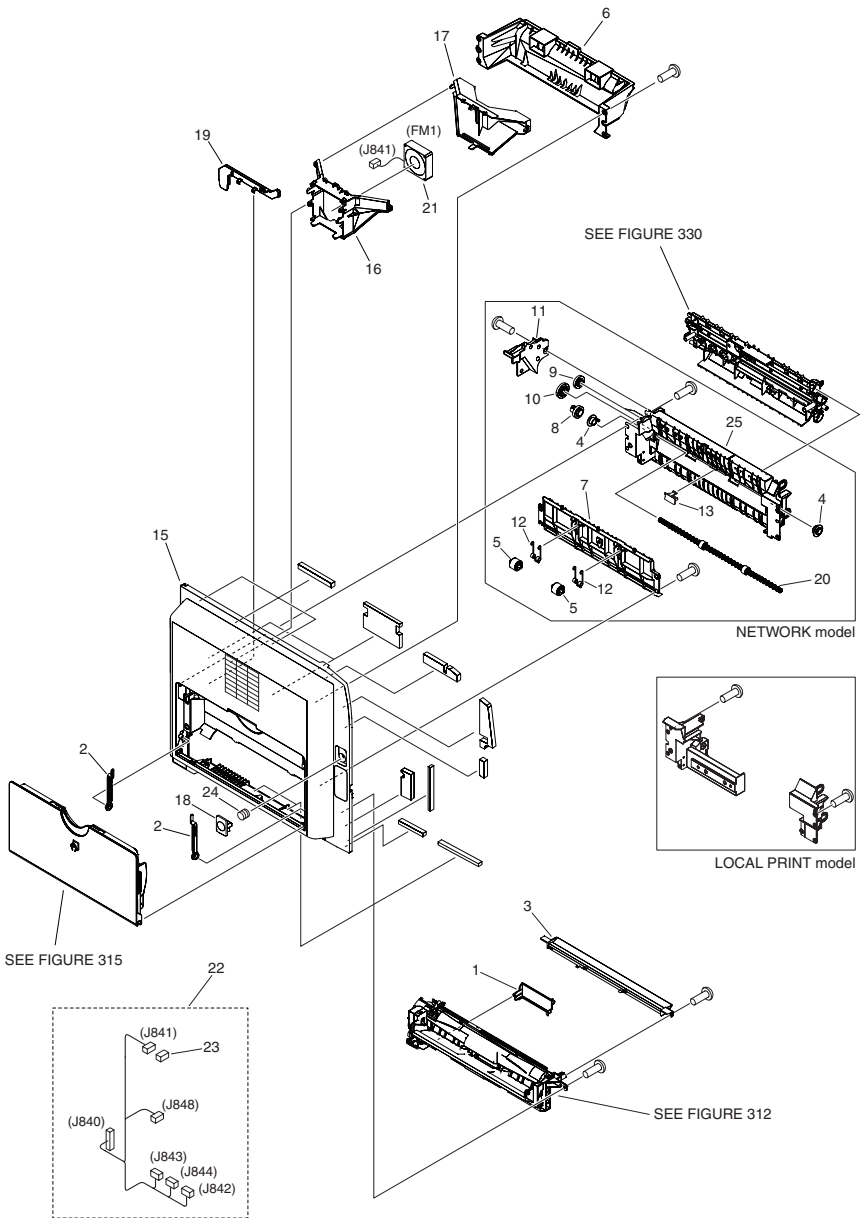


FIGURE & KEY NO.	PARTS NUMBER	RANK	Q'TY	DESCRIPTION	SERIAL NUMBER/REMARKS	SVC
Fig.110	NPN		RF	LEFT DOOR ASSEMBLY		
1	FC6-4232-000		1	COVER, HARNESS		
2	FC6-4238-000		2	STOPPER, MULTI FEED		
3	FC6-4377-000		1	GUIDE, FEED		
4	FC6-6758-000		2	BUSHING	NETWORK model	
5	FC9-7720-000		2	COLLAR, FIXING DELIVERY	NETWORK model	
6	FE3-2811-000		1	GUIDE, DELIVERY, LEFT		
7	FE3-2828-000		1	GUIDE, DUPLEXING, LOWER	NETWORK model	
8	FE3-2829-000		1	GEAR, 19T	NETWORK model	
9	FE3-2830-000		2	GEAR, 19T	NETWORK model	
10	FE3-2831-000		1	GEAR, 23T	NETWORK model	
11	FE3-2836-000		1	COVER, GEAR	NETWORK model	
12	FE3-2837-000		2	SPRING, TORSION	NETWORK model	
13	FE3-2881-000		1	RETAINER, ROLLER	NETWORK model	
15	FE3-3165-000		1	DOOR, LEFT		
16	FE3-3166-000		1	DUCT, FAN		
17	FE3-3167-000		1	DUCT, FAN		
18	FE3-3168-000		1	BUTTON, LEFT DOOR		
19	FE3-3171-000		1	COVER, CABLE		
20	FL0-0701-000		1	ROLLER, DUPLEXING PAPER FEED	NETWORK model	
21	FK2-0360-000		1	FAN	FM1	
22	FM1-C934-000		1	CABLE, LEFT DOOR		
23	VS1-7177-003		1	CONNECTOR, SNAP TIGHT, BK		
24	FU6-2160-000		1	SPRING, COMPRESSION		
25	FE3-2812-000		1	MOUNT, FEEDER	NETWORK model	
26	FM1-C940-000		1	CABLE, DUPLEX	DUPLEX model	
27	VS1-8412-011		1	CONNECTOR, SNAP TIGHT, BL	DUPLEX model	

FIGURE 130
CONTROL PANEL ASSEMBLY (NETWORK MODEL)

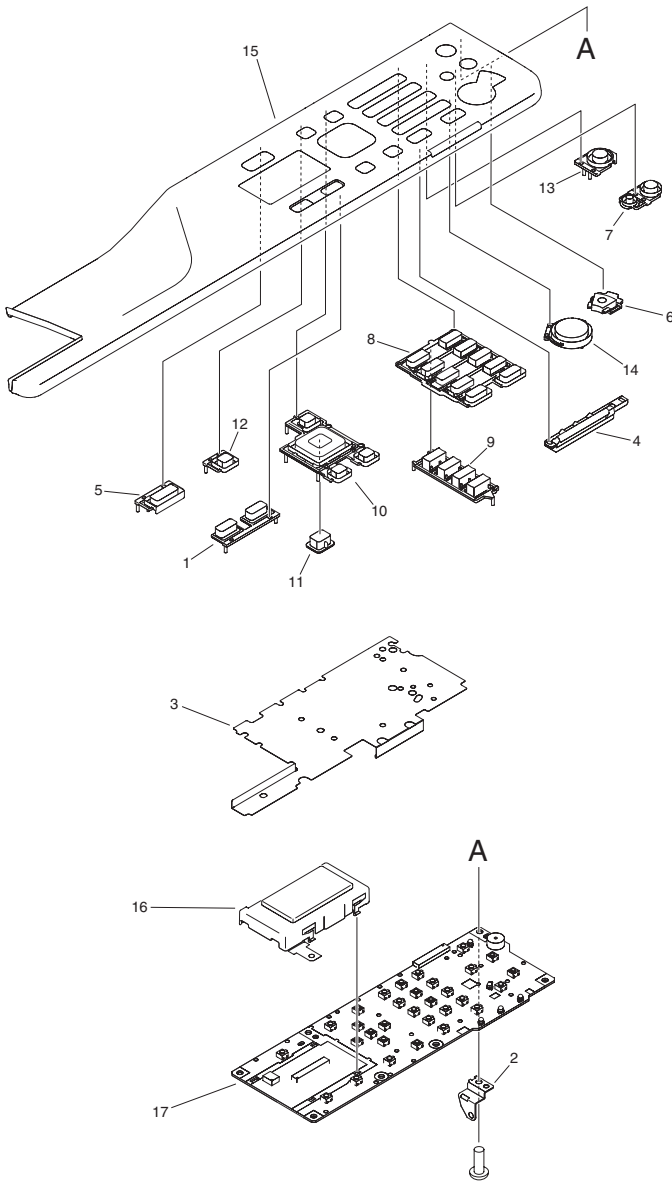


FIGURE & KEY NO.	PARTS NUMBER	RANK	Q'TY	DESCRIPTION	SERIAL NUMBER/REMARKS	SVC
Fig.130	FM1-B337-000		1	CONTROL PANEL ASSEMBLY	NETWORK model, EUR	
Fig.130	FM1-B384-000		1	CONTROL PANEL ASSEMBLY	NETWORK model, SG,HK,LTN(230V)	
Fig.130	FM1-B385-000		1	CONTROL PANEL ASSEMBLY	NETWORK model, CN	
Fig.130	FM1-B386-000		1	CONTROL PANEL ASSEMBLY	NETWORK model, LTN(120V)	
1	FE3-3658-000		1	KEY TOP, PORTAL	NETWORK model	
2	FE3-3662-000		1	PLATE, GROUNDING	NETWORK model	
3	FE3-3663-000		1	SHEET, ELECTROSTATIC	NETWORK model	
4	FE3-3669-000		1	COVER, LED		
5	FE3-3673-000		1	KEY TOP, SCAN		
6	FL0-0672-000		1	KEY TOP, STOP		
7	FL0-0673-000		1	KEY TOP, SETTINGS/REGISTRATION		
8	FL0-0675-000		1	KEY TOP, NUMBERS, 1	NETWORK model	
9	FL0-0676-000		1	KEY TOP, NUMBERS, 2	NETWORK model	
10	FL0-0677-000		1	KEY TOP, CROSS		
11	FL0-0678-000		1	KEY TOP, OK		
12	FL0-0679-000		1	KEY TOP, RESET		
13	FL0-0680-000		1	KEY TOP, ENERGY SAVER	NETWORK model	
14	FL0-0835-000		1	KEY TOP, START		
15	FL0-1769-000		1	COVER, CONTROL PANEL	NETWORK model, EUR	
15	FL0-1770-000		1	COVER, CONTROL PANEL	NETWORK model, SG,HK,LTN(230V)	
15	FL0-1771-000		1	COVER, CONTROL PANEL	NETWORK model, CN	
15	FL0-1772-000		1	COVER, CONTROL PANEL	NETWORK model, LTN(120V)	
16	FM1-B364-000		1	LCD UNIT	NETWORK model	
17	FM1-B999-000		1	CONTROL PANEL PCB ASSEMBLY	NETWORK model	

FIGURE 130A
CONTROL PANEL ASSEMBLY (LOCAL PRINT MODEL)

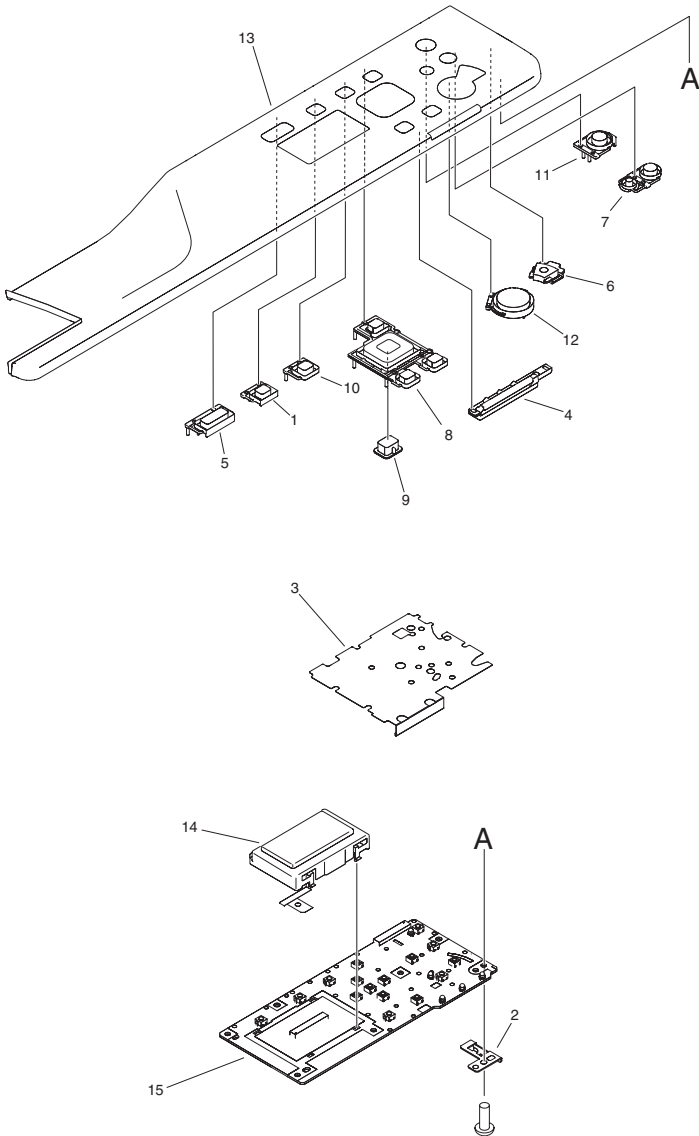


FIGURE & KEY NO.	PARTS NUMBER	R A N K	Q'TY	DESCRIPTION	SERIAL NUMBER/ REMARKS	S V C
Fig.130A	FM1-B336-000		1	CONTROL PANEL ASSEMBLY	LOCAL PRINT model, EUR	
Fig.130A	FM1-B382-000		1	CONTROL PANEL ASSEMBLY	LOCAL PRINT model, SG,HK	
Fig.130A	FM1-B383-000		1	CONTROL PANEL ASSEMBLY	LOCAL PRINT model, CN	
1	FE3-3665-000		1	KEY TOP, PORTAL	LOCAL PRINT model	
2	FE3-3668-000		1	PLATE, GROUNDING	LOCAL PRINT model	
3	FE3-3666-000		1	SHEET, ELECTROSTATIC	LOCAL PRINT model	
4	FE3-3669-000		1	COVER, LED		
5	FE3-3673-000		1	KEY TOP, SCAN		
6	FL0-0672-000		1	KEY TOP, STOP		
7	FL0-0673-000		1	KEY TOP, SETTINGS/REGISTRATION		
8	FL0-0677-000		1	KEY TOP, CROSS		
9	FL0-0678-000		1	KEY TOP, OK		
10	FL0-0679-000		1	KEY TOP, RESET		
11	FL0-0674-000		1	KEY TOP, ENERGY SAVER	LOCAL PRINT model	
12	FL0-0835-000		1	KEY TOP, START		
13	FL0-1766-000		1	COVER, CONTROL PANEL	LOCAL PRINT model, EUR	
13	FL0-1767-000		1	COVER, CONTROL PANEL	LOCAL PRINT model, SG,HK	
13	FL0-1768-000		1	COVER, CONTROL PANEL	LOCAL PRINT model, CN	
14	FM1-B365-000		1	LCD UNIT	LOCAL PRINT model	
15	FM1-B998-000		1	CONTROL PANEL PCB ASSEMBLY	LOCAL PRINT model	

FIGURE 250 MAIN DRIVE ASSEMBLY

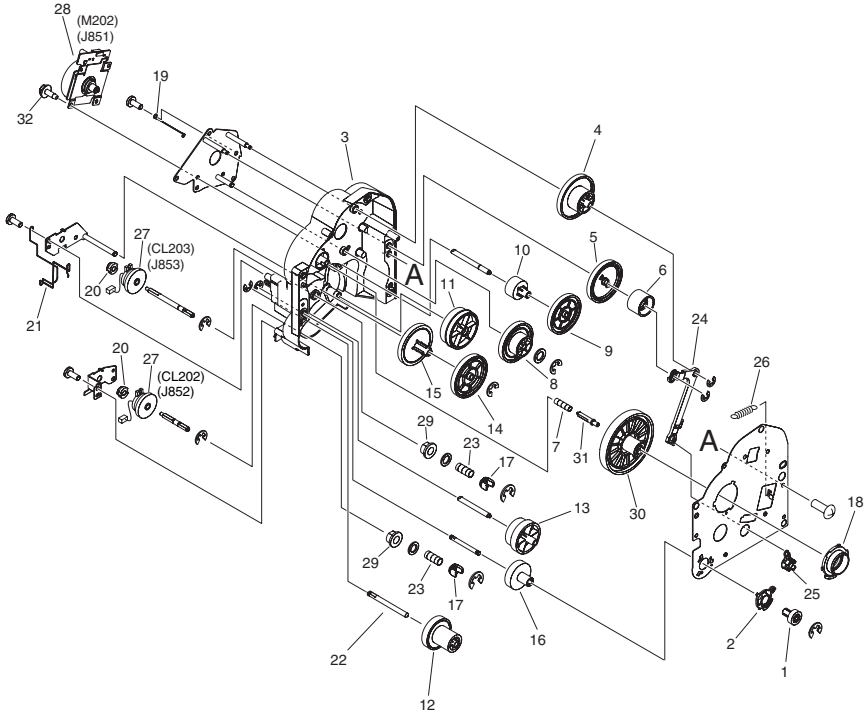
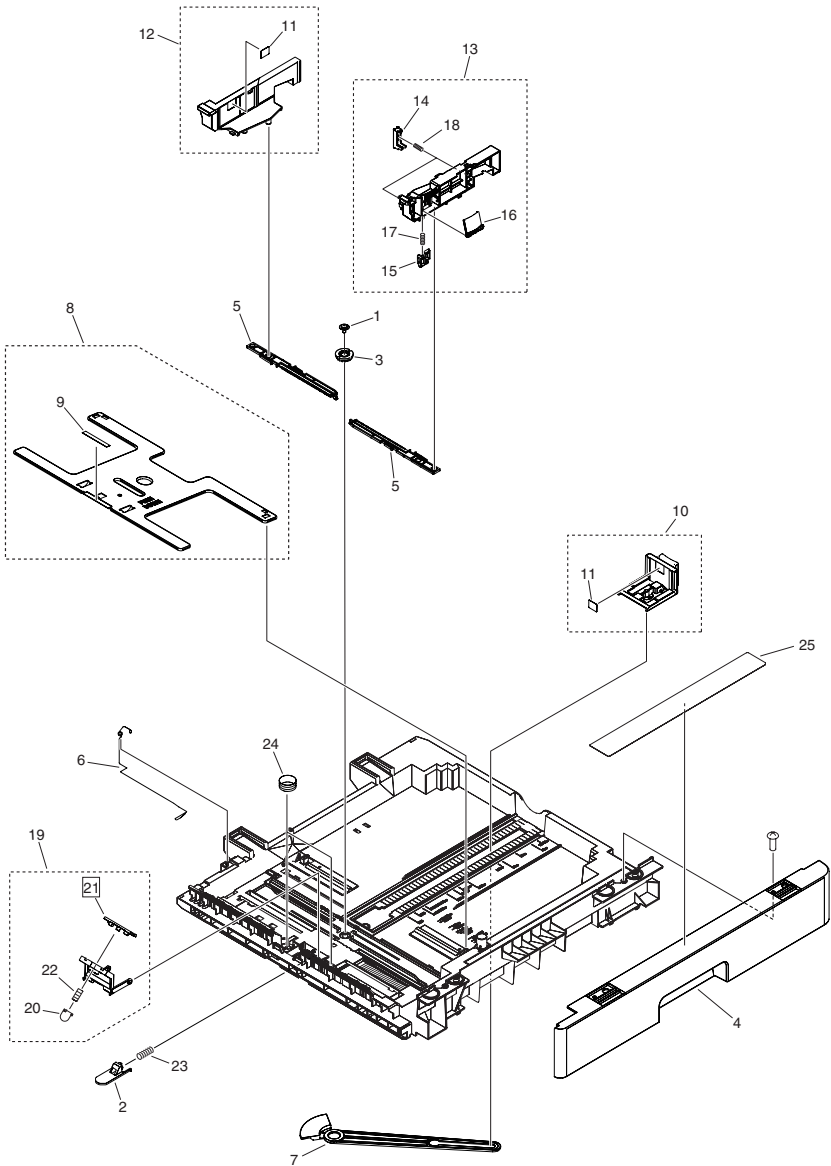


FIGURE & KEY NO.	PARTS NUMBER	R A N K	Q'TY	DESCRIPTION	SERIAL NUMBER/ REMARKS	S V C
Fig.250	NPN		RF	MAIN DRIVE ASSEMBLY		
1	FE3-3002-000		1	GEAR, 17T		
2	FE3-3003-000		1	BUSHING		
3	FE3-3009-000		1	FRAME, MAIN DRIVE		
4	FE3-3010-000		1	GEAR, 57T/113T		
5	FE3-3011-000		1	GEAR, 107T		
6	FE3-3012-000		1	GEAR, 59T		
7	FE3-3013-000		1	SPRING, COMPRESSION		
8	FE3-3014-000		1	GEAR, 53T/103T		
9	FE3-3015-000		1	GEAR, 101T		
10	FE3-3016-000		1	GEAR, 29T		
11	FE3-3017-000		1	GEAR, 48T/59T		
12	FE3-3018-000		1	GEAR, 23T/42T		
13	FE3-3019-000		1	GEAR, 36T/50T		
14	FE3-3020-000		1	GEAR, 67T		
15	FE3-3021-000		1	GEAR, 55T		
16	FE3-3023-000		1	GEAR, 42T		
17	FE3-3027-000		2	COUPLING		
18	FE3-3031-000		1	BUSHING		
19	FE3-3032-000		1	CABLE, GROUNDING		
20	FE3-3045-000		2	BUSHING		
21	FE3-3048-000		1	CABLE, GROUNDING		
22	FE3-3053-000		1	SHAFT, TRANSMISSION		
23	FE3-3059-000		2	SPRING, COMPRESSION		
24	FE3-3061-000		1	LEVER, RELEASE		
25	FE3-3062-000		1	COUPLING		
26	FE3-3074-000		1	SPRING, TENSION		
27	FK4-0529-000		2	CLUTCH, ELECTROMAGNETIC	CL202,CL203	
28	FM1-B328-000		1	MOTOR UNIT, DC	M202	
29	FS1-1205-000		2	BUSHING		
30	FU6-0788-000		1	GEAR, 161T		
31	RB2-1850-000		1	PIN		

FIGURE & KEY NO.	PARTS NUMBER	R A N K	Q'TY	DESCRIPTION	SERIAL NUMBER/ REMARKS	S V C
32	XA9-1386-000		4	SCREW,RS,M3X8		

FIGURE 300 CASSETTE ASSEMBLY



NOTE : This assembly does not include the parts shown with key No. 25.
 注 : このユニットにKey No. 25の部品は含まれません。

FIGURE & KEY NO.	PARTS NUMBER	RANK	Q'TY	DESCRIPTION	SERIAL NUMBER/REMARKS	SVC
Fig.300	FM1-B366-000		1	CASSETTE ASSEMBLY	EXCEPT QRS, SEE NOTE	
Fig.300	FM1-F150-000		1	CASSETTE ASSEMBLY	QRS, SEE NOTE	
1	FC8-0352-000		1	SCREW, WWASHER, M3X6		
2	FC9-1037-000		1	BLOCK, LIFTER PLATE RETAINING		
3	FC9-1683-000		1	PINION, 18T		
4	FE3-2935-000		1	COVER, CASSETTE, FRONT	EXCEPT QRS	
4	FE3-2989-000		1	COVER, CASSETTE, FRONT	QRS	
5	FE3-2937-000		2	RACK		
6	FE3-2939-000		1	SPRING, TORSION		
7	FE3-2940-000		1	LINK, SENSOR		
8	FL0-0696-000		1	PLATE, CENTER		
9	FC9-1044-000		1	SHEET, CASSETTE PLATE		
10	FL0-0735-000		1	PLATE, BACK END LIMIT		
11	FC8-4965-000		2	LABEL, HEIGHT LIMIT, R		
12	FL0-0736-000		1	PLATE, PAPER SIDE END, REAR		
13	FM1-B353-000		1	SIDE END PLATE ASSEMBLY, FRONT		
14	FC9-1046-000		2	BLOCK, PAPER RETAINING		
15	FE3-2953-000		1	LOCK, PAPER SIDE END		
16	FE3-2954-000		1	LEVER, LOCK		
17	FE3-2987-000		1	SPRING, COMPRESSION		
18	FU7-2990-000		2	SPRING, COMPRESSION		
19	FM3-9348-000		1	CASSETTE HOLDER ASSEMBLY		
20	FC9-1043-000		1	CAP, CASSETTE HOLDER SPRING		
21	FL3-1447-000		1	MOUNT, CASSETTE PAD	[DP]	
22	FU7-2989-000		1	SPRING, COMPRESSION		
23	FU7-2987-000		1	SPRING, LEAF		
24	FU7-2988-000		2	SPRING, COMPRESSION		
25	FE3-2983-000		1	LABEL, PAPER SET	SG,HK,CN SEE NOTE	
25	FE3-3076-000		1	LABEL, PAPER SET	EUR, SEE NOTE	
25	FE3-3077-000		1	LABEL, PAPER SET	LTN, SEE NOTE	

FIGURE 310 CASSETTE FEEDER ASSEMBLY

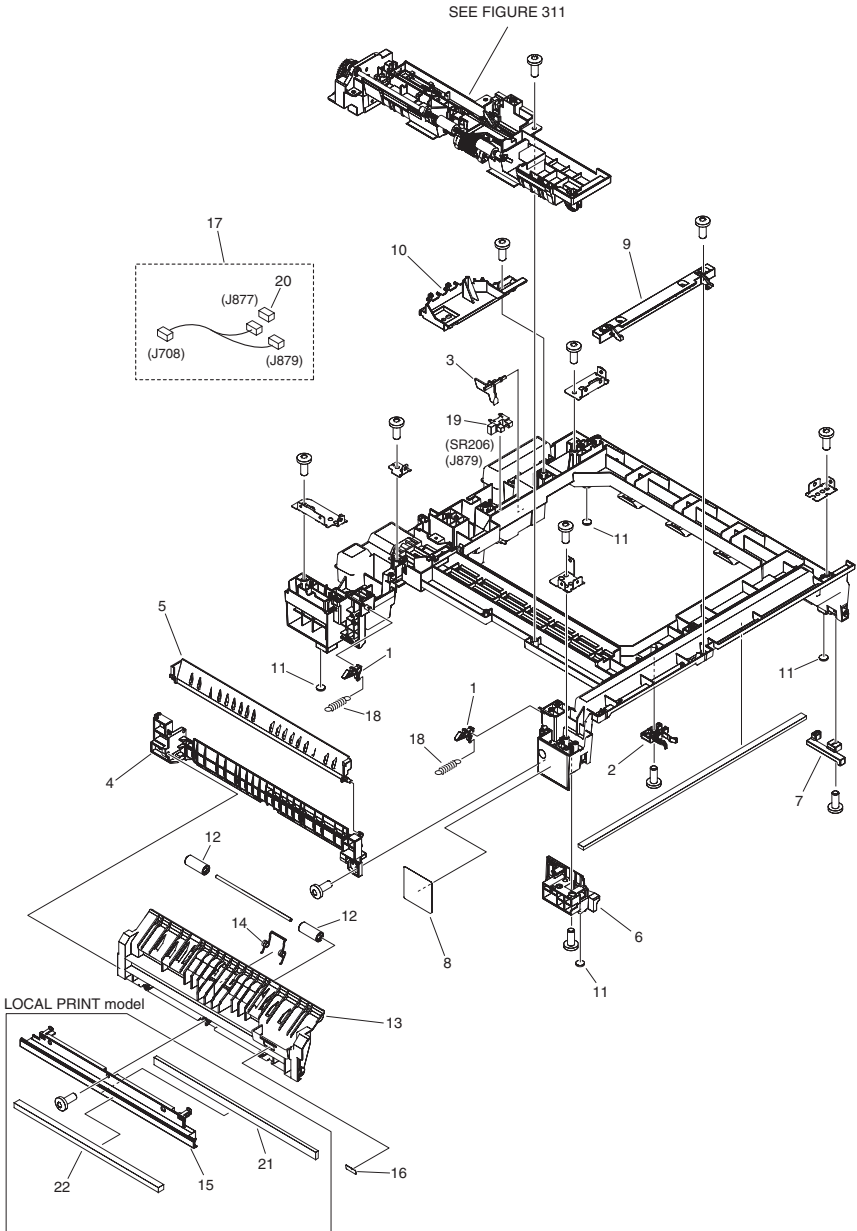


FIGURE & KEY NO.	PARTS NUMBER	R A N K	Q'TY	DESCRIPTION	SERIAL NUMBER/ REMARKS	S V C
Fig.310	NPN		RF	CASSETTE FEEDER ASSEMBLY		
1	FC6-4326-000		2	LOCK, VERTICAL PASS		
2	FE3-2917-000		1	BLOCK, POSITIONING		
3	FE3-2919-000		1	FLAG, SENSOR		
4	FE3-2928-000		1	GUIDE, CASSETTE, LEFT		
5	FE3-2932-000		1	COVER, CASSETTE INNER, LEFT		
6	FE3-2959-000		1	RAIL, CASSETTE, LEFT		
7	FE3-2960-000		1	RAIL, CASSETTE, RIGHT		
8	FE3-2986-000		1	LABEL, JAM CLEARING		
9	FE3-3143-000		1	SUPPORT, FRONT COVER		
10	FE3-3373-000		1	RAIL, BASE PLATE		
11	FL0-0708-000		4	FOOT, RUBBER		
12	FE3-2930-000		2	ROLLER		
13	FE3-2931-000		1	COVER, CASSETTE, LEFT		
14	FE3-2950-000		1	SPRING, TORSION		
15	FE3-3397-000		1	COVER, CASSETTE, LEFT LOWER	LOCAL PRINT model	
16	FU5-8586-000		1	LABEL, COVER		
17	FM1-C929-000		1	CABLE, CASSETE LARGE SENSOR		
18	FU6-2174-000		2	SPRING, TENSION		
19	WG8-5935-000		1	IC, PHOTO INTERRUPTER	SR206	
20	VS1-7207-003		1	CONNECTOR, SNAP TIGHT, BK		
21	FL0-2051-000		1	SHEET, SILENCER	LOCAL PRINT model	
22	FL0-3345-000		1	SHEET, SILENCER	LOCAL PRINT model	

FIGURE 311 PAPER PICK-UP ASSEMBLY

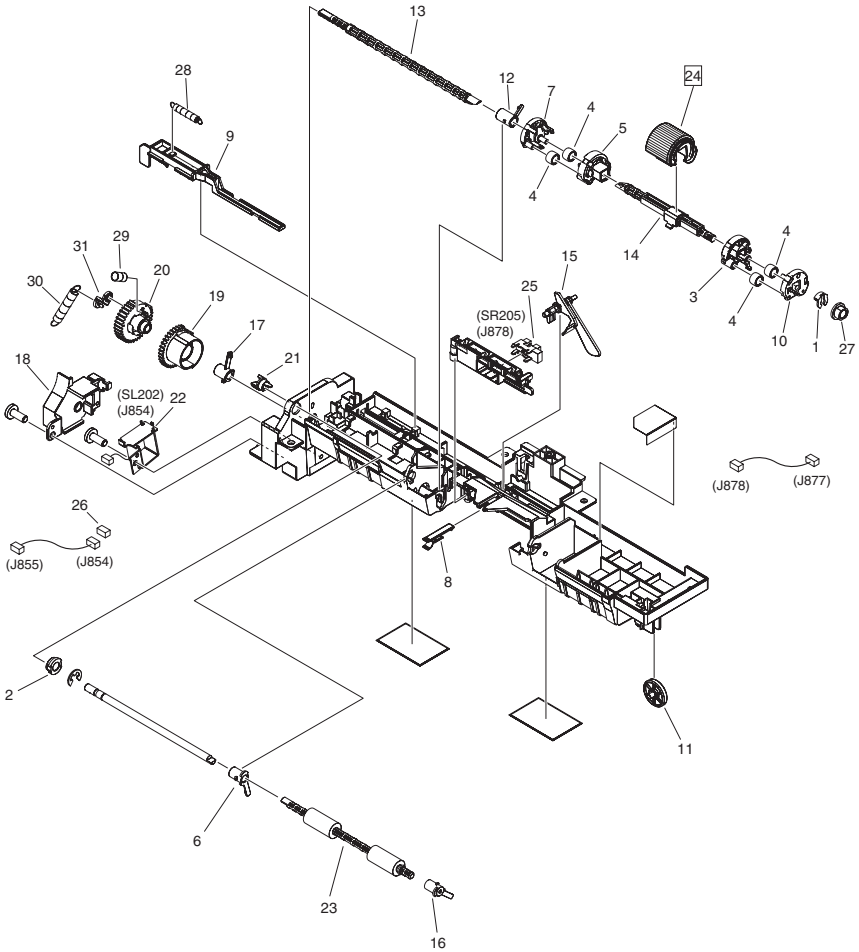
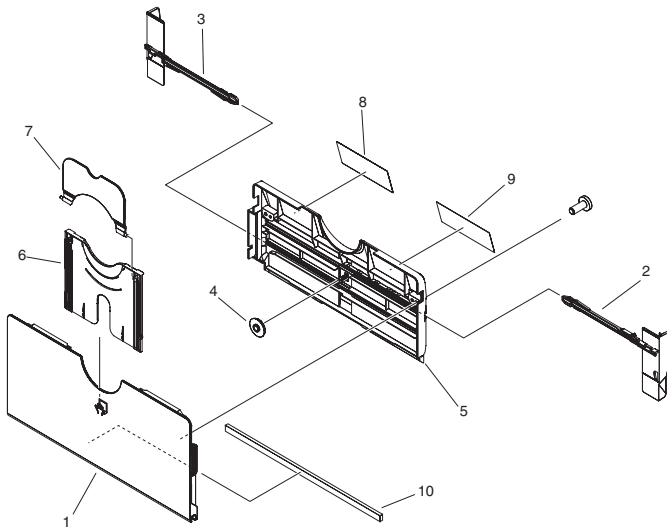


FIGURE & KEY NO.	PARTS NUMBER	R A N K	Q'TY	DESCRIPTION	SERIAL NUMBER/ REMARKS	S V C
Fig.311	FM1-B350-000		1	PAPER PICK-UP ASSEMBLY		
1	FC5-4425-000		1	CLIP		
2	FC9-0923-000		1	BUSHING		
3	FC9-1022-010		1	CAM,CASSETTE PAPER PICK-UP,RR.		
4	FC9-1024-000		4	ROLLER, PAPER PICK-UP		
5	FC9-1025-000		1	CAM, CST. PAPER PICK-UP, FRONT		
6	FC9-1026-000		1	BUSHING		
7	FC9-1032-000		1	FLANGE, PICK-UP ROLLER, FRONT		
8	FC9-1051-000		1	BUSHING		
9	FC9-1624-000		1	LEVER, CASSETTE DETECT MOVING		
10	FC9-1625-000		1	FLANGE, PICK-UP ROLLER, REAR		
11	FC9-1632-000		1	ROLLER, PLATE RETAINER, MIDDLE		
12	FE3-2923-000		1	BUSHING		
13	FE3-2924-000		1	SHAFT, TRANSMISSION		
14	FE3-2925-000		1	SHAFT, TRANSMISSION		
15	FE3-2926-000		1	FLAG, SENSOR		
16	FE3-2964-000		1	BUSHING		
17	FE3-2967-000		1	BUSHING		
18	FE3-2980-000		1	COVER, SOLENOID		
19	FE3-3024-000		1	GEAR, 36T		
20	FE3-3025-000		1	GEAR, 36T		
21	FE3-3042-000		1	COUPLING		
22	FK2-9196-000		1	SOLENOID	SL202	
23	FL0-0695-000		1	ROLLER, EXTRACTION		
24	FL3-1352-000		1	ROLLER, PAPER PICK-UP	[DP]	
25	WG8-5935-000		1	IC, PHOTO INTERRUPTER	SR205	
26	VS1-7177-003		1	CONNECTOR, SNAP TIGHT, BK		
27	FS1-1205-000		1	BUSHING		
28	FU6-2406-000		1	SPRING, TENSION		
29	FU7-2923-000		1	SPRING, COMPRESSION		
30	FU7-2982-000		1	SPRING, TENSION		
31	FU8-0573-000		1	HOOK, INTERMITTENT GEAR		

FIGURE & KEY NO.	PARTS NUMBER	R A N K	Q'TY	DESCRIPTION	SERIAL NUMBER/ REMARKS	S V C
Fig.312	NPN		RF	MULTI FEED ASSEMBLY		
1	FC6-4209-020		1	FLAG, SENSOR		
2	FC6-4210-000		1	COVER, ROLLER		
3	FC6-4211-010		1	GUIDE, MULTI FEED		
4	FC6-4224-000		1	SUPPORT, CAM, LIFTING		
5	FC6-4227-020		1	ARM, MULTI FEED		
6	FC6-4231-000		1	PLATE, GROUNDING		
7	FC6-4234-000		1	ARM, PAD, SEPARATION		
8	FC6-4239-000		1	HOLDER, SENSOR		
9	FC8-0165-000		1	GEAR, 39T		
10	FC8-0166-000		1	GEAR, 39T		
11	FC8-0167-010		1	STOPPER, SWING PLATE		
12	FC8-0168-000		1	CAM, PLATE, MIDDLE		
13	FK2-1070-000		1	CLUTCH, ELECTROMAGNETIC	CL201	
14	FK2-1072-000		1	SOLENOID	SL201	
15	FL2-3200-000		1	LIFTING PLATE ASSEMBLY		
16	FC5-0543-000		1	SHEET, SEPARATION		
17	FL2-3201-010		1	SEPARATION PAD ASSY	[DP]	
18	FL2-3202-000		1	ROLLER, PICK-UP	[DP]	
19	FM2-4421-000		1	HARNESS, SENSOR, PAPER		
20	FU5-1527-000		2	BUSHING, ROLLER, PICK-UP		
21	FU5-1528-000		1	BUSHING, SHAFT, PICK-UP		
22	FU5-1529-000		1	BUSHING, SHAFT, CAM (F)		
23	FU5-1530-000		1	BUSHING, SHAFT, CAM (R)		
24	FU6-0814-000		1	GEAR, 25T		
25	FU6-2180-000		1	SPRING, COMPRESSION		
26	FU6-2182-000		1	SPRING, TORSION		
27	FU7-2221-000		2	SPRING, COMPRESSION		
28	FU7-2222-000		1	SPRING, TORSION		
29	VS1-7177-002		1	CONNECTOR, SNAP TIGHT, BK		
30	VS1-7177-003		1	CONNECTOR, SNAP TIGHT, BK		
31	VS1-7177-004		1	CONNECTOR, SNAP TIGHT, BK		

FIGURE & KEY NO.	PARTS NUMBER	R A N K	Q'TY	DESCRIPTION	SERIAL NUMBER/ REMARKS	S V C
32	WG8-5696-000		1	PHOTO INTERRUPTER, TLP1243	SR210	

FIGURE 315 MULTI FEED TRAY ASS'Y



NOTE : This assembly does not include the parts shown with key No. 9.
注 : このユニットにKey No. 9 の部品は含まれません。

FIGURE & KEY NO.	PARTS NUMBER	RANK	Q'TY	DESCRIPTION	SERIAL NUMBER/REMARKS	SVC
Fig.315	FM1-F182-000		1	MULTI FEED TRAY ASSEMBLY	SEE NOTE	
1	FC6-4215-000		1	COVER, MULTI FEED		
2	FC6-4218-000		1	PLATE, LIMIT, FRONT		
3	FC6-4219-000		1	PLATE, LIMIT, REAR		
4	FC6-4220-000		1	GEAR, PINION		
5	FC6-4221-000		1	TRAY, MULTI FEED		
6	FC6-4222-000		1	TRAY, MULTI FEED, SUB (L)		
7	FC6-4223-000		1	TRAY, MULTI FEED, SUB (S)		
8	FE3-2885-000		1	LABEL, MULTI PAPER SET		
9	FE3-2886-000		1	LABEL, MULTI PAPER SIZE	EUR, SEE NOTE	
9	FE3-2887-000		1	LABEL, MULTI PAPER SIZE	LTN, SEE NOTE	
9	FE3-2888-000		1	LABEL, MULTI PAPER SIZE	SG,HK,CN. SEE NOTE	
10	FL0-2043-000		1	SHEET, SILENCER		

FIGURE 330 TRANSFER MOUNT ASSEMBLY

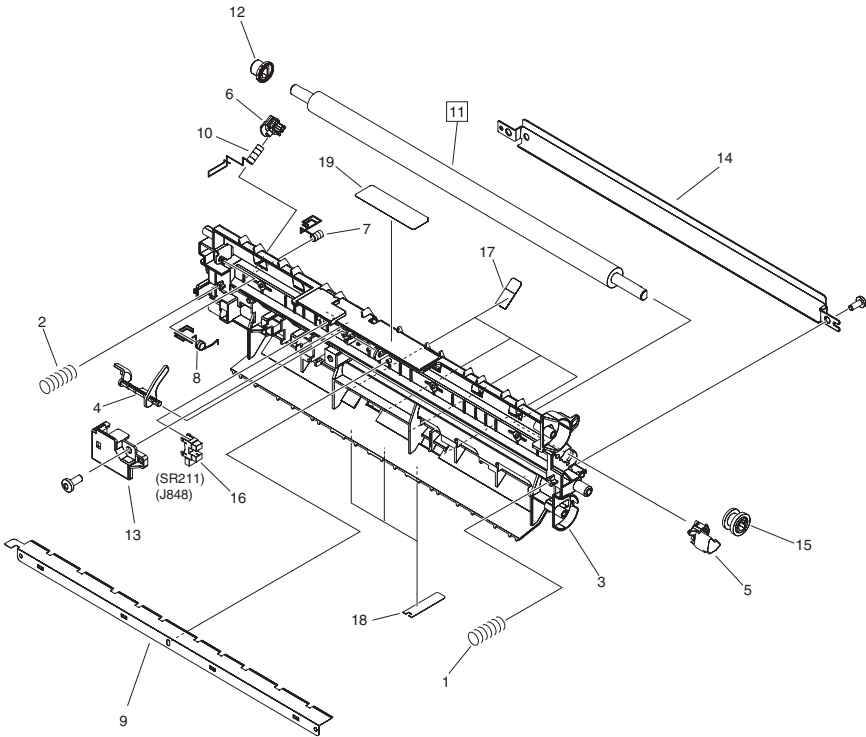


FIGURE & KEY NO.	PARTS NUMBER	R A N K	Q'TY	DESCRIPTION	SERIAL NUMBER/ REMARKS	S V C
Fig.330	FM1-B359-000		1	TRANSFER MOUNT ASSEMBLY		
1	FE3-2813-000		1	SPRING, COMPRESSION		
2	FE3-2814-000		1	SPRING, COMPRESSION		
3	FE3-2815-000		1	HOLDER, TRANSFER ROLLER		
4	FE3-2816-000		1	FLAG, SENSOR		
5	FE3-2817-000		1	BUSHING		
6	FE3-2818-000		1	BUSHING		
7	FE3-2843-000		1	SPRING, GROUNDING		
8	FE3-2844-000		1	SPRING, CONTACT		
9	FE3-2845-000		1	ELIMINATOR, STATIC CHARGE		
10	FE3-2846-000		1	SPRING, CONTACT		
11	FE3-2866-000		1	ROLLER, TRANSFER	[DP]	
12	FE3-2879-000		1	ROLLER		
13	FE3-2880-000		1	COVER, SENSOR		
14	FL0-0705-000		1	GUIDE, PRE-TRANSFER, LOWER		
15	FU6-0773-000		1	GEAR, 30T		
16	WG8-5935-000		1	IC, PHOTO INTERRUPTER	SR211	
17	FL0-0734-000		4	SHEET		
18	FL0-2039-000		3	SHEET		
19	FE3-2882-000		1	LABEL, TRANSFER ROLLER CAUTION		

FIGURE 350 PAPER DELIVERY ASSEMBLY

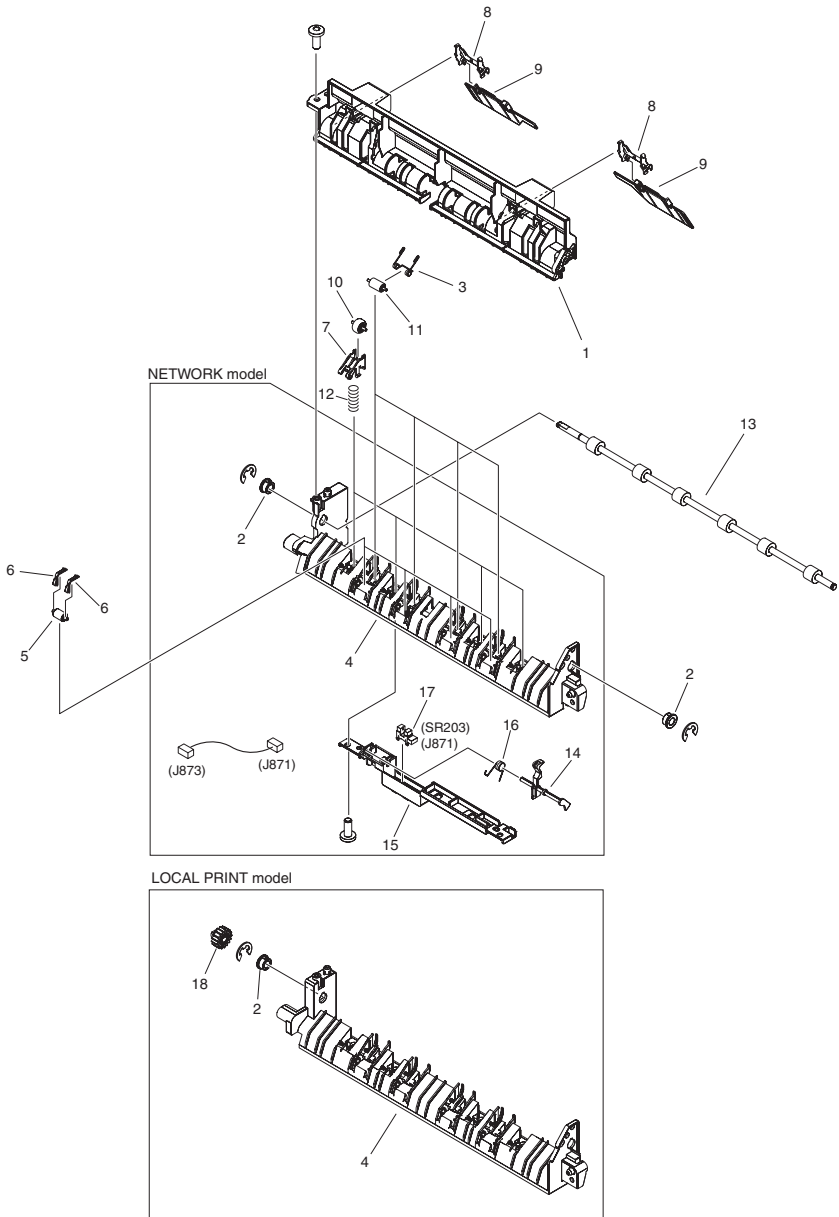


FIGURE & KEY NO.	PARTS NUMBER	R A N K	Q'TY	DESCRIPTION	SERIAL NUMBER/ REMARKS	S V C
Fig.350	FM1-B317-000		1	PAPER DELIVERY ASSEMBLY	NETWORK model	
Fig.350	FM1-B316-000		1	PAPER DELIVERY ASSEMBLY	LOCAL PRINT model	
1	FE3-2751-000		1	GUIDE, DELIVERY, UPPER		
2	FS5-1805-000		2	BUSHING		
3	FE3-2762-000		4	SPRING, TORSION		
4	FE3-2763-000		1	GUIDE, DELIVERY	NETWORK model	
4	FE3-2752-000		1	GUIDE, DELIVERY	LOCAL PRINT model	
5	FE3-2787-000		4	ROLLER		
6	FE3-2788-000		8	HOLDER, ROLLER		
7	FE3-2869-000		4	HOLDER, ROLLER		
8	FE3-2870-000		2	HOLDER, RETAINING PLATE		
9	FE3-2871-000		2	PLATE, SUPPORT		
10	FE3-2872-000		4	ROLLER		
11	FE3-2873-000		4	ROLLER		
12	FE3-2874-000		4	SPRING, COMPRESSION		
13	FE3-2878-000		1	ROLLER, DELIVERY		
14	FE3-2759-000		1	FLAG, SENSOR	NETWORK model	
15	FE3-2760-000		1	HOLDER, SENSOR	NETWORK model	
16	FE3-2766-000		1	SPRING, TORSION	NETWORK model	
17	WG8-5935-000		1	IC, PHOTO INTERRUPTER	SR203, NETWORK model	
18	FE3-2756-000		1	GEAR, 17T	LOCAL PRINT model	

FIGURE 400 READER ASSEMBLY

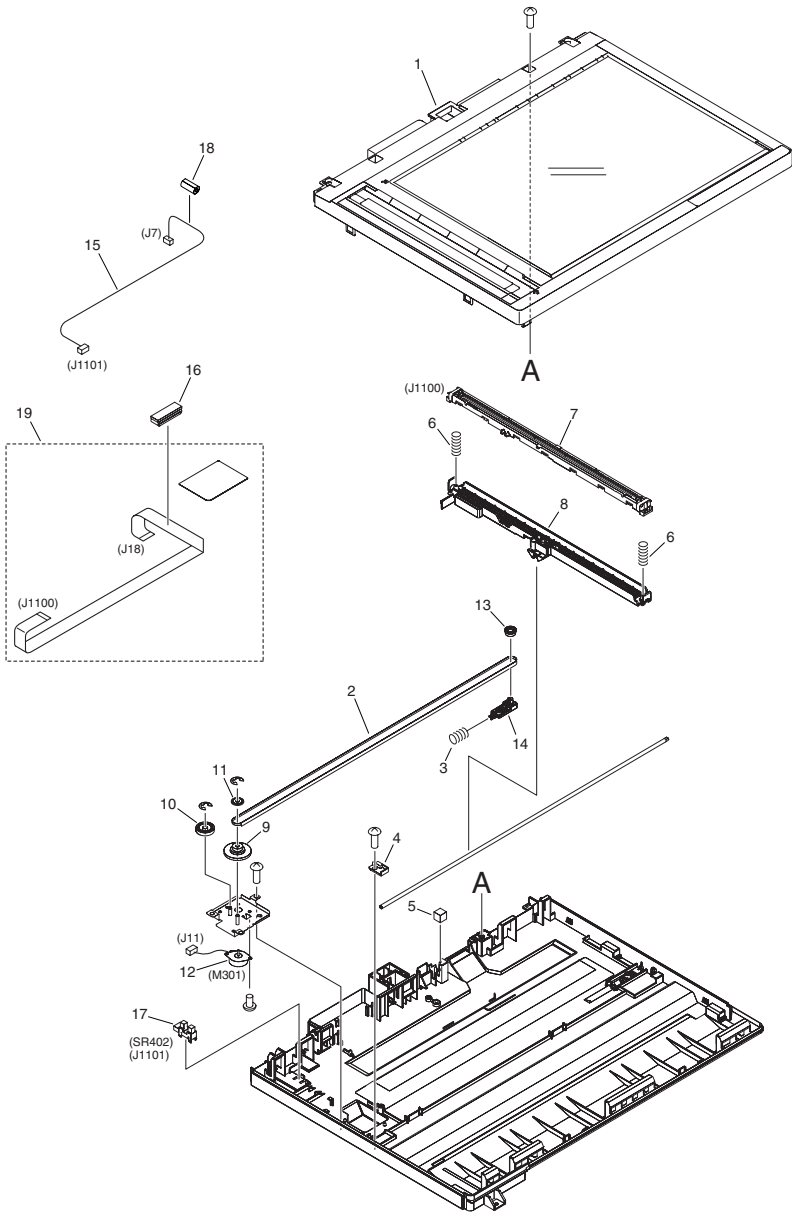


FIGURE & KEY NO.	PARTS NUMBER	R A N K	Q'TY	DESCRIPTION	SERIAL NUMBER/ REMARKS	S V C
Fig.400	NPN		RF	READER ASSEMBLY		
1	FM1-B469-000		1	COPYBOARD GLASS UNIT	NETWORK model	
1	FM1-B468-000		1	COPYBOARD GLASS UNIT	LOCAL PRINT model	
2	FE3-3560-000		1	BELT, TIMING		
3	FE3-3754-000		1	SPRING, COMPRESSION		
4	FE3-5642-000		1	STOPPER, SHAFT		
5	FE3-6104-000		1	CUSHION		
6	FE3-3696-000		2	SPRING, COMPRESSION		
7	FM1-B473-000		1	CONTACT IMAGE SENSOR UNIT		
8	FM1-B474-000		1	CIS HOLDER UNIT		
9	FE3-3561-000		1	GEAR, 90T/PULLEY, 32T		
10	FE3-3562-000		1	GEAR, 27T/60T		
11	FE3-3567-000		1	CLIP		
12	FK4-0830-000		1	MOTOR, STEPPING	M301	
13	FE3-3570-000		1	PULLEY, 32T		
14	FE3-3596-000		1	HOLDER, PULLEY		
15	FM1-C958-000		1	CABLE, READER HP		
16	FM1-D020-000		1	FERRITE CORE UNIT		
17	WG8-5935-000		1	IC, PHOTO INTERRUPTER	SR402	
18	WE8-6816-000		1	FERRITE CORE		
19	4Y8-3040-000		1	READER FLAT CABLE SET		

FIGURE 460 LASER SCANNER ASSEMBLY

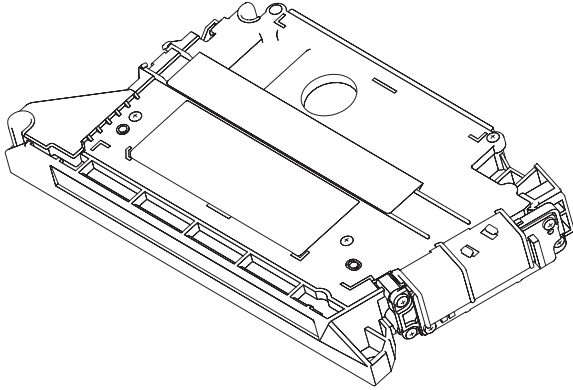


FIGURE & KEY NO.	PARTS NUMBER	RANK	QTY	DESCRIPTION	SERIAL NUMBER/REMARKS	SVC
Fig.460	FM1-F171-000		1	LASER SCANNER ASSEMBLY	EUR, LTN	
Fig.460	FM1-F172-000		1	LASER SCANNER ASSEMBLY	SG,HK,CN	

FIGURE 640
DEVELOPING ASSEMBLY

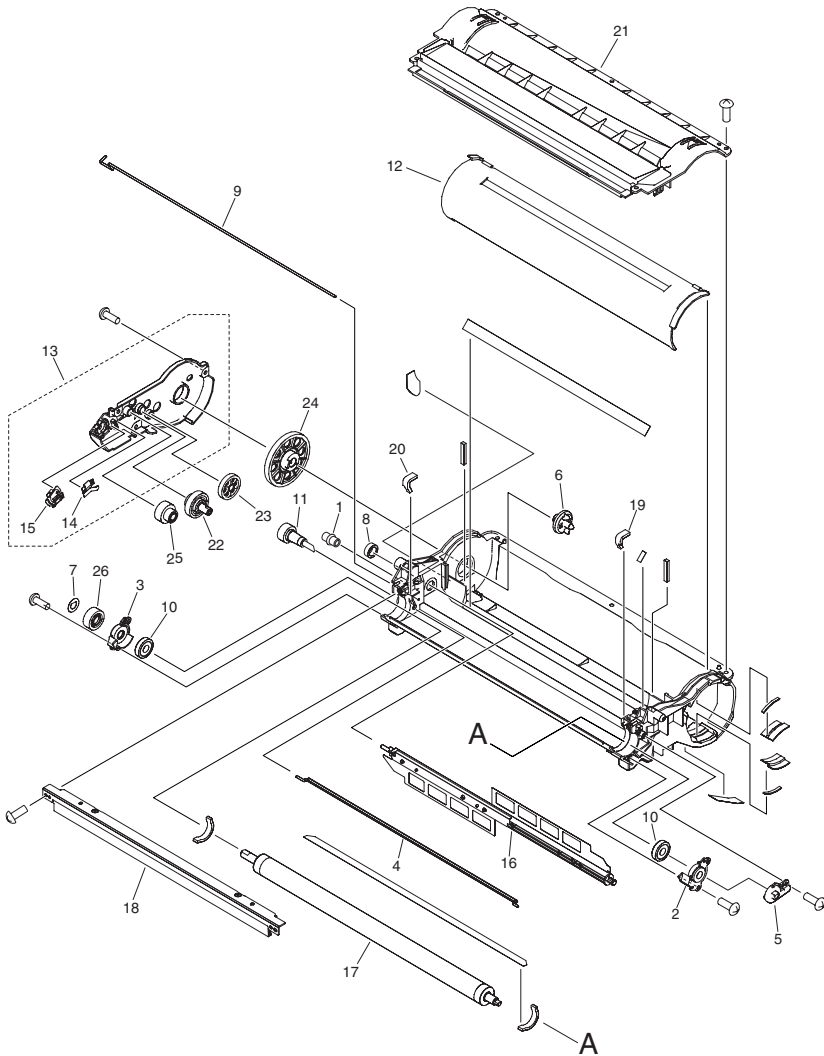


FIGURE & KEY NO.	PARTS NUMBER	R A N K	Q'TY	DESCRIPTION	SERIAL NUMBER/ REMARKS	S V C
Fig.640	FM1-B029-000		1	DEVELOPING ASSEMBLY	[DP] EUR	
Fig.640	FM1-F146-000		1	DEVELOPING ASSEMBLY	[DP] LTN	
Fig.640	FM1-F147-000		1	DEVELOPING ASSEMBLY	[DP] SG,HK,CN	
1	FB6-6896-000		1	CAP, DEVELOPPING		
2	FC6-4164-000		1	BUSHING, SLEEVE, FRONT		
3	FC6-4165-000		1	BUSHING, SLEEVE, REAR		
4	FC6-4166-000		1	ROD, STEERING		
5	FC6-4168-000		1	GUIDE, POSITIONING, MAGNET		
6	FC6-4169-000		1	COUPLER		
7	FC6-4170-000		1	PLATE, TERMINAL, SLEEVE		
8	FC6-4173-000		1	RING, TONER SCATTER PREVENTION		
9	FE3-3311-000		1	ROD, DETECTION		
10	FE3-3312-000		2	ROLLER		
11	FL2-3193-000		1	GEAR ASSEMBLY		
12	FL2-3197-000		1	SHUTTER ASSEMBLY		
13	FL2-3199-000		1	HOLDER, GEAR		
14	FC6-4163-000		1	PLATE, DETECTION		
15	FC6-4202-000		1	PLATE, TERMINAL		
16	FL2-3304-000		1	ROD, STEERING		
17	FM1-B028-000		1	DEVELOPING SLEEVE UNIT		
18	FM3-3672-010		1	DEVELOPING BLADE UNIT		
19	FC6-4176-000		1	PAD, SIDE, FRONT		
20	FC6-4177-000		1	PAD, SIDE, REAR		
21	FM2-3287-000		1	LID, DEVELOPING		
22	FU6-0761-000		1	GEAR, 41T		
23	FU6-0762-000		1	GEAR, 31T		
24	FU6-0763-000		1	GEAR, 70T		
25	FU6-0764-000		1	GEAR, 31T/19T		
26	FU6-0765-000		1	GEAR, 32T		

FIGURE 810 FIXING ASSEMBLY

NOTE : Pay attention to difference of parts number of FIXING ASSEMBLY.
注 : 定着器の部番の違いに注意して下さい。

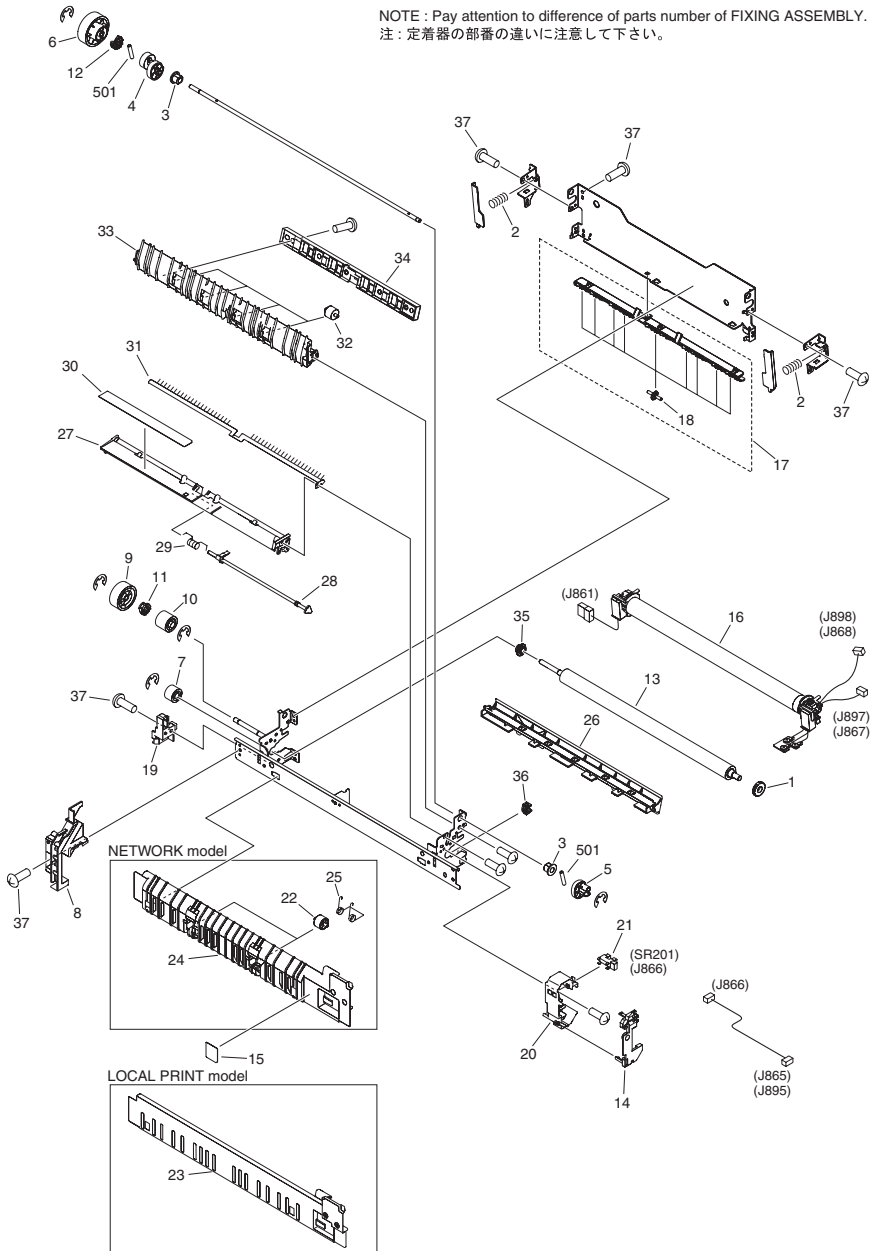


FIGURE & KEY NO.	PARTS NUMBER	R A N K	Q'TY	DESCRIPTION	SERIAL NUMBER/ REMARKS	S V C
Fig.810	FM1-F160-000		1	FIXING ASSEMBLY	[DP] Pay attention to difference of parts number of FIXING ASSEMBLY. 230V EUR, LOCAL PRINT model	
Fig.810	FM1-F161-000		1	FIXING ASSEMBLY	[DP] Pay attention to difference of parts number of FIXING ASSEMBLY. 230V SG,HK,CN, LOCAL PRINT model	
Fig.810	FM1-F162-000		1	FIXING ASSEMBLY	[DP] Pay attention to difference of parts number of FIXING ASSEMBLY. 230V EUR, NETWORK model	
Fig.810	FM1-F163-000		1	FIXING ASSEMBLY	[DP] Pay attention to difference of parts number of FIXING ASSEMBLY. 230V SG,HK,CN, NETWORK model	
Fig.810	FM1-F164-000		1	FIXING ASSEMBLY	[DP] Pay attention to difference of parts number of FIXING ASSEMBLY. 120V LTN, NETWORK model	
1	FC5-4860-000		1	RUBBER RING,CONDUCTIVE		
2	FE3-3210-000		2	SPRING, COMPRESSION		
3	FE3-3212-000		2	BUSHING		
4	FE3-3213-000		1	CAM, RELEASE, LEFT		
5	FE3-3214-000		1	CAM, RELEASE, RIGHT		
6	FE3-3215-000		1	GEAR, 51T		
7	FE3-3222-000		1	GEAR, 23T		
8	FE3-3228-000		1	COVER, GEAR		
9	FE3-3236-000		1	GEAR, 41T		
10	FE3-3237-000		1	GEAR, 27T		
11	FE3-3247-000		1	CAM		
12	FE3-3249-000		1	CAM		
13	FE3-3258-000		1	ROLLER, PRESSURE		
14	FE3-3279-000		1	COVER, CABLE GUIDE		
15	FE3-3284-000		1	LABEL, DRUM CAUTION		
16	FM1-B334-000		1	FIXING FILM ASSEMBLY	120V	
16	FM1-B335-000		1	FIXING FILM ASSEMBLY	230V	

FIGURE & KEY NO.	PARTS NUMBER	R A N K	Q'TY	DESCRIPTION	SERIAL NUMBER/REMARKS	S V C
17	FM1-B340-000		1	GUIDE UNIT, FIXING ENTRANCE, 1		
18	FC6-4375-000		9	ROWEL		
19	FM1-B342-000		1	H.V. CONTACT GUIDE UNIT		
20	FE3-3227-000		1	GUIDE, CABLE		
21	WG8-5935-000		1	IC, PHOTO INTERRUPTER	SR201	
22	FC9-7720-000		2	ROLLER, FIXING DELIVERY	NETWORK model	
23	FE3-3229-000		1	COVER, FIXING, FRONT	LOCAL PRINT model	
24	FE3-3253-000		1	COVER, FIXING, FRONT	NETWORK model	
25	FE3-3254-000		2	SPRING, TORSION	NETWORK model	
26	FM1-B345-000		1	GUIDE UNIT, FIXING ENTRANCE, 2		
27	FE3-3231-000		1	GUIDE, DELIVERY, LOWER		
28	FE3-3232-000		1	LEVER, SENSOR		
29	FE3-3267-000		1	SPRING, TORSION		
30	FE3-3183-000		1	LABEL, HIGH TMP. CAUTION	EUR	
30	FE3-3184-000		1	LABEL, HIGH TMP. CAUTION	LTN	
30	FE3-3185-000		1	LABEL, HIGH TMP. CAUTION	SG,HK,CN	
31	FM1-B347-000		1	ELIMINATOR, STATIC CHARGE		
32	FC9-0772-000		4	ROLLER, FIXING DELIVERY, CENTER		
33	FE3-3235-000		1	GUIDE, DELIVERY, UPPER		
34	FE3-3285-000		1	GUIDE, DELIVERY ROLLER		
35	FU5-1519-000		1	BUSHING		
36	FU5-1520-000		1	BUSHING		
37	XA9-2006-000		AR	SCREW, W/WASHER, M3X6		
501	XD3-2200-102		2	PIN, PARALLEL		

FIGURE 900 CONTROLLER PCB ASSEMBLY

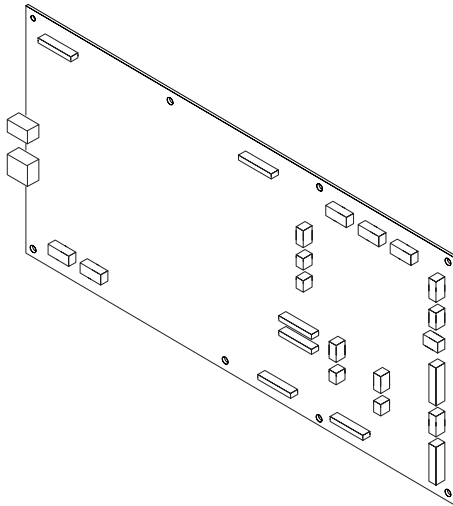


FIGURE & KEY NO.	PARTS NUMBER	RANK	Q'TY	DESCRIPTION	SERIAL NUMBER/REMARKS	SVC
Fig.900	FM1-D996-000		1	CONTROLLER PCB ASSEMBLY	iR2202/iR2202L	
Fig.900	FM1-D997-000		1	CONTROLLER PCB ASSEMBLY	iR2202DN/iR2202N, 230V	
Fig.900	FM1-D998-000		1	CONTROLLER PCB ASSEMBLY	iR2202N, 120V	
Fig.900	FM1-E878-000		1	CONTROLLER PCB ASSEMBLY	iR2002/iR2002L	
Fig.900	FM1-E879-000		1	CONTROLLER PCB ASSEMBLY	iR2002N/iR2002G	
IC	FH4-6294-000		1	IC, MB87L4950, ASIC		
IC	FK4-0151-000		1	IC, MB87S4560		

FIGURE 930 H.V.T PCB ASSEMBLY

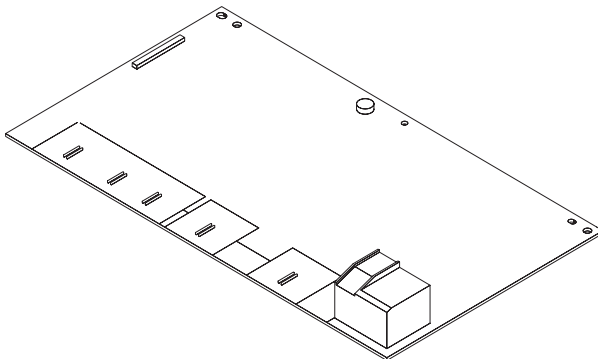


FIGURE & KEY NO.	PARTS NUMBER	RANK	QTY	DESCRIPTION	SERIAL NUMBER/REMARKS	SVC
Fig.930	FM1-C951-000		1	H.V.T PCB ASSEMBLY		

FIGURE D10
COPYBOARD COVER ASSEMBLY (COPYBOARD
MODEL)

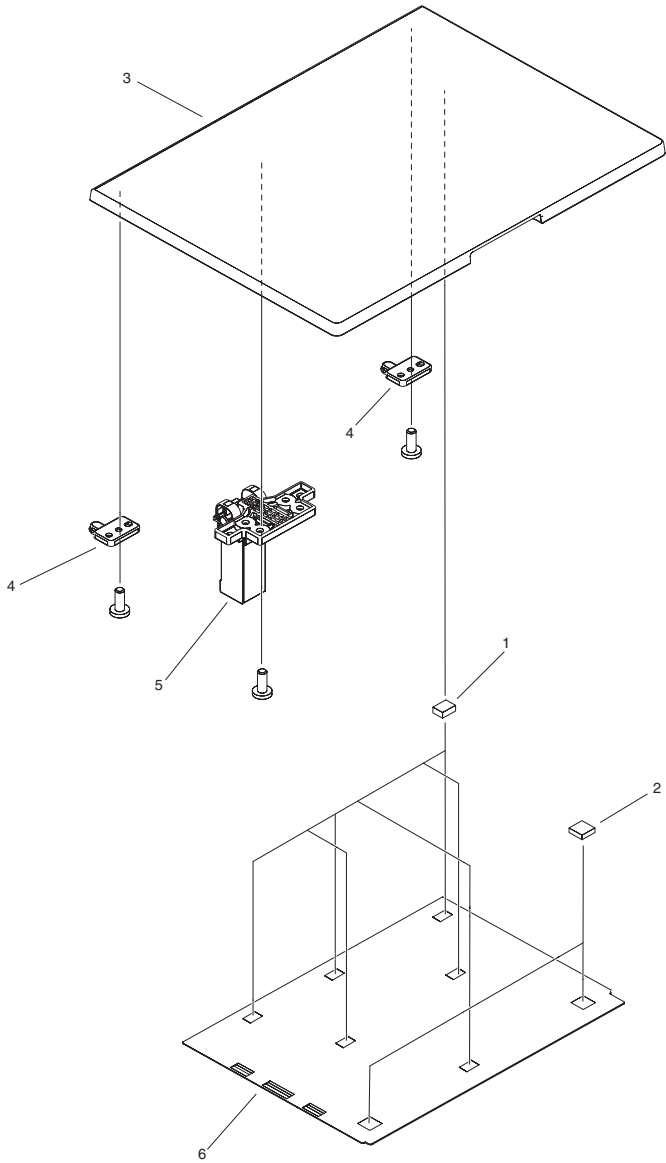


FIGURE & KEY NO.	PARTS NUMBER	RANK	Q'TY	DESCRIPTION	SERIAL NUMBER/REMARKS	SVC
Fig.D10	NPN		RF	COPYBOARD COVER ASSEMBLY	COPYBOARD model	
1	FC6-4508-000		6	SPONGE, 1		
2	FC6-4509-000		2	SPONGE, 2		
3	FE3-3778-000		1	COVER, PLATEN		
4	FE3-3779-000		2	STOPPER, PLATEN		
5	FE3-6131-000		1	HINGE		
6	FC5-4265-000		1	COVER, COPYBOARD		

FIGURE H30 CASSETTE ASSEMBLY (2 CASSETTE UNIT MODEL)

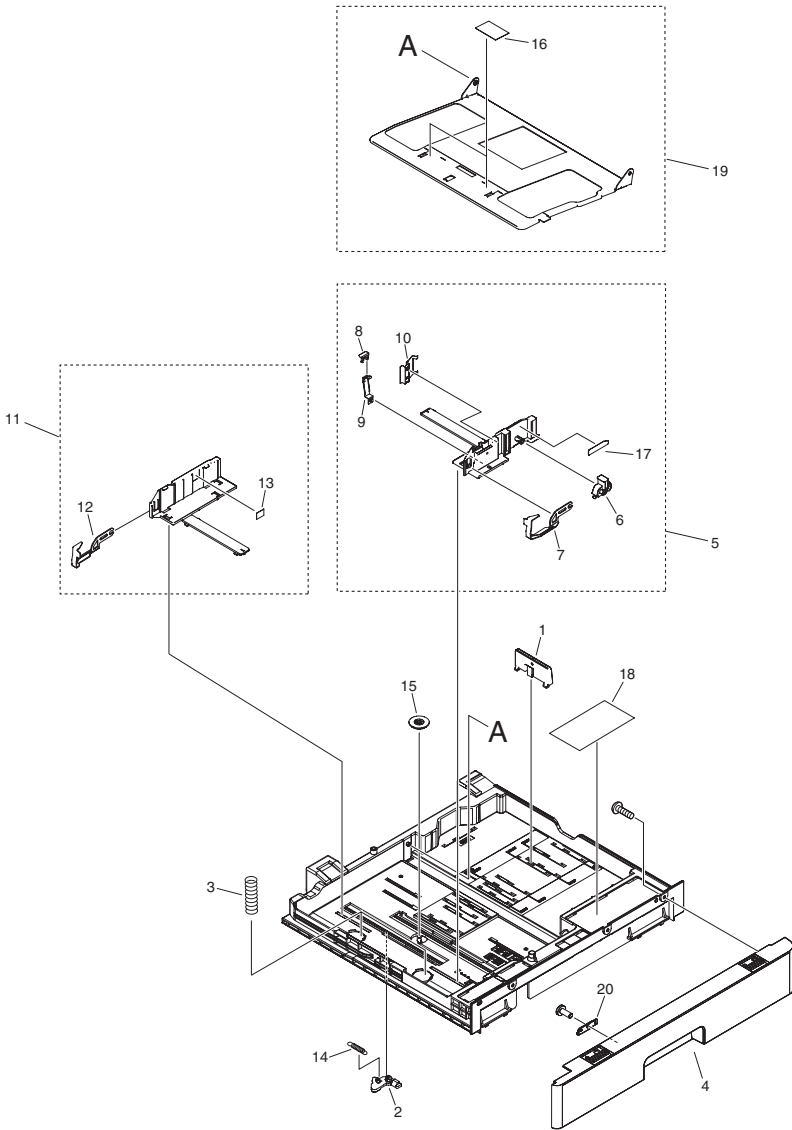


FIGURE & KEY NO.	PARTS NUMBER	R A N K	Q'TY	DESCRIPTION	SERIAL NUMBER/ REMARKS	S V C
Fig.H30	FM1-B325-000		1	CASSETTE ASSEMBLY	2 CASSETTE UNIT model	
1	FB4-5814-000		1	PLATE, SIZE, REAR		
2	FB6-1644-000		1	LOCK, PAPER LIFTING PLATE		
3	FB6-2000-000		2	SPRING, COMPRESSION		
4	FE3-2935-000		1	COVER, CASSETTE		
5	FM2-3325-000		1	PAPER SIDE GUIDE (F) UNIT		
6	FB4-5809-020		1	LEVER, LOCK		
7	FB4-5813-020		1	PLATE, HOLD-DOWN TAB		
8	FB4-5810-000		1	PLATE, PAPER CONTACT		
9	FB6-1646-000		1	SPRING, LEAF		
10	FB6-1649-000		1	SPRING, LEAF		
11	FM2-3326-010		1	PAPER SIDE GUIDE (R) UNIT		
12	FB4-5808-020		1	PLATE, HOLD-DOWN TAB		
13	FE3-2899-000		1	LABEL, LIMIT		
14	FS6-2917-000		1	SPRING, TENSION		
15	FS7-0207-000		1	GEAR, 20T		
16	FB6-1650-000		2	SHEET SEPARATION		
17	FU5-8588-000		1	LABEL, SIDE LOCK		
18	FE3-3429-000		1	LABEL, PAPER SET		
19	FL2-3305-000		1	PLATE, CENTER		
20	FE3-2968-000		1	LINK, CASSETTE		

FIGURE H40 CASSETTE FEEDER ASSEMBLY (2 CASSETTE UNIT MODEL)

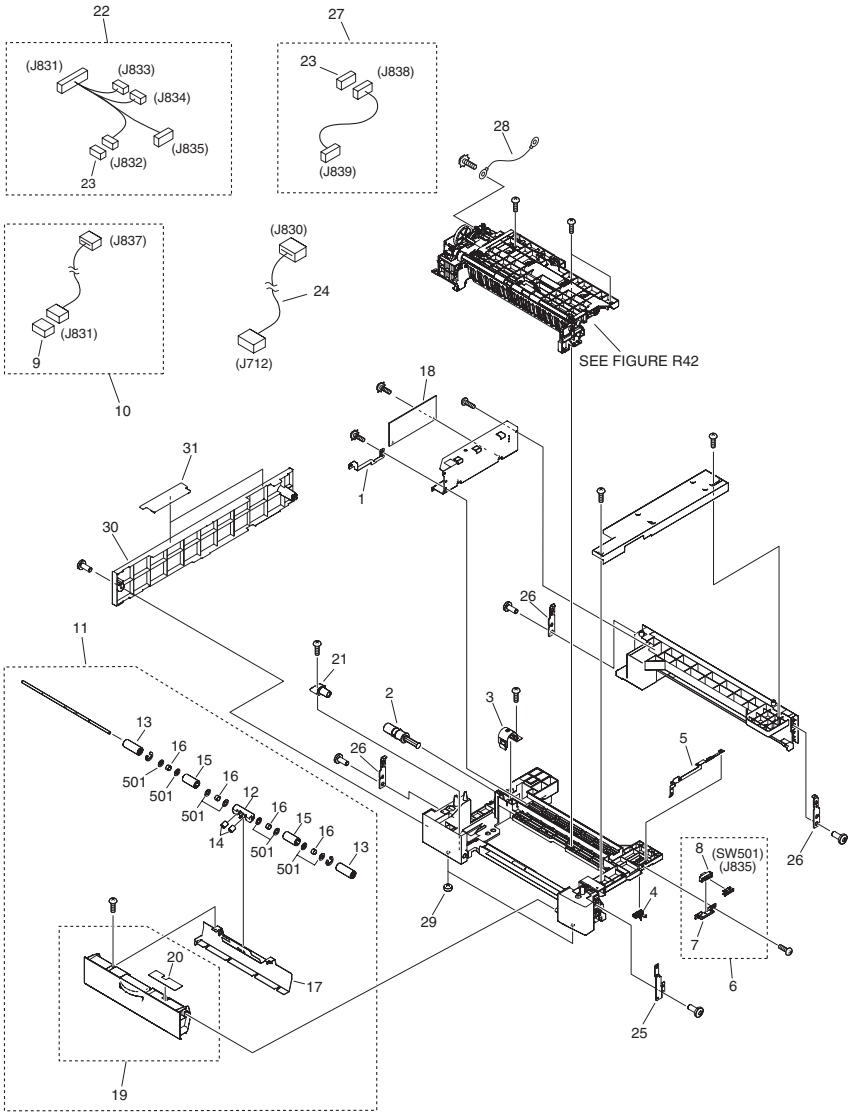


FIGURE & KEY NO.	PARTS NUMBER	R A N K	Q'TY	DESCRIPTION	SERIAL NUMBER/ REMARKS	S V C
Fig.H40	NPN		RF	CASSETTE FEEDER ASSEMBLY	2 CASSETTE UNIT model	
1	FC6-6720-000		1	PLATE, GROUNDING		
2	FB4-5532-000		1	DAMPER		
3	FB6-1608-000		1	HOLDER, DAMPER		
4	FC6-4357-000		1	BLOCK, POSITION		
5	FC6-6706-000		1	PLATE, EARTH		
6	FG6-8440-000		1	SIZE SENSOR UNIT		
7	FB6-1910-000		1	MOUNT, SIZE SENSOR		
8	WC2-5680-000		1	SWITCH, CASSETTE SIZE	SW501	
9	VS1-7177-013		1	CONNECTOR, SNAP TIGHT		
10	FM2-4499-000		1	CABLE, FEEDER		
11	FM1-B397-000		1	VERTICAL PATH UNIT		
12	FA8-2447-000		1	MOUNT, ROLLER		
13	FB6-1536-000		2	ROLLER		
14	FB6-1920-000		2	SPRING, COMPRESSION		
15	FB6-1996-000		2	ROLLER, VERTICAL PATH		
16	FB6-1997-000		4	SPRING, COMPRESSION		
17	FC6-6714-000		1	GUIDE, VERTICAL PATH		
18	FM1-C952-000		1	FEEDER CONTROLLER PCB ASS'Y		
19	FM1-B398-000		1	COVER,VERTICAL PATH		
20	FE3-2988-000		1	LABEL, JAM CLEARING		
21	FC6-6718-000		1	SHAFT, COVER		
22	FM2-4496-000		1	CABLE, SENSOR		
23	VS1-7177-002		2	CONNECTOR, SNAP TIGHT		
24	FM1-C945-000		1	CABLE, OPTION CASSETTE		
25	FE3-2945-000		1	PLATE, FEEDER JOINT		
26	FE3-2946-000		3	PLATE, JOINT		
27	FM1-C946-000		1	CABLE, CLUTCH		
28	FM1-C947-000		1	CABLE, GROUNDING		
29	XH9-0135-000		2	FOOT, RUBBER		
30	FC6-6710-000		1	COVER, CASSETTE, REAR		
31	FL0-0714-000		2	COVER, BLANKING		

FIGURE & KEY NO.	PARTS NUMBER	R A N K	Q'TY	DESCRIPTION	SERIAL NUMBER/ REMARKS	S V C
501	XD1-1106-235		8	WASHER,COP		

FIGURE H42 PAPER PICK-UP ASSEMBLY (2 CASSETTE UNIT MODEL)

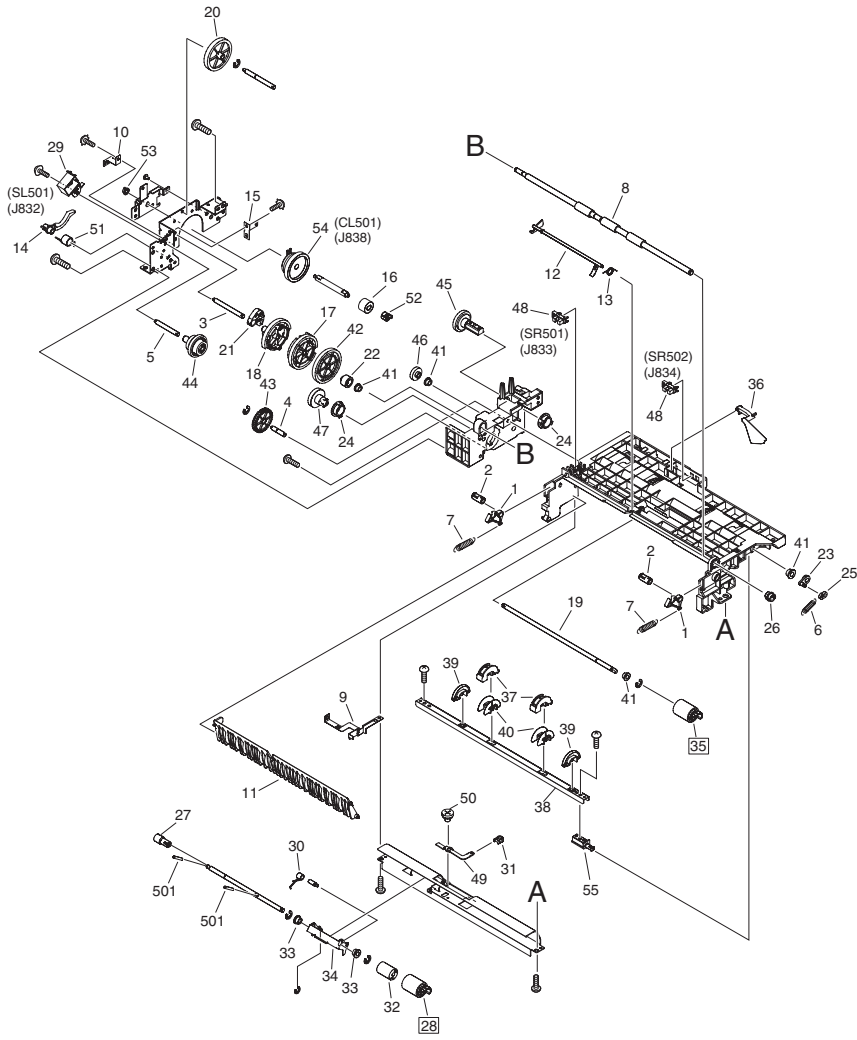


FIGURE & KEY NO.	PARTS NUMBER	R A N K	Q'TY	DESCRIPTION	SERIAL NUMBER/ REMARKS	S V C
Fig.H42	FM1-B394-000		1	PAPER PICK-UP ASSEMBLY	2 CASSETTE UNIT model	
1	FA8-2448-000		2	PAWL, LOCK		
2	FA8-2449-000		2	SHAFT, LOCK		
3	FE3-2907-000		1	SHAFT, CLUTCH		
4	FE3-2906-000		1	SHAFT, TRANSMISSION		
5	FE3-2905-000		1	SHAFT, TRANSMISSION		
6	FB6-1550-000		1	SPRING, TENSION		
7	FB6-1551-000		2	SPRING, TENSION		
8	FC8-0172-000		1	ROLLER, VERTICAL PATH		
9	FB6-1614-000		1	PLATE, GROUNDING		
10	FB6-1615-000		1	PLATE, GROUNDING		
11	FB6-1616-000		1	GUIDE, VERTICAL PATH		
12	FL2-9922-000		1	ARM, FEED SENSOR		
13	FB6-1624-000		1	SPRING, TORSION		
14	FB6-1626-000		1	LEVER, COUPLING		
15	FB6-1628-000		1	PLATE, GROUNDING		
16	FE3-3070-000		1	GEAR, 16T		
17	FC6-4390-000		1	GEAR, 40T/50T		
18	FB6-1634-000		1	GEAR, 29T		
19	FE3-2903-000		1	SHAFT, TRANSMISSION		
20	FB6-1636-000		1	GEAR, 39T		
21	FB6-1660-000		1	CAM		
22	FB6-1905-000		1	GEAR, 14T		
23	FB6-1909-000		1	BUSHING		
24	FC6-4304-000		2	BUSHING, ROLLER, PICK-UP		
25	4A3-6738-000		1	COLLAR, SPRING		
26	FC6-4355-000		1	BUSHING		
27	FC6-4358-000		1	JOINT, RETARD		
28	FF6-1621-000		1	ROLLER, SEPARATION	[DP]	
29	FK2-1104-000		1	SOLENOID	SL501	
30	FU7-2234-000		1	SPRING, TORSION		
31	FB6-1908-000		1	CAP		

FIGURE & KEY NO.	PARTS NUMBER	RANK	Q'TY	DESCRIPTION	SERIAL NUMBER/REMARKS	SVC
32	FC6-4290-000		1	LIMITTER, TORQUE		
33	FB6-1541-000		2	BUSHING		
34	FF6-1610-000		1	HOLDER, SEPARATION ROLLER		
35	FC8-0170-000		1	ROLLER, SEPARATION	[DP]	
36	FC9-4288-000		1	ARM,DETECTION, PAPER		
37	FB4-9817-030		2	ROLLER, PICK-UP		
38	FB6-1631-030		1	SHAFT, PICK-UP ROLLER		
39	FC6-4356-000		2	ROLLER, LOOP		
40	FE5-4048-000		2	BLOCK, PICK-UP ROLLER ADAPTER		
41	FS1-1205-000		4	BUSHING		
42	FS7-0225-000		1	GEAR, 53T		
43	FS7-0226-000		1	GEAR, 36T		
44	FS7-0227-000		1	GEAR, 21T/33T/22T		
45	FS7-0228-000		1	GEAR, 31T		
46	FS7-0229-000		1	GEAR, 18T		
47	FS7-0230-000		1	GEAR, 27T		
48	WG8-5836-000		2	IC PHOTO INTERRUPTER, HYBRID	SR501, SR502	
49	FC6-4288-020		1	LEVER, PRESSURE		
50	FS5-9714-000		1	SCREW,STEPPED,M3		
51	FU6-2175-000		1	SPRING,TORSION		
52	FE3-3071-000		1	BUSHING		
53	FE3-3075-000		1	BUSHING		
54	FK4-0515-000		1	CLUTCH,EM	CL501	
55	FC6-4351-000		1	SHAFT, ROLLER		
501	XD3-1200-122		2	PIN, SPRING		

FIGURE S20 DUPLEX FEEDER ASSEMBLY (DUPLEX MODEL)

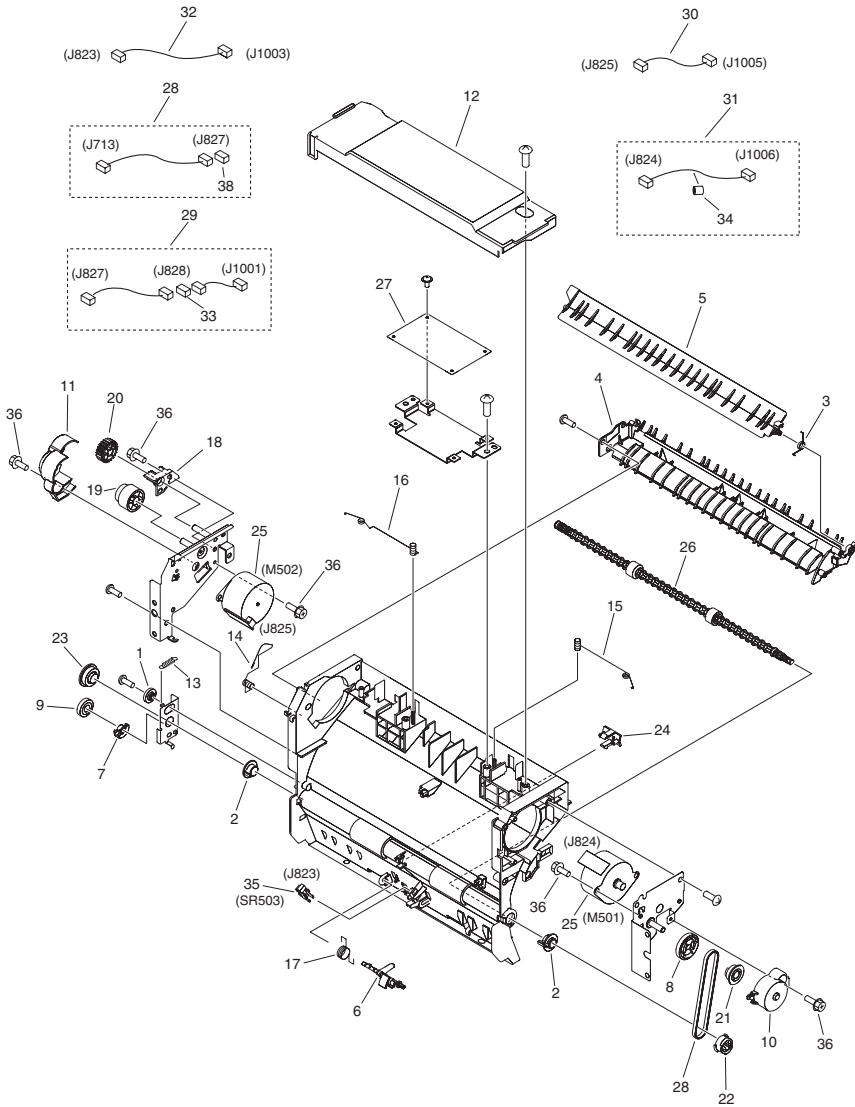


FIGURE & KEY NO.	PARTS NUMBER	R A N K	Q'TY	DESCRIPTION	SERIAL NUMBER/ REMARKS	S V C
Fig.S20	NPN		RF	DUPLEX FEEDER ASSEMBLY	DUPLEX model	
1	FC6-4413-000		1	SPACER, FRAME, FEED		
2	FC6-6758-000		2	BUSHING		
3	FE3-2792-000		1	SPRING, TORSION		
4	FE3-2823-000		1	GUIDE, FLAPPER SUPPORT		
5	FE3-2826-000		1	DEFLECTOR, REVERSE		
6	FE3-2827-000		1	FLAG, SENSOR		
7	FE3-2832-000		1	ROLLER		
8	FE3-2833-000		1	GEAR, 53T		
9	FE3-2834-000		1	GEAR, 18T		
10	FE3-2838-000		1	COVER, DUPLEX, FRONT		
11	FE3-2839-000		1	COVER, DUPLEX, REAR		
12	FE3-2840-000		1	COVER, DUPLEX, UPPER		
13	FE3-2841-000		1	SPRING, TENSION		
14	FE3-2847-000		1	SPRING, TORSION		
15	FE3-2848-000		1	SPRING, TORSION		
16	FE3-2849-000		1	SPRING, TORSION		
17	FE3-2850-000		1	SPRING, TORSION		
18	FE3-2853-000		1	CLAMP, GEAR		
19	FE3-2854-000		1	GEAR, 47T/18T		
20	FE3-2855-000		1	GEAR, 23T		
21	FE3-2858-000		1	PULLEY, 28T		
22	FE3-2859-000		1	PULLEY, 28T		
23	FE3-2863-000		1	GEAR, 19T		
24	FE3-2881-000		1	RETAINER, ROLLER		
25	FK4-0513-000		2	MOTOR, STEPPING	M501, M502	
26	FL0-0702-000		1	ROLLER, FEED		
27	FM1-B886-000		1	DUPLEX DRIVER PCB ASS'Y		
28	XF2-3611-640		1	BELT, TIMING		
29	FM1-C941-000		1	CABLE, DUPLEX RELAY		
30	FM1-C942-000		1	CABLE, DUPLEX MOTOR		
31	FM1-C943-000		1	CABLE, REVERSE MOTOR		

FIGURE & KEY NO.	PARTS NUMBER	RANK	Q'TY	DESCRIPTION	SERIAL NUMBER/REMARKS	SVC
32	FM1-C944-000		1	CABLE, DUPLEX SENSOR	SR503	
33	VS1-7177-011		1	CONNECTOR, SNAP TIGHT, 11P, BK		
34	WE8-6817-000		1	CORE, FERRITE		
35	WG8-5935-000		1	IC, PHOTO INTERRUPTER		
36	XA9-1386-000		7	SCREW,RS,M3X8		

FIGURE ZZA

MECHANICAL STANDARD PARTS (HOW TO USE)

Mechanical standard parts

機械標準部品

About a mechanical standard parts

A Mechanical standard parts is a mechanical part which not parts peculiar to a product. They are parts which are common to a Canon product and are used, such as a screw and a washer. The Fig No. and parts number of the mechanical standard parts are not listed in the product parts catalog. Refer to the parts catalog of mechanical standard parts when checking the parts number for screw or washer etc. and identify them by part shape or size.

機械標準部品とは

機械標準部品とは、製品特有の部品ではなく、ねじやワッシャなどキヤノン製品共通で使用されている機械部品（メカ部品）のことです。
製品のパーツカタログには、機械標準部品のFig No.や部品番号は記載しておりません。
ねじや、ワッシャ等の部品番号を調べるときは、機械標準部品のパーツカタログを参照し、部品の形状や大きさから判断し、使用している部品を調べてください。

Material and surface treatment of a mechanical standard parts

Material and surface treatment of mechanical standard parts are assigned commonly for each part. Refer to the Table 1 for the parts which material and surface treatment are assigned as numbers.

機械標準部品の材料および表面処理

機械標準部品の材料および表面処理については、各種部品共通で決められています。
材料および表面処理が番号で決められている部品については、表1を参照してください。

Table 1 Material and Surface treatment

表1 材料および表面処理

No. 番号	Material 材料	Surface treatment 表面処理	Color 色
1	Stainless steel ステンレス	Stainless steel black coloring (BC4) ステンレス黒着色(BC4)	Black 黒
2		not to be given なし	White 白
3	Brass 黄銅	Regular nickel plating (NL) 普通ニッケルメッキ(NL)	White 白
4		Black nickel plating (BN) 黒色ニッケルメッキ(BN)	Black 黒
5	Steel 鋼	White zinc trivalent chromate treating (ZC3) 白色亜鉛3価クロメート(ZC3)	White 白
6		Regular nickel chromium plating (NC) 普通ニッケルクロムメッキ(NC)	White 白
7		Regular nickel plating (NL) 普通ニッケルメッキ(NL)	White 白
8		Iron and steel phosphating (P1) 鉄鋼磷酸塩処理(P1)	Black 黒
9		Black zinc trivalent chromate treating (BZ3) 黒色亜鉛3価クロメート(BZ3)	Black 黒

FIGURE ZZB MECHANICAL STANDARD PARTS (SCREWS)

1. Screws ねじ

How to read Parts Numbers
部品番号の見方

Screws
ねじ

XB1-2400-609

Type No.
類別番号

Normal designation (d)
ねじの呼び(d)

Length (L)
ねじの長さ(L)

Material and Surface treatment
材料および表面処理

XB1-2 expresses Binding head machine screw.
XB1-2は、バインドねじを表す

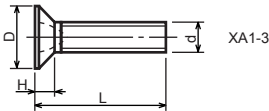
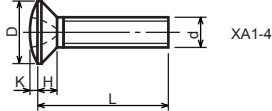
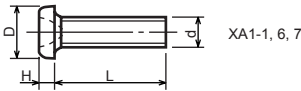
40 expresses M4.0.
40は、M4.0を表す

0-60 expresses a length of 6.0mm.
0-60は、6.0mmの長さを表す

9 expresses Steel (Black zinc trivalent chromate
treating) from Table 1.
9は、表1より鋼(黒色亜鉛3価クロメート)を表す

1-1. Cross Recessed Head Screws for Precision Equipments

精密機器用十字穴付き小ねじ

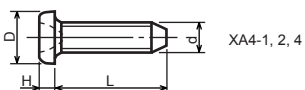


Type No. 類別番号	Type 類別
XA1-1	Pan head Class 1 なべ1種
XA1-3	Countersunk head Class 1 さら1種
XA1-4	Oval countersunk head Class 1 丸さら1種
XA1-6	Pan head Class 3 なべ3種
XA1-7	Pan head Class 2 なべ2種

		Head size (mm) 頭部寸法 (mm)					
		M1.4	M1.6	M1.7	M2	M2.5	M2.6
D	XA1-1	2	2.4	2.5	3	3.8	4
H	XA1-1	0.5	0.55	0.5	0.6	0.9	0.8
D	XA1-3	2	2.4	2.5	3	3.8	4
H	XA1-3	0.48	0.55	0.58	0.73	0.85	0.93
D	XA1-4	2	2.4	2.5	3	3.8	4
H + K	XA1-4	0.68	0.8	0.88	1	1.25	1.3
D	XA1-6	2.5	2.8	3	3.5	4.3	4.5
H	XA1-6	0.8	0.85	0.9	1	1.3	1.2
D	XA1-7	2.5	2.8	3	3.5	4.3	4.5
H	XA1-7	0.5	0.55	0.5	0.6	0.9	0.8

1-2. Precision Tapping Screws

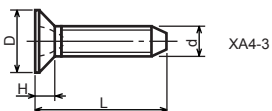
精密用タッピンねじ



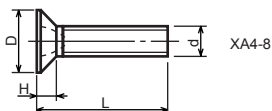
XA4-1, 2, 4



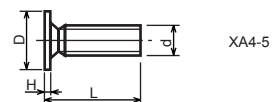
XA4-6, 7, 9



XA4-3



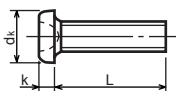
XA4-8



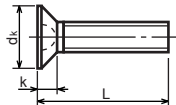
XA4-5

Type No. 類別番号	Type 類別	Head size (mm) 頭部寸法 (mm)						
		M1.4	M1.6	M1.7	M2	M2.5	M2.6	
XA4-1	With tapered end pan head Class 1 絞りなべ1種	D XA4-1	2	2.4	2.5	3	3.8	4
		H XA4-1	0.5	0.55	0.5	0.6	0.9	0.8
XA4-2	With tapered end pan head Class 3 絞りなべ3種	D XA4-2	2.5	2.8	3	3.5	4.3	4.5
		H XA4-2	0.8	0.85	0.9	1	1.3	1.2
XA4-3	With tapered end countersunk head 絞り-さら	D XA4-3	2	2.4	2.5	3	3.8	4
		H XA4-3	0.48	0.55	0.58	0.73	0.85	0.93
XA4-4	With tapered end pan head Class 2 絞りなべ2種	D XA4-4	2.5	2.8	3	3.5	4.3	4.5
		H XA4-4	0.5	0.55	0.5	0.6	0.9	0.8
XA4-5	With parallel end ultra thin head ストレート-超薄頭	D XA4-5	2.5	2.8	3	-	-	-
		H XA4-5	0.2	0.2	0.2	-	-	-
XA4-6	With parallel end pan head Class 1 ストレートなべ1種	D XA4-6	2	2.4	2.5	3	3.8	4
		H XA4-6	0.5	0.55	0.5	0.6	0.9	0.8
XA4-7	With parallel end pan head Class 3 ストレートなべ3種	D XA4-7	2.5	2.8	3	3.5	4.3	4.5
		H XA4-7	0.8	0.85	0.9	1	1.3	1.2
XA4-8	With parallel end countersunk head ストレート-さら	D XA4-8	2	2.4	2.5	3	3.8	4
		H XA4-8	0.48	0.55	0.58	0.73	0.85	0.93
XA4-9	With parallel end pan head Class 2 ストレートなべ2種	D XA4-9	2.5	2.8	3	3.5	4.3	4.5
		H XA4-9	0.5	0.55	0.5	0.6	0.9	0.8

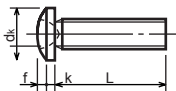
1-3. Cross Recessed Head Screws
 一般用十字穴付き小ねじ



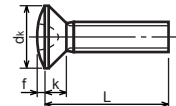
XB1-1



XB1-3



XB1-2

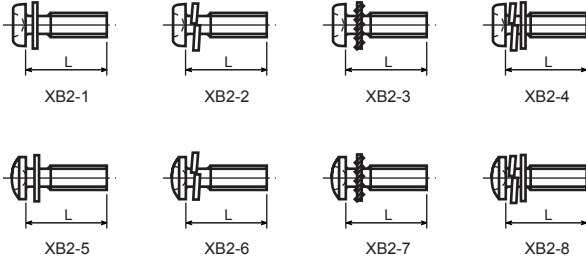


XB1-4

Type No. 類別番号	Type 類別
XB1-1	Pan head なべ
XB1-2	Binding head バインド
XB1-3	Countersunk head さら
XB1-4	Oval countersunk head 丸さら

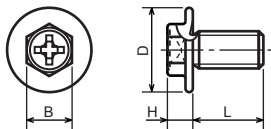
		Head size (mm) 頭部寸法 (mm)					
		M2	M2.5	M2.6	M3	M4	M5
dk	XB1-1	3.5	4.5	4.5	5.5	7	9
k	XB1-1	1.3	1.7	1.7	2	2.6	3.3
dk	XB1-2	4.3	5.3	5.5	6.3	8.3	10.3
k+f	XB1-2	1.2	1.5	1.6	1.9	2.5	3.1
dk	XB1-3	4	5	-	6	8	10
k	XB1-3	1.2	1.45	-	1.75	2.3	2.8
dk	XB1-4	4	5	-	6	8	10
k+f	XB1-4	1.6	2	-	2.45	3.2	4
Screw part length ねじ部長さ b		8	12	12	12	16	20

1-4. Cross Recessed Head Screws with Captive Washer
 座金組込み十字穴付き小ねじ



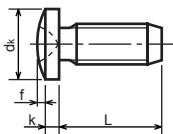
Type No. 類別番号	Type 類別
XB2-1	Pan head + Plain washer (circular bright) なべねじ+平座金
XB2-2	Pan head + Spring washer なべねじ+ばね座金
XB2-3	Pan head + Toothed lock washer なべねじ+歯付座金
XB2-4	Pan head + Spring washer and plain washer (circular bright) なべねじ+(ばね+平)座金
XB2-5	Binding head + Plain washer (circular bright) バインドねじ+平座金
XB2-6	Binding head + Spring washer バインドねじ+ばね座金
XB2-7	Binding head + Toothed lock washer バインドねじ+歯付座金
XB2-8	Binding head + Spring washer and plain washer (circular bright) バインドねじ+(ばね+平)座金

1-5. Hexagon Head Tapping Screws for Metallic Materials
 金属用六角タッピンねじ



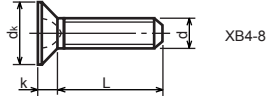
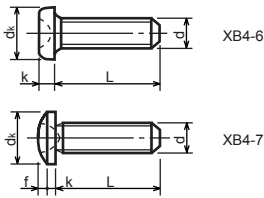
Type No. 類別番号	Type 類別	Head size (mm) 頭部寸法 (mm)	
		M3	M4
XB3-6	For metallic materials 金属用タッピン	D	8 10
		B	5.5 5.5
XB3-7	For metallic materials with clawed 金属用タッピン-つめ付き	H XB3-6	3.1 3.1
		H XB3-7	3.2 3.2

1-6. Special Tapping Screws
 特殊タッピンねじ



Type No. 類別番号	Type 類別	Head size (mm) 頭部寸法 (mm)	
		M3	M4
XB4-5	Binding head バインド	d _k	6.3 8.3
		k	1.3 1.7
		k+f	1.9 2.5

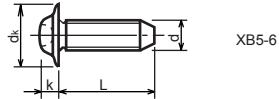
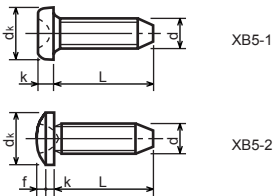
1-7. General Head Tapping Screws
 一般用タッピンねじ



Type No. 類別番号	Type 類別
XB4-6	Pan head なべ
XB4-7	Binding head バインド
XB4-8	Countersunk head さら

		Head size (mm) 頭部寸法 (mm)					
		M2	M2.5	M2.6	M3	M4	M5
dk	XB4-6	3.5	4.5	4.5	5.5	7	9
k	XB4-6	1.3	1.7	1.7	2	2.6	3.3
dk	XB4-7	4.3	5.3	5.5	6.3	8.3	10.3
k+f	XB4-7	1.2	1.5	1.6	1.9	2.5	3.1
dk	XB4-8	4	5	5.2	6	8	10
k	XB4-8	1.2	1.45	1.5	1.75	2.3	2.8

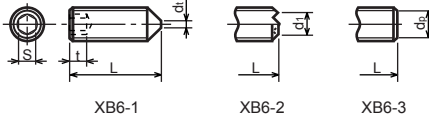
1-8. Tapping Screws for Metallic Materials
 金属用タッピンねじ



Type No. 類別番号	Type 類別
XB5-1	Pan head なべ
XB5-2	Binding head バインド
XB5-6	Flanged pan head つば付きなべ

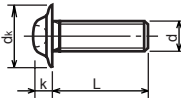
		Head size (mm) 頭部寸法 (mm)				
		M2.5	M2.6	M3	M4	M5
dk	XB5-1	4.5	4.5	5.5	7	9
k	XB5-1	1.7	1.7	2	2.6	3.3
dk	XB5-2	5.5	5.5	6.3	8.3	10.3
k+f	XB5-2	1.6	1.6	1.9	2.5	3.1
dk	XB5-6	6.5	6.5	8	10	12
k	XB5-6	2.1	2.1	1.75	3.2	4

1-9. Hexagon Socket Set Screws
六角穴付止めねじ



Type No. 類別番号	Type 類別	Head size (mm) 頭部寸法 (mm)							
		M1.6 M1.7	M2	M2.5 M2.6	M3	M5	M5	M6	
XB6-1	Cone point とがり先	S	0.7	0.9	1.3	1.5	2	2.5	3
		t	1.5	1.7	2	2	2.5	3	3.5
		$d_{t \max}$ XB6-1	0.4	0.5	0.65	0.75	1	1.25	1.5
		$d_{t \max}$ XB6-2	-	1.2	1.5	1.7	2.2	2.8	3.3
		$d_{t \min}$ XB6-2	-	1	1.2	1.4	1.9	2.4	2.9
XB6-3	Flat point 平先	$d_{p \max}$ XB6-3	0.8	1	1.5	2	2.5	3.5	4
		$d_{p \min}$ XB6-3	0.55	0.75	1.25	1.75	2.25	3.2	3.7

1-10. Flanged Pan Head Machine Screws
つば付きなべ小ねじ



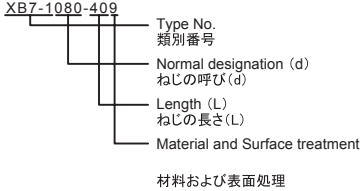
Type No. 類別番号	Type 類別	Head size (mm) 頭部寸法 (mm)					
		M2	M2.5 M2.6	M3	M5	M5	
XB6-7	Flanged pan head つば付きなべ	d_k	5	6.5	8	10	12
		k	1.7	2.1	2.5	3.2	4

FIGURE ZZC MECHANICAL STANDARD PARTS (BOLTS)

2. Bolts (Socket head cap screw) ボルト

How to read Parts Numbers
部品番号の見方

Bolt (Socket head cap screw)
ボルト



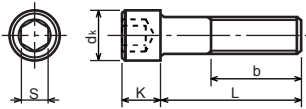
XB7-1 expresses Hexagon socket head cap screws.
XB7-1は、六角穴付きボルトを表す

080 expresses M8.0.
080は、M8.0を表す

40 expresses a length of 40mm.
40は、40mmの長さを表す

9 expresses Steel (Black zinc trivalent chromate treating) from Table 1.
9は、表1より鋼(黒色亜鉛3価クロメート)を表す

2-1. Hexagon socket head cap screws 六角穴付きボルト



Type No. 類別番号	Type 類別
XB7-1	Hexagon socket head cap screws 六角穴付きボルト

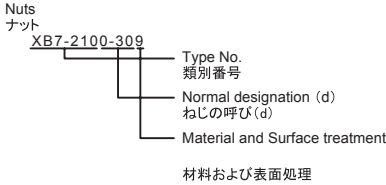
Head size (mm)
頭部寸法 (mm)

	M3	M4	M5	M6	M8	M10	M12
S	2.5	3	4	5	6	8	10
d_k	5.5	7	8.5	10	13	16	18
K	3	4	5	6	8	10	12
Screw part length b_{max} ねじ部長さ b_{max}	18	20	22	24	28	32	36

FIGURE ZZD MECHANICAL STANDARD PARTS (NUTS)

3. Nuts ナット

How to read Parts Numbers
部品番号の見方

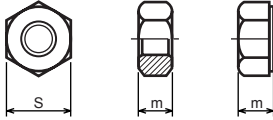


XB7-210 expresses Hexagon nut class 1.
XB7-210は、六角ナット1種を表す

0-30 expresses M3.0.
0-30は、M3.0を表す

9 expresses Steel (Black zinc trivalent chromate treating) from Table 1.
9は、表1より鋼(黒色亜鉛3価クロメート)を表す

3-1. Hexagon Nuts and Hexagon Thin Nuts 六角ナット



Type No. 類別番号	Type 類別
XB7-210	Hexagon nut Class 1 六角ナット-1種
XB7-220	Hexagon nut Class 3 六角ナット-3種
XB7-230	Hexagon nut Style 1 double chamfered 六角ナット-スタイル1-両面とり
XB7-231	Hexagon nut Style 1 washer faced 六角ナット-スタイル1-座付き
XB7-240	Hexagon nut Style 2 double chamfered 六角ナット-スタイル2-両面とり
XB7-241	Hexagon nut Style 2 washer faced 六角ナット-スタイル2-座付き
XB7-250	Hexagon nut 六角ナット
XB7-260	Hexagon thin nut double chamfered 六角低ナット-両面とり
XB7-270	Hexagon thin nut not chamfered 六角低ナット-面とり無し

	Head size (mm) 頭部寸法 (mm)						
	M2	M2.5	M3	M4	M5	M6	M8
S	4	5	5.5	7	8	10	13
m XB7-210	1.6	2	2.4	3.2	4	5	6.5
m XB7-220	1.2	1.6	1.8	2.4	3.2	3.6	5
m XB7-230, 231	1.6	2	2.4	3.2	4.7	5.2	6.8
m XB7-240, 241	-	-	-	-	5.1	5.7	7.5
m XB7-250	-	-	-	-	5.6	6.1	7.9
m XB7-260	1.2	1.6	1.8	2.2	2.7	3.2	4
m XB7-270	1.2	1.6	1.8	2.2	2.7	3.2	4

FIGURE ZZE MECHANICAL STANDARD PARTS (RETAINING RINGS)

5. Retaining Rings

止め輪

How to read Parts Numbers
部品番号の見方

Retaining Rings

止め輪

XD2-1100-202

Type No.
類別番号

Nominal designation
呼び

Material and Surface treatment
材料および表面処理

XD2-110 expresses retaining ring-E type (Type1).
XD2-110は、E形止め輪(1種)を表す

0-20 expresses a 020 of nominal designation.
(See Table 5)

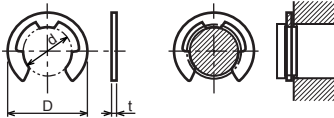
0-20は、呼び020を表す(表5参照)

2 expresses Stainless steel (Surface treatment is not to be given) from Table 1.

2は、表1よりステンレス(表面処理なし)を表す

5-1. Retaining Rings - E type

E形止め輪

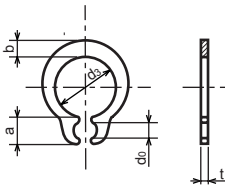


Type No. 類別番号	Type 類別
XD2-110	Retaining ring - E type (Type 1) E形止め輪(1種)
XD2-120	Retaining ring - E type (Type 2) E形止め輪(2種)

Table 5 表5

Type 種類	Nominal designation 呼び	d (mm)	D (mm)	t (mm)
Type 1 1種	007	0.65	2	0.2
	010	0.95	2.8	0.2
	013	1.25	3.3	0.3
	017	1.65	4.2	0.4
	020	1.95	4.6	0.5
	024	2.35	6	0.6
	028	2.74	6.5	0.6
	032	3.14	7.2	0.6
	037	3.64	8	0.7
	040	3.93	10	0.7
	042	4.13	10	0.7
	050	4.93	11	0.7
	058	5.73	12	0.7
	060	5.93	12.7	0.9
	064	6.32	13.5	0.9
	074	7.31	15	0.9
080	7.91	16.5	1	
Type 2 2種	008	0.8	2	0.2
	012	1.2	3	0.3
	015	1.5	4	0.4
	020	2	5	0.4
	025	2.5	6	0.4
	030	3	7	0.6
	040	4	9	0.6
	050	5	11	0.6
	060	6	12	0.8
	070	7	14	0.8
	080	8	16	0.8
	090	9	18	0.8
	100	10	20	1

5-2. Grip Rings
グリップ止め輪

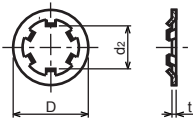


Type No. 類別番号	Type 類別
XD2-210	Grip ring グリップ止め輪

Table 5 表5

Nominal designation 呼び	d ₃ (mm)	t (mm)	b (mm)	a (mm)	d ₀ (mm)
020	1.9	0.5	1	1.8	0.8
025	2.35	0.5	1.2	1.9	0.9
030	2.85	0.6	1.4	1.9	0.9
035	3.3	0.6	1.6	2	0.9
040	3.8	0.8	1.8	2.8	1.2
045	4.25	0.8	2	2.9	1.3
050	4.75	0.8	2.2	2.9	1.3
060	5.7	1	2.4	3.1	1.4
070	6.7	1	2.7	3.3	1.4
080	7.7	1	3	3.5	1.4
090	8.65	1.2	3.3	4.7	1.5
100	9.65	1.2	3.5	4.7	2

5-3. Toothed Retaining Rings
歯付き形止め輪



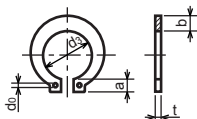
Type No. 類別番号	Type 類別
XD2-230	Toothed retaining ring 歯付き形止め輪

Table 5 表5

Nominal designation 呼び	d _z (mm)	D (mm)	t (mm)	No of teeth 歯数
015	1.4	5.2	0.25	3
020	1.9	6	0.25	3
024	2.3	6.4	0.25	3
030	2.8	8	0.25	4
040	3.8	9	0.25	4
050	4.8	10	0.25	5
060	5.8	11	0.25	5
080	7.8	13	0.25	5
100	9.8	15.4	0.25	6

5-4. Retaining Rings - C Type

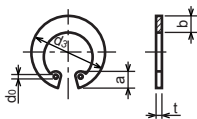
C形止め輪



Type No. 類別番号	Type 類別
XD2-310	Retaining ring - C type for shaft C形止め輪 軸用

Table 5 表5

Nominal designation 呼び	d ₃ (mm)	t (mm)	b (mm)	a (mm)	d ₀ (mm)
010	9.3	1	1.6	3	1.2
012	11.1	1	1.8	3.2	1.5
014	12.9	1	2	3.4	1.7
015	13.8	1	2.1	3.5	1.7
016	14.7	1	2.2	3.6	1.7
017	15.7	1	2.2	3.7	1.7
018	16.5	1.2	2.6	3.8	1.7
020	18.5	1.2	2.7	3.9	2
022	20.5	1.2	2.7	4.1	2
025	23.2	1.2	3.1	4.3	2
028	25.9	1.5	3.1	4.6	2
030	27.9	1.5	3.5	4.8	2
032	29.6	1.5	3.5	5	2.5
035	32.2	1.5	4	5.4	2.5



Type No. 類別番号	Type 類別
XD2-320	Retaining ring - C type for hole C形止め輪 穴用

Table 5 表5

Nominal designation 呼び	d ₃ (mm)	t (mm)	b (mm)	a (mm)	d ₀ (mm)
010	10.7	1	1.8	3.1	1.2
011	11.8	1	1.8	3.2	1.2
012	13	1	1.8	3.3	1.5
014	15.1	1	2	3.6	1.7
016	17.3	1	2	3.7	1.7
018	19.5	1	2.5	4	1.7
019	20.5	1	2.5	4	2
020	21.5	1	2.5	4	2
022	23.5	1	2.5	4.1	2
025	26.9	1.2	3	4.4	2
028	30.1	1.2	3	4.6	2
030	32.1	1.2	3	4.7	2
032	34.4	1.2	3.5	5.2	2.5
035	37.8	1.5	3.5	5.2	2.5
037	39.8	1.5	3.5	5.2	2.5
040	43.5	1.8	4	5.7	2.5
042	45.5	1.8	4	5.8	2.5
045	48.5	1.8	4.5	5.9	2.5
047	50.5	1.8	4.5	6.1	2.5
050	54.2	2	4.5	6.5	2.5
052	56.2	2	5.1	6.5	2.5
055	59.2	2	5.1	6.5	2.5
060	64.2	2	5.1	6.8	2.5
062	66.2	2	5.5	6.9	2.5
068	72.5	2.5	6	7.4	2.5
072	76.5	2.5	6.6	7.4	2.5
075	79.5	2.5	6.6	7.8	2.5
080	85.5	2.5	7	8	2.5
085	90.5	3	7	8	3
090	95.5	3	7.6	8.3	3
095	100.5	3	8	8.5	3

Prepared by
OIP Business Support Group
CANON INC.

Canon