

EPSON FX2180

(SHADED ROWS INDICATE MAJOR ITEMS)

Page 1

REF	PART NO.	REMARKS	QTY	DESCRIPTION
100	1039455	ECW	1	HOUSING ASSY., LOWER; W
101	1039403	ECW	1	COVER, FRONT; W
102	1039396	ECW	1	HOUSING, UPPER; W
103	1028340		1	COVER, PRINTER, REAR
104	1025024		1	COVER ASSY., PRINTER
105	1039456	ECW	1	EDGE GUIDE ASSY., FRONT; W
106	1039459		1	EDGE GUIDE ASSY., REAR; W
107	1039404	ECW	1	COVER, BOTTOM; W
108	1039462	ECW	1	KNOB; W
109	1025044		1	SHIELD PLATE
110	1037223	ECW	1	COVER, CONNECTOR, UPPER
111	1025668		1	SHIELD PLATE, UPPER
112	1005480		4	GROUNDING PLATE
113	1025669		1	GROUNDING PLATE, I/F
114	1026336		1	STOPPER, COVER, FRONT
115	1026337		1	COVER, COMPRESSION SPRING
116	1026338		1	HOLDER, DETECTOR
117	1039408	ECW	1	GUIDE, I/F BOARD; B; W
118	1026339		1	COMPRESSION SPRING, 2.94
119	2018967		1	DETECTOR ASSY., CASE OPEN
120	1039774		1	LOGO PLATE
121	B310206511	M4X14	3	C.B.B. SCREW
122	1006901	M3X8	4	C.B.C-LAMITITE
123	NOT USED			
124	B310204311	M3X8	3	C.B.B. SCREW
125	B010350211	M2X7	1	C.B.SCREW
126	1025409		4	PRINTER MECH.MOUNTING SCREW
127	B310204511	M3X12	10	C.B.B. SCREW
128	B300200111	M3X4	3	C.B.S. SCREW
129	1028106		1	C.B.B.SCREW, 4X14, F/ZR
130	2020073		1	FERRITE CORE
133	1002674	M3X12	2	C.B.S-TITE SCREW
137	1011863		1	GROUNDING PLATE, I/F, UPPER
200	2026629		1	BOARD ASSY., MAIN (WITHOUT IC2)
IC5	2027948	4M BIT	1	EP-ROM, TDD15A
CN10	2017936	4,	1	CONNECTOR
CN11	2005108	5 PIN	1	CONNECTOR
CN12	X600440410	4 PIN	1	CONNECTOR
CN13	2017929	4,	1	CONNECTOR
CN14	2022403	10,	1	CONNECTOR
CN15	2017940	22,	1	CONNECTOR
CN2	2007160	36PIN	1	CONNECTOR
CN3	2019114	10,	1	CONNECTOR
CN4	X600440310	3 PIN	1	CONNECTOR
CN5	2007097	3,	1	CONNECTOR
CN6	X600440120	2 PIN	1	CONNECTOR
CN7	2019111	4,	1	CONNECTOR
CN8	2008494	18,	1	CONNECTOR
CN9	2019112	16,	1	CONNECTOR
CR1	2023893	17.2MHZ,	1	CERAMIC OSCILLATOR
C1	2009004	TP,100UF,50V,+/-20%,	1	AL' IUM. EL' YTIC. CAP.
C10,C29	2017467		2	CHIP CAPACITOR
C28,C40	X275124711		2	CHIP CAPACITOR
C3	2021043	TP,10UF,50V,+/-20%,	1	ELECTROLYTIC CAPACITOR
C30	X285122201	22PF 50V 5%	1	CERAMIC CAPACITOR

EPSON FX2180

Page 2

REF	PART NO.	REMARKS	QTY	DESCRIPTION
C31-C33	2017467		3	CHIP CAPACITOR
C37-C39	2017467		3	CHIP CAPACITOR
C4,C11-C25	X275121021		16	CHIP RESISTOR
C41,C53	X275124711		2	CHIP CAPACITOR
C42,C45	2017467		2	CHIP CAPACITOR
C43,C44	X285322221	2200PF 50V 5% TP	2	CERAMIC CAPACITOR
C46,C48	2017467		2	CHIP CAPACITOR
C5	2018745		1	CHIP CAPACITOR
C52,C58	2017467		2	CHIP CAPACITOR
C54,C57	X275124711		2	CHIP CAPACITOR
C55,C56	2005424	4700 PF 50V 10% TP	2	CHIP CAPACITOR
C59,C64	2017467		2	CHIP CAPACITOR
C6-C8	2017467		3	CHIP CAPACITOR
C60-C63	2025398	TP,470PF,200V,+/-10%,	4	CHIP CAPACITOR
C65	2017467		1	CHIP CAPACITOR
C68-C71	2018745		4	CHIP CAPACITOR
C9	2003619		1	CHIP CAPACITOR
D1	2012708	35V,225MA	1	DIODE
D2-D5	2017977		4	DIODE
IC1	2025363		1	GATE ARRAY
IC11	X422350329	QUAD 2-INPUT PO. OR	1	TTL-IC
IC12	2025169		1	HIC
IC15	2023625		1	RESET IC
IC2	2026807		1	MICRO CONTROLLER
IC3	2016149	1M BIT,80NS,32,	1	PS-RAM, TC518128CFL-80
IC5	X630113230	32 PIN	1	IC SOCKET
IC6	X422350069		1	TTL-IC SN74LS06NS-TPL
IC8	2014681	SOP,1K BIT,8	1	EEPROM, AT93C46-10SC
IC9	2000592		1	HYBRID IC SLA7024M
Q1	2011623	50V,100MA,200MW,100.0,	1	TRANSISTOR
Q2,Q19	2027239	85V,3A,30W,0.0,	2	TRANSISTOR
RM1	2021627	TP,3.3KOHM,1/16W,+/-5%,	1	CHIP RESISTOR ARRAY
RM10	2021622	TP,68OHM,1/16W,+/-5%,	1	CHIP RESISTOR ARRAY
RM11,RM17	2021630	TP,10KOHM,1/16W,+/-5%,	2	CHIP RESISTOR ARRAY
RM12-RM14	2021627	TP,3.3KOHM,1/16W,+/-5%,	3	CHIP RESISTOR ARRAY
RM2	2021626	TP,1KOHM,1/16W,+/-5%,	1	CHIP RESISTOR ARRAY
RM23-RM32	2021621	TP,47OHM,1/16W,+/-5%,	10	CHIP RESISTOR ARRAY
RM3,RM4	2021622	TP,68OHM,1/16W,+/-5%,	2	CHIP RESISTOR ARRAY
RM34,RM35	2021620	TP,33OHM,1/16W,+/-5%,	2	CHIP RESISTOR ARRAY
RM5-RM8	2021627	TP,3.3KOHM,1/16W,+/-5%,	4	CHIP RESISTOR ARRAY
R1,R2	2025371	TP,10KOHM,1/10W,+/-5%,	2	CHIP RESISTOR
R15,R18	2025371	TP,10KOHM,1/10W,+/-5%,	2	CHIP RESISTOR
R17,R22	2025372	TP,15KOHM,1/10W,+/-5%,	2	CHIP RESISTOR
R19	2013177	TP,180OHM,1/4W,+/-5%,	1	CHIP RESISTOR
R21,R23	2025371	TP,10KOHM,1/10W,+/-5%,	2	CHIP RESISTOR
R26,R28	2025371	TP,10KOHM,1/10W,+/-5%,	2	CHIP RESISTOR
R3,R20	2025380	TP,3.9KOHM,1/10W,+/-5%,	2	CHIP RESISTOR
R30,R32	2025371	TP,10KOHM,1/10W,+/-5%,	2	CHIP RESISTOR
R36,R38	2025370	TP,1KOHM,1/10W,+/-5%,	2	CHIP RESISTOR
R37,R43	2025369	TP,100OHM,1/10W,+/-5%,	2	CHIP RESISTOR
R4-R8	2025370	TP,1KOHM,1/10W,+/-5%,	5	CHIP RESISTOR
R42,R44	2025381	TP,47OHM,1/10W,+/-5%,	2	CHIP RESISTOR
R45	2025381	TP,47OHM,1/10W,+/-5%,	1	CHIP RESISTOR
R49	2007180	5.1K OHM 1/2W 5%	1	CHIP RESISTOR

ESP0537/2

REF	PART NO.	REMARKS	QTY	DESCRIPTION
R50,R51	X120220686	0.68 OHM 2W 5%	2	METAL OXIDE FILM RESISTOR
R58,R59	2025385	TP,56KOHM,1/10W,+5%,	2	CHIP RESISTOR
R60,R62	2025370	TP,1KOHM,1/10W,+5%,	2	CHIP RESISTOR
R73	2025371	TP,10KOHM,1/10W,+5%,	1	CHIP RESISTOR
R74	X193211012	100 OHM 1/2W 5%	1	CHIP RESISTOR
R75	2025370	TP,1KOHM,1/10W,+5%,	1	CHIP RESISTOR
R79-R81	2025381	TP,470HM,1/10W,+5%,	3	CHIP RESISTOR
R9	X193214702		1	
ZD1	2026808		1	ZENER DIODE
300	2024567		1	BOARD ASSY., POWER SUPPLY 220/240V
CN1	2000295	2 PIN	1	CONNECTOR
CN2	2018864		1	HARNESS
CN3	X600440120	2 PIN	1	CONNECTOR
C1	2001137	0.47UF 250V 20%	1	FILM CAPACITOR FOR 240V
C11	2019129	BL,400UF,180V,+20%,	1	AL'UM. EL'YTIC. CAP. FOR 240V
C12	2018996	TP,220UF,35V,+20%,	1	AL'UM. EL'YTIC. CAP.
C13	2003140	4700PF 50V 5%	1	FILM CAPACITOR
C14	2001087	2200PF 50V 5%	1	PLASTIC FILM CAPACITOR
C15	2019005	BL,750PF,1.5KV,+5%,	1	FILM CAPACITOR FOR 240V
C2	X234511044	0.1UF 250V 20%	1	CERAMIC CAPACITOR
C31,C81	X220222220	2200PF DC50V 10%	2	CERAMIC CAPACITOR
C51,C52	2003131	2200UF 50V 20%	2	AL'UM. EL'YTIC. CAP.
C54	2005190	1000UF 6.3V 20%	1	ELECTROLYTIC CAPACITOR
C55	X236104010	0.1UF 50V 5%	1	FILM CAPACITOR
C56	2011481	TP,33UF,16V,+20%,	1	AL'UM. EL'YTIC. CAP.
C57	2003109	470UF 6.3V 20%	1	AL'UM. EL'YTIC. CAP.
C58	2003142	0.01UF 50V 5%	1	FILM CAPACITOR
C59	X220223310	330PF DC50V 10%	1	CERAMIC CAPACITOR
C8	2011121	BL,2200PF,250V,+20%,	1	CERAMIC CAPACITOR
C82	X224221031	0.01UF DC50V +80-20%	1	CERAMIC CAPACITOR
DB1	2010688		1	DIODE BRIDGE FOR 240V
D1	2013050		1	DIODE
D2	X320011449	40V 0.6A 0.2W	1	DIODE
D51	1013213		1	HEAT SINK
D51	2011510	100V,5A,0W,	1	DIODE
D52	2004284	200V,0.5A,0W,	1	DIODE
D55	2019126		1	DIODE
D81-D86	X320011201	SI 60V 150MA	6	DIODE
F1	2012329	125V,3.15A,UL-L;	1	FUSE
F1	2019130	250V,2A,	1	FUSE FOR 240V
IC1	2001638		1	VOLTAGE REGULATOR
IC51	X440034940	BIPOLAR SWREG DIP	1	LINEAR IC
IC52	X440072920	BIPOLAR DUAL COMP.	1	IC
L1	2019131	15MH,800MA,	1	CHOKER COIL FOR 240V
L51	2019837	470UH,700MA,	1	CHOKER COIL
PC1	2013130	0V,0A,0W,	1	PHOTO COUPLER FOR 240V
Q1	2011115	500V 5A	1	FET
Q1	2019003	900V,3A,0W,	1	FET FOR 240V
Q1,D51	B300204311	M3X8	2	C.B.S. SCREW
Q2	2000623	50V 2A 900MW	1	TRANSISTOR
Q3,Q53	X300101589	PNP 50V 150MA 400MW	2	TRANSISTOR
Q31	2018987	30V,1A,1W,	1	FET
Q32	2018986	50V,100MA,0W,56,0,	1	TRANSISTOR
Q51	X300168009	PNP 50V 2A 900MW	1	TRANSISTOR, 2SA1680-TPE6

EPSON FX2180

Page 4

REF	PART NO.	REMARKS	QTY	DESCRIPTION
Q54	X302181589	NPN 50V 150MA 400MW	1	TRANSISTOR
Q55	2018985	50V,100MA,0W,0,0,	1	TRANSISTOR
Q81,Q82	2018984	50V,100MA,0W,0,0,	2	TRANSISTOR
R1	2011119	TP,1MOHM,1/2W,+,-5%,	1	CARBON FILM RESISTOR
R11	X155411022	1K OHM 1/4W 5%	1	CARBON FILM RESISTOR FOR 240V
R12	X120220626	0.62 OHM 2W 5%	1	M/ OXIDE FILM RESISTOR FOR 240V
R13,R21,	X155414722	4.7K OHM	2	CARBON FILM RESISTOR
R14	X155415112	510 OHM 1/4W 5%	1	CARBON FILM RESISTOR
R15	X155411212	120 OHM 1/4W 5%	1	CARBON FILM RESISTOR
R16,R57	X155412712	270 OHM 1/4W 5%	2	CARBON FILM RESISTOR
R18	2011471	TP,150KOHM,1/2W,+,-5%,	1	CARBON FILM RESISTOR
R19,R32,	X155412032	20K OHM 1/4W 5%	2	CARBON FILM RESISTOR
R20,R64	X155412422	2.4K OHM 1/4W 5%	2	CARBON FILM RESISTOR
R22,R29	2012559	TP,1.1MOHM,1/2W,+,-5%,	2	CARBON FILM RESISTOR FOR 240V
R31,R68,	X155411032	10K OHM 1/4W 5%	2	CARBON FILM RESISTOR
R51	2003105	470 OHM 2W 5%	1	METAL OXIDE FILM RESISTOR
R53	2025579	TP,0.51OHM,1W,+,-5%,	1	METAL FILM RESISTOR
R54,R82	X155412022	2K OHM 1/4W 5%	2	CARBON FILM RESISTOR
R55,R65,	X155412032	20K OHM 1/4W 5%	2	CARBON FILM RESISTOR
R56	X155411512	150 OHM 1/4W 5%	1	CARBON FILM RESISTOR
R58,R66	X155412042	200K OHM 1/4W 5%	2	CARBON FILM RESISTOR
R59	X143194751	4.75K OHM 1/4W 1%	1	HIGH STAB.M/F RES.
R60	X155414722	4.7K OHM	1	CARBON FILM RESISTOR
R61	X155413012	300 OHM 1/4W 5%	1	CARBON FILM RESISTOR
R63,R87	X155413622	3.6K OHM 1/4W 5%	2	CARBON FILM RESISTOR
R67	X155413022	3K OHM 1/4W 5%	1	CARBON FILM RESISTOR
R69,R71	X155411522	1.5K OHM 1/4W 5%	2	CARBON FILM RESISTOR
R70,R74	X155411032	10K OHM 1/4W 5%	2	CARBON FILM RESISTOR
R72	X155416222	6.2K OHM 1/4W 5%	1	CARBON FILM RESISTOR
R73,R89	X155411222	1.2K OHM 1/4W 5%	2	CARBON FILM RESISTOR
R75	X155412722	2.7K OHM 1/4W 5%	1	CARBON FILM RESISTOR
R81	X143198452	84.5K OHM 1/4W 1%	1	HIGH STAB.M/F RES.
R83	X155415132	51K OHM 1/4W 5%	1	CARBON FILM RESISTOR
R84,R85	X155412032	20K OHM 1/4W 5%	2	CARBON FILM RESISTOR
R86	X155412742	270K OHM 1/4W 5%	1	CARBON FILM RESISTOR
R90	X155411222	1.2K OHM 1/4W 5%	1	CARBON FILM RESISTOR
R91	X155410102	1 OHM 1/4W 5%	1	CARBON FILM RESISTOR
TH1	2019006		1	THERMISTOR
T1	2019021		1	TRANSFORMER 240V
ZD51,ZD54,	2011463	150MA 400MW 6.9V 7.2V	2	ZENER DIODE
ZD52,ZD87	2018990		2	ZENER DIODE
ZD53,ZD86	2011464	150MA 400W 6.9V 7.2V	2	ZENER DIODE
ZD55	2004320	150MA 400MW 5.2W 5.5V	1	ZENER DIODE
ZD81-ZD85	2011463	150MA 400MW 6.9V 7.2V	5	ZENER DIODE
330	2018862		1	HARNESS
380	2021422		1	FAN
400	2006741	240V	1	POWER CABLE, BS31303SA-SR-10A
401	2018861		1	HARNESS
450	2027190		1	BOARD ASSY., PANEL
500	2027972		1	PRINTER MECHANISM, M-3K60-100
501	1025190		1	FRAME ASSY., RIGHT
502	1025376		1	FRAME ASSY., LEFT
503	2026605	DC3.0V/1.1A/3.3W ST	1	MOTOR, CR
504	1025199		1	RD ASSY.

ESP0537/4

REF	PART NO.	REMARKS	QTY	DESCRIPTION
511	2019040	DC6.4V/0.4A/2.6W	1	MOTOR, PF
521	2019039		1	HARNESS, PG
522	2021854	4V,50MA,100MW,	1	DETECTOR, HP
523	2019016		1	HARNESS, HP
524	2014328		4	CONNECTOR SWITCH; B
525	1039409	ECW	1	PAPER GUIDE; W
526	1025322		1	SHAFT, RELEASE
527	2019010		1	HARNESS, PE, FRONT
528	2019009		1	HARNESS, PE, REAR
529	1025324		1	LEVER, PE, SUPPORT
530	2019011	0V,0A,0W,	1	DETECTOR, PE, FRONT
531	1005727		1	DETECTOR ASSY., REAR
532	1005213		5	ROLLER, PF, DRIVEN, LOWER
533	1025249		5	ROLLER ASSY., PF
534	1005215		5	EXTENSION SPRING, 70
535	1025363		5	COMPRESSION SPRING, 10.8
536	1025192		1	CARRIAGE ASSY.
538	1025344		1	COVER, CR
539	1025348		1	BUSHING, 14
541	1039012		1	TRACTOR ASSY, REAR; W
542	1039341		2	TRACTOR, LEFT; W
543	1039342		2	TRACTOR, RIGHT; W
544	1025291		2	SHAFT, TR, DRIVE
545	1025292		2	SHAFT, TR, GUIDE
546	1039415	ECW	2	FRAME, TR, LEFT; W
547	1039416	ECW	2	FRAME, TR, RIGHT; W
548	1025289		1	LEVER, TR, LEFT, REAR
549	1025290		1	LEVER, TR, RIGHT, REAR
550	1025296		2	PAPER SUPPORT
551	1025295		4	SPUR GEAR, 20
552	1025350		1	EXTENSION SPRING, 15.7
555	1039457	ECW	1	PAPER EJECT ASSY.; W
556	1025301		1	COVER, PAPER EJECT
557	1029507		1	FRAME, PAPER EJECT, BASE
558	1039413	ECW	1	FRAME, PAPER EJECT, LEFT
559	1039414	ECW	1	FRAME, PAPER EJECT, RIGHT
560	1025306		5	ROLLER, PAPER EJECT, DRIVEN
561	1025310		1	SPUR GEAR, 15
562	1005245		1	SPUR GEAR, 18
564	1025305		1	ROLLER, PAPER EJECT, DRIVE
565	1025203		1	ROLLER ASSY., PF, DRIVE
566	1025334		1	HOLDER, HEAD, CABLE
567	2019013		1	CABLE, HEAD, LOWER
568	2019014		1	CABLE, HEAD, UPPER
569	1025355		1	BUSHING, 8, LEFT
570	1025284		1	PLATEN
571	1031612		1	SPUR GEAR, 36
572	1025285		1	BUSHING, 8, RIGHT
573	1025351		1	COVER, PLATEN
574	2018904		1	DETECTOR ASSY., PW
575	1025345		1	RIBBON MASK
576	1025352		1	PAPER GUIDE, SUPPORT
577	1025280		1	HOLDER, DRIVEN PULLEY
578	1025326		1	FRAME, REAR

EPSON FX2180

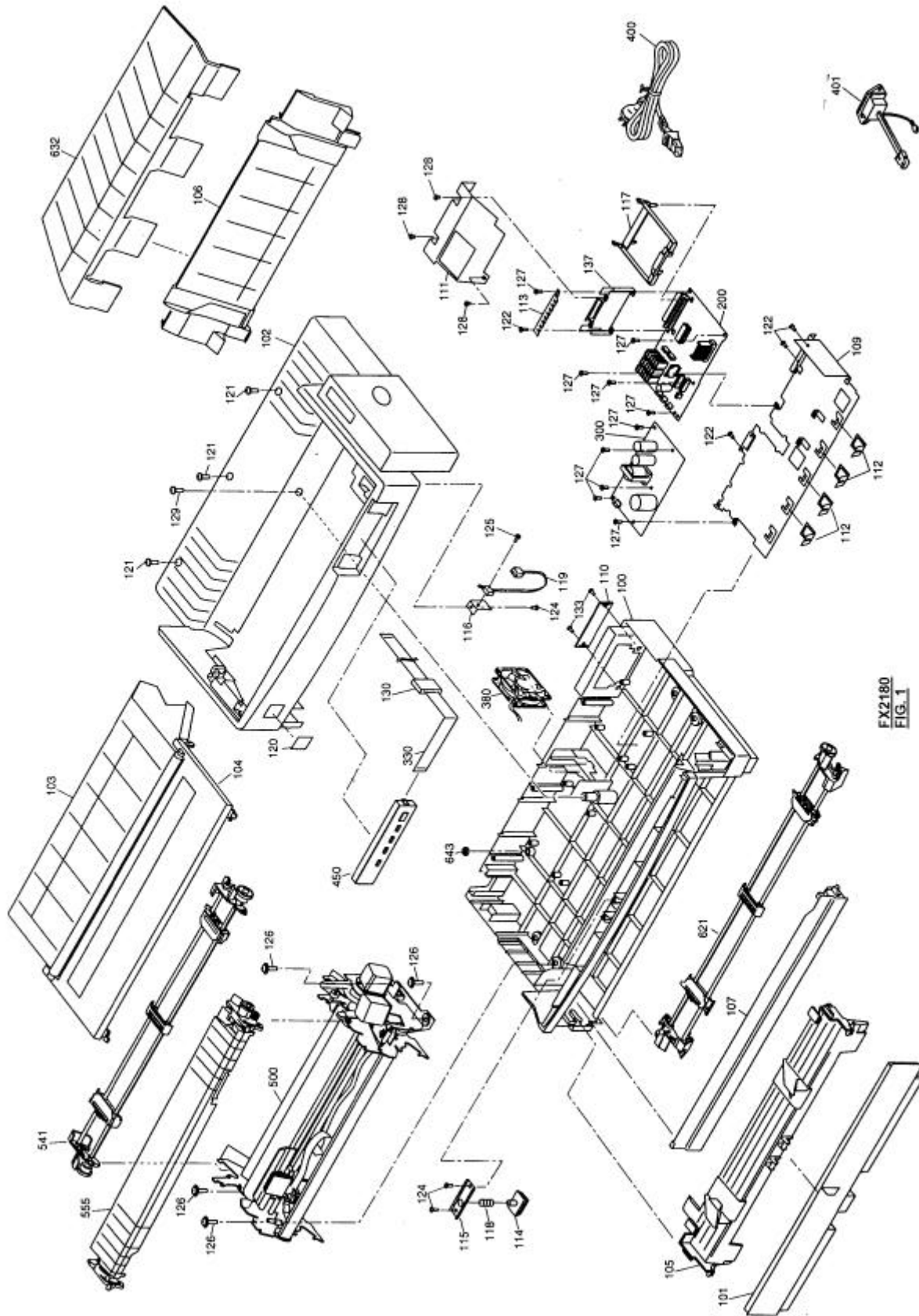
Page 6

REF	PART NO.	REMARKS	QTY	DESCRIPTION
579	1025327		1	FRAME, FRONT
580	1028578		1	FRAME, SUB, RIGHT
581	1025329		1	SHAFT, CR, GUIDE, REAR
582	1025330		1	SHAFT, CR, GUIDE, FRONT
583	1025331		1	BUSHING, PARALLEL, ADJUST
584	1025332		1	LEVER, GAP, ADJUST
585	1039412	ECW	1	CAP, LEVER; W
586	1025374		1	SHEET, RELEASE, CAP
587	1025349		1	MOUNTING PLATE, MOTOR, CR
588	1025346		1	HOLDER, RIBBON MASK
589	1027101		2	OIL PAD, LOWER
590	1039410	ECW	1	LEVER, RELEASE; W
591	1028357		1	CAM, CLUTCH, TRACTOR
592	1025335		4	BASE RUBBER
593	1008716		1	COMBINATION GEAR, 31, 5, 8
594	1005224		1	SPUR GEAR, 27
595	1013093		2	SPUR GEAR, 34.5
596	1005226		1	SPUR GEAR, 34
597	B101253990	8.2X0.25X15	1	LEAF SPRING
598	1028359		1	INTERMITTENT GEAR
599	1025353		1	PAPER GUIDE, MIDDLE
600	1025354		1	PAPER GUIDE, FRONT
601	1005232		2	COMPRESSION SPRING, 200
602	1025360		1	SPUR GEAR, 21
603	1039411	ECW	1	LEVER, RELEASE, TRANSMISSION; W
604	1030844		2	OIL PAD
605	1025343		1	HOLDER, DETECTOR, PG
606	1029076		1	LEVER, RELEASE, DETECTOR
607	1025375		1	GROUNDING PLATE, PG, MIDDLE
608	1026439		1	SHEET, RELEASE, CAP, SUB
609	1026551		1	HOLDER, CABLE
610	1026620		1	COVER, DRIVEN PULLEY
611	B010303411	M3X8	2	C.B.SCREW
612	1025311		1	GROUNDING PLATE, PAPER EJECT
613	1005416		2	SHAFT, MOUNT, CR
614	B010302211	M2.5X5	1	C.B.SCREW
615	B310204311	M3X8	1	C.B.B. SCREW
617	1025356		1	LEAF SPRING, CR
620	1025323		1	LEVER, DETECTOR, PE, REAR
621	1039013	ECW	1	TRACTOR ASSY., FRONT; W
624	1025299		1	LEVER, TR, LEFT, FRONT
625	1025300		1	LEVER, TR, RIGHT, FRONT
626	1025325		1	TORSION SPRING, 0.26
627	1025307		5	HOLDER, PAPER EJECT, DRIVEN
628	1025309		5	COMPRESSION SPRING, 1.08
629	1025308		5	HOLDER, PAPER EJECT, SPRING
630	2019015		1	CABLE, DETECTOR
631	2021824		1	HARNES, RE
632	1039461	ECW	1	GUIDE, PAPER EJECT; W
633	B150300911	TYPE-E(6)	4	RETAINING RING
634	1031702		1	SPRING PIN, 2X18, F/B
635	B302704211	M3X6	4	C.P.S.P.S. SCREW
636	B300204211	M3X6	9	C.B.S. SCREW
637	B100166012	8X0.5X15	1	PLAIN WASHER

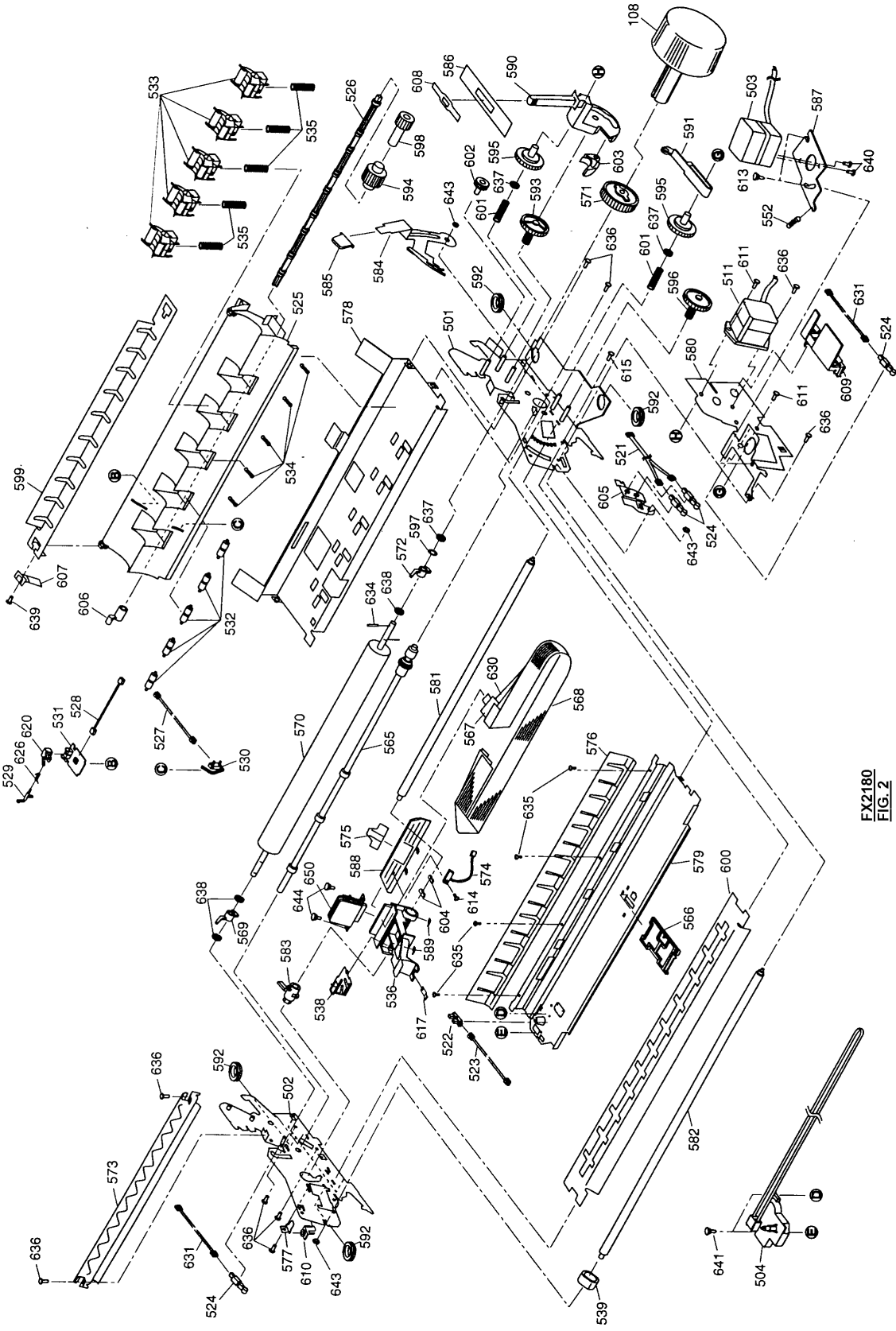
ESP0537/6

EPSON FX2180

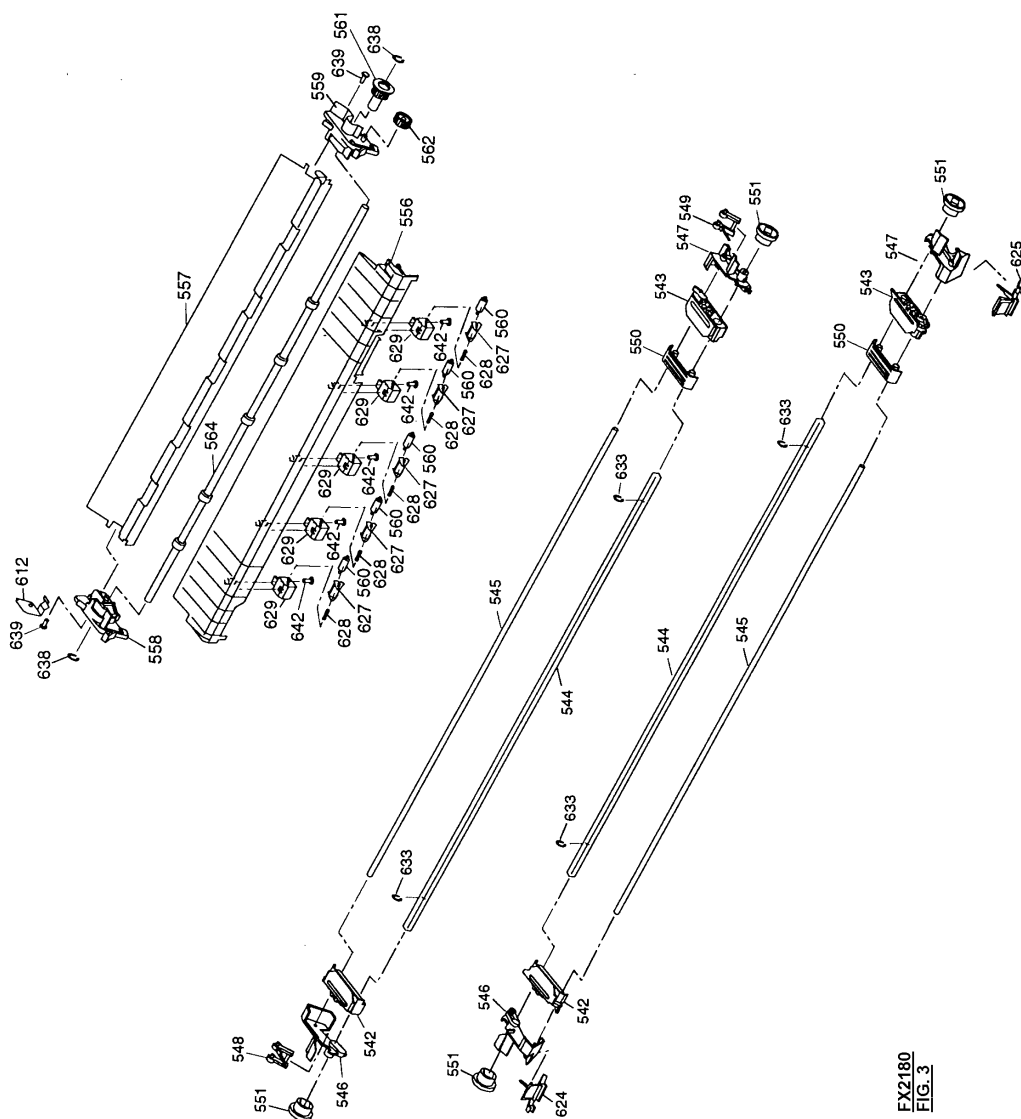
Page 8



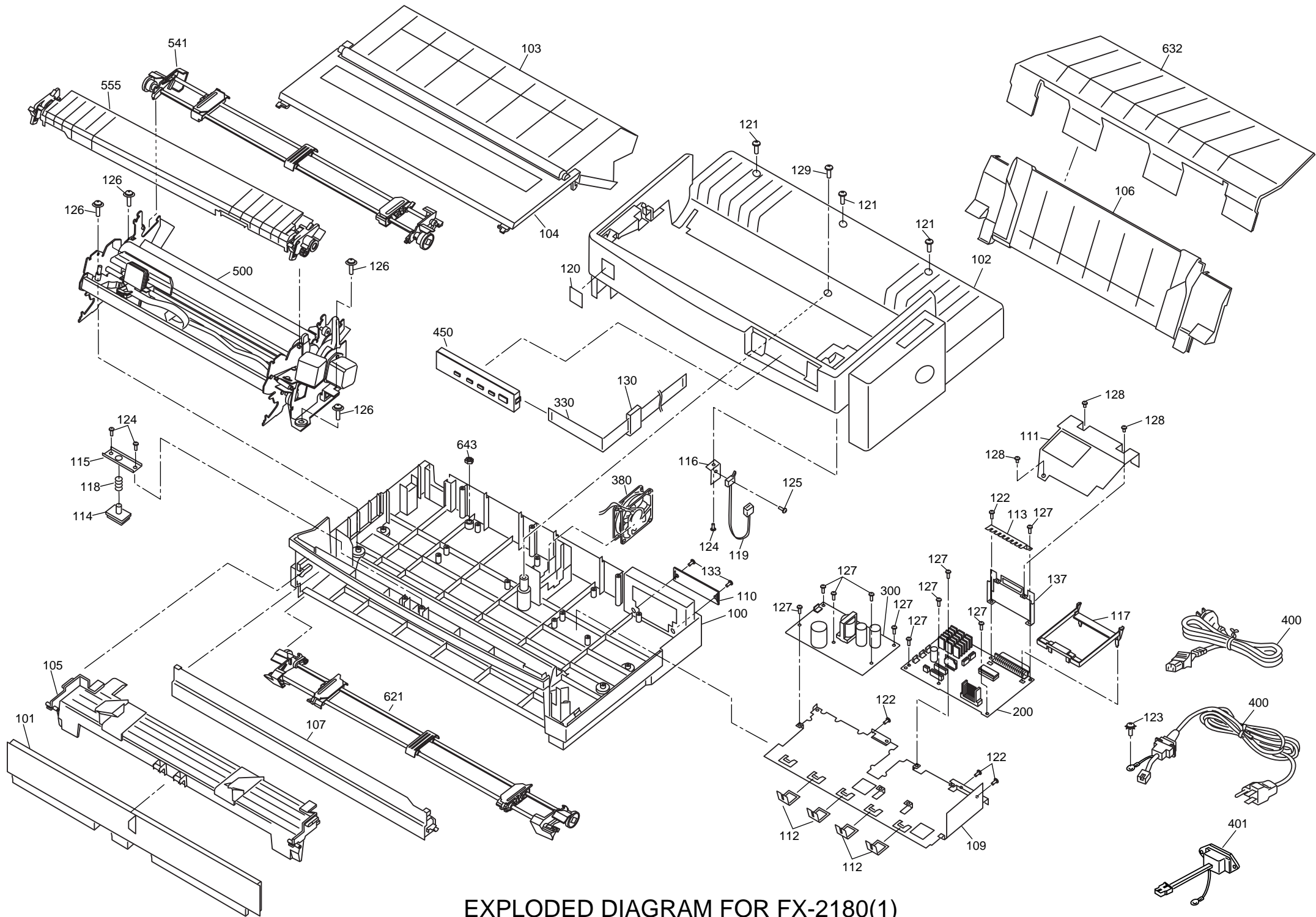
FX2180
FIG. 1



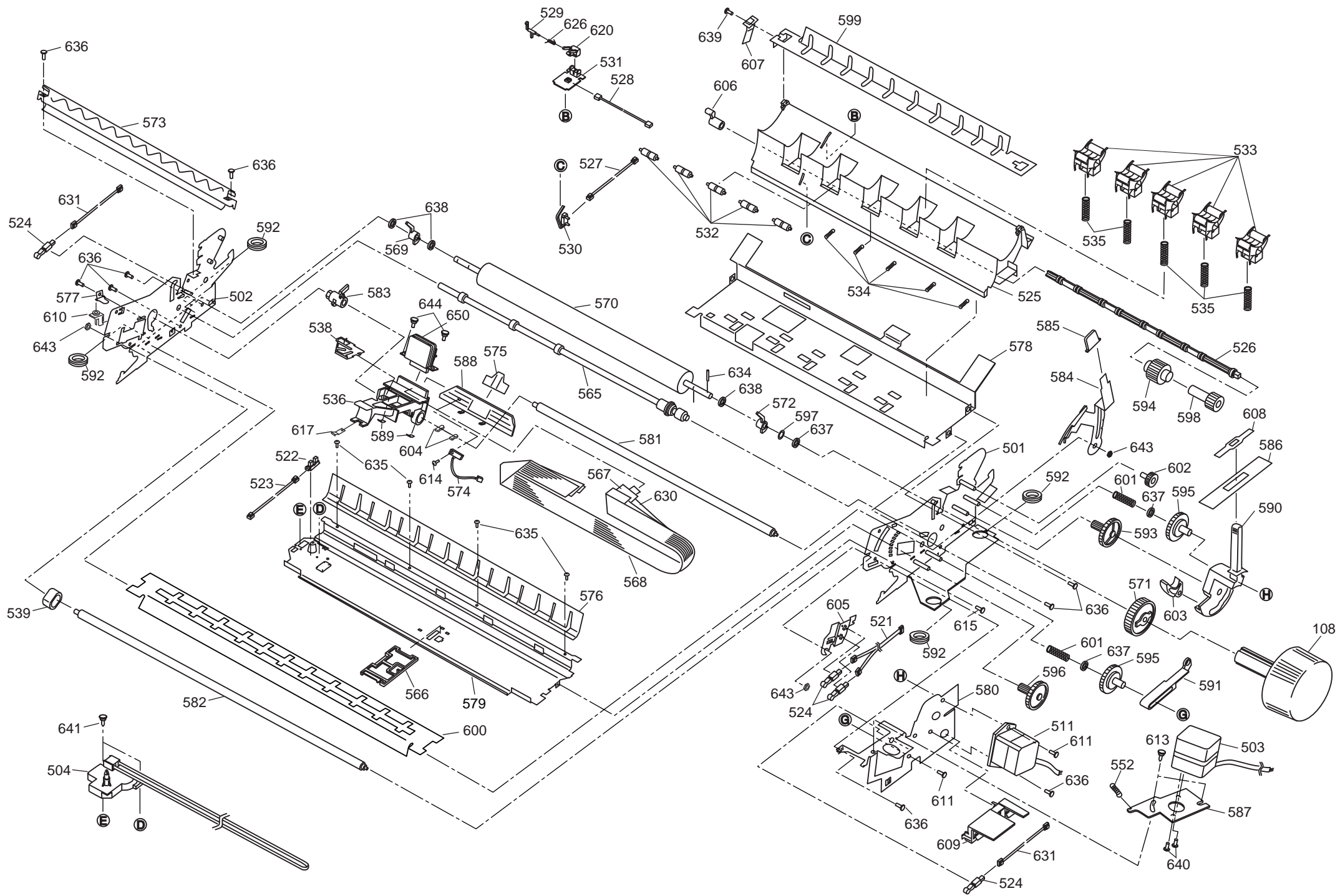
FX2180
FIG. 2



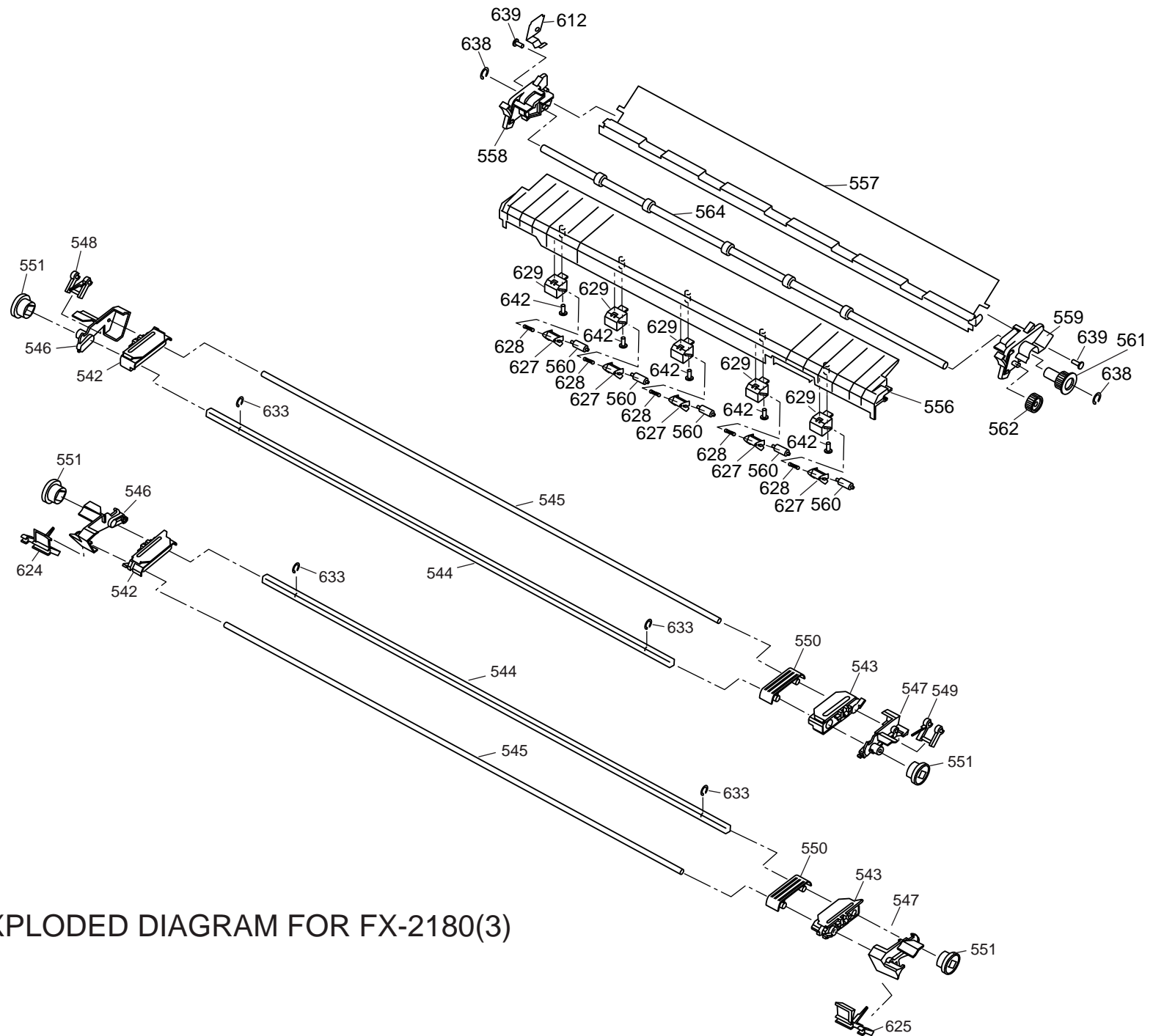
FX2180
FIG. 3



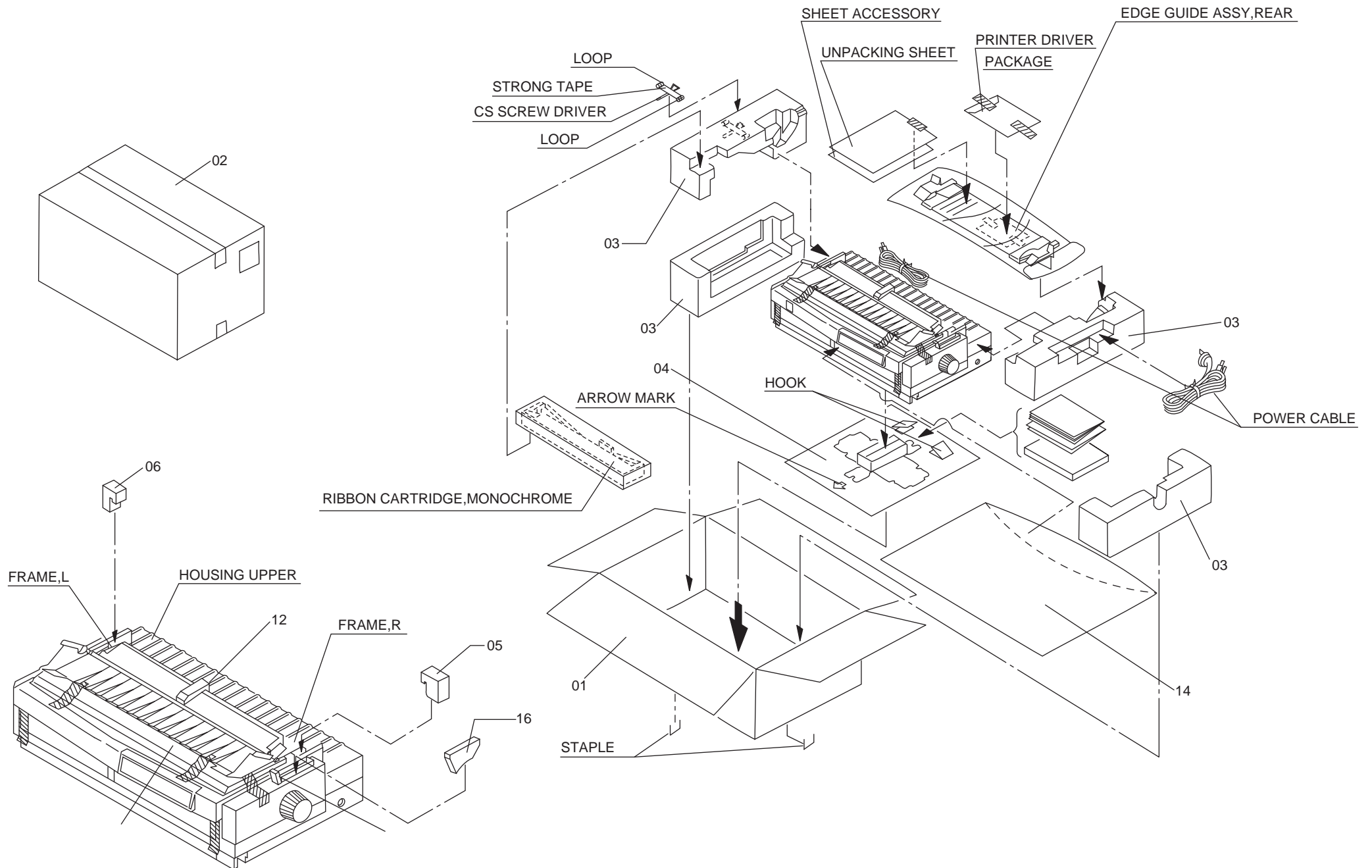
EXPLODED DIAGRAM FOR FX-2180(1)



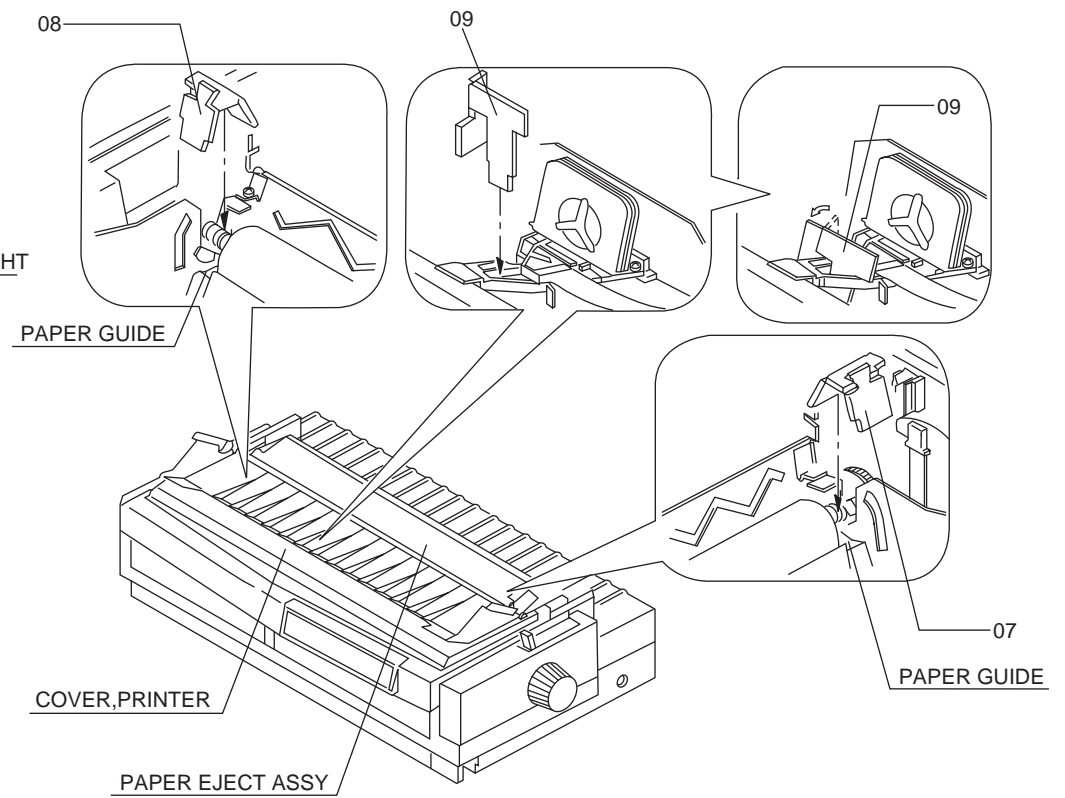
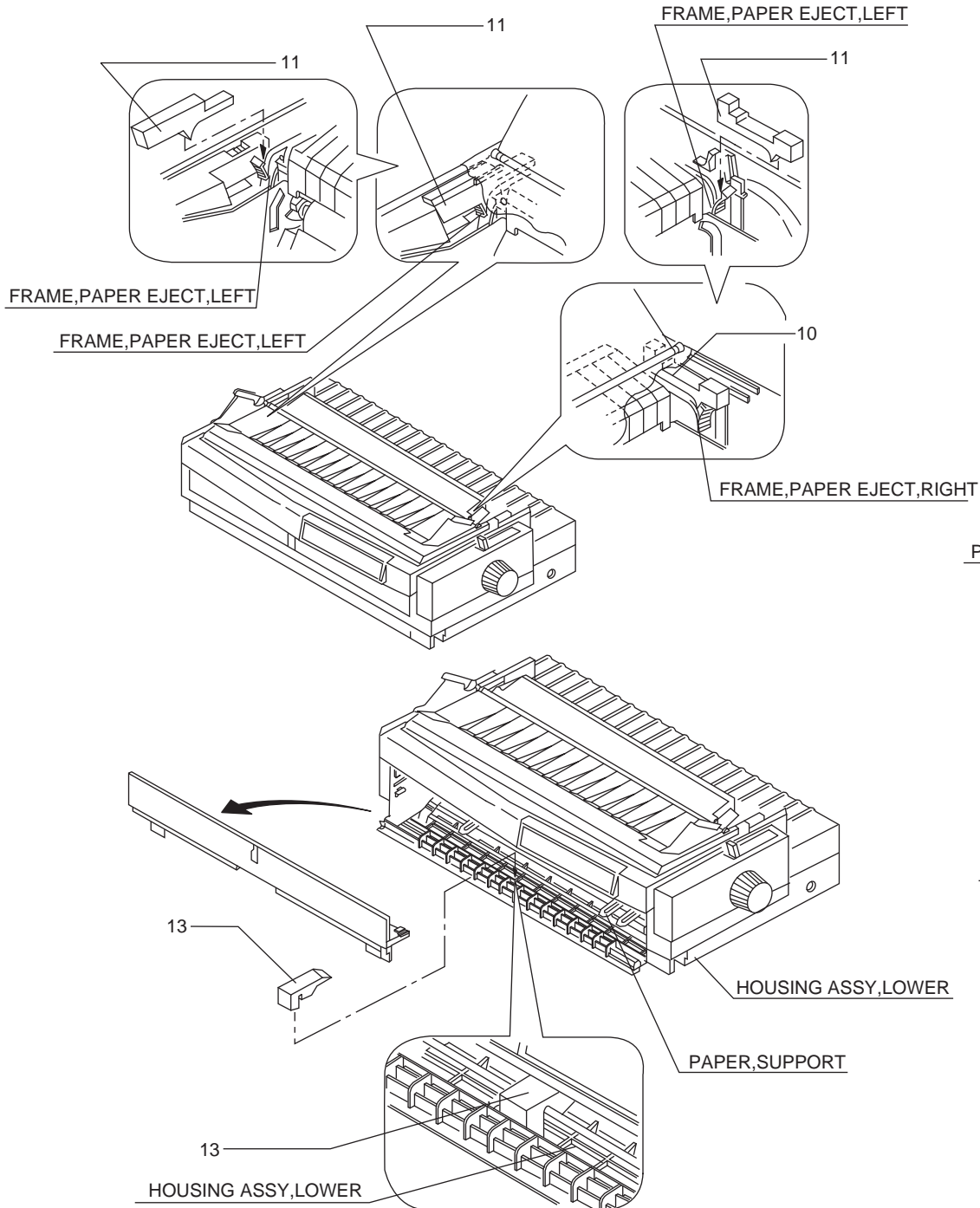
EXPLODED DIAGRAM FOR FX-2180(2)



EXPLODED DIAGRAM FOR FX-2180(3)



PACKING MATERIALS FOR FX-2180(1)

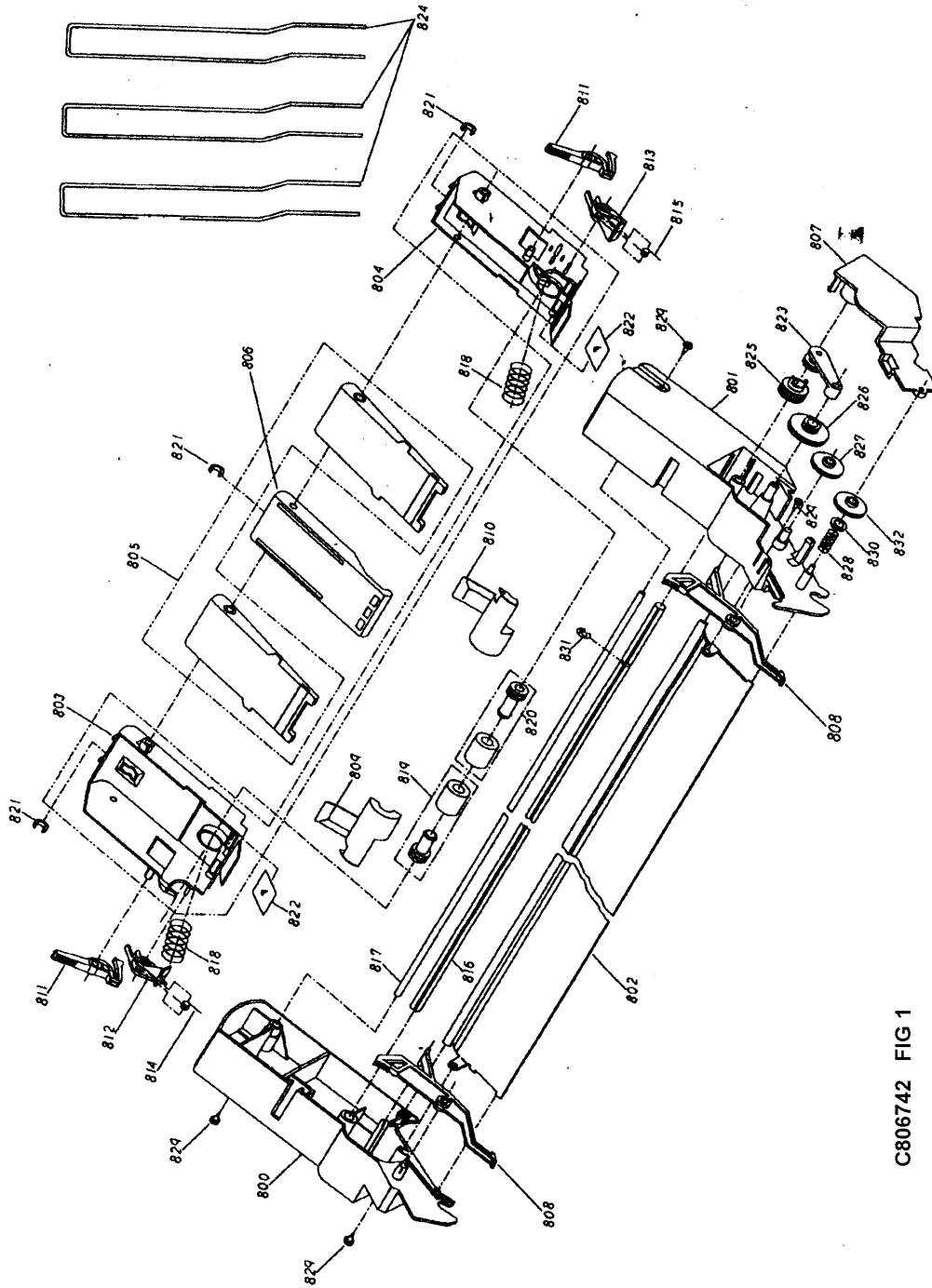


PACKING MATERIALS FOR FX-2180(2)

EPSON

C806742 (CSF – FX2170/2180)

Page 2



C806742 FIG 1

EPSON

C806742 (CSF – FX2170/2180)

Page 3

