

PARTS CATALOG

DADF-AA1

Canon

Nov 25 2009

PREFACE

This Parts Catalog contains listings of parts used

Diagrams are provided with the listings to aid the service technician in identifying clearly, the item to be ordered.

Whenever ordering parts, consult this Parts Catalog for all of the information pertaining to each item. Be sure to include, in the Parts Request, the full item description, the item part number, and the quantity.

COPYRIGHT (C) 1999 CANON INC.

Use of this manual should be strictly supervised to avoid disclosure of confidential information.

Contents

NUMERICAL INDEX

DADF-AA1(Numerical Index).....	1-1
--------------------------------	-----

DADF-AA1(Parts Catalog)

A	ASSEMBLY LOCATION DIAGRAM	2-1
A01	ADF MOUNTING ASSEMBLY	2-2
A10	INTERNAL COMPONENTS	2-4
A11	BASE ASSEMBLY	2-6
A12	PAPER PICK-UP COVER ASSEMBLY	2-8
A13	DOCUMENT TRAY ASSEMBLY	2-10
A21	ESTRANGEMENT DRIVE ASSEMBLY	2-12
A41	PAPER FEED ASSEMBLY	2-13
A90	ADF PCB ASSEMBLY	2-18
ZZA	MECHANICAL STANDARD PARTS (HOW TO USE)	2-19
ZZB	MECHANICAL STANDARD PARTS (SCREWS)	2-20
ZZC	MECHANICAL STANDARD PARTS (BOLTS)	2-27
ZZD	MECHANICAL STANDARD PARTS (NUTS)	2-28
ZZE	MECHANICAL STANDARD PARTS (RETAINING RINGS)	2-29

NUMERICAL INDEX

DADF-AA1(Numerical Index)

PARTS NUMBER	FIGURE & KEY NO.	PARTS NUMBER	FIGURE & KEY NO.	PARTS NUMBER	FIGURE & KEY NO
FC5-4285-030	A11 - 1	FC8-6386-000	A41 - 14	FM4-3023-000	A90 -
FC5-4286-000	A11 - 2	FC8-6387-000	A10 - 6	FM4-3024-000	A13 - 13
FC5-4287-000	A11 - 3	FC8-6388-000	A10 - 7	FM4-3025-000	A10 - 17
FC5-4323-000	A12 - 1	FC8-6395-000	A41 - 15	FM4-5642-000	A41 -
FC5-4324-000	A12 - 2	FC8-6396-000	A41 - 16	FM4-5643-000	A12 -
FC5-4353-000	A41 - 1	FC8-6397-000	A41 - 17	FS9-0197-000	A10 - 2
FC5-4425-000	A11 - 4	FC8-6398-000	A41 - 35	FS9-0198-000	A10 - 3
FC5-4425-000	A12 - 3	FC8-6399-000	A41 - 30	FS9-0203-000	A10 - 1
FC5-4425-000	A21 - 1	FC8-6403-000	A12 - 11	FS9-0204-000	A41 - 46
FC5-4425-000	A41 - 2	FC8-6403-000	A41 - 38	FS9-0205-000	A41 - 47
FC5-4427-000	A01 - 4	FC8-6404-000	A11 - 8	FU5-1168-000	A11 - 18
FC6-2784-000	A12 - 14	FC8-6405-000	A10 - 8	FU5-1172-000	A12 - 24
FC6-8971-010	A12 - 15	FC8-6406-000	A21 - 2	FU5-1172-000	A41 - 50
FC6-8973-000	A11 - 5	FC8-6407-000	A21 - 3	FU5-1173-000	A10 - 15
FC6-8973-000	A41 - 3	FC8-6410-000	A12 - 20	FU5-1626-000	A12 - 25
FC8-6178-000	A01 - 7	FC8-6411-000	A41 - 25	FU5-1626-000	A41 - 51
FC8-6311-000	A10 - 4	FC8-6412-000	A41 - 28	FU5-8853-000	A01 - 5
FC8-6312-000	A01 - 1	FC8-6418-000	A41 - 18	FU5-9139-000	A01 - 2
FC8-6316-000	A11 - 19	FC8-6419-000	A11 - 22	FU5-9140-000	A01 - 3
FC8-6317-000	A11 - 20	FC8-6420-000	A10 - 9	FU6-1088-000	A41 - 52
FC8-6318-000	A11 - 21	FC8-6421-000	A41 - 19	FU6-1089-000	A41 - 53
FC8-6319-000	A11 - 6	FC8-6422-000	A11 - 10	FU6-8059-000	A01 - 5
FC8-6322-000	A11 - 7	FC8-6423-000	A11 - 11	FU6-8060-000	A01 - 5
FC8-6330-000	A10 - 5	FC9-5683-000	A13 - 3	FU6-8061-000	A01 - 5
FC8-6331-000	A11 - 15	FC9-5684-000	A13 - 4	FU6-8744-000	A10 - 19
FC8-6332-000	A11 - 16	FK2-0207-000	A21 - 4	FU6-8745-000	A10 - 19
FC8-6339-000	A13 - 5	FK2-6869-000	A41 - 20	FU6-8747-000	A10 - 18
FC8-6341-000	A13 - 10	FK2-6870-000	A41 - 21	FU6-8888-000	A01 - 5
FC8-6345-000	A12 - 4	FK2-6871-000	A41 - 39	FU6-8889-000	A01 - 5
FC8-6346-000	A12 - 5	FK2-6872-000	A10 - 11	FU7-2651-000	A10 - 16
FC8-6347-000	A12 - 6	FL2-9843-000	A01 - 6	FU7-2652-000	A11 - 9
FC8-6348-000	A12 - 7	FL2-9933-000	A11 - 12	FU7-2653-000	A11 - 17
FC8-6351-000	A12 - 16	FL2-9934-000	A11 - 13	FU7-2654-000	A12 - 26
FC8-6352-000	A12 - 17	FL2-9935-010	A11 - 14	FU7-2655-000	A12 - 27
FC8-6353-000	A12 - 18	FL2-9937-000	A41 - 22	FU7-2656-000	A12 - 28
FC8-6355-000	A12 - 19	FL2-9939-000	A41 - 36	FU7-2657-000	A41 - 44
FC8-6368-000	A41 - 4	FL2-9942-000	A41 - 43	FU7-2658-000	A41 - 54
FC8-6371-000	A41 - 6	FL2-9945-000	A10 - 12	FU7-2659-000	A41 - 55
FC8-6372-000	A41 - 7	FL2-9947-000	A10 - 14	FU7-2660-000	A41 - 56
FC8-6373-000	A41 - 31	FL2-9948-000	A12 - 9	FU7-8159-000	A13 - 6
FC8-6374-000	A41 - 32	FL2-9949-000	A41 - 5	FU7-8160-000	A13 - 12
FC8-6375-000	A41 - 33	FL3-2449-000	A13 - 9	FU7-8397-000	A10 - 18
FC8-6376-000	A41 - 34	FL3-2450-000	A13 - 1	FU7-8399-000	A01 - 8
FC8-6377-000	A41 - 8	FL3-2844-000	A10 - 13	FU7-8432-000	A01 - 8
FC8-6378-000	A41 - 9	FL3-2847-000	A13 - 11	FU7-8433-000	A01 - 8
FC8-6379-000	A41 - 10	FL3-2848-000	A13 - 2	FU7-8434-000	A01 - 8
FC8-6380-000	A41 - 11	FL3-5019-000	A12 - 10	FU7-8436-000	A01 - 9
FC8-6381-000	A41 - 37	FL3-5020-000	A12 - 12	FU7-8437-000	A01 - 9
FC8-6382-000	A41 - 12	FM3-6892-000	A12 - 13	FU7-8438-000	A01 - 9
FC8-6383-000	A41 - 24	FM3-6916-000	A41 - 45	FU7-8439-000	A01 - 9
FC8-6384-000	A41 - 27	FM4-2459-000	A41 - 42	FU7-8441-000	A10 - 18
FC8-6385-000	A41 - 13	FM4-2460-000	A13 -	FU8-0299-000	A12 - 21

NUMERICAL INDEX

DADF-AA1(Numerical Index)

PARTS NUMBER	FIGURE & KEY NO.	PARTS NUMBER	FIGURE & KEY NO.	PARTS NUMBER	FIGURE & KEY NO
FU8-0300-000	A12 - 22				
FU8-0301-000	A12 - 23				
FU8-0302-000	A12 - 8				
FU8-0303-000	A41 - 57				
FU8-0304-000	A41 - 26				
FU8-0305-000	A41 - 58				
FU8-0306-000	A41 - 40				
FU8-0307-000	A41 - 29				
FU8-0308-000	A41 - 59				
FU8-0309-000	A41 - 60				
FU8-0310-000	A41 - 61				
FU8-0311-000	A21 - 5				
FU8-0312-000	A41 - 62				
FU8-0313-000	A41 - 63				
FU8-0314-000	A41 - 64				
FU8-0315-000	A41 - 65				
FU8-0316-000	A41 - 66				
FU8-0317-000	A41 - 67				
FU8-0318-000	A41 - 68				
FU8-0319-000	A21 - 6				
FU8-0320-000	A21 - 7				
FU8-0910-000	A13 - 7				
NPN	A01 -				
NPN	A10 -				
NPN	A11 -				
NPN	A21 -				
VS1-7177-002	A10 - 20				
VS1-7177-002	A41 - 49				
VS1-7177-004	A21 - 8				
WG8-5696-000	A13 - 8				
WG8-5696-000	A21 - 9				
WG8-5696-000	A41 - 41				
XA9-0702-000	A41 - 48				
XA9-0732-000	A10 - 10				
XA9-0732-000	A21 - 10				
XA9-1164-000	A41 - 69				
XA9-1415-000	A01 - 10				
XD3-2200-102	A12 - 501				
XD3-2200-122	A11 - 501				
XD3-2200-122	A41 - 501				
XF2-1607-640	A21 - 11				
XF2-1607-640	A41 - 70				
XG9-0507-000	A41 - 23				

DADF-AA1(Parts Catalog)

DADF-AA1

A/INCH SIZE F28-0542-000 FVZ

A SIZE F28-0543-000 FWA

AB/K/INCH SIZE F28-0544-000 FWC

Contents

A	ASSEMBLY LOCATION DIAGRAM	2-1
A01	ADF MOUNTING ASSEMBLY	2-2
A10	INTERNAL COMPONENTS	2-4
A11	BASE ASSEMBLY	2-6
A12	PAPER PICK-UP COVER ASSEMBLY	2-8
A13	DOCUMENT TRAY ASSEMBLY	2-10
A21	ESTRANGEMENT DRIVE ASSEMBLY	2-12
A41	PAPER FEED ASSEMBLY	2-13
A90	ADF PCB ASSEMBLY	2-18
ZZA	MECHANICAL STANDARD PARTS (HOW TO USE)	2-19
ZZB	MECHANICAL STANDARD PARTS (SCREWS).....	2-20
ZZC	MECHANICAL STANDARD PARTS (BOLTS).....	2-27
ZZD	MECHANICAL STANDARD PARTS (NUTS).....	2-28
ZZE	MECHANICAL STANDARD PARTS (RETAINING RINGS)	2-29

FIGURE A ASSEMBLY LOCATION DIAGRAM

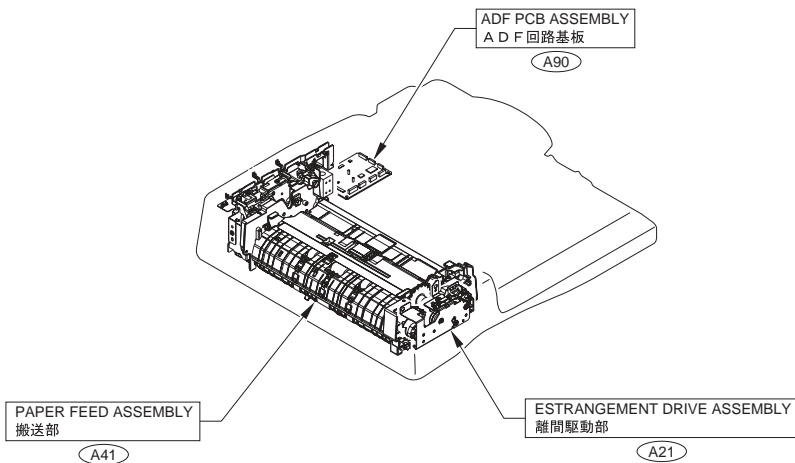
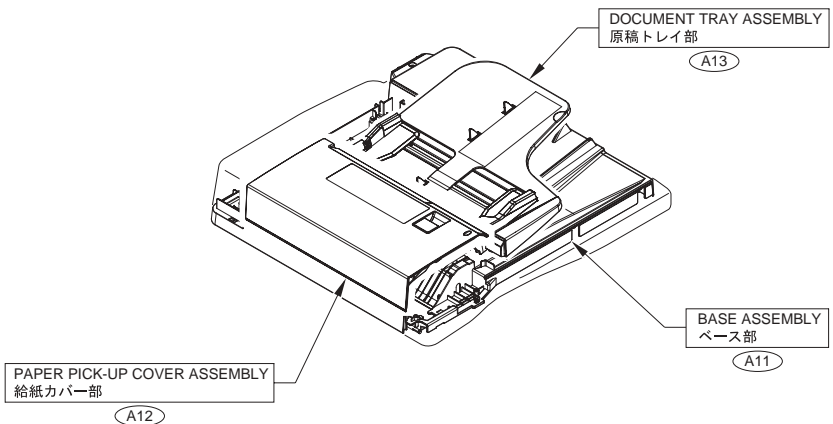


FIGURE A01 ADF MOUNTING ASSEMBLY

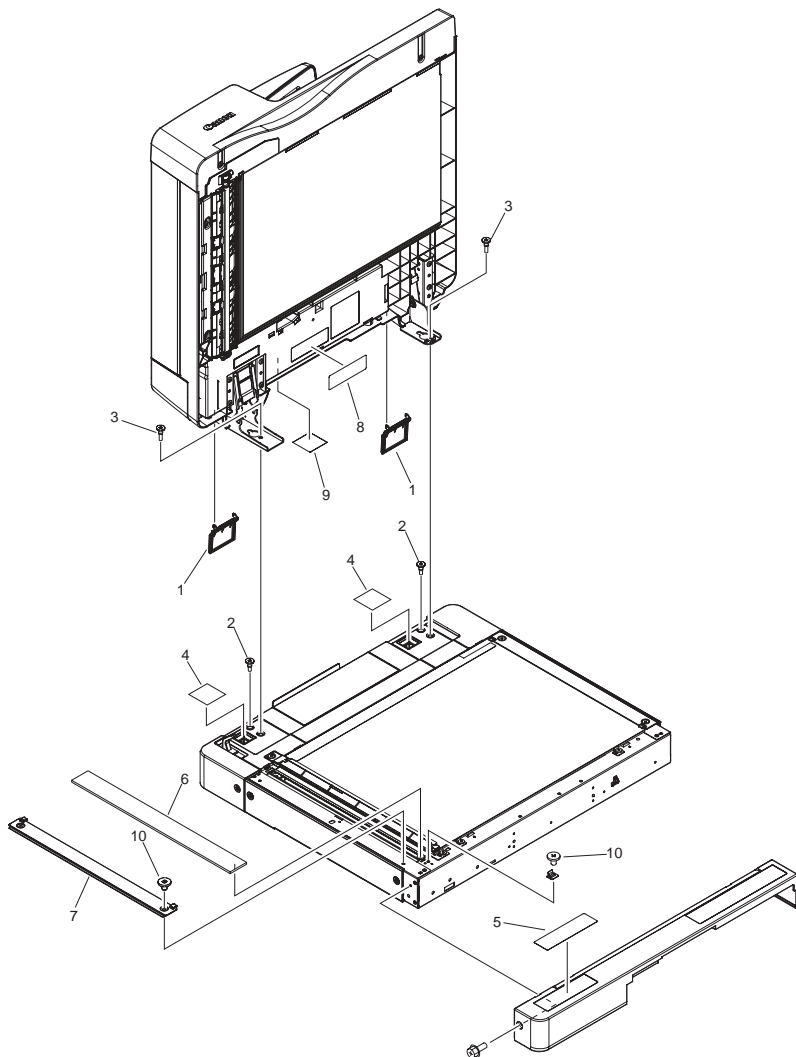


FIGURE & KEY NO.	PARTS NUMBER	R A N K	Q'TY	DESCRIPTION	SERIAL NUMBER/ REMARKS	S V C
Fig.A01	NPN		RF	ADF MOUNTING ASSEMBLY		
1	FC8-6312-000		2	COVER, HINGE BLANKING		
2	FU5-9139-000		2	SCREW, STEPPED, M5X6		
3	FU5-9140-000		2	SCREW, STEPPED, M4X10		
4	FC5-4427-000		2	SHEET, BLANKING		
5	FU6-8888-000		1	LABEL, CLEANING POSITION	US English	
5	FU6-8889-000		1	LABEL, CLEANING POSITION	French,UK English,German,Italian,Spanish,English	
5	FU6-8059-000		1	LABEL, CLEANING POSITION	Simplifide Chinese	
5	FU6-8060-000		1	LABEL, CLEANING POSITION	Korean	
5	FU6-8061-000		1	LABEL, CLEANING POSITION	Traditional Chinese	
5	FU5-8853-000		1	LABEL, CLEANING POSITION	EXCEPT AU,CN,KR,TW	
6	FL2-9843-000		1	GLASS, READER		
7	FC8-6178-000		1	COVER, GLASS RETAINING		
8	FU7-8399-000		1	LABEL, HINGE CAUTION	English	
8	FU7-8432-000		1	LABEL, HINGE CAUTION, A	US English	
8	FU7-8433-000		1	LABEL, HINGE CAUTION, A	French,UK English,German,Italian,Spanish,English	
8	FU7-8434-000		1	LABEL, HINGE CAUTION, A	Simplifide Chinese,Traditional Chinese,Korean	
9	FU7-8436-000		1	LABEL, HINGE CAUTION, C	English	
9	FU7-8437-000		1	LABEL, HINGE CAUTION, C	US English	
9	FU7-8438-000		1	LABEL, HINGE CAUTION, C	French,UK English,German,Italian,Spanish,English	
9	FU7-8439-000		1	LABEL, HINGE CAUTION, C	Simplifide Chinese,Traditional Chinese,Korean	
10	XA9-1415-000		3	SCREW, FLAT HEAD, M4		

FIGURE & KEY NO.	PARTS NUMBER	R A N K	Q'TY	DESCRIPTION	SERIAL NUMBER/ REMARKS	S V C
Fig.A10	NPN		RF	INTERNAL COMPONENTS		
1	FS9-0203-000		1	LABEL, DIAL OPERATION		
2	FS9-0197-000		1	LABEL, HINGE CAUTION		
3	FS9-0198-000		1	LABEL, HINGE CAUTION, C		
4	FC8-6311-000		1	COVER, STAMP		
5	FC8-6330-000		1	LEVER, READ 1 ESTRANGEMENT		
6	FC8-6387-000		1	HOLDER, TRAY SUPPORT		
7	FC8-6388-000		1	HOLDER, FEEDER SHAFT		
8	FC8-6405-000		1	SHEET, READ 2 LEAD		
9	FC8-6420-000		1	HINGE, LEFT		
10	XA9-0732-000		6	SCREW,RS,M4		
11	FK2-6872-000		1	FAN	FM1	
12	FL2-9945-000		1	COVER, COPYBOARD		
13	FL3-2844-000		1	COVER, FRONT		
14	FL2-9947-000		1	COVER, REAR		
15	FU5-1173-000		1	BUSHING		
16	FU7-2651-000		1	SPRING, TENSION		
17	FM4-3025-000		1	CABLE, INTERFACE		
18	FU6-8747-000		1	LABEL, DOCUMENT SIZE	A SIZE	
18	FU7-8397-000		1	LABEL, DOCUMENT SIZE	AB/K/INCH SIZE	
18	FU7-8441-000		1	LABEL, DOCUMENT SIZE	A/INCH SIZE	
19	FU6-8744-000		1	LABEL, PROHIBITION DOCUMENT	A SIZE	
19	FU6-8745-000		1	LABEL, PROHIBITION DOCUMENT	A/INCH SIZE,AB/K/INCH SIZE	
20	VS1-7177-002		1	CONNECTOR, SNAP TIGHT, BK		

FIGURE A11 BASE ASSEMBLY

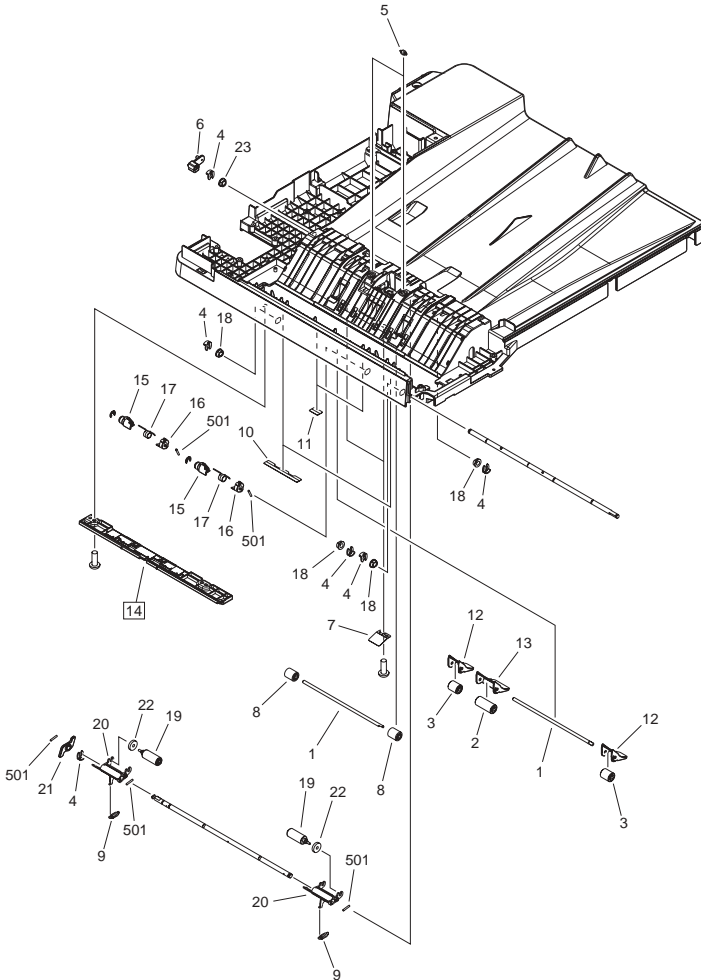


FIGURE & KEY NO.	PARTS NUMBER	R A N K	Q'TY	DESCRIPTION	SERIAL NUMBER/ REMARKS	S V C
Fig.A11	NPN		RF	BASE ASSEMBLY		
1	FC5-4285-030		2	SHAFT, PAPER FEED ROLLER		
2	FC5-4286-000		1	ROLLER, PAPER FEED, 1		
3	FC5-4287-000		2	ROLLER, PAPER FEED, 2		
4	FC5-4425-000		6	CLIP		
5	FC6-8973-000		2	ROLLER, PLATEN		
6	FC8-6319-000		1	HOLDER, SOLENOID		
7	FC8-6322-000		2	SPRING, LEAF		
8	FC8-6404-000		2	ROLLER, READ 2 PINCH		
9	FU7-2652-000		2	SPRING, TENSION		
10	FC8-6422-000		2	SHEET, PAPER FEED		
11	FC8-6423-000		2	SHEET, PAPER FEED		
12	FL2-9933-000		2	HOLDER, ROLLER, SMALL		
13	FL2-9934-000		1	HOLDER, ROLLER, LARGE		
14	FL2-9935-010		1	COVER, BASE, LOWER	[DP]	
15	FC8-6331-000		2	LEVER, READ 1 PRESSURE		
16	FC8-6332-000		2	COLLAR, READ 1 PRESSURE		
17	FU7-2653-000		2	SPRING, TORSION		
18	FU5-1168-000		5	BUSHING		
19	FC8-6316-000		2	ROLLER, DELIVERY		
20	FC8-6317-000		2	HOLDER, DELIVERY ROLLER		
21	FC8-6318-000		1	CAM, DELIVERY ESTRANGEMENT		
22	FC8-6419-000		2	DAMPER, DELIVERY		
501	XD3-2200-122		5	PIN, DOWEL		

FIGURE A12 PAPER PICK-UP COVER ASSEMBLY

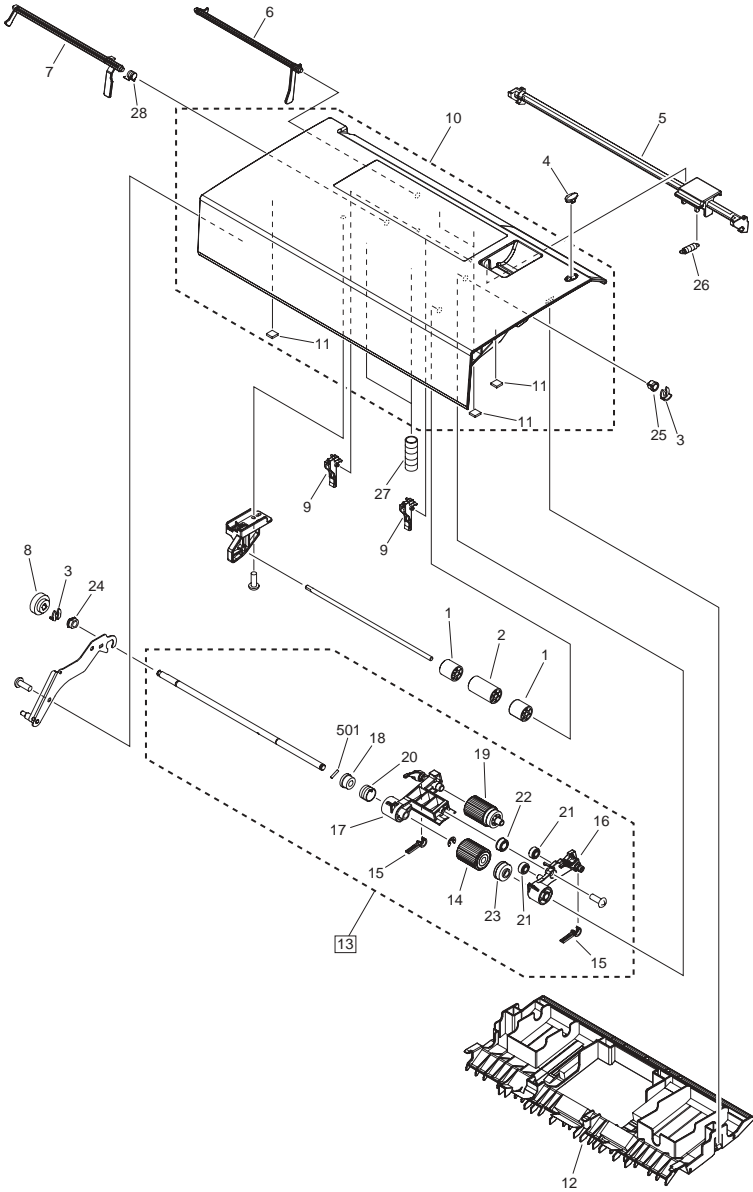


FIGURE & KEY NO.	PARTS NUMBER	R A N K	Q'TY	DESCRIPTION	SERIAL NUMBER/ REMARKS	S V C
Fig.A12	FM4-5643-000		1	PAPER PICK-UP COVER ASSEMBLY		
1	FC5-4323-000		2	ROLLER, REGISTRATION, 1		
2	FC5-4324-000		1	ROLLER, REGISTRATION, 2		
3	FC5-4425-000		2	CLIP		
4	FC8-6345-000		1	CASE, LED		
5	FC8-6346-000		1	KNOB, PAPER PICK-UP COVER		
6	FC8-6347-000		1	LEVER, EMPTY SENSOR		
7	FC8-6348-000		1	LEVER, TIMING SENSOR		
8	FU8-0302-000		1	GEAR, 24T		
9	FL2-9948-000		2	SHUTTER		
10	FL3-5019-000		1	COVER, PAPER PICK-UP		
11	FC8-6403-000		4	DAMPER, REV. GUIDE RETAINING		
12	FL3-5020-000		1	GUIDE, PAPER PICK-UP, LOWER		
13	FM3-6892-000		1	PAPER PICK-UP ROLLER UNIT	[DP]	
14	FC6-2784-000		1	ROLLER, PAPER SEPARATION		
15	FC6-8971-010		2	LEVER, STOP		
16	FC8-6351-000		1	ARM, PICK, FRONT		
17	FC8-6352-000		1	ARM, PICK, REAR		
18	FC8-6353-000		1	JOINT		
19	FC8-6355-000		1	ROLLER, PICK-UP		
20	FC8-6410-000		1	SPRING, TORSION		
21	FU8-0299-000		2	GEAR, 20T		
22	FU8-0300-000		1	GEAR, 22T		
23	FU8-0301-000		1	GEAR, 33T		
24	FU5-1172-000		1	BUSHING		
25	FU5-1626-000		1	BUSHING		
26	FU7-2654-000		1	SPRING, TENSION		
27	FU7-2655-000		2	SPRING, COMPRESSION		
28	FU7-2656-000		1	SPRING, TORSION		
501	XD3-2200-102		1	PIN, DOWEL		

FIGURE A13 DOCUMENT TRAY ASSEMBLY

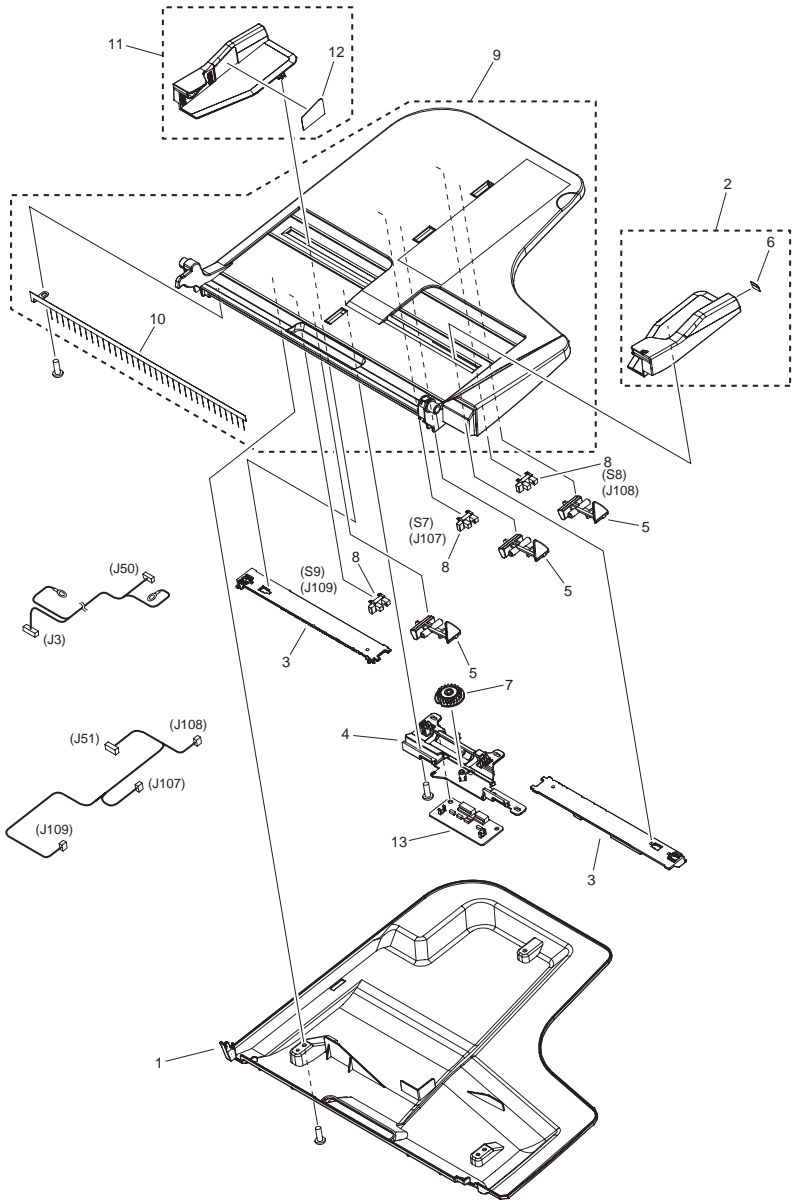


FIGURE & KEY NO.	PARTS NUMBER	R A N K	Q'TY	DESCRIPTION	SERIAL NUMBER/ REMARKS	S V C
Fig.A13	FM4-2460-000		1	DOCUMENT TRAY ASSEMBLY		
1	FL3-2450-000		1	COVER, TRAY, LOWER		
2	FL3-2848-000		1	GUIDE, TRAY, FRONT		
3	FC9-5683-000		2	RACK, TRAY		
4	FC9-5684-000		1	HOLDER, TRAY VOLUME		
5	FC8-6339-000		3	LEVER, TRAY SENSOR		
6	FU7-8159-000		1	LABEL, DOCUMENT MAXIMUM LOAD		
7	FU8-0910-000		1	PINION, 22T		
8	WG8-5696-000		3	PHOTO INTERRUPTER, TLP1243	S7,S8,S9	
9	FL3-2449-000		1	TRAY, DOCUMENT		
10	FC8-6341-000		1	ELIMINATOR, STATIC CHARGE		
11	FL3-2847-000		1	GUIDE, TRAY, REAR		
12	FU7-8160-000		1	LABEL, DOCUMENT MAXIMUM LOAD		
13	FM4-3024-000		1	PHOTO SENSOR PCB UNIT, TRAY		

FIGURE A21 ESTRANGEMENT DRIVE ASSEMBLY

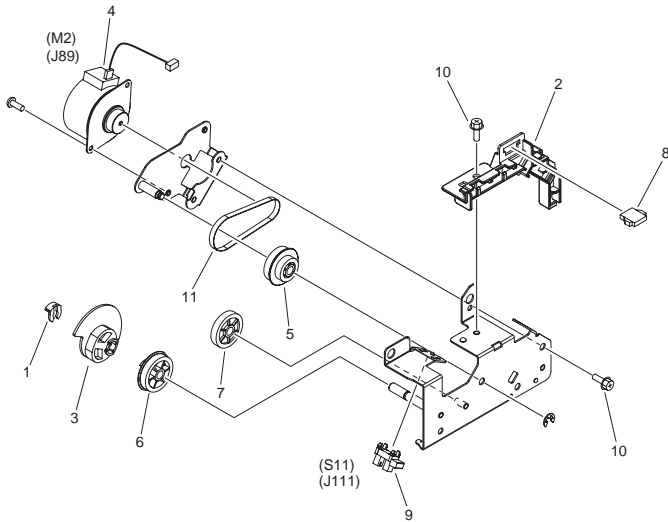


FIGURE & KEY NO.	PARTS NUMBER	RANK	QTY	DESCRIPTION	SERIAL NUMBER/REMARKS	SVC
Fig.A21	NPN		RF	ESTRANGEMENT DRIVE ASSEMBLY		
1	FC5-4425-000		1	CLIP		
2	FC8-6406-000		1	DUCT, ESTRANGEMENT HARNESS		
3	FC8-6407-000		1	CAM, ESTRANGEMENT		
4	FK2-0207-000		1	MOTOR, STEPPING, DC	M2	
5	FU8-0311-000		1	GEAR/PULLEY, 40T/20T		
6	FU8-0319-000		1	GEAR, 31T		
7	FU8-0320-000		1	GEAR, 30T		
8	VS1-7177-004		1	CONNECTOR, SNAP TIGHT, BK		
9	WG8-5696-000		1	PHOTO INTERRUPTER, TLP1243	S11	
10	XA9-0732-000		3	SCREW,RS,M4		
11	XF2-1607-640		1	BELT, TIMING		

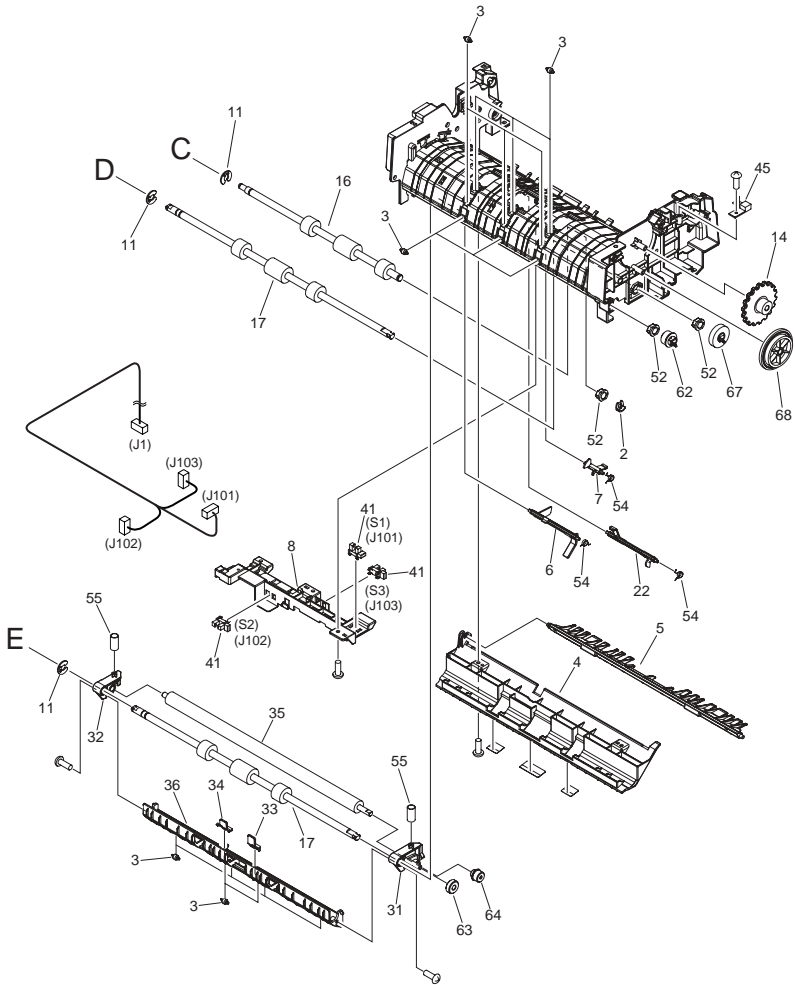


FIGURE & KEY NO.	PARTS NUMBER	R A N K	Q'TY	DESCRIPTION	SERIAL NUMBER/ REMARKS	S V C
Fig.A41	FM4-5642-000		1	PAPER FEED ASSEMBLY		
1	FC5-4353-000		1	FLANGE, BELT		
2	FC5-4425-000		9	CLIP		
3	FC6-8973-000		15	ROLLER, PLATEN		
4	FC8-6368-000		1	GUIDE, PLATEN, 2		
5	FL2-9949-000		1	FLAPPER, REVERSE		
6	FC8-6371-000		1	LEVER, READ SENSOR		
7	FC8-6372-000		1	LEVER, PAPER DELIVERY SENSOR		
8	FC8-6377-000		1	HOLDER, SENSOR		
9	FC8-6378-000		1	DUCT, HARNESS		
10	FC8-6379-000		1	FLANGE, PULLEY		
11	FC8-6380-000		3	CLIP		
12	FC8-6382-000		1	ROLLER, BELT TENSION		
13	FC8-6385-000		1	JOINT, DELIVERY GEAR		
14	FC8-6386-000		1	DIAL, JAM		
15	FC8-6395-000		1	ROLLER, DELIVERY		
16	FC8-6396-000		1	ROLLER, REGISTRATION		
17	FC8-6397-000		2	ROLLER, READ		
18	FC8-6418-000		2	JOINT, READ PULLEY		
19	FC8-6421-000		1	BELT, TIMING		
20	FK2-6869-000		1	MOTOR, STEPPING, DC	M1	
21	FK2-6870-000		2	CLUTCH, ELECTROMAGNETIC	CL1,CL2	
22	FL2-9937-000		1	FLAG, REGISTRATION SENSOR		
23	XG9-0507-000		2	BEARING, BALL, MF128ZZ		
24	FC8-6383-000		1	JOINT, PICK-UP		
25	FC8-6411-000		1	SPRING, TORSION		
26	FU8-0304-000		1	GEAR, 22T		
27	FC8-6384-000		1	JOINT, REGISTRATION		
28	FC8-6412-000		1	SPRING, TORSION		
29	FU8-0307-000		1	GEAR, 18T		
30	FC8-6399-000		1	ELIMINATOR, STATIC CHARGE		
31	FC8-6373-000		1	ARM, PLATEN, FRONT		

FIGURE & KEY NO.	PARTS NUMBER	R A N K	Q'TY	DESCRIPTION	SERIAL NUMBER/ REMARKS	S V C
32	FC8-6374-000		1	ARM, PLATEN, REAR		
33	FC8-6375-000		1	SPACER, READ, FRONT		
34	FC8-6376-000		1	SPACER, READ, REAR		
35	FC8-6398-000		1	ROLLER, WHITE		
36	FL2-9939-000		1	GUIDE, PLATEN, 1		
37	FC8-6381-000		1	LINK, SOLENOID		
38	FC8-6403-000		1	DAMPER, REV. GUIDE RETAINING		
39	FK2-6871-000		1	SOLENOID	SL1	
40	FU8-0306-000		1	GEAR, 25T		
41	WG8-5696-000		6	PHOTO INTERRUPTER, TLP1243	S1,S2,S3,S4,S5,S6	
42	FM4-2459-000		1	SEPARATION REVERSE GUIDE ASS'Y		
43	FL2-9942-000		1	HOLDER, SEPARATION PAD UNIT	[DP]	
44	FU7-2657-000		1	SPRING, COMPRESSION		
45	FM3-6916-000		1	LED PCB		
46	FS9-0204-000		1	LABEL, JAM CLEARING OPERATION		
47	FS9-0205-000		1	LABEL, GREEN		
48	XA9-0702-000		3	SCREW, WWASHER, M3X6		
49	VS1-7177-002		2	CONNECTOR, SNAP TIGHT, BK		
50	FU5-1172-000		5	BUSHING		
51	FU5-1626-000		1	BUSHING		
52	FU6-1088-000		3	BUSHING		
53	FU6-1089-000		1	BUSHING		
54	FU7-2658-000		3	SPRING, TORSION		
55	FU7-2659-000		2	SPRING, COMPRESSION		
56	FU7-2660-000		2	SPRING, TENSION		
57	FU8-0303-000		1	GEAR PULLEY, 27T/22T		
58	FU8-0305-000		1	GEAR, 18T		
59	FU8-0308-000		1	GEAR, 22T		
60	FU8-0309-000		1	GEAR PULLEY, 36T/54T/28T		
61	FU8-0310-000		2	PULLEY, 36T		
62	FU8-0312-000		1	GEAR, 18T		
63	FU8-0313-000		1	GEAR, 18T		

FIGURE & KEY NO.	PARTS NUMBER	R A N K	Q'TY	DESCRIPTION	SERIAL NUMBER/ REMARKS	S V C
64	FU8-0314-000		1	GEAR, 14T		
65	FU8-0315-000		1	GEAR, 39T		
66	FU8-0316-000		1	GEAR, 21T		
67	FU8-0317-000		1	GEAR, 32T		
68	FU8-0318-000		1	GEAR, 48T/62T		
69	XA9-1164-000		8	SCREW,RS,M3X6.5		
70	XF2-1607-640		2	BELT, TIMING		
501	XD3-2200-122		2	PIN, DOWEL		

FIGURE A90

ADF PCB ASSEMBLY

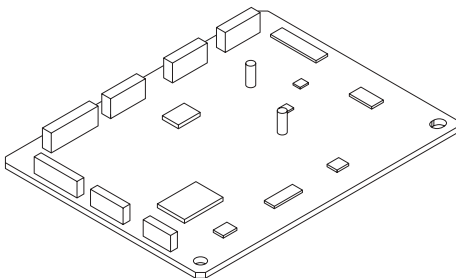


FIGURE & KEY NO.	PARTS NUMBER	RANK	Q'TY	DESCRIPTION	SERIAL NUMBER/ REMARKS	SVC
Fig.A90	FM4-3023-000		1	ADF PCB ASSEMBLY		

FIGURE ZZA

MECHANICAL STANDARD PARTS (HOW TO USE)

Mechanical standard parts

機械標準部品

About a mechanical standard parts

A Mechanical standard parts is a mechanical part which not parts peculiar to a product. They are parts which are common to a Canon product and are used, such as a screw and a washer. The Fig No. and parts number of the mechanical standard parts are not listed in the product parts catalog. Refer to the parts catalog of mechanical standard parts when checking the parts number for screw or washer etc. and identify them by part shape or size.

機械標準部品とは

機械標準部品とは、製品特有の部品ではなく、ねじやワッシャなどキヤノン製品共通で使用されている機械部品（メカ部品）のことです。
製品のパーツカタログには、機械標準部品のFig No.や部品番号は記載しておりません。
ねじや、ワッシャ等の部品番号を調べるときは、機械標準部品のパーツカタログを参照し、部品の形状や大きさから判断し、使用している部品を調べてください。

Material and surface treatment of a mechanical standard parts

Material and surface treatment of mechanical standard parts are assigned commonly for each part. Refer to the Table 1 for the parts which material and surface treatment are assigned as numbers.

機械標準部品の材料および表面処理

機械標準部品の材料および表面処理については、各種部品共通で決められています。
材料および表面処理が番号で決められている部品については、表1を参照してください。

Table 1 Material and Surface treatment
表1 材料および表面処理

No. 番号	Material 材料	Surface treatment 表面処理	Color 色
1	Stainless steel ステンレス	Stainless steel black coloring (BC4) ステンレス黒着色(BC4)	Black 黒
2		not to be given なし	White 白
3	Brass 黄銅	Regular nickel plating (NL) 普通ニッケルメッキ(NL)	White 白
4		Black nickel plating (BN) 黒色ニッケルメッキ(BN)	Black 黒
5	Steel 鋼	White zinc trivalent chromate treating (ZC3) 白色亜鉛3価クロメート(ZC3)	White 白
6		Regular nickel chromium plating (NC) 普通ニッケルクロムメッキ(NC)	White 白
7		Regular nickel plating (NL) 普通ニッケルメッキ(NL)	White 白
8		Iron and steel phosphating (P1) 鉄鋼磷酸塩処理(P1)	Black 黒
9		Black zinc trivalent chromate treating (BZ3) 黒色亜鉛3価クロメート(BZ3)	Black 黒

FIGURE ZZB MECHANICAL STANDARD PARTS (SCREWS)

1. Screws ねじ

How to read Parts Numbers
部品番号の見方

Screws
ねじ

XB1-2400-609

Type No.
類別番号
Normal designation (d)
ねじの呼び(d)
Length (L)
ねじの長さ(L)
Material and Surface treatment
材料および表面処理

XB1-2 expresses Binding head machine screw.
XB1-2は、バインドねじを表す

40 expresses M4.0.
40は、M4.0を表す

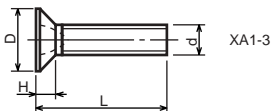
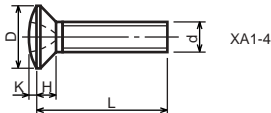
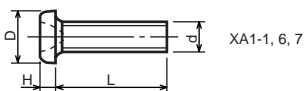
0-60 expresses a length of 6.0mm.
0-60は、6.0mmの長さを表す

9 expresses Steel (Black zinc trivalent chromate treating) from Table 1.

9は、表1より鋼(黒色亜鉛3価クロメート)を表す

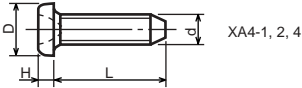
1-1. Cross Recessed Head Screws for Precision Equipments

精密機器用十字穴付き小ねじ

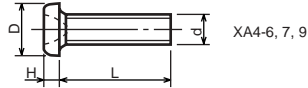


Type No. 類別番号	Type 類別	Head size (mm) 頭部寸法 (mm)							
		M1.4	M1.6	M1.7	M2	M2.5	M2.6		
XA1-1	Pan head Class 1 なべ1種	D	XA1-1	2	2.4	2.5	3	3.8	4
		H	XA1-1	0.5	0.55	0.5	0.6	0.9	0.8
XA1-3	Countersunk head Class 1 さら1種	D	XA1-3	2	2.4	2.5	3	3.8	4
		H	XA1-3	0.48	0.55	0.58	0.73	0.85	0.93
XA1-4	Oval countersunk head Class 1 丸さら1種	D	XA1-4	2	2.4	2.5	3	3.8	4
		H + K	XA1-4	0.68	0.8	0.88	1	1.25	1.3
XA1-6	Pan head Class 3 なべ3種	D	XA1-6	2.5	2.8	3	3.5	4.3	4.5
		H	XA1-6	0.8	0.85	0.9	1	1.3	1.2
XA1-7	Pan head Class 2 なべ2種	D	XA1-7	2.5	2.8	3	3.5	4.3	4.5
		H	XA1-7	0.5	0.55	0.5	0.6	0.9	0.8

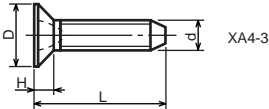
1-2. Precision Tapping Screws
精密用タッピンねじ



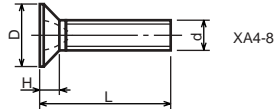
XA4-1, 2, 4



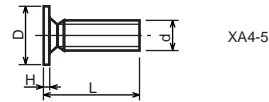
XA4-6, 7, 9



XA4-3



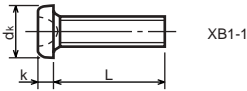
XA4-8



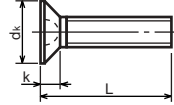
XA4-5

Type No. 類別番号	Type 類別	Head size (mm) 頭部寸法 (mm)						
		M1.4	M1.6	M1.7	M2	M2.5	M2.6	
XA4-1	With tapered end pan head Class 1 絞りなべ1種	D XA4-1	2	2.4	2.5	3	3.8	4
		H XA4-1	0.5	0.55	0.5	0.6	0.9	0.8
XA4-2	With tapered end pan head Class 3 絞りなべ3種	D XA4-2	2.5	2.8	3	3.5	4.3	4.5
		H XA4-2	0.8	0.85	0.9	1	1.3	1.2
XA4-3	With tapered end countersunk head 絞り-さら	D XA4-3	2	2.4	2.5	3	3.8	4
		H XA4-3	0.48	0.55	0.58	0.73	0.85	0.93
XA4-4	With tapered end pan head Class 2 絞りなべ2種	D XA4-4	2.5	2.8	3	3.5	4.3	4.5
		H XA4-4	0.5	0.55	0.5	0.6	0.9	0.8
XA4-5	With parallel end ultra thin head ストレート-超薄頭	D XA4-5	2.5	2.8	3	-	-	-
		H XA4-5	0.2	0.2	0.2	-	-	-
XA4-6	With parallel end pan head Class 1 ストレートなべ1種	D XA4-6	2	2.4	2.5	3	3.8	4
		H XA4-6	0.5	0.55	0.5	0.6	0.9	0.8
XA4-7	With parallel end pan head Class 3 ストレートなべ3種	D XA4-7	2.5	2.8	3	3.5	4.3	4.5
		H XA4-7	0.8	0.85	0.9	1	1.3	1.2
XA4-8	With parallel end countersunk head ストレート-さら	D XA4-8	2	2.4	2.5	3	3.8	4
		H XA4-8	0.48	0.55	0.58	0.73	0.85	0.93
XA4-9	With parallel end pan head Class 2 ストレートなべ2種	D XA4-9	2.5	2.8	3	3.5	4.3	4.5
		H XA4-9	0.5	0.55	0.5	0.6	0.9	0.8

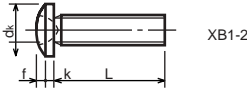
1-3. Cross Recessed Head Screws
 一般用十字穴付き小ねじ



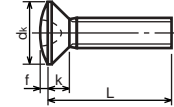
XB1-1



XB1-3



XB1-2

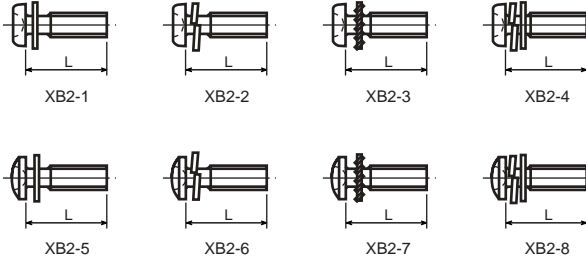


XB1-4

Type No. 類別番号	Type 類別
XB1-1	Pan head なべ
XB1-2	Binding head バインド
XB1-3	Countersunk head さら
XB1-4	Oval countersunk head 丸さら

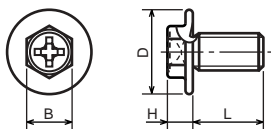
		Head size (mm) 頭部寸法 (mm)					
		M2	M2.5	M2.6	M3	M4	M5
dk	XB1-1	3.5	4.5	4.5	5.5	7	9
k	XB1-1	1.3	1.7	1.7	2	2.6	3.3
dk	XB1-2	4.3	5.3	5.5	6.3	8.3	10.3
k+f	XB1-2	1.2	1.5	1.6	1.9	2.5	3.1
dk	XB1-3	4	5	-	6	8	10
k	XB1-3	1.2	1.45	-	1.75	2.3	2.8
dk	XB1-4	4	5	-	6	8	10
k+f	XB1-4	1.6	2	-	2.45	3.2	4
Screw part length ねじ部長さ b	b	8	12	12	12	16	20

1-4. Cross Recessed Head Screws with Captive Washer
座金組込み十字穴付き小ねじ



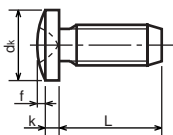
Type No. 類別番号	Type 類別
XB2-1	Pan head + Plain washer (circular bright) なべねじ+平座金
XB2-2	Pan head + Spring washer なべねじ+ばね座金
XB2-3	Pan head + Toothed lock washer なべねじ+歯付座金
XB2-4	Pan head + Spring washer and plain washer (circular bright) なべねじ+(ばね+平)座金
XB2-5	Binding head + Plain washer (circular bright) バインドねじ+平座金
XB2-6	Binding head + Spring washer バインドねじ+ばね座金
XB2-7	Binding head + Toothed lock washer バインドねじ+歯付座金
XB2-8	Binding head + Spring washer and plain washer (circular bright) バインドねじ+(ばね+平)座金

1-5. Hexagon Head Tapping Screws for Metallic Materials
 金属用六角タッピンねじ



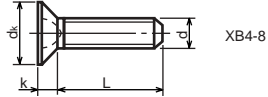
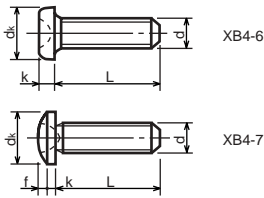
Type No. 類別番号	Type 類別	Head size (mm) 頭部寸法 (mm)	
		M3	M4
XB3-6	For metallic materials 金属用タッピン	D	8 10
		B	5.5 5.5
XB3-7	For metallic materials with clawed 金属用タッピン-つめ付き	H XB3-6	3.1 3.1
		H XB3-7	3.2 3.2

1-6. Special Tapping Screws
 特殊タッピンねじ



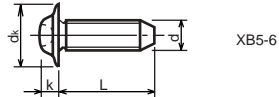
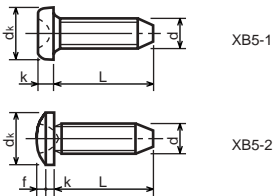
Type No. 類別番号	Type 類別	Head size (mm) 頭部寸法 (mm)	
		M3	M4
XB4-5	Binding head バインド	d _k	6.3 8.3
		k	1.3 1.7
		k+f	1.9 2.5

1-7. General Head Tapping Screws
一般用タッピンねじ



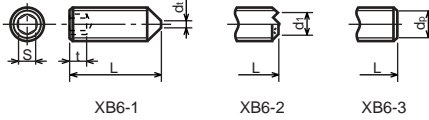
Type No. 類別番号	Type 類別	Head size (mm) 頭部寸法 (mm)						
		M2	M2.5	M2.6	M3	M4	M5	
XB4-6	Pan head なべ	d _k	3.5	4.5	4.5	5.5	7	9
		k	1.3	1.7	1.7	2	2.6	3.3
XB4-7	Binding head バインド	d _k	4.3	5.3	5.5	6.3	8.3	10.3
		k+f	1.2	1.5	1.6	1.9	2.5	3.1
XB4-8	Countersunk head さら	d _k	4	5	5.2	6	8	10
		k	1.2	1.45	1.5	1.75	2.3	2.8

1-8. Tapping Screws for Metallic Materials
金属用タッピンねじ



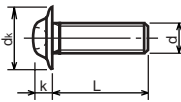
Type No. 類別番号	Type 類別	Head size (mm) 頭部寸法 (mm)					
		M2.5	M2.6	M3	M4	M5	
XB5-1	Pan head なべ	d _k	4.5	4.5	5.5	7	9
		k	1.7	1.7	2	2.6	3.3
XB5-2	Binding head バインド	d _k	5.5	5.5	6.3	8.3	10.3
		k+f	1.6	1.6	1.9	2.5	3.1
XB5-6	Flanged pan head つば付きなべ	d _k	6.5	6.5	8	10	12
		k	2.1	2.1	1.75	3.2	4

1-9. Hexagon Socket Set Screws
六角穴付止めねじ



Type No. 類別番号	Type 類別	Head size (mm) 頭部寸法 (mm)							
		M1.6 M1.7	M2	M2.5 M2.6	M3	M5	M5	M6	
XB6-1	Cone point とがり先	S	0.7	0.9	1.3	1.5	2	2.5	3
		t	1.5	1.7	2	2	2.5	3	3.5
		$d_{t \max}$ XB6-1	0.4	0.5	0.65	0.75	1	1.25	1.5
		$d_{l \max}$ XB6-2	-	1.2	1.5	1.7	2.2	2.8	3.3
		$d_{l \min}$ XB6-2	-	1	1.2	1.4	1.9	2.4	2.9
		$d_{p \max}$ XB6-3	0.8	1	1.5	2	2.5	3.5	4
		$d_{p \min}$ XB6-3	0.55	0.75	1.25	1.75	2.25	3.2	3.7

1-10. Flanged Pan Head Machine Screws
つば付きなべ小ねじ



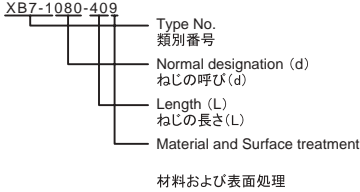
Type No. 類別番号	Type 類別	Head size (mm) 頭部寸法 (mm)					
		M2	M2.5 M2.6	M3	M5	M5	
XB6-7	Flanged pan head つば付きなべ	d_k	5	6.5	8	10	12
		k	1.7	2.1	2.5	3.2	4

FIGURE ZZC MECHANICAL STANDARD PARTS (BOLTS)

2. Bolts (Socket head cap screw) ボルト

How to read Parts Numbers
部品番号の見方

Bolt (Socket head cap screw)
ボルト



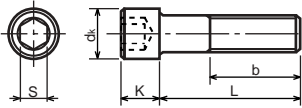
XB7-1 expresses Hexagon socket head cap screws.
XB7-1は、六角穴付きボルトを表す

080 expresses M8.0.
080は、M8.0を表す

40 expresses a length of 40mm.
40は、40mmの長さを表す

9 expresses Steel (Black zinc trivalent chromate
treating) from Table 1.
9は、表1より鋼(黒色亜鉛3価クロメート)を表す

2-1. Hexagon socket head cap screws 六角穴付きボルト



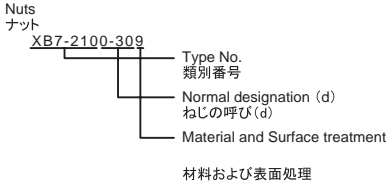
Type No. 類別番号	Type 類別
XB7-1	Hexagon socket head cap screws 六角穴付きボルト

	Head size (mm) 頭部寸法 (mm)						
	M3	M4	M5	M6	M8	M10	M12
S	2.5	3	4	5	6	8	10
d_k	5.5	7	8.5	10	13	16	18
K	3	4	5	6	8	10	12
Screw part length ねじ部長さ b_{max}	18	20	22	24	28	32	36

FIGURE ZZD MECHANICAL STANDARD PARTS (NUTS)

3. Nuts ナット

How to read Parts Numbers
部品番号の見方



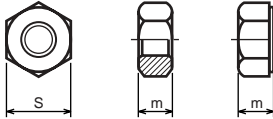
XB7-210 expresses Hexagon nut class 1.
XB7-210は、六角ナット1種を表す

0-30 expresses M3.0.
0-30は、M3.0を表す

9 expresses Steel (Black zinc trivalent chromate
treating) from Table 1.

9は、表1より鋼(黒色亜鉛3価クロメート)を表す

3-1. Hexagon Nuts and Hexagon Thin Nuts 六角ナット



Type No. 類別番号	Type 類別
XB7-210	Hexagon nut Class 1 六角ナット-1種
XB7-220	Hexagon nut Class 3 六角ナット-3種
XB7-230	Hexagon nut Style 1 double chamfered 六角ナット-スタイル1-両面とり
XB7-231	Hexagon nut Style 1 washer faced 六角ナット-スタイル1-座付き
XB7-240	Hexagon nut Style 2 double chamfered 六角ナット-スタイル2-両面とり
XB7-241	Hexagon nut Style 2 washer faced 六角ナット-スタイル2-座付き
XB7-250	Hexagon nut 六角ナット
XB7-260	Hexagon thin nut double chamfered 六角低ナット-両面とり
XB7-270	Hexagon thin nut not chamfered 六角低ナット-面とり無し

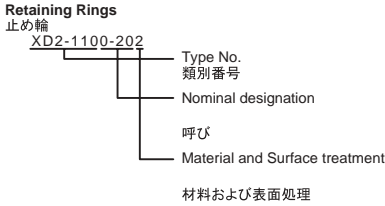
	Head size (mm) 頭部寸法 (mm)						
	M2	M2.5	M3	M4	M5	M6	M8
S	4	5	5.5	7	8	10	13
m XB7-210	1.6	2	2.4	3.2	4	5	6.5
m XB7-220	1.2	1.6	1.8	2.4	3.2	3.6	5
m XB7-230, 231	1.6	2	2.4	3.2	4.7	5.2	6.8
m XB7-240, 241	-	-	-	-	5.1	5.7	7.5
m XB7-250	-	-	-	-	5.6	6.1	7.9
m XB7-260	1.2	1.6	1.8	2.2	2.7	3.2	4
m XB7-270	1.2	1.6	1.8	2.2	2.7	3.2	4

FIGURE ZZE MECHANICAL STANDARD PARTS (RETAINING RINGS)

5. Retaining Rings

止め輪

How to read Parts Numbers
部品番号の見方



XD2-110 expresses retaining ring-E type (Type1).
XD2-110は、E形止め輪(1種)を表す

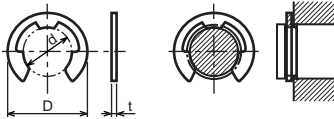
0-20 expresses a 020 of nominal designation.
(See Table 5)

0-20は、呼び020を表す(表5参照)

2 expresses Stainless steel (Surface treatment is not to be given) from Table 1.
2は、表1よりステンレス(表面処理なし)を表す

5-1. Retaining Rings - E type

E形止め輪

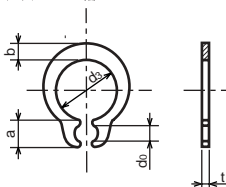


Type No. 類別番号	Type 類別
XD2-110	Retaining ring - E type (Type 1) E形止め輪(1種)
XD2-120	Retaining ring - E type (Type 2) E形止め輪(2種)

Table 5 表5

Type 種類	Nominal designation 呼び	d (mm)	D (mm)	t (mm)
Type 1 1種	007	0.65	2	0.2
	010	0.95	2.8	0.2
	013	1.25	3.3	0.3
	017	1.65	4.2	0.4
	020	1.95	4.6	0.5
	024	2.35	6	0.6
	028	2.74	6.5	0.6
	032	3.14	7.2	0.6
	037	3.64	8	0.7
	040	3.93	10	0.7
	042	4.13	10	0.7
	050	4.93	11	0.7
	058	5.73	12	0.7
	060	5.93	12.7	0.9
	064	6.32	13.5	0.9
	074	7.31	15	0.9
080	7.91	16.5	1	
Type 2 2種	008	0.8	2	0.2
	012	1.2	3	0.3
	015	1.5	4	0.4
	020	2	5	0.4
	025	2.5	6	0.4
	030	3	7	0.6
	040	4	9	0.6
	050	5	11	0.6
	060	6	12	0.8
	070	7	14	0.8
	080	8	16	0.8
	090	9	18	0.8
	100	10	20	1

5-2. Grip Rings
グリップ止め輪

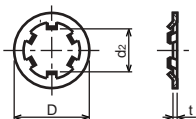


Type No. 類別番号	Type 類別
XD2-210	Grip ring グリップ止め輪

Table 5 表5

Nominal designation 呼び	d ₃ (mm)	t (mm)	b (mm)	a (mm)	d ₀ (mm)
020	1.9	0.5	1	1.8	0.8
025	2.35	0.5	1.2	1.9	0.9
030	2.85	0.6	1.4	1.9	0.9
035	3.3	0.6	1.6	2	0.9
040	3.8	0.8	1.8	2.8	1.2
045	4.25	0.8	2	2.9	1.3
050	4.75	0.8	2.2	2.9	1.3
060	5.7	1	2.4	3.1	1.4
070	6.7	1	2.7	3.3	1.4
080	7.7	1	3	3.5	1.4
090	8.65	1.2	3.3	4.7	1.5
100	9.65	1.2	3.5	4.7	2

5-3. Toothed Retaining Rings
歯付き形止め輪



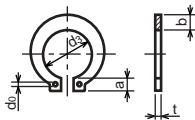
Type No. 類別番号	Type 類別
XD2-230	Toothed retaining ring 歯付き形止め輪

Table 5 表5

Nominal designation 呼び	d _z (mm)	D (mm)	t (mm)	No of teeth 歯数
015	1.4	5.2	0.25	3
020	1.9	6	0.25	3
024	2.3	6.4	0.25	3
030	2.8	8	0.25	4
040	3.8	9	0.25	4
050	4.8	10	0.25	5
060	5.8	11	0.25	5
080	7.8	13	0.25	5
100	9.8	15.4	0.25	6

5-4. Retaining Rings - C Type

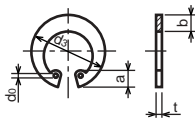
C形止め輪



Type No. 類別番号	Type 類別
XD2-310	Retaining ring - C type for shaft C形止め輪 軸用

Table 5 表5

Nominal designation 呼び	d ₃ (mm)	t (mm)	b (mm)	a (mm)	d ₀ (mm)
010	9.3	1	1.6	3	1.2
012	11.1	1	1.8	3.2	1.5
014	12.9	1	2	3.4	1.7
015	13.8	1	2.1	3.5	1.7
016	14.7	1	2.2	3.6	1.7
017	15.7	1	2.2	3.7	1.7
018	16.5	1.2	2.6	3.8	1.7
020	18.5	1.2	2.7	3.9	2
022	20.5	1.2	2.7	4.1	2
025	23.2	1.2	3.1	4.3	2
028	25.9	1.5	3.1	4.6	2
030	27.9	1.5	3.5	4.8	2
032	29.6	1.5	3.5	5	2.5
035	32.2	1.5	4	5.4	2.5



Type No. 類別番号	Type 類別
XD2-320	Retaining ring - C type for hole C形止め輪 穴用

Table 5 表5

Nominal designation 呼び	d ₃ (mm)	t (mm)	b (mm)	a (mm)	d ₀ (mm)
010	10.7	1	1.8	3.1	1.2
011	11.8	1	1.8	3.2	1.2
012	13	1	1.8	3.3	1.5
014	15.1	1	2	3.6	1.7
016	17.3	1	2	3.7	1.7
018	19.5	1	2.5	4	1.7
019	20.5	1	2.5	4	2
020	21.5	1	2.5	4	2
022	23.5	1	2.5	4.1	2
025	26.9	1.2	3	4.4	2
028	30.1	1.2	3	4.6	2
030	32.1	1.2	3	4.7	2
032	34.4	1.2	3.5	5.2	2.5
035	37.8	1.5	3.5	5.2	2.5
037	39.8	1.5	3.5	5.2	2.5
040	43.5	1.8	4	5.7	2.5
042	45.5	1.8	4	5.8	2.5
045	48.5	1.8	4.5	5.9	2.5
047	50.5	1.8	4.5	6.1	2.5
050	54.2	2	4.5	6.5	2.5
052	56.2	2	5.1	6.5	2.5
055	59.2	2	5.1	6.5	2.5
060	64.2	2	5.1	6.8	2.5
062	66.2	2	5.5	6.9	2.5
068	72.5	2.5	6	7.4	2.5
072	76.5	2.5	6.6	7.4	2.5
075	79.5	2.5	6.6	7.8	2.5
080	85.5	2.5	7	8	2.5
085	90.5	3	7	8	3
090	95.5	3	7.6	8.3	3
095	100.5	3	8	8.5	3

Prepared by
OIP Service Management Center
CANON INC.

Canon