

KONICA MINOLTA

PARTS GUIDE MANUAL

SEPTEMBER 2011

bizhub C35
A121

INFORMATION FOR PARTS GUIDE MANUAL

To find correct Parts No., refer to the "HOW TO MAKE THE BEST USE OF THIS MANUAL" in the following page.

HOW TO MAKE THE BEST USE OF THIS MANUAL

- 1 When you order, please check the proper figures beforehand that are on Our Parts Guide Manual, and order with the appropriate figures.
- 2 For screws, Nuts, Washers, retaining rings and Pins which are used in this model, one letter is shown on the Standard parts column of Parts list and exploded diagrams.
- 3 In order to maintain safety of the product, some specific parts composed of this product are set up as "essential safety parts".
- 4 The assigned parts number for the "essential safety parts" is indicated as "SP00-****".
When replacing these parts, follow precautions for disassembling and installing which are listed in the Service Manual.
Do not use any parts that are not set up as
- 5 ♣ means that there are exclusive parts for each destination.
Please check the appropriate destination when you order.
- 6 Revision Mark
Marked as ▲ on the illustration shows that the revision has been made.
- 7 All rights reserved. (any reprints or quotations are prohibited.)
Use of this parts guide manual should be strictly supervised to avoid disclosure of confidential information.

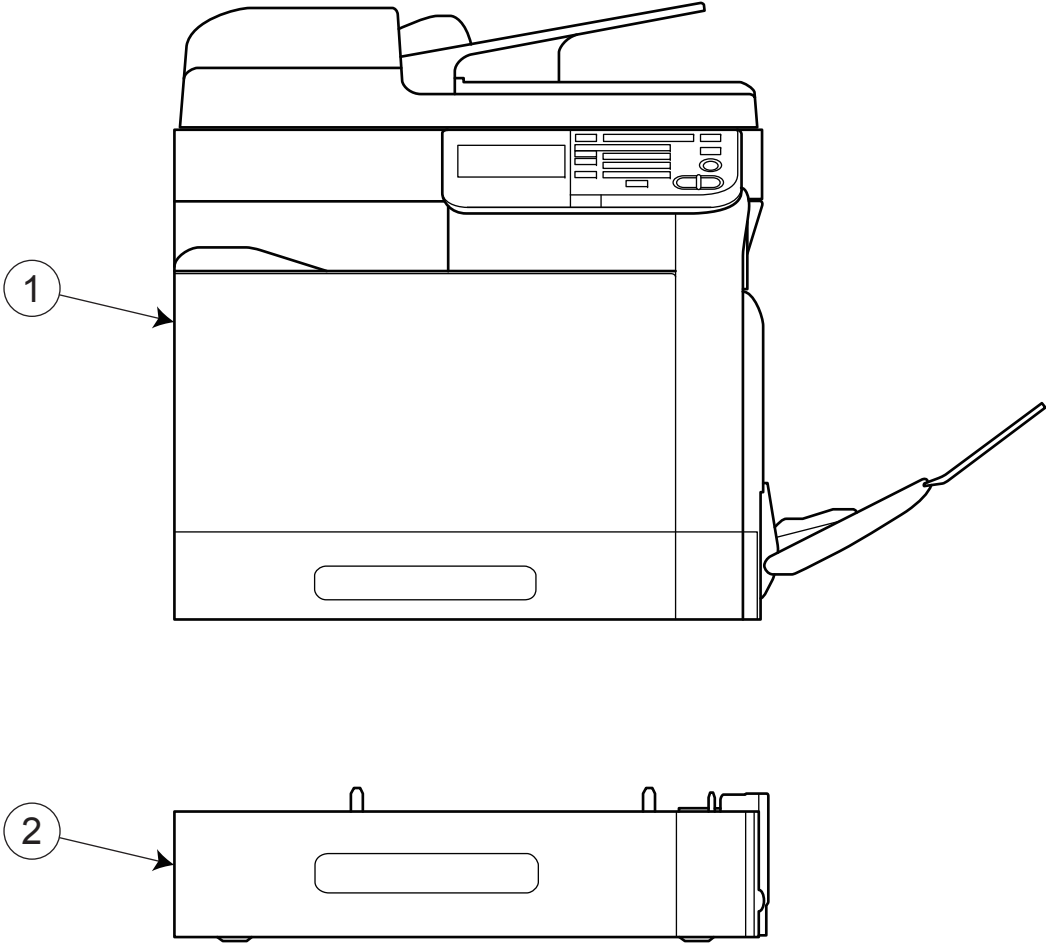
パーツガイドマニュアルのご案内

サービス部品をご発注の際には、下記に示す“パーツガイドマニュアルの活用にあたって”をご参照の上、正しい部品番号にてお願い致します。

パーツガイドマニュアルの活用にあたって

- 1 部品発注の際には、掲載されている部品番号の桁数を確認し、掲載されている桁数で発注願います。
- 2 この製品に使用されているネジ、ナット、ワッシャー、止め輪、ピンなどは、リストの右側の Standard parts 欄に a,b,c,……で表示し、イラストにも a,b,c,……表示してあります。
- 3 製品の安全性を維持する為に、製品に使用される特定の部品を「重要保安部品」として設定しています。
- 4 重要保安部品の部品番号は、“SP00-****”と記載されていますので、部品交換時は、サービスマニュアル記載の分解・組み立ての注意事項に従って作業をして下さい。
また、指定以外の部品は一切使用しないで下さい。
- 5 本文に ♣ が表示されている部品は、仕向け地毎に専用部品がある事を意味しています。
オーダーされる時は、仕向け地を確認して下さい。
- 6 改訂記号について
イラスト上に ▲ 印が表示されている部分は、改訂された事を表します。
- 7 著作権所有（無断転載及び無断引用の禁止）
本パーツガイドマニュアルについては、機密保持等その扱いには十分注意して下さい。万一取り扱いを誤った場合には、法律で処罰されることがあります。

SYSTEM OUTLINE



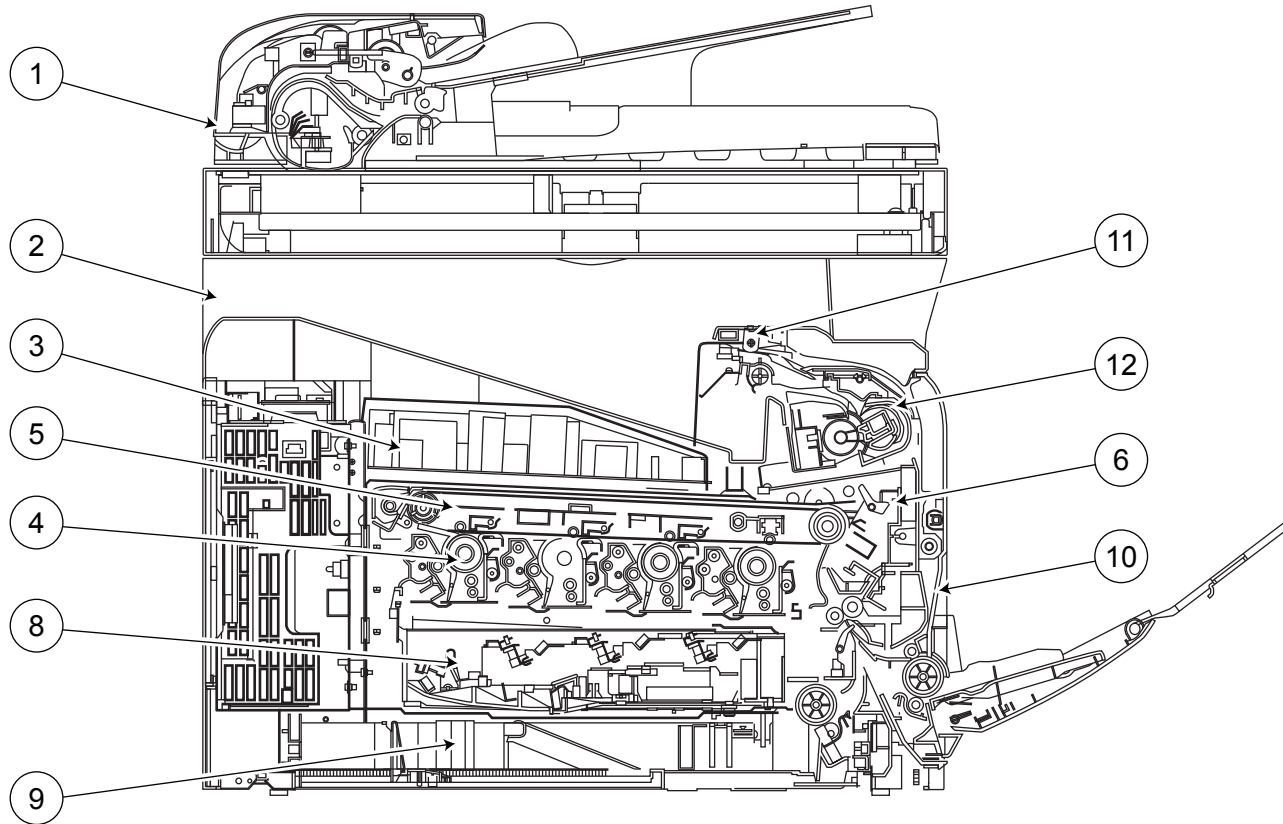
GENERAL CONTENTS

No.	Description	Model
1	PRINTER COLOR	bizhub C35
2	PAPER FEEDER	PF-P08

DIAGRAM OF MAIN PARTS SECTION

REAR SIDE

- 7
- 13
- 14
- 15



CONTENTS

No.	DESCRIPTION	名称	PAGE No.
1	ADF & IR SECTION	A D F & I R 部	P1
2	EXTERNAL PARTS	外装部	P2
3	POWER SUPPLY SECTION	低圧電源部	P3
4	TONER BOTTLE DRIVE SECTION	トナーボトル駆動部	P4
5	TRANSFER BELT UNIT	転写ベルトユニット	P5
6	TRANSFER GUIDE SECTION	転写ガイド部	P6
7	HIGH VOLTAGE SECTION	高圧電源部	P7
8	PRINT HEAD SECTION	P / H 部	P8
9	CASSETTE SECTION	カセット部	P9
10	VERTICAL CONVEYANCE SECTION	縦搬送部	P10 P11 P12
11	DUP REVERSE DRIVE SECTION	D U P 反転駆動部	P13
12	FUSING SECTION	定着部	P14
13	MAIN DRIVE SECTION	メイン駆動部	P15 P16 P17
14	PAPER FEED DRIVE SECTION	給紙駆動部	P18
15	ELECTRICAL COMPONENTS	電装部	P19 P20
16	WIRING	束線	P21 P22
17	WIRING ACCESSORIES AND JIGS	配線部品・治具	P23
18	ACCESSORY PARTS	同梱部品	P24

INDEX

Parts No.	Page No.
4002312303	18-8
4030303401	9-2
4030303401	10-9
4036301401	16-5
4040M40100	3-19
4131300301	9-1
4131305601	9-7
4131305601	10-7
4131305702	9-8
4138303202	9-3
4138303202	10-8
4138325501	10-3
4138352802	12-4
4138353202	12-6
4138731601	9-14
4138731601	10-16
4139M10000	3-1
4628680101	24-4
4658015106	9-4
4658015106	10-12
9313130051	13-1
9326140021	2-6
9326181021	20-16
9326181051	24-2
9326191031	19-16
9335140051	8-16
9381430031	24-1
9381430041	24-1
9J06M60100	3-10
A00F213900	16-2
A00J945500	2-23
A011946200	2-30
A011M20000	12-18
A011M20000	16-4
A02EM20000	18-2
A034213400	12-24
A034214000	12-23
A034563800	12-12
A034M20000	12-25
A034M60200	19-7

Parts No.	Page No.
A0CRPP0100	1-7
A0CRPP0200	1-8
A0EDM72000	20-10
A0VD101301	8-5
A0VD101301	19-8
A0VD108902	9-16
A0VD109001	8-18
A0VD110104	5-6
A0VD110205	5-18
A0VD110400	5-8
A0VD110500	5-4
A0VD111102	5-10
A0VD111203	5-11
A0VD111302	8-4
A0VD111402	5-13
A0VD111502	5-19
A0VD111600	5-2
A0VD111700	5-1
A0VD114101	5-3
A0VD115100	5-20
A0VD115200	5-22
A0VD115301	5-21
A0VD115400	5-26
A0VD134102	5-9
A0VD134300	5-28
A0VD135201	3-8
A0VD135303	3-7
A0VD135317	3-7
A0VD135402	3-9
A0VD135500	3-5
A0VD135512	3-5
A0VD135600	3-25
A0VD136100	19-2
A0VD136701	8-15
A0VD136800	5-7
A0VD139401	7-3
A0VD139500	7-5
A0VD139700	3-24
A0VD161600	11-9
A0VD162101	11-2

Parts No.	Page No.
A0VD162300	10-14
A0VD163400	11-8
A0VD163600	11-7
A0VD166401	2-10
A0VD211303	15-5
A0VD214700	5-23
A0VD218301	16-6
A0VD219800	15-4
A0VD220201	15-3
A0VD220300	15-2
A0VD230901	18-4
A0VD231200	18-3
A0VD233301	18-5
A0VD235101	8-13
A0VD235301	12-3
A0VD235400	8-7
A0VD235500	8-10
A0VD235600	8-8
A0VD235700	8-6
A0VD235900	8-9
A0VD236400	4-1
A0VD236500	4-5
A0VD236601	4-2
A0VD236902	4-3
A0VD237400	4-8
A0VD237800	4-9
A0VD248501	16-3
A0VD362201	5-15
A0VD362300	5-14
A0VD362400	5-16
A0VD362500	5-17
A0VD362602	8-12
A0VD362702	8-11
A0VD363700	5-24
A0VD491000	4-13
A0VD491100	4-14
A0VD491200	4-15
A0VD491300	4-16
A0VD561301	10-5
A0VD561700	10-2

Parts No.	Page No.
A0VD561800	10-6
A0VD621100	9-5
A0VD621100	10-13
A0VD623101	9-10
A0VD623200	9-11
A0VD624100	18-7
A0VD624800	9-6
A0VD624800	10-10
A0VD701701	11-3
A0VD702101	12-8
A0VD702300	12-5
A0VD702400	12-21
A0VD702501	12-7
A0VD702902	12-9
A0VD703001	12-15
A0VD703501	12-19
A0VD703700	12-16
A0VD704300	12-13
A0VD704400	12-11
A0VD704700	12-10
A0VD704900	12-20
A0VD705101	12-14
A0VD705200	12-22
A0VD705303	12-17
A0VD706101	6-7
A0VD706201	6-6
A0VD706300	6-2
A0VD706400	6-1
A0VD706500	6-4
A0VD707101	6-12
A0VD707201	6-11
A0VD707303	6-10
A0VD707501	6-14
A0VD820103	13-10
A0VD820200	13-9
A0VD821100	13-12
A0VD822400	13-7
A0VD822700	13-3
A0VD822800	13-2
A0VD823100	13-4

Parts No.	Page No.
A0VD823200	13-6
A0VD823400	13-5
A0VD825600	13-11
A0VD890102	14-6
A0VD890200	14-10
A0VD890301	14-12
A0VD890800	14-7
A0VD892400	14-4
A0VD907300	14-14
A0VD908101	14-5
A0VD941801	2-27
A0VD949100	14-1
A0VDM10000	15-1
A0VDM10200	16-1
A0VDM10200	17-1
A0VDM20000	4-7
A0VDM20000	13-8
A0VDM50000	6-3
A0VDM50100	6-9
A0VDM50200	3-11
A0VDN10001	19-10
A0VDN12200	20-8
A0VDN12300	20-7
A0VDN30000	24-1
A0VDN30100	24-1
A0VDN30200	24-1
A0VDR71300	10-4
A0VDR71600	10-1
A0VDR71711	12-1
A0VDR73600	18-1
A0VDR90700	12-27
A108M50100	3-6
A108M50100	4-4
A108M50100	6-13
A108M50100	10-11
A108M50100	11-1
A108M50100	12-26
A108M50100	14-11
A108M50100	18-6
A108R90000	3-26

Parts No.	Page No.
A11PM70100	20-20
A121100102	3-2
A121100200	3-21
A121100300	3-16
A121100400	3-14
A121100701	19-4
A121101102	20-5
A121101300	7-4
A121102000	2-28
A121102100	2-29
A121102200	20-18
A121102300	19-14
A121102400	19-15
A121102500	20-19
A121102600	3-23
A121102600	14-17
A121104101	3-4
A121108701	8-14
A121130201	19-1
A121130701	2-26
A121130801	20-6
A121131501	20-4
A121131701	3-15
A121131901	19-5
A121132100	20-13
A121132200	20-12
A121132401	19-9
A121132500	3-22
A121132600	20-9
A121137000	3-3
A121160105	2-21
A121160202	2-25
A121160302	2-9
A121160401	2-4
A121160501	2-2
A121160603	11-5
A121160801	2-1
A121160903	2-3
A121190201	2-16
A121190301	2-14

Parts No.	Page No.
A121190400	2-18
A121190600	2-13
A121190701	2-20
A121190801	2-19
A121190900	2-24
A121191000	2-11
A121191101	2-12
A121191201	4-11
A121191301	2-15
A121260101	1-3
A121270101	1-1
A121620800	9-9
A121890302	14-8
A121891200	14-9
A121893002	14-15
A121895302	14-8
A121902500	14-2
A121942400	2-22
A121943100	11-6
A121943200	9-12
A121943900	1-9
A121944600	1-2
A121944700	1-2
A121944700	24-5
A121948300	14-3
A121950100	2-8
A121950100	24-3
A121950200	24-3
A121950300	24-3
A121950400	2-8
A121950500	24-3
A121950600	2-8
A121950700	24-3
A121950800	2-8
A121G18000	2-17
A121H0010B	19-13
A121H0120D	19-11
A121H01306	19-11
A121H01507	20-2
A121H01607	20-2

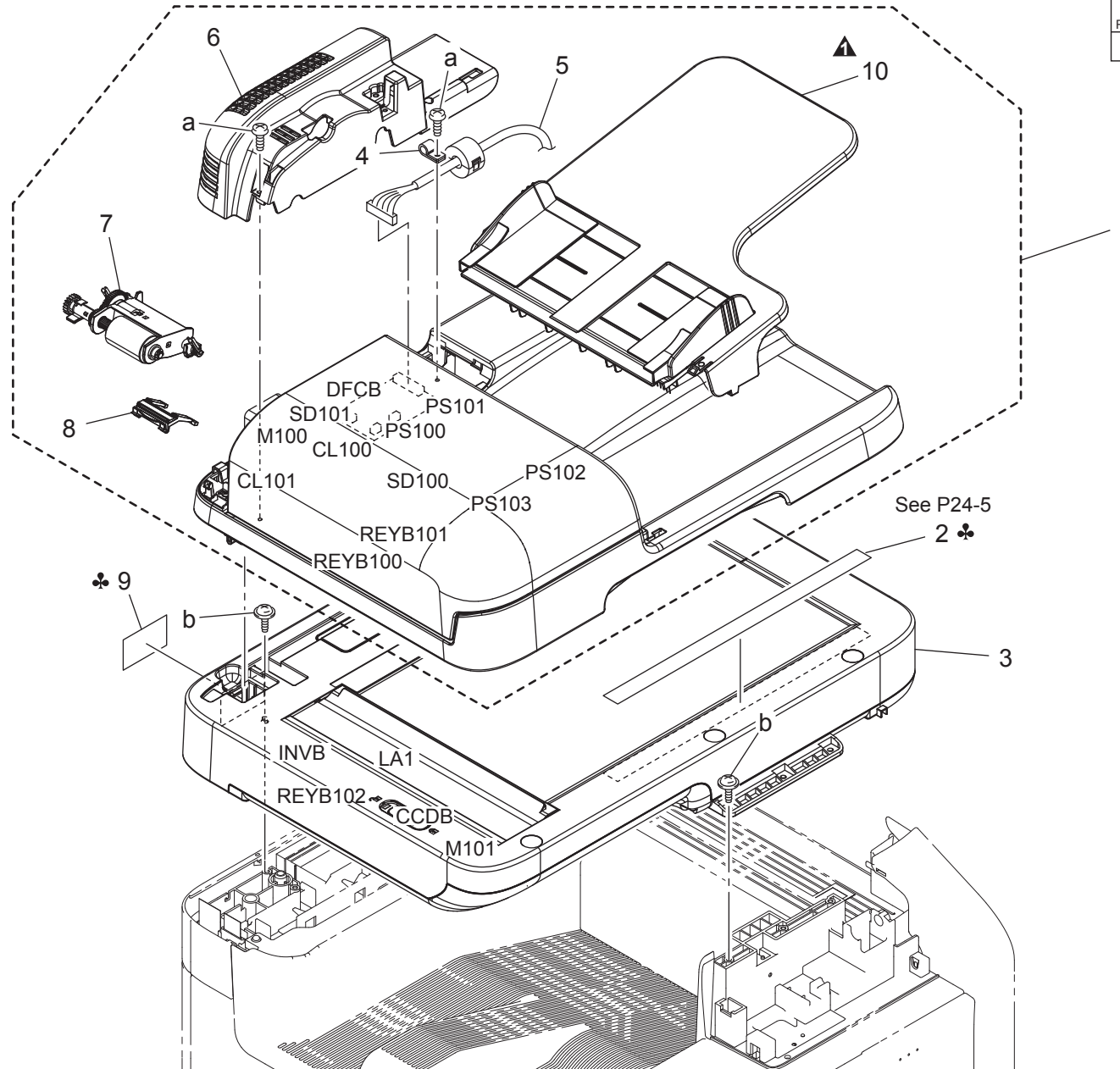
Parts No.	Page No.
A121M40002	3-12
A121M40105	3-12
A121M40200	7-1
A121M70000	3-18
A121M70100	3-17
A121M71A02	2-7
A121N10000	19-6
A121N10100	21-1
A121N10200	20-17
A121N10300	18-10
A121N10401	22-1
A121N10500	6-8
A121N10600	6-5
A121N10800	3-20
A121N10900	22-2
A121N10A00	5-12
A121N10C00	21-2
A121N10D01	18-9
A121N10E01	19-3
A121N10G00	8-1
A121N10H01	7-2
A121N10J01	8-2
A121N10K01	19-12
A121N12000	2-5
A121N12101	4-10
A121N12202	20-3
A121N12301	20-15
A121PP0000	1-6
A121PP0100	1-5
A121PP0200	1-4
A121PP0400	1-10
A121R70000	4-6
A121R70100	9-13
A121R70211	10-15
A121R70300	13-13
A121R90000	19-11
A121R90022	19-11
A121R90100	19-11
A121R90122	19-11
A121R90200	19-11

Parts No.	Page No.
A121R90222	19-11
A121R90411	19-11
A148001	14-16
A148011	14-16
A148021	14-16
A1480Y1	5-5
A1480Y2	11-4
A1ARR70000	8-3
A1AU0Y1	8-17
V500010003	23-1
V500010005	23-2
V500010008	23-4
V500010020	23-3
V500010046	23-5
V500010061	23-6
V500020018	23-8
V501010001	23-9
V501010018	23-7
V502010021	3-13
V819300016	20-1

ADF & IR SECTION

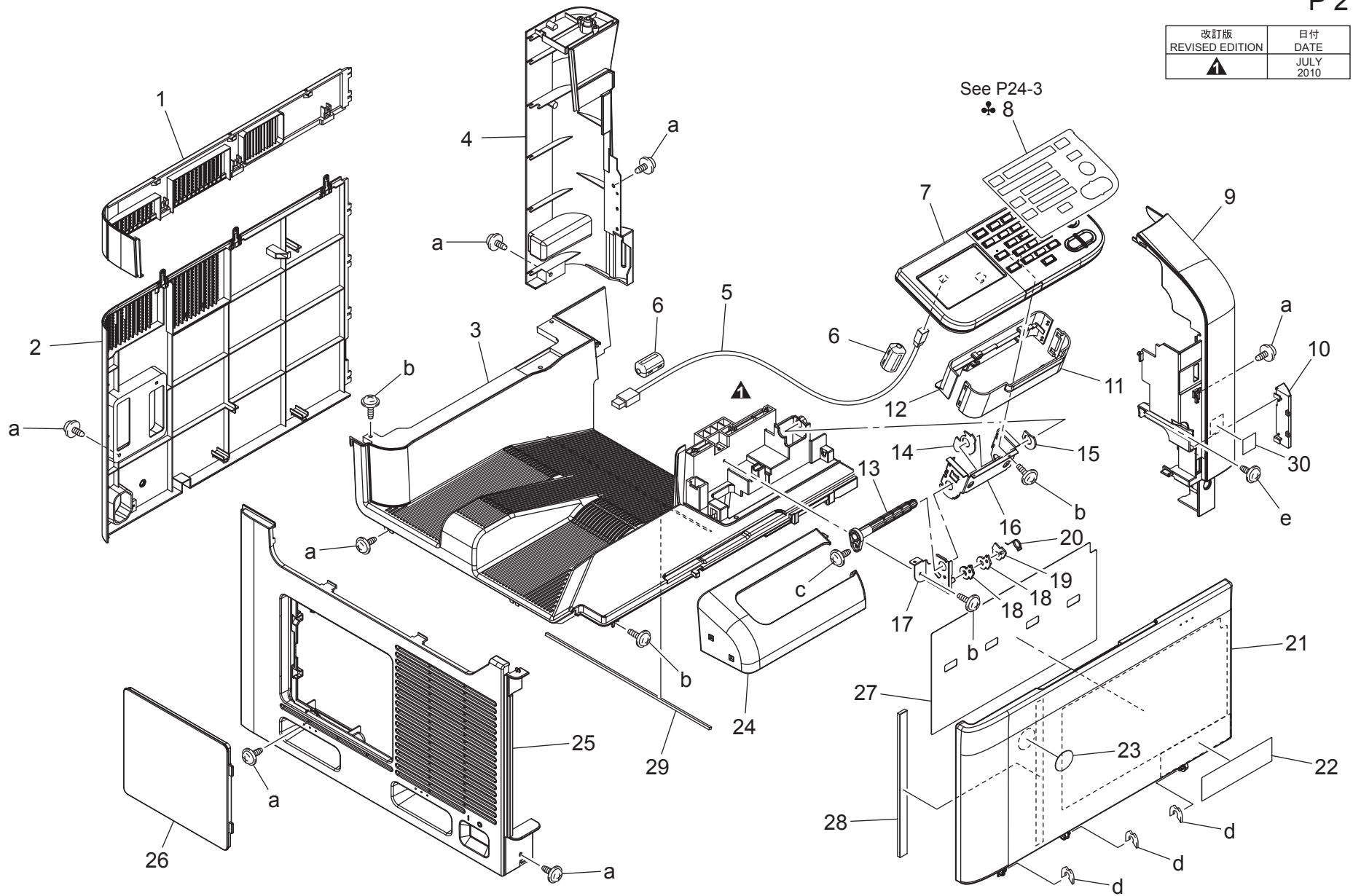
改訂版 REVISED EDITION	日付 DATE
▲	JUNE 2011

P 1



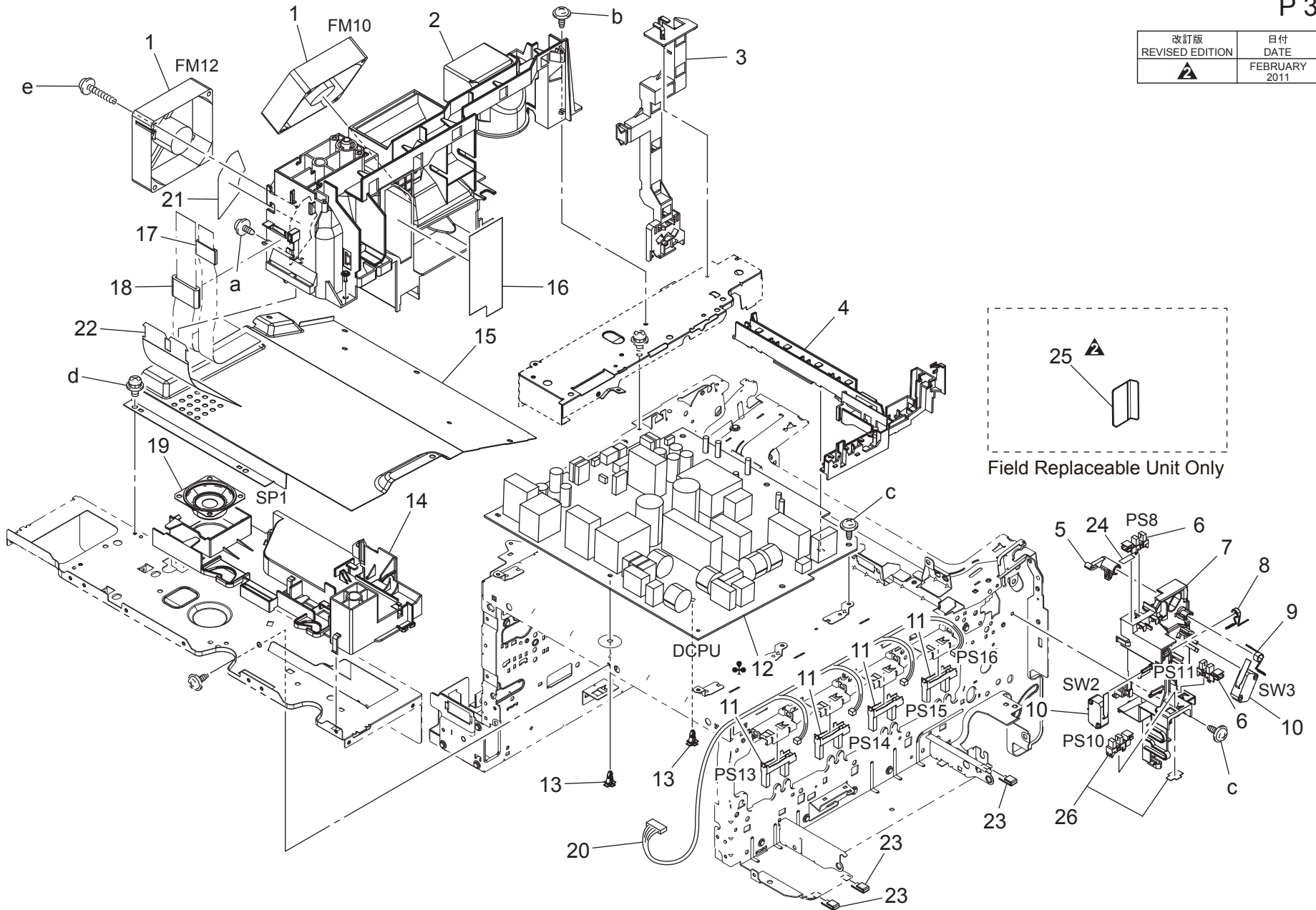
EXTERNAL PARTS

改訂版 REVISED EDITION	日付 DATE
	JULY 2010



POWER SUPPLY SECTION

改訂版 REVISED EDITION	日付 DATE
	FEBRUARY 2011

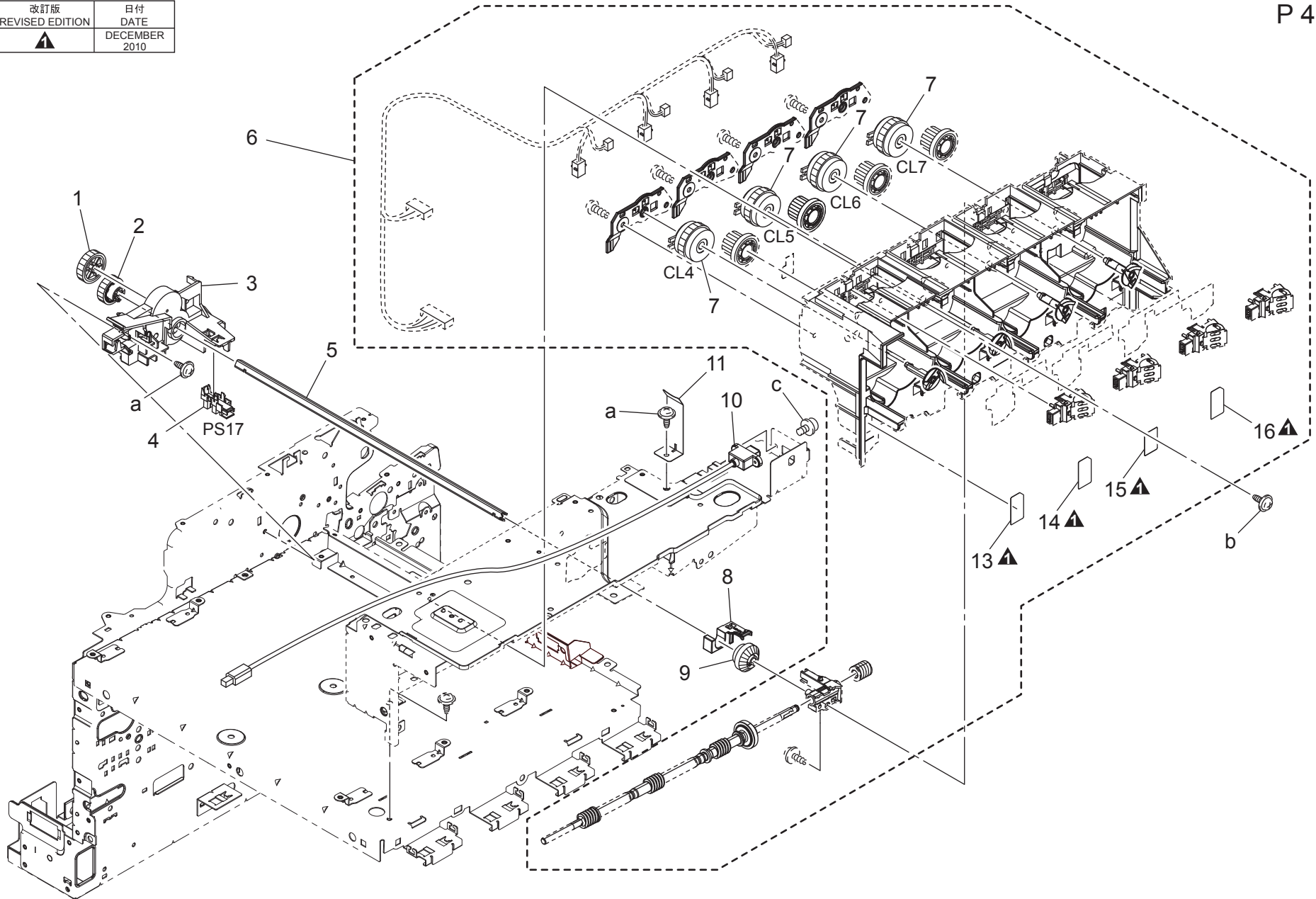


POWER SUPPLY SECTION

Key	Part No.	Description	Destinations	Class	QTY	Standard parts
1	4139M10000	FAN MOTOR		B	2	a-V144030803 b-V137030803 c-V137030603 d-V116030603 e-V153033003
2	A121100102	Duct		D	1	
3	A121137000	Holder		D	1	
4	A121104101	Protection Cover		D	1	
5	A0VD135500Old	Detecting Part		C	1	
5	A0VD135512	Detecting Part		C	1	
6	A108M50100	Photointerrupter		B	2	
7	A0VD135303Old	Hold Holder		D	1	
7	A0VD135317	Hold Holder		D	1	
8	A0VD135201	Adjusting Spring		D	1	
9	A0VD135402	Torsion Coil spring		D	1	
10	9J06M60100	MICRO SWITCH		C	2	
11	A0VDM50200	Photointerrupter		I	4	
12	A121M40002	Power supply /100V	A,A1,B,F1,G2,H	I	1	
12	A121M40105	Power supply /230V	C,D1,D3,F2,G1,I,J,K	I	1	
13	V502010021	spacer		D	2	
14	A121100400	Duct		D	1	
15	A121131701	Cover		D	1	
16	A121100300	Seal		D	1	
17	A121M70100	Ferritecore		D	1	
18	A121M70000	Ferritecore		D	1	
19	4040M40100	LOUDSPEAKER		D	1	
20	A121N10800	Toner Wiring /2		D	1	
21	A121100200	Seal		D	1	
22	A121132500	Insulating Sheet		D	1	
23	A121102600	Seal		D	3	
24	A0VD139700	Seal		D	1	
25	A0VD135600	Guide		C	1	
26	A108R90000	PHOTO INTERRUPTER		I	1	

TONER BOTTLE DRIVE SECTION

改訂版 REVISED EDITION	日付 DATE
▲	DECEMBER 2010



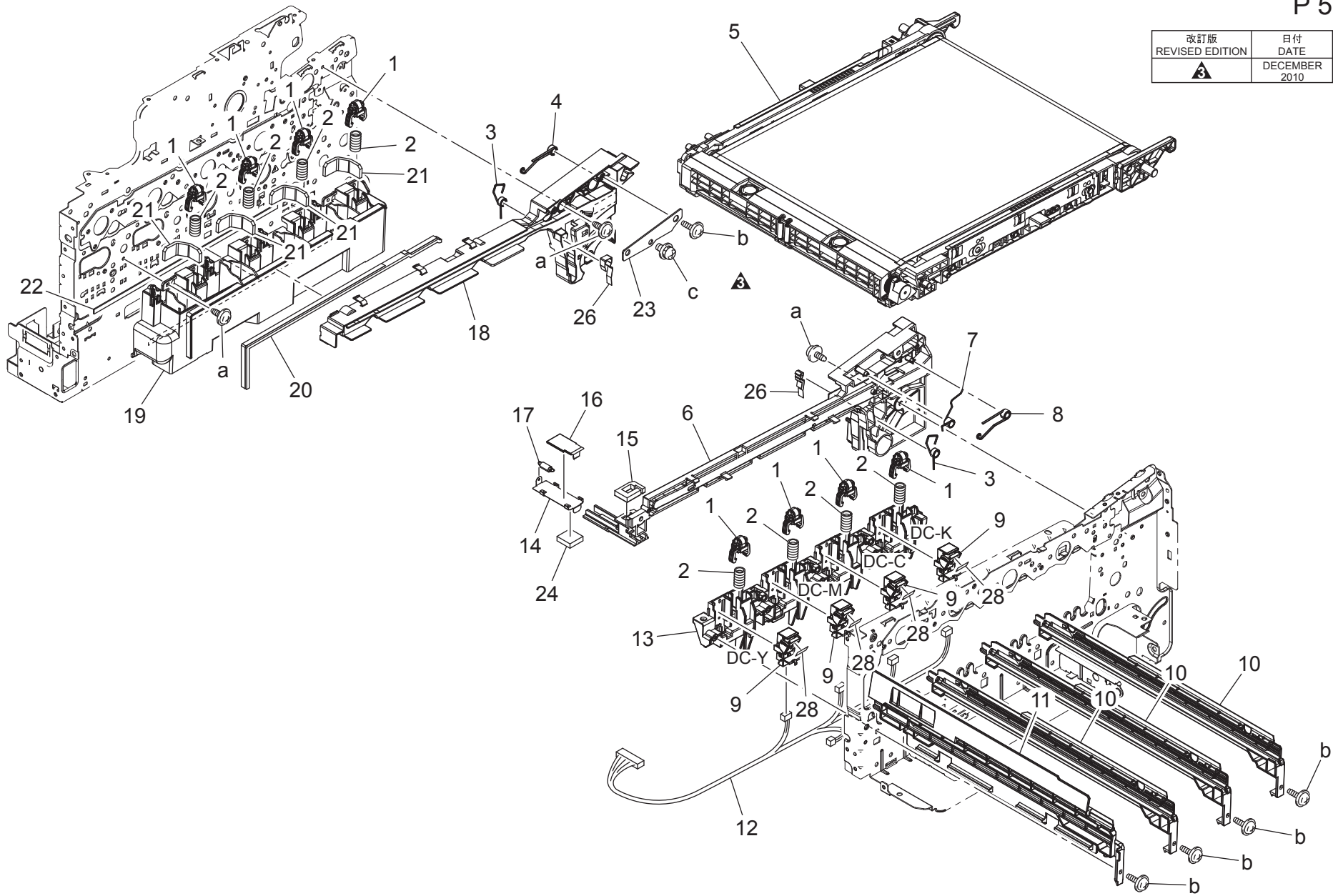
TONER BOTTLE DRIVE SECTION

Key	Part No.	Description	Destinations	Class	QTY	Standard parts
1	A0VD236400	Gear 29T		D	1	a-V137030803 b-V137030603 c-V116030603
2	A0VD236601	Gear 25T		D	1	
3	A0VD236902	Drive Holder		D	1	
4	A108M50100	Photointerrupter		B	1	
5	A0VD236500	Shaft		D	1	
6	A121R70000	Toner bottle Drive Assy		C	1	
7	A0VDM20000	Clutch		C	4	
8	A0VD237400	Stopper		D	1	
9	A0VD237800	Gear 20T		D	1	
10	A121N12101	Relay Wiring		D	1	
11	A121191201	Ground Plate		D	1	
13	A0VD491000	Label		C	1	
14	A0VD491100	Label		C	1	
15	A0VD491200	Label		C	1	
16	A0VD491300	Label		C	1	

TRANSFER BELT UNIT

P 5

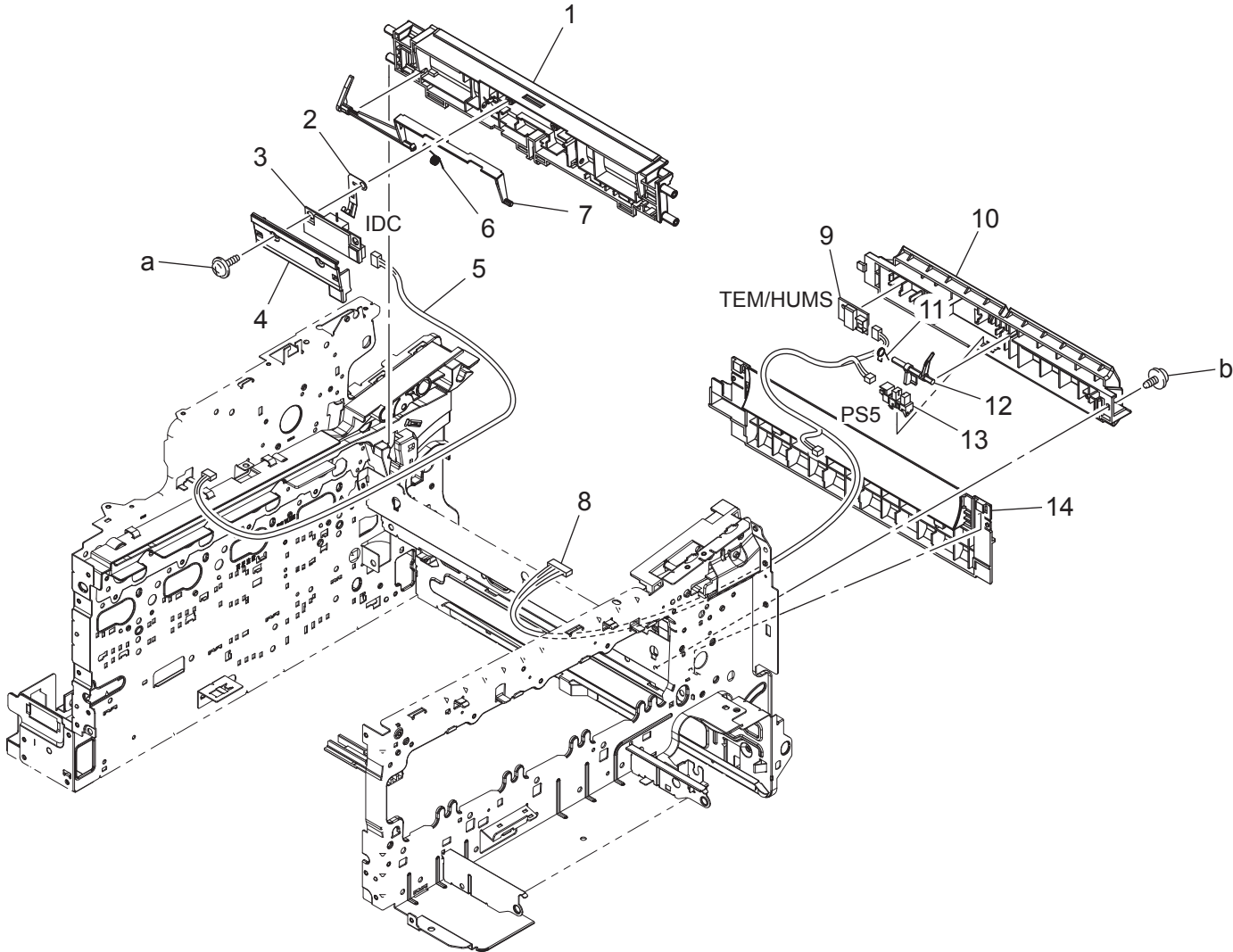
改訂版 REVISED EDITION	日付 DATE
	DECEMBER 2010



TRANSFER BELT UNIT

Key	Part No.	Description	Destinations	Class	QTY	Standard parts
1	A0VD111700	Holder	ホルダ	D	8	a-V137030803 b-V116030603 c-V153030803
2	A0VD111600	Compressing Coil spring	圧縮コイルばね	D	8	
3	A0VD114101	Torsion Coil spring	ねじりコイルばね (転写上ガイド)	D	2	
4	A0VD110500	Torsion Coil spring /Rear	ねじりコイルばね/後	D	1	
5	A1480Y1	Transfer Unit	中間転写 ASSY	A	1	
6	A0VD110104	Rail /Front	レール/前	D	1	
7	A0VD136800	Contact	接点 (アース定着)	D	1	
8	A0VD110400	Torsion Coil spring /Front	ねじりコイルばね/前	D	1	
9	A0VD134102	Hold Holder /ASSY	保持ホルダ/ ASSY (PU)	D	4	
10	A0VD111102	Rail	レール (PU)	D	3	
11	A0VD111203	Rail	レール (PU L)	D	1	
12	A121N10A00	Photoconductor Wiring /1	感光体束線/1 (PU用CSIC, 廃トナ)	D	1	
13	A0VD111402	Holder /Front	ホルダ/前	D	1	
14	A0VD362300	Shutter	シャッター (中継)	D	1	
15	A0VD362201	Seal	シール (転写ジョイント)	D	1	
16	A0VD362400	Seal	シール (中継)	D	1	
17	A0VD362500	Pulling Coil spring	引張りコイルばね (中継)	D	1	
18	A0VD110205	Rail /Rear	レール/後	D	1	
19	A0VD111502	Duct	ダクト	D	1	
20	A0VD115100	Seal	シール	D	1	
21	A0VD115301	Seal	シール (吸引口)	D	4	
22	A0VD115200	Seal	シール (ダクト裏)	D	1	
23	A0VD214700	Mounting Plate	取付板	D	1	
24	A0VD363700	Seal	シール (シャッター外)	D	1	
26	A0VD115400	Seal	シール (ホルダ)	D	2	
28	A0VD134300	Protection Seal	保護シール	D	4	

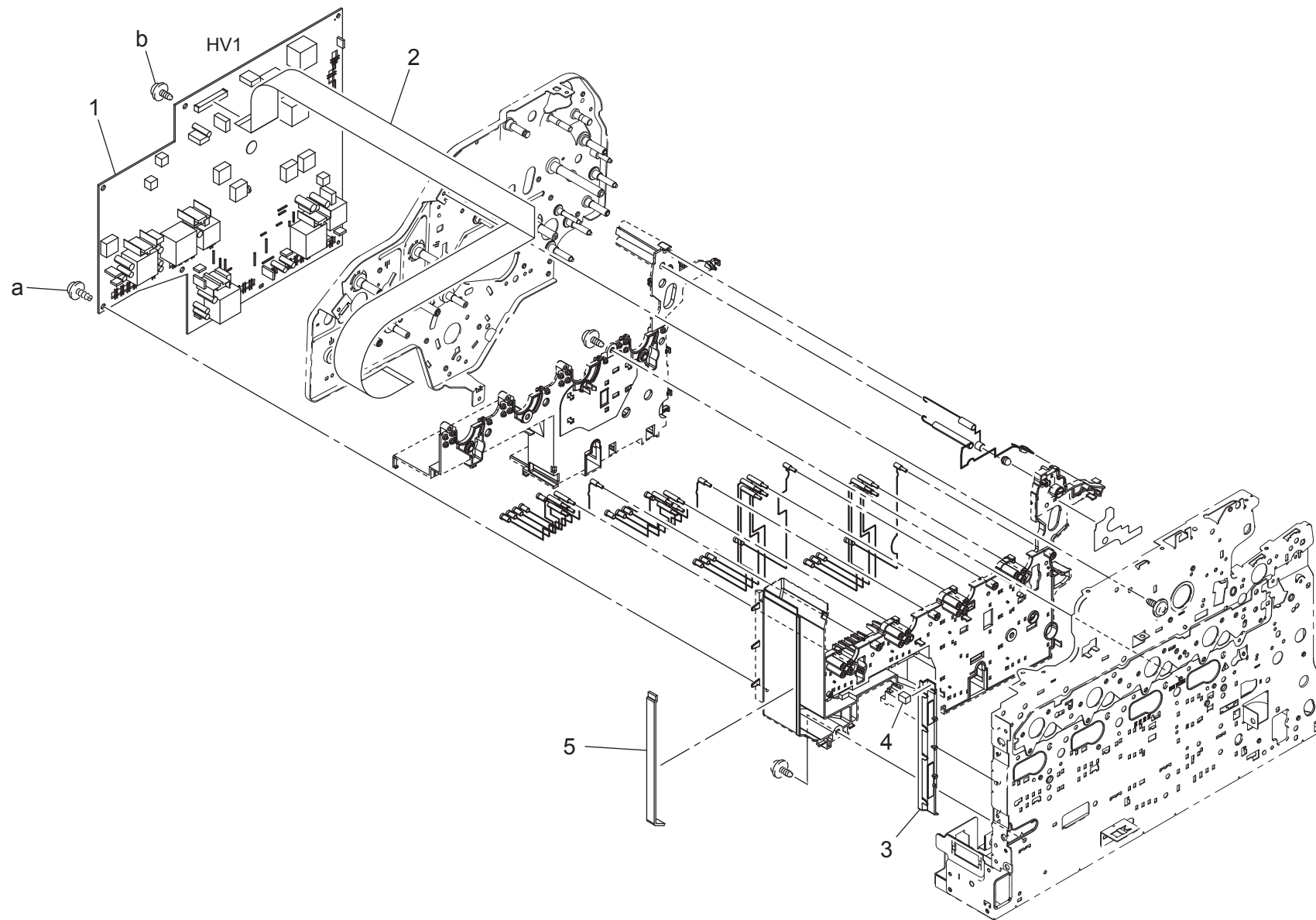
TRANSFER GUIDE SECTION



TRANSFER GUIDE SECTION

Key	Part No.	Description	Destinations	Class	QTY	Standard parts
1	A0VD706400	Guide		D	1	a-V153031203 b-V144030603
2	A0VD706300	Contact		D	1	
3	A0VDM50000	Photo sensing		I	1	
4	A0VD706500	Holder		D	1	
5	A121N10600	Sensor Wiring /3		D	1	
6	A0VD706201	Torsion Coil spring		D	1	
7	A0VD706101	Cover		D	1	
8	A121N10500	Sensor Wiring /2		D	1	
9	A0VDM50100	Humidity sensor		I	1	
10	A0VD707303	Guide		D	1	
11	A0VD707201	Torsion Coil spring		D	1	
12	A0VD707101	Actuator		C	1	
13	A108M50100	Photointerrupter		B	1	
14	A0VD707501	Guide		D	1	

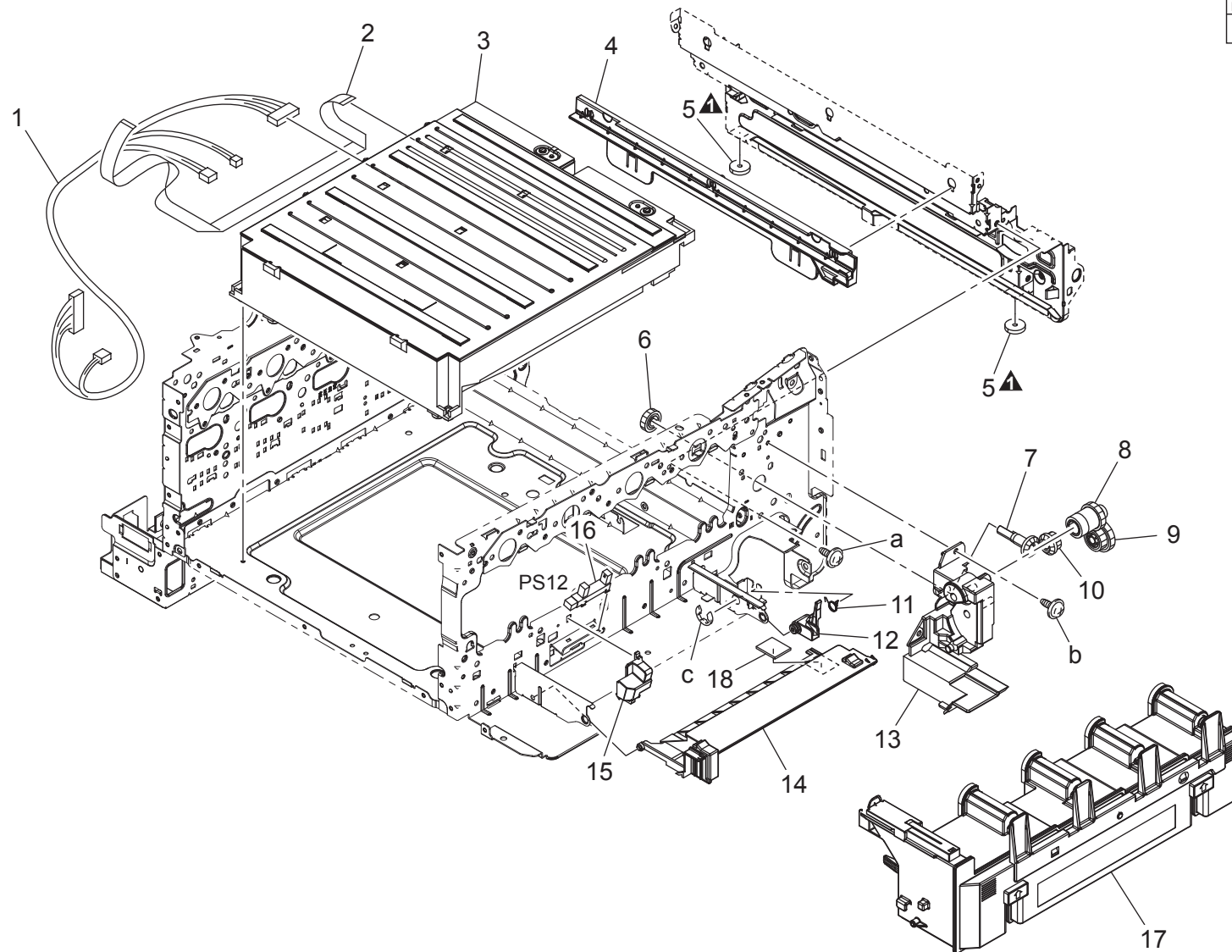
HIGH VOLTAGE SECTION



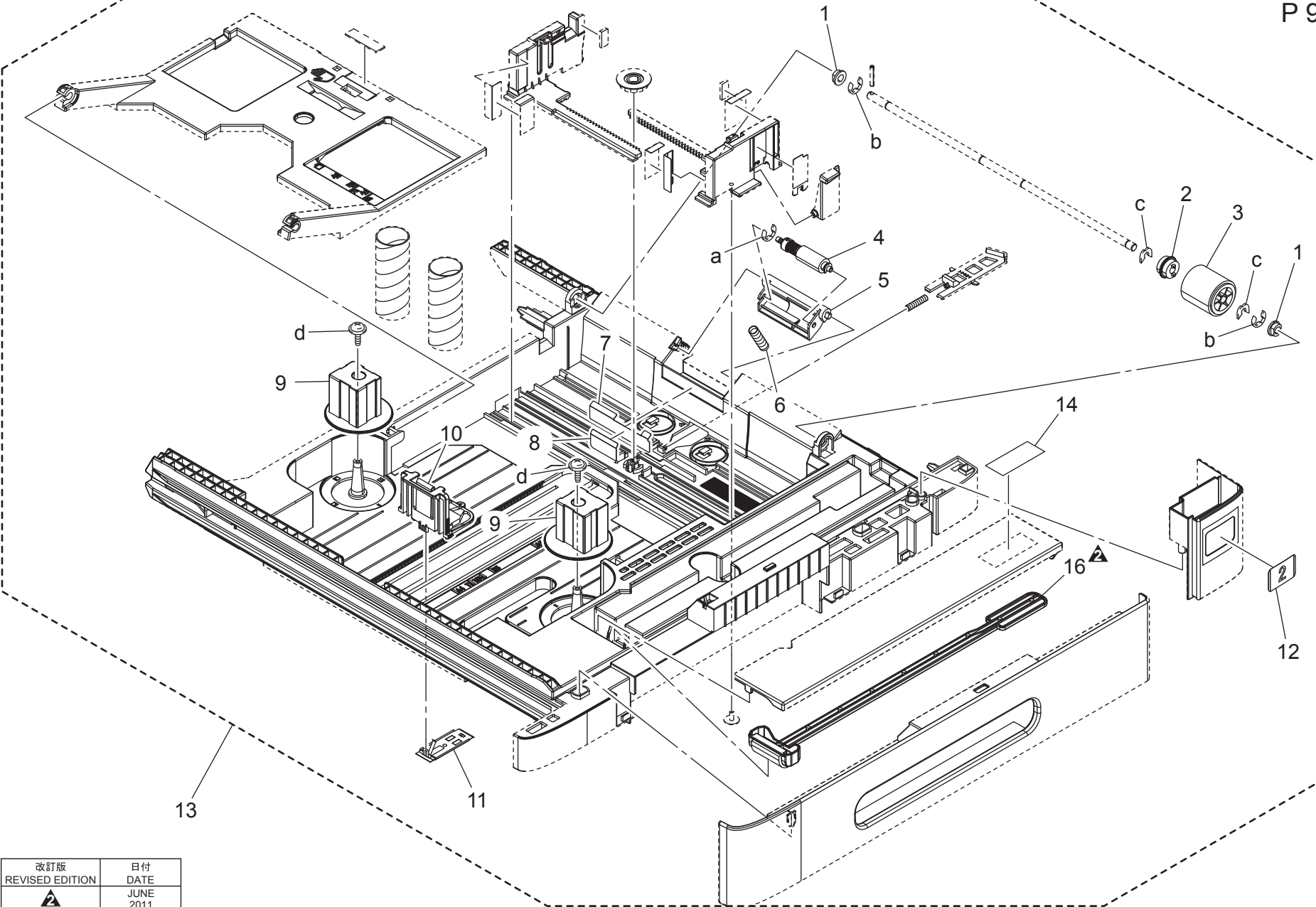
PRINT HEAD SECTION

P 8

改訂版 REVISED EDITION	日付 DATE
▲	SEPTEMBER 2010

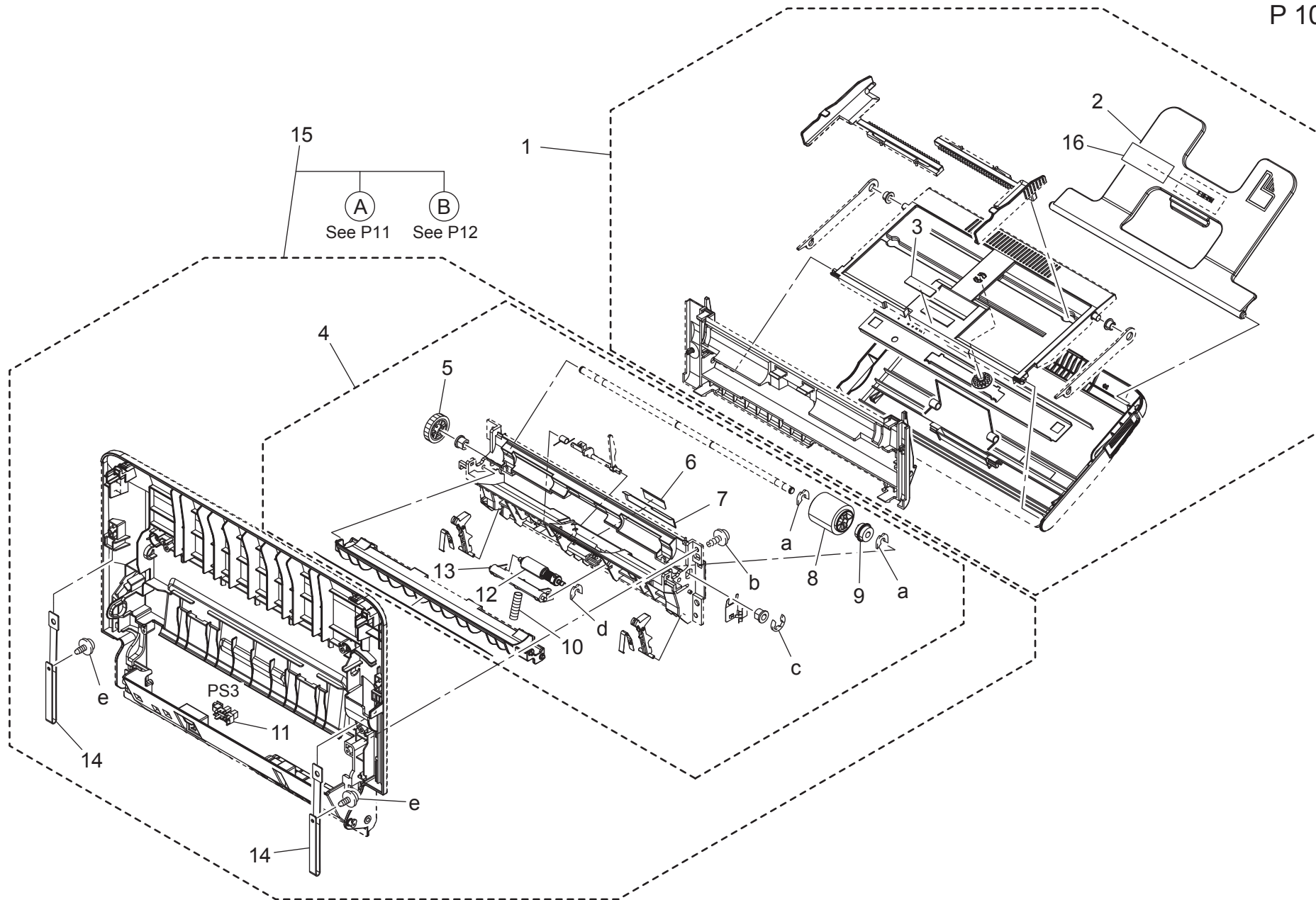


CASSETTE SECTION



改訂版 REVISED EDITION	日付 DATE
	JUNE 2011

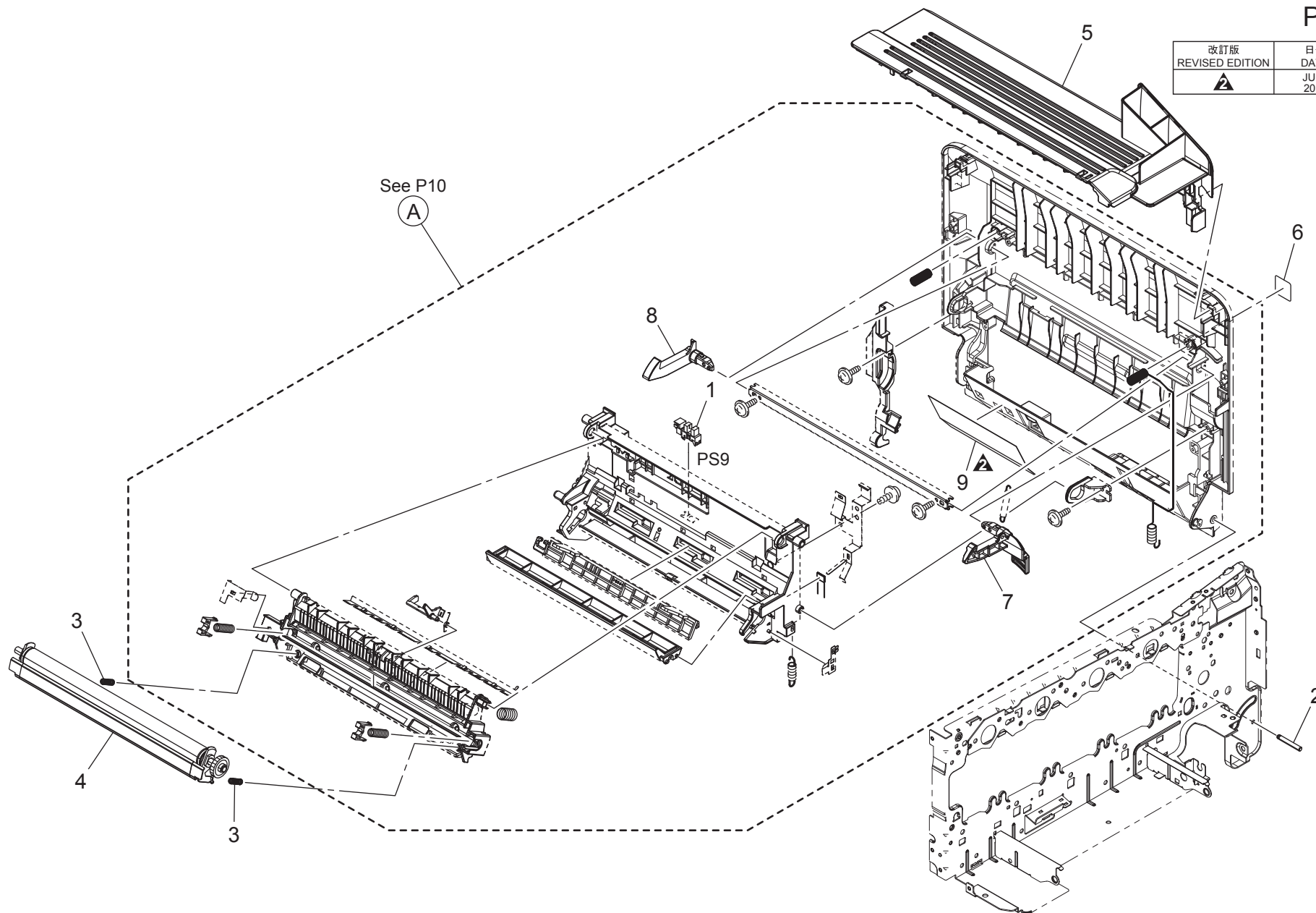
VERTICAL CONVEYANCE SECTION



VERTICAL CONVEYANCE SECTION

P 11

改訂版 REVISED EDITION	日付 DATE
	JULY 2011

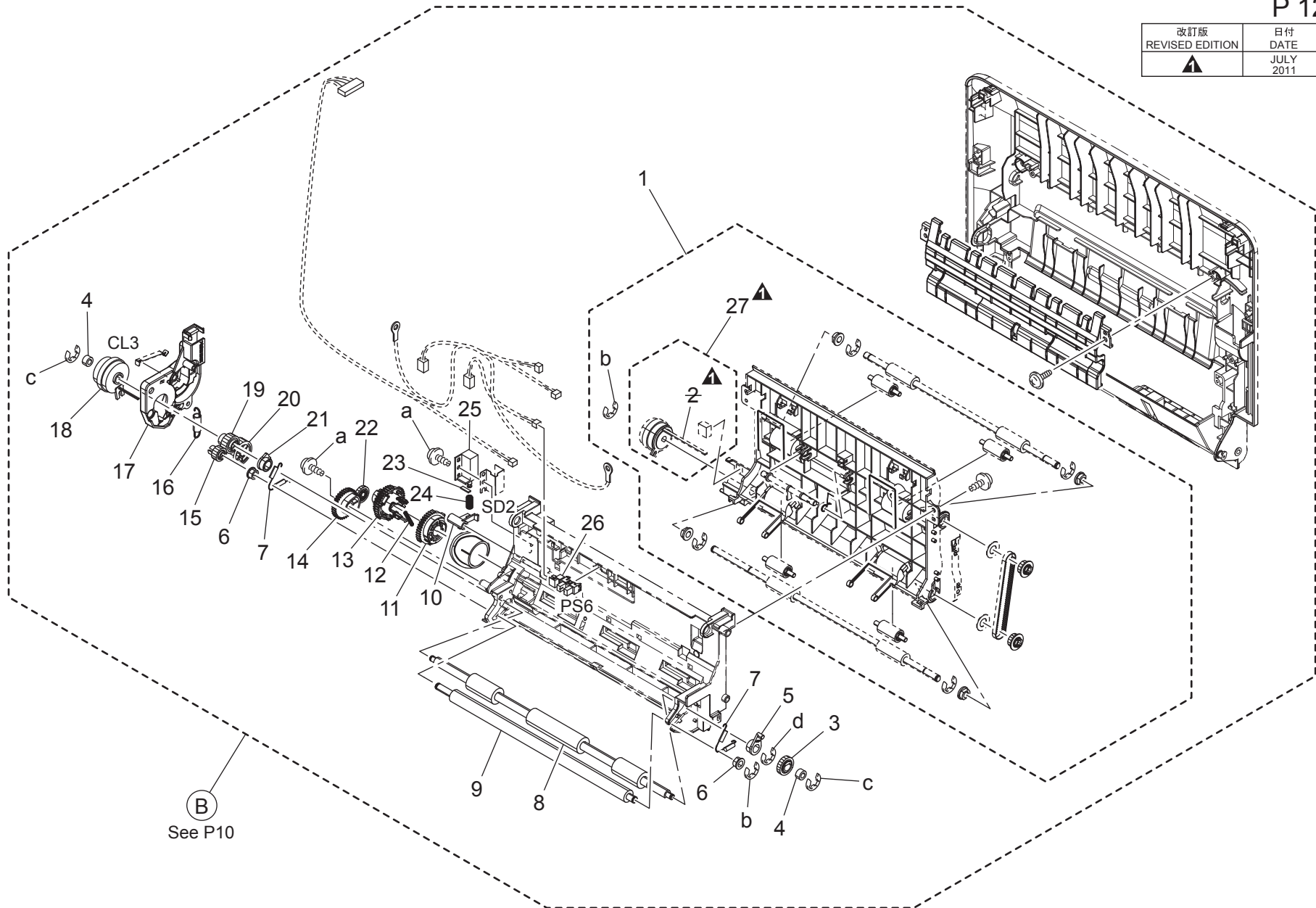


VERTICAL CONVEYANCE SECTION

Key	Part No.	Description	Destinations	Class	QTY	Standard parts
1	A108M50100	Photointerrupter		B	1	
2	A0VD162101	Shaft		D	1	
3	A0VD701701	Compressing Spring		C	2	
4	A1480Y2	2nd Transfer Roller		A	1	
5	A121160603	Cover		D	1	
6	A121943100	Label 1		D	1	
7	A0VD163600	Lever /Front		D	1	
8	A0VD163400	Lever /Rear		D	1	
9	A0VD161600	Guide		D	1	

VERTICAL CONVEYANCE SECTION

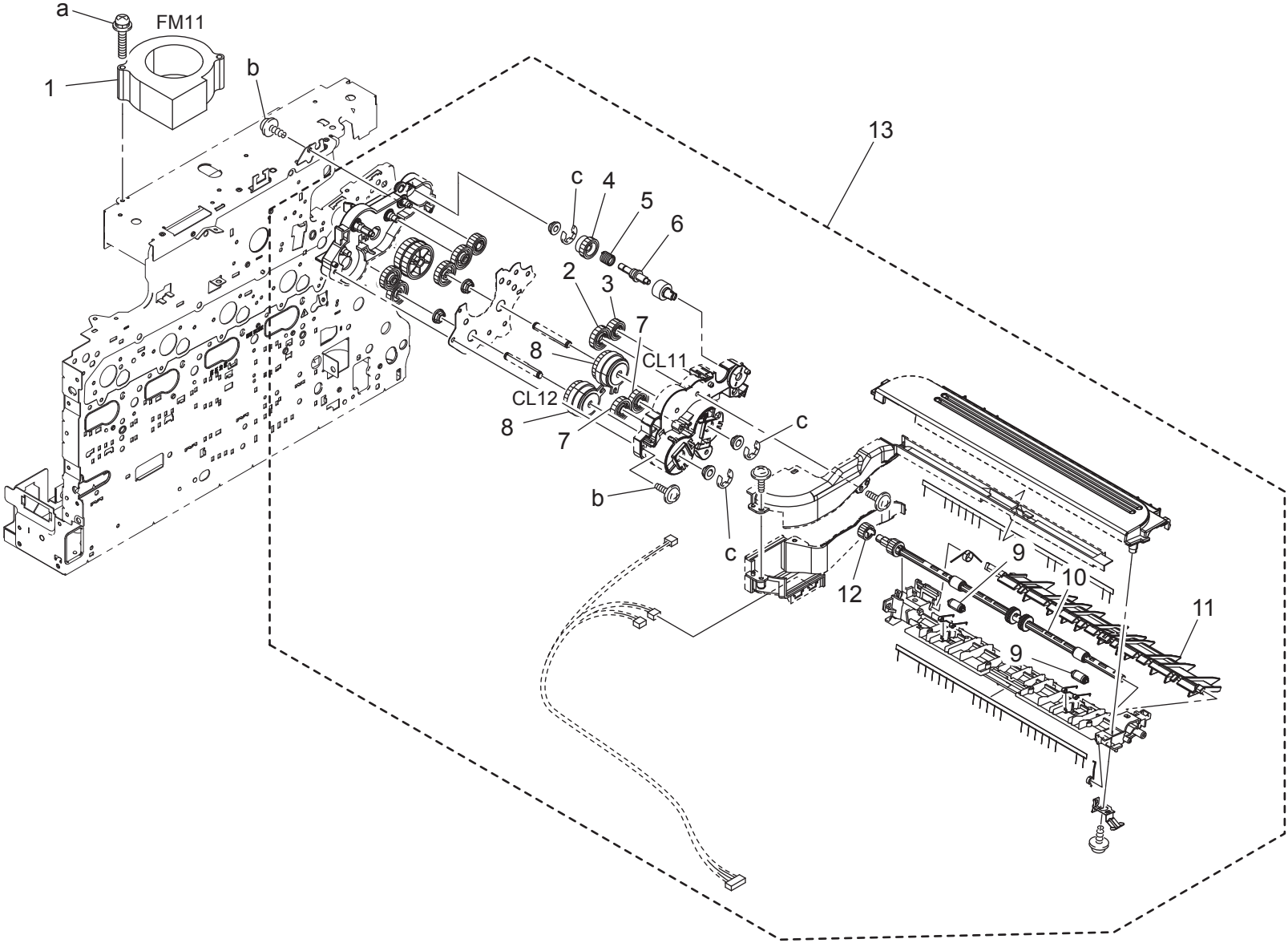
改訂版 REVISED EDITION	日付 DATE
▲	JULY 2011




VERTICAL CONVEYANCE SECTION

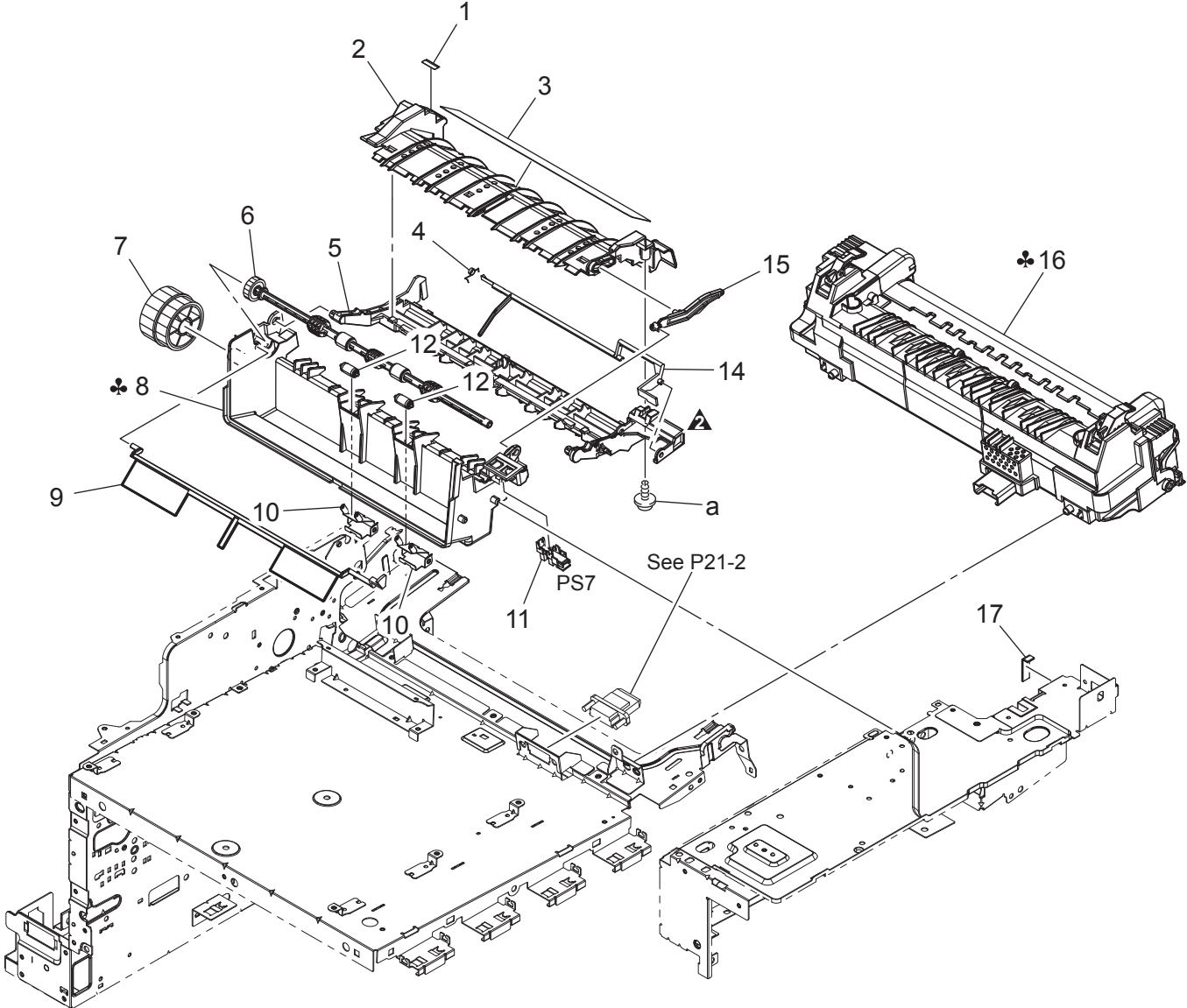
Key	Part No.	Description	Destinations	Class	QTY	Standard parts
1	A0VDR71711	DUP Transport Assy	DUP 搬送 ASSY	C	1	a-V153030803 b-V217040001 c-V217030001 d-V217060001
3	A0VD235301	Gear 16T	ギア 16 T	C	1	
4	4138352802	ROLL	ころ	C	2	
5	A0VD702300	Bushing	すべり軸受	D	1	
6	4138353202	BUSHING	軸受	C	2	
7	A0VD702501	Pulling Coil spring	引張りコイルばね (TR 圧接 SP)	D	2	
8	A0VD702101	Roller	ローラ (TR 駆動)	D	1	
9	A0VD702902	Roller	ローラ (TR 従動)	D	1	
10	A0VD704700	Lever	レバー (ソレノイド ONOFF 用)	D	1	
11	A0VD704400	Gear 32T	ギア 32 T	D	1	
12	A034563800	Compressing Spring	圧縮ばね (欠歯)	D	1	
13	A0VD704300	Gear 35/42T	ギア 35 / 42 T	D	1	
14	A0VD705101	Gear 35T	ギア 35 T	D	1	
15	A0VD703001	Gear 15T	ギア 15 T	D	1	
16	A0VD703700	Pulling Coil spring	引張りコイルばね (ユニット引込用)	D	1	
17	A0VD705303	Mounting Plate	取付板	D	1	
18	A011M20000	CLUTCH	クラッチ	C	1	
19	A0VD703501	Gear 20T	ギア 20 T	D	1	
20	A0VD704900	Gear 28T	ギア 28 T	D	1	
21	A0VD702400	Bushing	すべり軸受	D	1	
22	A0VD705200	Gear 18T	ギア 18 T	D	1	
23	A034214000	Seal	シール (レバー・消音)	D	1	
24	A034213400	Compressing Spring	圧縮ばね (SL04)	D	1	
25	A034M20000	Paperfeed Solenoid	給紙ソレノイド	C	1	
26	A108M50100	Photointerrupter	透過型センサ	B	1	
27	A0VDR90700	Clutch Kit	クラッチキット	C	1	

DUP REVERSE DRIVE SECTION

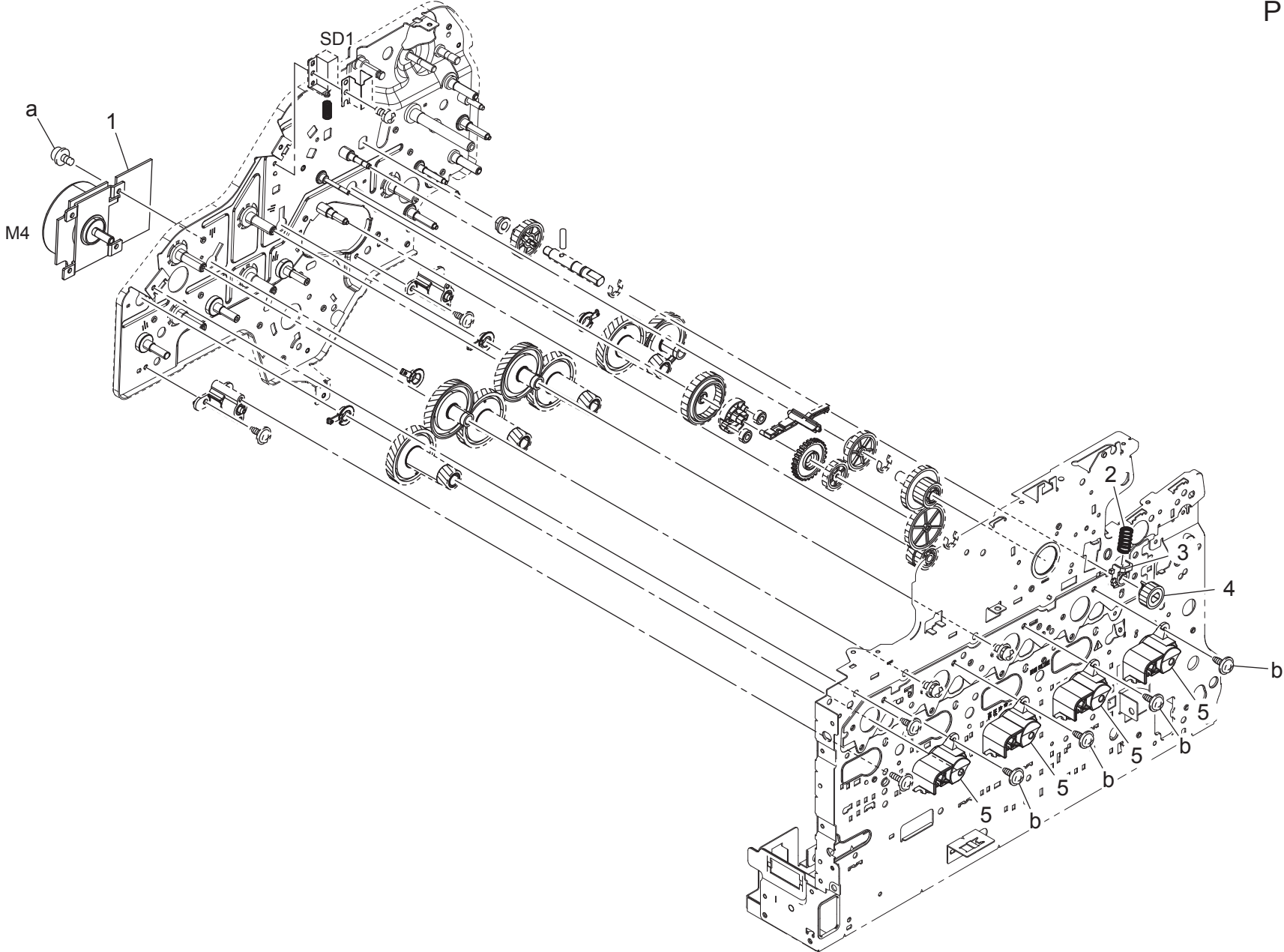


FUSING SECTION

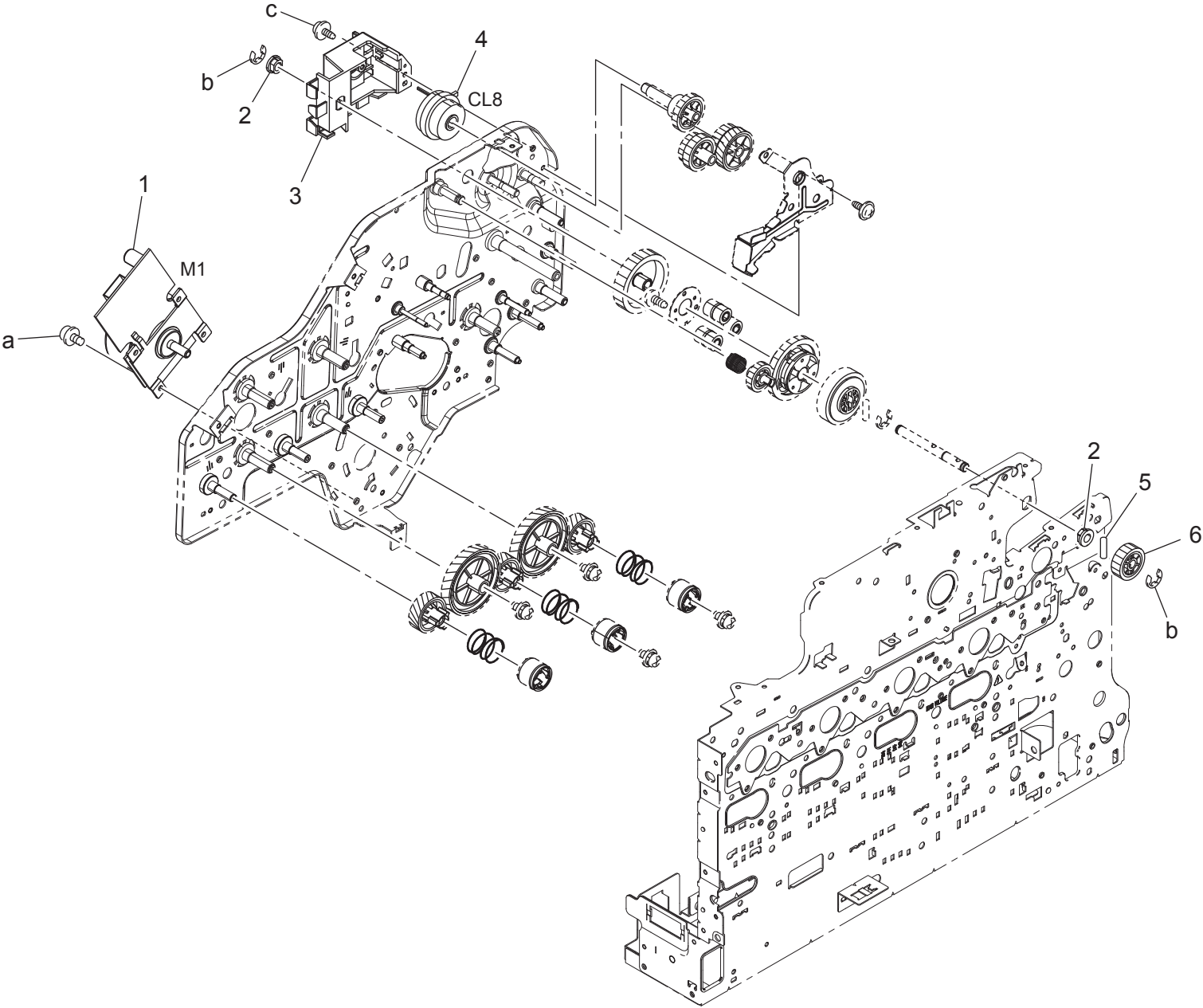
改訂版 REVISED EDITION	日付 DATE
	NOVEMBER 2010



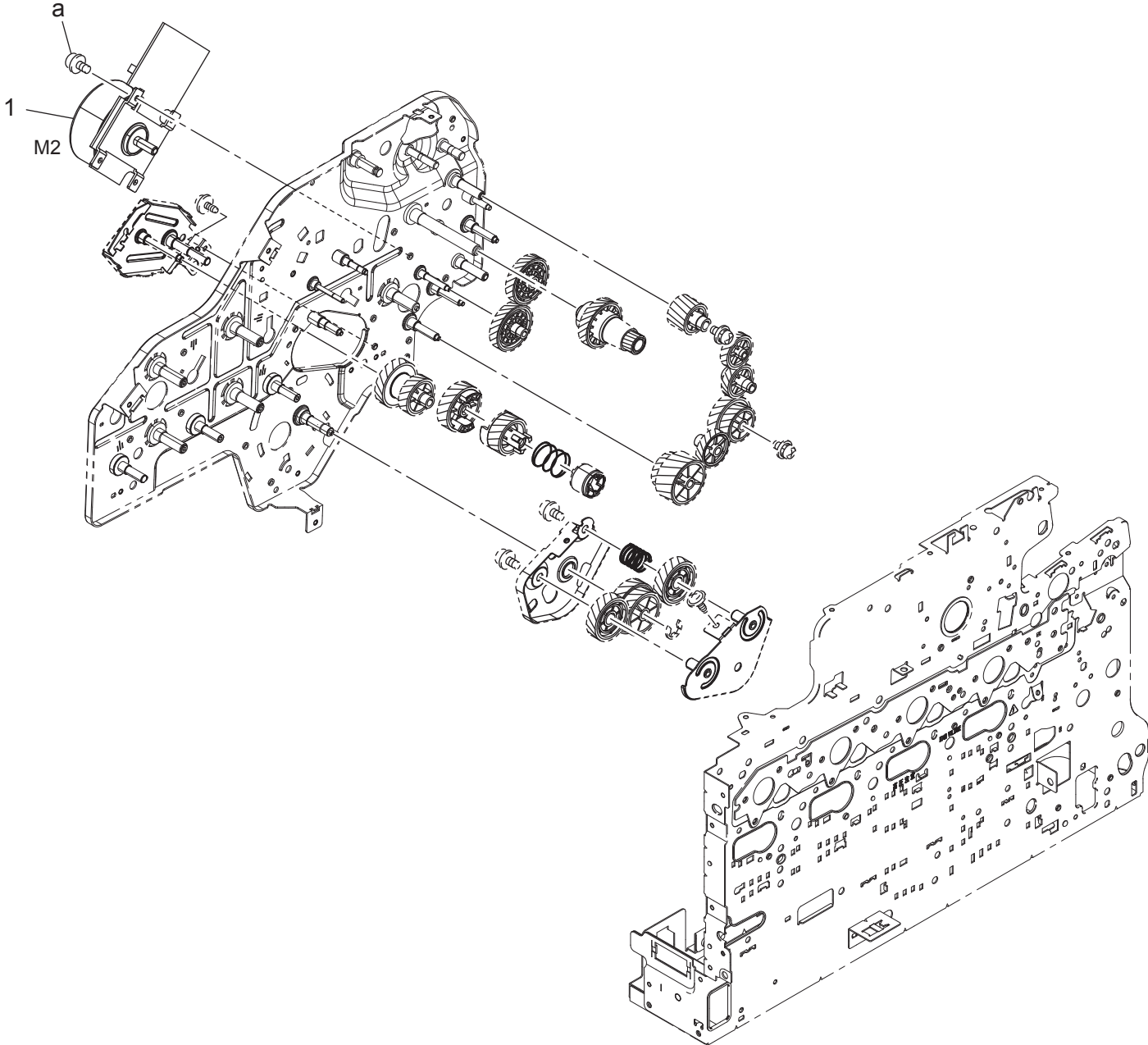
MAIN DRIVE SECTION



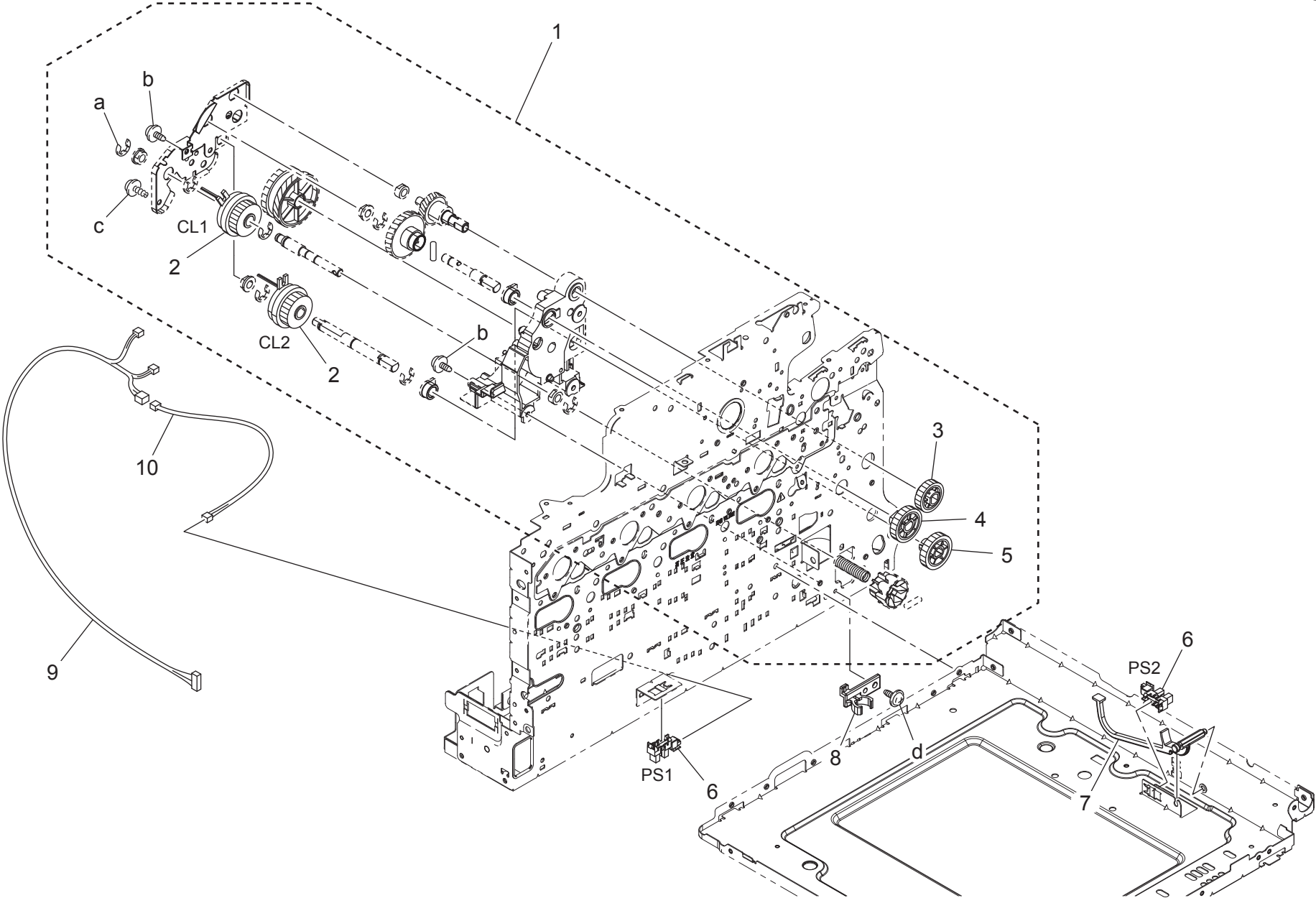
MAIN DRIVE SECTION




MAIN DRIVE SECTION

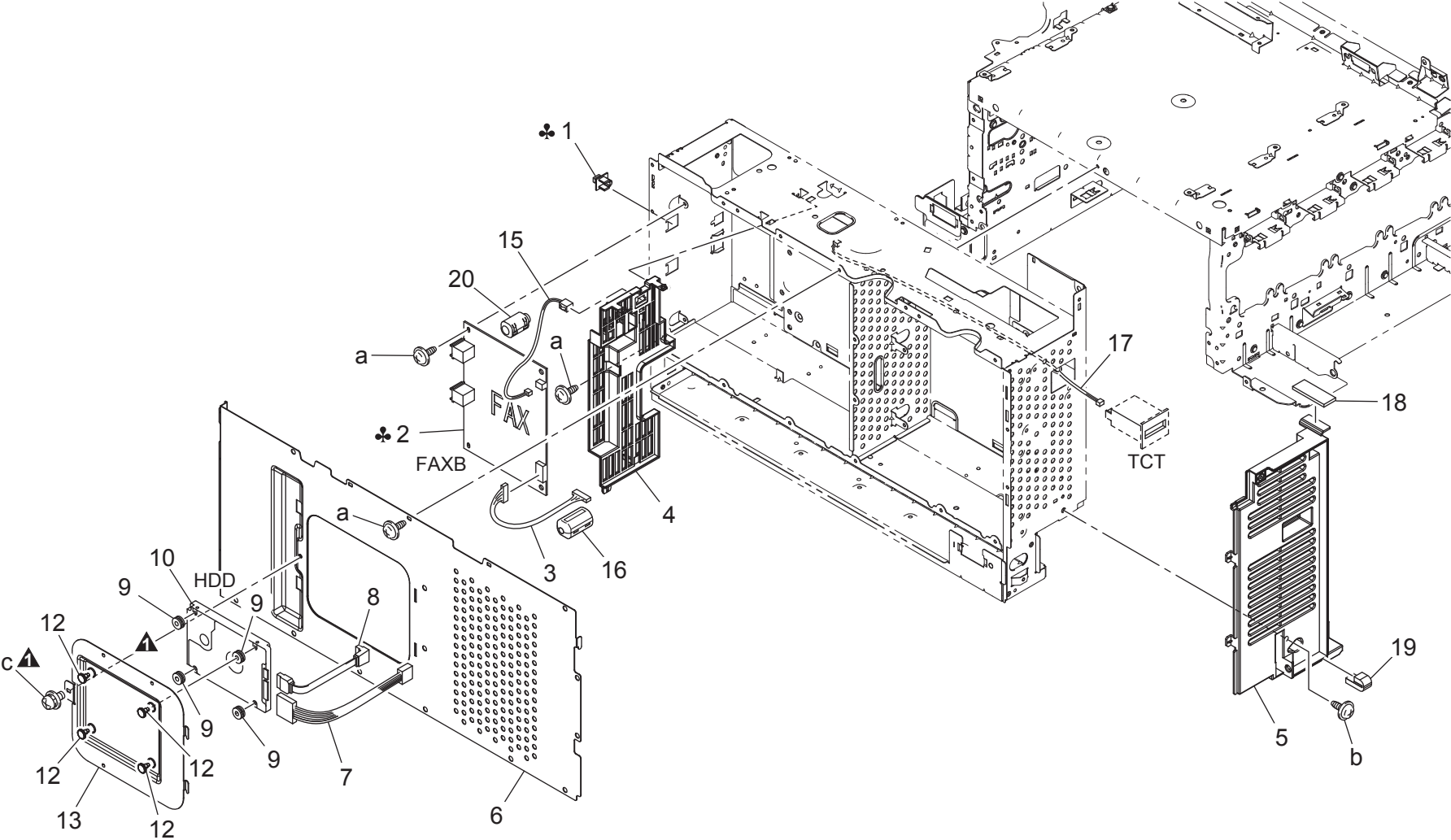


PAPER FEED DRIVE SECTION



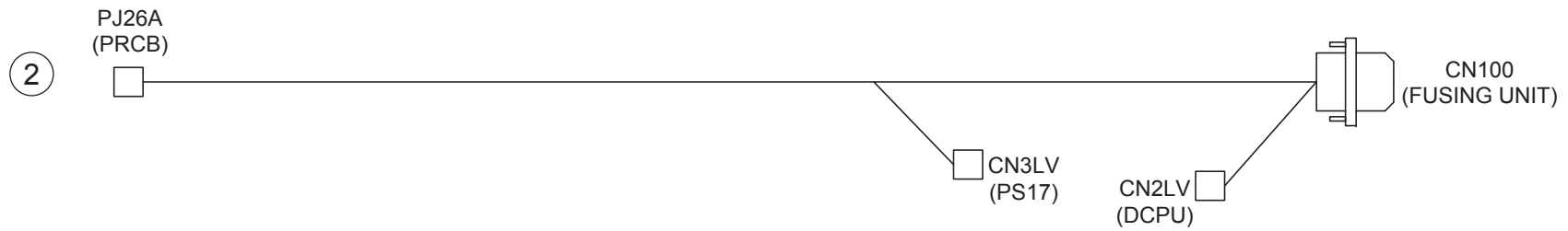
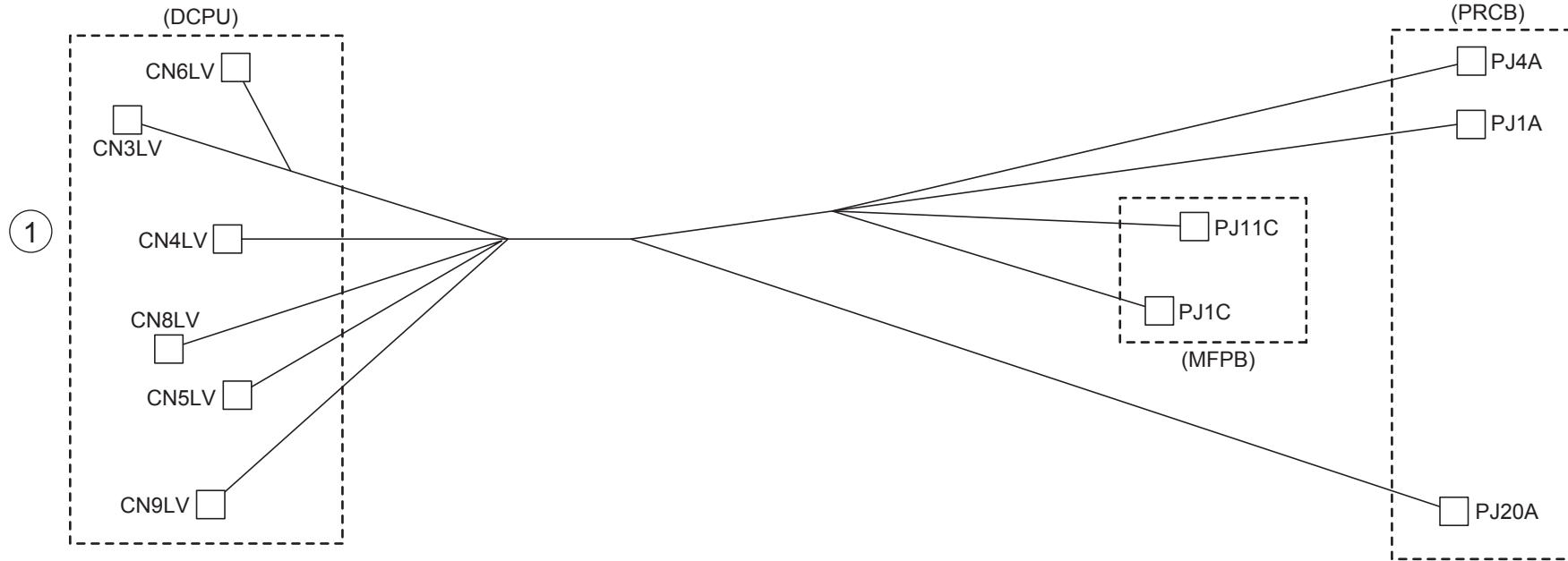
ELECTRICAL COMPONENTS

改訂版 REVISED EDITION	日付 DATE
	DECEMBER 2010

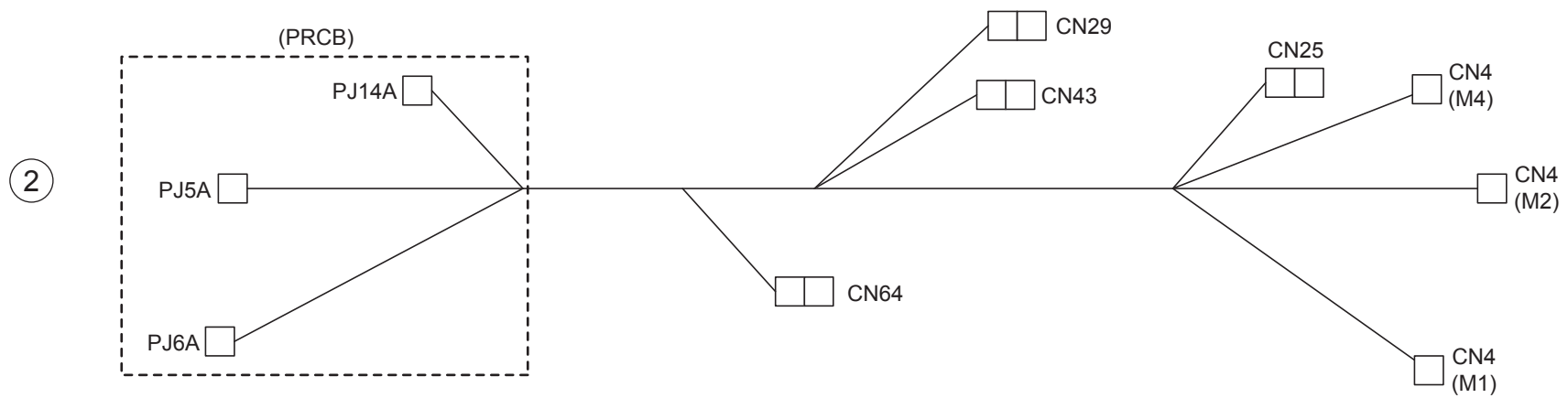
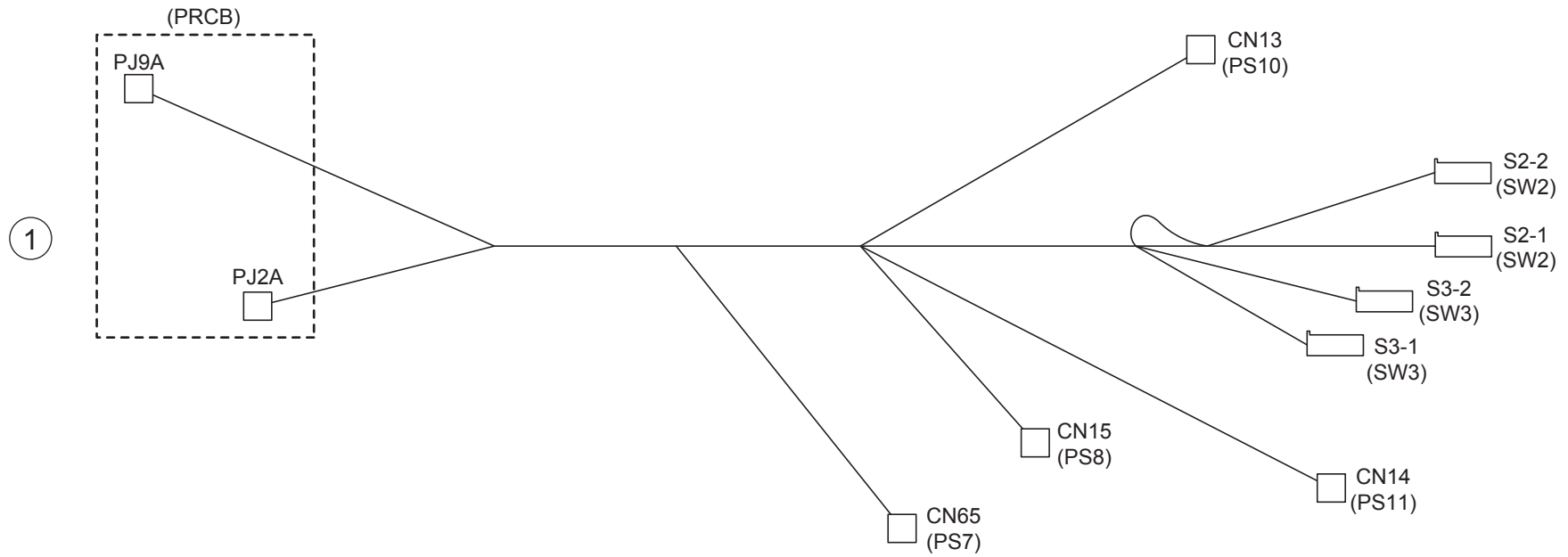


WIRING

P 21

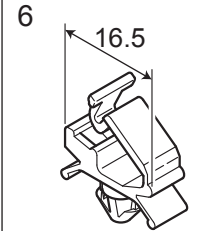
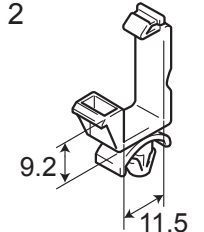
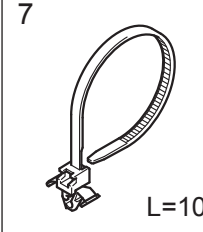
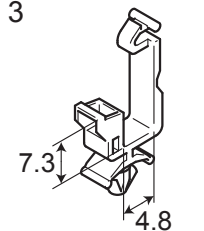
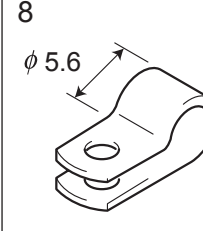
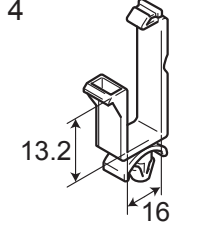
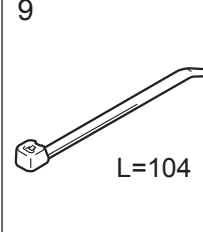
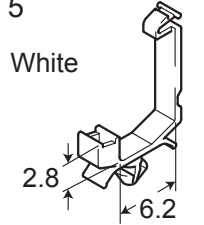


WIRING



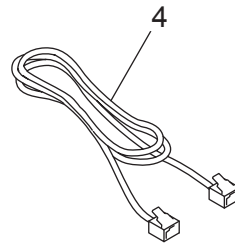
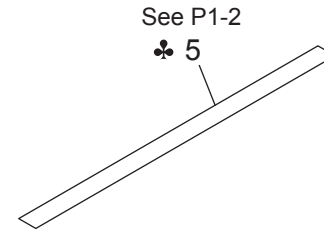
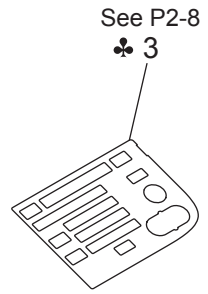
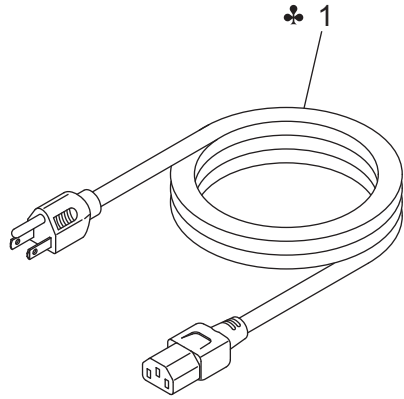
WIRING ACCESSORIES AND JIGS

P 23

1 	6 	11	16	21	26	31	36
2 	7 	12	17	22	27	32	37
3 	8 	13	18	23	28	33	38
4 	9 	14	19	24	29	34	39
5 White 	10	15	20	25	30	35	40

Key	Part No.	Description	Destinations	Class	QTY	Standard parts
1	V500010003	Saddle		D		
2	V500010005	saddle		D		
3	V500010020	Saddle		D		
4	V500010008	saddle		D		
5	V500010046	saddle		D		
6	V500010061	saddle		D		
7	V501010018	BAND		D		
8	V500020018	clamp		D		
9	V501010001	band		D		

ACCESSORY PARTS



ACCESSORY PARTS

Key	Part No.	Description	Destinations	Class	QTY	Standard parts
1	A0VDN30200	Power code	電源コード (国内)	C	1	
1	A0VDN30100	Power code	電源コード (北米)	C	1	
1	A0VDN30000	Power code	電源コード (欧州)	C	1	
1	9381430041	POWER CORD	プラグなし電源コード	C	1	
1	9381430031	POWER CORD	プラグ付電源コード	D	1	
2	9326181051	FERRITE CORE	フェライトコア	D	1	
3	A121950100	Sheet English	シート (パネル・海外 / MFP)	C	1	
3	A121950200	Sheet French	シート (パネル・フランス語 / MFP)	C	1	
3	A121950300	Sheet Portuguese	シート (パネル・ポルトガル語 / MFP)	C	1	
3	A121950500	Sheet Spanish	シート (パネル・スペイン語 / MFP)	C	1	
3	A121950700	Sheet Korean	シート (パネル・韓国語 / MFP)	C	1	
4	4628680101	WIRE HARNESS ASSY	ハーネス ASSY	D	1	
5	A121944700	Label Prohibit	ラベル (コピー禁止事項・E)	C	1	

MAINTENANCE LIST

● The items with no Page/Key numbers are not handled as spare parts.

No.	Section	PM Parts Description	Maintenance Cycle (K=1,000)		Parts No.	Destinations	Page/Key	Note
			QTY	Replace				
1	Processing section	Imaging unit (C,M,Y,K)	1	30k	-			Continuous printing
2		Imaging unit (C,M,Y,K)	1	20k	-			2P/J *1
3		Standard in-box toner cartridge (C,M,Y,K)	1	2k	-			Continuous printing
4		High-capacity toner cartridge (C,M,Y,K)	1	6k	-			Continuous printing
5	Image transfer section	Waste toner bottle (WB-P03)	1	36k	A1AU0Y1		P8-17	(monochrome) Continuous printing
6		Waste toner bottle (WB-P03)	1	9k	A1AU0Y1		P8-17	(full color) Continuous printing
7		Transfer roller (TF-P04)	1	100k	A1480Y2		P11-4	2P/J *1
8		Transfer belt unit (TF-P05)	1	100k	A1480Y1		P5-5	2P/J *1
9	Fusing section	Fuser unit (FU-P02)	1	100k	A148001	100V	P14-16	2P/J *1
10		Fuser unit (FU-P02)	1	100k	A148011	120V	P14-16	2P/J *1
11		Fuser unit (FU-P02)	1	100k	A148021	230V	P14-16	2P/J *1
12	Tray1 (Manual feed tray)	Tray1 feed roller	1	300K	4138303202		P10-8	
13	Tray2	Tray2 feed roller	1	300K	4138303202		P9-3	

*1: 2pages/job

メンテナンスリスト

● ページ / キーナンバーのないものは、アフターサービス部品ではありません。

No.	区分	PM 部品名称	サイクル (K=1,000)		部品番号	仕向地	頁 / キー	備考
			員数	交換				
1	プロセス部	イメージングユニット (C, M, Y, K)	1	30k	-			連続プリント 2 P / J *1
2		イメージングユニット (C, M, Y, K)	1	20k	-			
3		同梱トナーカートリッジ (C, M, Y, K)	1	2k	-			
4		大容量トナーカートリッジ (C, M, Y, K)	1	6k	-			
5	転写部	廃トナーボトル (WB?P 03)	1	36k	A1AU0Y1		P8-17	(モノクロ) 連続プリント (フルカラー) 連続プリント
6		廃トナーボトル (WB?P 03)	1	9k	A1AU0Y1		P8-17	
7		転写ローラー (TF?P 04)	1	100k	A1480Y2		P11-4	
8		転写ベルト (TF?P 05)	1	100k	A1480Y1		P5-5	
9	定着部	定着ユニット (FU?P 02)	1	100k	A148001	100V	P14-16	2 P / J *1
10		定着ユニット (FU?P 02)	1	100k	A148011	120V	P14-16	
11		定着ユニット (FU?P 02)	1	100k	A148021	230V	P14-16	
12	トレイ 1 (手差しトレイ)	給紙ローラー	1	300K	4138303202		P10-8	
13	トレイ 2 (標準トレイ)	給紙ローラー	1	300K	4138303202		P9-3	

*1: 2 ページプリント / ジョブ

DESTINATION

Destination No.		Destinations		V	Hz	Model No.
A	A1	JAPAN		100	50/60	A121001
	A2	JAPAN				
B		USA, CANADA		120	60	A121011
C		EUROPEAN TYPE		220-240	50/60	A121021
D	D1	S.E ASIA TYPE	THAILAND, SRI LANKA, SINGAPORE, MALAYSIA, HONG KONG, PAKISTAN, INDIA, BANGLADESH, INDONESIA	220-240	50/60	A121041
	D3	OCEANIA TYPE	AUSTRALIA, NEW ZEALAND	220-240	50/60	A121041
E		PHILIPPINES				
F	F1	SAUDI ARABIA		127	60	A121011
	F2	SAUDI ARABIA		220-240	50/60	A121041
G	G1	C.S AMERICA		220-240	50/60	A121041
	G2	C.S AMERICA		120	60	A121011
H		TAIWAN		110	60	A121011
I		JORDAN, LEBANON, SYRIA, SOUTH AFRICA, IRAQ, IRAN, N.YEMEN, CAMEROON, UAE, BAHRAIN, OMAN, QATAR, KUWAIT, KENYA, TUNISIA, IVORY COAST, MOROCCO		220-240	50/60	A121041
J		CHINA		220-240	50/60	A121081
K		KOREA		220-240	50/60	A121041