

5 Parts Lists

PL 1 - Standby Power

PL 1.10 Power and Control Assembly 5-3

PL 2 - User Interface

PL 2.10 User Interface 5-4

PL 4 - Main Frame, Covers and Drives

PL 4.15 Main Frame Assembly 5-5

PL 4.20 Drives Assembly 5-6

PL 5 - DADF

PL 5.10 DADF Assembly (1 of 4) 5-7

PL 5.15 DADF Assembly (2 of 4) 5-8

PL 5.20 DADF Assembly (3 of 4) 5-9

PL 5.25 DADF Assembly (4 of 4) 5-10

PL 6 - Imaging

PL 6.10 LSU 5-11

PL 7 - Paper Supply

PL 7.10 Tray 1 - 4 Cassette Assembly 5-12

PL 7.15 Tray 1 Frame Assembly (1 of 2) 5-13

PL 7.17 Tray 1 Frame Assembly (2 of 2) 5-14

PL 7.20 Trays 2 - 4 Frame Assembly (1 of 2) 5-15

PL 7.25 Trays 2 - 4 Frame Assembly (2 of 2) 5-16

PL 7.30 Bypass Tray and Side Cover Assembly (1 of 3) 5-17

PL 7.35 Bypass Tray and Side Cover Assembly (2 of 3) 5-18

PL 7.40 Bypass Tray and Side Cover Assembly (3 of 3) 5-19

PL 8 - Paper Transport

PL 8.10 Tray 1-4 Feed Assembly 5-20

PL 8.15 Registration Guide Assembly 5-21

PL 8.20 Paper Transport Assembly 5-22

PL 9 - Xerographics

PL 9.10 Toner and Xerographic modules 5-23

PL 10 - Fusing and Copy/Print Transport

PL 10.10 Fuser and Exit Assemblies 5-24

PL 10.15 Exit Assembly 5-25

PL 10.20 Exit Drive 5-26

PL 10.25 Fuser (1 of 2) 5-27

PL 10.26 Fuser (1 of 2) 5-28

PL 12 - Finisher

PL 12.10 Finisher frame 5-29

PL 12.15 Duplex and Entry Components 5-30

PL 12.20 Compiler and Exit Components 5-31

PL 12.25 Support Finger Assembly 5-32

PL 12.30 Jogger and Paddle Assembly 5-33

PL 12.35 Stapler Assembly 5-34

PL 12.40 Ejector Assembly 5-35

PL 12.45 Stacker Assembly 5-36

PL 12.50 Finisher Assembly 5-37

PL 14 - Scanner

PL 14.10 Scanner Module and CVT/Document Glass 5-38

PL 20 - Fax

PL 20.10 FAX Assembly 5-39

PL 26 - Consumables and Tools

PL 26.10 Consumables and Tools 5-40

PL 28 - Main Covers

PL 28.10 Covers 5-41

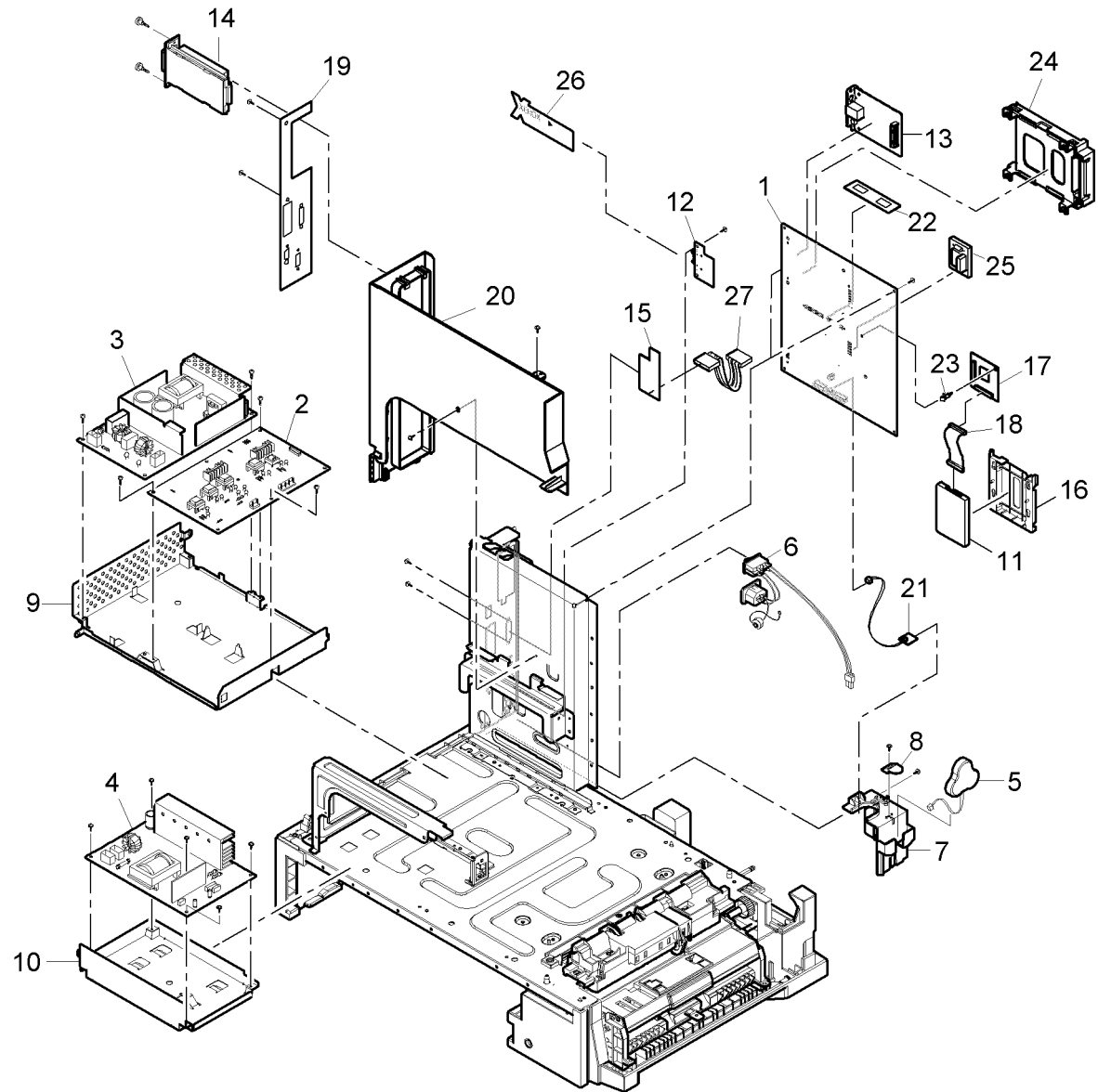
PL 31 - Maintenance/Installation/Removal Kits

PL 31.10 Maintenance/Installation/Removal Kits 5-42

Part Number Index 5-43

PL 1.10 Power and Control Assembly

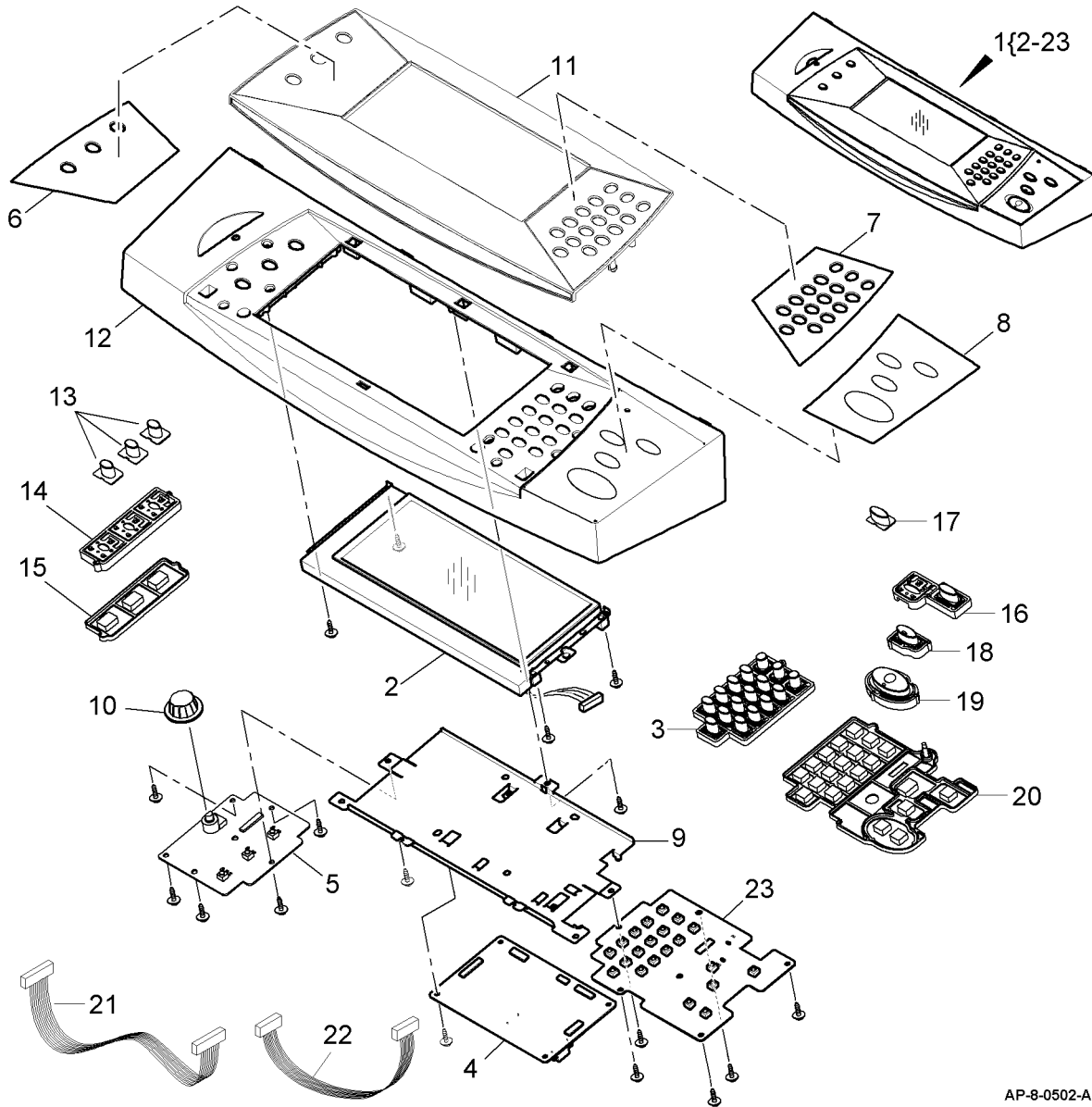
Item	Part	Description
1	140N63141	Main PWB (REP 1.2)
2	105N02092	HVPS (REP 1.1)
3	105N02091	Power supply unit (1) 220V (XE) (REP 1.1)
-	105N02090	Power supply unit (1) 110V (USSG/XC) (REP 1.1)
4	112N00221	Power supply unit (2) (XE) (REP 1.3)
-	112N00220	Power supply unit (2) (USSG/XC) (REP 1.3)
5	105N02093	Battery
6	152N11705	Main power socket
7	-	Cover (Not Spared)
8	-	Battery retainer (Not Spared)
9	-	Support cage (Not Spared)
10	-	Support cage (Not Spared)
11	005N01086	HDD
12	101N01387	SIM PWB
13	101N01388	NIC PWB
14	-	FAX module (REF: PL 20.10 Item 6)
15	-	Foreign device interface PWB (P/O PL 31.10 Item 2)
16	-	HDD cover (Not Spared)
17	140N63205	HDD PWB
18	152N11731	HDD harness
19	-	Infill cover (REF: PL 28.10 Item 5)
20	-	Rear exit cover (REF: PL 28.10 Item 8)
21	140N62870	Ambient temperature sensor
22	144N00138	Memory DIMM (128Mb)
-	144N00139	Memory DIMM (256 Mb)
23	-	Stand off (Not Spared)
24	019N00909	FAX holder
25	-	MSOK (Not Spared)
26	-	OSOK (Not Spared)
27	-	Foreign device interface harness (P/O PL 31.10 Item 2)



AP-8-0500-A

PL 2.10 User Interface

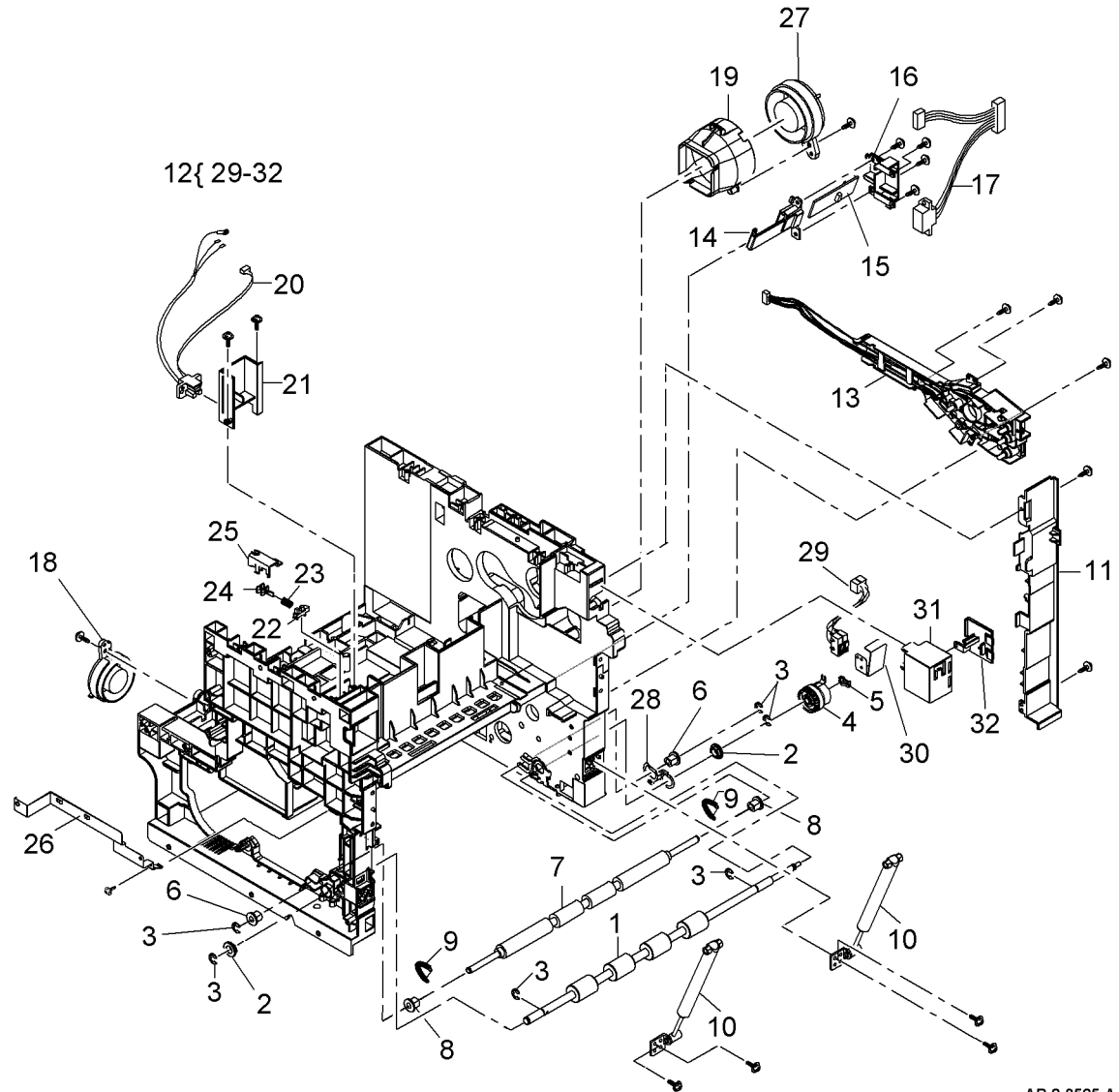
Item	Part	Description
1	002N02562	User interface assembly (supplied without labels, item 6, item 7 and item 8) (REP 2.1)
-	002N02621	User interface assembly (supplied with labels in English, item 6, item 7 and item 8) (REP 2.1)
2	123N00244	Touch screen
3	003N01009	Numerical key matrix
4	140N63147	User interface PWB
5	140N63146	Left keys PWB
6	101N01396	Status label (International)
-	101N01390	Status label (English)
-	101N01393	Status label (French)
7	101N01397	Numerical label (International)
-	101N01391	Numerical label (English)
-	101N01394	Numerical label (French)
8	101N01398	Start label (International)
-	101N01392	Start label (English)
-	101N01395	Start label (French)
9	-	Cover (P/O PL 2.10 Item 1)
10	003N01007	Contrast control knob
11	002N02578	UI inlay
12	-	UI housing (P/O PL 2.10 Item 1)
13	123N00243	Job status key
14	003N01006	Job status key pad
15	003N01008	Left hand PWB membrane
16	018N00194	All clear key
17	029N00351	Interrupt key
18	029N00352	Stop key
19	029N00353	Start key
20	003N01010	Right PWB membrane
21	152N11712	Left keys PWB harness
22	152N11713	Right keys PWB harness
23	140N63145	Right keys PWB



AP-8-0502-A

PL 4.15 Main Frame Assembly

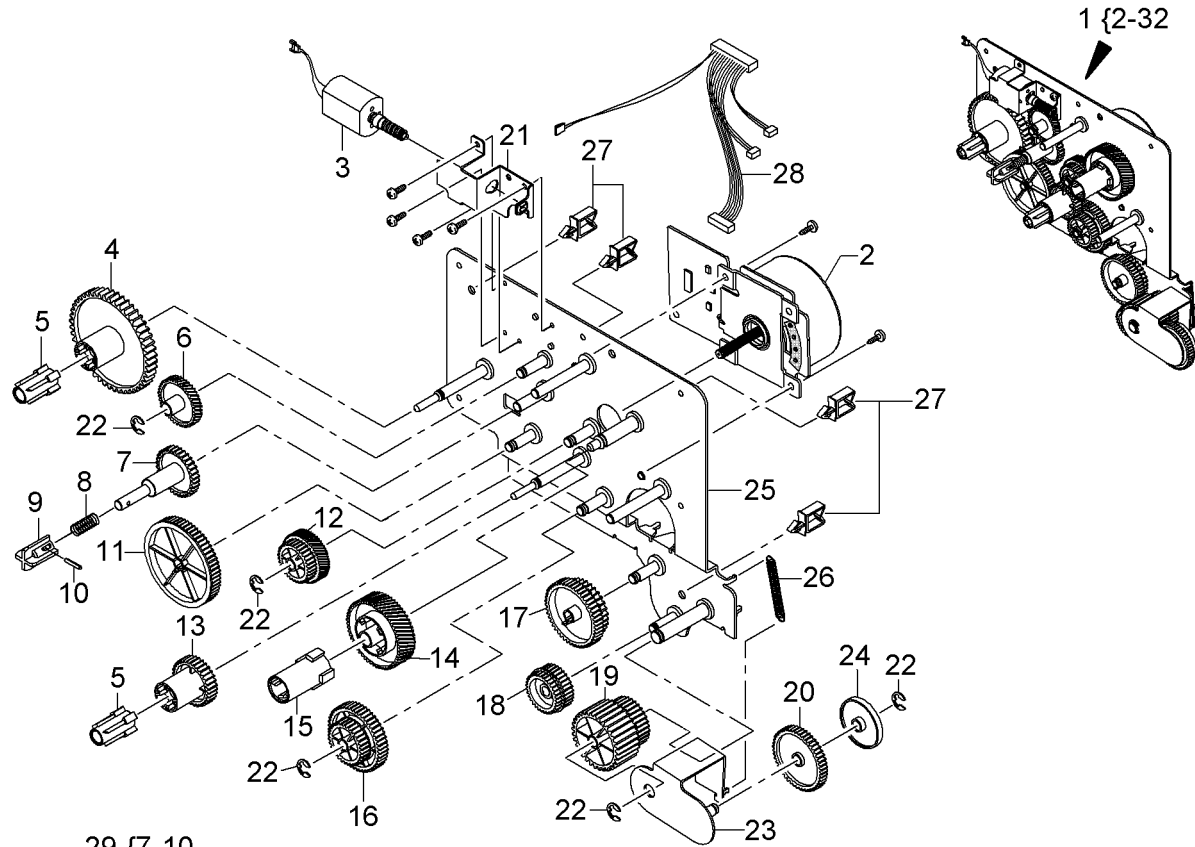
Item	Part	Description
1	022N02229	Registration roll (REP 8.2)
2	016N00293	Bearing (REP 8.2)
3	-	E-Clip (Not Spared)
4	005N01085	Registration clutch (CL08-850)
5	-	KL-Clip (Not Spared)
6	016N00294	Bearing (REP 8.2)
7	022N02271	Registration idler roll (REP 8.2)
8	-	Bearing (Not Spared)
9	-	Tension spring (Not Spared)
10	004N00245	Damper
11	-	Infill panel (Not Spared)
12	002N02622	Side cover interlock switch assembly (S01-100)
13	115N00861	Terminal assembly (REP 9.3)
14	-	Housing CRUM PWB (Not Spared)
15	113N01303	CRUM PWB (REP 9.2)
16	-	Cover CRUM PWB (Not Spared)
17	152N11706	Xerographic module connector (REP 9.2)
18	127N07487	SMPS fan (09-500)
19	-	Duct (Not Spared)
20	152N11732	Fuser connector (REP 10.6)
21	-	Retainer (Not Spared)
22	130N01274	Exit cover present sensor
23	-	Spring (Not Spared)
24	-	Actuator (Not Spared)
25	-	Sensor cover (Not Spared)
26	-	Xerographic module, ground connector (Not Spared)
27	127N07485	Fuser fan (10-500)
28	-	Ground clip (Not Spared)
29	002N02571	Side cover interlock switch (S01-100)
30	-	Side cover interlock switch actuator (P/O PL 4.15 Item 12)
31	-	Side cover interlock switch housing (P/O PL 4.15 Item 12)
32	-	Side cover interlock switch panel (P/O PL 4.15 Item 12)



AP-8-0525-A

PL 4.20 Drives Assembly

Item	Part	Description
1	002N02556	Main drive assembly (REP 4.1)
2	127N07489	Main BLDC motor (MOT 04-100)
3	007N01515	Toner dispense motor (MOT 09-600) (REP 9.1)
4	-	Agitator gear (P/O PL 4.20 Item 30)
5	-	Coupling (P/O PL 4.20 Item 30, PL 4.20 Item 31)
6	007N01500	Idler gear
7	-	Dispense idler gear (P/O PL 4.20 Item 29)
8	-	Spring (P/O PL 4.20 Item 29)
9	-	Toner coupling (P/O PL 4.20 Item 29)
10	-	Pin (P/O PL 4.20 Item 29)
11	007N01501	Agitator Idler gear
12	007N01502	Registration Idler gear (A)
13	-	Mixer gear (P/O PL 4.20 Item 31)
14	-	Xerographic module base gear (P/O PL 4.20 Item 32)
15	-	Coupling (P/O PL 4.20 Item 32)
16	007N01505	Registration Idler gear (B)
17	007N01506	Pickup idler gear (A)
18	007N01507	Bypass idler gear (A)
19	007N01508	Bypass idler gear (B)
20	007N01509	Duplex idler gear
21	-	Bracket (P/O PL 4.20 Item 1)
22	-	E-Clip (P/O PL 4.20 Item 1)
23	-	Swing bracket (P/O PL 4.20 Item 1)
24	-	Collar (P/O PL 4.20 Item 1)
25	-	Main bracket (P/O PL 4.20 Item 1)
26	-	Spring (P/O PL 4.20 Item 1)
27	-	Cable clamp (Not Spared)
28	-	Harness (P/O PL 4.20 Item 1)
29	007N01516	Toner dispense gear assembly
30	007N01499	Agitator gear assembly
31	007N01503	Mixer gear assembly
32	007N01558	Xerographic module base gear assembly

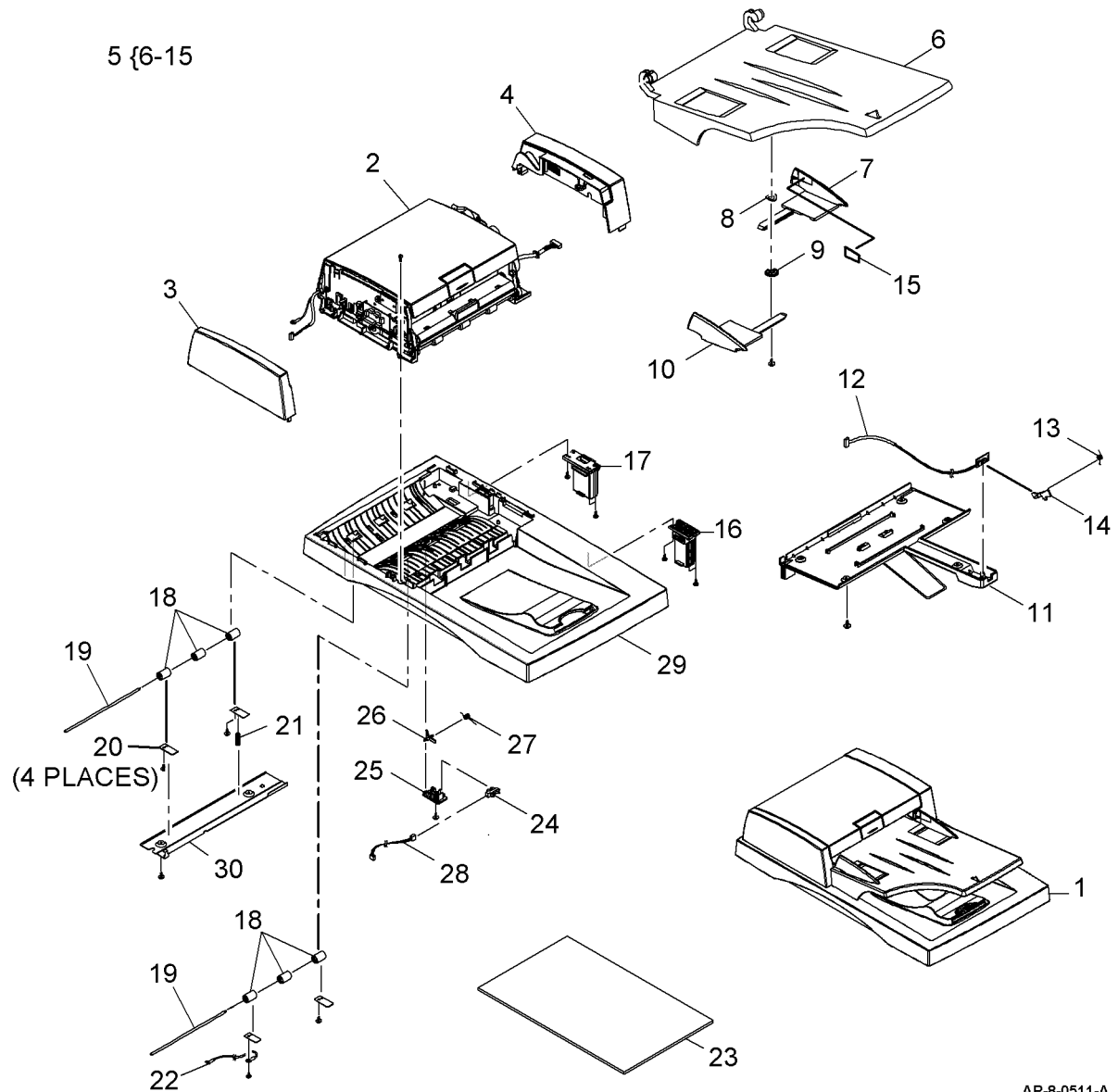


- 29 {7-10
- 30 {4-5
- 31 {5, 13
- 32 {14-15

AP-8-0505-A

PL 5.10 DADF Assembly (1 of 4)

Item	Part	Description
1	002N02558	DADF assembly (REP 5.1), (ADJ 5.1)
2	022N02280	Document transport assembly (REF: PL 5.15 Item 1) (REP 5.1)
3	-	Front cover (P/O PL 5.10 Item 1) (REP 5.1)
4	-	Rear cover (P/O PL 5.10 Item 1) (REP 5.1)
5	050N00494	Input tray assembly (REP 5.1)
6	-	Stacker tray (P/O PL 5.10 Item 5)
7	-	Document guide left (P/O PL 5.10 Item 5)
8	-	Washer (P/O PL 5.10 Item 5)
9	007N01525	Pinion gear
10	-	Document guide right (P/O PL 5.10 Item 5)
11	-	Lower cover (P/O PL 5.10 Item 5)
12	140N62867	Paper length sensor (Q05-120)
13	-	Spring (P/O PL 5.10 Item 5)
14	-	Actuator (P/O PL 5.10 Item 5)
15	091N80242	Max fill label
16	003N00967	Right counterbalance
17	003N01004	Left counterbalance
18	-	Idle roll (P/O PL 5.10 Item 1)
19	-	Idle shaft (P/O PL 5.10 Item 1)
20	-	Retaining plate (P/O PL 5.10 Item 1)
21	-	Spring (P/O PL 5.10 Item 1)
22	-	Ground harness (P/O PL 5.10 Item 1)
23	025N00081	Document pad
24	130N01274	Gate sensor (Q05-150)
25	-	Actuator cradle (P/O PL 5.10 Item 1)
26	-	Actuator (P/O PL 5.10 Item 1)
27	-	Spring (P/O PL 5.10 Item 1)
28	-	Sensor harness (P/O PL 5.10 Item 1)
29	-	Platen cover (P/O PL 5.10 Item 1)
30	-	Idler cover (P/O PL 5.10 Item 1)

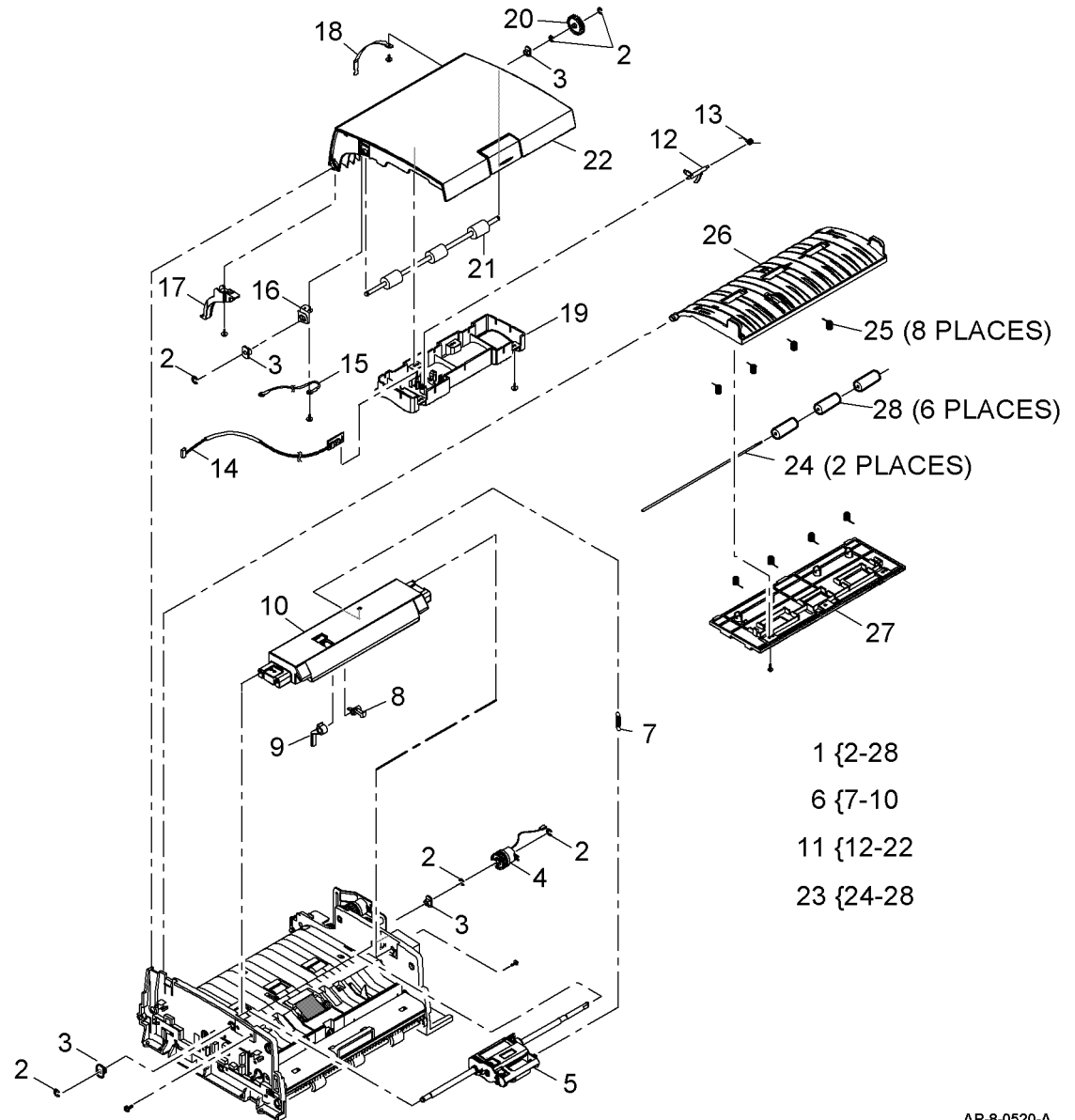


AP-8-0511-A

PL 5.15 DADF Assembly (2 of 4)

Item	Part	Description
1	-	Transport assembly (P/O PL 5.10 Item 1), (REF: PL 5.10 Item 2)
2	-	E-clip (P/O PL 5.15 Item 1)
3	-	Bearing (P/O PL 5.15 Item 1)
4	-	Pick up clutch (CL05-300) (P/O PL 5.10 Item 1)
5	130N01466	Feed roll assembly (See Note)
6	030N00721	Upper feed assembly (REP 5.1)
7	-	Spring (P/O PL 5.15 Item 6)
8	-	Link arm (P/O PL 5.15 Item 6)
9	-	Feed gate (P/O PL 5.15 Item 6)
10	-	Upper feed cover (P/O PL 5.15 Item 6)
11	002N02288	Top cover assembly (REP 5.1)
12	-	Actuator (P/O PL 5.15 Item 11)
13	-	Spring (P/O PL 5.15 Item 11)
14	140N62869	Registration sensor (Q05-130)
15	-	Ground harness (P/O PL 5.15 Item 11)
16	-	Ground clip (P/O PL 5.15 Item 11)
17	-	Harness cover (P/O PL 5.15 Item 11)
18	-	Top cover restraining strap (P/O PL 5.15 Item 11)
19	-	Sensor housing (P/O PL 5.15 Item 11)
20	007N01523	Registration gear
21	-	Registration roll (P/O PL 5.15 Item 11)
22	002N02583	Top cover
23	038N00497	Duplex guide (REP 5.1)
24	-	Idler shaft (P/O PL 5.15 Item 23)
25	-	Idler springs (P/O PL 5.15 Item 23)
26	-	Upper duplex guide (P/O PL 5.15 Item 23)
27	-	Lower duplex guide (P/O PL 5.15 Item 23)
28	-	Idlers (P/O PL 5.15 Item 23)

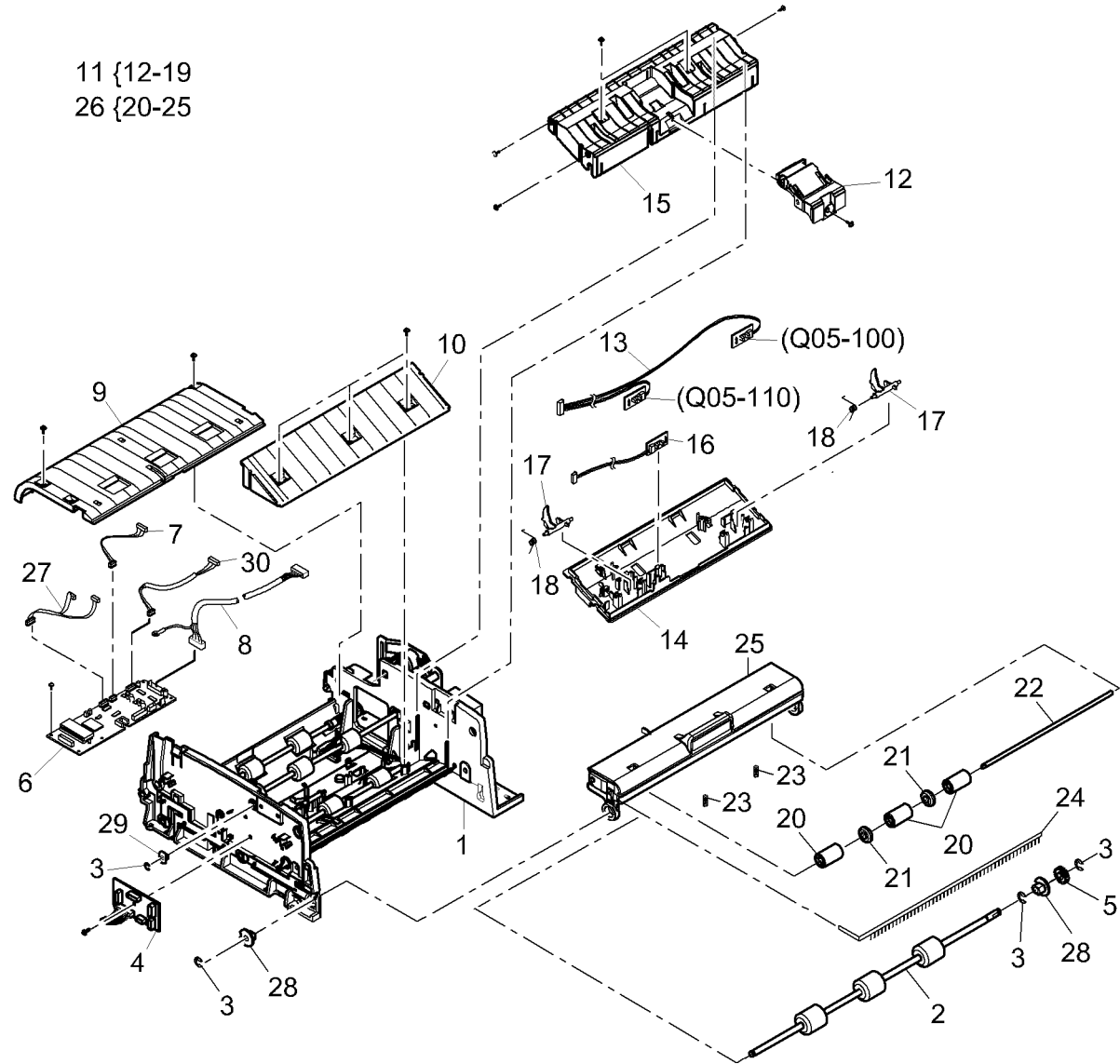
NOTE: This is a HFSI. To reset the HFSI count, go to GP 16.



AP-8-0520-A

PL 5.20 DADF Assembly (3 of 4)

Item	Part	Description
1	-	Transport assembly (REF: PL 5.10 Item 2)
2	-	Exit roll (P/O PL 5.20 Item 1)
3	-	E-clip (P/O PL 5.20 Item 1)
4	140N63152	DADF sensor PWB
5	007N01538	Exit roll gear (REP 5.1)
6	140N63144	DADF PWB (REP 5.2)
7	-	Scan motor harness (P/O PL 5.20 Item 1)
8	152N11711	Main I/F
9	-	Left guide (P/O PL 5.20 Item 1)
10	-	Right guide (P/O PL 5.20 Item 1)
11	130N01465	Lower feed assembly (REP 5.1)
12	019N00795	Retard pad (See Note)
13	140N63150	Document detect sensor (Q05-100), Paper width sensor (Q05-110) assembly
14	-	Lower feed bottom cover (P/O PL 5.20 Item 11)
15	-	Lower feed top cover (P/O PL 5.20 Item 11)
16	140N63151	Exit open Sensor (Q05-150)
17	120N00488	Actuator
18	-	Spring (P/O PL 5.20 Item 11)
19	-	Not used
20	-	Idler roll (P/O PL 5.20 Item 22)
21	-	Idler disc (P/O PL 5.20 Item 22)
22	-	Shaft (P/O PL 5.20 Item 26) (REP 5.1)
23	-	Spring (P/O PL 5.20 Item 26)
24	063N00110	Static eliminator
25	-	Exit cover (P/O PL 5.20 Item 26)
26	002N02584	Exit assembly (REP 5.1)
27	-	Clutch & switch harness (P/O PL 5.20 Item 1)
28	-	Exit roll bearing (P/O PL 5.20 Item 1)
29	-	Bearing (P/O PL 5.20 Item 1)
30	-	Scan motor harness (P/O PL 5.20 Item 1)



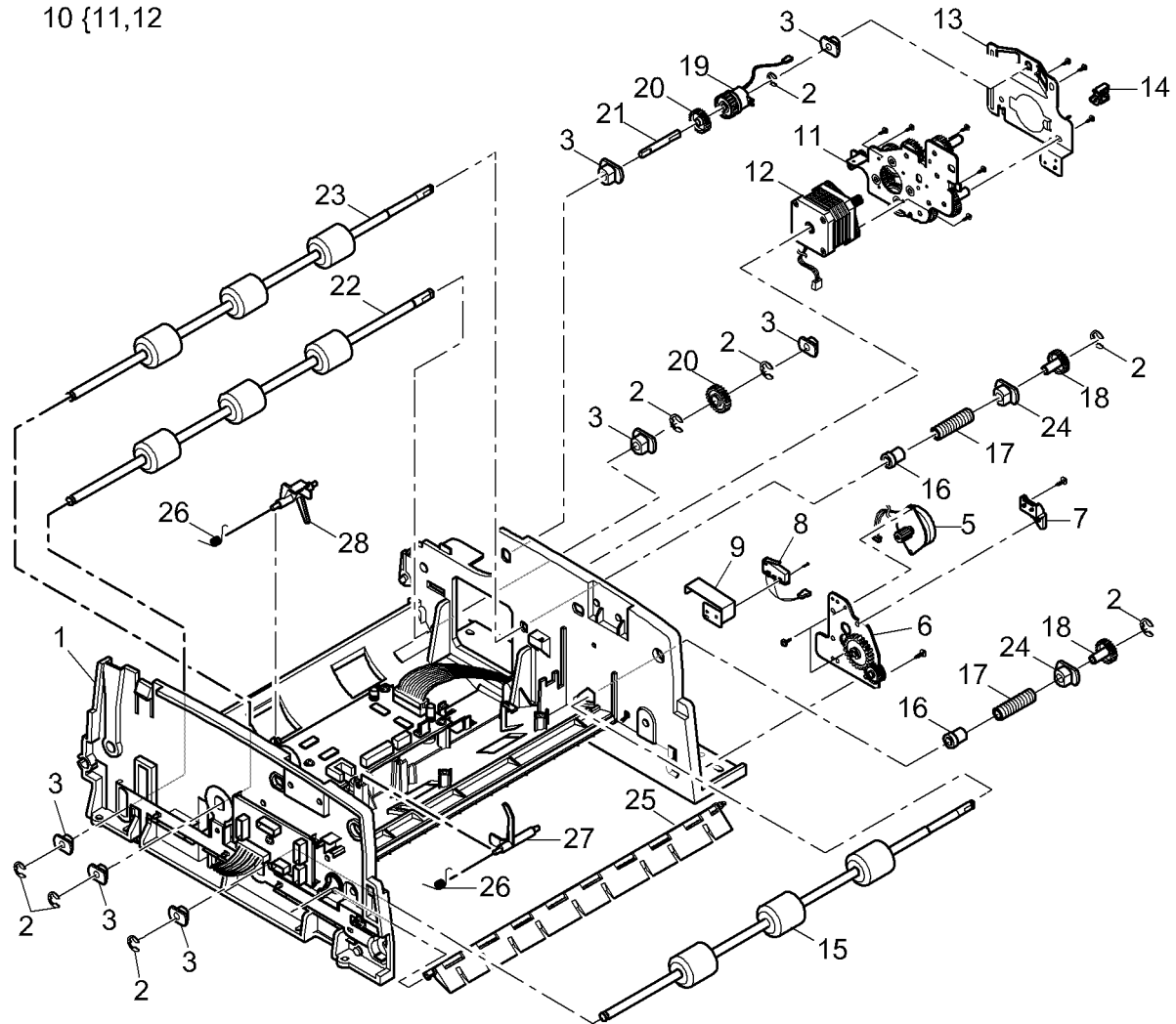
NOTE: This is a HFSI. To reset the HFSI count, go to GP 16.

AP-8-0512-A

PL 5.25 DADF Assembly (4 of 4)

Item	Part	Description
1	-	Transport assembly (REF: PL 5.10 Item 2)
2	-	E-clip (P/O PL 5.25 Item 1)
3	-	Bearing (P/O PL 5.25 Item 1)
4	127N07500	DADF duplex motor assembly (REP 5.1)
5	-	Duplex motor (MOT05-210) (P/O PL 5.25 Item 4)
6	-	Duplex bracket (P/O PL 5.25 Item 4)
7	-	Switch bracket (P/O PL 5.25 Item 1)
8	152N11715	DADF door open switch (S05-160)
9	-	Switch guard (P/O PL 5.25 Item 1)
10	127N07498	DADF Scan motor assembly (REP 5.1)
11	-	Gear assembly (P/O PL 5.25 Item 10)
12	127N07497	DADF scan motor (MOT05-200) (REP 5.1)
13	-	Drive gear cover (P/O PL 5.25 Item 1)
14	-	Harness clip (P/O PL 5.25 Item 1)
15	-	Gate roll (P/O PL 5.25 Item 1)
16	-	Bush holder (P/O PL 5.25 Item 1)
17	009N01605	Spring clutch
18	007N01524	Gear
19	-	Registration clutch (CL05-310) (P/O PL 5.10 Item 1)
20	007N01557	Gear (REP 5.1)
21	006N01300	Clutch shaft (REP 5.1)
22	-	Duplex roll (P/O PL 5.25 Item 1)
23	-	Scan roll (P/O PL 5.25 Item 1)
24	-	Roll bearing (P/O PL 5.25 Item 1)
25	050N00500	Duplex gate (REP 5.1)
26	-	Spring (P/O PL 5.25 Item 1)
27	-	Actuator (P/O PL 5.25 Item 1)
28	-	Actuator (P/O PL 5.25 Item 1)

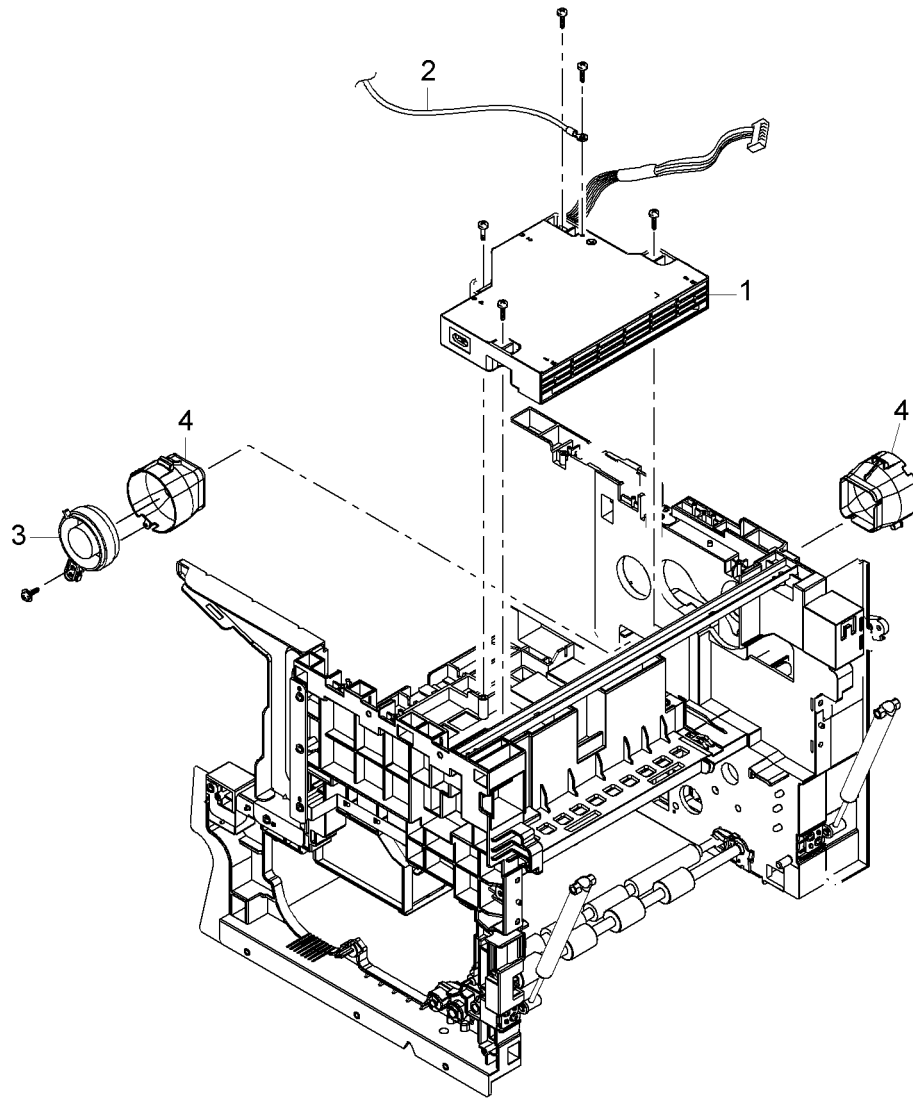
4 {5,6
10 {11,12



AP-8-0513-A

PL 6.10 LSU

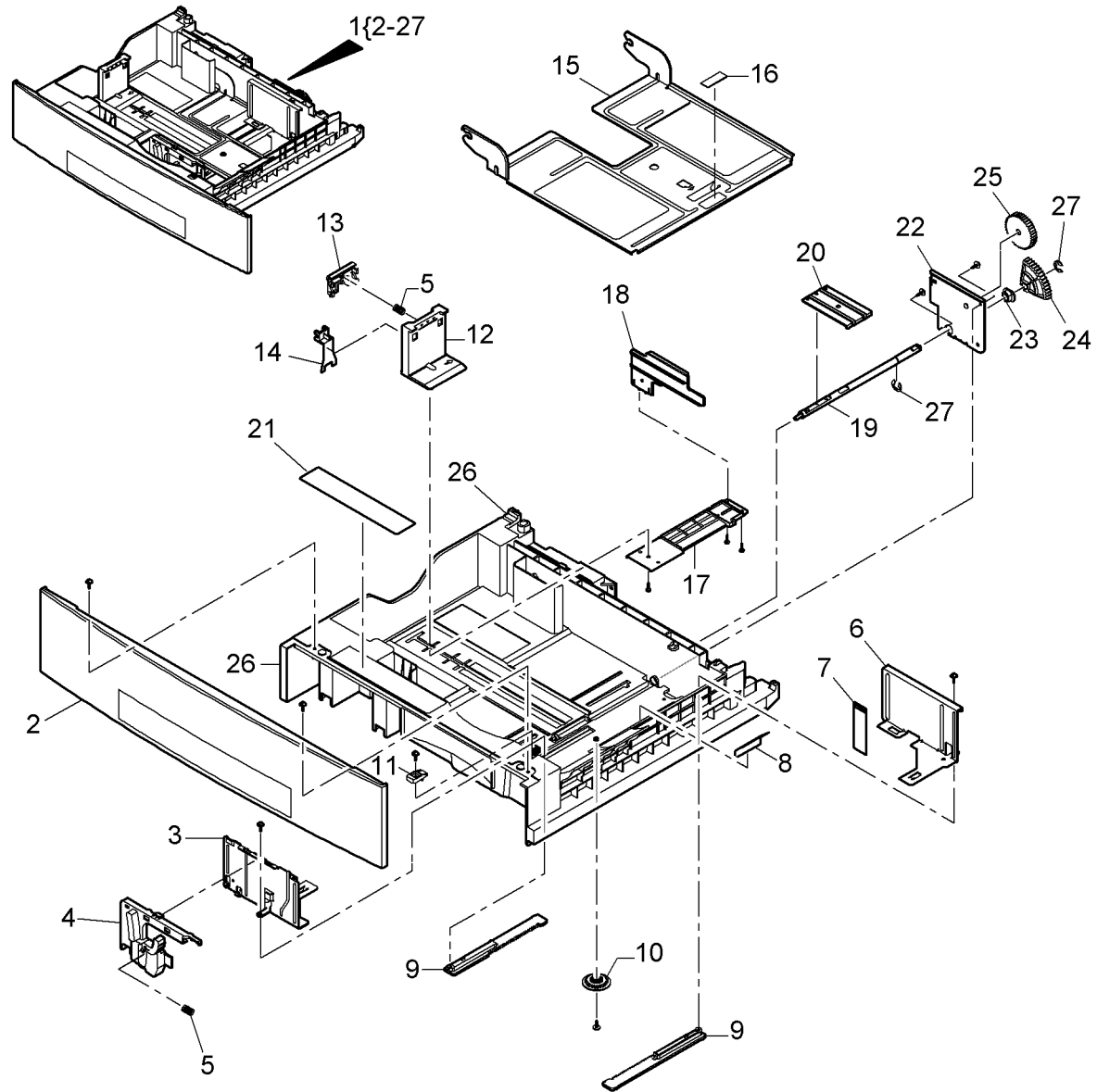
Item	Part	Description
1	062N00271	LSU (REP 6.1)
2	—	Ground harness (Not Spared)
3	127N07486	LSU fan (REP 6.2)
4	—	LSU fan duct (Not Spared)



AP-8-0508-A

PL 7.10 Tray 1 - 4 Cassette Assembly

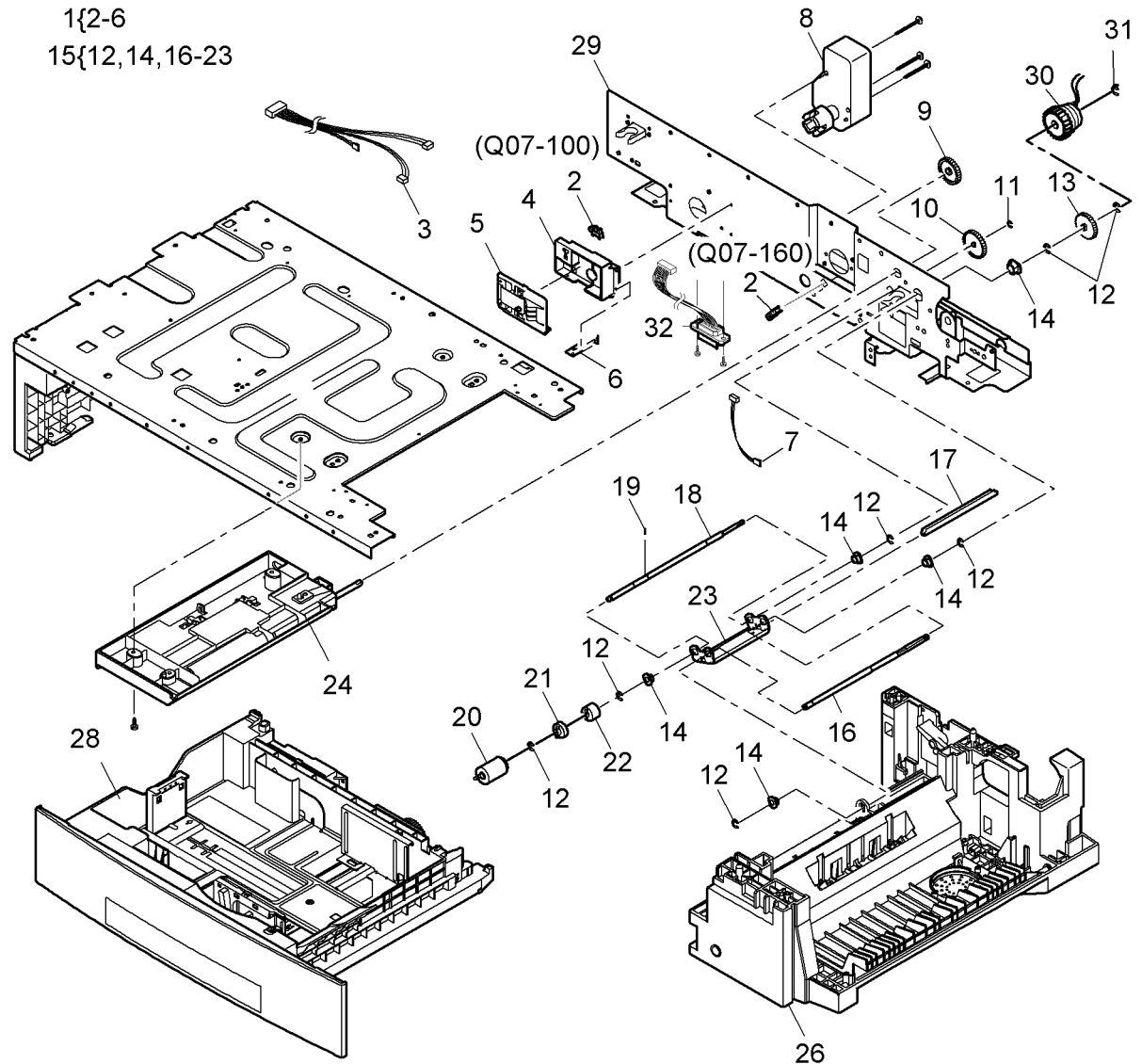
Item	Part	Description
1	050N00488	Cassette assembly
2	-	Cassette cover (P/O PL 7.10 Item 1)
3	038N00495	Left side paper guide
4	003N01005	Latch
5	009N01615	Latch spring
6	-	Right side paper guide (P/O PL 7.10 Item 1)
7	091N80243	MAX fill label
8	038N00496	Paper guide
9	-	Rack gear (P/O PL 7.10 Item 1)
10	007N01526	Pinion gear 24T
11	-	Knock-up plate stopper (P/O PL 7.10 Item 1)
12	032N00475	Rear paper guide
13	003N01011	Latch lever
14	032N00476	Latch
15	-	Knock-up plate (P/O PL 7.10 Item 1)
16	019N00796	Pad
17	-	Actuator arm (P/O PL 7.10 Item 1)
18	-	Paper size actuator (P/O PL 7.10 Item 1)
19	-	Shaft (P/O PL 7.10 Item 1)
20	-	Lever (P/O PL 7.10 Item 1)
21	091N80244	Paper loading label
22	-	Bracket (P/O PL 7.10 Item 1)
23	-	Bush (P/O PL 7.10 Item 1)
24	007N01527	Elevator gear
25	007N01528	Drive gear
26	-	Cassette frame (P/O PL 7.10 Item 1)
27	-	E-Clip (P/O PL 7.10 Item 1)



AP-8-0516-A

PL 7.15 Tray 1 Frame Assembly (1 of 2)

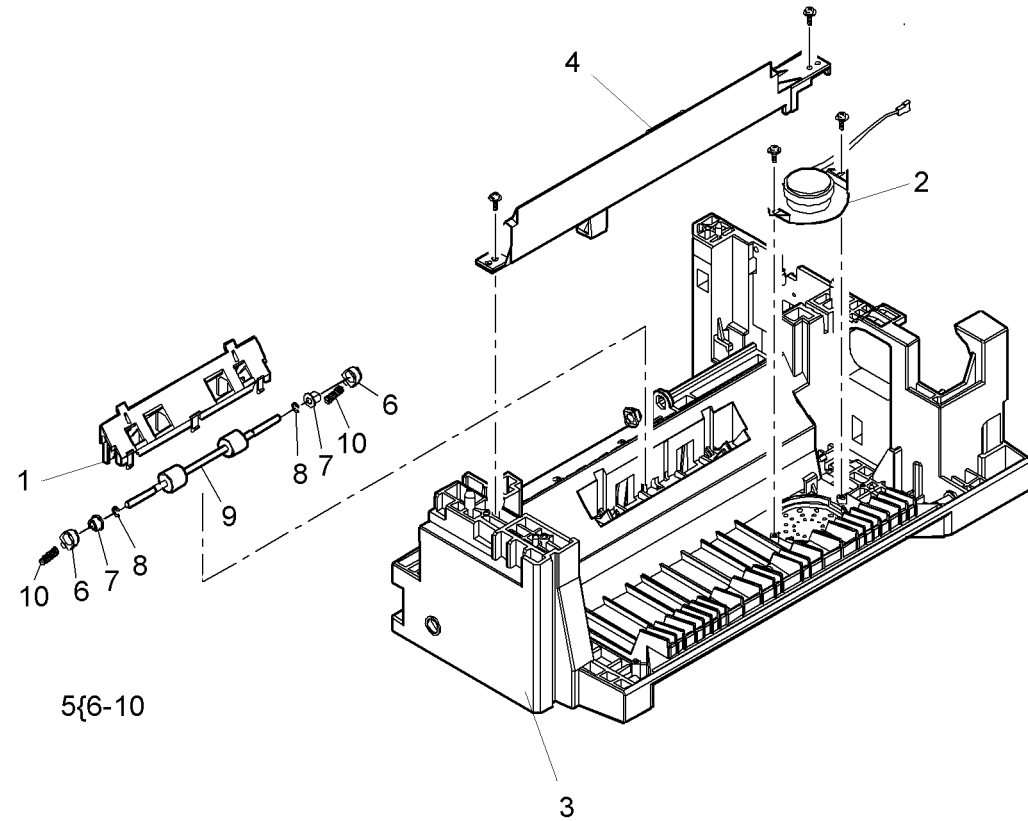
Item	Part	Description
1	130N01460	Paper size detect assembly (REP 7.3)
2	130N01274	Tray 1 home position sensor (Q07-100), Tray 1 paper low sensor (Q07-160)
3	-	Harness (P/O PL 7.15 Item 1)
4	-	Housing (P/O PL 7.15 Item 1)
5	130N01461	Paper size detect PWB (REP 7.3)
6	-	Grounding strip (P/O PL 7.15 Item 1)
7	-	Sensor harness (Not Spared)
8	127N07488	Tray 1 elevating motor (MOT04-510)
9	-	Tray 1 feed gear (Not Spared)
10	-	Retard roll gear (Not Spared)
11	-	E-Clip (Not Spared)
12	-	E-Clip (Not Spared)
13	-	Pick-up gear (Not Spared)
14	-	Bearing (P/O PL 7.15 Item 15)
15	-	Retard assembly (Not Spared)
16	-	Drive shaft (P/O PL 7.15 Item 15)
17	-	Actuator (P/O PL 7.15 Item 15)
18	006N01299	Retard shaft
19	006N01293	Pin
20	022N02232	Retard roll assembly
21	022N02231	Drive dog coupling
22	017N00259	Drive dog
23	-	Retard bracket (P/O PL 7.15 Item 15)
24	-	Tray feed assembly (REF PL 8.10 Item 1)
25	-	Not used
26	-	Right hand base (REF: PL 7.17) (Not Spared)
27	-	Not used
28	-	Cassette (REF: PL 7.10)
29	-	Rear panel (Not Spared)
30	005N01085	Pick-up clutch (CL08-810)
31	-	K-L Clip (Not Spared)
32	152N11714	Tray connector



AP-8-0503-A

PL 7.17 Tray 1 Frame Assembly (2 of 2)

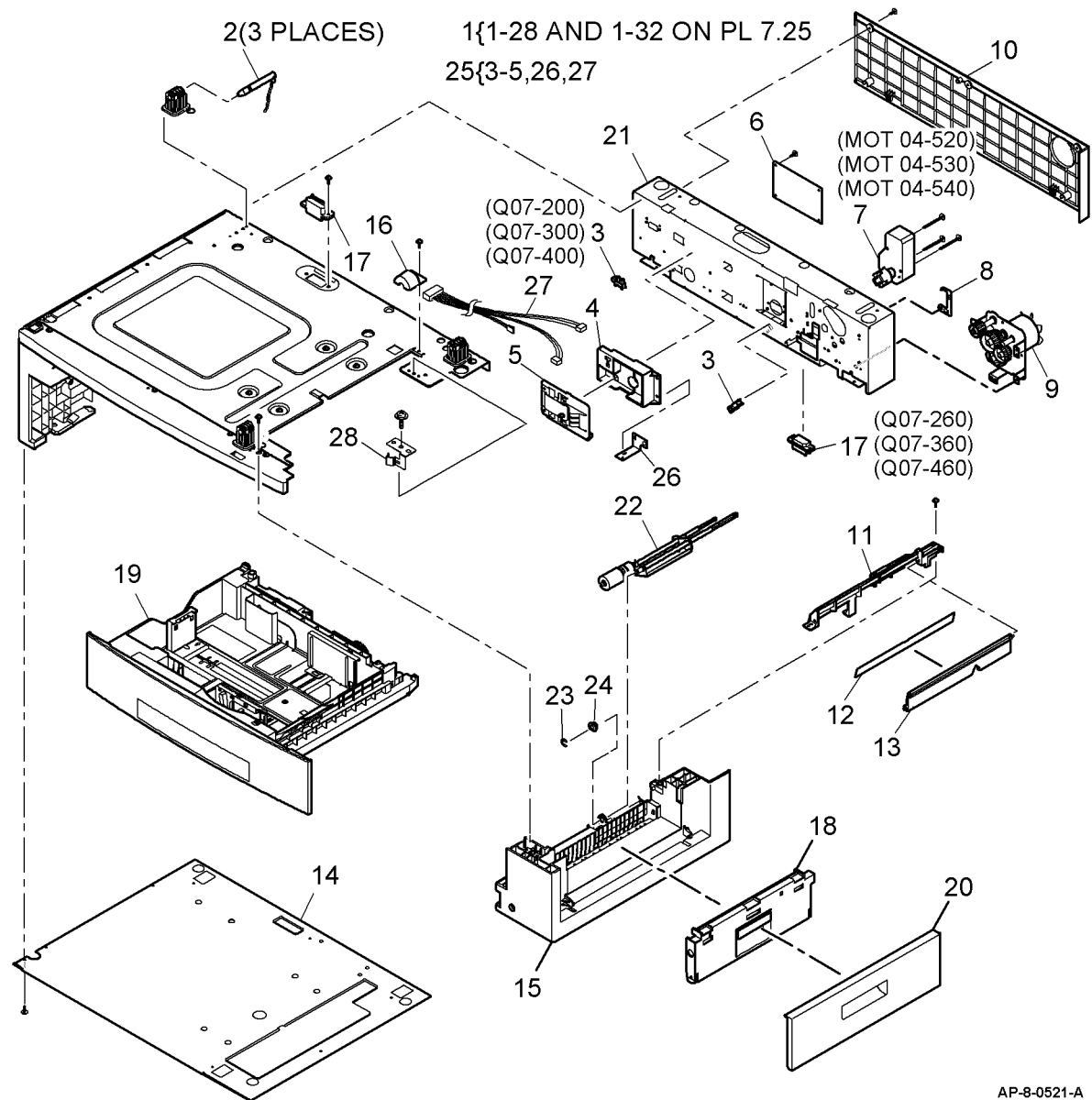
Item	Part	Description
1	038N00502	Guide (REP 8.7)
2	130N01213	Speaker (REP 8.4)
3	-	Right hand base (REF: PL 7.15 Item 26)
4	-	Guide (Not Spared)
5	022N02279	Transport roll idler assembly (REP 8.7)
6	-	Spring holder (P/O PL 7.17 Item 5)
7	-	Bearing (P/O PL 7.17 Item 5)
8	-	E-clip (P/O PL 7.17 Item 5)
9	-	Transport roll Idler (P/O PL 7.17 Item 5)
10	-	Spring (P/O PL 7.17 Item 5)



AP-8-0539-A

PL 7.20 Trays 2 - 4 Frame Assembly (1 of 2)

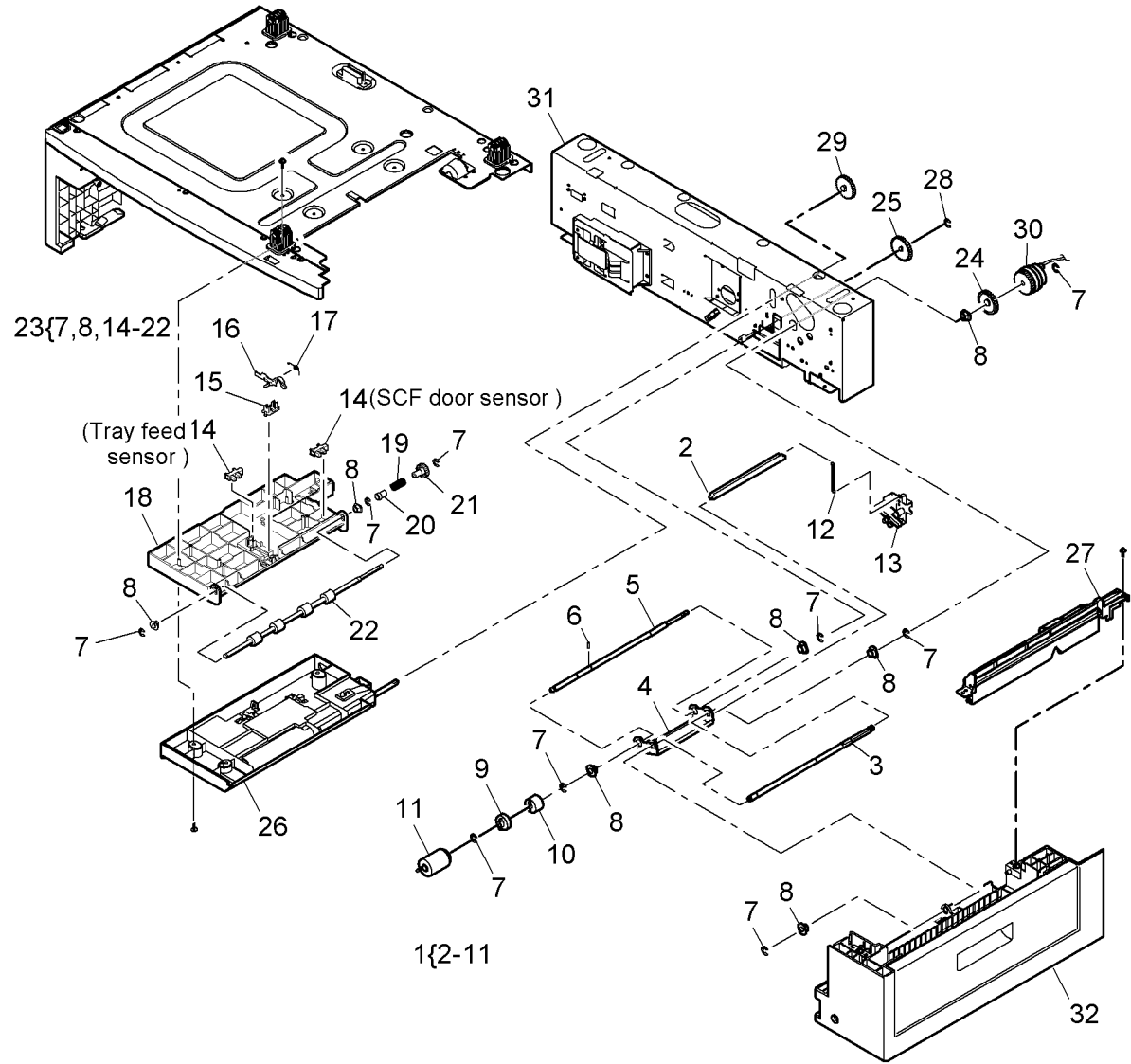
Item	Part	Description
1	062N00272	Tray assembly
2	-	Locking pin (P/O PL 7.20 Item 1)
3	130N01274	Tray home position sensor (Q07-200 tray 2), (Q07-300 tray 3), (Q07-400 tray 4). Paper low sensor (Q07-260 tray 2), (Q07-360 tray 3), (Q07-460 tray 4)
4	-	Housing (P/O PL 7.20 Item 1)
5	130N01461	Paper size detect PWB (REP 7.4)
6	140N63148	Tray PWB
7	127N07488	Tray elevating motor (MOT04-520 tray 2), (MOT04-530 tray 3), (MOT04-540 tray 4)
8	-	Ground strip (P/O PL 7.20 Item 1)
9	023N01160	Feed motor assembly
10	-	Rear cover (P/O PL 7.20 Item 1)
11	-	Retard assembly cover (P/O PL 7.20 Item 1)
12	032N00477	Mylar strip
13	-	Paper guide (P/O PL 7.20 Item 1)
14	-	Base cover (P/O PL 7.20 Item 1)
15	-	Right hand base (P/O PL 7.20 Item 1)
16	-	Gear cover (P/O PL 7.20 Item 1)
17	152N11714	Tray connector
18	002N02579	Access door assembly
19	-	Cassette (REF: PL 7.10)
20	-	Cover door (P/O PL 7.20 Item 1)
21	-	Rear panel (P/O PL 7.20 Item 1)
22	-	Retard assembly (REF: PL 7.25 Item 1)
23	-	E-Clip (P/O PL 7.20 Item 1)
24	-	Bearing (P/O PL 7.20 Item 1)
25	130N01464	Paper size detect assembly (REP 7.3)
26	-	Grounding strip (P/O PL 7.20 Item 1)
27	-	Harness (P/O PL 7.20 Item 1)
28	002N02580	Grounding strip



AP-8-0521-A

PL 7.25 Trays 2 - 4 Frame Assembly (2 of 2)

Item	Part	Description
1	-	Retard assembly (P/O PL 7.20 Item 1)
2	-	Actuator (P/O PL 7.25 Item 1)
3	-	Drive shaft (P/O PL 7.25 Item 1)
4	-	Retard bracket (P/O PL 7.25 Item 1)
5	-	Retard shaft (P/O PL 7.25 Item 1)
6	006N01293	Pin
7	-	E-Clip (P/O PL 7.25 Item 23)
8	-	Bearing (P/O PL 7.25 Item 23)
9	022N02231	Drive dog Coupling
10	017N00259	Drive dog
11	022N02232	Roll assembly (See Note 2)
12	-	Spring (P/O PL 7.20 Item 1)
13	-	Retard roll release assembly (P/O PL 7.20 Item 1)
14	130N01274	Tray feed sensor, SCF door sensor (See Note 1) (REP 7.2)
15	-	Cradle (P/O PL 7.25 Item 23)
16	-	Actuator (P/O PL 7.25 Item 23)
17	-	Spring (P/O PL 7.25 Item 23)
18	-	Paper transport housing (P/O PL 7.25 Item 23)
19	009N01605	Spring Clutch
20	-	Bush holder (P/O PL 7.25)
21	007N01529	Gear (REP 7.2)
22	-	Transport roll (P/O PL 7.25 Item 23)
23	-	Paper transport (Not Spared)
24	-	Gear, retard assembly (P/O PL 7.20 Item 1)
25	-	Gear, paper transport assembly (P/O PL 7.20 Item 1)
26	-	Tray feed assembly (REF: PL 8.10)
27	-	Paper guide assembly (P/O PL 7.20 Item 1)
28	-	E-Clip (P/O PL 7.20 Item 1)
29	-	Gear, tray feeder assembly (P/O PL 7.20 Item 1)
30	005N01085	Tray pickup clutch (Tray 2 CL08-820), (Tray 3 CL08-830), (Tray 4 CL08-840)
31	-	Rear frame (P/O PL 7.20 Item 1)
32	-	R/H base (P/O PL 7.20 Item 1)



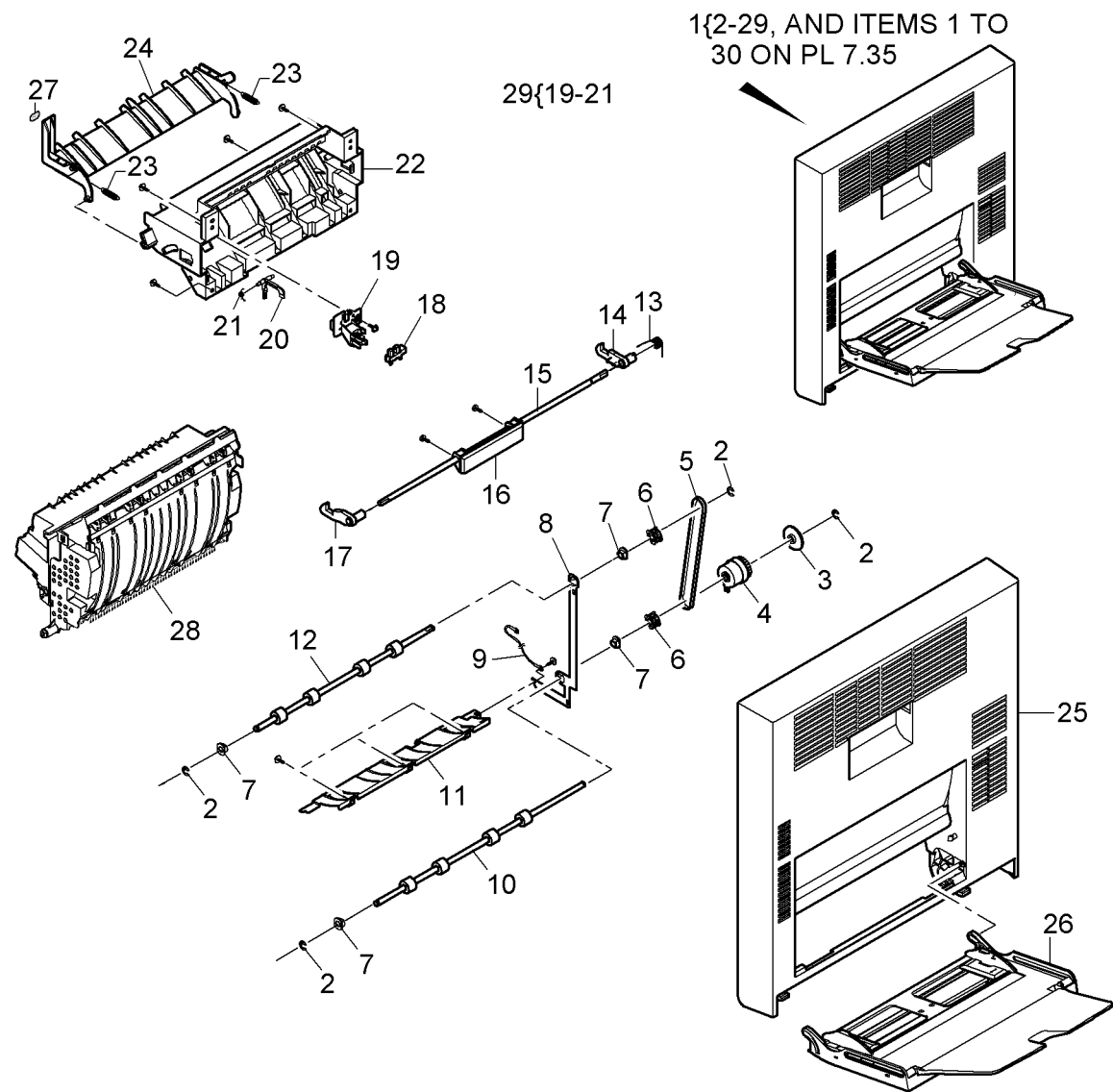
AP-8-0518-A

NOTE: 1. The tray feed sensor and the SCF door sensor component control codes are common, (Tray 2 Q08-200), (Tray 3 Q08-300), (Tray 4 Q08-400).

NOTE: 2. This is a HFSI. To reset the HFSI count, go to GP 16.

PL 7.30 Bypass Tray and Side Cover Assembly (1 of 3)

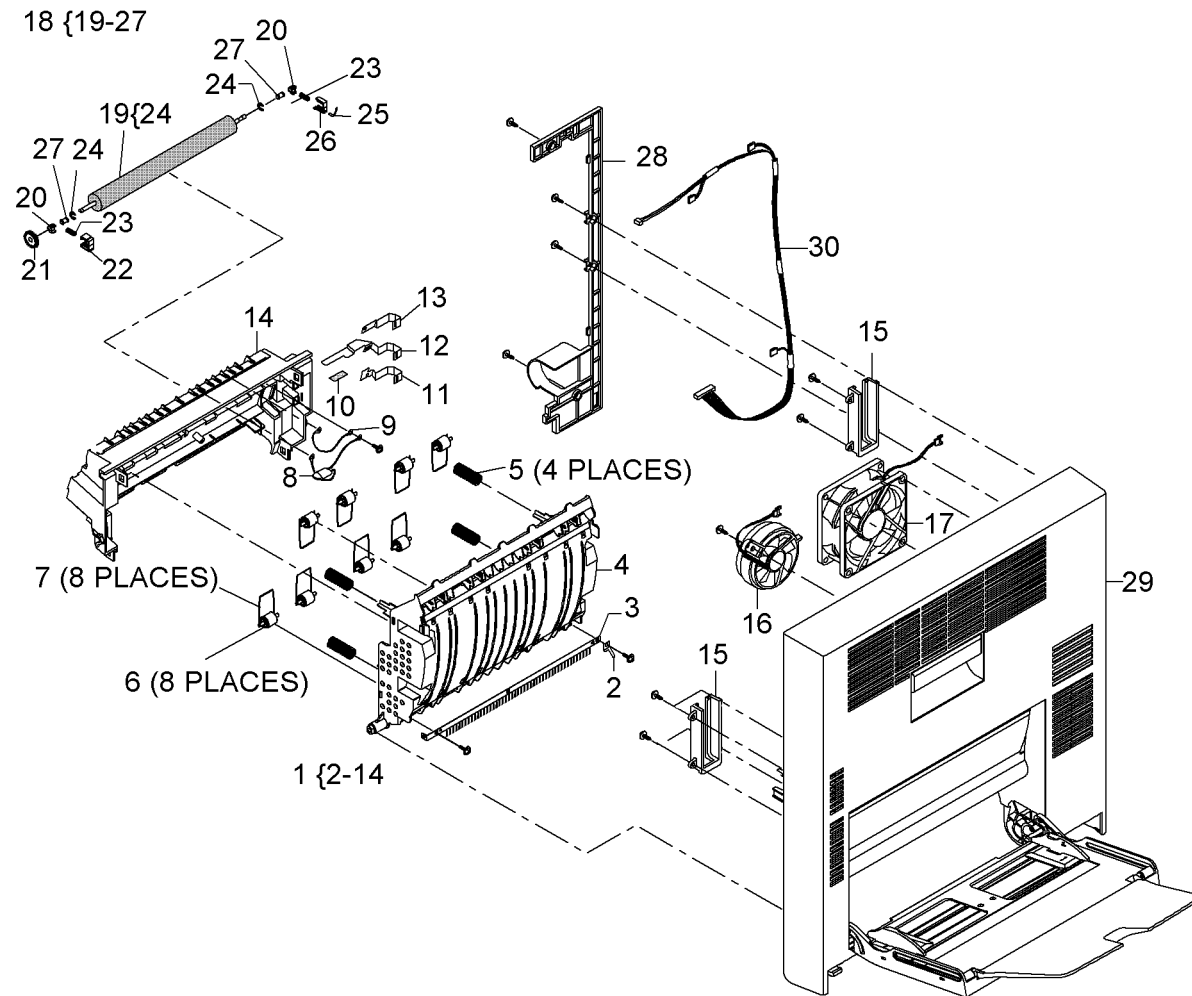
Item	Part	Description
1	002N02561	Side cover assembly (REP 8.1)
2	-	E-Clip (P/O PL 7.30 Item 1)
3	-	Collar (P/O PL 7.30 Item 1)
4	005N01088	Duplex feed clutch (CL08-860)
5	007N01530	Belt
6	020N00829	Duplex pulley
7	-	Bearing (P/O PL 7.30 Item 1)
8	-	Ground strip (P/O PL 7.30 Item 1)
9	-	Ground harness (P/O PL 7.30 Item 1)
10	022N02274	Duplex feed roll 2
11	-	Duplex guide (P/O PL 7.30 Item 1)
12	022N02275	Duplex feed roll 1
13	009N01366	Latch spring
14	003N01017	Rear latch
15	-	Shaft (P/O PL 7.30 Item 1)
16	-	Handle (P/O PL 7.30 Item 1)
17	003N01016	Latch front
18	130N01274	Duplex jam 1 sensor (Q08-700)
19	-	Sensor holder (P/O PL 7.30 Item 1)
20	-	Actuator (P/O PL 7.30 Item 1)
21	009N01597	Spring
22	-	Duplex side guide (P/O PL 7.30 Item 1)
23	009N01598	Spring
24	-	Duplex exit guide (P/O PL 7.30 Item 1)
25	-	Side cover (P/O PL 7.30 Item 1)
26	-	Bypass tray (REF: PL 7.40 Item 1)
27	-	Label (P/O PL 7.30 Item 1)
28	-	Duplex assembly (REF: PL 7.35 Item 1)
29	120N00500	Actuator assembly



AP-8-0514-A

PL 7.35 Bypass Tray and Side Cover Assembly (2 of 3)

Item	Part	Description
1	002N02576	Duplex assembly
2	—	Grounding brush (P/O PL 7.35 Item 1)
3	115N00860	Static eliminator
4	—	Duplex guide (P/O PL 7.35 Item 1)
5	009N01599	Spring
6	022N02234	Duplex idler roll
7	115N00864	Spring clip
8	—	Ground harness assembly (P/O PL 7.35 Item 1)
9	—	Ground harness (P/O PL 7.35 Item 1)
10	—	Double sided tape (P/O PL 7.35 Item 1)
11	—	Transfer ground strip (P/O PL 7.35 Item 1)
12	—	Detack ground strip (P/O PL 7.35 Item 1)
13	—	Ground strip (P/O PL 7.35 Item 1)
14	—	Feed guide (P/O PL 7.35 Item 1)
15	—	Damper bracket (P/O PL 7.35 Item 1)
16	127N07485	Duplex fan 1
17	127N07495	Duplex fan 2
18	022N02277	Transfer roll assembly (See Note)
19	022N02235	Transfer roll (See Note)
20	115N00863	Bush
—	013N00537	Bush (Alternative part)
21	—	Gear (P/O PL 7.35 Item 18)
22	019N00913	Retainer
23	009N01600	Spring
24	—	E-Clip (P/O PL 7.35 Item 19)
25	009N01601	Spring plate
26	019N00914	Retainer
27	016N00289	Bush
28	—	Harness cover (P/O PL 7.35 Item 1)
29	—	Side cover (REF: PL 7.30 Item 1)
30	152N11710	Duplex harness

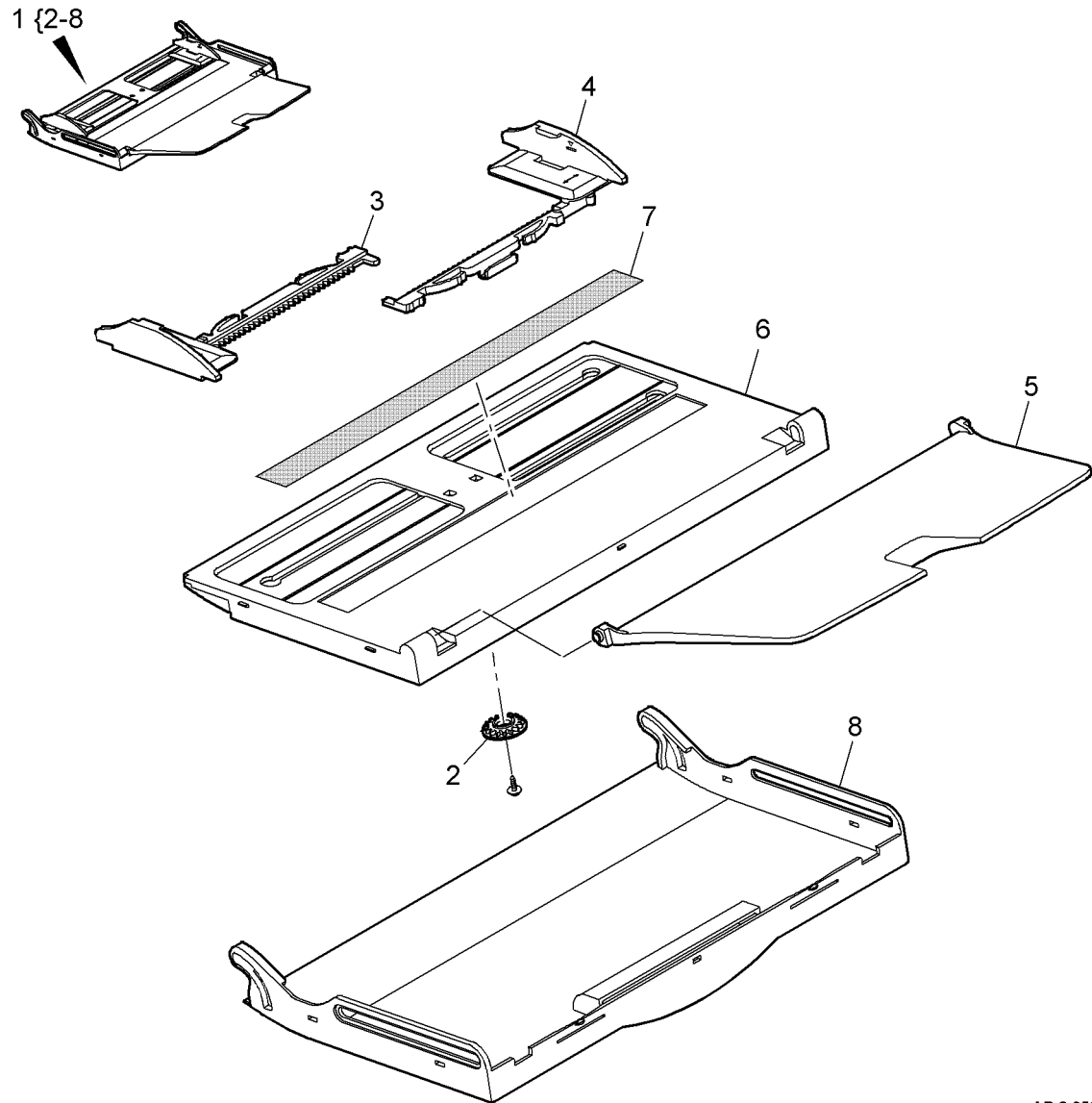


NOTE: This is a HFSI. To reset the HFSI count, go to GP 16.

AP-8-0526-A

PL 7.40 Bypass Tray and Side Cover Assembly (3 of 3)

Item	Part	Description
1	050N00493	Bypass tray assembly
2	007N01210	Pinion gear
3	-	Side guide left (P/O PL 7.40 Item 1)
4	-	Side guide right (P/O PL 7.40 Item 1)
5	050N00495	Exit tray
6	-	Top cover (P/O PL 7.40 Item 1)
7	-	Bypass label (P/O PL 7.40 Item 1)
8	-	Lower cover (P/O PL 7.40 Item 1)

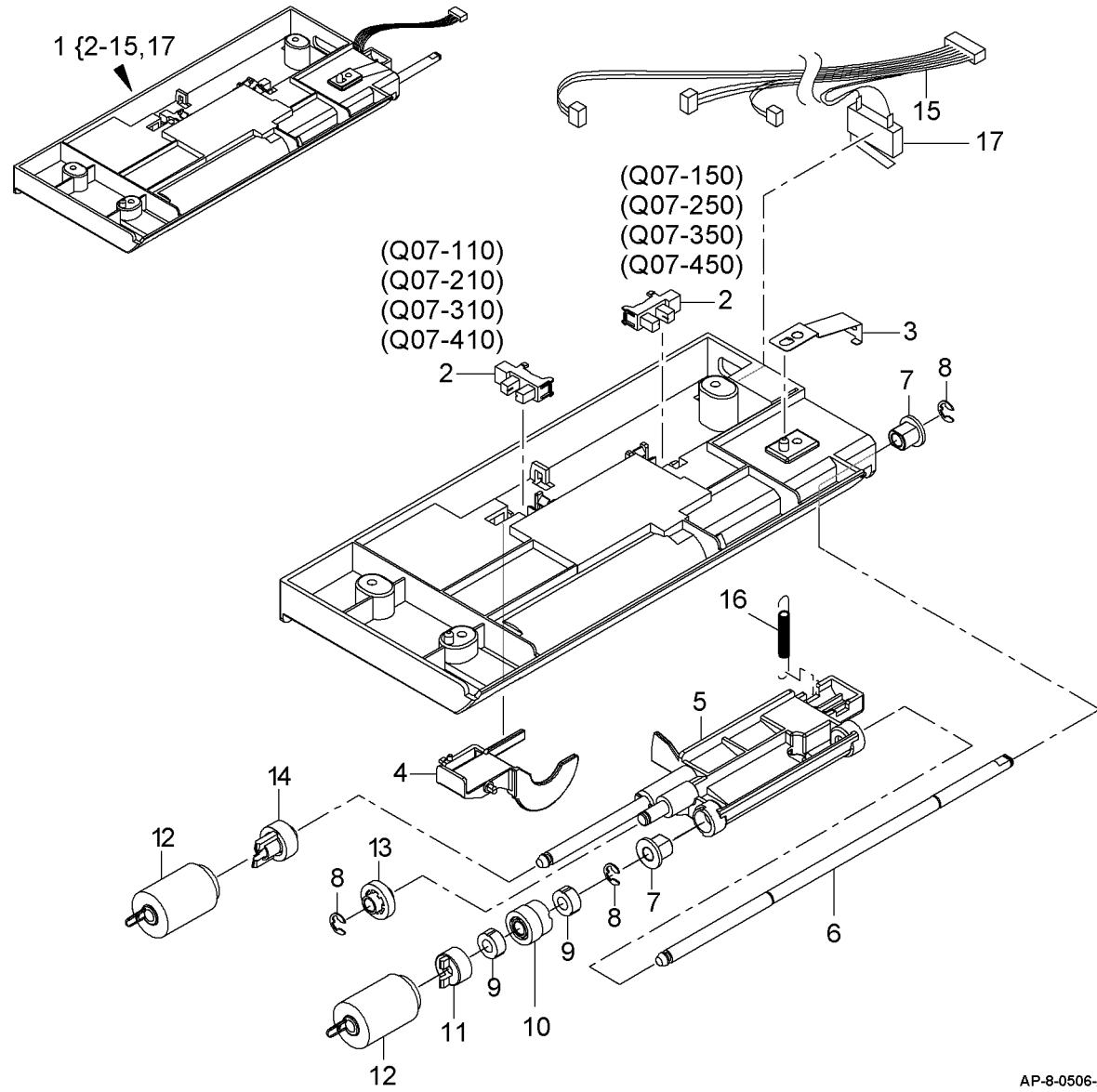


AP-8-0527-A

PL 8.10 Tray 1-4 Feed Assembly

Item	Part	Description
1	130N01459	Tray feed assembly (REP 7.1)
2	130N01274	Paper empty sensor (Q07-110 tray 1), (Q07-210 tray 2), (Q07-310 tray 3), (Q07-410 tray 4), Stack height sensor (Q07-150 tray 1), (Q07-250 tray 2), (Q07-350 tray 3), (Q07-450 tray 4). (REP 7.2)
3	-	Ground strip (P/O PL 8.10 Item 1)
4	-	Actuator (P/O PL 8.10 Item 1)
5	-	Feed head (P/O PL 8.10 Item 1)
6	-	Feed roll shaft (P/O PL 8.10 Item 1)
7	-	Bearing (P/O PL 8.10 Item 1)
8	-	E-Clip (P/O PL 8.10 Item 1)
9	005N01094	Clutch
10	007N01520	Feed roll gear
11	005N01087	Feed roll drive dog
12	022N02232	Roll assembly (See Note)
13	007N01556	Intermediate drive gear
14	007N01522	Nudger roll gear
15	-	Harness (P/O PL 8.10 Item 1)
16	-	Spring (Not Spared)
17	-	Tray up limit switch (P/O PL 8.10 Item 1) (REP 7.2)

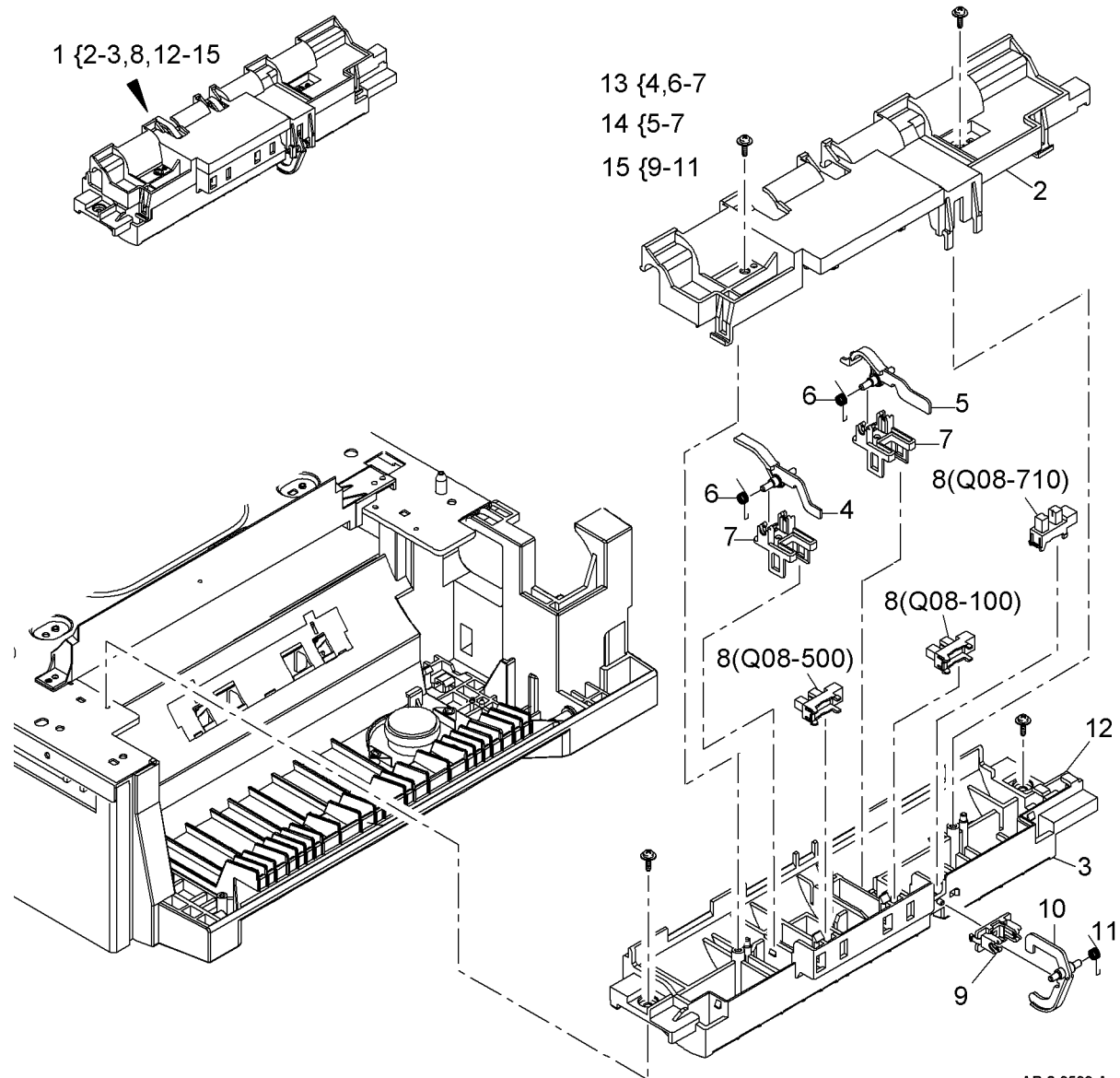
NOTE: This is a HFSI. To reset the HFSI count, go to GP 16.



AP-8-0506-A

PL 8.15 Registration Guide Assembly

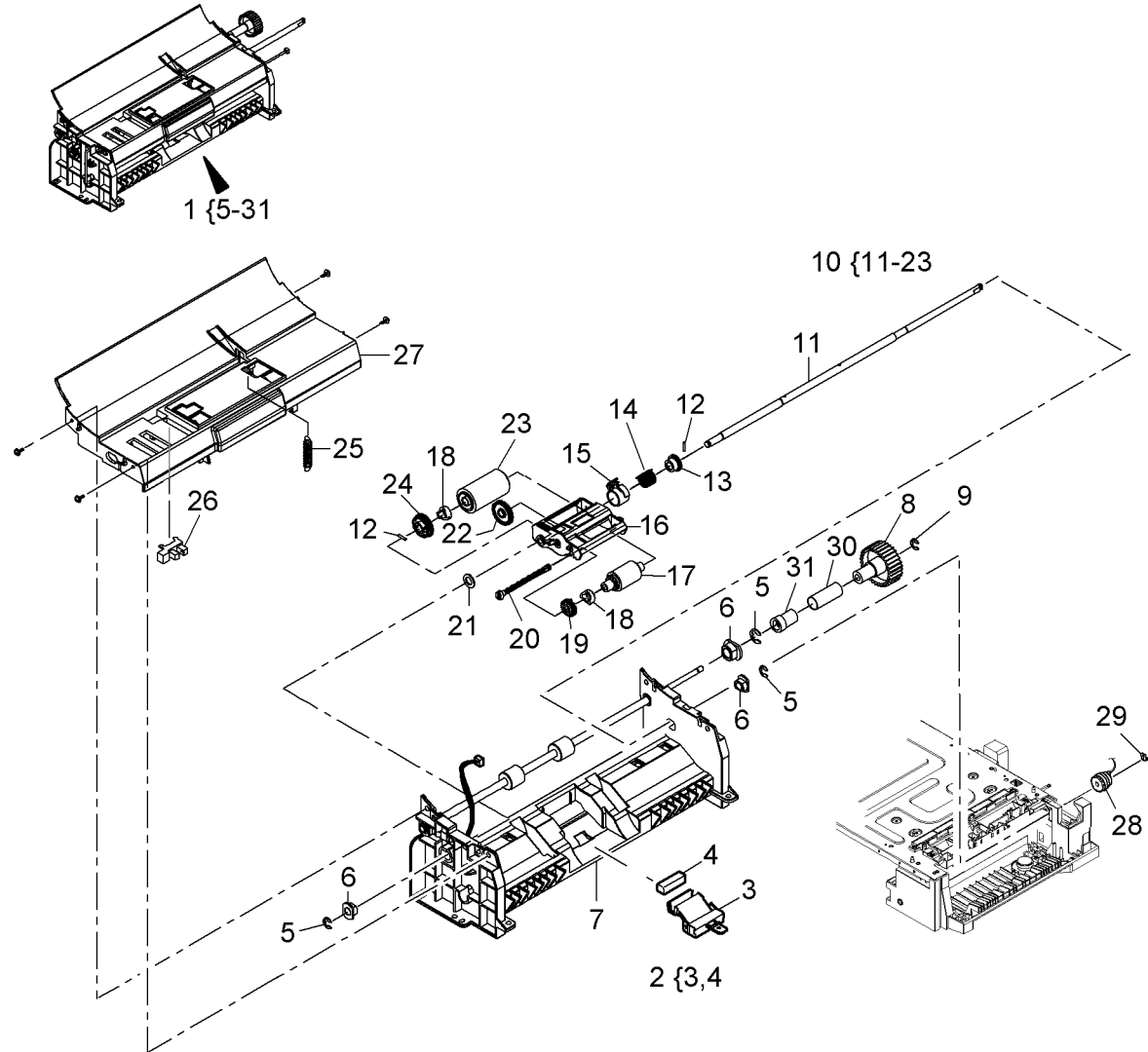
Item	Part	Description
1	-	Registration guide assembly (Not Spared)
2	015N00589	Registration roll cover (REP 8.2)
3	-	Registration guide base (Not Spared)
4	-	Registration sensor actuator (P/O PL 8.15 Item 13) (REP 8.2)
5	-	Feed sensor actuator (P/O PL 8.15 Item 14) (REP 8.2)
6	-	Actuator spring (P/O PL 8.15 Item 13) & (PL 8.15 Item 14) (REP 8.2)
7	-	Registration actuator cradle (P/O PL 8.15 Item 13, PL 8.15 Item 14) (ACO) (REP 8.2)
8	130N01274	Registration sensor (Q08-500), Feed sensor (Q08-100), Duplex jam 2 sensor (Q08-710) (REP 8.2)
9	-	Cradle (P/O PL 8.15 Item 15) (REP 8.2)
10	-	Duplex jam sensor actuator (P/O PL 8.15 Item 15) (REP 8.2)
11	009N01513	Spring (REP 8.2)
12	-	Registration guide housing (P/O PL 8.15 Item 1) (REP 8.2)
13	022N02278	Registration sensor actuator assembly (REP 8.2)
14	120N00501	Feed sensor actuator assembly (REP 8.2)
15	120N00502	Duplex jam 2 sensor actuator assembly (REP 8.2)



AP-8-0509-A

PL 8.20 Paper Transport Assembly

Item	Part	Description
1	002N02563	Paper transport assembly (REP 8.3)
2	019N00911	Bypass tray retard assembly (REP 8.5)
3	-	Retard pad holder (P/O PL 8.20 Item 2)
4	019N00566	Retard pad (See Note) (REP 8.5)
5	-	E-Clip (P/O PL 8.20 Item 1)
6	-	Bearing (P/O PL 8.20 Item 1)
7	-	Lower guide (P/O PL 8.20 Item 1)
8	007N01535	Gear
9	-	E-Clip (P/O PL 8.20 Item 1)
10	002N02577	Bypass tray feed roll assembly (REP 8.6)
11	-	Shaft (P/O PL 8.20 Item 10)
12	029N00374	Pin
13	016N00290	Clutch bush
14	009N01602	Clutch spring
15	005N01090	Collar
16	-	Roller frame (P/O PL 8.20 Item 10)
17	022N02191	Feed roll
18	005N01089	Clutch
19	007N01533	Gear 26T
20	-	Shaft (P/O PL 8.20 Item 10)
21	-	Washer (P/O PL 8.20 Item 10)
22	007N01179	Idler gear 38T
23	022N02190	Roll assembly
24	007N01534	Idler gear 34T
25	009N01604	Spring
26	130N01274	Bypass paper empty sensor (Q07-510)
27	-	Upper guide (P/O PL 8.20 Item 1)
28	005N01085	Bypass feed clutch
29	-	KL-Clip (P/O PL 8.20 Item 1)
30	009N01603	Spring clutch
31	-	Bush (P/O PL 8.20 Item 1)



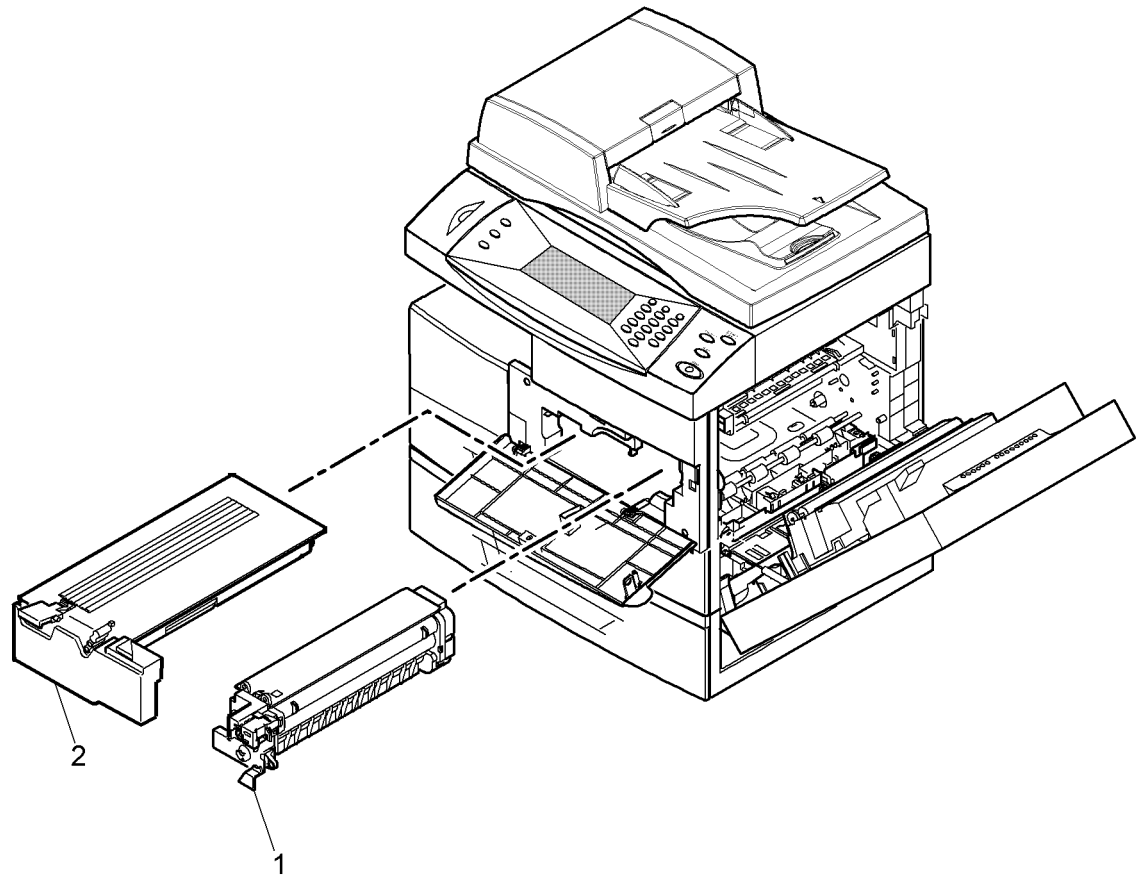
NOTE: This is a HFSI. To reset the HFSI count, go to GP 16.

AP-8-0507-A

PL 9.10 Toner and Xerographic modules

Item	Part	Description
1	013R00623	Xerographic module (See Note)
-	020N00843	(Alternative part) (See Note)
2	-	Toner module, see below for variants
-	006R01274	Worldwide metered
-	006R01275	North America/Europe sold
-	006R01276	DMO West/XING sold

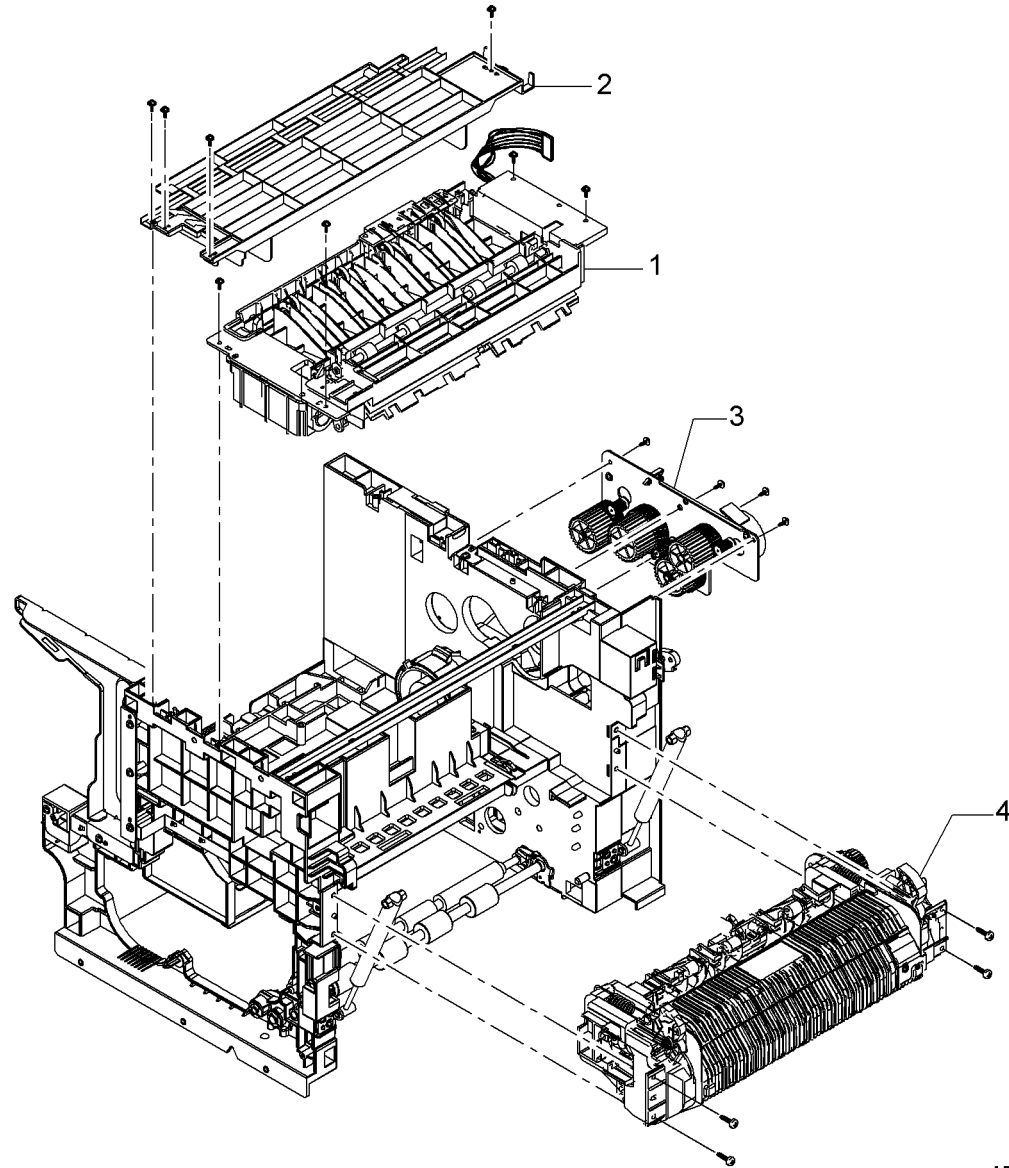
NOTE: This is a HFSI. To reset the HFSI count, go to GP 16.



AP-8-0519-A

PL 10.10 Fuser and Exit Assemblies

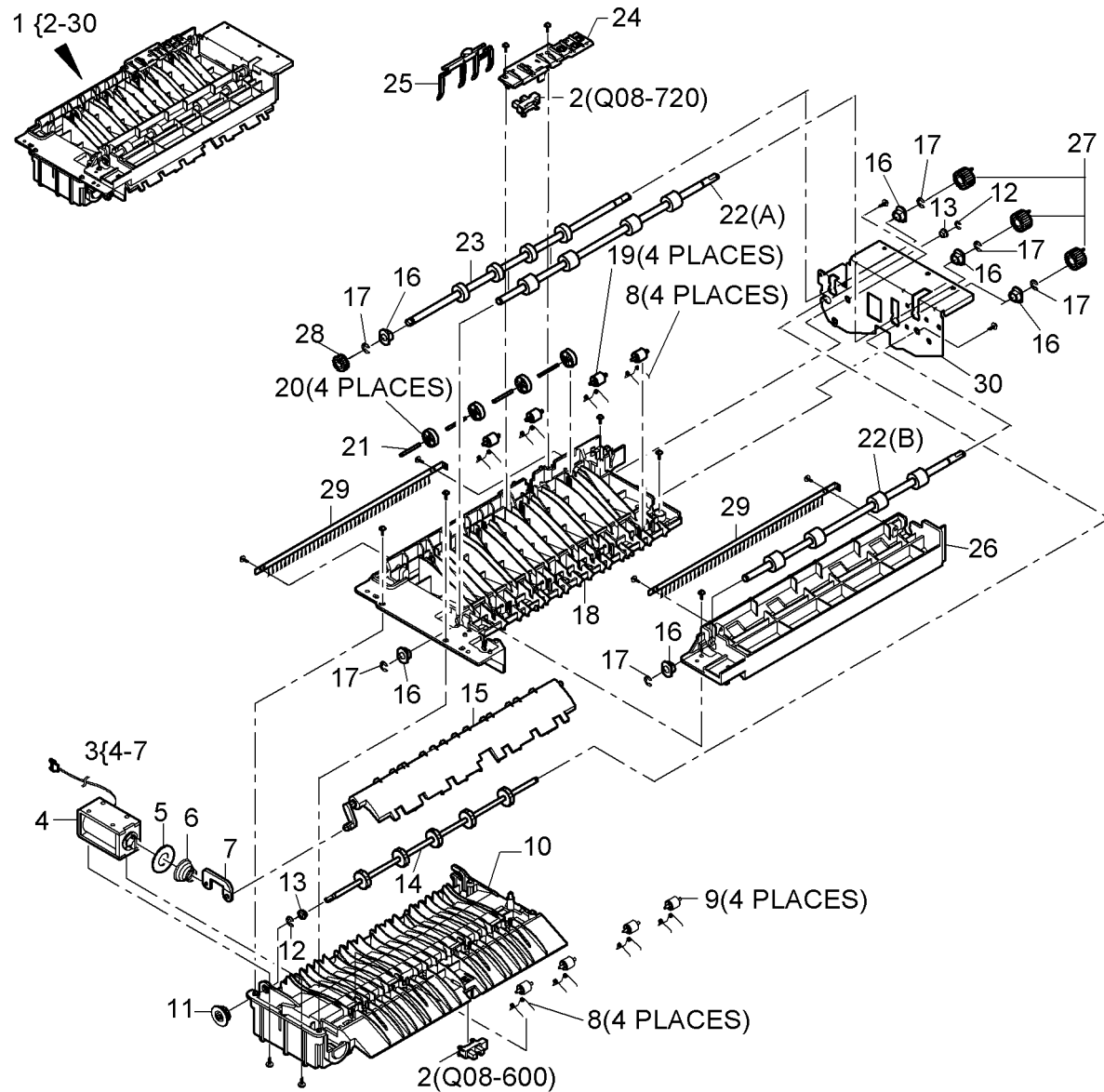
Item	Part	Description
1	–	Exit assembly (REF: PL 10.15 Item 1) (REP 10.2)
2	–	Exit guide assembly (Not Spared) (REP 10.2)
3	–	Exit drive assembly (REF: PL 10.20 Item 1)
4	–	Fuser assembly (REF: PL 10.25 Item 1) (REP 10.1)



AP-8-0504-A

PL 10.15 Exit Assembly

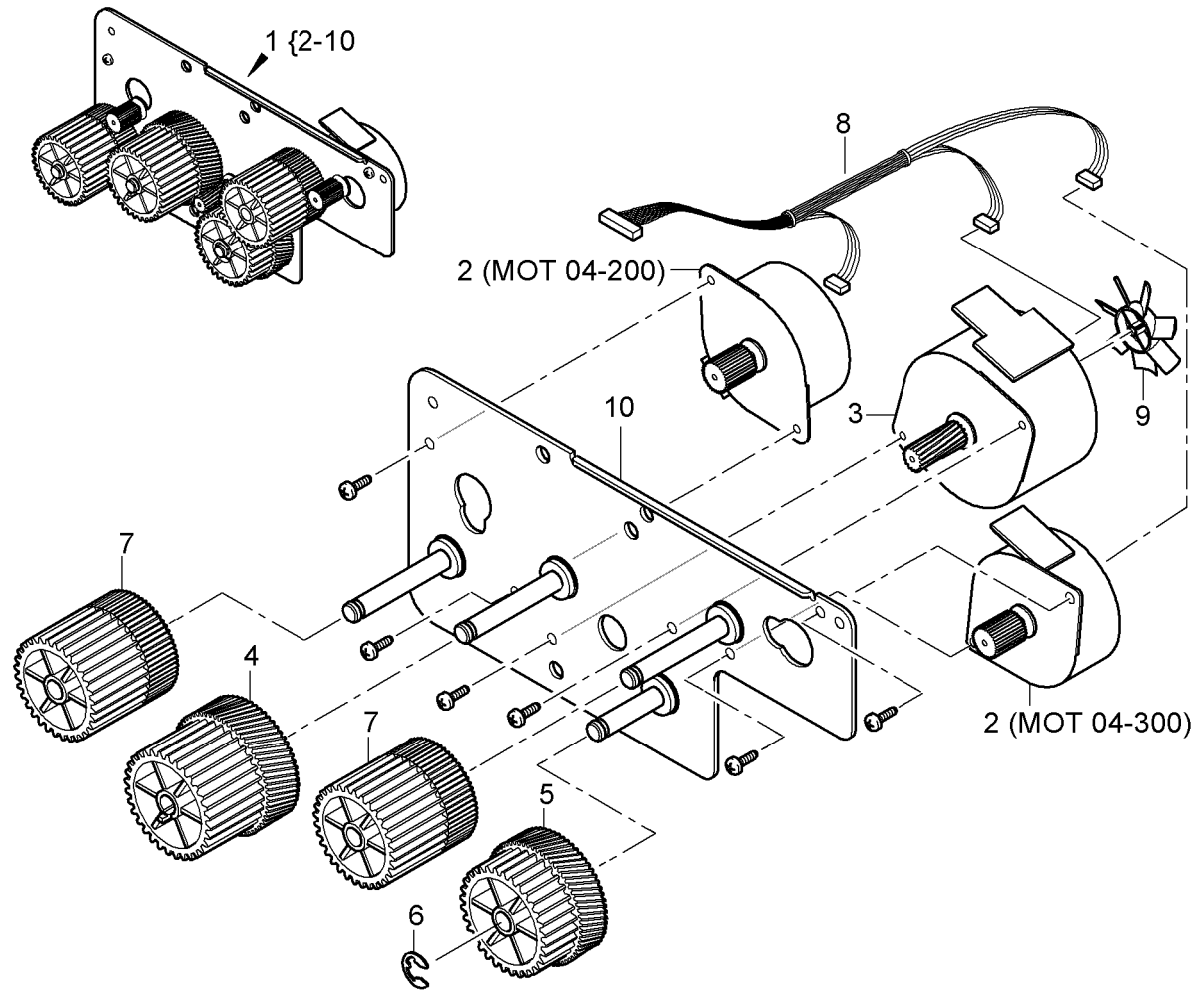
Item	Part	Description
1	002N02554	Exit assembly (REP 10.2)
2	130N01274	Out bin full sensor (Q08-720), Exit sensor (Q08-600)
3	121N01130	Duplex solenoid assembly (REP 10.3)
4	-	Duplex gate solenoid (SOL 08-870) (P/O PL 10.15 Item 3)
5	-	Washer (P/O PL 10.15 Item 3)
6	-	Spring (P/O PL 10.15 Item 3)
7	-	Actuator (P/O PL 10.15 Item 3)
8	-	Spring (P/O PL 10.15 Item 1)
9	-	Duplex roll idler (P/O PL 10.15 Item 1)
10	-	Lower exit guide (P/O PL 10.15 Item 1)
11	007N01555	Gear
12	-	E-Clip (P/O PL 10.15 Item 1)
13	-	Bush (P/O PL 10.15 Item 1)
14	-	Lower exit roll (P/O PL 10.15 Item 1)
15	050N00499	Duplex gate (REP 10.3)
16	-	Bush (P/O PL 10.15 Item 1)
17	-	E-Clip (P/O PL 10.15 Item 1)
18	-	Upper exit guide (P/O PL 10.15 Item 1)
19	-	Transport roll idler (P/O PL 10.15 Item 1)
20	022N02272	Duplex roll idler
21	-	Pin (P/O PL 10.15 Item 1)
22	-	Transport roll (22A), Duplex roll (22B) (P/O PL 10.15 Item 1)
23	-	Upper exit roller (P/O PL 10.15 Item 1)
24	-	Sensor cover (P/O PL 10.15 Item 1)
25	017N00266	Actuator
26	-	Exit guide (P/O PL 10.15 Item 1)
27	007N01559	Gear
28	007N01513	Gear
29	-	Static eliminator (P/O PL 10.15 Item 1)
30	-	Exit assembly bracket (Not Spared)



AP-8-0523-A

PL 10.20 Exit Drive

Item	Part	Description
1	002N02555	Exit drive assembly (REP 10.4)
2	127N07490	Exit motor (MOT 04-200), Duplex motor (MOT 04-300)
3	127N01443	Fuser motor (MOT 10-400)
4	007N01510	Exit idler gear (A)
5	007N01511	Fuser idler gear (A)
6	-	E-Clip (P/O PL 10.20 Item 1)
7	007N01512	Exit idler gear (C)
8	002N02575	Motor harness
9	-	Fan blade (P/O PL 10.20 Item 1)
10	-	Mounting plate (P/O PL 10.20 Item 1)



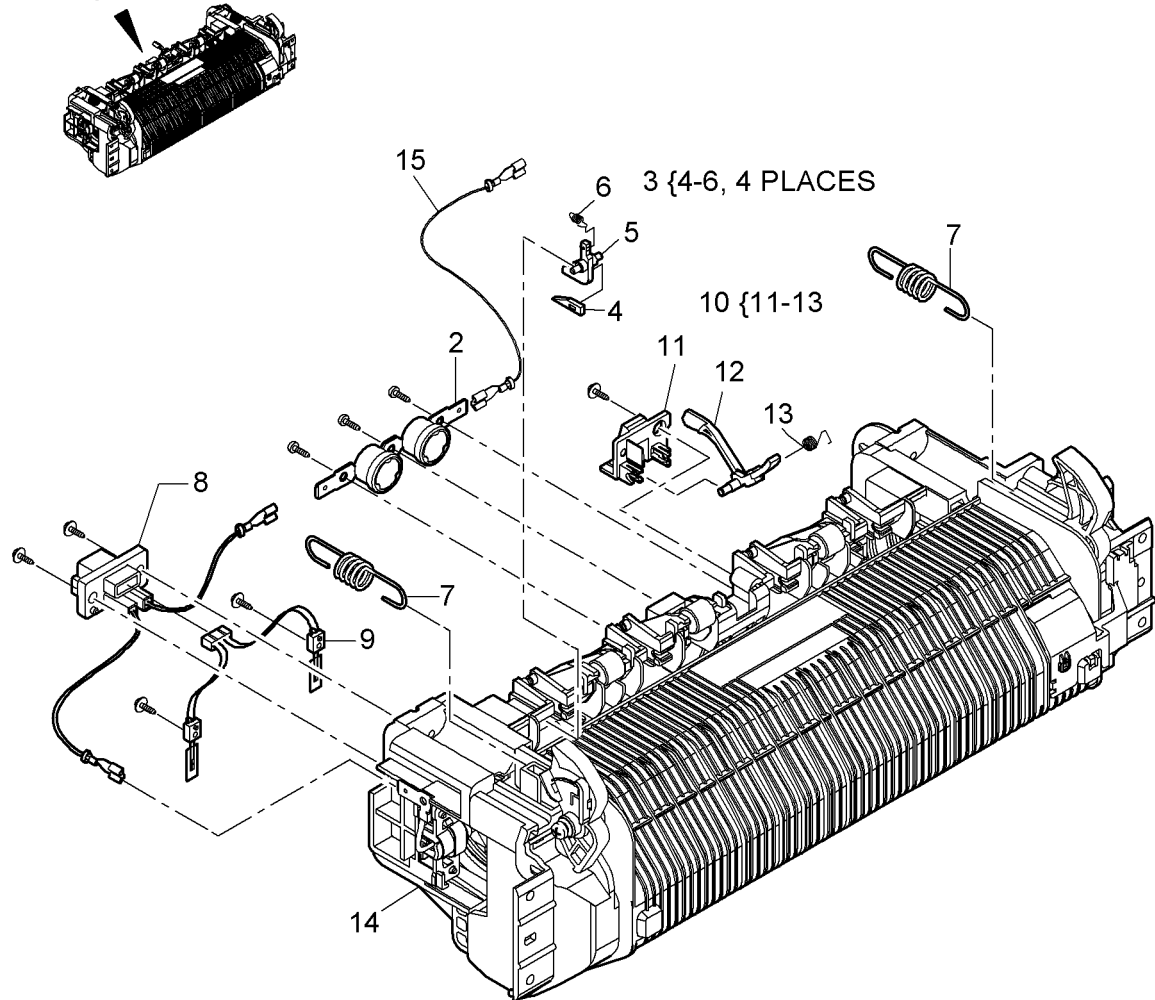
AP-8-0522-A

PL 10.25 Fuser (1 of 2)

Item	Part	Description
1	002N02557	Fuser assembly (See Note) (REP 10.1)
2	130N01463	Thermostat assembly
3	031N00217	Stripper finger assembly
4	—	Stripper finger (P/O PL 10.25 Item 3)
5	—	Finger holder (P/O PL 10.25 Item 3)
6	—	Spring (P/O PL 10.25 Item 3)
7	009N01595	Spring (REP 10.5)
8	152N11708	Connector
9	130N01462	Thermistor assembly
10	120N00487	Fuser exit sensor assembly
11	—	Actuator cradle (P/O PL 10.25 Item 10)
12	—	Actuator (P/O PL 10.25 Item 10)
13	—	Spring (P/O PL 10.25 Item 10)
14	—	Fusing unit (P/O PL 10.25 Item 1)
15	152N11709	AC Fuser harness

NOTE: This is a HFSI. To reset the HFSI count, go to GP 16.

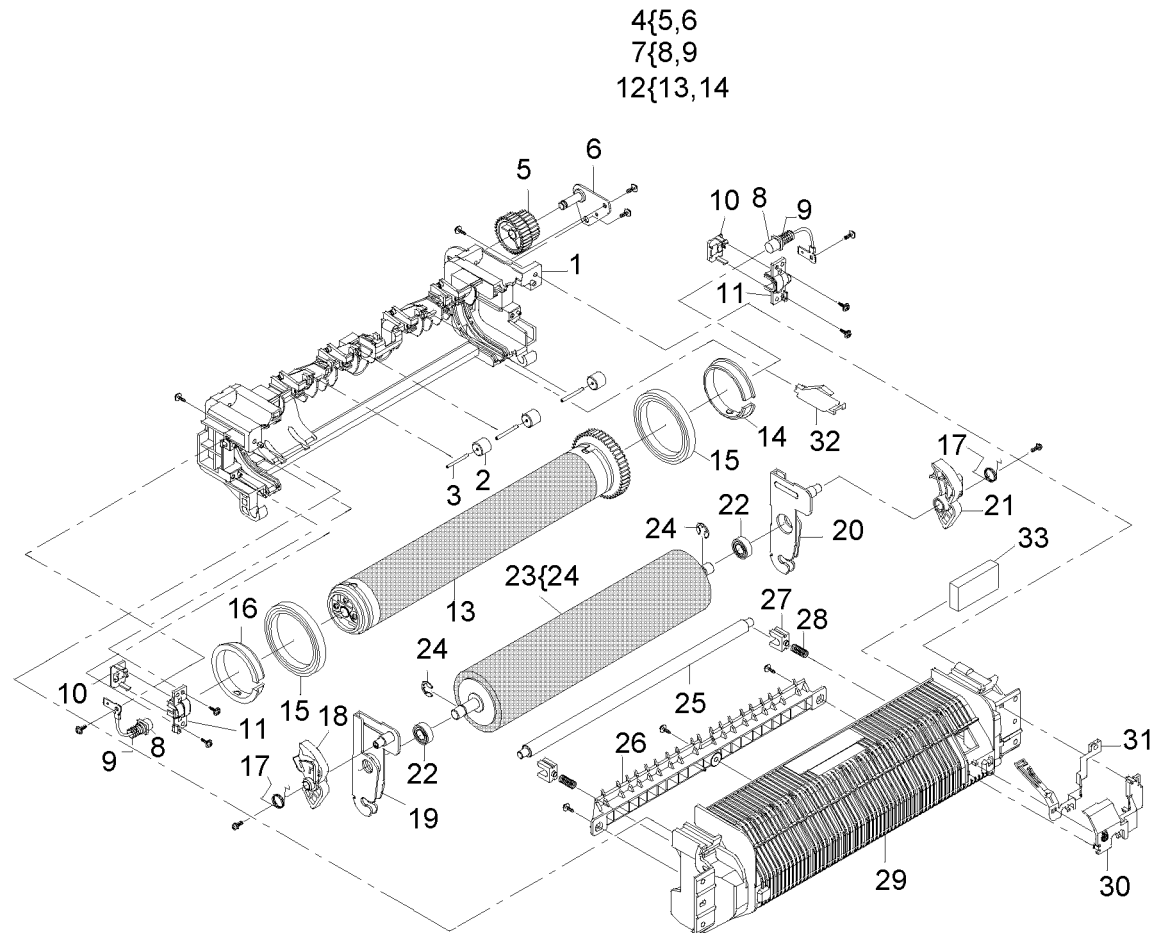
1 {2-15 AND ITEMS 1-33 ON PL 10.26



AP-8-0524-A

PL 10.26 Fuser (1 of 2)

Item	Part	Description
1	–	Fuser cover (P/O PL 10.25 Item 1)
2	–	Roll (P/O PL 10.25 Item 1)
3	–	Pin (P/O PL 10.25 Item 1)
4	030N00720	Gear and bracket assembly
5	–	Gear (P/O PL 10.26 Item 4)
6	–	Bracket (P/O PL 10.26 Item 4)
7	115N00862	Carbon brush assembly (REP 10.5)
8	–	Carbon brush (P/O PL 10.26 Item 7)
9	–	Spring (P/O PL 10.26 Item 7)
10	–	Lower brush cover (P/O PL 10.25 Item 1)
11	–	Upper brush cover (P/O PL 10.25 Item 1)
12	022N02233	Heat roller assembly (See Note 1 and Note 2) (REP 10.5)
13	–	Heat roller (P/O PL 10.26 Item 12)
14	–	Heat roller collar (P/O PL 10.26 Item 12)
15	013N13866	Bearing (REP 10.5)
16	016N00295	Heat roller collar (See Note 2)
17	–	Spring (P/O PL 10.25 Item 1)
18	–	Jam lever LH (P/O PL 10.25 Item 1)
19	–	Bracket (P/O PL 10.25 Item 1)
20	–	Bracket (P/O PL 10.25 Item 1)
21	–	Jam lever RH (P/O PL 10.25 Item 1)
22	013N13847	Bearing (REP 10.5)
23	022N02273	Pressure roller (See Note 1)
24	–	E-clip (P/O PL 10.25 Item 1)
25	–	Cleaning shaft (P/O PL 10.25 Item 1)
26	–	Input guide (P/O PL 10.25 Item 1)
27	–	Pressure bearing (P/O PL 10.25 Item 1)
28	–	Spring (P/O PL 10.25 Item 1)
29	–	Fuser cover (P/O PL 10.25 Item 1)
30	–	Grounding strip (P/O PL 10.25 Item 1)
31	–	Cover (P/O PL 10.25 Item 1)
32	–	Grounding strip (P/O PL 10.25 Item 1)
33	–	Cleaning felt (P/O PL 10.25 Item 1)



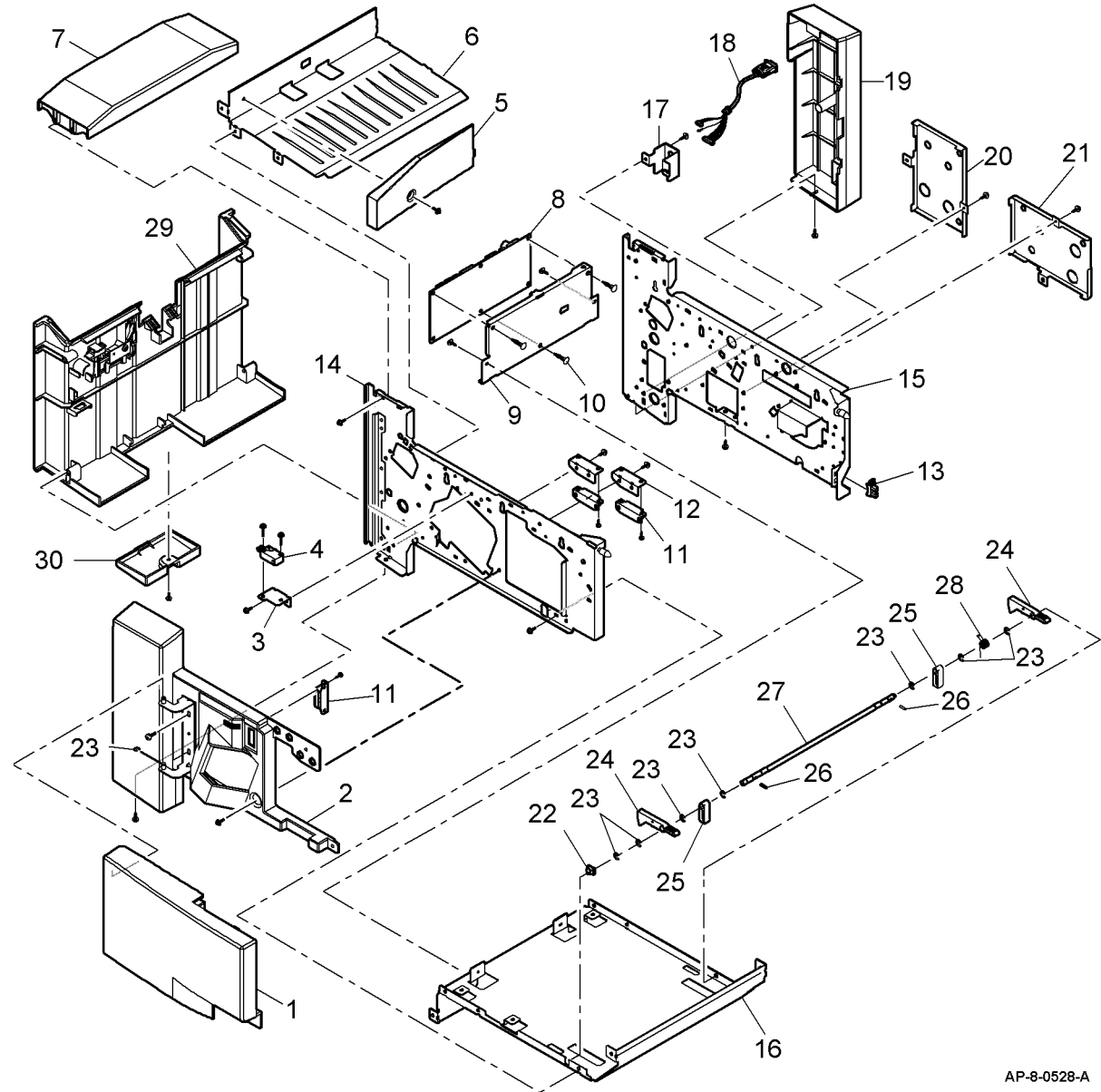
AP-8-0537-A

NOTE: 1. This is a HFSI. To reset the HFSI count, go to GP 16.

NOTE: 2. If a new heat roller assembly is installed, also install a new heat roller collar, PL 10.26 Item 16.

PL 12.10 Finisher frame

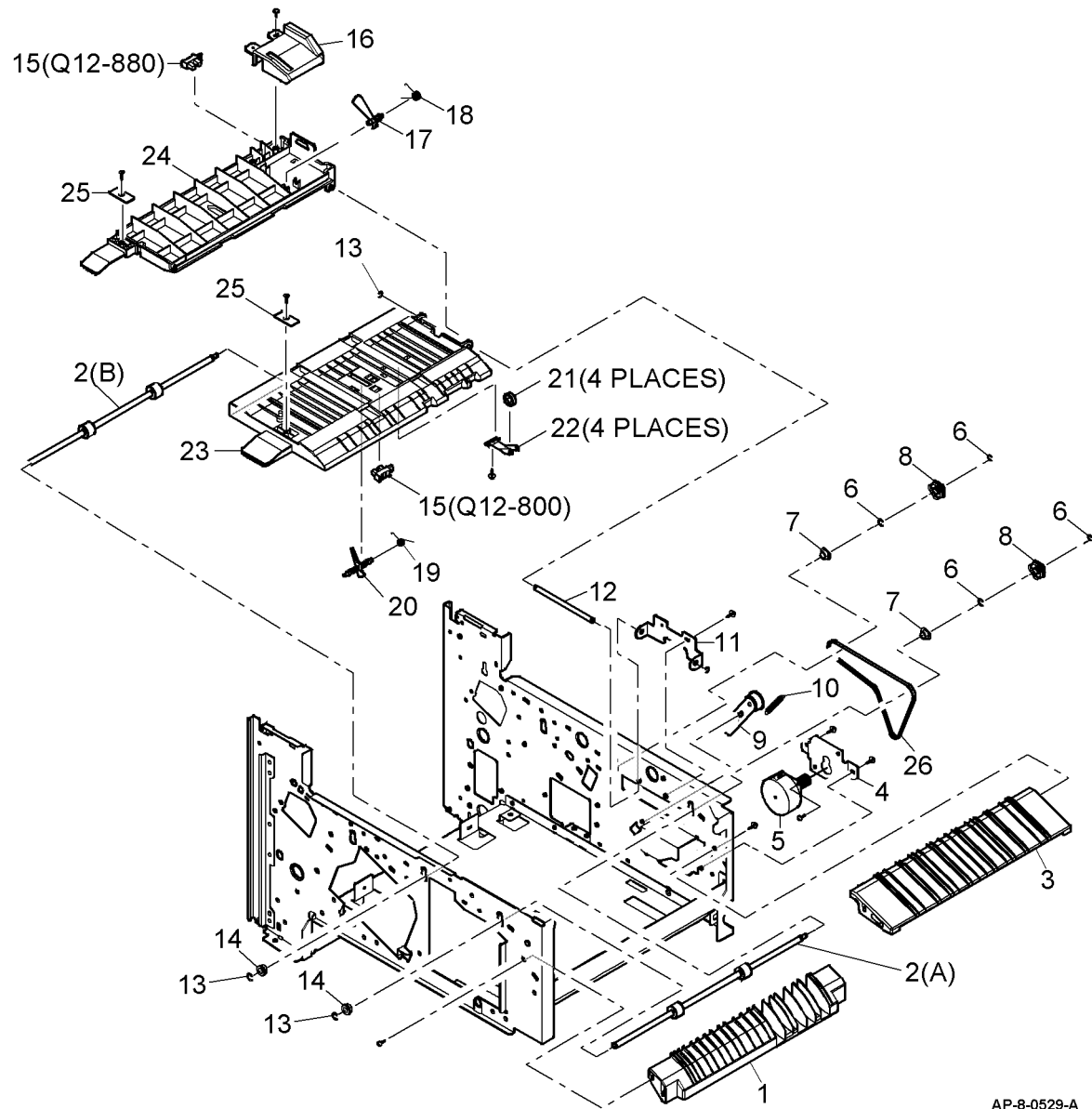
Item	Part	Description
1	101N01389	Door
2	002N02626	Front cover
3	-	Interlock switch bracket (Not Spared)
4	109N00655	Finisher door switch (S12-870)
5	101N01406	Top infill cover
6	-	Exit cover (Not Spared)
7	002N02572	Top cover (REP 12.4)
8	140N63143	Finisher PWB (REP 12.2)
9	-	PWB bracket (Not Spared)
10	-	Stand off (Not Spared)
11	121N01131	Magnet
12	-	Magnet bracket (Not Spared)
13	130N01274	IOT Set sensor (Q12-875)
14	-	Front side plate (Not Spared)
15	-	Rear side plate (Not Spared)
16	-	Base plate (Not Spared)
17	-	Interface harness bracket (Not Spared)
18	113N01304	Interface harness
19	002N02573	Rear cover (REP 12.4)
20	-	Exit belt cover (Not Spared)
21	-	Entry belt cover (Not Spared)
22	-	Bearing (Not Spared)
23	-	E-Clip (Not Spared)
24	-	Hook (Not Spared)
25	-	Guide (Not Spared)
26	-	Pin (Not Spared)
27	-	Shaft (Not Spared)
28	-	Spring (Not Spared)
29	-	Left cover assembly (Not Spared)
30	-	PWB Access cover (Not Spared)



AP-8-0528-A

PL 12.15 Duplex and Entry Components

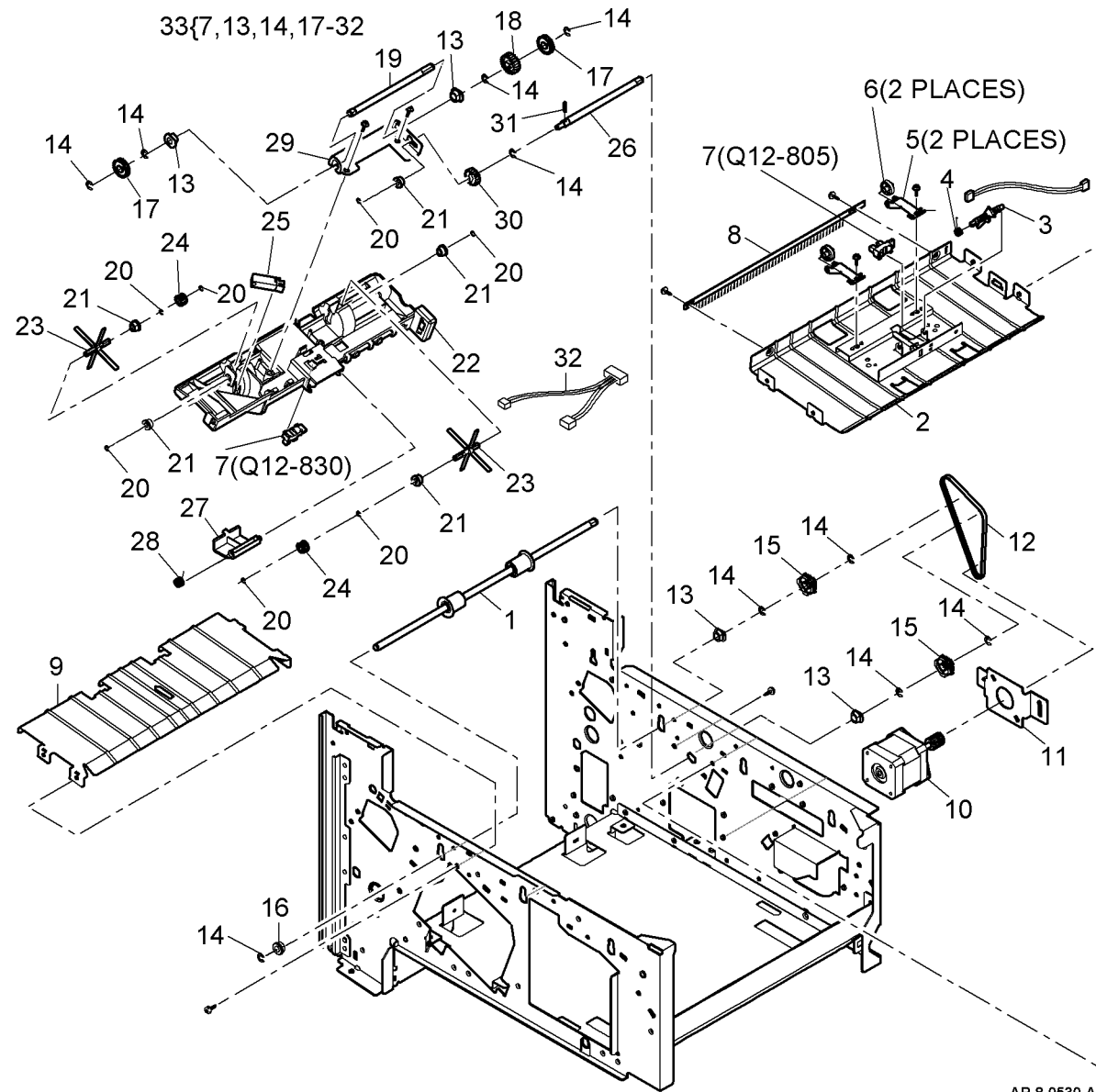
Item	Part	Description
1	-	Lower entry guide (Not Spared)
2	-	Entry roll (2A), Transport roll (2B) (Not Spared)
3	-	Upper entrance guide (Not Spared)
4	-	Entry motor bracket (Not Spared)
5	127N07484	Entrance motor (MOT12-100)
6	-	E-Clip (Not Spared)
7	-	Bearing (Not Spared)
8	020N00821	Pulley
9	-	Belt tensioner (Not Spared)
10	-	Spring (Not Spared)
11	-	Hinge bracket (Not Spared)
12	-	Hinge shaft (Not Spared)
13	-	E-Clip (Not Spared)
14	-	Bearing (Not Spared)
15	130N01274	Duplex paper sensor (Q12-880), Finisher entrance sensor (Q12-800)
16	-	Actuator cover (Not Spared)
17	-	Duplex actuator (Not Spared)
18	-	Spring (Duplex) (Not Spared)
19	-	Spring (Entry) (Not Spared)
20	-	Entry actuator (Not Spared)
21	-	Idler (Not Spared)
22	-	Leaf spring (Not Spared)
23	-	Document entry guide (Not Spared)
24	-	Duplex guide (Not Spared)
25	-	Magnet catch plate (Not Spared)
26	023N01155	Drive belt



AP-8-0529-A

PL 12.20 Compiler and Exit Components

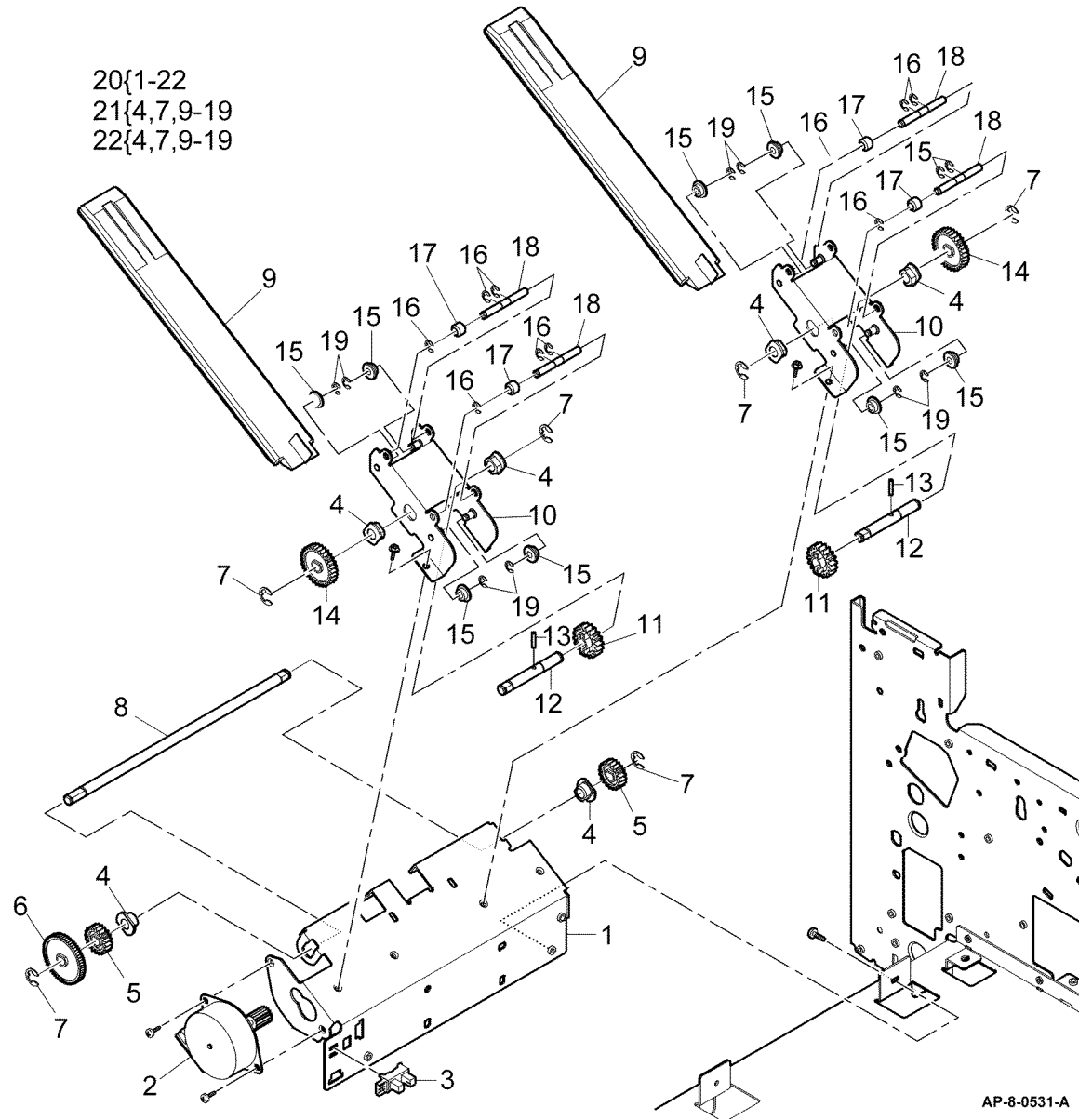
Item	Part	Description
1	022N02228	Exit roll (REP 12.3)
2	-	Upper exit guide (Not Spared)
3	-	Actuator (Not Spared)
4	-	Spring (Not Spared)
5	-	Leaf spring (Not Spared)
6	-	Idler (Not Spared)
7	130N01274	Exit sensor (Q12-805) (REP 12.3), Ejector home sensor (Q12-830) (P/ O PL 12.20 Item 33)
8	115N00860	Static eliminator
9	-	Lower exit guide (Not Spared)
10	127N07483	Exit motor (MOT12-110)
11	-	Motor bracket (Not Spared)
12	023N01154	Drive belt (REP 12.3)
13	-	Bearing (Not Spared)
14	-	E-Clip (Not Spared)
15	-	Pulley (Not Spared)
16	-	Bearing (Not Spared)
17	-	Gear 34T (P/O PL 12.20 Item 33)
18	-	Gear 22T (P/O PL 12.20)
19	-	Shaft (Not Spared)
20	-	E-Clip (Not Spared)
21	-	Bearing (Not Spared)
22	-	Compiler guide (Not Spared)
23	-	Paddle (P/O PL 12.20 Item 33)
24	-	Paddle gear 18T (P/O PL 12.20 Item 33)
25	-	Paper detector sensor (Q12-865) (Not Spared) (REP 12.3)
26	-	Shaft (Not Spared)
27	-	Actuator (Not Spared)
28	-	Spring (Not Spared)
29	-	Paddle bracket (Not Spared)
30	-	Gear 18T (P/O PL 12.20 Item 33)
31	-	Pin (Not Spared)
32	-	Harness (P/O PL 12.20 Item 33)
33	022N02276	Compiler assembly (REP 12.5)



AP-8-0530-A

PL 12.25 Support Finger Assembly

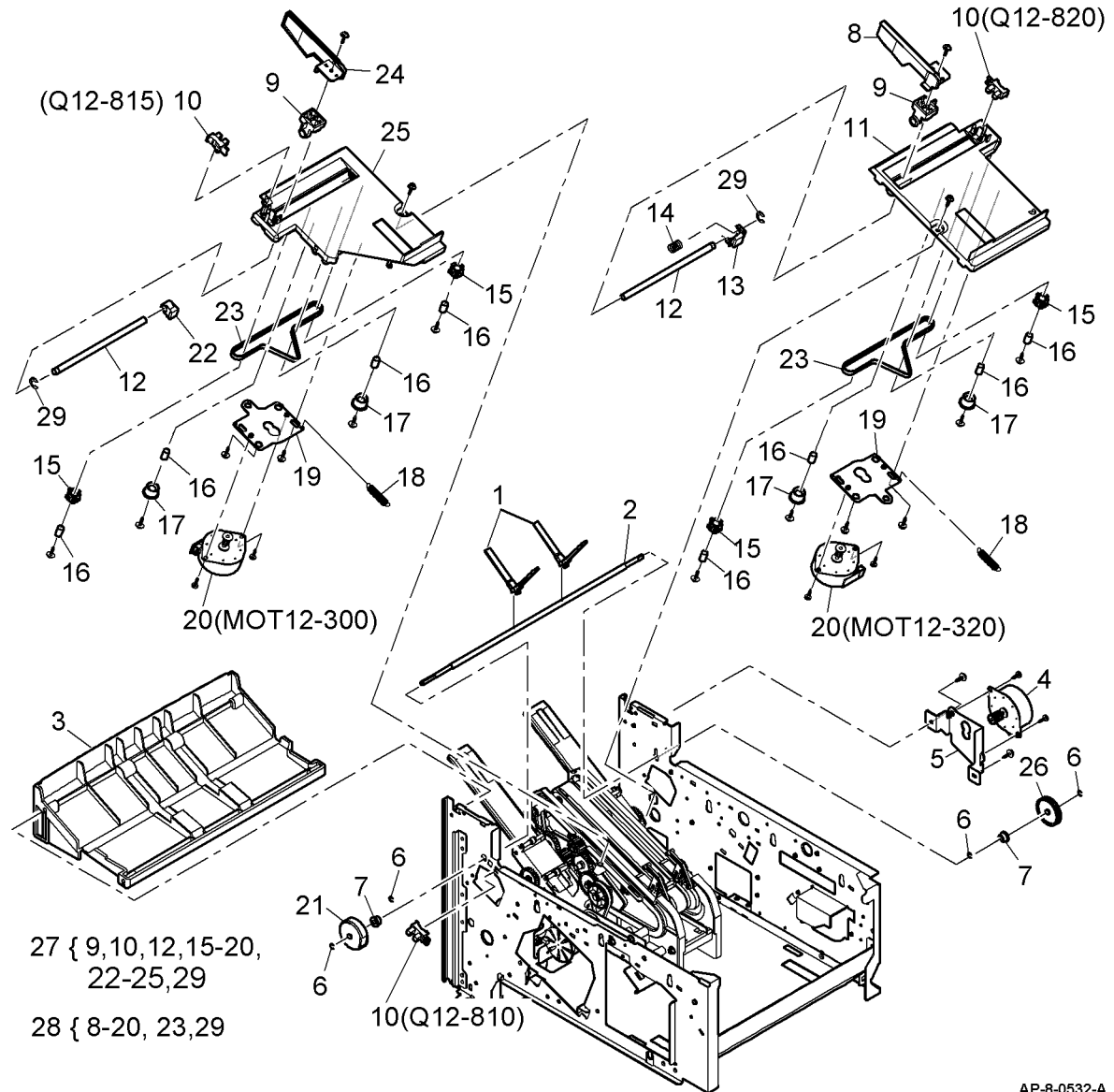
Item	Part	Description
1	-	Bracket (P/O PL 12.25 Item 20)
2	127N07492	Support finger motor (MOT12-400) (REP 12.7)
3	130N01274	Ejector encoder sensor (Q12-835)
4	-	Bearing (P/O PL 12.25 Item 21) & (PL 12.25 Item 22)
5	007N01492	Gear 20T
6	007N01493	Gear 60T
7	-	E-Clip (P/O PL 12.25 Item 21) & (PL 12.25 Item 22)
8	-	Transport shaft (P/O PL 12.25 Item 20)
9	-	Support finger (P/O PL 12.25 Item 21) & (PL 12.25 Item 22) (REP 12.6)
10	-	Bracket (P/O PL 12.25 Item 21) & (PL 12.25 Item 22)
11	-	Pinion gear 18T (P/O PL 12.25 Item 21) & (PL 12.25 Item 22)
12	-	Pinion shaft (P/O PL 12.25 Item 21) & (PL 12.25 Item 22)
13	-	Pin (P/O PL 12.25 Item 21) & (PL 12.25 Item 22)
14	-	Gear 30T (P/O PL 12.25 Item 21) & (PL 12.25 Item 22)
15	-	Bearing (P/O PL 12.25 Item 21) & (PL 12.25 Item 22)
16	-	E-Clip (P/O PL 12.25 Item 21) & (PL 12.25 Item 22)
17	-	Roller (P/O PL 12.25 Item 21) & (PL 12.25 Item 22)
18	-	Shaft (P/O PL 12.25 Item 21) & (PL 12.25 Item 22)
19	-	E-Clip (P/O PL 12.25 Item 21) & (PL 12.25 Item 22)
20	-	Support finger assembly (Not Spared) (REP 12.7)
21	019N00922	Front support finger assembly (REP 12.6)
22	019N00923	Rear support finger assembly (REP 12.6)



AP-8-0531-A

PL 12.30 Jogger and Paddle Assembly

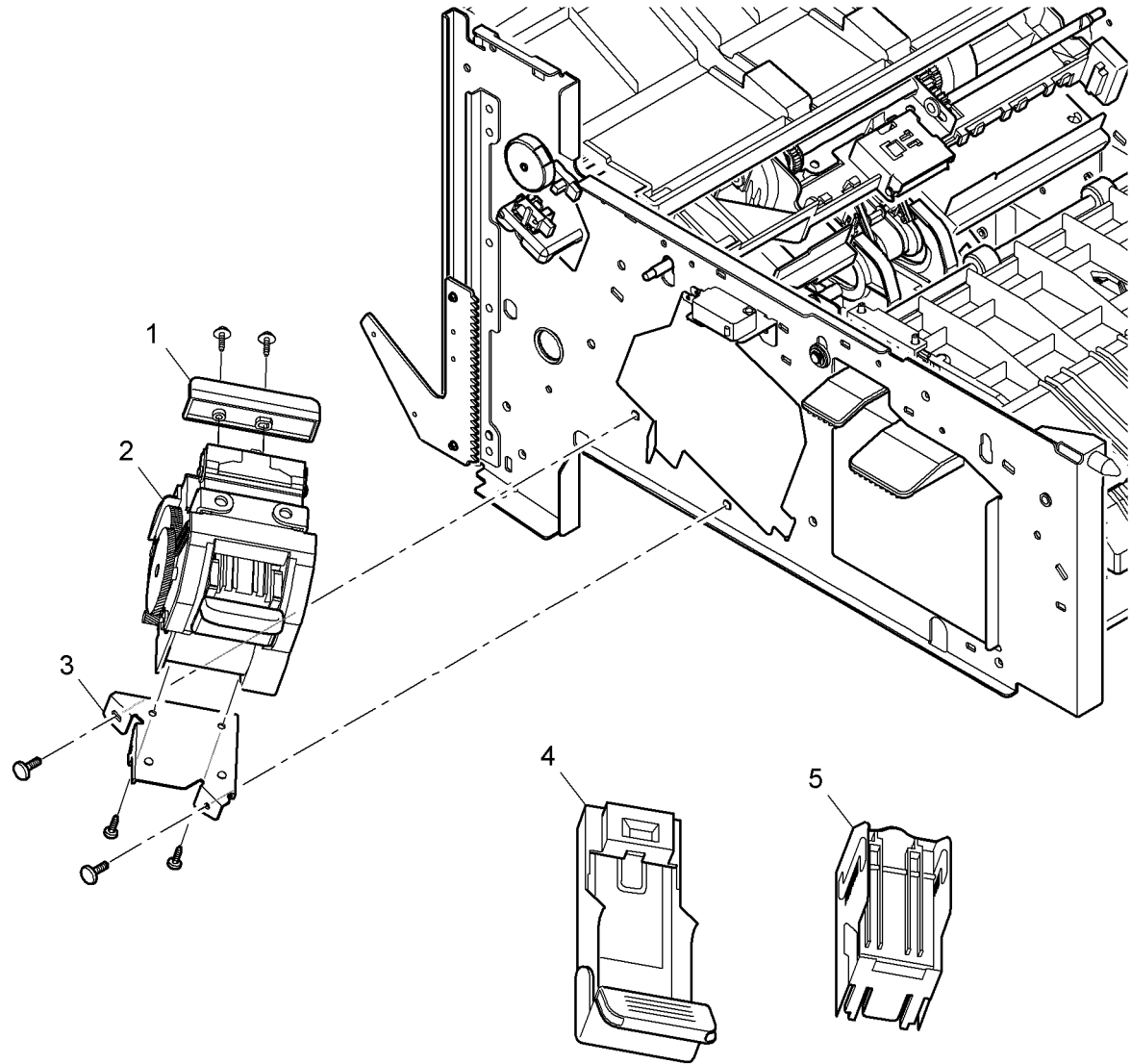
Item	Part	Description
1	033N00239	Compiler exit paddles
2	-	Paddle shaft (Not Spared)
3	-	Upper compiler cover (Not Spared)
4	127N07492	Paddle motor (MOT 12-200)
5	-	Paddle motor bracket (Not Spared)
6	-	E-Clip (Not Spared)
7	-	Bearing (Not Spared)
8	-	Rear jogger arm (P/O PL 12.30 Item 28)
9	-	Jogger bush (P/O PL 12.30 Item 27) & (PL 12.30 Item 28)
10	130N01274	Paddle home sensor (Q2-810), Front jogger home sensor (Q12-815), Rear jogger home sensor (Q12-820)
11	-	Compiler rear frame (Not Spared)
12	-	Jogger shaft (P/O PL 12.30 Item 27) & (PL 12.30 Item 28)
13	-	Rear belt holder (P/O PL 12.30 Item 28)
14	-	Jogger spring (P/O PL 12.30 Item 28)
15	-	Timing pulley (P/O PL 12.30 Item 27) & (PL 12.30 Item 28)
16	-	Pivot tube (P/O PL 12.30 Item 27) & (PL 12.30 Item 28)
17	-	Idler (P/O PL 12.30 Item 27) & (PL 12.30 Item 28)
18	-	Spring (P/O PL 12.30 Item 27) & (PL 12.30 Item 28)
19	-	Jogger motor bracket (P/O PL 12.30 Item 27) & (PL 12.30 Item 28)
20	-	Front jogger motor (MOT12-300) (P/O PL 12.30 Item 27) & (PL 12.30 Item 28)
21	-	Paddle home actuator (Not spared)
22	-	Belt holder front (P/O PL 12.30 Item 27)
23	023N01153	Jogger belt (REP 12.8)
24	-	Front jogger arm (P/O PL 12.30 Item 27)
25	-	Compiler front frame (P/O PL 12.30 Item 27)
26	007N01497	Paddle gear 56T
27	038N00494	Front jogger assembly (REP 12.5)
28	038N00493	Rear jogger assembly (REP 12.5)
29	--	E-Clip (P/O PL 12.30 Item 27) & (PL 12.30 Item 28)



AP-8-0532-A

PL 12.35 Stapler Assembly

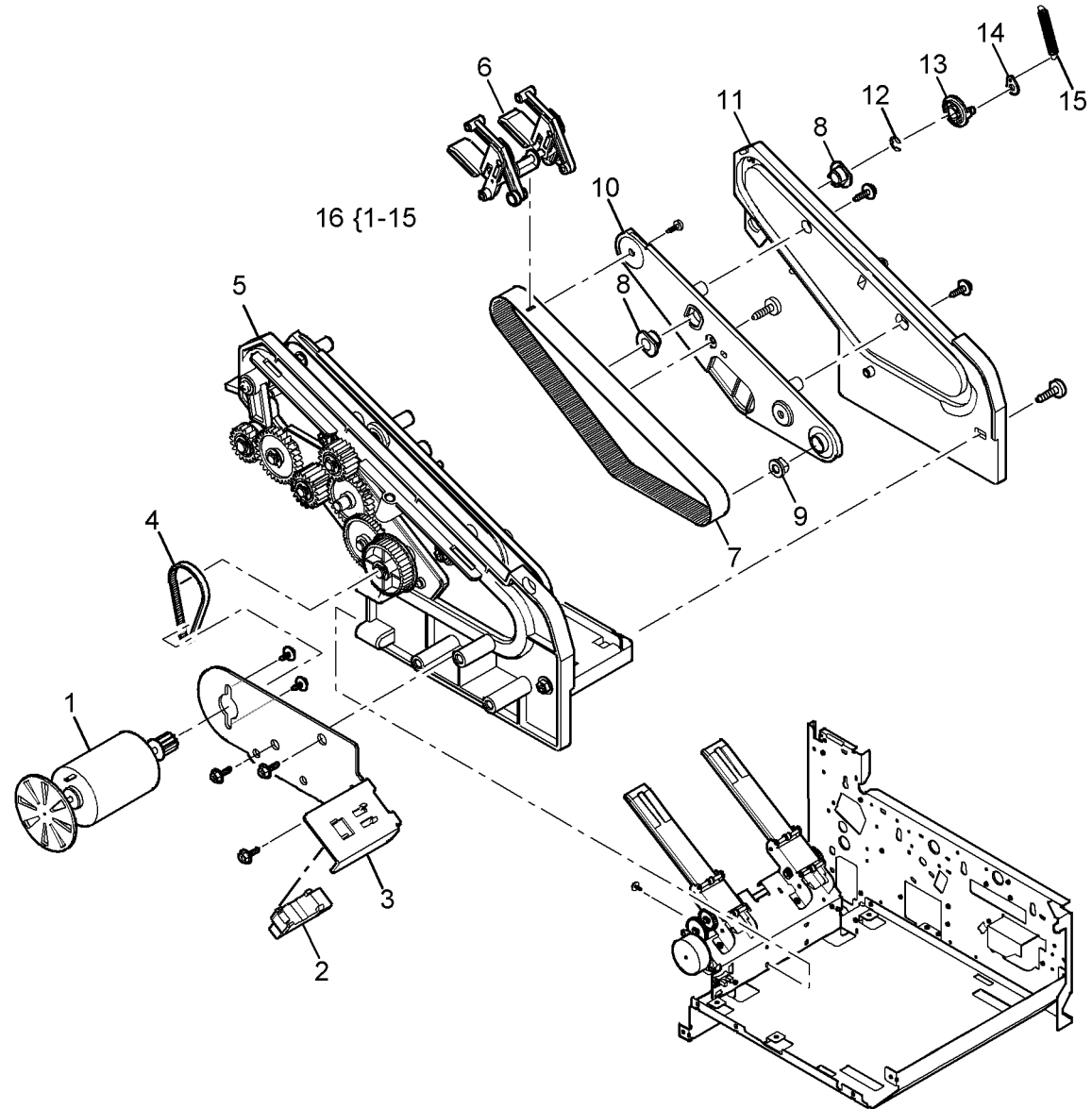
Item	Part	Description
1	—	Stapler guide (Not Spared)
2	029N00373	Stapler assembly
3	—	Stapler bracket (Not Spared)
4	029N00371	Stapler Cartridge
5	—	Staple refill (Not Spared)



AP-8-0533-A

PL 12.40 Ejector Assembly

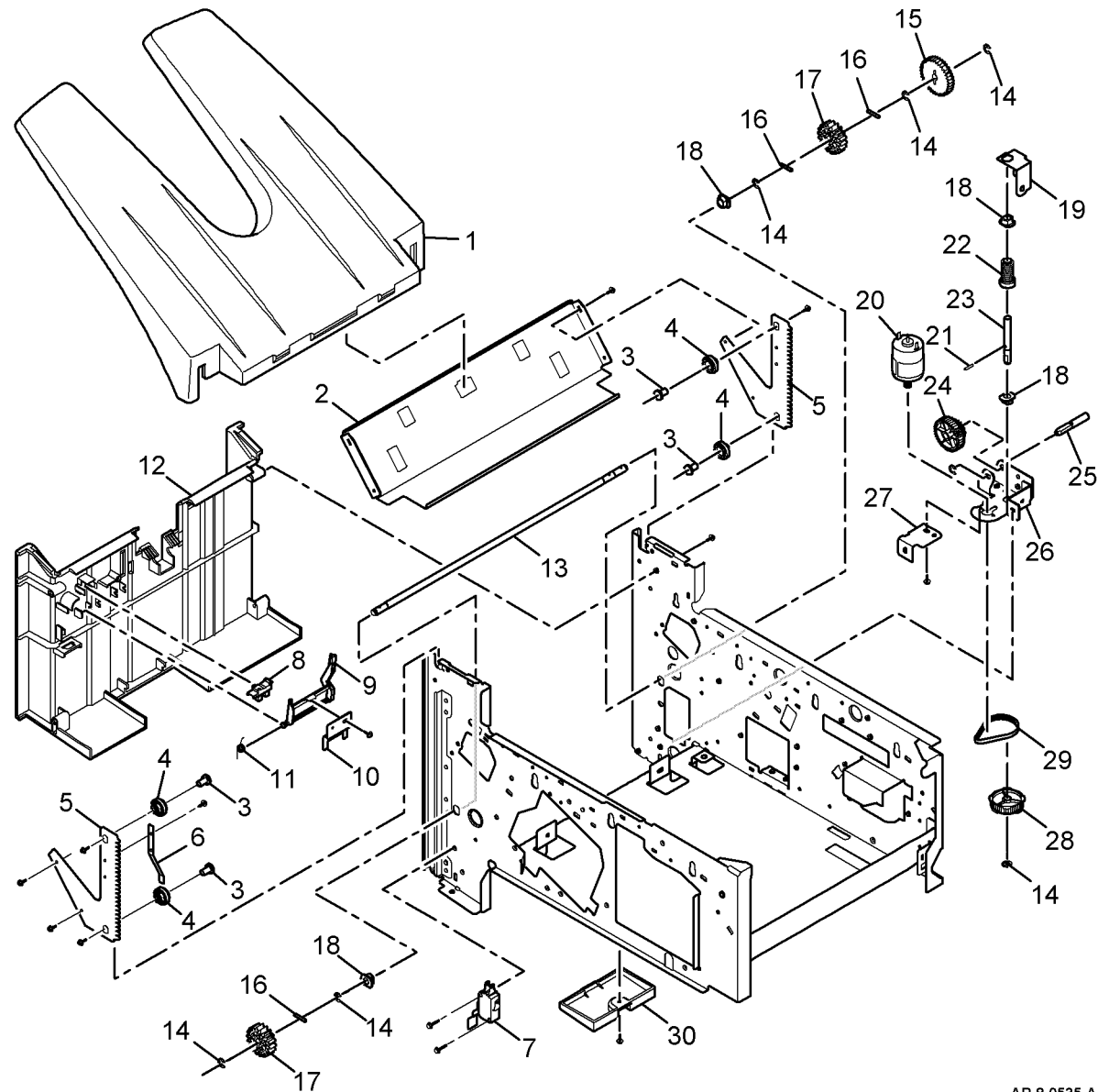
Item	Part	Description
1	127N07493	Ejector motor (MOT 12-500) (REP 12.7)
2	130N01274	Support finger home sensor (Q 12-825)
3	-	Motor bracket (P/O PL 12.40 Item 16)
4	-	Drive belt (P/O PL 12.40 Item 16)
5	-	Eject unit (P/O PL 12.40 Item 16)
6	-	Document grip assembly (P/O PL 12.40 Item 16)
7	-	Ejector belt (P/O PL 12.40 Item 16)
8	-	Bearing (P/O PL 12.40 Item 16)
9	-	Bearing (P/O PL 12.40 Item 16)
10	-	Ejector belt rear cover (P/O PL 12.40 Item 16)
11	-	Ejector rear frame (P/O PL 12.40 Item 16)
12	-	E-Clip (P/O PL 12.40 Item 16)
13	-	Cam (P/O PL 12.40 Item 16)
14	-	Link (P/O PL 12.40 Item 16)
15	-	Spring (P/O PL 12.40 Item 16)
16	019N00924	Ejector assembly (REP 12.7)



AP-8-0534-A

PL 12.45 Stacker Assembly

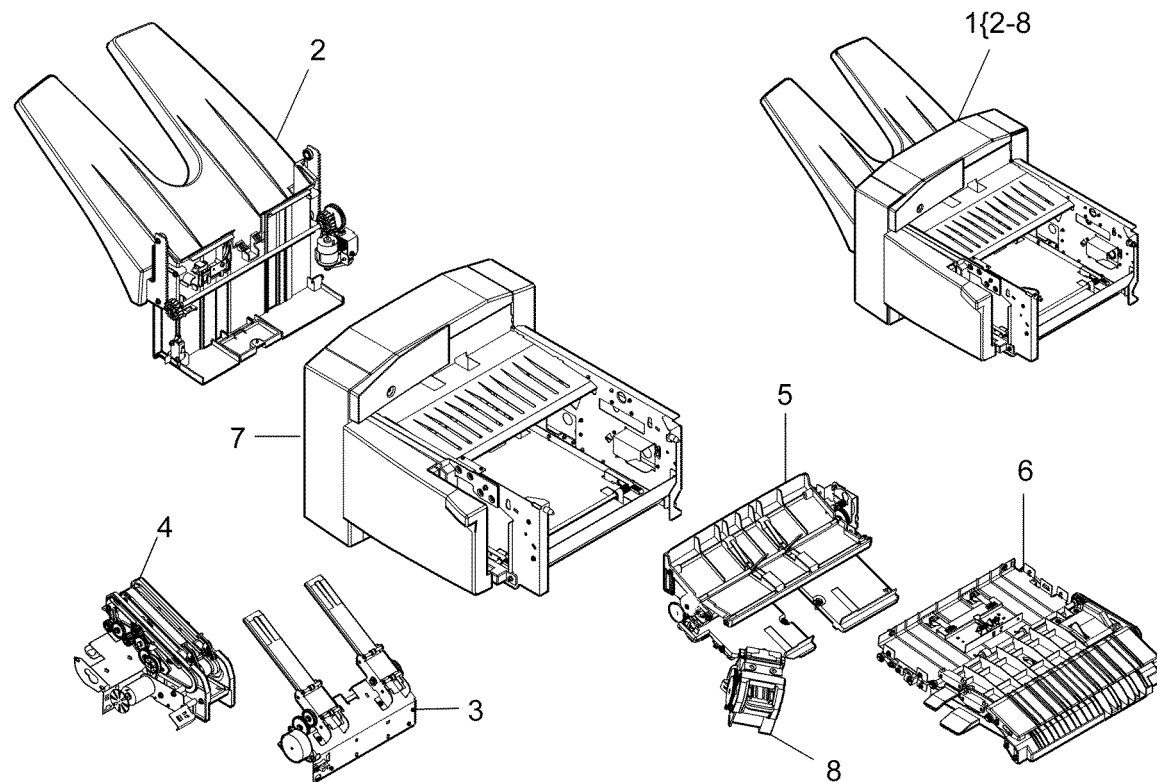
Item	Part	Description
1	050N00489	Stacker tray
2	-	Tray support (Not Spared)
3	-	Stud (Not Spared)
4	-	Roller (Not Spared)
5	-	Rack bracket (Not Spared)
6	-	Grounding strip (Not Spared)
7	050N00490	Stacker bottom switch (S12-845)
8	130N01274	Stacker top sensor (Q12-840)
9	-	Actuator (Not Spared)
10	-	Retainer (Not Spared)
11	-	spring (Not Spared)
12	-	Left cover (Not Spared)
13	-	Drive shaft (Not Spared)
14	-	E-Clip (Not Spared)
15	007N01491	Gear 35T (REP 12.9)
16	-	Pin (2x14) (Not Spared)
17	007N01490	Pinion gear (REP 12.9)
18	-	Bearing (Not Spared)
19	-	Worm gear bracket (Not Spared)
20	127N07494	Stacker tray motor (MOT 12-600) (REP 12.9)
21	-	Pin (2x10) (Not Spared)
22	050N00491	Worm gear (REP 12.9)
23	-	Shaft (Not Spared)
24	020N00828	Worm wheel (REP 12.9)
25	-	Worm shaft (Not Spared)
26	-	Motor bracket (Not Spared)
27	-	Motor support bracket (Not Spared)
28	-	Pulley (Not Spared)
29	023N01156	Belt (REP 12.9)
30	-	PWB access cover (Not Spared)



AP-8-0535-A

PL 12.50 Finisher Assembly

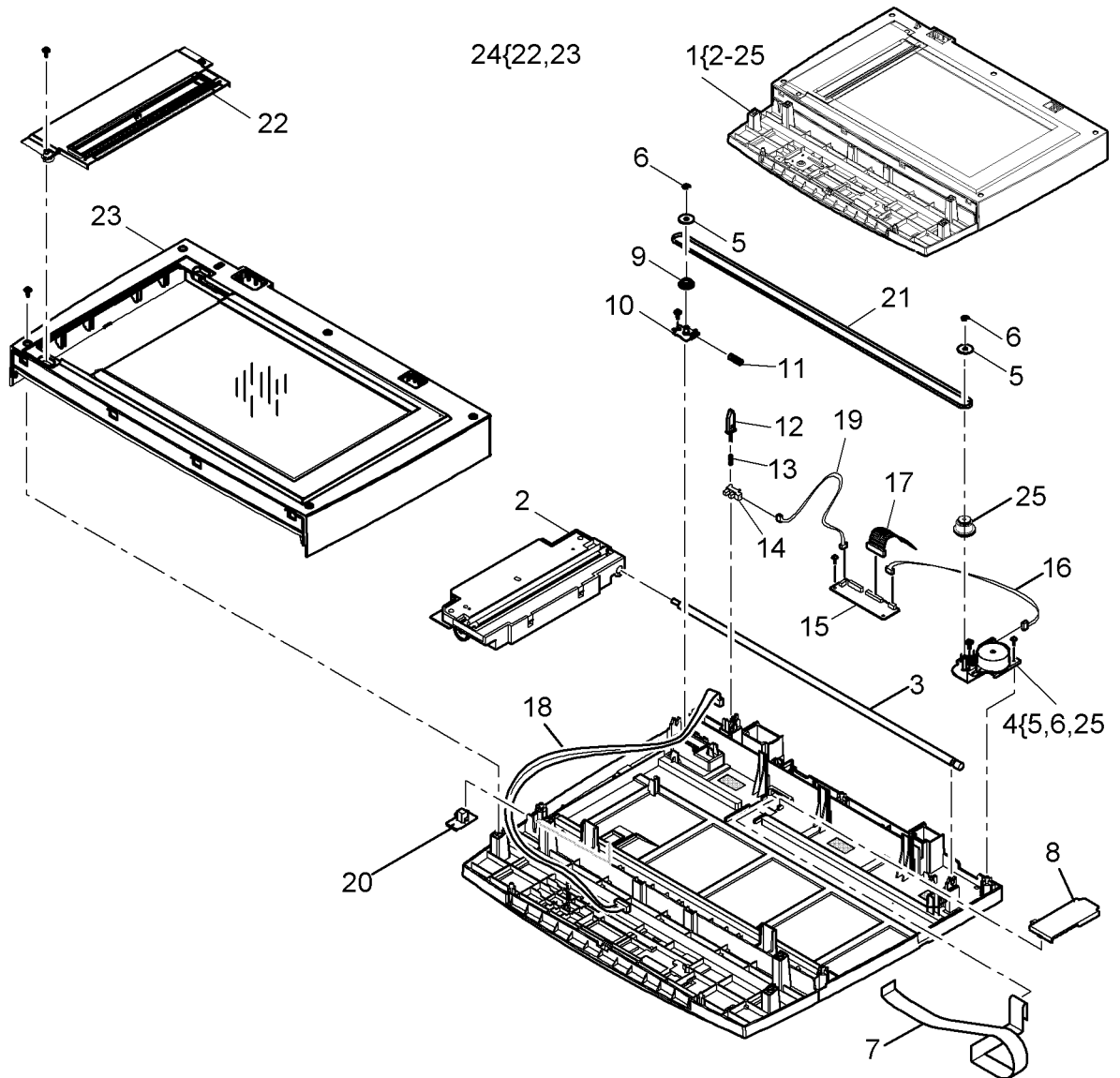
Item	Part	Description
1	050N00504	Finisher assembly (complete)
2	-	Stacker assembly (REF: PL 12.45)
3	-	Support finger assembly (REF: PL 12.25)
4	-	Ejector assembly (REF: PL 12.40)
5	-	Jogger and Paddle assembly (REF: PL 12.30)
6	-	Duplex and Entry components (REF: PL 12.15)
7	-	Finisher frame (REF: PL 12.10)
8	-	Stapler assembly (REF: PL 12.35)



AP-8-0541-A

PL 14.10 Scanner Module and CVT/ Document Glass

Item	Part	Description
1	002N02559	Scanner assembly (REP 14.1)
2	101N01399	CCD module (REP 14.2)
3	-	Shaft (P/O PL 14.10 Item 1)
4	127N07496	Scanner drive motor assembly (REP 14.2)
5	-	Sheave (P/O PL 14.10 Item 4)
6	-	E-clip (P/O PL 14.10 Item 4)
7	109N00656	CCD ribbon cable (REP 14.2)
8	-	Ribbon cable cover (P/O PL 14.10 Item 1)
9	020N00830	Drive belt pulley (REP 14.2)
10	-	Pulley seat (P/O PL 14.10 Item 1)
11	009N01616	Pulley spring
12	-	Platen cover sensor actuator (P/O PL 14.10 Item 1) (REP 14.2)
13	-	Spring (P/O PL 14.10 Item 1)
14	130N01274	Platen cover sensor (Q05-400) (REP 14.2)
15	140N63149	Scanner PWB (REP 14.2)
16	-	Drive motor harness (P/O PL 14.10 Item 1)
17	152N11716	Scanner harness
18	152N11717	GUI harness (P/O PL 14.10 Item 1)
19	-	Platen cover sensor harness (P/O PL 14.10 Item 1)
20	-	Scanner lock switch (P/O PL 14.10 Item 1)
21	023N00954	Scanner drive belt (REP 14.2)
22	002N02582	CVT glass assembly
23	-	Scanner top cover (P/O PL 14.10 Item 24) (REP 14.2)
24	002N02581	Scanner top cover assembly (REP 14.2)
25	007N01537	Timing gear (REP 14.2)

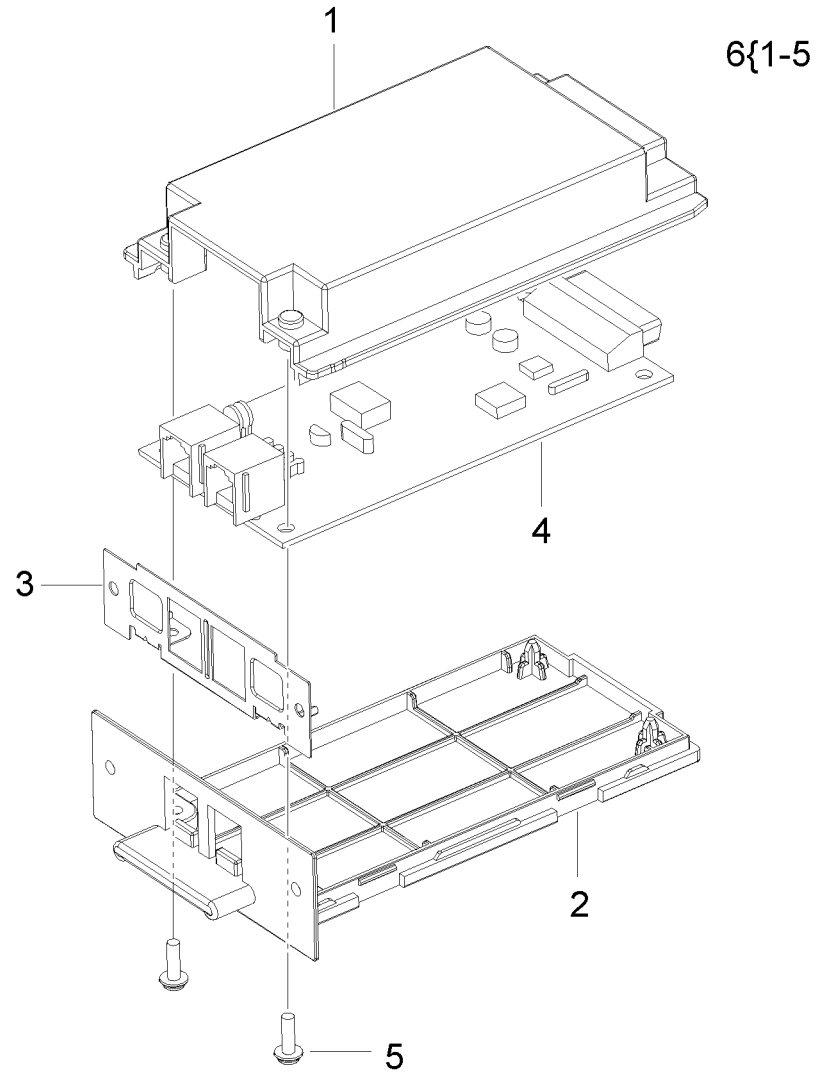


AP-8-0510-A

PL 20.10 FAX Assembly

Item	Part	Description
1	—	Upper cover (P/O PL 20.10 Item 6)
2	—	Lower cover (P/O PL 20.10 Item 6)
3	—	Bracket (P/O PL 20.10 Item 6)
4	140N63142	FAX PWB
5	—	Screw (P/O PL 20.10 Item 6)
6	002N02560	FAX module (P/O PL 31.10 Item 1) (See Note)

NOTE: For FAX kits, see PL 31.10 Item 1



AP-8-0536-A

PL 26.10 Consumables and Tools

Item	Part	Description
1	600T02252	Ethernet crossover cable (PWS to network controller)
2	600T02299	Screwdriver

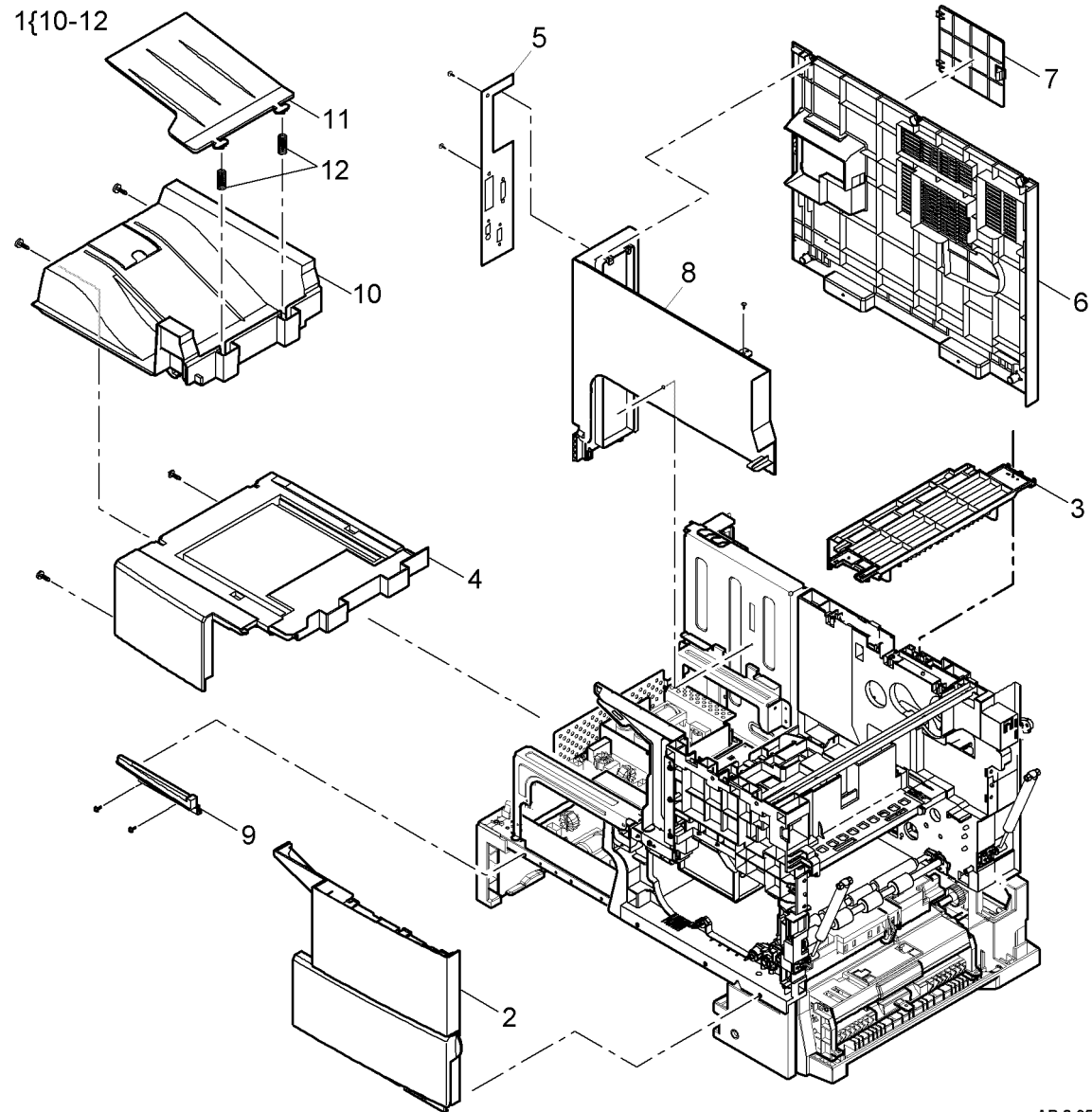
**NO EXPLODED
VIEW PROVIDED**

AP-8-0540-

PL 28.10 Covers

Item	Part	Description
1	002N02564	Exit tray assembly
2	002N02565	Front door assembly
3	002N02566	Exit guide assembly (REP 10.2)
4	002N02567	Paper exit cover
5	002N02568	Infill cover
6	002N02569	Rear cover
7	002N02570	Rear access cover
8	—	Rear exit cover (Not Spared) (REP 4.2)
9	—	Front infill cover (Not Spared)
10	—	Tray (P/O PL 28.10 Item 1)
11	—	Lower tray (P/O PL 28.10 Item 1)
12	009N01593	Spring (P/O PL 28.10 Item 1)

NOTE: Refer to PL 12.10 - PL 12.45 for the finisher covers.



AP-8-0515-A

PL 31.10 Maintenance/Installation/ Removal Kits

Item	Part	Description
1	097N01527	Fax kit (Parallel) (see Note)
–	097N01526	Fax (Serial) (see Note)
2	097S03772	Foreign device interface kit

NOTE: For the FAX module, see PL 20.10 Item 6.

**NO EXPLODED
VIEW PROVIDED**

AP-8-0027-1

Part Number Index

Table 1 Part Number Index

Part Number	Part List
002N02288	PL 5.15
002N02554	PL 10.15
002N02555	PL 10.20
002N02556	PL 4.20
002N02557	PL 10.25
002N02558	PL 5.10
002N02559	PL 14.10
002N02560	PL 20.10
002N02561	PL 7.30
002N02562	PL 2.10
002N02563	PL 8.20
002N02564	PL 28.10
002N02565	PL 28.10
002N02566	PL 28.10
002N02567	PL 28.10
002N02568	PL 28.10
002N02569	PL 28.10
002N02570	PL 28.10
002N02571	PL 4.15
002N02572	PL 12.10
002N02573	PL 12.10
002N02575	PL 10.20
002N02576	PL 7.35
002N02577	PL 8.20
002N02578	PL 2.10
002N02579	PL 7.20
002N02580	PL 7.20
002N02581	PL 14.10
002N02582	PL 14.10
002N02583	PL 5.15
002N02584	PL 5.20
002N02621	PL 2.10
002N02622	PL 4.15
002N02626	PL 12.10
003N00967	PL 5.10
003N01004	PL 5.10
003N01005	PL 7.10
003N01006	PL 2.10
003N01007	PL 2.10

Table 1 Part Number Index

Part Number	Part List
003N01008	PL 2.10
003N01009	PL 2.10
003N01010	PL 2.10
003N01011	PL 7.10
003N01016	PL 7.30
003N01017	PL 7.30
004N00245	PL 4.15
005N01085	PL 4.15
	PL 8.20
	PL 7.15
	PL 7.25
005N01086	PL 1.10
005N01087	PL 8.10
005N01088	PL 7.30
005N01089	PL 8.20
005N01090	PL 8.20
005N01094	PL 8.10
006N01293	PL 7.15
	PL 7.25
006N01299	PL 7.15
006N01300	PL 5.25
006R01274	PL 9.10
006R01275	PL 9.10
006R01276	PL 9.10
007N01179	PL 8.20
007N01210	PL 7.40
007N01490	PL 12.45
007N01491	PL 12.45
007N01492	PL 12.25
007N01493	PL 12.25
007N01497	PL 12.30
007N01499	PL 4.20
007N01500	PL 4.20
007N01501	PL 4.20
007N01502	PL 4.20
007N01503	PL 4.20
007N01505	PL 4.20
007N01506	PL 4.20
007N01507	PL 4.20
007N01508	PL 4.20
007N01509	PL 4.20

Table 1 Part Number Index

Part Number	Part List
007N01510	PL 10.20
007N01511	PL 10.20
007N01512	PL 10.20
007N01513	PL 10.15
007N01515	PL 4.20
007N01516	PL 4.20
007N01520	PL 8.10
007N01522	PL 8.10
007N01523	PL 5.15
007N01524	PL 5.25
007N01525	PL 5.10
007N01526	PL 7.10
007N01527	PL 7.10
007N01528	PL 7.10
007N01529	PL 7.25
007N01530	PL 7.30
007N01533	PL 8.20
007N01534	PL 8.20
007N01535	PL 8.20
007N01537	PL 14.10
007N01538	PL 5.20
007N01555	PL 10.15
007N01556	PL 8.10
007N01557	PL 5.25
007N01558	PL 4.20
007N01559	PL 10.15
009N01366	PL 7.30
009N01513	PL 8.15
009N01593	PL 28.10
009N01595	PL 10.25
009N01597	PL 7.30
009N01598	PL 7.30
009N01599	PL 7.35
009N01600	PL 7.35
009N01601	PL 7.35
009N01602	PL 8.20
009N01603	PL 8.20
009N01604	PL 8.20
009N01605	PL 5.25
	PL 7.25
009N01615	PL 7.10

Table 1 Part Number Index

Part Number	Part List
009N01616	PL 14.10
013N00537	PL 7.35
013R00623	PL 9.10
013N13847	PL 10.26
013N13866	PL 10.26
015N00589	PL 8.15
016N00289	PL 7.35
016N00290	PL 8.20
016N00293	PL 4.15
016N00294	PL 4.15
016N00295	PL 10.26
017N00259	PL 7.15
	PL 7.25
017N00266	PL 10.15
018N00194	PL 2.10
019N00566	PL 8.20
019N00795	PL 5.20
019N00796	PL 7.10
019N00909	PL 1.10
019N00911	PL 8.20
019N00913	PL 7.35
019N00914	PL 7.35
019N00922	PL 12.25
019N00923	PL 12.25
019N00924	PL 12.40
020N00821	PL 12.15
020N00828	PL 12.45
020N00829	PL 7.30
020N00830	PL 14.10
020N00843	PL 9.10
022N02190	PL 8.20
022N02191	PL 8.20
022N02228	PL 12.20
022N02229	PL 4.15
022N02231	PL 7.15
	PL 7.25
022N02232	PL 7.15
	PL 7.25
	PL 8.10
022N02233	PL 10.26
022N02234	PL 7.35

Table 1 Part Number Index

Part Number	Part List
022N02235	PL 7.35
022N02271	PL 4.15
022N02272	PL 10.15
022N02273	PL 10.26
022N02274	PL 7.30
022N02275	PL 7.30
022N02276	PL 12.20
022N02277	PL 7.35
022N02278	PL 8.15
022N02279	PL 7.17
022N02280	PL 5.10
023N00954	PL 14.10
023N01153	PL 12.30
023N01154	PL 12.20
023N01155	PL 12.15
023N01156	PL 12.45
023N01160	PL 7.20
025N00081	PL 5.10
029N00351	PL 2.10
029N00352	PL 2.10
029N00353	PL 2.10
029N00371	PL 12.35
029N00373	PL 12.35
029N00374	PL 8.20
030N00720	PL 10.26
030N00721	PL 5.15
031N00217	PL 10.25
032N00475	PL 7.10
032N00476	PL 7.10
032N00477	PL 7.20
033N00239	PL 12.30
038N00493	PL 12.30
038N00494	PL 12.30
038N00495	PL 7.10
038N00496	PL 7.10
038N00497	PL 5.15
038N00502	PL 7.17
050N00488	PL 7.10
050N00489	PL 12.45
050N00490	PL 12.45
050N00491	PL 12.45

Table 1 Part Number Index

Part Number	Part List
050N00493	PL 7.40
050N00494	PL 5.10
050N00495	PL 7.40
050N00499	PL 10.15
050N00500	PL 5.25
050N00504	PL 12.50
062N00271	PL 6.10
062N00272	PL 7.20
063N00110	PL 5.20
091N80242	PL 5.10
091N80243	PL 7.10
091N80244	PL 7.10
097N01526	PL 31.10
097N01527	PL 31.10
097S03772	PL 31.10
101N01387	PL 1.10
101N01388	PL 1.10
101N01389	PL 12.10
101N01390	PL 2.10
101N01391	PL 2.10
101N01392	PL 2.10
101N01393	PL 2.10
101N01394	PL 2.10
101N01395	PL 2.10
101N01396	PL 2.10
101N01397	PL 2.10
101N01398	PL 2.10
101N01399	PL 14.10
101N01406	PL 12.10
105N02090	PL 1.10
105N02091	PL 1.10
105N02092	PL 1.10
105N02093	PL 1.10
109N00655	PL 12.10
109N00656	PL 14.10
112N00220	PL 1.10
112N00221	PL 1.10
113N01303	PL 4.15
113N01304	PL 12.10
115N00860	PL 12.20
	PL 7.35

Table 1 Part Number Index

Part Number	Part List
115N00861	PL 4.15
115N00862	PL 10.26
115N00863	PL 7.35
115N00864	PL 7.35
120N00487	PL 10.25
120N00488	PL 5.20
120N00500	PL 7.30
120N00501	PL 8.15
120N00502	PL 8.15
121N01130	PL 10.15
121N01131	PL 12.10
123N00243	PL 2.10
123N00244	PL 2.10
127N01443	PL 10.20
127N07483	PL 12.20
127N07484	PL 12.15
127N07485	PL 4.15
	PL 7.35
127N07486	PL 6.10
127N07487	PL 4.15
127N07488	PL 7.15
	PL 7.20
127N07489	PL 4.20
127N07490	PL 10.20
127N07492	PL 12.25
	PL 12.30
127N07493	PL 12.40
127N07494	PL 12.45
127N07495	PL 7.35
127N07496	PL 14.10
127N07497	PL 5.25
127N07498	PL 5.25
127N07500	PL 5.25
130N01213	PL 7.17
130N01274	PL 10.15
	PL 8.20
	PL 8.15
	PL 8.10
	PL 7.20
	PL 7.15
	PL 5.10

Table 1 Part Number Index

Part Number	Part List
	PL 4.15
	PL 14.10
	PL 12.45
	PL 12.40
	PL 12.30
	PL 7.30
	PL 7.25
	PL 12.25
	PL 12.20
	PL 12.15
	PL 12.10
130N01459	PL 8.10
130N01460	PL 7.15
130N01461	PL 7.15
	PL 7.20
130N01462	PL 10.25
130N01463	PL 10.25
130N01464	PL 7.20
130N01465	PL 5.20
130N01466	PL 5.15
140N62867	PL 5.10
140N62869	PL 5.15
140N62870	PL 1.10
140N63141	PL 1.10
140N63142	PL 20.10
140N63143	PL 12.10
140N63144	PL 5.20
140N63145	PL 2.10
140N63146	PL 2.10
140N63147	PL 2.10
140N63148	PL 7.20
140N63149	PL 14.10
140N63150	PL 5.20
140N63151	PL 5.20
140N63152	PL 5.20
140N63205	PL 1.10
144N00138	PL 1.10
144N00139	PL 1.10
152N11705	PL 1.10
152N11706	PL 4.15
152N11708	PL 10.25

Table 1 Part Number Index

Part Number	Part List
152N11709	PL 10.25
152N11710	PL 7.35
152N11711	PL 5.20
152N11712	PL 2.10
152N11713	PL 2.10
152N11714	PL 7.15
	PL 7.20
152N11715	PL 5.25
152N11716	PL 14.10
152N11717	PL 14.10
152N11731	PL 1.10
152N11732	PL 4.15
600T02252	PL 26.10
600T02299	PL 26.10