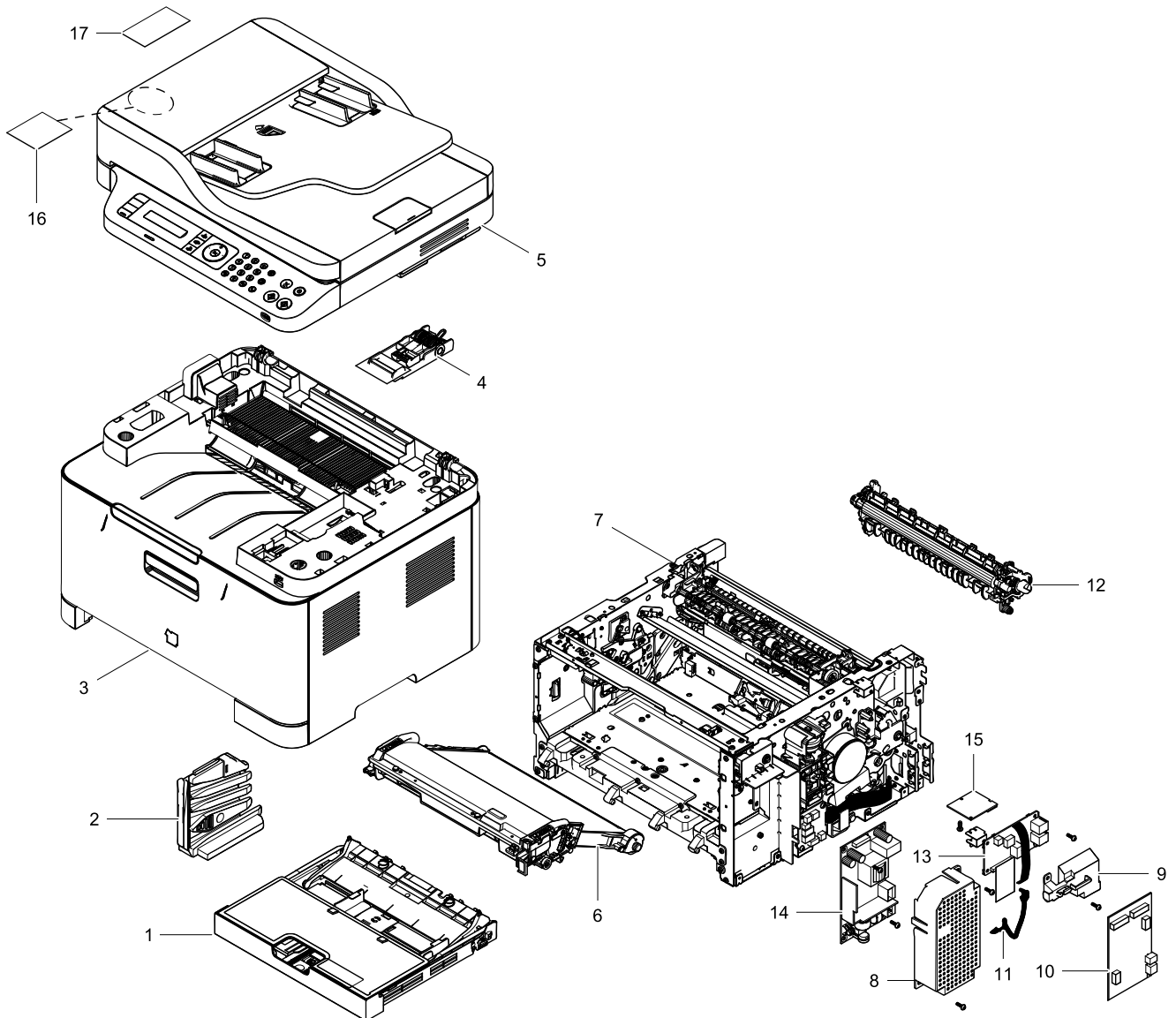


# 1. MAIN

## Exploded View



## Parts List

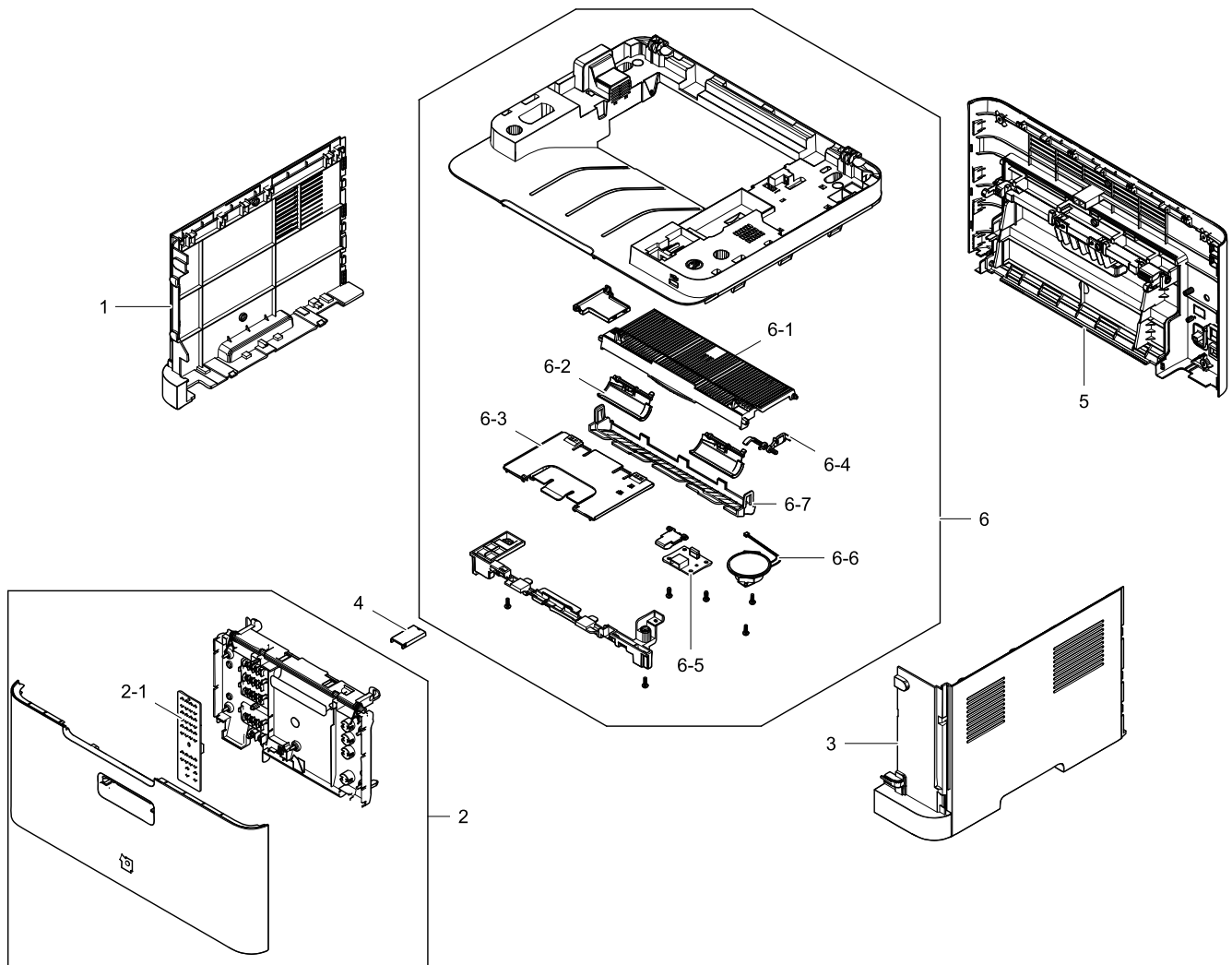
No.	Lvl.	Loc.	Material Code	Description & Specification	SNA	Qty.
1	1		JC90-01142E	CASSETTE; C430,SEC,NON-MD	SA	1
2	2		JC96-06298A	CARTRIDGE-WTB; CLP-365W,SEC	SA	1
3	1		JC95-01592H	COVER; SL-C480FW	SNA	1
4	2		JC93-00528B	FRAME-SCANNER HINGE; CLX-3305FW,SEE	SA	1
5	1		JC97-04712G	MFA; SL-C480FW,ETS	SNA	1
6	1		JC96-06292B	TRANSFER-CARTRIDGE; CLP-365W,SEC	SA	1
7	1		JC93-00728R	FRAME-MAIN; C480,220v	SNA	1
8	2		JC63-03861A	COVER-SMPS; clp-365w,ABS+PC,2,144,76,BLAC	SNA	1

Exploded Views and Parts List

No.	Lvl.	Loc.	Material Code	Description & Specification	SNA	Qty.
9	2		JC63-03862A	COVER-FAX; CLX-3305FW,ABS,1.6T,90,53.2	SNA	1
10	1		JC92-02821A	PBA-MAIN; C480,4L,96.75*130,4in1 W	SA	1
11	2		JC39-01868A	HARNESS-BLDC; CLP-365W,UL10272,9p,GRAY/BL	SA	1
12	1		JC93-00708A	FRAME-TRANSFER; CLP-365	SA	1
13	1		JC92-02569A	PBA-LIU; cuhead,CX95110-22Z,SPI,3.3V,90MM	SA	1
14	1		JC44-00214A	SMPS-V2; CLP-365W,Carlsen,Flyback,60W,220	SA	1
15	2		JC92-02766A	PBA-WNPC; PRT/MFP Seg.1,WISOL,Broadcom bc	SA	1
16	1		JC68-03012A	LABEL ETC-NFC TECTILE STICKER; EAD-X11,EU	SA	1
17	1		JC68-03048B	LABEL VER-INFORMATION; C460,SEC,PP,0.1T,3	SNA	1

## 2. COVER

### Exploded View



### Parts List

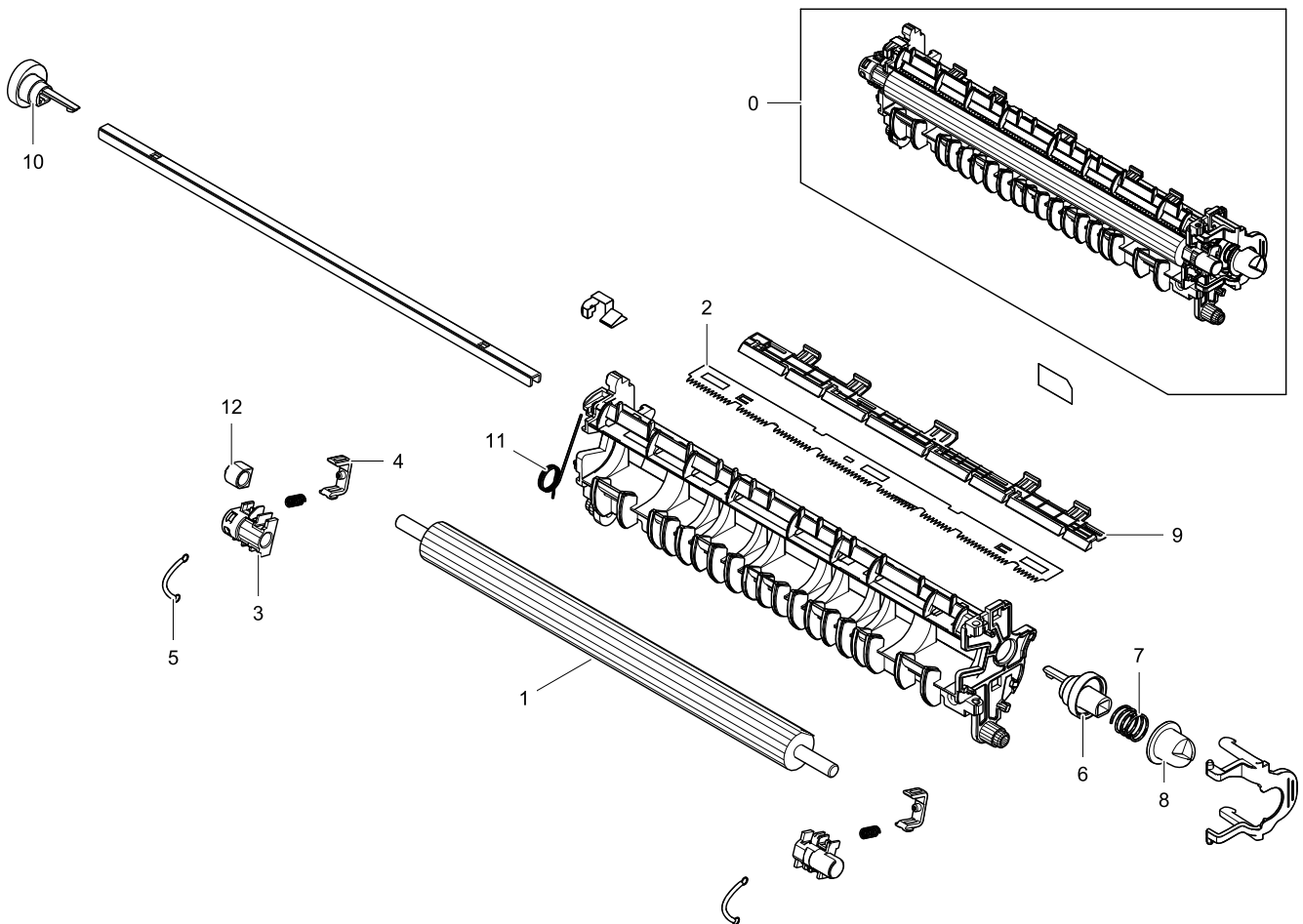
No.	Lvl.	Loc.	Material Code	Description & Specification	SNA	Qty.
1	2		JC63-03548B	COVER-LEFT; SL-C480,ABS,CREAM-WHITE,CM-01	SA	1
2	2		JC95-02021A	COVER-FRONT; SL-C480	SA	1
2-1	3		JC92-02824A	PBA-CRUM JOINT; C480,1L,123.5x46.5	SA	1
3	2		JC63-03552B	COVER-RIGHT; SL-C480,ABS,CREWM WHITE,CM-0	SA	1
4	2	H4282	JC63-01574A	COVER-CABLE; CLP-310,POM,T1.5,19.7,37.3,H	SA	1
5	2		JC95-01596E	COVER-REAR; SL-C480FW,CREAM WHITE	SA	1
6	2		JC95-01590F	COVER-MIDDLE; SL-C480FW	SNA	1
6-1	3		JC63-03541A	COVER-JAM; CLX-3305FW,ABS+PC,2.2T,226.3,9	SNA	1

Exploded Views and Parts List

No.	Lvl.	Loc.	Material Code	Description & Specification	SNA	Qty.
6-2	3	L9804	JC66-02748A	ACTUATOR-SUB STACKER; CLX-3185,PC+GF,27.4	SA	2
6-3	3		JC61-05008B	GUIDE-EXTENSION LARGE; SL-C480,ABS,CM-014	SNA	1
6-4	3		JC66-03362A	ACTUATOR-OUTFULL; CLX-3305FW,PC,VO,BLACK,	SA	1
6-5	3	E7301	JC92-02048A	PBA-USB HOST; CLX-3170FN,SEC,,45mm*35mm*	SA	1
6-6	3	G1134	3001-002207	SPEAKER; 0.3W,8Ohm,81dB,400Hz	SA	1
6-7	3		JC63-03570A	COVER-EXIT; CLX-3305FW,ABS+PC,2.0T,241,33	SNA	1

### 3. FRAME-TRANSFER

#### Exploded View



#### Parts List

No.	Lvl.	Loc.	Material Code	Description & Specification	SNA	Qty.
0	1		JC93-00708A	FRAME-TRANSFER; CLP-365	SA	1
1	2		JC66-03353A	ROLLER TR-TRANSFER; Calsen,-,SCF SENSOR,1	SA	1
2	2	D1171	JC70-10232A	IPR-PLATE SAW; ML-80,STS304,T0.1	SNA	1
3	2		JC61-05658A	HOLDER-SHAFT L; CLP-365,POM,2.0,16,23,WHI	SNA	1
4	2		JC61-05655A	HOLDER-TR CAM; CLP-365,HIPS,2,11,16,BLACK	SNA	2
5	2		6107-001542	SPRING-ES; SWP,PI0.45,L34.1,ID3,OD3.9	SNA	2
6	2		JC66-03789A	CAM-TR R; CLP-365,POM,2.0,30,WHITE,HB	SA	1
7	2		6107-003276	SPRING-CS; SWP B,0.9,12,12.1,FREE	SNA	1
8	2		JC67-00671A	COUPLER-TR; CLP-365,POM,13,WHITE	SNA	1
9	2		JC61-04156A	HOLDER-SAW PLATE; CLP-325,HIPS,1.2,9.6,21	SNA	1
10	2		JC66-03788A	CAM-TR L; CLP-365,POM,2,20,WHITE,HB	SA	1

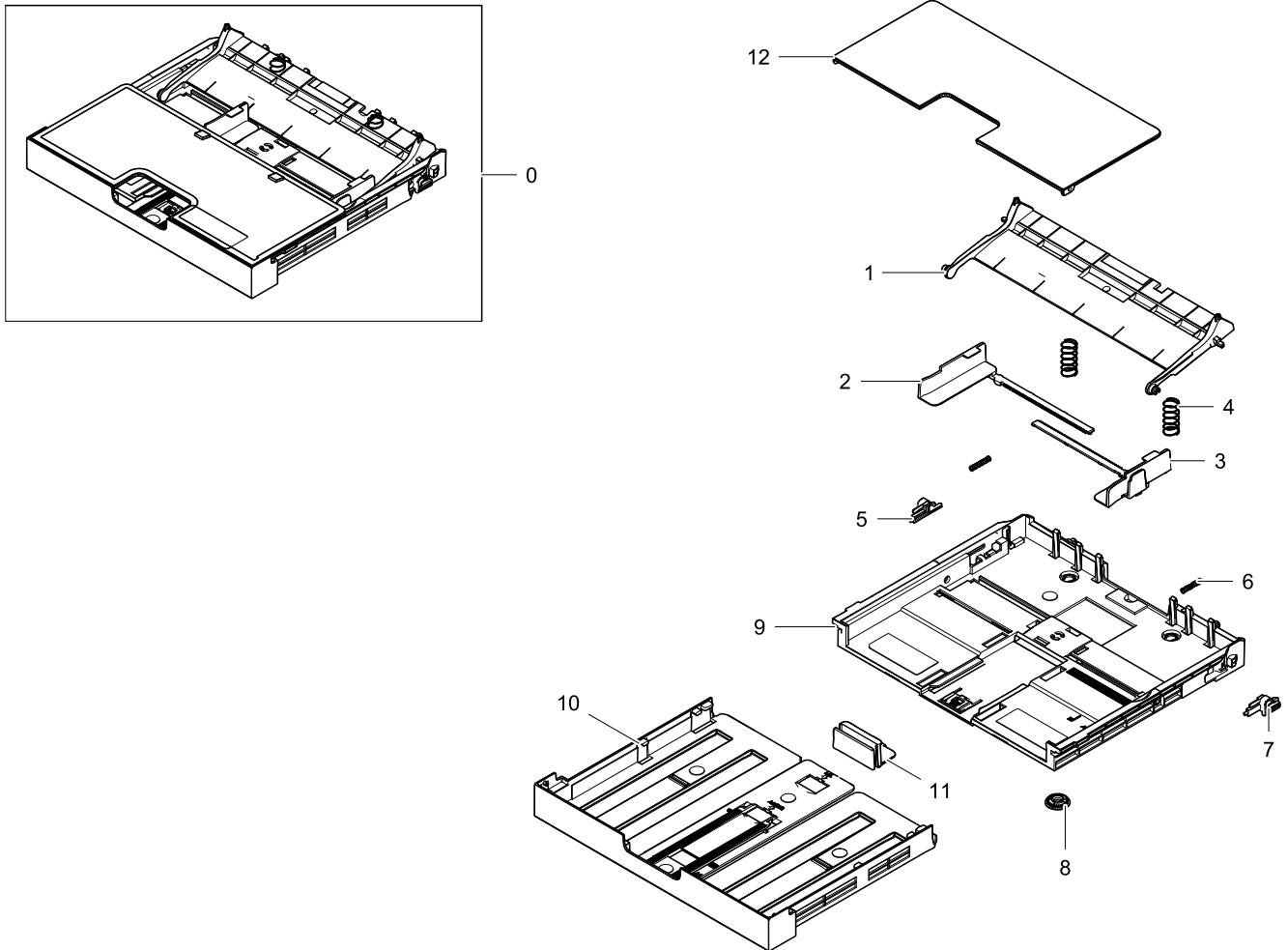
Exploded Views and Parts List

---

No.	Lvl.	Loc.	Material Code	Description & Specification	SNA	Qty.
11	2		6107-003280	SPRING-TS; SWP,ZINC WHITE,0.8,25/16,8,RIG	SNA	1
12	2		JC61-04944A	HOLDER-CHARGE; CLP-360,BRONZE-SINTERED	SNA	1

## 4. CASSETTE

### Exploded View



### Parts List

No.	Lvl.	Loc.	Material Code	Description & Specification	SNA	Qty.
0	1		JC90-01142E	CASSETTE; C430,SEC,NON-MD	SA	1
1	2		JC61-04940B	PLATE-KNOCK UP; C430,ABS,CREAM WHITE,GUID	SNA	1
2	2		JC61-04937B	GUIDE-ADJUST CASSETTE L; C430,HIPS,73,124	SA	1
3	2		JC61-04936B	GUIDE-ADJUST CASSETTE R; C430,HIPS,73,124	SA	1
4	2	G1521	6107-001240	SPRING-CS; SUS304-WPB,GROUND END,PI0.6,D1	SA	2
5	2	B1072	JC61-02127A	GUIDE-KNOCKUP L; SCX-4500,POM,NTR,GUIDE	SA	1
6	2	G1358	JG61-70531A	SPRING ETC-LOCKER,PLATE; SF6000,SUS304WPB	SA	2

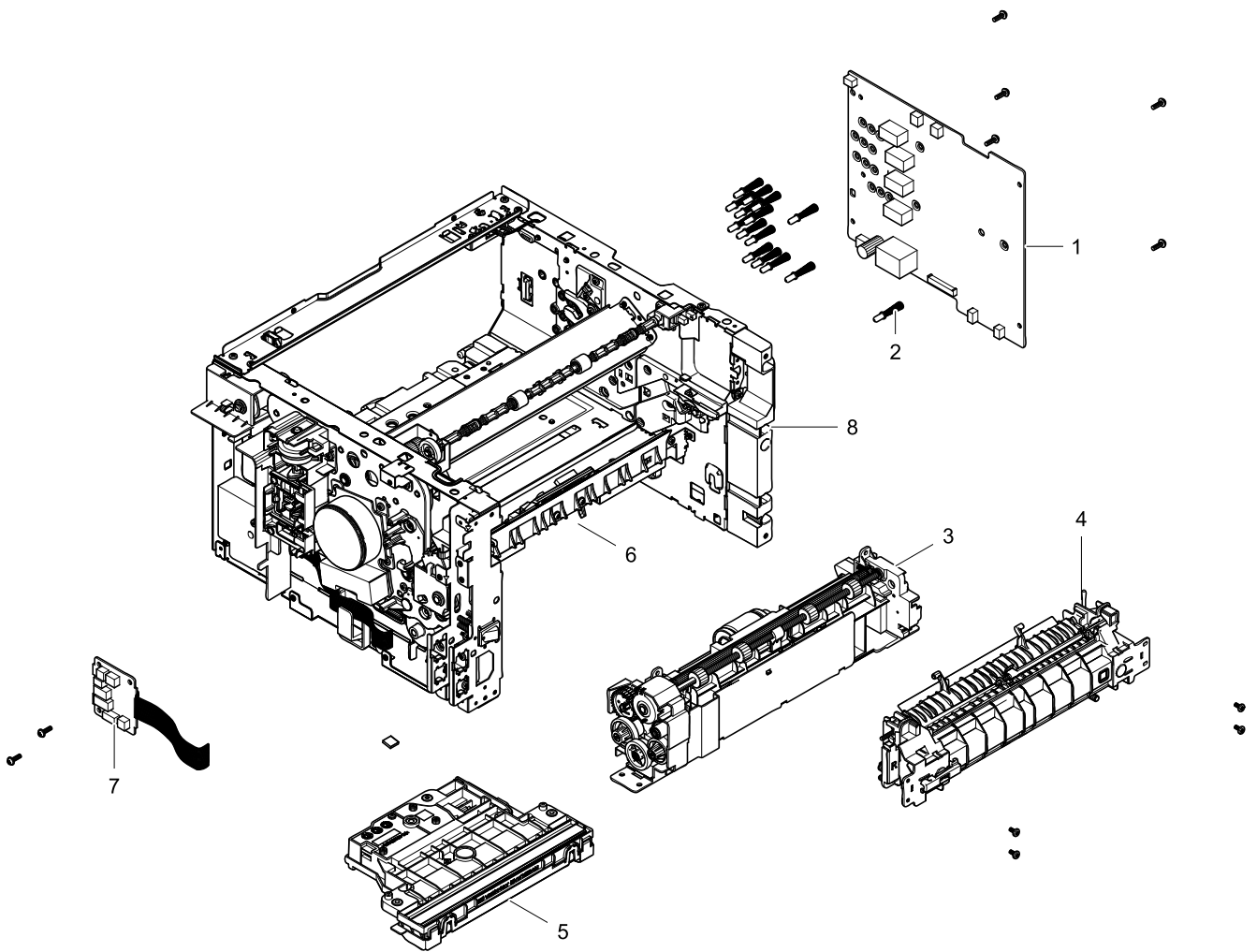
## Exploded Views and Parts List

No.	Lvl.	Loc.	Material Code	Description & Specification	SNA	Qty.
7	2	B1073	JC61-02128A	GUIDE-KNOCKUP R; SCX-4500,POM,NTR,GUIDE	SA	1
8	2		JC66-03004A	GEAR-PINION; ML-2950ND,POM,0.5,32,3.9,WHI	SNA	1
9	2		JC61-04951B	FRAME-SEMI CASSETTE; C430,ABS,CREAM WHITE	SNA	1
10	2		JC61-04935C	SUPPORT-CASSETTE EXTENSION; C430,ABS,2.0,	SNA	1
11	2		JC61-04934B	STOPPER-PAPER REAR; C430,ABS,CM-0140M,CRE	SA	1
12	2		JC63-03487A	COVER; CLP-360,PC,GRAY	SA	1



## 5. FRAME-MAIN

### Exploded View

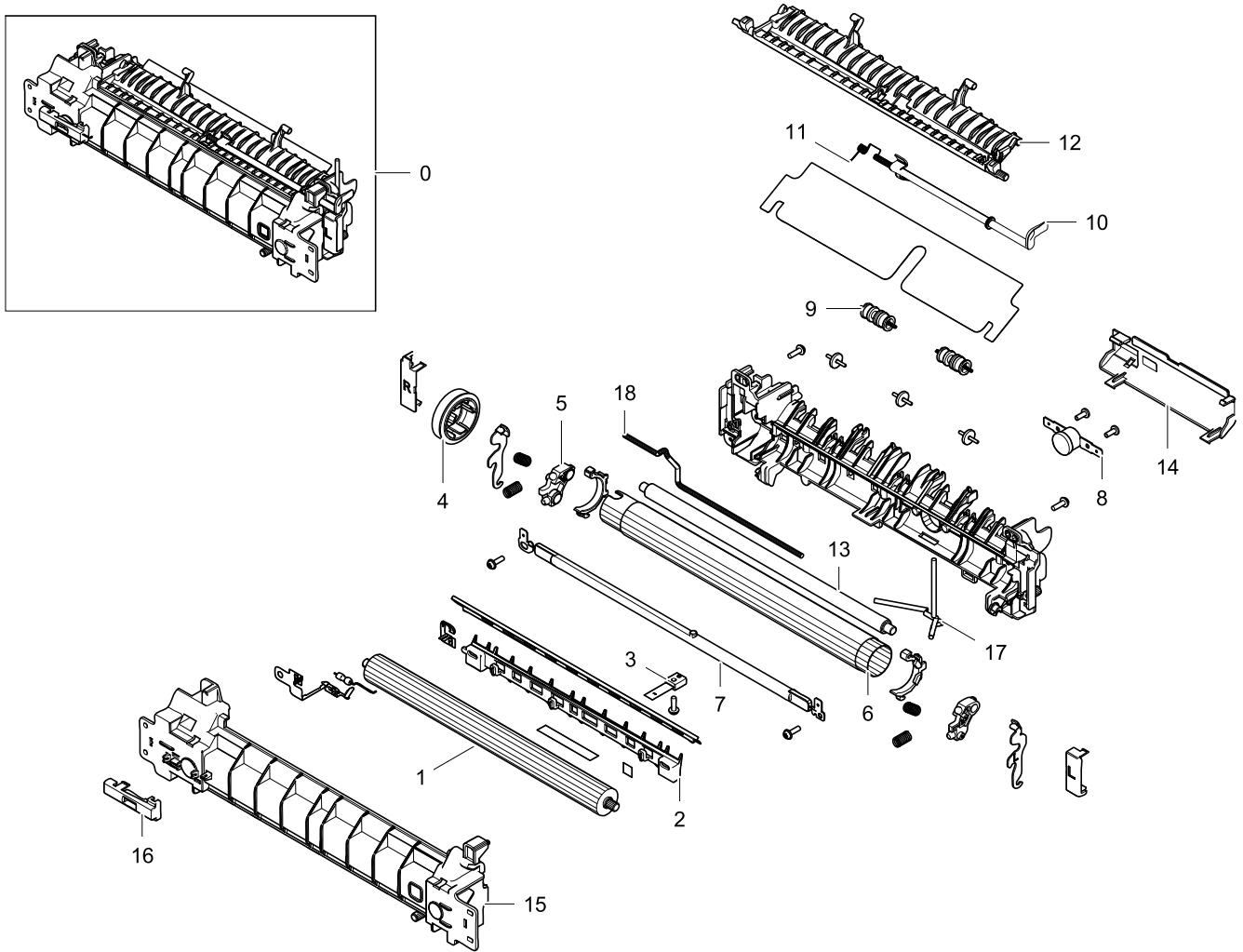


### Parts List

No.	Lvl.	Loc.	Material Code	Description & Specification	SNA	Qty.
1	2		JC44-00215B	HVPS-CARLSEN S; 24V,21.6V~27.6V,MAX 4KV,M	SA	1
2	2		JC93-00734A	FRAME-TERMINAL; CLP-365W,SEC	SA	15
3	2		JC93-01225A	FRAME-BASE PAPER PATH; C430,SEC	SA	1
4	2		JC91-01080A	FUSER; CLP-365W,SEC,WORLD,220V	SA	1
5	2		JC97-04058A	LSU; CLP-365W,SEC,Single,A4(Ltr),600,S2,7	SA	1
6	2		JC93-00729B	FRAME; CLX-3305W,SEC	SNA	1
7	2		JC92-02489A	PBA-CONNECTOR; CLP-365W,SEC,CONNECTION,45	SA	1
8	2		JC61-04961A	FRAME-DUMMY MFP; CLX-3305FW,HIPS,FG-1790,	SA	1

# 5.1. FUSER

## Exploded View



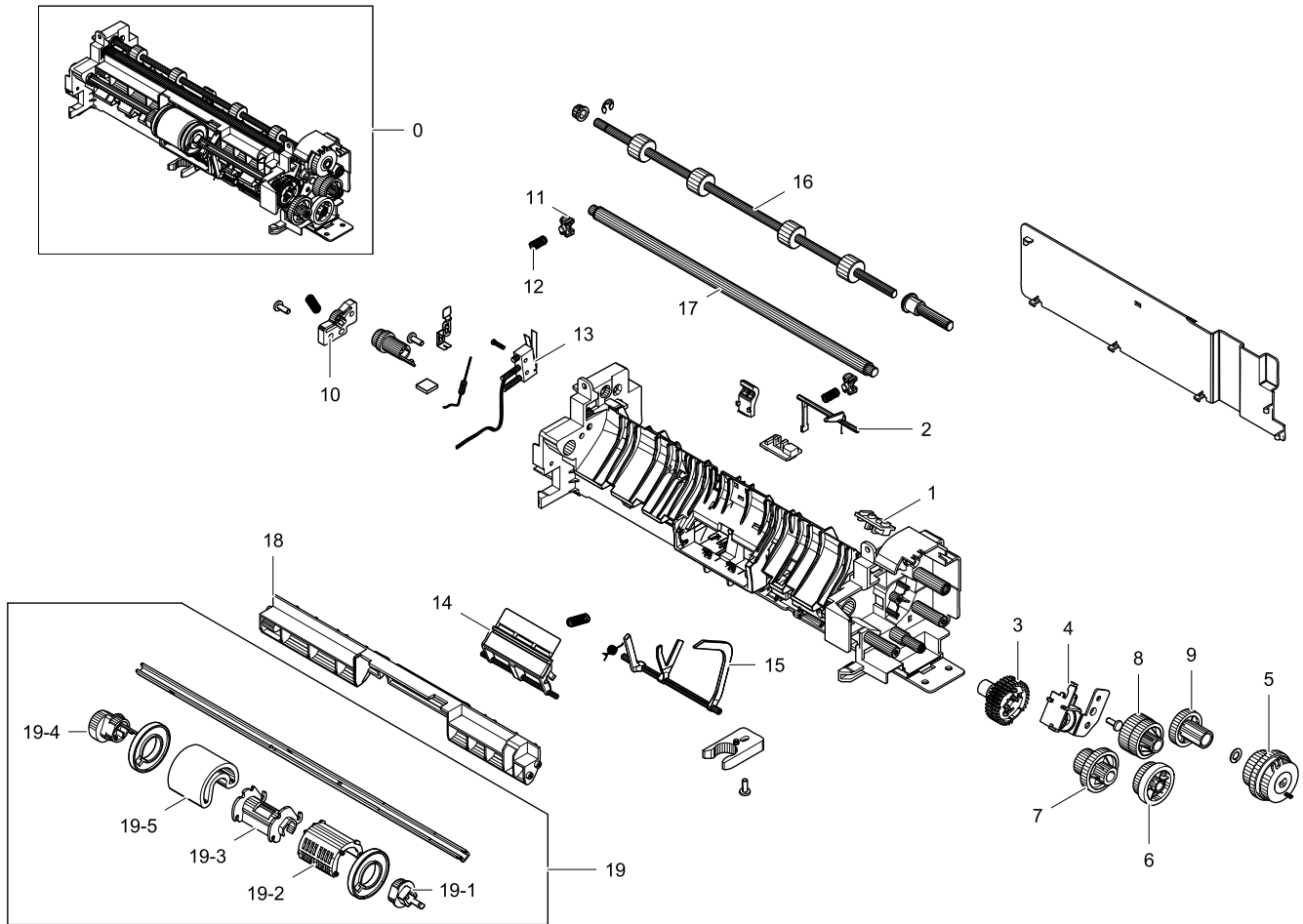
## Parts List

No.	Lvl.	Loc.	Material Code	Description & Specification	SNA	Qty.
0	2		JC91-01080A	FUSER; CLP-365W,SEC,WORLD,220V	SA	1
1	4	L9622	JC66-02716B	ROLLER FUSER-PRESSURE; ML-1660,8,SUM22 or	SA	1
2	4		JC61-04989A	GUIDE-INPUT; CLP-365W,PET+GF,LV2550GN30,P	SNA	1
3	4		1404-001740	THERMISTOR-NTC ASSY; 7Kohm,3370K,0.3MWC,B	SNA	1
4	4		JC66-03355A	GEAR-FUSER; CLP-365W,PPS,1,34,BROWN,36,13	SNA	1
5	4		JC61-04984A	BUSH-PR R; CLP-365W,PPS,6.1,BLACK,SEC,RBA	SNA	1
6	4		JC66-03326A	ROLLER FUSER-HEAT; CLP-360,23.2,AL3304-H3	SNA	1

No.	Lvl.	Loc.	Material Code	Description & Specification	SNA	Qty.
7	4		4713-001662	LAMP-HALOGEN; 230V,850W	SNA	1
8	4		4712-001091	THERMOSTAT; AC125/250V,195+-5100	SNA	1
9	4	L7112	JC61-02423A	SPRING ETC-EXIT; CLP-310,SUS304 WPB,PI0.3	SA	2
10	4		JC66-03359A	ACTUATOR-EXIT; CLP-365W,PA,BLACK,ACTUATOR	SNA	1
11	4	L7540	6107-001507	SPRING-TS; SUS304,NATURAL,PI0.25,W5.3,ID4	SA	1
12	4		JC61-04990A	GUIDE-OUTPUT; CLP-365W,PET+GF,41.1,GF30%,	SNA	1
13	4		JC66-03871A	ROLLER FUSER-PRESSURE SHAFT; CLP-365W,9.6	SNA	1
14	4		JC63-03522A	COVER-UPPER; CLP-365W,PC,SEC,NH-1035	SNA	1
15	4		JC61-04987A	FRAME-LOWER; CLP-365W,PET+GF,LV2550GN30,B	SNA	1
16	4		JC67-00674A	CAP-RESISTOR; CLP-365W,PC,46,14.7	SNA	1
17	4	H2699	JC39-00521A	CBF HARNESS-FUSER REC; SCX-5530FN,CBF,UL3	SA	1
18	4		JC39-01701A	HARNESS-FUSER AC; CLP-365W,UL3398,2p,BLK,	SNA	1

## 5.2. FRAME BASE-PAPER PATH

### Exploded View



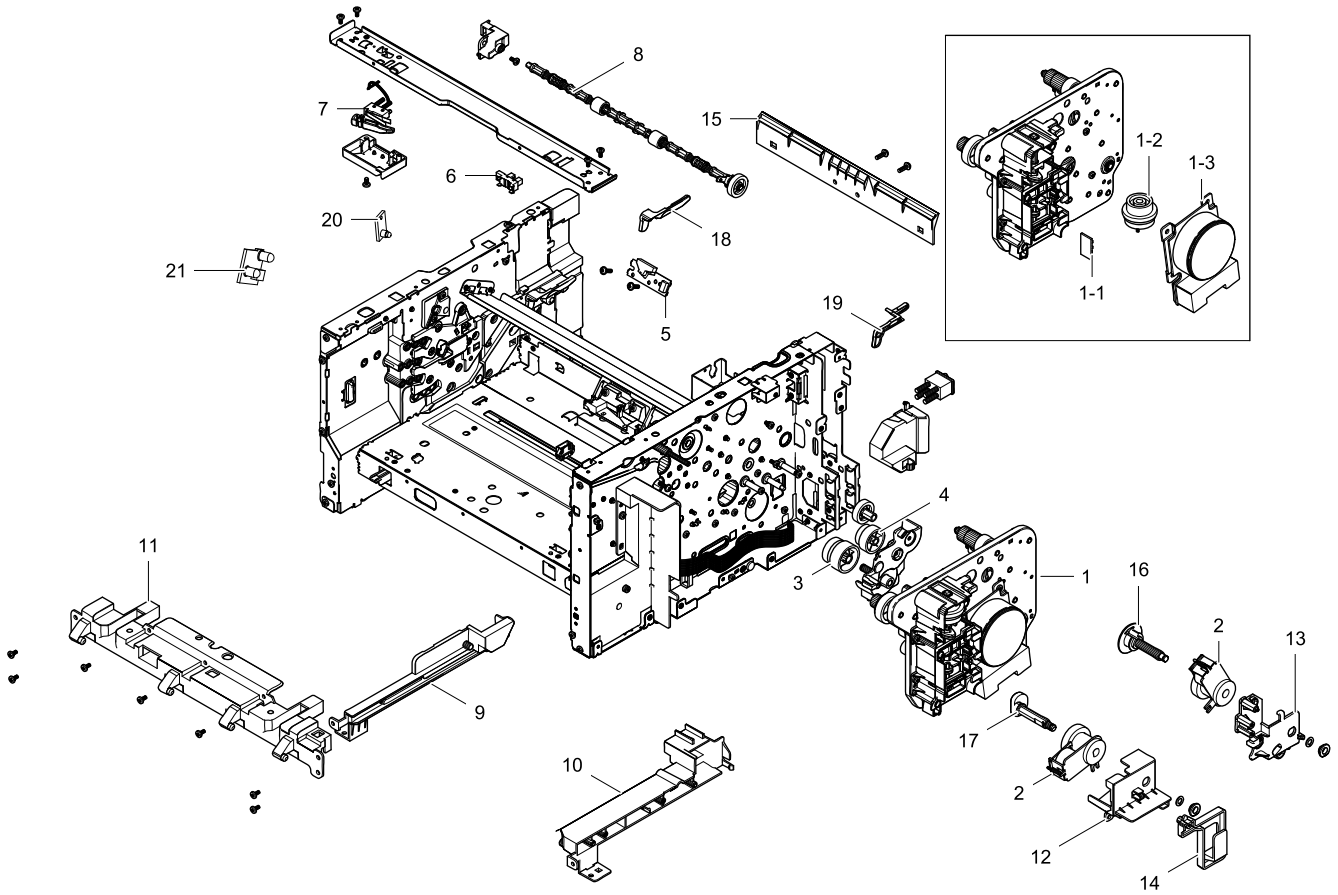
### Parts List

No.	Lvl.	Loc.	Material Code	Description & Specification	SNA	Qty.
0	2		JC93-01225A	FRAME-BASE PAPER PATH; C430,SEC	SA	1
1	3		JC98-01960A	BOARD-EMPTY SENSOR; CLP-360W,SEC,Photo-In	SNA	1
2	3		JC66-03321A	ACTUATOR-FEED; CLP-360,ABS+PC,BLACK,ACTUA	SA	1
3	3		JC93-00549A	DRIVE-PICK UP; SEC,150X91XT1,WHT,CLP-365W	SA	1
4	3	L6828	JC33-00025B	SOLENOID-MANUAL; SCX-5135ND,DC 24V,120ohm	SA	1
5	5		JC47-00033C	CLUTCH-ELECTRIC; 2.5,36,0.6,120mA,200Ohm	SA	1
6	3		JC66-03824A	GEAR-RDCN PH 3; CLP-365W,POM,M0.8 / M0.6,	SNA	1
7	3		JC66-03825A	GEAR-RDCN PICK-UP; CLP-365W,POM,M0.6 / M0	SNA	1

No.	Lvl.	Loc.	Material Code	Description & Specification	SNA	Qty.
8	3		JC66-03826A	GEAR-RDCN REGI; CLP-365W,POM,M0.6 / M0.6,	SNA	1
9	3		JC66-03813A	GEAR-IDLE REGI; CLP-365W,POM,M0.6,Z35,NAT	SNA	1
10	3	C5143	JC61-01548A	HOLDER-M-CAM; CLP-300,POM,18.5,27.5,WHITE	SA	1
11	3		JC61-05049A	HOLDER-SHAFT IDLE; CLP-365W,POM,NATURAL	SNA	2
12	3	L7445	6107-001309	SPRING-CS; SWP-B,PI0.5,L10,ID4.0,OD5.0	SA	2
13	3		JC39-01704A	HARNES-COVER S/W; CLP-365W,UL10272,2p,BL	SA	1
14	3		JC93-00555A	FRAME BASE-HOLDER PAD; CLP-365W,SEC,L81.6	SNA	1
15	3		JC66-03322A	ACTUATOR-EMPTY; CLP-360,ABS+PC,BLACK,ACTU	SA	1
16	3		JC66-03317A	ROLLER IDLE-REGI; CLP-360,EPDM,SUM22,6	SA	1
17	3		JC66-04912A	SHAFT-FEED IDLE; SUM22,237,8,STEEL	SNA	1
18	3		JC61-05648A	GUIDE-PATH LOWER; CLP-365W,ABS,1.5,20,222	SNA	1
19	3		JC93-00553A	FRAME BASE-PICK UP; CLP-365W,SEC,USA	SA	1
19-1	4	G1665	JC61-01714A	STOPPER-PICK_UP L; ML-2571N,POM,D17,20,NA	SA	1
19-2	4		JC61-05815A	HOUSING-PICKUP A; CLP-365W,ABS+PC,25.7,32	SA	1
19-3	4	C5342	JC61-02389A	HOUSING-PICKUP B; CLP-310,POM F20-02,1.0,	SA	1
19-4	4		JC66-03786A	CAM-CTD; CLP-365W,POM,1.2,NATURAL,Right	SNA	1
19-5	4		JC73-00309A	ROLLER IDLE-RUBBER-PICK_UP; CLP-310,-,6.5	SA	1

### 5.3. FRAME

#### Exploded View



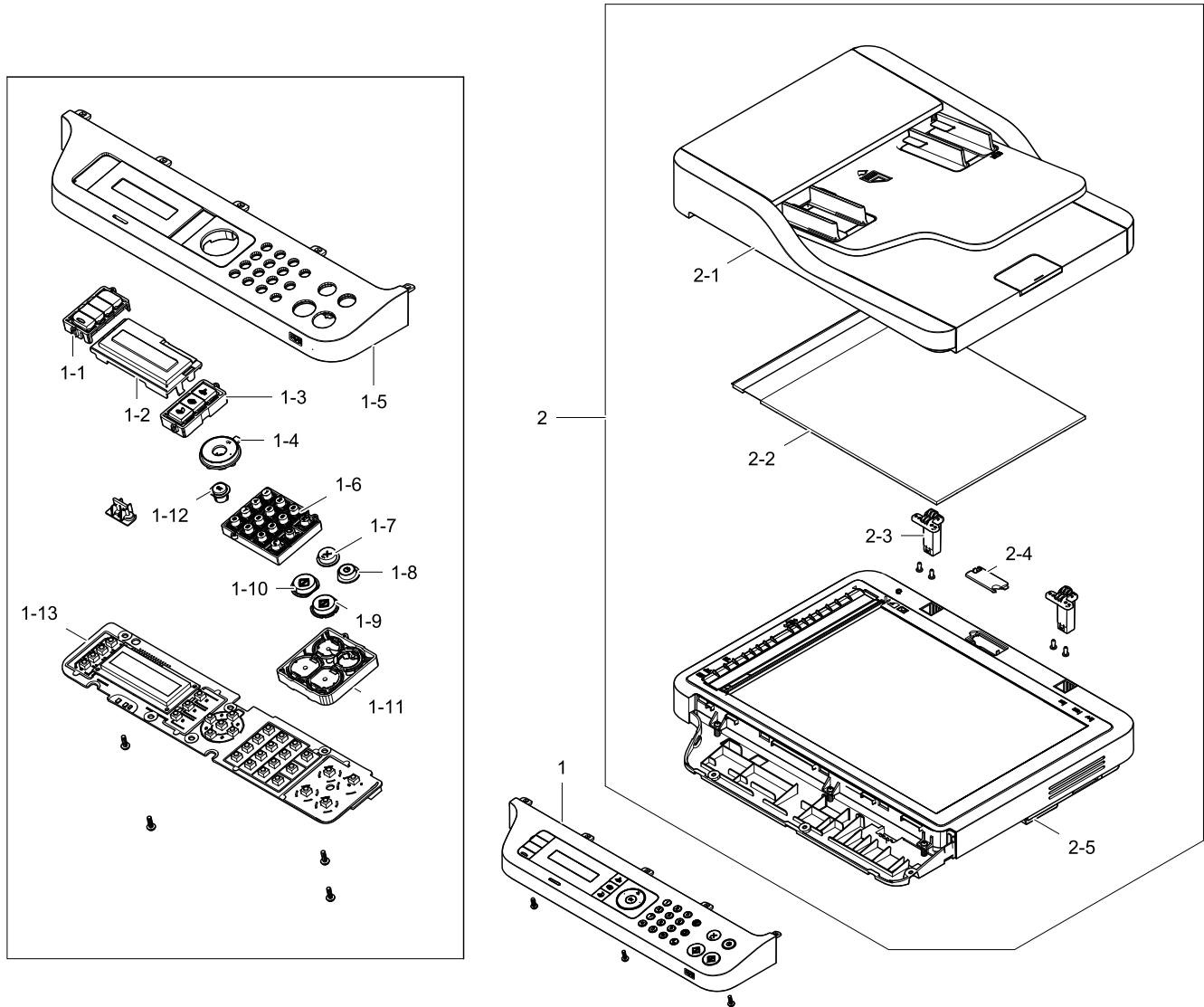
#### Parts List

No.	Lvl.	Loc.	Material Code	Description & Specification	SNA	Qty.
1	4		JC93-00714A	DRIVE; SEC,SCAN LOWER,CLP-365W	SNA	1
1-1	5	K4920	JC92-01986A	PBA-SUB-DEVEHOME; CLP-310,SEC,SEC,FR-1,1L	SA	1
1-2	5		JC47-00033C	CLUTCH-ELECTRIC; 2.5,36,0.6,120mA,200Ohm	SA	1
1-3	5	L9654	JC31-00091B	MOTOR BLDC; 48M843D010B/BL55K-M01,1443.82	SA	1
2	3	H3697	JC47-00007F	CLUTCH-ITB CAM; 8,33,0.8,133mA,180Ohm	SA	2
3	3		JC66-03829A	GEAR-RDCN PH 2; CLP-365W,POM,M0.5 / M0.8,	SA	1
4	3		JC66-03828A	GEAR-RDCN T2 CAM; CLP-365W,POM,M0.5 / M0.	SA	1
5	4		JC32-00014A	SENSOR-CTD; SENSOR-CTD,0 ~ 60,5V,6.62mA,r	SA	1
6	3	L9633	0604-001415	PHOTO-INTERRUPTER; TR,DIP-4,BK	SA	1
7	3		JC39-01704A	HARNESS-COVER S/W; CLP-365W,UL10272,2p,BL	SA	1

No.	Lvl.	Loc.	Material Code	Description & Specification	SNA	Qty.
8	3		JC91-01078A	FUSER-ROLLER EXIT; CLP-360,SEC,WORLD	SA	1
9	3		JC61-05650A	GUIDE-CASSETTE L; CLP-365W,HIPS,1.5,33.86	SNA	1
10	3		JC61-05649A	GUIDE-CASSETTE R; CLP-365W,HIPS,1.5,35.85	SNA	1
11	3		JC61-05677A	GUIDE-BASE FRONT HINGE; CLP-365W,HIPS,2,3	SA	1
12	3		JC61-05753A	HOLDER-CLUTCH_ITB; CLP-365W,ABS,2,45,54.8	SNA	1
13	3		JC61-05758A	HOLDER-T2 CLUTCH; CLP-365W,HIPS,2,85.1,69	SNA	1
14	3		JC61-04960A	HOUSING-HARNESS; CLP-365W,HIPS,2.0T,BLACK	SNA	1
15	3		JC61-05647A	GUIDE-PATH UPPER; CLP-365W,HIPS,1.5,30.35	SNA	1
16	3		JC66-03790A	SHAFT-COUPLER; CLP-365,POM,52,17,WHITE,HB	SNA	1
17	3		JC66-03349A	SHAFT-ITB CLEAN CAM C; CLP-365W,POM,L47.1	SNA	1
18	4		JC64-00856A	LOCKER-ITB_LEFT; CLP-365W,POM,BLACK,L38*W	SA	1
19	4		JC64-00855A	LOCKER-ITB_RIGHT; CLP-365W,POM,NATURAL,L3	SA	1
20	3		JC92-02568A	PBA-ERASER; CLX-360,SEC,ERASER,FR1, 1L,	SA	1
21	3	E7066	JC92-01993A	PBA-SUB-WASTE; CLP-310,SEC,SEC,FR-1,1LAYE	SA	1

# 6. MFA

## Exploded View



## Parts List

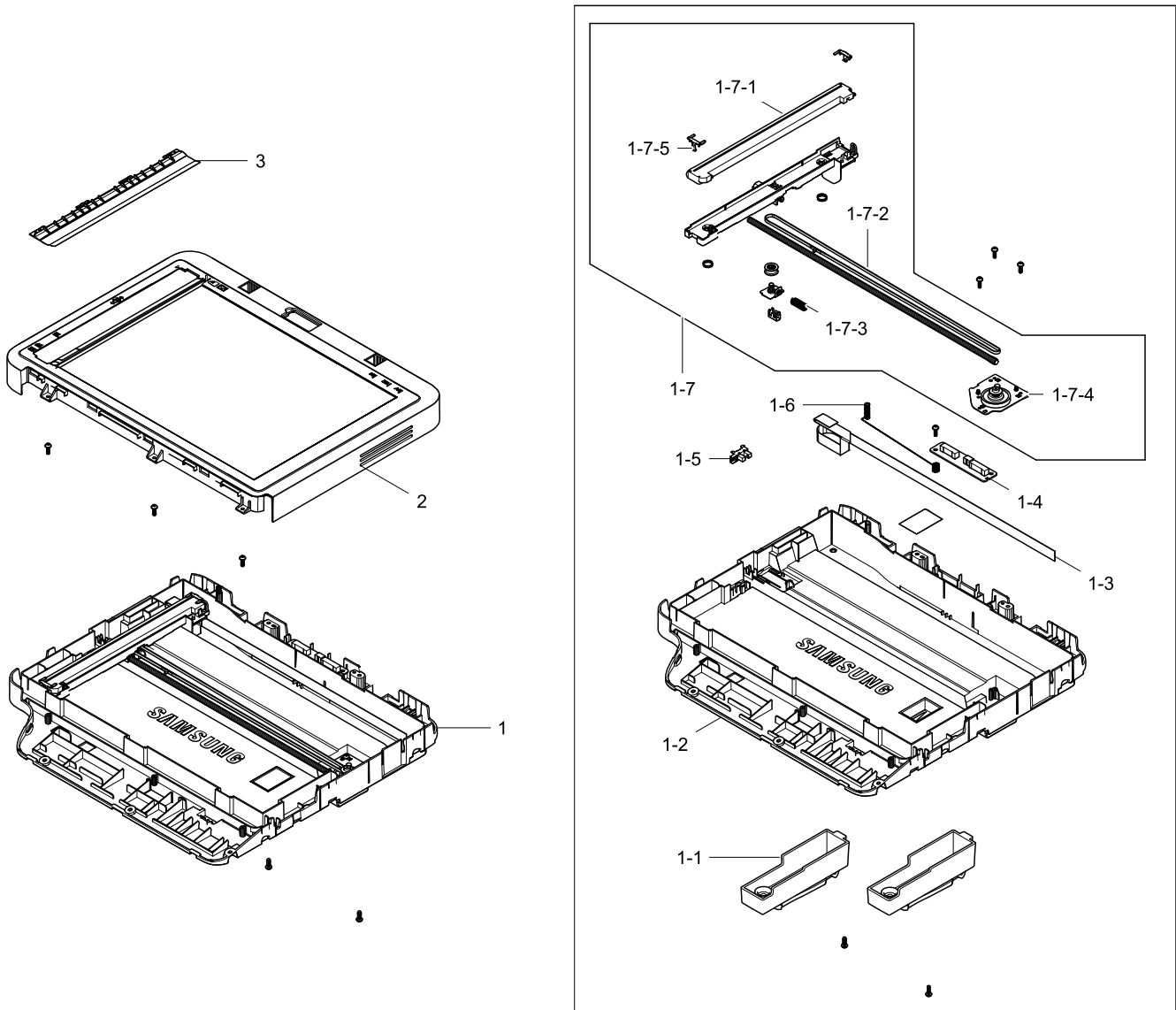
No.	Lvl.	Loc.	Material Code	Description & Specification	SNA	Qty.
1	2		JC97-04709G	OPE; SL-C480FW,ETS	SA	1
1-1	3		JC64-00772E	KEY-FUNCTION; CLX-3305FW,ABS,47.63*28.8,S	SA	1
1-2	3		JC63-03571A	COVER-LCD; CLX-3305FW,PC,2.4T,86.35,40.32	SNA	1
1-3	3		JC64-00765A	KEY-FAX; CLX-3305FW,ABS,50.34*26.46,2.0T,	SNA	1
1-4	3		JC64-00766A	KEY-MENU; CLX-3305FW,ABS,29.95,1.5T,SPLIT	SNA	1
1-5	3		JC63-05274G	COVER-OPE; SL-C480FW,ABS,ETS,SPLIT BROWN	SA	1
1-6	3		JC64-00774A	KEY-TEL; CLX-3305FW,ABS,62.9*53.11,1.0T,S	SNA	1



No.	Lvl.	Loc.	Material Code	Description & Specification	SNA	Qty.
1-7	3		JC64-00813A	KEY-STOP; CLP-680ND,ABS,14.15,SPLIT ORANG	SNA	1
1-8	3		JC64-00812A	KEY-POWER; CLP-680ND,ABS,13.36,1.5T,SPLIT	SNA	1
1-9	3		JC64-00820A	KEY-START-COLOR; CLX-6260ND,ABS,18.1,SPLI	SNA	1
1-10	3		JC64-00819A	KEY-START-BLACK; CLX-6260ND,ABS,18.1,BLAC	SNA	1
1-11	3		JC63-03846A	COVER-KEY HOLDER; CLX-3305FW,HIPS,2.0T,55	SA	1
1-12	3		JC64-00757A	KEY-OK; CLX-3305FW,ABS,11.04,2.0T,SPLIT B	SNA	1
1-13	3		JC92-02823A	PBA OPE; C480,Text,4in1,308x64	SA	1
2	2		JC97-04714A	SCANNER; C480,SEC	SNA	1
2-1	3		JC97-04615A	ADF; SL-C480,SEC	SA	1
2-2	3	L8658	JC63-02569A	SHEET-WHITE; FIT,PP,3.6,216,250.2,White,9	SA	1
2-3	3	D9329	JC97-03191A	ETC-MEA UNIT-HINGE L; CLX-3170,SEC,103.4*	SC	2
2-4	3		JC63-03545A	COVER-CONNECTOR; CLX-3305FW,ABS,2.2T,43,2	SA	1
2-5	3		JC97-04070A	PLATEN; CLX-3305FW,SEE	SA	1

# 6.1. PLATEN

## Exploded View



## Parts List

No.	Lvl.	Loc.	Material Code	Description & Specification	SNA	Qty.
1	4		JC97-04072A	PLATEN-LOWER; CLX-3305FW,SEE	SA	1
1-1	5		JC63-03974A	COVER-JAM HOLDER; CLX-3305FW,HIPS,2.0T,72	SNA	2
1-2	5		JC63-03554A	COVER-SCAN LOWER; CLX-3305FW,ABS,2.0T,396	SNA	1
1-3	5		JC39-01714A	FLAT CABLE-CIS; CLX-3305FW,16P,0.05,700mm	SA	1
1-4	5		JC39-02445A	HARNESS-ADF JOINT; C480,12,UL20276,375,GR	SA	1
1-5	3	L9633	0604-001415	PHOTO-INTERRUPTER; TR,DIP-4,BK	SA	1

No.	Lvl.	Loc.	Material Code	Description & Specification	SNA	Qty.
1-6	5		6107-002981	SPRING-ETC; SUS304,0.5,9,6.5,2.4,LEFT	SNA	1
1-7	5		JC97-03968B	SCANNER-PLATEN FLA; CLX-3305FW,SEE	SNA	1
1-7-1	6		0609-001408	CONTACT IMAGE SENSOR; 218mm,10368DOT,0.5M	SA	1
1-7-2	6	A4232	6602-001637	BELT-TIMING GEAR; POLY URETHANE,T0.98,L73	SA	1
1-7-3	6	G1544	6107-001194	SPRING-CS; SWP-B,BLK,PI0.9,D6.95,L20,ID6.	SA	1
1-7-4	6		JC93-00712A	DRIVE-PLATEN; 0,NBR+ECO Foam,218 (mm),0.4	SA	1
1-7-5	6	G0802	JC66-01580A	SLIDER-CIS; CLX-2160,POM,0.7,11.2,18.6,NT	SA	2
2	4		JC97-04071D	PLATEN-UPPER; CLX-3305FW,SEC	SNA	1
3	4		JC97-04066A	PLATEN-SHEET; SCX-4729FD,SEE	SA	1