

# SHARP PARTS GUIDE

CODE:00ZARM206/025

## DIGITAL COPIER

Revised Edition

**AR-M206**  
**AR-M161**  
**AR-M207**  
**AR-M207E**  
**AR-M162**  
**AR-M162E**  
**MODEL AR-M165**

### CONTENTS

- |                                    |  |
|------------------------------------|--|
| 1 Exteriors                        | 14 Delivery frame unit                                       |
| 2 Operation panel section          | 15 TC case unit  |
| 3 Side door unit                   | 16 250 sheets tray unit                                      |
| 4 Optical unit                     | 17 Packing material & Accessories                            |
| 5 2nd,3rd mirror unit              | 18 2nd Tray exteriors<br>[AR-M206/AR-M207/AR-M207E]          |
| 6 Middle frame unit                | 19 2nd Tray paper feeding unit<br>[AR-M206/AR-M207/AR-M207E] |
| 7 Process unit                     | ■ Index  |
| 8 DV cartridge unit                |  |
| 9 Fusing unit                      |  |
| 10 Main driving unit               |  |
| 11 Base plate unit 1               |  |
| 12 Base plate unit 2               |  |
| 13 Manual paper feeding multi unit |  |

## DEFINITION

- Rank A : Maintenance parts, and consumable parts which are not included in but closely related to maintenance parts
- Rank B : Performance/function parts (sensors, clutches, and other electrical parts), consumable parts
- Rank E : Unit parts including PWB
- Rank D : Preparation parts (External fitting, packing, parts packed together)
- Rank C : Parts other than the above (excluding sub components of PWB)

Because parts marked with "△" is indispensable for the machine safety maintenance and operation, it must be replaced with the parts specific to the product specification.

- Other than this Parts Guide, please refer to documents Service Manual(including Circuit Diagram)of this model.
- Please use the 13 digit code described in the right hand corner of front cover of the document, when you place an order.
- For U.S. only-Use order codes provided in advertising literature. Do not order from parts department.

### [NOTE]

- \* There parts are supplied by SMF

### <Note for use of the revised Parts Guide>







- Interchangeability of parts is expressed by No1~6 as shown in the table below.

#### <Interchangeability>

1	Interchangeable.
2	Current type can be used in place of new type. New type cannot be used in place of current type.
3	Current type cannot be used in place of new type. New type can be used in place of current type.
4	Not interchangeable.
5	Interchangeable if replaced with same types of related parts in use.
6	Others.

- New & Addition, Change, Abolition, and Quantity change are expressed with the marks shown in the table below.

#### <Change of Division>

New & Addition	
Change	
Abolition	
Quantity (increase) /Others	
Quantity (decrease)	
Correction	

- Running Change of Effective Time is expressed as R/C.

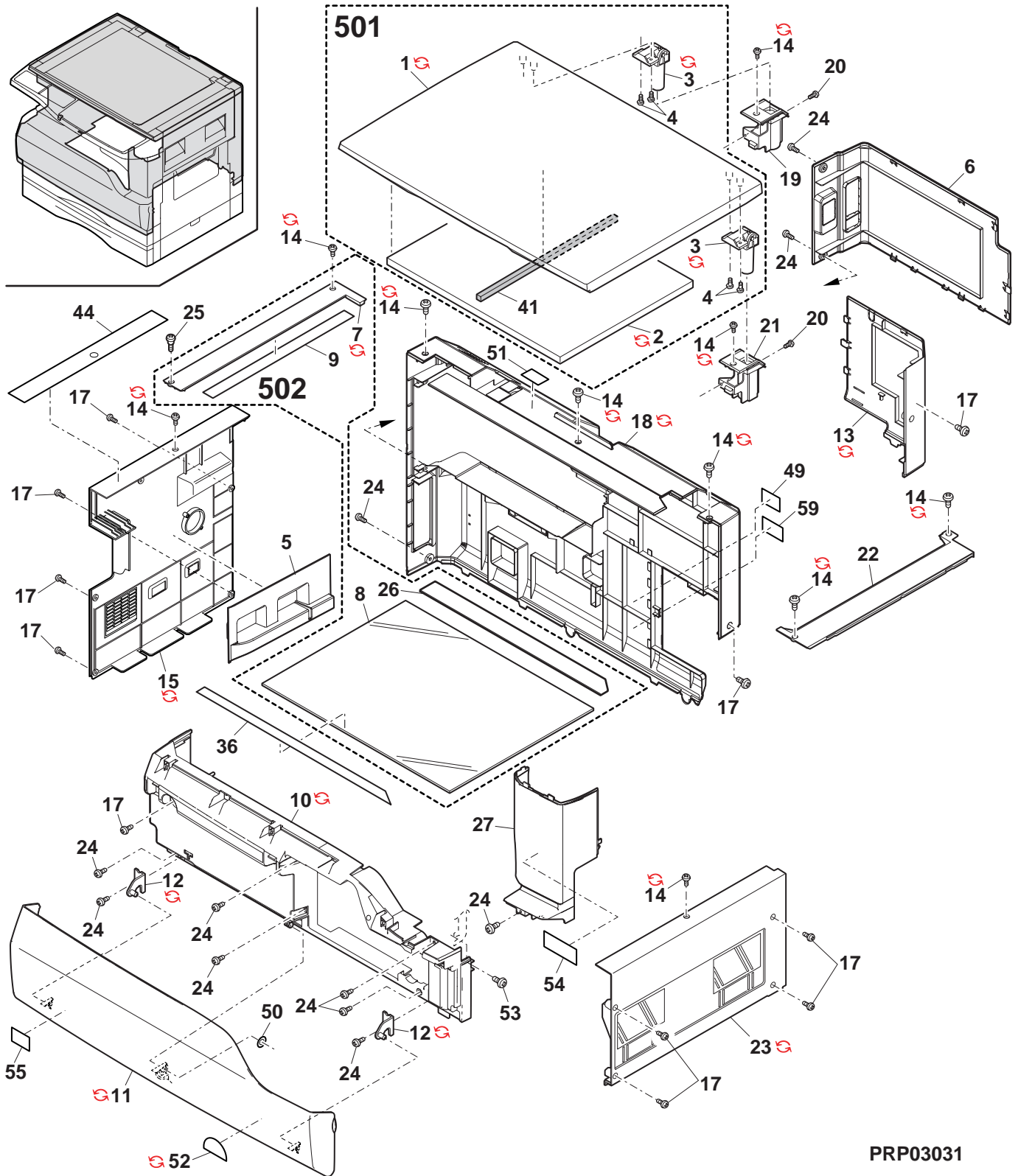
#### <Effective Time>

R / C	Running Change
-------	----------------

## 1 Exteriors

NO.	PARTS CODE	Inter-change	PRICE RANK	NEW MARK	PART RANK	DESCRIPTION	TR No.	Effective time
1	GCÖVH0010QSE5		BD		D	OC cover [AR-M161/AR-M162/AR-M162E/AR-M165]		
	GCÖVH0010QSE6	1	BD		D	OC cover [AR-M161/AR-M162/AR-M162E/AR-M165]		07/10 R/C
	PCUSS0023QSZ1		AV		C	OC mat [AR-M161/AR-M162/AR-M162E/AR-M165]		
2	PCUSS0023QSZ2	1	AV		C	OC mat [AR-M161/AR-M162/AR-M162E/AR-M165]		06/08 mid
	CHNG-0007QS02		AM		C	OC hinge [AR-M161/AR-M162/AR-M162E/AR-M165]		
3	CHNG-0007QS06	1	AL	N	C	OC hinge [AR-M161/AR-M162/AR-M162E/AR-M165]		07/08 R/C
4	XEBS740P10000		AA		C	Screw(4x10)		
5	GCAB-0104QSZZ		AL		D	Delivery left cabinet		
6	GCÖV-0064QSZ1		AP		D	Rear cover [AR-M161/AR-M162/AR-M206/AR-M207(U.S.A,Canada)]		
	GCÖV-0064QSZZ		AP		D	Rear cover [AR-M162(Australia,New Zealand,Taiwan)/AR-M162E/AR-M165/AR-M207(Europe,Australia,New Zealand,Taiwan)/AR-M207E]		
7	CFIX-0024QS07		AK		D	Glass fixing plate		
	CFIX-0024QS13	1	AK		D	Glass fixing plate		- R/C
8	PGLSP0003QSZZ		BA		B	Table glass		
9	PSHEZ0220QSZ1		AK		C	Sheet		
	GCAB-0068QSZZ		AV		D	Front cabinet		
10	GCAB-0068QSZ1	1	AV		D	Front cabinet		- R/C
	CCOV-0046QS17		AY		D	Front cabinet cover [AR-M162/AR-M162E]		
	CCOV-0046QS1M	1	AY		D	Front cabinet cover [AR-M162/AR-M162E]		- R/C
	CCOV-0046QS23		AY		D	Front cabinet cover [AR-M165]		
	CCOV-0046QS1T	1	AY		D	Front cabinet cover [AR-M165]		- R/C
	CCOV-0046QS18		AY		D	Front cabinet cover [AR-M207/AR-M207E]		
	CCOV-0046QS1N	1	AY		D	Front cabinet cover [AR-M207/AR-M207E]		- R/C
12	CARMP0010QS03		AD		C	Hinge arm		
	CARMP0010QS04	1	AD		C	Hinge arm		08/02
	GCÖV-0048QSZZ		AM		D	Rear cabinet cover		
13	GCÖV-0048QSZ1	1	AM		D	Rear cabinet cover		- R/C
14	LX-BZ0750FCPZ		AA		C	Screw(3x6)		
	LX-BZ0088QSPZ	1	AA		C	Screw(3x6)		07/09
	GCAB-0071QSZ3		AU		D	Left cabinet		
15	GCAB-0071QSZ4	1	AU		D	Left cabinet		- R/C
17	XHBS730P08000		AB		C	Screw(3x8)		
	GCAB-0102QSZ1		AZ		D	Rear cabinet		
18	GCAB-0102QSZ3	3	AZ		D	Rear cabinet [Form change]		06/10
19	PGIDM0110QSZZ		AG		C	Hinge guide L		
20	XHBS730P06000		AC		C	Screw(3x6)		
21	PGIDM0111QSZZ		AG		C	Hinge guide R		
22	LFIX-0026QSZZ		AH		C	OC glass fixing		
	GCAB-0015QSEB		AU		D	Right cabinet		
23	GCAB-0015QSEC	1	AU		D	Right cabinet		06/04
	GCAB-0015QSED	1	AU		D	Right cabinet		- R/C
24	XEBS740P10000		AA		C	Screw(4x10)		
25	LX-BZ0759FCPZ		AC		C	Screw(3x6)		
26	CGIDM0133QS01		AG		C	OR guide unit		
27	GCAB-0101QSZZ		AL		D	Front right cabinet (U.S.A,Canada)		
	CCAB-0101QS01		AN		D	Front right cabinet (Except U.S.A,Canada)		
36	PSHEZ0088QSZ1		AD		C	Table glass sheet F		
41	PMLT-0039QSZZ		AC		C	OC cushion [AR-M161/AR-M162/AR-M162E/AR-M165]		
44	TLABH0458QSZZ		AF		D	Operation label		
49	TLABZ0058QSZZ		AD		D	Class 1 label (Except U.S.A,Canada)		
50	LX-WZ1003HCZZ		AA		C	Poly slider(T=0.5)		
51	TLABH0322QSZZ		AD		D	Scanning direction label		
	TLABG0401QSZZ		AR		D	Energy star label (Hong Kong)		
	TLABZ4047FCZZ		AC		D	Energy star label (Europe)		
52	TLABZ5148FCZZ	1	AC		D	Energy star label (Europe)		06/07
	TLABZ5148FCZZ		AC		D	Energy star label (U.S.A,Canada,Australia,New Zealand)		
53	LX-BZ3008SCPS		AA		C	Screw(3x8)		
54	TLABM0520QSZZ		AE		D	Imagery label (U.S.A,Canada)		
55	TLABZ0059QSZZ		AE		D	ECP label (U.S.A,Canada)		
59	TCAUA0770FCZZ		AB		D	Service caution label		
501	CCOVH0010RS56		BK		E	OC cover unit [AR-M161/AR-M162/AR-M162E/AR-M165]		
502	CFIX-0024RS56		BC		E	Table unit		

1 Exteriors



PRP03031

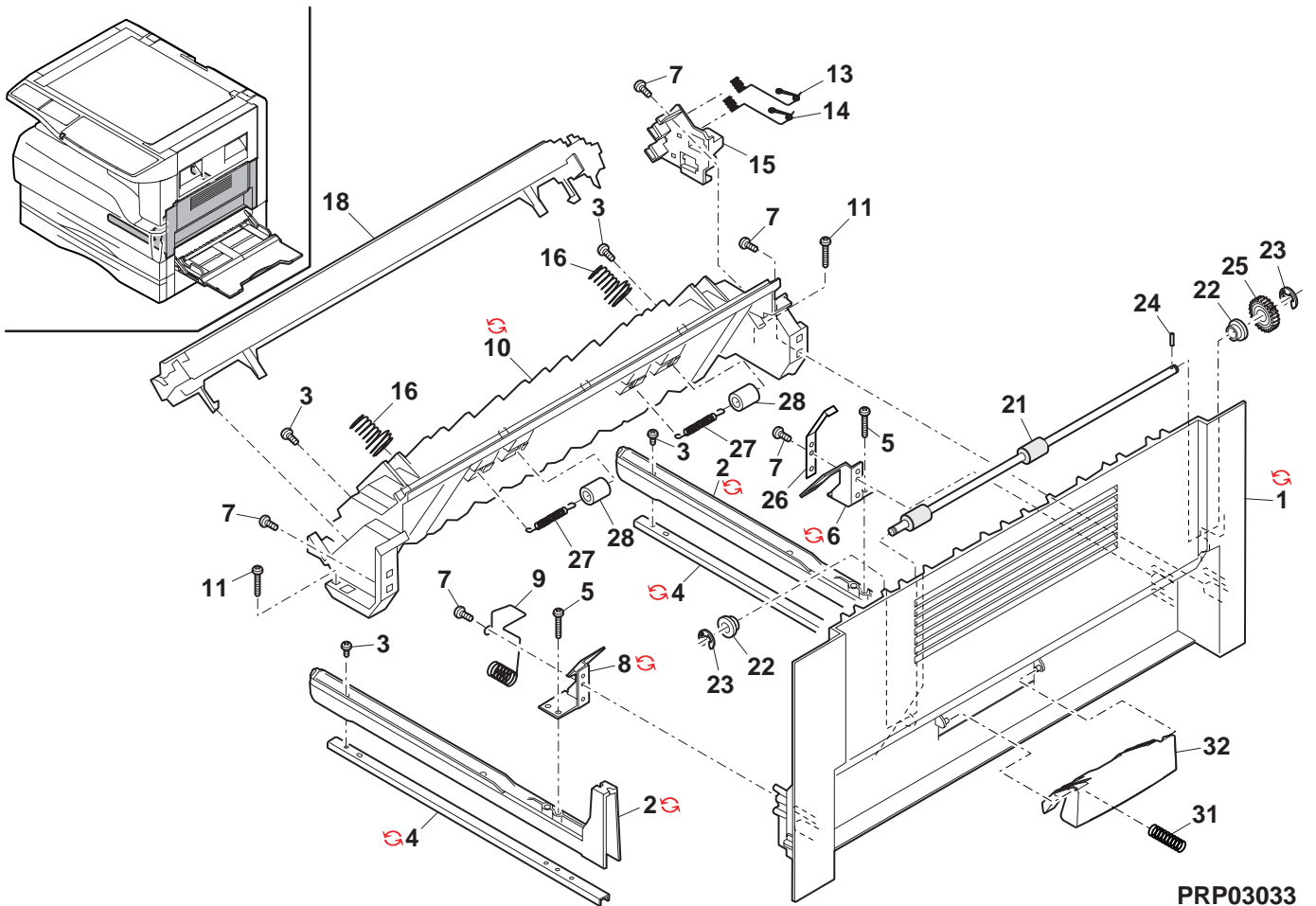




3 Side door unit

NO.	PARTS CODE	Inter-change	PRICE RANK	NEW MARK	PART RANK	DESCRIPTION	TR No.	Effective time
1	GDOR-0004QSZ1		AQ		D	Right door		
	GDOR-0004QSZ2	1	AQ		D	Right door		- R/C
2	LRALP0004QSZ2		AH		C	Right door rail		
	LRALP0004QSZ3	1	AH	N	C	Right door rail		07/08 R/C
3	XHBS730P10000		AD		C	Screw(3x10)		
4	LPLTM0092QSZZ		AF		C	Rail reinforce plate		
	LPLTM0092QSZ1	1	AE		C	Rail reinforce plate		08/02
5	XHBS730P14000		AA	N	C	Screw(3x14)		
6	LPLTM0091QSZZ		AE		C	Inner reinforce plate R		
	LPLTM0091QSZ1	3	AE		C	Inner reinforce plate R	[Form change]	06/04 R/C
7	XEBS730P10000		AC		C	Screw(3x10)		
8	LPLTM0090QSZZ		AE		C	Inner reinforce plate F		
	LPLTM0090QSZ1	3	AE		C	Inner reinforce plate F	[Form change]	06/04 R/C
9	MSPRC0085QSZZ		AE		C	TC case GND spring		
10	LFRM-0016QSZ5		AQ		C	Right door inner N		
	LFRM-0016QSZ6	1	AQ		C	Right door inner N		06/04
11	XHBS730P16000		AA	N	C	Screw(3x16)		
13	MSPRC0084QSZ1		AD		C	BC I/F electrode spring		
14	MSPRC0083QSZ1		AD		C	TC I/F electrode spring		
15	LHLDZ0033QSZ1		AF		C	TC terminal I/F holder		
16	MSPRC0082QSZ1		AC		C	Pressure spring		
18	CHLDZ0030RS55		AY		E	TC unit		
21	NRÖLP0036QSZZ		AP		B	DUP transport roller	[AR-M165/AR-M206/AR-M207/AR-M207E]	
22	LBSHZ0303FCZZ		AC		C	M bushing C	[AR-M165/AR-M206/AR-M207/AR-M207E]	
23	XRESP40-06000		AA		C	E type ring(E4)	[AR-M165/AR-M206/AR-M207/AR-M207E]	
24	XPSSJ20-07000		AA		C	Spring pin(φ2-7)	[AR-M165/AR-M206/AR-M207/AR-M207E]	
25	NGERH0074QSZZ		AD		C	DUP roller driving gear	[AR-M165/AR-M206/AR-M207/AR-M207E]	
26	LPLTM0102QSZZ		AD		C	DUP roller earth plate	[AR-M165/AR-M206/AR-M207/AR-M207E]	
27	MSPRT0141GCA1		AB		C	FU PSV spring	[AR-M165/AR-M206/AR-M207/AR-M207E]	
28	NRÖLP1122FCZZ		AF		C	PS upper roller	[AR-M165/AR-M206/AR-M207/AR-M207E]	
31	MSPRC0319QSZZ		AB		C	Right door knob spring		
32	JKNBZ0008QSZZ		AE		C	Right door knob		
	(Unit)							
901	CDOR-0004RS51		BC		E	Side door unit(Without No.16,18)	[AR-M161/AR-M162/AR-M162E]	
	CDOR-0004RS52		BD		E	Side door unit(Without No.16,18)	[AR-M165/AR-M206/AR-M207/AR-M207E]	

3 Side door unit



PRP03033

## 4 Optical unit

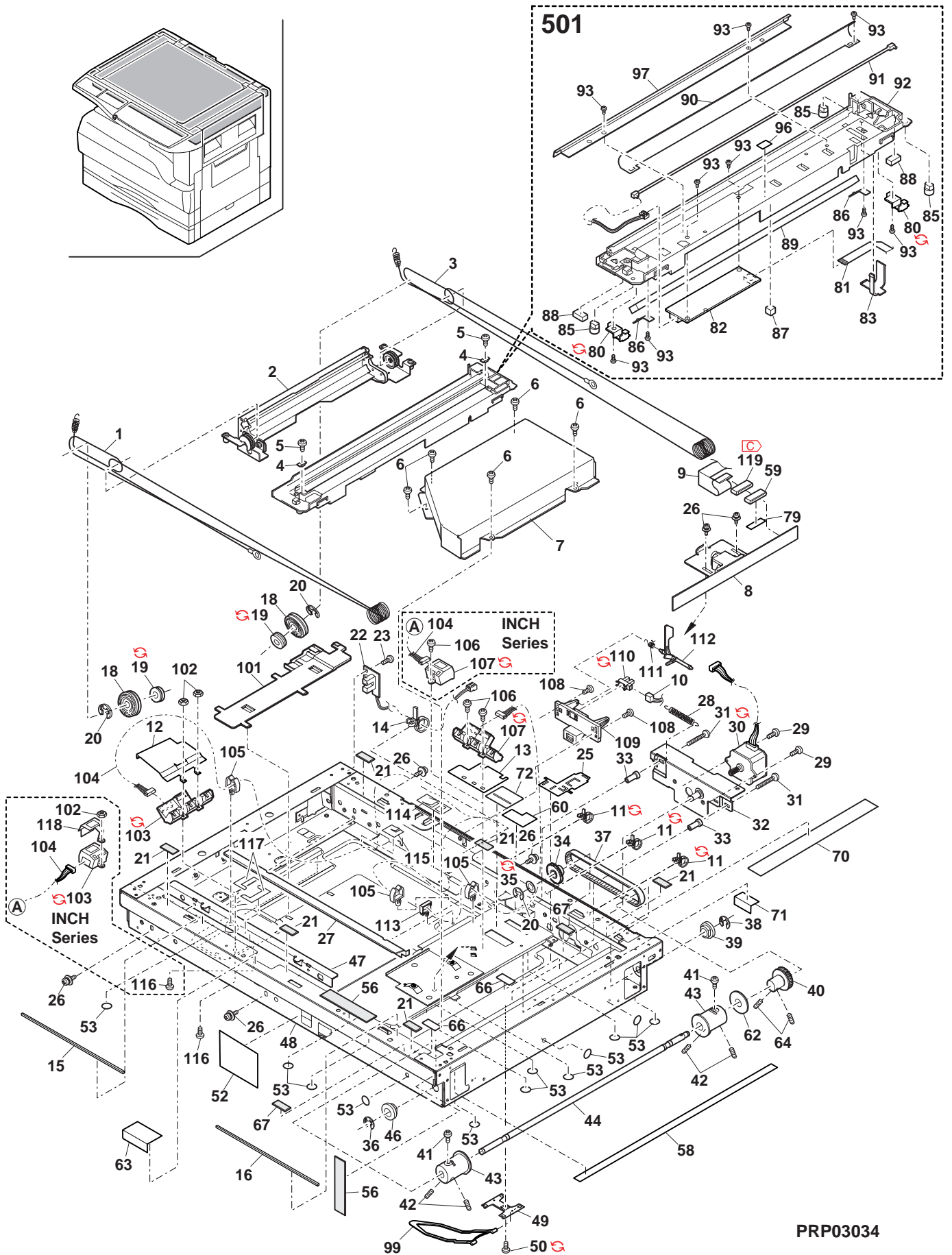
NO.	PARTS CODE	Inter-change	PRICE RANK	NEW MARK	PART RANK	DESCRIPTION	TR No.	Effective time
1	PWIR-0006QSPZ		AZ		C	MB wire F		
2	CMIR-0008QS37		BA		E	2nd,3rd mirror unit		
3	PWIR-0005QSP1		AZ		C	MB wire R		
4	LHLDZ0109QSZZ		AD		C	Wire holder		
5	XBPS740P06K00		AA	N	C	Screw(4x6K)		
6	XHBS730P06000		AC		C	Screw(3x6)		
7	PCASZ0010QSZZ		AL		C	Dark box		
8	CLNS-0006RS52		BY		E	Lens unit		
9	DHAI-0342QSZZ		AG		C	CCD harness		
10	DHAI-0488QSZZ		AD		C	OC cover harness		
11	LBNDJ0043FCP1		AB		C	Cable band [AR-M162E/AR-M207E]		
	LBNDJ0043FCZ1		AA		C	Cable band [Other Model]		
	LBNDJ0043FCP1	3	AB		C	Cable band [Unleaded correspondence][Other Model]		06/02
12	LPLTM0384QSZZ		AE		C	Original detection shield plate (AB series)		
13	PSHEZ0500QSZZ		AD		C	Manuscript detection shield sheet		
14	LBNDJ0071FCZZ		AC		C	Cable band(RSG-100)		
15	PMLT-0109QSZZ		AC		C	Cushion ORG1		
16	PMLT-0110QSZZ		AC		C	Cushion ORG2		
18	NPLYZ0016QSZZ		AF		C	Pulley		
19	NPLYZ0006QSZZ		AD		C	L pulley		
19	NPLYZ0006QSZ1	1	AD	N	C	L pulley		06/12 R/C
20	XRESP40-05000		AA		C	E type ring(E4)		
21	PGUMS0004QSZZ		AA		C	Table glass cushion		
22	CPWBF0147QSF3		AL		E	MHPS PWB		
23	XBBS730P08000		AA		C	Screw(3x8)		
25	LHLDZ0104QSZZ		AD		C	CL lead holder		
26	LX-BZ0004QSPZ		AB		C	Screw(Red)		
27	LRALM0007QSZ1		AG		C	MB-B rail R		
28	MSPRC0040QSZZ		AB		C	MB drive spring		
29	XBPS730P05K00		AA	N	C	Screw(3x5K)		
30	RMOTS0041QSPZ		BA		B	Mirror motor [AR-M162E/AR-M207E]		
	RMOTS0041QSZZ		BA		B	Mirror motor [Other Model]		
	RMOTS0041QSPZ	3	BA		B	Mirror motor [Unleaded correspondence][Other Model]		06/02
31	XBPS740P16KS0		AB		C	Screw(4x16KS)		
32	CPLTM0312QS02		AK		C	Mirror motor fixing plate		
33	PGUMS0002QSZZ		AL		C	Protection rubber		
34	NGERH0165QSZZ		AE		C	Mirror motor idle gear		
35	LX-WZ0017GCZZ		AC		C	Washer		
	LX-WZ0017GCZ1	1	AC		C	Washer		- R/C
36	XRESP70-08000		AA		C	E type ring(E7)		
37	NBLTT0037QSZZ		AL		B	Winder drive belt		
38	XRESP50-06000		AA		C	E type ring(E5)		
39	NBRGP0012QSZZ		AC		C	Winder bearing R		
40	NPLYZ0032QSZZ		AK		C	Winder drive shaft pulley		
41	LX-BZ0324FCPZ		AA		C	Screw(3x4)		
42	LX-BZ0049FCPZ		AB		C	Screw(4x6) [AR-M162E/AR-M207E]		
	LX-BZ0049FCZZ		AB		C	Screw(4x6) [Other Model]		
43	NPLYZ0031QSZZ		AL		C	Winder pulley		
44	NSFTZ0071QSPZ		AQ		C	Winder drive shaft		
46	NBRGP0011QSZZ		AC		C	Winder bearing F		
47	LRALM0006QSZZ		AG		C	MB-B rail F		
48	CDAIU0012QS13		BF		D	Optical base plate		
49	LHLDZ0116QSZZ		AD		C	Paper fixing holder		
50	LX-BZ0750FCPZ		AA		C	Screw(3x6)		
	LX-BZ0088QSPZ	1	AA		C	Screw(3x6)		07/09
52	PSHEZ0440QSZZ		AC		C	Optical front sheet		
53	PSHEZ0448QSZZ		AA		C	Optical base plate bottom sheet B		
56	PMLT-0033QSZZ		AC		C	Optical cushion D		
58	PSHEZ0152QSZZ		AD		C	Optical bottom sheet		
59	RCORF0018QSZZ		AR		C	Ferrite core		
60	PSHEZ0209QSZZ		AB		C	CCD harness protect sheet A		
62	LPFTF0004QSZZ		AB		C	Winder flange		
63	PSHEZ0418QSZZ		AC		C	Optical FR front sheet		
64	LX-BZ0039FCZZ		AB		C	Screw(4x4)		
66	PSHEZ0420QSZZ		AC		C	OP harness protect sheet		
67	PSHEZ0426QSZZ		AB		C	OP harness protect sheet B		
70	PTPE-0051QSZZ		AC		C	OP harness fixing tape		
71	PSHEZ0273QSZZ		AB		C	CCD harness sheet		
72	PSHEZ0217QSZZ		AC		C	CCD harness protect sheet B		
79	PTPE-0050QSZZ		AA		C	Core fixing tape		
80	LPLTM0314QSZZ		AC		C	Wire support plate		
	LPLTM0314QSZ1	1	AC		C	Wire support plate		08/02
81	DHAI-0332QSZZ		AE		C	CL harness		
82	RINV-0002QSZZ		AU		E	Inverter		
83	LFIX-0023QSZZ		AC		C	Harness fixing plate		
85	MSLI-0138FCZZ		AC		C	Slider		
86	MSPRP2825FCZZ		AC		C	Mirror spring		
87	PCUSF0334FCZZ		AP		C	Mirror cushion		
88	PCUSU0203FCZZ		AE		C	Cushion		
89	PMIR-0164FCZZ		AP		B	1st mirror		



4 Optical unit

NO.	PARTS CODE	Inter-change	PRICE RANK	NEW MARK	PART RANK	DESCRIPTION	TR No.	Effective time
90	PREFL0005QSZZ		AH		C	Lamp reflector		
91	RLMPD0033QSZZ		AS		B	Lamp		
92	LDAIU0030QSZZ		AS		D	Lamp base		
93	XEBS830P06000		AB		C	Screw(3x6)		
96	TLABZ4335FCZZ		AB		D	High pressure cautions label		
97	PREFL0006QSZZ		AK		C	Sub reflector		
99	MARMP0054QSZ1		AD	N	C	Arm		
101	PCOVP0075QSZZ		AE		D	Harness cover		
102	XNES730-24000		AA	N	C	Nut(M3)		
103	VHPGP2D03// - 18		AZ		B	Photo sensor(GP2D03)		(Inch series)
	VHPGP2D07// - 1		BA		B	Photo sensor(GP2D07)		(AB series)
	VHPGP2D07// - 18	3	BA	N	B	Photo sensor [Unleaded solder correspondence]		(AB series) 06/03
104	DHAi-0484QSZZ		AL		C	OC detection harness		(Inch series)
	DHAi-0483QSZZ		AM		C	OC detection harness		(AB series)
105	LHLDW1009ACZZ		AA		C	Clamp		
106	XHBS730P06000		AC		C	Screw(3x6)		
107	VHPGP2D032// - 18		BA		B	Photo sensor(GP2D032)		(Inch series)
	RSNSZ0001QSZZ		BA		B	Photo sensor(GP2D071)		(AB series)
	RSNSZ0001QSPZ	3	BA	N	B	Photo sensor [Unleaded solder correspondence]		(AB series) 06/02
108	XBPS730P08X00		AA	N	C	Screw(3x8X)		
109	LPLTP0230QSZZ		AF		C	Open/close sensor fixing plate		
110	VHPGP1S73P+ - 18		AF		B	Photo transistor(GP1S73P)		
111	MSPRD0232QSZZ		AB		C	Return spring		
112	MLEVP0077QSZZ		AC		C	Open/Close actuator		
113	LCRA-0002QSZZ		AC		C	Mini clump		
114	PSHEZ0218QSZZ		AC		C	Edge protect sheet A		
115	PSHEZ0219QSZZ		AC		C	Edge protect sheet B		
116	LX-BZ0077QSZZ		AB		C	Screw		
117	PSHEZ0254QSZZ		AC		C	Optical bottom sheet		
118	PSHEZ0499QSZZ		AF		C	Manuscript detection shield sheet		(Inch series)
119	RCORF0018QSZZ	-	AR		C	Ferrite core		(Taiwan, South Africa) 08/01
501	CREFL0005RS56		BD		E	Copy lamp unit		

4 Optical unit

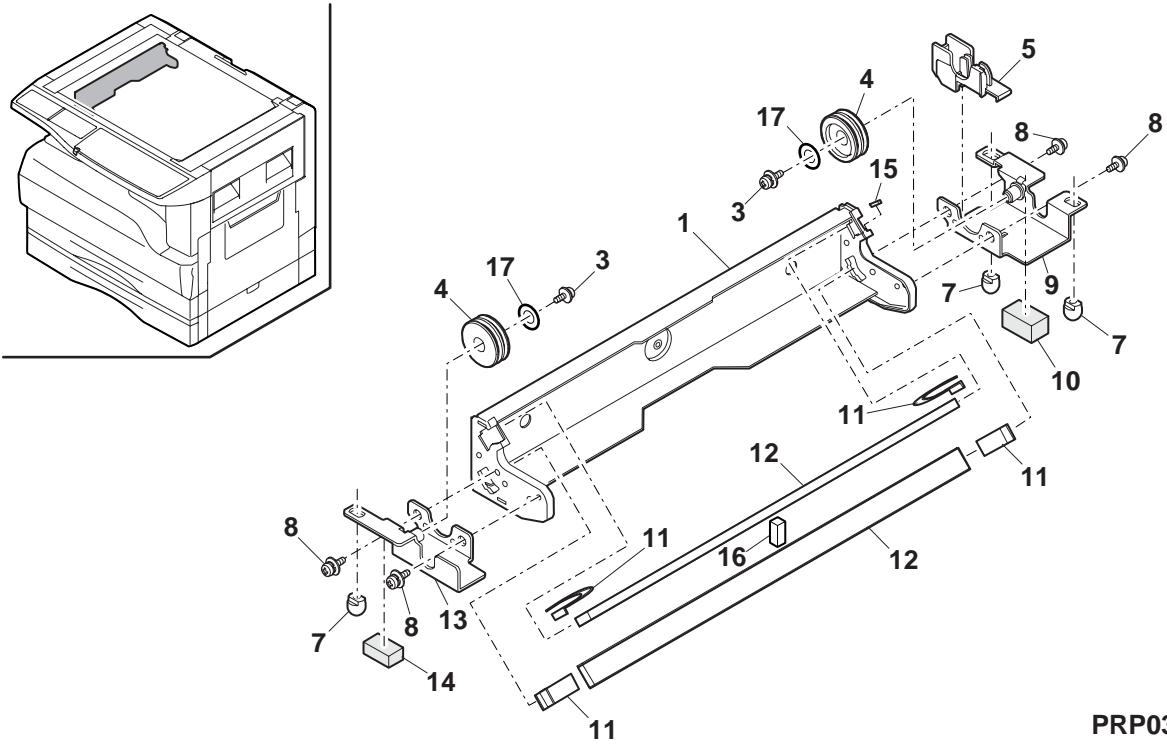


PRP03034

5 2nd,3rd mirror unit

NO.	PARTS CODE	Inter-change	PRICE RANK	NEW MARK	PART RANK	DESCRIPTION	TR No.	Effective time
1	LHLDZ0044QSZ2		AN		C	2nd,3rd mirror holder		
3	XBPS740P06KS0		AB	N	C	Screw(4x6KS)		
4	NPLYZ0017QSZZ		AE		C	W pulley		
5	LHLDZ0013QSZZ		AD		C	CL guide holder		
7	MSLi-0138FCZZ		AC		C	Slider		
8	LX-BZ0335FCPZ		AB		C	Screw(4x6)(Red)		
9	CPLTM0156QS03		AH		C	Pulley fixing plate R		
10	PCUSS0009QSZZ		AA		C	MB-B cushion R		
11	LFiX-0284FCZZ		AC		C	2nd,3rd mirror fixing plate F		
12	PMiR-0008QSZ1		BA		B	2nd,3rd mirror		
13	CPLTM0155QS03		AH		C	Pulley fixing plate F		
14	PCUSS0201FCZZ		AA		C	MB-B cushion		
15	PSPAZ0011QSZZ		AD		C	Mirror spacer		
16	PMLT-0084QSZZ		AB		C	2nd,3rd mirror cushion		
17	LX-WZ0001GCZZ		AB		C	Washer		
	(Unit)							
901	CMiR-0008QS37		BA		E	2nd,3rd mirror unit		

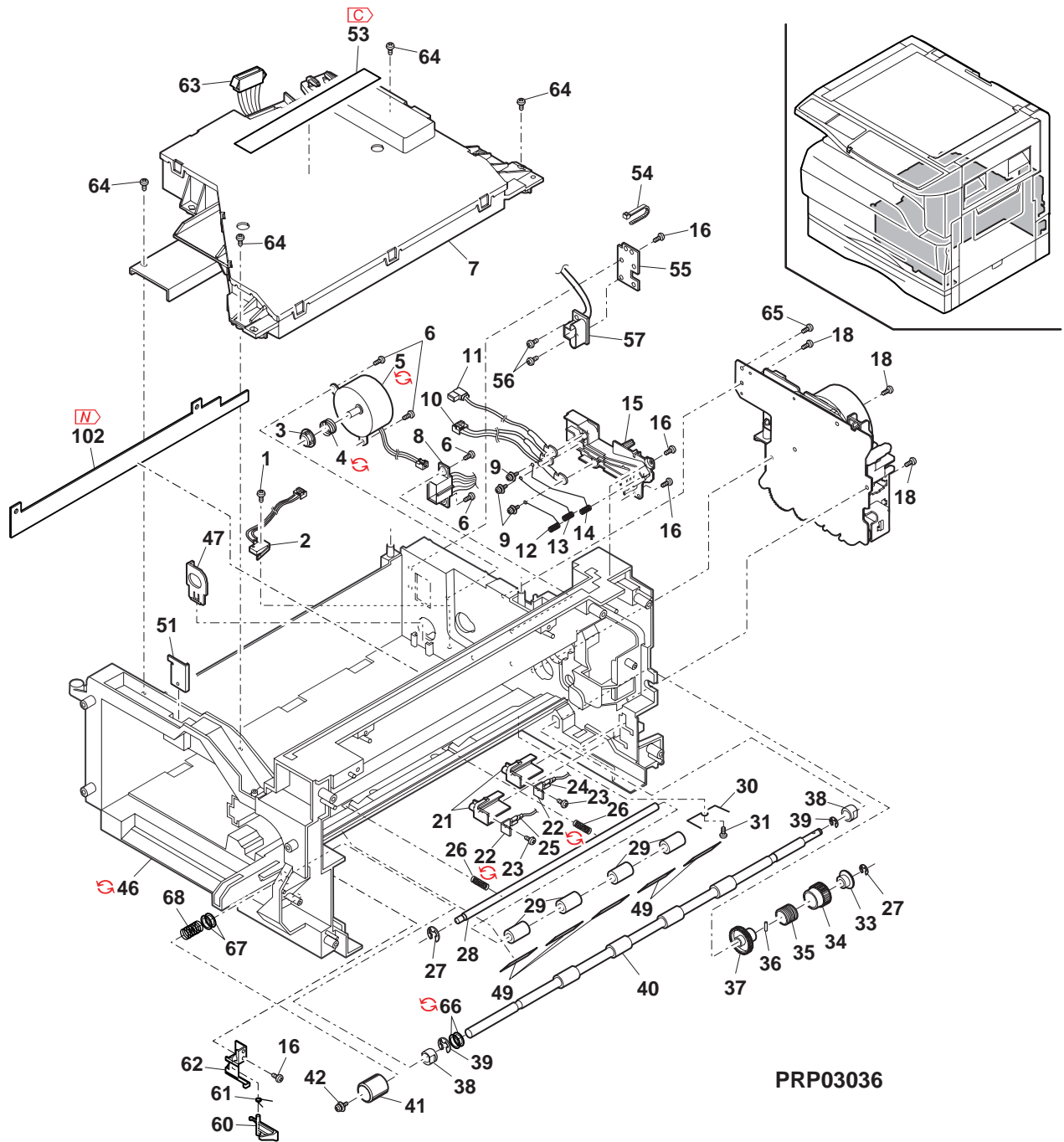
5 2nd,3rd mirror unit



## 6 Middle frame unit

NO.	PARTS CODE	Inter-change	PRICE RANK	NEW MARK	PART RANK	DESCRIPTION	TR No.	Effective time
1	XEPS723P12000		AA	N	C	Screw(2.3x12)		
2	CSW-M0007RS55		AS		B	Interlock switch unit		
3	NCPL-0007QSZ1		AC		C	Hopper coupling		
4	MSPRC0024QSZZ		AA		C	Hopper spring		
4	MSPRC0024QSZ1	1	AC		C	Hopper spring		07/09
5	RMOTD0035QSPZ		AX		B	Toner motor		
5	RMOTD0035QSP1	1	AZ		B	Toner motor		06/08 R/C
6	XEBS730P10000		AC		C	Screw(3x10)		
7	DUNTK0343RS12		BR		E	LSU[Include No.101]		
8	DHAi-0322QSZZ		AS		C	DEV harness		
9	XBPS30P06ES0		AA		C	Screw(3x6ES)		
10	CHAi-0109RS52		AN		C	GB-MCFB harness unit		
11	CHAi-0107RS52		AM		C	MC harness unit		
12	MSPRD0104QSZZ		AC		C	HV terminal spring (case)		
13	MSPRD0103QSZZ		AC		C	HV terminal spring (grid)		
14	MSPRD0102QSZZ		AC		C	HV terminal spring (saw)		
15	LHLDZ0038QSZ1		AH		C	High voltage terminal holder		
16	XEBS730P08000		AC		C	Screw(3x8)		
18	XEBS730P10000		AC		C	Screw(3x10)		
21	LHLDZ0039QSZZ		AE		C	High voltage terminal holder TC		
22	LPLTM0067QSZZ		AC		C	TC terminal plate		
22	LPLTM0067QSZ1	1	AC		C	TC terminal plate		08/02
23	XEBS730P06000		AA		C	Screw(3x6)		
24	DHAi-0106QSZZ		AK		C	BC harness		
25	DHAi-0108QSZZ		AH		C	TC harness		
26	MSPRC0278QSZZ		AC		C	PS pressure spring		
27	XRESP40-06000		AA		C	E type ring(E4)		
28	NSFTZ0021QSP1		AN		C	PS follower roller shaft		
29	NKOM-0001QSZZ		AD		C	PS collar(φ12)		
30	MSPRD0139QSZZ		AB		C	PS earth spring		
31	XEBS730P06000		AA		C	Screw(3x6)		
33	LBOSZ1508FCZZ		AG		C	Cam boss A2		
34	PPiPP0174FCZZ		AC		C	Pipe C		
35	MSPRC0106QSZZ		AF		C	PS clutch spring		
36	XPSSJ20-07000		AA		C	Spring pin(φ2-7)		
37	NGERH0062QSZZ		AK		C	Clutch gear(32T)		
38	NBRGC0018QSZZ		AD		C	Bearing E		
39	XRESP60-08000		AA		C	E type ring(E6)		
40	NROLP0032QSP2		AT		B	PS transport roller		
41	JKNBZ0010QSZZ		AD		C	PS knob		
42	XBPS730P10KS0		AB	N	C	Screw(3x10KS)		
46	LFRM-0024QSZ3		BC		C	Middle frame		
46	LFRM-0024QSZ5	5	BA		C	Middle frame [With No.102,9-63,101]	DCE582	05/08
47	LPI NS0300FCZZ		AD		C	DV guide pin (Inch series)		
47	LPI NS0301FCZZ		AD		C	DV guide pin (AB series)		
49	PSHEZ0056QSZZ		AC		C	PS rear guide sheet		
51	LANGT0003QSZ1		AC		C	SRU fixing angle		
53	TCAUH0007QSZZ		AD		D	Laser caution label		
53	TCAUH0021QSZZ	-	AD		D	Laser caution label [Missing parts code][AR-M162/AR-M207(Taiwan)]		1st lot
54	LBNDJ0013FCZ1		AE		C	Cable band		
55	LPLTM0149QSZZ		AD		C	Connector fixing plate		
56	LX-BZ0020QSPZ		AB		C	Screw		
57	DHAi-0333QSZZ		AL		C	SRU harness		
60	LSTPP0014QSZZ		AC		C	Right door stopper		
61	MSPRD0298QSZZ		AD		C	Stopper spring		
62	LHLDZ0099QSZZ		AC		C	Stopper holder		
63	DHAi-0321QSZZ		AH		C	LSU harness		
64	XEPS730P14X00		AB	N	C	Screw(3x14X)		
65	XHBS730P06000		AC		C	Screw(3x6)		
66	LX-WZ0198FCZZ		AA		C	Poly slider(T=0.13)		
66	LX-WZ0198FCZ1	1	AA		C	Poly slider(T=0.13)		- R/C
67	LX-WZ1003HCZZ		AA		C	Poly slider(T=0.5)		
68	MSPRC0339QSZZ		AD		C	PS brake spring		
101	RMOTN0022QSPZ		BL		B	Polygon motor[Contained in No.7]		
102	LPLTM0389QSZZ	5	AK		C	Fusing fixing plate [With No.46,9-63,101]		05/08

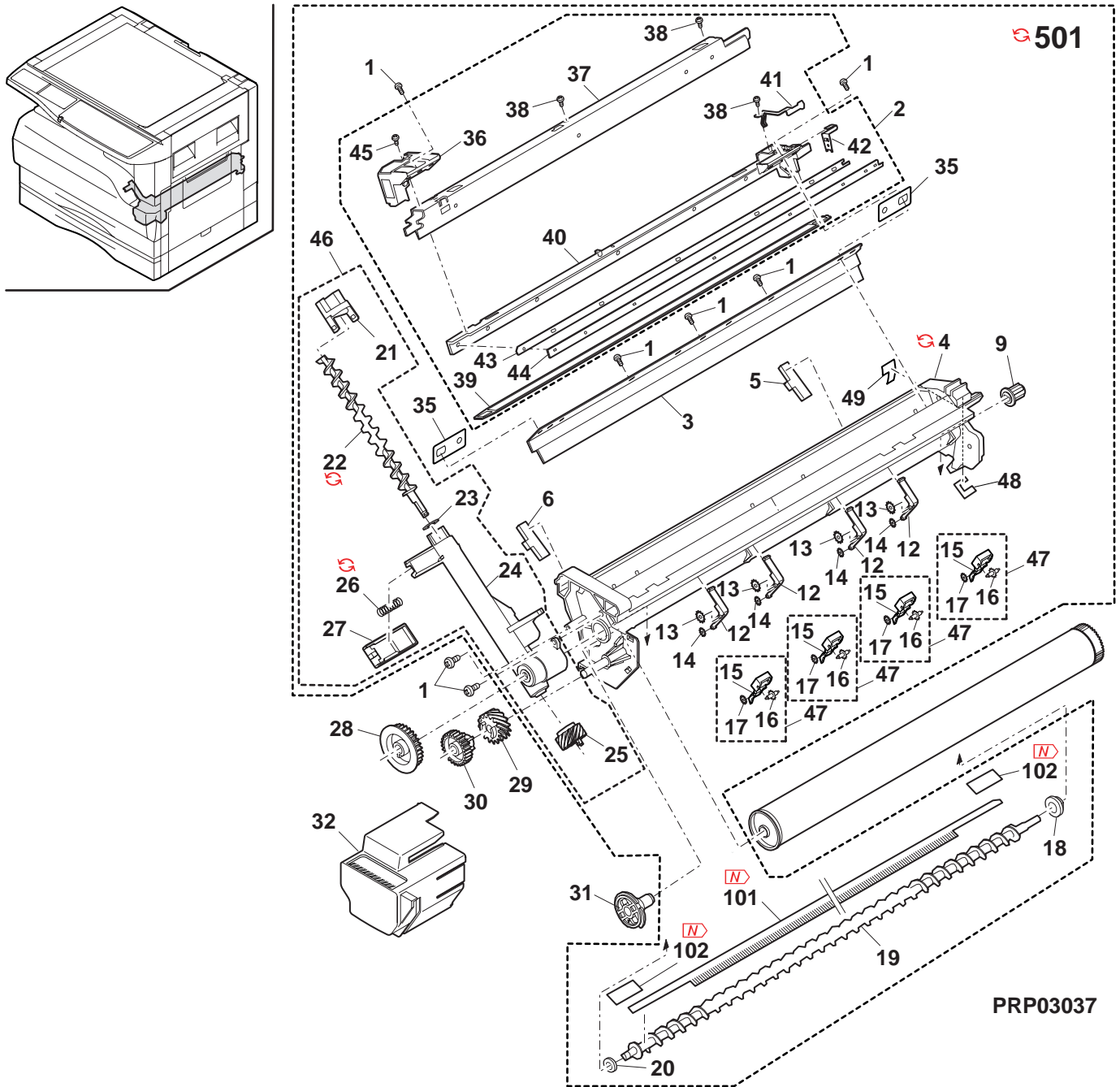
6 Middle frame unit



## 7 Process unit

NO.	PARTS CODE	Inter-change	PRICE RANK	NEW MARK	PART RANK	DESCRIPTION	TR No.	Effective time
1	XEBS730P10000		AC		C	Screw(3x10)		
2	CHLDZ0035RS55		BG		E	MC holder unit		
3	UCLEZ0009QSZ2		AQ		A	Cleaning blade		
4	CFRM-0021RS6K		AY		E	Process sub unit (U.S.A,Canada)		
	CFRM-0021RS6T	3	AX		E	Process sub unit (U.S.A,Canada)	DCE608	06/09
	CFRM-0021RS6M		AY		E	Process sub unit (Except U.S.A,Canada)		
	CFRM-0021RS6R	3	AX		E	Process sub unit (Except U.S.A,Canada)	DCE608	06/09
5	PSEL-0130QSZZ		AF		C	Seal R		
6	PSEL-0129QSZZ		AF		C	Seal F		
9	NCPL-0003QSZ1		AC		C	Screw coupling		
12	LHLDZ0045QSZZ		AD		C	Starling holder (U.S.A,Canada)		
	LHLDZ0098QSZZ		AD		C	Pawl holder (Except U.S.A,Canada)		
13	LX-WZ0329FCZZ		AB		C	Washer (U.S.A,Canada)		
14	LX-RZ0001QSZZ		AB		C	Starling(φ5) (U.S.A,Canada)		
15	PTME-0033QSZZ		AK		A	Separator pawl (Except U.S.A,Canada)		
16	PRNGF0106FCZ2		AC		C	Starling N2 (Except U.S.A,Canada)		
17	LX-RZ0001QSZZ		AB		C	Starling(φ5) (Except U.S.A,Canada)		
18	NBRGP0299FCPZ		AD		C	CL bearing(M5)		
19	NSFTZ0020QSZZ		AL		C	Transport screw		
20	PMLT-0018QSZ1		AC		C	Transport screw cushion		
21	PCAPH0009QSZZ		AC		C	Toner pipe cap		
22	NSFTZ0019QSZZ		AE		C	Transport pipe screw		
	NSFTZ0019QSZ1	1	AE	N	C	Transport pipe screw		08/04 R/C
23	PSPAZ0696FCZZ		AC		C	Pipe cap spacer		
24	PPiPP0005QSZZ		AM		C	Toner sleeve		
25	NGERH0039QSZZ		AE		C	Transport pipe gear(14T)		
26	MSPRC0045QSZZ		AA		C	Toner pipe spring		
	MSPRC0045QSZ1	1	AC		C	Toner pipe spring		07/09
27	PSHT-0004QSZ1		AC		C	Toner pipe shutter		
28	NGERH0036QSZZ		AC		C	Transport screw gear(30T)		
29	NGERH0038QSZZ		AC		C	Transport pipe gear(15T)		
30	NGERH0037QSZZ		AC		C	Idle gear(26T)		
31	LFiX-0007QSZ1		AE		C	Drum fixing plate B		
32	PCOVP0093QSZZ		AE		C	Drum cover		
35	PSHEP0135QSZ1		AB		C	MC guide sheet R		
36	LHLDZ0036QSZZ		AF		C	Grid tension holder		
37	PCASZ0007QSZZ		AN		C	MC case		
38	XEBS726P05000		AA	N	C	Screw(2.6x5)		
39	LPLTM0062QSZ1		AG		B	Grid		
40	LHLDZ0035QSZ1		AP		C	MC holder		
41	QTANP0004QSZZ		AD		C	Terminal		
42	QTANP0007QSZZ		AC		C	Grid terminal		
43	PTPE-0005QSZZ		AG		C	Tape		
44	LPLTM0386QSZZ		AG	N	C	Sawtooth plate		
45	XEBS726P06000		AD		C	Screw(2.6x6)		
46	CPiPP0005RS51		AP		E	Toner pipe unit		
47	CTME-0033RS51		AL		E	Separator pawl unit (Except U.S.A,Canada)		
48	PSHEZ0501QSZZ		AD		C	Drum MG sheet A		
49	PSHEZ0502QSZZ		AD		C	Drum MG sheet B		
101	PSHEZ0513QSZZ	3	AK		C	Paper dust stirring sheet	DCE608	06/02
102	PTPE-0026QSZZ	3	AA		C	Screw tape	DCE608	06/02
501	CFRM-0021RS6L		BE		E	Process frame unit (U.S.A,Canada)		
	CFRM-0021RS5T	3	BF		E	Process frame unit (U.S.A,Canada)	DCE608	06/09
	CFRM-0021RS6N		BF		E	Process frame unit (Except U.S.A,Canada)		
	CFRM-0021RS5R	3	BH		E	Process frame unit (Except U.S.A,Canada)	DCE608	06/09

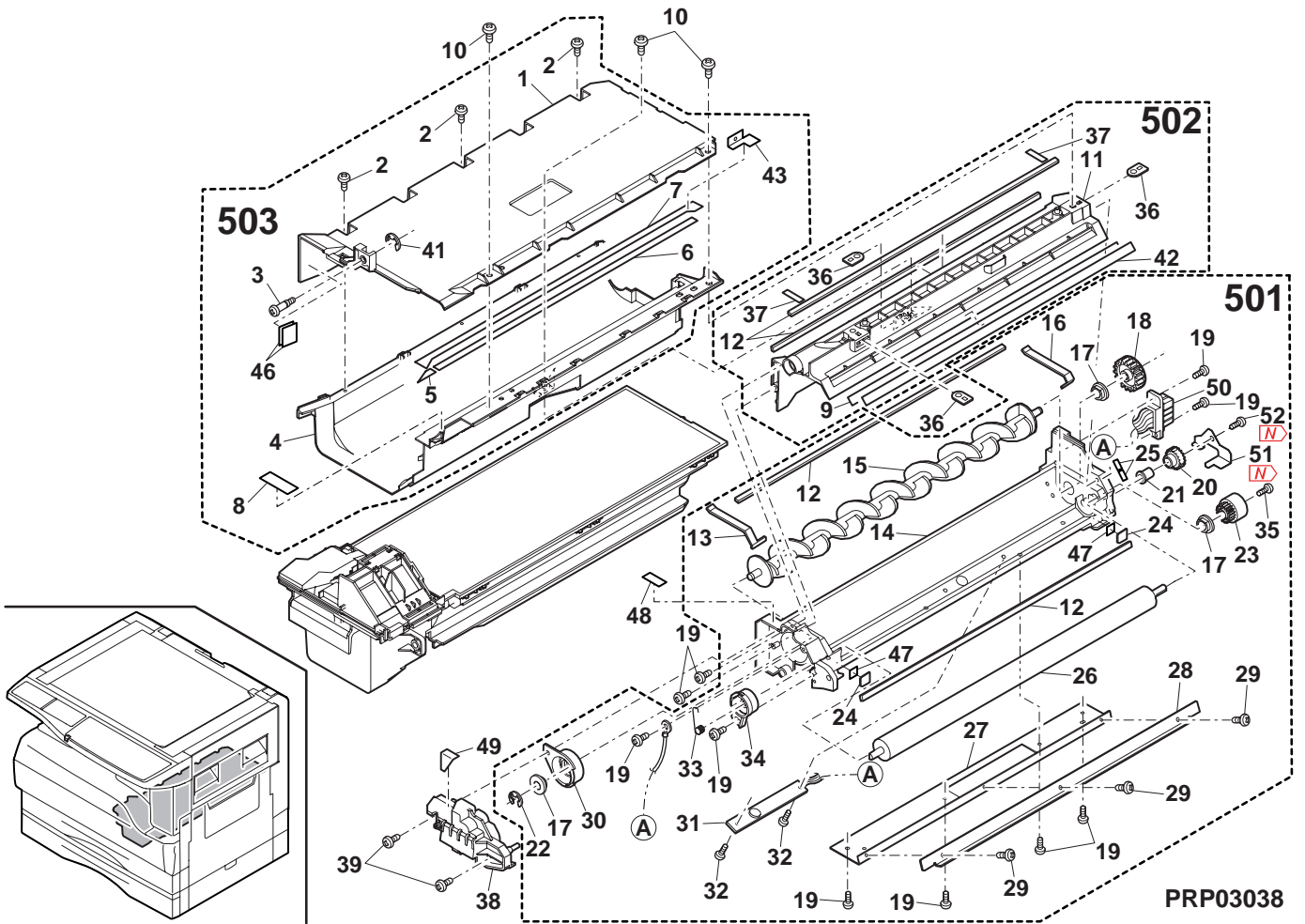
7 Process unit







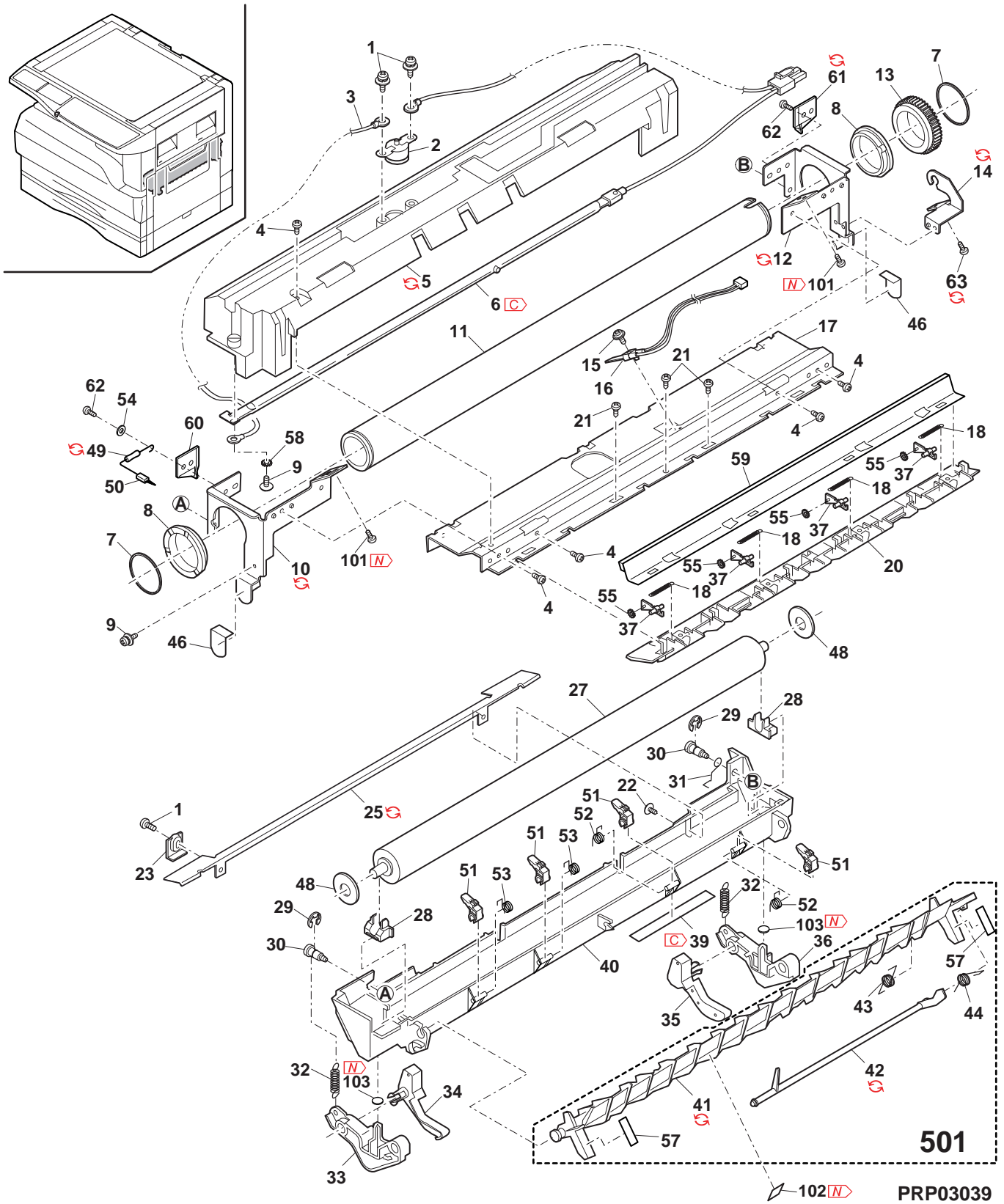
8 DV cartridge unit



## 9 Fusing unit

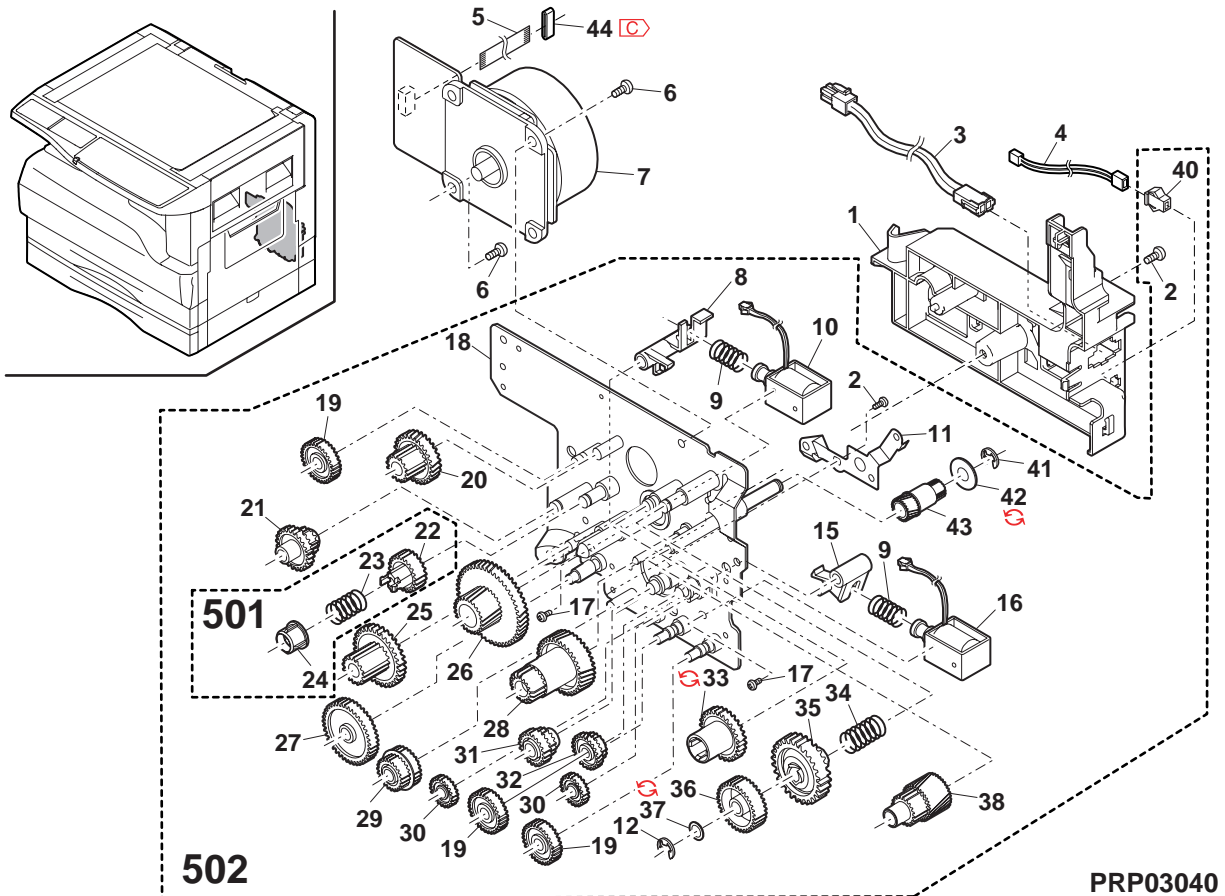
NO.	PARTS CODE	Inter-change	PRICE RANK	NEW MARK	PART RANK	DESCRIPTION	TR No.	Effective time
1	XBPS730P06KS0		AB	N	C	Screw(3x6KS)		
2	RTHM-0001QSZZ		AM		B	Thermostat		
3	DHA i -0184QSZ1		AE		C	Fusing harness		
4	XHBS730P06000		AC		C	Screw(3x6)		
5	PCOVP0029QSZ6		AT		D	Fusing cover		
5	PCOVP0029QSZ7	1	AT		D	Fusing cover		07/06 R/C
6	RLMPU0015QSZZ		BA		B	Heater lamp (120V series)		
	RLMPU0016QSZZ		BA		B	Heater lamp (230V series)		
	RLMPU0018QSZZ	-	BA		B	Heater lamp [Missing parts code][AR-M162/AR-M207(Taiwan)]		1st lot
7	LSTPP01116FCZZ		AA		C	Roller stopper A2		
8	NBRGP0567FCZZ		AG		A	Fusing bearing		
9	XBPS730P08KS0		AB	N	C	Screw(3x8KS)		
10	CFRM-0017QS01		AH		C	Fusing frame F		
	CFRM-0017QS03	1	AH		C	Fusing frame F		08/01 R/C
11	NROLi0030QSZZ		BC		A	Upper heat roller		
12	CFRM-0018QS01		AH		C	Fusing frame R		
	CFRM-0018QS03	1	AH		C	Fusing frame R		08/01 R/C
13	NGERH0540FCZ3		AD		B	Fusing gear(45T)		
14	LHLDZ0034QSZZ		AF		C	Lamp holder		
14	LHLDZ0034QSZ1	1	AF		C	Lamp holder		08/02
15	XBPS730P10KS0		AB	N	C	Screw(3x10KS)		
16	RDTCT0005QSZ1		AN		B	Thermistor		
17	LPLTM0050QSZ1		AM		C	Fusing joint plate		
18	MSPRT0086QSZZ		AB		C	Upper pawl pressure spring		
20	PGiDM0034QSZ6		AL		C	Fusing rear paper guide		
21	XEBS730P06000		AA		C	Screw(3x6)		
22	XBBS730P06000		AC		C	Screw(3x6)		
23	LPLTP0051QSZZ		AD		C	PG fixing plate		
25	PGiDH0131QSZ1		AU		C	Fusing front paper guide		
	PGiDH0131QSZ2	1	AU		C	Fusing front paper guide		06/07
27	NROLR0031QSP1		BB		A	Pressure roller		
28	NBRGP0260FCZ1		AD		C	Pressure bearing N		
29	XRESP30-06000		AA		C	E type ring(E3)		
30	LX-BZ0013QSP1		AD		C	Screw(3x7)		
31	MSPRP0087QSZZ		AC		C	PG earth spring		
32	MSPRT0303QSZZ		AD		C	Pressure spring B		
33	MLEVP0018QSZ1		AF		C	Fusing pressure lever F		
34	MLEVP0019QSZ3		AE		C	Release lever F		
35	MLEVP0020QSZ3		AE		C	Release lever R		
36	MLEVP0017QSZ1		AF		C	Fusing pressure lever R		
37	PTME-0020GCZ1		AF		A	Separator pawl		
39	TLABH0062QSZZ		AE		D	High temperature caution label		
	TLABH0155QSZ1	-	AE		D	High temperature caution label [Missing parts code][AR-M162/AR-M207(Taiwan)]		1st lot
40	LFRM-0036QSZ2		AS		C	Fusing lower frame		
41	LPLTP0060QSZ4		AM		C	Reverse gate		
	LPLTP0060QSZ5	1	AM	N	C	Reverse gate		06/04
42	MLEVP0026QSZ2		AE		C	DMC actuator		
42	MLEVP0026QSZ3	1	AE	N	C	DMC actuator		06/06 R/C
43	MSPRD0117QSZZ		AB		C	Rotation spring		
44	MSPRD0118QSZ1		AB		C	Actuator return spring		
46	PSHEZ0105QSZZ		AC		C	Fusing sheet		
48	LX-WZ0313FCZZ		AA		C	Washer		
49	VRHRST2HB157K		AD		C	Resistor(1/2W 150MΩ ±10%)		
50	PBRSR0004QSZ1		AD		B	Discharge brush		
51	PTME-0014QSZZ		AK		A	Lower separator pawl		
52	MSPRD0122QSZZ		AB		C	Separator pawl spring R		
53	MSPRD0121QSZZ		AB		C	Separator pawl spring F		
54	XWHS730-05070		AA	N	C	Washer (AB series)		
55	LX-WZ0001QSZZ		AC		C	Separator pawl washer		
57	TLABH0364QSZZ		AA		D	Green label		
58	LX-WZ7021SCPZ		AA		C	Washer		
59	CPLTM0255QS01		AS		C	FU felt fixing plate		
60	PGiDM0102QSZZ		AD		C	Fusing front guide F (Except Taiwan AB series)		
60	PGiDM0103QSZZ		AD		C	Fusing front guide R (Except Taiwan AB series)		
61	PGiDM0103QSZ1	3	AD		C	Fusing front guide R [Productivity improvement] (Except Taiwan AB series)		07/01 R/C
62	XHBS730P08000		AB		C	Screw(3x8)		
63	XEBS740P12000		AA		C	Screw(4x12)		
	XEBS740P14000	5	AB		C	Screw(4x14) [With No.101,6-46,102]		05/08
101	LX-BZ0080QSZZ	5	AC		C	Fusing fixing screw [With No.63,6-46,102]		05/08
102	TLABH0685QSZZ	-	AD		D	High temperature caution label	DCE622	06/09
103	PSPAZ0054QSZZ	-	AF		C	Mylar sheet	DCE644	-
501	CPLTP0060RS52		AR		E	Reverse gate unit		
	(Unit)							
901	DUNTW0524RSZZ		BU		E	Fusing unit (120V series)		
	DUNTW0524USZZ	1	BU	N	E	Fusing unit (120V series)		07/06
	DUNTW0524RS12		BV		E	Fusing unit (230V series)		
	DUNTW0524US12	1	BV	N	E	Fusing unit (230V series)		07/06

9 Fusing unit





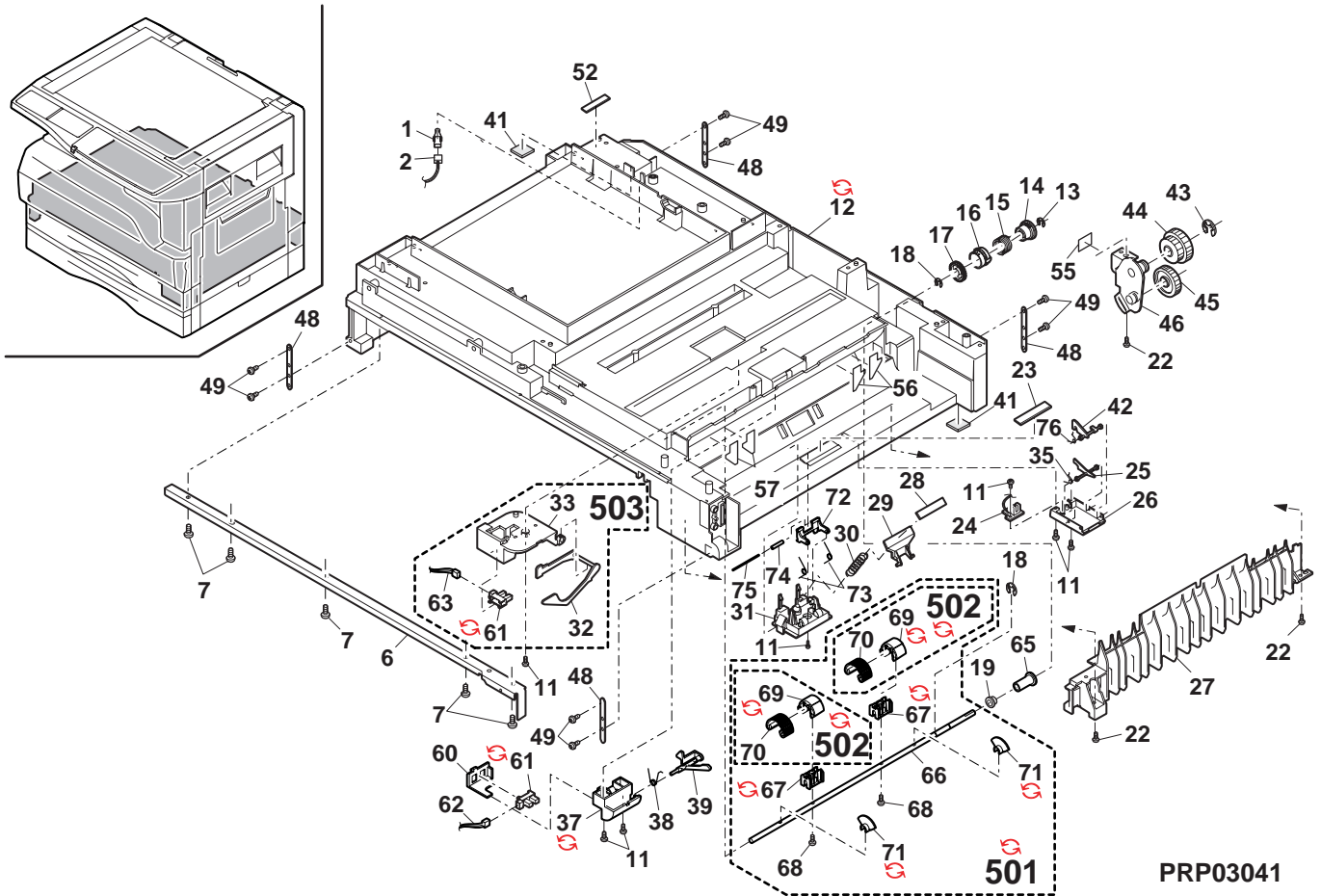
10 Main driving unit



## 11 Base plate unit 1

NO.	PARTS CODE	Inter-change	PRICE RANK	NEW MARK	PART RANK	DESCRIPTION	TR No.	Effective time
1	QSW-B0017QSZZ		AF		B	Tray detect switch		
2	DHAi-0315QSZZ		AD		C	Tray switch harness		
6	LPLTM0065QSZZ		AL		C	Base reinforce plate F		
7	XEPS740P12000		AB		C	Screw(4x12)		
11	XEBS730P08000		AC		C	Screw(3x8)		
12	GDAi-0002QSE1		BF		D	Base plate		
12	GDAi-0002QSE2	1	BF		D	Base plate		- R/C
13	XRESP40-06000		AA		C	E type ring(E4)		
14	LBOSZ1031FCZZ		AC		C	Clutch boss		
15	MSPRC0161QSZZ		AF		C	Clutch spring		
16	PPiPP0006QSZZ		AD		C	Clutch sleeve		
17	NGERH0060QSZZ		AH		C	Clutch gear(34T)		
18	XRESP50-06000		AA		C	E type ring(E5)		
19	NBRGP0007QSZZ		AD		C	Bearing(φ6)		
22	XEBS740P12000		AA		C	Screw(4x12)		
23	PSHEZ0133QSZZ		AD		C	Paper feeding sheet		
24	CPWBF0147QSE4		AL		E	Manual paper feeding sensor PWB		
25	MLEVP0023QSZZ		AE		C	MF sensor actuator		
26	PCOVP0033QSZZ		AF		C	Manual feed sensor cover		
27	LRALP0014QSEZ		AM		C	Base plate rail R		
28	PSHEZ0378QSZZ		AG		C	Sheet		
29	LPLTP0348QSZZ		AC		C	Pressure plate		
30	MSPRC0301QSZZ		AD		C	Pressure plate spring		
31	PFTA-0018QSZZ		AE		C	Pressure plate cover		
32	MLEVP0024QSZZ		AF		C	Sensor lever		
33	LDAiS0029QSZZ		AD		D	Sensor base		
35	MSPRD0233QSZZ		AC		C	MF actuator spring		
37	LHLDZ0100QSZZ		AD		C	PS holder		
37	LHLDZ0100QSZZ	3	AE		C	PS holder [Form change]		06/01 R/C
38	MSPRD0300QSZZ		AD		C	PS front actuator spring		
39	MLEVP0091QSZZ		AD		C	PS front actuator		
41	GLEGG0064FCZZ		AC		C	Rubber foot		
42	MLEVP0044QSZZ		AE		C	MF sensor actuator 2		
43	XRESP70-08000		AA		C	E type ring(E7)		
44	NGERH0078QSZZ		AE		C	Joint gear(39/33T)		
45	NGERH1169FCZZ		AF		C	2nd joint gear		
46	CPLTM0114QS02		AG		C	Joint gear fixing plate		
48	LPLTM0112QSZZ		AE		C	Adjustment plate [AR-M206/AR-M207/AR-M207E]		
49	XEBS740P14000		AB		C	Screw(4x14) [AR-M206/AR-M207/AR-M207E]		
52	LPLTM0125QSZZ		AD		C	Blind plate		
55	PSPAZ0024QSZZ		AB		C	2nd joint spacer [Except AR-M162E/AR-M207E]		
56	PSHEZ0187QSZZ		AB		C	PS guide sheet R [AR-M165/AR-M206/AR-M207]		
57	PSHEZ0186QSZZ		AB		C	PS guide sheet F [AR-M165/AR-M206/AR-M207]		
60	PCOVP0091QSZZ		AC		C	PS sensor cover		
61	VHPGP1S73P+-18		AF		B	Photo transistor(GP1S73P)		
62	DHAi-0318QSZZ		AE		C	Pin harness		
63	DHAi-0316QSZZ		AE		C	CAS EMP harness		
65	PCLR-0010QSZZ		AC		C	Collar		
66	NSFTZ0066QSPZ		AP		C	Roller shaft		
67	LHLDR0095QSZZ		AD		C	Paper feed roller holder		
67	LHLDR0095QSZZ	1	AD		C	Paper feed roller holder		08/02 mid
68	XEBS730P12000		AC		C	Screw(3x12)		
69	LBRCR0011QSZZ		AD		C	Paper feed roller bracket		
69	LBRCR0011QSZZ	1	AD		C	Paper feed roller bracket		08/02 mid
70	PGUMM0013QSZZ		AG		C	Paper feed roller rubber		
71	PCLR-0011QSZZ		AC		C	Roller collar		
71	PCLR-0011QSZZ	1	AC		C	Roller collar		08/02 mid
72	LBRC-0012QSZZ		AD		C	Collar bracket		
73	MSPRD0340QSZZ		AC		C	Collar spring		
74	NKOM-0009QSZZ		AC		C	Manual paper collar		
75	NSFTZ0064QSZZ		AD		C	Roller shaft		
76	MSPRD0148QSZZ		AB		C	Sensor spring		
501	CSFTZ0066RS73		AV		E	Paper feeding shaft unit		
501	CSFTZ0066US73	1	AX		E	Paper feeding shaft unit		07/06
502	CGUMM0013RS51		AN		E	Paper feed roller rubber unit		
502	CGUMM0013US51	1	AP		E	Paper feed roller rubber unit		07/06
503	CDAiS0029RS52		AM		E	Sensor base unit		

11 Base plate unit 1



## 12 Base plate unit 2

NO.	PARTS CODE	Inter-change	PRICE RANK	NEW MARK	PART RANK	DESCRIPTION	TR No.	Effective time
1	LSOU-0036QSZZ		BA		D	Delivery tray		
	LSOU-0036QSZ2	1	BA		D	Delivery tray		- R/C
2	GCAB-0069QSZZ		AT		D	Delivery rear cover		
	GCAB-0069QSZ1	1	AT		D	Delivery rear cover		- R/C
3	XEBS740P10000		AA		C	Screw(4x10)		
5	CPWBF0114QSE8		AZ		E	I/F PWB (U.S.A,Canada)		
	CPWBF0114QSE9		AZ	N	E	I/F PWB (Except U.S.A,Canada)		
6	NFANP0010QSPZ		AQ		B	PS fan [AR-M162E/AR-M207E]		
	NFANP0010QSZZ		AS		B	PS fan [Other Model]		
	NFANP0010QSPZ	3	AQ		B	PS fan [Unleaded correspondence][Other Model]		06/02
7	XBPS730P32KS0		AC		C	Screw(3x32KS)		
8	RDENC0015QS11		BV		E	Low voltage power supply unit (120V series)		
	RDENC0015QS12		BV		E	Low voltage power supply unit (230V series Except South Africa)		
	RDENC0019QS12	1	BZ		E	Low voltage power supply unit (230V series Except South Africa)		07/10 R/C
	RDENC0015QS138	-	BY	N	E	Low voltage power supply unit [Missing parts code] [AR-M162/AR-M207(Taiwan)]		1st lot
9	QSW-C9292QCPZ		AN		B	AC switch		
10	XBPS730P08KS0		AB	N	C	Screw(3x8KS)		
11	RDENC0017QSZZ		BE		E	High voltage power supply unit		
	RDENC0017QSZ1	1	BU	N	E	High voltage power supply unit (Except Taiwan,South Africa)		07/10
12	LPLTM0082QSZ7		AF		C	PS PWB fixing plate		
13	XHBS730P06000		AC		C	Screw(3x6)		
14	LFRM-0067QSZZ		AK		C	Corner frame FL		
15	XEBS740P12000		AA		C	Screw(4x12)		
16	LFRM-0068QSZ1		AQ		C	Corner frame RL		
17	XBPSN40P06K00		AA		C	Screw(4x6K)		
18	QACCDR614QCPZ		AS		B	AC cord (U.S.A,Canada)		
	QACCBR421QCPZ		AZ		B	AC cord (U.kingdom)		
	QACCLR421QCPZ		AW		B	AC cord (Australia,New Zealand)		
	QACCR624QCPZ		AW		B	AC cord (Germany,Switzerland,STCL,France,Holland,Spain,Italy,Denmark,Finland,Norway)		
	QACCR411QCPZ	-	AW		B	AC cord [Missing parts code][AR-M162/AR-M207(Taiwan)]		1st lot
	QPLGA0009QCZZ		AS		B	Plug (Hong Kong,Singapore)		
	QPLGA0009QCPZ	3	AR	N	B	Plug [Unleaded solder correspondence](Hong Kong,Singapore)		06/02
18	QPLGA4171CCZZ		AN		B	Plug (South Africa)		
	QPLGA4171CCPZ	3	AR	N	B	Plug [Unleaded solder correspondence](South Africa)		06/02
	PHOG-1023CCZZ		AB		C	Plug protector [AR-M161/AR-M206 Except STCL]		
19	DHAi-0122QSZ1		AK		C	AC switch harness		
20	LX-BZ0705FCPZ		AC		C	Screw [AR-M162(Australia,New Zealand)/AR-M162E/AR-M165/AR-M207(Europe)/AR-M207E]		
21	LPLTM0308QSZZ		AL		C	Corner frame reinforce plate		
22	GDAi-0002QSE1		BF		D	Base plate		
	GDAi-0002QSE2	1	BF		D	Base plate		- R/C
23	LFRM-0025QSZ3		AH		C	Corner flame FR		
24	LPLTM0099QSZ2		AK		C	Corner frame R reinforce plate		
25	LFRM-0026QSZ2		AN		C	Corner frame RR		
26	XHBS730P14000		AA	N	C	Screw(3x14)		
27	XEBS730P10000		AC		C	Screw(3x10)		
28	LX-BZ0700FCPZ		AB		C	Screw(4x12)		
29	XHBS730P08000		AB		C	Screw(3x8)		
30	CPLTM0071QS03		AF		C	Drive joint plate [AR-M161/AR-M162/AR-M162E]		
31	LPLTM0347QSZZ		AG		C	Net box fixing plate		
32	XHBS730P08000		AB		C	Screw(3x8) [AR-M161/AR-M162/AR-M162E]		
33	LX-BZ0031QSPZ		AE		C	Screw		
	LX-BZ0090QSPZ	1	AE		C	Screw		07/09
35	LX-BZ0750FCPZ		AA		C	Screw(3x6)		
	LX-BZ0088QSPZ	1	AA		C	Screw(3x6)		07/09
36	NBLTT0007QSZZ		AH		B	Delivery roller drive belt [AR-M161/AR-M162/AR-M162E]		
37	CPWBX0175QS32		CC		E	MCU PWB [AR-M161/AR-M162/AR-M162E]		
	CPWBX0175QS12	1	CL	N	E	MCU PWB [AR-M161/AR-M162/AR-M162E]		06/06
	CPWBX0175QSA2	1	CL	N	E	MCU PWB [AR-M161/AR-M162/AR-M162E]		07/03 R/C
	CPWBX0175QS36		CD		E	MCU PWB [AR-M165]		
	CPWBX0175QS16	1	CL	N	E	MCU PWB [AR-M165]		06/06
	CPWBX0175QSA6	1	CL	N	E	MCU PWB [AR-M165]		07/03 R/C
	CPWBX0175QS31		CD		E	MCU PWB [AR-M206/AR-M207(U.S.A,Canada,Australia,New Zealand)/AR-M207E]		
	CPWBX0175QS11	1	CL	N	E	MCU PWB [AR-M206/AR-M207(U.S.A,Canada,Australia,New Zealand)/AR-M207E]		06/06
	CPWBX0175QSA1	1	CL	N	E	MCU PWB [AR-M206/AR-M207(U.S.A,Canada,Australia,New Zealand)/AR-M207E]		07/03 R/C
	CPWBX0175QS39		CG		E	MCU PWB [AR-M207 Europe]		
	CPWBX0175QS19	1	CL	N	E	MCU PWB [AR-M207 Europe]		06/06
37	CPWBX0175QSA9	1	CL		E	MCU PWB [AR-M207 Europe]		07/03 R/C
	CPWBX0175QSC8	-	CC	N	E	MCU PWB [Missing parts code][AR-M162(Taiwan)]		07/03 R/C
	CPWBX0175QSC7	-	CC	N	E	MCU PWB [Missing parts code][AR-M207(Taiwan)]		07/03 R/C
39	GCOV-0066QSZZ		AC		C	Frame cover		
40	LPLTM0307QSZ1		AL		C	Delivery left cover		
41	LPLTM0309QSZZ		AE		C	Optical adjustment plate		
42	LX-BZ0039QSPZ		AB		C	Screw(4x10)		

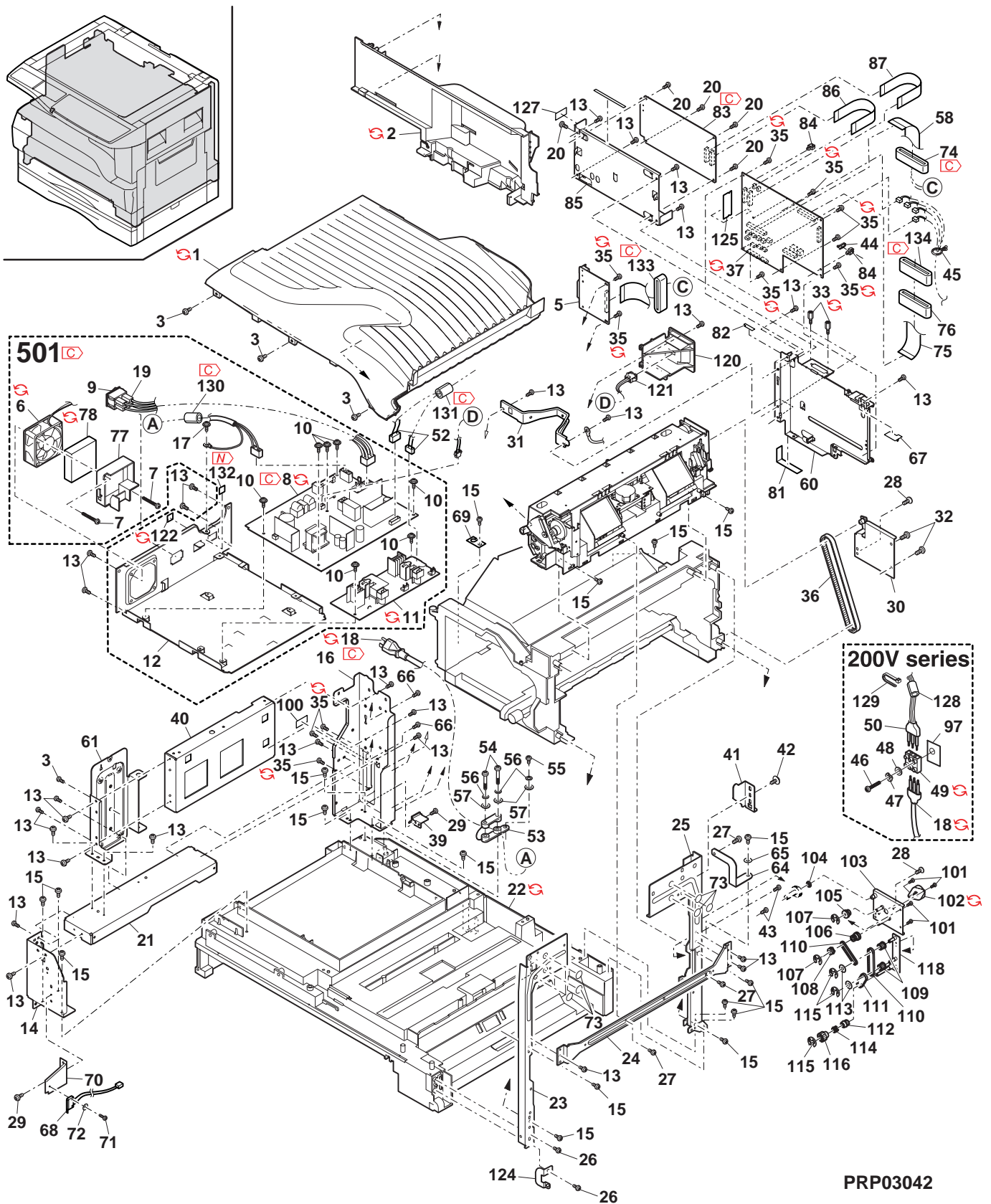


## 12 Base plate unit 2

NO.	PARTS CODE	Inter-change	PRICE RANK	NEW MARK	PART RANK	DESCRIPTION	TR No.	Effective time
43	XHBS730P08000		AB		C	Screw(3x8)		
44	LBNDJ0037FCZ1		AA		C	Cable band		
45	LHLDW0086QSZZ		AB		C	Harness ring		
46	XEBS730P18000		AB		C	Screw(3x18) (200V series)		
47	XWSS730-07000		AA	N	C	Washer (200V series)		
48	XWHS730-05080		AA	N	C	Washer (200V series)		
49	QTANN0015FCZZ		AG		C	3P terminal base (200V series)		
49	QTANN0015FCPZ	3	AG	N	C	3P terminal base [Unleaded solder correspondence](200V series)		06/02
50	DHAi-0140QSZ1		AH		C	AC harness (200V series)		
52	DHAi-0320QSZZ		AN		C	PS harness		
53	LFiX-0016FCZZ		AD		C	AC cord holder		
54	XEPS740P30000		AC		C	Screw(4x30)		
55	XEBS740P12000		AA		C	Screw(4x12)		
56	XWSS740-10000		AA	N	C	Washer		
57	XWHS740-08100		AA	N	C	Washer		
58	DHAi-0328QSZZ		AH		C	IF-MCU harness		
60	LPLTM0382QSZZ		AR		C	MCU fixing plate		
61	LPLTM0306QSZ1		AL		C	Optical reinforce plate		
64	PSHEZ0135QSZZ		AC		C	Drive plate sheet		
65	XWHS740-08100		AA	N	C	Washer [AR-M161/AR-M162/AR-M162E/AR-M206(South Africa)]		
66	XEBS730P08000		AC		C	Screw(3x8)		
67	PSHEZ0421QSZZ		AC		C	MCU edge protect sheet		
68	CSW-M0007RS55		AS		B	Interlock switch unit		
69	PSHEZ0408QSZZ		AC		C	Interlock switch maintenance sheet		
70	LPLTM0303QSZZ		AE		C	Interlock switch fixing plate		
71	XBPS720P09000		AB		C	Screw(2x9)		
72	XWHS720-04043		AA	N	C	Washer		
73	PSHEZ0448QSZZ		AA		C	Optical base plate bottom sheet B		
74	RCORF0018QSZZ		AR		C	Ferrite core (Except Taiwan,South Africa)		
74	RCORF0026QSPZ	-	AE		C	Ferrite core (Except Taiwan,South Africa)		08/01
74	RCORF0027QSZZ	-	AN		C	I/F FFC core [Missing parts code][AR-M162/AR-M206/AR-M207(Taiwan)]		1st lot
75	DHAi-0342QSZZ		AG		C	CCD harness		
76	RCORF0018QSZZ		AR		C	Ferrite core		
77	PDUC-0006QSZ1		AF		C	Duct		
78	PFiLZ0013QSZZ		AR		A	Ozone filter		
78	PFiLZ0013QSZ1	1	AR	N	A	Ozone filter		07/04 R/C
78	PFiLZ0021QSZZ	1	AR		A	VOC ozone filter		08/02
81	PSHEZ0496QSZZ		AD		C	LSU harness protect sheet		
82	PSHEZ0497QSZZ		AB		C	MCU screw receive sheet		
83	CPWBX0130QS34		CD		E	IMC2 PWB [AR-M162(Australia,New Zealand)/AR-M162E/AR-M165/AR-M207(Europe,Australia,New Zealand)/AR-M207E]		
83	CPWBX0130QS35	-	CA	N	E	IMC2 PWB [Missing parts code][AR-M162/AR-M207(Taiwan)]		1st lot
84	LHLDW1009ACZZ		AA		C	Clamp		
85	LPLTM0315QSZZ		AL		C	ERDH fixing plate [AR-M162(Australia,New Zealand,Taiwan)/AR-M162E/AR-M165/AR-M207(Europe,Taiwan)/AR-M207E]		
86	DHAi-0329QSZZ		AD		C	IMC IN harness [AR-M162(Australia,New Zealand,Taiwan)/AR-M162E/AR-M165/AR-M207(Europe,Taiwan)/AR-M207E]		
87	DHAi-0330QSZZ		AD		C	IMC OUT harness [AR-M162(Australia,New Zealand,Taiwan)/AR-M162E/AR-M165/AR-M207(Europe,Taiwan)/AR-M207E]		
97	PSHEZ0140QSZ1		AE		C	3P terminal base sheet (200V series)		
100	TLABH0602QSZ1		AB		D	USB-1 label		
101	XHBS730P08000		AB		C	Screw(3x8)		
102	RMOTS0054QSPA		AT		B	DUP motor [AR-M207E]		
102	RMOTS0042QSZZ		AT		B	DUP motor [AR-M165/AR-M206/AR-M207]		
102	RMOTS0042QSPZ	3	AT	N	B	DUP motor [Unleaded correspondence][AR-M165/AR-M206/AR-M207]		06/02
103	CPLTM0073QS01		AM		C	DUP motor fixing plate [AR-M165/AR-M206/AR-M207/AR-M207E]		
104	NBRGC0529FCZZ		AD		C	Bearing [AR-M165/AR-M206/AR-M207/AR-M207E]		
105	NGERH0065QSZZ		AC		C	Gear(21-28T) [AR-M165/AR-M206/AR-M207/AR-M207E]		
106	NGERH0064QSZZ		AD		C	Gear pulley(40T24T) [AR-M165/AR-M206/AR-M207/AR-M207E]		
107	XRESP40-06000		AA		C	E type ring(E4) [AR-M165/AR-M206/AR-M207/AR-M207E]		
108	NGERH0075QSZZ		AC		C	Gear(20T) [AR-M165/AR-M206/AR-M207/AR-M207E]		
109	NPLYZ0011QSZZ		AC		C	Pulley [AR-M165/AR-M206/AR-M207/AR-M207E]		
110	NBLTT0009QSZZ		AG		B	DUP driving belt(134) [AR-M165/AR-M206/AR-M207/AR-M207E]		
111	NBLTT0008QSZZ		AG		B	DUP roller driving belt [AR-M165/AR-M206/AR-M207/AR-M207E]		
112	NPLYZ0008QSZZ		AC		C	Pulley(S2M20T) [AR-M165/AR-M206/AR-M207/AR-M207E]		
113	PSHEZ0065QSZZ		AB		C	Pulley flange sheet [AR-M165/AR-M206/AR-M207/AR-M207E]		
114	MSPRC1315FCZ1		AD		C	Clutch spring A [AR-M165/AR-M206/AR-M207/AR-M207E]		
115	XRESP40-06000		AA		C	E type ring(E4) [AR-M165/AR-M206/AR-M207/AR-M207E]		
116	NGERH0066QSZZ		AD		C	Gear(17T) [AR-M165/AR-M206/AR-M207/AR-M207E]		
118	CPLTM0103QS02		AF		C	DUP driving idle plate [AR-M165/AR-M206/AR-M207/AR-M207E]		
120	LHLDZ0110QSZZ		AG		C	Connector holder		
121	DHAi-0403QSZZ		AG		C	NWAC I/F 1 harness		
122	TLABZ4868FCZZ		AC		D	Ground label (200V series)		
122	TLABZ4868FCZ1	1	AB	N	D	Ground label (200V series)		06/12
124	LPLTM0360QSZZ		AC		C	Earth plate		



12 Base plate unit 2

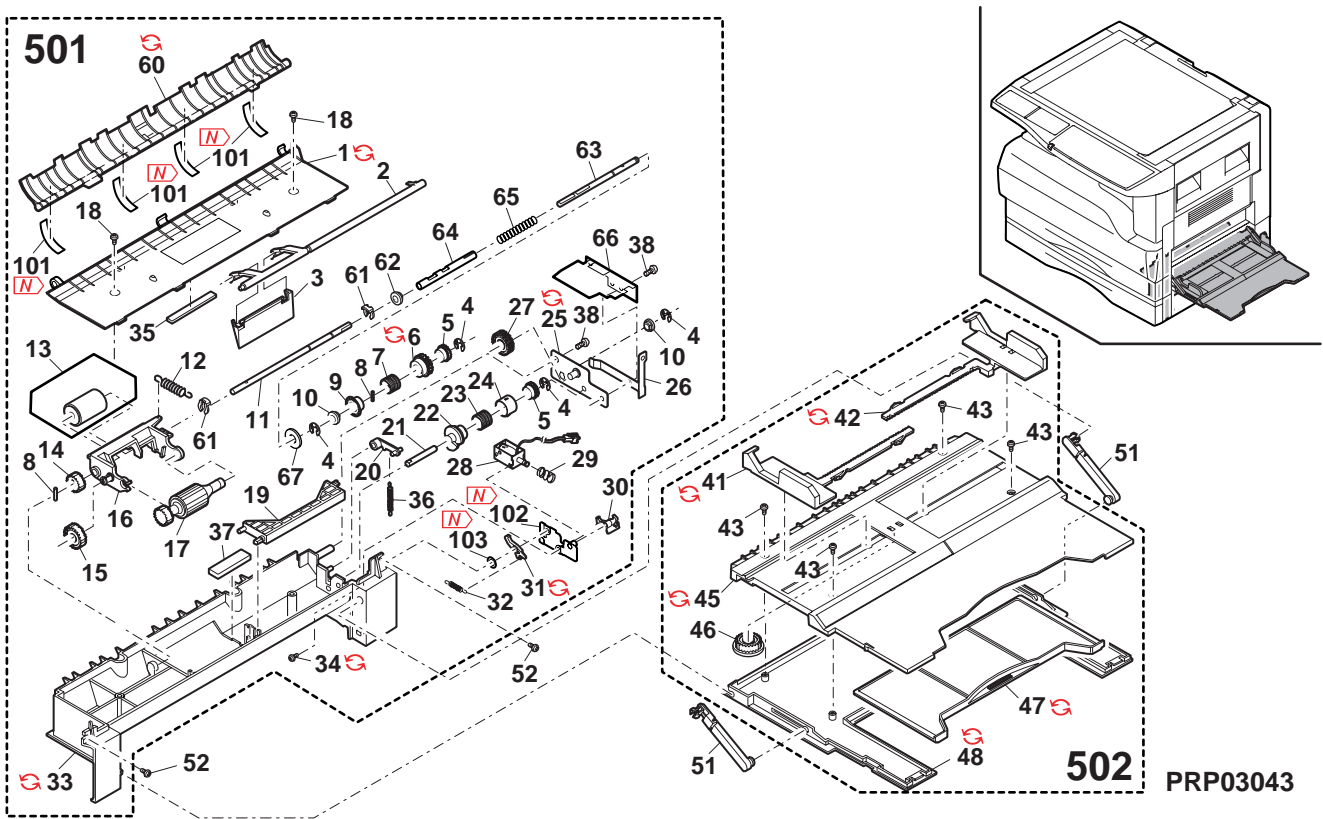


PRP03042

## 13 Manual paper feeding multi unit

NO.	PARTS CODE	Inter-change	PRICE RANK	NEW MARK	PART RANK	DESCRIPTION	TR No.	Effective time
1	PCOVP0098QSZZ		AN		C	Multi frame cover		
1	PCOVP0098QSZ1	1	AN		C	Multi frame cover		- R/C
2	MARMP0008QSZZ		AH		C	Stopper arm		
3	LPLTP0056QSZ3		AD		C	Stopper plate		
4	XRESP40-06000		AA		C	E type ring(E4)		
5	LBOSZ1510FCZZ		AF		C	Cam boss A1		
6	PPiPP0109FCZZ		AB		C	PF clutch pipe A		
6	PPiPP0109FCZ1	1	AC		C	PF clutch pipe A		06/04
7	MSPRC1315FCZ1		AD		C	Clutch spring A		
8	XPSSJ20-07000		AA		C	Spring pin(φ2-7)		
9	LBOSZ1508FCZZ		AG		C	Cam boss A2		
10	LBSHZ0303FCZZ		AC		C	M bushing C		
11	NSFTZ0069QSPZ		AN		C	Roller shaft F		
12	MSPRT0091QSZZ		AC		C	Roller arm spring		
13	NRÖLR0922FCZ2		AR		A	Manual paper feed roller		
14	NGERH0495FCZZ		AC		C	Gear(20T)		
15	NGERH0061QSZZ		AD		C	Gear(24T)		
16	MARMP0009QSZ1		AF		C	Roller arm		
17	NRÖLR1267FCZ1		AH		A	Manual feed pick up roller		
18	XEBS730P10000		AC		C	Screw(3x10)		
19	MARMP0041QSZZ		AE		C	Cam transmission arm		
20	MARMP0006QSZZ		AD		C	Arm		
21	NSFTZ0017QSPZ		AM		C	Manual feed cam shaft		
22	MCAMP0001QSZZ		AF		C	Drive cam		
23	MSPRC1316FCZ1		AE		C	Clutch spring B		
24	PPiPP0009QSZZ		AD		C	Cam clutch sleeve		
25	CPLTM0304QS02		AD		C	Cpl feeding joint plate		
25	CPLTM0304QS03	1	AD		C	Paper feeding joint plate		08/07
26	MSPRD0092QSZZ		AE		C	MF earth spring		
27	NGERH0972FCZZ		AB		C	Gear(27T)		
28	RPLU-0007QSZ1		AM		B	Multi feeding solenoid		
29	MSPRC1318FCZ1		AA		C	Spring B		
30	PTME-0179FCZZ		AC		C	Manual paper feeding pawl B		
31	PTME-0178FCZZ		AC		C	Manual paper feeding pawl A		
31	PTME-0178FCZ1	1	AC		C	Manual paper feeding pawl A		06/04
32	MSPRC2175FCZZ		AA		C	Pawl A spring		
33	LFRM-0020QSE7		AT		C	Multi feed frame		
33	LFRM-0020QSEL	1	AT		C	Multi feed frame		06/04
33	LFRM-0020QSEP	1	AT		C	Multi feed frame		- R/C
34	XBBS730P10000		AA	N	C	Screw(3x10)		
34	XHBS730P12000	5	AA		C	Screw(3x12)	DCE700	-
35	PSHEZ0099QSZZ		AC		C	Vibration proof sheet		
36	MSPRT0147QSZZ		AC		C	Stopper arm spring		
37	PSHEZ0241QSZZ		AB		C	Vibration proof sheet C		
38	XEBS730P08000		AC		C	Screw(3x8)		
41	PGiDM0037QSEZ		AF		C	MB side guide F		
41	PGiDM0037QSE1	1	AF		C	MB side guide F		06/04 R/C
42	PGiDM0038QSEZ		AF		C	MB side guide R		
42	PGiDM0038QSE1	1	AF		C	MB side guide R		06/04 R/C
43	XEBS730P08000		AC		C	Screw(3x8)		
45	LSOU-0009QSE2		AS		D	Multi feed tray 1-U		
45	LSOU-0009QSE3	1	AS		D	Multi feed tray 1-U		- R/C
46	NGERH0193FCZZ		AB		C	UC manual feed gear		
47	LSOU-0011QSE1		AL		D	Multi feed tray 2		
47	LSOU-0011QSE2	1	AL		D	Multi feed tray 2		- R/C
48	LSOU-0010QSE1		AR		D	Multi feed tray 1-L		
48	LSOU-0010QSE2	1	AR		D	Multi feed tray 1-L		- R/C
51	MARMP0005QSE1		AD		C	Tray arm		
52	XEBS730P08000		AC		C	Screw(3x8)		
60	PGiDM0117QSZZ		AH		C	Multi frame cover guide		
60	PGiDM0117QSZ1	1	AH		C	Multi frame cover guide		- R/C
61	LSTPP0011QSZZ		AC		C	Stopper		
62	LBSHZ0006QSZZ		AC		C	M bushing 2		
63	NSFTZ0070QSPZ		AN		C	Roller shaft R		
64	NCPL-0012QSZZ		AD		C	Manual feed coupling		
65	MSPRD0302QSZZ		AC		C	Manual feed coupling spring		
66	PSHEZ0410QSZZ		AC		C	Manual feed protect sheet		
67	LX-WZ0011QSZZ		AB		C	Poly slider(5-12-0.5)		
101	PSHEZ0605QSZZ	-	AB		C	PS guide sheet [AR-M165/AR-M206/AR-M207/AR-M207E]	DCE691	07/10 mid
102	CPLTM0422QS01	5	AE		C	Manual paper feeding pawl plate	DCE700	-
103	LX-WZ0019GCZZ	5	AC		C	Poly slider	DCE700	-
501	CFRM-0020RS57		BF		E	Manual paper feeding multi unit(Without No.101)		
502	CSOU-0009QS34		BA		E	Manual paper tray unit		

13 Manual paper feeding multi unit



## 14 Delivery frame unit

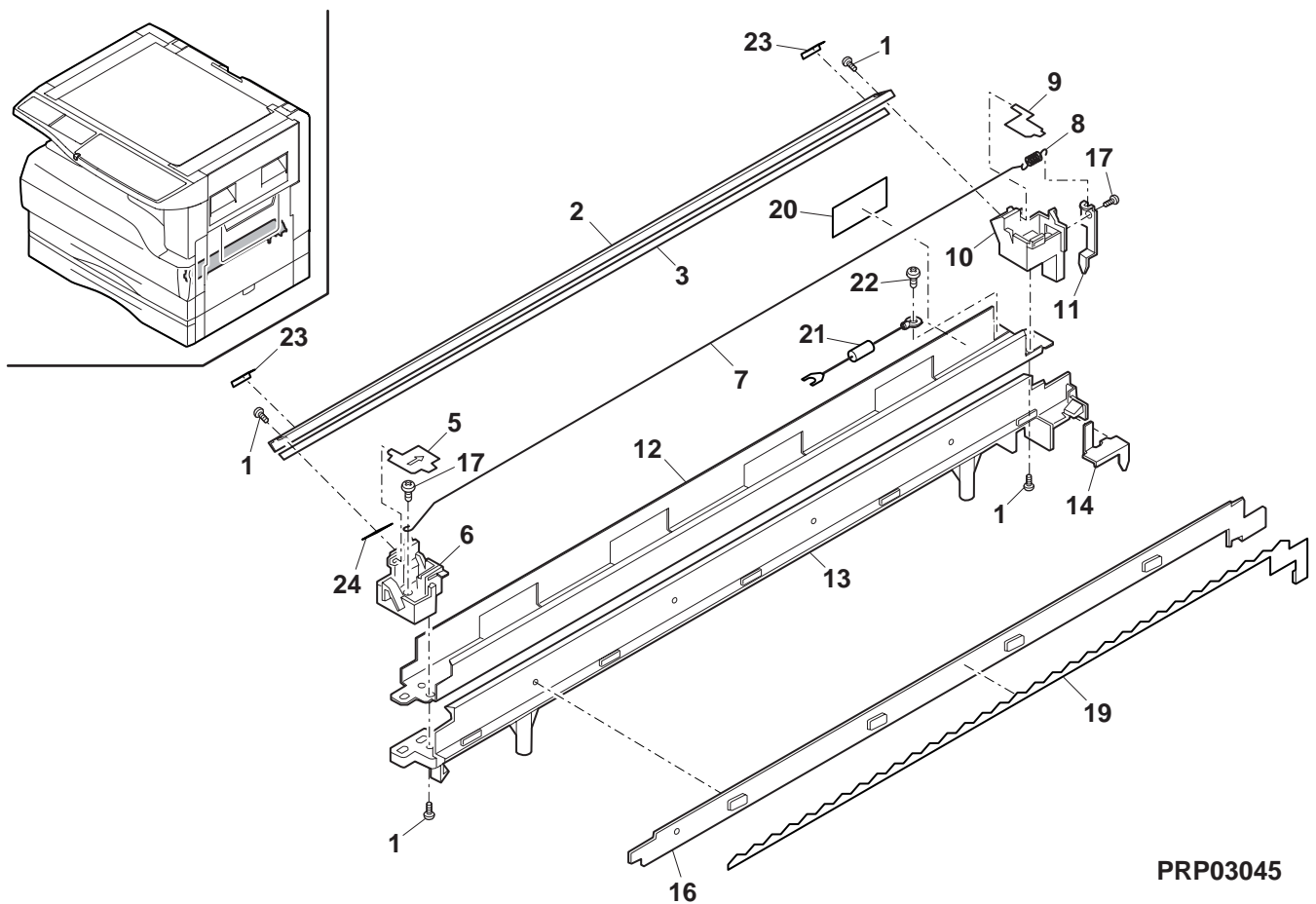
NO.	PARTS CODE	Inter-change	PRICE RANK	NEW MARK	PART RANK	DESCRIPTION	TR No.	Effective time
1	XEBS730P08000		AC		C	Screw(3x8)		
2	GCOV-0065QSZZ		AN		C	Delivery front side cover		
3	CPWBF0179QSE1		AX		E	Tray PWB		
4	XEBS730P06000		AA		C	Screw(3x6)		
5	PSPO-0030QSZZ		AC		C	Cushion		
6	NROLM0124QSZ1		AP		C	Delivery roller		
7	MSPRT0229GCAZ		AC		C	FU spring R		
8	NROLP0123QSZZ		AH		C	Delivery follower roller B		
9	NKOM-0002QSZZ		AC		C	Delivery collar		
10	CPWBF0147QSF1		AL		E	P-OUT sensor PWB		
11	PBRSR0009QSZ1		AH		B	Discharge brush [AR-M161/AR-M162/AR-M162E]		
	PBRSR0005QSZZ		AK		B	Discharge brush [AR-M165/AR-M206/AR-M207/AR-M207E]		
12	XRESP50-06000		AA		C	E type ring(E5)		
13	NBRGC0529FCZZ		AD		C	Bearing		
14	LPLTM0100QSZ1		AD		C	Delivery earth plate B		
15	NBRGY2122SCZZ		AB		B	Transport roller bearing 1		
16	LHLDZ0040QSZZ		AS		C	Delivery roller holder		
17	XEBS730P14000		AD	N	C	Screw(3x14)		
18	LBOSZ0048QSZZ		AC		C	Separator lever boss		
19	MLEVP0028QSE1		AD		C	Separator lever F		
20	LPINS0001QSZZ		AA		C	Pin		
21	NGERH0076QSZZ		AD		C	Separator cam gear		
22	XRESP50-06000		AA		C	E type ring(E5)		
24	NSFTZ0025QSP1		AM		C	Separator drive shaft		
25	MCAMP0002QSZZ		AE		C	Separator drive cam		
26	MLEVP0027QSZZ		AD		C	Separator lever R		
26	MLEVP0027QSZZ	1	AD		C	Separator lever R		08/02 R/C
27	MLEVP0110QSZZ		AD		C	FULL detection lever		
28	MLEVP0106QSZZ		AD		C	Delivery actuator		
29	CPWBF0147QSF2		AL		E	DUP sensor PWB		
30	MSPRD0143QSZZ		AF		C	Delivery earth spring A		
31	NPLYZ0030QSZZ		AE		C	Delivery pulley [AR-M161/AR-M162/AR-M162E]		
	NGERH0063QSZZ		AD		C	Delivery drive gear(30T) [AR-M165/AR-M206/AR-M207/AR-M207E]		
32	LPINS0258FCZZ		AA		C	Spring pin(φ3-8)		
33	NBRGC0019QSZZ		AD		C	Bearing(φ6)		
34	XRESP40-06000		AA		C	E type ring(E4) [AR-M165/AR-M206/AR-M207/AR-M207E]		
35	NGERH0070QSZZ		AC		C	DUP delivery R gear(20T) [AR-M165/AR-M206/AR-M207/AR-M207E]		
36	XPSSJ20-10000		AA		C	Spring pin(φ2-10) [AR-M165/AR-M206/AR-M207/AR-M207E]		
37	NBRGY2122SCZZ		AB		B	Transport roller bearing 1 [AR-M165/AR-M206/AR-M207/AR-M207E]		
38	NROLP0038QSZZ		AP		C	DUP delivery roller [AR-M165/AR-M206/AR-M207/AR-M207E]		
39	LFRM-0027QSZZ		AV		C	Delivery frame		
39	LFRM-0027QSZZ	1	AV		C	Delivery frame		06/04
	PFILZ0004QSZZ		AM		A	Ozone filter		
40	PFILZ0004QSZZ	1	AM	N	A	Ozone filter		07/04 R/C
40	PFILZ0017QSZZ	1	AP		A	Ozone filter VOC2		08/02
41	PMLT-0099QSZZ		AC		C	Cooling fan cushion		
42	XEBS720P06000		AC		C	Screw(2x6)		
42	LX-BZ0095QSZZ	1	AA		C	Screw(2x6)		08/04
	NFANP0009QSPZ		AS		B	Cooling fan [AR-M162E/AR-M207E]		
43	NFANP0009QSZZ		AT		B	Cooling fan [Other Model]		
43	NFANP0009QSPZ	3	AS		B	Cooling fan [Unleaded correspondence]		06/02
44	PDOC-0003QSZZ		AG		C	Cooling fan duct		
45	PGIDM0062QSZZ		AK		D	Delivery upper paper guide 20		
46	NROLP1122FCZZ		AF		C	PS upper roller [AR-M165/AR-M206/AR-M207/AR-M207E]		
47	PGIDM0040QSZZ		AK		C	Delivery lower paper guide		
48	MSPRT0229GCAZ		AC		C	FU spring R [AR-M165/AR-M206/AR-M207/AR-M207E]		
50	XEBS730P08000		AC		C	Screw(3x8)		
51	CSFTZ0023QS02		AH		C	Shifter shaft		
52	MSPRD0144QSZZ		AC		C	Delivery earth spring B		
53	XRESP40-06000		AA		C	E type ring(E4)		
54	LSTPP0003QSZZ		AC		C	Shifter stopper		
55	MSPRT0107QSZZ		AC		C	Shifter return spring		
56	NGERH0067QSZZ		AD		C	Shifter gear(24T)		
57	NGERH0068QSZZ		AD		C	Shifter gear(50T)		
58	CPLTM0075QS02		AG		C	Shifter drive plate		
	RMOTS0053QSPA		AR		B	Shifter motor [AR-M162E/AR-M207E]		
59	RMOTS0040QSZZ		AR		B	Shifter motor [Other Model]		
59	RMOTS0040QSPZ	3	BC	N	B	Shifter motor [Unleaded correspondence][Other Model]		06/02
60	XHBS830P05000		AA		C	Screw(3x5)		
61	CPWBF0147QSE3		AL		E	Shifter HP sensor PWB		
62	XRESP30-06000		AA		C	E type ring(E3)		
64	DHAi-0480QSZZ		AF		C	Delivery tray unit harness		
71	NROLP0122QSZZ		AH		C	Delivery follower roller A		
73	XHBS730P08000		AB		C	Screw(3x8)		
77	DUNT-0513RSZZ		AT		E	JOB separator minimum unit		
78	DHAi-0489QSZZ		AC		C	JOB separator switch harness		
79	LPLTM0147QSZZ		AD		C	Minimum sensor fixing plate		
80	LX-BZ7062XCPZ		AA		C	Screw		
87	LPLTP0385QSZZ		AD		C	Delivery fixing plate		



15 TC case unit

NO.	PARTS CODE	Inter-change	PRICE RANK	NEW MARK	PART RANK	DESCRIPTION	TR No.	Effective time
1	XEBS730P08000		AC		C	Screw(3x8)		
2	PGiDH0118QSZZ		AK		C	TC front guide		
3	PSHEP0050QSZ1		AD		C	TC sheet		
5	PSHEP0051QSZZ		AB		C	TC cover sheet F		
6	LHLDZ0030QSZZ		AD		C	TC holder F		
7	DWiR-0466CSZZ		BE		B	Charger wire		
8	MSPRT0513FCZ1		AA		C	MC tension spring		
9	PSHEP0052QSZZ		AB		C	TC cover sheet R		
10	LHLDZ0032QSZZ		AD		C	TC holder R		
11	QSLP-0009QSZZ		AD		C	TC electrode plate		
12	PCASZ0013QSZZ		AP		C	TC case		
13	LHLDZ0031QSZZ		AH		C	Discharge holder		
14	QSLP-0008QSZZ		AD		C	BC electrode plate		
16	PGiDM0032QSZZ		AE		C	Separator guide		
17	XEBS730P06000		AA		C	Screw(3x6)		
19	PSHEZ0125QSZZ		AE		C	Discharge delivery sheet		
20	PSHEZ0434QSZZ		AC		C	TC case sheet		
21	DUNTK0233QSPZ		AH	N	E	Resistor unit transfer		
22	XBPSC30P06K00		AA		C	Screw(3x6K)		
23	PSHEZ0435QSZ1		AA		C	Guide sheet		
24	PSPAZ0040QSZZ		AB		C	Front guide spacer		
(Unit)								
901	CHLDZ0030RS55		AY		E	TC unit		

15 TC case unit



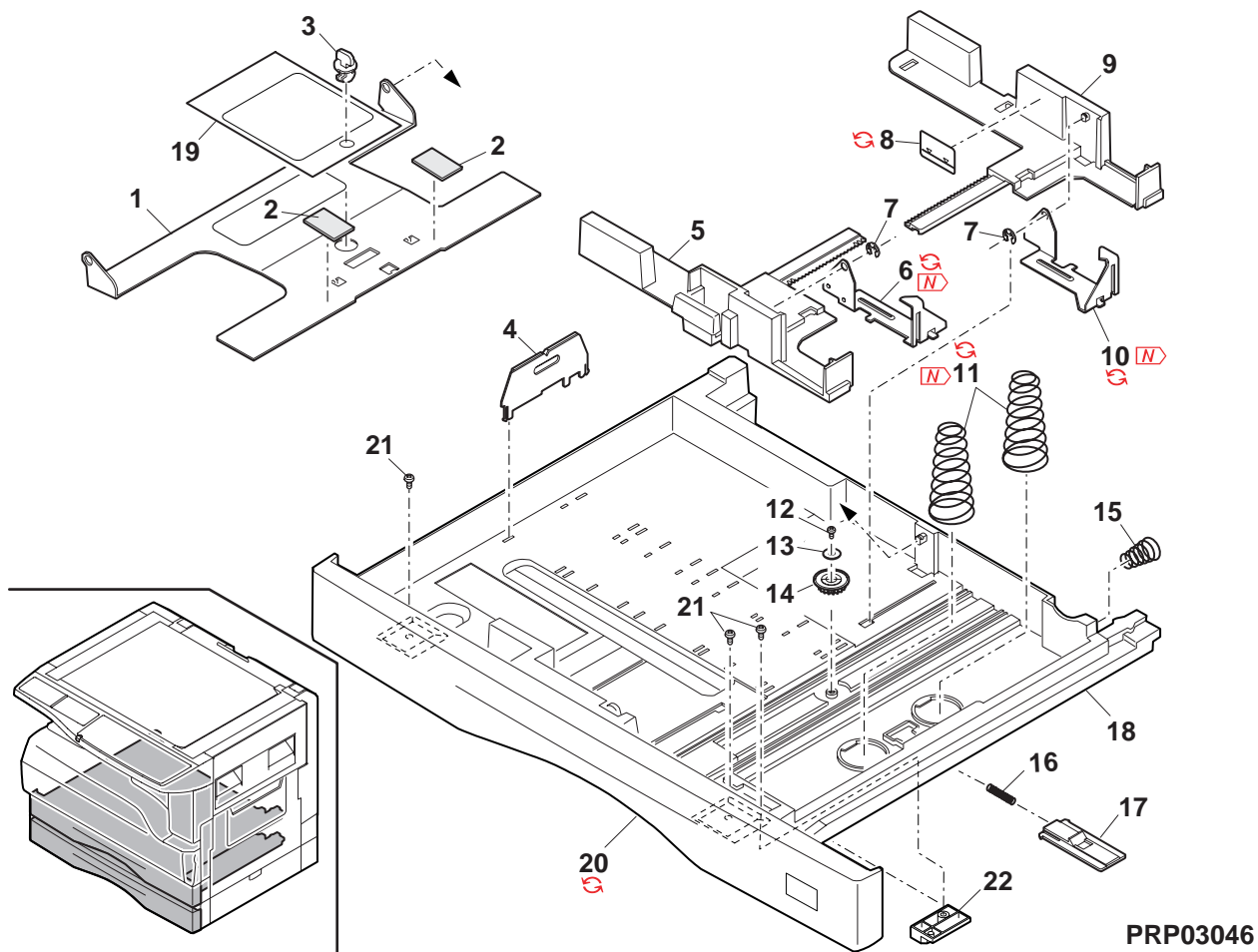
PRP03045



16 250 sheets tray unit

NO.	PARTS CODE	Inter-change	PRICE RANK	NEW MARK	PART RANK	DESCRIPTION	TR No.	Effective time
1	LPLTM0364QSZZ		AR		C	Rotation plate		
2	PSHEZ0441QSZZ		AD		C	Rotation plate sheet		
3	LHLDW1226FCZZ		AB		C	Turn fastener		
4	LPLTM2642FCG2		AD		C	Tray rear plate		
5	PGIDM0122QSZZ		AL		C	Guide F		
6	PTME-0027QSZZ		AL		C	250 tray pawl F		
	<del>PTME-0027QSZZ3</del>	-	AM		C	250 tray pawl F	DCE671	-
	<del>PTME-0027QSZZ3</del>	3	AM		C	250 tray pawl F (For Taiwan)	DCE650R	07/03
7	XRESP40-06000		AA		C	E type ring(E4)		
8	TLABH0064QSZ1		AC		D	Indicator label		
	<del>TLABH0064QSZ2</del>	1	AC		D	Indicator label	DCE645	07/03
9	PGIDM0123QSZZ		AL		C	Guide R		
10	PTME-0028QSZZ		AL		C	250 tray pawl R		
	<del>PTME-0028QSZZ3</del>	-	AM		C	250 tray pawl R	DCE671	-
	<del>PTME-0028QSZZ3</del>	3	AM		C	250 tray pawl R (For Taiwan)	DCE650R	07/03
11	MSPRC0334QSZZ		AD		C	Tray spring		
	<del>MSPRC0090QSZZ</del>	-	AD		C	Tray spring	DCE671	-
	<del>MSPRC0090QSZZ</del>	3	AD		C	Tray spring (For Taiwan)	DCE650R	07/03
12	XEBS730P08000		AC		C	Screw(3x8)		
13	XWHS730-08100		AA		C	Washer		
14	NGERH0193FCZZ		AB		C	UC manual feed gear		
15	MSPRC0152QSZZ		AB		C	Tray drawer lower spring D		
16	MSPRC1145FCZZ		AA		C	Stopper spring		
17	LSTPP0161FCZZ		AB		C	Rotation plate stopper		
18	GCASP0007QSZ1		AY		D	Tray case		
19	TTAG-0009QSZZ		AC		D	Tray rotation tag		
20	JHNDP0007QSZZ		AS		C	Cassette panel		
	<del>JHNDP0007QSZ1</del>	1	AS		C	Cassette panel		- R/C
21	XEBS740P10000		AA		C	Screw(4x10)		
22	LPLTP0368QSZZ		AD		C	Cassette position block		
	(Unit)							
901	CCASP0007RS52		BL		E	250 sheets tray unit		

16 250 sheets tray unit



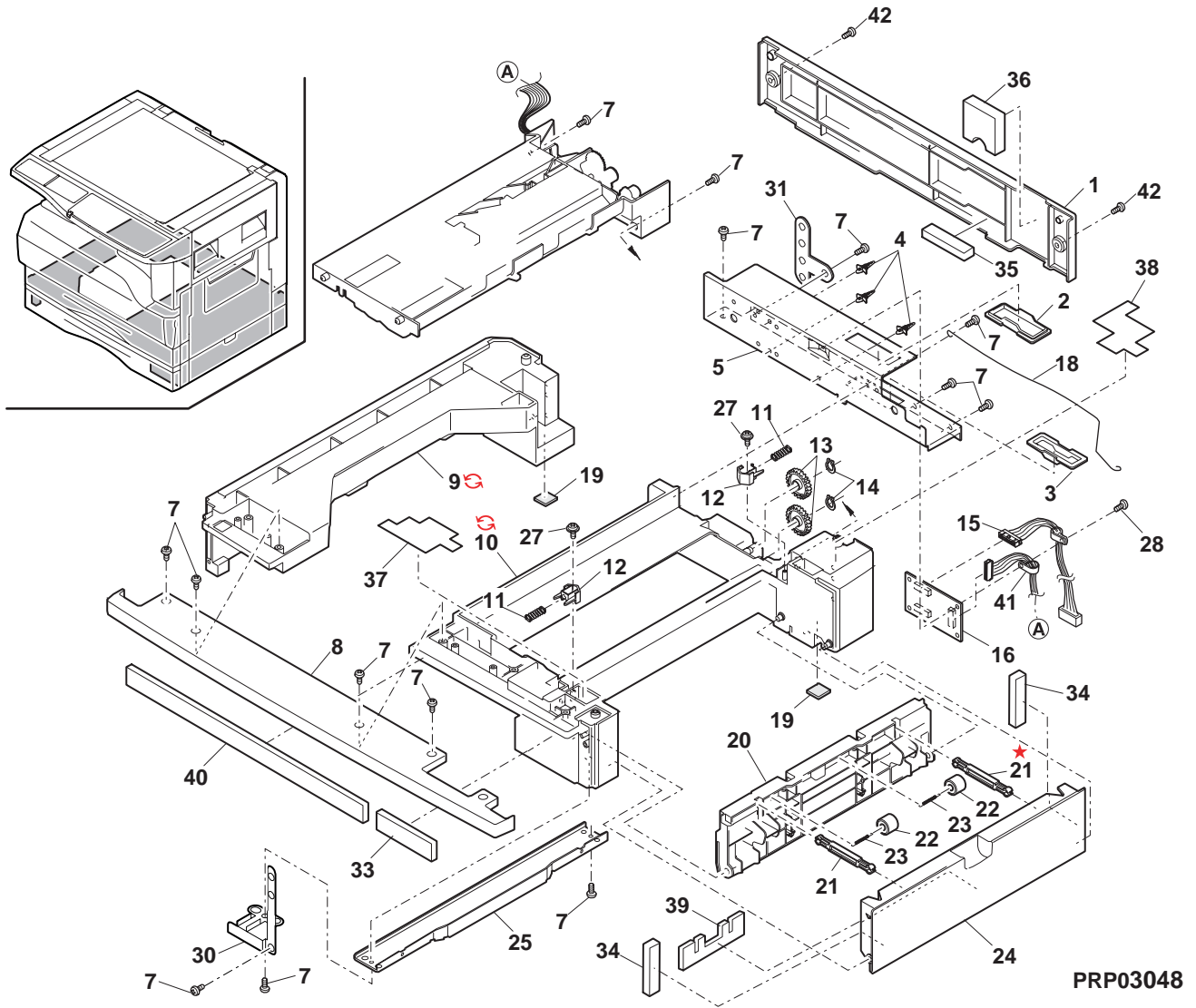
## 17 Packing material &amp; Accessories

NO.	PARTS CODE	Inter-change	PRICE RANK	NEW MARK	PART RANK	DESCRIPTION	TR No.	Effective time
2	SPAKA0464QSZZ		AV		D	Top packing cushion R		
3	SPAKA0603QSZZ		AY		D	Top packing cushion LA		
5	SSAKZ0003QSZZ		AF		D	Vinyl bag		
7	SPAKA0134QSZZ		AE		D	OC protect sheet [AR-M161/AR-M162/AR-M162E/AR-M165]		
8	TCADZ0010QSZZ		AC		D	Fixing screw caution card		
9	LX-BZ0015QSPZ		AF		C	2nd,3rd fixing screw		
10	LHLDW1226FCZZ		AB		C	Turn fastener		
11	TTAG-0009QSZZ		AC		D	Tray rotation tag		
12	CCL EZ0005RS51		AQ		D	Charger cleaner		
13	SPAKA0466QSZZ		AG		D	Scanner reinforcement material		
14	SSAKA3001CCZZ		AA		D	Vinyl bag(140x260mm)		
18	SPAKA0465QSZZ		BE		D	Bottom case		
19	SSAKA2343QCZZ		AA		D	Vinyl bag(260x380mm)		
20	TLABH0078QSZ1		AE		D	Magnification select label (Inch series)		
	TLABH0068QSZ1		AF		D	Magnification select label (AB series)		
	TLABH0069QSZ2		AG		D	Size display label (Inch series)		
	TLABH0065QSZ2		AG		D	Size display label (AB series)		
	TLABH0117QSZ1	-	AP		D	Size display label [Missing parts code][AR-M162/AR-M207(Taiwan)]		1st lot
	CCASZ0067FC01		AD		D	Maintenance card		
	CDSKA0072QS33		AM		D	CD-ROM [AR-M161/AR-M162(U.S.A,Canada)/AR-M162E/AR-M206/AR-M207(U.S.A,Canada)/AR-M207E]		
	CDSKA0089QS33		BB		D	CD-ROM [AR-M162(Australia,New Zealand)/AR-M165/AR-M207(Europe,Australia,New Zealand)]		
	CDSKA0078QS31		BB		D	CD-ROM(IE)		
	TiNSE1333QSZ1		AU		D	Operation manual(COPY) (ENGLISH[U.S.A])		
	TiNSE1333QSZ2	3	AU	N	D	Operation manual(COPY) [Specification change](ENGLISH[U.S.A])		07/10
	TiNSE1536QSZZ		AY		D	Operation manual(COPY) (ENGLISH[U.S.A])		
	TiNSE1536QSZ1	3	AY	N	D	Operation manual(COPY) [Specification change](ENGLISH[U.S.A])		07/10
	TiNSE1335QSZZ		BA		D	Operation manual(COPY) (ENGLISH[U.kingdom])		
	TiNSE1335QSZ1	1	BA		D	Operation manual(COPY) (ENGLISH[U.kingdom])		06/07
	TiNSE1415QSZ1		BA		D	Operation manual(COPY) (ENGLISH[Hong Kong])		
	TiNSE1334QSZ1		BA		D	Operation manual(COPY) (ENGLISH[Other Countries])		
	TiNSG1336QSZZ		BB		D	Operation manual(COPY) (GERMAN)		
	TiNSG1336QSZ1	1	BB		D	Operation manual(COPY) (GERMAN)		06/07
	TiNSE1452QSZ1	-	BA		D	Operation manual(COPY) [Missing parts code][AR-M162/AR-M207(Taiwan)]		1st lot
TiNSE1507QSZZ		AP		D	Operation manual(SETUP) (ENGLISH)			
TiNSE1537QSZZ		AN		D	Operation manual(SETUP) (ENGLISH[U.S.A])			
TiNSG1508QSZZ		AY		D	Operation manual(SETUP) (GERMAN)			
TiNSE1456QSZZ	-	AP		D	Operation manual(SETUP) [Missing parts code][AR-M162/AR-M207(Taiwan)]		1st lot	
TiNSE1337QSZZ		AK		D	Operation manual(KEY) (ENGLISH[U.S.A])			
TiNSE1538QSZZ		AT		D	Operation manual(KEY) (ENGLISH[U.S.A])			
21	CPNLH0048QS01		AY		D	Key sheet (ENGLISH)		
	CPNLH0048QS03		AV		D	Key sheet (FRENCH)		
	CPNLH0049QS01		BD		D	Key sheet [AR-M162](FRENCH)		
22	TiNSE1334TSZZ		*	N	D	Operation manual(COPY) (ENGLISH)		
	TiNSS1344TSZZ		*	N	D	Operation manual(COPY) (SPANISH)		
	TiNSF1345TSZZ		*	N	D	Operation manual(COPY) (FRENCH)		
	TiNSi1346TSZZ		*	N	D	Operation manual(COPY) (ITALIAN)		
	TiNSH1347TSZZ		*	N	D	Operation manual(COPY) (DUTCH)		
	TiNSW1348TSZZ		*	N	D	Operation manual(COPY) (SWEDISH)		
	TiNSZ1349TSZZ		*	N	D	Operation manual(COPY) (NORWEGIAN)		
	TiNSZ1350TSZZ		*	N	D	Operation manual(COPY) (FINNISH)		
	TiNSD1351TSZZ		*	N	D	Operation manual(COPY) (DANISH)		
	TiNSP1352TSZZ		*	N	D	Operation manual(COPY) (PORTUGUESE)		
23	TiNSE1456TSZZ		*	N	D	Operation manual(Setup) (ENGLISH)		
	TiNSS1463TSZZ		*	N	D	Operation manual(Setup) (SPANISH)		
	TiNSF1462TSZZ		*	N	D	Operation manual(Setup) (FRENCH)		
	TiNSi1464TSZZ		*	N	D	Operation manual(Setup) (ITALIAN)		
	TiNSH1465TSZZ		*	N	D	Operation manual(Setup) (DUTCH)		
	TiNSW1466TSZZ		*	N	D	Operation manual(Setup) (SWEDISH)		
	TiNSZ1469TSZZ		*	N	D	Operation manual(Setup) (NORWEGIAN)		
	TiNSZ1468TSZZ		*	N	D	Operation manual(Setup) (FINNISH)		
	TiNSD1467TSZZ		*	N	D	Operation manual(Setup) (DANISH)		
TiNSP1362TSZZ		*	N	D	Operation manual(Setup) (PORTUGUESE)			
24	SSAKA2341QCZZ		AA		D	Vinyl bag(230x340mm)		
101	TLABH4259FCZZ		AH		D	Display label (Hong Kong)		





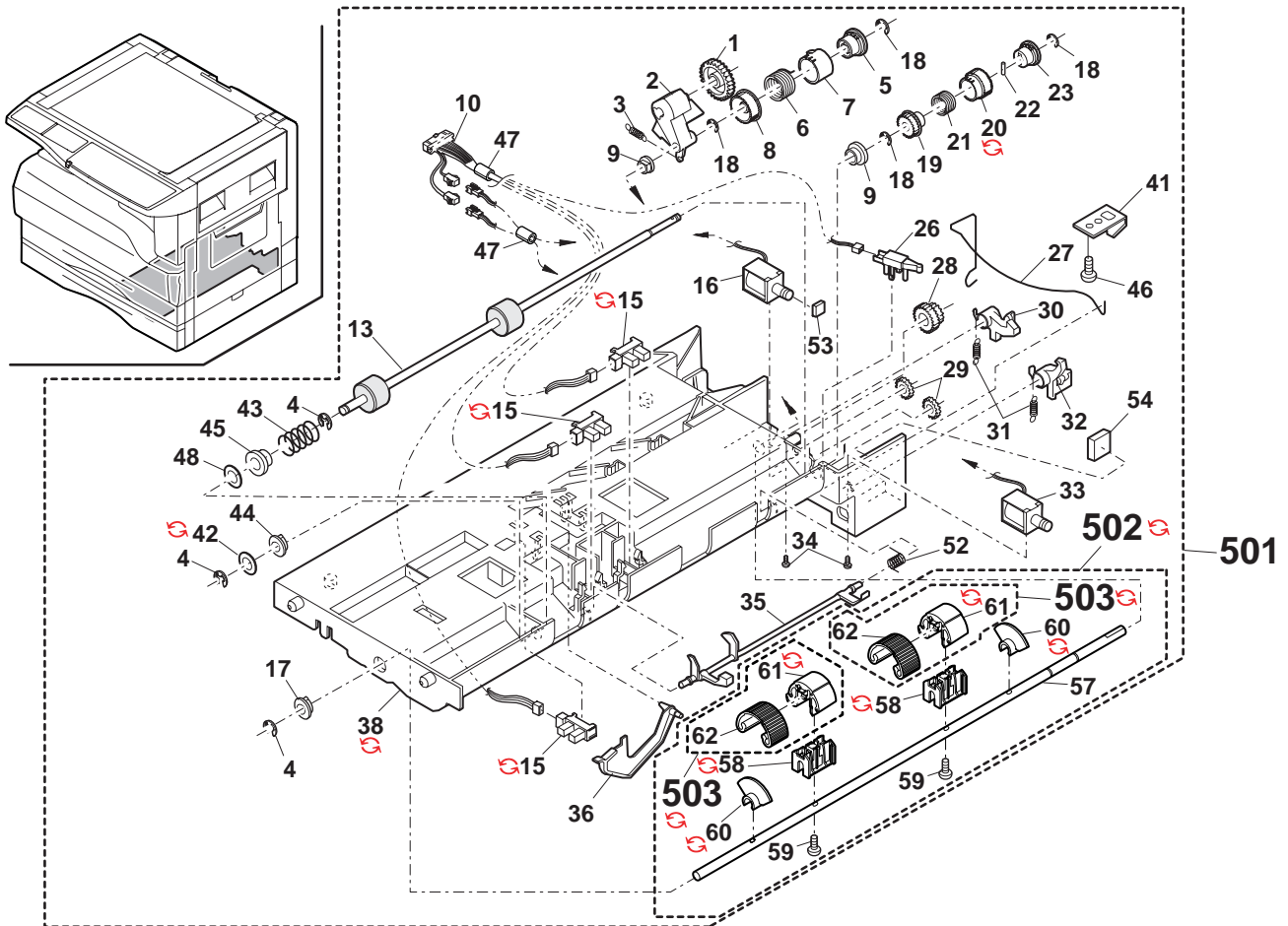
18 2nd Tray exteriors [AR-M206/AR-M207/AR-M207E]



## 19 2nd Tray paper feeding unit [AR-M206/AR-M207/AR-M207E]

NO.	PARTS CODE	Inter-change	PRICE RANK	NEW MARK	PART RANK	DESCRIPTION	TR No.	Effective time
1	NGERH1207FCZZ		AF		C	Joint gear(40T)		
2	MARMP0229FCZZ		AE		C	Joint arm		
3	MSPRT0128QSZZ		AB		C	Joint arm spring		
4	XRESP50-06000		AA		C	E type ring(E5)		
5	LBOSZ1031FCZZ		AC		C	Clutch boss		
6	MSPRC0161QSZZ		AF		C	Clutch spring		
7	PPiPP0007QSZZ		AD		C	Clutch sleeve		
8	NGERH1132FCZZ		AH		C	Clutch gear(29T)		
9	NBRGM0501FCZZ		AB		C	Bearing(B-F6-7)		
10	DHAi-0075QSZ1		AR		C	1st harness		
13	NR0LP0044QSP2		AQ		B	1st transport roller		
15	VHPGP1A71A1-18		AG		B	Photo sensor(GP1A71A1)		
15	VHPGP1A71A1-18	3	AG		B	Photo sensor [Unleaded solder correspondence]		06/03
16	RPLU-0012QSZ1		AM		B	Paper feeding solenoid		
17	NBRGC0188FCZZ		AB		C	PF bearing		
18	XRESP40-06000		AA		C	E type ring(E4)		
19	LBOSZ1510FCZZ		AF		C	Cam boss A1		
20	PPiPP0109FCZZ		AB		C	PF clutch pipe A		
20	PPiPP0109FCZ1	1	AC		C	PF clutch pipe A		06/04
21	MSPRC1315FCZ1		AD		C	Clutch spring A		
22	LPiNS0181FCZZ		AA		C	Spring pin		
23	LBOSZ1508FCZZ		AG		C	Cam boss A2		
26	QSW-B0017QSZZ		AF		B	Tray detect switch		
27	MSPRD0134QSZZ		AC		C	Paper feeding earth spring		
28	NGERH0041QSZZ		AF		C	2ND gear ID(18T/26T)		
29	NGERH0990FCZZ		AB		C	Gear(16T)		
30	PTME-0017QSZZ		AD		C	Paper feeding clutch pawl		
31	MSPRT0130QSZZ		AB		C	Clutch pawl spring		
32	PTME-0016QSZZ		AD		C	Transport clutch pawl		
33	RPLU-0013QSZZ		AM		B	Transport solenoid		
34	XBBS730P06000		AC		C	Screw(3x6)		
35	MLEVP0039QSZZ		AE		C	PPDI actuator		
36	MLEVP0046QSZZ		AD		C	CICS actuator		
38	LFRM-0031QSE3		AU		C	Paper feeding frame		
38	LFRM-0031QSE4	1	AU		C	Paper feeding frame		08/01 R/C
41	LPLTM0137QSZZ		AD		C	Boss reinforce plate		
42	LX-WZ0314FCZZ		AA		C	Poly slider		
42	LX-WZ0314FCZ1	1	AA		C	Poly slider		- R/C
43	MSPRC0157QSZZ		AC		C	Brake spring		
44	NBRGC0529FCZZ		AD		C	Bearing		
45	PPiPP0011QSZZ		AC		C	Brake sleeve		
46	XBBS730P06000		AC		C	Screw(3x6)		
47	RCORF0006QSZZ		AL		C	Core		
48	XWHS760-10000		AA	N	C	Washer		
52	MSPRD0156QSZZ		AB		C	PPDI ACT spring		
53	PSPO-0005QSZZ		AA		C	Clutch pawl cushion (Europe)		
54	PSPO-0007QSZZ		AB		C	Transport clutch pawl cushion (Europe)		
57	NSFTZ0067QSPZ		AP		C	Paper feed roller shaft		
58	LHLDR0095QSZZ		AD		C	Paper feed roller holder		
58	LHLDR0095QSZ1	1	AD		C	Paper feed roller holder		08/02 mid
59	XEBS730P12000		AC		C	Screw(3x12)		
60	PCLR-0011QSZZ		AC		C	Roller collar		
60	PCLR-0011QSZ1	1	AC		C	Roller collar		08/02 mid
61	LBRRCR0011QSZZ		AD		C	Paper feed roller bracket		
61	LBRRCR0011QSZ1	1	AD		C	Paper feed roller bracket		08/02 mid
62	PGUMM0013QSZZ		AG		C	Paper feed roller rubber		
501	CFRM-0031RS5K		BK		E	Paper feeding unit [AR-M206/AR-M207(U.S.A,Canada, Australia,New Zealand)/AR-M207E]		
501	CFRM-0031RS5L		BK		E	Paper feeding unit [Europe]		
502	CSFTZ0067RS53		AW		E	Paper feeding shaft		
502	CSFTZ0067US53	1	AX		E	Paper feeding shaft		07/06
503	CGUMM0013RS51		AN		E	Paper feed roller rubber unit		
503	CGUMM0013US51	1	AP		E	Paper feed roller rubber unit		07/06

19 2nd Tray paper feeding unit [AR-M206/AR-M207/AR-M207E]



PRP03049

# SHARP

**COPYRIGHT © 2008 BY SHARP CORPORATION**

All rights reserved.

Printed in Japan.

No part of this publication may be reproduced,  
stored in a retrieval system, or transmitted.

In any form or by any means,  
electronic, mechanical, photocopying, recording, or otherwise,  
without prior written permission of the publisher.

**SHARP CORPORATION**  
**Digital Document System Group**  
**CS Promotion Center**  
**Yamatokoriyama, Nara 639-1186, Japan**  
2008 April Printed in Japan ⓘ