

FRU Parts List

This section provides a list of Field Replaceable Units for the Xerox Phaser 3400 Laser Printer.

Changes to the printer may be made to accommodate improved components as they become available. When ordering parts and/or supplies, it is important to include the following information:

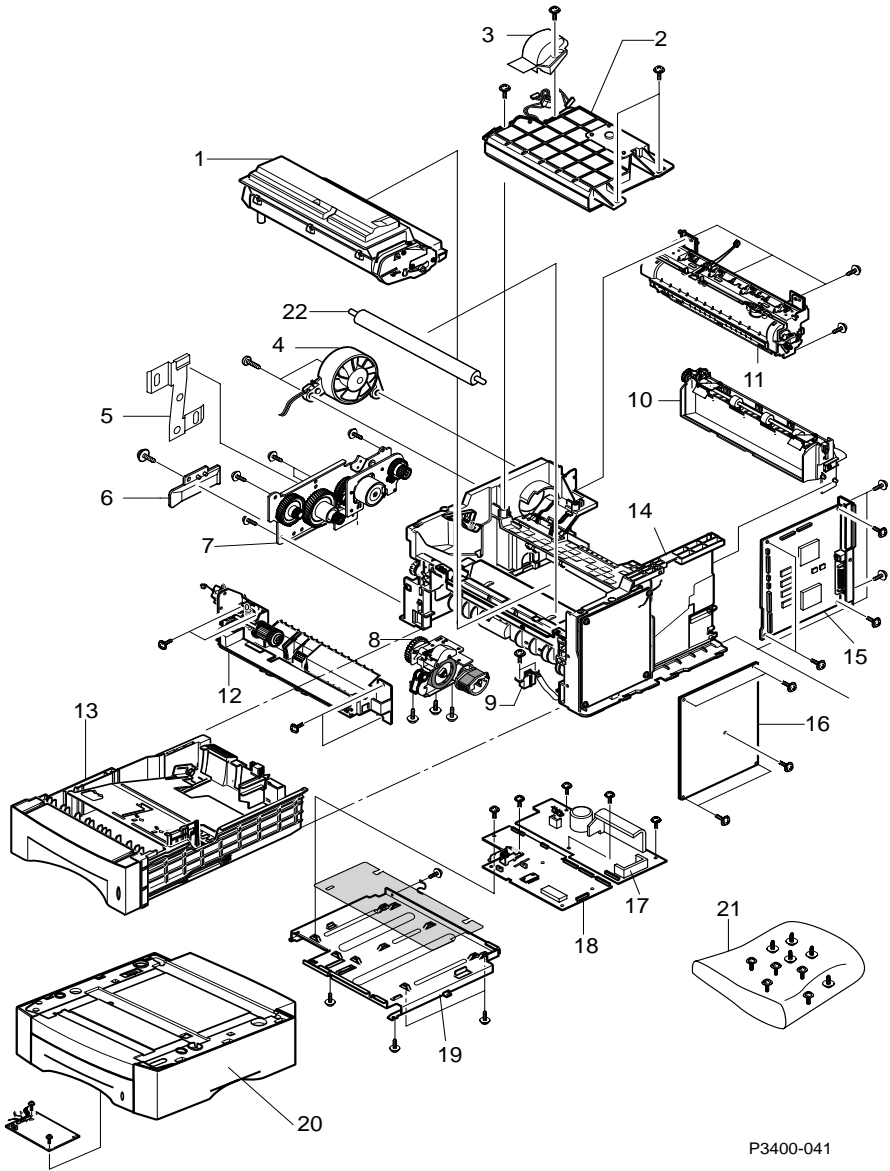
- Component's part number
- Printer type or model number
- Printer serial number
- Modification number, if any

Using the Parts List

1. The callout numbers shown in each part's exploded illustration corresponds to the parts list numbers for that illustration.
2. Throughout this manual, parts are identified by the prefix "PL", followed by a number, a decimal point and another number: For example, PL 1.3 means the part is item 3 of Parts List 1.
3. An asterisk (*) following a part name indicates that the page contains a note about this part.

Note *Only parts showing part numbers are available for support.
Parts not showing part numbers are available on the parent assembly.*

PL 1 - Main Assemblies

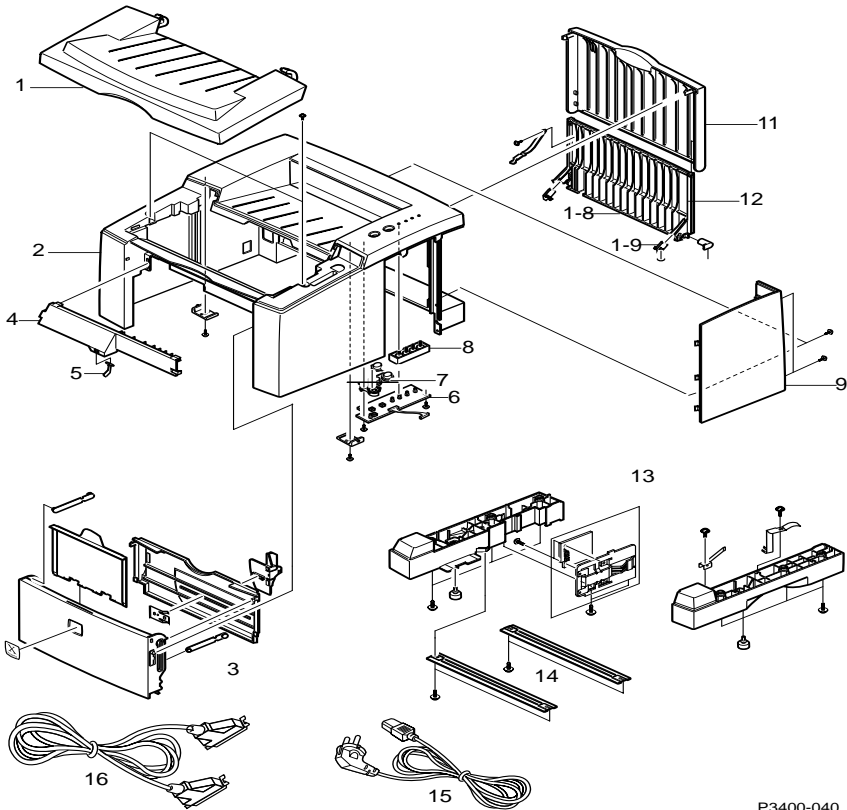


P3400-041

PL 1 - Major Assemblies

No	Part Number	Qty	Description
1.	106R00461	1	Print Cartridge 4K
	106R00462	1	Print Cartridge 8K
2.	062K13370	1	Laser Assembly (LSU)
3.		1	Fan Duct
4.		1	Fan
5.		1	Clamp
6.		1	
7.	127K42210	1	Main Drive Motor Assembly
8.	022N01301	1	Pick-Up Assembly
9.		1	Cap Sensor
10.	059K28920	1	Exit Assembly
11.	126K22080	1	110 V Fuser Assembly
	126K22090		220 V Fuser Assembly
12.	022N01304	1	Multi-Purpose Feeder Assembly
13.	109R00526	1	Standard 550-sheet Paper Tray
14.		1	Base Printer Assembly (110 V)
15.	160K88590	1	System Controller Board
16.	105E14930	1	High Voltage Power Supply Board
17 - 19	160K88600	1	110 V Print Engine Controller Board
	160K88610		220 V Print Engine Controller Board
20.	097S02716	1	Optional 550-sheet Feeder with Paper Tray 2
21.	600N01672	1	Screws (Hardware Kit)
22.	059K29120	1	Bias Transfer Roller

PL 2 - Covers and Base

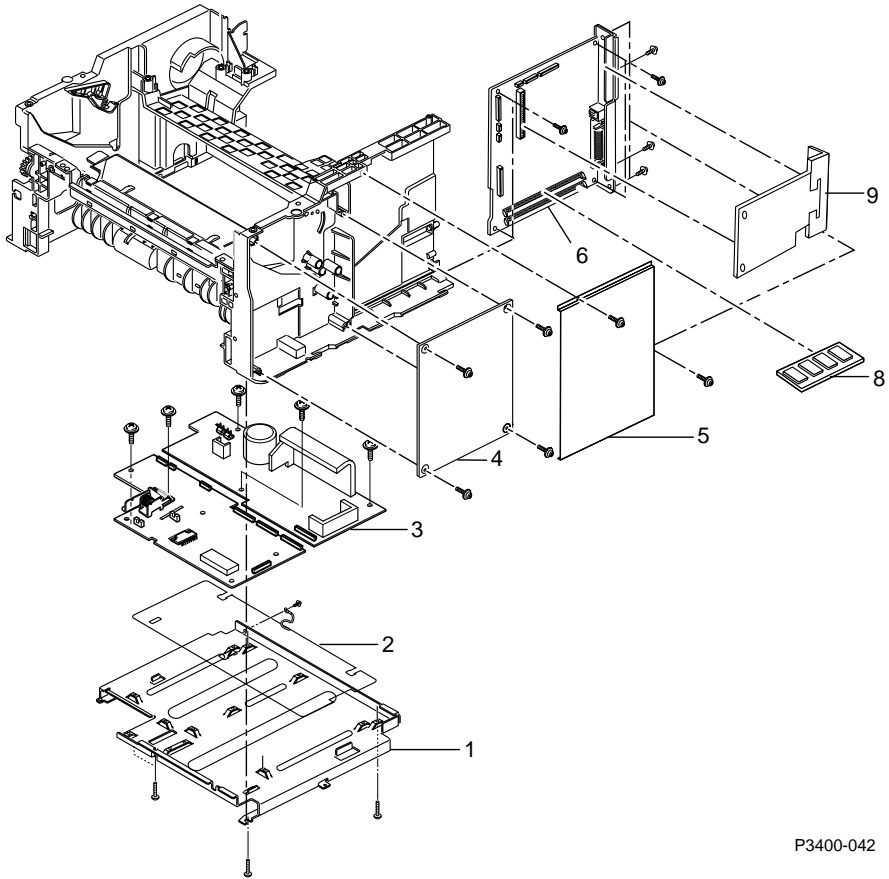


P3400-040

PL 2 - Covers and Base

No	Part Number	Qty	Description
1.			Top Cover
2.		1	Main Cover
3.		1	Multi-Purpose Feeder Tray Unit
4.		1	Multi-Purpose Tray Support
5.		1	Multi-Purpose Tray Empty Lever
6.		1	LED Panel
7.		1	Button Panel
8.		1	LED Lens
9.		1	System Controller Cover
10.			Exit Guide
11.		1	Rear Cover
12.		1	Output tray Cover
13.		2	Base Legs
14.		2	Base Brackets
15.	117E21930	1	Power Cord 110 V
16.	117E21940	1	Parallel Printer Cable

PL 3 - Main Boards, Optional NIC Card and Memory Expansion

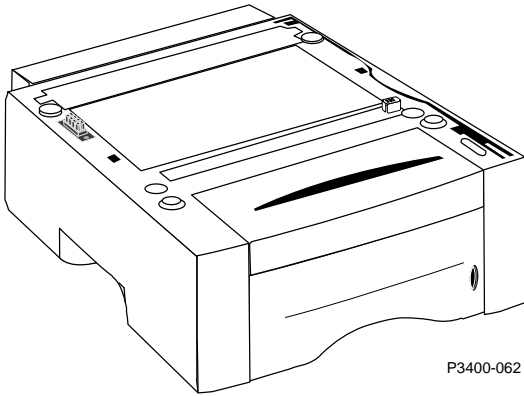


P3400-042

PL 3 - Main Boards, Optional NIC Card and Memory Expansion

No	Part Number	Qty	Description
1.			Shield
2.			Insulator
3.	160K88600	1	Main Engine Controller Board (110V)
	160K88610	1	Main Engine Controller Board (220V)
4.	105E14930	1	High Voltage Power Supply Board
5.		1	System Controller Board Cover
6.	160K88590	1	System Controller Board
7.			Currently Not Used
8.			RAM Memory Option Kit
	097S02718	1	16-Mbyte DIMM
	097S02719	1	32-Mbyte DIMM
	097S02720	1	64-Mbyte DIMM
9.	097S02722	1	Internal NIC 10/100 Base T Option

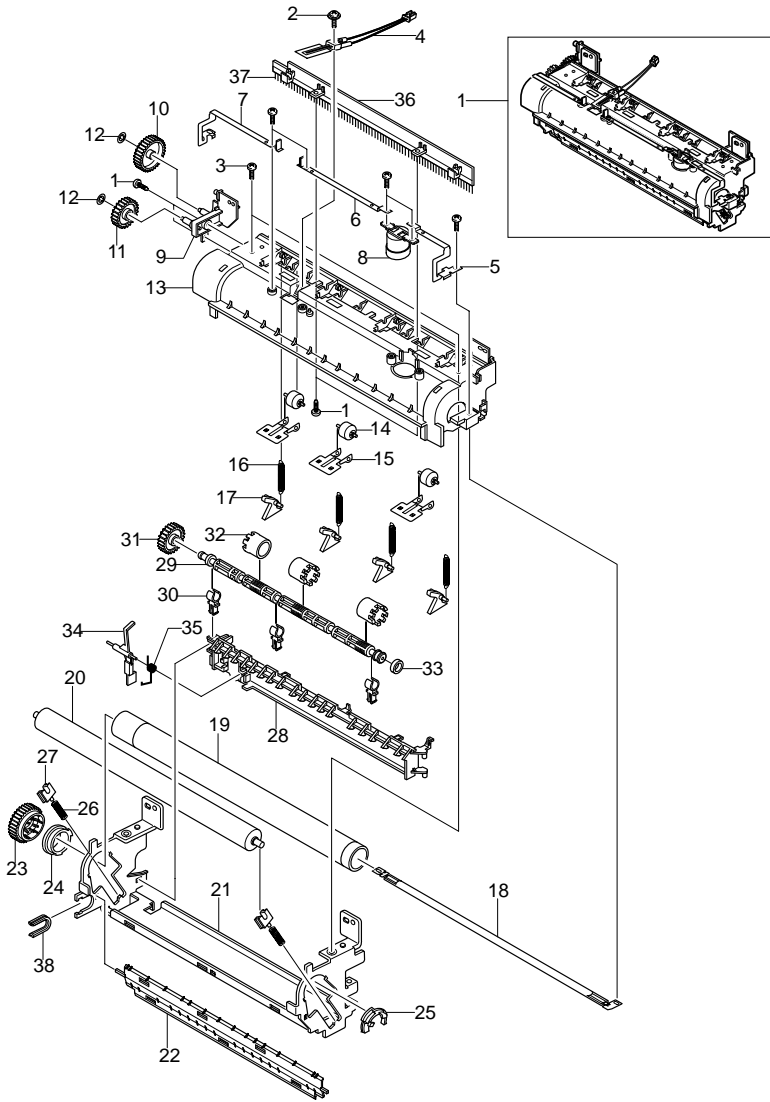
PL 4 - Optional Paper Trays



Optional Lower 550-sheet Paper Tray 2

No	Part Number	Qty	Description
1.	097S02716	1	Lower 550-sheet Optional Feeder and Paper Tray

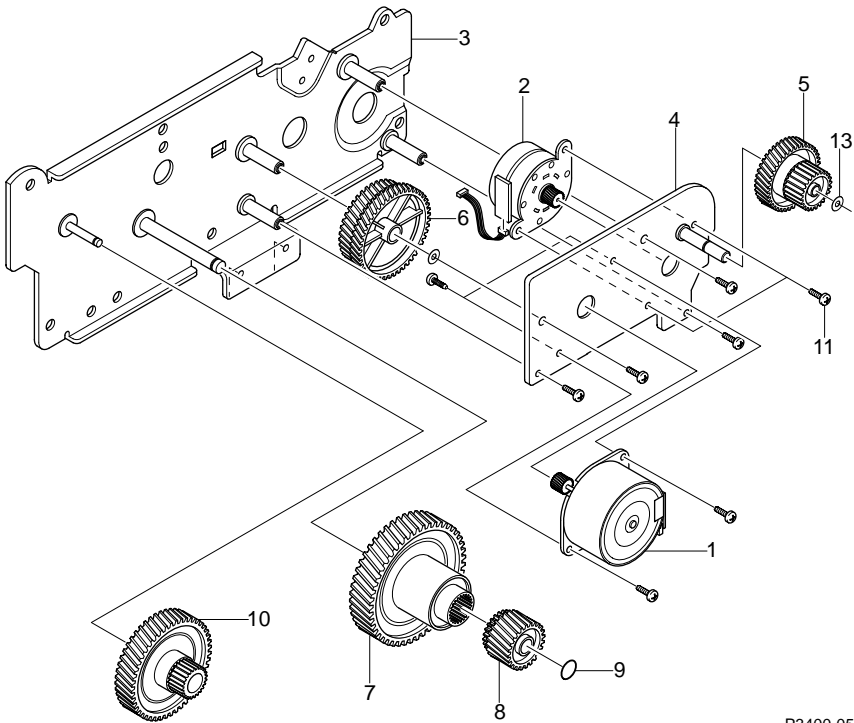
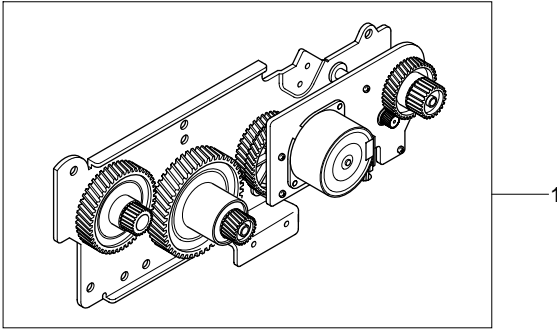
PL 5 - Fuser Assembly



P3400-056

**Fuser Assembly - Exploded View - Part #126K22080 110 V
#126K22090 220 V**

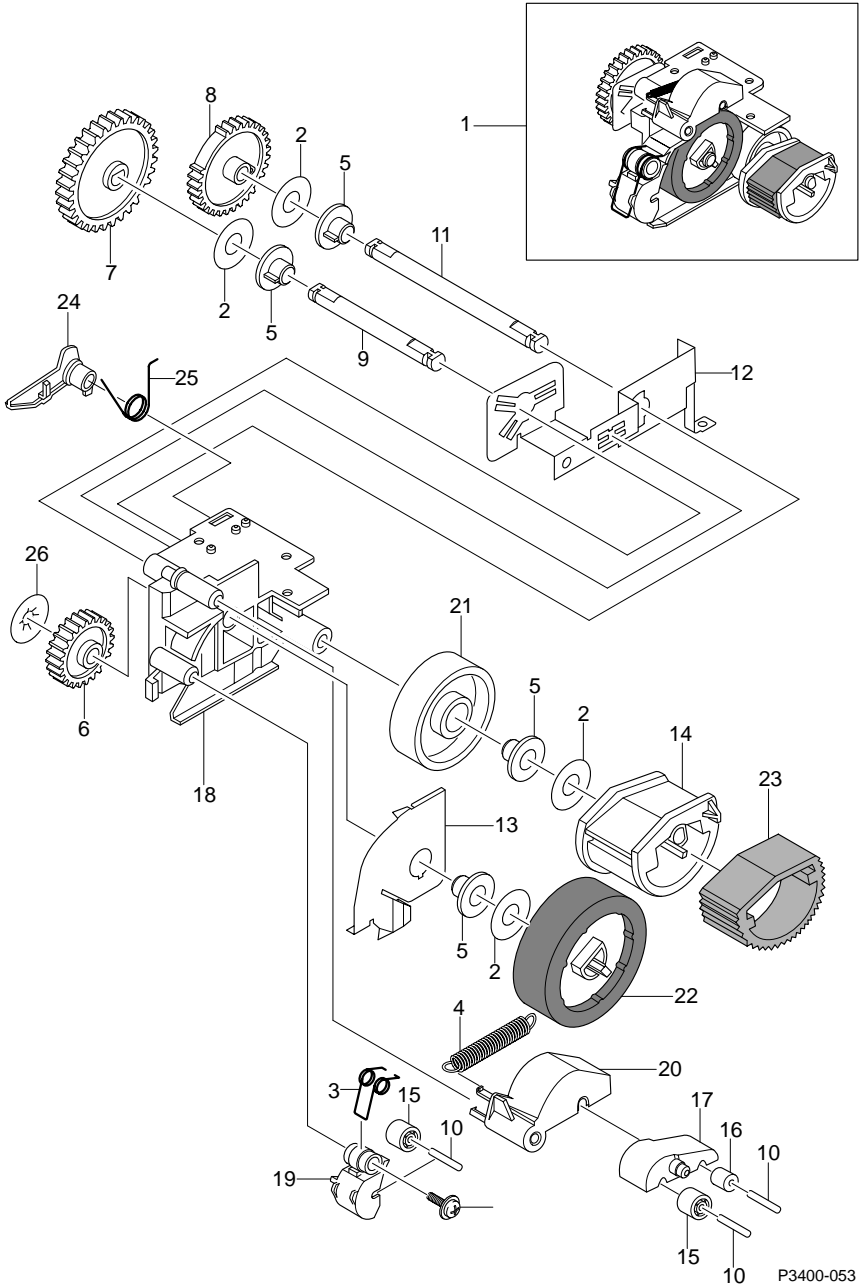
PL 6 - Main Drive Motor



P3400-051

Main Drive - Exploded View - Part #127K42210

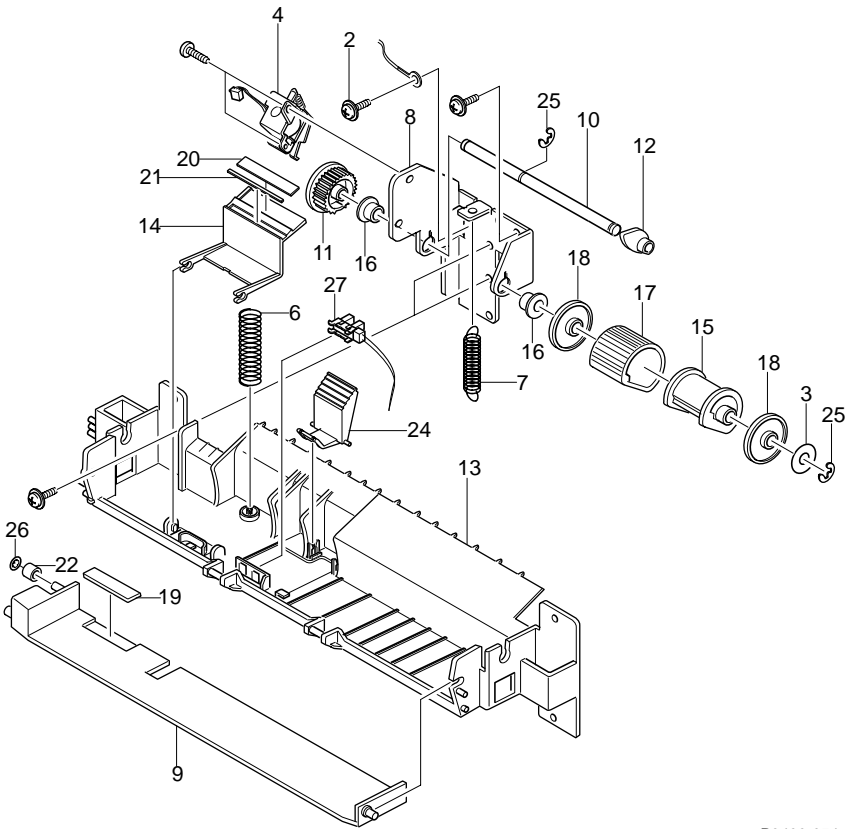
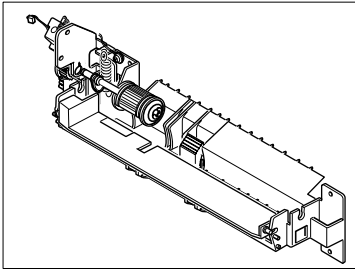
PL 7 - Pick-Up Assembly



P3400-053

Pick-Up Assembly - Exploded View - Part #022N01301

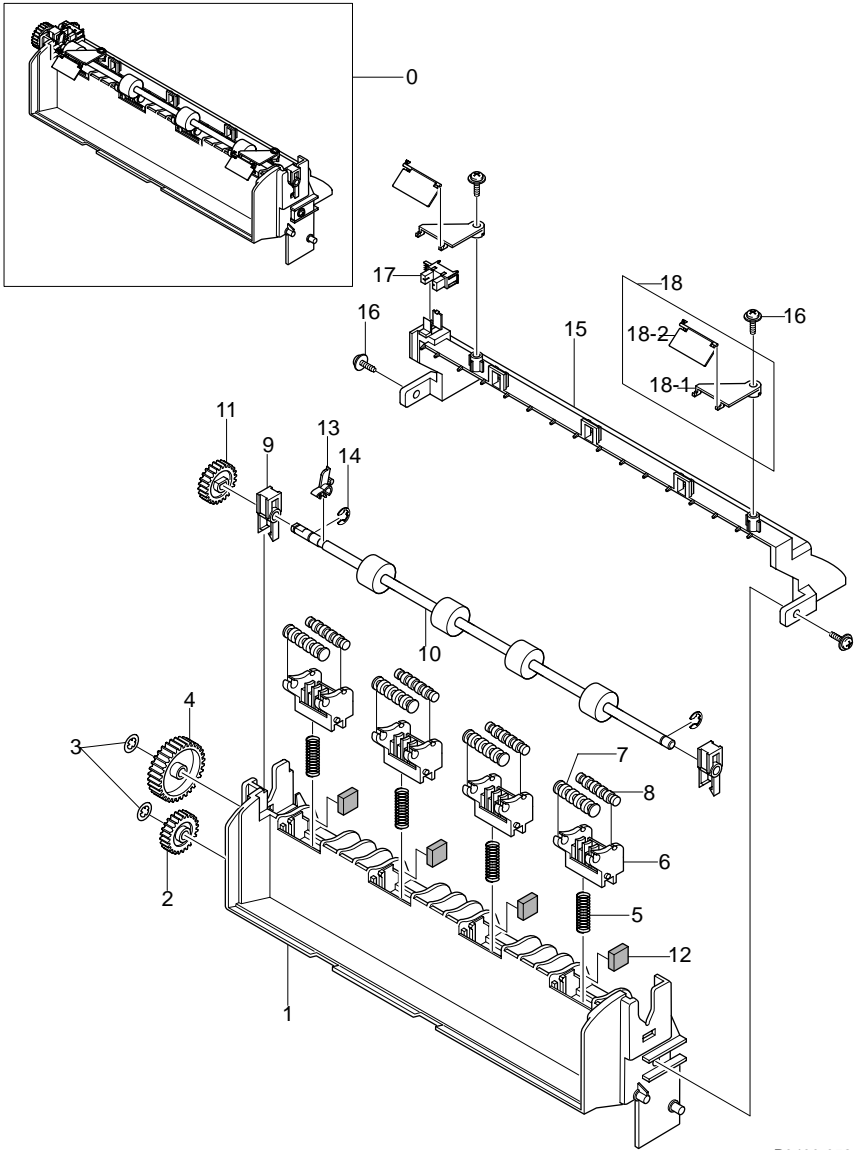
PL 8 - Multi-Purpose Feeder



P3400-054

Multi-Purpose Feeder - Exploded View - Part #022N01304

PL 9 - Exit Assembly



P3400-052

Exit Assembly - Exploded View - Part #059K28920

Parts List Summary Table

Description	Part Number
Pick-Up Roller Assembly	022N01301
Multi-Purpose Feeder Assy	022N01304
Exit Transport Assembly	059K28920
Bias Transfer Roller	059K29120
Laser Assembly	062K13370
High Voltage Power Supply	105E14930
Printer Cartridge w/ Recycling Campaign 4K	106R00461
Printer Cartridge w/ Recycling Campaign 8K	106R00462
550-sheet Paper Tray	109R00526
Power Cord, 110 V	117E21930
Printer Cable	117E21940
Fuser Assembly, 110 V	126K22080
Fuser Assembly, 220 V	126K22090
Main Drive Motor Assembly	127K42210
System Controller Board	160K88590
Print Engine Controller Board, 110 V	160K88600
Print Engine Controller Board, 220 V	160K88610
Hardware Kit	600N01672
Removal and Replacement Instructions	602E86670
Repackaging Kit	695K12330
Optional 550 Lower Paper Tray 2 (Cassette)	097S02716
16-Mbyte Memory DIMM Option Kit	097S02718
32-Mbyte Memory DIMM Option Kit	097S02719
64-Mbyte Memory DIMM Option Kit	097S02720
Internal NIC 10/100 Base T Option	097S02722
Product CD-ROM	301K05940
Service Guide Phaser 3400 Printer	071-0826-00