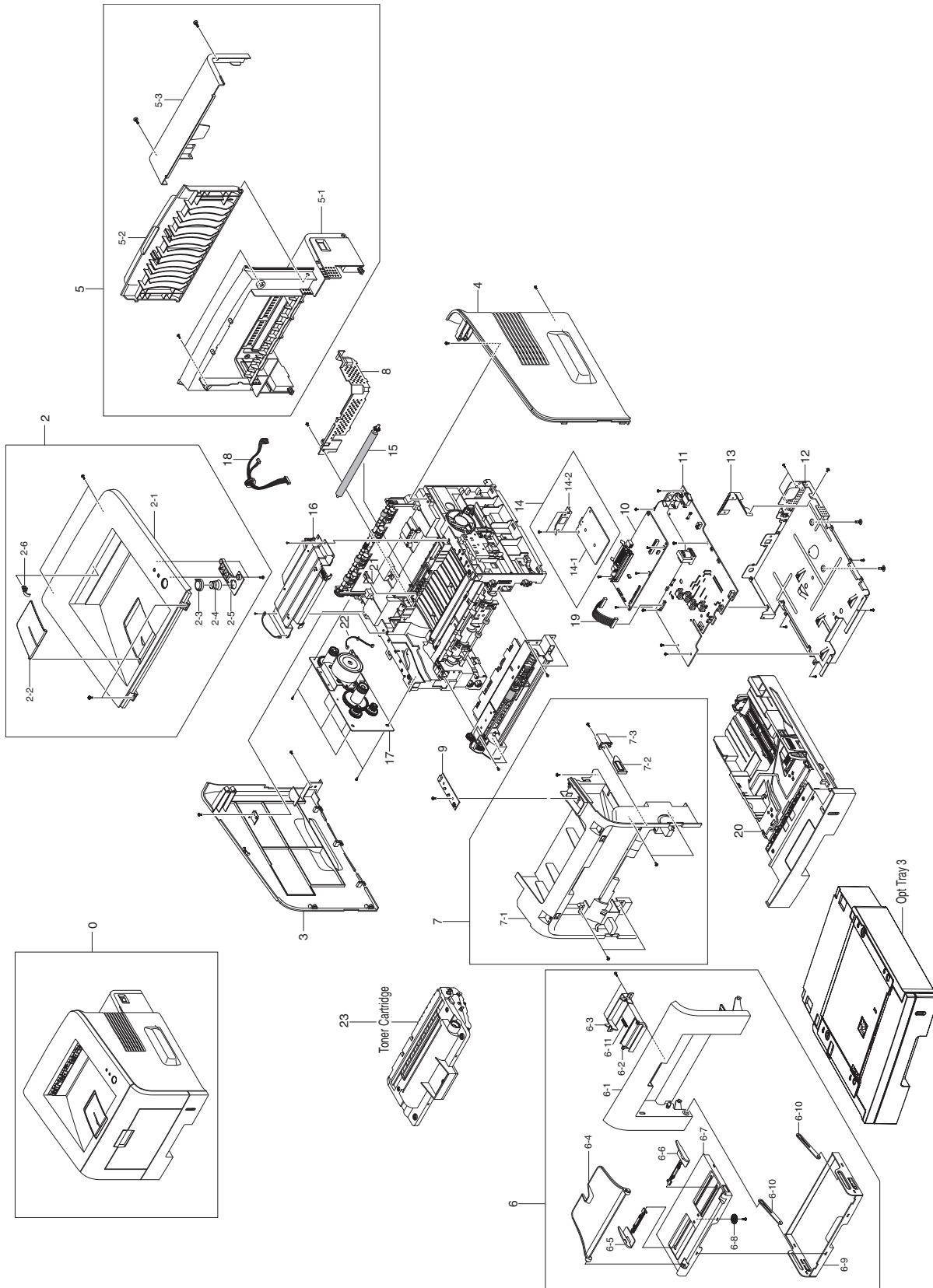


8 Parts List

Contents

- 8.1 Main Assembly
- 8.2 Frame Unit Assembly
- 8.3 MP Assembly
- 8.4 Fuser Unit Assembly
- 8.5 Main Drive Unit Assembly
- 8.6 Tray 2 (Cassette) Unit Assembly
- 8.7 Tray 3 (SCF - Optional Cassette) Unit Assembly

8.1 Main Assembly



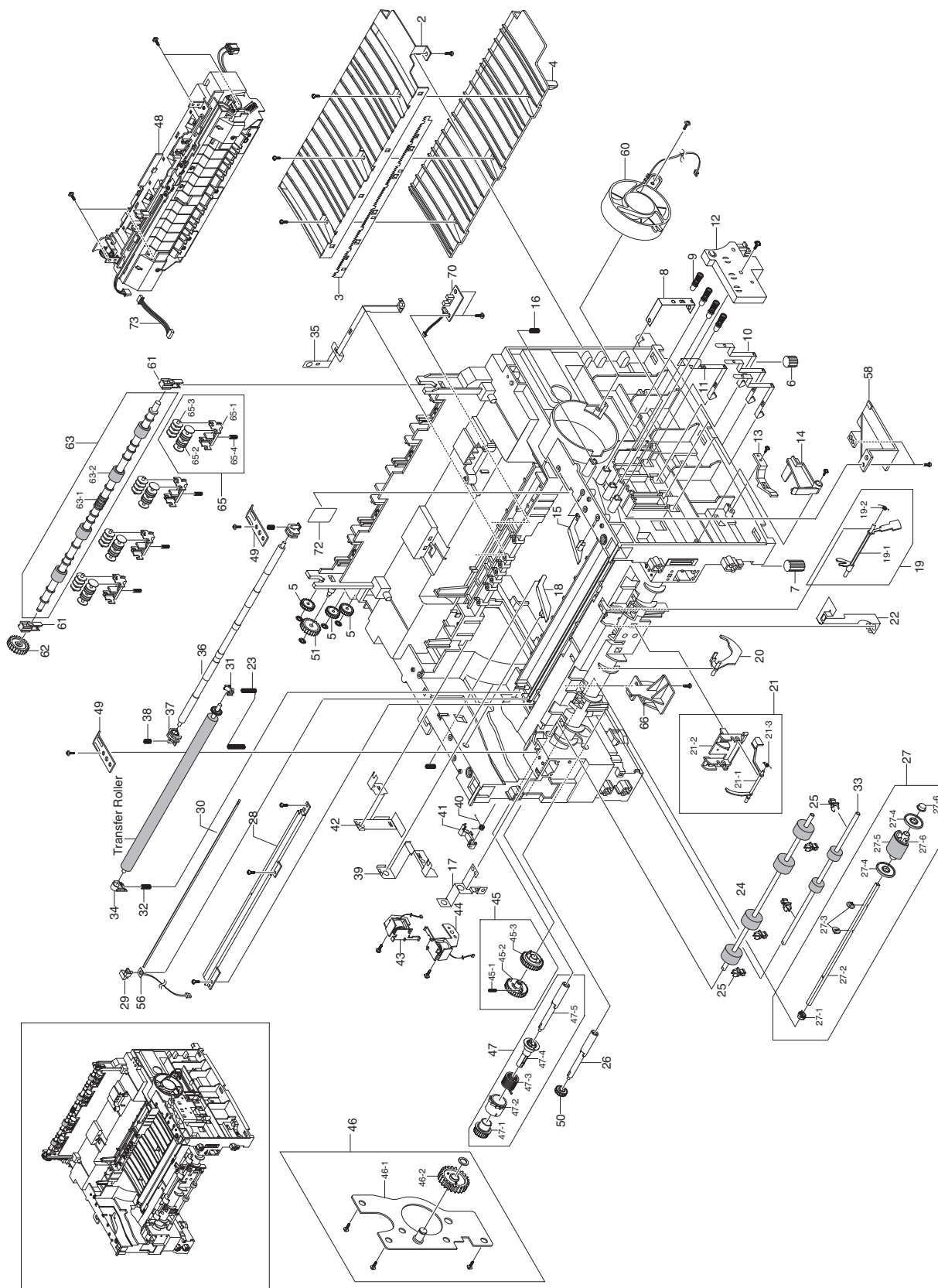
Main Assembly Parts List 8.1

No.	Part Name and (part description)	Qty	Part number	Remark
0	SET			
1	ELA HOU-FRAME-220V, HB2	1		
1	ELA HOU-FRAME-110V, HB2	1		
2	MEA UNIT-COVER TOP	1	002N02314	
2-1	COVER-M-TOP	1		
2-2	PMO-STACKER RX	1		
2-3	KEY-M-ON LINE	1		
2-4	SPRING-CS	1		
2-5	LENS LED-M-LED	1		
2-6	BUSH-M-F/DOWN	1		
3	COVER-M-SIDE L	1	002N02317	
4	COVER-M-SIDE R	1	002N02318	
5	MEA UNIT-COVER REAR	1	002N02319	
5-1	COVER-M-REAR	1		
5-2	COVER-FACE UP	1		
5-3	COVER-M-REAR OPEN	1		
6	MEA UNIT-COVER FRONT	1	002N02316	
6-1	COVER-M-FRONT	1		
6-2	KNOB-M-LOCKER	1		
6-3	HOLDER-M-LOCKER	1		
6-4	TRAY-EXIT-MP	1		
6-5	ADJUST-M-MP L	1		
6-6	ADJUST-M-MP R	1		
6-7	TRAY-M-COVER-MP	1		
6-8	GEAR-PINION	1		
6-9	TRAY-M-CASE-MP	1		
6-10	TRAY-M-LINK-MP	2		
6-11	SPRING-CIS(C2)	1		
7	MEA UNIT-COVER MID	1	002N02315	
7-1	COVER-M-MIDDLE	1		
7-2	PMO-M-SUB ACTUATOR	1		
7-3	CAP-M-SUB ACTUATOR	1		
8	COVER-M-SMPS REAR	1		
9	PBA MAIN-PANEL	1	101N01330	
10	PBA MAIN-CONTROLLER	1	140N62926	
11	SMPS-V2_220V	1	105N02039	220V
	SMPS-V1_110V	1	105N02038	110V
12	MEA UNIT-SHIELD	1		
13	BRACKET-P-INLET	1		
14	NETWORK OPTION (ELA HOU-NPC3_PRT)	1	097N01438	
14-1	BRACKET-NPC	1		
14-2	PBA SUB-NPC3_PRT	1		
14	ELA HOU-WLAN NPC	1		
15	MEA ETC-TR	1	022N02079	
16	UNIT-LSU	1	122N00235	
17	ELA UNIT-RX-DRIVE	1	007N01270	
18	CBF HARNESS-LSU	1	152N02010	

Parts List

No.	Part Name and (part description)	Qty	Part number	Remark
19	CBF HARNESS-ENGINE	1	152N02012	
20	MEA UNIT-CASSETTE (PAPER TRAY)	1	109R00749	
21	PLATE CHANNEL	1		
22	MOTOR HARNESS-DRIVE	1	152N11566	
23	TONER CARTRIDGE 3.5k STANDARD CAP	1	109R00746	
23	TONER CARTRIDGE 5k HIGH CAPACITY	1	109R00747	

8.2 Frame Unit Assembly

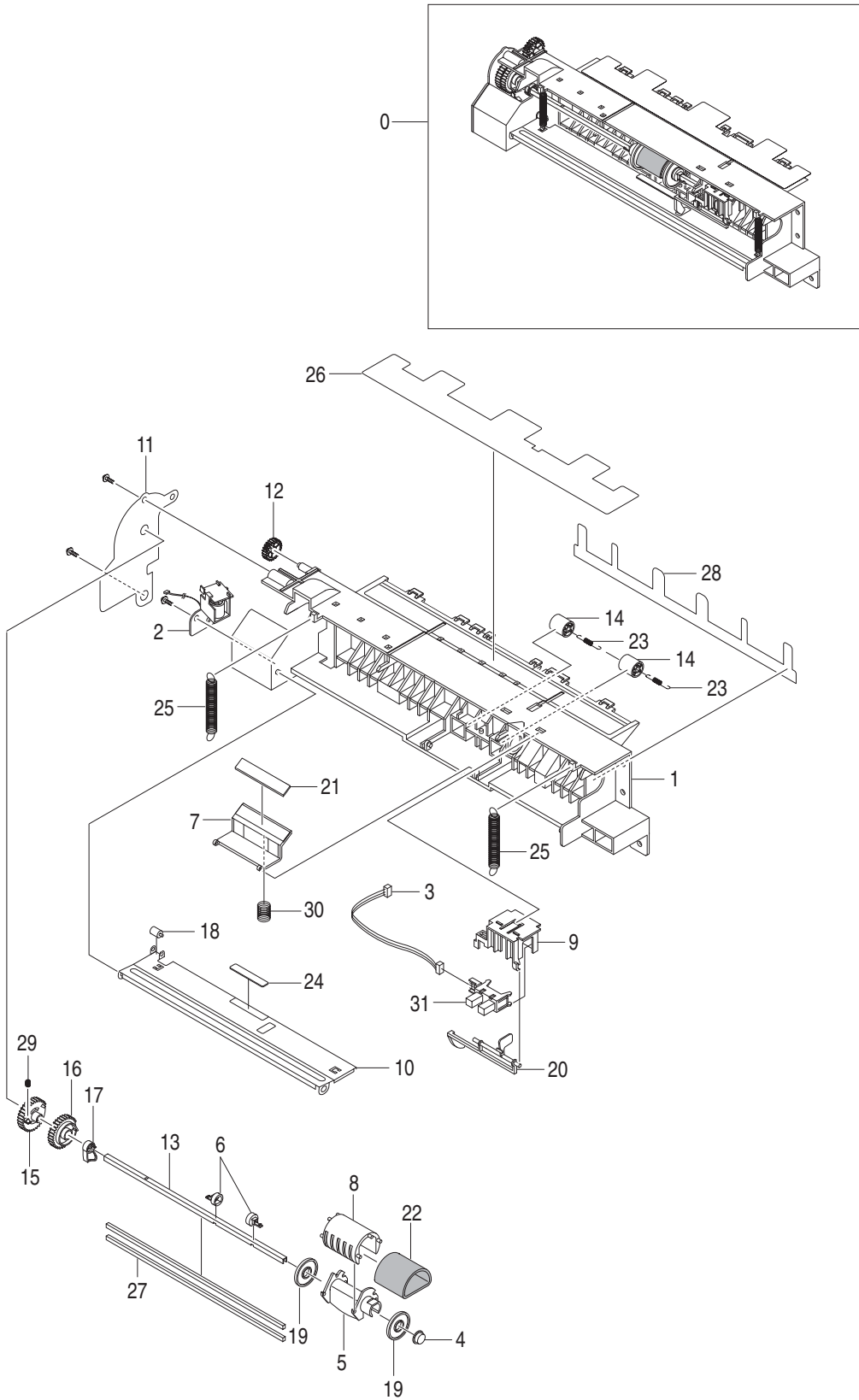


Frame Unit Assembly Parts List 8.2

No.	Part Name and (part description)	Qty	Part number	Remark
0	ELA UNIT-FRAME 110V	1		110V
	ELA UNIT-FRAME 220V	1		220V
1	FRAME-BASE R2	1		
2	GUIDE-P-TR	1	038N00407	
3	PLATE-P-SAW	1		
4	GUIDE-M-TR RIB	1	038N00408	
5	PMO-GEAR_EXIT_DRV16	3		
6	FOOT-BACK	2		
7	FOOT-FRONT	2		
8	GROUND-GUDIE TR R2	1		
9	MEC-TERMINAL	4		
10	PLATE-TERMINAL CON R2	3		
11	PLATE-TERMINAL CR R2	1		
12	HOUSING-TERMINAL R2	1	002N02320	
13	PMO-LOCKER CST	2	120N00427	
14	PMO-ACTUATOR CVR OPEN	1	120N00423	
15	PMO-PLATE GUIDE DEVE_R	1	032N00390	
16	SPRING ETC-GUIDE DEVE	2		
17	GROUND-PUSH BUSHING	1		
18	PMO-PLATE GUIDE DEVE_L	1	032N00391	
19	MEA UNIT-ACT FEED	1		
19-1	PMO-ACT FEED R2	1	120N00444	
19-2	SPRING-TS	1		
20	PMO-ACTUATOR EMPTY	1	120N00425	
21	MEA UNIT-ACT MANUAL	1		
21-1	PMO-ACT MANUAL R2	1	120N00446	
21-2	HOLDER-ACT MANUAL R2	1		
21-3	SPRING-TS	1		
22	GROUND-EARTH TR R2	1		
23	GROUND-TERMINAL TR	1		
24	ROLLER-FEED ROLLER 1	1	022N02080	
25	PMO-BUSHING FEED	5	016N00274	
26	SHAFT-FEED	1		
27	MEA UNIT-PICKUP	1	022N02084	
27-1	BUSH-M-PICK_UP L	1		
27-2	SHAFT-P-PICK_UP	1		
27-3	STOPPER-PICK UP_R2	2		
27-4	PMO-IDLE PICK_UP	2		
27-5	SPONGE-ROLLER PICK_UP	1		
27-6	BUSH-M-PICK_UP R	1		
27-7	HOUSING-PICK UP_R2	1		
27-8	HOUSING-PICK UP2_R2	1		
27-9	SHAFT-CORE	2		
28	IPR-P-EARTH TRANSFER	1	117N01616	
29	HOLDER-PTL R2	1		
30	LENS-PTL	1	062N00246	
31	PMO-BUSHING_TR(L)	1		

No.	Part Name and (part description)	Qty	Part number	Remark
32	SPRING ETC-TR L HAWK	1		
33	ROLLER-FEED	1	022N01607	
34	BUSH-M-TR L	1		
35	GROUND-FUSER R2	1		
36	SHAFT-FEED IDLE	1		
37	BUSH-M-FEED IDLE	2		
38	SPRING ETC-TR	2		
39	GROUND-DRIVE2 R2	1		
40	SPRING-TS	1		
41	CAM-M-PICK_UP	1	008N01738	
42	GROUND-DRIVE R2	1		
43	SOLENOID-FEED ROCKY2	1	121N01074	
44	SOLENOID-HB (MANUAL)	1	700N00094	
45	MEA UNIT-GEAR PICKUP	1	007N01271	
45-1	GEAR-PICK UP B_R2	1		
45-2	GEAR-PICK UP A_R2	1		
45-3	SPRING-CS	1		
46	MEA UNIT-BRACKET FEED	1	030N00690	
46-1	BRACKET-FEED R2	1		
46-2	GEAR-Z35 IDLE	1		
47	MEA UNIT-CLUTCH	1	022N01609	
47-1	GEAR-FEED 1	1		
47-2	PMO-COLLAR_SPRING	1		
47-3	SPRING-TS	1		
47-4	PMO-HUB CLUTCH	1		
47-5	SHAFT-FEED	1		
48	ELA HOU-FUSER 110V	1	126N00229	110V
	ELA HOU-FUSER 220V	1	126N00230	220V
49	PLATE-PUSH BUSHING	2		
50	GEAR-FEED 2	1		
51	GEAR-IDLE 23	1		
52	SPRING-TS	1		
54	IPR-P-TERMINAL DEVE KEY	3		
56	PBA SUB -PTL	1		
58	HOLDER-TERMINAL R2	1		
60	FAN-DC	1	127N07328	
61	MEC-BEARING,EXIT	2		
62	GEAR-EXIT F/DOWN	1		
63	ROLLER-EXIT F/DOWN	1		
64	RMO-RUBBER EXIT	4		
65	MEA RACK-EXIT ROLLER	4	022N02081	
65-1	PMO-HOLDER EXIT ROLL	1		
65-2	PMO-ROLLER FD F	1		
65-3	PMO-ROLLER FD R	1		
65-4	SPRING ETC-EXIT ROLL FD	1		
66	GUIDE-SUB FRONT	1		
70	PBA SUB-EXIT SENSOR	1	130N01360	
72	LABEL(R)-HOT CAUTION,KME	1		
73	HARNESS-FUSER	1		

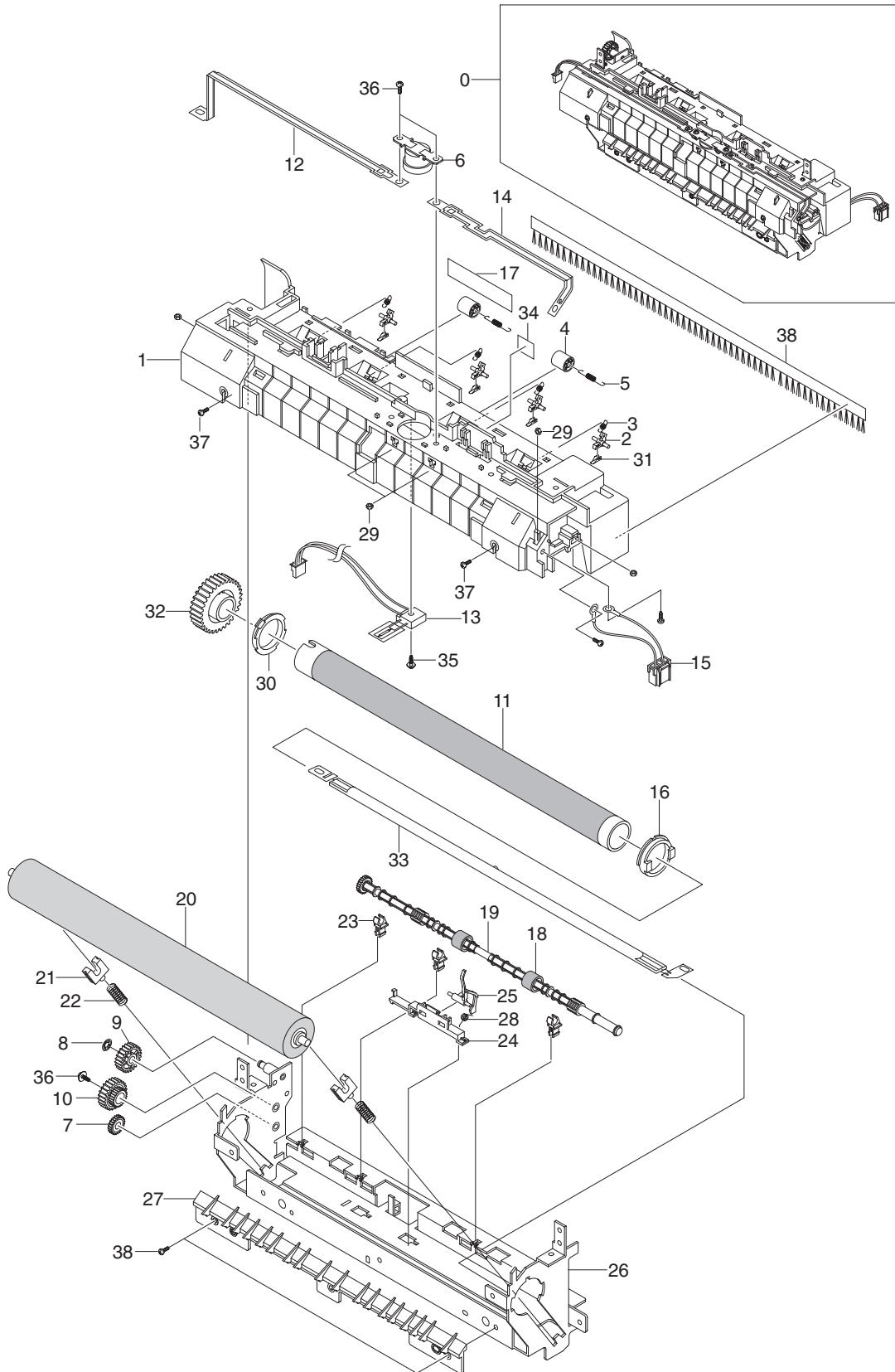
8.3 MP Assembly



MP Assembly Parts List 8.3

No.	Part Name and (part description)	Qty	Part number	Remark
0	ELA UNIT-MP	1	022N02085	
1	FRAME-17-MP	1		
2	SOLENOID-MP	1	121N01075	
3	CBF HARNESS-MPF SEN	1		
4	BUSH-M-PICK-UP R	1		
5	HOUSING-M-PICK UP2_R2	1		
6	STOPPER-M-PICK UP_R2	2		
7	HOLDER-M-PAD_MP	1		
8	HOUSING-M-PICK UP_MP	1		
9	HOLDER-M-SENSOR_MP	1		
10	PLATE-P-KNOCK UP_MP	1		
11	BRACKET-P-PICK UP_MP	1		
12	GEAR-IDLE 23	1		
13	SHAFT-P-PICK_UP	1		
14	ROLLER-M-IDLE FEED	2		
15	GEAR-M-PICK UP_MP	1		
16	GEAR-M-HOLDER_MP	1		
17	CAM-M-PICK UP_MP	1		
18	PMO-ROLLER CAM_MP	1		
19	PMO-IDLE PICK UP	2		
20	PMO-M-ACT EMPTY MP	1		
21	RPR-FRICTION PAD	1	019N00742	
22	RUBBER-PICK UP_MP	1		
23	SPRING-ETC-EXIT ROLL FD	2		
24	RPR-PAD CASSETTE	1		
25	SPRING-ES	2		
26	SHEET GUIDE PAPER R2	1		
27	SHAFT-P-CORE	2		
28	SHEET GUIDE MP	1		
29	SPRING-CS	1		
30	SPRING-ES	1		
31	PHOTO INTERRUPTER	1		

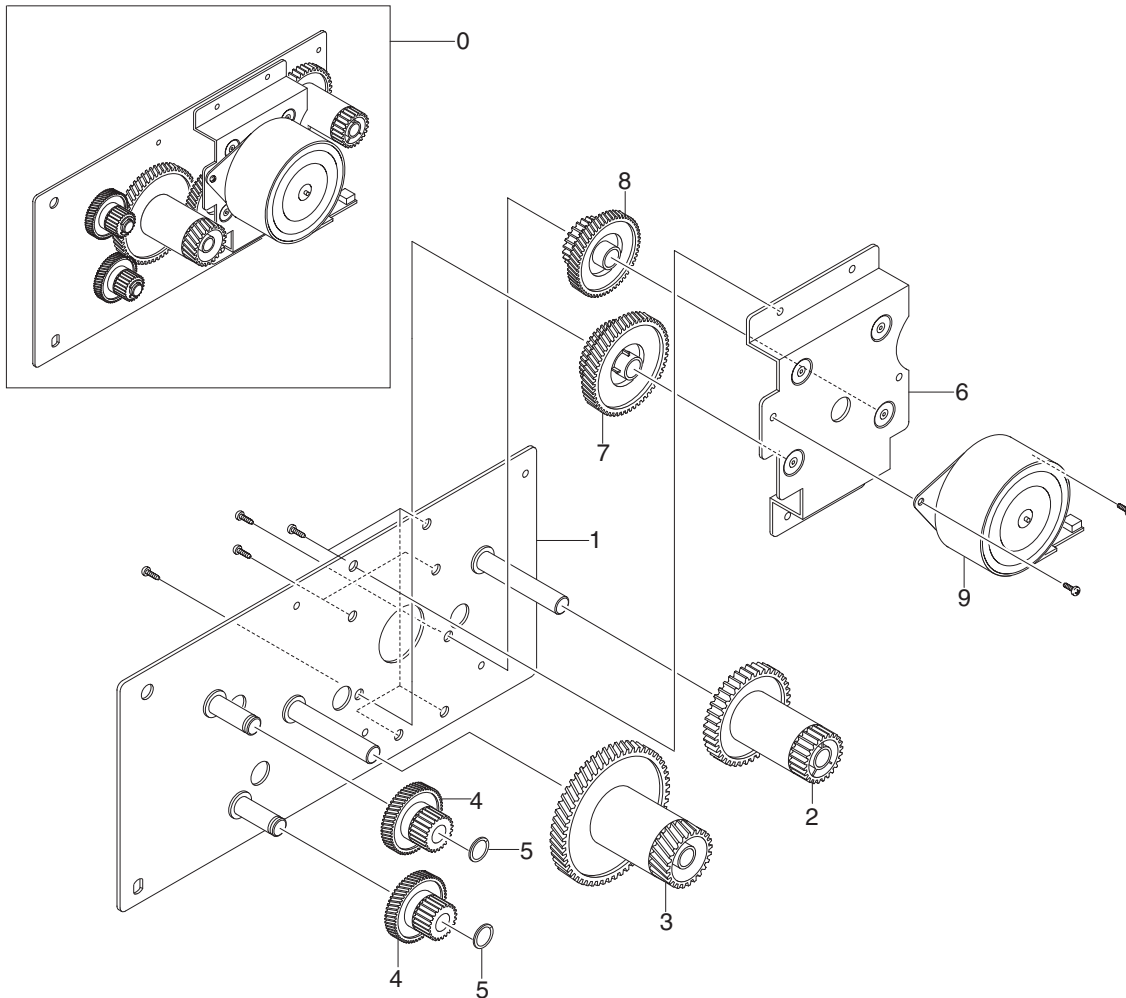
8.4 Fuser Unit Assembly



Fuser Assembly Parts List 8.4

No.	Part Name and (part description)	Qty	Part number	Remark
0	ELA HOU-FUSER 110V	1	126N00229	110V
0	ELA HOU-FUSER 220V	1	126N00230	220V
1	COVER-FUSER R2	1		
2	HOLDER-PLATE CLAW R2	4		
3	SPRING ETC-CLAW	4		
4	PMO-ROLLER_EXIT	2		
5	SPRING ETC-FUSER EXIT	2		
6	THERMOSTAT-150	1	130N01265	
7	PMO-GEAR_EXIT_DRV16	1		
8	GEAR-IDLE 23	1		
9	RING-E	1		
10	GEAR-RDCN 25/15	1		
11	ROLLER-HEATER	1		
12	ELECTRODE-LFET R2	1		
13	THERMISTOR-NTC	1	130N01266	
14	ELECTRODE-RIGHT R2	1		
15	CBF HARNESS-FUSER 110V	1		WHITE
	CBF HARNESS-FUSER 220V	1		BLACK
16	BUSH-HR R_R2	1		
17	LABEL(P)-CAUTION, HOT_FUSER	1		
18	RMO-RUBBER_EXIT	2		
19	ROLLER-M-EXIT F/UP	1		
20	ROLLER-PRESSURE	1		
21	BEARING-PRESSURE/R	2		
22	SPRING-CS	2		
23	PMO-BUSHING TX	3		
24	HOLDER-ACTUATOR	1		
25	PMO-ACTUATOR EXIT R2	1		
26	FRAME-FUSER R2	1		
27	GUIDE-INPUT R2	1		
28	SPRING-TS	1		
29	NUT-HEXAGON	5		
30	BUSH-HR L_R2	1		
31	PLATE-P-CLAW	4		
32	GEAR-FUSER R2	1		
33	LAMP-HALOGEN 110V	1	122N00231	110V
	LAMP-HALOGEN 220V	1	122N00229	220V
34	LABEL(R)-HV FUSER	1		
35	SCREW-TAPTIEE	1		
36	SCREW-ASS'Y MACH	6		
37	SCREW-TAPTIEE	6		
38	BRUSH-ANTISTAIC	1		

8.5 Main Drive Unit Assembly



Main Drive Unit Assembly Parts List 8.5

No.	Part Name and (part description)	Qty	Part number	Remark
0	ELA UNIT- DRIVE	1	007N01270	
1	BRACKET-GEAR MAIN	X		
2	GEAR-RDCN 53/26	1		
3	GEAR-RDCN 113/33	1		
4	GEAR-RDCN 57/18	2		
5	WASHER-PLAIN	2		
6	BRACKET-MOTOR MAIN	1		
7	GEAR-RDCN	1		
8	GEAR-RDCN	1		
9	MOTOR STEP-HUMMINGBIRD	1		

Tray 2 (Cassette) Unit Assembly Parts List 8.6

No.	Part Name and (part description)	Qty	Part number	Remark
0	MEA UNIT-CASSETTE, USA	1	109R00749	
1	FRAME-M-CASSETTE	1		
2	GUIDE-M-EXTENSION LARGE	1		
3	GUIDE-EXTENSION SMALL	1		
4	PLATE-P-KNOCK_UP	1		
5	SPRING-CS	2		
6	MEA UNIT-HOLDER PAD	1		
6-1	HOLDER-M-PAD	1		
6-2	SHEET-HOLDER PAD R2	1		
6-3	RPR-FRICTION PAD	1	019N00742	
6-4	IPR-PLATE PAD	1		
7	SPRING ETC-EXIT ROLL FD	1		
8	COVER-SUB CASSETTE R2	1		
9	INDICATOR-M-CST PAPER	1		
10	PMO-PLATE_LOCKER	1		
11	SPRING ETC-LOCKER,PLATE	1		
12	ADJUST-M-CASSETTE_L	1		
13	ADJUST-M-CASSETTE_R	1		
14	GEAR-PINION	1		
15	RPR-PAD CASSETTE	1		
16	CAM-KNOCK UP	1		

Tray 3 (SCF - Optional Cassette) Assembly Parts List 8.7

No.	Part Name and (part description)	Qty	Part number	Remark
0	ELA HOU-SCF H2	1	097N01439	
1	COVER-M-FRONT SCF H2	1		
1-1	SPRING-ES	2		
1-2	ROLLER-IDLE FEED	2		
2	COVER-M-LEFT SCF H2	1		
3	COVER-M-RIGHT SCF H2	1		
4	COVER-M-REAR SCF H2	1		
5	FRAME-M-SCF	1		
6	HOUSING-M-PICKUP _R2	1		
7	HOUSING-M-PICKUP2 _R2	1		
8	SPONGE-ROLLER PICK_UP	1		
9	SHAFT-P-CORE	2		
10	STOPPER-M-PICK_UP_R2	2		
11	BUSHING-PICK_UP L	1		
12	BUSHING-PICK_UP R	1		
13	SHAFT-P-PICK_UP	1		
14	PMO-IDLE PICK_UP	2		
15	ROLLER-FEED	1		
16	PMO-BUSHING FEED	2		
17	PMO-GEAR PICK_UP A	1		
18	PMO-GEAR PICK_UP B	1		
19	SPRING-CS	1		
20	RING-CS	1		
21	CAM-M-PICK_UP	1		
22	SHAFT-FEED	1		
23	GEAR-FEED 2	1		
24	SPRING-TS	1		
25	PCB-SENSOR	1		
26	PBASUB-SCF	1		
27	CBF HARNESS-SCF GND	2		
28	CBF HARNESS-SCF	1		
29	COVER-M-SIMM R2	1		
30	SHEET-COVER SENSOR	1		
31	PMO-ACTUATOR EMPTY	1		
32	IPR-GND TOP	1		
33	SOLENOID-HB (MANUAL)	1		
34	PMO-LOCKER CST	2		
35	FOOT-BACK	2		
36	FOOT-FRONT	2		
37	SCREW-ASS'Y TAPT	1		
38	SCREW-TAPTITE	4		
39	ELAHOU-MOTOR SCF	1		
39-1	BRKT-P-MOTOR SCF	1		
39-2	BRKT-P-GEAR SCF	1		
39-3	BRKT-M-FEED SCF	1		
39-4	GEAR 61/47 IDLE	1		
39-5	GEAR 59 IDLE	1		

No.	Part Name and (part description)	Qty	Part number	Remark
39-6	GEAR 35 IDLE	1		
39-7	GEAR-RDCN 57/18	1		
39-8	GEAR-IDLE 23	1		
39-9	MOTOR STEP(SCF)	1		
39-10	SCREW-MACHINE	5		
39-11	CORE-FERRITE	1		
39-12	CABLE TIE	1		
40	BUSH CABLE	1		
41	SCREW-TAPTITE	14		
42	GUIDE-M-KNOCKUP	1		
43	MEA UNIT-CASSETTE	1	109R00749	

Xerox Options and Accessories

Part Name and (part description)	Qty	Part number	Remark
POWER CORD, 110 V	1	117N01602	
USB CABLE	1	117N01313	
DCU Tool	1	600T80340	
OPTIONAL TRAY 3	1	097N01439	
MEMORY	1		
32 MB		097N01434	
64 MB		097N01435	
128 MB		097N01436	
NETWORK CARD	1	097N01438	
POSTSCRIPT OPTION	1	097N01437	