
4 Parts and diagrams

- [Order parts by authorized service providers](#)
- [How to use the parts lists and diagrams](#)
- [Assembly locations](#)
- [Covers](#)
- [Internal assemblies \(1 of 6\)](#)
- [Internal assemblies \(2 of 6\)](#)
- [Internal assemblies \(3 of 6\)](#)
- [Internal assemblies \(4 of 6\)](#)
- [Internal assemblies \(5 of 6\)](#)
- [Internal assemblies \(6 of 6\)](#)
- [Input devices](#)
- [Alphabetical parts list](#)
- [Numerical parts list](#)

Order parts by authorized service providers

Order parts, accessories, and supplies

Table 4-1 Order parts, accessories, and supplies

Order supplies and paper	www.hp.com/go/suresupply
Order genuine HP parts or accessories	www.hp.com/buy/parts
Order through service or support providers	Contact an HP-authorized service or support provider.
Order using HP software	For information about using the HP software to order parts, accessories, and supplies, see the product user guide.

Related documentation and software

Table 4-2 Related documentation and software

Item	Description	Part number
<i>HP LaserJet P3010 Series Printers User Guide</i>	Product user guide.	CE524-90910
<i>HP LaserJet P3010 Series Printers Service Manual</i>	English service manual (this manual)	CE544-90909

Supplies part numbers

Table 4-3 Supplies part numbers

Item	Description	Part number
HP LaserJet print cartridge	Standard-capacity cartridge	CE255A (new)
		CE225-67901 (service)
	High-capacity cartridge	CE255X (new)
		CE255-67902 (service)

Accessories part numbers

Table 4-4 Accessories part numbers

Item	Description	Part number
144 x 32-pin DDR2 memory DIMM (dual inline memory module)	64 MB	CC413A (new) CE524-67901 (kit) NOTE: The kit includes the DIMM and installation instructions.
	128 MB	CC414A (new) CE524-67902 (kit) NOTE: The kit includes the DIMM and installation instructions.
	256 MB	CC415A (new) CE524-67903 (kit) NOTE: The kit includes the DIMM and installation instructions.
	512 MB	CE483A (new) CE524-67904 (kit) NOTE: The kit includes the DIMM and installation instructions.
Formatter PCA	Base product	CE474-67901 (new) CE474-69001 (exchange)
	Network product	CE475-67901 (new) CE475-69001 (exchange)
HP Encrypted High Performance hard disk	Encrypted hard disk to install in the EIO accessory slot	J8019A (new) CE525-69003 (kit)
	63 mm (2.5 in)	NOTE: The kit includes the hard disk and installation instructions.
Optional 500-sheet tray and feeder unit	Optional tray to increase paper capacity.	CE530A (new)
	The product can accommodate up to two optional 500-sheet feeders.	CE530-69001 (service)

Table 4-4 Accessories part numbers (continued)

Item	Description	Part number	
Enhanced I/O (EIO) cards	HP High Performance Serial ATA EIO Hard Disk	J6073G	
HP Jetdirect print server multi-protocol EIO network cards	1284B parallel adaptor	J7972G	
	Jetdirect EIO wireless 690n (IPv6/IPsec)	J8007G	
	Jetdirect en3700	J7942G	
	Jetdirect en1700	J7988G	
	Jetdirect ew2400 USB wireless print server	J7951G	
	Jetdirect 630n EIO networking card (IPv6/gigabit)	J7997G	
	Jetdirect 635n EIO networking card (IPv6/IPsec)	J7961G	
Service maintenance kit	Maintenance kit includes the following items:	110V: CE525-67901 220V: CE525-67902	
	<ul style="list-style-type: none"> ● Fuser for the appropriate voltage rating ● Transfer roller ● Tray 1 pickup roller ● Tray 1 separation pad ● Tray 2 pickup roller ● Tray 2 separation pad 		
	USB cable	2-meter A-to-B cable	C6518A

Whole-unit replacement part numbers

Table 4-5 Whole-unit replacement part numbers

Item	Description	Part number
HP LaserJet P3015	110V	CE525-69001
	220V	CE525-69002
HP LaserJet P3015d	110V	CE526-69001
	220V	CE526-69002
HP LaserJet P3015dn	110V	CE528-69001
	220V	CE528-69002
HP LaserJet P3015x	110V	CE529-69001
	220V	CE529-69002

How to use the parts lists and diagrams

△ **CAUTION:** Be sure to order the correct part. When looking for part numbers for electrical components, pay careful attention to the voltage that is listed. Doing so will make sure that the part number selected is for the correct model.

📄 **NOTE:** In this manual, the abbreviation “PCA” stands for “printed circuit-board assembly.” Components described as a PCA might consist of a single circuit board or a circuit board plus other parts, such as cables and sensors.

The figures in this chapter show the major subassemblies in the product and their component parts. A parts list table follows each exploded view assembly diagram. Each table lists the item number, the associated part number, and the description of each part. If a part is not listed in the table, then it is not a field replacement unit (FRU).

Assembly locations

Base product (no optional trays or accessories)

Figure 4-1 Base product (no optional trays or accessories)

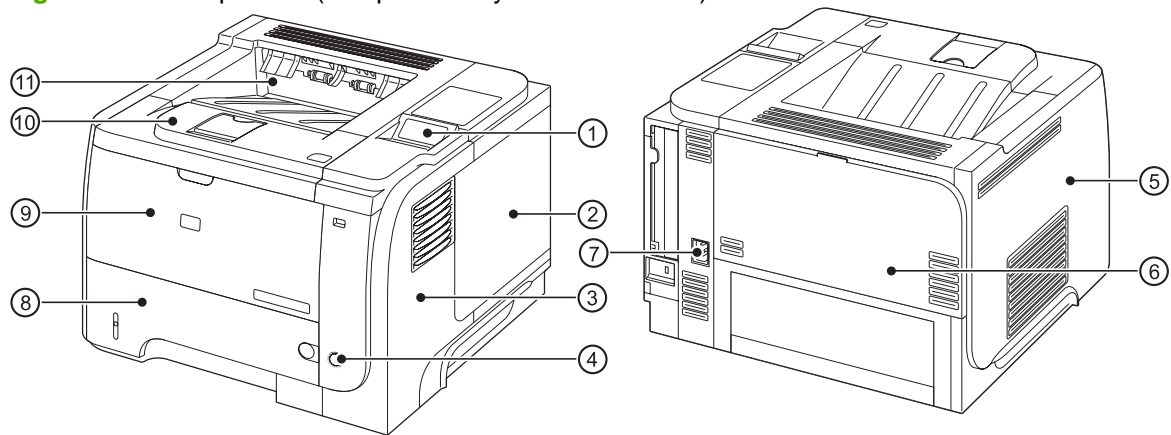


Table 4-6 Base product

Item	Description	Item	Description
1	Control panel	7	Power receptacle
2	DIMM cover	8	Tray 2 cassette
3	Front-right and right-side cover assembly	9	Tray 1 (multipurpose tray)
4	Power switch	10	Cartridge-door assembly (print-cartridge door)
5	Left cover	11	Output bin (face-down tray)
6	Rear-door assembly		

Base product (optional trays or accessories)

Figure 4-2 Base product (optional trays or accessories)

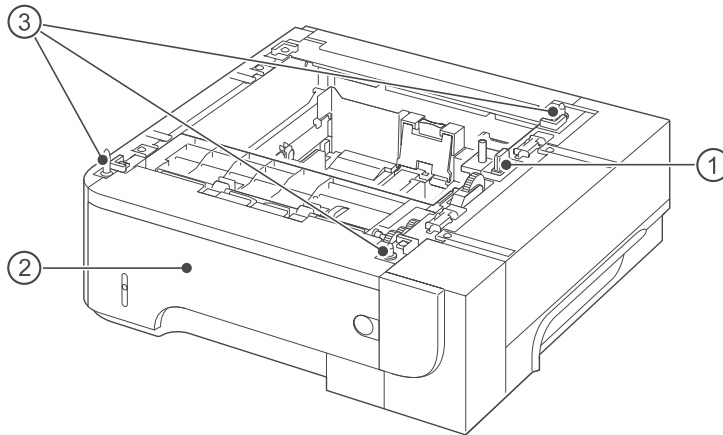


Table 4-7 Optional 500-sheet input tray

Item	Description
1	Connector
2	Tray 3 or Tray 4 cassette
3	Positioning pin

Covers

Figure 4-3 Covers

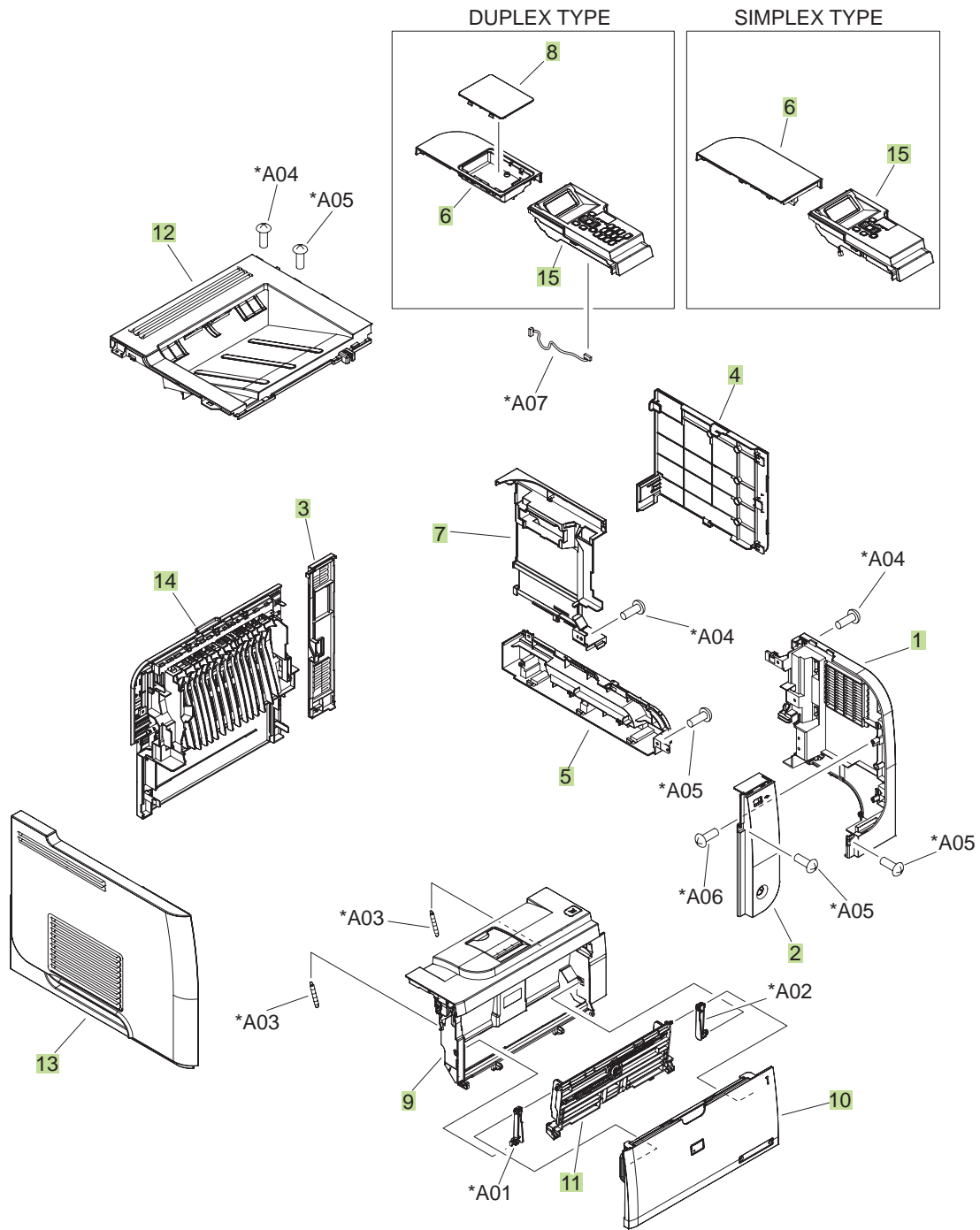


Table 4-8 Covers

Ref	Description	Part number	Qty
1	Cover, right	RC2-7670-000CN	1
2	Cover, right-front	RC2-7672-000CN	1
3	Cover, right-rear	RC2-7673-000CN	1
4	Cover, DIMM	RC2-7674-000CN	1
5	Cover, handle right	RC2-7675-000CN	1
6	Cover, upper-right (top-right); duplex models	RC2-7676-000CN	1
6	Cover, upper-right (top-right); simplex models	RC2-7707-000CN	1
7	Cover, formatter	RC2-7688-000CN	1
8	Cover, upper-right (top-right) sub; duplex models	RC2-7677-000CN	1
9	Cartridge-door assembly	RM1-6264-000CN	1
10	Cover, multipurpose assembly	RM1-6265-000CN	1
11	Multipurpose lifting plate assembly	RM1-6266-000CN	1
12	Cover, top assembly	RM1-6289-000CN	1
13	Cover, left	RM1-6291-000CN	1
14	Cover, rear assembly	RM1-6292-000CN	1
15	Control panel; duplex models	RM1-6518-000CN	1
15	Control panel; duplex models	RM1-6519-000CN	1

Internal assemblies (1 of 6)

Figure 4-4 Internal assemblies (1 of 6)

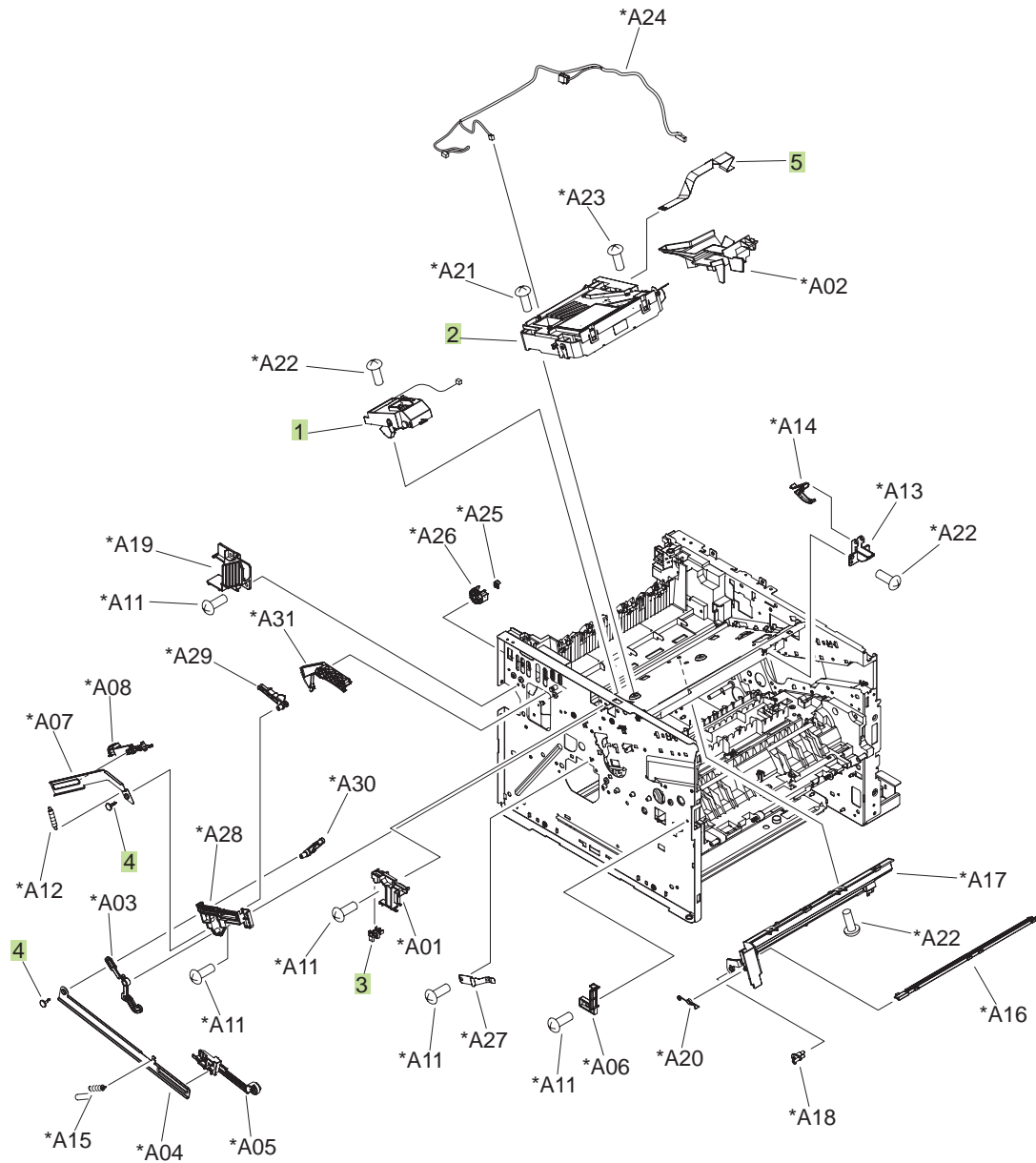


Table 4-9 Internal assemblies (1 of 6)

Ref	Description	Part number	Qty
1	Tag holder assembly	RM1-6284-000CN	1
2	Laser/scanner	RM1-6322-000CN	1
3	Photo interrupter, TLP1243	WG8-5696-000CN	1
4	Stopper, bushing arm	RC2-7933-000CN	2
5	Cable, flat	RK2-3103-000CN	1

Internal assemblies (2 of 6)

Figure 4-5 Internal assemblies (2 of 6)

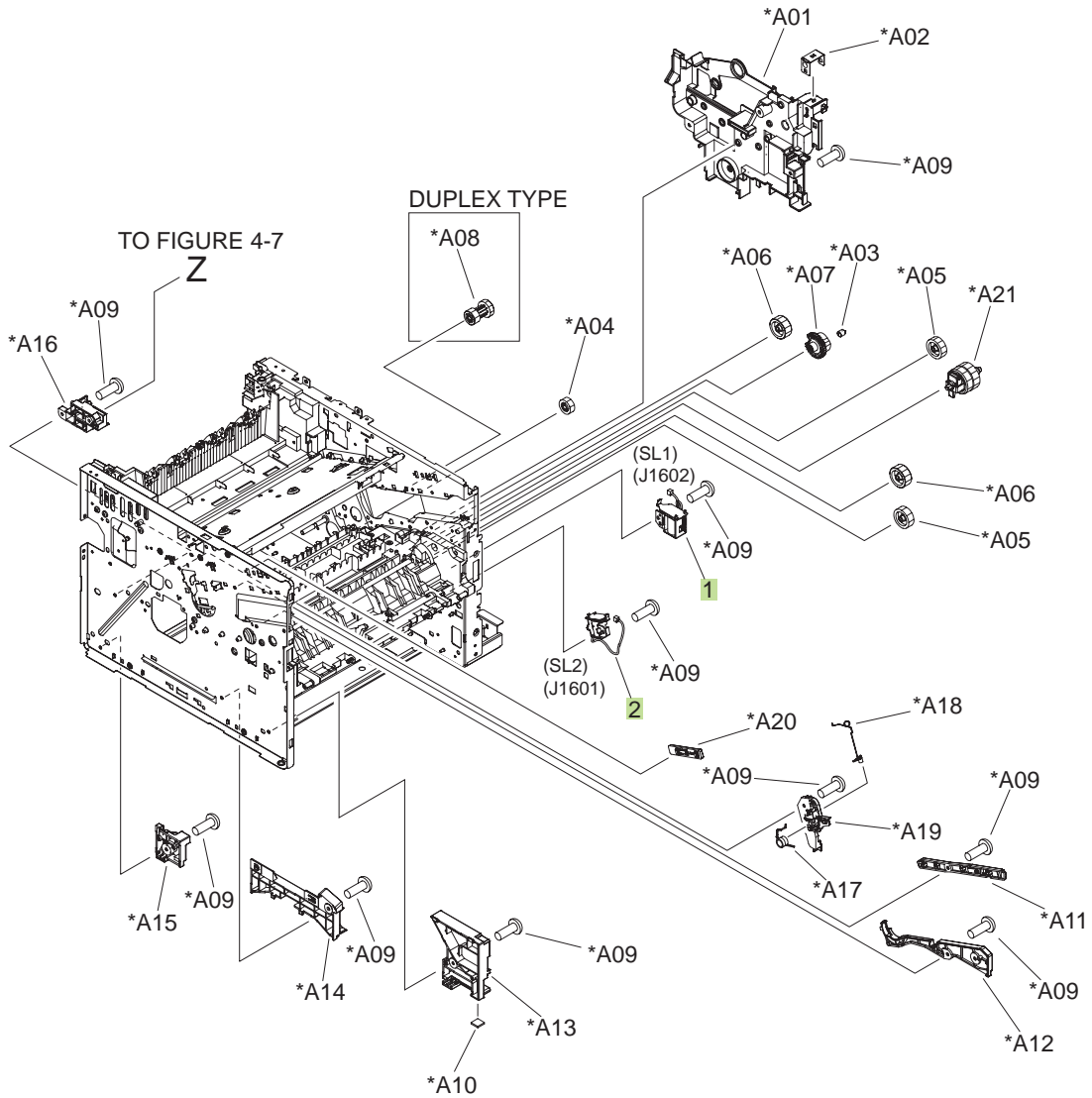


Table 4-10 Internal assemblies (2 of 6)

Ref	Description	Part number	Qty
1	Tray 1 solenoid	RK2-1490-000CN	1
2	Tray 2 solenoid	RK2-1492-000CN	1

Internal assemblies (3 of 6)

Figure 4-6 Internal assemblies (3 of 6)

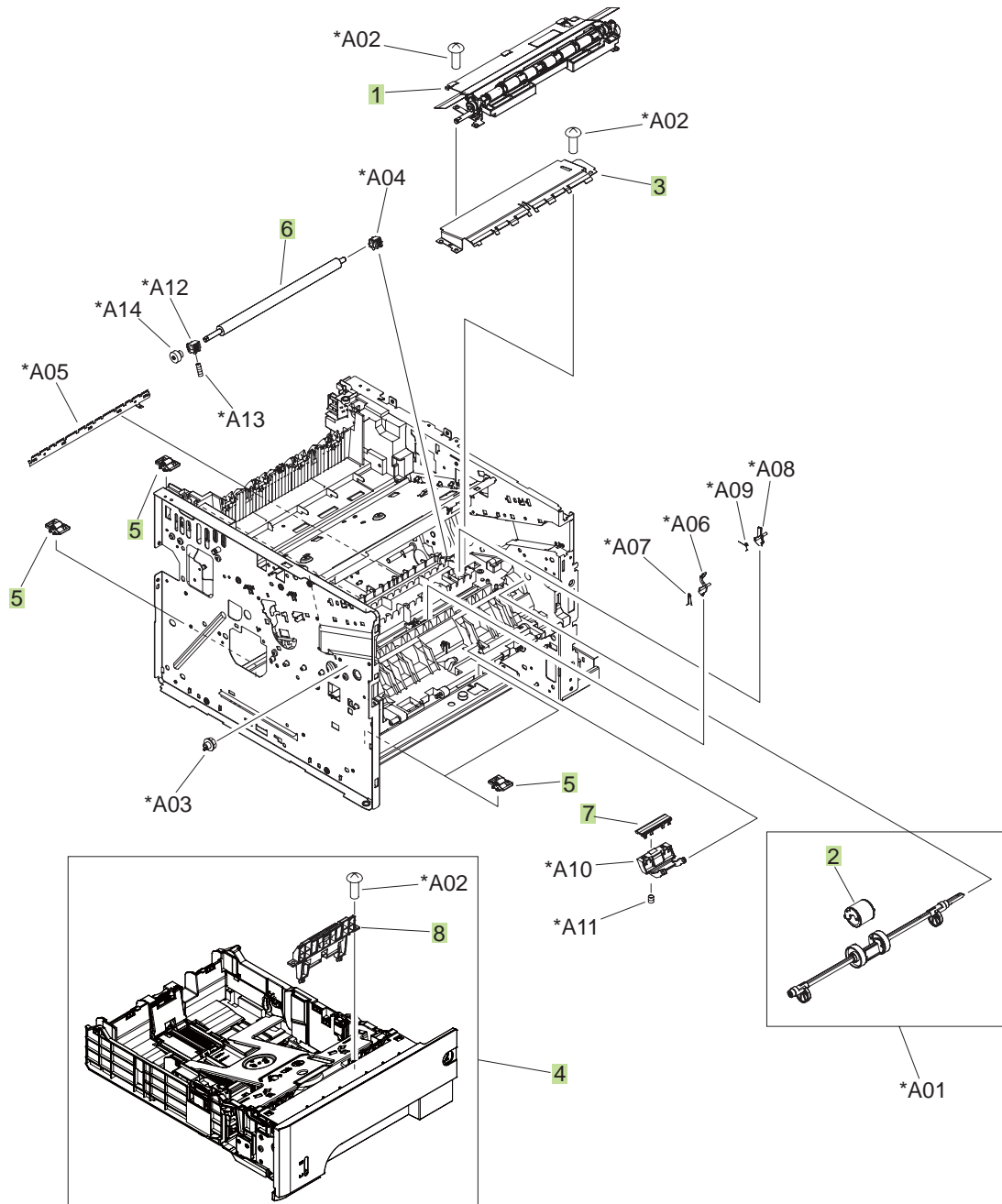


Table 4-11 Internal assemblies (3 of 6)

Ref	Description	Part number	Qty
1	Registration roller assembly	RM1-6272-000CN	1
2	Roller, multipurpose	RL1-2412-000CN	1
3	Transfer lower guide assembly	RM1-6315-000CN	1
4	Cassette	RM1-6279-000CN	1
5	Base plate roller assembly	RM1-6306-000CN	4
6	Roller, transfer	RM1-6321-000CN	1
7	Pad, multipurpose separation	RC2-8575-000CN	1
8	Separation holder assembly	RM1-6303-000CN	1

Internal assemblies (4 of 6)

Figure 4-7 Internal assemblies (4 of 6)

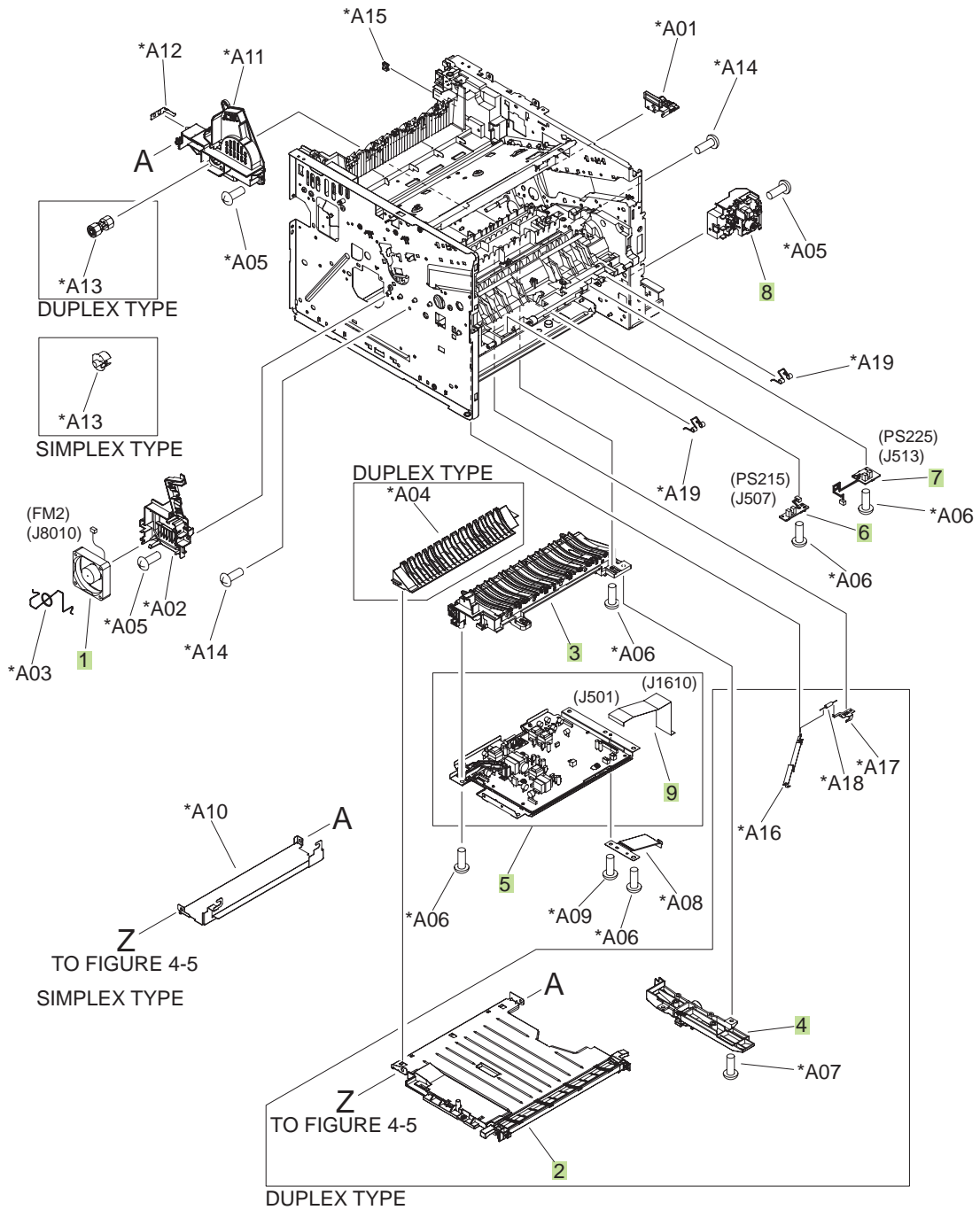


Table 4-12 Internal assemblies (4 of 6)

Ref	Description	Part number	Qty
1	Fan, sub	RK2-1499-000CN	1
2	Lower paper feed guide; duplex models	RM1-6263-000CN	1
3	Paper-feed guide assembly	RM1-6270-000CN	1
4	Position-guide assembly; duplex models	RM1-6273-000CN	1
5	High-voltage power supply; duplex models	RM1-6280-000CN	1
5	High-voltage power supply; simplex models	RM1-6300-000CN	1
6	TOP sensor PCA	RM1-6511-000CN	1
7	Paper width sensor PCA	RM1-6512-000CN	1
8	Switch assembly, power	RM1-6283-000CN	1
9	Cable, flat	RK2-3101-000CN	1

Internal assemblies (5 of 6)

Figure 4-8 Internal assemblies (5 of 6)

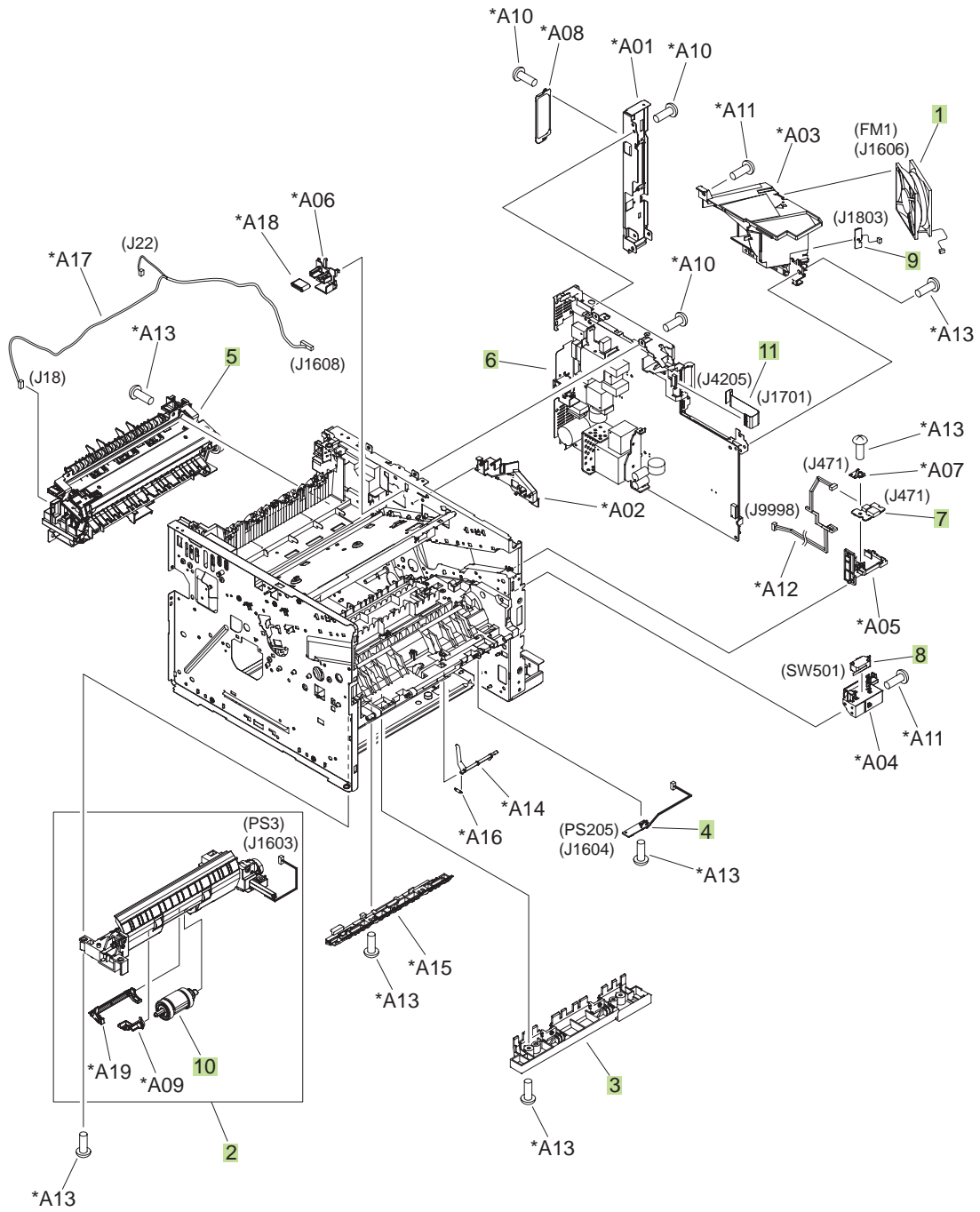


Table 4-13 Internal assemblies (5 of 6)

Ref	Description	Part number	Qty
1	Fan, main	RK2-1497-000CN	1
2	Cassette, paper pickup assembly; duplex models	RM1-6268-000CN	1
2	Cassette, paper pickup assembly; simplex models	RM1-6299-000CN	1
3	Idler roller assembly	RM1-6271-000CN	1
4	Multipurpose sensor PCA	RM1-6510-000CN	1
5	Fuser assembly 110V	RM1-6274-000CN	1
5	Fuser assembly 220V	RM1-6319-000CN	1
6	Engine controller PCA 110V	RM1-6281-000CN	1
6	Engine controller PCA 220V	RM1-6318-000CN	1
7	Front USB PCA	RM1-6514-000CN	1
8	Microswitch	WC4-5171-000CN	1
9	Environmental sensor assembly	RM1-6515-000CN	2
10	Cassette pickup roller	RM1-6313-000CN	1
11	Cable, flat	RK2-2788-000CN	1

Internal assemblies (6 of 6)

Figure 4-9 Internal assemblies (6 of 6)

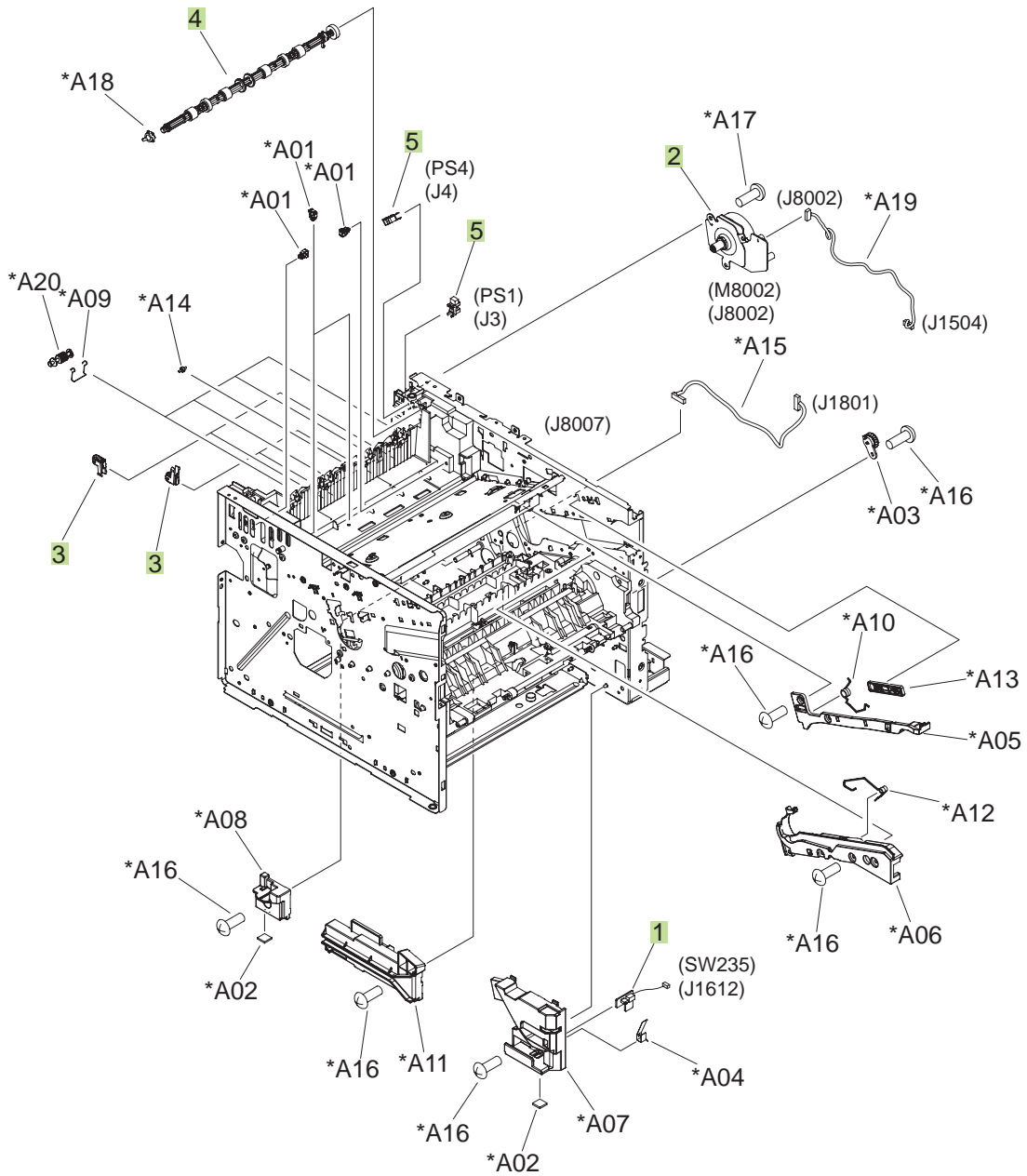


Table 4-14 Internal assemblies (6 of 6)

Ref	Description	Part number	Qty
1	Tray sensor PCA	RM1-6487-000CN	1
2	Fuser motor assembly	RM1-6296-000CN	1
3	Paper delivery roller assembly	RM1-6301-000CN	4
4	Face-down roller assembly	RM1-6311-000CN	1
5	Photo interrupter, TLP1243	WG8-5696-000CN	2

Input devices

500-sheet input tray (Tray 3 and Tray 4)

Figure 4-10 500-sheet input tray (Tray 3 and Tray 4)

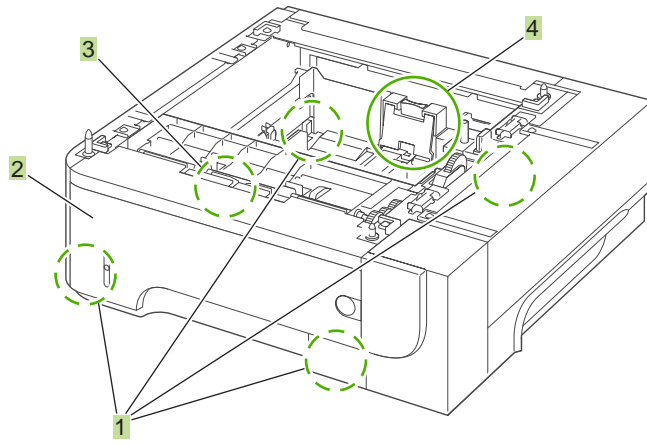


Table 4-15 500-sheet input tray (Tray 3 and Tray 4)

Ref	Description	Part number	Qty
	Optional 500-sheet tray and feeder unit	CE530-69001	1
1	Base plate roller assembly	RM1-6306-000CN	4
2	Cassette	RM1-6279-000CN	1
3	Pickup roller set, cassette	RM1-6313-000CN	1
4	Separation holder assembly	RM1-6303-000CN	1

Alphabetical parts list

Table 4-16 Alphabetical parts list

Description	Part number	Table and page
Base plate roller assembly	RM1-6306-000CN	Internal assemblies (3 of 6) on page 281
Base plate roller assembly	RM1-6306-000CN	500-sheet input tray (Tray 3 and Tray 4) on page 289
Cable, flat	RK2-3103-000CN	Internal assemblies (1 of 6) on page 277
Cable, flat	RK2-3101-000CN	Internal assemblies (4 of 6) on page 283
Cable, flat	RK2-2788-000CN	Internal assemblies (5 of 6) on page 285
Cartridge-door assembly	RM1-6264-000CN	Covers on page 275
Cassette	RM1-6279-000CN	Internal assemblies (3 of 6) on page 281
Cassette	RM1-6279-000CN	500-sheet input tray (Tray 3 and Tray 4) on page 289
Cassette pickup roller	RM1-6313-000CN	Internal assemblies (5 of 6) on page 285
Cassette, paper pickup assembly; duplex models	RM1-6268-000CN	Internal assemblies (5 of 6) on page 285
Cassette, paper pickup assembly; simplex models	RM1-6299-000CN	Internal assemblies (5 of 6) on page 285
Control panel; duplex models	RM1-6518-000CN	Covers on page 275
Control panel; duplex models	RM1-6519-000CN	Covers on page 275
Cover, DIMM	RC2-7674-000CN	Covers on page 275
Cover, formatter	RC2-7688-000CN	Covers on page 275
Cover, handle right	RC2-7675-000CN	Covers on page 275
Cover, left	RM1-6291-000CN	Covers on page 275
Cover, multipurpose assembly	RM1-6265-000CN	Covers on page 275
Cover, rear assembly	RM1-6292-000CN	Covers on page 275
Cover, right	RC2-7670-000CN	Covers on page 275
Cover, right-front	RC2-7672-000CN	Covers on page 275
Cover, right-rear	RC2-7673-000CN	Covers on page 275
Cover, top assembly	RM1-6289-000CN	Covers on page 275
Cover, upper-right (top-right) sub; duplex models	RC2-7677-000CN	Covers on page 275
Cover, upper-right (top-right); duplex models	RC2-7676-000CN	Covers on page 275
Cover, upper-right (top-right); simplex models	RC2-7707-000CN	Covers on page 275

Table 4-16 Alphabetical parts list (continued)

Description	Part number	Table and page
Engine controller PCA 110V	RM1-6281-000CN	Internal assemblies (5 of 6) on page 285
Engine controller PCA 220V	RM1-6318-000CN	Internal assemblies (5 of 6) on page 285
Environmental sensor assembly	RM1-6515-000CN	Internal assemblies (5 of 6) on page 285
Face-down roller assembly	RM1-6311-000CN	Internal assemblies (6 of 6) on page 287
Fan, main	RK2-1497-000CN	Internal assemblies (5 of 6) on page 285
Fan, sub	RK2-1499-000CN	Internal assemblies (4 of 6) on page 283
Front USB PCA	RM1-6514-000CN	Internal assemblies (5 of 6) on page 285
Fuser assembly 110V	RM1-6274-000CN	Internal assemblies (5 of 6) on page 285
Fuser assembly 220V	RM1-6319-000CN	Internal assemblies (5 of 6) on page 285
Fuser motor assembly	RM1-6296-000CN	Internal assemblies (6 of 6) on page 287
High-voltage power supply; duplex models	RM1-6280-000CN	Internal assemblies (4 of 6) on page 283
High-voltage power supply; simplex models	RM1-6300-000CN	Internal assemblies (4 of 6) on page 283
Idler roller assembly	RM1-6271-000CN	Internal assemblies (5 of 6) on page 285
Laser/scanner	RM1-6322-000CN	Internal assemblies (1 of 6) on page 277
Lower paper feed guide; duplex models	RM1-6263-000CN	Internal assemblies (4 of 6) on page 283
Microswitch	WC4-5171-000CN	Internal assemblies (5 of 6) on page 285
Multipurpose lifting plate assembly	RM1-6266-000CN	Covers on page 275
Multipurpose sensor PCA	RM1-6510-000CN	Internal assemblies (5 of 6) on page 285
Optional 500-sheet tray and feeder unit	CE530-69001	500-sheet input tray (Tray 3 and Tray 4) on page 289
Pad, multipurpose separation	RC2-8575-000CN	Internal assemblies (3 of 6) on page 281
Paper delivery roller assembly	RM1-6301-000CN	Internal assemblies (6 of 6) on page 287
Paper width sensor PCA	RM1-6512-000CN	Internal assemblies (4 of 6) on page 283

Table 4-16 Alphabetical parts list (continued)

Description	Part number	Table and page
Paper-feed guide assembly	RM1-6270-000CN	Internal assemblies (4 of 6) on page 283
Photo interrupter, TLP1243	WG8-5696-000CN	Internal assemblies (1 of 6) on page 277
Photo interrupter, TLP1243	WG8-5696-000CN	Internal assemblies (6 of 6) on page 287
Pickup roller set, cassette	RM1-6313-000CN	500-sheet input tray (Tray 3 and Tray 4) on page 289
Position-guide assembly; duplex models	RM1-6273-000CN	Internal assemblies (4 of 6) on page 283
Registration roller assembly	RM1-6272-000CN	Internal assemblies (3 of 6) on page 281
Roller, multipurpose	RL1-2412-000CN	Internal assemblies (3 of 6) on page 281
Roller, transfer	RM1-6321-000CN	Internal assemblies (3 of 6) on page 281
Separation holder assembly	RM1-6303-000CN	Internal assemblies (3 of 6) on page 281
Separation holder assembly	RM1-6303-000CN	500-sheet input tray (Tray 3 and Tray 4) on page 289
Stopper, bushing arm	RC2-7933-000CN	Internal assemblies (1 of 6) on page 277
Switch assembly, power	RM1-6283-000CN	Internal assemblies (4 of 6) on page 283
Tag holder assembly	RM1-6284-000CN	Internal assemblies (1 of 6) on page 277
TOP sensor PCA	RM1-6511-000CN	Internal assemblies (4 of 6) on page 283
Transfer lower guide assembly	RM1-6315-000CN	Internal assemblies (3 of 6) on page 281
Tray sensor PCA	RM1-6487-000CN	Internal assemblies (6 of 6) on page 287
Tray 1 solenoid	RK2-1490-000CN	Internal assemblies (2 of 6) on page 279
Tray 2 solenoid	RK2-1492-000CN	Internal assemblies (2 of 6) on page 279

Numerical parts list

Table 4-17 Numerical parts list

Part number	Description	Table and page
CE530-69001	Optional 500-sheet tray and feeder unit	500-sheet input tray (Tray 3 and Tray 4) on page 289
RC2-7670-000CN	Cover, right	Covers on page 275
RC2-7672-000CN	Cover, right-front	Covers on page 275
RC2-7673-000CN	Cover, right-rear	Covers on page 275
RC2-7674-000CN	Cover, DIMM	Covers on page 275
RC2-7675-000CN	Cover, handle right	Covers on page 275
RC2-7676-000CN	Cover, upper-right (top-right); duplex models	Covers on page 275
RC2-7677-000CN	Cover, upper-right (top-right) sub; duplex models	Covers on page 275
RC2-7688-000CN	Cover, formatter	Covers on page 275
RC2-7707-000CN	Cover, upper-right (top-right); simplex models	Covers on page 275
RC2-7933-000CN	Stopper, bushing arm	Internal assemblies (1 of 6) on page 277
RC2-8575-000CN	Pad, multipurpose separation	Internal assemblies (3 of 6) on page 281
RK2-1490-000CN	Tray 1 solenoid	Internal assemblies (2 of 6) on page 279
RK2-1492-000CN	Tray 2 solenoid	Internal assemblies (2 of 6) on page 279
RK2-1497-000CN	Fan, main	Internal assemblies (5 of 6) on page 285
RK2-1499-000CN	Fan, sub	Internal assemblies (4 of 6) on page 283
RK2-2788-000CN	Cable, flat	Internal assemblies (5 of 6) on page 285
RK2-3101-000CN	Cable, flat	Internal assemblies (4 of 6) on page 283
RK2-3103-000CN	Cable, flat	Internal assemblies (1 of 6) on page 277
RL1-2412-000CN	Roller, multipurpose	Internal assemblies (3 of 6) on page 281
RM1-6263-000CN	Lower paper feed guide; duplex models	Internal assemblies (4 of 6) on page 283
RM1-6264-000CN	Cartridge-door assembly	Covers on page 275
RM1-6265-000CN	Cover, multipurpose assembly	Covers on page 275
RM1-6266-000CN	Multipurpose lifting plate assembly	Covers on page 275
RM1-6268-000CN	Cassette, paper pickup assembly; duplex models	Internal assemblies (5 of 6) on page 285

Table 4-17 Numerical parts list (continued)

Part number	Description	Table and page
RM1-6270-000CN	Paper-feed guide assembly	Internal assemblies (4 of 6) on page 283
RM1-6271-000CN	Idler roller assembly	Internal assemblies (5 of 6) on page 285
RM1-6272-000CN	Registration roller assembly	Internal assemblies (3 of 6) on page 281
RM1-6273-000CN	Position-guide assembly; duplex models	Internal assemblies (4 of 6) on page 283
RM1-6274-000CN	Fuser assembly 110V	Internal assemblies (5 of 6) on page 285
RM1-6279-000CN	Cassette	Internal assemblies (3 of 6) on page 281
RM1-6279-000CN	Cassette	500-sheet input tray (Tray 3 and Tray 4) on page 289
RM1-6280-000CN	High-voltage power supply; duplex models	Internal assemblies (4 of 6) on page 283
RM1-6281-000CN	Engine controller PCA 110V	Internal assemblies (5 of 6) on page 285
RM1-6283-000CN	Switch assembly, power	Internal assemblies (4 of 6) on page 283
RM1-6284-000CN	Tag holder assembly	Internal assemblies (1 of 6) on page 277
RM1-6289-000CN	Cover, top assembly	Covers on page 275
RM1-6291-000CN	Cover, left	Covers on page 275
RM1-6292-000CN	Cover, rear assembly	Covers on page 275
RM1-6296-000CN	Fuser motor assembly	Internal assemblies (6 of 6) on page 287
RM1-6299-000CN	Cassette, paper pickup assembly; simplex models	Internal assemblies (5 of 6) on page 285
RM1-6300-000CN	High-voltage power supply; simplex models	Internal assemblies (4 of 6) on page 283
RM1-6301-000CN	Paper delivery roller assembly	Internal assemblies (6 of 6) on page 287
RM1-6303-000CN	Separation holder assembly	Internal assemblies (3 of 6) on page 281
RM1-6303-000CN	Separation holder assembly	500-sheet input tray (Tray 3 and Tray 4) on page 289
RM1-6306-000CN	Base plate roller assembly	Internal assemblies (3 of 6) on page 281
RM1-6306-000CN	Base plate roller assembly	500-sheet input tray (Tray 3 and Tray 4) on page 289
RM1-6311-000CN	Face-down roller assembly	Internal assemblies (6 of 6) on page 287

Table 4-17 Numerical parts list (continued)

Part number	Description	Table and page
RM1-6313-000CN	Cassette pickup roller	Internal assemblies (5 of 6) on page 285
RM1-6313-000CN	Pickup roller set, cassette	500-sheet input tray (Tray 3 and Tray 4) on page 289
RM1-6315-000CN	Transfer lower guide assembly	Internal assemblies (3 of 6) on page 281
RM1-6318-000CN	Engine controller PCA 220V	Internal assemblies (5 of 6) on page 285
RM1-6319-000CN	Fuser assembly 220V	Internal assemblies (5 of 6) on page 285
RM1-6321-000CN	Roller, transfer	Internal assemblies (3 of 6) on page 281
RM1-6322-000CN	Laser/scanner	Internal assemblies (1 of 6) on page 277
RM1-6487-000CN	Tray sensor PCA	Internal assemblies (6 of 6) on page 287
RM1-6510-000CN	Multipurpose sensor PCA	Internal assemblies (5 of 6) on page 285
RM1-6511-000CN	TOP sensor PCA	Internal assemblies (4 of 6) on page 283
RM1-6512-000CN	Paper width sensor PCA	Internal assemblies (4 of 6) on page 283
RM1-6514-000CN	Front USB PCA	Internal assemblies (5 of 6) on page 285
RM1-6515-000CN	Environmental sensor assembly	Internal assemblies (5 of 6) on page 285
RM1-6518-000CN	Control panel; duplex models	Covers on page 275
RM1-6519-000CN	Control panel; duplex models	Covers on page 275
WC4-5171-000CN	Microswitch	Internal assemblies (5 of 6) on page 285
WG8-5696-000CN	Photo interrupter, TLP1243	Internal assemblies (1 of 6) on page 277
WG8-5696-000CN	Photo interrupter, TLP1243	Internal assemblies (6 of 6) on page 287

