

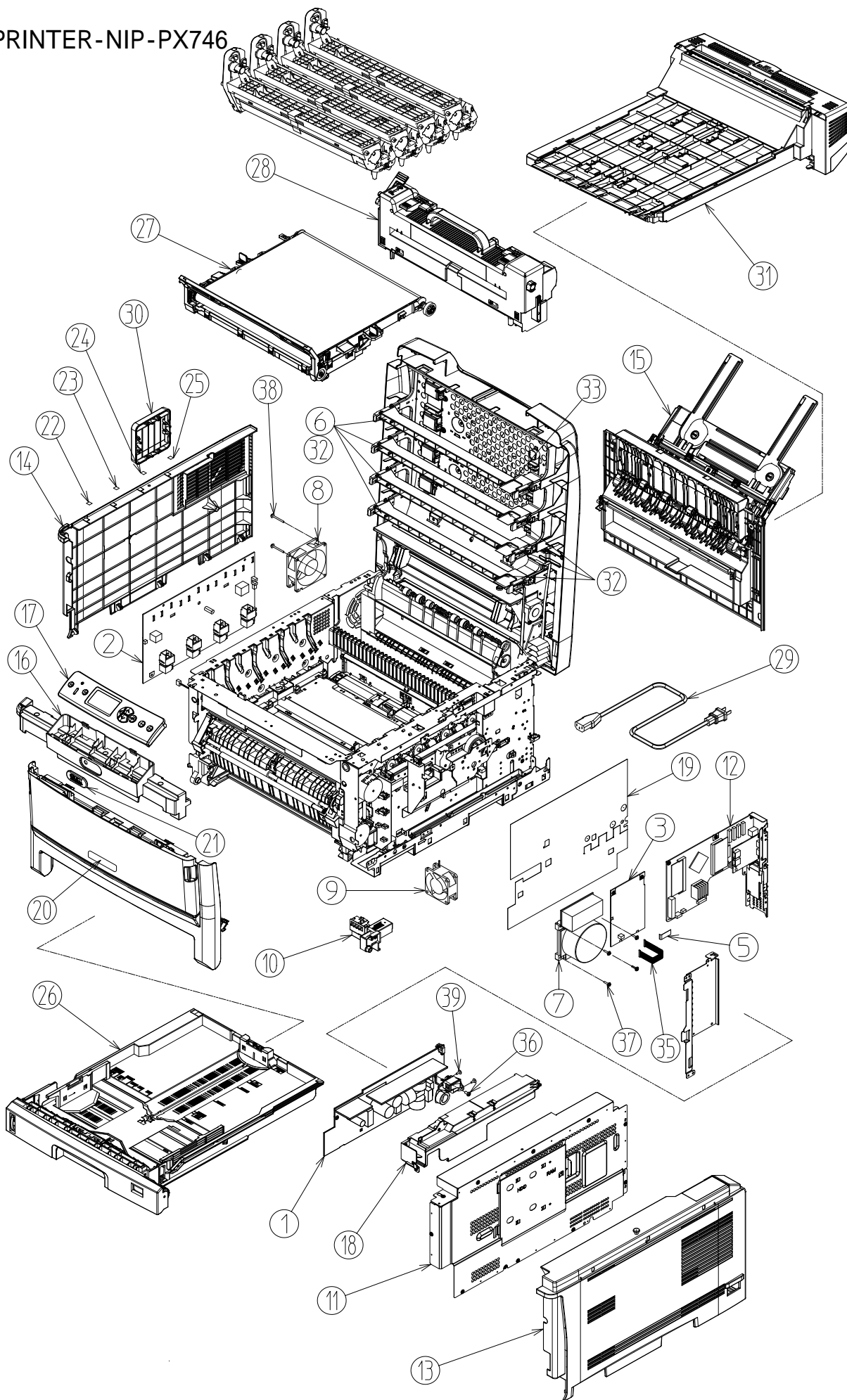
OEL Recommended Spare Parts List

C830

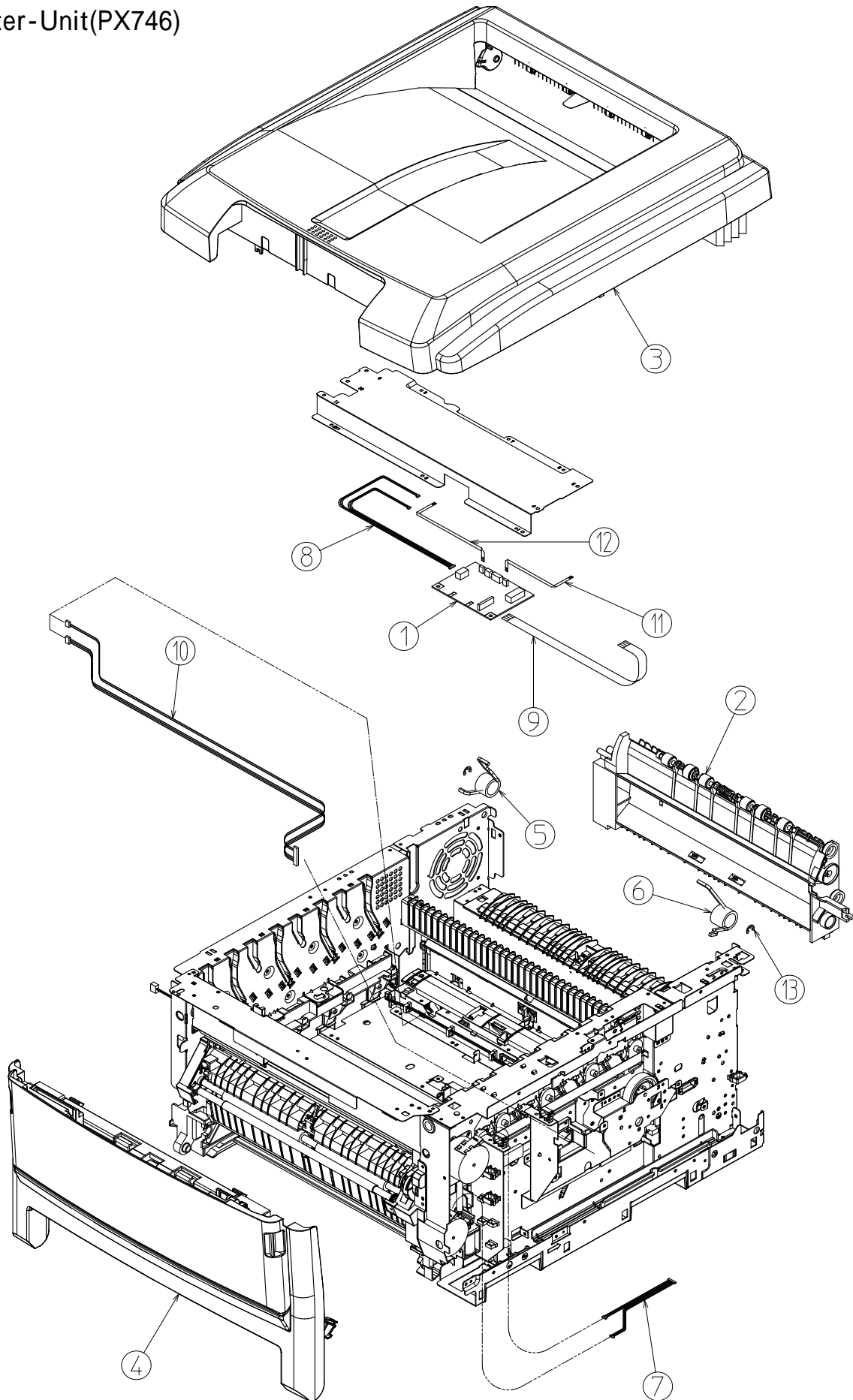


Revision 4

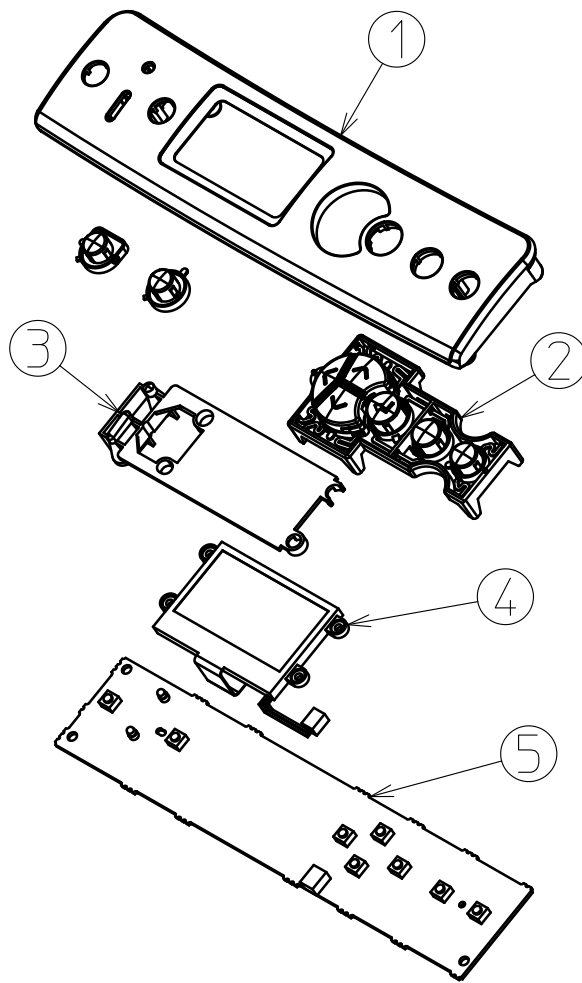
PRINTER-NIP-PX746



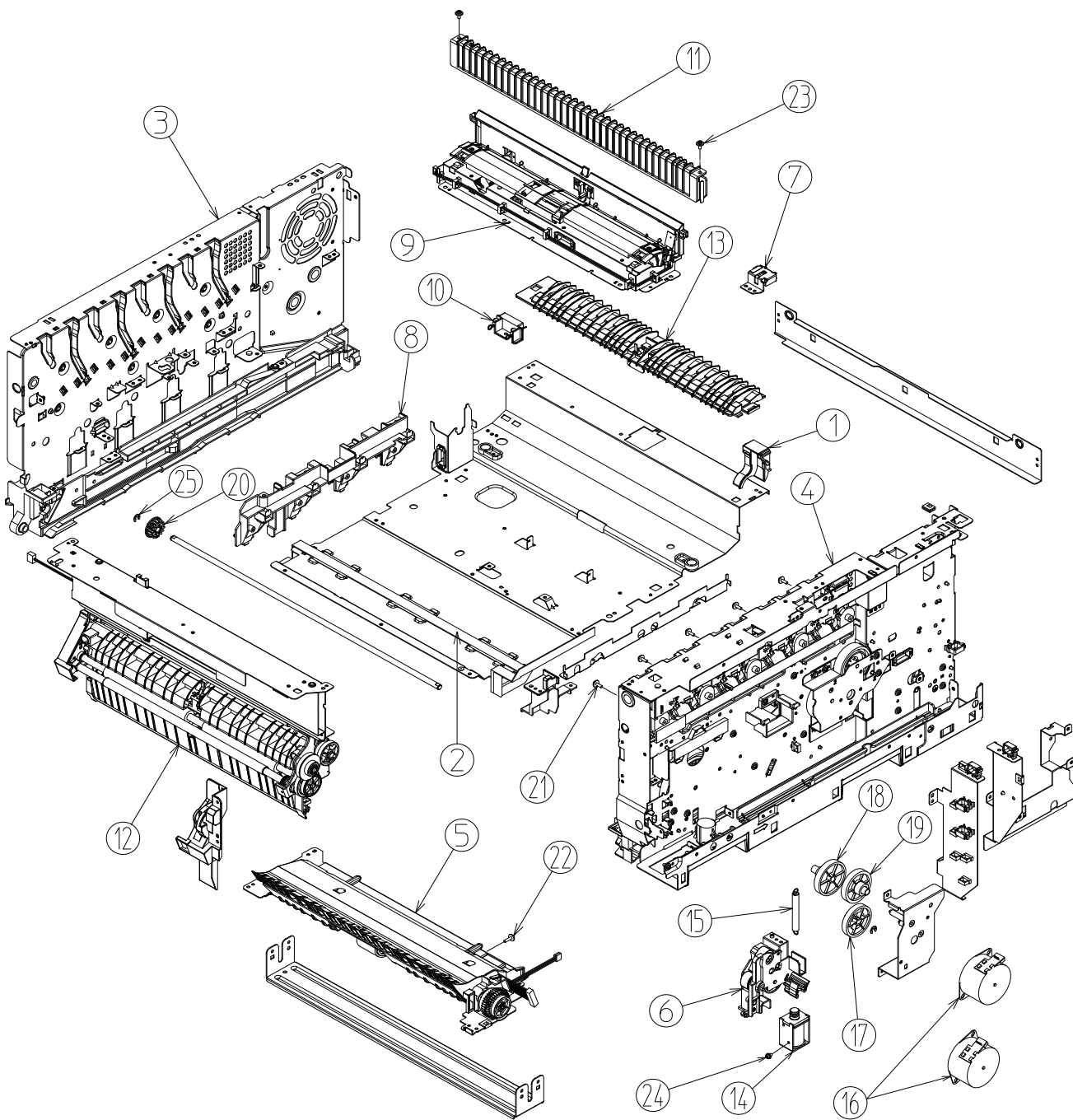
Printer-Unit(PX746)



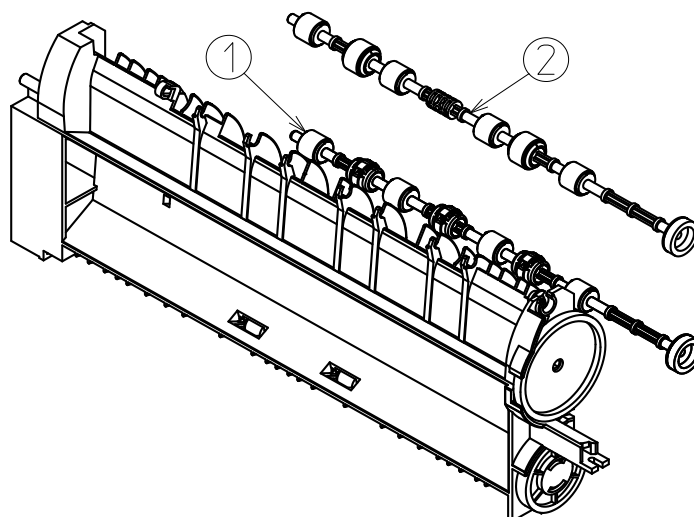
Cover - Assy - OP - Panel



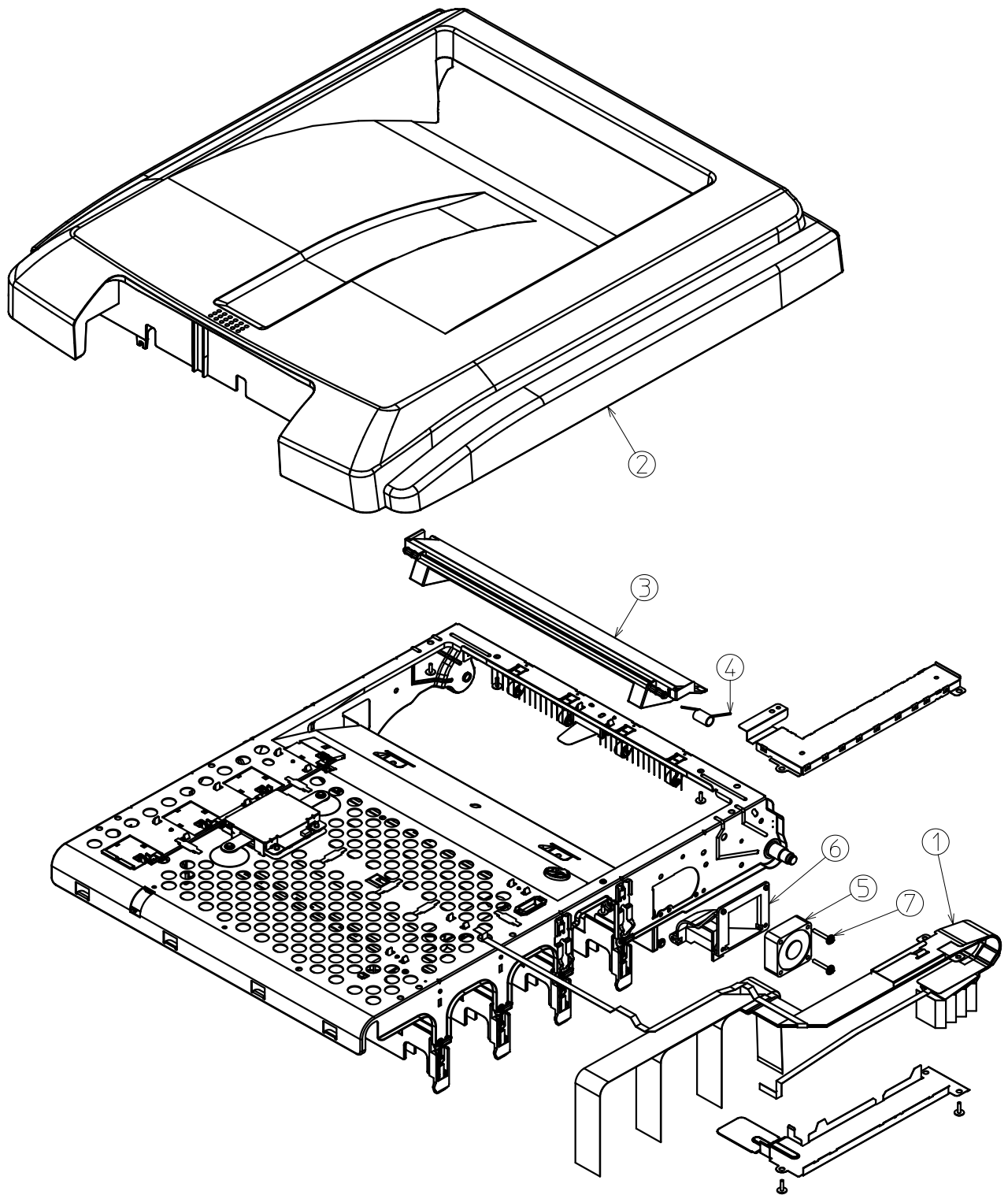
Frame-Assy



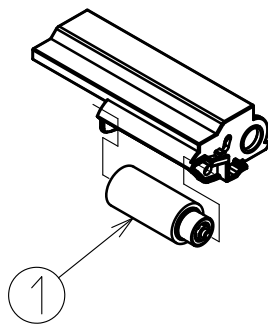
Guide-Eject-Assy-Upper



Cover - Assy - Top



Holder-Pickup-Assy



Cover-Front-Assy

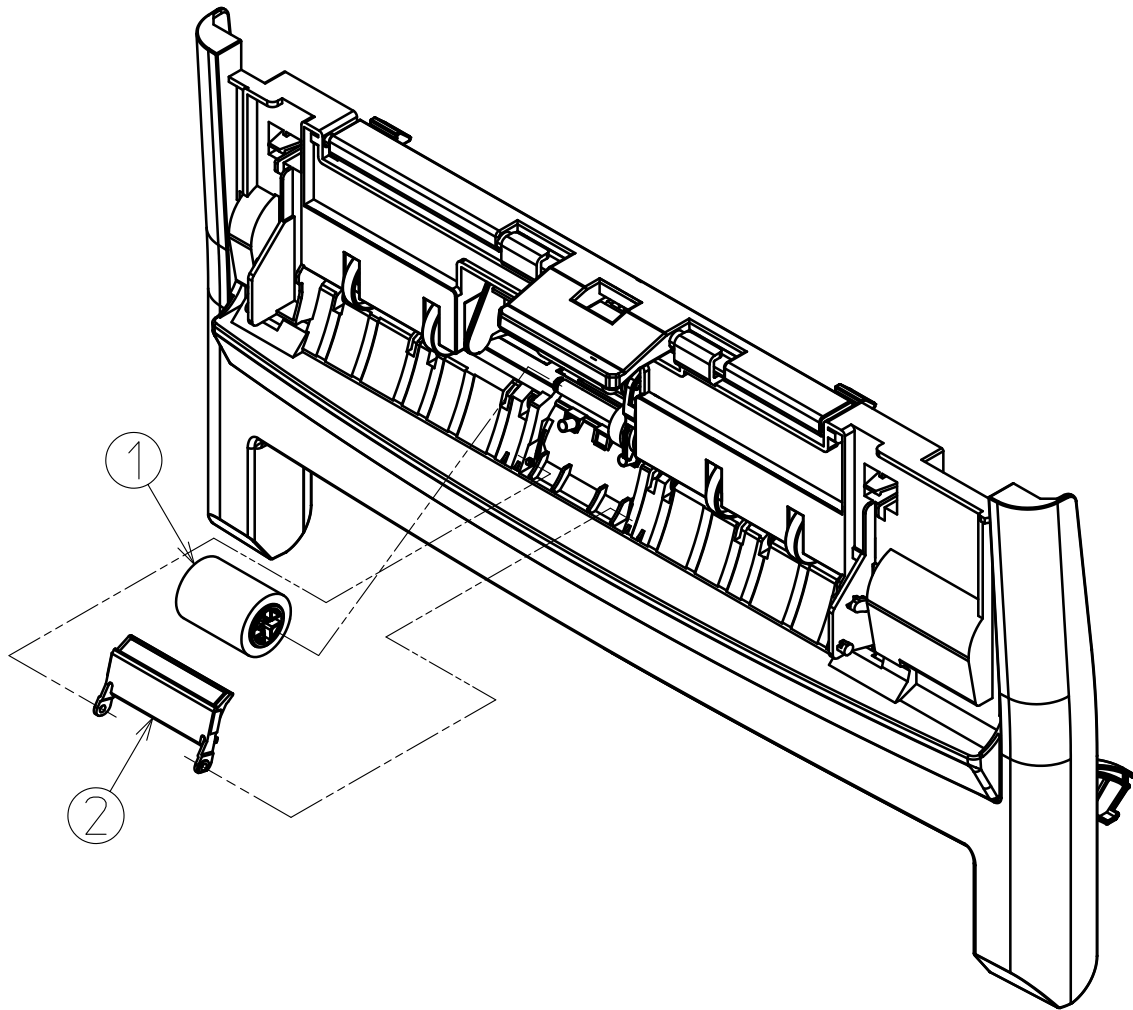


Plate-Side-R-Assy

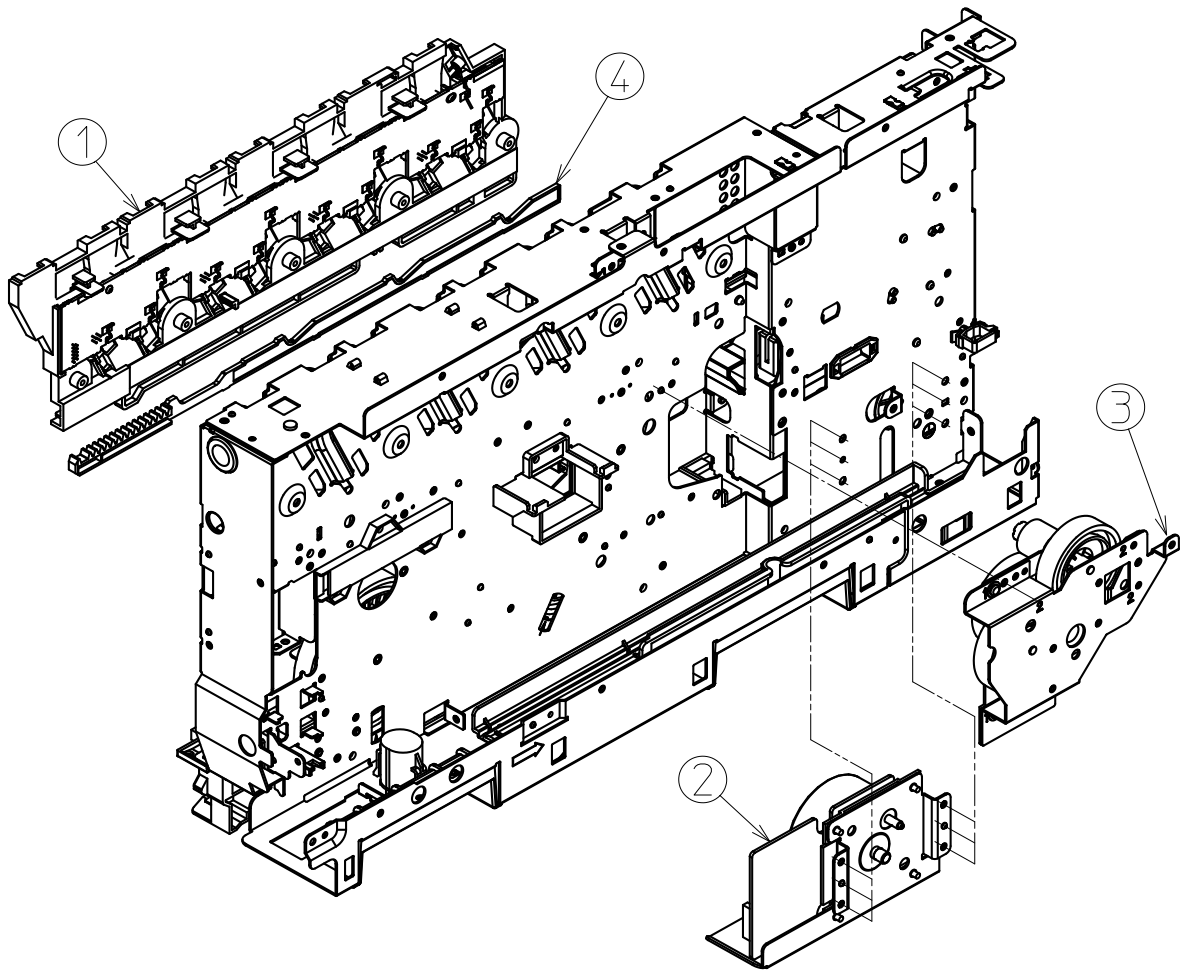
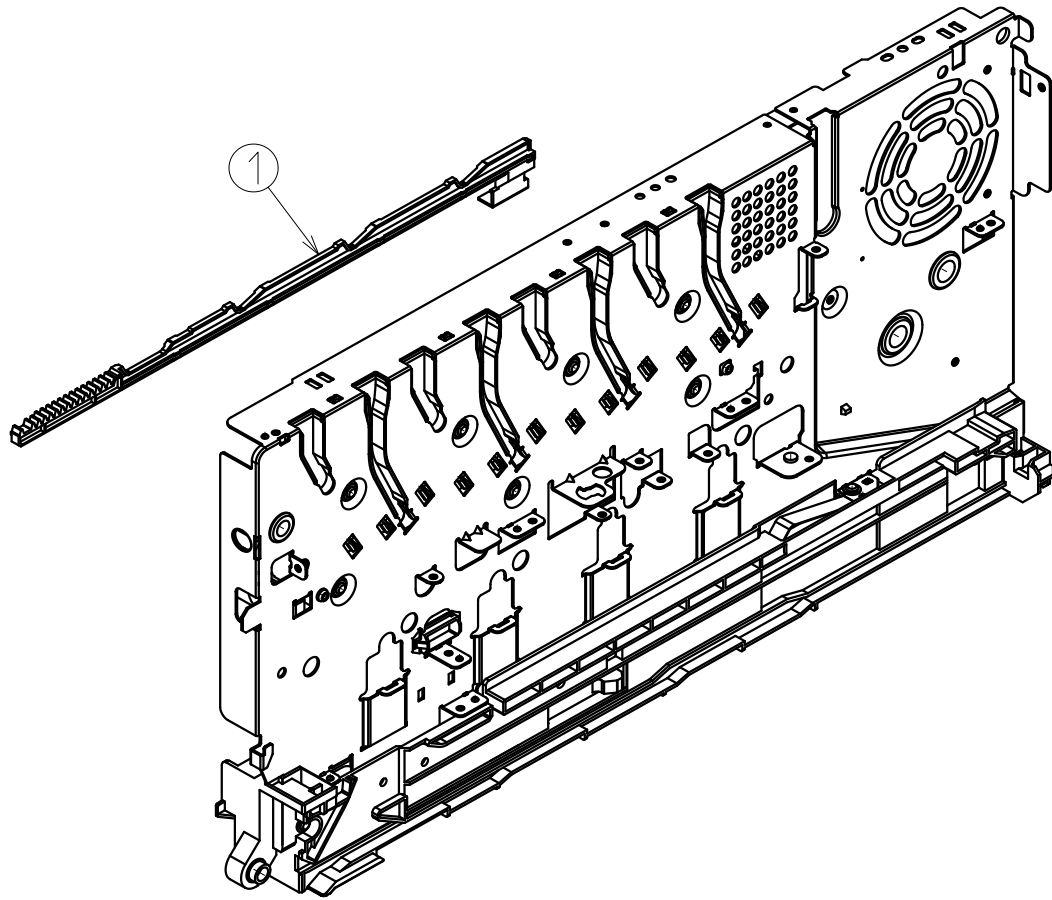
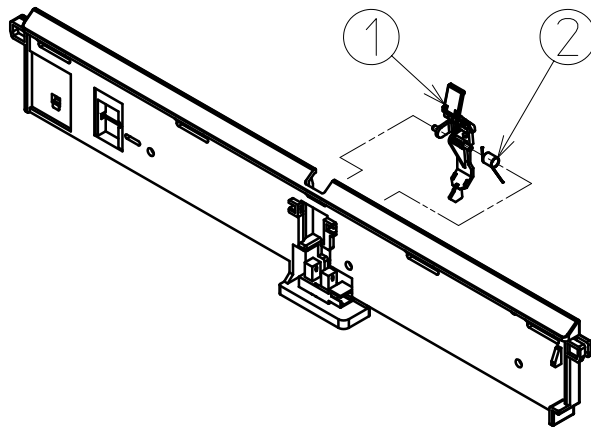


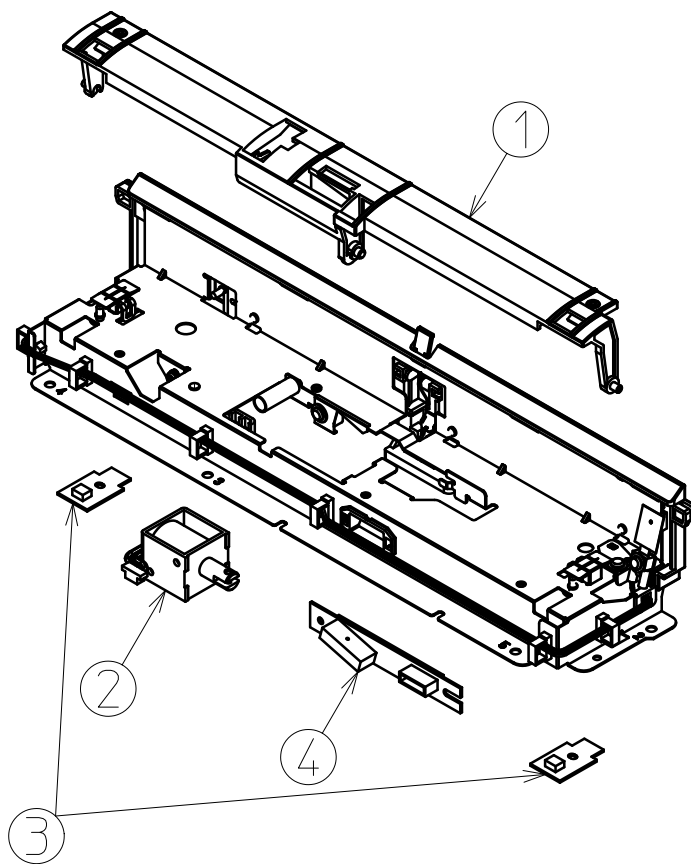
Plate-Side-L-Assy



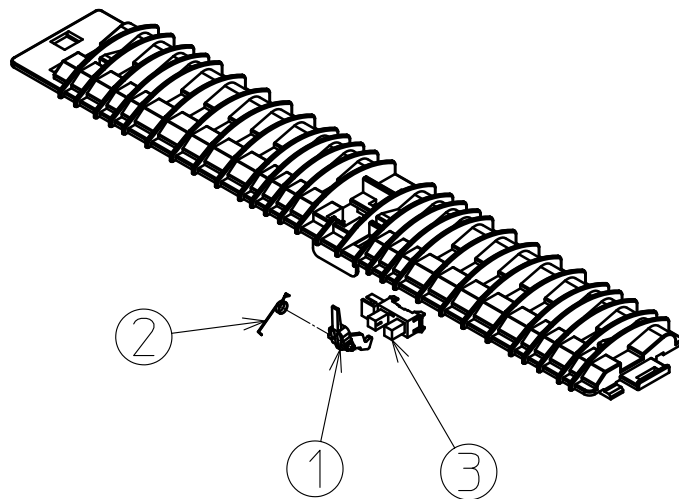
Sensor-Assy-Fuser-A



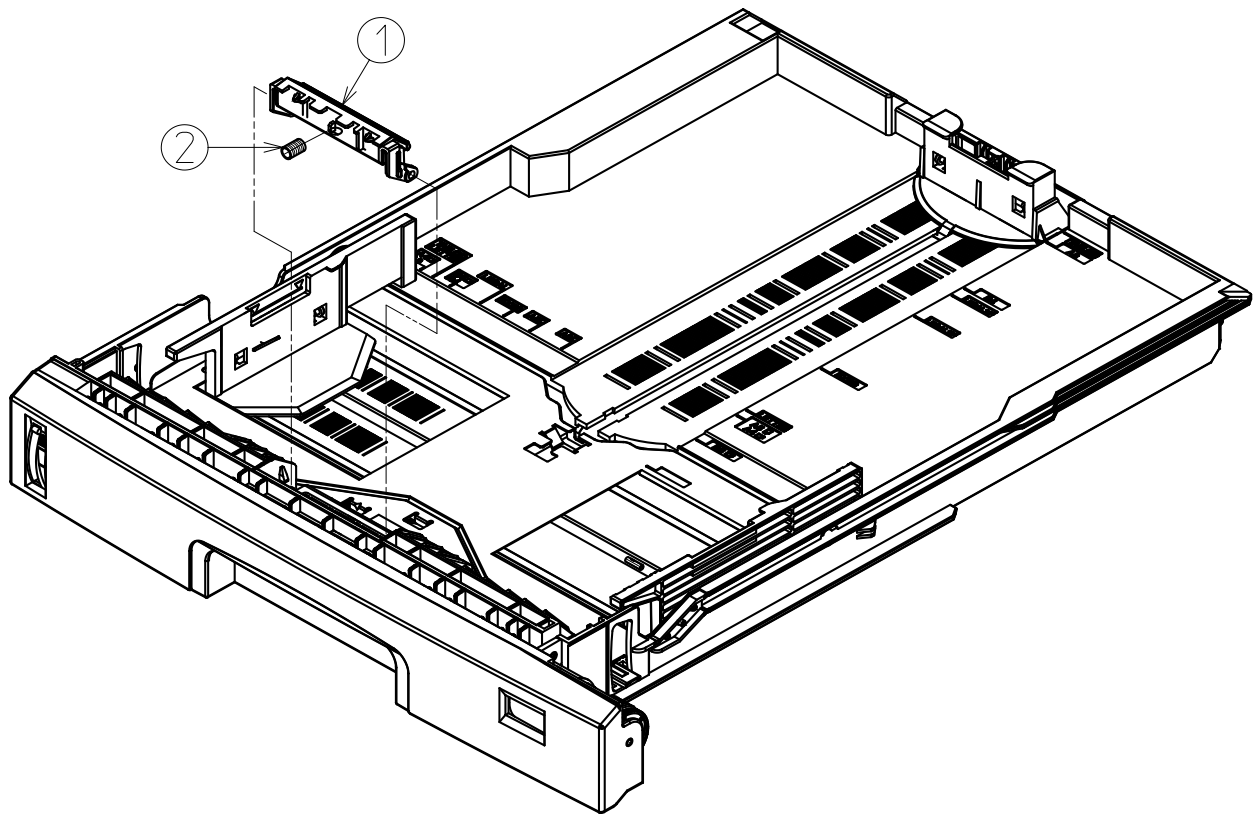
Sensor - Assy - Regist



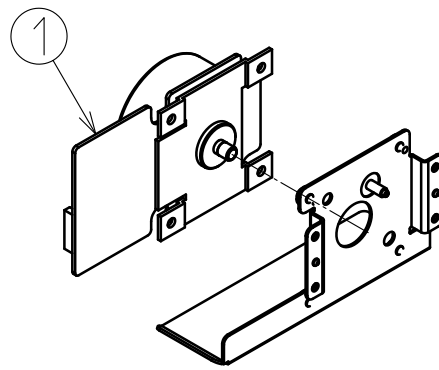
Guide-Eject-Assy-Lower



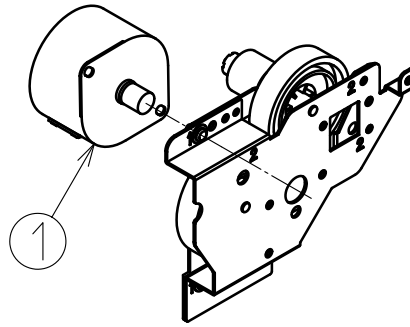
Cassette-Assy



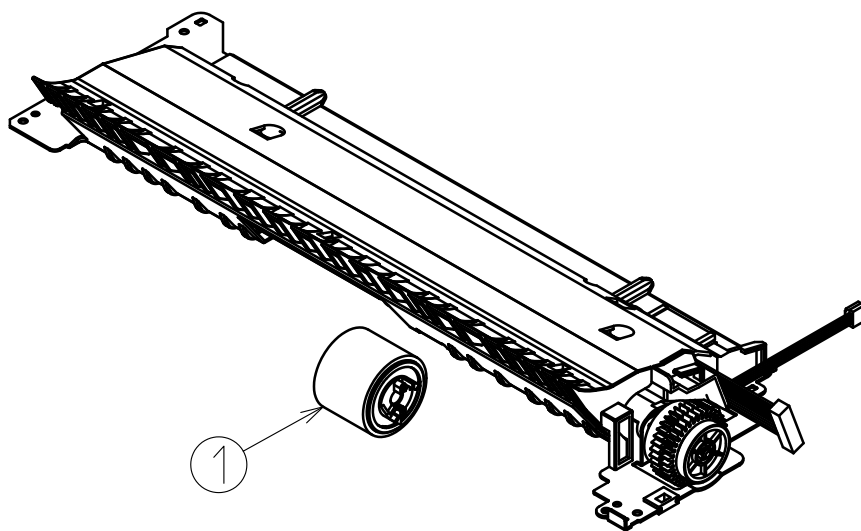
Moter - Assy - Fuser



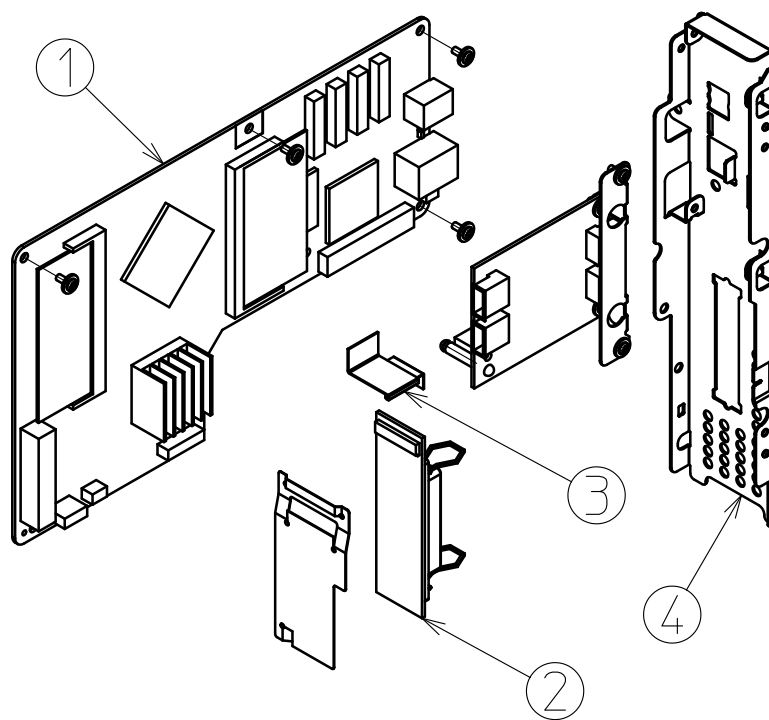
Moter - Assy - Belt



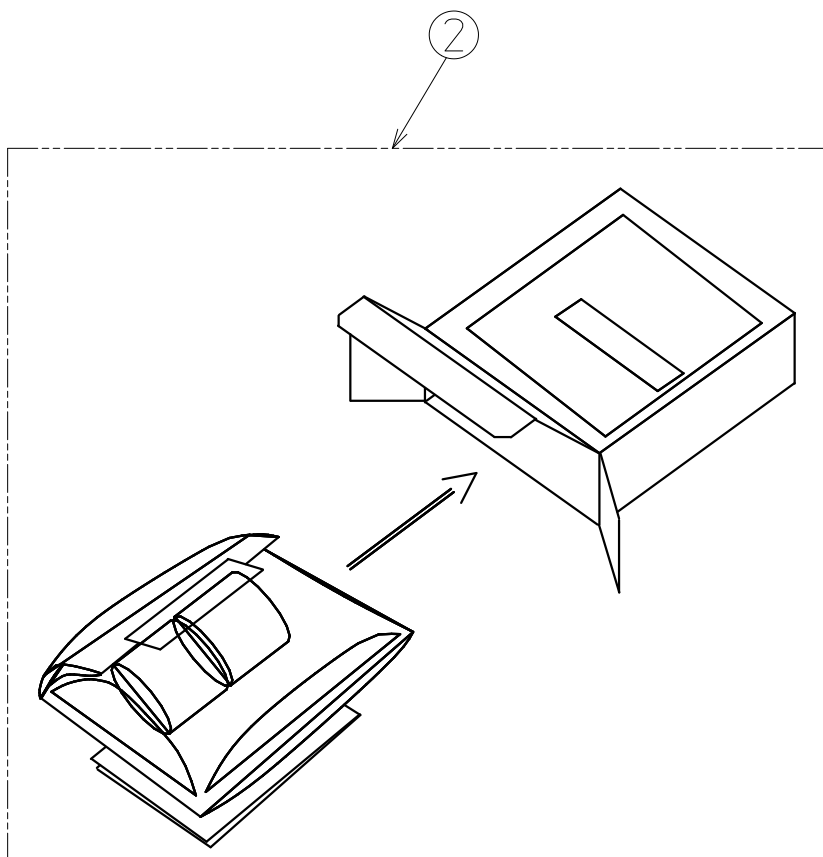
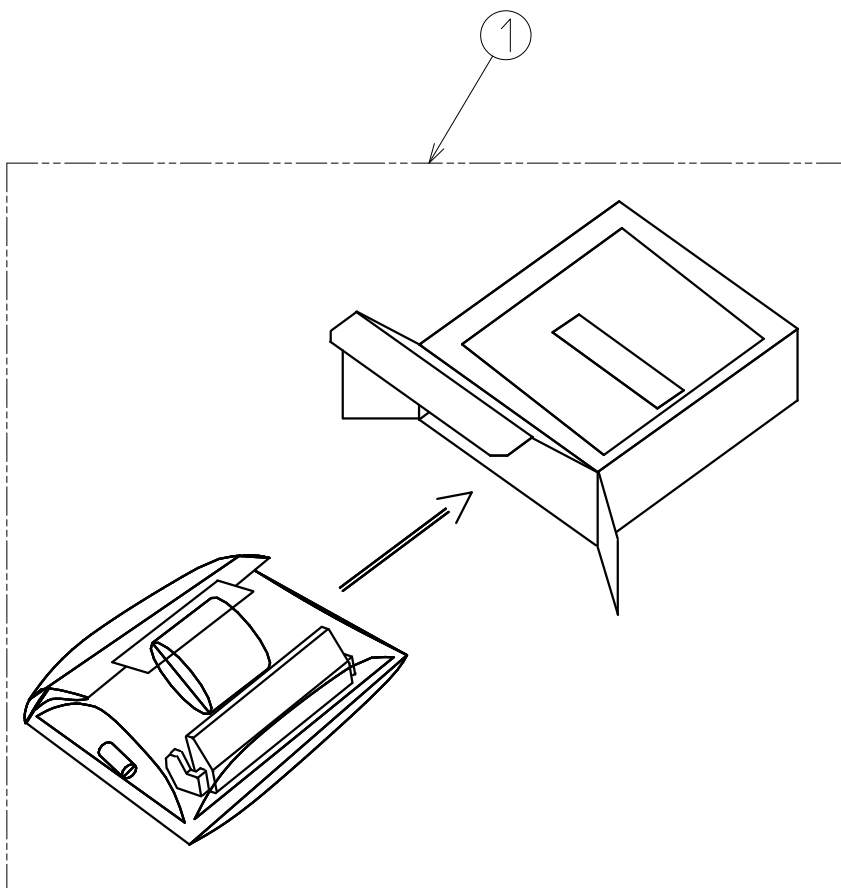
Frame-Assy-Hopping



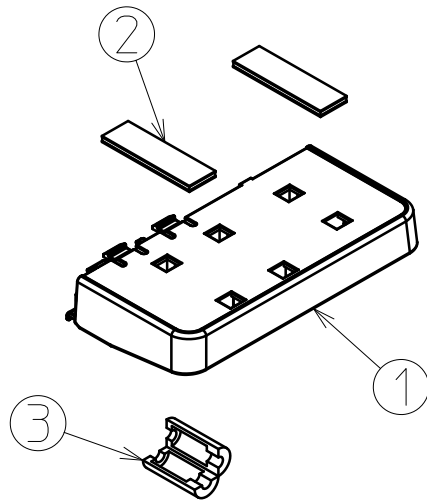
Board-Assy-CU




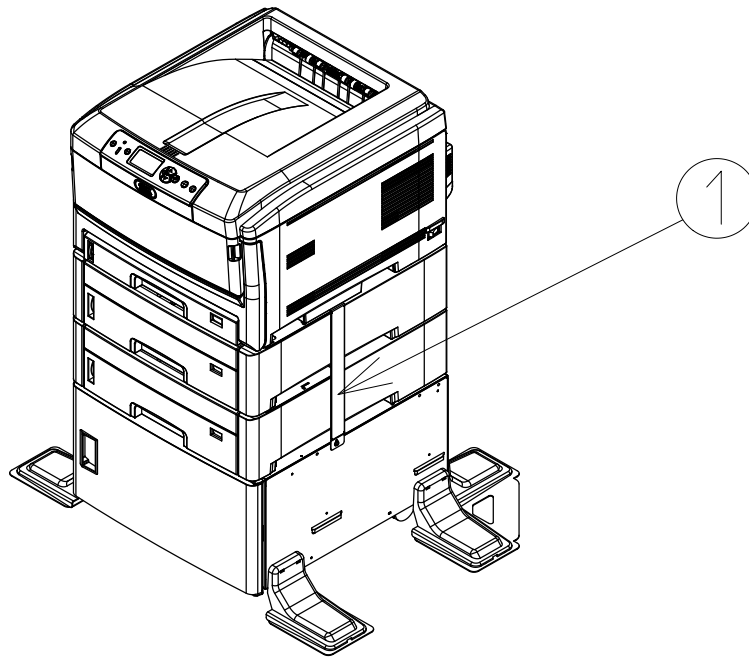
Consumable



Option



Cabinet 



Rev	Unit Name	No.	Part No.	Part Name	Q'ty /Unit	Recommended Q'ty/Year			Remarks	Del/A dd	Remarks for environment
						per 500	per 1000	per 2000			
	Printer-NIP-PX746	1	43455902	PWR unit-ACDC Switch	1	1	2	4	230V		-
	Printer-NIP-PX746	2	43694601	PWR unit-DCDC	1	2	4	8			-
	Printer-NIP-PX746	3	44051901	OR-PVD	1	2	4	8			-
	Printer-NIP-PX746	5	2381003P0093	TW-VF/SMCD16-40-1.0	1	1	2	4			G
	Printer-NIP-PX746	6	43686801	LED Head Unit-53STA	4	2	4	8			-
	Printer-NIP-PX746	7	43241301	Motor-DC-ID	1	1	2	4			-
	Printer-NIP-PX746	8	43446501	Motor-Fan(80)	1	1	2	4			-
	Printer-NIP-PX746	9	43191302	Motor-Fan(60)PowL	1	1	2	4			-
	Printer-NIP-PX746	10	43508302	Holder Assy.-Switch	1	2	4	8			-
	Printer-NIP-PX746	11	43711901	Plate-Assy-Shield	1	2	4	8			-
4	Printer-NIP-PX746	12	43793743	TB2 maintenance board specification	1	1	2	4	OEL	A	
	Printer-NIP-PX746	14	43276501	Cover-Side(L)	1	2	4	8			-
3	Printer-NIP-PX746	15	43182601	Cover Assy.-Rear	1	2	4	8	ODA/OEL/AOS		-
	Printer-NIP-PX746	16	44120001	Frame Assy.-OP-Panel-PDL	1	2	4	8			-
3	Printer-NIP-PX746	17	44120102	Cover Assy.-OP-Panel-PDL	1	2	4	8	ODA/OEL/AOS		-
	Printer-NIP-PX746	18	43310001	Duct-POW	1	1	2	4			-
	Printer-NIP-PX746	19	43310201	Insulator-POW	1	1	2	4			-
3	Printer-NIP-PX746	26	43178216	Cassette-Assy.	1	1	2	4	OEL/AOS		-
3	Printer-NIP-PX746	27	43449701	Belt-Unit-PX736	1	50	100	200	JPN/OEL/AOS		-
3	Printer-NIP-PX746	28	43529405	Fuser-Unit-PX736 OEL	1	50	100	200	OEL 230V		
2	Printer-NIP-PX746	30	44058401	Louver	1	1	2	4			
2	Printer-NIP-PX746	32	43618501	Spring-Head	7	1	2	4			-
2	Printer-NIP-PX746	33	43637101	Spring-Head	1	1	2	4			-
2	Printer-NIP-PX746	35	43405001	CONN Cord-AMP11P-AMP11P	1	2	4	8			
2	Printer-NIP-PX746	36	42921008	Screw (SW+2W)	2	2	4	8			
2	Printer-NIP-PX746	37	42920814	Screw (SW+2W)	4	4	8	16			
2	Printer-NIP-PX746	38	42920830	Screw (SW+2W)	3	3	6	12			
2	Printer-NIP-PX746	39	42920808	Screw (SW+2W)	3	3	6	12			
	Printer-Unit(PX746)	1	43438901	OR-P6Y	1	2	4	8			-
	Printer-Unit(PX746)	2	43183601	Guide-Eject-Assy-Upper	1	2	4	8			-
	Printer-Unit(PX746)	3	44120904	Cover Assy.-Top	1	1	2	4	ODA/OEL		-
	Printer-Unit(PX746)	4	44121101	MPT-Assy	1	2	4	8			-
	Printer-Unit(PX746)	5	43311901	Spring-Torsion(L)	1	1	2	4			-
	Printer-Unit(PX746)	6	43312001	Spring-Torsion(R)	1	1	2	4			-
	Printer-Unit(PX746)	7	43359801	CONN Cord-AMP8P-AMP4P,AMP4P	1	2	4	8			-
2	Printer-Unit(PX746)	8	43360501	CONN Cord-AMP6P-AMP3P,AMP3P	1	2	4	8			-
2	Printer-Unit(PX746)	9	2381003P0084	TW-VF/SMCD21-230-1.0	1	2	4	8			
	Printer-Unit(PX746)	10	43409601	CONN Cord-JST8P-AMP2P	1	2	4	8			-
	Printer-Unit(PX746)	11	43629001	CONN-Regist-Cord(R_bend)	1	2	4	8			-
	Printer-Unit(PX746)	12	43628901	CONN-Regist-Cord(L_bend)	1	1	2	4			-
2	Printer-Unit(PX746)	13	RE6-SK	Ring	2	2	4	8			
3	Cover Assy.-OP(Panel)	1	44058102	Cover-OP-Panel-PDL	1	2	4	8	ODA/OEL/AOS		-
	Cover Assy.-OP(Panel)	2	43746701	Button-Key	1	1	2	4			-
	Cover Assy.-OP(Panel)	3	43746601	Cover-LCD	1	1	2	4			-
	Cover Assy.-OP(Panel)	4	43925102	OR-PRG	1	1	2	4			-
2	Cover Assy.-OP(Panel)	5	6530076M0001	BTG-12864BG-FBWB-F-Frame-Assy	1	1	2	4			-
2	Frame-Assy	2	2381003P0083	TW-VF/SMCD13-740-1.0	1	2	4	8			
2	Frame-Assy	3	43240401	Plate-Side-L-Assy	1	1	2	4			-
2	Frame-Assy	4	43241203	Plate-Side-R-Assy	1	1	2	4			-
2	Frame-Assy	5	43245502	Frame-Assy-Hopping	1	2	4	8			-
2	Frame-Assy	6	43246101	Gear-Holder-Assy	1	2	4	8			-
2	Frame-Assy	7	43246401	Sensor-Assy-Fuser	1	1	2	4			-
2	Frame-Assy	8	43246601	Frame-Assy-Contact	1	2	4	8			-
2	Frame-Assy	9	43246801	Sensor-Assy-Regist	1	2	4	8			-

Rev	Unit Name	No.	Part No.	Part Name	Qty /Unit	Recommended Q'ty/Year			Remarks	Del/A dd	Remarks for environment
						per 500	per 1000	per 2000			
2	Frame-Assy	10	43247501	Fuse-Cut-Assy	1	1	2	4			-
2	Frame-Assy	11	43247701	Beam-Fuser-Assy	1	1	2	4			-
2	Frame-Assy	12	43248005	Regist-Roller-Assy	1	2	4	8			-
2	Frame-Assy	13	43250501	Guide-Eject-Assy-Lower	1	2	4	8			-
2	Frame-Assy	14	42058304	Solenoid	1	2	4	8			G
2	Frame-Assy	15	42058401	Spring-Solenoid	1	1	2	4			-
2	Frame-Assy	16	43252401	Motor-Z18(Spur)	2	2	4	8			-
2	Frame-Assy	17	43251801	Gear-Reduction-L-Up	1	1	2	4			-
2	Frame-Assy	18	43253501	Gear-Reduction-L-Up2	1	1	2	4			-
2	Frame-Assy	19	43313101	Gear-Reduction-L-Up3	1	1	2	4			-
2	Frame-Assy	20	43361001	Gear-Reduction-L-Up4	1	1	2	4			-
2	Frame-Assy	25	RE4-SK	Ring	2	2	4	8			-
	Guide-Eject-Assy-	1	43183801	Shaft Assy.-Eject(FU)	1	1	2	4			-
	Guide-Eject-Assy-	2	43184001	Shaft Assy.-Eject(FD)	1	1	2	4			-
	Cover-Assy-Top	1	43311704	Cable-Assy.-Head	1	2	4	8			-
	Cover-Assy-Top	2	44057601	Cover-Top	1	1	2	4			-
	Cover-Assy-Top	3	43381801	Cover-Top-Sub	1	1	2	4			-
	Cover-Assy-Top	4	42293101	Spring-Torsion(Sub)	1	1	2	4			-
	Cover-Assy-Top	5	43793601	OR-Motor-FAN(40)	1	1	2	4			-
	Cover-Assy-Top	6	43590701	Duct-Fan-FU	1	1	2	4			-
	Cover-Assy-Top	7	42920420	Cup_Screw A	2	2	4	8			-
	Holder-Pickup-Assy	1	43417901	Roller-Assy.-Pickup	1	3	6	12			-
	Cover-Front Assy.	1	43411001	Roller-Feed(OW)	1	3	6	12			-
	Cover-Front Assy.	2	43418001	Frame-Assy.-Separator	1	3	6	12			-
	Plate-Side-R-Assy	1	43242201	Guide-Side-R-Assy	1	1	2	4			-
	Plate-Side-R-Assy	2	43242701	Motor-Assy-Fuser	1	1	2	4			-
	Plate-Side-R-Assy	3	43314401	Motor-Assy.-Belt	1	1	2	4			-
	Plate-Side-R-Assy	4	43245401	Rack-Lift-Up-R	1	1	2	4			-
	Plate-Side-L-Assy	1	43241001	Rack-Lift-Up-L	1	1	2	4			-
	Sensor-Assy-Fuser-A	1	43601701	Lever-Sensor-FUIN-Assy	1	1	2	4			-
	Sensor-Assy-Fuser-A	2	43334501	Spring-Torsion	1	1	2	4			-
	Sensor-Assy-Regist	1	43247201	Shutter-Assy	1	1	2	4			-
	Sensor-Assy-Regist	2	42755801	DC-Solenoid	1	2	4	8			-
	Sensor-Assy-Regist	3	43132302	OR-PRC	2	2	4	8			-
	Sensor-Assy-Regist	4	5654200P0001	GP2TC2J000F	1	2	4	8			G
	Guide-Eject-Assy-	1	42063301	Lever-Eject-Sensor	1	2	4	8			-
	Guide-Eject-Assy-	2	40386501	Spring-SNS(F/R)	1	2	4	8			-
	Guide-Eject-Assy-	3	40135301	Photo-Interrupter	1	2	4	8			G
	Cassette-Assy	1	42088801	Frame-Separation-Assy.	1	3	6	12			-
	Cassette-Assy	2	42089001	Spring-Separation	1	1	2	4			-
	Motor-Assy-Fuser	1	43242801	Motor-DC-FU	1	1	2	4			-
	Motor-Assy.-Belt	1	43242601	Motor-Z15(Helical)	1	1	2	4			-
	Frame-Assy-Hopping	1	43334901	Roller Assy.-Hopping	1	3	6	12			-
2	Board-Assy-CU	3	2381101P0001	SML2CD-32X72-BDXAUP	1	1	2	4			
2	Board-Assy-CU	4	43659203	Plate-Shield-CU	1	2	4	8			
	Consumable	1	43651503	Rollerset-Tray1	1	1	2	4	OEL		-
	Consumable	2	43651803	RollerSet-MPT	1	1	2	4	OEL		-
3	Cabinet(Optional)	4	44150101	Plate-Connect	1	1	2	4			