

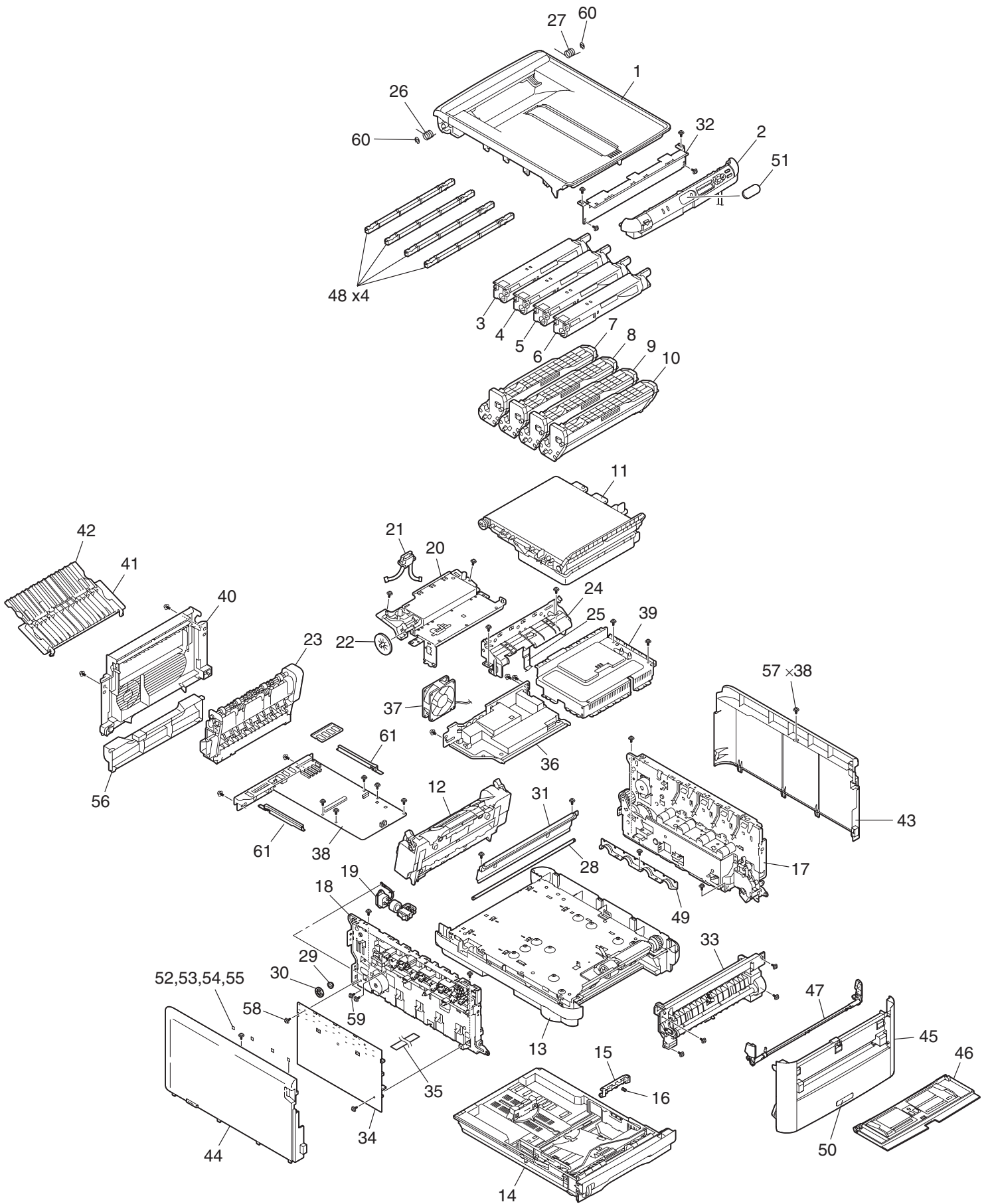
# OEL Recommended Spare Parts List

C3600

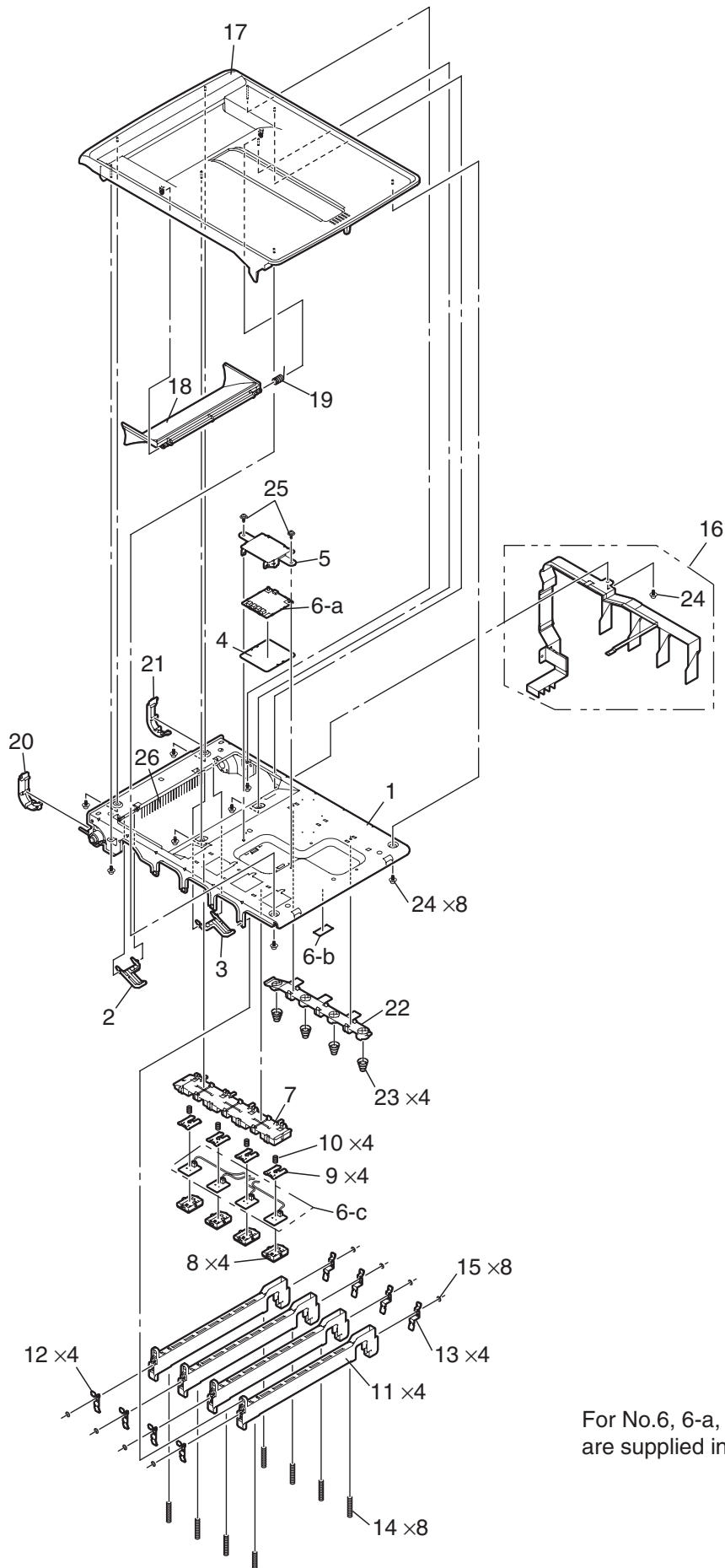


Revision 3

# Parts Layout

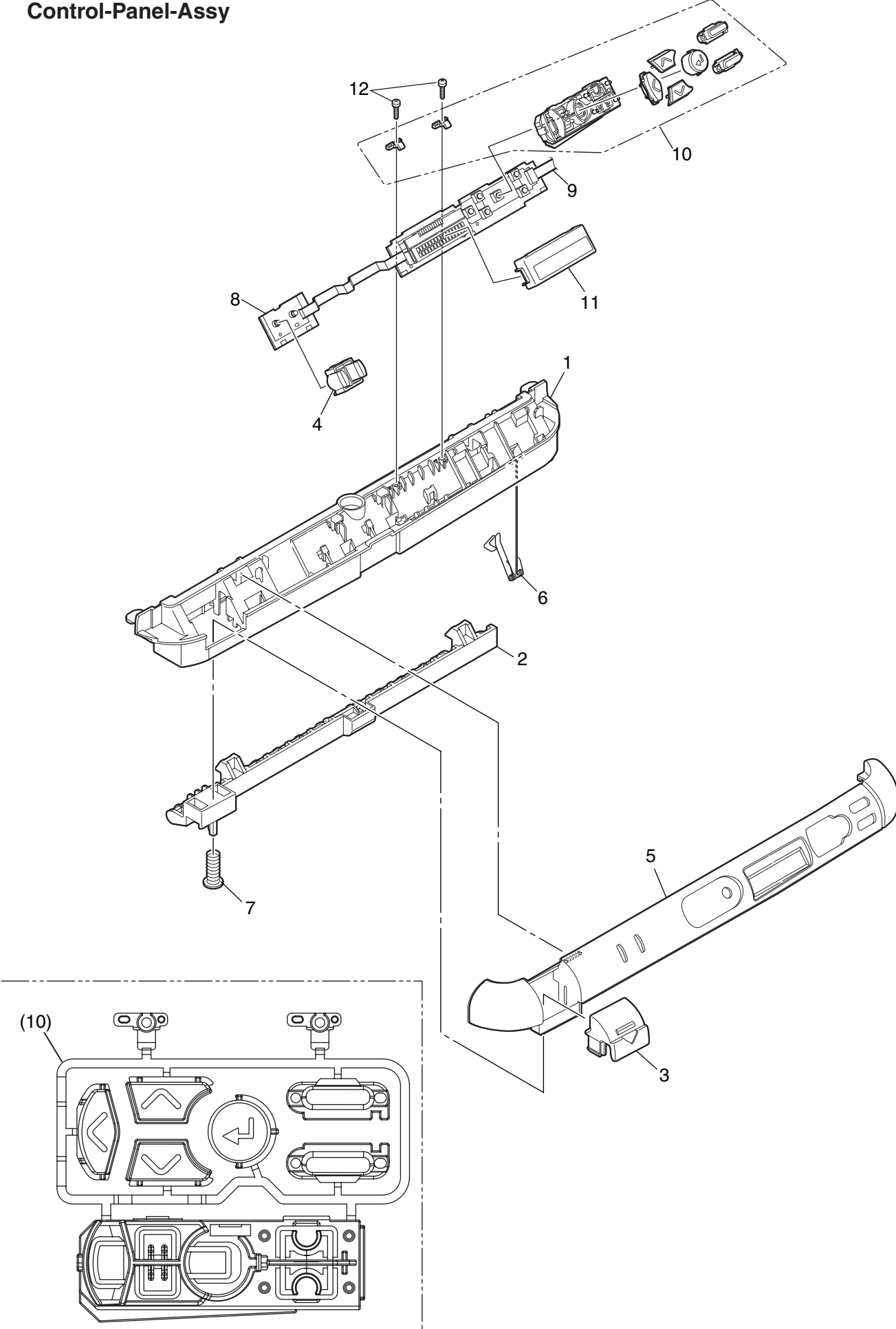


# Top-Cover-Assy

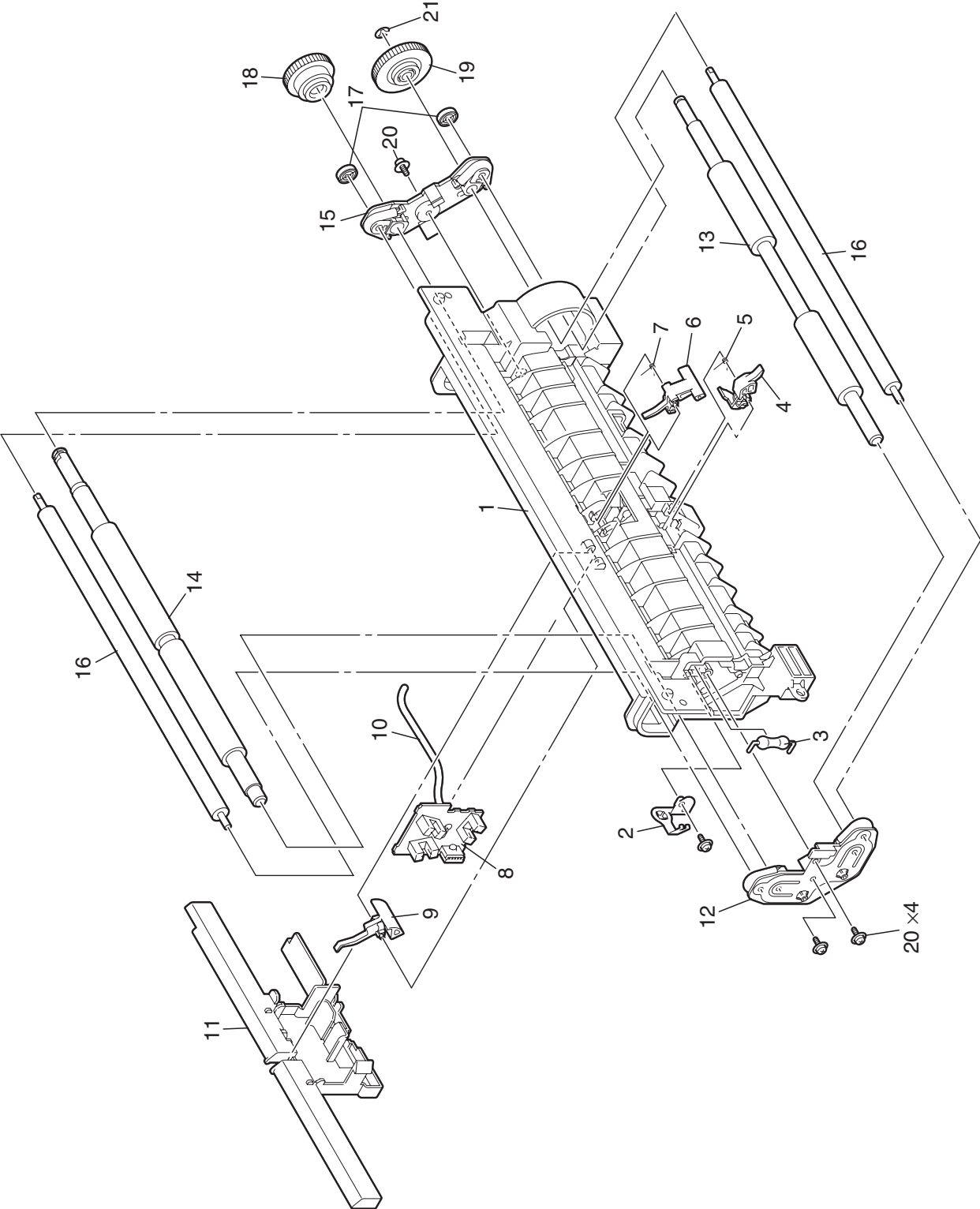


For No.6, 6-a, 6-b and 6-c are supplied in one set.

**Control-Panel-Assy**



Feeder\_Unit



# Plate Assy-Side\_R

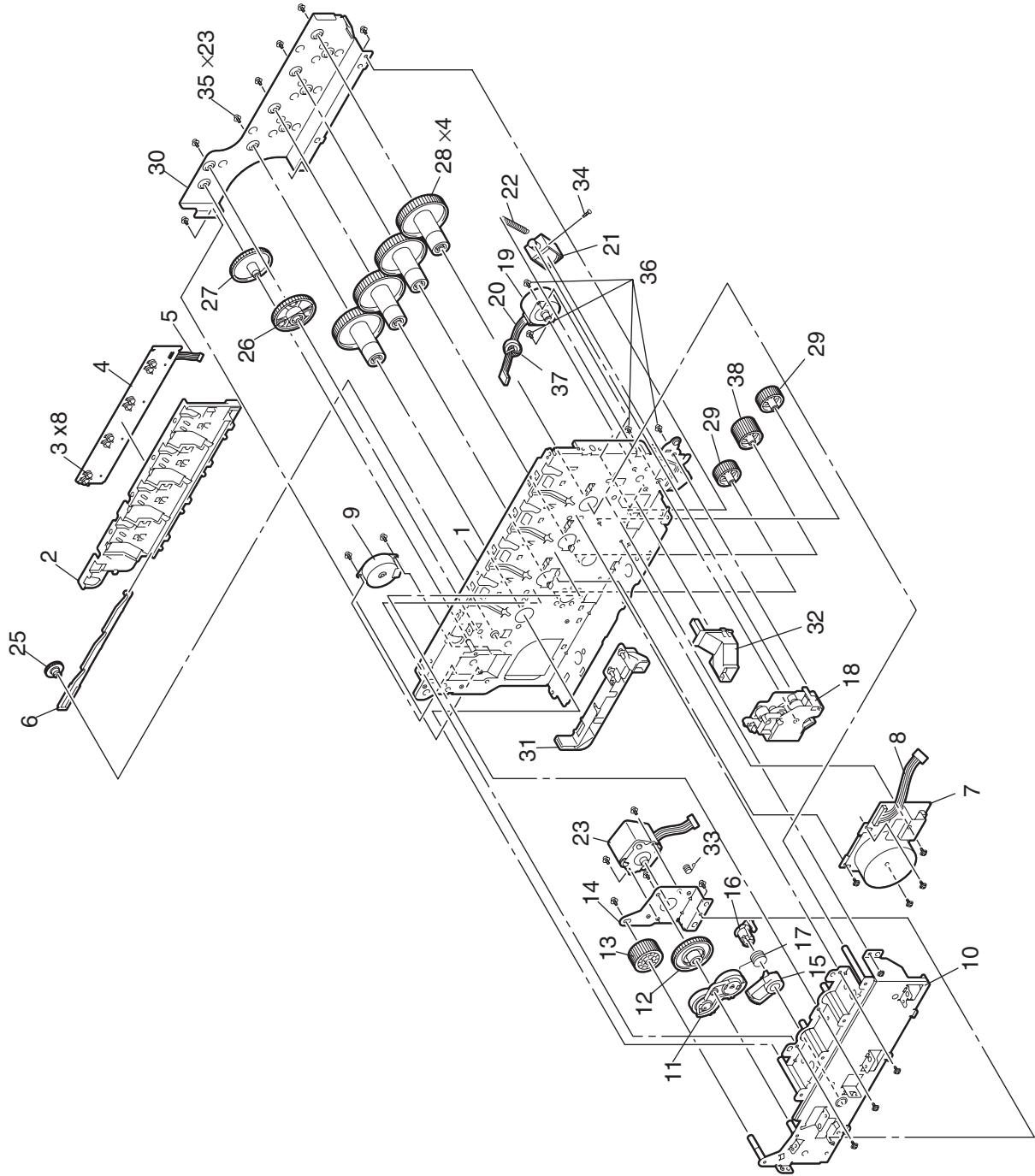
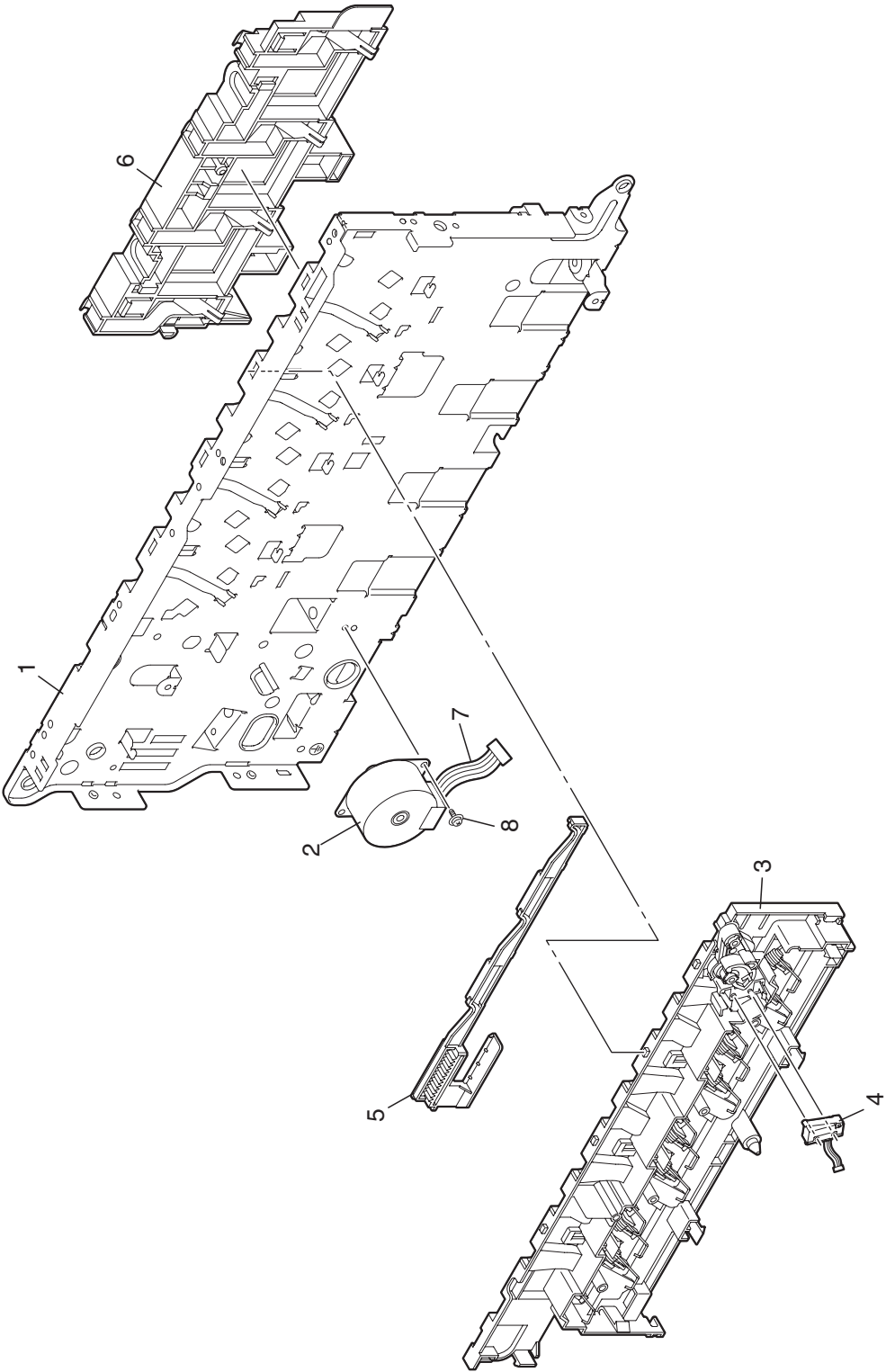
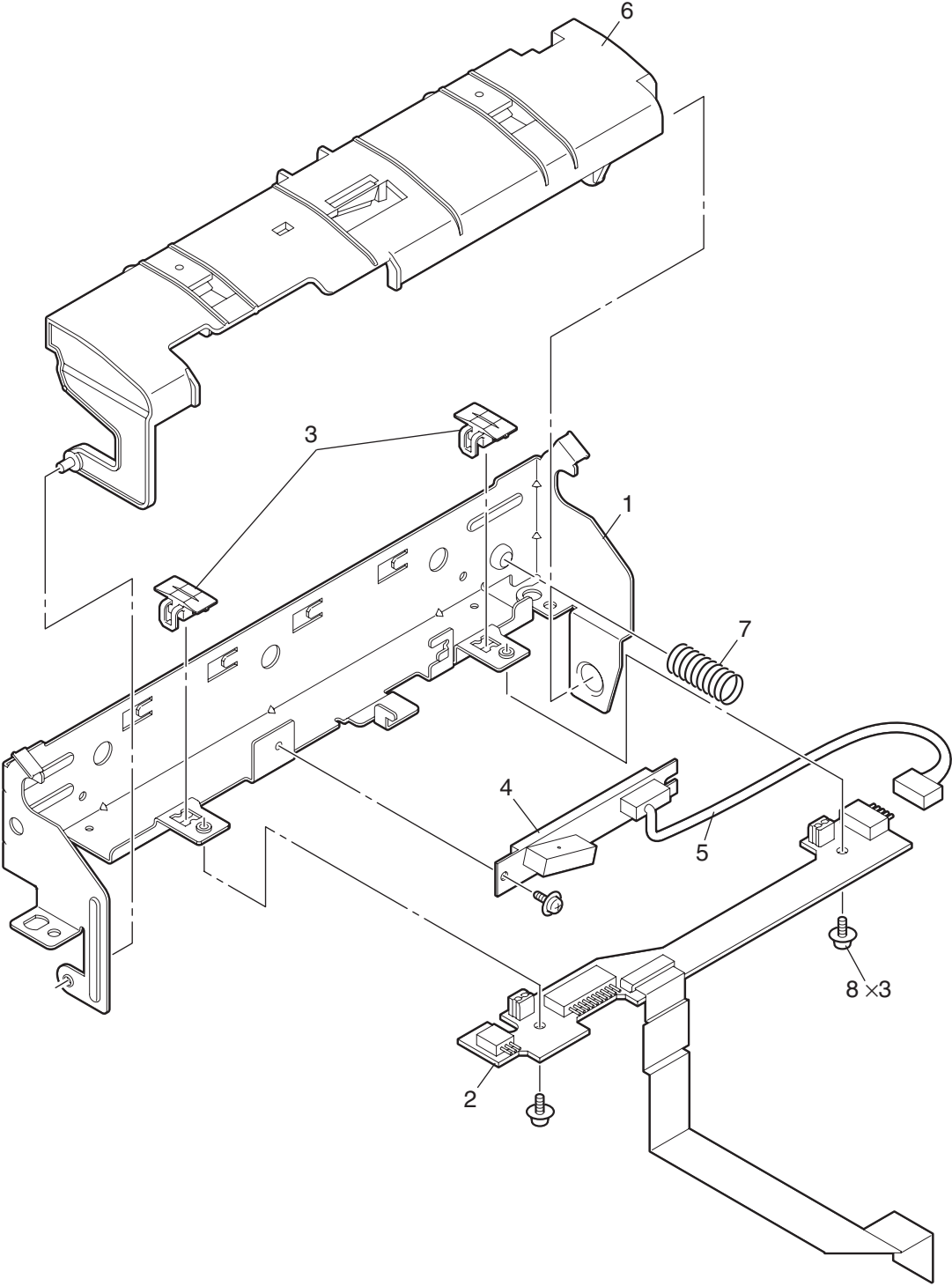


Plate Assy-Side\_L

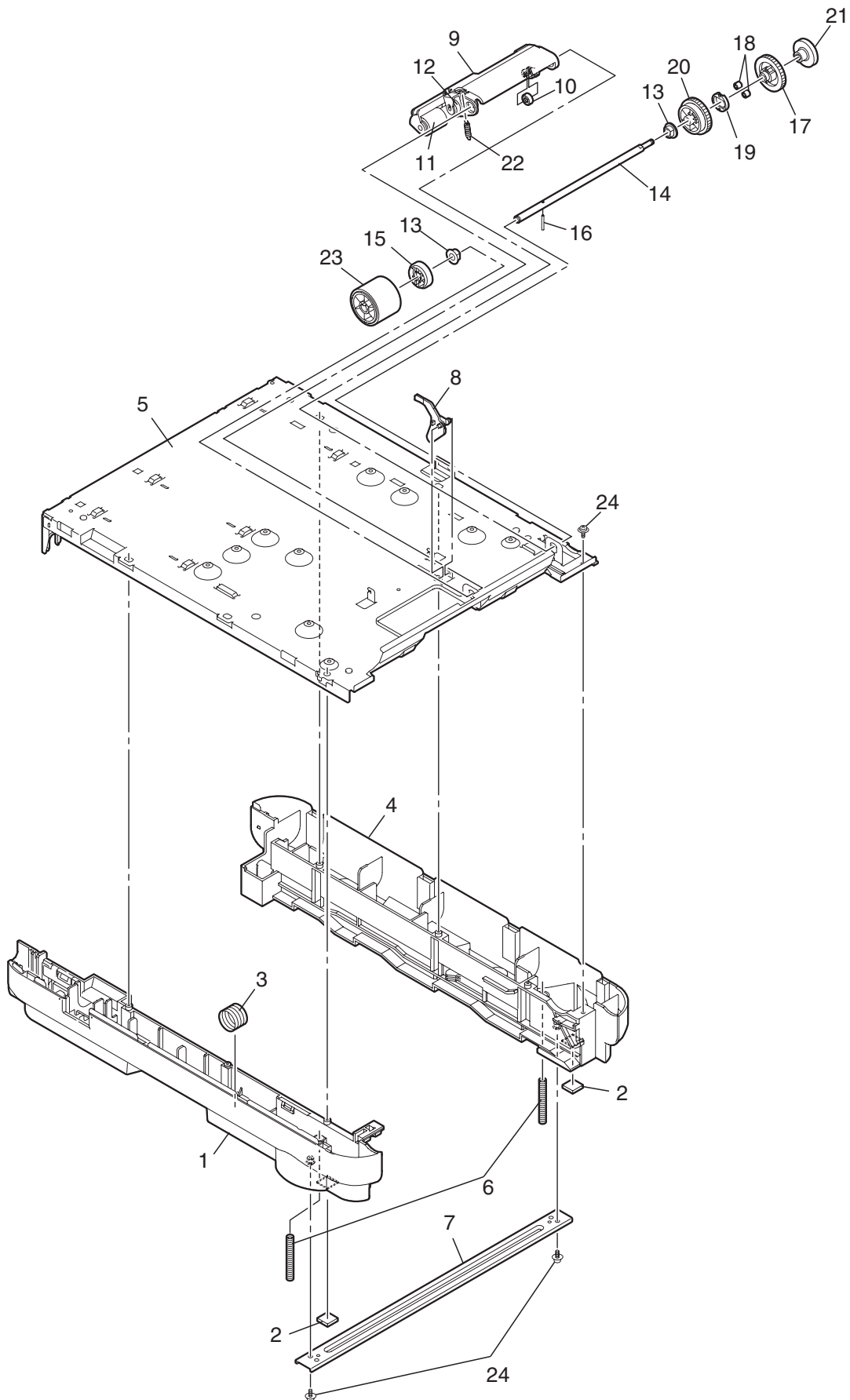


**Sensor\_Assy-Color\_Regist**

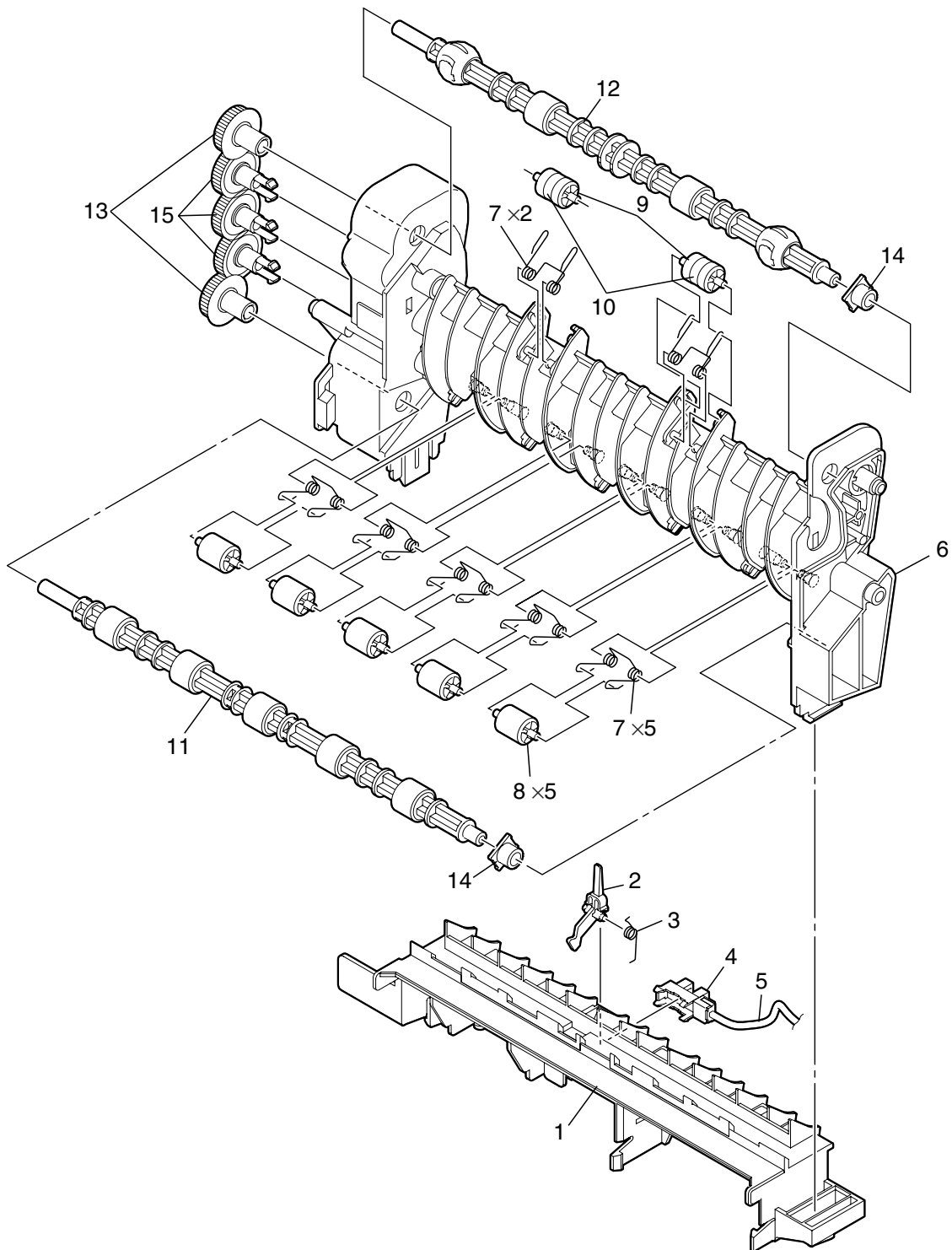




# Base-Assy



# Eject-Assy



| Rev | Unit Name      | No. | Part No.     | Part Name                            | Q'ty /Unit | Recommended Q'ty/Year |          |          | Remarks                           | Special | Del/ Add | Remarks for environment |
|-----|----------------|-----|--------------|--------------------------------------|------------|-----------------------|----------|----------|-----------------------------------|---------|----------|-------------------------|
|     |                |     |              |                                      |            | per 500               | per 1000 | per 2000 |                                   |         |          |                         |
|     | C3600n         | 2   | 44005602     | Frame-Assy.-OP PX742                 | 1          | 2                     | 4        | 8        | ODA, OEL, AOS                     |         | -        |                         |
|     | C3600n         | 12  | 43377003     | PX732n Fuser Unit(OEL 230V)          | 1          | 15                    | 30       | 60       | C3600 OEL(230V) Pack in box       |         | -        |                         |
|     | C3600n         | 13  | 43192202     | Plate Assy.-Base                     | 1          | 2                     | 4        | 8        |                                   |         | -        |                         |
|     | C3600n         | 14  | 43192602     | Cassette-Assy                        | 1          | 1                     | 2        | 4        |                                   |         | -        |                         |
|     | C3600n         | 15  | 42088801     | Frame-Separation-Assy.               | 1          | 3                     | 6        | 12       |                                   |         | -        |                         |
|     | C3600n         | 16  | 42089001     | Spring-Separation                    | 1          | 3                     | 6        | 12       |                                   |         | -        |                         |
|     | C3600n         | 17  | 43194101     | Plate Assy-Side-R(PX732n)            | 1          | 2                     | 4        | 8        |                                   |         | -        |                         |
|     | C3600n         | 18  | 43200101     | Plate Assy-Side-L(PX732)             | 1          | 2                     | 4        | 8        |                                   |         | -        |                         |
|     | C3600n         | 19  | 43362201     | ACINLET-SW-JST3P                     | 1          | 1                     | 2        | 4        | ACINLET-SWCord                    |         | -        |                         |
|     | C3600n         | 21  | 43361901     | CONN Cord-HRS12P-JST3P MOLEX10P      | 1          | 1                     | 2        | 4        | HeaterAC/IFCord                   |         | -        |                         |
|     | C3600n         | 22  | 42062401     | Gear-Idle-Belt(Z20-121)              | 1          | 1                     | 2        | 4        |                                   |         | -        |                         |
|     | C3600n         | 23  | 43206103     | Eject Assy. (PX742)                  | 1          | 2                     | 4        | 8        |                                   |         | -        |                         |
|     | C3600n         | 24  | 43204101     | Sensor Assy.-Color-Regist(PX732)     | 1          | 2                     | 4        | 8        |                                   |         | -        |                         |
|     | C3600n         | 25  | 2381028P0032 | SMCD-17-210BD(1.0)                   | 1          | 2                     | 4        | 8        | RearSensor_FFC                    |         | -        |                         |
|     | C3600n         | 26  | 43214301     | Spring-Torsion(L)                    | 1          | 1                     | 2        | 4        |                                   |         | -        |                         |
|     | C3600n         | 27  | 43214401     | Spring-Torsion(R)                    | 1          | 1                     | 2        | 4        |                                   |         | -        |                         |
|     | C3600n         | 28  | 43207401     | Shaft-Liftup                         | 1          | 1                     | 2        | 4        |                                   |         | -        |                         |
|     | C3600n         | 29  | 42060701     | Bush                                 | 1          | 1                     | 2        | 4        |                                   |         | -        |                         |
|     | C3600n         | 30  | 42066701     | Gear-Planet-UP-L                     | 1          | 1                     | 2        | 4        |                                   |         | -        |                         |
|     | C3600n         | 33  | 43209301     | Feeder-Assy.-Regist                  | 1          | 2                     | 4        | 8        |                                   |         | -        |                         |
|     | C3600n         | 34  | 43035201     | PWR unit-High Voltage Purchase spec. | 1          | 2                     | 4        | 8        | HighVoltage                       |         | -        |                         |
|     | C3600n         | 35  | 2381028P0034 | SMCD-12-180BD(1.0)                   | 1          | 2                     | 4        | 8        | HighVoltage_FFC                   |         | -        |                         |
|     | C3600n         | 36  | 43505401     | PWR unit-ACDC Switch                 | 1          | 2                     | 4        | 8        | 230V                              |         | -        |                         |
|     | C3600n         | 37  | 43198901     | Motor-FAN(80)                        | 1          | 1                     | 2        | 4        | FUSER                             |         | -        |                         |
|     | C3600n         | 38  | 43823101     | TB3 maintenance                      | 1          | 2                     | 4        | 8        | C3600 Board-PUCU ODA, OEL, AOS    |         | -        |                         |
|     | C3600n         | 40  | 43215201     | Cover-Rear                           | 1          | 1                     | 2        | 4        |                                   |         | -        |                         |
|     | C3600n         | 41  | 43215301     | Cover-FaceUP                         | 1          | 1                     | 2        | 4        |                                   |         | -        |                         |
|     | C3600n         | 42  | 43215401     | Cover-FaceUP-Sub                     | 1          | 1                     | 2        | 4        |                                   |         | -        |                         |
|     | C3600n         | 43  | 43215601     | Cover-Side(R)                        | 1          | 1                     | 2        | 4        |                                   |         | -        |                         |
|     | C3600n         | 44  | 43215501     | Cover-Side(L)                        | 1          | 1                     | 2        | 4        |                                   |         | -        |                         |
|     | C3600n         | 45  | 43209201     | Cover-Front                          | 1          | 1                     | 2        | 4        |                                   |         | -        |                         |
|     | C3600n         | 46  | 43210701     | Cover-Assy.-ManualFeed               | 1          | 1                     | 2        | 4        | C3600 ODA, OEL, AOS               |         | -        |                         |
|     | C3600n         | 47  | 43324602     | Lever-Assy.-Front-Lock               | 1          | 1                     | 2        | 4        | 600DPI                            |         | -        |                         |
|     | C3600n         | 48  | 43295201     | LED Head Unit-51STA                  | 4          | 2                     | 4        | 8        |                                   |         | -        |                         |
|     | C3600n         | 49  | 43197201     | Plate-Lockout-ID                     | 1          | 1                     | 2        | 4        |                                   |         | -        |                         |
| 3   | C3600n         | 50  | 43191809     | Plate-name 742n                      | 1          | 1                     | 2        | 4        | C3600 ODA, OEL                    |         | -        |                         |
|     | C3600n         | 51  | 43216801     | Plate-Logo                           | 1          | 1                     | 2        | 4        |                                   |         | -        |                         |
|     | C3600n         | 56  | 43215702     | Cover-Rear-Bottom                    | 1          | 1                     | 2        | 4        |                                   |         | -        |                         |
|     | Top-Cover-Assy | 2   | 43214801     | Lever-Stack-L                        | 1          | 1                     | 2        | 4        |                                   |         | -        |                         |
|     | Top-Cover-Assy | 3   | 43214901     | Lever-Stack-R                        | 1          | 1                     | 2        | 4        |                                   |         | -        |                         |
|     | Top-Cover-Assy | 6   | 43508801     | RFID-UNIT Assy. -(Maintenance)       | 1          | 2                     | 4        | 8        | Board-RFIDR/W, Concurrent;a, b, c |         | -        |                         |
|     | Top-Cover-Assy | 11  | 43212901     | Holder-Head(SH)                      | 4          | 1                     | 2        | 4        |                                   |         | -        |                         |

| Rev | Unit Name                | No. | Part No.     | Part Name                   | Q' ty /Unit | Recommended Q' ty/Year |          |          | Remarks                      | Special | Del/ Add | Remarks for environment |
|-----|--------------------------|-----|--------------|-----------------------------|-------------|------------------------|----------|----------|------------------------------|---------|----------|-------------------------|
|     |                          |     |              |                             |             | per 500                | per 1000 | per 2000 |                              |         |          |                         |
|     | Top-Cover-Assy           | 12  | 43213001     | Plate-FG-Head-L (SH)        | 4           | 1                      | 2        | 4        |                              |         |          | -                       |
|     | Top-Cover-Assy           | 13  | 43213101     | Plate-FG-Head-R (SH)        | 4           | 1                      | 2        | 4        |                              |         |          | -                       |
|     | Top-Cover-Assy           | 15  | 43501005     | Push-Nut (SPN-2. 6 A. C. P) | 8           | 1                      | 2        | 4        |                              |         |          | -                       |
|     | Top-Cover-Assy           | 16  | 43213301     | Cable-Assy. -Head           | 1           | 1                      | 2        | 4        | LED-HEAD-FFC RFID-FFC        |         |          | -                       |
|     | Top-Cover-Assy           | 17  | 43214002     | Cover-Top                   | 1           | 1                      | 2        | 4        |                              |         |          | -                       |
|     | Top-Cover-Assy           | 18  | 43214102     | Cover-Top (Sub)             | 1           | 1                      | 2        | 4        |                              |         |          | -                       |
|     | Top-Cover-Assy           | 20  | 43214501     | Cover-Hinge (L)             | 1           | 1                      | 2        | 4        |                              |         |          | -                       |
|     | Top-Cover-Assy           | 21  | 43214601     | Cover-Hinge (R)             | 1           | 1                      | 2        | 4        |                              |         |          | -                       |
|     | Control-Panel-Assy       | 8   | 44005202     | OR-PX7420PE (Cyrille)       | 1           | 2                      | 4        | 8        | Board-Opepanel ODA, OEL, AOS |         |          | -                       |
|     | Control-Panel-Assy       | 9   | 2381028P0031 | SMCD-7-400BD (1. 0)         | 1           | 2                      | 4        | 8        | OperationPanel_FFC           |         |          | -                       |
|     | Feeder_Unit              | 8   | 43135401     | OR-Board-MIP                | 1           | 2                      | 4        | 8        | Board-FrontSensor            |         |          | -                       |
|     | Feeder_Unit              | 10  | 43361401     | CONN Cord-AMP5P-AMP5P       | 1           | 1                      | 2        | 4        | FrontSensorCord              |         |          | -                       |
|     | Feeder_Unit              | 11  | 43209601     | Cover-SNS                   | 1           | 1                      | 2        | 4        |                              |         |          | -                       |
|     | Plate Assy-Side_R        | 4   | 43614901     | OR-Board-PRS                | 1           | 2                      | 4        | 8        | Board-TonerSensor            |         |          | -                       |
|     | Plate Assy-Side_R        | 5   | 2381028P0030 | SMCD-10-280BD (1. 0)        | 1           | 2                      | 4        | 8        | TonerSensor_FFC              |         |          | -                       |
|     | Plate Assy-Side_R        | 7   | 43195101     | Motor-DC-ID-M58             | 1           | 1                      | 2        | 4        |                              |         |          | -                       |
|     | Plate Assy-Side_R        | 8   | 43361601     | CONN Cord-AMP10P-AMP10P     | 1           | 1                      | 2        | 4        | DC-IDMotorCord               |         |          | -                       |
|     | Plate Assy-Side_R        | 9   | 43353101     | OR-Motor-Pulse-Liftup       | 1           | 1                      | 2        | 4        |                              |         |          | -                       |
| 3   | Plate Assy-Side_R        | 11  | 43196201     | Gear Assy. -Planet          | 1           | 1                      | 2        | 4        | Around Fuser                 |         |          | -                       |
| 3   | Plate Assy-Side_R        | 12  | 43196601     | Gear-Idle-Heat (Z14-102)    | 1           | 1                      | 2        | 4        | Around Fuser                 |         |          | -                       |
| 3   | Plate Assy-Side_R        | 13  | 43196701     | Gear-Idle-Z35               | 1           | 1                      | 2        | 4        | Around Fuser                 |         |          | -                       |
|     | Plate Assy-Side_R        | 19  | 43353001     | OR-Motor-Pulse-HOP          | 1           | 1                      | 2        | 4        |                              |         |          | -                       |
|     | Plate Assy-Side_R        | 20  | 43361501     | CONN Cord-AMP4P-AMP4P       | 1           | 1                      | 2        | 4        | HoppingMotorCord             |         |          | -                       |
|     | Plate Assy-Side_R        | 21  | 42058303     | Solenoid                    | 1           | 1                      | 2        | 4        |                              |         |          | G                       |
|     | Plate Assy-Side_R        | 23  | 43197801     | Motor-Pulse-Fuser           | 1           | 1                      | 2        | 4        |                              |         |          | -                       |
|     | Plate Assy-Side_L        | 2   | 43352901     | OR-Motor-Pulse-Belt         | 1           | 1                      | 2        | 4        |                              |         |          | -                       |
|     | Plate Assy-Side_L        | 4   | 43415601     | Microswitch Assy. -PX732    | 1           | 2                      | 4        | 8        | CoverOpenSwitchAssy          |         |          | -                       |
|     | Plate Assy-Side_L        | 5   | 43201001     | Link-LiftUp-L               | 1           | 1                      | 2        | 4        |                              |         |          | -                       |
|     | Plate Assy-Side_L        | 7   | 43361502     | CONN Cord-AMP4P-AMP4P       | 1           | 1                      | 2        | 4        | BeltMotorCord                |         |          | -                       |
|     | Sensor_Assy-Color_Regist | 2   | 43135301     | OR-Board-ZAK                | 1           | 2                      | 4        | 8        | Board-RearSensor             |         |          | -                       |
|     | Sensor_Assy-Color_Regist | 4   | 5654200P0001 | GP2TC2J000F                 | 1           | 3                      | 6        | 12       | DensitySensor                |         |          | G                       |
|     | Sensor_Assy-Color_Regist | 5   | 43361701     | CONN Cord-MOLEX5P-MOLEX5P   | 1           | 1                      | 2        | 4        | DensitySensorCord            |         |          | -                       |
|     | Base-Assy                | 11  | 43334801     | Roller Assy. -Sub           | 1           | 1                      | 2        | 4        |                              |         |          | -                       |
|     | Base-Assy                | 23  | 43334901     | Roller Assy. -Hopping       | 1           | 1                      | 2        | 4        |                              |         |          | -                       |
|     | Eject-Assy               | 2   | 43206401     | Lever-Eject-Sensor          | 1           | 1                      | 2        | 4        |                              |         |          | -                       |
|     | Eject-Assy               | 4   | 40135301     | Photo-Interrupter           | 1           | 1                      | 2        | 4        | ExitSensor                   |         |          | G                       |
|     | Eject-Assy               | 5   | 43361801     | CONN Cord-AMP3P-AMP3P       | 1           | 1                      | 2        | 4        | ExitSensorCord               |         |          | -                       |
|     | Eject-Assy               | 10  | 43649701     | Sponge-Roller-FD            | 2           | 2                      | 4        | 8        |                              |         |          | -                       |
|     | Eject-Assy               | 11  | 43206901     | Shaft Assy. -Eject (FU)     | 1           | 1                      | 2        | 4        |                              |         |          | -                       |
|     | Eject-Assy               | 12  | 43207201     | Shaft Assy. -Eject (FD)     | 1           | 1                      | 2        | 4        |                              |         |          | -                       |