

Di151

PARTS MANUAL



MINOLTA

PREFACE

1. The part numbers listed in Parts Manual are those which were assigned to the parts making up the machine at the time machine was originally introduced onto the market.
2. Parts whose INDEX numbers are shown white against a black background in the illustration are those to be used in only certain market areas. These part numbers are given in the lower half part of the list section. Check the SFIX No. listed in SFIX CHART on page II to find which part number is applicable to your own area.
3. Parts whose INDEX numbers are shown black against a white background in the illustration are those to be used in all market areas. These parts are listed on the upper half part of the list section.
4. If "NS" follows a part number given in the list section, it indicates that we do not keep a stock of the part. The part is not required for ordinary service jobs, either.
5. If "RP" is shown in the REC column of the list section, it indicates that the part is functionally important.
6. In the exploded views in this Parts Manual the parts (Screws & Washes, etc...) which are indicated with a "four-digit" numbers are listed in numerical order in the section "SCREWS AND WASHERS". Please check these "four-digit" numbers with the part numbers ("ten-digit" numbers) which should be used for ordering the part.
7. All part numbers consist of "ten-digit" which should all be quoted when ordering a part. The price of parts can be obtained by referring to the "Parts Price List" which is separately issued.
8. All information contained in this parts manual is subject to change.

ATTENTION

Minolta Corporation would like to call to your attention the omission of various item call out numbers and part numbers throughout this Parts Manual.

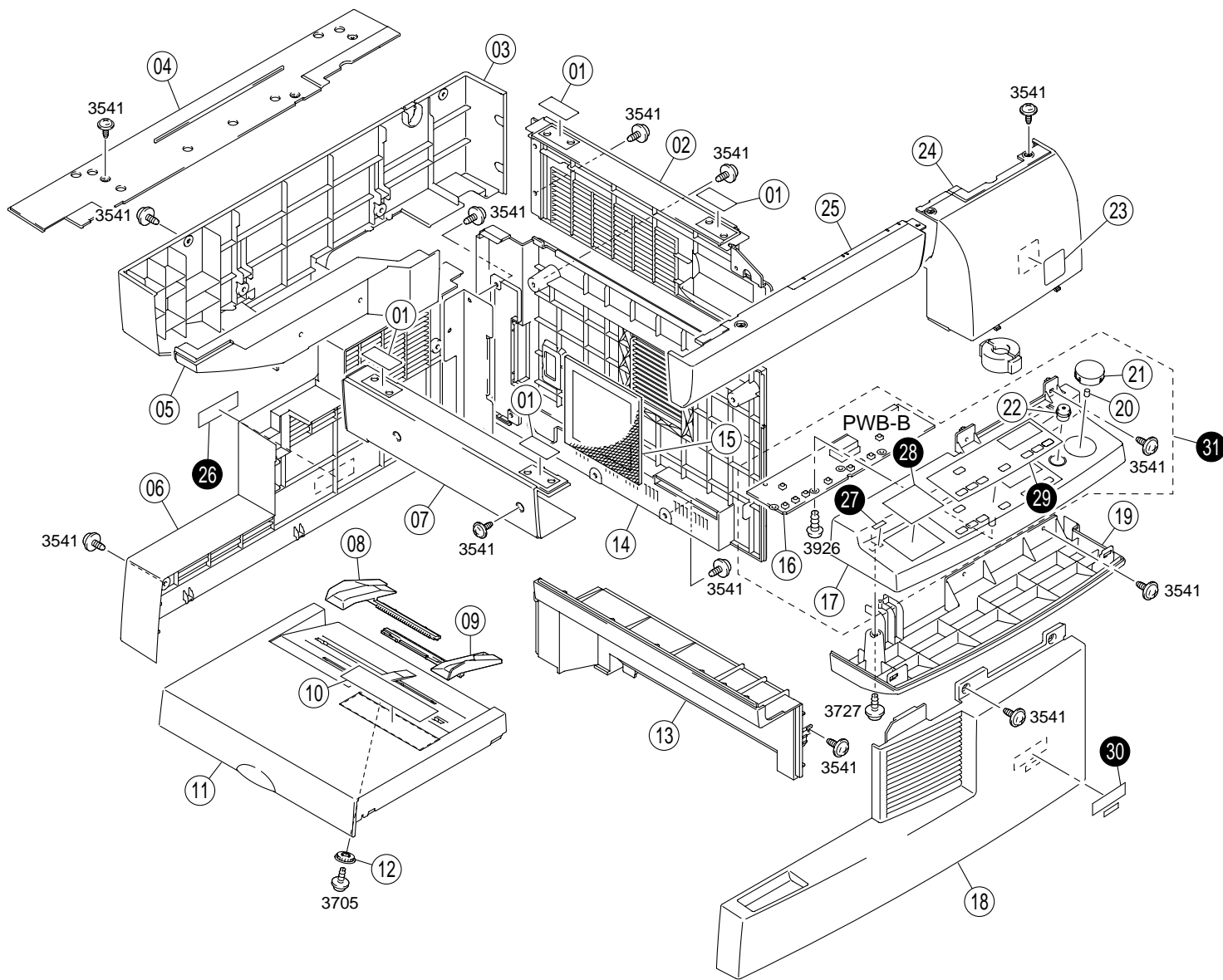
While those items omitted are usually of low demand, if any information on one of these items is needed, please contact Minolta Corporation for further assistance.

SFIX CHART

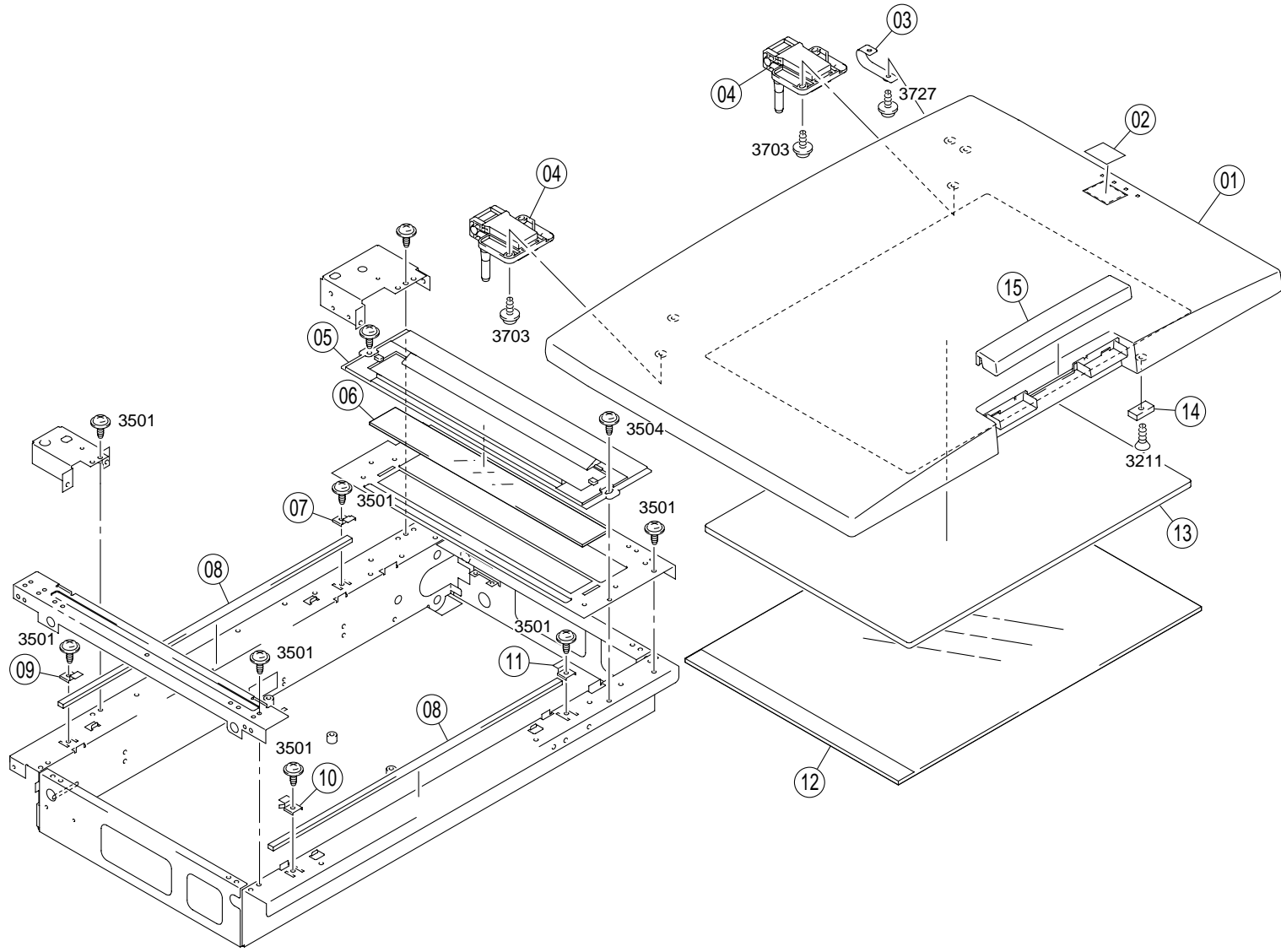
SFIX No.	COUNTRY	VOLTAGE	FREQUENCY (Hz)	PAPER SIZE	SFIX No.	COUNTRY	VOLTAGE	FREQUENCY (Hz)	PAPER SIZE
111	TAIWAN	115	60	METRIC	211	EUROPE	230	50/60	METRIC
212	S AFRICA SINGAPORE S ARABIA MALAYSIA INDONESIA OCEANIA HONG KONG RUSSIA	230	50/60	METRIC	214	PHILIPPINE PAKISTAN	230	50/60	INCH
311	USA/CANADA	120	60	INCH	711	S ARABIA CURACAO BRAZIL	127	60	METRIC

CONTENTS

- 1. HOUSING 1
- 2. ORIGINAL COVER 3
- 3. OPTICAL SECTION 5
- 4. UPPER FRAMES 7
- 5. LOWER FRAMES 9
- 6. PAPER EXIT SECTION 11
- 7. FUSING UNIT 13
- 8. TRANSFER UNIT 15
- 9. PAPER TAKE-UP SECTION 17
- 10. 2ND PAPER TAKE-UP (A) (OPTION) PF-116 19
- 11. 2ND PAPER TAKE-UP (B) (OPTION) PF-116 21
- 12. HOUSING (OPTION) AF-8 23
- 13. PAPER TAKE-UP SECTION (A) (OPTION) AF-8 25
- 14. PAPER TAKE-UP SECTION (B) (OPTION) AF-8 27
- 15. WIRING ACCESORIES AND JIGS 29
- 16. SCREWS AND WASHERS 31
- 17. NUMERICAL INDEX 32

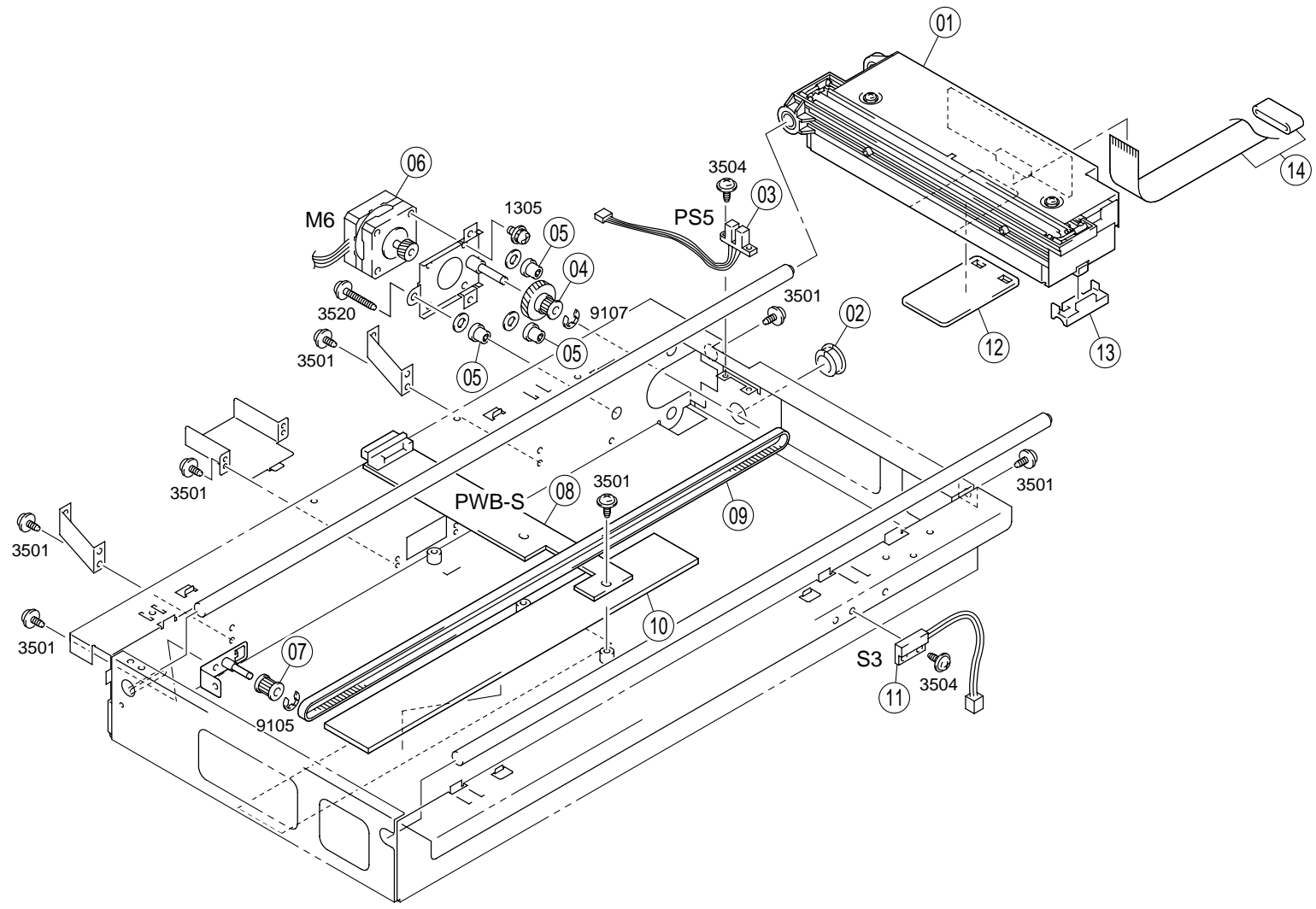


INDEX	PART NO.	PART NAME	REC	QTY	INDEX	PART NO.	PART NAME	REC	QTY
01	4007-1118-01	SEAL		4	19	4007-1204-03	COVER		1
02	4007-1110-03	COVER		1	20	1139-1221-02	CUSHION		1
03	4007-1109-03	COVER		1	21	1151-1204-02	BUTTON		1
04	4007-1117-02	COVER		1	22	1159-1202-01	KEY TOP STOP		1
05	4007-1112-01	COVER		1	23	4007-7356-01	LABEL		1
06	4007-1102-01	COVER		1	24	4007-1113-02	COVER		1
07	4007-1111-02	COVER		1	25	4007-1108-02	COVER		1
08	4109-3106-02	GUIDE		1					
09	4109-3105-02	GUIDE		1					
10	4007-7355-02	LABEL		1					
11	4007-1009-01	COVER		1					
12	0957-3104-01	GEAR		1					
13	4007-1104-01	COVER		1					
14	4007-1103-05	COVER		1					
15	4007-1120-01	FILTER		1					
16	1159-0102-03	PW BOARD	CTRL PANE (PWB-B)	RP	1				
17	4007-1201-02	CONTROL PANEL		1					
18	4007-1101-03	COVER		1					
INDEX	PART NO.	PART NAME	REC	QTY	SFIX				
26	0818-7319-01	LABEL CAUTION		1	211, 212, 214				
27	4007-7358-01	LABEL		1	111, 212, 214, 311, 711				
28	4007-1207-01	LABEL		1	214, 311				
28	4007-1208-01	LABEL		1	111, 212, 711				
29	4007-1203-01	PANEL SHEET		1	214, 311				
29	4007-1205-01	PANEL SHEET		1	211				
29	4007-1206-01	PANEL SHEET		1	111, 212, 711				
30	4007-7357-01	LABEL		1	211				
30	4007-7359-01	LABEL		1	111, 212, 214, 311, 711				
31	4007-0471-02	OPE ASSY	RP	1	111, 212, 711				
31	4007-0472-02	OPE ASSY	RP	1	211				
31	4007-0473-02	OPE ASSY	RP	1	214, 311				



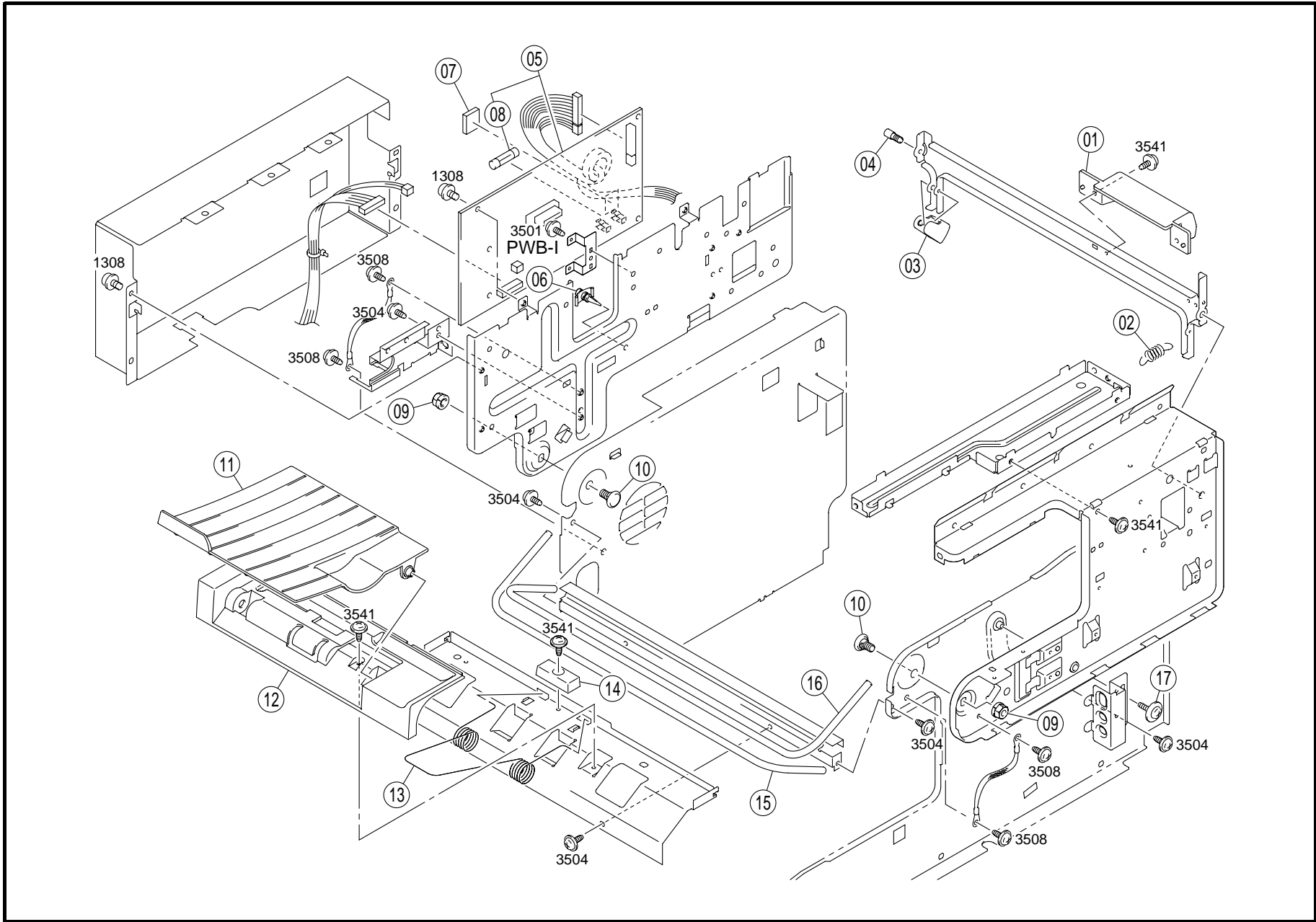
INDEX	PART NO.	PART NAME	REC	QTY	INDEX	PART NO.	PART NAME	REC	QTY
01	4007-1611-04	ORIGINAL COVER		1					
02	4007-1616-01	LABEL		1					
03	4007-1615-01	BELT		1					
04	1139-1705-01	HINGE		2					
05	4647-1015-01	SDH SCALE		1					
06	4647-1035-01	SDH GLASS		1					
07	4647-1013-01	GLASS MOUNT-R		1					
08	4647-1034-01	SPONGE		2					
09	4647-1012-01	GLASS MOUNT-2		1					
10	4647-1011-01	GLASS MOUNT-1		1					
11	4647-1014-01	GLASS MOUNT-L		1					
12	4647-1036-01	GLASS ASSY		1					
13	4007-1613-01	MAT		1					
14	9326-2320-21	MAGNET		1					
15	4007-1614-02	HANDLE		1					

INDEX	PART NO.	PART NAME	REC	QTY	SFIX



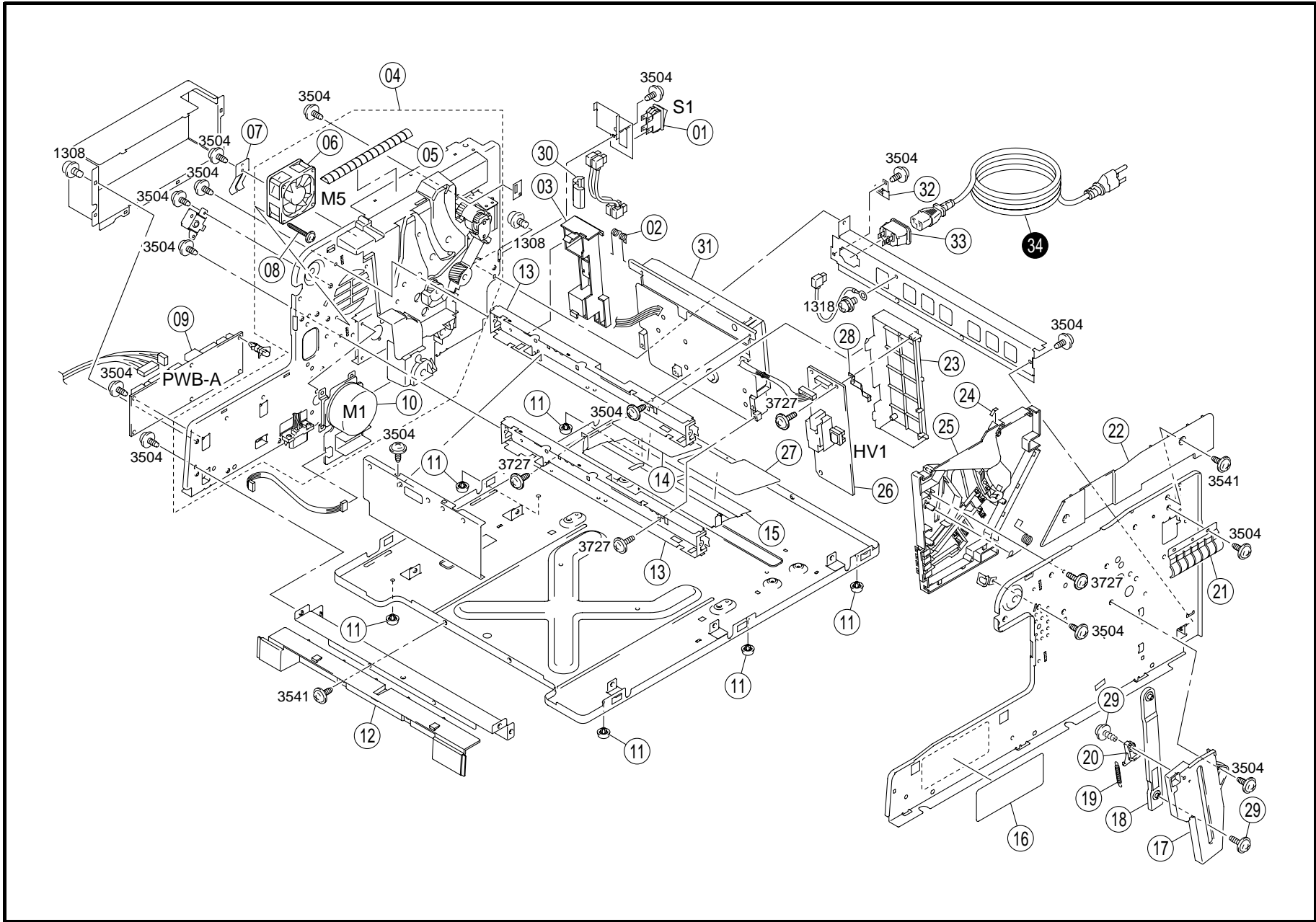
INDEX	PART NO.	PART NAME	REC	QTY	INDEX	PART NO.	PART NAME	REC	QTY
01	4647-1005-01	CCD MODULE	RP	1					
02	4647-1006-01	BUSHING		1					
03	4647-1002-01	PHOTO INTERRUPTER	SCANNER HP (PS5)	RP					
04	4647-1018-01	PULLEY 16/48T		1					
05	4647-1032-01	RUBBER CUSHION		3					
06	4647-1042-01	MOTOR	SCANNER (M6)	RP					
07	4647-1041-01	PULLEY		1					
08	4647-1009-01	SCANNER I/F PCB ASSY	I/F (PWB-S)	RP					
09	4647-1038-01	BELT(488T)		RP					
10	4647-1031-01	EMI PAD		1					
11	4647-1039-01	MAGNETIC SW	ADF SET (S3)	RP					
12	4647-1021-01	CCD PAD		1					
13	4647-1017-01	SLIDE PAD		1					
14	4647-1004-01	CONNECTOR UNIT		RP					

INDEX	PART NO.	PART NAME	REC	QTY	SFIX

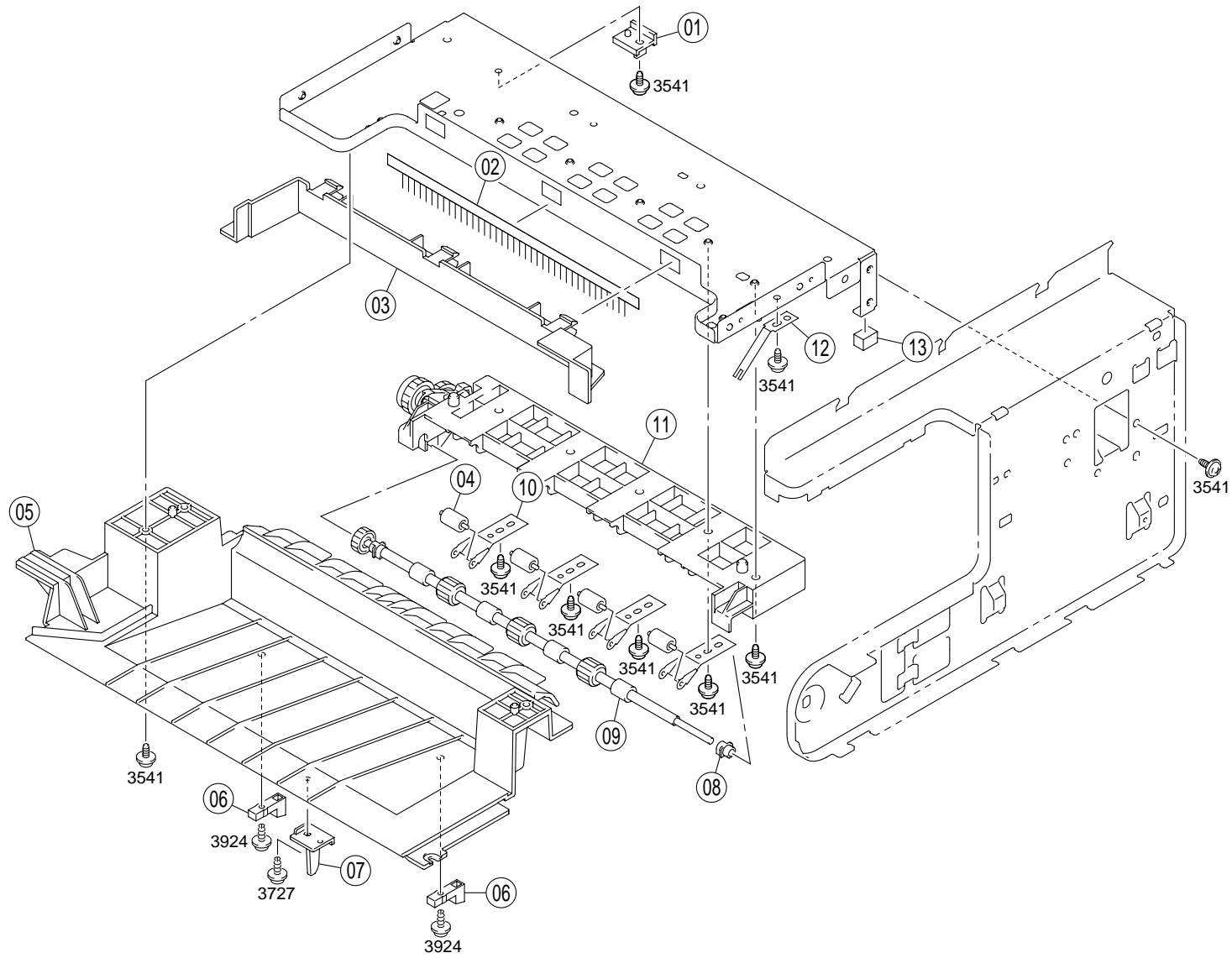


INDEX	PART NO.	PART NAME	REC	QTY	INDEX	PART NO.	PART NAME	REC	QTY
01	4007-2207-01	LEVER		1					
02	4007-2209-01	TENSION SPRING		1					
03	4007-2212-02	COVER		1					
04	4110-1212-01	SHOULDER SCREW		1					
05	4007-6051-02	PWB ASSY	CONTROL (PWB-I)	RP	1				
06	9384-1920-51	PWB SUPPORT		1					
07	4007-6601-02	IC		1					
08	9346-3010-91	FUSE 3A		RP	1				
09	1052-2306-01	NUT		2					
10	1159-2024-01	SHOULDER SCREW		2					
11	4007-1007-03	TRAY		1					
12	4007-1107-02	COVER		1					
13	4007-3751-01	TORSION SPRING		1					
14	4007-1010-01	STOPPER		1					
15	4007-2206-02	SPRING		1					
16	4007-2205-02	SPRING		1					
17	1250-2301-01	SCREW		1					

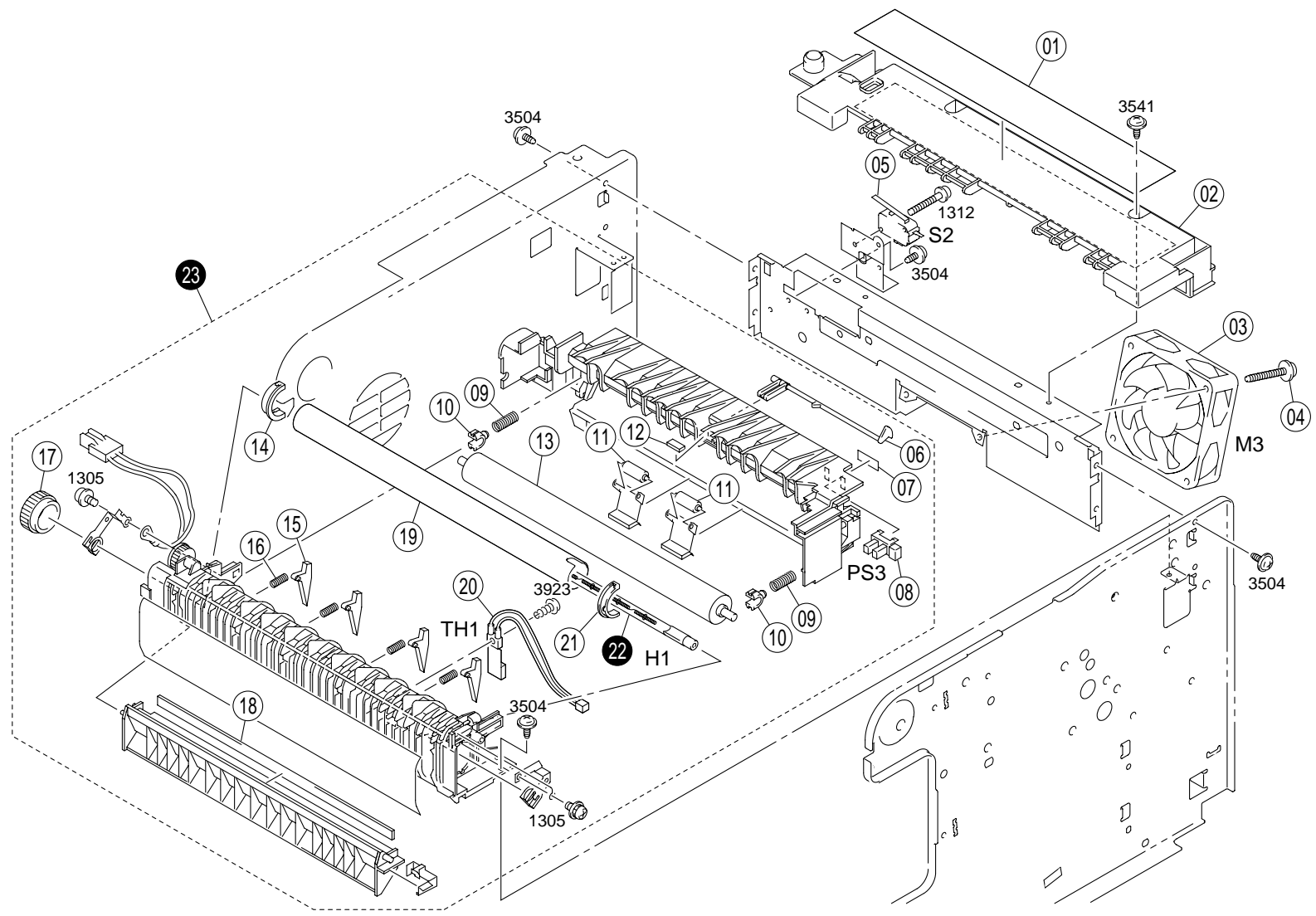
INDEX	PART NO.	PART NAME	REC	QTY	SFIX



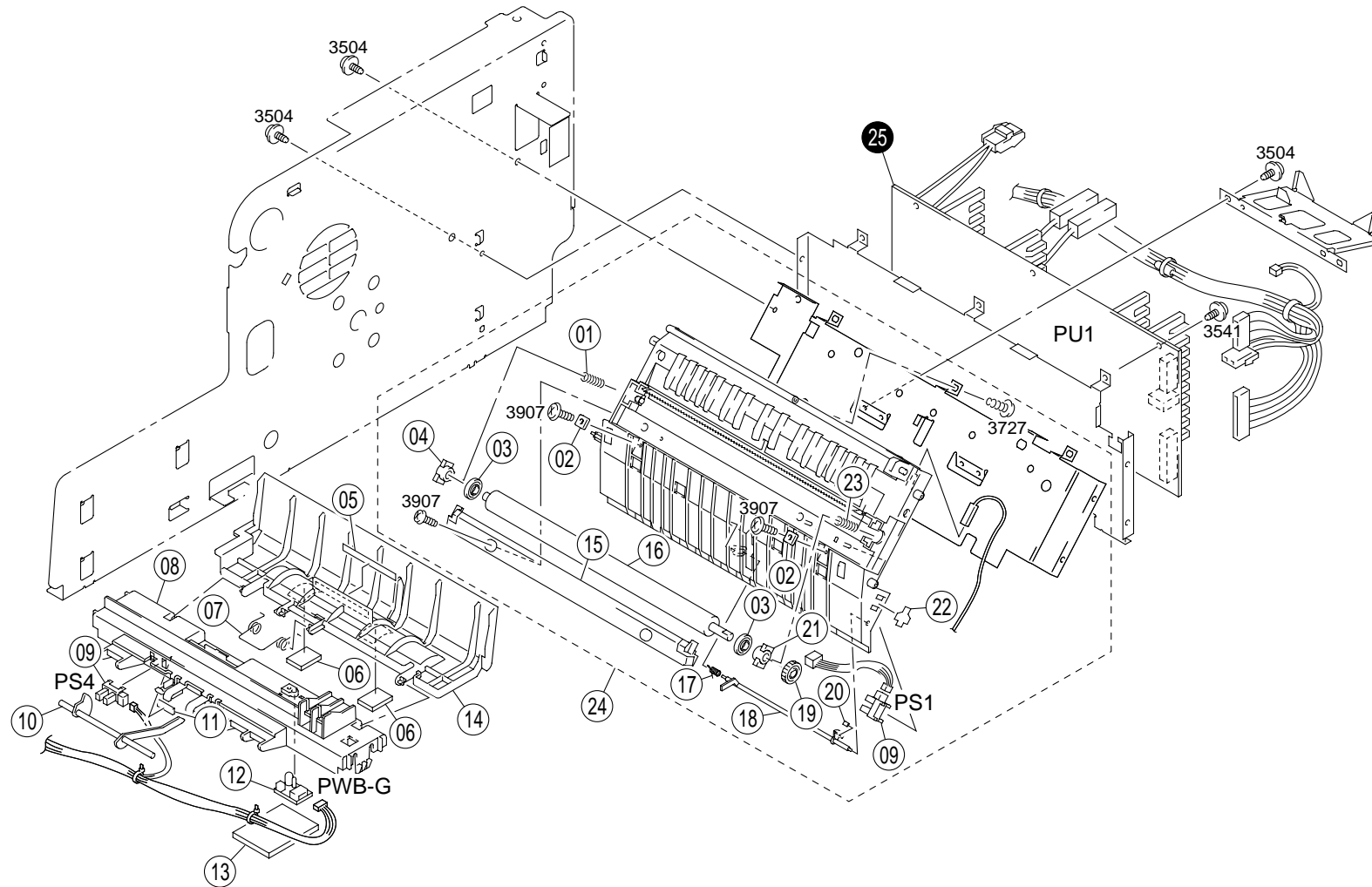
INDEX	PART NO.	PART NAME	REC	QTY	INDEX	PART NO.	PART NAME	REC	QTY
01	0990-6304-02	SWITCH POWER (S1)		1	19	0993-2013-01	TENSION SPRING		1
02	4110-2026-03	TORSION SPRING		1	20	0993-2012-01	LEVER		1
03	4110-2025-03	COVER		1	21	4007-2352-02	EARTH GROUND		1
04	4007-0341-02	FRAME ASSY		1	22	4007-1114-01	COVER		1
05	4007-2353-02	EARTH GROUND		1	23	4007-2301-01	COVER		1
06	9313-1711-11	MOTOR PH COOLING (M5)		1	24	4007-7351-01	LABEL		1
07	4007-2355-01	EARTH GROUND		1	25	4007-0751-01	FRAME ASSY		1
08	0993-2045-01	SCREW		2	26	9325-1710-42	PWB-HV (HV1)	RP	1
09	4007-0101-03	PWB ASSY MASTER (PWB-A)	RP	1	27	4110-3322-01	GUIDE		1
10	9314-2711-01	MOTOR MAIN (M1)		1	28	4110-2308-02	GROUND PLATE		1
11	4111-2015-01	RUBBER FOOT		6	29	1250-2301-01	SCREW		2
12	4007-1115-01	COVER		1	30	9326-1810-21	FERRITE CORE		1
13	4110-2001-02	BRACKET		2	31	4110-0532-02	PRINT HEAD UNIT		1
14	4110-3323-01	GUIDE		1	32	4007-1119-01	EARTH GROUND		1
15	4110-3201-03	GUIDE		1	33	9383-2710-21	SOCKET		1
16	4007-7360-01	LABEL		1					
17	4007-2061-01	GUIDE		1					
18	4007-2060-01	STOPPER		1					
INDEX	PART NO.	PART NAME	REC	QTY	SFIX				
34	9381-4810-61	POWER CORD		1	212, 214				
34	9381-4911-01	POWER CORD		1	111, 311, 711				



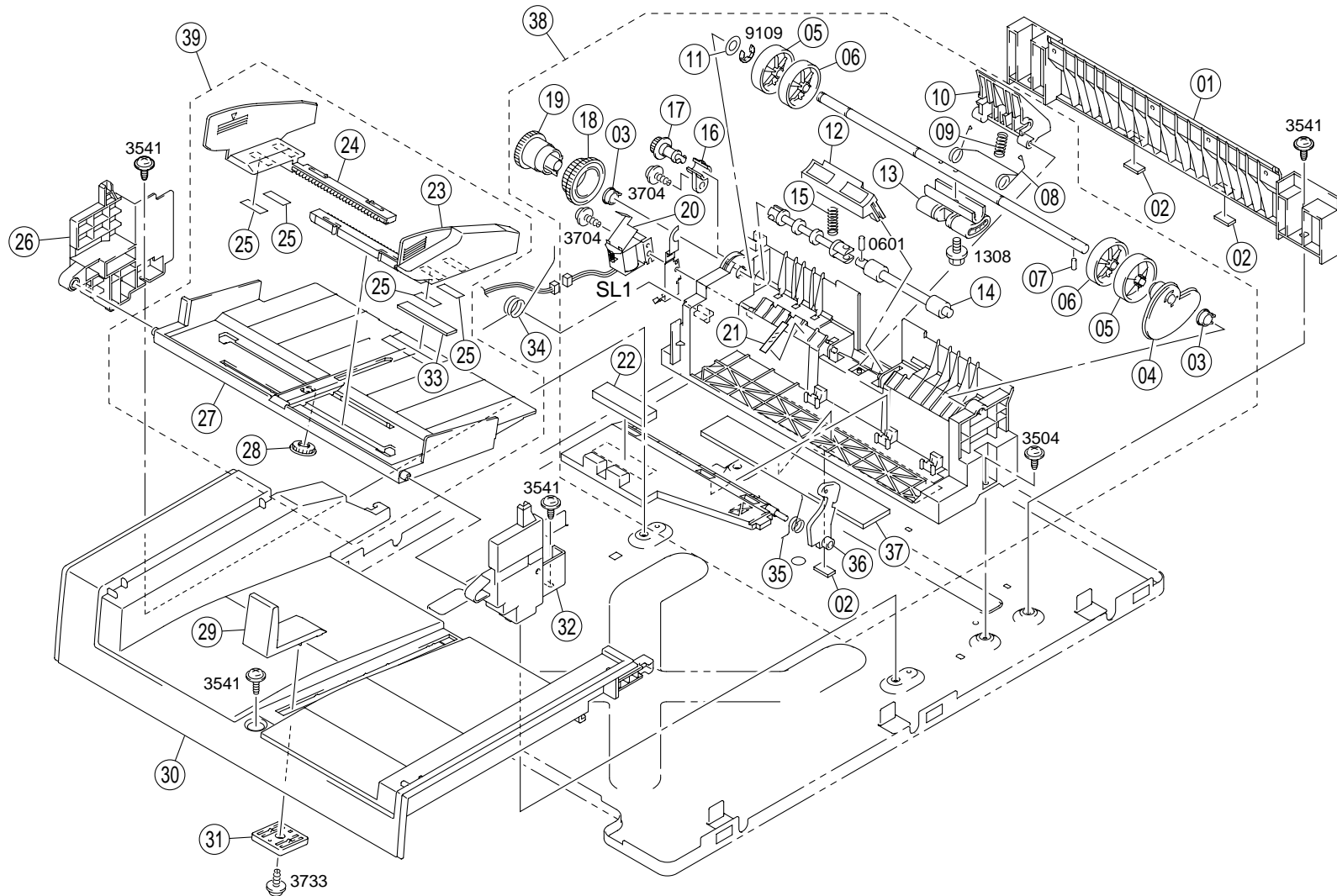
INDEX	PART NO.	PART NAME	REC	QTY	INDEX	PART NO.	PART NAME	REC	QTY
01	4007-2306-02	LEVER		1					
02	4007-3207-01	NEUTRALIZING BRUSH		1					
03	4007-1105-01	COVER		1					
04	0951-4711-01	ROLL		4					
05	4007-1002-01	GUIDE		1					
06	4007-3752-01	LEVER		2					
07	4007-1012-01	LEVER		1					
08	0993-3204-01	BUSHING		1					
09	4007-0752-01	HOUSING ASSY		1					
10	4007-3221-01	HOLDER		4					
11	4007-0753-01	GUIDE ASSY		1					
12	4007-3256-01	CONTACT		1					
13	4007-2105-01	CUSHION		1					
INDEX	PART NO.	PART NAME	REC	QTY	SFIX				



INDEX	PART NO.	PART NAME	REC	QTY	INDEX	PART NO.	PART NAME	REC	QTY
01	4007-5550-01	LABEL		1	19	4110-5501-02	FUSING ROLLER	RP	1
02	4007-1106-02	COVER		1	20	4109-6701-01	THERMISTOR (TH1)		1
03	9313-1000-31	FAN MOTOR FUSING (M3)		1	21	4122-5522-01	BUSHING		1
04	0993-2045-01	SCREW		2					
05	9331-2710-11	MICRO SWITCH INTERLOCK (S2)		1					
06	4109-5518-01	ACTUATOR		1					
07	4109-5530-01	STOPPER		1					
08	9335-1410-31	PHOTO INTERRUPTER EXIT (PS3)	RP	1					
09	4110-5517-02	PRESSURE SPRING		2					
10	4110-5511-01	BUSHING		2					
11	4110-5536-01	ROLL		2					
12	4007-5560-02	CUSHION		1					
13	4110-5502-01	ROLLER	RP	1					
14	4109-5521-01	BUSHING		1					
15	4109-5533-01	SEPARATOR	RP	4					
16	4109-5516-01	PRESSURE SPRING		4					
17	4109-5512-01	GEAR		1					
18	4110-5537-02	NETURALIZING MEMBER		1					
INDEX	PART NO.	PART NAME	REC	QTY	SFIX				
22	9352-2810-11	TUBE LAMP FUSING (H1)	RP	1	111, 311, 711				
22	9352-2810-21	TUBE LAMP FUSING (H1)	RP	1	211, 212, 214				
23	4007-0431-02	FUSING UNIT	RP	1	111, 311, 711				
23	4007-0432-02	FUSING UNIT	RP	1	211, 212, 214				

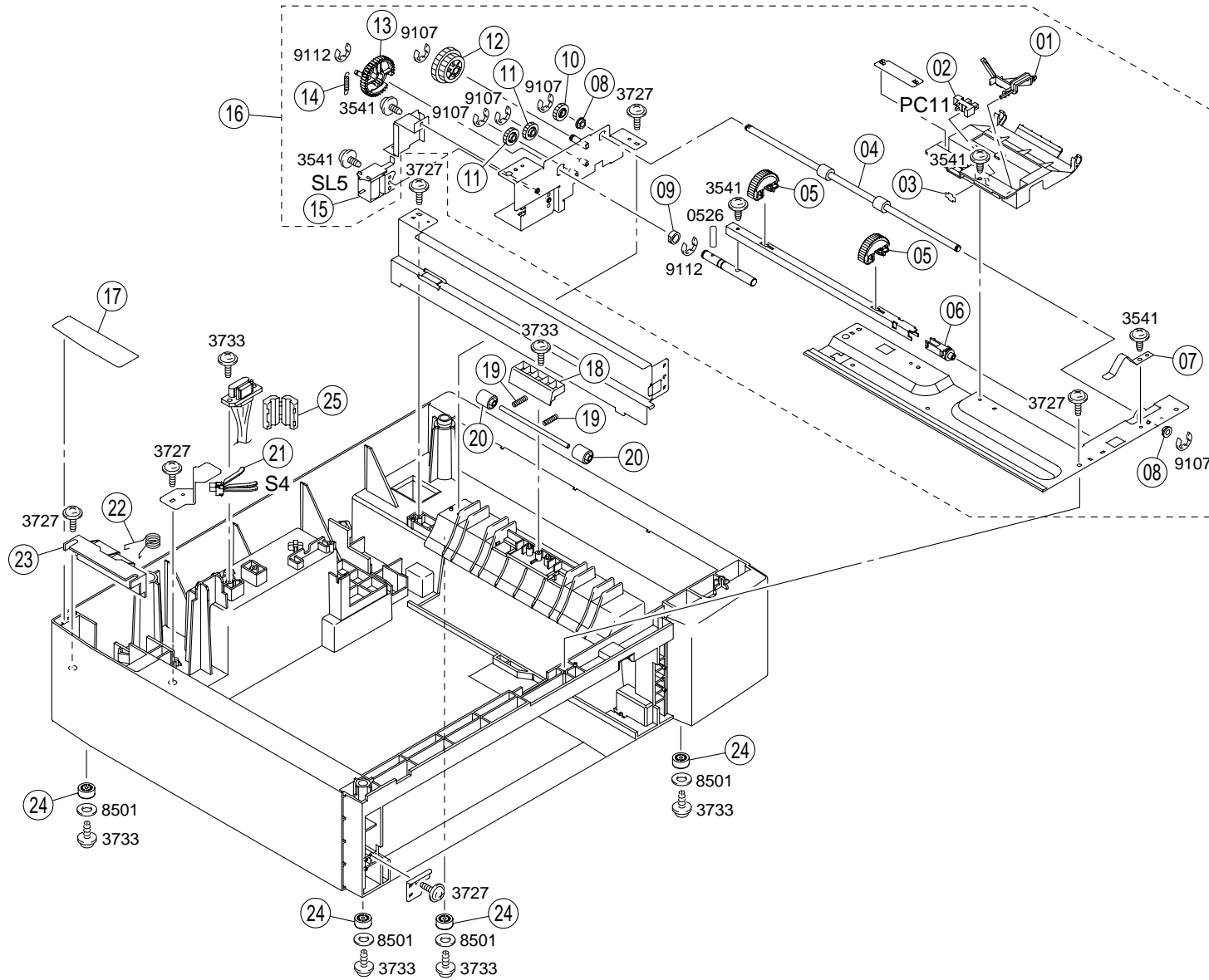


INDEX	PART NO.	PART NAME	REC	QTY	INDEX	PART NO.	PART NAME	REC	QTY
01	4110-4108-01	PRESSURE SPRING		1	19	4110-4111-01	GEAR		1
02	4110-4124-02	SPACER		2	20	4007-3060-01	CUSHION		1
03	4110-4105-01	ROLL		2	21	4110-4118-01	BUSHING		1
04	4110-4104-01	BUSHING		1	22	1136-2131-03	STOPPER	RP	1
05	4007-7353-01	LABEL		1	23	4110-4107-02	PRESSURE SPRING		1
06	4110-3916-01	MEMBER		2	24	4007-0411-01	TRANSFER ASSY		1
07	4110-3022-01	TORSION SPRING		1					
08	4110-2013-15	COVER		1					
09	9335-1410-31	PHOTO INTERRUPTER (PS1.4)	RP	2					
10	4110-3021-01	ACTUATOR		1					
11	4109-5530-01	STOPPER	RP	1					
12	4110-0108-13	PWB ASSY TONER EM (PWB-G)	RP	1					
13	4110-2031-01	SHIELD PLATE		1					
14	4110-3020-01	GUIDE		1					
15	4110-0755-01	GUIDE		1					
16	4110-4103-01	TRANSFER ROLLER	RP	1					
17	4110-4106-01	TORSION SPRING		1					
18	4110-4117-01	ACTUATOR		1					
INDEX	PART NO.	PART NAME	REC	QTY	SFIX				
25	9325-2910-12	POWER SUPPLY (PU1)	RP	1	111, 311, 711				
25	9325-2910-22	POWER SUPPLY (PU1)	RP	1	211, 212, 214				



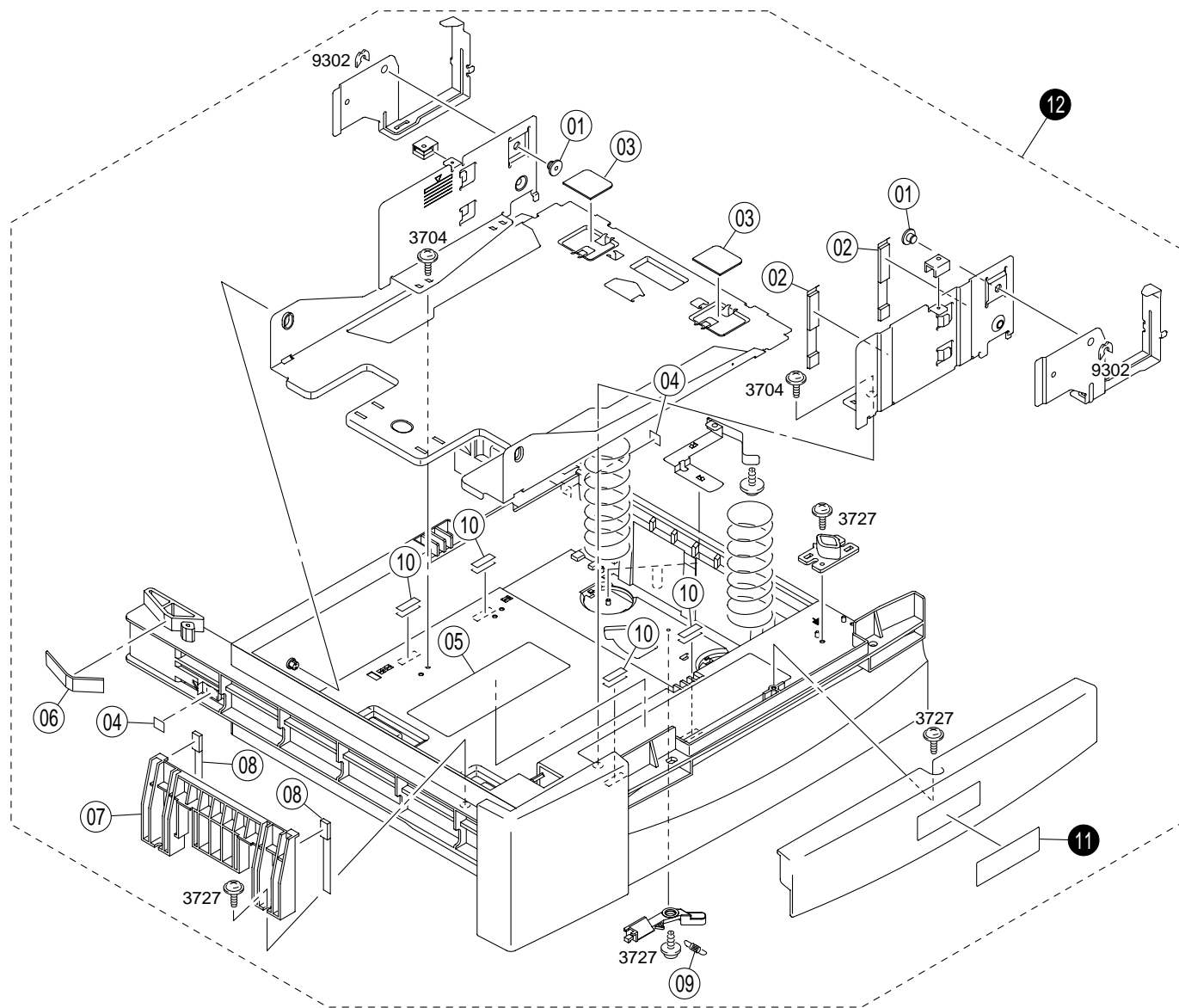
INDEX	PART NO.	PART NAME	REC	QTY	INDEX	PART NO.	PART NAME	REC	QTY
01	4110-4114-13	GUIDE		1	21	4110-3503-01	POLYESTER FILM		1
02	4110-3507-01	RUBBER		3	22	4110-3051-01	CUSHION		1
03	0972-3009-01	BUSHING		2	23	4007-3102-01	REGULATING PLATE		1
04	4110-3007-02	CAM		1	24	4007-3103-01	REGULATING PLATE		1
05	4122-3056-01	ROLL	RP	2	25	4110-3104-01	FRICTION PLATE		4
06	4122-3055-01	ROLL	RP	2	26	4110-2020-02	LIFTING HOLDER		1
07	0957-3040-01	PIN		1	27	4007-0755-01	LIFTING PLATE ASSY		1
08	4110-3504-01	TORSION SPRING		1	28	0957-3104-01	GEAR		1
09	4110-3018-01	PRESSURE SPRING		1	29	4110-1018-01	REGULATING PLATE		1
10	4110-3502-02	HOLDER		1	30	4007-1008-02	TRAY		1
11	4109-3505-01	WASHER		2	31	4110-1019-01	SUPPORT PLATE		1
12	4110-0751-01	SEPARATED PAD	RP	1	32	4110-2019-02	LIFTING HOLDER		1
13	4122-3001-01	ROLLER	RP	1	33	4109-3013-02	SHEET		1
14	4110-3033-01	ROLLER	RP	1	34	4110-3019-01	TORSION SPRING		1
15	4109-3041-03	PRESSURE SPRING		1	35	4110-3016-02	TORSION SPRING		1
16	4007-3015-01	BUSHING		1	36	4110-3042-01	ARM		1
17	4109-3014-12	GEAR 18T	RP	1	37	4007-4130-01	CUSHION		1
18	4109-3034-13	GEAR 36/54T	RP	1	38	4007-0321-02	PAPER PAKE-UP UNIT	RP	1
19	4110-3010-02	GEAR		1	39	4007-0381-02	REGULATING PLATE ASSY		1
20	4109-6201-02	SOLENOID		1					
		TAKE-UP (SL1)							

INDEX	PART NO.	PART NAME	REC	QTY	SFIX

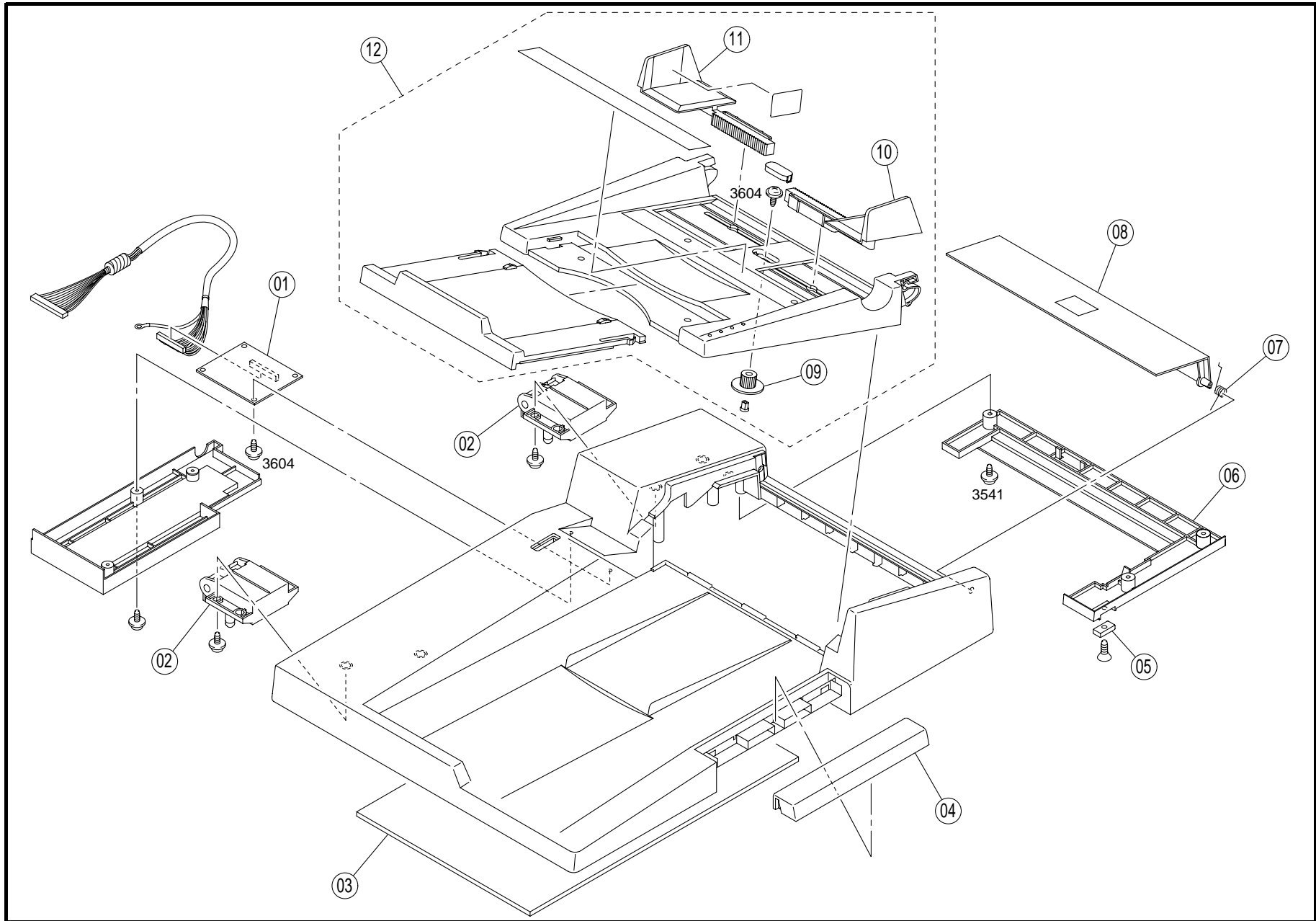


INDEX	PART NO.	PART NAME	REC	QTY	INDEX	PART NO.	PART NAME	REC	QTY
01	4646-3853-01	ACTUATOR		1	19	0933-3839-02	PRESSURE SPRING		2
02	9335-1410-31	PHOTO INTERRUPTER (PC11)	RP	1	20	0933-3840-02	ROLL		2
03	4470-4024-01	STOPPER	RP	1	21	4109-6301-01	SWITCH (S4)	RP	1
04	4165-3818-01	ROLLER		1	22	4498-3491-01	SPRING		1
05	4646-3332-01	ROLLER	RP	2	23	4498-3490-03	HOLDER		1
06	4498-3334-01	SHAFT		1	24	4498-3402-01	RUBBER FOOT		4
07	4646-3842-01	EARTH GROUND		1	25	9326-1810-21	FERRITE CORE		1
08	4156-3838-01	BUSHING		2					
09	1200-3131-07	BUSHING		1					
10	4165-3831-01	GEAR 15T		1					
11	4646-3829-01	GEAR		2					
12	4165-3824-01	GEAR 26/32T		1					
13	4646-3815-02	GEAR		1					
14	4165-3816-01	TENSION SPRING		1					
15	0993-6204-02	SOLENOID (SL5)		1					
16	4646-0321-02	PAPER TAKE-UP UNIT		1					
17	4646-3857-01	SEAL		1					
18	4165-3833-01	BRACKET		1					

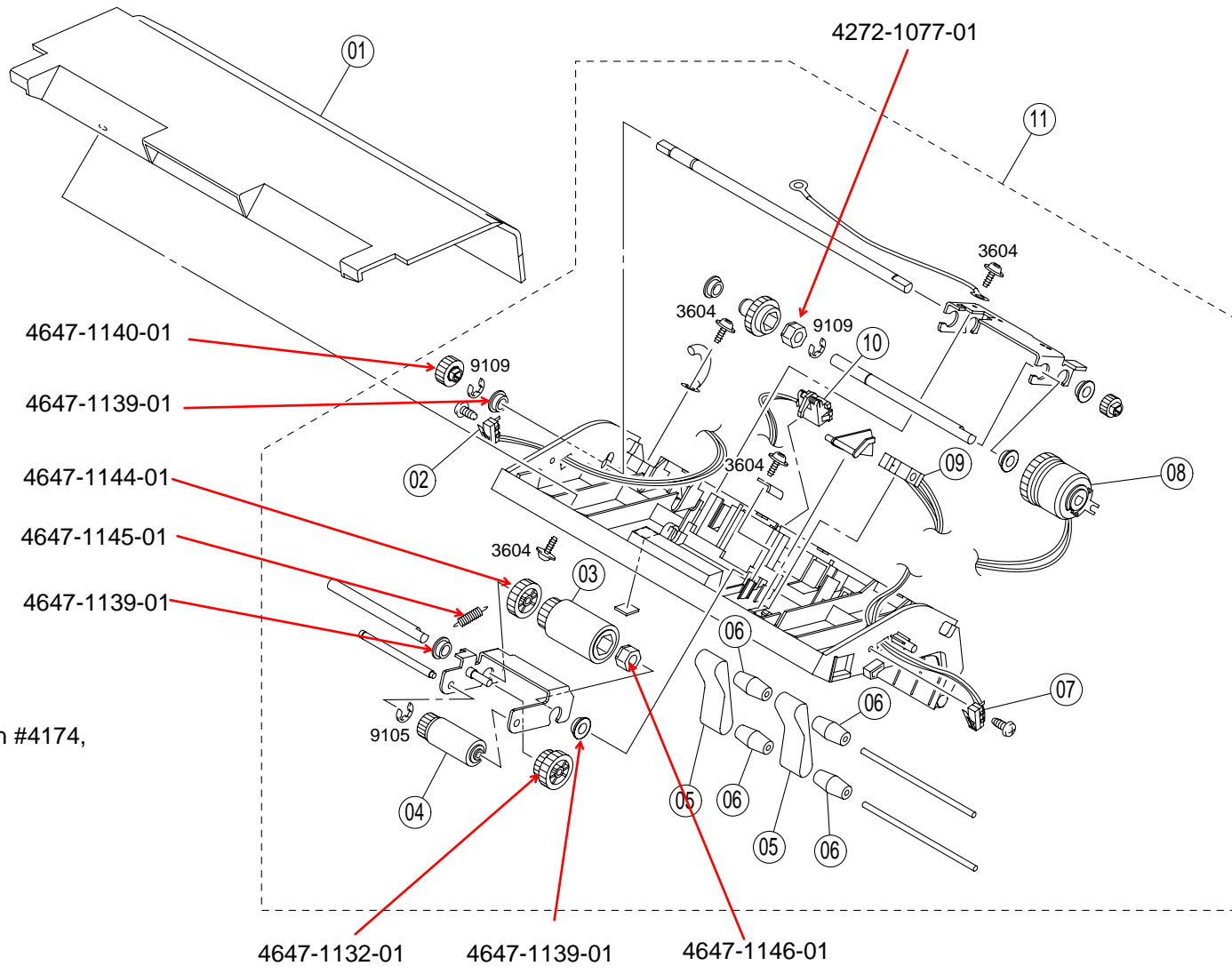
INDEX	PART NO.	PART NAME	REC	QTY	SFIX



INDEX	PART NO.	PART NAME	REC	QTY	INDEX	PART NO.	PART NAME	REC	QTY
01	4498-3345-04	HOLD PLATE		2					
02	4165-3916-01	CUSHION		2					
03	4165-3920-01	FRITION PLATE		2					
04	4646-7305-01	LABEL		2					
05	4646-7302-02	LABEL		1					
06	4498-3833-01	FRICTION SHEET		1					
07	4165-3912-01	REGULATING PLATE		1					
08	4165-3918-02	CUSHION		2					
09	4498-3404-01	TENSION SPRING		1					
10	4165-3927-01	SPACER		8					
INDEX	PART NO.	PART NAME	REC	QTY	SFIX				
11	4646-7303-01	LABEL LTR		1	214, 311				
11	4646-7304-01	LABEL A4		1	111, 211, 212, 711				
12	4646-0301-02	CASSETTE ASSY LTR	RP	1	214, 311				
12	4646-0302-01	CASSETTE ASSY A4	RP	1	111, 211, 212, 711				



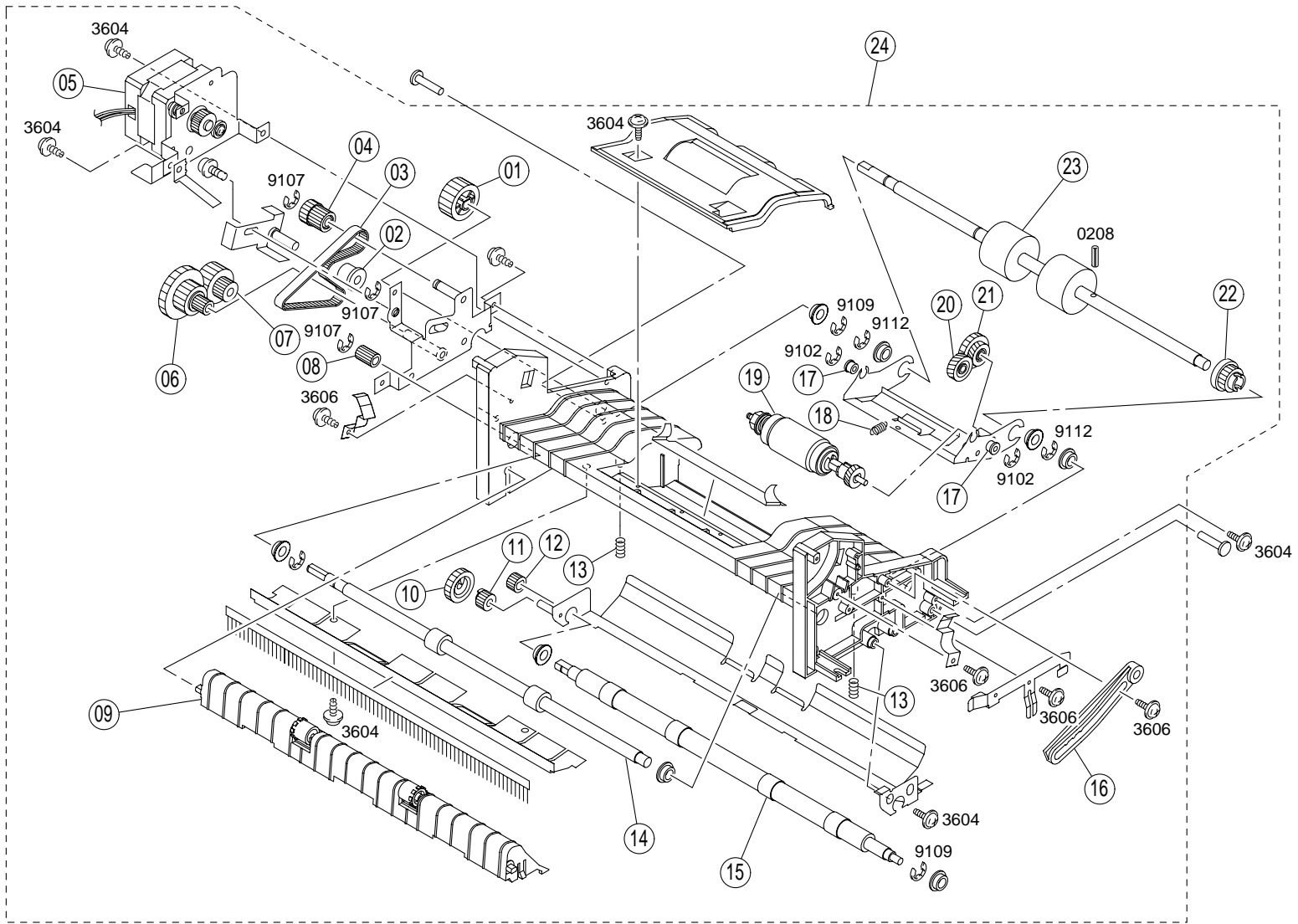
INDEX	PART NO.	PART NAME	REC	QTY	INDEX	PART NO.	PART NAME	REC	QTY
01	4647-1010-01	SDH PCB ASSY	RP	1					
02	4647-1104-01	HINGE		2					
03	4647-1124-01	PAD		1					
04	4647-1110-01	HANDLE		1					
05	4647-1128-01	MAGNET		1					
06	4647-1107-01	COVER		1					
07	4647-1129-01	TORSION SPRING		1					
08	4647-1106-01	COVER		1					
09	4647-1123-01	GEAR		1					
10	4647-1108-01	REGULATING PLATE		1					
11	4647-1109-01	REGULATING PLATE		1					
12	4647-1101-01	GUIDE ASSY		1					
INDEX	PART NO.	PART NAME	REC	QTY	SFIX				



See Bulletin #4174,
3338

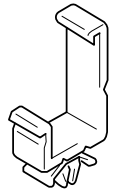
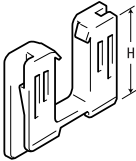


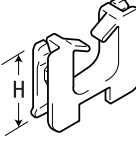
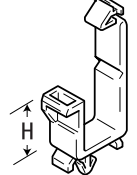
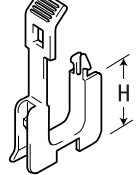
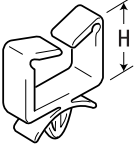
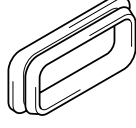
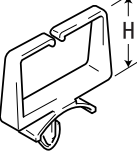
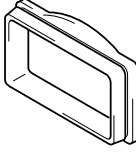
INDEX	PART NO.	PART NAME	REC	QTY	INDEX	PART NO.	PART NAME	REC	QTY
01	4647-1105-01	COVER		1					
02	4647-1007-01	MICRO SWITCH ASSY(A)	RP	1					
03	4647-1026-01	MAIN FEED ROLLER	RP	1					
04	4647-1027-01	PICK-UP ROLLER	RP	1					
05	4647-1030-01	RUBBER BELT	RP	2					
06	4647-1020-01	ELLIPTICAL ROLLER	RP	4					
07	4647-1008-01	MICRO SWITCH ASSY(B)	RP	1					
08	4647-1040-01	MAGNETIC CLUTCH	RP	1					
09	4647-1001-01	PHOTO INTERRUPTER	RP	1					
10	4647-1003-01	PHPTO INTERRUPTER	RP	1					
11	4647-1102-01	BASE ASSY		1					

INDEX	PART NO.	PART NAME	REC	QTY	SFIX



INDEX	PART NO.	PART NAME	REC	QTY	INDEX	PART NO.	PART NAME	REC	QTY
01	4647-1119-01	GEAR 26T		1	19	4647-1028-01	SPRIT ROLLER	RP	1
02	4647-1019-01	BELT ROLLER	RP	1	20	4647-1116-01	GEAR 17T		1
03	4647-1037-01	BELT(94T)	RP	1	21	4647-1118-01	GEAR 15/23T		1
04	4647-1121-01	GEAR 15/20T		1	22	4647-1115-01	GEAR 16T		1
05	4647-1043-01	MOTOR ASSY	RP	1	23	4647-1024-01	TURNING ROLLER	RP	1
06	4647-1120-01	GEAR 49/21/14T		1	24	4647-1103-01	FRAME ASSY		1
07	4647-1112-01	GEAR 13/24T		1					
08	4647-1122-01	PULLEY		1					
09	4647-1029-01	GIUDE ASSY	RP	1					
10	4647-1117-01	GEAR 22T		1					
11	4647-1114-01	GEAR 15T		1					
12	4647-1113-01	GEAR 14T		1					
13	4647-1126-01	PRESSURE SPRING		2					
14	4647-1025-01	EXIT ROLLER	RP	1					
15	4647-1023-01	WHITE ROLLER	RP	1					
16	4647-1111-01	SUPPORT BAR		1					
17	4647-1127-01	BUSHING		2					
18	4647-1125-01	TENSION SPRING		1					

INDEX	PART NO.	PART NAME	REC	QTY	SFIX

①①, ②② 	⑨⑨ 	⑭⑭ 					
③③-⑤⑤ 	⑩⑩ 						
⑥⑥ 	⑪⑪ 						
⑦⑦ 	⑫⑫ 						
⑧⑧ 	⑬⑬ 						

INDEX	PART NO.	PART NAME	REC	QTY	INDEX	PART NO.	PART NAME	REC	QTY
01	9384-1310-91	WIRING SADDLE 18.5H		12					
02	9384-1311-01	WIRING SADDLE 27H		12					
03	9384-1110-61	WIRING SADDLE 21.5H		3					
04	9384-1211-01	WIRING SADDLE 19.2H		1					
05	9384-1310-11	WIRING SADDLE 5.2H		6					
06	9384-1921-31	WIRING SADDLE 17.3H		1					
07	9384-1210-21	WIRING SADDLE 18.2H		2					
08	9384-1310-81	WIRING SADDLE 6.4H		8					
09	9384-2600-11	EDGE COVER 26.0H		1					
10	9384-2010-21	EDGE COVER 8.5H		8					
11	9384-2010-41	EDGE COVER 25.0H		1					
12	1050-4805-01	EDGE COVER		1					
13	1038-4006-01	INSULATING MEMBER		1					
14	9384-1311-11	CABLE TIE 104L		2					

INDEX	PART NO.	PART NAME	REC	QTY	SFIX



Copyright
2000 MINOLTA Co., Ltd.
Printed in Japan

4007-7995-21 00051730