

# Parts catalog

- “Legend” on page 801
- “Assembly 1: Covers” on page 803
- “Assembly 2: Paper path” on page 807
- “Assembly 3: Fusers” on page 809
- “Assembly 4: Electronics” on page 811
- “Assembly 5: Drive motors” on page 815
- “Assembly 6: Duplex” on page 817
- “Assembly 7: Frame” on page 819
- “Assembly 8: Control panel” on page 821
- “Assembly 9: Paper tray” on page 825
- “Assembly 10: Input options” on page 827
- “Assembly 11: 250-sheet tray option” on page 829
- “Assembly 12: 550-sheet tray option” on page 831
- “Assembly 13: High capacity input tray option 1” on page 833
- “Assembly 14: High capacity input tray option 2” on page 835
- “Assembly 15: Output options” on page 837
- “Assembly 16: Output expander option 1” on page 839
- “Assembly 17: Output expander option 2” on page 841
- “Assembly 18: Output expander option 3” on page 843
- “Assembly 19: Output expander option 4” on page 845
- “Assembly 20: High capacity output expander option 1” on page 847
- “Assembly 21: High capacity output expander option 2” on page 849
- “Assembly 22: High capacity output expander option 3” on page 851
- “Assembly 23: High capacity output expander option 4” on page 853
- “Assembly 24: Staple finisher option 1” on page 855
- “Assembly 25: Staple finisher option 2” on page 857
- “Assembly 26: Staple finisher option 3” on page 859
- “Assembly 27: Staple finisher option 4” on page 861
- “Assembly 28: Mailbox option 1” on page 863
- “Assembly 29: Mailbox option 2” on page 865
- “Assembly 30: Mailbox option 3” on page 867
- “Assembly 31: Staple, hole punch finisher option 1” on page 869
- “Assembly 32: Staple, hole punch finisher option 2” on page 871
- “Assembly 33: Staple, hole punch finisher option 3” on page 873
- “Assembly 34: Staple, hole punch finisher option 4” on page 875
- “Assembly 35: Power cords” on page 877
- “Assembly 36: Miscellaneous” on page 879

# Legend

The following column headings are used in the parts catalog:

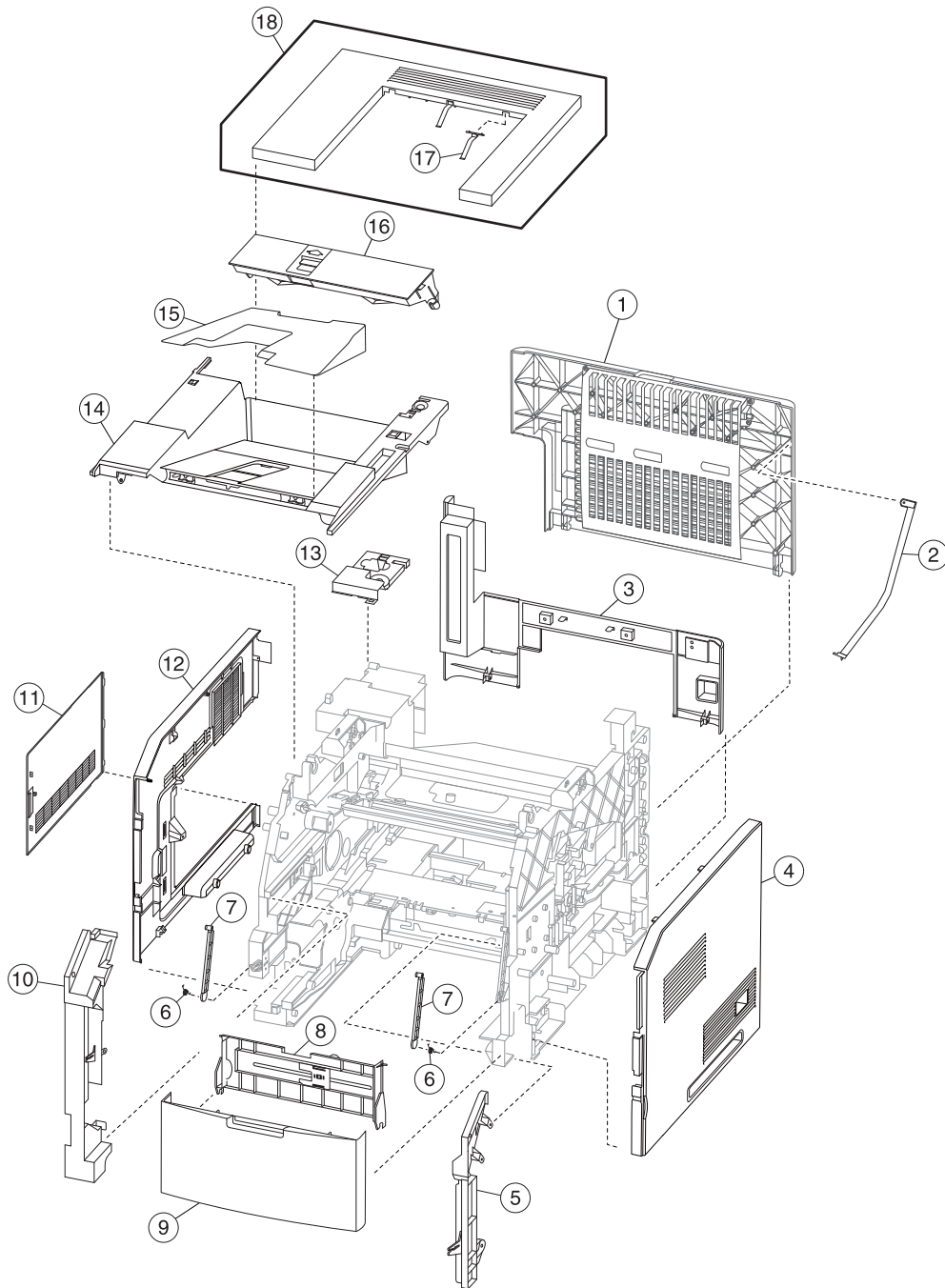
- **Asm-index**—Identifies the assembly and the item in the diagram. For example, 3-1 indicates Assembly 3 and item 1 in the table.
- **Part number**—Identifies the unique number that correlates with the part.
- **Units/mach**—Refers to the number of units actually used in the base machine or product.
- **Units/option**—Refers to the number of units in a particular option.
- **Units/FRU**—Refers to the number of units in a particular FRU.
- **Description**—A brief description of the part.

The following abbreviations are used in the parts catalog:

- **NS** (not shown) in the Asm-index column indicates that the part is procurable but is not pictured in the illustration.
- **PP** (parts packet) in the Description column indicates that the part is contained in a parts packet.



# Assembly 1: Covers



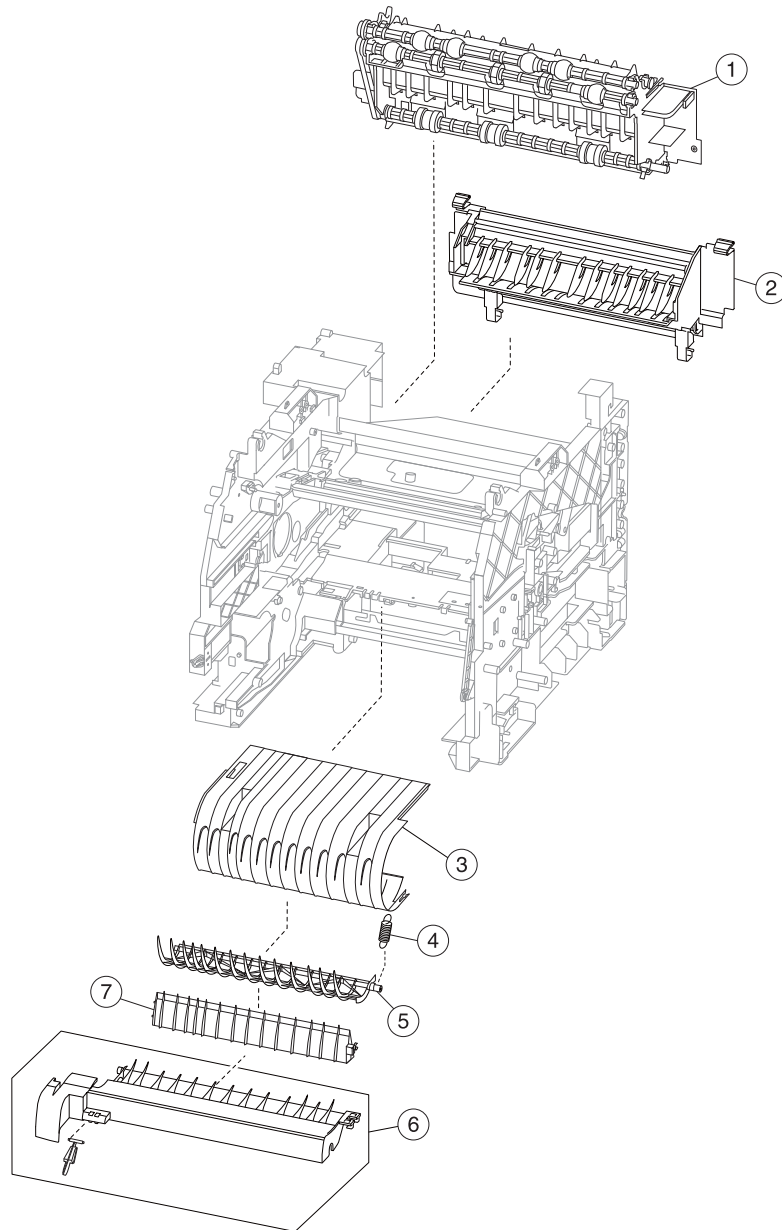
## Assembly 1: Covers

Asm-index	P/N	Units/mach	Units/FRU	Description	Removal procedure
1	40X7678	1	1	Rear door	See <b>“Rear door removal” on page 456.</b>
2	40X7726	1	1	Rear door support	N/A
3	40X7671	1	1	Rear lower cover (integrated 550-sheet tray)	See <b>“Rear lower cover removal” on page 454.</b>
3	40X8404	1	1	Rear lower cover (integrated 250-sheet tray)	See <b>“Rear lower cover removal” on page 454.</b>
4	40X7680	1	1	Right cover (integrated 550-sheet tray)	See <b>“Right cover removal” on page 505.</b>
4	40X8403	1	1	Right cover (integrated 250-sheet tray)	See <b>“Right cover removal” on page 505.</b>
5	40X7670	1	1	Right inner cover	See <b>“Right inner cover removal” on page 406.</b>
6	40X7690	2	1	Torsion spring	N/A
7	40X7715	2	1	Front door support link	N/A
8	40X7725	1	1	MPF tray	See <b>“MPF tray removal” on page 404.</b>
9	40X7674	1	1	Front door	See <b>“Front door removal” on page 383.</b>
10	40X7669	1	1	Inner left cover	See <b>“Left inner cover removal” on page 390.</b>
11	40X7672	1	1	Controller board access cover	See <b>“Controller board access cover removal” on page 493.</b>
12	40X7679	1	1	Left cover (integrated 550-sheet tray)	See <b>“Left cover removal” on page 489.</b>
12	40X8402	1	1	Left cover (integrated 250-sheet tray)	See <b>“Left cover removal” on page 489.</b>
13	40X7677	1	1	Bin sensor cover	See <b>“Output bin sensor cover removal” on page 463.</b>
14	40X7675	1	1	Standard bin cover (integrated 550-sheet tray)	See <b>“Standard bin cover removal” on page 467.</b>
14	40X8397	1	1	Standard bin cover (integrated 250-sheet tray)	See <b>“Standard bin cover removal” on page 467.</b>
15	40X8855	1	1	Bin insert	N/A
16	40X8398	1	1	Fuser wiper cover (hot roll fuser printer only)	N/A
17	40X7604	2	1	Output bin guide	N/A

Asm-index	P/N	Units/mach	Units/FRU	Description	Removal procedure
18	40X7673	1	1	Top cover	See <b>“Top cover removal”</b> <b>on page 466.</b>



## Assembly 2: Paper path

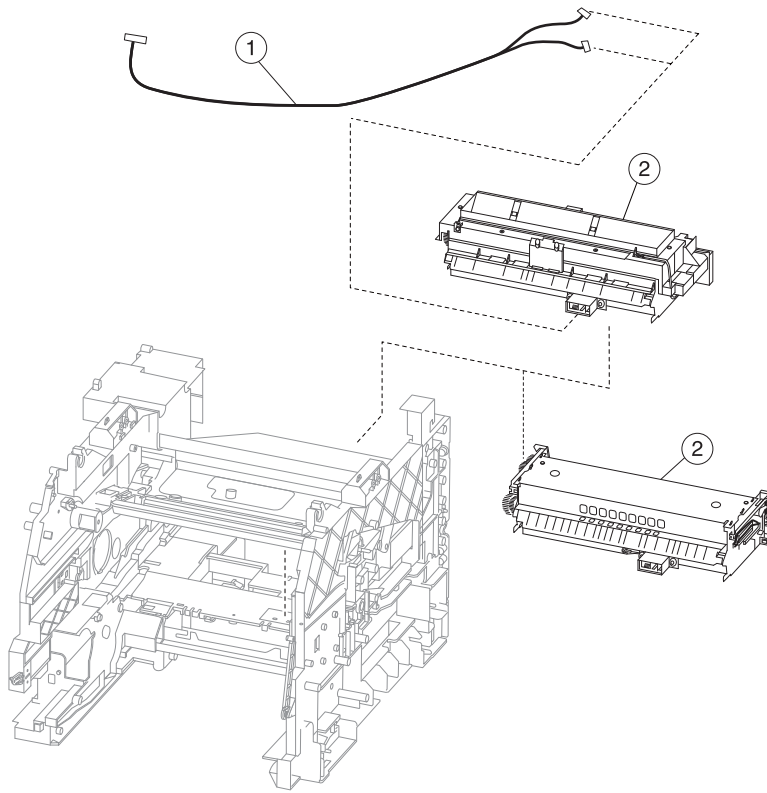




## Assembly 2: Paper path

Asm-index	P/N	Units/mach	Units/FRU	Description	Removal procedure
1	40X7602	1	1	Upper redrive	See <b>“Upper redrive removal”</b> on page 471.
2	40X7588	1	1	Fuser access door (belt fuser printers only)	See <b>“Fuser access door removal”</b> on page 461.
2	40X8399	1	1	Fuser access door (hot roll fuser printers only)	See <b>“Fuser access door removal”</b> on page 461.
3	40X7587	1	1	Inner guide deflector	See <b>“Inner guide deflector removal”</b> on page 384.
4	40X7585	1	1	Recoil spring	N/A
5	40X7584	1	1	Duplex exit diverter	See <b>“Duplex exit diverter removal”</b> on page 381.
6	40X7583	1	1	Media turn guide	See <b>“Media turn guide removal”</b> on page 394.
7	40X7586	1	1	Media vertical guide	See <b>“Media vertical guide removal”</b> on page 395.

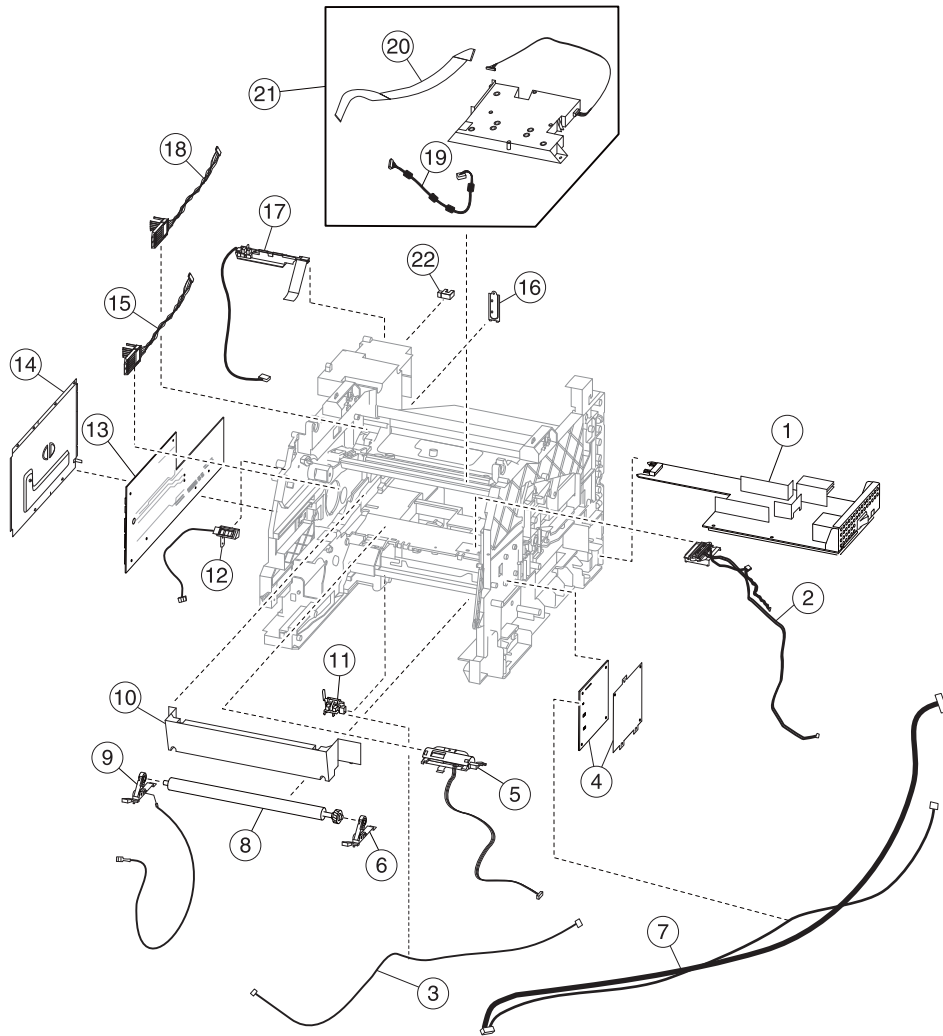
# Assembly 3: Fusers



## Assembly 3: Fusers

Asm-index	P/N	Units/mach	Units/FRU	Description	Removal procedure
1	40X7577	1	1	Fuser data cable	N/A
2	40X7743	1	1	MS81x Return Program Fuser Type 00, 110-120V Letter	See <b>"Fuser removal"</b> on page 459.
2	40X7744	1	1	MS81x Return Program Fuser Type 01, 220-240V A4	See <b>"Fuser removal"</b> on page 459.
2	40X7745	1	1	MS81x Return Program Fuser Type 02, 100V A4	See <b>"Fuser removal"</b> on page 459.
2	40X7581	1	1	MS81x Return Program Fuser Type 03, 110-120V A4	See <b>"Fuser removal"</b> on page 459.
2	40X7734	1	1	MS81x Return Program Fuser Type 04, 220-240V Letter	See <b>"Fuser removal"</b> on page 459.
2	40X8016	1	1	MS81x Fuser Type 05, 110-120V Letter	See <b>"Fuser removal"</b> on page 459.
2	40X8017	1	1	MS81x Fuser Type 06, 220-240V A4	See <b>"Fuser removal"</b> on page 459.
2	40X8018	1	1	MS81x Fuser Type 07, 100V A4	See <b>"Fuser removal"</b> on page 459.
2	40X8019	1	1	MS81x Fuser Type 08, 110-120V A4	See <b>"Fuser removal"</b> on page 459.
2	40X8020	1	1	MS81x Fuser Type 09, 220-240V Letter	See <b>"Fuser removal"</b> on page 459.
2	40X8503	1	1	MS71x Return Program Fuser Type 11, 110-120V contact	See <b>"Fuser removal"</b> on page 459.
2	40X8504	1	1	MS71x Return Program Fuser Type 13, 220-240V contact	See <b>"Fuser removal"</b> on page 459.
2	40X8505	1	1	MS71x Return Program Fuser Type 15, 100V contact	See <b>"Fuser removal"</b> on page 459.
2	40X8506	1	1	MS71x Fuser Type 17, 110v contact	See <b>"Fuser removal"</b> on page 459.
2	40X8507	1	1	MS71x Fuser Type 19, 220v contact	See <b>"Fuser removal"</b> on page 459.
2	40X8508	1	1	MS71x Fuser Type 21, 100v contact	See <b>"Fuser removal"</b> on page 459.

# Assembly 4: Electronics



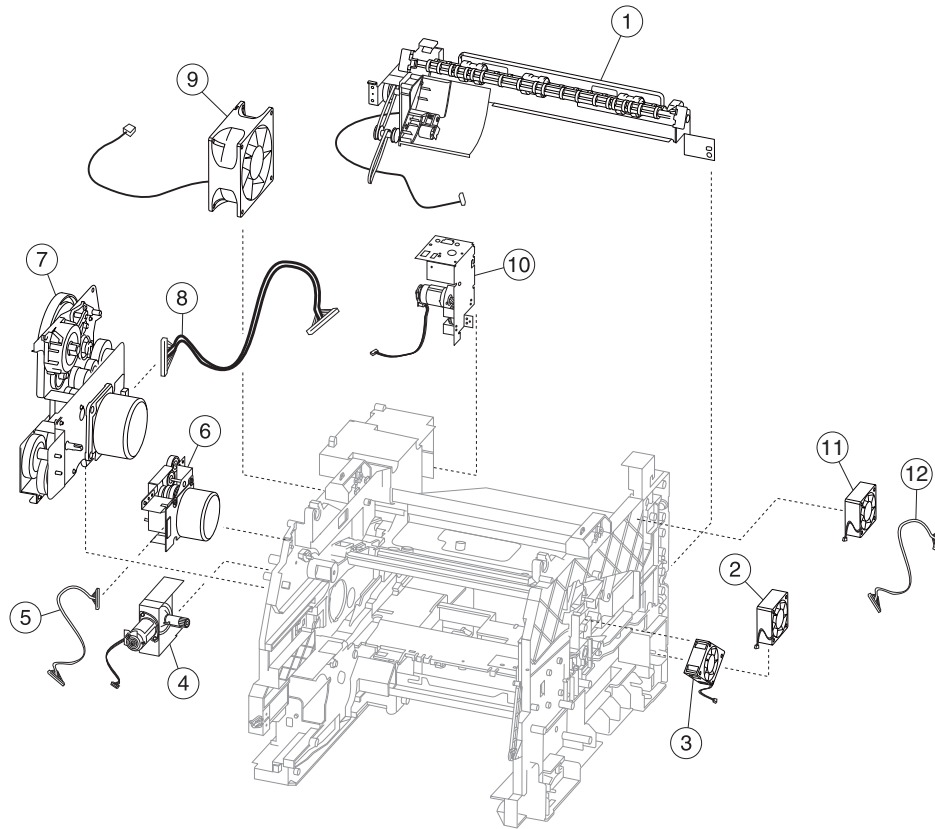
## Assembly 4: Electronics

Asm-index	P/N	Units/mach	Units/FRU	Description	Removal procedure
1	40X7694	1	1	LVPS (universal)	See <b>“LVPS removal” on page 511.</b>
2	40X7685	1	1	Toner level / imaging unit high voltage contact	See <b>“HVPS removal” on page 510.</b>
3	40X7688	1	1	Input sensor cable	N/A
4	40X7578	1	1	HVPS	See <b>“HVPS removal” on page 510.</b>
5	40X7686	1	1	Sensor (toner density) Includes shutter and cable	See <b>“Transfer roller right arm removal” on page 411.</b>
6	40X7606	1	1	Transfer roller right arm	See <b>“Transfer roller right arm removal” on page 411.</b>
7	40X7699	1	1	HVPS/toner cartridge fan cable	N/A
8	40X7582	1	1	Transfer roller	See <b>“Transfer roller removal” on page 414.</b>
9	40X7605	1	1	Transfer roller left arm with cable	See <b>“Transfer roller left arm with cable removal” on page 410.</b>
10	40X8365	1	1	Printhead access cover	See <b>“Laser printhead removal” on page 386.</b>
11	40X7607	1	1	Sensor (input)	See <b>“Sensor (input) removal” on page 407.</b>
12	40X7693	1	1	Sensor (control panel interlock) Includes bracket and cable	See <b>“Sensor (control panel interlock) removal” on page 501.</b>
13	40X7570	1	1	Controller board (2.4” display printers only)	See <b>“Controller board removal” on page 492.</b>
13	40X7571	1	1	Controller board (4.3” tilting display printers only)	See <b>“Controller board removal” on page 492.</b>

Asm-index	P/N	Units/mach	Units/FRU	Description	Removal procedure
13	40X7572	1	1	Controller board (7" tilting display printers only)	See <b>"Controller board removal"</b> on page 492.
14	40X7722	1	1	Controller board access shield	See <b>"Controller board access shield removal"</b> on page 494.
15	40X7692	1	1	Toner cartridge smart chip contact with cable	See <b>"Laser printhead removal"</b> on page 386.
16	40X8034	1	1	Option card cover plate	N/A
17	40X7691	1	1	Sensor (standard bin full) with output bin guide	See <b>"Sensor (standard bin full) removal"</b> on page 466.
18	40X7689	1	1	Imaging unit smart chip contact with cable	See <b>"Laser printhead removal"</b> on page 386.
19	40X7707	1	1	Printhead power cable	See <b>"Laser printhead removal"</b> on page 386.
20	40X7708	1	1	Printhead video cable	See <b>"Laser printhead removal"</b> on page 386.
21	40X7597	1	1	Laser printhead (quad diode) (belt fuser printers only) Includes data and power cables	See <b>"Laser printhead removal"</b> on page 386.
21	40X8481	1	1	Laser printhead (dual diode) (hot roller fuser printers only) Includes data and power cables	See <b>"Laser printhead removal"</b> on page 386.
22	40X7592	1	1	Interrupt sensor <ul style="list-style-type: none"> <li>• sensor (rear door interlock)</li> </ul>	See <b>"Sensor (rear door interlock) removal"</b> on page 465.



# Assembly 5: Drive motors

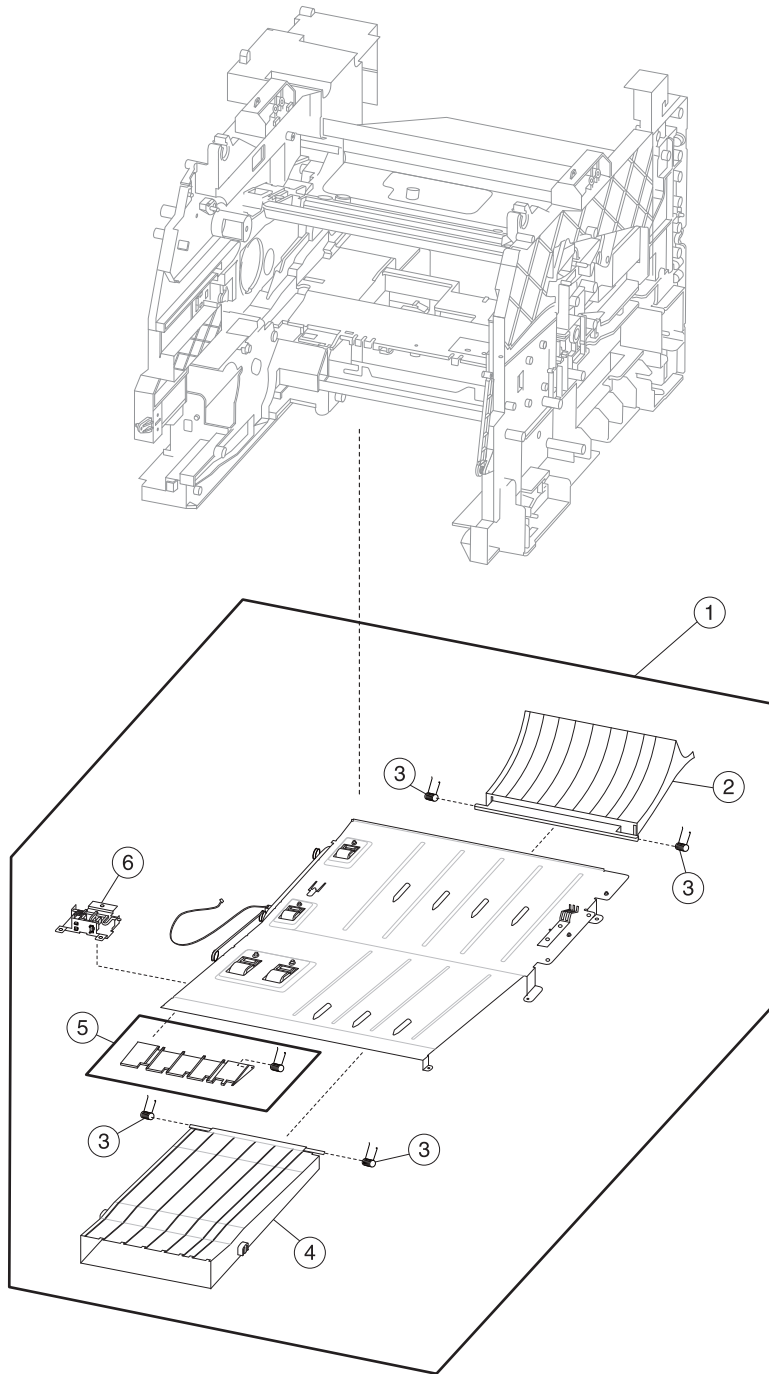




## Assembly 5: Drive motors

Asm-index	P/N	Units/mach	Units/FRU	Description	Removal procedure
1	40X7684	1	1	Duplex motor with cable	See <b>“Duplex motor removal”</b> on page 457.
2	40X7695	1	1	Duplex cooling fan	See <b>“Duplex cooling fan removal”</b> on page 508.
3	40X7580	1	1	Cartridge cooling fan	See <b>“Cartridge cooling fan removal”</b> on page 507.
4	40X7596	1	1	Toner add motor with cable	See <b>“Toner add motor removal”</b> on page 503.
5	40X7576	1	1	Fuser drive motor cable	See <b>“Fuser drive motor removal”</b> on page 494.
6	40X7595	1	1	Fuser drive motor (belt fuser printers only)	See <b>“Fuser drive motor removal”</b> on page 494.
6	40X8401	1	1	Fuser drive motor (hot roll fuser printers only)	See <b>“Fuser drive motor removal”</b> on page 494.
7	40X7594	1	1	Main drive motor	See <b>“Main drive motor removal”</b> on page 497.
8	40X7574	1	1	Main motor cable	See <b>“Main cooling fan removal”</b> on page 496.
9	40X7579	1	1	Main cooling fan with cable	See <b>“Main cooling fan removal”</b> on page 496.
10	40X7682	1	1	Upper redrive motor with cable	See <b>“Upper redrive motor removal”</b> on page 469.
11	40X8483	1	1	Fuser cooling fan (hot roll fuser printers only)	N/A
12	40X8484	1	1	Fuser cooling fan cable (hot roll fuser printers only)	N/A

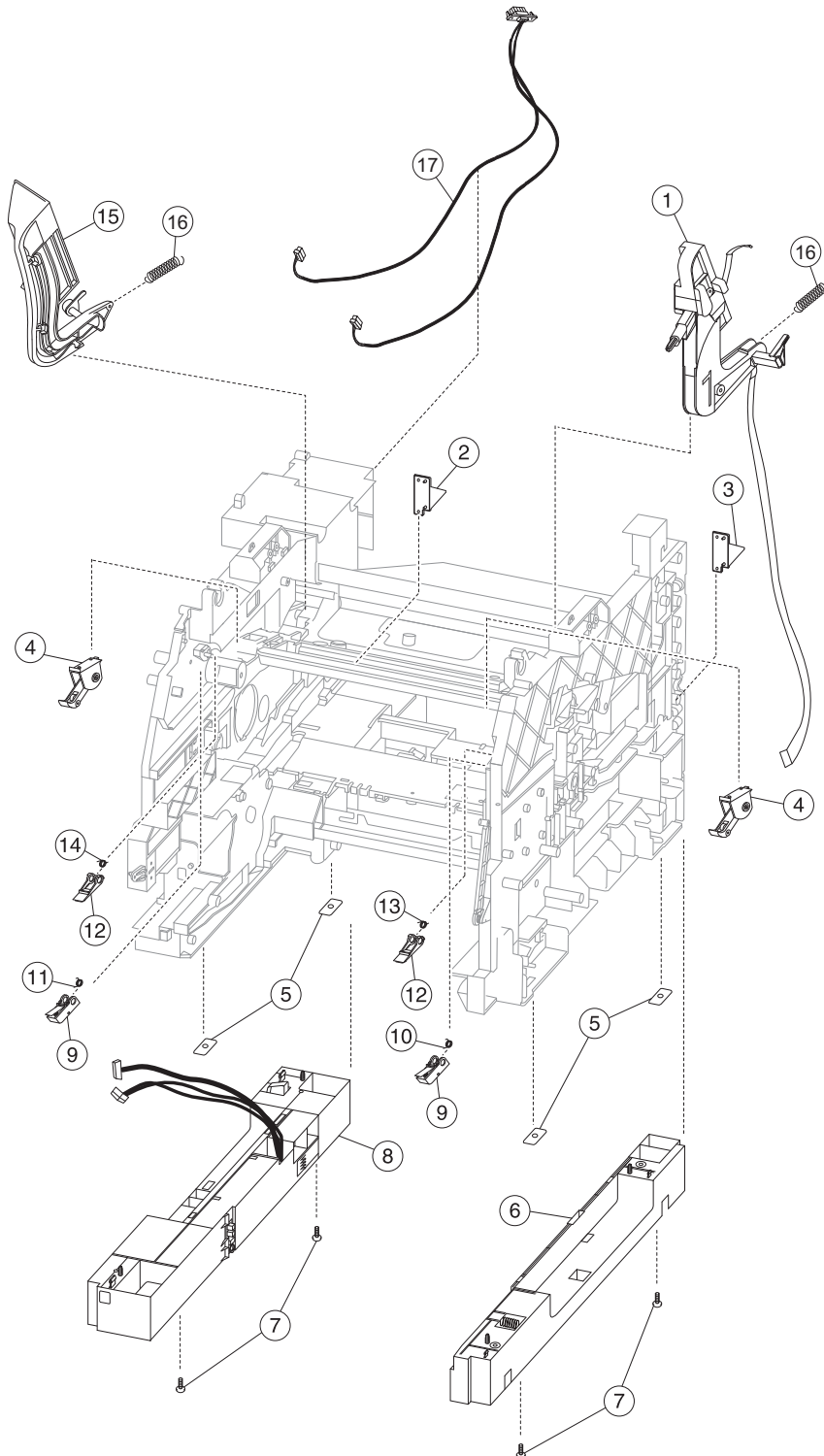
# Assembly 6: Duplex



## Assembly 6: Duplex

Asm-index	P/N	Units/mach	Units/FRU	Description	Removal procedure
1	40X8803	1	1	Internal duplex with cable (MS710 only)	N/A
2	40X8804	1	1	Duplex rear flap (MS710 only)	See <b>"Duplex rear flap removal"</b> on page 476.
3	40X7723	4	1	Torsion spring	N/A
4	40X7667	1	1	Duplex front flap	See <b>"Duplex front flap removal"</b> on page 475.
5	40X7952	1	1	Duplex jam release guide	N/A
6	40X7697	1	1	Sensor (duplex path) with cable	See <b>"Sensor (duplex path) removal"</b> on page 484.

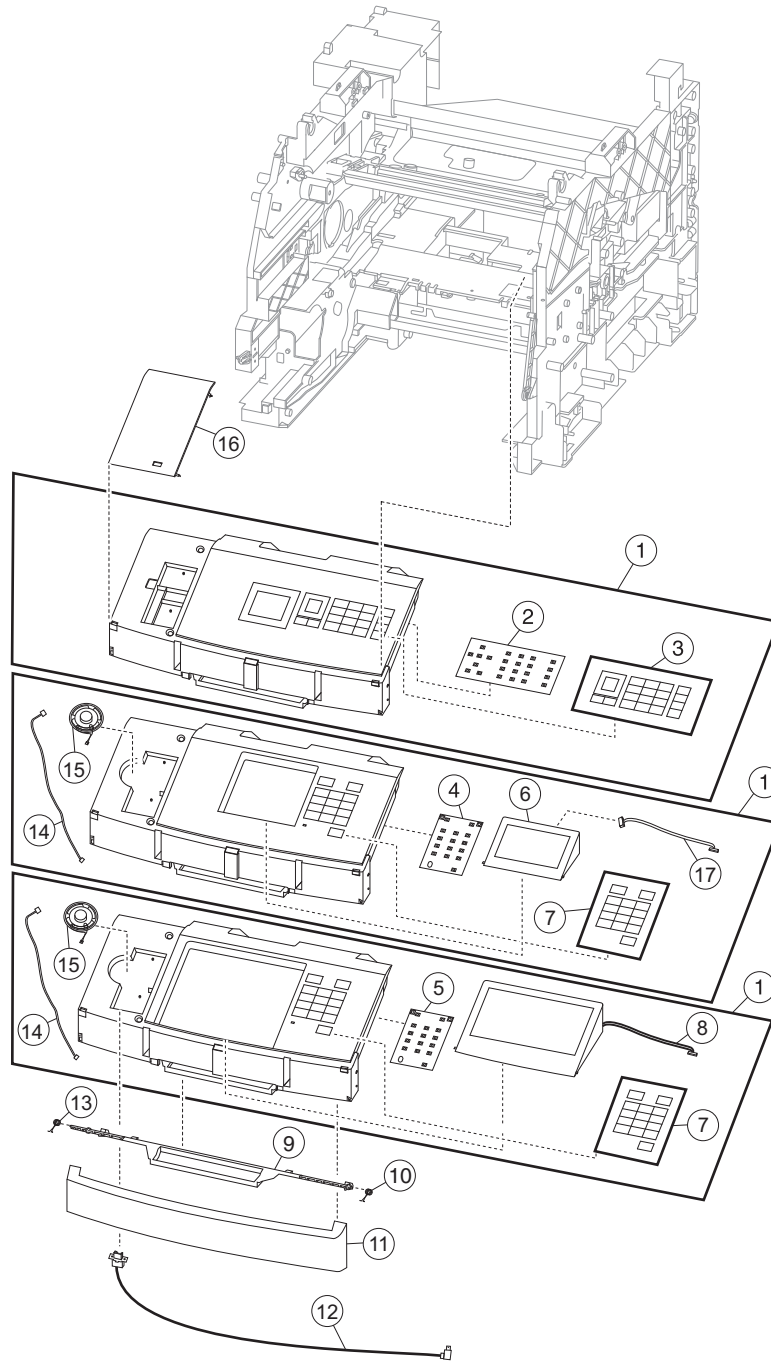
# Assembly 7: Frame



## Assembly 7: Frame

Asm-index	P/N	Units/mach	Units/FRU	Description	Removal procedure
1	40X8316	1	1	Right control panel hinge, with control panel cable	See <b>“Right control panel hinge removal” on page 450.</b>
2	40X7732	1	1	Left frame pivot	See <b>“Left frame pivot removal” on page 462.</b>
3	40X7733	1	1	Right frame pivot	See <b>“Right frame pivot removal” on page 464.</b>
4	40X7714	2	1	Imaging unit clamp	N/A
5	40X7589	4	1	Fastener plate	N/A
6	40X7728	1	1	Right frame extension with tray latch (integrated 550-sheet tray)	See <b>“Right frame extension” on page 483.</b>
6	40X8408	1	1	Right frame extension (integrated 250-sheet tray)	See <b>“Right frame extension” on page 483.</b>
7	40X7590	4	1	M5x12 screw	N/A
8	40X7727	1	1	Left frame extension (integrated 550-sheet tray) <ul style="list-style-type: none"> <li>• with media size sensor with cable</li> <li>• with input option interface cable</li> <li>• with sensor (media tray position) with cable</li> </ul>	See <b>“Left frame extension removal” on page 477.</b>
8	40X8407	1	1	Left frame extension (integrated 250-sheet tray) <ul style="list-style-type: none"> <li>• with media size sensor with cable</li> <li>• with input option interface cable</li> <li>• with sensor (media tray position) with cable</li> </ul>	See <b>“Left frame extension removal” on page 477.</b>
9	40X7716	2	1	Toner cartridge lock	N/A
10	40X7721	1	1	Torsion spring	N/A
11	40X7719	1	1	Torsion spring	N/A
12	40X7717	2	1	Toner cartridge clamp	N/A
13	40X7720	1	1	Torsion spring	N/A
14	40X7718	1	1	Torsion spring	N/A
15	40X8315	1	1	Left control panel hinge	See <b>“Left control panel hinge removal” on page 447.</b>
16	40X7724	2	1	Recoil spring	N/A
17	40X7575	1	1	Top option interface cable	N/A

# Assembly 8: Control panel



## Assembly 8: Control panel

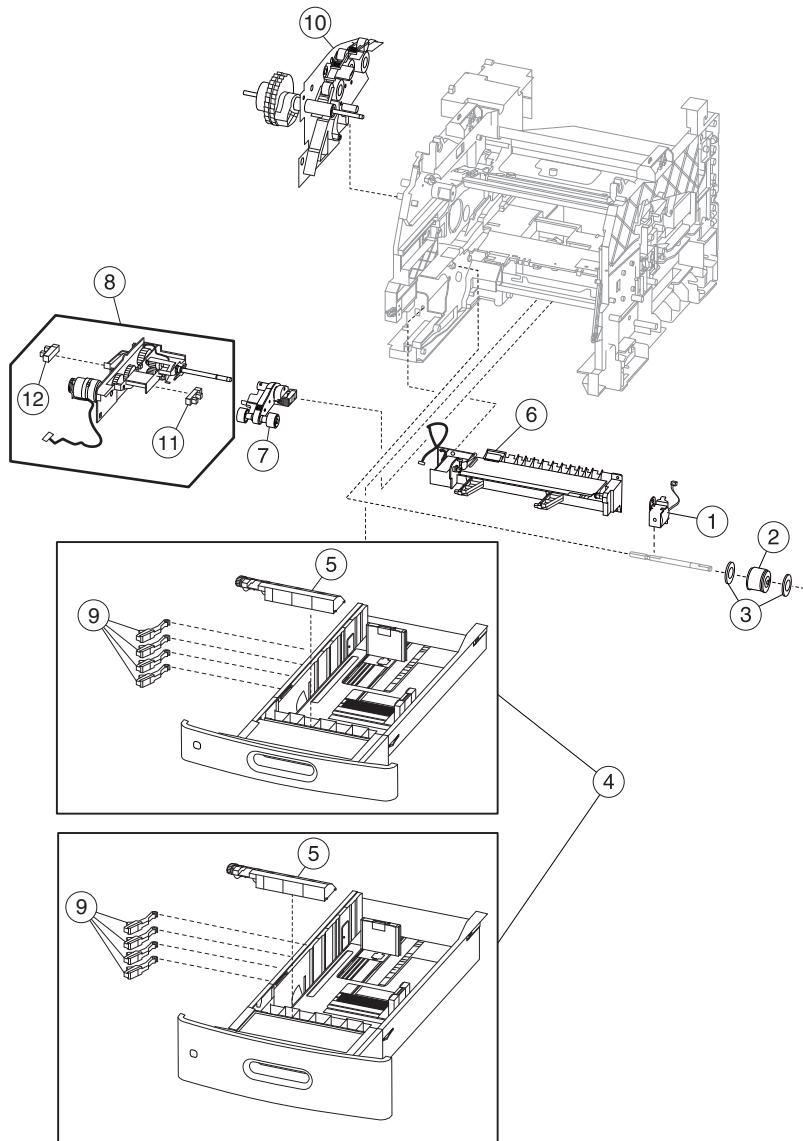
Asm-index	P/N	Units/mach	Units/FRU	Description	Removal procedure
1	40X7700	1	1	2.4" LCD control panel	N/A
1	40X7701	1	1	4.3" touch screen control panel	See <b>"Control panel removal (4.3-inch screen, 7-inch screen)"</b> on page 428.
1	40X7875	1	1	7" touch screen control panel	See <b>"Control panel removal (4.3-inch screen, 7-inch screen)"</b> on page 428.
2	40X7737	1	1	Control panel board (2.4" display only)	See <b>"Control panel board (2.4-inch tilting display) removal"</b> on page 434.
3	40X7741	1	1	Control panel buttons (2.4" display only)	N/A
4	40X7735	1	1	Control panel board (4.3" tilting display only)	See <b>"Control panel board (4.3-inch tilting display) removal"</b> on page 437.
5	40X8042	1	1	Control panel board (7" tilting display only)	See <b>"Control panel board (4.3-inch tilting display) removal"</b> on page 437.
6	40X8537	1	1	4.3" tilting display	See <b>"4.3-inch tilting display removal"</b> on page 417.
7	40X8661	1	1	Control panel buttons (4.3" and 7" tilting displays only)	N/A
8	40X8538	1	1	7" tilting display	See <b>"7-inch tilting display removal"</b> on page 419.
9	40X7729	1	1	Control panel latch	See <b>"Control panel latch removal"</b> on page 445.
10	40X7731	1	1	Torsion spring	N/A
11	40X7681	1	1	Control panel front cover	See <b>"Control panel front cover removal"</b> on page 443.
12	40X7704	1	1	USB cable	N/A
13	40X7730	1	1	Torsion spring	N/A
14	40X7702	1	1	Speaker cable	N/A
15	40X9079	1	1	Control panel speaker	N/A
16	40X8583	1	1	Control panel left bezel (M5155)	See <b>"Control panel left bezel removal"</b> on page 446.

Asm-index	P/N	Units/mach	Units/FRU	Description	Removal procedure
16	40X8584	1	1	Control panel left bezel (M5163)	See <b>“Control panel left bezel removal” on page 446.</b>
16	40X8585	1	1	Control panel left bezel (M5170)	See <b>“Control panel left bezel removal” on page 446.</b>
16	40X8334	1	1	Control panel left bezel (MS810n)	See <b>“Control panel left bezel removal” on page 446.</b>
16	40X8335	1	1	Control panel left bezel (MS810dn)	See <b>“Control panel left bezel removal” on page 446.</b>
16	40X8336	1	1	Control panel left bezel (MS810de)	See <b>“Control panel left bezel removal” on page 446.</b>
16	40X8337	1	1	Control panel left bezel (MS811n)	See <b>“Control panel left bezel removal” on page 446.</b>
16	40X8338	1	1	Control panel left bezel (MS811dn)	See <b>“Control panel left bezel removal” on page 446.</b>
16	40X8339	1	1	Control panel left bezel (MS812dn)	See <b>“Control panel left bezel removal” on page 446.</b>
16	40X8340	1	1	Control panel left bezel (MS812de)	See <b>“Control panel left bezel removal” on page 446.</b>
16	40X8364	1	1	Control panel left USB delete cover	N/A
16	40X8362	1	1	Control panel left bezel (MS710)	See <b>“Control panel left bezel removal” on page 446.</b>
16	40X8363	1	1	Control panel left bezel (MS711)	See <b>“Control panel left bezel removal” on page 446.</b>
17	40X7705	1	1	Display to control panel board cable (4.3” tilting display only)	NA





# Assembly 9: Paper tray



## Assembly 9: Paper tray

Asm-index	P/N	Units/mach	Units/FRU	Description	Removal procedure
1	40X7712	1	1	MPF solenoid	See <b>“MPF solenoid removal” on page 402.</b>
2	40X7600	1	1	MPF pick roller	See <b>“MPF pick roller removal” on page 400.</b>
3	40X7601	2	1	MPF feed roller flange	N/A
4	40X7742	1	1	550-sheet tray	N/A
4	40X8153	1	1	250-sheet tray	N/A
5	40X7713	1	1	Separator roller assembly	See <b>“Separator roller assembly removal” on page 487.</b>
6	40X7598	1	1	MPF feeder lift plate with cable	See <b>“MPF feeder lift plate removal” on page 397.</b>
7	40X7593	1	1	Pick roller assembly	See <b>“Pick roller assembly removal” on page 482.</b>
8	40X7591	1	1	Media feeder	See <b>“Media feeder removal” on page 498.</b>
9	40X8541	4	1	Media size actuator	<b>“Media size actuator removal” on page 480</b>
10	40X7599	1	1	Media aligner roller with MPF pick roller	See <b>“Media aligner roller removal” on page 392.</b>
11	40X7592	1	1	Interrupt sensor <ul style="list-style-type: none"> <li>• Sensor (media empty)</li> </ul>	N/A
12	40X7592	1	1	Interrupt sensor <ul style="list-style-type: none"> <li>• Sensor (pick roller position)</li> </ul>	See <b>“Sensor (pick roller position) removal” on page 502.</b>

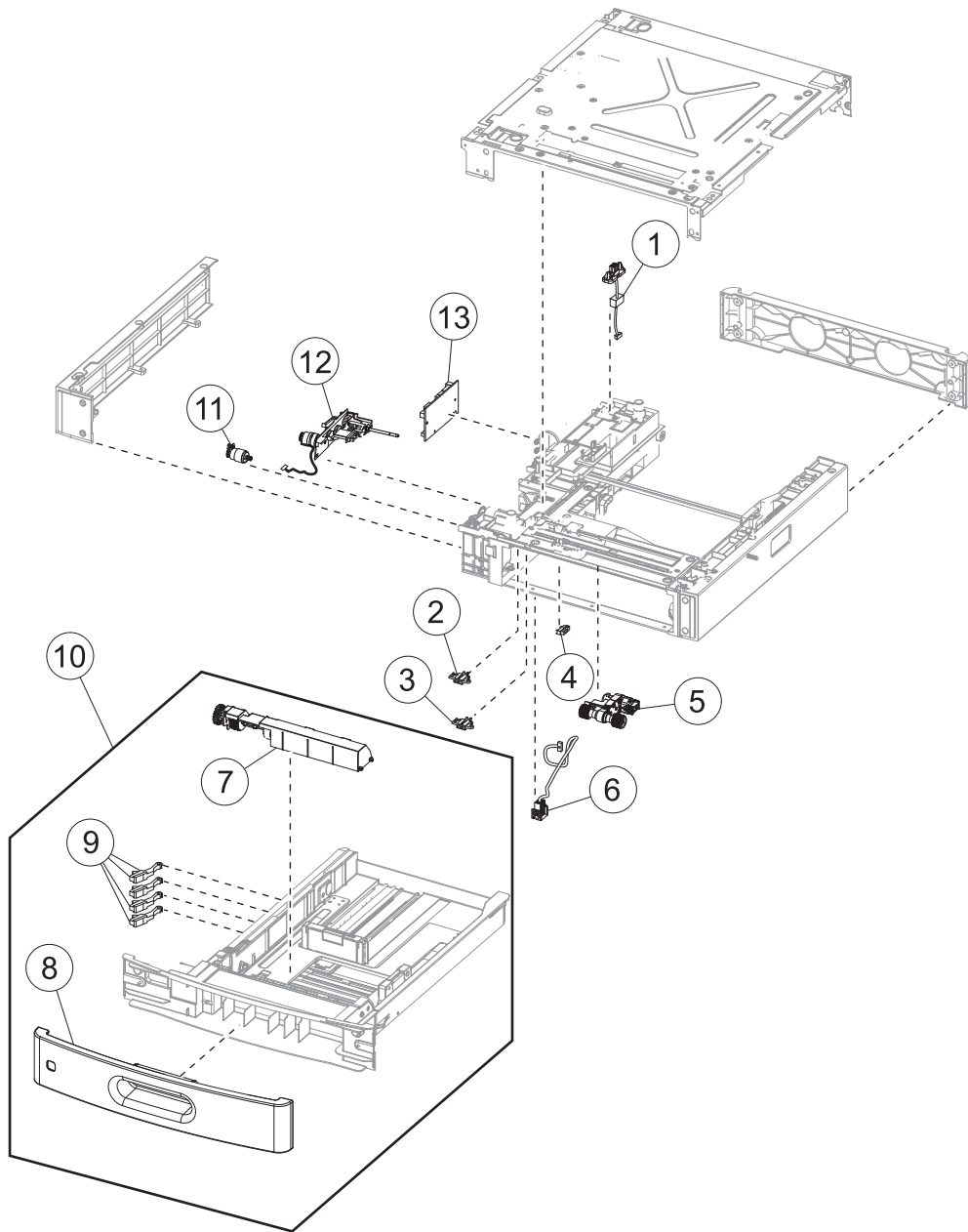
# Assembly 10: Input options



## Assembly 10: Input options

Asm-index	P/N	Units/mach	Units/FRU	Description	Removal procedure
1	40X8106	1	1	550-sheet tray option	<b>"250/550-sheet media tray and drawer assembly removal" on page 514</b>
1	40X8411	1	1	550-sheet tray option, lockable	<b>"250/550-sheet media tray and drawer assembly removal" on page 514</b>
2	40X8152	1	1	250-sheet tray option	<b>"250/550-sheet media tray and drawer assembly removal" on page 514</b>
2	40X8410	1	1	250-sheet tray option, lockable	<b>"250/550-sheet media tray and drawer assembly removal" on page 514</b>
3	40X8161	1	1	HCIT option	<b>"High capacity input tray option removal" on page 530</b>
NS	40X8409	1	1	Spacer	N/A

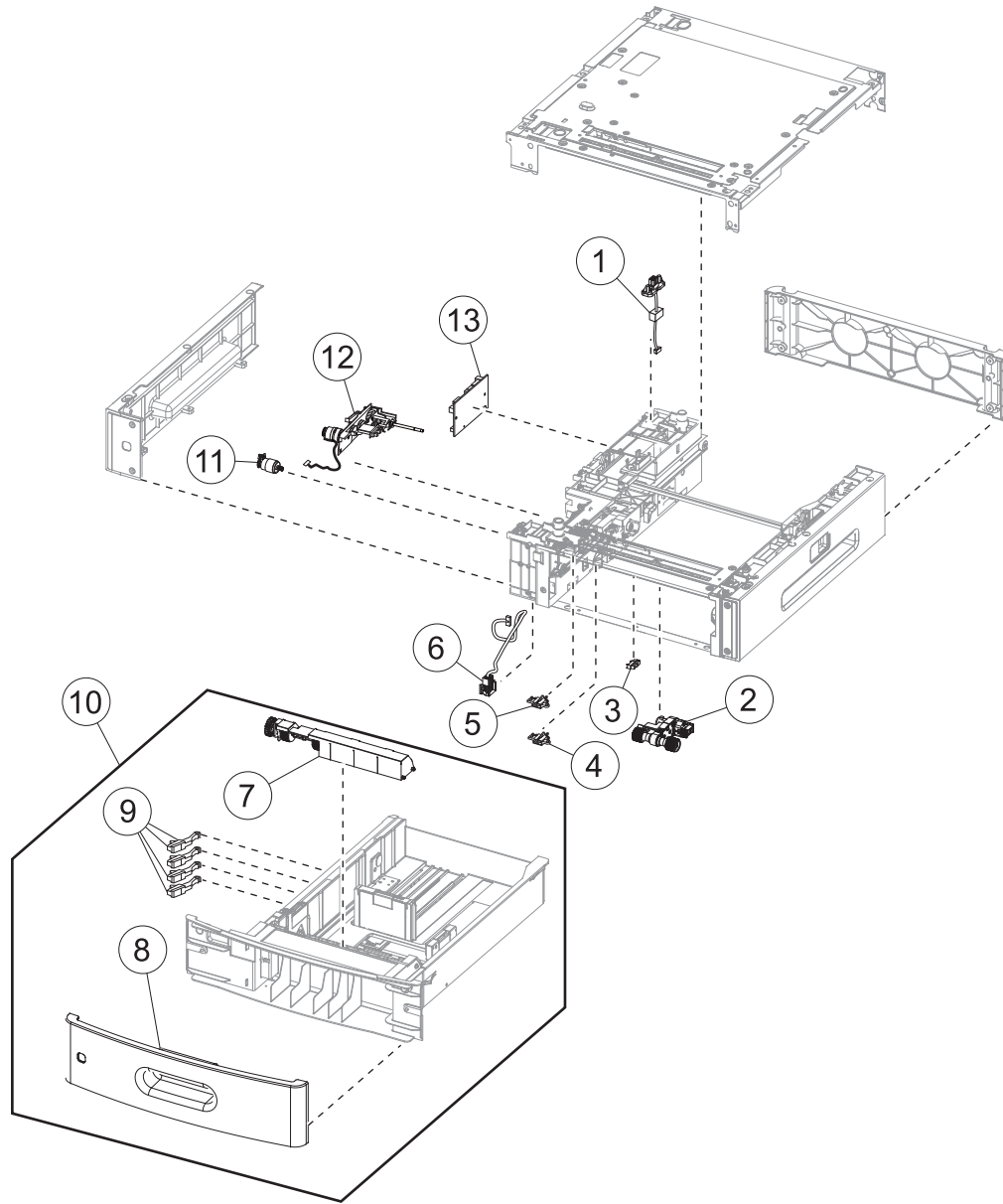
# Assembly 11: 250-sheet tray option



## Assembly 11: 250-sheet tray option

Asm-index	P/N	Units/mach	Units/FRU	Description	Removal procedure
1	40X8160	1	1	250-sheet tray option upper interface cable	<b>“Drawer upper interface cable removal” on page 520</b>
2	40X8156	1	1	Sensor (pass through)	<b>“Sensor (drawer pass through) removal” on page 527</b>
3	40X8158	1	1	Sensor (pick)	<b>“Sensor (pick) removal” on page 525</b>
4	40X7592	1	1	Sensor (pick roller position)	<b>“Sensor (pick roll position) removal” on page 516</b>
5	40X7593	1	1	Pick roller	<b>“Drawer pick roller removal” on page 516</b>
6	40X8159	1	1	250-sheet tray option lower interface cable	<b>“Drawer lower interface cable removal” on page 521</b>
7	40X7713	1	1	Separation roller	<b>“Media tray separation roller removal” on page 514</b>
8	40X8154	1	1	250-sheet tray front cover	<b>“Media tray front cover removal” on page 515</b>
9	40X8541	4	1	Media size actuator	<b>“Media size actuator removal” on page 480</b>
10	40X8153	1	1	250-sheet tray	<b>“Media tray assembly removal” on page 515</b>
11	40X8157	1	1	250-sheet tray option transport motor	<b>“Drawer transport motor removal” on page 524</b>
12	40X7591	1	1	Media feeder	<b>“Drawer media feeder removal” on page 522</b>
13	40X8672	1	1	250-sheet tray option controller PCBA	<b>“Drawer controller PCBA removal” on page 519</b>

## Assembly 12: 550-sheet tray option

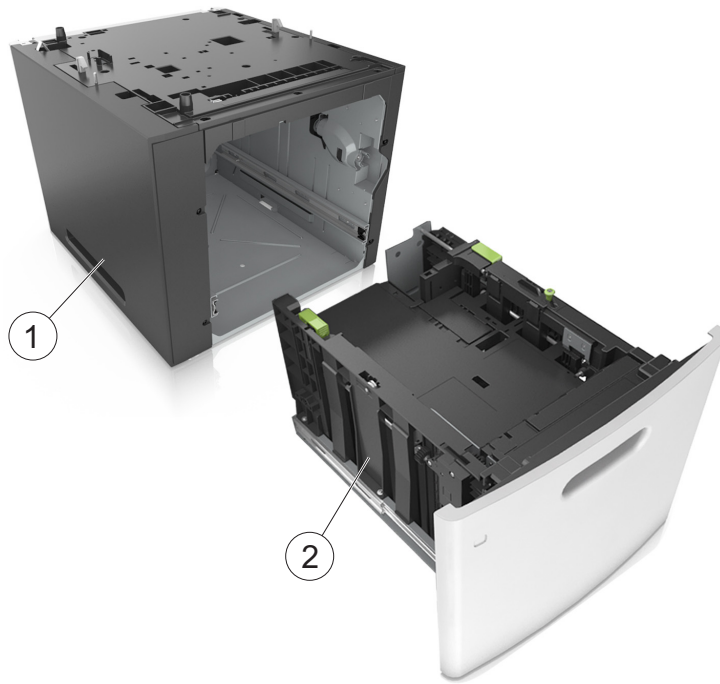




## Assembly 12: 550-sheet tray option

Asm-index	P/N	Units/mach	Units/FRU	Description	Removal procedure
1	40X8160	1	1	550-sheet tray option upper interface cable	<b>“Drawer upper interface cable removal” on page 520</b>
2	40X7593	1	1	Pick roller	<b>“Drawer pick roller removal ” on page 516</b>
3	40X7592	1	1	Sensor (pick roller position)	<b>“Sensor (pick roll position) removal ” on page 516</b>
4	40X8158	1	1	Sensor (pick)	<b>“Sensor (pick) removal” on page 525</b>
5	40X8156	1	1	Sensor (pass through)	<b>“Sensor (drawer pass through) removal ” on page 527</b>
6	40X8159	1	1	550-sheet tray option lower interface cable	<b>“Drawer lower interface cable removal” on page 521</b>
7	40X7713	1	1	Separation roller	<b>“Media tray separation roller removal” on page 514</b>
8	40X8109	1	1	550-sheet tray front cover	<b>“Media tray front cover removal” on page 515</b>
9	40X8541	4	1	Media size actuator	<b>“Media size actuator removal” on page 480</b>
10	40X7742	1	1	550-sheet tray	<b>“Media tray assembly removal” on page 515</b>
11	40X8157	1	1	550-sheet tray option transport motor	<b>“Drawer transport motor removal” on page 524</b>
12	40X7591	1	1	Media feeder	<b>“Drawer media feeder removal ” on page 522</b>
13	40X8155	1	1	550-sheet tray option controller PCBA	<b>“Drawer controller PCBA removal” on page 519</b>

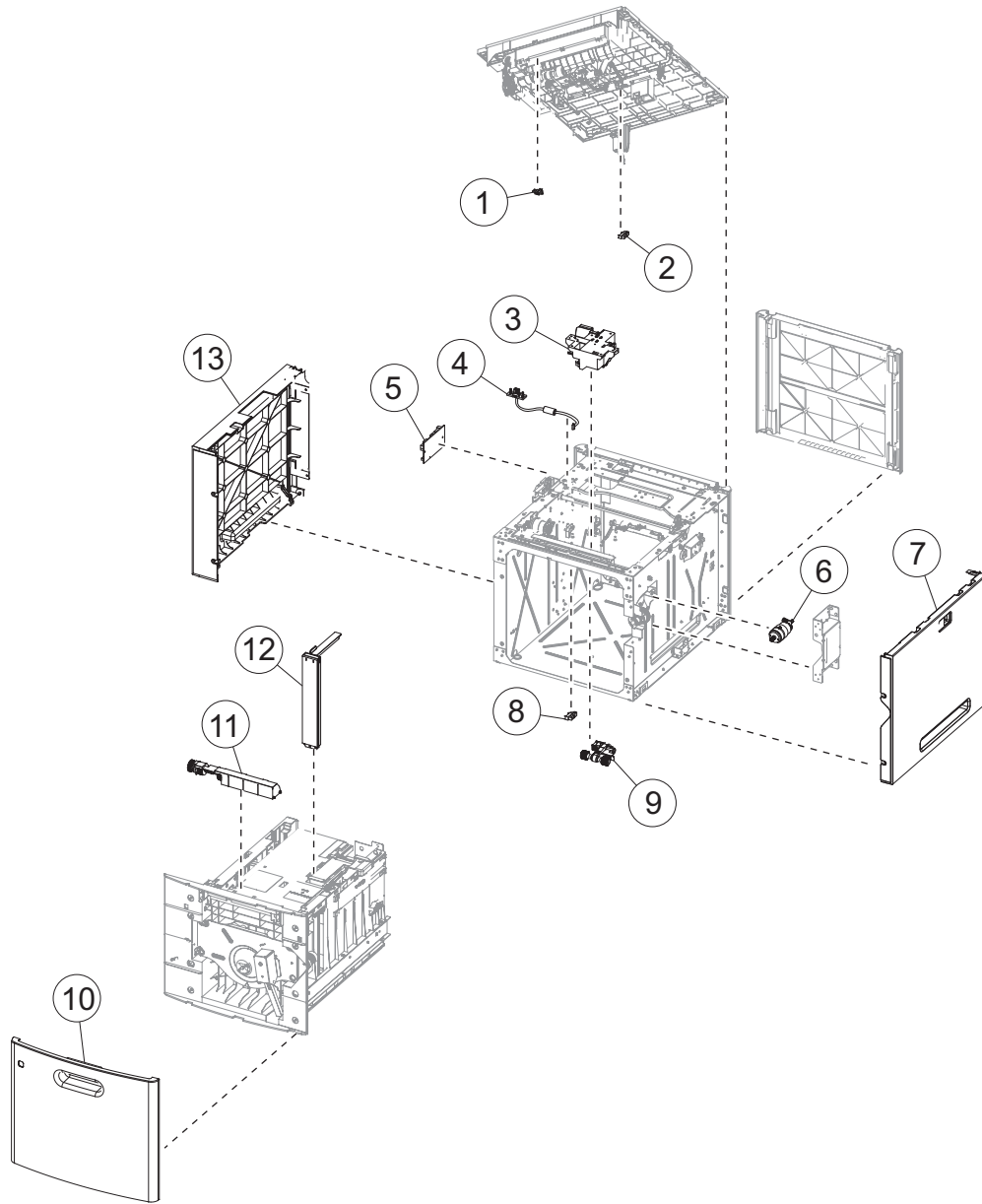
## Assembly 13: High capacity input tray option 1



## Assembly 13: High capacity input tray option 1

Asm-index	P/N	Units/mach	Units/FRU	Description	Removal procedure
1	40X8163	1	1	HCIT drawer assembly	<b>"HCIT drawer assembly removal" on page 531</b>
2	40X8165	1	1	HCIT	<b>"HCIT removal" on page 531</b>

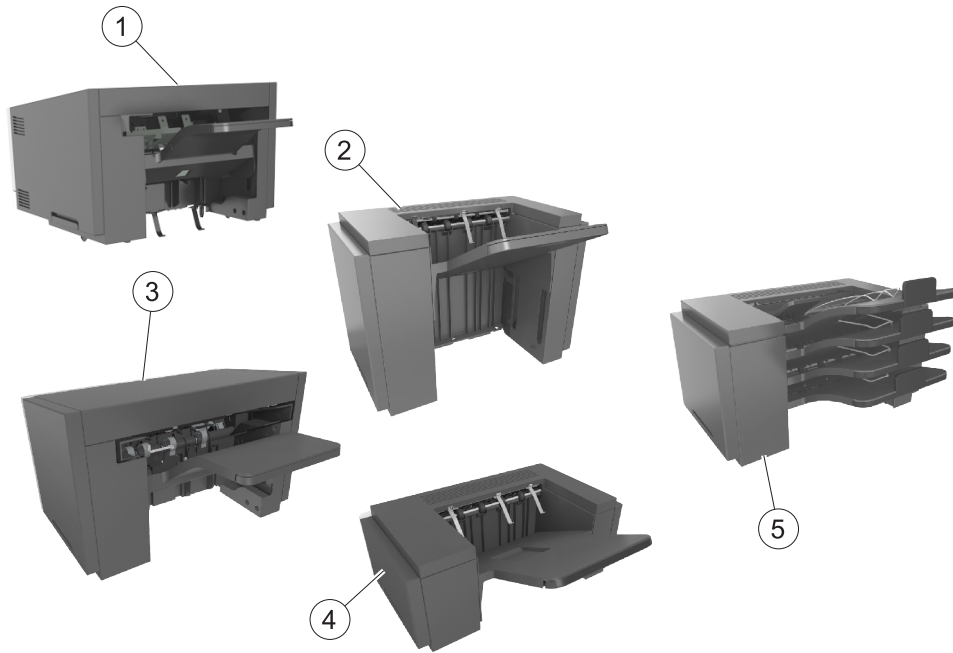
## Assembly 14: High capacity input tray option 2



## Assembly 14: High capacity input tray option 2

Asm-index	P/N	Units/mach	Units/FRU	Description	Removal procedure
1	40X8178	1	1	Sensor (HCIT pick) with cable	<b>"Sensor (HCIT pick) removal" on page 550</b>
2	40X8177	1	1	Sensor (HCIT media low) with flag	<b>"Sensor (HCIT media low) with flag removal" on page 547</b>
3	40X8174	1	1	HCIT media feeder	<b>"HCIT media feeder removal" on page 551</b>
4	40X8180	1	1	HCIT interface cable	<b>"HCIT interface cable removal" on page 546</b>
5	40X8173	1	1	HCIT controller PCBA	<b>"HCIT controller PCBA removal" on page 541</b>
6	40X8179	1	1	HCIT lift drive motor	<b>"HCIT lift drive motor removal" on page 544</b>
7	40X8169	1	1	HCIT right cover	<b>"HCIT right cover removal" on page 539</b>
8	40X7592	1	1	Sensor (HCIT pick roller position)	<b>"Sensor (HCIT pick roller position) removal" on page 548</b>
9	40X7593	1	1	HCIT pick roller assembly	<b>"HCIT pick roller assembly removal" on page 535</b>
10	40X8171	1	1	HCIT front cover	<b>"HCIT front cover removal" on page 533</b>
11	40X7713	1	1	HCIT separator roller assembly	<b>"HCIT separator roller assembly removal" on page 532</b>
12	40X8176	1	1	HCIT media guide	<b>"HCIT media guide removal" on page 532</b>
13	40X8167	1	1	HCIT left cover	<b>"HCIT left cover removal" on page 537</b>

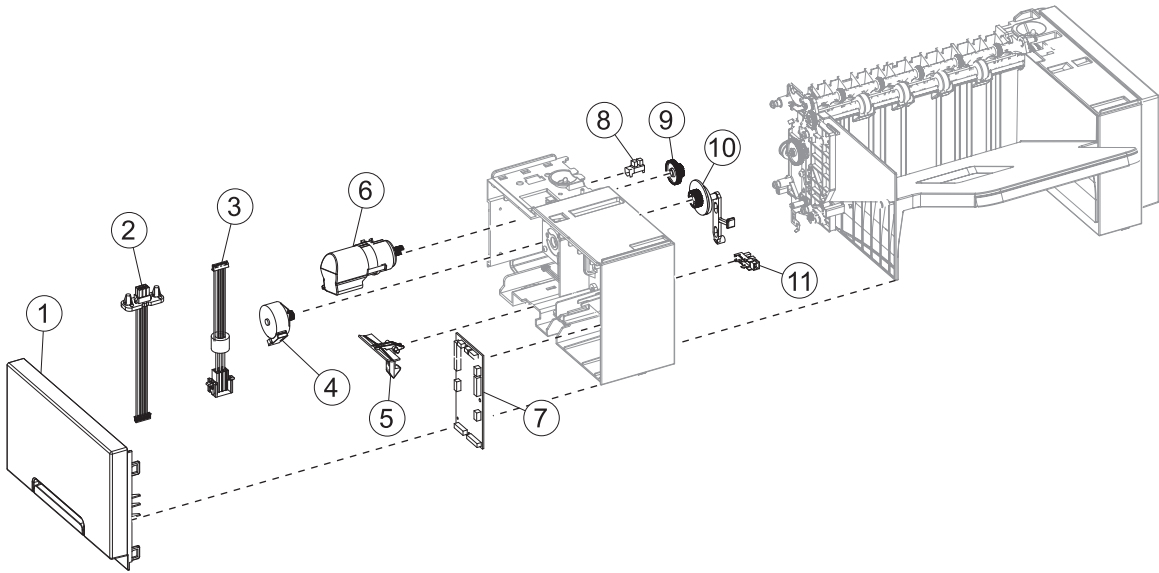
# Assembly 15: Output options



## Assembly 15: Output options

Asm-index	P/N	Units/mach	Units/FRU	Description	Removal procedure
1	40X8416	1	1	Staple, hole punch finisher option	<b>“Staple, hole punch finisher option removal” on page 738</b>
2	40X8195	1	1	High capacity output expander option	<b>“High capacity output expander option removal” on page 584</b>
3	40X8207	1	1	Staple finisher option	<b>“Staple finisher option removal” on page 621</b>
4	40X8184	1	1	Output expander option	<b>“Output expander option removal” on page 554</b>
5	40X8241	1	1	Mailbox option	<b>“Mailbox option removal” on page 688</b>

## Assembly 16: Output expander option 1

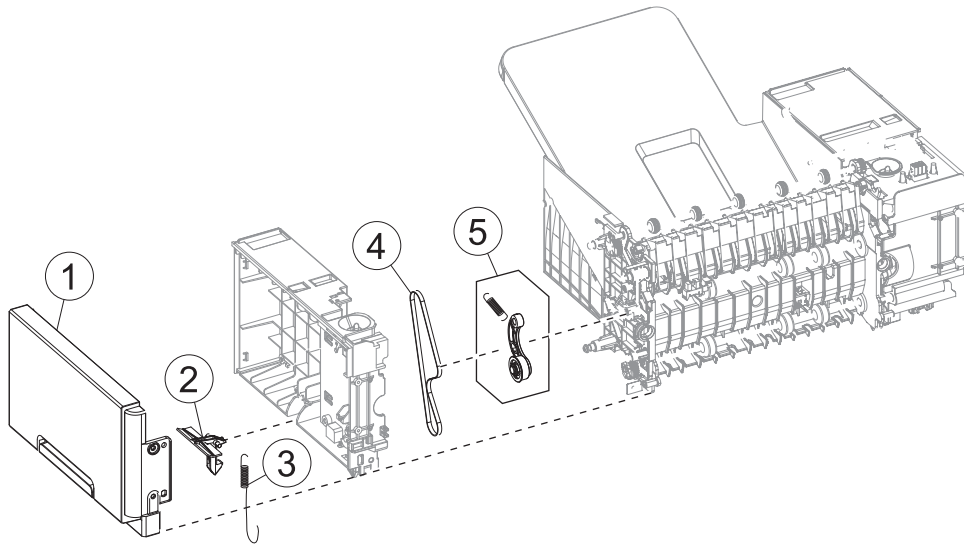




## Assembly 16: Output expander option 1

Asm-index	P/N	Units/mach	Units/FRU	Description	Removal procedure
1	40X8190	1	1	Output expander left cover	<b>"Output expander left cover removal" on page 560</b>
2	40X8206	1	1	Upper interface cable	<b>"Upper interface cable removal" on page 564</b>
3	40X8205	1	1	Lower interface cable	<b>"Lower interface cable removal" on page 563</b>
4	40X8256	1	1	Output expander diverter motor	<b>"Output expander diverter motor removal" on page 568</b>
5	40X8721	2	2	Output expander option latch	<b>"Output expander option latch removal" on page 567</b>
6	40X8714	1	1	Output expander main motor	<b>"Output expander main motor removal" on page 571</b>
7	40X8199	1	1	Output expander controller PCBA	<b>"Output expander controller PCBA removal" on page 562</b>
8	40X7592	1	1	Sensor (OE rear door interlock)	<b>"Sensor (OE rear door interlock) removal" on page 573</b>
9	40X8726	1	2	Output expander drive gear	<b>"Output expander drive gear removal" on page 570</b>
10	40X8722	1	1	Output expander diverter plunger assembly	<b>"Output expander diverter plunger assembly removal" on page 568</b>
11	40X7592	1	1	Sensor (OE diverter plunger HP)	<b>"Sensor (OE diverter plunger HP) removal" on page 575</b>

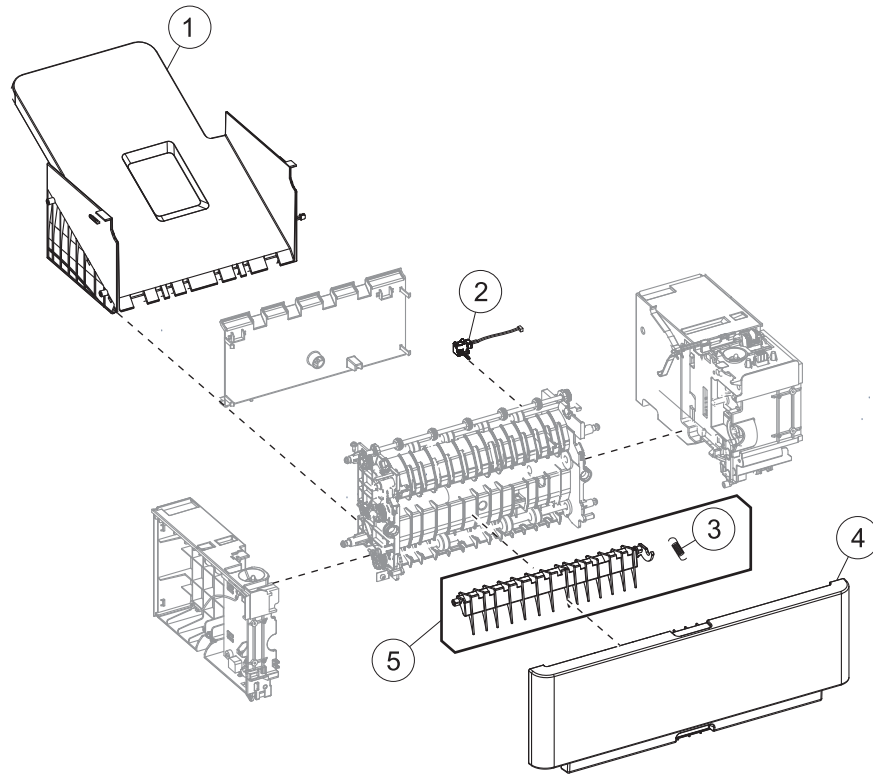
## Assembly 17: Output expander option 2



## Assembly 17: Output expander option 2

Asm-index	P/N	Units/mach	Units/FRU	Description	Removal procedure
1	40X8187	1	1	Output expander right cover	<b>"Output expander right cover removal" on page 558</b>
2	40X8721	2	2	Output expander option latch	<b>"Output expander option latch removal" on page 567</b>
3	40X8192	1	1	Spring with string	<b>"Spring with string removal" on page 566</b>
4	40X8732	1	1	Output expander drive belt	<b>"Output expander drive belt removal" on page 579</b>
5	40X8718	1	1	Output expander belt tensioner	<b>"Output expander belt tensioner removal" on page 579</b>

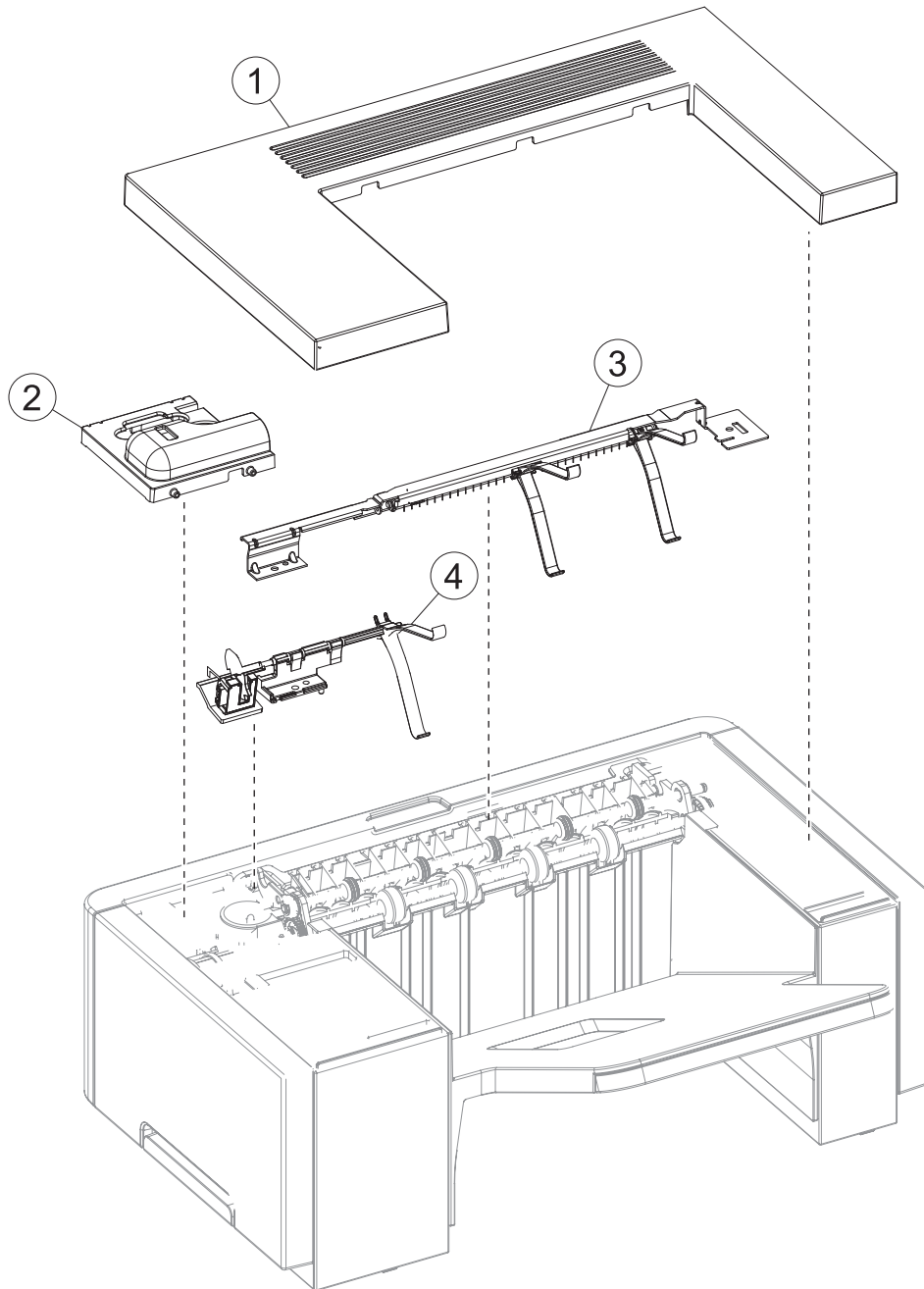
## Assembly 18: Output expander option 3



## Assembly 18: Output expander option 3

Asm-index	P/N	Units/mach	Units/FRU	Description	Removal procedure
1	40X8717	1	1	Output expander bin	<b>"Output expander bin removal" on page 580</b>
2	40X8729	1	1	Sensor (OE pass through)	<b>"Sensor (OE pass through) removal" on page 581</b>
3	40X2000	1	1	Output expander diverter spring	<b>"Output expander diverter spring removal" on page 576</b>
4	40X8186	1	1	Output expander rear door	<b>"Output expander rear door removal" on page 555</b>
5	40X8713	1	1	Output expander diverter	<b>"Output expander diverter removal" on page 577</b>

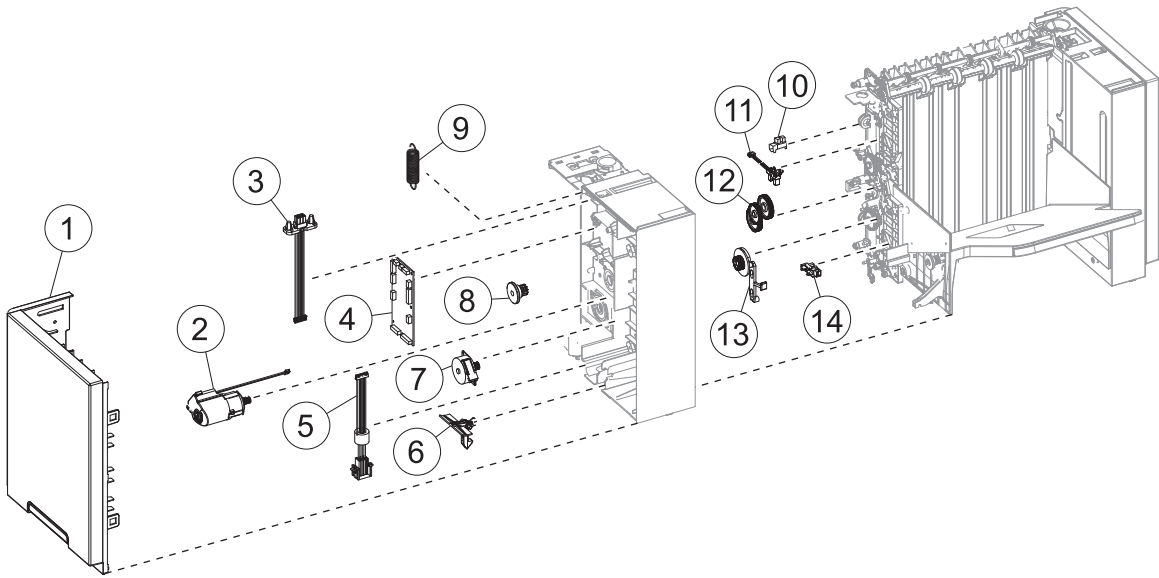
## Assembly 19: Output expander option 4



## Assembly 19: Output expander option 4

Asm-index	P/N	Units/mach	Units/FRU	Description	Removal procedure
1	40X8196	1	1	Output expander top cover	<b>“Output expander top cover removal” on page 554</b>
2	40X8715	1	1	Output expander sensor cover	<b>“Output expander sensor cover removal” on page 557</b>
3	40X8712	1	1	Output expander bin full flag	<b>“Output expander bin full flag removal” on page 557</b>
4	40X8191	1	1	Sensor (media bin full) with flag	<b>“Sensor (media bin full) with flag removal” on page 557</b>

# Assembly 20: High capacity output expander option 1

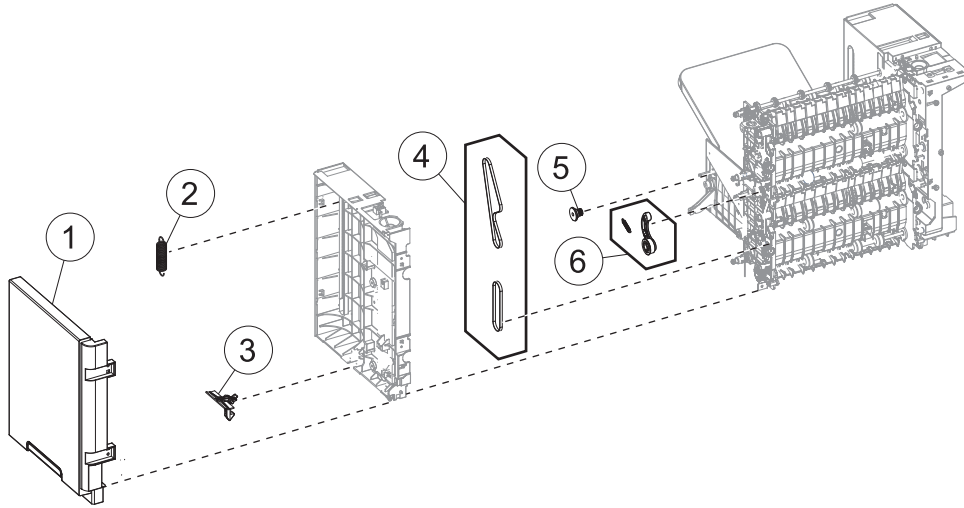




## Assembly 20: High capacity output expander option 1

Asm-index	P/N	Units/mach	Units/FRU	Description	Removal procedure
1	40X8202	1	1	HCOE left cover	"HCOE left cover removal" on page 589
2	40X8730	1	1	HCOE main motor	"HCOE main motor removal" on page 607
3	40X8206	1	1	HCOE upper interface cable	"HCOE upper interface cable removal" on page 594
4	40X8199	1	1	HCOE controller PCBA	"HCOE controller PCBA removal" on page 591
5	40X8205	1	1	HCOE lower interface cable	"HCOE lower interface cable removal" on page 593
6	40X8721	2	2	HCOE option latch	"HCOE option latch removal" on page 594
7	40X8256	1	1	HCOE diverter motor	"HCOE diverter motor removal" on page 595
8	40X8731	2	2	HCOE Tray pinion	"HCOE tray pinion removal" on page 598
9	40X8733	2	2	HCOE Tray spring	"HCOE tray spring removal" on page 597
10	40X7592	2	1	Sensor (HCOE rear door interlock)	"Sensor (HCOE rear door interlock) removal" on page 599
11	40X8728	1	1	Sensor (HCOE tray HP)	"Sensor (HCOE tray HP) removal" on page 596
12	40X8726	1	1	HCOE main drive gear assembly	"HCOE main drive gear assembly removal" on page 605
13	40X8722	1	1	HCOE diverter plunger assembly	"HCOE diverter plunger assembly removal" on page 604
14	40X7592	2	1	Sensor (HCOE diverter HP)	"Sensor (HCOE diverter HP) removal" on page 609

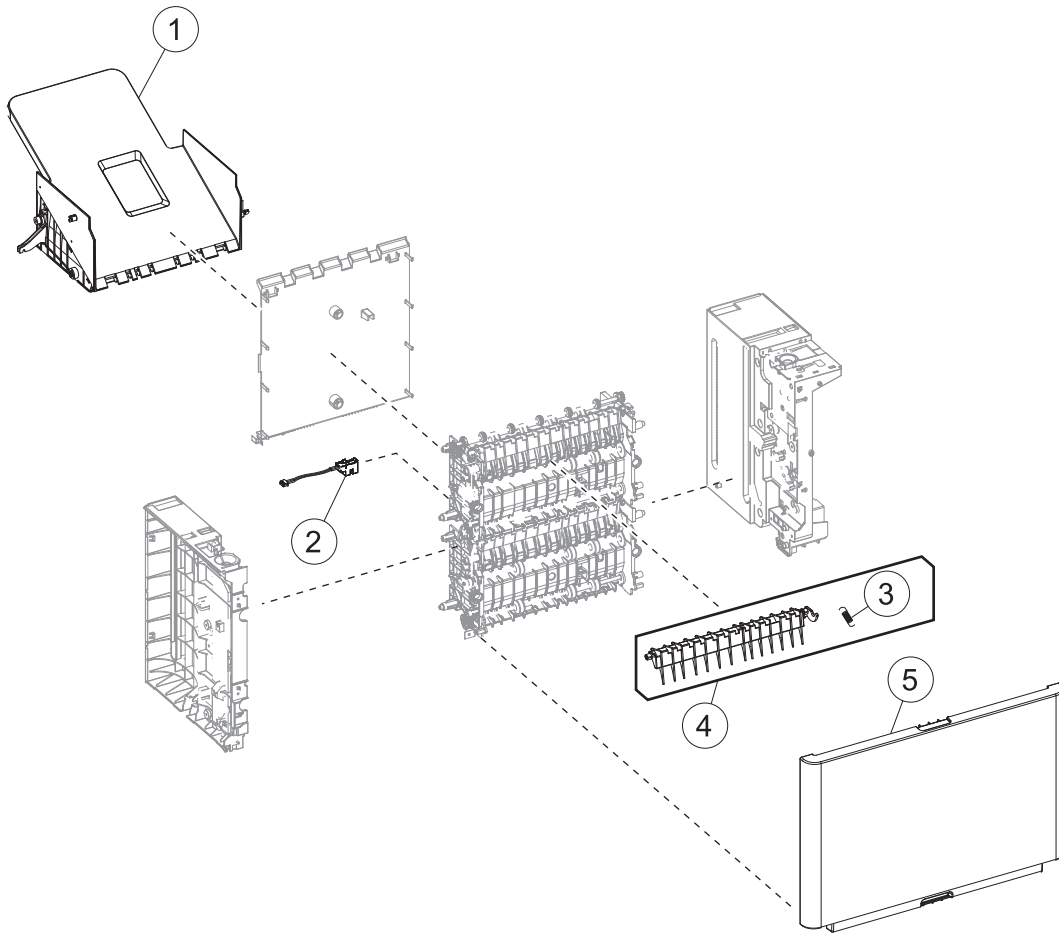
## Assembly 21: High capacity output expander option 2



## Assembly 21: High capacity output expander option 2

Asm-index	P/N	Units/mach	Units/FRU	Description	Removal procedure
1	40X8198	1	1	HCOE right cover	<b>"HCOE right cover removal" on page 588</b>
2	40X8733	2	2	HCOE Tray spring	<b>"HCOE tray spring removal" on page 597</b>
3	40X8721	2	2	HCOE option latch	<b>"HCOE option latch removal" on page 594</b>
4	40X8732	2	2	HCOE drive belt	<b>"HCOE drive belt removal" on page 602</b>
5	40X8731	2	2	HCOE Tray pinion	<b>"HCOE tray pinion removal" on page 598</b>
6	40X8718	1	1	HCOE belt tensioner	<b>"HCOE belt tensioner removal" on page 601</b>

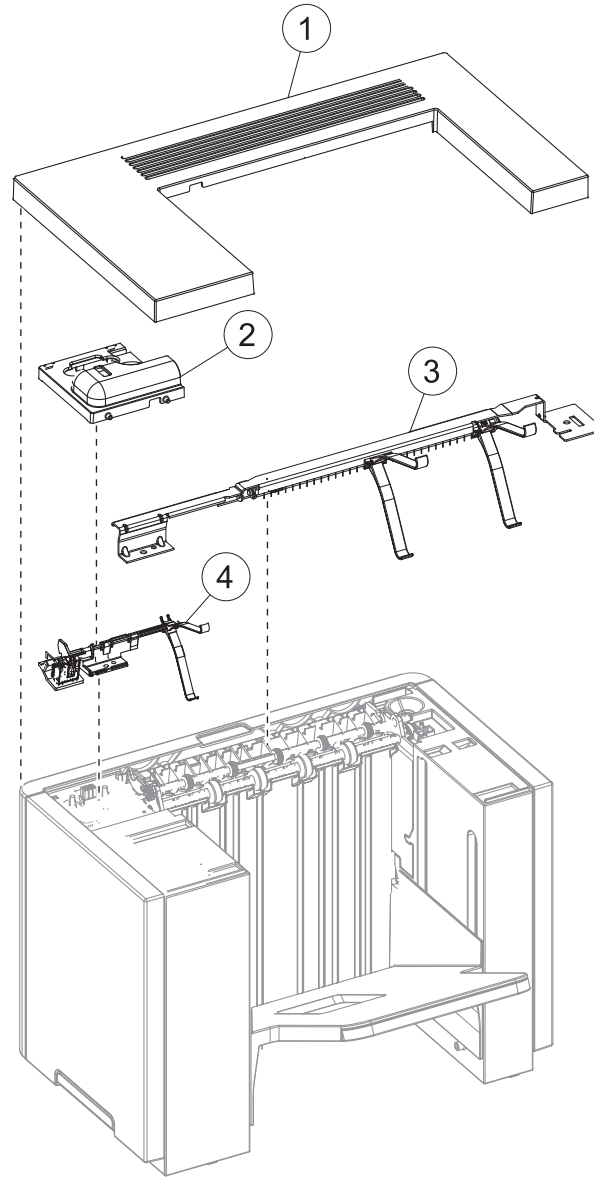
## Assembly 22: High capacity output expander option 3



## Assembly 22: High capacity output expander option 3

Asm-index	P/N	Units/mach	Units/FRU	Description	Removal procedure
1	40X8727	1	1	HCOE bin	<b>"HCOE bin removal" on page 615</b>
2	40X8729	1	1	Sensor (HCOE pass through)	<b>"Sensor (HCOE pass through) removal" on page 618</b>
3	40X2000	1	1	HCOE top diverter spring	<b>"HCOE top diverter spring removal" on page 611</b>
4	40X8713	1	1	HCOE top diverter	<b>"HCOE top diverter removal" on page 612</b>
5	40X8197	1	1	HCOE rear door	<b>"HCOE rear door removal" on page 585</b>

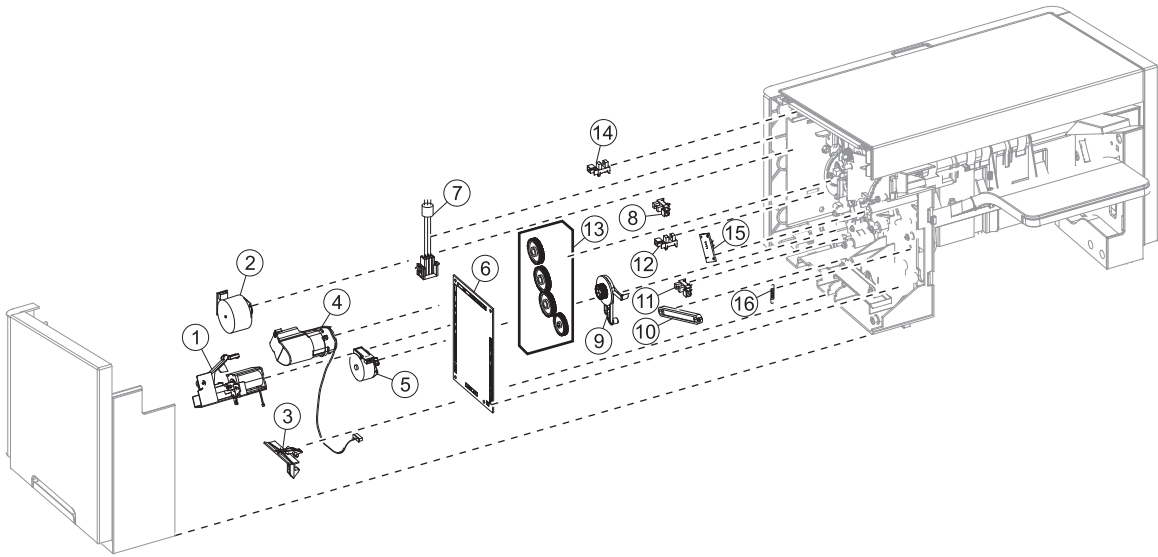
## Assembly 23: High capacity output expander option 4



## Assembly 23: High capacity output expander option 4

Asm-index	P/N	Units/mach	Units/FRU	Description	Removal procedure
1	40X8196	1	1	HCOE top cover	<b>"HCOE top cover removal" on page 584</b>
2	40X8715	1	1	HCOE sensor cover	<b>"HCOE sensor cover removal" on page 586</b>
3	40X8712	1	1	HCOE bin full flag	<b>"HCOE bin full flag removal" on page 587</b>
4	40X8191	1	1	Sensor (HCOE media bin full) with flag	<b>"Sensor (HCOE media bin full) with flag removal" on page 587</b>

## Assembly 24: Staple finisher option 1

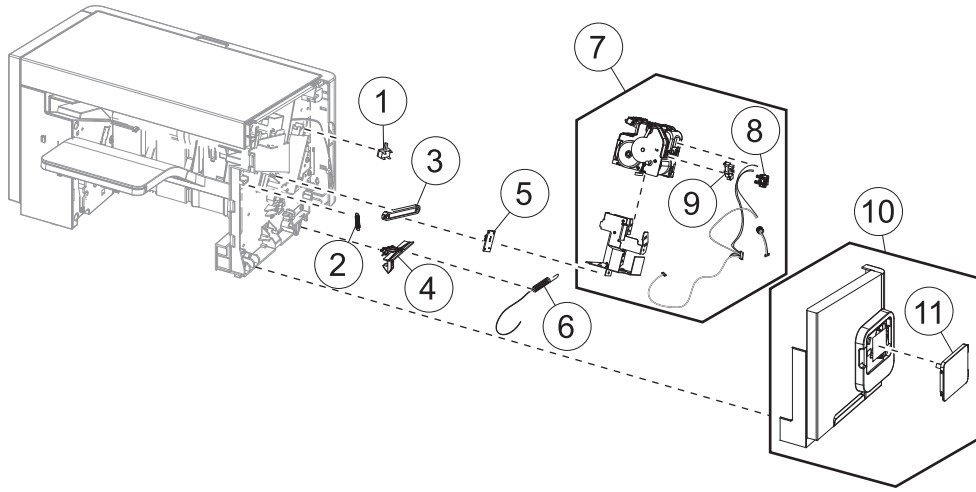




## Assembly 24: Staple finisher option 1

Asm-index	P/N	Units/mach	Units/FRU	Description	Removal procedure
1	40X8740	1	1	Media pusher assembly	<b>"Media pusher assembly removal" on page 672</b>
2	40X8213	1	1	Stapler paddle drive motor	<b>"Paddle drive motor removal" on page 660</b>
3	40X8721	2	2	Stapler option latch	<b>"Stapler option latch removal" on page 638</b>
4	40X8739	1	1	Stapler main motor	<b>"Stapler main motor removal" on page 664</b>
5	40X8256	1	1	Stapler diverter motor	<b>"Stapler diverter motor removal" on page 666</b>
6	40X8221	1	1	Stapler controller PCBA	<b>"Stapler controller PCBA removal" on page 663</b>
7	40X8224	1	1	Stapler lower interface cable	<b>"Stapler lower interface cable removal" on page 661</b>
8	40X7592	1	1	Sensor (media pusher HP)	<b>"Sensor (media pusher HP) removal" on page 684</b>
9	40X8722	1	1	Stapler diverter plunger assembly	<b>"Stapler diverter plunger assembly removal" on page 667</b>
10	40X8744	2	2	Stapler tray link assembly	<b>"Stapler tray link assembly removal" on page 640</b>
11	40X7592	1	1	Sensor (stapler diverter plunger HP)	<b>"Sensor (stapler diverter plunger HP) removal" on page 686</b>
12	40X7592	1	1	Sensor (paddle motor HP)	<b>"Sensor (paddle motor HP) removal" on page 643</b>
13	40X8741	1	1	Stapler drive gear assembly	<b>"Stapler drive gear assembly removal" on page 668</b>
14	40X7592	1	1	Sensor (stapler rear door interlock)	<b>"Sensor (stapler rear door interlock) removal" on page 642</b>
15	40X8220	1	1	Sensor (bin full receive)	<b>"Sensor (bin full receive) removal" on page 670</b>
16	40X8742	2	2	Stapler tray spring	<b>"Stapler tray spring removal" on page 639</b>

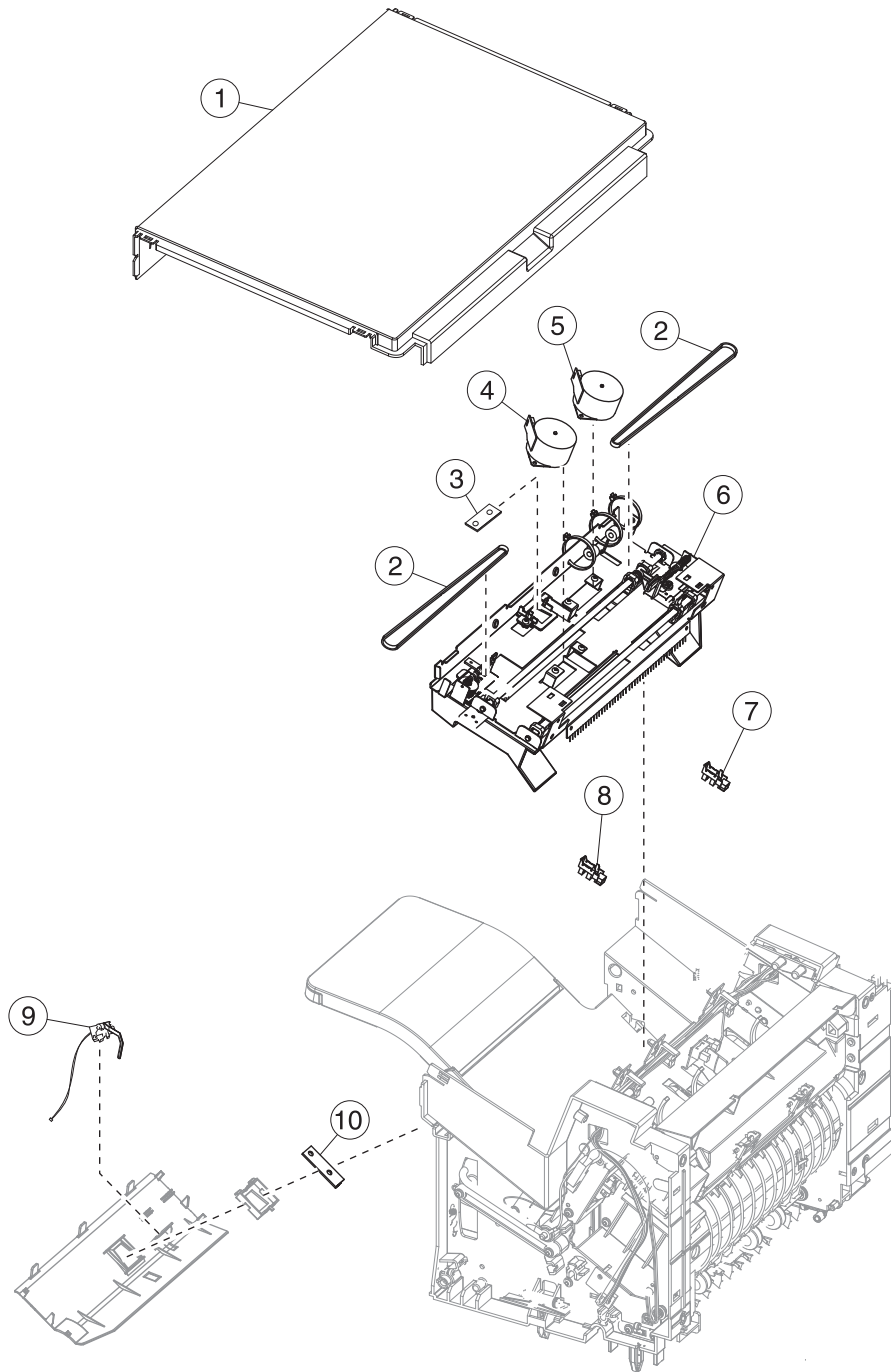
## Assembly 25: Staple finisher option 2



## Assembly 25: Staple finisher option 2

Asm-index	P/N	Units/mach	Units/FRU	Description	Removal procedure
1	40X8745	2	1	Sensor (throat media present)	<b>"Sensor (throat media present) removal" on page 632</b>
2	40X8742	2	2	Stapler tray spring	<b>"Stapler tray spring removal" on page 639</b>
3	40X8744	2	2	Stapler tray link assembly	<b>"Stapler tray link assembly removal" on page 640</b>
4	40X8721	2	2	Stapler option latch	<b>"Stapler option latch removal" on page 638</b>
5	40X8217	1	1	Sensor (bin full send)	<b>"Sensor (bin full send) removal" on page 669</b>
6	40X8226	1	1	Stapler spring with string	<b>"Stapler spring with string removal" on page 637</b>
7	40X8223	1	1	Stapler carriage assembly	<b>"Stapler carriage assembly removal" on page 628</b>
8	40X8225	1	1	Stapler door close limit switch	<b>"Stapler door close limit switch removal" on page 626</b>
9	40X7592	1	1	Sensor (cartridge door interlock)	<b>"Sensor (cartridge door interlock) removal" on page 627</b>
10	40X8216	1	1	Stapler right cover	<b>"Stapler right cover removal" on page 624</b>
11	40X8215	1	1	Stapler cartridge access door	<b>"Stapler cartridge access door removal" on page 632</b>

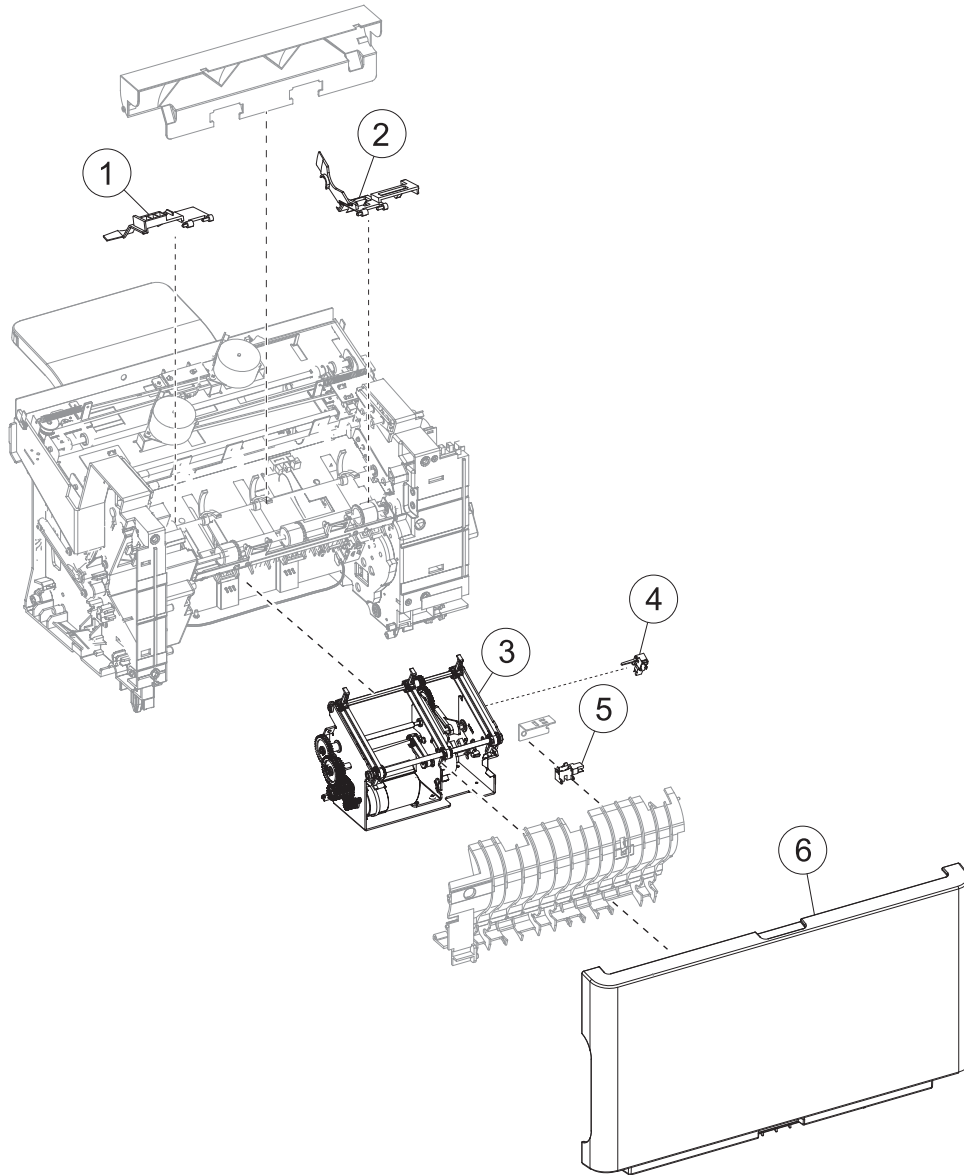
## Assembly 26: Staple finisher option 3



## Assembly 26: Staple finisher option 3

Asm-index	P/N	Units/mach	Units/FRU	Description	Removal procedure
1	40X8222	1	1	Stapler top cover	<b>"Stapler top cover removal" on page 635</b>
2	40X8212	2	2	Tamper drive belt	<b>"Tamper drive belt removal" on page 657</b>
3	40X8218	1	1	Stapler output bin LED	<b>"Stapler output bin LED removal" on page 658</b>
4	40X8211	1	1	Tamper motor (right)	<b>"Tamper motor (right) removal" on page 656</b>
5	40X8211	1	1	Tamper motor (left)	<b>"Tamper motor (left) removal" on page 656</b>
6	40X8743	1	1	Tamper assembly	<b>"Tamper assembly removal" on page 654</b>
7	40X7592	1	1	Sensor (left tamper motor HP)	<b>"Sensor (left tamper motor HP) removal" on page 649</b>
8	40X7592	1	1	Sensor (right tamper motor HP)	<b>"Sensor (right tamper motor HP) removal" on page 647</b>
9	40X8219	1	1	Sensor (finisher bin media present)	<b>"Sensor (finisher bin media present) removal" on page 653</b>
10	40X8218	1	1	Standard output bin LED	<b>"Standard output bin LED removal" on page 652</b>

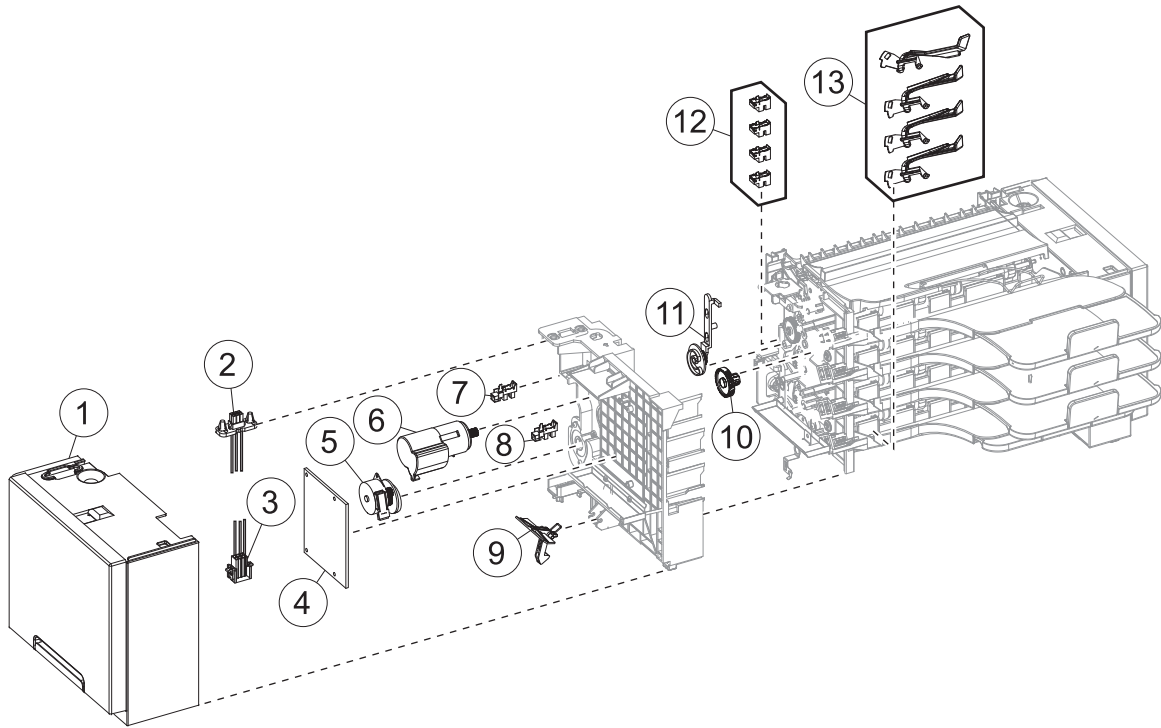
## Assembly 27: Staple finisher option 4



## Assembly 27: Staple finisher option 4

Asm-index	P/N	Units/mach	Units/FRU	Description	Removal procedure
1	40X8209	1	1	Media stack flap (right)	<b>"Media stack flap (right) removal" on page 643</b>
2	40X8210	1	1	Media stack flap (left)	<b>"Media stack flap (left) removal" on page 645</b>
3	40X8738	1	1	Stapler ejector motor assembly	<b>"Stapler ejector motor assembly removal" on page 678</b>
4	40X8745	1	1	Sensor (stapler ejector HP)	<b>"Sensor (stapler ejector HP) removal" on page 681</b>
5	40X8134	1	1	Sensor (stapler pass through)	<b>"Sensor (stapler pass through) removal" on page 677</b>
6	40X8214	1	1	Stapler rear door	<b>"Stapler rear door removal" on page 622</b>

# Assembly 28: Mailbox option 1

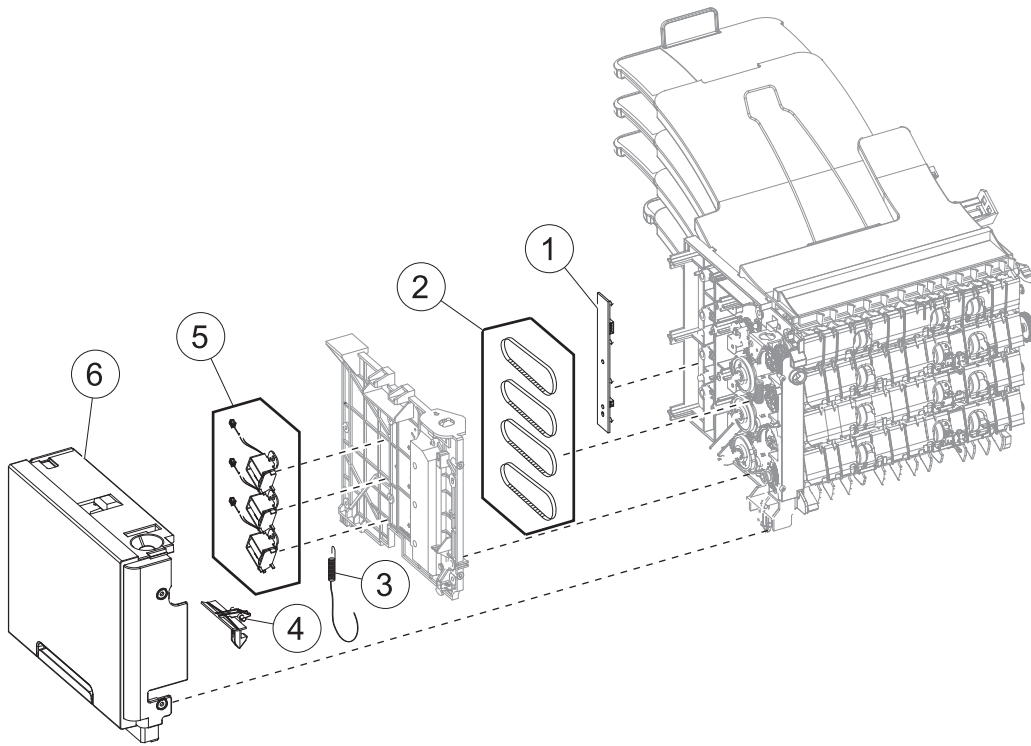




## Assembly 28: Mailbox option 1

Asm-index	P/N	Units/mach	Units/FRU	Description	Removal procedure
1	40X8246	1	1	Mailbox left cover	<b>"Mailbox left cover removal" on page 696</b>
2	40X8254	1	1	Mailbox upper interface cable	<b>"Mailbox upper interface cable removal" on page 712</b>
3	40X8253	1	1	Mailbox lower interface cable	<b>"Mailbox lower interface cable removal" on page 710</b>
4	40X8244	1	1	Mailbox controller PCBA	<b>"Mailbox controller PCBA removal" on page 707</b>
5	40X8256	1	1	Mailbox diverter motor	<b>"Mailbox diverter motor removal" on page 712</b>
6	40X8739	1	1	Mailbox main motor	<b>"Mailbox main motor removal" on page 706</b>
7	40X7592	1	1	Sensor (mailbox rear door interlock)	<b>"Sensor (mailbox rear door interlock) removal" on page 697</b>
8	40X7592	1	1	Sensor (mailbox diverter plunger HP)	<b>"Sensor (mailbox diverter plunger HP) removal" on page 708</b>
9	40X8721	2	2	Mailbox option latch	<b>"Mailbox option latch removal" on page 697</b>
10	40X8726	1	1	Mailbox main drive gear	<b>"Mailbox main drive gear removal" on page 703</b>
11	40X8722	1	1	Mailbox diverter plunger assembly	<b>"Mailbox diverter plunger assembly removal" on page 698</b>
12	40X8248	4	4	Sensor (mailbox bin full receive)	<b>"Sensor (mailbox bin full receive) removal" on page 715</b>
13	40X8247	4	4	Mailbox media bin full flag	<b>"Mailbox media bin full flag removal" on page 714</b>
NS	40X8500	1	1	Actuator flag (media bin full)	N/A

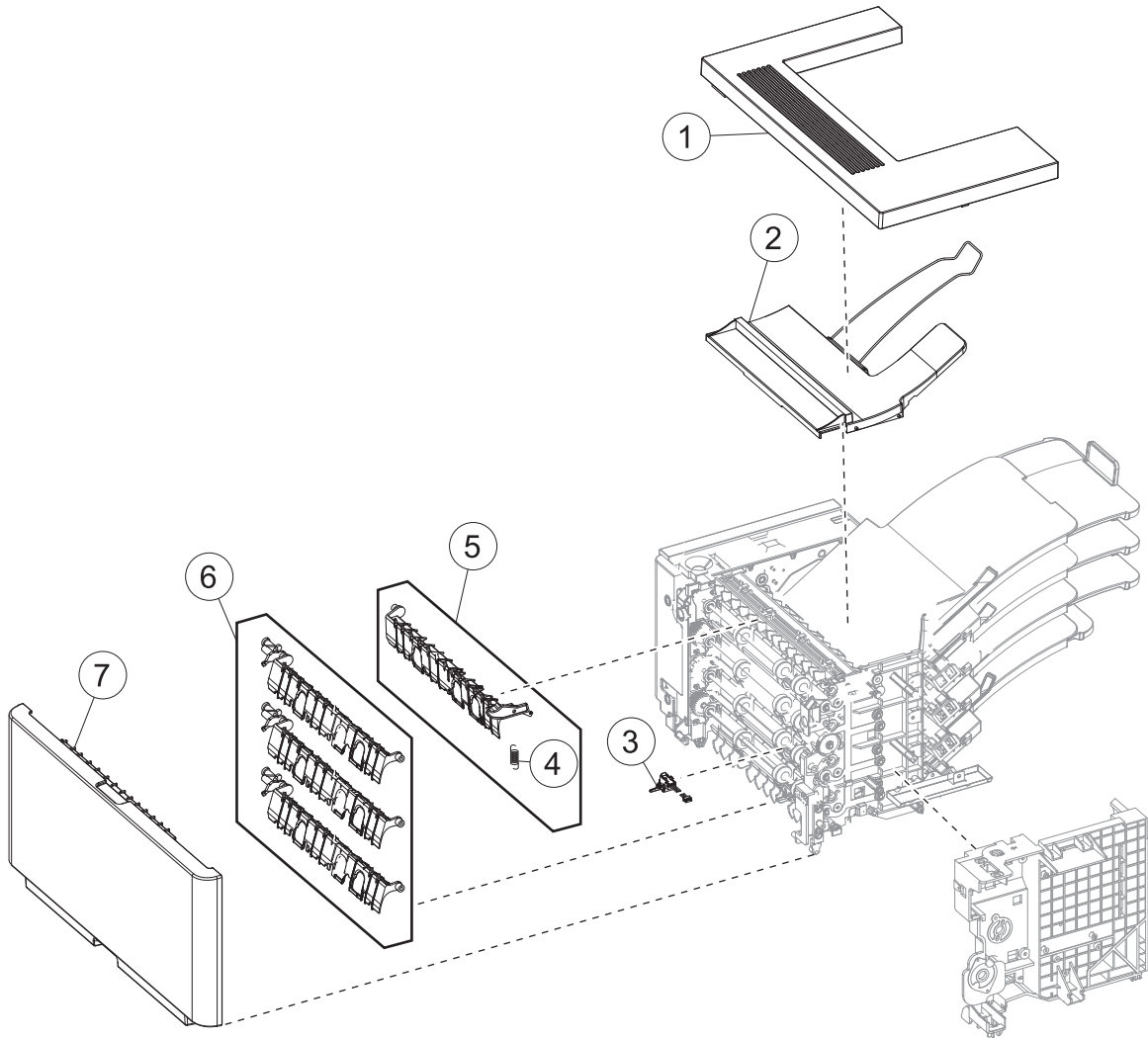
## Assembly 29: Mailbox option 2



## Assembly 29: Mailbox option 2

Asm-index	P/N	Units/mach	Units/FRU	Description	Removal procedure
1	40X8250	1	1	Mailbox output bin LED assembly	<b>“Mailbox output bin LED assembly removal” on page 720</b>
2	40X8249	4	1	Mailbox belt	<b>“Mailbox belt removal” on page 718</b>
3	40X8252	1	1	Mailbox spring with string	<b>“Mailbox spring with string removal” on page 693</b>
4	40X8721	2	2	Mailbox option latch	<b>“Mailbox option latch removal” on page 697</b>
5	40X8251	3	1	Mailbox solenoid	<b>“Mailbox solenoid removal” on page 694</b>
6	40X8243	1	1	Mailbox right cover	<b>“Mailbox right cover removal” on page 691</b>

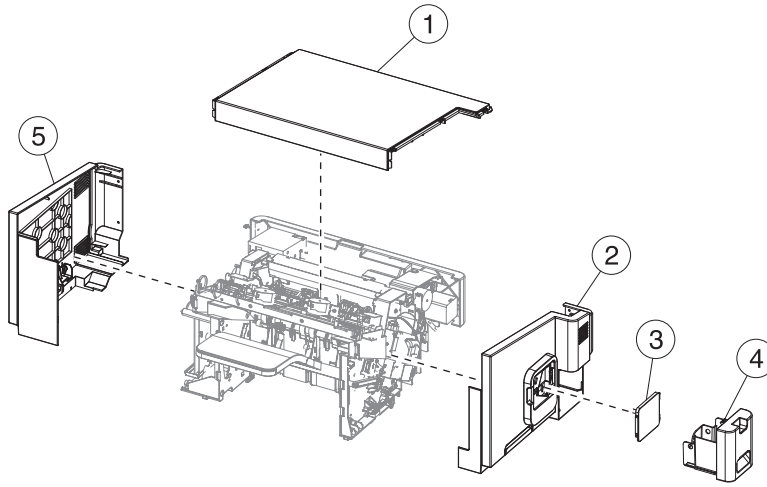
# Assembly 30: Mailbox option 3



## Assembly 30: Mailbox option 3

Asm-index	P/N	Units/mach	Units/FRU	Description	Removal procedure
1	40X8196	1	1	Mailbox top cover	<b>"Mailbox top cover removal" on page 688</b>
2	40X8720	1	1	Mailbox top bin cover with bail	<b>"Mailbox top bin cover with bail removal" on page 692</b>
3	40X8719	1	1	Sensor (mailbox pass through)	<b>"Sensor (mailbox pass through) removal" on page 733</b>
4	40X8725	1	1	Mailbox top diverter spring	<b>"Mailbox top diverter spring removal" on page 729</b>
5	40X8723	1	1	Mailbox top diverter	<b>"Mailbox top diverter removal" on page 723</b>
6	40X8724	3	1	Mailbox middle diverter	<b>"Mailbox middle diverter removal" on page 728</b>
7	40X8242	1	1	Mailbox rear door	<b>"Mailbox rear door removal" on page 689</b>

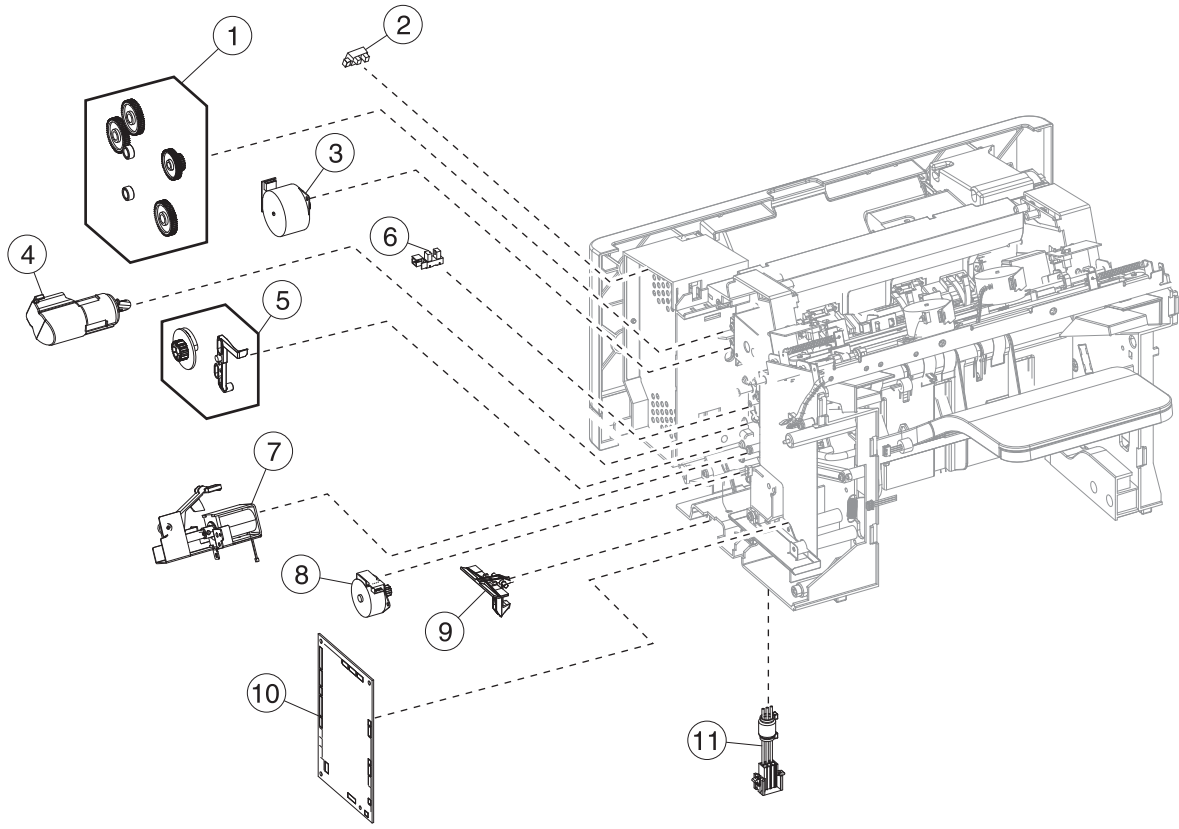
## Assembly 31: Staple, hole punch finisher option 1



## Assembly 31: Staple, hole punch finisher option 1

Asm-index	P/N	Units/mach	Units/FRU	Description	Removal procedure
1	40X8547	1	1	Staple, hole punch top cover	<b>“Staple, hole punch top cover removal” on page 762</b>
2	40X8550	1	1	Staple, hole punch right cover	<b>“Staple, hole punch right cover removal” on page 741</b>
3	40X8215	1	1	Stapler cartridge access door	<b>“Stapler cartridge access door removal” on page 739</b>
4	40X8552	1	1	Hole punch box	<b>“Hole punch box removal” on page 739</b>
5	40X8593	1	1	Staple, hole punch left cover	<b>“Staple, hole punch left cover removal” on page 739</b>

## Assembly 32: Staple, hole punch finisher option 2

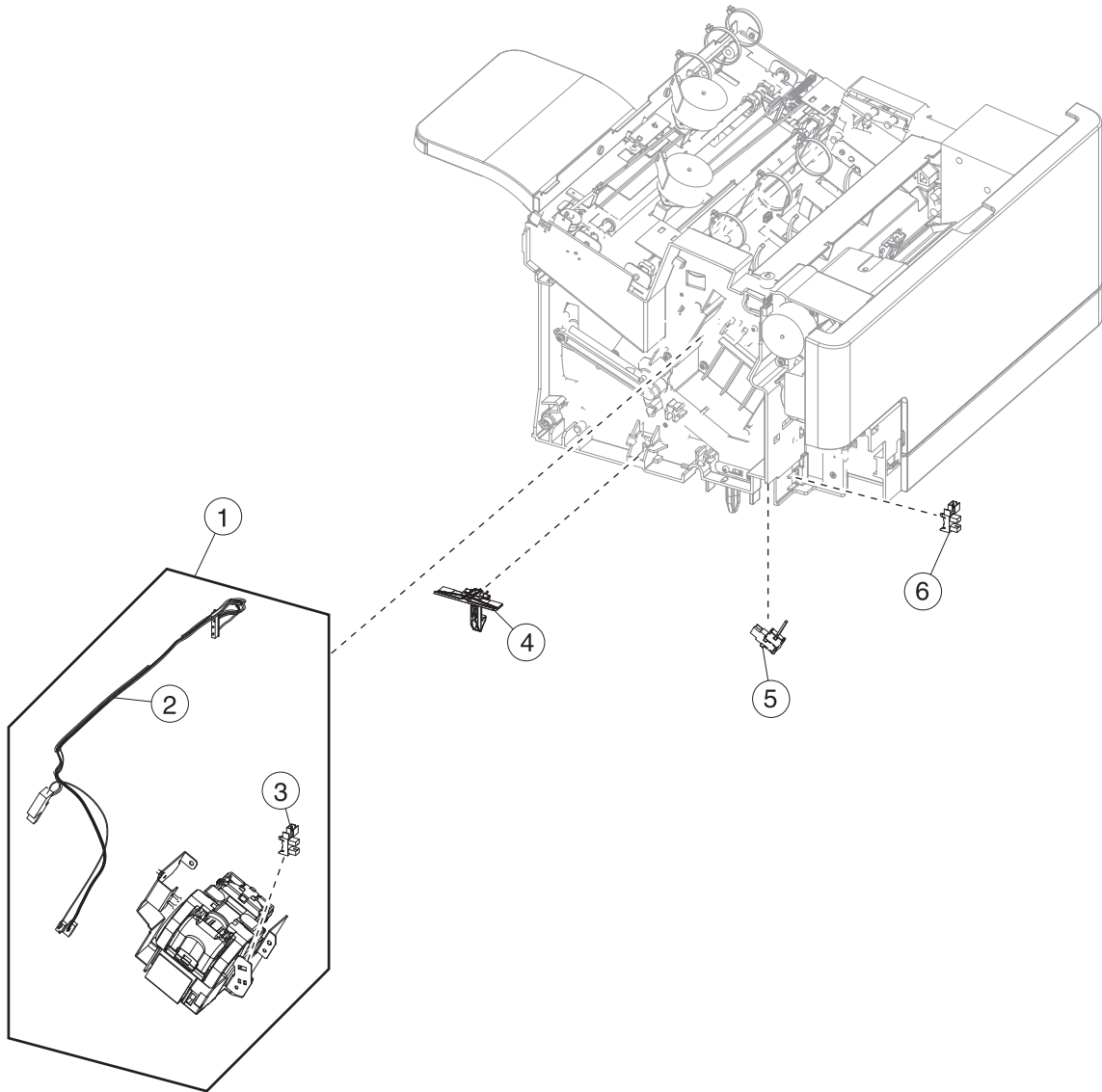




## Assembly 32: Staple, hole punch finisher option 2

Asm-index	P/N	Units/mach	Units/FRU	Description	Removal procedure
1	40X8741	1	1	Stapler drive gear assembly	<b>“Stapler drive gear assembly removal” on page 755</b>
2	40X7592	1	1	Sensor (HPU rear door interlock)	<b>“Sensor (HPU rear door interlock) removal” on page 776</b>
3	40X8213	1	1	Stapler paddle motor	<b>“Stapler paddle motor removal” on page 751</b>
4	40X8739	1	1	Stapler main motor	<b>“Stapler main motor removal” on page 750</b>
5	40X8722	1	1	Stapler diverter plunger assembly	<b>“Stapler diverter plunger assembly removal” on page 754</b>
6	40X7592	1	1	Sensor (paddle motor HP)	<b>“Sensor (paddle motor HP) removal” on page 752</b>
7	40X8740	1	1	Media pusher assembly	<b>“Media pusher assembly removal” on page 759</b>
8	40x8256	1	1	Stapler diverter motor	<b>“Stapler diverter motor removal” on page 753</b>
9	40X8721	2	2	Staple, hole punch latch	<b>“Staple, hole punch latch removal” on page 749</b>
10	40X8221	1	1	Stapler controller PCBA	<b>“Stapler controller PCBA removal” on page 749</b>
11	40X8224	1	1	Staple, hole punch lower interface cable	<b>“Staple, hole punch lower interface cable removal” on page 759</b>

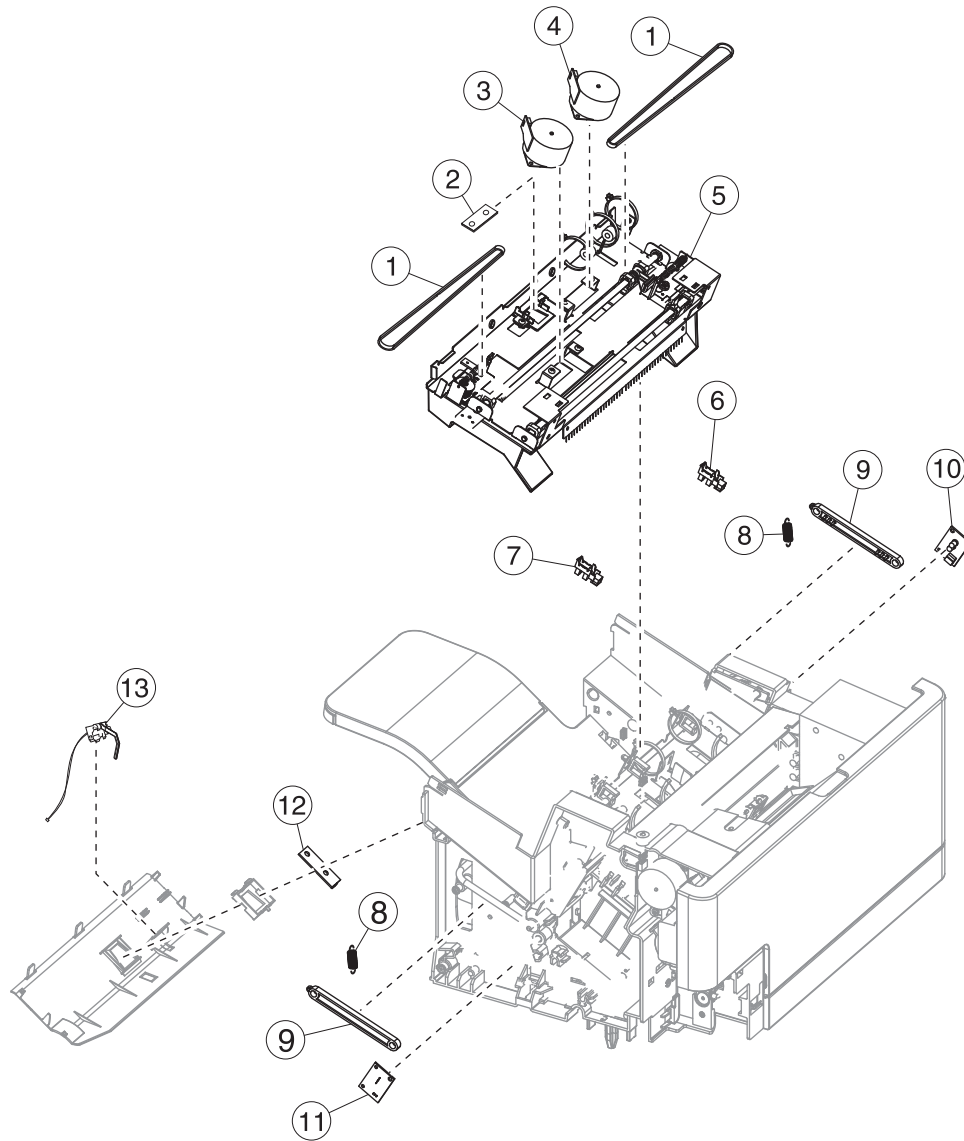
## Assembly 33: Staple, hole punch finisher option 3



## Assembly 33: Staple, hole punch finisher option 3

Asm-index	P/N	Units/mach	Units/FRU	Description	Removal procedure
1	40X8223	1	1	Stapler carriage assembly	<b>"Stapler carriage assembly removal" on page 746</b>
2	40X8225	1	1	Stapler door close limit switch	<b>"Stapler door close limit switch removal" on page 743</b>
3	40X7592	1	1	Sensor (cartridge door interlock)	<b>"Sensor (cartridge door interlock) removal" on page 742</b>
4	40X8721	2	2	Staple, hole punch latch	<b>"Staple, hole punch latch removal" on page 749</b>
5	40X8745	1	1	Sensor (throat media present)	<b>"Sensor (throat media present) removal" on page 747</b>
6	40X7592	1	1	Sensor (hole punch box present)	<b>"Sensor (hole punch box present) removal" on page 775</b>

# Assembly 34: Staple, hole punch finisher option 4



## Assembly 34: Staple, hole punch finisher option 4

Asm-index	P/N	Units/mach	Units/FRU	Description	Removal procedure
1	40X8212	2	2	Tamper drive belt	<b>“Tamper drive belt removal” on page 771</b>
2	40X8218	1	1	Stapler output bin LED	<b>“Stapler output bin LED removal” on page 772</b>
3	40X8211	2	2	Tamper motor (right)	<b>“Tamper motor (right) removal” on page 769</b>
4	40X8211	2	2	Tamper motor (left)	<b>“Tamper motor (left) removal” on page 770</b>
5	40X8743	1	1	Stapler tamper assembly	<b>“Stapler tamper assembly removal” on page 767</b>
6	40X7592	1	1	Sensor (left tamper motor HP)	<b>“Sensor (left tamper motor HP) removal” on page 765</b>
7	40X7592	1	1	Sensor (right tamper motor HP)	<b>“Sensor (right tamper motor HP) removal” on page 763</b>
8	40X8742	2	2	Staple, hole punch tray link tension spring	<b>“Staple, hole punch tray link tension spring removal” on page 774</b>
9	40X8744	2	2	Staple, hole punch tray link	<b>“Staple, hole punch tray link removal” on page 774</b>
10	40X8220	1	1	Sensor (bin full receive)	<b>“Sensor (bin full receive) removal” on page 757</b>
11	40X8217	1	1	Sensor (bin full send)	<b>“Sensor (bin full send) removal” on page 756</b>
12	40X8218	1	1	Standard Output Bin LED	<b>“Standard output bin LED removal” on page 760</b>
13	40X8219	1	1	Sensor (finisher bin media present)	<b>“Sensor (finisher bin media present) removal” on page 761</b>

## Assembly 35: Power cords

Asm-index	P/N	Units/mach	Units/FRU	Description	Removal procedure
NS	40X0269	1	1	Power cord LV, USA & Canada, Latin America	N/A
NS	40X0288	1	1	Power cord HV, Argentina	N/A
NS	40X1766	1	1	Power cord HV, Bolivia & Peru	N/A
NS	40X0273	1	1	Power cord HV, Chile, Uruguay	N/A
NS	40X3141	1	1	Power cord HV, Paraguay, Austria, Belgium, France, Germany, Italy, Netherlands, Bluemark, Czech & Solvic countries, Greece, Hungary, Medmark 1, Medmark 2, Arabic, Poland, Russia, CIS, Spain, Portugal, & Ireland	N/A
NS	40X4596	1	1	Power cord LV, Brazil PPB kits	N/A
NS	40X0271	1	1	Power cord HV, United Kingdom, Asian, Brunei, Cambodia, Indonesia, Laos, Malaysia, Myanmar, Philippines, Singapore, Thailand, Vietnam, Afghanistan, Bangladesh, Bhutan, India, Nepal, Pakistan, Sri Lanka, Tibet, & Hong Kong	N/A
NS	40X0301	1	1	Power cord HV, Australia & New Zealand	N/A
NS	40X0270	1	1	Power cord 100 V, Japan	N/A
NS	40X1792	1	1	Power cord HV, Korea	N/A
NS	40X0303	1	1	Power cord HV PRC	N/A
NS	40X1791	1	1	Power cord LV Taiwan	N/A
NS	40X1774	1	1	Power cord HV, Denmark, Finland, Norway, Sweden	N/A
NS	40X0275	1	1	Power cord HV, Israel	N/A
NS	40X1773	1	1	Power cord HV, South Africa, Namibia, Lesotho, Botswana & Pakistan	N/A
NS	40X1772	1	1	Power cord HV, Switzerland	N/A



## Assembly 36: Miscellaneous

Asm-index	P/N	Units/mach	Units/FRU	Description	Removal procedure
NS	40X4819	1	1	RS232C serial adapter	N/A
NS	40X5315	1	1	SHIP-WITH ISP (2PER) screw	N/A
NS	40X5316	1	1	14 PIN JST-FOR ISP cable	N/A
NS	40X5317	1	1	Tee with thumbscrew standoff	N/A
NS	40X4826	1	1	N8120 GIGABIT INA adapter	N/A
NS	40X4823	1	1	Parallel 1284-B THCK adapter	N/A
NS	40X4827	1	1	N8130 10/100 fiber adapter	N/A
NS	40X6522	1	1	DDR3-512Mx16 1GB-400MHZ RAM card	N/A
NS	40X7445	1	1	DDR3-512Mx32 2GB RAM card	N/A
NS	40X7566	1	1	DDR3-256Mx16 512MB-400MHZ RAM card	N/A
NS	40X7567	1	1	DDR3-256Mx32 1GB-400MHZ RAM card	N/A
NS	40X8555	1	1	256MB user flash card	N/A
NS	40X8556	1	1	Traditional Chinese font card	N/A
NS	40X8557	1	1	Simplified Chinese font card	N/A
NS	40X8568	1	1	Korean font card	N/A
NS	40X8569	1	1	Japanese font card	N/A
NS	40X8594	1	1	MS810/1/2 forms and barcode card	N/A
NS	40X8597	1	1	MS810de forms and barcode card	N/A
NS	40X8600	1	1	MS812de forms and barcode card	N/A
NS	40X8596	1	1	MS81xn prescribe card	N/A
NS	40X8599	1	1	MS810de prescribe card	N/A
NS	40X8602	1	1	MS812de prescribe card	N/A
NS	40X8595	1	1	MS81xn IPDS card	N/A
NS	40X8598	1	1	MS810de IPDS card	N/A
NS	40X8601	1	1	MS812de IPDS card	N/A
NS	40X0387	1	1	USB-A interface device	N/A
NS	40X1593	1	1	Lexmark MarkNet N7000e (1 port USB) Ethernet 10Base/100BaseTX	N/A
NS	40X1594	1	1	Lexmark MarkNet N7002e (1 port Parallel) Ethernet 10BaseT/100BaseTX	N/A
NS	40X1592	1	1	Lexmark MarkNet N7020e (4 port USB) Ethernet 10BaseT/100BaseTX/1000BaseT	N/A
NS	40X7706	1	1	MS71x & MS81x Roller Kit	N/A



Asm-index	P/N	Units/mach	Units/FRU	Description	Removal procedure
NS	40X8420	1	1	MS81x Return Program Fuser Maint. Kit Type 00, 110-120V Letter	N/A
NS	40X8421	1	1	MS81x Return Program Fuser Maint. Kit Type 01, 220-240V A5	N/A
NS	40X8422	1	1	MS81x Return Program Fuser Maint. Kit Type 02, 100V A5	N/A
NS	40X8423	1	1	MS81x Return Program Fuser Maint. Kit Type 03, 110-120V A5	N/A
NS	40X8424	1	1	MS81x Return Program Fuser Maint. Kit Type 04, 220-240V Letter	N/A
NS	40X8425	1	1	MS81x Fuser Maint. Kit Type 05, 110-120V Letter	N/A
NS	40X8426	1	1	MS81x Fuser Maint. Kit Type 06, 220-240V A4	N/A
NS	40X8427	1	1	MS81x Fuser Maint. Kit Type 07, 100V A4	N/A
NS	40X8428	1	1	MS81x Fuser Maint. Kit Type 08, 110-120V A4	N/A
NS	40X8429	1	1	MS81x Fuser Maint. Kit Type 09, 220-240V Letter	N/A
NS	40X8530	1	1	MS71x Return Program Fuser Maint. Kit Type 11, 110-120V	N/A
NS	40X8531	1	1	MS71x Return Program Fuser Maint. Kit Type 13, 220-240V	N/A
NS	40X8532	1	1	MS71x Return Program Fuser Maint. Kit Type 15, 100V	N/A
NS	40X8533	1	1	MS71x Fuser Maint. Kit Type 17, 110-120V	N/A
NS	40X8534	1	1	MS71x Fuser Maint. Kit Type 19, 220-240V	N/A
NS	40X8535	1	1	MS71x Fuser Maint. Kit Type 21, 100V	N/A
NS	40X8093	1	1	MS7xx, MS8xx, MX7xx caster base	N/A
NS	40X8359	1	1	Locking caster	N/A
NS	40X8579	1	1	Oil Wiper (MS7xx only)	N/A
NS	40X8581	1	1	Wax Wiper (MS7xx only)	N/A
NS	40X7857	1	1	Hard disk drive	N/A
NS	40X7858	1	1	Network adapter 802.11 US	N/A
NS	40X8311	1	1	Case card reader—small stick-on	N/A
NS	40X8312	1	1	Case card reader—large stick-on	N/A
NS	40X8313	1	1	Case card reader—small snap-on	N/A
NS	40X8693	1	1	Relocation kit (MX810)	N/A