

Parts catalog

Legend

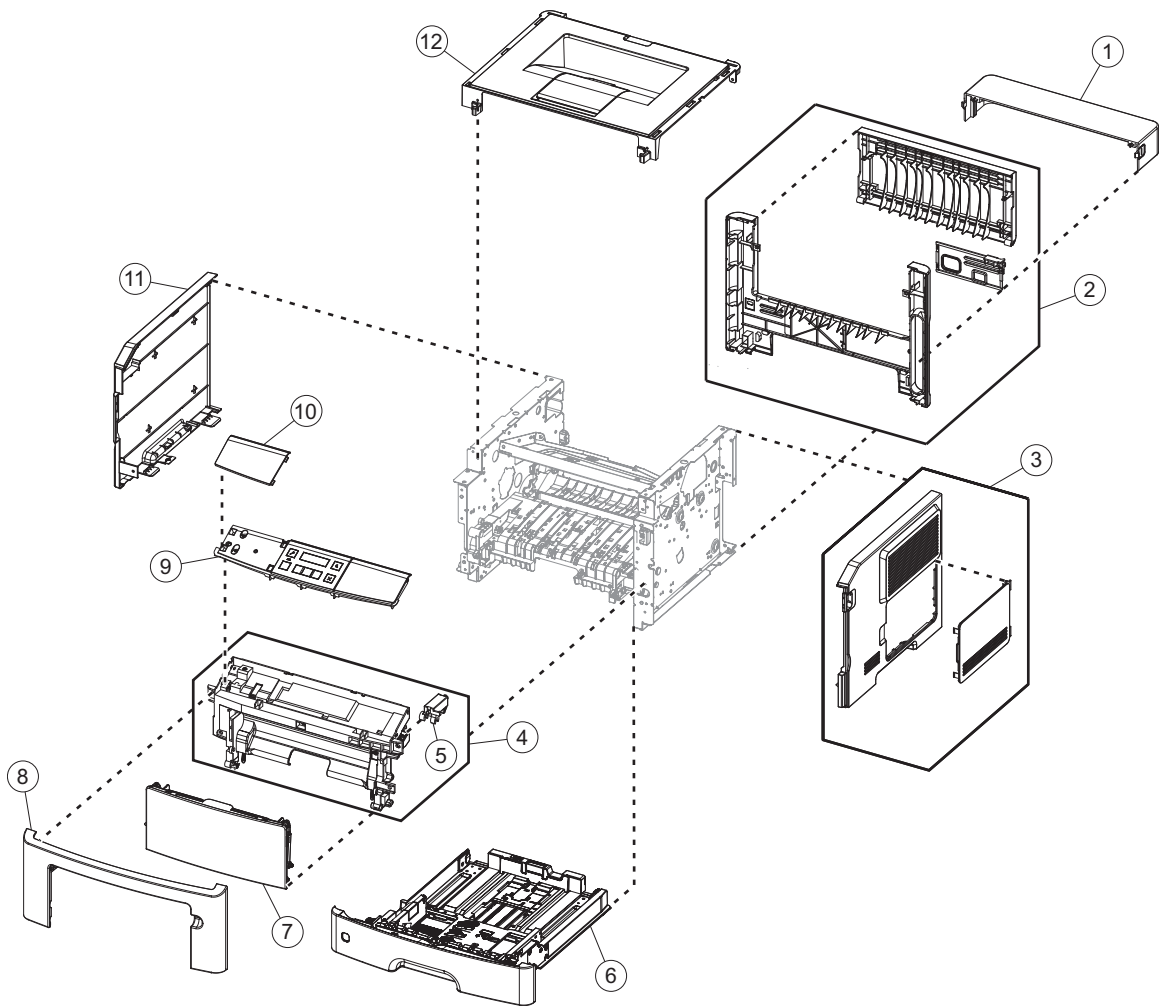
The following column headings are used in the parts catalog:

- **Asm-index**—Identifies the item in the illustration.
- **Part number**—Identifies the unique number that correlates with the part.
- **Units/mach**—Refers to the number of units actually used in the base machine or product.
- **Units/FRU**—Refers to the number of units in a particular FRU.
- **Description**—A brief description of the part.

The following abbreviations are used in the parts catalog:

- **NS** (not shown) in the Asm-index column indicates that the part is procurable but is not pictured in the illustration.
- **PP** (parts packet) in the Description column indicates that the part is contained in a parts packet.

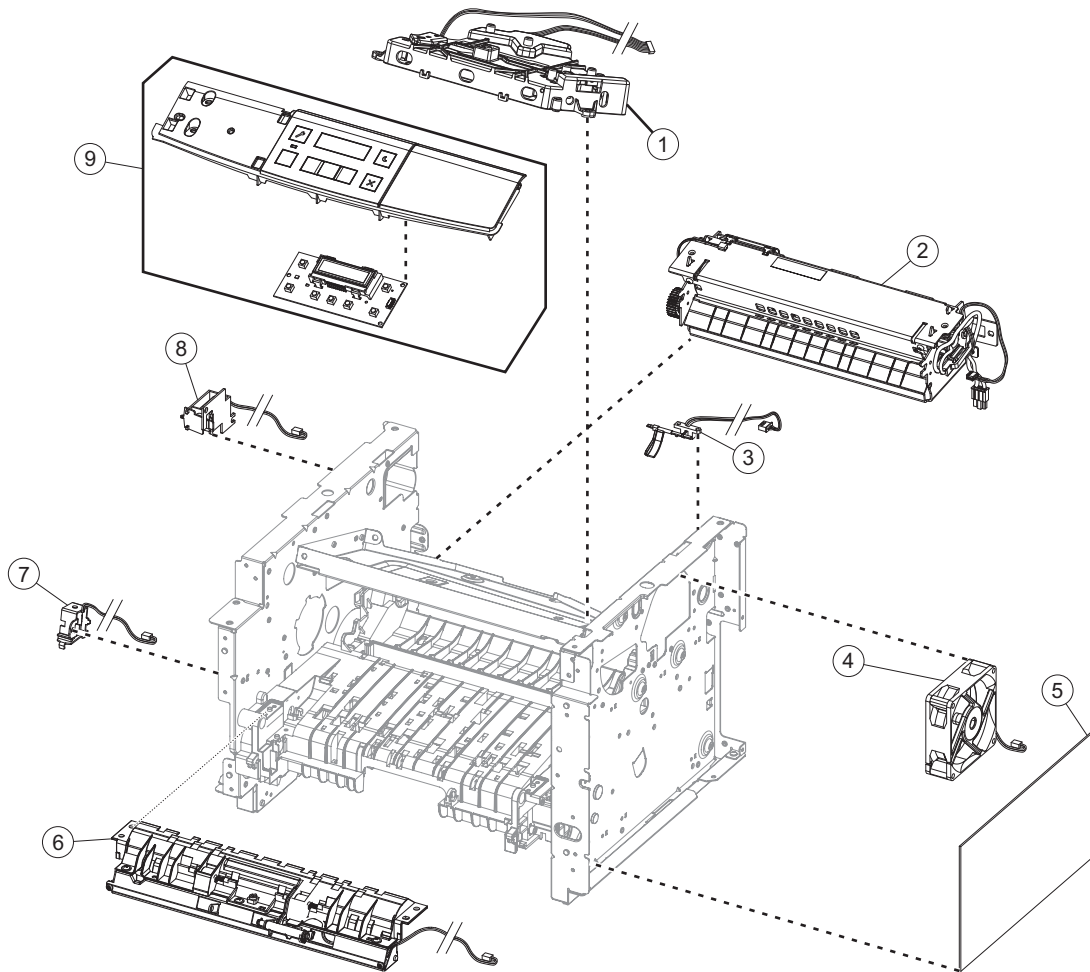
Assembly 1: Covers



Assembly 1: Covers

Asm-index	P/N	Units/mach	Units/FRU	Description	Removal procedure
1	40X8520	1	1	Dust cover (250-sheet tray)	"Dust cover removal" on page 215
2	40X8054	1	1	Rear door and cover	"Rear door and cover removal" on page 215
3	40X8052	1	1	Right cover	"Right cover removal" on page 169
4	40X8056	1	1	Front access cover	"Front access cover removal" on page 194
5	40X9148	1	1	Cartridge plunger	"Cartridge plunger removal" on page 179
6	40X8303	1	1	250-sheet tray	N/A
7	40X8302	1	1	MPF assembly (50 sheets)	"MPF assembly removal" on page 186
8	40X8051	1	1	Nameplate	"Nameplate removal" on page 183
9	40X8059	1	1	Control panel assembly Note: Does not include the UICC.	"Control panel assembly removal" on page 183 "UICC removal" on page 185
10	40X8064	1	1	Bezel (MS410d)	"Bezel removal" on page 182
10	40X8065	1	1	Bezel (MS410dn)	"Bezel removal" on page 182
11	40X8053	1	1	Left cover	"Left cover removal" on page 152
12	40X8055	1	1	Top cover	"Top cover removal" on page 220
NS	40X8273	4	40	Rubber foot	N/A

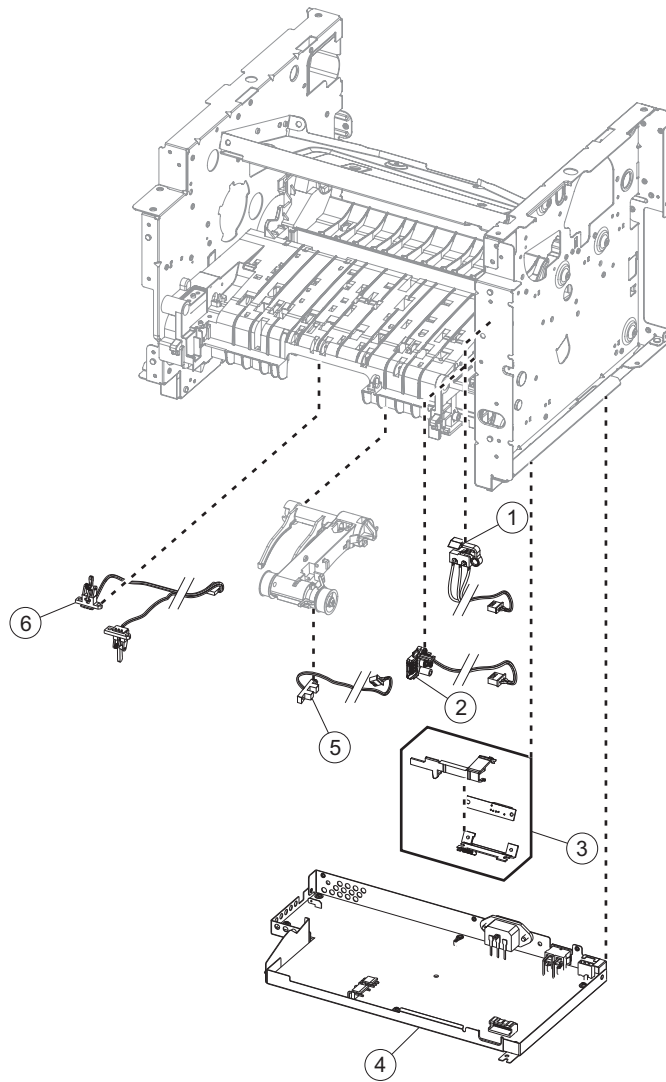
Assembly 2: Electronics 1



Assembly 2: Electronics 1

Asm-index	P/N	Units/mach	Units/FRU	Description	Removal procedure
1	40X8081	1	1	Laser scanning unit	"Laser scanning unit (LSU) removal" on page 221
2	40X8343	1	1	Fuser, 100 V	"Fuser removal" on page 219
2	40X8023	1	1	Fuser, 110 V	"Fuser removal" on page 219
2	40X8024	1	1	Fuser, 220 V	"Fuser removal" on page 219
3	40X8050	1	1	Narrow media/bin full sensor	"Narrow media/bin full sensor removal" on page 216
4	40X8276	1	1	Cooling fan	"Cooling fan removal" on page 170
5	40X8027	1	1	Controller board (MS410d)	"Controller board removal" on page 171
5	40X8028	1	1	Controller board (MS410dn)	"Controller board removal" on page 171
6	40X8280	1	1	Front input guide	"Front input guide removal" on page 195
7	40X8300	1	1	MPF solenoid	"MPF solenoid removal" on page 155
8	40X8301	1	1	Reverse solenoid	"Reverse solenoid removal" on page 161
9	40X8291	1	1	Control panel assembly	"Control panel assembly removal" on page 183 "UICC removal" on page 185

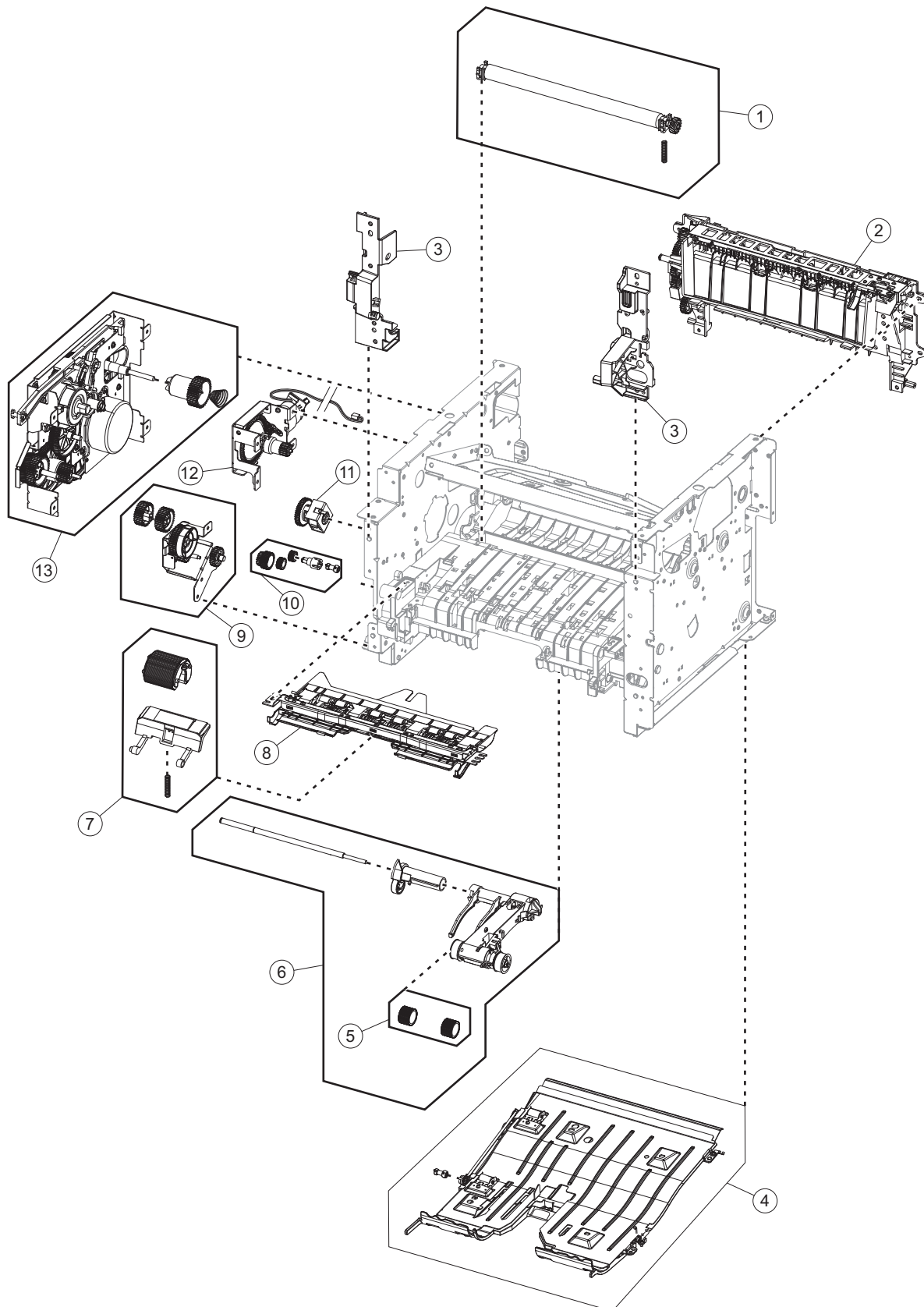
Assembly 3: Electronics 2



Assembly 3: Electronics 2

Asm-index	P/N	Units/mach	Units/FRU	Description	Removal procedure
1	40X8048	1	1	Front door sensor	"Front door sensor removal" on page 194
2	40X8266	1	1	Toner cartridge smart chip contact	"Toner cartridge smart chip contact removal" on page 172
3	40X8046	1	1	Toner density sensor	"Toner density sensor removal" on page 204
4	40X7795	1	1	Power supply, 100 V/110 V	"Power supply removal" on page 199
4	40X7796	1	1	Power supply, 220 V	"Power supply removal" on page 199
5	40X8047	1	1	Trailing edge sensor	"Trailing edge sensor removal" on page 205
6	40X8043	1	1	Duplex sensor and input sensor	"Duplex sensor and input sensor removal" on page 202

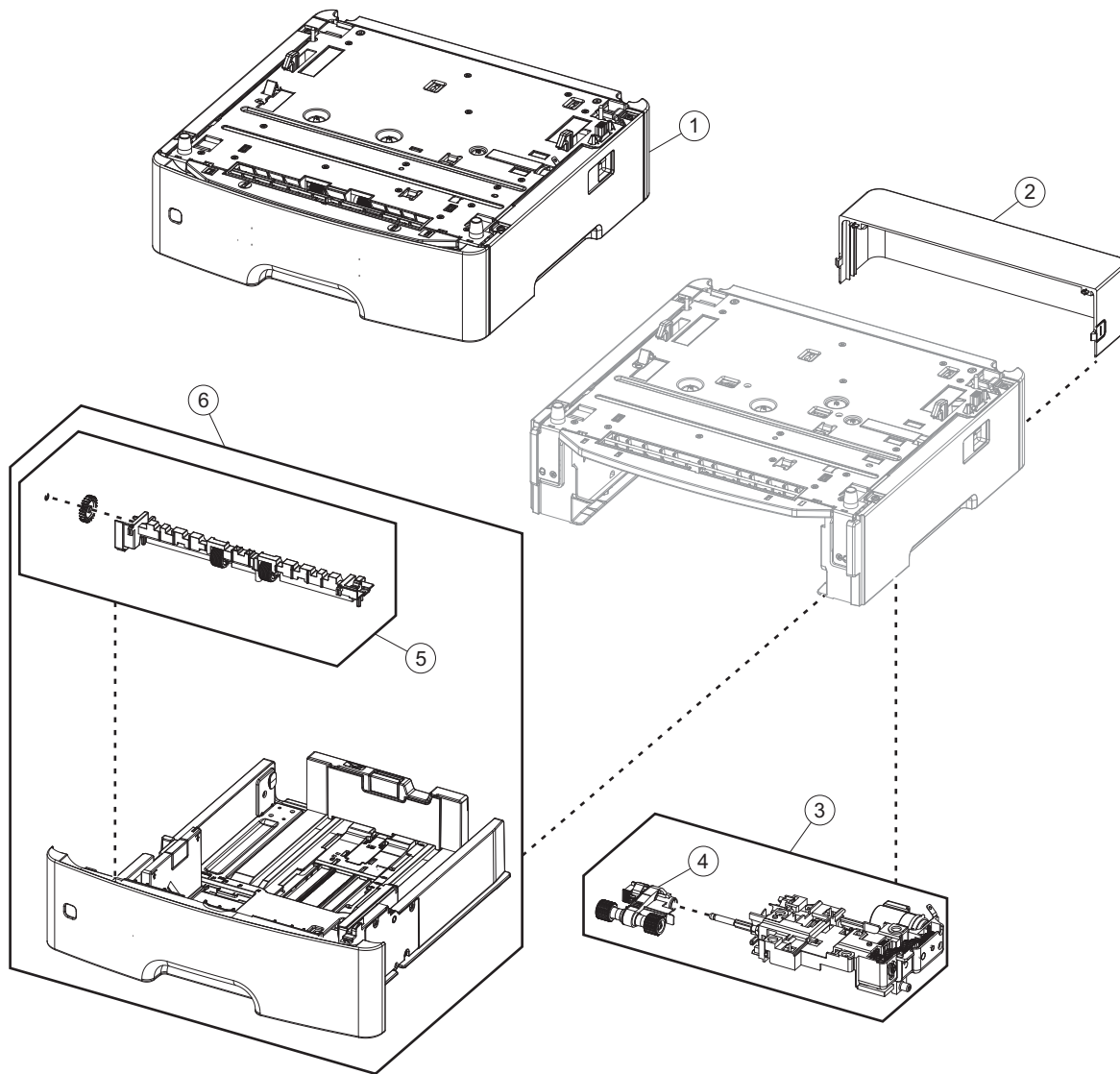
Assembly 4: Frame



Assembly 4: Frame

Asm-index	P/N	Units/mach	Units/FRU	Description	Removal procedure
1	40X8393	1	1	Transfer roll	“Transfer roll removal” on page 178
2	40X8298	1	1	Redrive assembly	“Redrive assembly removal” on page 218
3	40X8299	1	1	Front mounts	“Left front mount removal” on page 174 “Right front mount removal” on page 176
4	40X8275	1	1	Duplex assembly	“Duplex removal” on page 201
5	40X8296	2	2	Pick tire	N/A
6	40X8260	1	1	ACM assembly	“ACM assembly removal” on page 210
7	40X8295	1	1	MPF pick roller and Separator pad	“MPF pick roller removal” on page 189 “Separator pad removal” on page 197
8	40X8279	1	1	Jam access cover	“Jam access cover removal” on page 190
9	40X8278	1	1	MPF gearbox	“MPF gearbox removal” on page 158
10	40X8277	1	1	Duplex gear assembly	“Duplex gear assembly removal” on page 167
11	40X8265	1	1	ACM clutch, includes: <ul style="list-style-type: none"> Insulated displacement connector (IDC), 40X8682—2 pieces 	“ACM clutch removal” on page 162
12	40X8083	1	1	Cartridge gearbox	“Cartridge gearbox removal” on page 167
13	40X8085	1	1	Main drive gearbox	“Main drive gearbox removal” on page 153
NS	40X8394	1	1	Screw kit, contains: <ul style="list-style-type: none"> MT3x0.5+8PF-NI—10 pieces MT3x0.5+6PF-NI—10 pieces TP2NC-3+6PF-NI—10 pieces 	N/A

Assembly 5: Option trays



Assembly 5: Option trays

Asm-index	P/N	Units/opt	Units/FRU	Description	Removal procedure
1	40X8287	1	1	250-sheet tray	N/A
1	40X8286	1	1	550-sheet tray	N/A
2	40X8520	1	1	Dust cover, 250-sheet tray	"Dust cover removal" on page 215
2	40X8521	1	1	Dust cover, 550-sheet tray	"Dust cover removal" on page 215
3	40X8262	1	1	ACM assembly	"ACM assembly removal" on page 226
4	40X8443	1	1	Pick roller assembly	"Pick roller removal" on page 223
5	40X8444	1	1	Separator roll assembly	"Separator roll assembly removal" on page 224
6	40X8305	1	1	250-sheet tray insert	N/A
6	40X8086	1	1	550-sheet tray insert	N/A

Assembly 6: Power cords

Asm-index	P/N	Units/mach	Units/FRU	Description	Removal procedure
NS	40X0269	1	1	Power cord, 2.5 m (straight)—USA, Canada	N/A
NS	40X3141	1	1	Power cord, 2.5 m (straight)—Europe and others	N/A
NS	40X0288	1	1	Power cord, 2.5 m (straight)—Argentina	N/A
NS	40X0271	1	1	Power cord, 2.5 m (straight)—United Kingdom	N/A
NS	40X0275	1	1	Power cord, 2.5 m (straight)—Israel	N/A
NS	40X1772	1	1	Power cord, 2.5 m (straight)—Switzerland	N/A
NS	40X1773	1	1	Power cord, 2.5 m (straight)—South Africa	N/A
NS	40X0273	1	1	Power cord, 2.5 m (straight)—Traditional Italy	N/A
NS	40X1774	1	1	Power cord, 2.5 m (straight)—Denmark	N/A
NS	40X4596	1	1	Power cord, 2.5 m (straight)—Brazil	N/A
NS	40X0303	1	1	Power cord, 2.5 m (straight)—China	N/A
NS	40X0270	1	1	Power cord, 2.5 m (straight)—Japan	N/A
NS	40X1792	1	1	Power cord, 2.5 m (straight)—Korea	N/A
NS	40X1791	1	1	Power cord, 2.5 m (straight)—Taiwan	N/A
NS	40X0301	1	1	Power cord, 2.5 m (straight)—Australia	N/A

Assembly 7: Miscellaneous

Asm-index	P/N	Units/mach	Units/FRU	Description	Removal procedure
NS	40X8737	1	1	RFID card reader	N/A
NS	40X8330	1	1	MarkNet N8352 802.11 b/g/n Wireless Print Server Kit	N/A
NS	40X8570	1	1	Font card, Arabic	N/A
NS	40X8571	1	1	Font card, Hebrew	N/A
NS	40X8568	1	1	Font card, Korean	N/A
NS	40X8569	1	1	Font card, Japanese	N/A
NS	40X8556	1	1	Font card, Traditional Chinese	N/A
NS	40X8557	1	1	Font card, Simplified Chinese	N/A
NS	40X8555	1	1	256MB flash card	N/A
NS	40X1368	1	1	USB cable, packaged (2 m)	N/A
NS	40X8694	1	1	Relocation kit	N/A

Appendix A: Printer specifications

Product power consumption

The following table documents the power consumption characteristics of the product.

Note: Some modes may not apply to your product.

Mode	Description	Power consumption (Watts)
Printing	The product is generating hard-copy output from electronic inputs.	560
Copy	The product is generating hard-copy output from hard-copy original documents.	NA
Scan	The product is scanning hard-copy documents.	NA
Ready	The product is waiting for a print job.	8
Sleep Mode	The product is in a high-level energy-saving mode.	5
Hibernate	The product is in a low-level energy-saving mode.	1
Off	The product is plugged into an electrical outlet, but the power switch is turned off.	0

The power consumption levels listed in the previous table represent time-averaged measurements. Instantaneous power draws may be substantially higher than the average.

Values are subject to change. See www.lexmark.com for current values.

Electrical specifications

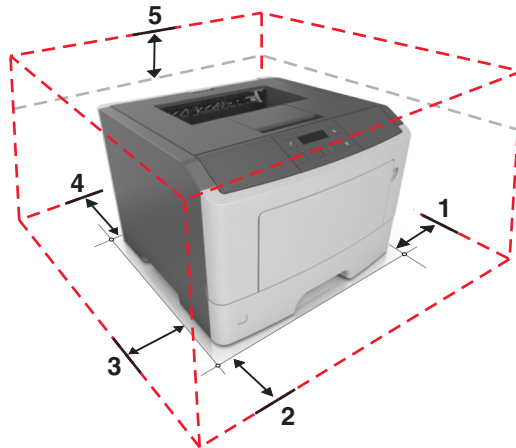
Low-voltage models

- 100 to 127 V ac at 47 to 63 Hz nominal
- 90 to 137 V ac, steady state operational extremes

High-voltage models

- 220 to 240 V ac at 47 to 63 Hz nominal (not available in all countries)
- 198 to 254 V ac, steady state operational extremes

Operating clearances



1	Right	305 mm (12 in.)
2	Front	508 mm (20 in.)
3	Left	203 mm (8 in.)
4	Rear	203 mm (8 in.)
5	Top	305 mm (12 in.)
Allow additional clearance around the printer for adding the optional input trays.		

Acoustics

All measurements are made in accordance with ISO 7779 and conform with ISO 9296.

Status	1 meter average sound pressure dBA	Declared sound power level (Bels)
Idle (Standby)	Inaudible	Inaudible
Quiet Mode	50 dBA	6.4 Bels
Simplex Printing	53 dBA	6.8 Bels
Sleep/Hibernate Mode	Inaudible	Inaudible
Measurements apply to 300 dpi, 600 dpi and 1200 dpi printing.		

Operating environment

Environment	Specification
Temperature—printer operating	60 to 90 °F (16 to 32 °C)
Relative humidity—printer operating	8 to 80%
Maximum wet bulb temperature—printer operating	73 °F (23 °C)
*In some cases, performance specifications (such as paper OCF, EP cartridge usage) are measured at an ambient condition.	

Environment	Specification
Temperature—printer off	50 to 110 °F (10 to 43 °C)
Relative humidity—printer off	8 to 80%
Maximum wet bulb temperature—printer off	80 °F (27 °C)
Temperature—ambient operating environment*	60 to 90 °F (16 to 32 °C)
Relative humidity—ambient operating environment*	8 to 80%
Temperature—storage and shipping (packaged printer) with or without print cartridge	-40 to 110 °F (-40 to 43 °C)
Altitude	10,000 ft (0 to 3,048 m)
Atmospheric pressure	74.6 kPa
Tilt	2°
*In some cases, performance specifications (such as paper OCF, EP cartridge usage) are measured at an ambient condition.	

