

PARTS CATALOG

MF620 Series (CEL)

<PREFACE>

This Parts Catalog contains listings of parts used. Diagrams are provided with the listings to aid the service technician in identifying clearly, the item to be ordered.

Whenever ordering parts, consult this Parts Catalog for all of the information pertaining to each item. Be sure to include, in the Parts Request, the full item description, the item part number, and the quantity.

The Canon logo is displayed in a bold, black, sans-serif font. The letter 'C' is significantly larger and more stylized than the other letters, which are in a standard weight. The letters are closely spaced together.

Index

SNL	Product Code No. /Serial No.
A1A	ASSEMBLY LOCATION DIAGRAM(ADF model)
A2	OPTION PARTS CATALOG LIST
001D	ACCESSORIES (EXCEPT FAX model)
001E	ACCESSORIES (FAX model)
100D	EXTERNAL COVERS, PANELS, ETC. (ADF EXCEPT FAX model)
100E	EXTERNAL COVERS, PANELS, ETC. (ADF FAX model)
101	INTERNAL COMPONENTS 1
102D	INTERNAL COMPONENTS 2 (EXCEPT FAX model EUR, SG, IN, 230V LTN, CN, KR)
102E	INTERNAL COMPONENTS 2 (FAX model)
103	INTERNAL COMPONENTS 3
104	INTERNAL COMPONENTS 4
105C	INTERNAL COMPONENTS 5 (EXCEPT FAX model)
105D	INTERNAL COMPONENTS 5 (FAX model)
130D	CONTROL PANEL ASS'Y (i-SENSYS MF623Cn)
130E	CONTROL PANEL ASS'Y (i-SENSYS MF628Cw)
160C	READER/ADF ASSEMBLY
165	PAPER FEEDER ASSEMBLY (ADF model)
300	CASSETTE
400A	READER ASSEMBLY (ADF model)
460	LASER SCANNER ASSEMBLY
530	INTERMEDIATE TRANS. BELT ASS'Y
810C	FIXING ASS'Y (230V)
900A	MAIN CONTROLLER PCB ASSEMBLY (MF628Cw)
900C	MAIN CONTROLLER PCB ASSEMBLY (MF623Cn)
ZZA	MECHANICAL STANDARD PARTS (HOW TO USE)
ZZB	MECHANICAL STANDARD PARTS (SCREWS)
ZZC	MECHANICAL STANDARD PARTS (BOLTS)
ZZD	MECHANICAL STANDARD PARTS (NUTS)
ZZE	MECHANICAL STANDARD PARTS (RETAINING RINGS)

Figure SNL Product Code No./Serial No.

	Product Code No.	Model Name	Remarks	Serial No.
1	F16-7795-000	i-SENSYS MF628Cw	ADF + WIRELESS + FAX	TMV
2	F16-7792-000	i-SENSYS MF623Cn	ADF	TWF

	中オーダー	製品名	備考	シリアル No.
1	F16-7795-000	i-SENSYS MF628Cw	A D F + ワイヤレス + F A X	TMV
2	F16-7792-000	i-SENSYS MF623Cn	A D F	TWF

FIGURE & KEY NO.	PART NUMBER	RANK	QTY	DESCRIPTION	SERIAL NUMBER /REMARKS
SNL	NPN		RF	Product Code No./Serial No.	
1	F16-7795-000		1	i-SENSYS MF628Cw	TMV ADF + WIRELESS + FAX
2	F16-7792-000		1	i-SENSYS MF623Cn	TWF ADF

Figure A1A ASSEMBLY LOCATION DIAGRAM(ADF model)

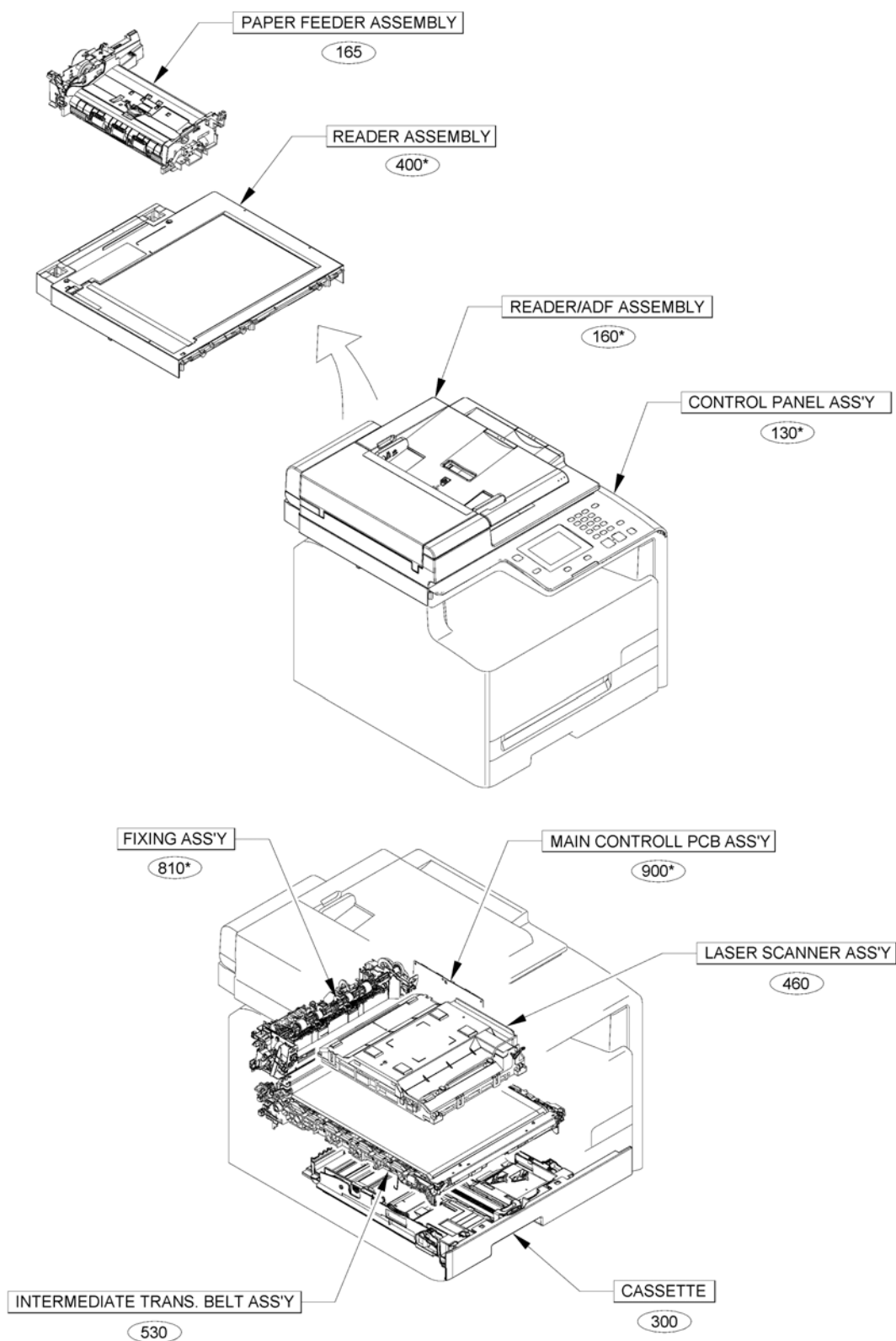


Figure A2 OPTION PARTS CATALOG LIST

This is the table of the machine's options whose parts catalog is issued.
 本機のオプションで、パーツカタログが発行されている機種の一覧である。

No.	Model Name(English)	Model Name(Japanese)
1	HANDSET KIT 3 Long cord	(日本仕向けなし)
2	TELEPHONE 6 KIT Long cord	(日本仕向けなし)

Figure 001D ACCESSORIES(EXCEPT FAX model)

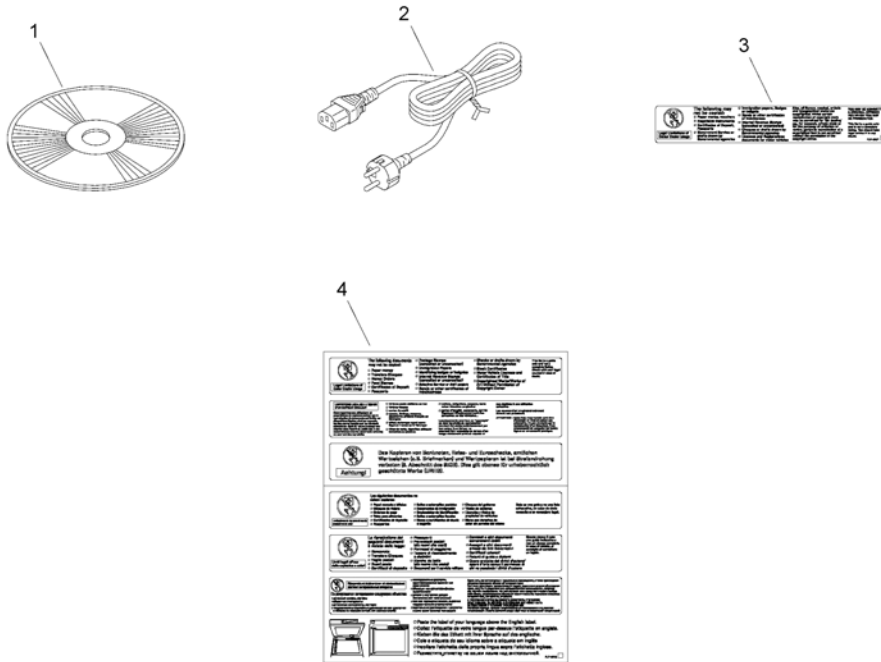


FIGURE & KEY NO.	PART NUMBER	RANK	QTY	DESCRIPTION	SERIAL NUMBER /REMARKS
001D	NPN		1	ACCESSORIES	EXCEPT FAX model
1	FK4-3422-000		1	DVD-ROM, USER SOFTWARE	
2	FH2-7080-000		1	CORD, POWER, 230V	
3	FU7-8407-000		1	LABEL, COPY PROHIBITION	
4	FU7-8413-000		1	LABEL, COPY PROHIBITION	

Figure 001E ACCESSORIES (FAX model)

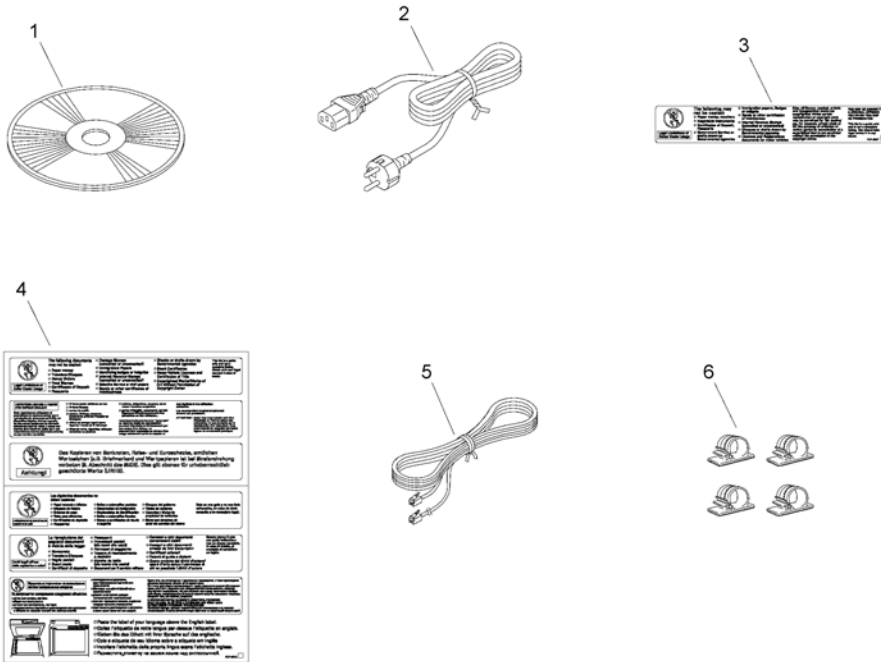


FIGURE & KEY NO.	PART NUMBER	RANK	QTY	DESCRIPTION	SERIAL NUMBER /REMARKS
001E	NPN		1	ACCESSORIES	FAX model
1	FK4-3422-000		1	DVD-ROM, USER SOFTWARE	
2	FH2-7080-000		1	CORD, POWER, 230V	
3	FU7-8407-000		1	LABEL, COPY PROHIBITION	
4	FU7-8413-000		1	LABEL, COPY PROHIBITION	
5	FK2-5275-000		1	CORD, MODULAR	
6	FK2-3531-000		4	CLAMP, CABLE	

Figure 100D EXTERNAL COVERS, PANELS, ETC. (ADF EXCEPT FAX model)

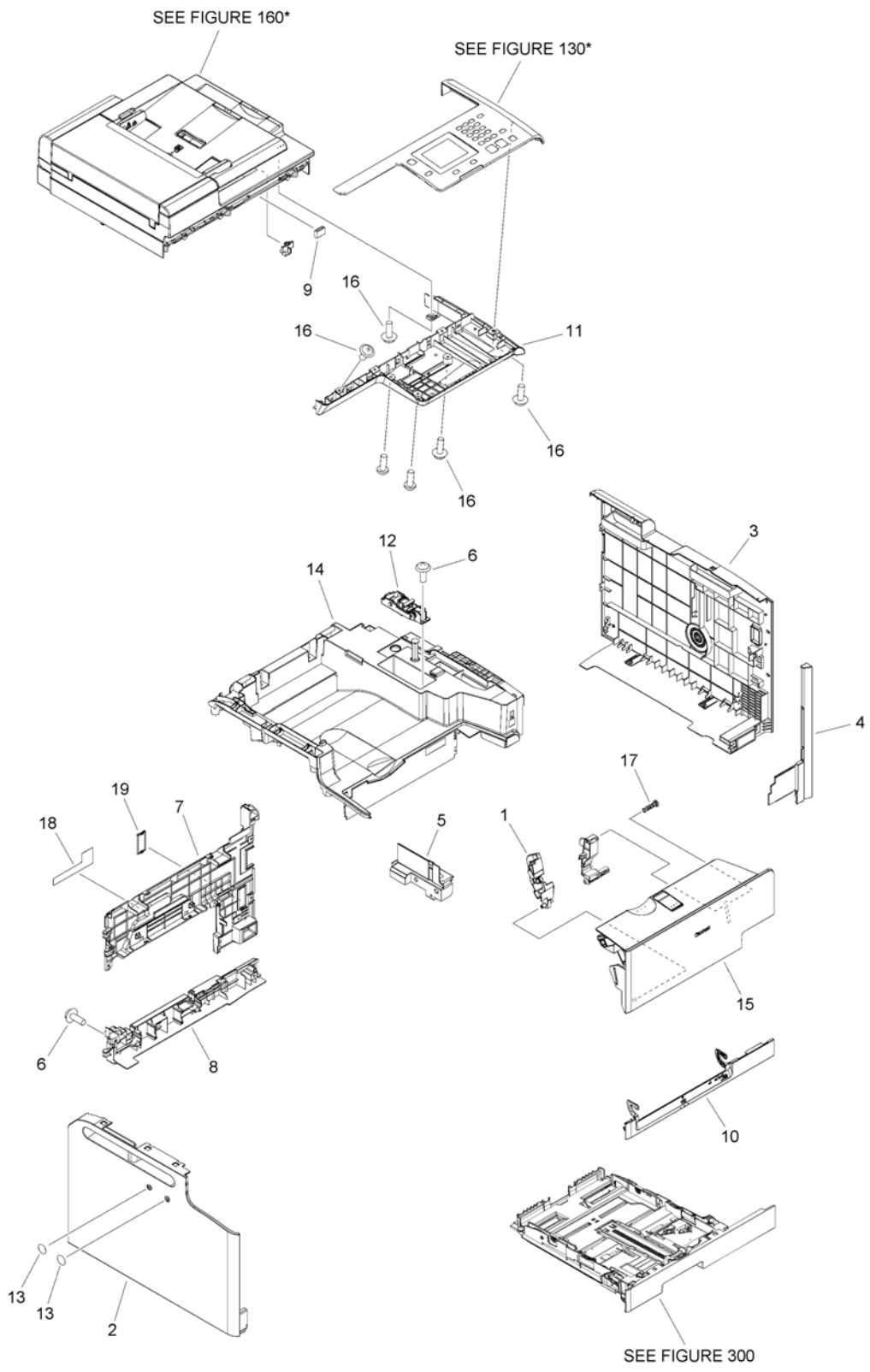


FIGURE & KEY NO.	PART NUMBER	RANK	QTY	DESCRIPTION	SERIAL NUMBER /REMARKS
100D	NPN		1	EXTERNAL COVERS, PANELS, ETC.	ADF EXCEPT FAX model
1	FC7-9827-000		1	CAM, FRONT COVER, LEFT	
2	FC9-4440-000		1	COVER,LEFT	
3	FE2-2381-000		1	COVER, RIGHT, L6	
4	FE2-2321-000		1	GUIDE, SIDE, RIGHT	
5	FC9-4443-000		1	GUIDE, HANDLE	
6	XA9-1671-000		3	SCREW, D, M3X8	
7	FE2-2385-000		1	COVER, UPPER REAR	
8	FE2-2386-000		1	COVER, LOWER REAR	
9	FK2-5242-000		1	CORE	
10	FC9-4454-000		1	COVER, PAPER PICK-UP SLOT	
11	FE4-0076-000		1	COVER, BASE	
12	FM3-9816-000		1	HINGE ASSEMBLY	
13	HB1-5537-000		2	SHEET,BLANKING	
14	FM0-3545-000		1	COVER, TOP	
15	FM0-3544-000		1	COVER UNIT, FRONT	
16	XA9-0476-000		13	SCREW,TP M3X8	
17	RC2-2015-000		1	SHAFT, SUPPORT	
18	FU7-8090-000		1	LABEL, HIGH TMP. CAUTION	
19	FC9-4584-000		1	COVER, MODULAR	

Figure 100E EXTERNAL COVERS, PANELS, ETC. (ADF FAX model)

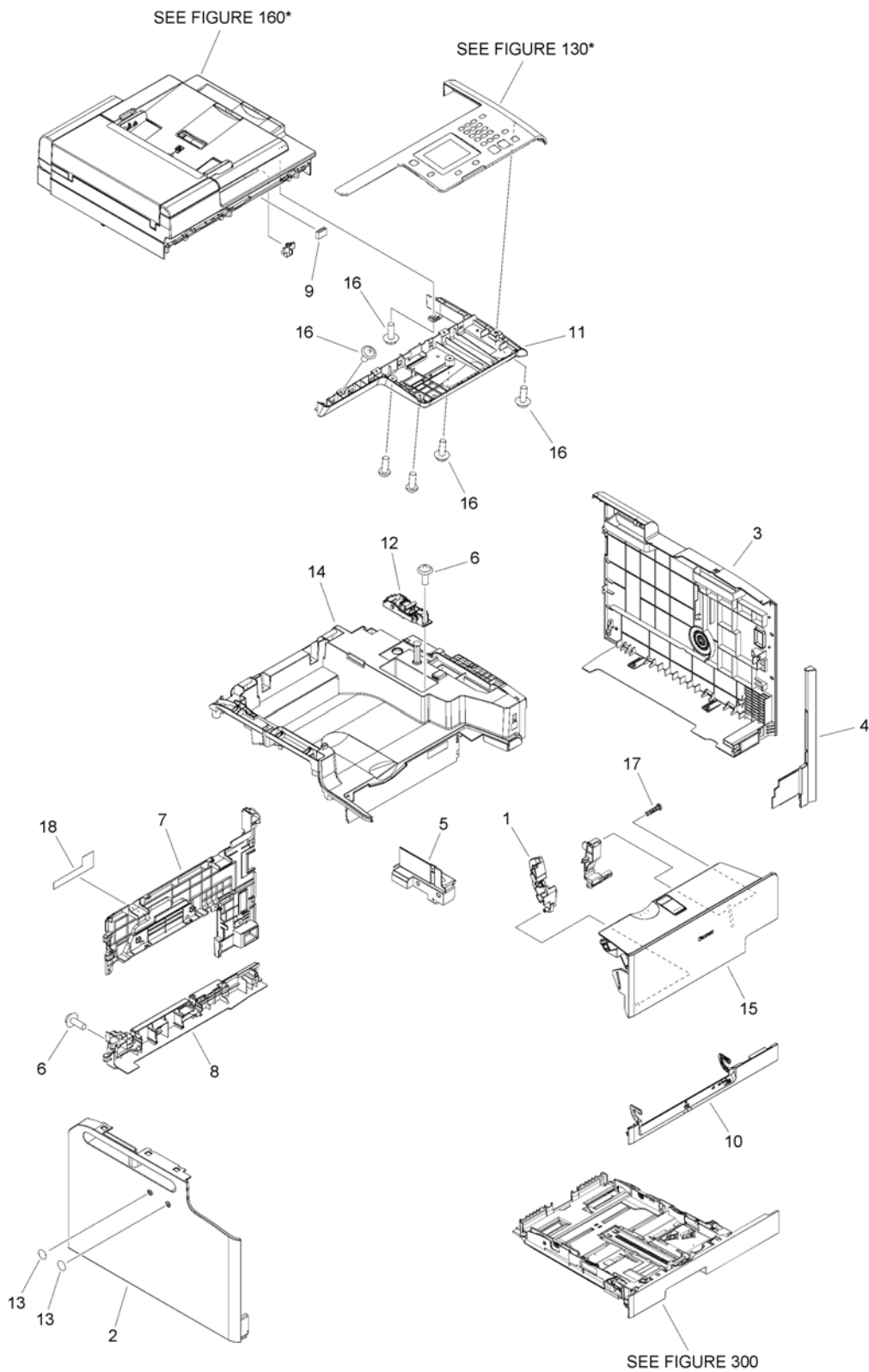


FIGURE & KEY NO.	PART NUMBER	RANK	QTY	DESCRIPTION	SERIAL NUMBER /REMARKS
100E	NPN		1	EXTERNAL COVERS, PANELS, ETC.	ADF FAX model
1	FC7-9827-000		1	CAM, FRONT COVER, LEFT	
2	FC9-4440-000		1	COVER,LEFT	
3	FE2-2381-000		1	COVER, RIGHT, L6	
4	FE2-2321-000		1	GUIDE, SIDE, RIGHT	
5	FC9-4443-000		1	GUIDE, HANDLE	
6	XA9-1671-000		3	SCREW, D, M3X8	
7	FE2-2385-000		1	COVER, UPPER REAR	
8	FE2-2386-000		1	COVER, LOWER REAR	
9	FK2-5242-000		1	CORE	
10	FC9-4454-000		1	COVER, PAPER PICK-UP SLOT	
11	FE4-0076-000		1	COVER, BASE	
12	FM3-9816-000		1	HINGE ASSEMBLY	
13	HB1-5537-000		2	SHEET,BLANKING	
14	FM0-3545-000		1	COVER, TOP	
15	FM0-3544-000		1	COVER UNIT, FRONT	
16	XA9-0476-000		13	SCREW,TP M3X8	
17	RC2-2015-000		1	SHAFT, SUPPORT	
18	FU7-8090-000		1	LABEL, HIGH TMP. CAUTION	

Figure 101 INTERNAL COMPONENTS 1

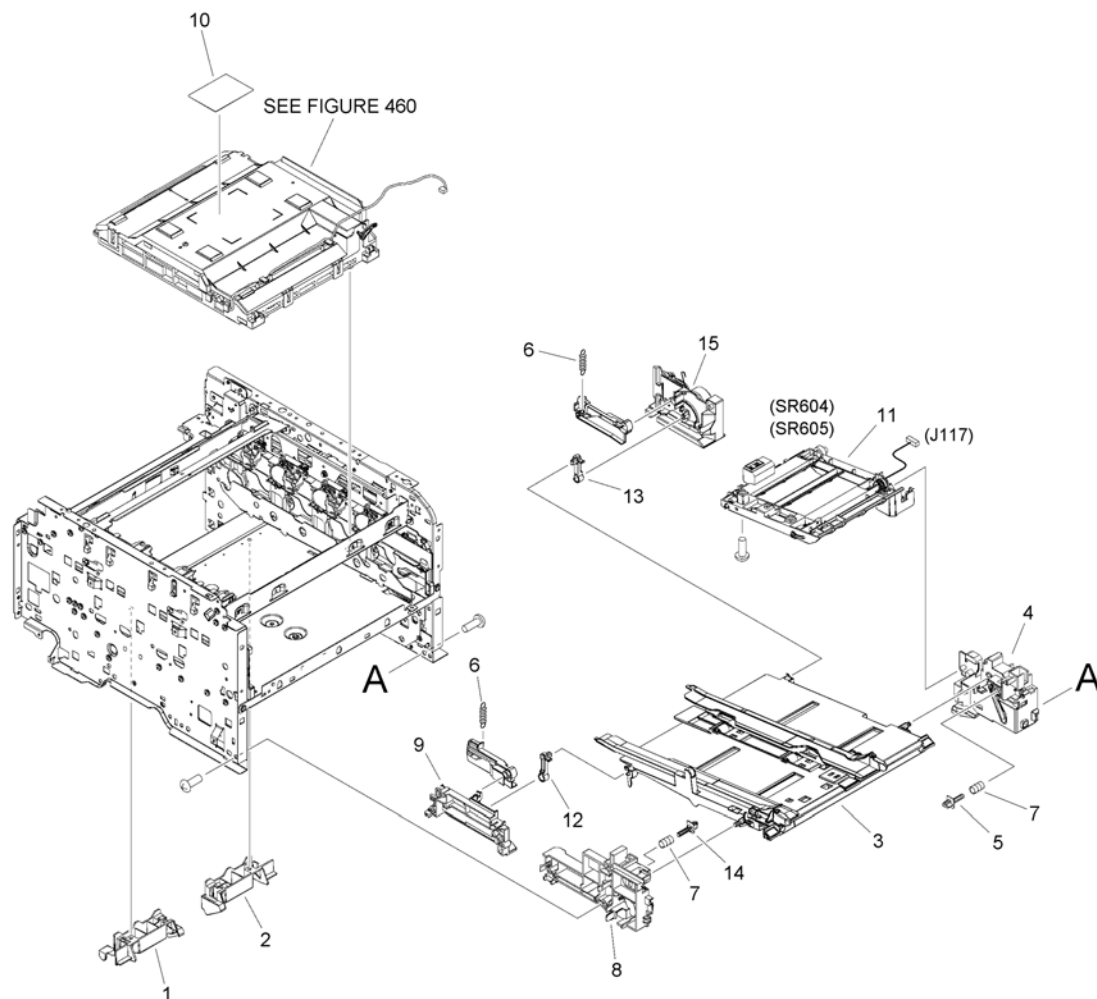


FIGURE & KEY NO.	PART NUMBER	RANK	QTY	DESCRIPTION	SERIAL NUMBER /REMARKS
101	NPN		1	INTERNAL COMPONENTS 1	
1	FC7-9868-000		1	COVER, SPRING, LEFT	
2	FC7-9869-000		1	COVER, SPRING, RIGHT	
3	FM3-3441-000		1	PRIORITY SLOT TRAY ASS'Y	
4	RL1-1849-000		1	RAIL, CASSETTE, RIGHT FRONT	
5	RC2-2006-000		1	HOLDER, MF TRAY, RIGHT	
6	RU6-2016-000		2	SPRING, TENSION	
7	RU6-2042-000		2	SPRING, COMPRESSION	
8	RC2-1878-000		1	RAIL, CASSETTE, LEFT FRONT	
9	RC2-1879-020		1	RAIL, CASSETTE, LEFT REAR	
10	RU6-8007-000		1	LABEL, LASER CAUTION	
11	FM0-3542-000		1	PRIORITY SLOT DRIVE ASS'Y	SR604,SR605
12	RC2-1993-000		1	ARM, MF TRAY, LEFT	
13	RC2-1997-000		1	ARM, MF TRAY, RIGHT	
14	RC2-2007-000		1	HOLDER, MF TRAY, LEFT	
15	RL1-1850-000		1	RAIL, CASSETTE, RIGHT REAR	

Figure 102D INTERNAL COMPONENTS 2 (EXCEPT FAX model EUR, SG, IN, 230V LTN, CN, KR)

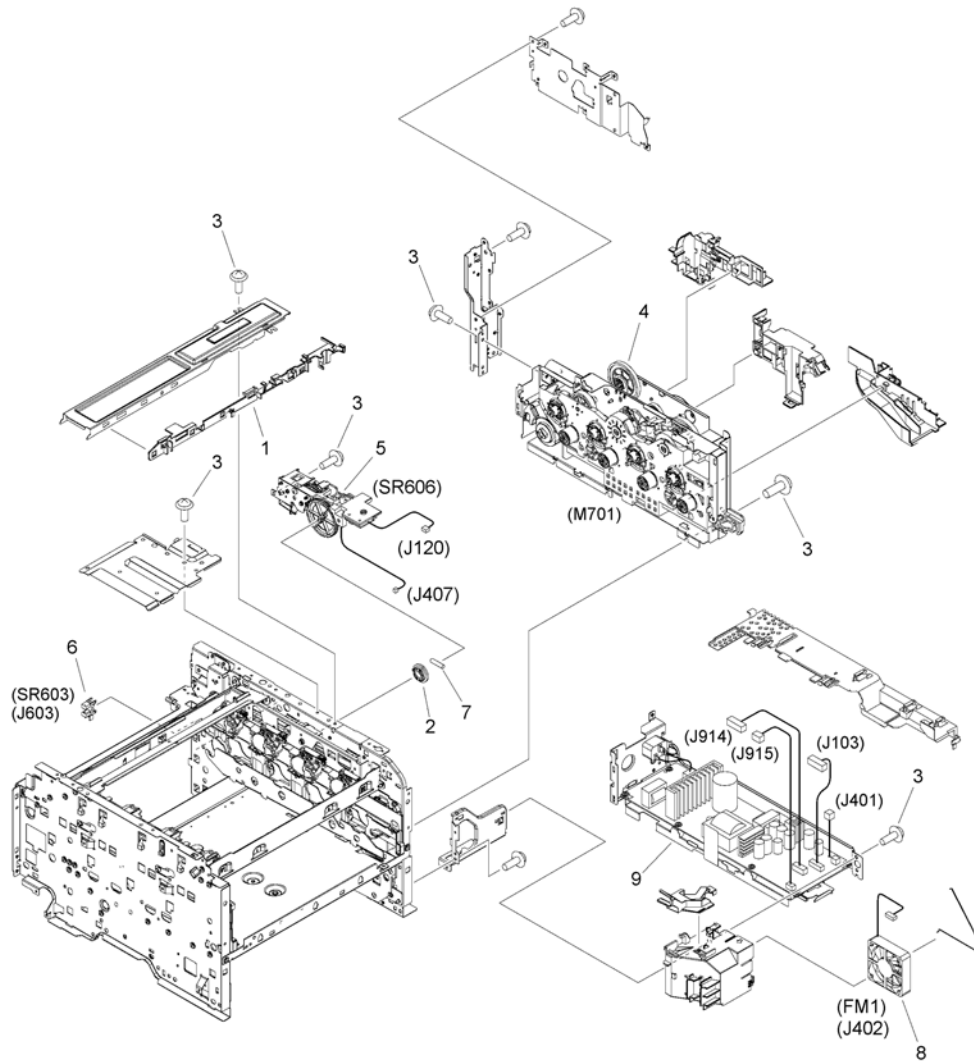


FIGURE & KEY NO.	PART NUMBER	RANK	QTY	DESCRIPTION	SERIAL NUMBER /REMARKS
102D	NPN		1	INTERNAL COMPONENTS 2	EXCEPT FAX model EUR,SG,IN,230V LTN,CN,KR
1	RC2-1819-000		1	GUIDE, CABLE, A	
2	RC2-1922-000		1	BUSHING	
3	XA9-1671-000		19	SCREW, D, M3X8	
4	FM0-3543-010		1	MAIN DRIVE ASS'Y	M701
5	RM1-8785-000		1	SUB DRIVE ASS'Y	SR606
6	WG8-5935-000		1	IC, PHOTO INTERRUPTER	SR603
7	XD9-0278-000		1	PIN, DOWEL	
8	RK2-4255-000		1	FAN	FM1
9	FM0-4740-000		1	POWER SUPPLY ASS'Y	

Figure 102E INTERNAL COMPONENTS 2 (FAX model)

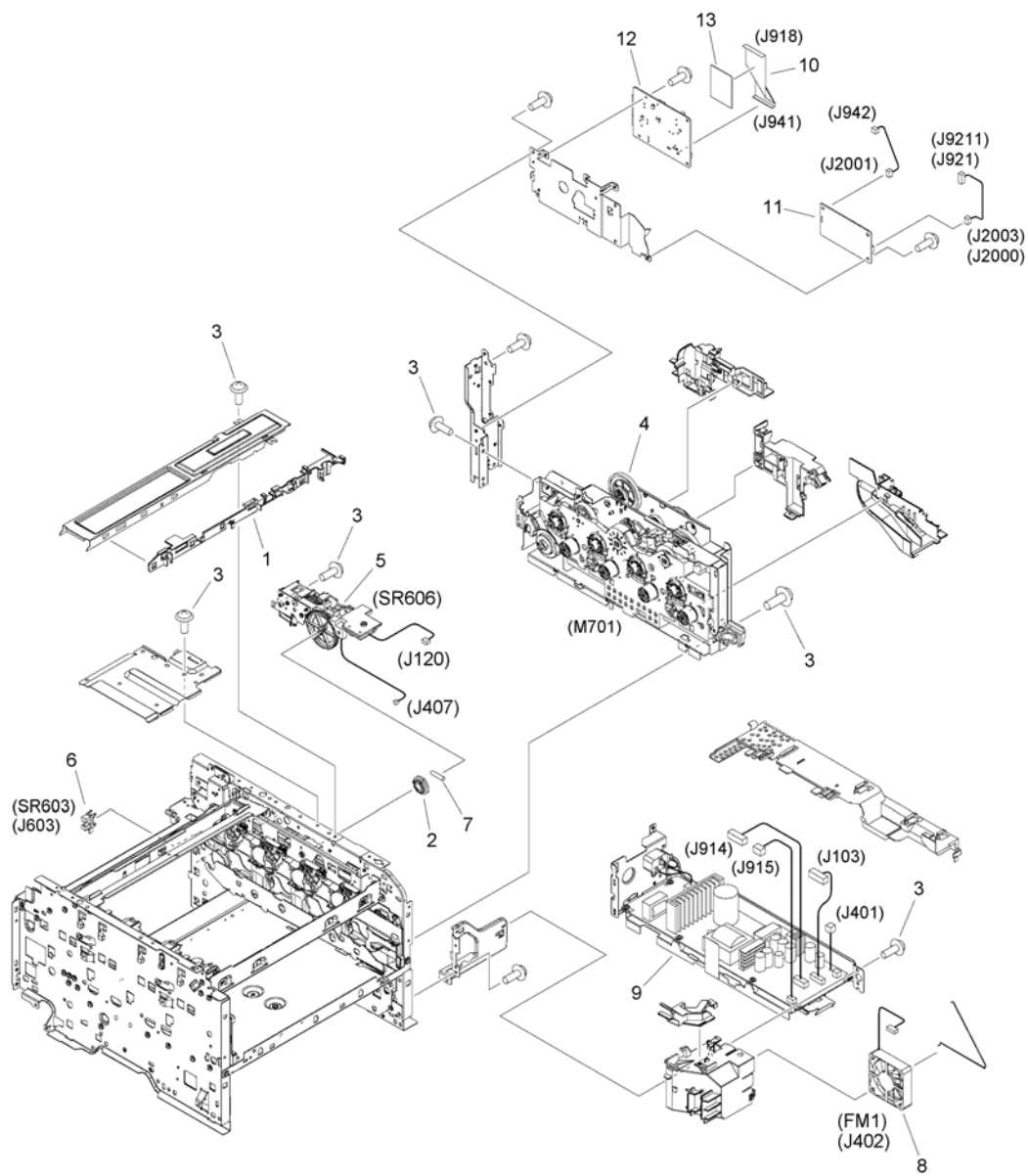


FIGURE & KEY NO.	PART NUMBER	RANK	QTY	DESCRIPTION	SERIAL NUMBER /REMARKS
102E	NPN		1	INTERNAL COMPONENTS 2	FAX model
1	RC2-1819-000		1	GUIDE, CABLE, A	
2	RC2-1922-000		1	BUSHING	
3	XA9-1671-000		19	SCREW, D, M3X8	
4	FM0-3543-010		1	MAIN DRIVE ASS'Y	M701
5	RM1-8785-000		1	SUB DRIVE ASS'Y	SR606
6	WG8-5935-000		1	IC, PHOTO INTERRUPTER	SR603
7	XD9-0278-000		1	PIN, DOWEL	
8	RK2-4255-000		1	FAN	FM1
9	FM0-4740-000		1	POWER SUPPLY ASSY	
10	FK4-2611-000		1	CABLE, FLAT	
11	FM4-8968-010		1	OFFHOOK PCB ASSEMBLY	
12	FM1-N815-000		1	FAX-NCU PCB ASSEMBLY	
13	FL0-3731-000		1	SHEET, INSULATING	

Figure 103 INTERNAL COMPONENTS 3

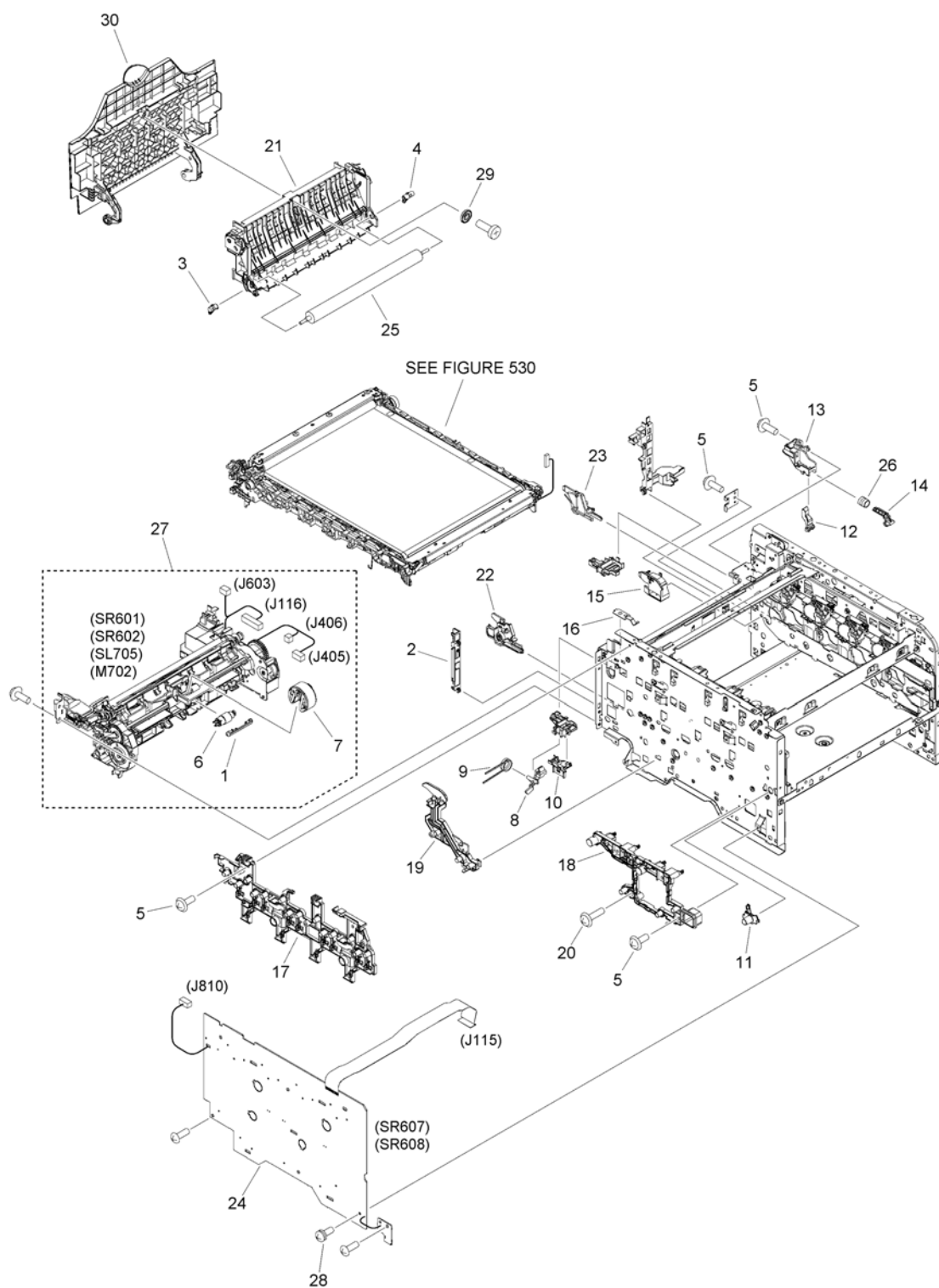


FIGURE & KEY NO.	PART NUMBER	RANK	QTY	DESCRIPTION	SERIAL NUMBER /REMARKS
103	NPN		1	INTERNAL COMPONENTS 3	
1	RC2-2014-000		1	COVER, HOLDER	
2	FE2-1445-000		1	GUIDE, CABLE, F	
3	RC2-2111-000		1	BUSHING	
4	RC2-2112-000		1	BUSHING	
5	XA9-1671-000		6	SCREW, D, M3X8	
6	RM1-8765-000		1	SEPARATION ROLLER ASS'Y	
7	RM1-8047-030		1	PICK-UP ROLLER ASS'Y	
8	RC2-2879-000		1	FLAG, DOOR SENSOR, REAR	
9	RC2-2880-000		1	SPRING, COMPRESSION	
10	RC2-2881-000		1	COVER, DOOR SENSOR	
11	RC2-2899-000		1	SUPPORT, HIGH VOLTAGE PCB	
12	RC2-2902-000		1	LEVER, CARTRIDGE TRAY PUSH	
13	RC2-2904-000		1	HOLDER, CARTRIDGE TRAY PUSH	
14	RC2-2906-000		1	LEVER, CARTRIDGE TRAY PUSH	
15	RC2-2907-000		1	GUIDE, I.T.B., R	
16	RC2-3100-000		1	SPRING, GROUNDING	
17	RL1-1844-000		1	HOLDER, CONTACT SPRING	
18	RL1-1845-000		1	HOLDER, CONTACT SPRING	
19	RL1-1846-000		1	HOLDER, CONTACT SPRING	
20	XA9-1830-000		2	SCREW, D, M3X12	
21	RM1-8779-000		1	PAPER FEED GUIDE ASS'Y	
22	RM1-4482-000		1	I.T.B. LOCK LEVER ASS'Y, LEFT	
23	RM1-4483-000		1	I.T.B. LOCK LEVER ASS'Y, RIGHT	
24	RM1-8705-010		1	H.V. POWER SUPPLY PCB ASS'Y	SR607,SR608
25	RM1-4445-000		1	ROLLER, TRANSFER	
26	RU6-2017-000		1	SPRING, COMPRESSION	
27	FM0-3541-000		1	PAPER PICK-UP DRIVE ASS'Y	SR601,SR602, SL705,M702
28	XA9-1831-000		1	SCREW, W/WASHER D, M3X8	
29	RC2-2144-000		1	CAP, GUIDE	
30	FE2-2387-000		1	GUIDE, REAR	

Figure 104 INTERNAL COMPONENTS 4

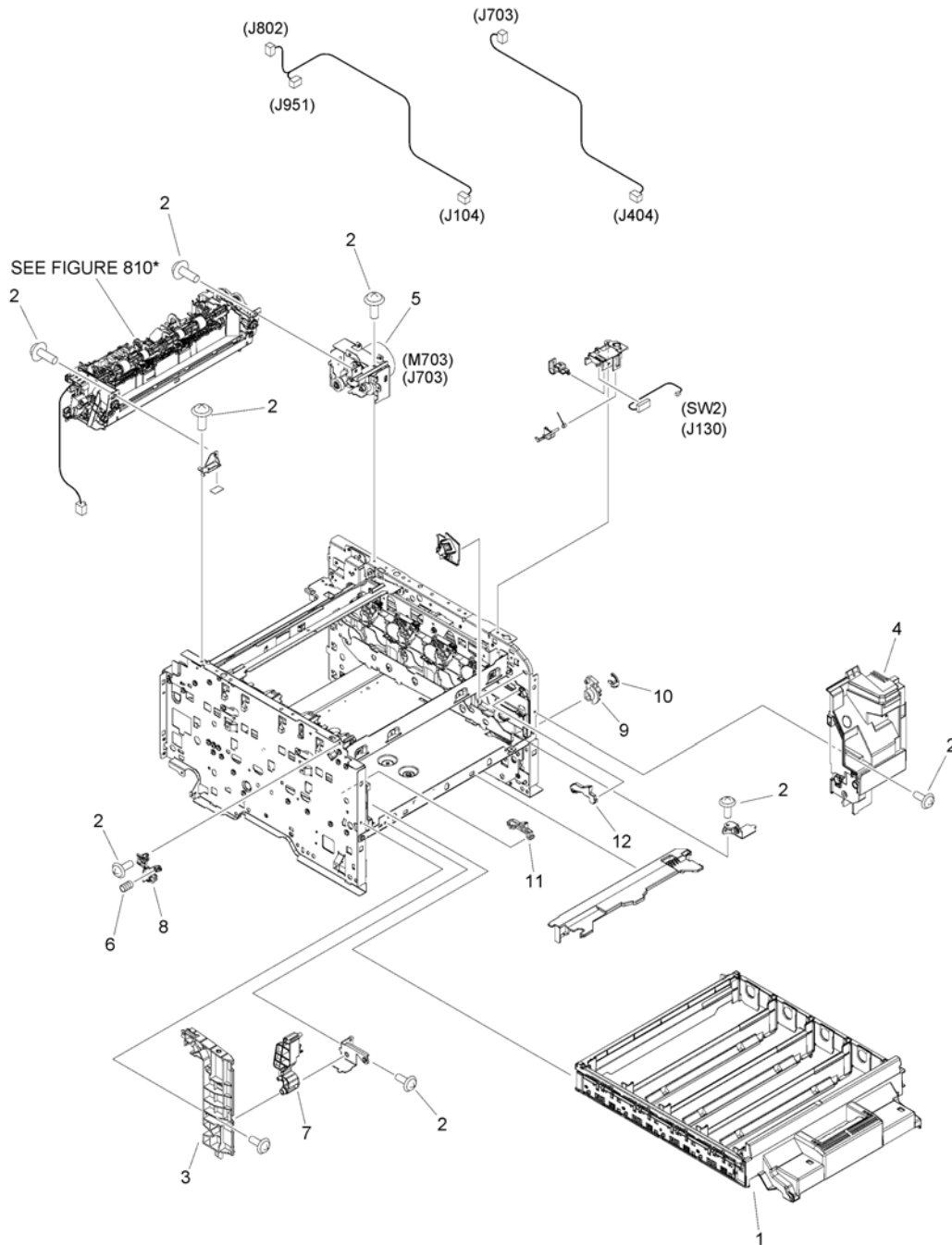


FIGURE & KEY NO.	PART NUMBER	RANK	QTY	DESCRIPTION	SERIAL NUMBER /REMARKS
104	NPN		1	INTERNAL COMPONENTS 4	
1	RM1-8774-000		1	CARTRIDGE TRAY ASS'Y	
2	XA9-1671-000		10	SCREW, D, M3X8	
3	FC9-4455-000		1	COVER, DOOR SIDE, LEFT	
4	FE2-2388-000		1	COVER, DOOR SIDE, RIGHT	
5	RM1-8784-000		1	FIXING DRIVE ASS'Y	M703
6	RU6-2064-000		1	SPRING, COMPRESSION	
7	RC2-1871-000		1	LEVER, RAIL, LEFT	
8	RC2-2871-000		1	CLAW, FRONT DOOR, LEFT	
9	RC2-1911-000		1	LEVER, ESTRANGEMENT	
10	RC2-1914-000		1	STOPPER, LEVER	
11	RC2-3108-000		1	CLAMP, CARTRIDGE TRAY, LEFT	
12	RC2-3109-000		1	CLAMP, CARTRIDGE TRAY, RIGHT	

Figure 105C INTERNAL COMPONENTS 5 (EXCEPT FAX model)

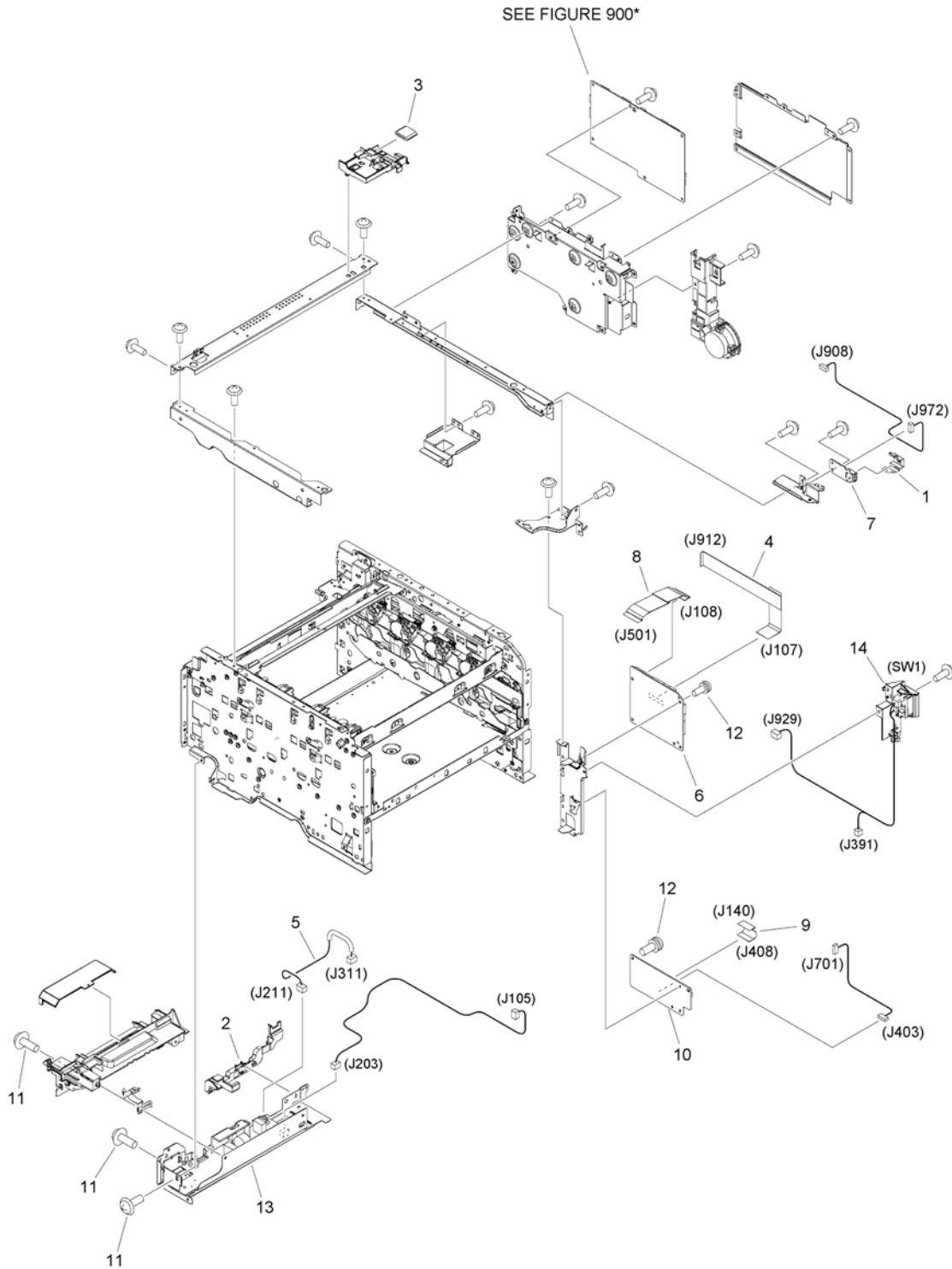


FIGURE & KEY NO.	PART NUMBER	RANK	QTY	DESCRIPTION	SERIAL NUMBER /REMARKS
105C	NPN		1	INTERNAL COMPONENTS 5	EXCEPT FAX model
1	FC9-4507-000		1	PLATE, USB GROUNDING	
2	FE2-1444-000		1	GUIDE, CABLE, E	
3	FK2-8767-000		1	CORE, FERRITE	
4	FK3-3518-000		1	CABLE, FLAT	
5	FM0-3903-000		1	CABLE, FIXING AC	
6	FM0-3913-000		1	DC CONTROLLER PCB ASS'Y	
7	FM0-4655-000		1	USB PCB ASSEMBLY	
8	RK2-3125-000		1	CABLE, FLEXIBLE FLAT	
9	RK2-4540-000		1	CABLE, FLEXIBLE FLAT	
10	RM1-8706-000		1	DRIVER PCB ASS'Y	
11	XA9-1671-000		5	SCREW, D, M3X8	
12	XA9-1831-000		6	SCREW, W/WASHER D, M3X8	
13	FM0-4742-000		1	FIXING POWER SUPPLY ASSEMBLY	
14	FM0-4790-000		1	POWER SUPPLY SWITCH ASS'Y, L6	SW1

Figure 105D INTERNAL COMPONENTS 5 (FAX model)

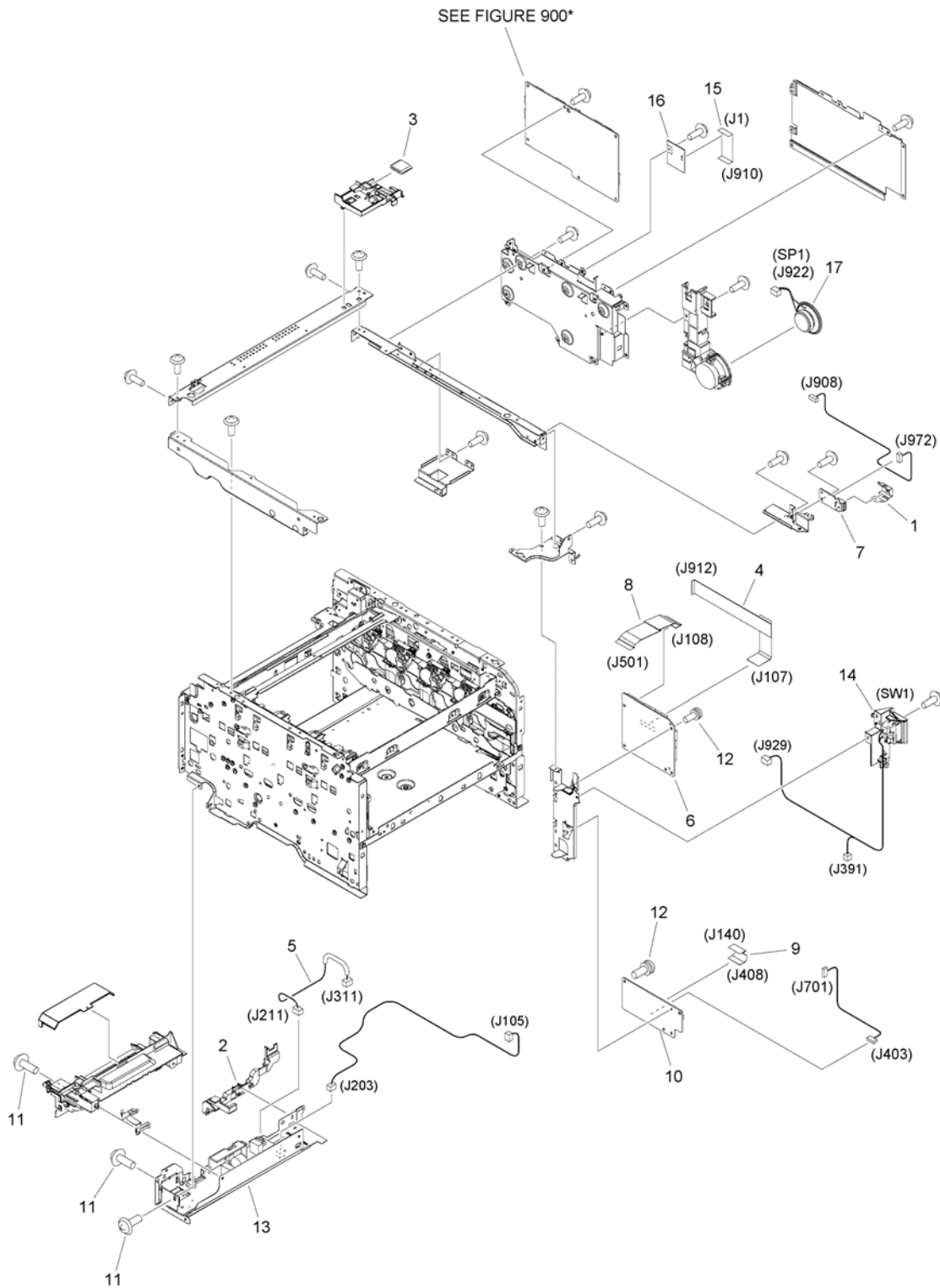


FIGURE & KEY NO.	PART NUMBER	RANK	QTY	DESCRIPTION	SERIAL NUMBER /REMARKS
105D	NPN		1	INTERNAL COMPONENTS 5	FAX model
1	FC9-4507-000		1	PLATE, USB GROUNDING	
2	FE2-1444-000		1	GUIDE, CABLE, E	
3	FK2-8767-000		1	CORE, FERRITE	
4	FK3-3518-000		1	CABLE, FLAT	
5	FM0-3903-000		1	CABLE, FIXING AC	
6	FM0-3913-000		1	DC CONTROLLER PCB ASS'Y	
7	FM0-4655-000		1	USB PCB ASSEMBLY	
8	RK2-3125-000		1	CABLE, FLEXIBLE FLAT	
9	RK2-4540-000		1	CABLE, FLEXIBLE FLAT	
10	RM1-8706-000		1	DRIVER PCB ASS'Y	
11	XA9-1671-000		5	SCREW, D, M3X8	
12	XA9-1831-000		6	SCREW, W/WASHER D, M3X8	
13	FM0-4742-000		1	FIXING POWER SUPPLY ASSEMBLY	
14	FM0-4790-000		1	POWER SUPPLY SWITCH ASS'Y, L6	SW1
15	FK4-2613-000		1	CABLE, FLAT	
16	FK4-1248-020		1	MODULE, WLAN 88W8782	
17	FK3-3944-000		1	SPEAKER	SP1

Figure 130D CONTROL PANEL ASS'Y (i-SENSYS MF623Cn)

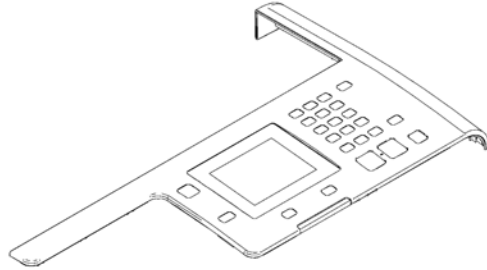


FIGURE & KEY NO.	PART NUMBER	R A N K	QTY	DESCRIPTION	SERIAL NUMBER /REMARKS
130D	FM1-H428-000		1	CONTROL PANEL ASS'Y	i-SENSYS MF623Cn

Figure 130E CONTROL PANEL ASS'Y (i-SENSYS MF628Cw)

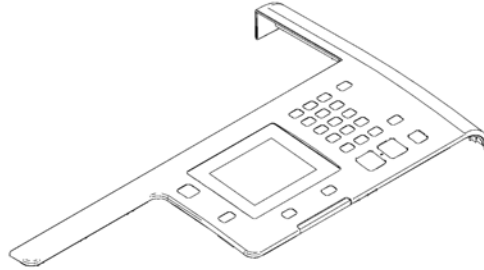


FIGURE & KEY NO.	PART NUMBER	R A N K	QTY	DESCRIPTION	SERIAL NUMBER /REMARKS
130E	FM1-H421-000		1	CONTROL PANEL ASS'Y	i-SENSYS MF628Cw

Figure 160C READER/ADF ASSEMBLY

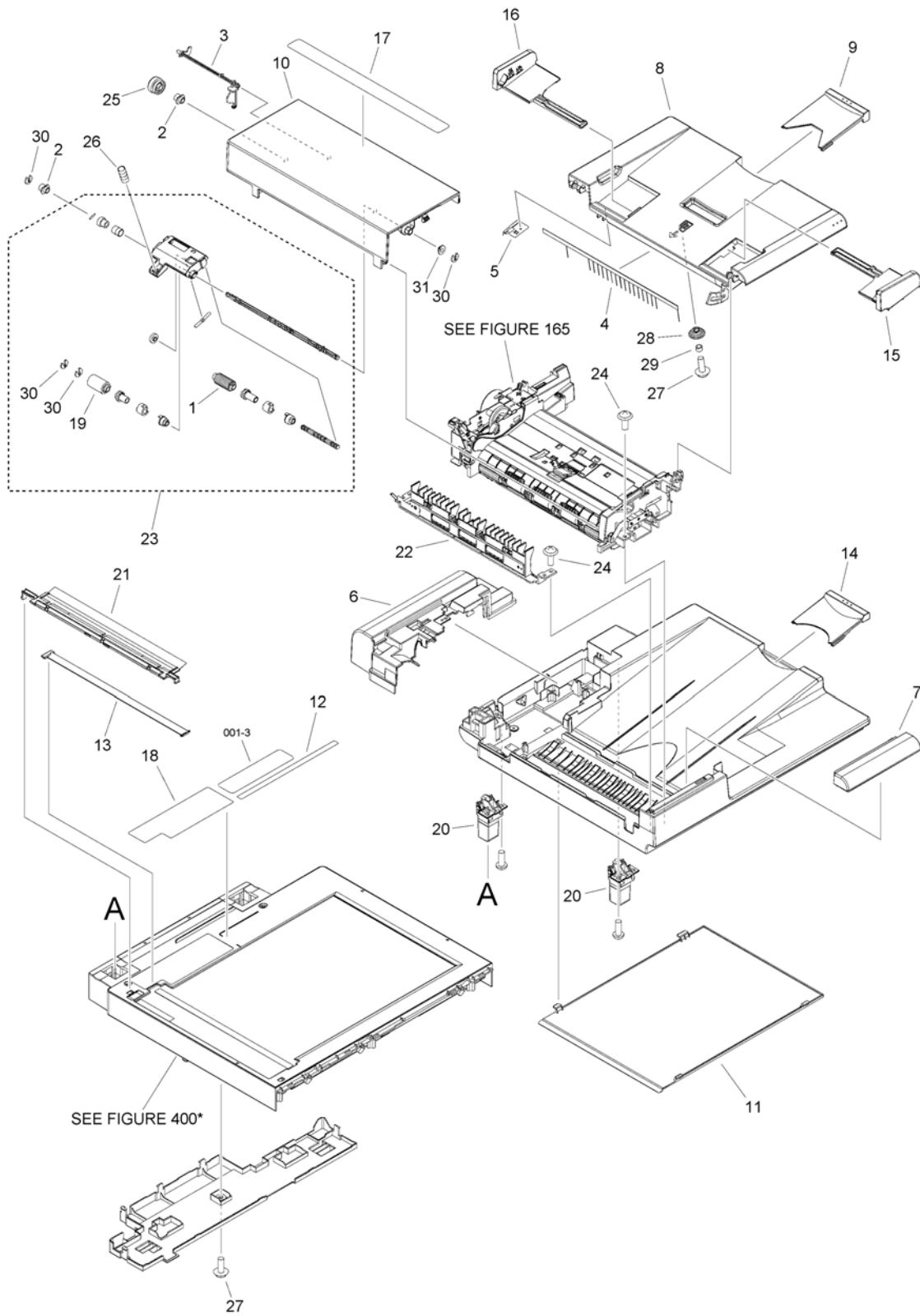


FIGURE & KEY NO.	PART NUMBER	RANK	QTY	DESCRIPTION	SERIAL NUMBER /REMARKS
160C	NPN		1	READER/ADF ASSEMBLY	
1	FC7-6189-000		1	ROLLER, PICK-UP	
2	FC7-6320-000		2	BUSHING	
3	FC7-6321-000		1	FLAG, DOCUMENT SCANNER	
4	FC7-6322-000		1	ELIMINATOR, STATIC CHARGE	
5	FC9-1503-000		1	PLATE, GROUNDING	
6	FL3-9296-000		1	COVER, REAR	
7	FL3-9295-000		1	COVER, FRONT UPPER	
8	FC9-1534-000		1	TRAY, DOCUMENT	
9	FC9-1535-000		1	TRAY, SUB DOCUMENT	
10	FL0-1992-000		1	PANEL, OPEN/CLOSE	
11	FC0-4435-000		1	SHEET, WHITE	
12	FE2-2444-000		1	LABEL, SIZE INDEX	
13	FE2-3485-000		1	PLATE, PAPER SIZE	
14	FC9-5655-000		1	TRAY, SUB	
15	FC9-5656-000		1	GUIDE, DOCUMENT, FRONT	
16	FC9-5657-000		1	GUIDE, DOCUMENT, REAR	
17	FC9-7563-000		1	LABEL, SIZE INDEX	
18	FC9-7567-000		1	LABEL, GLASS CLEANING	
19	FL2-6637-000		1	ROLLER, SEPARATION	
20	FL3-2453-000		2	HINGE, ADF	
21	FL3-3539-000		1	HOLDER, DOCUMENT, RELEASE SHEET	
22	FM0-4855-000		1	PAPER FEED GUIDE ASSEMBLY	
23	FM3-9538-000		1	SEPARATION ROLLER ASSEMBLY	
24	XA9-0831-000		5	SCREW, M3X10	
25	FU7-0672-000		1	GEAR, 24T	
26	FU7-2018-000		1	SPRING, COMPRESSION	
27	XA9-0476-000		2	SCREW, TP M3X8	
28	FU8-0895-000		1	GEAR, 18T	
29	FU8-2007-000		1	SPRING, COMPRESSION	
30	HC1-0586-000		4	RETAINING RING	
31	HU1-1022-000		1	BUSHING	

Figure 165 PAPER FEEDER ASSEMBLY (ADF mode I)

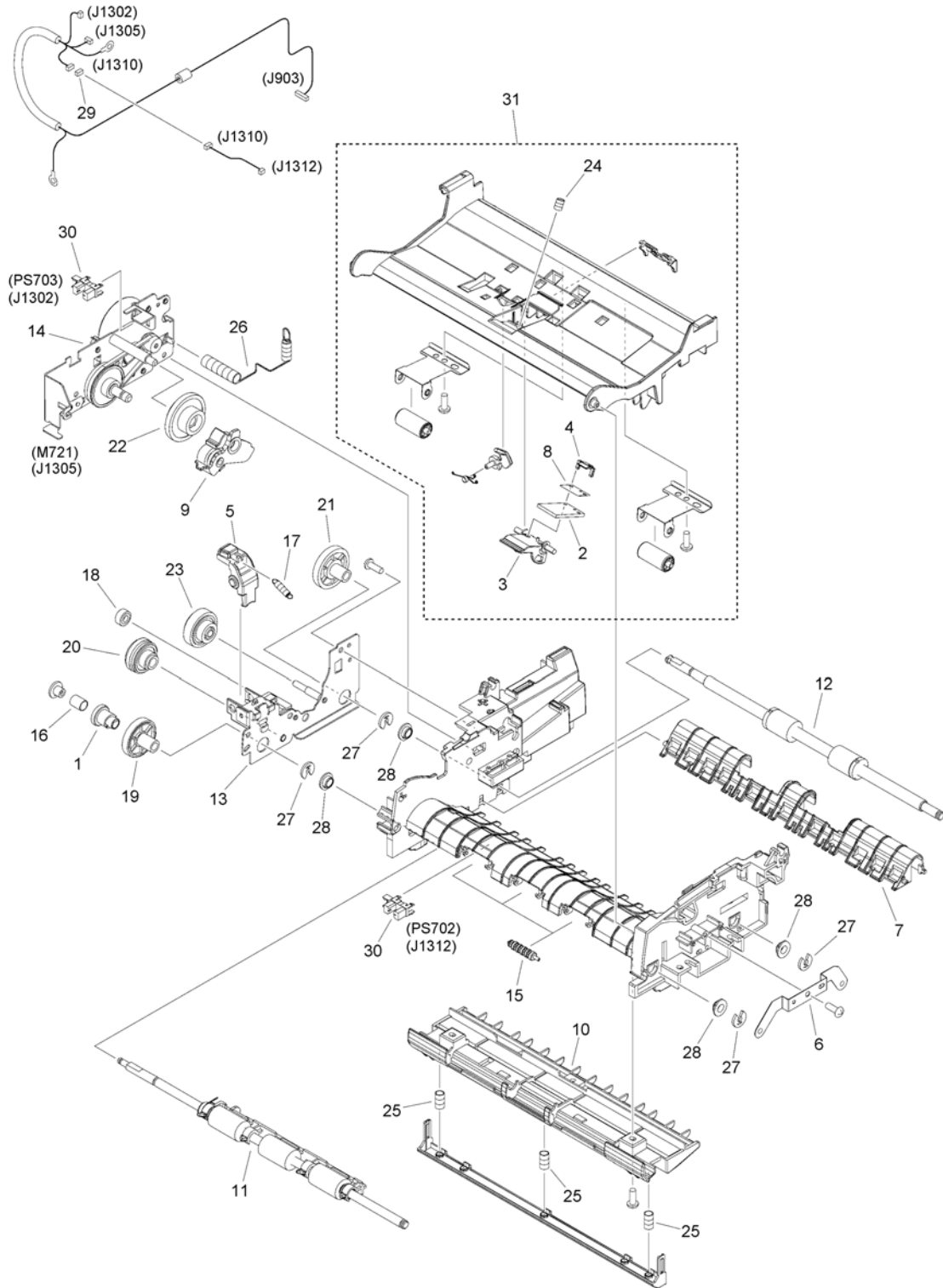


FIGURE & KEY NO.	PART NUMBER	RANK	QTY	DESCRIPTION	SERIAL NUMBER /REMARKS
165	FM0-4856-000		1	PAPER FEEDER ASSEMBLY	ADF model
1	FC7-6052-010		1	RATCHET, PAPER FEED ROLLER	
2	FC7-6297-000		1	PAD, SEPARATION	
3	FC7-6299-000		1	HOLDER, SEPARATION PAD	
4	FC7-6300-000		1	CLAMP, SEPARATION PAD	
5	FC9-1512-000		1	LEVER, RELEASE	
6	FC9-1523-000		1	PLATE, ROLLER GROUNDING	
7	FC9-1526-000		1	GUIDE, PAPER DELIVERY	
8	FC9-5654-000		1	SHEET, SEPARATION PAD	
9	FL3-1431-000		1	ARM, SEPARATION SWING	
10	FL3-1437-000		1	GUIDE LOWER ASSEMBLY	
11	FM4-1885-000		1	PAPER FEED ROLLER ASSEMBLY	
12	FL3-2458-000		1	PAPER DELIVERY ROLLER ASS'Y	
13	FM4-1880-000		1	DRIVE PLATE ASSEMBLY	
14	FM0-4858-000		1	MOTOR DRIVE ASS'Y	M721
15	FU5-6992-000		3	ROLLER, AUXILIARY	
16	FU6-2998-000		1	SPRING, COMPRESSION	
17	FU6-2999-000		1	SPRING, TENSION	
18	FU7-0667-000		1	GEAR, 20T	
19	FU7-0668-000		1	GEAR, 54T	
20	FU7-0669-000		1	GEAR, 46T/23T	
21	FU7-0671-000		1	GEAR, 36T	
22	FU7-0676-000		1	GEAR, 21T/42T	
23	FU7-0678-000		1	GEAR, 51T/17T	
24	FU7-2016-000		1	SPRING, COMPRESSION	
25	FU8-2008-000		3	SPRING, COMPRESSION	
26	FU8-2010-000		1	SPRING, COMPRESSION	
27	HC1-0586-000		4	RETAINING RING	
28	HU1-1022-000		4	BUSHING	
29	VS1-7207-004		1	CONNECTOR, SNAP TIGHT, BK	
30	WG8-5696-000		2	PHOTO INTERRUPTER, TLP1243	PS702,PS703
31	FM4-1882-000		1	GUIDE ASSEMBLY, UPPER	

Figure 300 CASSETTE

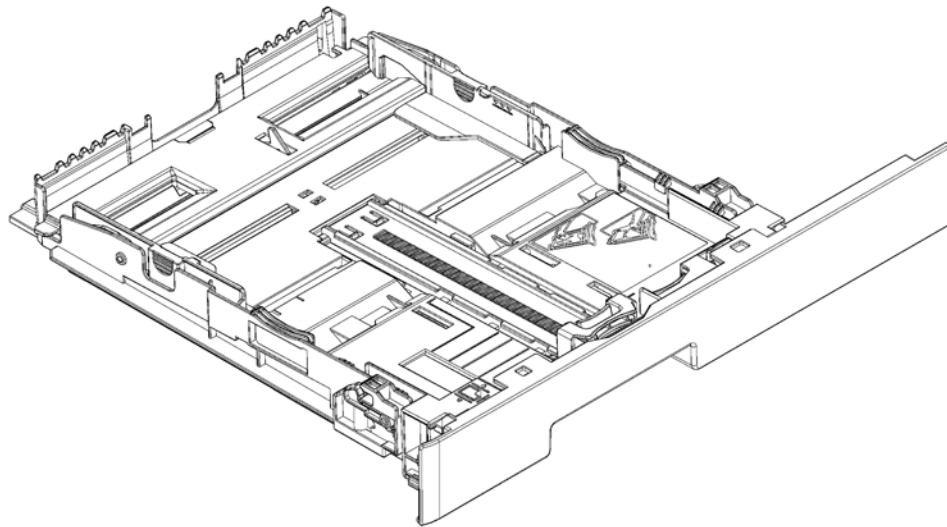


FIGURE & KEY NO.	PART NUMBER	R A N K	QTY	DESCRIPTION	SERIAL NUMBER /REMARKS
300	FM4-4263-000		1	CASSETTE	

Figure 400A READER ASSEMBLY (ADF model)

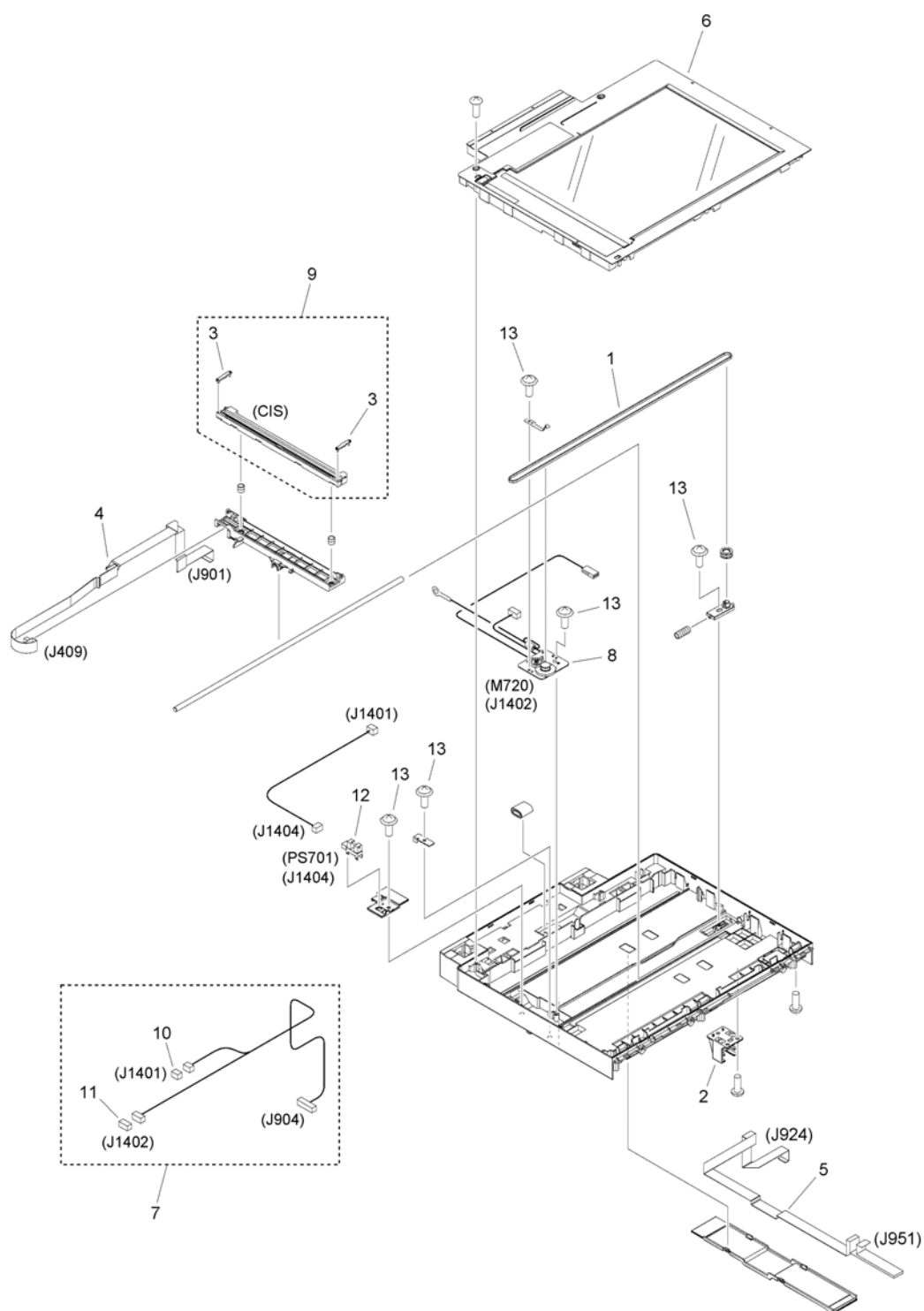


FIGURE & KEY NO.	PART NUMBER	RANK	QTY	DESCRIPTION	SERIAL NUMBER /REMARKS
400A	FM1-J263-000		1	READER ASSEMBLY	ADF model
1	FC9-1650-000		1	BELT, TIMING	
2	FC9-2101-000		1	MOUNT, SUPPORTER	
3	FC9-7571-000		2	SPACER, CIS	RANK_B
3	FC9-7573-000		2	SPACER, CIS	RANK_A
3	FC9-7574-000		2	SPACER, CIS	RANK_C
4	FK3-1884-000		1	CABLE, FLAT	
5	FK4-2614-000		1	CABLE, FLAT	
6	FM0-3591-000		1	READER COVER UNIT	
7	FM4-3653-000		1	CABLE, READER	
8	FM4-4301-000		1	DC MOTOR ASSEMBLY	M720
9	FM4-9076-000		1	CONTACT IMAGE SENSOR ASS'Y	CIS
10	VS1-7177-003		1	CONNECTOR, SNAP TIGHT, BK	
11	VS1-7177-004		1	CONNECTOR, SNAP TIGHT, BK	
12	WG8-5696-000		1	PHOTO INTERRUPTER, TLP1243	PS701
13	XA9-0476-000		10	SCREW,TP M3X8	

Figure 460 LASER SCANNER ASSEMBLY

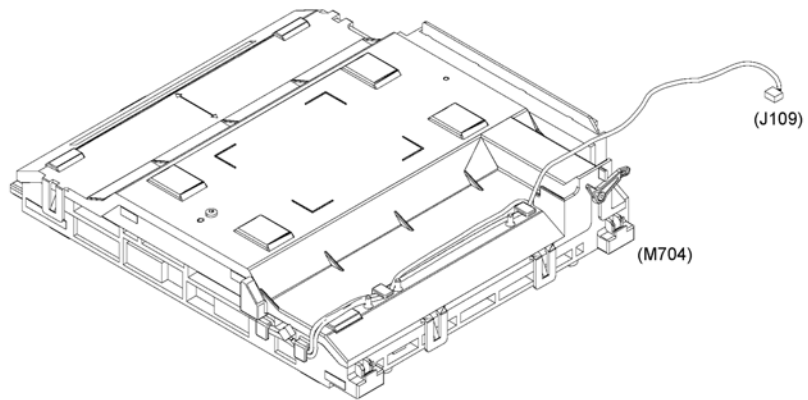


FIGURE & KEY NO.	PART NUMBER	R A N K	QTY	DESCRIPTION	SERIAL NUMBER /REMARKS
460	FM0-4590-000		1	LASER SCANNER ASSEMBLY	M704

Figure 530 INTERMEDIATE TRANS. BELT ASS'Y

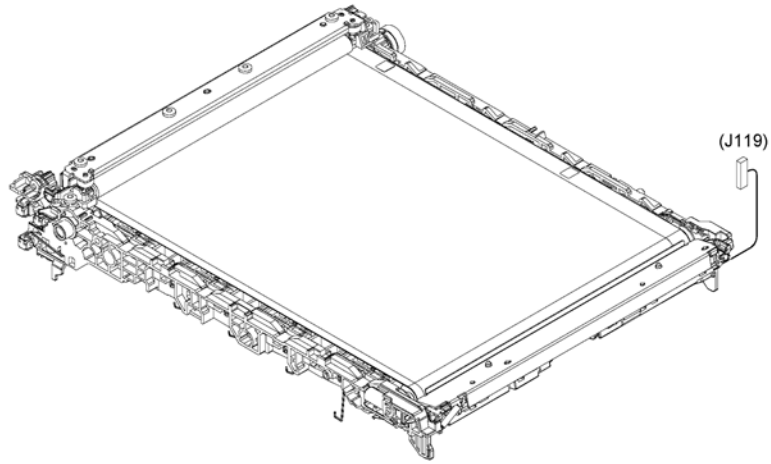


FIGURE & KEY NO.	PART NUMBER	R A N K	QTY	DESCRIPTION	SERIAL NUMBER /REMARKS
530	RM1-8777-000		1	INTERMEDIATE TRANS. BELT ASS'Y	

Figure 810C FIXING ASS'Y (230V)

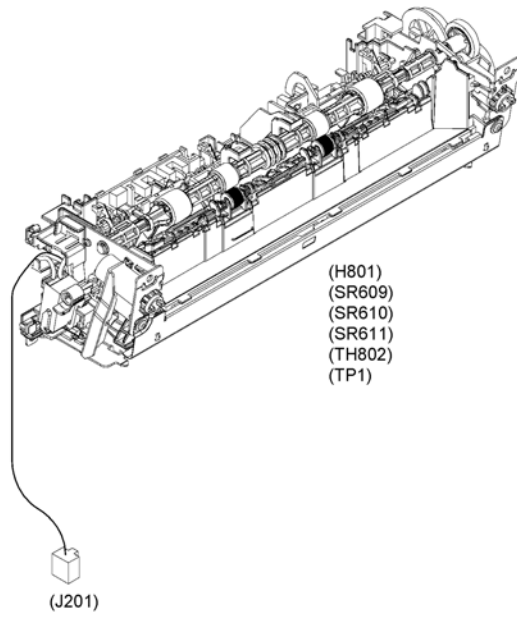


FIGURE & KEY NO.	PART NUMBER	R A N K	QTY	DESCRIPTION	SERIAL NUMBER /REMARKS
810C	FM0-4788-000		1	FIXING ASSY	H801,SR609, SR610,SR611, TH802,TP1 230V

Figure 900A MAIN CONTROLLER PCB ASSEMBLY (MF628Cw)

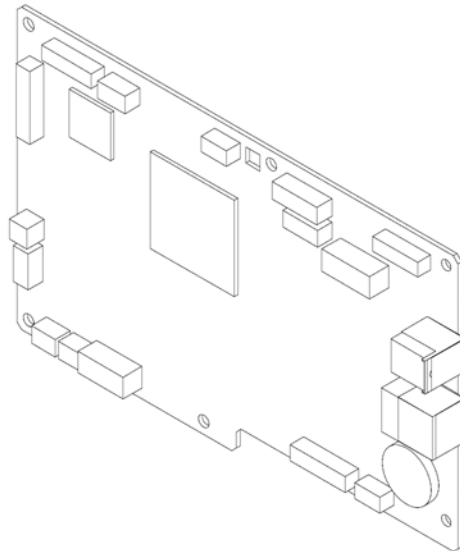


FIGURE & KEY NO.	PART NUMBER	RANK	QTY	DESCRIPTION	SERIAL NUMBER /REMARKS
900A	FM1-N969-000		1	MAIN CONTROLLER PCB ASSEMBLY	MF628Cw
IC	FK2-7852-000		1	IC, T6TH5EFG-0002(0), STANDARD	IC18
IC	FK3-1800-000		1	IC, ASIC, MB8AA4241EPBH-GE1	IC14

Figure 900C MAIN CONTROLLER PCB ASSEMBLY (MF623Cn)

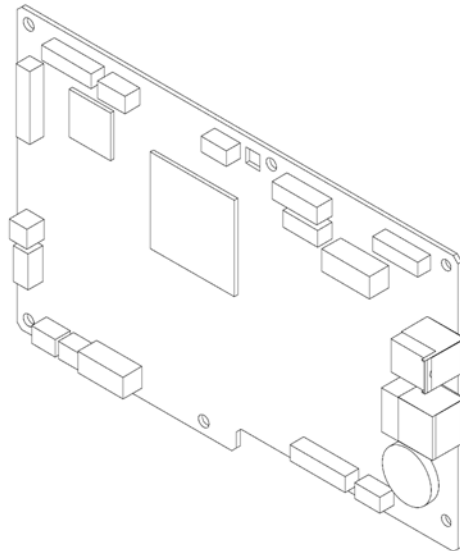


FIGURE & KEY NO.	PART NUMBER	RANK	QTY	DESCRIPTION	SERIAL NUMBER /REMARKS
900C	FM1-N966-000		1	MAIN CONTROLLER PCB ASSEMBLY	MF623Cn
IC	FK2-7852-000		1	IC, T6TH5EFG-0002(0), STANDARD	IC18
IC	FK3-1800-000		1	IC, ASIC, MB8AA4241EPBH-GE1	IC14

Figure ZZA MECHANICAL STANDARD PARTS (HOW TO USE)

Mechanical standard parts 機械標準部品

About a mechanical standard parts

A Mechanical standard parts is a mechanical part which not parts peculiar to a product.
They are parts which are common to a Canon product and are used, such as a screw and a washer.
The Fig No. and parts number of the mechanical standard parts are not listed in the product parts catalog.
Refer to the parts catalog of mechanical standard parts when checking the parts number for screw or washer etc. and identify them by part shape or size.

機械標準部品とは

機械標準部品とは、製品特有の部品ではなく、ねじやワッシャなどキヤノン製品共通で使用されている機械部品（メカ部品）のことです。
製品のパーツカタログには、機械標準部品のFig No.や部品番号は記載しておりません。
ねじや、ワッシャ等の部品番号を調べるときは、機械標準部品のパーツカタログを参照し、部品の形状や大きさから判断し、使用している部品を調べてください。

Material and surface treatment of a mechanical standard parts

Material and surface treatment of mechanical standard parts are assigned commonly for each part.
Refer to the Table 1 for the parts which material and surface treatment are assigned as numbers.

機械標準部品の材料および表面処理

機械標準部品の材料および表面処理については、各種部品共通で決められています。
材料および表面処理が番号で決められている部品については、表1を参照してください。

Table 1 Material and Surface treatment
表1 材料および表面処理

No. 番号	Material 材料	Surface treatment 表面処理	Color 色
1	Stainless steel ステンレス	Stainless steel black coloring (BC4) ステンレス黒着色(BC4)	Black 黒
2		not to be given なし	White 白
3	Brass 黄銅	Regular nickel plating (NL) 普通ニッケルメッキ(NL)	White 白
4		Black nickel plating (BN) 黒色ニッケルメッキ(BN)	Black 黒
5	Steel 鋼	White zinc trivalent chromate treating (ZC3) 白色亜鉛3価クロメート(ZC3)	White 白
6		Regular nickel chromium plating (NC) 普通ニッケルクロムメッキ(NC)	White 白
7		Regular nickel plating (NL) 普通ニッケルメッキ(NL)	White 白
8		Iron and steel phosphating (P1) 鉄鋼燐酸塩処理(P1)	Black 黒
9		Black zinc trivalent chromate treating (BZ3) 黒色亜鉛3価クロメート(BZ3)	Black 黒

Figure ZZB (1/7)MECHANICAL STANDARD PARTS (SCREWS)

1. Screws
ねじ

How to read Parts Numbers
部品番号の見方

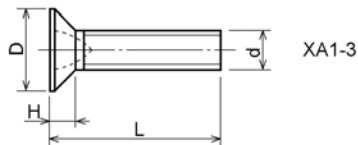
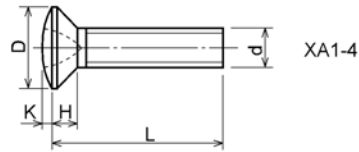
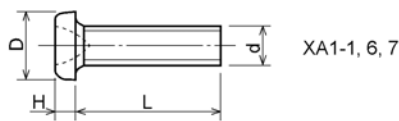
Screws
ねじ

XB1-2400-609

Type No.
類別番号
Normal designation (d)
ねじの呼び (d)
Length (L)
ねじの長さ (L)
Material and Surface treatment
材料および表面処理

XB1-2 expresses Binding head machine screw.
XB1-2は、バインドねじを表す
40 expresses M4.0.
40は、M4.0を表す
0-60 expresses a length of 6.0mm.
0-60は、6.0mmの長さを表す
9 expresses Steel (Black zinc trivalent chromate
treating) from Table 1.
9は、表1より鋼 (黒色亜鉛3価クロメート) を表す

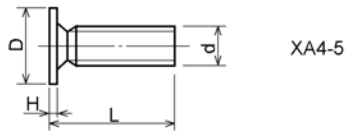
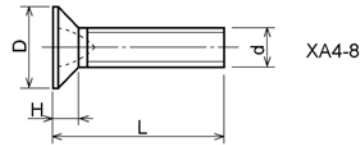
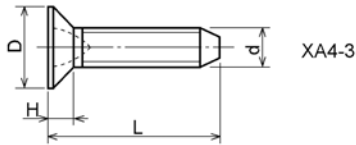
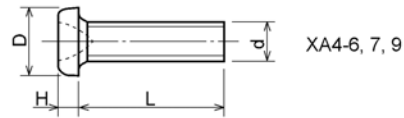
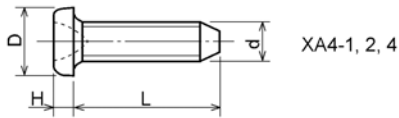
1-1. Cross Recessed Head Screws for Precision Equipments
精密機器用十字穴付き小ねじ



Type No. 類別番号	Type 類別	Head size (mm) 頭部寸法 (mm)						
		M1.4	M1.6	M1.7	M2	M2.5	M2.6	
XA1-1	Pan head Class 1 なべ1種	D	2	2.4	2.5	3	3.8	4
		H	0.5	0.55	0.5	0.6	0.9	0.8
XA1-3	Countersunk head Class 1 さら1種	D	2	2.4	2.5	3	3.8	4
		H	0.48	0.55	0.58	0.73	0.85	0.93
XA1-4	Oval countersunk head Class 1 丸さら1種	D	2	2.4	2.5	3	3.8	4
		H + K	0.68	0.8	0.88	1	1.25	1.3
XA1-6	Pan head Class 3 なべ3種	D	2.5	2.8	3	3.5	4.3	4.5
		H	0.8	0.85	0.9	1	1.3	1.2
XA1-7	Pan head Class 2 なべ2種	D	2.5	2.8	3	3.5	4.3	4.5
		H	0.5	0.55	0.5	0.6	0.9	0.8

Figure ZZB (2/7)MECHANICAL STANDARD PARTS (SCREWS)

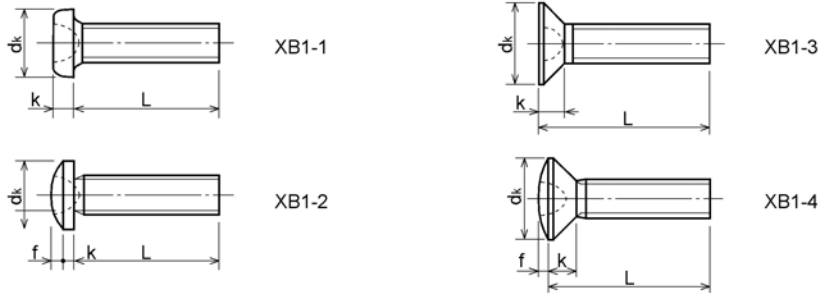
1-2. Precision Tapping Screws
精密用タッピンねじ



Type No. 類別番号	Type 類別	Head size (mm) 頭部寸法 (mm)						
		M1.4	M1.6	M1.7	M2	M2.5	M2.6	
XA4-1	With tapered end pan head Class 1 絞り-なべ1種	D XA4-1	2	2.4	2.5	3	3.8	4
		H XA4-1	0.5	0.55	0.5	0.6	0.9	0.8
XA4-2	With tapered end pan head Class 3 絞り-なべ3種	D XA4-2	2.5	2.8	3	3.5	4.3	4.5
		H XA4-2	0.8	0.85	0.9	1	1.3	1.2
XA4-3	With tapered end countersunk head 絞り-さら	D XA4-3	2	2.4	2.5	3	3.8	4
		H XA4-3	0.48	0.55	0.58	0.73	0.85	0.93
XA4-4	With tapered end pan head Class 2 絞り-なべ2種	D XA4-4	2.5	2.8	3	3.5	4.3	4.5
		H XA4-4	0.5	0.55	0.5	0.6	0.9	0.8
XA4-5	With parallel end ultra thin head ストレート-超薄頭	D XA4-5	2.5	2.8	3	-	-	-
		H XA4-5	0.2	0.2	0.2	-	-	-
XA4-6	With parallel end pan head Class 1 ストレート-なべ1種	D XA4-6	2	2.4	2.5	3	3.8	4
		H XA4-6	0.5	0.55	0.5	0.6	0.9	0.8
XA4-7	With parallel end pan head Class 3 ストレート-なべ3種	D XA4-7	2.5	2.8	3	3.5	4.3	4.5
		H XA4-7	0.8	0.85	0.9	1	1.3	1.2
XA4-8	With parallel end countersunk head ストレート-さら	D XA4-8	2	2.4	2.5	3	3.8	4
		H XA4-8	0.48	0.55	0.58	0.73	0.85	0.93
XA4-9	With parallel end pan head Class 2 ストレート-なべ2種	D XA4-9	2.5	2.8	3	3.5	4.3	4.5
		H XA4-9	0.5	0.55	0.5	0.6	0.9	0.8

Figure ZZB (3/7)MECHANICAL STANDARD PARTS (SCREWS)

1-3. Cross Recessed Head Screws
一般用十字穴付き小ねじ

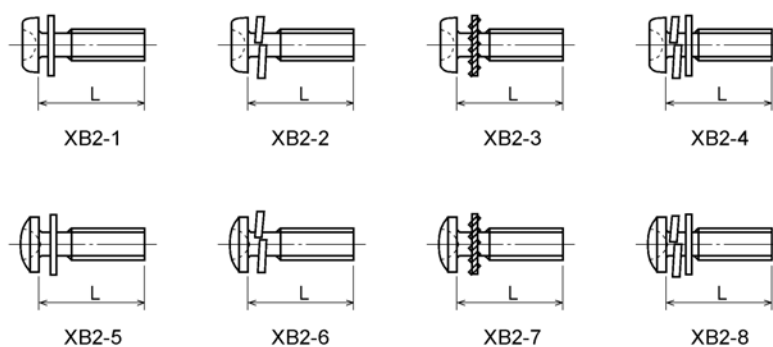


Type No. 類別番号	Type 類別
XB1-1	Pan head なべ
XB1-2	Binding head バインド
XB1-3	Countersunk head さら
XB1-4	Oval countersunk head 丸さら

		Head size (mm) 頭部寸法 (mm)					
		M2	M2.5	M2.6	M3	M4	M5
d_k	XB1-1	3.5	4.5	4.5	5.5	7	9
k	XB1-1	1.3	1.7	1.7	2	2.6	3.3
d_k	XB1-2	4.3	5.3	5.5	6.3	8.3	10.3
$k+f$	XB1-2	1.2	1.5	1.6	1.9	2.5	3.1
d_k	XB1-3	4	5	-	6	8	10
k	XB1-3	1.2	1.45	-	1.75	2.3	2.8
d_k	XB1-4	4	5	-	6	8	10
$k+f$	XB1-4	1.6	2	-	2.45	3.2	4
Screw part length ねじ部長さ b		8	12	12	12	16	20

Figure ZZB (4/7) MECHANICAL STANDARD PARTS (SCREWS)

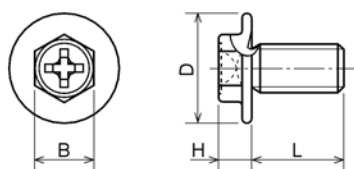
1-4. Cross Recessed Head Screws with Captive Washer
座金組込み十字穴付き小ねじ



Type No. 類別番号	Type 類別
XB2-1	Pan head + Plain washer (circular bright) なべねじ+平座金
XB2-2	Pan head + Spring washer なべねじ+ばね座金
XB2-3	Pan head + Toothed lock washer なべねじ+歯付座金
XB2-4	Pan head + Spring washer and plain washer (circular bright) なべねじ+(ばね+平)座金
XB2-5	Binding head + Plain washer (circular bright) バインドねじ+平座金
XB2-6	Binding head + Spring washer バインドねじ+ばね座金
XB2-7	Binding head + Toothed lock washer バインドねじ+歯付座金
XB2-8	Binding head + Spring washer and plain washer (circular bright) バインドねじ+(ばね+平)座金

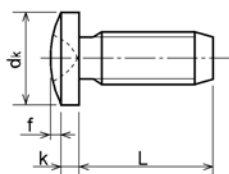
Figure ZZB (5/7) MECHANICAL STANDARD PARTS (SCREWS)

1-5. Hexagon Head Tapping Screws for Matallic Materials
 金属用六角タッピンねじ



Type No. 類別番号	Type 類別	Head size (mm) 頭部寸法 (mm)		
		M3	M4	
XB3-6	For metallic materials 金属用タッピン	D	8	10
		B	5.5	5.5
XB3-7	For metallic materials with clawed 金属用タッピン-つめ付き	H XB3-6	3.1	3.1
		H XB3-7	3.2	3.2

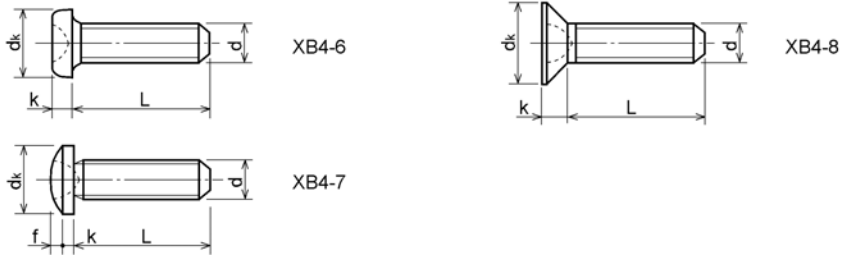
1-6. Special Tapping Screws
 特殊タッピンねじ



Type No. 類別番号	Type 類別	Head size (mm) 頭部寸法 (mm)		
		M3	M4	
XB4-5	Binding head バインド	dk	6.3	8.3
		k	1.3	1.7
		k+f	1.9	2.5

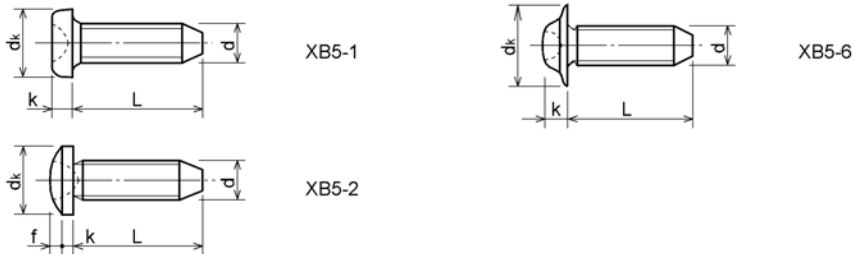
Figure ZZB (6/7) MECHANICAL STANDARD PARTS (SCREWS)

1-7. General Head Tapping Screws
一般用タッピンねじ



Type No. 類別番号	Type 類別	Head size (mm) 頭部寸法 (mm)						
		M2	M2.5	M2.6	M3	M4	M5	
XB4-6	Pan head なべ	dk XB4-6	3.5	4.5	4.5	5.5	7	9
		k XB4-6	1.3	1.7	1.7	2	2.6	3.3
XB4-7	Binding head バインド	dk XB4-7	4.3	5.3	5.5	6.3	8.3	10.3
		k+f XB4-7	1.2	1.5	1.6	1.9	2.5	3.1
XB4-8	Countersunk head さら	dk XB4-8	4	5	5.2	6	8	10
		k XB4-8	1.2	1.45	1.5	1.75	2.3	2.8

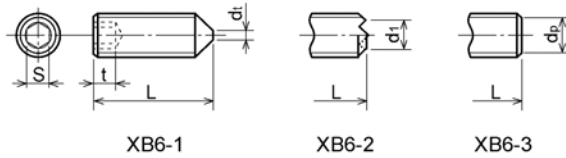
1-8. Tapping Screws for Metallic Materials
金属用タッピンねじ



Type No. 類別番号	Type 類別	Head size (mm) 頭部寸法 (mm)					
		M2.5	M2.6	M3	M4	M5	
XB5-1	Pan head なべ	dk XB5-1	4.5	4.5	5.5	7	9
		k XB5-1	1.7	1.7	2	2.6	3.3
XB5-2	Binding head バインド	dk XB5-2	5.5	5.5	6.3	8.3	10.3
		k+f XB5-2	1.6	1.6	1.9	2.5	3.1
XB5-6	Flanged pan head つば付きなべ	dk XB5-6	6.5	6.5	8	10	12
		k XB5-6	2.1	2.1	1.75	3.2	4

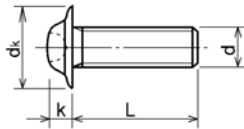
Figure ZZB (7/7)MECHANICAL STANDARD PARTS (SCREWS)

1-9. Hexagon Socket Set Screws
六角穴付き止めねじ



Type No. 類別番号	Type 類別	Head size (mm) 頭部寸法 (mm)						
		M1.6 M1.7	M2	M2.5 M2.6	M3	M5	M5	M6
	S	0.7	0.9	1.3	1.5	2	2.5	3
	t	1.5	1.7	2	2	2.5	3	3.5
	dt max XB6-1	0.4	0.5	0.65	0.75	1	1.25	1.5
	d1 max XB6-2	-	1.2	1.5	1.7	2.2	2.8	3.3
	d1 min XB6-2	-	1	1.2	1.4	1.9	2.4	2.9
	dp max XB6-3	0.8	1	1.5	2	2.5	3.5	4
	dp min XB6-3	0.55	0.75	1.25	1.75	2.25	3.2	3.7

1-10. Flanged Pan Head Machine Screws
つば付きなべ小ねじ



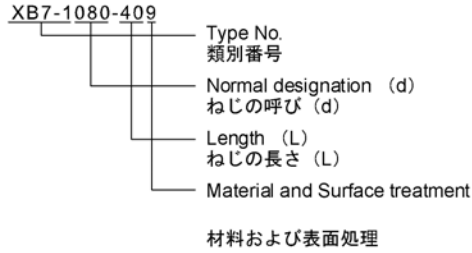
Type No. 類別番号	Type 類別	Head size (mm) 頭部寸法 (mm)				
		M2	M2.5 M2.6	M3	M5	M5
	dk	5	6.5	8	10	12
	k	1.7	2.1	2.5	3.2	4

Figure ZZC MECHANICAL STANDARD PARTS (BOLTS)

2. Bolts (Socket head cap screw)
ボルト

How to read Parts Numbers
部品番号の見方

Bolt (Socket head cap screw)
ボルト



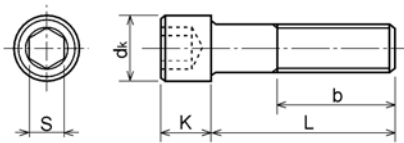
XB7-1 expresses Hexagon socket head cap screws.
XB7-1は、六角穴付きボルトを表す

080 expresses M8.0.
080は、M8.0を表す

40 expresses a length of 40mm.
40は、40mmの長さを表す

9 expresses Steel (Black zinc trivalent chromate treating) from Table 1.
9は、表1より鋼（黒色亜鉛3価クロメート）を表す

2-1. Hexagon socket head cap screws
六角穴付きボルト



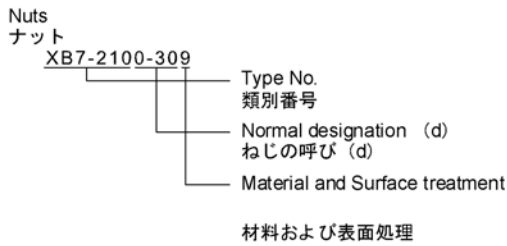
Type No. 類別番号	Type 類別
XB7-1	Hexagon socket head cap screws 六角穴付きボルト

	Head size (mm) 頭部寸法 (mm)						
	M3	M4	M5	M6	M8	M10	M12
S	2.5	3	4	5	6	8	10
dk	5.5	7	8.5	10	13	16	18
K	3	4	5	6	8	10	12
Screw part length ねじ部長さ b_{max}	18	20	22	24	28	32	36

Figure ZZD MECHANICAL STANDARD PARTS (NUTS)

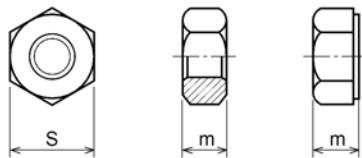
3. Nuts
ナット

How to read Parts Numbers
部品番号の見方



XB7-210 expresses Hexagon nut class 1.
XB7-210は、六角ナット1種を表す
0-30 expresses M3.0.
0-30は、M3.0を表す
9 expresses Steel (Black zinc trivalent chromate
treating) from Table 1.
9は、表1より鋼（黒色亜鉛3価クロメート）を表す

3-1. Hexagon Nuts and Hexagon Thin Nuts
六角ナット



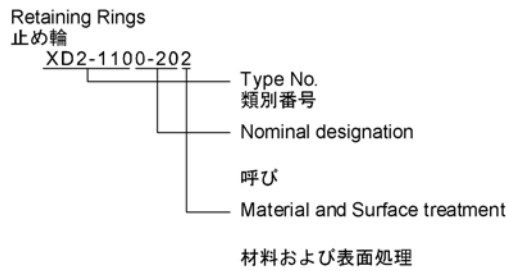
Type No. 類別番号	Type 類別
XB7-210	Hexagon nut Class 1 六角ナット-1種
XB7-220	Hexagon nut Class 3 六角ナット-3種
XB7-230	Hexagon nut Style 1 double chamfered 六角ナット-スタイル1-両面とり
XB7-231	Hexagon nut Style 1 washer faced 六角ナット-スタイル1-座付き
XB7-240	Hexagon nut Style 2 double chamfered 六角ナット-スタイル2-両面とり
XB7-241	Hexagon nut Style 2 washer faced 六角ナット-スタイル2-座付き
XB7-250	Hexagon nut 六角ナット
XB7-260	Hexagon thin nut double chamfered 六角低ナット-両面とり
XB7-270	Hexagon thin nut not chamfered 六角低ナット-面とり無し

	Head size (mm) 頭部寸法 (mm)						
	M2	M2.5	M3	M4	M5	M6	M8
S	4	5	5.5	7	8	10	13
m XB7-210	1.6	2	2.4	3.2	4	5	6.5
m XB7-220	1.2	1.6	1.8	2.4	3.2	3.6	5
m XB7-230, 231	1.6	2	2.4	3.2	4.7	5.2	6.8
m XB7-240, 241	-	-	-	-	5.1	5.7	7.5
m XB7-250	-	-	-	-	5.6	6.1	7.9
m XB7-260	1.2	1.6	1.8	2.2	2.7	3.2	4
m XB7-270	1.2	1.6	1.8	2.2	2.7	3.2	4

Figure ZZE (1/3)MECHANICAL STANDARD PARTS (RETAINING RINGS)

5. Retaining Rings
止め輪

How to read Parts Numbers
部品番号の見方

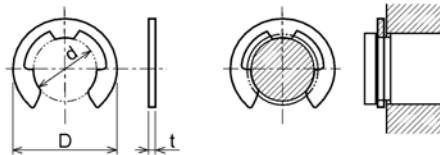


XD2-110 expresses retaining ring-E type (Type1).
XD2-110は、E形止め輪（1種）を表す

0-20 expresses a 020 of nominal designation.
(See Table 5)
0-20は、呼び020を表す（表5参照）

2 expresses Stainless steel (Surface treatment is not to be given) from Table 1.
2は、表1よりステンレス（表面処理なし）を表す

5-1. Retaining Rings - E type
E形止め輪



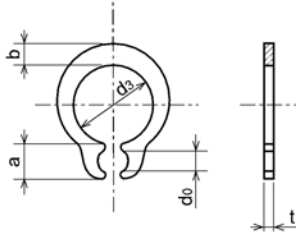
Type No. 類別番号	Type 類別
XD2-110	Retaining ring - E type (Type 1) E形止め輪（1種）
XD2-120	Retaining ring - E type (Type 2) E形止め輪（2種）

Table 5 表5

Type 種類	Nominal designation 呼び	d (mm)	D (mm)	t (mm)
Type 1 1種	007	0.65	2	0.2
	010	0.95	2.8	0.2
	013	1.25	3.3	0.3
	017	1.65	4.2	0.4
	020	1.95	4.6	0.5
	024	2.35	6	0.6
	028	2.74	6.5	0.6
	032	3.14	7.2	0.6
	037	3.64	8	0.7
	040	3.93	10	0.7
	042	4.13	10	0.7
	050	4.93	11	0.7
	058	5.73	12	0.7
	060	5.93	12.7	0.9
064	6.32	13.5	0.9	
074	7.31	15	0.9	
080	7.91	16.5	1	
Type 2 2種	008	0.8	2	0.2
	012	1.2	3	0.3
	015	1.5	4	0.4
	020	2	5	0.4
	025	2.5	6	0.4
	030	3	7	0.6
	040	4	9	0.6
	050	5	11	0.6
	060	6	12	0.8
	070	7	14	0.8
	080	8	16	0.8
	090	9	18	0.8
100	10	20	1	

Figure ZZE (2/3)MECHANICAL STANDARD PARTS (RETAINING RINGS)

5-2. Grip Rings
グリップ止め輪

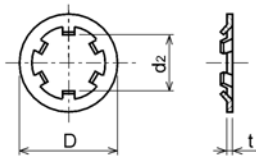


Type No. 類別番号	Type 類別
XD2-210	Grip ring グリップ止め輪

Table 5 表5

Nominal designation 呼び	d ₃ (mm)	t (mm)	b (mm)	a (mm)	d ₀ (mm)
020	1.9	0.5	1	1.8	0.8
025	2.35	0.5	1.2	1.9	0.9
030	2.85	0.6	1.4	1.9	0.9
035	3.3	0.6	1.6	2	0.9
040	3.8	0.8	1.8	2.8	1.2
045	4.25	0.8	2	2.9	1.3
050	4.75	0.8	2.2	2.9	1.3
060	5.7	1	2.4	3.1	1.4
070	6.7	1	2.7	3.3	1.4
080	7.7	1	3	3.5	1.4
090	8.65	1.2	3.3	4.7	1.5
100	9.65	1.2	3.5	4.7	2

5-3. Toothed Retaining Rings
歯付き形止め輪



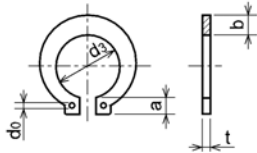
Type No. 類別番号	Type 類別
XD2-230	Toothed retaining ring 歯付き形止め輪

Table 5 表5

Nominal designation 呼び	d ₂ (mm)	D (mm)	t (mm)	No of teeth 歯数
015	1.4	5.2	0.25	3
020	1.9	6	0.25	3
024	2.3	6.4	0.25	3
030	2.8	8	0.25	4
040	3.8	9	0.25	4
050	4.8	10	0.25	5
060	5.8	11	0.25	5
080	7.8	13	0.25	5
100	9.8	15.4	0.25	6

Figure ZZE (3/3)MECHANICAL STANDARD PARTS (RETAINING RINGS)

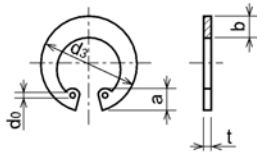
5-4. Retaining Rings - C Type
C形止め輪



Type No. 類別番号	Type 類別
XD2-310	Retaining ring - C type for shaft C形止め輪 軸用

Table 5 表5

Nominal designation 呼び	ds (mm)	t (mm)	b (mm)	a (mm)	d0 (mm)
010	9.3	1	1.6	3	1.2
012	11.1	1	1.8	3.2	1.5
014	12.9	1	2	3.4	1.7
015	13.8	1	2.1	3.5	1.7
016	14.7	1	2.2	3.6	1.7
017	15.7	1	2.2	3.7	1.7
018	16.5	1.2	2.6	3.8	1.7
020	18.5	1.2	2.7	3.9	2
022	20.5	1.2	2.7	4.1	2
025	23.2	1.2	3.1	4.3	2
028	25.9	1.5	3.1	4.6	2
030	27.9	1.5	3.5	4.8	2
032	29.6	1.5	3.5	5	2.5
035	32.2	1.5	4	5.4	2.5



Type No. 類別番号	Type 類別
XD2-320	Retaining ring - C type for hole C形止め輪 穴用

Table 5 表5

Nominal designation 呼び	ds (mm)	t (mm)	b (mm)	a (mm)	d0 (mm)
010	10.7	1	1.8	3.1	1.2
011	11.8	1	1.8	3.2	1.2
012	13	1	1.8	3.3	1.5
014	15.1	1	2	3.6	1.7
016	17.3	1	2	3.7	1.7
018	19.5	1	2.5	4	1.7
019	20.5	1	2.5	4	2
020	21.5	1	2.5	4	2
022	23.5	1	2.5	4.1	2
025	26.9	1.2	3	4.4	2
028	30.1	1.2	3	4.6	2
030	32.1	1.2	3	4.7	2
032	34.4	1.2	3.5	5.2	2.5
035	37.8	1.5	3.5	5.2	2.5
037	39.8	1.5	3.5	5.2	2.5
040	43.5	1.8	4	5.7	2.5
042	45.5	1.8	4	5.8	2.5
045	48.5	1.8	4.5	5.9	2.5
047	50.5	1.8	4.5	6.1	2.5
050	54.2	2	4.5	6.5	2.5
052	56.2	2	5.1	6.5	2.5
055	59.2	2	5.1	6.5	2.5
060	64.2	2	5.1	6.8	2.5
062	66.2	2	5.5	6.9	2.5
068	72.5	2.5	6	7.4	2.5
072	76.5	2.5	6.6	7.4	2.5
075	79.5	2.5	6.6	7.8	2.5
080	85.5	2.5	7	8	2.5
085	90.5	3	7	8	3
090	95.5	3	7.6	8.3	3
095	100.5	3	8	8.5	3