

Section 9:  
Spare Parts Breakdown



9.0 Spare Parts Breakdown

Table 9-1: Spare Parts List (Consumables and Supplies)

Ref. Number <sup>a</sup>	Part Name	Part Number	Remarks
1	Toner Cartridge, Yellow	1710362-004	8,500 images
2	Toner Cartridge, Magenta	1710362-003	8,500 images
3	Toner Cartridge, Cyan	1710362-002	8,500 images
4	Toner Cartridge, Black	1710362-001	14,000 images
5	OPC Belt Cartridge	1710365-001	12,000 images
6	Fuser Oil	1710367-001	12,000 pages
7	Cleaning Roller, Fuser	1710367-001	200,000 images
8	Waste Toner Bottle	1710368-001	18,000 images
9	Fuser (US)	825126619	100,000 pages
10	Fuser (EC)	825126620	100,000 pages
11	Fuser (JP)	825126621	100,000 pages
12	Transfer Roller	825126627	240,000 pages
13	Paper Discharger	825126628	240,000 pages
14	Drum Cleaner	825126630	240,000 pages
15	Ozone Filter	825126164	1 per year
16	Power Cord (US)	825126148	
17	Power Cord (JP)	NA	
18	Paper Cassette	825126636	
19	Cleaner Cover	825126657	
20	Transfer Unit Door Cover	825126626	
21	Transfer Unit	825126625	
22	Envelope Adaptor	1710389-001	
23	Controller (Crown)	2293279-901	
	Controller (DeskLaser)	2293282-901	

a. See Fig. 9-1 for an illustration of these parts.



Fig. 9-1 Diagram for Consumables and Supplies  
(See Table 9-1 for part numbers)

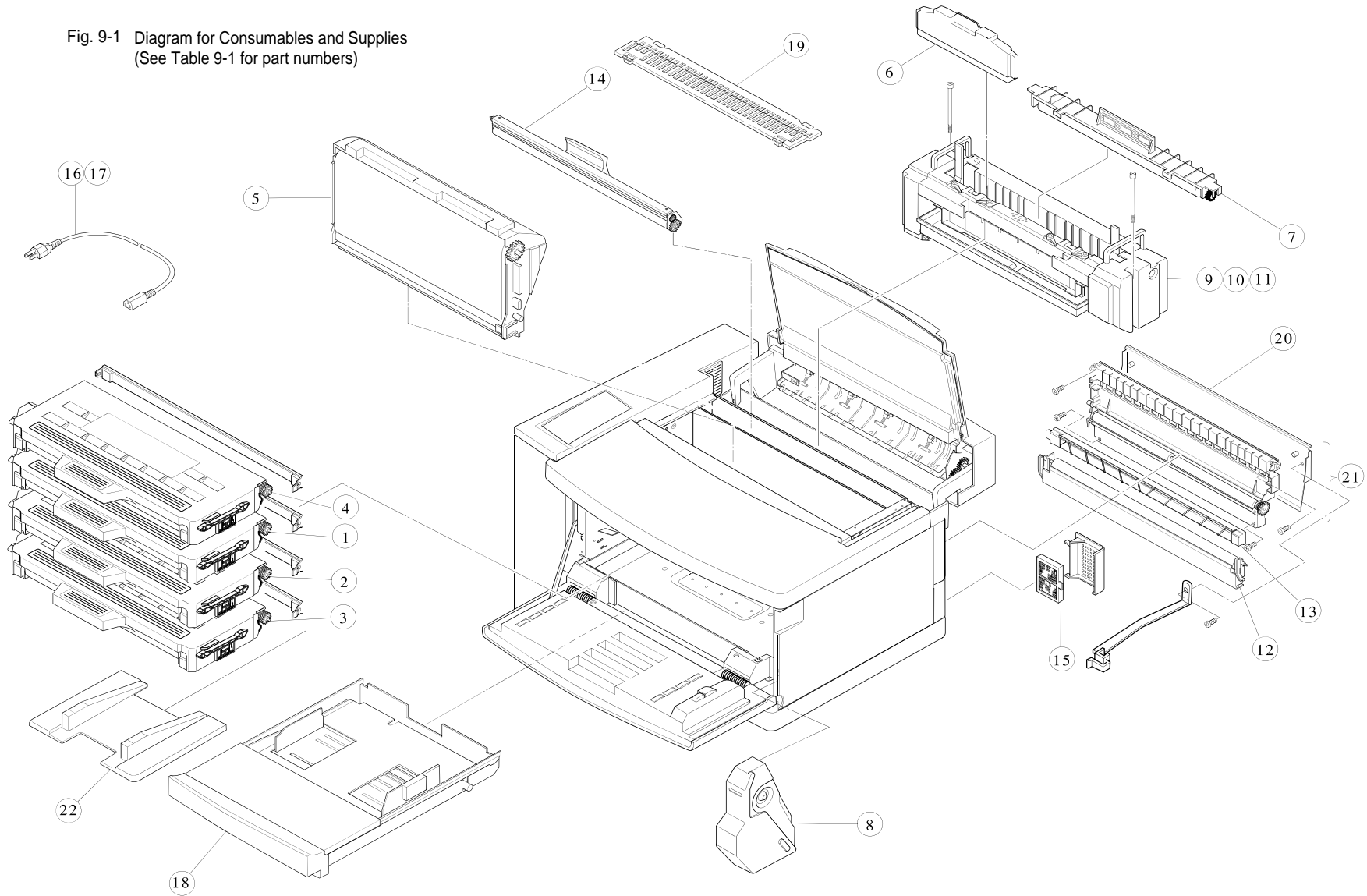




Table 9-2: Spare Parts List (Engine Breakdown #1)

Ref. Number <sup>a</sup>	Part Name	Part Number	Remarks
1	Top Cover	825126601	
2	Right Side Cover	825126602	
3	Left Side Cover	825126603	
4	Left-upper Side Cover	825126605	
5	Front Cover	825126608	
6	Paper Exit Unit Cover	825126610	
7	Paper Exit Front Cover	825126661	
8	Right Base Cover	825126614	
9	Left Base Cover	825126615	
10	Rear Cover	825126616	
11	Upper Rear Cover	825126617	
12	Side F Cover (L)	825126604	
13	Paper Exit Upper Cover	825126611	
14	Upper Rear Cover Cap	825126654	
15	Front Cover Unit	825126607	
16	MCTL P.W.B.	825126649	
16?	MCTL P.W.B. (EC) 3F	825126709	For Flicker
17	High Voltage Power Supply(HVPS)	825126652	
18	Panel Button	825126111	
19	Panel P.W.B.	825126112	
20	Discharge Brush	825126613	
21	Cooling Fan (EX)	825126659	
22	Paper Exit Filter	851126660	

Table 9-2: Spare Parts List (Engine Breakdown #1)

Ref. Number <sup>a</sup>	Part Name	Part Number	Remarks
23	Ozone Filter Cover	825126402	
24	Paper Sensor PT2	825126167	
25	Cleaning Roller Sensor	825126167	
267	Paper Exit Unit	825126609	
27	Paper Exit Roller	825126612	
28	Paper Exit Full Sensor	825126167	
29	Panel Case Assembly	825126606	
30	EP3 CR Sensor Lever	825126174	
31	BC Terminal 3	825126704	

a. See Fig. 9-2 for an illustration of these parts.



Fig. 9-2 Diagram of Engine Parts (Breakdown #1)  
 (See Table 9-2 for part numbers)

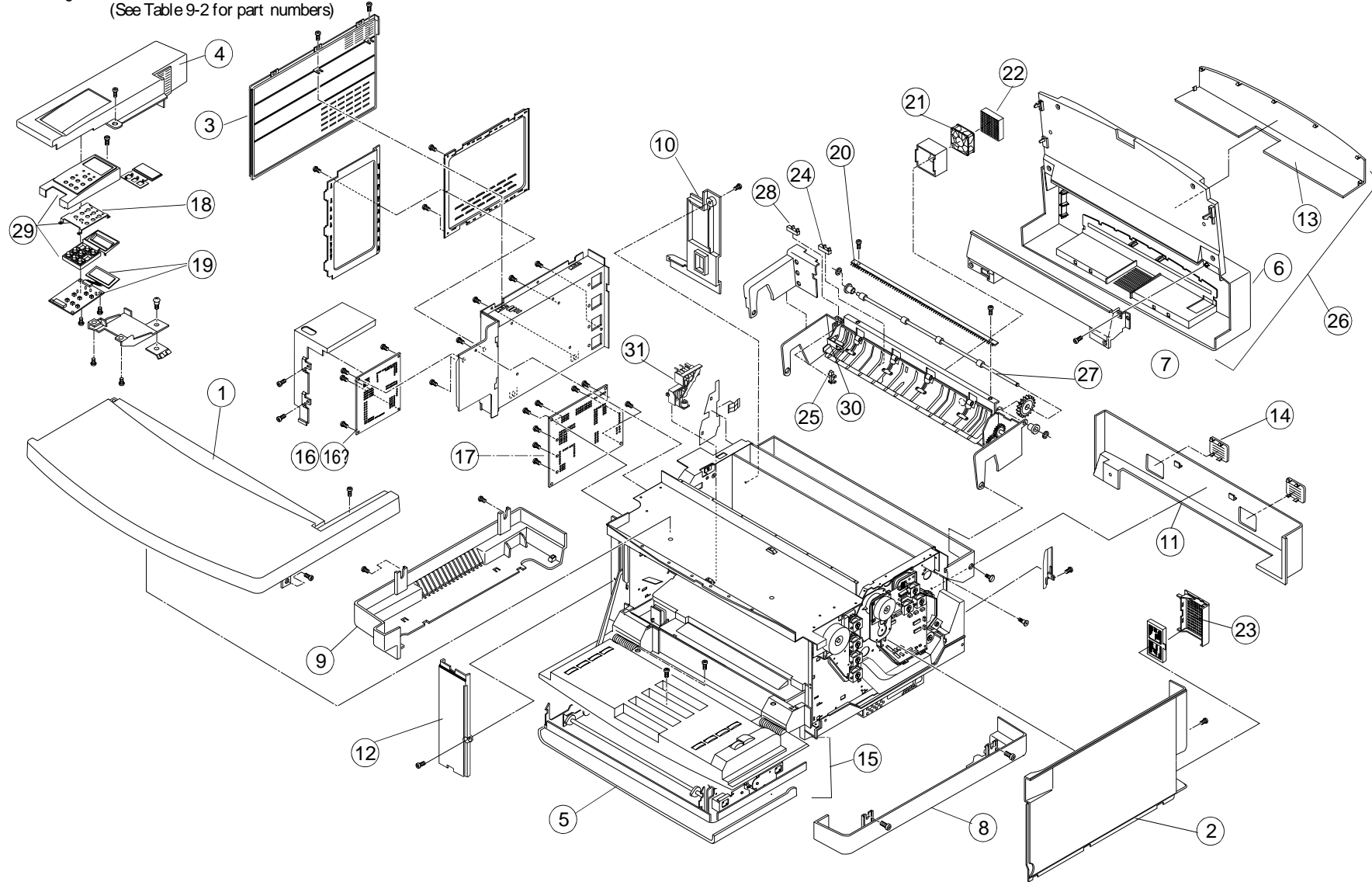




Table 9-3: Spare Parts List (Engine Breakdown #2)

Ref. Number <sup>a</sup>	Part Name	Part Number	Remarks
1	Paper Feeding Clutch	825126152	
2	Registration Clutch	825126153	
3	Fuser Clutch	825126637	
4	Developer Clutch	825126638	DCLK, DCLY, DCLM, DCLC
5	TR Cam Clutch	825126639	
6	FB Cam Clutch	825126639	
7	Cleaner Clutch	825126662	
8	Main Motor	825126640	
9	Main Gear Unit	825126642	
10	Developer Drive Motor	825126643	
11	Developer Drive Unit	825126644	
12	Paper Sensor (Drum Encoder)	825126167	EN
13	BD 3 Gear Assembly	825126641	
14	Low Voltage Power Supply (EC)	825126633	
14?	Low Voltage Power Supply (EC)	825126708	For Flicker
15	Low Voltage Power Supply (US)	825126634	
16	Fuser Connector	825126635	
17	Interlock Switch	825126817	Front, Back, Top
18	Toner Sensor Assembly (P.W.B.)	825126647	
19	IOD2 P.W.B.	825126651	
20	Cooling Fan (PS)	825126655	Controller
21	Cooling Fan (OZ)	825126163	Ozone
22	Waste Toner Feeder (U)	825126618	
23	Optical Unit	825126629	

Table 9-3: Spare Parts List (Engine Breakdown #2)

Ref. Number <sup>a</sup>	Part Name	Part Number	Remarks
24	Transfer Drum	825126631	600,000
25	Erase Lamp	825126632	
26	Oil Sensor	825126145	Oil
27	Belt Sensor	825126168	PBS
28	IOD1 P.W.B.	825126650	
29	Drum Jam Sensor	825126168	DJP
31	Fuser Heater (US)	825126622	
32	Fuser Heater (EC)	825126623	
33	Fuser Heater (JP)	825126624	
34	Oil Pan	825126663	
35	Waste Toner Feeder (L)	825126653	
36	WT Holder Assembly	825126656	WTS
37	SW Button	825126658	
38	Ozone Filter (PS)	825126671	
39	Toner Key Sensor	825126670	
40	SL3 Paper Guide D	825126697	
41	Dev. Drive Gear 3 (4 pcs.)	825126707	
42	MD Gear 15 (Set)	825126713	
43	WT Toner Auger (U)	825126712	
44	Fuser Cover (L) 3	825126705	
45	Fuser Cover (R) 3	825126706	
46	FU3 Felt A'ssy	825126774	
47	FU3 Cover F A'ssy	825126673	
48	SL3 BR Felt A/ssy	825126715	

a. See Fig. 9-3 for an illustration of these parts.

Fig. 9-3 Diagram of Engine Parts (Breakdown #2)  
 (See Table 9-3 for part numbers)

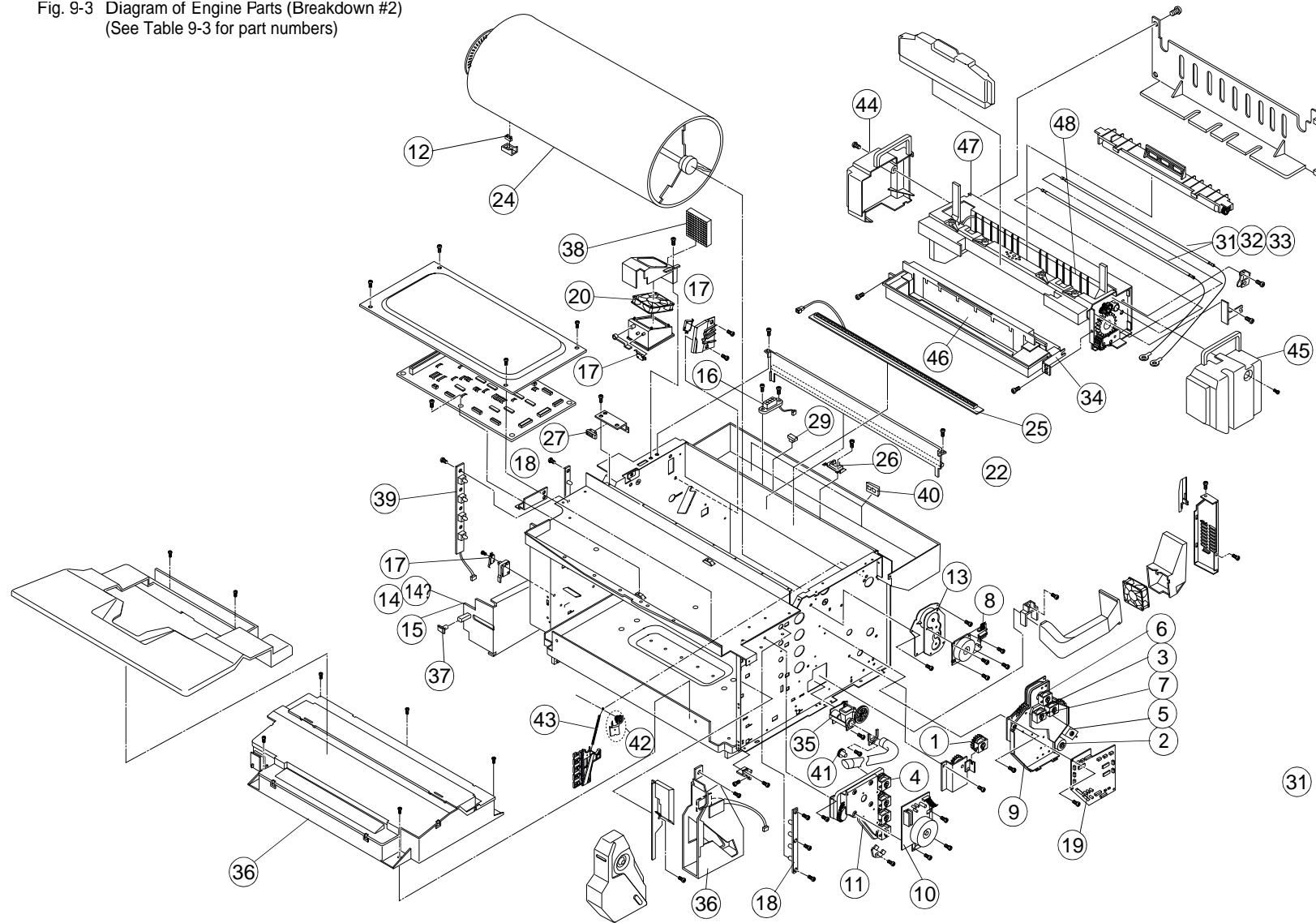




Table 9-4: Spare Parts List (Engine Breakdown #3)

Ref. Number <sup>a</sup>	Part Name	Part Number	Remarks
1	Paper Feeding Roller	825126142	120,000 pages
2	Separator Pad	825126528	120,000 pages
3	OHP Sensor	825126648	
4	Paper Empty Sensor	825126167	
5	Paper Sensor PT1	825126167	
6	Paper Size Sensor	825126646	

a. See Fig. 9-4 for an illustration of these parts.





Fig. 9-4 Diagram for Engine Parts (Breakdown #3)  
(See Table 9-4 for part numbers)

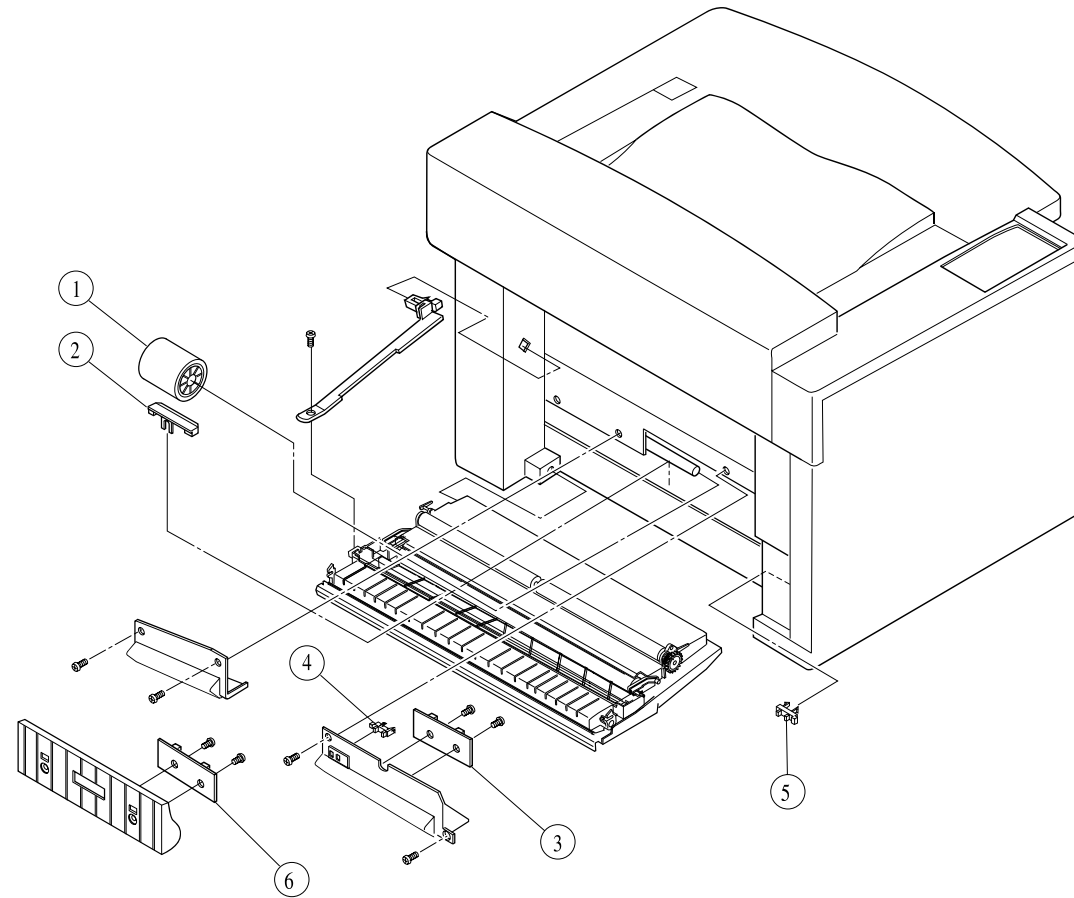




Table 9-5: Duplexer Spare Parts List Breakdown

Ref. Number <sup>a</sup>	Part Name	Part Number	Remarks
1	Top Cover	825126675	
2	Top-left Cover	825126676	
3	Top-right Cover	825126677	
4	Top-rear Cover	825126678	
5	Lower-left Cover	825126679	
6	Lower-right Cover	825126680	
7	Lower-rear Cover	825126681	
8	Bottom Cover	825126681	
9	Paper Guide Bottom Assembly	825126682	
10	Reverse Paper Guide Unit	825126683	
11	Reverse Input Paper Guide	825126684	
12	Paper Guide - U	825126692	
14	Duplexer P.W.B	825126693	
15	Relay P.W.B	825126686	
16	Motor	825126230	DPM1; DPM2
17	Fan Motor	825126687	
18	Upper Solenoid	825126688	
19	Lower Solenoid	825126689	
20	Interlock Switch	825126817	D-SW1 d-D-SW4
21	Sensor PT4	825126690	
22	Sensor PT5	825126691	

a. See Fig. 9-5 for an illustration of these parts.



Fig. 9-5 Diagram of Duplexer Spare Parts Breakdown  
(See Table 9-5 for part numbers)

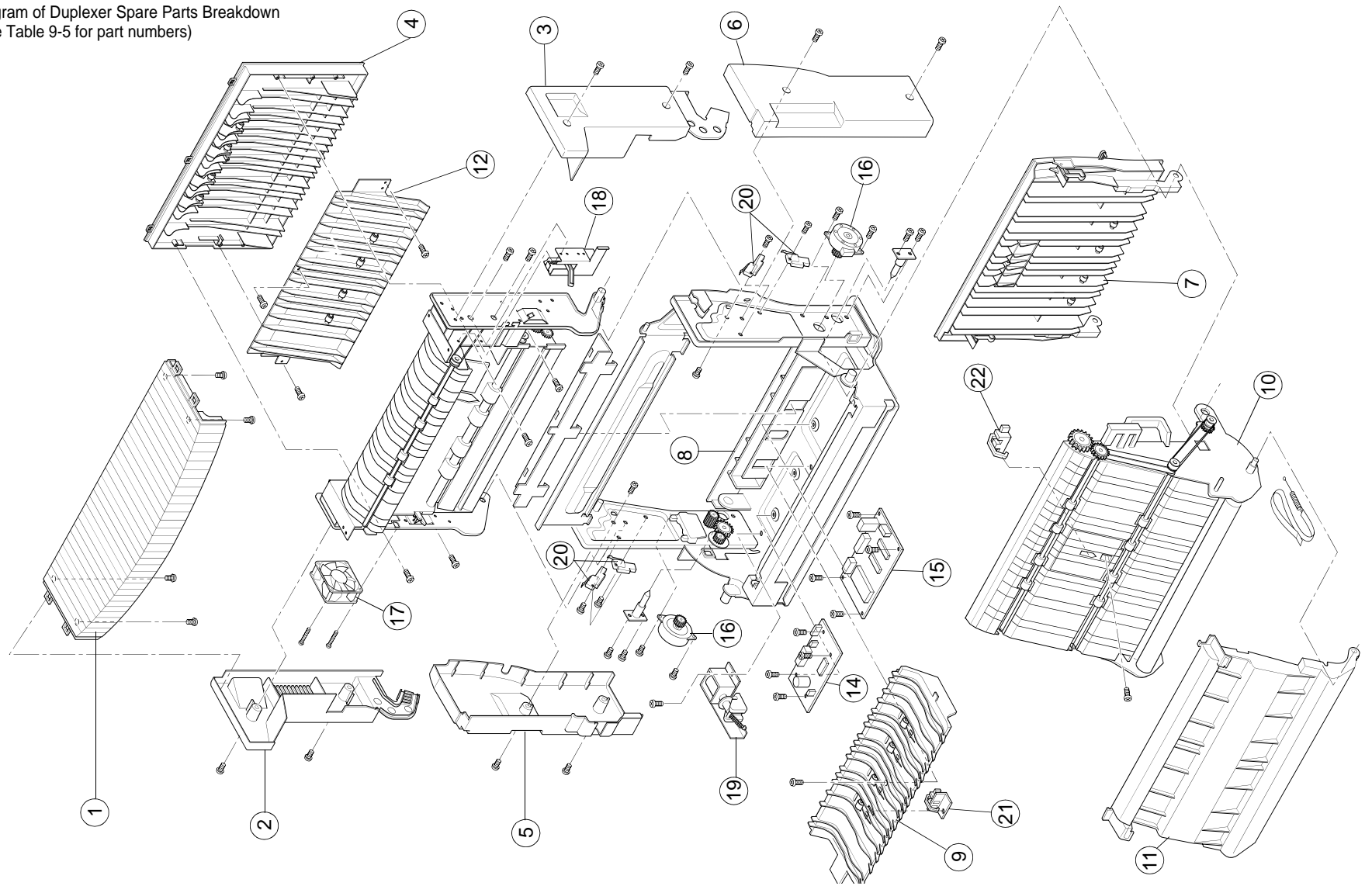




Table 9-6: Lower Feed Unit Spare Parts List Breakdown

Ref. Number <sup>a</sup>	Part Name	Part Number	Remarks
1	Paper Sensor	825126167	To sense the availability of paper.
2	Paper Size Sensor	825126646	To sense the size of paper in the paper cassette.
3	Paper Feeding Clutch	825126152	To drive the paper feeding roller.
4	Paper Feeding Roller	825126142	To automatically feed paper from cassette.
5	Separator Pad	825126528	Prevents multiple sheets from being fed.
6	Paper Cassette	1710375-001	Holds 250 sheets.
7	Right Base Cover	825126699	Right base cover.
8	Left Base Cover	825126700	Left base cover.
9	Right Side Cover	825126664	Right side cover.
10	Left Side Cover	825126665	Left side cover.
11	Paper Transportation Clutch	825126666	Drives the paper transportation roller.
12	LF3 Rear Cover Assy	825126668	Rear cover
13	IOD3 PWB Assy	825126669	IO Board
14	Interlock Switch	825123817	Micro switch for printer door

a. See Fig. 9-6 for an illustration of these parts.





Fig. 9-6 Diagram of Lower Feed Unit Spare Parts Breakdown  
(See table 9-6 for part numbers)

