

Chapter 5 Parts List CONTENTS

1. Parts List.....	5 - 1
1.1 Caution for use of parts list	5 - 1
PL 1.1 Cover [Illustration].....	5 - 2
PL 1.1 Cover [List]	5 - 3
PL 2.1 Paper Cassette [Illustration]	5 - 4
PL 2.1 Paper Cassette [List]	5 - 5
PL 3.1 Paper Feeder I [Illustration]	5 - 6
PL 3.1 Paper Feeder I [List]	5 - 7
PL 3.2 Paper Feeder II [Illustration]	5 - 8
PL 3.2 Paper Feeder II [List]	5 - 9
PL 3.3 Paper Feeder III [Illustration]	5 - 10
PL 3.3 Paper Feeder III [List]	5 - 11
PL 4.1 Housing Assy Retard [Illustration]	5 - 12
PL 4.1 Housing Assy Retard [List]	5 - 13
PL 5.1 Chute Assy In [Illustration].....	5 - 14
PL 5.1 Chute Assy In [List].....	5 - 15
PL 6.1 Chute Assy Out [Illustration]	5 - 16
PL 6.1 Chute Assy Out [List].....	5 - 17
PL 7.1 Chute Assy Exit [Illustration].....	5 - 18
PL 7.1 Chute Assy Exit [List].....	5 - 19
PL 8.1 BTR Assy & Fuser [Illustration].....	5 - 20
PL 8.1 BTR Assy & Fuser [List]	5 - 21
PL 9.1 Xerographics [Illustration].....	5 - 22
PL 9.1 Xerographics [List].....	5 - 23
PL 10.1 TCRU Assy [Illustration]	5 - 24
PL 10.1 TCRU Assy [List]	5 - 25
PL 11.1 Frame & Drive [Illustration].....	5 - 26
PL 11.1 Frame & Drive [List].....	5 - 27
PL 12.1 Electrical [Illustration].....	5 - 28
PL 12.1 Electrical [List]	5 - 29
PL 13.1 Harness [Illustration].....	5 - 30
PL 13.1 Harness [List].....	5 - 31

1. Parts List

1.1 Caution for use of parts list

The figures indicating the illustrations are the item No. in the list and present correspondence between the illustrations and parts.

The notation of PL "X.Y.Z" is composed of the plate (PL), item "X.Y", and parts "Z".

The alphabet characters in the illustrations represent screws and clips as follows:

"S": screw, "E": E-ring, "KL": KL clip, "C": C-ring, and "N": nut

" " mark in the illustrations are attached to items indicating assembly parts in the illustrations.

Encircled alphabetical figures in the illustrations indicate interrupted leader lines. Same characters in the illustrations represent lines to be connected.

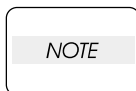
The mark "(with 2-5)" attached to assembly parts on the illustrations and lists represents that the items "2, 3, 4, and 5" of that plate are contained and the mark "(with 2-5, PL6.1.1.1)" represent that the item "2, 3, 4, and 5" of that plate and the item "1" of the plate "6.1" are contained.

The mark "[Same PLX.Y.Z]" attached to parts in the illustrations and lists represents that the parts is the same as the parts of the item "Z" of the plate "X.Y".

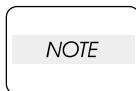
The mark " " attached to the item in the list represents "recommended spare parts" which can be usually supplied. (Supply of other parts shall be examined separately.)

The mark " " attached to parts in the list represents "Note" or "Reference" about that parts is contained in the same page.

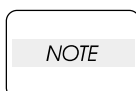
"HIGH ASSY" in the list represent the high level assembly parts containing that parts.



For spare parts, refer to the "Spare parts list" which is issued separately.

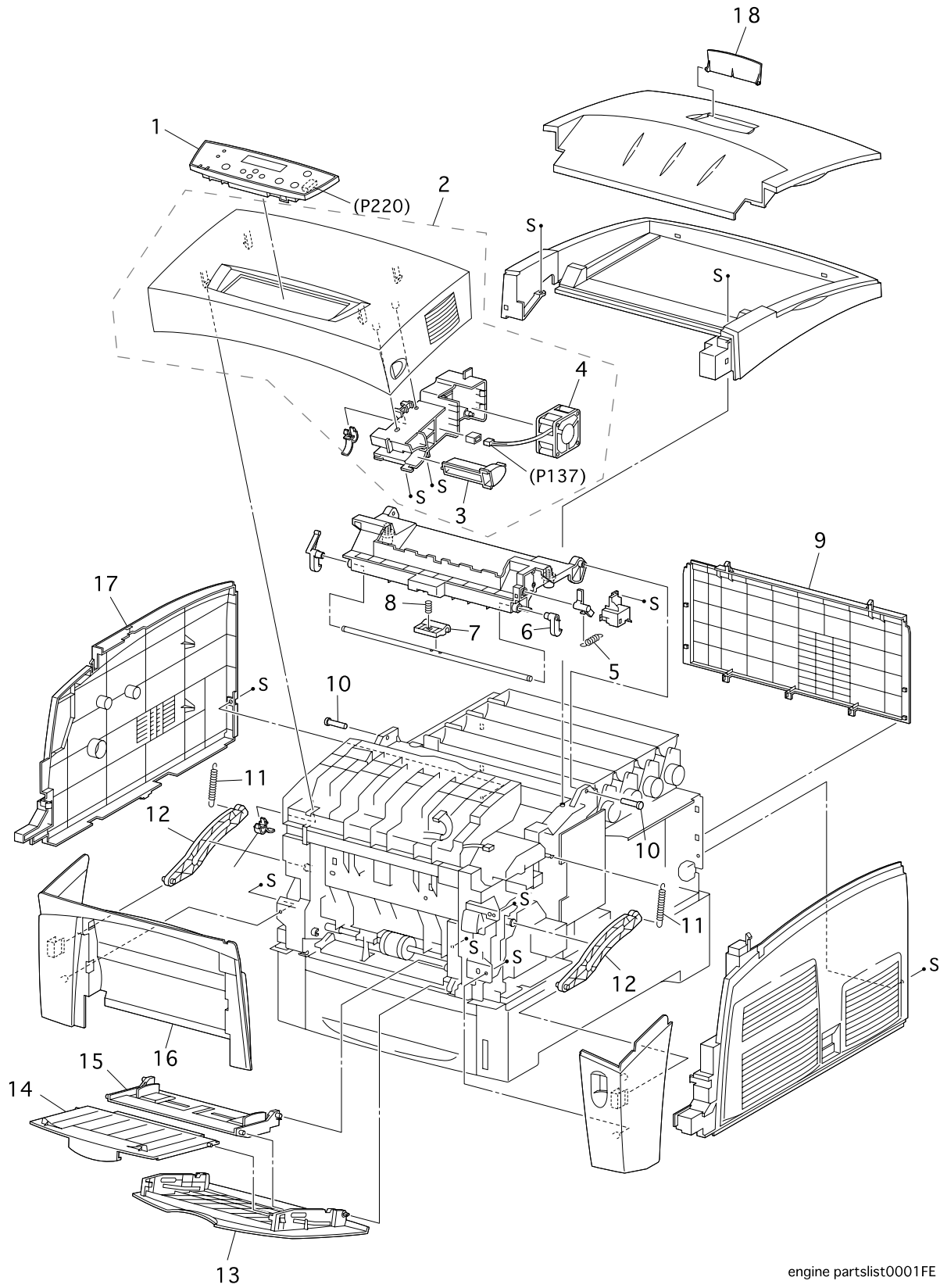


For the connector (P/J), parts such as harness, wire, etc. in the list, refer to "Chapter 6, Electric wiring"



It should be noted that configuration of parts may be different or some parts are not used depending on specifications of OEM.

PL 1.1 Cover [Illustration]

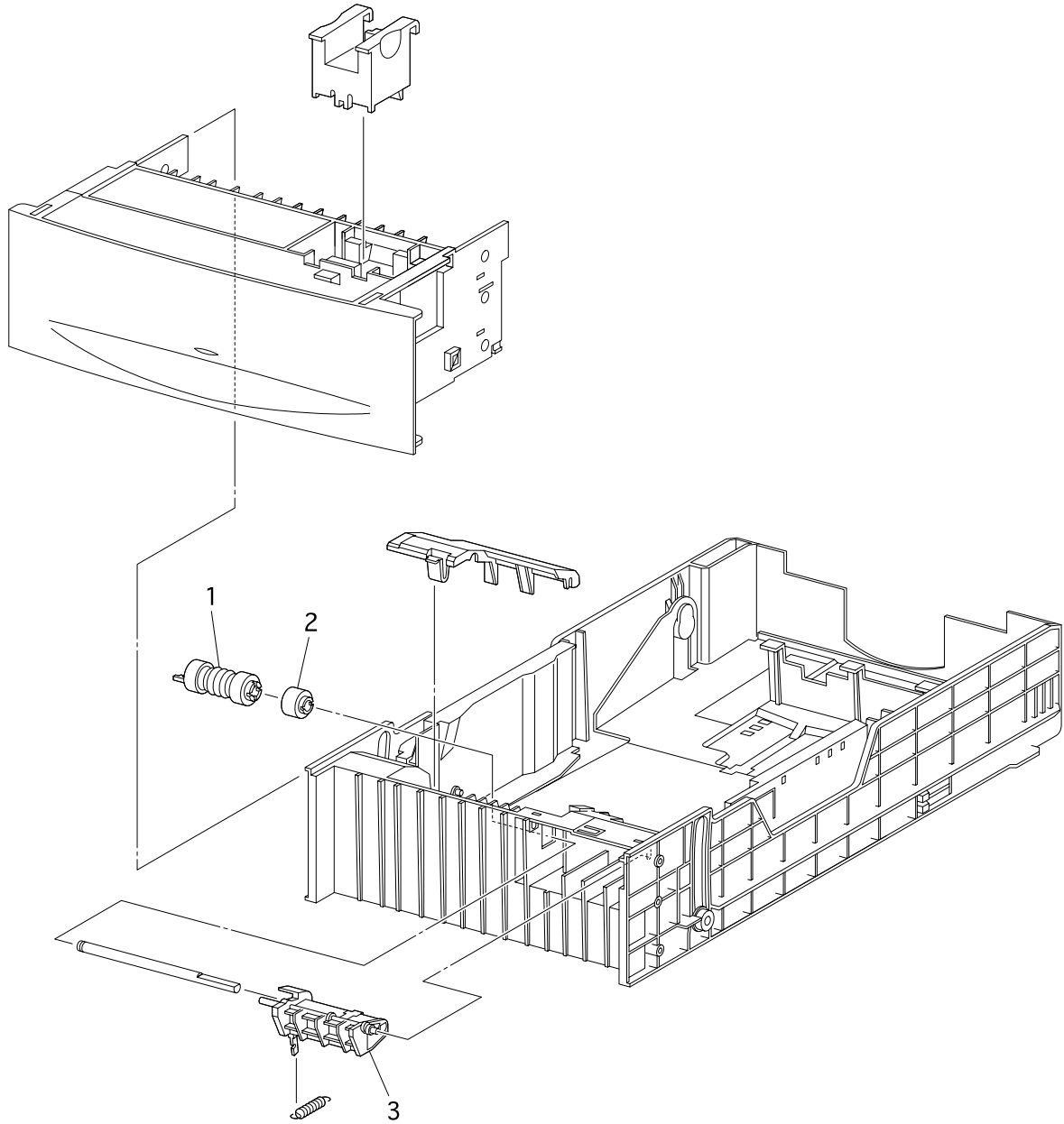


engine partslist0001FE

PL 1.1 Cover [List]

Item	Parts name	
1	Console panel	865802K52400
2	Cover Front head	865802K52170
3	Lever out	865011E10690
4	Fan Fuser	865127E82890
5	Spring Cam I/R	865809E28210
6	Latch Top R	865003E53230
7	Handle Top	865003E56850
8	Spring Handle	865809E28240
9	Cover Rear	865802E22930
10	Stud Top	865026E76270
11	Spring Link	865809E28570
12	Link	865012E10050
13	Cover MSI	865050K44820
14	Tray MSI Slide	865050E16900
15	Tray Assy Base	865050K44610
16	Cover Assy Front	865802K34290
17	Cover Side L	865802E22900
18	over Top Stopper	865802E32020

PL 2.1 Paper Cassette [Illustration]

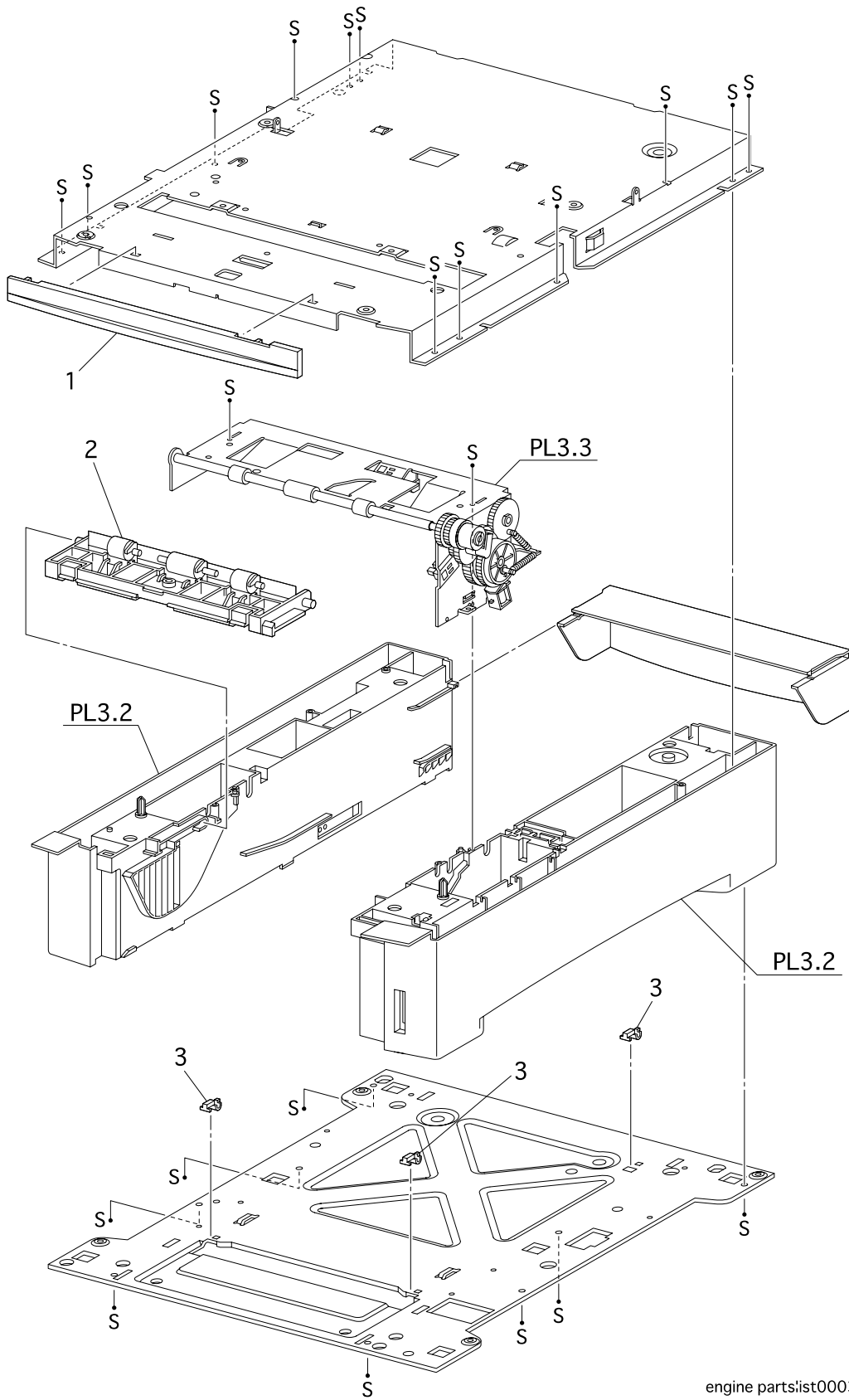


engine partslist0002FC

PL 2.1 Paper Cassette [List]

Item	Parts name	
1	Roll Assy	865059K21730
2	Clutch Assy Friction	865005K06270
3	Holder retard	865019E49231

PL 3.1 Paper Feeder I [Illustration]

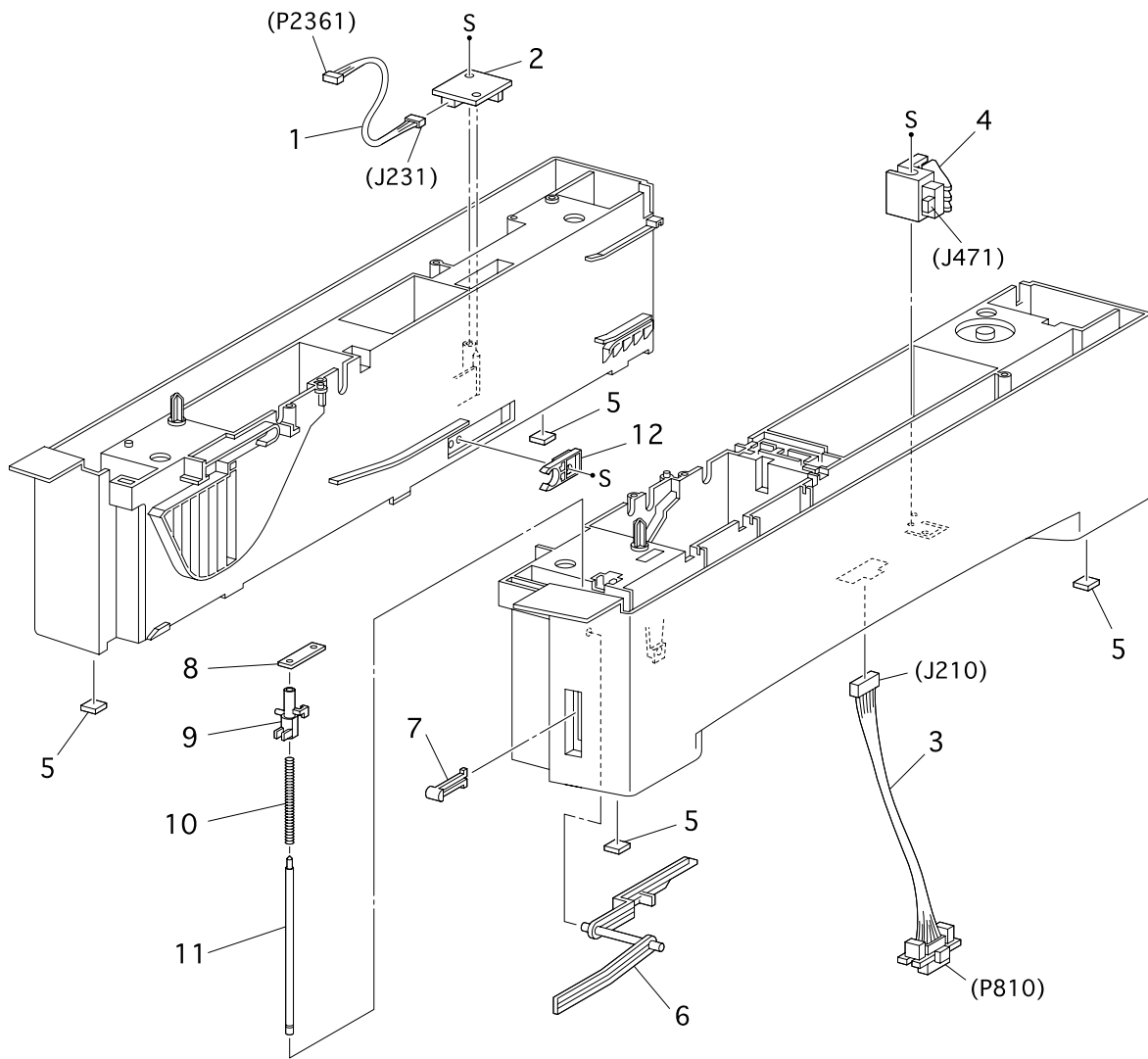


engine partslist0003FD

PL 3.1 Paper Feeder I [List]

Item	Parts name	
1	Cover FDR Front	865802E22810
2	Chute Assy Turn	865054K18000
3	Block	865014E42120

PL 3.2 Paper Feeder II [Illustration]

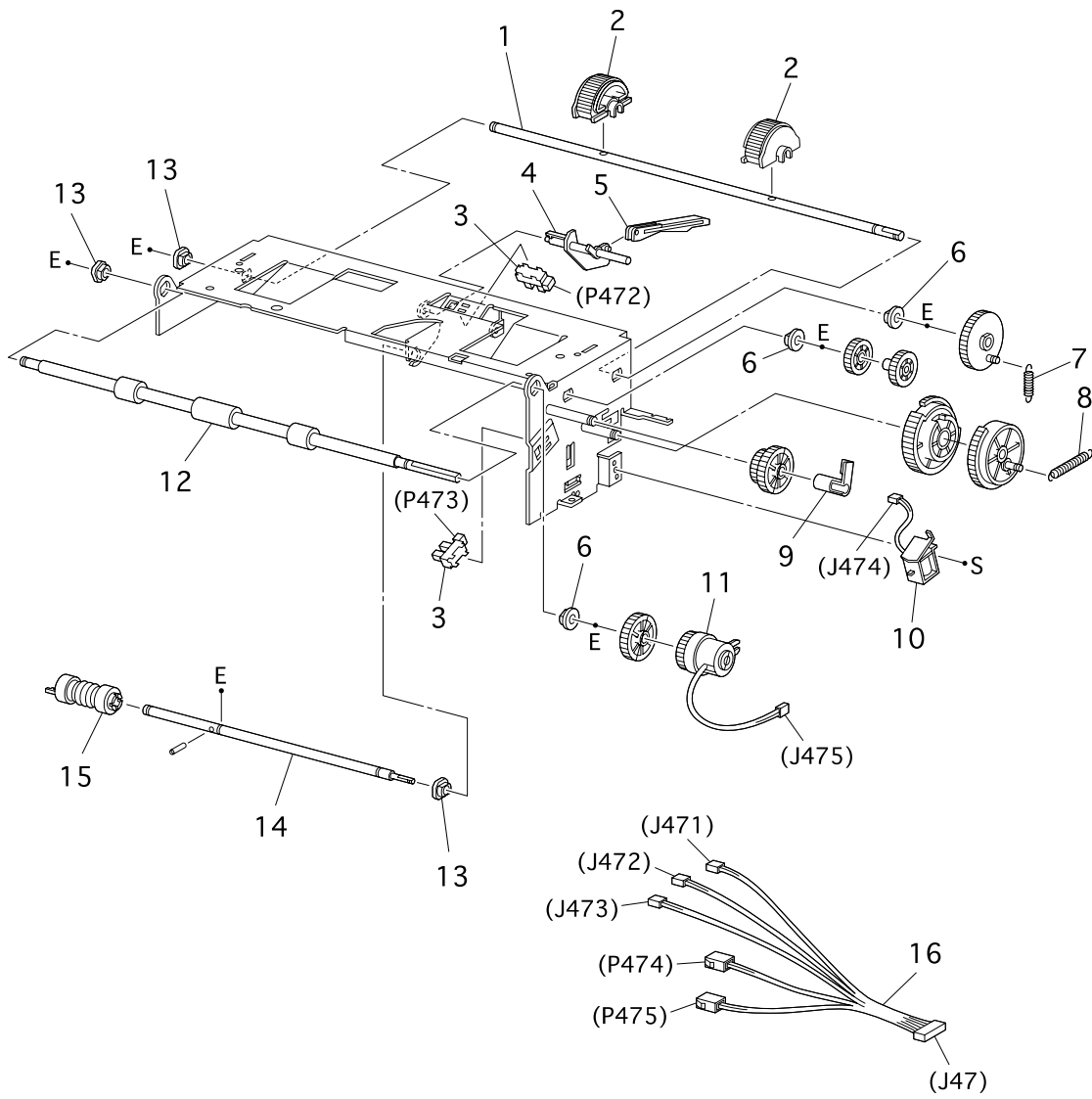


engine partslist0004FD

PL 3.2 Paper Feeder II [List]

Item	Parts name	
1	Harness Assy TMPA (J231-J2361	865162K69650
2	Sensor Hum Temp	865130K61530
3	Harness Assy OPFREC (J210-P810)	865162K69700
4	Switch assy size	865110K11240
5	Foot	865017E92080
6	Lever Low Paper	865011E10680
7	Indicator	865123E91110
8	Holder Shaft indicator	865019E48400
9	Guide Indicator	865032E16070
10	Spring indicator	865809E28300
11	Shaft indicator	865006E71960
12	Stopper CST	865003E56900

PL 3.3 Paper Feeder III [Illustration]

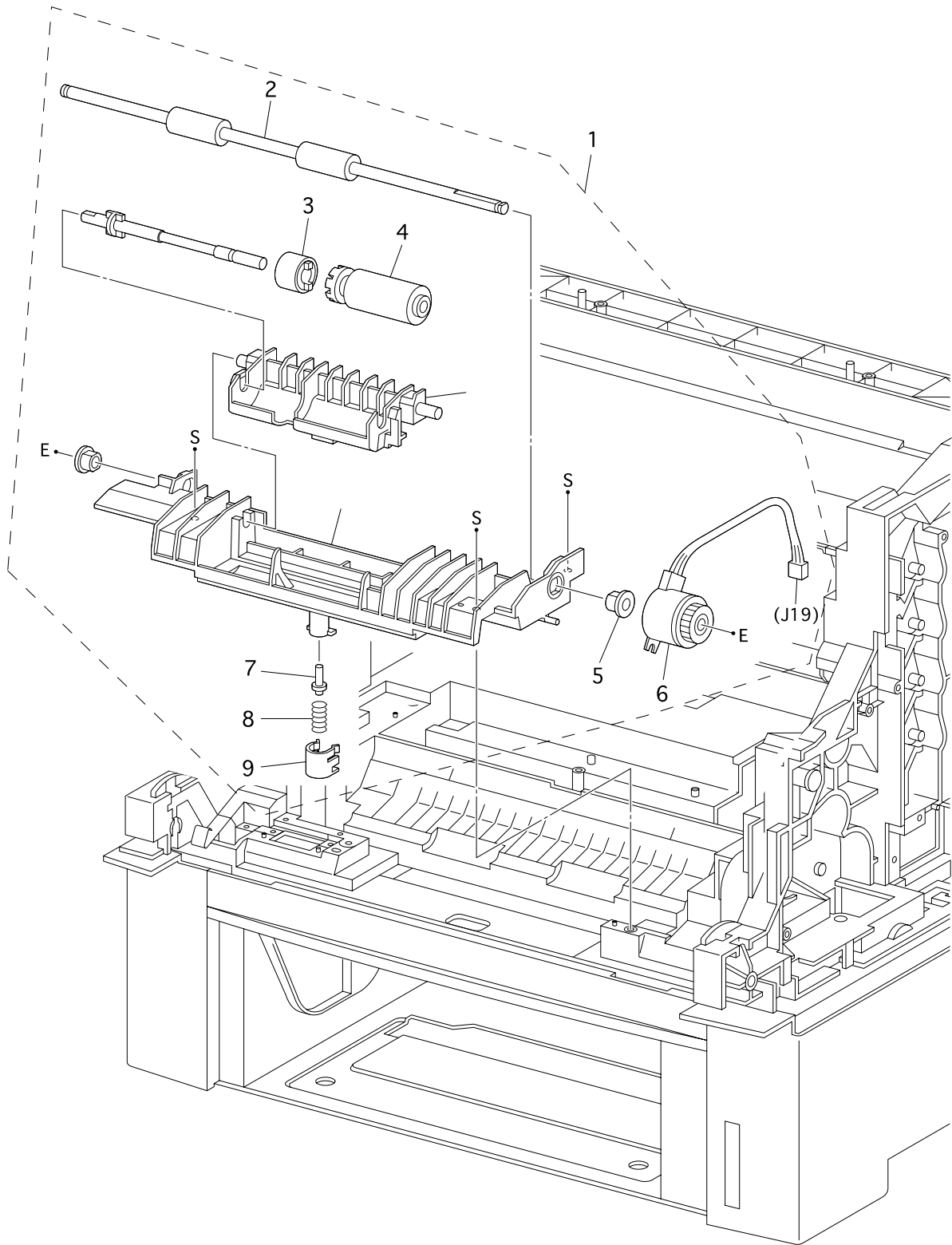


engine parts:ist0005FC

PL 3.3 Paper Feeder III [List]

Item	Parts name	
1	Shaft Feed 1	865006E71970
2	Roll Assy Feed	865059K18240
3	Sensor Photo	865130E82740
4	Actuator No Paper	865120E18640
5	Link Actuator	865012E93210
6	Bearing metal	865413W75959
7	Spring Feed 1	865809E28310
8	Spring Feed H	865809E28320
9	Stopper Clutch	865003E53290
10	Solenoid Feed	865121E87700
11	Clutch Assy Turn	865005K06011
12	Roll Assy Turn	865059K18261
13	Bearing Metal/Black	865413W11660
14	Shaft Feed 2	865006E71980
15	Roll Assy	865059K18250
16	Harness Assy Feeder (J47-J471/J472/J473/P474/P475)	865162K69690

PL 4.1 Housing Assy Retard [Illustration]

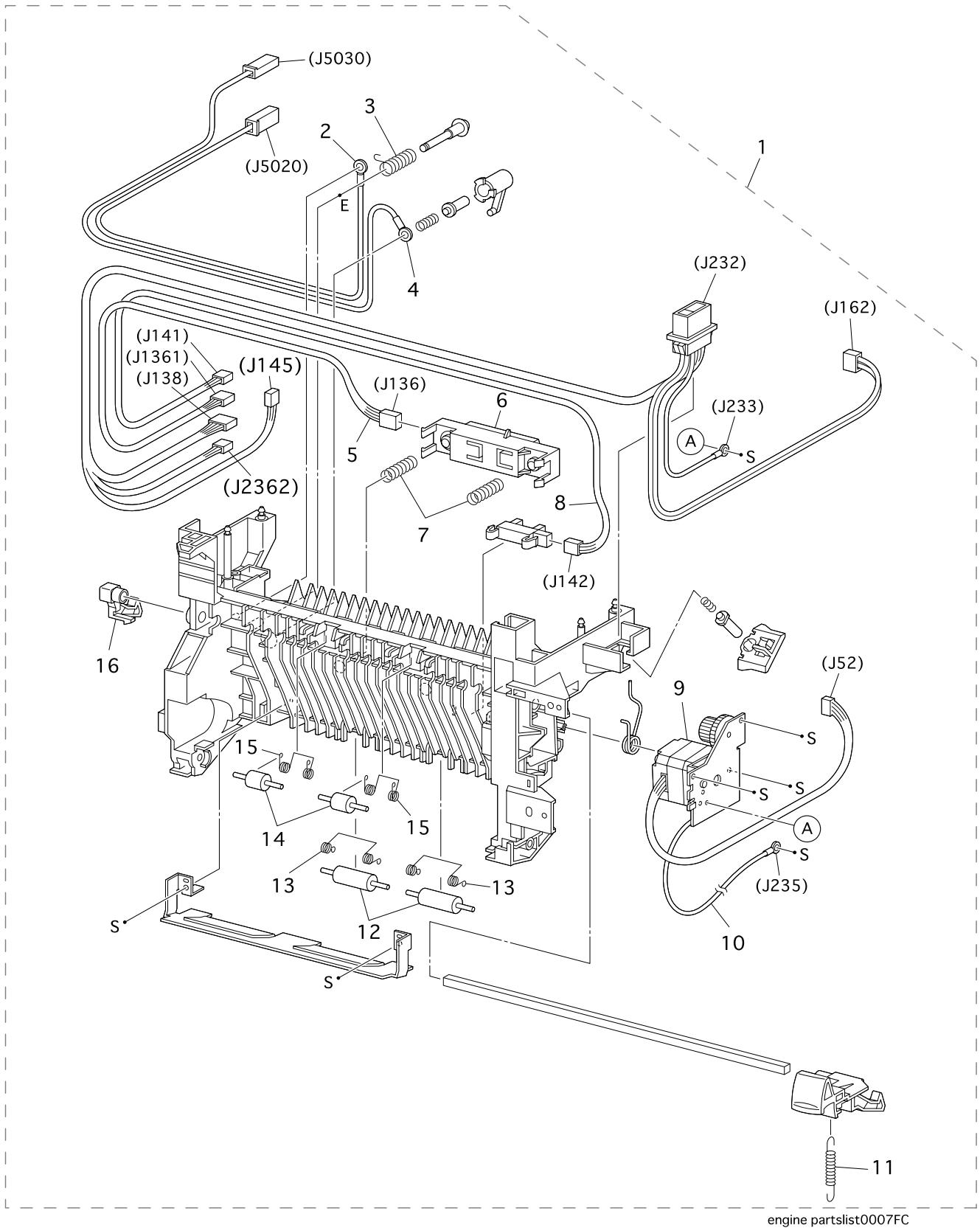


engine partslist0006FA

PL 4.1 Housing Assy Retard [List]

Item	Parts name	
1	Housing Assy Retard	865802K24843
2	Roll Turn	865059K19940
3	Clutch Assy Friction	865005K06280
4	Roll Assy Retard	865059K19950
5	Bearing	865013E18061
6	Clutch Turn	865121E87710
7	Stud Retard	865026E77720
8	Spring Retard 370	865809E28671
9	Cap Retard	865021E97470

PL 5.1 Chute Assy In [Illustration]

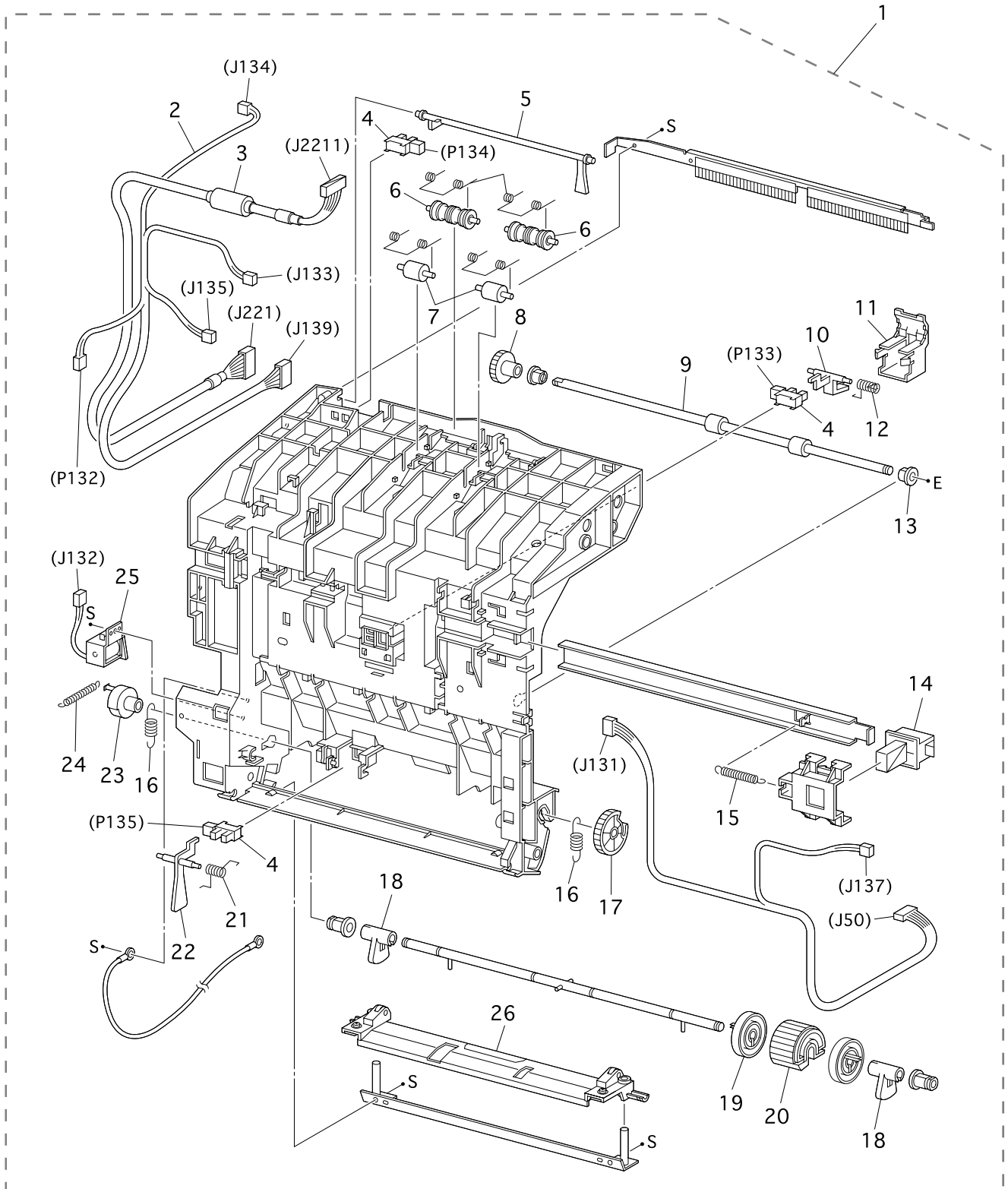


engine partslist0007FC

PL 5.1 Chute Assy In [List]

Item	Parts name	
1	Cute Assy In (100V)	865084K12170
1	Cute Assy In (200V)	865084K12280
2	Wire Assy BTR2 (J5020)	865117K34570
3	Spring BTR R2	865809E35110
4	Wire Assy DTSK(J5030)	865117K34560
5	Harness Assy CTD(J136-J1361)	865162K69620
6	Sensor ADC Assy	865019K97900
7	Spring ADC	865809E28620
8	Harness Assy TFLSNS(J141-J142)	865162K69830
9	Fuser Drive Assy	865007K87970
10	Wire Assy FSR Earth(J234-J235)	865117K34580
11	Spring Latch	865809E28590
12	Roll Pinch Turn	865059E95690
13	Spring Pinch Turn	865809E28610
14	Roll Pinch Dup	865059E95700
15	Spring Pinch Dup	865809E28600
16	Latch L	865003E53380

PL 6.1 Chute Assy Out [Illustration]

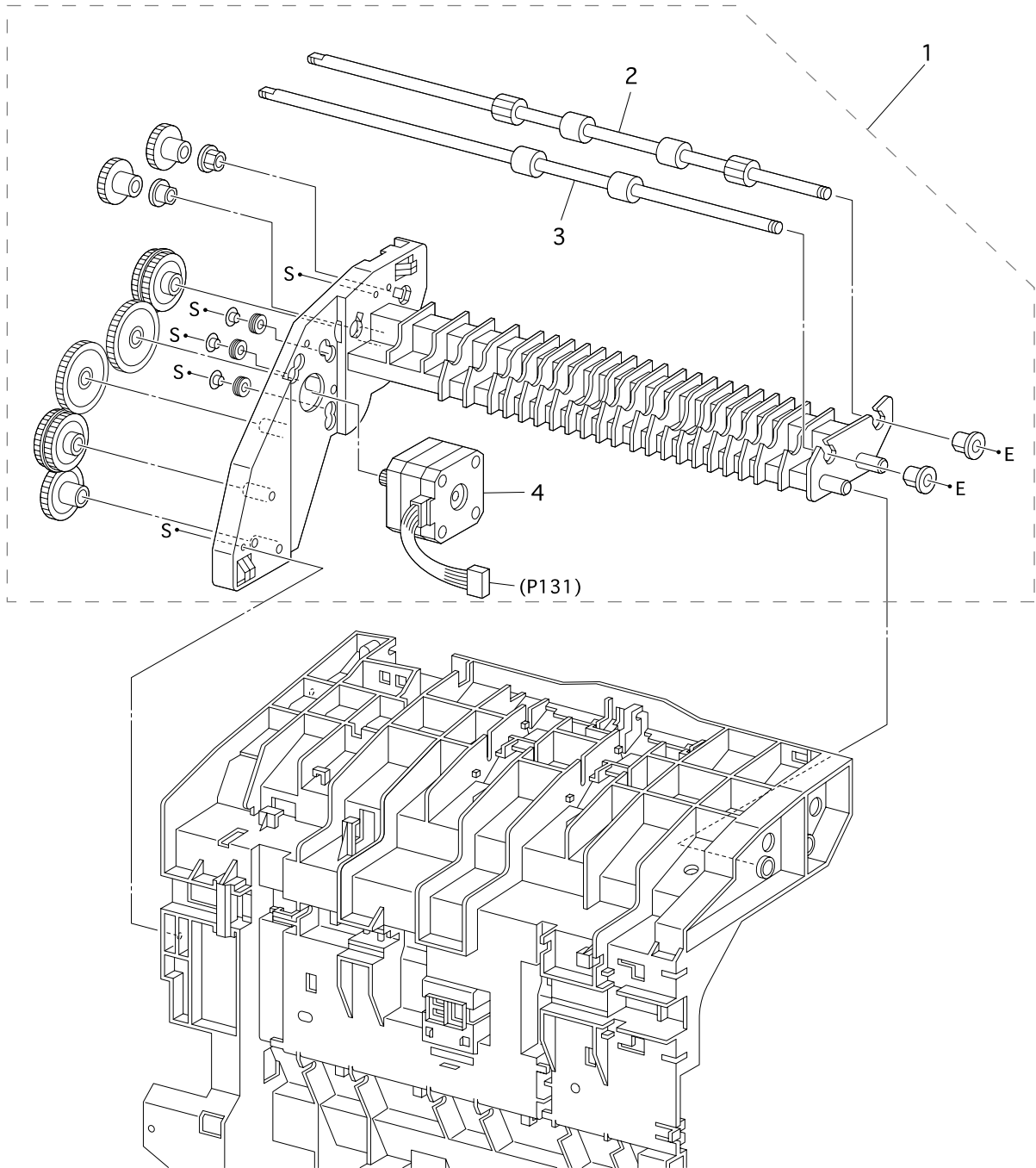


engine partslist0008FA

PL 6.1 Chute Assy Out [List]

Item	Parts name	
1	Cute Assy Out	865084K12161
2	Harness assy front 2 (J139-P132/J133/J134/J135)	865162K69590
3	Harness Assy Opepane BS(221-J2211)	865162K69610
4	Sensor Photo	865130E82740
5	Actuator Full	865120E18740
6	Roll Pinch Exit	865059E95780
7	Roll Pinch	865059E95760
8	Gear 30	865007E66672
9	Roll Dup	865059E95750
10	Actuator Dup	865120E18750
11	Cover Actuator	865802E23280
12	Spring SNR Dup	865809E30110
13	Bearing	865013E19281
14	Latch Out	865003E53410
15	Spring Latch Out	865809E28730
16	Spring N/F MSI 250gf	865809E28700
17	Gear MSI	865007E65840
18	Cam MSI	865008E93880
19	Roll Core MSI	865059E95740
20	Roll Assy Feed	865059K19960
21	Spring Sensor MSI	865809E28720
22	Actuator MSI	865120E18730
23	Stopper Sol	865003E53400
24	Spring Sol 0.5	865809E28690
25	Solenoid Feed MSI	865121E88250
26	PLate assy Bottom MSI	865015K52790

PL 7.1 Chute Assy Exit [Illustration]

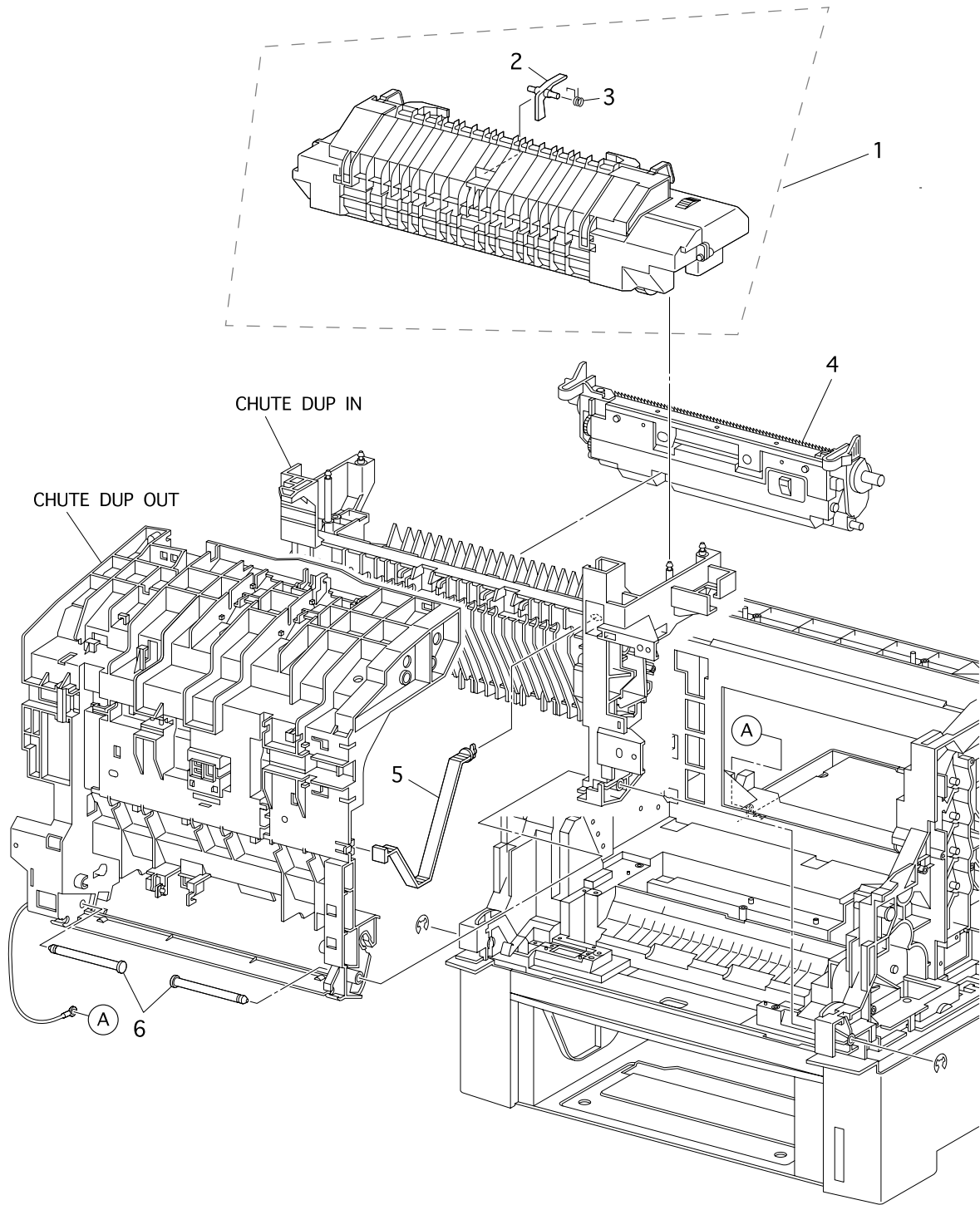


engine partslist0009FC

PL 7.1 Chute Assy Exit [List]

Item	Parts name	
1	Cute Assy Exit	865054K23260
2	Roll Exit	865059E96430
3	Roll Mid	865059E95770
4	Motor Assy Dup	865127K31710

PL 8.1 BTR Assy & Fuser [Illustration]

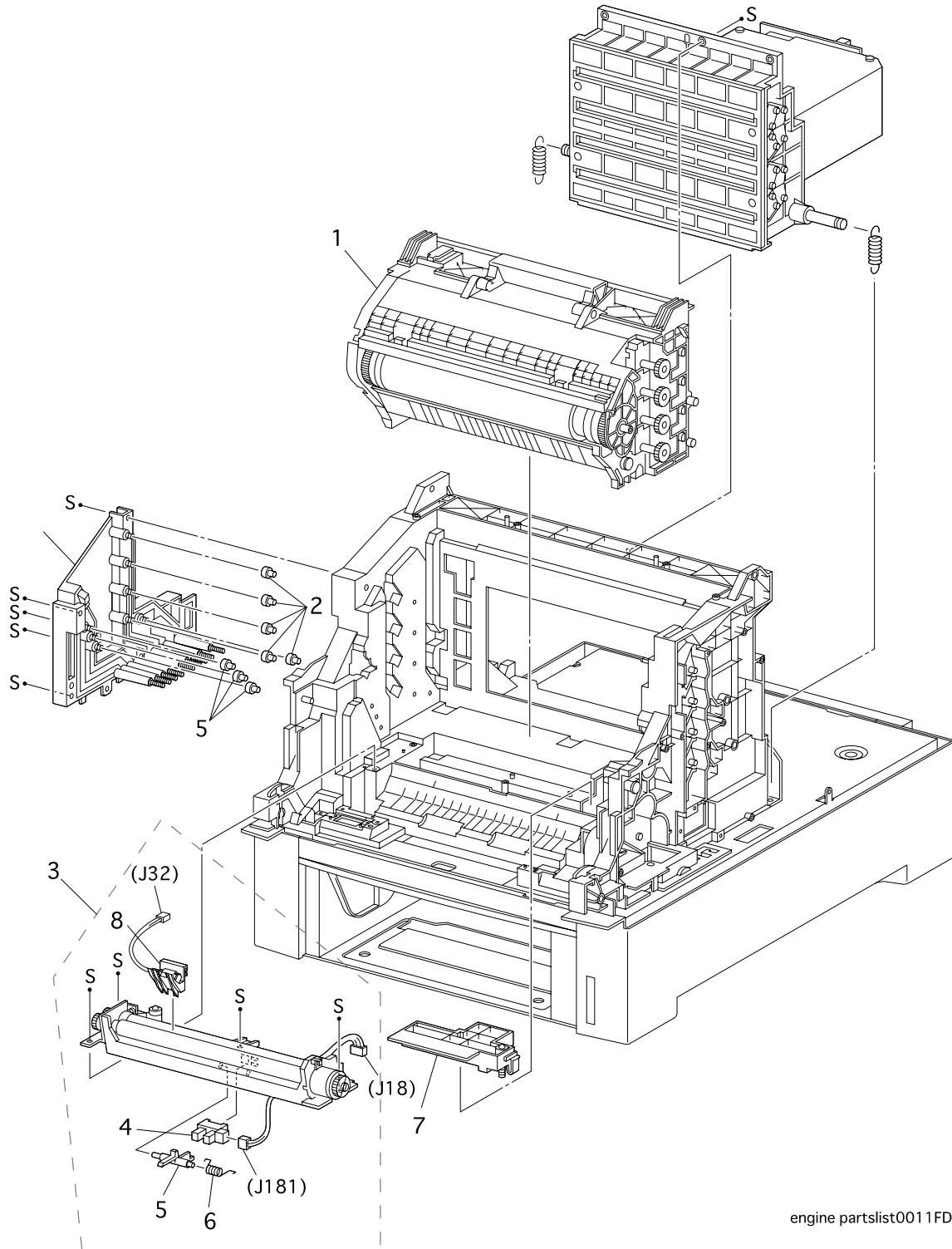


engine partslist0010FB

PL 8.1 BTR Assy & Fuser [List]

Item	Parts name	
1	Fuser Unit (220V)	1710555-002
2	Actuator Exit	865120E20790
3	Spring Actuator	865809E34550
4	BTR Kit	1710494-001
5	Strap	865003E53390
6	Shaft Pivot	865006E72030

PL 9.1 Xerographics [Illustration]

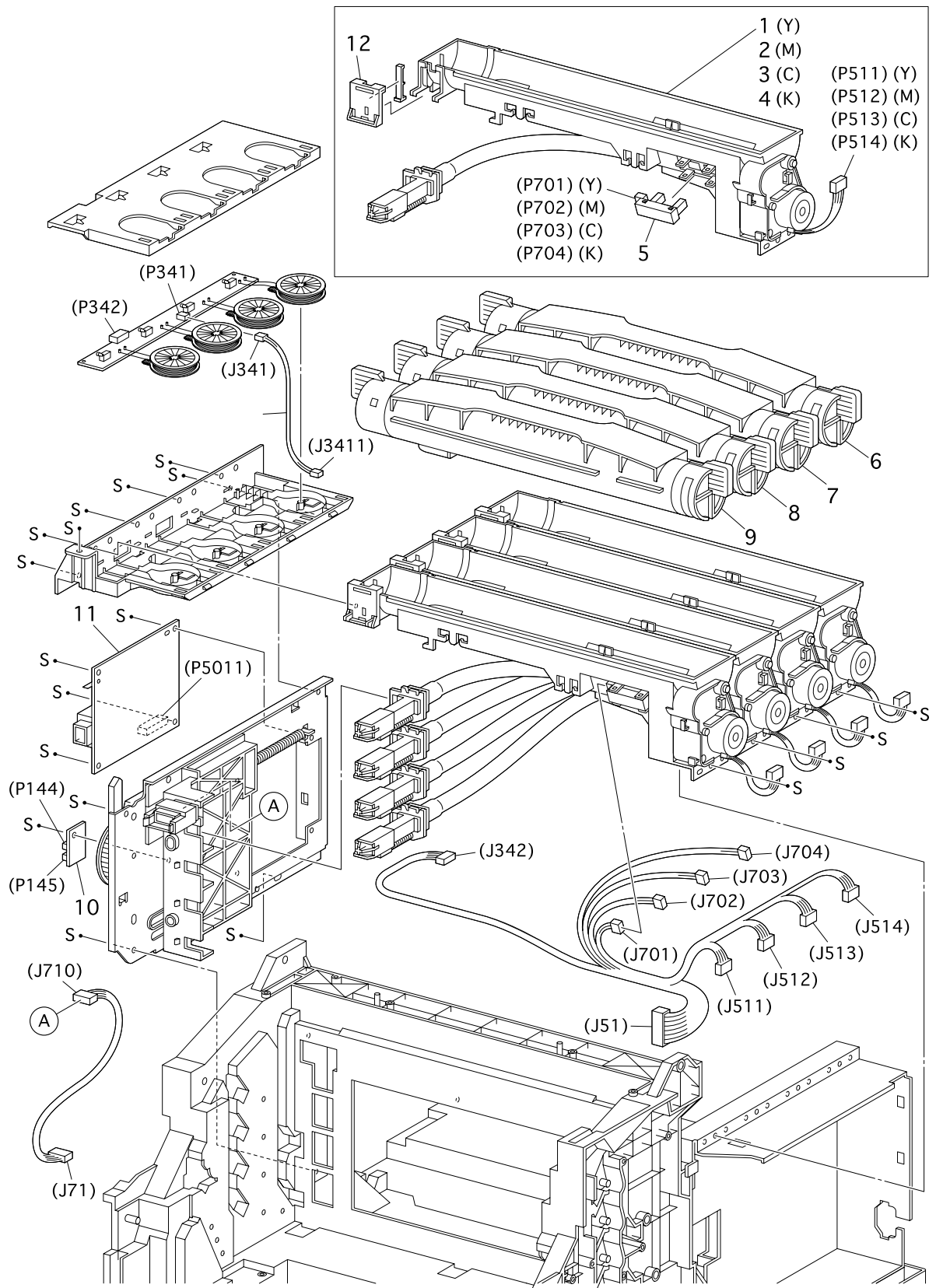


engine partslist0011FD

PL 9.1 Xerographics [List]

Item	Parts name	
1	Print Head Unit	1710552-001
2	Stud Plunger	865026E77670
3	Chute Assy Reg	865054K23250
4	Sensor Photo	865130E82740
5	Actuator Regi	865120E20680
6	Spring Sensor Regi	865809E34580
7	Housing Assy Elec	865802K24830
8	Kit Snr OHP (w/Harness)	865604K02520

PL 10.1 TCRU Assy [Illustration]

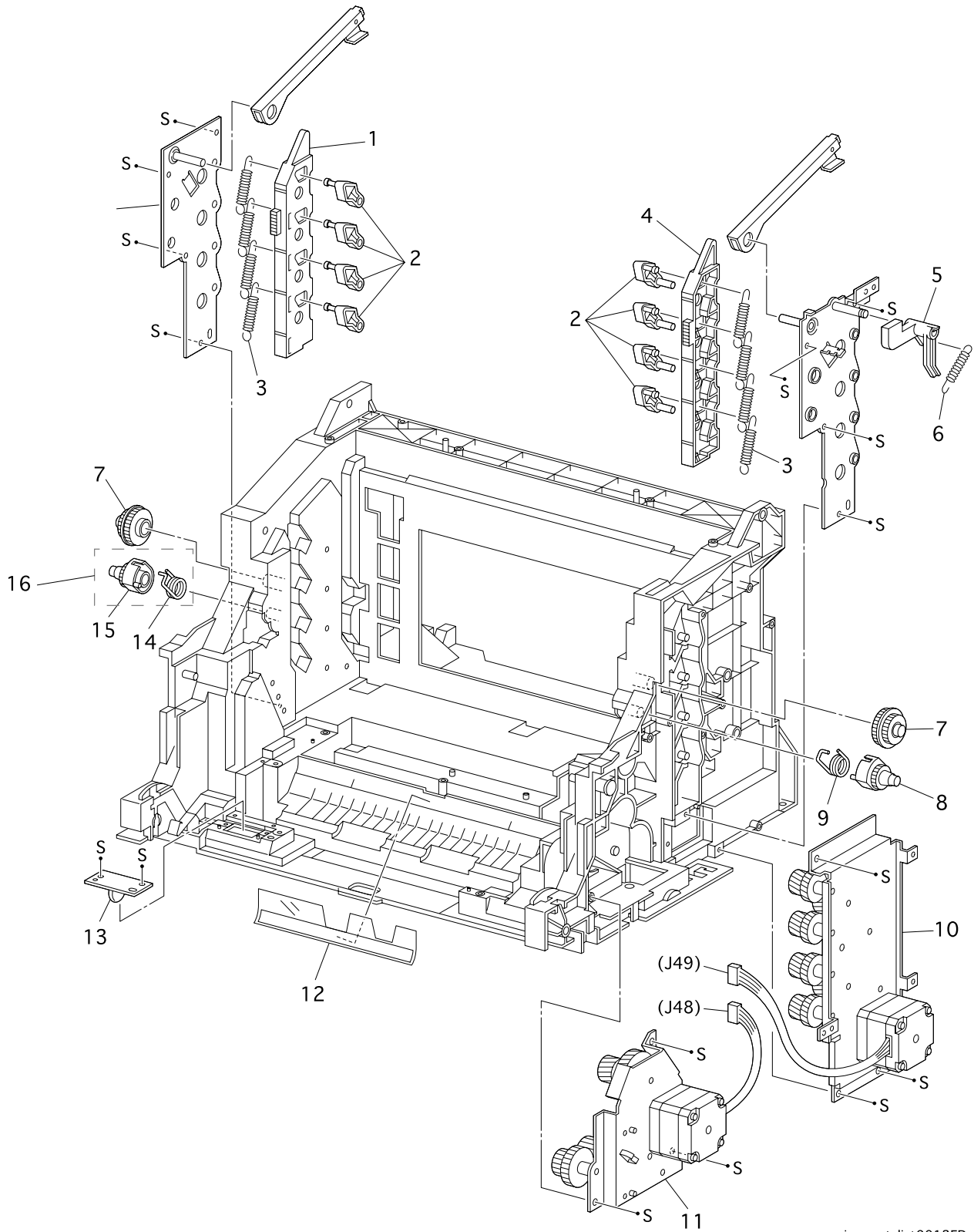


engine partslist0016FB

PL 10.1 TCRU Assy [List]

Item	Parts name	
1	Holder Assy Y	865113K03130
2	Holder Assy M	865113K03140
3	Holder Assy C	865113K82660
4	Holder Assy K	865113K82670
5	Sensor Toner Low	865130E85200
6	Toner Cartridge Y	1710550-002
7	Toner Cartridge M	1710550-003
8	Toner Cartridge C	1710550-004
9	Toner Cartridge K	1710550-001
10	PWBA Eeprom	865160K83190
11	S-HVPS	865105K19520
12	Switch TCRU Assy	865110K11250

PL 11.1 Frame & Drive [Illustration]

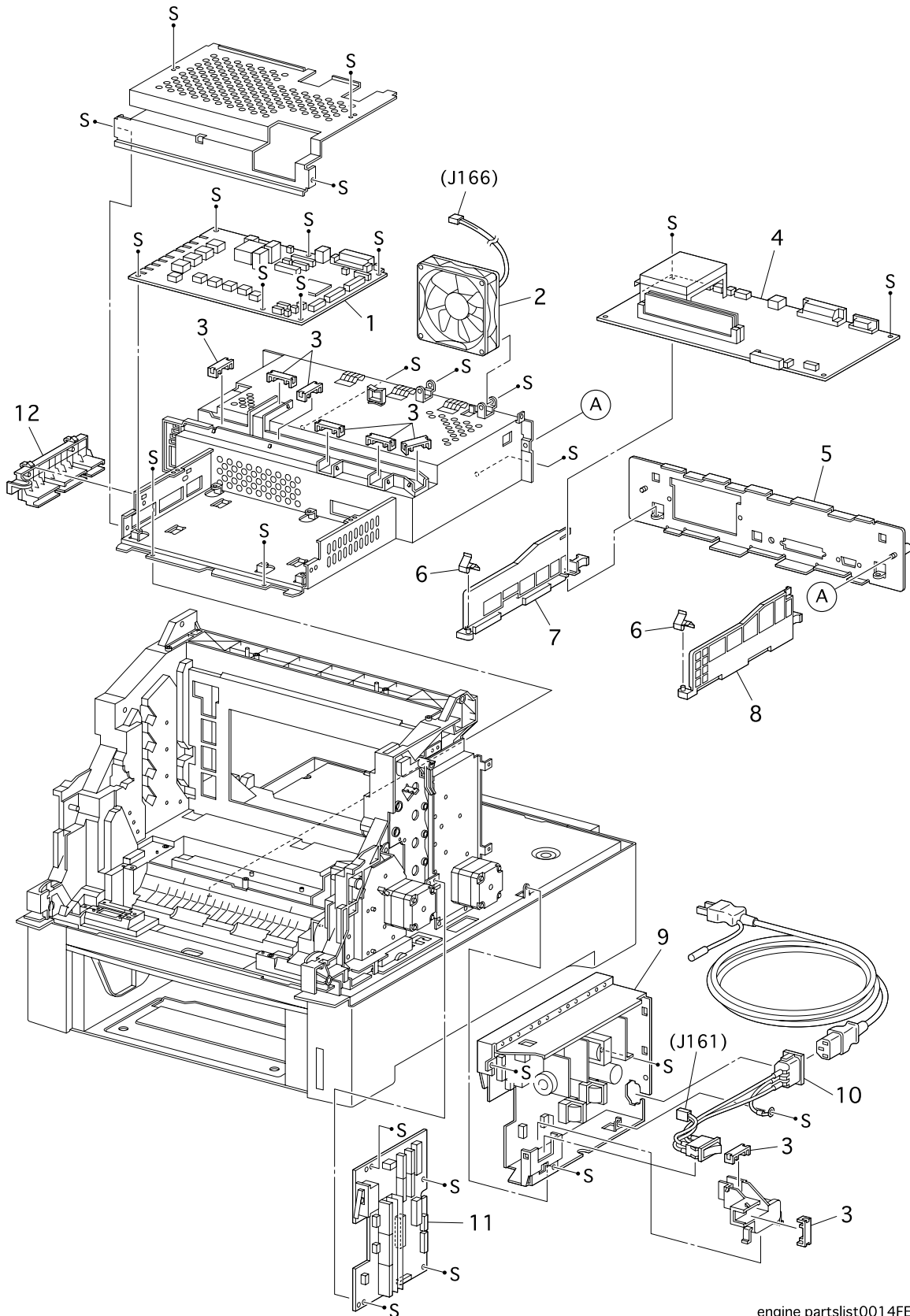


engine partslist0013FD

PL 11.1 Frame & Drive [List]

Item	Parts name	
1	Link Lever L	865012E10040
2	Lever Drum	865011E10730
3	Spring Lever 30n	865809E28430
4	Link Lever R	865012E10030
5	Actuator I/L	865120E18682
6	Spring I/L	865809E28460
7	Gear IDL. Press	865007E65810
8	Gear Press R	865007K87251
9	Spring IDT R	865809E28440
10	Deve Drive Assy	865007K86681
11	Main Drive Assy	865007K87980
12	Film Regi	865035E58130
13	PWBA Assy Earth	865160K70780
14	Spring IDT L	865809E28450
15	Gear Press L	865007E65801
16	Gear Assy Press L	865007K87261

PL 12.1 Electrical [Illustration]

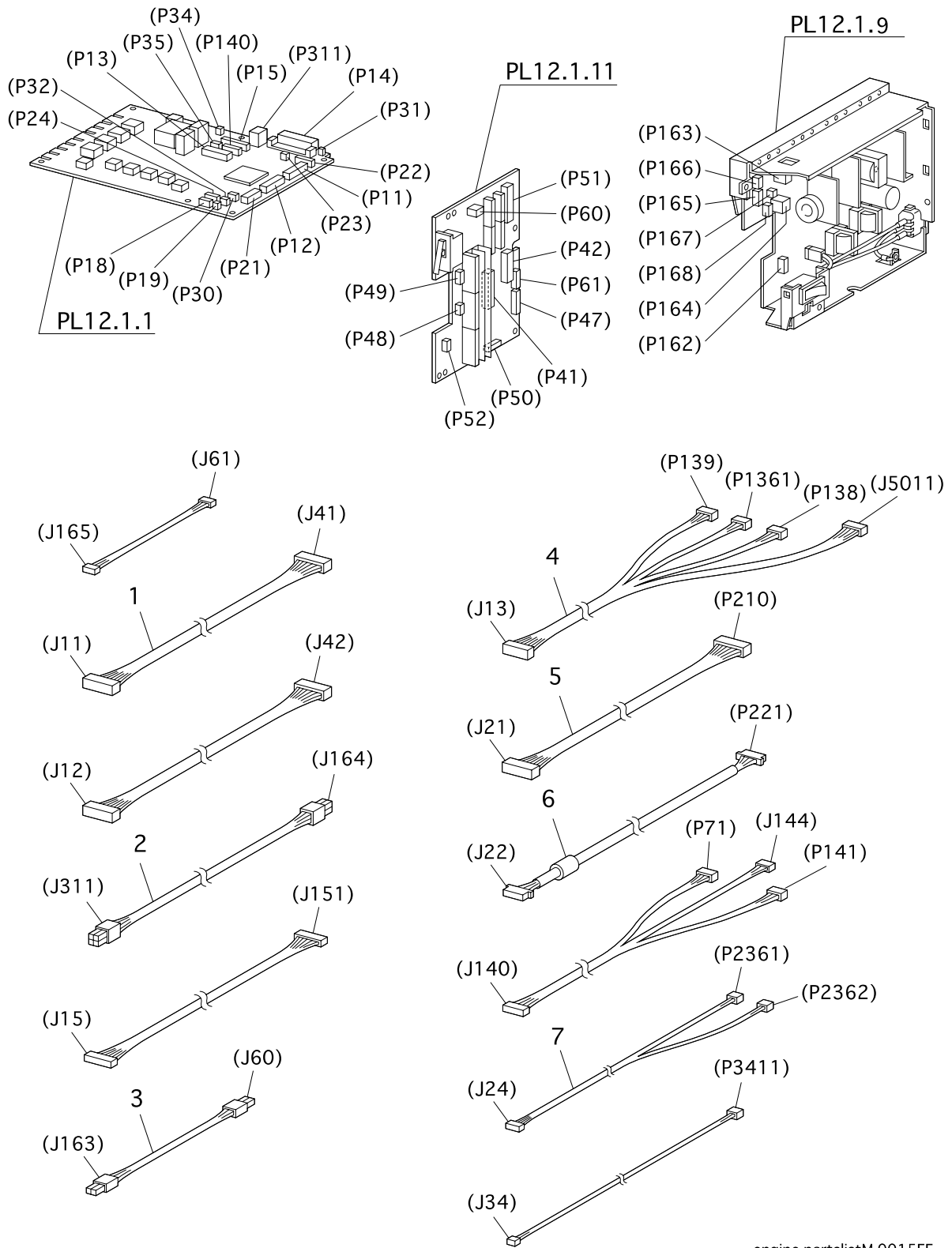


engine partslist0014FE

PL 12.1 Electrical [List]

Item	Parts name	
1	PWBA HNB MCU	865160K93610
2	Fan Rear	865127E82900
3	Clamp Guide Harness	865019E49010
4	Controller Board	865160K94530
5	Plate Rear Ess	865015E75141
6	Spring Earth Ess	865809E29820
7	Guide R Ess	865032E17450
8	Guide L Ess	865032E17440
9a	LVPS Std (230V)	865105K20320
9b	LVPS Std (100/120V)	865105K20310
10	Harness Assy AC SW	865162K69581
11	PWBA HNB DRV	865160K93700
12	Housing Assy Contact	865802K32500

PL 13.1 Harness [Illustration]



engine partslistM 0015FE

PL 13.1 Harness [List]

Item	Parts name	
1	Harness Assy Drv (J11-J41)	865162K69720
2	Harness Assy LVRPG (J164-J311)	865162K69740
3	Harness Assy 24V (J60-J163)	865162K69760
4	Harness Assy Front 1A (J13-P139/P1361/P1381/J5011)	865162K69770
5	Harness Assy OPF Main (J121-P210)	865162K69781
6	Harness Assy Opepane as (J22-P221)	865162K69790
7	Harness Assy EProm (J140-P71/J144/P141)	865162K69810