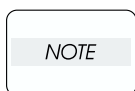


Chapter 5 Parts List

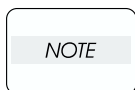
1. Parts List

1.1 Caution for use of parts list

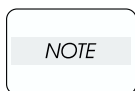
- ◆ The figures indicating the illustrations are the item No. in the list and present correspondence between the illustrations and parts.
- ◆ The notation of PL "X.Y.Z" is composed of the plate (PL), item "X.Y", and parts "Z".
- ◆ The alphabet characters in the illustrations represent screws and clips as follows:
"S": screw, "E": E-ring, "KL": KL clip, "C": C-ring, and "N": nut
- ◆ "▼" mark in the illustrations are attached to items indicating assembly parts in the illustrations.
- ◆ Encircled alphabetical figures in the illustrations indicate interrupted leader lines. Same characters in the illustrations represent lines to be connected.
- ◆ The mark "(with 2-5)" attached to assembly parts on the illustrations and lists represents that the items "2, 3, 4, and 5" of that plate are contained and the mark "(with 2-5, PL6.1.1.1)" represent that the item "2, 3, 4, and 5" of that plate and the item "1" of the plate "6.1" are contained.
- ◆ The mark "[Same PLX.Y.Z]" attached to parts in the illustrations and lists represents that the parts is the same as the parts of the item "Z" of the plate "X.Y".
- ◆ The mark "★" attached to the item in the list represents "recommended spare parts" which can be usually supplied. (Supply of other parts shall be examined separately.)
- ◆ The mark "※" attached to parts in the list represents "Note" or "Reference" about that parts is contained in the same page.
- ◆ "HIGH ASSY" in the list represent the high level assembly parts containing that parts.



For spare parts, refer to the "Spare parts list" which is issued separately.

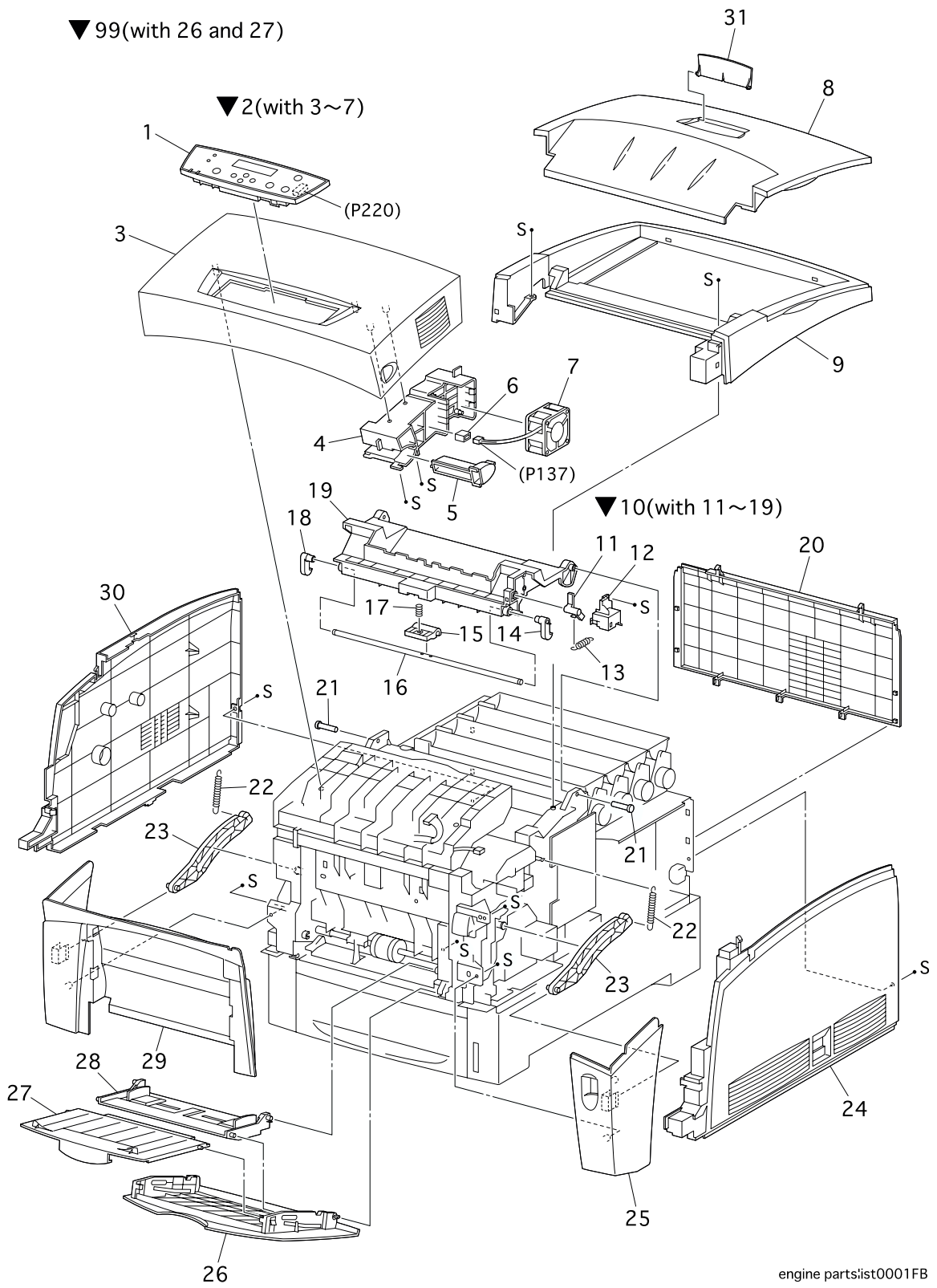


For the connector (P/J), parts such as harness, wire, etc. in the list, refer to "Chapter 6, Electric wiring"



It should be noted that configuration of parts may be different or some parts are not used depending on specifications of OEM.

PL 1.1 Cover [Illustration]

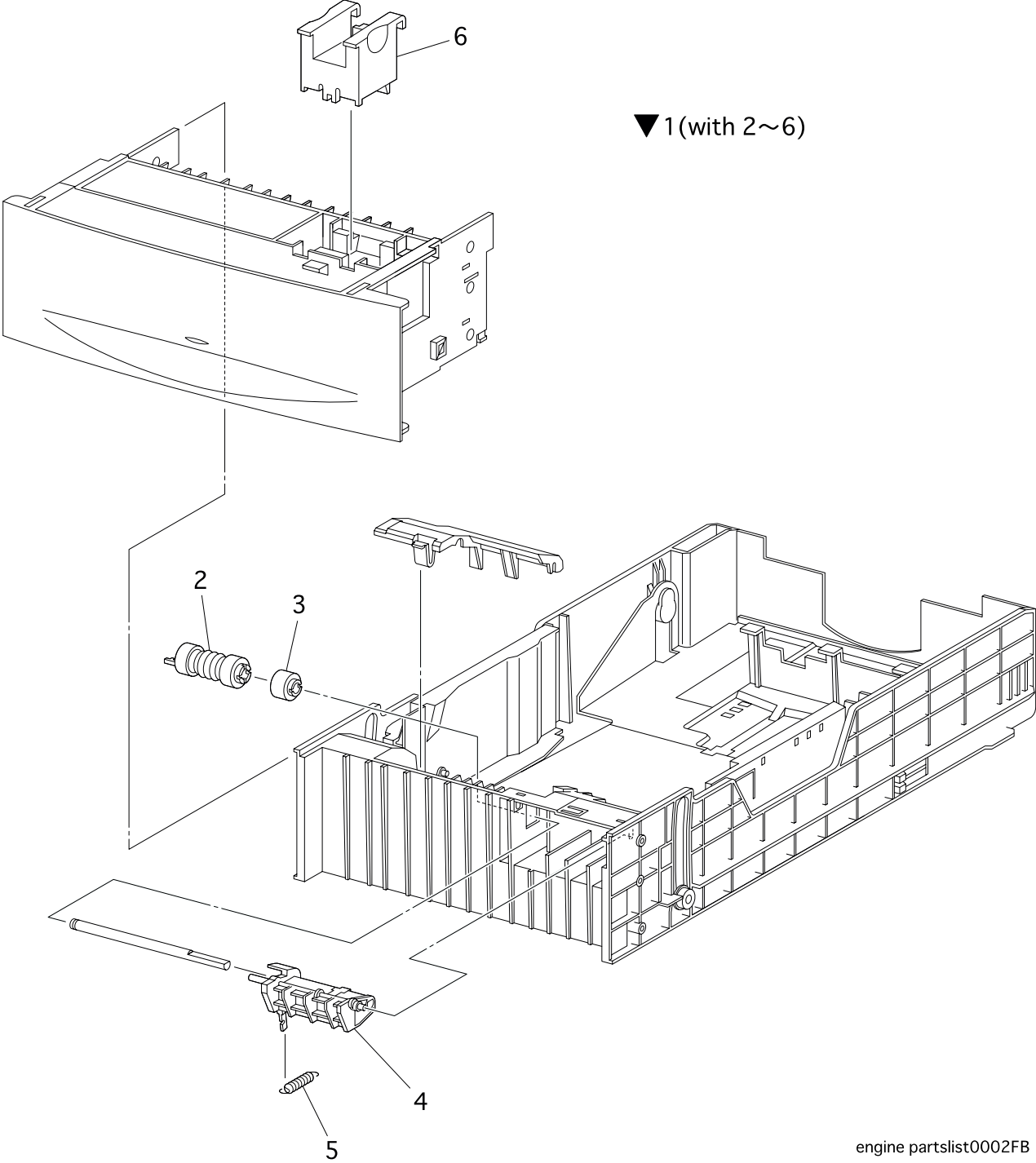


engine partslist0001FB

PL 1.1 Cover [List]

Item	Parts name	
1	CONSOLE PANEL HANABI.....	865802K32510
2	COVER ASSY FRONT HEAD (with 3~7).....	865802K32860
3	--	
4	HOLDER LEVER OUT	865019E48220
5	LEVER OUT	865011E10690
6	--	
7	FAN FUSER	865127E82890
8	COVER TOP	865802E31150
9	COVER TOP MAIN	865802E22950
10	COVER ASSY TOP PHD(with 11~19)	865802K33120
11	--	
12	--	
13	SPRING CAM I/R	865809E28210
14	LATCH TOP R.....	865003E53230
15	HANDLE TOP	865003E56850
16	--	
17	SPRING HANDLE	865809E28240
18	LATCH TOP L	865003E53220
19	--	
20	COVER REAR.....	865802E22930
21	STUD TOP	865026E76270
22	SPRING LINK.....	865809E28570
23	LINK	865012E10050
24	COVER SIDE R.....	865802E22910
25	COVER ASSY FRONT IN.....	865802K34280
26	COVER MSI	865050K44820
27	TRAY MSI SLIDE	865050E16900
28	TRAY ASSY BASE.....	865050K44610
29	COVER ASSY FRONT.....	865802K34290
30	COVER SIDE L	865802E22900
31	COVER TOP STOPPER	865802E31170
99	TRAY ASSY LOW(with 26 and 27)	865050K44820

PL 2.1 Paper Cassette [Illustration]

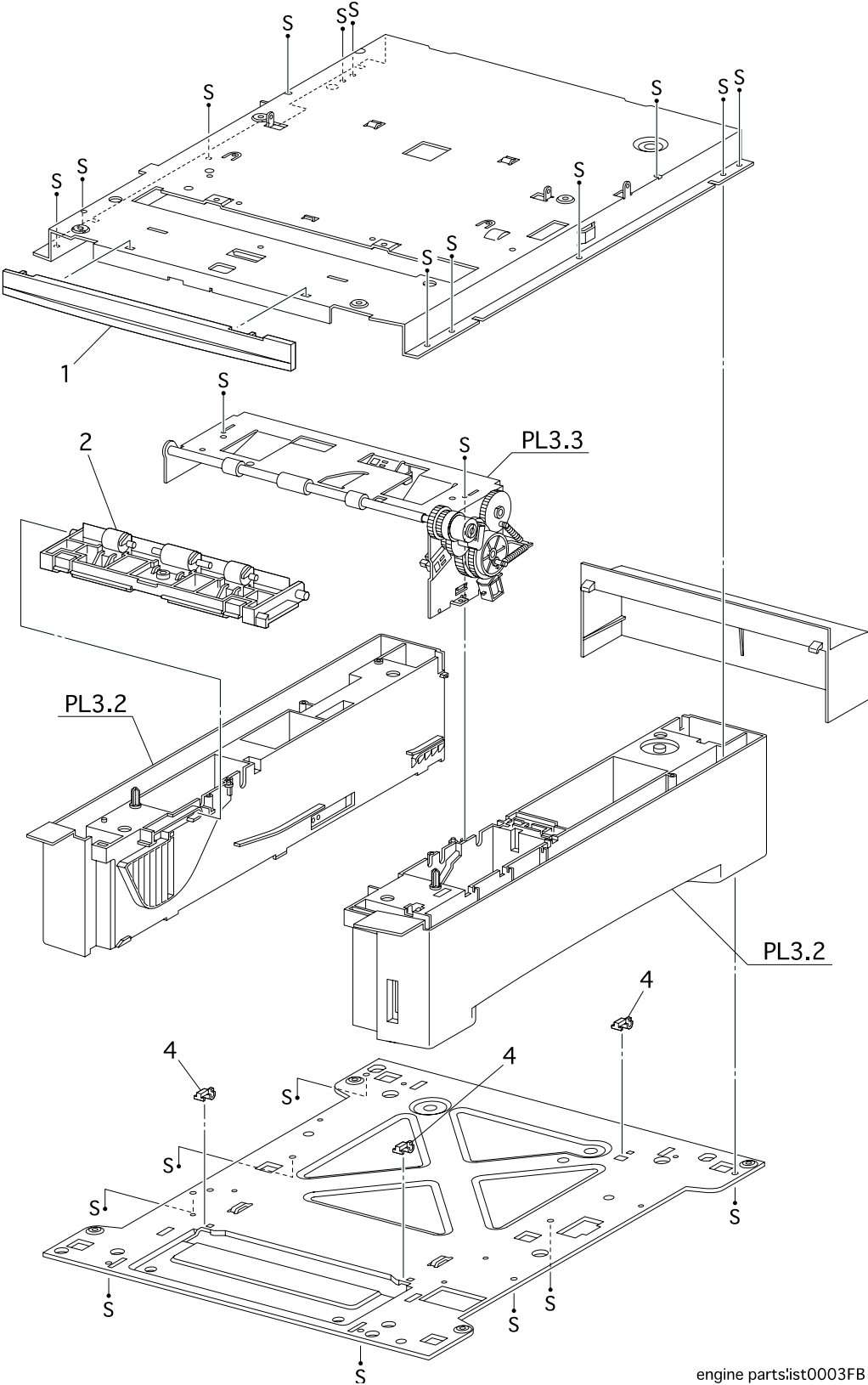


engine partslist0002FB

PL 2.1 Paper Cassette [List]

Item	Parts name	
1	CASSETTE ASSY(with 2~6)	865084K03070
2	ROLL ASSY	865059K21730
3	CLUTCH ASSY FRICTION	865005E16150
4	HOLDER RETARD.....	865019E49230
5	SPRING RETARD.....	865809E30100
6	A5 BLOCK	

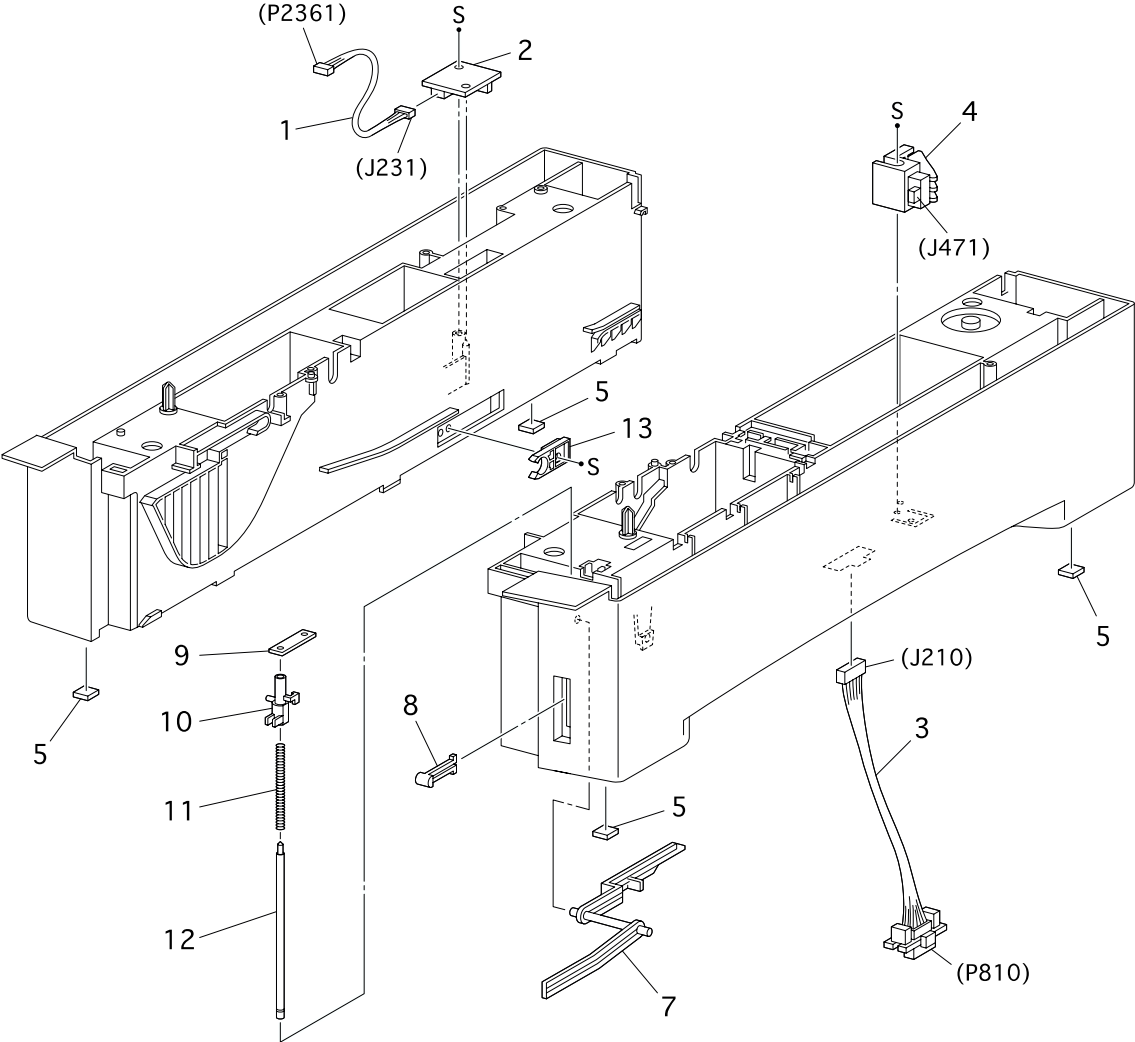
PL 3.1 Paper Feeder I [Illustration]



PL 3.1 Paper Feeder I [List]

Item	Parts name	
1	COVER FDR FRONT	865802E22810
2	CHUTE ASSY TURN	865054K18000
3	--	
4	BLOCK	865014E42120
5	--	

PL 3.2 Paper Feeder II [Illustration]

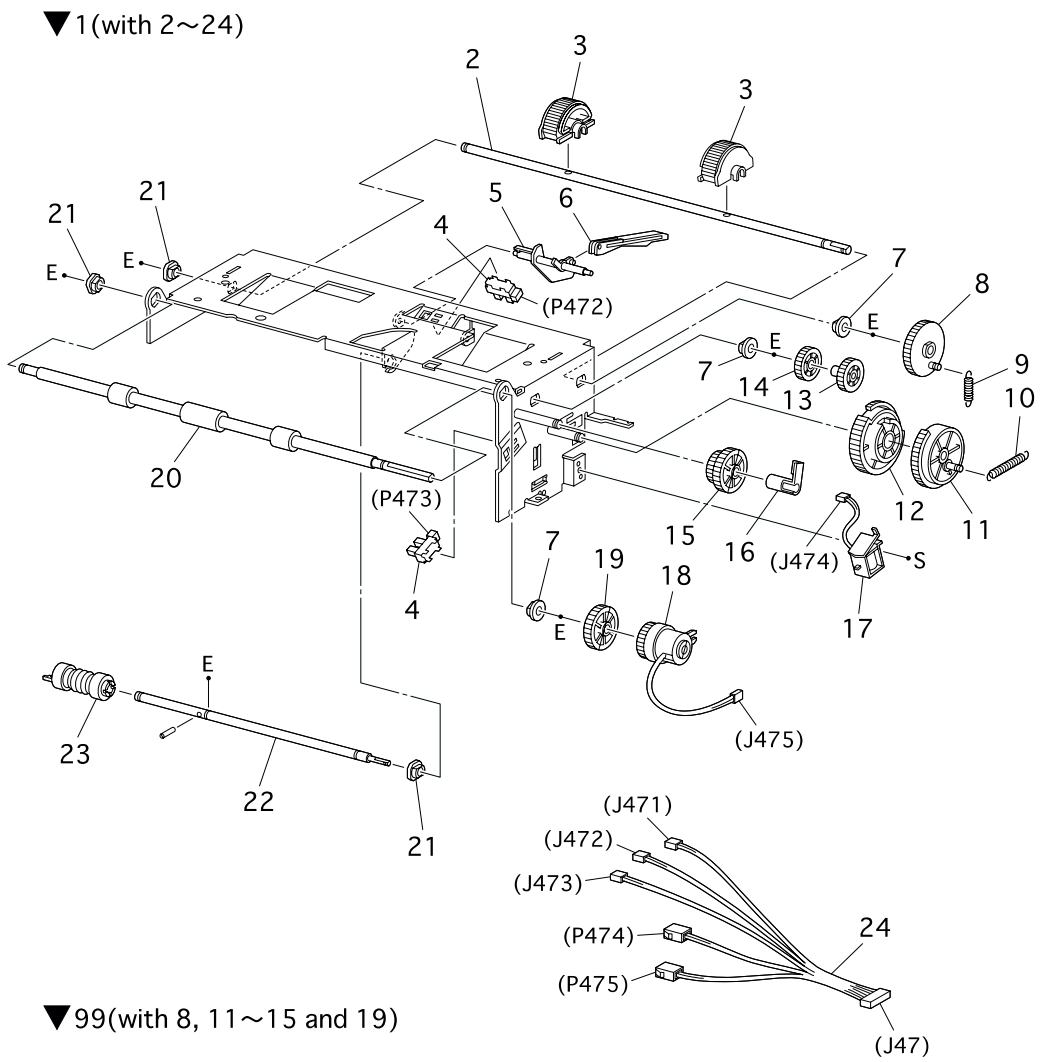


engine partslist0004FB

PL 3.2 Paper Feeder II [List]

Item	Parts name	
1	HARNESS ASSY TMPA(J231-J2361)	865162K69650
2	SENSOR HUM TEMP	865130K61530
3	HARNESS ASSY OPFREC(J210-P810).....	865162K69700
4	SWITCH ASSY SIZE.....	865110K11240
5	FOOT	865017E92080
6	--	
7	LEVER LOW PAPER	865011E10680
8	INDICATOR.....	865123E91110
9	HOLDER SHAFT INDICATOR.....	865019E48400
10	GUIDE INDICATOR	865032E16070
11	SPRING INDICATOR.....	865809E28300
12	SHAFT INDICATOR.....	865006E71960
13	STOPPER CST	865003E56900

PL 3.3 Paper Feeder III [Illustration]

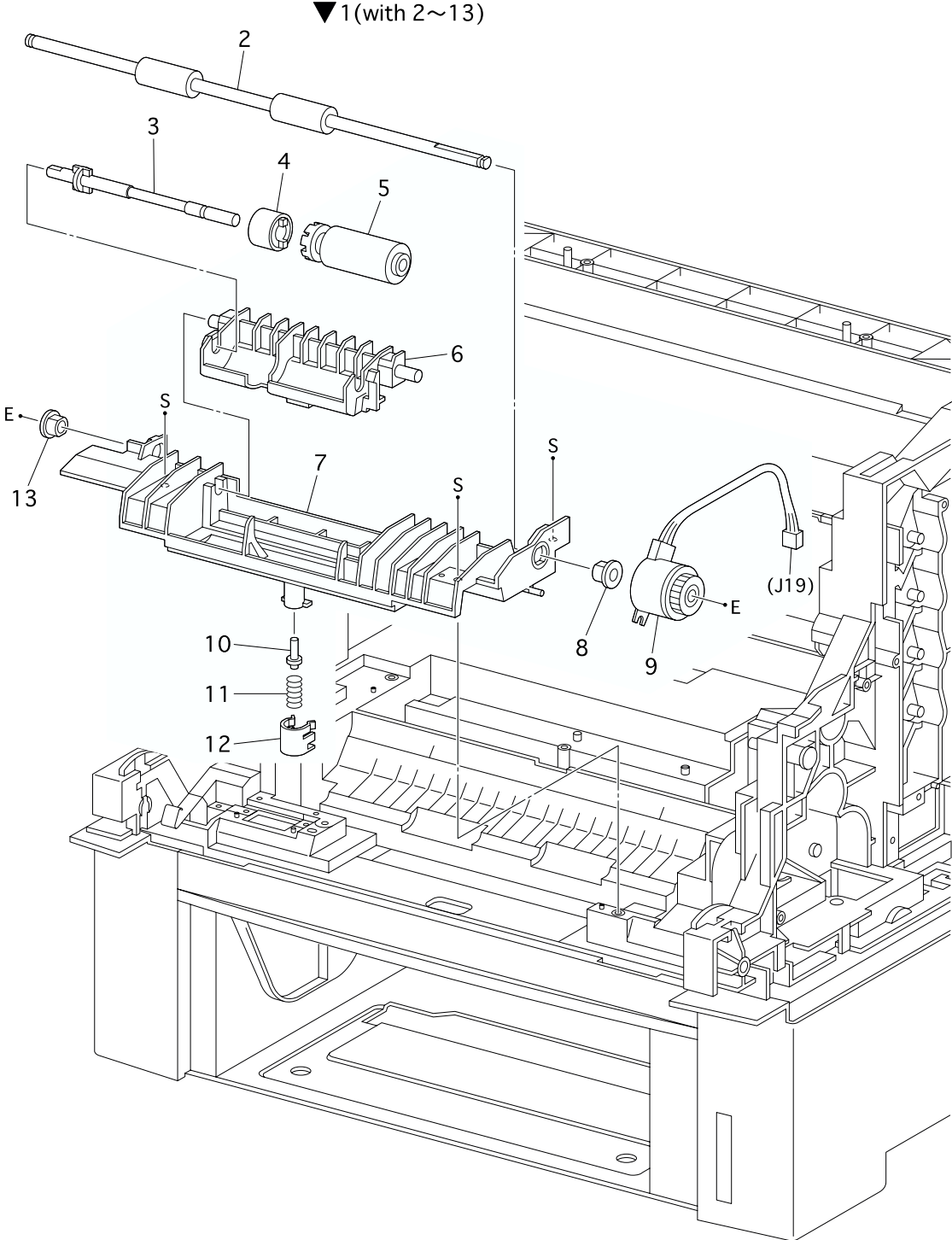


engine partslist0005FA

PL 3.3 Paper Feeder III [List]

Item	Parts name	
1	PICKUP ASSY(with 2~24).....	865001K03730
2	SHAFT FEED 1	865006E71970
3	ROLL ASSY FEED	865059K18240
4	SENSOR PHOTO	865130E82740
5	ACTUATOR NO PAPER	865120E18640
6	LINK ACTUATOR.....	865012E93210
7	BEARING (ø6xL8)/METAL.....	865413W75959
8	--	
9	SPRING FEED 1	865809E28310
10	SPRING FEED H	865809E28320
11	--	
12	--	
13	--	
14	--	
15	--	
16	STOPPER CLUTCH.....	865003E53290
17	SOLENOID FEED	865121E87700
18	CLUTCH ASSY TURN	865005K06010
19	--	
20	ROLL ASSY TURN	865059K18260
21	BEARING (ø6xL8)/BLACK.....	865413W11660
22	SHAFT FEED 2	865006E71980
23	ROLL ASSY	865059K18250
24	HARNESS ASSY FEEDER(J47-J471/J472/J473/P474/P475).....	865162K69690
99	KIT GEAR FDR(with 8,11~15 and 19)	865604K02530

PL 4.1 Housing Assy Retard [Illustration]

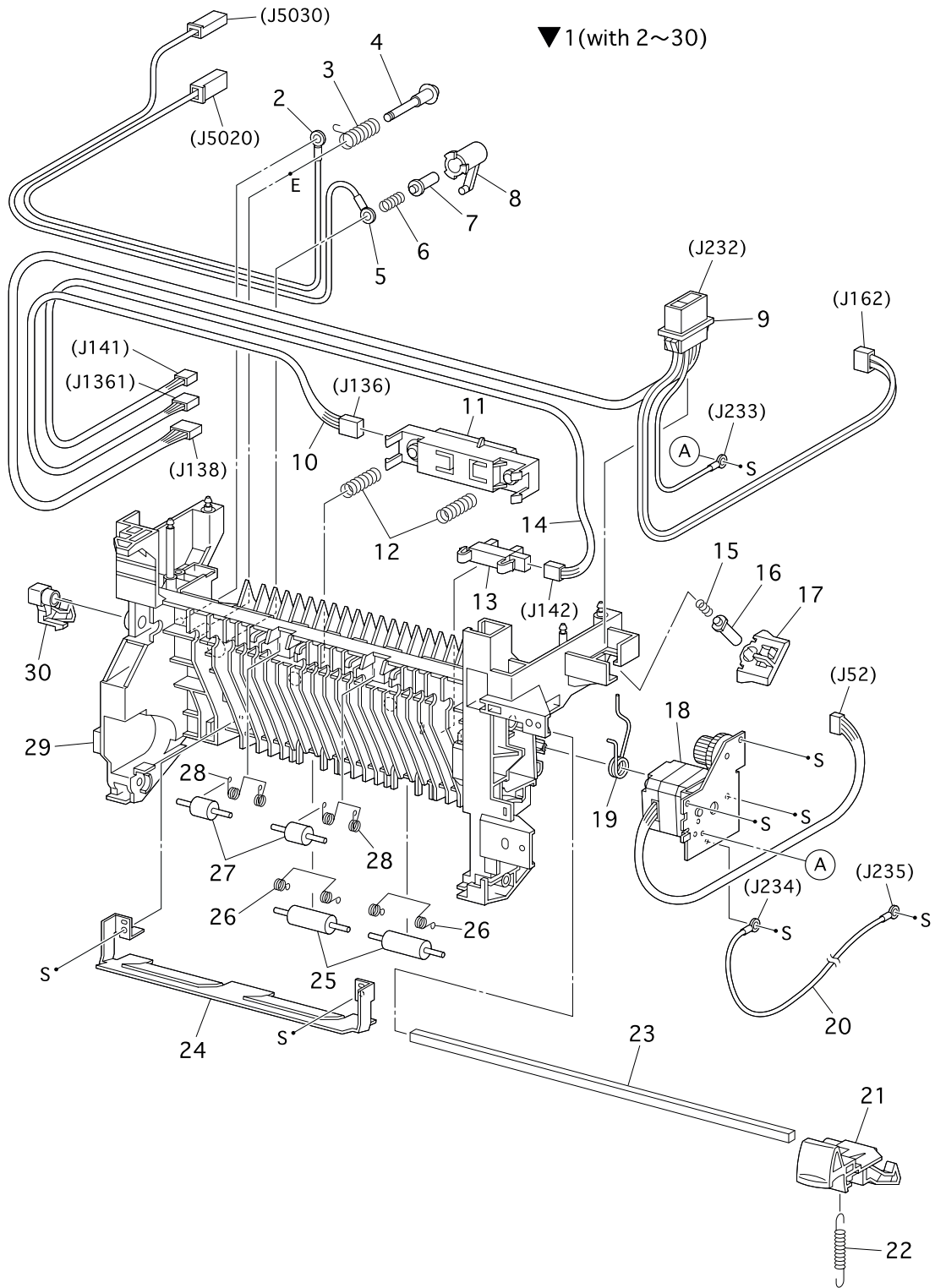


engine partslist0006FA

PL 4.1 Housing Assy Retard [List]

Item	Parts name	
1	HOUSING ASSY RETARD(with 2~13)	865802K24840
2	ROLL TURN	865059K19940
3	--	
4	CLUTCH ASSY FRICTION	865005K82440
5	ROLL ASSY RETARD.....	865059K19950
6	--	
7	--	
8	BEARING	865013E18060
9	CLUTCH TURN.....	865121E87710
10	STUD RETARD.....	865026E77720
11	SPRING RETARD 370.....	865809E28670
12	CAP RETARD	865021E97470
13	BEARING EARTH.....	865016E19270

PL 5.1 Chute Assy In [Illustration]

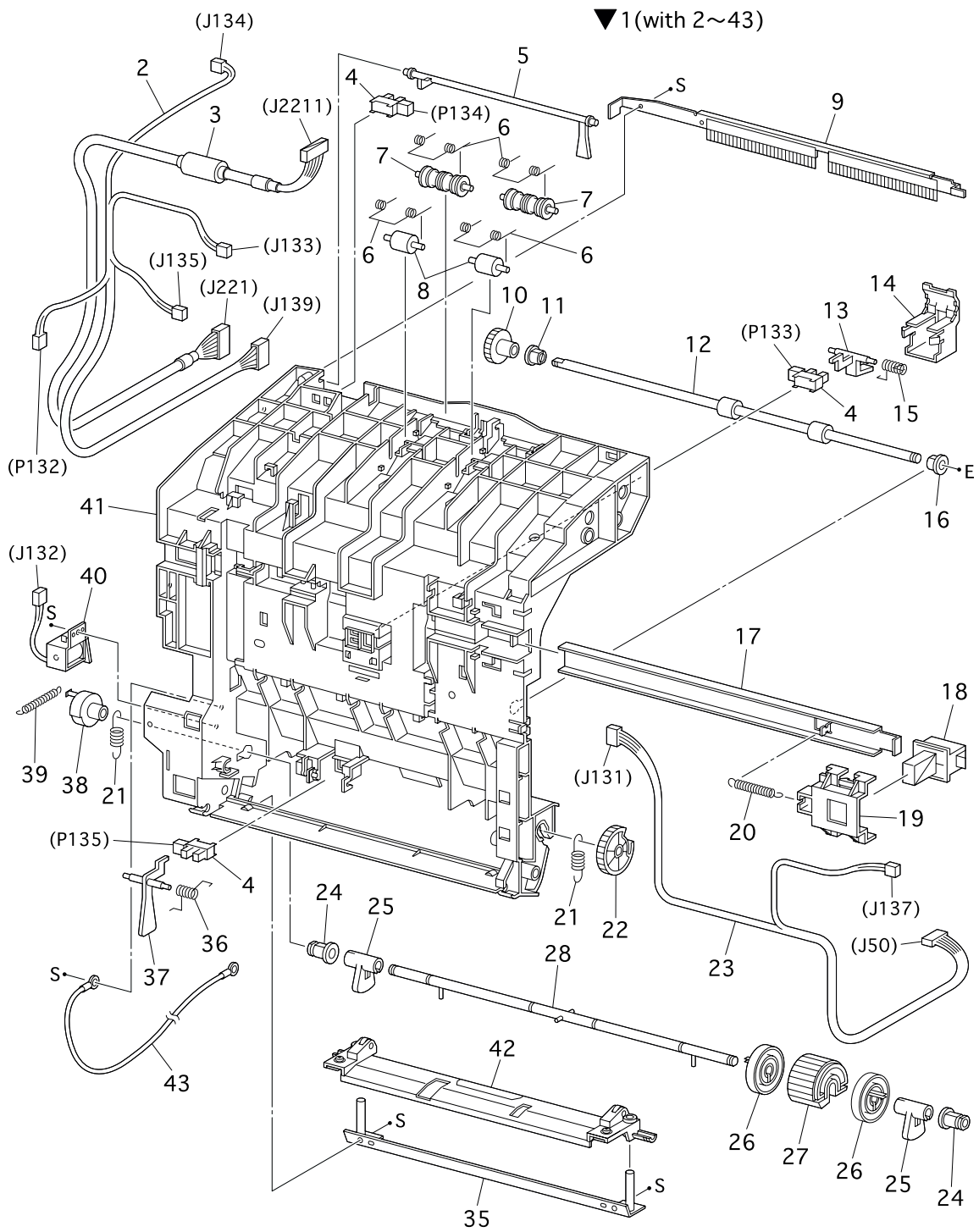


engine partslist0007FA

PL 5.1 Chute Assy In [List]

Item	Parts name	
1A	CHUTE ASSY IN(100V)	865084K03670
1B	CHUTE ASSY IN(200V)	865084K03680
2	WIRE ASSY BTR2(J5020)	865117K34570
3	SPRING BTR R2	865809E28630
4	--	
5	WIRE ASSY DTSK(J5030)	865117K34560
6	--	
7	--	
8	--	
9A	HARNESS ASSY FSR2(100V/120V)(J232-J138/J162/J233)	865162K69630
9B	HARNESS ASSY FSR22(220V)(J232-J138/J162/J233)	
10	HARNESS ASSY CTD(J136-J1361)	865162K69620
11	SENSOR ADC ASSY	865019K97900
12	SPRING ADC	865809E28620
13	SENSOR TNR FULL	865130E91010
14	HARNESS ASSY TFLSNS(J141-J142)	865162K69830
15	--	
16	--	
17	--	
18	FUSER DRIVE ASSY	865007K86690
19	--	
20	WIRE ASSY FSR EARTH(J234-J235)	865117K34580
21	LATCH R	865003E53370
22	SPRING LATCH 1.2kgf	865809E28590
23	--	
24	--	
25	ROLL PINCH TURN	865059E95690
26	SPRING PINCH TURN	865809E28610
27	ROLL PINCH DUP	865059E95700
28	SPRING PINCH DUP	865809E28600
29	--	
30	LATCH L	865003E53380

PL 6.1 Chute Assy Out [Illustration]

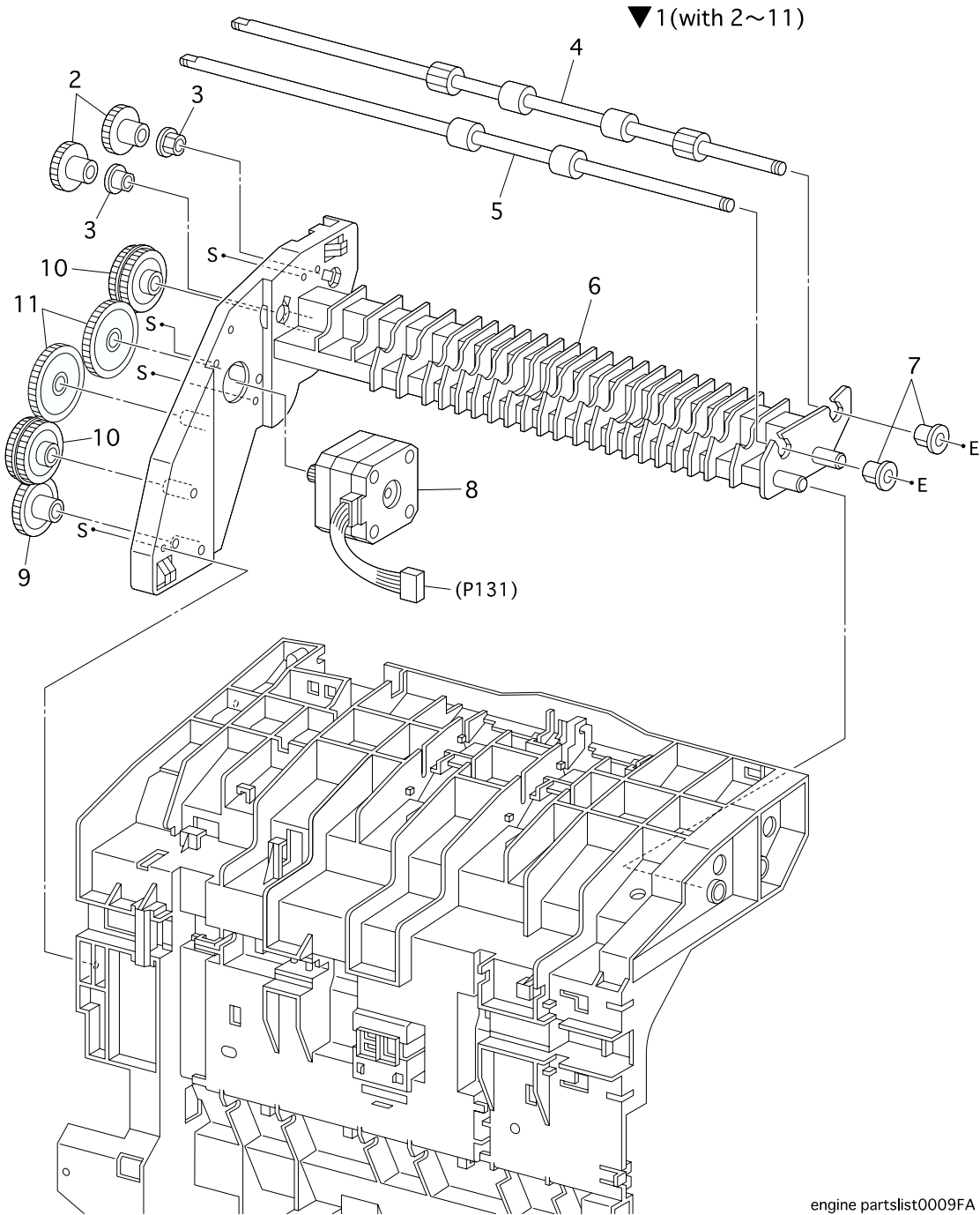


engine partslist0008FA

PL 6.1 Chute Assy Out [List]

Item	Parts name	
1	CHUTE ASSY OUT(with 2~43)	865084K03690
2	HARNESS ASSY FRONT 2(J139-P132/J133/J134/J135)....	865162K69590
3	HARNESS ASSY OPEPANE BS(J221-J2211)	865162K69610
4	SENSOR PHOTO	865130E82740
5	ACTUATOR FULL.....	865120E18740
6	SPRING PINCH E0IT	865809E28710
7	ROLL PINCH E0IT	865059E95780
8	ROLL PINCH.....	865059E95760
9	--	
10	GEAR 30	865007E66670
11	BEARING EARTH	865059E95750
12	ROLL DUP	865059E95750
13	ACTUATOR DUP	865120E18750
14	COVER ACTUATOR.....	865802E23280
15	SPRING SNR DUP	865809E30110
16	BEARING	865013E19280
17	--	
18	LATCH OUT	865003E53410
19	--	
20	SPRING LATCH OUT	865809E28730
21	SPRING N/F MSI 250gf	865809E28700
22	GEAR MSI.....	865007E65840
23	HARNESS ASSY DUP(J50-J131/J137).....	865062K69600
24	--	
25	CAM MSI	865008E93880
26	ROLL CORE MSI	865059E95740
27	ROLL ASSY FEED.....	865059K19960
28	--	
29	--	
30	--	
31	--	
32	--	
33	--	
34	--	
35	--	
36	SPRING SENSOR MSI	865809E28720
37	ACTUATOR MSI	865120E18730
38	STOPPER SOL	865003E53400
39	SPRING SOL 0.5	865809E28690
40	SOLENOID FEED MSI.....	865121E88250
41	--	
42	PLATE ASSY BOTTOM MSI.....	865015K52790
43	WIRE ASSY DUP EARTH	

PL 7.1 Chute Assy Exit [Illustration]

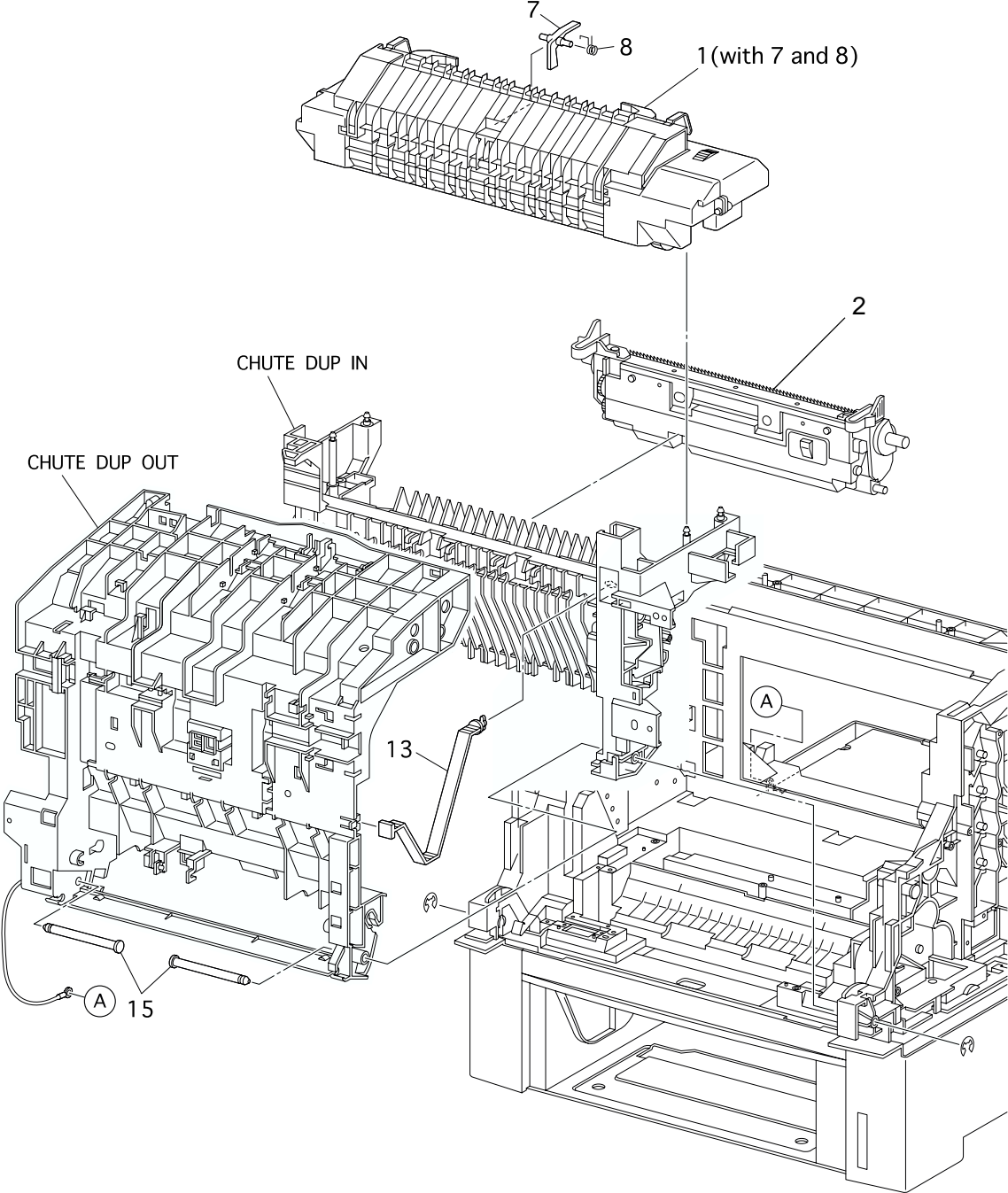


engine partslist0009FA

PL 7.1 Chute Assy Exit [List]

Item	Parts name	
1	CHUTE ASSY EXIT(with 2~11).....	865054K18100
2	--	
3	--	
4	ROLL EXIT	865059E96430
5	ROLL MID	865059E95770
6	--	
7	--	
8	MOTOR ASSY DUP	865127K31710
9	--	
10	--	
11	--	

PL 8.1 BTR Assy & Fuser [Illustration]

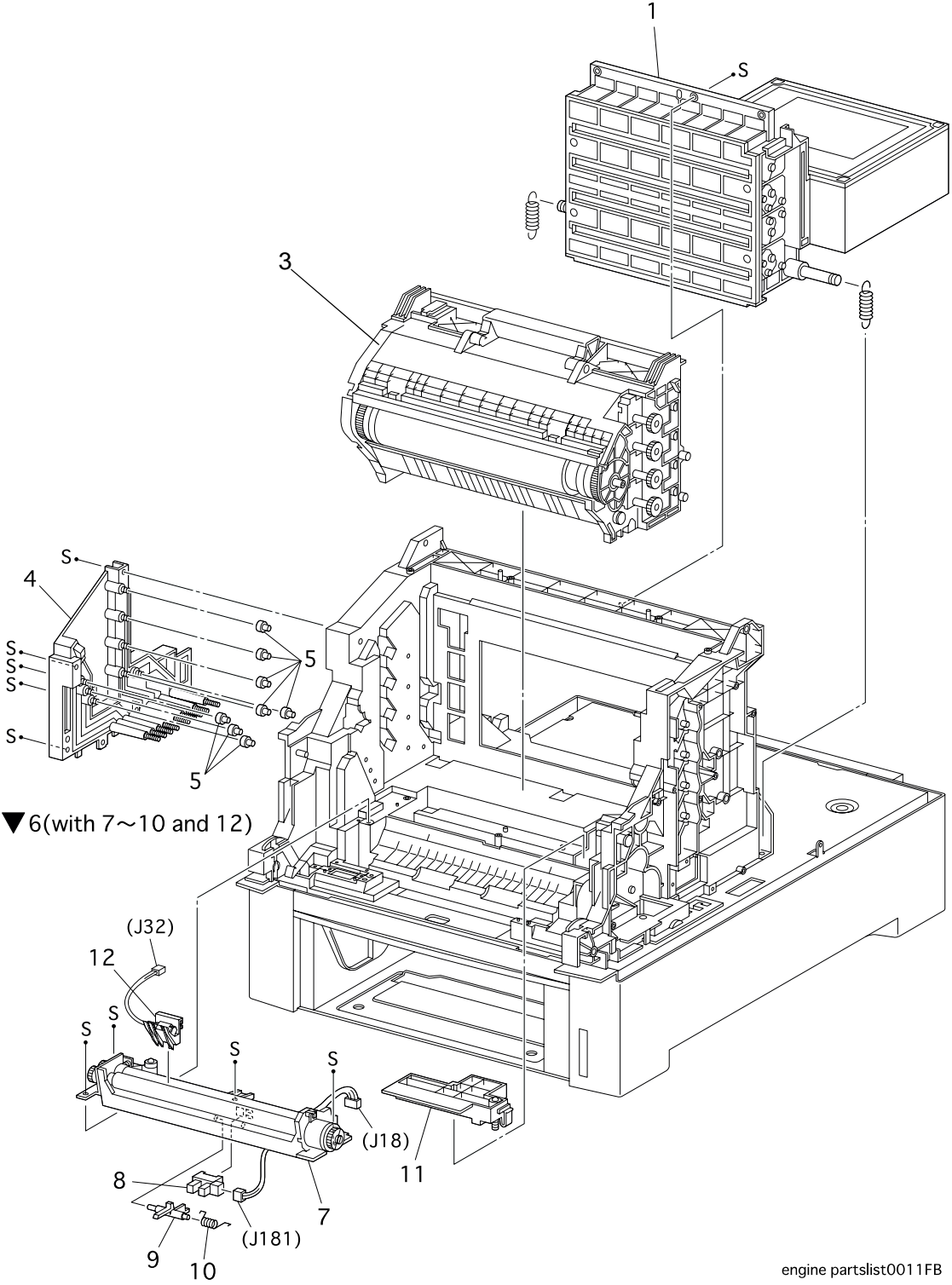


engine partslist0010FB

PL 8.1 BTR Assy & Fuser [List]

Item	Parts name	
1	FUSER ASSY(with 7 and 8)110V MQI.....	865NS080199A
	FUSER ASSY (with 7 and 8)220V MQI.....	865NS080199B
2	BTR ASSY(Transfer Unit)	1710494-001
3	--	
4	--	
5	--	
6	--	
7	ACTUATOR EXIT.....	865120E20790
8	SPRING ACTUATOR.....	865809E34550
9	--	
10	--	
11	--	
12	--	
13	STRAP	865003E53390
14	--	
15	SHAFT PIVOT	865006E72030

PL 9.1 Xerographics [Illustration]



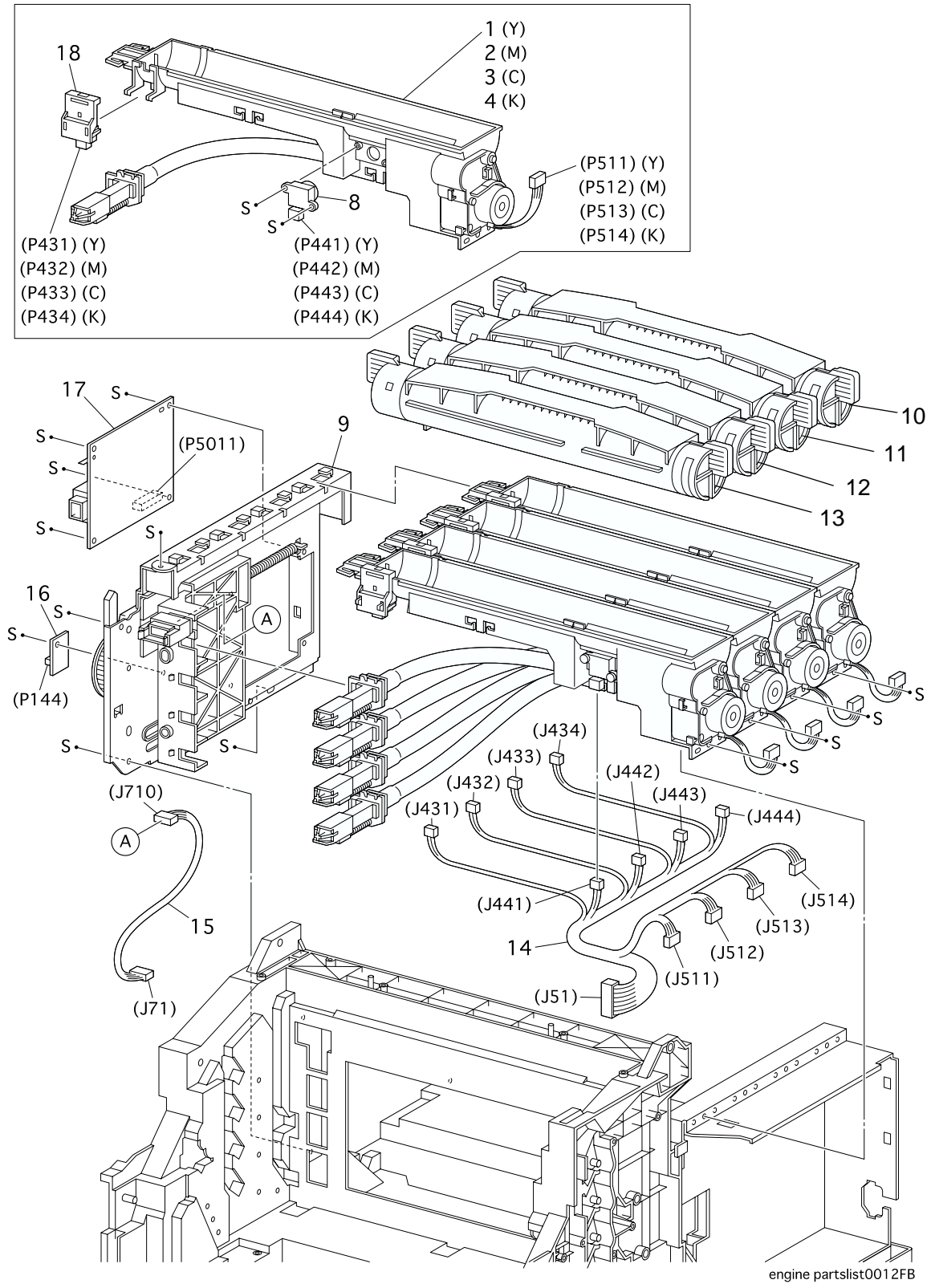
engine partslist0011FB

PL 9.1 Xerographics [List]

Item	Parts name	
1	ROS ASSY	865062K10860
2	--	
3	PHD ASSY PKG MQI.....	1710493-001
4	HSG ASSY BIAS.....	865805K24820
5	STUD PLUNGER	865026E77670
6	CHUTE ASSY REGI(with 7~10 and 12).....	865054K20530
7	--	
8	SENSOR PHOTO	865130E82740
9	ACTUATOR REGI.....	865120E20680
10	SPRING SENSOR REGI.....	865809E34580
11	HOUSING ASSY ELEC.....	865802K24830
12	KIT SNR OHP(w/HARNESS)*.....	865604K02520

*Note:FACTORY OPTION

PL 10.1 TCRU Assy [Illustration]

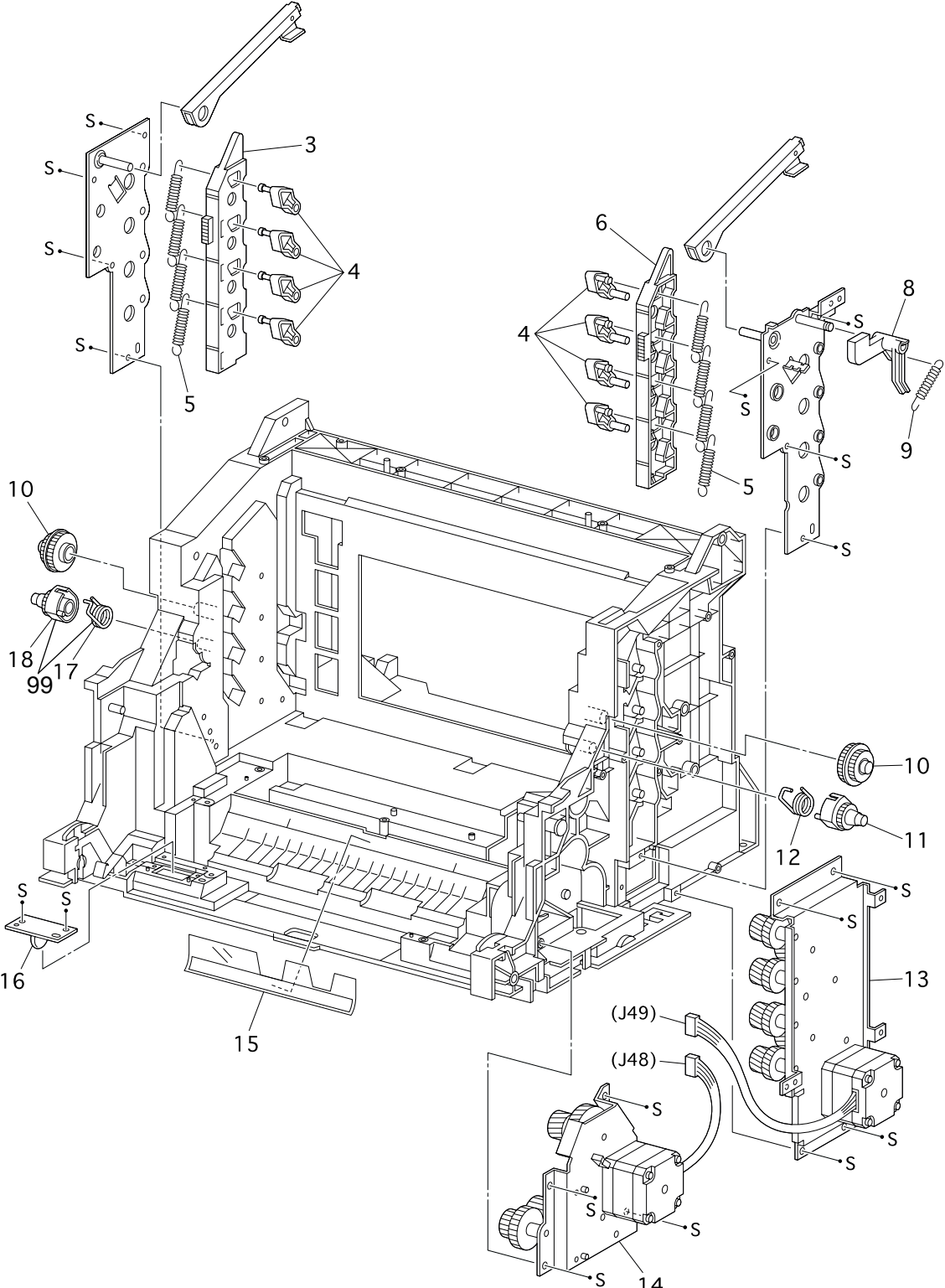


engine partslist0012FB

PL 10.1 TCRU Assy [List]

Item	Parts name	
1	HOLDER ASSY Y	865084K03770
2	HOLDER ASSY M.....	865084K03780
3	HOLDER ASSY C	865084K03790
4	HOLDER ASSY K	865084K03800
5	--	
6	--	
7	--	
8	SENSOR TONER LOW	865130E85200
9	PLATE ASSY DISPENSER L.....	865015K49550
10	PKG TCRU MQI-Y	1710490-002
11	PKG TCRU MQI-M.....	1710490-003
12	PKG TCRU MQI-C	1710490-004
13	PKG TCRU MQI-K	1710490-001
14	HARNESS ASSY TNR	865162K69670
	(J51-J431/J432/J433/J434/J441/J442/J443/J444/J511/J512/J513/J514)	
15	HARNESS ASSY CRUM(J71-J710)	865062K69680
16	PWBA EEPROM	865160K83190
17	S-HVPS	865105K19520
18	SWITCH TCRU ASSY.....	865110K11250

PL 11.1 Frame & Drive [Illustration]

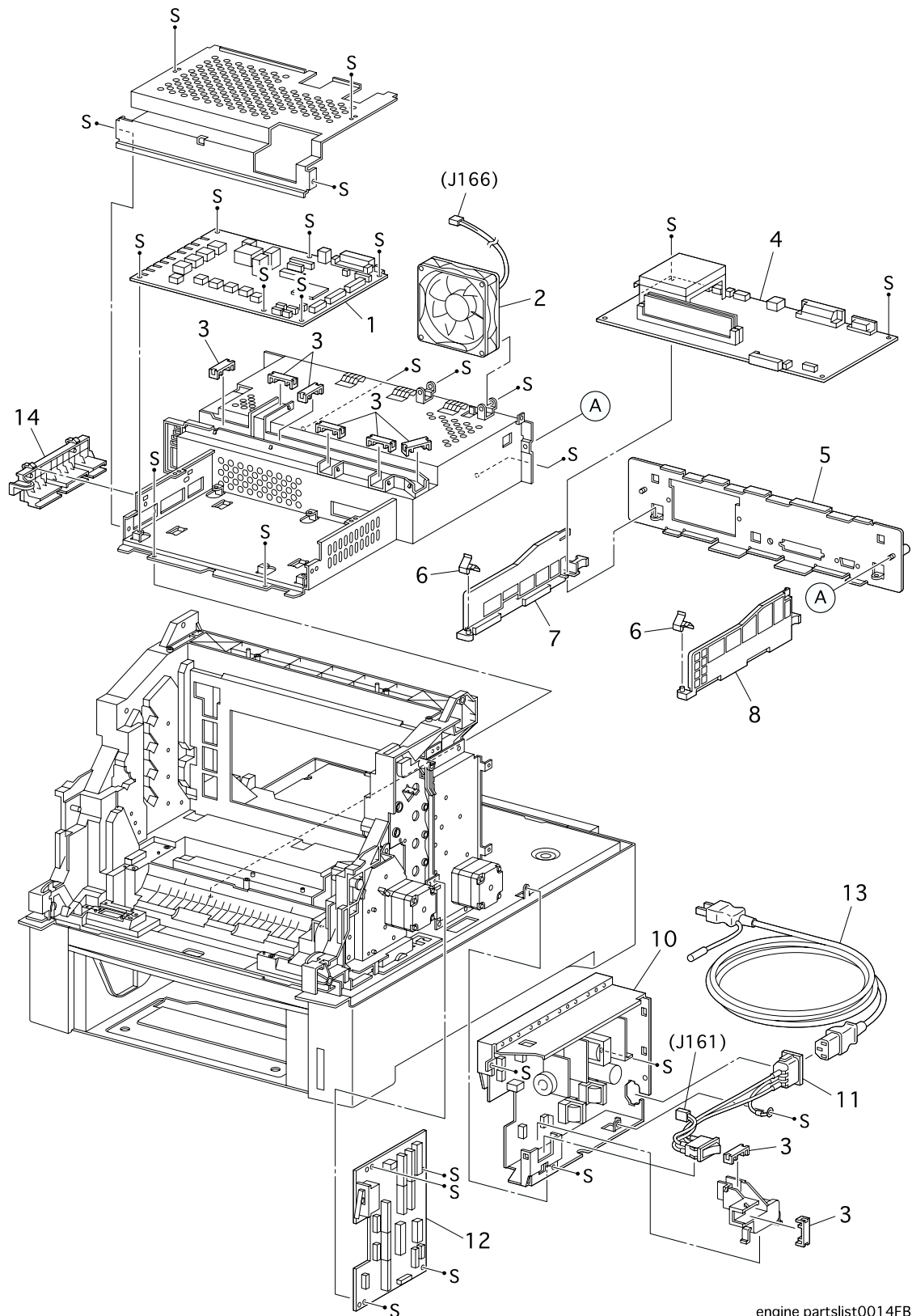


engine partslist0013FB

PL 11.1 Frame & Drive [List]

Item	Parts name	
1	--	
2	--	
3	LINK LEVER L.....	865012E10040
4	LEVER DRUM.....	865011E10730
5	SPRING LEVER 30N.....	865809E28430
6	LINK LEVER R.....	865012E10030
7	--	
8	ACTUATOR I/R.....	865120E18680
9	SPRING I/R.....	865809E28460
10	GEAR IDL. PRESS.....	865007E65810
11	GEAR PRESS R.....	865007K87250
12	SPRING IDT R.....	865809E28440
13	DEVE DRIVE ASSY.....	865007K86680
14	MAIN DRIVE ASSY.....	865007K86670
15	FILM REGI.....	865035E58130
16	PWBA ASSY EARTH.....	865160K70780
17	SPRING IDT L.....	865809E28450
18	GEAR PRESS L.....	865007E65800
99	GEAR ASSY PRESS L.....	865007K87260

PL 12.1 Electrical [Illustration]



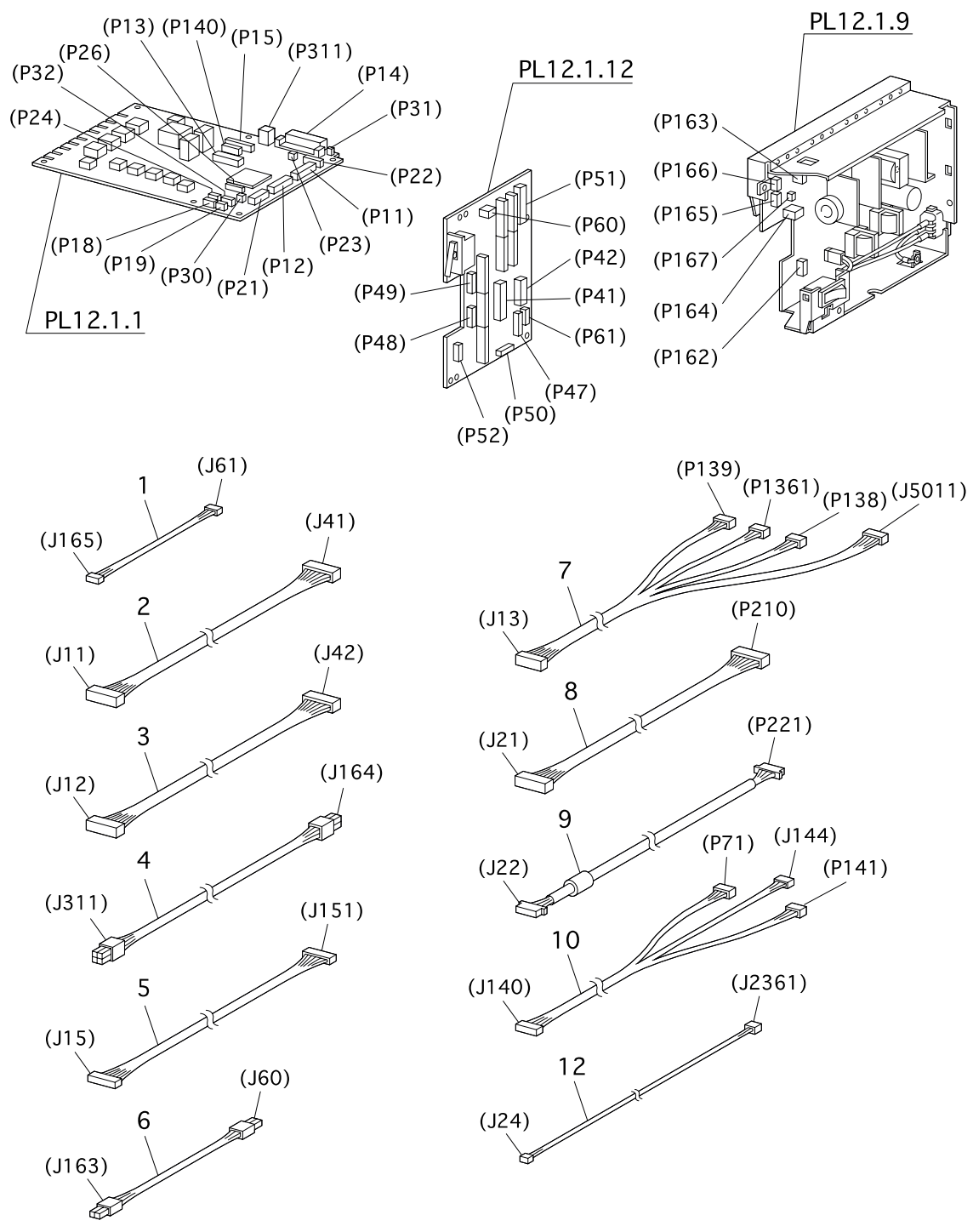
engine partslist0014FB

PL 12.1 Electrical [List]

Item	Parts name	
1	PWBA HNB MCU	865160K83960
2	FAN REAR	865127E82900
3	CLAMP GUIDE HARNESS	865019E49010
4	CONTROLLER BOARD	865160K83750
5	PLATE REAR ESS	865015K50530
6	SPRING EARTH ESS	865809E29820
7	GUIDE R ESS	865032E17450
8	GUIDE L ESS	865032E17440
9	--	
10A	LVPS STD 100/120V	865105K19480
10B	LVPS STD 230V	865105K19500
11	HARNESS ASSY AC SW	865162K69580
12	PWBA HNB DRV	865160K78360
13	POWER CORD US	865T359847
14	HOUSING ASSY CONTACT	865802K32500

PL 13.1 Harness [Illustration]

▼ 99



engine partslist0015FB

PL 13.1 Harness [List]

Item	Parts name	
1	HARNESS ASSY LVNC(J165-J61).....	865162K69710
2	HARNESS ASSY DRV 1(J11-J41).....	865162K69720
3	HARNESS ASSY DRV 2(J12-J42).....	865162K69730
4	HARNESS ASSY LVRPG(J164-J311).....	865162K69740
5	HARNESS ASSY ROSKA(J15-J151).....	865162K69750
6	HARNESS ASSY 24V(J60-J163).....	865162K69760
7	HARNESS ASSY FRONT 1A(J13-P139/P1361/P1381/J5011)	865162K69770
8	HARNESS ASSY OPF MAIN(J121-P210).....	865162K69780
9	HARNESS ASSY OPEPANE AS(J22-P221).....	865162K69790
10	HARNESS ASSY EEPROM(J140-P71/J144/P141).....	865162K69810
11	--	
12	HARNESS ASSY TMPB(J24-J2361).....	865162K69800
99	KIT PEPACK IOT.....	865604K02930