

CHAPTER 7 PARTS LIST

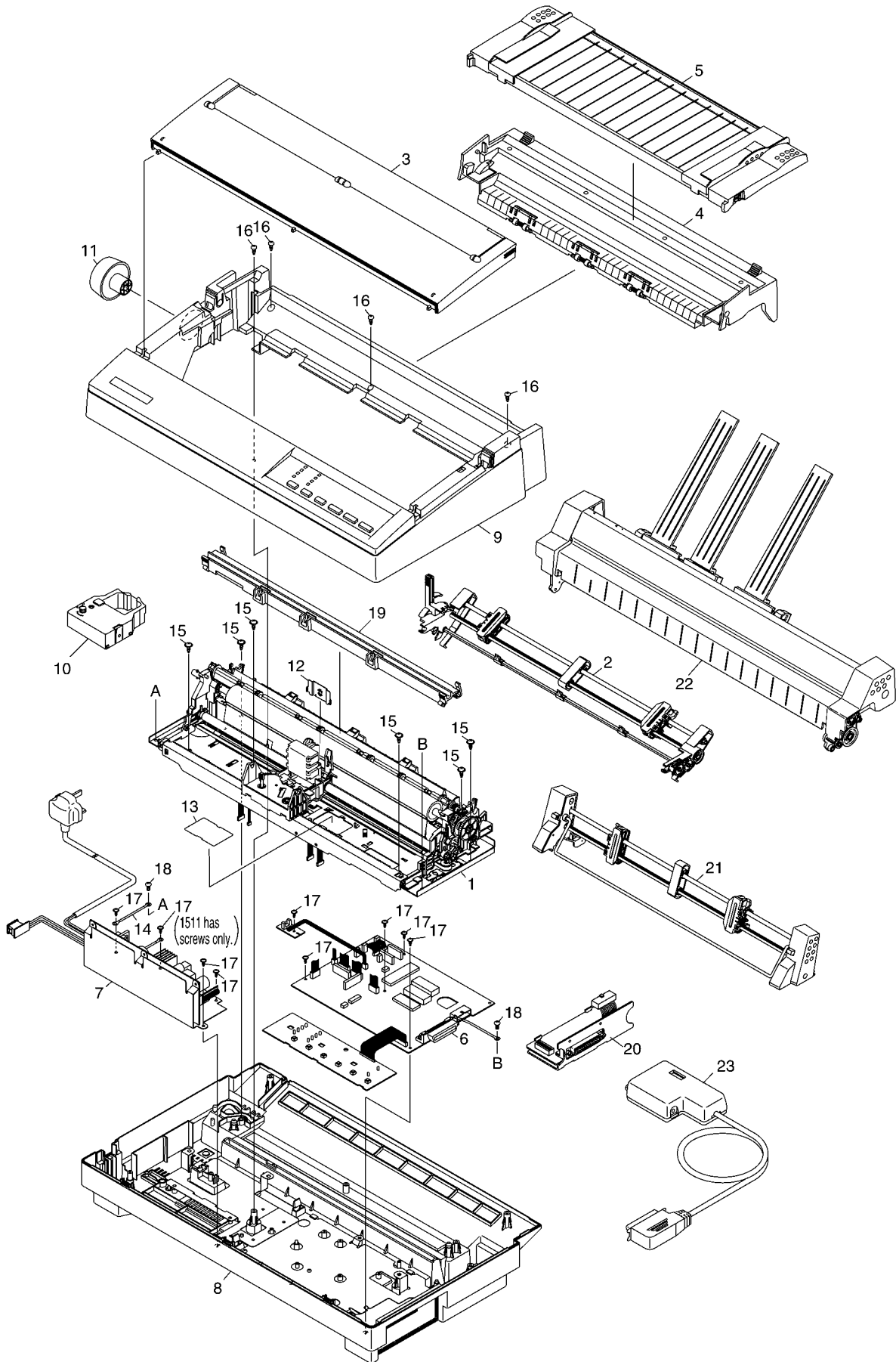
HOW TO USE PARTS LIST

- (1) DRWG. NO.
This column shows the drawing number of the illustration.
- (2) REVISED EDITION MARK
This column shows a revision number.
Part that have been added in the revised edition are indicated with "#".
Part that have been abolished in the revised edition are indicated with "*".
#1:First edition Second edition *1:First edition Second edition
- (3) PARTS NO.
Parts numbers must be notified when ordering replacement parts. Parts described as "NPN" have no parts number and are not in stock, i.e., unavailable.
- (4) PARTS NAME
Parts names must be notified when ordering replacement parts.
- (5) Q'TY
This column shows the number of the part used as indicated in the figure.
- (6) REMARKS
Where differences in specifications exist depending on location/destination.
- (7) RANK
Parts marked "S" are service parts. Service parts are recommended to be in stock for maintenance.

<p>1. Printer Assembly 72</p> <p> 1-1. Disassembly Drawing 72</p> <p> 1-2. Parts List 73</p> <p>2. Printer Mechanism 74</p> <p> 2-1. Disassembly Drawing 74</p> <p> 2-2. Parts List 75</p> <p>3. Sub - Assembly 76</p> <p> 3-1. Push Tractor Unit 76</p> <p> 3-2. Lower Case Unit 77</p> <p> 3-3. Upper Case Unit 78</p> <p> 3-4. Paper Chute Unit 79</p> <p> 3-5. Platen Unit 80</p> <p> 3-6. Carriage Unit (LC-1511) 81</p> <p> 3-7. Carriage Unit (LC-1521) 82</p> <p> 3-8. Frame L Unit 83</p> <p> 3-9. Frame R Unit 84</p> <p> 3-10. Serial IF Unit (Option) 85</p> <p> 3-11. Pull Tractor Unit (Option) 86</p> <p> 3-12. ASF (Option) 87</p> <p> 3-13. Serial-Parallel Converter (Option) 88</p> <p>4. Wiring Scheme of Printer 89</p> <p>5. Electrical Parts 92</p> <p> 5-1. Main Logic Board (LC-1511) 92</p> <p> 5-1-1. Circuit Diagram 92</p> <p> 5-1-2. Component Layout 94</p> <p> 5-1-3. Parts List 95</p> <p> 5-2. Main Logic Board (LC-1521) 98</p> <p> 5-2-1. Circuit Diagram 98</p> <p> 5-2-2. Component Layout 100</p> <p> 5-2-3. Parts List 101</p>	<p> 5-3. Control Panel Board 104</p> <p> 5-3-1. Circuit Diagram 104</p> <p> 5-3-2. Component Layout 104</p> <p> 5-3-3. Parts List 104</p> <p> 5-4. Connected Board 105</p> <p> 5-4-1. Circuit Diagram 105</p> <p> 5-4-2. Component Layout 105</p> <p> 5-4-3. Parts List 105</p> <p> 5-5. Power Supply Unit (LC-1511) 106</p> <p> 5-5-1. Circuit Diagram 106</p> <p> 5-5-2. Component Layout 107</p> <p> 5-5-3. Parts List 108</p> <p> 5-6. Power Supply Unit (LC-1521) 110</p> <p> 5-6-1. Circuit Diagram 110</p> <p> 5-6-2. Component Layout 111</p> <p> 5-6-3. Parts List 112</p> <p> 5-7. Serial Interface Board IS-8H192 (Option) 114</p> <p> 5-7-1. Circuit Diagram 114</p> <p> 5-7-2. Component Layout 115</p> <p> 5-7-3. Parts List 115</p> <p>6. Serial - Parallel Converter Board (Option) 116</p> <p> 6-1. Wiring Scheme 116</p> <p> 6-2. I/F Board 117</p> <p> 6-2-1. Circuit diagram 117</p> <p> 6-2-2. Component Layout 117</p> <p> 6-2-3. Parts List 117</p> <p> 6-3. CPU Board 118</p> <p> 6-3-1. Circuit diagram 118</p> <p> 6-3-2. Component Layout 119</p> <p> 6-3-3. Parts List 119</p> <p>7. Waveform with Oscilloscope 120</p>
---	---

1. Printer Assembly

1-1. Disassembly Drawing

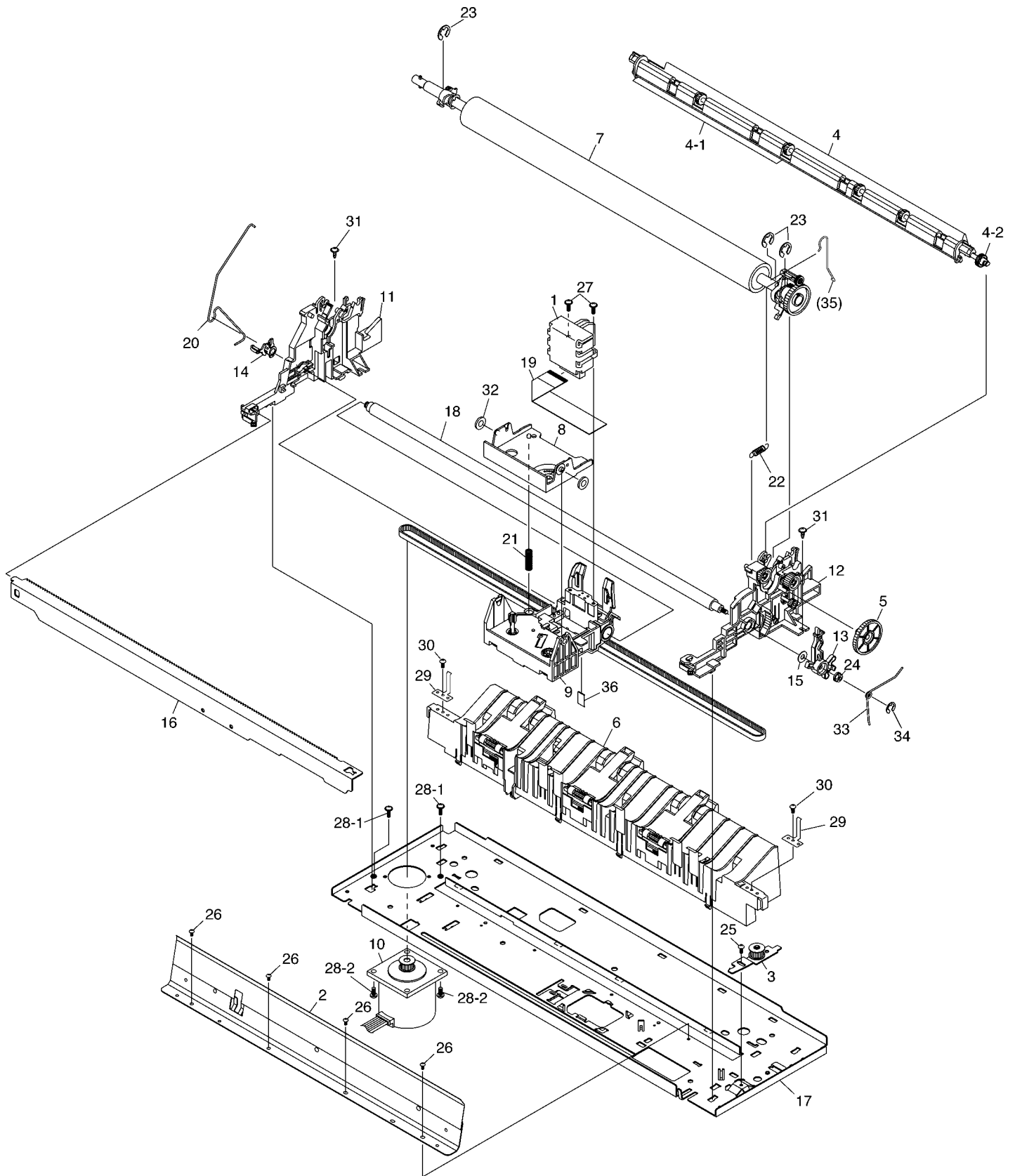


1-2. Parts List

DRWG.NO.	REV.	PARTS NO.	PARTS NAME	Q'TY		REMARKS	RANK
				1511	1521		
1		89428020	MECHANISM WITH HEAD DP505 (D)	1			S
		89428040	MECHANISM WITH HEAD DP505H (D)		1		S
2		87817050	PUSH TRACTOR UNIT HA-15(D)	1	1		S
3		87816650	PRINTER COVER UNIT HA-15(D)	1	1		S
4		87816670	REAR COVER UNIT HA-15(D)	1	1		S
5		87816660	PAPER GUIDE UNIT HA-15(D)	1	1		S
6		87815081	MAIN LOGIC BD UNIT HA-15(D)	1			S
		87815091	MAIN LOGIC BD UNIT HA-15H(D)		1		S
7		87814310	POWER SUPPLY UNIT HA-15 US(D)	1		FOR US,TW	S
		87814320	POWER SUPPLY UNIT HA-15 EC(D)	1		FOR EC,LA	S
		87814330	POWER SUPPLY UNIT HA-15 UK(D)	1		FOR UK	S
		87814340	POWER SUPPLY UNIT HA-15 AS(D)	1		FOR AS	S
		87814350	POWER SUPPLY UNIT HA-15 HK(D)	1		FOR HK	S
		87814360	POWER SUPPLY UNIT HA-15H US(D)		1	FOR US,TW	S
		87814370	POWER SUPPLY UNIT HA-15H EC(D)		1	FOR EC	S
		87814380	POWER SUPPLY UNIT HA-15H UK(D)		1	FOR UK	S
		87814390	POWER SUPPLY UNIT HA-15H AS(D)		1	FOR AS	S
		87814400	POWER SUPPLY UNIT HA-15H HK(D)		1	FOR HK	S
8		87811270	LOWER CASE UNIT HA-15(D)	1	1		S
9		87810430	UPPER CASE UNIT HA-15(D)	1			S
		87810440	UPPER CASE UNIT HA-15H(D)		1		S
10		89510420	RIBBON CASSETTE JAN Y9WH	1	1	FOR EC,UK,AS	S
		89510430	RIBBON CASSETTE UPC Y9WH	1		FOR US,LA	S
		89510430	RIBBON CASSETTE UPC Y9WH		1	FOR US	S
		89510440	RIBBON CASSETTE SMH Y9WH	1	1	FOR HK,TW	S
11		83903560	PLATEN KNOB ZBA-10	1	1		S
12		82902562	RIBBON HOLDER 771	1	1		S
13		80995010	CABLE HOLDER 721	1	1		
14		80701830	WIRE 18UL1007BLK055TT	1	1		
15		01914031	SCREW TAT 4-12 PT-FL	6	6		
16		01914030	SCREW TAT 4-15 PT	4	4		
17		01903038	SCREW TAT 3-10 PT-FL	9	9		
18		01903088	SCREW TAT 3-6 WS	2	2		
19		86424070	TOP GUIDE UNIT 505	1	1		
20		89597040	SERIAL IF BD IS-8H192 UPC	1		FOR US,LA OPTION	
		89597040	SERIAL IF BD IS-8H192 UPC		1	FOR US OPTION	
		89597050	SERIAL IF BD IS-8H192 JAN	1	1	EXCEPT FOR US,LA OPT	
21		89596180	PULL TRACTOR UNIT PT15HAUPC	1		FOR US,LA OPTION	
		89596180	PULL TRACTOR UNIT PT15HAUPC		1	FOR US OPTION	
		89596190	PULL TRACTOR UNIT PT15HAJAN	1	1	FOR EC,UK,AS OPTION	
		89596200	PULL TRACTOR UNIT PT15HASM	1	1	FOR HK,TW OPTION	
22		89590530	ASF SF-15HA UPC	1		FOR US,LA OPTION	
		89590530	ASF SF-15HA UPC		1	FOR US OPTION	
		89590540	ASF SF-15HA JAN	1	1	FOR EC,UK,AS OPTION	
		89590550	ASF SF-15HA SMH	1	1	FOR HK,TW OPTION	
23		89595010	S-P CONVERTER SPC-8K UPC	1	1	FOR US,LA OPTION	
		89595020	S-P CONVERTER SPC-8K JAN	1	1	EXCEPT FOR US,LA OPT	

2. Printer Mechanism

2-1. Disassembly Drawing

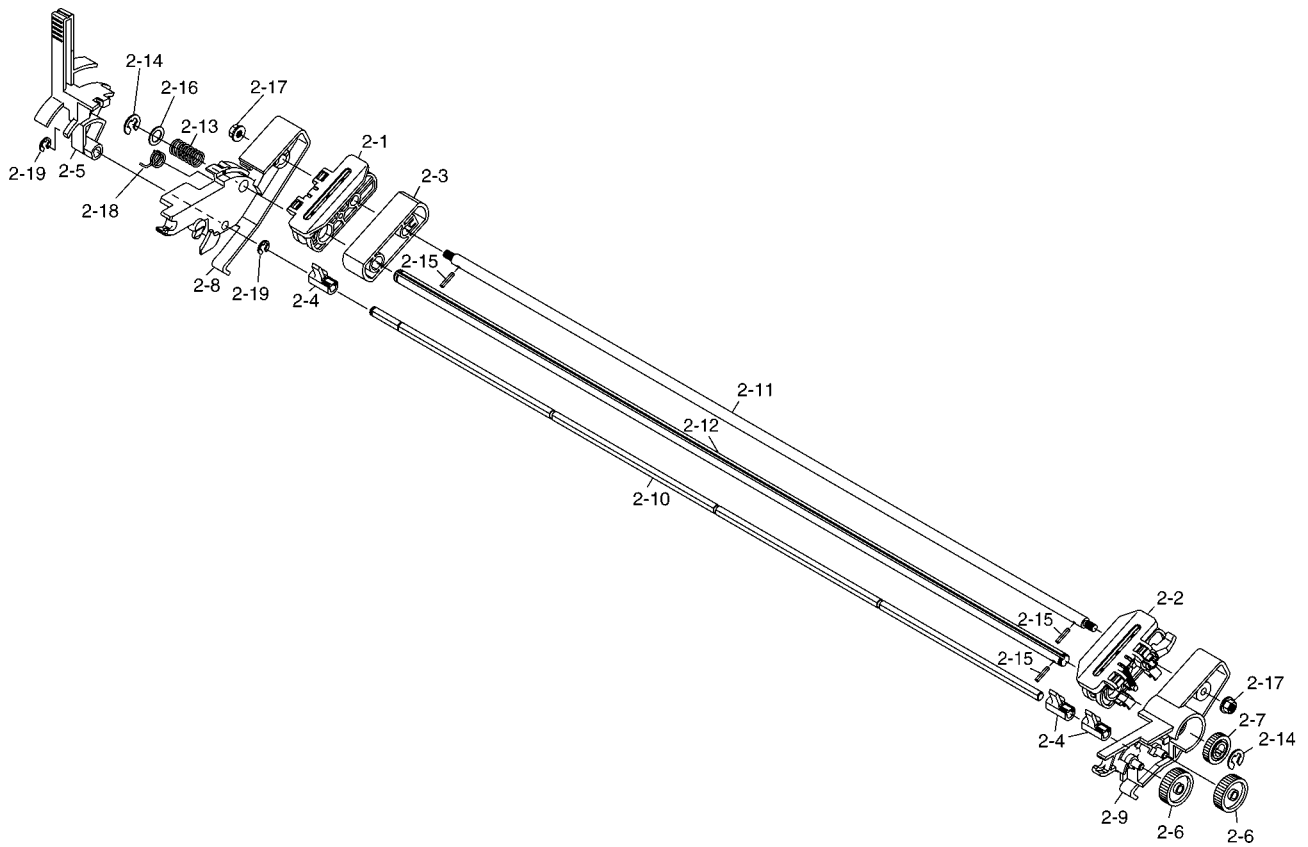


2-2. Parts List

DRWG.NO.	REV.	PARTS NO.	PARTS NAME	Q'TY		REMARKS	RANK
				1511	1521		
1	*1	89137020	PRINT HEAD DP5005 (D)	1			S
	#1	89137021	PRINT HEAD DP5005 (D)	1			S
		89137040	PRINT HEAD DP5005H (D)		1		S
2		86428010	BOTTOM GUIDE UNIT 505	1	1		S
3		86427050	TENSION LEVER UNIT 505	1			S
		86427040	TENSION LEVER UNIT 505H		1		S
4	*1	86426150	STACK GUIDE UNIT 505	1	1		
	#1	86426151	STACK GUIDE UNIT 505	1	1		
4-1	*1	80995230	DISCHARGE SHEET 505	1	1	INCLUDED DRWG.NO.4	
	#1	80995231	DISCHARGE SHEET 505	1	1	INCLUDED DRWG.NO.4	
4-2	*1	86426110	PF ROLLER SHAFT UNIT 505	1	1	INCLUDED DRWG.NO.4	
	#1	86426111	PF ROLLER SHAFT UNIT 505	1	1	INCLUDED DRWG.NO.4	
5		83101810	IDLER GEAR 16X72X0.5 731	1	1		S
6		86424060	PAPER CHUTE UNIT 505	1	1		S
7		86423040	PLATEN UNIT 505	1	1		S
8		86422420	COLOR RIBBON HOLDER ASSY 771	1	1		
		86422090	CARRIAGE UNIT 505	1			S
9		86422080	CARRIAGE UNIT 505H		1		S
		86420580	CARRIAGE MOTOR ASSY 505	1			S
10		86420560	CARRIAGE MOTOR ASSY 505H		1		S
11		86420160	FRAME L UNIT 505	1	1		
12		86420170	FRAME R UNIT 505	1			
		86420150	FRAME R UNIT 505H		1		
13		83401211	ADJUSTING LEVER 771	1	1		
14		83201061	ADJUSTING BUSHING 721	1	1		
15		82210180	COLLAR 4.5X12 771	1	1		
16		82091630	REAR ANGLE 505	1	1		
17		NPN	FRAME BASE 505	1	1		
18		NPN	CARRIAGE STAY 505	1	1		
19		80755570	HEAD CABLE 5005	1		INCLUDED DRWG.NO.1	S
		80755590	HEAD CABLE 5005H		1	INCLUDED DRWG.NO.1	S
20	*1	80531101	PLATEN GROUND SPRING 505	1	1		S
	#1	80531260	CR STAY GROUND SPRING 505	1	1		S
21		80520810	SPRING C065-040-0296	1	1		S
22		80511120	SPRING E050-026-0136	1	1		S
23		04020018	STOP RING SE8.0	3	3		
24		02040402	FLANGED NUT NHW4	1	1		
25		01903091	SCREW TAT 3-8	1	1		
26		01903064	SCREW TAT 3-5 CT	4	4		
27		01903038	SCREW TAT 3-10 PT-FL	2			
		01903035	SCREW TR 3-10 FL		2		
28-1		00630504	SCREW TR 3-5	2			
28-2		01604080	SCREW TR 4-8		2		
29	*1	82501500	PLATEN SPRING 505	2	2		S
	#1	82501580	PLATEN SPRING 505	2	2		S
30		01903061	SCREW TAT 3-6 PT-FL	2	2		
31		01903080	SCREW TAT 3-6	2	2		
32		02305025	POLY-SLIDER WP5X0.25	2	2		
33		80531131	PF MOTOR GROUND SPRING 505	1	1		S
34		04020010	STOP RING SE2.0	1	1		S
35	*1	80531141	PLATEN GROUND SPRING B 505	1	1		S
36		80995110	FELT 505	1	1		S

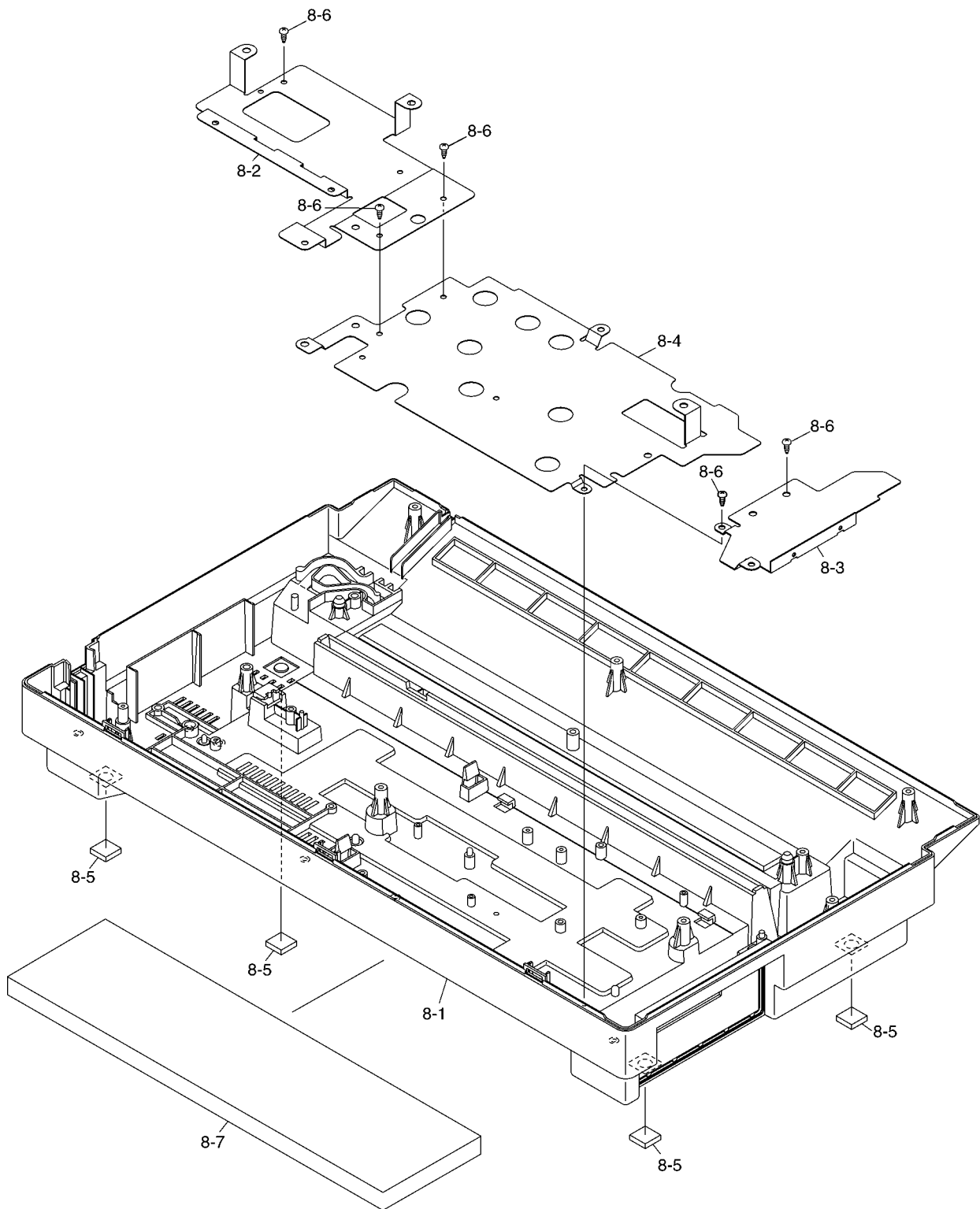
3. Sub - Assembly

3-1. Push Tractor Unit



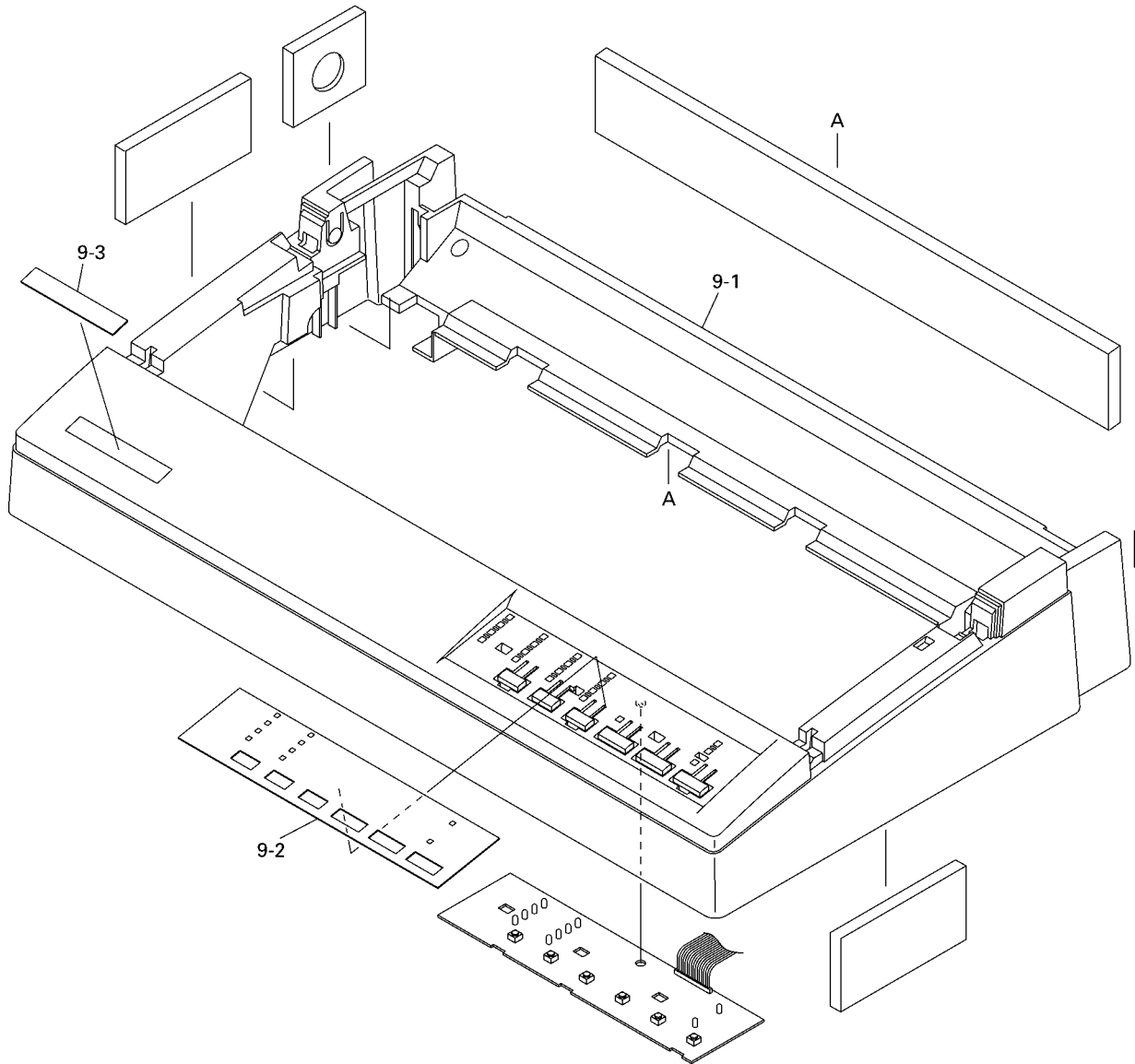
DRWG. NO.	REV.	PARTS NO.	PARTS NAME		Q'TY		REMARKS	RANK
					1511	1521		
2-1		86036360	TRACTOR L ASSY	941	1	1		
2-2		86036350	TRACTOR R ASSY	941	1	1		
2-3		NPN	SHEET GUIDE	905	1	1		
2-4		83904372	RELEASE ARM	721	3	3		
2-5		83401361	RELEASE LEVER	505	1	1		S
2-6		83101700	GEAR 38X0.5	771	2	2		S
2-7		83101690	TRACTOR GEAR	771	1	1		S
2-8	*1	83000201	TRACTOR FRAME L	505	1	1		
	#1	83000202	TRACTOR FRAME L	505	1	1		
2-9	*1	83000190	TRACTOR FRAME R	505	1	1		
	#1	83000191	TRACTOR FRAME R	505	1	1		
2-10		NPN	RELEASE SHAFT	505	1	1		
2-11		NPN	TRACTOR STAY	505	1	1		
2-12		NPN	TRACTOR SHAFT	505	1	1		
2-13		80521090	SPRING C090-060-0179		1	1		S
2-14		04020017	STOP RING SE5.0		2	2		
2-15		04012002	ROLL PIN SP2.0X10		3	3		
2-16		02307050	POLY-SLIDER WP7X0.5		1	1		
2-17		02040406	FLANGED NUT NHW4		2	2		
2-18		80531150	RELEASE LEVER SPRING	505	1	1		S
2-19		04020016	STOP RING SE4.0		2	2		

3-2. Lower Case Unit



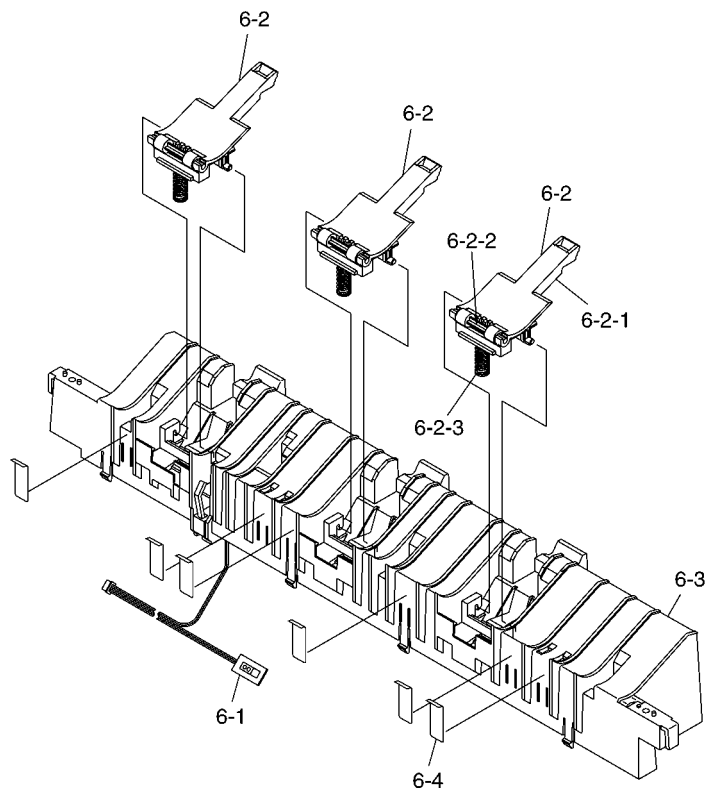
DRWG.NO.	REV.	PARTS NO.	PARTS NAME	Q'TY	REMARKS	RANK
8-1		83026190	LOWER CASE HA-15	1		S
8-2		NPN	LOWER CASE CHASSIS C HA-15	1		
8-3		NPN	LOWER CASE CHASSIS B HA-15	1		
8-4		NPN	LOWER CASE CHASSIS A HA-15	1		
8-5		NPN	RUBBER FOOT 15X15 QBS-10	4		
8-6		00930803	SCREW TAT 3-8 PT	5		
8-7		NPN	SHEET 5 HA-15	1		

3-3. Upper Case Unit



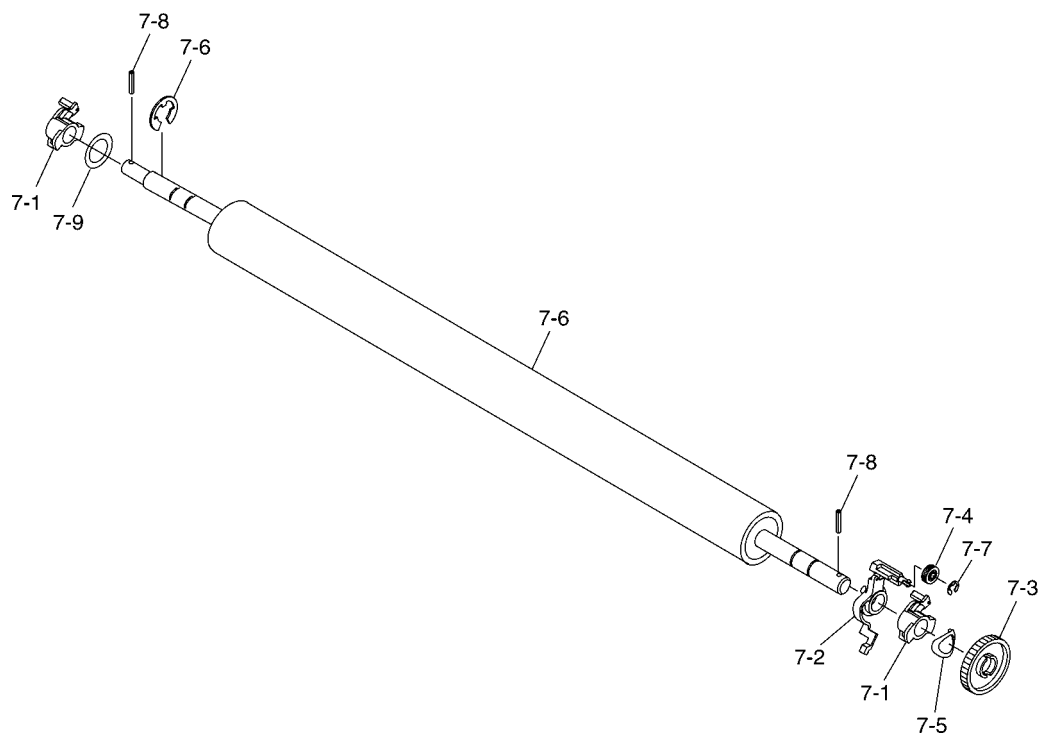
DRWG. NO.	REV.	PARTS NO.	PARTS NAME	Q'TY		REMARKS	RANK
				1511	1521		
9-1		83026180	UPPER CASE	HA-15	1	1	S
9-2		80088070	OPERATION SHEET	HA-15	1		
		80088080	OPERATION SHEET	HA-15H		1	
9-3		80060300	BRAND PLATE	HA-15	1		
		80060310	BRAND PLATE	HA-15H		1	

3-4. Paper Chute Unit



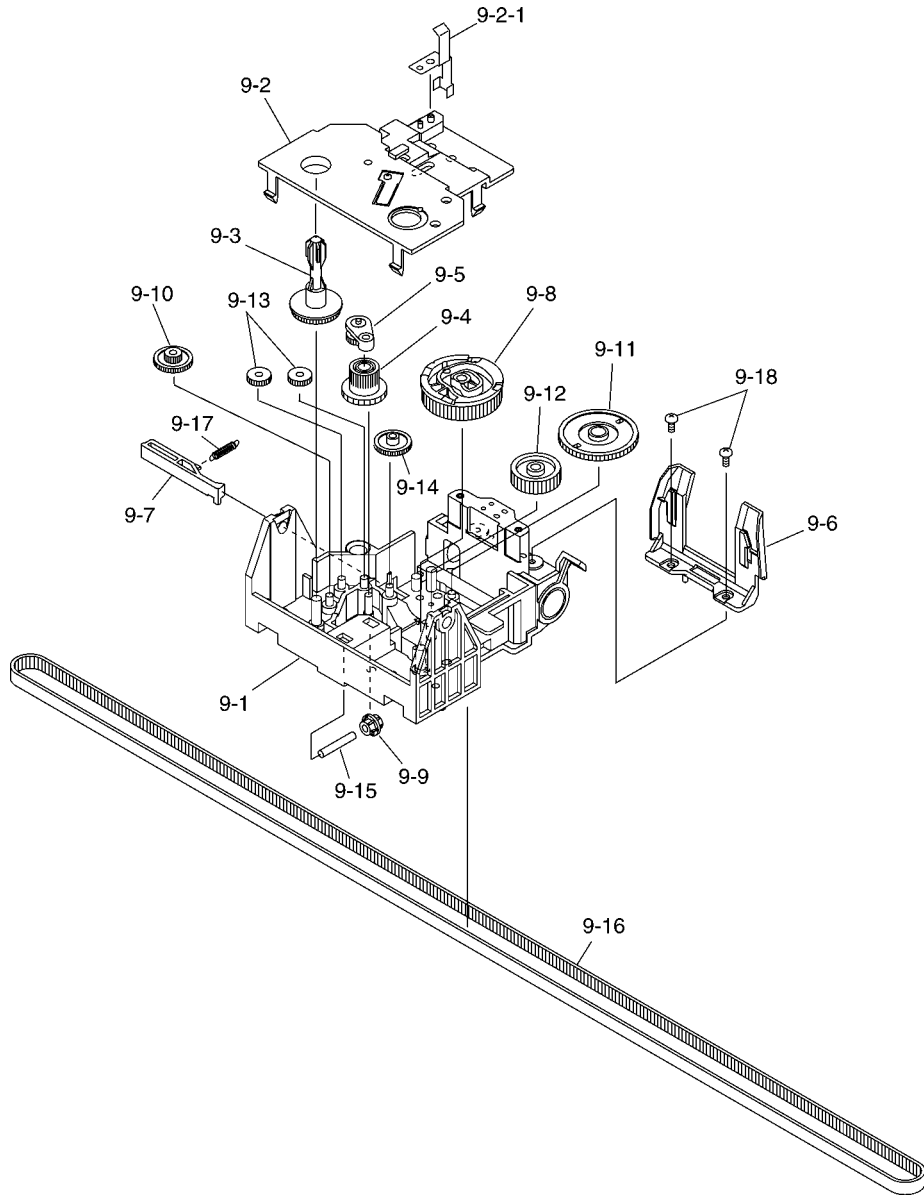
DRWG.NO.	REV.	PARTS NO.	PARTS NAME	Q'TY	REMARKS	RANK
6-1		86424370	DETECTOR UNIT A	505	1	S
6-2		86424361	ROLLER HOLDER ASSY	721	3	
6-2-1		83904403	ROLLER HOLDER	721	1	INCLUDER DRWG.NO.6-2
6-2-2	*1	83201071	PINCH ROLLER	721	1	INCLUDER DRWG.NO.6-2
	#1	83201072	PINCH ROLLER	721	1	INCLUDER DRWG.NO.6-2
6-2-3		80521111	SPRING C087-090-0172		1	INCLUDER DRWG.NO.6-2
6-3		83912362	PAPER CHUTE	505	1	
6-4	*1	80910480	ASSIST GUIDE	505	6	
	#1	80910481	ASSIST GUIDE	505	6	

3-5. Platen Unit



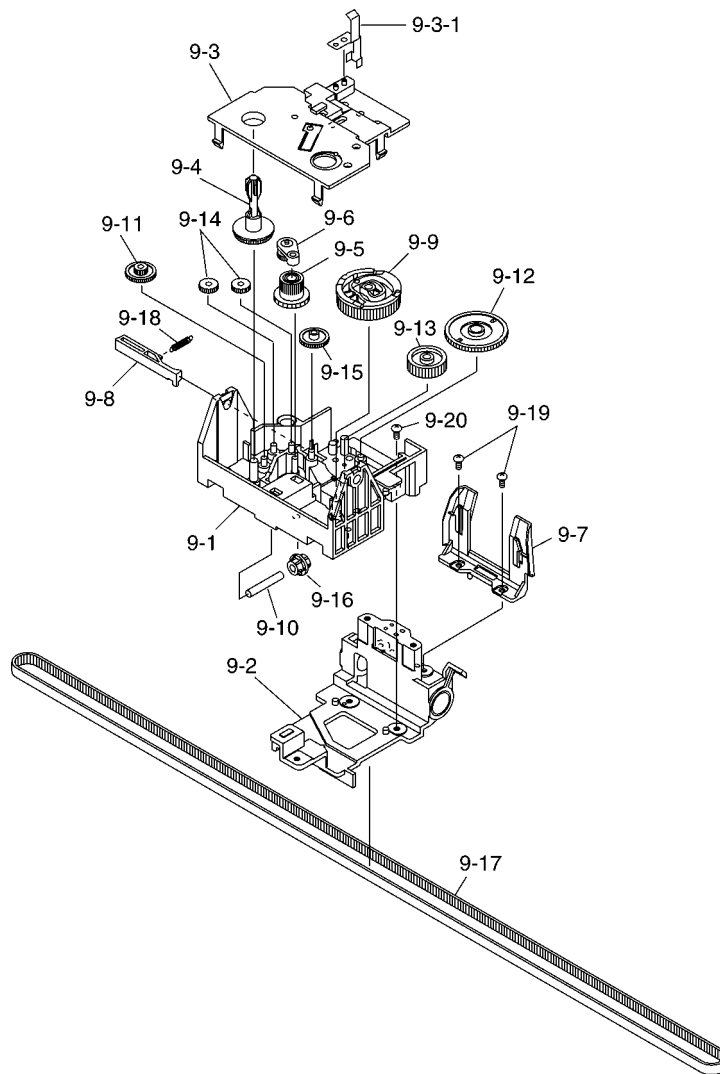
DRWG.NO.	REV.	PARTS NO.	PARTS NAME	Q'TY	REMARKS	RANK
7-1		83904412	PLATEN HOLDER	721	2	
7-2		83401311	ASF CLUTCH LEVER	721	1	
7-3		83101820	PLATEN GEAR	721	1	S
7-4		83101750	CLUTCH IDLER GEAR B	771	1	S
7-5		82210191	WAVE WASHER	721	1	
7-6		80202291	PLATEN	505	1	
7-7		04020018	STOP RING SE8.0		1	
7-8		04012503	ROLL PIN SP2.5X14		2	
7-9		02210001	PLAIN WASHER WF10X18X1.6		1	

3-6. Carriage Unit (LC-1511)



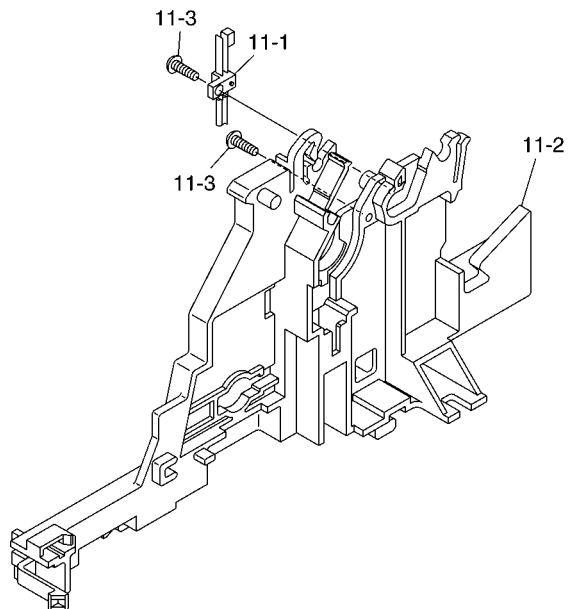
DRWG.NO.	REV.	PARTS NO.	PARTS NAME	Q'TY	REMARKS	RANK
9-1	*1	86422610	CARRIAGE ASSY	505	1	
	#1	86422611	CARRIAGE ASSY	505	1	
9-2		86422580	GEAR COVER ASSY	505	1	
9-2-1		NPN	HEAD GROUND SPRING	605	1	INCLUDED DRWG.NO.9-2
9-3		86422400	RIBBON CASSETTE GEAR ASSY	771	1	S
9-4		86032411	GEAR A ASSY	981	1	S
9-5		86032400	CLUTCH LEVER ASSY	981	1	S
9-6		83904541	CARD HOLDER	505	1	
9-7		83401162	RIBBON SHIFT LEVER	771	1	
9-8		83290150	SHIFT CAM	505	1	S
9-9		83200990	REAR ROLLER	981	1	S
9-10		83101930	IFLER GEAR 21X50X0.3	505	1	
9-11		83101730	SHIFT CLUTCH GEAR 62X0.5	771	1	S
9-12		83101700	GEAR 38X0.5	771	1	S
9-13		83101480	GEAR 30X0.3	981	2	S
9-14		83101370	GEAR 48X0.3	965	1	S
9-15		NPN	ROLLER SHAFT	981	1	
9-16		80902230	TIMING BELT HTD102 506X6.4		1	
9-17		80510951	SPRING E032-026-0116		1	S
9-18		01902615	SCREW TAT 2.6-6 PT		2	

3-7. Carriage Unit (LC-1521)



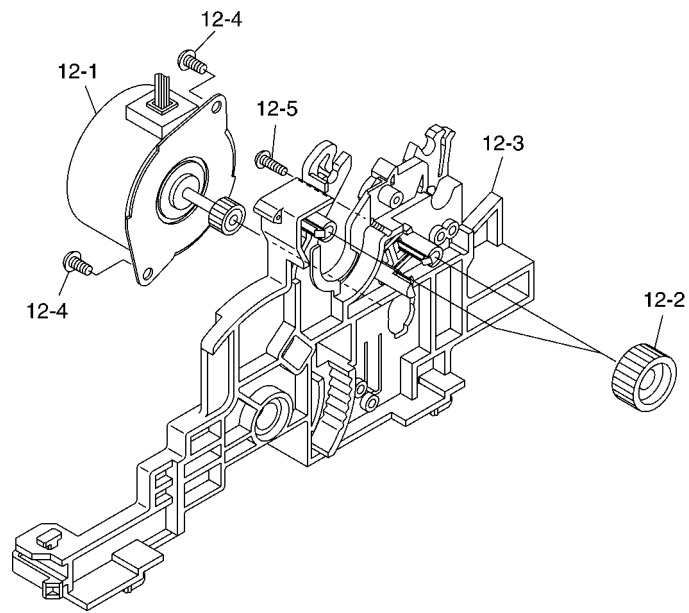
DRWG.NO.	REV.	PARTS NO.	PARTS NAME	Q'TY	REMARKS	RANK
9-1	*1	86422600	RIBBON HOUSING ASSY 505H	1		
	#1	86422601	RIBBON HOUSING ASSY 505H	1		
9-2		84900111	CARRIAGE 505H	1		
9-3		86422580	GEAR COVER ASSY 505	1		
9-3-1		NPN	HEAD GROUND SPRING 605	1	INCLUDED DRWG.NO.9-3	
9-4		86422400	RIBBON CASSETTE GEAR ASSY 771	1		S
9-5		86032411	GEAR A ASSY 981	1		S
9-6		86032400	CLUTCH LEVER ASSY 981	1		S
9-7		83904541	CARD HOLDER 505	1		
9-8		83401162	RIBBON SHIFT LEVER 771	1		
9-9		83290150	SHIFT CAM 505	1		S
9-10		83200990	REAR ROLLER 981	1		S
9-11		83101930	IFLER GEAR 21X50X0.3 505	1		
9-12		83101730	SHIFT CLUTCH GEAR 62X0.5 771	1		
9-13		83101700	GEAR 38X0.5 771	1		S
9-14		83101480	GEAR 30X0.3 981	2		S
9-15		83101370	GEAR 48X0.3 965	1		S
9-16		NPN	ROLLER SHAFT 981	1		
9-17		80902090	TIMING BELT HTD104 365X6.4	1		
9-18		80510951	SPRING E032-026-0116	1		S
9-19		00826504	SCREW TR 2.6-5	2		
9-20		00630504	SCREW TR 3-5	3		

3-8. Frame L Unit



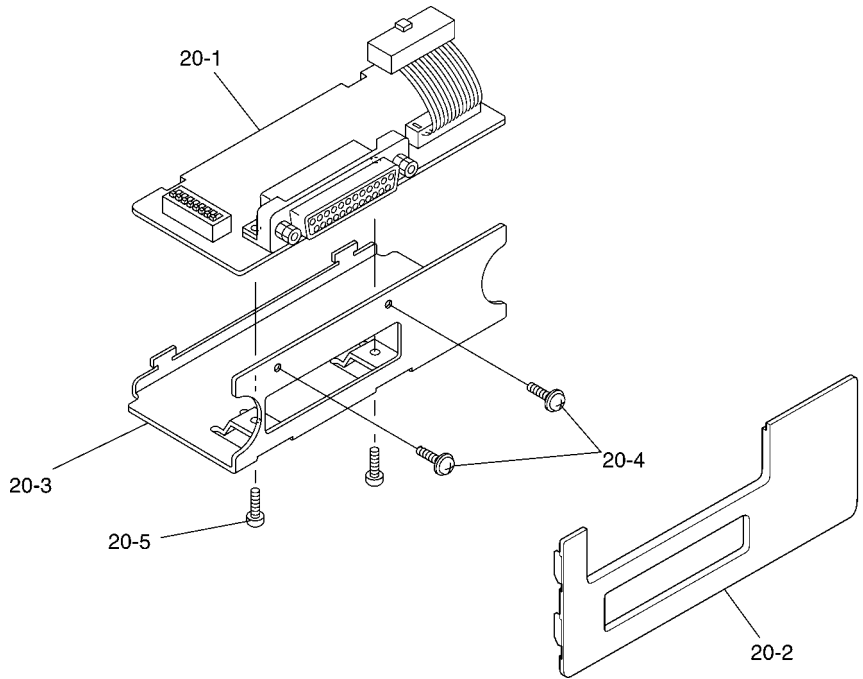
DRWG.NO.	REV.	PARTS NO.	PARTS NAME	Q'TY	REMARKS	RANK
11-1		86424380	DETECTOR UNIT B	505	1	S
11-2		NPN	FRAME L	505	1	
11-3		00926803	SCREW TAT 2.6-8 PT		2	

3-9. Frame R Unit



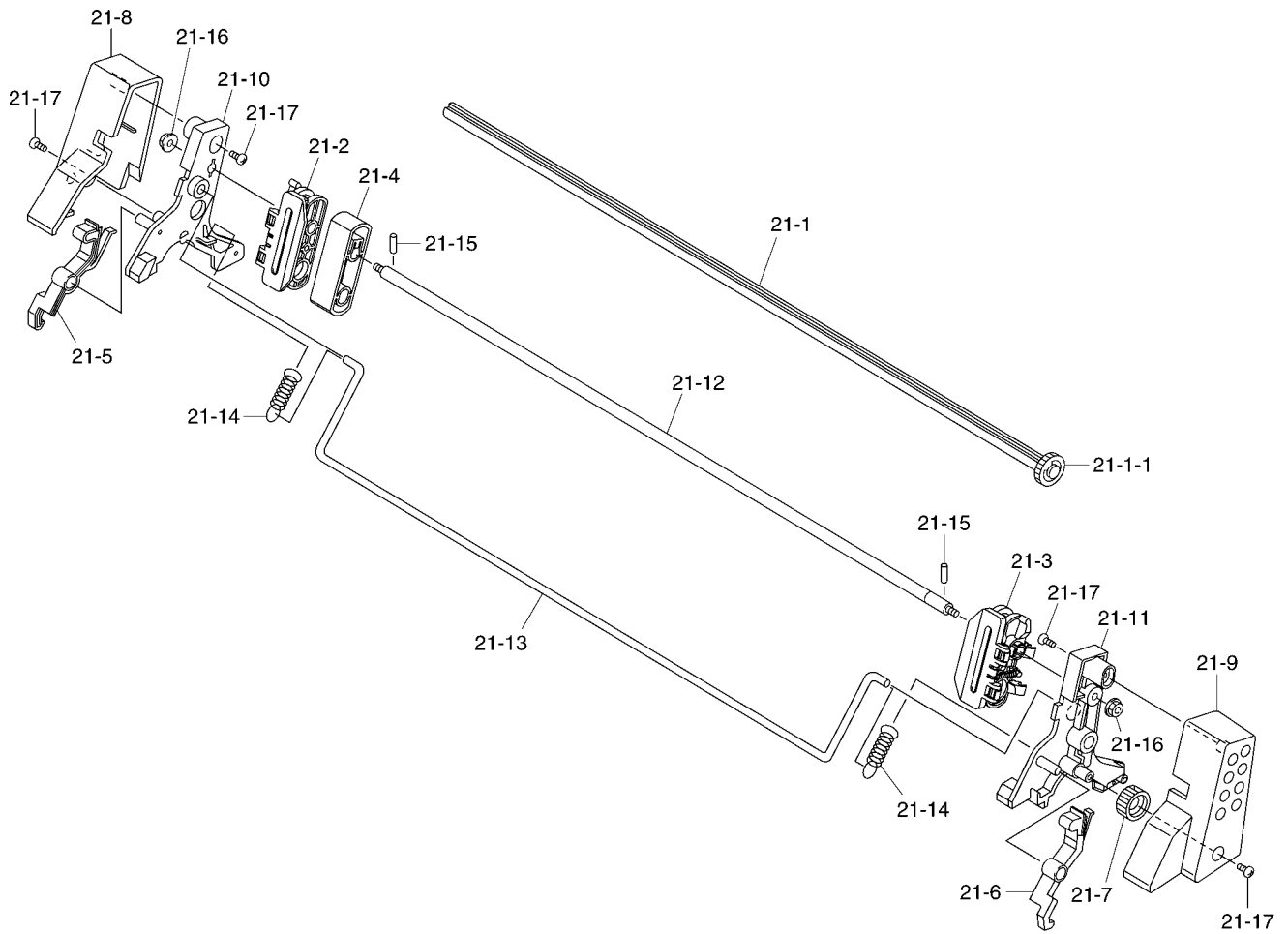
DRWG. NO.	REV.	PARTS NO.	PARTS NAME	Q'TY		REMARKS	RANK
				1511	1521		
12-1		86420570	PAPER FEED MOTOR ASSY 505	1			S
		86420550	PAPER FEED MOTOR ASSY 505H		1		S
12-2		83101760	PF IDLER GEAR 771	2	2		S
12-3		NPN	FRAME R 505	1	1		
12-4		00930603	SCREW TAT 3-6 PT	2	2		
12-5		00926803	SCREW TAT 2.6-8 PT	1	1		

3-10.Serial IF Unit (Option)



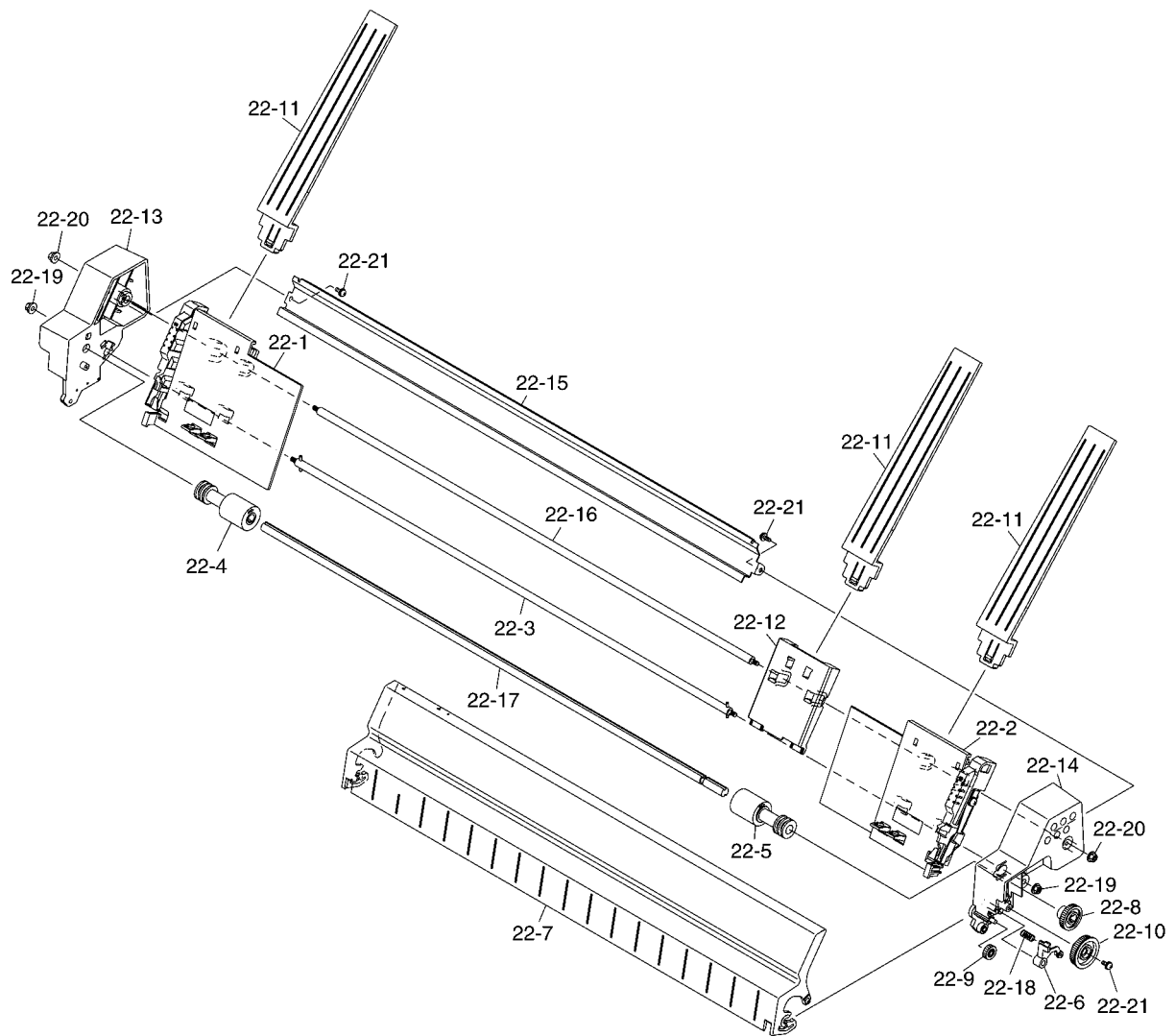
DRWG.NO.	REV.	PARTS NO.	PARTS NAME	Q'TY	REMARKS	RANK
20-1		87590120	IF BOARD UNIT IS-8H192	1		
20-2		NPN	INTERFACE COVER HA-15	1		
20-3		NPN	INTERFACE CHASSIS IS-8H	1		
20-4		NPN	SCREW TAT 3-5 CT	2		
20-5		NPN	SCREW TR 3-8	2		

3-11. Pull Tractor Unit (Option)



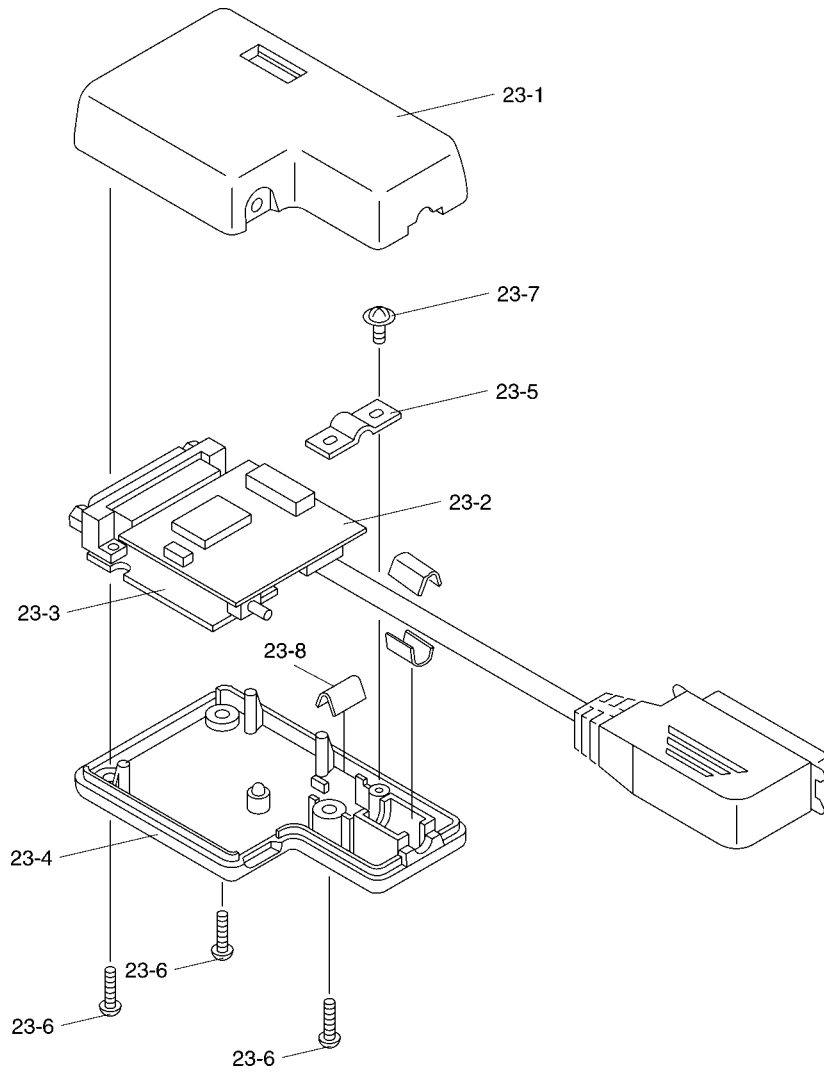
DRWG.NO.	REV.	PARTS NO.	PARTS NAME	Q'TY	REMARKS	RANK
21-1		86592110	TRACTOR SHAFT UNIT PT-15HA	1		
21-1-1		83101690	TRACTOR GEAR 771	1	INCLUDED DRWGNO.20-1	
21-2		86036360	TRACTOR L ASSY 941	1		
21-3		86036350	TRACTOR R ASSY 941	1		
21-4		NPN	SHEET GUIDE 905	1		
21-5		83401380	TRACTOR LOCK LEVER L PT-15HA	1		
21-6		83401370	TRACTOR LOCK LEVER R PT-15HA	1		
21-7		83101760	PF IDLER GEAR 771	1		
21-8		NPN	TRACTOR COVER L PT-15HA	1		
21-9		NPN	TRACTOR COVER R PT-15HA	1		
21-10		83000241	TRACTOR FRAME L PT-15HA	1		
21-11		83000231	TRACTOR FRAME R PT-15HA	1		
21-12		NPN	TRACTOR STAY PT-15HA	1		
21-13		NPN	GUIDE WIRE PT-15HA	1		
21-14		80510890	SPRING E060-050-0221	2		
21-15		04012002	ROLL PIN SP2.0X10	2		
21-16		02040406	FLANGED NUT NHW4	2		
21-17		00930803	SCREW TAT 3-8 PT	4		

3-12. ASF (Option)



DRWG.NO.	REV.	PARTS NO.	PARTS NAME	Q'TY	REMARKS	RANK
22-1		86594020	ADJUSTER ASSY L SF-15HA	1		
22-2		86594010	ADJUSTER ASSY R SF-15HA	1		
22-3		NPN	TRACTOR STAY ASSY SF-15HA	1		
22-4		86426660	FEED ROLLER COLLAR L ASSY 505	1		
22-5		86426650	FEED ROLLER COLLAR R ASSY 505	1		
22-6		86426330	ASF STOPPER ASSY 771	1		
22-7		NPN	MANUAL FEED GUIDE SF-15HA	1		
22-8		83101780	ASF FEED GEAR 771	1		
22-9		83101750	CLUTCH IDLER GEAR B 771	1		
22-10		83101741	CLUTCH IDLER GEAR A 771	1		
22-11		83026150	PAPER GUIDE B SF-15HA	3		
22-12		NPN	PAPER GUIDE A SF-15HA	1		
22-13		NPN	FRAME L SF-15HA	1		
22-14		NPN	FRAME R SF-15HA	1		
22-15		NPN	ASF COVER SF-15HA	1		
22-16		NPN	ASF STAY SF-15HA	1		
22-17		NPN	FEED ROLLER SHAFT SF-15HA	1		
22-18		80521070	SPRING C050-026-0099	1		
22-19		02040406	FLANGED NUT NHW4	2		
22-20		02040301	FLANGED NUT NHW3	2		
22-21		01903060	SCREW TAT 3-8 PT-FL	3		

3-13.Serial-Parallel Converter (Option)



DRWG.NO.	REV.	PARTS NO.	PARTS NAME	Q'TY	REMARKS	RANK
23-1		NPN	UPPER CASE	SPC-8K	1	
23-2		NPN	CPU BOARD UNIT	SPC-8K	1	
23-3		87590020	IF BOARD UNIT	SPC-8K	1	
23-4		NPN	LOWER CASE UNIT	SPC-8K	1	
23-5		NPN	CORD HOLDER	SPC-8K	1	
23-6		NPN	SCREW TAT 3-12 PT-FL		3	
23-7		NPN	SCREW TAT 3-8 PT-FL		1	
23-8		NPN	CORD HOLDER PLATE	SPC-8K	1	
-		NPN	FERRITE CORE HF70RU12X5		2	