

# **PARTS CATALOG**

**L B P 6 6 5 4 d n / 6 6 5 3 d n /  
6 6 5 0 d n / 6 6 5 0 n / 6 3 1 0 d n /  
6 3 0 4 d n / 6 3 0 3 d n / 6 3 0 0 d n /  
6 3 0 0 n / 6 3 0 0**

**Canon**

**Oct 29 2012**



## **PREFACE**

This Parts Catalog contains listings of parts used

Diagrams are provided with the listings to aid the service technician in identifying clearly, the item to be ordered.

Whenever ordering parts, consult this Parts Catalog for all of the information pertaining to each item. Be sure to include, in the Parts Request, the full item description, the item part number, and the quantity.

***COPYRIGHT (C) 1999 CANON INC.***

Use of this manual should be strictly supervised to avoid disclosure of confidential information.



# Contents

## NUMERICAL INDEX

LBP6654dn/6653dn/6650dn/6650n/6310dn/6304dn/6303dn/6300dn/6300n/ 6300(Numerical Index) .....	1-1
---	-----

## LBP6654dn/6653dn/6650dn/6650n/6310dn/6304dn/6303dn/6300dn/ 6300n/6300(Parts Catalog)

A1	ASSEMBLY LOCATION DIAGRAM .....	2-1
A2	OPTION PARTS CATALOG LIST .....	2-2
001	ACCESSORIES .....	2-3
100	EXTERNAL COVERS, PANELS, ETC. (EXCEPT LBP6310dn) .....	2-5
100A	EXTERNAL COVERS, PANELS, ETC. (LBP6310dn) .....	2-9
101	INTERNAL COMPONENTS 1 .....	2-11
102	INTERNAL COMPONENTS 2 .....	2-13
103	INTERNAL COMPONENTS 3 .....	2-15
104	INTERNAL COMPONENTS 4 .....	2-17
105	INTERNAL COMPONENTS 5 .....	2-19
900	MAIN CONTROLLER PCB ASS'Y (LBP6650) .....	2-21
901	MAIN CONTROLLER PCB ASS'Y (LBP6300) .....	2-22
ZZA	MECHANICAL STANDARD PARTS (HOW TO USE) .....	2-23
ZZB	MECHANICAL STANDARD PARTS (SCREWS) .....	2-24
ZZC	MECHANICAL STANDARD PARTS (BOLTS) .....	2-31
ZZD	MECHANICAL STANDARD PARTS (NUTS) .....	2-32
ZZE	MECHANICAL STANDARD PARTS (RETAINING RINGS) .....	2-33



# NUMERICAL INDEX

LBP6654dn/6653dn/6650dn/6650n/6310dn/6304dn/6303dn/6300dn/6300n/6

PARTS NUMBER	FIGURE & KEY NO.	PARTS NUMBER	FIGURE & KEY NO.	PARTS NUMBER	FIGURE & KEY NO
FC0-4235-000	100A - 1	FK3-2977-000	001 - 1	FM4-8694-000	103 - 6
FC0-4239-000	100A - 5	FK3-3127-000	001 - 1	FM4-8695-000	100A - 9
FC0-4251-000	100A - 7	FK3-3128-000	001 - 1	FM4-8797-000	100 - 24
FC0-4252-000	100A - 4	FK3-3593-000	001 - 1	FM4-8798-000	100 - 24
FC0-4270-000	100A - 16	FK3-3594-000	001 - 1	FM4-8807-000	100 - 24
FC0-4275-000	100A - 19	FL3-2802-000	900 - IC	FM4-8808-000	100 - 24
FC0-4281-000	100A - 15	FM0-0679-000	901 -	NPN	001 -
FC5-5256-000	100 - 1	FM0-1139-000	104 - 14	NPN	100 -
FC7-0496-000	100 - 1	FM0-1140-000	104 - 13	NPN	100A -
FC7-0810-000	100 - 2	FM0-1143-000	105 - 12	NPN	101 -
FC7-3206-000	105 - 1	FM0-1147-000	104 - 16	NPN	102 -
FC8-0081-000	100 - 3	FM0-1148-000	104 - 17	NPN	103 -
FC8-0094-000	100 - 3	FM0-4101-000	100A - 23	NPN	104 -
FC8-0095-000	100 - 3	FM0-4102-000	901 -	NPN	105 -
FC8-0096-000	100 - 3	FM0-4646-000	105 - 7	RC2-6198-000	101 - 11
FC8-0103-000	100 - 5	FM0-4647-000	104 - 3	RC2-6273-000	100 - 27
FC8-9828-000	100 - 6	FM0-4649-000	105 - 9	RC2-6273-000	100A - 11
FC8-9837-000	100 - 7	FM0-4650-000	105 - 10	RC2-8291-000	100 - 28
FC8-9837-000	100A - 3	FM0-4653-000	105 - 11	RC2-8291-000	100A - 12
FC8-9846-000	100 - 8	FM0-4763-000	100A - 14	RC2-8349-000	101 - 7
FC8-9858-000	100 - 4	FM2-6194-000	100 - 16	RH9-1164-000	001 - 5
FC8-9868-000	100 - 4	FM2-8329-000	100 - 17	RH9-1166-000	001 - 8
FC8-9869-000	100 - 4	FM2-8342-000	100 - 18	RH9-1169-000	001 - 7
FC8-9870-000	100 - 9	FM3-3599-000	100 - 22	RK2-1302-000	001 - 2
FC8-9871-000	100 - 10	FM3-3600-000	100 - 22	RK2-2719-000	103 - 4
FC8-9872-000	100 - 11	FM3-3601-000	100 - 22	RK2-2728-000	104 - 4
FC8-9878-000	104 - 12	FM3-3602-000	100 - 22	RK2-2729-000	104 - 5
FC8-9894-000	100 - 13	FM3-8834-000	100 - 19	RK2-2731-000	104 - 6
FC8-9895-000	100 - 14	FM3-8835-000	104 - 2	RK2-2733-000	105 - 2
FC8-9896-000	100 - 12	FM3-8836-000	100 - 24	RL1-2111-000	101 - 9
FC8-9896-000	100A - 6	FM3-8837-000	100 - 20	RL1-2112-000	101 - 8
FC8-9969-000	100 - 15	FM3-8838-000	100 - 21	RL1-2115-000	102 - 1
FC8-9973-000	100 - 9	FM3-8839-000	104 - 1	RL1-2120-000	104 - 7
FC8-9985-000	100 - 32	FM3-8841-000	100 - 23	RM1-1301-000	102 - 2
FE2-0480-000	100A - 22	FM3-8847-000	100 - 23	RM1-4275-000	104 - 8
FE2-0484-000	100A - 21	FM3-8849-000	100 - 23	RM1-6350-000	102 - 3
FE2-0486-000	100A - 2	FM3-8850-000	100 - 24	RM1-6375-000	102 - 4
FH2-7080-000	001 - 6	FM3-8855-000	103 - 1	RM1-6378-000	102 - 5
FH4-6302-000	900 - IC	FM3-9087-000	100 - 24	RM1-6397-000	104 - 9
FK2-1243-000	900 - IC	FM3-9088-000	101 - 1	RM1-6401-000	101 - 2
FK2-4390-000	001 - 3	FM3-9092-000	100 - 24	RM1-6402-000	103 - 5
FK2-5869-000	901 - IC	FM3-9093-000	100 - 24	RM1-6405-000	101 - 1
FK2-7852-000	901 - IC	FM4-2367-000	900 -	RM1-6406-000	101 - 1
FK2-9583-000	001 - 4	FM4-2465-000	105 - 7	RM1-6414-000	102 - 6
FK3-0666-000	901 - IC	FM4-2466-000	105 - 7	RM1-6419-000	103 - 6
FK3-0679-000	001 - 1	FM4-2469-000	100 - 25	RM1-6421-000	101 - 3
FK3-1742-000	001 - 1	FM4-2470-000	100 - 26	RM1-6423-000	105 - 3
FK3-1986-000	104 - 15	FM4-3877-000	901 -	RM1-6424-000	103 - 2
FK3-2255-000	001 - 1	FM4-3879-000	104 - 3	RM1-6441-000	105 - 4
FK3-2974-000	001 - 1	FM4-8671-000	100A - 8	RM1-6445-000	101 - 4
FK3-2975-000	001 - 1	FM4-8674-000	100A - 20	RM1-6450-000	103 - 3
FK3-2976-000	001 - 1	FM4-8683-000	100A - 10	RU5-2895-000	100 - 29

# NUMERICAL INDEX

LBP6654dn/6653dn/6650dn/6650n/6310dn/6304dn/6303dn/6300dn/6300n/6

PARTS NUMBER	FIGURE & KEY NO.	PARTS NUMBER	FIGURE & KEY NO.	PARTS NUMBER	FIGURE & KEY NO.
RU5-2895-000	100A - 13				
RU6-2610-000	101 - 10				
WA7-3525-000	900 - 1				
WA7-4673-000	901 - 1				
WC4-5171-000	104 - 10				
XA9-1420-000	103 - 7				
XA9-1420-000	105 - 8				
XA9-1503-000	100 - 31				
XA9-1503-000	100A - 18				
XA9-1503-000	101 - 5				
XA9-1503-000	105 - 5				
XA9-1671-000	100 - 30				
XA9-1671-000	100A - 17				
XA9-1671-000	101 - 6				
XA9-1671-000	102 - 7				
XA9-1671-000	103 - 8				
XA9-1671-000	104 - 11				
XA9-1671-000	105 - 6				



# **LBP6654dn/6653dn/6650dn/6650n/ 6310dn/6304dn/6303dn/6300dn/6300n/ 6300(Parts Catalog)**

Satera LBP6300

**100V JP                    F15-6812-000    MFQA**

imageCLASS LBP6650dn

**120V US                    F15-6734-000    MJCA**

imageCLASS LBP6300dn

**120V US                    F15-6834-000    MJDA**

LASER SHOT LBP6654dn

**230V KR                    F15-6742-000**

LASER SHOT LBP6653dn

**230V KR                    F15-6742-000**

LASER SHOT LBP6650dn

**230V                        F15-6742-000    MFMA  
HK,KR,LTN,SG**

**230V AU                    F15-6742-000    MFPA**

**230V CN                    F15-6752-000    MFNA**

LASER SHOT LBP6650n

230V CN            F15-6754-000   MKMA

LASER SHOT LBP6304dn

230V KR            F15-6842-000

LASER SHOT LBP6303dn

230V KR            F15-6842-000

LASER SHOT LBP6300dn

120V LTN           F15-6832-000   MFRA

230V  
HK,KR,LTN,SG      F15-6842-000   MFTA

230V AU            F15-6842-000   MFYA

230V CN            F15-6852-000   MFXA

LASER SHOT LBP6300n

230V CN            F15-6854-000   MKNA

i-SENSYS LBP6650dn

230V EUR           F15-6792-000   MFLA

i-SENSYS LBP6310dn

230V EUR           F16-1996-000   MTLA

i-SENSYS LBP6300dn

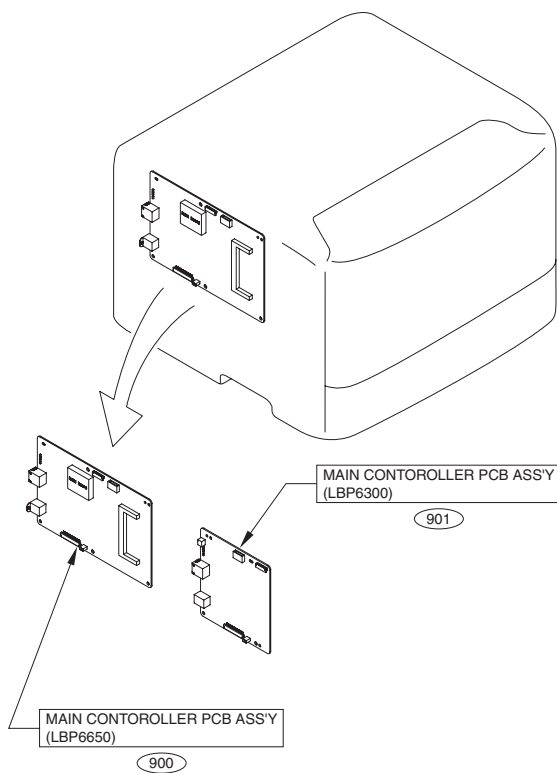
230V EUR           F15-6892-000   MFSA

# Contents

A1	ASSEMBLY LOCATION DIAGRAM .....	2-1
A2	OPTION PARTS CATALOG LIST .....	2-2
001	ACCESSORIES .....	2-3
100	EXTERNAL COVERS, PANELS, ETC. (EXCEPT LBP6310dn).....	2-5
100A	EXTERNAL COVERS, PANELS, ETC. (LBP6310dn) .....	2-9
101	INTERNAL COMPONENTS 1 .....	2-11
102	INTERNAL COMPONENTS 2 .....	2-13
103	INTERNAL COMPONENTS 3 .....	2-15
104	INTERNAL COMPONENTS 4 .....	2-17
105	INTERNAL COMPONENTS 5 .....	2-19
900	MAIN CONTROLLER PCB ASS'Y (LBP6650).....	2-21
901	MAIN CONTROLLER PCB ASS'Y (LBP6300).....	2-22
ZZA	MECHANICAL STANDARD PARTS (HOW TO USE) .....	2-23
ZZB	MECHANICAL STANDARD PARTS (SCREWS).....	2-24
ZZC	MECHANICAL STANDARD PARTS (BOLTS).....	2-31
ZZD	MECHANICAL STANDARD PARTS (NUTS).....	2-32
ZZE	MECHANICAL STANDARD PARTS (RETAINING RINGS) .....	2-33



# FIGURE A1 ASSEMBLY LOCATION DIAGRAM

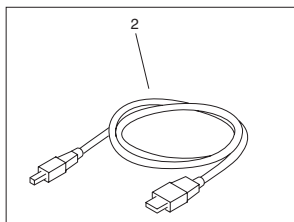
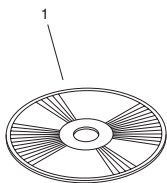


## FIGURE A2 OPTION PARTS CATALOG LIST

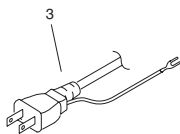
This is the table of the machine's options whose parts catalog is issued.  
本機のオプションで、パーツカタログが発行されている機種の一覧である。

No.	Model Name(English)	Model Name(Japanese)
1	Paper Feeder Unit PF-44	ペーパーフィーダーユニット PF-44
2	PS ROM A-44	PS拡張ROM A-44

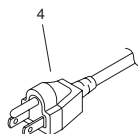
# FIGURE 001 ACCESSORIES



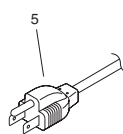
CN,HK,KR,LTN,SG



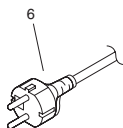
100V JP



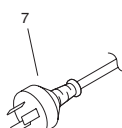
120V US



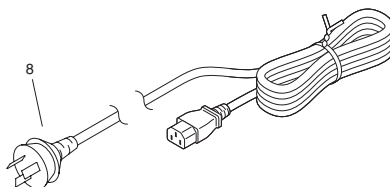
120V LTN



230V EUR,HK,KR,LTN,SG



230V AU



230V CN

FIGURE & KEY NO.	PARTS NUMBER	R A N K	Q'TY	DESCRIPTION	SERIAL NUMBER/ REMARKS	S V C
Fig.001	NPN		RF	ACCESSORIES		
1	FK3-2974-000		1	CD- ROM, USER SOFTWARE	LBP6300 JP	
1	FK3-2977-000		1	CD- ROM, USER SOFTWARE	LBP6300dn US	
1	FK3-2976-000		1	CD- ROM, USER SOFTWARE	LBP6300dn EUR	
1	FK3-2975-000		1	CD- ROM, USER SOFTWARE	LBP6300dn EXCEPT EUR,JP,US	
1	FK3-2255-000		1	CD- ROM, USER SOFTWARE	LBP6300n	
1	FK3-1742-000		1	CD- ROM, USER SOFTWARE	LBP6650 US	
1	FK3-3127-000		1	CD- ROM, USER SOFTWARE	LBP6650 EUR English,French,German,Italian,Spanish	
1	FK3-3128-000		1	CD- ROM, USER SOFTWARE	LBP6650 EUR Dutch,Danish,Norwegian,Finnish,Swedish,Polish,Russian	
1	FK3-0679-000		1	CD- ROM, USER SOFTWARE	LBP6650 EXCEPT EUR,US	
1	FK3-3593-000		1	CD- ROM, USER SOFTWARE	LBP6310dn English,French,German,Italian,Spanish,Russian	
1	FK3-3594-000		1	CD- ROM, USER SOFTWARE	LBP6310dn English,Dutch,Danish,Norwegian,Finnish,Swedish,Polish	
2	RK2-1302-000		1	CABLE, USB	CN,HK,KR,LTN,SG	
3	FK2-4390-000		1	CORD, POWER	100V JP	
4	FK2-9583-000		1	CORD, POWER	120V US	
5	RH9-1164-000		1	CORD, POWER	120V LTN	
6	FH2-7080-000		1	CORD, POWER	230V EUR,HK,KR,LTN,SG	
7	RH9-1169-000		1	CORD, POWER	230V AU	
8	RH9-1166-000		1	CORD, POWER	230V CN	



FIGURE 100  
EXTERNAL COVERS, PANELS, ETC. (EXCEPT  
LBP6310dn)

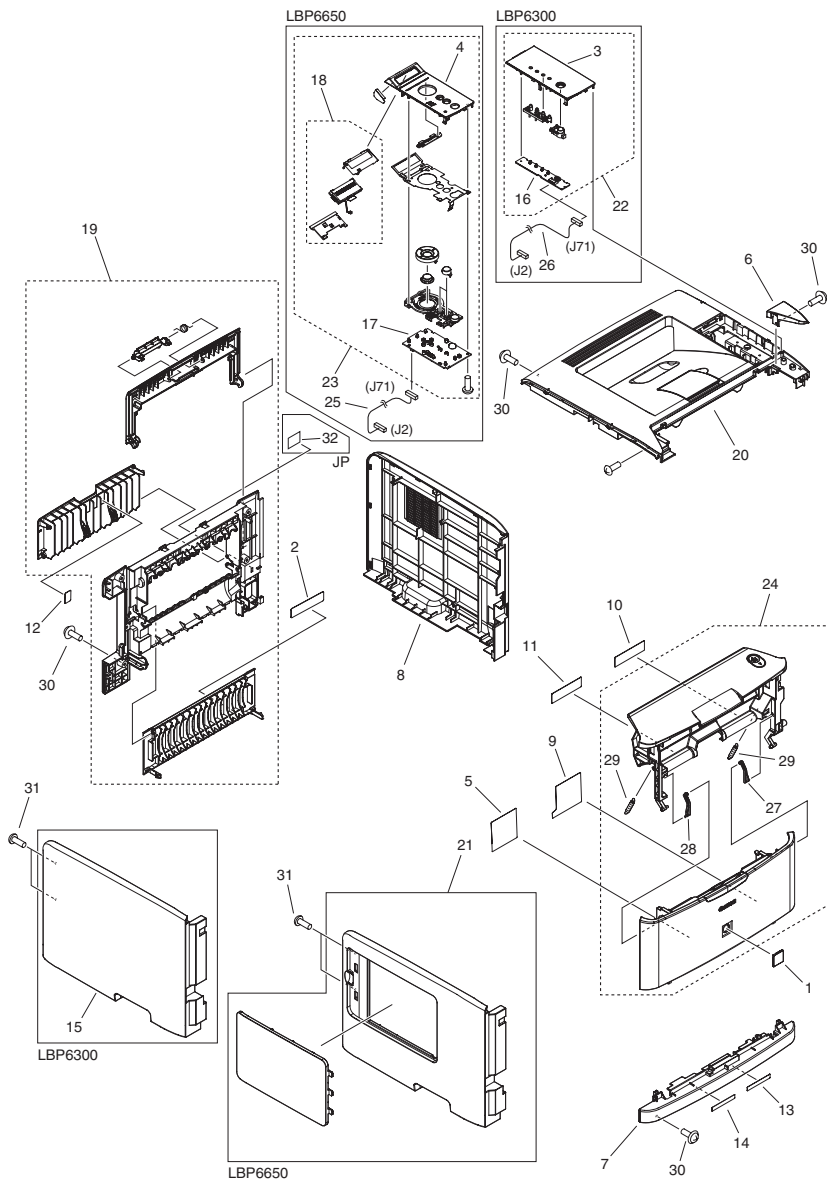


FIGURE & KEY NO.	PARTS NUMBER	R A N K	Q'TY	DESCRIPTION	SERIAL NUMBER/ REMARKS	S V C
Fig.100	NPN		RF	EXTERNAL COVERS, PANELS, ETC.	EXCEPT LBP6310dn	
1	FC7-0496-000		1	EMBLEM	EXCEPT JP	
1	FC5-5256-000		1	EMBLEM	JP	
2	FC7-0810-000		1	LABEL, DUPLEXING SIZE CONTROL		
3	FC8-0095-000		1	PANEL, OPERATE	LBP6300 CN	
3	FC8-0096-000		1	PANEL, OPERATE	LBP6300 EUR	
3	FC8-0081-000		1	PANEL, OPERATE	LBP6300 JP	
3	FC8-0094-000		1	PANEL, OPERATE	LBP6300 EXCEPT CN,EUR,JP	
4	FC8-9868-000		1	PANEL, OPERATE	LBP6650 CN	
4	FC8-9869-000		1	PANEL, OPERATE	LBP6650 EUR	
4	FC8-9858-000		1	PANEL, OPERATE	LBP6650 EXCEPT CN,EUR	
5	FC8-0103-000		1	LABEL, PRINT INSTRUCTION		
6	FC8-9828-000		1	COVER, RIGHT, UPPER		
7	FC8-9837-000		1	COVER, FRONT		
8	FC8-9846-000		1	COVER, RIGHT		
9	FC8-9870-000		1	LABEL, MP, SIZE	EXCEPT JP	
9	FC8-9973-000		1	LABEL, MP, SIZE	JP	
10	FC8-9871-000		1	LABEL, JAM, HANDLE, C		
11	FC8-9872-000		1	LABEL, FUSER, PRESS, RELEASE		
12	FC8-9896-000		1	LABEL, H.V. CAUTION		
13	FC8-9894-000		1	LABEL, DUPLEX, OPE, C		
14	FC8-9895-000		1	LABEL, RELEASE, LEVERE, C		
15	FC8-9969-000		1	COVER, SIDE, LEFT	LBP6300	
16	FM2-6194-000		1	DISPLAY PCB ASS'Y	LBP6300	
17	FM2-8329-000		1	DISPLAY PCB ASS'Y	LBP6650	
18	FM2-8342-000		1	LCD COVER ASS'Y	LBP6650	
19	FM3-8834-000		1	REAR COVER ASS'Y		
20	FM3-8837-000		1	TOP COVER ASS'Y		
21	FM3-8838-000		1	LEFT COVER ASS'Y	LBP6650	
22	FM3-3602-000		1	OPERATION PANEL ASS'Y	LBP6300 CN	
22	FM3-3600-000		1	OPERATION PANEL ASS'Y	LBP6300 EUR	

FIGURE & KEY NO.	PARTS NUMBER	R A N K	Q'TY	DESCRIPTION	SERIAL NUMBER/ REMARKS	S V C
22	FM3-3599-000		1	OPERATION PANEL ASS'Y	LBP6300 JP	
22	FM3-3601-000		1	OPERATION PANEL ASS'Y	LBP6300 EXCEPT CN, EUR, JP	
23	FM3-8847-000		1	OPERATION PANEL ASS'Y	LBP6650 CN	
23	FM3-8849-000		1	OPERATION PANEL ASS'Y	LBP6650 EUR	
23	FM3-8841-000		1	OPERATION PANEL ASS'Y	LBP6650 EXCEPT CN, EUR	
24	FM4-8807-000		1	CARTRIDGE DOOR ASS'Y	LBP6300 US	
24	FM3-9092-000		1	CARTRIDGE DOOR ASS'Y	LBP6300dn EUR	
24	FM3-9087-000		1	CARTRIDGE DOOR ASS'Y	LBP6300dn JP	
24	FM3-9093-000		1	CARTRIDGE DOOR ASS'Y	LBP6300dn EXCEPT EUR, JP	
24	FM4-8808-000		1	CARTRIDGE DOOR ASS'Y	LBP6300n	
24	FM4-8797-000		1	CARTRIDGE DOOR ASS'Y	LBP6650 US	
24	FM3-8850-000		1	CARTRIDGE DOOR ASS'Y	LBP6650dn EUR	
24	FM3-8836-000		1	CARTRIDGE DOOR ASS'Y	LBP6650dn EXCEPT EUR	
24	FM4-8798-000		1	CARTRIDGE DOOR ASS'Y	LBP6650n	
25	FM4-2469-000		1	CABEL, PANEL	LBP6650	
26	FM4-2470-000		1	CABEL, PANEL	LBP6300	
27	RC2-6273-000		1	HINGE, MULTI-PURPOSE, RIGHT		
28	RC2-8291-000		1	HINGE, MULTI-PURPOSE, LEFT		
29	RU5-2895-000		2	SPRING, TENSION		
30	XA9-1671-000		AR	SCREW, D, M3X8		
31	XA9-1503-000		2	SCREW, TAP, M3X6		
32	FC8-9985-000		1	LABEL, GROUNDING CAUTION	JP	

# FIGURE 100A EXTERNAL COVERS, PANELS, ETC. (LBP6310dn)

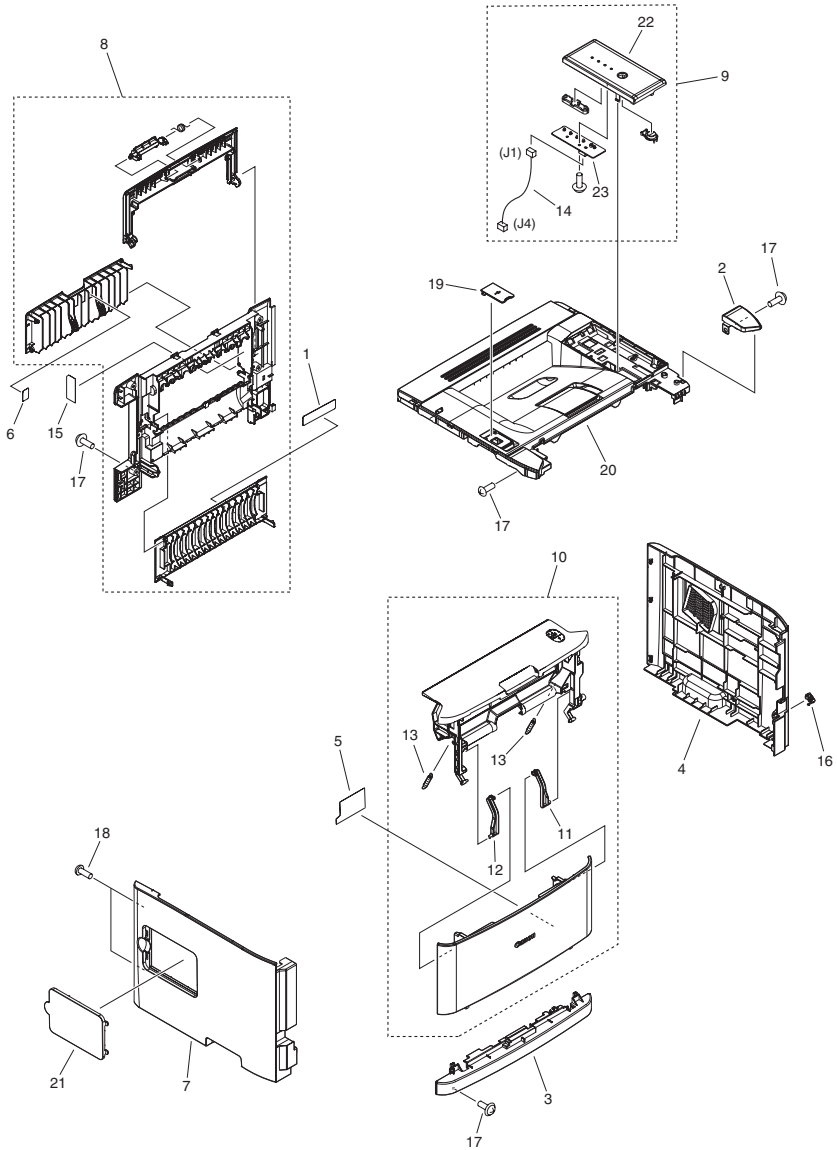


FIGURE & KEY NO.	PARTS NUMBER	R A N K	Q'TY	DESCRIPTION	SERIAL NUMBER/ REMARKS	S V C
Fig.100A	NPN		RF	EXTERNAL COVERS, PANELS, ETC.	LBP6310dn	
1	FC0-4235-000		1	LABEL, DUPLEXING SIZE CONTROL		
2	FE2-0486-000		1	COVER, RIGHT, UPPER		
3	FC8-9837-000		1	COVER, FRONT		
4	FC0-4252-000		1	COVER, RIGHT		
5	FC0-4239-000		1	LABEL, MP, SIZE		
6	FC8-9896-000		1	LABEL, ATTENTION		
7	FC0-4251-000		1	COVER, LEFT		
8	FM4-8671-000		1	REAR COVER ASS'Y		
9	FM4-8695-000		1	CONTROL PANEL ASS'Y		
10	FM4-8683-000		1	CARTRIDGE DOOR ASS'Y		
11	RC2-6273-000		1	HINGE, MULTI-PURPOSE, RIGHT		
12	RC2-8291-000		1	HINGE, MULTI-PURPOSE, LEFT		
13	RU5-2895-000		2	SPRING, TENSION		
14	FM0-4763-000		1	CABLE, PANEL		
15	FC0-4281-000		1	LABEL, CAUTION		
16	FC0-4270-000		1	COVER, SWITCH		
17	XA9-1671-000		AR	SCREW, D, M3X8		
18	XA9-1503-000		2	SCREW, TAP, M3X6		
19	FC0-4275-000		1	COVER, USB		
20	FM4-8674-000		1	TOP COVER ASS'Y		
21	FE2-0484-000		1	COVER, CAPT, L6		
22	FE2-0480-000		1	PANEL, OPERATE		
23	FM0-4101-000		1	DISPLAY PCB ASS'Y		

# FIGURE 101 INTERNAL COMPONENTS 1

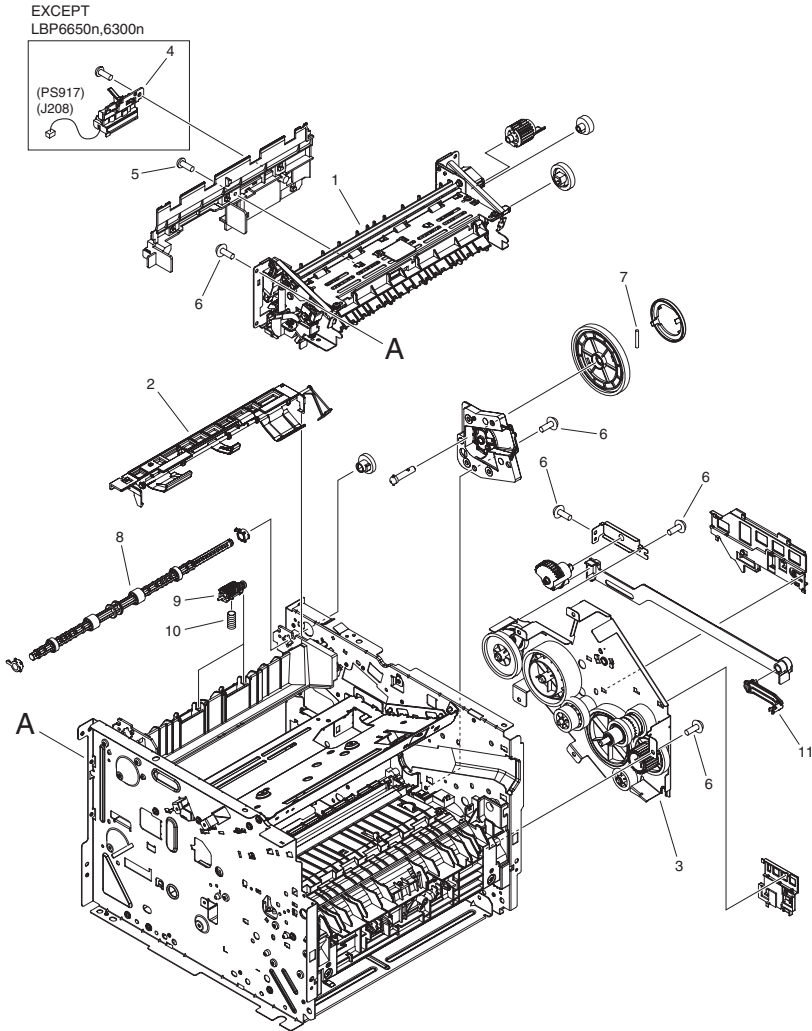


FIGURE & KEY NO.	PARTS NUMBER	R A N K	Q'TY	DESCRIPTION	SERIAL NUMBER/ REMARKS	S V C
Fig.101	NPN		RF	INTERNAL COMPONENTS 1		
1	FM3-9088-000		1	FIXING ASS'Y	100V	
1	RM1-6405-000		1	FIXING ASS'Y	120V	
1	RM1-6406-000		1	FIXING ASS'Y	230V	
2	RM1-6401-000		1	PAPER RETAINING DELIVERY ASS'Y		
3	RM1-6421-000		1	MAIN DRIVE ASS'Y		
4	RM1-6445-000		1	REVERSE SENSOR ASS'Y	EXCEPT LBP6650n,6300n PS917	
5	XA9-1503-000		3	SCREW, TAP, M3X6		
6	XA9-1671-000		AR	SCREW, D, M3X8		
7	RC2-8349-000		1	PIN LARGE GEAR		
8	RL1-2112-000		1	ROLLER, FACE-DOWN		
9	RL1-2111-000		2	FACE-DOWN ROLLER UNIT		
10	RU6-2610-000		2	SPRING, COMPRESSION		
11	RC2-6198-000		1	ARM, LINK, 1		



# FIGURE 102 INTERNAL COMPONENTS 2

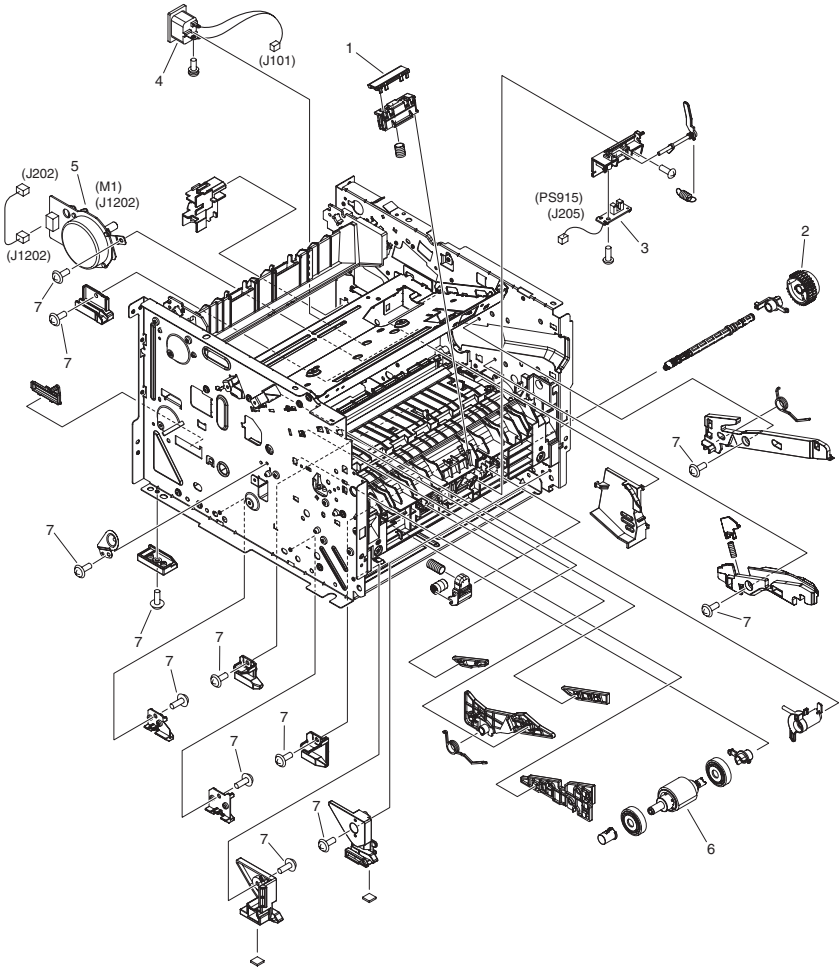


FIGURE & KEY NO.	PARTS NUMBER	RANK	Q'TY	DESCRIPTION	SERIAL NUMBER/REMARKS	SVC
Fig.102	NPN		RF	INTERNAL COMPONENTS 2		
1	RL1-2115-000		1	PAD, MULTI-PURPOSE SEPARATION		
2	RM1-1301-000		1	PAPER PICK-UP GEAR ASS'Y		
3	RM1-6350-000		1	MULTI-PURPOSE SENSOR PCB ASS'Y	PS915	
4	RM1-6375-000		1	INLET CABLE ASS'Y		
5	RM1-6378-000		1	MAIN MOTOR ASS'Y	M1	
6	RM1-6414-000		1	PAPER PICK-UP ROLLER ASS'Y		
7	XA9-1671-000		AR	SCREW, D, M3X8		

# FIGURE 103 INTERNAL COMPONENTS 3

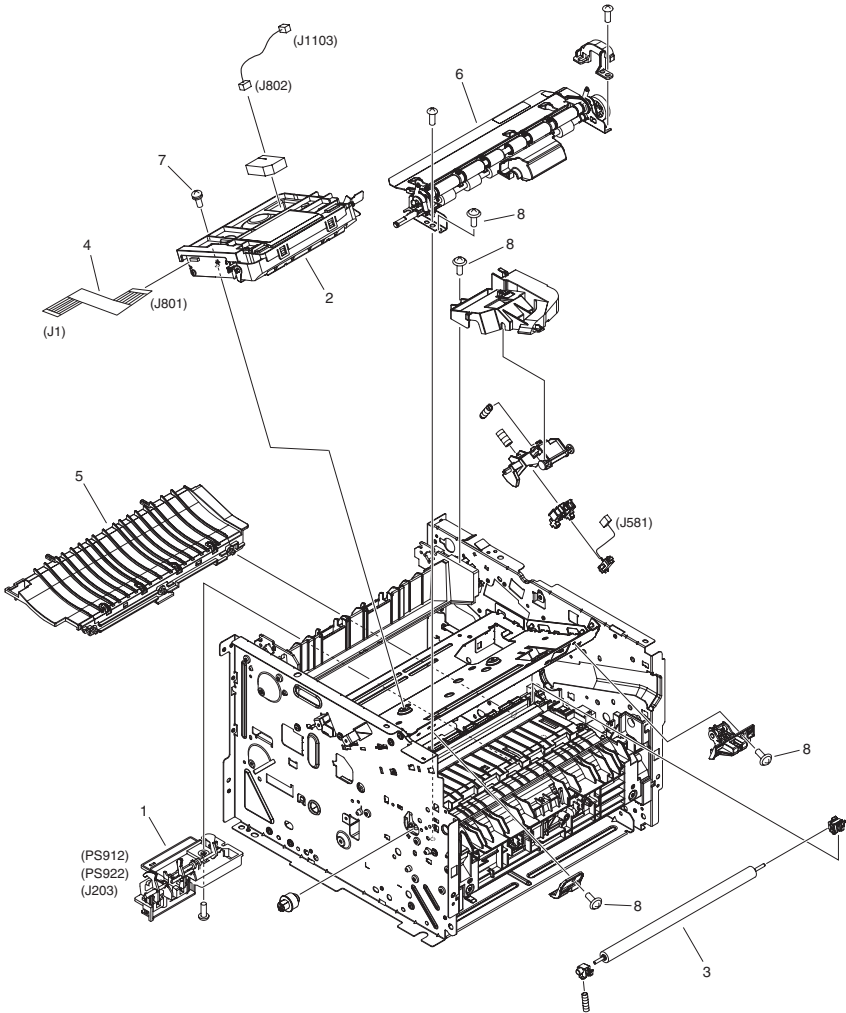


FIGURE & KEY NO.	PARTS NUMBER	RANK	Q'TY	DESCRIPTION	SERIAL NUMBER/REMARKS	SVC
Fig.103	NPN		RF	INTERNAL COMPONENTS 3		
1	FM3-8855-000		1	TOP SENSOR ASS'Y	PS912,PS922	
2	RM1-6424-000		1	SCANNER ASS'Y		
3	RM1-6450-000		1	TRANSFER ROLLER ASS'Y		
4	RK2-2719-000		1	CABLE, LASER FLEXIBLE FLAT		
5	RM1-6402-000		1	PAPER FEED GUIDE ASS'Y		
6	RM1-6419-000		1	REGISTRATION ASS'Y	EXCEPT LBP6310dn	
6	FM4-8694-000		1	REGISTRATION ASS'Y	LBP6310dn	
7	XA9-1420-000		4	SCREW, W/WASHER, M3X8		
8	XA9-1671-000		5	SCREW, D, M3X8		

# FIGURE 104 INTERNAL COMPONENTS 4

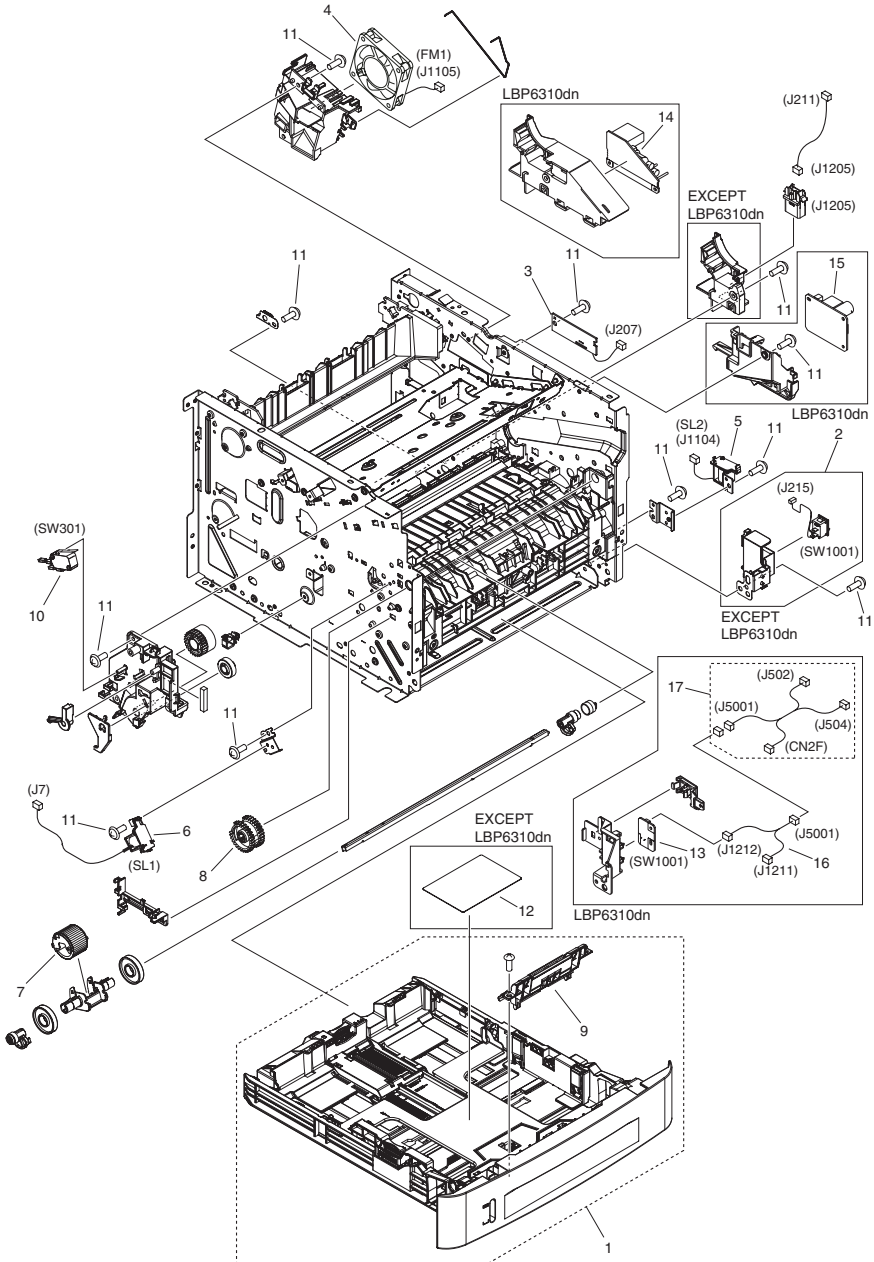


FIGURE & KEY NO.	PARTS NUMBER	R A N K	Q'TY	DESCRIPTION	SERIAL NUMBER/ REMARKS	S V C
Fig.104	NPN		RF	INTERNAL COMPONENTS 4		
1	FM3-8839-000		1	CASSETTE ASS'Y		
2	FM3-8835-000		1	POWER SUPPLY SWITCH ASS'Y	EXCEPT LBP6310dn SW1001	
3	FM4-3879-000		1	DUPLEX DRIVER PCB ASS'Y	EXCEPT LBP6310dn	
3	FM0-4647-000		1	DUPLEX DRIVER PCB ASS'Y	LBP6310dn	
4	RK2-2728-000		1	FAN	FM1	
5	RK2-2729-000		1	SOLENOID	SL2	
6	RK2-2731-000		1	SOLENOID	SL1	
7	RL1-2120-000		1	ROLLER, MULTI-PURPOSE PICK-UP		
8	RM1-4275-000		1	PAPER PICK-UP GEAR ASS'Y		
9	RM1-6397-000		1	SEPARATION PAD HOLDER ASS'Y		
10	WC4-5171-000		1	MICROSWITCH	SW301	
11	XA9-1671-000		AR	SCREW, D, M3X8		
12	FC8-9878-000		1	LABEL, OPE, CHANGE, PAPER	EXCEPT LBP6310dn	
13	FM0-1140-000		1	POWER SUPPLY SWITCH ASS'Y	LBP6310dn	
14	FM0-1139-000		1	AC RELAY PCB ASS'Y	LBP6310dn	
15	FK3-1986-000		1	A.N. POWER SUPPLY PCB ASSEMBLY	LBP6310dn	
16	FM0-1147-000		1	CABLE, AC RELAY CONNECTING, L6	LBP6310dn	
17	FM0-1148-000		1	CABLE, SLEEP IF CONNECTING, L6	LBP6310dn	



FIGURE & KEY NO.	PARTS NUMBER	R A N K	Q'TY	DESCRIPTION	SERIAL NUMBER/REMARKS	S V C
Fig.105	NPN		RF	INTERNAL COMPONENTS 5		
1	FC7-3206-000		1	PLATE, GROUNDING	LBP6650	
2	RK2-2733-000		1	SOLENOID	SL3	
3	RM1-6423-000		1	REVERSE DRIVE ASS'Y		
4	RM1-6441-000		1	DUPLEXING PAPER FEED ASS'Y		
5	XA9-1503-000		AR	SCREW, TAP, M3X6		
6	XA9-1671-000		6	SCREW, D, M3X8		
7	FM4-2465-000		1	ENGINE CONTROLLER ASS'Y	100V,120V	
7	FM4-2466-000		1	ENGINE CONTROLLER ASS'Y	EXCEPT LBP6310dn 230V	
7	FM0-4646-000		1	ENGINE CONTROLLER ASS'Y	LBP6310dn 230V	
8	XA9-1420-000		4	SCREW, W/WASHER, M3X8		
9	FM0-4649-000		1	SLEEP IF PCB ASS'Y, L6	LBP6310dn	
10	FM0-4650-000		1	CABLE, L6	LBP6310dn	
11	FM0-4653-000		1	CABLE, L6	LBP6310dn	
12	FM0-1143-000		1	CABLE, L6	LBP6310dn	



# FIGURE 900 MAIN CONTROLLER PCB ASS'Y (LBP6650)

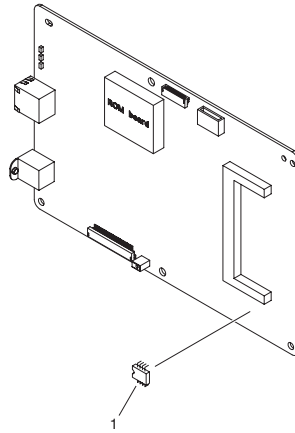


FIGURE & KEY NO.	PARTS NUMBER	RANK	Q'TY	DESCRIPTION	SERIAL NUMBER/REMARKS	SVC
Fig.900	FM4-2367-000		1	MAIN CONTROLLER PCB ASS'Y	LBP6650	
1	WA7-3525-000		1	IC, 24LC128-I/PG, EEP-ROM,	IC9	
IC	FH4-6302-000		1	IC, S1L50552F32L000, ASIC	IC1009	
IC	FK2-1243-000		1	IC, T8K26EXBG-3U TOSHIBA	IC1010	
IC	FL3-2802-000		1	IC, M29W128GL70N6, FLASH-ROM	IC16	

# FIGURE 901 MAIN CONTROLLER PCB ASS'Y (LBP6300)

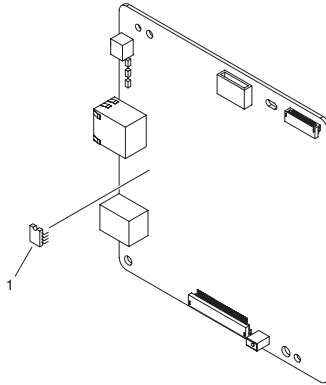


FIGURE & KEY NO.	PARTS NUMBER	RANK	QTY	DESCRIPTION	SERIAL NUMBER/REMARKS	SVC
Fig.901	FM4-3877-000		1	MAIN CONTROLLER PCB ASS'Y	LBP6300/ LBP6300dn	
Fig.901	FM0-0679-000		1	MAIN CONTROLLER PCB ASS'Y	LBP6300n	
Fig.901	FM0-4102-000		1	MAIN CONTROLLER PCB ASS'Y, L6	LBP6310dn	
1	WA7-4673-000		1	IC, 24LC256-I/PG, EEP-ROM,	IC1	
IC	FK2-5869-000		1	IC, UPD800435F1-011-MNG-A, CPU	IC3	
IC	FK2-7852-000		1	IC, T6TH5EFG-0002(0), STANDARD	IC5	
IC	FK3-0666-000		1	IC, S29AL016J70TFI01, FLASH	IC12	

# FIGURE ZZA

## MECHANICAL STANDARD PARTS (HOW TO USE)

### Mechanical standard parts

#### 機械標準部品

About a mechanical standard parts

A Mechanical standard parts is a mechanical part which not parts peculiar to a product. They are parts which are common to a Canon product and are used, such as a screw and a washer. The Fig No. and parts number of the mechanical standard parts are not listed in the product parts catalog. Refer to the parts catalog of mechanical standard parts when checking the parts number for screw or washer etc. and identify them by part shape or size.

機械標準部品とは

機械標準部品とは、製品特有の部品ではなく、ねじやワッシャなどキヤノン製品共通で使用されている機械部品（メカ部品）のことです。  
製品のパーツカタログには、機械標準部品のFig No.や部品番号は記載していません。  
ねじや、ワッシャ等の部品番号を調べるときは、機械標準部品のパーツカタログを参照し、部品の形状や大きさから判断し、使用している部品を調べてください。

Material and surface treatment of a mechanical standard parts

Material and surface treatment of mechanical standard parts are assigned commonly for each part. Refer to the Table 1 for the parts which material and surface treatment are assigned as numbers.

機械標準部品の材料および表面処理

機械標準部品の材料および表面処理については、各種部品共通で決められています。  
材料および表面処理が番号で決められている部品については、表1を参照してください。

Table 1 Material and Surface treatment  
表1 材料および表面処理

No. 番号	Material 材料	Surface treatment 表面処理	Color 色
1	Stainless steel ステンレス	Stainless steel black coloring (BC4) ステンレス黒着色(BC4)	Black 黒
2		not to be given なし	White 白
3	Brass 黄銅	Regular nickel plating (NL) 普通ニッケルメッキ(NL)	White 白
4		Black nickel plating (BN) 黒色ニッケルメッキ(BN)	Black 黒
5	Steel 鋼	White zinc trivalent chromate treating (ZC3) 白色亜鉛3価クロメート(ZC3)	White 白
6		Regular nickel chromium plating (NC) 普通ニッケルクロムメッキ(NC)	White 白
7		Regular nickel plating (NL) 普通ニッケルメッキ(NL)	White 白
8		Iron and steel phosphating (P1) 鉄鋼磷酸塩処理(P1)	Black 黒
9		Black zinc trivalent chromate treating (BZ3) 黒色亜鉛3価クロメート(BZ3)	Black 黒

# FIGURE ZZB MECHANICAL STANDARD PARTS (SCREWS)

## 1. Screws ねじ

How to read Parts Numbers  
部品番号の見方

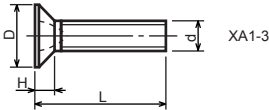
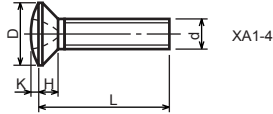
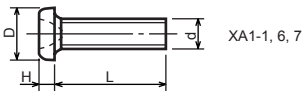
Screws  
ねじ

**XB1-2400-609**

Type No.  
類別番号  
Normal designation (d)  
ねじの呼び(d)  
Length (L)  
ねじの長さ(L)  
Material and Surface treatment  
材料および表面処理

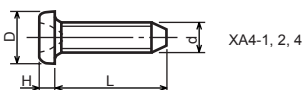
XB1-2 expresses Binding head machine screw.  
XB1-2は、バインドねじを表す  
40 expresses M4.0.  
40は、M4.0を表す  
0-60 expresses a length of 6.0mm.  
0-60は、6.0mmの長さを表す  
9 expresses Steel (Black zinc trivalent chromate  
treating) from Table 1.  
9は、表1より鋼(黒色亜鉛3価クロメート)を表す

### 1-1. Cross Recessed Head Screws for Precision Equipments 精密機器用十字穴付き小ねじ

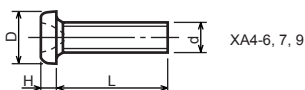


Type No. 類別番号	Type 類別	Head size (mm) 頭部寸法 (mm)							
		M1.4	M1.6	M1.7	M2	M2.5	M2.6		
XA1-1	Pan head Class 1 なべ1種	D	XA1-1	2	2.4	2.5	3	3.8	4
		H	XA1-1	0.5	0.55	0.5	0.6	0.9	0.8
XA1-3	Countersunk head Class 1 さら1種	D	XA1-3	2	2.4	2.5	3	3.8	4
		H	XA1-3	0.48	0.55	0.58	0.73	0.85	0.93
XA1-4	Oval countersunk head Class 1 丸さら1種	D	XA1-4	2	2.4	2.5	3	3.8	4
		H + K	XA1-4	0.68	0.8	0.88	1	1.25	1.3
XA1-6	Pan head Class 3 なべ3種	D	XA1-6	2.5	2.8	3	3.5	4.3	4.5
		H	XA1-6	0.8	0.85	0.9	1	1.3	1.2
XA1-7	Pan head Class 2 なべ2種	D	XA1-7	2.5	2.8	3	3.5	4.3	4.5
		H	XA1-7	0.5	0.55	0.5	0.6	0.9	0.8

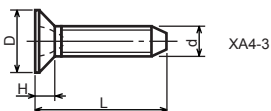
1-2. Precision Tapping Screws  
精密用タッピンねじ



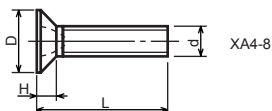
XA4-1, 2, 4



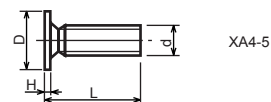
XA4-6, 7, 9



XA4-3



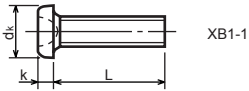
XA4-8



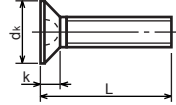
XA4-5

Type No. 類別番号	Type 類別	Head size (mm) 頭部寸法 (mm)						
		M1.4	M1.6	M1.7	M2	M2.5	M2.6	
XA4-1	With tapered end pan head Class 1 絞りなべ1種	D XA4-1	2	2.4	2.5	3	3.8	4
		H XA4-1	0.5	0.55	0.5	0.6	0.9	0.8
XA4-2	With tapered end pan head Class 3 絞りなべ3種	D XA4-2	2.5	2.8	3	3.5	4.3	4.5
		H XA4-2	0.8	0.85	0.9	1	1.3	1.2
XA4-3	With tapered end countersunk head 絞り-さら	D XA4-3	2	2.4	2.5	3	3.8	4
		H XA4-3	0.48	0.55	0.58	0.73	0.85	0.93
XA4-4	With tapered end pan head Class 2 絞りなべ2種	D XA4-4	2.5	2.8	3	3.5	4.3	4.5
		H XA4-4	0.5	0.55	0.5	0.6	0.9	0.8
XA4-5	With parallel end ultra thin head ストレート-超薄頭	D XA4-5	2.5	2.8	3	-	-	-
		H XA4-5	0.2	0.2	0.2	-	-	-
XA4-6	With parallel end pan head Class 1 ストレートなべ1種	D XA4-6	2	2.4	2.5	3	3.8	4
		H XA4-6	0.5	0.55	0.5	0.6	0.9	0.8
XA4-7	With parallel end pan head Class 3 ストレートなべ3種	D XA4-7	2.5	2.8	3	3.5	4.3	4.5
		H XA4-7	0.8	0.85	0.9	1	1.3	1.2
XA4-8	With parallel end countersunk head ストレート-さら	D XA4-8	2	2.4	2.5	3	3.8	4
		H XA4-8	0.48	0.55	0.58	0.73	0.85	0.93
XA4-9	With parallel end pan head Class 2 ストレートなべ2種	D XA4-9	2.5	2.8	3	3.5	4.3	4.5
		H XA4-9	0.5	0.55	0.5	0.6	0.9	0.8

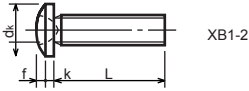
**1-3. Cross Recessed Head Screws**  
 一般用十字穴付き小ねじ



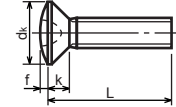
XB1-1



XB1-3



XB1-2

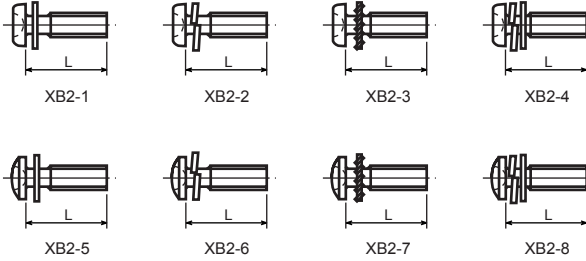


XB1-4

Type No. 類別番号	Type 類別
XB1-1	Pan head なべ
XB1-2	Binding head バインド
XB1-3	Countersunk head さら
XB1-4	Oval countersunk head 丸さら

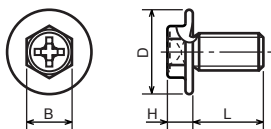
		Head size (mm) 頭部寸法 (mm)					
		M2	M2.5	M2.6	M3	M4	M5
dk	XB1-1	3.5	4.5	4.5	5.5	7	9
k	XB1-1	1.3	1.7	1.7	2	2.6	3.3
dk	XB1-2	4.3	5.3	5.5	6.3	8.3	10.3
k+f	XB1-2	1.2	1.5	1.6	1.9	2.5	3.1
dk	XB1-3	4	5	-	6	8	10
k	XB1-3	1.2	1.45	-	1.75	2.3	2.8
dk	XB1-4	4	5	-	6	8	10
k+f	XB1-4	1.6	2	-	2.45	3.2	4
Screw part length ねじ部長さ b		8	12	12	12	16	20

1-4. Cross Recessed Head Screws with Captive Washer  
 座金組み十字穴付き小ねじ



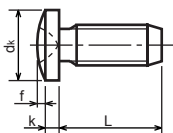
Type No. 類別番号	Type 類別
XB2-1	Pan head + Plain washer (circular bright) なべねじ+平座金
XB2-2	Pan head + Spring washer なべねじ+ばね座金
XB2-3	Pan head + Toothed lock washer なべねじ+歯付座金
XB2-4	Pan head + Spring washer and plain washer (circular bright) なべねじ+(ばね+平)座金
XB2-5	Binding head + Plain washer (circular bright) バインドねじ+平座金
XB2-6	Binding head + Spring washer バインドねじ+ばね座金
XB2-7	Binding head + Toothed lock washer バインドねじ+歯付座金
XB2-8	Binding head + Spring washer and plain washer (circular bright) バインドねじ+(ばね+平)座金

**1-5. Hexagon Head Tapping Screws for Metallic Materials**  
 金属用六角タッピンねじ



Type No. 類別番号	Type 類別	Head size (mm) 頭部寸法 (mm)		
		M3	M4	
XB3-6	For metallic materials 金属用タッピン	D	8	10
		B	5.5	5.5
XB3-7	For metallic materials with clawed 金属用タッピン-つめ付き	H XB3-6	3.1	3.1
		H XB3-7	3.2	3.2

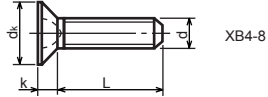
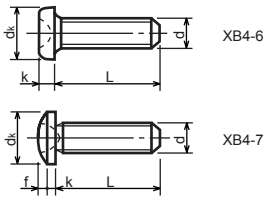
**1-6. Special Tapping Screws**  
 特殊タッピンねじ



Type No. 類別番号	Type 類別	Head size (mm) 頭部寸法 (mm)		
		M3	M4	
XB4-5	Binding head バインド	d <sub>k</sub>	6.3	8.3
		k	1.3	1.7
		k+f	1.9	2.5



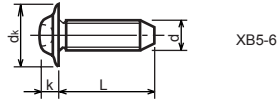
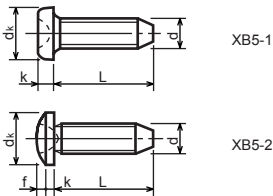
**1-7. General Head Tapping Screws**  
 一般用タッピンねじ



Type No. 類別番号	Type 類別
XB4-6	Pan head なべ
XB4-7	Binding head バインド
XB4-8	Countersunk head さら

		Head size (mm) 頭部寸法 (mm)					
		M2	M2.5	M2.6	M3	M4	M5
dk	XB4-6	3.5	4.5	4.5	5.5	7	9
k	XB4-6	1.3	1.7	1.7	2	2.6	3.3
dk	XB4-7	4.3	5.3	5.5	6.3	8.3	10.3
k+f	XB4-7	1.2	1.5	1.6	1.9	2.5	3.1
dk	XB4-8	4	5	5.2	6	8	10
k	XB4-8	1.2	1.45	1.5	1.75	2.3	2.8

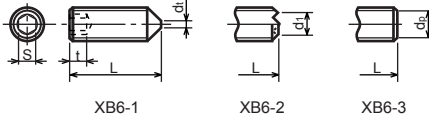
**1-8. Tapping Screws for Metallic Materials**  
 金属用タッピンねじ



Type No. 類別番号	Type 類別
XB5-1	Pan head なべ
XB5-2	Binding head バインド
XB5-6	Flanged pan head つば付きなべ

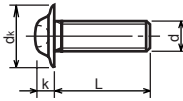
		Head size (mm) 頭部寸法 (mm)				
		M2.5	M2.6	M3	M4	M5
dk	XB5-1	4.5	4.5	5.5	7	9
k	XB5-1	1.7	1.7	2	2.6	3.3
dk	XB5-2	5.5	5.5	6.3	8.3	10.3
k+f	XB5-2	1.6	1.6	1.9	2.5	3.1
dk	XB5-6	6.5	6.5	8	10	12
k	XB5-6	2.1	2.1	1.75	3.2	4

**1-9. Hexagon Socket Set Screws**  
六角穴付止めねじ



Type No. 類別番号	Type 類別	Head size (mm) 頭部寸法 (mm)							
		M1.6 M1.7	M2	M2.5 M2.6	M3	M5	M5	M6	
XB6-1	Cone point とがり先	S	0.7	0.9	1.3	1.5	2	2.5	3
		t	1.5	1.7	2	2	2.5	3	3.5
		$d_{t \max}$ XB6-1	0.4	0.5	0.65	0.75	1	1.25	1.5
		$d_{l \max}$ XB6-2	-	1.2	1.5	1.7	2.2	2.8	3.3
		$d_{l \min}$ XB6-2	-	1	1.2	1.4	1.9	2.4	2.9
		$d_{p \max}$ XB6-3	0.8	1	1.5	2	2.5	3.5	4
		$d_{p \min}$ XB6-3	0.55	0.75	1.25	1.75	2.25	3.2	3.7

**1-10. Flanged Pan Head Machine Screws**  
つば付きなべ小ねじ



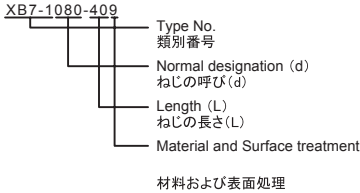
Type No. 類別番号	Type 類別	Head size (mm) 頭部寸法 (mm)					
		M2	M2.5 M2.6	M3	M5	M5	
XB6-7	Flanged pan head つば付きなべ	$d_k$	5	6.5	8	10	12
		k	1.7	2.1	2.5	3.2	4

# FIGURE ZZC MECHANICAL STANDARD PARTS (BOLTS)

## 2. Bolts (Socket head cap screw) ボルト

How to read Parts Numbers  
部品番号の見方

Bolt (Socket head cap screw)  
ボルト



XB7-1 expresses Hexagon socket head cap screws.  
XB7-1は、六角穴付きボルトを表す

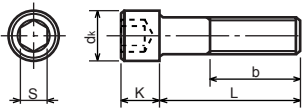
080 expresses M8.0.  
080は、M8.0を表す

40 expresses a length of 40mm.  
40は、40mmの長さを表す

9 expresses Steel (Black zinc trivalent chromate  
treating) from Table 1.

9は、表1より鋼(黒色亜鉛3価クロメート)を表す

### 2-1. Hexagon socket head cap screws 六角穴付きボルト



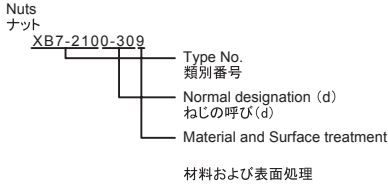
Type No. 類別番号	Type 類別
XB7-1	Hexagon socket head cap screws 六角穴付きボルト

	Head size (mm) 頭部寸法 (mm)						
	M3	M4	M5	M6	M8	M10	M12
S	2.5	3	4	5	6	8	10
$d_k$	5.5	7	8.5	10	13	16	18
K	3	4	5	6	8	10	12
Screw part length $b_{max}$ ねじ部長さ $b_{max}$	18	20	22	24	28	32	36

# FIGURE ZZD MECHANICAL STANDARD PARTS (NUTS)

## 3. Nuts ナット

How to read Parts Numbers  
部品番号の見方



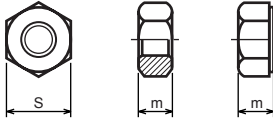
XB7-210 expresses Hexagon nut class 1.  
XB7-210は、六角ナット1種を表す

0-30 expresses M3.0.  
0-30は、M3.0を表す

9 expresses Steel (Black zinc trivalent chromate  
treating) from Table 1.

9は、表1より鋼(黒色亜鉛3価クロメート)を表す

### 3-1. Hexagon Nuts and Hexagon Thin Nuts 六角ナット



Type No. 類別番号	Type 類別
XB7-210	Hexagon nut Class 1 六角ナット-1種
XB7-220	Hexagon nut Class 3 六角ナット-3種
XB7-230	Hexagon nut Style 1 double chamfered 六角ナット-スタイル1-両面とり
XB7-231	Hexagon nut Style 1 washer faced 六角ナット-スタイル1-座付き
XB7-240	Hexagon nut Style 2 double chamfered 六角ナット-スタイル2-両面とり
XB7-241	Hexagon nut Style 2 washer faced 六角ナット-スタイル2-座付き
XB7-250	Hexagon nut 六角ナット
XB7-260	Hexagon thin nut double chamfered 六角低ナット-両面とり
XB7-270	Hexagon thin nut not chamfered 六角低ナット-面とり無し

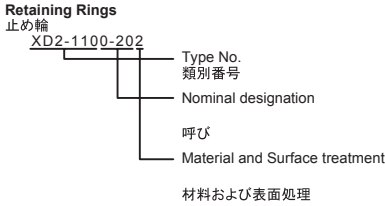
	Head size (mm) 頭部寸法 (mm)						
	M2	M2.5	M3	M4	M5	M6	M8
S	4	5	5.5	7	8	10	13
m XB7-210	1.6	2	2.4	3.2	4	5	6.5
m XB7-220	1.2	1.6	1.8	2.4	3.2	3.6	5
m XB7-230, 231	1.6	2	2.4	3.2	4.7	5.2	6.8
m XB7-240, 241	-	-	-	-	5.1	5.7	7.5
m XB7-250	-	-	-	-	5.6	6.1	7.9
m XB7-260	1.2	1.6	1.8	2.2	2.7	3.2	4
m XB7-270	1.2	1.6	1.8	2.2	2.7	3.2	4

# FIGURE ZZE MECHANICAL STANDARD PARTS (RETAINING RINGS)

## 5. Retaining Rings

止め輪

How to read Parts Numbers  
部品番号の見方



XD2-110 expresses retaining ring-E type (Type1).  
XD2-110は、E形止め輪(1種)を表す

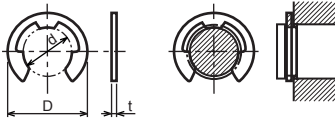
0-20 expresses a 020 of nominal designation.  
(See Table 5)

0-20は、呼び020を表す(表5参照)

2 expresses Stainless steel (Surface treatment is not to be given) from Table 1.  
2は、表1よりステンレス(表面処理なし)を表す

### 5-1. Retaining Rings - E type

E形止め輪

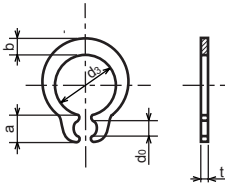


Type No. 類別番号	Type 類別
XD2-110	Retaining ring - E type (Type 1) E形止め輪(1種)
XD2-120	Retaining ring - E type (Type 2) E形止め輪(2種)

Table 5 表5

Type 種類	Nominal designation 呼び	d (mm)	D (mm)	t (mm)
Type 1 1種	007	0.65	2	0.2
	010	0.95	2.8	0.2
	013	1.25	3.3	0.3
	017	1.65	4.2	0.4
	020	1.95	4.6	0.5
	024	2.35	6	0.6
	028	2.74	6.5	0.6
	032	3.14	7.2	0.6
	037	3.64	8	0.7
	040	3.93	10	0.7
	042	4.13	10	0.7
	050	4.93	11	0.7
	058	5.73	12	0.7
	060	5.93	12.7	0.9
	064	6.32	13.5	0.9
	074	7.31	15	0.9
080	7.91	16.5	1	
Type 2 2種	008	0.8	2	0.2
	012	1.2	3	0.3
	015	1.5	4	0.4
	020	2	5	0.4
	025	2.5	6	0.4
	030	3	7	0.6
	040	4	9	0.6
	050	5	11	0.6
	060	6	12	0.8
	070	7	14	0.8
	080	8	16	0.8
	090	9	18	0.8
	100	10	20	1

5-2. Grip Rings  
グリップ止め輪

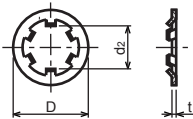


Type No. 類別番号	Type 類別
XD2-210	Grip ring グリップ止め輪

Table 5 表5

Nominal designation 呼び	d <sub>3</sub> (mm)	t (mm)	b (mm)	a (mm)	d <sub>0</sub> (mm)
020	1.9	0.5	1	1.8	0.8
025	2.35	0.5	1.2	1.9	0.9
030	2.85	0.6	1.4	1.9	0.9
035	3.3	0.6	1.6	2	0.9
040	3.8	0.8	1.8	2.8	1.2
045	4.25	0.8	2	2.9	1.3
050	4.75	0.8	2.2	2.9	1.3
060	5.7	1	2.4	3.1	1.4
070	6.7	1	2.7	3.3	1.4
080	7.7	1	3	3.5	1.4
090	8.65	1.2	3.3	4.7	1.5
100	9.65	1.2	3.5	4.7	2

5-3. Toothed Retaining Rings  
歯付き形止め輪



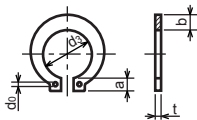
Type No. 類別番号	Type 類別
XD2-230	Toothed retaining ring 歯付き形止め輪

Table 5 表5

Nominal designation 呼び	d <sub>z</sub> (mm)	D (mm)	t (mm)	No of teeth 歯数
015	1.4	5.2	0.25	3
020	1.9	6	0.25	3
024	2.3	6.4	0.25	3
030	2.8	8	0.25	4
040	3.8	9	0.25	4
050	4.8	10	0.25	5
060	5.8	11	0.25	5
080	7.8	13	0.25	5
100	9.8	15.4	0.25	6

### 5-4. Retaining Rings - C Type

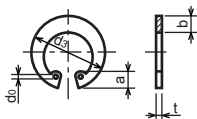
C形止め輪



Type No. 類別番号	Type 類別
XD2-310	Retaining ring - C type for shaft C形止め輪 軸用

Table 5 表5

Nominal designation 呼び	d <sub>3</sub> (mm)	t (mm)	b (mm)	a (mm)	d <sub>0</sub> (mm)
010	9.3	1	1.6	3	1.2
012	11.1	1	1.8	3.2	1.5
014	12.9	1	2	3.4	1.7
015	13.8	1	2.1	3.5	1.7
016	14.7	1	2.2	3.6	1.7
017	15.7	1	2.2	3.7	1.7
018	16.5	1.2	2.6	3.8	1.7
020	18.5	1.2	2.7	3.9	2
022	20.5	1.2	2.7	4.1	2
025	23.2	1.2	3.1	4.3	2
028	25.9	1.5	3.1	4.6	2
030	27.9	1.5	3.5	4.8	2
032	29.6	1.5	3.5	5	2.5
035	32.2	1.5	4	5.4	2.5



Type No. 類別番号	Type 類別
XD2-320	Retaining ring - C type for hole C形止め輪 穴用

Table 5 表5

Nominal designation 呼び	d <sub>3</sub> (mm)	t (mm)	b (mm)	a (mm)	d <sub>0</sub> (mm)
010	10.7	1	1.8	3.1	1.2
011	11.8	1	1.8	3.2	1.2
012	13	1	1.8	3.3	1.5
014	15.1	1	2	3.6	1.7
016	17.3	1	2	3.7	1.7
018	19.5	1	2.5	4	1.7
019	20.5	1	2.5	4	2
020	21.5	1	2.5	4	2
022	23.5	1	2.5	4.1	2
025	26.9	1.2	3	4.4	2
028	30.1	1.2	3	4.6	2
030	32.1	1.2	3	4.7	2
032	34.4	1.2	3.5	5.2	2.5
035	37.8	1.5	3.5	5.2	2.5
037	39.8	1.5	3.5	5.2	2.5
040	43.5	1.8	4	5.7	2.5
042	45.5	1.8	4	5.8	2.5
045	48.5	1.8	4.5	5.9	2.5
047	50.5	1.8	4.5	6.1	2.5
050	54.2	2	4.5	6.5	2.5
052	56.2	2	5.1	6.5	2.5
055	59.2	2	5.1	6.5	2.5
060	64.2	2	5.1	6.8	2.5
062	66.2	2	5.5	6.9	2.5
068	72.5	2.5	6	7.4	2.5
072	76.5	2.5	6.6	7.4	2.5
075	79.5	2.5	6.6	7.8	2.5
080	85.5	2.5	7	8	2.5
085	90.5	3	7	8	3
090	95.5	3	7.6	8.3	3
095	100.5	3	8	8.5	3





Prepared by  
OIP Business Support Group  
CANON INC.

**Canon**