



ECOSYS FS-1020MFP
ECOSYS FS-1220MFP
ECOSYS FS-1120MFP
ECOSYS FS-1320MFP
ECOSYS FS-1025MFP
ECOSYS FS-1125MFP
ECOSYS FS-1325MFP

PARTS LIST

Published in December 2013

2M7PL071

842M7121

Rev.1

— CONTENTS —

FIG. 1	Covers	2
FIG. 2	Frames	4
FIG. 3	Paper Feed Section	6
FIG. 4	Developer Section	8
FIG. 5	Image Formation Section	10
FIG. 6	Fuser Section	12
FIG. 7	Drive Section	14
FIG. 8	Electrical Components	16
FIG. 9	Scanner Section	18
FIG. 10	Operation Section	20
FIG. 11	Document Processor & Original Cover & Options .	22
FIG. 12	Maintenance Kits.....	24
	• INDEX	25

<Notation of products>

For the purpose of this parts list, products are identified as following.

FS-1020MFP : 20ppm(A)

FS-1220MFP : 20ppm(B)

FS-1120MFP : 20ppm(AF)

FS-1320MFP : 20ppm(BF)

FS-1025MFP : 25ppm(A)

FS-1125MFP : 25ppm(AF)

FS-1325MFP : 25ppm(BF)

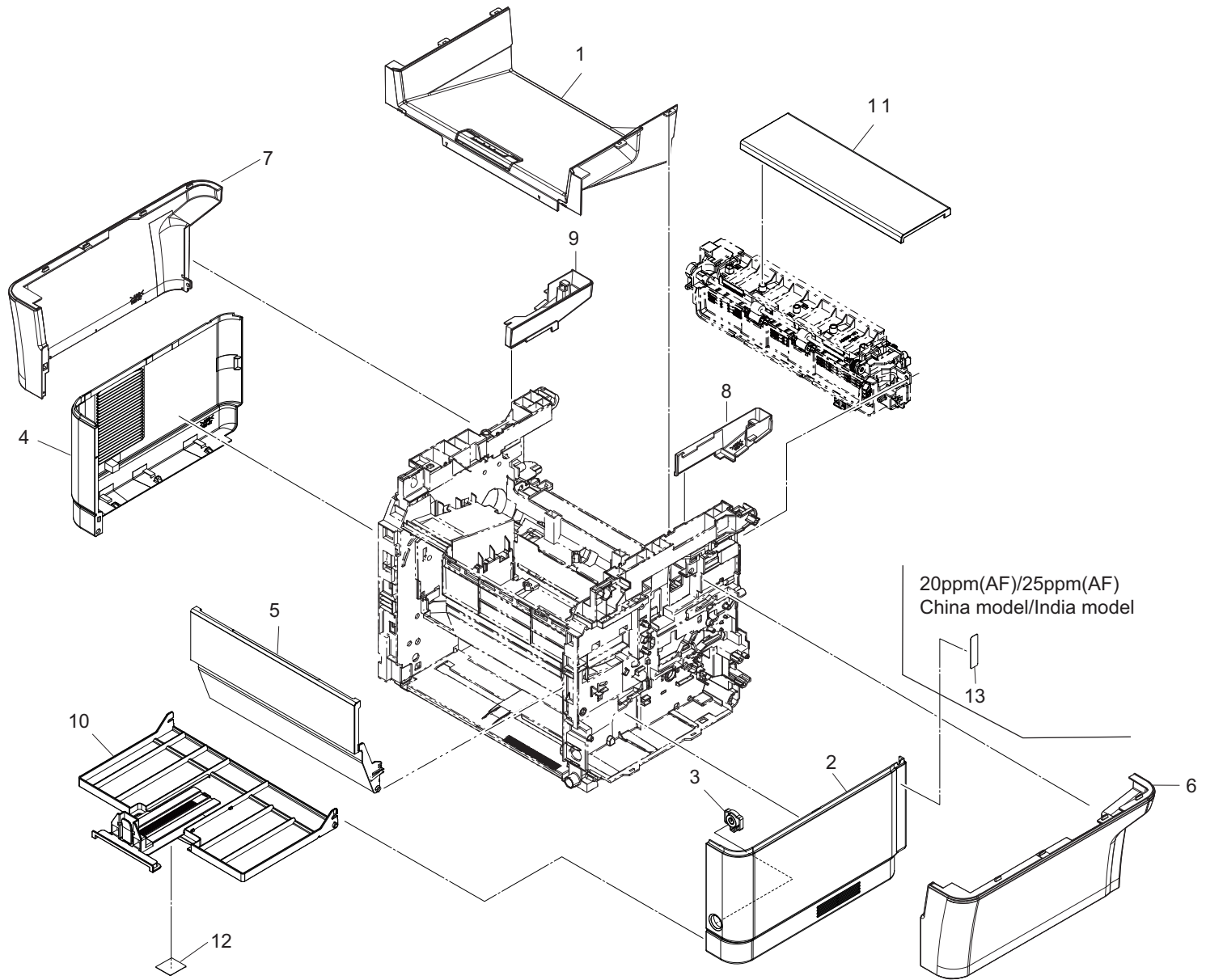


FIG. 1 Covers

2M4/2M5/2M6/2M7-1

Ref. No.	Part.No.	Alternative.	Description	Notes	Quantity	
					120	220-240
1	302M494010	2M494010	PARTS COVER TOP ASSY SP		1	1
2	302M204020	2M204020	COVER RIGHT		1	1
3	302M204100	2M204100	KEY POWER SWITCH		1	1
4	302M204030	2M204030	COVER LEFT		1	1
5	302M294020	2M294020	PARTS COVER FRONT ASSY SP		1	1
6	302M404020	2M404020	COVER RIGHT UPPER		1	1
7	302M404030	2M404030	COVER LEFT UPPER		1	1
8	302M404040	2M404040	COVER REAR UPPER R		1	1
9	302M404050	2M404050	COVER REAR UPPER L		1	1
10	302M294060	2M294060	PARTS TRAY FRONT ASSY SP		1	1
10	302M494020	2M494020	PARTS TRAY FRONT ASSY SP CN	20ppm(A)-China model		1
10	302M594040	2M594040	PARTS TRAY FRONT ASSY SP CN	20ppm(AF)-China model		1
10	302M694010	2M694010	PARTS TRAY FRONT ASSY SP CN	25ppm(A)-China model		1
10	302M794010	2M794010	PARTS TRAY FRONT ASSY SP CN	25ppm(AF)-China model		1
11	302M204060	2M204060	COVER FD		1	1
12	302G634070	2G634070	LABEL ENERGY STAR	Except for China model	1	1
13	302M734160	2M734160	LABEL FAX	20ppm(AF)/25ppm(AF)-China model		1
13	3V2M734180	2M734180	LABEL FAX SG	20ppm(AF)/25ppm(AF)-India model		1

•Parts with Ref.No. indicate maintenance parts and the ones without it indicate out of the above.

•Parts with "*" are component parts or sub-assemblies of the assembly appearing immediately above them.
 •Parts with "• •" are component parts or sub-assembly with "•" appearing immediately above them.

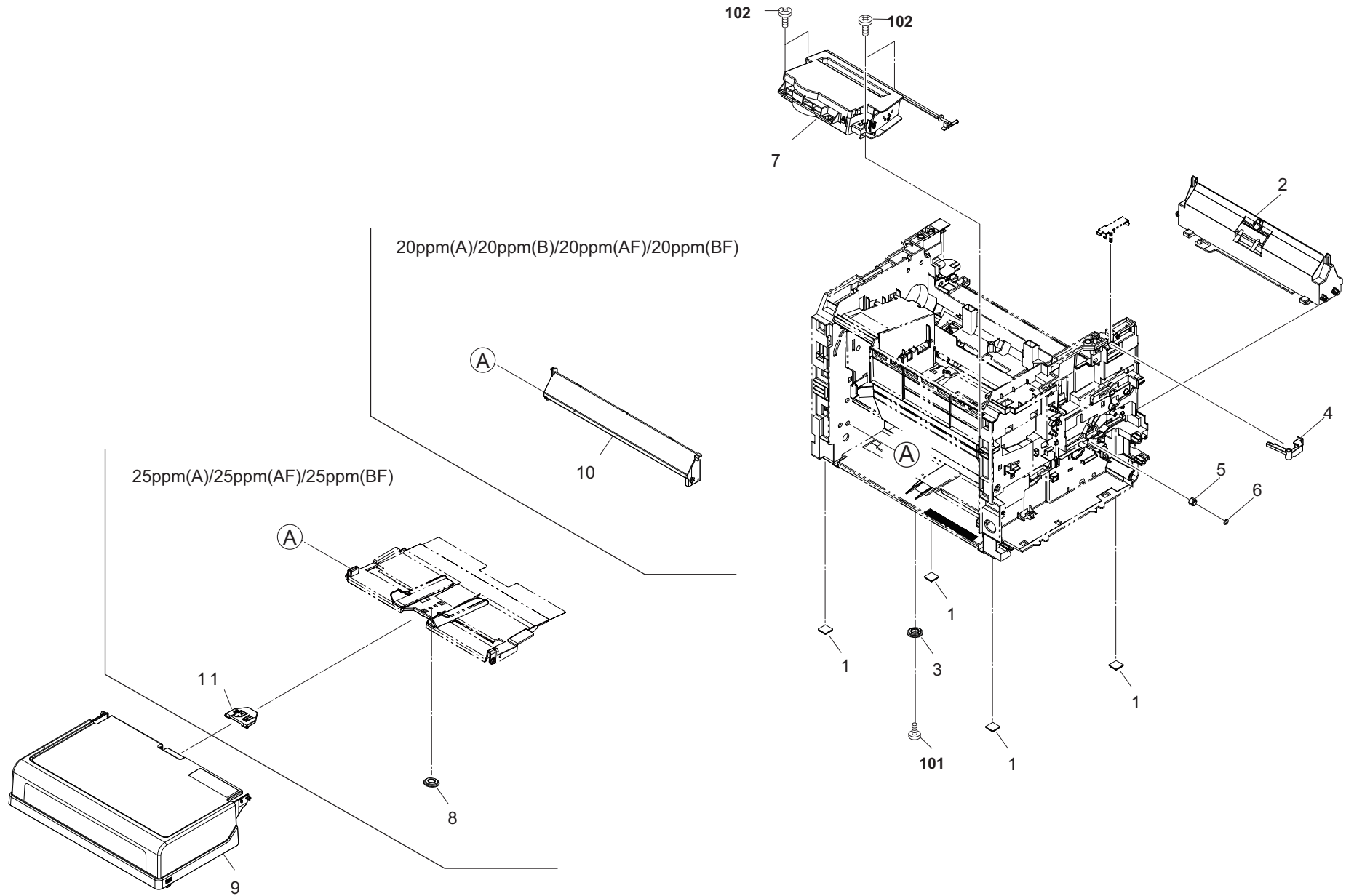


FIG. 2 Frames

2M4/2M5/2M6/2M7-1

Ref. No.	Part.No.	Alternative.	Description	Notes	Quantity	
					120	220-240
1	302M202850	2M202850	FOOT		4	4
2	302M294050	2M294050	PARTS FRAME FEED BOTTOM ASSY SP		1	1
3	302M202750	2M202750	GEAR MANUAL		1	1
4	302M202470	2M202470	LEVER INTERLOCK C		1	1
5	302M224050	2M224050	GEAR REGIST UP Z15L		1	1
6	2BG22990	2BG22990	CUT WASHER 4		1	1
7	302M293060	2M293060	LK-1110	20ppm(A)/20ppm(B)/20ppm(AF)/20ppm(BF)	1	1
7	302M393030	2M393030	LK-1120	25ppm(A)/25ppm(AF)/25ppm(BF)	1	1
8	302B700780	2B700780	GEAR MANUAL	25ppm(A)/25ppm(AF)/25ppm(BF)	1	1
9	302M209110	2M209110	COVER TRAY	20ppm(A)/20ppm(B)/20ppm(AF)/20ppm(BF)	1	1
9	302M309020	2M309020	COVER TRAY	25ppm(A)/25ppm(AF)/25ppm(BF)	1	1
10	302M209180	2M209180	COVER TRAY B	20ppm(A)/20ppm(B)/20ppm(AF)/20ppm(BF)	1	1
11	302M309010	2M309010	COVER TRAY C	25ppm(A)/25ppm(AF)/25ppm(BF)	1	1
101	7BB202308H	BB105690	+TP-FLAT T.T P SCREW 3X8			
102	7BB200410H	BB105700	+BIND T.T P SCREW 4X10			

•Parts with Ref.No. indicate maintenance parts and the ones without it indicate out of the above.

•Parts with "*" are component parts or sub-assemblies of the assembly appearing immediately above them.
 •Parts with "•" are component parts or sub-assembly with "•" appearing immediately above them.

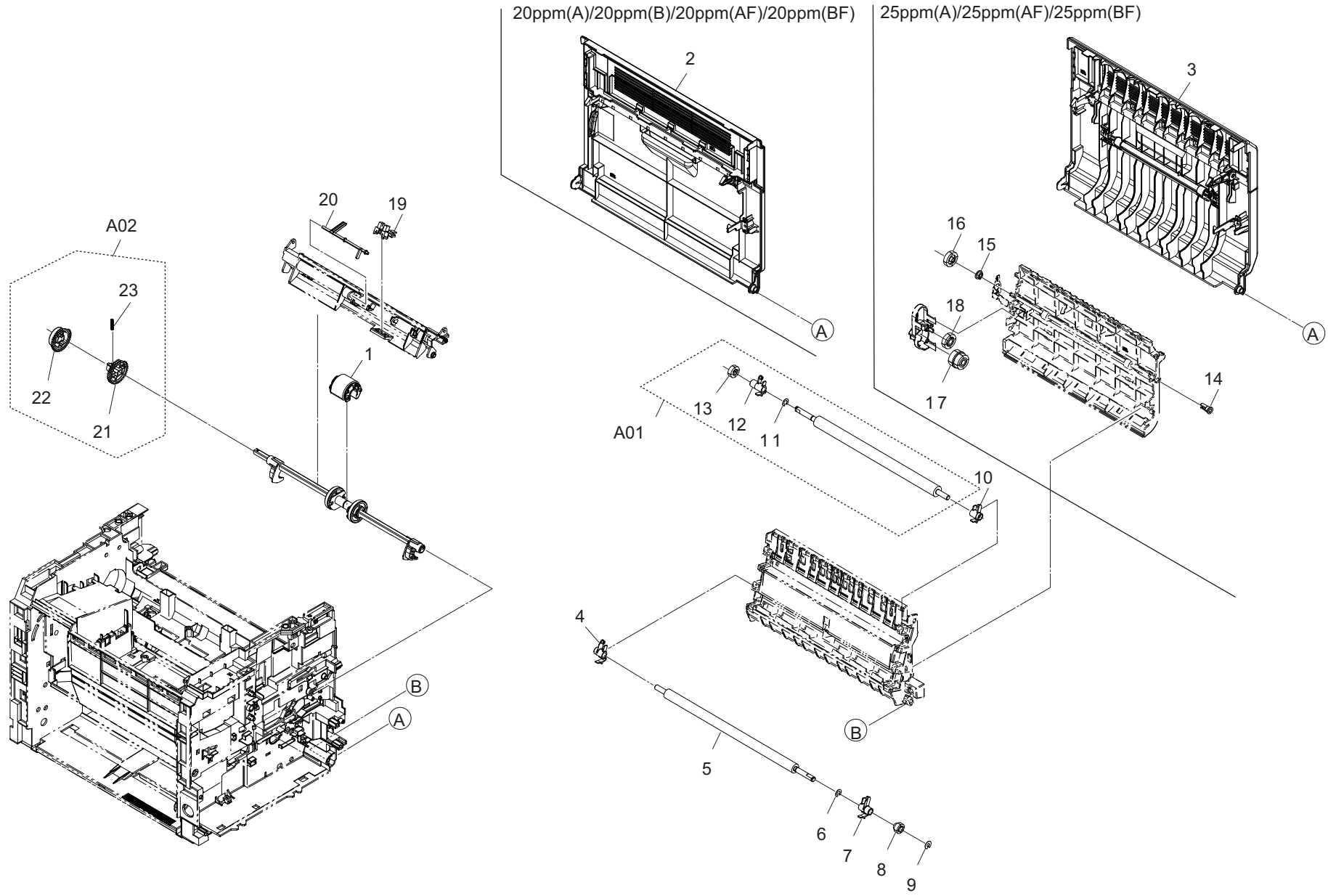


FIG. 3 Paper Feed Section

2M4/2M5/2M6/2M7-1

Ref. No.	Part.No.	Alternative.	Description	Notes	Quantity	
					120	220-240
1	302M294200	2M294200	PARTS ROLLER FEED ASSY SP		1	1
2	302M294040	2M294040	PARTS COVER REAR L ASSY SP	20ppm(A)/20ppm(B)/20ppm(AF)/20ppm(BF)	1	1
3	302M394010	2M394010	PARTS COVER REAR H ASSY SP	25ppm(A)/25ppm(AF)/25ppm(BF)	1	1
4	302M224060	2M224060	BUSH REGIST L		1	1
5	302M294190	2M294190	PARTS ROLLER REGIST LOW SP		1	1
6	302KK04570	2KK04570	CUT WASHER 5		1	1
7	302M224070	2M224070	BUSH REGIST R		1	1
8	302M224040	2M224040	GEAR REGIST LOW Z23R		1	1
9	302HG12310	2HG12310	CUT WASHER 4		1	1
10	302M224160	2M224160	BUSH TRANS R		1	1
A01	302M294240	2M294240	PARTS ROLLER TRANSFER ASSY I SP		1	
A01	302M294250	2M294250	PARTS ROLLER TRANSFER ASSY C SP			1
11	*302KK04570	2KK04570	CUT WASHER 5		1	1
12	*302M224150	2M224150	BUSH TRANS L		1	1
13	*302M224140	2M224140	GEAR TRANS Z17S		1	1
14	302HN25450	2HN25450	BUSH EXIT	25ppm(A)/25ppm(AF)/25ppm(BF)	1	1
15	302F929140	2F929140	BUSH DU	25ppm(A)/25ppm(AF)/25ppm(BF)	1	1
16	302M329070	2M329070	GEAR DU Z22S	25ppm(A)/25ppm(AF)/25ppm(BF)	1	1
17	302M329050	2M329050	GEAR Z23R-Z22S	25ppm(A)/25ppm(AF)/25ppm(BF)	1	1
18	302M329040	2M329040	GEAR Z22S	25ppm(A)/25ppm(AF)/25ppm(BF)	1	1
19	303M894260	3M894260	PARTS SENSOR OPT SP		1	1
20	302M224210	2M224210	ACTUATOR REGIST		1	1
A02	302M294340	2M294340	PARTS GEAR INPUT FEED ASSY SP		1	1
21	*302M231171	2M231171	GEAR A Z38S		1	1
22	*302M231180	2M231180	GEAR B Z38S		1	1
23	*302HN31650	2HN31650	SPRING INPUT MPF		1	1

•Parts with Ref.No. indicate maintenance parts and the ones without it indicate out of the above.

•Parts with "-" are component parts or sub-assemblies of the assembly appearing immediately above them.
 •Parts with "•" are component parts or sub-assembly with "•" appearing immediately above them.

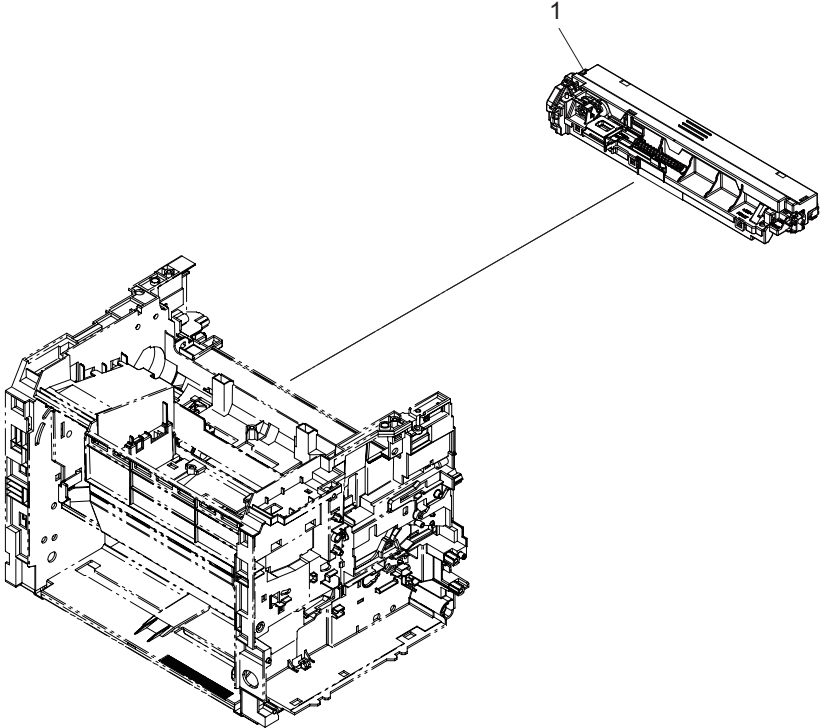


FIG. 4 Developer Section

2M4/2M5/2M6/2M7-1

Ref. No.	Part.No.	Alternative.	Description	Notes	Quantity	
					120	220-240
1	302M293021	2M293021	DV-1110		1	1
1	302M29C021	2M29C021	DV-1110	China model		1

•Parts with Ref.No. indicate maintenance parts and the ones without it indicate out of the above.

•Parts with "*" are component parts or sub-assemblies of the assembly appearing immediately above them.
 •Parts with "•" are component parts or sub-assembly with "*" appearing immediately above them.

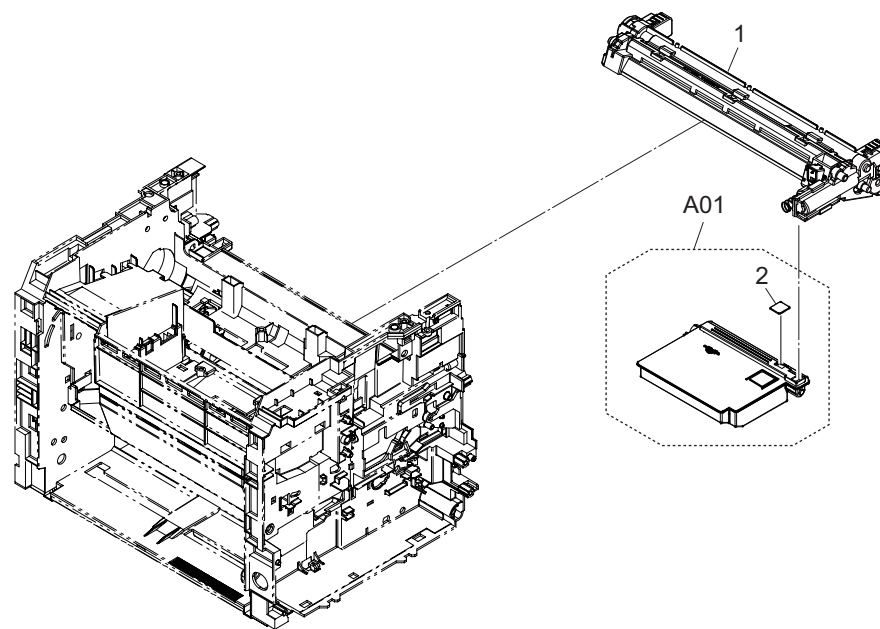


FIG. 5 Image Formation Section

2M4/2M5/2M6/2M7-1

Ref. No.	Part.No.	Alternative.	Description	Notes	Quantity	
					120	220-240
1	302M293012	2M293012	DK-1110	China model	1	1
1	302M29C012	2M29C012	DK-1110		1	1
A01	302M293030	2M293030	WT-1110		1	1
2	*302M213060	2M213060	CAP WASTE		1	1

•Parts with Ref.No. indicate maintenance parts and the ones without it indicate out of the above.

•Parts with "-" are component parts or sub-assemblies of the assembly appearing immediately above them.
 •Parts with "•" are component parts or sub-assembly with "-" appearing immediately above them.

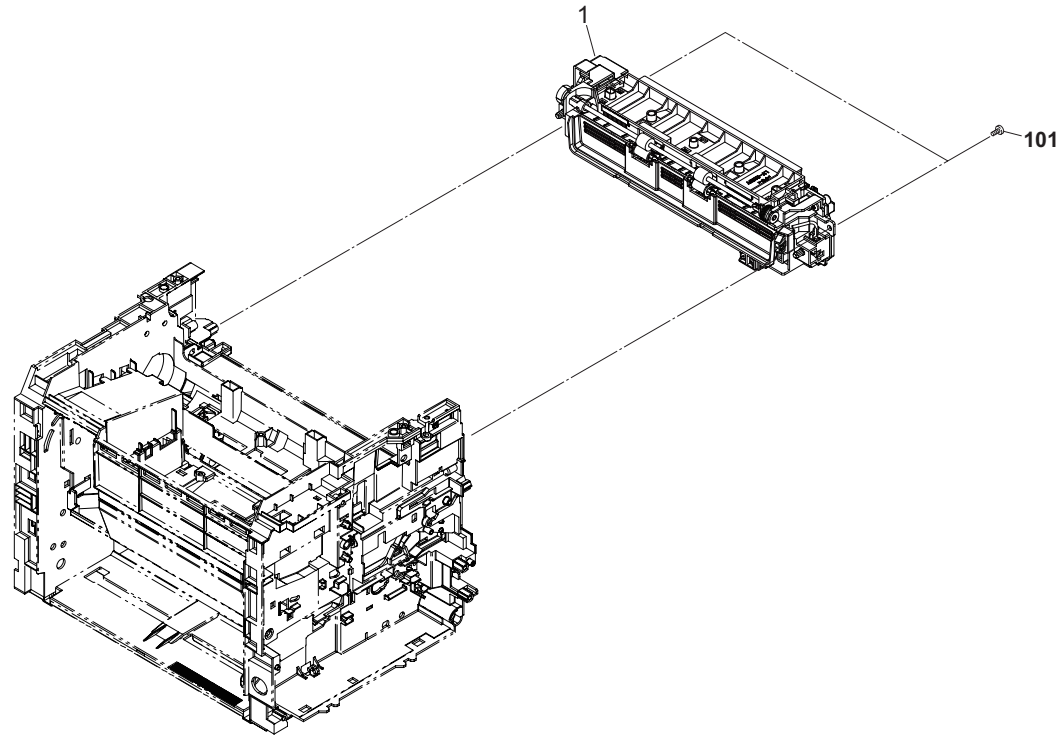


FIG. 6 Fuser Section

2M4/2M5/2M6/2M7-1

Ref. No.	Part.No.	Alternative.	Description	Notes	Quantity	
					120	220-240
1	302M293051	2M293051	FK-1110(U)	20ppm(A)	1	
1	302M293041	2M293041	FK-1110(E)	20ppm(A)/20ppm(B)		1
1	302M29C041	2M29C041	FK-1110(E)	20ppm(A)-China model		1
1	302M593022	2M593022	FK-1111(U)	20ppm(AF)	1	
1	302M593012	2M593012	FK-1111(E)	20ppm(AF)/20ppm(BF)		1
1	302M59C012	2M59C012	FK-1111(E)	20ppm(AF)-China model		1
1	302M393022	2M393022	FK-1120(U)	25ppm(A)/25ppm(AF)	1	
1	302M393012	2M393012	FK-1120(E)	25ppm(A)/25ppm(AF)/25ppm(BF)		1
1	302M39C012	2M39C012	FK-1120(E)	25ppm(A)/25ppm(AF)-China model		1
101	7BB200410H	BB105700	+BIND T.T P SCREW 4X10			

•Parts with Ref.No. indicate maintenance parts and the ones without it indicate out of the above.

•Parts with "•" are component parts or sub-assemblies of the assembly appearing immediately above them.
 •Parts with "• •" are component parts or sub-assembly with "•" appearing immediately above them.

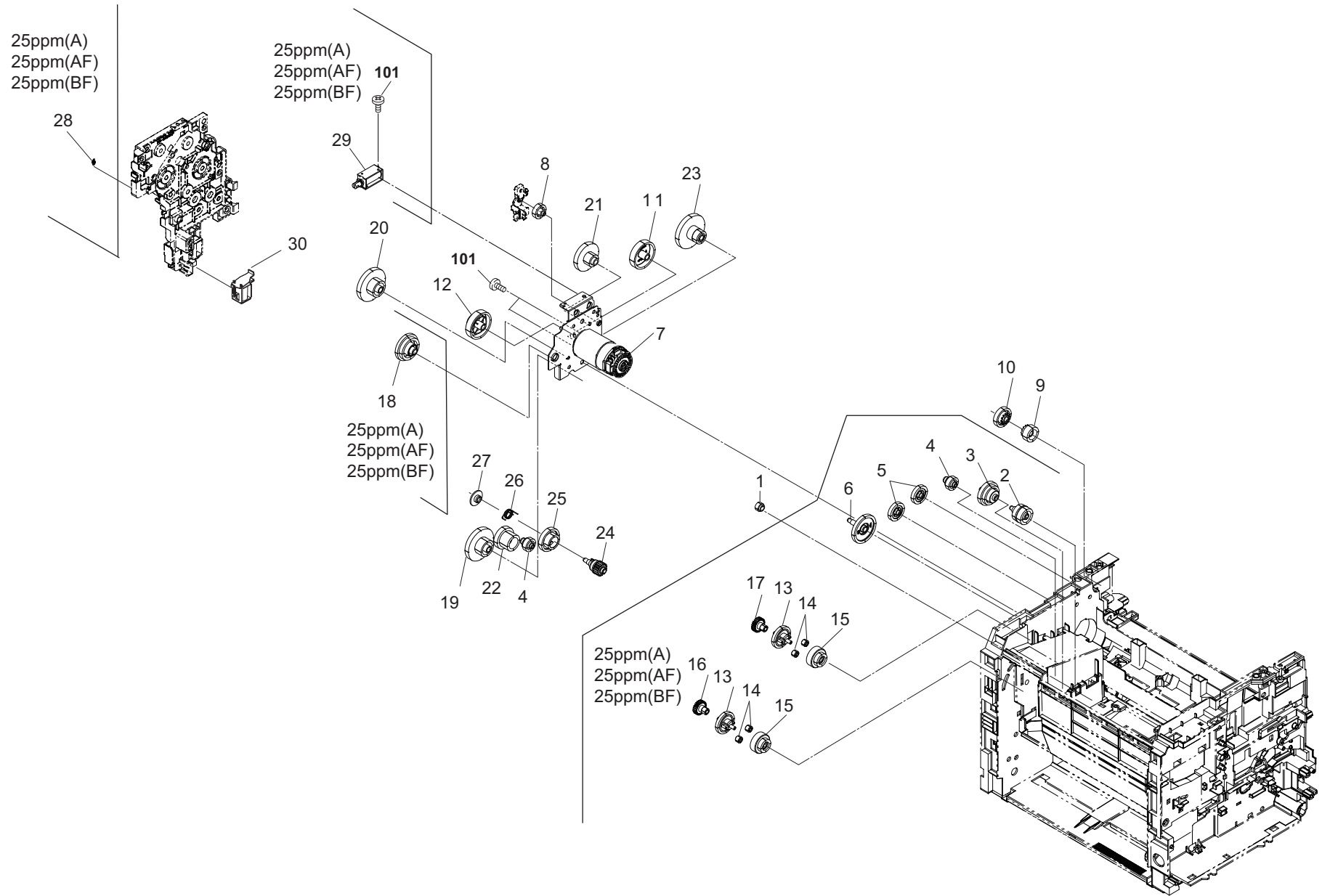


FIG. 7 Drive Section

2M4/2M5/2M6/2M7-1

Ref. No.	Part.No.	Alternative.	Description	Notes	Quantity	
					120	220-240
1	302HN24060	2HN24060	GEAR Z19L REG REAR		1	1
2	302M331030	2M331030	GEAR Z39L-Z24L	25ppm(A)/25ppm(AF)/25ppm(BF)	1	1
3	302M331020	2M331020	GEAR Z57L-Z47R	25ppm(A)/25ppm(AF)/25ppm(BF)	1	1
4	302M231150	2M231150	GEAR Z31R	25ppm(A)/25ppm(AF)/25ppm(BF)	2	2
4	302M231150	2M231150	GEAR Z31R	25ppm(A)/25ppm(AF)/25ppm(BF)	1	1
5	302M331110	2M331110	GEAR Z28S	25ppm(A)/25ppm(AF)/25ppm(BF)	2	2
6	302M331100	2M331100	GEAR Z45S	25ppm(A)/25ppm(AF)/25ppm(BF)	1	1
7	302M394031	2M394031	PARTS MOTOR DC ASSY SP		1	1
8	302M231090	2M231090	GEAR Z34L		1	1
9	302M231110	2M231110	GEAR Z23S		1	1
10	302M231100	2M231100	GEAR Z47R		1	1
11	302M231050	2M231050	GEAR Z68L-Z20R		1	1
12	302M231070	2M231070	GEAR Z68L-Z34R		1	1
13	302M331050	2M331050	GEAR Z34S	25ppm(A)/25ppm(AF)/25ppm(BF)	2	2
14	302M331080	2M331080	GEAR Z14S	25ppm(A)/25ppm(AF)/25ppm(BF)	4	4
15	302M331090	2M331090	GEAR Z42S-Z20S	25ppm(A)/25ppm(AF)/25ppm(BF)	2	2
16	302M331060	2M331060	GEAR A Z14S	25ppm(A)/25ppm(AF)/25ppm(BF)	1	1
17	302M331070	2M331070	GEAR B Z14S	25ppm(A)/25ppm(AF)/25ppm(BF)	1	1
18	302M331040	2M331040	GEAR Z66R-Z35S	25ppm(A)/25ppm(AF)/25ppm(BF)	1	1
19	302M231130	2M231130	GEAR Z68R		1	1
20	302M231120	2M231120	GEAR Z82L-Z40L		1	1
21	302M231080	2M231080	GEAR Z70L-Z29R		1	1
22	302M231140	2M231140	GEAR Z53L-Z24L		1	1
23	302M231060	2M231060	GEAR Z85L-Z38L		1	1
24	302M231281	2M231281	GEAR Z19S		1	1
25	302M231270	2M231270	GEAR Z57L-Z36R		1	1
26	302M231301	2M231301	SPRING GEAR B		1	1
27	302M231290	2M231290	CAP GEAR		1	1
28	302M331140	2M331140	SPRING CLUTCH	25ppm(A)/25ppm(AF)/25ppm(BF)	1	1
29	302HN94140	2HN94140	SOLENOID FD ASSY SP	25ppm(A)/25ppm(AF)/25ppm(BF)	1	1
30	302GR44150	2GR44150	SOLENOID TONER		1	1
101	7BB000303H	BB107000	+BIND M SCREW 3X3			

•Parts with Ref.No. indicate maintenance parts and the ones without it indicate out of the above.

•Parts with "*" are component parts or sub-assemblies of the assembly appearing immediately above them.

•Parts with "•" are component parts or sub-assembly with "*" appearing immediately above them.

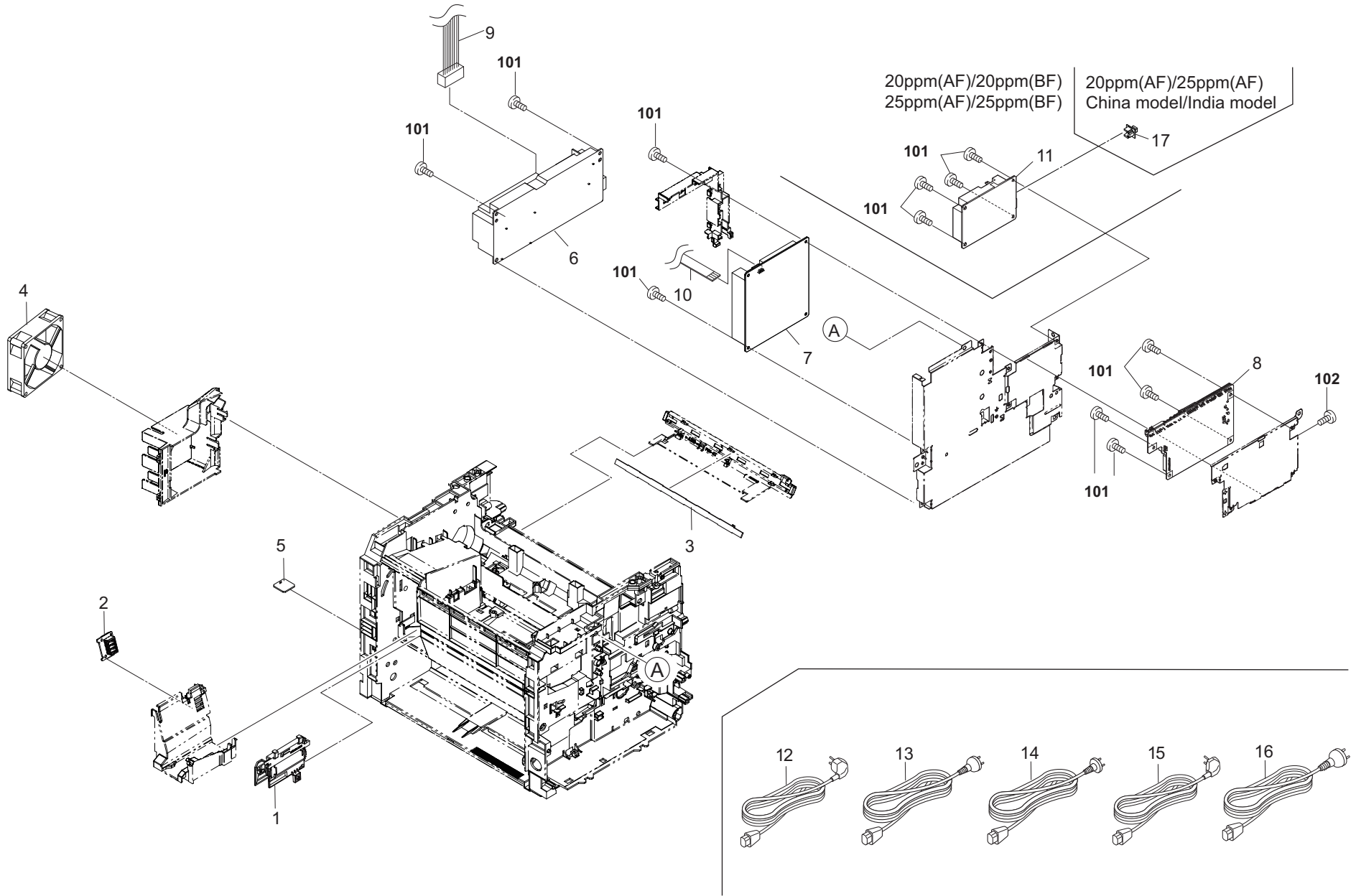


FIG. 8 Electrical Components

2M4/2M5/2M6/2M7-1

Ref. No.	Part.No.	Alternative.	Description	Notes	Quantity	
					120	220-240
1	302M294030	2M294030	PARTS TE SENSOR ASSY SP		1	1
2	302M294110	2M294110	PARTS PWB ASSY CONTAINER CONNECT SP		1	1
3	302M294120	2M294120	PARTS PWB ASSY ERASER SP		1	1
4	302HN44010	2HN44010	FAN MOTOR		1	1
5	302M294130	2M294130	PARTS PWB ASSY THERMISTOR SP		1	1
6	302M294152	2M294152	PARTS SWITCHING REGULATOR 120V SP		1	
6	302M294143	2M294143	PARTS SWITCHING REGULATOR 230V SP			1
7	302M294160	2M294160	PARTS HIGH VOLTAGE UNIT SP		1	1
8	302M494031	2M494031	PARTS PWB ASSY MAIN SP	20ppm(A)	1	
8	302M494071	2M494071	PARTS PWB ASSY MAIN SP RU	20ppm(A)-Russia,CIS and Non EU models		1
8	302M494081	2M494081	PARTS PWB ASSY MAIN SP AO	20ppm(A)-India model		1
8	302M494091	2M494091	PARTS PWB ASSY MAIN SP CN	20ppm(A)-China model		1
8	302M494111	2M494111	PARTS PWB ASSY MAIN SP EU	20ppm(B)-Western european model		1
8	302M594051	2M594051	PARTS PWB ASSY MAIN SP	20ppm(AF)	1	
8	302M594101	2M594101	PARTS PWB ASSY MAIN SP RU	20ppm(AF)-Russia,CIS and Non EU models		1
8	302M594061	2M594061	PARTS PWB ASSY MAIN SP EU	20ppm(BF)-Western european model		1
8	302M594180	2M594180	PARTS PWB ASSY MAIN SP AO2	20ppm(AF)-India model		1
8	302M594171	2M594171	PARTS PWB ASSY MAIN SP CN2	20ppm(AF)-China model		1
8	302M594141	2M594141	PARTS PWB ASSY MAIN SP AU	20ppm(BF)-Australia model		1
8	302M694021	2M694021	PARTS PWB ASSY MAIN SP	25ppm(A)	1	
8	302M694041	2M694041	PARTS PWB ASSY MAIN SP RU	25ppm(A)-Russia,CIS and Non EU models		1
8	302M694051	2M694051	PARTS PWB ASSY MAIN SP AO	25ppm(A)-India model		1
8	302M694061	2M694061	PARTS PWB ASSY MAIN SP CN	25ppm(A)-China model		1
8	302M794021	2M794021	PARTS PWB ASSY MAIN SP	25ppm(AF)	1	
8	302M794041	2M794041	PARTS PWB ASSY MAIN SP RU	25ppm(AF)-Russia,CIS and Non EU models		1
8	302M794031	2M794031	PARTS PWB ASSY MAIN SP EU	25ppm(BF)-Western european model		1
8	302M794100	2M794100	PARTS PWB ASSY MAIN SP AO2	25ppm(AF)-India model		1
8	302M794091	2M794091	PARTS PWB ASSY MAIN SP CN2	25ppm(AF)-China model		1
8	302M794081	2M794081	PARTS PWB ASSY MAIN SP AU	25ppm(BF)-Australia model		1
9	302M446050	2M446050	CONN.CORD ASSY S03791		1	1
10	302M446040	2M446040	CONN.CORD ASSY S03790		1	1
11	302M594080	2M594080	PARTS FAX UNIT E SP	20ppm(AF)/20ppm(BF)/25ppm(AF)/25ppm(BF)		1
11	302M594090	2M594090	PARTS FAX UNIT U SP	20ppm(AF)/25ppm(AF)	1	
11	303PA94010	3PA94010	PARTS FAX UNIT E SP	20ppm(AF)/25ppm(AF)-China model/India model		1
12	7AAACCUS+10H001	AA068380	AC CORD ASSY US		1	
13	302FV94010	2FV94010	PARTS AC CORD EU SP			1
14	7AAACCND+06H006	AA137980	AC CORD ASSY CN	China model		1
15	7AAACCND+06H003	AA132310	AC CORD ASSY ND	India model		1
16	302FV45040	2FV45040	AC CORD ASSY	Australia model		1
17	302M739010	2M739010	CAP TEL	20ppm(AF)/25ppm(AF)-China model/India model		1
101	7BB700308H	BB105600	+BIND T.T S SCREW 3X8 SR			
102	7BB601306H	BB105790	+PAN M SCREW 3X6 R			

•Parts with Ref.No. indicate maintenance parts and the ones without it indicate out of the above.

•Parts with "-" are component parts or sub-assemblies of the assembly appearing immediately above them.

•Parts with "•" are component parts or sub-assembly with "•" appearing immediately above them.

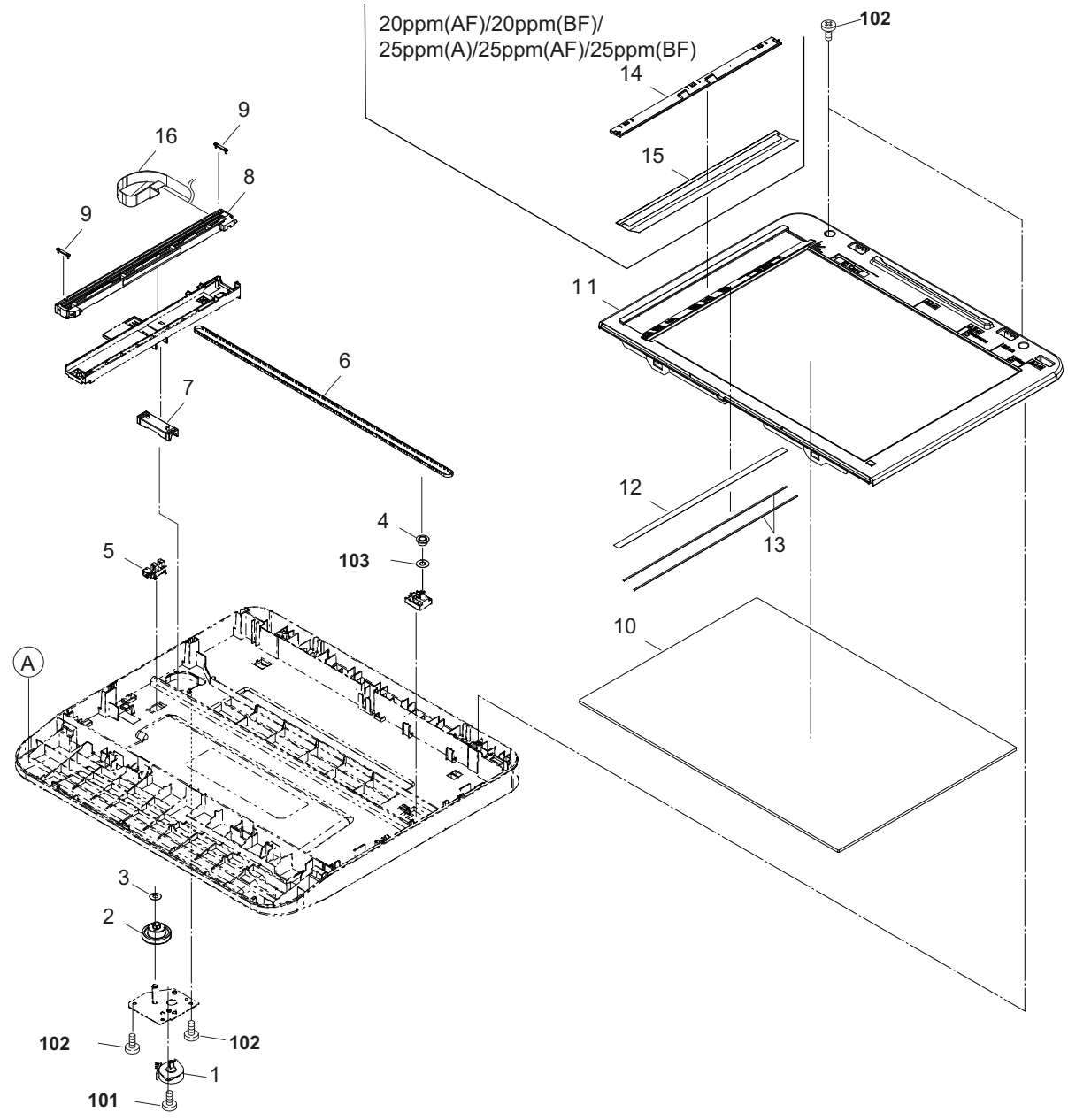


FIG. 9 Scanner Section

2M4/2M5/2M6/2M7-1

Ref. No.	Part.No.	Alternative.	Description	Notes	Quantity	
					120	220-240
1	302M494050	2M494050	PARTS MOTOR-PM ISU SP		1	1
2	302M417150	2M417150	GEAR Z73S-P27		1	1
3	302M417190	2M417190	STOPPER BELT		1	1
4	302M417180	2M417180	PULLEY TENSION		1	1
5	303M894260	3M894260	PARTS SENSOR OPT SP		1	1
6	302M417160	2M417160	BELT ISU		1	1
7	302M417100	2M417100	SLIDER SHAFT		1	1
8	302M494060	2M494060	PARTS SENSOR A4 CIS SP		1	1
9	302M417120	2M417120	SLIDER ISU		2	2
10	302M417030	2M417030	CONTACT-GLASS		1	1
11	302M417020	2M417020	FRAME ISU TOP		1	1
11	302M417240	2M417240	FRAME ISU TOP	China model		1
12	302M417210	2M417210	STANDARD PLATE SHADING		1	1
13	302M517040	2M517040	TAPE CONTACT GLASS A		2	2
14	302M517050	2M517050	HOLDER SHEET DP	20ppm(AF)/20ppm(BF)/25ppm(A)/25ppm(AF)/25ppm(BF)	1	1
15	302M517020	2M517020	SHEET DP	20ppm(AF)/20ppm(BF)/25ppm(A)/25ppm(AF)/25ppm(BF)	1	1
16	302M446020	2M446020	CONN.CORD ASSY S03770		1	1
101	7BB700306H	BB105590	+BIND T.T S SCREW 3X6 SR			
102	7BB200308H	BB105660	+BIND T.T P SCREW 3X8			
103	C2893960	C2893960	SHIM 6.2-13-0.13T			

•Parts with Ref.No. indicate maintenance parts and the ones without it indicate out of the above.

•Parts with "*" are component parts or sub-assemblies of the assembly appearing immediately above them.
 •Parts with "• •" are component parts or sub-assembly with "•" appearing immediately above them.

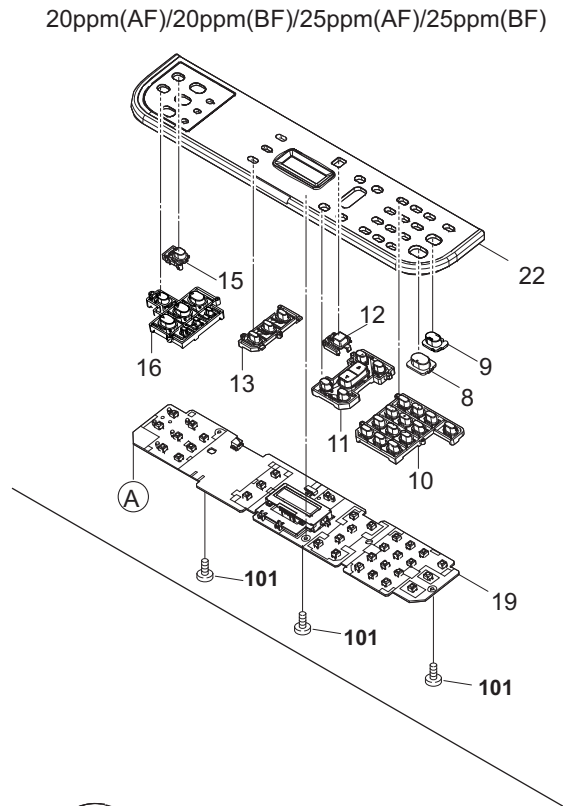
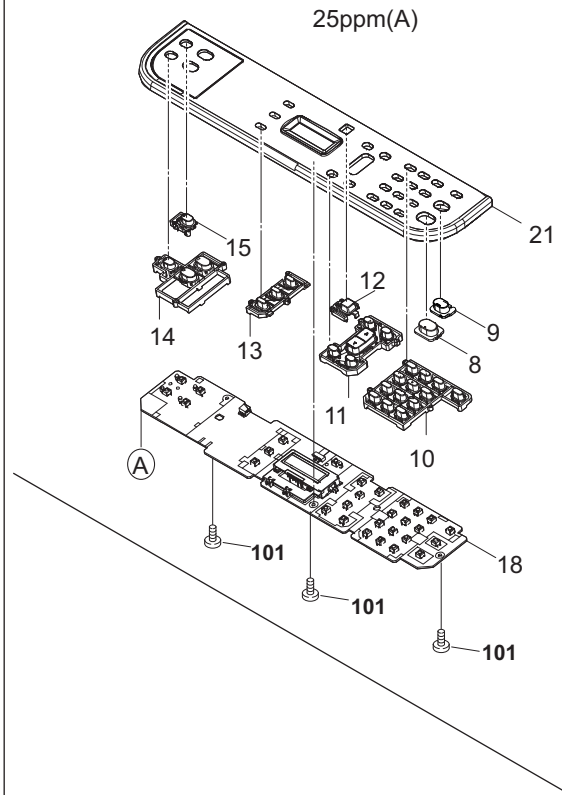
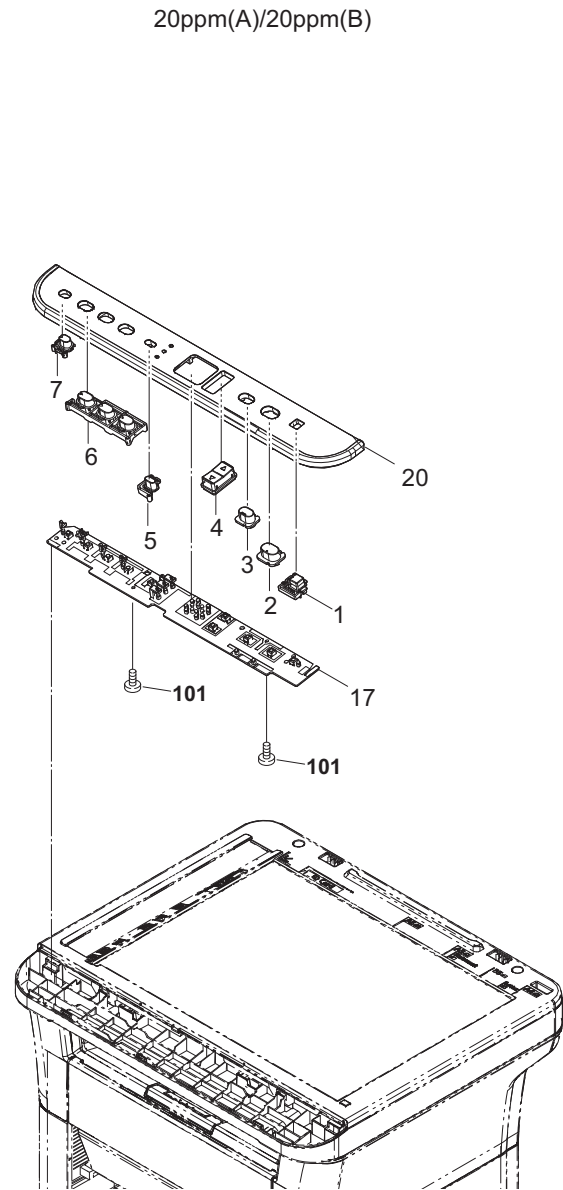


FIG. 10 Operation Section

2M4/2M5/2M6/2M7-1

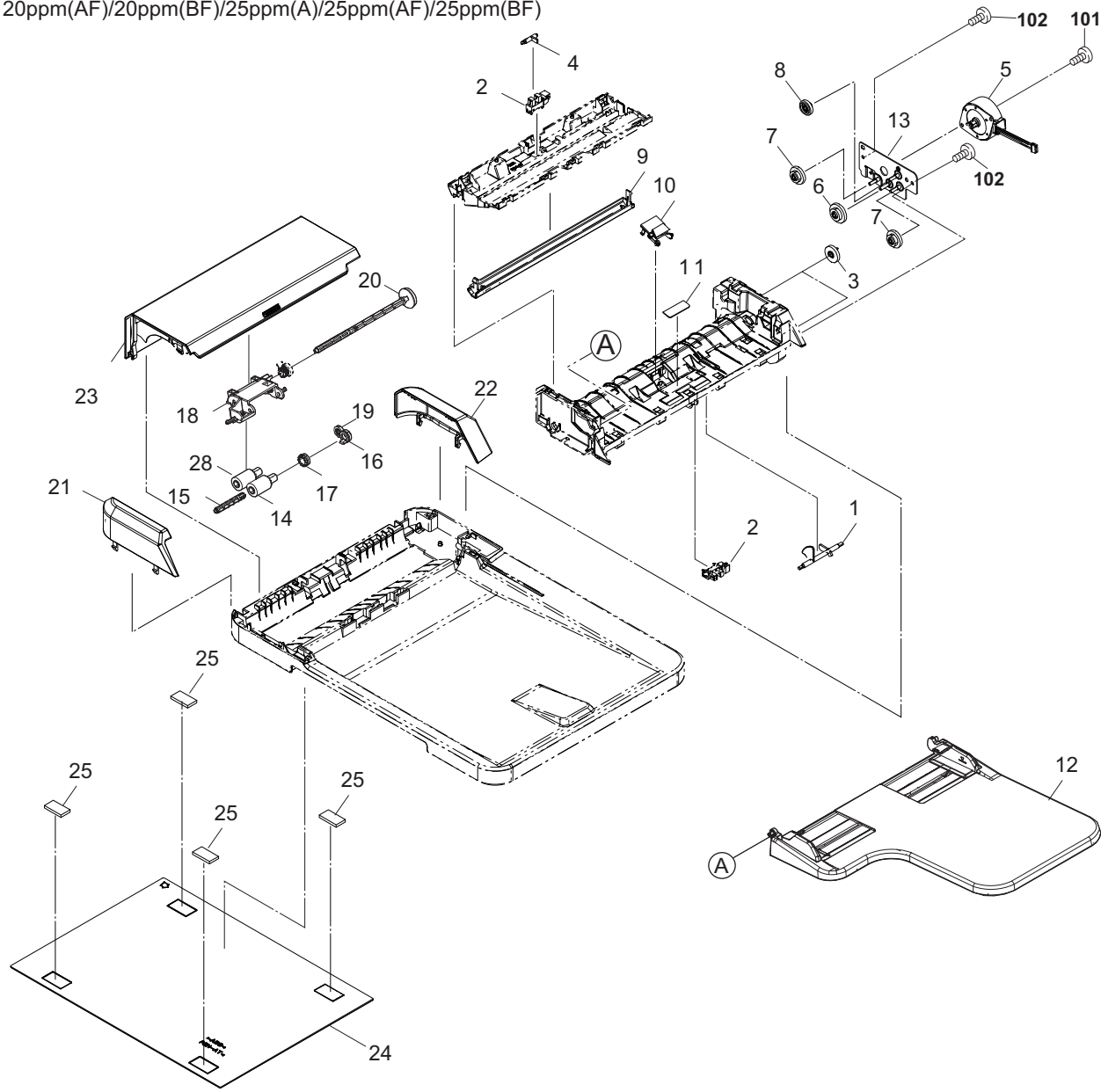
Ref. No.	Part.No.	Alternative.	Description	Notes	Quantity	
					120	220-240
1	302M405100	2M405100	KEY ECO	20ppm(A)/20ppm(B)	1	1
2	302M405020	2M405020	KEY START A	20ppm(A)/20ppm(B)	1	1
3	302M405030	2M405030	KEY STOP A	20ppm(A)/20ppm(B)	1	1
4	302M405040	2M405040	KEY UP DOWN	20ppm(A)/20ppm(B)	1	1
5	302M405130	2M405130	KEY PROGRAM A	20ppm(A)/20ppm(B)	1	1
6	302M405050	2M405050	KEY SELECT A	20ppm(A)/20ppm(B)	1	1
7	302M405140	2M405140	KEY SELECT D	20ppm(A)/20ppm(B)	1	1
8	302M505130	2M505130	KEY START B	20ppm(AF)/20ppm(BF)/25ppm(A)/25ppm(AF)/25ppm(BF)	1	1
9	302M505140	2M505140	KEY STOP B	20ppm(AF)/20ppm(BF)/25ppm(A)/25ppm(AF)/25ppm(BF)	1	1
10	302M505060	2M505060	KEY 10	20ppm(AF)/20ppm(BF)/25ppm(A)/25ppm(AF)/25ppm(BF)	1	1
11	302M505070	2M505070	KEY MENU	20ppm(AF)/20ppm(BF)/25ppm(A)/25ppm(AF)/25ppm(BF)	1	1
12	302M505170	2M505170	KEY ECO B	20ppm(AF)/20ppm(BF)/25ppm(A)/25ppm(AF)/25ppm(BF)	1	1
13	302M505150	2M505150	KEY PROGRAM B	20ppm(AF)/20ppm(BF)/25ppm(A)/25ppm(AF)/25ppm(BF)	1	1
14	302M605020	2M605020	KEY SELECT C	25ppm(A)	1	1
15	302M505160	2M505160	KEY SELECT C	20ppm(AF)/20ppm(BF)/25ppm(A)/25ppm(AF)/25ppm(BF)	1	1
16	302M505020	2M505020	KEY SELECT B	20ppm(AF)/20ppm(BF)/25ppm(A)/25ppm(AF)	1	1
17	302M494040	2M494040	PARTS PWB ASSY PANEL SP	20ppm(A)/20ppm(B)	1	1
18	302M694030	2M694030	PARTS PWB ASSY LCDCONT SP	25ppm(A)	1	1
19	302M594070	2M594070	PARTS PWB ASSY LCDCONT SP	20ppm(AF)/20ppm(BF)/25ppm(AF)/25ppm(BF)	1	1
20	302M405011	2M405011	COVER OPERATION A	20ppm(A)/20ppm(B)		1
20	302M405161	2M405161	COVER OPERATION A UX	20ppm(A)	1	
20	302M405171	2M405171	COVER OPERATION A KS	20ppm(A)-China model		1
20	302M405271	2M405271	COVER OPERATION A NL	20ppm(B)-Western european model		1
21	302M605010	2M605010	COVER OPERATION C	25ppm(A)		1
21	302M605030	2M605030	COVER OPERATION C UX	25ppm(A)	1	
21	302M605040	2M605040	COVER OPERATION C KS	25ppm(A)-China model		1
22	302M505010	2M505010	COVER OPERATION B	20ppm(AF)/20ppm(BF)		1
22	302M505200	2M505200	COVER OPERATION B UX	20ppm(AF)	1	
22	302M505211	2M505211	COVER OPERATION B KS	20ppm(AF)-China model		1
22	302M505300	2M505300	COVER OPERATION B NL	20ppm(BF)-Western european model		1
22	3V2M505310	2M505310	COVER OPERATION B SG	20ppm(AF)-India model		1
22	302M705010	2M705010	COVER OPERATION B	25ppm(AF)/25ppm(BF)		1
22	302M705020	2M705020	COVER OPERATION B UX	25ppm(AF)	1	
22	302M705031	2M705031	COVER OPERATION B KS	25ppm(AF)-China model		1
22	302M705110	2M705110	COVER OPERATION B NL	25ppm(BF)-Western european model		1
22	3V2M705120	2M705120	COVER OPERATION B SG	25ppm(AF)-India model		1
101	7BB200308H	BB105660	+BIND T.T P SCREW 3X8			

•Parts with Ref.No. indicate maintenance parts and the ones without it indicate out of the above.

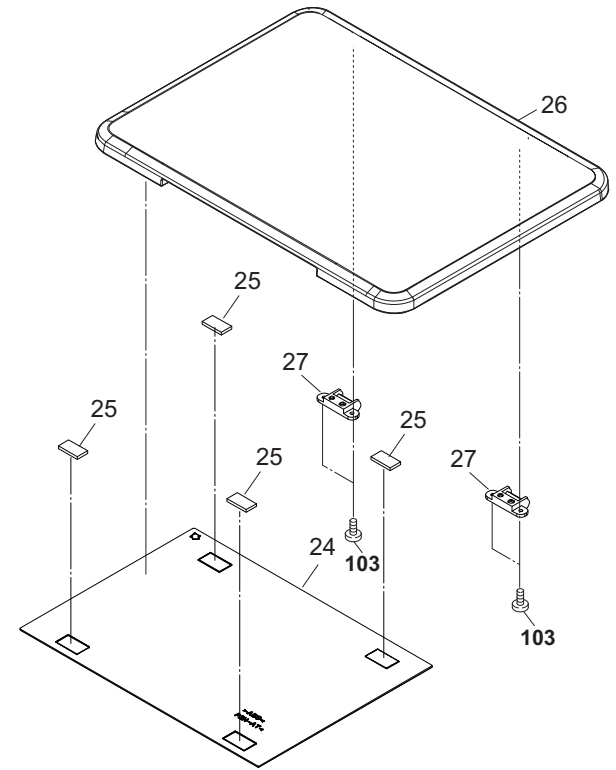
•Parts with "-" are component parts or sub-assemblies of the assembly appearing immediately above them.

•Parts with "•" are component parts or sub-assembly with "•" appearing immediately above them.

20ppm(AF)/20ppm(BF)/25ppm(A)/25ppm(AF)/25ppm(BF)



20ppm(A)/20ppm(B)



OPTION

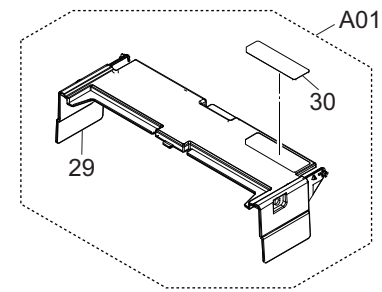


FIG. 11 Document Processor & Original Cover & Options

2M4/2M5/2M6/2M7-1

Ref. No.	Part.No.	Alternative.	Description	Notes	Quantity	
					120	220-240
1	302M518170	2M518170	ACTUATOR SET	20ppm(AF)/20ppm(BF)/25ppm(A)/25ppm(AF)/25ppm(BF)	1	1
2	303M894260	3M894260	PARTS SENSOR OPT SP	20ppm(AF)/20ppm(BF)/25ppm(A)/25ppm(AF)/25ppm(BF)	2	2
3	302M518910	2M518910	GEAR CONVEYING Z32S	20ppm(AF)/20ppm(BF)/25ppm(A)/25ppm(AF)/25ppm(BF)	2	2
4	302M518240	2M518240	ACTUATOR TIMING	20ppm(AF)/20ppm(BF)/25ppm(A)/25ppm(AF)/25ppm(BF)	1	1
5	302M544010	2M544010	MOTOR-PM	20ppm(AF)/20ppm(BF)/25ppm(A)/25ppm(AF)/25ppm(BF)	1	1
6	302M518930	2M518930	GEAR Z44R-Z21S	20ppm(AF)/20ppm(BF)/25ppm(A)/25ppm(AF)/25ppm(BF)	1	1
7	302M518920	2M518920	GEAR Z41S-Z21S	20ppm(AF)/20ppm(BF)/25ppm(A)/25ppm(AF)/25ppm(BF)	2	2
8	302M518940	2M518940	GEAR Z32S	20ppm(AF)/20ppm(BF)/25ppm(A)/25ppm(AF)/25ppm(BF)	1	1
9	302M518520	2M518520	GUIDE READING	20ppm(AF)/20ppm(BF)/25ppm(A)/25ppm(AF)/25ppm(BF)	1	1
10	302M594010	2M594010	PARTS SEPARATION ASSY SP	20ppm(AF)/20ppm(BF)/25ppm(A)/25ppm(AF)/25ppm(BF)	1	1
11	302M518160	2M518160	FELT PF	20ppm(AF)/20ppm(BF)/25ppm(A)/25ppm(AF)/25ppm(BF)	1	1
12	302M594020	2M594020	PARTS TABLE ASSY SP	20ppm(AF)/20ppm(BF)/25ppm(A)/25ppm(AF)/25ppm(BF)	1	1
13	302M518310	2M518310	MOUNT MOTOR	20ppm(AF)/20ppm(BF)/25ppm(A)/25ppm(AF)/25ppm(BF)	1	1
14	302M518720	2M518720	ROLLER PF	20ppm(AF)/20ppm(BF)/25ppm(A)/25ppm(AF)/25ppm(BF)	1	1
15	302M518710	2M518710	SHAFT PICK	20ppm(AF)/20ppm(BF)/25ppm(A)/25ppm(AF)/25ppm(BF)	1	1
16	302M518760	2M518760	GEAR Z22S FEED JOINT	20ppm(AF)/20ppm(BF)/25ppm(A)/25ppm(AF)/25ppm(BF)	1	1
17	302M518790	2M518790	COUPLING FEED JOINT	20ppm(AF)/20ppm(BF)/25ppm(A)/25ppm(AF)/25ppm(BF)	1	1
18	302M518750	2M518750	HOLDER PF	20ppm(AF)/20ppm(BF)/25ppm(A)/25ppm(AF)/25ppm(BF)	1	1
19	302M518950	2M518950	GEAR Z24S PF IDLE	20ppm(AF)/20ppm(BF)/25ppm(A)/25ppm(AF)/25ppm(BF)	1	1
20	302M518740	2M518740	SHAFT PF	20ppm(AF)/20ppm(BF)/25ppm(A)/25ppm(AF)/25ppm(BF)	1	1
21	302M518410	2M518410	COVER FRONT	20ppm(AF)/20ppm(BF)/25ppm(A)/25ppm(AF)/25ppm(BF)	1	1
22	302M518420	2M518420	COVER REAR	20ppm(AF)/20ppm(BF)/25ppm(A)/25ppm(AF)/25ppm(BF)	1	1
23	302M518430	2M518430	COVER PF	20ppm(AF)/20ppm(BF)/25ppm(A)/25ppm(AF)/25ppm(BF)	1	1
24	302M518040	2M518040	PLATE ORIGINAL		1	1
25	302M518050	2M518050	SPONGE ORIGINAL PLATE		4	4
26	302M417220	2M417220	COVER PLATEN	20ppm(A)/20ppm(B)	1	1
27	302M417230	2M417230	HINGE UPPER A	20ppm(A)/20ppm(B)	2	2
28	302M518770	2M518770	ROLLER FEED		1	1
A01	302M294330	2M294330	PARTS JOINT COVER TRAY SET SP		1	1
29	*302M209260	2M209260	JOINT COVER TRAY		1	1
30	*302M334160	2M334160	LABEL SIZE MPF		1	1
101	7BB700306H	BB105590	+BIND T.T S SCREW 3X6 SR			
102	7BB200308H	BB105660	+BIND T.T P SCREW 3X8			
103	7BB202308H	BB105690	+TP-FLAT T.T P SCREW 3X8			

•Parts with Ref.No. indicate maintenance parts and the ones without it indicate out of the above.

•Parts with "*" are component parts or sub-assemblies of the assembly appearing immediately above them.

•Parts with "•" are component parts or sub-assembly with "•" appearing immediately above them.

FIG. 12 Maintenance Kits

2M4/2M5/2M6/2M7

Ref. No.	Part.No.	Alternative.	Description	Notes	Quantity	
					120	220-240
	1702M76UX0	072M76UX	MK-1112/MAINTENANCE KIT PARTS ROLLER FEED ASSY SP DK-1110 WT-1110 DV-1110 PARTS FRAME FEED BOTTOM ASSY SP	OPTION	1 1 1 1 1 1	
	1702M75NX0	072M75NX	PARTS ROLLER TRANSFER I SP MK-1110/MAINTENANCE KIT PARTS ROLLER FEED ASSY SP DK-1110 WT-1110 DV-1110 PARTS FRAME FEED BOTTOM ASSY SP	OPTION	1	1 1 1 1
	1702M75KS0	072M75KS	PARTS ROLLER TRANSFER C SP MK-1110/MAINTENANCE KIT PARTS ROLLER FEED ASSY SP DK-1110 WT-1110 DV-1110 PARTS FRAME FEED BOTTOM ASSY SP PARTS ROLLER TRANSFER C SP	OPTION-China model		1 1 1 1 1 1 1

•Parts with Ref.No. indicate maintenance parts and the ones without it indicate out of the above.

•Parts with "*" are component parts or sub-assemblies of the assembly appearing immediately above them.
•Parts with "•" are component parts or sub-assembly with "•" appearing immediately above them.

INDEX

2M4/2M5/2M6/2M7-1

Part.No.	Alternative.	Description	Fig.No.
1702M75KS0	072M75KS	MK-1110/MAINTENANCE KIT	12
1702M75NX0	072M75NX	MK-1110/MAINTENANCE KIT	12
1702M76UX0	072M76UX	MK-1112/MAINTENANCE KIT	12
2BG22990	2BG22990	CUT WASHER 4	2
302B700780	2B700780	GEAR MANUAL	2
302F929140	2F929140	BUSH DU	3
302FV45040	2FV45040	AC CORD ASSY	8
302FV94010	2FV94010	PARTS AC CORD EU SP	8
302G634070	2G634070	LABEL ENERGY STAR	1
302GR44150	2GR44150	SOLENOID TONER	7
302HG12310	2HG12310	CUT WASHER 4	3
302HNN24060	2HN24060	GEAR Z19L REG REAR	7
302HNN25450	2HN25450	BUSH EXIT	3
302HNN31650	2HN31650	SPRING INPUT MPF	3
302HNN44010	2HN44010	FAN MOTOR	8
302HNN94140	2HN94140	SOLENOID FD ASSY SP	7
302KK04570	2KK04570	CUT WASHER 5	3
302M202470	2M202470	LEVER INTERLOCK C	2
302M202750	2M202750	GEAR MANUAL	2
302M202850	2M202850	FOOT	2
302M204020	2M204020	COVER RIGHT	1
302M204030	2M204030	COVER LEFT	1
302M204060	2M204060	COVER FD	1
302M204100	2M204100	KEY POWER SWITCH	1
302M209110	2M209110	COVER TRAY	2
302M209180	2M209180	COVER TRAY B	2
302M209260	2M209260	JOINT COVER TRAY	11
302M213060	2M213060	CAP WASTE	5
302M224040	2M224040	GEAR REGIST LOW Z23R	3
302M224050	2M224050	GEAR REGIST UP Z15L	2
302M224060	2M224060	BUSH REGIST L	3
302M224070	2M224070	BUSH REGIST R	3
302M224140	2M224140	GEAR TRANS Z17S	3
302M224150	2M224150	BUSH TRANS L	3
302M224160	2M224160	BUSH TRANS R	3
302M224210	2M224210	ACTUATOR REGIST	3
302M231050	2M231050	GEAR Z68L-Z20R	7
302M231060	2M231060	GEAR Z85L-Z38L	7
302M231070	2M231070	GEAR Z68L-Z34R	7
302M231080	2M231080	GEAR Z70L-Z29R	7
302M231090	2M231090	GEAR Z34L	7
302M231100	2M231100	GEAR Z47R	7
302M231110	2M231110	GEAR Z23S	7
302M231120	2M231120	GEAR Z82L-Z40L	7
302M231130	2M231130	GEAR Z68R	7
302M231140	2M231140	GEAR Z53L-Z24L	7
302M231150	2M231150	GEAR Z31R	7
302M231171	2M231171	GEAR A Z38S	3
302M231180	2M231180	GEAR B Z38S	3
302M231270	2M231270	GEAR Z57L-Z36R	7

Part.No.	Alternative.	Description	Fig.No.
302M231281	2M231281	GEAR Z19S	7
302M231290	2M231290	CAP GEAR	7
302M231301	2M231301	SPRING GEAR B	7
302M293012	2M293012	DK-1110	5
302M293021	2M293021	DV-1110	4
302M293030	2M293030	WT-1110	5
302M293041	2M293041	FK-1110(E)	6
302M293051	2M293051	FK-1110(U)	6
302M293060	2M293060	LK-1110	2
302M294020	2M294020	PARTS COVER FRONT ASSY SP	1
302M294030	2M294030	PARTS TE SENSOR ASSY SP	8
302M294040	2M294040	PARTS COVER REAR L ASSY SP	3
302M294050	2M294050	PARTS FRAME FEED BOTTOM ASSY SP	2
302M294060	2M294060	PARTS TRAY FRONT ASSY SP	1
302M294110	2M294110	PARTS PWB ASSY CONTAINER CONNECT SP	8
302M294120	2M294120	PARTS PWB ASSY ERASER SP	8
302M294130	2M294130	PARTS PWB ASSY THERMISTOR SP	8
302M294143	2M294143	PARTS SWITCHING REGULATOR 230V SP	8
302M294152	2M294152	PARTS SWITCHING REGULATOR 120V SP	8
302M294160	2M294160	PARTS HIGH VOLTAGE UNIT SP	8
302M294190	2M294190	PARTS ROLLER REGIST LOW SP	3
302M294200	2M294200	PARTS ROLLER FEED ASSY SP	3
302M294240	2M294240	PARTS ROLLER TRANSFER ASSY I SP	3
302M294250	2M294250	PARTS ROLLER TRANSFER ASSY C SP	3
302M294330	2M294330	PARTS JOINT COVER TRAY SET SP	11
302M294340	2M294340	PARTS GEAR INPUT FEED ASSY SP	3
302M29C012	2M29C012	DK-1110	5
302M29C021	2M29C021	DV-1110	4
302M29C041	2M29C041	FK-1110(E)	6
302M309010	2M309010	COVER TRAY C	2
302M309020	2M309020	COVER TRAY	2
302M329040	2M329040	GEAR Z22S	3
302M329050	2M329050	GEAR Z23R-Z22S	3
302M329070	2M329070	GEAR DU Z22S	3
302M331020	2M331020	GEAR Z57L-Z47R	7
302M331030	2M331030	GEAR Z39L-Z24L	7
302M331040	2M331040	GEAR Z66R-Z35S	7
302M331050	2M331050	GEAR Z34S	7
302M331060	2M331060	GEAR A Z14S	7
302M331070	2M331070	GEAR B Z14S	7
302M331080	2M331080	GEAR Z14S	7
302M331090	2M331090	GEAR Z42S-Z20S	7
302M331100	2M331100	GEAR Z45S	7
302M331110	2M331110	GEAR Z28S	7
302M331140	2M331140	SPRING CLUTCH	7
302M334160	2M334160	LABEL SIZE MPF	11
302M393012	2M393012	FK-1120(E)	6
302M393022	2M393022	FK-1120(U)	6
302M393030	2M393030	LK-1120	2
302M394010	2M394010	PARTS COVER REAR H ASSY SP	3

Part.No.	Alternative.	Description	Fig.No.
302M394031	2M394031	PARTS MOTOR DC ASSY SP	7
302M39C012	2M39C012	FK-1120(E)	6
302M404020	2M404020	COVER RIGHT UPPER	1
302M404030	2M404030	COVER LEFT UPPER	1
302M404040	2M404040	COVER REAR UPPER R	1
302M404050	2M404050	COVER REAR UPPER L	1
302M405011	2M405011	COVER OPERATION A	10
302M405020	2M405020	KEY START A	10
302M405030	2M405030	KEY STOP A	10
302M405040	2M405040	KEY UP DOWN	10
302M405050	2M405050	KEY SELECT A	10
302M405100	2M405100	KEY ECO	10
302M405130	2M405130	KEY PROGRAM A	10
302M405140	2M405140	KEY SELECT D	10
302M405161	2M405161	COVER OPERATION A UX	10
302M405171	2M405171	COVER OPERATION A KS	10
302M405271	2M405271	COVER OPERATION A NL	10
302M417020	2M417020	FRAME ISU TOP	9
302M417030	2M417030	CONTACT-GLASS	9
302M417100	2M417100	SLIDER SHAFT	9
302M417120	2M417120	SLIDER ISU	9
302M417150	2M417150	GEAR Z73S-P27	9
302M417160	2M417160	BELT ISU	9
302M417180	2M417180	PULLEY TENSION	9
302M417190	2M417190	STOPPER BELT	9
302M417210	2M417210	STANDARD PLATE SHADING	9
302M417220	2M417220	COVER PLATEN	11
302M417230	2M417230	HINGE UPPER A	11
302M417240	2M417240	FRAME ISU TOP	9
302M446020	2M446020	CONN.CORD ASSY S03770	9
302M446040	2M446040	CONN.CORD ASSY S03790	8
302M446050	2M446050	CONN.CORD ASSY S03791	8
302M494010	2M494010	PARTS COVER TOP ASSY SP	1
302M494020	2M494020	PARTS TRAY FRONT ASSY SP CN	1
302M494031	2M494031	PARTS PWB ASSY MAIN SP	8
302M494040	2M494040	PARTS PWB ASSY PANEL SP	10
302M494050	2M494050	PARTS MOTOR-PM ISU SP	9
302M494060	2M494060	PARTS SENSOR A4 CIS SP	9
302M494071	2M494071	PARTS PWB ASSY MAIN SP RU	8
302M494081	2M494081	PARTS PWB ASSY MAIN SP AO	8
302M494091	2M494091	PARTS PWB ASSY MAIN SP CN	8
302M494111	2M494111	PARTS PWB ASSY MAIN SP EU	8
302M505010	2M505010	COVER OPERATION B	10
302M505020	2M505020	KEY SELECT B	10
302M505060	2M505060	KEY 10	10
302M505070	2M505070	KEY MENU	10
302M505130	2M505130	KEY START B	10
302M505140	2M505140	KEY STOP B	10
302M505150	2M505150	KEY PROGRAM B	10
302M505160	2M505160	KEY SELECT C	10

Part.No.	Alternative.	Description	Fig.No.
302M505170	2M505170	KEY ECO B	10
302M505200	2M505200	COVER OPERATION B UX	10
302M505211	2M505211	COVER OPERATION B KS	10
302M505300	2M505300	COVER OPERATION B NL	10
302M517020	2M517020	SHEET DP	9
302M517040	2M517040	TAPE CONTACT GLASS A	9
302M517050	2M517050	HOLDER SHEET DP	9
302M518040	2M518040	PLATE ORIGINAL	11
302M518050	2M518050	SPONGE ORIGINAL PLATE	11
302M518160	2M518160	FELT PF	11
302M518170	2M518170	ACTUATOR SET	11
302M518240	2M518240	ACTUATOR TIMING	11
302M518310	2M518310	MOUNT MOTOR	11
302M518410	2M518410	COVER FRONT	11
302M518420	2M518420	COVER REAR	11
302M518430	2M518430	COVER PF	11
302M518520	2M518520	GUIDE READING	11
302M518710	2M518710	SHAFT PICK	11
302M518720	2M518720	ROLLER PF	11
302M518740	2M518740	SHAFT PF	11
302M518750	2M518750	HOLDER PF	11
302M518760	2M518760	GEAR Z22S FEED JOINT	11
302M518770	2M518770	ROLLER FEED	11
302M518790	2M518790	COUPLING FEED JOINT	11
302M518910	2M518910	GEAR CONVEYING Z32S	11
302M518920	2M518920	GEAR Z41S-Z21S	11
302M518930	2M518930	GEAR Z44R-Z21S	11
302M518940	2M518940	GEAR Z32S	11
302M518950	2M518950	GEAR Z24S PF IDLE	11
302M544010	2M544010	MOTOR-PM	11
302M593012	2M593012	FK-1111(E)	6
302M593022	2M593022	FK-1111(U)	6
302M594010	2M594010	PARTS SEPARATION ASSY SP	11
302M594020	2M594020	PARTS TABLE ASSY SP	11
302M594040	2M594040	PARTS TRAY FRONT ASSY SP CN	1
302M594051	2M594051	PARTS PWB ASSY MAIN SP	8
302M594061	2M594061	PARTS PWB ASSY MAIN SP EU	8
302M594070	2M594070	PARTS PWB ASSY LCDCONT SP	10
302M594080	2M594080	PARTS FAX UNIT E SP	8
302M594090	2M594090	PARTS FAX UNIT U SP	8
302M594101	2M594101	PARTS PWB ASSY MAIN SP RU	8
302M594141	2M594141	PARTS PWB ASSY MAIN SP AU	8
302M594171	2M594171	PARTS PWB ASSY MAIN SP CN2	8
302M594180	2M594180	PARTS PWB ASSY MAIN SP AO2	8
302M59C012	2M59C012	FK-1111(E)	6
302M605010	2M605010	COVER OPERATION C	10
302M605020	2M605020	KEY SELECT C	10
302M605030	2M605030	COVER OPERATION C UX	10
302M605040	2M605040	COVER OPERATION C KS	10
302M694010	2M694010	PARTS TRAY FRONT ASSY SP CN	1

Part.No.	Alternative.	Description	Fig.No.	Part.No.	Alternative.	Description	Fig.No.
302M694021	2M694021	PARTS PWB ASSY MAIN SP	8				
302M694030	2M694030	PARTS PWB ASSY LCDCONT SP	10				
302M694041	2M694041	PARTS PWB ASSY MAIN SP RU	8				
302M694051	2M694051	PARTS PWB ASSY MAIN SP AO	8				
302M694061	2M694061	PARTS PWB ASSY MAIN SP CN	8				
302M705010	2M705010	COVER OPERATION B	10				
302M705020	2M705020	COVER OPERATION B UX	10				
302M705031	2M705031	COVER OPERATION B KS	10				
302M705110	2M705110	COVER OPERATION B NL	10				
302M734160	2M734160	LABEL FAX	1				
302M739010	2M739010	CAP TEL	8				
302M794010	2M794010	PARTS TRAY FRONT ASSY SP CN	1				
302M794021	2M794021	PARTS PWB ASSY MAIN SP	8				
302M794031	2M794031	PARTS PWB ASSY MAIN SP EU	8				
302M794041	2M794041	PARTS PWB ASSY MAIN SP RU	8				
302M794081	2M794081	PARTS PWB ASSY MAIN SP AU	8				
302M794091	2M794091	PARTS PWB ASSY MAIN SP CN2	8				
302M794100	2M794100	PARTS PWB ASSY MAIN SP AO2	8				
303M894260	3M894260	PARTS SENSOR OPT SP	3,9,11				
303PA94010	3PA94010	PARTS FAX UNIT E SP	8				
3V2M505310	2M505310	COVER OPERATION B SG	10				
3V2M705120	2M705120	COVER OPERATION B SG	10				
3V2M734180	2M734180	LABEL FAX SG	1				
7AAACCCN+06H001	AA131920	AC CORD ASSY CN	8				
7AAACCND+06H006	AA137980	AC CORD ASSY ND	8				
7AAACCUS+10H001	AA068380	AC CORD ASSY US	8				

KYOCERA Document Solutions America, Inc.**Headquarters**

225 Sand Road,
Fairfield, New Jersey 07004-0008, USA
Phone: +1-973-808-8444
Fax: +1-973-882-6000

Latin America

8240 NW 52nd Terrace Dawson Building, Suite 100
Miami, Florida 33166, USA
Phone: +1-305-421-6640
Fax: +1-305-421-6666

KYOCERA Document Solutions Canada, Ltd.

6120 Kestrel Rd., Mississauga, ON L5T 1S8,
Canada
Phone: +1-905-670-4425
Fax: +1-905-670-8116

**KYOCERA Document Solutions
Mexico, S.A. de C.V.**

Calle Arquimedes No. 130, 4 Piso, Colonia Polanco
Chapultepec, Delegacion Miguel Hidalgo,
Distrito Federal, C.P. 11560, México
Phone: +52-555-383-2741
Fax: +52-555-383-7804

KYOCERA Document Solutions Brazil, Ltda.

Av. Tambore, 1180 Mod. B-09 CEP 06460-000
Tambore-Barueri-SP, Brazil
Phone: +55-11-4195-8496
Fax: +55-11-4195-6167

**KYOCERA Document Solutions
Australia Pty. Ltd.**

Level 3, 6-10 Talavera Road North Ryde N.S.W, 2113,
Australia
Phone: +61-2-9888-9999
Fax: +61-2-9888-9588

**KYOCERA Document Solutions
New Zealand Ltd.**

Ground Floor, 19 Byron Avenue, Takapuna, Auckland,
New Zealand
Phone: +64-9-415-4517
Fax: +64-9-415-4597

KYOCERA Document Solutions Asia Limited

16/F., Mita Centre, 552-566, Castle Peak Road
Tsuenwan, NT, Hong Kong
Phone: +852-2610-2181
Fax: +852-2610-2063

**KYOCERA Document Solutions
(China) Corporation**

8F, No. 288 Nanjing Road West, Huangpu District,
Shanghai, 200003, China
Phone: +86-21-5301-1777
Fax: +86-21-5302-8300

**KYOCERA Document Solutions
(Thailand) Corp., Ltd.**

335 Ratchadapisek Road, Bangsue, Bangkok 10800,
Thailand
Phone: +66-2-586-0333
Fax: +66-2-586-0278

**KYOCERA Document Solutions
Singapore Pte. Ltd.**

12 Tai Seng Street #04-01A,
Luxasia Building, Singapore 534118
Phone: +65-6741-8733
Fax: +65-6748-3788

**KYOCERA Document Solutions
Hong Kong Limited**

16/F., Mita Centre, 552-566, Castle Peak Road
Tsuenwan, NT, Hong Kong
Phone: +852-3582-4000
Fax: +852-3185-1399

**KYOCERA Document Solutions
Taiwan Corporation**

6F., No. 37, Sec. 3, Minguan E. Rd.,
Zhongshan Dist., Taipei 104, Taiwan R.O.C.
Phone: +886-2-2507-6709
Fax: +886-2-2507-8432

KYOCERA Document Solutions Korea Co., Ltd.

18F, Kangnam bldg, 1321-1,
Seocho-Dong, Seocho-Gu, Seoul, Korea
Phone: +822-6933-4050
Fax: +822-747-0084

**KYOCERA Document Solutions
India Private Limited**

First Floor, ORCHID CENTRE
Sector-53, Golf Course Road, Gurgaon 122 002,
India
Phone: +91-0124-4671000
Fax: +91-0124-4671001

KYOCERA Document Solutions Europe B.V.

Bloemlaan 4, 2132 NP Hoofddorp,
The Netherlands
Phone: +31-20-654-0000
Fax: +31-20-653-1256

KYOCERA Document Solutions Nederland B.V.

Beechavenue 25, 1119 RA Schiphol-Rijk,
The Netherlands
Phone: +31-20-5877200
Fax: +31-20-5877260

KYOCERA Document Solutions (U.K.) Limited

Eldon Court, 75-77 London Road,
Reading, Berkshire RG1 5BS,
United Kingdom
Phone: +44-118-931-1500
Fax: +44-118-931-1108

KYOCERA Document Solutions Italia S.p.A.

Via Verdi, 89/91 20063 Cernusco s/N.(MI),
Italy
Phone: +39-02-921791
Fax: +39-02-92179-600

KYOCERA Document Solutions Belgium N.V.

Sint-Martinusweg 199-201 1930 Zaventem,
Belgium
Phone: +32-2-7209270
Fax: +32-2-7208748

KYOCERA Document Solutions France S.A.S.

Espace Technologique de St Aubin
Route de l'Orme 91195 Gif-sur-Yvette CEDEX,
France
Phone: +33-1-69852600
Fax: +33-1-69853409

KYOCERA Document Solutions Espana, S.A.

Edificio Kyocera, Avda. de Manacor No.2,
28290 Las Matas (Madrid), Spain
Phone: +34-91-6318392
Fax: +34-91-6318219

KYOCERA Document Solutions Finland Oy

Atomitie 5C, 00370 Helsinki,
Finland
Phone: +358-9-47805200
Fax: +358-9-47805390

KYOCERA Document Solutions Europe B.V., Amsterdam (NL) Zürich Branch

Hohlstrasse 614, 8048 Zürich,
Switzerland
Phone: +41-44-9084949
Fax: +41-44-9084950

KYOCERA Document Solutions Deutschland GmbH

Otto-Hahn-Strasse 12, 40670 Meerbusch,
Germany
Phone: +49-2159-9180
Fax: +49-2159-918100

KYOCERA Document Solutions Austria GmbH

Eduard-Kittenberger-Gasse 95, 1230 Vienna,
Austria
Phone: +43-1-863380
Fax: +43-1-86338-400

KYOCERA Document Solutions Nordic AB

Esbogatan 16B 164 75 Kista, Sweden
Phone: +46-8-546-550-00
Fax: +46-8-546-550-10

KYOCERA Document Solutions Norge Nuf

Postboks 150 Oppsal, 0619 Oslo,
Norway
Phone: +47-22-62-73-00
Fax: +47-22-62-72-00

KYOCERA Document Solutions Danmark A/S

Ejby Industrivej 60, DK-2600 Glostrup,
Denmark
Phone: +45-70223880
Fax: +45-45765850

KYOCERA Document Solutions Portugal Lda.

Rua do Centro Cultural, 41 (Alvalade) 1700-106 Lisboa,
Portugal
Phone: +351-21-843-6780
Fax: +351-21-849-3312

KYOCERA Document Solutions South Africa (Pty) Ltd.

KYOCERA House, Hertford Office Park,
90 Bekker Road (Cnr. Allandale), Midrand, South Africa.
Phone: +27-11-540-2600
Fax: +27-11-466-3050

KYOCERA Document Solutions Russia LLC

Botanichesky pereulok 5, Moscow, 129090,
Russia
Phone: +7(495)741-0004
Fax: +7(495)741-0018

KYOCERA Document Solutions Middle East

Dubai Internet City, Bldg. 17,
Office 157 P.O. Box 500817, Dubai,
United Arab Emirates
Phone: +971-04-433-0412

KYOCERA Document Solutions Inc.

2-28, 1-chome, Tamatsukuri, Chuo-ku
Osaka 540-8585, Japan
Phone: +81-6-6764-3555
<http://www.kyoceradocumentsolutions.com>

© 2013 KYOCERA Document Solutions Inc.

 is a trademark of KYOCERA Corporation