

**ILLUSTRATED PART LIST**

**CONTENTS**

<b>PART LIST TABLES</b>	5
TABLE COLUMNS	5
SPARE PARTS ORDERING	5
<b>PLANCHE 1 / FIGURE 1</b>	6
HFFv2 PRODUCT	7
<b>PLANCHE 2 / FIGURE 2</b>	8
HOUSING	9
<b>PLANCHE 3 / FIGURE 3</b>	10
ADF MODULE	11
<b>PLANCHE 4 / FIGURE 4</b>	12
KEYPAD	13
<b>PLANCHE 5 / FIGURE 5</b>	14
FRONT PANEL ASM	15
<b>PLANCHE 6 / FIGURE 6</b>	16
FLATBED ASM	17
<b>PLANCHE 7 / FIGURE 7</b>	18
OPEN BUTTON	19
<b>PLANCHE 8 / FIGURE 8</b>	20
SCANNER TRAY ASM	21
<b>PLANCHE 9 / FIGURE 9</b>	22
INTERFACE	23
<b>PLANCHE 10 / FIGURE 10</b>	24
HDD SUPPORT	25
<b>PLANCHE 11 / FIGURE 11</b>	26
MAINBOARD	27
<b>PLANCHE 12 / FIGURE 12</b>	28
BACK COVER	29
<b>PLANCHE 13 / FIGURE 13</b>	30
TRAP HOLDER	31
<b>PLANCHE 14 / FIGURE 14</b>	32

---

---

# CONTENTS

---

---

DETAIL OF SCANNER TRAY (1)	33
<b>PLANCHE 15 / FIGURE 15</b>	34
DETAIL OF SCANNER TRAY (2)	35
<b>PLANCHE 16 / FIGURE 16</b>	36
DETAIL OF FRONT PANEL	37
<b>PLANCHE 17 / FIGURE 17</b>	38
DETAIL OF HDD SUPPORT	39
<b>PLANCHE 18 / FIGURE 18</b>	40
SCANNER M&H UPPER COVER (FLAP COVER)	41
<b>PLANCHE 19 / FIGURE 19</b>	42
FLAP SCANNER EQUIPPED	43
<b>PLANCHE 20 / FIGURE 20</b>	44
ADF M&H EQUIPPED	45
<b>PLANCHE 21 / FIGURE 21</b>	46
ADF COVER M&H ASSY	47
<b>PLANCHE 22 / FIGURE 22</b>	48
INPURT PAPERWAY GUIDE EQUIPPED	49
<b>PLANCHE 23 / FIGURE 23</b>	50
FLATBED SCANNER H&M ASSY	51
<b>PLANCHE 24 / FIGURE 24</b>	52
COVER	53
<b>PLANCHE 25 / FIGURE 25</b>	54
PAPER CASSETTE 150	55
<b>PLANCHE 26 / FIGURE 26</b>	56
PAPER CASSETTE 550	57
<b>PLANCHE 27 / FIGURE 27</b>	58
PAPER FEEDER 150	59
<b>PLANCHE 28 / FIGURE 28</b>	60
PAPER FEEDER 550	61
<b>PLANCHE 29 / FIGURE 29</b>	62
XERO	63
<b>PLANCHE 30 / FIGURE 30</b>	64
PAPER EXIT 500 1/2	65

---

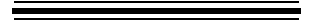
---

## CONTENTS

---

---

<b>PLANCHE 31 / FIGURE 31</b>	66
PAPER EXIT 500 2/2	67
<b>PLANCHE 32 / FIGURE 32</b>	68
FRAME & DRIVE	69
<b>PLANCHE 33 / FIGURE 33</b>	70
ELECTRICAL	71
<b>PLANCHE 34 / FIGURE 34</b>	72
OPTION PAPER FEEDER 550	73
<b>PLANCHE 35 / FIGURE 35</b>	74
DUPLEX UNIT	75



## 1. PART LIST TABLES

### 1.1 TABLE COLUMNS

- ITEM NUMBER column: number of the item illustrated on the corresponding figure.  
**Note 1:** An item number preceded by a hyphen "-" is a non-illustrated item.  
**Note 2:** An item may be illustrated in a figure without being listed in the corresponding part list: such an article cannot be replaced other than by replacing the subassembly of which it is part.
- REFERENCE column:SAGEMCOM part number.
- DESIGNATION column:description of the item.
- QTY column:quantity.
- R column:repairability.  
The letter R indicates that an item is repairable in the workshop.

### 1.2 SPARE PARTS ORDERING

When ordering spares parts, please state:

- the name of the equipment, its part number and its serial number (on manufacturer's nameplate).
- the designation of the part as given in the parts list.  
Example: Right cover,
- the SAGEMCOM part number with the Prefix 9960P  
Example: 9960P252272850

It is also recommended to state the reference of the document in which the part number has been found.

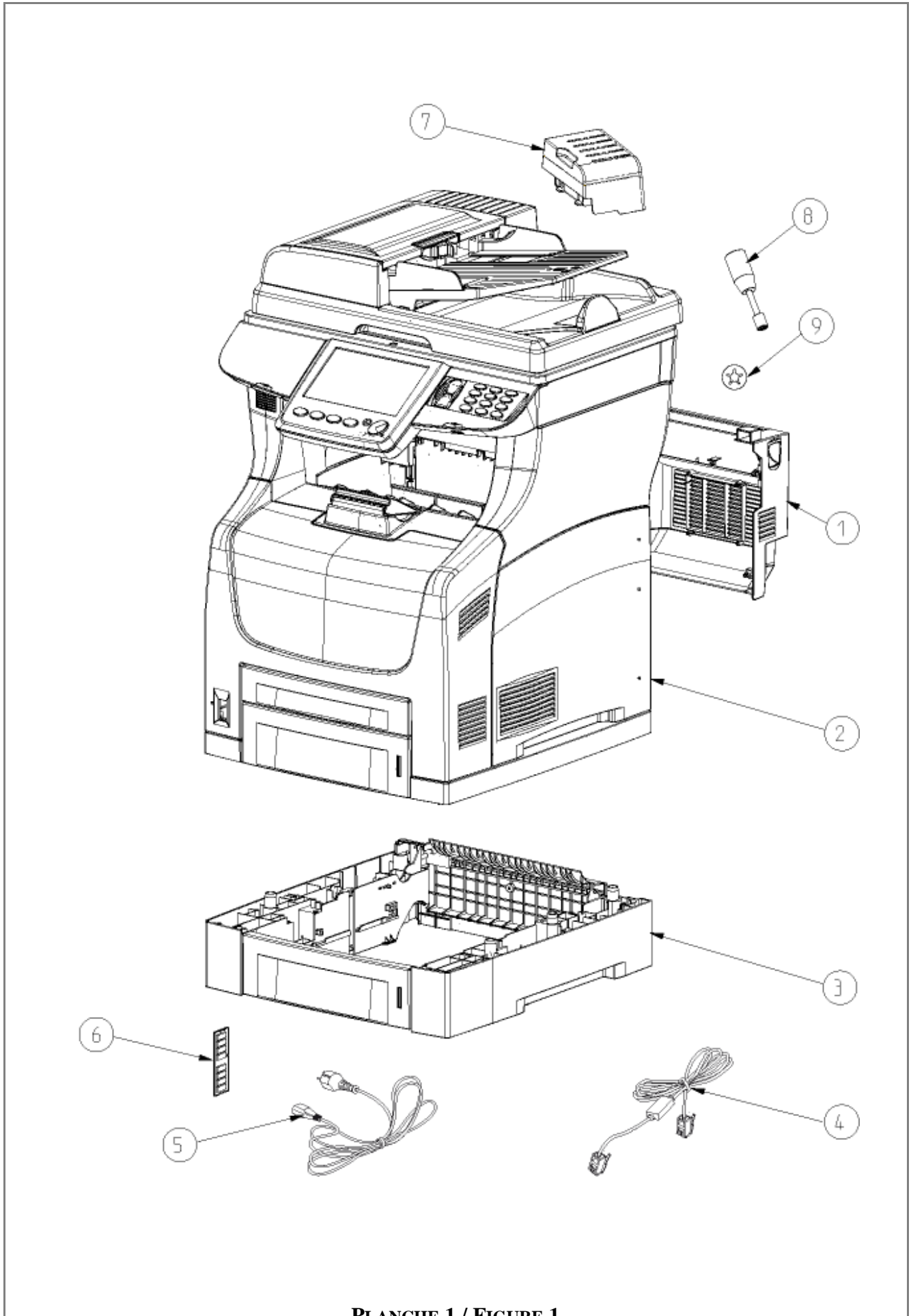


PLANCHE 1 / FIGURE 1

ITEM No.	REFERENCE	DESIGNATION	QTY	R
1	253086918	Duplex module	1	
2	253074778	Base HFFv2 asm	1	
3	253087139	Optional paper tray	1	
4	See §2	Line cord	1	
5	See §2	Power cord	1	
6	253232817	Memory extension HFXv2	1	
7	253217550	Zencube Diffuser HFX sunline	1	
8	253235371	Grip ring tool	1	
9	186205664	Grip ring DIAM11.5*DIAM4*0.2 THICK	3	
HFFV2 PRODUCT			PLANCHE 1 / FIGURE 1	

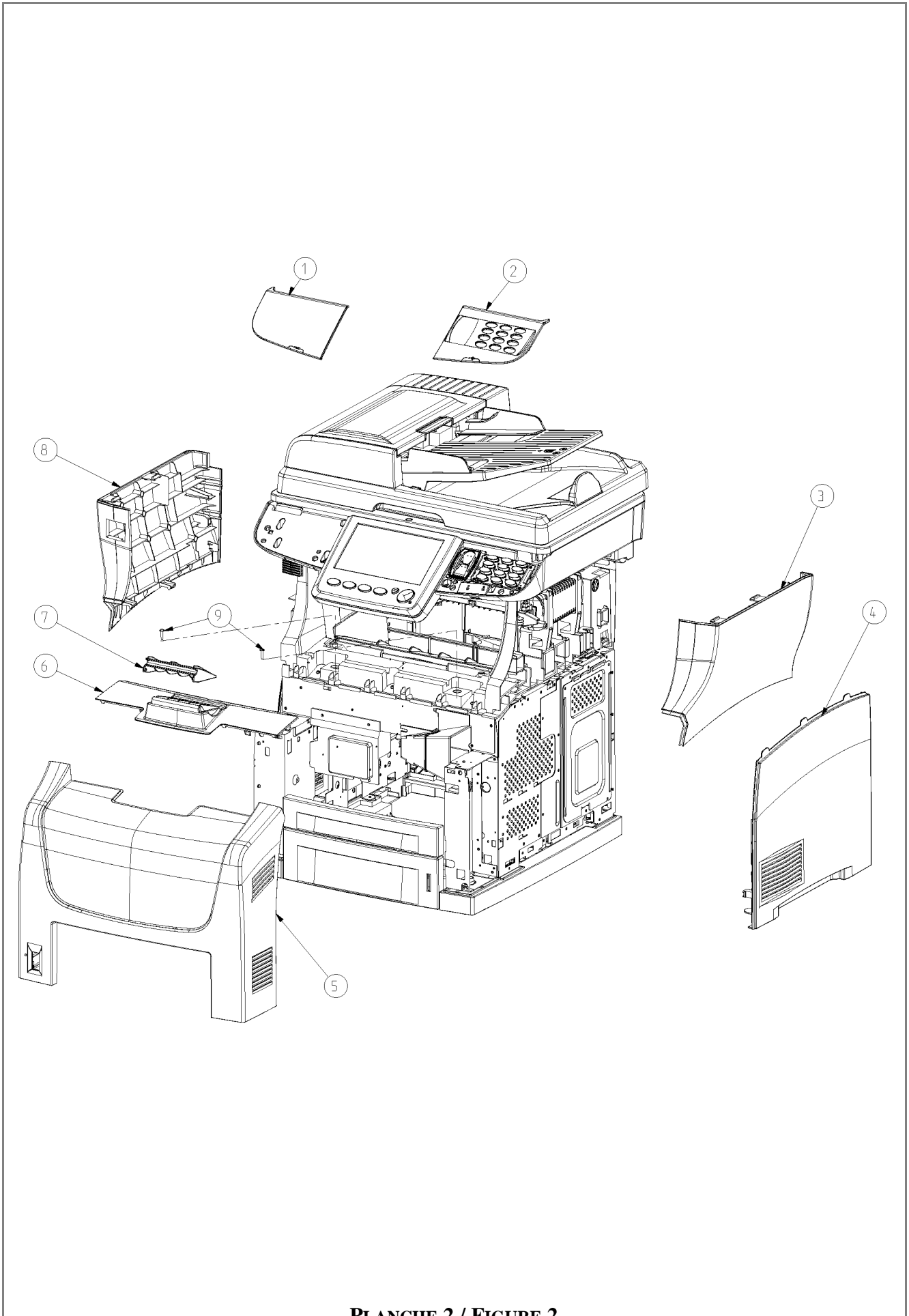


PLANCHE 2 / FIGURE 2



ITEM No.	REFERENCE	DESIGNATION	QTY	R
1	See §2	Left front panel	1	
2	See §2	Right front panel	1	
3	253075126	Side cover right injected	1	
4	186138694	Bottom right cover	1	
5	253075134	Front cover injected	1	
6	253075147	Top cover ASM	1	
7	186138735	Paper guide	1	
8	253075113	Side cover left injected	1	
9	189976418	Screw Plastic 3*16 washer TORX	1	
HOUSING			PLANCHE 2 /	FIGURE 2

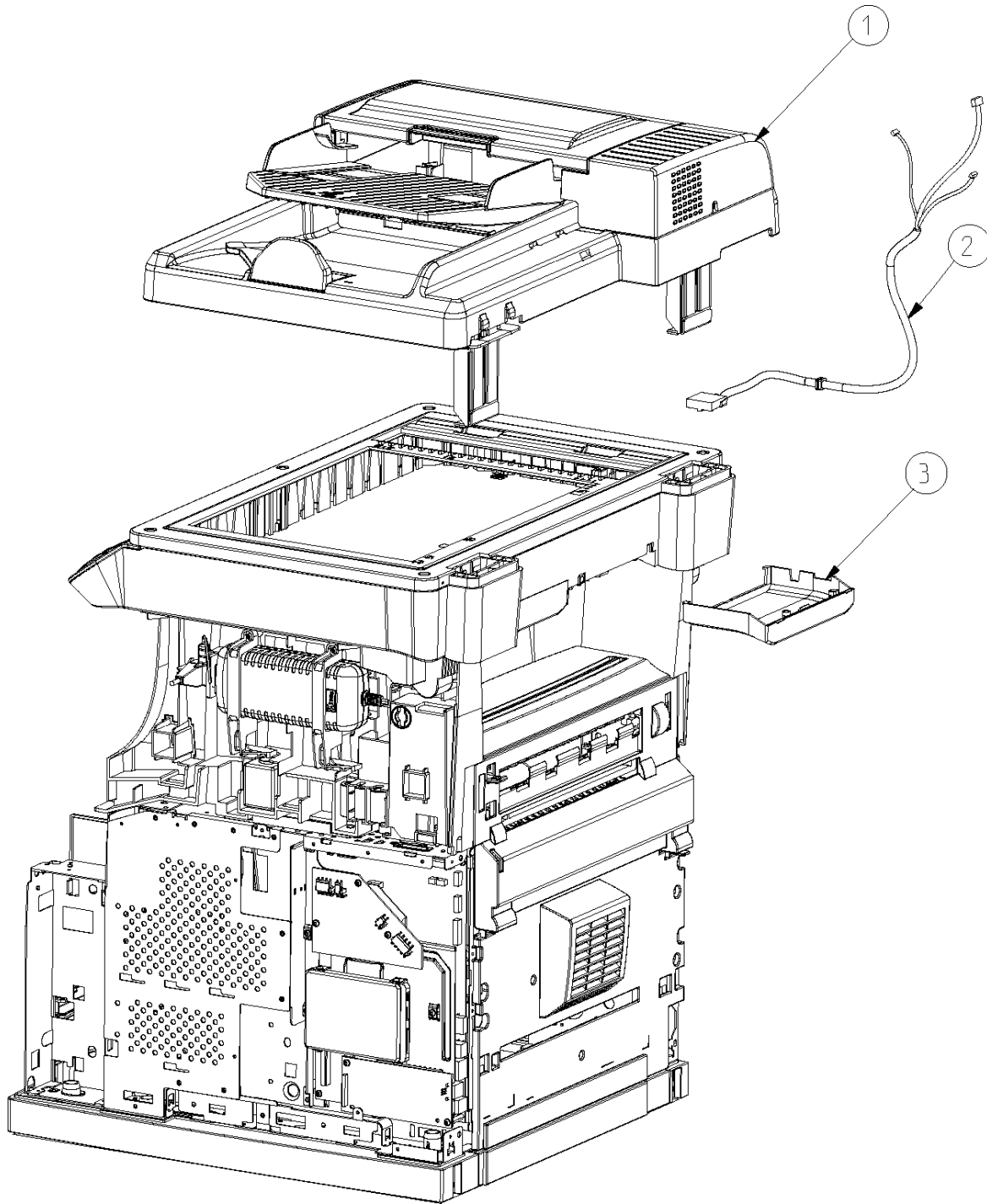


PLANCHE 3 / FIGURE 3

ITEM No.	REFERENCE	DESIGNATION	QTY	R
1	253032671	Flat scanner M&H ASM (see figure 18)	1	
2	253075093	Interco trap injected	1	
3	253125968	HFFv2 ADF in scanner cable not shielded	1	
ADF MODULE			PLANCHE 3 / FIGURE 3	

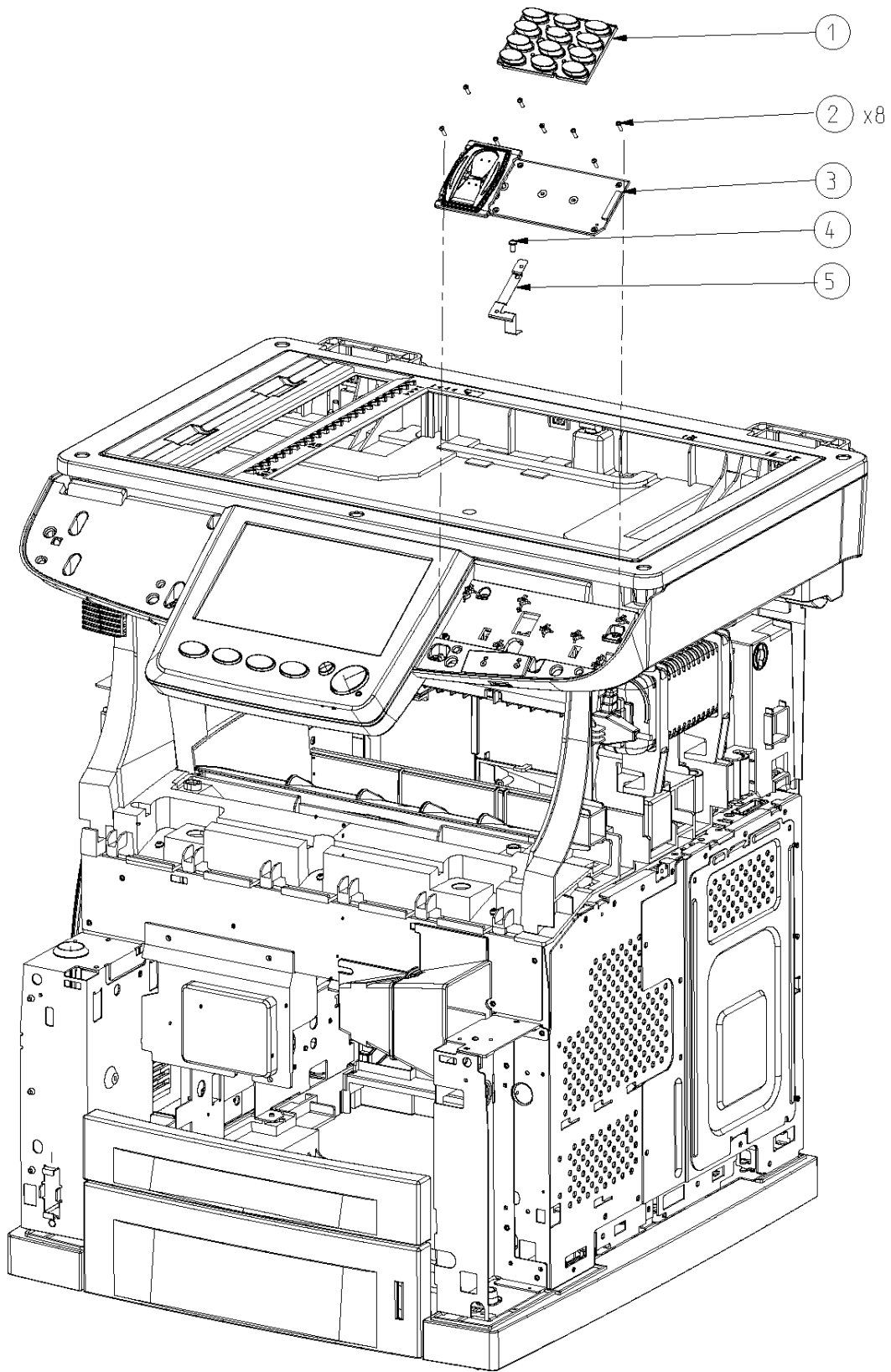


PLANCHE 4 / FIGURE 4

ITEM No.	REFERENCE	DESIGNATION	QTY	R
1	253070155	HFxv2 Keypad ASM	1	
2	189976372	Screw torx 2x7 for plastic	8	
3	See §2	Keypad panel ASM	1	
4	253074997	Screw torx 3x6mm	1	
5	253127433	Ground spring keypad	1	
KEYPAD			PLANCHE 4 / FIGURE 4	

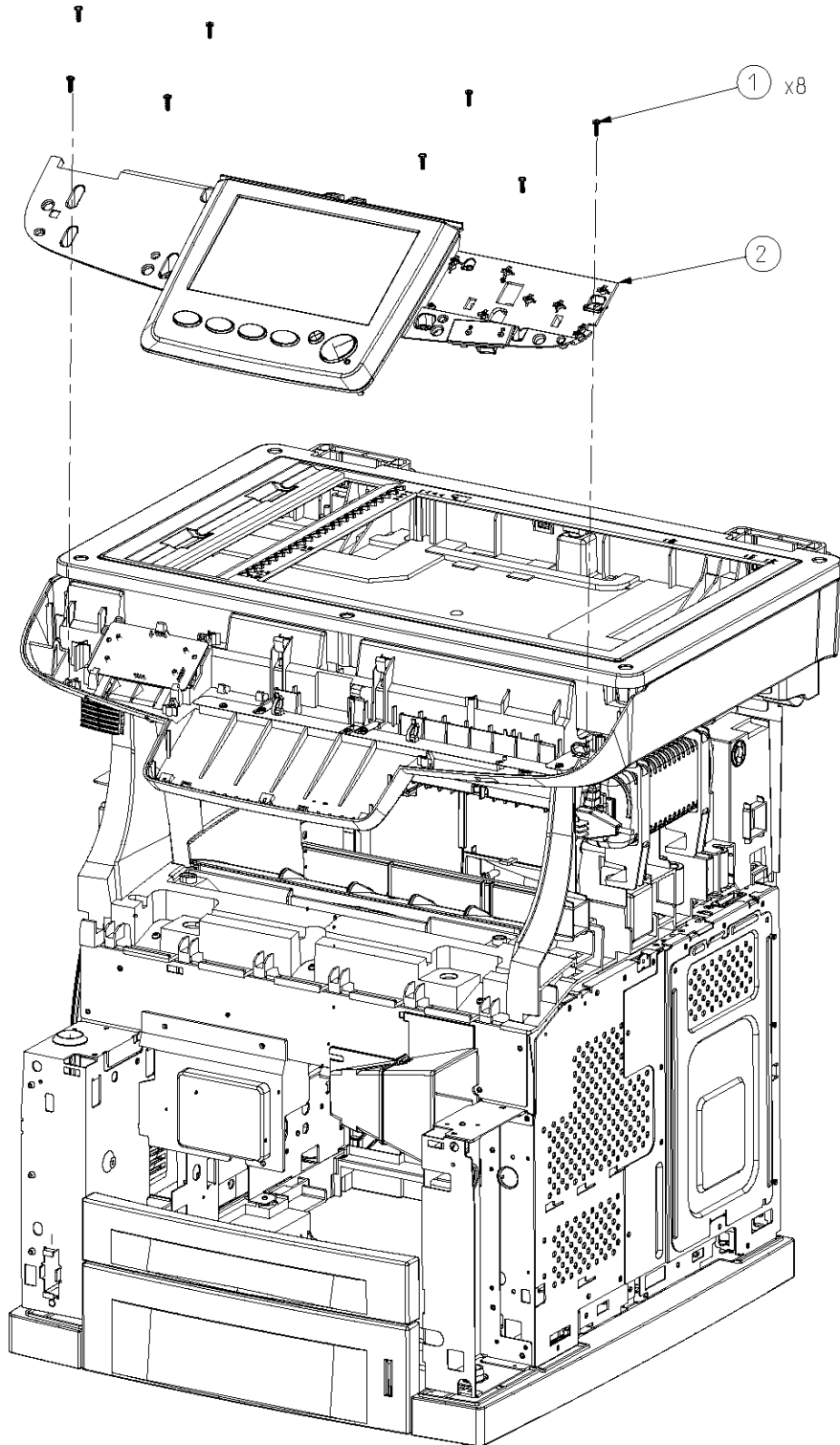


PLANCHE 5 / FIGURE 5

ITEM No.	REFERENCE	DESIGNATION	QTY	R
1	253090735	Screw torx 3x10mm	8	
2	253058183	LCD front cover ASM  Note : The software version of the Front panel must be at least Version E. See Administrator settings to read the version (PIC version parameter). PIC Version (in binary) : 0000 0001 hhyy yyyy hh : Hardware version yy yyyy : Software version of Front panel	1	
FRONT PANEL ASM			PLANCHE 5 / FIGURE 5	

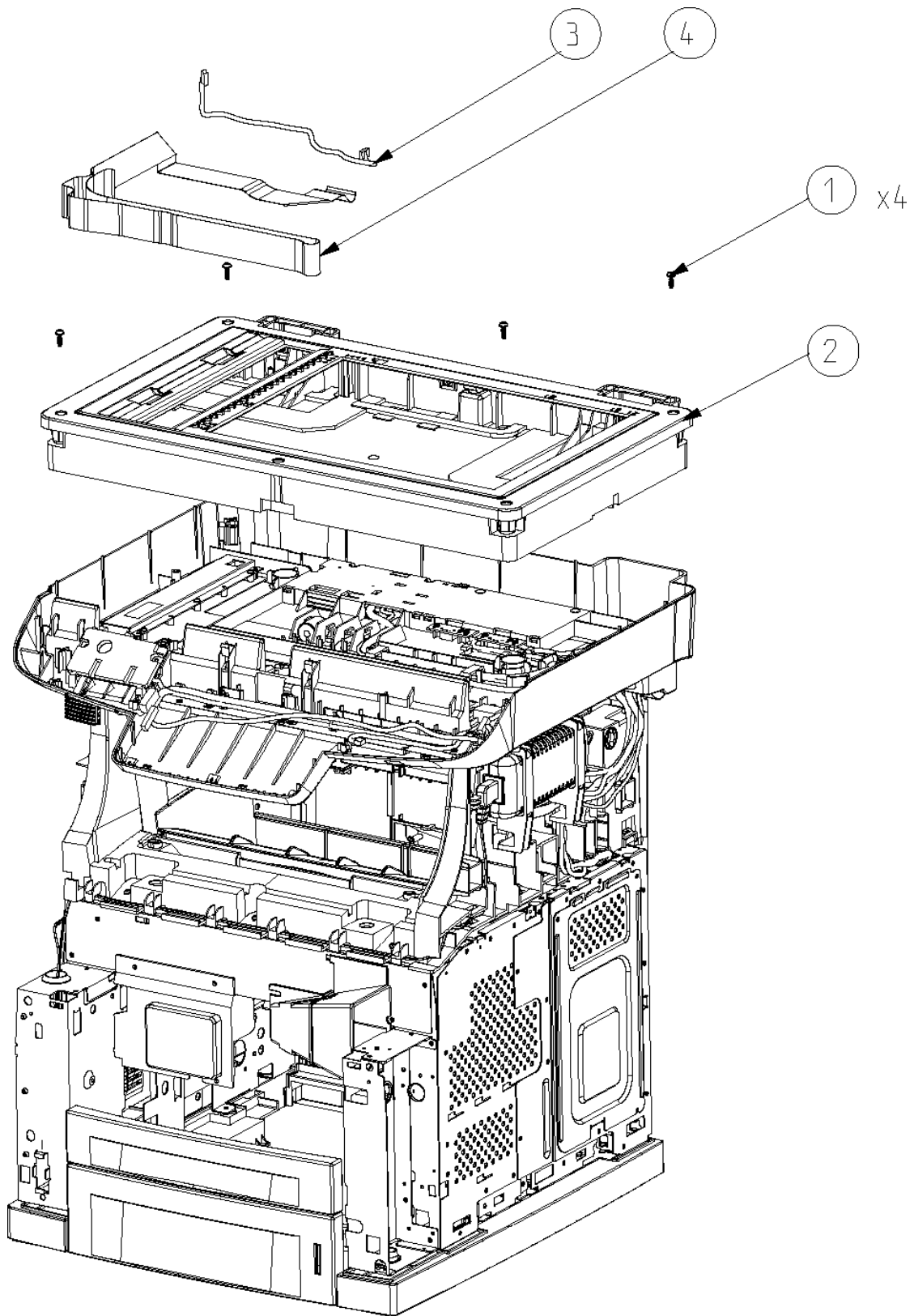


PLANCHE 6 / FIGURE 6



<b>ITEM No.</b>	<b>REFERENCE</b>	<b>DESIGNATION</b>	<b>QTY</b>	<b>R</b>
1	253090748	Screw torx 4*12mm	4	
2	253033053	Flatbed scanner H&M assy (see figure 23)	1	
3	253096005	HFFv2 Flatbed ground cable	1	
4	189955232	Flat cable	1	
FLATBED ASM			PLANCHE 6/ FIGURE 6	

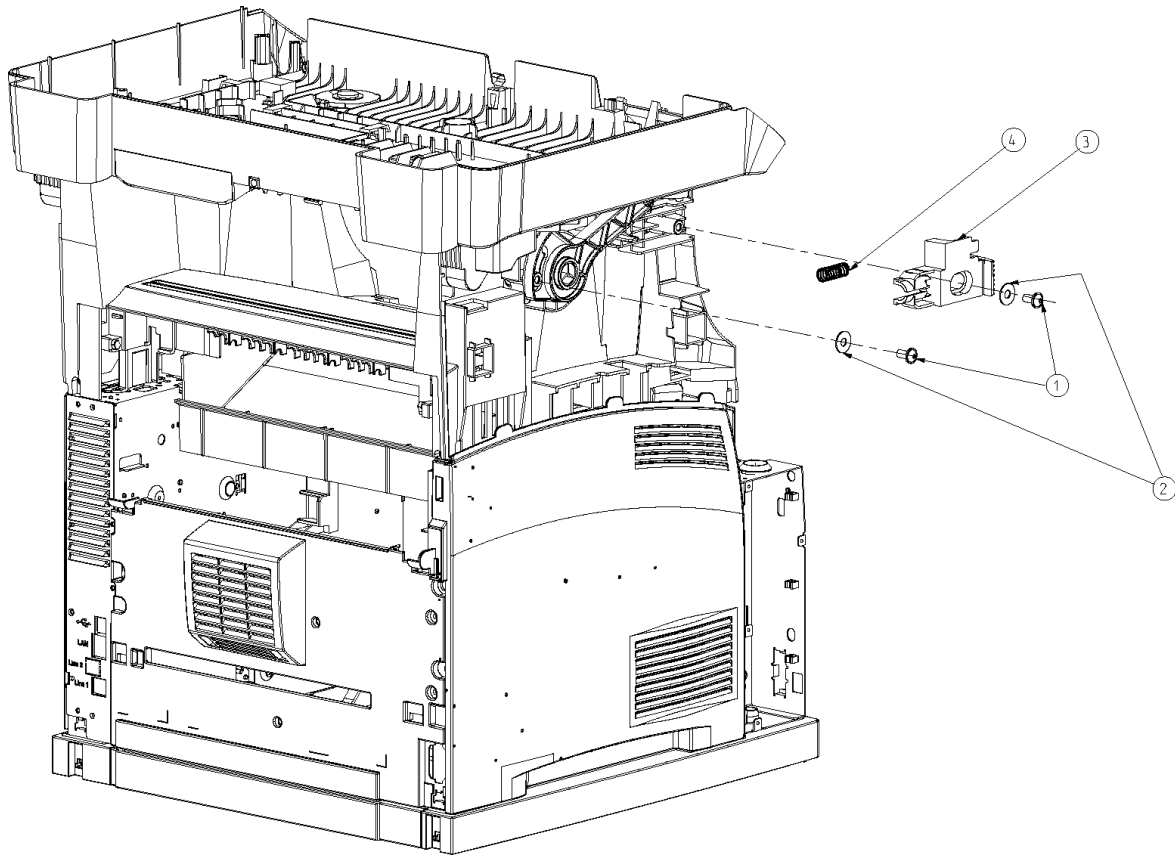


PLANCHE 7 / FIGURE 7

<b>ITEM No.</b>	<b>REFERENCE</b>	<b>DESIGNATION</b>	<b>QTY</b>	<b>R</b>
1	253074864	Screw torx 6*12mm	2	
2	253074851	Washer 6x12	2	
3	253074822	Open button injected	1	
4	253074843	Open button spring	1	
<b>OPEN BUTTON</b>			<b>PLANCHE 7/ FIGURE 7</b>	

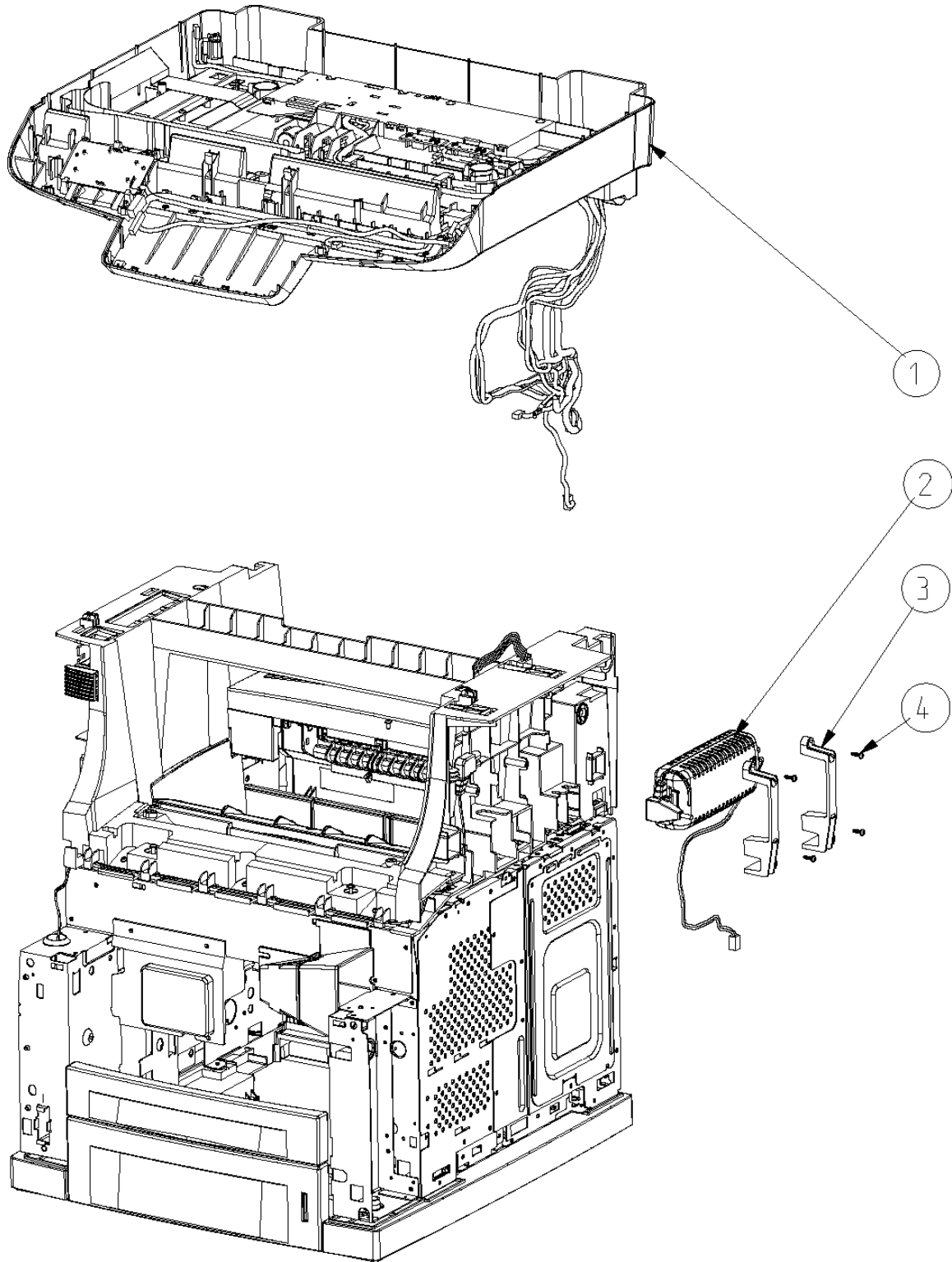


PLANCHE 8 / FIGURE 8

<b>ITEM No.</b>	<b>REFERENCE</b>	<b>DESIGNATION</b>	<b>QTY</b>	<b>R</b>
1	253074893	Scanner tray ASM	1	
2	191031847	BLOC.ALIM.SECTEUR 100-240V 24V/2A SP	1	
3	253074872	LVPS holder injected	2	
4	253090735	Screw torx 3x10mm	4	
SCANNER TRAY ASM			PLANCHE 8/ FIGURE 8	

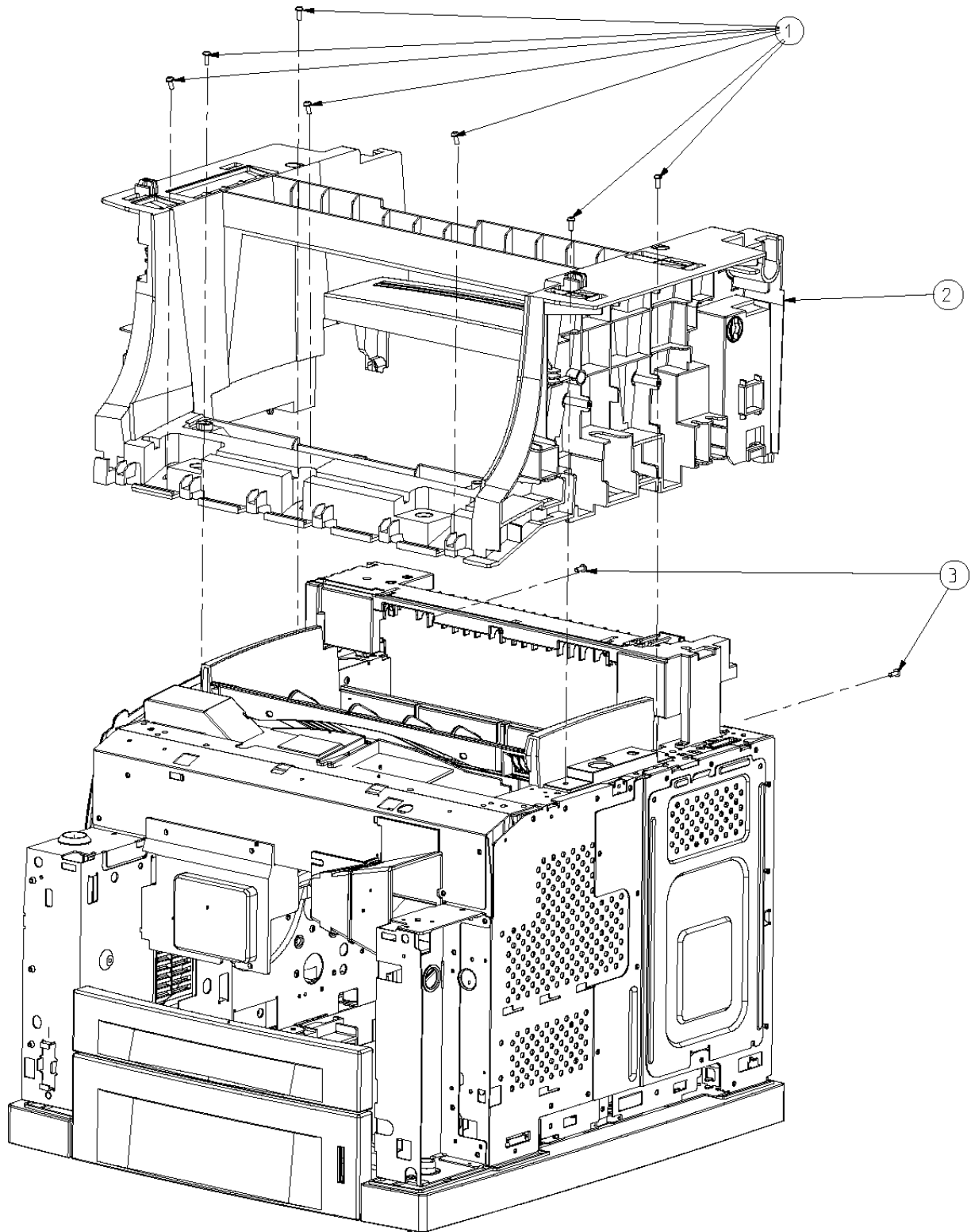


PLANCHE 9 / FIGURE 9

ITEM No.	REFERENCE	DESIGNATION	QTY	R
1	253074819	Screw torx M3*8mm for metal	7	
2	253074801	Interface injected	1	
3	253123550	Screw torx M4*10	2	
INTERFACE			PLANCHE 9/ FIGURE 9	

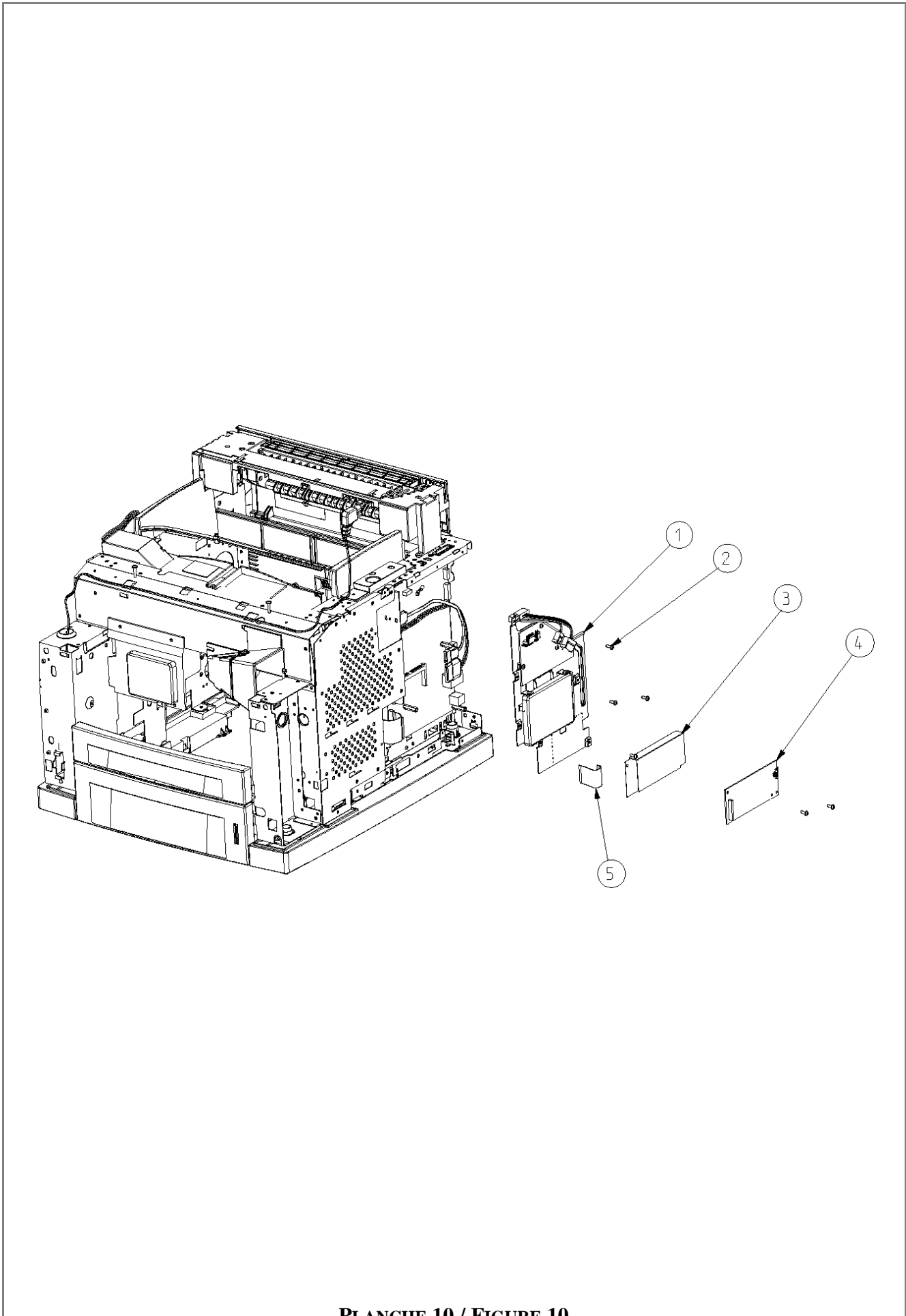


PLANCHE 10 / FIGURE 10



ITEM No.	REFERENCE	DESIGNATION	QTY	R
1	253074799	HDD support ASM	1	
2	189976351	Screw self tapping M3x5mm Torx	5	
3	253169530	Mylar protection	1	
4	253052798	ref card Mezz. Modem	1	
5	253074629	Mezz. Modem cord	1	
HDD SUPPORT			PLANCHE 10/ FIGURE 10	

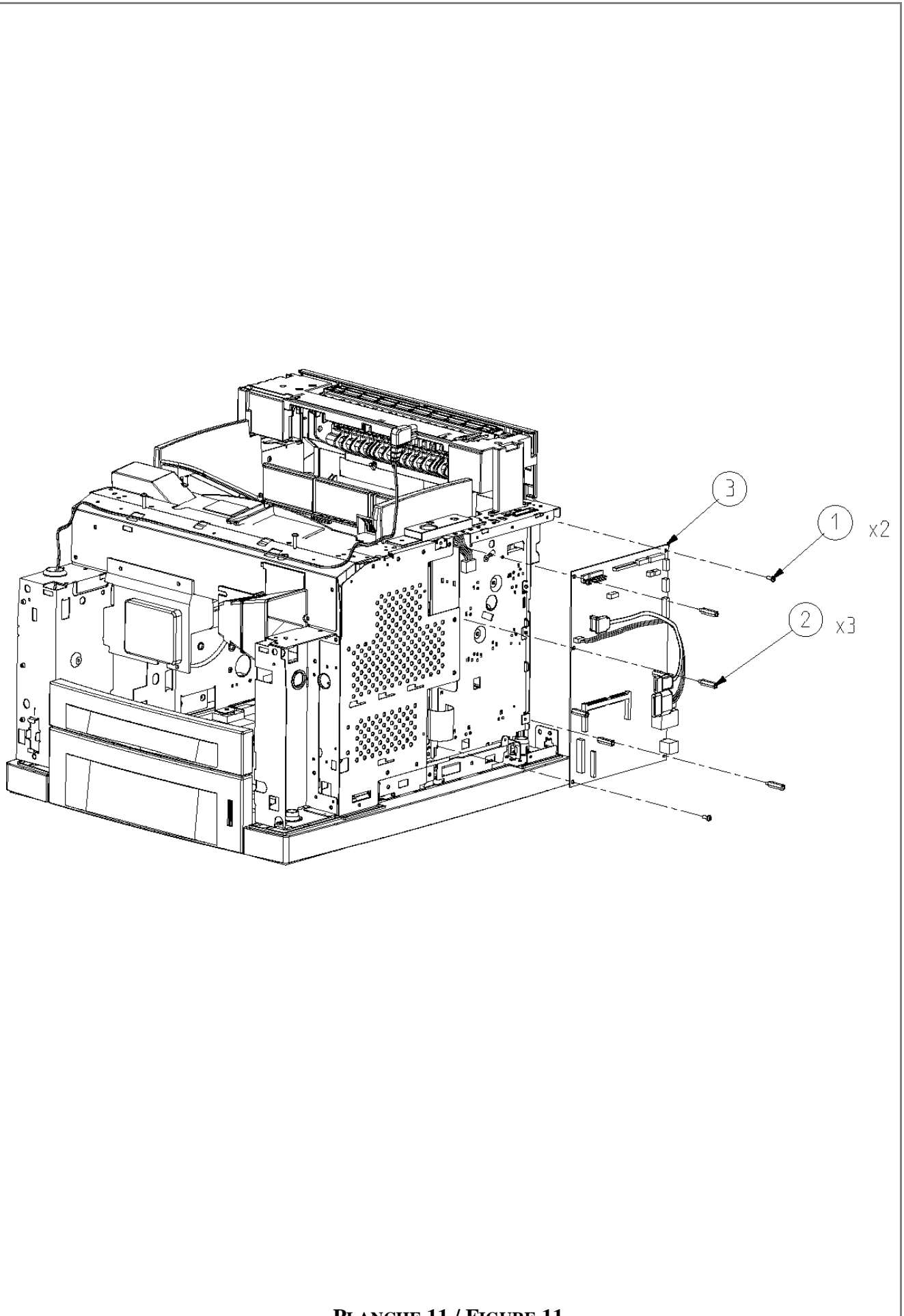


PLANCHE 11 / FIGURE 11

ITEM No.	REFERENCE	DESIGNATION	QTY	R
1	189976351	Screw self tapping M3x5mm Torx	2	
2	253058120	UC spacer	3	
3	See §2	Main PCB board programmed HFFV2 (SAV)	1	
MAINBOARD			PLANCHE 11/ FIGURE 11	

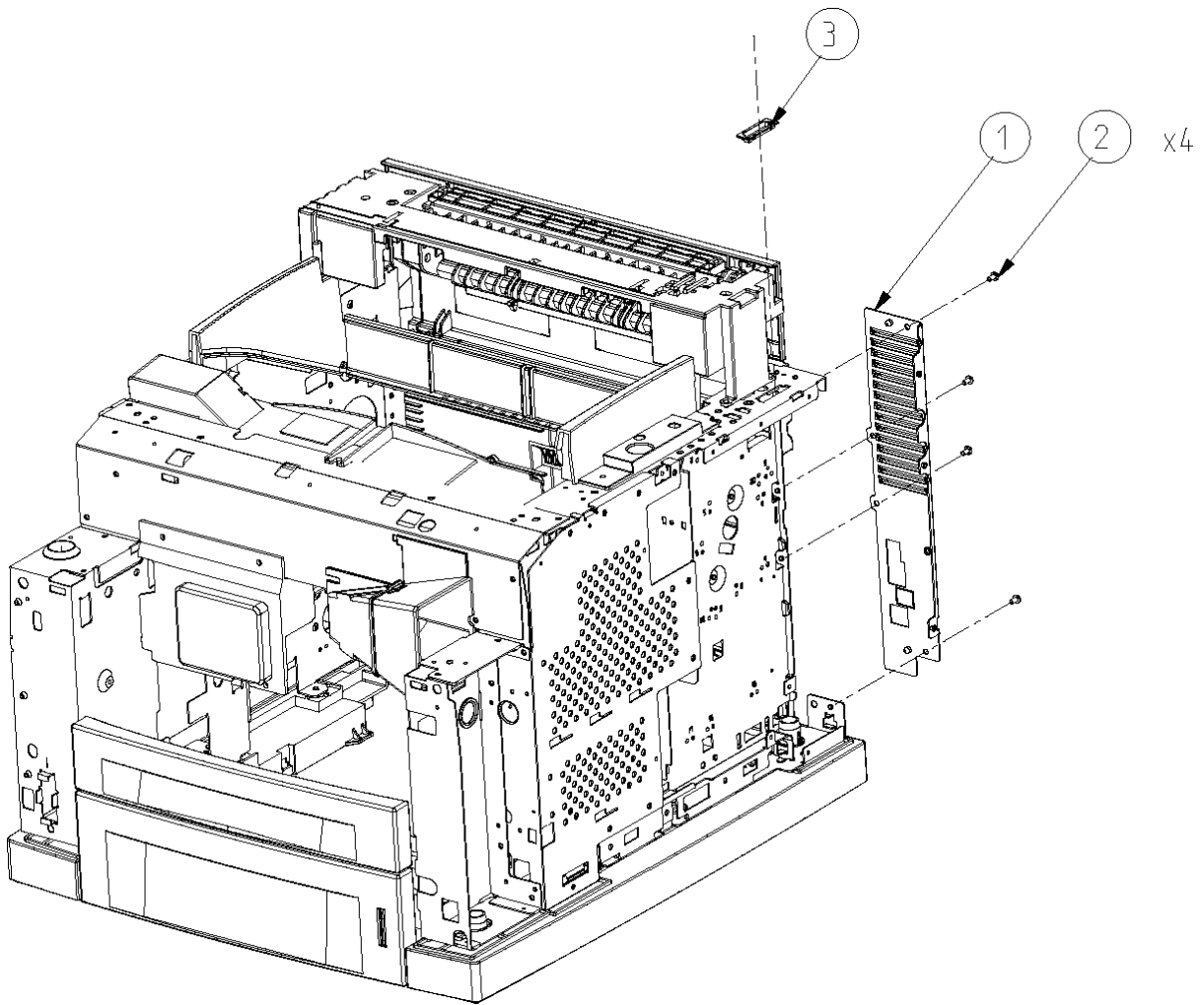


PLANCHE 12 / FIGURE 12

ITEM No.	REFERENCE	DESIGNATION	QTY	R
1	253058414	Rear plate	1	
2	189976351	Screw self tapping M3x5mm Torx	4	
3	253100768	Wire protection	1	
BACK COVER			PLANCHE 12/ FIGURE 12	

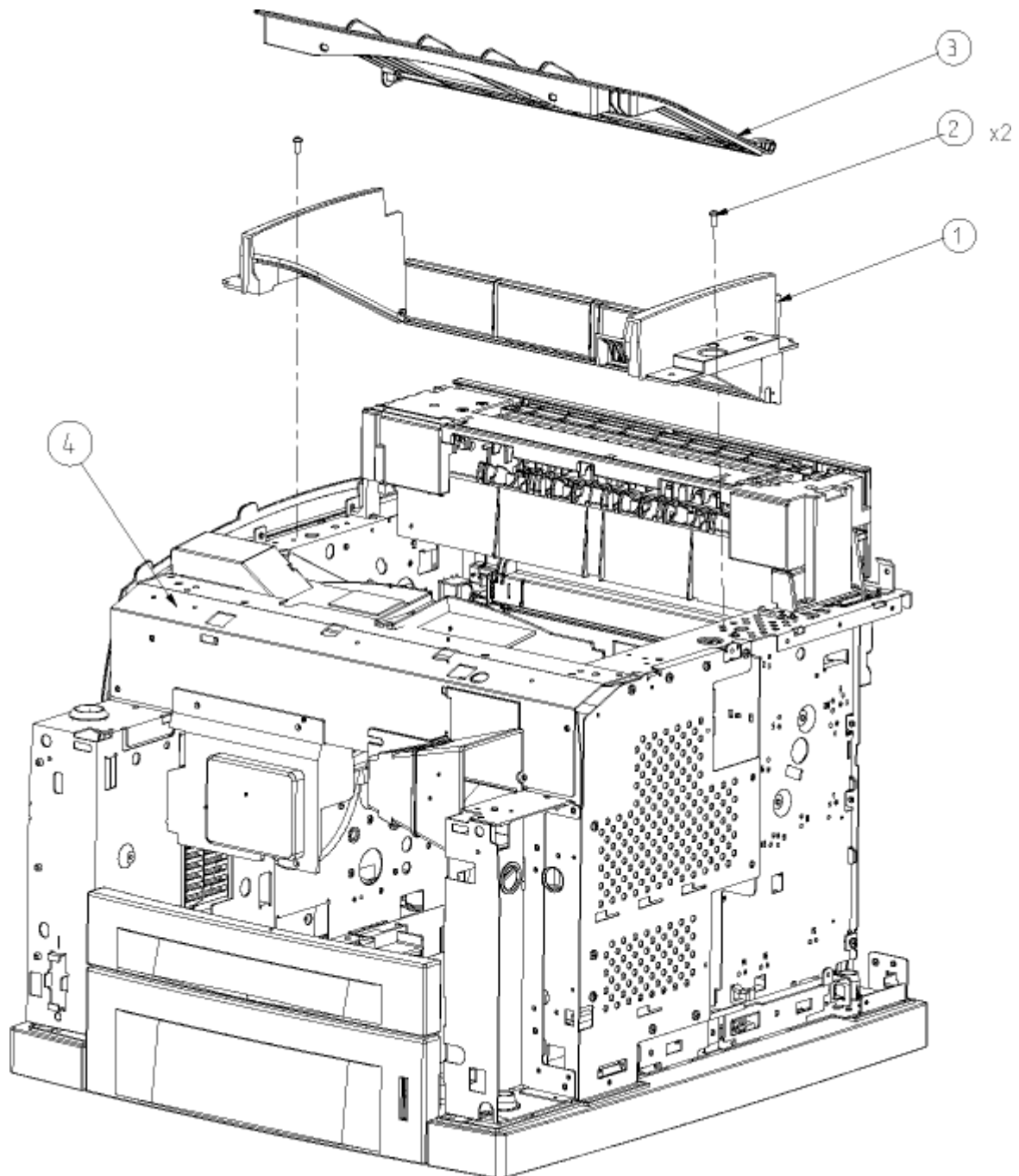


PLANCHE 13 / FIGURE 13

ITEM No.	REFERENCE	DESIGNATION	QTY	R
1	253114796	Trap holder Asm	1	
2	253074819	Screw torx M3*8mm for metal	2	
3	186138649	Trap	1	
4	See §2	Printer HFFv2	1	
TRAP HOLDER			PLANCHE 13/ FIGURE 13	

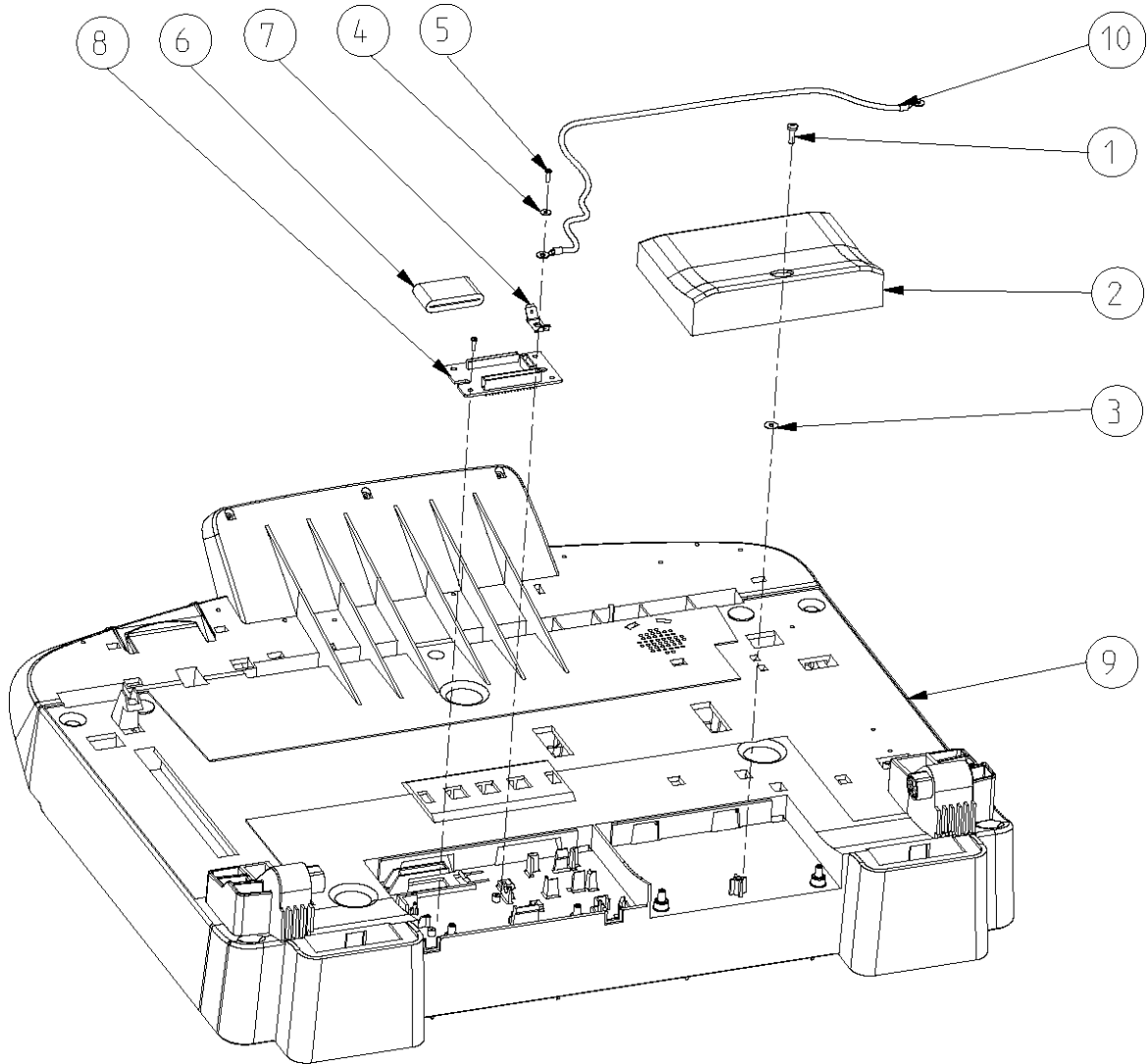


PLANCHE 14 / FIGURE 14



ITEM No.	REFERENCE	DESIGNATION	QTY	R
1	253074997	Screw torx 3x6mm	1	
2	253075072	Wifi-BT trap injected	1	
3	253075085	Washer plastic	1	
4	253088194	Washer D2D6	1	
5	189976372	Screw torx 2x7 for plastic	2	
6	189976108	Ferrite	1	
7	186116833	Faston receiver PC2L25035LR(KST)	1	
8	253108540	Ref Interco card	1	
9	253074905	Scanner tray injected	1	
10	253084625	HFFv2 ground plate to interconnect cable	1	
DETAIL OF SCANNER TRAY (1)			PLANCHE 14/ FIGURE 14	

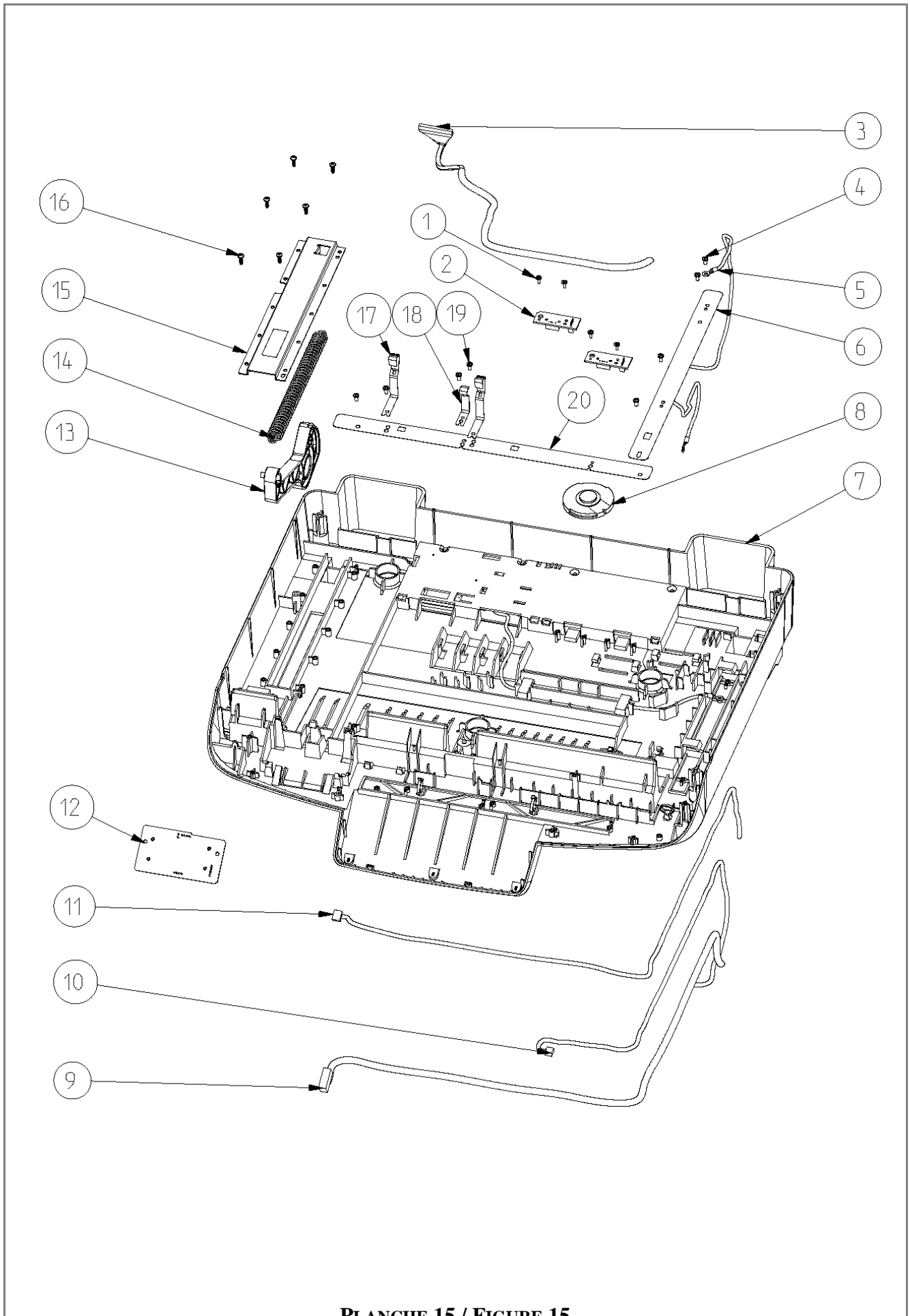


PLANCHE 15 / FIGURE 15

ITEM No.	REFERENCE	DESIGNATION	QTY	R
1	186113907	Screw2x6mm washer6x0.5 torx	4	
2	253093640	USB Host Back	2	
3	253083053	Ground plate to printer ground cable	1	
4	253074997	Screw torx 3x6mm	4	
5	253083053	HFFv2 ground plate to printer cable	1	
6	253074968	Ground plate scanner tray	1	
7	253074905	Scanner tray injected	1	
8	253083029	HP HFF-V2	1	
9	253066891	Front panel cable	1	
10	253074596	USB front cable	1	
11	253066911	Cable Smartcart	1	
12	253108579	Ref smartcard	1	
13	253074913	Hinge injected	1	
14	253074947	Spring hinge	1	
15	253074934	Plate spring hinge	1	
16	253090735	Screw torx 3x10mm	6	
17	253074976	Ground spring LCD	2	
18	253074989	Ground spring front panel	1	
19	253074997	Screw torx 3x6mm	4	
20	253074955	Ground plate1	1	
DETAIL OF SCANNER TRAY (2)			PLANCHE 15/ FIGURE 15	

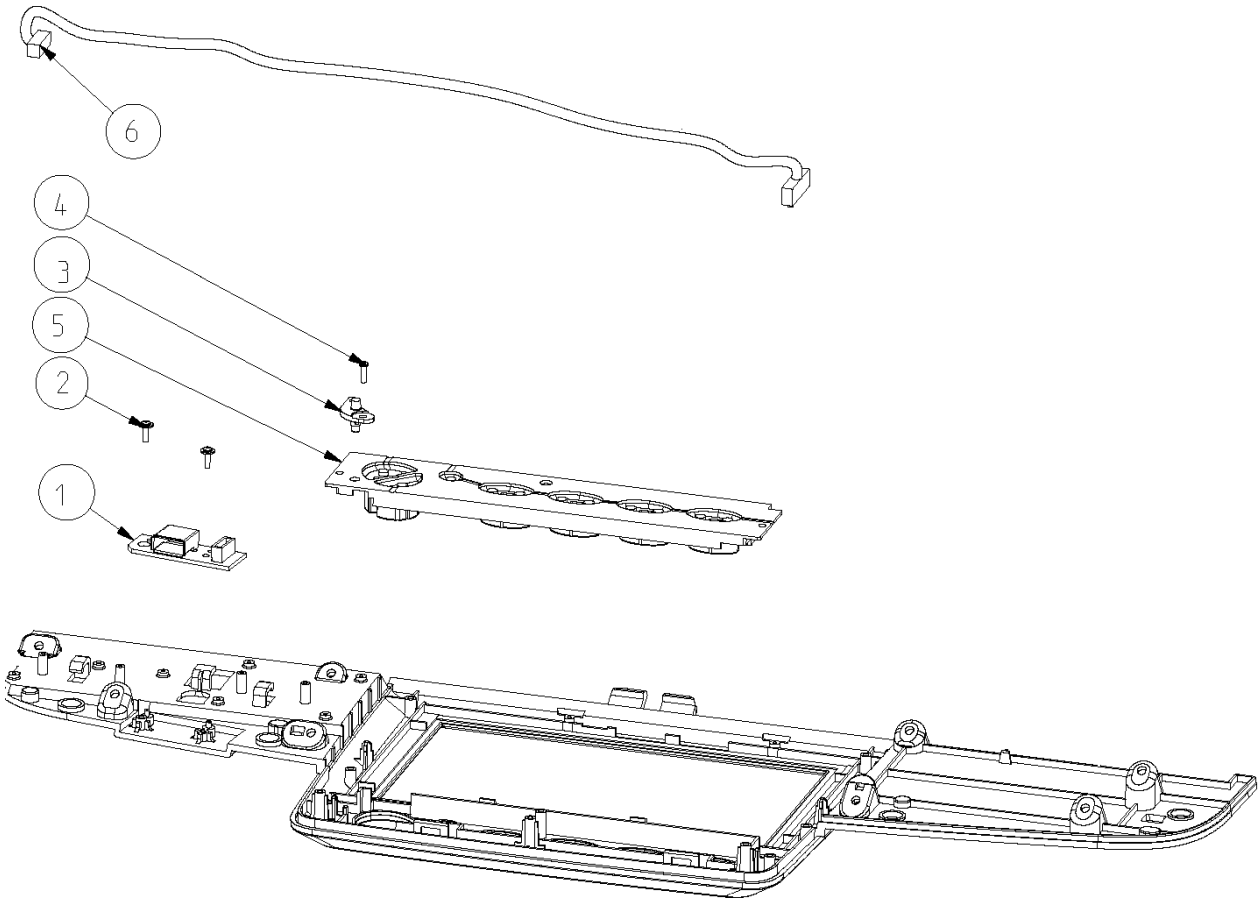


PLANCHE 16 / FIGURE 16

<b>ITEM No.</b>	<b>REFERENCE</b>	<b>DESIGNATION</b>	<b>QTY</b>	<b>R</b>
1	253110384	Ref USB Board	1	
2	186113907	Screw2x6mm washer6x0.5 torx	2	
3	253097114	Light guide injected	1	
4	189976372	Screw torx 2x7 for plastic	1	
5	253058266	Keypad front panel HFF-V2	1	
6	253066903	Cable keypad	1	
<b>DETAIL OF FRONT PANEL</b>			<b>PLANCHE 16/ FIGURE 16</b>	

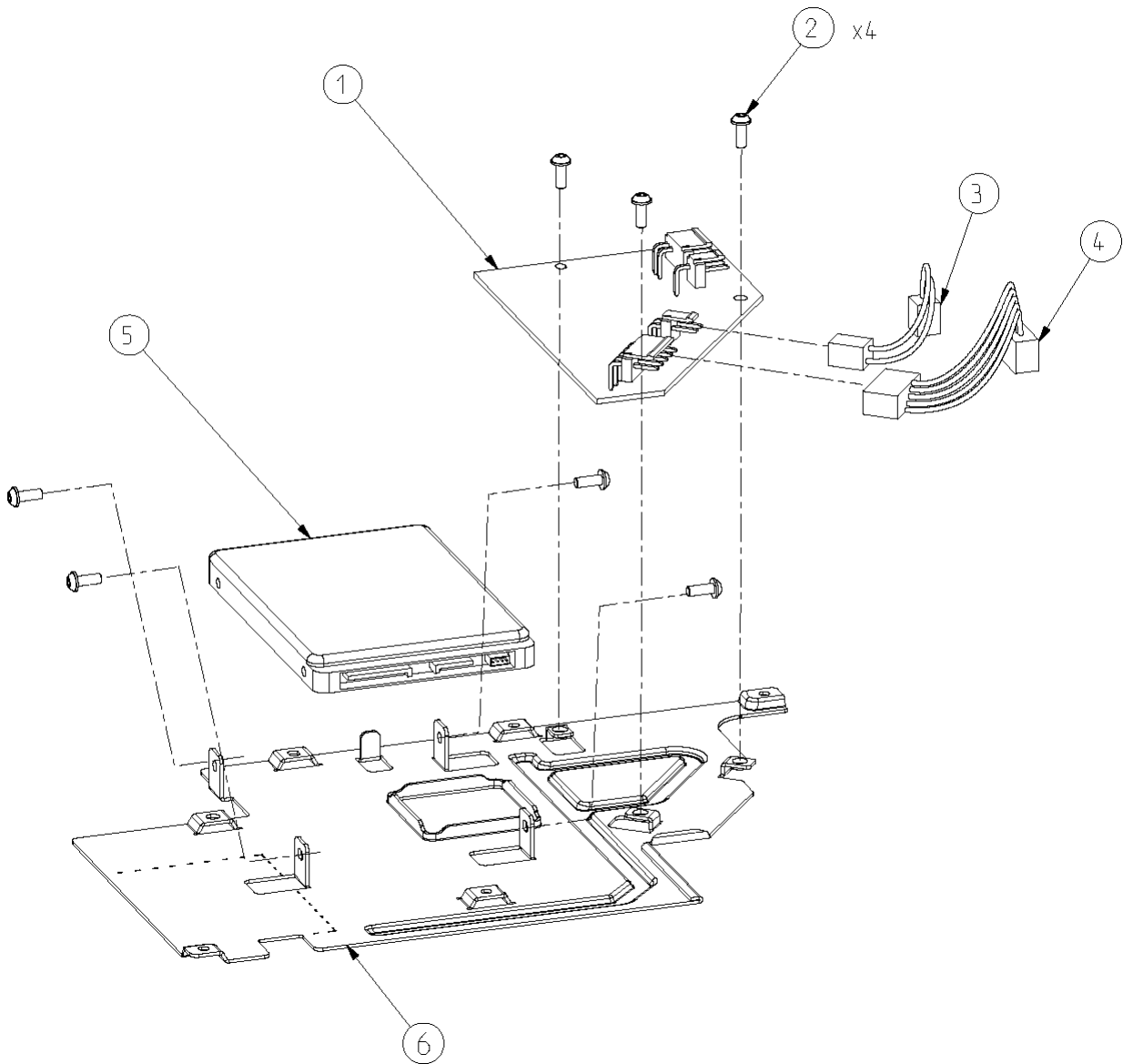


PLANCHE 17 / FIGURE 17

ITEM No.	REFERENCE	DESIGNATION	QTY	R
1	253108582	Ref card DC-DC	1	
2	189976351	Screw self tapping M3x5mm Torx	7	
3	253083040	DC-DC 2 Wires Cables	1	
4	253083032	DC-DC 5 Wires Cables	1	
5	253284019	DISQUE DUR 160GO HDD SATA 2,5" FORMATE	1	
6	253058133	HDD support	1	
DETAIL OF HDD SUPPORT			PLANCHE 17/ FIGURE 17	

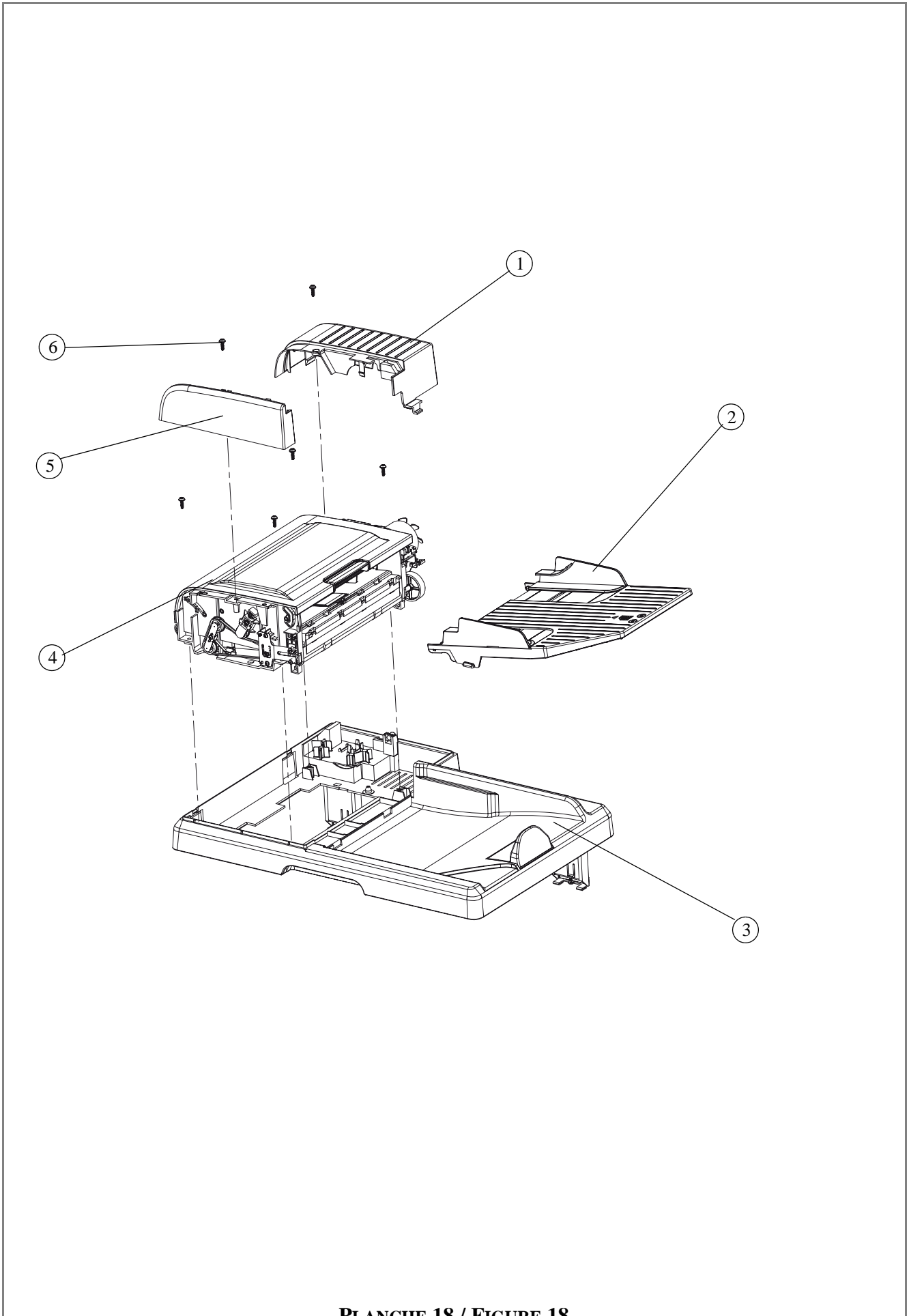


PLANCHE 18 / FIGURE 18



ITEM No.	REFERENCE	DESIGNATION	QTY	R
1	253029950	ADF right cover colored	1	
2	253033029	Input scanner assy	1	
3	253032684	FLAP scanner H&M equipped (see figure 19)	1	
4	253063580	ADF MH equipped (see figure 20)	1	
5	253029968	ADF left cover colored	1	
6	253090748	Screw plastic 4x12 torx	6	
SCANNER M&H UPPER COVER (FLAP COVER)			PLANCHE 18/ FIGURE 18	

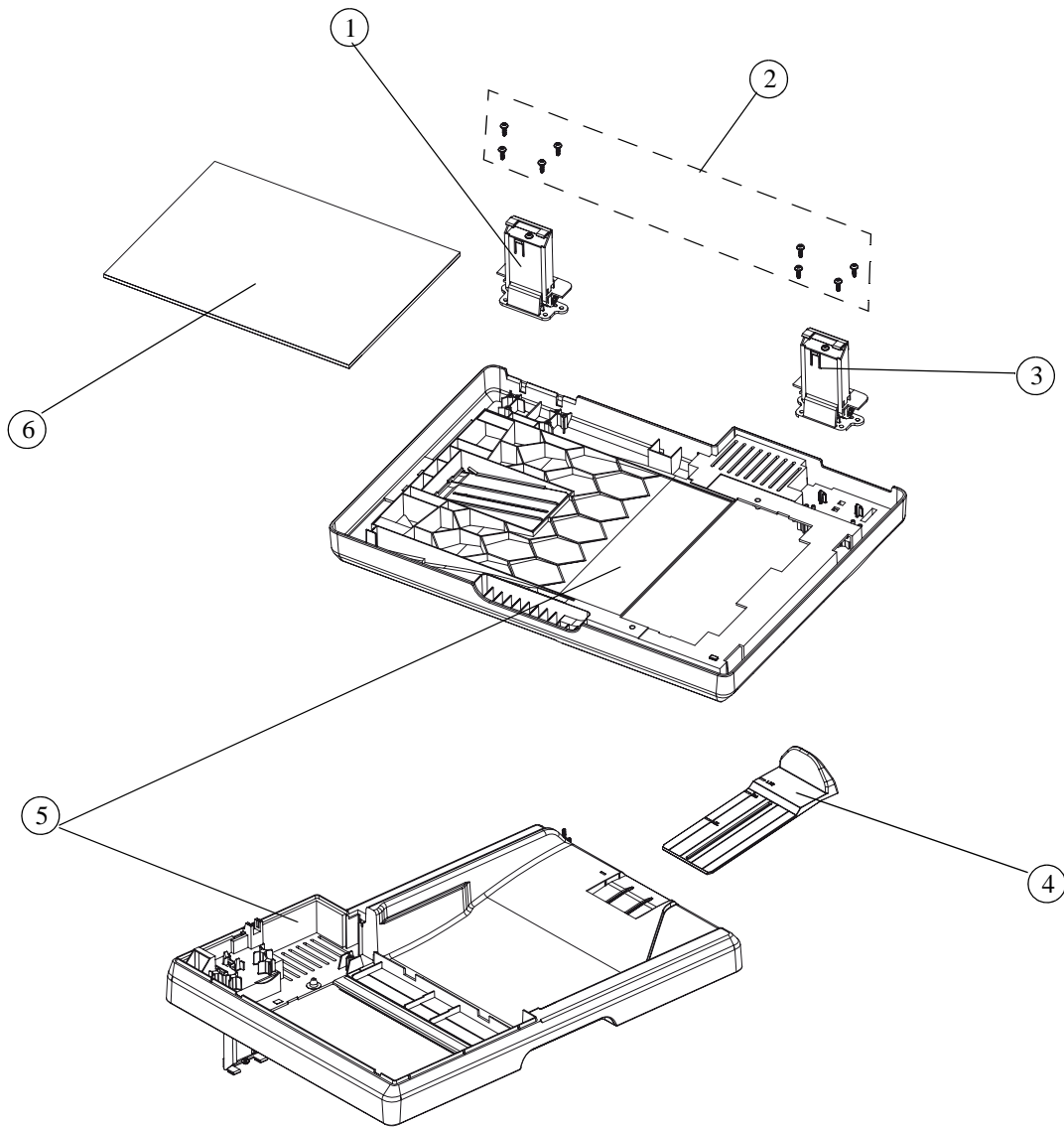


PLANCHE 19 / FIGURE 19

ITEM No.	REFERENCE	DESIGNATION	QTY	R
1	253026582	Right hinge assembly	1	
2	253090748	Screw plastic 4x12 torx	8	
3	253026350	Left hinge assembly	1	
4	253029294	Exit tray Makalu colored	1	
5	253029252	Flap Makalu colored	1	
6	253057107	Flap floam Makalu	1	
FLAP SCANNER EQUIPPED			PLANCHE 19/ FIGURE 19	

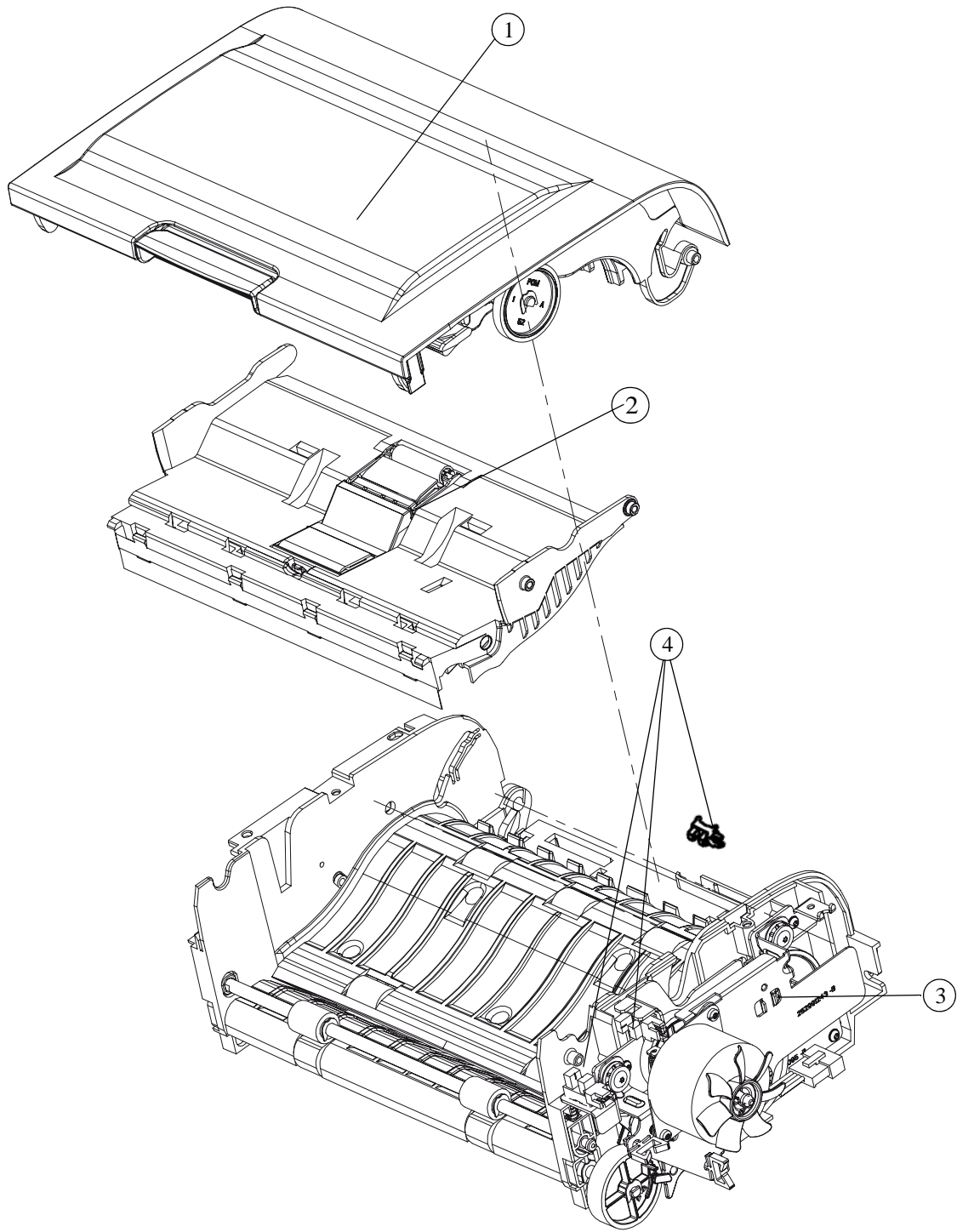


PLANCHE 20 / FIGURE 20

ITEM No.	REFERENCE	DESIGNATION	QTY	R
1	253032811	ADF cover M&H assy (see figure 21)	1	
2	253032788	Input paperway guide equipped (see figure 22)	1	
3	253032725	ADF M&H assembly	1	
4	189978272	Photointerrupter optic GP1S73 SP	3	
ADF M&H EQUIPPED			PLANCHE 20/ FIGURE 20	

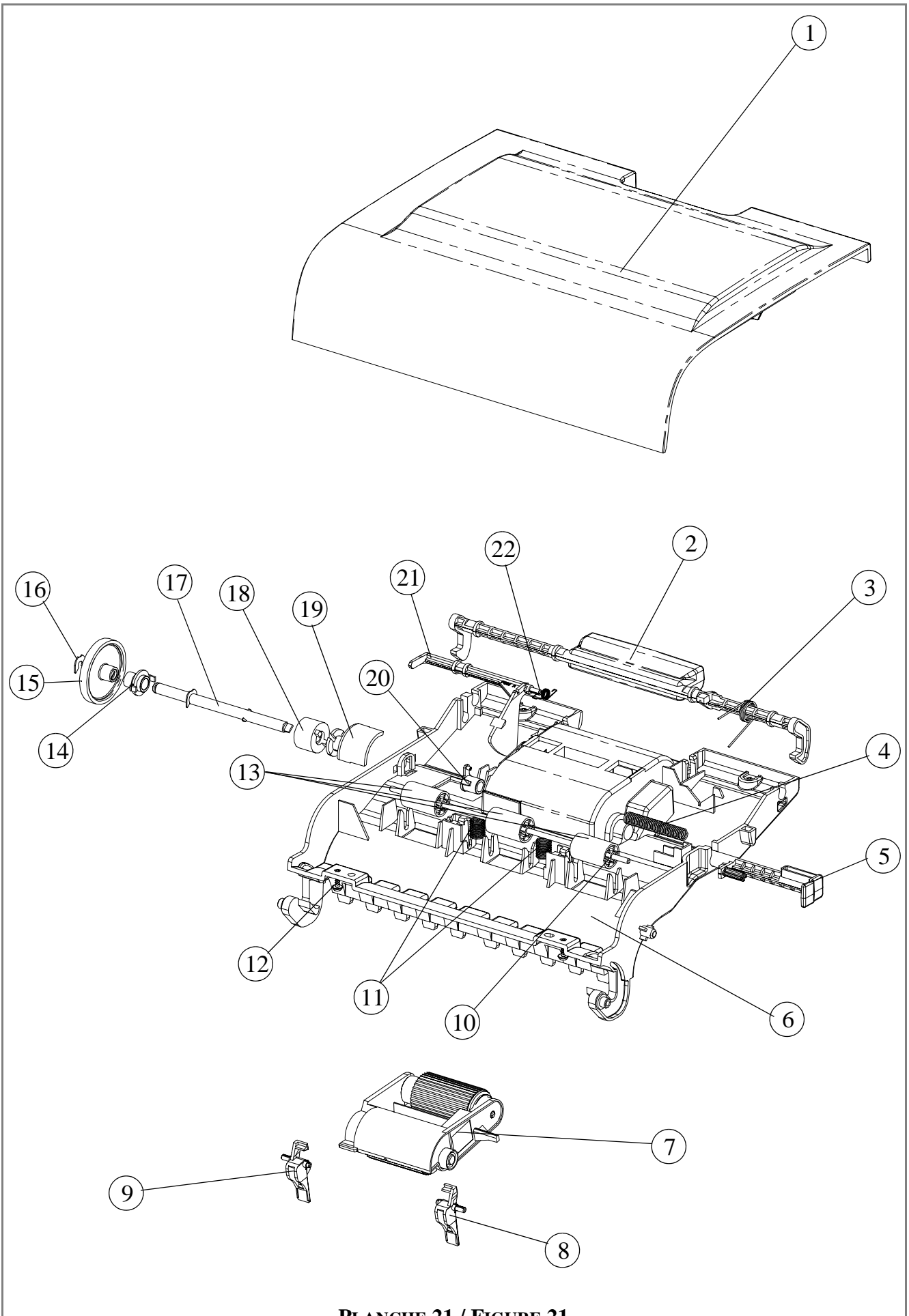


PLANCHE 21 / FIGURE 21

ITEM No.	REFERENCE	DESIGNATION	QTY	R
1	253029570	ADF cover M&H colored	1	
2	253029591	Hook lever colored	1	
3	252988296	Hook lever spring	1	
4	252987968	Lock bearing spring	1	
5	253029632	Lock bearing colored	1	
6	253029588	Outside paper guide colored	1	
7	253032840	Feeder roller module	1	
8	253029629	Feeder stopper right colored	1	
9	253029611	Feeder stopper left colored	1	
10	252990410	Counter roller 1 metal shaft	1	
11	252990788	Spring 3 N	2	
12	253090735	Screw plastic 3X10 torx	4	
13	253029450	Counter roller colored	3	
14	253029674	Feeder main bearing colored	1	
15	253029661	Gear chargeur 52 teeth colored	1	
16	253008360	Plastic E-ring	2	
17	253032829	Feeder main shaft assy	1	
18	189955295	Torque limiter 300GFCM	1	
19	253029653	Feeder frame latch colored	1	
20	253029640	Main bearing colored	1	
21	253029608	Paper detector colored	1	
22	253056473	Paper detector spring	1	
ADF COVER M&H ASSY			PLANCHE 21/ FIGURE 21	

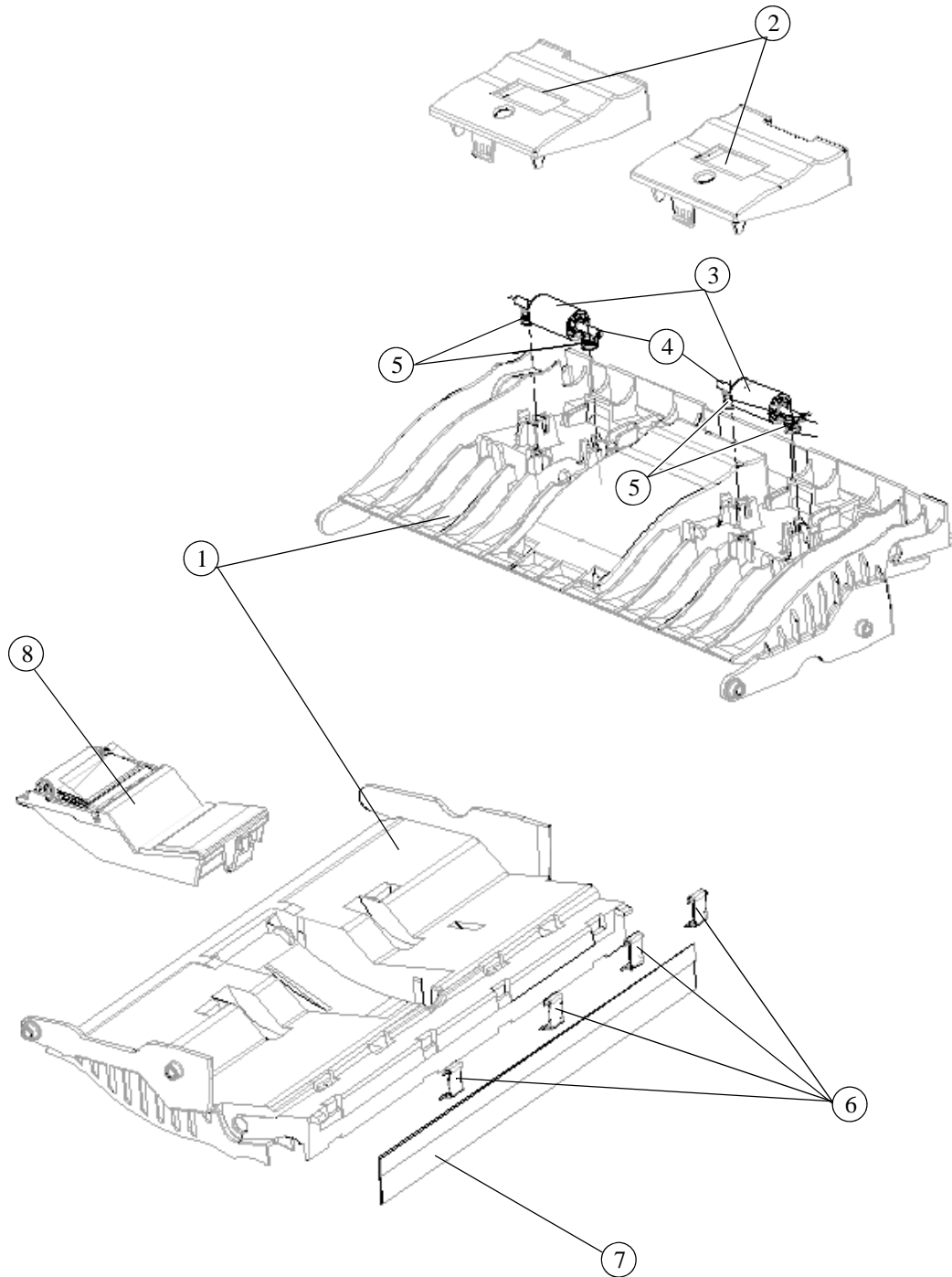


PLANCHE 22 / FIGURE 22



ITEM No.	REFERENCE	DESIGNATION	QTY	R
1	253029504	Input paperway guide colored	1	
2	253029517	Counter roller 3 sup.frame v 2 colored	2	
3	253029538	Counter roller 3 sup colored	2	
4	252989805	Counter roller shaft Makalu	2	
5	252990770	Spring 1,5 N	4	
6	253052032	Brush clip	4	
7	253058055	Makalu brush	1	
8	253032796	Feeder shoe assy	1	
INPURT PAPERWAY GUIDE EQUIPPED			PLANCHE 22/ FIGURE 22	

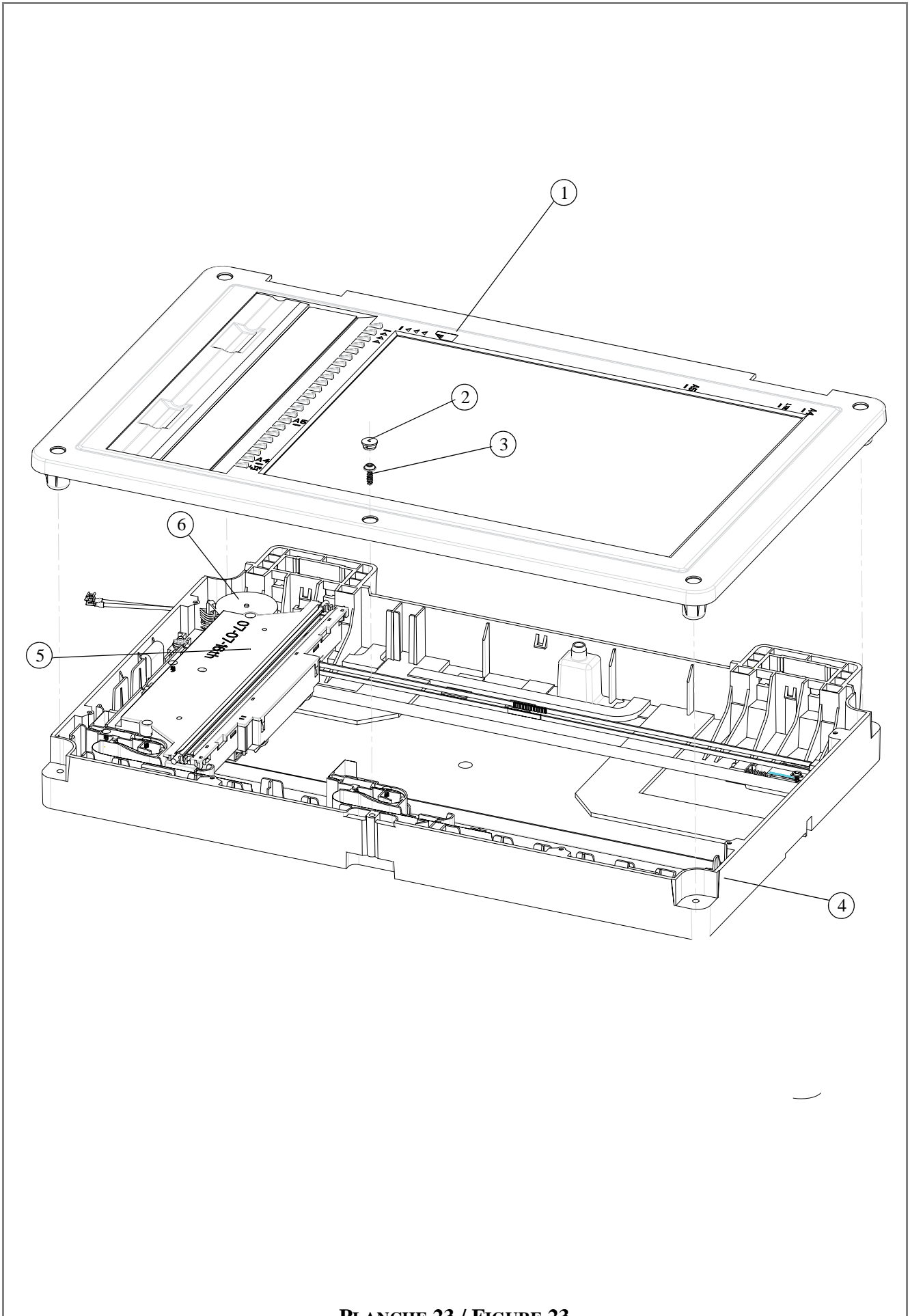


PLANCHE 23 / FIGURE 23

ITEM No.	REFERENCE	DESIGNATION	QTY	R
1	253033186	Upper cover flatbed Makalu assy	1	
2	253033264	Screw cover colored	1	
3	253005658	Screw torx 4x12 mm	5	
4	253033040	Bottom cover flatbed Makalu assy	1	
5	253056431	CCD BOX PRIMAX EQUIPED	1	
6	253104927	FLATBED MOTOR FDK -SMW35-EQUIPPED	1	
FLATBED SCANNER H&M ASSY			PLANCHE 23/ FIGURE 23	

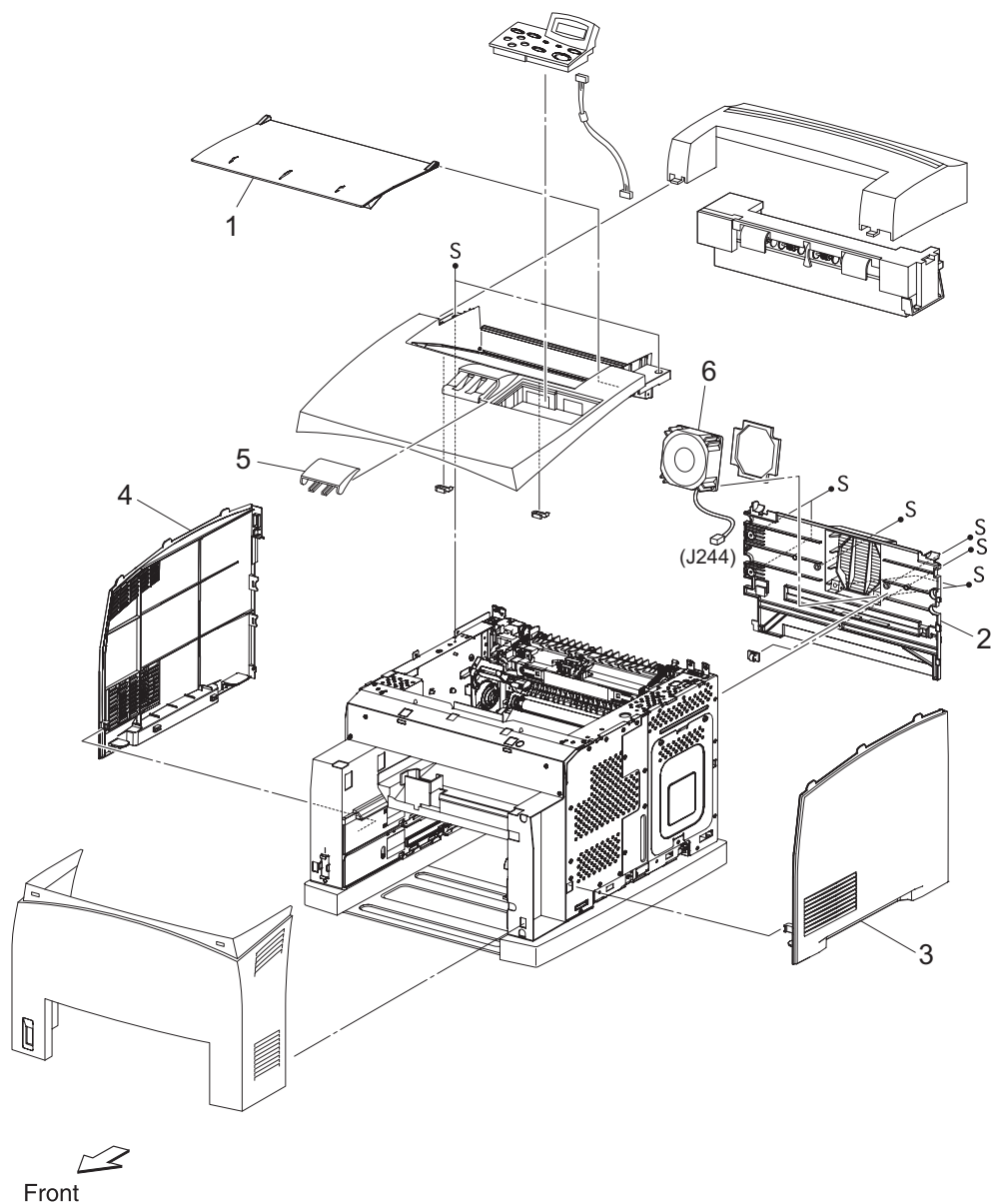


PLANCHE 24 / FIGURE 24

ITEM No.	REFERENCE	DESIGNATION	QTY	R
1	186138649	HFFV2 PRN COVER - KIT COVER OPEN SGM	1	
2	186138652	HFFV2 PRN COVER - COVER REAR 45PPM	1	
3	186138694	HFFV2 PRN COVER - COVER RIGHT J2	1	
4	186138706	HFFV2 PRN COVER - COVER LEFT J2	1	
5	186138735	HFFV2 PRN COVER - COVER STOPPER J2	1	
6	186138673	HFFV2 PRN COVER - FAN MAIN 80	1	
COVER			PLANCHE 24/ FIGURE 24	

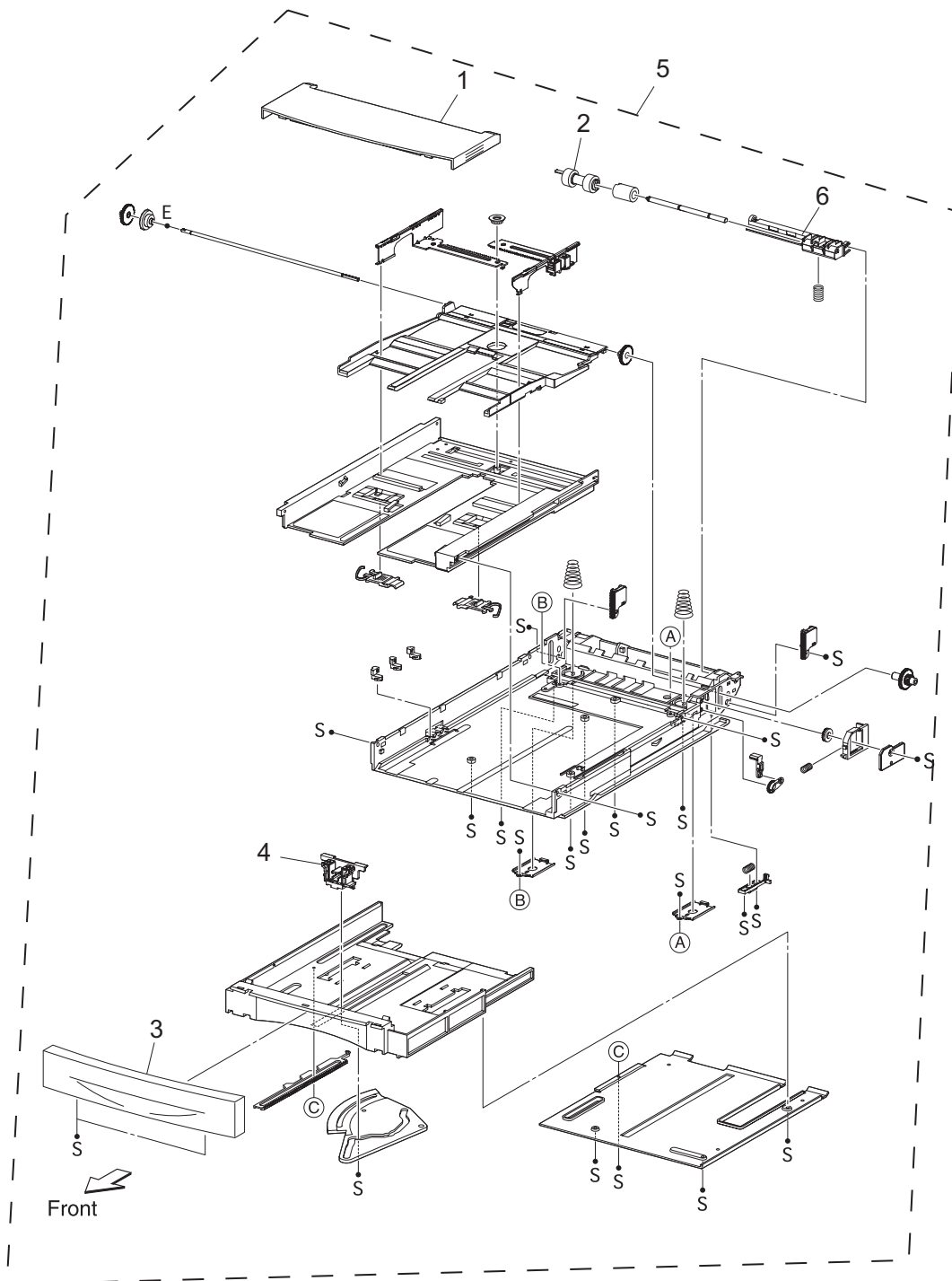


PLANCHE 25 / FIGURE 25

ITEM No.	REFERENCE	DESIGNATION	QTY	R
1	186138769	HFFV2 PRN CST 150 - COVER CST	1	
2	186138777	HFFV2 PRN CST 150 - KIT ROLL ASSY RETARD	1	
3	186138798	HFFV2 PRN CST 150 - HANDLE EXTENSION 150	1	
4	186138818	HFFV2 PRN CST 150 - GUIDE END 150	1	
5	186138821	HFFV2 PRN CST 150 - 150 PAPER CASSETTE	1	
6	186138839	HFFV2 PRN CST 150 - HOLDER ASSY RETARD	1	
PAPER CASSETTE 150			PLANCHE 25/ FIGURE 25	

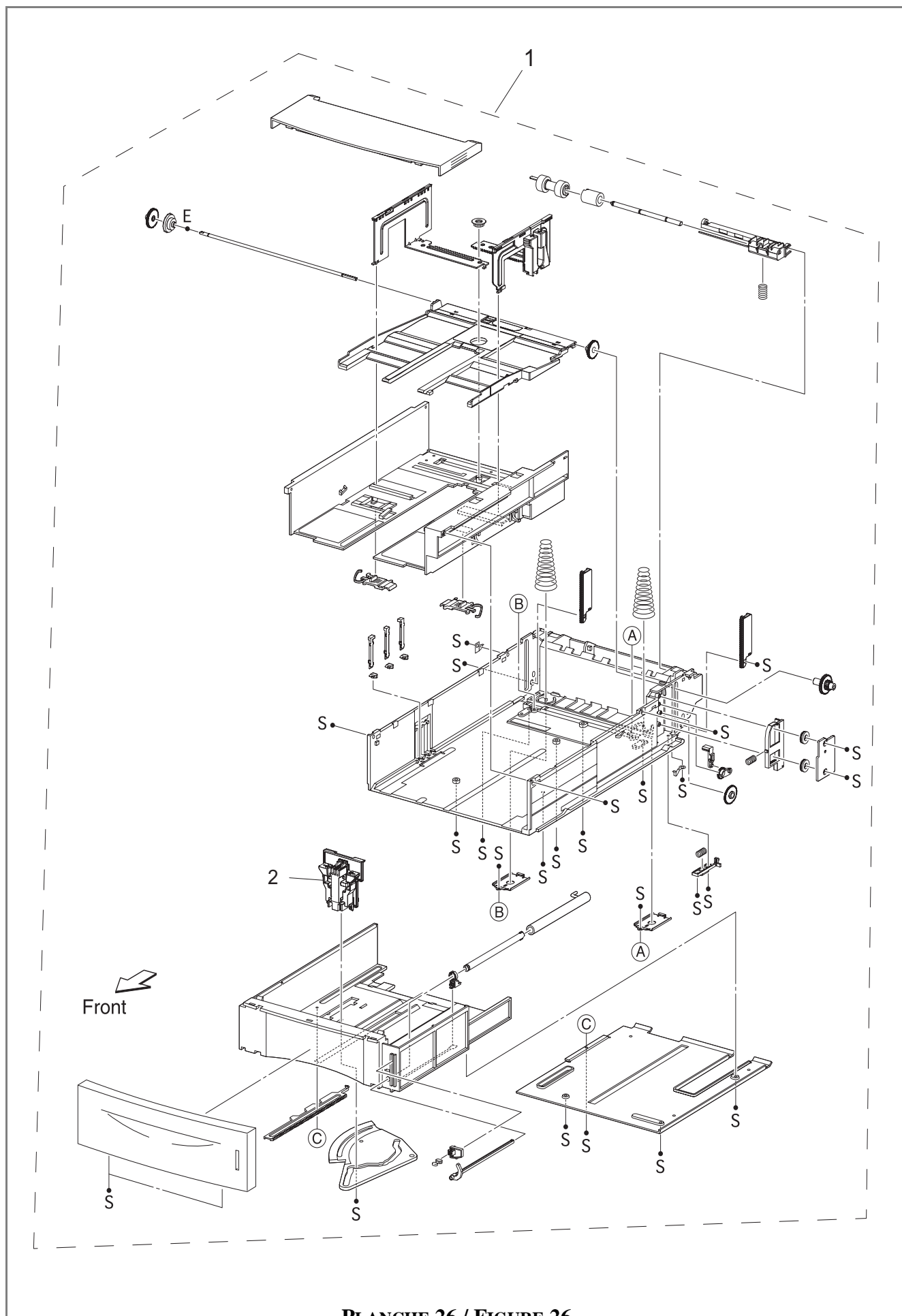


PLANCHE 26 / FIGURE 26



ITEM No.	REFERENCE	DESIGNATION	QTY	R
1	186138850	HFFV2 PRN CST 550 - 550 PAPER CASSETTE	1	
2	186138842	HFFV2 PRN CST 550 - GUIDE END 550	1	
PAPER CASSETTE 550			PLANCHE 26/ FIGURE 26	

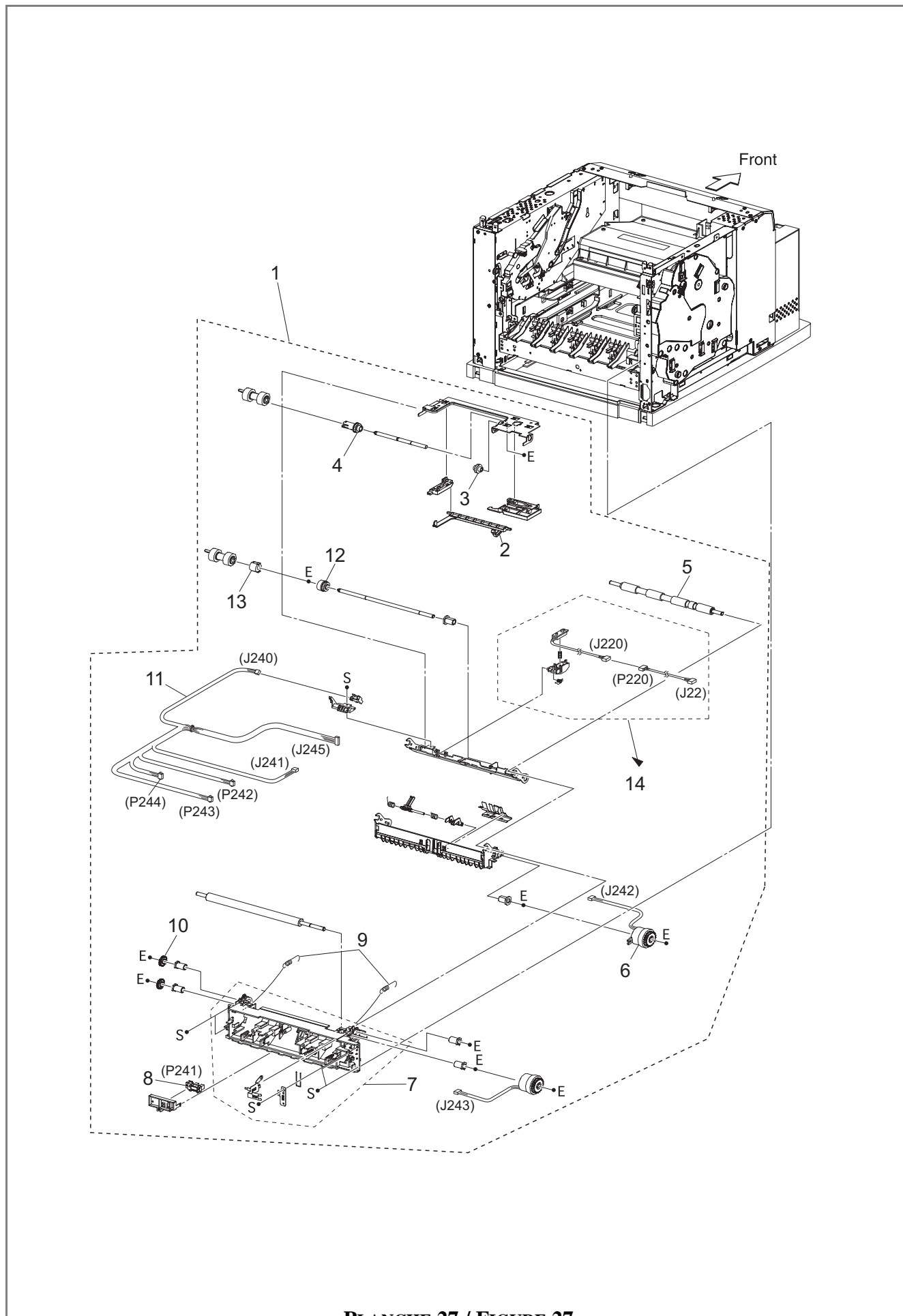


PLANCHE 27 / FIGURE 27

ITEM No.	REFERENCE	DESIGNATION	QTY	R
1	186138863	HFFV2 PRN FDR 150 - KIT 150 FDR ASSY J2	1	
2	186138871	HFFV2 PRN FDR 150 - ACTUATOR NO PAPER	1	
3	186138884	HFFV2 PRN FDR 150 - GEAR IDLER NUDGER	1	
4	186138892	HFFV2 PRN FDR 150 - GEAR NUDGER	1	
5	186138904	HFFV2 PRN FDR 150 - ROLL REGI RUBBER J2	1	
6	186138917	HFFV2 PRN FDR 150 - CLUTCH ASSY PH	1	
7	186139021	HFFV2 PRN FDR 150 - KIT CHUTE REGI 45	1	
8	186138938	HFFV2 PRN FDR 150 - SENSOR REGI	1	
9	186138946	HFFV2 PRN FDR 150 - SPRING REGI	1	
10	186138959	HFFV2 PRN FDR 150 - GEAR REGI RUBBER	1	
11	186138970	HFFV2 PRN FDR 150 - HARNESS ASSY TR	1	
12	186138991	HFFV2 PRN FDR 150 - CLUTCH 1 WAY NUDGER	1	
13	186139000	HFFV2 PRN FDR 150 - CLUTCH 1 WAY FEED	1	
14	186139013	HFFV2 PRN FDR 150 - SENSOR TONER ASSY	1	
PAPER FEEDER 150			PLANCHE 27/ FIGURE 27	

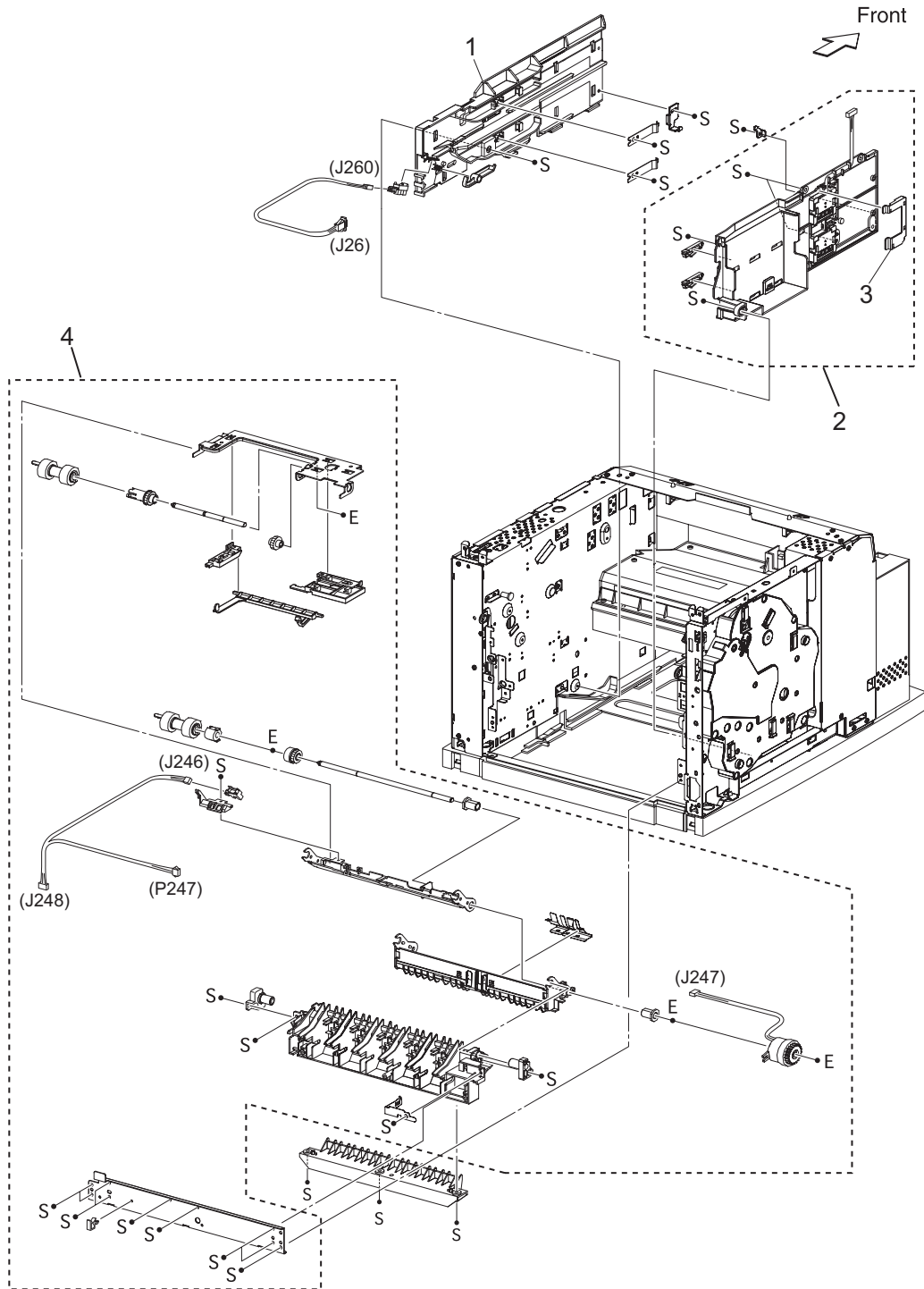


PLANCHE 28 / FIGURE 28

ITEM No.	REFERENCE	DESIGNATION	QTY	R
1	186139034	HFFV2 PRN CST FDR - GUIDE TRAY RIGHT	1	
2	186139042	HFFV2 PRN CST FDR - GUIDE TRAY LEFT	1	
3	186139055	HFFV2 PRN CST FDR - LOCK CST L	1	
4	186139063	HFFV2 PRN CST FDR - FEEDER2 ASSY 250-J2	1	
PAPER FEEDER 550			PLANCHE 28/ FIGURE 28	

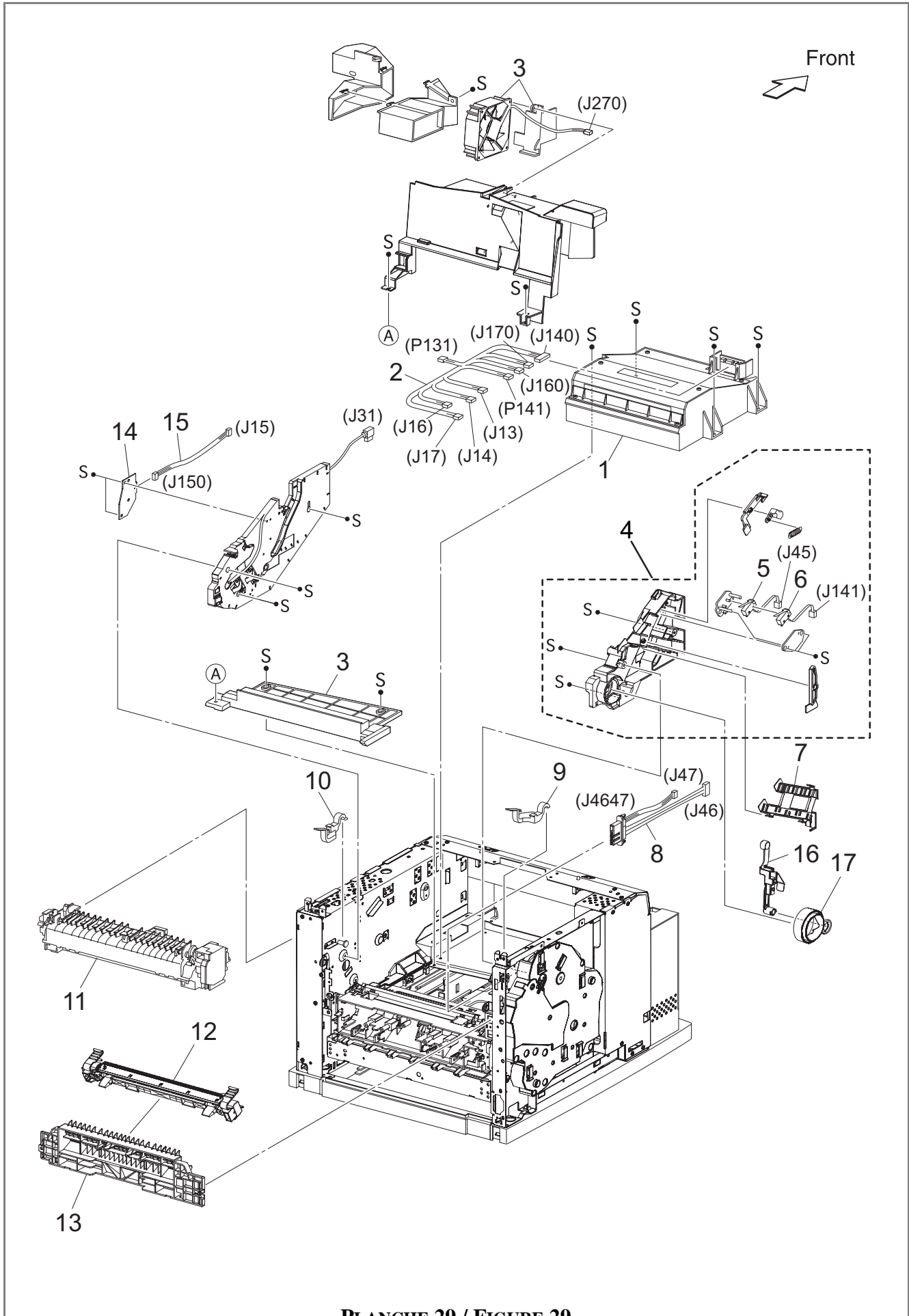


PLANCHE 29 / FIGURE 29

ITEM No.	REFERENCE	DESIGNATION	QTY	R
1	186139076	HFFV2 PRN TNR ZONE - ROS ASSY 45-1200	1	
2	186139097	HFFV2 PRN TNR ZONE - HARNESS ASSY ROS 34	1	
3	186139104	HFFV2 PRN TNR ZONE - FAN SUB	1	
4	186139117	HFFV2 PRN TNR ZONE - GUIDE ASSY CRU L J2	1	
5	186139125	HFFV2 PRN TNR ZONE - HARNESS ASSY LOCK1	1	
6	186139146	HFFV2 PRN TNR ZONE - HARNESS ASSY LOCK3	1	
7	186139167	HFFV2 PRN TNR ZONE - COVER GUIDE CRU	1	
8	See §2	HFFV2 PRN TNR ZONE - HRNS ASSY FSR	1	
9	186139191	HFFV2 PRN TNR ZONE - LEVER FSR LH 34PPM	1	
10	186139203	HFFV2 PRN TNR ZONE - LEVER CRU FSR RH J2	1	
11	See §2	HFFV2 PRN TNR ZONE - FUSER ASSY J2	1	
12	186139232	HFFV2 PRN TNR ZONE - BTR ASSY J2	1	
13	186139245	HFFV2 PRN TNR ZONE - CHUTE TRANSFER (34)	1	
14	186139253	HFFV2 PRN TNR ZONE - PWBA ASSY ANT P150	1	
15	186139266	HFFV2 PRN TNR ZONE - HARNESS ASSY ANT	1	
16	186139274	HFFV2 PRN TNR ZONE - LEVER LINK	1	
17	186139287	HFFV2 PRN TNR ZONE - LINK GEAR 3	1	
XERO			PLANCHE 29/ FIGURE 29	

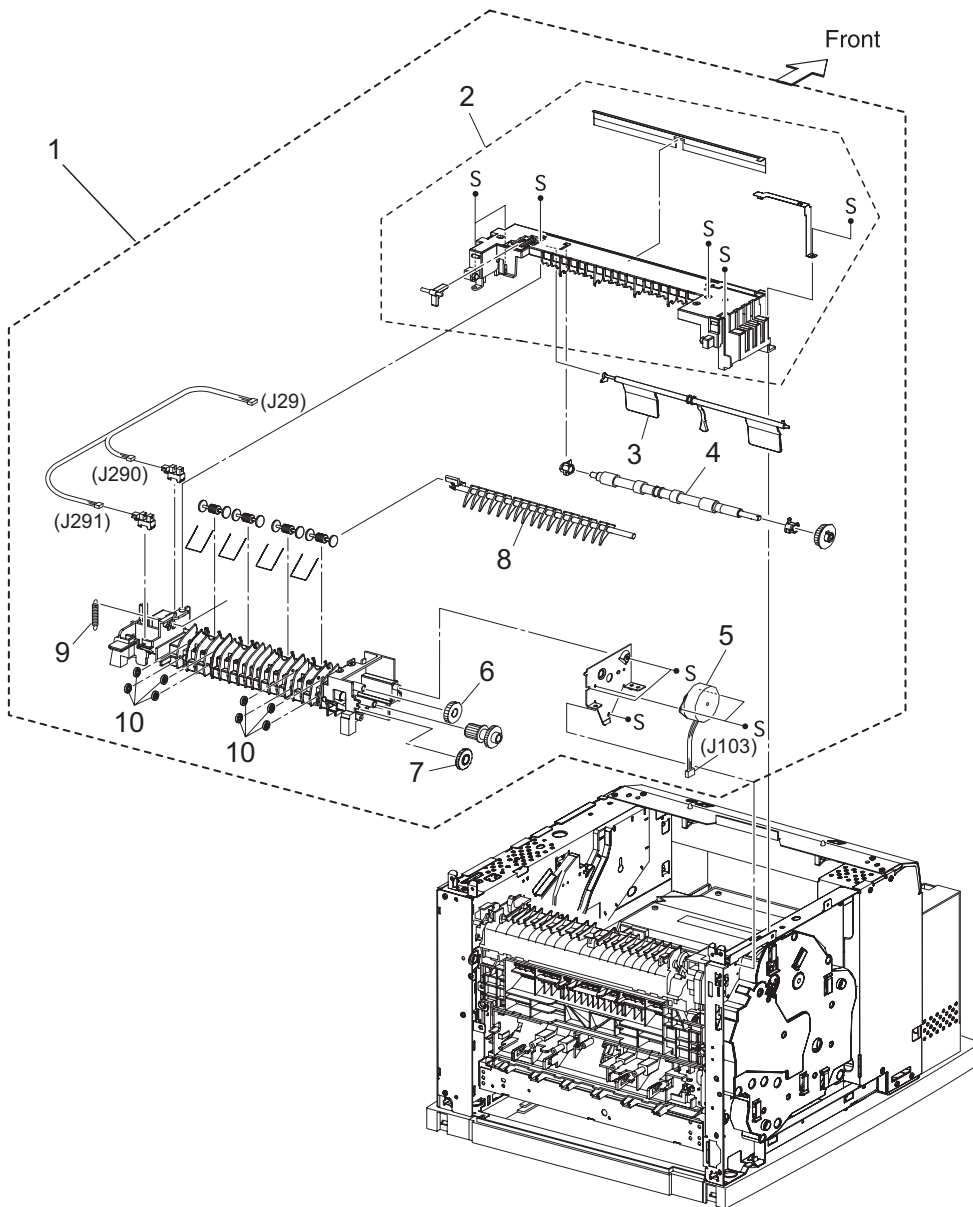


PLANCHE 30 / FIGURE 30



ITEM No.	REFERENCE	DESIGNATION	QTY	R
1	186139295	HFFV2 PRN PAP EXIT1 - 500 EXIT ASSY 45	1	
2	186139401	HFFV2 PRN PAP EXIT1 - KIT CHUTE UP 550	1	
3	186139307	HFFV2 PRN PAP EXIT1 - ACTUATR FULL STACK	1	
4	186139315	HFFV2 PRN PAP EXIT1 - ROLL EXIT	1	
5	186139328	HFFV2 PRN PAP EXIT1 - MOTOR ASSY EXIT MT	1	
6	186139336	HFFV2 PRN PAP EXIT1 - GEAR 25-2	1	
7	186139357	HFFV2 PRN PAP EXIT1 - GEAR 25-1	1	
8	186139360	HFFV2 PRN PAP EXIT1 - GATE OCT EXIT	1	
9	186139378	HFFV2 PRN PAP EXIT1 - SPRING GATE OCT	1	
10	186139399	HFFV2 PRN PAP EXIT1 - ROLLER EXIT 500	1	
PAPER EXIT 500 1/2			PLANCHE 30/	FIGURE 30

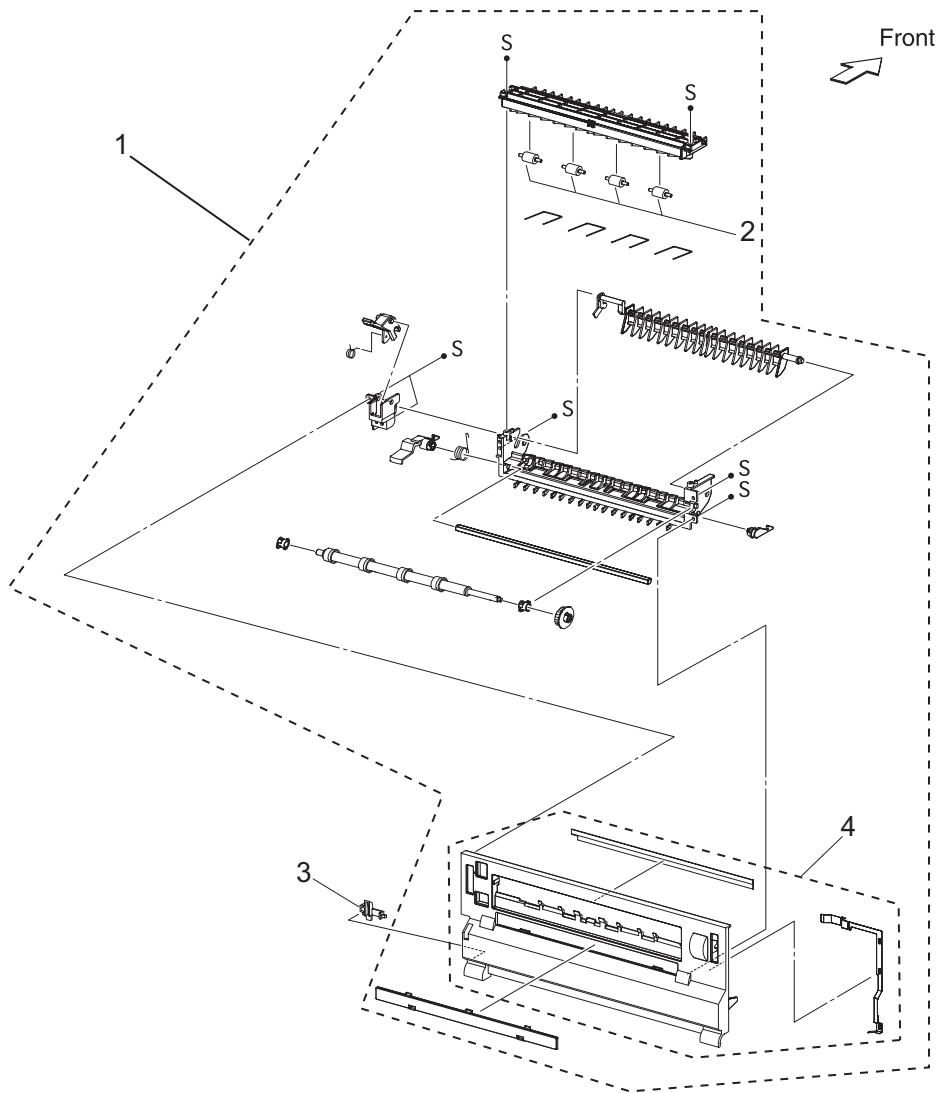


PLANCHE 31 / FIGURE 31

ITEM No.	REFERENCE	DESIGNATION	QTY	R
1	186139422	HFFV2 PRN PAP EXIT2 - ROLL PINCH FU	1	
2	186143137	HFFV2 PRN PAP EXIT2 - STOPPER FSR	4	
3	186139435	HFFV2 PRN PAP EXIT2 - COVER REAR 500 J2	1	
4	186139443	HFFV2 PRN PAP EXIT2 - KIT COV REAR 500	1	
PAPER EXIT 500 2/2			PLANCHE 31/ FIGURE 31	

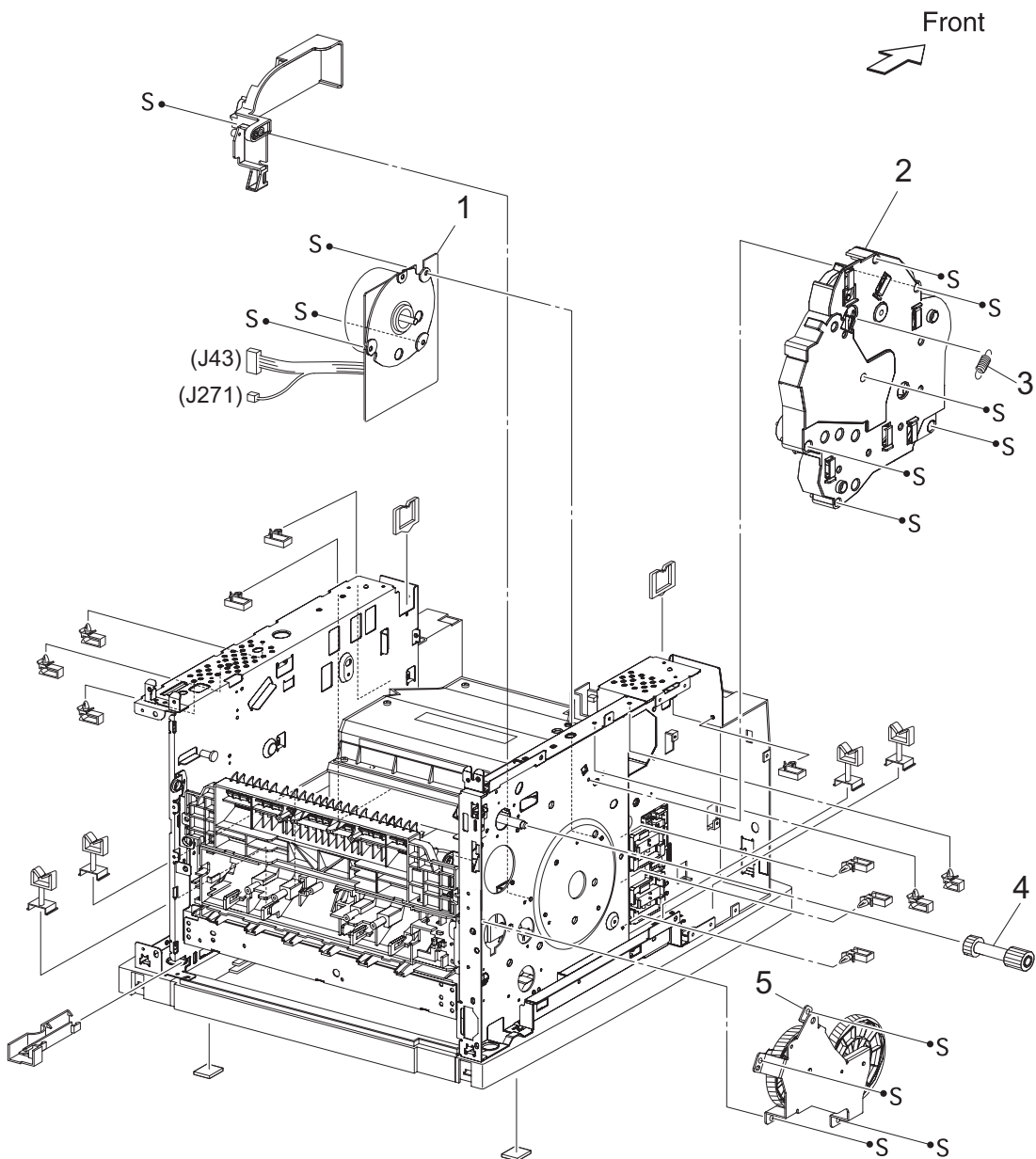


PLANCHE 32 / FIGURE 32

ITEM No.	REFERENCE	DESIGNATION	QTY	R
1	186139456	HFFV2 PRN FRM DRV - MAIN MOTOR (J2)	1	
2	186139464	HFFV2 PRN FRM DRV - GEAR ASSY HOUSING	1	
3	186139477	HFFV2 PRN FRM DRV - SPRING RELEASE	1	
4	186139485	HFFV2 PRN FRM DRV - GEAR 9	1	
5	186139498	HFFV2 PRN FRM DRV - GEAR ASSY PLATE	1	
FRAME & DRIVE			PLANCHE 32/	FIGURE 32

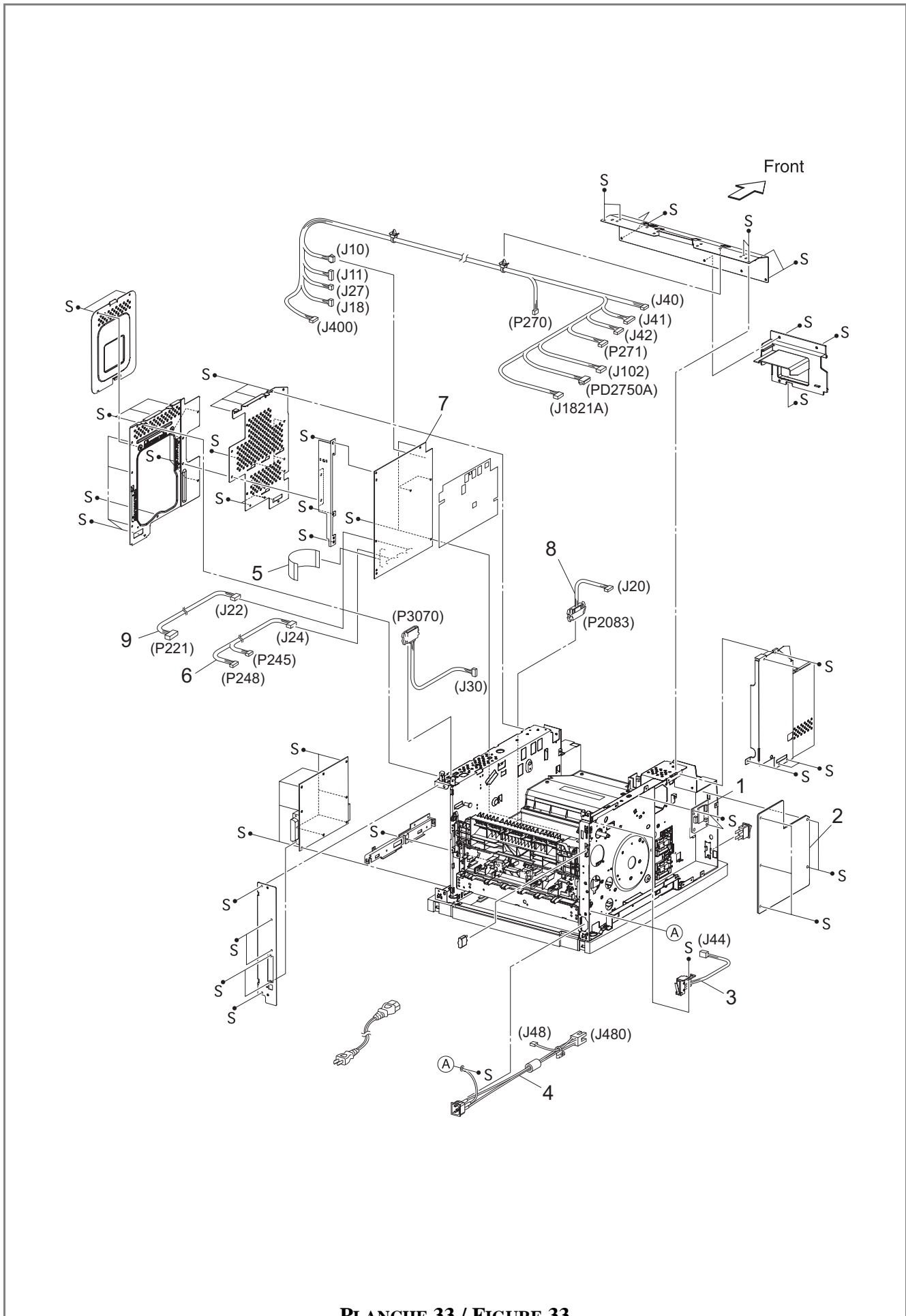


PLANCHE 33 / FIGURE 33

ITEM No.	REFERENCE	DESIGNATION	QTY	R
1	186139505	HFFV2 PRN ELEC - PWBA EXIT J2	1	
2	See §2	HFFV2 PRN ELEC - PS LV J2	1	
3	186139539	HFFV2 PRN ELEC - SWITCH ASSY EXIT J2	1	
4	See §2	HFFV2 PRN ELEC - HRNS ASSY AC SGM	1	
5	186139571	HFFV2 PRN ELEC - FFC ASSY ESS	1	
6	186139592	HFFV2 PRN ELEC - HARNESS ASSY CHUTE	1	
7	See §2	HFFV2 PRN ELEC - HVPS/MCU J2	1	
8	186143129	HFFV2 PRN ELEC - HARNESS ASSY FEEDER 2	1	
9	186139604	HFFV2 PRN ELEC - HARNESS ASSY TONER 2	1	
ELECTRICAL			PLANCHE 33/ FIGURE 33	

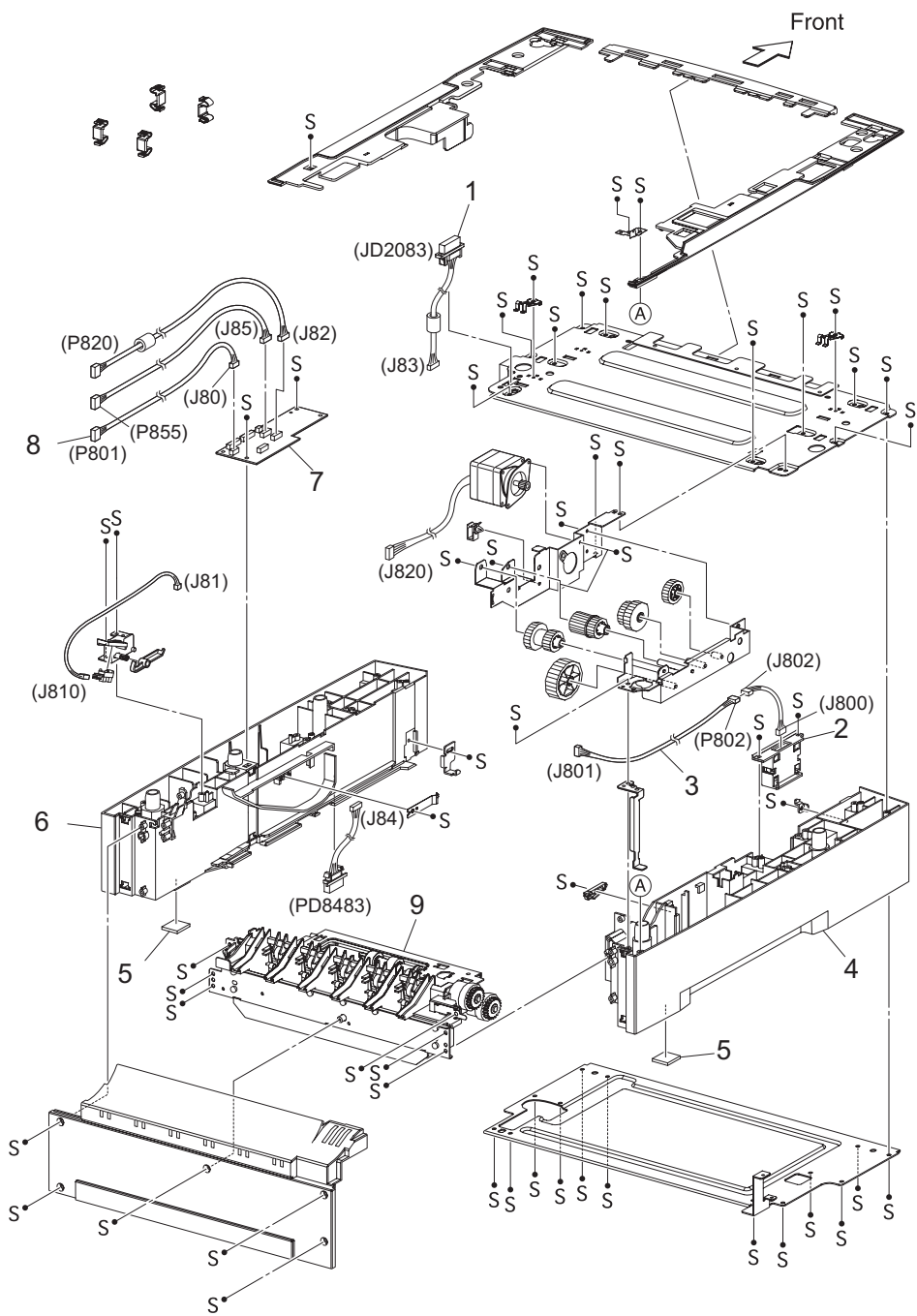


PLANCHE 34 / FIGURE 34



ITEM No.	REFERENCE	DESIGNATION	QTY	R
1	186139612	HFFV2 OPT FDR 550 - HARNESS ASSY FDR2	1	
2	186139625	HFFV2 OPT FDR 550 - OPT ASSY SIZE	1	
3	186139633	HFFV2 OPT FDR 550 - HRNS ASSY SIZE FDR1	1	
4	186139646	HFFV2 OPT FDR 550 - FRAME CVR L A4 (MAT)	1	
5	186139654	HFFV2 OPT FDR 550 - FOOT	1	
6	186139667	HFFV2 OPT FDR 550 - FRAME CVR R550 J2	1	
7	186139675	HFFV2 OPT FDR 550 - PWBA OPTFDR JIGEN2	1	
8	186139688	HFFV2 OPT FDR 550 - HRNS ASSY SIZE FDR2	1	
9	186139696	HFFV2 OPT FDR 550 - 550 FEEDER OPTION	1	
OPTION PAPER FEEDER 550			PLANCHE 34/ FIGURE 34	

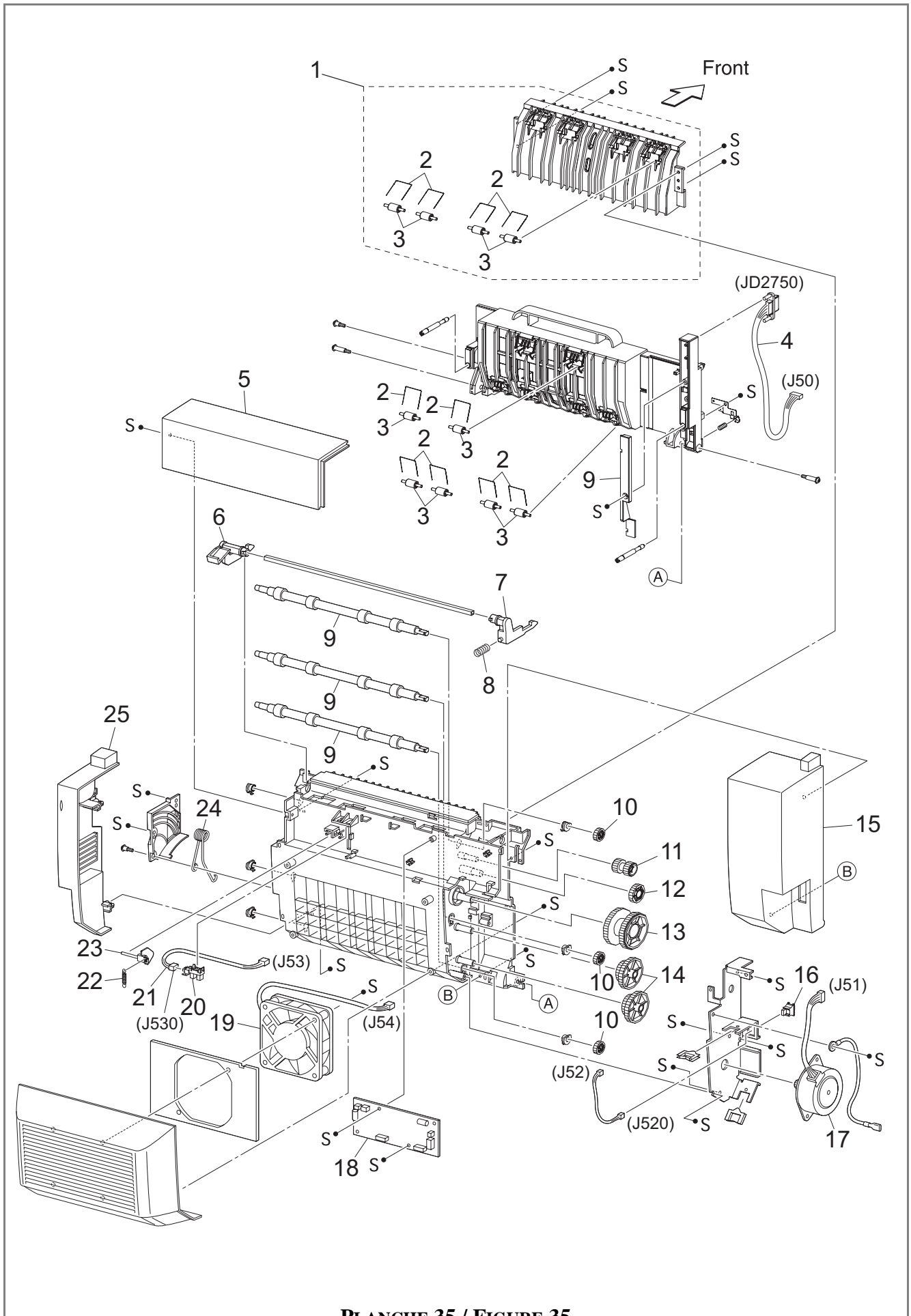


PLANCHE 35 / FIGURE 35

ITEM No.	REFERENCE	DESIGNATION	QTY	R
1	186139708	HFFV2 OPT DPLX - HSG UPPER ASSY 34PPM	1	
2	186139716	HFFV2 OPT DPLX - SPRING PINCH	1	
3	186139729	HFFV2 OPT DPLX - ROLL PINCH	1	
4	186139737	HFFV2 OPT DPLX - HARNESS ASSY DUP 34PPM	1	
5	186139740	HFFV2 OPT DPLX - COVER TOP DUP J2 (SPEC)	1	
6	186139758	HFFV2 OPT DPLX - LEVER LATCH RIGHT 34PPM	1	
7	186139761	HFFV2 OPT DPLX - LEVER LATCH LEFT 34PPM	1	
8	186139779	HFFV2 OPT DPLX - SPRING LATCH	1	
9	186139782	HFFV2 OPT DPLX - ROLLER DUP	1	
10	186139790	HFFV2 OPT DPLX - GEAR ROLLER	1	
11	186139802	HFFV2 OPT DPLX - GEAR IDLE 29	1	
12	186139815	HFFV2 OPT DPLX - GEAR IDLE 47 34PPM	1	
13	186139823	HFFV2 OPT DPLX - GEAR IDLE 77 34PPM	1	
14	186139836	HFFV2 OPT DPLX - GEAR IDLE 57-37	1	
14	186139844	HFFV2 OPT DPLX - COVER LEFT	1	
16	186139857	HFFV2 OPT DPLX - SWITCH DUPLEX	1	
17	186139878	HFFV2 OPT DPLX - MOTOR DUPLEX	1	
18	186139886	HFFV2 OPT DPLX - PWBA DUPLEX J2	1	
19	186139899	HFFV2 OPT DPLX - FAN DUP J2	1	
20	186139906	HFFV2 OPT DPLX - SENSOR DUP	1	
21	186139919	HFFV2 OPT DPLX - HARNESS ASSY DUP SNR	1	
22	186139927	HFFV2 OPT DPLX - SPRING ACTUATOR	1	
23	186139948	HFFV2 OPT DPLX - ACTUATOR DUP 34PPM	1	
24	186139951	HFFV2 OPT DPLX - SPRING DAMPER 34PPM	1	
25	186139969	HFFV2 OPT DPLX - COVER RIGHT	1	
DUPLEX UNIT			PLANCHE 35/ FIGURE 35	