

KONICA MINOLTA

# *PARTS GUIDE MANUAL*

---

*JUNE 2010*

*bizhub 40P*  
*A0DX013*

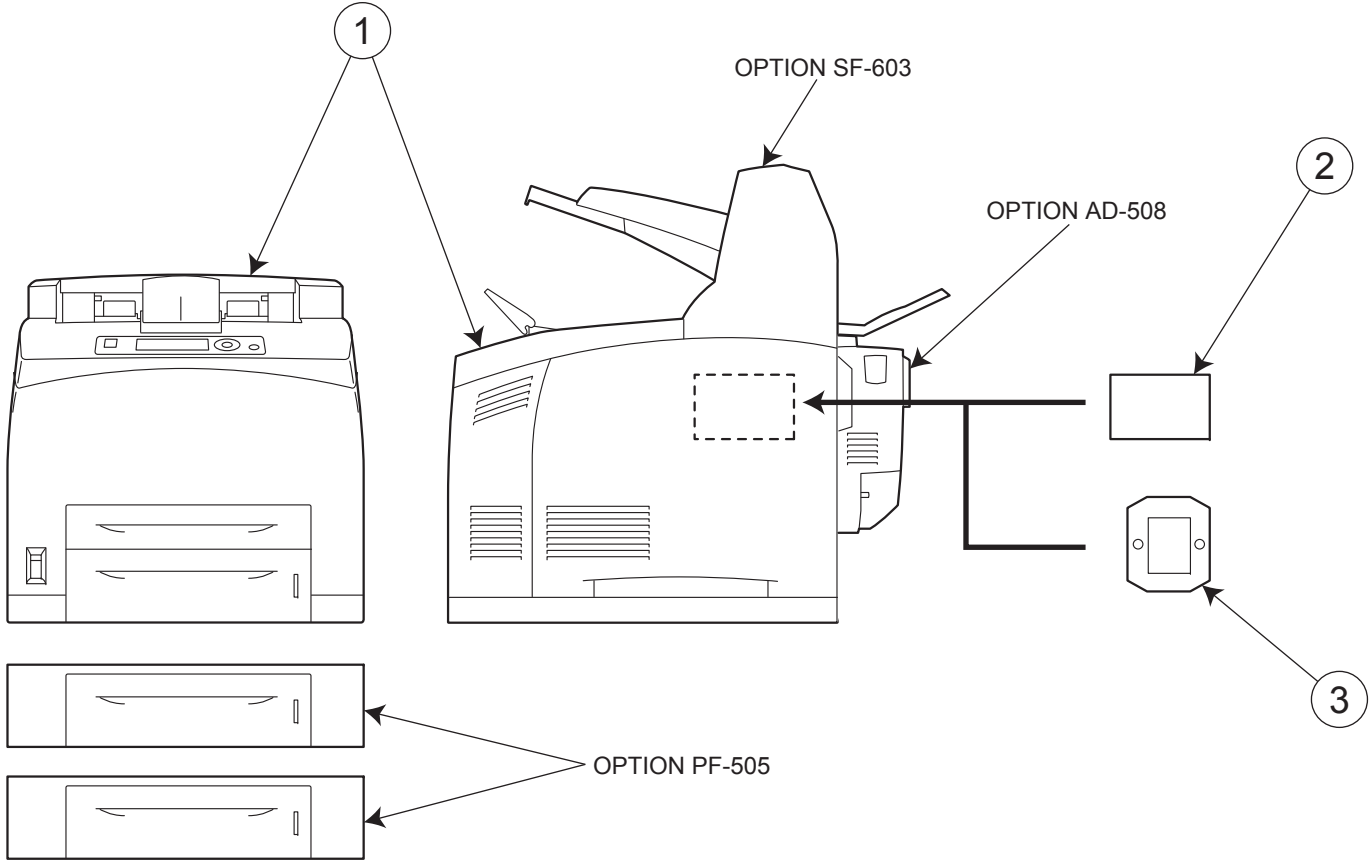
## INFORMATION FOR PARTS GUIDE MANUAL

To find correct Parts No., refer to the "HOW TO MAKE THE BEST USE OF THIS MANUAL" in the following page.

### HOW TO MAKE THE BEST USE OF THIS MANUAL

- 1 When you order, please check the proper figures beforehand that are on Our Parts Guide Manual, and order with the appropriate figures.
- 2 For screws, Nuts, Washers, retaining rings and Pins which are used in this model, one letter is shown on the Standard parts column of Parts list and exploded diagrams.
- 3 In order to maintain safety of the product, some specific parts composed of this product are set up as "essential safety parts".
- 4 The assigned parts number for the "essential safety parts" is indicated as "SP00-\*\*\*\*".  
When replacing these parts, follow precautions for disassembling and installing which are listed in the Service Manual.  
Do not use any parts that are not set up as
- 5 ♣ means that there are exclusive parts for each destination.  
Please check the appropriate destination when you order.
- 6 Revision Mark  
Marked as ▲ on the illustration shows that the revision has been made.
- 7 All rights reserved. (any reprints or quotations are prohibited.)  
Use of this parts guide manual should be strictly supervised to avoid disclosure of confidential information.

# SYSTEM OUTLINE



Parts Guide Manual "bizhub 40P" includes PF-505, AD-508 and SF-603.

# GENERAL CONTENTS

<b>No.</b>	<b>Description</b>	<b>Model</b>
1	PRINTER B/W	bizhub 40P
2	OTHER OPTION	HD-512
3	OTHER OPTION	MK-717

# DIAGRAM OF MAIN PARTS SECTION

# CONTENTS

No.	DESCRIPTION	PAGE No.
1	EXTERNAL PARTS	P1
2	150 PAPER CASSETTE	P2
3	550 PAPER CASSETTE	P3
4	PAPER FEED SECTION	P4 P5
5	P/H FUSING SECTION	P6
6	PAPER EXIT SECTION	P7 P8
7	DRIVE SECTION	P9
8	ELECTRICAL COMPONENTS	P10
9	PF-505	P11 P12 P13
10	AD-508	P14
11	SF-603	P15

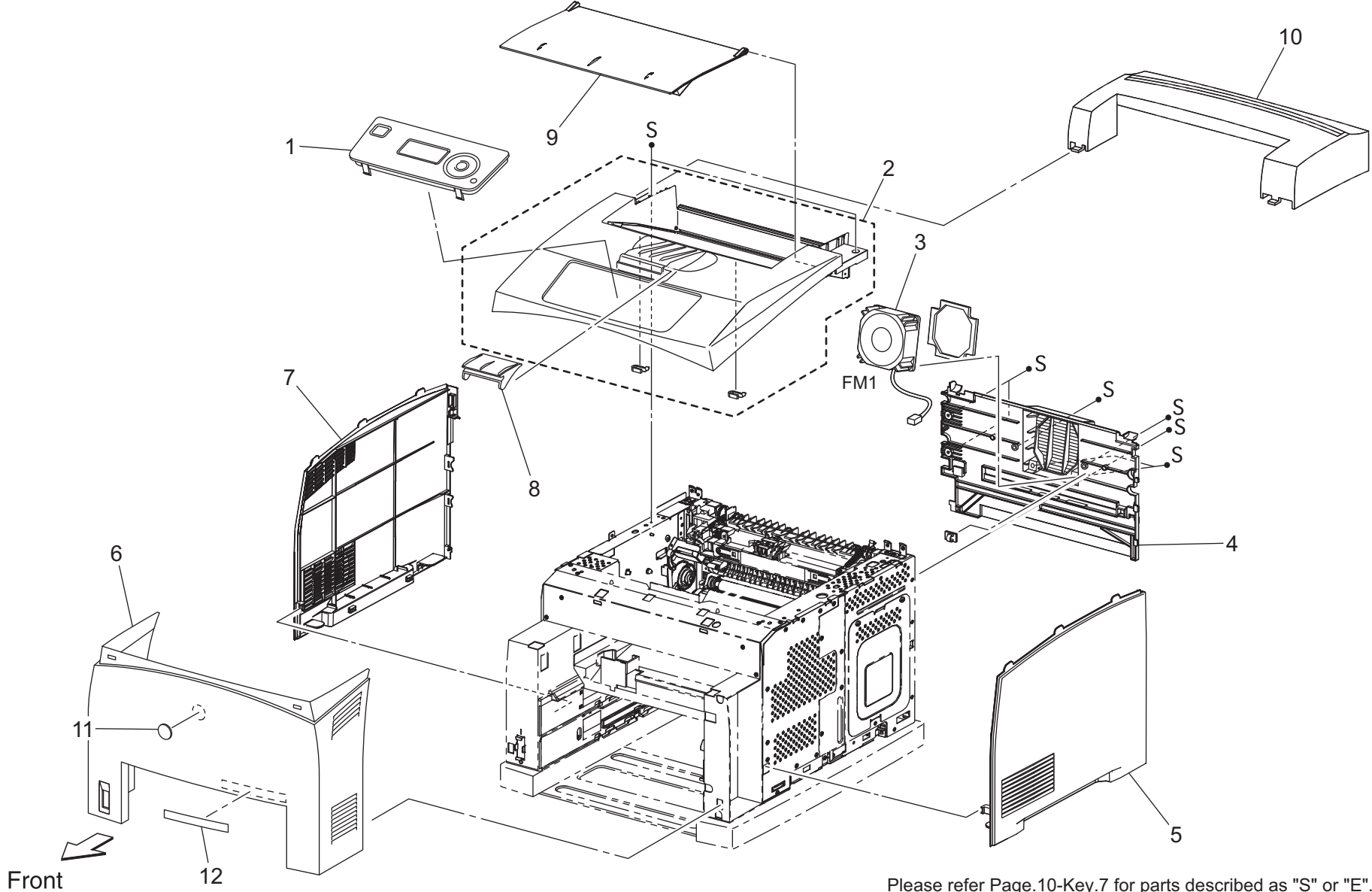
# INDEX

Parts No.	Page No.
A00F 9420 00	1-11
A0DX 9421 00	1-12
A0DX M712 02	10-5
A0DX M71A 01	1-1
A0DX PP00 00	11-5
A0DX PP01 01	2-5
A0DX PP04 00	5-8
A0DX PP05 00	12-4
A0DX PP06 00	5-1
A0DX PP07 00	5-7
A0DX PP08 00	15-2
A0DX PP09 00	3-3
A0DX PP09 00	13-3
A0DX PP0A 00	2-4
A0DX PP0B 01	15-12
A0DX PP0C 01	2-6
A0DX PP0D 01	3-4
A0DX PP0E 00	15-10
A0DX PP0F 00	15-4
A0DX PP0G 00	6-2
A0DX PP0J 00	8-1
A0DX PP0Q 00	10-2
A0DX PP0R 00	10-2
A0DX PP0S 00	14-9
A0DX PP0S 00	15-7
A0DX PP0T 00	10-3
A0DX PP0V 00	11-3
A0DX PP0X 00	10-4
A0DX PP0Y 00	5-2
A0DX PP10 00	4-2
A0DX PP10 00	5-6
A0DX PP11 00	4-1
A0DX PP11 00	5-4
A0DX PP11 00	12-2
A0DX PP12 00	15-8
A0DX PP13 00	14-3
A0DX PP16 00	1-3
A0DX PP17 00	14-6
A0DX PP1A 00	15-6
A0DX PP1B 00	15-11

Parts No.	Page No.
A0DX PP1C 00	6-5
A0DX PP1D 00	9-1
A0DX PP1E 00	11-1
A0DX PP1F 00	14-7
A0DX PP1G 00	4-5
A0DX PP1J 00	15-5
A0DX PP1M 01	15-1
A0DX PP1R 00	2-2
A0DX PP1R 00	3-2
A0DX PP1R 00	4-4
A0DX PP1R 00	5-5
A0DX PP1R 00	12-1
A0DX PP1R 00	13-2
A0DX PP1U 00	1-4
A0DX PP1V 00	4-7
A0DX PP1W 00	6-4
A0DX PP1X 00	6-4
A0DX PP1Y 00	9-2
A0DX PP20 00	2-1
A0DX PP20 00	3-1
A0DX PP20 00	13-1
A0DX PP21 00	1-9
A0DX PP22 01	15-3
A0DX PP23 00	1-7
A0DX PP24 00	1-5
A0DX PP25 00	11-6
A0DX PP28 01	14-2
A0DX PP29 01	14-8
A0DX PP2B 00	6-3
A0DX PP2D 00	2-3
A0DX PP2E 01	14-4
A0DX PP2F 01	14-1
A0DX PP2G 00	11-4
A0DX PP2H 00	4-3
A0DX PP2H 00	5-3
A0DX PP2H 00	7-1
A0DX PP2H 00	12-3
A0DX PP2H 00	15-9
A0DX PP2J 00	11-7
A0DX PP2K 00	14-5

Parts No.	Page No.
A0DX PP2M 00	11-2
A0DX PP2N 00	6-1
A0DX PP2P 00	1-6
A0DX PP2R 00	1-8
A0DX PP2V 00	4-6
A0DX PP2X 01	1-2
A0DX PP30 00	1-10
A0DX PP33 00	10-7
A0DX PP41 00	15-13
A0DX PP43 00	10-1
A0DX PP44 00	10-1
A0DX PP45 00	6-6
A0DX PP46 00	6-7
A0DX PP51 00	6-8
A0DX PP52 00	6-9
A0DX PP53 00	7-2
A0DX PP55 00	7-3
A0FM 012	10-6
A0FM 0Y2	10-6

EXTERNAL PARTS



Please refer Page.10-Key.7 for parts described as "S" or "E".

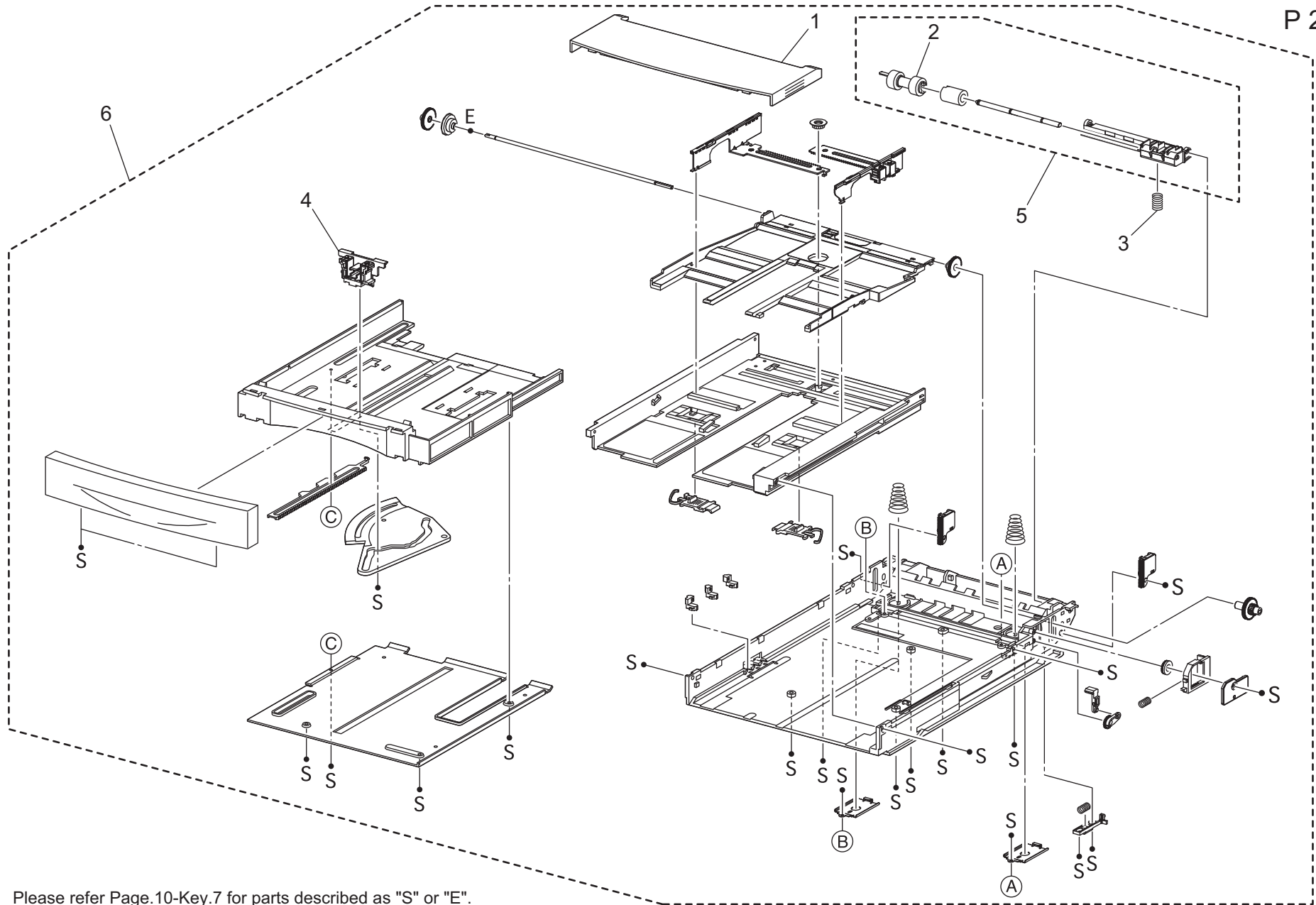


EXTERNAL PARTS

Key	Part No.	Description	Destinations	Class	QTY	Standard parts
1	A0DX M71A 01	OPERATION PANEL 34PPM		I	1	
2	A0DX PP2X 01	KIT TOP COVER		C	1	
3	A0DX PP16 00	FAN MAIN 80		C	1	
4	A0DX PP1U 00	COVER REAR		C	1	
5	A0DX PP24 00	COVER RIGHT		C	1	
6	A0DX PP2P 00	COVER FRONT		C	1	
7	A0DX PP23 00	COVER LEFT		C	1	
8	A0DX PP2R 00	COVER STOPPER		C	1	
9	A0DX PP21 00	COVER OPEN		C	1	
10	A0DX PP30 00	COVER EXIT J2 500		C	1	
11	A00F 9420 00	Label Logo Mark		C	1	
12	A0DX 9421 00	Label bizhub40P		C	1	

# 150 PAPER CASSETTE

P 2

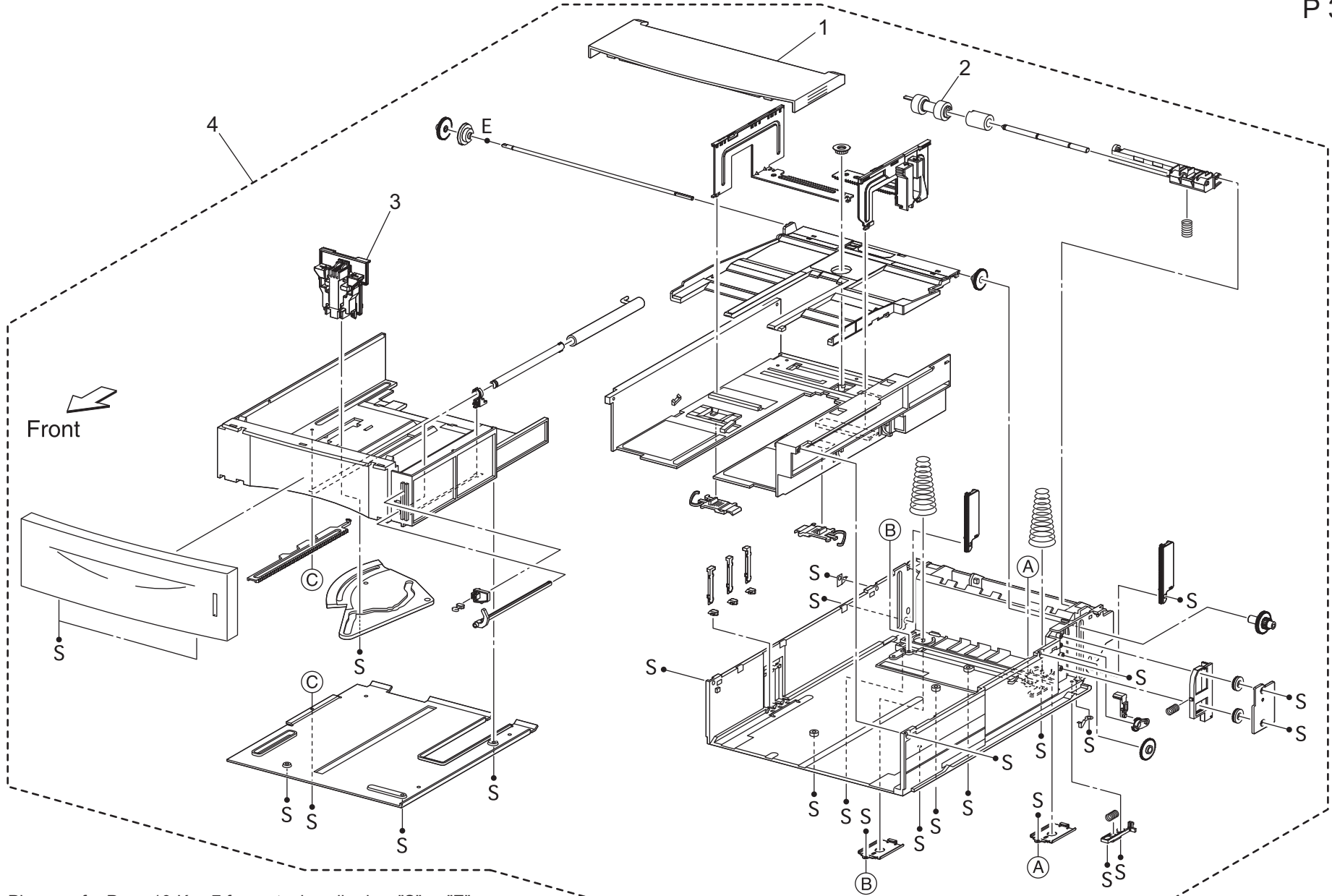


Please refer Page.10-Key.7 for parts described as "S" or "E".

150 PAPER CASSETTE

Key	Part No.	Description	Destinations	Class	QTY	Standard parts
1	A0DX PP20 00	COVER CST		C	1	
2	A0DX PP1R 00	ROLL ASSY RETARD		C	1	
3	A0DX PP2D 00	SPRING RETARD		C	1	
4	A0DX PP0A 00	GUIDE END 150		C	1	
5	A0DX PP01 01	HOLDER ASSY RETARD		C	1	
6	A0DX PP0C 01	150 PAPER CASSETTE		C	1	

550 PAPER CASSETTE

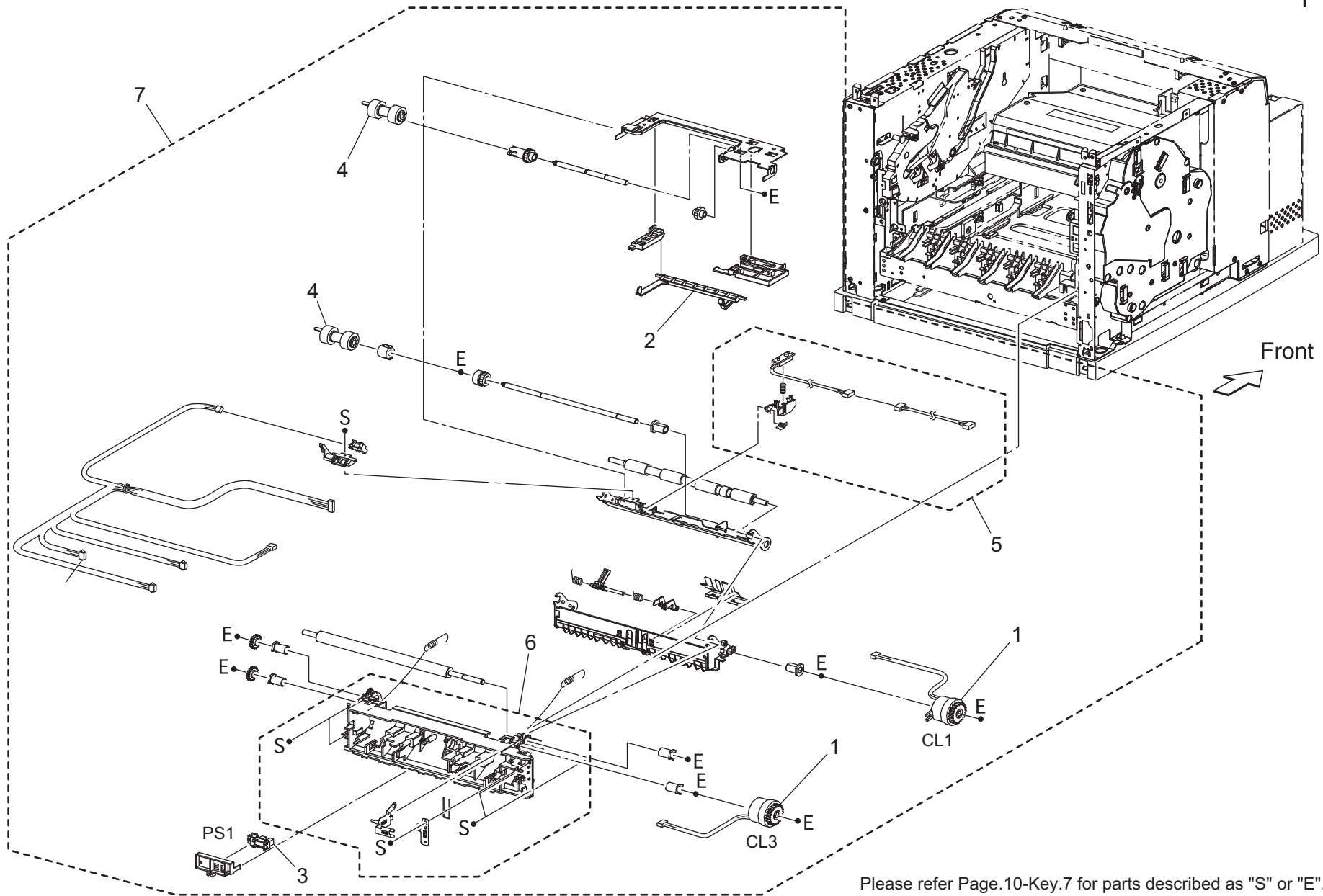


Please refer Page.10-Key.7 for parts described as "S" or "E".

550 PAPER CASSETTE

Key	Part No.	Description	Destinations	Class	QTY	Standard parts
1	A0DX PP20 00	COVER CST		C	1	
2	A0DX PP1R 00	ROLL ASSY RETARD		C	1	
3	A0DX PP09 00	GUIDE END 550		C	1	
4	A0DX PP0D 01	550 PAPER CASSETTE		C	1	

# PAPER FEED SECTION

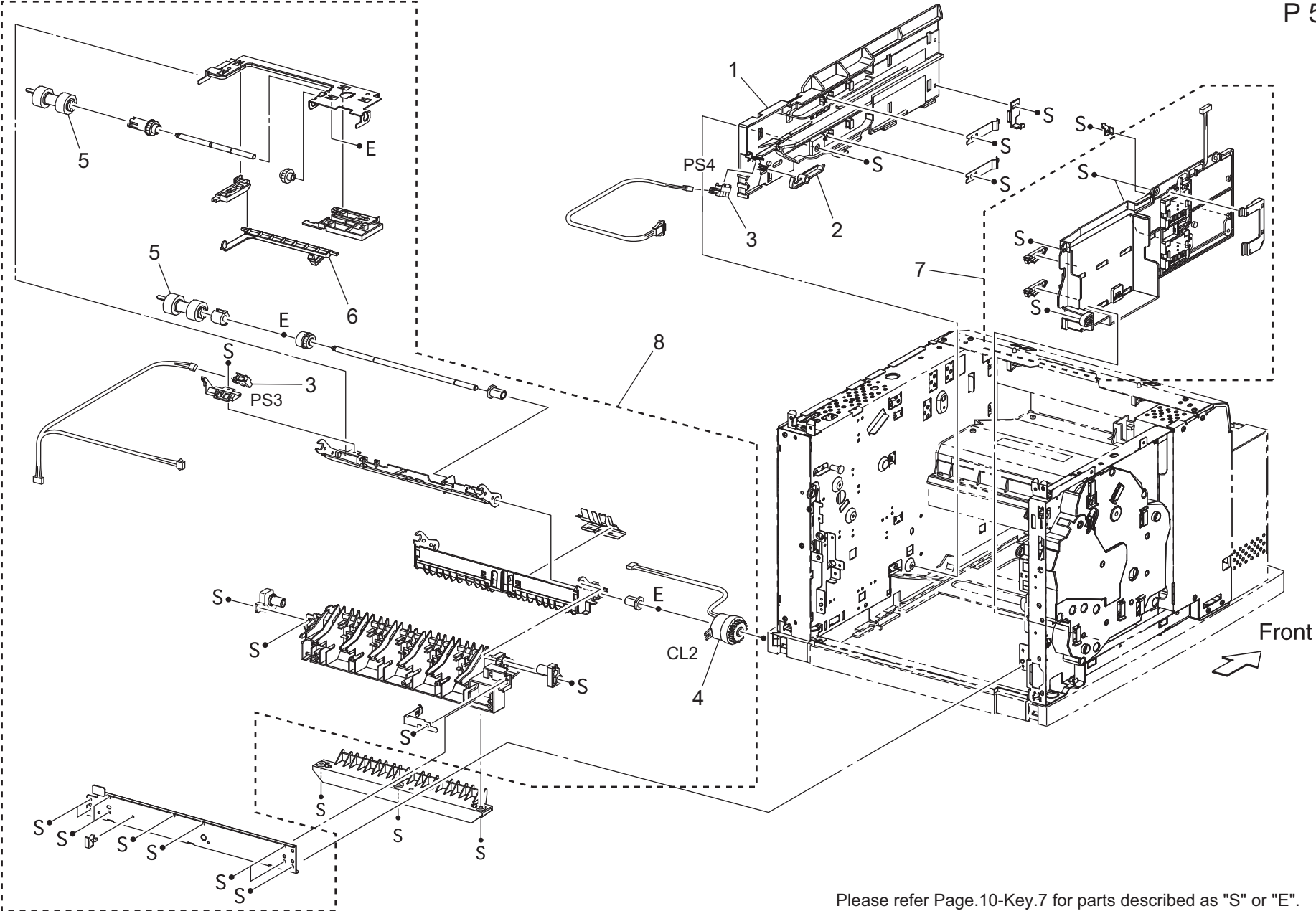


Please refer Page.10-Key.7 for parts described as "S" or "E".

PAPER FEED SECTION

Key	Part No.	Description	Destinations	Class	QTY	Standard parts
1	A0DX PP11 00	CLUTCH ASSY PH		C	2	
2	A0DX PP10 00	ACTUATOR NO PAPER		C	1	
3	A0DX PP2H 00	SENSOR OCT		I	1	
4	A0DX PP1R 00	ROLL ASSY RETARD		C	2	
5	A0DX PP1G 00	SENSOR TONER ASSEMBLY		C	1	
6	A0DX PP2V 00	KIT CHUTE REGI		C	1	
7	A0DX PP1V 00	150-45 FEEDER ASSY		C	1	

# PAPER FEED SECTION




Please refer Page.10-Key.7 for parts described as "S" or "E".



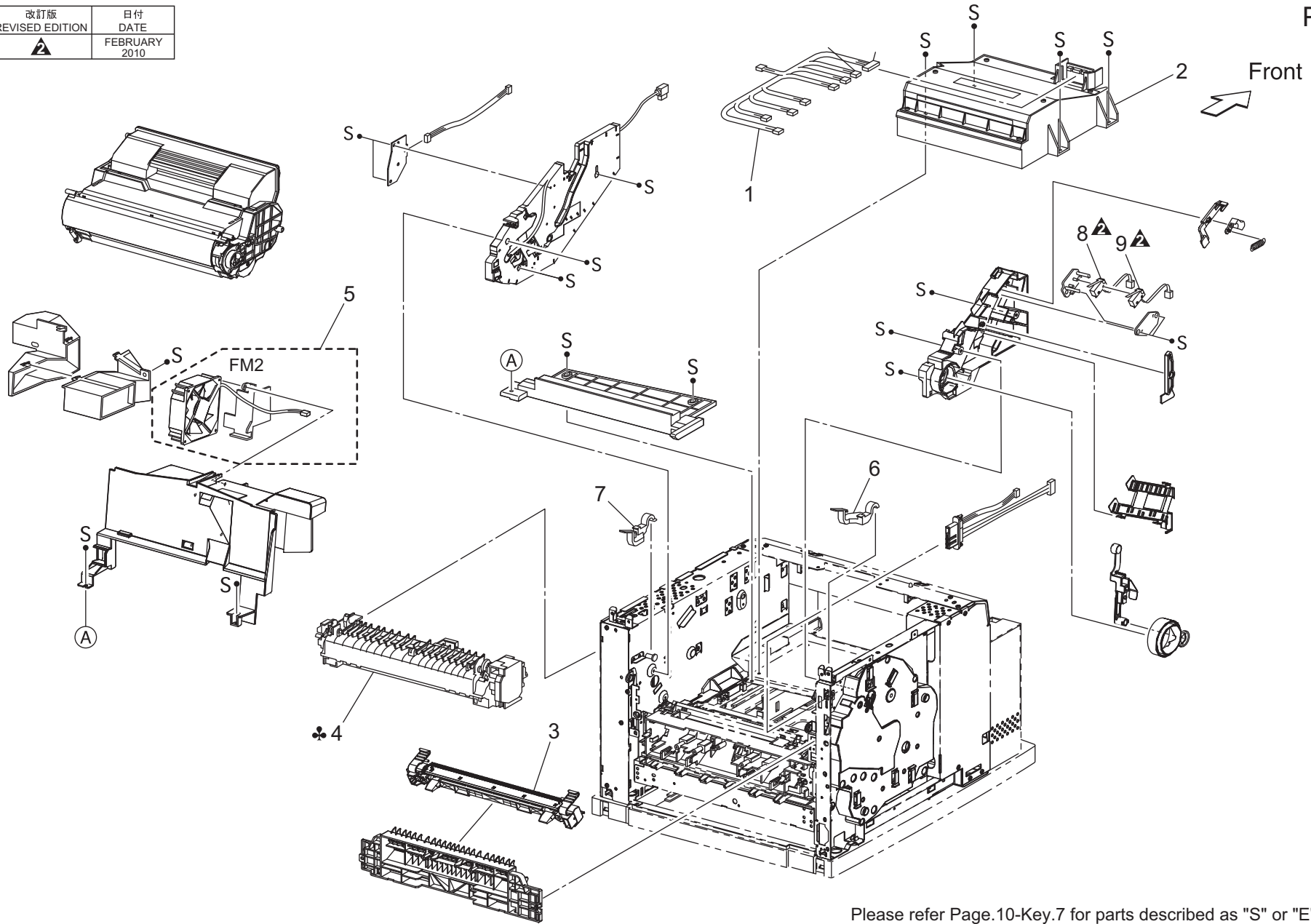
PAPER FEED SECTION

Key	Part No.	Description	Destinations	Class	QTY	Standard parts
1	A0DX PP06 00	GUIDE TRAY RIGHT		D	1	
2	A0DX PP0Y 00	ACTUATOR		C	1	
3	A0DX PP2H 00	SENSOR OCT		I	2	
4	A0DX PP11 00	CLUTCH ASSY PH		C	1	
5	A0DX PP1R 00	ROLL ASSY RETARD		C	2	
6	A0DX PP10 00	ACTUATOR NO PAPER		C	1	
7	A0DX PP07 00	GUIDE TRAY LEFT		C	1	
8	A0DX PP04 00	FEEDER2 ASSY 250		C	1	

# P/H FUSING SECTION

改訂版 REVISED EDITION	日付 DATE
	FEBRUARY 2010

P 6



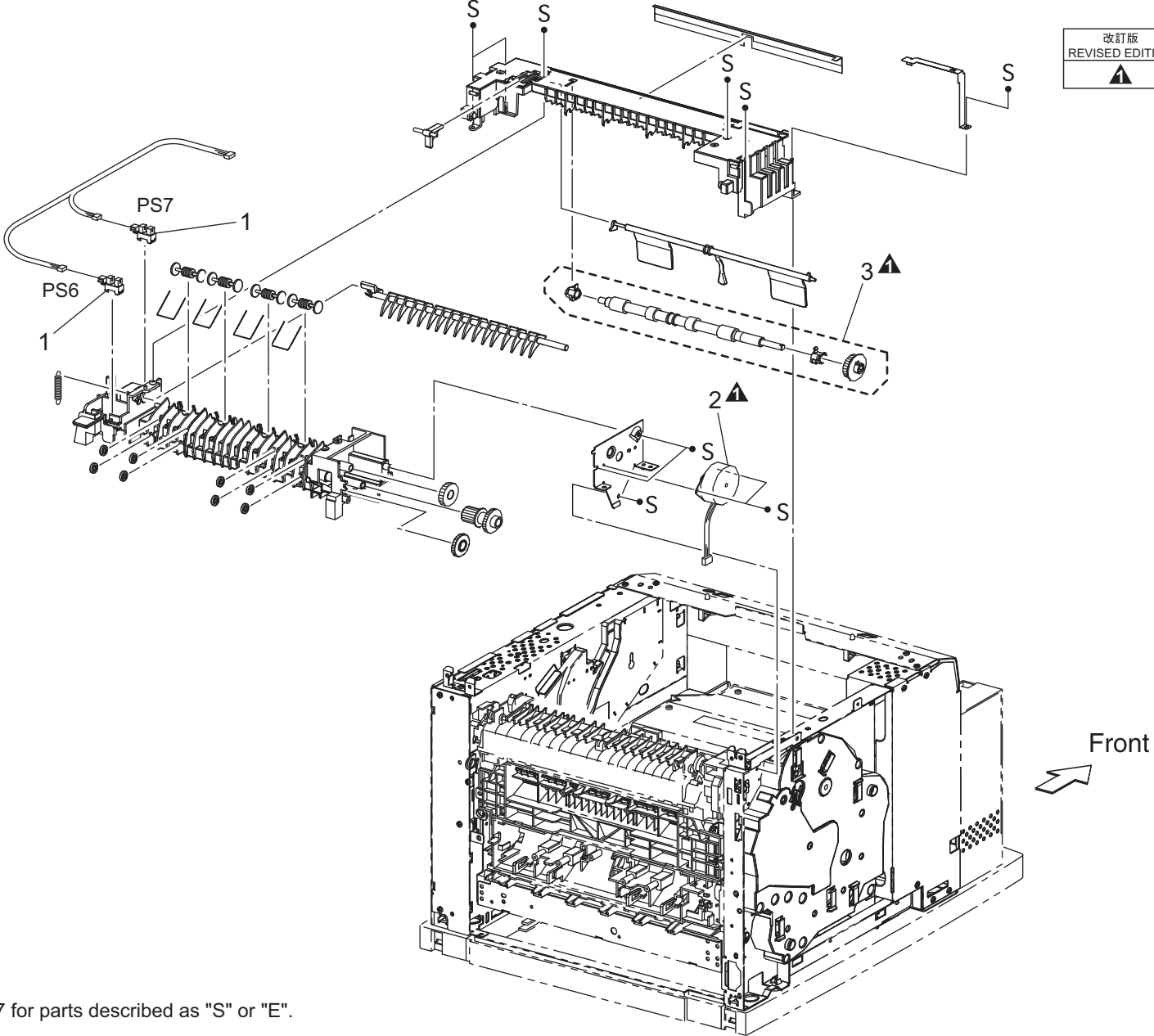
Please refer Page.10-Key.7 for parts described as "S" or "E".

P/H FUSING SECTION

Key	Part No.	Description	Destinations	Class	QTY	Standard parts
1	A0DX PP2N 00	HARNESS ASSY ROS 34PPM		D	1	
2	A0DX PP0G 00	ROS ASSY 45PPM		I	1	
3	A0DX PP2B 00	HOUSING ASSY BTR		C	1	
4	A0DX PP1W 00	FUSER ASSY 45PPM 110V	B	C	1	
4	A0DX PP1X 00	FUSER ASSY 45PPM 220V	C,D1,D3	C	1	
5	A0DX PP1C 00	FAN SUB		B	1	
6	A0DX PP45 00	LEVER FUSER LEFT		C	1	
7	A0DX PP46 00	LEVER FUSER RIGHT(34PPM)		C	1	
8	A0DX PP51 00	INTERLOCK SW		I	1	
9	A0DX PP52 00	INTERLOCK SW		I	1	

# PAPER EXIT SECTION

改訂版 REVISED EDITION	日付 DATE
▲	FEBRUARY 2010

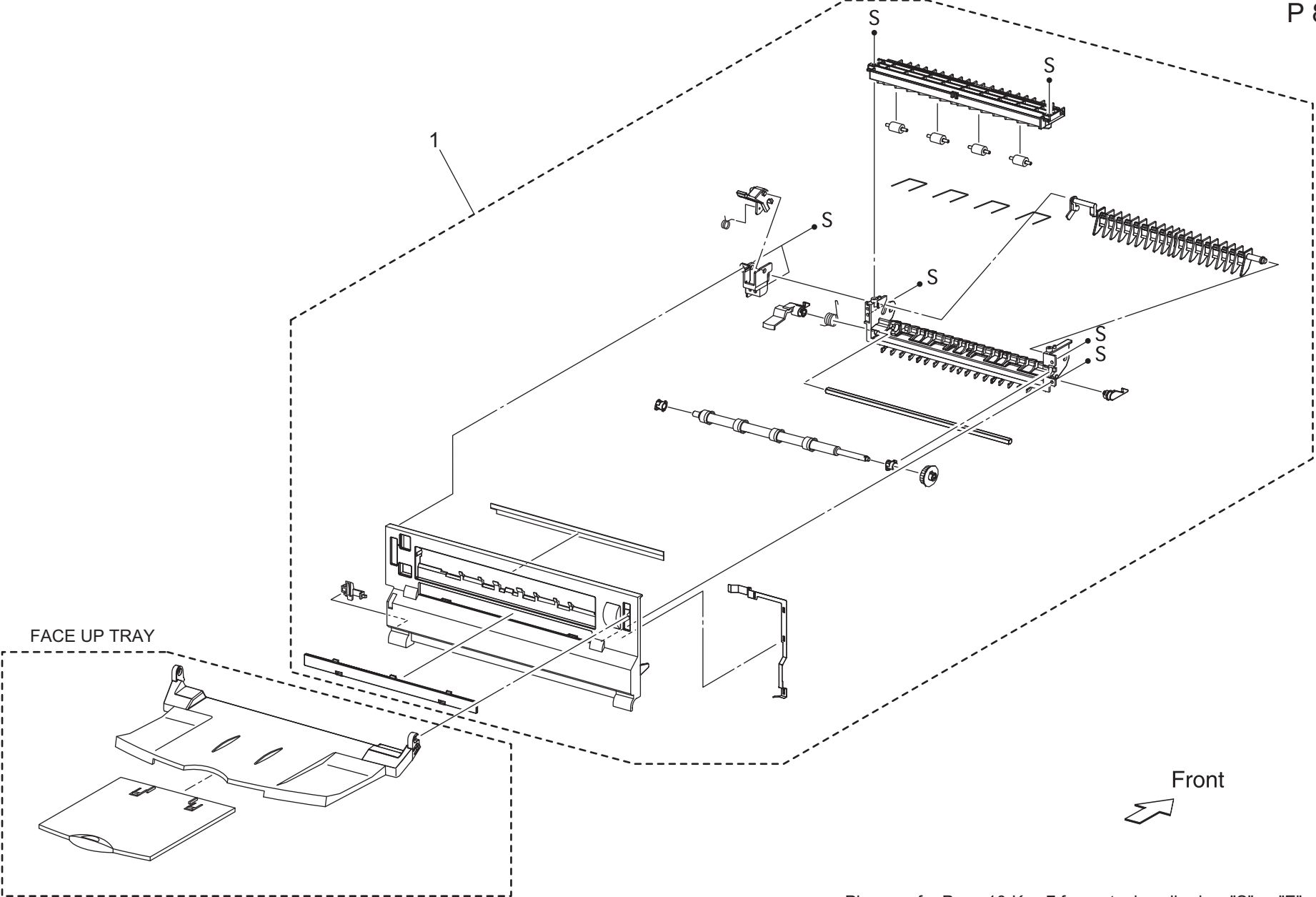


Please refer Page.10-Key.7 for parts described as "S" or "E".

PAPER EXIT SECTION

Key	Part No.	Description	Destinations	Class	QTY	Standard parts
1	A0DX PP2H 00	SENSOR OCT		I	2	
2	A0DX PP53 00	MOTOR ASSY EXIT		B	1	
3	A0DX PP55 00	KIT ROLL EXIT		C	1	

PAPER EXIT SECTION

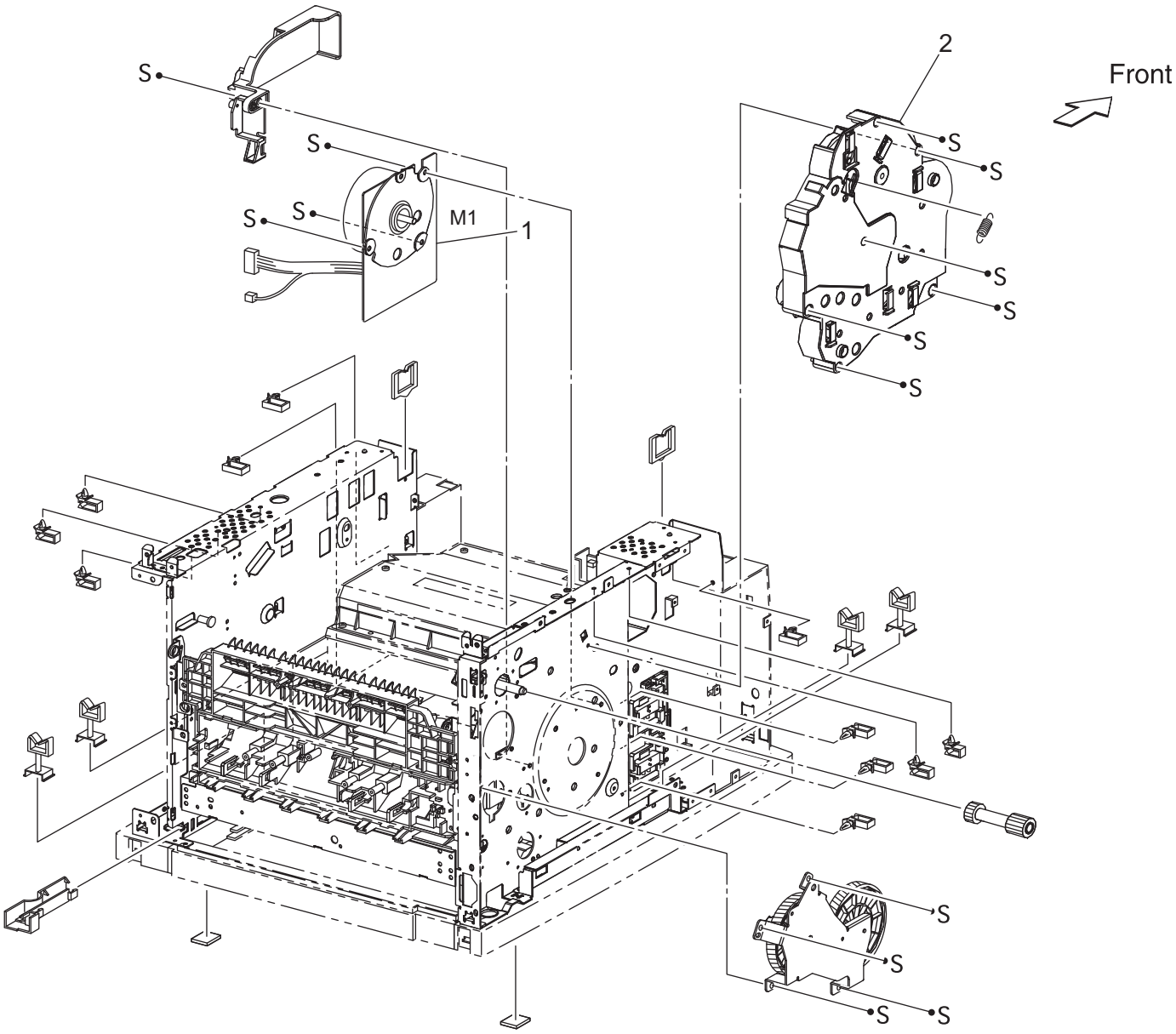


Please refer Page.10-Key.7 for parts described as "S" or "E".

PAPER EXIT SECTION

Key	Part No.	Description	Destinations	Class	QTY	Standard parts
1	A0DX PP0J 00	COVER REAR 500 34PPM		C	1	

DRIVE SECTION



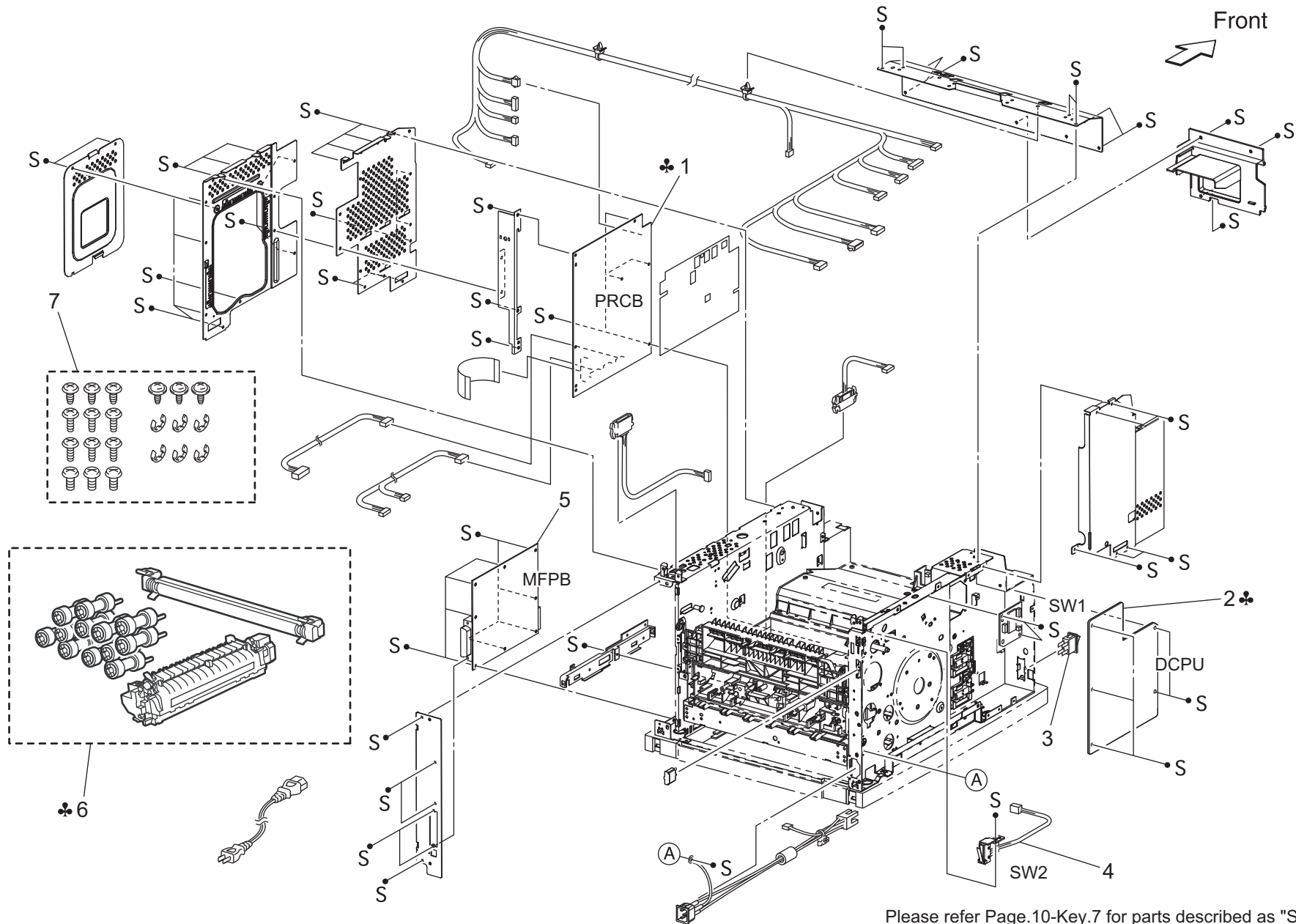
Please refer Page.10-Key.7 for parts described as "S" or "E".



DRIVE SECTION

Key	Part No.	Description	Destinations	Class	QTY	Standard parts
1	A0DX PP1D 00	MAIN MOTOR		C	1	
2	A0DX PP1Y 00	GEAR ASSY HOUSING		C	1	

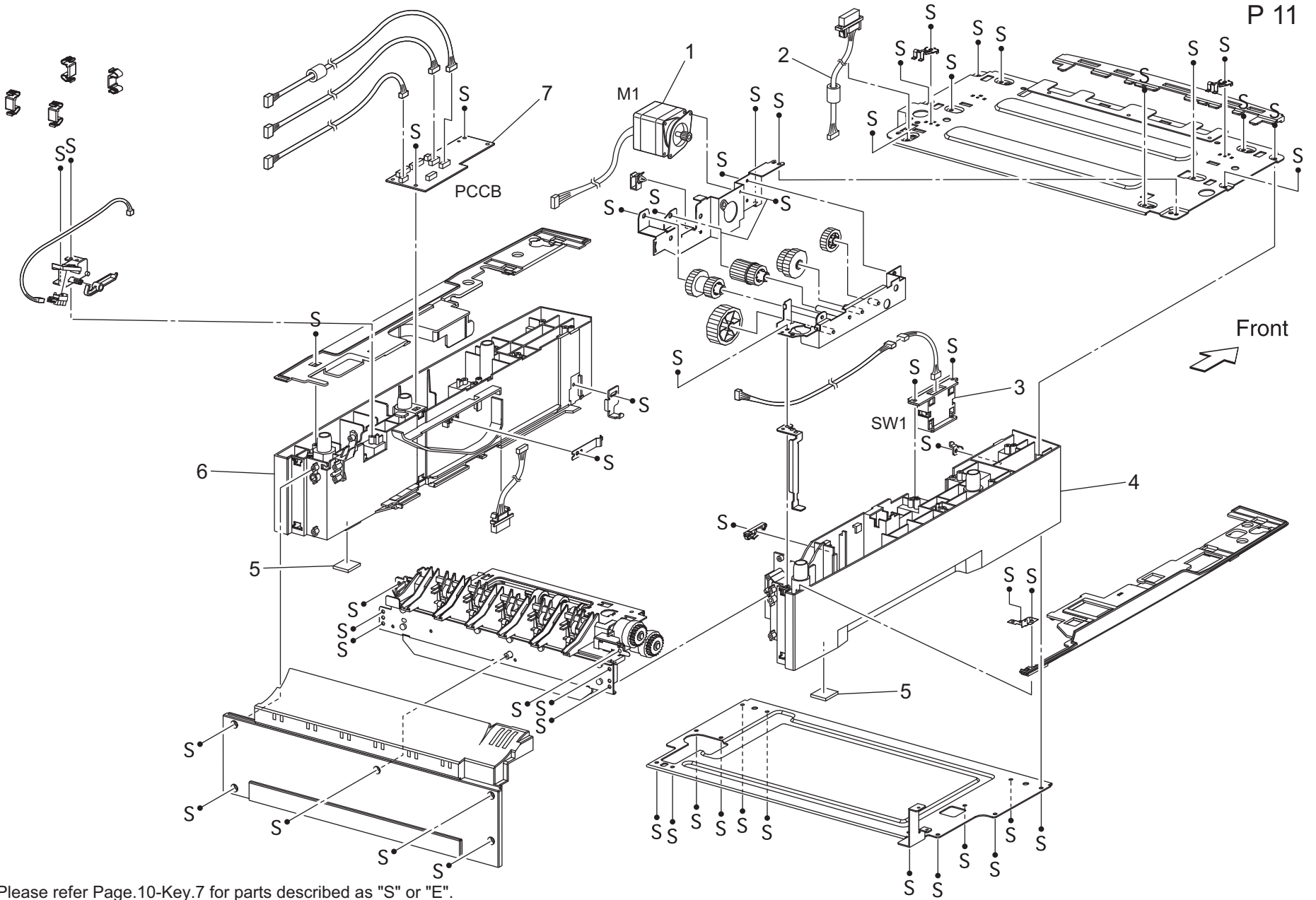
# ELECTRICAL COMPONENTS



Please refer Page.10-Key.7 for parts described as "S" or "E".

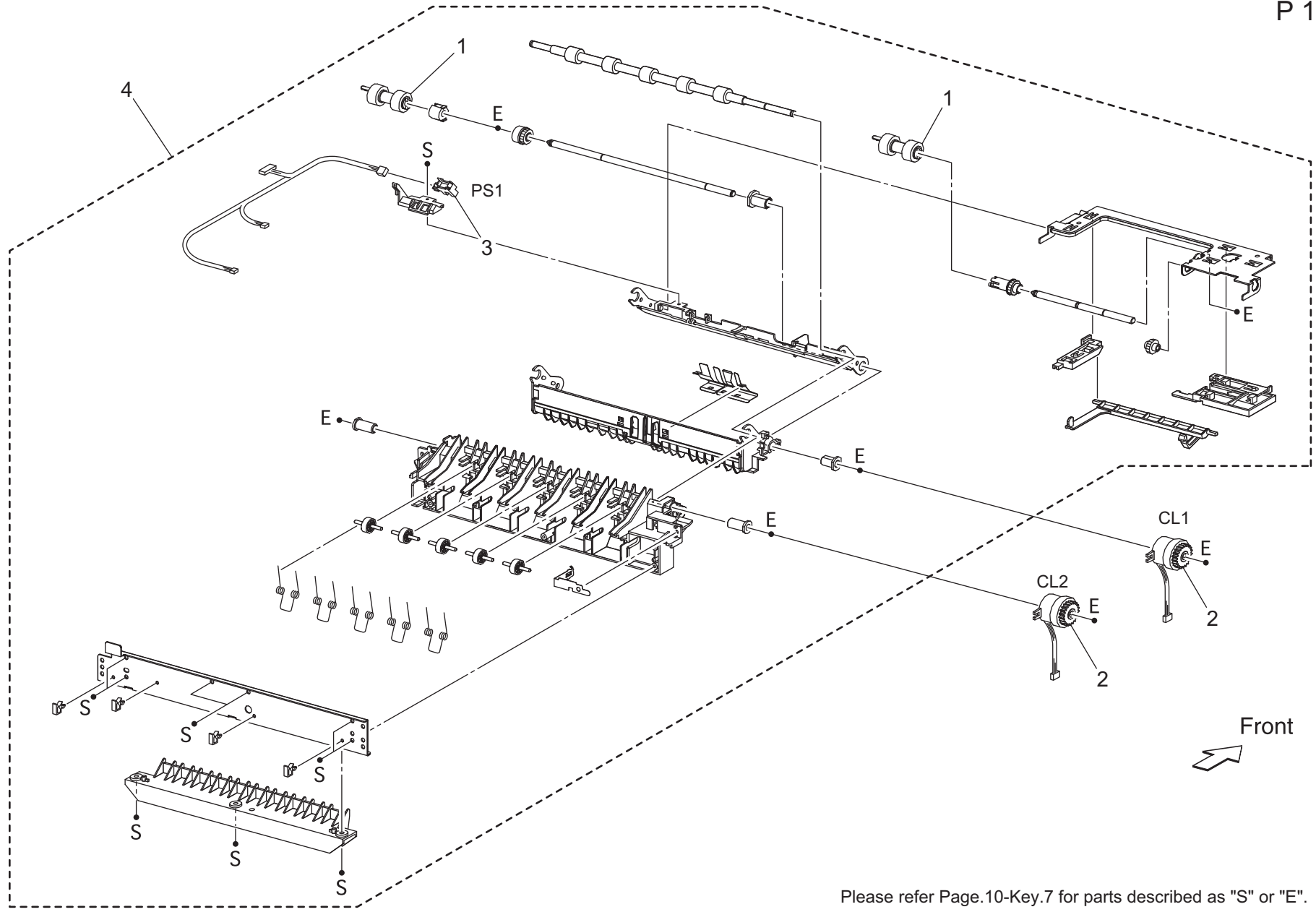
ELECTRICAL COMPONENTS

Key	Part No.	Description	Destinations	Class	QTY	Standard parts
1	A0DX PP44 00	KIT HVPS/MCU KM 45-BIZHUB 220V	C,D1,D3	I	1	
1	A0DX PP43 00	KIT HVPS/MCU KM 45-BIZHUB 110V	B	I	1	
2	A0DX PP0Q 00	LVPS 110V	B	I	1	
2	A0DX PP0R 00	LVPS 220V	C,D1,D3	I	1	
3	A0DX PP0T 00	POWER SWITCH		C	1	
4	A0DX PP0X 00	INTERLOCK S/W REAR		C	1	
5	A0DX M712 02	Controller PWB assembly		I	1	
6	A0FM 012	Maintenance Kit 110V	B	B	1	
6	A0FM 0Y2	Maintenance Kit 220V	C,D1,D3	B	1	
7	A0DX PP33 00	KIT SCREW		C	1	



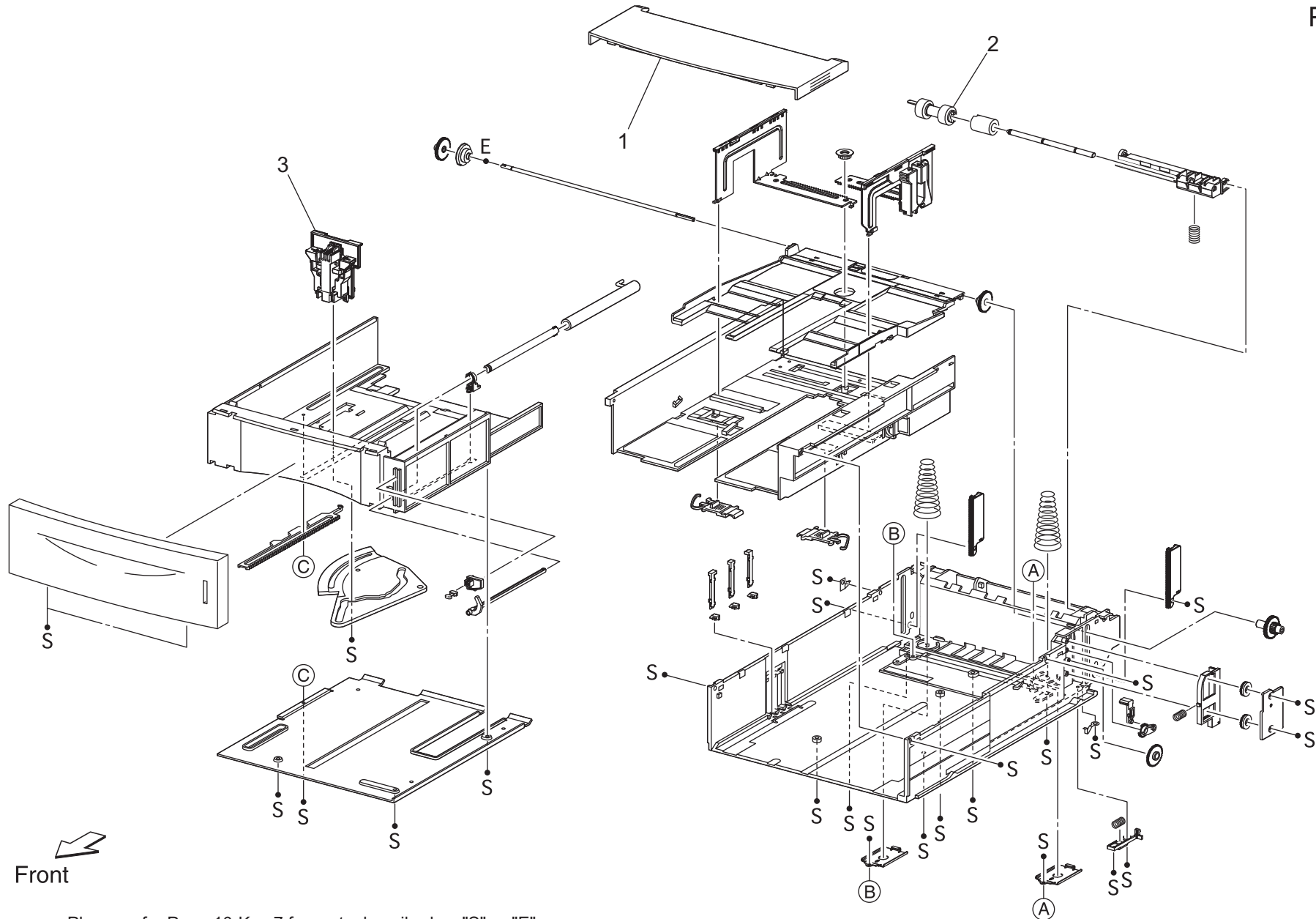
Please refer Page.10-Key.7 for parts described as "S" or "E".

Key	Part No.	Description	Destinations	Class	QTY	Standard parts
1	A0DX PP1E 00	MOTOR ASSY OPT FDR		C	1	
2	A0DX PP2M 00	HARNES ASSY FDR2		D	1	
3	A0DX PP0V 00	OPT ASSY SIZE		C	1	
4	A0DX PP2G 00	FRAME CVR L550		C	1	
5	A0DX PP00 00	FOOT		C	2	
6	A0DX PP25 00	FRAME CVR R550		C	1	
7	A0DX PP2J 00	PWBA FEEDER 550		I	1	



Please refer Page.10-Key.7 for parts described as "S" or "E".

Key	Part No.	Description	Destinations	Class	QTY	Standard parts
1	A0DX PP1R 00	ROLL ASSY RETARD		C	2	
2	A0DX PP11 00	CLUTCH ASSY PH		C	2	
3	A0DX PP2H 00	SENSOR OCT		I	1	
4	A0DX PP05 00	550 FEEDER OPTION		C	1	

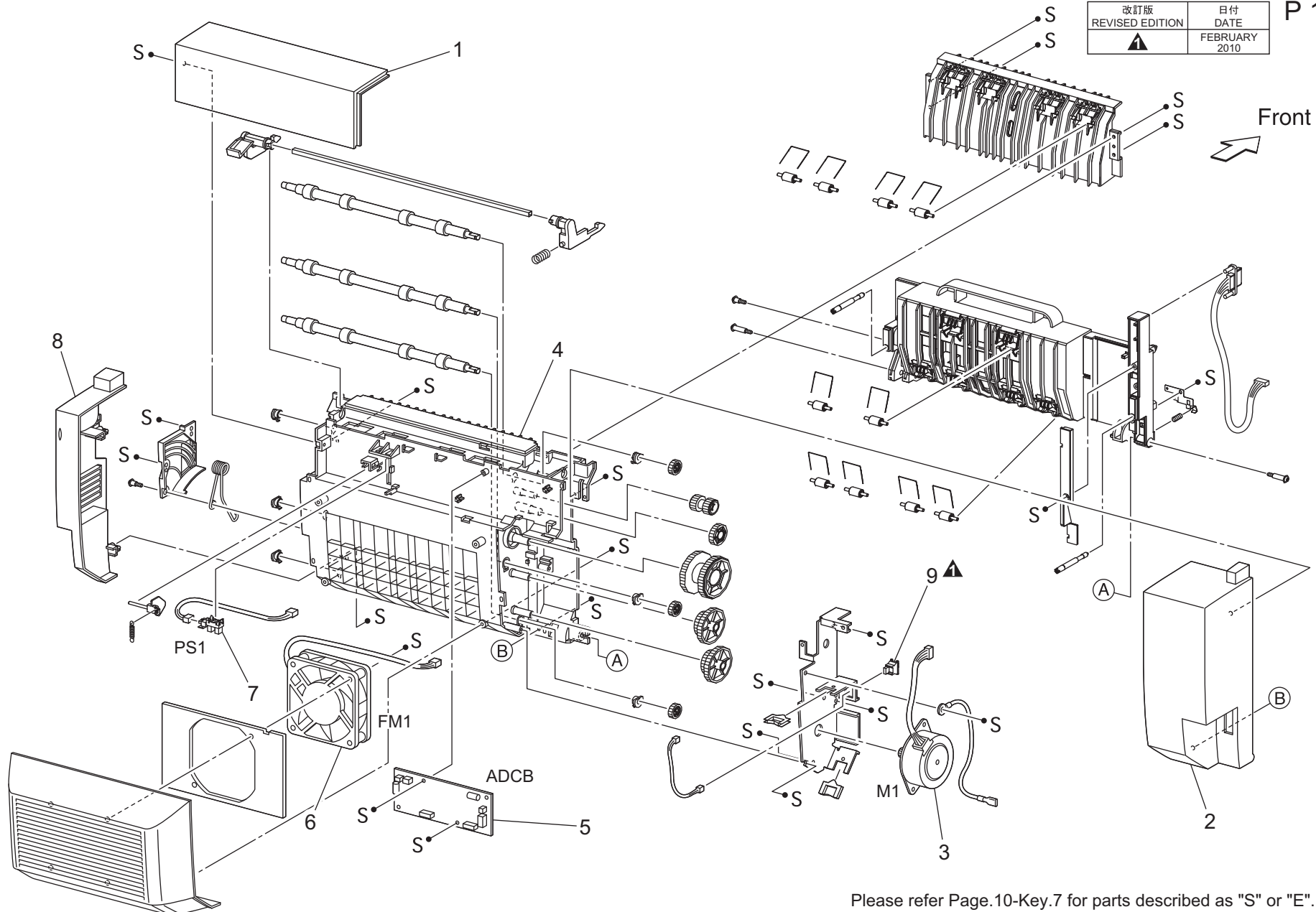


Please refer Page.10-Key.7 for parts described as "S" or "E".



Key	Part No.	Description	Destinations	Class	QTY	Standard parts
1	A0DX PP20 00	COVER CST		C	1	
2	A0DX PP1R 00	ROLL ASSY RETARD		C	1	
3	A0DX PP09 00	GUIDE END 550		C	1	

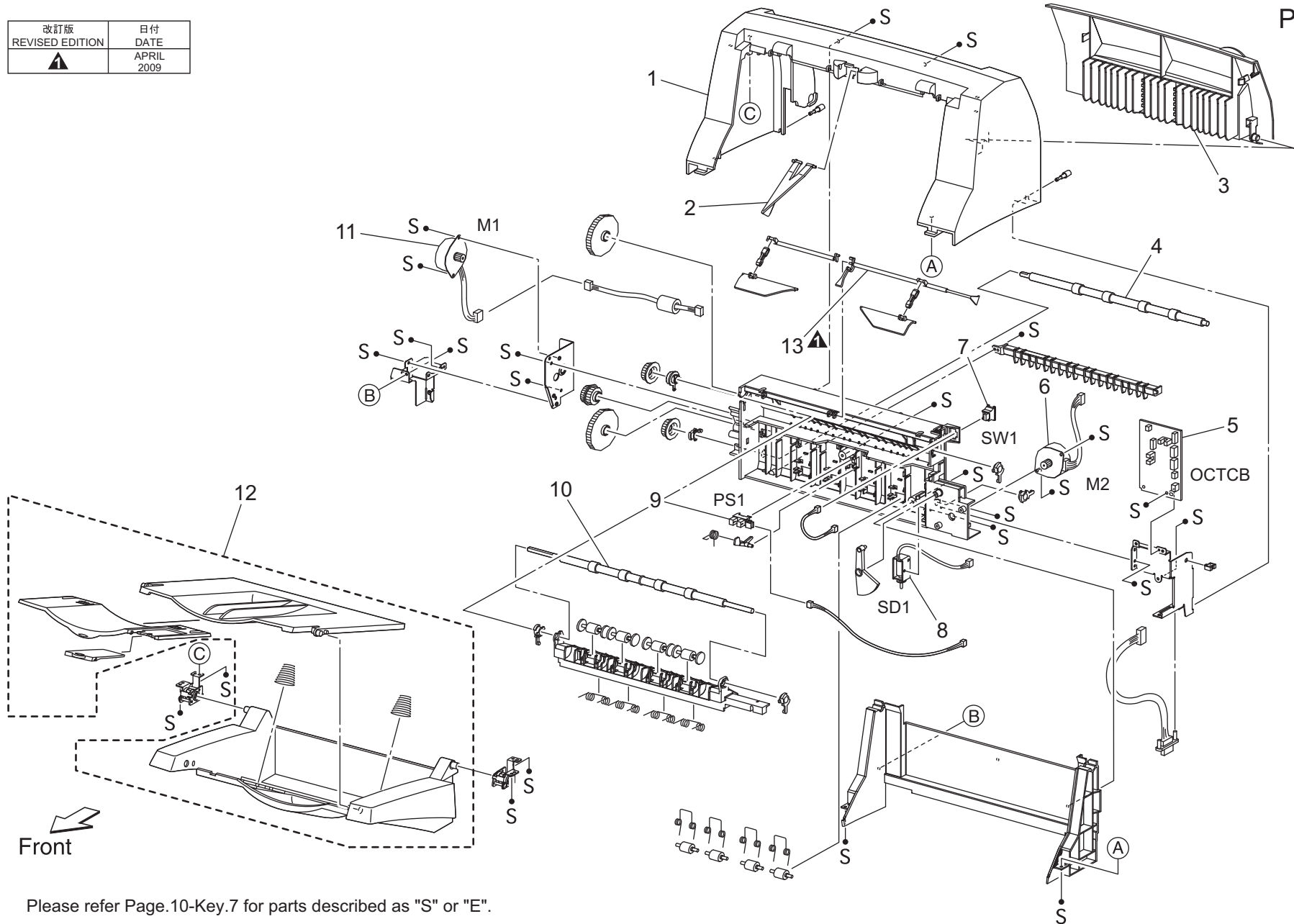
改訂版 REVISED EDITION	日付 DATE
	FEBRUARY 2010



Please refer Page.10-Key.7 for parts described as "S" or "E".

Key	Part No.	Description	Destinations	Class	QTY	Standard parts
1	A0DX PP2F 01	COVER TOP		C	1	
2	A0DX PP28 01	COVER LEFT		C	1	
3	A0DX PP13 00	MOTOR DUPLEX		C	1	
4	A0DX PP2E 01	COVER HSG DUP		C	1	
5	A0DX PP2K 00	PWBA DUPLEX		I	1	
6	A0DX PP17 00	FAN DUP		C	1	
7	A0DX PP1F 00	SENSOR DUP		I	1	
8	A0DX PP29 01	COVER RIGHT		C	1	
9	A0DX PP0S 00	S/W REAR COVER		C	1	

改訂版 REVISED EDITION	日付 DATE
▲	APRIL 2009



Please refer Page.10-Key.7 for parts described as "S" or "E".

Key	Part No.	Description	Destinations	Class	QTY	Standard parts
1	A0DX PP1M 01	COVER OCT		C	1	
2	A0DX PP08 00	WEIGHT		D	1	
3	A0DX PP22 01	COVER REAR		C	1	
4	A0DX PP0F 00	ROLL OCT LOWER		C	1	
5	A0DX PP1J 00	PWBA OCT		I	1	
6	A0DX PP1A 00	MOTOR ASSY OFFSET		C	1	
7	A0DX PP0S 00	S/W REAR COVER		C	1	
8	A0DX PP12 00	SOLENOID ASSY GATE		C	1	
9	A0DX PP2H 00	SENSOR OCT		I	1	
10	A0DX PP0E 00	ROLL OCT UPPER		C	1	
11	A0DX PP1B 00	MOTOR ASSY OCT		C	1	
12	A0DX PP0B 01	TRAY ASST OCT		C	1	
13	A0DX PP41 00	ACTUATOR		C	1	

# MAINTENANCE LIST

● The items with no Page/Key numbers are not handled as spare parts.

No.	Section	PM Parts Description	Maintenance Cycle (K=1,000)		Parts No.	Destinations	Page/Key	Note
			QTY	Replace				
1	-	Maintenance Kit 110V *3	1	200K *1	A0FM012	110 V areas	P10-6	*2
2	-	Maintenance Kit 220V *3	1	200K *1	A0FM0Y2	220 V areas	P10-6	*2

\*1: Continuous printing, B/W ratio: 5 %

\*2: For details about maintenace procedure of lower feeder unit, see the optional lower feeder unit service manual.

\*3: The Maintenance kit includes Rollers(for feed roller, pick-up roller and separation roller), Transfer roller and Fuser unit.

## DESTINATION

Destination No.		Destinations		V	Hz	Model No.
A	A1	JAPAN		100	50/60	
	A2	JAPAN		200	50/60	
B		USA, CANADA		120	60	A0DX-013
C		EUROPEAN TYPE		220-240	50/60	A0DX-023
D	D1	S.E ASIA TYPE	THAILAND, SRI LANKA, SINGAPORE, MALAYSIA, HONG KONG, PAKISTAN, INDIA, BANGLADESH, INDONESIA	220-240	50/60	A0DX-023
	D3	OCEANIA TYPE	AUSTRALIA, NEW ZEALAND	220-240	50/60	A0DX-023
E		PHILIPPINES		220-240	50/60	
F	F1	SAUDI ARABIA		127	60	
	F2	SAUDI ARABIA		220-240	50/60	
G	G1	C.S AMERICA		220-240	50/60	
	G2	C.S AMERICA		120	60	
H		TAIWAN		110	60	
I		JORDAN, LEBANON, SYRIA, SOUTH AFRICA, IRAQ, IRAN, N.YEMEN, CAMEROON, UAE, BAHRAIN, OMAN, QATAR, KUWAIT, KENYA, TUNISIA, IVORY COAST, MOROCCO		220-240	50/60	
J		CHINA		220-240	50/60	
K		KOREA		220-240	50/60	