

## 2 Parts and diagrams

This section describes resources for ordering parts, and for technical support and resources for ordering related documentation and software.

### Order parts by authorized service providers

**Table 2-1 Order parts, accessories, and supplies**

Order supplies and paper	<a href="http://www.hp.com/go/suresupply">www.hp.com/go/suresupply</a>
Order genuine HP parts or accessories	<a href="http://www.hp.com/buy/parts">www.hp.com/buy/parts</a>
Order through service or support providers	Contact an HP-authorized service or support provider.
Order using HP software	For information about using the HP software to order parts, accessories, and supplies, see the product user guide.

### Service kit parts

**Table 2-2 Repair kits**

Kit part number	Description	Part number	Customer replaceable?	Self-replace option
A3E42-65017	<b>Tray 1 Cover Kit (includes name plate &amp; HP logo)</b>		N	
	Multi-purpose cover assembly	RM2-0625-000		
	Name plate: LaserJet Pro MFP M435nw	A3E42-40010		
	Low profile round logo, size 35	7121-8541		
	Multi-Purpose Tray (Tray1) install guide	A3E42-90982		
A3E42-65018	<b>Tray 1 Roller Kit</b>		Y	Optional
	Roller, multi-purpose paper pick-up	RL2-0544-000		
	Multi-purpose pad assembly	RM1-2462-000		
	Tray 1 Roller Kit install guide	A3E42-90983		
	<b>Tray 2 Roller Kit</b>	A3E42-65019	Y	Optional
	Cassette pick-up roller assembly	RL1-4049-000		
	Tray 2 separation pad	RM1-2546-000		
	Tray 2 Roller Kit Install Guide	A3E42-90984		

**Table 2-2 Repair kits (continued)**

<b>Kit part number</b>	<b>Description</b>	<b>Part number</b>	<b>Customer replaceable?</b>	<b>Self-replace option</b>
A3E42-65010	<b>Tray 2 Cassette Assembly Kit</b>		Y	Optional
	Cassette assembly	RM2-0629-000		
A3E42-65011	<b>Tray 3 Roller Kit</b>		Y	Mandatory
	Paper pick-up roller assembly	RM1-0036-020		
	Paper feed roller assembly	RM1-0037-020		
	Tray 3 retard roller	RM1-0037-020		
	Tray 3 Roller Kit install guide	A3E42-90985		
A3E42-65012	<b>Laser Scanner Kit</b>		N	
	Laser Scanner assembly	RM2-0648-000		
	Laser Scanner Install guide	A3E42-90986		
A3E42-65013	<b>220V Fuser Kit</b>		N	
	Fuser assembly (220V)	RM2-0639-000		
	Recycle Guide	5851-3945		
	Fuser Install Guide	A3E42-90987		
A3E42-65014	<b>Transfer Roller Kit</b>		N	
	Transfer Roller assembly	RM2-5841-000		
	Transfer Roller Kit Install Guide	A3E42-90988		
A3E42-65015	<b>Scanner Flatbed Whole Unit Kit</b>		N	
	Whole unit scanner assembly with control panel	A3E42-60101		
	Scanner Flatbed Whole Unit install guide	A3E42-90989		
A3E46-67901	<b>Optional accessory duplex unit</b>			
	Optional Duplexer Unit	A3E46A		
	Duplexer Installation Guide	A3E46-90901		
A3E47-67901	<b>Optional accessory 500 Sheet Feeder Tray 3</b>		Y	Mandatory
	Optional accessory 500 Sheet Feeder Tray 3 Product	A3E47A		
	Optional tray Installation Guide	A3E47-90901		
A3E42-65016	<b>Service Maintenance Kit</b>		N	
	Fusing assembly (220V)	RM2-0639-000		
	Transfer roller assembly	RM2-5841-000		
	Roller, multi-purpose paper pick-up	RL2-0544-000		
	Multi-purpose pad assembly	RM1-2462-000		
	Cassette pick-up roller assembly	RL1-4049-000		
	Tray 2 Separation Pad	RM1-2546-000		

**Table 2-2 Repair kits (continued)**

Kit part number	Description	Part number	Customer replaceable?	Self-replace option
	Recycle Guide	5851-3945		
	Service Maintenance install guide	NA		

## Whole-unit replacement part numbers

**Table 2-3 Whole-unit replacement part numbers**

Item	Description	Part number
HP LaserJet Pro MFP M435nw Printer	220V CN #AB2	A3E42-67901 (replacement)
HP LaserJet Pro MFP M435nw Printer	220V IN #ACJ	A3E42-67905 (replacement)
HP LaserJet Pro MFP M435nw Printer	220V EMEA #B19	A3E42-69002 (exchange)

## Supplies and accessories part numbers

Item	Description	Part number
HP CZ192A Black Laser Cartridge	Replacement toner cartridge	CZ192-67901
Optional accessory Duplex unit		A3E46-67901
Optional accessory 500-Sheet Feeder Tray 3		A3E47-67901

## Related documentation and software


**Table 2-4 Related documentation and software**


Item	Description	Part number
<i>HP LaserJet Pro M435nw Printer User Guide</i>	Product user guide	A3E42-90945
<i>HP LaserJet Pro M435nw Printer Repair Manual</i>	English service repair manual	A3E42-90978
<i>HP LaserJet Pro M435nw Printer Troubleshooting Manual</i>	English service troubleshooting manual	A3E42-90980

## How to use the parts lists and diagrams

The figures in this chapter show the major subassemblies in the product and their component parts. A parts list table follows each exploded-view assembly diagram. Each table lists the item number, the associated part number, and the description of each part. If a part is not listed in the table, then it is not a field replacement unit (FRU).

---

 **CAUTION:** Be sure to order the correct part. When looking for part numbers for electrical components, pay careful attention to the voltage that is listed in the description column to ensure that the part number selected is for the correct product model.

 **NOTE:** In this manual, the abbreviation “PCA” stands for “printed circuit board assembly.” Components described as a PCA might consist of a single circuit board or a circuit board plus other parts, such as cables and sensors.

---

## Fasteners used in this product


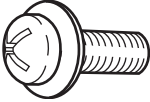
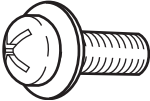
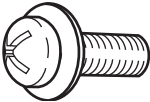
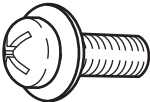
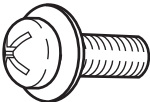
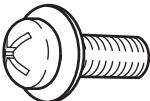
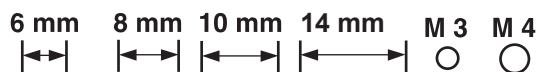
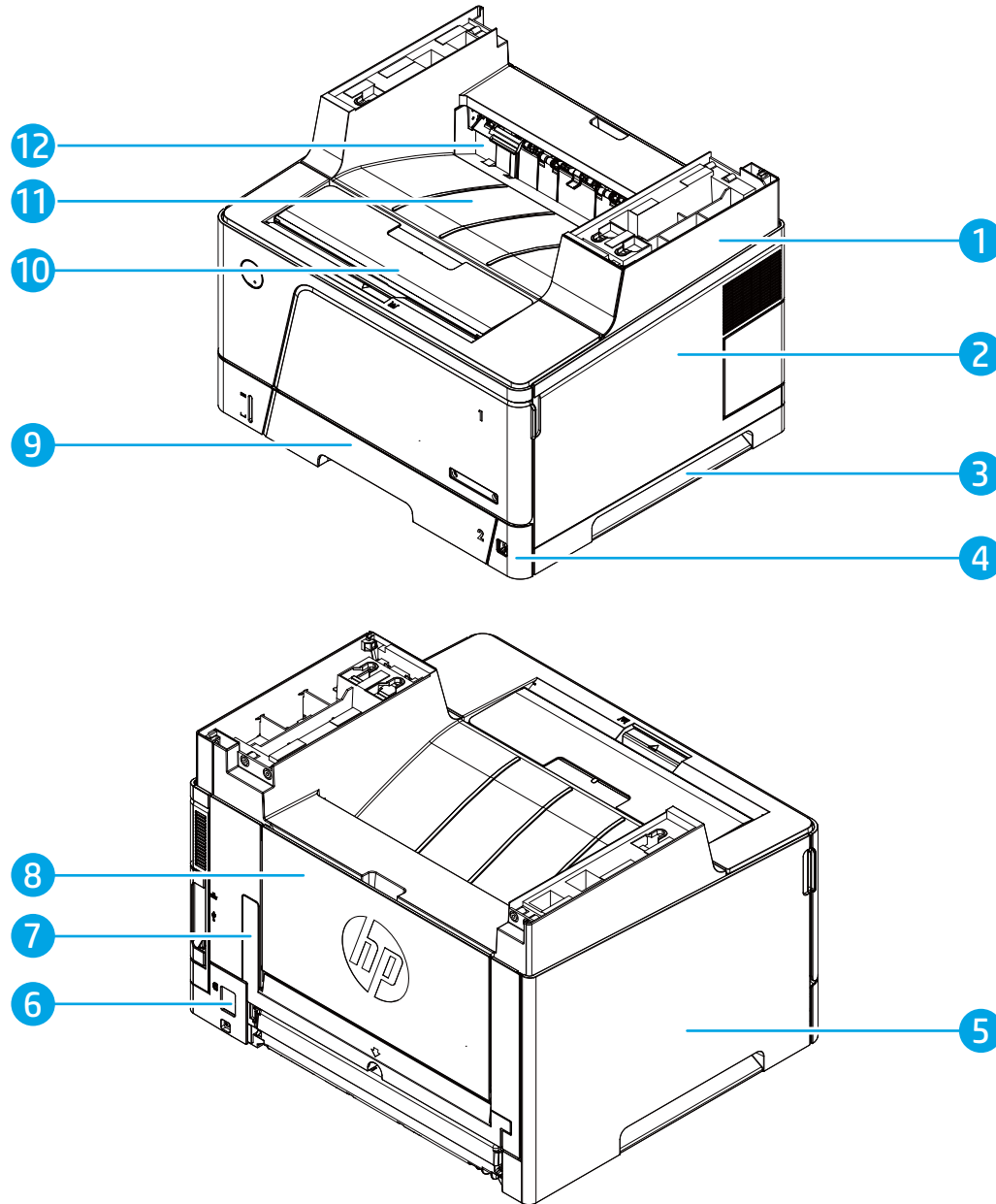
 **NOTE:** The screw illustrations in the following table are for reference only. Screws might vary in size and appearance from those shown in this table.

Illustration	Description	Size	Part number	Use
	Screw, Phillips	M3x6	0515-2908	Used to secure metal components to metal components (for example, a ground wire to the frame)
	Screw, Phillips, tapping	M3X10	0515-4671	Used to secure cover cable
	Screw, Phillips, tapping	M3X10	0515-5427	Used to secure hinge cover
	Screw, tapping, truss head	M4X14	0515-4743	Used to secure anything to plastic
	Screw, Phillips, tapping	M3X10	0515-4680	Used to secure Holder-CP ferrite
	Screw, Torx, tapping	M3X4.5	0515-547	Scanner lid



# Assembly locations

Figure 2-1 External assembly locations

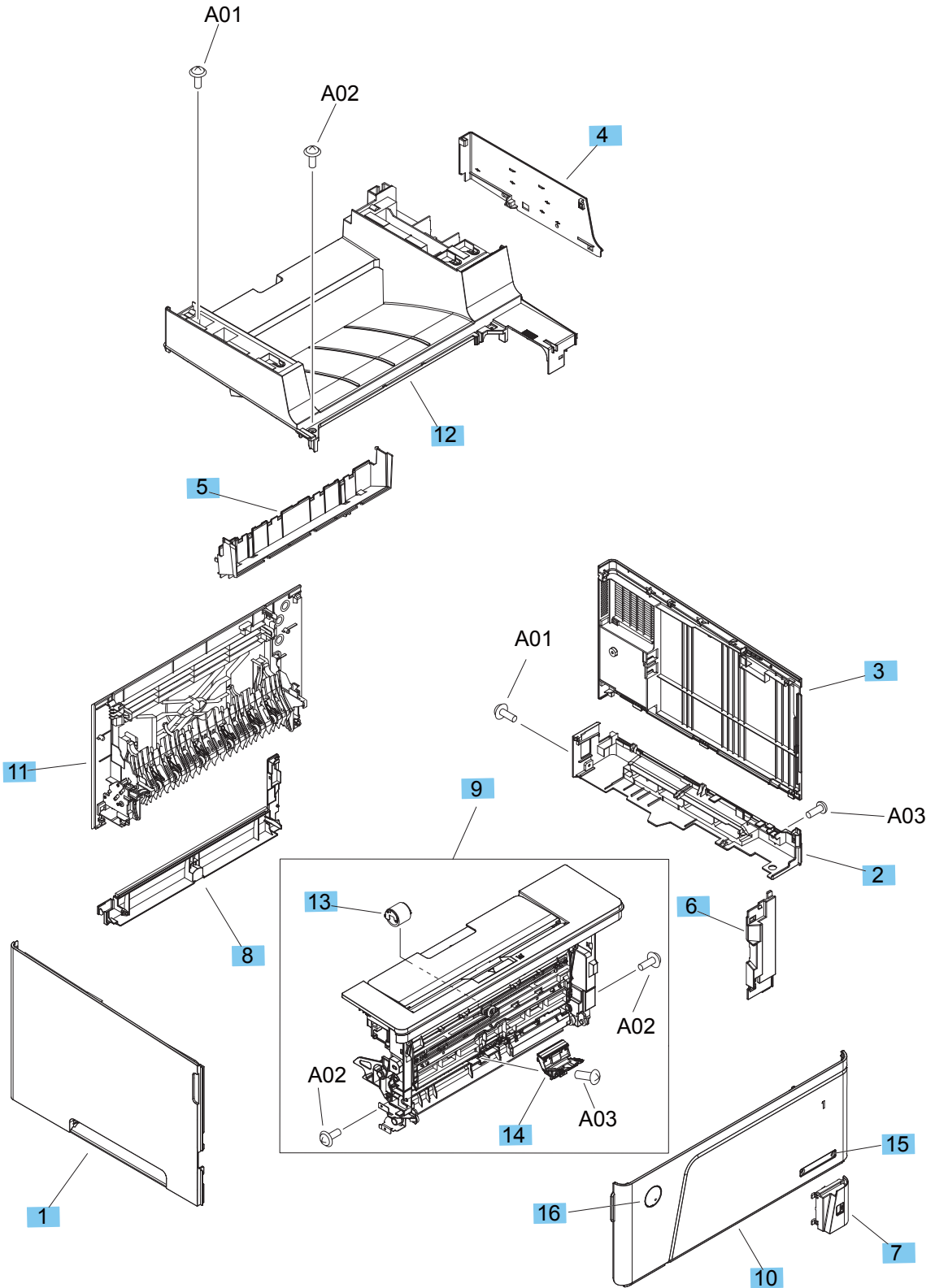


Item	Description	Item	Description
1	Upper right cover	7	Lower rear cover
2	Right cover assembly	8	Rear cover assembly
3	Right handle cover	9	Multi-purpose tray cover
4	Right front cover	10	Cartridge door
5	Left cover	11	Top cover assembly
6	Power receptacle	12	Face-down cover



# Covers

Figure 2-2 External panels and covers



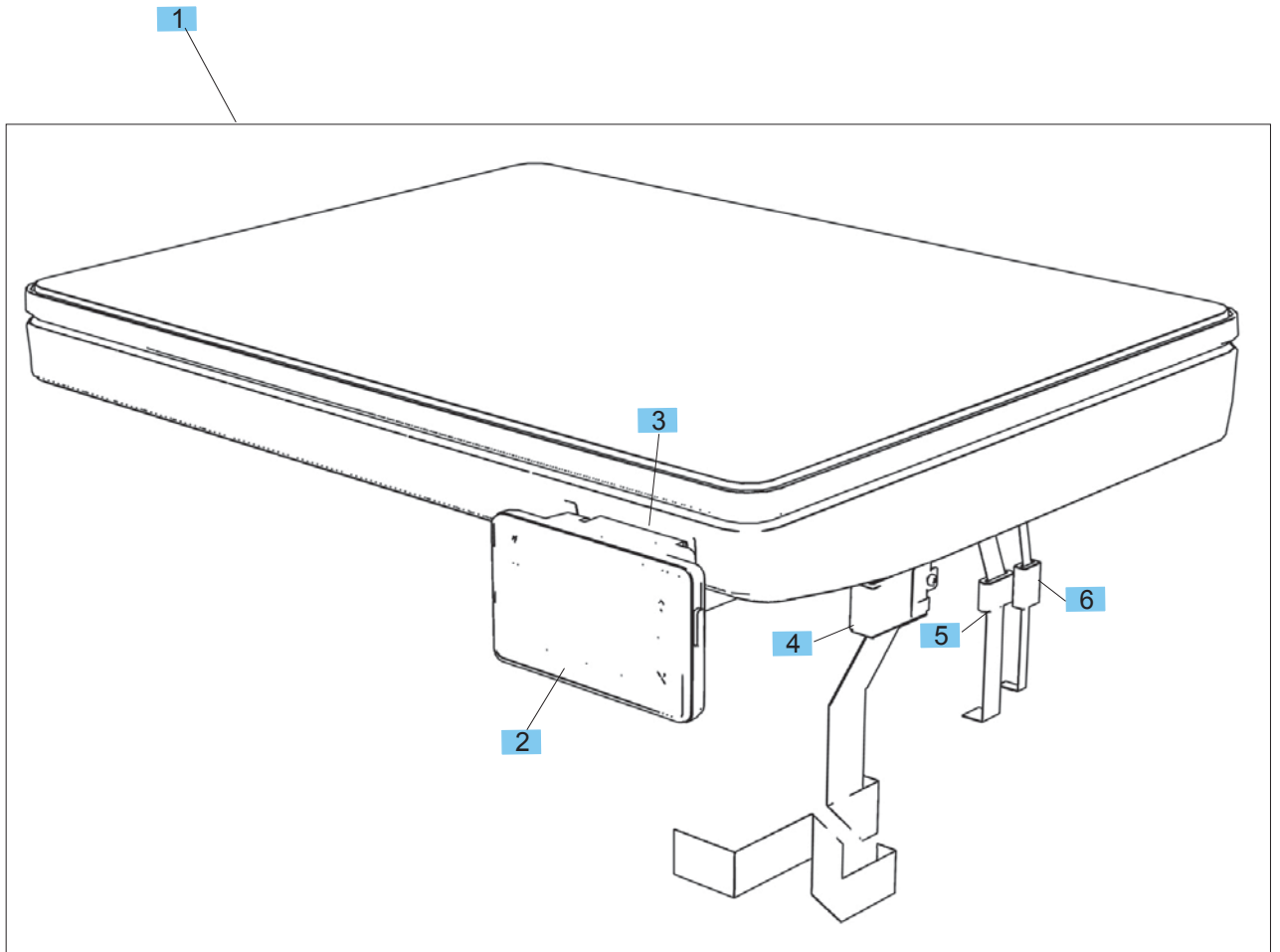


**Table 2-5 External panels and covers**

<b>Ref</b>	<b>Description</b>	<b>Part number</b>	<b>Qty</b>
1	Cover, left	RC3-5757-000	1
2	Cover, right handle	RC3-5758-000	1
3	Assembly, right cover	RM2-5843-000	1
4	Cover, right upper	RC3-5760-000	1
5	Cover, face down	RL2-0546-000	1
6	Cover, right front	RC3-5762-000	1
7	Cover, front USB	RC3-5763-000	1
8	Cover, rear lower	RL2-0550-000	1
9	Assembly, cartridge door	RM2-0624-000	1
10	Cover, multipurpose tray	RM2-0625-000	1
11	Cover, rear	RM2-0636-000	1
12	Cover, top	RM2-0642-000	1
13	Roller, multi-purpose tray, pickup	RL2-0544-000	1
14	Pad, multi-purpose tray, separation	RM1-2462-000	1
15	Name plate	A3E42-40010	1
16	HP logo, low profile round	7121-8541	1

## SSA and control panel

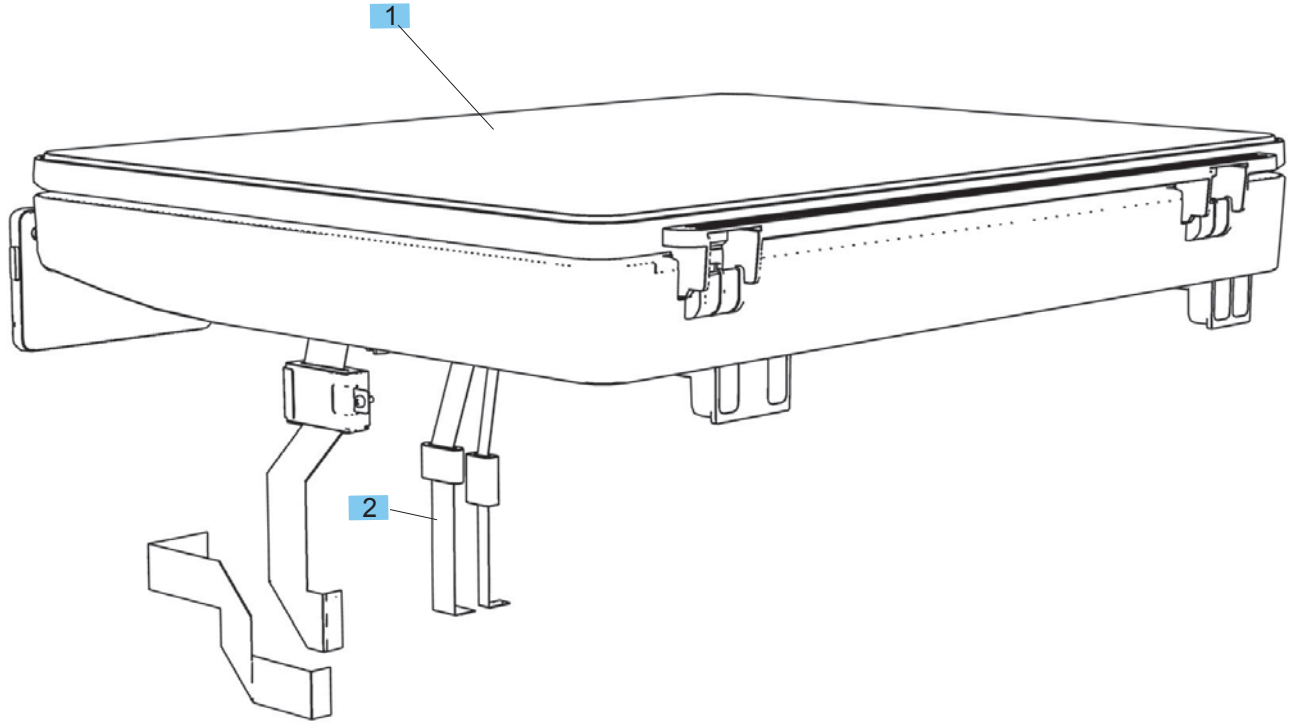
Figure 2-3 SSA and control panel (1 of 4)



**Table 2-6 SSA and control panel (1 of 4)**

<b>Ref</b>	<b>Description</b>	<b>Part number</b>	<b>Qty</b>
1	Assembly, scanner with control panel, whole-unit	A3E42-60101	1
2	Assembly, 3.0"MF control panel	A3E42-60106	1
3	Cover, hinge	A3E42-40009	1
4	Ferrite, control panel	9170-2329	1
5	Ferrite, scanner	9170-2597	1
6	Ferrite, motor	5851-5178	1

Figure 2-4 SSA and control panel (2 of 4)

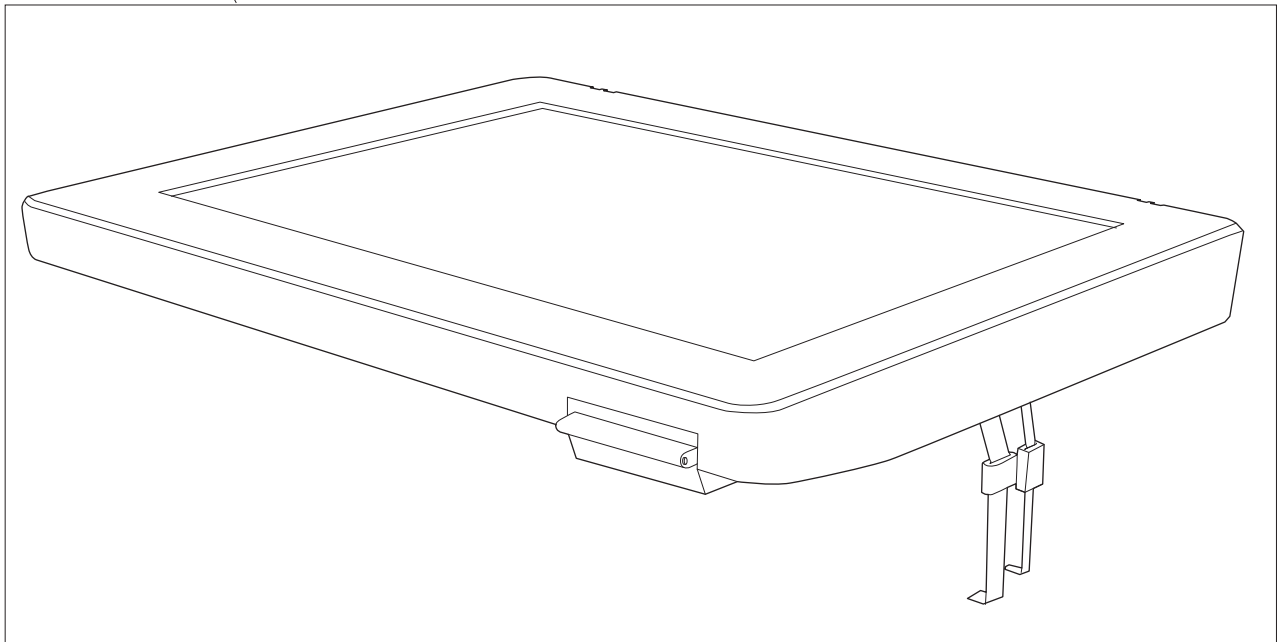


**Table 2-7 SSA and control panel (2 of 4)**

<b>Ref</b>	<b>Description</b>	<b>Part number</b>	<b>Qty</b>
1	Assembly, scanner lid	A3E42-60105	1

**Figure 2-5** SSA and control panel (3 of 4)

1

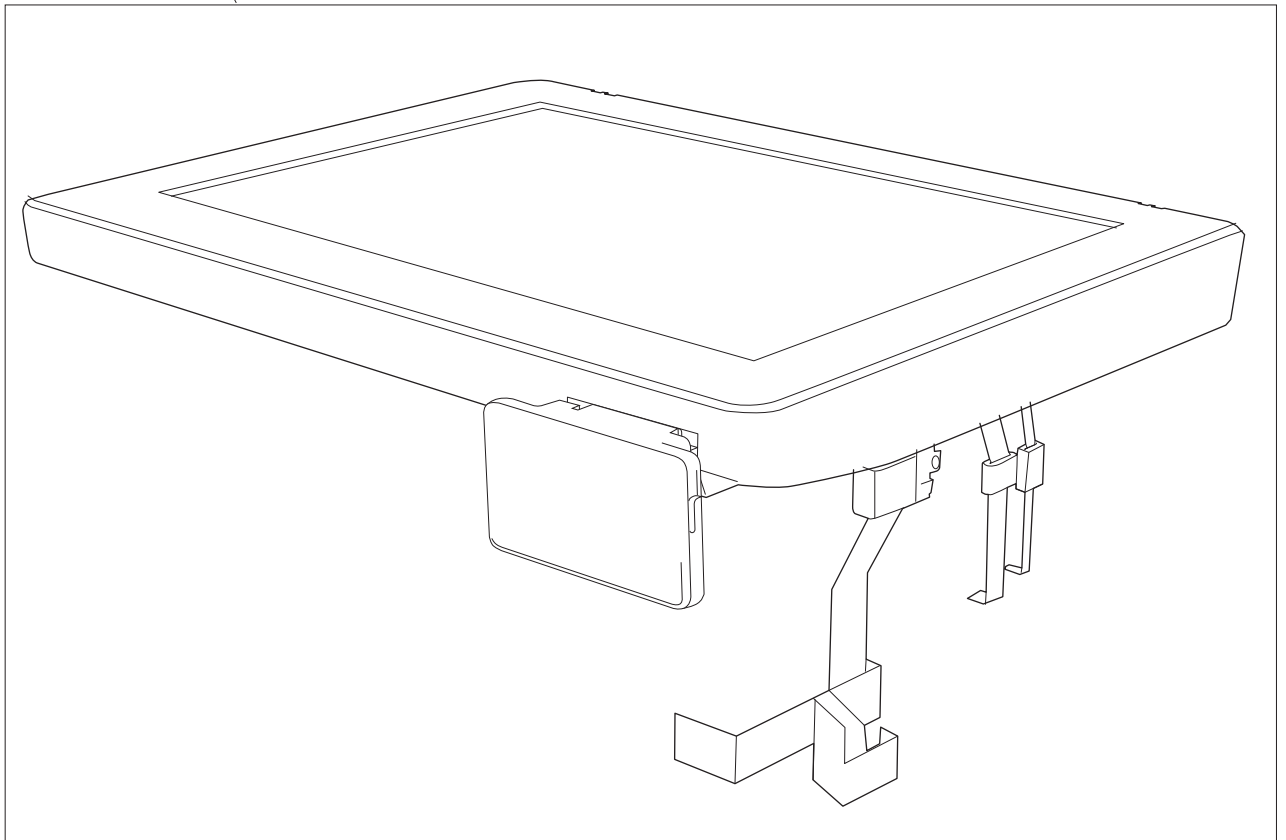


**Table 2-8 Scanner assembly without lid and control panel (3 of 4)**

<b>Ref</b>	<b>Description</b>	<b>Part number</b>	<b>Qty</b>
1	Assembly, scanner without lid and control panel	A3E42-60116	1

**Figure 2-6** SSA and control panel (4 of 4)

1



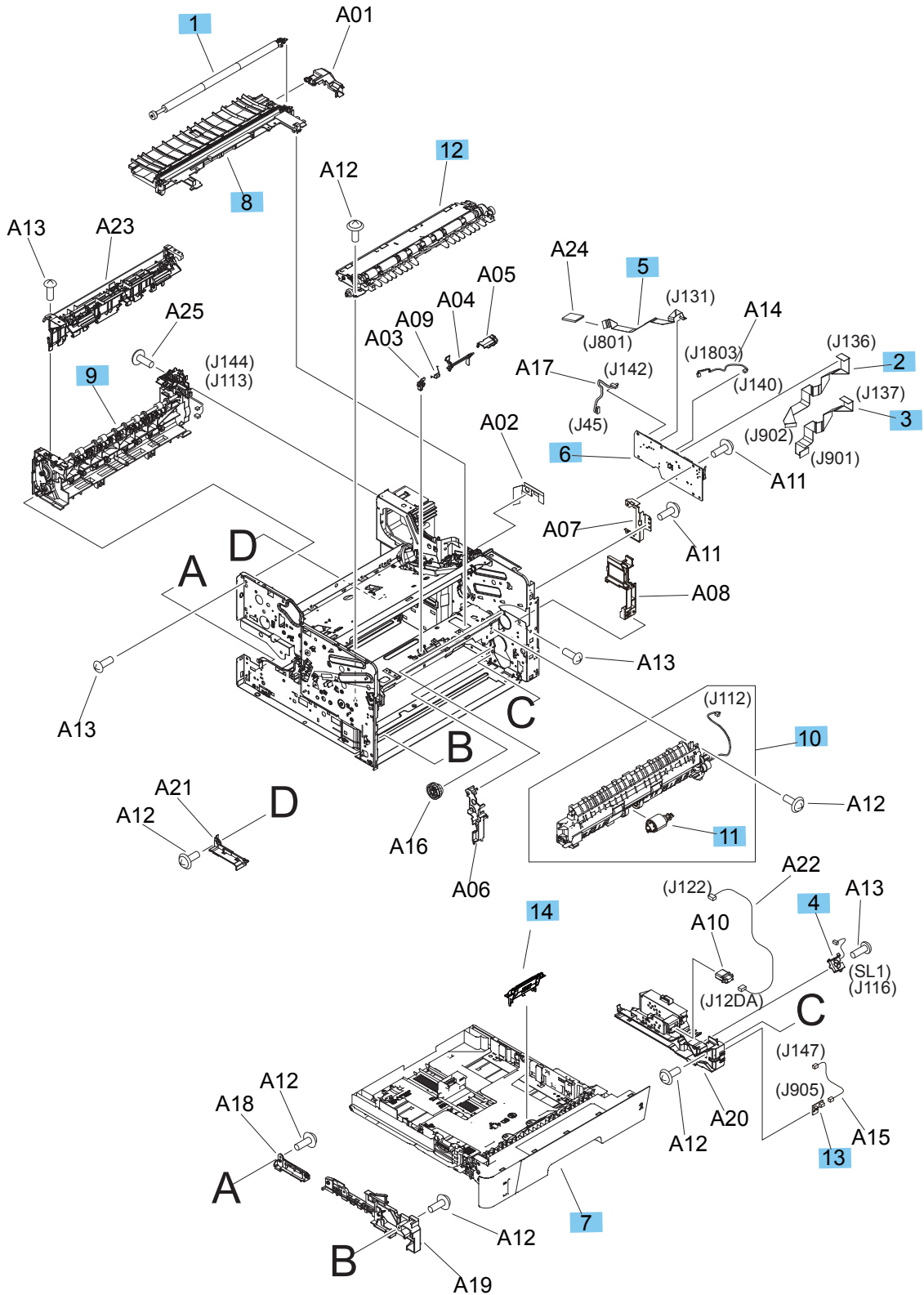


**Table 2-9 Scanner assembly with control panel and without lid**

<b>Ref</b>	<b>Description</b>	<b>Part number</b>	<b>Qty</b>
1	Assembly, scanner with control panel and without lid	A3E42-60120	1

# Internal components

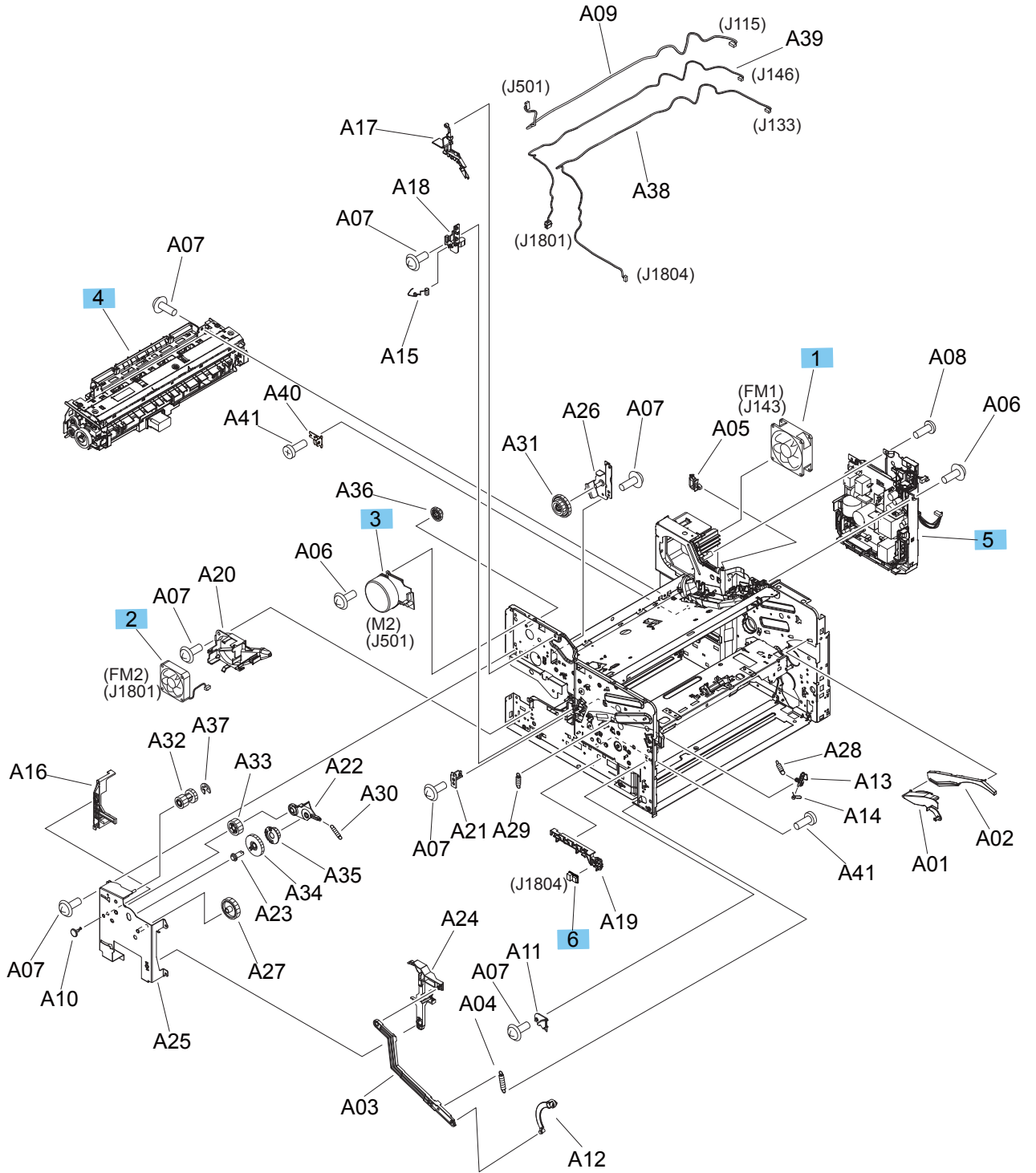
Figure 2-7 Internal components (1 of 3)



**Table 2-10 Internal components (1 of 3)**

<b>Ref</b>	<b>Description</b>	<b>Part number</b>	<b>Qty</b>
1	Roller, transfer	RM2-5841-000	1
2	FFC, 21P	RK2-1054-000	1
3	FFC, 23P	RK2-1056-000	1
4	Solenoid, tray 2	RK2-1096-000	1
5	FFC, 15P	RK2-4915-000	1
6	PCA, DC controller	RM2-0231-000	2
7	Cassette, tray 2	RM2-0629-000	2
8	Assembly, paper feed	RM2-0630-000	1
9	Assembly, face-down paper delivery	RM2-0633-000	1
10	Assembly, paper pickup	RM2-0643-000	1
11	Roller, tray 2 pickup	RL1-4049-000	1
12	Assembly, registration	RM2-0645-000	1
13	Assembly, cassette detect switch	RM2-0236-000	1
14	Pad, tray 2 separation	RM1-2546-000	1

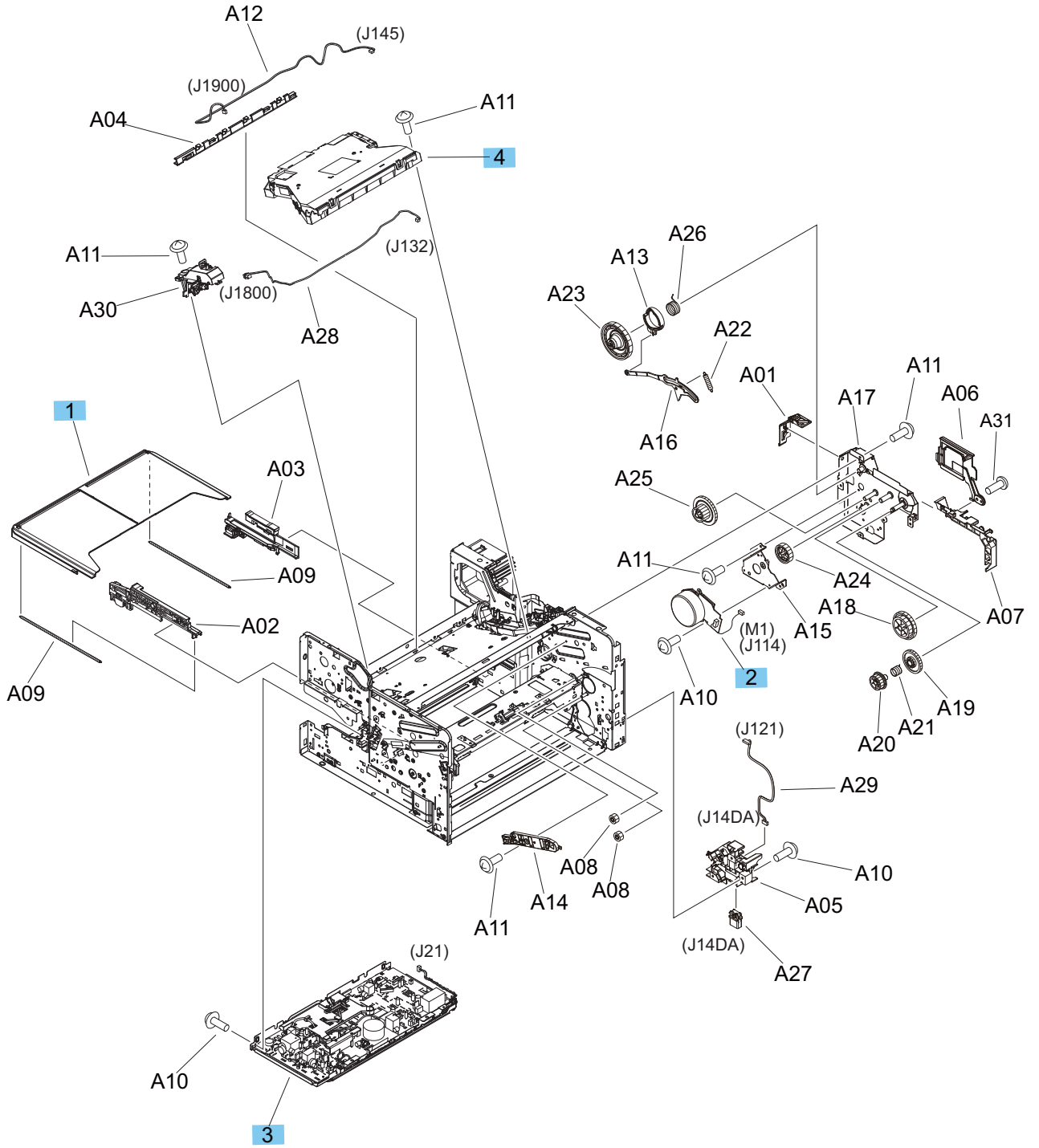
Figure 2-8 Internal components (2 of 3)



**Table 2-11 Internal components (2 of 3)**

<b>Ref</b>	<b>Description</b>	<b>Part number</b>	<b>Qty</b>
1	Fan, right	RK2-1090-000	1
2	Fan, left	RK2-2728-000	1
3	Motor, fuser	RM2-0622-000	1
4	Assembly, fuser (220v)	RM2-0639-000	1
5	Power supply, low-voltage	RM2-0647-000	1
6	Sensor, humidity	WP2-5368-000	1

Figure 2-9 Internal components (3 of 3)

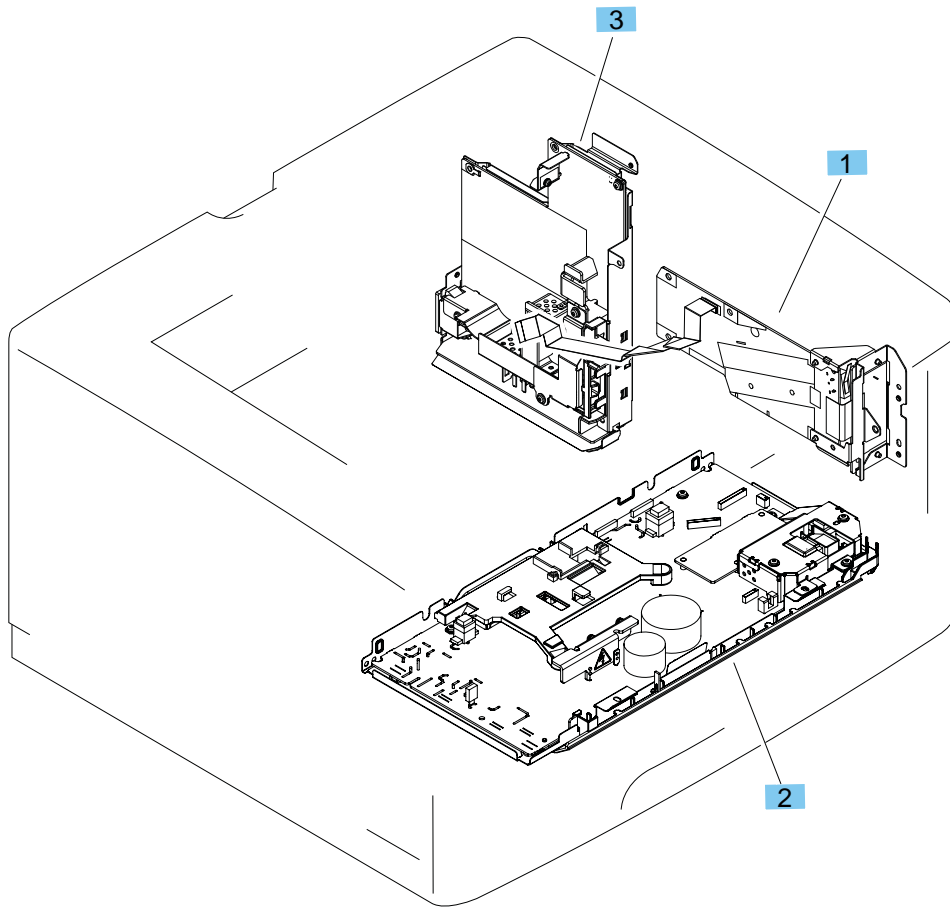


**Table 2-12 Internal components (3 of 3)**

<b>Ref</b>	<b>Description</b>	<b>Part number</b>	<b>Qty</b>
1	Cover, dust	RC3-5754-000	1
2	Motor, main	RM2-0623-000	1
3	Power supply, high-voltage	RM2-0631-000	1
4	Assembly, laser scanner unit	RM2-0648-000	1

# PCAs

Figure 2-10 PCA assembly



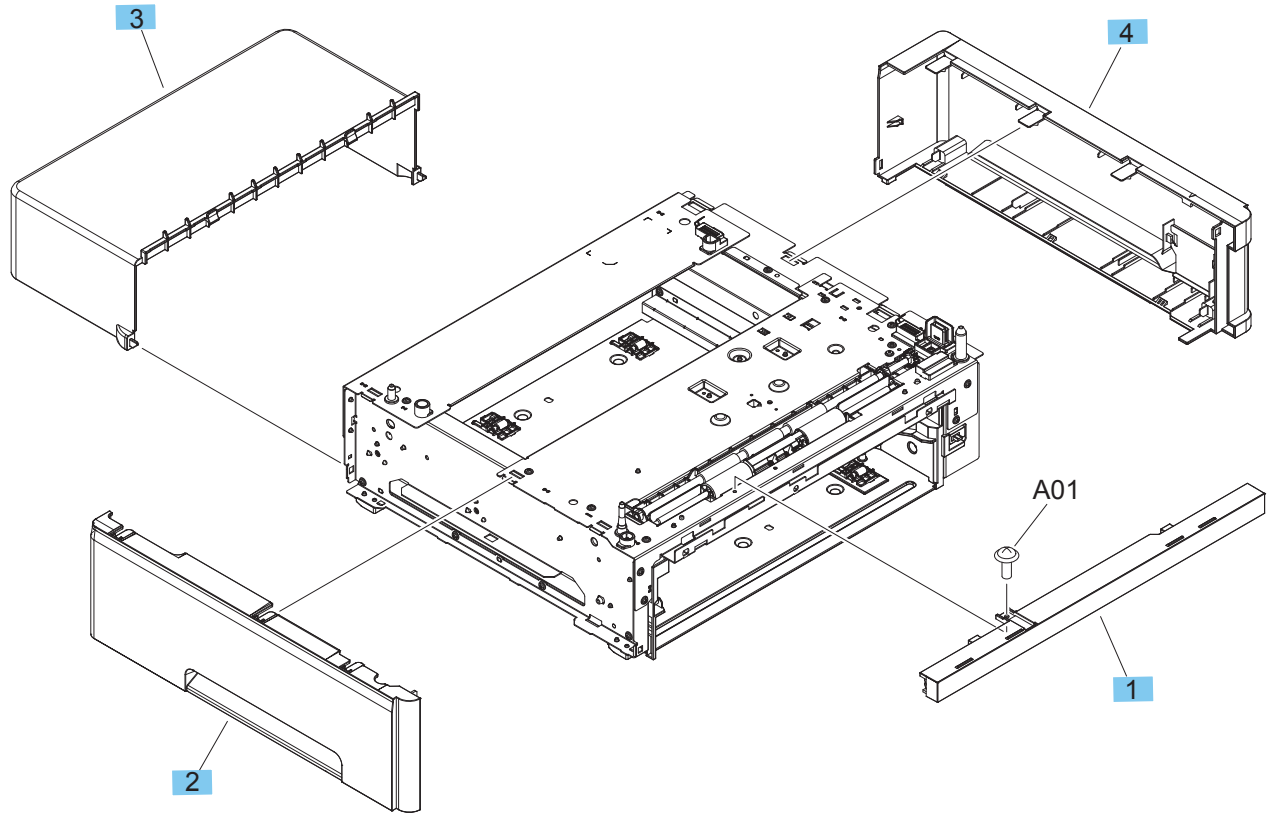


**Table 2-13 PCA assembly**

<b>Ref</b>	<b>Description</b>	<b>Part number</b>	<b>Qty</b>
1	DC controller PCA assembly	RM2-0231-000	1
2	High-voltage PCA assembly	RM2-0631-000	1
3	Low-voltage PCA assembly	RM2-0647-000	1
Not shown	PCA, formatter	CZ237-60001	1
Not shown	Stay, formatter	A3E42-00005	1
Not shown	FFC, formatter engine	A3E42-40013	1
Not shown	PCA, walk-up USB	CF368-60001	1
Not shown	Cable, front USB	A3E42-90978	1
Not shown	Bracket, USB	A2E42-00003	1
Not shown	PCA, WiFi	1150-7957	1
Not shown	Holder, WiFi	CF144-40011	1

# 500-sheet feeder, cassette, external panels and covers

Figure 2-11 500-sheet feeder cassette external panels and covers

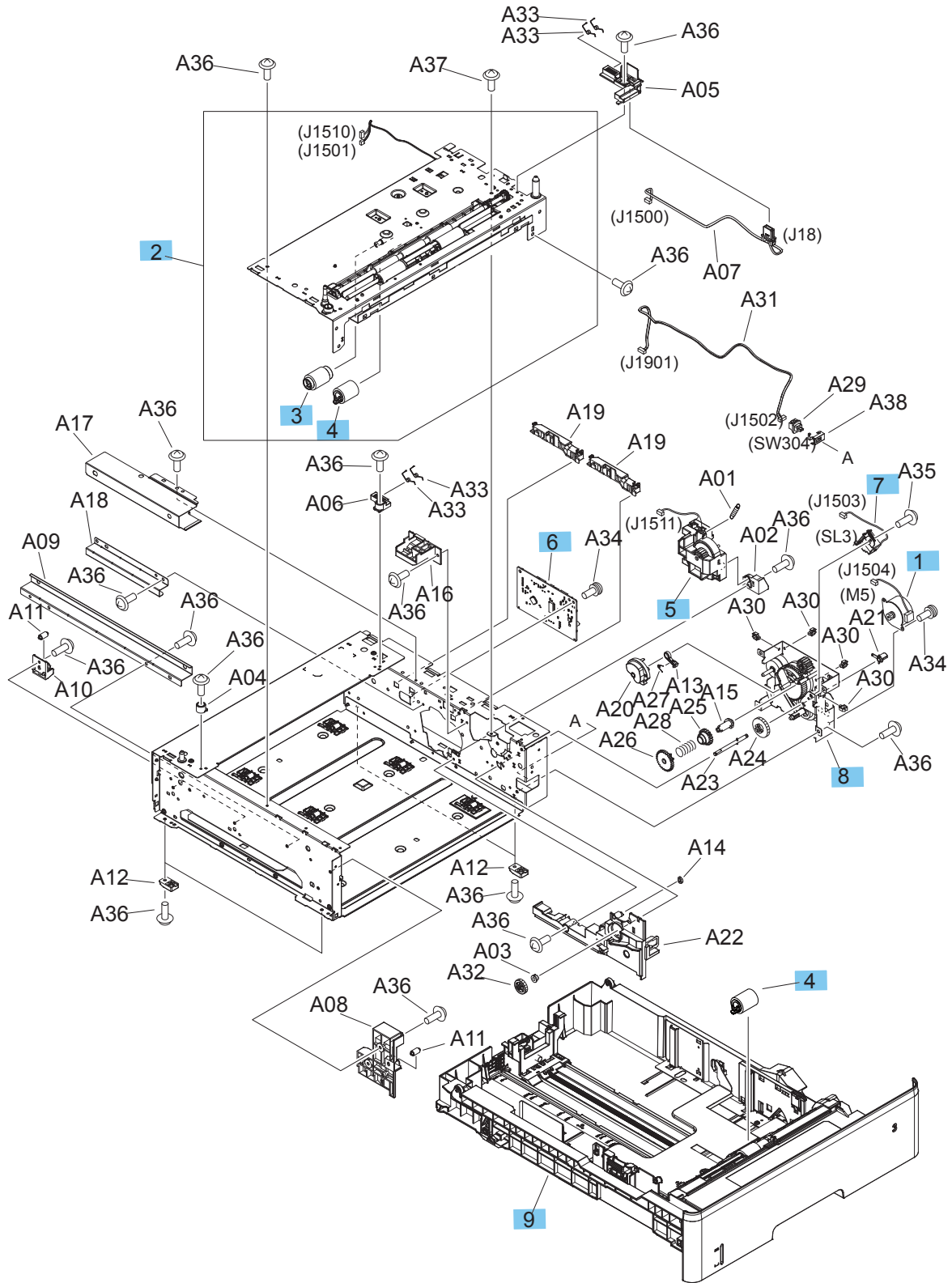


**Table 2-14 500-sheet feeder cassette external panels and covers**

<b>Ref</b>	<b>Description</b>	<b>Part number</b>	<b>Qty</b>
1	Cover, front, 500-sheet cassette	RC3-6131-000	1
2	Cover, left, 500-sheet cassette	RC3-6132-000	1
3	Cover, cassette	RC3-6134-000	1
4	Cover, right, 500-sheet cassette	RM2-0656-000	1

# 500-sheet feeder internal components

Figure 2-12 500-sheet feeder internal components

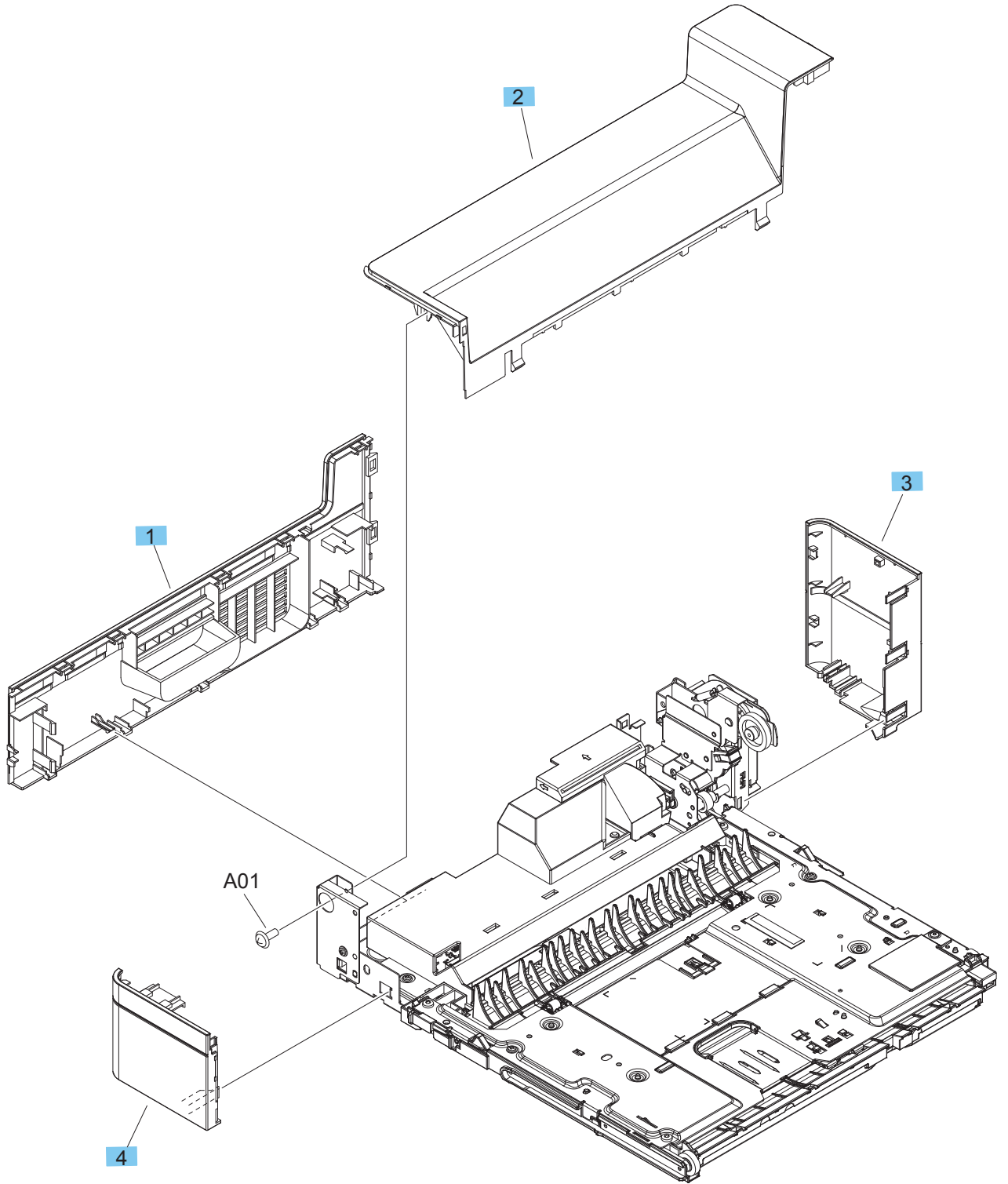


**Table 2-15 500-sheet feeder internal components**

<b>Ref</b>	<b>Description</b>	<b>Part number</b>	<b>Qty</b>
1	Motor, DC stepping	RK2-1062-000	1
2	Assembly, paper pickup	RM1-2896-000	1
3	Roller, paper pickup	RM1-0036-020	1
4	Roller, paper feed	RM1-0037-020	2
5	Assembly, lifter drive	RM1-2912-030	1
6	PCA, paper feed	RM2-0241-000	1
7	Solenoid, tray 3	RK2-0270-000	1
8	Assembly, drive	RM1-2909-000	1
9	Cassette, tray 3	RM2-0657-000	1

# Duplexer external covers

Figure 2-13 Duplexer external covers

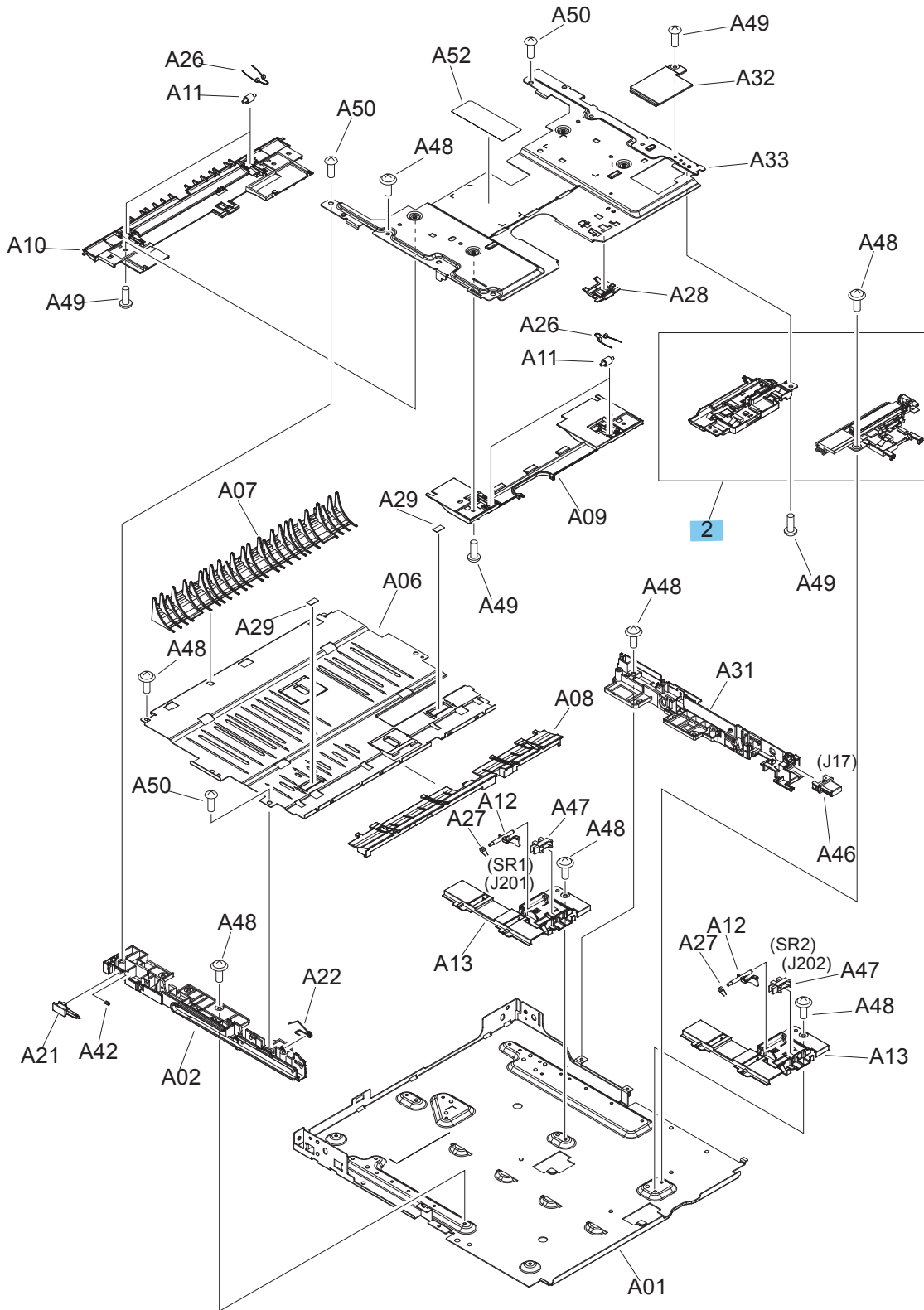


**Table 2-16 Duplexer external covers**

<b>Ref</b>	<b>Description</b>	<b>Part number</b>	<b>Qty</b>
1	Cover, rear	RC3-6137-000	1
2	Cover, upper	RC3-6138-000	1
3	Cover, right	RC3-6139-000	1
4	Cover, left	RC3-6140-000	1

# Duplexing main body

Figure 2-14 Duplexing main body (1 of 2)

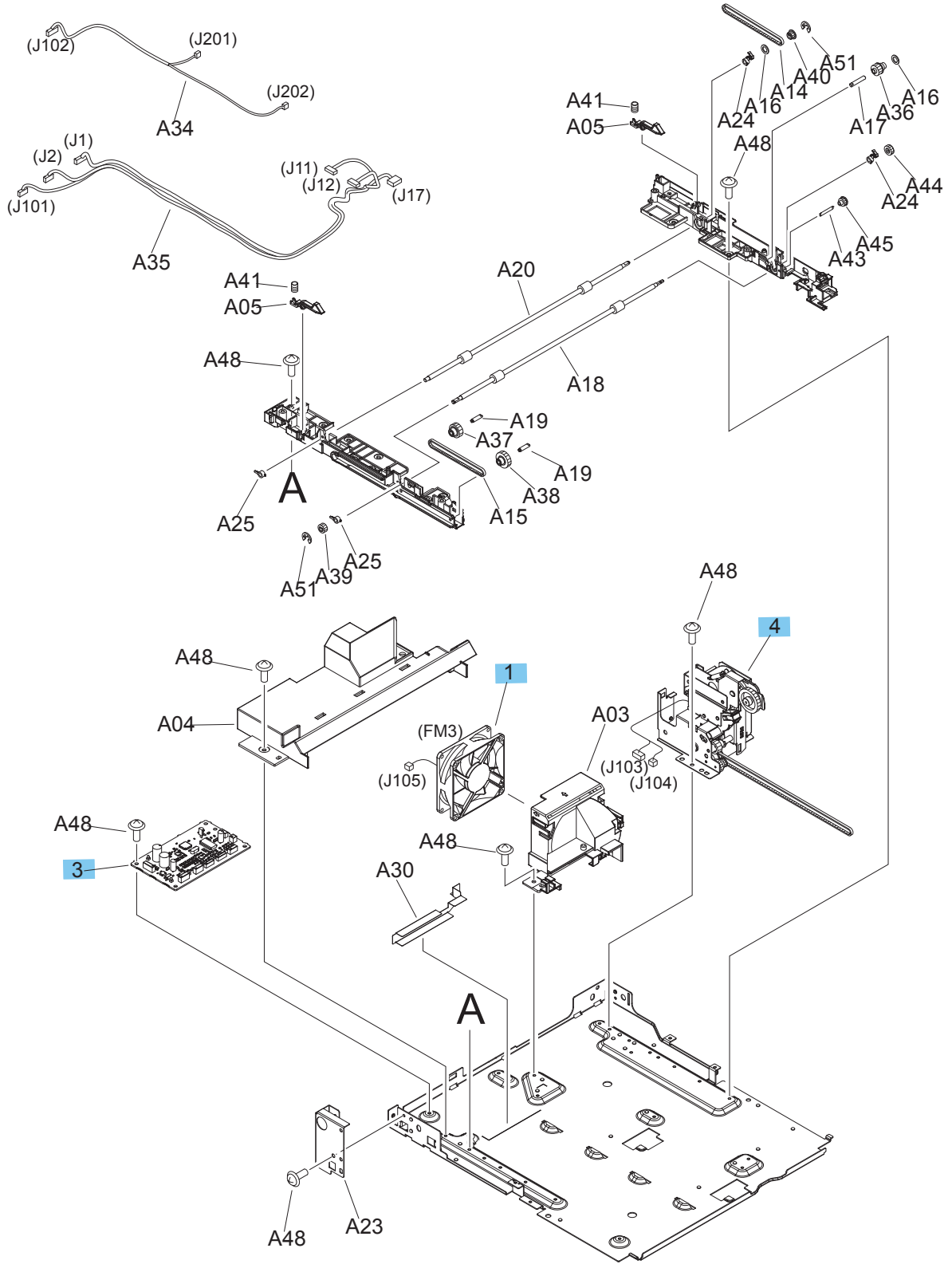




**Table 2-17 Duplexing main body (2 of 2)**

<b>Ref</b>	<b>Description</b>	<b>Part number</b>	<b>Qty</b>
2	Kit, registration sensor	RM1-9838-010	1

**Figure 2-15** Duplexing main body (2 of 2)



**Table 2-18 Duplexing main body (3 of 3)**

<b>Ref</b>	<b>Description</b>	<b>Part number</b>	<b>Qty</b>
1	Fan, duplexer	RK2-1067-000	1
3	PCA, duplexer	RM2-0255-000	1
4	Drive assembly, duplexer	RM2-0663-000	1

# Alphabetical parts list

**Table 2-19 Alphabetical parts list**

<b>Description</b>	<b>Part number</b>	<b>Table and page</b>
Assembly, 3.0"MF control panel	A3E42-60106	<a href="#">SSA and control panel (1 of 4) on page 125</a>
Assembly, cartridge door	RM2-0624-000	<a href="#">External panels and covers on page 123</a>
Assembly, cassette detect switch	RM2-0236-000	<a href="#">Internal components (1 of 3) on page 133</a>
Assembly, drive	RM1-2909-000	<a href="#">500-sheet feeder internal components on page 143</a>
Assembly, face-down paper delivery	RM2-0633-000	<a href="#">Internal components (1 of 3) on page 133</a>
Assembly, fuser (220v)	RM2-0639-000	<a href="#">Internal components (2 of 3) on page 135</a>
Assembly, laser scanner unit	RM2-0648-000	<a href="#">Internal components (3 of 3) on page 137</a>
Assembly, lifter drive	RM1-2912-030	<a href="#">500-sheet feeder internal components on page 143</a>
Assembly, paper feed	RM2-0630-000	<a href="#">Internal components (1 of 3) on page 133</a>
Assembly, paper pickup	RM2-0643-000	<a href="#">Internal components (1 of 3) on page 133</a>
Assembly, paper pickup	RM1-2896-000	<a href="#">500-sheet feeder internal components on page 143</a>
Assembly, registration	RM2-0645-000	<a href="#">Internal components (1 of 3) on page 133</a>
Assembly, right cover	RM2-5843-000	<a href="#">External panels and covers on page 123</a>
Assembly, scanner lid	A3E42-60105	<a href="#">SSA and control panel (2 of 4) on page 127</a>
Assembly, scanner with control panel and without lid	A3E42-60120	<a href="#">Scanner assembly with control panel and without lid on page 131</a>
Assembly, scanner with control panel, whole-unit	A3E42-60101	<a href="#">SSA and control panel (1 of 4) on page 125</a>
Assembly, scanner without lid and control panel	A3E42-60116	<a href="#">Scanner assembly without lid and control panel (3 of 4) on page 129</a>
Bracket, USB	A2E42-00003	<a href="#">PCA assembly on page 139</a>
Cable, front USB	A3E42-90978	<a href="#">PCA assembly on page 139</a>
Cassette, tray 2	RM2-0629-000	<a href="#">Internal components (1 of 3) on page 133</a>

**Table 2-19 Alphabetical parts list (continued)**

<b>Description</b>	<b>Part number</b>	<b>Table and page</b>
Cassette, tray 3	RM2-0657-000	<a href="#">500-sheet feeder internal components on page 143</a>
Cover, cassette	RC3-6134-000	<a href="#">500-sheet feeder cassette external panels and covers on page 141</a>
Cover, dust	RC3-5754-000	<a href="#">Internal components (3 of 3) on page 137</a>
Cover, face down	RL2-0546-000	<a href="#">External panels and covers on page 123</a>
Cover, front USB	RC3-5763-000	<a href="#">External panels and covers on page 123</a>
Cover, front, 500-sheet cassette	RC3-6131-000	<a href="#">500-sheet feeder cassette external panels and covers on page 141</a>
Cover, hinge	A3E42-40009	<a href="#">SSA and control panel (1 of 4) on page 125</a>
Cover, left	RC3-5757-000	<a href="#">External panels and covers on page 123</a>
Cover, left	RC3-6140-000	<a href="#">Duplexer external covers on page 145</a>
Cover, left, 500-sheet cassette	RC3-6132-000	<a href="#">500-sheet feeder cassette external panels and covers on page 141</a>
Cover, multipurpose tray	RM2-0625-000	<a href="#">External panels and covers on page 123</a>
Cover, rear	RM2-0636-000	<a href="#">External panels and covers on page 123</a>
Cover, rear	RC3-6137-000	<a href="#">Duplexer external covers on page 145</a>
Cover, rear lower	RL2-0550-000	<a href="#">External panels and covers on page 123</a>
Cover, right	RC3-6139-000	<a href="#">Duplexer external covers on page 145</a>
Cover, right front	RC3-5762-000	<a href="#">External panels and covers on page 123</a>
Cover, right handle	RC3-5758-000	<a href="#">External panels and covers on page 123</a>
Cover, right upper	RC3-5760-000	<a href="#">External panels and covers on page 123</a>
Cover, right, 500-sheet cassette	RM2-0656-000	<a href="#">500-sheet feeder cassette external panels and covers on page 141</a>
Cover, top	RM2-0642-000	<a href="#">External panels and covers on page 123</a>

**Table 2-19 Alphabetical parts list (continued)**

<b>Description</b>	<b>Part number</b>	<b>Table and page</b>
Cover, upper	RC3-6138-000	<a href="#">Duplexer external covers on page 145</a>
DC controller PCA assembly	RM2-0231-000	<a href="#">PCA assembly on page 139</a>
Drive assembly, duplexer	RM2-0663-000	<a href="#">Duplexing main body (3 of 3) on page 149</a>
Fan, duplexer	RK2-1067-000	<a href="#">Duplexing main body (3 of 3) on page 149</a>
Fan, left	RK2-2728-000	<a href="#">Internal components (2 of 3) on page 135</a>
Fan, right	RK2-1090-000	<a href="#">Internal components (2 of 3) on page 135</a>
Ferrite, control panel	9170-2329	<a href="#">SSA and control panel (1 of 4) on page 125</a>
Ferrite, motor	5851-5178	<a href="#">SSA and control panel (1 of 4) on page 125</a>
Ferrite, scanner	9170-2597	<a href="#">SSA and control panel (1 of 4) on page 125</a>
FFC, 15P	RK2-4915-000	<a href="#">Internal components (1 of 3) on page 133</a>
FFC, 21P	RK2-1054-000	<a href="#">Internal components (1 of 3) on page 133</a>
FFC, 23P	RK2-1056-000	<a href="#">Internal components (1 of 3) on page 133</a>
FFC, formatter engine	A3E42-40013	<a href="#">PCA assembly on page 139</a>
High-voltage PCA assembly	RM2-0631-000	<a href="#">PCA assembly on page 139</a>
Holder, WiFi	CF144-40011	<a href="#">PCA assembly on page 139</a>
HP logo, low profile round	7121-8541	<a href="#">External panels and covers on page 123</a>
Kit, registration sensor	RM1-9838-010	<a href="#">Duplexing main body (2 of 2) on page 147</a>
Low-voltage PCA assembly	RM2-0647-000	<a href="#">PCA assembly on page 139</a>
Motor, DC stepping	RK2-1062-000	<a href="#">500-sheet feeder internal components on page 143</a>
Motor, fuser	RM2-0622-000	<a href="#">Internal components (2 of 3) on page 135</a>
Motor, main	RM2-0623-000	<a href="#">Internal components (3 of 3) on page 137</a>
Name plate	A3E42-40010	<a href="#">External panels and covers on page 123</a>
Pad, multi-purpose tray, separation	RM1-2462-000	<a href="#">External panels and covers on page 123</a>

**Table 2-19 Alphabetical parts list (continued)**

<b>Description</b>	<b>Part number</b>	<b>Table and page</b>
Pad, tray 2 separation	RM1-2546-000	<a href="#">Internal components (1 of 3) on page 133</a>
PCA, DC controller	RM2-0231-000	<a href="#">Internal components (1 of 3) on page 133</a>
PCA, duplexer	RM2-0255-000	<a href="#">Duplexing main body (3 of 3) on page 149</a>
PCA, formatter	CZ237-60001	<a href="#">PCA assembly on page 139</a>
PCA, paper feed	RM2-0241-000	<a href="#">500-sheet feeder internal components on page 143</a>
PCA, walk-up USB	CF368-60001	<a href="#">PCA assembly on page 139</a>
PCA, WiFi	1150-7957	<a href="#">PCA assembly on page 139</a>
Power supply, high-voltage	RM2-0631-000	<a href="#">Internal components (3 of 3) on page 137</a>
Power supply, low-voltage	RM2-0647-000	<a href="#">Internal components (2 of 3) on page 135</a>
Roller, multi-purpose tray, pickup	RL2-0544-000	<a href="#">External panels and covers on page 123</a>
Roller, paper feed	RM1-0037-020	<a href="#">500-sheet feeder internal components on page 143</a>
Roller, paper pickup	RM1-0036-020	<a href="#">500-sheet feeder internal components on page 143</a>
Roller, transfer	RM2-5841-000	<a href="#">Internal components (1 of 3) on page 133</a>
Roller, tray 2 pickup	RL1-4049-000	<a href="#">Internal components (1 of 3) on page 133</a>
Sensor, humidity	WP2-5368-000	<a href="#">Internal components (2 of 3) on page 135</a>
Solenoid, tray 2	RK2-1096-000	<a href="#">Internal components (1 of 3) on page 133</a>
Solenoid, tray 3	RK2-0270-000	<a href="#">500-sheet feeder internal components on page 143</a>
Stay, formatter	A3E42-00005	<a href="#">PCA assembly on page 139</a>

# Numerical parts list

**Table 2-20 Numerical parts list**

Part number	Description	Table and page
1150-7957	PCA, WiFi	<a href="#">PCA assembly on page 139</a>
5851-5178	Ferrite, motor	<a href="#">SSA and control panel (1 of 4) on page 125</a>
7121-8541	HP logo, low profile round	<a href="#">External panels and covers on page 123</a>
9170-2329	Ferrite, control panel	<a href="#">SSA and control panel (1 of 4) on page 125</a>
9170-2597	Ferrite, scanner	<a href="#">SSA and control panel (1 of 4) on page 125</a>
A2E42-00003	Bracket, USB	<a href="#">PCA assembly on page 139</a>
A3E42-00005	Stay, formatter	<a href="#">PCA assembly on page 139</a>
A3E42-40009	Cover, hinge	<a href="#">SSA and control panel (1 of 4) on page 125</a>
A3E42-40010	Name plate	<a href="#">External panels and covers on page 123</a>
A3E42-40013	FFC, formatter engine	<a href="#">PCA assembly on page 139</a>
A3E42-60101	Assembly, scanner with control panel, whole-unit	<a href="#">SSA and control panel (1 of 4) on page 125</a>
A3E42-60105	Assembly, scanner lid	<a href="#">SSA and control panel (2 of 4) on page 127</a>
A3E42-60106	Assembly, 3.0"MF control panel	<a href="#">SSA and control panel (1 of 4) on page 125</a>
A3E42-60116	Assembly, scanner without lid and control panel	<a href="#">Scanner assembly without lid and control panel (3 of 4) on page 129</a>
A3E42-60120	Assembly, scanner with control panel and without lid	<a href="#">Scanner assembly with control panel and without lid on page 131</a>
A3E42-90978	Cable, front USB	<a href="#">PCA assembly on page 139</a>
CF144-40011	Holder, WiFi	<a href="#">PCA assembly on page 139</a>
CF368-60001	PCA, walk-up USB	<a href="#">PCA assembly on page 139</a>
CZ237-60001	PCA, formatter	<a href="#">PCA assembly on page 139</a>
RC3-5754-000	Cover, dust	<a href="#">Internal components (3 of 3) on page 137</a>
RC3-5757-000	Cover, left	<a href="#">External panels and covers on page 123</a>
RC3-5758-000	Cover, right handle	<a href="#">External panels and covers on page 123</a>
RC3-5760-000	Cover, right upper	<a href="#">External panels and covers on page 123</a>



**Table 2-20 Numerical parts list (continued)**

<b>Part number</b>	<b>Description</b>	<b>Table and page</b>
RC3-5762-000	Cover, right front	<a href="#">External panels and covers on page 123</a>
RC3-5763-000	Cover, front USB	<a href="#">External panels and covers on page 123</a>
RC3-6131-000	Cover, front, 500-sheet cassette	<a href="#">500-sheet feeder cassette external panels and covers on page 141</a>
RC3-6132-000	Cover, left, 500-sheet cassette	<a href="#">500-sheet feeder cassette external panels and covers on page 141</a>
RC3-6134-000	Cover, cassette	<a href="#">500-sheet feeder cassette external panels and covers on page 141</a>
RC3-6137-000	Cover, rear	<a href="#">Duplexer external covers on page 145</a>
RC3-6138-000	Cover, upper	<a href="#">Duplexer external covers on page 145</a>
RC3-6139-000	Cover, right	<a href="#">Duplexer external covers on page 145</a>
RC3-6140-000	Cover, left	<a href="#">Duplexer external covers on page 145</a>
RK2-0270-000	Solenoid, tray 3	<a href="#">500-sheet feeder internal components on page 143</a>
RK2-1054-000	FFC, 21P	<a href="#">Internal components (1 of 3) on page 133</a>
RK2-1056-000	FFC, 23P	<a href="#">Internal components (1 of 3) on page 133</a>
RK2-1062-000	Motor, DC stepping	<a href="#">500-sheet feeder internal components on page 143</a>
RK2-1067-000	Fan, duplexer	<a href="#">Duplexing main body (3 of 3) on page 149</a>
RK2-1090-000	Fan, right	<a href="#">Internal components (2 of 3) on page 135</a>
RK2-1096-000	Solenoid, tray 2	<a href="#">Internal components (1 of 3) on page 133</a>
RK2-2728-000	Fan, left	<a href="#">Internal components (2 of 3) on page 135</a>
RK2-4915-000	FFC, 15P	<a href="#">Internal components (1 of 3) on page 133</a>
RL1-4049-000	Roller, tray 2 pickup	<a href="#">Internal components (1 of 3) on page 133</a>
RL2-0544-000	Roller, multi-purpose tray, pickup	<a href="#">External panels and covers on page 123</a>

**Table 2-20 Numerical parts list (continued)**

<b>Part number</b>	<b>Description</b>	<b>Table and page</b>
RL2-0546-000	Cover, face down	<a href="#">External panels and covers on page 123</a>
RL2-0550-000	Cover, rear lower	<a href="#">External panels and covers on page 123</a>
RM1-0036-020	Roller, paper pickup	<a href="#">500-sheet feeder internal components on page 143</a>
RM1-0037-020	Roller, paper feed	<a href="#">500-sheet feeder internal components on page 143</a>
RM1-2462-000	Pad, multi-purpose tray, separation	<a href="#">External panels and covers on page 123</a>
RM1-2546-000	Pad, tray 2 separation	<a href="#">Internal components (1 of 3) on page 133</a>
RM1-2896-000	Assembly, paper pickup	<a href="#">500-sheet feeder internal components on page 143</a>
RM1-2909-000	Assembly, drive	<a href="#">500-sheet feeder internal components on page 143</a>
RM1-2912-030	Assembly, lifter drive	<a href="#">500-sheet feeder internal components on page 143</a>
RM1-9838-010	Kit, registration sensor	<a href="#">Duplexing main body (2 of 2) on page 147</a>
RM2-0231-000	PCA, DC controller	<a href="#">Internal components (1 of 3) on page 133</a>
RM2-0231-000	DC controller PCA assembly	<a href="#">PCA assembly on page 139</a>
RM2-0236-000	Assembly, cassette detect switch	<a href="#">Internal components (1 of 3) on page 133</a>
RM2-0241-000	PCA, paper feed	<a href="#">500-sheet feeder internal components on page 143</a>
RM2-0255-000	PCA, duplexer	<a href="#">Duplexing main body (3 of 3) on page 149</a>
RM2-0622-000	Motor, fuser	<a href="#">Internal components (2 of 3) on page 135</a>
RM2-0623-000	Motor, main	<a href="#">Internal components (3 of 3) on page 137</a>
RM2-0624-000	Assembly, cartridge door	<a href="#">External panels and covers on page 123</a>
RM2-0625-000	Cover, multipurpose tray	<a href="#">External panels and covers on page 123</a>
RM2-0629-000	Cassette, tray 2	<a href="#">Internal components (1 of 3) on page 133</a>
RM2-0630-000	Assembly, paper feed	<a href="#">Internal components (1 of 3) on page 133</a>
RM2-0631-000	Power supply, high-voltage	<a href="#">Internal components (3 of 3) on page 137</a>

**Table 2-20 Numerical parts list (continued)**

<b>Part number</b>	<b>Description</b>	<b>Table and page</b>
RM2-0631-000	High-voltage PCA assembly	<a href="#">PCA assembly on page 139</a>
RM2-0633-000	Assembly, face-down paper delivery	<a href="#">Internal components (1 of 3) on page 133</a>
RM2-0636-000	Cover, rear	<a href="#">External panels and covers on page 123</a>
RM2-0639-000	Assembly, fuser (220v)	<a href="#">Internal components (2 of 3) on page 135</a>
RM2-0642-000	Cover, top	<a href="#">External panels and covers on page 123</a>
RM2-0643-000	Assembly, paper pickup	<a href="#">Internal components (1 of 3) on page 133</a>
RM2-0645-000	Assembly, registration	<a href="#">Internal components (1 of 3) on page 133</a>
RM2-0647-000	Power supply, low-voltage	<a href="#">Internal components (2 of 3) on page 135</a>
RM2-0647-000	Low-voltage PCA assembly	<a href="#">PCA assembly on page 139</a>
RM2-0648-000	Assembly, laser scanner unit	<a href="#">Internal components (3 of 3) on page 137</a>
RM2-0656-000	Cover, right, 500-sheet cassette	<a href="#">500-sheet feeder cassette external panels and covers on page 141</a>
RM2-0657-000	Cassette, tray 3	<a href="#">500-sheet feeder internal components on page 143</a>
RM2-0663-000	Drive assembly, duplexer	<a href="#">Duplexing main body (3 of 3) on page 149</a>
RM2-5841-000	Roller, transfer	<a href="#">Internal components (1 of 3) on page 133</a>
RM2-5843-000	Assembly, right cover	<a href="#">External panels and covers on page 123</a>
WP2-5368-000	Sensor, humidity	<a href="#">Internal components (2 of 3) on page 135</a>