
2 Parts and diagrams

- [Order parts by authorized service providers](#)
- [Related documentation and software](#)
- [Fasteners used in this product](#)
- [How to use the parts lists and diagrams](#)
- [Assembly locations](#)
- [Covers](#)
- [ADF and scanner assemblies](#)
- [Control panel assembly](#)
- [ADF assemblies](#)
- [Scanner assemblies](#)
- [Internal assemblies \(1 of 6\)](#)
- [Internal assemblies \(2 of 6\)](#)
- [Internal assemblies \(3 of 6\)](#)
- [Internal assemblies \(4 of 6\)](#)
- [Internal assemblies \(5 of 6\)](#)
- [Internal assemblies \(6 of 6\)](#)
- [Input devices](#)
- [Alphabetical parts list](#)
- [Numerical parts list](#)

Order parts by authorized service providers

Order parts, accessories, and supplies

Table 2-1 Order parts, accessories, and supplies

Order supplies and paper	www.hp.com/go/suresupply
Order genuine HP parts or accessories	www.hp.com/buy/parts
Order through service or support providers	Contact an HP-authorized service or support provider.
Order using HP software	For information about using the HP software to order parts, accessories, and supplies, see the product user guide.
Power cords	8121-0564; India 220 v, 6A 8121-0729; Argentina 220 v, 10A 8121-0731; Korea, EU generic 220 v, 10A 8121-0733; Denmark 220 v, 10A 8121-0734; Thailand, Philippines 220/110 v 8121-0735; South America, Chile, Peru 220 v, 10A 8121-0737; South Africa 220 v, 10A 8121-0738; Switzerland 220 v, 10A 8121-0739; UK, Asia Pacific 220 v, 10A 8121-0740; North America 110 v, 13A 8121-0837; Australia, New Zealand 220 v, 10A 8121-0943; China 220 v, 10A 8121-0964; Taiwan 110 v, 13A 8121-1004; Israel 220 v, 10A 8121-1071; Brazil 110 v, 10A 8121-1143; Japan 110 v, 12A

Supplies part numbers

Table 2-2 Supplies part numbers

Item	Description	Part number
HP LaserJet print cartridge	Standard-capacity cartridge	CE255-67901
		CE255A
	High-capacity cartridge	CE255-67902
		CE255X
Staple cartridge	Q7432-67901	

Customer self-repair (CSR) and service kits

Table 2-3 Customer self-repair (CSR) and service kits

Item	Part number
Fax kit (fax models only)	CF116-67904
<ul style="list-style-type: none">Fax cardFax cradleFax black plastic cradleInstallation instructions	
Control-panel kit	CD644-67916
<ul style="list-style-type: none">Control panelInstallation instruction	
Service PM kit	CF116-67903
<ul style="list-style-type: none">FuserTransfer rollerTray 1 rollerTray 1 separation PadTray 2 rollerTray 2 separation padRecycle guide	
ADF roller maintenance kit	<ul style="list-style-type: none">L2718AL2725-60002
Control-panel HIP (Hardware Integration Packet) cover	5042-8976

Table 2-3 Customer self-repair (CSR) and service kits (continued)

Item	Part number
Control-panel USB cover	5042-8977
Foam-reflector kit <ul style="list-style-type: none"> • Foam reflector • Installation instruction 	5851-4878
Separation pad spring kit <ul style="list-style-type: none"> • Separation pad spring • Installation instruction 	5851-4879
SSM solid state module kit <p>Replacement memory module for the M525dn model</p> <ul style="list-style-type: none"> • SSM SanDisk 8 GB • Lock key • Installation instruction 	CF116-67916
Hard disk drive kit <p>Replacement HP Encrypted High Performance Hard Disk for the M525f model</p> <ul style="list-style-type: none"> • HDD 250 GB SED • Hard disk drive bracket • Installation instruction 	CF116-67907
Hard disk drive kit <p>Replacement HP Encrypted High Performance Hard Disk (Government option)</p> <ul style="list-style-type: none"> • HDD 320 GB FIPS140 • Hard disk drive bracket • Installation instruction 	CF116-67915
Tray 2, cassette only	RM1-8512-000CN
Tray 3, cassette only	RM1-6279-000CN
500-sheet feeder CE530A <p>Complete 500-sheet feeder for Tray 3 or Tray 4; includes tray</p>	CE530-69001
MFP stand CF338A	CF116-67919
ADF whole unit kit <ul style="list-style-type: none"> • ADF • Foam reflector kit • Installation instruction 	CF116-67910

Table 2-3 Customer self-repair (CSR) and service kits (continued)

Item	Part number
Image scanner whole unit kit	CF116-67918
<ul style="list-style-type: none">• Flatbed scanner assembly• Foam reflector kit• Installation instruction	
Multipurpose (Tray 1) cover assembly	CF116-67917
Includes nameplate and HP gem.	
ADF mylar kit	5851-4998
<ul style="list-style-type: none">• Guide, mylar A4• Installation instruction	
NOTE: The ADF mylar kit contains six mylar guides. Only two guides are required for the product. Additional guides are to be used if the adhesive on a guide is contaminated during installation.	
Scanner memory PCA kit	CF116-67923
<ul style="list-style-type: none">• Scanner memory PCA• Installation instruction	
Service preventative maintenance kit	CF116-67903
<ul style="list-style-type: none">• Fuser (universal)• Transfer roller• Tray 1 roller• Tray 1 separation pad• Tray 2 roller• Tray 2 separation pad• Recycle guide• Installation instruction	

Related documentation and software

Table 2-4 Related documentation and software

Item	Description	Part number
<i>HP LaserJet Enterprise 500 MFP M525 Printer User Guide</i>	Product user guide	CF116-90912
<i>HP LaserJet Enterprise 500 MFP M525 Repair Manual</i>	English service repair manual	CF116-90902
<i>HP LaserJet Enterprise 500 MFP M525 Troubleshooting Manual</i>	English service troubleshooting manual	CF116-90901

Fasteners used in this product


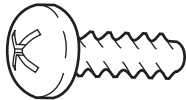
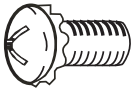


 **NOTE:** The screw illustrations in the following table are for reference only. Screws might vary in size and appearance from those shown in this table.

Table 2-5 Common fasteners

Example	Description	Size	Part Number
	Screw, tapping, truss head	M4X10	XB4-7401-005CN
	Screw, D	M3X8	XA9-1671-000CN

6 mm 8 mm 10 mm M 3 M 4
 

How to use the parts lists and diagrams

⚠ CAUTION: Be sure to order the correct part. When looking for part numbers for electrical components, pay careful attention to the voltage that is listed. Doing so will make sure that the part number selected is for the correct model.

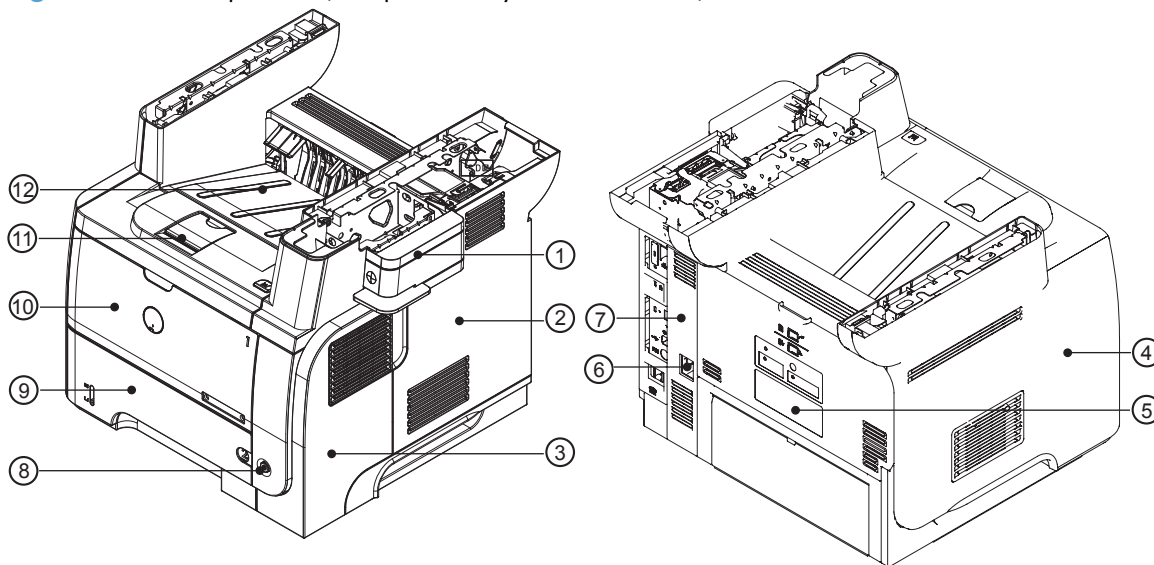
📝 NOTE: In this manual, the abbreviation “PCA” stands for “printed circuit-board assembly.” Components described as a PCA might consist of a single circuit board or a circuit board plus other parts, such as cables and sensors.

The figures in this chapter show the major subassemblies in the product and their component parts. A parts list table follows each exploded view assembly diagram. Each table lists the item number, the associated part number, and the description of each part. If a part is not listed in the table, then it is not a field replacement unit (FRU).

Assembly locations

Base product (no optional trays or accessories)

Figure 2-1 Base product (no optional trays or accessories)



Item	Description	Item	Description
1	Stapler cover	7	Right-rear cover
2	Formatter cover	8	Power switch
3	Right cover	9	Tray 2
4	Left cover	10	Tray 1
5	Rear door	11	Cartridge door
6	Power port	12	Face-down output bin

Base product (optional trays or accessories)

Figure 2-2 Base product (optional trays or accessories)

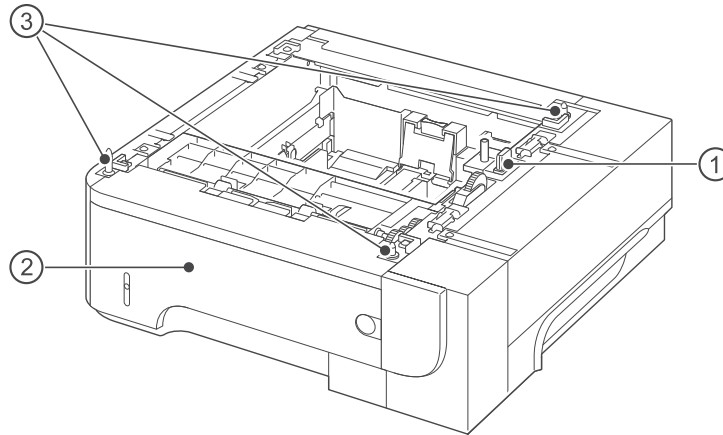


Table 2-6 Optional 500-sheet input tray

Item	Description
1	Connector
2	Tray 3 or Tray 4
3	Positioning pin

Covers

Figure 2-3 Covers

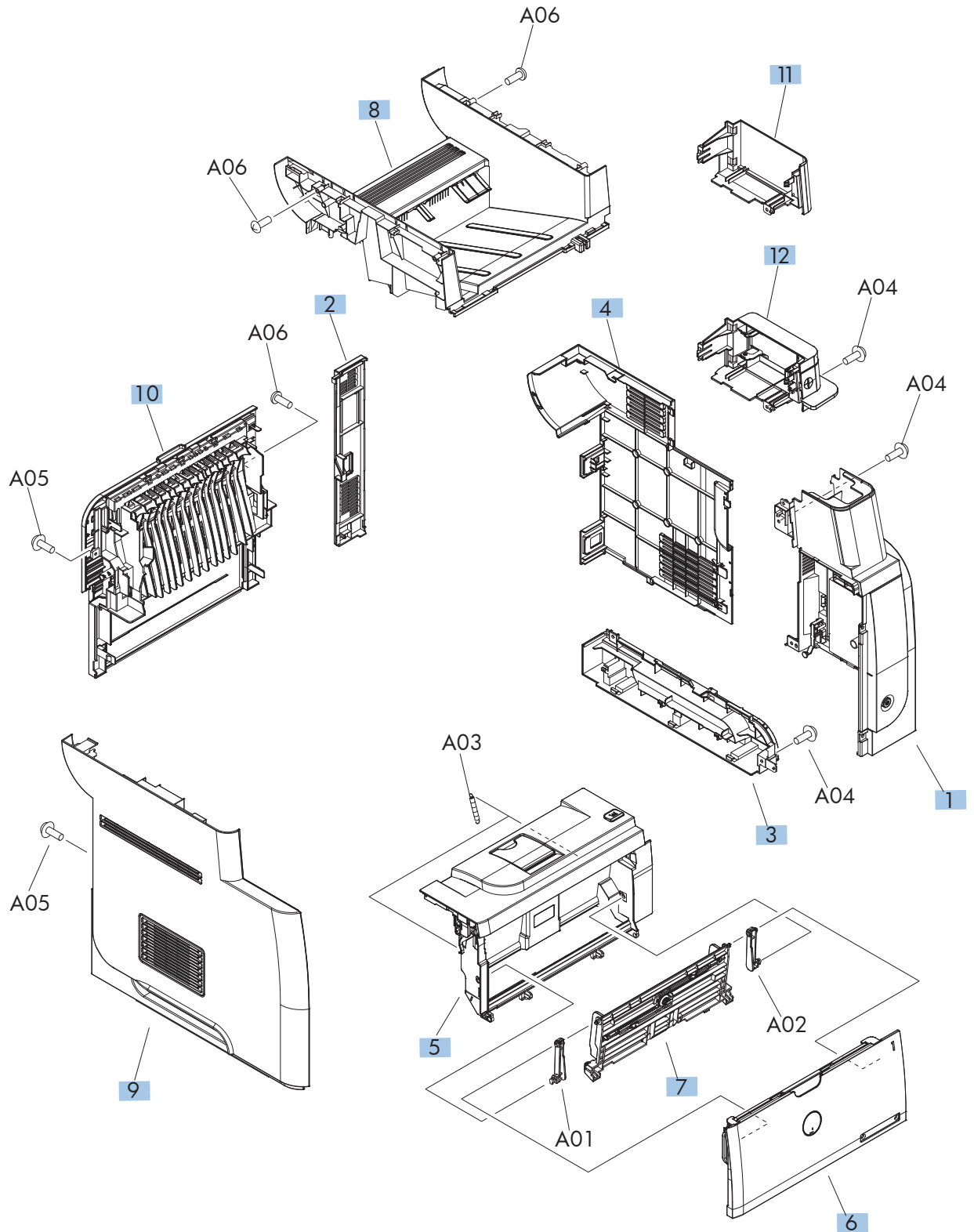


Table 2-7 Covers

Ref	Description	Part number	Qty
1	Cover, right assembly	RM1-8498-000CN	1
2	Cover, right rear	RC2-7673-000CN	1
3	Cover, handle, right	RC2-7675-000CN	1
4	Cover, formatter	RC3-1863-000CN	1
5	Door, cartridge assembly	RM1-8502-000CN	1
6	Cover, multipurpose assembly	CF116-67917	1
7	Multipurpose lifting plate assembly	RM1-6325-000CN	1
8	Cover, top assembly	RM1-8516-000CN	1
9	Cover, left assembly	RM1-8517-000CN	1
10	Cover, rear assembly	RM1-8518-000CN	1
11	Cover, dummy	RC3-1920-000CN	1
12	Cover, staple assembly	RM1-8520-000CN	1

ADF and scanner assemblies

Figure 2-4 ADF and scanner assemblies

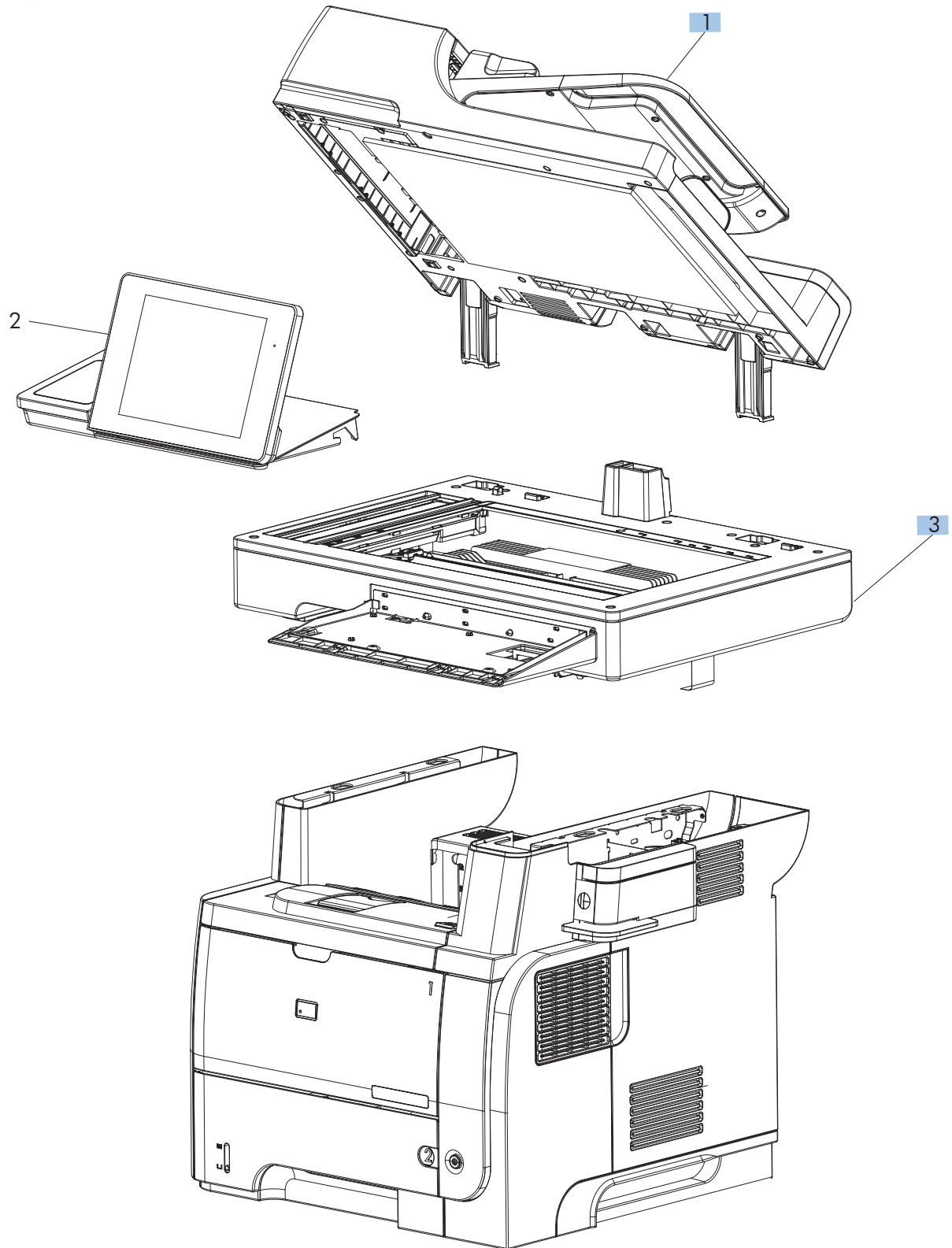


Table 2-8 ADF and scanner assemblies

Ref	Description	Part number	Qty
1	ADF whole unit kit	CF116-67910	1
3	Scanner whole unit	CF116-67918	1

Control panel assembly

Figure 2-5 Control panel assembly

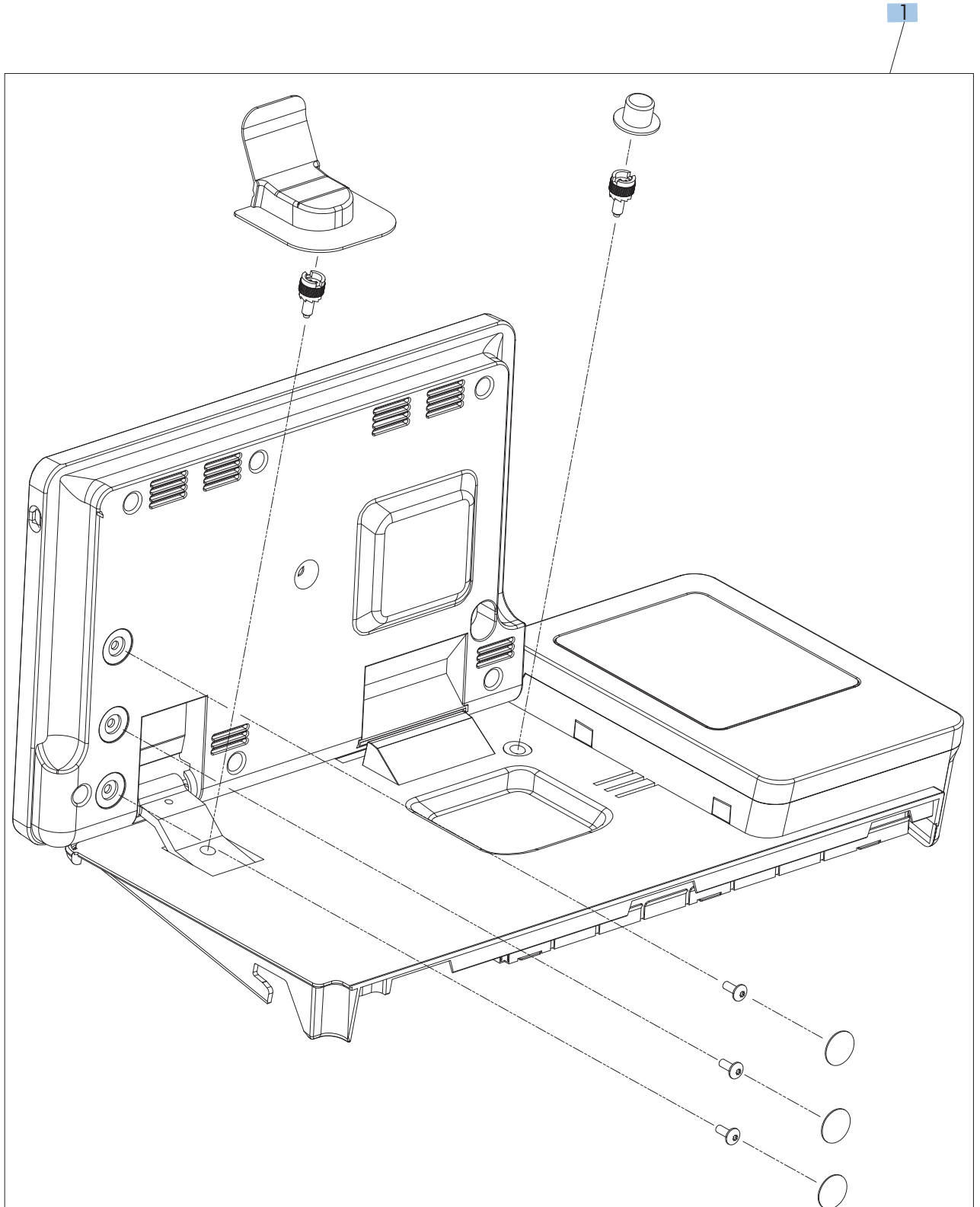


Table 2-9 Control panel assembly

Ref	Description	Part number	Qty
1	Control panel assembly kit	CD644-67916	1
Not shown	Control-panel cable (see Control-panel cable on page 103)	CF116-60105	1

ADF assemblies

Figure 2-6 ADF assemblies

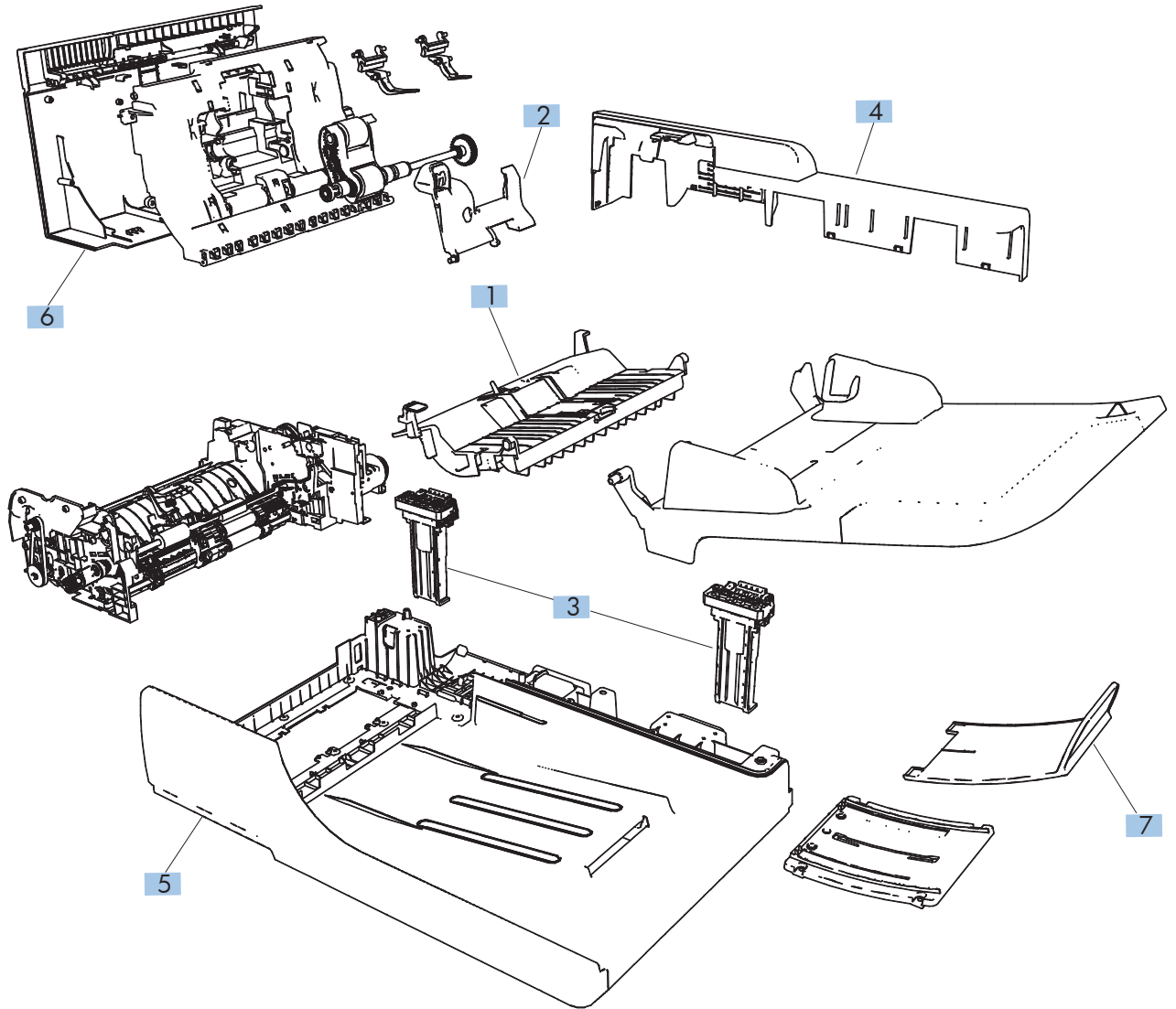


Table 2-10 ADF assemblies

Ref	Description	Part number	Qty
1	ADF separation pad spring	5851-4879	1
2	ADF cover, bogie	CC355-40013	1
3	ADF hinge assembly	Q7404-60024	2
4	Cover, ADF rear (cover rear)	Q7404-40007	1
5	Cover, ADF front (cover front)	Q7404-40030	1
6	Cover, hatch	Q7404-40006	1
7	ADF tray extender (paper stopper)	Q7404-40020	1
Not shown	Assy-harness (ADF cable) (see ADF cable on page 83)	Q7404-50007	1
Not shown	Mylar kit	5851-4998	1

Scanner assemblies

Figure 2-7 Scanner assemblies

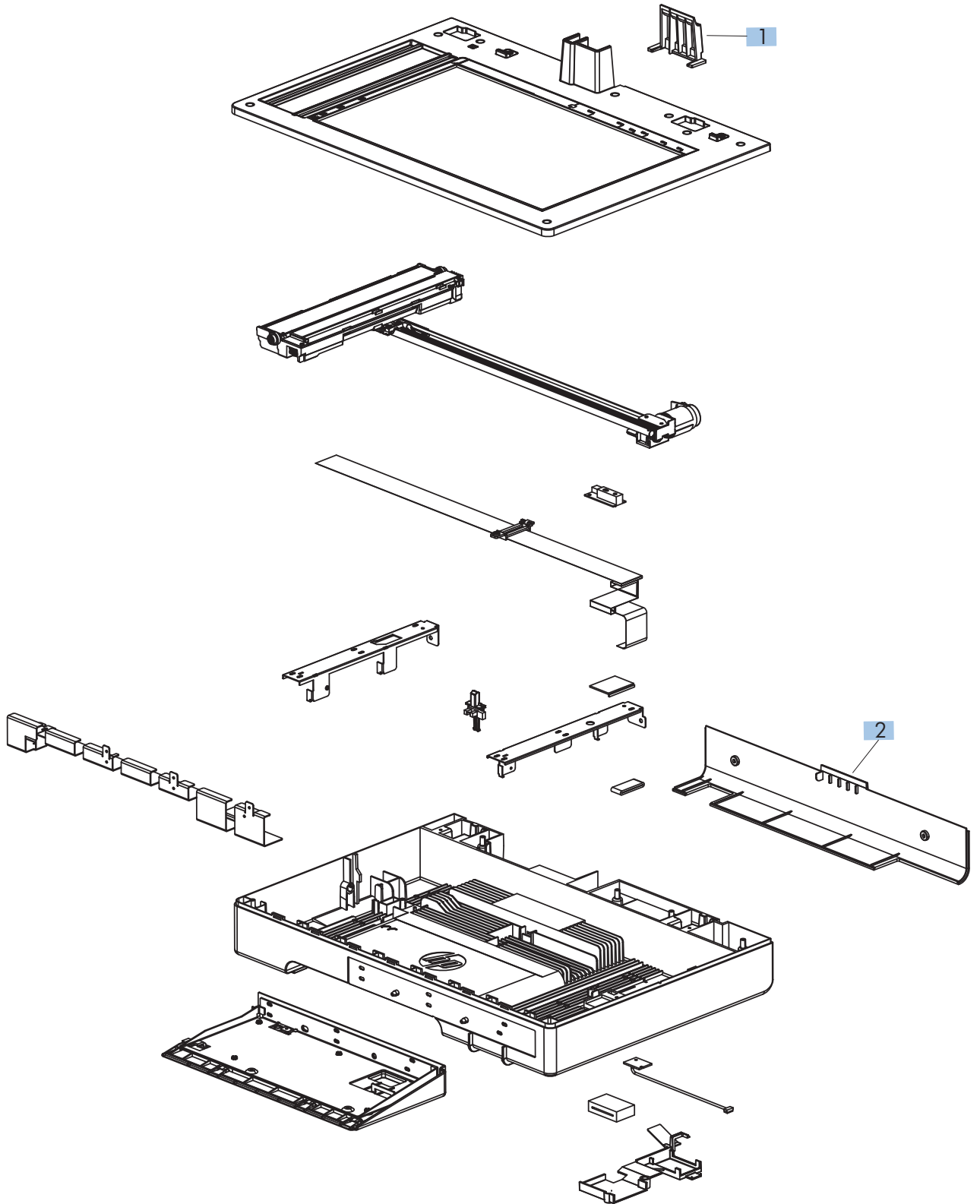


Table 2-11 Scanner assemblies

Ref	Description	Part number	Qty
1	Cover, ADF cable (asset chimney)	5851-0630	1
2	Cover, rear scanner (rear cover)	CF116-40002	1
Not shown	PCA, scanner memory (see Scanner memory PCA (memory board kit) on page 79)	CF116-67923	1
Not shown	Cave light	CF116-60104	1

Internal assemblies (1 of 6)

Figure 2-8 Internal assemblies (1 of 6)

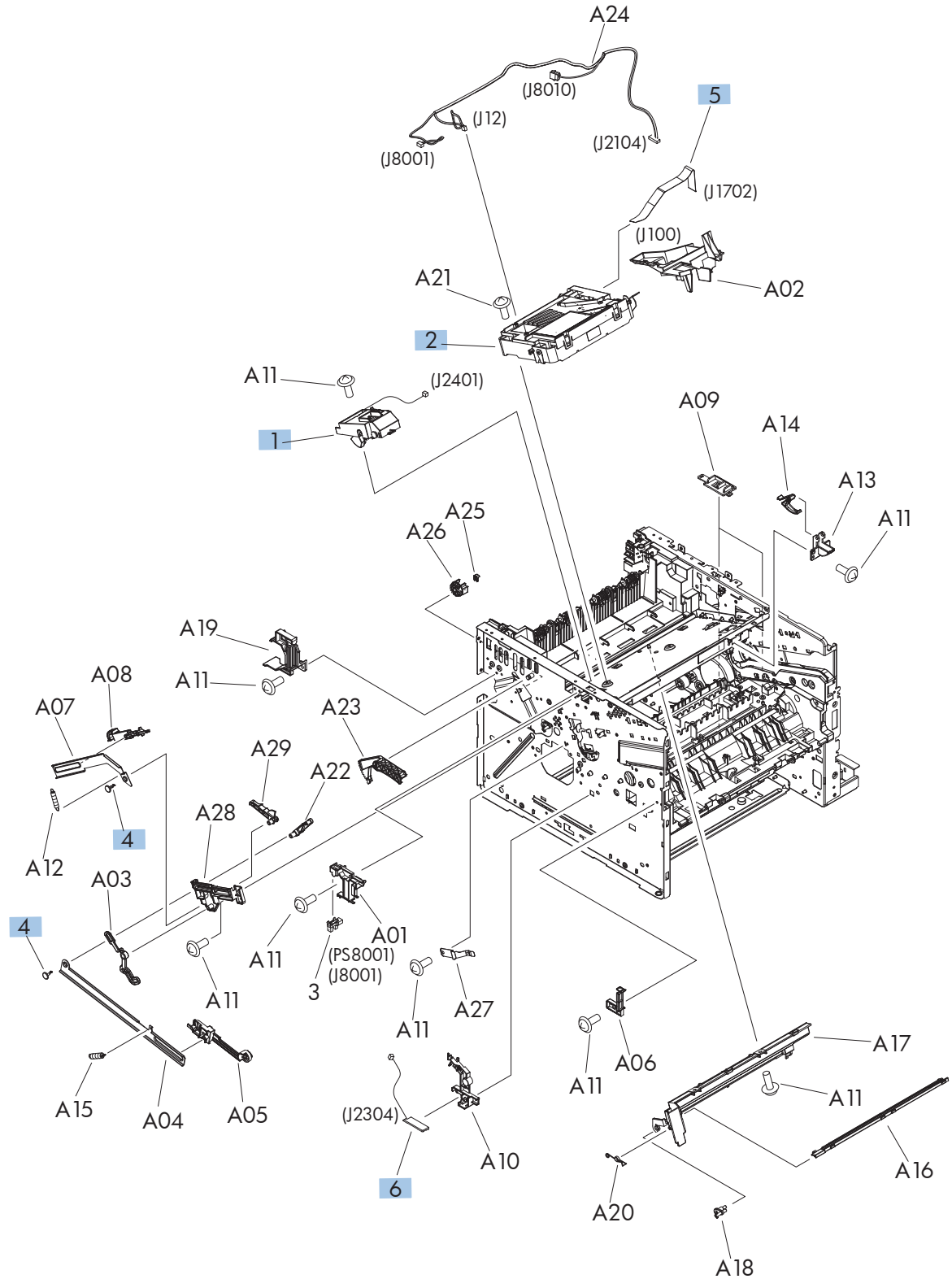


Table 2-12 Internal assemblies (1 of 6)

Ref	Description	Part number	Qty
1	Tag holder assembly	RM1-8521-000CN	1
2	Laser/scanner	RM1-6322-000CN	1
4	Stopper, bushing arm	RC2-7928-000CN	2
5	Cable, flat	RK2-4218-000CN	1
6	Sensor, environmental PCA	RM1-8622-000CN	1

Internal assemblies (2 of 6)

Figure 2-9 Internal assemblies (2 of 6)

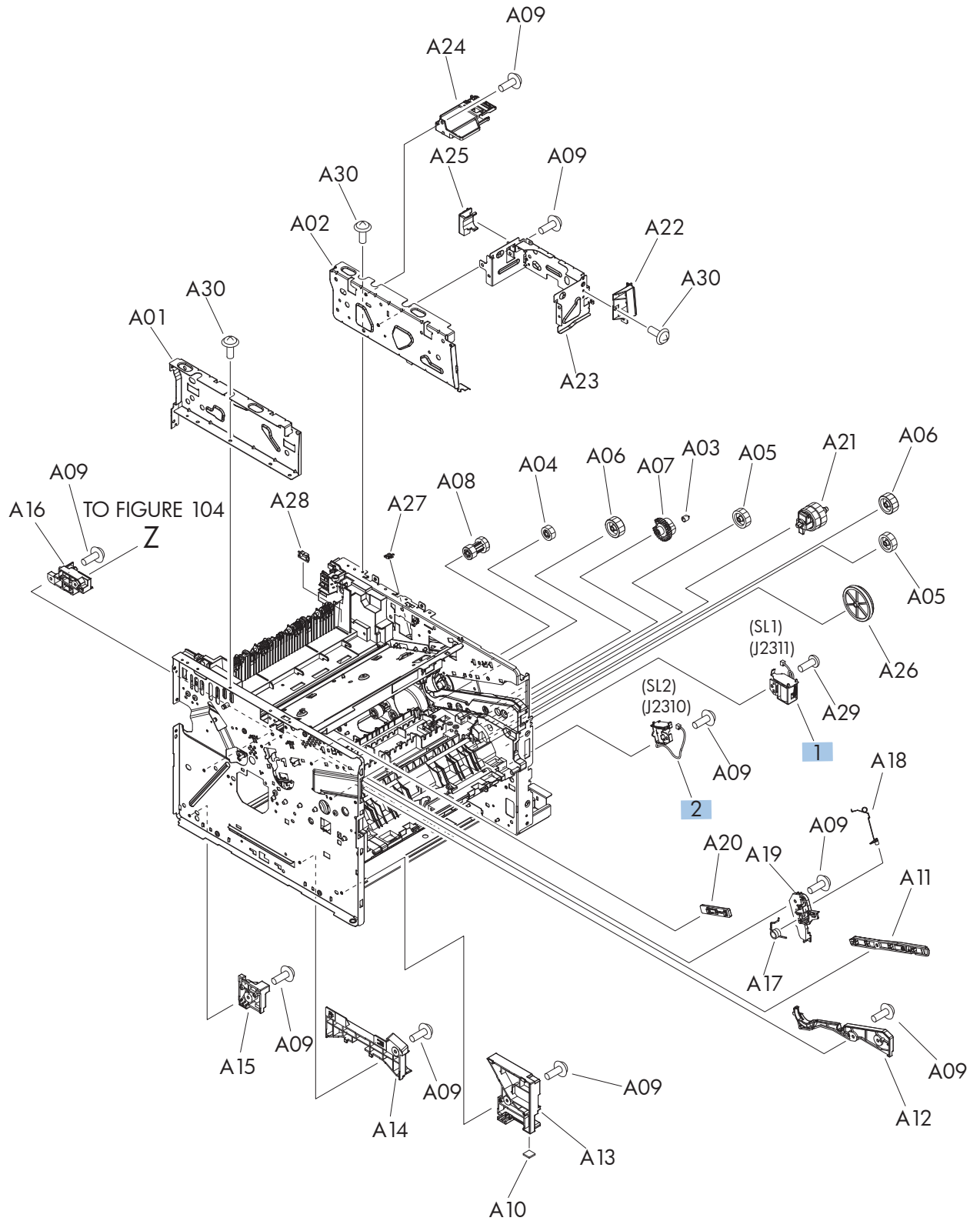


Table 2-13 Internal assemblies (2 of 6)

Ref	Description	Part number	Qty
1	Tray 1 solenoid	RK2-1490-000CN	1
2	Tray 2 solenoid	RK2-1492-000CN	1

Internal assemblies (3 of 6)

Figure 2-10 Internal assemblies (3 of 6)

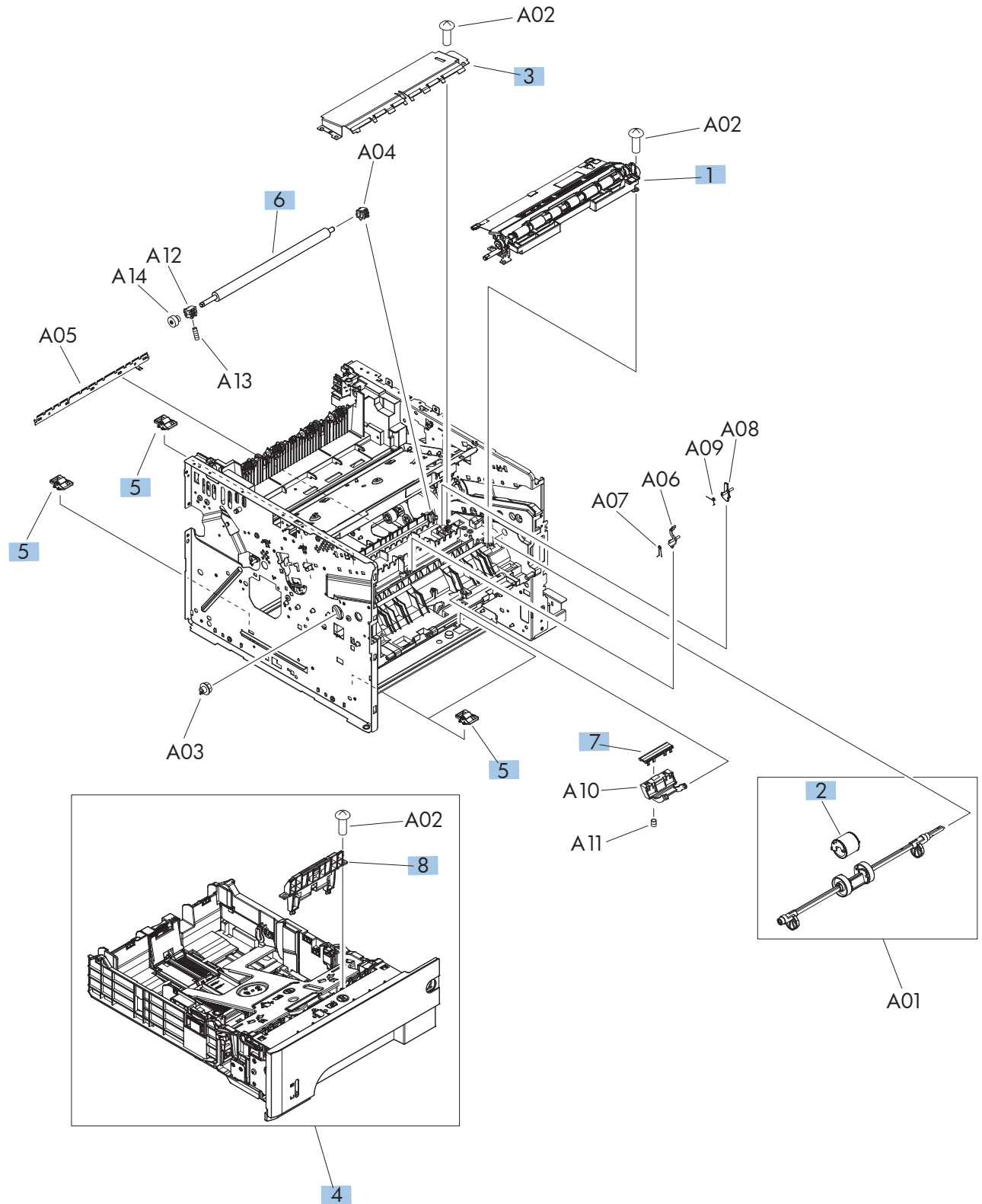


Table 2-14 Internal assemblies (3 of 6)

Ref	Description	Part number	Qty
1	Registration roller assembly	RM1-8507-000CN	1
2	Roller, multipurpose	RL1-2412-000CN	1
3	Transfer lower guide assembly	RM1-6315-000CN	1
4	Cassette, Tray 2	RM1-8512-000CN	1
5	Base plate roller assembly	RM1-6306-000CN	4
6	Roller, transfer	RM1-6321-000CN	1
7	Pad, multipurpose separation	RC2-8575-000CN	1
8	Separation holder assembly	RM1-6303-000CN	1

Internal assemblies (4 of 6)

Figure 2-11 Internal assemblies (4 of 6)

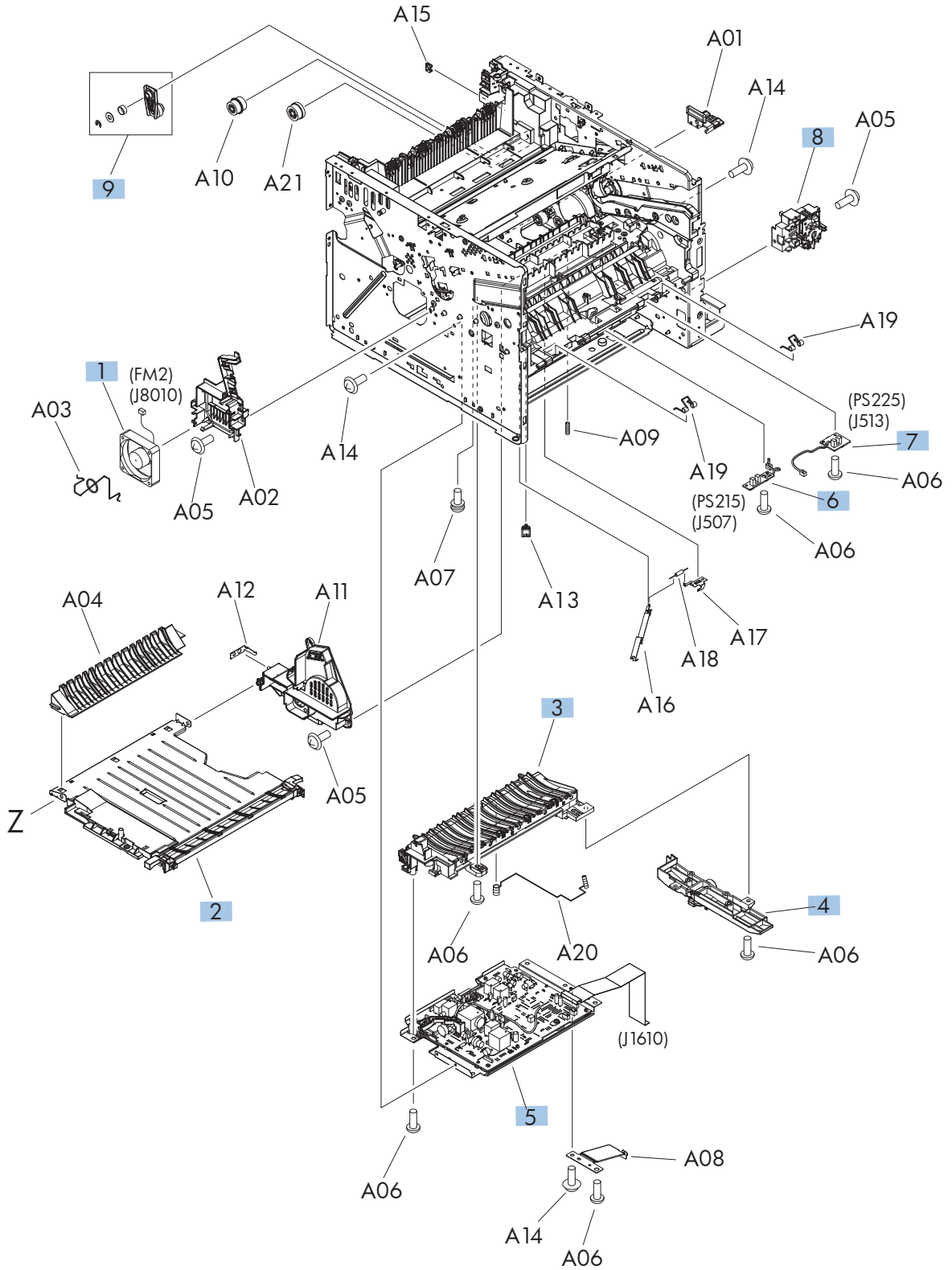


Table 2-15 Internal assemblies (4 of 6)

Ref	Description	Part number	Qty
1	Fan, sub	RK2-1499-000CN	1
2	Lower paper feed guide	RM1-6263-000CN	1
3	Paper-feed guide assembly	RM1-6270-000CN	1
4	Position-guide assembly	RM1-6273-000CN	1
5	High-voltage power supply PCA	RM1-8519-000CN	1
6	Top sensor PCA	RM1-8617-000CN	1
7	Paper width sensor PCA	RM1-8618-000CN	1
8	Switch assembly	RM1-8515-000CN	1
9	Pendulum service kit	RM1-6598-000CN	1

Internal assemblies (5 of 6)

Figure 2-12 Internal assemblies (5 of 6)

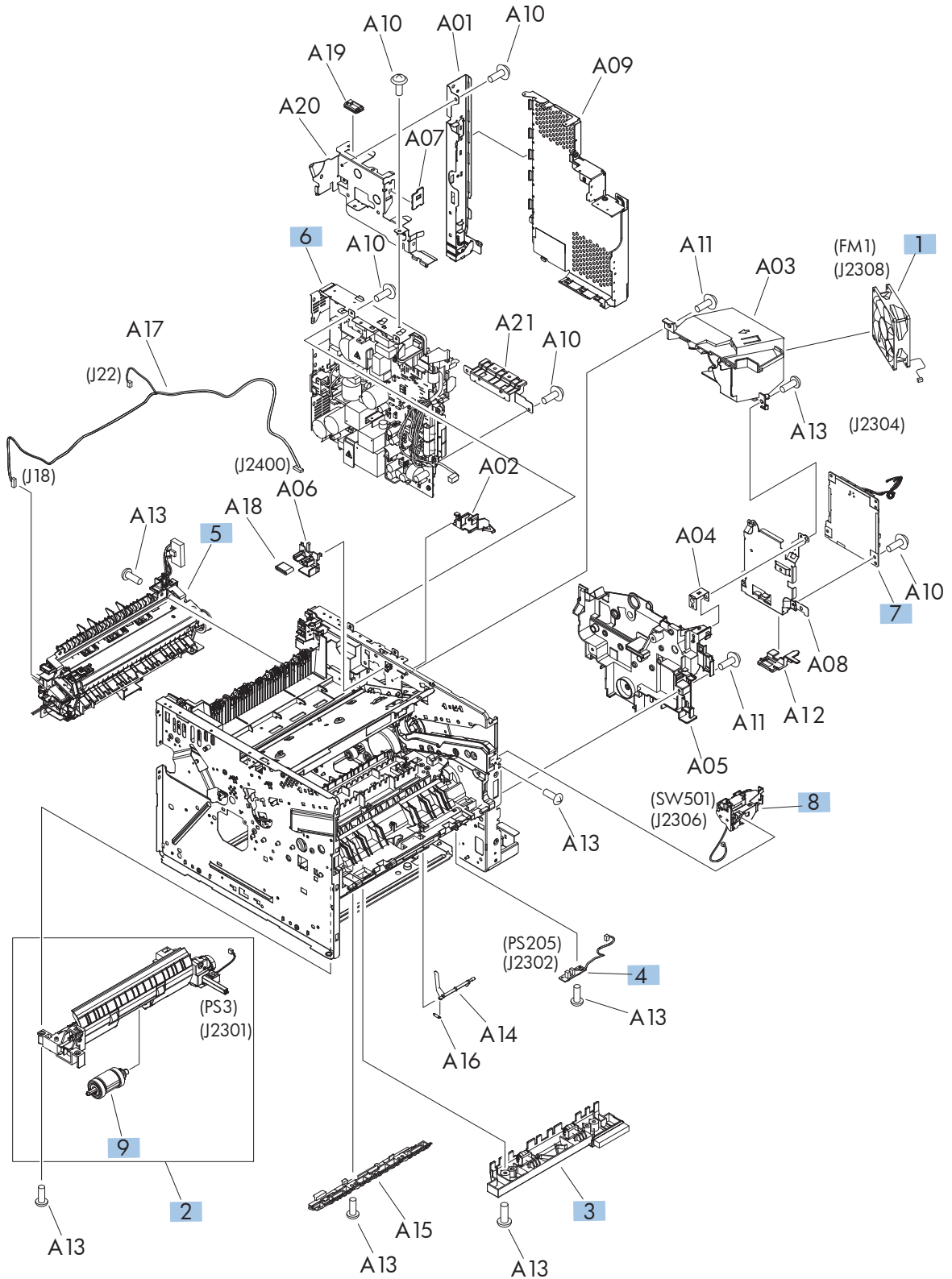


Table 2-16 Internal assemblies (5 of 6)

Ref	Description	Part number	Qty
1	Fan, main	RK2-2416-000CN	1
2	Tray 2, paper pickup assembly	RM1-8505-000CN	1
3	Idler roller assembly	RM1-8506-000CN	1
4	Multipurpose sensor PCA	RM1-8621-000CN	1
5	Fuser assembly (universal)	RM1-8508-000CN	1
6	Low voltage power supply assembly	RM1-8514-000CN	1
7	DC controller PCA	RM1-8615-000CN	1
8	Interlock switch assembly	RM1-8499-000CN	1
9	Tray pickup roller assembly	RM1-6323-000CN	1
Not shown	Stapler assembly (no cable) (see Stapler assembly on page 43)	5851-0786	1
Not shown	Stapler cable (see Stapler assembly on page 43)	CF116-60106	1
Not shown	Fax cradle, black plastic	5851-0672	1
Not shown	Hard drive, bracket	5851-3453	1
Not shown	Fax, cable	5851-3499	1
Not shown	Fax, cable, Israel	8120-8913	1
Not shown	Fax, cable, rest of the world	8120-0811	1
Not shown	Fax, cable, Switzerland	8120-0844	1
Not shown	Formatter, standard	CF104-69001	1
Not shown	Formatter, standard (China only)	CF116-67914	1

Internal assemblies (6 of 6)

Figure 2-13 Internal assemblies (6 of 6)

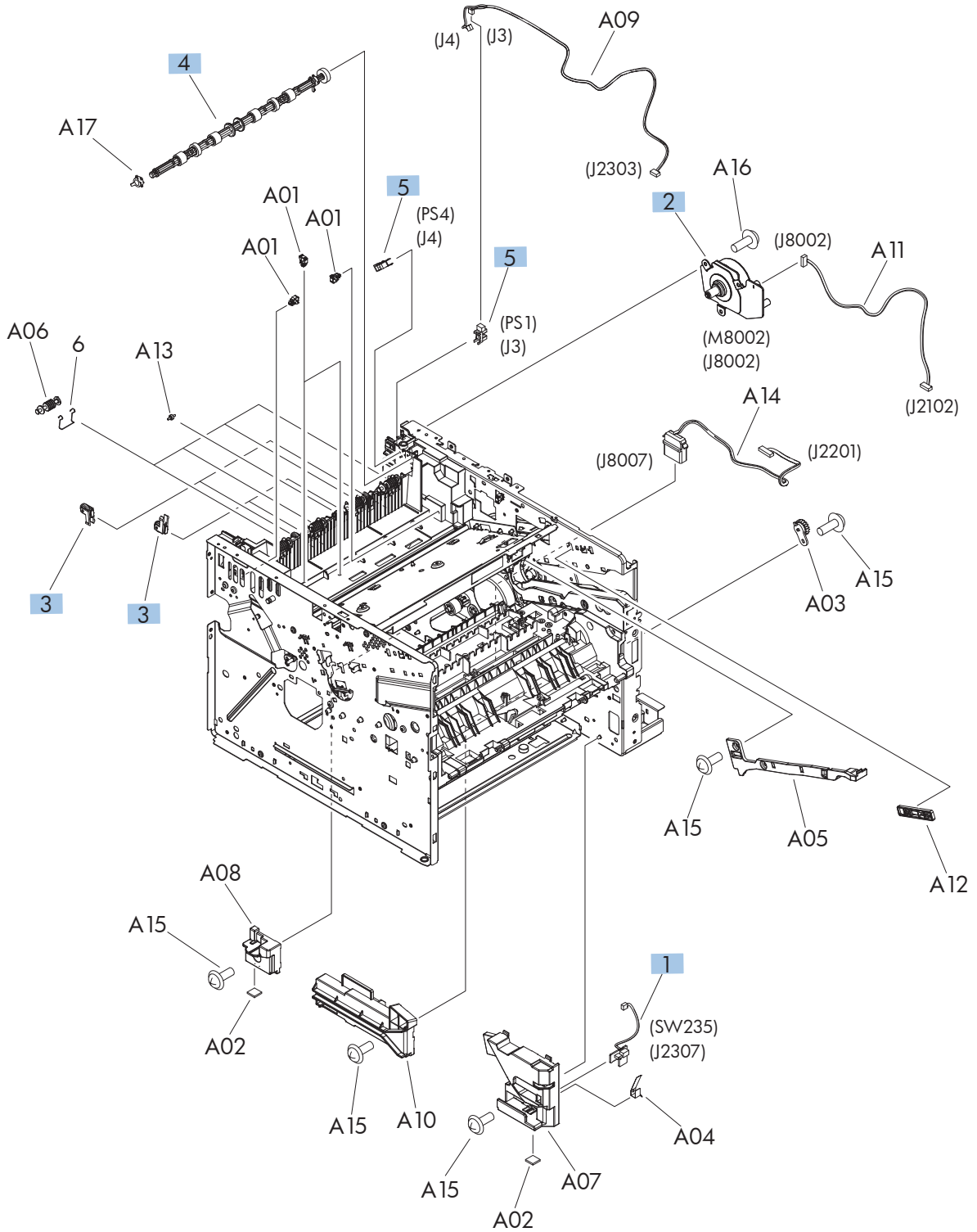


Table 2-17 Internal assemblies (6 of 6)

Ref	Description	Part number	Qty
1	Tray sensor PCA	RM1-8620-000CN	1
2	Fuser motor assembly	RM1-8523-000CN	1
3	Paper delivery roller assembly	RM1-6301-000CN	4
4	Face-down roller assembly	RM1-6311-000CN	1
5	Photo interrupter, IC	WG8-5935-000CN	2

Input devices

500-sheet input tray (Tray 3 and Tray 4)

Figure 2-14 500-sheet input tray (Tray 3 and Tray 4)

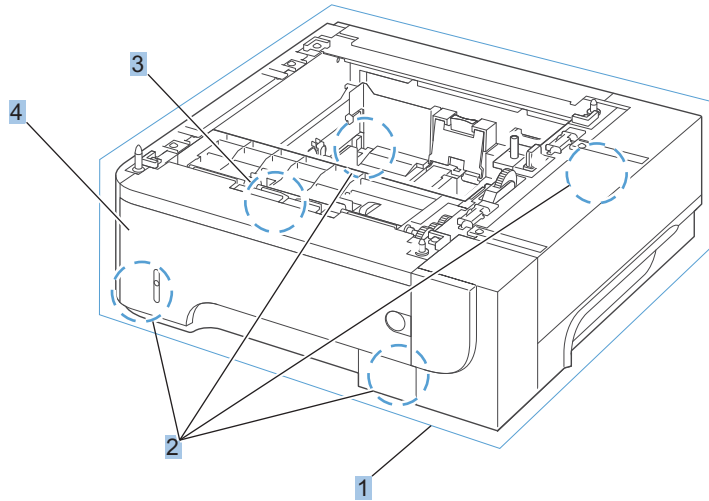


Table 2-18 500-sheet input tray (Tray 3 and Tray 4)

Ref	Description	Part number	Qty
1	Optional 500-sheet tray and feeder unit	CE530-69001	1
2	Base plate roller assembly	RM1-6306-000CN	4
3	Separation holder assembly	RM1-6303-000CN	1
4	Cassette, Tray 3/4	RM1-6279-000CN	1