



*Ecosys FS-9120DN/FS-9520DN
Laser Printers*

PARTS LIST

Published in Feb. 27, 2004
2FH70770
842FH120

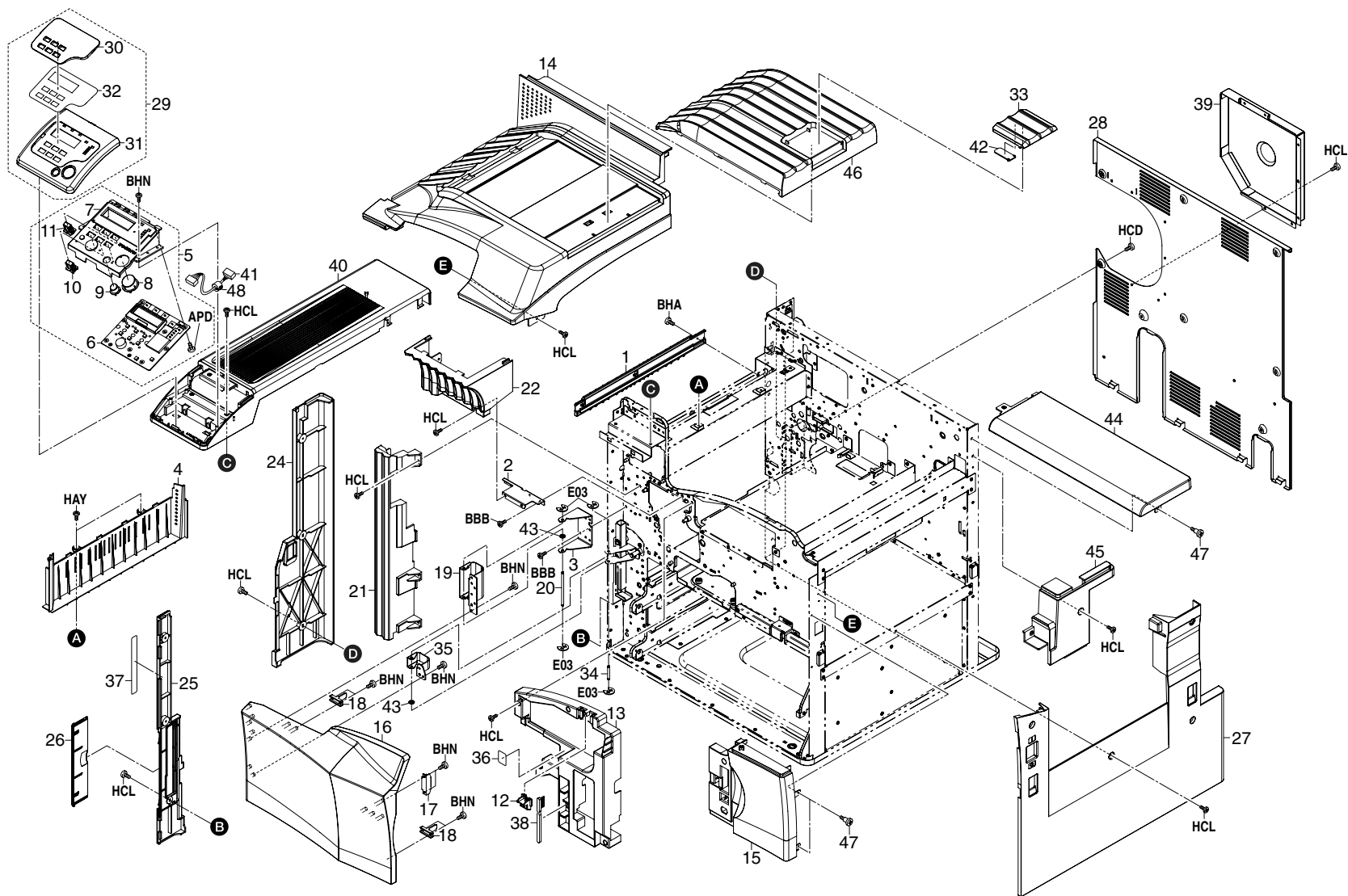
Contents

1. Exterior Covers	3
2. Upper Frame Unit	6
3. Paper Cassette	9
4. Paper Feed Assembly	12
5. Paper Feed Unit	14
6. Paper Feed Unit	18
7. Paper Conveyers	20
8. Paper Exit Unit	23
9. Bypass Unit	26
10. Bypass Feed Unit	29
11. LSU	31
12. Developer Unit	33
13. Fuser Unit	35
14. Cleaning System	38
15. Drive Unit	40
16. Drive Unit	43
17. Electrical Component	46

Notes on Ordering

- Parts with SP marked in the column are spare parts. Other parts may not be ordered.
- Parts with + are component parts or sub-assemblies of the assembly appearing above them.

1. Exterior Covers

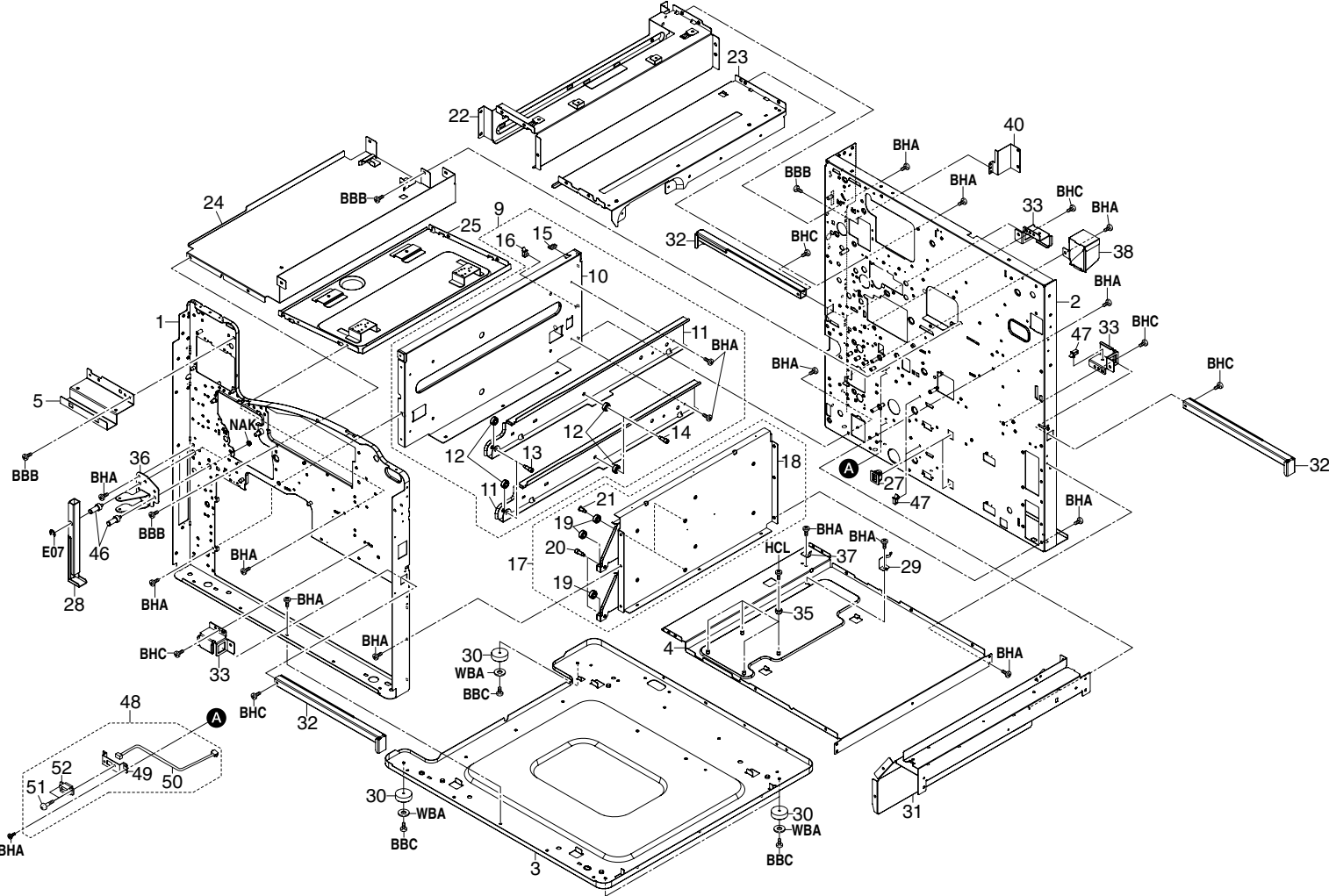


List 1 - Exterior Covers

Ref. No.	Part Code	Description	Applicable Model	SP	120V	230V
01-001	2BL21350	GUIDE DU FEED R		-	1	1
01-002	2BL04320	MOUNT TRAY EJECT		-	1	1
01-003	2BL04220	MOUNT HINGE		-	1	1
01-004	2BL04100	COVER EXIT LOW		X	1	1
01-005	2FH93070	PARTS, OPERATION ASSY		X	1	1
01-006	+ 2FH01090	P.W.BOARD ASS'Y		-	1	1
01-007	+ 2BL04240	LOWER COVER KEY		-	1	1
01-008	+ 2BL04260	KEY OPERATION A		-	1	1
01-009	+ 2BL04270	KEY OPERATION B		-	1	1
01-010	+ 2BL04280	KEY OPERATION C		-	3	3
01-011	+ 2BL04050	KEY OPERATION D		-	3	3
01-012	2BL04200	LEVER CONT RELEASE		-	1	1
01-013	2BL04090	INNER RIGHT COVER		-	1	1
01-014	2BL04040	TRAY EJECT		X	1	1
01-015	2FJ04010	RIGHT FRONT COVER	FS-9120DN	X	1	1
01-015	2FH04010	RIGHT FRONT COVER	FS-9520DN	X	1	1
01-016	2BJ04600	FRONT COVER MIDDLE K		X	1	1
01-017	60804120	MAGNET CATCH		-	1	1
01-018	2BL04330	HOLDER SWITCH		X	2	2
01-019	2BL04350	FRONT HINGE COVER P		-	1	1
01-020	2BL04190	PIN COVER HINGE		-	1	1
01-021	2BL04150	LEFT COVER CASSETTE		X	1	1
01-022	2BL04010	LEFT FRONT COVER		X	1	1
01-024	2BL04120	REAR LEFT COVER		X	1	1
01-025	2BL04110	FRONT LEFT COVER		X	1	1
01-026	2BL04300	LID COVER LEFT		X	1	1
01-027	2BL04130	RIGHT COVER		X	1	1
01-028	2BL04071	REAR COVER		X	1	1
01-029	2BL93330	PARTS, UPPER COVER KEY ASY	Excl. KMFR/KMIT	X	1	1
01-029	2BL93340	PARTS, UPPER COVER KEY FR	KMFR only	X	-	1
01-029	2BL93350	PARTS, UPPER COVER KEY IT	KMIT only	X	-	1
01-030	+ 2BL04250	COVER LCD	Excl. KMFR/KMIT	-	1	1
01-030	+ 2BL04830	COVER LCD F	KMFR only	-	-	1
01-030	+ 2BL04810	COVER LCD I	KMIT only	-	-	1
01-031	+ 2BL04230	UPPER COVER KEY	Excl.KMFR/KMIT	-	1	1
01-031	+ 2BL04820	UPPER COVER KEY F	KMFR only	-	-	1
01-031	+ 2BL04800	UPPER COVER KEY I	KMIT only	-	-	1
01-032	+ 2BL04960	FILM OPERATION	Excl. KMFR/KMIT	-	1	1
01-032	+ 2BL04980	FILM OPERATION F	KMFR only	-	-	1

Ref. No.	Part Code	Description	Applicable Model	SP	120V	230V
01-032	+ 2BL04970	FILM OPERATION I	KMIT only	-	-	1
01-033	2BK04030	STOPPER PAPER C	FS-9120DN	X	1	1
01-033	2BL04400	STOPPER PAPER P	FS-9520DN	X	1	1
01-034	2BL04840	PIN COVER HINGE S		-	1	1
01-035	2BL04480	FRONT COVER HINGE S		-	1	1
01-036	2BL05070	LABEL SEP CLEANING		-	1	1
01-037	2BL05120	LABEL CONVEYING JAM		X	1	1
01-038	2BL16220	BRUSH CLEANER		X	1	1
01-039	2BL04710	COVER FLYWHEEL		X	1	1
01-040	2BL04170	LEFT TOP COVER		X	1	1
01-041	2BL27270	WIRE OPE FRONT (P)		-	1	1
01-042	2BK04040	STOPPER PAPER SUB	FS-9120DN	-	1	1
01-043	2BL04880	FILM HINGE		-	2	2
01-044	2BL04180	REAR TOP COVER		X	1	1
01-045	2BL04210	RIGHT TOP COVER		X	1	1
01-046	2BK04020	TRAY SUB C	FS-9120DN	X	1	1
01-046	2BL04340	TRAY SUB	FS-9520DN	X	1	1
01-047	2BL04410	PIN COVER		-	3	3
01-048	33927590	CORE 7-15X18		-	1	1

2. Upper Frame Unit

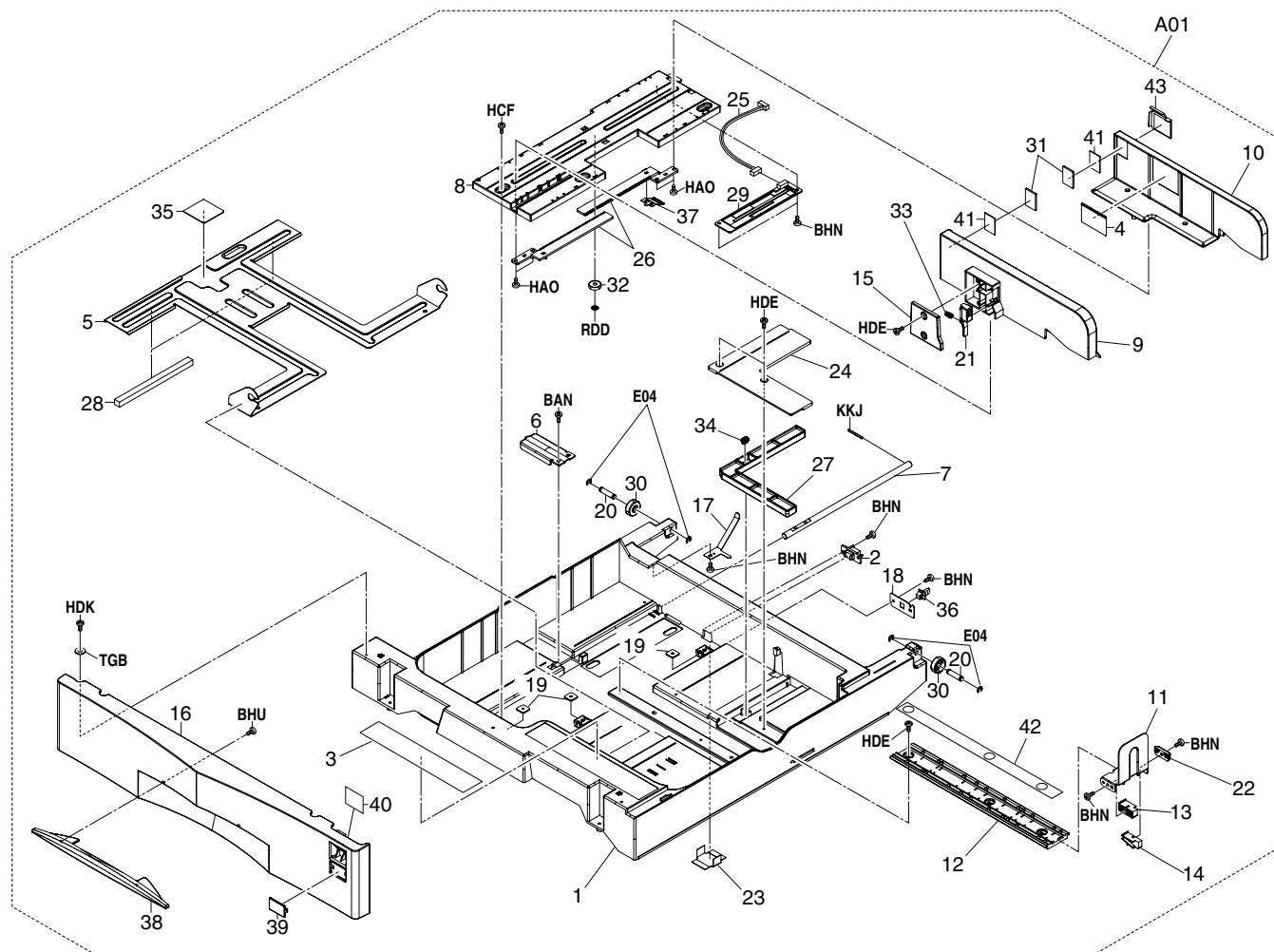


List 2 - Upper Frame Unit 1

Ref. No.	Part Code	Description	Applicable Model	SP	120V	230V	Remarks
02-001	2BL02010	FRONT FRAME		-	1	1	
02-002	2BL02020	REAR FRAME		-	1	1	
02-003	2BL02030	BASE		-	1	1	
02-004	2BL02040	BASE MIDDLE		-	1	1	
02-005	2BL04290	MOUNT OPERATION		-	1	1	
02-009	2AR00030	LOWER LEFT REINFORCEMENT ASSY		-	1	1	
02-010	+ 2AR02060	LOWER LEFT REINFORCEMENT		-	1	1	
02-011	+ 2AR07140	LEFT RAIL, CASSETTE		-	2	2	
02-012	+ 2AR07800	PULLEY, CASSETTE RAIL		X	4	4	
02-013	+ 2AR07810	FRONT PIN, CASSETTE RAIL		-	2	2	
02-014	+ 2AR07820	REAR PIN, CASSETTE RAIL		-	2	2	
02-015	+ M2104350	EDGING, EDS-0607M (KITAGAWA)		-	1	1	
02-016	+ M2109330	WIRE SADDLE, YMC-10-0 (KITAGAWA)		-	1	1	
02-017	2AR00020	LOWER RIGHT REINFORCEMENT ASSY		-	1	1	
02-018	+ 2AR02050	LOWER RIGHT REINFORCEMENT		-	1	1	
02-019	+ 2AR07800	PULLEY, CASSETTE RAIL		X	4	4	
02-020	+ 2AR07810	FRONT PIN, CASSETTE RAIL		-	2	2	
02-021	+ 2AR07820	REAR PIN, CASSETTE RAIL		-	2	2	
02-022	2BL02100	UPPER PLATE FIXING		-	1	1	
02-023	2BL02060	UPPER PLATE DRUM		-	1	1	
02-024	2BL02130	LOWER PLATE CONT		-	1	1	
02-025	2BL02050	LOWER BASE LSU		-	1	1	
02-027	77906291	HOLDER, CASSETTE STOPPER		-	2	2	
02-028	2BL02140	HANDLE MACHINE		-	1	1	
02-029	2BL06840	SPRING BYPASS RET		-	1	1	
02-030	2AR02180	BASE RUBBER		-	4	4	
02-031	2BL02120	UPPER RIGHT PLATE		-	1	1	
02-032	2BL02180	RIGHT HANDLE MACHINE		-	3	3	
02-033	2BL02150	MOUNT RIGHT HANDLE		-	3	3	
02-035	2BL06590	PULLEY RAIL		-	4	4	
02-036	2BL04470	MOUNT HINGE S		-	1	1	
02-037	2BL06410	GROUND PLATE MIDDLE		-	1	1	
02-038	2AR07720	COVER, CASSETTE RAIL		-	1	1	
02-040	2BL02200	MOUNT REAR COVER		-	1	1	
02-046	2BL02170	PIN HANDLE		-	2	2	
02-047	M2109330	WIRE SADDLE, YMC-10-0 (KITAGAWA)		-	3	3	
02-048	2AR00610	PAPER FEED DRAWER ASSY		-	2	2	
02-049	+ 2AR07710	MOUNT, PAPER FEED DRAWER		-	2	2	
02-050	+ 2AR27600	JUNCTION WIRING, PRIMARY PAPER FEED UNIT		-	2	2	

Ref. No.	Part Code	Description	Applicable Model	SP	120V	230V	Remarks
02-051	+	33927450	RETAINING PIN, DRAWER	-	4	4	
02-052	+	J0464080	RECEPTACLE, QR/P15-8S-C (02) (HIROSE)	X	2	2	

3. Paper Cassette

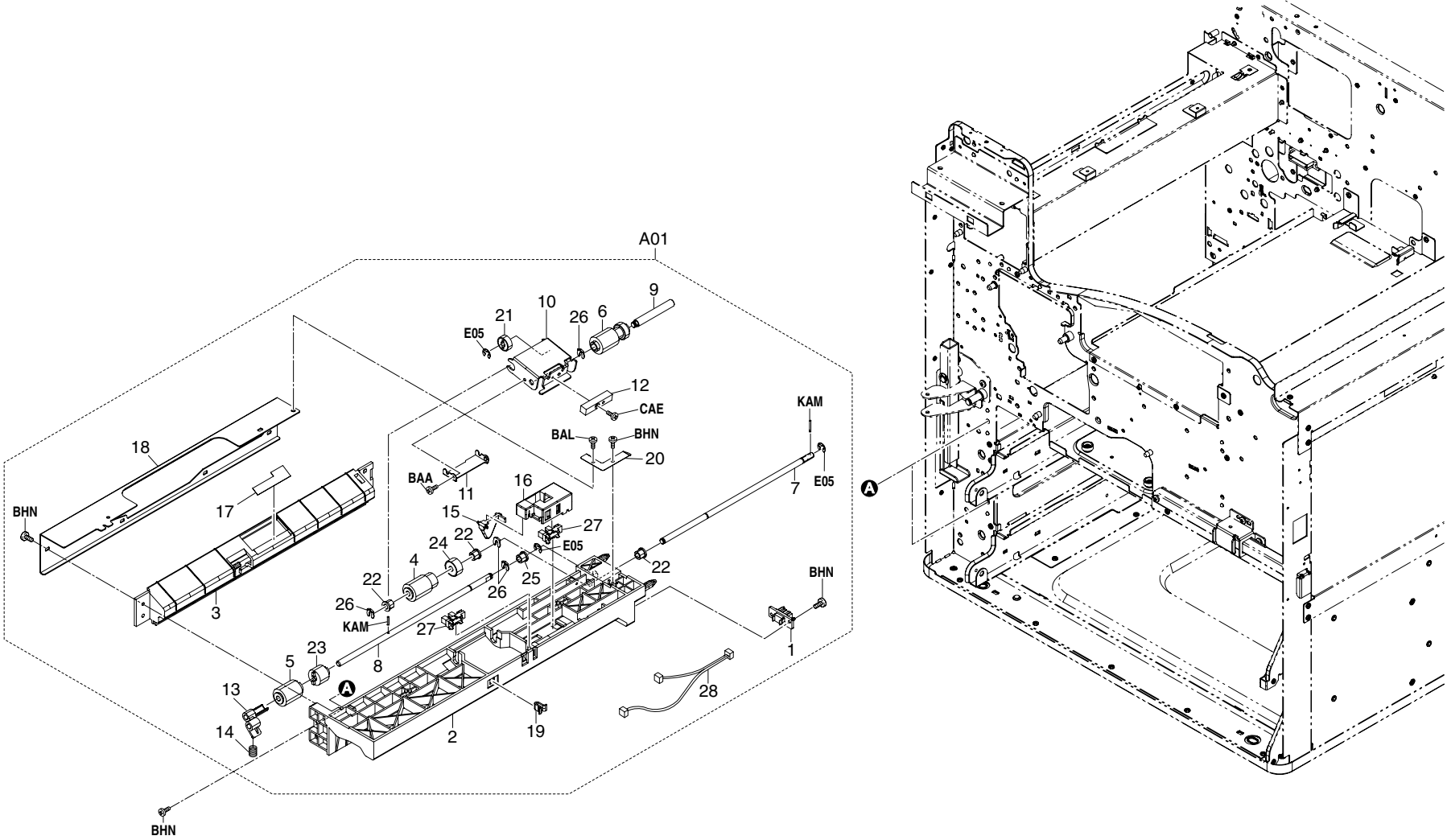


List 3 - Paper Cassette

Ref. No.	Part Code	Description	Applicable Model	SP	120V	230V	Remarks
03-A01	2BL93110	PC-700 (A4) CASSETTE ASSY		X	-	2	
03-A01	2BL93120	PC-700 (LTR) CASSETTE ASSY		X	2	-	
03-001	+ 2AR07010	CASSETTE		-	2	2	
03-002	+ J0463080	PLUG, QR/P15-8S-C (HIROSE)		X	2	2	
03-003	+ 2AR05150	LABEL, CASSETTE OPERATION		-	2	2	
03-004	+ 2AR05200	LABEL, PAPER UPPER LIMIT		-	2	2	
03-005	+ 2AR07020	BASE, CASSETTE		-	2	2	
03-006	+ 2AR07030	WORK PLATE, CASSETTE BASE		-	2	2	
03-007	+ 2AR07040	SHAFT, WORK PLATE		-	2	2	
03-008	+ 2AR07050	RAIL A, CURSOR		-	2	2	
03-009	+ 2AR07060	CURSOR A, CASSETTE		-	2	2	
03-010	+ 2AR07070	CURSOR B, CASSETTE		-	2	2	
03-011	+ 2AR07080	CURSOR C, CASSETTE		-	2	2	
03-012	+ 2AR07090	RAIL C, CURSOR		-	2	2	
03-013	+ 2AR07100	FRONT GUIDE C, CURSOR		-	2	2	
03-014	+ 2AR07110	REAR GUIDE C, CURSOR		-	2	2	
03-015	+ 2AR07120	LID A, CURSOR		-	2	2	
03-016	+ 2BL04140	COVER CASSETTE		X	2	2	
03-017	+ 2AR07150	GROUND PLATE, CASSETTE		X	2	2	
03-018	+ 2AR07160	MOUNT, CASSETTE STOPPER		-	2	2	
03-019	+ 2AR07180	RETAINER M4		-	6	6	
03-020	+ 2AR07190	SHAFT, CASSETTE PULLEY		-	4	4	
03-021	+ 2AR07340	LEVER A, CURSOR		-	2	2	
03-022	+ 2AR07610	STOPPER, TRAILING EDGE DETECTION		-	2	2	
03-023	+ 2AR07620	PROTECTING PLATE, CASSETTE WIRE		-	2	2	
03-024	+ 2AR07630	LID, TRAILING EDGE DETECTION PLATE		-	2	2	
03-025	+ 2AR27220	WIRE, CASSETTE UNIT		-	2	2	
03-026	+ 33907100	RACK, CASSETTE		X	4	4	
03-027	+ 33907170	DETECTION PLATE, PAPER SIZE		-	2	2	
03-028	+ 33907210	CUSHION, CASSETTE WORK PLATE		X	4	4	
03-029	+ 2FG01020	SIZE DETECTION ASSY		X	2	2	
03-030	+ 34907150	PULLEY, CASSETTE		X	4	4	
03-031	+ 60907170	CUSHION, CASSETTE R		X	4	4	
03-032	+ 65914120	GEAR 18, IDLE DEVELOPING		X	2	2	
03-033	+ 66007120	SPRING, CURSOR C		-	2	2	
03-034	+ 66106080	SPRING, PAD		X	2	2	
03-035	+ 66107100	PAD, CASSETTE		X	2	2	
03-036	+ 77906210	CASSETTE STOPPER		-	2	2	
03-037	+ 33907110	TERMINAL, PAPER SIZE PCB		-	2	2	

Ref. No.	Part Code	Description	Applicable Model	SP	120V	230V	Remarks
03-038	+ 2BL04160	HANDLE CASSETTE		X	2	2	
03-039	+ 2BL04310	PLATE NUMBER		X	1	1	
03-039	+ 2BL04370	PLATE NUMBER 2		X	1	1	
03-040	+ 2BL06470	PLATE SIZE C		X	2	2	
03-040	+ 2BL06910	PLATE SIZE IN		X	2	2	
03-041	+ 2AR06890	MOUNT CUSHION		-	4	4	
03-042	+ 2BJ68190	STOPPER PAPER SP		-	2	2	
03-043	+ 2BL05260	LABEL CASSETTE SIZE		-	2	2	

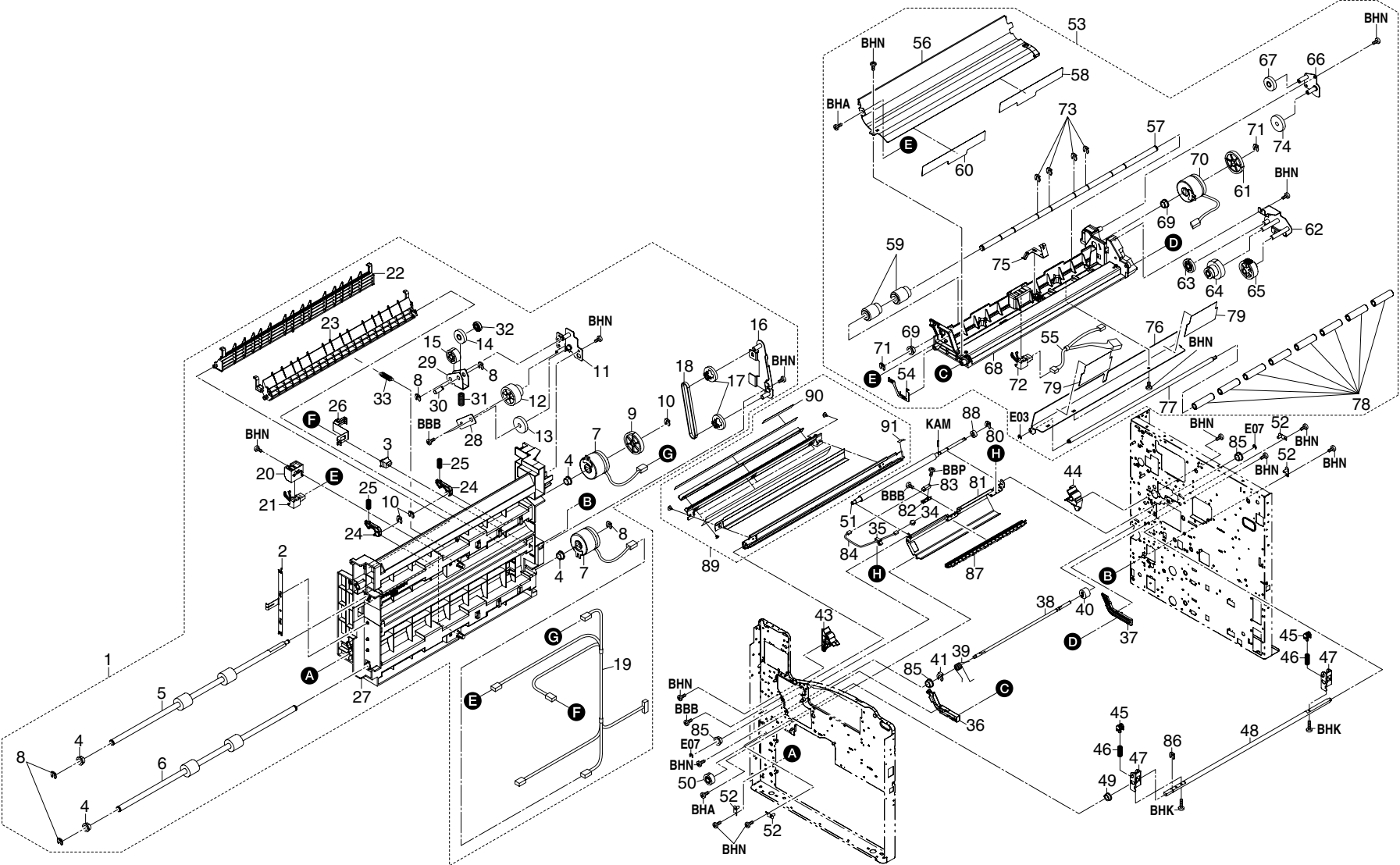
4. Paper Feed Assembly



List 4 - Paper Cassette

Ref. No.	Part Code	Description	Applicable Model	SP	120V	230V	Remarks
04-A01	2BL00050	PRIMARY PAPER FEED ASSY		X	2	2	
04-001	+ J0463080	PLUG, QR/P15-8S-C (HIROSE)		X	2	2	
04-002	+ 2AR07200	UPPER HOUSING, PAPER FEED		-	2	2	
04-003	+ 2AR07210	LOWER HOUSING, PAPER FEED		-	2	2	
04-004	+ 2AR07220	PULLEY, PAPER FEED		X	2	2	
04-005	+ 2AR07230	PULLEY, SEPARATION		X	2	2	
04-006	+ 2AR07240	PULLEY, LEADING FEED		X	2	2	
04-007	+ 2AR07250	SHAFT, PAPER FEED		-	2	2	
04-008	+ 2AR07260	SHAFT, SEPARATION		-	2	2	
04-009	+ 2AR07270	SHAFT, LEADING FEED		-	2	2	
04-010	+ 2BL07910	SUPPORT PLATE FEED		-	2	2	
04-011	+ 2BL07900	PLATE LEADING FEED		-	2	2	
04-012	+ 2AR07300	WEIGHT, LEADING FEED PULLEY		-	2	2	
04-013	+ 2AR07310	LEVER, SEPARATION PULLEY RELEASE		-	2	2	
04-014	+ 2AR07350	SPRING, SEPARATION PULLEY		X	2	2	
04-015	+ 2AR07640	ACTUATOR, PAPER EMPTY		-	2	2	
04-016	+ 2AR07650	HOLDER, ACTUATOR		-	2	2	
04-017	+ 2AR07660	GUIDE FILM, SEPARATION PULLEY		-	2	2	
04-018	+ 2AR07670	REINFORCEMENT, PRIMARY PAPER FEED		-	2	2	
04-019	+ 2AR07690	STOPPER, SUPPORT PLATE		-	2	2	
04-020	+ 2AR07790	GROUND PLATE, PRIMARY PAPER FEED		-	2	2	
04-021	+ 34922420	GEAR 15		X	2	2	
04-022	+ 29806810	BUSHING, 6 REGISTRATION		X	6	6	
04-023	+ 33906070	TORQUE LIMITER, PAPER FEED		X	2	2	
04-024	+ 33906160	GEAR 16, PAPER FEED		X	2	2	
04-025	+ 34806040	LOWER BUSHING, PAPER FEED		X	2	2	
04-026	+ 2A806250	RING STOPPER		X	8	8	
04-027	+ 2C927210	SENSOR 248NL1		X	4	4	
04-028	+ 2AR27430	WIRE, PRIMARY PAPER FEED UNIT		-	2	2	

5. Paper Feed Unit



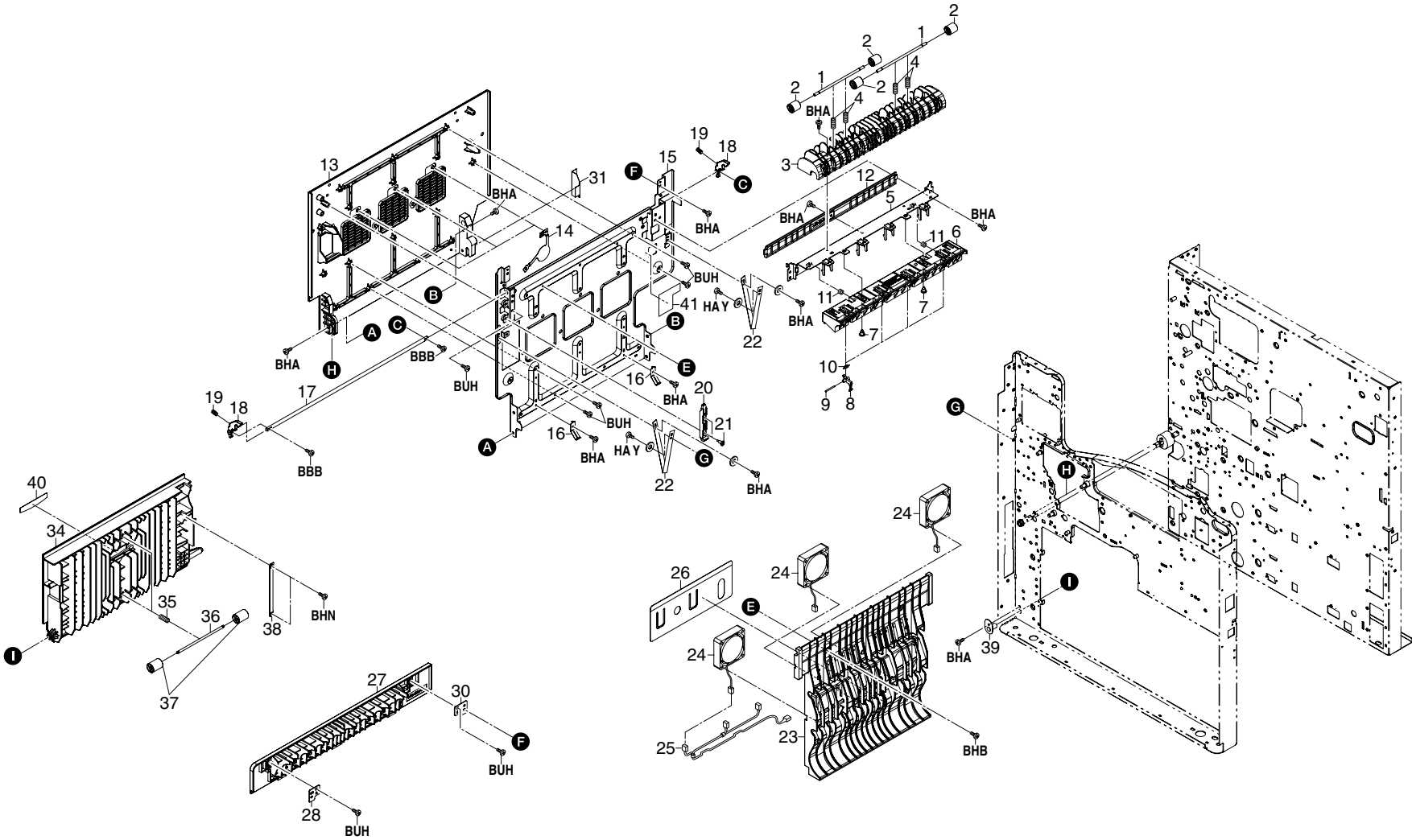
List 5 - Paper Feed Unit

Ref. No.	Part Code	Description	Applicable Model	SP	120V	230V	Remarks
05-001	2FG93080	PARTS,VERTICAL FEED ASSY,SP		X	1	1	
05-002	+ 2BL06220	EARTH VERTICAL FEED		-	1	1	
05-003	+ 35927420	SWITCH,SIZE		X	1	1	
05-004	+ 67322230	BUSHING 8		X	4	4	
05-005	+ 2BL06080	ROLLER B FEED		X	1	1	
05-006	+ 2BL06090	ROLLER C FEED		X	1	1	
05-007	+ 2FG27160	CLUTCH FEED		X	2	2	
05-008	+ 2BC06980	STOPPER 5		X	5	5	
05-009	+ 2BL06170	GEAR Z42 FEED		X	1	1	
05-010	+ 2A806250	RING STOPPER		X	3	3	
05-011	+ 2FG06020	MOUNT FEED DRIVE A		-	1	1	
05-012	+ 2FG06040	GEAR Z21-36 FEED		X	1	1	
05-013	+ 36222250	GEAR 30,IDLE		X	1	1	
05-014	+ 2AL06110	GEAR 25		X	1	1	
05-015	+ 2BL06380	GEAR Z25 JOINT		X	1	1	
05-016	+ 2BL06130	MOUNT C FEED DRIVE		-	1	1	
05-017	+ 2BL06180	GEAR Z28-P18 FEED		X	2	2	
05-018	+ 2BL06320	BELT CONVEYING		X	1	1	
05-019	+ 2BL27190	WIRE CONVEYING		-	1	1	
05-020	+ 2BL06450	HOLDER FEED SWITCH		-	2	2	
05-021	+ 2BL27410	SWITCH CONVEYING		X	2	2	
05-022	+ 2BL06110	GUIDE VERTICAL FEED		-	1	1	
05-023	+ 2BL06330	GUIDE B FEED		-	1	1	
05-024	+ 5MVX421DN003	LOCK COVER RIGHT		X	2	2	
05-025	+ 2BL06460	SPRING LEFT COVER		-	2	2	
05-026	+ 2BL06940	EARTH PUSH SWITCH		-	1	1	
05-027	+ 2FG06010	FRAME VERTICAL FEED A		-	1	1	
05-028	+ 2FG06030	MOUNT FEED DRIVE B		-	1	1	
05-029	+ 2FG06050	JOINT FEED DRIVE		-	1	1	
05-030	+ 2FG06060	SHAFT FEED JOINT		-	1	1	
05-031	+ 2FG06070	SPRING FEED JOINT		-	1	1	
05-032	+ 2FG06120	COLLAR FEED JOINT		-	1	1	
05-033	+ 2FG06130	SPRING GUIDE FEED		-	1	1	
05-034	J5016030	CASE, BU03P-TR-PC-H (JST)		-	1	1	
05-035	M2109330	WIRE SADDLE, YMC-10-0 (KITAGAWA)		-	1	1	
05-036	2BL06051	FRONT RAIL FEED		-	1	1	
05-037	2BL06061	REAR RAIL FEED		-	1	1	
05-038	2BL04520	SHAFT LEFT COVER M		-	1	1	
05-039	2BL16230	SPRING CONV OPEN		-	1	1	

Ref. No.	Part Code	Description	Applicable Model	SP	120V	230V	Remarks
05-040	2BL06950	DUMPER LEFT COVER		-	1	1	
05-041	33973300	STOPPER 7, CARTRIDGE		X	1	1	
05-043	2FG16160	GUIDE ROLLER F		-	1	1	
05-044	2FG16170	GUIDE ROLLER R		-	1	1	
05-045	2BL14240	CAM DLP		-	2	2	
05-046	2BL14410	SPRING CAM		-	2	2	
05-047	2BL14140	MOUNT CAM		-	2	2	
05-048	2BL14230	SHAFT CAM		-	1	1	
05-049	2BM17920	BUSH POM		-	1	1	
05-050	2BL14250	GEAR 18		-	1	1	
05-051	2FG06211	RIGHT ROLLER REGIST		X	1	1	
05-052	2AR02250	POSITIONING PLATE,LSU		-	4	4	
05-053	2FG93061	PARTS,MIDDLE FEED ASS'Y		X	1	1	
05-054	+ 2BL06230	GROUND PLATE A FEED		-	1	1	
05-055	+ 2BL27240	WIRE FEED 1		-	1	1	
05-056	+ 2BL06020	GUIDE A FEED		-	1	1	
05-057	+ 2BL06920	SHAFT FEED A		-	1	1	
05-058	+ 2BL06480	FILM REGIST F		X	1	1	
05-059	+ 2BL06930	PULLEY FEED		X	2	2	
05-060	+ 2BL06970	FILM REGIST FF		-	1	1	
05-061	+ 2BL06360	GEAR Z42 BYPASS		X	1	1	
05-062	+ 2FG06160	MOUNT BYPASS FEED		-	1	1	
05-063	+ 2BL06190	GEAR Z25 FEED		X	1	1	
05-064	+ 2BL06160	GEAR Z35-15 FEED		X	1	1	
05-065	+ 2BL06150	GEAR Z28 FEED		X	1	1	
05-066	+ 2FG06150	MOUNT MID FEED DRIVE		-	1	1	
05-067	+ 36222250	GEAR 30 IDLE		X	1	1	
05-068	+ 2FG06080	HOUSING FEED A		-	1	1	
05-069	+ 67322230	BUSHING 8		X	2	2	
05-070	+ 2FG27180	CLUTCH REGISTRATION		X	1	1	
05-071	+ 2BC06980	STOPPER 5		X	2	2	
05-072	+ 2BL27410	SWITCH CONVEYING		X	1	1	
05-073	+ 2BC06910	STOPPER 6		X	4	4	
05-074	+ 2AL06110	GEAR 25		X	1	1	
05-075	+ 2FG06170	GROUND PLATE GUIDE A		-	1	1	
05-076	+ 2FG06090	GUIDE MIDDLE FEED		-	1	1	
05-077	+ 2FG06100	SHAFT MIDDLE FEED		-	1	1	
05-078	+ 2FG06110	PULLEY MIDDLE FEED		-	8	8	
05-079	+ 2FG06200	FILM MIDDLE FEED		-	2	2	
05-080	2BC06910	STOPPER 6		X	1	1	
05-081	2BL06260	FRONT GUIDE REGIST		-	1	1	

Ref. No.	Part Code	Description	Applicable Model	SP	120V	230V	Remarks
05-082	2BL06440	MOUNT REGIST SWITCH		-	1	1	
05-083	2FG27110	SWITCH REGISTRATION		X	1	1	
05-084	2BL27170	WIRE REGISTRATION		-	1	1	
05-085	67322230	BUSHING 8		X	3	3	
05-086	2BC06980	STOPPER 5		X	1	1	
05-087	2BL93450	REGIST CLEANER ASSY		X	1	1	
05-088	36722860	GEAR 18		X	1	1	
05-089	2FG93110	PARTS, GUIDE TRANSFER ASSY		X	1	1	
05-090	+ 2FG05080	LABEL DRUM CAUTION E1		-	-	1	
05-090	+ 2FG05090	LABEL DRUM CAUTION E2		-	-	1	
05-090	+ 2FG05100	LABEL DRUM CAUTION A		-	1	-	
05-090	+ 2FG05110	LABEL DRUM CAUTION CN		-	-	1	
05-091	+ 2FG17190	FILM RIGHT GUIDE A		-	1	1	

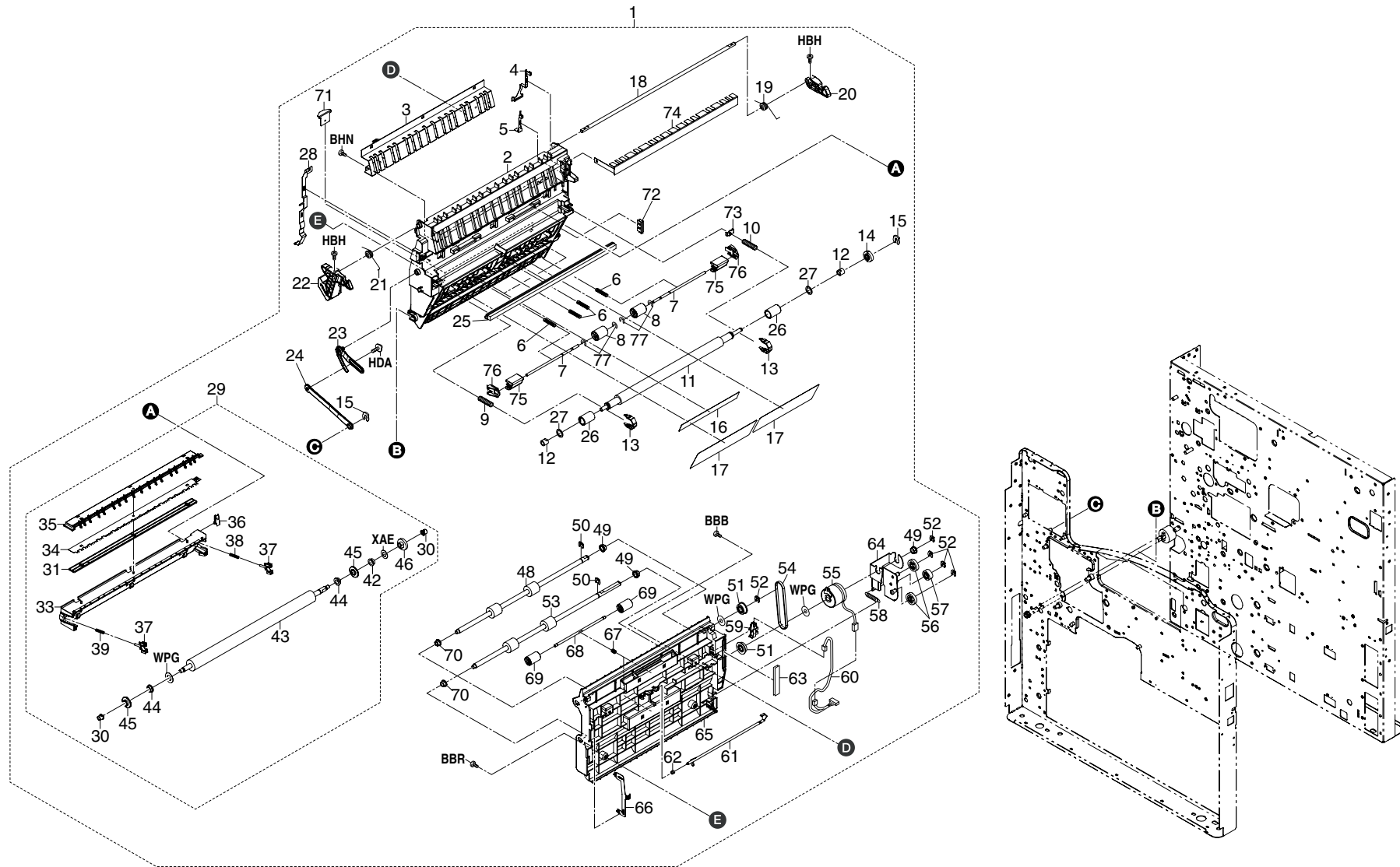
6. Paper Feed Unit



List 6 - Paper Feed Unit

Ref. No.	Part Code	Description	Applicable Model	SP	120V	230V	Remarks
06-001	2BL21360	SHAFT CHANGE PULLEY		-	2	2	
06-002	2BL21330	PULLEY FEED SHIFT		X	4	4	
06-003	2BL21290	GUIDE EXIT L		-	1	1	
06-004	2BL21340	SPRING CHANGE PULLEY		-	4	4	
06-005	2FG20180	MOUNT REAR GUIDE		-	1	1	
06-006	2FG20170	REAR GUIDE FIXING		-	1	1	
06-007	34920170	FULCRUM PIN, FIXING		-	2	2	
06-008	36720493	CLAW, PRESS ROLLER		X	4	4	
06-009	2AR20510	SHAFT, PRESSURE ROLLER SEPARATION CLAW		-	4	4	
06-010	2FG20370	SPRING PRESS ROLLER		X	4	4	
06-011	65009050	SPRING, DEVELOPING ROCK		-	2	2	
06-012	2BL21410	GUIDE FEED SHIFT L		-	1	1	
06-013	2BL04510	LEFT COVER MIDDLE 1		X	1	1	
06-014	2BL23110	GROUND PLATE LEFT FAN		-	3	3	
06-015	2BL04620	PLATE LEFT COVER M		-	1	1	
06-016	2BL04700	GROUND PLATE LEFT B		-	2	2	
06-017	2BL04540	SHAFT L COVER LOCK M		-	1	1	
06-018	2BL04550	LEVER L COVER LOCK M		X	2	2	
06-019	2BL04560	SPRING L COVER LOCK		-	2	2	
06-020	2BL04600	LEVER COVER RELEASE		-	1	1	
06-021	73912281	PIN, ORIGINAL HOLDER		-	2	2	
06-022	2BL04680	STRAP COVER		-	2	2	
06-023	2BL21320	GUIDE LEFT COVER M		-	1	1	
06-024	2FG27080	FAN MOTOR 4		X	3	3	
06-025	2BL27300	WIRE CONVEYING FAN		-	1	1	
06-026	2BL21460	FILM WIRE PROTECT		-	1	1	
06-027	2BL04650	COVER EXIT L		X	1	1	
06-028	2BL04660	FRONT PLATE EXIT L		-	1	1	
06-030	2BL04670	REAR PLATE EXIT L		-	1	1	
06-031	2BL21500	FILM WIRE PROTECT B		-	1	1	
06-034	2BL06100	LEFT COVER FEED		X	1	1	
06-035	2BL06340	SPRING FEED		-	2	2	
06-036	2BL06210	SHAFT FEED PULLEY		-	2	2	
06-037	2BL16080	PULLEY FEED		X	4	4	
06-038	2BL06960	STRAP RELEASE		-	1	1	
06-039	2AR07540	RETAINING PIN, VERTICAL CONVEYING		-	1	1	
06-040	2BL05050	LABEL LEFT COVER		X	1	1	
06-041	2BL05110	LABEL HIGH TEMP		-	1	1	

7. Paper Conveyers

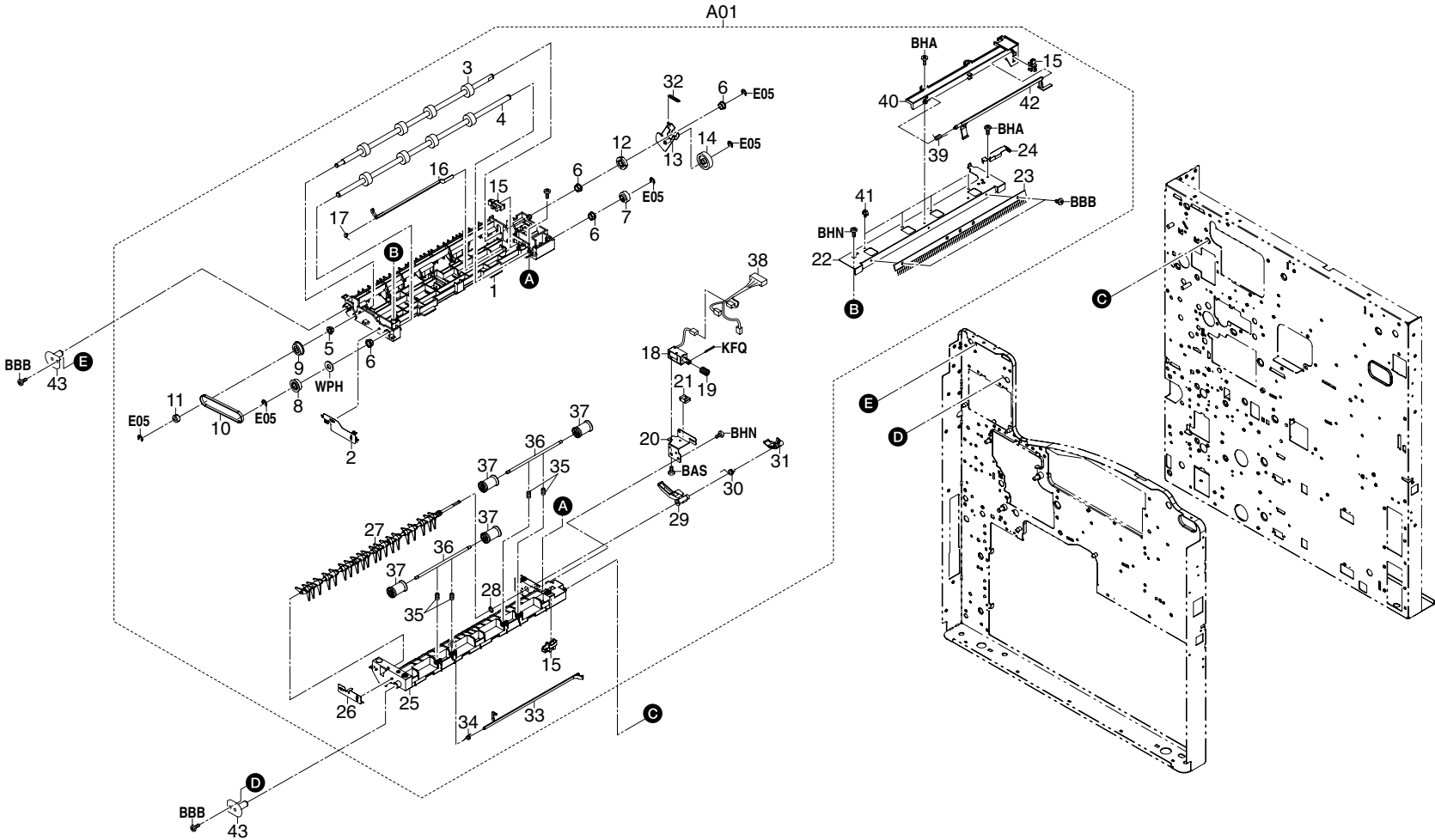


List 7 - Paper Conveyers

Ref. No.	Part Code	Description	Applicable Model	SP	120V	230V	Remarks
07-001	2FH93100	PARTS, FEED UNIT FE-702		X	1	1	
07-002	+ 2FG16260	BASE CONVEYING A 1		-	1	1	
07-003	+ 2FG16200	PLATE PAPER GUIDE		-	1	1	
07-004	+ 2BL16150	PLATE TRANS B		-	1	1	
07-005	+ 2BL16170	PLATE SEPARATION B		-	1	1	
07-006	+ 2FG16320	SPRING FEED		-	4	4	
07-007	+ 2FG16280	SHAFT FEED		-	2	2	
07-008	+ 2BL16080	PULLEY FEED		X	2	2	
07-009	+ 2FG16300	SPRING REGIST F		X	1	1	
07-010	+ 2FG16310	SPRING REGIST R		X	1	1	
07-011	+ 2FG16021	ROLLER REGIST		X	1	1	
07-012	+ 72107160	BUSHING 6, LOWER REGISTRATION ROLLER		X	2	2	
07-013	+ 2BL16030	STOPPER BUSH		X	2	2	
07-014	+ 2BL16060	GEAR REGIST Z18		X	1	1	
07-015	+ 2A806250	RING STOPPER		X	2	2	
07-016	+ 2BL16130	GUIDE REGIST F		X	2	2	
07-017	+ 2BL16250	GUIDE FEED F		-	2	2	
07-018	+ 2BL16210	SHAFT CONVEYING		-	1	1	
07-019	+ 2BL16240	SPRING CONVEYING B		-	1	1	
07-020	+ 2BL16190	HOOK CONVEYING		X	1	1	
07-021	+ 2BL16200	SPRING CONVEYING		-	1	1	
07-022	+ 2BL16180	HANDLE CONVEYING		X	1	1	
07-023	+ 2BL16100	STRAP CONVEYING A		-	1	1	
07-024	+ 2BL16110	STRAP CONVEYING B		-	1	1	
07-025	+ 2BL07950	UNDER CLEANER REGIST		-	1	1	
07-026	+ 2FG16030	PULLEY REGIST		-	2	2	
07-027	+ 2BL07970	CUT WASHER 10		-	2	2	
07-028	+ 2BL16160	PLATE TRANS UNIT GND		-	1	1	
07-029	+ 2FG93091	PARTS, TRANSFER ROLLER		X	1	1	
07-030	++ 2BL17030	COLLAR TRANS ROLLER		X	2	2	
07-031	++ 2FG17020	SPACER SEPARATION		-	1	1	
07-033	++ 2BL17010	HOUSING TRANSFER		-	1	1	
07-034	++ 2FG17040	BRUSH SEPARATION		X	1	1	
07-035	++ 2FG17010	HOLDER SEPARATION A		-	1	1	
07-036	++ 2BL17050	PLATE TRANS UNIT		-	1	1	
07-037	++ 2BL17060	BUSH TRANS ROLLER		X	2	2	
07-038	++ 2FG17160	SPRING TRANS R		X	1	1	
07-039	++ 2BL17070	SPRING TRANS F		X	1	1	
07-042	++ 75718040	BUSHING,CLEANING BLADE SHAFT		X	1	1	

Ref. No.	Part Code	Description	Applicable Model	SP	120V	230V	Remarks
07-043	++ 2BL17021	ROLLER TRANSFER		X	1	1	
07-044	++ 2BL17170	BUSHING 8		X	2	2	
07-045	++ 2BL17040	PULLEY TRANS ROLLER		X	2	2	
07-046	++ 2BL17090	GEAR TRANS Z25H		X	1	1	
07-048	+ 2BL07020	ROLLER DU FEED UP		X	1	1	
07-049	+ 67322230	BUSH 8		X	3	3	
07-050	+ 2BC06910	STOPPER 6		X	2	2	
07-051	+ 2BL21230	PULLEY EXIT T30		X	2	2	
07-052	+ 2BC06980	STOPPER 5		X	5	5	
07-053	+ 2BL07030	ROLLER DU FEED LOW		X	1	1	
07-054	+ 2BL21240	BELT EXIT P2M212		X	1	1	
07-055	+ 2FG27160	CLUTCH FEED		X	1	1	
07-056	+ 2AL06110	GEAR 25		X	2	2	
07-057	+ 66506630	GEAR IDLE 20		X	1	1	
07-058	+ 2BL07080	SPRING DU JOINT		-	1	1	
07-059	+ 2C927210	SENSOR 248NL1		X	1	1	
07-060	+ 2BL27200	WIRE DUPLEX		-	1	1	
07-061	+ 2BL07090	ACTUATOR DU		X	1	1	
07-062	+ 2BL07130	SPRING DU ACT.		-	1	1	
07-063	+ 2BL07140	FILM WIRE DU		-	1	1	
07-064	+ 2BL07070	JOINT DU		-	1	1	
07-065	+ 2BL07010	FRAME DU		-	1	1	
07-066	+ 2BL07110	PLATE EARTH DU		-	1	1	
07-067	+ 2BL07060	SPRING DU PULLEY		-	2	2	
07-068	+ 2BL07050	SHAFT DU PULLEY		-	2	2	
07-069	+ 2BL07040	PULLEY DU		X	4	4	
07-070	+ 73210450	BUSH 6		X	2	2	
07-071	+ 2BL07120	PLATE NUT DU		-	2	2	
07-072	+ 2FG16010	PLATE MID FEED UNIT		-	1	1	
07-073	+ 2FG16250	SPACER REGIST		-	1	1	
07-074	+ 2FG16270	SHEET CONVEYING		-	1	1	
07-075	+ 2FG16290	GUIDE FEED		-	2	2	
07-076	+ 2FG16330	HOLDER SHAFT A		-	2	2	
07-077	+ 2BL07970	CUT WASHER 3		X	4	4	

8. Paper Exit Unit

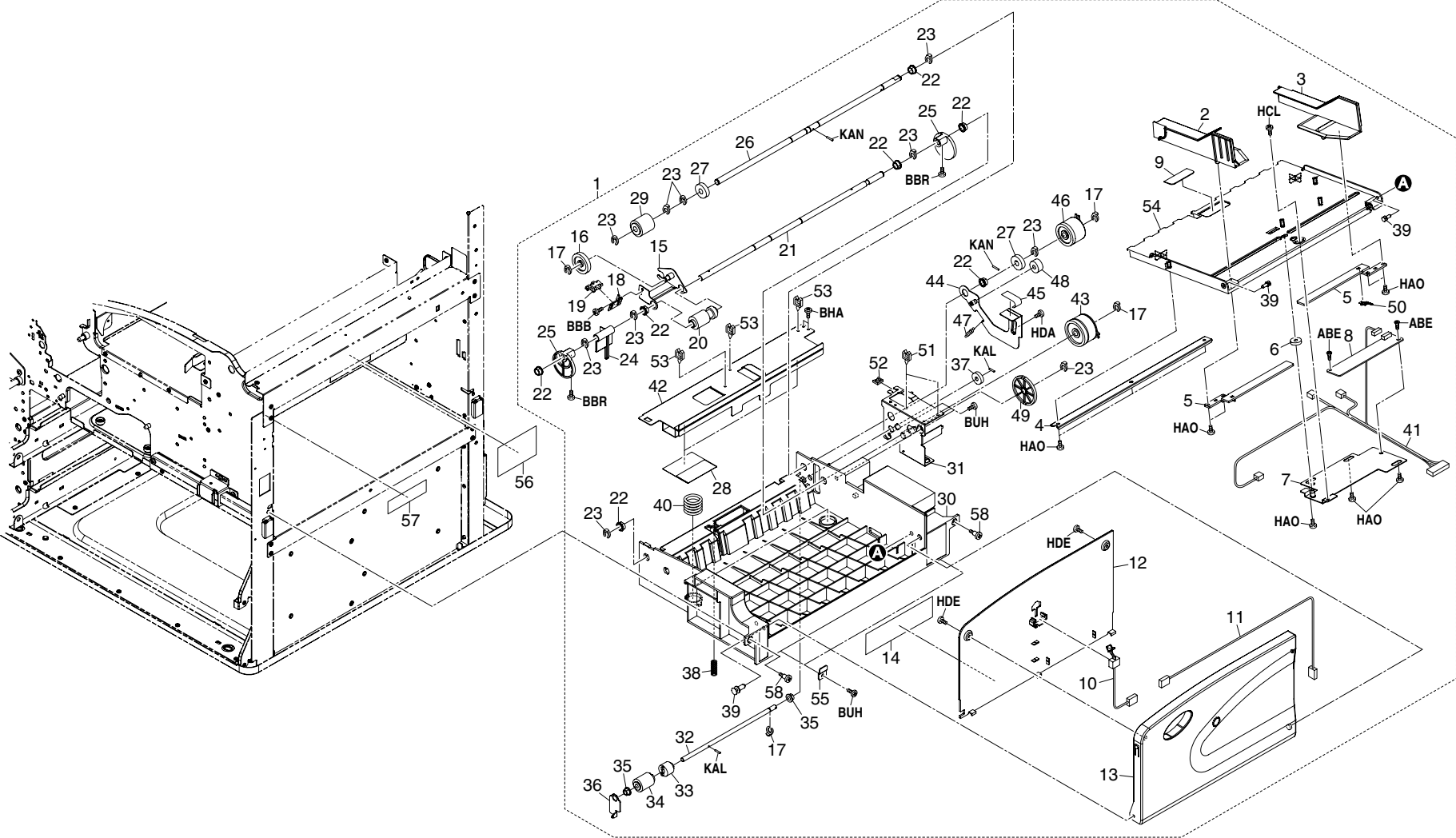


List 8 - Paper Exit Unit

Ref. No.	Part Code	Description	Applicable Model	SP	120V	230V	Remarks
08-A01	2BL93100	EXIT ASSY	Excl. Taiwan	X	1	1	
08-A01	2BL93490	PARTS EXIT UNIT J	Taiwan only	X	1	-	
08-001	+ 2BL21040	FRAME EXIT UP		-	1	1	
08-002	+ 2BL21170	PLATE EARTH EXIT F		-	1	1	
08-003	+ 2BL21030	ROLLER FEED SHIFT		X	1	1	
08-004	+ 2BL21020	ROLLER EXIT	Excl. Taiwan	X	1	1	
08-004	+ 2BL21050	ROLLER EXIT J	Taiwan only	X	1	-	
08-005	+ 73210450	BUSH, 6		X	1	1	
08-006	+ 67322230	BUSHING 8		X	4	4	
08-007	+ 2BL21430	GEAR EXIT Z20		X	1	1	
08-008	+ 2BL21230	PULLEY EXIT T30		X	1	1	
08-009	+ 2BL21210	PULLEY ONEWAY T30		X	1	1	
08-010	+ 2BL21240	BELT EXIT P2M212		X	1	1	
08-011	+ 2BL22580	COLLAR BELT		-	1	1	
08-012	+ 2BL21220	GEAR EXIT Z19		X	1	1	
08-013	+ 2BL21200	JOINT EXIT		-	1	1	
08-014	+ 2BL21390	GEAR EXIT JOINT Z26S		X	1	1	
08-015	+ 35327400	SWITCH FEED		X	3	3	
08-016	+ 2BL21130	ACTUATOR EXIT L		X	1	1	
08-017	+ 2BL21260	SPRING ACTUATOR L		-	1	1	
08-018	+ 3AZ21890	SOLENOID, FEED SHIFT		X	1	1	
08-019	+ 2BL21440	SPRING EXIT CHANGE		X	1	1	
08-020	+ 2BL21190	BKT SOLENOID		-	1	1	
08-021	+ M2104350	EDGING, EDS-0607M (KITAGAWA)		-	1	1	
08-022	+ 2BL21160	BKT DISCHARGER		-	1	1	
08-023	+ 34821100	STATIC ELIMINATOR, EJECT		X	1	1	
08-024	+ 2BL21180	PLATE EARTH EXIT R		-	1	1	
08-025	+ 2BL21010	FRAME EXIT		-	1	1	
08-026	+ 2BL21470	PLATE EARTH CHANGE		-	1	1	
08-027	+ 2BL21080	GUIDE EXIT CHANGE		X	1	1	
08-028	+ 2BL21510	CUT WASHER 6		X	1	1	
08-029	+ 2BL21370	LEVER GUIDE CHANGE B		-	1	1	
08-030	+ 2BL21270	SPRING FEED SHIFT		-	1	1	
08-031	+ 2BL21100	LEVER GUIDE CHANGE		-	1	1	
08-032	+ 2BL21400	SPRING EXIT JOINT		-	1	1	
08-033	+ 2BL21120	ACTUATOR EXIT R		X	1	1	
08-034	+ 2BL21250	SPRING ACTUATOR R		-	1	1	
08-035	+ 2BL21070	SPRING EXIT PULLEY		-	4	4	
08-036	+ 2BL21060	SHAFT EXIT PULLEY		-	2	2	

Ref. No.	Part Code	Description	Applicable Model	SP	120V	230V	Remarks
08-037	+ 2BL21520	PULLEY EXIT C		-	4	4	
08-037	+ 2BL21450	PULLEY EXIT B		-	4	-	
08-038	+ 2BL27160	WIRE EJECT (P)		-	1	1	
08-039	+ 2BL21480	SPRING EXIT FULL		-	1	1	
08-040	+ 2BL21150	BKT EXIT FULL		-	1	1	
08-041	+ M2105740	MINIATURE CLAMP, UAMS-05S-2		-	4	4	
08-042	+ 2BL21140	ACTUATOR EXIT FULL		-	1	1	
08-043	+ 2BL21420	PIN EXIT		-	2	2	

9. Bypass Unit

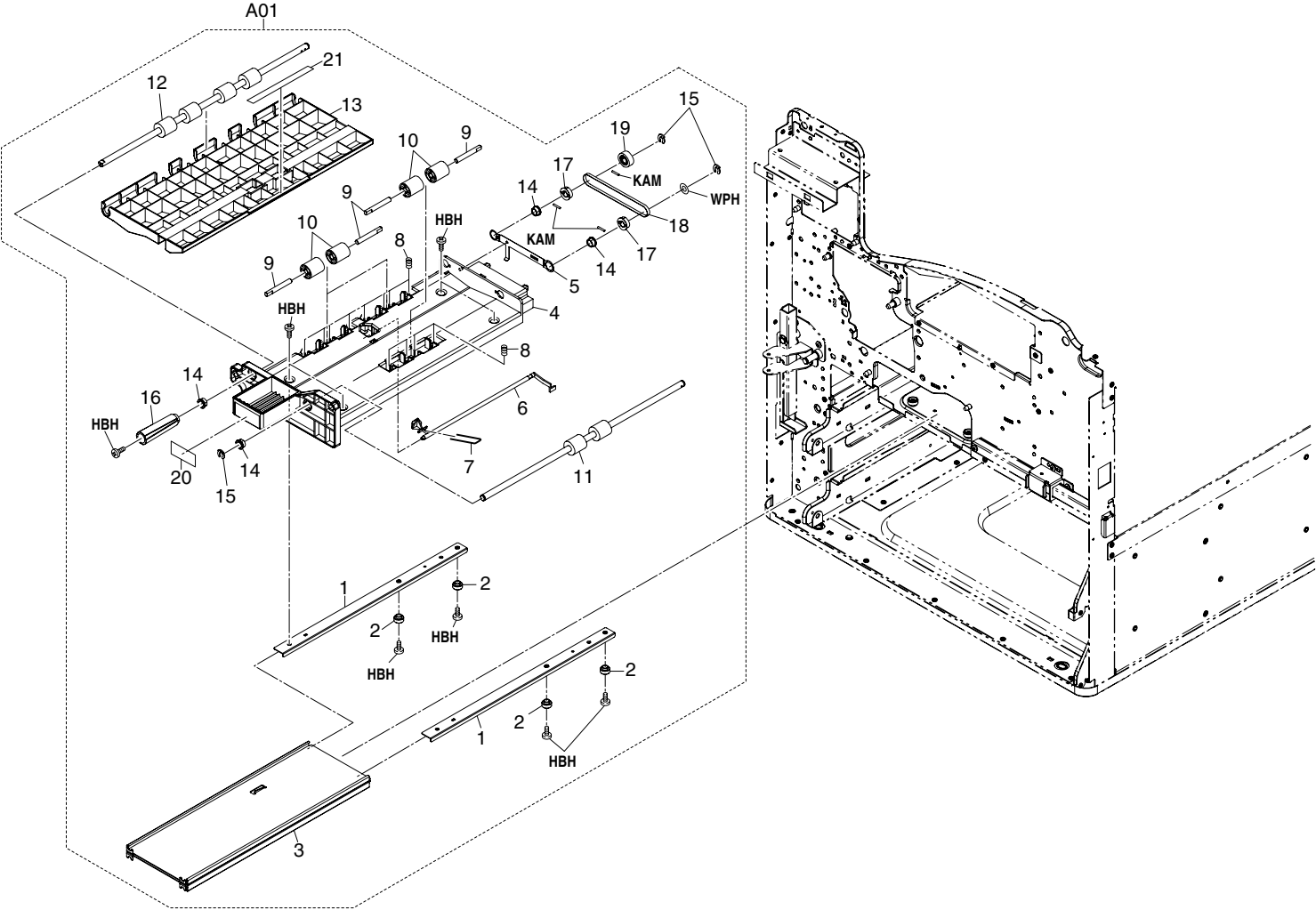


List 9 - Bypass Unit

Ref. No.	Part Code	Description	Applicable Model	SP	120V	230V	Remarks
09-001	2FG68010	BYPASS UNIT (C)		X	-	1	
09-001	2FG68020	BYPASS UNIT (I)		X	1	-	
09-002	+ 2BL06660	FRONT CURSOR BYPASS		-	1	1	
09-003	+ 2BL06670	REAR CURSOR BYPASS		-	1	1	
09-004	+ 2BL06650	STAY LIFTPLATE		-	1	1	
09-005	+ 33907100	RACK, CASSETTE		X	2	2	
09-006	+ 65914120	GEAR 18, IDLE DEVELOPING		X	1	1	
09-007	+ 3A206461	MOUNT, BYPASS PCB		-	1	1	
09-008	+ 2FG01020	SIZE DETECTION ASS'Y		X	1	1	
09-009	+ 34806490	FRICTION PLATE, BYPASS LEADING FEED		-	1	1	
09-010	+ 33906990	SWITCH, BYPASS SIZE DETECTION		X	1	1	
09-011	+ 2BL27210	WIRE BYPASS TRAY		-	1	1	
09-012	+ 2BL06610	TABLE BYPASS		X	1	1	
09-013	+ 2BL06600	COVER BYPASSSTRAY		X	1	1	
09-014	+ 2BL05010	LABEL BYPASSSIZE (C)		X	-	1	
09-014	+ 2BL05060	LABEL BYPASSSIZE (I)		X	1	-	
09-015	+ 3A206130	JOINT, BYPASS PICKUP		-	1	1	
09-016	+ 72321350	GEAR 30, FD EJECT IDLE		X	1	1	
09-017	+ 2BC06980	STOPPER 5		X	4	4	
09-018	+ 3A206210	MOUNT, BYPASS PE SWITCH		-	1	1	
09-019	+ 2C927210	SENSOR 248NL1		X	1	1	
09-020	+ 2AR07240	PULLEY, LEADING FEED		X	1	1	
09-021	+ 2BL06760	SHAFT BYPASSCAM		-	1	1	
09-022	+ 67322230	BUSHING 8		X	7	7	
09-023	+ 2BC06910	STOPPER 6		X	10	10	
09-024	+ 3A206100	ARM, BYPASS PE		X	1	1	
09-025	+ 2BL06680	CAM BYPASS		X	2	2	
09-026	+ 2BL06770	SHAFT BYPASS		-	1	1	
09-027	+ 45729416	GEAR, TONER ROLLER		X	2	2	
09-028	+ 2BL06880	FILM BYPASS		-	2	2	
09-029	+ 61706770	UPPER PULLEY, BYPASS		X	1	1	
09-030	+ 2BL06510	BASE BYPASSUNIT (1)		-	1	1	
09-031	+ 2BL06690	MOUNT BYPASSDRIVE		-	1	1	
09-032	+ 2BL06750	SHAFT RETARD		-	1	1	
09-033	+ 33906430	TORQUE LIMITER,BYPASS		X	1	1	
09-034	+ 2AR07230	PULLEY, SEPARATION		X	1	1	
09-035	+ 73210450	BUSH, 6		X	2	2	
09-036	+ 3A206170	HOLDER, RETARD		-	1	1	
09-037	+ 66006810	GEAR, 16 BYPASS PULLEY		X	1	1	

Ref. No.	Part Code	Description	Applicable Model	SP	120V	230V	Remarks
09-038	+ 2BL06860	SPRING RETARD		-	1	1	
09-039	+ 66007310	PIN, CASSETTE WORK PLATE		X	3	3	
09-040	+ 34907380	SPRING, CASSETTE		-	2	2	
09-041	+ 2BL27150	WIRE BYPASS UNIT		-	1	1	
09-042	+ 2BL06530	COVER BYPASSUNIT		-	1	1	
09-043	+ 2FG27170	CLUTCH, FEED B		X	1	1	
09-044	+ 2BL06850	JOINT RETARD		-	1	1	
09-045	+ 2BL05040	LABEL RETARD		-	1	1	
09-046	+ 2FG27160	CLUTCH FEED		X	1	1	
09-047	+ 2BL06870	SPRING JOINTRETARD		-	1	1	
09-048	+ 33906160	GEAR 16, PAPER FEED		X	1	1	
09-049	+ 2BL06720	GEAR 55/15		X	1	1	
09-050	+ 33907110	TERMINAL, PAPER SIZE PCB		-	1	1	
09-051	+ M2105740	MINIATURE CLAMP, UAMS-05S-2		-	2	2	
09-052	+ M2104210	EDGING, EDS-2		-	1	1	
09-053	+ M2109370	WIRE SADDLE, RLWS-1515T V0 (KITAGAWA)		-	3	3	
09-054	+ 2BL06640	LIFTPLATE BYPASS		-	1	1	
09-055	+ 2BL06890	PLATE BYPASS HOLD		-	2	2	
09-056	2BL05100	LABEL BYPASS JAM R		-	1	1	
09-057	3A205010	LABEL, CAUTION GEAR		-	1	1	
09-058	2BL04410	PIN COVER		-	2	2	

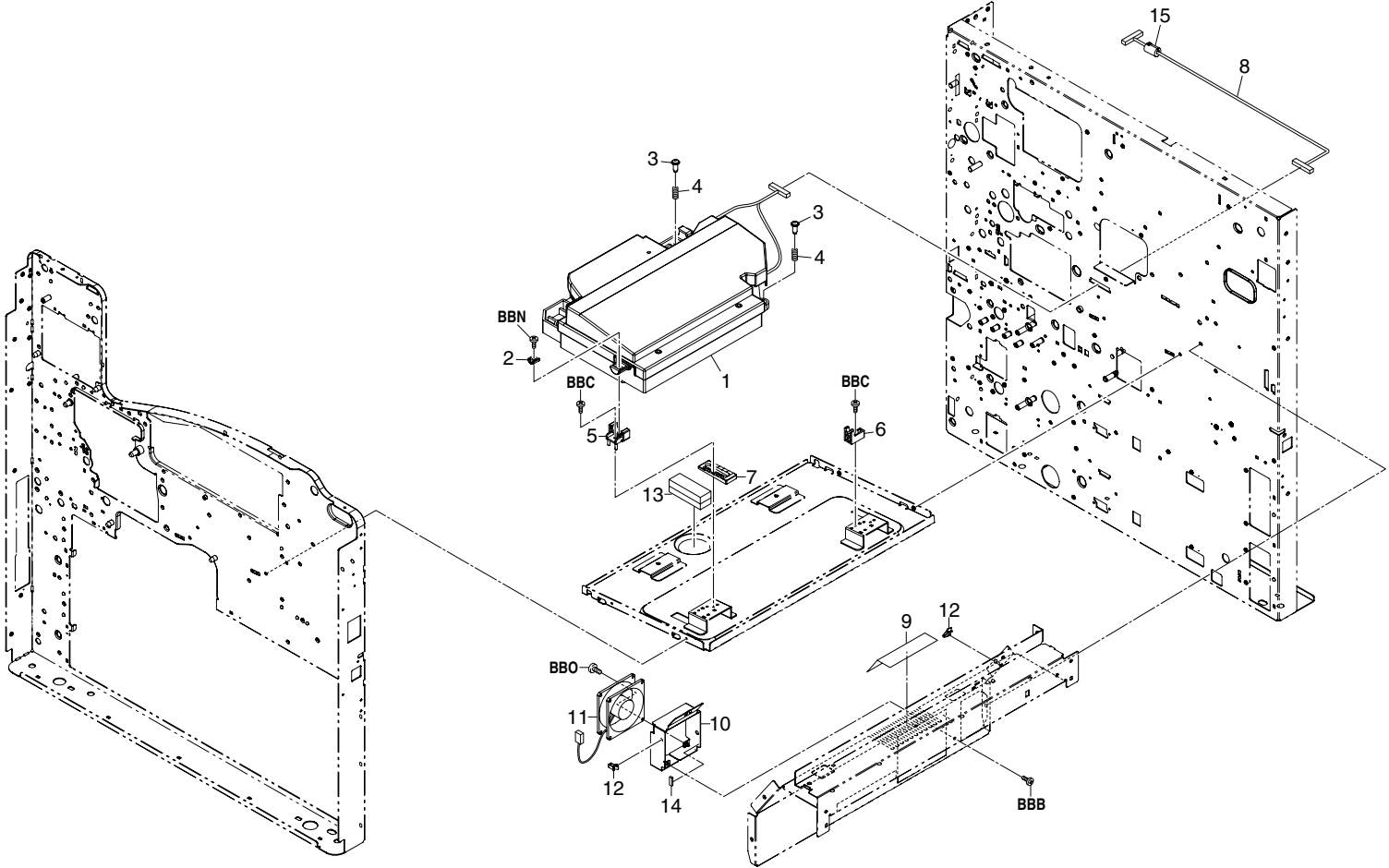
10. Bypass Feed Unit



List 10 - Bypass Feed Unit

Ref. No.	Part Code	Description	Applicable Model	SP	120V	230V	Remarks
10-A01	2BL93390	BYPASS FEED UNIT		X	1	1	
10-001	+ 2BL06570	MOUNT RAIL		-	2	2	
10-002	+ 2BL06590	PULLEY RAIL		-	4	4	
10-003	+ 2BL06580	RAIL BYPASS		-	1	1	
10-004	+ 2BL06500	BASE BYPASSFEED (1)		-	1	1	
10-005	+ 2BL06790	GROUNDPLATE BYPASS		-	1	1	
10-006	+ 2BL06730	ACTUATOR BYPASSFEED		X	1	1	
10-007	+ 2BL06800	SPRING BYPASS		X	1	1	
10-008	+ 2BL06780	SPRING BYPASSFEED		-	12	12	
10-009	+ 2BL06740	SHAFT BYPASSFEED		-	6	6	
10-010	+ 33906660	RIGHT PULLEY, FEED		X	6	6	
10-011	+ 2BL06540	ROLLER2 BYPASSFEED		X	1	1	
10-012	+ 2BL06560	ROLLER4 BYPASSFEED		X	1	1	
10-013	+ 2BL06520	UPPERGUIDE BYPASS		-	1	1	
10-014	+ 67322230	BUSHING 8		X	4	4	
10-015	+ 2BC06910	STOPPER 6		X	3	3	
10-016	+ 2BL06830	DIAL BYPASSFEED		-	1	1	
10-017	+ 2BL06820	PULLEY25 BYPASSFEED		X	2	2	
10-018	+ 2BL06810	BELT BYPASSFEED		X	1	1	
10-019	+ 36722860	GEAR 18		X	1	1	
10-020	+ 2BL05020	FRONT LABEL BYPASS		-	1	1	
10-021	+ 2BL05030	UPPER LABEL BYPASS		-	1	1	

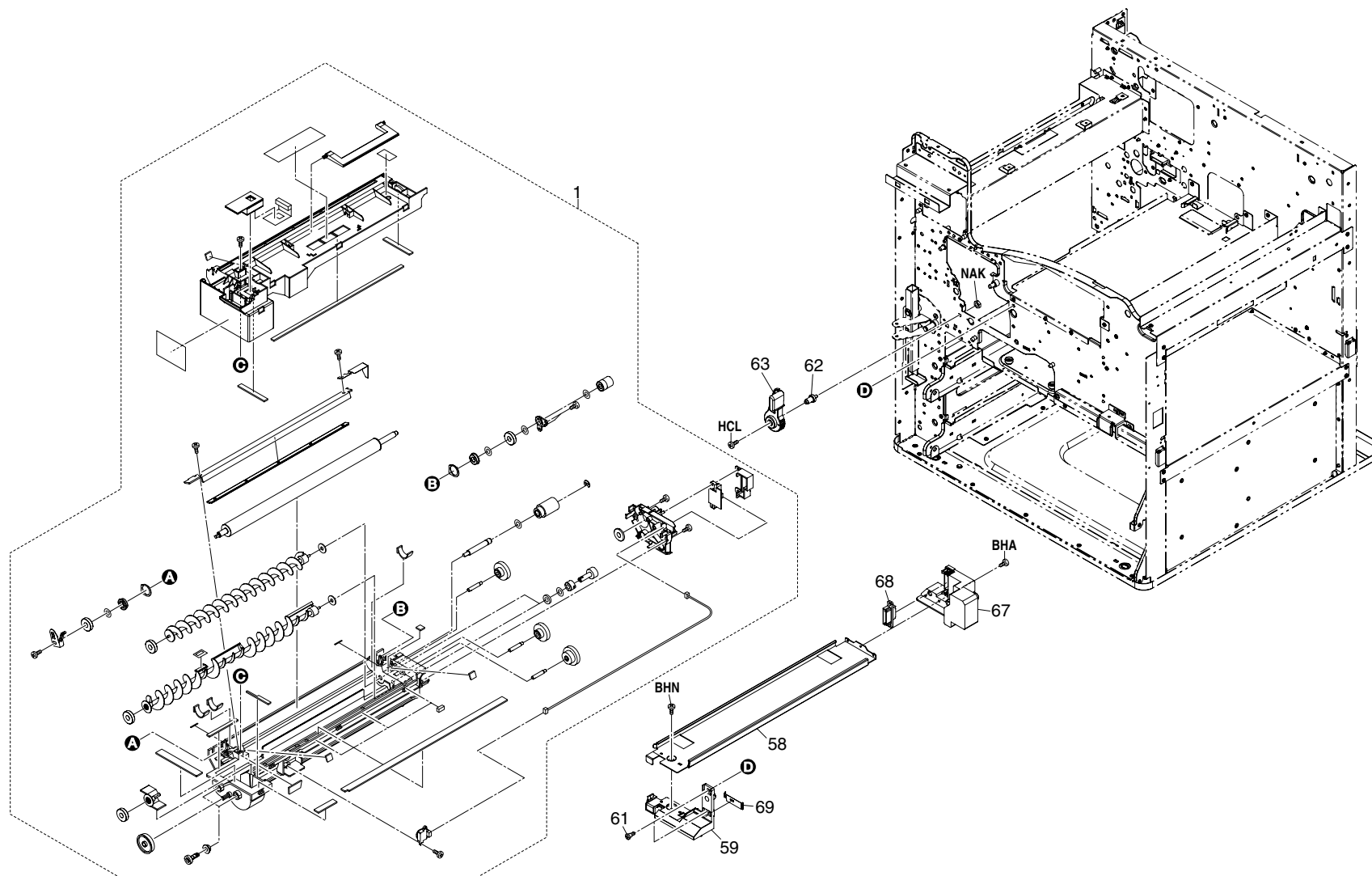
11. LSU



List 11 - LSU

Ref. No.	Part Code	Description	Applicable Model	SP	120V	230V	Remarks
11-001	2BL93141	PARTS, LASER UNIT, LK-700		X	1	1	
11-002	2BL13120	FRONT MOUNT HOUSING		-	1	1	
11-003	76610320	PIN TENSION PULLEY		-	2	2	
11-004	2BL13290	SPRING FIX LSU		-	2	2	
11-005	2BL13070	FRONT ADJUSTING LSU		-	1	1	
11-006	2BL13060	REAR ADJUSTING LSU		-	1	1	
11-007	2BL13250	ADJUSTING PLT LSU		-	1	1	
11-008	2BL27060	WIRE LSU		-	1	1	
11-009	2BL23090	FILTER DUST SHIELD		-	1	1	
11-010	2BL02230	MOUNT FAN		-	1	1	
11-011	2BL27700	FAN COOLING (60-25)		X	1	1	
11-012	M2109330	WIRE SADDLE, YMC-10-0 (KITAGAWA)		-	2	2	
11-013	2BL27690	SHEET RADIATER (LSU)		-	2	2	
11-014	2BL02240	SPONGE FAN		-	1	1	
11-015	2FG27640	COREATFC-16-8-16		-	1	1	

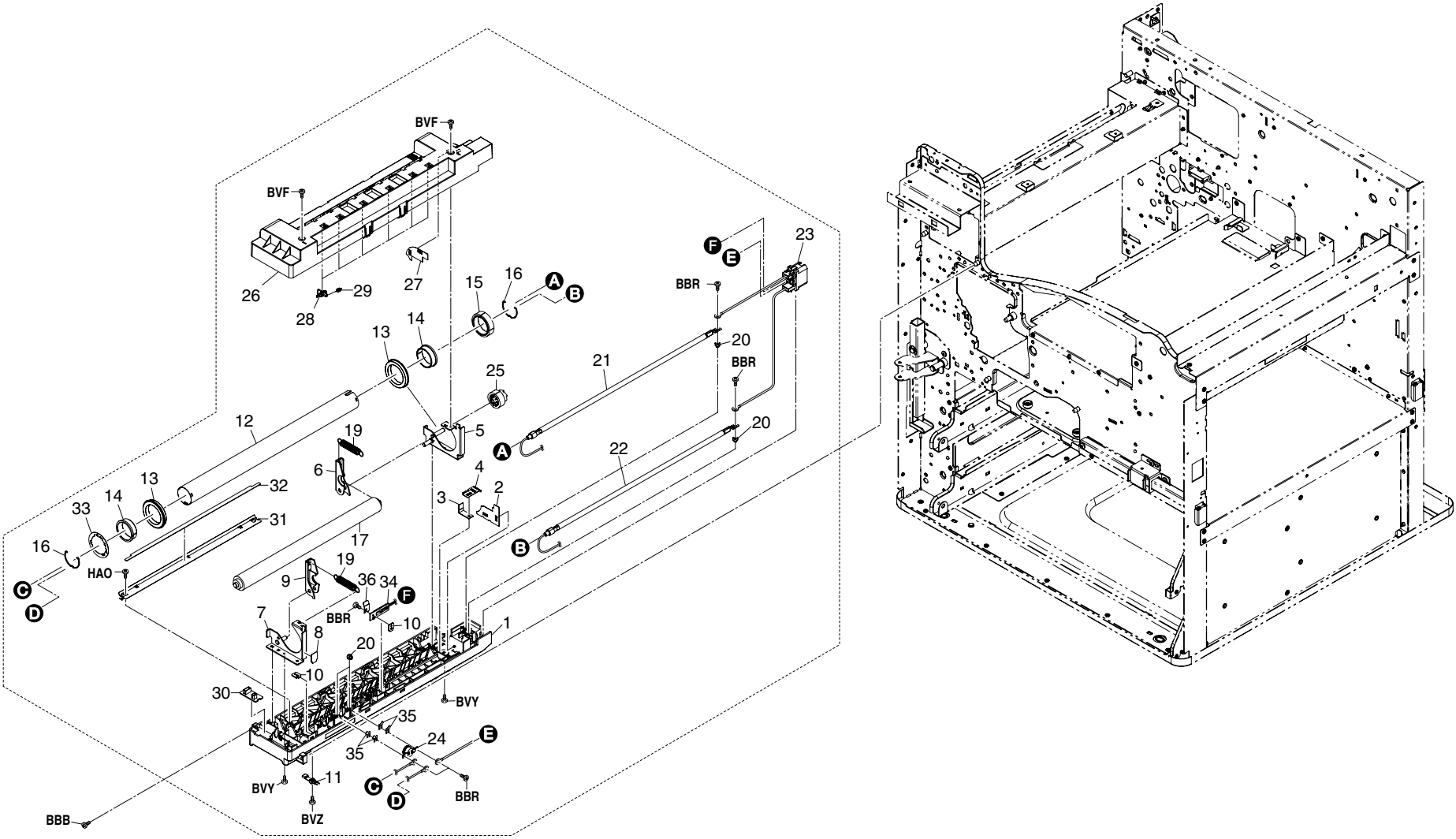
12. Developer Unit



List 12 - Developer Unit

Ref. No.	Part Code	Description	Applicable Model	SP	120V	230V	Remarks
12-001	2BL93010	DV-700		X	1	1	
12-058	2BL14200	RAIL DLP		-	1	1	
12-059	2BL14180	FRONT ARM RAIL		-	1	1	
12-061	2BL14660	STUD SCREW S		-	2	2	
12-062	2BL14220	PIN LEVER DLP		-	1	1	
12-063	2BL14210	LEVER DLP		-	1	1	
12-067	2BL14190	REAR ARM RAIL		-	1	1	
12-068	J7340100	RECEPTACLE, 9715S-10A (IRS)		-	1	1	
12-069	2BL14350	GROUND PLATE RAIL		-	1	1	

13. Fuser Unit

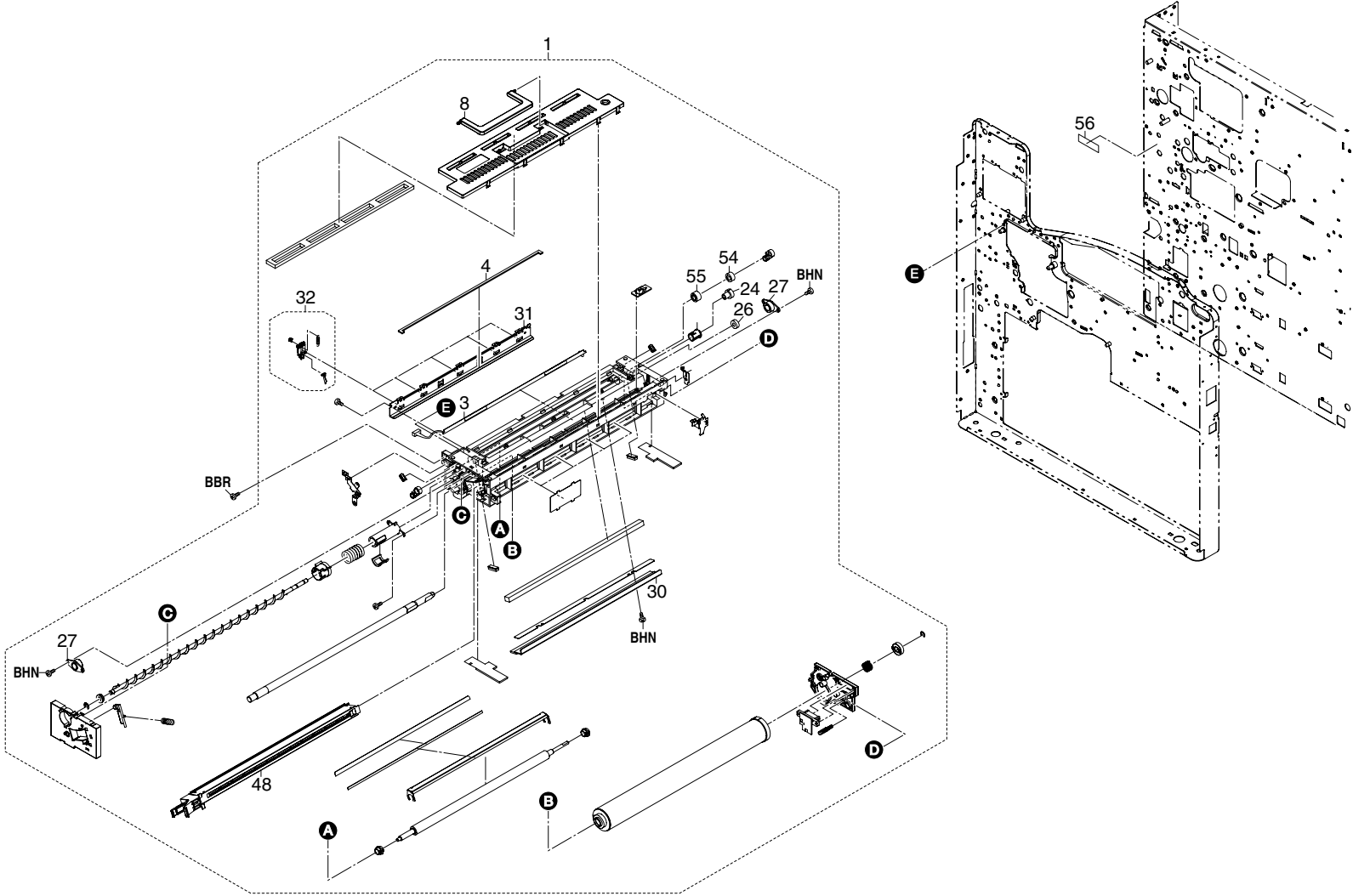


List 13 - Fuser Unit

Ref. No.	Part Code	Description	Applicable Model	SP	120V	230V	Remarks
13-000	2FH93030	PARTS, FK-702 (E), SP		X	-	1	
13-000	2FH93020	PARTS, FK-702 (U), SP	Excl. Taiwan	X	1	-	
13-000	2FH93050	PARTS, FK-702 (TW), SP	Taiwan only	X	1	-	
13-001	+ 2FG20021	LOWER FRAME FIXING A		-	1	1	
13-002	+ 2BL20310	LOWER COVER FRAME		-	1	1	
13-003	+ 34820310	STATIC ELIMINATOR, HEAT ROLLER		-	1	1	
13-004	+ 2BL20230	PLATE SPRING FIXING		-	1	1	
13-005	+ 2FG20040	REAR FRAME FIXING		-	1	1	
13-006	+ 2FG20300	REAR PRESSING PLATE		-	1	1	
13-007	+ 2FG20030	FRONT FRAME FIXING		-	1	1	
13-008	+ 2BL20290	COVER FIXING WIRE		-	1	1	
13-009	+ 2FG20290	FRONT PRESSING PLATE		-	1	1	
13-010	+ 2BL20210	MOUNT THERMISTOR		-	1	1	
13-011	+ 2FG20210	THERMISTOR FIXING		X	1	1	
13-012	+ 2FG20050	ROLLER HEAT FS-9120DN		X	1	1	
13-013	+ 2FG20190	BUSHING, HEAT ROLLER		X	2	2	
13-014	+ 2FG20230	BEARING, HEAT ROLLER		X	2	2	
13-015	+ 2FG20070	GEAR 55 HEAT ROLLER		X	1	1	
13-016	+ 2FG20200	STOPPER HEAT ROLLER		-	2	2	
13-017	+ 2FG93150	PARTS, PRESS ROLLER ASSY		X	1	1	
13-019	+ 2FG20240	SPRING PRESSURE	FS-9120DN	-	2	2	
13-020	+ 2FG20360	NUT FUSER		-	4	4	
13-021	+ 2FG20120	HEATER M120 FIXING	Excl. Taiwan	X	1	-	
13-021	+ 2FG20140	HEATER M230 FIXING		X	-	1	
13-021	+ 2FG20320	HEATER M110 FIXING	Taiwan only	X	1	-	
13-022	+ 2FG20130	HEATER S120 FIXING	FS-9120DN, Excl. Taiwan	X	1	-	
13-022	+ 2FG20150	HEATER S230 FIXING	FS-9120DN	X	-	1	
13-022	+ 2FG20330	HEATER S110 FIXING	FS-9120DN, Taiwan only	X	1	-	
13-022	+ 2BL20140	HEATER S120 FIXING	FS-9520DN, Excl. Taiwan	X	1	-	
13-022	+ 2BL20160	HEATER S230 FIXING	FS-9520DN	X	-	1	
13-022	+ 2BL20120	HEATER S110 FIXING	FS-9520DN, Taiwan only	X	1	-	
13-023	+ 2BL27130	WIRE FIXING UNIT		-	1	1	
13-024	+ 2FG20220	THERMOSTAT FIXING		X	1	1	
13-025	+ 2BL20260	GEAR FIXING Z33		X	1	1	
13-026	+ 2FG20010	UPPER FRAME FIXING A		X	1	1	
13-027	+ 2BL20300	UPPER COVER FRAME		-	1	1	
13-028	+ 2BL20080	CLAW HEAT ROLLER		X	6	6	
13-029	+ 2FG20350	SPRING CLAW		-	6	6	
13-030	+ 2FH01080	PCB FIXING ASSY		-	1	1	

Ref. No.	Part Code	Description	Applicable Model	SP	120V	230V	Remarks
13-031	+ 2BL20320	HOLDER PRESS SE		-	1	1	
13-032	+ 2BL20330	STATIC ELIMINATOR PRESS		-	1	1	
13-033	+ 2FG20280	GROUND PLATE FIXING		X	1	1	
13-034	+ 2FG20340	THERMISTOR FIXING UC		X	1	1	
13-035	+ 2FG20380	SPACER THERMOSTAT		-	4	4	
13-036	+ 2FG20390	SPACER THERMISTOR UC		-	1	1	

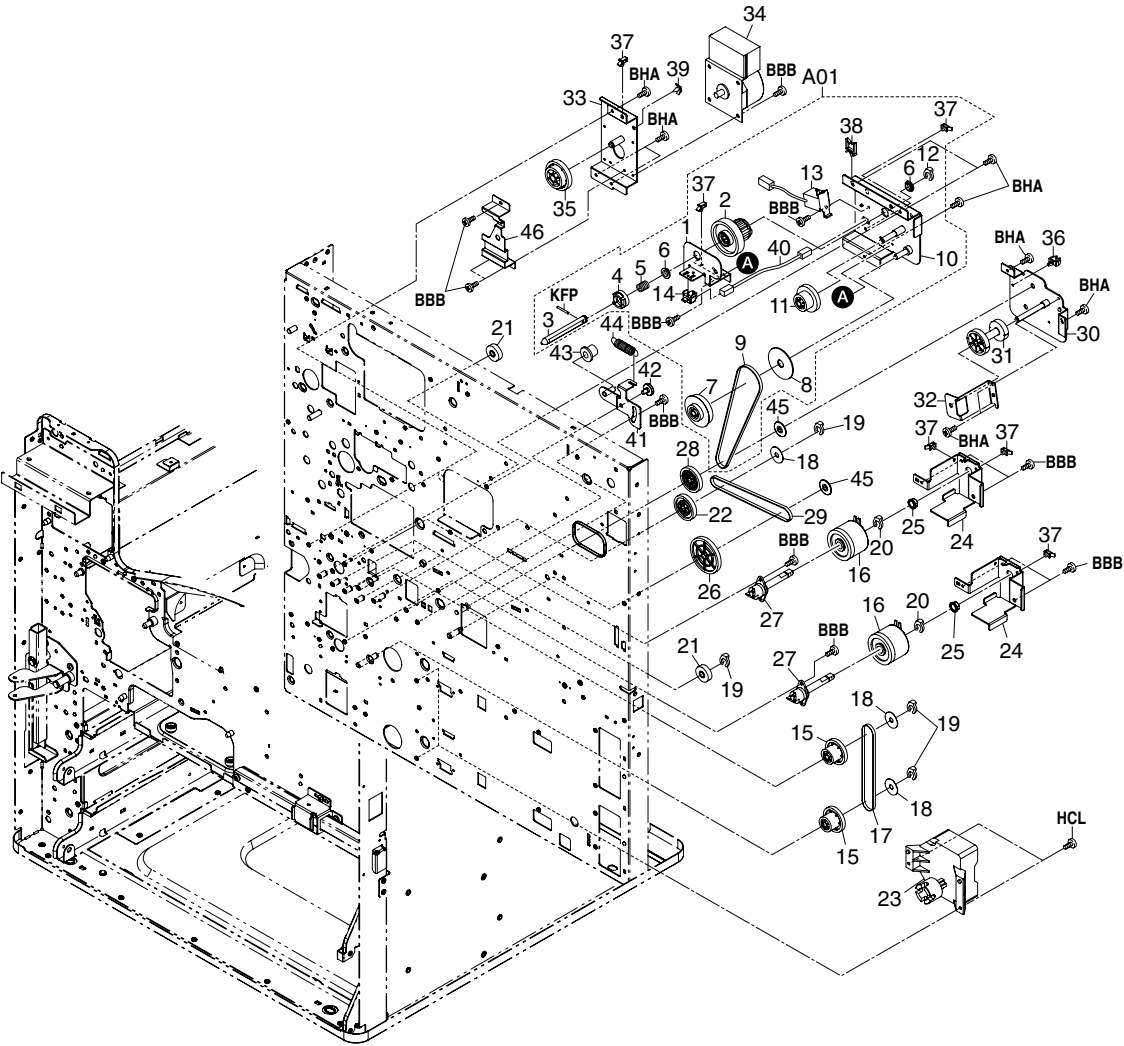
14. Cleaning System



List 14 - Cleaning System

Ref. No.	Part Code	Description	Applicable Model	SP	120V	230V	Remarks
14-001	2BK93030	DK-700 DRUM UNIT	FS-9120DN	X	1	1	
14-001	2BL93020	DK-701 DRUM UNIT	FS-9520DN	X	1	1	
14-003	+ 2BL93420	PARTS, LAMP CLEANING ASSY		X	1	1	
14-004	+ 2BL18560	SPONGE LOWER SEAL		X	1	1	
14-008	+ 2BL18320	HANDLE DRUM		X	1	1	
14-024	+ 2BL18160	GEAR SPIRAL 16		X	1	1	
14-026	+ 2BL18170	GEAR IDLE 15		X	1	1	
14-027	+ 2BL18630	BUSHING DRUM A		X	2	2	
14-030	+ 2BL18300	BLADE CLEANING		X	1	1	
14-031	+ 2BL18070	LOWER SEAL CLEANING		X	1	1	
14-032	+ 2BL93310	PARTS, CLAW SEPARATION		X	5	5	
14-048	+ 2BL93090	MC-700 MAIN CHARGER		X	1	1	
14-054	+ 2BL18870	GEAR CL ROLLER 15		-	1	1	
14-055	+ 2BL18880	GEAR CL ROLLER 16		-	1	1	
14-056	2BL05080	LABEL DRUM		-	1	1	

15. Drive Unit

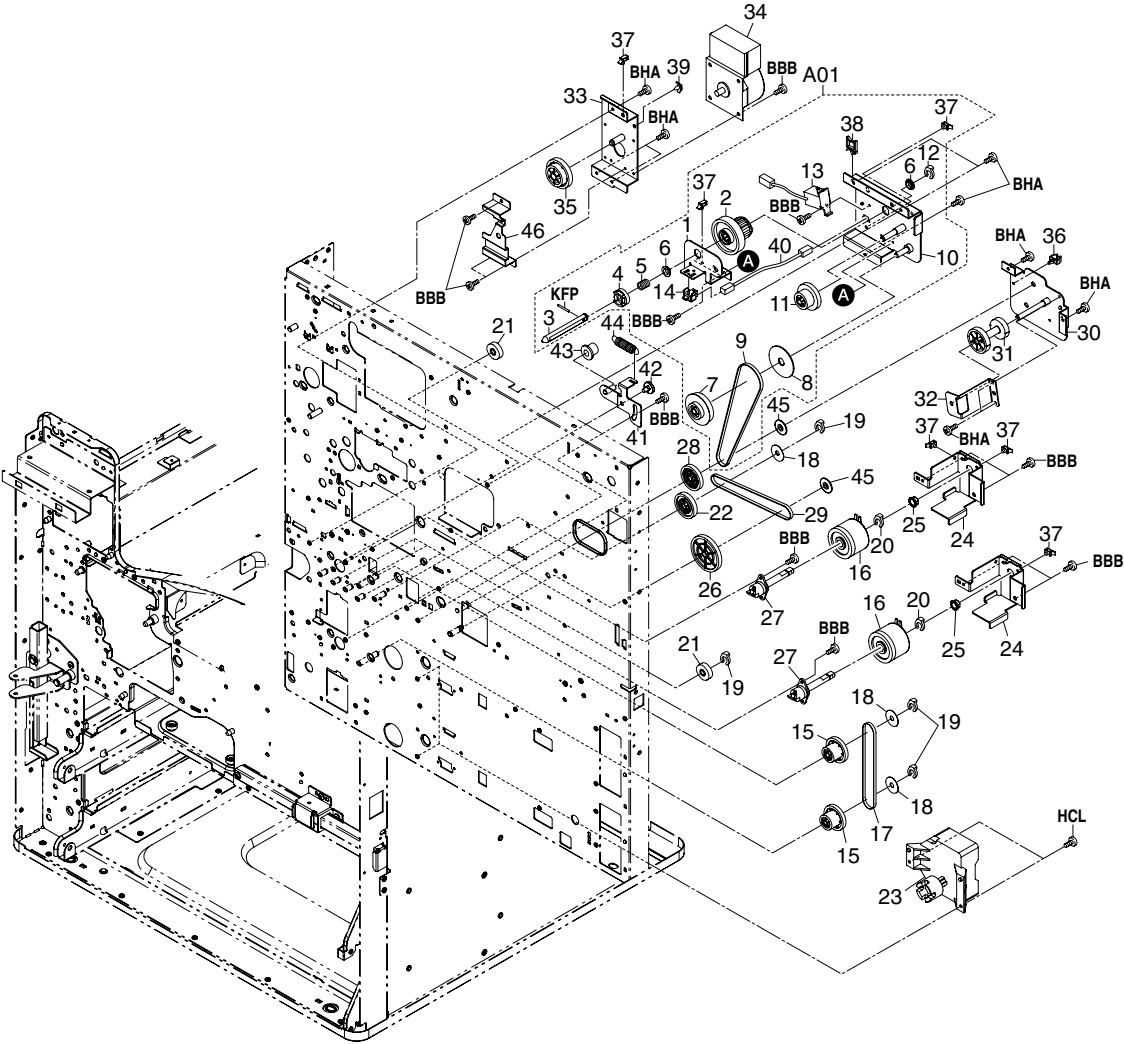


List 15 - Drive Unit

Ref. No.	Part Code	Description	Applicable Model	SP	120V	230V
15-A01	2BL93380	PARTS, CONT DRIVE ASSY, SP		X	1	1
15-001	+ 2BL22450	PLATE DRIVE CONT. B		-	1	1
15-002	+ 2BL22520	CLUTCH CONTAINER		X	1	1
15-003	+ 2BL22460	SHAFT DRIVE CONT		-	1	1
15-004	+ 2BL22500	COUPLING CONTAINER		X	1	1
15-005	+ 2BL22510	SPRING DRIVE CONT.		X	1	1
15-006	+ 2BL22570	BUSH DRIVE CONT 8		X	2	2
15-007	+ 2BL22480	GEAR Z24S-P40		X	1	1
15-008	+ 2BL22560	PULLEY CONT. DRIVE		X	1	1
15-009	+ 2BL22590	BELT DRIVE CONTAINER		X	1	1
15-010	+ 2BL22440	PLATE DRIVE CONT. A		-	1	1
15-011	+ 2BL22490	GEAR Z40S-Z25S		X	X	X
15-012	+ 2BC06910	STOPPER 6		X	1	1
15-013	+ 2BL27510	SOLENOID TONER		X	1	1
15-014	+ 35927420	SWITCH, SIZE		X	1	1
15-015	2BL22330	GEAR Z41S-Z24S-P30		X	2	2
15-016	2FG27160	CLUTCH FEED		X	2	2
15-017	2BL22350	BELT DRIVE FEED		X	1	1
15-018	2BL22580	COLLAR BELT		-	3	3
15-019	2A806250	RING STOPPER		X	6	6
15-020	2BC06980	STOPPER 5		X	2	2
15-021	5MVG137DB025	GEAR M FEED Z25		X	4	4
15-022	2BL22530	GEAR Z41S-P15		X	1	1
15-023	2BL27580	LIFT MOTOR		X	2	2
15-024	2FG22090	BRACKET CLUTCH FEED		-	2	2
15-025	67322230	BUSHING 8		X	2	2
15-026	2BL22540	GEAR Z60S-P20		X	1	1
15-027	2AR00170	PRIMARY PAPER FEED BUSHING ASSY		X	2	2
15-028	2BL22420	GEAR Z41S-P18		X	1	1
15-029	2BL22400	BELT DRIVE MPF		X	1	1
15-030	2BL22370	PLATE DRIVE MPF A		-	1	1
15-031	2BL22550	GEAR Z40S-Z32S		X	1	1
15-032	2BL22380	PLATE DRIVE MPF B		-	1	1
15-033	2FG22070	PLATE DRIVE FEED A		-	1	1
15-034	2FG27020	FEED MOTOR		X	1	1
15-035	2BL22320	GEAR Z76H-Z35S		X	1	1
15-036	M2105740	MINIATURE CLAMP, UAMS-05S-2		-	1	1
15-037	M2109330	WIRE SADDLE, YMC-10-0 (KITAGAWA)		-	6	6
15-038	M2109010	WIRE SADDLE, WS-2NS		-	1	1

Ref. No.	Part Code	Description	Applicable Model	SP	120V	230V
15-039	M2108080	SPACER, KGPS-3S		-	1	1
15-040	2BL27180	WIRE CONT SW		-	1	1
15-041	2BL22810	PLATE TENSION A		-	1	1
15-042	72114320	PIN, DEV. UNIT HANDLE		-	1	1
15-043	2BL22830	PULLEY TENSION		-	1	1
15-044	2BL22820	SPRING PULLEY		-	1	1
15-045	2BL22390	PULLEY MPF DRIVE		-	2	2
15-046	2FG22080	PLATE DRIVE FEED B		-	1	1

16. Drive Unit

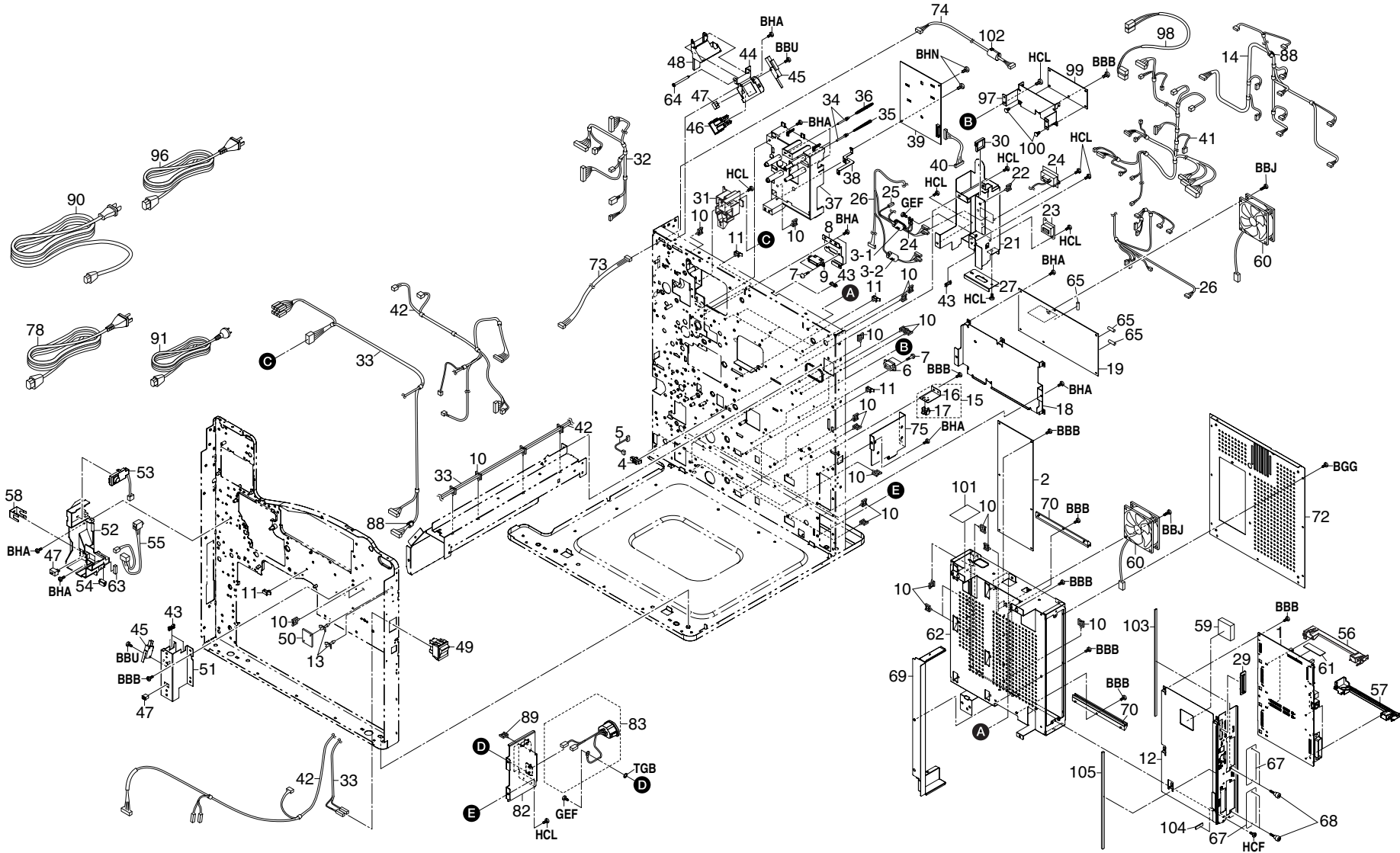


List 16 - Drive Unit

Ref. No.	Part Code	Description	Applicable Model	SP	120V	230V	Remarks
16-001	2FH93110	PARTS, DRIVE UNIT DR-702		X	1	1	
16-002	+ 2BL27540	MOTOR MAIN		X	1	1	
16-003	+ 2BL22140	GUIDE DLP		-	1	1	
16-004	+ 2BL22240	SPRING JOINT FUSER		X	1	1	
16-005	+ 2BL22220	GEAR Z36S-Z31H		X	1	1	
16-006	+ 2BL22190	GEAR Z50H		X	1	1	
16-007	+ 2BL22180	GEAR Z37H-Z28H		X	1	1	
16-008	+ 2BL22230	GEAR Z34H		X	1	1	
16-009	+ 2FG22030	GEAR Z59H-Z44S		X	1	1	
16-010	+ 2BL22710	GEAR Z76H-Z35H		X	1	1	
16-011	+ 5MVG148DN027	GEAR Z37S		X	1	1	
16-012	+ 2FG22040	GEAR Z22S		X	1	1	
16-013	+ 2BL22160	GEAR DRUM Z76H-Z30H		X	1	1	
16-014	+ 2BL22210	GEAR JOINT Z32S		X	1	1	
16-015	+ 2FG22010	PLATE DRIVE FRONT		-	1	1	
16-016	+ 2BL22170	PLATE GUIDE DRUM		X	1	1	
16-017	+ 2BL22840	SHAFT DRIVE DRUM FW		-	1	1	
16-018	+ 2BL22050	GEAR DRUM Z70H		X	1	1	
16-019	+ G3169000	BEARING 6900ZZNR		-	1	1	
16-020	+ 2FG22020	PLATE DRIVE REAR		-	1	1	
16-021	2BL27560	MOTOR EJECT		X	1	1	
16-022	2FG22050	PLATE DRIVE EXIT A		-	1	1	
16-023	2BL22800	GEAR Z47S-Z28S		X	1	1	
16-024	2BL22630	GEAR EXIT Z30S		X	1	1	
16-025	2FG27180	CLUTCH REGISTRATION		X	1	1	
16-026	2BC06980	STOPPER 5		X	1	1	
16-027	2BL23020	DUCT DRUM		-	1	1	
16-028	2FG23010	COVER DUCT DRUM		-	1	1	
16-029	2BL23030	DUCT DLP		-	1	1	
16-030	2FG27130	FAN MOTOR 1		X	1	1	
16-031	2BL23040	LID DLP DUCT		-	1	1	
16-032	2BL22850	RETAINER FLYWHEEL		-	1	1	
16-033	2BL22860	FLYWHEEL 190		-	1	1	
16-034	2BL22870	WEIGHT 190		-	1	1	
16-035	2BL26150	MOUNT BASE TERMINAL		-	1	1	
16-036	2BL26160	PLATE TRANSFER A		-	1	1	
16-037	2BL26170	PLATE SEPARATION A		-	1	1	
16-038	2BL01170	EMPTY SW ASSY		X	1	1	
16-039	2BL23050	DUCT MAIN A		-	1	1	

Ref. No.	Part Code	Description	Applicable Model	SP	120V	230V	Remarks
16-040	2BL23060	DUCT MAIN B		-	1	1	
16-041	2FG27060	FAN MOTOR 2		X	1	1	
16-042	M2109010	WIRE SADDLE, WS-2NS		-	2	2	
16-043	2BL27120	WIRE CONTAINER		-	1	1	
16-044	2BL02220	RAIL DRUM R		-	1	1	
16-045	M2109330	WIRE SADDLE, YMC-10-0 (KITAGAWA)		-	3	3	
16-047	2BL23070	MOUNT REAR FAN		-	1	1	
16-048	2BL23100	FILM COOLING		-	1	1	
16-049	2BL22880	FILM BKT CLUTCH		-	1	1	
16-050	2BL22150	BRACKET CLUTCH		-	1	1	
16-051	2BL23130	FILM DUCT DLP A		-	1	1	
16-052	2BL23140	FILM DUCT DLP B		-	1	1	
16-053	2FG22060	PLATE DRIVE EXIT B		-	1	1	

17. Electrical Component



List 17 - Electrical Component

Ref. No.	Part Code	Description		Applicable Model	SP	120V	230V	Remarks
17-001	2FJ01010	P.W.BORAD ASSY KP-5132	MAIN	FS-9120DN	X	1	1	
17-001	2FH01010	P.W.BORAD ASSY KP-5132	MAIN	FS-9520DN	X	1	1	
17-002	2FH01020	P.W.BORAD ASSY KP-5133	ENGINE	METRIC	X	-	1	
17-002	2FH01130	P.W.BORAD ASSY KP-5133	ENGINE	INCH	X	1	-	
17-003-1	2BL27660	CORE 8-20X34			-	1	1	
17-003-2	2BL27650	CORE 6-18X34			-	1	1	
17-004	2BL27450	SWITCH PI			X	1	1	
17-005	2BL27290	WIRE BYPASS FEED PI			-	1	1	
17-006	J0464080	RECEPTACLE,QR/P15-8S-C(02)(HIROSE)			X	2	2	
17-007	33927450	RETAINING PIN,DRAWER			-	6	6	
17-008	2BL26200	MOUNT DRUM DRAWER			-	1	1	
17-009	J7340100	RECEPTACLE,9715S-10A(IRS)			-	1	1	
17-010	M2109010	WIRE SADDLE,WS-2NS			-	33	32	
17-011	M2109330	WIRE SADDLE,YMC-10-0(KITAGAWA)			-	4	4	
17-012	2FH26010	MOUNT MAIN PCB			-	1	1	
17-013	M2108120	SPACER,KGLS-4S			-	2	2	
17-015	2AR00150	CASSETTE SWITCH ASSY			-	2	2	
17-016	+ 2AR07170	MOUNT,CASSETTE SWITCH			-	2	2	
17-017	+ 66127010	SWITCH,COVER OPEN			X	2	2	
17-018	2FG26010	MOUNT POWER PCB			-	1	1	
17-019	2FG28021	POWER SOURCE PCB (100)			X	1	-	
17-019	2FG28031	POWER SOURCE PCB (200)			X	-	1	
17-021	2BJ26100	MOUNT OPTION I/F (E)			-	1	1	
17-022	M2109020	WIRE SADDLE,WS-2WS			-	1	1	
17-023	J0326120	CASE,54082-1215(MOLEX)			X	1	1	
17-024	2BL27280	WIRE FINISHER GND			X	1	1	
17-025	2AC27880	WIRE FG,FINISHER			-	1	1	
17-026	2FH27020	WIRE OPTION(P)			X	1	1	
17-027	2AR26340	MOUNT,DECK CONNECTOR			-	1	1	
17-028	M2108670	SPACER,KGPS-6RF(KITAGAWA)			-	1	1	
17-029	2BM26020	GUIDE CF CARD			-	1	1	
17-030	M2104280	EDGING,EDS-25L(KITAGAWA)			-	1	1	
17-031	2BL26290	MOUNT FIXING DRAWER			-	1	1	
17-032	2BL27030	WIRE DRAWER			-	1	1	
17-033	2FH27030	WIRE PRIMARY (P)			-	1	1	
17-034	2BL26060	PIN TERMINAL			-	4	4	
17-035	2BL26070	SPRING TERMINAL			-	1	1	
17-036	2BL26270	SPRING TERMINAL T			-	3	3	
17-037	2BL26050	CASE HIGH VOLTAGE			-	1	1	

Ref. No.	Part Code	Description	Applicable Model	SP	120V	230V	Remarks
17-038	2BL26080	GROUND PLATE HV		-	1	1	
17-039	2BL28051	HIGH VOLTAGE PCB		X	1	1	
17-040	2BL27070	WIRE HIGH VOLTAGE(P)		-	1	1	
17-041	2FH27010	WIRE MOTOR(P)		-	1	1	
17-042	2BL27140	WIRE FRONT(P)		-	1	1	
17-043	M2104210	EDGING,EDS-2		-	4	4	
17-044	2BL26110	LEFT MOUNT I/L		-	1	1	
17-045	2FG27120	SWITCH INTERLOCK		X	2	2	
17-046	2AR27040	SWITCH,INTERLOCK		X	1	1	
17-047	35927420	SWITCH,SIZE		X	3	3	
17-048	2BL26120	LEFT WORK PLATE I/L		-	1	1	
17-049	2BL27430	SWITCH,MAIN		X	1	1	
17-050	2BM27890	HUMIDITY SENSOR		X	1	1	
17-051	2BL04060	FRONT MOUNT COVER		-	1	1	
17-052	2BL04080	INNER LEFT COVER		-	1	1	
17-053	2BL01160	TONER SW ASSY		X	1	1	
17-054	J5016050	CASE,BU05P-TR-PC-H(JST)		-	1	1	
17-055	2BL27250	WIRE TONER DISPOSAL		-	1	1	
17-056	2BL26210	RAIL OPTION A		-	2	2	
17-057	2BL26220	RAIL OPTION B		-	2	2	
17-058	2BL04450	GROUND PLATE INNER L		-	2	2	
17-059	3H827010	SHEET RADIATOR		-	1	1	
17-060	2FG27140	FAN MOTOR 3		X	2	2	
17-061	2FH01040	P.W.BOARD ASSY KP-893	DIMM	X	1	1	
17-062	2FH26020	SHIELD		-	1	1	
17-063	2BL04460	SPACER WIRE		-	1	1	
17-064	2BL26280	SHAFT I/L		-	1	1	
17-065	M1660010	FUSE,237010(LITTEL)		X	3	3	
17-067	3BH26020	PLATE OPTION		-	2	2	
17-068	3BH26030	PIN OPTION		-	4	4	
17-069	2BL26190	MOUNT CONNECTOR		-	1	1	
17-070	2BL26180	RAIL MAIN PCB		-	2	2	
17-071	2BL27680	SHIELD GASKET		-	2	2	
17-072	2BL26020	UPPER SHIELD		-	1	1	
17-073	2BL27260	WIRE OPE INNER(P)		-	1	1	
17-074	2BL27090	WIRE OPE REAR(P)		-	1	1	
17-075	2BL26260	COVER POWER PCB		-	1	1	
17-078	19527400	POWER CORD (120)	Excl. Taiwan	X	1	-	
17-082	2BL26250	MOUNT INLET CORD 230		-	1	1	
17-083	2FG01090	INLET ASSY		-	1	1	
17-088	63827080	FERRITE CORE		-	-	2	

Ref. No.	Part Code	Description	Applicable Model	SP	120V	230V	Remarks
17-089	M2109010	WIRE SADDLE,WS-2NS	Incl. Taiwan	-	-	1	
17-090	2AR27800	POWER CORD(230)	KMDE/KMFR/KMTH	-	-	1	
17-091	29927231	POWER CODE AS(240)	KMAUS only	-	-	1	
17-095	79327580	POWER CODE GB	KMUK/KMSG/KMHG	-	-	1	
17-096	65027600	POWER CODE 110	Taiwan only	-	1	-	
17-097	2FH26030	MOUNT FILTER PCB		-	1	1	
17-098	2FG27370	WIRE FILTER PCB		-	1	1	
17-099	2FG28121	NOISE FILTER PCB 100		X	1	-	
17-099	2FG28131	NOISE FILTER PCB 200		X	-	1	
17-100	M2108920	SPACER,KGLS-5RT		-	1	1	
17-101	M4712000	COPPER TAPE 2245 (25MMX20M)		-	1	1	
17-102	2FG27640	CORE ATFC-16-8-16		-	1	1	
17-103	2FG27520	GASKET LID PRINTER		-	1	1	
17-104	3CR27010	SHIELD A GASKET		-	1	1	
17-105	3H826010	GASKET PRINTER A		-	1	1	
17-020	4AK85050	GRID CLEANER 3 ASSY		X	1	1	
17-021	2BL93130	TB-700 TONER DISPOSAL TANK ASSY		X	1	1	
17-022	33960020	HEATER CASSETTE (240)		X	-	1	
17-022	34860030	HEATER CASSETTE (120)		X	1	-	
17-023	M2107120	BINDING BAND SG-130		-	1	1	
17-024	B1304060	BINDING SCREW BVM4X6(BLACK)		-	2	2	
17-025	20305130	LABEL L,HIGH TEMPERATURE CAUTION (EXP)		-	1	1	
17-026	2BL05240	LABEL OFF		X	1	1	

List 17 - Miscellaneous

Ref. No.	Part Code	Description	Applicable Model	SP	120V	230V	Remarks
	2FJ93010	PARTS PACKING ASSY 36U	FS-9120DN Excl. Taiwan	X	1	-	
	2FJ93020	PARTS PACKING ASSY 36E	FS-9120DN Incl. Taiwan	X	-	1	
	2FH93150	PARTS PACKING ASSY 51U	FS-9520DN Excl. Taiwan	X	1	-	
	2FH93160	PARTS PACKING ASSY 51E	FS-9520DN Incl. Taiwan	X	-	1	