



FS-1040

FS-1060DN

PARTS LIST

Published in March 2012
2M3PL070
842M3120
First Edition

———— CONTENTS ————

FIG. 1	Covers	2
FIG. 2	Frames	4
FIG. 3	Paper Feed Section	6
FIG. 4	Developer Section	8
FIG. 5	Image Formation Section	10
FIG. 6	Fuser Section	12
FIG. 7	Drive Section	14
FIG. 8	Electrical Components	16
FIG. 9	Maintenance Kits	18
• INDEX		19

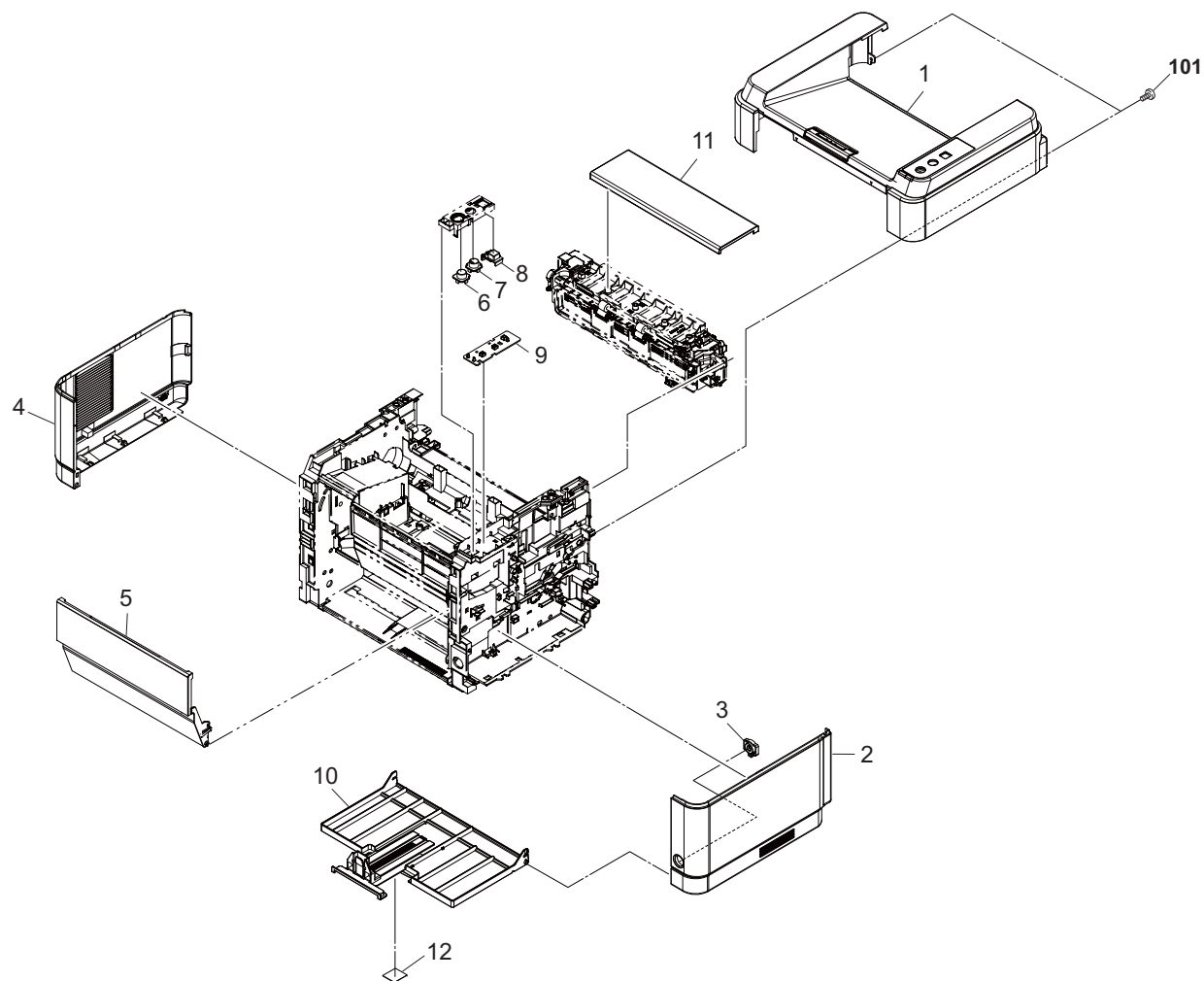


FIG. 1 Covers

2M2/2M3

Ref. No.	Part.No.	Alternative.	Description	Notes	Quantity	
					120	220-240
1	302M294220	2M294220	PARTS COVER TOP ASSY SP SPA	20ppm	1	
1	302M294010	2M294010	PARTS COVER TOP ASSY SP	20ppm		1
1	302M294210	2M294210	PARTS COVER TOP ASSY SP CN	20ppm,Chinese model		1
1	302M394070	2M394070	PARTS COVER TOP ASSY SP SPA	25ppm	1	
1	302M394050	2M394050	PARTS COVER TOP ASSY SP	25ppm		1
1	302M394060	2M394060	PARTS COVER TOP ASSY SP CN	25ppm,Chinese model		1
2	302M204020	2M204020	COVER RIGHT		1	1
3	302M204100	2M204100	KEY POWER SWITCH		1	1
4	302M204030	2M204030	COVER LEFT		1	1
5	302M294020	2M294020	PARTS COVER FRONT ASSY SP		1	1
6	302M205010	2M205010	KEY START		1	1
7	302M205020	2M205020	KEY CANCEL		1	1
8	302M205030	2M205030	KEY QUIET MODE		1	1
9	302M294100	2M294100	PARTS PWB ASSY PANEL SP		1	1
10	302M294060	2M294060	PARTS TRAY FRONT ASSY SP		1	1
10	302M294070	2M294070	PARTS TRAY FRONT ASSY SP CN	20ppm,Chinese model		1
10	302M394020	2M394020	PARTS TRAY FRONT ASSY SP CN	25ppm,Chinese model		1
11	302M204060	2M204060	COVER FD		1	1
12	302G634070	2G634070	LABEL ENERGY STAR		1	1
101	7BB200410H	BB105700	+BIND T.T P SCREW 4X10			

•Parts with Ref.No. indicate maintenance parts and the ones without it indicate out of the above.

•Parts with "*" are component parts or sub-assemblies of the assembly appearing immediately above them.
 •Parts with "• •" are component parts or sub-assembly with "•" appearing immediately above them.

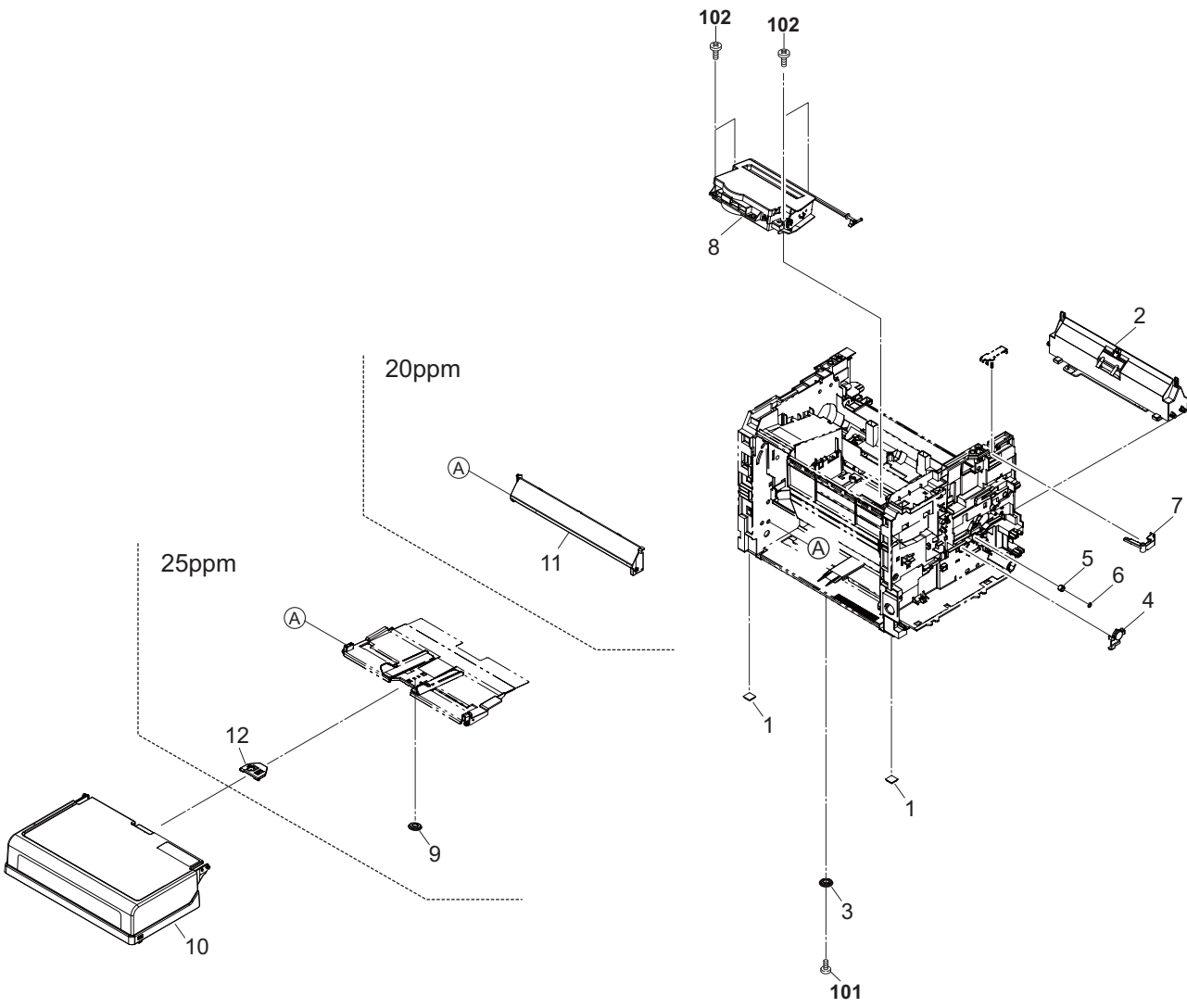


FIG. 2 Frames

2M2/2M3

Ref. No.	Part.No.	Alternative.	Description	Notes	Quantity	
					120	220-240
1	302J002010	2J002010	FOOT		2	2
2	302M294050	2M294050	PARTS FRAME FEED BOTTOM ASSY SP		1	1
3	302M202750	2M202750	GEAR MANUAL		1	1
4	302M206160	2M206160	BUSH FEED R		1	1
5	302M224050	2M224050	GEAR REGIST UP Z15L		1	1
6	2BG22990	2BG22990	CUT WASHER 4		1	1
7	302M202470	2M202470	LEVER INTERLOCK C		1	1
8	302M293060	2M293060	LK-1110	20ppm	1	1
8	302M393030	2M393030	LK-1120	25ppm	1	1
9	302B700780	2B700780	GEAR MANUAL	25ppm	1	1
10	302M209110	2M209110	COVER TRAY	20ppm	1	1
10	302M309020	2M309020	COVER TRAY	25ppm	1	1
11	302M209180	2M209180	COVER TRAY B	20ppm	1	1
12	302M309010	2M309010	COVER TRAY C	25ppm	1	1
101	7BB202308H	BB105690	+TP-FLAT T.T P SCREW 3X8			
102	7BB200410H	BB105700	+BIND T.T P SCREW 4X10			

•Parts with Ref.No. indicate maintenance parts and the ones without it indicate out of the above.

•Parts with "*" are component parts or sub-assemblies of the assembly appearing immediately above them.
 •Parts with "• •" are component parts or sub-assembly with "•" appearing immediately above them.

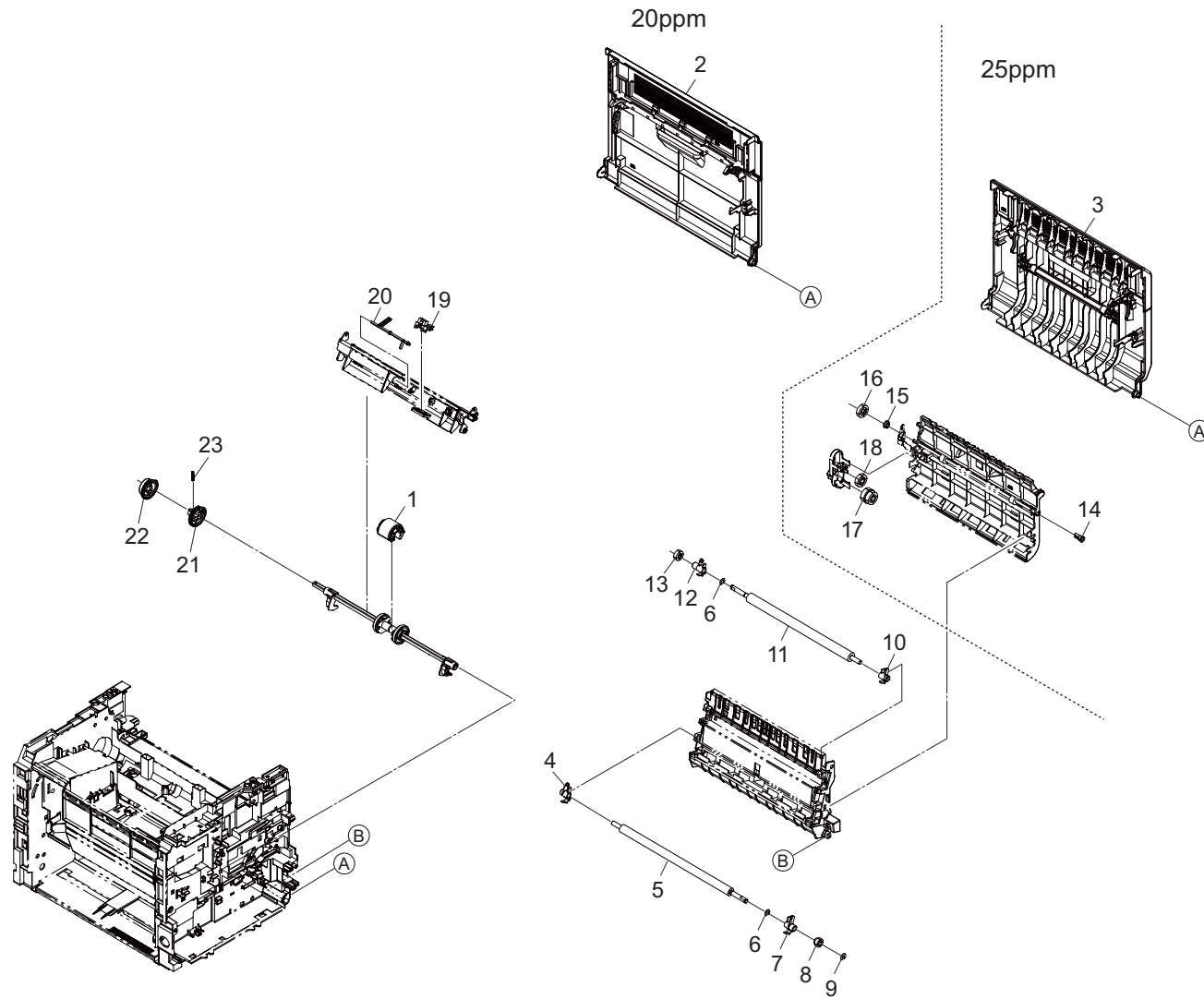


FIG. 3 Paper Feed Section

2M2/2M3

Ref. No.	Part.No.	Alternative.	Description	Notes	Quantity	
					120	220-240
1	302M294200	2M294200	PARTS ROLLER FEED ASSY SP		1	1
2	302M294040	2M294040	PARTS COVER REAR L ASSY SP	20ppm	1	1
3	302M394010	2M394010	PARTS COVER REAR H ASSY SP	25ppm	1	1
4	302M224060	2M224060	BUSH REGIST L		1	1
5	302M294190	2M294190	PARTS ROLLER REGIST LOW SP		1	1
6	302KK04570	2KK04570	CUT WASHER 5		2	2
7	302M224070	2M224070	BUSH REGIST R		1	1
8	302M224040	2M224040	GEAR REGIST LOW Z23R		1	1
9	302HG12310	2HG12310	CUT WASHER 4		1	1
10	302M224160	2M224160	BUSH TRANS R		1	1
11	302M294180	2M294180	PARTS ROLLER TRANSFER U SP		1	
11	302M294170	2M294170	PARTS ROLLER TRANSFER E SP			1
12	302M224150	2M224150	BUSH TRANS L		1	1
13	302M224140	2M224140	GEAR TRANS Z17S		1	1
14	302HN25450	2HN25450	BUSH EXIT	25ppm	1	1
15	302F929140	2F929140	BUSH DU	25ppm	1	1
16	302M329070	2M329070	GEAR DU Z22S	25ppm	1	1
17	302M329050	2M329050	GEAR Z23R-Z22S	25ppm	1	1
18	302M329040	2M329040	GEAR Z22S	25ppm	1	1
19	303M894260	3M894260	PARTS SENSOR OPT SP		1	1
20	302M224210	2M224210	ACTUATOR REGIST		1	1
21	302M231170	2M231170	GEAR A Z38S		1	1
22	302M231180	2M231180	GEAR B Z38S		1	1
23	302HN31650	2HN31650	SPRING INPUT MPF		1	1

•Parts with Ref.No. indicate maintenance parts and the ones without it indicate out of the above.

•Parts with "*" are component parts or sub-assemblies of the assembly appearing immediately above them.
 •Parts with "•" are component parts or sub-assembly with "•" appearing immediately above them.

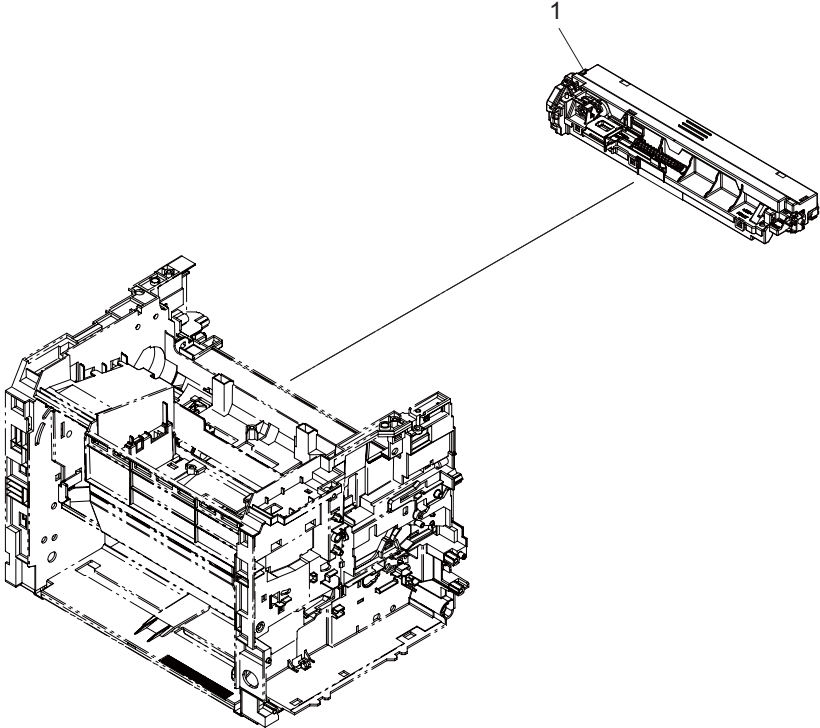


FIG. 4 Developer Section

2M2/2M3

Ref. No.	Part.No.	Alternative.	Description	Notes	Quantity	
					120	220-240
1	302M293010	2M293010	DK-1110		1	1

•Parts with Ref.No. indicate maintenance parts and the ones without it indicate out of the above.

•Parts with "." are component parts or sub-assemblies of the assembly appearing immediately above them.
 •Parts with "• •" are component parts or sub-assembly with "•" appearing immediately above them.

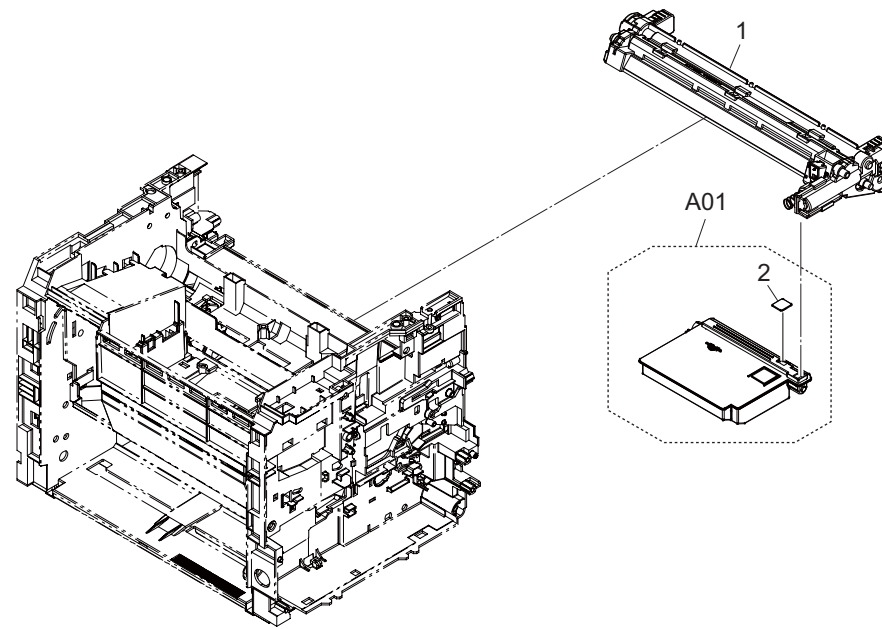


FIG. 5 Image Formation Section

2M2/2M3

Ref. No.	Part.No.	Alternative.	Description	Notes	Quantity	
					120	220-240
1	302M293020	2M293020	DV-1110		1	1
A01	302M293030	2M293030	WT-1110		1	1
2	*302M213060	2M213060	CAP WASTE		1	1

•Parts with Ref.No. indicate maintenance parts and the ones without it indicate out of the above.

•Parts with "*" are component parts or sub-assemblies of the assembly appearing immediately above them.
 •Parts with "* •" are component parts or sub-assembly with "*" appearing immediately above them.

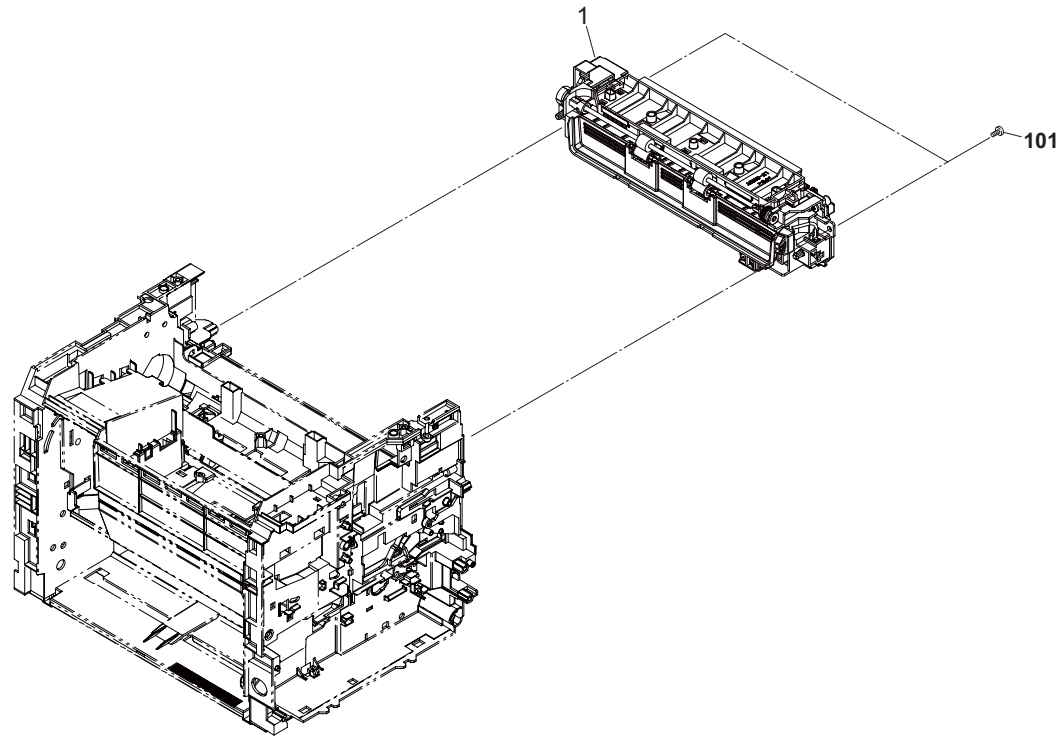


FIG. 6 Fuser Section

2M2/2M3

Ref. No.	Part.No.	Alternative.	Description	Notes	Quantity	
					120	220-240
1	302M293050	2M293050	FK-1110(U)	20ppm	1	
1	302M293040	2M293040	FK-1110(E)	20ppm		1
1	302M393020	2M393020	FK-1120(U)	25ppm	1	
1	302M393010	2M393010	FK-1120(E)	25ppm		1
101	7BB200410H	BB105700	+BIND T.T P SCREW 4X10			

•Parts with Ref.No. indicate maintenance parts and the ones without it indicate out of the above.

•Parts with "*" are component parts or sub-assemblies of the assembly appearing immediately above them.
 •Parts with "•" are component parts or sub-assembly with "*" appearing immediately above them.

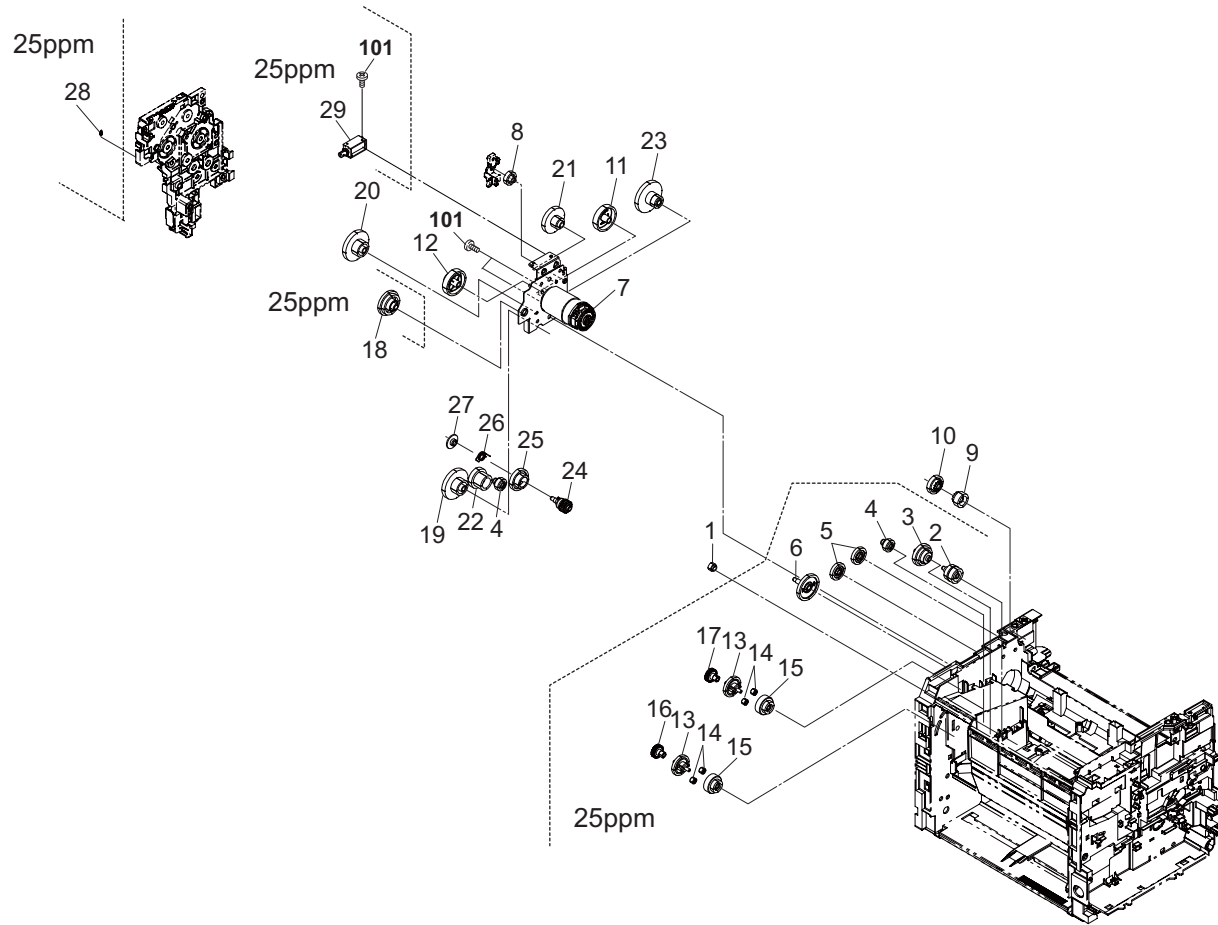


FIG. 7 Drive Section

2M2/2M3

Ref. No.	Part.No.	Alternative.	Description	Notes	Quantity	
					120	220-240
1	302HN24060	2HN24060	GEAR Z19L REG REAR		1	1
2	302M331030	2M331030	GEAR Z39L-Z24L	25ppm	1	1
3	302M331020	2M331020	GEAR Z57L-Z47R	25ppm	1	1
4	302M231150	2M231150	GEAR Z31R	25ppm	2	2
4	302M231150	2M231150	GEAR Z31R	20ppm	1	1
5	302M331110	2M331110	GEAR Z28S	25ppm	2	2
6	302M331100	2M331100	GEAR Z45S	25ppm	1	1
7	302M394030	2M394030	PARTS MOTOR DC ASSY SP		1	1
8	302M231090	2M231090	GEAR Z34L		1	1
9	302M231110	2M231110	GEAR Z23S		1	1
10	302M231100	2M231100	GEAR Z47R		1	1
11	302M231050	2M231050	GEAR Z68L-Z20R		1	1
12	302M231070	2M231070	GEAR Z68L-Z34R		1	1
13	302M331050	2M331050	GEAR Z34S	25ppm	2	2
14	302M331080	2M331080	GEAR Z14S	25ppm	4	4
15	302M331090	2M331090	GEAR Z42S-Z20S	25ppm	2	2
16	302M331060	2M331060	GEAR A Z14S	25ppm	1	1
17	302M331070	2M331070	GEAR B Z14S	25ppm	1	1
18	302M331040	2M331040	GEAR Z66R-Z35S	25ppm	1	1
19	302M231130	2M231130	GEAR Z68R		1	1
20	302M231120	2M231120	GEAR Z82L-Z40L		1	1
21	302M231080	2M231080	GEAR Z70L-Z29R		1	1
22	302M231140	2M231140	GEAR Z53L-Z24L		1	1
23	302M231060	2M231060	GEAR Z85L-Z38L		1	1
24	302M231280	2M231280	GEAR Z19S		1	1
25	302M231270	2M231270	GEAR Z57L-Z36R		1	1
26	302M231300	2M231300	SPRING GEAR B		1	1
27	302M231290	2M231290	CAP GEAR		1	1
28	302M331140	2M331140	SPRING CLUTCH	25ppm	1	1
29	302HN94140	2HN94140	SOLENOID FD ASSY SP	25ppm	1	1
101	7BB000303H	BB107000	+BIND M SCREW 3X3			

•Parts with Ref.No. indicate maintenance parts and the ones without it indicate out of the above.

•Parts with "-" are component parts or sub-assemblies of the assembly appearing immediately above them.

•Parts with "• •" are component parts or sub-assembly with "•" appearing immediately above them.

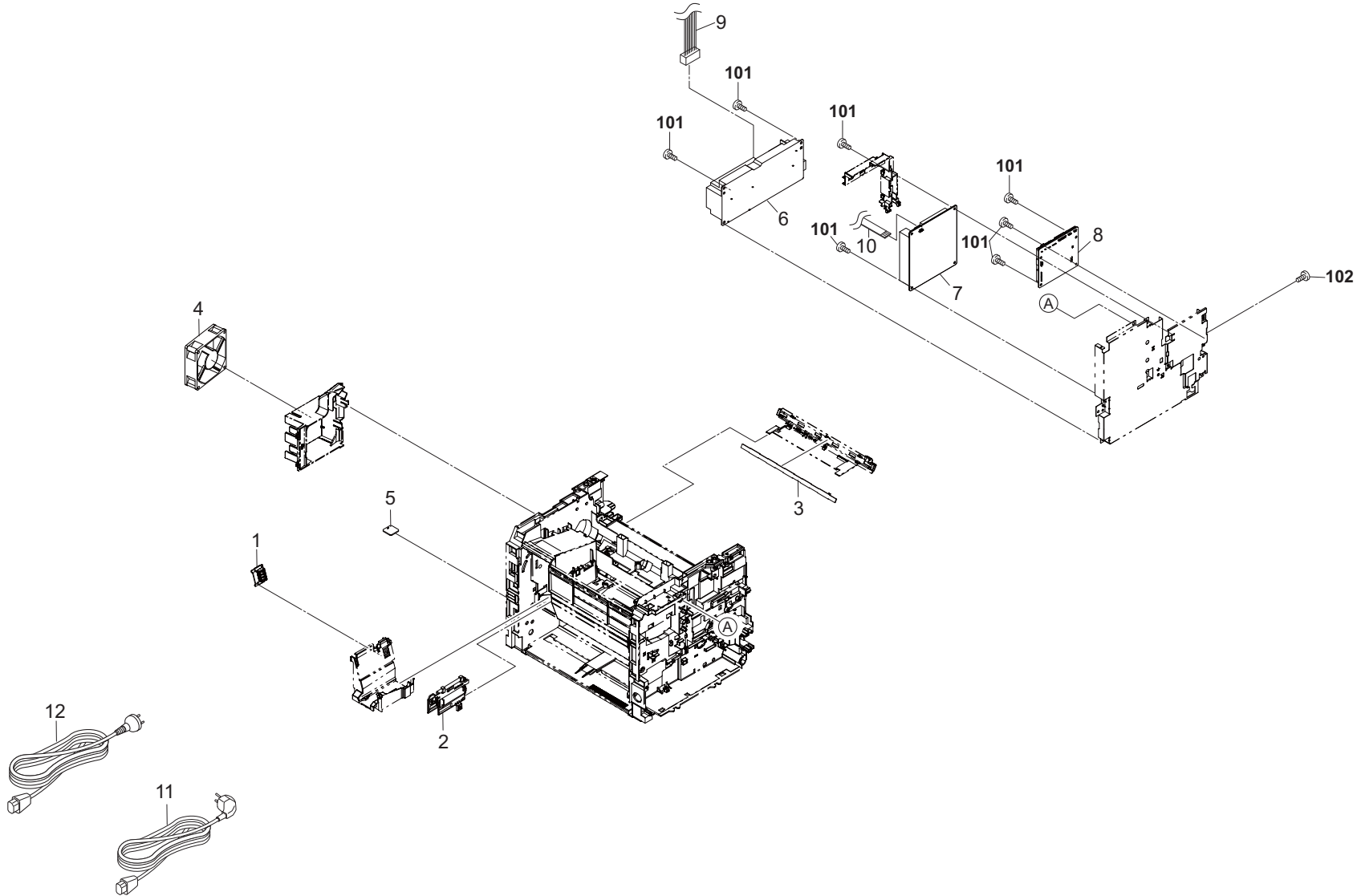


FIG. 8 Electrical Components

2M2/2M3

Ref. No.	Part.No.	Alternative.	Description	Notes	Quantity	
					120	220-240
1	302M294030	2M294030	PARTS TE SENSOR ASSY SP		1	1
2	302M294110	2M294110	PARTS PWB ASSY CONTAINER CONNECT SP		1	1
3	302M294120	2M294120	PARTS PWB ASSY ERASER SP		1	1
4	302HN44010	2HN44010	FAN MOTOR		1	1
5	302M294130	2M294130	PARTS PWB ASSY THERMISTOR SP		1	1
6	302M294150	2M294150	PARTS SWITCHING REGULATOR 120V SP		1	
6	302M294140	2M294140	PARTS SWITCHING REGULATOR 230V SP			1
7	302M294160	2M294160	PARTS HIGH VOLTAGE UNIT SP		1	1
8	302M294090	2M294090	PARTS PWB ASSY MAIN SP	20ppm	1	1
8	302M394040	2M394040	PARTS PWB ASSY MAIN SP	25ppm	1	1
9	302M246050	2M246050	CONN.CORD ASSY S03747		1	1
10	302M246060	2M246060	CONN.CORD ASSY S03748		1	1
11	7AAACCUS+10H001	AA068380	AC CORD ASSY US		1	
12	302FV45020	2FV45020	AC CORD ASSY			1
12	7AAACCCN+06H001	AA131920	AC CORD ASSY CN	Chinese model		1
12	7AAACCND+06H003	AA132310	AC CORD ASSY ND	India model		1
101	7BB700308H	BB105600	+BIND T.T S SCREW 3X8 SR			
102	7BB601306H	BB105790	+PAN M SCREW 3X6 R			

•Parts with Ref.No. indicate maintenance parts and the ones without it indicate out of the above.

•Parts with "*" are component parts or sub-assemblies of the assembly appearing immediately above them.
 •Parts with "•" are component parts or sub-assembly with "*" appearing immediately above them.

FIG. 9 Maintenance Kits

2M2/2M3

Ref. No.	Part.No.	Alternative.	Description	Notes	Quantity	
					120	220-240
	1702M76UX0	072M76UX	MK-1112/MAINTENANCE KIT PARTS ROLLER FEED ASSY SP DK-1110 WT-1110 DV-1110 PARTS FRAME FEED BOTTOM ASSY SP	OPTION	1 1 1 1 1 1	
	1702M75NX0	072M75NX	PARTS ROLLER TRANSFER U SP MK-1110/MAINTENANCE KIT PARTS ROLLER FEED ASSY SP DK-1110 WT-1110 DV-1110 PARTS FRAME FEED BOTTOM ASSY SP PARTS ROLLER TRANSFER E SP	OPTION	1	1 1 1 1 1 1

•Parts with Ref.No. indicate maintenance parts and the ones without it indicate out of the above.

•Parts with "-" are component parts or sub-assemblies of the assembly appearing immediately above them.
•Parts with "• •" are component parts or sub-assembly with "-" appearing immediately above them.

INDEX

2M2/2M3

Part.No.	Alternative.	Description	Fig.No.
1702M75NX0	072M75NX	MK-1110/MAINTENANCE KIT	9
1702M76UX0	072M76UX	MK-1112/MAINTENANCE KIT	9
2BG22990	2BG22990	CUT WASHER 4	2
302B700780	2B700780	GEAR MANUAL	2
302F929140	2F929140	BUSH DU	3
302FV45020	2FV45020	AC CORD ASSY	8
302G634070	2G634070	LABEL ENERGY STAR	1
302HG12310	2HG12310	CUT WASHER 4	3
302HN24060	2HN24060	GEAR Z19L REG REAR	7
302HN25450	2HN25450	BUSH EXIT	3
302HN31650	2HN31650	SPRING INPUT MPF	3
302HN44010	2HN44010	FAN MOTOR	8
302HN94140	2HN94140	SOLENOID FD ASSY SP	7
302J002010	2J002010	FOOT	2
302KK04570	2KK04570	CUT WASHER 5	3
302M202470	2M202470	LEVER INTERLOCK C	2
302M202750	2M202750	GEAR MANUAL	2
302M204020	2M204020	COVER RIGHT	1
302M204030	2M204030	COVER LEFT	1
302M204060	2M204060	COVER FD	1
302M204100	2M204100	KEY POWER SWITCH	1
302M205010	2M205010	KEY START	1
302M205020	2M205020	KEY CANCEL	1
302M205030	2M205030	KEY QUIET MODE	1
302M206160	2M206160	BUSH FEED R	2
302M209110	2M209110	COVER TRAY	2
302M209180	2M209180	COVER TRAY B	2
302M213060	2M213060	CAP WASTE	5
302M224040	2M224040	GEAR REGIST LOW Z23R	3
302M224050	2M224050	GEAR REGIST UP Z15L	2
302M224060	2M224060	BUSH REGIST L	3
302M224070	2M224070	BUSH REGIST R	3
302M224140	2M224140	GEAR TRANS Z17S	3
302M224150	2M224150	BUSH TRANS L	3
302M224160	2M224160	BUSH TRANS R	3
302M224210	2M224210	ACTUATOR REGIST	3
302M231050	2M231050	GEAR Z68L-Z20R	7
302M231060	2M231060	GEAR Z85L-Z38L	7
302M231070	2M231070	GEAR Z68L-Z34R	7
302M231080	2M231080	GEAR Z70L-Z29R	7
302M231090	2M231090	GEAR Z34L	7
302M231100	2M231100	GEAR Z47R	7
302M231110	2M231110	GEAR Z23S	7
302M231120	2M231120	GEAR Z82L-Z40L	7
302M231130	2M231130	GEAR Z68R	7
302M231140	2M231140	GEAR Z53L-Z24L	7
302M231150	2M231150	GEAR Z31R	7
302M231170	2M231170	GEAR A Z38S	3
302M231180	2M231180	GEAR B Z38S	3
302M231270	2M231270	GEAR Z57L-Z36R	7

Part.No.	Alternative.	Description	Fig.No.
302M231280	2M231280	GEAR Z19S	7
302M231290	2M231290	CAP GEAR	7
302M231300	2M231300	SPRING GEAR B	7
302M246050	2M246050	CONN.CORD ASSY S03747	8
302M246060	2M246060	CONN.CORD ASSY S03748	8
302M293010	2M293010	DK-1110	4
302M293020	2M293020	DV-1110	5
302M293030	2M293030	WT-1110	5
302M293040	2M293040	FK-1110(E)	6
302M293050	2M293050	FK-1110(U)	6
302M293060	2M293060	LK-1110	2
302M294010	2M294010	PARTS COVER TOP ASSY SP	1
302M294020	2M294020	PARTS COVER FRONT ASSY SP	1
302M294030	2M294030	PARTS TE SENSOR ASSY SP	8
302M294040	2M294040	PARTS COVER REAR L ASSY SP	3
302M294050	2M294050	PARTS FRAME FEED BOTTOM ASSY SP	2
302M294060	2M294060	PARTS TRAY FRONT ASSY SP	1
302M294070	2M294070	PARTS TRAY FRONT ASSY SP CN	1
302M294090	2M294090	PARTS PWB ASSY MAIN SP	8
302M294100	2M294100	PARTS PWB ASSY PANEL SP	1
302M294110	2M294110	PARTS PWB ASSY CONTAINER CONNECT SP	8
302M294120	2M294120	PARTS PWB ASSY ERASER SP	8
302M294130	2M294130	PARTS PWB ASSY THERMISTOR SP	8
302M294140	2M294140	PARTS SWITCHING REGULATOR 230V SP	8
302M294150	2M294150	PARTS SWITCHING REGULATOR 120V SP	8
302M294160	2M294160	PARTS HIGH VOLTAGE UNIT SP	8
302M294170	2M294170	PARTS ROLLER TRANSFER E SP	3
302M294180	2M294180	PARTS ROLLER TRANSFER U SP	3
302M294190	2M294190	PARTS ROLLER REGIST LOW SP	3
302M294200	2M294200	PARTS ROLLER FEED ASSY SP	3
302M294210	2M294210	PARTS COVER TOP ASSY SP CN	1
302M294220	2M294220	PARTS COVER TOP ASSY SP SPA	1
302M309010	2M309010	COVER TRAY C	2
302M309020	2M309020	COVER TRAY	2
302M329040	2M329040	GEAR Z22S	3
302M329050	2M329050	GEAR Z23R-Z22S	3
302M329070	2M329070	GEAR DU Z22S	3
302M331020	2M331020	GEAR Z57L-Z47R	7
302M331030	2M331030	GEAR Z39L-Z24L	7
302M331040	2M331040	GEAR Z66R-Z35S	7
302M331050	2M331050	GEAR Z34S	7
302M331060	2M331060	GEAR A Z14S	7
302M331070	2M331070	GEAR B Z14S	7
302M331080	2M331080	GEAR Z14S	7
302M331090	2M331090	GEAR Z42S-Z20S	7
302M331100	2M331100	GEAR Z45S	7
302M331110	2M331110	GEAR Z28S	7
302M331140	2M331140	SPRING CLUTCH	7
302M393010	2M393010	FK-1120(E)	6
302M393020	2M393020	FK-1120(U)	6

Part.No.	Alternative.	Description	Fig.No.
302M393030	2M393030	LK-1120	2
302M394010	2M394010	PARTS COVER REAR H ASSY SP	3
302M394020	2M394020	PARTS TRAY FRONT ASSY SP CN	1
302M394030	2M394030	PARTS MOTOR DC ASSY SP	7
302M394040	2M394040	PARTS PWB ASSY MAIN SP	8
302M394050	2M394050	PARTS COVER TOP ASSY SP	1
302M394060	2M394060	PARTS COVER TOP ASSY SP CN	1
302M394070	2M394070	PARTS COVER TOP ASSY SP SPA	1
303M894260	3M894260	PARTS SENSOR OPT SP	3
7AAACCCN+06H001	AA131920	AC CORD ASSY CN	8
7AAACCND+06H003	AA132310	AC CORD ASSY ND	8
7AAACCCUS+10H001	AA068380	AC CORD ASSY US	8

Part.No.	Alternative.	Description	Fig.No.

**KYOCERA Document Solutions America, Inc.
Headquarters**

225 Sand Road,
Fairfield, New Jersey 07004-0008, USA
Phone: +1-973-808-8444
Fax: +1-973-882-6000

Latin America

8240 NW 52nd Terrace Dawson Building, Suite 100
Miami, Florida 33166, USA
Phone: +1-305-421-6640
Fax: +1-305-421-6666

KYOCERA Document Solutions Canada, Ltd.

6120 Kestrel Rd., Mississauga, ON L5T 1S8,
Canada
Phone: +1-905-670-4425
Fax: +1-905-670-8116

**KYOCERA Document Solutions
Mexico, S.A. de C.V.**

Calle Arquimedes No. 130, 4 Piso, Colonia Polanco
Chapultepec, Delegacion Miguel Hidalgo,
Distrito Federal, C.P. 11560, México
Phone: +52-555-383-2741
Fax: +52-555-383-7804

KYOCERA Document Solutions Brazil, Ltd.

Av. Tambore, 1180 Mod.B-09 CEP 06460-000
Tambore-Barueri-SP, Brazil
Phone: +55-11-4195-8496
Fax: +55-11-4195-6167

**KYOCERA Document Solutions
Australia Pty. Ltd.**

Level 3, 6-10 Talavera Road North Ryde N.S.W, 2113,
Australia
Phone: +61-2-9888-9999
Fax: +61-2-9888-9588

**KYOCERA Document Solutions
New Zealand Ltd.**

1-3 Parkhead Place, Albany, Auckland 1330,
New Zealand
Phone: +64-9-415-4517
Fax: +64-9-415-4597

KYOCERA Document Solutions Asia Limited

16/F., Mita Centre, 552-566, Castle Peak Road
Tsuenwan, NT, Hong Kong
Phone: +852-2610-2181
Fax: +852-2610-2063

**KYOCERA Document Solutions
(Thailand) Corp., Ltd.**

335 Ratchadapisek Road, Bangsue, Bangkok 10800,
Thailand
Phone: +66-2-586-0333
Fax: +66-2-586-0278

**KYOCERA Document Solutions
Singapore Pte. Ltd.**

12 Tai Seng Street #04-01A,
Luxasia Building, Singapore 534118
Phone: +65-6741-8733
Fax: +65-6748-3788

**KYOCERA Document Solutions
Hong Kong Limited**

16/F., Mita Centre, 552-566, Castle Peak Road
Tsuenwan, NT, Hong Kong
Phone: +852-2429-7422
Fax: +852-2423-2159

**KYOCERA Document Solutions
Taiwan Corporation**

6F., No.37, Sec. 3, Minquan E. Rd.,
Zhongshan Dist., Taipei 104, Taiwan R.O.C.
Phone: +886-2-2507-6709
Fax: +886-2-2507-8432

**KYOCERA Document Solutions Korea Co.,
Ltd.**

18F, Kangnam bldg, 1321-1,
Seocho-Dong, Seocho-Gu, Seoul, Korea
Phone: +822-6933-4050
Fax: +822-747-0084

**KYOCERA Document Solutions
India Private Limited**

First Floor, ORCHID CENTRE
Sector-53, Golf Course Road, Gurgaon 122 002,
India
Phone: +91-0124-4671000
Fax: +91-0124-4671001

KYOCERA Document Solutions Europe B.V.
Bloemlaan 4, 2132 NP Hoofddorp,
The Netherlands
Phone: +31-20-654-0000
Fax: +31-20-653-1256

KYOCERA Document Solutions Nederland B.V.
Beechavenue 25, 1119 RA Schiphol-Rijk,
The Netherlands
Phone: +31-20-5877200
Fax: +31-20-5877260

KYOCERA Document Solutions (U.K.) Limited
8 Beacontree Plaza,
Gillette Way Reading, Berkshire RG2 0BS,
United Kingdom
Phone: +44-118-931-1500
Fax: +44-118-931-1108

KYOCERA Document Solutions Italia S.p.A.
Via Verdi, 89/91 20063 Cernusco s/N.(MI),
Italy
Phone: +39-02-921791
Fax: +39-02-92179-600

KYOCERA Document Solutions Belgium N.V.
Sint-Martinusweg 199-201 1930 Zaventem,
Belgium
Phone: +32-2-7209270
Fax: +32-2-7208748

KYOCERA Document Solutions France S.A.S.
Espace Technologique de St Aubin
Route de l'Orme 91195 Gif-sur-Yvette CEDEX,
France
Phone: +33-1-69852600
Fax: +33-1-69853409

KYOCERA Document Solutions Espana, S.A.
Edificio Kyocera, Avda. de Manacor No.2,
28290 Las Matas (Madrid), Spain
Phone: +34-91-6318392
Fax: +34-91-6318219

KYOCERA Document Solutions Finland Oy
Atomitie 5C, 00370 Helsinki,
Finland
Phone: +358-9-47805200
Fax: +358-9-47805390

KYOCERA Document Solutions Europe B.V., Amsterdam (NL) Zürich Branch
Hohlstrasse 614, 8048 Zürich,
Switzerland
Phone: +41-44-9084949
Fax: +41-44-9084950

KYOCERA Document Solutions Deutschland GmbH
Otto-Hahn-Strasse 12, 40670 Meerbusch,
Germany
Phone: +49-2159-9180
Fax: +49-2159-918100

KYOCERA Document Solutions Austria GmbH
Eduard-Kittenberger-Gasse 95, 1230 Vienna,
Austria
Phone: +43-1-863380
Fax: +43-1-86338-400

KYOCERA Document Solutions Nordic AB
Esbogatan 16B 164 75 Kista, Sweden
Phone: +46-8-546-550-00
Fax: +46-8-546-550-10

KYOCERA Document Solutions Norge NUF
Postboks 150 Oppsal, 0619 Oslo,
Norway
Phone: +47-22-62-73-00
Fax: +47-22-62-72-00

KYOCERA Document Solutions Danmark A/S
Ejby Industrivej 60, DK-2600 Glostrup,
Denmark
Phone: +45-70223880
Fax: +45-45765850

KYOCERA Document Solutions Portugal Lda.
Rua do Centro Cultural, 41 (Alvalade) 1700-106 Lisboa,
Portugal
Phone: +351-21-843-6780
Fax: +351-21-849-3312

KYOCERA Document Solutions South Africa (Pty) Ltd.
49 Kyalami Boulevard,
Kyalami Business Park 1685 Midrand, South Africa
Phone: +27-11-540-2600
Fax: +27-11-466-3050

KYOCERA Document Solutions Russia LLC
Botanichesky pereulok 5, Moscow, 129090,
Russia
Phone: +7(495)741-0004
Fax: +7(495)741-0018

KYOCERA Document Solutions Middle East
Dubai Internet City, Bldg. 17,
Office 157 P.O. Box 500817, Dubai,
United Arab Emirates
Phone: +971-04-433-0412

KYOCERA Document Solutions Inc.
2-28, 1-chome, Tamatsukuri, Chuo-ku
Osaka 540-8585, Japan
Phone: +81-6-6764-3555
<http://www.kyoceradocumentsolutions.com>

© 2012 KYOCERA Document Solutions Inc.

 is a trademark of KYOCERA Corporation