



Parts and Diagrams

5

Printer Support 5-2
Center Covers (Front) 5-4
Center Covers (Rear) 5-6
Right Cover 5-8
Left Cover 5-10
Right Hand Assemblies 5-12
Left Hand Assemblies 5-14
Carriage Assembly 5-16
Scan-Axis Assemblies 5-18
Paper Path Assemblies (Front) 5-20
Paper Path Assemblies (Rear) 5-22
Tool Kits 5-24
Miscellaneous Parts 5-26

Printer Support

	HP Part Number	Part Description	Printer Model	Size	Page ^a
1	Q5669-60718	Leg Cover	All	All	N/A
2	Q5669-60716	Legs Assembly	All	All	N/A
3	Q5669-60715	Foot Assembly (includes 1 foot and 1 support tube)	All	All	N/A
4	Q5669-60719	Bin Assembly (Includes the Bin Support)	All	24 inch	N/A
	Q6659-60237			44 inch	N/A
5	Q5669-60717	X-Brace Assembly	All	24 inch	N/A
	Q6659-60236			44 inch	N/A
-	Q5669-60730	Hardware Kit (Includes screws for Legs Assembly)	All	All	N/A
-	Q5669-67063	Basket Tubes and Adaptors	All	All	N/A

a Refers to the page in the Removal and Installation Chapter



Figure 5-1: Printer Support

Center Covers (Front)

	HP Part Number	Part Description	Printer Model	Size	Page ^a
1	Q5669-60662	Window	All	24 inch	6-13
	Q6659-60172			44 inch	
2	Q5669-60656	Top Cover	All	24 inch	
	Q6659-60168			44 inch	
3	Q5669-60675	Window Position Sensor	All	All	6-54
4	Q5669-60155	Media Output Assembly	All	24 inch	6-18
	Q6659-60089			44 inch	
5	Q5669-60651	Front Cover	Z2100	24 inch	6-17
	Q6659-60165			44 inch	
	Q5669-67001		Z3100/ Z3100ps	24 inch	
	Q6659-67001		/Z3200/ Z3200ps	44 inch	
6	Q6675-60060	Front Panel	Z2100	All	6-48
	Q5669-60714		Z3100/ Z3100ps		
	Q6718-67010		Z3200/ Z3200ps		

a Refers to the page in the Removal and Installation Chapter

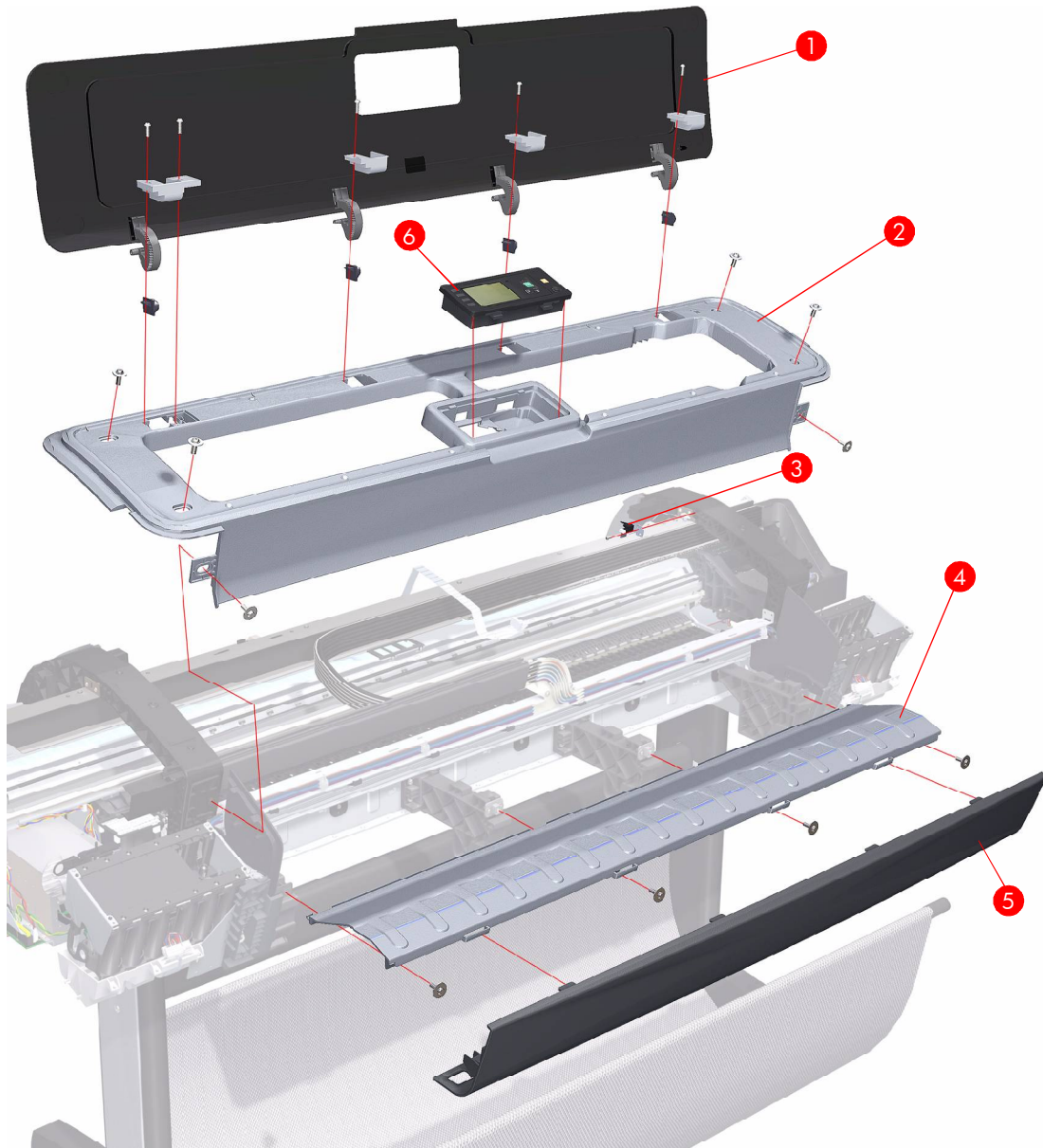


Figure 5-2: Center Covers (Front)

Center Covers (Rear)

	HP Part Number	Part Description	Printer Model	Size	Page ^a
1	Q5669-60660	Rear Tray Supports	Z2100/ Z3100/ Z3100ps	All	6-44
	Q6683-60207		Z3200/ Z3200ps		
2	Q6683-67802	Clean Out Assembly	All	24 inch	6-78
	Q6687-67801			44 inch	
3	Q5669-60676	Out Of Paper Sensor	All	All	6-79
4	Q5669-60659	Rear Tray (For the Z2100/Z3100/ Z3100ps printers, there are two valid Rear Tray types. One type has an extension tray, and the other type does not. All Rear Trays ordered as service parts have the extension.)	Z2100/ Z3100/ Z3100ps	24 inch	6-36
	Q6659-60170			44 inch	
	Q6683-60194		Z3200/ Z3200ps	24 inch	
	Q6687-60058		44 inch		
5	Q5669-60650	Rear Cover	All	24 inch	6-37
	Q6659-60164			44 inch	

^a Refers to the page in the Removal and Installation Chapter

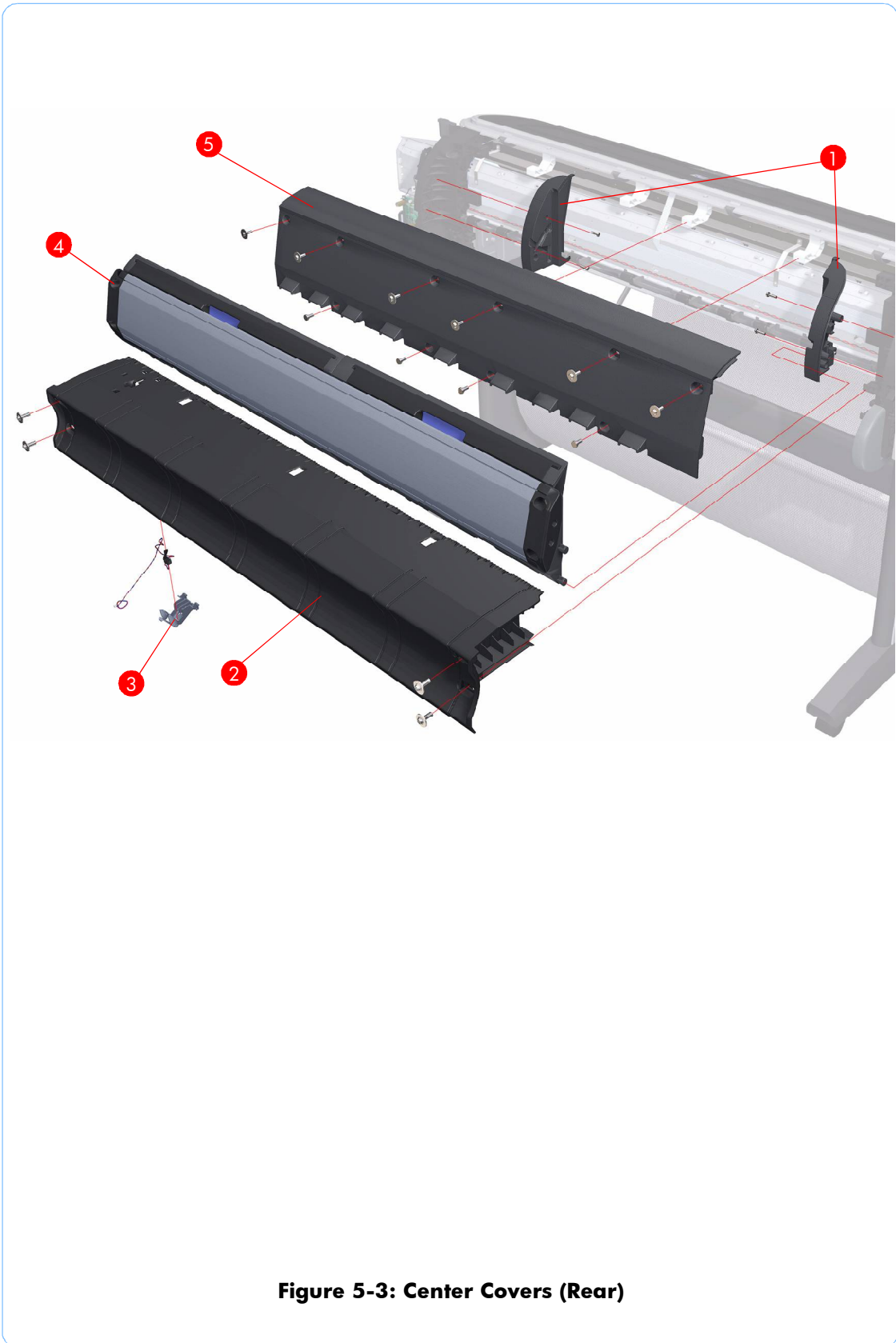


Figure 5-3: Center Covers (Rear)

Right Cover

	HP Part Number	Part Description	Printer Model	Size	Page ^a
1	Q6675-60015	Right Cover (without Right Ink Cartridge Door)	Z2100	All	6-27
	Q5669-60653		Z3100/ Z3100ps		
	Q6718-67019		Z3200/ Z3200ps		
2	Q5669-60657	Left Front Trim/Right Front Trim (Left not shown. There are two valid Left/Right Trim types. One type is integrated with the Output Support, and the other type is separate from the Output Support. All Left/Right Trim ordered as service parts are integrated.)	All	All	6-19
3	Q6675-60017	Right Ink Cartridge Door	Z2100	All	6-23
	Q5669-60655		Z3100/ Z3100ps		
	Q6675-60089		All		
	Q6718-67016		Z3200/ Z3200ps		

^a Refers to the page in the Removal and Installation Chapter

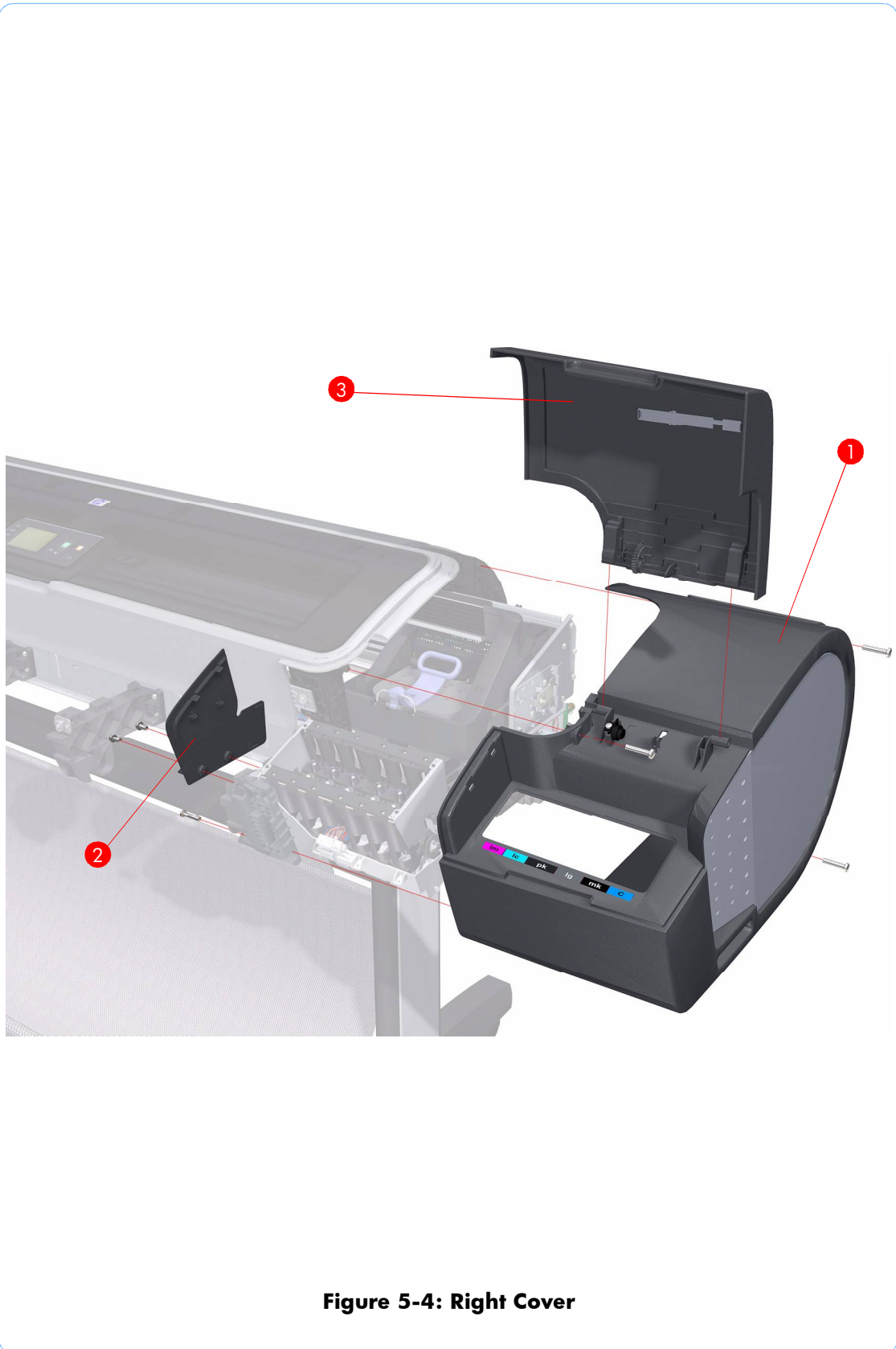


Figure 5-4: Right Cover

Left Cover

	HP Part Number	Part Description	Printer Model	Size	Page ^a
1	Q6675-60016	Left Ink Cartridge Door	Z2100/ Z3100	All	6-25
	Q6675-60088		All		
2	Q5669-60657	Left Front Trim/Right Front Trim (Right not shown. There are two valid Left/Right Trim types. One type is integrated with the Output Support, and the other type is separate from the Output Support. All Left/Right Trim ordered as service parts are integrated.)	All	All	6-21
3	Q6675-67003	Left Side Panel	All	All	6-30
4	Q6675-60014	Left Cover (without Left Ink Cartridge Door)	Z2100	All	6-30
	Q5669-60652		Z3100/ Z3100ps		
	Q6675-67021	Ink Trim Assembly	Z2100	All	

^a Refers to the page in the Removal and Installation Chapter



Figure 5-5: Left Cover

Right Hand Assemblies

	HP Part Number	Part Description	Printer Model	Size	Page ^a
1	Q6675-60043	Carriage Rail Oiler	All	All	6-120
2	Q5669-67807	Pen to Paper Space (PPS) Solenoid	All	All	6-73
3	Q5669-60674	Scan-Axis Motor	All	All	6-116
4	Q6675-60018	PrintMech PCA	All	All	6-71
5	Q5669-60667	Service Station Spittoon	All	All	6-60
6	Q5669-60664	Aerosol Fan Assembly	All	All	6-65
7	Q6718-67025	Service Station	All	All	6-60
8	Q5669-60666	Drop Detector	All	All	6-64
9	Q6675-60020	Right Ink Supply Station	Z2100	All	6-143
	Q5669-60670		Z3100/ Z3100ps		
	Q6718-67001		Z3200/ Z3200ps		

^a Refers to the page in the Removal and Installation Chapter

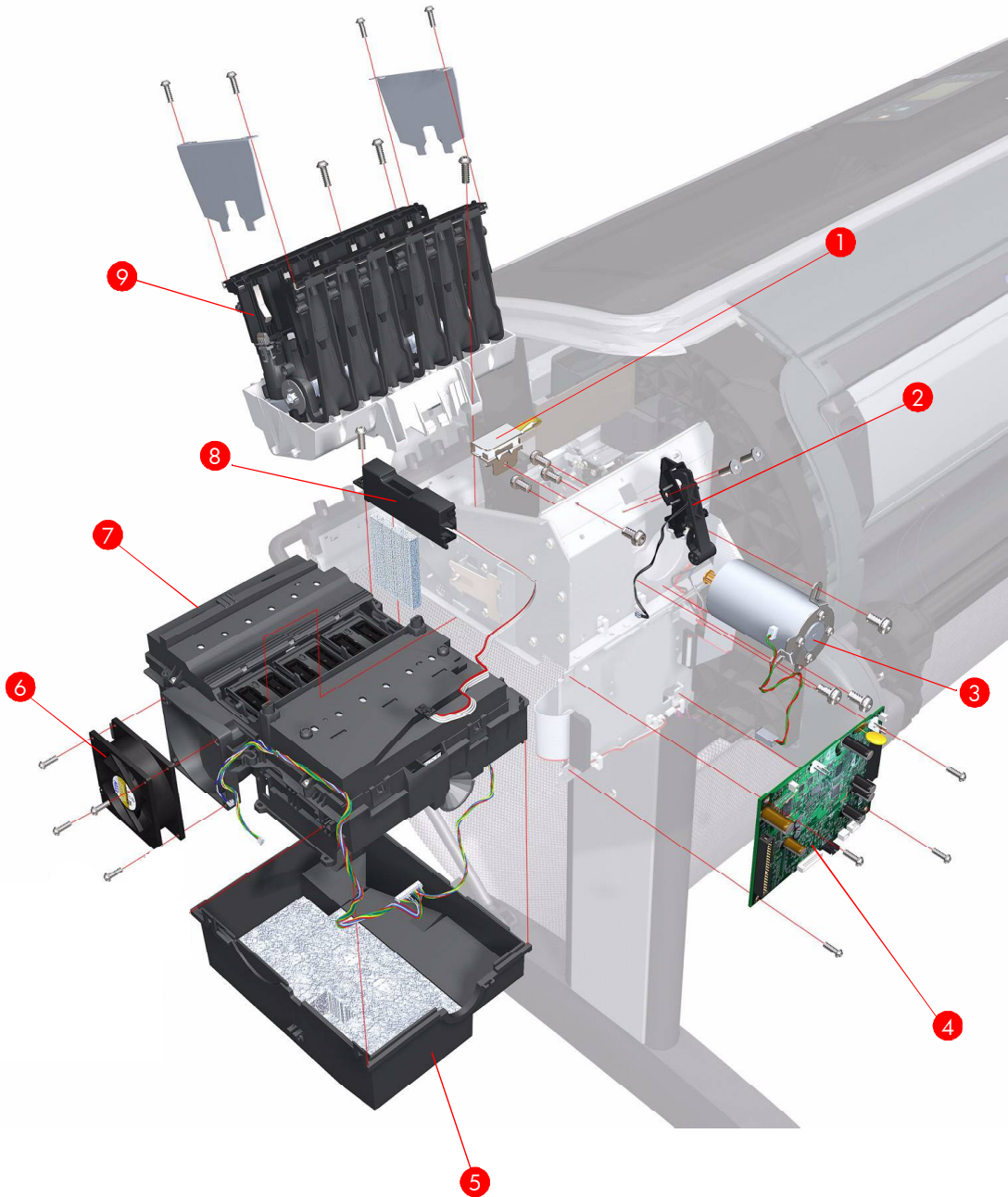


Figure 5-6: Right Hand Assemblies

Left Hand Assemblies

	HP Part Number	Part Description	Printer Model	Size	Page ^a
1	Q6675-60019	Left Ink Supply Station	Z2100	All	6-147
	Q5669-60669		Z3100/ Z3100ps /Z3200/ Z3200ps		
2	Q6708-67017	Starwheel Motor	All	All	6-211
3	Q5669-60703	Encoder Sensor	All	All	6-176
4	Q5669-60702	Encoder Disk	All	All	6-176
5	Q5669-60700	Media Advance Transmission	All	All	6-180
6	Q5669-67049	Left Spittoon	All	All	6-173
7	Q5669-60693	Power Supply Unit (PSU) Assembly	Z2100Z 3100/ Z3100ps	All	6-161
	Q6718-67005		Z3200/ Z3200ps		
8	Q6675-60023	Main PCA with Power Supply Unit (PSU) Assembly	Z2100Z 3100/ Z3100ps	24 inch	6-161
	Q6677-60008		Z3200/ Z3200ps	44 inch	
	Q6718-67015		Z3200/ Z3200ps	24 inch	
	Q6719-67005		Z3200/ Z3200ps	44 inch	
9	Q6675-60086	Formatter	Z2100	All	6-159
	Q5669-67010		Z3100		
	Q5670-60011		Z3100ps		
	Q6718-67020		Z3200/ Z3200ps		
10	Q5669-60705	Media Lever	All	All	6-38
11	Q5669-60706	Media Lever Position Sensor	All	All	6-41

^a Refers to the page in the Removal and Installation Chapter

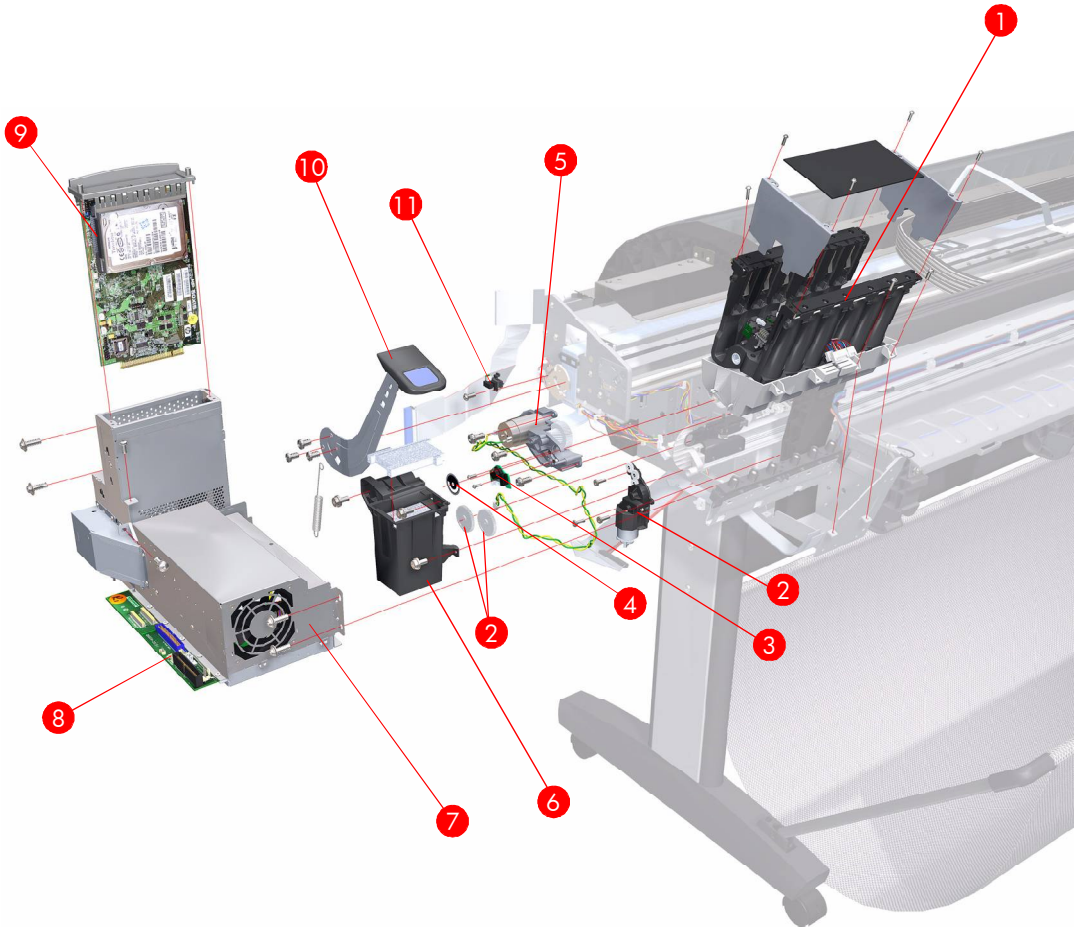


Figure 5-7: Left Hand Assemblies

Carriage Assembly

	HP Part Number	Part Description	Printer Model	Size	Page ^a
1	Q5669-60689	Carriage PCA Cover	All	All	6-138
2	Q5669-60685	Carriage Latch	All	All	6-133
3	Q5669-60686	Carriage Cover (includes Carriage Latch)	All	All	6-133
4	Q5669-60682	Carriage PCA	Z2100/ Z3100/ Z3100ps	All	6-138
	Q6718-67003		Z3200/ Z3200ps	44 inch	
5	Q5669-60687	Carriage Rear Bushing	All	All	6-113
6	Q6683-67004	Line Sensor	All	All	6-128
7	Q5669-60684	Color Sensor ESP (spectrophotometer)	All	All	6-122
8	Q5669-67052	Trailing Cable	All	24 inch	6-92
	Q6659-67015			44 inch	
1 - 8	Q6675-67020	Carriage Assembly (includes: Line Sensor, Carriage Cover, Carriage Latch, Carriage PCA, Carriage Rear Bushing, Trailing Cable, and Color Sensor (ESP))	Z2100	24 inch	6-100
	Q6677-67004		Z2100	44 inch	
	Q5669-67051		Z3100/ Z3100ps	24 inch	
	Q6659-67014		Z3100/ Z3100ps	44 inch	
	Q6718-67012		Z3200/ Z3200ps	24 inch	
	Q6719-67003		Z3200/ Z3200ps	44 inch	
	Q5669-67055	Extra High PRS Wedge	All	All	6-109

^a Refers to the page in the Removal and Installation Chapter

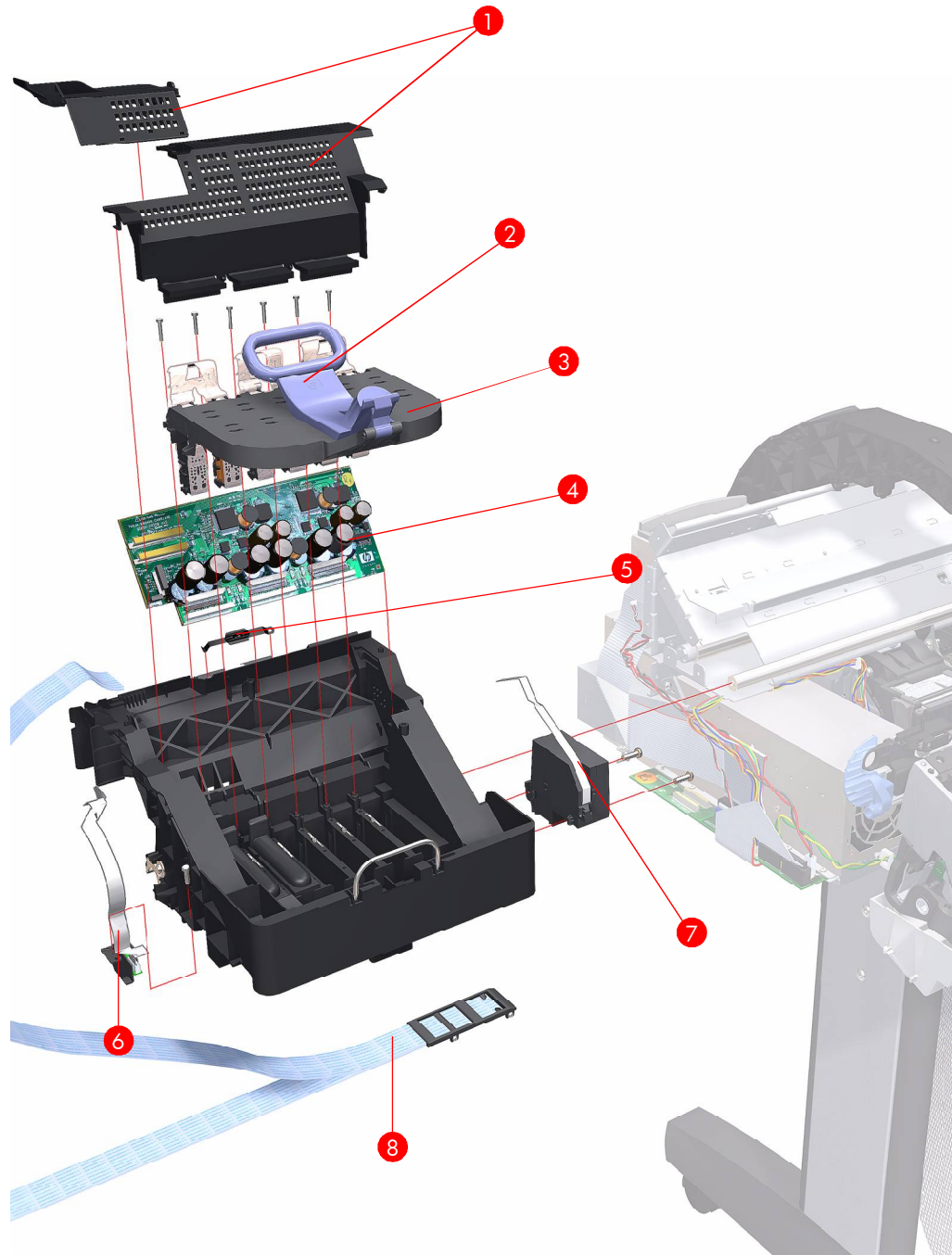


Figure 5-8: Carriage Assembly

Scan-Axis Assemblies

	HP Part Number	Part Description	Printer Model	Size	Page ^a
1	Q6675-60021	Ink Supply Tubes	Z2100	24 inch	6-151
	Q5669-60671		Z3100/ Z3100ps		
	Q6677-60007		Z2100	44 inch	
	Q6659-60174		Z3100/ Z3100ps		
	Q6718-67002		Z3200/ Z3200ps	24 inch	
	Q6719-67001		Z3200/ Z3200ps	44 inch	
2	Q6675-60071	Encoder Strip (including Encoder Strip Spring and Nut)	All	24 inch	6-84
	Q6677-60024			44 inch	
3	Q5669-60673	Belt Assembly	All	24 inch	6-115
	Q6659-60175			44 inch	
4	Q5669-60672	Belt Tensioner	All	All	6-115
5	Q5669-67052	Trailing Cable (with Carriage PCA Cover)	All	24 inch	6-92
	Q6659-67015			44 inch	
-	Q5669-60679	Encoder Strip (including Encoder Strip Spring and Nut) - 50 units	All	24 inch	6-84
	Q6659-60176			44 inch	

a Refers to the page in the Removal and Installation Chapter

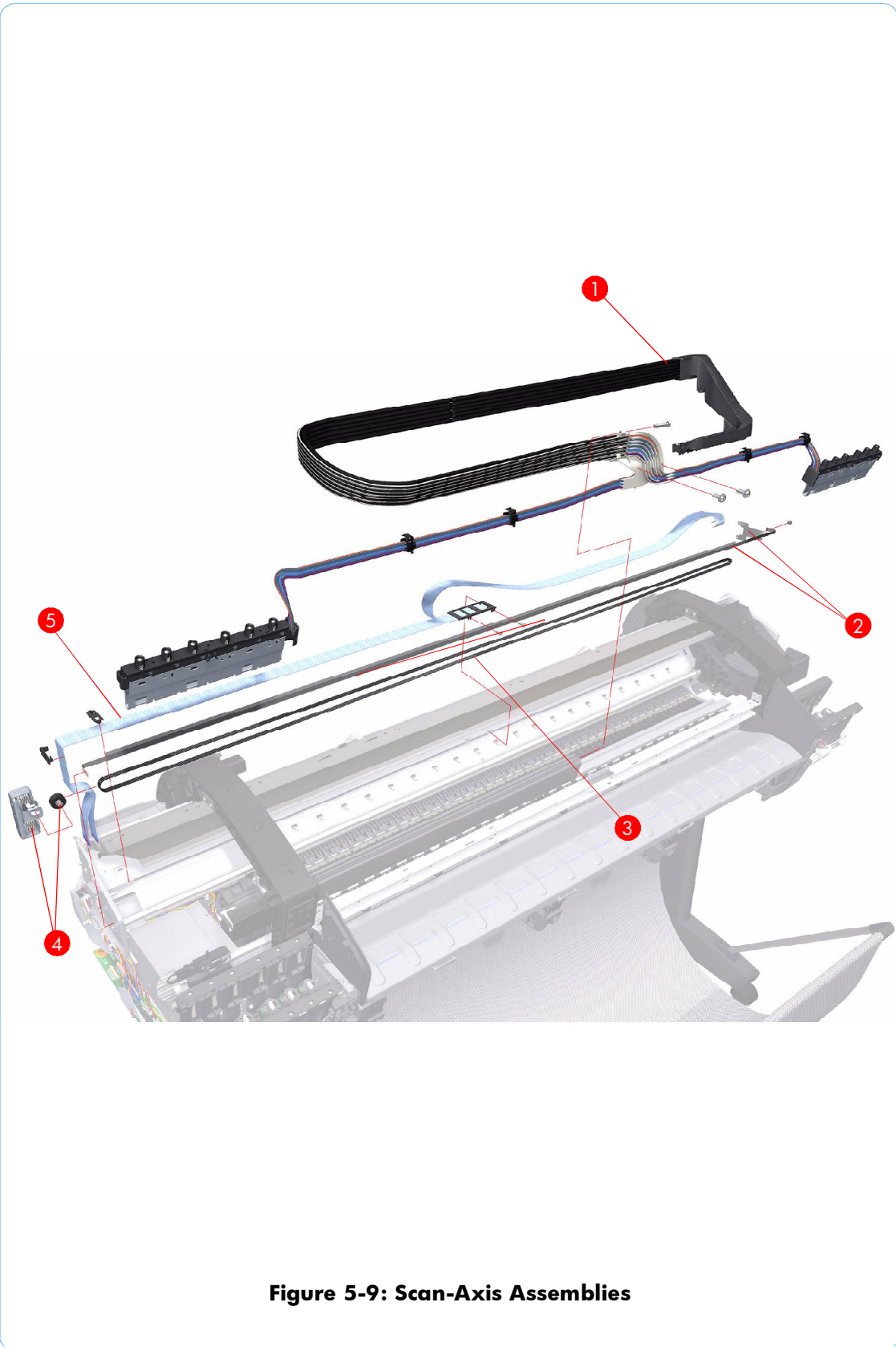


Figure 5-9: Scan-Axis Assemblies

Paper Path Assemblies (Front)

	HP Part Number	Part Description	Printer Model	Size	Page ^a
1	Q6718-67014	Starwheel Assembly (without Actuator)	All	24 inch	6-164
	Q6719-67004		All	44 inch	
1	Q5669-67061	Starwheel Assembly (with Actuator)	Z2100/ Z3100/ Z3100ps	24 inch	6-164
	Q6659-67016			44 inch	
2	Q6675-60042	Print Zone Overdrive	All	24 inch	6-169
	Q6677-60018			44 inch	
3	Q5669-67054	Starwheel Lifter	Z2100/ Z3100/ Z3100ps	All	6-204
	Q6718-67013				
4	Q5669-60713	Cutter Assembly	All	All	6-43
5	Q5669-60701	Full Bleed Foam Kit	All	24 inch	6-213
	Q6659-60182			44 inch	

a Refers to the page in the Removal and Installation Chapter

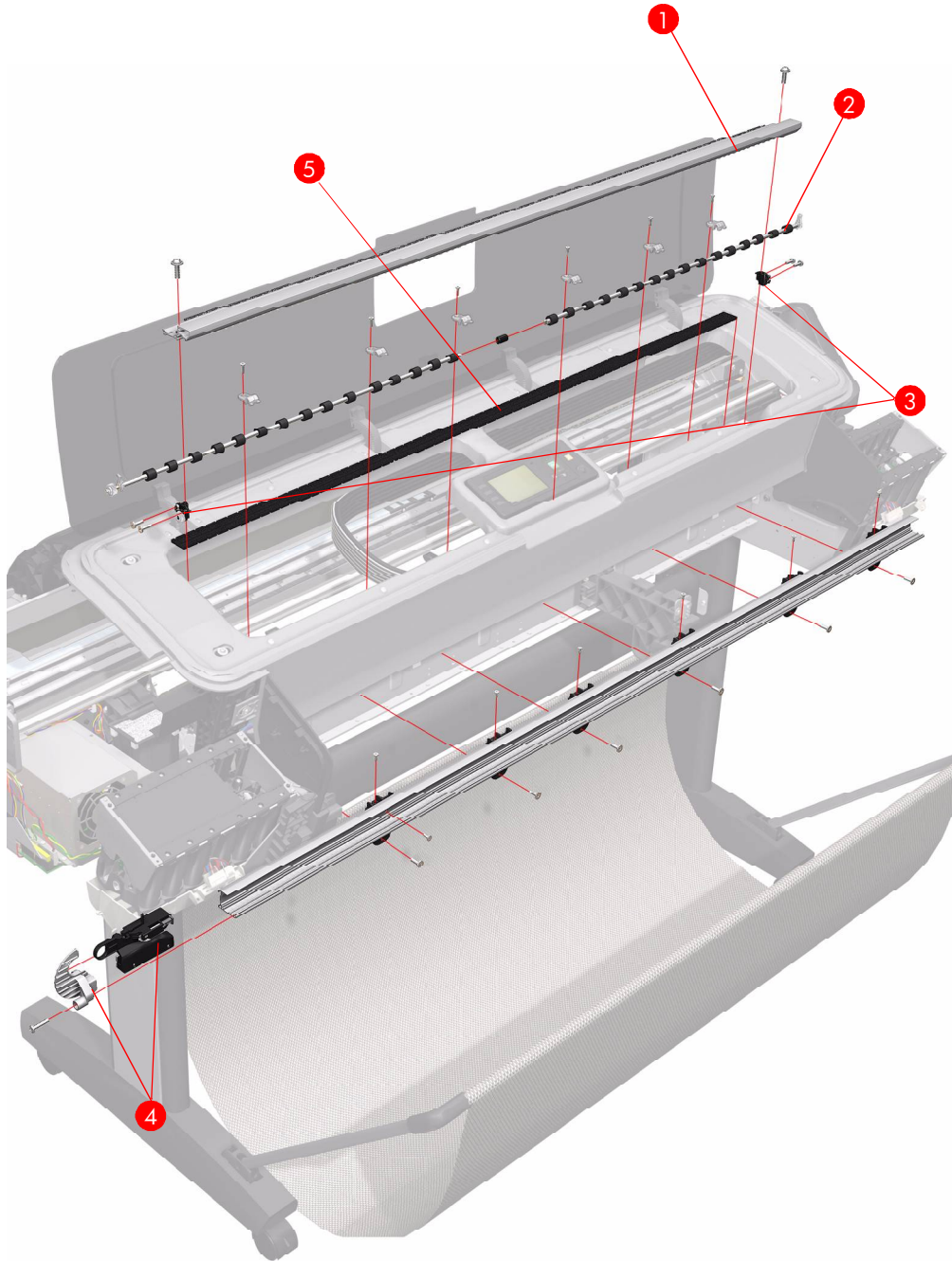


Figure 5-10: Paper Path Assemblies (Front)

Paper Path Assemblies (Rear)

	HP Part Number	Part Description	Printer Model	Size	Page ^a
1	Q5669-60708	Pinch Roller (plastic pinchwheels)	All	All	6-199
2	Q5669-60707	Pinchwheel Assembly	All	All	6-191
-	Q5669-67060	Rubber Pinchwheel Kit	Z2100/ Z3100/ Z3100ps	All	6-200
3	Q6677-60019	Left Roll Guide	All	44 inch	6-82
4	Q5669-60711	Left Spindle Holder	Z2100/ Z3100/ Z3100ps	All	6-76
	Q6718-67008		Z3200/ Z3200ps		
5	Q5669-60710	Spindle (There are two valid spindle types for the 24 inch printers. The difference is the diameter of the spindle. All spindles ordered as service parts have the thicker diameter).	All	24 inch	6-75
	Q6659-60183			44 inch	
5	Q6677-60028	Tech 44 Spindle (for increased back tension)	All	44 inch	6-75
6	Q5669-60712	Right Spindle Holder	Z2100/ Z3100/ Z3100ps	All	6-77
	Q6718-67009		Z3200/ Z3200ps		
7	Q6675-60044	Right Roll Guide	All	All	6-83
-	Q6675-60103	Media Advance Kit	All	24 inch	
	Q6677-60030			44 inch	
-	Q6675-60093	3 inch Spindle Adaptor Kit	All	All	N/A

a Refers to the page in the Removal and Installation Chapter

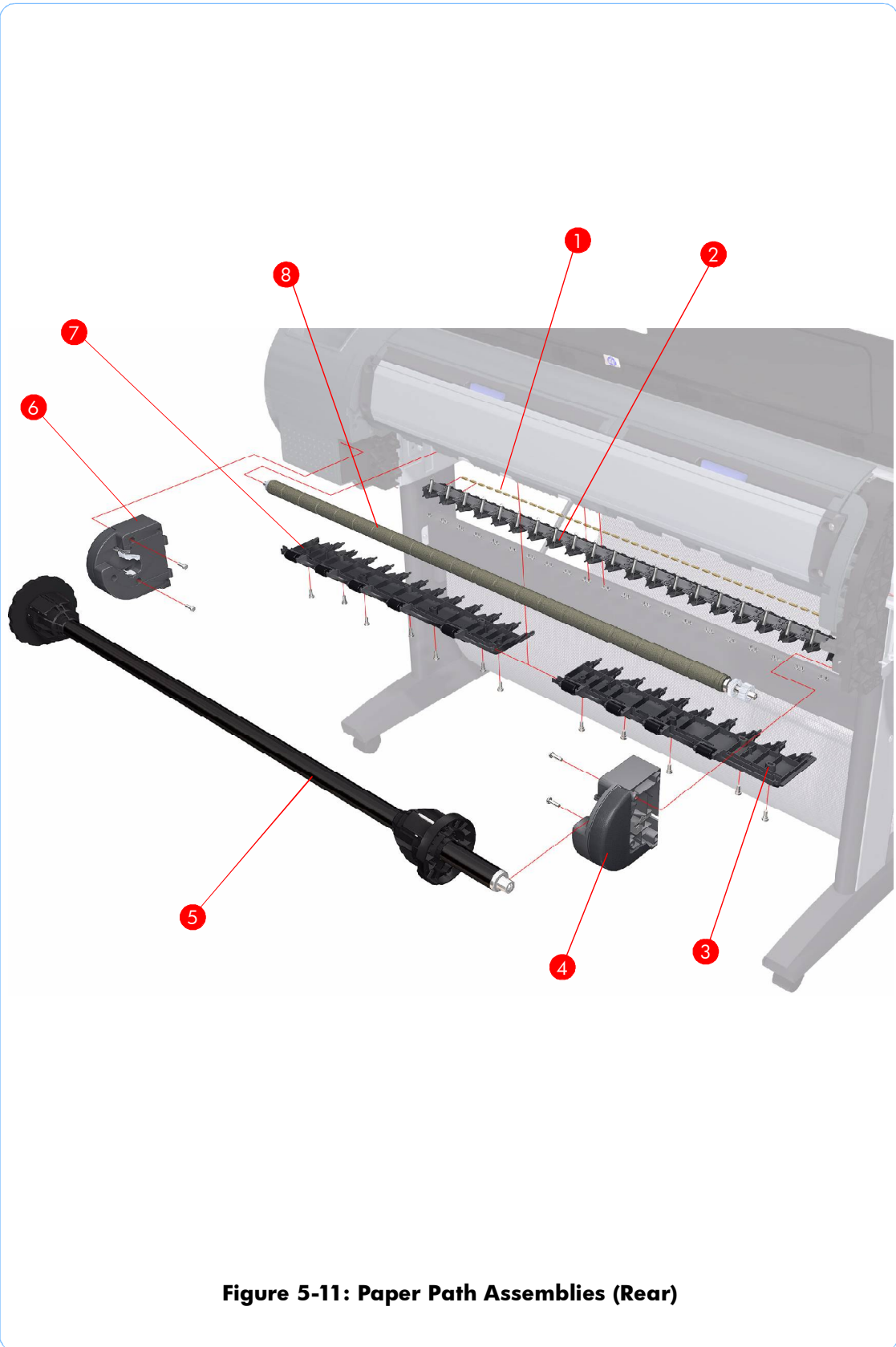
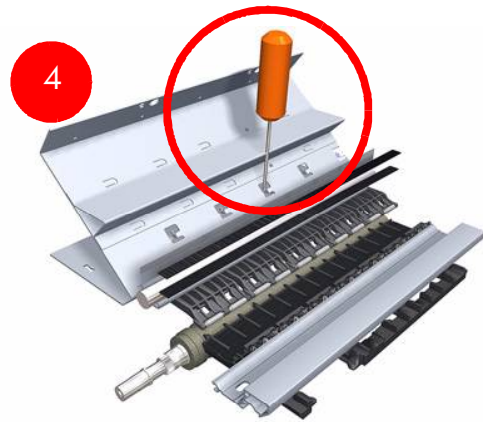
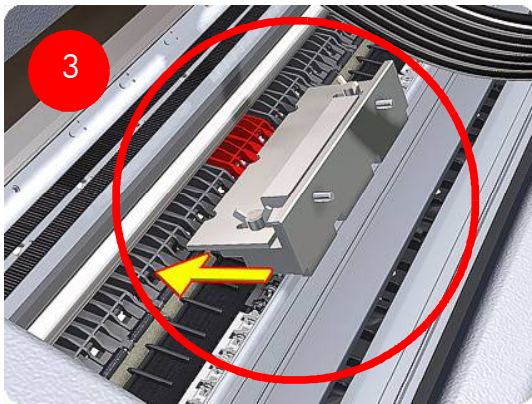
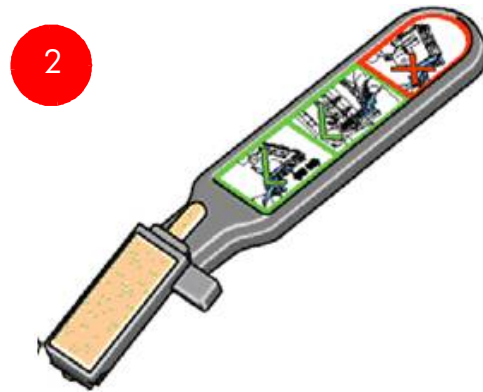
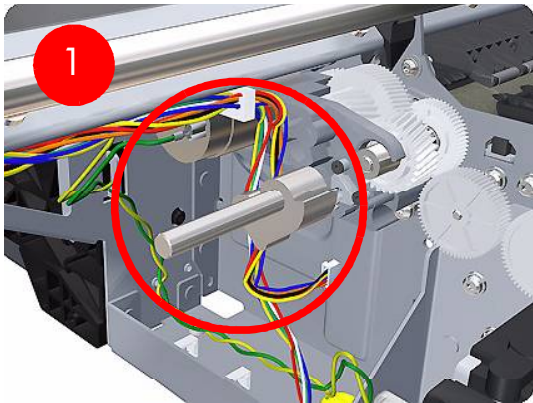


Figure 5-11: Paper Path Assemblies (Rear)

Took Kits

	HP Part Number	Part Description	Printer Model	Size
2	Q5669-60690	Flex Contacts Cleaning Tool	All	All
1	Q6675-67018	Media Driver Tool Kit (includes the Handle for Media Driver Tool Support and the Media Driver Adjustment Tool)	All	All
3-4	Q6687-60084	Pinchwheel Insertion Tool	All	All
5	Q6675-67017	Spanner Tool	All	All
6	Q6683-67001	Tool Kit (includes pinwheel alignment tool, media driver tool, spanner # 13, oil dispenser, insert spring tool, tweezers, T15 screwdriver, 100cc Isopropyl Alcohol, lubricant oil, plastic gloves, flex contacts cleaning tool and cleaning kit)	All	All
7	Q5669-60692	Lubrication Kit	All	All



7

Dispenser Oil



Lubricant Oil



Cleaning cloth



Alcohol

Figure 5-12: Tool Kits

Miscellaneous Parts

	Part Description	Printer Model	Size
Q6675-67019	Preventive Maintenance Kit #1	Z2100	24 inch
Q5669-67050		Z3100/ Z3100ps	
Q6677-67003		Z2100	44 inch
Q6659-67013		Z3100/ Z3100ps	
Q6718-67011		Z3200/ Z3200ps	24 inch
Q6719-67002			44 inch
Q6718-67026	Preventive Maintenance Kit #2	All	All
Q5669-60722	Preventive Maintenance Kit #3	All	All
Q6675-60103	Paper Advance Calibration Kit	All	24 inch
Q6677-60030			44 inch
Q6675-60092	Harness Cables (includes Left ISS, Right ISS, Printmech PCA 24 inch and 44 inch)	All	All
Q6675-60068	Serial Number Label	All	All
Q6675-67004	Ink System Purgers (6 Units)	All	All
Q6675-67005	Ink System Purgers (100 Units)	All	All
Q6675-67006	Double Sided Adhesive Pad	All	All