

DADF-D1

PARTS CATALOG

REVISION 0

F25 - 4401	AB SIZE	XDB00001 -
F25 - 4411	INCH/A SIZE	XDC00001 -
F25 - 4421	A SIZE	XDD00001 -
F25 - 4431	INCH/AB SIZE	XDE00001 -

Canon

JUNE 2000

FY8-31EW-000

PREFACE

This Parts Catalog contains listings of parts used in the Canon DADF-D1. Diagrams are provided with the listings to aid the service technician in identifying clearly, the item to be orderd.

Whenever ordering parts, consult this Parts Catalog for all of the information pertaining to each item. Be sure to include, in the Parts Request, the full item description, the item part number, and the quantity.

Canon Inc.

Office Imaging Products Technical Support Div.
5-1, Hakusan 7-chome,
Toride-city, Ibaraki 302-8501, Japan

COPYRIGHT © 2000 CANON INC.

Printed in Japan

Imprimé au Japon

Use of this manual should be strictly supervised to avoid disclosure of confidential information.

CONTENTS

- DADF-D1 -

- PA. ASSEMBLY LOCATION DIAGRAM

- P01. MOUNTING HARDWARE

- P10. EXTERNAL COVERS, PANELS, ETC.
- P11. INTERNAL COMPONENTS 1
- P12. INTERNAL COMPONENTS 2
- P13. INTERNAL COMPONENTS 3
- P14. TOP PANEL ASSEMBLY
- P15. DOCUMENT TRAY ASSEMBLY

- P20. FEED DRIVE ASSEMBLY

- P35. DELIVERY GUIDE ASSEMBLY

- P90. ADF CONTROLLER PCB ASSEMBLY

- PB. LIST OF CONNECTORS

- C. LIST OF STANDARD FASTENERS

- PD. NUMERICAL INDEX

FIGURE PA ASSEMBLY LOCATION DIAGRAM

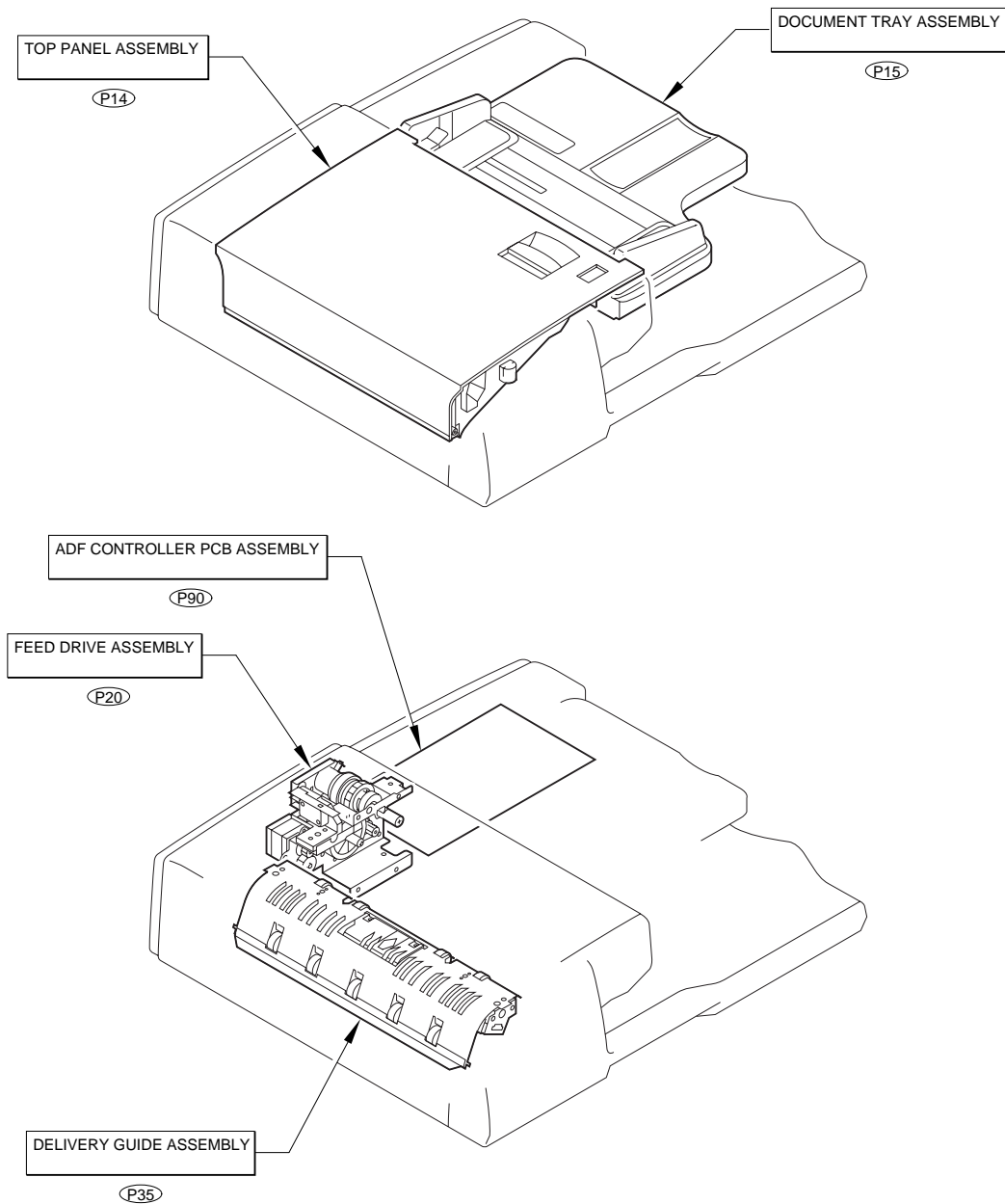


FIGURE P01 MOUNTING HARDWARE

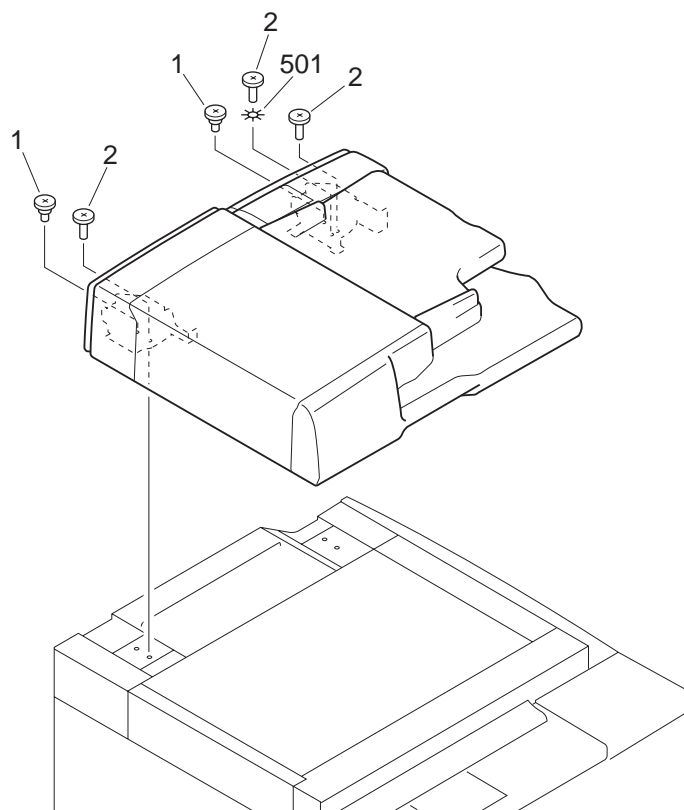


FIGURE & KEY NO.	PART NUMBER	RANK	QTY	DESCRIPTION	SERIAL NUMBER / REMARKS
P01 -	NPN		RF	MOUNTING HARDWARE	
1	FS2-9540-000		2	SCREW, STEPPED, M5	
2	FS2-9542-000		3	SCREW, STEPPED	
501	XD1-4200-602		1	WASHER, TOOTHED LOCK	

FIGURE P10 EXTERNAL COVERS, PANELS, ETC.

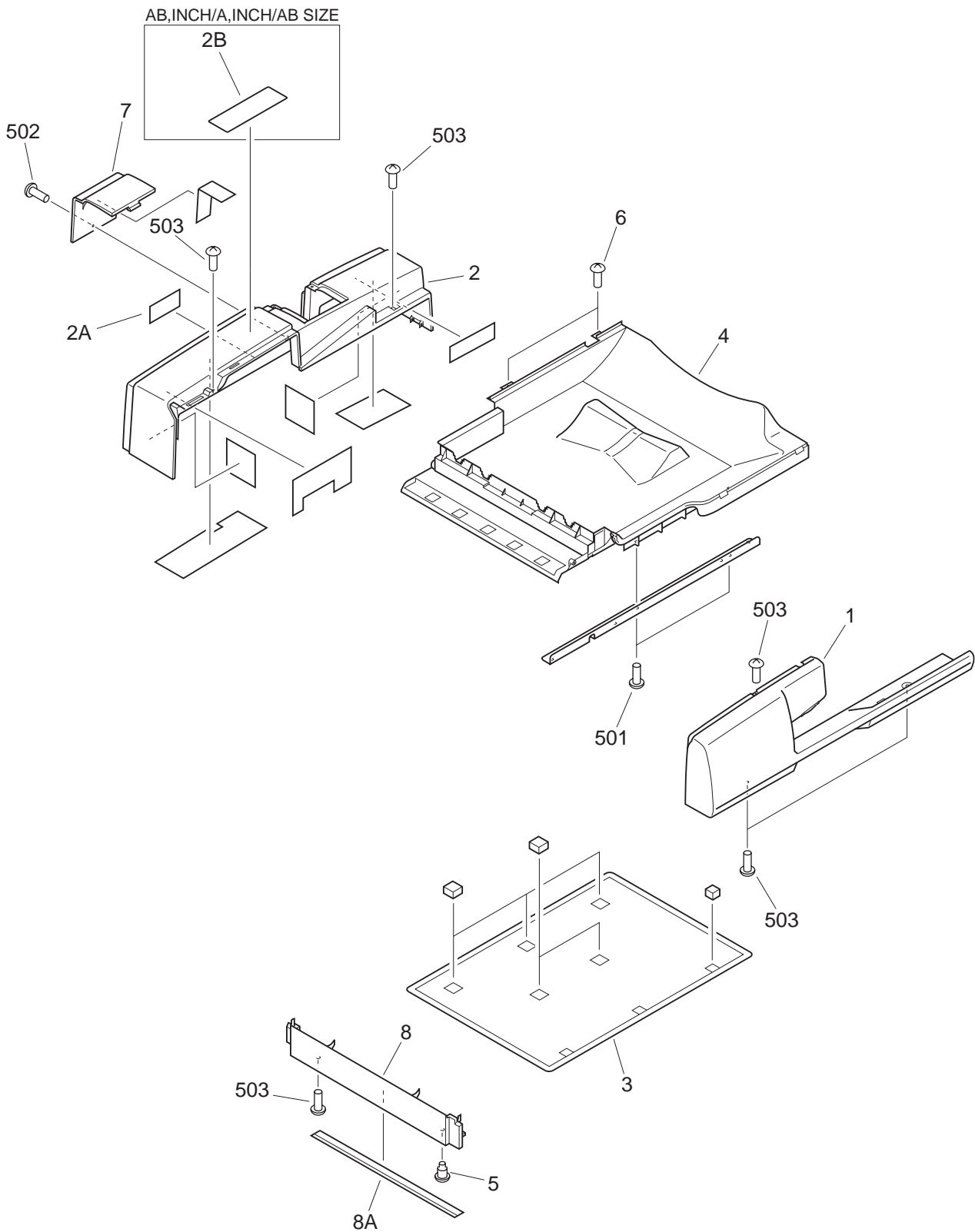


FIGURE & KEY NO.	PART NUMBER	RANK	QTY	DESCRIPTION	SERIAL NUMBER / REMARKS
P10 -	NPN		RF	EXTERNAL COVERS, PANELS, ETC.	
1	FC3-0619-000		1	PANEL, FRONT	
2	FF3-4000-000		1	PANEL, REAR	AB SIZE
	FF3-4002-000		1	PANEL, REAR	INCH/A, INCH/AB SIZE
	FF3-4003-000		1	PANEL, REAR	A SIZE
2A	FB4-5946-000		1	LABEL, CAUTION, HINGE	
2B	FC3-0796-000		1	LABEL, ADF	AB SIZE
	FC3-0797-000		1	LABEL, ADF	INCH/A, INCH/AB SIZE
3	FF3-3994-000		1	COVER, COPYBOARD	
4	FC3-0645-000		1	TRAY, DELIVERY	
5	FS2-9541-000		1	SCREW, STEPPED	
6	FC2-8477-000		2	SCREW, TP, M3X8	
7	FC3-0616-000		1	PANEL, SMALL	
8	FF3-3976-000		1	PANEL, LEFT	
8A	FC3-0708-000		1	SHEET	
501	XB4-5400-809		2	SCREW, P, M4X8	
502	XB1-2300-806		1	SCREW, MACH., TRUSS HEAD, M3X8	
503	XB1-2300-606		6	SCREW, MACH., TRUSS HEAD, M3X6	

FIGURE P11 INTERNAL COMPONENTS 1

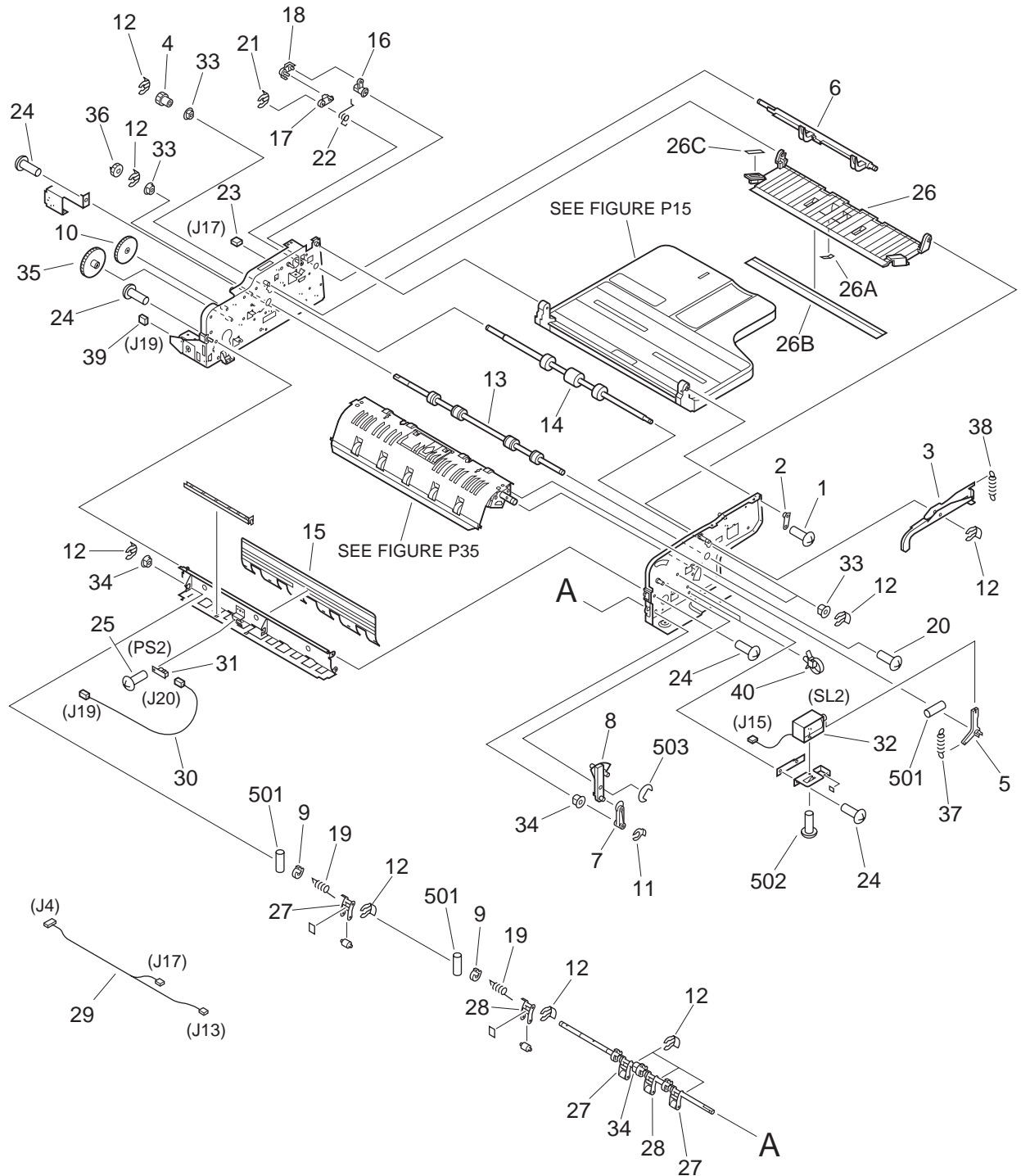


FIGURE & KEY NO.	PART NUMBER	RANK	QTY	DESCRIPTION	SERIAL NUMBER / REMARKS
P11 -	NPN		RF	INTERNAL COMPONENTS 1	
1	FC3-0779-000		1	SCREW,TAPPING,M3X6	
2	FF3-3993-000		1	PIN, POSITIONING	
3	FC3-0606-000		1	ARM, JAM CLEARING	
4	FC3-0609-000		1	GEAR, 22T	
5	FC3-0615-000		1	ARM, SOLENOID	
6	FC3-0640-000		1	FLAG, PAPER SENSING	
7	FC3-0655-000		1	ARM, ROLLER	
8	FC3-0656-000		1	LINK	
9	FC3-0658-000		5	ROLLER	
10	FC3-0660-000		1	KNOB, JAM CLEARING	
11	FC3-0661-000		2	CLIP	
12	FC3-0662-000		11	CLIP	
13	FC3-0700-000		1	ROLLER, DELIVERY	
14	FC3-0701-000		1	ROLLER, REGISTRATION	
15	FC3-0707-000		1	SHEET	
16	FC3-0718-000		1	LEVER, LOCK	
17	FC3-0719-000		1	LEVER, LOCK	
18	FC3-0721-000		1	LEVER, LOCK	
19	FC3-0731-000		5	SPRING, TORSION	
20	XA9-0787-000		4	SCREW,TP,M4X6	
21	FC3-0801-000		1	CLIP	
22	FC3-0760-000		1	SPRING, TORSION	
23	VS1-5057-004		1	CONNECTOR, SNAP TIGHT	J17
24	FC2-2120-000		AR	SCREW, M4X7	
25	FC2-8477-000		AR	SCREW,TP,M3X8	
26	FF3-3987-000		1	GUIDE, PAPER	
26A	FC3-0747-000		1	SHEET	
26B	FC3-0757-000		1	SHEET	
26C	FC3-0773-000		1	LABEL, GREEN	

FIGURE & KEY NO.	PART NUMBER	R A N K	Q' T Y	DESCRIPTION	SERIAL NUMBER / REMARKS
P11 - 27	FG3-1254-000		3	ROLLER, FEED	
28	FG3-1255-000		2	ROLLER, FEED	
29	FH5-3092-000		1	CABLE, SOLENOID	J4,13,17
30	FH5-3094-000		1	CABLE, SENSOR	J19,20
31	FH5-3104-000		1	SENSOR PCB ASSEMBLY	PS2 J20
32	FH7-5974-000		1	SOLENOID	SL2 J15
33	FS2-1671-000		4	BUSHING	
34	FS2-1672-000		3	BUSHING	
35	FS4-0588-000		1	GEAR, 60T	
36	FS4-0589-000		1	GEAR, 24T	
37	FS4-2712-000		1	SPRING, TENSION	
38	FS4-2716-000		1	SPRING, TENSION	
39	VS1-5057-003		1	CONNECTOR, SNAP TIGHT	J19
40	WT2-5565-000		2	CLAMP, CABLE	
501	XD3-2200-122		5	PIN,DOWEL	
502	XB6-7300-409		1	SCREW,TP,M3X4	
503	XD2-1100-502		1	RING,E	

FIGURE P12 INTERNAL COMPONENTS 2

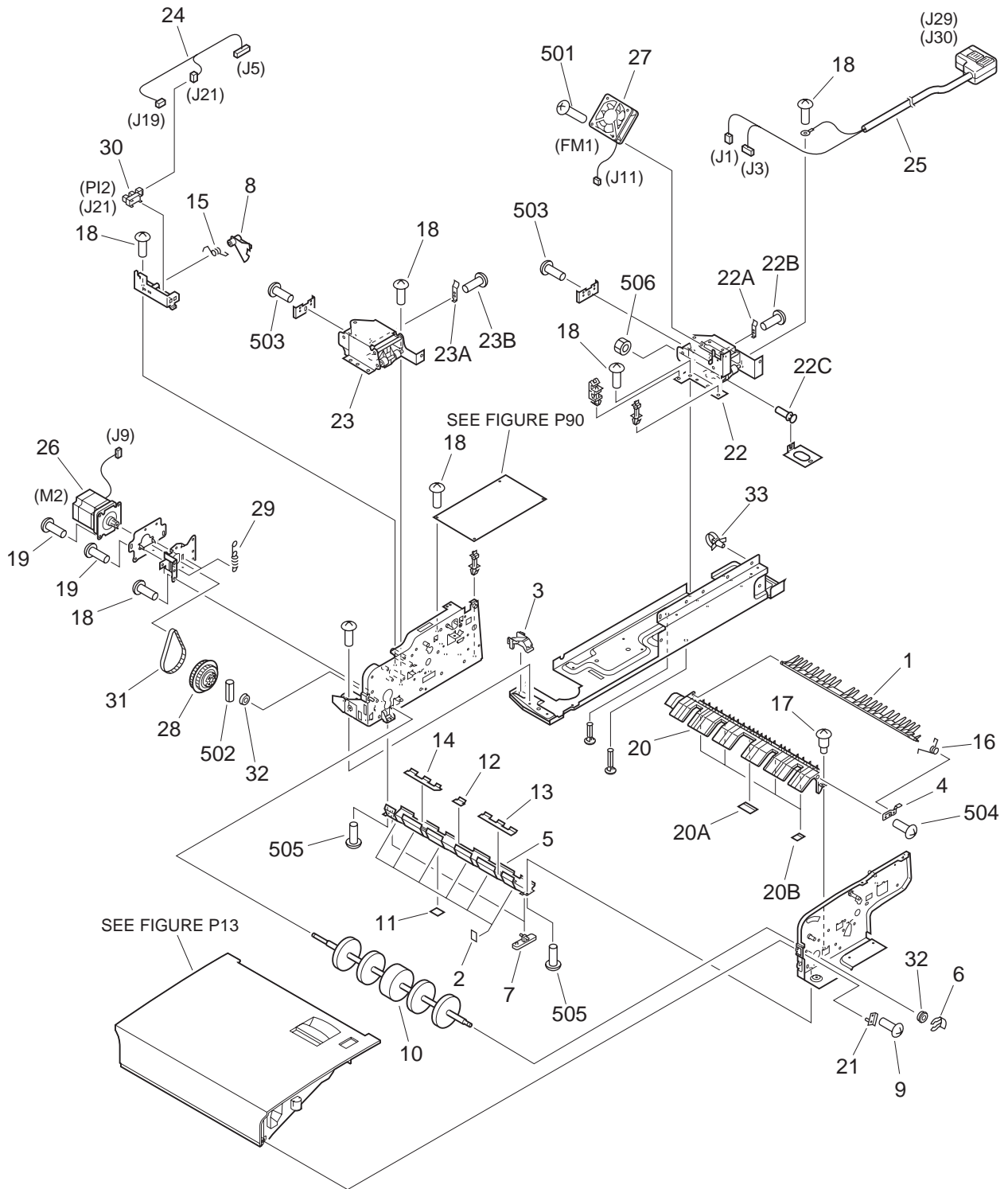


FIGURE & KEY NO.	PART NUMBER	R A N K	Q' T Y	DESCRIPTION	SERIAL NUMBER / REMARKS
P12 -	NPN		RF	INTERNAL COMPONENTS 2	
1	FC3-0603-000		1	DEFLECTOR	
2	FC3-0710-000		6	SHEET	
3	FC3-0783-000		1	BLOCK, PLATE	
4	FC3-0639-000		1	SPRING, LEAF	
5	FC3-0642-000		1	GUIDE, PAPER	
6	FC3-0662-000		1	CLIP	
7	FC3-0611-000		2	FOOT, GUIDE	
8	FC3-0677-000		1	FLAG, SENSOR	
9	FC3-0779-000		1	SCREW,TAPPING,M3X6	
10	FC3-0702-000		1	ROLLER, PAPER READ	
11	FC3-0711-000		1	SHEET	
12	FC3-0714-000		1	SHEET	
13	FC3-0733-000		1	SHEET	
14	FC3-0734-000		1	SHEET	
15	FC3-0735-000		1	SPRING, TORSION	
16	FC3-0774-000		1	SPRING, TORSION	
17	FS2-9541-000		1	SCREW,STEPPED	
18	FC2-2120-000		AR	SCREW, M4X7	
19	FC2-8476-000		5	SCREW,W/WASHER,M4X8	
20	FF3-3975-000		1	GUIDE, PAPER	
20A	FC3-0637-000		1	SHEET	
20B	FC3-0638-000		1	SHEET	
21	FF3-3992-000		1	PLATE, PANEL	
22	FG3-1248-000		1	RIGHT HINGE UNIT	
22A	FC3-0698-000		1	SPRING, GROUNDING	
22B	FC3-0795-000		1	SCREW,M3X10	
22C	FS2-9539-000		1	SCREW,ADJUSTING	
23	FG3-1271-000		1	LEFT HINGE UNIT	
23A	FC3-0698-000		1	SPRING, GROUNDING	

FIGURE & KEY NO.	PART NUMBER	R A N K	Q' T Y	DESCRIPTION	SERIAL NUMBER / REMARKS
P12 - 23B	FC3-0795-000		1	SCREW,M3X10	
24	FH5-3095-000		1	CABLE, SENSOR	J5,19,21
25	FH5-3100-000		1	CABLE, INTERFACE	J1,3,29,30
26	FH6-1760-000		1	MOTOR, STEPPING	M2 J9
27	FH6-1762-000		1	FAN	FM1 J11
28	FS2-3880-000		1	GEAR, 55T/PULLEY, 80T	
29	FS4-2711-000		2	SPRING, TENSION	
30	WG8-5362-000		1	IC, TLP1241, PHOTO-INTERRUPTER	PI2 J21
31	XF2-1110-510		1	BELT, TIMING	
32	XG4-0818-055		2	BALL BEARING, LNR-1680HHRPOP15	
33	WT2-5565-000		1	CLAMP, CABLE	
501	XB1-2400-289		2	SCREW,MACH.,TRUSS HEAD,M4X2.8	
502	XD3-1300-142		1	PIN,SPRING	
503	XB1-2400-607		2	SCREW,MACH.,TRUSS HEAD,M4X6	
504	XB4-7300-809		1	SCREW,TAPPING,TRUSS HEAD,M3X8	
505	XB1-2300-606		2	SCREW,MACH.,TRUSS HEAD,M3X6	
506	XB7-2100-407		1	NUT,HEX,M4	

FIGURE & KEY NO.	PART NUMBER	R A N K	Q' T Y	DESCRIPTION	SERIAL NUMBER / REMARKS
P13 -	NPN		RF	INTERNAL COMPONENTS 3	
1	FC3-0607-000		1	ROLLER, SEPARATION	
2	FC3-0636-000		2	BUSHING	
3	FC3-0646-000		1	FLAG, SENSOR	
4	FC3-0662-000		3	CLIP	
5	FC3-0670-000		1	ARM, PICK-UP	
6	FC3-0671-000		1	ARM, PICK-UP	
7	FC3-0673-000		1	FLAG, REGIST SENSOR	
8	FC3-0772-000		1	PAD, PAPER SEPARATION	
9	FC3-0716-000		1	PANEL, CENTER	
10	FC3-0717-000		1	WINDOW, LED	
11	FC3-0722-000		1	ROLLER, PICK-UP	
12	FC3-0784-000		2	ELIMINATOR, STATIC CHARGE	
13	FC3-0746-000		1	DAMPER	
14	FC3-0751-000		1	SPRING, TORSION	
15	FS2-9541-000		1	SCREW, STEPPED	
16	FC3-0715-000		1	ELIMINATOR, STATIC CHARGE	
17	FC3-0758-000		1	SPRING, TORSION	
18	FC3-0771-000		1	LABEL, JAM CLEARING	
19	FC3-0786-000		2	SPRING, CLUTCH	
20	FC3-0780-000		2	SCREW, S, M3X6	
21	FC2-2120-000		AR	SCREW, M4X7	
22	FC2-8477-000		AR	SCREW, TP, M3X8	
23	FF3-3988-000		1	GUIDE, PAPER	
23A	FC3-0745-000		2	SHEET	
23B	FC3-0752-000		1	SHEET	
23C	FC3-0753-000		1	SHEET	
24	FH5-3089-000		1	DOCUMENT DISPLAY PCB ASSEMBLY	U2 J27
25	FH5-3093-000		1	CABLE, SENSOR	J17,18
26	FH5-3099-000		1	CABLE, PAPER SEPARATING	J7,26,27,28

FIGURE & KEY NO.	PART NUMBER	RANK	QTY	DESCRIPTION	SERIAL NUMBER / REMARKS
P13 - 27	FH5-3104-000		1	SENSOR PCB ASSEMBLY	PS3 J26
28	FS2-1672-000		2	BUSHING	
29	FS2-3882-000		2	PULLEY, 18T	
30	FS4-2715-000		1	SPRING, COMPRESSION	
31	WG8-5362-000		2	IC, TLP1241, PHOTO-INTERRUPTER	PI1,5 J18,28
32	XF2-1106-140		1	BELT, TIMING	
33	FS4-2718-000		1	SPRING, COMPRESSION	
34	FC3-0661-000		4	CLIP	
501	XD2-1100-502		2	RING,E	
502	XD3-2200-102		4	PIN,DOWEL	
503	XB6-7400-609		8	SCREW,TP,M4X6	
504	XD2-1200-322		1	RING,E	
505	XB6-6301-609		3	SCREW,W/WASHER,M3X16	
506	XB1-2300-606		AR	SCREW,MACH.,TRUSS HEAD,M3X6	

FIGURE & KEY NO.	PART NUMBER	R A N K	Q' T Y	DESCRIPTION	SERIAL NUMBER / REMARKS
P14 -	FG3-1285-000		1	TOP PANEL ASSEMBLY	EXCEPT A SIZE
	FG3-1479-000		1	TOP PANEL ASSEMBLY	A SIZE
1	FC3-0621-000		1	HANDLE, PANEL	
2	FC3-0624-000		2	LEVER, LATCH	
3	FC3-0661-000		18	CLIP	
4	FC3-0723-000		8	DAMPER	
5	FF3-3991-000		1	PANEL, UPPER	EXCEPT A SIZE
	FF3-4001-000		1	PANEL, UPPER	A SIZE
5A	FC3-0799-000		1	SHEET, U	
5B	FC3-0798-000		1	LABEL, ADF	A SIZE
6	FS2-6593-000		6	ROLLER, REGISTRATION	
7	FS2-6594-000		2	ROLLER, REGISTRATION	
8	FC3-0682-000		1	SPRING, GROUNDING	
9	FH5-3102-000		1	WIRE, GROUNDING	
10	FC3-0620-000		2	CAP	
11	FF3-3997-000		1	PANEL, TOP	
11A	FC3-0787-000		1	SHEET, L	
11B	FC3-0788-000		1	SHEET, S	
12	FS4-2713-000		2	SPRING, COMPRESSION	
13	FS4-2714-000		8	SPRING, COMPRESSION	
14	FS4-2717-000		1	SPRING, TENSION	
501	XB4-5300-809		6	SCREW,P,M3X8	
502	XB4-7300-409		3	SCREW,TAPPING,TRUSS HEAD,M3X4	

FIGURE P15 DOCUMENT TRAY ASSEMBLY

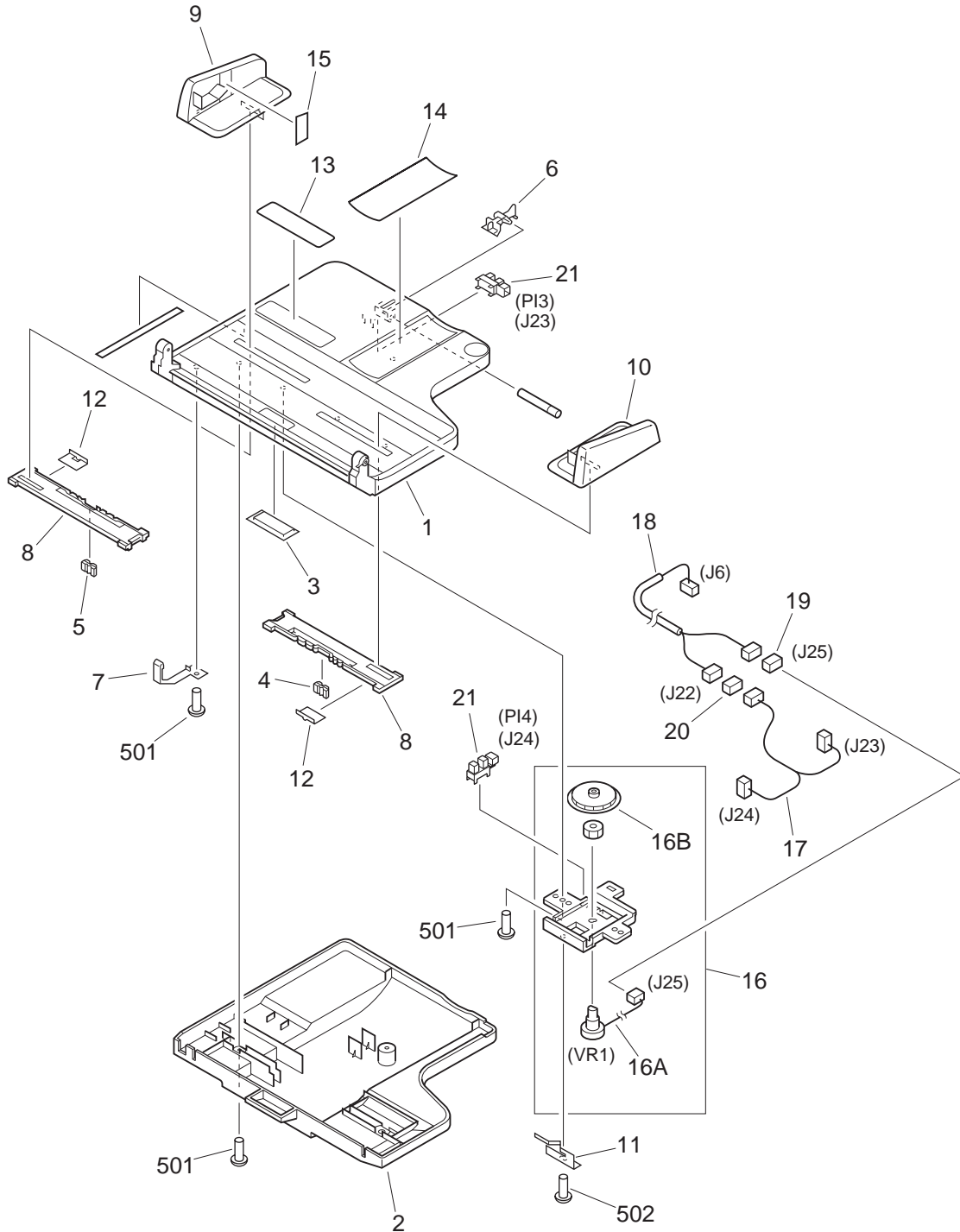


FIGURE & KEY NO.	PART NUMBER	RANK	QTY	DESCRIPTION	SERIAL NUMBER / REMARKS
P15 -	FG3-1291-000		1	DOCUMENT TRAY ASSEMBLY	AB SIZE
	FG3-1301-000		1	DOCUMENT TRAY ASSEMBLY	INCH/A SIZE
	FG3-1302-000		1	DOCUMENT TRAY ASSEMBLY	A SIZE
	FG3-1303-000		1	DOCUMENT TRAY ASSEMBLY	INCH/AB SIZE
	1	FC3-0631-000		1	TRAY, DOCUMENT, UPPER
2	FC3-0632-000		1	TRAY, DOCUMENT, LOWER	
3	FC3-0633-000		1	WINDOW	
4	FC3-0634-000		1	RACK	A4
5	FC3-0665-000		1	RACK	LTR
6	FC3-0668-000		1	LEVER, SENSOR	
7	FC3-0678-000		1	COVER, BLANKING	
8	FC3-0680-000		2	RACK	
9	FC3-0684-000		1	PLATE, PAPER END	
10	FC3-0685-000		1	PLATE, PAPER END	
11	FC3-0729-000		1	SPRING, LEAF	
12	FC3-0730-000		2	SPRING, LEAF	
13	FC3-0762-000		1	LABEL, SIZE	AB SIZE
	FC3-0763-000		1	LABEL, SIZE	INCH/A SIZE
	FC3-0764-000		1	LABEL, SIZE	A SIZE
	FC3-0765-000		1	LABEL, SIZE	INCH/AB SIZE
14	FC3-0766-000		1	LABEL, DOCUMENT SET	AB SIZE
	FC3-0767-000		1	LABEL, DOCUMENT SET	INCH/A, INCH/AB SIZE
	FC3-0768-000		1	LABEL, DOCUMENT SET	A SIZE
15	FC3-0770-000		1	LABEL, PAPER HEIGHT	
16	FG3-1292-000		1	ROTARY SWITCH ASSEMBLY	
16A	FH5-3097-000		1	SWITCH, ROTARY	VR1 J25
16B	FS4-0590-000		1	GEAR, 62T	
17	FH5-3096-000		1	CABLE, SENSOR	J22-24
18	FH5-3098-000		1	CABLE, DOCUMENT TRAY	J6,22,25
19	VS1-6198-003		1	CONNECTOR, SNAP TIGHT	J25

FIGURE & KEY NO.	PART NUMBER	R A N K	Q' T Y	DESCRIPTION	SERIAL NUMBER / REMARKS
P15 - 20	VS1-6198-006		1	CONNECTOR, SNAP TIGHT	J22
21	WG8-5362-000		2	IC, TLP1241, PHOTO-INTERRUPTER	PI3,4 J23,24
501	XB4-5300-809		6	SCREW,P,M3X8	
502	XB4-7300-809		1	SCREW,TAPPING,TRUSS HEAD,M3X8	

FIGURE P20 FEED DRIVE ASSEMBLY

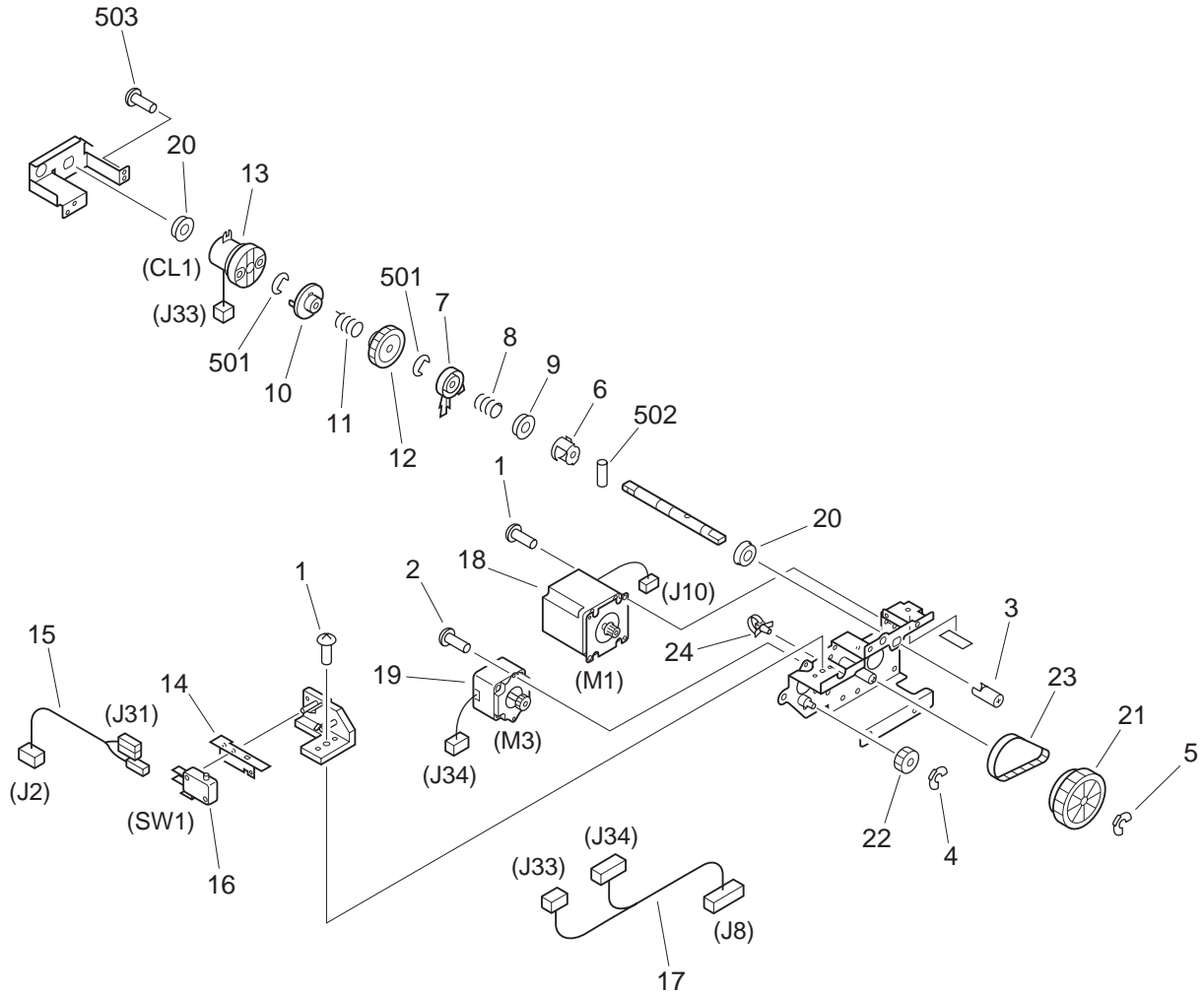


FIGURE & KEY NO.	PART NUMBER	R A N K	Q' T Y	DESCRIPTION	SERIAL NUMBER / REMARKS
P20 -	FG3-1274-000		1	FEEDER DRIVE ASSEMBLY	
1	FC2-8476-000		3	SCREW,W/WASHER,M4X8	
2	FC2-8477-000		2	SCREW,TP,M3X8	
3	FC3-0610-000		1	JOINT	
4	FC3-0661-000		1	CLIP	
5	FC3-0662-000		1	CLIP	
6	FC3-0725-000		1	COLLAR	
7	FC3-0724-000		1	LEVER, RELEASE	
8	FC3-0775-000		1	SPRING, CLUTCH	
9	FC3-0781-000		1	CLUTCH, ONE-WAY	
10	FC3-0659-000		1	JOINT	
11	FC3-0782-000		1	SPRING, CLUTCH	
12	FS4-0587-000		1	GEAR, 40T	
13	FH7-5975-000		1	CLUTCH, ELECTROMAGNETIC	CL1 J33
14	FC3-0622-000		1	LEVER, SWITCH	
15	FH5-3101-000		1	CABLE, SWITCH	J2,31
16	WC4-5175-000		1	MICROSWITCH	SW1
17	FH5-3103-000		1	CABLE, MOTOR	J8,33,34
18	FH6-1759-000		1	MOTOR, STEPPING	M1 J10
19	FH6-1761-000		1	MOTOR, STEPPING	M3 J34
20	FS2-1672-000		2	BUSHING	
21	FS2-3881-000		1	GEAR, 60T/PULLEY, 60T	
22	FS4-0586-000		1	GEAR, 20T	
23	XF2-1108-560		1	BELT, TIMING	
24	WT2-5565-000		1	CLAMP, CABLE	
501	XD2-1100-502		2	RING,E	
502	XD3-2200-102		1	PIN,DOWEL	
503	XB6-6301-609		1	SCREW,W/WASHER,M3X16	

FIGURE P35 DELIVERY GUIDE ASSEMBLY

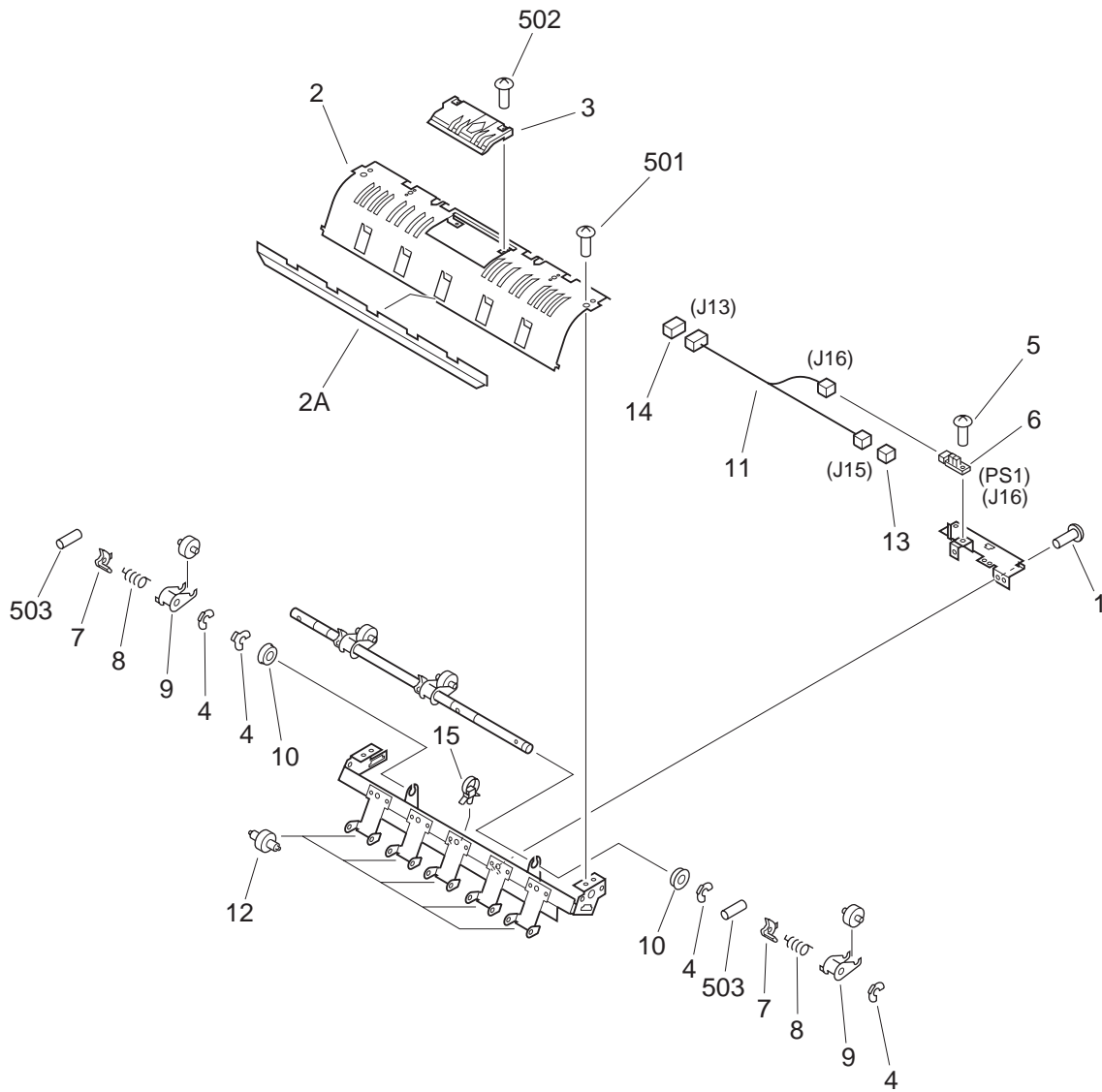


FIGURE & KEY NO.	PART NUMBER	R A N K	Q' T Y	DESCRIPTION	SERIAL NUMBER / REMARKS
P35 -	FG3-1256-000		1	DELIVERY GUIDE ASSEMBLY	
1	FC3-0780-000		2	SCREW,S,M3X6	
2	FF3-3980-000		1	GUIDE, DELIVERY	
2A	FC3-0706-000		1	SHEET	
3	FC3-0649-000		1	COVER, GUIDE	
4	FC3-0662-000		6	CLIP	
5	FC2-8477-000		1	SCREW,TP,M3X8	
6	FH5-3104-000		1	SENSOR PCB ASSEMBLY	PS1 J16
7	FC3-0658-000		4	ROLLER	
8	FC3-0732-000		4	SPRING, TORSION	
9	FG3-1261-000		4	ROLLER, DELIVERY	
10	FS2-1672-000		2	BUSHING	
11	FH5-3091-000		1	CABLE, SENSOR	J13,15,16
12	FS2-6596-000		5	ROLLER	
13	VS1-5057-002		1	CONNECTOR, SNAP TIGHT	J15
14	VS1-5057-007		1	CONNECTOR, SNAP TIGHT	J13
15	WT2-5565-000		7	CLAMP, CABLE	
501	XB6-7300-409		2	SCREW,TP,M3X4	
502	XB1-2300-609		2	SCREW,MACH.,TRUSS HEAD,M3X6	
503	XD3-2200-122		4	PIN,DOWEL	

FIGURE P90 ADF CONTROLLER PCB ASSEMBLY

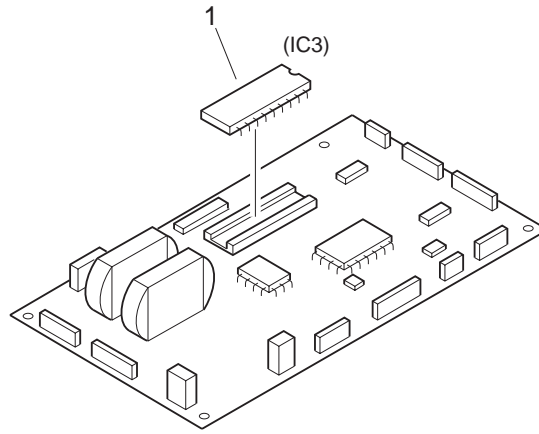


FIGURE & KEY NO.	PART NUMBER	RANK	QTY	DESCRIPTION	SERIAL NUMBER / REMARKS
P90 -	FG3-1243-000		1	ADF CONTROLLER PCB ASSEMBLY	
1	FF3-3965-000		1	IC, M27C1001-80XF1, EP-ROM	IC3

FIGURE PB LIST OF CONNECTORS

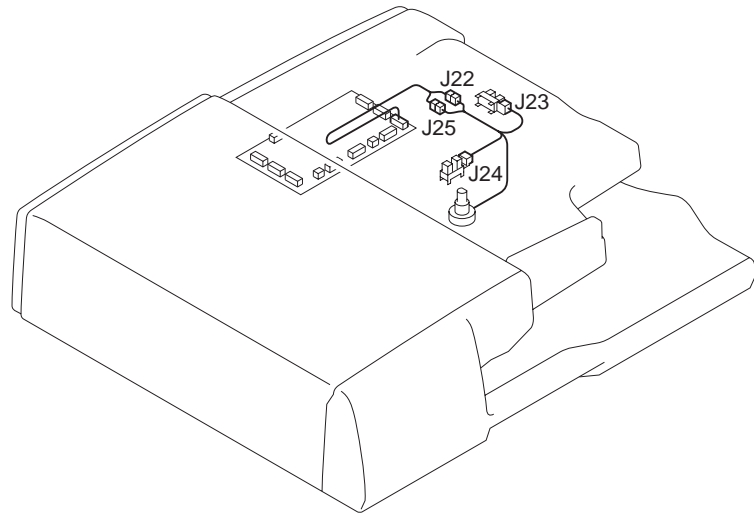
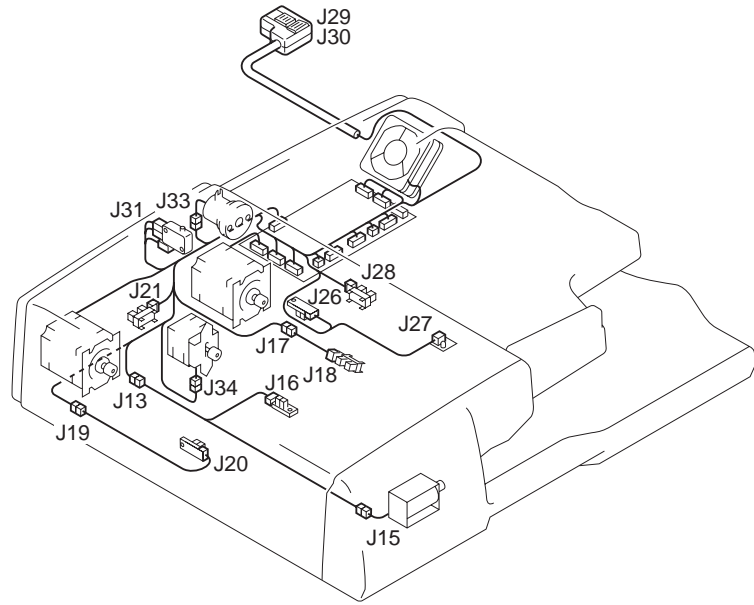


FIGURE & KEY NO.	PART NUMBER	R A N K	Q' T Y	DESCRIPTION	SERIAL NUMBER / REMARKS
P B -	NPN		RF	LIST OF CONNECTORS	
J1	PCB			DC CONTROLLER	U1
	FH5-3100-000		1	CABLE, INTERFACE	
J2	PCB			DC CONTROLLER	U1
	FH5-3101-000		1	CABLE, SWITCH	
J3	PCB			DC CONTROLLER	U1
	FH5-3100-000		1	CABLE, INTERFACE	
J4	PCB			DC CONTROLLER	U1
	FH5-3092-000		1	CABLE, SOLENOID	
J5	PCB			DC CONTROLLER	U1
J6	PCB			DC CONTROLLER	U1
	FH5-3095-000		1	CABLE, SENSOR	
	FH5-3098-000		1	CABLE, DOCUMENT TRAY	
J7	PCB			DC CONTROLLER	U1
	FH5-3099-000		1	CABLE, PAPER SEPARATING	
J8	PCB			DC CONTROLLER	U1
	FH5-3103-000		1	CABLE, MOTOR	
J9	PCB			DC CONTROLLER	U1
	NPN			READ MOTOR	M2
J10	PCB			DC CONTROLLER	U1
J11	PCB			DC CONTROLLER	U1
	NPN			COOLING FAN	FM1
J13	FH5-3091-000		1	CABLE, SENSOR	
	FH5-3092-000		1	CABLE, SOLENOID	
J15	NPN			SOLENOID	SL2
	FH5-3091-000		1	CABLE, SENSOR	
J16	NPN			PAPER DELIVERY REVERSE SENSOR	PS1
	FH5-3091-000		1	CABLE, SENSOR	
J17	FH5-3092-000		1	CABLE, SOLENOID	

FIGURE & KEY NO.	PART NUMBER	RANK	QTY	DESCRIPTION	SERIAL NUMBER / REMARKS
P B - J17	FH5-3093-000		1	CABLE, SENSOR	
	VS1-5057-004		1	CONNECTOR, SNAP TIGHT	
J18	NPN			REGISTRATION SENSOR	PI1
	FH5-3093-000		1	CABLE, SENSOR	
J19	FH5-3094-000		1	CABLE, SENSOR	
<hr/>					
	FH5-3095-000		1	CABLE, SENSOR	
	VS1-5057-003		1	CONNECTOR, SNAP TIGHT	
J20	NPN			READ SENSOR	PS2
	FH5-3094-000		1	CABLE, SENSOR	
J21	NPN			DF OPEN SENSOR	PI2
<hr/>					
	FH5-3095-000		1	CABLE, SENSOR	
J22	FH5-3096-000		1	CABLE, SENSOR	
	FH5-3098-000		1	CABLE, DOCUMENT TRAY	
	VS1-6198-006		1	CONNECTOR, SNAP TIGHT	
J23	NPN			LG/LD SENSOR	PI3
<hr/>					
	FH5-3096-000		1	CABLE, SENSOR	
J24	NPN			A4/LT SENSOR	PI4
	FH5-3096-000		1	CABLE, SENSOR	
J25	NPN			DUCUMENT WIDTH SWITCH	VR1
	VS1-6198-003		1	CONNECTOR, SNAP TIGHT	
<hr/>					
	FH5-3098-000		1	CABLE, DOCUMENT TRAY	
J26	NPN			SEPARATION SENSOR	PS3
	FH5-3099-000		1	CABLE, PAPER SEPARATING	
J27	PCB			DOCUMENT SET LED	U2
	FH5-3099-000		1	CABLE, PAPER SEPARATING	
<hr/>					
J28	NPN			EMPTY SENSOR	PI5
	FH5-3099-000		1	CABLE, PAPER SEPARATING	
J29	SYS			TO COPIER	
	FH5-3100-000		1	CABLE, INTERFACE	
J30	SYS			TO COPIER	

FIGURE & KEY NO.	PART NUMBER	RANK	QTY	DESCRIPTION	SERIAL NUMBER / REMARKS
P B - J30	FH5-3100-000		1	CABLE, INTERFACE	
J31	NPN			COVER OPEN SWITCH	SW1
	FH5-3101-000		1	CABLE, SWITCH	
J33	NPN			CLUTCH	CL1
	FH5-3103-000		1	CABLE, MOTOR	
J34	NPN			PAPER DELIVERY REVERSE MOTOR	M3
	FH5-3103-000		1	CABLE, MOTOR	

PD NUMERICAL INDEX

PART NUMBER	FIGURE & KEY NO.	PART NUMBER	FIGURE & KEY NO.	PART NUMBER	FIGURE & KEY NO.
FB4-5946-000	P10 - 2A	FC3-0730-000	P15 - 12	FH5-3093-000	P13 - 25
FC2-2120-000	P11 - 24	FC3-0731-000	P11 - 19		P B - J17
	P12 - 18	FC3-0732-000	P35 - 8		P B - J18
	P13 - 21	FC3-0733-000	P12 - 13	FH5-3094-000	P11 - 30
FC2-8476-000	P12 - 19	FC3-0734-000	P12 - 14		P B - J19
	P20 - 1	FC3-0735-000	P12 - 15		P B - J20
FC2-8477-000	P10 - 6	FC3-0745-000	P13 - 23A	FH5-3095-000	P12 - 24
	P11 - 25	FC3-0746-000	P13 - 13		P B - J5
	P13 - 22	FC3-0747-000	P11 - 26A		P B - J19
	P20 - 2	FC3-0751-000	P13 - 14		P B - J21
	P35 - 5	FC3-0752-000	P13 - 23B	FH5-3096-000	P15 - 17
FC3-0603-000	P12 - 1	FC3-0753-000	P13 - 23C		P B - J22
FC3-0606-000	P11 - 3	FC3-0757-000	P11 - 26B		P B - J23
FC3-0607-000	P13 - 1	FC3-0758-000	P13 - 17		P B - J24
FC3-0609-000	P11 - 4	FC3-0760-000	P11 - 22	FH5-3097-000	P15 - 16A
FC3-0610-000	P20 - 3	FC3-0762-000	P15 - 13	FH5-3098-000	P15 - 18
FC3-0611-000	P12 - 7	FC3-0763-000	P15 - 13		P B - J6
FC3-0615-000	P11 - 5	FC3-0764-000	P15 - 13		P B - J22
FC3-0616-000	P10 - 7	FC3-0765-000	P15 - 13		P B - J25
FC3-0619-000	P10 - 1	FC3-0766-000	P15 - 14	FH5-3099-000	P13 - 26
FC3-0620-000	P14 - 10	FC3-0767-000	P15 - 14		P B - J7
FC3-0621-000	P14 - 1	FC3-0768-000	P15 - 14		P B - J26
FC3-0622-000	P20 - 14	FC3-0770-000	P15 - 15		P B - J27
FC3-0624-000	P14 - 2	FC3-0771-000	P13 - 18		P B - J28
FC3-0631-000	P15 - 1	FC3-0772-000	P13 - 8	FH5-3100-000	P12 - 25
FC3-0632-000	P15 - 2	FC3-0773-000	P11 - 26C		P B - J1
FC3-0633-000	P15 - 3	FC3-0774-000	P12 - 16		P B - J3
FC3-0634-000	P15 - 4	FC3-0775-000	P20 - 8		P B - J29
FC3-0636-000	P13 - 2	FC3-0779-000	P11 - 1		P B - J30
FC3-0637-000	P12 - 20A		P12 - 9	FH5-3101-000	P20 - 15
FC3-0638-000	P12 - 20B	FC3-0780-000	P13 - 20		P B - J2
FC3-0639-000	P12 - 4		P35 - 1		P B - J31
FC3-0640-000	P11 - 6	FC3-0781-000	P20 - 9	FH5-3102-000	P14 - 9
FC3-0642-000	P12 - 5	FC3-0782-000	P20 - 11	FH5-3103-000	P20 - 17
FC3-0645-000	P10 - 4	FC3-0783-000	P12 - 3		P B - J8
FC3-0646-000	P13 - 3	FC3-0784-000	P13 - 12		P B - J33
FC3-0649-000	P35 - 3	FC3-0786-000	P13 - 19		P B - J34
FC3-0655-000	P11 - 7	FC3-0787-000	P14 - 11A	FH5-3104-000	P11 - 31
FC3-0656-000	P11 - 8	FC3-0788-000	P14 - 11B		P13 - 27
FC3-0658-000	P11 - 9	FC3-0795-000	P12 - 22B		P35 - 6
	P35 - 7		P12 - 23B	FH6-1759-000	P20 - 18
FC3-0659-000	P20 - 10	FC3-0796-000	P10 - 2B	FH6-1760-000	P12 - 26
FC3-0660-000	P11 - 10	FC3-0797-000	P10 - 2B	FH6-1761-000	P20 - 19
FC3-0661-000	P11 - 11	FC3-0798-000	P14 - 5B	FH6-1762-000	P12 - 27
	P13 - 34	FC3-0799-000	P14 - 5A	FH7-5974-000	P11 - 32
	P14 - 3	FC3-0801-000	P11 - 21	FH7-5975-000	P20 - 13
	P20 - 4	FF3-3965-000	P90 - 1	FS2-1671-000	P11 - 33
FC3-0662-000	P11 - 12	FF3-3975-000	P12 - 20	FS2-1672-000	P11 - 34
	P12 - 6	FF3-3976-000	P10 - 8		P13 - 28
	P13 - 4	FF3-3980-000	P35 - 2		P20 - 20
	P20 - 5	FF3-3987-000	P11 - 26		P35 - 10
	P35 - 4	FF3-3988-000	P13 - 23	FS2-3880-000	P12 - 28
FC3-0665-000	P15 - 5	FF3-3991-000	P14 - 5	FS2-3881-000	P20 - 21
FC3-0668-000	P15 - 6	FF3-3992-000	P12 - 21	FS2-3882-000	P13 - 29
FC3-0670-000	P13 - 5	FF3-3993-000	P11 - 2	FS2-6593-000	P14 - 6
FC3-0671-000	P13 - 6	FF3-3994-000	P10 - 3	FS2-6594-000	P14 - 7
FC3-0673-000	P13 - 7	FF3-3997-000	P14 - 11	FS2-6596-000	P35 - 12
FC3-0677-000	P12 - 8	FF3-4000-000	P10 - 2	FS2-9539-000	P12 - 22C
FC3-0678-000	P15 - 7	FF3-4001-000	P14 - 5	FS2-9540-000	P01 - 1
FC3-0680-000	P15 - 8	FF3-4002-000	P10 - 2	FS2-9541-000	P10 - 5
FC3-0682-000	P14 - 8	FF3-4003-000	P10 - 2		P12 - 17
FC3-0684-000	P15 - 9	FG3-1243-000	P90 -		P13 - 15
FC3-0685-000	P15 - 10	FG3-1248-000	P12 - 22	FS2-9542-000	P01 - 2
FC3-0698-000	P12 - 22A	FG3-1254-000	P11 - 27	FS4-0586-000	P20 - 22
	P12 - 23A	FG3-1255-000	P11 - 28	FS4-0587-000	P20 - 12
FC3-0700-000	P11 - 13	FG3-1256-000	P35 -	FS4-0588-000	P11 - 35
FC3-0701-000	P11 - 14	FG3-1261-000	P35 - 9	FS4-0589-000	P11 - 36
FC3-0702-000	P12 - 10	FG3-1271-000	P12 - 23	FS4-0590-000	P15 - 16B
FC3-0706-000	P35 - 2A	FG3-1274-000	P20 -	FS4-2711-000	P12 - 29
FC3-0707-000	P11 - 15	FG3-1285-000	P14 -	FS4-2712-000	P11 - 37
FC3-0708-000	P10 - 8A	FG3-1291-000	P15 -	FS4-2713-000	P14 - 12
FC3-0710-000	P12 - 2	FG3-1292-000	P15 - 16	FS4-2714-000	P14 - 13
FC3-0711-000	P12 - 11	FG3-1301-000	P15 -	FS4-2715-000	P13 - 30
FC3-0714-000	P12 - 12	FG3-1302-000	P15 -	FS4-2716-000	P11 - 38
FC3-0715-000	P13 - 16	FG3-1303-000	P15 -	FS4-2717-000	P14 - 14
FC3-0716-000	P13 - 9	FG3-1479-000	P14 -	FS4-2718-000	P13 - 33
FC3-0717-000	P13 - 10	FH5-3089-000	P13 - 24	PCB	P B - J1
FC3-0718-000	P11 - 16	FH5-3091-000	P35 - 11		P B - J2
FC3-0719-000	P11 - 17		P B - J13		P B - J3
FC3-0721-000	P11 - 18		P B - J15		P B - J4
FC3-0722-000	P13 - 11		P B - J16		P B - J5
FC3-0723-000	P14 - 4		P11 - 29		P B - J6
FC3-0724-000	P20 - 7	FH5-3092-000	P B - J4		P B - J7
FC3-0725-000	P20 - 6		P B - J13		P B - J8
FC3-0729-000	P15 - 11		P B - J17		P B - J9

PART NUMBER	FIGURE & KEY NO.	PART NUMBER	FIGURE & KEY NO.	PART NUMBER	FIGURE & KEY NO.
PCB	P B - J10				
	P B - J11				
	P B - J27				
VS1-5057-002	P35 - 13				
VS1-5057-003	P11 - 39				
	P B - J19				
VS1-5057-004	P11 - 23				
	P B - J17				
VS1-5057-007	P35 - 14				
VS1-6198-003	P15 - 19				
	P B - J25				
VS1-6198-006	P15 - 20				
	P B - J22				
WC4-5175-000	P20 - 16				
WG8-5362-000	P12 - 30				
	P13 - 31				
	P15 - 21				
WT2-5565-000	P11 - 40				
	P12 - 33				
	P20 - 24				
	P35 - 15				
XA9-0787-000	P11 - 20				
XB1-2300-606	P10 - 503				
	P12 - 505				
	P13 - 506				
XB1-2300-609	P35 - 502				
XB1-2300-806	P10 - 502				
XB1-2400-289	P12 - 501				
XB1-2400-607	P12 - 503				
XB4-5300-809	P14 - 501				
	P15 - 501				
XB4-5400-809	P10 - 501				
XB4-7300-409	P14 - 502				
XB4-7300-809	P12 - 504				
	P15 - 502				
XB6-6301-609	P13 - 505				
	P20 - 503				
XB6-7300-409	P11 - 502				
	P35 - 501				
XB6-7400-609	P13 - 503				
XB7-2100-407	P12 - 506				
XD1-4200-602	P01 - 501				
XD2-1100-502	P11 - 503				
	P13 - 501				
	P20 - 501				
XD2-1200-322	P13 - 504				
XD3-1300-142	P12 - 502				
XD3-2200-102	P13 - 502				
	P20 - 502				
XD3-2200-122	P11 - 501				
	P35 - 503				
XF2-1106-140	P13 - 32				
XF2-1108-560	P20 - 23				
XF2-1110-510	P12 - 31				
XG4-0818-055	P12 - 32				

Prepared by
OFFICE IMAGING PRODUCTS TECHNICAL SUPPORT DIV.
CANON INC.
Printed in Japan

REVISION 0 [JUNE 2000]

5-1, Hakusan 7-chome, Toride-city, Ibaraki 302-8501, Japan

Canon