

PARTS CATALOG

**imageRUNNER1750/1740/
1730 Series**

Canon

Jul 3 2012

PREFACE

This Parts Catalog contains listings of parts used

Diagrams are provided with the listings to aid the service technician in identifying clearly, the item to be ordered.

Whenever ordering parts, consult this Parts Catalog for all of the information pertaining to each item. Be sure to include, in the Parts Request, the full item description, the item part number, and the quantity.

COPYRIGHT (C) 1999 CANON INC.

Use of this manual should be strictly supervised to avoid disclosure of confidential information.

Contents

NUMERICAL INDEX

imageRUNNER1750/1740/1730 Series(Numerical Index)..... 1-1

imageRUNNER1750/1740/1730 Series(Parts Catalog)

| | | |
|-----|--|------|
| A1 | ASSEMBLY LOCATION DIAGRAM | 2-1 |
| A2 | OPTION PARTS CATALOG LIST | 2-4 |
| 001 | ACCESSORIES | 2-5 |
| 100 | EXTERNAL COVERS, PANELS, ETC. | 2-7 |
| 101 | INTERNAL COMPONENTS 1 | 2-11 |
| 102 | INTERNAL COMPONENTS 2 | 2-13 |
| 103 | INTERNAL COMPONENTS 3 | 2-15 |
| 104 | MACHINE REAR PLATE | 2-17 |
| 110 | RIGHT DOOR ASSEMBLY | 2-19 |
| 130 | CONTROL PANEL ASSEMBLY | 2-22 |
| 250 | MAIN DRIVE ASSEMBLY | 2-25 |
| 280 | FIXNG DRIVE ASS'Y | 2-27 |
| 300 | CASSETTE ASSEMBLY | 2-28 |
| 310 | PAPER PICK-UP ASSEMBLY | 2-30 |
| 312 | MULTI PAPER PICK-UP ASSEMBLY | 2-32 |
| 315 | PRE-REGISTRATION GUIDE ASS'Y | 2-34 |
| 320 | TRANSFER PAPER FEED ASSEMBLY | 2-35 |
| 350 | PAPER DELIVERY REVERSE ASS'Y | 2-36 |
| 400 | READER ASSEMBLY | 2-38 |
| 460 | LASER SCANNER UNIT | 2-40 |
| 620 | HOPPER ASSEMBLY | 2-41 |
| 640 | DEVELOPING UNIT | 2-42 |
| 770 | WASTE TONER BOX ASSEMBLY | 2-43 |
| 810 | FIXING ASSEMBLY | 2-44 |
| 900 | CONTROLLER BOX ASSEMBLY | 2-46 |
| 930 | MAIN CONTROLLER PCB ASSEMBLY | 2-47 |
| 935 | ENGINE CONTROLLER PCB ASS'Y | 2-48 |
| 980 | HIGH VOLTAGE PCB ASSEMBLY | 2-49 |
| A10 | INTERNAL COMPONENTS (ADF) | 2-50 |
| A12 | PAPER PICK-UP COVER ASSEMBLY (ADF) | 2-52 |
| A13 | DOCUMENT TRAY ASSEMBLY (ADF) | 2-53 |
| A30 | DRIVE ASSEMBLY (ADF) | 2-54 |
| A40 | PAPER FEED ASSEMBLY (ADF) | 2-56 |
| T20 | FAX ASSEMBLY (FAX model) | 2-57 |
| ZZA | MECHANICAL STANDARD PARTS (HOW TO USE) | 2-59 |

Contents

| | | |
|-----|---|------|
| ZZB | MECHANICAL STANDARD PARTS (SCREWS) | 2-60 |
| ZZC | MECHANICAL STANDARD PARTS (BOLTS) | 2-67 |
| ZZD | MECHANICAL STANDARD PARTS (NUTS) | 2-68 |
| ZZE | MECHANICAL STANDARD PARTS (RETAINING RINGS) | 2-69 |

NUMERICAL INDEX

imageRUNNER1750/1740/1730 Series(Numerical Index)

| PARTS NUMBER | FIGURE & KEY NO. | PARTS NUMBER | FIGURE & KEY NO. | PARTS NUMBER | FIGURE & KEY NO |
|--------------|------------------|--------------|------------------|--------------|-----------------|
| FA8-2446-000 | 100 - 21 | FC0-3273-000 | 130 - 11 | FC0-3987-000 | 100 - 14 |
| FB6-3405-000 | 310 - 1 | FC0-3274-000 | 130 - 12 | FC0-3988-000 | 100 - 14 |
| FC0-0829-000 | 810 - 1 | FC0-3275-000 | 130 - 13 | FC0-3989-000 | 100 - 14 |
| FC0-0830-000 | 810 - 2 | FC0-3278-000 | 100 - 29 | FC0-3990-000 | 100 - 14 |
| FC0-0868-000 | 100 - 1 | FC0-3283-000 | 104 - 1 | FC0-3991-000 | 100 - 14 |
| FC0-0883-000 | 100 - 4 | FC0-3300-000 | 130 - 14 | FC0-3992-000 | 100 - 14 |
| FC0-0884-000 | 100 - 5 | FC0-3305-000 | 110 - 7 | FC0-3993-000 | 100 - 14 |
| FC0-0913-000 | 300 - 1 | FC0-3309-000 | 104 - 2 | FC0-3994-000 | 100 - 14 |
| FC0-0922-000 | 101 - 1 | FC0-3350-000 | 300 - 4 | FC0-3997-000 | 100 - 32 |
| FC0-0945-000 | 300 - 2 | FC0-3351-000 | 300 - 5 | FC0-3998-000 | 101 - 6 |
| FC0-0967-000 | 103 - 2 | FC0-3381-000 | 110 - 8 | FC0-4005-000 | 103 - 6 |
| FC0-0969-000 | 130 - 1 | FC0-3392-000 | 100 - 22 | FC0-4012-000 | 103 - 7 |
| FC0-1003-000 | 101 - 2 | FC0-3394-000 | 100 - 23 | FC0-4029-000 | 350 - 7 |
| FC0-1005-000 | 103 - 3 | FC0-3395-000 | 100 - 24 | FC0-4033-000 | 100 - 15 |
| FC0-1010-000 | 102 - 1 | FC0-3396-000 | 101 - 5 | FC0-4034-000 | 100 - 16 |
| FC0-1013-000 | 810 - 3 | FC0-3398-000 | 312 - 11 | FC0-4038-000 | 350 - 8 |
| FC0-1021-000 | 810 - 4 | FC0-3399-000 | 312 - 11 | FC0-4054-000 | 810 - 6 |
| FC0-1022-000 | 810 - 5 | FC0-3400-000 | 312 - 11 | FC0-4061-000 | 620 - 1 |
| FC0-1045-000 | 810 - 18 | FC0-3401-000 | 312 - 12 | FC0-5104-000 | 103 - 8 |
| FC0-1076-000 | 100 - 6 | FC0-3403-000 | 100 - 25 | FC0-5105-000 | 110 - 9 |
| FC0-1077-000 | 100 - 7 | FC0-3404-000 | 100 - 26 | FC0-5110-000 | 400 - 24 |
| FC0-1079-000 | 400 - 1 | FC0-3405-000 | 100 - 26 | FC0-5113-000 | 103 - 9 |
| FC0-1083-000 | 110 - 1 | FC0-3406-000 | 100 - 26 | FC0-5123-000 | 103 - 1 |
| FC0-1090-000 | 110 - 2 | FC0-3409-000 | 100 - 30 | FC0-5254-000 | A10 - 6 |
| FC0-1120-000 | 110 - 3 | FC0-3411-000 | 810 - 15 | FC0-6912-000 | 100 - 23 |
| FC0-1131-000 | 103 - 4 | FC0-3413-000 | 810 - 16 | FC5-1367-000 | 810 - 19 |
| FC0-1133-000 | 103 - 5 | FC0-3414-000 | 810 - 17 | FC5-4424-000 | 400 - 5 |
| FC0-1143-000 | 110 - 5 | FC0-3418-000 | 100 - 31 | FC5-4424-000 | A30 - 1 |
| FC0-1144-000 | 102 - 2 | FC0-3419-000 | 100 - 31 | FC5-4425-000 | A12 - 2 |
| FC0-1155-000 | 100 - 10 | FC0-3424-000 | 100 - 31 | FC5-4697-000 | 100 - 28 |
| FC0-1156-000 | 310 - 2 | FC0-3425-000 | 100 - 31 | FC6-4391-000 | 100 - 17 |
| FC0-1159-000 | 300 - 3 | FC0-3426-000 | 100 - 31 | FC6-4511-000 | 400 - 6 |
| FC0-1179-000 | 110 - 6 | FC0-3427-000 | 300 - 6 | FC6-6661-000 | 310 - 3 |
| FC0-1184-000 | 400 - 2 | FC0-3428-000 | 001 - 8 | FC6-7083-000 | 310 - 4 |
| FC0-1188-000 | 400 - 3 | FC0-3429-000 | 300 - 7 | FC6-7598-000 | 400 - 7 |
| FC0-1191-000 | 400 - 4 | FC0-3430-000 | 300 - 8 | FC6-7604-000 | 400 - 8 |
| FC0-1193-000 | 100 - 11 | FC0-3431-000 | 300 - 9 | FC6-9867-000 | 104 - 25 |
| FC0-2970-000 | A12 - 1 | FC0-3433-000 | 312 - 12 | FC6-9867-000 | 310 - 5 |
| FC0-2976-000 | A10 - 1 | FC0-3434-000 | 312 - 12 | FC7-2975-000 | 400 - 25 |
| FC0-2978-000 | A10 - 2 | FC0-3449-000 | A10 - 4 | FC7-5845-000 | 310 - 6 |
| FC0-2985-000 | A12 - 6 | FC0-3450-000 | A10 - 4 | FC7-9381-000 | 310 - 1 |
| FC0-3256-000 | 130 - 22 | FC0-3451-000 | A10 - 5 | FC7-9502-000 | 310 - 4 |
| FC0-3257-000 | 130 - 2 | FC0-3452-000 | A10 - 5 | FC7-9959-000 | 312 - 3 |
| FC0-3261-000 | 130 - 3 | FC0-3971-000 | 100 - 13 | FC7-9960-000 | 312 - 4 |
| FC0-3262-000 | 130 - 4 | FC0-3972-000 | 100 - 13 | FC8-2475-000 | 300 - 10 |
| FC0-3263-000 | 130 - 5 | FC0-3973-000 | 100 - 13 | FC8-4986-000 | 300 - 11 |
| FC0-3264-000 | 130 - 6 | FC0-3974-000 | 100 - 13 | FC8-4987-000 | 300 - 12 |
| FC0-3265-000 | 130 - 7 | FC0-3975-000 | 100 - 13 | FC8-4990-000 | 300 - 13 |
| FC0-3266-000 | 130 - 8 | FC0-3976-000 | 100 - 13 | FC8-6380-000 | 103 - 10 |
| FC0-3267-000 | 130 - 9 | FC0-3984-000 | 100 - 14 | FC9-0503-000 | 101 - 7 |
| FC0-3269-000 | 130 - 23 | FC0-3985-000 | 100 - 14 | FC9-0717-000 | 110 - 10 |
| FC0-3272-000 | 130 - 10 | FC0-3986-000 | 100 - 14 | FC9-1698-000 | 101 - 8 |

NUMERICAL INDEX

imageRUNNER1750/1740/1730 Series(Numerical Index)

| PARTS NUMBER | FIGURE & KEY NO. | PARTS NUMBER | FIGURE & KEY NO. | PARTS NUMBER | FIGURE & KEY NO |
|--------------|------------------|--------------|------------------|--------------|-----------------|
| FC9-7171-000 | 300 - 14 | FL3-4875-000 | 110 - 32 | FM4-6506-000 | 620 - |
| FC9-7259-000 | 300 - 15 | FL3-4878-000 | 300 - 18 | FM4-6507-000 | 101 - 12 |
| FC9-7260-000 | 300 - 16 | FL3-4881-000 | 400 - 12 | FM4-6509-000 | 103 - 13 |
| FC9-7261-000 | 300 - 17 | FL3-4882-000 | 400 - 12 | FM4-6511-000 | 103 - 14 |
| FC9-7708-000 | 101 - 9 | FL3-4883-000 | 400 - 12 | FM4-6514-000 | 400 - 13 |
| FE3-1295-000 | 310 - 3 | FL3-4890-000 | 312 - 9 | FM4-6515-000 | 130 - |
| FK2-0408-000 | A30 - 2 | FL3-5532-000 | A12 - 3 | FM4-6516-000 | 104 - 5 |
| FK2-0408-000 | A40 - 1 | FL3-5535-000 | A10 - 7 | FM4-6517-000 | 315 - |
| FK2-1410-000 | 312 - 5 | FL3-5542-000 | A30 - 5 | FM4-6520-000 | 320 - |
| FK2-1773-000 | 935 - IC | FL3-5543-000 | A30 - 6 | FM4-6522-000 | 320 - 3 |
| FK2-2530-000 | 103 - 11 | FL3-5544-000 | A10 - 9 | FM4-6524-000 | 102 - 4 |
| FK2-2530-000 | 104 - 3 | FL3-5556-000 | A40 - 3 | FM4-6527-000 | 103 - 15 |
| FK2-3218-000 | 930 - IC | FL3-5617-000 | 100 - 18 | FM4-6533-000 | 300 - 19 |
| FK2-4903-000 | 930 - IC | FL3-5619-000 | 110 - 12 | FM4-6534-000 | 300 - 20 |
| FK2-5758-000 | 930 - IC | FL3-5627-000 | 350 - 2 | FM4-6536-000 | 400 - 14 |
| FK2-6450-000 | 935 - IC | FL3-5652-000 | 100 - 3 | FM4-6537-000 | 400 - 15 |
| FK2-6470-000 | 315 - 1 | FL3-5653-000 | 100 - 2 | FM4-6538-000 | 100 - 27 |
| FK2-6818-000 | 110 - 11 | FL3-5654-000 | 100 - 9 | FM4-6539-000 | 100 - 27 |
| FK2-6871-000 | A40 - 2 | FL3-5655-000 | 100 - 8 | FM4-6540-000 | 312 - 6 |
| FK2-7852-000 | 930 - IC | FL3-5656-000 | 100 - 12 | FM4-6541-000 | 312 - 7 |
| FK2-8755-000 | 350 - 1 | FL3-5659-000 | 312 - 2 | FM4-6543-000 | 110 - 4 |
| FK2-9154-000 | 103 - 12 | FL3-5660-000 | 312 - 1 | FM4-6546-000 | 350 - 3 |
| FK2-9442-000 | T20 - 1 | FL3-6626-000 | 310 - 14 | FM4-6555-000 | 310 - |
| FK3-1408-000 | 280 - 1 | FL3-7878-000 | A10 - 8 | FM4-6558-000 | 300 - |
| FK3-1416-000 | 130 - 15 | FM0-0098-000 | 900 - 2 | FM4-6559-000 | 300 - 21 |
| FK3-1417-000 | 130 - 16 | FM0-0099-000 | 900 - 2 | FM4-6560-000 | 300 - 22 |
| FK3-1418-000 | 130 - 17 | FM0-0139-000 | 100 - 33 | FM4-6564-000 | 104 - 6 |
| FK3-1443-000 | 101 - 10 | FM0-0629-000 | 100 - 20 | FM4-6566-000 | 104 - 7 |
| FK3-1444-000 | T20 - 2 | FM0-0630-000 | 100 - 20 | FM4-6568-000 | 310 - 7 |
| FK3-1445-000 | T20 - 3 | FM0-0631-000 | 100 - 20 | FM4-6571-000 | 104 - 8 |
| FK3-1446-000 | 900 - 1 | FM0-0632-000 | 100 - 20 | FM4-6572-000 | 110 - 13 |
| FK3-1447-000 | 400 - 9 | FM0-0633-000 | 100 - 20 | FM4-6573-000 | 110 - 14 |
| FK3-1448-000 | 400 - 10 | FM0-0634-000 | 100 - 20 | FM4-6574-000 | 110 - 15 |
| FK3-1626-000 | 104 - 4 | FM0-0635-000 | 100 - 20 | FM4-6575-000 | 110 - 16 |
| FK3-1633-000 | A30 - 3 | FM0-0636-000 | 100 - 20 | FM4-6576-000 | 110 - 17 |
| FK3-1634-000 | A30 - 4 | FM0-0637-000 | 100 - 20 | FM4-6579-000 | 103 - 16 |
| FK3-2091-000 | 001 - 1 | FM0-0638-000 | 100 - 20 | FM4-6583-000 | 810 - 7 |
| FK3-2094-000 | 001 - 1 | FM0-0639-000 | 100 - 20 | FM4-6584-000 | 810 - 8 |
| FK3-2097-000 | 001 - 2 | FM0-0640-000 | 100 - 20 | FM4-6590-000 | 103 - 17 |
| FK3-3006-000 | 001 - 1 | FM0-1846-000 | 460 - | FM4-7730-000 | A30 - |
| FK3-3007-000 | 001 - 1 | FM1-A131-000 | 320 - 2 | FM4-7732-000 | A12 - 4 |
| FL2-3897-000 | 312 - 8 | FM2-4786-000 | 001 - 6 | FM4-7733-000 | A12 - |
| FL2-3941-000 | 400 - 11 | FM2-4787-000 | 001 - 7 | FM4-7734-000 | A13 - |
| FL3-4856-000 | 320 - 1 | FM4-0040-000 | 001 - 4 | FM4-7735-000 | A10 - 10 |
| FL3-4857-000 | 320 - 2 | FM4-6494-000 | 640 - | FM4-7736-000 | A40 - |
| FL3-4866-000 | 130 - 21 | FM4-6495-000 | 810 - | FM4-7782-000 | 101 - 21 |
| FL3-4867-000 | 130 - 21 | FM4-6496-000 | 312 - | FM4-7810-000 | 130 - 18 |
| FL3-4868-000 | 130 - 21 | FM4-6497-000 | 250 - | FM4-7811-000 | 130 - 19 |
| FL3-4869-000 | 130 - 21 | FM4-6501-000 | 101 - 11 | FM4-7812-000 | 130 - 20 |
| FL3-4870-000 | 130 - 21 | FM4-6502-000 | 102 - 3 | FM4-7813-000 | 935 - |
| FL3-4871-000 | 130 - 21 | FM4-6504-000 | 280 - | FM4-7814-000 | 980 - 1 |
| FL3-4874-000 | 110 - 31 | FM4-6505-000 | 350 - | FM4-7819-000 | 935 - |

NUMERICAL INDEX

imageRUNNER1750/1740/1730 Series(Numerical Index)

| PARTS NUMBER | FIGURE & KEY NO. | PARTS NUMBER | FIGURE & KEY NO. | PARTS NUMBER | FIGURE & KEY NO |
|--------------|------------------|--------------|------------------|--------------|-----------------|
| FM4-7826-000 | 400 - 16 | FU8-2856-000 | A10 - 3 | VS1-8412-023 | 104 - 22 |
| FM4-7836-000 | 001 - 5 | FU8-2953-000 | 400 - 18 | WG8-5836-000 | 101 - 3 |
| FM4-7989-000 | 103 - 18 | FU8-2957-000 | 104 - 26 | WG8-5836-000 | 110 - 29 |
| FM4-7990-000 | 101 - 18 | FU8-2974-000 | A30 - 7 | WG8-5836-000 | 310 - 12 |
| FM4-7991-000 | 101 - 19 | FU9-0206-000 | 810 - 9 | WG8-5836-000 | 320 - 4 |
| FM4-7999-000 | 400 - 17 | FU9-0207-000 | 810 - 10 | WG8-5836-000 | 350 - 5 |
| FM4-8001-000 | 100 - 19 | FU9-0209-000 | 810 - 12 | WG8-5836-000 | 400 - 19 |
| FM4-8004-000 | 103 - 19 | FU9-0221-000 | 350 - 4 | WG8-5836-000 | 810 - 13 |
| FM4-8011-000 | 103 - 20 | FU9-0222-000 | 110 - 24 | WG8-5836-000 | A13 - 1 |
| FM4-8017-000 | 104 - 9 | FU9-0230-000 | 110 - 25 | WG8-5836-000 | A30 - 11 |
| FM4-8018-000 | 102 - 5 | FU9-0231-000 | 110 - 26 | WG8-5836-000 | A40 - 5 |
| FM4-8027-000 | 101 - 13 | FU9-0345-000 | A30 - 8 | WG8-5928-000 | 101 - 4 |
| FM4-8029-000 | 620 - 2 | FU9-0353-000 | A30 - 14 | XA9-0679-000 | 400 - 20 |
| FM4-8035-000 | 770 - | FU9-0354-000 | A12 - 7 | XA9-0702-000 | 104 - 24 |
| FM4-8040-000 | 310 - 8 | FU9-0358-000 | A30 - 9 | XA9-0702-000 | 280 - 2 |
| FM4-8050-000 | 810 - | FU9-0367-000 | A30 - 10 | XA9-0702-000 | 810 - 14 |
| FM4-8051-000 | 103 - 16 | FU9-0401-000 | 810 - 11 | XA9-1016-000 | 300 - 24 |
| FM4-8053-000 | 130 - | HH2-2824-000 | 001 - 3 | XA9-1523-000 | 300 - 25 |
| FM4-8054-000 | 130 - | NPN | 001 - | XA9-1567-000 | 100 - 34 |
| FM4-8055-000 | 130 - | NPN | 100 - | XA9-1567-000 | 101 - 20 |
| FM4-8056-000 | 130 - | NPN | 101 - | XA9-1567-000 | 102 - 7 |
| FM4-8057-000 | 130 - | NPN | 102 - | XA9-1567-000 | 103 - 26 |
| FM4-8064-000 | 102 - 6 | NPN | 103 - | XA9-1567-000 | 104 - 23 |
| FM4-8075-000 | 310 - | NPN | 104 - | XA9-1567-000 | 310 - 13 |
| FM4-8076-000 | 310 - 8 | NPN | 110 - | XA9-1567-000 | 400 - 21 |
| FM4-8163-000 | 930 - | NPN | 400 - | XD1-4100-402 | 300 - 501 |
| FM4-8164-000 | 930 - | NPN | 900 - | XD3-2200-222 | 620 - 501 |
| FM4-8165-000 | 930 - | NPN | 980 - | XF2-1606-040 | A30 - 12 |
| FM4-8166-000 | T20 - 4 | NPN | A10 - | XF2-1606-940 | A30 - 13 |
| FM4-8168-000 | T20 - 5 | NPN | T20 - | XF2-1607-240 | 250 - 1 |
| FS5-1943-000 | 310 - 9 | VS1-7173-003 | 104 - 12 | XF2-1610-440 | 104 - 11 |
| FS5-1943-000 | 350 - 6 | VS1-7173-003 | 110 - 27 | XF2-1617-740 | 110 - 30 |
| FU0-0043-000 | 310 - 10 | VS1-7173-005 | 104 - 27 | XF2-4607-230 | 400 - 22 |
| FU5-1030-000 | 103 - 21 | VS1-7173-006 | 103 - 25 | XF2-4665-530 | 400 - 23 |
| FU5-1626-000 | A12 - 5 | VS1-7173-006 | 104 - 13 | | |
| FU5-1763-000 | 310 - 11 | VS1-7173-009 | 104 - 14 | | |
| FU5-3796-000 | 110 - 18 | VS1-7173-012 | 104 - 15 | | |
| FU6-0934-000 | 110 - 19 | VS1-7177-002 | 104 - 16 | | |
| FU6-2423-000 | 312 - 10 | VS1-7177-002 | A10 - 11 | | |
| FU6-3074-000 | 110 - 20 | VS1-7177-003 | 103 - 24 | | |
| FU6-8873-000 | 101 - 14 | VS1-7177-003 | 104 - 17 | | |
| FU6-8880-000 | 101 - 15 | VS1-7177-003 | 110 - 28 | | |
| FU7-2192-000 | A40 - 4 | VS1-7177-006 | 280 - 3 | | |
| FU7-2518-000 | 300 - 23 | VS1-7207-003 | A10 - 12 | | |
| FU7-2912-000 | 101 - 16 | VS1-7207-004 | A10 - 13 | | |
| FU7-2996-000 | 101 - 17 | VS1-7207-006 | A10 - 14 | | |
| FU8-2648-000 | 103 - 22 | VS1-7207-008 | A10 - 15 | | |
| FU8-2649-000 | 110 - 21 | VS1-7507-002 | 104 - 18 | | |
| FU8-2661-000 | 103 - 23 | VS1-7507-002 | A10 - 16 | | |
| FU8-2663-000 | 110 - 22 | VS1-8412-015 | 104 - 19 | | |
| FU8-2667-000 | 104 - 10 | VS1-8412-017 | 104 - 20 | | |
| FU8-2669-000 | 110 - 23 | VS1-8412-019 | 104 - 21 | | |

imageRUNNER1750/1740/1730 Series(Parts Catalog)

imageRUNNER1750

| | | | |
|-------------------|--------------|-----|-----------------------|
| 120V US | F15-9228-000 | KWY | SEND model GOVERNMENT |
| 120V US,CA,LTN | F15-9238-000 | HHW | SEND model |
| 230V CN | F15-9257-000 | HHU | |
| 230V KR | F15-9277-000 | HHV | |

imageRUNNER1750i

| | | | |
|----------------------|--------------|-----|------------|
| 230V AU,SG,HK,LTN | F15-9248-000 | HJA | SEND model |
| 230V KR | F15-9278-000 | HJC | SEND model |
| 230V EUR | F15-9298-000 | HHZ | SEND model |

imageRUNNER1750iF

| | | | |
|-------------------|--------------|-----|----------------|
| 120V US,CA,LTN | F15-9239-000 | HJE | FAX/SEND model |
|-------------------|--------------|-----|----------------|

imageRUNNER1740

| | | | |
|-------------------|--------------|-----|-----------------------|
| 120V US | F15-9225-000 | KWW | SEND model GOVERNMENT |
| 120V US,CA,LTN | F15-9235-000 | HHJ | SEND model |
| 230V CN | F15-9254-000 | HHF | |
| 230V KR | F15-9274-000 | HHH | |

imageRUNNER1740i

| | | | |
|------------|--------------|-----|------------|
| 230V TW,HK | F15-9205-000 | HHN | SEND model |
|------------|--------------|-----|------------|

| | | | |
|------------------------------|---------------------|------------|------------|
| 230V AU,SG,HK,LTN | F15-9245-000 | HHL | SEND model |
|------------------------------|---------------------|------------|------------|

| | | | |
|----------------|---------------------|------------|------------|
| 230V KR | F15-9275-000 | HHM | SEND model |
|----------------|---------------------|------------|------------|

| | | | |
|-----------------|---------------------|------------|------------|
| 230V EUR | F15-9295-000 | HHK | SEND model |
|-----------------|---------------------|------------|------------|

imageRUNNER1740iF

| | | | |
|---------------------------|---------------------|------------|----------------|
| 120V US,CA,LTN | F15-9236-000 | HHP | FAX/SEND model |
|---------------------------|---------------------|------------|----------------|

imageRUNNER1730

| | | | |
|----------------|---------------------|------------|-----------------------|
| 120V US | F15-9222-000 | KWU | SEND model GOVERNMENT |
|----------------|---------------------|------------|-----------------------|

| | | | |
|---------------------------|---------------------|------------|------------|
| 120V US,CA,LTN | F15-9232-000 | HGX | SEND model |
|---------------------------|---------------------|------------|------------|

| | | | |
|-------------------|---------------------|------------|--|
| 230V SG,HK | F15-9241-000 | HGU | |
|-------------------|---------------------|------------|--|

| | | | |
|----------------|---------------------|------------|--|
| 230V CN | F15-9251-000 | HGV | |
|----------------|---------------------|------------|--|

| | | | |
|----------------|---------------------|------------|--|
| 230V KR | F15-9271-000 | HGW | |
|----------------|---------------------|------------|--|

imageRUNNER1730i

| | | | |
|------------------------------|---------------------|------------|------------|
| 230V AU,SG,HK,LTN | F15-9242-000 | HGZ | SEND model |
|------------------------------|---------------------|------------|------------|

| | | | |
|----------------|---------------------|------------|------------|
| 230V KR | F15-9272-000 | HHA | SEND model |
|----------------|---------------------|------------|------------|

| | | | |
|-----------------|---------------------|------------|------------|
| 230V EUR | F15-9292-000 | HGY | SEND model |
|-----------------|---------------------|------------|------------|

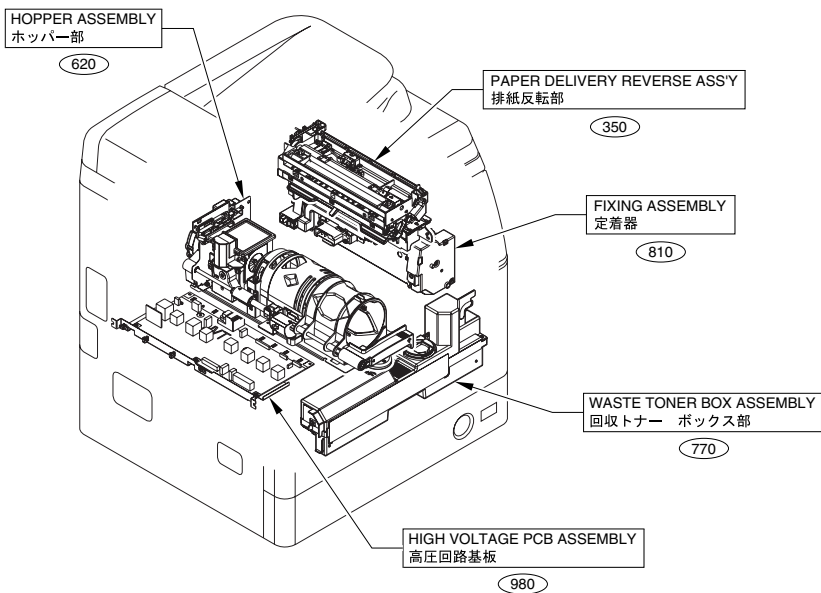
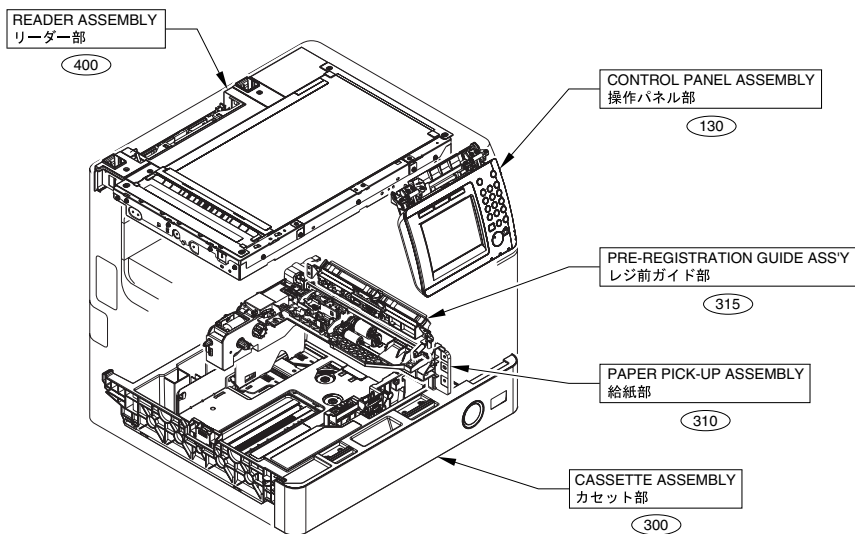
imageRUNNER1730iF

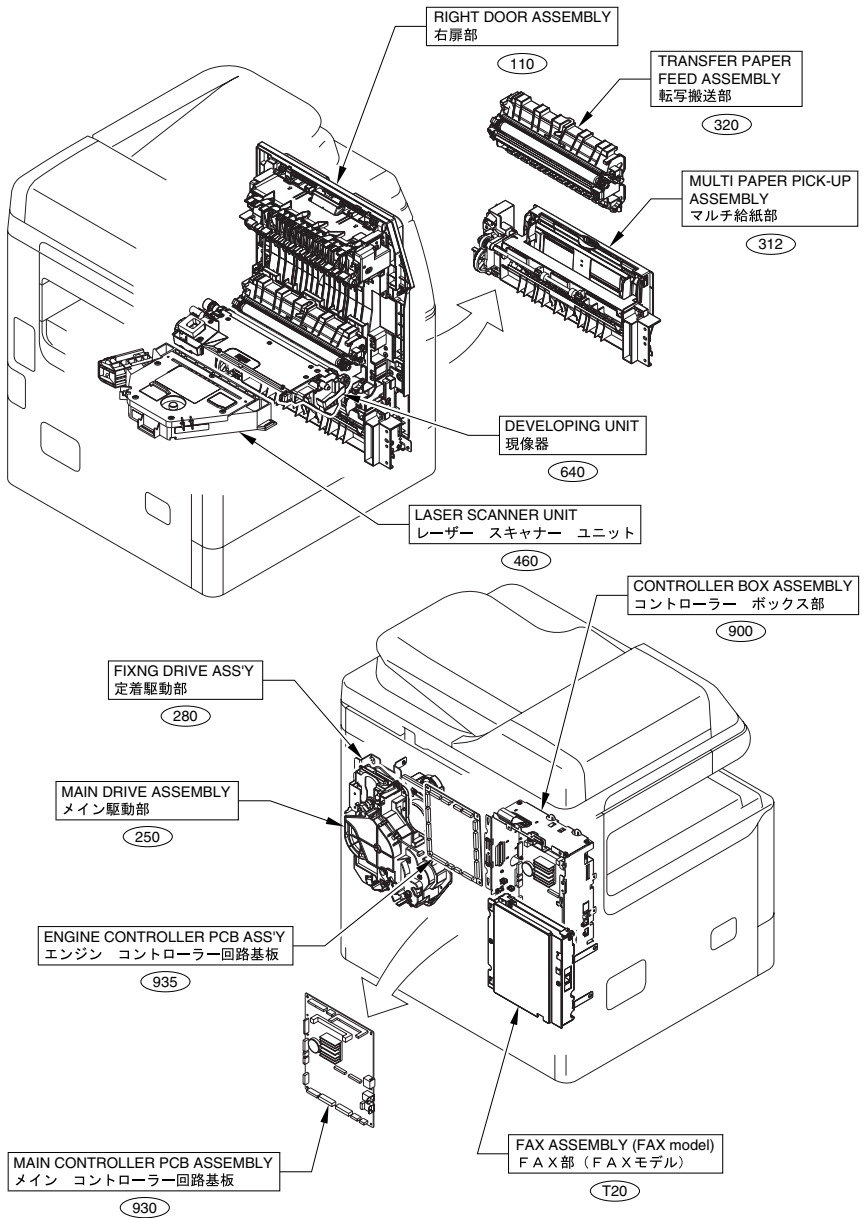
| | | | |
|---------------------------|---------------------|------------|----------------|
| 120V US,CA,LTN | F15-9233-000 | HHC | FAX/SEND model |
|---------------------------|---------------------|------------|----------------|

Contents

| | | |
|-----|---|------|
| A1 | ASSEMBLY LOCATION DIAGRAM | 2-1 |
| A2 | OPTION PARTS CATALOG LIST | 2-4 |
| 001 | ACCESSORIES | 2-5 |
| 100 | EXTERNAL COVERS, PANELS, ETC. | 2-7 |
| 101 | INTERNAL COMPONENTS 1 | 2-11 |
| 102 | INTERNAL COMPONENTS 2 | 2-13 |
| 103 | INTERNAL COMPONENTS 3 | 2-15 |
| 104 | MACHINE REAR PLATE | 2-17 |
| 110 | RIGHT DOOR ASSEMBLY | 2-19 |
| 130 | CONTROL PANEL ASSEMBLY | 2-22 |
| 250 | MAIN DRIVE ASSEMBLY | 2-25 |
| 280 | FIXING DRIVE ASS'Y | 2-27 |
| 300 | CASSETTE ASSEMBLY | 2-28 |
| 310 | PAPER PICK-UP ASSEMBLY | 2-30 |
| 312 | MULTI PAPER PICK-UP ASSEMBLY | 2-32 |
| 315 | PRE-REGISTRATION GUIDE ASS'Y | 2-34 |
| 320 | TRANSFER PAPER FEED ASSEMBLY | 2-35 |
| 350 | PAPER DELIVERY REVERSE ASS'Y | 2-36 |
| 400 | READER ASSEMBLY | 2-38 |
| 460 | LASER SCANNER UNIT | 2-40 |
| 620 | HOPPER ASSEMBLY | 2-41 |
| 640 | DEVELOPING UNIT | 2-42 |
| 770 | WASTE TONER BOX ASSEMBLY | 2-43 |
| 810 | FIXING ASSEMBLY | 2-44 |
| 900 | CONTROLLER BOX ASSEMBLY | 2-46 |
| 930 | MAIN CONTROLLER PCB ASSEMBLY | 2-47 |
| 935 | ENGINE CONTROLLER PCB ASS'Y | 2-48 |
| 980 | HIGH VOLTAGE PCB ASSEMBLY | 2-49 |
| A10 | INTERNAL COMPONENTS (ADF) | 2-50 |
| A12 | PAPER PICK-UP COVER ASSEMBLY (ADF) | 2-52 |
| A13 | DOCUMENT TRAY ASSEMBLY (ADF) | 2-53 |
| A30 | DRIVE ASSEMBLY (ADF) | 2-54 |
| A40 | PAPER FEED ASSEMBLY (ADF) | 2-56 |
| T20 | FAX ASSEMBLY (FAX model) | 2-57 |
| ZZA | MECHANICAL STANDARD PARTS (HOW TO USE) | 2-59 |
| ZZB | MECHANICAL STANDARD PARTS (SCREWS) | 2-60 |
| ZZC | MECHANICAL STANDARD PARTS (BOLTS) | 2-67 |
| ZZD | MECHANICAL STANDARD PARTS (NUTS) | 2-68 |
| ZZE | MECHANICAL STANDARD PARTS (RETAINING RINGS) | 2-69 |

FIGURE A1 ASSEMBLY LOCATION DIAGRAM





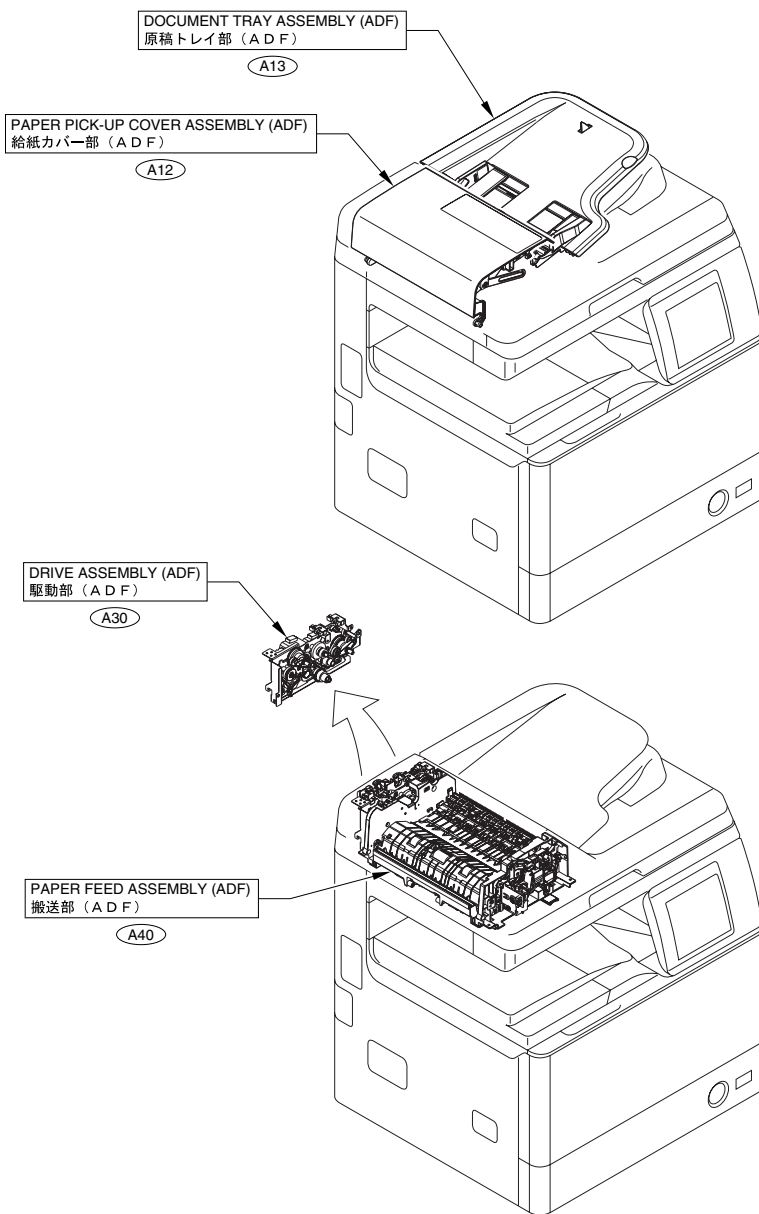
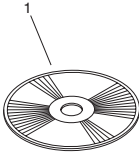


FIGURE A2 OPTION PARTS CATALOG LIST

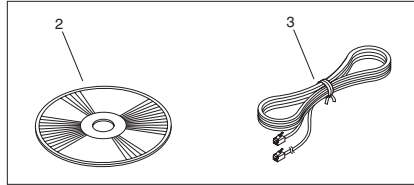
This is the table of the machine's options whose parts catalog is issued.
本機のオプションで、パーツカタログが発行されている機種の一覧である。

| No. | Model Name(English) | Model Name(Japanese) |
|-----|---|----------------------|
| 1 | ADF Access Handle-A1 | (日本仕向けなし) |
| 2 | Cassette Module-Y1 | (日本仕向けなし) |
| 3 | FL Cassette-AP1 | (日本仕向けなし) |
| 4 | Envelope Cassette-D1 | (日本仕向けなし) |
| 5 | Staple Finisher-H1 | (日本仕向けなし) |
| 6 | Drum Heater-D1 | (日本仕向けなし) |
| 7 | Copy Card Reader Attachment-C1 | (日本仕向けなし) |
| 8 | Super G3 Fax Board-AJ1 | (日本仕向けなし) |
| 9 | USB Application 3-Port Interface Kit-B1 | (日本仕向けなし) |

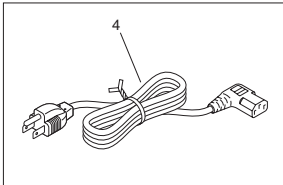
FIGURE 001 ACCESSORIES



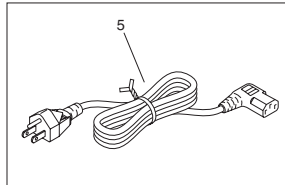
FAX model



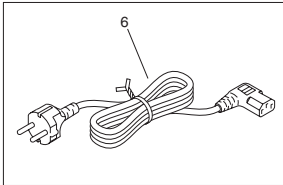
120V US,CA,LTN



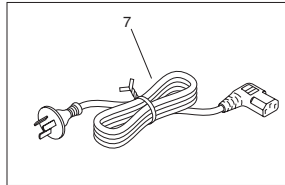
120V TW



230V EXCEPT CN



230V CN

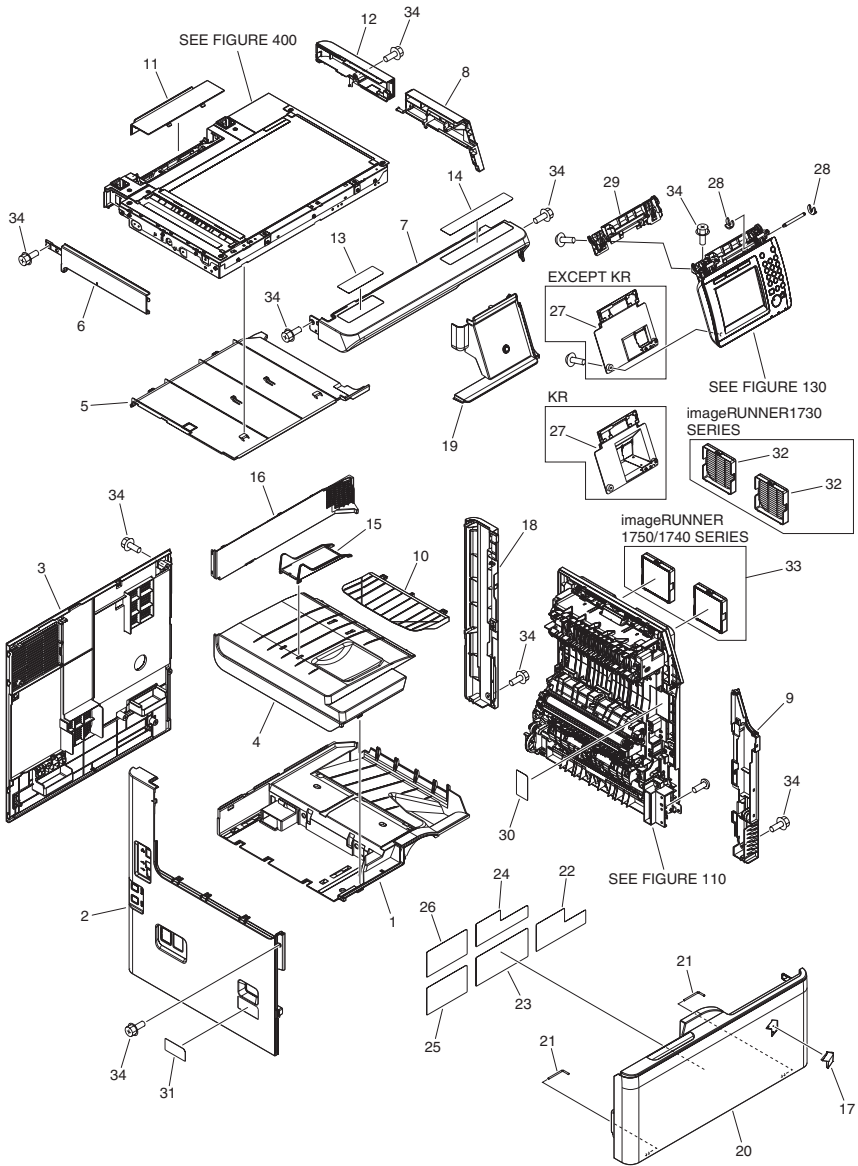


8



| FIGURE & KEY NO. | PARTS NUMBER | R A N K | Q'TY | DESCRIPTION | SERIAL NUMBER/ REMARKS | S V C |
|------------------|--------------|------------------|------|--------------------------------|---|-------------|
| Fig.001 | NPN | | RF | ACCESSORIES | | |
| 1 | FK3-3006-000 | | 1 | CD-ROM, SOFTWARE FOR UFR II LT | English,French,Italian,German,Spanish | |
| 1 | FK3-3007-000 | | 1 | CD-ROM, SOFTWARE FOR UFR II LT | English,Simplified Chinese,Traditional Chinese,Korean | |
| 1 | FK3-2091-000 | | 1 | CD-ROM, SOFTWARE FOR PCL | English,French,Italian,German,Spanish | |
| 1 | FK3-2094-000 | | 1 | CD-ROM, SOFTWARE FOR PS | English,French,Italian,German,Spanish | |
| 2 | FK3-2097-000 | | 1 | CD-ROM, SOFTWARE FOR FAX | English,French,Italian,German,Spanish | |
| 3 | HH2-2824-000 | | 1 | MODULAR CORD, 2P | FAX model | |
| 4 | FM4-0040-000 | | 1 | CORD, POWER | 120V US,CA,LTN | |
| 5 | FM4-7836-000 | | 1 | CORD, POWER | 120V TW | |
| 6 | FM2-4786-000 | | 1 | POWER CORD | 230V EXCEPT CN | |
| 7 | FM2-4787-000 | | 1 | CORD, POWER | 230V CN | |
| 8 | FC0-3428-000 | | 1 | SHEET, PAPER SIZE | | |

FIGURE 100 EXTERNAL COVERS, PANELS, ETC.



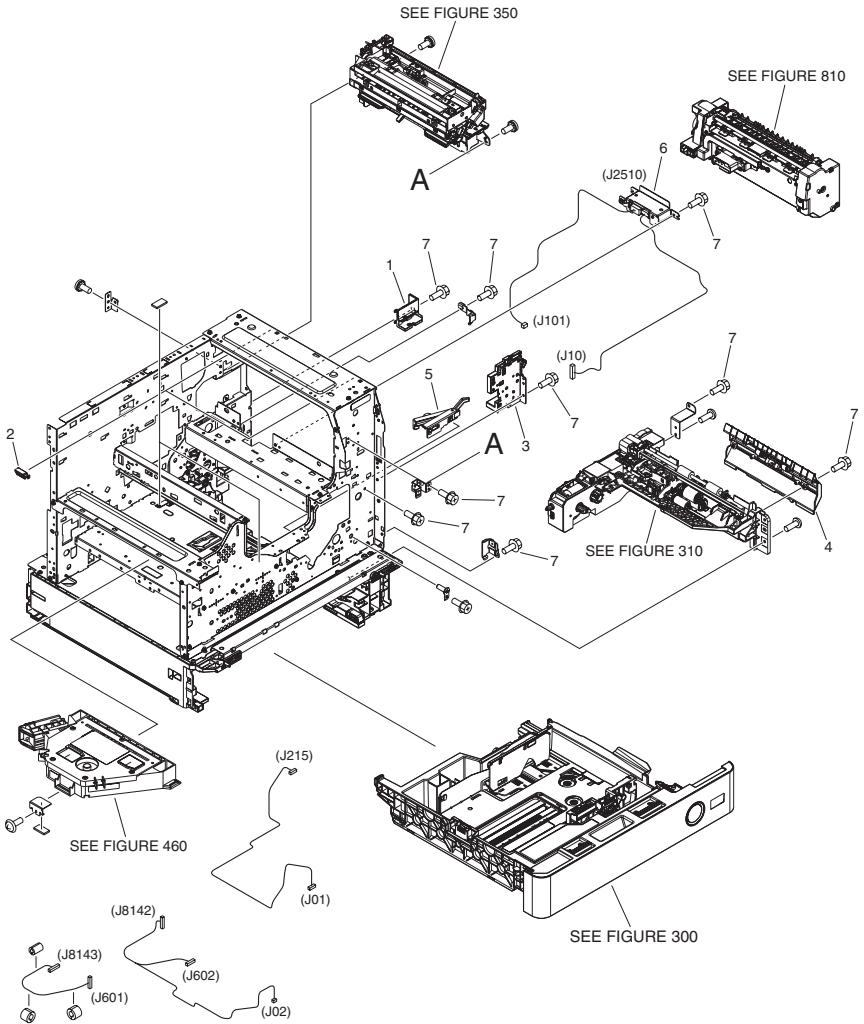
| FIGURE & KEY NO. | PARTS NUMBER | R A N K | Q'TY | DESCRIPTION | SERIAL NUMBER/ REMARKS | S V C |
|------------------|--------------|------------------|------|-------------------------------|---|-------------|
| Fig.100 | NPN | | RF | EXTERNAL COVERS, PANELS, ETC. | | |
| 1 | FC0-0868-000 | | 1 | TRAY, PAPER DELIVERY, 1 | | |
| 2 | FL3-5653-000 | | 1 | COVER, LEFT | | |
| 3 | FL3-5652-000 | | 1 | COVER, REAR | | |
| 4 | FC0-0883-000 | | 1 | TRAY, PAPER DELIVERY, 2 | | |
| 5 | FC0-0884-000 | | 1 | COVER, REEDER, LOWER | | |
| 6 | FC0-1076-000 | | 1 | COVER, READER, LEFT | | |
| 7 | FC0-1077-000 | | 1 | COVER, READER, FRONT | | |
| 8 | FL3-5655-000 | | 1 | COVER, READER, RIGHT | | |
| 9 | FL3-5654-000 | | 1 | COVER, RIGHT FRONT | | |
| 10 | FC0-1155-000 | | 1 | TRAY, REVERSE | | |
| 11 | FC0-1193-000 | | 1 | COVER, READER REAR, 2 | | |
| 12 | FL3-5656-000 | | 1 | COVER, READER, RIGHT REAR | | |
| 13 | FC0-3971-000 | | 1 | LABEL, GLASS CLEANING | US,CA,AU,SG,HK,LTN US English | |
| 13 | FC0-3972-000 | | 1 | LABEL, GLASS CLEANING | US,CA,AU,SG,HK,LTN Canadian French,Spanish,Portuguese | |
| 13 | FC0-3973-000 | | 1 | LABEL, GLASS CLEANING | EUR | |
| 13 | FC0-3974-000 | | 1 | LABEL, GLASS CLEANING | CN | |
| 13 | FC0-3975-000 | | 1 | LABEL, GLASS CLEANING | KR | |
| 13 | FC0-3976-000 | | 1 | LABEL, GLASS CLEANING | TW | |
| 14 | FC0-3984-000 | | 1 | LABEL, COPY INHIBITED | US English | |
| 14 | FC0-3985-000 | | 1 | LABEL, COPY INHIBITED | Canadian French | |
| 14 | FC0-3986-000 | | 1 | LABEL, COPY INHIBITED | Portuguese | |
| 14 | FC0-3987-000 | | 1 | LABEL, COPY INHIBITED | Spanish | |
| 14 | FC0-3988-000 | | 1 | LABEL, COPY INHIBITED | UK English | |
| 14 | FC0-3989-000 | | 1 | LABEL, COPY INHIBITED | French | |
| 14 | FC0-3990-000 | | 1 | LABEL, COPY INHIBITED | German | |
| 14 | FC0-3991-000 | | 1 | LABEL, COPY INHIBITED | Italian | |
| 14 | FC0-3992-000 | | 1 | LABEL, COPY INHIBITED | Simplified Chinese | |
| 14 | FC0-3993-000 | | 1 | LABEL, COPY INHIBITED | Traditional Chinese | |
| 14 | FC0-3994-000 | | 1 | LABEL, COPY INHIBITED | Korean | |

| FIGURE & KEY NO. | PARTS NUMBER | R A N K | Q'TY | DESCRIPTION | SERIAL NUMBER/REMARKS | S V C |
|------------------|--------------|---------|------|-----------------------------|--------------------------------|-------|
| 15 | FC0-4033-000 | | 1 | RIB, STACK | | |
| 16 | FC0-4034-000 | | 1 | PANEL, INNER | | |
| 17 | FC6-4391-000 | | 1 | EMBLEM | | |
| 18 | FL3-5617-000 | | 1 | COVER, RIGHT REAR | | |
| 19 | FM4-8001-000 | | 1 | COVER UNIT, RIGHT FRONT | | |
| 20 | FM0-0629-000 | | 1 | FRONT DOOR ASS'Y | imageRUNNER1750 US,CA,LTN | |
| 20 | FM0-0630-000 | | 1 | FRONT DOOR ASS'Y | imageRUNNER1750 CN,KR | |
| 20 | FM0-0632-000 | | 1 | FRONT DOOR ASS'Y | imageRUNNER1750i | |
| 20 | FM0-0631-000 | | 1 | FRONT DOOR ASS'Y | imageRUNNER1750iF | |
| 20 | FM0-0633-000 | | 1 | FRONT DOOR ASS'Y | imageRUNNER1740 US,CA,LTN | |
| 20 | FM0-0634-000 | | 1 | FRONT DOOR ASS'Y | imageRUNNER1740 CN,KR | |
| 20 | FM0-0636-000 | | 1 | FRONT DOOR ASS'Y | imageRUNNER1740i | |
| 20 | FM0-0635-000 | | 1 | FRONT DOOR ASS'Y | imageRUNNER1740iF | |
| 20 | FM0-0637-000 | | 1 | FRONT DOOR ASS'Y | imageRUNNER1730 US,CA,LTN | |
| 20 | FM0-0638-000 | | 1 | FRONT DOOR ASS'Y | imageRUNNER1730 SG,HK,CN,KR | |
| 20 | FM0-0640-000 | | 1 | FRONT DOOR ASS'Y | imageRUNNER1730i | |
| 20 | FM0-0639-000 | | 1 | FRONT DOOR ASS'Y | imageRUNNER1730iF | |
| 21 | FA8-2446-000 | | 2 | PIN, HINGE | | |
| 22 | FC0-3392-000 | | 1 | LABEL, WASTE TONER EXCHANGE | | |
| 23 | FC0-3394-000 | | 1 | LABEL, DRUM EXCHANGE, 1 | US,CA,EUR,AU,SG,HK,L TN | |
| 23 | FC0-6912-000 | | 1 | LABEL, DRUM EXCHANGE, 1 | CN,KR,TW | |
| 24 | FC0-3395-000 | | 1 | LABEL, DRUM EXCHANGE, 2 | | |
| 25 | FC0-3403-000 | | 1 | LABEL, TONER SUPPLY | | |
| 26 | FC0-3406-000 | | 1 | LABEL, TONER | US,CA,LTN | |
| 26 | FC0-3405-000 | | 1 | LABEL, TONER | EUR | |
| 26 | FC0-3404-000 | | 1 | LABEL, TONER | CN,KR,TW | |
| 27 | FM4-6538-000 | | 1 | COVER UNIT, OPERATION, REAR | EXCEPT KR | |
| 27 | FM4-6539-000 | | 1 | COVER UNIT, OPERATION, REAR | KR | |

| FIGURE & KEY NO. | PARTS NUMBER | R A N K | Q'TY | DESCRIPTION | SERIAL NUMBER/ REMARKS | S V C |
|------------------|--------------|------------------|------|--------------------------------|--------------------------------|-------------|
| 28 | FC5-4697-000 | | 2 | RING, RETAINING | | |
| 29 | FC0-3278-000 | | 1 | COVER, FFC | | |
| 30 | FC0-3409-000 | | 1 | LABEL, TRANSFER ROLLER CAUTION | | |
| 31 | FC0-3419-000 | | 1 | LABEL, MAIN POWER | EUR | |
| 31 | FC0-3418-000 | | 1 | LABEL, MAIN POWER | US,CA,AU,SG,HK,LTN | |
| 31 | FC0-3424-000 | | 1 | LABEL, MAIN POWER | CN | |
| 31 | FC0-3425-000 | | 1 | LABEL, MAIN POWER | KR | |
| 31 | FC0-3426-000 | | 1 | LABEL, MAIN POWER | TW | |
| 32 | FC0-3997-000 | | 2 | COVER, AIR FILTER | imageRUNNER1730 SERIES | |
| 33 | FM0-0139-000 | | 1 | FILTER, AIR | imageRUNNER1750/1740 SERIES | |
| 34 | XA9-1567-000 | | AR | SCREW, RS, M3X8.5 | | |

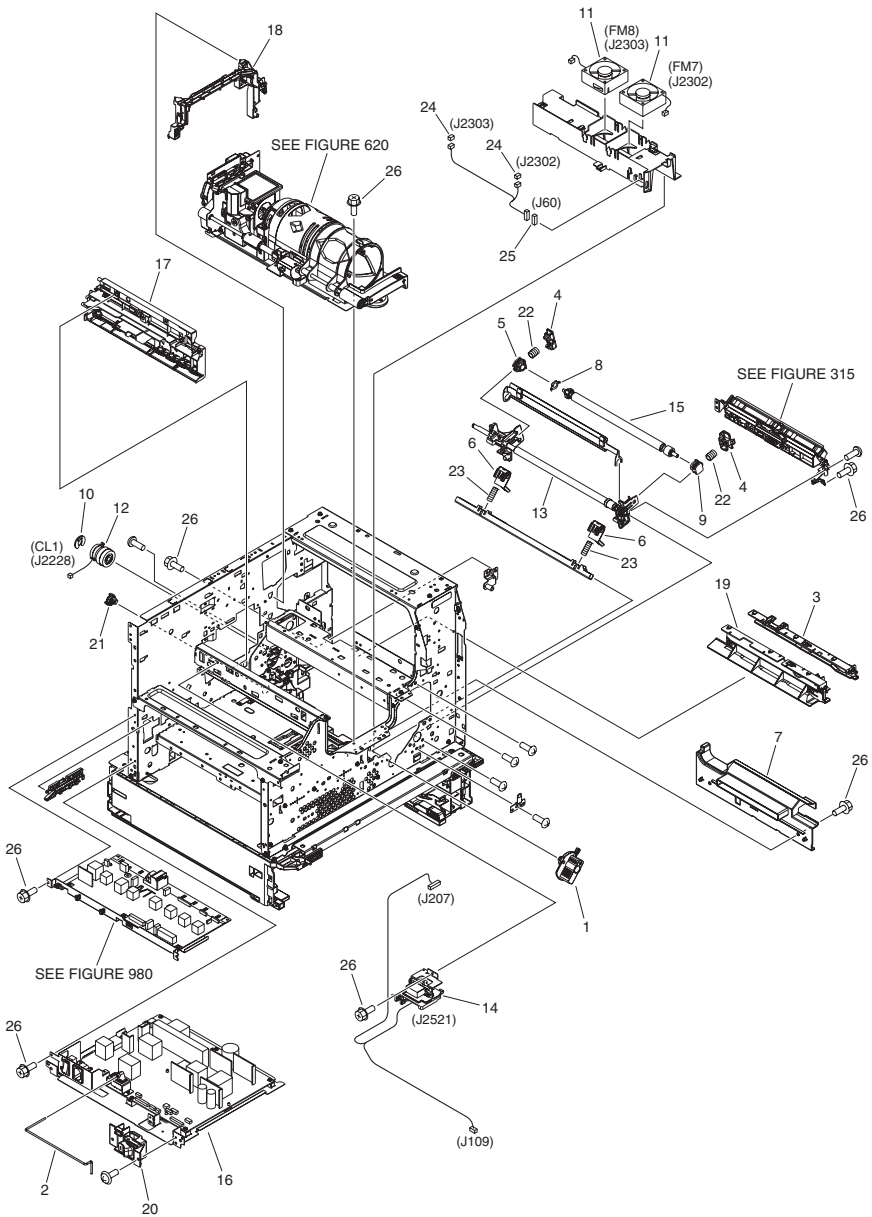
| FIGURE & KEY NO. | PARTS NUMBER | RANK | Q'TY | DESCRIPTION | SERIAL NUMBER/REMARKS | SVC |
|------------------|--------------|------|------|-----------------------------|-----------------------|-----|
| Fig.101 | NPN | | RF | INTERNAL COMPONENTS 1 | | |
| 1 | FC0-0922-000 | | 1 | LEVER, BOTTLE EXCHANGE | | |
| 2 | FC0-1003-000 | | 1 | SPRING, LEAF | | |
| 3 | WG8-5836-000 | | 1 | IC PHOTOINTERRUPTER, HYBRID | PS1 | |
| 4 | WG8-5928-000 | | 1 | IC, PHOTO INTERRUPTER | PS2 | |
| 5 | FC0-3396-000 | | 1 | LABEL, DEV. PRESSURE LOCK | | |
| 6 | FC0-3998-000 | | 1 | PANEL, DEVELOPING EXCHANGE | | |
| 7 | FC9-0503-000 | | 1 | LEVER, HANDLE LOCK | | |
| 8 | FC9-1698-000 | | 2 | HOOK, FRONT DOOR | | |
| 9 | FC9-7708-000 | | 1 | GEAR, 7T | | |
| 10 | FK3-1443-000 | | 1 | CABLE, PANEL-IP FLAT | | |
| 11 | FM4-6501-000 | | 1 | INTERLOCK UNIT | SW1 | |
| 12 | FM4-6507-000 | | 1 | WASTE TONER DRIVE UNIT | M3,PS3 | |
| 13 | FM4-8027-000 | | 1 | STAY UNIT, DEVELOPING | | |
| 14 | FU6-8873-000 | | 1 | LABEL, LOCK UNLOCK | | |
| 15 | FU6-8880-000 | | 1 | LABEL, LASER CAUTION | | |
| 16 | FU7-2912-000 | | 1 | SPRING, TORSION | | |
| 17 | FU7-2996-000 | | 2 | SPRING, TENSION | | |
| 18 | FM4-7990-000 | | 1 | HV GUIDE UNIT, LOWER | | |
| 19 | FM4-7991-000 | | 1 | HV GUIDE UNIT, RIGHT | | |
| 20 | XA9-1567-000 | | AR | SCREW, RS, M3X8.5 | | |
| 21 | FM4-7782-000 | | 1 | CABLE, CONNECTING, SENSOR | | |

FIGURE 102 INTERNAL COMPONENTS 2



| FIGURE & KEY NO. | PARTS NUMBER | RANK | Q'TY | DESCRIPTION | SERIAL NUMBER/REMARKS | SVC |
|------------------|--------------|------|------|---------------------------|-----------------------|-----|
| Fig.102 | NPN | | RF | INTERNAL COMPONENTS 2 | | |
| 1 | FC0-1010-000 | | 1 | RAIL, FIXING GUIDE | | |
| 2 | FC0-1144-000 | | 2 | LOCK, RIGHT DOOR | | |
| 3 | FM4-6502-000 | | 1 | RAIL UNIT, FIXING, FRONT | | |
| 4 | FM4-6524-000 | | 1 | VERTICAL PATH GUIDE UNIT | | |
| 5 | FM4-8018-000 | | 1 | LASER SHUTTER UNIT | | |
| 6 | FM4-8064-000 | | 1 | DRAWER CABLE UNIT, FIXING | | |
| 7 | XA9-1567-000 | | AR | SCREW, RS, M3X8.5 | | |

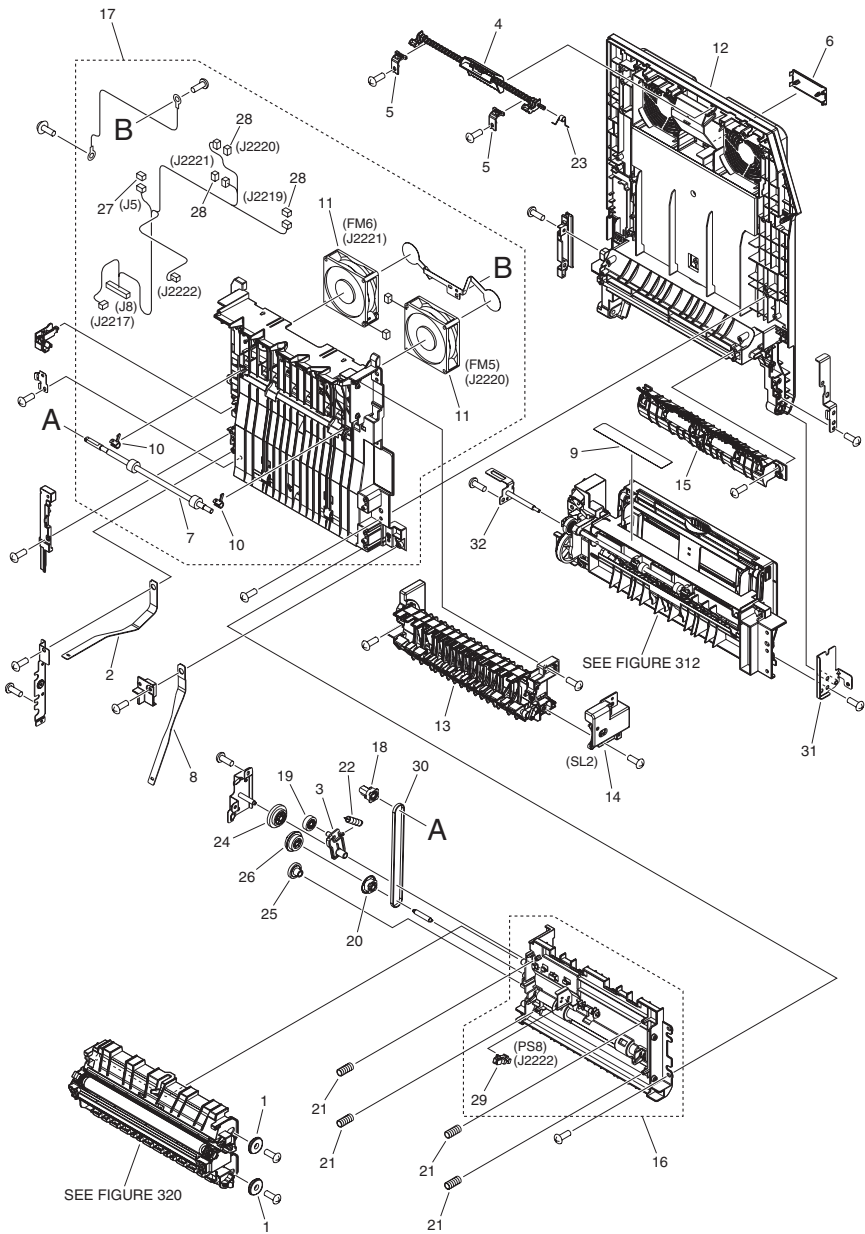
FIGURE 103 INTERNAL COMPONENTS 3



| FIGURE & KEY NO. | PARTS NUMBER | R A N K | Q'TY | DESCRIPTION | SERIAL NUMBER/ REMARKS | S V C |
|------------------|--------------|------------------|------|------------------------------|---------------------------|-------------|
| Fig.103 | NPN | | RF | INTERNAL COMPONENTS 3 | | |
| 1 | FC0-5123-000 | | 1 | HANDLE, PRESSURE | | |
| 2 | FC0-0967-000 | | 1 | ROD, JOINT | | |
| 3 | FC0-1005-000 | | 1 | RAIL, CARTRIDGE, RIGHT | | |
| 4 | FC0-1131-000 | | 2 | STOPPER | | |
| 5 | FC0-1133-000 | | 1 | BUSHING | | |
| 6 | FC0-4005-000 | | 2 | CAM, DEVELOPING PRESSURE | | |
| 7 | FC0-4012-000 | | 1 | GUIDE, HOPPER LOWER | | |
| 8 | FC0-5104-000 | | 1 | PLATE, GROUNDING | | |
| 9 | FC0-5113-000 | | 1 | BUSHING | | |
| 10 | FC8-6380-000 | | 1 | CLIP | | |
| 11 | FK2-2530-000 | | 2 | FAN | FM7,FM8 | |
| 12 | FK2-9154-000 | | 1 | CLUTCH | CL1 | |
| 13 | FM4-6509-000 | | 1 | REGISTRATION UNIT | | |
| 14 | FM4-6511-000 | | 1 | DRAWER CABLE UNIT | | |
| 15 | FM4-6527-000 | | 1 | REGISTRATION ROLLER UNIT | | |
| 16 | FM4-6579-000 | | 1 | POWER SUPPLY ASSEMBLY | 120V | |
| 16 | FM4-8051-000 | | 1 | POWER SUPPLY ASSEMBLY | 230V | |
| 17 | FM4-6590-000 | | 1 | HV GUIDE UNIT | | |
| 18 | FM4-7989-000 | | 1 | HV GUIDE UNIT, UPPER | | |
| 19 | FM4-8004-000 | | 1 | RAIL UNIT, CARTRIDGE, LEFT | | |
| 20 | FM4-8011-000 | | 1 | POWER SWITCH UNIT | | |
| 21 | FU5-1030-000 | | 1 | BUSHING | | |
| 22 | FU8-2648-000 | | 2 | SPRING, COMPRESSION | | |
| 23 | FU8-2661-000 | | 2 | SPRING, COMPRESSION | | |
| 24 | VS1-7177-003 | | 2 | CONNECTOR, SNAP TIGHT, BK | | |
| 25 | VS1-7173-006 | | 1 | CONNECTOR, SNAP TIGHT, 6P, W | | |
| 26 | XA9-1567-000 | | AR | SCREW, RS, M3X8.5 | | |

| FIGURE & KEY NO. | PARTS NUMBER | R A N K | Q'TY | DESCRIPTION | SERIAL NUMBER/ REMARKS | S V C |
|------------------|--------------|------------------|------|-------------------------------|--------------------------------------|-------------|
| Fig.104 | NPN | | RF | MACHINE REAR PLATE | | |
| 1 | FC0-3283-000 | | 1 | RIB, HANDLE | | |
| 2 | FC0-3309-000 | | 1 | ROLLER, TENSION | | |
| 3 | FK2-2530-000 | | 1 | FAN | FM2 | |
| 4 | FK3-1626-000 | | 1 | BATTERY, NI-MH | MODELS WITH FAX OR SEND FUNCTIONS | |
| 5 | FM4-6516-000 | | 1 | PAPER PICK-UP MOTOR UNIT | M8 | |
| 6 | FM4-6564-000 | | 1 | DRAWER CABLE UNIT, CASSETTE | | |
| 7 | FM4-6566-000 | | 1 | LINK DRIVE UNIT | | |
| 8 | FM4-6571-000 | | 1 | SIZE DETECT UNIT | | |
| 9 | FM4-8017-000 | | 1 | FAN UNIT | FM4 | |
| 10 | FU8-2667-000 | | 1 | SPRING, TENSION | | |
| 11 | XF2-1610-440 | | 1 | BELT, TIMING, CR | | |
| 12 | VS1-7173-003 | | 1 | CONNECTOR, SNAP TIGHT, 3P, W | | |
| 13 | VS1-7173-006 | | 1 | CONNECTOR, SNAP TIGHT, 6P, W | | |
| 14 | VS1-7173-009 | | 1 | CONNECTOR, SNAP TIGHT, 9P, W | | |
| 15 | VS1-7173-012 | | 1 | CONNECTOR, SNAP TIGHT, 12P, W | | |
| 16 | VS1-7177-002 | | 2 | CONNECTOR, SNAP TIGHT, BK | | |
| 17 | VS1-7177-003 | | 2 | CONNECTOR, SNAP TIGHT, BK | | |
| 18 | VS1-7507-002 | | 1 | CONNECTOR, 2P | | |
| 19 | VS1-8412-015 | | 1 | CONNECTOR, SNAP TIGHT, BL | | |
| 20 | VS1-8412-017 | | 1 | CONNECTOR, SNAP TIGHT, BL | | |
| 21 | VS1-8412-019 | | 1 | CONNECTOR, SNAP TIGHT, BL | | |
| 22 | VS1-8412-023 | | 1 | CONNECTOR, SNAP TIGHT, BL | | |
| 23 | XA9-1567-000 | | AR | SCREW, RS, M3X8.5 | | |
| 24 | XA9-0702-000 | | 2 | SCREW, W/WASHER, M3X6 | | |
| 25 | FC6-9867-000 | | 1 | RING, RETAINING | | |
| 26 | FU8-2957-000 | | 1 | SPRING, TENSION | | |
| 27 | VS1-7173-005 | | 1 | CONNECTOR, SNAP TIGHT | | |

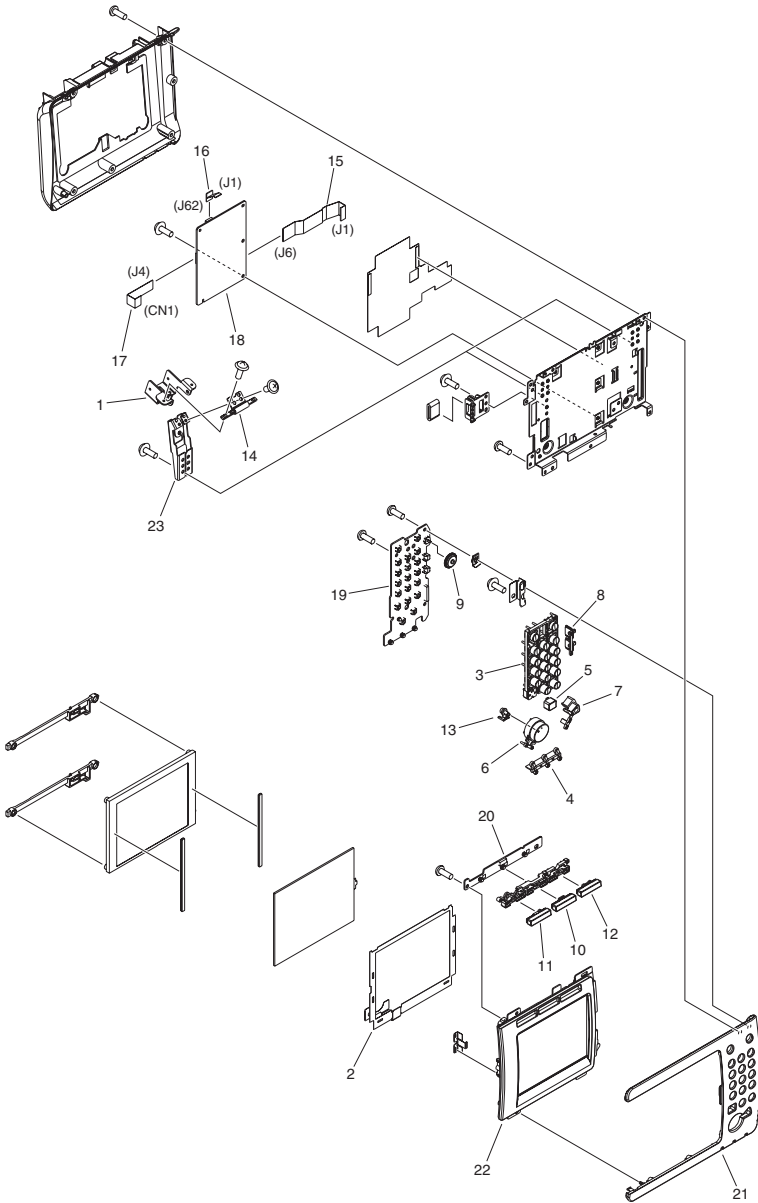
FIGURE 110 RIGHT DOOR ASSEMBLY



| FIGURE & KEY NO. | PARTS NUMBER | RANK | Q'TY | DESCRIPTION | SERIAL NUMBER/REMARKS | SVC |
|------------------|--------------|------|------|--------------------------------|-----------------------|-----|
| Fig.110 | NPN | | RF | RIGHT DOOR ASSEMBLY | | |
| 1 | FC0-1083-000 | | 2 | RING | | |
| 2 | FC0-1090-000 | | 1 | BAND, RIGHTDOOR, REAR | | |
| 3 | FC0-1120-000 | | 1 | ARM, GEAR | | |
| 4 | FM4-6543-000 | | 1 | HOOK UNIT, RIGHT DOOR | | |
| 5 | FC0-1143-000 | | 2 | STOPPER, LEVER | | |
| 6 | FC0-1179-000 | | 1 | PLATE, RIGHT DOOR | | |
| 7 | FC0-3305-000 | | 1 | ROLLER | | |
| 8 | FC0-3381-000 | | 1 | BAND, RIGHT DOOR, FRONT | | |
| 9 | FC0-5105-000 | | 1 | LABEL, LEVER | | |
| 10 | FC9-0717-000 | | 2 | BUSHING | | |
| 11 | FK2-6818-000 | | 2 | FAN | FM5,FM6 | |
| 12 | FL3-5619-000 | | 1 | DOOR, RIGHT | | |
| 13 | FM4-6572-000 | | 1 | DUPLEXING PAPER FEED UNIT | | |
| 14 | FM4-6573-000 | | 1 | SOLENOID UNIT | SL2 | |
| 15 | FM4-6574-000 | | 1 | VERTICAL PATH GUIDE UNIT | | |
| 16 | FM4-6575-000 | | 1 | DUPLEXING FEED MOUNT UNIT | | |
| 17 | FM4-6576-000 | | 1 | DUPLEXING ENTRANCE GUIDE ASS'Y | | |
| 18 | FU5-3796-000 | | 1 | PULLEY, 28T | | |
| 19 | FU6-0934-000 | | 1 | GEAR, 18T | | |
| 20 | FU6-3074-000 | | 1 | PULLEY, 28T | | |
| 21 | FU8-2649-000 | | 4 | SPRING, COMPRESSION | | |
| 22 | FU8-2663-000 | | 1 | SPRING, TENSION | | |
| 23 | FU8-2669-000 | | 1 | SPRING, TORSION | | |
| 24 | FU9-0222-000 | | 1 | GEAR, 31T/22T | | |
| 25 | FU9-0230-000 | | 1 | GEAR, 20 T | | |
| 26 | FU9-0231-000 | | 1 | PULLEY, 28T/GEAR, 20T/26T | | |
| 27 | VS1-7173-003 | | 1 | CONNECTOR, SNAP TIGHT, 3P, W | | |
| 28 | VS1-7177-003 | | 3 | CONNECTOR, SNAP TIGHT, BK | | |
| 29 | WG8-5836-000 | | 1 | IC PHOTOINTERRUPTER, HYBRID | PS8 | |
| 30 | XF2-1617-740 | | 1 | BELT, TIMING | | |
| 31 | FL3-4874-000 | | 1 | HINGE, DOOR, FRONT | | |

| FIGURE & KEY NO. | PARTS NUMBER | R A N K | Q'TY | DESCRIPTION | SERIAL NUMBER/ REMARKS | S V C |
|------------------------|-----------------|------------------|------|-------------------|---------------------------|-------------|
| 32 | FL3-4875-000 | | 1 | HINGE, DOOR, REAR | | |

FIGURE 130 CONTROL PANEL ASSEMBLY

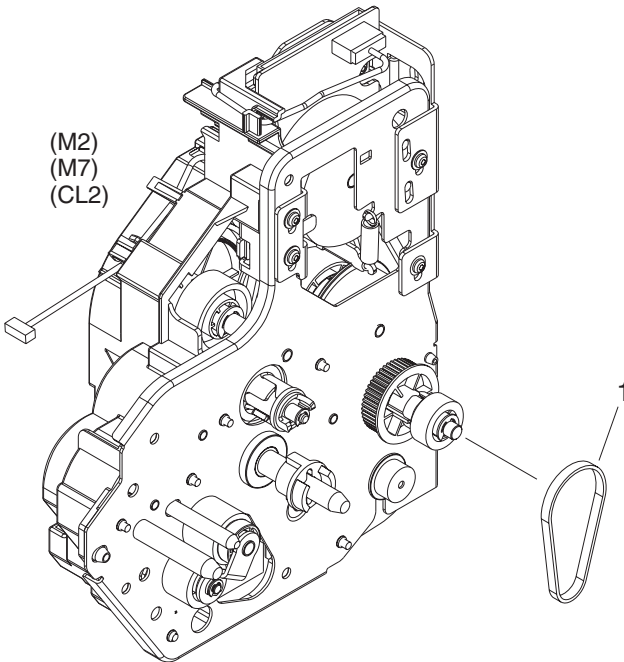


| FIGURE & KEY NO. | PARTS NUMBER | R A N K | Q'TY | DESCRIPTION | SERIAL NUMBER/ REMARKS | S V C |
|------------------|--------------|------------------|------|--------------------------------|---------------------------|-------------|
| Fig.130 | FM4-6515-000 | | 1 | CONTROL PANEL ASSEMBLY | US,CA,LTN | |
| Fig.130 | FM4-8054-000 | | 1 | CONTROL PANEL ASSEMBLY | EUR | |
| Fig.130 | FM4-8053-000 | | 1 | CONTROL PANEL ASSEMBLY | AU,SG,HK,LTN | |
| Fig.130 | FM4-8055-000 | | 1 | CONTROL PANEL ASSEMBLY | CN | |
| Fig.130 | FM4-8056-000 | | 1 | CONTROL PANEL ASSEMBLY | KR | |
| Fig.130 | FM4-8057-000 | | 1 | CONTROL PANEL ASSEMBLY | TW | |
| 1 | FC0-0969-000 | | 2 | HINGE, 1 | | |
| 2 | FC0-3257-000 | | 1 | SHEET, TOUCH PANEL | | |
| 3 | FC0-3261-000 | | 1 | KEY TOP, TEN | | |
| 4 | FC0-3262-000 | | 1 | COVER, LED | | |
| 5 | FC0-3263-000 | | 1 | KEY TOP, RESET | | |
| 6 | FC0-3264-000 | | 1 | KEY TOP, START | | |
| 7 | FC0-3265-000 | | 1 | KEY TOP, STOP | | |
| 8 | FC0-3266-000 | | 1 | KEY TOP, VOLUME | | |
| 9 | FC0-3267-000 | | 1 | DIAL, CONTRAST | | |
| 10 | FC0-3272-000 | | 1 | KEY TOP, SYSTEM, 2 | | |
| 11 | FC0-3273-000 | | 1 | KEY TOP, SYSTEM, 1 | | |
| 12 | FC0-3274-000 | | 1 | KEY TOP, SYSTEM, 3 | | |
| 13 | FC0-3275-000 | | 1 | KEY TOP, START, LED | | |
| 14 | FC0-3300-000 | | 2 | HINGE, 2 | | |
| 15 | FK3-1416-000 | | 1 | CABLE, CPU-TEN KEY FLAT | | |
| 16 | FK3-1417-000 | | 1 | CABLE, CPU-SYSTEM KEY FLAT | | |
| 17 | FK3-1418-000 | | 1 | CABLE, CPU-LCD FLAT | | |
| 18 | FM4-7810-000 | | 1 | CONTROL PANEL CPU PCB ASS'Y | | |
| 19 | FM4-7811-000 | | 1 | TEN KEY PCB ASS'Y | | |
| 20 | FM4-7812-000 | | 1 | SYSTEM KEY PCB ASS'Y | | |
| 21 | FL3-4866-000 | | 1 | COVER, CONTROL PANEL, FRONT, 1 | US,CA,LTN | |
| 21 | FL3-4868-000 | | 1 | COVER, CONTROL PANEL, FRONT, 1 | EUR | |
| 21 | FL3-4867-000 | | 1 | COVER, CONTROL PANEL, FRONT, 1 | AU,SG,HK,LTN | |
| 21 | FL3-4869-000 | | 1 | COVER, CONTROL PANEL, FRONT, 1 | CN | |
| 21 | FL3-4870-000 | | 1 | COVER, CONTROL PANEL, FRONT, 1 | KR | |
| 21 | FL3-4871-000 | | 1 | COVER, CONTROL PANEL, FRONT, 1 | TW | |

| FIGURE & KEY NO. | PARTS NUMBER | R A N K | Q'TY | DESCRIPTION | SERIAL NUMBER/ REMARKS | S V C |
|------------------------|-----------------|------------------|------|--------------------------------|---------------------------|-------------|
| 22 | FC0-3256-000 | | 1 | COVER, CONTROL PANEL, FRONT, 2 | | |
| 23 | FC0-3269-000 | | 2 | PLATE, HINGE | | |

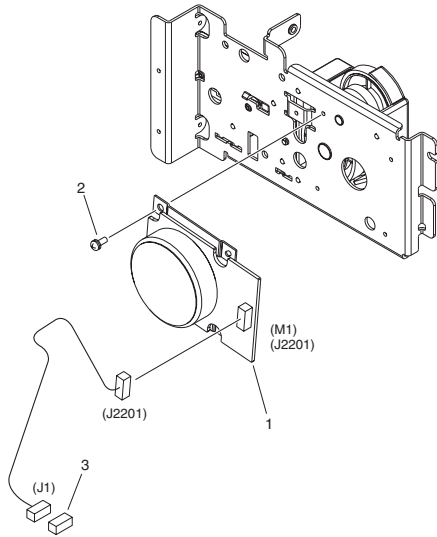
FIGURE 250
MAIN DRIVE ASSEMBLY

MAIN DRIVE ASSEMBLY
メイン駆動部



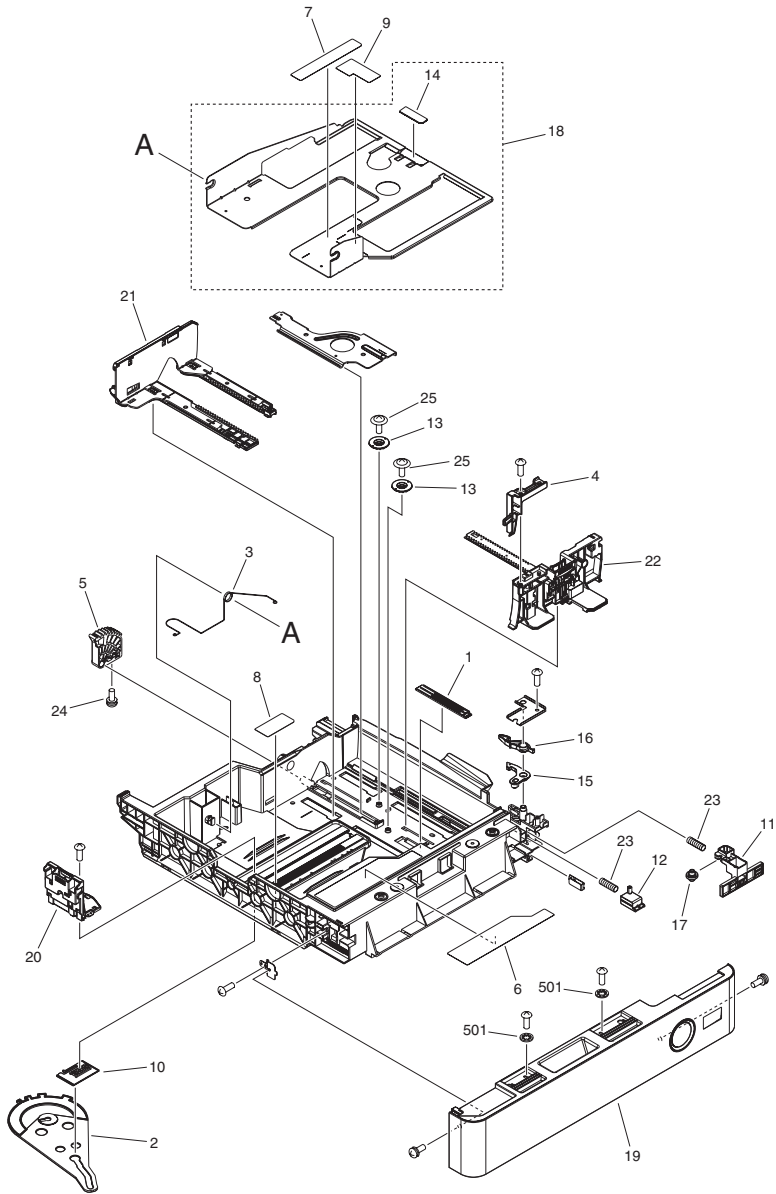
| FIGURE & KEY NO. | PARTS NUMBER | R A N K | Q'TY | DESCRIPTION | SERIAL NUMBER/ REMARKS | S V C |
|------------------------|-----------------|------------------|------|---------------------|---------------------------|-------------|
| Fig.250 | FM4-6497-000 | | 1 | MAIN DRIVE ASSEMBLY | M2,M7,CL2 | |
| 1 | XF2-1607-240 | | 1 | BELT, TIMING | | |

FIGURE 280 FIXNG DRIVE ASS'Y



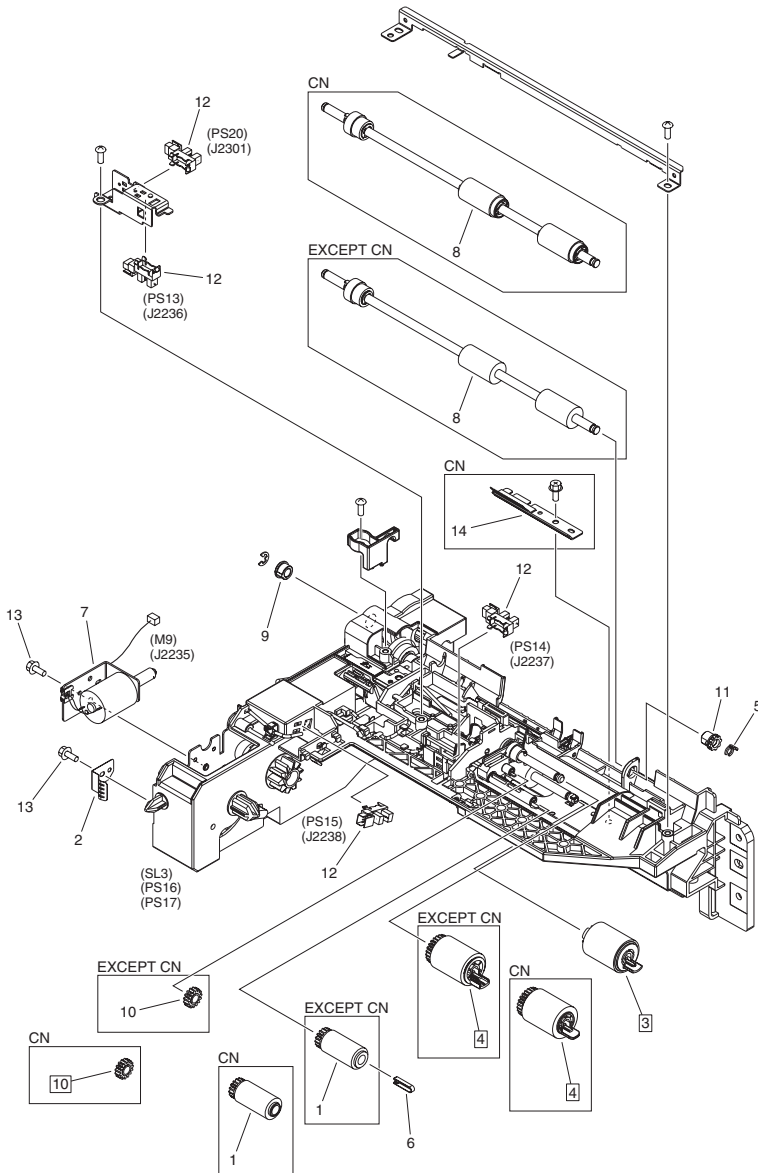
| FIGURE & KEY NO. | PARTS NUMBER | RANK | Q'TY | DESCRIPTION | SERIAL NUMBER/REMARKS | SVC |
|------------------|--------------|------|------|---------------------------|-----------------------|-----|
| Fig.280 | FM4-6504-000 | | 1 | FIXNG DRIVE ASS'Y | | |
| 1 | FK3-1408-000 | | 1 | MOTOR, DC | M1 | |
| 2 | XA9-0702-000 | | 4 | SCREW, W/WASHER, M3X6 | | |
| 3 | VS1-7177-006 | | 1 | CONNECTOR, SNAP TIGHT, BK | | |

FIGURE 300 CASSETTE ASSEMBLY



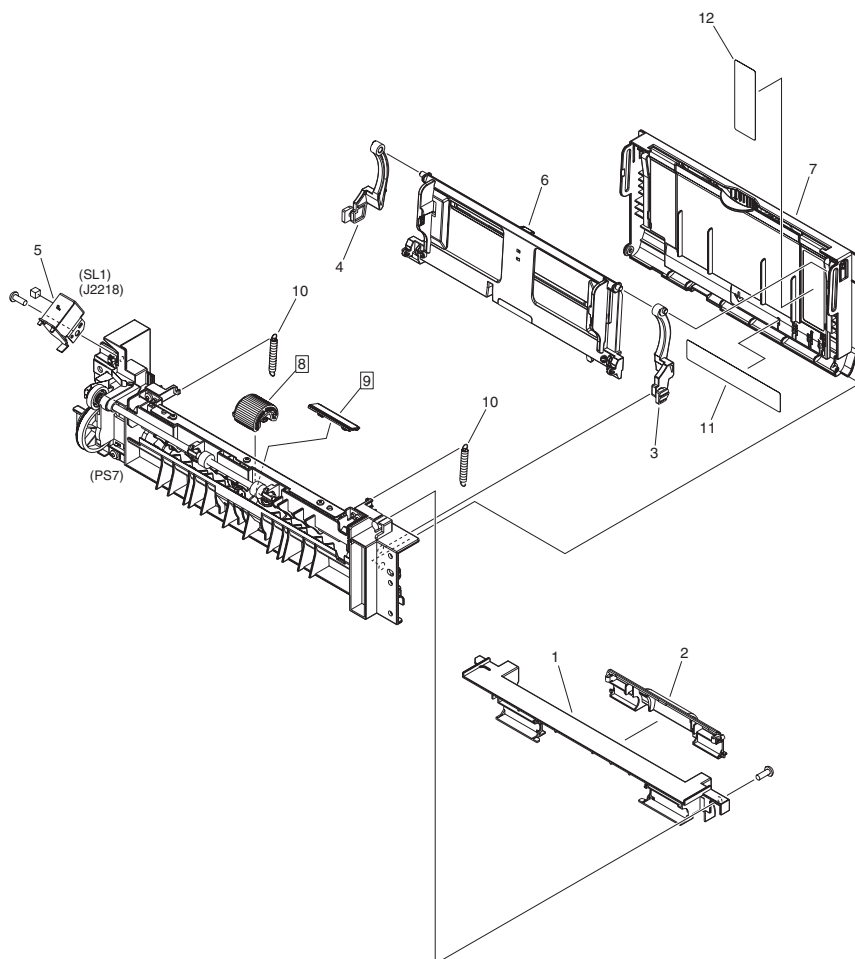
| FIGURE & KEY NO. | PARTS NUMBER | RANK | Q'TY | DESCRIPTION | SERIAL NUMBER/REMARKS | SVC |
|------------------|--------------|------|------|--------------------------------|-----------------------|-----|
| Fig.300 | FM4-6558-000 | | 1 | CASSETTE ASSEMBLY | | |
| 1 | FC0-0913-000 | | 1 | PLATE, FREE STOP | | |
| 2 | FC0-0945-000 | | 1 | LINK, BACK END DETECT | | |
| 3 | FC0-1159-000 | | 1 | SPRING, TORSION | | |
| 4 | FC0-3350-000 | | 1 | PLATE,PAPER SIDE END EXTENSION | | |
| 5 | FC0-3351-000 | | 1 | GEAR, 9T | | |
| 6 | FC0-3427-000 | | 1 | LABEL, PAPER SET | | |
| 7 | FC0-3429-000 | | 1 | LABEL, SIZE INDEX, END, LARGE | | |
| 8 | FC0-3430-000 | | 1 | LABEL, SIZE INDEX, END | | |
| 9 | FC0-3431-000 | | 1 | LABEL, SIZE INDEX, SIDE | | |
| 10 | FC8-2475-000 | | 1 | PLATE, JOINT | | |
| 11 | FC8-4986-000 | | 1 | LINK, BUTTON, UPPER, 2 | | |
| 12 | FC8-4987-000 | | 1 | LINK, BUTTON, LOWER | | |
| 13 | FC8-4990-000 | | 2 | GEAR, 14T | | |
| 14 | FC9-7171-000 | | 1 | SHEET, SEPARATION | | |
| 15 | FC9-7259-000 | | 1 | ARM, LOCK, A | | |
| 16 | FC9-7260-000 | | 1 | ARM, LOCK, B | | |
| 17 | FC9-7261-000 | | 1 | ROLLER, LINK | | |
| 18 | FL3-4878-000 | | 1 | PLATE, CENTER | | |
| 19 | FM4-6533-000 | | 1 | CASSETTE FRONT COVER UNIT | | |
| 20 | FM4-6534-000 | | 1 | BACK END LIMIT PLATE UNIT | | |
| 21 | FM4-6559-000 | | 1 | SIDE END PLATE ASSEMBLY, REAR | | |
| 22 | FM4-6560-000 | | 1 | SIDE END PLATE ASSEMBLY, FRONT | | |
| 23 | FU7-2518-000 | | 2 | SPRING, COMPRESSION | | |
| 24 | XA9-1016-000 | | 1 | SCREW WWASHER, M3X6 | | |
| 25 | XA9-1523-000 | | 2 | SCREW, B, M4X8 | | |
| 501 | XD1-4100-402 | | 2 | TOOTHED LOCK WASHER(SUS) | | |

FIGURE 310 PAPER PICK-UP ASSEMBLY



| FIGURE & KEY NO. | PARTS NUMBER | R A N K | Q'TY | DESCRIPTION | SERIAL NUMBER/REMARKS | S V C |
|------------------|--------------|---------|------|-----------------------------|----------------------------|-------|
| Fig.310 | FM4-6555-000 | | 1 | PAPER PICK-UP ASSEMBLY | EXCEPT CN SL3,PS16,PS17 | |
| Fig.310 | FM4-8075-000 | | 1 | PAPER PICK-UP ASSEMBLY | CN SL3,PS16,PS17 | |
| 1 | FB6-3405-000 | | 1 | ROLLER, PAPER PICK-UP | EXCEPT CN | |
| 1 | FC7-9381-000 | | 1 | ROLLER, PAPER PICK-UP | CN | |
| 2 | FC0-1156-000 | | 1 | PLATE, GROUNDING | | |
| 3 | FC6-6661-000 | | 1 | ROLLER, SEPARATION | EXCEPT CN [DP] | |
| 3 | FE3-1295-000 | | 1 | ROLLER, SEPARATION | CN [DP] | |
| 4 | FC6-7083-000 | | 1 | ROLLER, FEED/SEPARATION | EXCEPT CN [DP] | |
| 4 | FC7-9502-000 | | 1 | ROLLER, FEED/SEPARATION | CN [DP] | |
| 5 | FC6-9867-000 | | 1 | RING, RETAINING | | |
| 6 | FC7-5845-000 | | 1 | STOPPER, ROLLER | | |
| 7 | FM4-6568-000 | | 1 | LIFT MOTOR UNIT | M9 | |
| 8 | FM4-8040-000 | | 1 | VERTICAL PATH ROLLER UNIT | EXCEPT CN | |
| 8 | FM4-8076-000 | | 1 | VERTICAL PATH ROLLER UNIT | CN | |
| 9 | FS5-1943-000 | | 1 | BUSHING | | |
| 10 | FU0-0043-000 | | 1 | GEAR, 15T | [DP] CN ONLY | |
| 11 | FU5-1763-000 | | 1 | BUSHING | | |
| 12 | WG8-5836-000 | | 4 | IC PHOTOINTERRUPTER, HYBRID | PS13,PS14,PS15,PS20 | |
| 13 | XA9-1567-000 | | 2 | SCREW, RS, M3X8.5 | | |
| 14 | FL3-6626-000 | | 1 | ELIMINATOR, STATIC CHARGE | CN | |

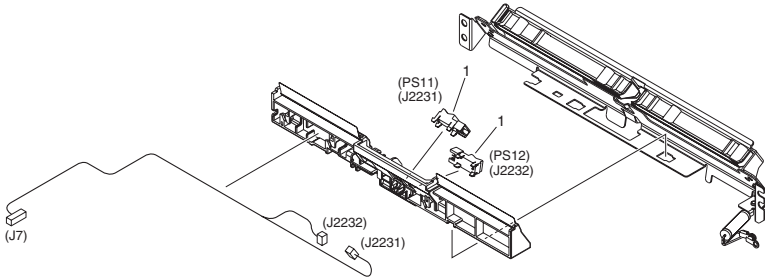
FIGURE 312 MULTI PAPER PICK-UP ASSEMBLY



NOTE : This assembly does not include the parts shown with key No. 11 and 12.
注 : このユニットにKey No. 11, 12の部品は含まれません。

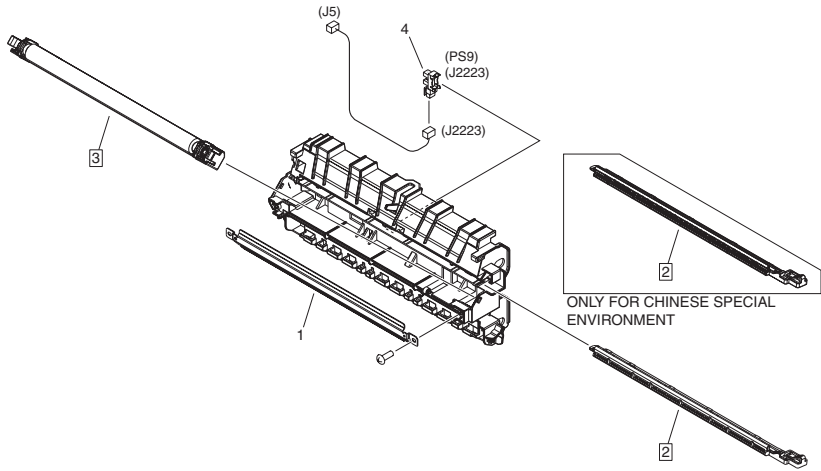
| FIGURE & KEY NO. | PARTS NUMBER | R A N K | Q'TY | DESCRIPTION | SERIAL NUMBER/ REMARKS | S V C |
|------------------|--------------|------------------|------|------------------------------|---------------------------------------|-------------|
| Fig.312 | FM4-6496-000 | | 1 | MULTI PAPER PICK-UP ASSEMBLY | PS7 | |
| 1 | FL3-5660-000 | | 1 | COVER, UPPER | | |
| 2 | FL3-5659-000 | | 1 | COVER, ROLLER | | |
| 3 | FC7-9959-000 | | 1 | HINGE, M.P. PICK UP, LEFT | | |
| 4 | FC7-9960-000 | | 1 | HINGE, M.P. PICK UP, RIGHT | | |
| 5 | FK2-1410-000 | | 1 | SOLENOID | SL1 | |
| 6 | FM4-6540-000 | | 1 | LIFTER PLATE UNIT | | |
| 7 | FM4-6541-000 | | 1 | MULTI TRAY UNIT | | |
| 8 | FL2-3897-000 | | 1 | ROLLER, MP PICK-UP | [DP] | |
| 9 | FL3-4890-000 | | 1 | PAD, SEPARATION | [DP] | |
| 10 | FU6-2423-000 | | 2 | SPRING, TENSION | | |
| 11 | FC0-3399-000 | | 1 | LABEL, MULTI TRAY SIZE | SEE NOTE A/INCH SIZE | |
| 11 | FC0-3400-000 | | 1 | LABEL, MULTI TRAY SIZE | SEE NOTE A SIZE | |
| 11 | FC0-3398-000 | | 1 | LABEL, MULTI TRAY SIZE | SEE NOTE A/B/INCH/K SIZE | |
| 12 | FC0-3433-000 | | 1 | LABEL, PAPER SET SIDE | SEE NOTE US,CA,LTN | |
| 12 | FC0-3401-000 | | 1 | LABEL, PAPER SET SIDE | SEE NOTE EUR | |
| 12 | FC0-3434-000 | | 1 | LABEL, PAPER SET SIDE | SEE NOTE AU,SG,HK,LTN,CN,KR,T W | |

FIGURE 315 PRE-REGISTRATION GUIDE ASS'Y



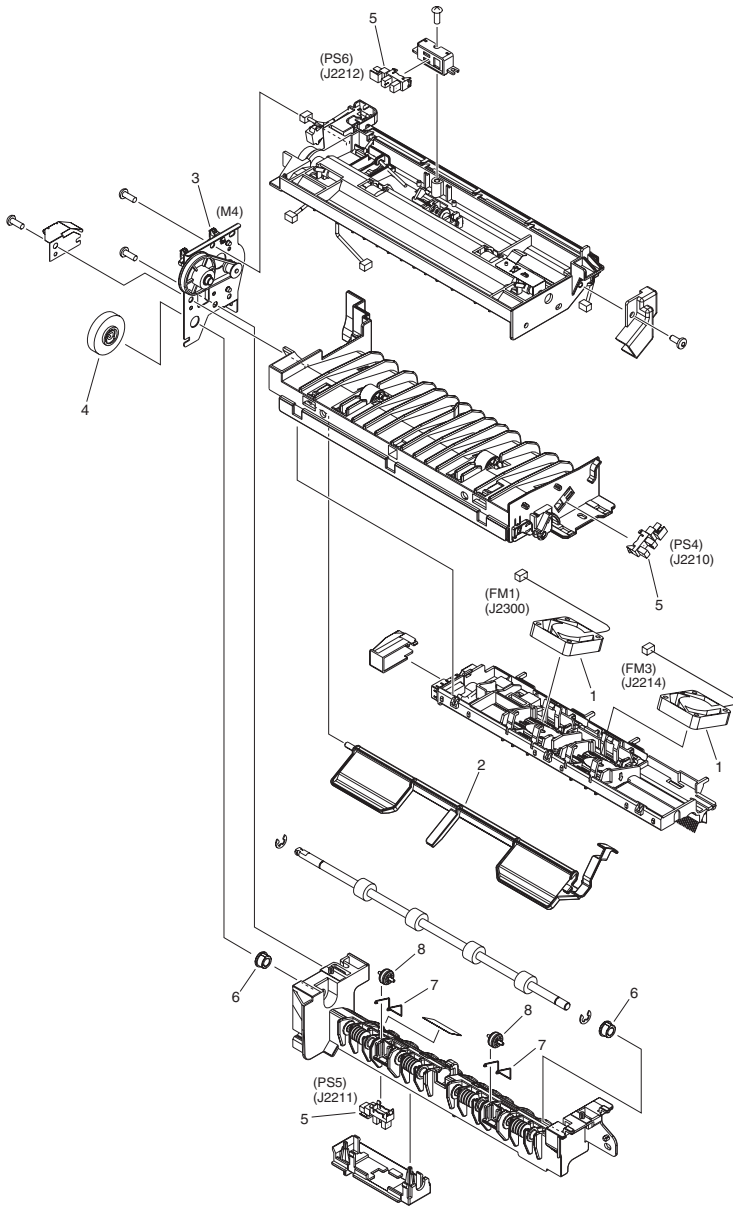
| FIGURE & KEY NO. | PARTS NUMBER | RANK | QTY | DESCRIPTION | SERIAL NUMBER/REMARKS | SVC |
|------------------|--------------|------|-----|------------------------------|-----------------------|-----|
| Fig.315 | FM4-6517-000 | | 1 | PRE-REGISTRATION GUIDE ASS'Y | | |
| 1 | FK2-6470-000 | | 2 | PHOTO-SENSOR, KUA0055C | PS11,PS12 | |

FIGURE 320 TRANSFER PAPER FEED ASSEMBLY



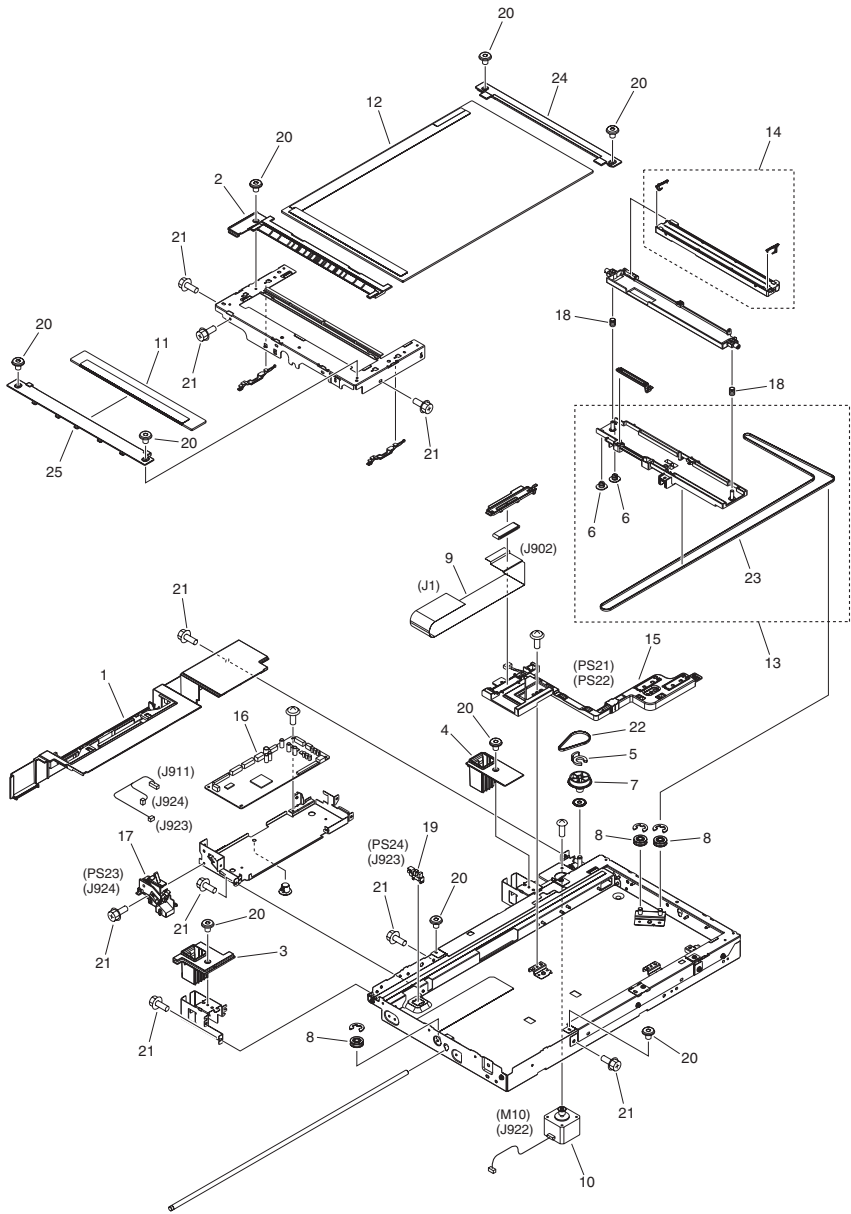
| FIGURE & KEY NO. | PARTS NUMBER | RANK | Q'TY | DESCRIPTION | SERIAL NUMBER/REMARKS | SVC |
|------------------|--------------|------|------|------------------------------|--|-----|
| Fig.320 | FM4-6520-000 | | 1 | TRANSFER PAPER FEED ASSEMBLY | | |
| 1 | FL3-4856-000 | | 1 | GUIDE, ELIMINATOR | | |
| 2 | FL3-4857-000 | | 1 | HOLDER, ELIMINATOR | [DP] | |
| 2 | FM1-A131-000 | | 1 | HOLDER, ELIMINATOR | ONLY FOR CHINESE SPECIAL ENVIRONMENT [DP] | |
| 3 | FM4-6522-000 | | 1 | TRANSFER ROLLER UNIT | [DP] | |
| 4 | WG8-5836-000 | | 1 | IC PHOTOINTERRUPTER, HYBRID | PS9 | |

FIGURE 350 PAPER DELIVERY REVERSE ASS'Y



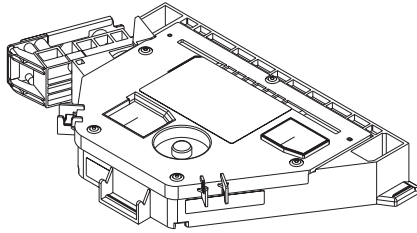
| FIGURE & KEY NO. | PARTS NUMBER | RANK | Q'TY | DESCRIPTION | SERIAL NUMBER/REMARKS | SVC |
|------------------|--------------|------|------|------------------------------|-----------------------|-----|
| Fig.350 | FM4-6505-000 | | 1 | PAPER DELIVERY REVERSE ASS'Y | | |
| 1 | FK2-8755-000 | | 2 | FAN | FM1,FM3 | |
| 2 | FL3-5627-000 | | 1 | LEVER, SENSOR | | |
| 3 | FM4-6546-000 | | 1 | REVERSE DRIVE UNIT | M4 | |
| 4 | FU9-0221-000 | | 1 | GEAR, 38T | | |
| 5 | WG8-5836-000 | | 3 | IC PHOTOINTERRUPTER, HYBRID | PS4,PS5,PS6 | |
| 6 | FS5-1943-000 | | 2 | BUSHING | | |
| 7 | FC0-4029-000 | | 2 | SPRING, ROLLER | | |
| 8 | FC0-4038-000 | | 2 | ROLLER | | |

FIGURE 400 READER ASSEMBLY



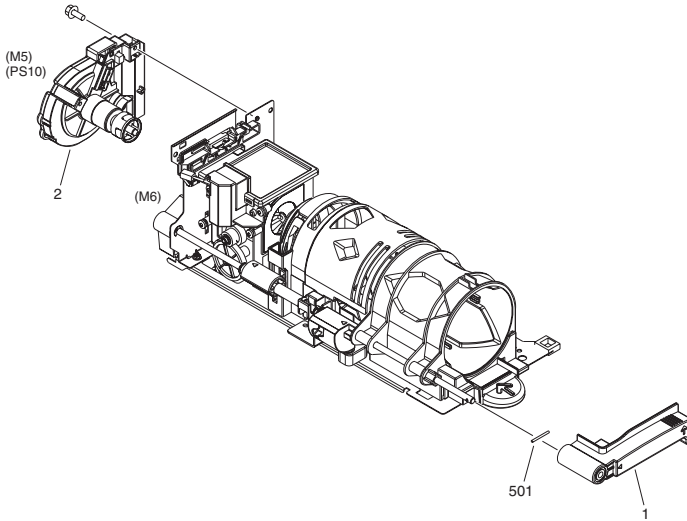
| FIGURE & KEY NO. | PARTS NUMBER | R A N K | Q'TY | DESCRIPTION | SERIAL NUMBER/ REMARKS | S V C |
|------------------|--------------|------------------|------|-------------------------------|---------------------------|-------------|
| Fig.400 | NPN | | RF | READER ASSEMBLY | | |
| 1 | FC0-1079-000 | | 1 | COVER, READER REAR, 1 | | |
| 2 | FC0-1184-000 | | 1 | MOUNT, JUMP | | |
| 3 | FC0-1188-000 | | 1 | COVER, HINGE, LEFT | | |
| 4 | FC0-1191-000 | | 1 | COVER, HINGE, RIGHT | | |
| 5 | FC5-4424-000 | | 1 | CLIP | | |
| 6 | FC6-4511-000 | | 2 | SLIDER | | |
| 7 | FC6-7598-000 | | 1 | PULLEY, 49T/17T | | |
| 8 | FC6-7604-000 | | 3 | PULLEY, DRIVEN | | |
| 9 | FK3-1447-000 | | 1 | CABLE, CIS-READER FLAT | | |
| 10 | FK3-1448-000 | | 1 | MOTOR, STEPPING | M10 | |
| 11 | FL2-3941-000 | | 1 | READER GLASS UNIT | | |
| 12 | FL3-4881-000 | | 1 | GLASS, COPYBOARD | A/INCH SIZE | |
| 12 | FL3-4882-000 | | 1 | GLASS, COPYBOARD | A SIZE | |
| 12 | FL3-4883-000 | | 1 | GLASS, COPYBOARD | A/B/INCH/K SIZE | |
| 13 | FM4-6514-000 | | 1 | CARRIAGE ASS'Y | | |
| 14 | FM4-6536-000 | | 1 | CONTACT IMAGE SENSOR UNIT | | |
| 15 | FM4-6537-000 | | 1 | PAPER SIZE SENSOR UNIT | PS21,PS22 | |
| 16 | FM4-7826-000 | | 1 | READER CONNECTING PCB ASS'Y | | |
| 17 | FM4-7999-000 | | 1 | PHOTO SENSOR UNIT, OPEN/CLOSE | PS23 | |
| 18 | FU8-2953-000 | | 2 | SPRING, COMPRESSION | | |
| 19 | WG8-5836-000 | | 1 | IC PHOTOINTERRUPTER, HYBRID | PS24 | |
| 20 | XA9-0679-000 | | 9 | SCREW, MACH., FLAT HEAD, M3X4 | | |
| 21 | XA9-1567-000 | | AR | SCREW, RS, M3X8.5 | | |
| 22 | XF2-4607-230 | | 1 | BELT, TIMING | | |
| 23 | XF2-4665-530 | | 1 | BELT, TIMING | | |
| 24 | FC0-5110-000 | | 1 | SUPPORT, GLASS, RIGHT | | |
| 25 | FC7-2975-000 | | 1 | SUPPORT, GLASS, LEFT | | |

FIGURE 460 LASER SCANNER UNIT



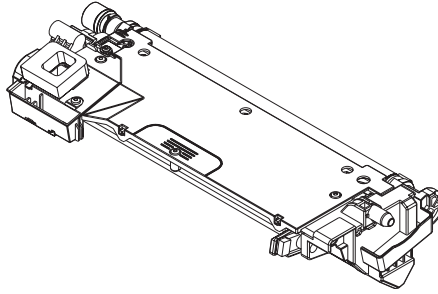
| FIGURE & KEY NO. | PARTS NUMBER | RANK | QTY | DESCRIPTION | SERIAL NUMBER/REMARKS | SVC |
|------------------|--------------|------|-----|--------------------|-----------------------|-----|
| Fig.460 | FM0-1846-000 | | 1 | LASER SCANNER UNIT | | |

FIGURE 620 HOPPER ASSEMBLY



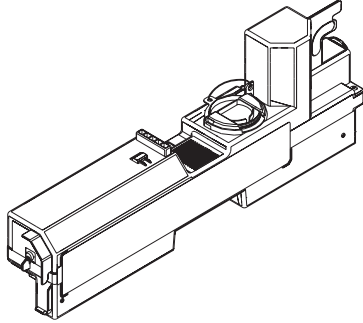
| FIGURE & KEY NO. | PARTS NUMBER | RANK | Q'TY | DESCRIPTION | SERIAL NUMBER/REMARKS | SVC |
|------------------|--------------|------|------|-------------------|-----------------------|-----|
| Fig.620 | FM4-6506-000 | | 1 | HOPPER ASSEMBLY | M6 | |
| 1 | FC0-4061-000 | | 1 | LEVER, SET | | |
| 2 | FM4-8029-000 | | 1 | BOTTLE DRIVE UNIT | M5,PS10 | |
| 501 | XD3-2200-222 | | 1 | PIN | | |

FIGURE 640 DEVELOPING UNIT



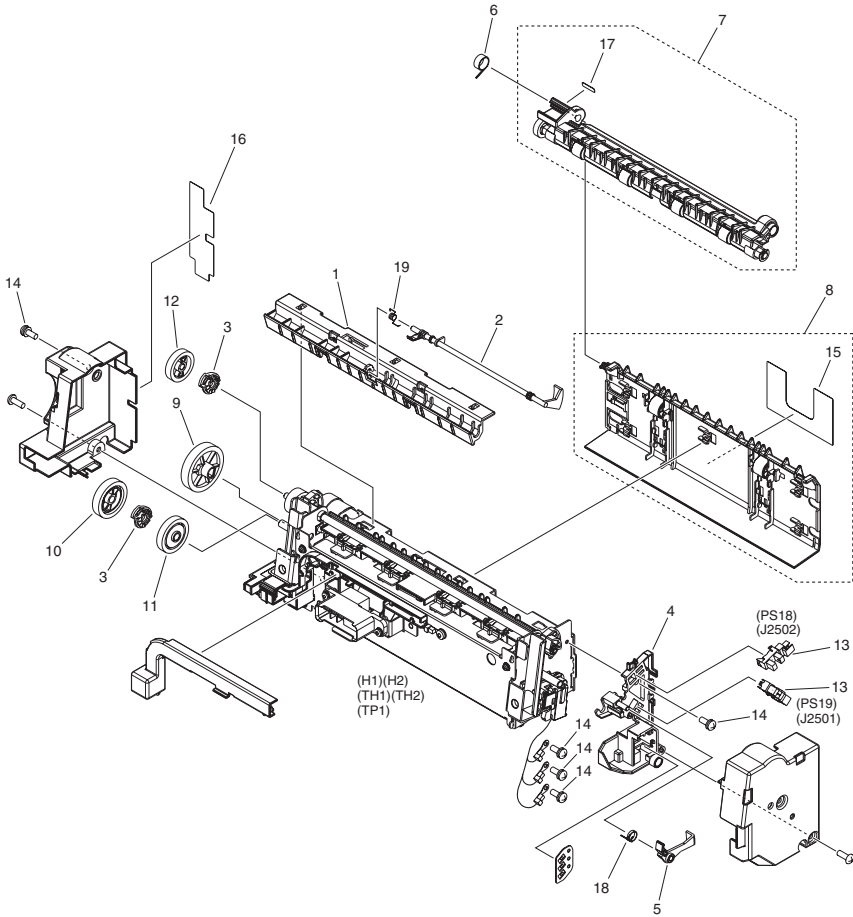
| FIGURE & KEY NO. | PARTS NUMBER | RANK | QTY | DESCRIPTION | SERIAL NUMBER/REMARKS | SVC |
|------------------|--------------|------|-----|-----------------|-----------------------|-----|
| Fig.640 | FM4-6494-000 | | 1 | DEVELOPING UNIT | | |

FIGURE 770 WASTE TONER BOX ASSEMBLY



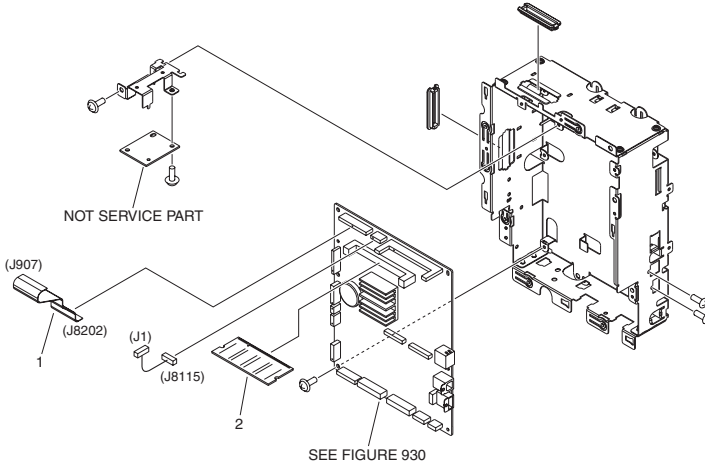
| FIGURE & KEY NO. | PARTS NUMBER | RANK | Q'TY | DESCRIPTION | SERIAL NUMBER/REMARKS | SVC |
|------------------|--------------|------|------|--------------------------|-----------------------|-----|
| Fig.770 | FM4-8035-000 | | 1 | WASTE TONER BOX ASSEMBLY | [DP] | |

FIGURE 810 FIXING ASSEMBLY



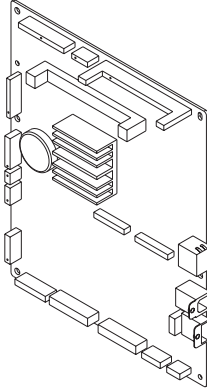
| FIGURE & KEY NO. | PARTS NUMBER | RANK | Q'TY | DESCRIPTION | SERIAL NUMBER/REMARKS | SVC |
|------------------|--------------|------|------|-----------------------------|-----------------------------|-----|
| Fig.810 | FM4-6495-000 | | 1 | FIXING ASSEMBLY | 120V H1,H2,TH1,TH2,TP1 [DP] | |
| Fig.810 | FM4-8050-000 | | 1 | FIXING ASSEMBLY | 230V H1,H2,TH1,TH2,TP1 [DP] | |
| 1 | FC0-0829-000 | | 1 | GUIDE, FIXING, LOWER | | |
| 2 | FC0-0830-000 | | 1 | FLAG, DELIVERY SENSOR | | |
| 3 | FC0-1013-000 | | 1 | CAM | | |
| 4 | FC0-1021-000 | | 1 | GUIDE, FIXING CABLE | | |
| 5 | FC0-1022-000 | | 1 | FLAG, RELEASE SENSOR | | |
| 6 | FC0-4054-000 | | 1 | SPRING, TORSION | | |
| 7 | FM4-6583-000 | | 1 | FIXING DELIVERY LOWER UNIT | | |
| 8 | FM4-6584-000 | | 1 | FIXING DUPLEXING FEED UNIT | | |
| 9 | FU9-0206-000 | | 1 | GEAR, 36T | | |
| 10 | FU9-0207-000 | | 1 | GEAR, 29T | | |
| 11 | FU9-0401-000 | | 1 | GEAR, 27T | | |
| 12 | FU9-0209-000 | | 1 | GEAR, 23T | | |
| 13 | WG8-5836-000 | | 2 | IC PHOTOINTERRUPTER, HYBRID | PS18,PS19 | |
| 14 | XA9-0702-000 | | AR | SCREW, WWASHER, M3X6 | | |
| 15 | FC0-3411-000 | | 1 | LABEL, HIGH TMP.CAUTION | | |
| 16 | FC0-3413-000 | | 1 | LABEL, FIXING JAM DISPOSE | | |
| 17 | FC0-3414-000 | | 1 | LABEL, GREEN | | |
| 18 | FC0-1045-000 | | 1 | SPRING, TORSION | | |
| 19 | FC5-1367-000 | | 1 | SPRING,SENSOR LEVER | | |

FIGURE 900 CONTROLLER BOX ASSEMBLY



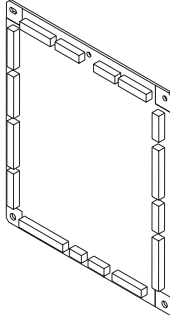
| FIGURE & KEY NO. | PARTS NUMBER | RANK | QTY | DESCRIPTION | SERIAL NUMBER/REMARKS | SVC |
|------------------|--------------|------|-----|-------------------------|--------------------------------------|-----|
| Fig.900 | NPN | | RF | CONTROLLER BOX ASSEMBLY | | |
| 1 | FK3-1446-000 | | 1 | CABLE, IP-READER FLAT | | |
| 2 | FM0-0099-000 | | 1 | DIMM PCB ASSEMBLY | MODELS WITH FAX OR SEND FUNCTIONS | |
| 2 | FM0-0098-000 | | 1 | DIMM PCB ASSEMBLY | MODELS WITHOUT FAX OR SEND FUNCTIONS | |

FIGURE 930 MAIN CONTROLLER PCB ASSEMBLY



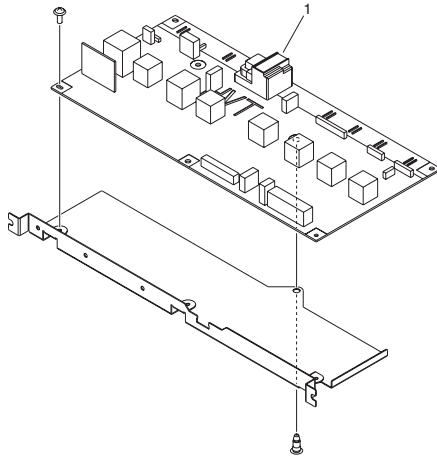
| FIGURE & KEY NO. | PARTS NUMBER | RANK | Q'TY | DESCRIPTION | SERIAL NUMBER/REMARKS | SVC |
|------------------|--------------|------|------|--------------------------------|-----------------------|-----|
| Fig.930 | FM4-8163-000 | | 1 | MAIN CONTROLLER PCB ASSEMBLY | imageRUNNER1730 | |
| Fig.930 | FM4-8164-000 | | 1 | MAIN CONTROLLER PCB ASSEMBLY | imageRUNNER1740 | |
| Fig.930 | FM4-8165-000 | | 1 | MAIN CONTROLLER PCB ASSEMBLY | imageRUNNER1750 | |
| IC | FK2-3218-000 | | 1 | IC, MB87L8650, GATE ARRAY | IC24 | |
| IC | FK2-4903-000 | | 1 | IC, MB87S4030, ASIC, FUJITSU | IC5 | |
| IC | FK2-5758-000 | | 1 | IC, UPD 808000F1-641-RN4-A | IC32 | |
| IC | FK2-7852-000 | | 1 | IC, T6TH5EFG-0002(0), STANDARD | IC28 | |

FIGURE 935 ENGINE CONTROLLER PCB ASS'Y



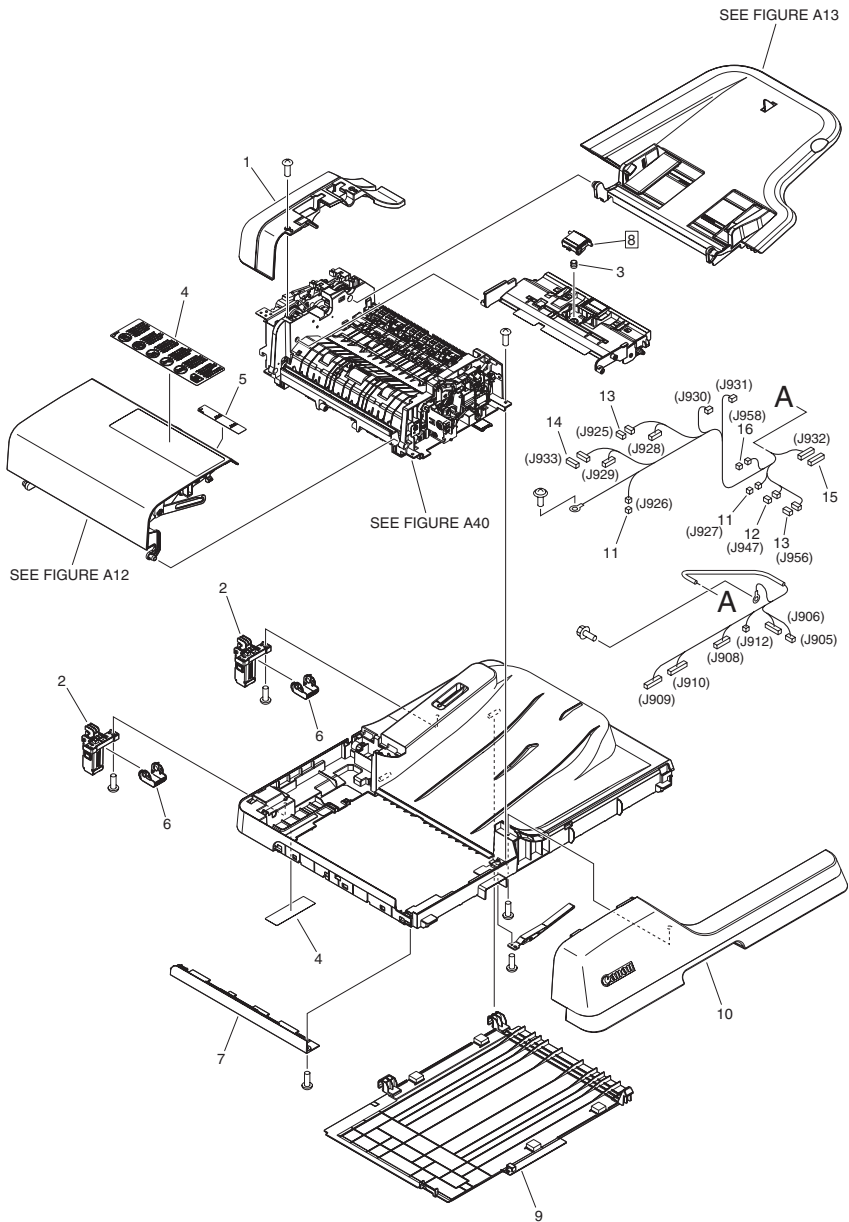
| FIGURE & KEY NO. | PARTS NUMBER | RANK | Q'TY | DESCRIPTION | SERIAL NUMBER/REMARKS | SVC |
|------------------|--------------|------|------|--------------------------------|-----------------------|-----|
| Fig.935 | FM4-7813-000 | | 1 | ENGINE CONTROLLER PCB ASS'Y | 120V | |
| Fig.935 | FM4-7819-000 | | 1 | ENGINE CONTROLLER PCB ASS'Y | 230V | |
| IC | FK2-1773-000 | | 1 | IC,TC200GO2EFG-1031,GATE ARRAY | IC18 | |
| IC | FK2-6450-000 | | 1 | IC, FSA0AC211AA | IC3 | |

FIGURE 980 HIGH VOLTAGE PCB ASSEMBLY



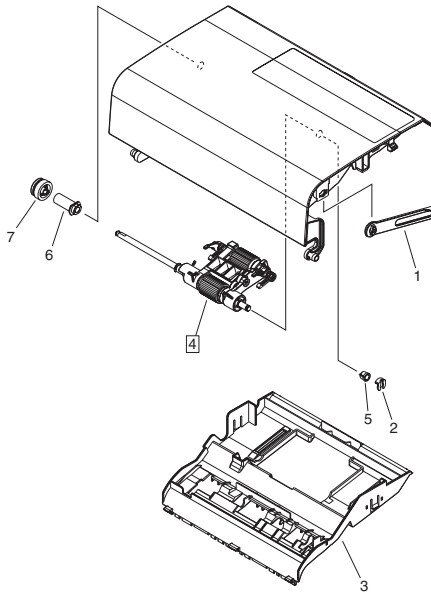
| FIGURE & KEY NO. | PARTS NUMBER | RANK | Q'TY | DESCRIPTION | SERIAL NUMBER/REMARKS | SVC |
|------------------|--------------|------|------|---------------------------|-----------------------|-----|
| Fig.980 | NPN | | RF | HIGH VOLTAGE PCB ASSEMBLY | | |
| 1 | FM4-7814-000 | | 1 | HIGH VOLTAGE PCB ASSEMBLY | | |

FIGURE A10 INTERNAL COMPONENTS (ADF)



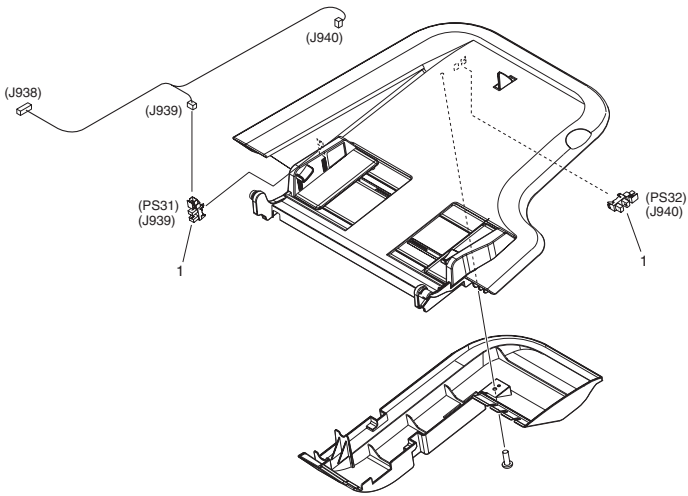
| FIGURE & KEY NO. | PARTS NUMBER | R A N K | Q'TY | DESCRIPTION | SERIAL NUMBER/ REMARKS | S V C |
|------------------|--------------|------------------|------|-----------------------------|---------------------------------|-------------|
| Fig.A10 | NPN | | RF | INTERNAL COMPONENTS | ADF | |
| 1 | FC0-2976-000 | | 1 | COVER, REAR | | |
| 2 | FC0-2978-000 | | 2 | HINGE | | |
| 3 | FU8-2856-000 | | 1 | SPRING, COMPRESSION | | |
| 4 | FC0-3449-000 | | 1 | LABEL, PROHIBITION DOCUMENT | EUR | |
| 4 | FC0-3450-000 | | 1 | LABEL, PROHIBITION DOCUMENT | US,CA,AU,SG,HK,LTN,C N,KR,TW | |
| 5 | FC0-3451-000 | | 1 | LABEL, DOCUMENT SIZE | A SIZE | |
| 5 | FC0-3452-000 | | 1 | LABEL, DOCUMENT SIZE | A/INCH SIZE | |
| 6 | FC0-5254-000 | | 2 | SUPPORT, HINGE | | |
| 7 | FL3-5535-000 | | 1 | COVER, LEFT | | |
| 8 | FL3-7878-000 | | 1 | PAD, SEPARATION | [DP] | |
| 9 | FL3-5544-000 | | 1 | PANEL, COPYBOARD | | |
| 10 | FM4-7735-000 | | 1 | FRONT COVER UNIT | | |
| 11 | VS1-7177-002 | | 2 | CONNECTOR, SNAP TIGHT, BK | | |
| 12 | VS1-7207-003 | | 1 | CONNECTOR, SNAP TIGHT, BK | | |
| 13 | VS1-7207-004 | | 2 | CONNECTOR, SNAP TIGHT, BK | | |
| 14 | VS1-7207-006 | | 1 | CONNECTOR, SNAP TIGHT | | |
| 15 | VS1-7207-008 | | 1 | CONNECTOR, SNAP TIGHT, BK | | |
| 16 | VS1-7507-002 | | 1 | CONNECTOR, 2P | | |

FIGURE A12 PAPER PICK-UP COVER ASSEMBLY (ADF)



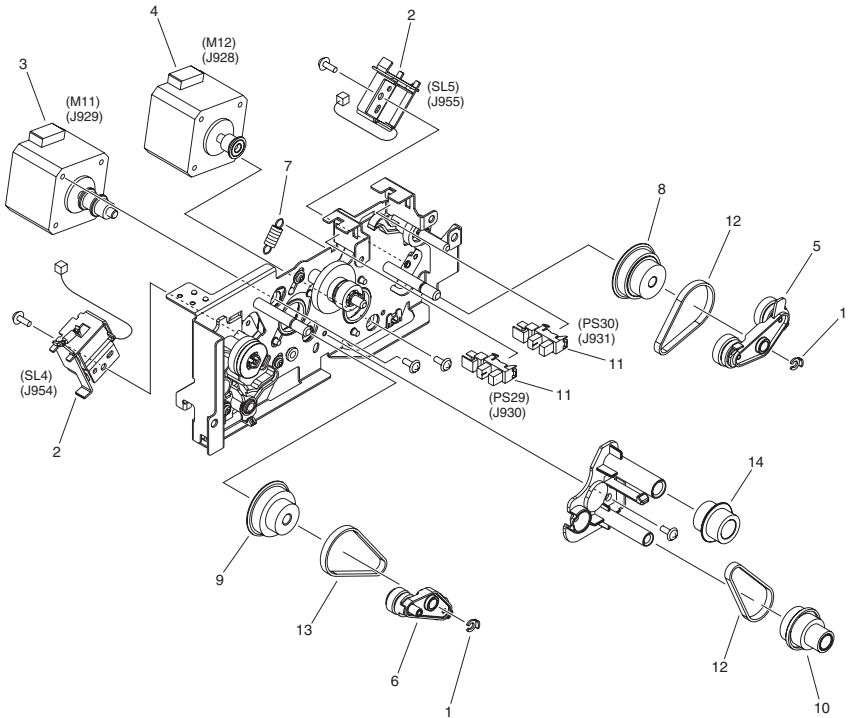
| FIGURE & KEY NO. | PARTS NUMBER | RANK | QTY | DESCRIPTION | SERIAL NUMBER/REMARKS | SVC |
|------------------|--------------|------|-----|------------------------------|-----------------------|-----|
| Fig.A12 | FM4-7733-000 | | 1 | PAPER PICK-UP COVER ASSEMBLY | ADF | |
| 1 | FC0-2970-000 | | 1 | LINK, OPEN/CLOSE | | |
| 2 | FC5-4425-000 | | 1 | CLIP | | |
| 3 | FL3-5532-000 | | 1 | GUIDE, PAPER PICK-UP, LOWER | | |
| 4 | FM4-7732-000 | | 1 | PAPER PICK-UP ROLLER UNIT | [DP] | |
| 5 | FU5-1626-000 | | 1 | BUSHING | | |
| 6 | FC0-2985-000 | | 1 | BUSHING | | |
| 7 | FU9-0354-000 | | 1 | GEAR, 23 T | | |

FIGURE A13 DOCUMENT TRAY ASSEMBLY (ADF)



| FIGURE & KEY NO. | PARTS NUMBER | RANK | Q'TY | DESCRIPTION | SERIAL NUMBER/REMARKS | SVC |
|------------------|--------------|------|------|-----------------------------|-----------------------|-----|
| Fig.A13 | FM4-7734-000 | | 1 | DOCUMENT TRAY ASSEMBLY | ADF | |
| 1 | WG8-5836-000 | | 2 | IC PHOTOINTERRUPTER, HYBRID | PS31,PS32 | |

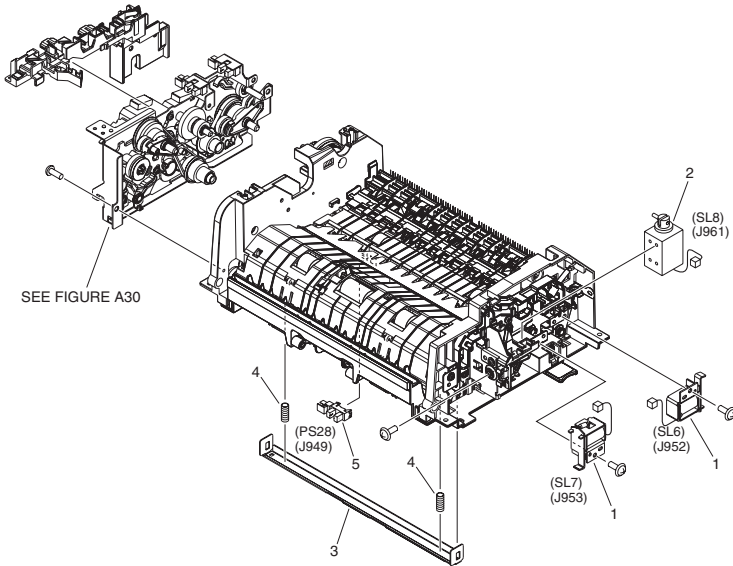
FIGURE A30 DRIVE ASSEMBLY (ADF)



NOTE : This assembly is included in the assembly shown in Figure A40.
 注 : このユニットはFigure A40のユニットに含まれます。

| FIGURE & KEY NO. | PARTS NUMBER | R A N K | Q'TY | DESCRIPTION | SERIAL NUMBER/ REMARKS | S V C |
|------------------|--------------|------------------|------|-----------------------------|---------------------------|-------------|
| Fig.A30 | FM4-7730-000 | | 1 | DRIVE ASSEMBLY | ADF SEE NOTE | |
| 1 | FC5-4424-000 | | 2 | CLIP | | |
| 2 | FK2-0408-000 | | 2 | SOLENOID | SL4,SL5 | |
| 3 | FK3-1633-000 | | 1 | MOTOR, STEPPING | M11 | |
| 4 | FK3-1634-000 | | 1 | MOTOR, STEPPING | M12 | |
| 5 | FL3-5542-000 | | 1 | ARM, SWING, FEED | | |
| 6 | FL3-5543-000 | | 1 | ARM, SWING, REGIST | | |
| 7 | FU8-2974-000 | | 1 | SPRING, TENSION | | |
| 8 | FU9-0345-000 | | 1 | PULLEY, 45T/GEAR, 24T | | |
| 9 | FU9-0358-000 | | 1 | PULLEY, 45T/GEAR, 36T | | |
| 10 | FU9-0367-000 | | 1 | PULLEY, 33T/GEAR, 36T/24T | | |
| 11 | WG8-5836-000 | | 2 | IC PHOTOINTERRUPTER, HYBRID | PS29,PS30 | |
| 12 | XF2-1606-040 | | 2 | BELT, TIMING | | |
| 13 | XF2-1606-940 | | 1 | BELT, TIMING | | |
| 14 | FU9-0353-000 | | 1 | GEAR, 20T | | |

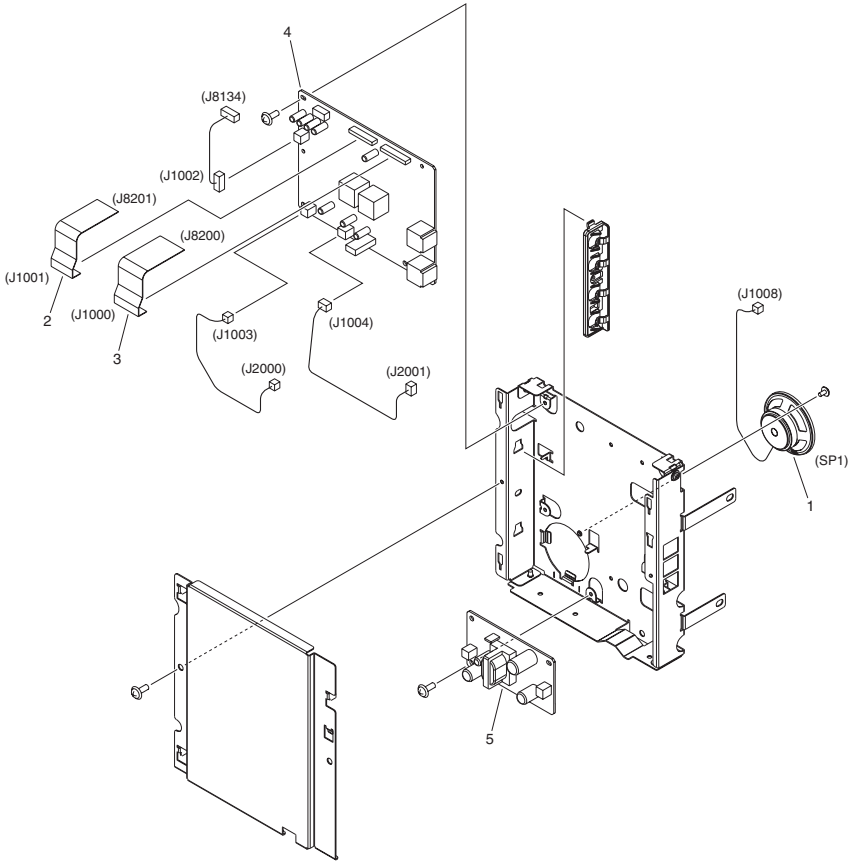
FIGURE A40 PAPER FEED ASSEMBLY (ADF)



NOTE : This assembly includes the assembly shown in Figure A30.
注 : このユニットはFigure A30のユニットを含みます。

| FIGURE & KEY NO. | PARTS NUMBER | RANK | Q'TY | DESCRIPTION | SERIAL NUMBER/REMARKS | SVC |
|------------------|--------------|------|------|-----------------------------|--------------------------------|-----|
| Fig.A40 | FM4-7736-000 | | 1 | PAPER FEED ASSEMBLY | ADF SEE NOTE PS25,PS26,PS27 | |
| 1 | FK2-0408-000 | | 2 | SOLENOID | SL6,SL7 | |
| 2 | FK2-6871-000 | | 1 | SOLENOID | SL8 | |
| 3 | FL3-5556-000 | | 1 | STAY, READ | | |
| 4 | FU7-2192-000 | | 2 | SPRING, COMPRESSION | | |
| 5 | WG8-5836-000 | | 1 | IC PHOTOINTERRUPTER, HYBRID | PS28 | |

FIGURE T20 FAX ASSEMBLY (FAX model)



| FIGURE & KEY NO. | PARTS NUMBER | RANK | Q'TY | DESCRIPTION | SERIAL NUMBER/REMARKS | SVC |
|------------------|--------------|------|------|---------------------------|-----------------------|-----|
| Fig.T20 | NPN | | RF | FAX ASSEMBLY | FAX model | |
| 1 | FK2-9442-000 | | 1 | SPEAKER | SP1 | |
| 2 | FK3-1444-000 | | 1 | CABLE, IP-NCU FLAT(21PIN) | | |
| 3 | FK3-1445-000 | | 1 | CABLE, IP-NCU FLAT(24PIN) | | |
| 4 | FM4-8166-000 | | 1 | FAX PCB ASSEMBLY | | |
| 5 | FM4-8168-000 | | 1 | OFFHOOK PCB ASSEMBLY | | |

FIGURE ZZA

MECHANICAL STANDARD PARTS (HOW TO USE)

Mechanical standard parts

機械標準部品

About a mechanical standard parts

A Mechanical standard parts is a mechanical part which not parts peculiar to a product. They are parts which are common to a Canon product and are used, such as a screw and a washer. The Fig No. and parts number of the mechanical standard parts are not listed in the product parts catalog. Refer to the parts catalog of mechanical standard parts when checking the parts number for screw or washer etc. and identify them by part shape or size.

機械標準部品とは

機械標準部品とは、製品特有の部品ではなく、ねじやワッシャなどキヤノン製品共通で使用されている機械部品（メカ部品）のことです。製品のパーツカタログには、機械標準部品のFig No.や部品番号は記載しておりません。ねじや、ワッシャ等の部品番号を調べるときは、機械標準部品のパーツカタログを参照し、部品の形状や大きさから判断し、使用している部品を調べてください。

Material and surface treatment of a mechanical standard parts

Material and surface treatment of mechanical standard parts are assigned commonly for each part. Refer to the Table 1 for the parts which material and surface treatment are assigned as numbers.

機械標準部品の材料および表面処理

機械標準部品の材料および表面処理については、各種部品共通で決められています。材料および表面処理が番号で決められている部品については、表1を参照してください。

Table 1 Material and Surface treatment
表1 材料および表面処理

| No. 番号 | Material 材料 | Surface treatment 表面処理 | Color 色 |
|--------|--------------------------|--|------------|
| 1 | Stainless steel ステンレス | Stainless steel black coloring (BC4) ステンレス黒着色(BC4) | Black 黒 |
| 2 | | not to be given なし | White 白 |
| 3 | Brass 黄銅 | Regular nickel plating (NL) 普通ニッケルメッキ(NL) | White 白 |
| 4 | | Black nickel plating (BN) 黒色ニッケルメッキ(BN) | Black 黒 |
| 5 | Steel 鋼 | White zinc trivalent chromate treating (ZC3) 白色亜鉛3価クロメート(ZC3) | White 白 |
| 6 | | Regular nickel chromium plating (NC) 普通ニッケルクロムメッキ(NC) | White 白 |
| 7 | | Regular nickel plating (NL) 普通ニッケルメッキ(NL) | White 白 |
| 8 | | Iron and steel phosphating (P1) 鉄鋼磷酸塩処理(P1) | Black 黒 |
| 9 | | Black zinc trivalent chromate treating (BZ3) 黒色亜鉛3価クロメート(BZ3) | Black 黒 |

FIGURE ZZB MECHANICAL STANDARD PARTS (SCREWS)

1. Screws ねじ

How to read Parts Numbers
部品番号の見方

Screws
ねじ

XB1-2400-609

Type No.
類別番号

Normal designation (d)
ねじの呼び(d)

Length (L)
ねじの長さ(L)

Material and Surface treatment
材料および表面処理

XB1-2 expresses Binding head machine screw.
XB1-2は、バインドねじを表す

40 expresses M4.0.
40は、M4.0を表す

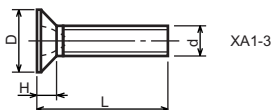
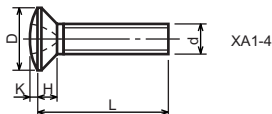
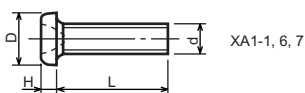
0-60 expresses a length of 6.0mm.
0-60は、6.0mmの長さを表す

9 expresses Steel (Black zinc trivalent chromate treating) from Table 1.

9は、表1より鋼(黒色亜鉛3価クロメート)を表す

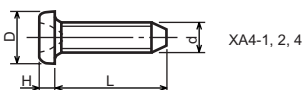
1-1. Cross Recessed Head Screws for Precision Equipments

精密機器用十字穴付き小ねじ

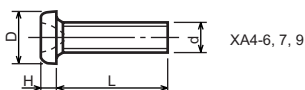


| Type No. 類別番号 | Type 類別 | Head size (mm) 頭部寸法 (mm) | | | | | | | |
|------------------|--|-----------------------------|-------|------|------|------|------|------|------|
| | | M1.4 | M1.6 | M1.7 | M2 | M2.5 | M2.6 | | |
| XA1-1 | Pan head Class 1 なべ1種 | D | XA1-1 | 2 | 2.4 | 2.5 | 3 | 3.8 | 4 |
| | | H | XA1-1 | 0.5 | 0.55 | 0.5 | 0.6 | 0.9 | 0.8 |
| XA1-3 | Countersunk head Class 1 さら1種 | D | XA1-3 | 2 | 2.4 | 2.5 | 3 | 3.8 | 4 |
| | | H | XA1-3 | 0.48 | 0.55 | 0.58 | 0.73 | 0.85 | 0.93 |
| XA1-4 | Oval countersunk head Class 1 丸さら1種 | D | XA1-4 | 2 | 2.4 | 2.5 | 3 | 3.8 | 4 |
| | | H + K | XA1-4 | 0.68 | 0.8 | 0.88 | 1 | 1.25 | 1.3 |
| XA1-6 | Pan head Class 3 なべ3種 | D | XA1-6 | 2.5 | 2.8 | 3 | 3.5 | 4.3 | 4.5 |
| | | H | XA1-6 | 0.8 | 0.85 | 0.9 | 1 | 1.3 | 1.2 |
| XA1-7 | Pan head Class 2 なべ2種 | D | XA1-7 | 2.5 | 2.8 | 3 | 3.5 | 4.3 | 4.5 |
| | | H | XA1-7 | 0.5 | 0.55 | 0.5 | 0.6 | 0.9 | 0.8 |

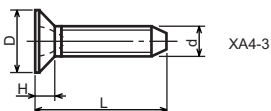
1-2. Precision Tapping Screws
精密用タッピンねじ



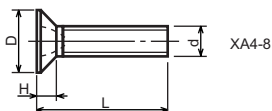
XA4-1, 2, 4



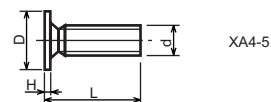
XA4-6, 7, 9



XA4-3



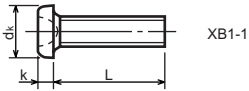
XA4-8



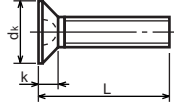
XA4-5

| Type No. 類別番号 | Type 類別 | Head size (mm) 頭部寸法 (mm) | | | | | | |
|------------------|---|-----------------------------|------|------|------|------|------|------|
| | | M1.4 | M1.6 | M1.7 | M2 | M2.5 | M2.6 | |
| XA4-1 | With tapered end pan head Class 1 絞りなべ1種 | D XA4-1 | 2 | 2.4 | 2.5 | 3 | 3.8 | 4 |
| | | H XA4-1 | 0.5 | 0.55 | 0.5 | 0.6 | 0.9 | 0.8 |
| XA4-2 | With tapered end pan head Class 3 絞りなべ3種 | D XA4-2 | 2.5 | 2.8 | 3 | 3.5 | 4.3 | 4.5 |
| | | H XA4-2 | 0.8 | 0.85 | 0.9 | 1 | 1.3 | 1.2 |
| XA4-3 | With tapered end countersunk head 絞り-さら | D XA4-3 | 2 | 2.4 | 2.5 | 3 | 3.8 | 4 |
| | | H XA4-3 | 0.48 | 0.55 | 0.58 | 0.73 | 0.85 | 0.93 |
| XA4-4 | With tapered end pan head Class 2 絞りなべ2種 | D XA4-4 | 2.5 | 2.8 | 3 | 3.5 | 4.3 | 4.5 |
| | | H XA4-4 | 0.5 | 0.55 | 0.5 | 0.6 | 0.9 | 0.8 |
| XA4-5 | With parallel end ultra thin head ストレート-超薄頭 | D XA4-5 | 2.5 | 2.8 | 3 | - | - | - |
| | | H XA4-5 | 0.2 | 0.2 | 0.2 | - | - | - |
| XA4-6 | With parallel end pan head Class 1 ストレートなべ1種 | D XA4-6 | 2 | 2.4 | 2.5 | 3 | 3.8 | 4 |
| | | H XA4-6 | 0.5 | 0.55 | 0.5 | 0.6 | 0.9 | 0.8 |
| XA4-7 | With parallel end pan head Class 3 ストレートなべ3種 | D XA4-7 | 2.5 | 2.8 | 3 | 3.5 | 4.3 | 4.5 |
| | | H XA4-7 | 0.8 | 0.85 | 0.9 | 1 | 1.3 | 1.2 |
| XA4-8 | With parallel end countersunk head ストレート-さら | D XA4-8 | 2 | 2.4 | 2.5 | 3 | 3.8 | 4 |
| | | H XA4-8 | 0.48 | 0.55 | 0.58 | 0.73 | 0.85 | 0.93 |
| XA4-9 | With parallel end pan head Class 2 ストレートなべ2種 | D XA4-9 | 2.5 | 2.8 | 3 | 3.5 | 4.3 | 4.5 |
| | | H XA4-9 | 0.5 | 0.55 | 0.5 | 0.6 | 0.9 | 0.8 |

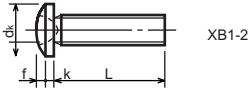
1-3. Cross Recessed Head Screws
 一般用十字穴付き小ねじ



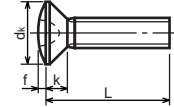
XB1-1



XB1-3



XB1-2

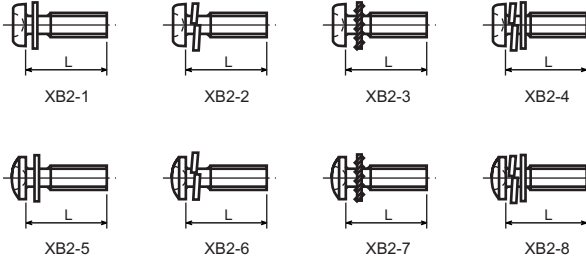


XB1-4

| Type No. 類別番号 | Type 類別 |
|------------------|------------------------------|
| XB1-1 | Pan head なべ |
| XB1-2 | Binding head バインド |
| XB1-3 | Countersunk head さら |
| XB1-4 | Oval countersunk head 丸さら |

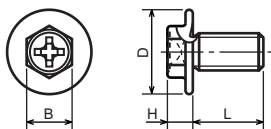
| | | Head size (mm) 頭部寸法 (mm) | | | | | |
|------------------------------|-------|-----------------------------|------|------|------|-----|------|
| | | M2 | M2.5 | M2.6 | M3 | M4 | M5 |
| dk | XB1-1 | 3.5 | 4.5 | 4.5 | 5.5 | 7 | 9 |
| k | XB1-1 | 1.3 | 1.7 | 1.7 | 2 | 2.6 | 3.3 |
| dk | XB1-2 | 4.3 | 5.3 | 5.5 | 6.3 | 8.3 | 10.3 |
| k+f | XB1-2 | 1.2 | 1.5 | 1.6 | 1.9 | 2.5 | 3.1 |
| dk | XB1-3 | 4 | 5 | - | 6 | 8 | 10 |
| k | XB1-3 | 1.2 | 1.45 | - | 1.75 | 2.3 | 2.8 |
| dk | XB1-4 | 4 | 5 | - | 6 | 8 | 10 |
| k+f | XB1-4 | 1.6 | 2 | - | 2.45 | 3.2 | 4 |
| Screw part length ねじ部長さ b | | 8 | 12 | 12 | 12 | 16 | 20 |

1-4. Cross Recessed Head Screws with Captive Washer
座金組込み十字穴付き小ねじ



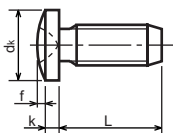
| Type No. 類別番号 | Type 類別 |
|------------------|---|
| XB2-1 | Pan head + Plain washer (circular bright) なべねじ+平座金 |
| XB2-2 | Pan head + Spring washer なべねじ+ばね座金 |
| XB2-3 | Pan head + Toothed lock washer なべねじ+歯付座金 |
| XB2-4 | Pan head + Spring washer and plain washer (circular bright) なべねじ+(ばね+平)座金 |
| XB2-5 | Binding head + Plain washer (circular bright) バインドねじ+平座金 |
| XB2-6 | Binding head + Spring washer バインドねじ+ばね座金 |
| XB2-7 | Binding head + Toothed lock washer バインドねじ+歯付座金 |
| XB2-8 | Binding head + Spring washer and plain washer (circular bright) バインドねじ+(ばね+平)座金 |

1-5. Hexagon Head Tapping Screws for Metallic Materials
 金属用六角タッピンねじ



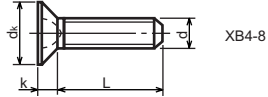
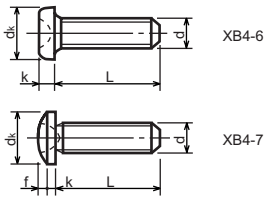
| Type No. 類別番号 | Type 類別 | Head size (mm) 頭部寸法 (mm) | |
|------------------|--|-----------------------------|---------|
| | | M3 | M4 |
| XB3-6 | For metallic materials 金属用タッピン | D | 8 10 |
| | | B | 5.5 5.5 |
| XB3-7 | For metallic materials with clawed 金属用タッピン-つめ付き | H XB3-6 | 3.1 3.1 |
| | | H XB3-7 | 3.2 3.2 |

1-6. Special Tapping Screws
 特殊タッピンねじ



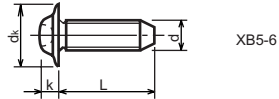
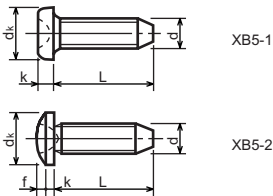
| Type No. 類別番号 | Type 類別 | Head size (mm) 頭部寸法 (mm) | |
|------------------|----------------------|-----------------------------|---------|
| | | M3 | M4 |
| XB4-5 | Binding head バインド | dk | 6.3 8.3 |
| | | k | 1.3 1.7 |
| | | k+f | 1.9 2.5 |

1-7. General Head Tapping Screws
一般用タッピンねじ



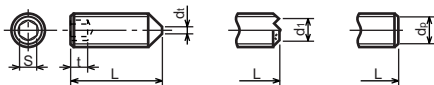
| Type No. 類別番号 | Type 類別 | Head size (mm) 頭部寸法 (mm) | | | | | | |
|------------------|------------------------|-----------------------------|------|------|-----|------|-----|------|
| | | M2 | M2.5 | M2.6 | M3 | M4 | M5 | |
| XB4-6 | Pan head なべ | d_k XB4-6 | 3.5 | 4.5 | 4.5 | 5.5 | 7 | 9 |
| | | k XB4-6 | 1.3 | 1.7 | 1.7 | 2 | 2.6 | 3.3 |
| XB4-7 | Binding head バインド | d_k XB4-7 | 4.3 | 5.3 | 5.5 | 6.3 | 8.3 | 10.3 |
| | | $k+f$ XB4-7 | 1.2 | 1.5 | 1.6 | 1.9 | 2.5 | 3.1 |
| XB4-8 | Countersunk head さら | d_k XB4-8 | 4 | 5 | 5.2 | 6 | 8 | 10 |
| | | k XB4-8 | 1.2 | 1.45 | 1.5 | 1.75 | 2.3 | 2.8 |

1-8. Tapping Screws for Metallic Materials
金属用タッピンねじ



| Type No. 類別番号 | Type 類別 | Head size (mm) 頭部寸法 (mm) | | | | | |
|------------------|----------------------------|-----------------------------|------|-----|------|-----|------|
| | | M2.5 | M2.6 | M3 | M4 | M5 | |
| XB5-1 | Pan head なべ | d_k XB5-1 | 4.5 | 4.5 | 5.5 | 7 | 9 |
| | | k XB5-1 | 1.7 | 1.7 | 2 | 2.6 | 3.3 |
| XB5-2 | Binding head バインド | d_k XB5-2 | 5.5 | 5.5 | 6.3 | 8.3 | 10.3 |
| | | $k+f$ XB5-2 | 1.6 | 1.6 | 1.9 | 2.5 | 3.1 |
| XB5-6 | Flanged pan head つば付きなべ | d_k XB5-6 | 6.5 | 6.5 | 8 | 10 | 12 |
| | | k XB5-6 | 2.1 | 2.1 | 1.75 | 3.2 | 4 |

1-9. Hexagon Socket Set Screws
六角穴付止めねじ



XB6-1

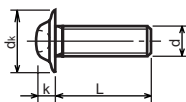
XB6-2

XB6-3

| Type No. 類別番号 | Type 類別 |
|------------------|-------------------------|
| XB6-1 | Cone point とがり先 |
| XB6-2 | Double point ダブルポイント |
| XB6-3 | Flat point 平先 |

| | Head size (mm) 頭部寸法 (mm) | | | | | | |
|--------------------------|-----------------------------|------|--------------|------|------|------|-----|
| | M1.6 M1.7 | M2 | M2.5 M2.6 | M3 | M5 | M5 | M6 |
| S | 0.7 | 0.9 | 1.3 | 1.5 | 2 | 2.5 | 3 |
| t | 1.5 | 1.7 | 2 | 2 | 2.5 | 3 | 3.5 |
| d _{t max} XB6-1 | 0.4 | 0.5 | 0.65 | 0.75 | 1 | 1.25 | 1.5 |
| d _{l max} XB6-2 | - | 1.2 | 1.5 | 1.7 | 2.2 | 2.8 | 3.3 |
| d _{l min} XB6-2 | - | 1 | 1.2 | 1.4 | 1.9 | 2.4 | 2.9 |
| d _{p max} XB6-3 | 0.8 | 1 | 1.5 | 2 | 2.5 | 3.5 | 4 |
| d _{p min} XB6-3 | 0.55 | 0.75 | 1.25 | 1.75 | 2.25 | 3.2 | 3.7 |

1-10. Flanged Pan Head Machine Screws
つば付きなべ小ねじ



| Type No. 類別番号 | Type 類別 |
|------------------|----------------------------|
| XB6-7 | Flanged pan head つば付きなべ |

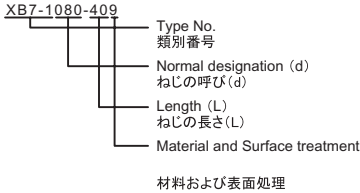
| | Head size (mm) 頭部寸法 (mm) | | | | |
|----------------|-----------------------------|--------------|-----|-----|----|
| | M2 | M2.5 M2.6 | M3 | M5 | M5 |
| d _k | 5 | 6.5 | 8 | 10 | 12 |
| k | 1.7 | 2.1 | 2.5 | 3.2 | 4 |

FIGURE ZZC MECHANICAL STANDARD PARTS (BOLTS)

2. Bolts (Socket head cap screw) ボルト

How to read Parts Numbers
部品番号の見方

Bolt (Socket head cap screw)
ボルト



XB7-1 expresses Hexagon socket head cap screws.
XB7-1は、六角穴付きボルトを表す

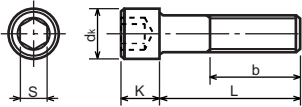
080 expresses M8.0.
080は、M8.0を表す

40 expresses a length of 40mm.
40は、40mmの長さを表す

9 expresses Steel (Black zinc trivalent chromate
treating) from Table 1.

9は、表1より鋼(黒色亜鉛3価クロメート)を表す

2-1. Hexagon socket head cap screws 六角穴付きボルト



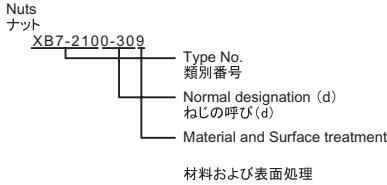
| Type No. 類別番号 | Type 類別 |
|------------------|--|
| XB7-1 | Hexagon socket head cap screws 六角穴付きボルト |

| | Head size (mm) 頭部寸法 (mm) | | | | | | |
|---|-----------------------------|----|-----|----|----|-----|-----|
| | M3 | M4 | M5 | M6 | M8 | M10 | M12 |
| S | 2.5 | 3 | 4 | 5 | 6 | 8 | 10 |
| d_k | 5.5 | 7 | 8.5 | 10 | 13 | 16 | 18 |
| K | 3 | 4 | 5 | 6 | 8 | 10 | 12 |
| Screw part length b_{max} ねじ部長さ b_{max} | 18 | 20 | 22 | 24 | 28 | 32 | 36 |

FIGURE ZZD MECHANICAL STANDARD PARTS (NUTS)

3. Nuts ナット

How to read Parts Numbers
部品番号の見方



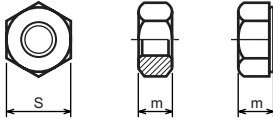
XB7-210 expresses Hexagon nut class 1.
XB7-210は、六角ナット1種を表す

0-30 expresses M3.0.
0-30は、M3.0を表す

9 expresses Steel (Black zinc trivalent chromate
treating) from Table 1.

9は、表1より鋼(黒色亜鉛3価クロメート)を表す

3-1. Hexagon Nuts and Hexagon Thin Nuts 六角ナット



| Type No. 類別番号 | Type 類別 |
|------------------|--|
| XB7-210 | Hexagon nut Class 1 六角ナット-1種 |
| XB7-220 | Hexagon nut Class 3 六角ナット-3種 |
| XB7-230 | Hexagon nut Style 1 double chamfered 六角ナット-スタイル1-両面とり |
| XB7-231 | Hexagon nut Style 1 washer faced 六角ナット-スタイル1-座付き |
| XB7-240 | Hexagon nut Style 2 double chamfered 六角ナット-スタイル2-両面とり |
| XB7-241 | Hexagon nut Style 2 washer faced 六角ナット-スタイル2-座付き |
| XB7-250 | Hexagon nut 六角ナット |
| XB7-260 | Hexagon thin nut double chamfered 六角低ナット-両面とり |
| XB7-270 | Hexagon thin nut not chamfered 六角低ナット-面とり無し |

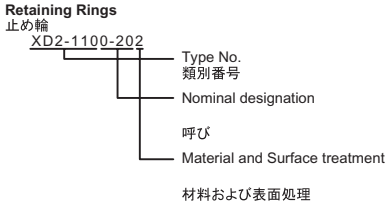
| | Head size (mm) 頭部寸法 (mm) | | | | | | |
|----------------|-----------------------------|------|-----|-----|-----|-----|-----|
| | M2 | M2.5 | M3 | M4 | M5 | M6 | M8 |
| S | 4 | 5 | 5.5 | 7 | 8 | 10 | 13 |
| m XB7-210 | 1.6 | 2 | 2.4 | 3.2 | 4 | 5 | 6.5 |
| m XB7-220 | 1.2 | 1.6 | 1.8 | 2.4 | 3.2 | 3.6 | 5 |
| m XB7-230, 231 | 1.6 | 2 | 2.4 | 3.2 | 4.7 | 5.2 | 6.8 |
| m XB7-240, 241 | - | - | - | - | 5.1 | 5.7 | 7.5 |
| m XB7-250 | - | - | - | - | 5.6 | 6.1 | 7.9 |
| m XB7-260 | 1.2 | 1.6 | 1.8 | 2.2 | 2.7 | 3.2 | 4 |
| m XB7-270 | 1.2 | 1.6 | 1.8 | 2.2 | 2.7 | 3.2 | 4 |

FIGURE ZZE MECHANICAL STANDARD PARTS (RETAINING RINGS)

5. Retaining Rings

止め輪

How to read Parts Numbers
部品番号の見方



XD2-110 expresses retaining ring-E type (Type1).
XD2-110は、E形止め輪(1種)を表す

0-20 expresses a 020 of nominal designation.
(See Table 5)

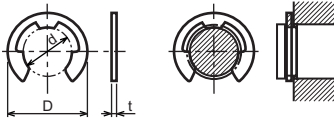
0-20は、呼び020を表す(表5参照)

2 expresses Stainless steel (Surface treatment is not to be given) from Table 1.

2は、表1よりステンレス(表面処理なし)を表す

5-1. Retaining Rings - E type

E形止め輪

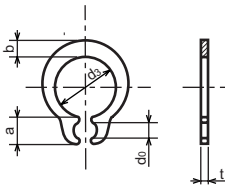


| Type No. 類別番号 | Type 類別 |
|------------------|---|
| XD2-110 | Retaining ring - E type (Type 1) E形止め輪(1種) |
| XD2-120 | Retaining ring - E type (Type 2) E形止め輪(2種) |

Table 5 表5

| Type 種類 | Nominal designation 呼び | d (mm) | D (mm) | t (mm) |
|--------------|------------------------------|--------|--------|--------|
| Type 1 1種 | 007 | 0.65 | 2 | 0.2 |
| | 010 | 0.95 | 2.8 | 0.2 |
| | 013 | 1.25 | 3.3 | 0.3 |
| | 017 | 1.65 | 4.2 | 0.4 |
| | 020 | 1.95 | 4.6 | 0.5 |
| | 024 | 2.35 | 6 | 0.6 |
| | 028 | 2.74 | 6.5 | 0.6 |
| | 032 | 3.14 | 7.2 | 0.6 |
| | 037 | 3.64 | 8 | 0.7 |
| | 040 | 3.93 | 10 | 0.7 |
| | 042 | 4.13 | 10 | 0.7 |
| | 050 | 4.93 | 11 | 0.7 |
| | 058 | 5.73 | 12 | 0.7 |
| | 060 | 5.93 | 12.7 | 0.9 |
| | 064 | 6.32 | 13.5 | 0.9 |
| | 074 | 7.31 | 15 | 0.9 |
| Type 2 2種 | 080 | 7.91 | 16.5 | 1 |
| | 008 | 0.8 | 2 | 0.2 |
| | 012 | 1.2 | 3 | 0.3 |
| | 015 | 1.5 | 4 | 0.4 |
| | 020 | 2 | 5 | 0.4 |
| | 025 | 2.5 | 6 | 0.4 |
| | 030 | 3 | 7 | 0.6 |
| | 040 | 4 | 9 | 0.6 |
| | 050 | 5 | 11 | 0.6 |
| | 060 | 6 | 12 | 0.8 |
| | 070 | 7 | 14 | 0.8 |
| | 080 | 8 | 16 | 0.8 |
| | 090 | 9 | 18 | 0.8 |
| | 100 | 10 | 20 | 1 |

5-2. Grip Rings
グリップ止め輪

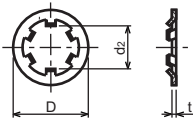


| Type No. 類別番号 | Type 類別 |
|------------------|----------------------|
| XD2-210 | Grip ring グリップ止め輪 |

Table 5 表5

| Nominal designation 呼び | d ₃ (mm) | t (mm) | b (mm) | a (mm) | d ₀ (mm) |
|---------------------------|---------------------|--------|--------|--------|---------------------|
| 020 | 1.9 | 0.5 | 1 | 1.8 | 0.8 |
| 025 | 2.35 | 0.5 | 1.2 | 1.9 | 0.9 |
| 030 | 2.85 | 0.6 | 1.4 | 1.9 | 0.9 |
| 035 | 3.3 | 0.6 | 1.6 | 2 | 0.9 |
| 040 | 3.8 | 0.8 | 1.8 | 2.8 | 1.2 |
| 045 | 4.25 | 0.8 | 2 | 2.9 | 1.3 |
| 050 | 4.75 | 0.8 | 2.2 | 2.9 | 1.3 |
| 060 | 5.7 | 1 | 2.4 | 3.1 | 1.4 |
| 070 | 6.7 | 1 | 2.7 | 3.3 | 1.4 |
| 080 | 7.7 | 1 | 3 | 3.5 | 1.4 |
| 090 | 8.65 | 1.2 | 3.3 | 4.7 | 1.5 |
| 100 | 9.65 | 1.2 | 3.5 | 4.7 | 2 |

5-3. Toothed Retaining Rings
歯付き形止め輪



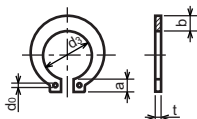
| Type No. 類別番号 | Type 類別 |
|------------------|-----------------------------------|
| XD2-230 | Toothed retaining ring 歯付き形止め輪 |

Table 5 表5

| Nominal designation 呼び | d _z (mm) | D (mm) | t (mm) | No of teeth 歯数 |
|---------------------------|---------------------|--------|--------|-------------------|
| 015 | 1.4 | 5.2 | 0.25 | 3 |
| 020 | 1.9 | 6 | 0.25 | 3 |
| 024 | 2.3 | 6.4 | 0.25 | 3 |
| 030 | 2.8 | 8 | 0.25 | 4 |
| 040 | 3.8 | 9 | 0.25 | 4 |
| 050 | 4.8 | 10 | 0.25 | 5 |
| 060 | 5.8 | 11 | 0.25 | 5 |
| 080 | 7.8 | 13 | 0.25 | 5 |
| 100 | 9.8 | 15.4 | 0.25 | 6 |

5-4. Retaining Rings - C Type

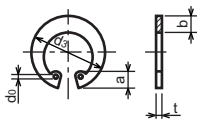
C形止め輪



| Type No. 類別番号 | Type 類別 |
|------------------|---|
| XD2-310 | Retaining ring - C type for shaft C形止め輪 軸用 |

Table 5 表5

| Nominal designation 呼び | d ₃ (mm) | t (mm) | b (mm) | a (mm) | d ₀ (mm) |
|---------------------------|---------------------|--------|--------|--------|---------------------|
| 010 | 9.3 | 1 | 1.6 | 3 | 1.2 |
| 012 | 11.1 | 1 | 1.8 | 3.2 | 1.5 |
| 014 | 12.9 | 1 | 2 | 3.4 | 1.7 |
| 015 | 13.8 | 1 | 2.1 | 3.5 | 1.7 |
| 016 | 14.7 | 1 | 2.2 | 3.6 | 1.7 |
| 017 | 15.7 | 1 | 2.2 | 3.7 | 1.7 |
| 018 | 16.5 | 1.2 | 2.6 | 3.8 | 1.7 |
| 020 | 18.5 | 1.2 | 2.7 | 3.9 | 2 |
| 022 | 20.5 | 1.2 | 2.7 | 4.1 | 2 |
| 025 | 23.2 | 1.2 | 3.1 | 4.3 | 2 |
| 028 | 25.9 | 1.5 | 3.1 | 4.6 | 2 |
| 030 | 27.9 | 1.5 | 3.5 | 4.8 | 2 |
| 032 | 29.6 | 1.5 | 3.5 | 5 | 2.5 |
| 035 | 32.2 | 1.5 | 4 | 5.4 | 2.5 |



| Type No. 類別番号 | Type 類別 |
|------------------|--|
| XD2-320 | Retaining ring - C type for hole C形止め輪 穴用 |

Table 5 表5

| Nominal designation 呼び | d ₃ (mm) | t (mm) | b (mm) | a (mm) | d ₀ (mm) |
|---------------------------|---------------------|--------|--------|--------|---------------------|
| 010 | 10.7 | 1 | 1.8 | 3.1 | 1.2 |
| 011 | 11.8 | 1 | 1.8 | 3.2 | 1.2 |
| 012 | 13 | 1 | 1.8 | 3.3 | 1.5 |
| 014 | 15.1 | 1 | 2 | 3.6 | 1.7 |
| 016 | 17.3 | 1 | 2 | 3.7 | 1.7 |
| 018 | 19.5 | 1 | 2.5 | 4 | 1.7 |
| 019 | 20.5 | 1 | 2.5 | 4 | 2 |
| 020 | 21.5 | 1 | 2.5 | 4 | 2 |
| 022 | 23.5 | 1 | 2.5 | 4.1 | 2 |
| 025 | 26.9 | 1.2 | 3 | 4.4 | 2 |
| 028 | 30.1 | 1.2 | 3 | 4.6 | 2 |
| 030 | 32.1 | 1.2 | 3 | 4.7 | 2 |
| 032 | 34.4 | 1.2 | 3.5 | 5.2 | 2.5 |
| 035 | 37.8 | 1.5 | 3.5 | 5.2 | 2.5 |
| 037 | 39.8 | 1.5 | 3.5 | 5.2 | 2.5 |
| 040 | 43.5 | 1.8 | 4 | 5.7 | 2.5 |
| 042 | 45.5 | 1.8 | 4 | 5.8 | 2.5 |
| 045 | 48.5 | 1.8 | 4.5 | 5.9 | 2.5 |
| 047 | 50.5 | 1.8 | 4.5 | 6.1 | 2.5 |
| 050 | 54.2 | 2 | 4.5 | 6.5 | 2.5 |
| 052 | 56.2 | 2 | 5.1 | 6.5 | 2.5 |
| 055 | 59.2 | 2 | 5.1 | 6.5 | 2.5 |
| 060 | 64.2 | 2 | 5.1 | 6.8 | 2.5 |
| 062 | 66.2 | 2 | 5.5 | 6.9 | 2.5 |
| 068 | 72.5 | 2.5 | 6 | 7.4 | 2.5 |
| 072 | 76.5 | 2.5 | 6.6 | 7.4 | 2.5 |
| 075 | 79.5 | 2.5 | 6.6 | 7.8 | 2.5 |
| 080 | 85.5 | 2.5 | 7 | 8 | 2.5 |
| 085 | 90.5 | 3 | 7 | 8 | 3 |
| 090 | 95.5 | 3 | 7.6 | 8.3 | 3 |
| 095 | 100.5 | 3 | 8 | 8.5 | 3 |

Prepared by
OIP Business Support Group
CANON INC.

Canon